

Historic, Archive Document

Do not assume content reflects current scientific knowledge, policies, or practices.

62.31

LIBRARY
RECEIVED
★
U. S. Department of Agriculture

HILLENMEYER *Nurseries*



*In the Heart of the
Blue Grass Country*

LEXINGTON • KENTUCKY

FALL 1946 • SPRING 1947

Our 105th Year



Francis Xavier Hillenmeyer
Founder

Your Assurance of Satisfaction



OF FAIR DEALINGS

Since 1841

Some Businesses Grow Old with Years ~ Others Continue Young and Vigorous

HILLENMEYER NURSERIES, Lexington, Ky.

NURSEYRYMEN



HORTICULTURISTS



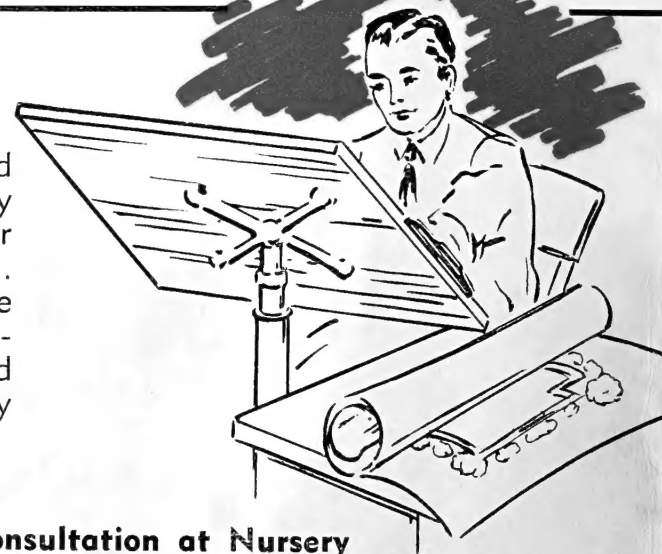
LANDSCAPE ARCHITECTS

NO JOB OR ORDER TOO SMALL

Let Us Help You Plan

A WELL PLANNED and planted home is the cherished hope of every American family. Pleasing and satisfactory results are only attained through a careful study of your grounds, the selection and planting of the proper material. Hundreds of Kentucky homes, both large and small, have been successfully landscaped from plans and service rendered by our firm. Because of our knowledge, experience and training we are in a position to serve you well. Satisfactory results are assured at surprisingly low cost.

LET US HELP YOU



No Charge For Consultation at Nursery

There are no charges for consultation or suggestions at the nursery. If you will bring your plans, measurements, pictures, etc., we will be pleased to give you valuable assistance.

Making of Plans

As the time required to make a plan depends on so many things, it is impractical to give an estimate unless we have sufficient information. Where simple plans are required locally we make no charge when we furnish the nursery stock. In cities close by we make no charge for a plan if the resultant business justifies the trip. This matter can be discussed when on the grounds.

Where consultation or advice only is requested out of the city we will be glad to furnish this at a nominal fee, based on distance and time required.

We make many plans for customers who cannot come to the nursery or who live too far distant to justify a personal call. If you will send the dimensions of your property, location of house (with blue prints if possible), the direction it faces, trees, drives, walks and a Kodak picture we can usually make a very satisfactory plan. For detail plans through the mail we ask a deposit of \$5.00 which will be deducted when at least \$50.00 worth of stock is purchased. For simple suggestions through correspondence there are no charges and we are always ready and pleased to render such service.

When to Plant

Shade Trees, Shrubs, and Fruit Trees, when handled with bare roots, are best planted in the fall after we have had sufficient frost to kill the foliage or in the spring when dormant.

Evergreens, Shade Trees and Shrubs, when dug Balled and Burlapped (B&B), may be planted almost any time during the year if you can give them proper attention such as watering, cultivation and mulching.

Asparagus and Small Fruits may be planted in the fall if there is sufficient moisture and your soil is in good condition, otherwise plant in early spring.



Liberal Payment Plan

While we sell for cash, credit will be extended to responsible customers with satisfactory references. For those who want to buy or plant and cannot pay all at one time we will be glad to arrange a deferred payment plan. Tell us about how much you want to pay, how much you want to pay at a time and no doubt suitable arrangements can be made.

No Agents

We sell direct and our contacts are usually made by appointments. Refuse to buy from anyone who represents himself or herself as our agents. **WE HAVE NO AGENTS.** When dealing direct you get full benefit of our facilities.





Hillenmeyer's Beautiful Evergreens

"The Green-Robed Senators of Mighty Woods"—Keats

FOR beauty both winter and summer, the Evergreen has no equal. Succeeding in almost any soil, with their range of color, form and habit of growth they find a place in almost any landscape. Our trees are all several times transplanted, dug with a ball of earth, and the finest to be had.

Abies - Fir

"I remember, I remember
The Fir trees dark and high;
I used to think their slender tops
Were close against the sky."—HOOD

ABIES concolor (*Silver or White Fir*). The best of all the Firs. A native of the Rockies and requires a well-drained location. Has a deep root system and will withstand droughts and heat better than most Evergreens. The color ranges from a blue-green to a distinct blue. Not quite as showy as the Blue Spruce but a much better tree for Southern conditions. Sometimes irregular in growth when young but develops into a compact conical specimen. The needles are arranged around the branches. We consider it one of the outstanding evergreens in cultivation for either a specimen or grouping. Each

2 1/2 to 3 ft.	\$ 5.00
3 1/2 to 4 ft.	6.00
4 to 5 ft.	7.50
8 to 10 ft. Specimen	20.00
10 to 12 ft. Specimen	30.00
12 to 14 ft. Specimen	40.00

A. nordmanniana (*Nordmann Fir*). A beautiful, stately tree with horizontal branches; deep green lustrous needles above, silvery beneath. Each

2 1/2 to 3 ft.	\$ 5.00
3 to 3 1/2 ft.	6.00
3 1/2 to 4 ft.	7.50
4 to 5 ft.	10.00

Chamaecyparis - False Cypress

A group of beautiful Evergreens including some of the most unique interesting trees in cultivation. Valuable in garden or foundation planting. Prefers a moist acid soil but will grow almost anywhere when not too dry or alkaline.

CHAMAECYPARIS obtusa. A rather irregular growing tree of upright habit and horizontal branches. Foliage bright green and silvery beneath. Makes a fine specimen. Each

2 to 3 ft.	\$4.00
3 to 4 ft.	5.00

C. pisifera (*Savara Cypress*). The foliage somewhat resembles that of the Arbor-vitae except that the tree is more graceful. Light green, silvery beneath, and of erect growth. Can be used in foundation planting or as a specimen. Each

C. pisifera aurea (*Golden Savara Cypress*). Has all the characteristics of the preceding except that the foliage is of a lighter green and is bordered with yellow in early spring.

C. pisifera plumosa (*Plumed Cypress*). Feathery green foliage, broad, symmetrical and dense. Stands shearing well.

C. pisifera squarrosa veitchi (*Veitch's Mossy Cypress*). A distinct form with short pale blue-green needles, slightly bent toward the branchlets. The appearance is a soft, mosslike tree of irregular habit and of picturesque beauty.

Prices of the foregoing 4 Chamaecyparis:

	Each
2 1/2 to 3 ft.	\$4.00
3 to 3 1/2 ft.	4.50
3 1/2 to 4 ft.	5.00
4 1/2 to 5 ft.	6.00

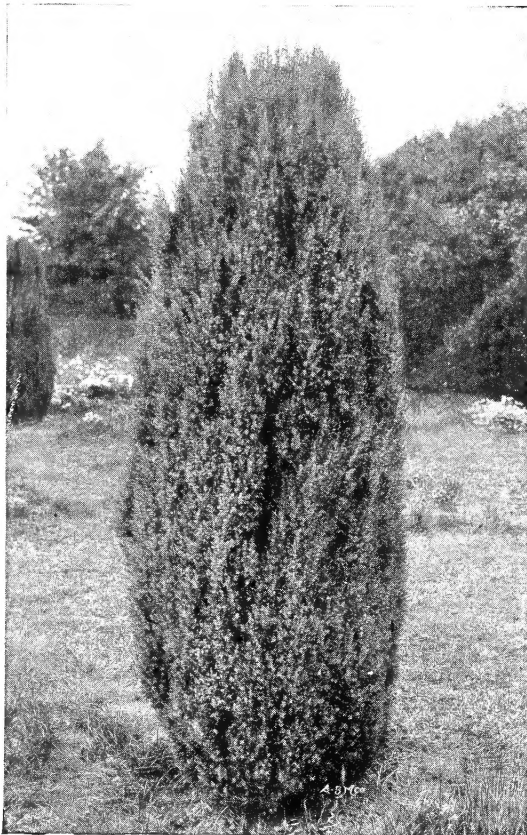
C. pisifera filifera (*Thread-Branched Cypress*). One of the best dwarf Evergreens. Unusual foliage, drooping and graceful, resembling cords of green. Compact; fine in color both winter and summer. Each

2 1/2 to 3 ft.	\$4.00
3 to 3 1/2 ft.	5.00





Juniperus - Juniper



Juniperus Communis Hibernica

JUNIPERUS communis ashfordi (*Ashford's Juniper*).

Columnar with silvery green foliage. Much like Irish Juniper except not quite so compact or pointed and larger in diameter. Holds color well in winter. Each

2 1/2 to 3 ft.	\$3.00
3 to 3 1/2 ft.	4.00
3 1/2 to 4 ft.	5.00

J. communis depressa plumosa (*Purple Spreading Juniper*).

A very low spreading variety which lies close to the ground. In summer it has a silvery reflex to the otherwise gray-green foliage. In fall and winter assumes a purplish cast that is unusual in Evergreens. Fine for rockeries or low planting. Each

18 to 24 in.	\$3.50
2 to 2 1/2 ft.	4.00
2 1/2 to 3 ft.	5.00
3 to 3 1/2 ft.	6.00

J. communis hibernica (*Irish Juniper*).

A distinct, slender, columnar form with glaucous green foliage. The numerous upright branches are closely adpressed. Its formality is invaluable where a narrow plant must or should be used. Needs no shearing. Each

2 to 2 1/2 ft.	\$2.50
2 1/2 to 3 ft.	3.00
3 to 3 1/2 ft.	3.50
3 1/2 to 4 ft.	4.00
4 to 5 ft.	5.00

J. excelsa stricta (*Spiny Greek Juniper*).

An unusually attractive, dwarf, pyramidal Evergreen with compact, bluish green foliage. A valuable small, compact plant which can be used on either side of steps, walks or planted in urns. Each

15 to 18 in.	\$2.50
18 to 24 in.	3.00
2 to 2 1/2 ft.	3.50
2 1/2 to 3 ft.	4.00
3 to 3 1/2 ft.	5.00
3 1/2 to 4 ft.	6.00

J. chinensis compacta. A low, compact, spreading form of Juniper pfitzeriana, which does not grow so large. Can be used in more restricted areas.

18 to 24 in.	Each \$3.50
2 to 2 1/2 ft.	4.00
2 1/2 to 3 ft.	5.00
3 to 3 1/2 ft.	6.00

J. chinensis (pfitzeriana) (*Pfitzer Juniper*). The most popular of all the spreading Junipers. The branches grow horizontally with slightly drooping terminals. The foliage is a bright gray-green which is retained throughout the winter. Desirable because of its form, hardiness, color and ability to grow in almost any location.

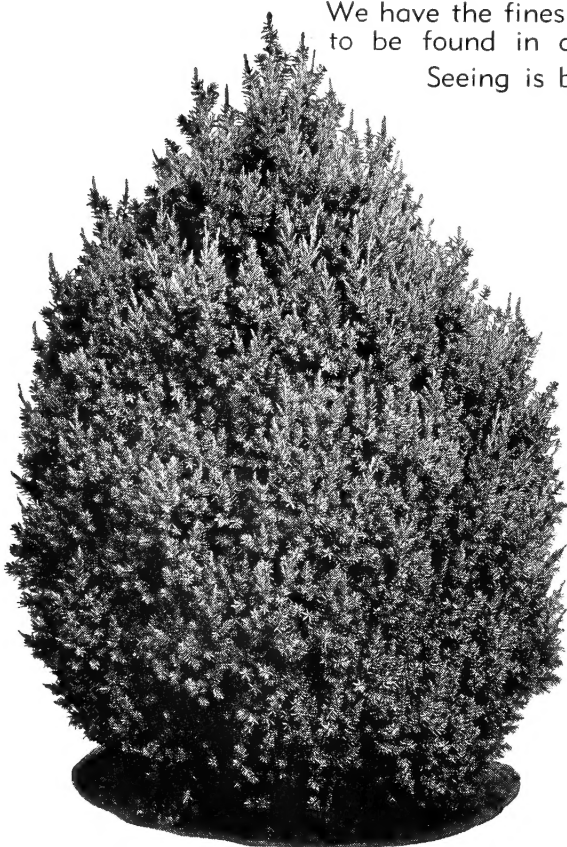
18 to 24 in.	Each \$3.00
2 to 2 1/2 ft.	4.00
2 1/2 to 3 ft.	5.00
3 to 3 1/2 ft.	6.00
3 1/2 to 4 ft.	7.00
4 to 5 ft.	8.00

Staked Juniper Pfitzeriana. Frequently the spreading Pfitzer Juniper cannot be used where a semi-erect plant is needed. Therefore, we have "staked" a quantity of selected trees, training them to a single stem, allowing side branches to develop. They then make an attractive, vigorous plant for restricted areas.

2 to 2 1/2 ft.	Each \$3.50
2 1/2 to 3 ft.	4.00
3 to 3 1/2 ft.	5.00
3 1/2 to 4 ft.	6.00
4 to 4 1/2 ft.	7.00

Experts Tell Us

We have the finest Evergreens to be found in any nursery. Seeing is believing.



Juniperus Excelsa Stricta

J. virginiana canaerti (*Canaert Juniper*). A fine, rather compact, pyramidal variety with tufted dark green foliage which is retained throughout the winter. Can easily be kept in bounds by slight pruning. Frequently has attractive silvery blue berries. Valuable for foundation plantings.

J. virginiana keteleeri (*Keteleer's Cedar*). A fairly compact, pyramidal tree, well proportioned as to height and spread. Its large, slate-colored berries form a distinct contrast against the lighter, "fleshy" green foliage. Excellent for foundation or specimen. Will grow well in almost any soil.

J. virginiana hillii (*Hill's Dundee Juniper*). A pyramidal, compact growing Evergreen of much merit. Bluish green foliage in spring, changing to plumlike color in early autumn. Stands shearing well. Excellent for formal planting.

J. virginiana burki (*Burk's Silver Juniper*). A silvery blue, compact, upright form of merit. Stands shearing well and is much prized for foundation planting.

J. virginiana glauca (*Blue Juniper*). A rather loose growing variety which can and is usually kept formal by pruning. Its attractive blue-green foliage makes it stand out in any planting.

Prices of above 5 Junipers:

2 1/2 to 3 ft.	Each \$3.50
3 to 3 1/2 ft.	4.00
3 1/2 to 4 ft.	4.50
4 to 4 1/2 ft.	5.50
4 1/2 to 5 ft.	6.50
5 1/2 to 6 ft.	7.50

J. virginiana globosa. A compact, globe form of rich green color, which can be kept within bounds with little pruning. Desirable. Each

2 to 2 1/2 ft.	\$4.00
2 1/2 to 3 ft.	5.00
3 to 3 1/2 ft.	6.00



Juniperus Pfitzeriana



Pinus - Pine

*Lord, let me be a Pine that lifts its hands up high
To grasp the subtle secrets of the sky.—Edna DeRan*

This grand family of Evergreens stands at the top of economic and social importance. It is symbolical of strength, endurance and perseverance. It has been forever in the mind of man as evidenced by its place in literature, art and commerce. There are many forms, but the large, rugged, cone-bearing varieties are the ones which are of such importance. They do not like city conditions of soot, smoke and dust but are at home in the great outdoors. When small they are more or less compact and shapely, but as they develop, age brings a charm and beauty which few trees possess. They will grow in almost any well-drained soil. Plant Pines for permanency and beauty.

PINUS griffithi (*Himalayan Pine*). A beautiful bluish green variety with spreading branches and pendulous foliage. Looks like a much refined White Pine. Makes a wonderful specimen for the lawn.

	Each		Each
3 to 4 ft.	\$5.00	5 to 6 ft.	\$7.50
4 to 5 ft.	6.00	6 to 7 ft.	9.00

P. montana mughus (*Mugho Pine*). An excellent dwarf Pine, globe-shaped with erect branches. It is especially attractive in the spring, when the new growth, which looks like miniature candles, completely covers the tree.

	Each		Each
15 to 18 in. wide	\$3.50	2 to 2½ ft. wide	\$5.00
18 to 24 in. wide	4.00	2½ to 3 ft. wide	6.00

P. resinosa (*Red or Norway Pine*). A valuable large, quick growing tree, useful as a specimen or for screening. Needles 4 to 6 inches, glossy green. Hardy and holds a good color throughout the winter.

P. strobus (*White Pine*). One of our most beautiful native Evergreens, growing into a tall, majestic specimen. Needles 3 to 4 inches long, soft and flexible. Grows well on both dry and moist soil. It is a beautiful object planted alone and we think it one of the most desirable of our ornamental evergreens.

P. sylvestris (*Scotch Pine*). One of the best. Very quick to re-establish itself, vigorous, and has ability to grow luxuriantly on high and dry ground. Its needles are shorter than either White or Red Pine, its habit more compact, the foliage dark green.

Prices of above 3 Pines:	Each		Each
2 to 3 ft.	\$3.00	5 to 6 ft.	\$ 6.00
3 to 4 ft.	4.00	6 to 7 ft.	8.00
4 to 5 ft.	5.00	7 to 8 ft.	10.00

Ask for Prices on Specimen White Pine.

Picea - Spruce

PICEA glauca (*White Spruce*). A very hardy Evergreen with light green foliage and similar in many respects to the Norway Spruce, except that it is decidedly slower growing in our locality and can be used where a medium sized or more compact tree is wanted.

	Each		Each
2½ to 3 ft. ..	\$3.50	3½ to 4 ft. ..	\$4.50
3 to 3½ ft. ..	4.00	4 to 4½ ft. ..	5.00

P. abies (*Norway Spruce*). The most popular of all the Spruce. Tall, pyramidal, of rapid growth, with horizontal branches and dark green foliage. A very graceful tree, extensively planted and of great adaptability. Valuable as a specimen, for grouping or as windbreaks.

	Each		Each
2 to 2½ ft. ..	\$2.50	4 to 4½ ft. ..	\$4.50
2½ to 3 ft. ..	3.00	4½ to 5 ft. ..	5.00
3 to 3½ ft. ..	3.50	5 to 6 ft. ..	6.00
3½ to 4 ft. ..	4.00		

Large specimens priced on request.

P. orientalis (*Oriental Spruce*). Slow growing, compact, with dark rich green foliage. Excellent for foundation planting.

	Each		Each
2 to 2½ ft. ..	\$4.00	3 to 3½ ft. ..	\$6.00
2½ to 3 ft. ..	5.00	3½ to 4 ft. ..	7.50

P. pungens glauca (*Blue Colorado Spruce*). The color of Colorado Spruce as it grows naturally may vary from dark green to light blue. It is a blue form of this popular species and they are sometimes called "Shiners." Not as blue as Koster's but the closest thing to it.

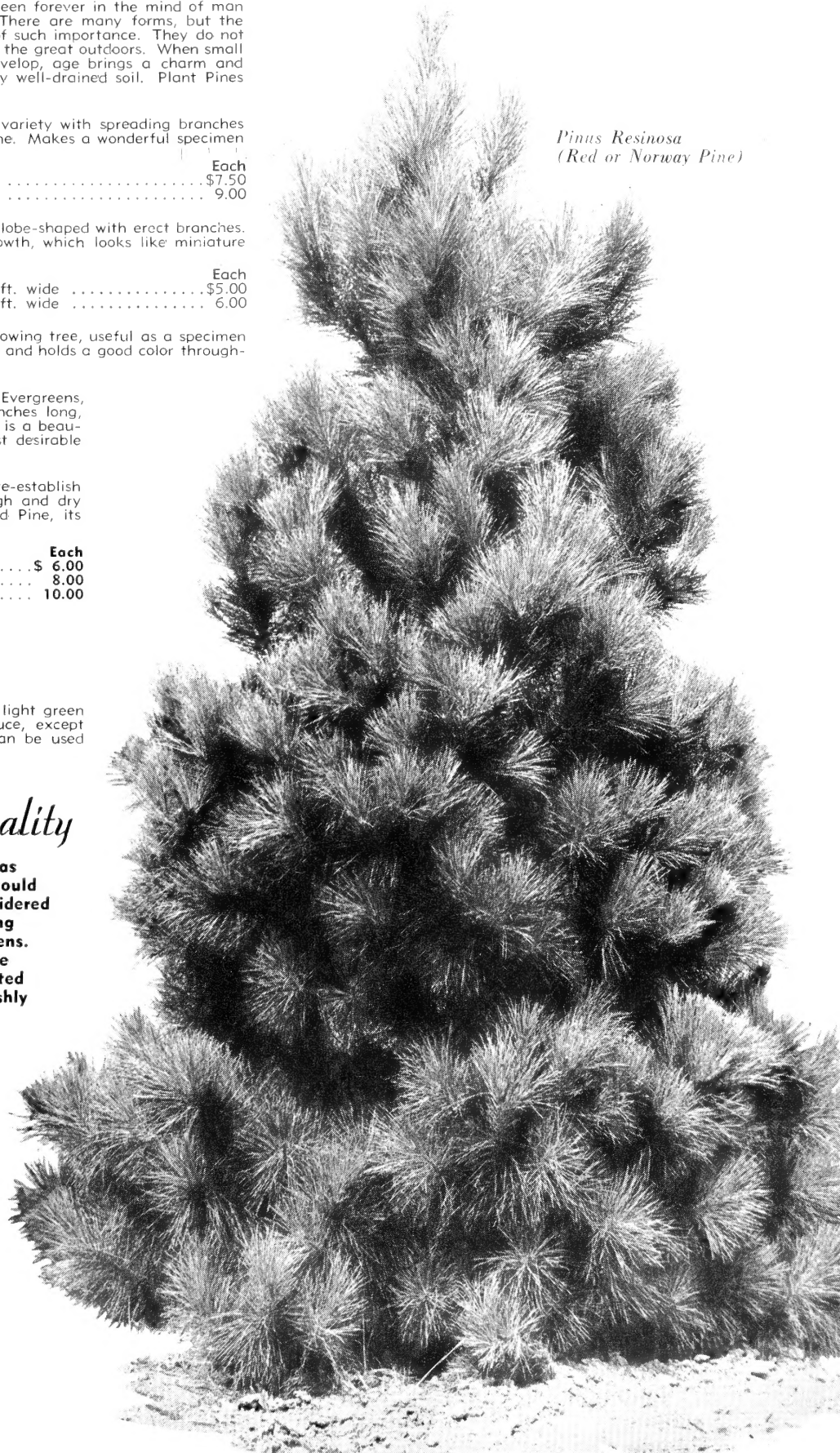
	Each		Each
2½ to 3 ft. ..	\$5.00	3½ to 4 ft. ..	\$ 7.50
3 to 3½ ft. ..	6.00	4 to 5 ft. ..	10.00

Pseudotsuga - Fir

PSEUDOTSUGA douglasii (*Douglas Fir*). Soft green foliage, resembling the Hemlock or Spruce, but of a blue cast. Makes a compact tree, and can be used as a specimen or in group plantings.

	Each		Each
3 to 4 ft. ..	\$4.00	5 to 6 ft. ..	\$6.00
4 to 5 ft. ..	5.00	6 to 7 ft. ..	8.00

*Pinus Resinosa
(Red or Norway Pine)*



Quality
as well as price should be considered in buying Evergreens. Ours are acclimated and freshly dug.

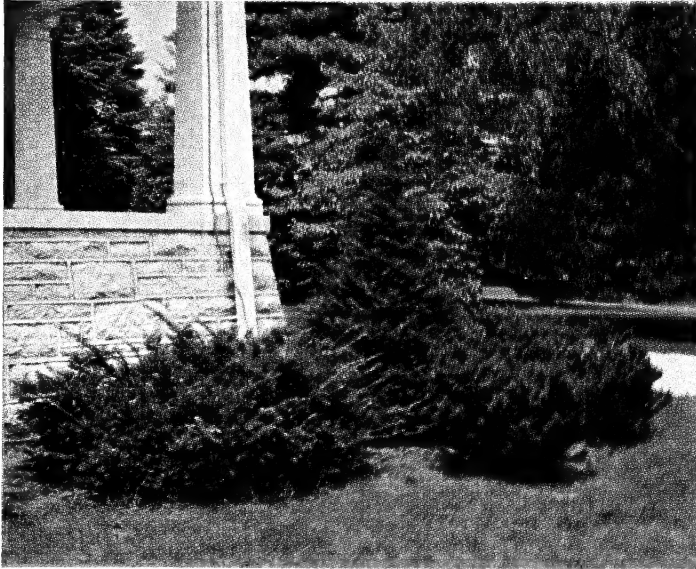


Taxus - YEW

The Disease-Proof Evergreen

EVERGREEN QUALITY

Every Evergreen has been transplanted to increase the root-system, and sheared to make it compact. Height does not indicate compactness and shapeliness, nor does price indicate VALUE—seeing is believing!



A Group of Hillenmeyer Taxus

Does Well in Shade

TAXUS cuspidata (Spreading Yew). Low, spreading type which is usually broader than high. Can be pruned into compact form to look like Boxwood or made into a hedge if desired. Withstands heat and cold and is perfectly hardy in our climate. Can be grown in sun or shade. One of the finest spreading Evergreens.

Each	
18 to 24 in.	\$ 5.00
2 to 2½ ft.	6.00
2½ to 3 ft.	7.00
3 to 3½ ft.	8.00
3½ to 4 ft.	10.00
4 to 4½ ft.	12.00

T. cuspidata browni (Brown's Yew). A selected seedling of Taxus cuspidata. Normally grows about 1½ times in height to spread. Needles short, compact and of good deep, rich green. Excellent for hedge or specimen. Can easily be pruned into globe form.

Each	
18 to 24 in.	\$5.00
2 to 2½ ft.	6.00

T. cuspidata capitata (Upright Yew). An upright, cone-shaped form of medium growth. Desirable for foundation planting or hedge. The most desirable variety of this type.

	Each
2½ to 3 ft.	\$ 7.00
3 to 3½ ft.	8.00
3½ to 4 ft.	10.00
4 to 4½ ft.	12.50
4½ to 5 ft.	15.00
5 to 5½ ft.	17.50
5½ to 6 ft.	20.00
6 to 7 ft.	25.00

T. media hatfieldi (Hatfield Yew). A dwarf, dense, columnar form with upright branches and dark green foliage.

Each	
15 to 18 in.	\$5.00
18 to 24 in.	6.00

T. media hicksi (Hicks' Yew). Decidedly upright, forming a column of deepest green foliage. Slow growing and very compact.

Each	
2½ to 3 ft.	\$ 6.00
3 to 3½ ft.	7.50
3½ to 4 ft.	10.00
4 to 4½ ft.	12.50

T. repandens (Spreading English Yew). A low, spreading form from England which prefers a northern or eastern exposure. Dark, rich green.

Each	
18 to 24 in.	\$ 6.00
2 to 2½ ft.	7.00
2½ to 3 ft.	8.00
3 to 3½ ft.	10.00

T. cuspidata nana (Dwarf Yew). A low picturesque form of much merit. Can be used as a specimen or hedge.

Each	
12 to 18 in.	\$5.00
18 to 24 in.	6.00
2 to 2½ ft.	7.50

GLOBE TAXUS

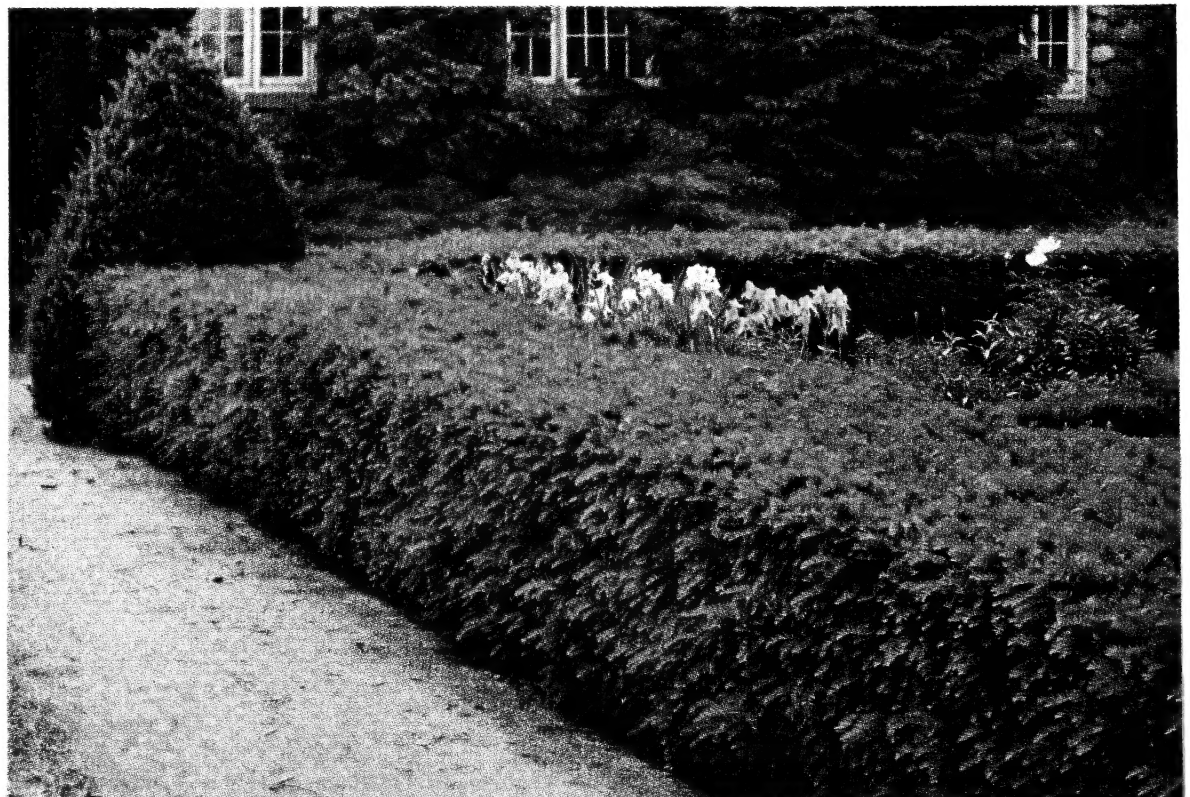
This is a compact form of Taxus, made such by pruning, and is the best substitute for Boxwood. Hardy.

Each	
18 to 24 in.	\$ 6.00
2 to 2½ ft.	7.00
2½ to 3 ft.	8.00
3 to 3½ ft.	10.00
3½ to 4 ft.	15.00
4 to 4½ ft.	20.00
4½ to 5 ft.	25.00

NO family of Evergreens has gained such popularity in recent years as the Yew. Their dark, rich color, hardiness, variety of form, ease to transplant, adaptability, freedom from disease or insects has merited this position. They all do well in the shade. We have one of the largest stocks in the South, and are using it in quantities for foundation planting and to replace Boxwood, which so often freeze.

Large Trees

In addition to the stock listed we have many large, fine specimens which will give immediate effect, at moderate cost. Why wait a lifetime for results? Write or consult us.



Hedge Planting of Taxus Cuspidata



Tsuga - HEMLOCK

The All-Purpose Evergreen

- HEDGE
- SCREEN
- SPECIMEN
- FOUNDATION

THIS grand tree has more uses than any Evergreen we sell. The fact that it grows rather rapidly, can be pruned to almost any shape desired, will tolerate both sun and shade, good color winter and summer, and is graceful, has made it a standout.

While Hemlocks prefer a good, rich, moist soil, they will grow almost anywhere. Keep well watered immediately after transplanting.

We have one of the largest and finest stocks in the entire country. We have a saying, "When in doubt plant a Hemlock."

Hothouse
Cut Flowers
Fade and
Die, but
Evergreens
Bring Beauty
to Your
Home the
Year 'Round

FOUNDATION PLANTING

Few trees are better adapted to foundation work than the Hemlock. While it will sometimes grow rather large if not restrained by pruning, it still can be kept within bounds very easily. They can be shaped into columnar, pyramidal or globular forms. Their graceful soft foliage is usually of good color and the trees will grow almost anywhere both in shade or sun if given a reasonable amount of moisture.

SPECIMEN

As a specimen many consider Hemlock the handsomest Evergreen. Certainly there are few which preserve for a long time the grace, dignity, and beauty of the entire tree from base to tip as the Hemlock. Small or large they are beautiful. If permitted to grow with little or no pruning the pendulous twigs drooping from the rather horizontal branches give a form which is dignified yet graceful. Yes, as a specimen we recommend a Hemlock.

HEDGE

While a great many plants have been used from time to time in making hedges, there is none for all-round purposes which is superior to the Hemlock. Its rich green color in winter or summer, softness of texture, compactness, hardiness, ability to thrive in shade or open exposure, freedom from disease are some of its outstanding qualities. Our trees have been several times transplanted, and every one is a specimen. Can furnish in heights of from 2 to 10 feet. Should be planted from 3 feet apart or more, depending on size.

SCREEN

While Hemlocks are usually not so rapid in growth as the Pines and Spruces, they will soon develop into large, compact trees. If given good soil and ample moisture, a screen of Hemlock will soon surprise and delight the most fastidious. There is nothing more beautiful or satisfactory than a planting of Hemlock, be it a single row, large masses, a small cluster or even a single tree.

Tsuga—Hemlock

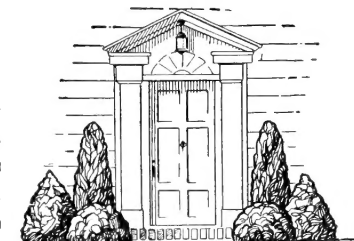


Tsuga - Hemlock			
	Each		Each
2 to 2½ ft.	\$ 3.50	7 to 8 ft.	\$12.00
2½ to 3 ft.	4.00	8 to 9 ft.	14.00
3 to 3½ ft.	4.50	9 to 10 ft.	17.00
3½ to 4 ft.	5.00	10 to 11 ft.	20.00
4 to 4½ ft.	6.00	11 to 12 ft.	25.00
4½ to 5 ft.	7.00	12 to 14 ft.	30.00
5 to 6 ft.	8.00	14 to 16 ft.	40.00
6 to 7 ft.	10.00	16 to 18 ft.	50.00



Thuja - ARBOR-VITAE

One of the most popular and extensively planted Evergreens. The branches are flat or grow in layers. To many, they are known as "pressed Cedars." While they prefer a moist soil or ample water they will grow almost anywhere. They vary in color from green to yellow and in shape from globe to pyramidal.



Suggested Doorway Planting



Golden Arbor-Vitae

THUJA occidentalis (Eastern Arbor-Vitae). One of the best. Light green in early spring and turning dark rich green during the summer. Pyramidal, compact, vigorous and can be used in foundation plantings, hedges or as specimens.

	Each
2 to 2½ ft.	\$2.50
2½ to 3 ft.	3.00
3 to 3½ ft.	3.50
3½ to 4 ft.	4.00
4 to 5 ft.	5.00
5 to 6 ft.	6.00

T. orientalis aurea nana (Berckmann's Golden Arbor-Vitae). A beautiful, dwarf, compact variety of golden color. Valuable for urns, small gardens, cemetery lots or brightening up foundation plantings. Grows about twice in height to width.

	Each
15 to 18 in.	\$3.00
18 to 24 in.	4.00
2 to 2½ ft.	5.00
2½ to 3 ft.	6.00
3 to 3½ ft.	7.00
3½ to 4 ft.	8.00

T. occidentalis globosa (Globe Arbor-Vitae). Usually develops into a perfect, globe-shaped plant, the spread equaling the height. The foliage is light green and attractive. They are largely used for front-line planting, in urns, vases, on either side of a step and in formal work where symmetry is desired.

	Each
12 to 15 in.	\$2.00
15 to 18 in.	2.50
18 to 24 in.	3.00
2 to 2½ ft.	4.00
2½ to 3 ft.	5.00

T. occidentalis pyramidalis (Pyramidal Arbor-Vitae). Strikingly attractive, narrow at its base, and retaining its shape without shearing. The color is deep, rich green. Like all Arbor-Vitae is easy to transplant. For corners, in front of pillars, background of group plantings and in urns, no dwarf Evergreen is quite so popular.

	Each
2 to 2½ ft.	\$2.50
2½ to 3 ft.	3.00
3 to 3½ ft.	3.50
3½ to 4 ft.	4.50
4 to 5 ft.	5.00
5 to 6 ft.	6.00



Globe Arbor-Vitae



Pyramidal Arbor-Vitae

Residence of Mr. and Mrs. Leslie Baynham, Barrow Road
Hardy Globe Taxus were used in lieu of Boxwood when planting this lovely home with Williamsburg features.





Broadleaf Evergreens

NOT many home owners know what this title means! Think of the Hollies and the Laurels as examples. We should sorely miss the glossy green foliage of the Broad-leaved Evergreens in early spring, the deeper colors of summer, and the cheerful contrast they give to dull winter scenes. They may be used around the house foundations, planted with tall evergreens or in the shrub border. You will be delighted with their beauty all the year—and you will like the plants we supply.

B&B means the roots are in a ball of earth wrapped in burlap—the safest and best way of moving all Evergreens.



Viburnum Rhytidophyllum (See page 3)

Berberis - Barberry

BERBERIS julianae (*Winter-green Barberry*). A beautiful, artistic plant with broad, glossy, rather spiny leaves which are retained throughout the winter.

Each	Each
15 to 18 in., B&B\$2.00	2 to 2½ ft., B&B\$3.00
18 to 24 in., B&B 2.50	2½ to 3 ft., B&B 4.00

B. mentorensis (*Mentor Barberry*). A patented, semi-evergreen Barberry which is being much used as a specimen or hedge. Upright in growth, vigorous and hardy. The leaves usually color in the fall but seldom remain on all winter.

SPECIMEN	
Each	Each
18 to 24 in., B&B\$2.00	2½ to 3 ft., B&B\$3.00
2 to 2½ ft., B&B 2.50	

HEDGE			
	3	12	
15 to 18 in.	\$1.50	\$4.50	18 to 24 in.
			3
			12
			\$2.00
			\$6.00

Ilex - Holly

ILEX crenata bullata (*Convex Leaf Holly*). A compact spreading evergreen shrub with arched branches and small convex leaves. Excellent for foundation planting or may be used as a hedge.

Each	Each
15 to 18 in., B&B\$2.50	2 to 2½ ft., B&B\$3.50
18 to 24 in., B&B 3.00	2½ to 3 ft., B&B 4.00

I. crenata rotundifolia. A rather dwarf spreading variety of Japanese Holly, with glossy, nearly round leaves. One of the hardiest of the species and excellent for foundation planting or hedge.

Each	Each
15 to 18 in., B&B\$2.50	18 to 24 in., B&B\$3.00

I. glabra (*Yukberry*). A rather loose growing evergreen shrub which will succeed in either sun or shade. Leaves turn a somewhat purple shade in the fall. When planted in mass the shining black berries are most attractive. One of the hardiest varieties.

Each	Each
18 to 24 in., B&B\$2.50	2 to 2½ ft., B&B\$3.00

Abelia - Bush Arbutus

ABELIA grandiflora (*Glossy Abelia*). A desirable, medium growing shrub for foundation planting, filling corners, curves or can be used as a hedge. The small, glossy leaves remain on most of the winter. Small, dainty blush-white blossoms are borne on rather arching branches from May until frost. We like Abelia.

Each	Each
18 to 24 in., B&B\$2.00	2 to 2½ ft., B&B\$2.50

Buxus - Boxwood

Due to the fact that we and so many of our customers have experienced difficulty in carrying Boxwood through severe winters, have discontinued growing them for the present. They are lovely plants, which sometimes grow and do well for a few years but usually are killed or severely damaged, from time to time, by low temperature. We think Taxus so much more satisfactory, with everything taken into consideration, and are offering them with confidence as a substitute. See Globe Taxus (page 4).

Euonymus

EUONYMUS patens (*Kiautschowicus*) (*Spreading Euonymus*). A valuable introduction from China). Leaves medium size, oblong, rich green, which persist throughout the winter. Small white flowers, followed by coral berries similar to our native Bittersweet. A rather spreading shrub which will grow in either sun or shade. One of our most useful broadleaf Evergreens.

Each	Each
15 to 18 in., B&B\$1.50	2 to 2½ ft., B&B\$2.50
18 to 24 in., B&B 2.00	2½ to 3 ft., B&B 3.00

E. fortunei vegetus (*Wintercreeper Euonymus*). While this is usually thought of and used as a slow growing vine it is one of the most desirable low-spreading, broad-leaf Evergreens. The almost round, rich green leaves and irregular growth make it an interesting and most useful shrub. We have grown them as specimen plants.

Each	Each
15 to 18 in., B&B\$2.00	18 to 24 in., B&B\$2.50



Mahonia Aquifolium (See page 8)



ILEX—Continued

I. opaca (American Holly). Our native Holly which is prized so much at Christmas time because of its large glossy leaves and striking red berries. Stands pruning well and can therefore be used as a specimen, in foundation plantings or as a hedge. Some trees bear berries (pistillate, female), while others (staminate, male) do not. It is necessary that you have a male Holly growing close by or one should be planted in every group for pollination. They will grow in partial shade or in the open.

	Non-Berried	Berried
3 to 4 ft., BGB	\$5.00	\$ 7.50
4 to 5 ft., BGB	6.00	9.00
5 to 6 ft., BGB	7.50	10.75

Prunus (Laurel Cherry)

PRUNUS caroliniana (Carolina Laurel Cherry). An attractive evergreen shrub with glossy, oval-like, green leaves and upright branches. Grows to a height of 7 to 9 feet. Very ornamental because of its good color.

	Each
2 to 3 ft., BGB	\$3.00
3 to 4 ft., BGB	4.00
4 to 5 ft., BGB	5.00
5 to 6 ft., BGB	6.00

P. laurocerasus schipkaensis (Schipka Laurel Cherry). Withstands more cold than any of the English Laurel, but will freeze from time to time. Its slick, glossy leaves are most attractive. A beautiful broad-leaf Evergreen.

	Each
2 to 2½ ft., BGB	\$4.00
2½ to 3 ft., BGB	5.00

Mahonia

MAHONIA aquifolium (Oregon Grape). The thick, glossy leaves resemble Holly, but are much larger and far more attractive. Makes a compact bush, and when pruned severely or cut to the ground every few years will become an indescribable mass of green and bronzed foliage. Yellow blossoms in June followed by blue berries. Thrives in shade.

	Each
18 to 24 in., BGB	\$2.00
2 to 2½ ft., BGB	2.50
2½ to 3 ft., BGB	3.00

Mahoberberis

MAHOBERBERIS neuberti (Mahonia Barberry). An interesting hybrid which is a cross between Mahonia aquifolium and Berberis vulgaris. Often sold as Berberis ilicifolia. This medium growing, almost evergreen shrub is hardy, vigorous and free of insects. Leaves toothed or spiny, somewhat resembling a Holly. We think it a most useful and desirable variety.

	Each
3 to 4 ft., BGB	\$3.00
4 to 5 ft., BGB	4.00



Abelia Grandiflora (See page 7)

Nandina

NANDINA domestica. A semi-evergreen shrub with numerous, upright, reedlike stems. Each cane has a tuft of spreading light green foliage except the very young growth, which is tinted pink to copper. In August, white panicles of flowers appear, followed by masses of red berries in trusses. In autumn, strong, coppery tints cover the foliage, making it a most pleasing combination. While not entirely evergreen, it is nearly so.

	Each
18 to 24 in., BGB	\$2.50
2 to 2½ ft., BGB	3.00
2½ to 3 ft., BGB	3.50

Osmanthus

OSMANTHUS americanus (Devilwood Osmanthus). A rapid growing shrub with upright branches and open formation. The leaves are long and narrow and it has small white or cream flowers. Not generally listed but we think it one of our best hardy broad-leaf shrubs.

	Each
2 to 3 ft., BGB	\$3.00
3 to 4 ft., BGB	4.00
4 to 5 ft., BGB	5.00

Pyracantha

PYRACANTHA coccinea pauciflora (Sparse Firethorn). A low, compact, rather round shaped plant with small silvery leaves, orange berries and twiggy growth. Excellent for individual specimen or mass planting.

	Each
2 to 2½ ft., bushy, BGB	\$3.00
2½ to 3 ft., BGB	3.50
3 to 3½ ft., BGB	4.00

Viburnum

VIBURNUM rhytidophyllum (Leather-Leaf Viburnum). A vigorous shrub with large, thick, leathery leaves which are deeply veined. The foliage somewhat resembles the Rhododendron. Has clusters of small, yellowish white blossoms, followed by red berries. Will grow in almost any location. A valuable ornamental plant.

	Each
2 to 3 ft., BGB	\$3.00
3 to 4 ft., BGB	4.00
4 to 5 ft., BGB	5.00

V. burkwoodi (Burkwood Viburnum). A recent introduction and often called the "Evergreen Carlesii." The glossy, green leaves are retained most of the winter, though most of them will fall as spring approaches. The pink-tinged, white blossoms are borne in clusters and are exceedingly fragrant. An outstanding, hardy variety which merits a place in any garden or planting.

	Each
2 to 3 ft., BGB	\$3.00
3 to 4 ft., BGB	4.00
4 to 5 ft., BGB	5.00
5 to 6 ft., BGB	6.00



Euonymus Vegetus (See page 7)



Berberis Mentorensis (See page 7)



Deciduous Trees

For Shade and Beauty

When the vision flies out over the earth it would become weary if it had nothing to obstruct it; so God planted the tree out yonder that our wandering eyes may pause, like birds, and rest upon them.
—DeLong Rice.

WHEN hot summer sun beats down, you long for the welcome shade of a Maple, an Oak, or a broad-spreading Elm. But to have and enjoy such shade and shelter, you must plant ahead. The trees must be planted in fall or spring when the weather is cool. Then the roots take hold, the tree flourishes, and in a surprisingly few seasons the outspreading branches give the protection you desire.

We can supply—at very low prices—large trees that will give immediate effect, as well as smaller specimens from 6 to 15 feet high, which need a little more time to develop after moving to your place. Our trees are well grown, root pruned, and transplanted several times; they are truly Hillenmeyer standard.

"He Who Plants a Tree, Plants for Posterity"

*There is no warrior who'll fight for life
More valiantly than a tree,
On rocky wind-swept ledge at mountain crests
Or on the fiercely elemental coastline by the sea.*
—R. H. Weisbrod.



Acer Platanoides—Norway Maple

Acer - Maple

ACER platanoides (Norway Maple). A vigorous, dense, round-headed tree, valuable for street or lawn planting. The large dark green leaves turn a pale yellow in the fall. It resembles the Sugar Maple except the leaves are larger and it is not as tall growing. May be planted under electric or telephone wires, causing little interference.

A. platanoides columnare (Column Norway Maple). A valuable, new type of Norway Maple with upright habit of growth. For street planting, accent plant or background it should prove quite popular. Has regular Norway foliage. Not available in 2½-inch size.

A. platanoides schwedleri (Schwedler Maple). Similar to the Norway, except in early spring the foliage is a bright purple, changing to bronze and then to dull green. In the fall it turns bronze before defoliating. Only available in 1¼ in., 1½ in., and 1¾ in.

A. rubrum (Red Maple). A native tree which is not appreciated and one of the most attractive as a lawn specimen. The young shoots are bright red in winter. Flowers red, appearing before the leaves, which in fall vie with the oaks, sassafras, gum, sumac, or sugar maples for magnificence in color.

A. saccharum (Sugar Maple). Known everywhere and extremely popular. The tree grows to great size, erect, conical form, is perfectly hardy, withstands any subnormal weather conditions, and is adaptable to nearly all types of soil. The tree yields valuable timber, as well as maple sugar. Foliage is deep green, turning to indescribable colors in the fall.

A. saccharinum (Silver Maple). Because of its quick growth and good foliage, this tree is in great demand. The leaves appear early in spring, are light green on the upper side, silvery beneath, and remain until late fall. Small flowers open before the leaves appear. For planting as temporary trees—that is, alternating between the hard-wooded and slower growers, such as oaks, elms, sugar maples, gums, etc.—the Silver Maple is highly recommended. Each

7 to 9 ft., 1¼ in. cal. \$2.50
8 to 10 ft., 1½ in. cal. 3.00
10 to 12 ft., 1¾ in. cal. 3.50
12 to 14 ft., 2 in. cal. 4.50
12 to 15 ft., 2½ in. cal. 6.00

Prices: Five above—	Each
7 to 9 ft., 1¼ in. cal. \$3.50
8 to 10 ft., 1½ in. cal. 4.50
10 to 12 ft., 1¾ in. cal. 5.50
12 to 14 ft., 2 in. cal. 6.50
12 to 15 ft., 2½ in. cal. 8.00

HEIGHT OF SHADE TREES

The approximate height of shade trees to their diameter is as follows:

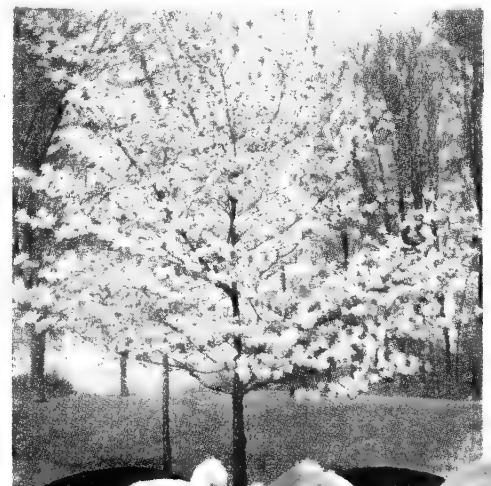
1¼"	7 to 9 ft.
1½"	8 to 10 ft.
1¾"	10 to 12 ft.
2"	12 to 14 ft.
2½"	12 to 15 ft.

However, the Diameter is the Determining Factor

Should any of your friends be interested in our catalog, please send in their names. A copy will be sent for the asking.



Betula Alba—Birch



Cornus, Dogwood



DECIDUOUS TREES—continued



Moving a Maple in Full Leaf, July 9th

We are equipped to transplant large trees, 20 to 40 feet, and while best done in the dormant period, we often move in full leaf. If interested in saving 10 to 20 years, and getting immediate effect, consult us.

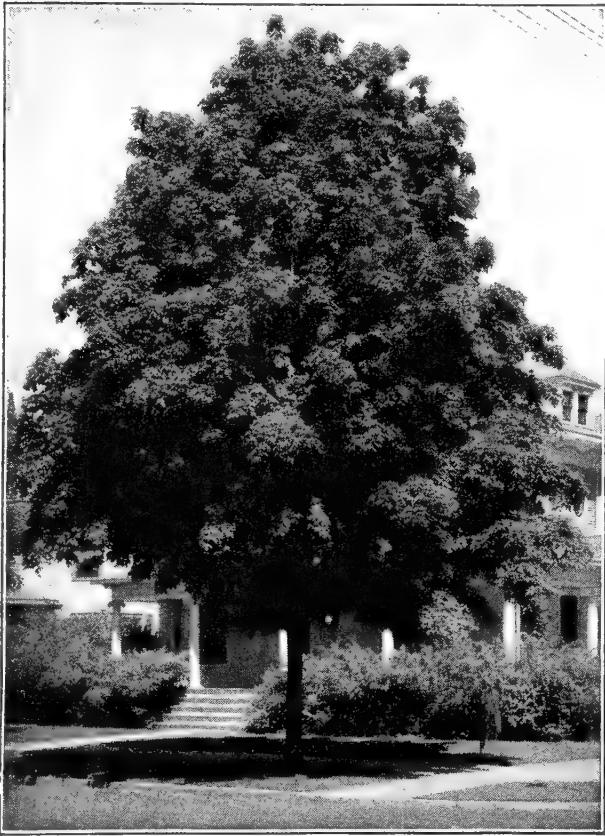
Aesculus

AESCULUS carnea (Red Horse-Chestnut). A handsome round-headed tree with red or scarlet flowers borne in panicles 6 to 8 inches long. Much prized for this highly ornamental feature. Trees must be grafted and are rather scarce.

5 to 6 ft.	Each \$5.00	7 to 8 ft.	Each \$10.00
6 to 7 ft.	7.50	8 to 10 ft.	12.50

A. globra (Ohio Buckeye). A native round-topped tree of good habit. Cream blossoms borne in clusters 5 to 6 inches long.

5 to 6 ft.	Each \$3.00	7 to 8 ft.	Each \$5.00
6 to 7 ft.	4.00	8 to 10 ft.	6.00



Sugar Maple

Castanea

CASTANEA mollissima (Chinese Chestnut). Small symmetrical tree, valuable for shade or nuts. With our native variety practically extinct this will take its place. Foliage beautiful in summer changing to yellow in fall. Fruits early and prolifically and is of good quality.

5 to 6 ft.	Each \$2.00
6 to 7 ft.	2.50
7 to 8 ft.	3.00
8 to 10 ft.	4.00
10 to 12 ft.	5.00

Celtis - Hackberry

CELTIS laevigata (Sugar Hackberry). The Hackberry is one of the best trees. It is not rapid in growth, but is comparatively free of disease and reaches a height of 75 to 100 feet. Grows on either dry or wet soil, and the fruits are attractive to birds and children.

7 to 9 ft., 1 1/4 in. cal.	Each \$3.50
8 to 10 ft., 1 1/2 in. cal.	4.50
10 to 12 ft., 1 3/4 in. cal.	5.50
12 to 14 ft., 2 in. cal.	6.50
12 to 15 ft., 2 1/2 in. cal.	8.00

Cladrastis - Yellow-Wood

CLADRASTIS lutea (American Yellow-wood). So called because the wood was formerly used to make a yellow dye. A native tree of spreading habit with foliage generally resembling the Ash. It produces great drooping panicles of white pealike blossoms not unlike Wistaria. Foliage brilliant yellow in autumn.

5 to 6 ft.	Each \$3.00	7 to 8 ft.	Each \$5.00
6 to 7 ft.	4.00	8 to 10 ft.	6.00

Betula - Birch

BETULA pendula alba (European White Birch). Tree of moderately quick growth, erect, with terminal branches slightly drooping. Bark almost white. As a specimen, and especially contrasted with evergreens, it makes a valuable tree for the lawn. Prefers a moist place, but will do well on dry ground.

7 to 8 ft., 1 1/4 in. cal.	Each \$3.50
8 to 9 ft., 1 1/2 in. cal.	4.50
9 to 10 ft., 1 3/4 in. cal.	5.50
10 to 11 ft., 2 in. cal.	6.50
11 to 12 ft., 2 1/2 in. cal.	8.00

B. pendula laciniata (Cut-leaf European White Birch). A weeping form of the European White Birch. Inclined to be rather pyramidal when young but as it matures develops a broad top. Its small pendent branches eventually almost touch the ground. Because of its deeply serrated leaves, white bark and weeping habit, it is one of our most highly prized trees for small lawns, cemetery lots, planted as a specimen or in groups.

6 to 7 ft.	Each \$4.00
7 to 8 ft.	5.00
8 to 10 ft.	6.00
10 to 12 ft.	8.00

B. populifolia (Gray Birch). A medium sized tree with papery white bark and slender, pendulous branches. More vigorous than the European form, will grow in almost any soil.

7 to 9 ft., 1 1/4 in. cal.	Each \$3.50
8 to 10 ft., 1 1/2 in. cal.	4.50
10 to 12 ft., 1 3/4 in. cal.	5.50
12 to 14 ft., 2 in. cal.	6.50
12 to 15 ft., 2 1/2 in. cal.	8.00

Carpinus - Hornbeam

CARPINUS betula pyramidalis (Pyramidal European Hornbeam). A much prized, narrow, compact, stately tree of columnar habit and Beech-like foliage. It is tough—will tolerate city conditions, transplants kindly and holds its leaves most of the winter. Stands clipping remarkably well and for this reason can be used for a tall hedge, pillars, or on either side of an entrance. Clipped or unclipped it attracts attention. We have some beautiful specimens and can think of no more appropriate gift to a friend than one or a pair of these beautiful specimen trees.

5 to 6 ft., B&B	Each \$ 5.00
6 to 7 ft., B&B	6.00
7 to 8 ft., B&B	7.50
8 to 10 ft., B&B	10.00
10 to 12 ft., B&B	15.00
12 to 15 ft., B&B	20.00

C. caroliniana (Hornbeam or Blue Beech). This attractive, slow growing tree deserves wider planting. In foliage it resembles the native Beech but is much more compact and graceful. The terminal growth has a reddish cast, and foliage colors scarlet to orange-yellow in the fall. Fine where a small, compact specimen is wanted.

5 to 6 ft.	Each \$3.00
6 to 7 ft.	4.00
7 to 8 ft.	5.00
8 to 10 ft.	6.00
10 to 12 ft.	7.50

Cercis - Judas Tree

CERCIS canadensis (Eastern Redbud). Harbinger of spring, blooming in April, and literally covered with red or pink blooms before the leaves appear. It is a small, shapely tree, with large, deep green leaves. May be used in heavy mass planting of shrubs, with white-flowering Dogwood or against Evergreens or white Birch, to furnish contrast.

3 to 4 ft.	Each \$1.00
4 to 5 ft.	1.50
5 to 6 ft.	2.00
6 to 7 ft.	2.50
7 to 8 ft.	3.00
8 to 10 ft.	4.00

C. canadensis alba (White Eastern Redbud). An unusual white form of our ordinary Redbud which is both distinctive and beautiful. The individual blossoms are about the same size and they open along with the type. Makes a distinctive gift to lovers of unusual trees. Grafted.

4 to 5 ft.	Each \$3.00
5 to 6 ft.	4.00
6 to 7 ft.	5.00
Balled and Burlapped, 50% additional.	

Let Hillenmeyer Help You Plan



Cornus - Dogwood

"A Dogwood tree will be monument enough for me."
—Irvin S. Cobb.

CORNUS florida (*White-Flowering Dogwood*). A native tree, well known to everyone, and beautiful all the year. Its large, white, single blossoms are conspicuous, coming early in the spring. The foliage is attractive all summer, and in the fall colors beautifully with red berries that hang on most of the winter. It can be used as a specimen, or in groups as a background for shrub borders. In contrast with bright, flowering trees like Redbud, it is especially showy.

	Each
2 to 3 ft., B&B	\$ 2.00
3 to 4 ft., B&B	2.50
4 to 5 ft., B&B	3.00
5 to 6 ft., B&B	4.00
6 to 7 ft., B&B	5.00
10 to 12 ft., specimens, B&B	15.00

C. florida rubra (*Red-Flowering Dogwood*). This is not a new or uncommon tree but one too often overlooked as a means of beautifying home grounds. The common white variety may be better known but this pink-flowering type affords the loveliest display. Our trees are shipped balled and burlapped to insure safe arrival. Once started, they need but simple care. Like the white-flowering kind, the leaves of this Dogwood color attractively in the fall.

	Each
2 to 3 ft., B&B	\$2.50
3 to 4 ft., B&B	3.00
4 to 5 ft., B&B	4.00
5 to 6 ft., B&B	5.00

Fraxinus - Ash

BLUE, GREEN and AMERICAN ASH. We offer these three varieties which are not unlike in appearance and which are all native. The whole group succeeds in dry, moist, alkaline soils. These should be more generally planted, especially in the paddock and for reforestation.

	Each		Each
7 to 9 ft., 1 1/4 in. cal.	\$3.00	12 to 14 ft., 2 in. cal.	\$5.50
8 to 10 ft., 1 1/2 in. cal.	3.50	12 to 15 ft., 2 1/2 in. cal.	7.00
10 to 12 ft., 1 3/4 in. cal.	4.50		

Ginkgo Biloba - Maidenhair Tree

The Ginkgo is one of the oldest living things in the world. It is a hang-over from prehistoric ages and has no relatives in the plant kingdom. A tall, picturesque, hardy tree with horizontal branches and small maidenhair-fern-like leaves which usually hang in clusters of three or more from the branches. The foliage changes to golden yellow in the fall. A unique tree worthy of a place on any lawn.

	Each		Each
7 to 8 ft., 1 1/4 in. cal.	\$3.50	10 to 12 ft., 2 in. cal.	\$6.50
8 to 9 ft., 1 1/2 in. cal.	4.50	11 to 12 ft., 2 1/2 in. cal.	8.00
9 to 10 ft., 1 3/4 in. cal.	5.50		

Gleditsia - Honey Locust

GLEDITZIA triacanthos inermis (*Thornless Honey Locust*). A picturesque, fast growing, spreading tree with small compound leaves. Not dense enough to kill the grass beneath and is being much used as a lawn or street tree and is a substitute for the Elm.

	Each		Each
1 1/4 in. cal.	\$3.50	2 in. cal.	\$6.50
1 1/2 in. cal.	4.50	2 1/2 in. cal.	8.00
1 3/4 in. cal.	5.50		

Residence of Mr. and Mrs. Roger Springate. Athens and Walnut Hill Pike.
This attractive home was made more beautiful by the generous use of Hillenmeyer stock.



Crataegus

CRATAEGUS phaenopyrum cordata (*Washington Hawthorn*). 15 to 18 feet. One of our most attractive small trees or large shrubs. The white blossoms are followed by bright red berries which persist well into the winter. The small, neat leaves are brilliant in autumn.

	Each
5 to 6 ft., B&B	\$3.00
6 to 7 ft., B&B	4.00
7 to 8 ft., B&B	5.00
8 to 10 ft., B&B	6.00
10 to 12 ft., B&B	8.00

Diospyros - Persimmon

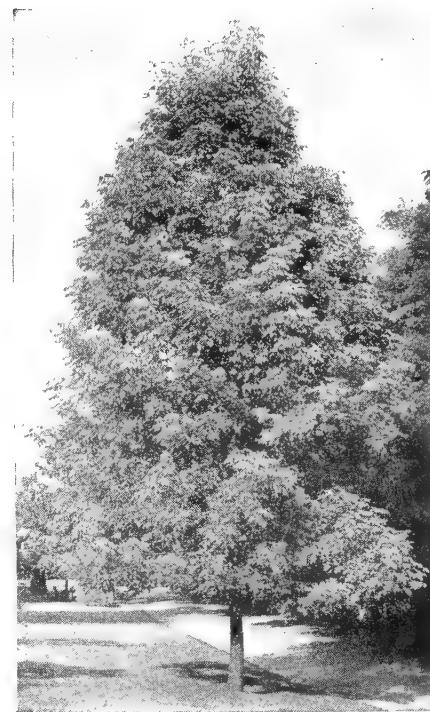
DIOSPYROS virginiana (*Persimmon*). 25 to 35 feet. Valuable both for shade and fruit. The foliage is glossy and shining, the coloring yellow in the fall. Its fruit is valued after frost time and is an old favorite. A tree too well known to describe.

	Each
6 to 7 ft., 1 1/4 in. cal.	\$3.50
7 to 9 ft., 1 1/2 in. cal.	4.50
9 to 10 ft., 1 3/4 in. cal.	5.50
10 to 12 ft., 2 in. cal.	6.50
12 to 15 ft., 2 1/2 in. cal.	8.00

Fagus - Beech

FAGUS grandiflora (*American Beech*). One of our loftiest and grandest shade trees. Admired for its smooth gray bark, strong, spreading branches and handsome foliage which turns brilliant yellow in autumn. Produces sweet nuts, borne in burrs, which are eagerly sought by children and grownups.

	Each		Each
7 to 8 ft.	\$5.00	10 to 12 ft.	\$7.50
8 to 10 ft.	6.00		



Fraxinus—Ash

FEED YOUR TREES

Like other plants, trees should be fed for best results. See our Plant Foods listed on inside back cover.

TREES IN QUANTITY LOTS

For 5 or more of a kind deduct 10 per cent from each price



Ginkgo—Maidenhair Tree



DECIDUOUS TREES—Continued

HALESIA, Silver Bell. See page 20.

Juglans - Walnut

JUGLANS cinerea (*Butternut*). This native tree is one of the most prized of the nut-bearing trees. It is rapid in growth, quickly making a round-headed tree. If you want nuts quickly, plant Butternuts.

J. nigra (*Black Walnut*). One of the noblest of our native forest trees; valued for timber and nuts.

Prices of Walnuts:	Each
6 to 7 ft., 1½ in. cal.	\$2.50
7 to 8 ft., 1¾ in. cal.	3.00
8 to 10 ft., 2 in. cal.	4.00
10 to 12 ft., 2½ in. cal.	5.00

Koelreuteria
(Varnish Tree)

KOELREUTERIA paniculata (*Panicled Golden Rain Tree*). Frequently called "Golden Rain Tree" because of the many yellow blossoms. It grows 20 to 30 feet high, and is of globular shape. In its young stages it is not so shapely but develops into an interesting specimen.

	Each
6 to 7 ft.	\$2.50
7 to 8 ft.	3.00
8 to 10 ft.	4.00
10 to 12 ft.	5.00

Larix - Larch

LARIX europaea (*European Larch*). A tall, conical tree with soft light green leaves which resemble the short needles of a pine. Valuable for screen or ornamental purposes. Among the first trees to start growth in the spring.

	Each
6 to 7 ft.	\$3.00
7 to 8 ft.	4.00
8 to 10 ft.	5.00
10 to 12 ft.	7.50

(Balling extra.)

Liquidambar

(Sweet Gum)

LIQUIDAMBAR styraciflua. Another native tree not appreciated. It is not of rapid growth nor especially easy to transplant, but the glossy foliage in summer, the brilliant color in the fall, and the unusual appearance of the young branches with corky bark in the winter are qualities which make it especially valuable.

	Each
7 to 9 ft., 1¼ in. cal.	\$3.50
8 to 10 ft., 1½ in. cal.	4.50
10 to 12 ft., 1¾ in. cal.	5.50
12 to 14 ft., 2 in. cal.	6.50
12 to 15 ft., 2½ in. cal.	8.00

Magnolia

MAGNOLIA acuminata (*Cucumber Tree*). A well known native of our mountains, conical in shape and with large, glaucous leaves, making it attractive. The flowers are fragrant, usually a dull white color, followed by elongated green seed clusters which later turn coral. Very satisfactory.

	Each
10 to 12 ft., 2 in. cal.	\$6.50
12 to 15 ft., 2½ in. cal.	8.00

M. macrophylla (*Bigleaf Magnolia*). An unusual tree with wide, stout branches, forming a broad rounded top. The leaves are very large, sometimes measuring 9 to 10 inches broad and 20 to 30 inches long. Large, creamy white, fragrant flowers. A little difficult to transplant.

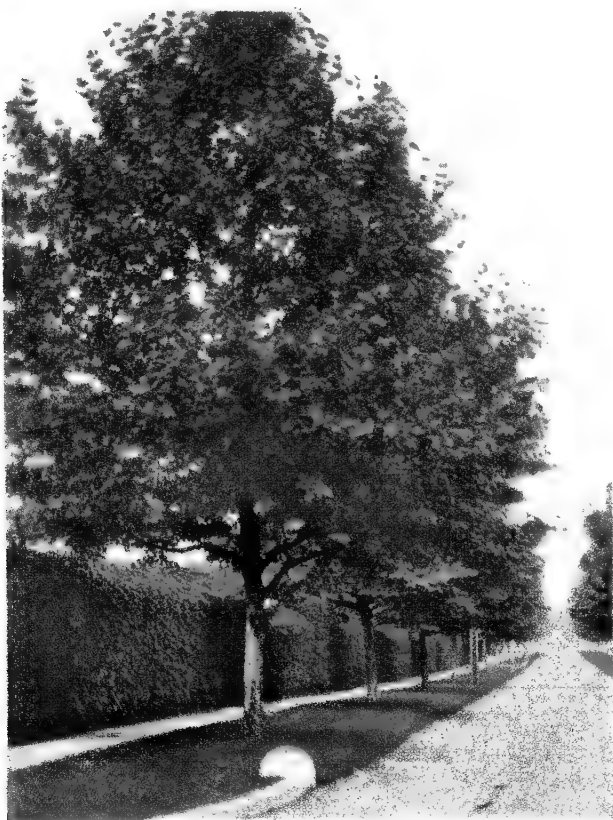
	Each
7 to 9 ft., 1¼ in. cal.	\$3.50
8 to 10 ft., 1½ in. cal.	4.50
10 to 12 ft., 1¾ in. cal.	5.50
12 to 14 ft., 2 in. cal.	6.50
12 to 15 ft., 2½ in. cal.	8.00

Best Balled and Burlapped for which the cost will be 40% additional.

M. tripetala (*Umbrella Magnolia*). A wide spreading tree with stout branches and large leaves, sometimes attaining a width of 8 to 9 inches and 15 to 20 inches long. Flowers creamy white, fragrant, and 8 to 10 inches across. A native tree to most of eastern Kentucky.

	Each
6 to 8 ft., 1¼ in. cal.	\$3.50
8 to 10 ft., 1½ in. cal.	4.50
10 to 12 ft., 1¾ in. cal.	5.50
12 to 14 ft., 2 in. cal.	6.50
12 to 15 ft., 2½ in. cal.	8.00

Magnolia—Other Varieties. See page 22.

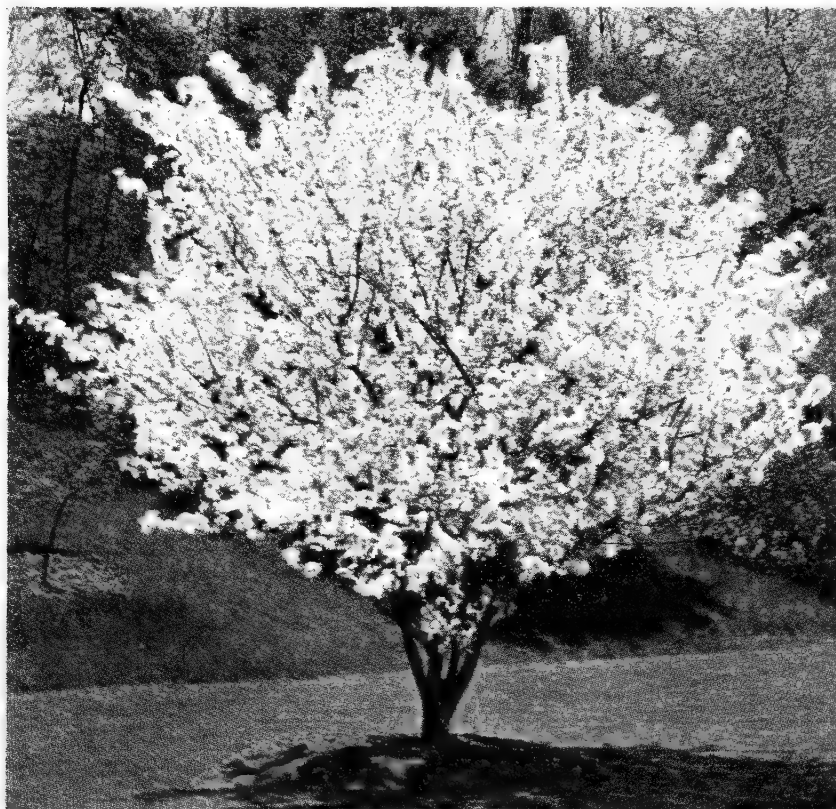


Platanus Occidentalis—Sycamore

Gymnocladus - Kentucky Coffee Tree

GYMNOCLADUS dioicus (*Kentucky Coffee Tree*). A native of noble proportions, growing rather irregular in shape, with blue-green foliage. Resembles the walnut tree. Fine for heavy clay soils.

	Each
7-9 ft., 1¼ in. cal.	\$3.50
8-10 ft., 1½ in. cal.	4.50
10-12 ft., 1¾ in. cal.	5.50
12-14 ft., 2 in. cal.	\$6.50
12-15 ft., 2½ in. cal.	8.00



Malus Zumi Calocarpa



Cercis—Redbud



Liriodendron - Tulip Tree

LIRIODENDRON tulipifera (*Tulip Tree*). Belongs to the Magnolia family, and is one of the finest native trees, growing to be very large, and bearing Tulip-shaped, yellowish blossoms. Its leaves are large and very dark green. Grows quickly when established.

7 to 9 ft., 1 1/4 in. cal.	Each \$3.50	12 to 14 ft., 2 in. cal.	Each 6.50
8 to 10 ft., 1 1/2 in. cal.	Each 4.50	12 to 15 ft., 2 1/2 in. cal.	Each 8.00
10 to 12 ft., 1 3/4 in. cal.	Each 5.50		

Morus - Mulberry

MORUS alba tatarica (*Russian Mulberry*). This makes a round-headed tree, quick of growth and with profuse foliage. It is wonderfully productive, and for anyone wishing to attract birds and for chicken runs it cannot be surpassed. Fruit smaller than our native variety.

15 to 16 ft., 2 1/2 in. cal.	Each \$ 8.00	16 to 18 ft., 3 in. cal.	Each 10.00
-----------------------------------	--------------	-------------------------------	------------

Nyssa - Sour Gum

NYSSA sylvatica (*Black Tupelo*). One of the finest trees known for fall coloring. It has long, narrow, glossy leaves, and is rather slow growing. Very attractive at all seasons.

5 to 6 ft.	Each \$3.00	7 to 8 ft.	Each 5.00
6 to 7 ft.	Each 4.00	8 to 10 ft.	Each 6.00

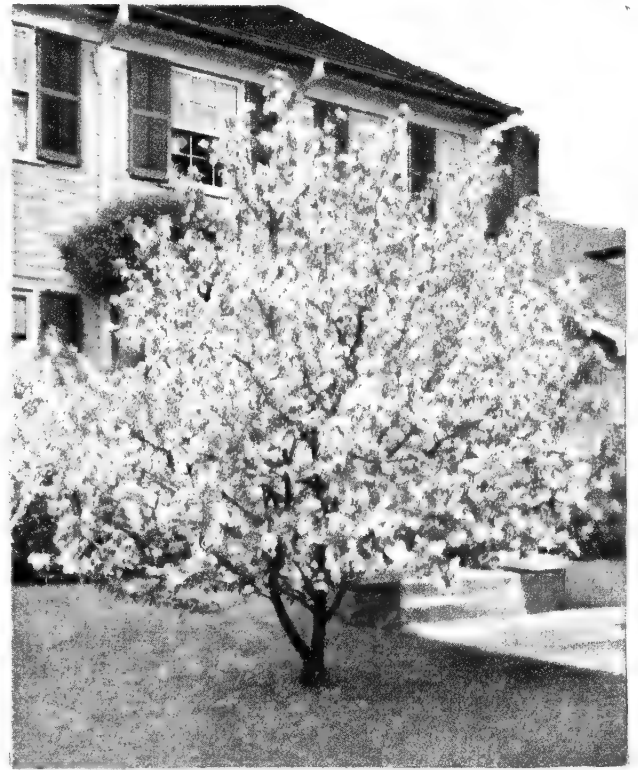
OXYDENDRUM. See page 22.

Malus - Flowering Crab

The Flowering Crabs have few rivals among the gorgeous spring-flowering trees. They are hardy, of easy culture, and will thrive in almost any soil. They are available in many shades and when used as specimens or mass plantings are most effective. Many kinds bear very ornamental fruit. No lawn is complete without one of these gems.



Quercus Palustris—Pin Oak



Malus (Flowering Crab)

MALUS arnoldiana (*Arnold Crab*). 10 to 15 ft. Large, soft pink flowers opening to an almost pure white. Conspicuous yellow and red fruit.

M. Dolgo. 15 to 20 ft. Compact in form. White flowers followed with conspicuous red, medium sized edible fruit. Very showy in August.

M. eleyi (*Ely Crab*). 12 to 15 ft. The best of the purple or red-leaf Crabs. Covered in spring with clusters of large pink flowers, followed by showy red fruit.

M. tlwangeriana. 12 to 15 ft. Rather upright with pink flowers. Its brilliant red and yellow fruit in the fall is extremely showy.

M. floribunda (*Japanese Flowering Crab*). 12 to 15 ft. A small, spreading tree with graceful arching branches. Buds rosy red changing to light pink. Fruit reddish yellow and showy.

M. Hopa (*Red Flowering Crab Apple*). 18 to 20 ft. Strong, healthy tree, rose-pink flowers. Fruit red inside and out.

M. ioensis plena (*Bechtel's Crab*). 12 to 15 ft. Rather slow grower with upright, spreading branches. Its double pink flowers resemble clusters of small Roses.

M. niedzwetkyana (*Redvein Crab*). 15 to 20 ft. A Russian variety with purplish red flowers, twigs, leaves and fruit. A rather larger spreading tree than most varieties.

M. scheideckeri (*Scheidecker Crab*). 10 to 15 ft. Compact, upright growth with small, bright single rose blossoms borne in profusion.

M. spectabilis. 15 to 20 ft. Upright form with semi-double rose flowers in bud, fading to delicate pink, followed with conspicuous yellow fruit.

M. zumi calocarpa. The finest of all the white Crabs. The buds are pink but expand into lovely large white blossoms which literally cover the tree. Fruit small, bright red to orange.

Price of above Crabs:	Each	Each
4 to 5 ft.	\$2.00	6 to 7 ft. \$3.00
5 to 6 ft.	2.50	

We have some beautiful specimens—quoted as follows:

7 to 8 ft., B&B	Each \$5.00	9 to 10 ft., B&B	Each \$10.00
8 to 9 ft., B&B	7.50	10 to 12 ft., B&B	15.00

Phellodendron - Corktree

PHELLODENDRON amurense (*Amur Corktree*). A handsome corky bark tree with spreading branches, compound leaves, and round top. Looks much like a Black Walnut but has dark berry-like fruit. Rapid grower, hardy and unusual.

7 to 9 ft., 1 1/4 in. cal.	Each \$3.50
9 to 10 ft., 1 1/2 in. cal.	4.50
10 to 12 ft., 1 3/4 in. cal.	5.50
12 to 14 ft., 2 in. cal.	6.50
12 to 15 ft., 2 1/2 in. cal.	8.00

The Famous Japanese Cherries Located at the Tidal Basin in Washington, D. C.





DECIDUOUS TREES—continued

Platanus - Sycamore

PLATANUS occidentalis (*American Plane Tree*). Our native Sycamore which is not appreciated. However, if you want a tree of rapid growth, rugged in character, picturesque in winter with its white bark, you should not overlook this grand old tree. Fine for woodland and paddocks. Tolerant of soot and smoke, and therefore is much used as a street tree in cities.

	Each
7 to 9 ft., 1 1/4 in. cal.	\$3.00
8 to 10 ft., 1 1/2 in. cal.	3.50
10 to 12 ft., 1 3/4 in. cal.	4.50
12 to 14 ft., 2 in. cal.	5.50
14 to 15 ft., 2 1/2 in. cal.	7.00

Poplar - Populus

POPULUS nigra italica (*Lombardy Poplar*). A tall, slender tree of rapid growth, reaching a great height and not to be confused with Carolina Poplar. Specimens often reach 50 feet, with a spread of less than 10 feet, and for this reason when trees are needed for narrow places, between buildings, congested lawns, narrow avenues, Lombardy Poplar may be used to advantage. Because of its great height and quick growth it is recommended for backgrounds of buildings, to add character to plantings or to offset straight or bare lines; for screening unsightly views, fire protection from close buildings, or windbreaks—and for quick effects we recommend it.

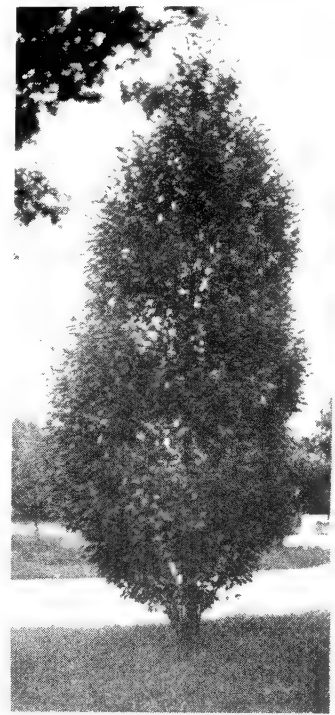
	Each
5 to 6 ft., 1/2 in. cal.	\$1.00
6 to 7 ft., 3/4 in. cal.	1.25
7 to 8 ft., 1 in. cal.	2.00
8 to 10 ft., 1 1/4 in. cal.	3.00
10 to 12 ft., 1 1/2 in. cal.	4.00

P. alba bolleana (*Bolleana Poplar*). Just because the Carolina Poplar is an enormous weed and nothing else, one should not discriminate against all the Poplar family. Bolleana Poplar has glittering green leaves, silvered underneath, and makes an attractive display against the sky when they are set in motion by a gentle breeze. The bark is gray, giving a pleasing winter effect. It is a fast growing, slender columnar tree, a little wider than Lombardy, which it resembles at a distance and for which it should be used as a substitute.

	Each	Each
6 to 7 ft.	\$2.00	8 to 10 ft. \$3.50
7 to 8 ft.	2.50	10 to 12 ft. 4.50



Quercus Robur Fastigiata—Pyramidal English Oak



Carpinus Betula Pyramidalis (See page 10)

Prunus Flowering Cherries

These beautiful flowering trees from the Orient are among the most decorative in cultivation. They are of medium growth, free of disease and will succeed almost anywhere. There are many species and horticultural forms. We have tested many kinds and the best are as follows:

WEeping FORMS

PRUNUS, Single or Double Pink. Grafted 6 to 7 feet from ground.

	Each
2-year heads	\$ 5.00
4-year heads, specimens	10.00

UPRIGHT FORMS

P. autumnalis. Single pink. Blossoms spring and fall.	
P., Kwanzan. Double deep pink.	
P., Naden. Double light pink.	
P., Shirofugen. Double white.	
	Each
4 to 5 ft.	\$3.00
5 to 6 ft.	4.00
6 to 7 ft.	5.00

P. yedoensis (*Yoshino*). Single pale pink. Extra hardy and the one which is largely planted around the tidal basin in Washington.

	Each
4 to 5 ft.	\$3.00
5 to 6 ft.	4.00

Prunus Persica

(Flowering Peach)

PRUNUS persica (*Double Red Flowering Peach*). A small tree, covered in spring with double, showy red blossoms.

	Each
4 to 5 ft.	\$1.50
5 to 6 ft.	2.00
9 to 10 ft.	5.00

(Special prices on specimen trees.)

P. tomentosa (*Nanking*). White or light pink. Small tree or shrub growing to about 10 feet and mainly prized for its brilliant red, edible fruit.

	Each
4 to 5 ft.	\$3.00
5 to 6 ft.	4.00

Below—

Residence of Mr. and Mrs. Charles H. Sturgill, Fontaine Road. Taking out the old planting, and replacing with Taxus, is a good example of how a lovely home can be made more attractive.





The Oaks

The Oak, with all its majesty, is the monarch of the woodlands. It is symbolical of strength, permanency and character. It has been interwoven, since time immemorial, with literature, art and craftsmanship. The family has world-wide distribution, containing many species, both evergreen and deciduous. Its timber is emblematical of strength and durability. By some it is considered of slow growth, but when given a congenial soil, develops rather rapidly in comparison with most hardwoods. When planted as specimens or street trees, varieties like Pin Oak, with their autumn coloring of yellow, orange and scarlet, are the source of enjoyment of him who plants, and elicits the admiration of the public. No lawn is complete without an Oak.

QUERCUS alba (White Oak). One of the greatest of all the Oaks. Rather difficult to transplant and of slow growth, but "patience brings a perfect reward." Leaves silver to purplish red in autumn.

Q. coccinea (Scarlet Oak). A beautiful symmetrical tree very much resembling the Pin Oak. Not quite as rapid in growth, leaves somewhat smaller and deeply lobed. Colors brilliantly in the fall.

Q. macrocarpa (Bur Oak). A native variety of slow growth, but becomes a stately tree well covered with thick, dark green foliage of heavy texture. For permanency it has no superior. Prefers a moist or deep soil.

Q. nigra (Water Oak). A round-topped tree of good form. Will grow in either moist or dry soil. Foliage green until late fall.

Q. palustris (Pin Oak). The most popular of all the Oaks. Its beautiful glossy, deeply lobed green leaves change to gorgeous shades of purplish red and scarlet in the autumn. It is symmetrical, easy to transplant and of rapid growth. For street, avenue or as a lawn specimen there is nothing superior. Where a desirable hardwood tree is wanted we unhesitatingly recommend a Pin Oak.

Q. phellos (Willow Oak). A graceful tree with conical head. Long, narrow, willow-like leaves which are whitish beneath, giving a silvery appearance on a windy day. They change to yellow and orange in autumn.

Q. borealis (Rubra) (Northern Red Oak). Not as compact nor does it color as brilliantly as the Pin Oak. Somewhat more difficult to transplant but will grow in almost any soil when once established. One of the fine Oaks.

Prices of above varieties of Oaks:	Each
7 to 9 ft., 1 1/4 in. cal.	\$3.50
8 to 10 ft., 1 1/2 in. cal.	4.50
10 to 12 ft., 1 3/4 in. cal.	5.50
12 to 14 ft., 2 in. cal.	6.50
12 to 15 ft., 2 1/2 in. cal.	8.00

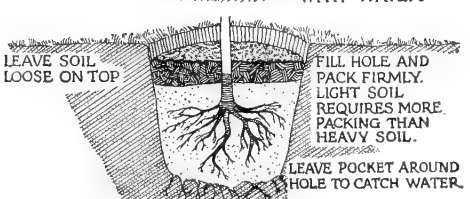
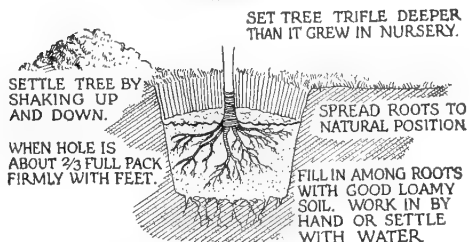
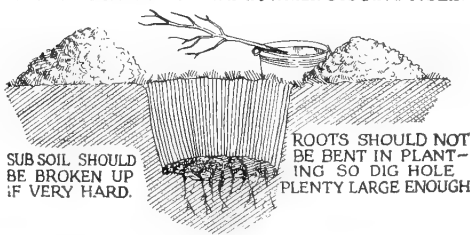
Q. robur fastigiata (Pyramidal English Oak). An upright form of English Oak which is quite valuable for specimen or formal use. Of slow growth but worth the time required for development. Each

6 to 7 ft., B&B	\$ 7.50
7 to 8 ft., B&B	10.00
8 to 10 ft., B&B	12.50
10 to 12 ft., B&B	15.00



How to plant a Tree

SET TREE IN TUB OF WATER WHILE DIGGING HOLE.



Prunus - Flowering Plum

PRUNUS cerasifera blireiana (Blireiana Plum). A small neat tree with rather upright branches on which are borne salmon-pink rosettes in great profusion. Very showy and desirable.

P. cerasifera pissardi (Purple-Leaf Plum). A handsome, upright tree with small pale pink flowers, wine-red fruit and purple foliage.

P. cerasifera (Thundercloud). A beautiful shapely tree with dark purple foliage about the color of the Purple Beech. Fine for contrast.

Prices of 3 above:	Each
5 to 6 ft.	\$2.50
6 to 7 ft.	3.00
7 to 8 ft.	4.00
8 to 10 ft.	5.00

The Singing Leaves

But the trees all kept their council
And never a word said they,
Only there sighed from the pine tops
A music of seas far away.

--Lowell.

Robinia - Locust

ROBINIA idahoensis (Idaho Locust). Very similar to our native Locust except it has very beautiful and striking racemes of pink and lavender blossoms in early spring. Valuable as an ornamental or shade tree.

1 1/4 in. ccl.	\$3.50
1 1/2 in. cal.	4.50
1 3/4 in. cal.	5.50
2 in. cal.	6.50
2 1/2 in. cal.	8.00



Spraying and Tree Feeding

We are now equipped to spray and feed large trees, using modern equipment and scientific methods. If your favorite shade tree is being destroyed by insects or is starving, you may need expert advice and treatment. Write and consult us when in need of this service.

Like other plants, trees should be fed for best results. See our Plant Foods listed on inside back cover.



DECIDUOUS TREES—continued

Salix - Willow

SALIX babylonica (*Babylon Weeping Willow*). One of the most graceful of all the Willows. Makes a round-topped tree, and when it attains some size its long, pendent branches are most effective.

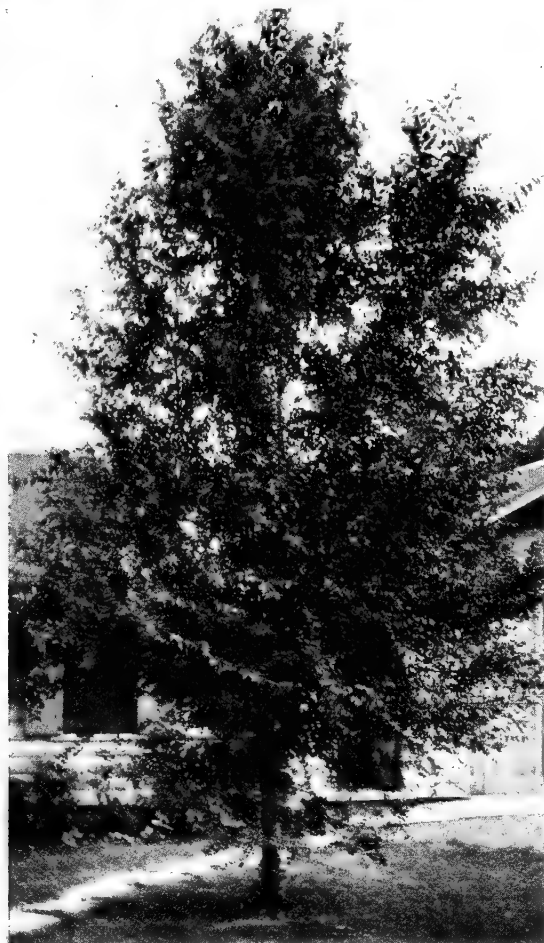
S. blanda (*Wisconsin Weeping Willow*). Of rather upright growth when young but as it attains height and age its long, drooping silvery branches make it the most effective of all the Willows. Rapid grower in either moist or other good soil. Fine for specimens or screens. Best of the Weeping Willows.

S. niobe (*Golden Weeping Willow*). Best of the Golden Willows. Slender leaves, green above, silvery below. Twigs and bark golden.

Prices of above 3 varieties:

7 to 8 ft.	Each
8 to 10 ft.	\$2.50
10 to 12 ft.	3.50
12 to 15 ft.	5.00

S. caprea (*Pussy Willow*). See page 23.



Sophora Japonica

(Pagoda Tree)

A medium size tree with spreading branches forming a symmetrical, compact head. Native of China and Japan. Flowers creamy white borne in large loose panicles expanding in midseason. A handsome tree with green-barked twigs. Each

7 to 8 ft., 1 3/4 in. cal.	\$5.50
8 to 10 ft., 2 in. cal.	6.50
10 to 12 ft., 2 1/2 in. cal.	8.00

Taxodium - Bald Cypress

TAXODIUM distichum. The great lumber tree of the far South, but native and perfectly at home here. Will grow in dry or wet soil and blends well in either deciduous or evergreen plantings. The light green foliage is needle-like, the general shape of the tree resembles a Spruce. Slow growing, but very symmetrical and as durable as an Oak; in fact, the lumber is called the "wood eternal."

Each	
6 to 8 ft., 1 1/2 in. cal.	\$4.50
7 to 9 ft., 1 3/4 in. cal.	5.50
8 to 10 ft., 2 in. cal.	6.50
10 to 12 ft., 2 1/2 in. cal.	8.00

Tilia - Linden

TILIA americana (*American Linden*). Sometimes known as Basswood. This native tree is very attractive and will grow rapidly when planted in low ground. The leaves are distinctly larger than other varieties. Branches pendulous in habit of growth. Makes an excellent shade tree under favorable conditions.

Each	
7 to 9 ft., 1 1/4 in. cal.	\$3.00
8 to 10 ft., 1 1/2 in. cal.	3.50
10 to 12 ft., 1 3/4 in. cal.	4.50
12 to 14 ft., 2 in. cal.	5.50
12 to 15 ft., 2 1/2 in. cal.	7.00

T. platyphyllos pyramidalis (*Pyramidal Bigleaf Linden*). A compact, upright form which can be used effectively in a very narrow space. Also desirable as a screen or sentinel tree.

Each	
6 to 7 ft. ...	\$4.00
7 to 8 ft. ...	5.00
8 to 10 ft. ...	6.00
10 to 12 ft. ...	7.50

T. europaea (*European Linden*). Similar to the American Linden except the leaves are smaller and the tree is more compact, developing to a shapely specimen.

Each	
7 to 9 ft., 1 1/2 in. cal.	\$4.50
9 to 10 ft., 1 3/4 in. cal.	5.50
10 to 11 ft., 2 in. cal.	6.50
11 to 12 ft., 2 1/2 in. cal.	8.00

Ulmus - Elm

ULMUS americana (*American Elm*). A vigorous native tree. It is rapid in growth, with long, spreading, and pendent branches forming giant arches over roads and streets; as a lawn tree is quick to make a marked effect. The wood is tough, the leaves are moderate in size, and make a permanent tree for shade. The beetle that defoliates the European Elms usually does not attack these.

Each	
7 to 9 ft., 1 1/4 in. cal.	\$3.00
8 to 10 ft., 1 1/2 in. cal.	3.50
10 to 12 ft., 1 3/4 in. cal.	4.50
12 to 14 ft., 2 in. cal.	5.50
12 to 15 ft., 2 1/2 in. cal.	7.00

U. americana moline (*Moline Elm*). A grafted, upright type invaluable in narrow spaces. Its clean growth, large, deep green, heavily plaited leaves, added to its sturdiness and solidity, will make it increasingly popular when it becomes known. We have a fine stock and invite your inspection.

Each	
7 to 9 ft., 1 1/4 in. cal.	\$3.50
8 to 10 ft., 1 1/2 in. cal.	4.50
10 to 12 ft., 1 3/4 in. cal.	5.50
12 to 14 ft., 2 in. cal.	6.50
12 to 15 ft., 2 1/2 in. cal.	8.00

U. parvifolia (*Chinese Elm*). A new, rapid-growing tree that does especially well in difficult situations, like city soot and gases, dry and poor ground, narrow street plots, etc. Leaves smaller than our native Elm, habit more pendent, and of course, much more rapid. Only drawback possible is sleet damage and Elm-beetle injury. Plant for twenty to thirty years' duration. We have the North China strain only and it will make up as quickly as a Willow.

Each	
7 to 9 ft., 1 1/4 in. cal.	\$2.50
8 to 10 ft., 1 1/2 in. cal.	3.00
10 to 12 ft., 1 3/4 in. cal.	3.50
12 to 14 ft., 2 in. cal.	4.50

Ulmus Pumila (Chinese Elm)



Weeping Willow

"Poems are made by fools like me
But only God can make a tree."

—Joyce Kilmer.



American Linden



PEONIES

The Flowers For Everybody

There are few flowers which have been improved more than the Peony. From the old-fashioned reds and pinks, familiar in our grandmother's gardens, we now have marvelous varieties with better color, form, and all-around quality.

Peonies are often rated on the basis of 10 as perfect but we are frank to state that we do not always agree. We have tested hundreds of varieties so as to give our customers the best and find that some of the highest rated kinds just do not perform satisfactorily here in the South. The kinds offered can be planted with confidence.

They are at home and should be in every garden. Plant the crowns about 2 or 3 inches deep, use bone meal, see that they get sufficient water at blooming time, and you will be more than pleased if you use HILLENMEYER'S CHOICE ROOTS.

STRONG DIVISIONS—YOUR ASSORTMENT
50c each; 10 for \$4.50.
For Parcel Post and Insurance, add 10 per cent.

SINGLE PEONIES

This type is distinguished by its five or more large petals surrounding a center of yellow stamens. Most are early and they stand wind and rain well. Very conspicuous.

Clairette. Large white flowers of unusual beauty; prominent tuft of golden stamens.

Duchess of Portland. Delicate shade of flesh-pink; large.

L'Étincelante. Rose-pink, margined silver. One of the best.

The Moor. Very attractive deep rich red of unusual beauty; stamens yellow and striking.

JAPANESE PEONIES

In these we have five or more guard petals surrounding a center of showy and abortive anthers. The second stage of development into the double type.

Akalu. Guards deep American Beauty shade; petaloids conspicuous saffron-yellow, margined rose.

Ruigegno. Dark maroon, with petaloids of most pleasing yellow. Very showy.

Snow Wheel. Large, pure white petals and petaloids. Our best white Japanese variety.

DOUBLE PEONIES

RED

Bunker Hill. Beautiful bright red with long, stiff stems. Has done exceedingly well with us.

Felix Crousse. Midseason. The most pleasing velvety red, fading to lighter shades as the blossom fades.

Francois Ortegat. Midseason to late. Very dark rose-red with yellow stamens; large, on strong stems. Extra good.

Karl Rosenfield. Late midseason. Large, showy, rich velvety crimson. Color striking.

Longfellow. A distinctive, fadeless crimson. Good foliage with strong stiff stems. Early midseason. Dependable.

Mary Brand. Vivid crimson with silvery sheen which gives it added brilliance. Midseason.

WHITE

Baroness Schroeder. Midseason. Delicate flesh-pink; fading to white with suggestion of heliotrope and gold.

Festiva Maxima. Early. The grandest white Peony. The extra large flowers are pure white, except petals tipped carmine.

Marie Jacquin. "Water-Lily Peony." Semi-double; favorite with everyone.

Mme. de Verneville. Early. Desirable, free-blooming, should be in every collection.

PINK

Edulis Superba. Early. Deep rose. Valued for its fragrance and freedom of bloom.

Georgiana Shaylor. Most exquisite shade of soft rose-pink. Midseason. Fragrant.

Lady Alexandra Duff. An unusual delicate flesh-pink. One of the most striking of all Peonies, with extra large, cup-shaped flowers.

Martha Bulloch. Silvery shell-pink at center, deepening to deep rose-pink. Late.

Mons. Jules Elie. Early to midseason. Large, compact; lilac-rose with lighter pink base petals; fragrant. Extra fine.

Reine Hortense. Midseason. Large, flat; flesh to shell-pink; very fragrant. One of the finest.

Samuel Hughes.

Late. Fine upright variety with unusual style and color combination—silver-pink. Excellent new variety.

Sarah Bernhardt.

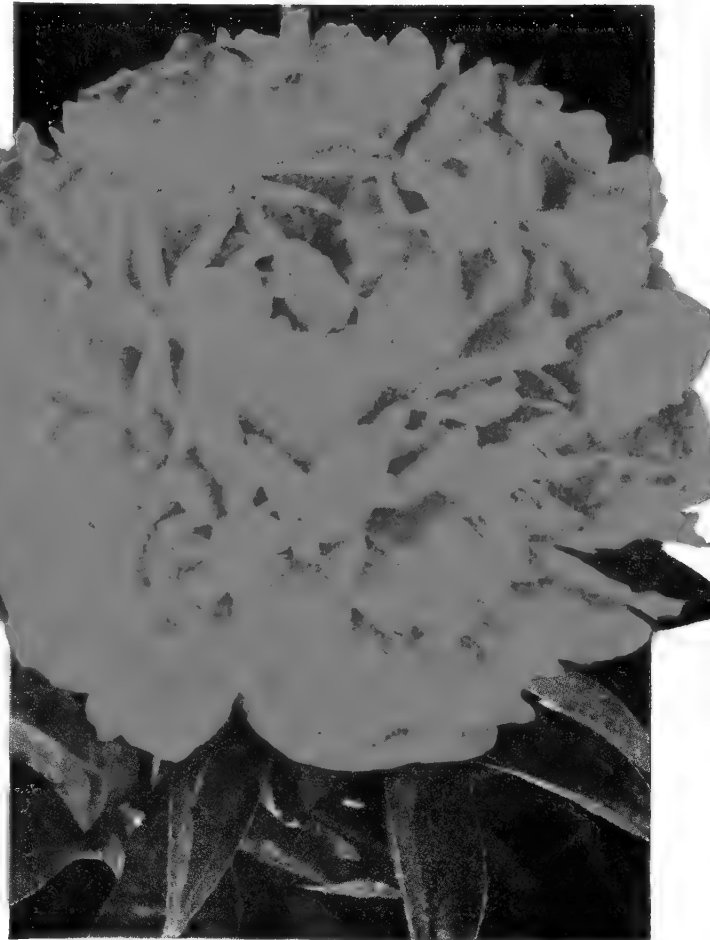
Late. Very large flowers of apple-blossom-pink, with silver-tipped petals. Vigorous.

Solange.

Late. Large, compact. Outer petals delicate, waxy white, deepening toward the center with shades of golden brown. Free bloomer.

Venus.

Midseason. Pale Hydrangea-pink. Large.



Mary Brand



Baroness Schroeder



ROSES

We are not listing Roses in this catalog. However, a choice list will be found in our Spring Folder, which will be sent you soon after the first of the year. If you do not receive your copy, write or phone for it.



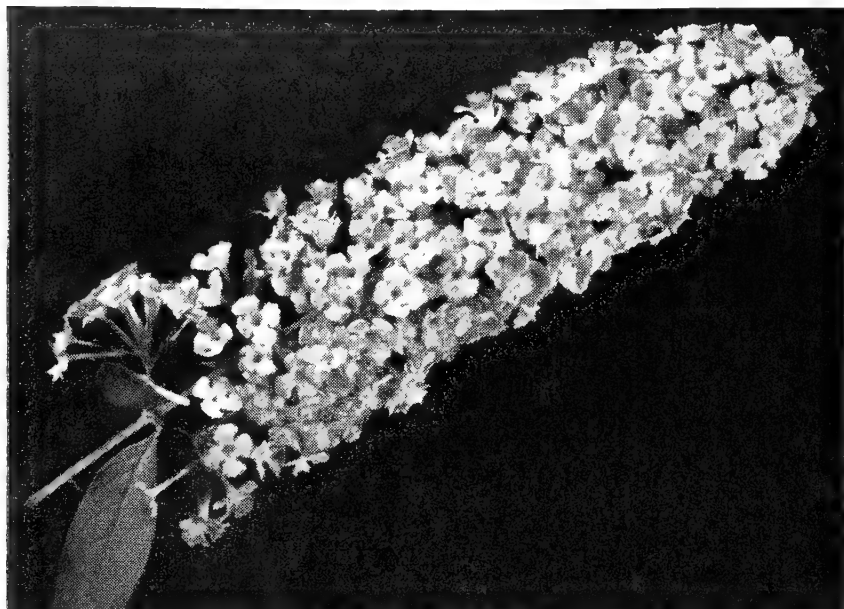
Flowering and Ornamental SHRUBS

"The beautiful lessons which 'blossoms' teach to children."—Chaplin

HERE is some place for flowering shrubs around every home—cottage, mansion or palace. A corner needs a little color, a foundation wall needs to be concealed, a garage should be screened. In all these places flowering shrubs are adaptable, and useful.

From our fields this year we shall take the finest shrubs possible to grow—large, well developed, with good roots, and not by any means like the shrubs sold on "bargain" counters, which in many cases are of unknown origin. In fact, Hillenmeyer shrubs carry several cones, and only the small sizes can be sent by parcel post.

The size listed after each shrub indicates the approximate height they should be expected to attain in an average planting.



Buddleia—Butterfly Bush

Abelia

ABELIA grandiflora. See page 7.

Acanthopanax

ACANTHOPANAX sieboldianus (Five-leaved Aralia). 4 to 6 ft. An interesting and very satisfactory shrub for planting in a shady place or under city conditions. Branches upright, prickly, arching and bearing bright green leaves in fives. If you have a troublesome situation, poor soil, shade or other adverse conditions give this shrub a trial.

	Each
2 to 3 ft.	\$0.60
3 to 4 ft.75
4 to 5 ft.	1.00

Aesculus

AESCULUS pavia (Red Buckeye). 6 to 10 ft. A native, southern shrub, recommended for naturalistic plantings. Its bright red spikelike flowers are produced in May, followed by distinctive fruit. Leaves compound, 4 to 5 inches long. Foliage not always the best but well worth planting because of its striking effect when in bloom.

	Each
3 to 4 ft.	\$1.00
4 to 5 ft.	1.50
5 to 6 ft.	2.00

Aralia

ARALIA spinosa (Devil's Walkingstick). 10 to 15 ft. A large, vigorous shrub or small tree giving semi-tropical effect. The stiff, erect, very prickly stems bear compound leaves which may be two feet or more in length. The leaflets are small, giving a feathery effect to the whole plant. Small white flowers in July or August. A very effective shrub when properly used.

	Each
3 to 4 ft.	\$0.75
4 to 5 ft.	1.00
5 to 6 ft.	1.25

Aronia

ARONIA arbutifolia brilliantissima (Brilliant Chokeberry). 3 to 5 ft. A useful shrub combining good habits of growth, attractive summer and fall foliage, showy flowers and brilliant fruits. The medium size leaves are glossy green, turning bright red in the fall. The white flowers in early May are followed by fruit which becomes brilliant red in the fall and is very persistent. One of our best berry-bearing shrubs. Will grow in sun or partial shade but requires ample moisture.

	Each
18 to 24 in.	\$0.60
2 to 3 ft.75
3 to 4 ft.	1.00

Benzoin

BENZOIN aestivale. See Lindera.

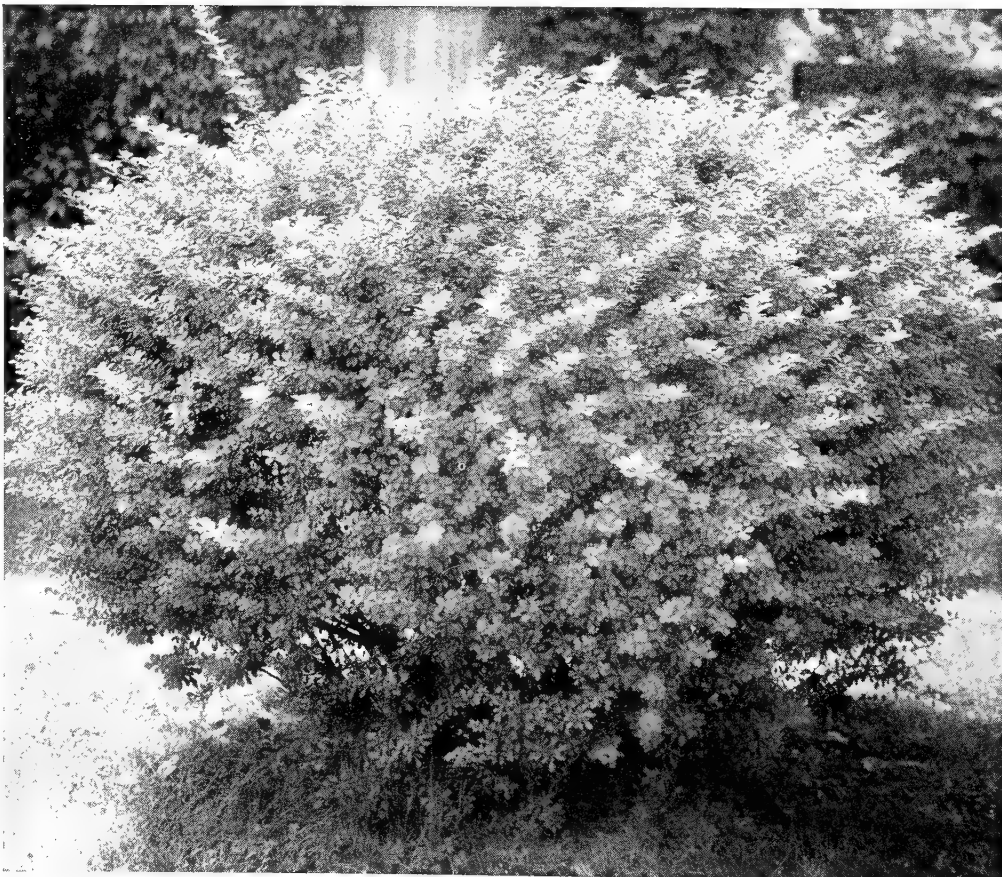
Berberis - Barberry

BERBERIS thunbergi (Japanese Barberry). 3 to 4 ft. Low, compact shrub with horizontal or arched branches. Twigs thorny, making it ideal for an almost impregnable hedge when mature. If left unpruned it will develop into a graceful, moundlike plant. The small green leaves come out early in the spring, along with the small yellow flowers. The foliage takes on a brilliant orange-scarlet when in the open and the flowers are followed by brilliant red fruit which persists throughout the winter. Will grow in almost any location but should be watered in periods of extreme drought.

	Each
18 to 24 in.	\$0.60
2 to 3 ft.75

B. thunbergi atropurpurea (Red Leaf Barberry). 3 to 4 ft. Resembles the Japanese Barberry in growth, but the foliage is brilliant blood-red in spring. The color holds all summer in sun, but in shady places it becomes a beautiful bronzy green. Its winter charm is enhanced by red berries that remain until spring. Few shrubs attract so much attention, or add so much color to a dull border. We consider it one of the best plants, and our stock is strong and vigorous.

	Each
18 to 24 in.	\$0.75
2 to 3 ft.	1.00



Berberis—Barberry



Buddleia - Butterfly Bush

There should be a place for these continuous summer-blooming shrubs around every home. Their long-pointed spikes of various shades resemble a Lilac though they are in no way related. Easy of culture. Often freeze to the ground unless protected, but will come back year after year.

BUDDLEIA, Charming. Soft pink, new and fine.
B. magnifica. Violet. Best of the older varieties.
B., Ile de France. Rosy violet-purple. Vigorous and floriferous.

Prices of above 3:	Each
2 to 3 ft.	\$0.60
3 to 4 ft.75

Callicarpa

CALLICARPA dichotoma (Purpurea) (Purple Beautyberry). 3 to 4 ft. One of our very few shrubs with attractive violet-blue fruit in the fall. Slightly slender, upright, spreading, with attractive medium-green foliage. Flat clusters of pinkish flowers in late summer. As the branches are not always hardy, it is best to use in a situation where they may be cut to the ground each spring. Desirable as a background to the perennial border.

Each	
18 to 24 in.	\$0.60
2 to 3 ft.75

Calycanthus

CALYCANTHUS floridus (Sweet Shrub). 6 to 8 ft. Few old shrubs have persisted as well as the Calycanthus. Always found in "Grandma's" garden. Its sweet, aromatic reddish brown flowers are most appreciated. The blossoms are produced in late spring followed by large pods, filled with smooth brown seed. Use as a specimen or for planting in a large border.

Each	
2 to 3 ft.	\$0.60
3 to 4 ft.75
4 to 5 ft.	1.00

Chaenomeles - Flowering Quince

CHAENOMELES lagenaria (Cydonia japonica) (Japanese Flowering Quince). 5 to 8 ft. One of our best early blooming shrubs. Upright, spreading, with somewhat spiny branches. The bell-shaped blossoms are usually from a light pink to scarlet. They open before the leaves appear and are borne all along the branches. Has good glossy foliage. Grows in most any location and can be used as a hedge, screen or specimen.

Each	
2 to 3 ft.	\$0.75
3 to 4 ft.	1.00

C. lagenaria alba. 4 to 5 ft. A white form of the Japanese flowering Quince with all its good qualities. Does not grow quite so large.

Each	
18 to 24 in.	\$0.75
2 to 3 ft.	1.00

C. lagenaria pygmaea (Dwarf Japanese Quince). 3 ft. A dwarf form of Cydonia with flesh-pink flowers which are most attractive. A fine variety where a low type is desired.

Each	
15 to 18 in.	\$0.60
18 to 24 in.75

C. japonica (Maulei). A little known but outstanding species of medium growth. Good foliage and orange flowers. Very attractive.

Each	
2 to 3 ft.	\$0.75
3 to 4 ft.	1.00

Cornus - Dogwood

CORNUS florida (White Flowering Dogwood). See page 11.

C. florida rubra (Pink Flowering Dogwood). See page 11.

C. alba sibirica (Sibirica Dogwood). 6 to 8 feet. Greenish white flowers in June. Grown because of its conspicuous red winter twigs. Cutting out old wood increases brilliance of new growth.

Each	
2 to 3 ft.	\$0.60
3 to 4 ft.75

C. mas (Cornelian Cherry). 10 to 15 ft. Attractive large shrub or small tree. Its small yellow blossoms are hardy and appear a few days ahead of the Forsythias. They are followed by large brilliant cherry-like fruit, ripening in midsummer. Does well in almost any soil. Valuable for its early spring effect.

Each	
3 to 4 ft.	\$0.75
4 to 5 ft.	1.00

If You Don't See What You Want, Write Us or Ask Us. We Have Many Trees and Plants Not Listed.



Calycanthus

Chionanthus White Fringe

CHIONANTHUS virginiana. 12 to 15 ft. For a large shrub or small tree, for use in border planting or as a specimen, few plants surpass the White Fringe. Its large, somewhat glossy leaves are attractive throughout the summer and add a pleasing bright yellow to the array of autumn colors. Large clusters of drooping white flowers hang from the ends of the twigs in late spring. Dark blue fruit in August. Prefers a moist acid soil. Worthy of a place on any lawn.

Each	
2 to 3 ft.	\$0.75
3 to 4 ft.	1.00
4 to 5 ft.	1.50

Deutzia

DEUTZIA gracilis (Slender Deutzia). 2 to 3 feet. A graceful, dwarf shrub which covers its arching branches with small racemes of white flowers in early spring. Sometimes caught by late freezes, and best used in protected places.

Each	
15 to 18 in.	\$0.60
18 to 24 in.75

D. lemoinei (Lemoine Deutzia). 3 to 4 feet. Upstanding shrub that is exceedingly free blooming in April and May, with stems completely covered with white blossoms. Stems droop as they age.

Each	
18 to 24 in.	\$0.75
2 to 3 ft.	1.00

D. magnifica (Showy Deutzia). 6 to 8 ft. A Japanese form producing in June a profusion of good white flowers in racemes. Suggests a double form of Lily-of-the-Valley. Useful for quick effect and screens.

Each	
2 to 3 ft.	\$0.60
3 to 4 ft.75
4 to 5 ft.	1.00
5 to 6 ft.	1.25

D. scabra, Pride of Rochester. 6 to 8 ft. Covered in June with pinkish white, showy flowers. Hardy, upstanding, distinct in form, adaptable to all locations and soils.

Each	
2 to 3 ft.	\$0.60
3 to 4 ft.75
4 to 5 ft.	1.00
5 to 6 ft.	1.25



Cotoneaster

Cotoneaster

COTONEASTER acutifolia (Peking Cotoneaster). 5 to 6 ft. Slender, upright or slightly spreading branches, bearing small, pointed, glossy green leaves which take on a reddish purple hue in the fall. Small pink flowers in May followed by shiny black fruit which persists until fall. Prefers good, well-drained soil. Excellent for a compact screen or hedge.

Each	
2 to 3 ft.	\$0.60
3 to 4 ft.75
4 to 5 ft.	1.00

C. divaricata (Spreading Cotoneaster). 4 to 5 feet. A semi-evergreen variety with good foliage and scarlet fruit.

Each	
2 to 3 ft., B&B	\$1.50
3 to 4 ft., B&B	2.00
4 to 5 ft., B&B	3.00

C. racemiflora soongarica (Sungari Cotoneaster). Medium size. Upright spreading branches, nearly round leaves. White blossoms followed by large, showy red fruit.

Each	
2 to 3 ft., B&B	\$1.50
3 to 4 ft., B&B	2.00
4 to 5 ft., B&B	3.00



Callicarpa

HOW TO PLANT

With every order we will send absolutely free a book which, by word and picture, will show just how to plant a tree or shrub. The instructions are clear, and if followed, your plants should grow and thrive. We send the booklet free with every order.



Flowering Shrubs—continued

Elaeagnus

ELAEAGNUS angustifolia (*Russian Olive*). 15 ft. An unusual shrub with dark green bark and silvery foliage. Fragrant, deep golden yellow flowers followed by ornamental olive fruit. Valuable for contrast with green foliage plants.

3 to 4 ft.	Each	5 to 6 ft.	Each
4 to 5 ft.	\$0.75		\$1.25
	1.00		

Exochorda

EXOCHORDA racemosa (*Pearl Bush*). 8 to 10 ft. One of the most pleasing spring flowering shrubs, having a mass of white blooms in April. Should be used extensively in mass plantings. Prune severely at planting time for best results.

2 to 3 ft.	Each	4 to 5 ft.	Each
3 to 4 ft.	\$0.60	5 to 6 ft.	\$1.00
	.75		1.25

Euonymus

EUONYMUS alatus (*Winged Euonymus*). 8 to 10 feet. A distinct shrub carrying shiny green foliage which colors to brilliant rose in fall. Produces small red berries, and is attractive in winter by reason of its curious corky bark. Adaptable to shade or sun; an admirable shrub.

2 to 3 ft.	Each	4 to 5 ft.	Each
3 to 4 ft.	\$1.00		\$1.50
	1.25		

E. alatus compactus (*Dwarf Winged Euonymus*). 5 to 6 ft. Similar to the preceding except that it is more compact, does not grow so large and colors more brilliantly in the fall.

18 to 24 in.	Each	2 to 3 ft.	Each
	\$1.00		\$1.50

E. americanus (*Brook Euonymus*). 7 to 8 ft. Has attractive pink fruit in the fall. Foliage colors well in autumn. While it grows under ordinary conditions its native habitat is moist locations.

2 to 3 ft.	Each	4 to 5 ft.	Each
3 to 4 ft.	\$0.75		\$1.25
	1.00		

E. europaeus (*European Euonymus*). 10 to 15 ft. A tall, slender shrub with green bark and deep green foliage that colors in autumn. Prized for the wealth of coral fruit in fall.

3 to 4 ft.	Each	5 to 6 ft.	Each
4 to 5 ft.	\$0.75		\$1.50
	1.00		

E. patens kiautschovicus (*Evergreen Wahoo*). See page 7.

E. yedoensis (*Yeddo Euonymus*). 6 to 8 ft. A showy Asiatic shrub with small yellow flowers in early spring followed in fall by scarlet fruit surrounded by pink husks. The foliage becomes a brilliant red in autumn.

2 to 3 ft.	Each	4 to 5 ft.	Each
3 to 4 ft.	\$0.75		\$1.25
	1.00		

Forsythia - Golden Bell

A charming group of shrubs admired for their graceful habits, good foliage and early yellow blossoms which precede any new growth. We have selected the best of the group.

FORSYTHIA spectabilis (*Showy Forsythia*). 5 to 8 ft. Much like Fortunei, except not quite as vigorous. Because of its showy flowers, which are borne in great profusion, it is the most popular.

F. suspensa (*Weeping Forsythia*). 4 to 6 ft. A weeping form much used to cover walls or as a low spreading specimen.

Price of above Forsythias:		Each	Each
2 to 3 ft.		\$0.60	4 to 5 ft.
3 to 4 ft.75	

F. suspensa nana. 3 to 4 ft. A dwarf, more compact form with the usual size yellow blossoms. Quite useful where a large Forsythia cannot be used.

18 to 24 in.	Each	2 to 3 ft.	Each
	\$0.60		\$0.75

Hamamelis

HAMAMELIS vernalis (*Vernal Witch-hazel*). 4 to 6 ft. A medium shrub with many branches which are usually covered with one-half inch yellow blossoms in January or February. Prefers a moist location. Good for naturalizing.

2 to 3 ft.	Each	4 to 5 ft.	Each
3 to 4 ft.	\$0.60		\$1.00
	.75		

H. virginiana (*Common Witch-hazel*). 8 to 10 ft. Ribbon-like, yellow flowers in late autumn. Good for natural planting and shady places.

3 to 4 ft.	Each	5 to 6 ft.	Each
4 to 5 ft.	\$0.75		\$1.25
	1.00		

Halesia

HALESIA Caroliniana (*Carolina Silver Bell*). 15 to 18 ft. Blooms with the Dogwood. Its great mass of snow-white, bell-shaped flowers are most attractive.

3 to 4 ft.	Each	5 to 6 ft.	Each
4 to 5 ft.	\$0.75		\$1.25
	1.00		

Hibiscus - The Altheas

HIBISCUS syriacus (*Shrub Althea*). 5 to 7 ft. Blooms from June to frost. Upright in growth and rarely spreads over 3 feet. It does astonishingly well in cities or congested areas where other plants fail.

- H., Ardens.** Double; lavender.
- H., Boule de Feu.** Double; red.
- H., Coelestis.** Single blue.
- H., Jeanne d'Arc.** Double; white.
- H., Single Pink.** Clear pink.
- H. totus albus.** Single; white.

All Hibiscus:		Each	Each
2 to 3 ft.		\$0.60	4 to 5 ft.
3 to 4 ft.75	



Hydrangea P. G.



Althea—Hibiscus

Hydrangea

Grand, free-flowering shrubs with large clusters or panicles of showy white flowers. They are admirably adapted for border or foundation planting, either as specimens or in masses. Like a fertile, moist soil with full or partial exposure.

- HYDRANGEA arborescens grandiflora** (*Snowhill Hydrangea*). 3 to 4 ft. A continuous bloomer with flower resembling a Snowball. Much used in foundation planting.

Each	Each
18 to 24 in.\$0.60	2 to 3 ft.\$0.75
- H. paniculata grandiflora** (*Panicle Hydrangea*). 4 to 5 ft. The old standard variety with large blossoms in August which turn pinkish under favorable weather conditions.

Each	Each
18 to 24 in.\$0.60	2 to 3 ft.\$0.75
- H. quercifolia** (*Oak-Leaf Hydrangea*). 4 to 5 ft. A distinct and handsome variety with short, stiff, spreading branches. Leaves deeply lobed, dark green above, silvery and downy beneath, which somewhat resemble an Oak. A very fine useful shrub.

Each	Each
18 to 24 in.\$1.00	2 to 3 ft.\$1.50
	3 to 4 ft.\$2.00

Hypericum

HYPERICUM calycinum. An unusual low-growing, almost evergreen shrub with single yellow blossoms. Excellent for covering low walls, areaways or can be used for ground cover.

Each
12 to 18 in.\$0.50

Ilex

ILEX verticillata (*Common Winterberry*). 4 to 5 feet. A deciduous Holly much admired for its brilliant scarlet berries which remain on the plant most of the winter. A spreading shrub which prefers a rather moist location and some shade. Staminate and pistillate plants should be set together for fruit.

Each	Each
2 to 3 ft.\$0.75	3 to 4 ft.\$1.00

Kerria - Globe Flower

Attractive shrub, native of Japan, with slender green branches and showy yellow flowers. Will grow in any well-drained soil.

- KERRIA japonica.** Single.
- K. japonica flore-pleno.** Double.
- | | |
|-------------------------|-----------------------|
| Each | Each |
| Above Kerria: | |
| 18 to 24 in.\$0.75 | 3 to 4 ft.\$1.25 |
| 2 to 3 ft.1.00 | |

Kolkwitzia

KOLKWITZIA amabilis (*Beauty Bush*). 6 to 10 feet. One of the most desirable introductions from Asia. Strong canes develop into graceful, sweeping branches. The flowers are shell to deep pink, with yellow streaks, and produced in great profusion all over the plant. Might be called a much-refined Weigela. Deeply admired.

Each	Each
2 to 3 ft.\$0.75	4 to 5 ft.\$1.50
3 to 4 ft.1.00	5 to 6 ft.2.00

Lespedeza

LESPEDEZA thunbergi (*Thunberg Lespedeza*). An attractive, August-blooming, herbaceous shrub, with reddish purple, sweet scented, pealike flowers borne on arching branches, and lasting several weeks. Very graceful; makes a good "forward" plant for shrub border. The tops may freeze in a severe winter, but come back each spring.

Each	Each
Medium plants, 2 to 3 ft.\$0.60	Large plants, 3 to 4 ft.\$0.75

Ligustrum - Privet

For Hedge Plants, see page 25.

LIGUSTRUM sinense (*Chinese Privet*). 6 to 10 ft. The small-leaved, almost evergreen Privet, much used for hedges, and also very desirable for landscape work because of its rapid growth, good foliage, and graceful branching. Is not particular about soil, and for screening and mass planting is unexcelled. We are very partial to its use in the South. Sometimes freezes during low temperature.

Each	Each
2 to 3 ft. shrubs\$0.50	4 to 5 ft. shrubs\$0.75
3 to 4 ft. shrubs60	

L. obtusifolium regelianum (*Regel Border Privet*). 6 to 7 ft. Low, spreading, and very twiggy, with dense foliage not so glossy as the California Privet. Because of its graceful appearance, hardiness, and adaptability to any soil and shady places, it is the most widely used Privet for landscape work.

Each	Each
2 to 3 ft.\$0.60	4 to 5 ft.\$1.00
3 to 4 ft.75	

Lonicera - Honeysuckle

LONICERA fragrantissima (*Winter Honeysuckle*). 6 to 10 ft. So called because of its very fragrant white blossoms in late winter. The foliage is deep green and glossy. Grows well in partial shade, poor soil, or in cities where tender plants fail. Almost evergreen. Excellent for screens, specimens, or hedges. One of our best and most useful shrubs. **For Hedges, see page 25.**

L. maackii podocarpa (*Late Honeysuckle*). 8 to 10 ft. A large, handsome shrub with pinkish blossoms followed by quantities of bright red berries which are fine for birds. Much prized for screen and mass planting.

L. tatarica (*Tartarian Honeysuckle*). 6 to 8 ft. Blooms in April, and is one of the few early pink-flowering shrubs. Has bright red berries that stay on all summer.

Each	Each
All Loniceras:	
2 to 3 ft.\$0.60	4 to 5 ft.\$1.00
3 to 4 ft.75	5 to 6 ft.1.25

Lindera - Spicebush

LINDERA benzoin (*Common Spicebush*). 6 to 8 ft. Does remarkably well in moist, shady locations. Alternate, light green leaves turning pale yellow in the autumn. Small yellow flowers are produced in early spring before the leaves appear, followed by red fruit in late summer. Birds are especially fond of the fruit. Leaves and twigs are aromatic when crushed.

Each	Each
2 to 3 ft.\$0.75	4 to 5 ft.\$1.25
3 to 4 ft.1.00	



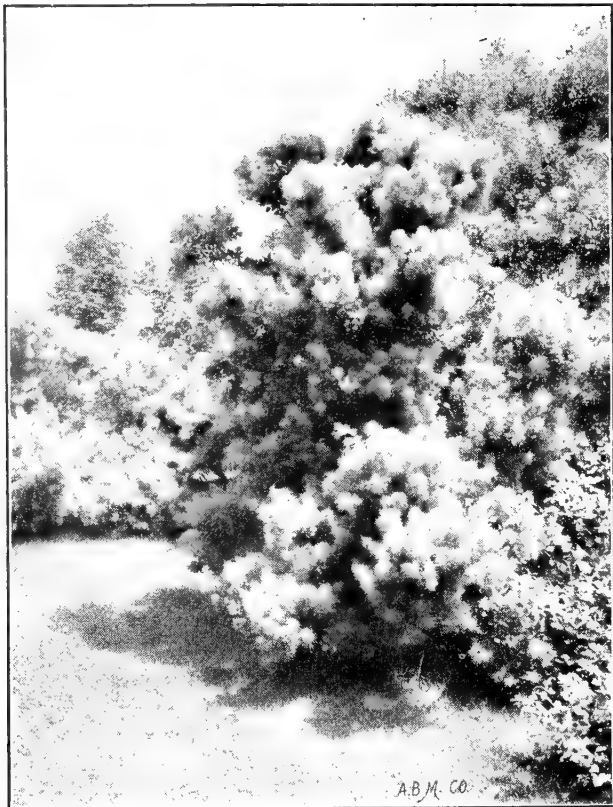
Deutzia, Pride of Rochester

For
Extra Large
Shrubs —
Write Us

Hillenmeyer Shrubs are transplanted and cut back to increase root-systems and bushiness. Don't confuse such shrubs with "straggly", sickly shrubs offered in many places. Size means more than height; quality more than mere price.



Forsythia



Rhus—Smoke Tree

Should any of your friends be interested in our catalog, please send in their names. A copy will be sent for the asking.



Philadelphus, Virginal

Magnolia

MAGNOLIA virginiana (*Sweet Bay Magnolia*). A fine, large American shrub with glossy, laurel-like, almost evergreen foliage. The richly fragrant white flowers come in June and are followed by attractive fruits.

	Each	
2 to 3 ft., B&B	\$3.00
3 to 4 ft., B&B	4.00
4 to 5 ft., B&B	5.00

M. kobus (*Kobus Magnolia*). A desirable upright shrub or small tree with short and slender branches. Pure white flowers 4 to 5 inches across appearing before the leaves.

	Each	Each
3 to 4 ft.	\$4.00	4 to 5 ft. \$5.00

M. liliflora (*Lily Magnolia*). A large shrub or small tree with light green leaves 4 to 6 inches. The Lily-like blossoms are 6 to 7 inches wide, white inside and purple outside. They are borne on short stout stalks and appear along with the leaves.

M. liliflora nigra (*Purple Magnolia*). Has larger flowers than the type which are dark purple outside and light pink to purple inside. One of the hardiest and best.

M. soulangeana (*Saucer Magnolia*). All of the Soulangeana type have large Tulip-shaped blossoms which expand early in the spring before the leaves. Very ornamental, and a garden treasure. The true Soulangeana is pink on the outside with white inside. The best known and most popular.

M. soulangeana lennei (*Lenne's Magnolia*). Outside rosy or reddish purple. White within. Later than the type.

The above 4 kinds:	Each
2 to 3 ft., B&B\$4.00
3 to 4 ft., B&B6.00
4 to 5 ft., B&B8.00

M. stellata (*Star Magnolia*). Native of the Orient. Shrubby habit with fragrant, semi-double, starlike flowers which appear before the leaves. One of the best.

	Each
2 to 3 ft., B&B\$ 5.00
3 to 4 ft., B&B7.50
4 to 5 ft., B&B10.00

M. acuminata. See page 12.

M. macrophylla. See page 12.

M. tripetala. See page 12.

MAHONIA aquifolium. See page 8.

Oxydendrum - Sourwood

OXYDENDRUM arborescens. 10 to 12 ft. The Lily-of-the-Valley-like flowers are borne in panicles in July and August. Its foliage is particularly brilliant in fall.

	Each	Each
3 to 4 ft.	\$1.00	5 to 6 ft. \$1.50
4 to 5 ft.	1.25	

Photinia

PHOTINIA villosa (*Oriental Photinia*). 10 to 12 ft. An unusual shrub, not often available. It has deep green, glossy foliage and is of dense, branching habit. The foliage colors brilliantly in the fall, and the small flowers produced in June, are followed by attractive red berries that hang on until taken by birds.

	Each	Each
3 to 4 ft.	\$0.75	5 to 6 ft. \$1.50
4 to 5 ft.	1.00	

Philadelphus - Mock Orange

PHILADELPHUS grandiflorus (*Big Scentless Mock Orange*). 6 to 8 ft. Its white blossoms in June are larger than most, and very attractive. Where a tall plant is wanted, few are better than this. Succeeds under all soil conditions.

	Each	Each
2 to 3 ft.	\$0.60	4 to 5 ft. \$1.00
3 to 4 ft.	.75	5 to 6 ft. 1.25

P. lemoinei (*Lemoine's Mock Orange*). 4 to 5 ft. Of good, compact, upright habit, leaves smaller than most and blooms sweetly scented. Highly recommended for foundation or other low planting.

	Each	Each
2 to 3 ft.	\$0.75	3 to 4 ft. \$1.00

P., Virginal (*Virginal Mock Orange*). 6 to 7 ft. The finest of all the Mock Oranges. While it produces flowers intermittently throughout the growing season, its great value lies in its magnificent spring display. The pure white, fragrant flowers are large, often 2 inches across, semi-double, and borne in such profusion that the branches are weighted down. The plant is an erect and vigorous grower. No one should be without this delightful shrub—the best of the Mock Oranges.

	Each	Each
2 to 3 ft.	\$0.60	4 to 5 ft. \$1.00
3 to 4 ft.	.75	5 to 6 ft. 1.25

Prunus

PRUNUS glandulosa (*Almond Cherry*). 3 to 4 ft. Rose-pink. The attractive plants are thickly studded in April with medium sized, double pink flowers from base to tip of branch.

	Each	Each
18 to 24 in.\$0.60	3 to 4 ft.\$1.00
2 to 3 ft.75	

Rhodotypos

RHODOTYPOS scandens (*Black Jetbead*). 4 to 5 ft. Ornamental shrub with bright green, serrated leaves and large white flowers one-half to one inch across in May and June. These are followed by shining black fruits that adhere practically all winter. A desirable shrub.

	Each	Each
2 to 3 ft.\$0.60	3 to 4 ft.\$0.75

Rhus

RHUS aromatica (canadensis). (*Fragrant Sumac*). 4 to 5 ft. Yellow flowers in clusters, followed in summer with coral-red fruits. Pleasant, aromatic foliage. Fine as an undershrub or in dry, shady, rocky places.

	Each	Each
2 to 3 ft.\$0.60	4 to 5 ft.\$1.00
3 to 4 ft.75	

R. copallina (*Flameleaf Sumac*). 7 to 10 ft. The native variety that colors so wonderfully in the fall. It is not as robust a grower as some of the others, but is most desirable.

	Each	Each
2 to 3 ft.\$0.60	4 to 5 ft.\$1.00
3 to 4 ft.75	5 to 6 ft.1.25

R. coggygia (*Smoke Tree*). 10 to 12 ft. An old favorite having unusual and attractive foliage. When in bloom the tree is virtually a mist of minute smoky lavender flowers, suggesting a cloud of smoke.

	Each	Each
2 to 3 ft.\$0.60	4 to 5 ft.\$1.00
3 to 4 ft.75	

Robinia - Locust

ROBINIA hispida (*Rose Acacia; Locust*). 6 to 8 ft. Foliage resembles that of our native Locust but the mass of long, graceful, deep rose-pink flowers in May make it most attractive.

	Each	Each
2 to 3 ft.\$0.60	4 to 5 ft.\$1.00
3 to 4 ft.75	

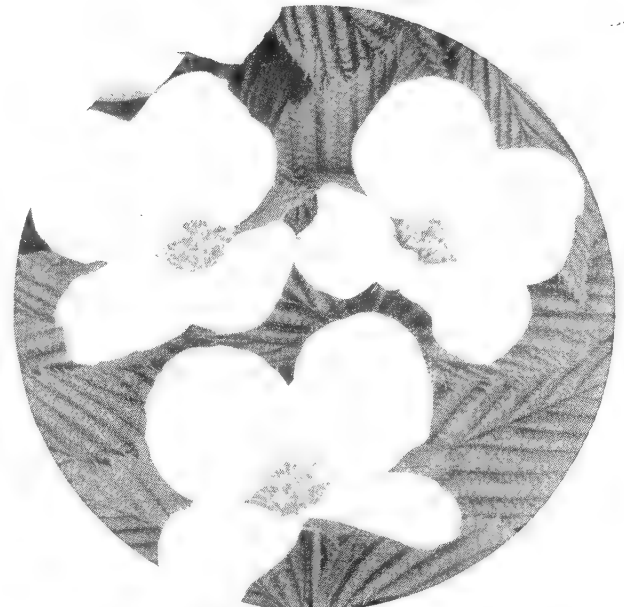
The size listed after each shrub indicates the approximate height they should be expected to attain in an average planting.

Salix - Willow

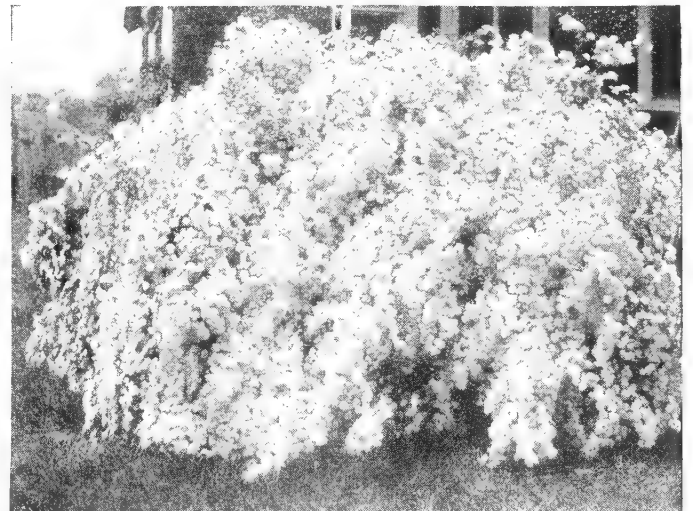
- SALIX caprea** (*Goat Willow*). 12 to 15 ft. Large shrub that grows on either dry or wet soil, and valued because of their silky catkins that appear before the foliage in the spring. Winter-cut twigs may be forced indoors.
- | | | | |
|-----------------|-------------|-----------------|-------------|
| 2 to 3 ft. | Each \$0.60 | 4 to 5 ft. | Each \$1.00 |
| 3 to 4 ft. | .75 | 5 to 6 ft. | 1.25 |

Spiraea - Spirea

- SPIRAEA bumalda** (*Bumalda Spirea*). 2 to 3 ft. A beautiful free flowering shrub with upright branches and usually with bright green leaves. However, there may be an occasional variegation of yellow foliage. The flowers are deep pink, produced in large flat-topped clusters throughout most of the summer.
- | | | | |
|-------------------|-------------|-----------------|-------------|
| 18 to 24 in. | Each \$0.60 | 2 to 3 ft. | Each \$0.75 |
|-------------------|-------------|-----------------|-------------|
- S. bumalda, Anthony Waterer**. 18 to 24 in. A compact, low-growing shrub with dense foliage, usually deep green with occasional variegated leaves of pink and white on young growth. The bright pink flowers are borne in full, flat clusters on erect stems in June and July. If these are cut away when they fade, the shrub will bloom during the summer. Valuable for edging in front of shrubbery and sometimes used as a dwarf hedge.
- | | | | |
|-------------------|-------------|-------------------|-------------|
| 15 to 18 in. | Each \$0.60 | 18 to 24 in. | Each \$0.75 |
|-------------------|-------------|-------------------|-------------|
- S. arguta** (*Garland Spirea*). 4 to 5 ft. Very free flowering in April. Its small, soft green foliage gives a billowy appearance and makes it one of the most attractive plants. Very much like *S. thunbergi*, but grows slightly larger.
- | | | | |
|-------------------|-------------|-----------------|-------------|
| 18 to 24 in. | Each \$0.60 | 3 to 4 ft. | Each \$1.00 |
| 2 to 3 ft. | .75 | | |
- S. douglasii** (*Douglas Spirea*). 5 to 6 ft. Terminals of each branch crowned with deep pink flower spikes 6 inches long in July. Our plants are an improved type of the above known as *Spiraea richmensis*.
- | | | | |
|-----------------|-------------|-----------------|-------------|
| 2 to 3 ft. | Each \$0.60 | 4 to 5 ft. | Each \$1.00 |
| 3 to 4 ft. | .75 | | |
- S. prunifolia** (*Bridal Wreath Spirea*). 5 to 6 ft. An old-fashioned variety with white, double flowers borne close to the slender, erect branches in April and May before the foliage appears.
- | | | | |
|-----------------|-------------|-----------------|-------------|
| 2 to 3 ft. | Each \$0.60 | 4 to 5 ft. | Each \$1.00 |
| 3 to 4 ft. | .75 | | |
- S. reevesiana lanceata** (*Reeves' Double Spirea*). 4 to 5 ft. The double white flowers are borne in clusters along the branches in May and the shrub resembles *Spiraea Van Houttei*, except the flowers are double and the leaves are longer and narrow. Foliage persistent in the fall.
- | | | | |
|-------------------|-------------|-----------------|-------------|
| 18 to 24 in. | Each \$0.75 | 2 to 3 ft. | Each \$1.00 |
|-------------------|-------------|-----------------|-------------|
- S. thunbergi** (*Thunberg Spirea*). 2½ to 3½ ft. A graceful shrub with slender, arching branches and small, narrow, light green leaves which change to shades of orange in fall. White, minute flowers appearing in great profusion in early spring. Fine for low foundation planting.
- | | | | |
|-------------------|-------------|-----------------|-------------|
| 18 to 24 in. | Each \$0.75 | 2 to 3 ft. | Each \$1.00 |
|-------------------|-------------|-----------------|-------------|
- S. trichocarpa** (*Korean Spirea*). 4 to 6 ft. A rather new *Spiraea* which resembles the well known *S. Van Houttei*, except more vigorous and with larger leaves and flowers coarse in every way. The white blossoms are borne on recurved branches about 2 or 3 weeks later.
- | | | | |
|-----------------|-------------|-----------------|-------------|
| 2 to 3 ft. | Each \$0.75 | 4 to 5 ft. | Each \$1.25 |
| 3 to 4 ft. | 1.00 | | |
- S. Van Houttei** (*Van Houtte Spirea*). 4 to 5 ft. This shrub should need no description as it is planted and known all over America. The rather slender arching branches are literally covered with clusters of small white flowers in early spring. Good foliage and form, but should be planted where it does not have to be cut back too severely. Can be used as specimen, in masses, or for a graceful hedge. Have a wonderful stock of plants. For hedges or quantity lots ask for prices.
- | | | | |
|-----------------|-------------|-----------------|-------------|
| 2 to 3 ft. | Each \$0.50 | 4 to 5 ft. | Each \$0.75 |
| 3 to 4 ft. | .60 | | |



Rhodotypos



Spirea Van Houttei

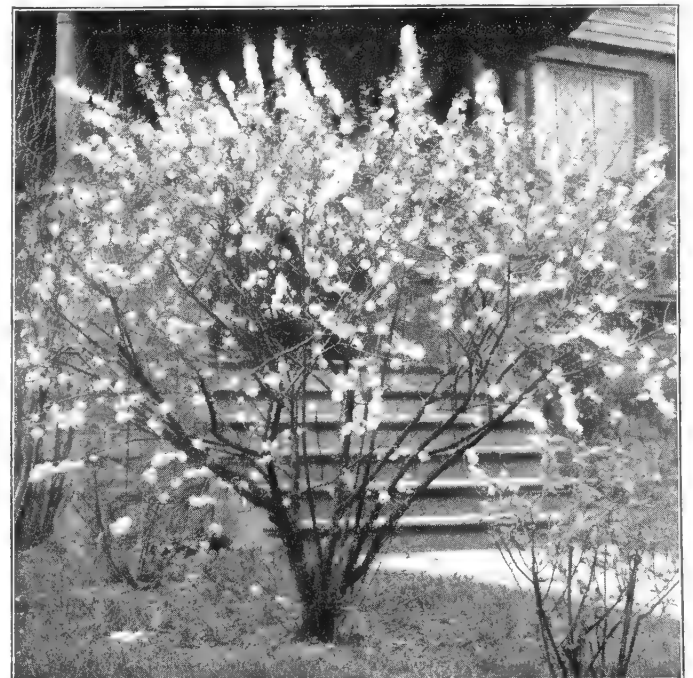
Symphoricarpos - Coralberry; Snowberry

- SYMPHORICARPOS chenaultii** (*Chenault Coralberry*). 4 to 6 ft. An improved form of Coralberry, of more upright growth, smaller leaves and coral fruit.
- S. alba** (*Common Snowberry*). 4 to 5 ft. Small pinkish flowers in July, followed by white berries in winter.
- S. orbiculatus** (*Indian Currant Coralberry*). 4 to 5 ft. A native shrub that in many localities grows in great masses. Bell-shaped white flowers in June, followed by coral berries.
- | | | | |
|------------------------------------|-------------|-----------------|--------|
| Price on above 3 varieties: | Each | Each | |
| 2 to 3 ft. | \$0.60 | 3 to 4 ft. | \$0.75 |

Syringa - Lilac

*"I am thinking of the Lilac trees
That shook their purple plumes
And when the sash was open
Shed fragrance through the room."
—Mrs. Stephens.*

- SYRINGA josikaea** (*Hungarian Lilac*). 8 to 10 ft. It produces violet flowers later than ordinary Lilacs; the round, heavy foliage is not subject to mildew.
- S. oblata dilatata** (*Korean Early Lilac*). 8 to 10 ft. A Chinese variety with good foliage. Single pinkish blue blossoms borne in rather loose clusters. Very early and desirable.
- S. villosa** (*Late Lilac*). 6 to 8 ft. The latest to bloom. Pale pinkish lilac flowers are very fragrant. Plants bushy and compact.
- | | | | |
|---------------------------|-------------|-----------------|--------|
| Above 3 varieties: | Each | Each | |
| 3 to 4 ft. | \$1.25 | 5 to 6 ft. | \$2.00 |
| 4 to 5 ft. | 1.50 | | |
- S. persica** (*Persian Lilac*). 6 to 8 ft. A rich lilac color; blooms later than the old-fashioned kinds.
- S. vulgaris** (*Common Purple Lilac*). 6 to 8 ft. The old familiar Purple Lilac of grandmother's garden, and which has lost none of its charm. Entirely hardy; blooms in April.
- S. vulgaris alba** (*Common White Lilac*). 6 to 8 ft. This is the old-fashioned White Lilac. Blooms in April.
- | | | | |
|---------------------------|-------------|-----------------|--------|
| Above 3 varieties: | Each | Each | |
| 2 to 3 ft. | \$0.75 | 4 to 5 ft. | \$1.25 |
| 3 to 4 ft. | 1.00 | | |



Prunus Glandulosa



French Lilacs

The so-called French Lilacs have been derived by crossing the best of the species, especially *Syringa vulgaris*. There are many wonderful varieties and after much testing we have selected the following as the best for our section.

- Adelaide Dunbar.** Semi-double maroon to violet-red.
- Alphonse Lavallee.** Light purple; double.
- Buffon.** Single mauve-pink.
- Chas. Tenth.** Single; bluish violet-red.
- Congo.** Single reddish purple.
- Descartes.** Single pink.
- Ellen Willmott.** Double; white.

- Ludwig Spaeth.** Reddish purple; single.
- Michel Buchner.** Pale lilac; double.
- Mme. Lemoine.** Double; creamy white.
- Mme. F. Morel.** Large single reddish purple.
- President Grevy.** Double; blue.
- Vauban.** Lilac-pink. Semi-double.
- William Robinson.** Pink; double.

All French Lilacs:	Each
2 to 3 ft.	\$1.25
3 to 4 ft.	1.50
4 to 5 ft.	2.00

Adelaide Dunbar, Descartes, Congo, and Wm. Robinson not available in 4 to 5 ft.

Tamarix

Graceful shrubs with few branches, feathery foliage and showy flowers. Will grow in very dry soil.

TAMARIX pentandra (*Five-Stamen Tamarix*). 6 to 8 ft. Beautiful blue-gray foliage, pink flowers in panicles during June and scattered throughout the summer.

T. africana (*African Tamarix*). 7 to 10 ft. The lavender flowers are borne along the branches in spring before the leaves. Strong grower and excellent for a background.

Prices of both varieties:	Each
2 to 3 ft.	\$0.60
3 to 4 ft.75
4 to 5 ft.	1.00

Viburnum

(The Snowballs)

Viburnum carlesii (*Korean Spice Viburnum*). 3 to 4 ft. A notable distinct shrub with rounded, leathery foliage and waxy pink flowers. Their very delightfully fragrant blossoms unfold with the leaves in spring. It is a real aristocrat and should be in every garden where quality is appreciated.

	Each
2 to 3 ft., B&B	\$2.50
3 to 4 ft., B&B	3.00

V. trilobum (*American Cranberry Bush*). 10 to 12 ft. A desirable variety grown primarily for its large, red, conspicuous fruit, which is persistent throughout the fall.

V. burkwoodii. See page 8.

V. dilatatum (*Linden Viburnum*). 6 to 8 ft. A very decorative Chinese variety with large clusters of white flowers followed by persistent red fruit.

V. lantana (*Wayfaring Tree*). 8 to 10 ft. A vigorous shrub with soft, heavy leaves and large clusters of white flowers in May. Red berries turn black as they ripen.

V. opulus (*European Cranberry Bush*). 8 to 10 ft. Its bright berries attract birds in midsummer, and its color effect in the fall is brilliant. White flowers in May.

V. opulus roseum (*Common Snowball*). 8 to 10 ft. The old-fashioned variety, well known to all. In May the balls of pure white flowers cover the bush.

V. prunifolium (*Black Haw Viburnum*). 10 to 12 ft. A large bushy shrub or small tree with horizontal, twigg branches and dark green leaves which color brilliantly in the fall. White flowers borne in flat clusters followed by smooth, glaucous bluish black fruit. A valuable variety.

V. rhytidophyllum. See page 8.

V. tomentosum sterile (*Japanese Snowball*). 6 to 8 ft. The pure white flowers are borne among the clean, pleated, healthy foliage, making it one of the showiest and most beautiful. Fine for specimen or mass planting.

Prices of all Viburnums except as noted:	Each
2 to 3 ft.	\$0.75
3 to 4 ft.	1.00
4 to 5 ft.	1.25

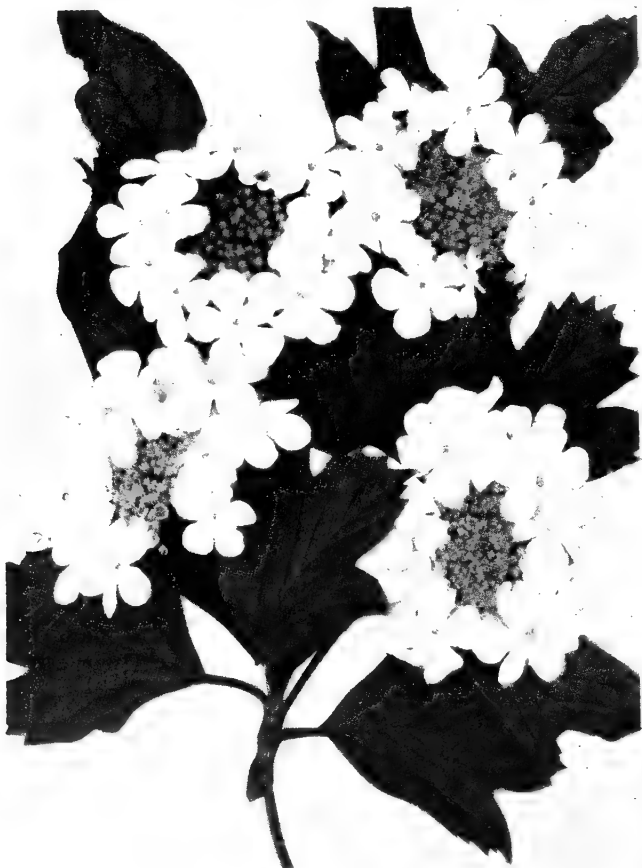
SPECIAL SHRUB ASSORTMENT

- Five of any \$1.00 size for \$4.00
- Five of any 75-cent size for \$3.50
- Five of any 60-cent size for \$2.75
- Five of any 50-cent size for \$2.25

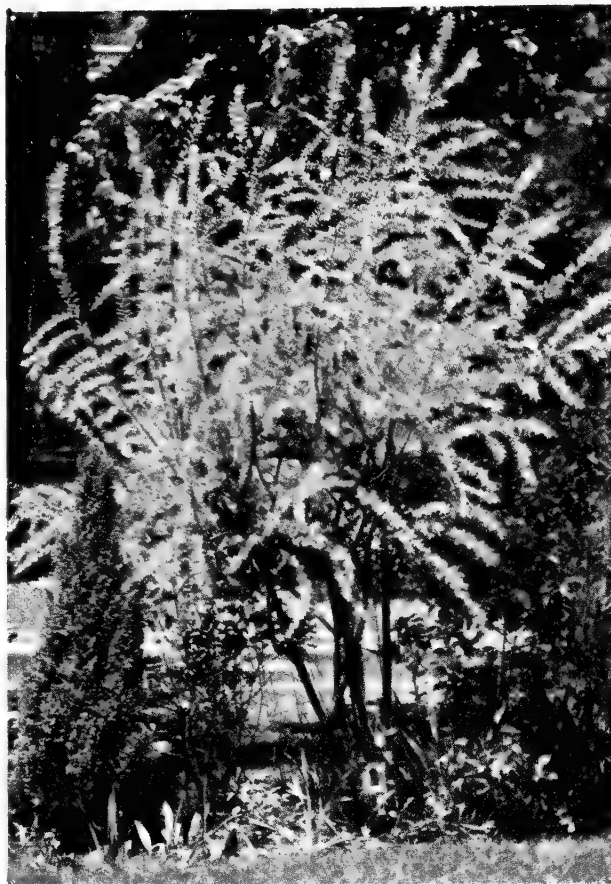
These are our regular plants, and carry the Hillenmeyer guarantee.



Vitex



Viburnum Opulus



Tamarix

Vitex

VITEX latifolia (*Chaste Tree*). A beautiful late blooming shrub with lilac-blue spikes similar to Butterfly Bush. Graceful, showy, and should be planted more. Each 2 to 3 ft. \$0.60 3 to 4 ft.75 4 to 5 ft. 1.00

Weigela

Hardy free flowering shrubs, 4 to 6 feet, of spreading habit with bell- or trumpet-shaped flowers. Thrive in moist soil, and will grow in partial shade.

WEIGELA candida (*Snow Weigela*). The best white.

W. desboisi (*Desbois Weigela*). Rose-pink; free bloomer.

W. floribunda. Best red. Superior to Eva Rathke.

W. florida. Delicate pink.

All Weigelas:	Each
2 to 3 ft.	\$0.60
3 to 4 ft.75

Let Hillenmeyer Help You Plan



We Ship at the Right Time to Plant. Free Planting Booklet With Every Order.



Hedges The Friendly Way to Fence

A thrifty, green hedge gives more character and beauty to home grounds than any fence ever devised. The first cost is usually less than an ordinary fence and trimming less expensive than painting. A hedge is an effective boundary marker, a wall of living green that protects the world within from the world without. The different hedge plants here listed are adapted to a variety of uses—and the plants themselves are in every way Hillenmeyer standard. All hedges should be cut back at least one-third when planting.

Chinese Privet (*Ligustrum Sinense*)

A rapid, semi-evergreen, loose growing plant that is desirable for hedge or screen. It prunes beautifully and can be kept to almost any height desired. When kept closely clipped the leaves are quite small and look almost like Boxwood. Occasionally freezes to the ground during a severe winter but always comes back with renewed vigor.

	25	50	100
12 to 18 in.	\$2.50	\$4.00	\$ 8.00
18 to 24 in.	3.00	5.00	10.00
2 to 3 ft.	3.50	6.00	12.00
3 to 4 ft.	4.50	7.50	15.00

California Privet (*Ligustrum Ovalifolium*)

Upright in growth, dark, thick, almost evergreen foliage and one of the most popular hedge plants. Can be pruned easily and does not require clipping as often as the Chinese Privet. Somewhat hardier than Chinese Privet.

Ibolium Privet (*Ligustrum Ibolium*)

This comparatively new Privet has proven hardy under the severe tests of the past few years. It has many characteristics of the California Privet though not as evergreen, and is as hardy as its other parent, the Ikota Privet. This superior Privet is a welcomed addition since it can be grown and sold at the price of California Privet.

PRICES ON CALIFORNIA AND IBOLIUM PRIVET

	25	50	100	1000
12 to 18 in.	\$2.00	\$3.00	\$6.00	\$45.00
18 to 24 in.	2.50	4.00	8.00	60.00
2 to 3 ft.	3.00	5.00	10.00	80.00
3 to 4 ft.	3.50	6.00	12.00	100.00

Plant above Privet 6 to 12 inches apart.

Fragrant Bush Honeysuckle

(*Lonicera Fragrantissima*)

One of the most satisfactory tall-growing screen or hedge plants. We do not recommend it where you want to keep it under 3½ to 4 feet. It is strong, vigorous, hardy, dense and holds its foliage well into the winter. The small, cream, bell-shaped blossoms appear in early spring and are quite fragrant. Normally growing into a hedge 6 to 12 feet. Requires little pruning and will thrive in almost any soil. Whether kept pruned or permitted to grow, actually it is one of our most useful shrubs to screen out objectionable views or to give privacy to your property. Plant 12 to 24 inches apart, depending on the density desired. Shorten back at least one-third after planting.

	10	50	100
18 to 24 in., 2 canes or more	\$2.00	\$ 7.50	\$15.00
2 to 3 ft., light, 3 canes	2.50	10.00	20.00
2 to 3 ft., heavy, 4 canes or more	3.00	12.50	25.00
3 to 4 ft., light, 3 canes	3.00	12.50	25.00
3 to 4 ft., heavy, 4 canes or more	3.50	15.00	30.00

Japanese Barberry (*Berberis Thunbergi*)

Each year sees an increased use of Japanese Barberry as a hedge plant. It is graceful, ornamental, serviceable, and hardy—four points that place it at the top of the list. The foliage unfolds in early spring, followed by yellow flowers, and later by red berries that remain all winter. In autumn the whole plant assumes a red tone. The drooping branches are thickly set with small spines that will turn cats or dogs. Japanese Barberry is excellent for foundation planting or for massing in corners. It thrives in bright sun and does well in shade.

	10	50	100
12 to 15 in.	\$2.50	\$10.00	\$20.00
15 to 18 in.	3.00	12.50	25.00

Plant 18 to 24 inches apart.

Other Plants for Hedges

Many other shrubs make useful hedges, giving both protection and color. We shall be happy to give special prices on quantities and in hedge size.

- Abelia.** See page 7.
- Arbor-Vitae.** See page 6.
- Hemlock.** See page 5.
- Hibiscus.** See page 20.
- Lilac.** See page 23.
- Privet, Regel's.** See page 21.
- Red Barberry.** See page 18.
- Spiraea.** See page 23.



Climbing and Creeping Vines

"Then the Wild Clematis Comes, With Her Wealth of Tangled Blooms."

—Goodale

These are the draperies that Nature gives us to cover porches, arbors, fences, and to disguise unsightly buildings and old trees. All the varieties here named are strong growers, with either bright flowers in summer or brilliant berries in fall. Use vines freely to make the landscape more beautiful. They thrive almost anywhere, cost little, and give a large return in comfort and pleasure.

Campsis Radicans

(Trumpet creeper)

A vigorous, woody vine, bearing scarlet flowers followed by long pods. It is a native of this section, easy to establish, and grows luxuriantly. Valuable for covering any kind of shelter or rustic work. 50c each; 5 for \$2.00.

Celastrus

CELASTRUS scandens (American Bittersweet). An unusually attractive native vine because of its showy berries in the fall and early winter. Vigorous. 50c each; 5 for \$2.00.

Clematis

CLEMATIS jockmani. The most popular Chinese Clematis. Has large purple flowers. Exquisite when it can be grown. 75c each; 5 for \$3.25.

C. paniculata (Sweet Autumn Clematis). The small-flowered, fragrant, white "star" variety that blooms so profusely. Easy to establish and attractive in foliage as well as blossoms. 50c each; 5 for \$2.00.

Euonymus

EUONYMUS radicans (Common Winter Creeper Euonymus). A slow growing vine that adheres to masonry and remains deep green all winter. 50c each; 5 for \$2.00.

E. fortunei coloratus (Bronze Winter Creeper). A comparatively new vine, growing more rapidly than others of this family. It has long, vigorous shoots, well covered with small, sharply pointed leaves. Clings exceptionally well and makes an artistic effect on a bare wall or chimney. Turns a rich bronze during the winter months. 50c each; 5 for \$2.00.

E. fortunei vegetus (Big-Leaf Winter Creeper). Another evergreen clinging vine of moderate habit, perfectly hardy, and especially valuable because of the profusion of red berries that hang on for several weeks. 50c each; 5 for \$2.00.

Hedera

HEDERA helix (English Ivy). The most popular evergreen vine. Has large, deep green, glossy foliage, and is unexcelled for covering walls in shady and cool places. Can be sheared into edging for walks or covering for graves, or used as a most satisfactory ground cover under trees or in shady places; adds beauty and dignity. Strong vines. 30c each; 4 for \$1.00; \$20.00 per 100.

For Parcel Post and Insurance, add 10 per cent.

Lonicera

LONICERA japonica halliana (Hall's Japanese Honeysuckle). An evergreen, twining vine that is so much used for fences and trellises. Blooms continuously, is fragrant, and very easy to establish. Used largely to hold roadside banks from rain erosion, and will flourish in poor soil. 25c each; 5 for \$1.00.

L. sempervirens (Trumpet Honeysuckle). Attractive, trumpet-shaped flowers of bright scarlet. 50c each; 5 for \$2.00.

Parthenocissus

PARTHENOCISSUS quinquefolia (Virginia Creeper). This is the five-leaved Ivy that is so valuable for covering walls, fences, etc. It will grow anywhere and colors brilliantly in the fall. 50c each; 5 for \$2.00.

P. tricuspidata (Boston Ivy). The best of the self-clinging vines. Foliage is small, deep green, and very dense, covering any object completely. Colors beautifully in the fall. Slow to start, but vigorous when established. 50c each; 5 for \$2.00.

Polygonum

POLYGONUM auberti (Silver Vine Fleecflower). A quick-growing vine with small, attractive foliage. The flowers are very small and lacy and when the plant blooms it is a perfect mass of silvery white; there is no other vine producing anything like the same effect. Blooms from August to frost. 75c each; 5 for \$3.25.

Pueraria

PUERARIA thunbergiana (Thunberg Kudzu Bean). The most rapid growing, twining vine known today. It is marvelous how it will cover fences, pergolas, or similar objects. The large, purple flowers are sweetly scented. Belongs to the pea family, and the foliage is dark green. 50c each; 5 for \$2.00.

Wistaria

WISTARIA sinensis (Chinese Wistaria). A rampant, clinging vine that has the robust vigor of a wild grape and the matchless beauty of a rare exotic. Flowers in large, drooping clusters. There is so much complaint of Wistaria not blooming that we are offering plants that are grafted from blooming wood. Wistaria always needs to be well established to bloom freely. **Purple and White.** 75c each; 5 for \$3.25.

Tree Wistaria

These lovely vines are most effective when grown in tree form. Much more satisfactory than Tree Roses, and as standards, are unsurpassed. **Purple only.** 4 to 5 ft., \$5.00 each. Specimen: 3- to 4-ft. heads, B&B at \$10.00 each.

Vines for Special Uses

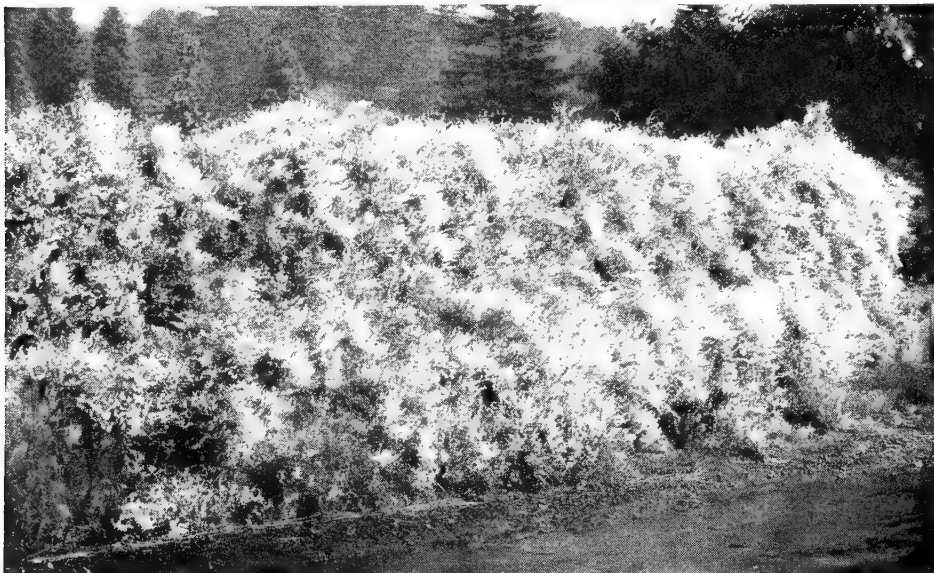
To Cover Top of Pergola or Lattice	
Kudzu Vine	Silver Lace Vine
Wistaria	
For Graceful Twining on Pergolas	
Climbing Rose	Honeysuckle
Clematis in variety	Bittersweet
For Covering Brick or Stone Walls	
English Ivy	Virginia Creeper
Boston Ivy	Euonymus
For Solid Screen Effects	
Honeysuckle	Virginia Creeper
Kudzu Vine	Trumpet Vine



Celastrus (American Bittersweet)



Clematis



Polygonum Auberti—Silver Lace Vine



HILLENMEYER Kentucky Grown Fruit Trees

Fruits—The Money-Makers are Coming Back to Southern Farms and Gardens

Wisely, many are again planting fruits. Changes during the past few years have shown clearly that farmers and gardeners who had a few bearing fruit trees were making money—or if they did not sell the fruit, they certainly did not have to buy at the store or on the market at high prices. So, the man who "raised his own" was ahead any way you look at it.

For many years we have given special attention to fruit trees and small fruit plants. This year we offer with great pride and confidence our Kentucky-grown trees, produced with the utmost care and skill, from fruiting trees of known parentage. Hillenmeyer trees are good trees, honest trees, and sold direct from the nursery—not by agents

whose commission you pay without getting a penny's worth of added value in the stock. As we sell direct to you, we do not ask fancy prices.

We propagate our fruits under careful conditions, taking every precaution to have them true to name, for we believe dependability of variety is our very best sales argument. We guarantee every variety to be as described and hold ourselves ready to replace, without charge, any tree that accidentally proves untrue to name. In addition to this dependability, our trees are suited to nearby conditions as we test all varieties before offering them for sale.

CHERRIES

Not difficult to grow, but the trees do best in well-drained, rich soil. The sour varieties grow more readily than do the sweets, but you can have both if the location is satisfactory. Be sure to plant the trees as soon as they arrive. Press the soil firmly around the roots; tramp it hard.

Cluster and Sub-Acid Varieties

You may plant one of these varieties and you will be rewarded. This group seldom fails to bear a good crop.

Early Richmond. This old standard Cherry has been the favorite for years. The fruit is tart and very valuable for canning purposes. Yields nearly every year and reddens the tree with its wonderful crop. It succeeds everywhere Cherries will grow and is the earliest in season.

Montmorency. Gradually supplanting Early Richmond because of its size. Except for being a little later it is practically the same. Not quite as acid. Good to eat from hand. The tree is hardy, blooming late, and frequently will make a crop when the sweet varieties fail.

Sweets or "Heart" Varieties

This group grows luxuriantly, makes a fine showing for a few years, and then may die if not in soil that is exactly suitable. The following varieties are the hardiest of the group. Best to plant two varieties of sweet Cherries for pollination.

Black Tartarian. Perhaps the most popular of the sweet varieties. Fruit is large, black, and heart-shaped. High quality. The tree is vigorous in suitable soil.

Napoleon (Royal Anne). Large; yellow, tinged with red; firm. The most popular and best light colored Cherry for this section.

PRICES ON CHERRIES

	Each	5
4 to 5 ft.	\$1.75	\$7.50
5 to 6 ft.	2.00	8.75

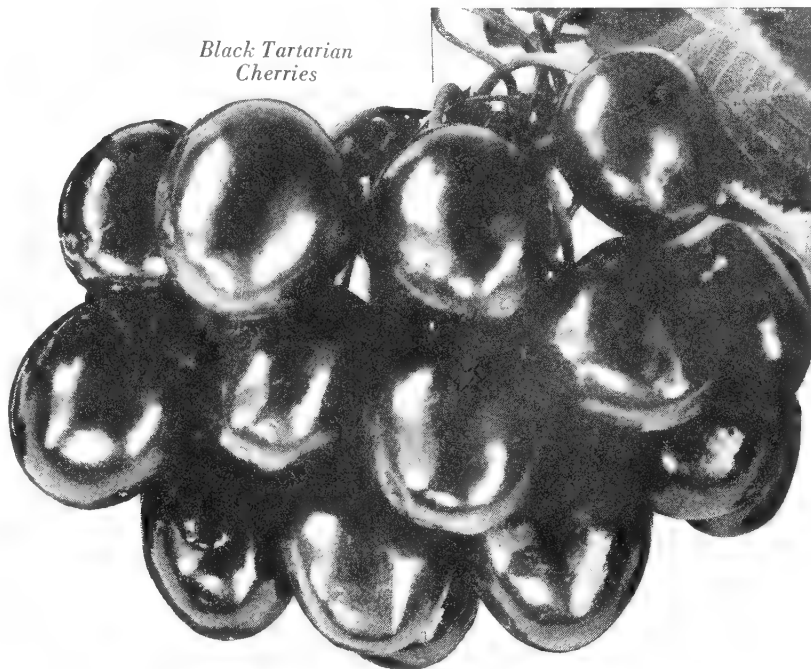
DISTANCES APART TO PLANT FRUITS

APPLES	30 to 40 feet	PLUM	25 feet
APRICOTS	20 to 25 feet	PEAR	25 feet
CHERRY (Sweet)	30 feet	QUINCE	12 to 15 feet
CHERRY (Sour)	25 to 30 feet	GRAPES	8 feet
PEACH	20 to 25 feet		

	Plants	Rows
BLACKBERRIES2 to 3 feet	6 to 8 feet
BLACK RASPBERRIES2 to 3 feet	6 feet
RED RASPBERRIES2 to 3 feet	5 to 6 feet
GOOSEBERRIES4 to 5 feet	5 to 6 feet
CURRANTS3 to 4 feet	5 feet
STRAWBERRIES1½ feet	3½ to 4 feet
ASPARAGUS1 to 1½ feet	4 to 6 feet
RHUBARB2 to 3 feet	3 to 4 feet

The above distances are approximate.

Black Tartarian Cherries



APRICOT

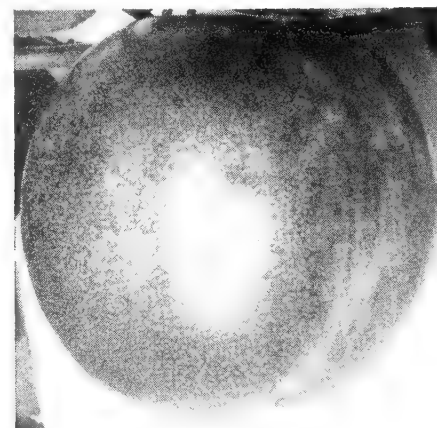
Talbert. Excellent quality. Bears early and selected for its hardness.

	Each	5
4 to 5 ft.	\$1.75	\$7.50
5 to 6 ft.	2.00	8.75

Fruit Trees By Post

Due to their length, the 5-6 ft. size trees cannot be sent by Parcel Post.

FOR POST AND INSURANCE ADD 10%



Nectarine

NECTARINE

Sure Crop. Imported from New Zealand by the United States Department of Agriculture. The best of all the Nectarines as to quality, size and hardness.

	Each
4 to 5 ft.	\$1.75
5 to 6 ft.	2.00



APPLES

No other fruit is so dependable and generally desirable as the Apple. They will thrive in almost any well-drained soil. Their period of ripening extends from early July until frost and then they can be kept through the entire winter. For family use there is no fruit so indispensable. With moderate care they will pay a handsome return on your efforts and investment. We have kept our list of varieties up to date and you can plant any of them with confidence.

PRICE OF APPLES			
2- and 3-year-old trees			
	Each	5	50
3 to 4 ft.	\$0.75	\$3.25	\$27.50
4 to 5 ft.	1.00	4.50	40.00
5 to 6 ft.	1.25	5.75	50.00

For Postage and Insurance to add 10%.

Summer Apples

ANOKA. Medium size, red striped and of good quality. The outstanding feature of this Apple is the earliness at which it bears. Sometimes produces fruit in the nursery row. Excellent for small areas.

CLOSE. A new, early, red variety of outstanding promise both for home and commercial plantings. Ripens a few days ahead of Transparent. Hardy and bears when quite young.

DUCHESS. (Often called "Oldenburg"). An outstanding variety following Early Transparent, is equally productive, and best of its season. Ours is the "red" strain. Early bearing.

EARLY TRANSPARENT. Waxy yellow; tart; excellent. Very early bearer; productive. Valuable for either home or market. Susceptible to blight on rich soil.

GOLDEN SWEET. Yellow. The best sweet we know. Vigorous grower; productive. Hasn't a fault.

HYSLOP CRAB. The very best hardy Crab, producing a heavy crop of tart, bright red fruits that are unexcelled for culinary purposes. Bears early and productively.

LODI. The best description of this variety may be to say that it is a larger, later Transparent. Pale yellow, tart, and ripens about a week later. Tree vigorous. Many think it will supplant Transparent as a commercial variety.

MAIDEN'S BLUSH. See Polly Eades.

POLLY EADES. A Kentucky developed variety; while not well known, is superior to Maiden's Blush. Plant this on our recommendation and you will never regret it.

Fall Apples

GRIMES GOLDEN. The best fall Apple. A recent survey showed this the most popular Apple of any season. Fruit golden yellow. Matures early and is heavy bearer. This variety is troubled with canker, shortening the life of the tree. We also offer "Double Grafted" Grimes Golden, which is a longer lived tree, at 25c extra.

McINTOSH. A fine fall or early winter sort that has won its way because of its productiveness and extra high quality. Bright red; smooth. Plant it liberally in Kentucky.

PADUCAH. A Kentucky product which very much resembles the Rome Beauty. About two or three weeks earlier, with more color. Prolific and a regular bearer. This variety stands at the top of the list as to production at the Kentucky Experiment Station.

WEALTHY. Large; shaded dark red; quality good, tender. Productive. Early to bear, and most satisfactory.



Yellow Delicious

Winter Apples

BALDWIN. Red; large; fine quality. Tree vigorous. The Eastern commercial Apple.

DELICIOUS. See Red Delicious.

JONATHAN. An early-bearing and long-keeping Apple; red; medium size, quality good. Tree never large, but productive.

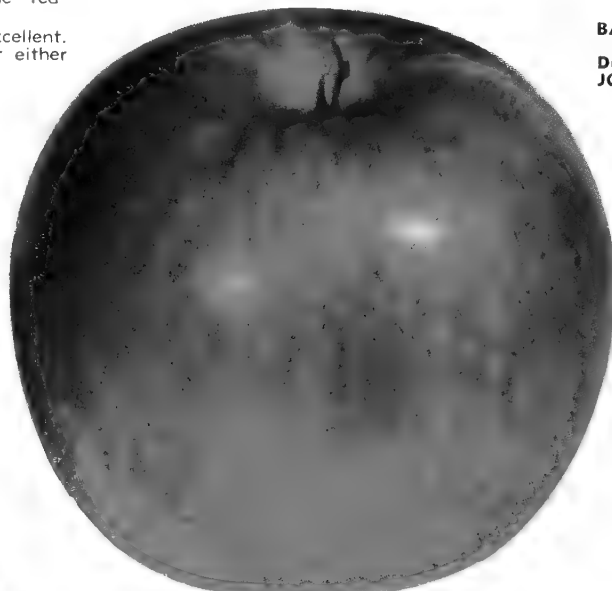
RED DELICIOUS. As this extra red strain is such an improvement on the old Delicious we are propagating it entirely. When you ask for Delicious we give you this red strain at no extra cost. Fruit large, uniform size, and highest quality. Distinguished by the five lobes on the blossom end. Good for home or market.

RED STAYMAN. Dark rich red. Fruit large, good quality and keeper; early to come into bearing and productive. We think this the outstanding winter Apple for Kentucky. As the red variety is an improvement over ordinary Stayman, we are propagating it entirely and filling all of our orders from this selected strain.

ROME BEAUTY. Large; red; tender, sub-acid. Early bearer and productive. A popular sort in most sections.

STAYMAN WINESAP. See Red Stayman.

TURLEY WINESAP. A seedling of Winesap which it somewhat resembles. Conical, rich red and of highest quality. A recent introduction, bears early and is popular.



Paducah

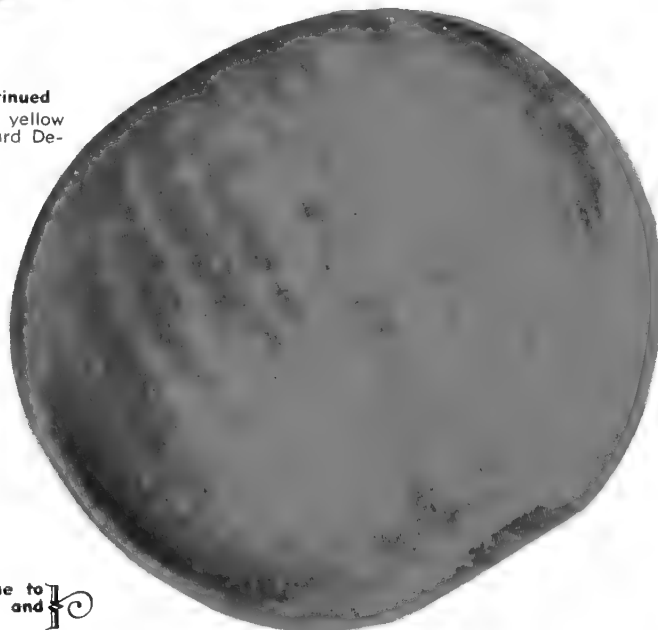
WINTER APPLES—Continued

YELLOW DELICIOUS. A yellow type of the old standard Delicious which has become deservedly popular throughout the country. Bears young and of highest quality.

YORK IMPERIAL. A late keeping commercial Apple, shaded red on yellow skin. Flesh firm. Tree healthy. Regular and heavy bearer. Plant for profit or for home.



Close

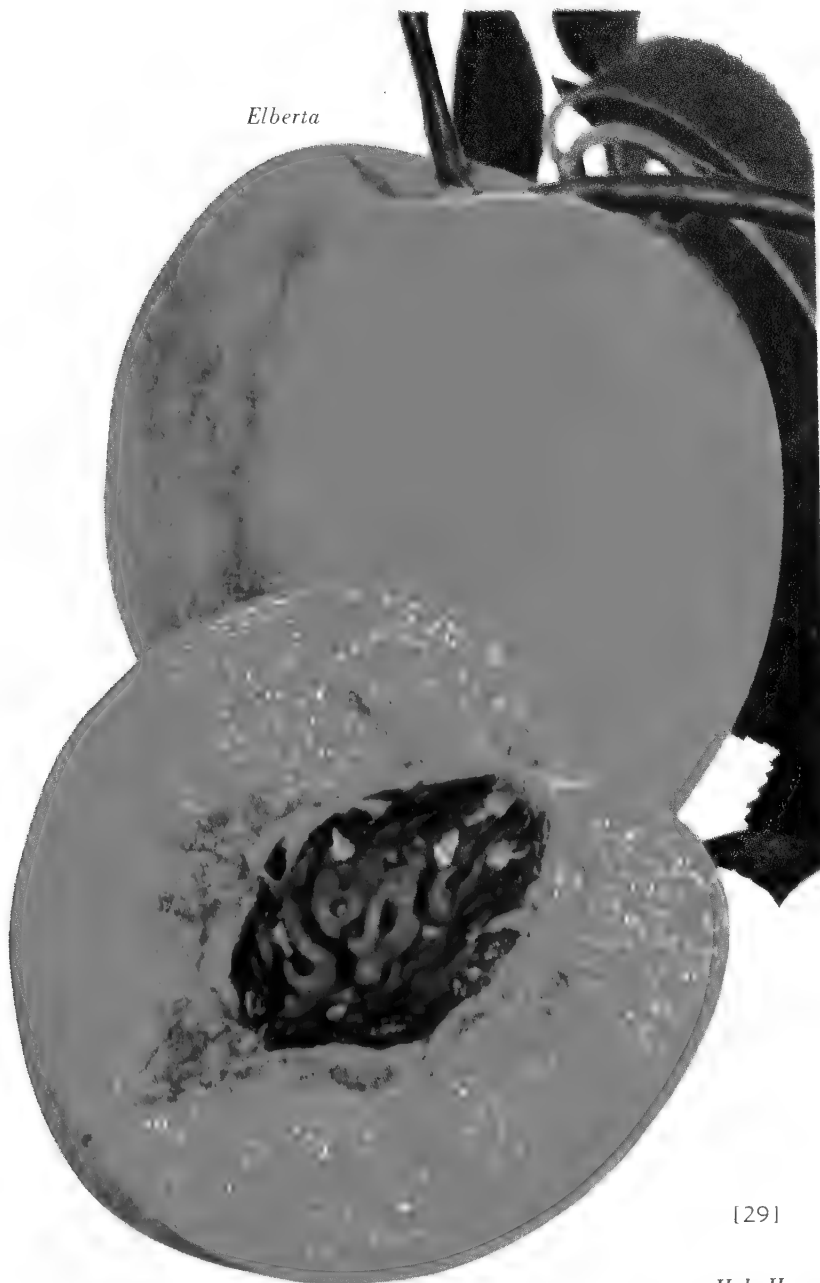


Red Stayman

Hillenmeyer's Apples are True to Name—the Best to be Had and They Cost No More.

PEACHES

Elberta



[29]

Hale-Haven



A home garden without Peaches? Can you imagine such a thing? Just think what you are missing—luscious fruit from late June to mid-October if you select an early, a midseason, and a late. One tree of each is better than none, but if you have space, plant five of each class. For a commercial orchard you need a special selection and several varieties—better write and ask our advice.

PLANTING AND CARE

The Peach is the quickest maturing of fruit trees, often bearing the second year after transplanting. Plant only in well-drained soil but otherwise follow methods recommended for other fruit trees.

When planting, prune rather severely, cut all side branches to 6 to 8 inches and head low. The tree gets top-heavy if allowed to develop a high head. Subsequent orchard pruning consists of shortening the terminal growth and keeping the tree compact and shapely.

Borers which live right below the ground line and frequently girdle the trunk should be removed annually. A new chemical, Paradichlorobenzene (PDB) may be used to control this pest. Our orchard growing and nursery experience is always at your service. Write us your questions and we will try to help you.

	Each	5	50
3 to 4 ft.	\$0.75	\$3.25	\$27.50
4 to 5 ft.	1.00	4.50	40.00
5 to 6 ft.	1.25	5.75	50.00

ARRANGED IN THEIR ORDER OF RIPENING

- MIKADO.** (Free.) The best and most popular very early Peach to-date. Medium size, round, yellow with red blush and of good quality. For best results should be planted with other varieties for cross-pollination. July 5 to 10.
- CARMAN.** (Semi-free.) Early. White with red blush. Medium size and good quality. One of the hardiest and you may frequently have Peaches when others freeze. Often needs thinning.
- GOLDEN JUBILEE.** (Free.) A new, large, early Peach, highly recommended by the Kentucky Experiment Station and other leading authorities. Yellow with a distinct blush. Quality fine. July 15.
- JULY HEATH.** (Cling.) A new and better cling which we are growing instead of the old standard Heath. Has distinct blush, of good quality and highly recommended by the Kentucky Experiment Station. July 25.
- HILEY.** (Free.) An early Belle of Georgia. White flesh, firm, sweet, of good quality, and best of its season. July 30.
- SOUTH HAVEN.** (Free.) Better color and quality than Elberta. Large, and ripens 10 to 14 days earlier. Has been much harder than other yellow Peaches and because of our tests we recommend it highly. August 5.
- HALE-HAVEN.** (Free.) An excellent new Peach introduced by the Michigan Experiment Station. A cross between J. H. Hale and South Haven. Large, midseason, yellow with blush. Good quality tree, healthy and hardy. August 5.
- VALIANT.** (Free.) A new, extra hardy outstanding yellow variety of good quality. August 5.
- BELLE OF GEORGIA.** (Free.) White, with decided blush; excellent quality. Heavy and regular bearer. The best white-fleshed Peach for home or market. August 10.
- EARLY ELBERTA.** (Free.) Clear yellow, with blush; fine grained and sweet. Tree a strong grower with a tendency to thin itself, carrying moderate loads of fruit. August 10.
- J. H. HALE.** (Free.) Fruit large, yellow, almost covered with red; more highly colored than Elberta; flesh firm, melting, and of best quality. Ripens August 10 to 15.
- ELBERTA.** (Free.) Fruit large, yellow, shaded with deep red. Elberta has been the standard Peach for years, and is just as good today. More than 80 per cent of commercial plantings are of Elbertas. August 10 to 15.



PEARS

This old standard fruit is still being planted by many. Blight is its chief enemy, and as it is worse on deep, rich soil, do not over-stimulate by feeding. Planted in the back lawn it will make a beautiful tree in foliage, blossom and fruit.

BARTLETT. August 15. The favorite eating Pear of America, East or West. Large, beautiful yellow with soft blush; high flavor. Tree bears quite young. On account of its popularity everywhere it is the most sought after of the European Pears.

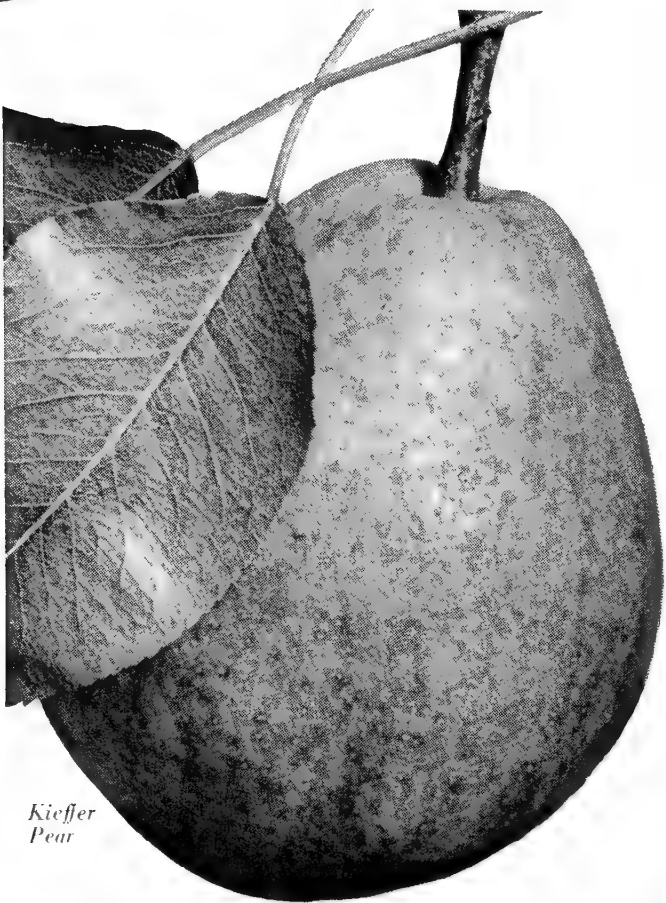
KIEFFER. September 10 to 15. The most popular Pear for our section. Fruit is large, golden yellow, sometimes tinted red on the sun-exposed side. Flesh is firm, crisp, juicy and for canning purposes it is especially prized. From the tree it is not good to eat, and to properly ripen, gather carefully and place in a dry place of even temperature. The quality improves and it is then desirable. For keeping longer, pack in shallow trays or wrap the fruit in paper and store in a room free from frost. In this manner it can be kept until Christmas.

LINCOLN. Blight-resistant and bears regular crops. Perfectly hardy and quality almost equals Bartlett. Season of ripening about September 1st. Plant with confidence. Considered by many the best of the Pears.

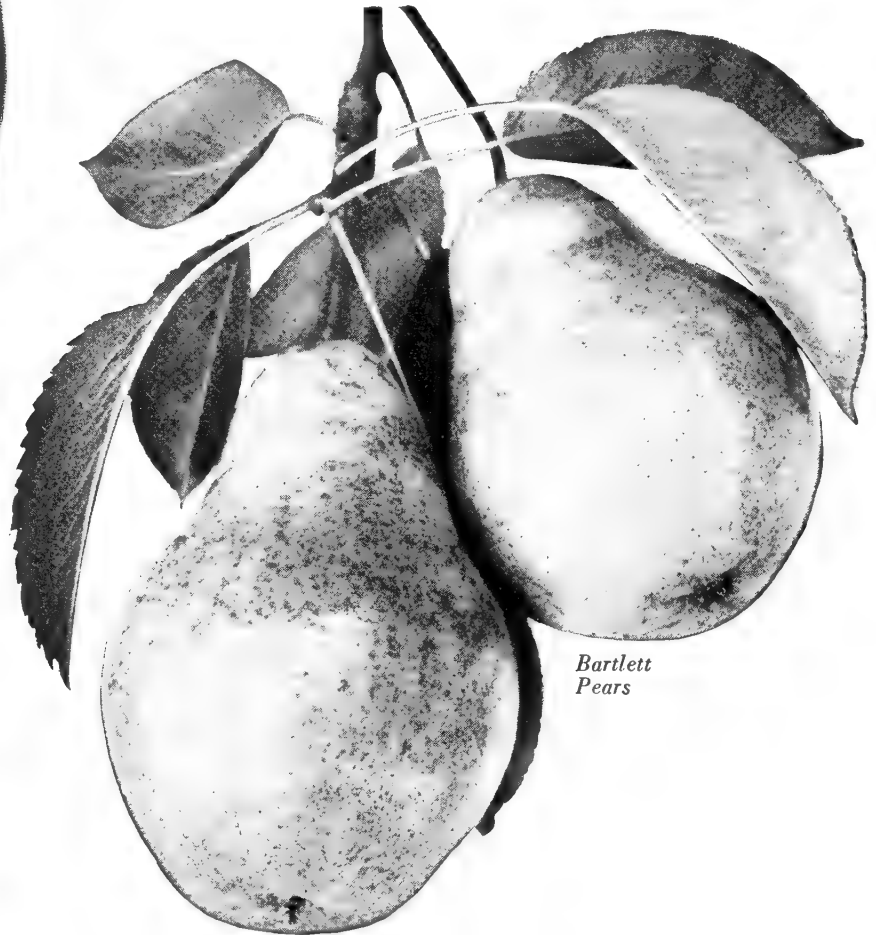
SECKEL. September 15. This small, high quality, yellowish brown Pear is one of the most popular of the September fruits. Of melting, juicy, and sugary quality (frequently called the "Little Sugar Pear"). Tree is of slow growth but lives long and is needed in every home garden.

TWO- AND THREE-YEAR-OLD TREES

	Each	5
4 to 5 ft.	\$1.75	\$7.50
5 to 6 ft.	2.00	8.75



Kieffer Pear



Bartlett Pears

MORE THAN 100 YEARS

... That's how long we have grown Hillenmeyer's Quality, True-to-Name Fruit Trees.



Damson Plums

PLUMS

The trees grow almost anywhere—garden, chicken-run, or orchard. Usually the trees are loaded with fruit, so it is wise to thin the green fruit when about as big as an acorn. Prune the trees same as apples.

BURBANK. Late July. Fruit large, violet to light purple, with occasional shades of yellow. Flesh yellow, of excellent quality. For either canning or market this is the most popular sort. We believe it to be the hardiest and most prolific of the Oriental varieties.

DAMSON. A medium size, purple or blue Plum which is well known for its fine culinary uses. Damson preserve is the height of epicurean delight. It bears heavily and should be in every planting where Plums are wanted.

GREEN GAGE. Another outstanding old variety. It ripens in mid-August and its medium sized, yellow-green, high quality fruit makes it a standard by which others are judged. Tree moderate grower; healthy.

OMAHA. (Hybrid.) A promising sort, vigorous in growth and free from disease. Being an American-Japanese hybrid, it inherits hardiness and productiveness from each parent. Produces great crops of coral fruit, yellow fleshed and of good quality.

STANLEY PRUNE. A large, sweet, purple Plum with much merit. Introduced by the New York Experiment Station. Annual bearer, good for home or commercial purposes and the best of the "prune" class.

TWO- AND THREE-YEAR-OLD TREES

	Each	5
4 to 5 ft.	\$1.75	\$7.50
5 to 6 ft.	2.00	8.75

Hillenmeyer's Small Fruits

GRAPE VINES

Other crops may fail but you never lose all the Grapes—unless the boys get them. Grapes are a sure crop. Vines bear every year, need little attention except training, lots of sunshine, and plenty of plant food. In the home garden, use sheep manure or bone meal; in the vineyard, use well-rotted manure.

	Each	5	50
2-year-old vines	\$0.35	\$1.50	\$10.00

For Postage and Insurance, add 10 per cent.

Black Grapes

- CONCORD.** The best general-purpose Grape grown. Berry large; bunches shouldered and compact. Should be the "backbone" of your planting. Special prices on large quantities.
- FREDONIA.** Outstanding new Grape, ripening a week or ten days before Concord. Berries and bunch large. Good quality, vine vigorous.
- MOORE'S EARLY.** An extra early variety. Medium bunch; large black berry. Vine is hardy, very reliable, and does well wherever planted.
- SHERIDAN.** An excellent, large Grape, ripening about a week after Concord. Very compact bunches but sometimes tries to overbear.

White Grapes

- NIAGARA.** The best white Grape. Bunch and berry large, meaty and juicy; flavor perfect. Medium season.
- PORTLAND.** The best early white for home and market. Vine moderately vigorous, fruit large and of excellent quality.

RASPBERRIES

We have tested many kinds of Raspberries and after due consideration are listing only four. These have proven best under our Kentucky conditions and we recommend them with confidence. Raspberries should be planted in every home garden, as they require small space and produce an abundance of our finest table fruit. Contrary to general belief, Raspberries and Blackberries want good rich soil.

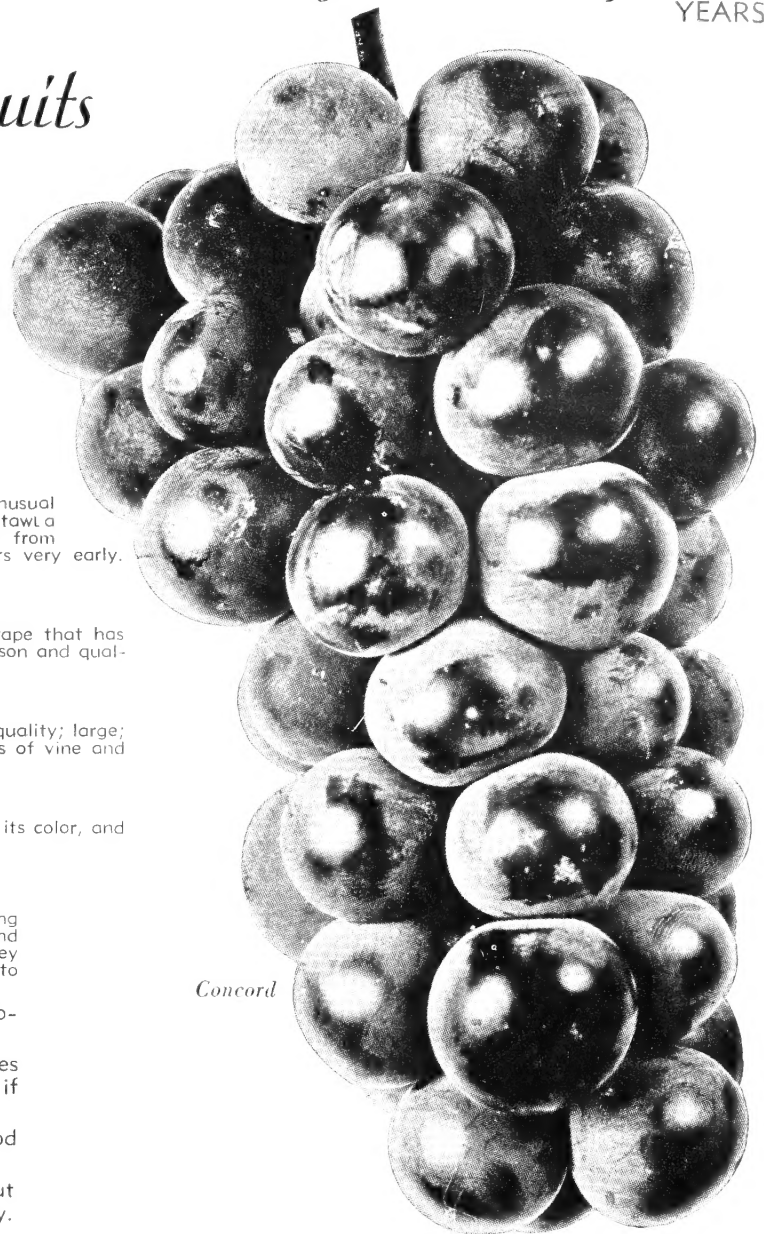
- CUMBERLAND.** Black. The best of its color for this section. Large, prolific and of good quality.
- INDIAN SUMMER.** Red. A new, repeat-bearing variety of merit. Produces a good crop of early berries and then will give you another in the fall if weather is favorable.
- LATHAM.** Red. The best all-round Red Raspberry. Large, prolific, good quality and firm. If you plant only one Raspberry, plant Latham.
- SUNRISE.** Red. A new early berry which is doing well in our section. About a week earlier than Latham. Not quite as large but of highest quality. Also hardy.

PRICES—ALL RASPBERRIES

12	25	100
\$1.50	\$2.50	\$8.00

FOR POSTAGE AND INSURANCE, ADD 10 PER CENT.

Quotations on larger quantities.



Concord

DEWBERRIES

We consider Lucretia the best Dewberry, making a very vigorous growth and fruiting early. The berries are large, jet black, and of fine flavor. May be allowed to develop on the ground or trained, in either case producing large crops.

12 for	\$1.50
25 for	2.50
100 for	8.00

For Postage and Insurance, add 10 per cent.

BLACKBERRIES

ELDORADO. Has stood at the head of the list for many years. It is later than Early Harvest, is not so subject to disease, and makes heavy, vigorous canes that hold the leaves and fruit well. Given a favorable season with moisture, or grown under mulch, it produces very large, long fruits that are a pride and joy to the grower.

EARLY HARVEST. Extra earliness and productiveness make this type the leading commercial and home variety. Is through with its crop when the wild ones begin to ripen. Hangs onto the canes well, and is a money-maker.

Prices of Blackberries:

12 for	\$1.50
25 for	2.50
100 for	8.00

For Postage and Insurance, add 10 per cent.

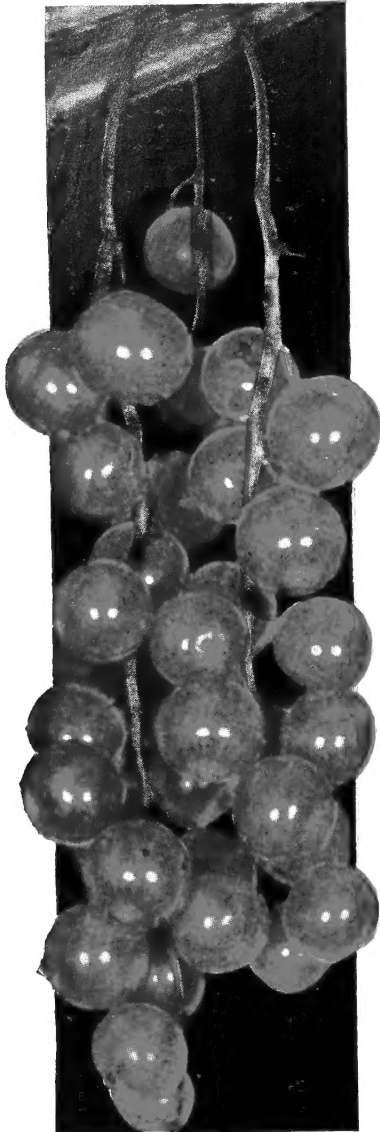
STRAWBERRIES

Strawberries should be planted only in the spring. When set in the fall, with alternate freezing and thawing, they usually heave out of the ground and die. We will have them listed in our spring literature which will also give cultural directions. The following varieties will be offered:

- Blakemore Fairfax Gandy
Catskill Premier
- PLANT ONLY IN THE SPRING**



Latham Red Raspberry



Currant

ASPARAGUS

WASHINGTON. This is the best known variety. It is a strong grower, producing stocks of large size, fine quality, and tender. The fact that it is rust-resistant makes it the ideal Asparagus for all. Our plants, produced on heavy soil, are superior to the little seedlings grown in sand. Every plant is graded and all are large, fleshy roots that, with proper care, will be ready to cut the second year. We are large growers of roots and can make attractive prices to commercial growers. Our plants will grow off much better than imported plants.

25 50 100
Strong, 2-yr. plants. \$1.50 \$2.50 \$4.00

Ask for prices on larger quantities.
For Postage and Insurance, add 10%.

CURRANTS

RED LAKE. By far the most productive of the many kinds we have tested. Color a brilliant red; large berries borne in long clusters along the stems; quality excellent. The white varieties have proved worthless in this climate.

Each 3 10
Price \$0.50 \$1.35 \$4.00

GOOSEBERRIES

DOWNING. Fruit almost round, large, and juicy; best quality; whitish green color. Does especially well in the North.

HOUGHTON. Round, medium size; dark red when ripe; juicy, sweet. Thin, smooth skin. The bush is hardy, very productive, free from mildew, and the best for general purposes in this section.

Each 3 10
Prices of Gooseberries \$0.50 \$1.35 \$4.00

RHUBARB

EXCELSIOR. Very early, with long stem. Plants vigorous and dependable.

1 for \$ 0.25
10 for 2.00
100 for 12.00

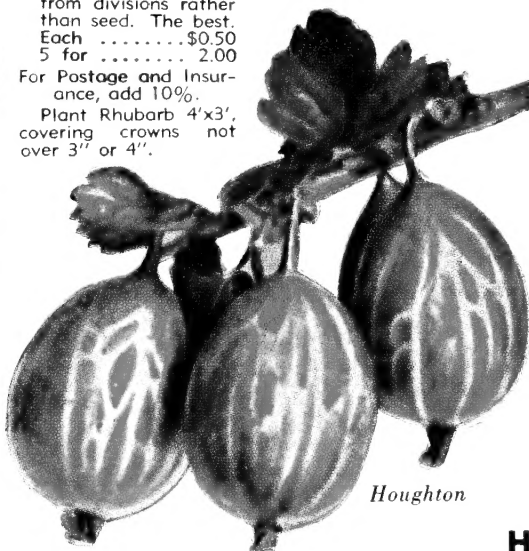
For Postage and Insurance, add 10%.

MacDONALD. New, bright, high quality Canadian variety, mildly acid. Takes less sugar. Raised from divisions rather than seed. The best.

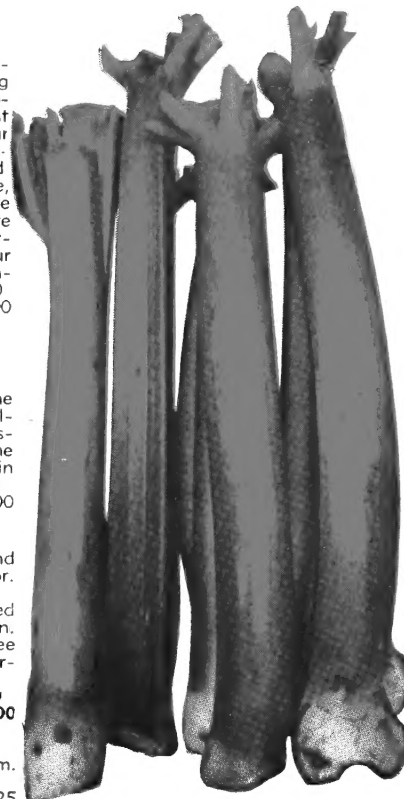
Each \$0.50
5 for 2.00

For Postage and Insurance, add 10%.

Plant Rhubarb 4'x3', covering crowns not over 3" or 4".



Houghton



MacDonald



Washington Asparagus

A Gift for You

To help you get the best results from your plans and plants we will send absolutely free with every order, a copy of this booklet:

"HOW TO PLANT"

The instructions are clear and cover planting, pruning, feeding, spraying, cultivating, and other details. This is a part of the service we give that you may have the greatest success and joy from Hillenmeyer stock. If other questions arise from time to time, write us—we are at your service.



HILLENMEYER'S FAMOUS Kentucky Blue Grass

BLUE GRASS

Here in the heart of the famed Blue Grass Section of Kentucky, the best seed in the world is produced. Hillenmeyer Seed is of the highest quality, both as to purity and germination. Do not sow light, chaffy material of weak germination and carrying many noxious weed seeds. Why gamble with poor seed? **Plant the best.**

SUNNY LAWN MIXTURE

For sowing new lawns or where you have a thin stand we recommend our Special Lawn Mixture. This consists of Blue Grass, White Clover, and other varieties for quick effect.

SHADY LAWN MIXTURE

A scientific mixture of grasses to be used in shady locations on which the sun does not shine more than 4 or 5 hours per day.

Sow 2 to 3 lbs. to 1000 sq. ft. on thin lawn, 4 to 6 lbs. to 1000 sq. ft. on new lawn.

	1 lb.	3 lbs.	10 lbs.
Blue Grass	\$1.00	\$2.90	\$9.50
Sunny Lawn Mixture90	2.65	8.75
Shady Lawn Mixture90	2.65	8.75
Postage or Prepaid Express, add 5c per pound.			

SEED POTATOES

We are making a specialty of **Seed Potatoes**, and in the spring will send out a catalog offering these at market prices.



Plant Food and Mulching Materials



Driconure

A perfectly blended combination of nature's products—cow manure, poultry manure and peat moss. A complete fertilizer plus a safety factor that prevents burning and over-feeding. Driconure is clean and absolutely free from weed seed, insect life, fungus and useless filler. Practically odorless, finely ground and easy to distribute. An ideal, all-organic food and soil conditioner. Use a handful or so, worked in the soil around plants when setting or 50 pounds per 500 sq. ft.

1/2-lb. bag, 75c; 50 lbs. (2 bus.), \$2.50.

Peat Moss

No other material is quite its equal for soil conditioning. It will retain 6 to 10 times its dry weight in water, and is free of all weed seeds. As a mulch, especially for Roses and perennials, it has no equal. Sold in bales of approximately 20 bushels which will cover 300 square feet 1 inch deep. Spaded in with manure it has the ability to absorb enormous amounts of fertility which the plants readily take up. Indispensable to the good gardener.

POULTRY LITTER. Peat Moss is also the ideal, safe and sanitary material for bedding young poultry. **Canadian.** \$4.75 per bale; 5 bales for \$22.50.

Sheep Manure

One of the best organic plant foods. Can be used for almost all purposes at any time. Excellent for top dressing and incorporating in the soil. Not especially high in food elements but well balanced and valuable for humus. Use 50 to 100 pounds per 1000 square feet.

25 lbs., \$1.00; 50 lbs., \$1.75; 100 lbs., \$3.50.

Turf Builder

This is especially made for feeding grass, though it can be used whenever a complete fertilizer is needed. It is not at all chemical but contains vegetable matter, thereby giving immediate and lasting results. Because of its concentration will go much farther than most other fertilizers. If grass is tender, "water-in." Can also be used for tree feeding and for this we recommend three (3) pounds per diameter inch. For broadcasting use 10 to 20 pounds per 1000 square feet.

25 lbs., \$2.00; 50 lbs., \$3.75; 100 lbs., \$6.50.

Vigoro

Vigoro is not just an ordinary fertilizer but a complete, balanced, scientifically prepared plant food containing all eleven of the elements necessary for proper development. Use 25 to 50 pounds per 1000 square feet on lawns, one handful to each square foot around Roses, Shrubs, and Evergreens. Water-in after applying.

10 lbs., 85c; 25 lbs., \$1.50; 50 lbs., \$2.50; 100 lbs., \$4.00.

Fertilizers and Peat Moss are Sent Transportation Charges Collect

How We Do Business

Delivery

No charge for local delivery in city and subdivisions adjacent thereto. Truck delivery beyond this can usually be arranged satisfactorily, depending on quantity and distance. On orders to be shipped, prices are f. o. b. Lexington depots.

Prepay Transportation Charges

For Parcel Post and Insurance, add 10 per cent of your order, on all nursery stock which can be sent through the mails. Fertilizers are excepted.

For express, truck or freight shipments, add 10 per cent on everything except shade trees and balled and burlapped plants.

On shade trees, add 15 per cent.

On balled and burlapped stock, add 20 per cent.

When stock is ordered by Post, we reserve the right to send by other carriers if too large.

Guarantee

We guarantee every item to be true to name, up to grade and in good condition when it leaves here. As there are so many forces beyond our control, such as weather, soil and care, which may cause stock to die, we cannot be responsible for losses which occur. However, we will absolutely refund or replace without charge any stock provided it has not been injured by public carrier.

Substitution

When out of a variety of fruit trees or Roses we sometimes substitute, giving you the closest to it. If this is not satisfactory, mark "No Substitutes" on your order.

NO AGENTS

WE HAVE NO AGENTS who go from door to door or sell on commission. Appointments for landscape work are usually made by phone or correspondence. If you want to contact someone from our firm, please call or write. Our catalog is one of our salesmen.

Many unscrupulous and transient salesmen go about the country representing themselves as our agents. Do not believe them. While we do sell some stock to dealers, they must make their own terms as to prices, collections, guarantees, etc. Since some of the material they sell often does not come from us, the way to get true-to-name Hillenmeyer stock is to buy direct.

Again, WE HAVE NO AGENTS.

INDEX

Abelia	7
Abies	1
Acanthopanax	18
Acer	9
Aesculus	10, 18
Althea	20
Apples	28
Apricot	27
Aralia	18
Arbor-Vitae	6
Aronia	18
Ash	11
Asparagus	32
Barberry	7, 18, 25
Beautyberry	19
Beauty Bush	21
Beech	11
Betula	10
Birch	10
Bittersweet	26
Blackberries	31
Boxwood	7
Buckeye	18
Buddleia	19
Bush Arbutus	7
Butterfly Bush	19
Buxus	7
Callicarpa	19
Calycanthus	19
Campsis	26
Carpinus	10
Castanea	10
Celastrus	26
Celtis	10
Cercis	10
Chaenomeles	19
Chamaecyparis	1
Chaste Tree	24
Cherry, Flowering	14, 22
Cherries	27
Chestnut, Chinese	10

Chionanthus	19
Chokeberry	18
Cladrastis	10
Clematis	26
Coralberry	23
Corktree	13
Cornus	11, 19
Cotoneaster	19
Crab, Flowering	13
Cranberry Bush	24
Crataegus	11
Currants	32
Cypress, Bald	16
Cypress, False	1
Deutzia	19
Dewberries	31
Diospyros	11
Dogwood	11, 19
Elaeagnus	20
Elm	16
Euonymus	7, 20, 26
Exochorda	20
Fagus	11
Fir	1
Fir, Douglas	3
Firethorn	8
Fleeceflower	26
Forsythia	20
Fraxinus	11
Fringe, White	19
Ginkgo	11
Gleditsia	11
Globe Flower	21
Golden Bell	20
Gooseberries	32
Grapes	31
Grass Seed	32
Gum, Sour	13
Gum, Sweet	12
Gymnocladus	12
Hackberry	10

Halesia	20
Hamamelis	20
Hawthorn	11
Hedges	25
Hedera	26
Hemlock	5
Hibiscus	20
Holly	7, 8
Honeysuckle	21, 25, 26
Hornbeam	10
Horse-Chestnut	10, 18
Hydrangea	21
Hypericum	21
Ilex	7, 8, 21
Ivy	26
Jetbead	22
Judas Tree	10
Juglans	12
Juniperus	2
Kerria	21
Koelreuteria	12
Kolkwitzia	21
Kudzu Bean	26
Larch	12
Laurel Cherry	8
Lespedeza	21
Ligustrum	21, 25
Lilac	23, 24
Linden	16
Lindera	21
Liquidambar	12
Liriodendron	13
Locust, Honey	11
Locust	15, 22
Lonicera	21, 25, 26
Magnolia	12, 22
Mahoberberis	8
Mahonia	8

Maidenhair Tree	11
Malus	13
Maple	9
Mock Orange	22
Morus	13
Mulberry	13
Nandina	8
Nectarine	27
Nyssa	13
Oak	15
Osmanthus	8
Oxydendrum	22
Pagoda Tree	16
Parthenocissus	26
Peaches	29
Peach, Flowering	14
Pearl Bush	20
Pears	30
Peonies	17
Persimmon	11
Phellodendron	13
Philadelphus	22
Photinia	22
Picea	3
Pinus	3
Platanus	14
Plums	30
Plum, Flowering	15
Polygonum	26
Poplar	14
Privet	21, 25
Prunus	8, 14, 15, 22
Pseudotsuga	3
Pueraria	26
Pyracantha	8
Quercus	15
Quince, Flowering	19
Raspberries	31
Redbud	10
Rhodotypos	22
Rhubarb	32

Rhus	22
Robinia	15, 22
Rose Acacia	22
Russian Olive	20
Salix	16, 23
Silver Bell	20
Smoke Tree	22
Snowball	24
Snowberry	23
Sophora	16
Sourwood	22
Spicebush	21
Spiraea	23
Spruce	3
Sumac	22
Sweet Shrub	19
Sycamore	14
Symphoricarpos	23
Syringa	23, 24
Tamarix	24
Taxodium	16
Taxus	4
Thuja	6
Tilia	16
Trumpet creeper	26
Tsuga	5
Tulip Tree	13
Ulmus	16
Varnish Tree	12
Viburnum	8, 24
Virginia Creeper	26
Vitex	24
Walnut	12
Wayfaring Tree	24
Weigela	24
Willow	16, 23
Winterberry	21
Wistaria	26
Witchhazel	20
Yew	4
Yellow-wood	10



HILLENMEYER NURSERIES
Lexington, Kentucky