

Historic, Archive Document

Do not assume content reflects current scientific knowledge, policies, or practices.

62.91

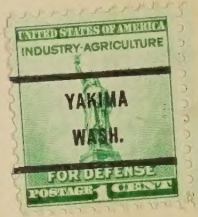
Iris Test Gardens



ALEXANDER MAXWELL
601 No. Naches Avenue
YAKIMA, WASHINGTON
RETURN POSTAGE GUARANTEED

RECEIVED
APR 14 1947
U.S. Department of Agriculture

Sec. 562, P. L. & R.



Test Gardens
in
Terrace
Heights

To Library
U.S. Dept. of Agriculture
Washington 25, D.C.

1947
Iris Season

Foreword

We wish to thank our many customers for their letters of appreciation of our business policy of selling the Top Notchers of Irisdom at prices wholesale and less.

We again continue our past policy of giving many extra premiums in our price brackets as shown in our Sensational Offers.

By allowing us to ship our Iris to you when ready; we can effect many economies which we can pass on to you.

Please do not specify shipping dates. That will upset our shipping each order in rotation as received.

Shipments will start about June 25th and will end July 20th, no order will be accepted after July 10th.

Every year we buy many new varieties from all over the Country, and we try and select the best of these newer things to list.

We have about 100 new varieties that we are growing for the first time this year, and if these varieties can stand up under our tough winters, and stock has increased enough to list the following year, we will then offer them to our customers.

It is with pleasure that we can announce that in 1946 we received Honorable Mention in the American Iris Society on four of Mr. Norton's creations which we introduced to the Iris World for him.

That grand new blue Sylvia Murray, that pink blend Easter Bonnet, and that superb white, The Capitol, and that different strong variegata Rajah Brooke, were the four of our introductions to get the Honorable Mention in 1946.

You can feel assured that we grow our stock with careful attention, and that it will grow for you.

We will positively replace or send your money back to you on any stock that does not grow for you, and do well for you.

This offer is subject to your reporting any loss to us before October 1st of the year of purchase; if stock is defective, and in unknown bad order when received this will be apparent before October 1st; however we feel our hardy stock will grow for you; hence we can make this unheard of offer.

Study our Sensational Offers carefully; the list price for instance on orders of \$100.00 or more will be exactly half price.

This season we allow for the first time a premium on orders beginning at \$5.00 and up to \$9.00; but cannot accept any orders under \$3.00.

Due to the extremely bad weather conditions all over the country this past winter there is bound to be more winter kill than usual and stocks of the newer, rarer things should be ordered early to avoid disappointment.

Thank you one and all.

IRIS TEST GARDENS

ALEXANDER MAXWELL

601 No. Naches Ave.

Yakima, Washington



TERMS

Cash with order. Make out all checks and money orders to **IRIS TEST GARDENS**; please do not send the cash or stamps.

All orders will be prepaid. No order accepted under \$3.00.

GUARANTEE

All Iris true to name and so guaranteed.

Orders filled in rotation, early orders will receive the pick of the rhizomes.

Our rhizomes must meet with your approval, or your money will be refunded, and in that case, we will pay return postage.

PLEASE READ THIS CAREFULLY

We reserve the right to refuse all orders received after July 10th.

Shipments to start at our convenience—June 25th to July 20th.

As you agree to co-operate with us by allowing us to ship at our convenience, we in turn will co-operate with you by allowing the following:

SENSATIONAL OFFERS

All orders under \$5.00 are net list price of catalog.

On orders \$5.00 to \$9.00 select 30% more Iris value.

On orders from \$10.00 up to \$49.00, select 50% more Iris value. Not more than five of a kind, please; stocks are short.

On orders from \$50.00 to \$99.00, select 75% more Iris value. Not more than two of a kind, please; novelties are very short.

On orders of \$100.00 or more, select 100% more Iris value. Not more than two of a kind, please.





ILLUSTRATIONS

For \$5.00 you select \$6.50 of Iris.

For \$10.00 you select a total of \$15.00 of Iris.

For \$50.00 you select a total of \$87.50 of Iris.

For \$100.00 you select a total of \$200.00 of Iris.

Select these premiums from the entire list, no variety will be withheld.

ON ORDERS ABOVE \$25.00: If you will allow us to ship EXPRESS COLLECT, you may select \$6.00 of Iris value.

We cannot accept an order unless these details are carried out fully.

The above offers are given to you, so we can receive our orders early, but will be discontinued July 1st.

After July 1st all premiums cease, and anything ordered after that date will be catalog net list price.

We do not substitute, but on orders sent after May 15th, we suggest you specify second choice, as these new rare novelties are scarce and sell out fast.

Any variety we cannot furnish, we will promptly refund your money.

Top size Washington rhizomes furnished, the best anywhere.

Please do not write letters on the order blank.

MAKE ALL CHECKS PAYABLE TO IRIS TEST GARDENS.

WASHINGTON STATE TAX

All Washington State residents: Please add 3% sales tax to the amount of your order. Outside State of Washington, no tax.

We get lots of letters from our customers, praising our stock, and methods of doing business, and we print just two of them.

A friend writes:

"Thank you for lovely rhizomes at low prices, and I do appreciate the premium in addition; which allows me to select more "Must Have" Iris, and keeps me within my Iris budget."

Another letter:

"Why not maintain other dealers' prices? You will sell more dollar value on less volume, and in these days of higher producing costs, you will make more money."

READ MY CATALOG, AND SEE WHICH LETTER WAS TAKEN SERIOUSLY.

A true Iris Fancier will go all lengths to have a new variety that will appeal to him, and we believe our method of doing business will allow the purchase of this new variety, without having to wait for prices to come within reach.



DESCRIPTIONS OF OUR 1946 INTRODUCTIONS

CARNIVAL PARADE. Originator, H. P. Sass, 1946—Dark rose top on standards which are basically colored light yellow; the falls are dark rose with a heavy blaze of gold in center of falls, gold reticulations on haft, and a deep orange beard. A large flower well spaced, strong, vigorous and 40 inches tall, sometimes 38 inches tall. Season is late and the massive flower opens slowly. **\$12.00**

HIWASSEE, Originator, Mr. Jos. C. Becherer of St. Louis, Mo., 1946—This is one of the aristocrats of the Iris family. A very large lilac pink bi-color of classic form and heavy substance. Excellent branching and perfect placement of blooms. The domed standards are a light lilac pink and the broad semi-flaring falls are a deep lilac with an overcast of light purple. A very lovely thing. **\$12.00**

MICHAEL, Originator, Luke Norton of Yakima, 1946—This is a cross of Matula X Remembrance and has the crinkled edges of Matula on standards and falls, altogether lovely. Color is close to Bridal Rose Pink, haft with gold reticulations and canary colored beard, standards and falls both bridal rose pink. Height 36 inches, midseason. Slight fragrance. Large flower well branched and spaced. Modestly priced. **\$12.00**

GENERAL IRIS LIST 1947

ACTION FRONT. A richly colored and highly rated copper red. **\$3.00**

ADELANTO. Golden yellow ochre. Falls drooping, blended golden buckthorne brown. A new note in color. **\$1.00**

ADVENTURE. Plicata crushed raspberry and yellow tones. **\$1.35**

ALBA SUPERBA. The grand new white from Mr. Sass. Limited stock **\$22.50**

ALDURA. Very large stunning blue and white plicata from Mr. Larson. A grand Utah Iris. **\$6.00**

ALASTOR. Deep cyclamen pink with underlay of old gold. Vivid bright orange beard. Famous. **\$1.50**

ALEPPO PLAIN. A yellow plicata. Cream ground heavily dotted and sanded on edge forming a border of pansy purple. Large flowers. Another of the Sass creations. Superb. **\$6.00**

ALPINE GLOW. Large flower of subdued rose tones, bordering on lilac. Gold beard, brown shading on haft. H.M. 1946. **\$15.00**

ALZA HOLA. A lovely blend of gold and powder blue. Standards and falls are lightly edged gold. **\$9.00**

AMIGO. Nothing like it in the intermediates. A bi-color, standards lavender-violet; falls hyacinth violet. Light border on falls. A.M. Sells out early **\$1.35**

AND THOU. Pale Wedgewood blue self, blue flushed center. Large flower. **\$7.50**

ANNA GAGE. Gorgeous blend of tawny olive standards, and flaring brown falls. From Mr. Gage. **90 cts.**

ANN NEWHARD. Standards hyacinth blue; falls velvety blue purple with margin of deep blue. Lovely. **\$1.35**

We do not list collections; we allow premiums; so you can make your own collections.

ANNE MARIE BERTHIER. Cayeux's pure white. Lemon yellow beard. **90c**

ANTIGONE. Grand yellow for massed effect. Cayeaux won Dykes Medal on this fellow 1938. Large. **\$1.35**

ARAB CHIEF. A near self of rich burnt orange coloring. Free bloomer. **\$9.00**

ARIANE. One of the better French plicatas. This and Florentine we think the best plicatas from France. **\$1.00**

ARETHUSA. Mr. Gage's daphne red with golden brown at haft. Metallic luster; unique color. Fine. **\$1.00**

ARCTIC. Creamy smooth warm white. Gold throat and heavy overlay of gold on falls. Sensational. **\$1.35**

ATROUS. Darkest of all red purples. Almost a self. Good sized flowers and velvety substance. In the black Iris class. From Mr. Gage. **\$3.00**

AUBANEL. New shrimp pink blend from France. Beautiful pink effect. **75 cts.**

AZTEC COPPER. Rare blend of smoky violets and delicate coppers. Bright large flowers. Very fine. **\$1.00**

AZURE SKIES. This fluffy ruffled bright blue self from the famous Iris Connoisseur Mrs. Pattison, is one of the newest blue sensations. Very lovely. **....\$4.50**

AUBURN. The color is close to auburn or near henna. Large flower. H.M. 1946. **\$16.50**

BANDMASTER. A new blue from Mr. Hall. Large and tall. **\$10.00**

BARRIMOHR. A new seedling of Wm. Mohr in rich tones of mulberry and red purple. Looked good here. **\$12.00**

Garden Clubs make up pooled orders to get the discounts and premiums. This you can do in our club, but the entire order must be shipped to one party for distribution, and entire order sent in at one time, not piecemeal.

BATAAN. Dark blend of coppery plum, henna and rich brown. This new one from Dr. Kleinsorge. Fine. **\$7.50**

BALMUNG. A finer yellow plicata from Mr. Sass. Award of Merit. Lovely. **\$1.35**

BERKELEY GOLD. A large deep yellow self. A good one. From Salbach. **\$5.00**

BERMUDA SAND. Light coffee tan with glint of gold. Very fine. **\$1.00**

BEVERLY. Lapham's new pink, most suitable for garden effect. Fine large flowers, blooming abundantly. **\$1.00**

BERTHA GERSDORFF. From Mr. Sass. Standards yellow flushed pink. Falls yellow, heavily flushed pinkish purple, 35-inch stems. A very fine thing. **\$2.50**

BILLOWY SEA. (Norton 1944). A Great Lakes seedling, a clearer blue than its parent; lighter color, tall, strong stalk; large flowers well spaced. Fine. **\$4.50**

BLACK AND GOLD. Striking new variegata from Dr. Kleinsorge. **\$9.00**

BLUE SHIMMER. A blue and white plicata. White ground, heavily but evenly marked and dotted soft bluish violet. 36-inch stem. Mr. Sass held them spell-bound with this one. Award Merit. **\$6.00**

BLUE ZENITH. A deep sky blue self of large size. Rates 87. **\$6.00**

BRIGHT MELODY. A smoothly finished Iris in rich Concord grape color. H.M. 1943. **\$7.50**

BROWN BONNET. Dark olive buff and deep brown. From Mr. Gage. A fine thing. Not much stock. **\$2.50**

BROWN BOY. Very brilliant copper with orange tones. Large flower, medium height. Very popular, order early. **\$1.00**

BROWN THRASHER. A very bright coppery golden brown. Very brilliant; more so than its parent Copper Luster. Dr. Kirkland's finest introduction. Award Merit. **\$7.50**

BRYCE CANYON. The shades of henna from Dr. Kleinsorge. H.M. **\$18.00**

BUCCANEER. A variegata blend of brilliant color, and great garden value. Standards are antimony yellow; falls are Kaiser brown overlaid yellow; with decided border. Introduced 1942. Good **\$1.20**

BUCKSKIN. The best tan we have seen. A very lovely self. Now priced within reach. Order early; it is popular. **\$1.25**

BUFFAWN. A beautiful gold tan blend of high coloring. **\$2.25**

BUTTERCUP LANE. A beautiful distinct yellow from Mr. Hall. Lustrous finish, glows. Tops. **\$1.00**

The prices in this catalog are based on amount of stock on hand and priced accordingly.

This catalog is both wholesale and retail, when premiums are taken into consideration.

CALCUTTA. Imposing flower in cocoa brown tones. Overlaid with bluish veil. Bold grower. **75 cts.**

CALIFORNIA PEACH. Delicate peach-pink blend from Salbach. Some gold and yellow. Beautiful. **\$3.00**

CAMEROUN. Lustrous deep purple from France. Absolutely glows. When well known will be large seller. **\$2.00**

CAPRICCIO. Bi-color blend. Falls flaring; overlaid onion skin pink. Standards bright yellow. A fine one from DeForest. **\$1.00**

CAPITOLA. Bright red-violet Wm. Mohr seedling. A fine thing. Large. **\$2.50**

CAPTAIN WELLS. A deep glossy maroon purple that is a large, rich, solidly colored self. A beautiful and distinct Iris from Mr. Cook. **\$3.00**

CAROLINE BURR. Something different in old ivory with an odd cast of soft and elusive green. The best of the creams. Award of Merit. **\$2.25**

CASA MORENA. From that master Mr. DeForest. Closest color is burnt sienna and chestnut. A very rich glowing flower; and we think will go places when better known. Not like anything that has gone before. **\$10.00**

CASCADE SPLENDOR. Easily the best of Dr. Kleinsorge introductions for 1945. A pinkish tan gold blend with deep orange beard. H.M. **\$22.50**

The rhizomes shipped you by us are top size Washington rhizomes to meet your entire satisfaction.

CASQUE D'OR. Deep old gold standards with greenish mid rib. Falls are richest blackish maroon. Bright and a credit to that master, Mr. Sass. **\$1.00**

CEDAR ROSE. A grand brown-red Iris from Mrs. Whiting. Few plants. **\$2.00**

CHARLOTTE MILLET. New from France; the color is bright reddish lilac in a shade novel and beautiful. **90 cts.**

CHICORY BLUE. A winner in the blue class. A large self chicory blue with firm substance and large flowers. **\$4.00**

CHIEF POKING FIRE. A different velvety brown red. A new shade of red from DeForest. **\$2.00**

CHINA MAID. Shades of pink, golden copper and lilac smoothly blended. Large tall flower in very heavy demand. **90 cts.**

Replace those older varieties by building up stocks of the newer higher rated varieties listed in this catalog.

CHOCOLATE CREAM. A cream background plicata with chocolate markings. A Sass creation. A grand one. **\$10.00**

The Fancier, Dealer and Hybridizer is solicited to purchase their stock of us.

CITY OF LINCOLN. Fairly large and clear colored variegata. Standard yellow; falls red brown with golden margin. A grand thing from Mr. Sass. \$1.00

CLARET VELVET. Glowing deep blackish wine burnt orange beard. Grand color. \$1.50

CLOTH OF GOLD. Here is a grand new deep yellow from Mrs. Whiting. We like it better than Golden Spike, which is praise enough. \$12.00

CLOUD CASTLE. Wisteria blue with a mauve undertone, a large flower, and slightly ruffled. H.M. \$12.00

COMRADE. A bright dusty rose color. Softly blended colors. \$2.25

CONCERTO. A rich velvety red or pansy purple. A lighter edge on the falls. Mr. Tompkins originated this one. Flaring, ruffled form. \$6.00

CONNOQUENESSING. A beautiful pinkish tan blend from the Kelloggs. A large flower of stand-out quality. \$7.50

COPPER PINK. Kellogg's soft pink flushed with bright copper. Another fine thing that must be seen. \$3.00

COPPER ROSE. Blend of old rose, tan and copper, with glow of golden yellow at heart. Award Merit. \$3.00

CORAL MIST. Soft pink blend from Dr. Grant, that sells out fast. \$7.50

CORITICA. New yellow plicata from Mr. Sass. A topnotch plicata. \$1.50

CRIMSON TIDE. Large, deep red with deep orange beard. Brilliant and pleasing. A grand red in a new shade. \$1.50

The high quality of our own introductions is shown by the Honorable Mention received in 1946 on Easter Bonnet, Rajah Brooke, Sylvia Murray and The Capitol. All of these four received this award from the American Iris Society.

CREAMO. A light yellow of large size that will help out in the light yellow field. This we thought one of the best things in this color. \$10.00

DAMERINE. A large flower of deep red with domed standards and flaring falls. Received Bronze Medal at New York World's Fair 1940. A sell out usually. 90 cts.

DAYBREAK. A huge golden pink from Dr. Kleinsorge, received Award of Merit last year and deservedly so. We hope we have enough to go around. \$5.00

DAY DAWN. Blend of rosy pink and gold. Large flowers and a favorite. 90 cts.

DEEP VELVET. One of the richest and best in the blue-black class from Mr. Salbach. A stunning "must have." \$2.50

Join the American Iris Society. Four bulletins a year, \$3.00 per year dues.

DISPLAY. The new sensational red from Dr. Grant. \$9.00

DRESS PARADE. (Maxwell 1944). Standards burnished gold; falls Egyptian red; deep full golden beard. Very smooth haft, free from reticulations. Large flower, well branched on stalks 38 inches tall. Clean and bright. \$5.00

DUBROVNIK. A highlight of color. Deep rose and gold with a violet flush on falls. Order early. 90 cts.

EASTER BONNET. (Maxwell-Norton 1944). A startling cross, Alastor X Morocco Rose. Base color rhodenite pink with half inch margin of burnished gold on both standards and falls, heavy to gold at the haft, golden beard. A large flower well spaced on stalk. 40 inches tall. Try this one. H.M. 1946. \$9.00

E. B. WILLIAMSON. A glowing coppery red. Large flower of silky texture; awarded Gold Medal in Rome Iris trials. 50 cts.

EDWARD LAPHAM. The judges acclaim this the topnotch new red. A glossy uniform crimson. A self. The reddest. From Mr. Lapham. \$7.50

ELENA CHOOSING. Metallic, bronze gold with lilac in the shadows. Tall, large and grows well. \$9.00

ELLA CALLIS. A large deep yellow with the falls flushed orange. 36 inches tall. One of those things that will hit you between the eyes. From Mr. Sass. \$7.50

ELMOHR. The sensational Wm. Mohr seedling that has a new note in novelties. Rich reddish mulberry. Glossy. \$2.50

EL MOROCCO. This new beautiful opal pink iris with very heavy substance does indeed do credit to Mr. Becherer who only introduces an iris after close comparison and study. There is nothing of this shade to compare with El Morocco. \$7.50

ELSA SASS. New lemon yellow with white flush in center of the falls. A grand bit of color from Mr. Sass. \$1.00

ETHELYN KLEITZ. Light Corinthian red and hydrangea red. Mr. Gage's H.M. Iris in A. I. S. \$2.25

ETHIOP QUEEN. The near black iris of deep blackish violet. Good grower. 75 cts.

FAIR ELAINE. Here is a classic and must have in pale cream standards and light yellow falls. Large flower and good strong grower. \$1.35

If you think we should continue our premium policy in future years, please write us and tell us.

Order early as many of the newer things are in scarce supply, and will go fast.

FASHION PLATE. (Maxwell). A sister seedling of Easter Bonnet. Standards at the top are shades of lavender crocus color, lightening to paler color at bottom of standards. Haft has some white at center with wide edge of gold half way down the falls. The light lavender crocus color deepening in color at bottom of falls; same color as top of standards. Gold beard, gold reticulations at haft. Medium to large flowers well spaced on 38-inch stalks. A lovely thing indeed. **\$6.00**

FIESTA. Sparkling copper standards. Falls apricot orange. Very gay, large blooms. A medley of color. **\$1.35**

FIRE CRACKER. A glowing dark burgundy red plicata with yellow trim. Good substance. Something out of the ordinary from Mr. Hall. **\$10.00**

FLAMELY. A glowing red self, the color more orange than purple. Standards ochre red to terra cotta; falls flaring garnet brown; cadium yellow beard. From Mr. Cook. A new color note. **\$3.50**

FLORA CAMPBELL. The new Etruscan red. A sparkling coppery red brown effect. Mr. Hill's best seedling. **\$1.00**

FLORA ZENOR. Mr. Jacob Sass finally put out a real pink gem in this one. The color is near a rosalane pink; the falls a few shades darker than the standards. Tangerine beard. You iris lovers that want a real pink, here it is. Award Merit. **\$1.65**

FLORENTINE. A different blue and white plicata from Cayeaux. A very fine thing. Attracts attention. Fine. **\$1.35**

FORTUNE. Large coppery, brown, gold self. Flaring falls, large flowers. Something different from Dr. Kleinsorge. **\$1.50**

FORT KNOX. The grand yellow from California. **\$5.00**

FRANCONIA. A gigantic cool marble white. Fine. H.M. 1942. **\$15.00**

We keep the price of the catalog down, and give you the benefit of lower costs.

FRECKLES. The freckled beauty from Mr. Becherer; a better King Karl. A fine speckled and sanded finish. **\$1.50**

FROSTY MOON. (Maxwell 1944). Cross of Prairie Sunset X Ming Yellow. A white lightly tinted lavender; golden beard and haft. Good substance; ruffled standards; crimped ruffled edges on falls. 38 inches tall; large well spaced flowers. Many bloom stalk. A distinctive new white. A new color. **\$5.00**

FROSTY BLUE. Another grand blue from Mrs. Whiting. It is really frosty blue. Well liked. **\$3.50**

Make your own collections; our premiums cover every Iris Variety we list.

These reading notes are an innovation. We would be pleased to have your comments.

FROSTED GLASS. Palest opalescent cream with frosty finish. A fine thing from Mr. Becherer. **\$4.00**

FULL MEASURE. A large deep yellow iris of distinction. Very tall, and very highly spoken of by all who have seen it. Mr. DeForest has gone to the front fast and this fellow is a topnotcher. **\$2.00**

GALLANTRY. This is a medium deep blue with large flowers and wide ruffled, flaring falls. Mrs. Whiting knows blues, and when she introduces a blue, its tops. **\$18.00**

GARDEN FLAME. A broad petaled dark red self from Mr. Sass. We enthuse over this red and justly so. Very fine. **\$6.00**

GARDEN MAGIC. This grand red is one of the classics in red shades. A good one. Order early. **\$1.35**

GAYOSO. A highly colored yellow from Golden Hind. A bright fine thing from Mr. Williams. Few plants. **\$2.25**

GARDEN GLORY. A pure rich Bordeaux red, a self with no haft markings. Mrs. Whiting's new red. **\$7.50**

GAY SENORITA. Stunning variegata with honey yellow standards and broad semi-flaring falls of gold heavily dressed with deep brown and deep brown veining. H.M. **\$12.00**

GILT EDGE. Large flowers of clear lemon yellow bordered empire yellow on falls. Very fine. **\$1.50**

GOLDBEATER. All deep yellow without markings. Large flower and a grand yellow. H.M. **\$15.00**

GLEN ELLEN. Luminous golden tan blend. Falls brushed with brown and plum tones. Very fine. **\$1.00**

GOLDEN EAGLE. A brilliant light yellow with a satiny sheen. Large flower. A very fine thing from Mr. Hall. Very few rhizomes. **\$2.00**

GOLDEN FLEECE. This beautiful iris when sold at popular prices will and should be in every fine iris collection. Its lovely lemon cream standards, with creamy white falls with band of deeper yellow makes this iris Mr. Jacob Sass' "Masterpiece." **\$4.00**

GOLDEN MADONNA. Creamy white and yellow combination. Edged yellow falls. A very lovely iris and desirable. **\$1.00**

GOLDEN MAJESTY. Tall, large, deep yellow from Mr. Salbach. This yellow is probably our most popular yellow at reasonable prices. Order early. **75 cts.**

Please do not specify any special shipping date, as we cannot fill orders this way, and will have to return your order if you do.

Shipments will be made at our convenience, starting at June 25th and ending July 20th.

GOLDEN SPIKE. This Award of Merit iris from Mrs. Whiting is a fine, wonderful, deep yellow and will win in any company. Tall, large, good grower. **\$1.50**

GOLDEN SPANGLE. Domed yellow standard. Falls clear white, with heavy gilding on border of rich yellow. Orange beard. H.M. 44. A good one. **\$4.00**

GRACE MOHR. A darker toned Wm. Mohr. Large flower. Order early **\$1.00**

GRACE BALLARD. A large and beautiful apricot blend from Mr. Sass. **\$1.35**

GRAND CANYON. An interesting blend of deep tones of plum and copper and gold. Vivid gold beard. When viewed closely this flower grows upon you, and becomes a "must have." Lovely. **\$1.65**

GREAT LAKES. The wonderful blue Dykes Medal winner. Besides being a grand garden subject, it is also a good parent. **\$1.35**

GUINARD. A fine red garnet color from Mr. Snyder. A good one. **\$2.25**

GYPSY. Coppery gold standards and falls of solid chestnut brown. A fine late iris from Dr. Kleinsorge. **\$6.00**

GYPSY BARON. Very deep blue-purple plicata with marbled falls. The dark appearance at a distance does not look like a plicata, but on inspection the plicata becomes clear cut. **\$3.00**

HARRIET THOREAU. A new and delightful orchid pink self from Mr. Cook. Large flowers and tall. H.M. **\$12.00**

HARVEST MOON. A luscious apricot blend. Large flowers, not as good or fine as Mellowglow, but fine in its own class. **\$3.00**

HAZEL GALLAGHER. An amazing blending of seven colors difficult to describe. Something different here. **\$1.00**

HOOSIER SUNRISE. A very large bloom of excellent substance. Standards buff tinted pink. Falls a lovely shade of pink. A grand blend from Mr. Lapham. **\$4.00**

HONEY RUST. Mrs. McClanahan of Iowa put out this fellow, and our comment is that this is a real distinctive color of honey rust, and a worthwhile introduction. About 34 inches tall, a large flower, and your money back if you don't enthuse over it at blooming time. You will like it I know. This iris was mentioned in A. I. S. Bulletin in 1944. **\$9.00**

HOWDY. A new bold white from Dr. Clevenger that is very appealing. **\$1.35**

ICY BLUE. The lightest blue self we have. A winner from Mr. Weed. Try this fellow; you will like it. **\$1.35**

Our business is built up by delivering more than we promise.

Read our schedules of premiums carefully. You will notice the different price brackets give you progressive discounts.

ILLUSION. An Ormohr seedling from Dr. Kleinsorge. The color is delicate lilac pink, with tawny brown overlay on the haft, and a brown tipped beard. It is a late bloomer. 30 inches tall. **\$9.00**

INVICTUS. A deep yellow with an orange tone. Strong amber markings at throat. Large flowers. **\$1.35**

INDIANA SUNSET. A blending of sunset colors from Mr. Lapham. **\$1.50**

IOWA MAID. A bi-color of golden buff and pure rose pink. A color gem from Mrs. Whiting. **\$1.50**

INTERMEZZO. A self of petunia violet with russet brown on haft. A touch of gentian blue at tip of beard. Large ruffled flower from Mr. Tompkins. **\$12.00**

Orders will be filled in rotation. Early orders will get the pick of the rhizomes.

JAKE. A grand Sass white introduced by J. D. Long. It's a honey. **\$2.00**

JONQUIL. A two-toned iris of two shades of yellow. Long buds. **\$2.25**

KATHRYN FAY. This grand pure white from Mr. Fay is a very fine thing and very highly rated. Only a few to offer. **\$15.00**

KATY. This light yellow beauty is needed to fill the gap in the light yellow class. **\$12.00**

LADY OF SHALOTT. A rose-pink frilled plicata that is very lovely. To all intents and purposes this is a pink plicata. **\$7.50**

LADY MOHR. The sensational oyster white and greenish yellow that made history. A grand thing. **\$22.50**

LAKE HURON. A medium toned blue self from Mr. Sass. **\$2.00**

LADY NAOMI. A tall and huge plicata with white ground overlaid with speckled blue; a brilliant orange beard. **\$1.50**

LANCASTER. Rose buff pink undertone. A coppery old rose blend. This is a fine new iris from Mr. Cook. **\$1.50**

LATE SUN. A deep yellow with reddish gold overlay. A fine yellow from Mr. DeForest. Sensational. **\$1.00**

LEILANI. This orange pink Iris is a real break in color, and famous throughout the iris world. Scarce, and will spare only a few. Only one to each customer. **\$35.00**

Many Fanciers have surplus stocks of the newer things and sell them to their neighbors. Most of the Iris Dealers of today started small in a back yard garden.

There is a definite improvement in new Iris varieties over the older ones.

On orders above \$15.00 if you send us a check for \$3.00 payable for one year's dues in the American Iris Society, you may select an additional premium of \$3.00 worth of Iris; your selection. Make check payable to the Society.

L'UVIA D'ORA. An apricot orange flower from Mr. DeForest. \$1.50

Many dealers purchase the newer things of us and build and grow stocks for future demand.

L. MERTON GAGE. A topnotch pink from Mr. Lapham. The standards are pale salmon color over Massicot yellow; falls rosane pink to broad hafts of Baryta yellow, reticulated Sayal brown. \$3.00

LORI MAY. Bright daphne pink with shades of rose. A gem indeed. DeForest scores again here. \$3.00

LOUVOIS. Amazing maroon brown with gold beard. Richly colored, nothing like it. Try this one. 90c

LORD DONGAN. Broad standards of silken Chinese violet, and broad rounded falls of deep velvety pansy violet. \$4.50

LOUISE BLAKE. Amigo type with pale blue standards, and velvety blue purple falls edged light blue. It is said to be taller than Amigo H.M. Not much stock. \$12.00

LULLABY. Apple blossom pink to orchid pink. Large flowers, a luscious color, and free bloomer. From Mr. Hall. \$3.00

MAIDEN BLUSH. A rich pleasing apricot color, a self, large flowers on 36-inch stems; semi-flaring falls, good substance. From Mr. Hall. \$2.00

MANDALAY. A smooth reddish rose self, a new and attractive color. Domed standards, flaring falls. 32 inches tall. From Mr. Hall. \$3.00

MARINELLA. A magnificent iris of rich brownish red with well arched standards of golden bronze lightly flushed red. The semi-flaring falls are garnet red with margin of bronze. Silver Medal New York World's Fair. A beautiful rich iris. \$1.20

MAJENICA. An exciting pink blend from Mr. Cook. A clear bright smoothly colored self of salmon tones. Lovely. \$3.00

MARY VERNON. Standards antique gold flushed Chianti ruby; the broad flaring falls are Chianti ruby with a narrow edge of gold. A large flower. Gives a red brown effect in the garden. \$4.50

No premiums on orders received after July 1st. Any order received after that date will be net list price of catalog.

We are growing about 100 new varieties we have not listed; as we wish to make sure that these varieties will stand up in our tough climate before we list them.

MARY E. NICHOLS. A warm white self with burnished gold inlay on the haft. Award of Merit. Order early. From Mr. Nichols. A winner. \$1.25

MARIMBA. Large clean cinnamon-buff. A new DeForest color. \$1.00

MASTER CHARLES. A rich glowing mulberry iris, a velvety sheen on the flower. A fine thing, and ranks very high in this shade. \$10.00

MATTERHORN. The finest pure white to date. Faultless. Order early. \$1.00

MATULA. An unusual blend from Mr. Sass. A warm rosy tan and gay cast of blended apricot rose. Velvety rosy falls with crinkled edges. A beauty. 90 cts.

MELANIE. The fast selling pink from Mr. Hill. Limited stock. \$1.50

MELITZA. This salmony flesh self with pinkish tangerine beard. Award of Merit. A sensational iris. Order early. \$1.50

MELLOWGLOW. A deep peach and apricot blend that has shown itself to be one of the finest things offered in late years. Scarce. Very few rhizomes. \$18.00

MEXICO. A blended bi-color of buff golden standards, and broad plush-like falls of glowing red brown. Gigantic flower well placed on strong stalks. There is a coppery orange suffusion in some lights. From Dr. Kleinsorge. \$6.00

MING YELLOW. Large stately yellow. Will carry off honors anywhere. Superb. A "must have." \$1.35

MINNIE COLQUITT. A massive white plicata, wide edging of purple. Mr. Sass wins on this one. \$4.50

MISS ANN. Luminous mauve pink blend from Mr. Beck. Large flower. \$1.50

MISSOURI NIGHT. Rich indigo blue with a purple cast; the haft devoid of veining but enriched with brown at the center. A thoroughly fine iris. Order early. 90 cts.

MIRABELLE. Alluring cream apricot and pink. A lovely touch of pink on falls. H.M. Large flowers. Fine. Sells heavily. \$6.00

MISTY GOLD. A lovely gold spangled lemon colored iris. A glistening beauty. \$10.00

Hybridizers—If you wish the newer things at prices you can afford to pay, study our premiums.

All stock is field grown and given expert care and attention.

MISTY ROSE. A soft shade of pink or rose. A rosy veil overcast. A dusty rose pink. Lovely. \$5.00

MME M LASSAILLY. Blue bi-color. Standards are bright lilac and falls a deep pansy violet with lilac edging. Dykes. France. \$1.35

MOLLY MAY. From DeForest comes this pink and cream blend. A large flower well spaced. \$9.00

MODISTE. A beautiful self of pale mauve. It's different, lovely and very desirable. 90 cts.

MONOMA. A warm heliotrope blend that combines rosy plum and purple shades. Rich. Lovely. \$2.25

MOONLIGHT MADONNA. From Mr. Sass. A cool yellow self. A pale lemon yellow of chaste form. Finer than Elsa Sass. Award Merit. \$4.50

MOONBEAM. A large creamy yellow of distinction from Mr. Sass. \$3.75

MOONLIT SEA. From Mr. Sass. Standards white heavily flushed lavender violet. Falls white heavily flushed lavender violet darkening to mulberry purple on lower edge. Most judges describe this iris as blue with a gold heart. Haft is empire yellow. Exquisite. \$3.00

MOROCCO ROSE. Very large rose-pink self with soft yellow glow at the heart. Very near genuine pink. \$1.20

MOUNTAIN SKY. Exceptionally fine, medium blue with a suffusion of yellow in the center of the flower that adds a warm glow to the iris. \$1.00

MOUNT WASHINGTON. Pure warm white with a golden beard. Hardy in our severe winters. Lovely. \$1.20

MULBERRY ROSE. Deep pink mulberry shaded brown. Very fine. \$4.50

NED LEFEVRE. Spicy toned coppery salmon and pinkish orange blend. Orange beard. A grand blending of colors. Mr. Lapham's grand new pink blend. \$1.50

Our Gardens are located in Central Washington, just east of the range of Cascade mountains. We do not have much rain, so we can grow good hard rhizomes of size.

Stock must live and grow for you or we will refund your money or replace the defective rhizome.

However this must be reported to us not later than October 1st—the year of purchase.

NICOLLE LASSAILLY. One of those blue bi-colors from Cayeaux; this sells out rapidly. Order early. Dykes Medal France. \$4.50

NIGHTFALL. Velvety rich black pansy purple from Mr. Hall. Striking color. \$2.25

NIGHTINGALE. A new color, a glistening golden russet. Large flowers. Fair substance. 36 inches tall. \$2.25

N. J. THOMAS. A Wm. Mohr cross, a bi-blue purple, with velvety falls. Sets seed readily. Mr. Muhlestein of Utah introduced this fellow, and he knows good ones. \$3.00

NOONTIDE. Here is a solid yellow iris with odd overlay of gold. A clean bright color. Heavy substance. Lovely. 60 cts

NYLON. A rosy tan blended self, large flower, well formed. Very sheer color. Fine. Try this. \$1.00

OLA KALA. The newest bid for the best deep yellow from Mr. Sass. Medium large ruffled flowers on 36-inch stem. A real one. A "must have." \$7.50

OLD PARCHMENT. A light creamy tan, with golden buff overlay, a most unusual color break, and a beautiful iris. Easily Dr. Kleinsorge's best iris to date. You need this one. \$1.35

ORANGE FLAME. Shades of burnished golden-orange and copper. Very large brilliant flower. A very fine thing from Mr. Salbach. You will like it. \$1.50

OREGON TRAIL. A big heavy flower of smoothly blended shades of tawny salmon. A rich gold beard and odd soft brown areas surmounting the falls. A blend of rich colors, indeed does credit to Dr. Kleinsorge. \$4.50

ORLOFF. Creamy yellow ground overlaid rich cinnamon brown. A beautiful plicata from Mr. Sass. 50 cts.

ORMACO. A cross of Aztec Copper and Ormohr. The color is an odd blend of violet with much bronze and brown, especially around the center of the large flower. \$2.00

Stock guaranteed true to name and if we make an error we will send two rhizomes of any variety that proves untrue, or refund your money. Your option.

We will not ship anything that isn't perfectly matured before shipment, and must do well for you.

ORMOHR. Very large pale lilac silvery cast veiled violet. A large tall iris worthy in all good collections. **\$1.00**

PACIFIC SUNSET. A new and enchanting blend in rich shades of rose, gold and copper. **\$7.50**

PAILLAISSE. Something similar to Marquita, a dustier rosier color and hardy. Distinctive. **75 cts.**

PAINTED DESERT. Blends the exquisite colors of the Arizona desert, a medley of colors that will grow on you. A beautiful thing from Mr. Milliken. **\$6.00**

PEACHBLOW. A pink plicata with a light yellow flush. Medium large flowers. This is the modest description from Mr. Sass; when you see it you will use more words to describe this fine flower. **\$2.00**

PEACH GLOW. A peach pink iris from Dr. Kleinsorge, a seedling of Daybreak. Not much stock. **\$7.50**

PERSIAN PRINCE. The new Sass variagata. Unlike City of Lincoln this variagata lacks the golden band on the falls. A fine distinctive variagata. **\$1.00**

PINK MARVEL. A deep salmon pink iris from Mr. Lapham. Large flower, tall stem. A real one in the pink class. **\$1.20**

PINK RUFFLES. This intermediate pink is from Mr. Smith, and is a most charming pink. Good. **\$2.00**

PINK LACE. This is a real pink from Mr. Sass. Flower is larger than Spindrift and shows pink bud, and clear pink in both standards and falls. This pink shade is not like the old pinks, but definitely in the new pink class, with tangerine beard. Have only a few to spare and just one to a customer. Order early. **\$30.00**

PINK REFLECTION. Chamois skin pink, a grand shade. Quality here. A.M. Popular. **\$10.00**

PRAIRIE SUNSET. This sensational iris from Mr. Hans Sass won the Dykes Medal in 1943. A glorious blend of rose and gold, apricot and orange. Brilliant, sparkling. Nothing like it in color before. **\$2.25**

PRESENT. An exceptional Onco bred iris. The beautiful shaped flowers of firm substance are of pinkish tints, with veins and dots set off by a velvety rose signal patch on the falls. 30 inches tall. **\$2.50**

PRETTY PENNY. Late coppery rose over-cast russet. Gold veined haft. Call it a blend of coppery rose. DeForest calls the shots on these new colors. **\$2.25**

PRINCE OF ORANGE. A solid golden orange; one of the richest things in the garden picture. We believe this to be the finest orange shade to date. **\$1.50**

RADIANT. A very rich coppery red, and very brilliant. Could not list last year as sold out before writing up the catalog. A classic. **\$1.00**

RADIANT LADY. (Maxwell 1944). Cross Radiant X Rosy Wings. Very near a self. Same color as falls of Radiant, metallic sheen overlaid terra cotta to brick. Vivid gold beard. Lovely color. **\$4.50**

RAJAH BROOKE. (Norton). Variagata fanciers will be surprised when you see this one. It's different. It's a honey. Standards topaz in color; falls pigeon blood red, with wide border of topaz on falls. Large burnished gold beard. A fanciers' flower; its beauty will grow on you. Large flower of flowing lines, well spaced and branched. 38 inches tall. H.M. 1946. **\$10.00**

RAE JEAN. A very large two-toned yellow from Mrs. Whiting. H.M. **\$2.00**

RANGER. Dark brilliant new crimson red from Dr. Kleinsorge. Another of the topnotch reds. **\$6.00**

RED AMBER. Standards jasper pink flushed amaranth pink. Falls a blending of old rose to Eugenia red with copper suffusion. Lovely large flower. **\$2.25**

REDWARD. Standards Indian Lake and Dahlia Carmine, falls Burnt Lake. Large flowers. A good red. **\$6.00**

RED GLEAM. Some critics claim this iris the reddest yet, but Edward Lapham now claims the prize. This however is very fine. **\$1.50**

RED VALOR. A magnificent garnet red iris of perfect habit. Gold Medal at Rome 1940. A fine thing. Order early. **\$2.25**

REMEMBRANCE. A beautiful pink blend with yellow overtone from Mr. Hall. Large flower, 38 inches tall. **\$4.50**

REVEILLE. Delicate large pale pink with broad flaring flowers, and full pinkish tangerine beard. H.M. This reflects credit to Mrs. Tobie, the originator. **\$15.00**

Any rhizome we ship you must satisfy you, or we will refund your money, paying the return postage.

We will not substitute; we will refund your money on anything we cannot furnish.

RIO ORO. A smooth deep glistening "Honey Yellow" self. Yellow beard. Nearly a bright brownish gold. This iris does credit to Mr. DeForest. **\$1.50**

RISING SUN. Radiant, handsome, deep pink bi-color from Dr. Kirkland. A "must have" in this shade. **\$1.20**

ROSE BOWL. A very tall darker China Maid. A fine color note. **\$3.00**

ROCKET. A brilliant new orange yellow from Mrs. Whiting. The Judges report great things about this iris. H.M. From Mrs. Whiting. Fine. **\$35.00**

ROSE PEARL. A large bi-color with standards of cream with suffusion of pinkish lilac; the falls are buff pink with gold at the haft. Lovely. **\$6.00**

ROSE FESTIVAL. This Kleinsorge iris is a deep rose pink and was introduced by Mr. Weed. A fine iris. **\$12.00**

ROSE TOP. A very large pink plicata. Ground color creamy white, with a broad border of pink. Tall. From Mr. Sass. Grand. **\$6.00**

ROYAL SCOT. A red trim plicata from Mr. Hall. We like it better than Firecracker. Large flower. Something different. **\$3.00**

RUBIENT. Standards are deep red purple; falls are black purple velvet, edged with purple of standards. **\$3.00**

RUTH POLLOCK. One of the finest of the yellow plicatas with heavy markings of maroon. Award of Merit. Another real one from Mr. Sass. **\$1.35**

SABLE. One of the finest black purple selfs. Award of Merit. Lustrous finish. A super iris in its color. **\$1.35**

SALAR. Blended tints of flesh, cream, and salmon with rose on the falls. Ranks very high in blends. From DeForest. Very lovely. **\$1.20**

SAMOVAR. A brilliant and colorful coppery rose that sparkles with grand garden effect. Mr. Hall excels in new colors: here is one. **\$1.20**

SEQUATCHIE. A blend of coppery brown with infusion of rose and a bright blaze of metallic violet in the center of the falls. Call the color a metallic coppery rose-brown, and you will be close to the color. H.M. From Mr. Caldwell. **\$18.00**

Our policy seems old fashioned, but we feel that our word must equal our bond.

SHARKSKIN. A large velvety pure white in heavy demand. **\$9.00**

SHERIFFA. An Onco bred of iridescent purple, very dark around the edges, but burnished through the center with a metallic lighter shade. Tall. A triumph of Mr. Clarence White. A.M. **\$1.50**

SHOW GIRL. (Elias Nelson 1945). A distinctive true self of blush rose from Ramases and Prairie Sunset. It is regarded as the best pink seedling of Prairie Sunset. Heavy orange beard and haft when first open. Large well shaped flower on 38-inch stalk. Modestly priced. **\$9.00**

SNOQUALMIE. Unusual leathery smooth cream. Lovely and in heavy demand. Order early. **60 cts.**

SNOW CARNIVAL. This is a large ruffled white from Dr. Graves. Very near the top notch white. A.M. 44. **\$12.00**

Our winters are tough and hard; summers are dry and hot; this produces hardy stock.

SNOW FLURRY. The startling pure icy white. Hint of light blue. Ruffled. Exclusive. **\$2.25**

SNOW VELVET. The new velvety white from Mr. Sass. Gold at the haft. Heavy substance. A very fine thing. **\$2.50**

SOLID MAHOGANY. This grand new dark red solidly colored is another triumph from Mr. Sass. Scarce. **\$15.00**

SONRISA. From DeForest. Large coppery-pink flower with yellow undertone. Very unusual color. A standout. Few rhizomes. **\$4.50**

SONNY BOY. Glowing gold and henna. Heavy to gold. Brilliant. **\$1.20**

SOUTHERN PACIFIC. Clear lavender blue with pinkish glow. Large and tall. Very fine. **\$4.50**

SORREL TOP. A rose and yellow plicata from Mr. Salbach. A new pattern. Scarce stock. **\$9.00**

SPARKLING BLUE. The large flowered near flax blue sparkles in sunlight. **\$4.50**

SPINDRIFT. The new pink from Dr. Loomis, much sought after. This is a real pink. Order early. **\$18.00**

Would suggest selecting second choice on orders received after May 15th.

Please do not ask us about my variety not listed in this catalog; we only list the varieties that we can offer for sale.

SPRING CHIMES. A beautiful russet tan from Mr. Hall. Flowers bunch a bit, but the unusual color overlooks its faults. Bright. \$1.35

SPRING SECRETARY. Smooth blending of buff and old gold; soft coloring overlay of mahogany. 75 cts.

SPUN GOLD. Probably the topnotch yellow to date. Award of Merit. Very fine. Dykes Medal. \$5.00

STAINED GLASS. A copper red self. Very bright and vivid. Glows in sunlight. From Dr. Wilhelm. 90 cts.

STARDOM. Mr. Hall's grand near onion skin pink. Add apricot, some copper and you have it. Sells out early. \$1.35

STARLESS NIGHT. Very dark blackish purple self with reddish sheen. Yellow beard. The near black contender from Mr. Sass. Very fine. \$1.35

STELLA POLARIS. Very large superior creamy white with heavy velvety surface. Tall, well branched. From Kenneth Smith. \$1.00

SUNSET GLORY. (Norton 1944). A seedling of Praise Sunset; strong intense russet tan self. 38 inches tall. Large flowers well spaced on strong stalks. \$3.00

STORM KING. A velvety blackish purple with red underglow. A superior near black. \$3.00

SUNSET SERENADE. A soft golden tan in effect. Standards apricot buff; falls orange vinaceous, yellow beard. Large flowers. Mr. Sass will go places with this fellow. Sparkles. \$7.50

SUNSHINE. The deepest yellow from Mr. Hall. A fine thing. Not much stock. A solid self color. \$5.00

SYLVIA MURRAY. (Norton 1944). This new blue a cross of Great Lakes and Shining Waters is very near a Celeste blue; standards as shown in intense sunlight are about two shades lighter than the falls; but effect is a self. We compared this new blue with lots of old and new blues; there was none like it. We know you will enjoy this blue. 40 inches tall, large flower, well spaced on strong stalks. H.M. 1946. \$9.00

These notes interspersed through out our varietal list are for your protection. We will live up to anything we say in these notes.

Customers come back year after year for our stock; we must satisfy them or they would not do this.

TA MING. A deep yellow with orange falls; this Naranja coloring is more intense than its parent. \$1.00

TAPESTRY ROSE. Large flowers of soft old rose; 38 inches tall. From Mr. Hall. Grand color. \$1.50

TEA ROSE. Almost a pure self of glowing copper pink. One of those things that stand out. \$7.50

THE CAPITOL. (Maxwell-Norton). A large clear crystalline white with extremely heavy deep golden beard and haft is golden. Very large heavy flower, same shape but larger than its parent, Gloriole. Flowers well spaced, sturdy, strong stalks, 38 to 40 inches tall. This is a standout white and is very striking. Glistening snow white. Modestly priced. Stands comparison. H.M. 1946. \$12.00

THE RAVEN. A rich dark black purple of merit from Mrs. Whiting. \$9.00

THELMA JEAN. A rich shade of petunia violet. Crisp broad falls. Very lovely. A color break of beauty. 90 cts.

THE ADMIRAL. The famous deep medium blue from Mr. Hall. Very fine. Large flower. Award Merit. \$1.50

THE GUARDSMAN. A handsome iris with standards of dusty pink; the falls are slightly darker with velvety overlay of mulberry. Edged with dusty pink of standards. Lovely. \$1.50

THE RED DOUGLAS. This red Dykes Medal winner from Mr. Sass speaks for itself. Color in general is raisin purple in dahlia purple. Lovely. \$1.00

THREE OAKS. This glowing rose pink is far ahead of its advance notice. Call it deep mallow pink, with overlay of rosy copper. Mrs. Whiting hits the jack pot here. Order early. \$6.00

THE SENTINEL. Burnished copper describes this new color in iris. A glowing beauty that attracts attention. \$1.00

Please do not write letters on the order blank. Use enclosed order blank.

We cannot accept any orders specifying special shipping dates. Please do not do this.

THREE SISTERS. Standards of pale cream, and fades to white in sunlight. Falls are red violet, and decidedly red when contrasted with standards. In effect sometimes called a red and white combination. Dr. DeForest made history on this one. **\$3.00**

TIFFANJA. Another DeForest beauty that is a headliner. Standards near colonial buff. Falls white with border of colonial buff. A cross of Naranja and Tiffany. Lovely. H.M. **\$4.50**

TIFFANY. Another Sass iris that merited the Award of Merit last year. Soft yellow ground plicata with rosy lilac markings. Lovely. **60 cts.**

TITIAN LADY. A self of purest white, with beard of Titian red. Lovely. **\$1.50**

TISHOMINGO. A large clear wisteria blue self of great merit. A.M. A best blue of "must have" quality. **\$7.50**

TOKEN. Standards are old gold flushed rose; falls rosy brown-red. A husky grower and grand iris from Mr. Hall. **75 cts.**

TOP SERGEANT. Brilliant red-brown, self. Rich color. Grand. **\$1.00**

TONGA. Mr. DeForest excels in new shades. Here is a russet coloring shaded Vandyke red. **\$1.00**

TOBACCO ROAD. It is a golden tobacco brown, and a self in color. From Dr. Kleinsorge. Everybody likes this one. Superb. H.M. A.M. 1946. **\$9.00**

UNIQUE. An odd blend of purplish vinaceous; distinctly pink toned at times. From DeForest. Unique it is. **\$1.00**

VAGABOND PRINCE. Darkest black purple. Black self from Mr. Sass. Glossy. Shines. **75 cts.**

VATICAN PURPLE. Very close to the color called Vatican Purple, and with it a fine large flower, and heavy substance. A good one. **\$3.00**

VEISHEA. A bright rosy copper blend with a clean blue blaze at the haft. Large flowers on a medium tall stalk. **\$2.00**

VIOLET SYMPHONY. Mr. Kenneth Smith's grand Bradley's violet self. Very fine. A top liner. **\$2.25**

All of the varieties we list will be well grown and full of energy to do well for you.

VISION FUGITIVE. A large cool white and yellow; the domed standards are cream yellow ruffled at the edge; falls are white faintly shadowed blue, with a trace of yellow on the rim. Large flower. Distinctive. H.M. **\$7.50**

WABASH. Standards pure white; flaring falls are deep hyacinth violet margined white. Dykes Medal. Lovely. **75 cts.**

WAKARUSA. A medley of color, with burnt orange, copper and brilliant red blended artistically into a most colorful thing. Mr. Lapham probably threw the book of brilliant color away on this one. Try this. **\$2.50**

WAVERLY. Standard of chicory-blue; the flaring falls with a slightly deeper flush just below the white-tipped beard. A grand topnotch blue. **75 cts.**

WESTPOINT. A wonderfully colored blue bi-color from Colonel Nichols. Indigo blue standards; falls slightly darker. Not much stock to offer. **\$1.00**

WHITE CITY. The white Dykes Medal winner from England. Large flower of silken sheen. Lovely. A.M. **\$1.50**

WHITE WEDGEWOOD. A large porcelain white with blue at base of beard. The beard appears blue, a fine Award of Merit Iris from Dr. Grant. **\$18.00**

WINTER SHADOWS. Shadows on snow. Large flowers. Superb. **\$1.00**

WINTER CARNIVAL. A trim white flower of grand shape; the center brushed with gold. A beautiful iris. **\$2.25**

WILLIAM SETCHELL. A huge bi-color of violet tone. Largest iris to date, holds its shape well. Distinctive. **\$1.35**

WORTHINGTON. Bi-color of great size of rosy red effect from Mr. Cook. A very bright garden iris. Fine. **\$9.00**

YELLOW JEWEL. Mr. Kenneth Smith's famous yellow. Large glowing deep wax yellow. Large flower; well placed on stalk. Perfection. **\$3.00**

IRIS SEED FOR 1947

Last season I stated in my catalog that this season we would issue an Iris seed list of crosses from top liner Iris Parents.

The two Iris judges that were going to make these crosses for me may not be available at blooming time and I may not be able to get this seed for 1947. However if these two judges can finally make these crosses, we will mail this seed list to our customers about August 1st of this year.

This seed, if available, will be the same high quality seed we will plant ourselves for new seedlings.

BOOTS AND SADDLES

The Junior Maxwells have a lot of Shetland ponies they are raising and training and they want me to get them English Tree Shetland saddles and pony saddle blankets and pony bridles for training their ponies.

We have western saddles and bridles, but do want the English Tree saddles. This catalog of mine goes through the states that used to have Shetland ponies, and if any of my customers have what we want, please write me what you have and the prices. It may be that some of your children have outgrown the ponies and have these saddles I want. If so cash or will give you a good trade in Iris, your selection.

ATOMIC BOMB

The greatest Iris news in years is that the American Iris Society is issuing a book, "*Iris* by Members of the American Iris Society." This will be a paper bound volume and will have as contributors the foremost authorities on Iris of today.

Reports on local culture, local selection of varieties, and species, and local garden use. The cost of this book to non-members will be \$2.00.

To each new member that will subscribe to the American Iris Society and send in their check for \$3.50 to us for not only this book on Iris, but a full year's subscription in the Society, you will receive four bulletins of the society besides.

Now this is not all: in addition to the above for \$3.50, the Iris Test Gardens will also send you as a premium \$3.00 of Iris, your selection from our 1947 catalog.

This is for NEW MEMBERS ONLY, and not renewals.

There is a limit on the members we will take in on the above basis; so get in your membership early, as we reserve the right to return your money after we receive 250 memberships.

You cannot afford to pass this up.