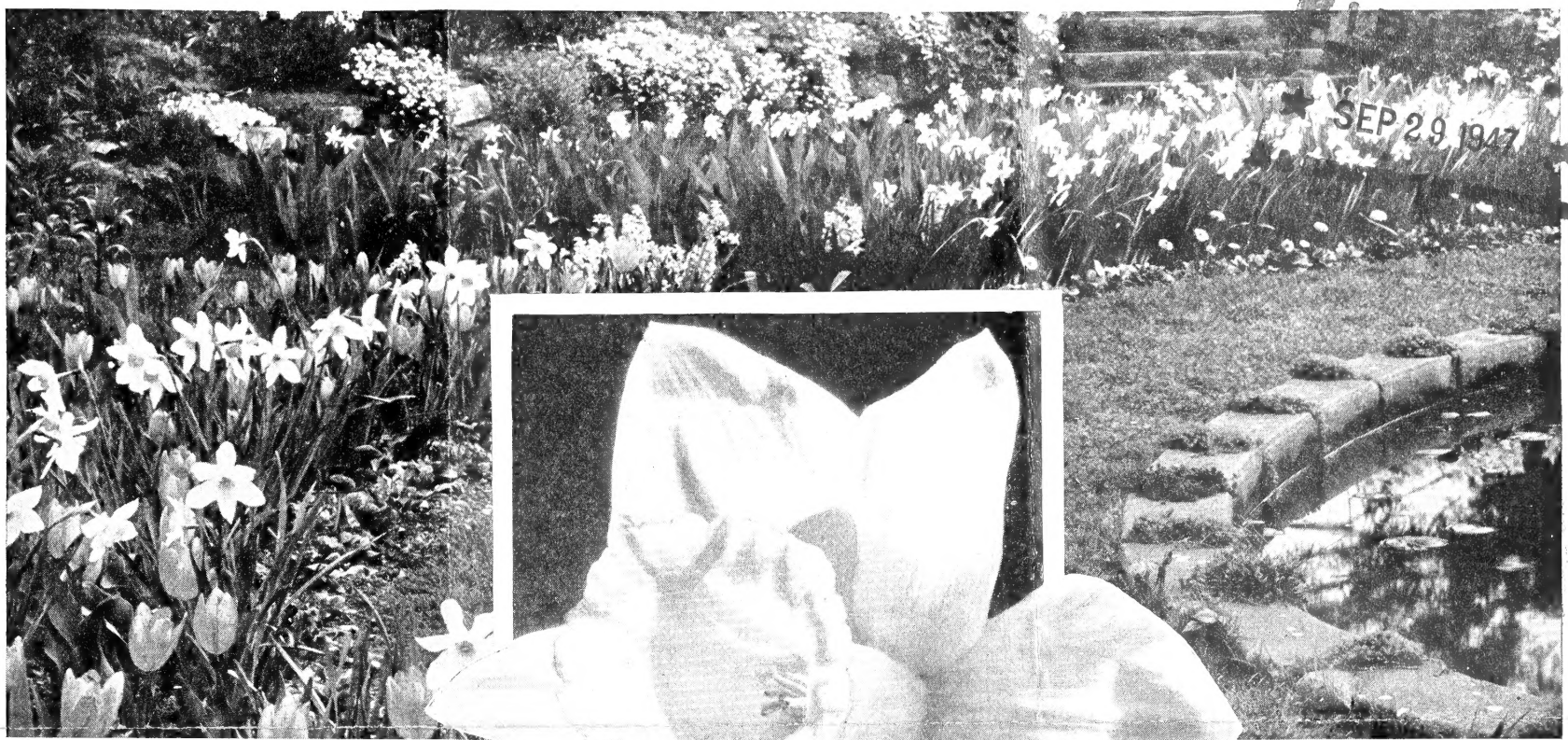


Historic, Archive Document

Do not assume content reflects current scientific knowledge, policies, or practices.





Narcissus or

Daffodils

IN ORDER to have a beautiful bulb garden, Narcissus should be planted very freely. They thrive in practically any climate in the United States, and are not only excellent for outdoors, but millions are used every year for forcing indoors. Their graceful form, beautifully shaped trumpets and cups, and the long, straight stems have made them favorites for cut-flower purposes.

Plant in soil in pots or bulb pans. Plunge in cold-frames or place in cool basement. When well rooted bring into conservatory or greenhouse or place in sunny window in a cool temperature.

Culture Outdoors: Plant so that top of bulb is at least 5 inches beneath the soil. A little protection should be given during severe winter weather, although they are perfectly hardy.



LARGE TRUMPET VARIETY
MRS. E. H. KRELAGE

Large Trumpet Varieties

- Aerolite.** A huge golden Daffodil, graceful despite its size. Perianth deep primrose, with a pure yellow trumpet. Blooms early; long lasting. **\$1.75 per doz.; \$12.00 per 100.**
- Beersheba.** Glistening snow-white; great size, flanged at mouth. Vigorous. **Each 35c; \$3.50 per doz.; \$25.00 per 100.**
- Dawson City.** Golden yellow. A fine garden variety. **\$1.75 per doz.; \$12.50 per 100.**
- Emperor.** Yellow trumpet, perianth primrose. **\$1.50 per doz.; \$10.00 per 100.**
- Golden Harvest.** Uniform golden yellow. Very early. **\$1.75 per doz.; \$12.00 per 100.**
- King Alfred.** Large, golden yellow flower with deeply frilled mouth, elegantly recurved; of lasting quality. **Round No. 1 bulbs, \$1.35 per doz.; \$9.50 per 100. Double No. 1 bulbs, \$1.75 per doz.; \$12.00 per 100. Jumbo bulbs, 3 for 75c; \$2.50 per doz.; \$17.00 per 100.**
- Magnificence.** Quite unique; will bloom earlier than King Alfred. Clear deep yellow. **\$1.50 per doz.; \$11.00 per 100.**
- Mrs. E. H. Krelage.** Really a pale bicolor, but changing to a uniform ivory-white. Smooth waxy texture with good form. **\$1.60 per doz.; \$12.00 per 100.**
- Spring Glory.** Pure yellow trumpet, white perianth. Excellent stem, and always free blooming. **\$1.50 per doz.; \$11.00 per 100.**
- Tresserve.** Deep canary-yellow with a paler perianth. The trumpet mouth is 2 inches across. **\$1.50 per doz.; \$11.00 per 100.**
- Van Waveren's Giant.** Yellow trumpet, primrose perianth. Very large. **\$1.75 per doz.; \$12.00 per 100.**
- Winter Gold.** Very early. Perianth bright yellow, trumpet long and straight, of deep golden yellow. **\$1.75 per doz.; \$12.00 per 100.**

Medium Trumpet Varieties

- Carlton.** A fine clear yellow of great size; crown frilled at brim. Vigorous. **\$1.35 per doz.; \$9.50 per 100.**
- Croesus.** Pale yellow perianth, orange-red crown. **\$1.25 per doz.; \$9.00 per 100.**
- Dick Wellband.** Pure white perianth with fiery red crown. Does not fade. **3 for 75c; \$2.50 per doz.; \$18.00 per 100.**
- Helios.** Overlapping, flat, deep golden yellow perianth. Large trumpet opens light orange changing to deep orange. **\$1.25 per doz.; \$8.50 per 100.**
- John Evelyn.** Flat perianth, 4 to 6 inches across, with a flat cup nearly 2 inches in diameter, densely frilled. Perianth pure white and cup lemon-yellow, fluted to the base. **\$1.35 per doz.; \$9.50 per 100.**

Medium Trumpet Varieties, continued

- Milford Haven.** Cream-white perianth and wide cup, ruffled and deeply frilled at edge, chrome-yellow at base, and shading into rich orange-scarlet. **\$1.75 per doz.; \$12.00 per 100.**
- Orange Glow.** Yellow perianth, orange crown. **\$1.25 per doz.; \$8.50 per 100.**
- Scarlet Elegans.** Dark yellow perianth with large orange-red crown. **\$1.25 per doz.; \$8.50 per 100.**
- Sir Watkin.** Primrose perianth, deep yellow cup. Large flower. **\$1.25 per doz.; \$9.00 per 100.**
- Yellow Poppy.** Well-formed flower with a primrose-yellow perianth; cup wide and shallow, edged orange. **\$1.25 per doz.; \$9.00 per 100.**

Short Trumpet Narcissus

- Alcida.** Flat, star-shaped, pure white perianth with petals over 1½ inches wide; broad citron-yellow cup with blood-orange frill. Free flowering; very late. **\$1.35 per doz.; \$9.50 per 100.**
- Bath's Flame.** Yellow perianth with darker cup, deeply edged orange-scarlet. **\$1.25 per doz.; \$9.00 per 100.**
- Diana Kasner.** Pure white perianth and a large fluted yellow cup with blood-red frill. Free-flowering and an excellent forcer. **\$1.15 per doz.; \$8.00 per 100.**
- Firetail.** Broad-petaled, creamy white perianth and large orange cup with scarlet-orange frill. **\$1.25 per doz.; \$8.50 per 100.**
- Laurens Koster.** (Poetaz or Bunch-flowered.) Vigorous grower, bearing heads of large flowers. Pure white perianth and large orange-yellow cup. **\$1.00 per doz.; \$7.00 per 100.**
- Mrs. Barclay.** Large flower with flat, reflexed, broad-petaled perianth of pale primrose; deeply frilled, flat cup of primrose-yellow, with dainty orange picotee. Extremely showy. **\$1.35 per doz.; \$9.50 per 100.**

Triandrus Hybrid

- Poeticus Actaea.** Pure white with a very large, orange-red eye. **\$1.25 per doz.; \$8.50 per 100.**
- Poeticus Recurvus.** (Pheasant's Eye; Poet's Narcissus.) Pure white, with distinct red crown; sweet-scented. **90c per doz.; \$6.00 per 100.**
- Thalia.** Two or three lovely pure white flowers per stem, 2 inches or more across, making a beautiful cluster. Suitable for rock-garden or for forcing. **\$2.25 per doz.; \$16.00 per 100.**

Leedsii Narcissus

- Daisy Schaeffer.** Flowers very large but graceful in form. Perianth pure white with cup opening primrose and turning to light canary-yellow, deeper at the base. **\$1.75 per doz.; \$12.00 per 100.**
- Gertie Millar.** Pure white perianth with a pale primrose cup, deeply fluted and frilled. Most handsome. **Each 40c; \$4.00 per doz.; \$28.00 per 100.**
- Mrs. Nette O'Melveny.** Pure white perianth and cup of clear lemon-yellow with orange picotee. Splendid foliage; tall, graceful stem. **\$1.15 per doz.; \$8.00 per 100.**
- Mrs. R. O. Backhouse.** This is the famous "pink Daffodil." Perianth of ivory-white, beautifully proportioned. Slim long trumpet of apricot-pink changing to shell-pink at the deeply fringed edge. Long lasting; early. **Each 50c; \$5.50 per doz.; \$39.00 per 100.**
- Silver Star.** Broad-petaled, star-shaped perianth of pure cream-white, with wide-mouthed trumpet of primrose, changing to cream-white. Extra fine, and very free-flowering. **Each 25c; \$2.25 per doz.; \$16.00 per 100.**
- Tunis.** Broad waved white perianth and large, bold ivory crown flushed pale coppery gold at the edge. **Each 20c; \$2.25 per doz.; \$15.00 per 100.**

Individual bulbs are supplied at one-tenth the dozen rate; 25 bulbs at the 100 rate

Double Narcissus

- Albus Plenus Odoratus.** (Double White Poeticus.) Snowy white; sweet-scented. **\$1.00 per doz.; \$7.00 per 100.**
- Cheerfulness.** This attractive double-flowering Poetaz Narcissus carries three or four fragrant flowers in clusters. A wonderful cut-flower. **\$1.25 per doz.; \$8.50 per 100.**
- Texas.** Pale yellow interspersed with brilliant orange; very late and tall. **Each 45c; \$4.25 per doz.; \$30.00 per 100.**
- Twink.** Petals alternating soft primrose and clear orange. Flowers very early and is particularly suited for forcing. **\$1.50 per doz.; \$11.00 per 100.**

Jonquil Narcissus

- Campernelle, Single.** A tiny golden Daffodil frequently having three blooms on a stalk. Very sweet-scented. **\$1.35 per doz.; \$9.50 per 100.**
- Orange Queen.** A very striking variety with two or three flowers on a stem. Intense golden orange with fluted cup; fragrant. **\$1.50 per doz.; \$11.00 per 100.**
- Trevithian.** Pale lemon-yellow. Produces two or more scented flowers on a stem. Free flowering. **\$1.35 per doz.; \$9.50 per 100.**

Daffodils for Naturalizing

- For planting under trees in a grassy meadow or on a sunny slope, the effect is always pleasing. Make the planting informal, allow the tops to ripen naturally each season, and they will increase in beauty year after year.
 - McCullough's Woodland Mixture.** This mixture contains the large trumpet, medium and small-cupped varieties. **\$1.00 per doz.; \$7.00 per 100; \$65.00 per 1000.**
 - McCullough's Garden Mixture.** A well-balanced mixture of the large trumpet varieties. **\$1.25 per doz.; \$9.00 per 100; \$85.00 per 1000.**
- Individual bulbs are supplied at one-tenth the dozen rate; 25 bulbs at the 100 rate



A BED OF DARWIN TULIPS IS A LOVELY SIGHT IN THE SPRING

Plant Tulips This Fall for Blooms Next Spring!

DARWIN TULIPS

A vigorous race of self-colored Tulips distinguished by their strong stems that carry the blooms well above the foliage, thus adding to their beauty in the garden and increasing their value for cutting and indoor decoration. They flower simultaneously with the Breeder and Cottage Tulips during the month of May. We offer below the new varieties which show improvement in color, height, or in some important respect, over the old varieties. But at the same time we retain the best of the old and tried varieties, many of which remain the best in their class.

- Afterglow.** A pleasing shade of apricot-orange, shaded deep pink. \$1.50 per doz.; \$10.00 per 100.
- Aristocrat.** Soft delicate rose. Large oval flower. \$2.35 per doz.; \$16.50 per 100.
- Baronne de la Tonnaye.** A beautiful, distinct, deep rosy pink, margined blush. \$1.25 per doz.; \$9.00 per 100.
- Bartigon.** Large; fiery red; showy. \$1.25 per doz.; \$9.00 per 100.
- Bleu Aimable.** Bright violet-purple, with distinct steel-blue shadings; inside dark violet-purple, with blue base starred white. \$1.50 per doz.; \$10.00 per 100.
- Campfire.** Blood-red. A sport of Bartigon. \$1.25 per doz.; \$9.00 per 100.
- Charles Needham.** A glorious carmine-scarlet flower; exceptional. \$1.35 per doz.; \$9.50 per 100.
- City of Haarlem.** Handsome vermilion flower. \$1.40 per doz.; \$9.75 per 100.
- Clara Butt.** Soft salmon-rose-pink. \$1.50 per doz.; \$10.00 per 100.
- Copeland's Rival.** Deep rosy lilac. \$1.25 per doz.; \$9.00 per 100.
- Demeter.** Deep violet-blue; large; extremely early. \$1.75 per doz.; \$11.50 per 100.
- Eclipse.** Warm crimson-maroon, with blue base. Large flowers, stiff stem. \$1.35 per doz.; \$9.50 per 100.
- Farncombe Sanders.** Brilliant rosy scarlet, with showy white base. \$1.35 per doz.; \$9.50 per 100.
- Gloria Swanson.** Carmine with blue base. \$1.35 per doz.; \$9.50 per 100.
- Golden Age.** Deep golden yellow, inside lighter; yellow anthers. Tall. \$1.35 per doz.; \$9.50 per 100.
- Insurpassable.** Orchid-lavender, white center. \$1.75 per doz.; \$11.50 per 100.
- La France.** Delicate pink, resembling the rose of this name, with a pure white center. \$1.50 per doz.; \$10.50 per 100.
- La Tulipe Noire (The Black Tulip).** Deep maroon-black, with velvety sheen. \$1.45 per doz.; \$10.25 per 100.
- Magic Fire.** Deep red. \$1.25 per doz.; \$9.00 per 100.
- Mme. Krelage.** Soft lilac-rose with broad margin of blush-pink. \$1.25 per doz.; \$9.00 per 100.
- Mrs. Grullemans.** Pure white with light yellow anthers; large. \$1.50 per doz.; \$10.50 per 100.
- Niphetos.** Soft yellow inside, creamy outside. Long flower. \$1.45 per doz.; \$10.25 per 100.
- Philip Snowden.** Light carmine-rose. \$1.25 per doz.; \$9.00 per 100.
- Pride of Haarlem.** Bright carmine-rose, with blue base. \$1.25 per doz.; \$9.00 per 100.

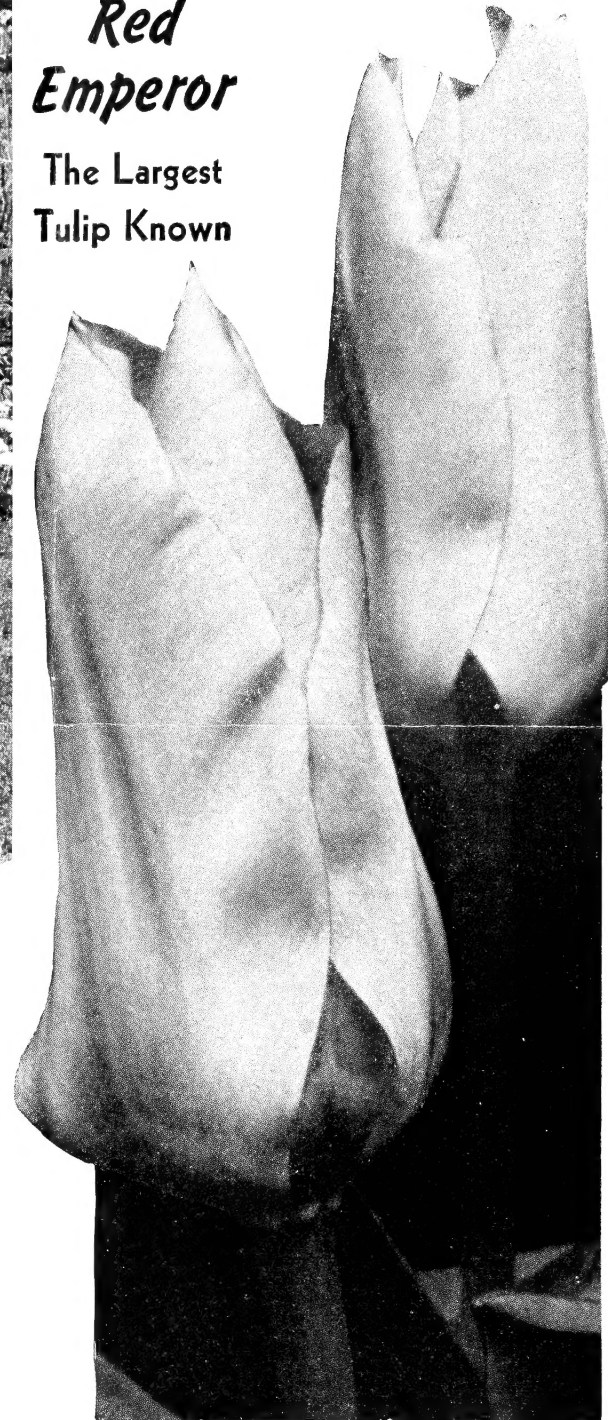
- Pride of Zwanenburg.** Salmon-rose; immense. \$1.50 per doz.; \$10.00 per 100.
- Princess Elizabeth.** Crimson-pink, edged soft rose-pink; white base. \$1.25 per doz.; \$9.00 per 100.
- Scotch Lassie.** Pure deep lavender, darker inside; blue base. \$1.60 per doz.; \$11.00 per 100.
- The Bishop.** Pure violet, white base. \$1.50 per doz.; \$10.50 per 100.
- White Giant.** Pure white, black anthers. Globular flower. \$1.50 per doz.; \$10.50 per 100.
- Wm. Copland.** Bright lavender. Early. \$1.25 per doz.; \$9.00 per 100.
- Wm. Pitt.** Dark scarlet. Early. \$1.35 per doz.; \$9.50 per 100.
- Yellow Giant.** Large globular flowers of pure golden yellow carried on a long, sturdy stem. \$1.25 per doz.; \$9.00 per 100.
- Zwanenburg.** Very large, pure white flower on tall stem. \$1.35 per doz.; \$9.25 per 100.
- Mixed Darwins.** All colors, making a fine display and good for cutting. \$1.20 per doz.; \$8.50 per 100.
- Individual bulbs are supplied at one-tenth the dozen rate; 25 bulbs at the 100 rate

COTTAGE TULIPS MAY-FLOWERING

- Next to the Darwin Tulips, the most important class is the Cottage, also called May-Flowering, Old English, or Single Late. The name "Cottage" is favored, for their garden beauty, adaptability to home ornamentation, color range, fragrance, texture of bloom, fine-shaped flowers and long stems are among their good qualities. As a class, the Cottage Tulips will make themselves at home for a longer time, even under adverse conditions, than any of the other late types.
- Advance.** One of the largest flowers seen in Tulips. When in full bloom resembles an Oriental Poppy. Fiery red with a purplish bloom on the outside and a blue inner base. Early. Tall, erect stem. \$1.25 per doz.; \$9.00 per 100.
- Belle Jaune.** Clear yellow, light base; yellow anthers. Early. \$1.35 per doz.; \$9.25 per 100.
- Carrara.** A Tulip that will create a sensation wherever shown. Of fine round form, and as white as the marble for which it is named. \$1.50 per doz.; \$10.00 per 100.
- Dido.** Rich orange, shaded salmon; inside bright orange, with yellow center. \$1.50 per doz.; \$10.00 per 100.
- Golden Harvest.** Soft lemon-yellow with yellow anthers; large. Early. \$1.35 per doz.; \$9.50 per 100.
- Grenadier.** Dazzling vermilion-orange. \$1.35 per doz.; \$9.50 per 100.
- Inglescombe Yellow.** Large, bold canary-yellow flower on long, strong stem. Called Yellow Darwin on account of its Darwin type. \$1.25 per doz.; \$9.00 per 100.
- Mongolia.** Large, globular, pure yellow flowers on tall strong stem. \$1.50 per doz.; \$10.50 per 100.
- Mother's Day (Lemon Queen).** Soft lemon-yellow. Good form and substance. \$1.35 per doz.; \$9.50 per 100.
- Mrs. John T. Scheepers.** Stunning golden yellow; tall, large flower. \$1.35 per doz.; \$9.50 per 100.
- Mrs. Moon.** Beautiful, large, rich golden yellow. Blooms long and pointed, outer petals reflexed. One of the few fragrant Tulips. \$1.50 per doz.; \$10.00 per 100.
- Superfine Mixed.** A superb mixture of all colors. \$1.20 per doz.; \$8.50 per 100.
- Individual bulbs are supplied at one-tenth the dozen rate; 25 bulbs at the 100 rate

Red Emperor

The Largest
Tulip Known



PARROT TULIPS

- Parrot Tulips create friends because the blooms are ragged and fringed, and effects can be obtained from them that are impossible with any other Tulips. They are most charming used as cut-flowers. Average height about 16 inches.
- Blue Parrot.** A glorious flower, bright violet shaded steel-blue. A sport from the well-known Darwin Tulip, Bleu Aimable. Very large flower on tall strong stem. \$1.75 per doz.; \$12.00 per 100.
- Fantasy.** Large, salmon-pink flower with green spot at base of petals. Sport of Clara Butt. \$1.35 per doz.; \$9.50 per 100.
- Gadelan.** Purple; very large flower. Each 35c; \$3.75 per doz.; \$28.00 per 100.
- Sunshine.** Yellow; medium size. Each 35c; \$3.50 per doz.; \$25.00 per 100.
- Therese.** Cherry-scarlet. Flowers often 8 inches in diameter. Each 25c; \$2.50 per doz.; \$17.50 per 100.
- Violet Queen.** Soft lavender-violet; large, white center. \$1.75 per doz.; \$12.00 per 100.
- Individual bulbs are supplied at one-tenth the dozen rate; 25 bulbs at the 100 rate
- ## SINGLE EARLY TULIPS
- Early Tulips have only one subdivision, that of Single and Double. The outstanding characteristic of this class is the earliness of bloom. On the heels of the crocus and side by side with the daffodils and hyacinths, before the trees and shrubs have made any decided efforts to prove their powers, the Single Early Tulips will march into place and proclaim themselves.
- Couleur Cardinal.** Crimson-scarlet. \$1.40 per doz.; \$10.25 per 100.
- De Wet (Fireglow).** Golden flushed fiery orange-scarlet. \$1.50 per doz.; \$10.50 per 100.
- Keizerskroon.** Crimson-scarlet, edged bright yellow; large, showy flowers on very tall and strong stems. \$1.50 per doz.; \$10.50 per 100.
- Olympiade.** Extra-fine yellow. \$1.35 per doz.; \$9.25 per 100.
- Prince Carnaval.** Yellow overlaid with red blotches. \$1.75 per doz.; \$11.50 per 100.
- White Hawk.** Pure white; early. \$1.35 per doz.; \$9.25 per 100.
- Finest Single Mixed.** All colors. \$1.25 per doz.; \$9.00 per 100.
- Individual bulbs are supplied at one-tenth the dozen rate; 25 bulbs at the 100 rate

CULTURAL DIRECTIONS

See diagram on back page showing depth and distance apart to plant bulbs.

BOTANICAL TULIPS

A most interesting group of wild Tulip species native in the mountain slopes and valleys of Central Asia and Asia Minor. Lovely odd shades, many with reflexed petals and curiously twisted, spotted and reflexed foliage. They belong to the rock-garden where their individual beauty stands out most prominently. Here they thrive and increase if left in the ground year in and year out. Plant in groups of six to twelve among the rocks in fairly deep, well-drained pockets.

Eichleri. Crimson-scarlet, shaded orange, with glistening black center marked with gold. Height 8 inches. \$1.25 per doz.; \$8.50 per 100.

Kaufmanniana (Water-Lily Tulip). Creamy white, tinged rosy red on the outside. Height 6 inches. \$1.10 per doz.; \$7.50 per 100.

Praestans, Fusilier. Flaming orange-red; one to three flowers per stem. Tall. \$1.40 per doz.; \$9.75 per 100.

Red Emperor. A glorious scarlet-red Tulip of remarkable size and substance, having a large black center. The largest Tulip known. \$1.40 per doz.; \$9.75 per 100.

Sylvestris. Citron-yellow; sweet-scented. Height 8 inches. \$1.25 per doz.; \$9.00 per 100.

Individual bulbs are supplied at one-tenth the dozen rate; 25 bulbs at the 100 rate

BREEDER TULIPS

The Breeders are a race of tall, handsome Tulips, generally of subdued color, including many fine purples, bronzes, dull yellows, browns, old rose, and mahogany shades. As the colors are naturally dull, it is better to plant them in a bright corner in the garden where they will receive the sunshine especially in the morning and late afternoon. The flowers are very large, carried on tall, strong stems, May-blooming.

Bacchus. Immense, dark violet; strong stem. \$1.50 per doz.; \$10.00 per 100.

Dillenburg. Bright salmon-orange, shaded rose to blush on the outer petals. \$1.40 per doz.; \$9.75 per 100.

Dom Pedro. Flowers large, chestnut-bronze, shaded maroon; base yellow, streaked olive; fragrant. \$1.40 per doz.; \$9.75 per 100.

Indian Chief (Meyerbeer). Indian-brown, flushed coppery red. A most artistic flower carried on a very tall stem. \$1.40 per doz.; \$9.75 per 100.

Louis XIV. A refined coloring of rich purple, overlaid golden bronze. Enormous flower. \$1.50 per doz.; \$10.00 per 100.

Panorama (Fairy). Large, globular, deep orange-red flower. \$1.40 per doz.; \$9.75 per 100.

President Hoover. Orange-scarlet. \$1.40 per doz.; \$9.75 per 100.

Tantalus. Lilac and buff-yellow; very sturdy. \$1.45 per doz.; \$10.25 per 100.

Velvet King. Dark purple, white base. \$1.60 per doz.; \$11.00 per 100.

Superfine Mixed. Superb mixture, all colors. \$1.40 per doz.; \$9.75 per 100.

Individual bulbs are supplied at one-tenth the dozen rate; 25 bulbs at the 100 rate

Miscellaneous Bulbs

FRITILLARIA

Meleagris. Single, dwarf, spring-flowering plants, bearing large, pendent, bell-shaped flowers of yellow, white, black, purple, striped, and splashed and checkered in the most curious way. They are invaluable for rock-gardens and pretty when grown in large groups in a dry situation. 60c per doz.; \$4.25 per 100.

ERANTHIS HYEMALIS (WINTER ACONITE)

Early in the spring the golden blossoms look charming, resting on an emerald-green cushion of leaves and forming a striking contrast to the snowdrops, scillas, and chionodoxas. The foliage remains long after the flowers, making the plant especially valuable in moist situations, such as under trees, which the Winter Aconite enjoys and where few other flowering plants will thrive. Plant firmly, 2 inches deep, about fifteen bulbs to the square foot. 60c per doz.; \$4.00 per 100.

SNOWDROPS (Galanthus)

Everybody knows the Snowdrop, with its little white bells coming through the snow very early in the spring—practically the first flower to show itself after the dreariness of winter. It is a wonderful bulb for naturalizing and planting in every garden. Plant 2 to 3 inches deep and 1 inch apart. Can also be grown in pots or baskets. **Single-flowering.** 75c per doz.; \$5.00 per 100.

DOUBLE EARLY TULIPS

Blooming as they do with the Single Early Tulips, these huge double peony-like blooms are stiff and formal as only a Tulip can be. They have a way of appearing suddenly with a splash of color that is breath-taking.

Boule de Neige. Large, pure white flower resembling a white peony. \$1.50 per doz.; \$10.50 per 100.

Mr. Van Der Hoef. A beautiful pure yellow sport of the variety Murillo. \$1.50 per doz.; \$10.50 per 100.

Peach Blossom. Dark pink. \$1.50 per doz.; \$10.50 per 100.

Vuurbaak. Immense, bright fiery scarlet flower on strong stem. Showy bedder; the best double scarlet for forcing. \$1.50 per doz.; \$10.50 per 100.

Finest Double Mixed. All colors. \$1.35 per doz.; \$10.00 per 100.

Individual bulbs are supplied at one-tenth the dozen rate; 25 bulbs at the 100 rate

TRIUMPH TULIPS

This new race of Tulips has well-formed, giant blooms in colors and color combinations distinctly different from all others, being the result of a cross between the Single Early and the Darwin Tulips. They find a place in the garden where it is necessary to bridge the gap between the Single Early and the Late Tulips such as Darwins, Breeders, and Cottage. They are of sturdy, compact growth; exceptionally colorful.

Elizabeth Evers. Beautiful large pink flower on strong stem. \$1.35 per doz.; \$9.25 per 100.

Kansas. Pure white, yellow base; early. \$1.25 per doz.; \$9.00 per 100.

Nova. Lilac-rose with silvery sheen, inside salmon-rose to vermilion. Base white, canary-yellow inside. \$1.25 per doz.; \$9.00 per 100.

Red Giant. Scarlet; early. \$1.35 per doz.; \$9.25 per 100.

Telescopium. Violet-rose; tall. \$1.25 per doz.; \$9.00 per 100.

Ursa Minor. Golden yellow, long flower. \$1.25 per doz.; \$9.00 per 100.

Mixed. \$1.20 per doz.; \$8.50 per 100.

Individual bulbs are supplied at one-tenth the dozen rate; 25 bulbs at the 100 rate

Striped and Feathered Tulips

REMBRANDT. Similar to Darwins, but with peculiar stripes and featherings. Flowers large, and the great variety of colors makes them extremely effective.

Cordell Hull. Red, sharply banded and feathered pure white. \$1.50 per doz.; \$10.00 per 100.

Splendid Mixture. \$1.50 per doz.; \$10.00 per 100.

BIZARRES and BYBLOEMEN. Old Dutch or "broken" Tulips. Flowers striped and feathered.

Bizarres Mixed. A strain of Breeder Tulips; brown stripes on yellow ground. \$1.50 per doz.; \$10.00 per 100.

Bybloemen Mixed. A strain of Cottage Tulips. White ground striped rose or mauve. \$1.50 per doz.; \$10.00 per 100.

Miscellaneous Bulbs

GRAPE HYACINTH (Muscari)

Charming, hardy spring-flowering bulbs. They are somewhat like the Hyacinth, but the clusters and the individual flowers are smaller and of delicate shape. Invaluable for naturalizing, especially with Narcissus.

Early Giant. Clear bright blue; large; early. 65c per doz.; \$4.50 per 100.

Alba. A pure white form of the above. 60c per doz.; \$4.00 per 100.

SCILLA (Harebell)

Very early-flowering bulbs, doing well in ordinary soil, producing fine, graceful spikes of bell-shaped flowers. Extremely showy and attractive as pot-plants and require about the same treatment as hyacinths.

Sibirica, Spring Beauty. Striking, large clear blue, much larger than Sibirica. 80c per doz.; \$6.00 per 100.

SCILLA CAMPANULATA (WOOD-HYACINTH)

This interesting class blooms during early May. The bell-shaped flowers are carried on slender, graceful spikes. Plant 3 to 4 inches deep and 6 inches apart. Very effective for borders and will thrive in shaded situations under trees.

Blue Queen. Erect spikes of porcelain-blue flowers. Strong grower. 60c per doz.; \$4.00 per 100.

Rose Queen. Bells are soft lilac-rose. Very pretty. 60c per doz.; \$4.00 per 100.

White Queen. Pure white. 60c per doz.; \$4.00 per 100.

LYCORIS (Hardy Amaryllis)

Amaryllis Halli. Produces in early spring attractive green foliage which grows until July, when it ripens and disappears. About a month later to your surprise the flower stalks spring from the ground to a height of 2 to 3 feet, developing an umbel of large lily-shaped flowers, eight to twelve in number, of a delicate lilac-pink shade. The bulb is perfectly hardy; must be planted in fall; cover the bulb about 4 inches. Each \$1.00; \$11.00 per doz.

Naphthaline Flakes

Naphthaline Flakes are recommended for the control of moles and field mice. Do not place Naphthaline Flakes under the bulb. Set the bulb, cover lightly with soil, then sprinkle about 1 teaspoonful of flakes over each bulb; the balance of soil can then be placed over the bulb. Lb. 30c; 5 lbs. \$1.25; 25 lbs. \$5.75.

PREPARED BULB FIBER

For growing bulbs, such as hyacinths, tulips, and narcissus, it has proved a great success. Plg. 25c.

SPRING-FLOWERING CROCUS

Crocus are frequently the first flowers to appear in spring, coming a few days after the snow disappears. They are at their very best when scattered over a lawn or planted in rows as a border for a bed of perennials. When used on the lawn, scatter them freely over the surface, then lift the sod with a trowel and slip the bulb underneath. Crocus may also be grown in pots or bulb pans and will produce a pleasing effect. The bulbs are entirely hardy, and the grass may be mowed without injuring the Crocus plants.

Kathleen Parlow. Large; pure white.

Midnight. Very dark purple; extra large.

Pallas. White with fine lilac stripes.

Queen of the Blues. Pure light lilac-blue.

Yellow. Golden yellow. A favorite extra-large variety having many flowers.

All above varieties in Jumbo size bulbs, 65c per doz.; \$4.50 per 100

Crocus for Bedding

Blue shades, Striped, White, and Yellow. Offered separately or mixed, 40c per doz.; \$2.75 per 100.

CHIONODOXA (Glory-of-the-Snow)

An early-flowering spring bulb, very desirable for use in borders or rockwork. The charming, small, star-shaped flowers are borne loosely on a small spike 4 to 5 inches long, and are of an attractive blue color. The bulbs should be planted about 3 inches apart. If planted in masses, close together, where they may be left undisturbed, they will continue to improve year after year.

Gigantea. A striking variety with unusually large, lilac-blue flowers with a conspicuous white center. 60c per doz.; \$4.25 per 100.



SPRING-FLOWERING CROCUS



SNOWDROPS (Galanthus)



CHIONODOXA (Glory-of-the-Snow)



SCILLA SIBIRICA, Spring Beauty



GRAPE HYACINTHS (Muscari)

You too - can have a beautiful lawn!

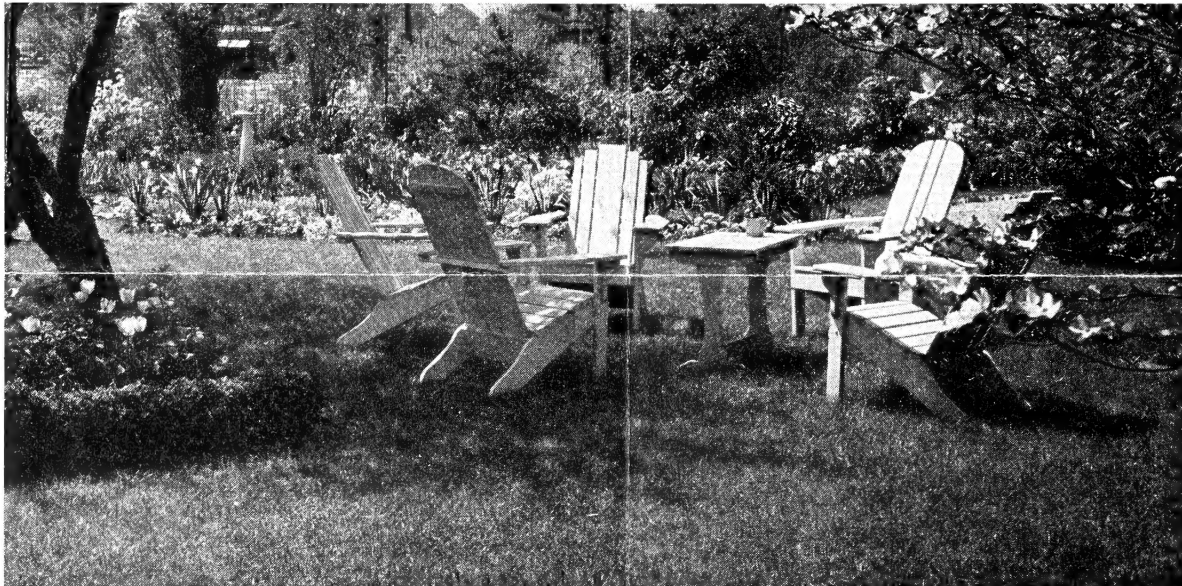
START YOUR LAWN THIS WAY

Be sure that the soil has good drainage and that the seed bed is fine, smooth, and mellow. Careful consideration should be given to the kind of seed to be used. The cost of the seed represents the smallest part of the investment. It is false economy to save a few cents by purchasing lawn seed from a questionable source, only to be annoyed later by repatching a weedy turf or being required to do the entire work over.

Select a calm day and sow half the quantity one way and the remaining half at right angles. Seed at the rate of 1 pound to 200 square feet on new lawns or 125 to 150 pounds per acre. It requires about half as much seed for an established lawn. A thick sod is the best protection against weeds. The seed should be covered by light raking and a top dressing of peat moss or humus. The lawn is then ready for rolling. If watering is necessary, use a fine spray to prevent washing.

Facts Concerning Fall Sowing

The cool, moist weather of late summer and early fall affords an ideal condition for renovating or rebuilding a lawn that has suffered from drought, neglect, or the ravages of crab grass or other weeds. Fall is also the ideal time for building a new lawn. Seed sown at this time will show quicker growth and has a tendency to stool or spread out, a condition not present during the warmer months. Competition with weeds is practically eliminated at this season, since they will not germinate until spring, by which time fall-sown grass is thoroughly established. Seed may be sown successfully as late as November in the latitude of Cincinnati, but we would recommend September for best results.



The Fragrant HYACINTHS

Hyacinths should be planted early, but they may be set from October until the ground freezes. Spade the soil 8 to 10 inches deep, making it as fine as possible. If the soil is heavy, add sand, well-decayed manure, or peat moss. Set the bulbs 5 to 6 inches deep and about the same distance apart. Before hard freezing comes, cover the bed lightly with leaves or litter, removing it in the spring.

Hyacinths grow readily in pots. Use the named varieties, one bulb in a 5-inch pot, or three bulbs in a 7-inch pot. Use garden soil or bulb fiber, and a little plant-food; set the bulb 1/2 inch below the soil level. Water thoroughly, put in a dark, cool place for six to eight weeks, giving water as needed; when the bulbs are well rooted, bring the pots to a warm room.

Hyacinths also thrive in water. Set the bulbs in a Hyacinth glass, with the base merely touching the water. Place in the dark until the roots are well grown. Add water as needed; a small piece of charcoal tends to keep the water pure. Give plenty of light and air, but the temperature should be less than 60 degrees until the flowers develop.

Choice Named Single HYACINTHS

Price per dozen and on single bulbs includes postage.

ALL NAMED HYACINTHS, TOP SIZE BULBS:
35c each; \$3.50 per doz.; \$27.00 per 100

RED AND ROSE

- G. Van Der Mey.** Rose-pink; very broad, compact truss. Good for bedding and a splendid forcing variety.
- Jan Bos.** Striking deep red.
- Marconi.** Bright rose; large. Fine for growing in water glasses.
- Pink Pearl.** Deep rose with lighter edge; early.

WHITE

- L'Innocence.** Pure white, fine large flower.

BLUE, LAVENDER AND PURPLE

- Duke of Westminster.** Its large purplish blue bells have white centers and a pleasing fragrance.
- Grand Maitre.** Deep porcelain-blue; large bells.
- Grand Monarque.** Beautiful light blue, large, broad spikes. Splendid for bedding.
- King of the Blues.** Rich dark blue.
- Myosotis.** A catching tone of light forget-me-not-blue.

YELLOW

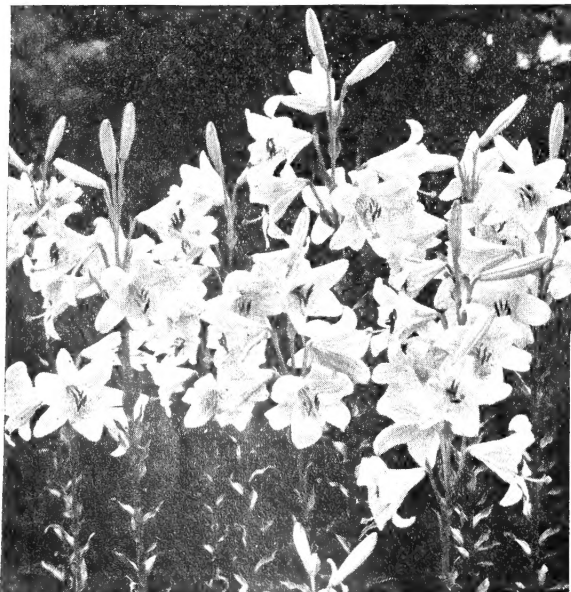
- City of Haarlem.** Golden yellow, well-formed flower.
- Yellow Hammer.** Golden yellow; fine, large spike.

Choice Unnamed Bedding HYACINTHS

In separate colors and mixed shades for pots and bedding.

25c each; \$2.25 per doz.; \$15.00 per 100

Blue Pink Red White Yellow



LILIUM CANDIDUM

Acme Superfine Lawn Seed

As the name implies, this mixture is the finest that modern seed-cleaning machinery can produce. Over 99.90 per cent free from weeds. It contains only the plump seeds which produce the strong healthy plants. It is a scientific combination of extra-heavy Kentucky Blue Grass, Fancy Red Top and Creeping Bent. All deep-rooting permanent grasses, free from any of the coarse grasses. Truly the best lawn seed obtainable. **Lb. \$1.00; 3 lbs. \$2.90; 5 lbs. \$4.75; 10 lbs. \$9.50; 20 lbs. \$17.00; 25 lbs. \$21.25.**

Emerald Lawn Seed

Our standard mixture that has proved satisfactory to our customers over a period of many years. Produces a good clean permanent turf. Composed of reselected Kentucky Blue Grass, Fancy Red Top, Creeping Bent, Cheving's Fescue, White Clover, and other fine grasses all carefully blended.

Emerald will give satisfaction. **Lb. 80c; 3 lbs. \$2.30; 5 lbs. \$3.75; 10 lbs. \$7.50; 20 lbs. \$13.50; 25 lbs. \$16.85.**

MISCELLANEOUS BULBS, continued

BULBOUS IRIS

Few bulbous plants are as easy to grow as the bulbous Iris. Their flowers are as graceful as orchids, are valuable as cut-flowers and also very showy in the flower garden. We offer two types: **Dutch**, which is a splendid improvement over the old Spanish, and in addition to the Dutch we offer a hybrid type known as **Wedgwood**. Bulbs of Dutch Iris when planted outdoors should be set 4 to 5 inches deep.

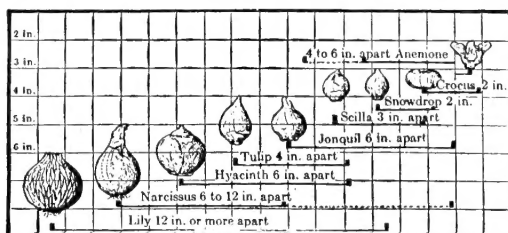
Dutch Iris

JUNE BLOOMING

For Indoor or Outdoor Blooming

- Blue Horizon.** Light violet-blue standards; falls soft sky-blue, narrow orange stripe. **85c per doz.; \$5.75 per 100.**
- D. Haring.** Standards grayish white; falls pure white. A very large flower of great substance. **85c per doz.; \$5.75 per 100.**
- Imperator.** Large, free-flowering, dark blue. **85c per doz.; \$5.75 per 100.**
- White Excelsior.** Very early; uniform pure white; falls very broad. **85c per doz.; \$5.75 per 100.**
- Yellow Queen.** Standard and falls golden yellow; very tall and early. **85c per doz.; \$5.75 per 100.**
- Mixed Dutch Iris.** A mixture of named varieties including the above. **75c per doz.; \$5.25 per 100.**

DEPTH TO PLANT BULBS



Iris Hybrid

Especially recommended for early forcing in greenhouse; excellent in the garden also.

Wedgwood. Standards dark blue; falls pale blue with yellow blotch. **90c per doz.; \$6.50 per 100.**

LILIES (Lilium)

Candidum (Madonna Lily). The loveliest of white Lilies. Its delightful fragrance and beautiful white flowers make it a symbol of purity. Madonna Lilies are simple to grow if you plant in full sun in well-drained soil. Will bloom in June. **Jumbo bulbs, 65c each; \$6.50 per doz.; \$50.00 per 100. Extra-large bulbs, 50c each; \$5.00 per doz.; \$40.00 per 100.**

Send for Special List of Other Lilies

BULBS FOR INDOOR CULTURE

Polyanthus Narcissus

Fragrant Paper-White Narcissus. This is the easiest and most satisfactory of all flowers to grow indoors. Planted in a bowl with pebbles and water, the bulbs bloom in six to eight weeks. By starting a new lot of bulbs every two or three weeks, a constant supply of these beautiful flowers may be had all winter. **Large bulbs, 3 for 25c; 85c per doz.; \$6.00 per 100. Mammoth bulbs, 3 for 35c; \$1.10 per doz.; \$8.00 per 100.**

Soleil d'Or. This is the so-called "Yellow Paper-White Narcissus." The culture is the same as for the Paper-White Narcissus offered above. Deep yellow flowers with an orange-yellow cup. **3 for 50c; \$1.50 per doz.; \$10.00 per 100.**

Chinese Sacred Lily

(Narcissus)

Flowers in clusters. Color white with yellow cup and very fragrant. Culture the same as Paper-White Narcissus. **3 for 50c; \$1.50 per doz.; \$10.00 per 100.**

FREESIAS

Tecolote Hybrids. Pure white. **65c per doz.; \$4.50 per 100.**
A Well-blended Mixture. A splendid strain containing a large number of beautiful colors. **65c per doz.; \$4.50 per 100.**