

Historic, Archive Document

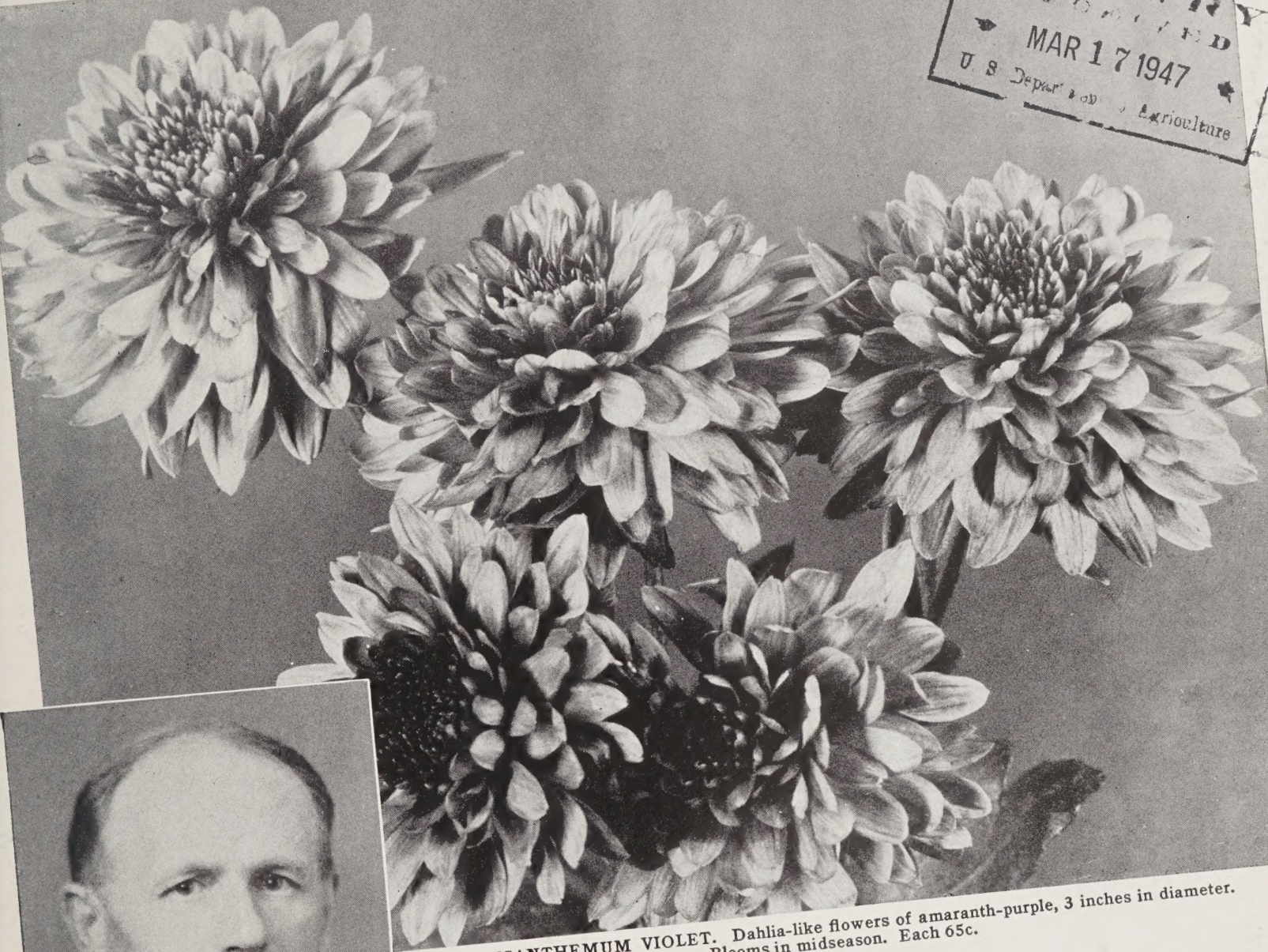
Do not assume content reflects current scientific knowledge, policies, or practices.

62.43

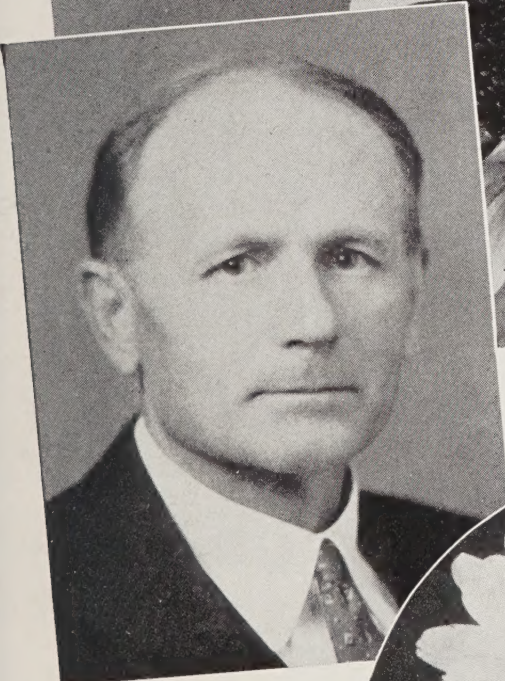
Chrysanthemums

Perennials • Annual and Vegetable Plants

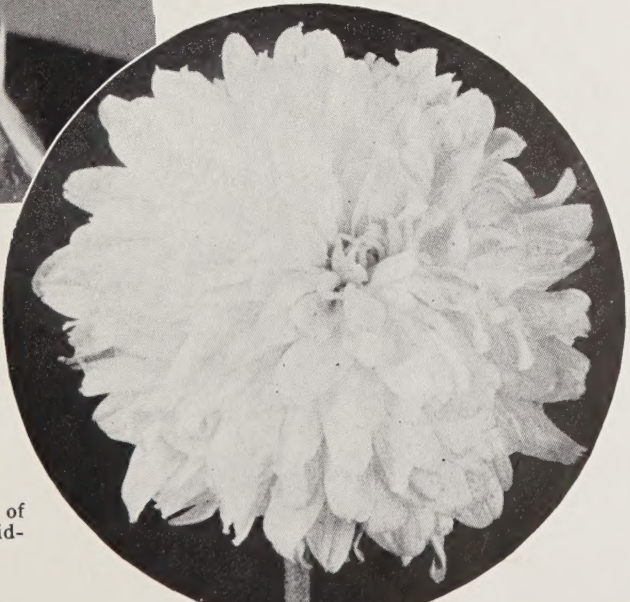
LIBRARY
RECORDED
MAR 17 1947
U. S. Department of Agriculture



CHRYSANTHEMUM VIOLET. Dahlia-like flowers of amaranth-purple, 3 inches in diameter. Blooms in midseason. Each 65c.



DR. L. E. LONGLEY
We are propagating all varieties of Chrysanthemums originated at the University of Minnesota by Dr. Longley.



CHRYSANTHEMUM DEE DEE AHRENS
Beautiful double flowers of purest white, appearing in mid-season. Each 65c.

for 1947

PERKINS BROS.

Stillwater Road

**SAINT PAUL 9
MINNESOTA**

U. S. Highway 212 • P. O. Address R. R. 6

Tel.: To 4424

A Special Message to You

YOU WILL find many new and lovely varieties of perennials and Chrysanthemums for your garden offered in this our twenty-second annual catalog. Since we cannot talk to each one of you individually, we wish to take this opportunity to say "Thank you for your patronage" and to wish you a happy and successful garden year; also to tell you a little about some of the newer varieties that we have been growing at our nursery. You are welcome to come to our nursery and see the plants when they are in bloom.

Chrysanthemums are probably the most popular garden flowers today. We grow many of them. Their ease of culture and abundant bloom in the fall make them excellent plants for a triumphant close to the garden season. The Minnesota strain of early-flowering garden Chrysanthemums originated by Dr. Longley at the University of Minnesota is still in the lead for our climate. Many of the fine varieties originated in the East cannot be depended upon to bloom here before killing frosts.

We have been growing all of Dr. Longley's introductions for a number of years and they have never failed to give us a crop of flowers. Practically every visitor to our nursery last fall praised and selected Maroon 'n' Gold (U. of M. 1945) as one of the newer Chrysanthemums to be planted in his garden this year. Its large attractive flowers are maroon on the upper side of the petals and golden beneath. Butterball, Chippewa and Glacier (see page 4) are three of the earlier introductions that should be given space in your garden.

The six varieties of the Chicago strain (U. of C.) we grew, did well. Many of our customers liked Robert Brydon for its garnet-red flowers. With us it is one of the last to bloom and its buds and blooms are quite frost-hardy. Zantha, with its stately large button-type, canary-yellow flowers, was especially pleasing to us.

Among our other varieties of Chrysanthemums, Avalanche is an outstanding white and should find a place in every garden. Its growth and appearance are similar to the annual branching Asters and it makes an ideal cut flower. Chris Columbus, tried last season, is a new, tall-growing, white pompon Mum with nice firm, fully double flowers fine for cutting. It may be a little late for our climate some years.

We have two varieties of Chrysanthemums especially suited for edging, namely Pygmy Gold and Little Eskimo. Autumn Sunlight and Gold were two good yellow Mums in our test gardens. Peggy is rose colored, quite similar to Heatherbloom but darker. The two varieties from New Hampshire, Nashua and Sunapee, were both very early.

Last August we visited a number of nurseries in the East and found some fine new items, several of which are not available in quantity. However, we have been promised a limited supply of the following, which we are offering, and feel certain that you will enjoy trying some of them: Catananche coerulea major; Coreopsis, Golden Shower; Lythrum, Morden's Pink; Nierembergia rivularis; Pentstemon, Ruby King; Salvia, Vatican Variety; Shasta Daisy, Chiffon, and the patented Viola, Purple Heart.

Very large Shasta Daisies are popular now and we are offering Edgebrook Giants, said to have flowers 7 inches in diameter on established plants. Another good-sized, slightly double one is Double Supreme.

For some time we have been interested in Daylilies (Hemerocallis). They need very little care and will add brightness and grace to your garden. Two of the newer large-flowered varieties, J. S. Gaynor and Moonbeam (page 3), are excellent. Hyperion is very fine and is highly recommended.

We greatly regret that we must omit Roses again this year. We are making plans to offer all curtailed items again as soon as stock is available.



BORDER OF CHRYSANTHEMUMS

HEMEROCALLIS • Daylilies

Use Daylilies freely in your garden. They probably possess more good qualities than any other group of flowers. The iris-like leaves and graceful flowers on long stems will add charm to any garden or shrubbery border. They are very hardy and bloom freely when established. The blooming period lasts from two to four weeks for each variety. They will thrive on any soil with good drainage, in sun or partial shade, and require but little attention. Daylilies are not bothered with insect pests or diseases.

Circe. (Stout.) 36-48 in. July. Soft lemon-yellow flowers of medium size. Each 60c.

Dauntless. (Stout.) 30 in. July-Aug. Pale yellowish orange with pastel blended mid-zone; large, wide and overlapping petals. Flowers of fine substance. Each 75c.

Dr. Regel. 24 in. May. Handsome rich orange-yellow flowers. Each 40c.

Duo Blooms. 24-30 in. June-Aug. Deep yellow blooms. There are two distinct sets of flowers. Each 35c.

Gold of Ophir. 4 ft. July-Aug. Waxy golden yellow flowers on strong stems. Dark green foliage. Long period of bloom. Each 35c.



Hemerocallis, Modesty



Hemerocallis Border

Hyperion. 4-5 ft. July-Aug. A very beautiful soft yellow-flowered, fragrant Daylily. Plant vigorous. Each 50c.

Imperator. 40 in. July-Aug. An English hybrid, with star-shaped flowers 6 to 7 inches in diameter. Rich orange-red with clear yellow throat. Each 40c.

J. S. Gaynor. 3 ft. July-Aug. Fine, firm, apricot-colored flowers. One of the best. Each \$1.25.

Kwanso. 4 ft. July-Aug. Vigorous-growing plant with rich orange-colored double flowers. Each 35c.

Mikado. 36 in. June-July. Orange flowers with a mahogany-red spot on each petal. Each 40c.

Modesty. 36 in. June-July. Medium-sized flowers of a glorious shade of chrome yellow. Each 50c.

Moonbeam. 5 ft. Especially desirable for background. Firm stems support the cream-colored flowers. Each \$2.00.

Mrs. W. H. Wyman. 42 in. July-Aug. Lovely light lemon-yellow blooms. Each 40c.

Old Ivory. 3 ft. June-July. Jersey cream shade; a delicate flower slightly whorled. Each \$2.00.

Patricia. (Stout.) 36 in. July. Flowers soft greenish yellow, with recurved petals; fragrant. Very beautiful. Each 75c.

Rajah. 3½ ft. July-Aug. Large, gaily colored English red blooms, with conspicuous eye-zone; throat pale orange. A heavy bearer. Each 85c.

Serenade. 4 ft. June-July. Light shade of yellow and pink. Petals twisted and crinkled. Flowers medium size. Each 85c.

Sunset. 42 in. July-Aug. Bright crimson-maroon flowers with deep yellow throat. Each 60c.

The Gem. 30 in. July. Deep yellow flowers. Each 35c.

Collection No. 1

5 Daylilies (value \$5.25) only \$4.50

One each of Dr. Regel, J. S. Gaynor, Moonbeam, Rajah, Patricia

Collection No. 2

One each of any 5 or more varieties of Daylilies at 10% discount

CHRYSANTHEMUMS

The Glory of Your Autumn Garden

All plants from 2½-inch pots

THE MINNESOTA GROUP

Here are offered twenty-three new varieties of garden Chrysanthemums developed by Prof. L. E. Longley at the University of Minnesota. They are admirably adapted to locations subject to early frosts because of their extra early flowering habit, long blooming period, unusual colors and high degree of hardiness. All are suitable for cutting and have long-lasting qualities as cut flowers. Time of planting has some influence on earliness of bloom.

1941-1945 Introductions

Each 40c; 3 for \$1.10; 6 for \$2.00

Aurora. A low compact type of plant. The flowers, borne in masses, are 2¼ inches in diameter, and dragon's-blood-red in color, becoming lighter as they age. They resemble those of Harmony, but are larger, more double, and brighter.

Boreas. An early double white. The flowers are about 2 inches in diameter and are produced in great profusion on long stems suitable for cutting. In cool weather the flowers take on a pinkish tinge. The plant is strong and of medium height.

Butterball. Low compact plant with flowers borne freely on moderately long stems. The flowers are ball-like in form, with rays incurved, 2½ inches in diameter, dark lemon-chrome in color. Starts blooming about August 15. An outstanding variety in our trials.

Chippewa. Bushy plant 20 inches tall or more, with many stems. Flowers aster-purple, 2¾ inches across, in large clusters; semi-double to double, aster-like and incurved. Very showy and good for cutting. Early to midseason. A fine variety and very popular.

Duluth. A rather tall, upright type with semi-double, lemon-yellow flowers 2 inches in diameter. Very floriferous, blooming early and continuing for a long period.

Glacier. A large-flowered type; upright habit with double, clear pure white flowers 3 inches in diameter, carried in loose clusters on long stems. A very good variety.

Harmony. In a general way this would be classed as a bronze-flowered variety, although the color of the flowers on the same plant varies from yellow to Brazil-red. During the early season it is yellowish, later strawberry-pink and with the cool weather it becomes Brazil-red. At times all the colors are present at once. The plant form is similar to that of the Cushion type; flowers 2¼ inches in diameter.

Maroon 'n' Gold. This variety forms a rather low plant, bearing the flowers in large trusses. The blooms are large, 3½ inches or more in diameter, full, double, incurved. Rays are Brazil-red to maroon in color above, and golden on the under side. Blooms early and freely. Very popular.

Moonglow. A low, bushy plant with dark green, glossy leaves. An early bloomer having double, deep lemon-chrome flowers 1¾ inches in diameter, covering the plant for several weeks.

Pipestone. A low, robust and spreading type of plant with semi-double Brazil-red to pinkish scarlet flowers that reach 2¾ inches in diameter. A very free-blooming, early variety.

Purple Star. Very tall and upright in growth, with long stems; floriferous. Bright dahlia-purple flowers, semi-double to nearly double, the rays formed in such a way as to make the flower star-like in appearance; 2 inches in diameter. Blooms over a long period, from midseason to late, and is suitable for cutting.

Red Gold. Plant medium tall, very stiff and upright. Flowers double, 2 inches in diameter, scarlet to Brazil-red, resembling pompon dahlias and somewhat like Early Bronze Mum, but brighter and more reddish. Early to midseason or later.

1941-1945 Introductions, continued

Redhawk. Plant upright in habit, of medium height. Flowers are in clusters on long stems, double, with some rays quilled, 2 inches or more in diameter. The color is dragon's-blood-red to Brazil-red. Starts blooming in mid-August.

Red Wing. A low, upright plant with rather long stems. The semi-double, Pompeian-red flowers are 1¾ inches in diameter and are produced very freely.

Redwood. A low compact type of plant, bearing semi-double flowers 2 inches in diameter. The color varies from carmine to oxblood. The season is mid-August to frost.

Snowball. The plant is medium in height and loose in habit, with double flowers which are ivory at first, later becoming pure white. The blooms are 2½ inches in diameter. Early.

Sun Red. Medium tall plants with long stems and large, semi-double flowers over 3 inches in diameter. Habit of plant and form of flowers much like Chippewa but color is bright Brazil-red. Blooms sparingly early in the season but very heavily midseason to late. An excellent variety to brighten the late garden.

Waterlily. Plant is upright, narrow, medium tall. Semi-double white flowers with four rows of rays. Suggests a waterlily in full bloom. Early.

Welcome. One of the earliest to bloom. The plant is irregularly bushy and rather low. The bright mallow-purple flowers on long stems are semi-double and measure 1¾ inches in diameter.

Collection No. 3

15 different varieties from above group (our selection), each plant labeled, \$4.50 postpaid

1946 Introductions

Each 65c; 2 for \$1.25

Dee Dee Ahrens (41-49-45). A tall upright plant bearing a multitude of flowers on long, slender, stiff stems. Flowers double, 2 to 2¼ inches in diameter, pure white. Midseason to late.

Violet (41-788-171). Plant rather spreading, recumbent the first year but very stiff and upright and moderately tall the second year. Blooms are fairly abundant. Very full, double flowers, dahlia-like, incurved, deep amaranth-purple to pansy-purple, 3 inches in diameter. Midseason to late.

1947 Introductions

Each 85c

Brilliant (42-11-4). A cushion type, very compact, low and flat in growth, covered with a mass of double, flat flowers with rather narrow rays, bright Brazil-red, 2½ inches in diameter. Resembles Aurora but flowers are more double and brighter red. Midseason.

Silver-Pink (41-78A-16). Plant upright in growth, of medium height. Flowers in large clusters on long stems, double, 2½ inches in diameter, soft amaranth-pink to Tyrian-pink with a silvery sheen. Good cut-flower type. Early to midseason.

Collection No. 9

50 Chrysanthemums, at least 10 varieties, our selection, each plant labeled and packed in open crate by express. \$13.50

Purchaser pays express charges

PLANT COLORFUL CHRYSANTHEMUMS for a SHOWY GARDEN



A Garden of Chrysanthemums

The Chicago Strain

- Early Harvest.** Plant low growing, with double flowers of glowing mahogany-orange, 2½ to 3 inches in diameter. Aug. to Oct. Each 50c.
- Harbinger.** Double flowers with incurved petals of primrose-yellow. Flowers borne in clusters. Each 50c.
- Heatherbloom.** Plant vigorous, of medium height. Flowers double, 2¼ inches in diameter, heather-pink. Each 50c.
- Polar Ice.** Clear, glistening blue-white flowers 2½ to 3 inches across; upright stems 20 inches tall. Each 40c.
- Robert Brydon.** Double dark garnet-red flowers 2½ inches across. Plant has a dense bushy habit 18 to 20 inches tall. Free blooming. Each 50c.
- Zantha.** Clear canary-yellow, double flowers. Each 50c.

Collection No. 4. One of each, \$2.75.

Other Varieties We Have Found Satisfactory for Our Climate

- Autumn Sunlight.** 30 in. A new variety introduced in 1945. The fully double flowers, borne on long stems, are 2½ inches in diameter and a very brilliant yellow. Blooms the latter part of September. Each 50c.
- Avalanche.** 2 ft. A desirable early-blooming, large-flowered, double white variety, the center petals being cream-colored. The 3½-inch flowers are borne on strong stems; fine for cutting. Admired by all visitors at our nursery. Each 50c.
- Chris Columbus.** 30 in. A new white pompon with yellow buds; long strong sturdy stems. Especially good for cutting. Said to be super hardy. We would class it as late. Each 50c.
- Eugene A. Wander.** Extra-large, double, glistening yellow flowers on bushy 18-inch plants. A very popular variety. Each 40c.
- Garden Queen.** 20 in. A striking combination of large salmon-pink flowers suffused with crimson-rose, 3 inches in diameter. Has done very well at Duluth. Each 40c.
- Gold.** 30 in. Large, 3 to 4-inch, double flowers of pure gold, blooming about the end of September. A 1946 introduction. Each 50c.
- Janet.** 20 in. (1946.) Plant dwarf and spreading, with masses of 3-inch, double incurved, rosy gold flowers. Each 50c.
- Little Eskimo.** Plant low growing. The double pure white flowers are ball-shaped, 1½ inches in diameter. Similar to Pygmy Gold and suitable for edging. Each 40c.

Other Varieties, continued

- Manantico.** A plant of medium height; a free producer of single red or dahlia-purple flowers, 2½ inches in diameter. It is bright and effective in the garden. Each 40c.
- Major Cushion.** Low-growing, compact plants with salmon-pink flowers. Tends to be late but buds are quite frost-hardy. Each 40c.
- Margaret Ann.** 28 in. (1946.) An early variety with 3-inch rosy pink flowers. Sturdy stems. Each 40c.
- Nashua.** 20 in. A new variety from the University of New Hampshire. It has fine sprays of fully double reddish bronze pompon flowers. Early. Each 40c.
- Peggy.** 24 in. Rosy pink flowers 2 inches in diameter. Similar to Heatherbloom. Early. Good for cutting. Each 40c.
- Prof. Sam Williston.** Dark red, semi-double flowers in great profusion. Late. Each 40c.
- Pure Gold.** Plants 18 inches to 2 feet tall, having fully double yellow flowers up to 3 inches in diameter. Early. Each 40c.
- Pygmy Gold.** A dwarf pompon type producing quantities of miniature blossoms. The color is clear golden yellow. Commences to bloom in early September. Each 40c.
- Santa Claus.** Grows taller than the Cushion Mums and produces an abundance of dark red flowers. Late. Each 35c.
- Scarlet Crimson.** New. An excellent red-flowered Chrysanthemum of the Cushion type. Each 40c.
- September Bronze.** Pompon blooms with the warm bronze tints of autumn; petals have a golden edge. Each 35c.
- Sunapee.** 24 in. From the University of New Hampshire. Fully double, rich gold pompon flowers on good stems. Early. Each 40c.

Collection No. 5

One each of the above 20 varieties, \$7.25

Cushion Chrysanthemums

Bushy plants of low to medium height, producing an abundance of flowers. These varieties are also sold under popular "trademark" names.

Pink	Yellow	Bronze	Early Red	White
Each 35c; 5 for \$1.50				

Collection No. 6

15 Cushion Mums (3 of each variety), \$4.00

Four Interesting Seedlings

- 41-78A-35.** A low-growing plant that blooms early and freely. Spoon-type flowers of a pink shade. Each 40c.
- 41-72-10.** Fully double yellow flowers 2 inches in diameter, on long stems; late. Each 40c.
- 5338.** A plant of medium height with bright clear yellow double blooms. Each 40c.
- 5302.** Large bushy plants about 2 feet tall, spreading. The single flowers, nearly 3 inches in diameter, are of a beautiful salmon-pink with yellow center. Many have two rows of petals. Starts blooming in September. Made an unusually attractive display at our nursery. Each 40c.

Collection No. 7

One of each seedling, \$1.40

Collection No. 8

10 Choice Chrysanthemums (value \$4.55)

Butterball	Peggy
Maroon 'n' Gold	Nashua
Violet	Little Eskimo
Harbinger	Chris Columbus
Zantha	Redwood

Only \$4.00

PERENNIALS: SELECTED VARIETIES

Achillea (Yarrow)

Ptarmica, Snowball. 18 in. June to Sept. An improved white Yarrow growing in ordinary soil. Suitable for cutting. Each 35c.

Tomentosa aurea. 6 in. Yellow flowers above close mats of silver-gray foliage. Each 35c.

Aconitum (Monkshood)

Fischeri. 2 to 3 ft. Sept. Blue flowers shaped like a monk's hood. The plant prefers a rich soil and will grow in sun or shade but the flowers will last longer in a shady place. It needs some winter protection. As Aconites contain poisonous substances, they should be kept away from children. Each 40c.

Alyssum (Basket of Gold)

Saxatile compactum. 1 ft. One of the earliest flowering plants; suitable for the border or the rock-garden. It has bright spreading clusters of golden yellow flowers. Foliage gray-green. When ripe the seed-pods have a lace-like appearance and may be used in winter bouquets. Each 35c.

Anchusa (Alkanet)

Dropmore Variety. 3 to 5 ft. Blooms in early summer and later if first flowers are cut as soon as wilted. Foliage rough and hairy, slightly gray. Flowers rich gentian-blue, in loose panicles. A rather coarse-appearing plant but fine in masses or as a border. Does best in partial shade. Each 35c.

Myosotidiflora. A dwarf form from Russia. Clusters of large leaves and bright blue, forget-me-not-like flowers. Each 50c.

Anthemis (Yellow Daisy)

Moonlight. 2½ ft. A choice variety of the hardy Marguerite producing pale yellow flowers over 2 inches in diameter, all summer. Each 40c.

Aquilegia (Columbine)

Blue King. Large flowers of medium blue. Each 40c.

Copper Queen. 18 in. Flowers copper-red with straw-colored corolla. Each 40c.

Crimson Star. A dwarf variety with large crimson and white flowers. Each 40c.

Longissima. Yellow flowers with very long spurs. Each 40c.

Mrs. Nichols. Flowers blue and white. Each 40c.

Mrs. Scott Elliott's Hybrids. A refined long-spurred strain. Includes many choice clear colors. Each 35c.

Snow Queen. Extra large, pure white flowers. Each 40c.

Arabis (Rock Cress)

Alpina. 6 in. A low-growing plant especially suited for edging or the rock-garden. Foliage is a gray-green. In early spring the plant is covered with masses of white flowers. Can be used for cutting. Each 35c.

Rosea. Similar to above. Flowers pink. Each 40c.

Armeria (Sea-Pink)

Armerias prefer dry sandy soil in a sunny location.

Lauchiana. A tufted plant with grass-like leaves and bright rosy flowers all summer. Low growing. Each 35c.

Tall Hybrids. 18 to 24 in. June–Oct. Large flowers of white, rose, or pink shades. Each 40c.

Artemisia (Sage-Brush)

Lactiflora. 3 ft. Aug.–Sept. A tall-growing plant with finely cut foliage and heads of fragrant white flowers. Good for cutting. Each 35c.

Silver Beauty. 3 ft. A white-leaved plant used for contrast. The silvery flowers are fine in bouquets, and may be dried for winter use. Each 35c.

Asters (Michaelmas Daisies)

Adorable. 4 to 5 ft. Sept.–Oct. A hardy Aster with habit and growth similar to that of Harrington's Pink. Flowers are salmon-pink. Each 50c.

Beechwood Challenger. A semi-dwarf variety with small crimson flowers which completely cover the plant. Very showy. Each 35c.

Blue Plume. Rich deep purple, nearly double flowers. Suitable for cutting. Each 40c.

Crimson Beauty. A new large-flowered crimson-red Aster. Each 50c.

Dr. Eckener. Another new red Aster from Holland. Each 50c.

Mt. Everest. 3 to 4 ft. An outstanding white Aster. Each 35c.

Palmyra. Medium height; semi-double, pure pink flowers making up into perfect pyramids. Each 50c.

Purple. 5 ft. Large purple flowers. Each 35c.

Red Rover. Flowers reddish. Compact habit, free blooming. Each 45c.

Violetta. 2 ft. During September the plant is completely covered with semi-double, deep rich blue flowers. Each 50c.

Astilbe

Fanal. 1 to 2 ft. Feathery spikes of fiery crimson flowers in May and June. Foliage attractive and good looking at all times. Each \$1.00.

Gloria. 1 ft. A beautiful low-growing variety producing many spikes of pink flowers. Each 50c.

Pink. A mixture of pink varieties. Each 40c.

Betonica (Betony)

Grandiflora. 2 ft. June–Aug. An attractive border perennial with tufty dark green foliage and a profusion of rose-purple flowers on long stems. Good for cutting. Each 50c.

Boltonia (False Chamomile)

The Boltonias are of easy culture, growing in any soil and even in partial shade. To produce large flowers divide the clumps every three years, or cut out some of the stems in the spring. The head of the plant is wide spreading and bears many single aster-like flowers. 3 to 4 ft. high. **Pink or White.** Each 35c.



White Daisies

PERENNIALS — MAINSTAY OF THE SUMMER GARDEN

Campanula

- Garganica.** 5 in. Compact, tufty plants. The star-shaped blue flowers have a white eye. Each 40c.
Punctata. 28 in. Plants form rambling foliage mats with flower stalks of varying height, from which hang big pendent bells. Creamy pink to purple. Each 40c.
Telham Beauty. Peachbells. 2 ft. Many large beautiful light blue bell-shaped flowers hanging from each stem. Blooms over a long period. Each 40c.
Wedgwood. Similar to above except that the flowers are a deep violet-blue. Sprays of buds may be cut and put in water. Each 50c.

Canterbury Bells

- Cup and Saucer.** Blue, Rose, White. Each 50c.

Carnation

- Cynthia.** Pink. Each 40c. **White Gold.** Each 40c.
Mixed Colors. Each 35c.

Catananche (Blue Cupid's Dart)

- Coerulea major.** 2 to 2½ ft. July–Oct. A fine border perennial producing an abundance of cone-like flowers. Foliage silvery green. Flowers lavender-blue, about 2 inches in diameter. Each 40c.

Centaurea (Knapweed)

- Macrocephala.** 3 to 4 ft. July–Aug. A rugged, upright-growing plant, bearing large thistle-like golden yellow flowers. May be used as cut-flowers. Each 35c.

Coreopsis

- Lanceolata grandiflora, Mayfield Giant.** 2 to 3 ft. Large, bright yellow daisy-like flowers on long stems all summer. Each 35c.
Verticillata, Golden Shower. 18 in. This semi-dwarf golden yellow Coreopsis is always in bloom. Flowers 2 inches in diameter. Each 45c.

White Daisies

- Alaska.** 2 to 3 ft. Summer. One of the best Shasta Daisies. Large white flowers, 4 to 5 inches in diameter, on long stems. Each 35c.
Elder Improved. 3½-inch flowers on 20-inch, stiff stems. Each 35c.
Giant Daisy. A tall-growing fall-blooming white Daisy. Very hardy. Each 35c.
Hardy Prolific. A very free-blooming white Daisy with 3-inch flowers. Each 35c.
June Marguerite. A nice-sized Daisy on long stems. Free flowering. Each 35c.
Market Favorite. 3 ft. A tall large-flowered Shasta, similar to Alaska. A cutting variety. Each 40c.

New White Daisies

- Double Supreme.** A fine semi-double Daisy of good substance. Flowers 3½ inches, on 24-inch stems. Each 40c.
Diener's Giants. A mixture of large single and double Daisies. Each 40c.
Edgebrook Giants. One of the largest new Shasta Daisies. The single blooms are 6 to 7 inches in diameter on good stems. Free flowering. Each 60c.
Giant Chiffon. Pure white, fully double flowers on long stems. Each 50c.
White Swan. 18 in. Early, pure white, double flowers 2½ inches in diameter. Excellent for cutting. Each 35c.

Dicentra (Bleeding-Heart)

- Spectabilis.** 1 to 2 ft. Spring. Favorite hardy perennial plants with deeply cut foliage and long racemes of graceful pink heart-shaped flowers. Needs part shade. Each 85c.
Eximia. Plumy or Fern-leaved Bleeding-Heart. 15 in. Blooms all summer. Foliage finely cut and very attractive. Plant in a shady place away from strong wind. Each 50c.

Beautiful Delphiniums

- Giant Pacific.** This is an American production, noted for its long spikes and huge flowers of fine texture and color. It is more resistant to disease than many other strains.
Blue Shades, Mixed. Each 50c.
Galahad. Pure white. Each 60c.
Guinevere. Light pink-lavender with white bee. Flowers 2½ to 3 inches in diameter. Each 50c.
Summer Skies. Light blue with white bee. Flowers medium size. Very prolific. Each 50c.
Blackmore & Langdon. An unsurpassed strain of English hybrid Delphiniums. Every plant produces an excellent spike of flowers. The color-range is fine and the colors are clear and bright. There is a good proportion of large double and semi-double flowers. Each 35c.
Belladonna, Cliveden Beauty. 2 to 3 ft. An improved strain of this ever-popular light blue Delphinium. The flowers are not as large as in the hybrid strains, but the plant bears many more spikes of flowers. Each 35c.
Belladonna, Fanny Stormonth. Light azure-blue. An English strain. Each 40c.
Lamartine. Fairly deep extra bright marine-blue. Similar to Belladonna except in color. Each 35c.
Lyondel Hybrids. A new strain of large-flowered hybrid Delphinium. Large spikes on heavy stems. Each 60c.
Wrexham. A well-known English strain of hybrid Delphinium. Mixed colors. Each 40c.

Dianthus, Old Spice

(Pat. 499)

A choice hybrid old-fashioned garden Pink with outstanding qualities. Its habit of growth is neat and cushion-like; flower stems about a foot tall. The beautiful double carnation-like flower is a choice salmon-pink and very fragrant. Blooms profusely. Each 60c; 3 for \$1.50.

Dianthus (Pinks)

The delightful sweet-scented garden Pinks are always welcome in any garden. They are easy to grow and give a large number of flowers for cutting.

- Crimson King.** A green-leaved double red Pink or garden carnation; blooms all summer. Only semi-hardy but a very satisfactory plant. Each 30c.
Jock Hybrids. A low-growing double-flowered Pink. Blooms very profusely. Color deep pink. Each 35c.
Perkins' Double White Pink. Blue-green foliage. Flowers double, 2 inches in diameter, white, slightly speckled with red in the center. Fragrant. Blooms most of the season. Each 40c.
Plumarius semperflorens. 1 ft. An everblooming hardy garden Pink. Blooms most of the summer. Mixed colors. Each 35c.
Scoticus. Self colors of various tints of pink, rose, salmon and white. Mostly double flowered. Free flowering. Each 40c.
Spring Beauty. Double-flowered grass Pinks in a beautiful range of color. Very fragrant. Each 35c.

New Pinks

- Bobby.** 8 in. A compact-growing gem with glaucous foliage and large flowers of deep pink with crimson eye. Each 40c.
Little Joe. 6 in. A fine free-blooming dwarf Pink with large crimson blossoms. Each 40c.

Collection of Daisies

- 1 Double Supreme.** White.
1 Market Favorite. Tall white.
1 Painted Daisy.
1 Anthemis, Moonlight. Yellow Daisy.

\$1.50 value for \$1.25

PERKINS BROS. PERENNIALS ARE BLOOMING-SIZE PLANTS

Foxglove (*Digitalis*)

Shirley Hybrids. The long flower spikes are covered with large bell-shaped blossoms. Wide range of colors. Large potted plants. Each 50c.

Funkia (*Plantain-Lily*)

Lanceolata. Aug.-Sept. Suitable for shade or sun. Flowers lavender. Each 35c.

Spp. A broad green-leaved form with lavender flowers on tall stems. Each 35c.

Subcordata grandiflora. Aug. Large leaves; pure white lily-shaped flowers. Plant in shade. Each 50c.

Thomas Hogg. A strong-growing variety for shade or sun. Likes moisture. Large clear leaves with a silver edging; lavender flowers. Each 40c.

Variegata. Variegated foliage and lavender flowers. Each 35c.

Gaillardia (*Blanket-Flower*)

Showy, very free-blooming perennials, growing from 2 to 3 feet tall.

Dazzler. Large golden yellow flowers; rich maroon center. Each 35c.

Portola Hybrids. The flowers are very large, brilliant scarlet intensified by golden yellow tips. Each 35c.

Geum (*Avens*)

Fire Opal. Dazzling orange-scarlet flowers often 3 inches across, produced abundantly. Very hardy. Each 40c.

Wilton Ruby. Rich ruby-red flowers. Each 50c.

Gypsophila (*Baby's-Breath*)

Bristol Fairy. We recommend this choice double-flowered variety as being far superior to the common single *Baby's-Breath*. Blooms all summer. Established plants are about 3 feet in diameter when in bloom. Large plants, each 75c.

Oldhamiana. Tangles of airy, misty light pink blossoms with white throat. Florets $\frac{1}{4}$ inch in diameter. Blooms in fall. Each 35c.

Rosy Veil. A dwarf pink continuous-blooming *Baby's-Breath*. Each 50c.

Heliopsis (*Orange Sunflower*)

Lemoine's Giant. 3 ft. A very brilliant border plant resembling a small sunflower. Bright yellow flowers, single to double. Blooms over a very long period and makes a good display in the border. Suitable for cutting. Each 35c.

Heuchera (*Coral-Bells*)

Perkins Red. A good red variety. Each 50c.

Sanguinea. 1½ ft. July-Aug. Crimson-scarlet flowers. Each 40c.

Perennial Garden Collection

40 plants—enough to fill a garden of 50 to 75 square feet. All plants labeled. A \$15.00 value for

\$12.00 by express collect

3 Astilbe	3 Phlox
3 Red Coral-Bells	3 Sweet William
3 Double White Pinks	3 Viola, Catherine Sharp
3 Lythrum	3 White Daisies
3 Chrysanthemums, Assorted	1 Daylily, Hyperion
3 Aquilegia, Assorted	3 Yellow Daisies
3 Platycodon	3 Gaillardia

Hibiscus (*Mallow*)

Plants 3 to 5 feet high, bearing large cup-like flowers similar to hollyhocks. **Red, Pink or White.** Each 35c.

Liatris (*Kansas Gayfeather*)

A clump of *Liatris* with its characteristic grass-like leaves and 5-foot spikes terminated with purple flowers in August will help to make your garden different. Each 40c.

Linum (*Flax*)

Perenne. Blue Flax. Bush-like plants for an open, warm place. Plant early for best results. Produces an abundance of blue flowers daily throughout the summer, which usually close about noon. Very showy when planted in masses. Each 35c.

Heavenly Blue. Flowers larger than the above. Color is a luminous ultramarine-blue. Each 50c.

Lythrum (*Loosestrife*)

Morden's Pink. A choice member of the *Lythrum* family. The flower spikes are a lovely clear pink that blends well with the other colors in the garden. Will grow in wet or dry places. Each 60c.

The Beacon. 3 ft. July-Sept. Long-lasting spikes of large clear deep carmine-red flowers. Each 50c.

Mertensia (*Virginia Bluebells*)

A beautiful early-blooming plant, with blue bell-like flowers fading to pink. Foliage disappears during the summer. Potted plants. Each 40c.

Monarda (*Bergamot or Bee-Balm*)

Scarlet. 2 to 3 ft. June-Aug. Attractive plants for the semi-shady or sunny border, bearing brilliant scarlet flower heads. Foliage fragrant. Each 35c.

Myosotis (*Forget-Me-Not*)

6 in. Everyone is familiar with the charming bright blue flowers of the *Forget-Me-Not*. They prefer partial shade and plenty of moisture. Blooms all summer. Each 35c.

Nierembergia (*Trailing Cup-Flower*)

Rivularis. A charming dwarf creeping alpine plant, bearing large, creamy white, cup-shaped flowers all summer. Give plenty of water in dry weather. Each 45c.

Papaver (*Oriental Poppies*)

All Poppies are in Cloverset pots. (Cannot be sent by mail.)

Beauty of Livermere. Dark crimson with black blotch. Free flowering. Each 60c.

Curtis Giant Flame. Giant blazing red flowers on long stems. Each 75c.

Helen Elizabeth. Large La-France-pink flowers on 30-inch stems. Each 60c.

Olympia. Large, semi-double, flame-scarlet flowers. Each 50c.

Salmon Glow. A fine double salmon-orange. Flowers large. Each 75c.

Hybrids, Large-flowered. Mixed colors. Each 50c.

Pardanthus (*Blackberry-Lily*)

Chinensis. An odd and unusual perfectly hardy perennial with green iris-like leaves. The small, daintily black-spotted orange lily-like flowers are borne on 24-inch stems. Seed-pods, when ripe, resemble blackberries. Each 40c.

PERKINS PERENNIALS FOR YOUR GARDEN

Pentstemon (Beard-Tongue)

Garnet. A large-flowered dark red Pentstemon, blooming continuously until frost. Keeps well as a cut-flower. Needs winter protection. Each 50c.

Ruby King. A choice hybrid Pentstemon. The 2-inch trumpet-like flowers are rich ruby with a white throat. The flower spikes are from 18 to 24 inches high; the foliage is shiny dark green. Excellent cut-flower. Needs winter protection. Each 75c.

Note. While neither of the above Pentstemons is likely to be hardy in Minnesota except under ideal conditions, both are worthy of a place in your garden and should give an abundance of bloom the first year.

Physostegia (False Dragonhead)

Summer Glow. Good plants for the sunny border; of easy culture. The deep pink flowers are borne on terminal spikes, and will last a long time when cut. Each 35c.

Platycodon (Chinese Balloon-Flower)

Grandiflorum. The Chinese Balloon-Flower gets its name from the interesting balloon-shaped buds which open into large bells. It blooms during the summer when there is likely to be a scarcity of flowers. The blooms are borne on 2 to 3-foot spikes and last a long time. All dead blossoms should be removed. As the Platycodons do not start growth until late in the spring, part of the old stem should be left on in the fall when cleaning the garden or a stake should be placed near it. This will prevent destroying the plant when working in the garden early in the spring. **Blue.** Each 35c.

Double. Flowers have two rows of petals. **Blue.** Each 50c.



Oriental Poppy

Summer-flowering Phlox

Groups of Phlox are especially useful for keeping your garden cheerful and colorful during the summer.

Africa. Brilliant carmine-red with blood-red eye. Well-shaped flower heads; large florets. Each 45c.

Augusta. (Pat. 252.) A strong-growing variety of medium height, with bronze-green leaves. Flowers brilliant cherry-red. An outstanding Phlox. Each 60c.

B. Comte. One of our standard Phlox. Flowers a rich dark amaranth-red. Each 40c.

Beacon. Cherry-red. Each 40c.

Border Queen. An outstanding dwarf Phlox with large florets of watermelon-pink. Has been very satisfactory in our garden trials for several years. Each 40c.

Brilliant. Large trusses of crimson flowers. Each 35c.

Caroline Vandenberg. An attractive lavender-blue Phlox. Large individual flowers. Each 40c.

Charles H. Curtis. A new Phlox of great merit. A strong grower with good clean foliage; flowers sunset-red. Each 45c.

Cheerfulness. A vigorous grower with panicles of salmon-orange flowers. Holds its color well. Each 50c.

Enchantress. Bright salmon-pink with dark eye. Each 35c.

Ethel Pritchard. French mauve, almost blue. If possible, plant next to yellow or white flowers. Each 35c.

George Stipp. An excellent new Phlox having deep glowing salmon flowers with lighter eye. Does not fade. Each 40c.

Graf Zeppelin. White with a vermilion-red eye. Each 40c.

Leo Schlageter. Brilliant orange-scarlet. Each 40c.

Lillian. A beautiful early salmon-pink. Each 40c.

Mary Louise. Pure white flowers, very large. Clean foliage and a prolific bloomer. Each 45c.

Miss Lingard. The best early white; pale pink eye. Continuous blooming throughout the summer. A most desirable variety. Each 40c.

Mrs. Jenkins. A standard late-blooming clear white. Each 35c.

Pinkette. A very light pink. Florets large. Each 40c.

Rheinlander. Fine old-time variety. Salmon-pink. Each 35c.

Salmon Glow. Flame-pink with salmon. Each 40c.

Widar. Violet florets with a clear white eye. Each 40c.

Spring-blooming Phlox

PHLOX subulata. Moss Phlox. A very attractive and satisfactory plant for the rockery or edge of the hardy border. Plant in groups of 3 to 6 plants and you will have a fine display of color about the end of May. Will grow in partial shade. **Rose, White and Purple.** Each 35c.

Primula (Primrose)

Old-time garden favorites. Primroses prefer a situation protected from noon and afternoon sun and drying winds. Coolness, some shade, ample moisture, and medium light woodland soil gives best results.

Mixed Varieties. Each 35c.

Pyrethrum (Painted Daisy)

Showy daisy-like flowers on long stems. Suitable for cutting.

Robinson's Hybrids. Large single flowers in shades of red, pink, and white. A fine strain. Each 35c.

Robinson's Dark Crimson. Showy, large, single, crimson, daisy-like flowers on long stems. Each 50c.

Rose. Mixed shades of pink. Each 35c.

For best results use 3 plants of a kind in a group

PERKINS PERENNIALS BRING COLOR TO YOUR GARDEN

Ranunculus (Double Buttercup)

An upright double yellow Buttercup, blooming in early June. Flowers similar to the double feverfew. Good for cutting. Each 35c.

Rudbeckia

Golden Glow. 6 ft. A good plant for the rear of the garden. Bright yellow flowers similar to small double chrysanthemums. Each 35c.

The King. An improved purple Coneflower with broad, deep crimson-red petals and rich coppery bronzy cones. Each 50c.

White Lustre. Large white flowers. Grows about 3 feet high and blooms over a very long period. Flowers last a long time when cut. A good novelty. Each 65c.

Salvia

Vatican Variety. New. The plants have woolly, silvery green leaves. The flower stalks are 3 feet tall and are covered with whorls of blush-pink flowers. All summer. Each 50c.

Scabiosa (Pincushion-Flower)

Caucasica. 18 in. Lovely daisy-like flowers of a soft shade of lavender. Each 35c.

Sedum (Stonecrop)

Spectabile, Brilliant. 1½ ft. This group of Sedums with its thick heavy stems, leaves and flowers offers a strong contrast to other garden plants. Foliage light green; flowers deep rose-pink. Keep a long time as a cut-flower. Each 35c.

Spectabile variegatum. Foliage variegated green and white. Each 40c.

Spurium. A low-growing Sedum suitable for ground-cover or the rocky. Red flowers in July. Each 35c.

Sempervivum (Hen and Chickens)

Tectorum. Rosettes of dark green leaves with reddish tips. Small rosettes grow out in all directions from the parent plant. Clusters of rosettes. Each 35c.

Spiraea (Dropwort)

Filipendula flore-pleno. 18 in. June-July. Numerous corymbs of double white flowers rise above a low-growing cluster of fern-like leaves. Each 35c.

Statice (Sea-Lavender)

Latifolia. 2 ft. Summer. The leathery leaves form a tuft at the ground from which arise several stems bearing numerous small lavender flowers similar to baby's-breath. Give full sunlight. Flowers may be dried and kept a long time. Each 35c.

Sweet William

Newport Pink.
Mixed Colors.

Blood-Red.

Homeland. Red, white eye.

Each 35c.

Thalictrum (Meadow-Rue)

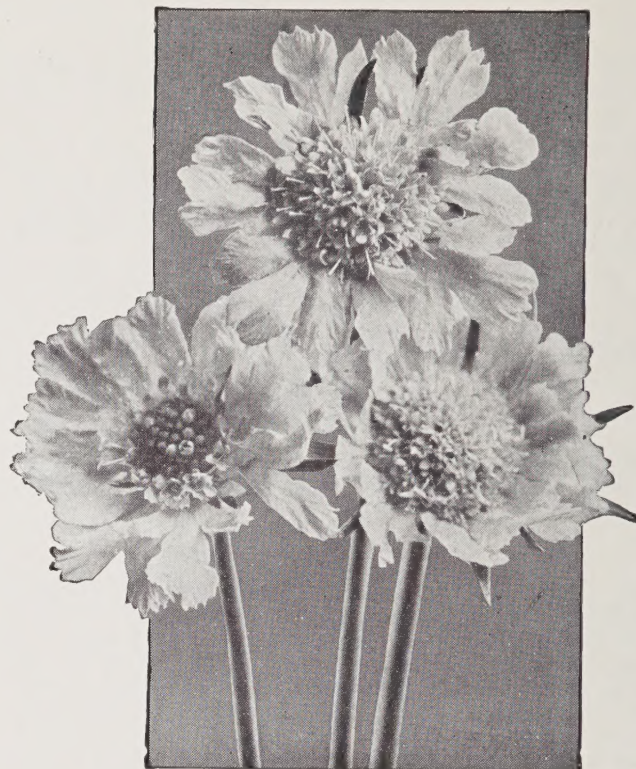
Adiantifolium. 2 ft. A plant grown largely for its maiden-hair-fern-like foliage. Small white flowers in June. Each 40c.

Aquilegifolium. Graceful foliage like columbine; delicate lavender flowers on 3-foot stems. Each 50c.

White. Form of above. Each 40c.

Thermopsis (Yellow Lupin)

Caroliniana. A good yellow accent plant. Spikes of yellow pea-like flowers in June. Each 40c.



Scabiosa caucasica

Tradescantia

Purple Dome. Tradescantias bloom over a long period. They do not need any particular care; insects do not bother them. Foliage is decorative. Purple Dome is a fine grower and blooms freely. Flowers are brilliant purple. Each 40c.

Valeriana (Garden Heliotrope)

Officinalis. 3 ft. Large heads of rose-tinted white flowers during June and July. Fragrant. Likes a moist spot. Each 40c.

Verbascum

Phoeniceum Hybrids. 2 ft. The plant consists of a group of basal leaves from which arise graceful spikes of flowers. Mixed colors. Each 35c.

Veronica (Speedwell)

Bluespire. 2½ ft. July-Aug. An improved form of *V. spicata*. The Speedwells make excellent plants for the sunny border. Long spikes of blue flowers. Very hardy. Each 40c.

True Blue. 1 ft. June. A dwarf form of Speedwell covered with striking blue flowers. Each 35c.

Vinca (Trailing Myrtle)

Minor, Bowles' Variety. An excellent ground-cover plant with dark green glossy leaves and blue flowers. Each 40c.

Viola

Catherine Sharp. A splendid blue Viola for the garden. Flowers large, on long stiff stems. Blooms very freely. Does well in light shade. Each 30c.

Purple Heart. (Pat. 671.) Flowers huge, velvety deep violet-blue with bright yellow eye. Large wavy petals on stems 7 to 8 inches long. Does best in a moist loamy soil. Trim runners to 8 inches in August for large fall bloom. Each 85c; 3 for \$2.25.

LOVELY ANNUALS *for continuous blooms*

All annuals are flat-grown plants, once transplanted and will give splendid results.

Ageratum. Dwarf; for edging.
White Alyssum.
Rustproof Snapdragons, Red, White, Pink, Yellow and Mixed Colors.
Wilt-Resistant Branching Asters, Mixed Colors.
Cosmos, Sensation Mixed.
Dark Blue Lobelia.
Marigold, Choice tall and dwarf varieties.
Moss Roses. Double and single, mixed colors.
Bedding Petunias. Blue, Pink, White, Red, and All Colors Mixed; Dwarf California Giants.
Balcony Petunias. These large-flowered varieties are very good for the garden as well as for window-boxes. Excellent for cutting. **Blue, Rose, White, Red.**
Dwarf Annual Phlox, Rose, Scarlet, Yellow.
Scabiosa, Giant-flowered, Mixed Colors.
Blue Moon. Very choice, light blue.
Verbena, Mixed Colors.
Zinnias. Giant and Small-flowered varieties.

Any of above, doz. 35c.
 By mail, 5c. per doz. extra

Pansies, Salvia, Riverside Ageratum

Perkins Jumbo Pansies, Mixed Colors. Doz. 50c.
Salvia, Red. Doz. 40c.
Riverside Ageratum. A superior dwarf Ageratum grown from cuttings. Doz. 70c.

Potted Annuals

Everblooming Dahlias, Unwin Hybrids. Dainty small-flowered Dahlias with single to double blooms in a great profusion of color. Prefers partial shade. Each 25c.; doz. \$2.50.
Morning-Glory, Heavenly Blue. Huge, cheer-giving, light blue flowers in great profusion. 3 plants to a pot, 35c. per pot.
Petunias, California Giants. Mixed colors. Each 20c.
Postage on potted plants, 10c. each; 2 for 15c.

VEGETABLE PLANTS

Choice Varieties for the Home Garden

TOMATOES. Doz. 40c.
Earliana. Selected strain. Very early.
Stokesdale. Midseason variety for general purposes.
Rutgers (an improved Marglobe). A little later than Stokesdale; good solid flesh.
Husk (Ground Cherry).
Yellow Plum. For jams, eating and decorating.
PEPPERS. Doz. 40c.
World Beater. Large fruit, sweet.
Half-Long Hot. A hot Pepper for flavoring.
CELERY. Doz. 40c.
Early Golden Blanching.
Late Utah.
EGGPLANT. A delicious vegetable. Doz. 40c.
CABBAGE. Early, Late, and Red. Doz. 30c.

MISCELLANEOUS PLANTS

Regal Lily. (Potted.) Snowy white with yellow center, exterior of petals tinged pink. Each 50c.
Double Tiger Lily. (Potted.) Very showy. Each 35c.
Lily-of-the-Valley. Clumps 35c.
Chives. Each 20c.
Mint. Each 35c.
Parsley. 3 for 10c.
Rhubarb, Canada Red. A new choice red Rhubarb. Each 75c.

NO ROSES THIS YEAR

IRIS

Each 35c.

Black Douglas. 38 in. A choice dark violet Iris.
Blue Triumph. 42 in. Very large flowers of heavy substance. Color a beautiful soft blue.
Cheerio. 40 in. A brilliant red Iris. Standards are tan flushed rose, while the falls are rich glowing red.
Ethelwyn Dubuar. 38 in. Fine large flowers of deep pink with delightful ruffling.
Gudrun. 36 in. Enormous, well-shaped flowers of pure white, dusted with soft gold at the throat.
Jean Cayeaux. 38 in. A beautiful blending of coffee-brown with a golden glint.
No Weta. 35 in. A true pink with yellow flushes at the center. The whole flower is softly frilled.
President Pilkington. 40 in. A combination of violet, yellow and silvery brown.
Red Dominion. 40 in. An outstanding variety of glowing ox-blood-red.
Sir Michael. 48 in. A combination of blue, pink and violet.

Dwarf Iris

Each 30c.

Brautjunger. Lilac-white and purple.
Dixmude. Rich blue-purple bicolor.
Huron Imp. Rich blue standards and velvety blue-black falls.
Ladies of Peeling. Soft blue.
Lieutenant de Chavagnac. Pansy-violet.
Mignonette. White flushed pinkish mauve.
Negus. Deep velvety purple.
Nono. Whitish amber.
Statellae. White flushed yellow.
Summer Skies. Beautiful light blue.

Collection No. 10

3 each of the 10 Dwarf Iris, only \$8.00

All prices in this catalog are subject to change



PENTSTEMON
Ruby King.
Each 75c.



BALCONY PETUNIAS
These Large-flowered Varieties
Are Good in the Garden as Well
as for Window-Boxes. Excellent
for Cutting.
Doz. 35c.



ZINNIAS
Giant and Small-flowered
Varieties.
Doz. 35c.



MARIGOLDS, Choice Tall and Dwarf. Doz. 35c.

PERKINS BROS.

Stillwater Road

SAINT PAUL 9, MINNESOTA

U. S. Highway 212

P. O. Address R. R. 6

Tel.: To4424