

## **Historic, Archive Document**

Do not assume content reflects current scientific knowledge, policies, or practices.



62.71

=1947=

LIBRARY  
RECORDED  
MAR 17 1947  
U. S. Department of Agriculture

---

# POWELL VALLEY NURSERY

GRESHAM, OREGON



1600 East Powell Boulevard

Phone Gresham 3252

---

## INFORMATION TO OUR CUSTOMERS

We grow most all of our nursery stock and what we have to buy is grown by our local largest and most dependable nursery, so therefore we know just what we are selling you. The nursery stock in the catalog is grown in some of the finest, richest soil in the U. S. We have a long growing season, so when we list a one or two year plant you can be sure you can't beat size at any other nursery. Our nursery stock is inspected by state inspectors and is free from disease.

And we give you the best descriptions of nursery stock and climates and soil they are best suited for. Any information which you do not find in our catalogue we will be glad to send you in a personal letter. Our prices are F.O.B. Other words our prices in this catalog are the same prices we have at our retail yard.

Packing and crating is free of charge, but the buyer is to pay postage or express. We will ship orders any month requested during planting season. You know more about planting season in your locality than we do, so we prefer you to set the shipping date and if you don't we will use our best judgment and as nursery stock is still not plentiful we ask you to get your order in early. To be fair to everyone we will fill orders as they are placed with us and will not substitute orders unless requested from buyer. Our fruit trees are budded or grafted from the most productive disease-free trees. Our ornamental and flowering trees that don't grow true from seed are all grafted, are on their own roots, so you can be sure that the nursery stock is true to name. We certainly would be glad to have you visit our nursery if you ever have a chance. We are located in Gresham on the Mt. Hood Highway, 14 miles east of Portland, 45 miles west of Mt. Hood, the playgrounds of the northwest. Don't miss seeing it.

Owners: L. E. Belcher, V. Rodefer.

Manager, L. E. Belcher.

## OUR GUARANTEE

We guarantee our nursery stock to be true to name, free from disease, and to reach you in a good growing condition. When found in other condition we will ask you to notify us within 5 days from time order is received and all stock is as described in catalogue.

But it is mutually agreed that under no circumstances we will be responsible for greater amount than purchased.

Under our Guarantee we refund the money or replace with nursery stock whichever is requested.

## TERMS

Money order or check. We do not ship C.O.D. You can send just amount of order. We will ship express, collect or ship parcel post and bill you for postage.

B B meaning Balled. Leaving a round ball of earth around roots, wrapped with burlap. Average ball on plant weighing around 8 pounds.

## SHADE AND FLOWERING TREES

### BALD CYPRESS TAXODIUM

This tree is well known in the south-eastern states. Grows to large tree, will grow in swampy ground as well as drained soil, has flat-like needles, resembles an evergreen in foliage, but loses it in winter. Grows rapidly. Hardy north.  
Size 18 to 24 inches. Ea. 30c 10 for \$2.50

### BLACK LOCUST ROBINIA PSEUDIACASIS

This common tree is well known to most of us. Grows to 60 or 70 feet tall, has fragrant, dense racemes, 4 to 8 inches long with white standards and yellow spots at the base. Hardy.

Size 3 to 4 feet  
Each 25c 10 for \$2.00 25 for \$4.00

### ELM ULMUS PARVIFOLIA CHINESIS

The Chinese Elm has wider range than any other elm, a native to China, Korea and Japan. It has a broad, round head, is a fast grower to 40 to 50 foot. Grows well in any soil and climate, used for hedges and wind breaks as well as street planting and shade.

One year size 12 to 18 inches  
10 for \$1.00 100 for \$5.00

### TULIP TREE LIRODENDRON TULIPFERA

Smooth bark, large leaves, glossy flowers 2 inches across. Greenish white with orange band at base, tulip shape. Grows into a large tree called Yellow Poplar in the south.

Size 3 to 4 feet. Each \$1.00

### DOGWOOD CORNUS FLORIDA

No other tree is as well known as the Flowering Dogwood. The tree produces a low spreading head. Hardy. Not many other trees such glorious scarlets in autumn with white, 4 petaled flowers in May with red berries. Following grows well in sun or shade to 15 to 30 feet.

Size 2 to 3 feet branched. Each \$1.15

### DOGWOOD CORNUS RUBRA Red Flowering

This tree has the description of the Cornus Florida in form. Starts blooming at a 3-foot size. These trees are all grafted and you could not have a more beautiful flowering tree in your yard. Blooms May or June and lasts over a long period. Deep rose, freely produced. Hardy north.

Size 4 to 5, branched BB. Each \$5.50  
Size 2 to 3, branched, \$2.75

### RED MAPLE ACER RUBRUM

Mostly for ornamental or could be called shade. One of the slower growing maples, foliage turning brilliant red in fall.

Size 18 to 24 inches  
Each 25c...10 for \$2.00

### CUT LEAF or SILVER MAPLE saccharinum (dasycarpum)

A soft maple, grows quickly into a shade tree.

Size 3 to 4 feet. Each 30c 10 for \$2.50

### SUGAR MAPLE SACCHARUM

One of the finer shade. Grows compact, but not so rapidly as the soft maple.

Size 4 to 5 feet. Each 65c

### NORWAY MAPLE PLANTANOIDES

Resembles sugar maple a lot, but a faster grower.

Size 6 to 9 feet. Branched. Each \$1.90



### SWEET GUM LIQUIDAMBER

Certainly one of the best. Dark green foliage. Lobed leaves, resembles maples. Leaves only real glossy.

Size 2 to 3 feet. Each 50c 10 for \$4.00

**RED BUD CERCIS CANADENSIS**

More as a flowering. Flowers coming out in spring before the foliage. Red, sweet pea shaped bloom.

Size 5 to 6 feet, Branched  
Each \$1.60

Size 2 to 3 feet. Not branched  
Each 25c 10 for \$2.00

**MOUNTAIN ASH EUP SORBUS AUCURARIA**

This is certainly a beautiful tree for the yard. Clusters of white flowers from 3 to 5 inches across. Followed by orange berries in cluster, hanging over a long period of time. Grows well in any soil or climate.

Size 8 to 10 feet, Branched  
Each \$1.95

**HAWTHORN PAUL SCARLET Double**

This is a free blooming tree. Blooms at a young age with just masses of small double scarlet blooms. Well worth any one's time and care. Grows to 30 feet. Hardy.

Size 5 to 6 feet, Branched. Each \$2.00.

**WILLOW, Golden Weeping Niobe**

Golden branches weeping from a 40-foot tree almost to the ground. Fast grower, will grow well in any soil. Especially likes wet soil..

Size 5 to 6 feet, Branched. Each \$1.50.

**WILLOW WISCONSIN WEEPING**

Same as above except branches are green.

Size 5 to 6 feet, Branched. Each \$1.50.

**CRABS FLOWERING**

Atrosanguinea. Deep red flowers. The buds are purplish red. The entire flower tinted purplish.

Size 5 to 6, Branched. Each \$1.50

**BECHTELS DOUBLE FLOWERED**

One of the best of the flowering crabs. Tree of medium size, covered in spring with large, double, fragrant pink flowers.

Size 4 to 5 feet. Each \$1.75  
Size 3 to 4 feet. Each \$1.40

**SCHEIDECKERI, Double Bright Rose**

Size 5 to 6, Branched. Each \$1.50

**PEACH FLOWERING**

Double red. Double pink.

There isn't anything more beautiful. Large double flowers covering the stems before the foliage.

Size 4 to 6 feet, Branched. Each \$1.50.

**PLUMS FLOWERING BLIRIANA**

Foliage reddish green. Blossoms very showy, double pink, the one that's the most popular.

Size 4 to 6 feet. Each \$1.25

**THUNDERCLOUD**

Deep purple leaf, single pink flowers.

Size 4 to 6 feet. Each \$1.25

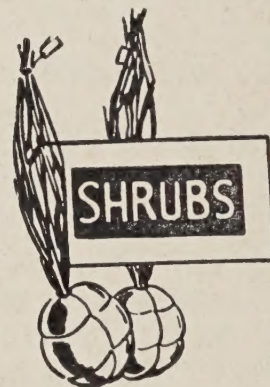
**TRILOBA, Double Pink Dwarf**

Size 3 to 4 feet. Each \$1.25

**CHERRY FLOWERING**

Kwanzan, double pink flowers, large.

Size 5 to 6 feet, Branched. Each \$1.75.



**SNOWBALL**, viburnum opulus sterile common snowball. Globular clusters of white flowers in April, an old favorite from Asia.

Size 4 to 5 feet. Each \$1.15

**MAGNOLIA SOULANGEANA**

Grows to 20 feet. Blooms appear before the foliage from white tinted to purple, cup-shaped. 3 to 5 inches. Half hardy. Grafted.

Size 3 to 4 feet, B. B. Each \$6.00

**HYDRANGIA OPULOIDES OTAKSA**

Blue or pink. Acid soil holds them to a deep blue; alkaline soil, pink. 2 yr. clumps, 6 to 12 inches. Each 90c

**LILAC BUDDER**

Ludwig Spaeth, single, dark, reddish purple. Marie Legrave, single white. Common purple.

Size 2 to 3 feet. Each \$1.50

## Fruit Trees

**APRICOTS**

Jilton  
Perfection  
Wen Moorpark

These are all good varieties and the very best for canning. Apricots usually do well where peaches do.

4 to 6 feet. Each \$1.25 3 for \$3.60  
3 to 4 feet. Each \$1.10 3 for \$3.20

**PLUMS AND PRUNES**

**PEACH PLUM**

Large, yellow to gold. Rich, juicy, with a fine flavor.

Size 4 to 6 feet. Each \$1.25  
Size 3 to 4 feet. Each \$1.00

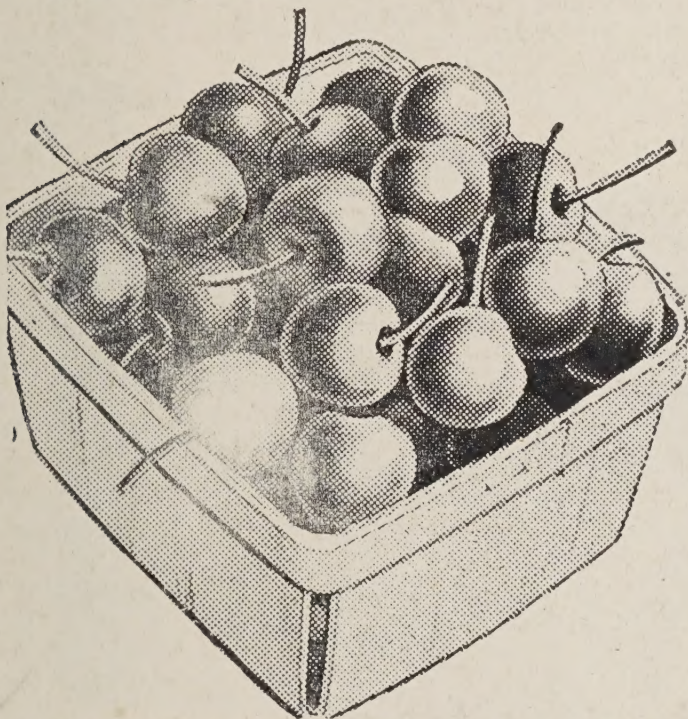
**ITALIAN PRUNE**

Large, almost black in color. Bears heavily. A fine fruit for canning and drying.

Size 4 to 6 feet. Each \$1.25 3 for \$3.60  
Size 3 to 4 feet. Each \$1.00 3 for \$2.90

**SWEET CHERRIES**

These cherries bear quite often the same year, planted especially on the heavier grades.



**BING.** A large dark red to almost black. Sweet and certainly a fine flavored.

**LAMBERT.** About the size of Bing cherry, maybe not as dark. When ripe certainly one of the best sweet cherries.

**ROYAL ANN** runs from yellow to a pinkish cast and truly one of the best canning cherries.

**BLACK TARTARIAN,** a large black cherry used as a pollinizer by commercial growers and fruit, also is very good.

**SOUR CHERRIES**

**MONTMORENCY,** bright red, delicious flavored, firm flesh. A great canning cherry and bears young.

In planting cherries there should be two or three varieties planted in same orchard. Better results with pollination.

6 to 8 feet, heavy branched.  
Each \$2.00 3 for \$5.56  
5 to 6 feet, branched  
Each \$1.50 3 for \$4.25

**PEACH TREES**



I am sure you would never be able to find better peach trees than the ones we have here to offer. I won't tell you that these peach trees will bear the same year you plant them, but I will say it has happened with our own trees here that we sell.

**ELBERTA,** medium large, yellow with reddish cheeks, firm, juicy, heavy bearing and a good canning peach.

**CRAWFORD.** Early, large, yellow and red skinned peach. Ripen early. Sweet, firm and juicy.

**J. H. HALE.** Another old standby. Golden yellow, fine flavor, firm, little fuzz.

**ROCHESTER.** Truly a fine yellow peach with orange colored flesh, and a fine flavor. All peaches listed are Freestone. Prices on all peach trees:  
4 to 6 feet, branched

Each \$1.25 3 for \$3.60

3 to 4 feet, branched

Each \$1.10 3 for \$3.20

**APPLES**

These apples are heavily rooted, budded or grafted from the finest and heaviest bearing trees in the country. Will bear at an early age, so why not start your family orchard now. So in a few years you can be gathering apples from your own orchard.

**WINTER APPLES**

**RED DELICIOUS,** a fine large red apple that keeps well. Also a good shipping apple.

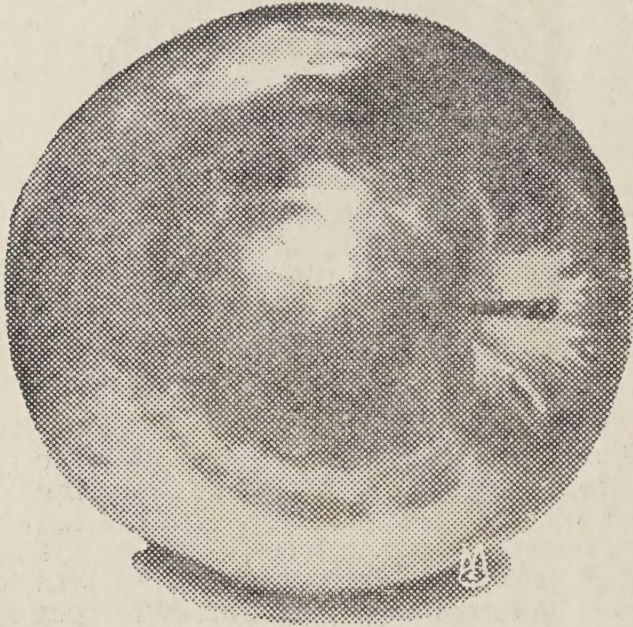
**JONATHAN,** medium size. red. Keeps well, good flavor.

**GRIMES GOLDEN,** a golden color, rich in flavor. A good cooking apple, medium size.

**STAYMAN WINESAP,** one of the old favorites. A medium size, juicy apple.

**RED ROME BEAUTY,** large, reddish, tender and juicy.

**YELLOW DELICIOUS** is sheep-nosed  
Flavor lot like Red Delicious, also a  
good keeper.



### SUMMER APPLE

**YELLOW TRANSPARENT**, one of the  
most popular; yellow when ripe and  
one of the earliest.

**GRAVENSTEIN**, a large striped, well  
flavored. Ripens some later than  
Yellow Transparent.

Prices on all apples above the same.  
5 to 6 feet, heavy branched

Each \$1.50 3 for \$4.25  
4 to 6 feet. Each \$1.00 3 for \$2.75

### PEARS

**BARTLETT**, one of the best pears.  
Ripens about August. Large, light  
yellow when ripe.

Size 4 to 6 feet. Each \$1.25

## BERRIES

### RASPBERRIES—CUTHBERT

One of the best market berries, red  
in color. Holds flavor well when  
frozen.

2 year plants:

5 for 50c 25 for \$2.25 100 for \$7.50

### BLACKBERRY—HIMALAYA

Strong grower, very prolific, a desir-  
able variety. Should be grown on  
trellis. Plant 8 ft. by 8 ft apart.

1 year plants 5 for 80c 25 for \$3.45

### STRAWBERRY, Improved Marshall

This is an outstanding market berry  
producer. Heavily, large, sweet, sub-  
acid, dark red flesh.

25 for \$1.45 100 for \$4.75

### NEW WASHINGTON

This berry is truly a fine berry, some  
larger than the Cuthbert, same color  
and flavor. Bears heavily, disease re-  
sistant.

2 year plants:

5 for 60c 25 for \$2.50 100 for \$8.00

### GEM EVERBEARING

These berries are large, good flavor  
and firm. Produces large, late summer  
and fall berries.

25 for \$-1.50 100 for \$5.00

### THORNLESS Evergreen Blackberry

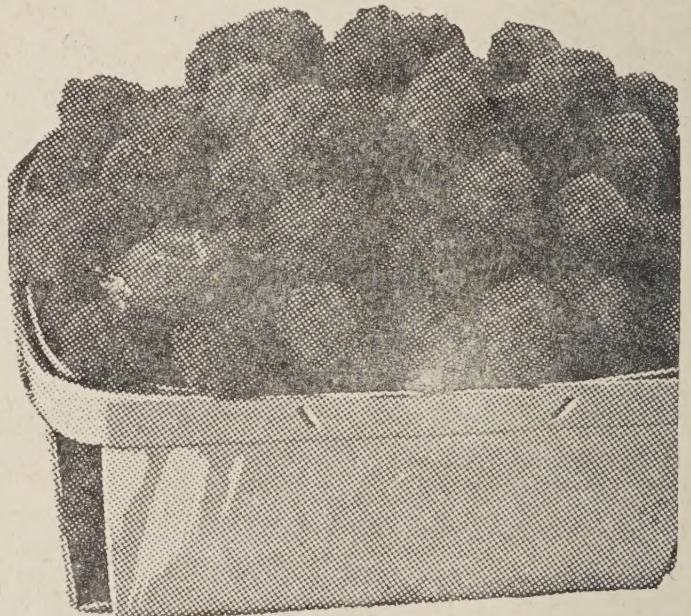
A very firm, well flavored blackberry  
going over big commercially in recent  
years. Easy to handle. Yields heavily.  
Trellis 8 ft. by 8 ft. apart.

1 year plants. 5 for \$1.00 25 for \$4.50

### BOYSENBERRY

Is no doubt one of the best money  
makers. It is a cross between Logan-  
berry, Raspberry and Blackberry and  
has large berries. It has been known  
that 50 berries have filled a quart and  
just imagine the combination flavor of  
the three in one. Trellis 8 ft. by 8 ft.  
apart.

1 year plants: 5 for 80c 25 for \$3.45



### YOUNGBERRY

Fruit medium size, flavor of rasp-  
berry. Very good for home use, but  
not a good shipper. Trellis 8 ft. by 8  
ft. apart.

1 year plants 5 for 80c 25 for \$3.45

Write for prices on larger quantities.

## NUTS

**FILBERTS, Barcelona**, the best filbert  
for the home orchard or commercial.

**DuCHILLY**, used for a pollenizer al-  
though the nuts are good.

In planting an orchard there should  
be one DuChilly to every 8 Barcelona  
planted. Even those who plant two or  
three trees I still recommend planting  
one pollenizer.

Size 3 to 4 feet, branched

Each \$1.00 5 for \$4.25

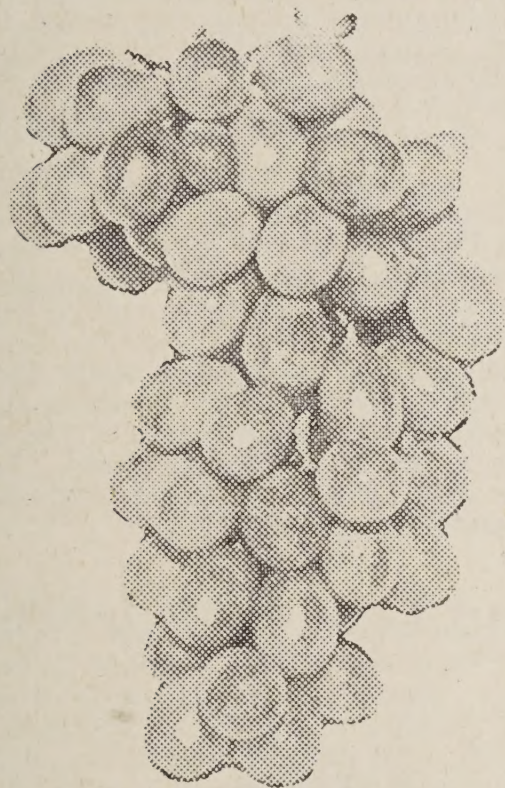
Write for special prices on large lots.

**WALNUTS, Franquettes**, soft shell  
English walnuts. Grafted. Not  
hardy in north states.

Size 4 to 6 feet

Each \$2.50 5 for \$11.50





## GRAPES

**CONCORD**, one of the most popular. Almost black in color, excellent flavor. Hardy, bears heavily. You can't beat them for jelly.

Each 35c 10 for \$3.00

**NIAGARA**, one of the best white grapes. Large clumps with large, greenish to white grapes when ripe; thin skin.

Price, each 35c 10 for \$3.00

## ROSES

**Two year old Rose Bushes No. 1**

These Roses, large, well rooted and good varieties.

**HYBRID T**, blooms same summer, planted not just once but all summer.

### TALISMAN

**Condesa De Sastago**—Two tone. Yellow and rose.

**Duquesa de Penaranda**—Apricot.

**Betty Uprichard**—Two tone. Dark pink to light pink.

**Picture**—Pink, long buds.

**K A Victoria**—White.

**McGredys Scarlet**—Scarlet.

**Pres. H. Hoover**—Two tone, yellow to orange, long buds.

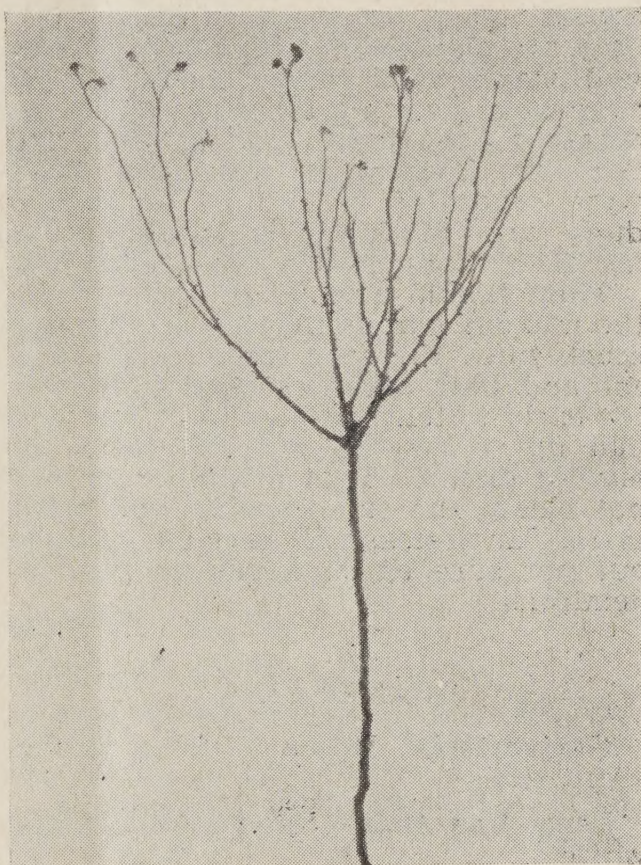
**Meu G. A. van Rossen**—Orange with yellow and red shadings.

**Margaret McGredy**—Scarlet to pink.

**Chris Stone**—Velvety, dark red.

**Sour Threse**—Yellow, long buds.

Each 95c 6 for \$5.25 12 for \$9.75



## TREE ROSES

Tree Roses on 40 inch Regosa stems, Good caliper and large heads Hybrid T. Blooms all summer.

**Betty Uprichard, K. A. Victoria, McGredy's Scarlet, Pres. H. Hoover, Margaret McCredy, Condesa de Sastaga**

### NOTE

## RHODODENDRON, AZALEAS AND CAMELLIAS

These are not hardy north, although they are growing them even where it gets to 20 below zero, but that all depends how much you appreciate these lovely shrubs. To my opinion they can't be beat by any shrub. They have gorgeous blooms and any one would think so that loves flowers. But there is work if you have success in colder climates. They love acidy soil and will not grow in any other kind. If you have alkaline soil the hole should be dug much larger than for any other planting and use leaf mold or peat moss. Preferred oak leaf mold. Mix thoroughly with soil about half and half and for winter protection they should be mounded up around plant, six to eight inches with peat moss, leaf mold or barnyard manure to protect roots during winter months and also a

box with top cut out should be placed around plant for top protection after they are planted for one winter. They will stand much more thereafter. I suggest in growing these if you are an amateur to join the Azalea and Camellia Society of America. They were organized in 1932. The annual dues are \$1.00. The secretary is Mr. H. T. Conner, Box 478, Macon, Ga.

They should also be protected from the mid-day sun as they do not like too much sun. We have some of the newest and best varieties, although it is too early to tell just how well they will bud up so we will not sell them for budded plants. That means they may not bloom the same spring you plant them. The azaleas will have bloom buds but not sure of camellias and rhododendrons.

### CAMELLIAS

**Grandiflora Rosea** — Semi-double, large, pink.

**Lady Van Setti**—Semi-double, large white.

**Julia Drayton**—Semi-double, large, deep pink.

**Regina De Giante**—Pink, Queen of the Giants.

**Monjisu**—Velvety, red, semi-double.

**Valtauareda**—Large, double pink.

**Magnoliaeflora**—Semi-double, rose to blush.

The above varieties are newer and surely the best varieties are out.

Size 15 to 18 inches, B. B. Each **\$3.00**

**Cheerful**—One of the old favorites free bloomer. Red, double.

Size, 15 to 18 inches, B.B. Each **\$1.95**

Size, 12 to 15 inches, B.B. Each **\$1.60**

**Purity**—A good white double.

Size, 15 to 18 inches, B.B. Each **\$2.25**

Size, 6 to 12 inches, B.B. Each **\$1.50**

**Pink Perfection**—Double, light pink. free bloomer.

Size. 9 to 12 inches, B.B. Each **\$1.25**

### AZALAES

**Hinodegiri**—Brilliant crimson, early.

**Ledifolia alba**—Large white.

**Coral Bell**—Shell pink.

**Lavender Queen**—Light lavender.

**Pink Pearl**—Deep tinted pink.

**Sherwoodi**—Orchid.

**Yayegiri**—Salmon red.

6 to 9 inches, Budded B. B. Each **\$1.25**

**Azalea Mollis Deciduous**—Ranging from yellow to orange, very showy blooms, coming out before the foliage. Size, 6 to 8 inches, not budded.

Each **35c** 3 for **\$1.00**

### RHODODENDRONS

**Pink Pearl**—Delicate pink, very large

**Alice**—Pink, large bloom.

**Cynthia**—Rosy crimson.

**John Walter**—Red.

Size, 15 to 18 inches. Each **\$5.95**

We have the promise of Britannia and several other good reds. We won't list them, so if interested write. We will be glad to let you know and also how they bud up.

## Broad Leaf Evergreens



**Box Truedwarf Suffruticosa** — A dwarf used for sidewalk edging and corner planting. Grows very slow to about 3 feet, dark green foliage, small leaves. Hardy.

Size, 8 to 10 inches.

Each **75c** 10 for **\$7.00**

**Andromeda Pieris Japonica**—Low, compact grower with blooms shooting out on tip of twigs. Resembles Lily of the Valley. White, very showy, half hardy.

Size, 12 to 15 inches. B.B. Each **\$2.50**

**Magnolia Grandiflora**—This is a half hardy evergreen tree growing to 90 feet. Large leaves, green on top, rusty brown beneath. The flowers are white, 6 to 8 inches across, cup shape. It is the state flower of Louisiana and Mississippi. Likes acid soil.

Size, 24 to 30 inches, B.B. Each \$3.75

**Magnolia Sweetbay Glauca**—This is listed as Evergreen or deciduous. It is half hardy and will hold its foliage to almost zero if there isn't too much cold wind. Green leaves, whitish beneath. Blooms 2 to 3 inches across, 9 to 12 petals, will grow well in swampy ground.

Size, 2 to 3 feet. Each \$4.25

**LAUREL ENGLISH**

Laurel is one of the most used ornamentals planted. Laurel is showy anywhere it is planted. Large, glossy, dark green leaves, not hardy north. It is used for hedges and wind breaks a lot as it is a fast grower. Growing to a height of 20 feet. Not recommended where it gets zero or below.

Size, 12 to 15 inches.

Each 35c 10 for \$3.00

**LAURESTINUS (viburnum tinus)**

A winter blooming shrub growing to a height of 10 feet with clusters of red buds opening into white blooms in the winter with purple berries following. Not hardy north.

Size, 6 to 12 inches. Each 40c

**PRIVET GOLDEN**

Leaves run from a green to a golden variegated. Very showy, quite hardy. Grows to 6 or 8 feet.

Each 30c 10 for \$2.75

**ABELIA GRANDIFLORIA**

Glossy foliage, blooms in fall with pink trumpet like blooms over a long period of time. Grows to a height of 4 to 6 feet.

Size, 12 to 15 inches. Each 65c

**DAPHNE ODORA**

Evergreen leaves, 2 to 4 inches long, fragrant clusters of pinkish flowers. Blooms early, half hardy.

Size, 12 to 15 inches. B.B. Each \$2.50

**DAPHNE CNEORUM**

Small narrow leaves, dwarf plant. Good for rockeries. Sometimes called Rock Daphne. Blooms in pink clusters. Half hardy.

Size, 4 to 6 inches. B.B. Each 75c

**MYRTLE COMMON**

Very ornamental for outdoor planting in mild climates and often grown as pot plants in north. It grows to 10 feet with glossy, green leaves and fragrant white flower, followed with blue berries it makes a good hedge.

Size, 6 to 12 inches

Each 20c 10 for \$1.50 100 for \$12.00

**RED LEAF BARBERRY**

Grows to a height of 3 to 4 feet, small red leaves and thorny stems, very showy. Is used in hedges as well as entrance planting. Medium, hardy.

Size, 6 to 12 feet.

Each 20c 10 for \$1.50 100 for \$12.00

**OREGON GRAPE**

(mahonia aquifoliumi)

Dark, glossy foliage, yellow blooms and blue berries. Very hardy, a good ornamental for the colder climate.

9 to 12 inches. Each 35c 10 for \$3.00

**EVERGREENS**



**Golden Berckmans Arborvitae**—Compact, globular deep golden color. Dwarf, grows slow, very showy, hardy.

Size, 12 to 15 inch. B.B. Each \$2.75



**Pyramidalis Arborvitae**—One of the best columnar used planting against walls, by doors or windows, but not in front of windows as they grow tall, narrow and compact. Green, flat, palm shape foliage. Hardy.

Size, 2 to 3. B.B. Each \$2.25  
 18 to 24 inches. B.B. Each \$1.50  
 12 to 18 inches. Each 85c

**Golden Oriental Arb.** — Pyramidal type. Golden color, hardy.

Size, 2 to 3 feet. B.B. Each \$2.25

**Engelmann Spruce Picea Engelmanni**  
 —A large growing tree, has bluish green to steel blue foliage. Hardy ornamental.

Size, 4 to 8 inches. Each 50c

**Black Hill Spruce, *Glauca densata***—  
 One of the most hardy of all trees, also called White Spruce. The twigs are grayish to pale brown. The bark is grayish. A beautiful ornamental.

Size, 4 to 8 inches. Each 50c

**Irish Yew, *taxus baccara fastigiata***—  
 The foliage is a rich, dark green. Grows narrow but compact. Red berries. A slow grower and lives long. Hardy.

Size, 18 to 24. Each \$2.75

**English Yew *Baccata***—Upright form but spreads some more than the Irish Yew, not as dark in color. Smaller needles.

Size, 18 to 24. Each \$2.50

#### **PINE LOBLOLLY *PINUS TEADA***

Needles slender, rigid, lustrous, light green. 5 to 6 inches. Cones large with thick, bristly scales. Hardy.

Size 9 to 12 inches

Each 20 10 for \$1.50 50 for \$6.00



**Colo. Blue Spruce, *picca pungens Glauca***—A silvery blue foliage, grows to a large tree. A very handsome and very hardy.

Size, 18-24 inches, B. B. Each \$3.25

Size, 4-8 inches. Each 50c



**Globe Arb. Woodward Woodwardi**—  
Dense Globe form, dark green foliage,  
compact, semi-dwarf. Grows to 4 or 5  
foot each way.

Size, 15 to 18 inches. B.B. Each \$2.75



**BLUE CYPRESS**

**Alumi Chamaccyparis**

A cone shape, blue foliage, always a  
good tree in your landscaping. Hardy  
except in far north.

Size 18 to 24 inches, B. B. Each \$2.50

**HEATHER Mediterranean Hybrid**

Fall and winter blooming pink. 6 to  
10 inches tall. Spreads to 18 inches  
width. Very attractive.

Size 10 to 12 inch spread. Each \$1.25

**LAWSON CYPRESS Chamaecyparis**

A conifer. Most satisfying effects,  
used for many purposes; not hardy  
in extreme cold climate. Graceful foli-  
age. It can be planted alone or in  
hedges. It can be trimmed to any  
shape. Always a good one.

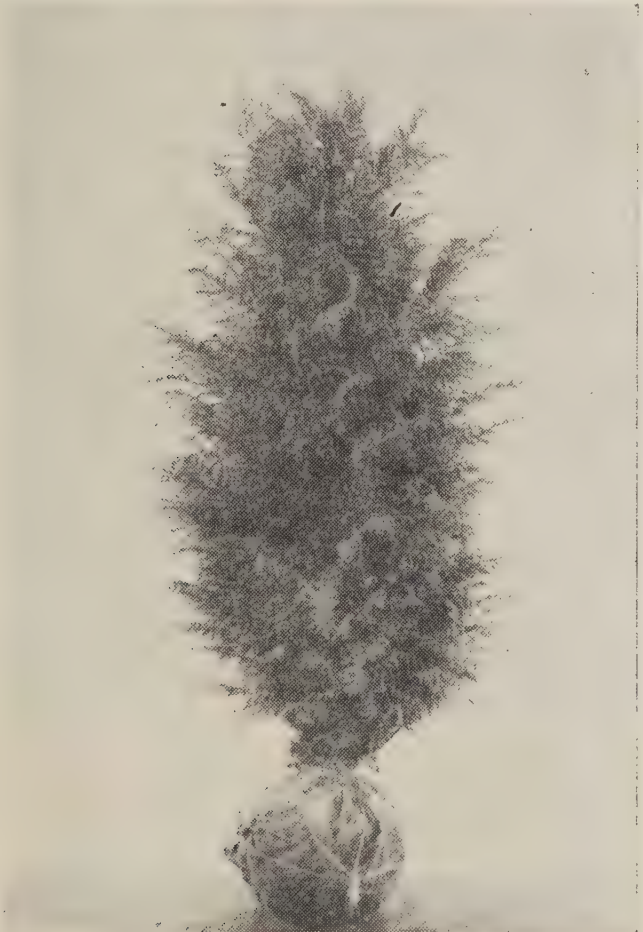
Size 4 to 8 inches, 1 year  
10 for \$1.00 50 for \$4.00 100 for \$7.50

**THREAD BRANCHED CYPRESS**

**RETINOSPORA**

Slender strings weeping over the  
sides of green foliage. Always grace-  
ful. Half hardy.

Size 24 to 30, B.B.. Each \$3.00  
Size 18 to 24. \$2.25



**PLUMOSA RETINOSPORA**

Upright form, soft feathery foliage,  
golden to green foliage.

Size 2 to 3 feet, B.B. Each \$2.25

**RED PINE PINUS RESINOSA**

Grows into a large tree. Needles 5 to 6 inches long. Dark green, glossy cones. 3 to 5 inches long. Hardy.

Sizes 12 to 15 inches. Each 90c

**IRISH JUNIPER FASTIGIATA**

Narrow type. Grows very compact. Bluish green foliage. Hardy.

Size 2 to 3 feet B.B. Each \$2.75

**MEYERS JUNIPER Squamata Meyeri**

Deep blue foliage, irregular in habit, semi-spreading. Dwarf. Hardy.

Size 6 to 12 inches. Each 60c

**PINE MUGO PINUS MUGHUS**

Dwarf spreading, grows to height of 4 to 5 feet, a spread of 6 to 8 feet. Hardy. Dark green.

Size 6 to 12 inches. Each \$1.00

**PFITZER JUNIPER PFITZERIANA**

Spreading type, fast grower, green foliage. Hardy.

Size 15 to 18 inches. B.B. \$2.90

**SQUARROSA RETINOSPORA**

Feathery blue foliage, very compact.

Size 2 to 3 feet, B.B. Each \$2.50

## VINES

### CLEMATIS INTEGRIFOLIA

Has undivided leaves and bears blue flowers with a white center. Grows from 18 to 24 inches.

Size 6 to 12 inches. Each 25c 3 for 60c

### IVY BALTIC

Has a good color; much hardier than English Ivy.

1 year, 6 to 10 inches. Each 15c

### WISTERIA

A tall, vigorous climber. Lilac purple flowers, 3 year. Grafted, 3 to 4 feet.

Each \$1.80

## PERENNIALS

**DELPHINUM, hardy perennial**—Lavender, White, Blue, Light Blue, Dark Blue.

1 year clumps. Each 35c

**CARNATIONS**—Red, Pink, White.

1 year. Each 35c

**GERANIUMS**—Dark Red, Bright Red, Pink, White. For spring orders from 2 inch pots. Well rooted. Very hardy.

Each 25c 6 for \$1.25 12 for \$2.25

**SWEET WILLIAMS, Mixed.** 1 year clumps. Each 35c

**DIANTHUS**—Red. 1 year clumps. Each 35c

**GUEM, MRS. BRADSHAW**—Red. One year clumps. Each 35c

**COLUMBINE, Mixed**—1 year clumps. Each 35c

**FORGET-ME-NOTS** — Blue. 1 year clumps. Each 35c

## CHRYSANTHEMUMS

For Spring Orders

**METEORE**—Lemon Yellow.  
**MRS. ROY**—Crimson.  
**EARLY OCTOBER**—Light Lavender.  
**SILVER MOON**—Cream White.  
**DARK PINK NORMA**—Deep Lavender  
**HELIOS**—Deep Golden Yellow.  
**GOLDEN MODENA**—Lemon Yellow.  
**FREIDA**—Light Lavender.  
**MOHAWK CHIEF**—Deep Red.  
**SUN GLOW**—Golden Yellow.  
**DEC GLORY**—Large, Golden Yellow.  
**GOLD SMITH**—Golden Yellow.  
**CITRUS QUEEN**—Lemon Yellow.  
**WHITE MISTLETOE**—White.  
**SILVER BALL**—Large White.  
**JAMIMA**—Redish Bronze.  
**GOLD IMPERIAL**—Golden Orange.  
**YELLOW MONUMENT**—Light Yellow.  
**PETER JOHN**—Deep Rose Pink.  
**MARKETEER**—White.

These will be 4 to 6 inch ruttet cuttings from 2 inch pots.

Any, 3 for 75c 10 for \$2.25 20 for \$4.25

## BULBS

### TUBEROUS BEGONIAS

Red Carnation type.  
 Red Camellia type.  
 Orange Carnation type.  
 Orange Camellia type.  
 Apricot Carnation type.  
 Apricot Camellia type.  
 Yellow Camellia type.  
 White Carnation type.  
 2 year bulbs. Each 25c 12 for \$2.75

### GLOXINIA

Empor of William.  
 Etoile de Feu.  
 Empor of Fredrick.  
 2 year bulbs. Each 30c 12 for \$3.25







