

## **Historic, Archive Document**

Do not assume content reflects current scientific knowledge, policies, or practices.



# RUSSELL GARDENS

FOURTEEN ACRES

## Daylilies

SPRING, TEXAS



FALL 1947

SPRING 1948

NEW VARIETIES,  
NEW COLORS AND  
NEW PRICES!

LIBRARY  
RECEIVED  
★ SEP 29 1947 ★  
U. S. DEPARTMENT OF AGRICULTURE

Sec. 562, P. L. & R.

U. S. POSTAGE

PAID

SPRING, TEXAS

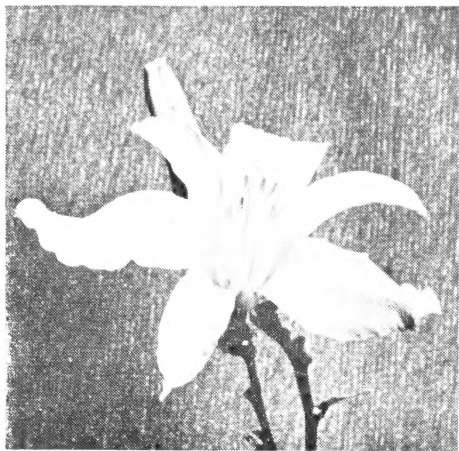
PERMIT No. 1

### *Our Own Originations*

U.S. Dept. Of Agriculture Library

Washington 25, D.C.





STARS OVER DALLAS

### EASY TO GROW

Nothing so easy to grow in sun or shade — acid or lime soil. For the border beds — foundation planting or along the banks of streams or lakes.



# RUSSELL'S

(HEMEROCALLIS)

## HARDY

FROM MAINE TO CALIFORNIA

# DAYLILIES



ON TOUR

### STARS OVER DALLAS

This is one of the palest lemons, with a cool green throat and has the best texture. Its lovely, wide petals are slightly twisted and recurved. A full 5-inch beauty growing 3 feet high. One of the palest really pale lemons. April, May, June. **\$2**



PURPLE SAGE

### ON TOUR

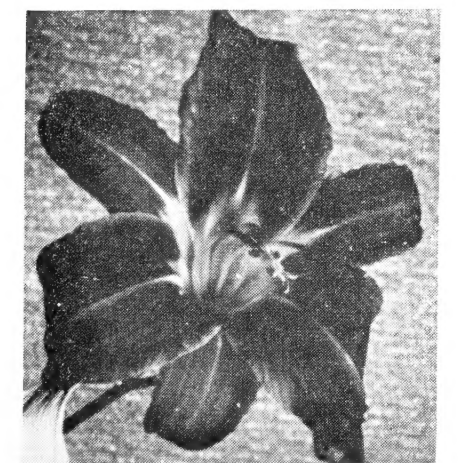
A giant bloom fully 6 inches across, of the palest yellow. The petals are wide and the sepals slightly twisted in a form found in no other daylily. No visitor in our fields wanted to go away without one. This one is simply a "must have". 3½ ft. May, June. **\$2**

### PURPLE SAGE

Deep wine — one of the darkest of the purples. The petals are ruffled, with a slightly yellow mid-rib and a large golden throat. The 4½-inch bloom keeps well in our hot sun. Rated as one of America's finest wine purples. 3 feet. April, May. **\$2**

### MRS. HUGH JOHNSON

Here is another red, a fiery red with a lovely satin sheen. The wide petals and sepals are slightly reflexed and open full. Stands our hottest sun and remains open evenings. Small yellow throat; bloom 4½ inches across. 3½ ft. April, May, June. **\$3**



MRS. HUGH JOHNSON

## NEW INTRODUCTIONS

We are forced this season to withdraw many of our new varieties to replenish our stock. Just as soon as possible we will offer them again. Many here are offered for the first time, and now priced so everybody can afford these lovely jewels.

We believe we are the largest grower of daylilies in America. This season we have taken in five more acres, making a total of fourteen solid acres in daylilies. We are now growing more than a million plants. I wish they were all good plants—but they are not. In fact, not even one-half of them are even worth having. We grow hundreds and hundreds of varieties here under observation and after years of careful study, many thousands are discarded as being unworthy as garden subjects.

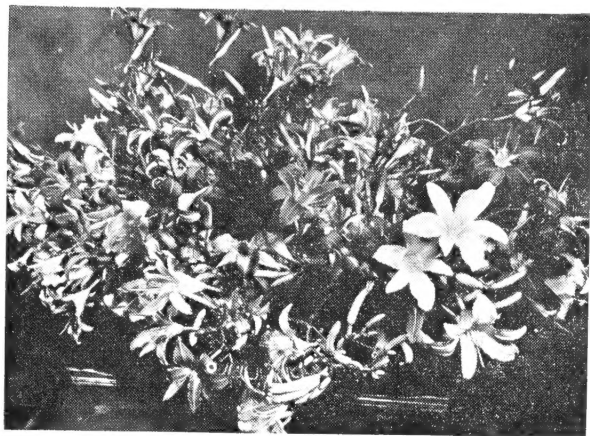
We are attempting to show you on this little folder actual photographs of those we consider worthy, and a photograph of a variety of which there are many many thousands that are absolutely useless. Notice this variety, how it folds up here under our Texas sun. You will not find such as this even in our mixed varieties — only those that can "take it" are placed in these series. Our Texas grown plants, those we consider worthy of garden subjects, are proven hardy from Maine to California, and when they hold up after our rigid tests, after the kind of sun Texas sends out, then you can bet your life you have something worth having. As to their hardiness, we get enough freeze to burst unprotected water



pipes, and to kill out many weak daylilies not found to be hardy, yet enough heat in the summer to show up a daylily if it can't "take it". The plants we send out are all hardy blooming size plants, and all orders amounting to \$3.00 or more are sent post-paid; otherwise, send 35c for postage.

WHAT YOU DON'T WANT IN DAYLILIES . . . READ ARTICLE ABOVE





## RUSSELL HYBRIDS

### CUT FLOWERS

As a cut flower — Daylilies from a single cutting will last for more than a week. New fresh buds every morning. Simply pinch off the old faded blooms and there you have a new treat for days and days.

### PERFECTLY HARDY

The lovely heavy grown Texas produced varieties we offer are positively proven hardy in all 48 states, South America, Hawaii, and Canada. We will positively replace any plant that fails to grow because of its hardiness in your section.

## NEW LOW PRICES

We have reduced our prices tremendously. Order now and avoid disappointment. All will come to you correctly labeled that you may have a chance to get better varieties without the higher prices. PLANT NOW for real bloom next season.

### LILLIAN RUSSELL \$3

Now comes a new break in colors. This big, full bloom is 6 inches across, with wide petals that overlap. It has a huge sulphur-green throat. Its habit of growth and the size and form is like that of Hyperion, but the texture is far superior, it stays open so long at night. The petals are rich rose slightly overcast with a shade of lavender and a slightly deeper rose eye zone. The sepals are lemon, deeply sprinkled with rose, ruffled and slightly reflexed. A most prolific bloomer. 2½ ft. May, June.

### MISS HOUSTON \$3

A real pink, both petals and sepals, with a slightly deeper eye zone and a yellow throat. This is a tall Hemerocallis and best pink available today, with flowers 4½ inches across, and when planted with various colors is simply breath-taking. We have now worked up a good stock and can offer until further notice at \$3.00. Opens full. Height 4½ ft. May, June.

### EDITH RUSSELL \$3

This is the first Daylily I have ever seen which has sepals darker than its petals. Its wide petals completely overlap the sepals and a part of the next petal. The color is a shade of yellow I have never before seen—not chrome, cream, nor lemon, but exactly the color of sulphur with rose veins, profusely ruffled. The huge open throat is a slightly deeper shade of sulphur. Sepals are the deepest rose sprinkled with gold dust, as though a jeweler had taken powdered gold and done this work. The flower holds up. Blooms 4½ inches. 3 ft. May, June.

### BLACK PRINCE \$3

Now you can have "Black Prince" for a limited time at this unheard of price. Rated as one of the loveliest really black red daylilies. Has a small yellow cup in throat. Keeps perfect. 4½ inch bloom. Has widest petals and sepals of an even color. 3½ ft. April, May. \$3.00.

### ADAGIO \$3

An unusual brilliant red, between a fiery red and a black red, with a deeper eye zone. One of the loveliest things that ever grew and a perfect keeper with a small yellow throat. You've wanted another red — here it is. 4-inch blooms. Height 3 ft. May, June. \$3.00.

### ROSE OF TEXAS \$3

This is a real rosy red, almost a fiery red, but decidedly lighter. Hard to describe, but 100% favored in my field, surely my favorite, and a very fast grower. 4-inch bloom. Height 3 ft. April, May, June.

ONE PLANT EACH OF THE SIX VARIETIES ABOVE . . . \$15.00

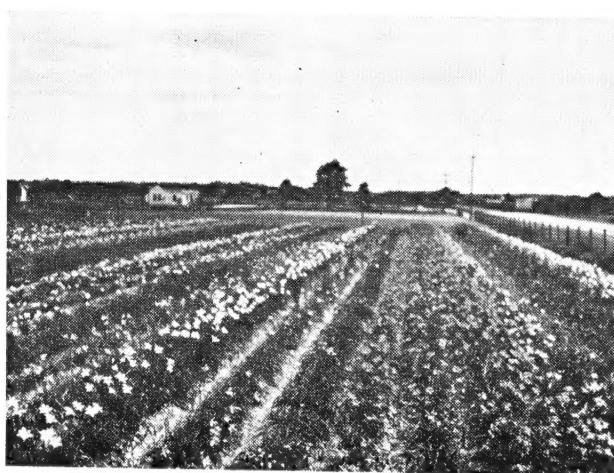
You May Have Any 3 Plants Priced at \$2.00 Each for \$5.50 . . . or Any 6 for \$10.00.

Three \$2.00 Plants of One Variety for \$5.00.

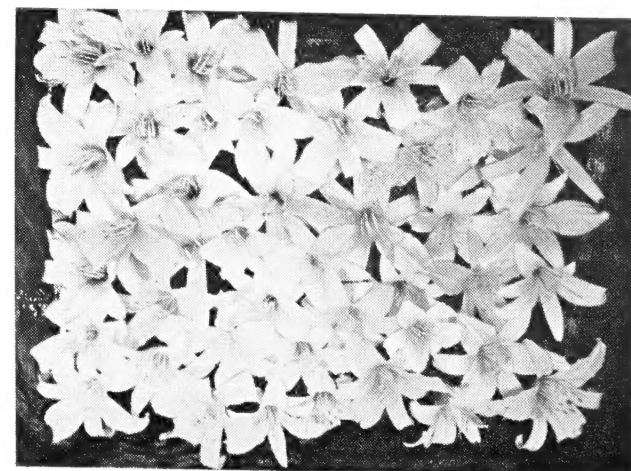
## PLACE YOUR ORDER NOW FOR SHIPMENT NOW OR LATER



THE LA GLORIA SERIES (SEE BACK COVER)



SMALL PART OF OUR FIELDS (14 ACRES)

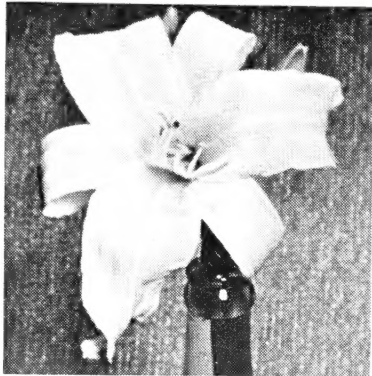


SUNSHINE SERIES (SEE BACK COVER)



# PLANT DAYLILIES ANYTIME

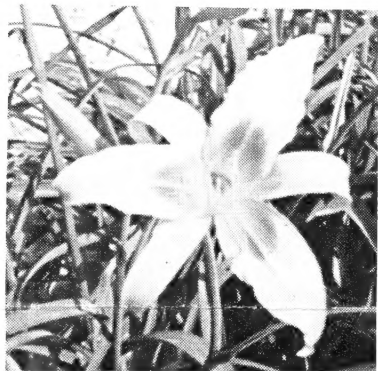
## ANYWHERE *They take care of themselves* ANYHOW



SKYLARK

### SKYLARK \$2

I could write pages about this one and not say enough. It is that color we loved and wanted to stay open at night for a cut flower, and this one does it. It is the most beautiful shade of lemon with a thick brittle substance and a faint green throat. This tall erect 4-foot variety carries a multitude of blooms 4½ to 5 inches across, slightly recurved, slightly ruffled, and remains open until 10 or 11 o'clock at night. Take it from me, of the thousands and thousands of daylilies we have grown, it will be many a year before this daylily is ever surpassed in beauty and dependability. May, June.



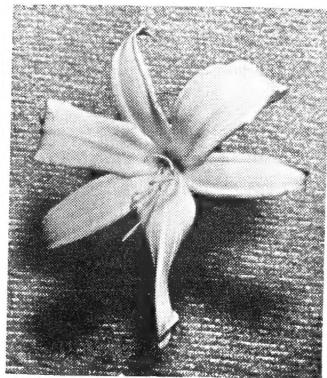
METEOR

### METEOR \$2

Lovely shade of deep yellow with a huge buff rose eye zone. Keeps perfect. 6-inch bloom. Height 3 ft. April, May, June.

### GUEST STAR \$2

Lemon, giant 7-inch bloom. Height 3 ft. Keeps well. May, June.



GUEST STAR

### PURPLE FLASH \$2

This daylily was rated by one of America's great daylily authorities in the "Better Homes and Gardens" as among one of America's really best daylilies. Its sepals are yellow, slightly flushed purple and recurved. Its petals are a real purple standing semi-upright, and a lovely throat shading to green. Most outstanding. Blooms, 6 inches. Height 2½ ft. May, June.

### VICTORY \$2

This variety is well named. Each petal and sepal has a distinct red "V" for an eye zone and is of a deep rich yellow, making a most delightful combination. Blooms 5 inches across. Only because we have worked up a good stock of this variety can we reoffer it now, after some absence, at a reasonable price. 3 ft. April, May, June.

### JUST MARY (Showing a single stem) \$2

This is another that will probably take a book to describe justly. First, its lovely rich coloring could best be described as red veins running through a yellow background with a deeper outstandingly rich red eye zone shading into a rich green throat. As many as seven blooms open at one time on a single stem, and from 40 to 75 buds on each stem, and keeps perfect in the evenings. This lily will be with us a long, long time. 5-inch bloom. 3-ft. May, June, July.

### BLACK HILLS \$2

Really a black red. Keeps well. 4-inch bloom. Height 3 ft. May, June, July.

### ANNIS VICTORIA RUSSELL \$2

This is surely one of the most beautiful daylilies that ever existed, and the most profuse bloomer. As many as 30 buds are not unusual on a single stem. The foliage is dark green and crinkled. Blooms on established plants are 7 to 9 inches across. Height 3 ft. March, April.

### SIDE SHOW \$2

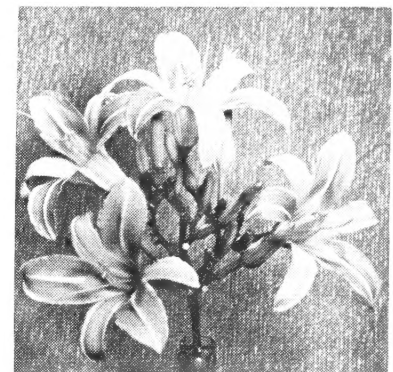
Widest petals of buff yellow with faint markings. Almost a fully rounded flower. 5-inch bloom, height 2½ ft. Blooms twice. April, May, again in July and August.

### QUEEN OF GONZALES \$1

This is a solid self. The whole flower is about the color of chrome, being rich deep yellow, and the wide overlapping petals open full. The 6-inch bloom remains longer after being cut than any I have ever seen, and the plant is an almost constant bloomer. This variety is the earliest of the giants to bloom. 3 ft. April, May, and again in midsummer.

### LOUISIANA MOON \$2

Purple petals with wide lemon mid-rib. Keeps perfect. One of the finest we grow. 5½-inch bloom. Height 3-ft. April, May.



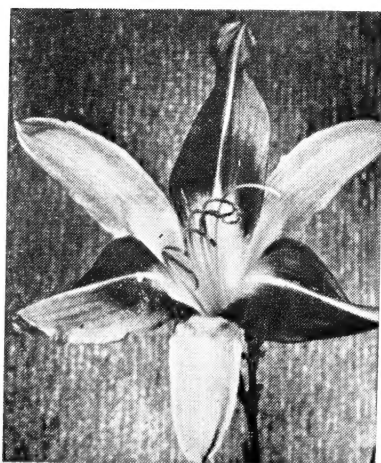
JUST MARY



BLACK HILLS  
ANNIS VICTORIA RUSSELL



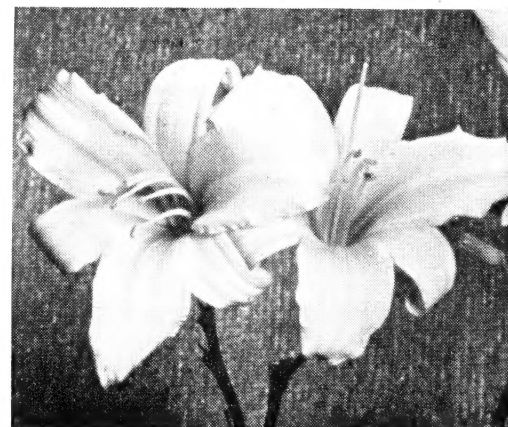
SIDE SHOW



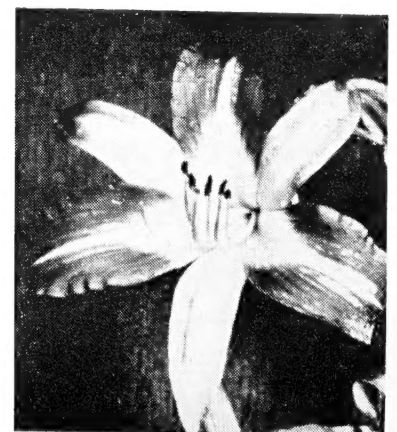
PURPLE FLASH



VICTORY

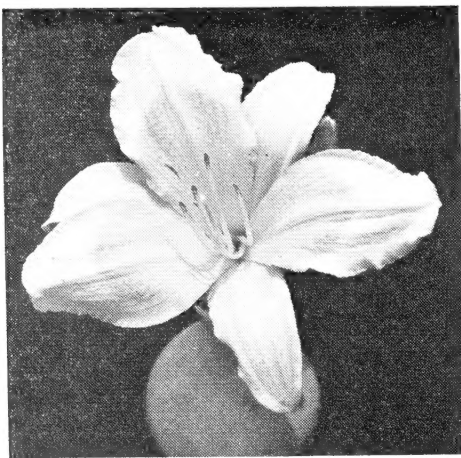


QUEEN OF GONZALES



LOUISIANA MOON





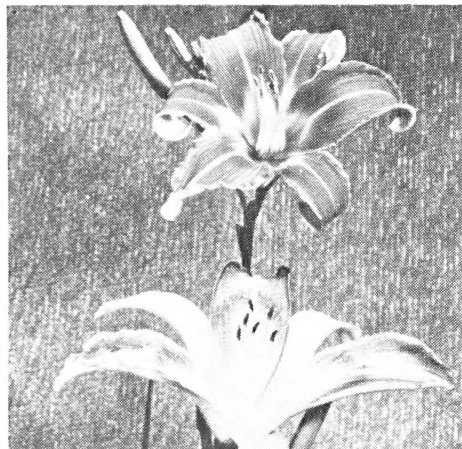
THE CHAMP

## THE CHAMP

This huge palest of pale yellows has lovely wide overlapping petals with a faint shading of rich copper that can hardly be seen late in the evening. Keeps excellent in the hottest sun and blooms profusely. Height, 3 ft. April, May, and June. . . . . \$2.00

## SCARLET PRINCESS

This lovely orange red flower is 4½ inches across, most profuse bloomer, with its brilliant ruffled petals fully recurved, a distinct but narrow yellow margin around the edges of each petal and sepal. A real jewel. Keeps well. Height, 3 ft. March, April, May. . . . \$2.00



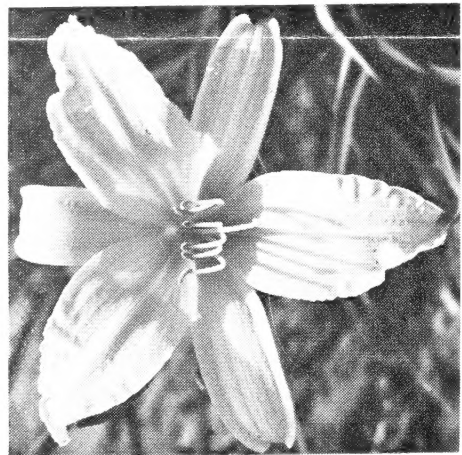
SCARLET PRINCESS • MAMIE LAKE

## MAMIE LAKE

This lovely variety was named for the past President of the Texas Federation of Garden Clubs and is one of the most unusual colors ever found in a Daylily. It has blooms 6 to 7 inches across with lemon sepals and fairly wide rosy petals with deeper rose eye zone. 3 ft. April, May, June. . . . . \$3.00

## JOY RUSSELL

This is the tallest of the really pale lemons. The 5-inch bloom of perfect texture opens full; the color is much paler than those usually described as lemon. Its height, after being established, is something not to be overlooked when planning your garden. Keeps well. 4 ft. April, May, June. . . . . \$1.00



JOY RUSSELL

## OTHER GLORIOUS VARIETIES

*Not Pictured in This Folder and Described in Column to the Right.*

These prices have been reduced tremendously for this folder only and positively will not prevail and are absolutely void after March 1st, 1948. We reserve the right to change these prices of those listed without notice at any time, until our new catalog is issued in the spring. Order early and avail yourself of these prices. We will reserve for you until you wish shipment made. Many of these are at reduced prices simply because they grow fast enough to allow it.

**BLACK EMPEROR**—Blooms 5 inches across, of a real dark red with a velvety texture that defies description. The throat is deep yellow. A most profuse bloomer. 4 ft. May, June. \$2.00.

**CITY OF MEXICO**—(1946.) This is a very fine 6-inch flower. The red-wine petals have a wide deep purple eye zone with a wide, almost white midrib. Ruffled, opens full, and has a most beautiful shade of yellow in its throat. The vividness of this color pattern represents the bright colors found in Mexico. This is an excellent keeper and multiplies fast. 3½ ft. April, May. \$3.00.

**FLAMING SWORD**—Deep fiery red, not as dark as mahogany, with an indescribable velvety sheen. Very free flowering, and because it is low-growing it looks like a small shrub when in full bloom. It has a beautiful chrome throat and is an excellent subject as a cut flower. One of our little "honeys" and certainly multiplies fast. Flower 3½ inches across. 2 ft. May, June. \$2.00.

**MEADOWLANDS**—This huge, beautiful flower is more than 6 inches across. Opens full, slightly flared, but with wide enough petals, deeply sprinkled rich rosy brown with a green throat. The petals are extremely ruffled, with a marking in the eye zone hard to describe. This huge dainty flower will please the most discriminating in their quest for the unusual in Daylilies. 3½ ft. April, May, and again in the summer. \$1.00.

**NIAZUMA**—(1946.) This 4½-inch bloom has the loveliest shape you could ever imagine. Its petals are wide, fully ruffled, and slightly recurved. It is a shade of the richest brilliant fiery red with deeper mahogany veins through the petals. The throat is green and the ruffled sepals have a faint lemon edge. A most profuse bloomer, admired by all. 3 ft. June, July. \$1.00.

**OLD VINTAGE**—This is a tall wine-colored Daylily with a yellow throat. Blooms not so large—about 4 inches—but a most profuse bloomer. Keeps well on the hottest days. 4½ feet. April, May. \$1.00.

**PAT FLEMING**—(1946.) This wide and ruffled flower has petals that are slightly twisted. It is true wine-red with deep burgundy veins. Sepals are lemon, richly overcast with the deepest wine; its throat is yellow shading to green. This makes an excellent cut flower because it keeps well late in the evening. This is surely my choice of all the wine-colored sorts. It has a beautiful velvety sheen. Bloom 4½ inches. 3½ ft. April, May. \$2.00.

**THE BATTLE CRY**—Deep red-purple with a rosy sheen, a color really hard to describe. The 4-inch bloom is profuse, opens full, and is one of the best in its color class. 2½ ft. June. \$2.00.

**RED TOKEN**—This deep mahogany-red cannot be overlooked in selecting an early-blooming variety. Its 5-inch blooms are mahogany-red with a deep purple eye zone. Its throat is green. The petals twist and recurve into a most graceful form. This is certainly a "jewel" for any garden and an unusually profuse bloomer. 2½ ft. May, June. \$1.00.

**ROSE OF GONZALES**—This is really a true rose—almost a rosy pink, with a deeper golden throat. A real "honey" if there ever was one. Multiplies very fast; hence the price. Opens full. Bloom 4½ inches across. 3½ ft. May, June. \$3.00.

**ROSE OF TRALEE**—This dainty little 4-inch flower is one of the best in the really rosy pink class that multiplies fast enough to be priced moderately. Its petals are true rose with a slightly deeper rose eye zone and deep rose veins. The sepals are a shade lighter, with a slight yellow midrib. Its throat is chartreuse-green and the dainty petals are ruffled. Makes a blaze of bloom. May, June. \$3.00.

**ROSE BEAUTY**—While not so deep a rose as some, this is far from salmon because it is too deep for that color class. Many visitors to our fields call it pink. Its wide petals and slightly ruffled sepals are unusually recurved. The texture is almost like leather, with a sulphur throat shading to green at the base. Quite the loveliest in its class, breaking the monotony of too many yellows in your garden. Quite a late bloomer. Multiplies fast. 4½-inch bloom. 3½ ft. June, July. \$3.00.

**RUSSELL'S MINUET**—For you who wish a dwarf lily with large 4½-inch blooms for your rock garden or the foreground of your border, this is it. The wide overlapping petals are rich rose, ruffled, and with a wide yellow stripe down the center of each. The sepals are pale canary. The stems stand stiff and erect, and are simply enveloped in bloom. 20 to 24 in. May, June. \$2.00.

**SUSAN**—The flower is 6 inches across. The ruffled petals are a rich brilliant red with a canary stripe in the center of each. The sepals are yellow in the center with a rosy red outer edge and to enhance this color combination further, there is a huge star-shaped green throat. A very profuse bloomer and a lovely companion for Glory of Texas and Mrs. B. F. Bonner, being so strikingly different. A fast multiplier. 3½ ft. June, July. \$2.00.

**TEJAS**—The most intense fiery red I have ever seen, with a yellow throat. It has a velvety sheen that simply glistens in the sun. Blooms 4 inches in diameter. 3 ft. April, May, June. \$2.00.

ANY 6 DAYLILIES PRICED AT \$1.00 EACH FOR \$5.00

## LA GLORIA SERIES

This series consists of the loveliest soft shades in pastels and soft salmons to light rose and tints of pink and combinations of such. So many of my clients have asked for Daylilies in colors to get away from the old yellow and orange shade; yet they do not want bold reds, wines,

6 for \$4.00

12 for \$7.50

and purples. Sold in a mixture only. These colors will satisfy the most discriminating as cut flowers in any drawing room or for the dinner table. Those of you who select this series are really in for a treat in Daylilies.

25 for \$13.00

## JACOB MURRAY SERIES

The Daylilies offered here are an entirely different mixture from that offered in the past in that there are more reds and wines of more intense colors. In this series there are nothing but reds, rose, purples, bi-colors, and the most indescribable color combinations. But since deciding many of these varieties are too much like some of the other more expensive varieties that are already on the market, we have decided to place them in this series, but in a mixture only.

If you want real beauty and care nothing for names, then by all means order these in quantities now. There will not be a solid yellow or common fulvous color in the entire lot. If orders are large or small, we will include a wide and varied selection and we will do our utmost to see that no two will be alike. Please do not ask us to pick special colors in this series because at this price it cannot be done.

These varieties have quite a varied blooming season and this mixture should give you at least three or four solid months bloom after they are established in your garden. Your order will be promptly acknowledged.

6 for \$3

12 for \$5

25 for \$10

100 for \$35

## SUNSHINE SERIES

*New Varieties in Yellow, Gold, and Lemons*

So many people still prefer yellows, lemons, and golds and even paler tints that we have decided to offer this Sunshine Series in a mixture but the varieties we have placed in this offer are unlike any we have ever sent out before in that they range in colors from the very palest to deep chromes in an assortment well balanced as to the heights, seasons of blooms, and forms of the flowers.

Most of them are huge giant blooms that are simply too much like those varieties that have been named for us to put them on the market under a name. Those of you who want huge displays of golden yellow in your garden will find this a wonderful offer and at unheard-of low prices for this quality Daylilies. Regardless of how many yellows you have in your garden, you will find these quite unlike any of them.

6 for \$3

12 for \$5

25 for \$10

100 for \$35

Fall 1947  
Spring 1948  
OUR FALL AND SPRING  
Specials

# New Daylilies

**I N N E W C O L O R S !**

REDS • WINES • ROSE • PURPLE • LEMONS • GOLDS AND BICOLORS IN EVERY SHAPE, FORM AND SIZE

---

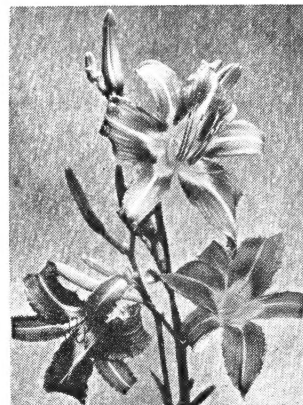
Daylilies will grow in sun or shade, acid or lime, wet or dry soil, and bloom beautifully with least care, but they respond to care and fertilization and will repay you many times for a little effort.

#### TRULY A LAZY MAN'S FLOWER

Here is the way to plant that long bed you've been trying to fill up—and to plant it for keeps. Perhaps you

need lots of color among your shrubby borders or along the bank of that lake. Try planting these in that shade where "nothing" else grows or in the hottest patios. The foliage also is beautiful.

These will come in excellent blooming size plants and all sent postpaid. Plant early for next season's bloom. Water them in a time or two, and they'll make it.



---

**RUSSELL GARDENS, *Spring, Texas***

WHERE AMERICA COMES FOR HER DAYLILIES!