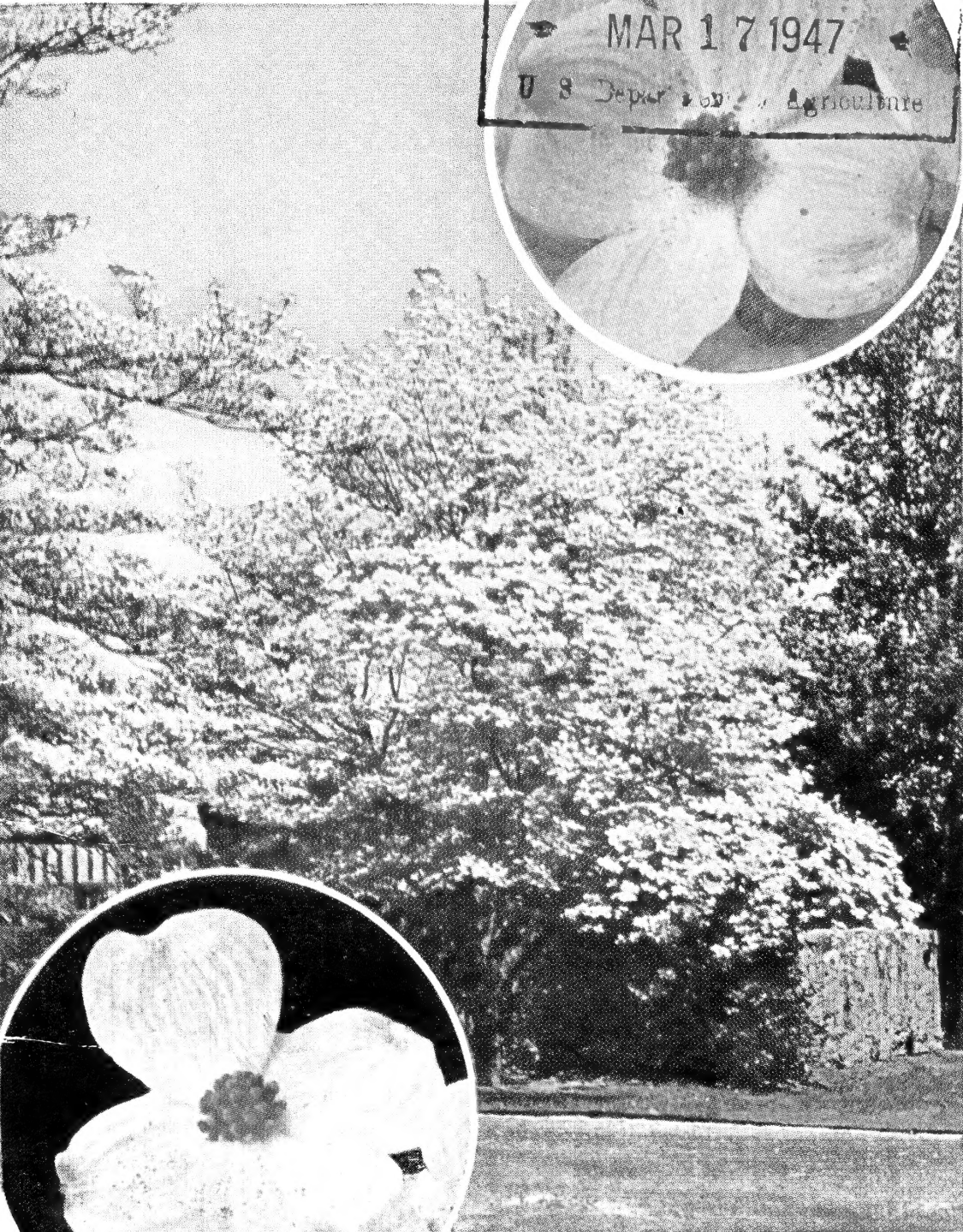


Historic, Archive Document

Do not assume content reflects current scientific knowledge, policies, or practices.

62.61

Pink Flowering Dogwood



White Flowering Dogwood

**SPRING
1947**

Rosedale
NURSERIES

*Saw Mill River Parkway
Eastview , , New York*



“BRISTOL RUBY”

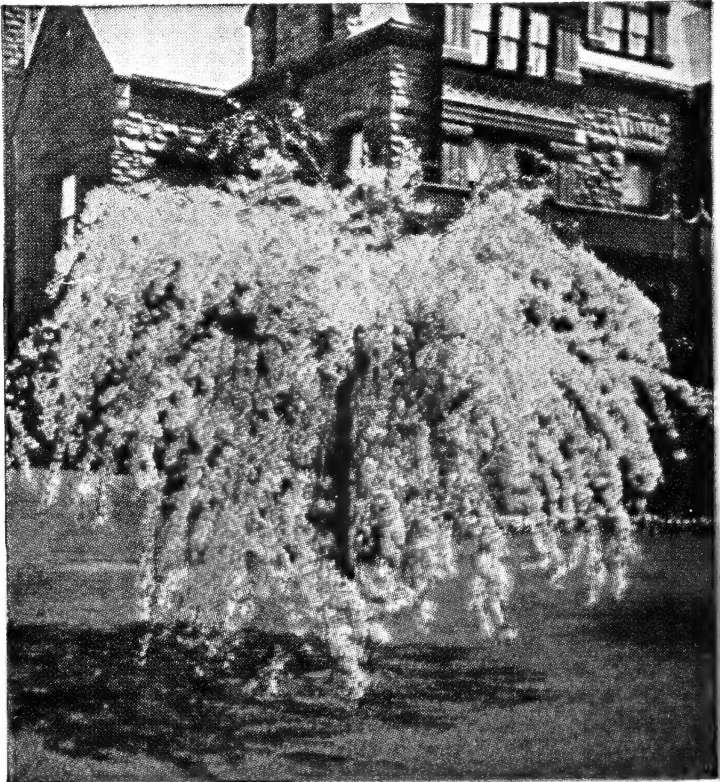
A New Brilliant Red Weigela

Hardier and more vigorous than the well-known Eva Rathke. Perfectly formed, well-rounded shrub. Wealth of blossoms in Summer and Fall. Color is pleasing soft, ruby-red shading to garnet-crimson.

2 to 3 ft. plants.....\$1.50 each, 3 for \$4.00

3 to 4 ft. plants..... 2.00 each, 3 for 5.50

Ships well—Express charges collect or add 10% for prepaid Parcel Post



WEeping JAPANESE CHERRY

Double Flowering Pink

These weeping Cherries are a delight to all who see them in bloom. Blooms are borne in great profusion and this double flowering type is very superior to the more common single flowering type.

3-yr.-old tops, 5 to 6 ft. well developed \$10.00 each



Saw Mill River Parkway Entrance to Nurseries

ROSEDALE

Offers Still More Fine Plants for 1947

We are very happy to offer this larger than usual list of nursery stock. While nursery stock in general is very scarce due to help shortages throughout the war, our stock is offered in a wider range of sizes and varieties than in recent years. Our Rose list includes 35% more varieties, including the best of the new and the finest of the old. So, too, with Rosedale Evergreens, Flowering Shrubs, Shade Trees and Fruit Trees. Our aim is to supply everything in plant material for the complete landscape. Items not on the list may be available in limited quantity.

We solicit your inquiries and welcome, as always, your visits to the nursery.

General Information

OUR GUARANTEE: We guarantee all nursery stock to be in first-class condition when delivered to the customer. Please advise us promptly of any damage or loss in handling.

We guarantee our nursery stock to be true to name and use every care to properly label as sold. Should any prove untrue we agree to replace or refund purchase price.

Provided account is paid in accordance with agree upon terms and plants have received reasonable care, we will replace at one-half price of the plants, any woody plants furnished which if planted in the Spring fail to survive through the Summer, or if planted in the Fall, fail to leaf out the following Spring. Plants originally planted by us shall be replaced as above plus the cost of planting.

MAIL ORDERS: While ours is primarily a local business within our truck delivery area we can handle Parcel Post, Express and Freight deliveries of all plants except those requiring a ball of earth.

No Mail Orders can be accepted for less than \$5.00.

No C.O.D. shipments will be made unless order is accompanied by a 25% deposit.

All shipping charges must be borne by the customer.

PLEASE GIVE CORRECT SHIPPING ADDRESS AND INSTRUCTIONS

Prices quoted here are for a fine grade of plant and include local delivery (Westchester County). We reserve the right where necessary to change prices without notice and to charge for personally-selected plants according to their individual value. A moderate delivery charge will apply to orders outside Westchester County.

INDEX

	Page		Page
Evergreen Trees	3-9	Laburnum. Golden Chain...	34
Abies. Fir.....	3	Magnolia.....	35
Chamaecyparis. Cypress....	4	Malus. Flowering Crab.....	35
Juniperus. Juniper.....	4	Prunus. Flowering Plums...	36
Picea. Spruce.....	5	Flowering Cherries.....	36
Pinus. Pine.....	6	Sorbus. Mountainash.....	36
Pseudotsuga. Douglas Fir... 6		Wisteria.....	36
Sciadopitys. Umbrella Pine.. 7		Fruit Trees	37-41
Taxus. Yew.....	7	Apples.....	37
Thuja. Arborvitae.....	8	Apricots.....	39
Tsuga. Hemlock.....	9	Cherries.....	39
Evergreens, Broadleaved ...10-14		Chinese Chestnuts... 3d Cover	
Abelia.....	10	Espalier Trees.....	41
Azaleas (<i>Evergreen</i>).....	10	Peaches.....	40
Azaleas (<i>Deciduous</i>).....	11	Pears.....	39
Berberis. Barberry.....	12	Plums.....	40
Cotoneaster.....	12	Fruits, Small	42-43
Ilex. Holly.....	13	Blackberries.....	42
Kalmia. Laurel.....	13	Blueberries.....	Back Cover
Leucothoe.....	13	Boysenberries.....	42
Pieris. Andromeda.....	13	Currants.....	42
Pyracantha. Firethorn.....	14	Gooseberries.....	42
Rhododendron.....	14	Grapes.....	42
Fertilizers, Soil Conditioners .. 46		Raspberries.....	43
Flowering Shrubs	21-28	General Information	1
Althaea. Rose of Sharon....	21	Gift Department	47
Amygdalus. Flowering Almond.....	21	Landscape Service	32, 33
Berberis. Barberry.....	22	Lawn Seed	44
Buddleia. Butterflybush....	22	Location of Nurseries	2
Calycanthus. Sweet Shrub...23		Mail Orders	1
Cydonia. Flowering Quince.. 23		Roses	17-20
Deutzia.....	23	Climbers.....	20
Enkianthus.....	24	Floribundas.....	19
Forsythia. Golden-bells.... 24		Hybrid Teas.....	19
Hydrangea. Snowball.....	24	Tree Roses.....	20
Kolkwitzia. Beautybush.... 24		Shade Trees	29-31
Ligustrum. Privet.....	24	Acer. Maple.....	29
Philadelphus. Mockorange.. 25		Betula. Birch.....	30
Spiraea. Spirea.....	27	Fagus. Beech.....	30
Syringa. Lilacs.....	26-27	Gleditsia. Honeylocust.... 30	
Viburnums.....	28	Liquidambar. Sweet Gum...30	
Weigela.....	28	Platanus. Sycamore.....	30
Flowering Trees	34-36	Quercus. Oak.....	31
Cornus. Dogwood.....	34	Salix. Willow.....	31
Crataegus. Hawthorn.....	34	Tilia. Linden.....	31
Location: 3½ miles north of Elmsford on Saw Mill River Parkway and on Saw Mill River Road. Entrance on both roads. 1 mile south of Hawthorne Circle on Saw Mill River Parkway.		Vine and Ground Covers .. 15-16	
Hours: During the planting season the Nurseries are open from 7:30 to 6:00 p.m. Monday through Saturday.			
Open Sundays March 16 through June 1			
Closed Sundays balance of year			
Visitors always welcome			

Location: 3½ miles north of Elmsford on Saw Mill River Parkway and on Saw Mill River Road. Entrance on both roads. 1 mile south of Hawthorne Circle on Saw Mill River Parkway.

Hours: During the planting season the Nurseries are open from 7:30 to 6:00 p.m. Monday through Saturday.

Open Sundays March 16 through June 1

Closed Sundays balance of year

Visitors always welcome

The illustrations and prices are typical of our large and varied stock, but specific plants may not be available at all times

Member: New York State Nurserymen's Association.
American Association of Nurserymen.

ROSEDALE NURSERIES

Howard C. Taylor, Owner

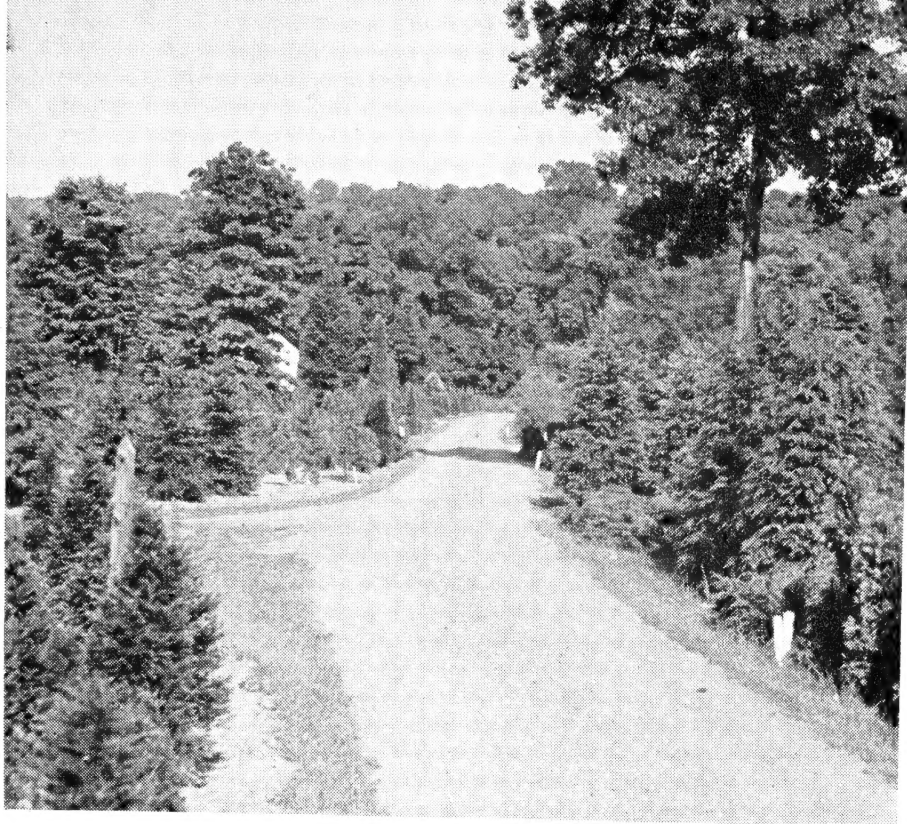
SAW MILL RIVER PARKWAY

EASTVIEW, NEW YORK

Telephones:

Pleasantville 889

Tarrytown 4-2620



Main Drive, Rosedale Nurseries

Evergreens

Rosedale Evergreens must be seen to be appreciated. They are healthy, vigorous, well-shaped and grown in a river valley soil ideally suited for safe and easy transplanting. We invite your personal selection and believe we can assist you in a proper selection of varieties better here at the nursery than any other way.

A combination of Evergreens and Evergreen Shrubs will produce an all-year planting of unsurpassed beauty. The variety of color formation available in Evergreens is not only extensive but almost unlimited.

ABIES · Fir

Homolepis (*Nikko Fir*). Hardy, beautiful Fir from the Orient. Dark green needles, silver on underside.

6 to 7 ft.....\$15.00 | 7 to 8 ft.....\$20.00
 8 to 9 ft.....\$25.00

The most important part of any tree is its root system. Here at Rosedale a great deal of emphasis is put on the development of the root system. Frequent transplanting and root pruning develops fibrous rather than heavy roots. This enables us to retain the entire root system when digging and means quicker and more vigorous growth when transplanted to your grounds. This is your assurance of satisfaction and real pleasure in your purchase.

We suggest doing your own planting wherever possible and it is easy to have success with Rosedale Evergreens. During the rush of Spring business, deliveries will be much more prompt if we are not required to plant.

CHAMAECYPARIS · Retinospora

These thrive best in moist soils and situations not too much exposed to Wintery gales. They are generally rapid growing types and should receive frequent shearing to keep them thick and attractive.

Obtusa nana compacta (*Dwarf Hinoki Cypress*). Very dwarf, dark green, irregular foliage. Extremely interesting plant for rockwork.

15 to 18 in. \$4.50 | 2 to 2½ ft. \$7.50
2½ to 3 ft. \$10.00

Pisifera. Quick-growing, feathery evergreen. Attains large size and grows bushy and thick. Useful for screen.

2 to 3 ft. \$4.50 | 3 to 4 ft. \$6.00
4 to 5 ft. \$9.00

P. aurea. A beautiful golden form with same delicate foliage as *Pisifera*.

2 to 3 ft. \$4.50 | 3 to 4 ft. \$7.50

Plumosa (*Plume Cypress*). Light green, soft, feathery, plume-like foliage; graceful habit.

2 to 3 ft. \$4.50 | 3 to 4 ft. \$7.50
4 to 5 ft. \$9.00

P. aurea (*Golden Plume Cypress*). Similar to *Plumosa* listed above except that the tips of growth are a golden color giving the entire plant a yellow cast.

2 to 3 ft. \$4.50 | 3 to 4 ft. \$7.50
4 to 5 ft. \$9.00

Squarrosa (*Moss Cypress*). A handsome, glaucous tree of striking appearance and color. Our strain is especially bright in color.

2 to 3 ft. \$5.00 | 3 to 4 ft. \$7.50
4 to 5 ft. \$12.00

JUNIPERUS · Juniper

All the Junipers are valuable ornamental plants—the upright species as single specimens or in groups and the low forms well adapted for rockery, slopes or banks. Junipers thrive best in a sandy, loam soil in sunny, open situations.

Chinensis columnaris. Fast growing, slender tapering spire.

Best substitute for our native Cedar. Hardy, light green, effective Evergreen.

4 to 5 ft. \$7.50 | 5 to 6 ft. \$9.00

Chinensis pfitzeriana (*Pfitzer's Spreading Juniper*). A handsome spreading form, slightly larger than most other spreading types. It has gray-green, plume-like foliage and is extremely useful as a filler in foundation or border planting. Hardy and indifferent to drought.

18 to 24 in. \$5.00 | 2½ to 3 ft. \$7.50
2 to 2½ ft. 6.00 | 3 to 3½ ft. 10.00
3½ to 4 ft. \$15.00

Chinensis sargentii. A low, trailing form with deep green foliage. Best Juniper for rock gardens.

18 to 24 in. \$5.00 | 2½ to 3 ft. \$9.00
2 to 2½ ft. 7.00 | 3 to 4 ft. 12.00



View in Nursery Taken July, 1946



Part of a Taxus Block in Our Nursery

JUNIPERS—Continued

Communis depressa plumosa (*Plumed Spreading Juniper*).

A dwarf form with grayish-green, plummy foliage.

2 to 2½ ft. \$4.50 | 2½ to 3 ft. \$6.00
3 to 4 ft. \$9.00

Excelsa stricta (*Greek Juniper*). Of upright, columnar habit with glaucous foliage.

18 to 24 in. \$3.50 | 2½ to 3 ft. \$7.50
2 to 2½ ft. 5.00 | 3 to 3½ ft. 9.00

Hibernica (*Irish Juniper*). A narrow, columnar, blue-green type. Attains about 7 to 8 ft. in height and is a great favorite for accent points in the garden.

18 to 24 in. \$3.50 | 2½ to 3 ft. \$6.00
2 to 2½ ft. 4.50 | 3 to 3½ ft. 7.50

Virginiana burki. A distinct, silver Cedar worthy of more attention. Uniform, upright growth of soft foliage.

4 to 5 ft. \$9.00

Virginiana cannarti. An aristocrat of Cedars. Upright, blackest green tree bearing quantities of the most ornamental blue berries.

4 to 5 ft. \$7.50

Virginiana keteleeri (*Keteleer Juniper*). Named for a landscape architect in Paris. This comparatively new variety is never attacked by aphid or blight. It grows in pyramidal form and is of very pleasing, light green color which it maintains during Winter.

3 to 3½ ft. \$5.50 | 3½ to 4 ft. \$7.50
4 to 5 ft. \$9.00

PICEA · Spruce

No group of Evergreens is more widely used in landscape work than the Spruces and many of them are among the most showy and rapid growing of their class. Spruces will grow in almost any kind of moderately moist soil and are easily transplanted.

Excelsa (*Norway Spruce*). Rapid growing Christmas tree type attaining great size. Useful for windbreak or individual specimen.

2 to 3 ft. \$3.00 | 3 to 4 ft. \$5.00
4 to 5 ft. \$8.00

Glauca albertiana conica (*Dwarf Alberta Spruce*). A dwarf form of dense, narrow, conical habit, with thin, slender leaves.

12 to 15 in. \$3.50 | 15 to 18 in. \$4.00
18 to 24 in. \$5.50

Omorika (*Serbian Spruce*). Dense pyramid attaining great size slowly. Needles are dark green above and silvery underneath and branches sweep out in arcs. Hardy and reliable.

18 to 24 in. \$3.50 | 2 to 2½ ft. \$5.00

Pungens glauca (*Colorado Blue Spruce*). These are selected Blue Spruce of fine, stately color and form. Grow to large size and will make delightful outdoor Christmas trees.

3 to 4 ft. \$10.00

PINUS · Pine

The Pines are essentially inhabitants of poor, sandy soils and dry situations. Their stout root systems enable them to seek scanty water supplies where other species find it difficult, and they thrive in any good soil.

Cembra (*Swiss Stone Pine*). Hardy dark green foliage; tree symmetrical, slow growing and compact. A very handsome lawn specimen narrowly pyramidal.

2 to 3 ft.....\$6.00 | 3 to 4 ft.....\$10.00
4 to 5 ft.....\$12.00

Montana mugho (*Dwarf Mugho Pine*). Low mounded Pine with short, stubby needles. Slow in growth, attaining greater spread than height.

15 to 18 in.....\$4.00 | 2½ to 3 ft.....\$7.50
3 to 3½ ft.....\$9.00

Nigra austriaca (*Austrian or Black Pine*). This flourishes near the seacoast and on high, bleak hills or in cities where smoke and dust would prohibit the use of many other evergreens.

4 to 5 ft.....\$9.00 | 5 to 6 ft.....\$12.00

Parviflora glauca (*Oriental White Pine*). A hardy tree of irregular growth with bluish green needles in tufts at the ends of branches. Very picturesque.

3 to 4 ft.....\$7.50 | 4 to 5 ft.....\$9.00

Peuce (*Macedonian Pine*). A very ornamental hardy Pine of regular, dense habit and slow growth. Needles rich silvery green about 3 inches long. Resembles Swiss Stone Pine.

3 to 4 ft.....\$6.00 | 4 to 5 ft.....\$9.00

Strobus (*White or Weymouth Pine*). This is beautiful in every stage of its growth, from a seedling to a stately tree of 150 ft. No other evergreen fulfills so well the requirements for rapid growth and none transplants more easily. Our large specimens, 35 ft. high and 18 ft. broad, may be moved with perfect safety.

3 to 4 ft.....\$5.00 | 6 to 7 ft.....\$15.00
4 to 5 ft..... 8.50 | 7 to 8 ft..... 18.00
5 to 6 ft.....12.00 | 8 to 9 ft..... 22.50

PSEUDOTSUGA

Douglasi (*Douglas Fir*). This handsome tree has gray-green foliage, is very hardy and extremely ornamental at all stages of growth. Its hardiness and beauty would be difficult to overrate. Thrives in Canada and will endure both drought and cold. Some specimens are rich deep green, others almost as blue as Blue Spruce. Douglas Fir does extremely well with us and believe we have superior stock to offer.

3 to 4 ft.....\$6.00 | 6 to 7 ft.....\$18.00
4 to 5 ft..... 8.00 | 7 to 8 ft..... 20.00
5 to 6 ft.....12.00 | 8 to 10 ft..... 25.00



Taxus and Douglas Fir in Our Nursery





Rosedale Evergreens, July, 1946

SCIADOPITYS

Verticillata (*Japanese Umbrella Pine*). A beautiful specimen for the lawn, narrowly pyramidal, with large, rich green needles in whorls. Very hardy and unusual.

2½ to 3 ft.....	\$5.00		4 to 5 ft.....	\$15.00
3 to 4 ft.....	7.50		5 to 6 ft.....	18.00

TAXUS · Yew

The Yews are very desirable Evergreens, densely clothed with dark green foliage. They thrive best in a moderately moist, sandy loam and endure shade well.

The hardiness and freedom from ills together with their dark green color and slow, rugged development, has made the Yews most popular of needled Evergreens. The modern planting includes a large number of Yews. The many varied shapes and types of growth make the Yews most satisfactory for so many different locations. Among other uses they make the finest of hedges.

Baccata repandens (*Spreading English Yew*). This dwarf, spreading form with its beautiful foliage and graceful, drooping branches is unique.

15 to 18 in.....	\$4.50		18 to 24 in.....	\$6.00
------------------	--------	--	------------------	--------

Cuspidata (*Spreading Japanese Yew*). Dense, spreading habit. Deep green foliage Especially useful near the house. Very hardy.

15 to 18 in.....	\$4.50		2 to 2½ ft.....	\$7.50
18 to 24 in.....	6.50		2½ to 3 ft.....	10.00
	3 to 3½ ft.....			\$15.00

A few large sizes priced on selection.

Cuspidata brevifolia (*Dwarf Japanese Yew*). Dwarf, compact, very hardy.

12 to 15 in.....	\$3.75		2½ to 3 ft.....	\$20.00
15 to 18 in.....	5.00		3 to 3½ ft.....	30.00
18 to 24 in.....	7.50		3½ to 4 ft.....	40.00
2 to 2½ ft.....	12.00		4 to 4½ ft.....	50.00
	4½ to 5 ft.....			\$75.00

Cuspidata capitata (*Upright Japanese Yew*). Upright tree form of *T. cuspidata*; very desirable for foundation planting. Best of evergreen hedges.

18 to 24 in.....	\$6.00		3 to 3½ ft.....	\$14.00
2 to 2½ ft.....	7.50		3½ to 4 ft.....	17.50
2½ to 3 ft.....	9.00		4 to 4½ ft.....	20.00
	4½ to 5 ft.....			\$25.00

A few large specimens priced on selection.

Hatfieldi (*Hatfield Upright Yew*). Finest upright Yew. Holds its form almost without trimming.

18 to 24 in.....	\$6.00		2 to 2½ ft.....	\$7.50
	2½ to 3 ft.....			\$9.00



Taxus Brevifolia Specimen

TAXUS—Continued

Hicksi (*Hicks Yew*). Interesting form of this most useful family. Exceptionally dark green needles. Grows in an upright, columnar shape.

18 to 24 in.....	\$6.00	3½ to 4 ft.....	\$15.00
2 to 2½ ft.....	7.50	4 to 4½ ft.....	17.50
2½ to 3 ft.....	9.00	4½ to 5 ft.....	20.00
3 to 3½ ft.....	12.00	5 to 5½ ft.....	25.00

Intermedia. Semi-dwarf variety, much superior to *Cuspidata* for foundation planting; dense and compact.

18 to 24 in.....	\$6.50	2 to 2½ ft.....	\$8.00
2½ to 3 ft.....	\$10.00		

Media browni. Slightly more erect than *Cuspidata*. Always better filled in center and forms large mound.

2 to 2½ ft.....	\$7.50	2½ to 3 ft.....	\$9.00
-----------------	--------	-----------------	--------

Media, Irish. A dense compact mound with slender, shiny dark green needles.

2 to 2½ ft.....	\$8.00	2½ to 3 ft.....	\$10.00
-----------------	--------	-----------------	---------

Moon's Columnar Yew. An upright Yew resembling the Hicks variety with dense, heavy, deeply foliated rich green in Winter as well as Summer. A suitable substitute for Boxwood. Splendid for hedge.

18 to 24 in.....	\$6.00	2½ to 3 ft.....	\$9.00
2 to 2½ ft.....	7.50	3 to 3½ ft.....	12.00

Ovata. A particularly heavy berrying, upright Yew.

2 to 2½ ft.....	\$6.00	2½ to 3 ft.....	\$9.00
-----------------	--------	-----------------	--------

THUJA · Arborvitae

Ornamental evergreen trees of narrow-pyramidal habit. They are favorites for formal gardens because of their regular, symmetrical habit. Adapted for hedges and windbreaks.

Thrive best in a moist, loamy soil, easily transplanted.

Occidentalis (*American Arborvitae*). Beautiful native tree, commonly known as White Cedar. Especially useful for hedges and screens.

3 to 4 ft.....	\$5.00	5 to 6 ft.....	\$9.00
4 to 5 ft.....	7.50	6 to 7 ft.....	12.00
7 to 8 ft.....	\$16.00		

Occidentalis pyramidalis (*Pyramidal Arborvitae*). The deep green color and upright pyramidal form of this species renders it conspicuous in contrast with other evergreens. It is very hardy and vigorous. We recommend this *Arborvitae* for an evergreen hedge.

4 to 5 ft.....	\$6.00	6 to 7 ft.....	\$12.00
5 to 6 ft.....	9.00	7 to 8 ft.....	14.00

THUJA—Continued

Occidentalis nigra (*Dark American Arborvitae*). An upright variety that maintains a dark, rich green.

4 to 5 ft.....\$6.50 | 5 to 6 ft.....\$9.00

Occidentalis spiralis. Compact tree, with upright branches and short, close set branchlets clothed with beautiful, dark foliage.

3 to 4 ft.....\$6.00 | 4 to 5 ft.....\$7.50
5 to 6 ft.....\$9.00

Occidentalis woodwardi (*Woodward Globe Arborvitae*).

Dense, globe-shaped variety which maintains its shape without shearing. The foliage is a pleasing sea-green in Summer; in Winter, bronze. Perfectly hardy. Grows about 3 ft. high.

18 to 24 in.....\$3.50 | 2 to 2½ ft.....\$5.00

Orientalis nana (*Golden Biota*). A neat compact, dwarf plant of round, or egg shape with yellow to bronze foliage.

Always retains its neat, compact form without training.

12 to 15 in.....\$2.00 | 15 to 18 in.....\$2.75
18 to 24 in.....\$3.50

TSUGA · Hemlock

Hemlocks can be used in many different ways; as lawn specimens they attain great size and beauty; by shearing they may be used in foundation planting and kept from overgrowing for years and years; for border or screen they form a most naturalistic background. Hemlocks thrive in shade or full sun and are practically immune to insects and disease.

Canadensis (*Canadian Hemlock*). A handsome, ornamental tree growing 70 to 100 ft. high. Dark green foliage. Hardy as far north as Canada.

18 to 24 in.....\$3.50	6 to 7 ft.....\$18.00
2 to 3 ft..... 5.00	7 to 8 ft..... 25.00
3 to 4 ft..... 7.50	8 to 9 ft..... 35.00
4 to 5 ft.....10.00	9 to 10 ft..... 50.00
5 to 6 ft.....15.00	10 to 12 ft..... 75.00

Canadensis sargentii (*Sargent's Weeping Hemlock*). Makes a tremendous mound of wavy outline many times broader than high, always well clothed and neat. Like all good things it develops slowly but becomes a real possession in your "personal" effects. Magnificent.

2 to 2½ ft.....\$7.50	3½ to 4 ft.....\$15.00
3 to 3½ ft.....10.00	4 to 4½ ft..... 20.00

Caroliniana (*Southern Hemlock*). Native of the mountains of the Southern States and perfectly hardy here in the North. A beautiful tree with dark green foliage and a habit of growth which makes it distinctly different from our Canadian Hemlock.

5 to 6 ft.....\$17.50	7 to 8 ft.....\$30.00
6 to 7 ft..... 20.00	8 to 9 ft..... 40.00

Specimen Hemlock in Our Nurseries ↓





Rhododendrons Growing in Our Nurseries

Evergreen Shrubs

for Year 'round Beauty

There is no class of plants which gives more satisfaction than Broadleaved Evergreens, for they are beautiful at all seasons of the year. Not only does this class include the most gorgeous flowering plants, but the foliage of some in Winter is even more beautiful than in Summer. This is especially true of the Leucothoe, whose leaves take on the finest shades of red, from bronze to intense scarlet. We are especially well supplied with these native American plants in both large and small sizes.

ABELIA

Abelia grandiflora (*Glossy Abelia*). A splendid half evergreen shrub bearing dainty, bell-shaped pink flowers from July until frost. The glossy foliage will persist all Winter in a protected spot.

2 to 3 ft. \$2.50

AZALEAS

Azalea amoena (*Evergreen*). Small, boxlike leaves on a neat, compact plant of rounded form. Leaves warm bronze hue in Winter. Covered with rosy, purple flowers in Spring. Very hardy.

Large Specimens Only

4½ to 5 ft. spread... \$35.00 each
 5 to 6 ft. spread... 45.00 each

Azalea hinodegiri (*Evergreen*). Probably the best of the Evergreen Azaleas for color, foliage and form. A low, compact plant with handsome, waxy foliage which turns bronze in Winter. The flowers are clear fine red, borne in great profusion in May. Splendid for facing Laurel and Rhododendron as mass planting. This stock is thick and compact and loaded with flower buds.

10 to 12 in. spread...	\$2.50	2 to 2½ ft. spread..	\$16.00
12 to 15 in. spread...	4.00	3 to 3½ ft. spread..	20.00
15 to 18 in. spread...	5.00	3½ to 4 ft. spread..	25.00
18 to 24 in. spread...	7.50	4 to 4½ ft. spread..	30.00
4½ to 5 ft.		\$35.00	

Azalea hinomayo (*Half Evergreen*). Similar to Hinodegiri except for color which is a clear soft pink. The habit of growth is somewhat more irregular than Hinodegiri.

15 to 18 in. spread... \$5.00 | 18 to 24 in. spread... \$6.00

AZALEAS—Continued

Azalea indica alba (Half Evergreen). Also called Snow Azalea. A fine combination with Hinodegiri, as the large white flowers appear at the same time. Grows slightly taller than most and is of purest white.

15 to 18 in.....	\$4.75		2 to 2½ ft.....	\$10.00
18 to 24 in.....	6.00		2½ to 3 ft.....	12.00

Azalea kaempferi (*Torch Azalea*). Half Evergreen. Not completely evergreen, but usually retains much of its foliage during Winter. Will grow to considerable height. The great profusion of bloom ranges in color from fire-red to salmon pink in varying shades.

15 to 18 in.....	\$4.00		2½ to 3 ft.....	\$8.50
18 to 24 in.....	5.00		3 to 3½ ft.....	10.00
2 to 2½ ft.....	6.00		4 to 5 ft.....	15.00

Azalea poukhanense (Half Evergreen). A broad plant of finest form with extremely large, lavender-blue, sweetly-scented blooms. Growth is modest and it is positively hardy, almost never losing a flower bud. We cannot recommend *Azalea poukhanense* too highly. Our stock is large and well grown.

18 to 24 in.....	\$5.00		2½ to 3 ft.....	\$10.00
2 to 2½ ft.....	6.00		3 to 3½ ft.....	15.00

Azalea Sunstar (Evergreen). A real hardy variety that will attain considerable size and usually grows about as wide as high. The profusion of bloom is unexcelled on any Azalea and is a coral red.

3 to 3½ ft.....	\$15.00
-----------------	---------

DECIDUOUS AZALEAS

For convenience we list here other varieties of Azaleas which are not evergreen, but which are just as beautiful and useful. They are slightly more hardy than evergreen types and combine splendidly with laurels and Rhododendrons, relieving the heavy, solid foliage of the Rhododendron with the lighter, more delicate, deciduous foliage.

Azalea altaclarensis. This is the finest yellow Azalea in our experience. Single, deep orange flowers changing to bright yellow, in large trusses. Hardy, good grower.

15 to 18 in.....	\$4.00
------------------	--------

Azalea arborescens. This is one of the few really hardy white forms. Blooms are quite large and occasionally tinged pink. Blooms late, usually mid-June, and the blooms have a delightful fragrance. A most desirable variety for mass plantings of native material.

18 to 24 in.....	\$4.25		2½ to 3 ft.....	\$7.50
2 to 2½ ft.....	5.00		3 to 4 ft. heavy.....	10.00
			4 to 4½ ft. heavy.....	\$15.00

Azalea calendulacea (*Flame Azalea*). A brilliant orange and yellow flowering native shrub. Tall but slow growing, free flowering.

2 to 2½ ft.....	\$4.50		3 to 4 ft.....	\$7.50
2½ to 3 ft.....	6.00		4 to 5 ft.....	9.00

KALMIA—MOUNTAIN LAUREL

K. latifolia (*Mountain Laurel*). The pink blooms of Mountain Laurel in June can hardly be matched by any other plant for profusion, delicate form or lasting quality. Most effective in group planting and must have acid soil.

18 to 24 in.....	\$3.50		2½ to 3 ft.....	\$6.00
2 to 2½ ft.....	4.75		3 to 4 ft.....	9.00

HARDY GHENT AZALEAS

They are absolutely hardy and rugged even in cold climates. Their foliage, even though deciduous, is handsome and especially valuable for its Autumn colors. Their bloom period follows *Azalea mollis*—usually May 15 to June 15.

Their captivating fragrance is akin to honeysuckle, as a base, with many other perfumed scents blended in.

2½ to 3 ft. \$7.50 | 3 to 3½ ft. \$10.00
3½ to 4 ft. \$15.00

***Azalea mucronulata*.** A most worthwhile variety for planting in front of Forsythia. Blooms at same time and the color combination is most striking. Flowers are lavender-pink.
18 to 24 in. \$3.50 | 2 to 2½ ft. \$5.00

***Azalea nudiflora* (*Pinxterbloom*).** Wild Honeysuckle. This lovely native is known to all who have tramped the woodlands in May. Fragrant pink.

18 to 24 in. \$2.75 | 3 to 4 ft. \$6.00
2 to 3 ft. 4.00 | 4 to 5 ft. 8.00

***Azalea vaseyi* (*Pinkshell Azalea*).** Shell-pink flowers in May. Blossoms cover the entire plant and make a striking picture before foliage has developed. A most lovely type.

18 to 24 in. \$4.50 | 2½ to 3 ft. heavy . . . \$7.50
2 to 2½ ft. 6.00 | 3 to 4 ft. heavy . . . 10.00
4 to 5 ft. heavy \$12.00

BERBERIS

***B. julianae* (*Wintergreen Barberry*).** Evergreen. Yellow flowers and purple fruit. Good ornamental for border, foundation or hedge.

15 to 18 in. \$3.50 | 18 to 24 in. \$4.50
2 to 2½ ft. \$6.00

COTONEASTER

The large family of Cotoneasters has many members of high value for landscape plantings. Cotoneasters grown in an open situation generally prove to be hardy throughout northern United States. They vary greatly in habit and attractiveness and rely upon their brilliantly colored fruit, more than floral beauty, for decorative effect. They do not transplant as readily as some shrubs and must be carefully handled during the transplanting operation. The generally interesting branching habit, both the low sprawly types and those with arching branches, are decorative all year.

***Cotoneaster applanata*.** A low spreading form similar to *horizontalis*. More compact grower with slightly more arching branches. Unexcelled rock garden variety.
10 to 12 in. \$2.25

***C. divaricata*.** A broadly spreading shrub which has tiny, glossy leaves interspersed with scarlet berries in Autumn. Vigorous grower.

18 to 24 in. \$2.50 | 2 to 3 ft. \$4.00

***C. francheti*.** Upright, dense shrub with wide spreading branches. Small pink flowers in June with a tremendous crop of orange berries in September; foliage grayish green.

15 to 18 in. \$2.50 | 18 to 24 in. \$3.50
2 to 3 ft. \$5.00

***C. henryana*.** A graceful shrub of spreading, drooping habit with reddish foliage. Bears an abundance of red berried clusters in Fall. Very fine for covering slopes.

18 to 24 in. \$3.50 | 2 to 3 ft. \$5.00

***C. horizontalis*.** One of the most effective fruiting shrubs for the rockery. Its low branches, almost horizontal, bear a profusion of bright red berries.

18 to 24 in. \$2.75

ILEX · The Hollies

There is something startling about the sight of a full-grown Holly tree aglow with red berries. Our imaginations are stirred by this familiar species not only because of its association with Christmas spirit and cheer, but by its crisp, dominant, year-round personality. Only one of this group looks anything like the tree Christmas Holly. They differ greatly in habit and use but all are among the most desirable of evergreen shrubs.

I. bullata (*Boxleaf Holly*). Resembles dwarf Boxwood in habit and foliage. Usually grows broader than high, with very glossy foliage. We recommend its wide use as it has a live, healthy look through the coldest weather.

15 to 18 in. \$4.00 | 18 to 24 in. \$6.00
 2½ to 3 ft. \$9.00

I. crenata. A rapid growing, dense evergreen bush with deep green, Boxwood-like foliage. A permanent plant of real character.

18 to 24 in. \$3.75 | 3 to 4 ft. \$6.50
 2 to 3 ft. 4.50 | 4 to 5 ft. 12.00
 5 to 6 ft. heavy. . \$15.00 to \$20.00

I. glabra (*Inkberry*). A bushy, upright growing, very hardy shrub with dark, oval foliage, small flowers and an abundance of glossy black fruit in the Fall. Useful for shady and moist locations.

18 to 24 in. \$3.50 | 2 to 2½ ft. \$4.75
 2½ to 3 ft. \$6.50

I. opaca (*American Holly*). The well known Christmas Holly, with red berries. Grows to a large tree but may be sheared to a dense bush. Both male and female plants should be planted. We believe we have one of the finest collections of American Holly available and all plants have been trained and transplanted frequently.

18 to 24 in. \$5.00 | 5 to 6 ft. \$15.00
 2 to 3 ft. 6.50 | 6 to 7 ft. 25.00
 3 to 4 ft. 8.50 | 7 to 8 ft. 35.00

I. rotundifolia (*Roundleaf Holly*). Compact evergreen shrub with shiny green foliage and black berries. An outstanding variety which is real hardy in Westchester.

2 to 2½ ft. \$7.50 | 2½ to 3 ft. \$9.00

KALMIA · Mountain Laurel

See page 11.

LEUCOTHOE

L. catesbaei (*Drooping Leucothoe*). Most beautiful dwarf shrub for either shade or sun. White, bell-shaped flowers cover the drooping stems in early Spring. Prices are low for bushy plants. The Fall and Winter color of foliage is bronze to red and most decorative. Cut the stems for decoration inside and it improves the plant and the stems will last for weeks inside.

15 to 18 in. \$2.50 | 2 to 2½ ft. \$5.00
 18 to 24 in. 4.00 | 2½ to 3 ft. 6.00

PIERIS

P. japonica (*Andromeda*). Hardy Laurel-like leafed plant of unequalled value in a broadleaf planting. Glossy leaves of various shades with lovely sprays of Lily-of-the-valley-like clusters of white flowers in very early Spring.

15 to 18 in. \$4.00 | 2½ to 3 ft. \$9.00
 18 to 24 in. 5.00 | 3 to 3½ ft. 12.00
 2 to 2½ ft. 7.50 | 3½ to 4 ft. 17.50
 4x4 ft. specimens. \$25.00

PYRACANTHA

P. coccinea lalandi (*Firethorn*). Semi-evergreen. Strong, slender branches rising from the ground develops stubby side growths upon which are hung the numerous orange red berries. Amazingly beautiful in the Fall, especially when planted against a gray stone background.

2 to 3 ft.....\$5.00 | 3 to 4 ft.....\$7.50

RHODODENDRONS

With beautiful blossoms in the Spring and rich green foliage during the Winter months, Rhododendrons are indispensable in any planting. Little care is needed after the plants are once established. They succeed in any light acid soil; enjoy Summer shade and dislike "wet feet." We will give you full instructions for planting and cultural care.

Carolinianum. A very early blooming variety, small and compact. Has handsome, dark green leaves and in May and June produces a profusion of soft rose pink bloom. A great favorite.

18 to 24 in.....\$5.00 | 2½ to 3 ft.....\$8.00
2 to 2½ ft..... 6.50 | 3 to 4 ft.....12.00

Catawbiense. A native, free-flowering variety, the parent of most hybrids. Will grow in any soil that is free from lime, is very hardy, and needs little attention. Large, round clusters of deep rosy purple flowers appearing in May or June, just after R. Carolinianum. Well budded plants.

18 to 24 in.....\$4.00 | 2½ to 3 ft.....\$7.50
2 to 2½ ft..... 5.00 | 3 to 3½ ft..... 9.00

Maximum (*Rosebay*). Our native Rhododendron, with white and light pink flowers. Nursery-grown plants.

2 to 3 ft.....\$5.00 | 3½ to 4 ft.....\$9.00
3 to 3½ ft..... 7.50 | 4 to 5 ft.\$12.00 to 15.00
5 to 6 ft.....\$15.00 to 20.00

RHODODENDRON HYBRIDS

These are the grafted named Rhododendrons which produce such gorgeous displays of color in June.

We offer only varieties hardy in this section. Their foliage is somewhat better than native types, and they almost never fail to set bloom buds.

Hybrid Rhododendrons are so scarce this year that we can accept orders at the nursery only since we do not have sufficient stock to list varieties here.

The following colors are available: **Pink, Red, White, Lavender.**

15 to 18 in.....\$6.50 | 18 to 24 in.....\$8.00
2 to 2½ ft.....\$10.00
Large specimens.....\$25.00 to \$40.00

↓ **Pieris Japonica**





Clematis Paniculata

Hardy Climbing VINES AND GROUND COVERS

Vines are often slow to start growth and reluctant to climb. To aid you in establishing a quick vine growth we have pre-planted most of the varieties listed below to stimulate quick growth. They are already growing in paper pots and may be planted without a setback. Many will climb 6 to 10 feet the first season.

AMPELOPSIS lowi. A small edition of Boston Ivy, much more delicate in every respect. The small leaves are crowded on the shoot and often curiously twisted. Useful for low walls.
2 yr. from pots.....\$1.00 each

A. tricuspidata (veitchi). (*Boston Ivy*). Closely clinging vine with medium sized foliage turning red in Autumn. Its rapid growth and closely clinging habit make it most popular for brick, stone or stucco walls.
2 yr.....Ea. \$1.00, per doz. \$10.00

BIGNONIA radicans (*Trumpet Creeper*). Orange-scarlet, trumpet-shaped flowers in clusters from July to September. Rapid grower but does not flower young. Must be supported
2 yr.....Ea. \$1.00

B. Mme. Galen. An especially fine variety similar to above but with very large, striking salmon-red trumpets. We highly recommend this decorative vine.
2 yr.....Ea. \$1.25

CELASTRUS orbiculatus (*Oriental Bittersweet*). Well known native Bittersweet. Splendid for fences and rocks or will make a shrub. The oriental variety differs from the native only that it bears more berries.
18 to 24 in.....Ea. 75c., per doz. \$7.50

CLEMATIS jackmani (*Purple Clematis*). Large purple single flowers from June to August. Striking.
2 yr.....Ea. \$1.25, per doz. \$12.00

C. paniculata (*Old-fashioned Clematis*). The sweet September fragrance of this old favorite indicates its presence long before the flower-laden vine is seen, and the feathery seeds are also decorative. Belongs to the home.
1 yr.....Ea. 60c.
2 yr.....Ea. 75c., per doz. \$7.50

EUONYMUS radicans. Self-clinging evergreen vine. Especially good for covering low stone walls and can be used for underplanting of evergreens.
12 to 18 in.....Ea. \$1.00, per doz. \$10.00

VINES—Continued

E. radicans vegetus (*Evergreen Bittersweet*). Low spreading shrub, but will climb high on masonry walls.

15 to 18 in.....Ea. \$1.25 | 18 to 24 in.....Ea. \$1.75

HEDERA helix (*English Ivy*). The truly evergreen Ivy which so picturesquely covers many stone buildings. English Ivy will gracefully hang over a wall or may be planted at the base and trained up. A grand ground cover plant in mass under trees or other shady or semi-shady locations.

4 in. pots.....Ea. 40c., per doz. \$4.00

LONICERA japonica halliana (*Honeysuckle*). Semi-evergreen ground cover vine with fragrant yellow and white flowers. Indispensable for covering banks. Will hold soil in place and permanently cover barren areas.

2 yr.....Ea. 35c., \$3.50 per doz., \$25.00 per 100

PACHYSANDRA terminalis (*Japanese Spurge*). Most popular evergreen ground cover plant. Spreads rapidly and gives the finishing touch to a planting of conifers. Grows in shade where grass will not thrive. Use plenty of humus in soil and plant closely.

Rooted Cuttings.....\$5.00 per 100, \$45.00 per 1000
2½ in. pots.....\$15.00 per 100

POLYGONUM auberti (*Chinese Fleecevine*). Slender, vigorous vine for arbor, trellis, or fence. Curious silver-white flowers in tremendous profusion.

2 yr. 6 in. pots.....Ea. \$1.25

VINCA minor (*Myrtle*). Dense evergreen ground cover. Small, dark, green leaves on slender trailing branches. Blue flowers in late Spring.

2 yr., field-grown.....\$2.50 per doz., \$20.00 per 100

WISTERIA sinensis (*Chinese Wisteria*). Fragrant, lavender flowers in long, drooping clusters. Grafted plants only. The most reliable to bloom.

2 yr.....Ea. \$1.00 | 4 yr.....Ea. \$2.50
3 yr.....Ea. 1.50 | 5 yr.....Ea. 4.00
XX Heavy.....Ea. \$7.50



Pachysandra Terminalis



ROSEDALE ROSES

Available March 1st—the best Time to Plant, Late March or April

Roses are still very scarce. Order immediately and mention second choice or allow us to substitute similar colors. Advance orders will be taken with 25% deposit for the following varieties.

HARDY HYBRID TEA OR EVERBLOOMING ROSES

Two Years Old, Field Grown, Low-budded on Multiflora Stock—The Best for Outdoor Planting—\$1.25 each, 5 for \$6.00

Ami Quinard. Dark maroon red. Semi-double flower with velvety sheen.

Autumn. Burnt orange, streaked with red. Moderately fragrant.

Betty Uprichard. Carmine buds, opening to salmon-orange inside flower. A vigorous, prolific Rose of delightful coloring and fragrance.

Caledonia. White; hardy and long-lasting, with large, very double blooms. Slightly fragrant.

Condesa de Sastago. Pink two-tone. Coppery pink inside with golden tint outside. Raspberry fragrance.

Dame Edith Helen. Pink. Large and full continuous bloomer. Intensely fragrant.

Edel. White; ivory shading at base. A flower of great quality.

HYBRID TEA ROSES—*Continued*

- Edith Nellie Perkins.** Pink two-tone. Salmon pink inside, rich copper tinged rose outside. Large and continuous bloomer. Mildly fragrant.
- Editor McFarland.** Pink. Shades from deep apricot to coral pink as bud opens.
- E. G. Hill.** Deep maroon. Warm, velvety color inside; very fragrant. Continuous.
- Etoile de Hollande.** Bright red. Large, loose, semi-double flowers of great fragrance.
- Golden Charm.** Yellow. Lemon-yellow buds splashed with crimson opening to large double yellow flowers.
- Grenoble.** Scarlet red. Large, tall, hardy plant with luxuriant foliage.
- Hinrich Gaede.** Orange yellow. Large flower flushed with Nasturtium red.
- Heinrich Wendland.** Golden yellow. A glorious combination of golden yellow and Nasturtium red on reverse sides of the petals.
- K. A. Viktoria.** White. Soft, pearly white with lemon-yellow center. Very fragrant.
- Luxembourg.** Yellow. Buds long and pointed; full blooms deep bronzy-yellow.
- Margaret McGredy.** Scarlet, overlaid with orange. As flower opens, changes to carmine rose. Fragrant.
- McGredy's Scarlet.** Rose-red with scarlet sheen. Tall growing.
- Mme. Jules Bouche.** White, blush pink in center. Fragrant and always in bloom.
- Mrs. Chas. Bell.** Shell pink. Buds and blooms are shaded with soft salmon tints. Fragrant.
- Mrs. E. P. Thom.** Yellow. Very fine buds and open flowers of rich color. Delicate fragrance.
- Mrs. P. S. DuPont.** Yellow. Deep golden, semi-double flower of medium size. Fragrant.
- Radiance.** Pink. Large flower of delicate cameo-pink. Blooms all season. Intensely fragrant.
- Red Radiance.** Red. Very large blooms of long lasting quality and even color. Extremely fragrant. Tall growing.
- Soeur Therese.** Daffodil yellow. Buds, silvery yellow; blooms have markings of mauve red. Fragrant.
- Talisman.** Orange-rose-yellow-red. Highest colored of the garden Roses.



RECENTLY INTRODUCED PATENTED VARIETIES

- American Flagship** (Plant Pat. No. 676). Dark red. Rich, velvety crimson with maroon shadings. Does not blue. Urn-shaped buds, double flowers. Official flower of American Airlines. **\$1.50 each.**
- Countess Vandal** (Plant Pat. No. 38). Bicolor. Coppery bronze and pink flooded with gold. Fine fragrance. **\$1.50 each.**
- Crimson Glory** (Plant Pat. No. 105). Oxblood red. Intense deep vivid crimson. Wonderful fragrance. **\$1.50 each.**
- Eclipse** (Plant Pat. No. 172). Yellow. A rich, clear gold color. Produces abundantly. Continuous bloomer. **\$1.50 each.**
- Heart's Desire** (Plant Pat. No. 501). Crimson. Velvety-like, double blooms of great fragrance. **\$1.50 each.**
- Mirandy** (Plant Pat. No. 632). Maroon red. Both buds and blooms of unusual brilliance. Extremely large, very double flowers of penetrating fragrance. **\$2.00 each.**
- Mary Margaret McBride** (Plant Pat. No. 537). Coral pink. Base of petals suffused with gold. Admired for its perfect form and extra large, double blooms. **\$1.50 each.**
- Peace** (Plant Pat. No. 591). Canary yellow to creamy ivory. Deep yellow buds with cerise-tipped edges swelling to creamy-white blooms with delicate pink tints. Unusually large, double and long-lasting. The 1946 All-America Award winner. **\$2.50 each.**
- R. M. S. Queen Mary** (Plant Pat. No. 249). Salmon-pink. A glorious combination of vivid shades of salmon and pure pink with an orange base. Strong, vigorous plant of delicate perfume. **\$1.50 each.**
- Show Girl** (Plant Pat. No. 646). Deep pink. Long, firm buds of rich coloring, on long stems, making for excellent cutting. Delicate fragrance. A sturdy plant. **\$2.00 each.**

FLORIBUNDAS, Always in Bloom

Large-flowered, Polyantha-type shrub Roses. Very hardy. Excellent for bedding, borders, and hedges.

\$1.25 each, 5 for \$6.00

- Betty Prior** (Plant Pat. No. 340). Pink. Outside of petals dark carmine; inside, several shades lighter. Single flower borne in large clusters. Best for mass planting. Very fragrant.
- Donald Prior** (Plant Pat. No. 377). Red. Bright scarlet tinted with crimson. Semi-double and very free flowering. Fragrant. Continuous bloomer.
- Else Poulsen.** Pink; medium size, semi-double flowers of lasting bright pink.
- Improved Lafayette.** Red. A fine bedding Rose of glowing vivid color. Flowers profusely.
- Mrs. R. M. Finch.** White. Although pink when first open and then changing to blush, the bloom is white, large and showy.
- Pink Gruss an Aachen.** Pink. Large, full flowers of deep salmon-rose. Hardy in semi-shade. Blooms prolifically.
- Pink Jewel.** Arbutus pink. Large, densely double flower shading to deep rose in center.
- Pink Lafayette.** Pink. Full, double blooms on dwarf, bushy plant. Constant bloomer.
- Red Velvet.** Vivid crimson. A recent, semi-double Rose which produces continuously.
- World's Fair** (Plant Pat. No. 362). Scarlet. Dark velvety clusters of blooms virtually hide this bushy plant. Large, double flowers open to show a mass of golden stamens.

RELIABLE CLIMBING ROSES

These large-flowered, hardy climbers need little care. All varieties, \$1.25 each, 5 for \$6.00, except as noted

Apricot Glow. Pink; coppery pink, double blooms in abundant clusters. A brilliant new shade that appeals to all.

Blaze (Plant Pat. No. 10). Scarlet. Vividly shaded, double flowers. An improved variety of Paul's Scarlet. Takes on everblooming characteristics as plant matures. \$1.50 each, 5 for \$7.25.

Jacotte. Yellow. Orange-yellow blooms with tints of coppery-red. Large, semi-double flower. Delightfully fragrant.

Mary Wallace. Pink. Large, bright pink flowers with a luminous sheen. Vigorous grower, with bright green foliage.

Mme. Gregoire Staechelin. Pink. Huge, fragrant, delicate pink flowers stained with crimson. One of the finest of all Climbers.

Paul's Scarlet. Red. Intensely red flowers borne in loose clusters. Most popular red climber.

Silver Moon. White. Big, saucer-shaped, moon-white flowers with brilliant yellow centers. Handsome foliage.

Dr. Van Fleet. Light pink. Large, fragrant flowers on fine, long stems. Very vigorous and hardy.

TRAILING GROUND COVER ROSES

Max Graf. Pink. Large single, shining pink flowers. Fine for banks and rocks. \$1.00 each, \$10.00 per dozen.

Wichuraiana. White. Clusters of starry white flowers. Glossy leaves. One of the best for bank covers. \$1.00 each, \$10.00 per dozen.

TREE ROSES

Roses in tree or standard form, with their crowns of glorious color add an unusual note of beauty and distinction to your garden. Budded on sturdy stock, they bloom abundantly from June through frost. We offer your favorite varieties in Tree Roses, too.

\$5.00 each

Charlotte Armstrong (Plant Pat. No. 455). Blood red to cerise.

Countess Vandal (Plant Pat. No. 38). Bronze pink tinged with gold.

Crimson Glory (Plant Pat. No. 105). Oxblood red to crimson.

Eclipse (Plant Pat. No. 172). Golden yellow.

K. A. Viktoria. White, yellow center.

Peace (Plant Pat. No. 591). Creamy-yellow and pink.

Talisman. Bicolor. Scarlet-gold to pale yellow.

MISCELLANEOUS ROSES

Skyrocket. Hardy, shrub-like in character. Bears deep pink blooms throughout the season. Often covered with blooms, buds, and seed pods at the same time. \$1.25 each.

Rosa Hugonis. Dainty, single yellow flowers on shrub-like plant. First to bloom in the early Spring. \$1.25 each.

FLOWERING SHRUBS

Shrubs are all-important in the planting of any grounds. Either in groups, borders, or individual specimens, they are equally beautiful. They are especially effective as a screen or border and marking boundaries where formal hedges are not desired. By careful selection you may have shrubs in blossom throughout the entire growing season. We do not crowd the plants growing in our nursery which allows for the maximum development.

ACANTHOPANAX pentaphyllum (*Aralia pentaphylla*).

An attractive, prickly shrub of dense growth. The lovely bright green leaves of tropical appearance make it desirable for a hedge, bank or slope planting. Thrives almost anywhere and will withstand city atmospheric conditions.

2 to 3 ft.....\$1.00

ALTHAEA (*Rose of Sharon*). A rather erect and tall-growing shrub of neat form. Blooms in late Summer, beginning in August and lasting usually until heavy frosts. Splendid plants in following varieties.

A. coelestis. Single, blue. An outstanding, newer form of a delightful shade.

2 to 3 ft.....\$1.00

A. Double Pink. A nice clear shade of pink and a robust erect-growing shrub.

2 to 3 ft.....\$1.00

A. Double Red. An attractive, deep shade of red. Stronger grower than most named varieties.

2 to 3 ft.....\$1.50

A. Double White.

2 to 3 ft.....\$1.00 | 3 to 4 ft.....\$1.50

A. totus alba. Finest single white of all.

3 to 4 ft.....\$1.50

AMELANCHIER canadensis. Small, graceful tree or large shrub of clumpy habit. Snowy flowers in early Spring and maroon fruit in June.

2 to 3 ft.....\$1.25 | 3 to 4 ft.....\$2.00

AMYGDALUS (*Flowering Almond*). Profusion of deep pink, double rosettes on bare stems in late April and early May. Pink or white.

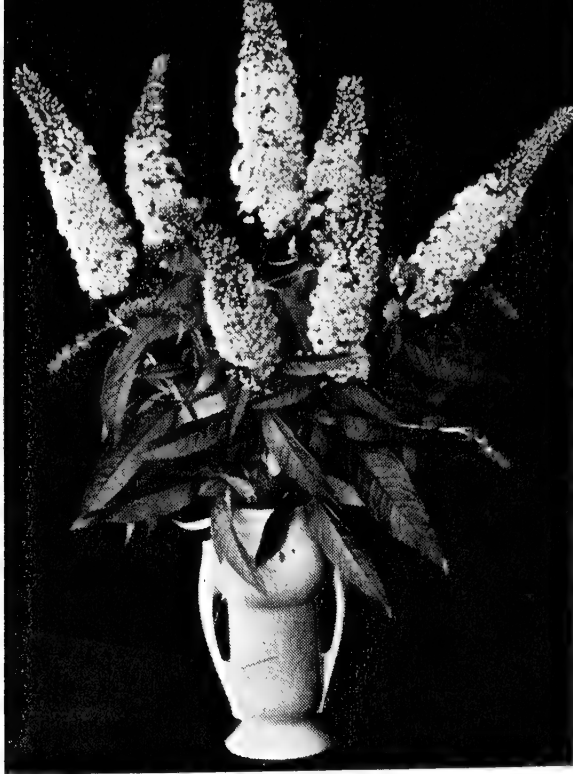
18 to 24 in. light....\$1.00 | 2 to 2½ ft. heavy... 1.50
2½ to 3 ft.....\$2.50

ARONIA arbutifolia (*Red Chokeberry*). Handsome red Autumn foliage on a shrub of modest growth. Abundance of bright red berries, very attractive to birds. Upright growth.

2 to 3 ft.....\$1.50 | 3 to 4 ft.....\$2.00

BENZOIN aestivale (*Spicebush*). Native shrub with fringed yellow flowers in early Spring. Leaves and twigs aromatic.

2 to 3 ft.....\$1.00 | 3 to 4 ft.....\$1.25



Buddleia, White Bouquet

BERBERIS *koreana* (*Korean Barberry*). A hardy species from Korea, large blotched leaves and upright, uniform growth. Gorgeous Fall coloring of most brilliant scarlet. Large clusters of red berries.

2 to 3 ft. \$1.00 each, \$90.00 per 100

B. mentorensis (*Plant Pat. No. 99*). A brand new variety of strong, rugged, upright habit. More beautiful than Japanese Barberry. Able to withstand heat and draught. Foliage darkest green and holds late in Fall. Highly recommended.

15 to 18 in. 75c. each, \$55.00 per 100

2 to 2½ ft. \$1.10 each, \$90.00 per 100

2½ to 3 ft. \$1.50 each, \$115.00 per 100

Heavy Specimens. \$3.50 to \$7.50 each

B. thunbergi (*Japanese Barberry*). Commonly used in hedges. Red berries in the Fall.

15 to 18 in. 60c. each, \$45.00 per 100

18 to 24 in. 75c. each, \$55.00 per 100

BUDDLEIA, Charming (*Butterflybush*). A glorious shrub, bearing throughout the late Summer and Autumn elegant sprays with lavender-pink blooms.

2 yr. \$0.90

2 yr. Heavy Potted. \$1.25

B. Dubonnet. A glorious color—a counterpart of the popular French wine, Dubonnet. Erect, strong-stemmed.

2 yr. \$0.90

2 yr. Heavy Potted. \$1.25

B. Ile de France. Fragrant, brilliant rosy purple flowers, suffused violet. Profuse bloomer. Large flower spikes.

2 yr. \$0.90

2 yr. Heavy Potted. \$1.25

B. White Bouquet (*New White Butterflybush*). Long, lovely, fragrant, glistening white sprays like White Lilacs all Summer and Fall, on graceful, medium-sized bush that seldom exceeds 5 to 6 ft. in height. Sweetly fragrant and attractive to butterflies. This is something distinctly different in Buddleias and is a definite contribution to Horticulture. You will want several in your garden this year. Long lasting cut flowers for the house and just as beautiful in the garden.

2 yr. \$0.90

2 yr. Heavy Potted. \$1.25



Deutzia Gracilis

CALLICARPA purpurea (*Beautyberry*). An attractive shrub, growing about 3 to 4 ft. tall, bearing an abundance of small, pink flowers in August, followed by innumerable glittering, lavender blue berries in dense clusters along the branches.
 2 yr.....\$1.25

CALYCANTHUS floridus (*Sweet Shrub*). An old-fashioned shrub with chocolate colored blossoms. Leaves and bark have a spicy fragrance. A splendid bush.
 2 to 3 ft.....\$1.00 | 3 to 4 ft.....\$1.50
 4 to 5 ft.....\$2.50

CLETHRA alnifolia (*Sweet Pepperbush*). An upright, slow-growing shrub with spikes of fragrant white flowers in late Summer. Fine for naturalizing.
 2 to 3 ft.....\$1.00 | 3 to 4 ft.....\$1.50

CYDONIA japonica (*Flowering Quince*). Early blooming shrub with shiny green foliage and deep crimson flowers.
 18 to 24 in.....\$1.00 | 2 to 3 ft.....\$1.25

C. superba carolina. An excellent pink flowering variety of Japanese Quince which is much admired.
 18 to 24 in.....\$1.75 | 2 to 3 ft.....\$2.50

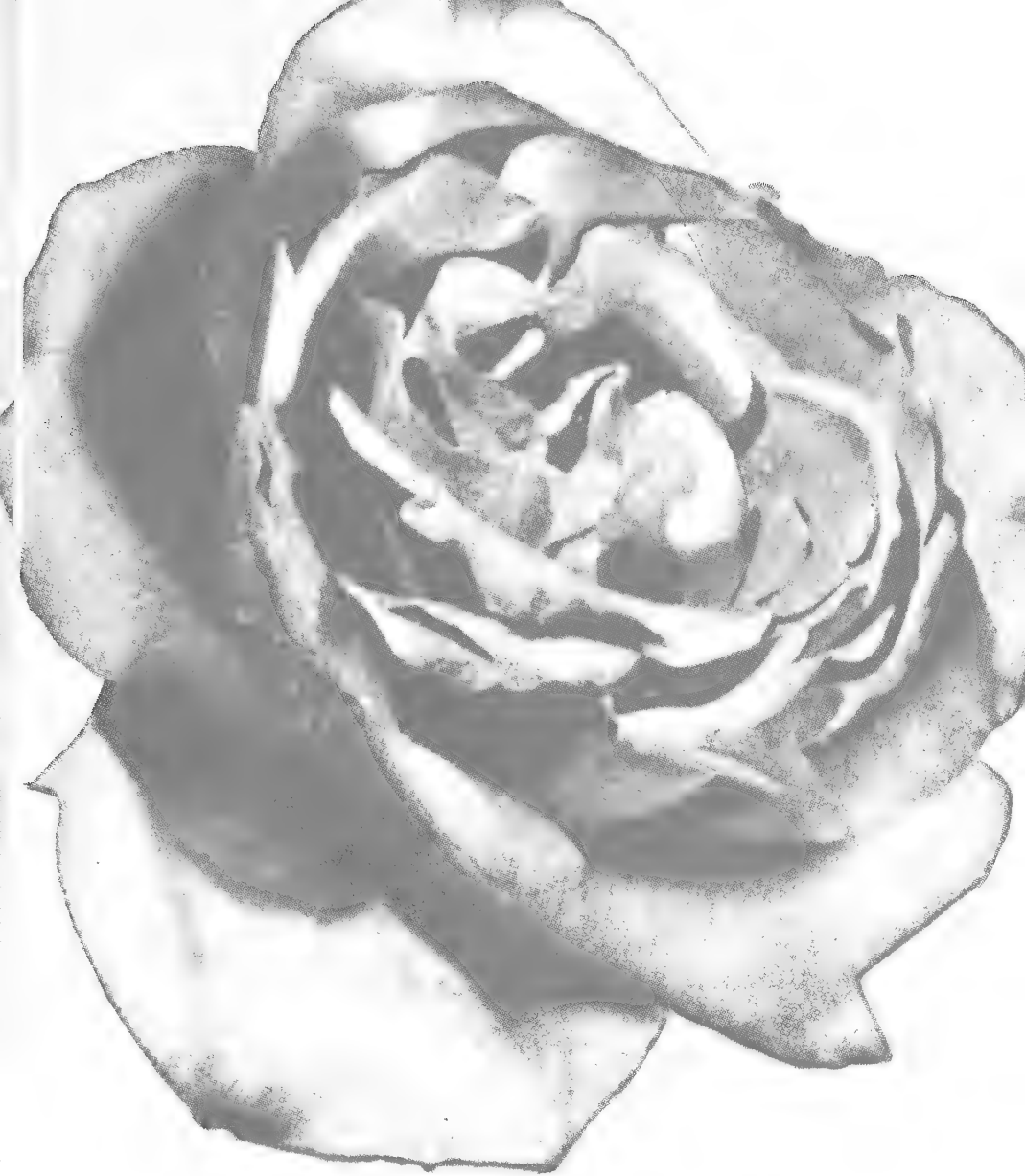
DAPHNE Somerset. Fragrant, easy to grow, almost ever-green shrub of medium size. Has all the good qualities of *Daphne cneorum* with the advantage of hardiness and larger growth.
 12 to 15 in.....\$1.00 each | 15 to 18 in.....\$1.50 each

DEUTZIA gracilis (*Slender Deutzia*). A dwarf variety with small, white flowers that completely cover it in May.
 12 to 15 in.....\$0.75 | 15 to 18 in.....\$1.00

D. gracilis rosea (*Rose-panicked Deutzia*). Pink form of *D. gracilis*.
 15 to 18 in.....\$0.75

D. scabra, Pride of Rochester. White flowers borne in July in great profusion. A handsome shrub of vigorous habit. Attains about 8 ft. in height.
 2 to 3 ft.....\$0.75 | 3 to 4 ft.....\$1.25
 4 to 5 ft.....\$2.00

- ENKIANTHUS campanulatus** (*Redvein Enkianthus*). Without artificial shaping, will develop into a handsome, large shrub, well clothed with clean foliage which turns brilliant red in Fall. Bunches of nodding flowers are borne on the whorled branches and these red-veined white cups are quite unlike any other flower.
 3 to 4 ft.....\$6.00 | 4 to 5 ft.....\$7.50
- EUONYMUS alatus** (*Corkbark Euonymus*). Particularly striking shrub, especially in Autumn and Winter, with corky wings and scarlet Fall foliage and berries. Blooms white.
 2 to 3 ft.....\$1.50 | 3 to 4 ft.....\$2.25
 4 to 5 ft.....\$3.50
- E. alatus compacta**. Just as beautiful and much neater and slower in growth than the original. A grand specimen or may be used in foundation planting.
 18 to 24 in.....\$1.75 | 2 to 3 ft.....\$2.50
- FORSYTHIA spectabilis** (*Showy Border Forsythia*). By far the best of the Forsythias in color, size of flower and profusion of bloom.
 2 to 3 ft.....\$0.75 | 3 to 4 ft.....\$1.00
 4 to 5 ft.....\$1.50
- HALESIA tetraptera** (*Silver Bell*). A slender shrub, attaining a height of 12 ft. The flowers resemble small silver bells. Bloom in May.
 6 to 7 ft.....\$6.00 | 8 to 10 ft.....\$12.00
 7 to 8 ft..... 7.50 | 10 to 12 ft..... 15.00
- HAMAMELIS virginiana** (*Witch-hazel*). Irregular spreading shrub, with large, oval leaves. Blooms with small yellow flowers close to stem in November. Thrives on deep shade or full sun.
 3 to 4 ft.....\$1.50 | 4 to 5 ft.....\$2.50
- HYDRANGEA arborescens** (*Summer Hydrangea*). Large, pure white blooms in July and August.
 3 to 4 ft.....\$1.50
- H. paniculata grandiflora** (*Peegee Hydrangea*). The best known Hydrangea with immense, conical, pink and white blooms from July to September.
 2 to 3 ft.....\$1.00 | 3 to 4 ft.....\$1.50
- ILEX verticillata** (*Winterberry*). Berrying plants. A fine, native shrub, carrying its bright red berries practically all Winter. Upright habit with black bark and clean, attractive foliage. Plant in groups to insure production of berries.
 4 to 5 ft.....\$2.50 | 5 to 6 ft.....\$5.00
- KERRIA japonica pleniflora**. A slender, green branched shrub with double, bright yellow flowers. Very attractive.
 2 to 3 ft.....\$1.25
- KOLKWITZIA amabilis** (*Beautybush*). A new shrub with slim, arching branches covered with pink flowers in June. We highly recommend it.
 18 to 24 in.....\$1.00 | 2 to 3 ft.....\$1.50
 3 to 4 ft.....\$2.00
- LIGUSTRUM ibota** (*Ibota Privet*). Graceful, arching branches with small, white flowers in clusters. Makes a splendid informal hedge. Exceptionally hardy.
 2 to 3 ft.....\$0.60 | 4 to 5 ft.....\$1.50
 3 to 4 ft..... .85 | 5 to 6 ft..... 2.50
- L. ovalifolium** (*California Privet*). The form most commonly used for hedges.
 2 to 3 ft.....\$2.50 per doz., \$20.00 per 100
 3 to 4 ft.....\$3.00 per doz., \$25.00 per 100
- L. regelianum** (*Regel Privet*). A low spreading form, almost horizontal.
 2 to 3 ft.....\$0.85 | 3 to 4 ft.....\$1.25



“PEACE” (Pat. No. 591).....Each \$2.50

Two Glorious New Roses

“CRIMSON GLORY” (Pat. No. 105)....Each \$1.50



1947 Collection of Choice Roses

- 1 — ETOILE DE HOLLANDE
- 2 — PINK RADIANCE
- 3 — SOEUR THERESE
- 4 — RED RADIANCE
- 5 — EDITH NELLIE PERKINS

\$6.00

3

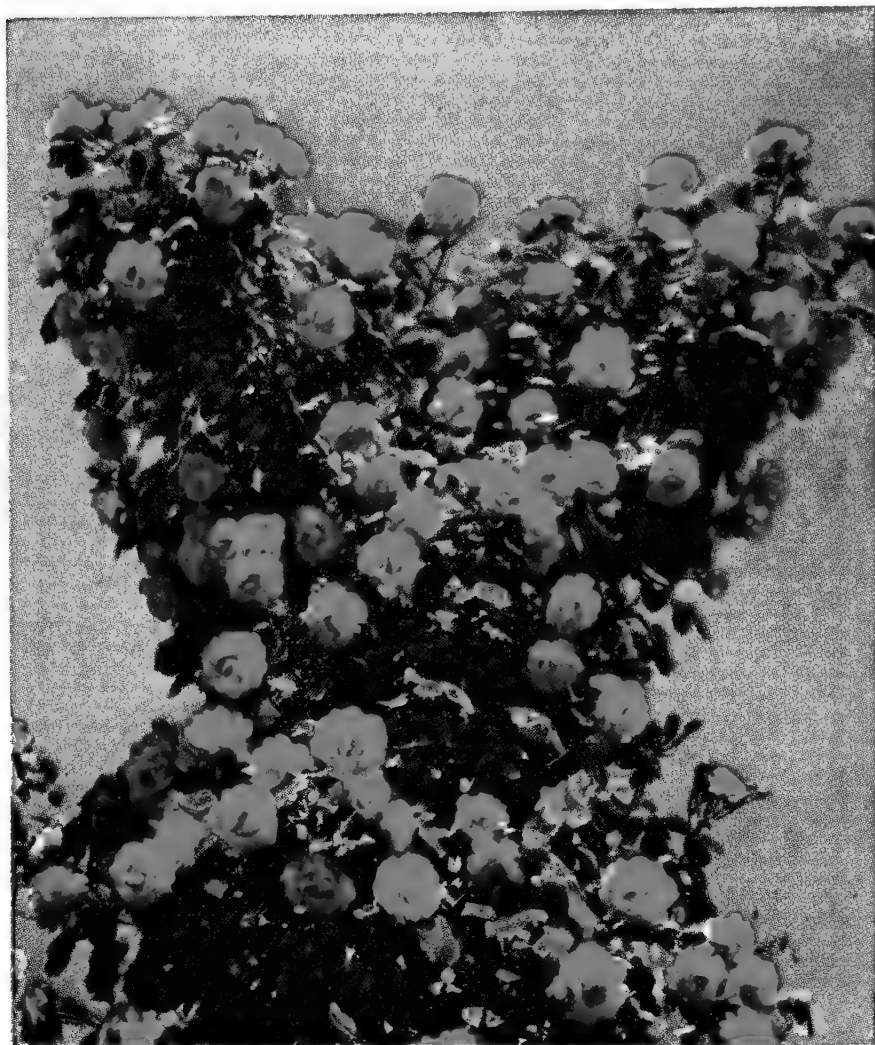


4



2

THE MOST POPULAR CLIMBER



"Paul's Scarlet Climber"

Often said to be world's most popular red climbing Rose. A blaze of color in June. Hardy and disease resistant. Plant them on fences, trellis, banks or arbors
Heavy, 2-year plants, \$1.25 each, 5 for \$6.00

"World's Fair"

FLORIBUNDA ROSE

Pat. No. 362



LONICERA tartarica (*Upright Honeysuckle*). Finest in habit of Bush Honeysuckles. A rapid grower, attaining 10 to 12 ft. in height. May be had in either Pink or White-flowering varieties.

2 to 3 ft.....\$1.00 | 3 to 4 ft.....\$1.25
4 to 5 ft.....\$2.00

L. zabelli. A new very red shrub Honeysuckle of medium growth. Bears an abundance of red fruit and blossoms are bright and in great profusion.

3 to 4 ft.....\$1.50 | 4 to 5 ft.....\$2.00

PHILADELPHUS coronarius (*Sweet Mockorange*). Extremely fragrant variety of Mockorange. Blooms white in May and June.

2 to 3 ft.....\$1.00 | 3 to 4 ft.....\$1.50
4 to 5 ft.....\$2.50

P. Minnesota Snowflake (Plant Patent No. 538). A grand addition to the Philadelphus family which produces a profusion of large, very double, pure white flowers of some fragrance. Shrub grows bushy and shapely and in this respect very superior to Philadelphus Virginal.

2 to 3 ft.....\$1.50 | 3 to 4 ft.....\$2.00
4 to 5 ft.....\$3.00

P. virginal (*Double Mockorange*). Fine, double-flowering variety, which blooms profusely.

2 to 3 ft.....\$1.50 | 3 to 4 ft.....\$2.00
4 to 5 ft.....\$3.00

RHODOTYPOS kerrioides (*Jetbead*). Small, shapely shrub. bearing white flowers and black berries. Foliage handsome, Good for shade.

2 to 3 ft.....\$1.00

SALIX caprea (*Pussy Willow*). Desirable for early Spring effects and will do well in dry locations as well as wet.

2 to 3 ft.....\$0.75



Philadelphus, Minnesota Snowflake



Hybrid Lilac, Marie Le Graye

HYBRID LILACS

Almost everybody knows and loves the old-fashioned purple Lilac, but only a few know how exquisitely lovely the French Hybrids are. They are just as easy to grow, and bloom when they are even younger. The flowers are relatively huge and are borne in enormous clusters, sometimes six or seven clusters combined in one great truss. Here is a list of favorite varieties which are so exquisitely lovely and different that you will want them all in the border as specimens.

2 to 3 ft.....	\$2.25	4 to 5 ft...	\$4.00 to \$6.00
3 to 4 ft.....	3.00	5 to 6 ft...	7.50 to 12.00
		8 to 12 ft...	\$12.00 to \$25.00

Some specimens in different colors.

FRENCH HYBRID LILAC VARIETIES

- Belle de Nancy.** Double satiny rose. 2 to 3 ft., 3 to 4 ft., 4 to 5 ft.
- Chas. Joly.** Purple red. One of the best double dark reds. 2 to 3 ft.
- Charles X.** Single, rich purple red. 2 to 3 ft., 3 to 4 ft., 4 to 5 ft.
- Emile Gentile.** Double, cobalt blue. 3 to 4 ft.
- Ellen Willmott.** Large, double, white. 2 to 3 ft., 3 to 4 ft., 4 to 5 ft.
- Hugo Koster.** Large, soft lilac. Dwarf, bushy growth. 2 to 3 ft.
- Katherine Havemeyer.** Immense double trusses. Mauve pink. 4 to 5 ft.
- Lucie Baltet.** A fine single, coppery-old rose, entirely unlike any other Lilac in color. 2 to 3 ft.
- Marie Le Graye.** Single, white. 2 to 3 ft., 3 to 4 ft.
- Mme. Casimir Perier.** Double, creamy white. 2 to 3 ft., 3 to 4 ft., 4 to 5 ft.
- Mme. Lemoine.** Double white. 2 to 3 ft., 3 to 4 ft., 4 to 5 ft., 5 to 6 ft., 6 to 7 ft.
- President Grevy.** Double, blue. 2 to 3 ft., 3 to 4 ft., 4 to 5 ft., 5 to 6 ft.
- President Poincare.** A very large double flowering purplish-red on outside, turning to lavender-blue as they open. 2 to 3 ft., 3 to 4 ft.
- Reamur.** Single, subdued rose-red. 3 to 4 ft., 4 to 5 ft.
- Souv. de Ludwig Spaeth.** Single, reddish purple. 2 to 3 ft., 3 to 4 ft., 4 to 5 ft.

OTHER FINE LILACS

SYRINGA (*Lilac*). Our stock of these favorite flowering plants is very complete in both common and French Hybrid varieties. We have a quantity of plants much larger than are listed here and will be pleased to receive your inquiries or a personal inspection.

S. persica (*Persian Lilac*). A graceful shrub with slender branches and single pale lilac flowers.

2 to 3 ft.....\$1.50

S. vulgaris (*Common Purple Lilac*). Considered by many as fine as any hybrid. Bears large clusters of fragrant purple flowers in May.

2 to 3 ft.....\$1.50 | 4 to 5 ft.....\$6.00

3 to 4 ft..... 2.50 | 5 to 6 ft.....10.00

10 to 12 ft. heavy.....\$25.00

S. vulgaris alba (*Common White Lilac*). Fragrant single white flowers.

2 to 3 ft.....\$1.50 | 3 to 4 ft.....\$2.50

4 to 5 ft.....\$5.00

SPIRAEA, Anthony Waterer (*Dwarf Spirea*). A small, compact shrub with pink flowers in July.

18 to 24 in.....\$0.75 | 2 to 2½ ft.....\$1.00

S. prunifolia (*True Bridalwreath*). Long racemes of pure white flowers in May. Small, glossy foliage.

18 to 24 in.....\$1.00 | 2 to 3 ft.....\$1.50

S. thunbergi (*Thunberg Spirea*). Semi-dwarf sort with very fine foliage and small white flowers. Dense.

18 to 24 in.....\$0.75 | 2 to 3 ft.....\$1.00

S. vanhouttei. Ever popular variety, producing an abundance of small white flowers in clusters.

2 to 3 ft.....\$0.65 | 3 to 4 ft.....\$1.00

3 to 4 ft. heavy.....\$1.50

STEPHANANDRA flexuosa (*Lace Shrub*). Splendid shrub of erect habit, with cut foliage. Striking at all seasons.

2 to 3 ft.....\$1.00 | 3 to 4 ft.....\$1.50

SYMPHORICARPOS chenaulti. Pink-berried form of Coralberry. Grows compact and has a better than average foliage.

2 to 3 ft.....\$0.75

S. racemosus (*Snowberry*). Pink flowers and white berries in profusion. Thrives in shade and is excellent for hillside.

2 to 3 ft.....\$0.75 | 3 to 4 ft.....\$1.00

S. vulgaris (*Coralberry*). Bears clusters of small red berries which remain most of the Winter.

2 to 3 ft.....\$0.75 | 3 to 4 ft.....\$1.00

VITEX macrophylla. A graceful shrub with attractive spikes of lovely lavender blue flowers. Blooms profusely from July to frost. Dies back in Winter, similar to Buddleia.

3 yr. heavy.....\$1.75

- VIBURNUMS.** Probably comprise more desirable varieties for landscape use than any other family of shrubs.
- V. burkwoodi.** Often called an improved *Viburnum carlesii*, differing in growth, foliage and time of bloom which is earlier. Growth is vigorous and foliage glossy. Flowers creamy white and very fragrant.
18 to 24 in. \$3.50
- V. carlesii** (*Fragrant Viburnum*). Most fragrant of all flowering shrubs. A blossom of this delightful shrub will scent an entire room. Fairly dwarf and slow in growth it eventually attains 5 to 6 ft. in height. Blooms are creamy white and borne in considerable profusion. Very scarce.
15 to 18 in. \$2.50 | 18 to 24 in. \$3.50
2 to 2½ ft. \$4.50
- V. dentatum** (*Arrowwood*). Bushy shrub with white flowers and blue berries. Fine for shade.
2 to 3 ft. \$0.75 | 4 to 5 ft. \$2.50
3 to 4 ft. 1.50 | 5 to 6 ft. 5.00
- V. dilatatum** (*Linden Viburnum*). Finest of the *Viburnums*. White flowers followed by immense clusters of bright red berries which turn the entire shrub red.
2 to 3 ft. \$1.50 | 4 to 5 ft. \$4.00
3 to 4 ft. 2.50 | 5 to 6 ft. 6.00
- V. opulus** (*Highbush Cranberry*). White flowers, followed by Cranberry-like fruit which persists all Winter. Rapid grower
2 to 3 ft. \$1.00 | 3 to 4 ft. \$1.50
4 to 5 ft. \$2.50
- V. sieboldi.** Vigorous shrub, attaining great size Berries pink, changing to black. Large, deep green, leathery leaves.
2 to 3 ft. \$1.25 | 3 to 4 ft. \$2.00
4 to 5 ft. \$3.50
- V. theiferum.** Large compound white flowers followed by huge clusters of brilliant scarlet berries. Probably the most showy of all *Viburnums* when in berry.
3 to 4 ft. \$1.50 | 4 to 5 ft. \$2.50
5 to 6 ft. \$5.00
- V. tomentosum** (*Single Japanese Snowball*). White flowers in profusion, followed by red berries. Foliage red in Fall.
2 to 3 ft. \$1.00 | 3 to 4 ft. heavy . . . \$2.00
3 to 4 ft. 1.50 | 4 to 5 ft. 2.50
5 to 6 ft. \$3.50
- WEIGELA, Bristol Ruby** (New)—(Improved *Eva Rathke*). *Bristol Ruby* is a better *Eva Rathke*. Hardier and more vigorous, developing to a shapely shrub. Color is a soft ruby red shading to garnet crimson.
2 to 3 ft. \$1.50 | 3 to 4 ft. \$2.00
- W. candida.** Sometimes called *Snow Weigela*. Creamy-white trumpet-like flowers in early June.
3 to 4 ft. \$1.50
- W. Eva Rathke.** Slower growing than other *Weigelas* but the finest of all. Dark crimson flowers in profusion.
2 to 3 ft. \$1.00
- W. Feerie.** A fine pink *Weigela*, less coarse than other varieties. This graceful shrub produces an enormous profusion of charming flowers a week or so earlier than *Rosea*.
3 to 4 ft. \$2.00 | 4 to 5 ft. \$2.50
- W. floribunda.** Extremely vigorous bright crimson flowers.
2 to 3 ft. \$0.75 | 3 to 4 ft. \$1.00
4 to 5 ft. \$1.50
- W. Gustav Mallot.** A fine red variety of much sturdier growth than *Eva Rathke* and growing somewhat larger. Highly recommended.
2 to 3 ft. \$1.50 | 3 to 4 ft. \$2.00
- W. rosea.** Medium growth with rose-colored flowers in June.
2 to 3 ft. \$0.75 | 3 to 4 ft. \$1.00



Norway Maples in the Nursery

Shade Trees

The soil at Rosedale insures good root systems which in turn insures well developed shade trees. They are well spaced in rows at our nursery to allow for proper development of top. We grow only varieties which will succeed in existing climatic conditions in this territory. You will find in our list varieties for almost every purpose.

ACER · Maple

The Maples are universally popular. They are regular in outline, vigorous growers, beautiful in foliage, and adapt themselves to almost any soil. The Norway Maple is especially desirable for street planting and thrives well near the sea.

Palmatum atropurpureum (*Redleaved Japanese Maple*).

A comparatively dwarf Maple, slow in growth and attaining ultimately about 20 ft. in height. Bright red foliage and branches. These are well shaped.

2 to 2½ ft.....	\$7.50	3 to 4 ft.....	\$12.00
2½ to 3 ft.....	9.00	4 to 5 ft.....	18.00
5 to 6 ft.....	\$20.00		

Palmatum dissectum (*Cutleaf Japanese Maple*). Very dwarf form with finely cut purple red leaves. Very graceful and a real treasure when fully developed.

18 to 24 in.....	\$5.00	2½ to 3 ft.....	\$12.00
2 to 2½ ft.....	7.50	3 to 4 ft.....	20.00

Platanoides (*Norway Maple*). Foremost of the Maples because of its regular outline, widespreading branches, and deep green foliage which is retained after the first heavy frosts.

1¾ to 2 in. cal.....	\$7.50	3 to 3½ in. cal.....	\$18.00
2 to 2½ in. cal.....	12.00	3½ to 4 in. cal.....	25.00
2½ to 3 in. cal.....	15.00	4 to 4½ in. cal.B&B	40.00
Larger sizes priced on application.			

Saccharum (*Sugar Maple*). A beautiful tree of upright form. Attains a greater height than the Norway Maple and colors yellow and red in Fall.

1¾ to 2 in. cal.....	\$7.50	2½ to 3 in. cal.....	\$16.00
2 to 2½ in. cal.....	12.00	3 to 3½ in. cal.....	22.50
3½ to 4 in. cal.....	\$30.00		

BETULA • Birch

Alba (*European White Birch*). Very graceful habit and creamy white bark even in the young trees.

8 to 10 ft.....\$5.00 | 10 to 12 ft.....\$7.50
12 to 14 ft.....\$15.00

Populifolia (*Gray or Silver Birch*). Generally in clumps of two or more white trunks rising gracefully from the ground. The small leaves quiver at the slightest breeze.

10 to 12 ft.....\$12.00 | 12 to 14 ft.....\$25.00
14 to 16 ft.....\$35.00

FAGUS Beech

Americana (*American Beech*). Grows slowly, but a handsome native, whose clean, gray-barked trunks are familiar in light woods. Prefers well-drained soil and Spring planting.

7 to 8 ft.....\$17.50 | 10 to 12 ft.....\$40.00
8 to 10 ft..... 25.00 | 12 to 14 ft..... 65.00

Sylvatica (*European Beech*). For screen or hedge, this Beech is ideal among deciduous trees. It gives nearly as much screen in Winter as in Summer, owing to the fact that the dead leaves persist in Winter. As it bears the shears well, it may be kept within bounds for hedge purposes and grows as dense as any hedge.

5 to 6 ft.....\$10.00 | 7 to 8 ft.....\$17.50
8 to 10 ft.....\$25.00

Sylvatica riversi (*Rivers Purple Beech*). This tree is similar to the European Beech except for its beautiful purple foliage. Handsome and dignified.

6 to 7 ft.....\$15.00 | 10 to 12 ft.....\$40.00
7 to 8 ft..... 22.50 | 12 to 14 ft..... 60.00

GLEDITSIA

Gleditsia inermis (*Thornless Honeylocust*). This is a truly lovely tree. Its towering, spreading canopy of lace-like foliage is the epitome of light and airy grace. Freedom from insect pests is only one of its outstanding characteristics. Not entirely free from thorns but many less than the older form. Triacanthos. Hardy and long lived. This tree is the answer to problem of planting something different in a shade tree.

8 to 10 ft.....\$7.50
10 to 12 ft., 1½ to 2 in. cal..... 9.00
2 to 2½ in. cal.....12.00
2½ to 3 in. cal.....17.50
3 to 3½ in. cal.....25.00

LIQUIDAMBAR

Styraciflua (*Sweet Gum*). A most interesting and satisfactory shade tree. It likes moisture and grows to immense size. The star-shaped leaves are blazing scarlet in Autumn. Very resistant to insects.

2 to 2½ in. cal.....\$12.00

PLATANUS

Platanus occidentalis (*American Plane*). This grand native American tree is sometimes called Buttonball or Sycamore. It attains great size and spread with open-branching and as soon as it reaches a little age will reveal attractive white bark. Leaves are large and the shade provided is light and airy. We recommend it highly for a rapid growing shade tree in well drained soil.

3 to 3½ in. cal.....\$20.00 | 3½ to 4 in. cal.....\$30.00
4 to 5 in. cal.....\$45.00

QUERCUS · Oak

The Oaks, especially when they attain size, are the most picturesque of all trees, symbolizing strength and durability. Their reputation as slow growers is not warranted, for, when once established, they will make a yearly growth equal to that of almost any other species.

Palustris (*Pin Oak*). A superb and distinct tree. The Pin Oak's graceful, drooping branches support a mass of deeply lobed, sharply pointed leaves, changing to deep red in Autumn. Jack Frost has never shown greater skill than in the coloring he produces in Pin and Scarlet Oaks.

1½ to 2 in. cal.....	\$8.00		3½ to 4 in. cal.....	\$50.00
2 to 2½ in. cal.....	12.00		4 to 4½ in. cal.....	65.00
3 to 3½ in. cal.....	35.00		4½ to 5 in. cal.....	90.00

Rubra (*Red Oak*). A fine, all-round tree with wide spreading branches. Colorful Fall foliage remains on all Winter.

1½ to 2 in. cal.....	\$8.00		2 to 2½ in. cal.....	\$12.00
----------------------	--------	--	----------------------	---------

SALIX · Willow

Babylonica (*Weeping Willow*). Long, stringy branches droop vertically to the ground, and with the narrow, light green leaves create a soft, velvety texture. Grows rapidly especially when close to water.

8 to 10 ft.....	\$4.50		2 to 2½ in. cal.....	\$10.00
10 to 12 ft.....	7.50		2½ to 3 in. cal.....	15.00
	3 to 3½ in. cal.....			\$20.00

Niobe (*Golden Twig Weeping Willow*).

8 to 10 ft.....	\$4.50		2 to 2½ in. cal.....	\$10.00
10 to 12 ft.....	7.50		2½ to 3 in. cal.....	15.00
	3 to 3½ in. cal.....			\$20.00

TILIA · Linden

Tomentosum (*Silver Linden*). Few trees could be more handsome than this striking species. The heart-shaped leaves are green above and silvery white beneath. Grows into a compact specimen, in June surrounded by bees gathering honey from the sweetly fragrant, greenish-yellow flowers. Resistant to beetle injury and altogether a most satisfactory tree.

1¾ to 2 in. cal.....	\$15.00		2½ to 3 in. cal.....	\$25.00
----------------------	---------	--	----------------------	---------

↓ Rivers Purple Beech





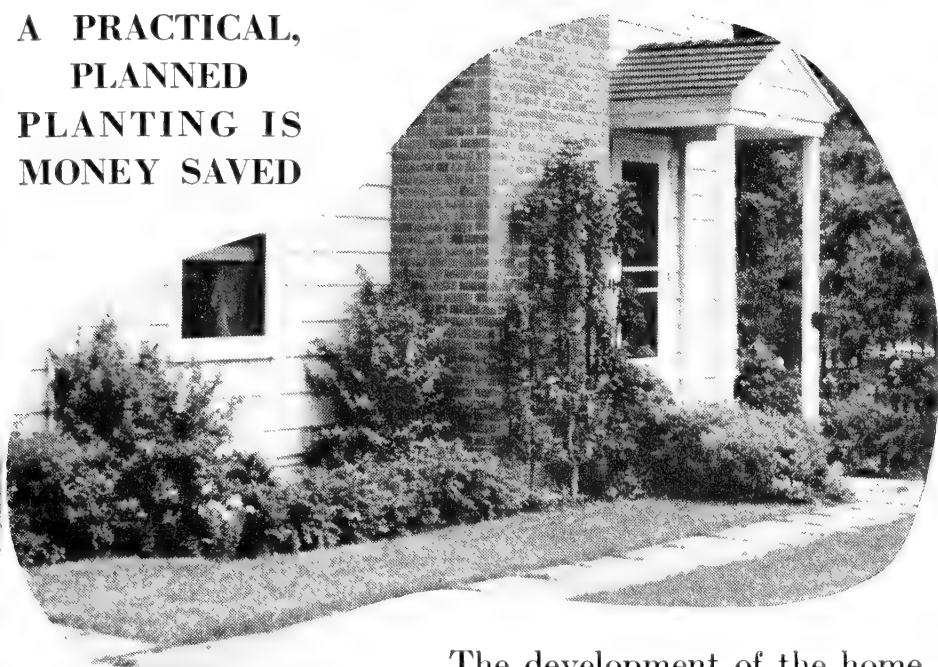
Rosedale Nurseries Landscape Service

Offers:

1. An interview with one of our competent Landscape Architects either at your home or at the nursery.
2. A plan or sketch if necessary, so that you may better visualize the finished job.
3. An estimate showing plant varieties, sizes and costs for your approval.
4. Planting by trained personnel using the plant material decided upon.



**A PRACTICAL,
PLANNED
PLANTING IS
MONEY SAVED**



The development of the home grounds deserves the same careful consideration as the interior—and even greater skill is required to satisfactorily develop the exterior.

We are a long established nursery having the finest of plant materials and the skill to plant them as they should be planted. You need not fear a jungle of over-growth a few years after planting.

Our controlled designs — our suited-to-the-spot selection of plant material—make for a delightful year-round appearance.



Whether the improvements you contemplate are large or small, new planting or the renovation of overgrown or neglected planting, our Landscape Department will be glad to confer with you.



A controlled, easy-to-care for planting by Rosedale

Flowering TREES

Flowering Trees are an investment in ever increasing beauty. They may be used effectively in the border, as lawn specimens, in conjunction with evergreens or as espaliers against bare wall surfaces. We have selected the varieties listed below with great care to insure complete satisfaction. They are all hardy, of pleasing colors and most varieties have extremely ornamental fruit.

We call particular attention to our stock of Dogwoods, Hawthorns, and Magnolias. We offer a wide range of sizes attractively priced and are proud of this stock. Your satisfaction is assured.

CORNUS · Dogwood

Florida (*White Dogwood*). A native flowering tree attaining about 20 ft. in height at maturity and producing a wealth of single white flowers before the leaves appear. The foliage is deep green turning a brilliant red in Autumn.

4 to 5 ft.....\$6.00	7 to 8 ft.....\$12.00
5 to 6 ft..... 7.50	10 to 12 ft..... 25.00
6 to 7 ft..... 9.00	12 to 14 ft..... 40.00
14 to 16 ft.....\$60.00	

Florida rubra (*Pink or Red Dogwood*). Similar to our native White Dogwood in habit and form but with masses of pink flowers.

3 to 4 ft.....\$6.00	7 to 8 ft.....\$17.50
4 to 5 ft..... 7.50	8 to 9 ft..... 20.00
6 to 7 ft.....14.00	10 to 12 ft. heavy.. 35.00

Kousa (*Kousa Dogwood*). White flowers borne after the leaves come out. Large, Strawberry-like crimson fruit.

6 to 7 ft.....\$10.00	8 to 10 ft.....\$15.00
7 to 8 ft..... 12.00	10 to 12 ft..... 18.00

CRATAEGUS · Hawthorn

Arnoldiana. Bright crimson-fruited Hawthorn of medium size. Zigzag branches with stout spines. Interesting upright shape.

4 to 5 ft.....\$3.50	5 to 6 ft.....\$5.00
----------------------	----------------------

Cordata (*Washington Thorn*). Upright tree of medium size. Blooms are clustered white and fruit is brilliant red. Ideal hedge form or will make a fine specimen tree.

4 to 5 ft.....\$4.50	5 to 6 ft.....\$6.00
----------------------	----------------------

Oxyacantha splendens (*Paul's Scarlet Thorn*). Double scarlet flowers. Late Spring bloomer. One of the finest.

4 to 5 ft.....\$5.00	6 to 7 ft.....\$10.00
5 to 6 ft..... 7.50	7 to 8 ft..... 15.00

LABURNUM

Vossi (*Golden Chain*). Large, pendant golden flowers hang from the twigs like Wisteria. Appears to be more hardy than laburnum vulgare.

7 to 8 ft.....\$6.00

MALUS^o · Flowering Crab

Floribunda. A single, rose pink variety bearing an abundance of fruit even when young.

4 to 5 ft.....\$6.00 | 6 to 7 ft.....\$12.00
5 to 6 ft..... 9.00 | Heavy specimens... 25.00

Hopa. Erect, symmetrical leaves tinged purple. Flowers large, red single; dark red fruit.

4 to 5 ft.....\$3.00 | 6 to 7 ft.....\$7.50
5 to 6 ft..... 4.50 | 7 to 8 ft.....10.00

Ioensis bechteli (*Double Pink Crab*). A very fine variety with double pink flowers resembling a miniature Rose. Makes a shapely, compact tree.

3 to 4 ft.....\$3.00 | 6 to 7 ft.....\$7.50

Sargenti (*Sargent's Crab*). A dwarf variety, shrubby in habit. Sparkling white flowers and an abundance of small red fruit. The best variety where a small tree is desired which will not overgrow. Ideal for garden border or background.

4 to 5 ft.....\$5.00 | 5 to 6 ft.....\$7.50
6 to 7 ft.....\$10.00

Theifera (*Tea Crab*). Irregular, spreading top with zig-zag branches completely clothed with flowers. Buds red, opening to single pink flowers. Fruits dull red.

5 to 6 ft.....\$6.00 | 6 to 7 ft.....\$12.00

MAGNOLIA

Soulangiana (*Saucer Magnolia*). Small, broad tree. Flowers large, cup-shaped, purplish outside, white at top, appear in early May before the leaves.

2 to 3 ft.....\$6.00 | 5 to 6 ft.....\$12.00
3 to 4 ft..... 7.50 | 6 to 7 ft..... 17.50
4 to 5 ft..... 9.00 | 7 to 8 ft..... 25.00

Soulangiana lennei. An outstanding variety with very handsome, big, leathery leaves. Late blooms of deep purple white inside.

2 to 3 ft.....\$6.00 | 4 to 5 ft.....\$10.00
3 to 4 ft..... 7.50 | 5 to 6 ft..... 15.00

Stellata (*Star Magnolia*). Small, broad, rounding habit, star-shaped flowers of pure dazzling white. Hardest and finest of all.

18 to 24 in.....\$6.00 | 2 to 3 ft.....\$7.50
3 to 4 ft.....\$12.00

Nigra (*Purple Magnolia*). Similar to *Lennei* with huge purple petals.

4 to 5 ft.....\$12.00 | 5 to 6 ft.....\$15.00
6 to 7 ft.....\$20.00

OXYDENDRUM

Arboreum (*Sorrel Tree*). A comparatively dwarf tree bearing an abundance of white flowers in Midsummer. The foliage turns several shades of red and crimson in Fall. Seldom seen in the Fall without being admired.

4 to 5 ft.....\$6.50 | 7 to 8 ft.....\$10.00
5 to 6 ft..... 7.50 | 8 to 10 ft..... 12.00

PRUNUS · Flowering Cherries

(*Serrulata Spectabilis Rosea*)

These are the oriental Cherries which are so famous in Washington. They are easily grown and will produce the almost phenomenal display in Spring which so many journey to Washington to see.

Kwanzan. Large, double, deep pink flowers, almost red in bud. Well formed, vigorous grower which is very popular.
4 to 5 ft.....\$4.00 | 5 to 6 ft.....\$6.00

Naden. A double deep pink variety of upright growth.
4 to 5 ft.....\$4.00

Paul Wohlert. Fragrant semi-double deep pink.
4 to 5 ft.....\$4.00 | 5 to 6 ft.....\$6.00

WEeping CHERRIES

Subhirtella pendula (*Japanese Weeping Cherry*). A pendulous form of well known Flowering Cherries so admired at Washington, D. C. Bears a profusion of single or double pink flowers in early Spring.

3 yr. 6 ft. stems.....\$10.00

Serrulata pendula. Double flowers a little later than Subhirtella. Color and form of bloom similar to Kwanzan.
3 yr., 6 ft. stems.....\$10.00

SORBUS Mountainash

Aucuparia (*European Mountainash*). Well-formed tree with small leaves and bearing large clusters of orange red berries.

8 to 10 ft.....\$3.50 | 2 to 2½ in. caliper..\$7.50
10 to 12 ft..... 5.00 | 2½ to 3 in. caliper..10.00
3 to 3½ in. caliper....\$17.50

TREE WISTERIA

No more lovely sight can be imagined than a Tree Wisteria in bloom. The purplish blue flowers completely cover the tree during May, transforming it into a sheer beauty. In formal gardens, Tree Wisterias are indispensable. In the lawn they develop into beautiful specimens and live for generations, increasing in beauty and dignity each successive season. The plants we offer are grown on stems about 4 ft. high and the crowns are about 2½-3 ft. in diameter. Every plant has bloomed.

Sinensis, Tree Form, 4 to 5 ft.....Each \$10.00

↓ **Tree Wisteria**



LARGE AND SMALL FRUITS

We offer a time-tested list of fruit trees and bush fruits. Every planting should include at least a few of these. Many are as beautiful in blossom as the finest ornamental plants and all bear fruit which is incomparably better in flavor than that which is purchased in the markets. You will find the large fruits such as Apple and Peach, will provide you with as much color and beauty during the flowering season as any of the finest flowering trees and at the same time, will provide luscious fruit later in the season. We are offering principally two-year old stock—the finest size for planting and in varieties of known hardiness and superior flavor.

APPLES

One of the most satisfactory of all lawn trees is a well-proportioned Apple tree, attractive at all times and really gorgeous when in full bloom. It follows with a generous crop of one of the finest of all fruits.

BEARING AGE APPLE TREES

Again this year we are able to offer landscape sizes of Apples. These trees are 2 inches or over in caliper, 7 years old, and have been rigidly pruned and cared for and are ready to bear. Available in all of the following varieties.

Each \$15.00

Delicious, Red. Dark red. Winter Apple. Good for cooking and eating.

Delicious, Yellow. Golden yellow. Winter Apple. Good for cooking and eating.

Kendall. Dark red. Winter Apple for eating.

McIntosh. Red, Winter Apple. Cooking and eating.

Milton. Pink-red. Autumn. Cooking and eating.

Northern Spy. Bright red. Winter. Cooking and eating.

Red Astrachan. Crimson. Summer. Cooking and eating.

Red Gravenstein. Solid dark red. Autumn. Cooking and eating.

Red Spy. Bright red. Winter. Cooking and eating.

R. I. Greening. Yellow-green. Winter. Best cooking Apple.

Stayman's Winesap. Yellow striped with red. Winter. Cooking and eating.

Sweet Bough. Pale yellow. Summer. Eating.

Wealthy. Brilliant red. Autumn. Cooking.

Yellow Transparent. Pale Yellow. Summer. Cooking.

Summer Apple—Best for use about late July and August.

Autumn Apple—Best for use from about October to December.

Winter Apple—Best for use from about December to March.



Bearing Age Apple Tree

TWO-YEAR OLD APPLE TREES

The best size to plant for a good sized orchard but will take 4 years or more to bear. This stock is propagated from bearing orchards of superior strains.

**Selected No. 1 Grade. 11/16 inch caliper. 5 to 7 feet.
Each \$1.75, 3 for \$5.00**

Baldwin. Well-known red. Winter Apple. Keeps well, fine flavor, juicy, crisp. Excellent for cooking and eating.

Cortland. An improved McIntosh type. Winter Apple with McIntosh flavor and quality but with tendency to cling to tree more than McIntosh. All-purpose Apple.

Delicious, Red. Large, dark red. Winter Apple. Crisp, fine flavor. Good for cooking and eating.

Delicious, Yellow. Golden yellow. Winter Apple. Firm, juicy. Good for cooking and eating.

Gravenstein, Red. Crisp, tart-flavored solid dark red Autumn Apple. Popular for eating and cooking.

McIntosh, Red. Leading commercial variety for New York State. Attractive red Winter Apple of white, tender juicy flesh. Fine eating and cooking. Bears fairly young.

Northern Spy. Large bright red Winter Apple of unsurpassed flavor. Bears well but matures slowly. Keeps very well. Excellent for cooking and eating.

R. I. Greening. Large yellow-green Autumn Apple unexcelled for cooking. Bears well, keeps well.

CRABAPPLE

Selected No. 1 Grade, 11/16 inch caliper, 5 to 7 feet
\$1.75 each, 3 for \$5.00

Dolgo. Handsome Red Crabapple in early September. Hardy, productive, juicy. Superb for ruby-red jelly, pickling, and exceptionally good for cider.

Hyslop. Brilliantly colored purplish-red Crabapple. Most popular Crab for preserving. Very hardy. Ripens about 2 weeks after Dolgo.

APRICOT

Moorpark. Large, round fruit. Orange with red cheek. Rich flavored, juicy flesh.

2 yr., 11/16 in. caliper.....\$2.00

CHERRIES

2-year old trees. 11/16 inch caliper. 4 to 6 feet.
\$2.50 each, 3 for \$7.00

SOUR CHERRIES

Early Richmond. Excellent early bright red Cherry ripening about early June. Hardest of all varieties.

Montmorency. The best sour Cherry. Productive, hardy and of excellent flavor. Ripens early, about July.

SWEET CHERRIES

Napoleon Bigarreau. Early ripening, large red fruit. Very productive and popular.

Schmidt's Bigarreau. Very large, purplish-red Cherry of splendid flavor. Early—about July.

PEARS

Selected No. 1 Grade. 2-year old trees. 11/16 inch caliper
\$2.25 each, 3 for \$6.00

Beurre Bosc. Large, deep yellow overspread with russet. Unsurpassed in quality and flavor. White fleshed. September.

Duchesse D'Angouleme. A dependable producer fruiting while quite young. Excellent quality, white flesh and yellow-spotted russet skin. September.

Seckle. One of the most delicious and ever-popular varieties. Small, russet brown Pears, ripening in October. Bears abundantly.

Sheldon. Large, round, russet and red Pears of first quality. Delicious. October.

DWARF FRUITS

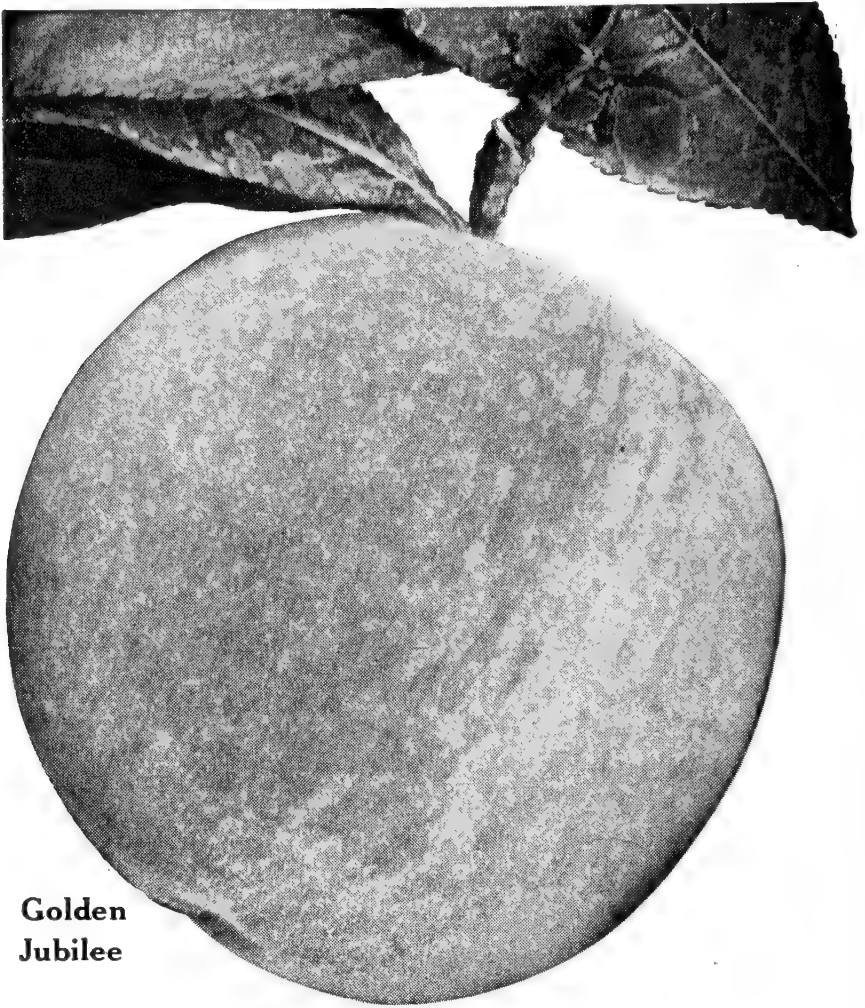
Dwarf Fruits are very scarce and we regret we can offer only a very limited supply this year. These are on malling root stocks and will remain small and bear younger than standard types.

APPLES: Baldwin, Cortland, McIntosh, Northern Spy, Delicious.

2 yr., 9/16 inch caliper.....\$3.75 each

PEARS: Bartlett.

1 yr. 2 ft. and up.....\$2.25 each



**Golden
Jubilee**

PEACHES

**Selected 1-year Budded Trees. 9/16 inch caliper.
3 to 5 feet.**

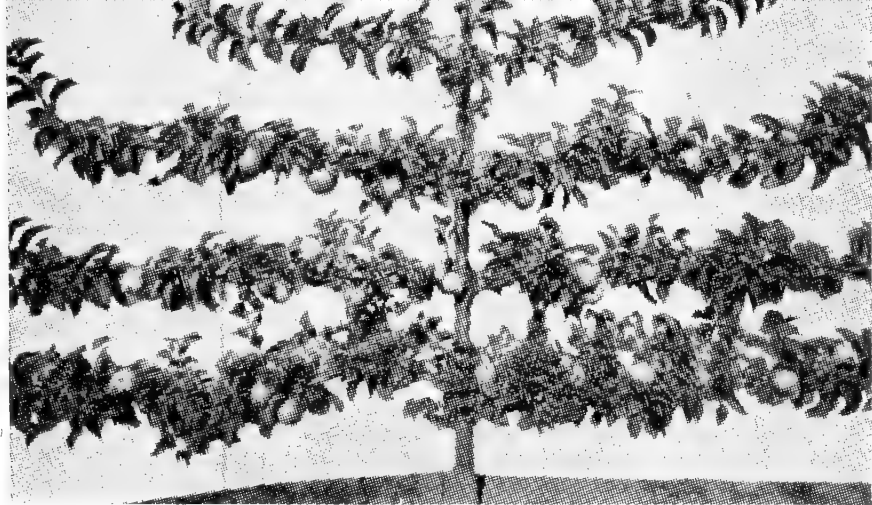
\$1.50 each, 3 for \$4.00

- Belle of Georgia.** Well-known white freestone Peach ripening late August. A rich creamy Peach with red blush.
- Crawford.** Large, yellow freestone Peach. One of the best of the late varieties, ripening about early September.
- Elberta.** Most popular and best known yellow Peach. Handles well, of good flavor, juicy and freestone. Ripens early September.
- Golden Jubilee.** Extremely popular, hardy new Peach. Large, golden-yellow, red-blushed fruit. Freestone. Best early yellow Peach, ripening about mid-August.
- South Haven.** (*New*). Golden-yellow, red-cheeked freestone Peach. Unusually hardy—good producer. Ripens about mid-August.

PLUMS

**Selected first-class trees. 2 years old. 11/16 inch caliper
\$2.25 each, 3 for \$6.00**

- Burbank.** Large, cherry-red Plum ripening about mid-August. Hardy, good producer.
- Fellenberg.** Italian Prune. Delicious, solid fruit; one of the finest for commercial growing. September.
- Reine Claude (Bevay's Green Gage).** Similar to Green Gage. Large, pale yellow fruit flecked with red. Bears well. Unsurpassed for richness of flavor. September.
- Stanley.** Large, deep bluish-purple Prune with excellent sweet flavor. Best for commercial or home use. Mid-season, about September.



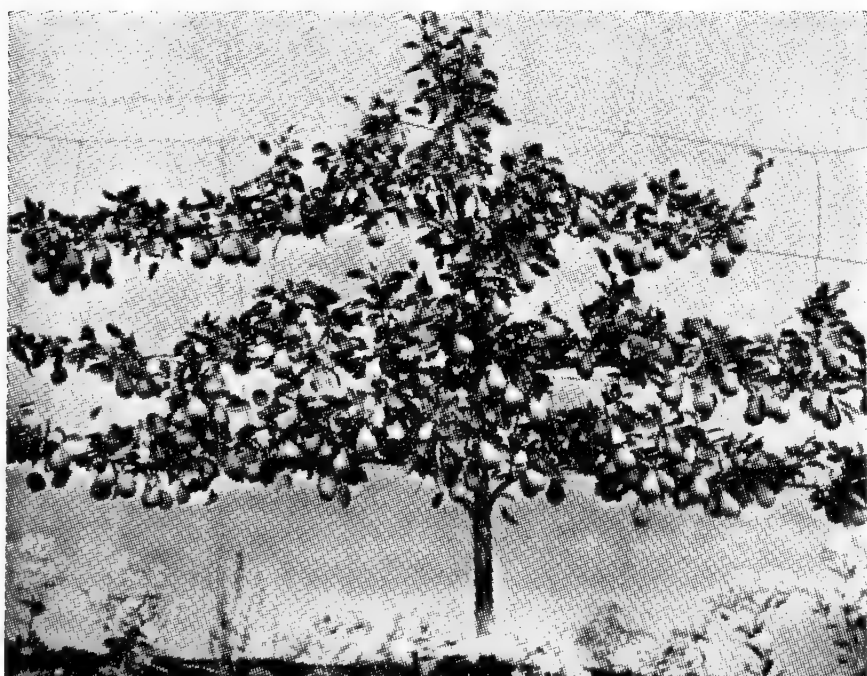
ESPALIER TREES

*Unique for their Beauty, Utility
and Delicious Fruit*

Beautify your home with an orchard growing on vines. Fruit trees grow in artistic, vine-like patterns against any wall, trellis or fence. They yield an abundance of delicious fruit that is often larger and richer than fruit from regular trees. Developed in Switzerland where garden space is limited, these unique trees are now available in America and add a distinctive touch of beauty to any home or garden.

These genuine Espalier Fruit Trees are propagated from true dwarf roots and scions which limit their size and growth. They require no more care than a small shrub or climbing Rose. Many of these 7-year old trees have a spread of 10 feet or more and up to 7 feet high. All are dug with a generous ball of earth and for this reason no shipping orders can be taken. Delivered anywhere in Westchester County.

Not only are there many sizes and styles, but many varieties of Apples and Pears. For this Spring planting only, they are priced from \$12.50 to \$25.00 each.



BLACKBERRIES

Alfred. The Mammoth Blackberry. For the home garden, Alfred is the ideal Blackberry. Tremendously large berries from 1½ to 1¾ inches long, practically free from seeds and extremely juicy.

Heavy 2 yr. Transplants. 25c. each, \$2.50 per doz.

BLUEBERRIES · Cultivated

SPECIAL OFFER—Back Cover

BOYSENBERRIES

The Boysenberry is from a triple cross involving Loganberries, Blackberries and Raspberries. They were bred by Rudolph Boysen, Superintendent of Parks at Anaheim, Calif. They are now planted in almost every state in the union. We offer it because of the tremendous large size of the berries, because of its very prolific fruiting and because Boysenberries are the highest quality of all bramble fruits.

New Thornless, 2-yr. transplants. 35c. each, \$3.50 per doz.

CURRENTS

New Red Lake. Finest of all Red Currants. The berry is unusually large in size and superior in quality. The clusters are long and filled out to the top. Heavy yields.

2 year. 45c. each, \$4.00 per doz.

GOOSEBERRIES

Downing. A white-green Gooseberry of good quality. Prolific grower of medium size. Midseason.

2 yr. 45c. each, \$4.00 per doz.

HARDY GRAPES

Caco. Our finest Grape. Wine red with sweet, delicious flavor. Large berries earlier than Concord.

2 year. 75c. each

Concord. Most successful in this section. Blue-black. Mid-September.

2 year. 50c. each

5 to 6 ft., 4-yr.-old Bearing Age. \$2.00 each

Delaware. Sweet, red, vinous. Late September.

2 year. 50c. each

Fredonia (New). Promises to be the earliest good black Grape; vigorous, hardy, productive; one of best American red juice varieties. Late August.

2 year. 50c. each

5 to 6 ft., 4-yr.-old Bearing Age. \$2.00 each

Niagara. Pale green, sweet, ripens with Concord, about mid-September.

2 year. 50c. each

5 to 6 ft., 4-yr.-old Bearing Age. \$2.00 each

Portland. A newer white Grape and one of the best for this section. Very early with a delicious flavor. About late August.

2 year. 50c. each



Marcy Raspberries

RASPBERRIES

Indian Summer. Red EVERBEARING. A grand new variety produced at Geneva Experiment Station. Produces a crop in mid-June and then again in early September until freezing weather. Vigorous. Hardy at Geneva.

2 year Transplants.....40c. each, \$3.50 per doz.

Marcy. Red. Considered by many as the finest red Raspberry yet introduced. The fruit is very large, firm and of high quality. The canes are strong, thrifty and hardy. Introduced by N. Y. State Agricultural Experiment Station. Late June.

2 year Transplants.....35c. each, \$3.00 per doz.

Newburgh. The world's finest Red Raspberry. Newburgh leads the field of Red Raspberry varieties in its desirable fruiting characteristics and productivity, but it has also proved itself to be practically immune to mosaic, the most dreaded Raspberry disease. The large red berry holds its size for a long season, has a fine, mild flavor, and the berries do not crumble. Early ripening, about late June. Extremely hardy.

2 year Transplants.....25c. each, \$2.50 per doz.

Taylor. A new Red Raspberry. Plants are vigorous, hardy, and productive. Long, conical shape, firm, thick flesh. Fairly early, about late June.

2 year Transplants.....35c. each, \$3.00 per doz.

Cumberland. Standard mid-season Blackcap, ripening about late June. Most widely planted variety grown for market and home use. Appearance and quality of fruit is superior.

2 year Transplants.....30c. each, \$3.00 per doz.

FOR THE LAWN

We are pleased to announce that we shall again handle **Scott's Lawn Seed** exclusively. This lawn seed has been sold since 1870 and has been famous for freedom from weeds and for high germination. It is grown and packed by **O. M. Scott and Sons Co.**, and is delivered to you in original sacks.

SCOTT'S LAWN SEED

All-purpose blend of deep-rooting, permanent grasses for open lawns in full sun or light shade. Triple cleaned by Scott's special process to remove chaff and assure 99.91% weed freedom. Rate: Sow 3 to 5 lbs. to 1000 square feet (area 50x20 feet).

1-lb. box.....	\$1.25		10-lb. bag.....	\$12.35
3-lb. box.....	3.75		25-lb. bag.....	29.85
5-lb. box.....	6.25		50-lb. bag.....	57.50
100 lbs.....			\$115.00	

SCOTT'S FOR DENSE SHADE

The best selection of perennial grasses for areas receiving practically no sunlight. Harmonizes in color and quality with turf produced by other Scotts Seeds.

1-lb. box.....	\$1.25		10-lb. bag.....	\$12.35
3-lb. box.....	3.75		25-lb. bag.....	29.85
5-lb. box.....	6.25		50-lb. bag.....	57.50
100 lbs.....			\$115.00	

SCOTT'S BENTGRASS

For over 25 years, this aristocrat of lawn grasses has been making prize winning home lawns and championship golf putting greens. Will help established lawns if sown in them or mixed with other seed. Rate: 2 or 3 lbs. per 1000 quare feet.

1 lb.....	\$2.25		3-lb. bag.....	\$6.75
5-lb. bag.....			\$10.85	

SCOTT'S CLOVER SEED

Finest quality high germinating seed. Not included in Scott mixtures because it is better to sow alone. Rate: Sparingly at 1/4 to 1/2 lb. per 1000 square feet.

1/2 lb. box.....	\$0.90		1-lb. box.....	\$1.80
------------------	--------	--	----------------	--------

SCOTT'S TURF BUILDER

Proper feeding each Spring and Fall with this enriched grass food keeps lawns healthy and sparkling green. Supplies all vital nutrients in correct proportion and goes twice as far—10 lbs. feeds 1000 square feet of lawn.

10-lb. sack.....	\$1.25		50-lb. sack.....	\$3.75
25-lb. sack.....	2.25		100 lbs. (2) sacks....	6.50

SCOTT SPREADERS

An outstanding seeder and fertilizer spreader for accurate economical distribution. Easy and convenient to operate. Available in two sizes:

No. 25. Sized for average city lot. Spreading width of 16 in. \$7.85.

No. 50. For large lawn. Hopper capacity of 25 lbs. Seed or 50 lbs. Turf builder. Rubber tired. \$14.85.



Select the Proper Lawn Seed for Sun and Shade

SCOTT'S WEED CONTROL

SCOTT'S 4X

A new principle in chemical weed control. Produces lovelier lawns by the easy elimination of the weeds. By following simple directions you can destroy the weeds (except Crabgrass) and not harm the turf grasses. A new Scott product tested and economical.

- To Treat 400 sq. ft. (20x20 ft.).....\$0.50
- To Treat 1200 sq. ft. (30x40 ft.)..... 1.25
- To Treat 6000 sq. ft. (100x60 ft.)..... 3.85

HAVEN GRASS SEED

A blend of lawn grasses for quick and permanent results. Quality grasses blended with quick-growing varieties for a pleasing lawn.

- 1 lb.....\$0.78 | 5 lbs.....\$3.85

Special Offer—

FOR THIS SPRING ONLY

We are offering **5-year-old Red Delicious Apples**—an ideal size for quick bearing at low cost. This hardy Winter Apple is a favorite for its crisp keeping quality and fine flavor.

Sorry this size not available in other varieties.

5 years old, 1 to 1½ inches caliper — \$7.50

Fertilizers

The success of any planting must ultimately depend largely on the available plant food. We are listing here a number of proven plant foods which we feel will help your garden materially.

AGRICO—Lawns, Trees, Shrubs. A complete plant food for lawns, trees and shrubs. Economical and immediate in results.

10 lbs.....	\$0.80	50 lbs.....	\$2.50
25 lbs.....	1.50	100 lbs.....	4.00

AGRICO—Gardens. Made especially for flowers and vegetables.

10 lbs.....	\$0.80	50 lbs.....	\$2.50
25 lbs.....	1.50	100 lbs.....	4.00

AGRICO—Broadleaved Evergreens. A balanced fertilizer for acid-loving plants. Rhododendron, Laurel, Hollies, Azaleas, etc.

10 lbs.....	\$1.00	50 lbs.....	\$3.25
25 lbs.....	2.00	100 lbs.....	5.00

DRICONURE. Splendid organic fertilizer containing dehydrated cow manure and poultry manure and 25% peat moss. Clean, dustproof bags.

50-lb. bags.....	\$2.00
------------------	--------

NATURAL HUMUS. A screened Natural Humus full of plantfood and organic material. Especially recommended for mulching broadleaved evergreens and for mixing with soil in planting where top soil is poor. Sold in bulk.

Per cubic yard.....	\$9.50
Packed in sacks approximately 80 lbs.....	1.50

RELIANCE—**Broadleaved Evergreen Fertilizer.** A scientifically blended fertilizer for use on Azaleas, Rhododendron, Laurel and all Broadleaved Evergreens.

10-lb. pkge.....	\$1.00	25-lb. pkge.....	\$2.00
100 lbs.....	\$6.00		

PEAT MOSS

Canadian Horticultural Peat Moss packed in standard, compressed bales, is again available in limited quantity. Pioneer brand.....\$4.50 per large bale



Consult Our Gift Department

**GIVE A TRULY LASTING GIFT—
A GIFT OF LIFE AND COLOR**

For that birthday or anniversary you want to remember, give a growing plant or tree that may be enjoyed in years to come—and always remembered.

Select from our catalog or personally from our wide range of healthy, hardy varieties of shrubs and trees at the nursery.

Delivery or shipment will be made at proper planting time, but our announcement is sent so as to reach the recipient on the "special" day.

We are happy to send our personal announcement card telling what you have selected. At the same time we send an acknowledgment to you.

Or, if you prefer to make no selection, a credit for any amount (of \$5.00 or over) that you specify may be established for or toward the purchase of a plant or tree. The recipient will be sent our announcement card and our catalog in making a selection. Personal selection is invited.

FILL IN THE BLANKS BELOW, TEAR OFF, SEND IN

It is advantageous to enter your orders as early as possible for future occasions so that we may reserve stock for you. As many orders as desired may be entered at one time.

**To: ROSEDALE NURSERIES
Eastview, New York**

Please send to:

Name _____

Address _____
Street _____

City _____ State _____

Occasion _____
 Birthday
 Anniversary

If other occasion, please indicate

Date of Occasion _____

Quan.	Name of Plant	Size	Cost
_____	_____	_____	_____
_____	_____	_____	_____
_____	_____	_____	_____
_____	_____	_____	_____

Total _____

I enclose my check in the amount of _____ and shall pay shipping charges, if any, when billed.

From (signed) Name _____

Address _____
Street _____

City _____ State _____

Special Flowering Shrub Collections

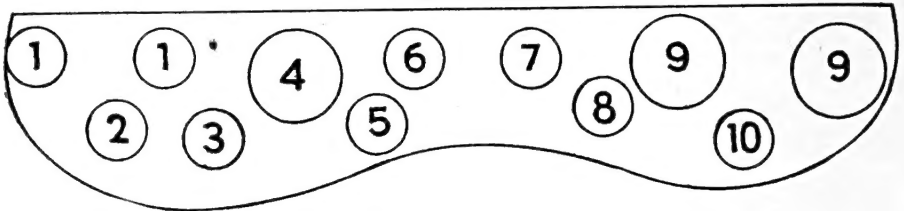
We have selected from our wide range of varieties two groups of Shrubs ideally suited for mass plantings.

Not only do they bloom in almost continuous succession but many have attractive berries in the Fall making them a welcome haven for birds.

Each group in itself is a complete unit and affords a delightful spot in the landscape. For larger areas several collections may be combined, retaining the balance of color and form.

These Shrub collections make ideal gifts. They may be shipped easily and safely, if the recipient is outside our delivery area.

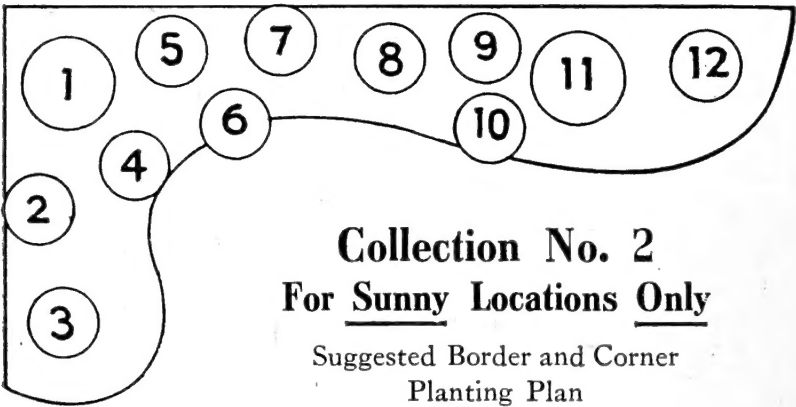
Collection No. 1 For Sunny and Shaded Locations



Key No.	Variety	Planting Key	Size	Time of Bloom
2 at 1	Althaea.....		2-3'	Aug.-Oct.
2	Calycanthus floridus.....		2-3'	June-July
3	Hydrangea P.G.....		3-4'	July
4	Hamamelis virginiana.....		4-5'	Nov.
5	Symphoricarpos racemosus.....		2-3'	Aug.
6	Lonicera tartarica alba.....		2-3'	May
7	Viburnum dentatum.....		3-4'	June
8	Rhodotypos kerrioides.....		2-3'	May-Oct.
2 at 9	Ilex verticillata.....		4-5'	July
10	Spiraea van houttei.....		2-3'	May

Special Shrub Collection No. 1 12 Shrubs \$15.00

(Express charges collect outside of our delivery area)



Collection No. 2 For Sunny Locations Only

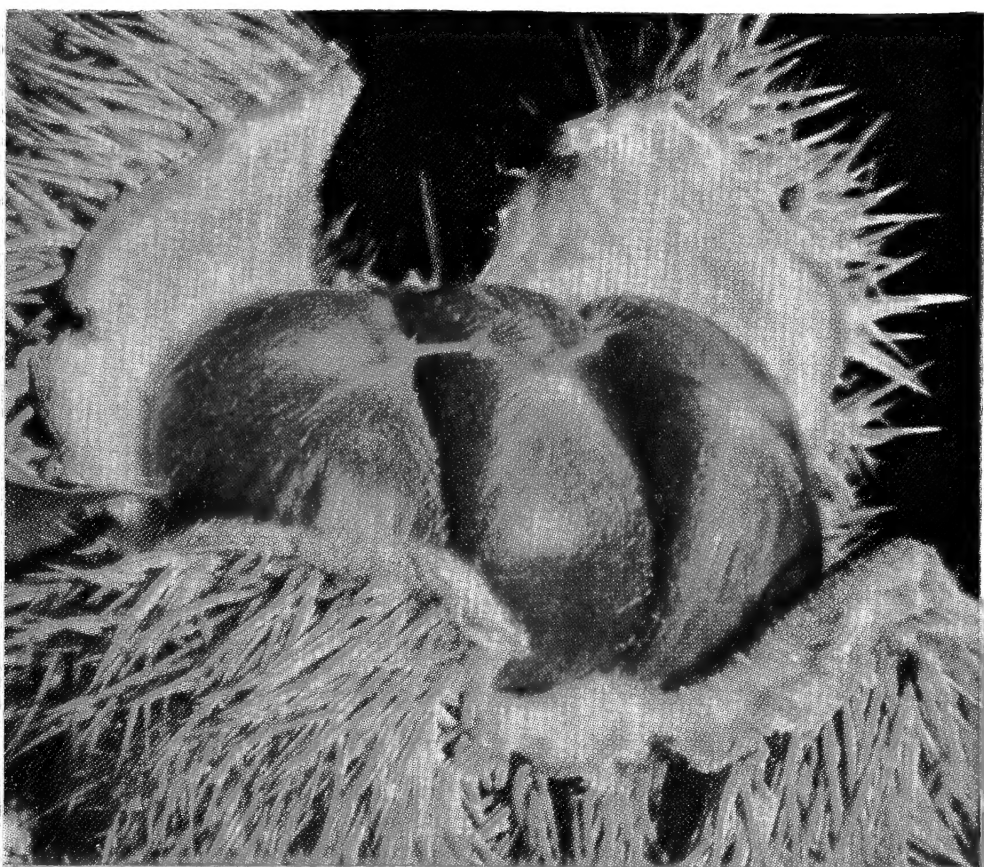
Suggested Border and Corner Planting Plan

Key No.	Variety	Planting Key	Size	Time of Bloom
1	Lilac, purple.....		3-4'	June
2	Calycanthus floridus.....		2-3'	June-July
3	Kolkwitzia amabilis.....		3-4'	June
4	Deutzia gracilis.....		12-15''	May
5	Spiraea van houttei.....		2-3'	May
6	Cydonia japonica.....		18-24''	April-May
7	Philadelphus virginal.....		3-4'	June
8	Viburnum dilatatum.....		3-4'	June
9	Weigela floribunda.....		2-3'	May-June
10	Symphoricarpos vulgaris.....		2-3'	August
11	Althaea.....		2-3'	Aug.-Oct.
12	Forsythia spectabilis.....		3-4'	April

Special Shrub Collection No. 2 12 Shrubs \$14.00

(Express charges collect outside of our delivery area)

On late orders if we are forced to substitute, varieties of similar characteristics will be supplied.



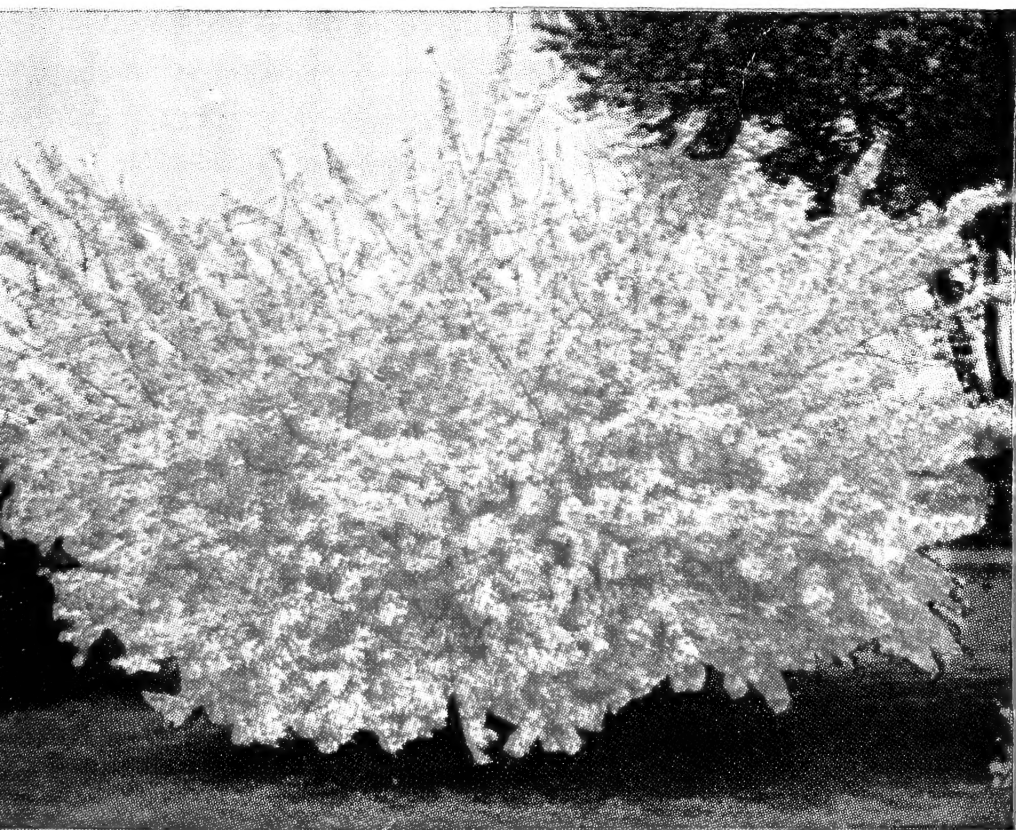
New! Blight-Resistant

CHINESE CHESTNUT

It is again possible to grow your own Chestnuts. The stock from which these trees are grown have been growing and bearing for over 20 years in this country. Hardy wherever native Chestnuts grow and completely blight-resistant. One of the finest ornamental trees. Available in following sizes only:

1½ to 2 ft., about 2 yrs. to bearing. . \$1.75 each, 3 for \$5.00
 4 to 5 ft., balled and burlapped. 5.50 each, 3 for 15.00

Ships well—Express charges collect



FLORIBUNDA CRAB

Not new but still the best. Wide spreading tree with greatest profusion of flowers. Buds crimson; open flowers, light pink. Fruits which are plentiful in Fall are small yellow and Cherry-like.

4 to 5 ft. . . \$6.00 5 to 6 ft. . . \$9.00 6 to 7 ft. . . \$12.00

Large specimens. \$25.00 to \$35.00 each



*New Hybrid
Blueberries*

*For Delicious Fruit and
Ornamental Beauty, Plant*
BLUEBERRIES

Special Spring Offer

After 10 years of intensive growing, we have ample Bearing Age Blueberries for all. These plants bore an average of a pint per plant last year. Two brand new varieties—PEMBERTON and STANLEY, finest of them all—included in each dozen. All well-known, heavy-bearing varieties such as Concord, Jersey, Rancocas and Rubel.

No spraying or difficult care necessary. Gigantic berries of exquisite flavor. Plants are hardy at 30 degrees below zero.

**4 year old 18-24 in. plants
\$18.00 per dozen**

\$2.25 each, 5 for \$10.00

**Large Specimen Plants—4 to 5 feet—Available for
Landscape Planting. \$10.00 each.**