

Historic, Archive Document

Do not assume content reflects current scientific knowledge, policies, or practices.

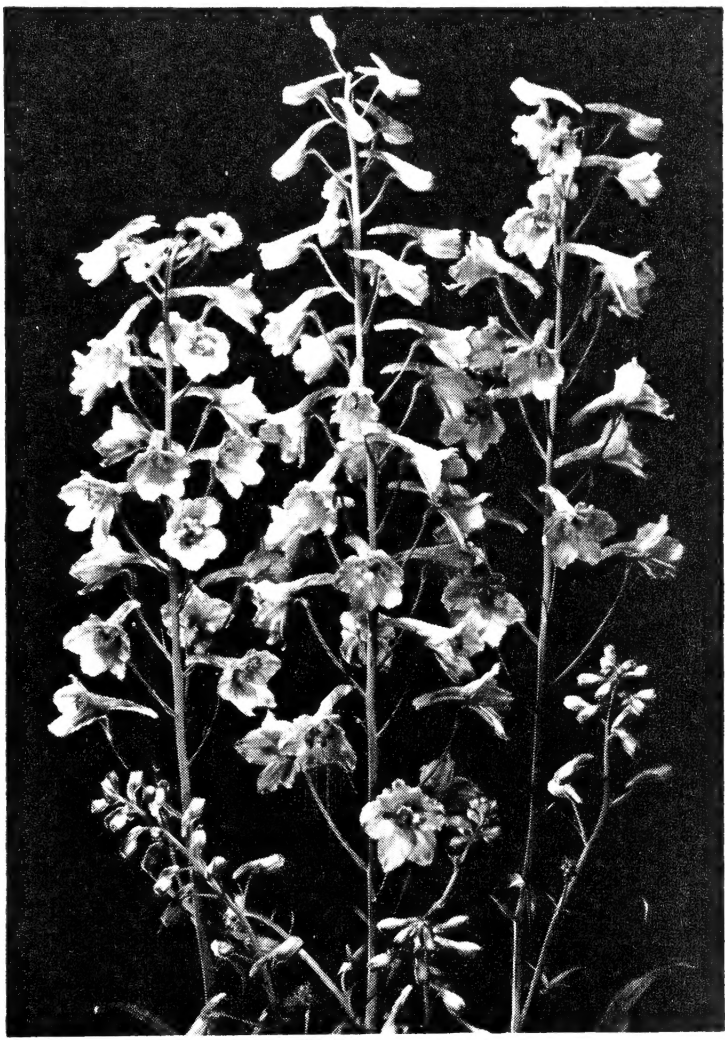
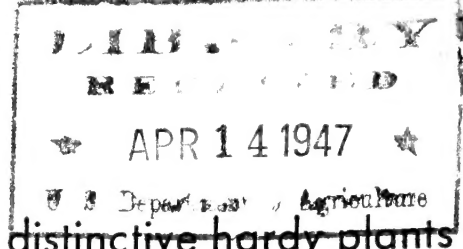
62.71

saxton & wilson

Successors to WM. BORSCH & SON

Growers of distinctive hardy plants
BORDER PERENNIALS • DWARF CONIFERS AND SHRUBS
ROCK GARDEN PLANTS • RARE ALPINES FOR COLLECTORS

maplewood, oregon



PINK DELPHINIUM

DELPHINIUM Ruysii Pink Sensation (Plant Patent No. 324) — This especially fine Delphinium originated in Holland and is the only hardy, perennial, pink variety worthy of the name. It is truly a sensation in the Delphinium world! The abundant gorgeous blooms on sturdy stems are an unusual and interesting shade of salmon buff as they begin to open. This shade subtly passes to a charming salmon pink and finally, the fully opened blossoms become a wonderful rose pink. Pink Sensation produces an amazing number of blooms during late Spring and early Summer and again in the Fall if sheared. The 2½ to 3½ foot plants branch freely, producing an airy effect and give a wealth of distinctive cut flowers.

Delphinium Pink Sensation is noted for its hardiness and vigor and often succeeds where other Delphiniums fail. Give it a moderately good, loamy soil and a warm, sunny spot that has good drainage. Water well while growing, less when dormant. Strong blooming size plants from pots or the field, depending on the season. Each \$1.50, three \$4.00, six \$7.50.

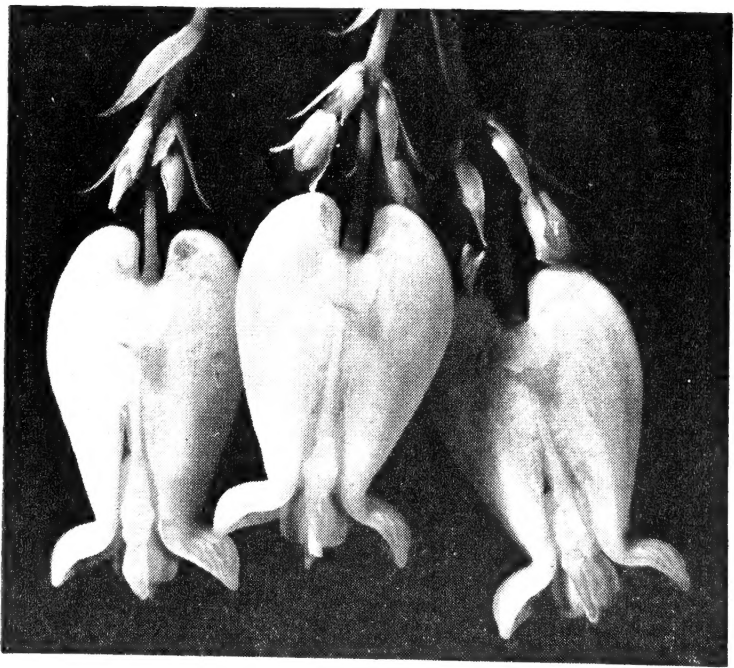
Presenting . . .

PERENNIAL ARISTOCRATS for 1947

A group of distinctive hardy plants taken from our Master Catalog and Gardening Guide.

WHITE BLEEDING HEART

DICENTRA *formosa Sweetheart — An outstanding newcomer with perfect heart-shaped blooms of purest white suspended from gracefully arched stems over cool, green, dainty, cut foliage. The charming, pendant clusters follow one another in endless succession from mid-Spring till frost. This rare, hardy variety increases very satisfactorily when planted in rich, woody soil which is moist and has continuous light to heavy, high shade. The classic foliage and shapely white blossoms blend well with all woodland plants, especially ferns, and make this a distinctive plant for naturalizing. Dicentra Sweetheart is delicately fragrant and also has strong, 15-inch stems for cutting. We consider this new, ever-blooming, White Bleeding Heart one of the finest plants introduced in recent years and cannot recommend it too highly! Vigorous, blooming-size plants from pots, each \$1.00, three \$2.75, six \$5.00, large field grown plants, each \$1.50.



CLOSE UP OF THE WHITE BLEEDING HEART



ALYSSUM SAXATILE FLORE-PLENO

AUBRIETA LAVENDER QUEEN
(See page 4)

ACONITUM CARMICHAELLII



"A Good Buy"

Our customers are decidedly satisfied. They write us gratifying letters telling why. We are passing along the reasons they are so pleased. Our plants are the finest quality. They are a "good buy". The prices of staples and manufactured goods are still going up. But **we have not increased prices!** In fact, we have actually **lowered** the prices of many varieties. You can now get plants formerly listed at **75c for 60c** and others priced **\$1.00 for 90c** or even as low as **75c**. We have many more customers—our sales have jumped—we have increased our supply of plants. So now we offer you our top quality stock at reduced prices. Our guarantee of safe delivery through insurance or replacement gives you complete security. And, remember, **we pay** all postage and insurance charges. This is a convenience and real saving. Otherwise, you would have to add the parcel post or express fees to the cost of the plants. Another saving, which is difficult to calculate in dollars and cents, is quality. Common, inferior varieties of poor quality often die after you plant them. Even if they grow, they take as much of your time and space as the best kinds. Discriminating gardeners order our distinctive varieties, the best of both old and new. These extra-fine, sturdy plants pay dividends in vigorous growth and enjoyment. They are a "good buy"!

ACONITUM—Monkshood

ACONITUM Carmichaellii (Fisheri)—A stately border perennial with unique, hooded, blue purple flowers in dense massive spikes on 3- to 4-foot stems in the Fall. An elegant, hardy plant for light shade and good soils and particularly useful because it blooms so late. Winter and Spring delivery only. Each 60c, three \$1.60, six \$3.00.

ALYSSUM—Basket-of-Gold

ALYSSUM *saxatile fl.-pl.—A much improved, double flowered Basket-of-Gold with deep golden-yellow blooms in early Spring. Only 10 inches high and much more compact than the common sort. This variety flourishes in ordinary soil and sun. A very bright, cheerful plant which should be in every rock garden. Each 50c, three \$1.40, six \$2.50.

ANEMONE—Pasque Flower

ANEMONE *Pulsatilla—One of the most satisfactory and beautiful rock garden plants. Great cups of bluish-purple or violet with a golden center in early Spring and silvery-silky, much cut foliage which turns greener with age. Pasque Flowers are long lived and of simple culture in average soil and sun. Height 1 ft. Each 50c, three \$1.40, six \$2.50.

Japanese Anemone

ANEMONE japonica—Among the most beautiful, hardy perennials giving an autumnal display. They are 3 to 5 feet high and have unusually attractive foliage and large, shapely flowers, excellent for cutting. Plant in a protected spot with a good rich soil and give ample water. Winter and Spring delivery only.

alba—Single, waxy white with a yellow center. Each 50c, three \$1.40, six \$2.50.

rubra—Semi-double, deep rosy-red; distinct and different. Each 50c, three \$1.40, six \$2.50.

*Dwarf plants for rock gardens and similar locations.

ANTHEMIS—Chamomile, Marguerite

ANTHEMIS tinctoria Moonlight—A splendid plant for the sunny perennial garden. The finely cut foliage and very large, soft yellow Daisies on 2-foot stems in early and mid-Summer make this a first class variety. Hardy, pest-free, and durable in ordinary loam. Each 60c, three \$1.60, six \$3.00.

AQUILEGIA—Dwarf Columbine

AQUILEGIA *akitensis kurilensis—Truly one of the finest of the dwarf Columbines. The huge blue flowers, cream-tipped in the center, on only 6- to 8-inch stems are decidedly effective. The plants bloom profusely in mid-Spring and require a sunny spot in average, well-drained, slightly limy soil. Each 60c, three \$1.60, six \$3.00.

ARABIS—Rockcress

ARABIS *albida fl.-pl.—The gray-green foliage is hidden by the full heads of double white flowers on 8-inch stems in very early Spring. Particularly good as a cut flower and much more attractive than the ordinary single type. Give sun and a loamy soil in the rock garden or wall. A pre-eminently showy and all-around satisfactory plant. Each 50c, three \$1.40, six \$2.50.

ARMERIA—Thrift

ARMERIA *juniperifolia seedlings—These fascinating Thrifts form very compact, evergreen hummocks to 6 inches and produce abundant, almost stemless flower heads which vary from light to deep pink. Besides giving early Spring bloom in the rock garden, they create a unique effect and always attract attention. Plant in sunny well-drained, average soil. Each 50c.

ASTER—Hardy Aster

ASTER Amellus Summertime—A very lovely hardy perennial, 2 feet high, with large, glowing, violet-blue flowers in late Summer. Summertime blooms heavily during the "problem" period before the Fall flowers start and is noteworthy for its low, shapely contour and beauty in floral decorations. Plant in moderately rich loam and sun. Each 60c.

Frikartii Wonder of Stafa—Still one of the most popular Asters in our gardens. Of branching habit, to 2½ feet, it bears extra large lavender-blue flowers on long stems for cutting from early Summer to Fall. It requires only sun, good drainage, and an open loam. Each 75c, three \$2.00, six \$3.75.

Gold Flake—Pretty, deep golden-yellow blooms on 3-foot stems from late Summer to mid-Fall. The plants are heavily set with narrow, dark green leaves which set off the bright flowers. An unusual and easy variety for ordinary loam and sun. Each 50c.

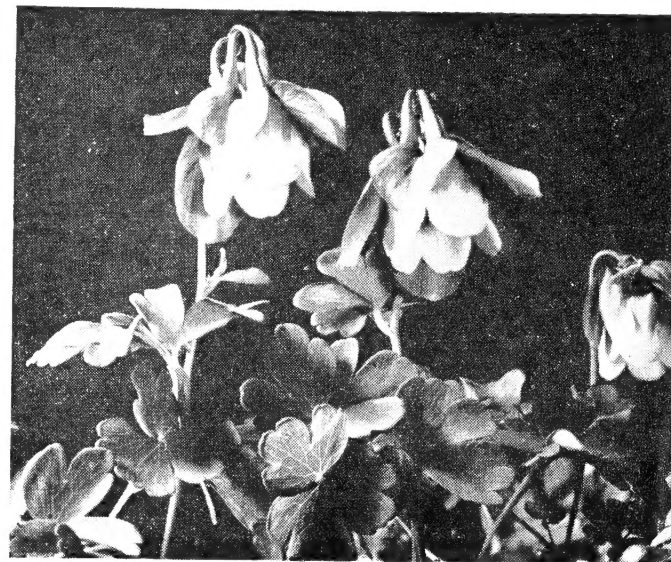
Harringtons Pink—By far the best Michaelmas Daisy of its type! Light, clear, rose pink flowers in bold masses on sturdy, 5-foot plants. A striking, irresistible, "hardy as an oak" perennial for the Autumn border. It will thrive in any reasonably good soil in a sunny place. Do not overlook this most magnificent of Fall flowers. Winter and Spring delivery only. Each 75c, three \$2.00, six \$3.75.

ASTILBE—Spirea

ASTILBE Arendsii Fanal—A new, European variety of superior quality. The lovely cut foliage is dark reddish-green when it first appears and passes to a luxuriant green with age. The feathery, artistic blooms are glowing, flaming red! A decidedly outstanding variety for the lightly shaded garden with moist, rich soil and for cutting. Two feet high. We cannot say too much for this new Astilbe. Each \$1.00, three \$2.75, six \$5.00.



ANTHEMIS TINCTORIA MOONLIGHT



AQUILEGIA AKITENSIS KURILENSIS



ANEMONE PULSATILLA

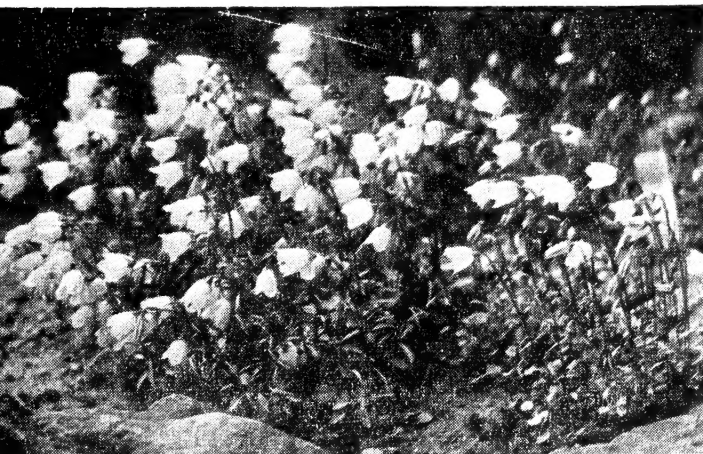
AUBRIETA

AUBRIETA—Essential, colorful plants for the rock garden or wall. They are solid masses of bloom in very early Spring and are unsurpassed in brilliance and ease of culture. Sun and light soils are best for these hardy, dwarf plants. Shear the mats heavily as soon as they have finished blooming. Few plants give as much satisfaction for such a small investment.

- ***Borschs Brilliant**—An especially strong growing variety with rich foliage and large flowers of brilliant crimson. Each 75c.
- ***Lavender Queen**—Compact habit and very soft lavender flowers. One of the largest flowered and last to bloom. Each 75c.
- ***Purple Knoll**—Tight mounds smothered with deep violet-purple blooms. Each 50c, three \$1.40, six \$2.50.
- ***Mixed Colors**—Plants grown from seed of the above and other choice named varieties. The colors and shades are infinite, ranging from the softest pastels to the deepest reds and purples. Wonderful for mass effects. Sold in mixture only. Each 50c, three \$1.40, six \$2.50, twelve \$5.00.

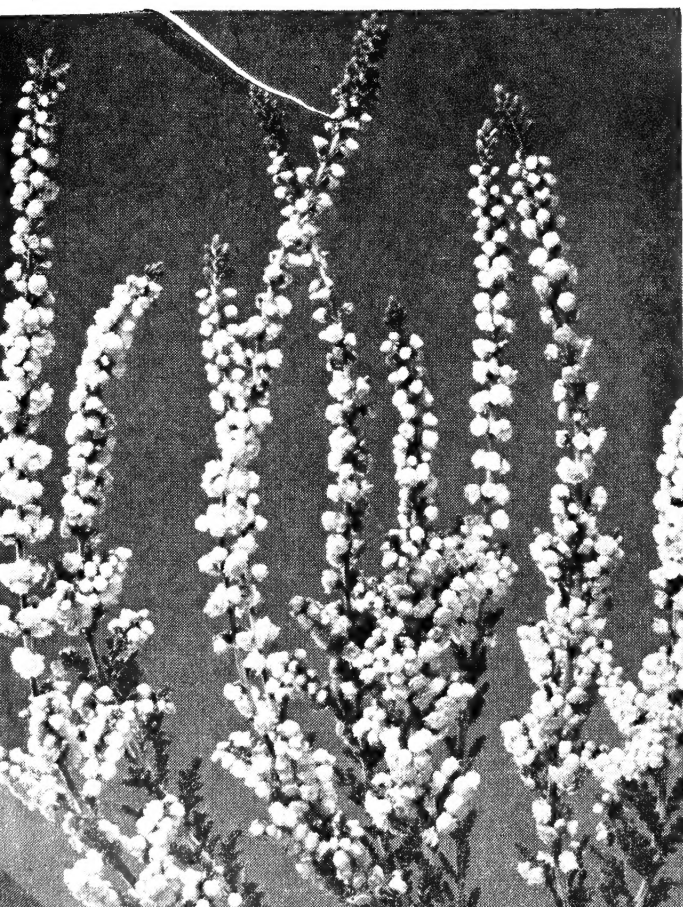


ASTER FRIKARTII WONDER OF STAFA
(See page 3)



CAMPANULA COCHLEARIFOLIA

DOUBLE CALLUNA VULGARIS



CALLUNA—Double Scotch Heather

CALLUNA **vulgaris* **County Wicklow** — A double-flowered, dwarf shrub with pretty, dainty, lilac-pink blooms in spikes during the Summer. Long-lasting and distinctive in small bouquets and lovely in the rock garden or as an edging. Grows freely in an open, acid, peaty soil in full sun; very hardy but protect the evergreen foliage with a mulch in Winter in cold regions. Uncommon and greatly superior to the ordinary single types. Height 1 foot. Each \$1.00.

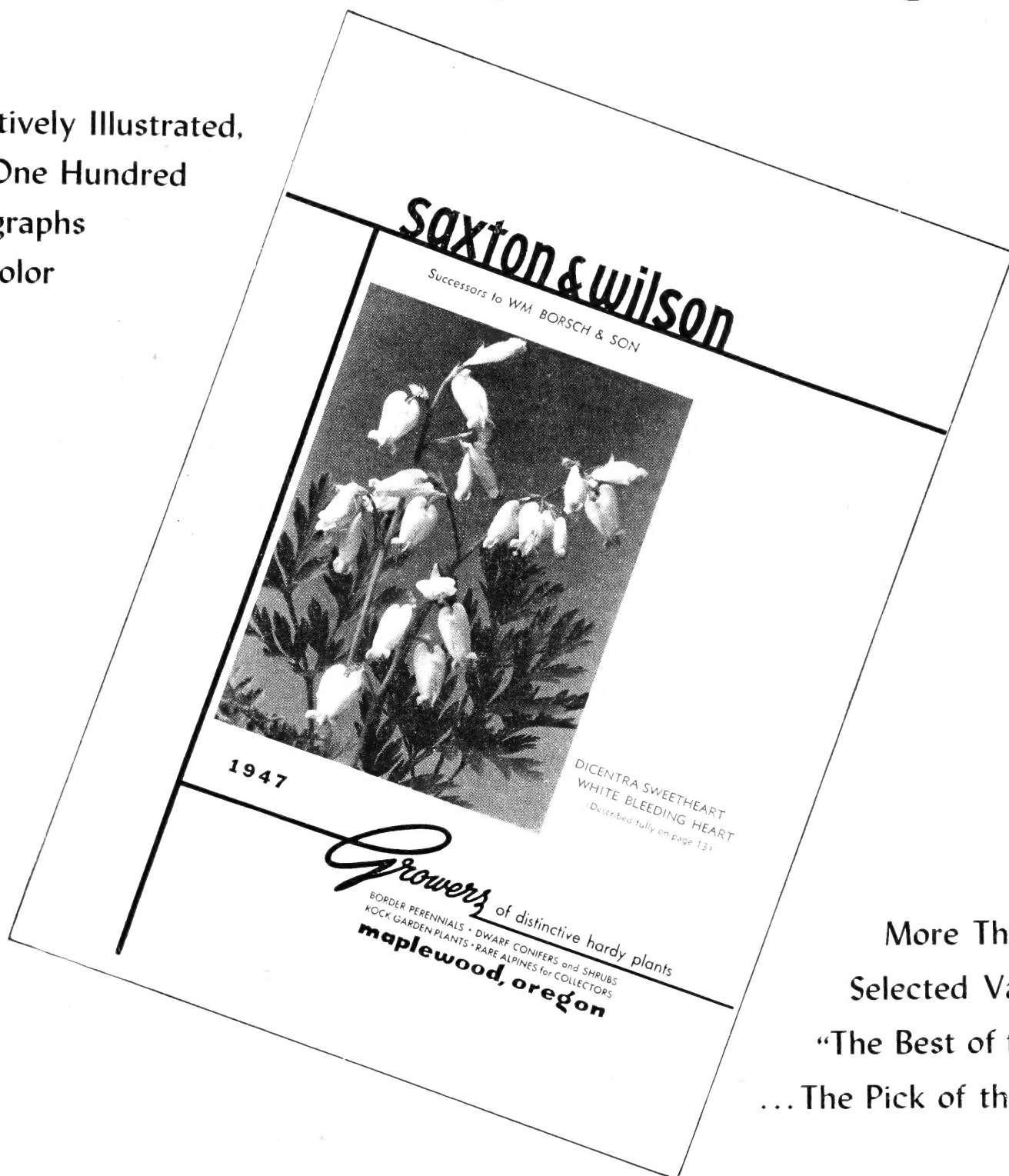
CAMPANULA—Dwarf Bellflower

CAMPANULA—These delightful plants are the backbone of the rock garden. They are beautiful yet easy subjects in sun or very light shade and soils which are gritty and well-drained. Their first flowering period is in late Spring and early Summer with a bonus of extra blooms in the Fall most seasons. It is wise to shear the plants after flowering to keep them tidy and to encourage later blooming.

- ***cochlearifolia** (*pusilla*)—A vigorous species, making dense mats of fine foliage, with large, nodding bells of lavender-blue on 3- to 4-inch stems. An unusually dainty creeper with an agreeable disposition and which is deservedly popular for crevice and wall. Pots, each 50c, three \$1.40, six \$2.50.
- ***Portenschlagiana**—Abundant, effective, bell-shaped flowers about 1 inch long over a compact central tuft or massed on stems splayed over the rocks. The bloom laden plants make a splendid picture in early Summer and often again in the Fall. This species grows freely and is delightful in sunny walls and rock gardens. 6 inches high. Each 50c, three \$1.40, six \$2.50.
- ***Poscharskyana**—A rather recent introduction which, because of its easy culture and beauty, soon became very popular. Trailing stems, often reddish to one yard long and well clothed with starry, lilac-blue flowers. This first rate species makes a fine display in early and mid-Summer and also again in the Fall. Height 12 inches. A robust plant for sunny rock gardens and margins of borders. Each 60c, three \$1.60, six \$3.00.

Free To Our Customers
1947 Master Catalog and Gardening Guide

Attractively Illustrated,
 Over One Hundred
 Photographs
 And Color
 Plates



More Than 500
 Selected Varieties,
 "The Best of the Old
 ... The Pick of the New"

Our exciting, unusual **MASTER CATALOG AND GARDENING GUIDE** for 1947 is sent **free** to all our customers. It is an expensive, top-quality, restricted edition which we can distribute without charge only to gardeners who encourage us by ordering. **A copy will be mailed to you the day your first regular order reaches us.** This booklet is a condensed sample of our Master Catalog. You will find in our Master Catalog an even greater selection of distinctive varieties. The full descriptions, cultural directions, and suggested uses are practical and easy to follow. The generous quantity of plant portraits helps you visualize the lovely effects these outstanding plants create in your own garden. Our customers are enthusiastic about their 1947 Master Catalog and Gardening Guide. You will also find it very enjoyable and especially useful. Remember . . . **it is mailed to you FREE the day your first order arrives!**

P. S. If you are unable to order but would like a copy, just cut out the coupon on page 13 of this booklet. Check your name and address on the reverse side, enclose 25c in stamps or coin, and mail them to us. Your copy will be forwarded immediately. As you know, a catalog of this scope and quality is expensive. The few cents you send will help cover handling and postage. We appreciate your interest. In return **we shall include with your first regular order a distinctive extra plant of our choice worth fifty cents or more. Send your quarter now . . . while you think of it!**

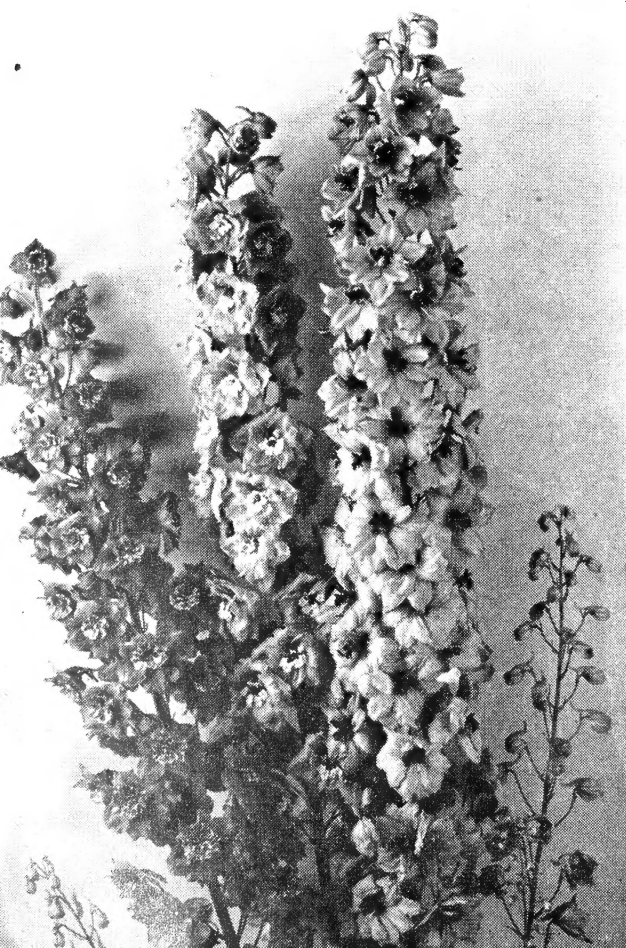


CHRYSANTHEMUM MAXIMUM
MT. SHASTA



EPIEDIUM

DELPHINIUM PACIFIC STRAIN



CAMPANULA—Peach-leaved Bellflower

CAMPANULA—These Bellflowers have simple requirements and are as valuable in the border as the dwarf kinds are in the rock garden. They flourish in sunny, moderately rich soil that is not wet and soggy. It is a good practice to divide and re-set the clumps when they become large. Peach-leaved Bellflowers produce rather flat, dark green rosettes from which sturdy, thin stalks grow in early Summer. These 3- to 4-foot spires carry quantities of huge, shallow to deep and sometimes doubled bowls of many-hued porcelain which make decidedly outstanding cut flowers.

Blue Gardenia—Bright semi-double flowers of rich blue which suggests a Gardenia. The best semi-double we have seen and noted for its freedom of bloom. Each 60c, three \$1.60, six \$3.00.

Telham Beauty—A magnificent English variety with immense, wide cups of waxy lavender-blue. The individual blossoms are often four inches or more across and are probably the largest of any variety introduced to date. An unexcelled border perennial. Each 60c, three \$1.60, six \$3.00.

CHRYSANTHEMUM—Painted Daisy

CHRYSANTHEMUM coccineum—Pyrethrums are bright colored favorites of medium height for border decoration and cutting. The 2½-foot stems carry much-cut foliage and shapely, colorful Daisies over a long period from late Spring to Fall. The flowers come in many gay shades and tints and vary from single types to crested and double sorts. Their requirements are simple: sun and a warm, light loam with good drainage. Mixed colors only. Each 60c.

Shasta Daisy

CHRYSANTHEMUM maximum—Another important group, generally recognized as producing some of the best garden effects in white. The plants are sturdy and long stemmed and the elegant Daisies come in perpetual profusion from early Summer until frost. The blooms are much admired in floral combinations and last well in water. Culture is simple in a rich moist but not wet soil in full sun. It is advisable to divide and re-set the clump every other year to keep them from becoming crowded.

Beaute Nivelloise—One of the largest Shasta Daisies we have grown. The fringed, double-petalled, white flowers often measure 7 inches across. An especially hardy variety with long, strong stems to 3 feet, unsurpassed for cutting. Each 60c, three \$1.60, six \$3.00.

Mt. Shasta—Pure white, high-crested blooms with a double row of overlapping guard petals. The blooms, 3 inches across, are borne in profusion on sturdy, 2- to 2½-foot stalks for many months. Hardy, beautiful, and invaluable for cutting—all in all, one of the finest varieties introduced in recent years. Each 90c, three \$2.50, six \$4.50.

COREOPSIS—Dwarf Coreopsis

COREOPSIS *auriculata—Only recently recognized as an outstanding rock garden plant. Attractive matted foliage over which float vivid, orange yellow, 2-inch Daisies on 8-inch stems. One of the very few hardy plants which can be depended on to bloom prolifically from mid-Spring through the late Autumn. Remove the faded blossoms to insure this "perpetual" flowering. A really worthwhile and easy plant for light, fairly moist soils in full sun or very light shade. High on our list of recommended rock garden plants! Pots, each 50c, three \$1.40, six \$2.50.

We Are Pleased to Present . . .

MINIATURE ROSES

Use Them Freely:

- In the Rock Garden
- As Edgings for Beds and Walks
- For Miniature Arrangements
- As “Floral Jewelry” and Corsages
- Indoors for Winter Bloom
- For Flower Show Exhibits
- In Miniature Formal Gardens Outdoors

Turn page for these exciting “Gems of the Garden”



TOM THUMB ROSES MAKE A CHARMING BOUQUET IN A THIMBLE
(Plant Patent No. 169)



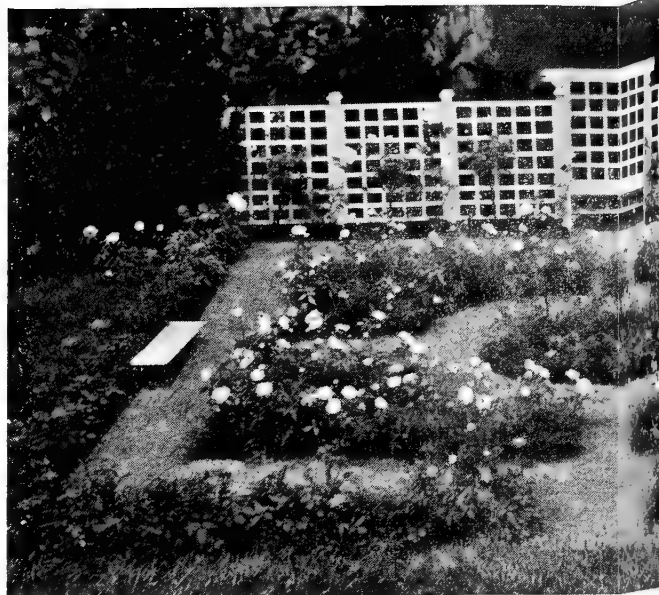
THE NEEDLES SHOW THE COMPARATIVE SIZE OF TOM THUMB

SOMETHING OUT OF THE ORDINARY . . .

A tiny garden of Miniature Roses exhibited at a New York Flower Show.

This and similar exhibits elsewhere have delighted thousands of visitors.

Why not plan **your** next exhibit around Miniature Roses!



MIDGET
FULLY DOUBLE MINIATURE RED ROSE
(Plant Patent No. 466)

NOT ILLUSTRATED HERE:
OAKINGTON RUBY
SWEET FAIRY (new)
(DESCRIBED ON NEXT PAGE)

Miniature



A PLANT OF TOM THUMB GROWN IN A FOUR-INCH POT

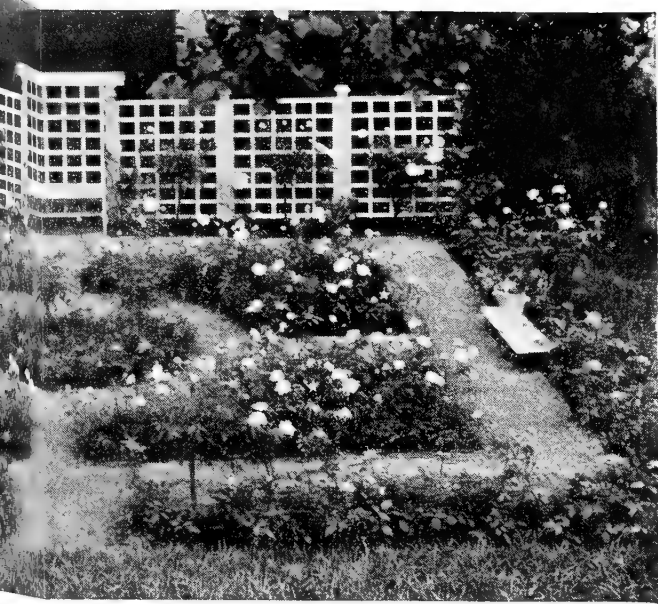
FOR THE SMART HOSTESS . . . A DISTINCTIVE TABLE SETTING FEATURING MINIATURE ROSES IN THE CENTER DECORATION AND IN TINY VASES AT EACH PLATE



CHINENSIS MINIATURE



*Gems
of
the
Garden*



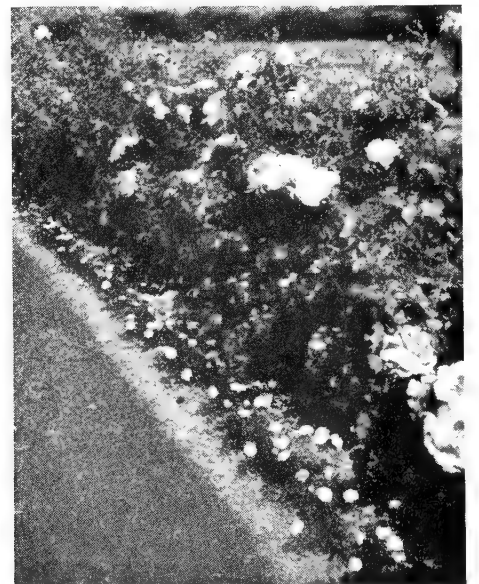
PIXIE
THE SMALLEST DOUBLE WHITE MINIATURE ROSE
(Plant Patent No. 408)

*Miniature
Roses*



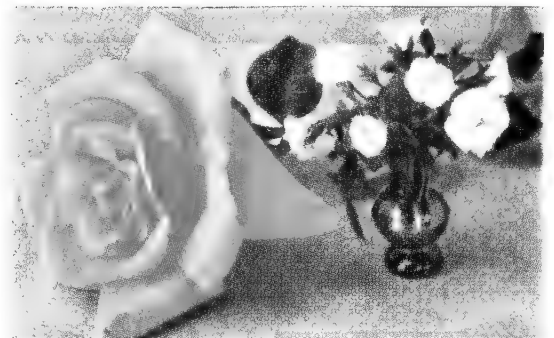
MINIATURE THUMB GROWING
IN 2-1/2 INCH POT

CHINENSIS MINIMA (Roulettii)
DAINTY EVERBLOOMING MINIATURE FOR
THE ROCK GARDEN OR EDGING



PIXIE USED AS A LOVELY AND
NOVEL EDGING FOR LARGE ROSES

PIXIE
IN AN ORIENTAL ARRANGEMENT



A BOUQUET OF PIXIE ROSES
CONTRASTED WITH A FULL-SIZE
ROSE BLOOM

CHINENSIS MINIMA (Roulettii)



*Turn page for descriptions,
cultural suggestions, and prices.*

Miniature Roses

These wee Roses are among the most delightful and charming plants in the world. They are truly "Gems of the Garden". Miniature Roses are hardy, good-natured little imps that are easy to grow, long-blooming, and entirely satisfactory in every respect. They require no "fussing" or extra care and are as hardy as their full-sized relatives. You, your family, and your friends will find their daintiness irresistible. Even youngsters are excited about the tiny plants and blooms which, surely, must have come from the land of Elves and Fairies!

Miniature Roses are ideally suited for many spots in your garden. They will look especially well in your rock garden or when used as edgings for your beds or borders. Nothing is more lovely than the little red buds of Midget or Tom Thumb peeping over a rock. Or imagine the effect of a tidy, "perk" row of white Pixie or fragrant, blush pink Sweet Fairy lining one of your walks. These tiny Roses can be planted in groups with other small shrubs in your border or used in your patio, terrace, or "outdoor living room". They will delight you with their Winter bloom if you pot them in the Fall and let them rest outdoors until January. Then place the pots in a sunny window and watch the little foliage and flowers develop. However, they resent hot, dry air and also should not be kept indoors the year 'round. Some gardeners have designed and planted formal, Miniature Rose gardens outdoors which are just like the usual kinds except for size. Others have done the same and exhibited them very successfully at flower shows. Such an exhibit is pictured on the preceding page. Miniature Roses as cut flowers have myriads of uses in bouquets, "line arrangements", table decorations, and as "floral jewelry" and boutonnieres both for personal use and for flower show exhibits. There are dozens and dozens of ways you can use and enjoy these Elves and Fairies of the plant world. It's lots of fun finding new uses or varying the old!

The culture of these tiny Roses is remarkably simple. Just like the Hybrid Tea Roses, they require an open spot that receives sunlight most of the day. They are not suited to shaded locations because they become spindly and bloom poorly. Miniature Roses are not fussy about soil. They will thrive and give you hundreds of exquisite blooms from late Spring until frost if you plant them in a reasonably good loam that is well drained. You should water them moderately during the dry weather and remove faded blooms to encourage extra flowering and to keep the plants tidy. If you live in a mild climate or if your soil is very rich, a plant may occasionally send up an unusually strong shoot. Cutting this off about three inches above the ground will make it branch and your plant will not grow more than eight to twelve inches high. Although perfectly Winter hardy, Miniature Roses sometimes "burn" in very cold sections where there is little snow. A light mulch of evergreen boughs or other material will effectively protect the plants. In general give your Miniature Roses the same care as large Roses.

With these few simple cultural suggestions in mind you will find growing these "Gems of the Garden" a pleasure and the plants a never-ending source of delight.

SIX DISTINCTIVE AND LOVELY MINIATURE ROSES

ROSA *chinensis minima (Roulettii)—This is the oldest and still one of the most beloved of Miniature Roses. Its true origin is a mystery. Although it belongs botanically to the Asiatic group of wild Roses, it was discovered many years ago in a Swiss village high in the Alps. This minute variety is hardy and ever-blooming. The little pink blossoms are only an inch across when open and the plants seldom exceed 6 to 8 inches in height. It is valued as a pot plant and for edgings. Plant 6 to 8 inches apart. Each 65c, three \$1.65, twelve \$6.50, twenty-five \$12.00.

The following varieties grow only 8 to 12 inches high and should be planted 7 to 10 inches apart.

***Midget** (Plant Patent No. 466)—The tiniest rose-red blooms imaginable! The vigorous little plants produce very double flowers over a long period and the fat, "saucy" buds are excellent for cutting. The stems make a compact, twiggy bushlet and are almost thornless. Each 75c, three \$1.90, twelve \$7.50, twenty-five \$13.75.

***Oakington Ruby**—An English variety which bears quantities of perfect miniature Roses from Spring 'til frost. The buds are rich crimson and open a bright ruby carmine. Oakington Ruby makes a particularly delightful edging for beds of large Roses or other plants. Each 65c, three \$1.65, twelve \$6.50, twenty-five \$12.00.

***Pixie** (Plant Patent No. 408)—This is the Fairy Queen of all the Miniature Roses. The tiny blossoms are the most double, often having upwards of 40 petals in each little flower. The blooms come continuously and are white with a faint pink flush in warm weather. During the cooler seasons they are an irresistible blush pink. No variety surpasses Pixie for miniature bouquets, decorations, or corsages. Each 75c, three \$1.90, twelve \$7.50, twenty-five \$13.75.

***Sweet Fairy** (Propagation Rights Reserved)—This is the newest of the miniatures. It is also the first with a true, rich, Rose fragrance. The very dainty, double blooms are dark pink in bud and open a lovely apple blossom pink. The dark green foliage makes a striking background for the long-lasting, one-inch flowers. Sweet Fairy holds its blooms erect and has stems an excellent length for cutting and arranging. Its delicate color, rich fragrance, and continuous blooming make it unusually attractive and valuable in the garden. Each \$1.25, three \$3.15, twelve \$12.50, twenty-five \$23.45.

***Tom Thumb** (Plant Patent No. 169)—This imp of a variety has been described as "a Red Rose bud the size of a grain of wheat, and a young plant you could cover with a coffee cup". The perfectly formed blooms are deep crimson in the bud. They become somewhat lighter as they open and finally a white eye appears in the heart of each beautiful flower. Tom Thumb is hardy, durable, and ever-blooming. It can be used in dozens of ways both indoors and out and should be included in every collection of Miniature Roses. Each 75c, three \$1.90, twelve \$7.50, twenty-five \$13.75.

READ BEFORE ORDERING!

Our Miniature Roses are all healthy, vigorous plants of blooming size. They are shipped from pots and we pay all transportation and insurance charges and, in addition, guarantee safe delivery on domestic orders.

Minimum order \$3:00: order may be entirely Miniature Roses or a combination of Miniature Roses and other plants. We shall appreciate your using the enclosed order blank. Please read "Ordering Is Easy" for other terms, conditions, and guarantees.

For warmer sections of the country like the West Coast, Gulf, and Southeastern states we recommend planting Miniature Roses in the Fall or Winter. Spring planting is best in the colder, more northerly states.

COLLECTIONS

Please Order by Number

COLLECTION 7A—3 Plants—\$2.00 postpaid.

One plant each: chinensis minima, Pixie, Tom Thumb.

COLLECTION 7B—3 Plants—\$2.35 postpaid.

One plant each of Midget, Pixie, and Sweet Fairy.

COLLECTION 7C—6 Plants—\$3.50 postpaid.

Three plants each of chinensis minima and Pixie.

Minimum order \$3.00.

COTONEASTER

COTONEASTER **Dammeri*—An essential, first-rate shrub for the rock garden which is noted for its hardiness and vigor. A perfectly prostrate species with bright, evergreen foliage and large, effective, coral-red berries. Also especially valuable for carpeting hot, dry banks. Hardy, durable, and pest-free in ordinary to poor soils and sun. Pots, each 50c.

CYPRIPEDIUM—Ladyslipper

CYPRIPEDIUM **Calceolus pubescens*—The Yellow Ladyslipper, often listed as *Cypridium parviflorum*, is a lovely, graceful, hardy Orchid for shade or a north exposure. The bright yellow "slippers" come on 15-inch stems in late Spring and always command attention. Plant in a very well prepared, rich soil that contains ample humus and keep well watered until the plants become dormant. A beautiful native plant that increases in vigor and loveliness through the years. Each 75c.

DABOECIA—Irish Bell Heath

DABOECIA **cantabrica alba*—A showy evergreen shrub to 1 1/2 feet with small, shiny, dark green leaves and conspicuous, nodding, white bells. The plants start blooming in late Spring and continue until Fall. Daboecias make a colorful picture in the rock garden, shrub border, or when used as edgings. Their requirements are simply an acid, peaty soil and sun or very light shade. Bell Heaths are particularly suited to climates like that of the West Coast but are hardy in colder areas when pruned in early Winter and covered with an evergreen mulch. Each \$1.25.

DELPHINIUM

DELPHINIUM *Pacific Strain Hybrids*—A magnificent, regal strain of modern Delphiniums with tremendous spikes of very large, mostly double flowers in the Spring and usually again in the Fall. The plants are vigorous and bushy and should be spaced two feet apart. Place in a sunny spot in rich, loamy, well-drained soil and water copiously while the plants are growing. Replant in freshly prepared soil every third season. We grow a wide range of superb colors: purple, blue, lavender, mauve, and white, all with contrasting or harmonizing centers. Plants shipped only in the Fall, Winter, and early Spring and available only in mixed colors. Strong, young plants which will soon become established and bloom in a few months; from pots, each 75c, three \$2.00, six \$3.75.

DIANTHUS—Pink

DIANTHUS **Pink Lady*—More refined in texture and color than most double Pinks and a notable improvement over the common single types. The neat, blue gray mats put up hundreds of full, pink blooms on thin but sturdy, 12-inch stems in late Spring. Easy and very pretty in the rock garden or as an edging in almost any non-acid soil and sun and charming in old-fashioned bouquets. Each 50c, three \$1.40, six \$2.50.

EPIMEDIUM—Inside-Out Flower

EPIMEDIUM *alpinum rubrum*—From the creeping rootstocks in early Spring come wiry, airy stems with red and bronzed-tinted foliage and graceful racemes of red and yellow, crystalline flowers. As the small sculptured leaves develop, they become green and heavy in texture. In the Fall the foliage again takes on colorful tints. It is most attractive at all seasons in the garden and flower arrangements. This variety requires only a peaty, loamy soil in partial shade and makes a top-notch, 12- to 15-inch ground cover. Each 60c, three \$1.60, six \$3.00.



COREOPSIS AURICULATA



CHRYSANTHEMUM MAXIMUM
BEAUTE NIVELLOISE

CHRYSANTHEMUM COCCINEUM



ERICA—Winter Heath

ERICA **carnea* King George—A herald of Spring because it is one of the first plants to bloom. The pleasant rosy-pink flowers open from mid-Winter through early Spring. This compact, low-growing evergreen shrub is invaluable in the rock garden or as a marginal planting for larger shrubs. The needle-like foliage is attractive the year 'round. Give either full sun or very light shade and lime-free, good loam mixed with plenty of peat and leafmold. Always a favorite with those who enjoy an outstanding, dwarf shrub. Each \$1.00.

FERNS

FERNS — These unique, evergreen, "flowerless" plants are best grown in good loam mixed with large amounts of organic matter (leafmold, old manure, compost, peat moss, etc.), a little sand, and a pinch of bone meal. This mixture should be slightly acid unless otherwise noted. Most ferns grow and look best in light shade or in locations not subjected to the mid-day sun and respond to extra water during the dry season.

ASPENIUM **Trichomanes* (Maidenhair Spleenwort)—One of our favorites and easy to grow in the rock garden. Narrow evergreen fronds in dense, spreading tufts from 5 to 8 inches high. The small segments are closely set along the shiny, purplish-brown, wiry stems. Add a little lime to the soil for this very dainty and attractive species. Pots, each 50c, three \$1.40, six \$2.50.

CRYPTOGRAMMA **crispa acrostichoides* (Parsley Fern)—Clustered evergreen fronds of two kinds with straw colored stems. The sterile blades are light green, thrice-divided, and have blunt toothed segments. The fertile fronds are only twice-divided and the segments are very narrow, almost pod-like. This unusual species grows mostly on cliffs and rocks in our western mountains. Each 60c, three \$1.60, six \$3.00.

POLYSTICHUM *aculeatum densum*—Very full, dense, evergreen fronds, thrice-divided, and with segments much cut, frilled, and overlapping. The fronds, 1½ to 2 feet long and up to 6 inches wide, are vivid green and possess a lush richness in form and color seldom equalled. Probably hardy in cold climates if protected. In addition an excellent houseplant if grown in cool, rather moist air. Pots, each 90c.

Braunii (Brauns Holly Fern)—A handsome, stately, eastern species with 2-foot, glossy, evergreen fronds which are twice-divided and conspicuously toothed. Mature specimens are distinctly vase-shaped and are exceptionally ornamental. Each 75c.

GEUM—Avens

GEUM—A charming and showy group of plants possessing qualities not often found in other types. Their colors are so clear and intense, the flowers seem to float above the plants. Geums have rich green, usually hairy foliage in mats or clumps. This greatly enhances the value of these plants by serving as an admirable background for the luminous blooms. Avens flower heavily from mid-Spring through early Summer and off and on thereafter and make noteworthy cut flowers. They have a brilliancy all their own and increase in beauty each year when given a loamy, moist soil and good drainage.



CRYPTOGRAMMA CRISPA
ACROSTICHOIDES



POLYSTICHUM BRAUNII

ASPENIUM TRICHOMANES



*Dwarf plants for rock gardens and similar locations.

***Borisii**—One of the showiest of this showy genus. Neat tufts of dark green leaves with many branching, 8- to 12-inch stems covered with large, vivid, orange scarlet blooms. A bright color for that difficult shaded spot in the rock garden or margin of the border but also suitable for sunny places in all but the hottest climates. Each 50c, three \$1.40, six \$2.50.

Fire Opal—The large vivid scarlet flowers suffused with orange fit the name! Slender stems to 2 feet and more refined foliage than many varieties and always effective in the sunny perennial garden. Fire Opal displays its beauty to best advantage when planted in groups. Each 60c, three \$1.60, six \$3.00.

Red Wings—The hardy Geum which has succeeded the lovely but tender variety Mrs. Bradshaw. Luscious, strawberry-red blooms with golden anthers and long-lasting, handsome foliage make this new variety deservedly popular. 2½ feet high. Each 75c, three \$2.00, six \$3.75.

GYPHILIA—Babysbreath

GYPHILIA repens Rosy Veil—A rather uncommon, dwarf variety with showers of double pink flowers from late Spring through most of the Summer. The 1½-foot plants create misty pink garden displays and airy effects in bouquets which cannot be achieved with other plants. Give full sun and ordinary soil which is not too heavy and acid. True to name, grafted plants. Each 75c, three \$2.00, six \$3.75.

HELENIUM

HELENIUM Chippersfield Orange—A reliable, hardy perennial with quantities of warm, Autumn-tinted blooms in shades of glowing orange stained brick red. The commanding, 4- to 5-foot plants flower during the late Summer and early Fall and add considerable color to the "late" perennial garden and make desirable cut flowers. They flourish in fairly light, loamy soils in the sun. Each 60c, three \$1.60, six \$3.00.

HELIANTHEMUM—Sun Rose

HELIANTHEMUM — Free-blooming, small, semi-evergreen shrubs for rock gardens, walls, and dry banks. Their only requirements are a warm soil and full sun, with a severe shearing after they are through flowering to prevent them from becoming straggly. In severe climates a light mulch protects the foliage. Sun Roses are gay, colorful masses in late Spring and early Summer with a sprinkling of flowers later. They are generous with their blooms and give a wealth of enjoyment for a small investment.

***Apricot**—Large rosy-peach blooms with an orange center and prostrate creeping stems covered with shiny leaves. 5 in. Each 50c.

***Brunette** — Neat of habit and countless flowers of pale, dusty-red with a deep, brownish-scarlet central ring. 6 to 8 in. Each 50c.

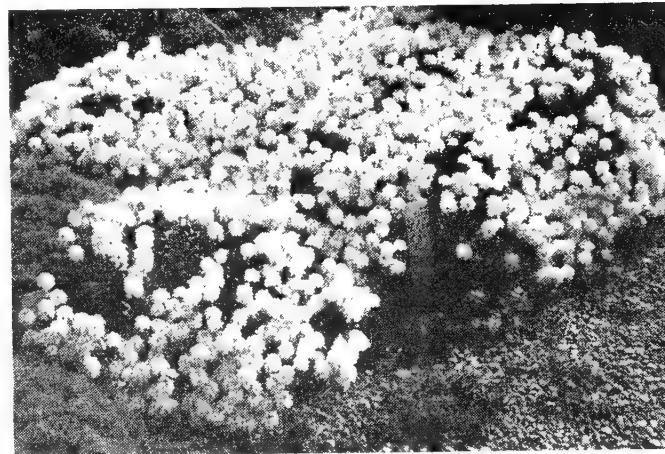
***Buttercup**—A fine, clear, golden yellow variety which reaches 6 to 8 inches. Each 50c, three \$1.40, six \$2.50.

***Jock Scott**—An uncommon, new color from England. Large blooms of warm tomato-red on vigorous, upright bushlets to 10 inches. Each 60c.

***Wendels Rose**—Very silvery-gray foliage and soft pink blossoms. A truly pleasing, pastel combination. Each 50c.



HELIANTHEMUM

IBERIS SEMPERVIRENS SNOWFLAKE
HELENIUM CHIPPERSFIELD ORANGE



HELLEBORUS ORIENTALIS HYBRIDS
(The Lenten Rose)



LITHOSPERMUM DIFFUSUM
GRACE WARD

IRIS GRACILIPES
ALBA



HELLEBORUS—Hellebore, Lenten Rose

HELLEBORUS orientalis hybrids—Called Lenten Roses because their flowering period comes during late Winter and early Spring, the time of Lent. They are erect growing, to 1 foot or more, and have bold, evergreen, palmately-divided leaves. The striking blossoms, 2 to 3 inches across, are borne in clusters on strong, stiff stems 12 to 18 inches long. They come in a wide range of pleasing colors: white, pink, maroon, some with purplish or crimson dots. Distinct in color and shape, valuable in the garden and floral combinations, and the plants are hardy and long-lived. Best planted in the shade in rich loam mixed with old manure, sand, and peat moss. Water during the dry seasons and do not disturb once established. Mixed colors only. Each 75c, \$1.00, and \$1.50, depending on the size.

IBERIS—Hardy Candytuft

IBERIS *sempervirens Snowflake—Brilliant white flowers hide the 15-inch, evergreen bushlets in early Spring. A new variety with by far the largest blossoms and a great improvement over the common type. Grows freely in ordinary loam and sun in the rock garden or as an edging for formal beds or border. Each 60c, three \$1.60, six \$3.00.

IRIS

IRIS *gracilipes alba—A choice and dainty miniature species from Asia for a cool, sheltered spot with light, woodland soil. This rare plant has exquisite white flowers crested with gold on 10-inch stems in mid-Spring. An unusual and fine Iris which is not difficult. Each 90c.

***pumila azurea**—In effect, a very much condensed Bearded Iris with large flowers of softest blue on 6-inch stems in early Spring. Very much better than the average, so-called "blue" pumila type. Always satisfactory and attractive in average soil and sun. Each 50c, three \$1.40, six \$2.50.

LITHOSPERMUM—Gromwell

LITHOSPERMUM *diffusum Grace Ward—An evergreen, 5- to 8-inch sub-shrub which makes wide-spreading mats of darkest green covered with many large, sky-blue flowers during the late Spring and early Summer and often again in the the early Autumn. One of the most wonderful blues for the rock garden! The plants require an acid soil composed of good loam, some sand, and plenty of leaf-mold or peat. Suitable for full sun in cool sections but better in light shade in most areas. Shear heavily after blooming to encourage compact growth and mulch lightly with evergreen boughs in severe climates to protect the foliage. We have discontinued the old variety, Heavenly Blue, for this new, more vigorous, and larger-flowered Grace Ward. Pots, each 75c, three \$2.00, six \$3.75.

LYCHNIS—Catchfly, Campion

LYCHNIS *Viscaria splendens fl.-pl.—An ideal plant for those who like a bright display. The very double blooms of lively magenta on 15-inch stems are carried in dense clusters over mats of narrow, evergreen leaves from late Spring to mid-Summer. This effective, showy variety grows in ordinary to poor soils in full sun. Each 50c.

LYTHRUM—Loosetrife, Long Purples

LYTHRUM Salicaria The Beacon—Well named! The soft but bright rosy-red plumes make a colorful display in mid- and late Summer. The 3-foot stems are very sturdy and the spikes are very fine for cutting. The Beacon has clean foliage and is a hardy, durable perennial for sun or light shade and average soils. It will tolerate dry but prefers wet locations, often being massed in waterside plantings. Each 60c, three \$1.60, six \$3.00.

PENSTEMON—Beard Tongue

PENSTEMON Garnet—A new hardy variety which should not be confused with the old, tender sorts. The cheerful, tubular blooms are an unusual shade of garnet-red and come on 2- to 2½-foot stems over a long period from early Summer to Fall, if the old stalks are removed. The shiny foliage and bushy growth add considerably to the value of this easy-growing, free-flowering plant for the warm, sunny garden with ordinary, well-drained soil. Garnet supplies a wealth of cut flowers for a small outlay. Each 60c, three \$1.60, six \$3.00.

PRIMULA—Juliana Primrose

PRIMULA *Juliae Hybrids—These satisfactory, dependable little plants require a moist loam and shade during the Summer. They soon form attractive, 4- to 6-inch mats thickly clothed with pretty leaves. The profusion of starry flowers make a gay carpet from early to mid-Spring. Juliana Primroses have proved hardy and easy even in difficult climates.

***Crimson Glow**—Robust foliage and large flowers of rich purplish-crimson. Each 60c.

***Roberta**—Pretty light green leaves and soft lavender blooms of large size. Each 75c.

***Wanda**—One of the best of the older varieties with clean foliage and red-purple, almost violet, blossoms. Each 50c.

Polyanthus Primrose

PRIMULA *polyantha—The ever-popular, hardy garden Primrose. Large flowers of many beautiful colors and color combinations, the blooms clustered at the top of a stiff, 6- to 12-inch stalk during much of the early and mid-Spring season. Plant in a rather moist, shaded spot with good soil containing ample humus. The plants we offer are grown from the best, modern, large-flowered strains. Mixed shades only. Each 50c, three \$1.40, six \$2.50.

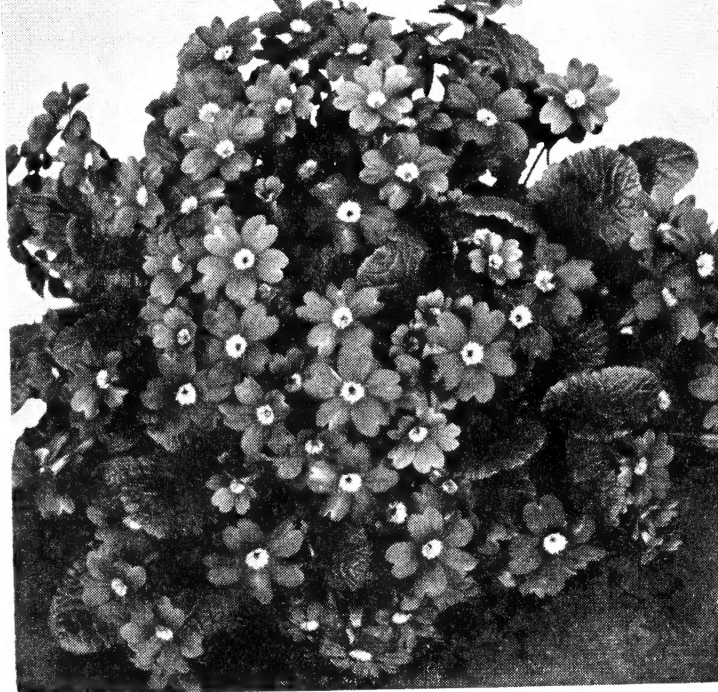
***Blue Shades**—These are all good blue shades grown from the best domestic and imported seeds. The plants are young and vigorous and will produce an abundance of lovely blooms, very distinct from the usual Primrose colors. Each 75c.

Siebolds Primrose

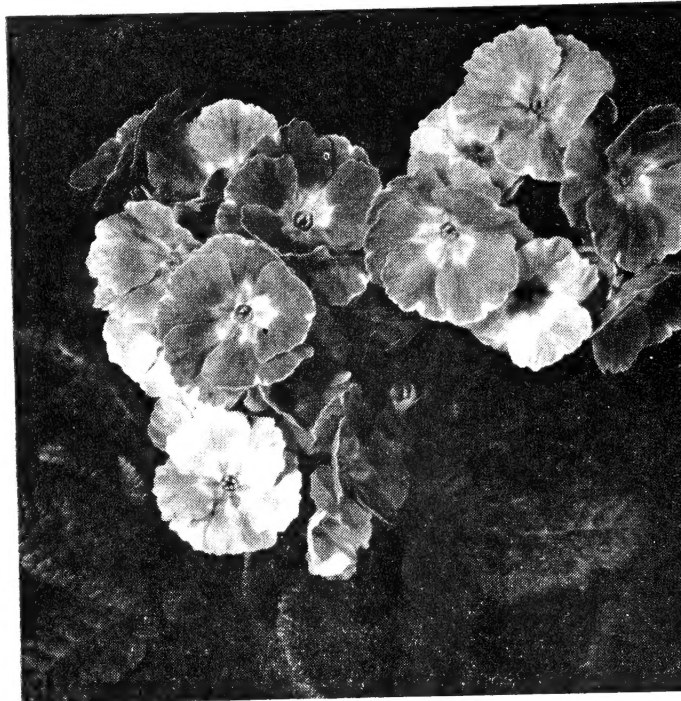
PRIMULA *Sieboldii—An exquisite, hardy, Asiatic species with masses of soft, scalloped, crumpley leaves and heads of beautiful blossoms which are often fringed. The pleasing colors, not common amongst Primroses, range from white through soft rose to almost red and some plants have bi-colored blooms. Siebolds Primrose flowers from mid- to late Spring, mostly after the other types have finished, thereby prolonging the Primrose season. The plants reach 10 inches in height and should be set in rather open, loamy soil in light shade. We constantly receive good reports about this Primrose from all over the country. It is one of the hardiest as well as loveliest species. Mixed shades only. Each 50c, three \$1.40 six \$2.50.

PULMONARIA—Lungwort

PULMONARIA angustifolia azurea—From low-growing tufts of dark green leaves come many heads of deep, sky-blue flowers on 12-inch stems in earliest Spring. The blooms are particularly welcome because of their intense color and appearance so early in the season. Suitable for rather shaded places with average moisture and soil and can be depended on to give a fine show each year. This Lungwort is very hardy and looks well in the large rock garden, shaded border, and woodland planting. Each 50c.

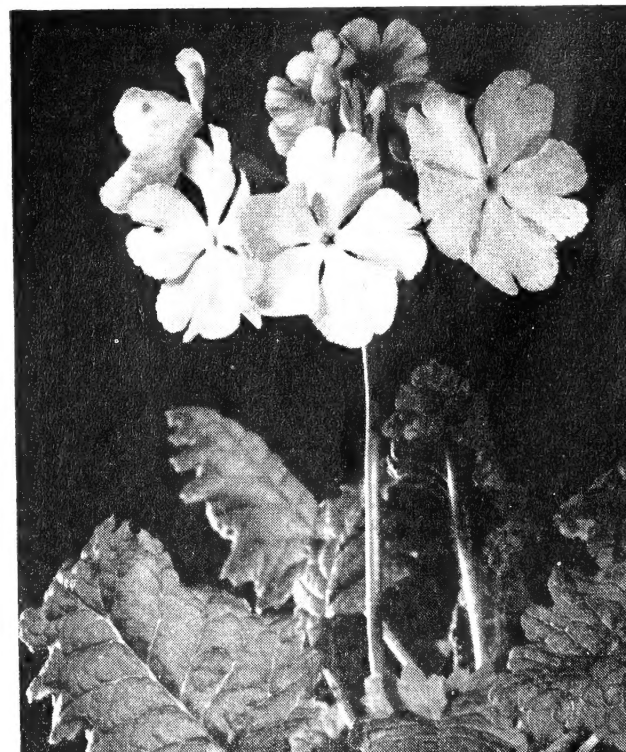


PRIMULA JULIAE HYBRID



PRIMULA POLYANTHA

PRIMULA SIEBOLDII



SALVIA—Blue Salvia, Sage

SALVIA Pitcheri—Narrow, pointed leaves clothe the slender, 4-foot stems and the unexcelled blue flowers are as clear as the Autumn skies under which they bloom. This blue is an amazingly intense luminous shade and easily makes this one of the ten best, hardy border perennials. Blue Salvia stages an autumnal display that is unsurpassed and, in addition, is of the easiest culture in ordinary loamy soil in any sunny spot that is not wet and poorly drained. Winter and Spring delivery only. Each 60c, three \$1.60, six \$3.00.



SALVIA PITCHERI

SCABIOSA—Hardy Pincushion Flower

SCABIOSA caucasica House Hybrids—One of the most generally valuable and useful hardy perennials as well as one of the most delightful. The cool, frosty blooms come in perpetual succession from early Summer through the Fall and possess unusual keeping qualities as a cut flower. Large shallow saucers of broad, fringed petals surround the lighter crest-like center and are soft, pleasing shades of dark to light lavender. The plants reach 1½ to 2 feet and are most effective towards the front of perennial borders. Scabiosas grow freely in sunny spots in good, open loam. Mixed shades only. Each 60c, three \$1.60, six \$3.00.

BEDS OF YOUNG ROCK GARDEN PLANTS
FOR YOUR GARDEN

SEDUM—Stonecrop

SEDUM *caucolicum—A very rare species with showy flower heads of bright rosy-red in late Summer and early Fall. The slender stems are low arching, 6 to 8 inches long, and are clothed with red-tinted, gray leaves. An ideal plant for the sunny crevice or rock garden and much better than the species Sieboldii, which it resembles. New, outstanding, and easy! Pots, each 75c.

VERONICA



SOLIDASTER—Yellow Aster

SOLIDASTER luteus—Countless small yellow flowers form plummy heads from mid-Summer until Fall precisely when bloom is needed most in the perennial garden. The conspicuous, bloom-laden stalks are also much in demand for bouquets because of their dainty habit, lovely color, and long-lasting qualities. This hardy, free-flowering plant is suitable for ordinary soils in the sun. 2 to 3 feet high. Each 60c, three \$1.60, six \$3.00.

THALICTRUM—Yellow Meadow Rue

THALICTRUM glaucum—The rather finely cut, blue gray foliage is topped by feathery clusters of yellow, fragrant blooms in early Summer. The stately clumps reach 5 feet or more and are invaluable in the sunny border or lightly shaded woodland garden with loamy, moist soil. The long stalks make decorative and artistic cut flowers. Each 60c, three \$1.60, six \$3.00.

*Dwarf plants for rock gardens and similar locations.

TRADESCANTIA—Spiderwort

TRADESCANTIA Purple Dome—This is one of the best of the new, large-flowered varieties. The deep, luminous blue-purple blooms touched with gold in the center come by the hundreds all Summer and Fall. Unlike the old types the foliage does not hide the blossoms. Dependable, persistent and hardy in loamy soil in either full sun or light shade. Height 1½ to 2 feet. We regard Purple Dome very highly! Each 60c, three \$1.60, six \$3.00.

TROLLIUS—Globe Flower

TROLLIUS Goldquelle Hybrids — Elegant, refined plants adapted to the moist, lightly shaded garden and pool-side planting. Distinctive, globe-shaped flowers from light yellow to deep orange on 2-foot stems over handsomely cut, rich green leaves. Globe Flowers bloom freely from mid-Spring to early Summer and sometimes again in the Fall, providing abundant, glorious cut flowers at little cost. Mixed colors only. Each 60c, three \$1.60, six \$3.00.

VERONICA—Speedwell

VERONICA Blue Spire—A recent introduction with noble, dark blue spikes on 2½-foot stems. The foliage is somewhat shiny and the clumps are robust and bushy. A splendid hardy variety for early and mid-Summer border decoration. Cultural requirements are simple: a sunny spot with ordinary loam and good drainage. Try this satisfactory, modern variety of Veronica. Each 60c, three \$1.60, six \$3.00.

VIOLA—Sweet Violet

VIOLA *odorata—Familiar, lovely flowers with great sentimental appeal. These cheerful, little, hardy plants will grow in ordinary soil but bloom and look best in a rich, loamy soil which is lightly shaded and kept rather moist. The fragrant blooms are too well known to need description. They are produced abundantly in late Winter in warm sections and a little later in colder places and have long been used in charming, miniature bouquets. Sweet Violets are frequently used to carpet small areas in the informal, shaded garden and a more delightful plant cannot be recommended.

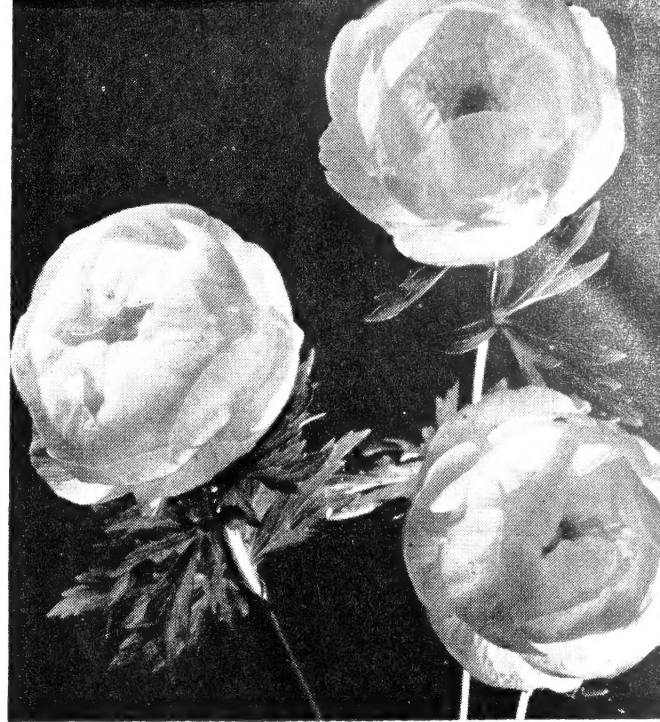
***Double Russian**—An old variety but still the best, deep violet colored, double kind. Each 50c, three \$1.50, six \$2.50.

***semperflorens** — This is the Perpetual-Flowering Sweet Violet with dark, fragrant, blue purple flowers off and on all season. Each 50c, three \$1.40, six \$2.50.

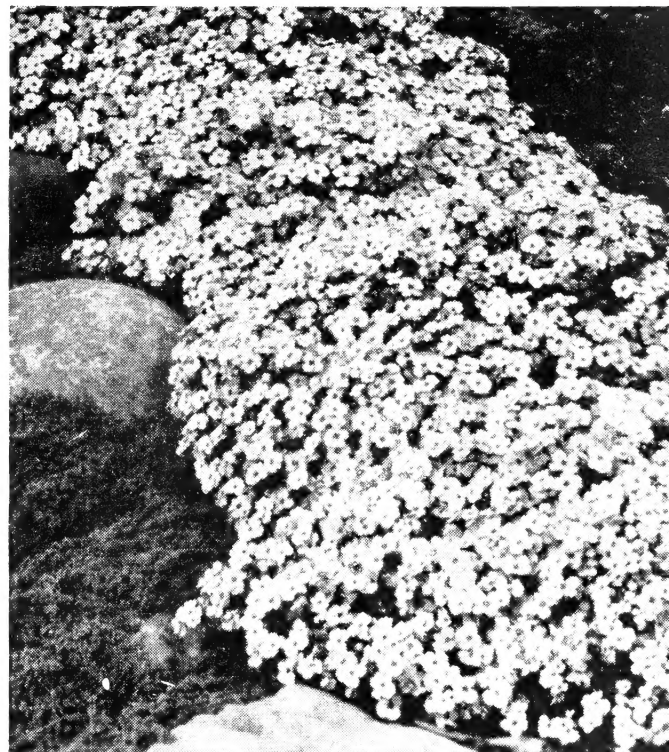
***Vilmoriniana**—Probably the rarest of the Sweet Violets. The abundant apricot blooms, touched with violet on the back, are unique and charming. Each \$1.00.

Remember . . .

The fine plants in this booklet were selected from more than 500 distinctive varieties in our 1947 Master Catalog and Gardening Guide.



TROLLIUS

AUBRIETA
(See page 4)

Cut Here

CATALOG COUPON

Important---Read Page 5 Before Mailing!

PLEASE SEND AT ONCE

1947 MASTER CATALOG AND GARDENING GUIDE

I am enclosing 25c in stamps coin
My name and address are on the reverse side of this coupon. I have checked them and they are correct.

FREE PLANT . . .

This coupon entitles me to **one** free plant of your choice, worth 50c or more, to be shipped with my **first order** from your **Master Catalog!**

Cut and Mail with Remittance to
SAXTON & WILSON
Maplewood, Oregon

Cut Here

ORDERING IS EASY

YOUR PROTECTION

We grow only selected kinds of **hardy** plants, the best of both old and new. Our collection is recognized as one of the finest in the country. This permits you to choose from many distinctive species and varieties, many of which are not available from other firms. Our stock is grown at our gardens and is exposed to the Summer heat and the Winter cold, snow, and rain. These plants average larger than ordinary nursery stock and with normal care should bloom within a year. They are carefully wrapped and packed to reach you in good condition at the proper planting time for your locality. We customarily leave more soil around the roots than most nurseries.

We guarantee our plants to be clean, true to name, and of excellent quality. We shall replace any plants which do not fulfill the above conditions or refund your original purchase price if you notify us within five days of receipt of your shipment. **We further guarantee our stock to reach you safely.*** For your protection all Express and the more valuable Parcel Post shipments are insured. If an **insured** shipment is lost or the plants arrive dead, **you** must file a claim with the proper authorities immediately. We are **not** responsible for damage to such insured shipments after they are delivered to the forwarding agencies. However, we shall replace or refund your purchase price for any **uninsured** Parcel Post shipment which is lost or in which the plants arrive dead, if you notify us within five days. Of course, **our** responsibility ends when we have fulfilled the conditions of our guarantee. Successful culture of the plants we send is **your** responsibility. In all cases our liability shall be limited to the amount of the original purchase and we accept orders only under these conditions.

*Because of conditions beyond our control this guarantee does not apply to overseas shipments.

PACKING AND SHIPPING

There is no additional charge for wrapping, packing, and transportation, except for foreign orders or for higher priced sizes of plants than those listed in our catalog. In such cases, you are billed at cost. We use an individual and superior packing method which is time consuming and expensive but it protects your plants en route and insures safe delivery. Large parcels are usually forwarded by Express and small ones by Parcel Post. In order to save you expense and ourselves extra time and office work, we do **not** ship C.O.D.

PRICES AND REMITTANCE

The prices listed are per plant except where special prices for larger quantities are given! We pay all postage and insurance charges except on foreign orders. Other firms charge extra, we save you this expense. You are not bothered with sending us extra money when you receive your plants. This simple arrangement makes ordering from us **rapid, easy and less expensive!**

It is more economical to dig and ship six or more plants of one kind than to handle six different kinds. **We offer twelve plants of the same species or variety at ten times the price of one, or six plants at five times the price of one.** These quantity reductions apply to the prices of all plants including the prices of large sizes.

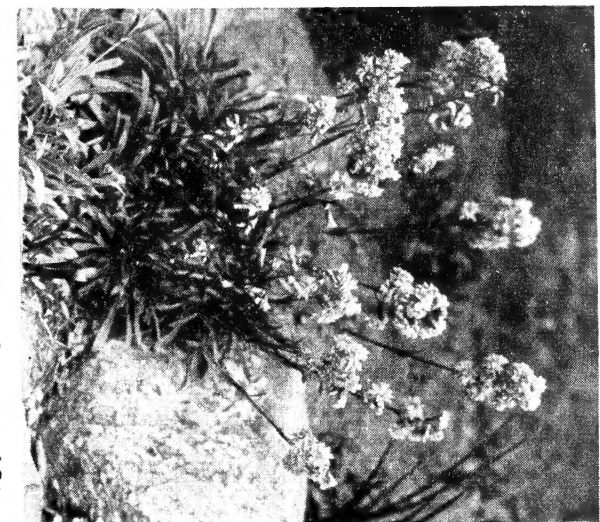
Handling small orders is very expensive and impairs our service to you. Therefore, **we do not accept orders for less than \$3.00.** Your remittance in full should accompany your order and will be acknowledged promptly. Remittance may be in any standard form. Please use the order blank and complete both sides. Your account is adjusted at the time your order is forwarded.

saxton & wilson
Successors to Wm. BORSCH & SON
maplewood, oregon
Proven of
DISTINCTIVE
HARDY PLANTS

We Grow . . .

"The Best of the Old,

The Pick of the New!"



← SCABIOSA CAUCASICA (See page 12)

← LYCHNIS VISCARIA
(See page 10)

