

Historic, Archive Document

Do not assume content reflects current scientific knowledge, policies, or practices.

62.09

Aggeler & Musser Seed Co.

LOS ANGELES, CALIFORNIA

LIBRARY
RECEIVED
★ JAN 16 1930 ★
U. S. Department of Agriculture.

A&M
reliable
SEEDS

Vegetable Seed Trials
D. N. Shoemaker

Tulip Cover Collection

1. Gesneriana Major
2. Moonlight
3. Dom Pedro
4. Clara Butt
5. Faust
6. Farncombe Sanders

3 of each \$1.45
(18 bulbs)

12 of each \$5.50
(72 bulbs)

25 of each \$10.50
(150 bulbs)

AUTUMN 1929

A. & M. Choice Bulbs and Seeds for Fall Planting

Every gardener realizes the importance of reliability in bulbs, plants and seeds. Throughout these pages are listed varieties of the very highest quality and we personally recommend them as being the best of their respective kinds.

For complete gardening information, tune in on KHJ Wednesday afternoons at 3 o'clock for the weekly radio garden talks by our Vice-president, Mr. Fred C. McNabb.



A. & M. Superb Exhibition Hyacinths

We have selected four of the finest colors from the many Hyacinths cultivated and feel sure the greatest pleasure will be derived from this splendid collection.

| | Each | Doz. |
|----------------------------|--------|--------|
| A. & M. Superb White | \$0.30 | \$3.00 |
| A. & M. Superb Red | .30 | 3.00 |
| A. & M. Superb Pink | .30 | 3.00 |
| A. & M. Superb Blue | .30 | 3.00 |

A. & M. Superb Hyacinth Collection

One each of the above four varieties, \$1.00;
three of each, \$2.90; twelve of each, \$11.00.

For complete list of varieties see Hyacinth page.

W. B. EARLY, President

F. C. McNABB, Vice-President

Aggeler & Musser Seed Co.

General Offices, Warehouses and Mail Order Dept.

P. O. Box 1228 — 1934 E. 15th St.

LOS ANGELES, CALIF.

STORES

750 S. Spring St.
Los Angeles

137 N. Sixth St.
Brawley, Calif.

767 Central Ave.
Los Angeles

200 W. Main St.
Santa Maria, Calif.

838 W. 165th St.
Gardena, Calif.

General Directions for Ordering

NAME AND ADDRESS. Be sure that your name and address are written plainly. Write in the proper place on the order blank Post Office, County, Rural Delivery, Box Number and nearest Express Office.

ORDER EARLY. We endeavor to ship all orders within 24 hours after we receive them, but as the numerous bulbs listed herein are not all available at the same time we will ship each variety as soon as ready and in good season for planting.

All bulbs are subject to examination by horticultural inspectors at destination, and as a result delay in final delivery to patrons may sometimes arise.

REMITTANCES. Should be made by post office money order, express money order, or bank draft, for a sufficient amount to cover the entire order and postage, if any. Do not send currency. Should it be lost there is no recourse. Stamps of two cent denominations will be accepted for small amounts.

POSTAGE NOT PAID. All bulbs in this catalog are offered net F. O. B. Los Angeles. As it is impossible to determine in advance postal charges on shipments of bulbs, customers are kindly requested to add sufficient to their remittances to cover postage. Any excess money sent us will be refunded at once. If desired, orders may be shipped by express or freight and transportation charges can be paid on receipt of goods.

All seeds listed are sent postpaid.

FOREIGN PARCEL POST. The parcel post rate to foreign countries is 14 cents per pound. Foreign correspondents should add a sufficient amount to cover postage at this rate.

MEXICO SHIPMENTS. All orders sent by express or freight to Mexico have an extra charge, as follows: Orders to the value of \$5.00 to \$50.00 require \$1.00 extra, and orders above \$50.00 require \$2.00 extra for consular fees. All orders sent by parcel post are free of these charges.

ERRORS. While we exercise the utmost care in filling orders we find that occasionally errors occur, in which event we ask you to please notify us promptly and we suggest that you keep copy of your orders for comparison.

NON-WARRANTY. Note: There are so many contingencies to be encountered in growing plants from seed and in setting out plants that are dependent on the weather and other conditions over which we have no control, that success in planting is not altogether dependent on the seed or plant. We will send out only seed which we believe will grow and produce the kind of plant and variety represented, but:

Aggeler & Musser Seed Co. give no warranty, expressed or implied, as to description, quality, productiveness, or any other matter of any seeds, bulbs, plants or trees they send out, and they will not be responsible in any way for the crop.

INDEX

| | Page | | Page | | Page |
|---------------|------|----------------|-------|-------------------|------|
| Agapanthus | 5 | Fertilizer | 22 | Narcissi | 10 |
| Allium | 5 | Flower Seeds | 14-20 | Ornithogalum | 7 |
| Amaryllis | 6 | Freesias | 7 | Oxalis | 7 |
| Anemone | 6 | Galanthus | 13 | Pancreatum | 13 |
| Baby Gladioli | 12 | Gladioli | 12 | Ranunculus | 13 |
| Bloomeria | 5 | Hyacinths | 4-5 | Scilla | 13 |
| Brodiaea | 6 | Insecticides | 24 | Snowdrops | 13 |
| Bulb Fibre | 13 | Iris | 8 | Snowflakes | 7 |
| Callas | 13 | Ismene | 12 | Sparaxis | 13 |
| Calochortus | 6 | Ixias | 13 | Sprayers | 23 |
| Chionodoxa | 6 | Jonquils | 11 | Star of Bethlehem | 7 |
| Chlidanthus | 6 | Lawn Grass | 27 | Tulips | 2-3 |
| Crocus | 5 | Leucojum | 7 | Vegetable Seeds | 21 |
| Daffodils | 10 | Lilies | 9 | Watsonia | 11 |
| Dusters | 23 | Lily of Valley | 9 | Wildflowers | 1 |
| Fairy Lilies | 13 | Madeira Vine | 13 | Zephyranthes | 13 |

California Wildflower Mixture

As though by magic one may transform that unsightly piece of ground into a most interesting California Wildflower Garden, by broadcasting this mixture over a prepared seed bed in the Autumn just before or during the rainy season. No irrigation will be required.

This mixture contains species of true Annual California Wildflowers and is blended so as to give a succession of blooms from early Spring to late Summer.

Real estate subdividers will find this an attractive as well as inexpensive landscape beautifier for their subdivisions. A great many already have proven its worth. One pound of seed plants an acre.

Pkt. 10c; oz., 50c; 1-4 lb., \$1.65; lb. \$5.00

Tulips

For a gorgeous display of early Spring flowers the tulip probably heads the list of bulbous plants for Fall planting. The rich bright shades of blooms are admired by all, and in addition to the beautiful garden display they are excellent for cutting and come at a time in the Spring when they are fully appreciated. The Darwin and Breeder Tulips are both strong growing types, the only practical difference being that the Darwins are generally of the self colors while Breeders are of buff and bronze shades. The Cottage or May-flowering Tulips include the yellow shades, and the petal tips are more or less pointed.

In Southern California and similar climates Tulips should be planted to a depth of 5 to 6 inches in heavy soil, and 6 to 7 inches in light soil. The object in planting to a greater depth in a mild climate is to retard the top growth, thus giving the bulb time to form a good root growth. In preparing the soil for Tulips and Hyacinths barnyard fertilizer should not be spaded in unless it is several months in advance of planting. Bone Meal is very good and it should be placed in the soil below the bulbs at the time of planting, but it should not come in direct contact with the bulbs. The addition of Gypsum to heavy adobe soil will prove very beneficial and will make the soil more porous and more easily cultivated. In extremely heavy soil use 100 lbs. of Gypsum to 100 square feet.

For a fine effect plant tulips in beds and about January first broadcast Nemophila Seed on the surface of the beds, covering with a light mulch of barnyard manure. This will provide a beautiful background for your tulips and make a handsome showing of color.

Darwin Tulips

Postage Extra. See Page 1.

ANTON ROOZEN. Large flowering bright rosy pink. A remarkable tulip. 3 for 30c; \$1.00 per doz.; 100 for \$6.50.

BARON LA TONNAYE. Bright rose shaded blush. A beautiful and faultless flower. 3 for 20c; 75c per doz.; 100 for \$5.50.

BLEU AMIABLE. Soft bluish lilac; very large flower. 3 for 20c; 75c per doz.; 100 for \$5.50.

CENTENAIRE. Pretty deep rose, flushed claret with a light blue center. 3 for 30c; \$1.00 per doz.; 100 for \$6.50.

CLARA BUTT. Delightful soft salmon rose. One of the leading varieties for bedding. 3 for 20c; 75c per doz.; 100 for \$5.50.

EDMEE. Beautiful deep cherry rose with silvery pink edges. 3 for 30c; \$1.00 per doz.; 100 for \$6.50.

EUROPE. Glowing fiery salmon scarlet, with a white center in the base of the flower. 3 for 30c; \$1.00 per doz.; 100 for \$6.50.

EUTERPE. Clear rosy lilac, with daintily incurving edges of the outer petals. 3 for 30c; \$1.00 per doz.; 100 for \$6.50.

FARNCOMBE SANDERS. Brilliant scarlet with a clear white base. Famous as a bedding variety. 3 for 20c; 75c per doz.; 100 for \$5.50.

FAUST. Blackish violet and an enormous flower borne on strong stems. 3 for 40c; \$1.50 per doz.; 100 for \$10.00.

FEU BRILLIANT. Lovely bright scarlet and one that will brighten up the tulip bed materially. 3 for 35c; \$1.25 per doz.; 100 for \$8.50.

FRANS HALS. A large flower of bluish violet. 3 for 40c; \$1.25 per doz.; 100 for \$8.50.

INGLESCOMBE YELLOW. Large globular flowers of a glossy canary yellow. A charming cup shaped tulip and very fine for all purposes. 3 for 20c; 75c per doz.; 100 for \$5.50.

KING HAROLD. A velvety crimson-maroon and a very large flower. 3 for 20c; 75c per doz.; 100 for \$5.50.

LA FIANCEE. Rosy mauve, edges light pink. Exceedingly fine. 3 for 40c; \$1.50 per doz.; 100 for \$8.50.



Darwin Tulips.

LA TULIPE NOIRE. A very fine black tulip with attractive velvety sheen. 3 for 30c; \$1.00 per doz.; 100 for \$6.50.

MARCONI. Beautiful purple-violet with a conspicuous white base. 3 for 30c; \$1.00 per doz.; 100 for \$6.50.

OIDA. One of the prettiest combinations, being a fiery scarlet-red with a pale blue base. 3 for 20c; 75c per doz.; 100 for \$5.50.

PETRUS HONDIUS. An extra large and showy variety of bright carmine rose. 3 for 35c; \$1.25 per doz.; 100 for \$8.50.

PRIDE OF HAARLEM. One of the best known varieties; old rose color. 3 for 20c; 75c per doz.; 100 for \$5.50.

PRINCE OF NETHERLANDS. Rich deep cerise rose with the petals margined pink and with a pale blue center. One of the finest tulips. 3 for 35c; \$1.25 per doz.; 100 for \$8.50.

REV. EWBANK. Heliotrope lilac with a paler edge of the petals. Fine bedder. 3 for 20c; 75c per doz.; 100 for \$5.50.

WHITE QUEEN. Fine white, flushed pink. 3 for 20c; 75c per doz.; 100 for \$5.50.

Collection No. 3B One each of the above 23 varieties Darwin Tulips, mixed, but not wrapped individually or named, postage extra **\$1.85**

A. & M. Special Darwin Mixed

A very choice assortment with splendid range of color. 75c per doz.; 100 for \$5.50; 1000 for \$50.00.

Cottage or May-Flowering Tulips

Postage Extra. See Page 1.

GESNERIANA MAJOR. Rich crimson scarlet with blue-black center. Splendid for bedding. 3 for 25c; \$1.00 per doz.; 100 for \$7.00.

GRENADIER. A very large flower of beautiful orange color. An extra nice variety. 3 for 25c; \$1.00 per doz.; 100 for \$7.00.

INGLESCOMBE PINK. Delicate rose pink tinted salmon, with a striking blue-green center. 3 for 25c; \$1.00 per doz.; 100 for \$7.00.

JOHN RUSKIN. Apricot rose, mauve shading and with pale yellow edge to the petals. The shades are soft and the flower very attractive. 3 for 25c; \$1.00 per doz.; 100 for \$7.00.

MOONLIGHT. Large clear yellow with an elongated flower of distinct type. Very striking. 3 for 25c; \$1.00 per doz.; 100 for \$7.00.

MRS. MOON. A very deep golden yellow with long pointed petals reflexed at the tips. This is one of the most beautiful tulips of the Mayflowering class. 3 for 25c; \$1.00 per doz.; 100 for \$7.00.

ORANGE KING. Large globular flowers of glowing orange shaded scarlet, with yellow center and black anthers. 3 for 25c; \$1.00 per doz.; 100 for \$7.00.

PICOTEE. A beautiful color combination of pure white margined carmine rose. 3 for 25c; \$1.00 per doz.; 100 for \$7.00.

SIRENE. A lily tulip of rich cerise pink. The long pointed petals are reflexed at the tips. A distinct and novel variety. 3 for 25c; \$1.00 per doz.; 100 for \$7.00.

Collection No. 4B One each of the 9 varieties Mayflowering Tulips listed above, mixed, that is, bulbs not individually wrapped or named **65c**

Mayflowering Tulips Mixed

A grand mixture of many varieties including color combinations that are not listed above. 75c per doz.; 100 for \$5.50.

Breeder Tulips

Postage Extra. See Page 1.

The great demand for flowers of artistic coloring is bringing these tulips into greater prominence each year; nature's happiest color combinations of purple and bronze, grey and lilac, yellow and bronze, brown and orange are revealed to us in no other class of tulips. The flowers are large, of perfect form and are borne on tall, strong stems.

BRONZE QUEEN. Velvety buff with the tips tinged apricot. 3 for 35c; \$1.25 per doz.; 100 for \$8.50.

DOM PEDRO. Very distinct. A dull brown shaded maroon; inside mahogany. 3 for 35c; \$1.25 per doz.; 100 for \$8.50.

GOLDEN BRONZE. The outside of the flower is old gold, the inside a deep golden bronze. 3 for 35c; \$1.25 per doz.; 100 for \$8.50.

LOUIS XIV. Purple, flushed golden bronze. Very stately. 3 for 35c; \$1.25 per doz.; 100 for \$8.50.

MEDEA. Crushed strawberry, shaded heliotrope, yellow center. Enormous flower. 3 for 35c; \$1.25 per doz.; 100 for \$8.50.

MON TRESOR. Brownish red, edged orange; inside all blood-red. 3 for 35c; \$1.25 per doz.; 100 for \$8.50.

PANORAMA. Deep orange, shaded mahogany. Very large globular flower of brilliant color. 3 for 35c; \$1.25 per doz.; 100 for \$8.50.

PRINCE OF ORANGE. Terra cotta with orange edge. Very fine. 3 for 35c; \$1.25 per doz.; 100 for \$8.50.

ST. JAMES. Dark rose-lilac, edged bronze, flushed coppery rose at tips. 3 for 35c; \$1.25 per doz.; 100 for \$8.50.

Collection No. 5B One each of the above 9 varieties of Breeder Tulips mixed but not wrapped individually and named **85c**

A. & M. Breeder Tulips Mixed

The very best A. & M. quality in this mixture of finest varieties. Well balanced as to colors and will produce a pleasing color combination in large or small bed. \$1.00 per doz.; 100 for \$7.50.

See Front Cover for Special Tulip Collection.



Cottage or May-Flowering Tulips.



Hyacinths

With their wondrous beauty and delightful fragrance Hyacinths are one of the glories of Spring. They are seen at their best in borders or formal beds, and one of the most effective methods of culture is to arrange them in color schemes. They are also very charming when growing in pots or glasses.

CULTURE. In climate similar to Southern California it is necessary to plant Hyacinths to a greater depth than they are planted in more severe climates. The reason for this is to retard the top growth, thus giving the bulb an opportunity to make a root system.

In heavy soil it would be well to plant the tip of the bulb 5 to 6 inches beneath the surface, and in light soil 6 to 7 inches beneath the surface. Set the bulbs about 6 inches apart each way in the bed. About January first plant Nemophila Seed on top of the bed and mulch with barnyard fertilizer or Leaf Mold. The Nemophila will provide a very attractive covering for the bed and will produce longer stemmed flowers of Hyacinths. October and November plantings of Hyacinths will give best results.

For pot culture of Hyacinths plant one bulb only to a 5-inch pot and bury pot and all in a shaded place in the garden, covering to a depth of 6 or 7 inches. In six weeks or two months they may be removed and brought to the light; however, leaving them longer might produce better results. Once they are brought to the light keep them near a window and give them plenty of fresh air and water.

A. & M. Exhibition Hyacinths

Postage Extra. See Page 1.

CITY OF HAARLEM. Yellow. A choice exhibition variety; considered the finest of Yellow Hyacinths. A splendid sort for all purposes. 30c each; 4 for \$1.00; \$3.00 per doz.; \$22.00 per 100.

GEN. de WET. Rose. This Hyacinth produces a broad spike of very fine light rose bells. A good variety. 30c each; 4 for \$1.00; \$3.00 per doz.; \$22.00 per 100.

GRAND MAITRE. Lavender. A large compact spike of deep lavender-blue. The stem is also dark and contrasts pleasingly with the color of the flower. 30c each; 4 for \$1.00; \$3.00 per doz.; \$22.00 per 100.

KING OF BLUES. Dark blue. An extra large truss of dark blue flowers; probably one of the largest varieties of Hyacinths grown. 30c each; 4 for \$1.00; \$3.00 per doz.; \$22.00 per 100.

KING OF THE REDS. Red. A glowing scarlet red and a splendid flower. This brilliant shade is one of the most popular for bedding or pot culture. 30c each; 4 for \$1.00; \$3.00 per doz.; \$22.00 per 100.

LADY DERBY. Pink. An excellent variety not only for bedding, but for pot culture. The very large flowers are a bright rose pink. 30c each; 4 for \$1.00; \$3.00 per doz.; \$22.00 per 100.

LA VICTOIRE. Carmine. A glistening deep carmine rose. The shade is lighter when grown inside. 30c each; 4 for \$1.00; \$3.00 per doz.; \$22.00 per 100.

L'INNOCENCE. White. An excellent pure white and well suited for all purposes, either pot culture or for the garden. 30c each; 4 for \$1.00; \$3.00 per doz.; \$22.00 per 100.

LORD BALFOUR. Lilac. Beautiful lilac tinged deep violet with rosy reflex. A fine truss and a very distinct color. 30c each; 4 for \$1.00; \$3.00 per doz.; \$22.00 per 100.

Collection No. 6B To give you an assortment of these wonderful bulbs we offer you one each of the above nine named varieties mixed and not individually wrapped for. **\$2.15**

See Inside Front Cover for A. & M. Superb Collection of Exhibition Hyacinths.

A. & M. Garden Hyacinths

Garden Hyacinths are similar in all respects to the Exhibition varieties except that the bulbs are slightly smaller. Of course the larger bulbs will produce larger flowers but very good blooms will be obtained from the smaller bulbs. Plant these by the hundred.

GERTRUDE. Pink. Very fine rosy pink, with strong stem and good spike. 20c each; 6 for \$1.10; 12 for \$2.00; 50 for \$8.00; 100 for \$15.00.

L'INNOCENCE. White. Pure white and a dense spike. 20c each; 6 for \$1.10; 12 for \$2.00; 50 for \$8.00; 100 for \$15.00.

LA VICTOIRE. Rose. Bright carmine rose. One of the best. 20c each; 6 for \$1.10; 12 for \$2.00; 50 for \$8.00; 100 for \$15.00.

LORD BALFOUR. Lilac. Beautiful lilac tinged scarlet. Very large. 20c each; 6 for \$1.10; 12 for \$2.00; 50 for \$8.00; 100 for \$15.00.

MARIE. Blue. An exquisite deep blue and one of the newer varieties. 20c each; 6 for \$1.10; 12 for \$2.00; 50 for \$8.00; 100 for \$15.00.

PERLE BRILLIANT. Blue. A very large pale blue. 20c each; 6 for \$1.10; 12 for \$2.00; 50 for \$8.00; 100 for \$15.00.

YELLOW HAMMER. Yellow. A beautiful deep truss of pure yellow. An early variety. 20c each; 6 for \$1.10; 12 for \$2.00; 50 for \$8.00; 100 for \$15.00.

Collection No. 8B One each of the above seven varieties. A. & M. Garden Hyacinths, mixed **\$1.00**

Dutch Roman Hyacinths

Plant these for cut flowers and for naturalizing in borders. They bloom earlier than the exhibition and bedding Hyacinths and often produce several graceful spikes from a single bulb. Plant four to five inches deep and about three inches apart in the rows. They are very fragrant and may be grown in pots as well as outdoors. For pot culture follow the directions given for exhibition Hyacinths.

GRAND MAITRE. Blue. A deep porcelain blue. For years it has been one of the popular varieties. 15c each; 6 for 85c; \$1.50 per doz.; 50 for \$5.75; 100 for \$11.00.

PERLE BRILLIANT. Blue. A very large pale blue. The color is clear and the flowers are waxy. 15c each; 6 for 85c; \$1.50 per doz.; 50 for \$5.75; 100 for \$11.00.

LA VICTOIRE. Red. Brilliant scarlet red flowers of a decided waxy appearance. Beautiful as a cut flower. 15c each; 6 for 85c; \$1.50 per doz.; 50 for \$5.75; 100 for \$11.00.

L'INNOCENCE. White. Graceful snowy white flowers, large and a good spike. 15c each; 6 for 85c; \$1.50 per doz.; 50 for \$5.75; 100 for \$11.00.

MORENO. Pink. Splendid large bells of deep pink. Undoubtedly the best pink in the Romans. 15c each; 6 for 85c; \$1.50 per doz.; 50 for \$5.75; 100 for \$11.00.

YELLOW HAMMER. Yellow. This bright, clear, yellow is one of the most striking colors in the Roman Hyacinths. Showy in the garden and excellent as a cut flower. 15c each; 6 for 85c; \$1.50 per doz.; 50 for \$5.75; 100 for \$11.00.

Collection No. 9B Two each of the above varieties of Dutch Roman Hyacinths, mixed, 12 bulbs **\$1.25**

Depth to Plant Bulbs

| | Inches | | Inches | | Inches |
|------------|--------|--------------------|--------|--------------|--------|
| Agapanthus | 4-6 | Freerias | 2 | Ornithogalum | 3-4 |
| Allium | 1 | Gladioli | 3 | Ranunculus | 2 |
| Amaryllis | 2-4 | Hyacinths | 5-7 | Snowdrops | 2 |
| Anemones | 1½ | Lilies | 8-10 | Tulips | 5-7 |
| Crocus | 2-4 | Lily-of-the-Valley | 2-3 | Watsonias | 3 |
| Daffodils | 5 | | | | |



Dutch Roman Hyacinths.

Agapanthus (Blue African Lily)

Postage Extra. See Page 1.

A very hardy and sure blooming lily, bearing clusters of bright blue flowers on stiff stems about three feet high. The leaves are long, glossy and very decorative. 35c each; \$3.50 per doz.

Bloomeria Aurea

A native flower closely allied to Brodiaea and requiring same culture. 15 to 18 inches tall and bears clusters of bright orange, star-shaped flowers. 50c per doz.; \$3.50 per 100.

Allium Neapolitanum

This charming, starlike flower is not well known, but is appreciated by all who grow it because of its splendid cutting qualities. The flowers are small, pure white with black centers and grow in loose clusters. May be used nicely as a filler in bouquets. Grows well in any good garden soil. 50c per doz.; \$3.75 per 100.

Crocus

One of the first flowers to bloom in the early Spring. Grows 3 to 4 inches high and is excellent for borders or masses. Will do well in partial shade.

Baron Von Brunow. Dark blue.

Sir Walter Scott. White, lilac stripe.

King of Whites.

Mixed. All colors.

50c per doz.; \$3.50 per 100.

Extra Large Yellow. 75c per doz.; \$5.50 per 100.

Amaryllis

Postage Extra. See Page 1.

BELLADONNA MAJOR. This variety has luxuriant green foliage during the Fall, Winter and Spring. During late Spring the foliage dies off and in July and August the flower stalks rise from the bare ground with umbels of lovely, rose-pink lilies. The flowers are fragrant and keep well. The bulbs should be planted during the Fall, but do not always flower the first year if planted late. Large size, 25c each; \$2.50 per doz. Second size, 15c each; \$1.50 per doz.

VITTATI HYBRIDS. The finest of this class. The flowers have six petals of velvety texture, which curve back and open wide so that these gorgeous flowers often measure 8 to 10 inches across. The colors vary through all shades of red, scarlet, pink and white. Extra fine bulbs, 75c each; \$7.50 per doz.

JOHNSONI. Brilliant red and very large flowers. One of the finest. Each, 50c; 4 for \$1.75.



Amaryllis—Vittati Hybrids.

Anemones

Anemones should be planted during the Fall and Winter in slightly raised beds. Soak the bulbs in water five or six hours and then plant with the pointed ends downwards. Set 1½ inches deep and 5 to 6 inches apart.

A. & M. GIANT SINGLE CORONARIA. This fine mixture of single poppy-like flowers includes a medley of colors—red, pink, blue, white, etc. Large bulbs, 75c per doz.; \$5.50 per 100. Medium bulbs, 50c per doz.; \$3.75 per 100. Packed in beautiful colored package.

A. & M. ST. BRIGID DOUBLE AND SINGLE MIXED. A beautiful selection from the Coronaria type containing many doubles and semi-doubles in the choicest colors. 75c per doz.; \$5.50 per 100.

Calochortus

(Mariposa Tulip)

Calochortus should have a special and separate bed where nature will care for them after they have been planted. Mix a liberal amount of leafmold with the soil in preparing it and plant them in partial shade during October. Set them to a depth of about 3 inches and water them thoroughly.

On large estates it is well to let the rains start them and only in the case of severe drought should they be watered. After the blooming season leave them in the ground and without water. They are easily grown; they multiply rapidly and are one of our most attractive native California flowers.

CALOCHORTUS ALBUS. Fairy Lantern or Fairy Bell. These dainty, creamy white flowers are pendant like bells and there are often 10 to 20 flowers blooming at the same time on a plant, giving a very charming effect. They require partial shade. 75c per doz.



Anemone—Giant Single Coronaria.

CALOCHORTUS MIXED. Contains many of the very finest varieties. 75c per doz.; \$3.50 per 100.

Brodiaea

BRODIAEA CAPITATA. This very attractive native California flower is often referred to as "Wild Hyacinth." The violet-blue flowers grow in clusters on stems two feet tall. They are of easy culture—thriving in hot or dry places and in any good garden soil. Plant about 3 inches deep and give them the same cultural directions as Calochortus. 50c per doz.; \$3.50 per 100.

BRODIAEA LAXA. A handsome, large flowering variety. There are 20 to 30 large purple flowers to an umbel. Height about 2 feet. Will thrive in either sun or shade. 75c per doz.; \$3.50 per 100.

Chionodoxa

(Glory of the Snow)

These are lovely early Spring flowers blooming in February, March and April and are generally used for borders or for pot culture. The flowers are blue with six or more to a stem. The bulbs may be left in the ground, lifting only every 3 or 4 years. Plant 3 inches deep, 4 inches apart. 10c each; \$1.00 per doz.; \$7.00 per 100.

Chlidanthus Fragrans

A very attractive plant of the Amaryllis family, bearing umbels of fragrant yellow flowers. They are especially lovely planted with blue delphiniums in a perennial border. 20c each; \$2.00 per doz.



Chionodoxa.

A. & M. Freesias

Postage Extra. See Page 1.

We are offering a complete list of wonderful new colored Freesias. They have been developed through years of work and are indeed a splendid achievement. We feel that we cannot recommend them too highly and you will be proud to have them in your garden.

Freesias may be planted from July until January. They are easily grown, blossom freely early in the Spring and the bulbs will multiply and continue blooming for years. The soil should be well prepared and though they grow well in full sun they also may be planted in partial shade. All Freesias are fragrant and make good cut flowers.

Plant the bulbs one to two inches apart and cover to a depth of about two inches. Instead of just a single row, place the bulbs to make a row about 3 or 4 inches wide; this will give a very nice effect.

Freesias may be left in the ground from year to year, or if they are taken up it should be done after the foliage has become entirely cured or dry.

AMETHYST. A beautiful amethyst blue with light center. This variety is of very strong sturdy growth. 10c each; \$1.00 per doz.; \$6.50 per 100.

AURORA. A large flowering variety which is much admired, being a combination of picturesque sunset shades. 10c each; \$1.00 per doz.; \$6.50 per 100.

CALIFORNIA. A large flower of a bright golden yellow, extra fine, strong growth and long stems, one of the very finest yellow Freesias. 10c each; \$1.00 per doz.; \$6.50 per 100.

CARRIE BUDAU. A lavender-pink. Large flowers and heavy stems; an enormous grower and producer. 10c each; \$1.00 per doz.; \$6.50 per 100.

GEN. PERSHING. Lavender-pink. 10c each; \$1.00 per doz.; \$6.50 per 100.

ILENA. Deep rosy lavender, white throat, deep orange blotch on lower petals and good stiff stems. Flowers large and very attractive. 10c each; \$1.00 per doz.; \$6.50 per 100.

OLIVETTE. Bright carmine-red with light yellow throat, lower petals having a deep yellow blotch with crimson veins. Very profuse bloomer. 10c each; \$1.00 per doz.; \$6.50 per 100.

YELLOW PRINCE. A deep yellow flower. Very fine. Stems extra long and wiry. Good for cutting. 10c each; \$1.00 per doz.; \$6.50 per 100.

A. & M. COLORED FREESIAS MIXED. A general mixture of some of the finest colored varieties, including many from our trial grounds. A long row of these will include a great assortment of colors and will not only make a very attractive garden show, but will furnish fine flowers for cutting during the early Spring months. 75c per doz.; 50 for \$2.75; 100 for \$5.25.

A. & M. PETER PAN FREESIA COLLECTION. Half dozen each of five varieties, your choice, each variety labeled separately and specially packed in attractive pictorial container. \$2.10. Two collections, \$4.00.

This is a California novelty that your eastern friends would probably appreciate and we will be pleased to mail orders direct.



Freesias.

A. & M. IMPROVED PURITY FREESIAS. White. A very fine strain of this popular pure white Freesia. The flowers are large and delightfully scented. Large size bulbs, 50c per doz.; \$3.50 per 100. Medium size bulbs, 25c per doz.; \$1.75 per 100.

Leucojum Vernum

(Snowflakes)

Pretty little white bells with a bright dot of green, hanging gracefully on stems eight to ten inches long make these little early Spring flowers a delight to all. Plant the bulbs 3 inches deep and give the same culture as Narcissi. 60c per doz.; \$1.75 per 100.

Ornithogalum

(Star of Bethlehem)

Large clusters of pure white star-shaped flowers with a jet black center and a delightful perfume. They grow to a height of about two feet, are very attractive and are easily grown. 10c each; \$1.00 per doz.

Oxalis

These attractive flowers are useful for borders, hanging boxes and window boxes. They bloom freely in partial shade and are particularly attractive for Winter flowering. Plant two inches deep and about six inches apart.

BOWEI. Very desirable type. Flowers a brilliant rose. 75c per doz.

Hardy or German Iris

Postage Extra. See Page 1.

This class of Iris, sometimes known as "Bearded" Iris, has justly come into popular favor and is the crowning glory of the Spring garden. In planting a selection of these perennials a magnificent range of color is assured, seldom obtained in other subjects. The plants should be set out

in a sunny situation from June to December. It is a good plan to work a small quantity of Gypsum into the soil, which is both beneficial to growth and a preventative of Iris rot.

New and Outstanding Varieties

- ASIA.** Very dainty variety. Standards are silvery lavender with golden base and falls are a rosy lavender lighter at margins. Bright yellow beard. 4 feet. \$2.00 each.
- FRIEDA MOHR.** This magnificent flower measures 6 inches across and 6½ inches from the top of standards to the tip of falls. The plants average 4 feet in height. The standards of this majestic variety are pure mauve with falls of a harmoniously delicate violet. \$10.00 each.
- HIDALGO.** An immense lavender self of remarkably broad shape, tall and very desirable. Grows 4 feet high. \$1.50 each; 3 for \$3.50.
- MONNIERI.** Spuria type. Beardless. Different from the bearded Iris in that it requires moist rich soil and it blooms later. Plant from October to December. Flowers are large and of deep golden yellow. A fine variety for Florists. 50c each; 3 for \$1.00.
- SANTA BARBARA.** In the pure lavender-blue class this lovely Iris stands supreme. It is notable for size, substance, well-branched stalks and strong growth. 3 feet. \$3.00 each.
- SUNSET.** Standards are golden, with falls of same color, suffused violet, making a delightful combination. Late and scented. \$1.00 each.
- TRUE DELIGHT.** Beautiful white "plicata" with rose colored veining. Free-flowering. 3 feet. \$1.50 each.
- WILLIAM MOHR.** The ground color is pale lilac, standards flushed darker with a lovely veining effect in manganese purple. Standards measure 3¼ by 2¾ inches and falls 3 by 2 inches. A truly wonderful variety predicted to supercede the tender Susiana. \$10.00 each.
- YELLOW MOON.** An amber-yellow self of pallida habit. Long bloomer and excellent for massing. 3 feet. \$1.50 each.

Six De Luxe Varieties

- AMBASSADEUR.** Standards lavender suffused bronze, falls velvety maroon. One of the most popular sorts grown. Late blooming. Tall.
- CLEMENT DESORMES.** Large bright flowers of deep red-pink coloring.
- MADAME GAUDICHAU.** Standards violet; falls brilliant dark purple. Growth rampant. 3 feet.
- MAGNIFICA.** Strong grower and huge flowers. Standards light violet-blue; falls red-violet. Early. 3¼ feet.
- RAMELDO.** Brownish Petunia violet. Very hardy. 2¼ feet.
- SOLEDAD.** A very early Iris and extremely fragrant. Standards pale yellow; falls amber. Very fine.
- Price, any of the above, 50c each; 3 for \$1.25. De Luxe Collection, one each of the six varieties, \$2.50; three each of the six varieties, \$7.00.

Five Exquisite Varieties

- ALCAZAR.** Standards mauve; falls dark purple; bronze and yellow in center. 3 feet.
- AUTOCRAT.** Standards bright clear blue; falls dark blue; very attractive. 2½ feet.
- DREAM.** Lovely orchid-like flower of rose pink self color with orange beard. Perfect form and long bloomer.
- RITA.** Very handsome clear blue-purple self color. Fine stems. 3 feet.
- SEMINOLE.** Dazzling, light red-purple with prominent orange beard. 2½ feet.
- Price, any of the above, 35c each; 3 for 90c. Exquisite Collection, one each of the 5 varieties, \$1.50; three each of the 5 varieties, \$4.15.

Nine Choice Varieties

- A. & M. LARGE WHITE.** Free blooming pure white variety, very hardy.
- CATERINA.** Tall heavy bloomer of charming light blue shade.
- EL DORADO.** Striking blend of bronze, heliotrope and purple; free bloomer.
- EVERBLOOMING PURPLE.** This may be used to good advantage in long borders. Continuous bloomer.
- IRIS KING.** Standards golden yellow; garnet falls edged yellow.
- SOLENE.** Standards silvery lilac; falls old rose; very striking.
- NANCY ORNE.** Rose purple suffused with yellow. 3¼ feet.
- SHERBET.** Eceru shaded purple. Very vigorous. 4 feet.
- A. & M. DWARF YELLOW.** Suitable for borders and rock gardens.
- Price, any of the above, 25c each; 3 for 65c; \$2.35 per doz. Choice Collection, one each of the 9 varieties, \$1.95; three each of the 9 varieties, \$4.00.

Dutch Iris

Dutch Iris are considered by many to be superior to Spanish. They are earlier and larger.

- IMPERATOR (Filifolia).** Lateblue. **HART NIBRIG.** Light blue.
- T. SCHWARTZ.** Lavender-white. **D. HARRING.** Large white.
- YELLOW QUEEN.** Early yellow. **GOLDEN GLORY.** Late yellow.

Any of the above, 10c each; \$1.00 per doz.



Hardy Iris.

Lilies

Postage Extra. See Page 1.

All of the lilies listed below do well in the open ground in Southern California. They require little care and are very satisfactory as a garden flower. Plant them 8 to 10 inches deep in soil blended with leaf mold and peat. If the soil is heavy it should be mixed with sand and in any case place a little sand under and around each bulb. Avoid the use of lime. Lilies should not be disturbed after they are planted, but rather should be planted in a permanent bed. They multiply rapidly and produce a wealth of bloom. For pot culture plant the bulb in the pot to a depth of about 1 inch, plunge the pot in soil several inches below the surface and leave it until growth appears. Plant in partial shade for best results. The Japanese varieties including Auratum, Rubrum and Tigrinum arrive in the country in December. Please mail your orders early. Bulbs will be sent as soon as available and in good season for planting.

LILIUM AURATUM. Commonly known as the Japanese Gold Banded Lily, and undoubtedly one of the very finest. It is very graceful, being a delicate ivory white in color and thickly studded with chocolate crimson spots with a gold band through the center of each petal. Delightfully fragrant. Extra large flowering bulbs, 25c each; \$2.50 per doz. (Illustrated inside back cover).

LILIUM RUBRUM. A delicately perfumed white lily suffused rose pink in the center and spotted blood red with a green stripe at the base. This is one of the most beautiful garden lilies. 25c each; \$2.50 per doz. (Illustrated inside back cover).

LILIUM TIGRINUM SPLENDENS. This is the lovely Tiger Lily bearing handsome orange-salmon flowers spotted black. It is a good pot or garden variety, a free bloomer, and grows very tall. 25c each; \$2.50 per doz. (Illustrated inside back cover).



Lilium—Candidum.

LILIUM CANDIDUM (Madonna Lily). A sweetly scented pure waxy white lily with yellow anthers. Will thrive in almost any soil but is at its best in sandy loam. Bulbs should be planted four to six inches beneath the surface. The first set of leaves are strap and these wither away before the flower spike starts. Grows three to four feet high. 35c each; \$3.50 per doz.

LILIUM REGALE. This popular lily may be seen growing in many gardens throughout California. The flowers inside are a canary-yellow fading to white and often suffused with pink. Outside they are white, shaded purple. They are one of the most profuse bloomers, specimen plants after they are two or three years old bearing as many as 20 to 25 flowers. The Regal Lily, as it is often called, is particularly suited to California soil and climatic conditions. 35c each; 3 for \$1.00; \$3.50 per doz. (Illustrated inside back cover).

LILIUM GIGANTEUM (Easter Lily). This is the large pure white Lily that is planted mostly for Easter. Choice flowers of these may be produced in the open ground. 25c each; \$2.50 per doz.

LILIUM FORMOSUM. The early dark stemmed Easter Lily. It is a vigorous grower and a very free bloomer, giving excellent results in the open ground. 25c each; \$2.50 per doz.

LILIUM PARDALINUM (Leopard Lily). This is one of the most easily grown Lilies. It will thrive in almost any soil, if given partial shade and plenty of water. Grows to a height of three to five feet, bearing flowers of a rich orange color, tipped with red and dotted with maroon. Plant the bulbs about four inches deep and leave them year after year. They increase rapidly if they are not disturbed. 25c each; \$2.50 per doz.

(See Inside Back Cover for Special Lily Collection).

I thought you might be interested in knowing all the bulbs purchased last Fall are blooming fine. The colored Freesias and Tulips are wonderful; every bulb grew.
MRS. EVERARD VESTEY,
Del Rosa, Calif.



Lily of the Valley.

Lily-of-the-Valley

Plants should be grown in the shade. Bulbs ready in November and December. \$1.00 per doz.



Easter Lily.

Daffodils and Narcissi

Postage Extra. See Page 1.

All varieties are very easy to grow and are very popular as cut flowers because of their splendid keeping qualities. They may be grown in cultivated beds or borders or in the shrubby border where they may be allowed to naturalize. While they prefer partial shade, they will thrive in full sun. Plant from October until January in any good garden soil, covering to a depth of 5 inches.

All Narcissi may be grown in bulb fibre and culture is same as for hyacinths.

Trumpet Daffodils

KING ALFRED. This is one of the largest flowers and the longest stemmed variety now being offered. The flowers are pure yellow, the trumpet is slightly frilled and there are 3 or 4 flowers produced from each bulb. Extra large. 35c each; \$3.50 per doz.

OLYMPIA. Trumpet is yellow with perianth of slightly paler shade. Much larger than Emperor. A splendid variety. 35c each; \$3.50 per doz.

ROBERT SYDENHAM. Well formed sulphur yellow perianth; deeply frilled wide open yellow trumpet. A splendid exhibition variety. 35c each; \$3.50 per doz.

VAN WAVEREN'S GIANT. The largest of the Daffodils. Primrose perianth and bright yellow trumpet. Extra fine. 35c each; \$3.50 per doz.

GLORY OF SASSENHEIM. Yellow trumpet with creamy white perianth. Large bold flower. 25c each; \$2.50 per doz.

EMPEROR. Brilliant golden yellow flowers of immense size, with wide overlapping perianth. Extra fine. 20c each; \$2.00 per doz.; 100 for \$15.00. (Illustrated on back cover).

EMPRESS. White perianth, yellow trumpet. Equally as good as the Emperor, about the only difference being the color of the perianth. 20c each; \$2.00 per doz.; 100 for \$15.00.

SPRING GLORY. Clear white perianth with long petals and long chrome yellow trumpet, reflexed brim. 10c each; \$1.00 per doz.; 100 for \$7.50.

PRIMROSE PHOENIX. Double. Large rose-shaped flower of lovely soft lemon shade. Very showy. 25c each; \$2.50 per doz. (Illustrated on back cover).

VAN SION. Double. Flowers are pure yellow. We consider this one of the best of the double varieties. 15c each; \$1.50 per doz.; 100 for \$10.00.



Van Waveren's Giant.

Collection No. 16B One each of the above ten named Daffodils, mixed and not individually wrapped **\$2.25**
 for

Medium and Short Cup Narcissi

ASPASIA. Large pure white perianth; rich yellow eye. Vigorous grower. Four to five flowers on a stem. 10c each; \$1.00 per doz.; 100 for \$7.50. (Illustrated on back cover).

BARRI CONSPICUUS. Beautiful Narcissi, having a broad yellow perianth and a broad short cup edged bright orange scarlet. Excellent for cutting purposes. 15c each; \$1.50 per doz.; 100 for \$10.00.

BERNARDINO. Splendid well formed flowers with widely expanded frilled cup heavily stained orange and apricot; creamy perianth. 35c each; \$3.50 per doz.

HELIOS. Earliest of Poetaz Hybrids and best for forcing. Flowers pure yellow and sweet scented. 35c each; \$3.50 per doz.

LUCIFER. Handsome white perianth; cup glowing orange red. 25c each; \$2.50 per doz.

LAURENS KOSTER. One of the Poetaz Hybrids, the flower being a pure white perianth with a large orange yellow cup. 15c each; \$1.50 per doz.; 100 for \$10.00. (Illustrated on back cover).

POETICUS ORNATUS. Pure white perianth with broad cup delightfully edged scarlet. 15c each; \$1.50 per doz.; 100 for \$10.00. (Illustrated on back cover).

SOUTHERN GEM. Beautifully crimped pale lemon cup on handsome pure white perianth. Exhibition variety. 25c each; \$2.50 per doz.

SIR WATKIN. Very large perianth of primrose yellow with rich golden cup. 15c each; \$1.50 per doz.; 100 for \$10.00.

Collection No. 17B One each of the above nine named Narcissi mixed and not individually wrapped **\$1.65**
 for



Narcissus—Paper-White.

Ranunculus

Plant These in Quantity for Cut Flowers or Garden Show

During recent years the Ranunculus has become one of our most popular early Spring blooming flowers, being used extensively for massed beds or for borders. Our special A. & M. selected strains of these contain a great variety of the brightest colors and a large percentage of the semi-double flowers.

They may be planted from August to February or March, the earlier planting, however, will produce a more sturdy growth and a greater number of flowers over a longer blooming period. We grow many thousands of bulbs from these specially selected strains, from which have been eliminated the undesirable colors and flowers.

Soak the bulbs in water for two hours before planting. Plant the claws downward. Plant one to two inches apart in the row and cover to a depth of about 2½ inches.

GIANT FRENCH MIXED

Large Size Bulbs. \$1.00 per doz.; \$7.00 per 100.

Medium Size Bulbs. 50c per doz.; 50 for \$2.00; 100 for \$3.50; 1000 for \$32.50.

Small Size Bulbs. While these are small they will produce good plants and the flowers will be just as nice as from the larger bulbs. It takes them longer to become established, but you will not be disappointed in the results. Plant them thick in the row, covering to a depth of about one inch. Put up only in the following size packages: 100 for \$1.75; 500 for \$8.00; 1000 for \$15.00.

Our Ranunculus Bulbs are packed in a beautiful colored container, making an attractive gift.

Dahlias

Ready for shipment March 1st. Write for special bulletin No. 10. Full cultural directions and instructions for dis-budding.

Polyanthus Narcissi

These are often referred to as the bunch flowered type, that is, they produce their flowers in clusters and they are very fragrant. For bowl culture place fairly good size pebbles in the dish, fill with water and place the bulbs among the pebbles so that the bottom of the bulb just touches the water when the bowl is full. Place the bowl in a cool situation, out of doors preferably, and leave them there until a good root system is formed and until the buds begin to form. A slight freeze will not injure them, but in very cold climate it would be best to have them in a more protected place. If they are kept in the house the tendency is for them to grow too tall and spindling and under these conditions the buds blight. In Southern California keep them outdoors until the buds form, then take them into the house, place them near a window and leave them until they have finished blooming. After they have bloomed plant them in the open ground and leave them until the tops cure down entirely.

CHINESE SACRED LILY. The flowers are pure white with a yellow cup. May be planted in the open ground or in bowls with pebbles as described above. 15c each; \$1.50 per doz.; 100 for \$10.00.

PAPER-WHITE GRANDIFLORA. One of the earliest of the Polyanthus type and an excellent variety for growing in water. The flowers are pure white and very fragrant. 15c each; \$1.50 per doz.; 100 for \$10.00.

SOLEIL D'OR. Beautiful golden yellow flowers with a deep orange cup. 20c each; \$2.00 per doz.

GRAND MONARQUE. White with primrose yellow cup. This variety is not recommended for bowl culture. 15c each; \$1.50 per doz.; 100 for \$10.00.

Jonquils

MINIATURE SWEET SCENTED. One of the most fragrant of the Jonquils. Flowers are deep golden yellow, about one inch in diameter. Often produces several on a stem. Plant bulbs about two inches apart and cover to a depth of three inches. 75c per doz.

SINGLE RUGULOSUS. The most popular of all the Jonquils, for garden borders, forcing or cut flowers. The fragrant waxy flowers of a beautiful clear yellow are borne in groups of two or three on a stem. 15c each; \$1.50 per doz.; 100 for \$8.50.

See back cover for Special Daffodil Collection.

Watsonia

Postage Extra. See Page 1.

A clump of Watsonia in a partially shaded nook will add an artistic touch to the garden and will furnish beautiful spikes for cutting. The bulbs of these are ready for planting in August and the sooner they are planted after this the better will be the results. Bulbs that are kept out of the ground more than three months begin to deteriorate, therefore, we do not offer them after November 15th. Plant them about 3 or 4 inches apart and cover to a depth of about 2½ or 3 inches.

NEW HYBRIDS

AMERICA. Finest pink.

ARDERNEI. Very choice white.

EUNICE. Light salmon-pink with deeper veining.

J. J. DEAN. Deep rose pink.

GIANT PINK. A dainty color.

K. O. SESSIONS. Rose pink with deeper pink shading.

MARIAN WELCH. Coppery red and deep salmon with lavender shading in throat.

VICTORY. Deep salmon-red.

SANTA BARBARA. Dark salmon-pink with white in throat. Rosy shading on outside of petals.

Each of the above, 20c each; \$2.00 per doz.

MIXED. A splendid mixture of best shades. \$2.00 per doz.

Water Lilies

Write for free circular on the construction of ponds and see our general catalog for complete list of water lilies for present planting.

A. & M. Gladioli

Our Gladioli are grown on new, clean land each season thus eliminating any danger from fungus that might be carried over from year to year. As an additional safeguard the bulbs are treated in a disinfectant solution before planting. No flowers are cut for sale from our fields. By allowing the flower and foliage to die down naturally more vitality returns to the bulb and it is superior in all respects. Gladioli should be planted about three inches deep in good soil, preferably in a sunny situation. For complete list see our General Catalog issued January 1st. Our bulbs will be ready November to December.

Postage Extra. See Page 2.

- A. & M. FLAMING SPIRE.** Beautiful new Primulinus variety of striking rose doree color shading to scarlet with veining of lighter hue and slightly edged cream giving a feather-like appearance to petals. The spikes are long and graceful with medium sized flowers well placed. \$1.00 each.
- ALICE TIPLADY (Primulinus).** Beautiful orange-saffron color. 10c each; \$1.00 per doz.; \$7.00 per 100.
- AMERICA.** Soft lavender-pink. Very popular. 10c each; 75c per doz.; \$5.50 per 100.
- AMERICAN BEAUTY.** Brilliant American Beauty color. Throat creamy yellow, striped ruby. 20c each; \$2.00 per doz.; \$15.00 per 100.
- ANNA EBERIUS.** Purple, very popular shade. 10c each; \$1.00 per doz.; \$7.00 per 100.
- BUCKEYE.** Massive blooms of rose pink. 15c each; \$1.50 per doz.; \$10.00 per 100.
- DAVID STARR JORDAN.** Immense spikes of flame color overlaid scarlet. Open flowers. 15c each; \$1.50 per doz.; \$10.00 per 100.
- E. J. SHAYLOR.** Deep rose pink. 10c each; 75c per doz.; \$5.50 per 100.
- ELF.** Pure white with delicate lemon tip. 25c each; \$2.50 per doz.
- EVERLYN KIRTLAND.** Coral-pink. 10c each; \$1.00 per doz.; \$7.00 per 100.
- GOLDEN MEASURE.** A large, clear, deep yellow. 15c each; \$1.50 per doz.; \$10.00 per 100.
- GRETCHEN ZANG.** A soft pink blended with scarlet in throat. 10c each; 75c per doz.; \$5.50 per 100.
- HALLEY.** Salmon pink. 10c each; 75c per doz.; \$5.50 per 100.
- HERADA.** Mauve. 10c each; \$1.00 per doz.; \$7.00 per 100.
- JACK LONDON.** Light salmon, vermilion striped. 15c each; \$1.50 per doz.; \$10.00 per 100.
- JEWELL.** Wonderful pink salmon with golden throat marking. 15c each; \$1.50 per doz.; \$10.00 per 100.
- JOE COLEMAN.** Large rich red. 25c each; \$2.50 per doz.
- LE MARECHAL FOCH.** Light pink. 10c each; 75c per doz.; \$5.50 per 100.
- LOS ANGELES.** Shrimp pink with considerable orange; delicately ruffled. 10c each; \$1.00 per doz.; \$7.00 per 100.
- MAIDEN BLUSH (Primulinus).** Exquisite pink. 10c each; 75c per doz.; \$5.50 per 100.
- MARY FENNEL.** Deep lilac with primrose yellow throat. 20c each; \$2.00 per doz.
- MARY PICKFORD.** Creamy white, with throat sulphur yellow. 10c each; \$1.00 per doz.; \$7.00 per 100.
- MRS. DR. NORTON.** Delicate pink. 10c each; \$1.00 per doz.; \$7.00 per 100.
- MRS. F. C. PETERS.** Lovely rose lilac with crimson blotch. 20c each; \$2.00 per doz.
- MRS. F. PENDLETON.** Rose pink with carmine blotch. 10c each; 75c per doz.; \$5.50 per 100.
- MRS. FRANCIS KING.** Bright red. 15c each; \$1.50 per doz.; \$10.00 per 100.
- MRS. H. E. BOTHIN.** Light geranium pink with scarlet center. 15c each; \$1.50 per doz.; \$10.00 per 100.
- MRS. LEON DOUGLAS.** Huge begonia rose flower with pale lemon tip. 25c each; \$2.50 per doz.
- MIRTLE.** Very delicate pink. Fine for florists. 15c each; \$1.50 per doz.; \$10.00 per 100.
- NIAGARA.** Pale yellow; throat splashed lavender. 15c each; \$1.50 per doz.; \$10.00 per 100.
- 1910 ROSE.** Deep rose pink. 10c each; 75c per doz.; \$5.50 per 100.
- PANAMA.** Bright pink. 10c each; \$1.00 per doz.; \$7.60 per 100.
- PASADENA.** White, edged blood red. 10c each; \$1.00 per doz.; \$7.00 per 100.
- PRINCE OF WALES.** Clear delicate salmon pink. 10c each; 75c per doz.; \$5.50 per 100.
- RED CANNA.** Dark red; very fine. 20c each; \$2.00 per doz.
- REV. EWBANK.** Delicate blue with darker blotch. 25c each; \$2.50 per doz.
- ROSE ASH.** Corinthian red shading into ashes of roses. 20c each; \$2.00 per doz.
- SALMON BEAUTY.** Large salmon pink. 10c each; \$1.00 per doz.; \$7.00 per 100.
- SCHWABEN.** Yellow, red blotch. 10c each; 75c per doz.; \$5.50 per 100.
- SOUVENIR (Primulinus).** Striking clear bright yellow. 10c each; \$1.00 per doz.; \$7.00 per 100.
- VIRGINIA.** Brilliant scarlet and very attractive. 10c each; 75c per doz.; \$5.50 per 100.
- WILBRINK.** Pale pink. 10c each; 75c per doz.; \$5.50 per 100.
- DE LUXE MIXTURE.** Includes many of the finest varieties listed above and numerous worthwhile seedlings from our Trial Grounds. Many delightful surprises will be found in this mixture. 85c per doz.; \$6.25 per 100; \$50.00 per 1000.
- CHOICE MIXTURE.** Grown from the best mixture of bulbets. A splendid range of colors will be obtained from this fine assortment. 60c per doz.; \$4.50 per 100; \$35.00 per 1000.
- GROWMORE MIXTURE.** Every year we harvest thousands of bulbs which are hardly large enough to include in our other mixtures. These smaller bulbs will produce very satisfactory flowers although the spikes will not be so long as those grown from No. 1 bulbs. We are offering these at a special price to enable you to grow more Gladioli. 50c per doz.; \$3.50 per 100; \$25.00 per 1000.
- PRIMULINUS MIXED.** Many of the most recent introductions are included in this mixture. This type is very valuable as a cut flower, the long slender spikes lending themselves to most artistic arrangements in vases. 75c per doz.; \$5.50 per 100.



Gladioli.

Ismene Calathina

(Pernvian Daffodil)

Lovely large pure white flower particularly admired for its haunting fragrance and excellent keeping qualities. The bulbs should be planted in a sunny situation and they may be left in the ground from year to year to multiply. The plants grow to a height of 3 feet and the foliage remains green and pretty most of the year. 35c each; 3 for \$1.00.

Baby Gladioli

Baby Glads are different and they usually come at a time when other flowers are scarce. They are excellent for cutting purposes or for garden show and many spikes are produced from a single bulb. The bulbs multiply from year to year.

APOLLYN. Pleasing salmon shade.
BLUSHING BRIDE. White flaked carmine.
OLD ROSE. Beautiful color.
PINK PERFECTION. Finest pink.
QUEEN WILHELMINA. Light lavender.
RED BRIDE. Best red.
THE BRIDE. Pure white.

Price, 75c per doz.; 50 for \$3.00; 100 for \$5.75.



Ismene Calathina.



White Calla.

White Calla

Very popular for outdoor bedding in California. They should be taken up every fourth year and the bulbs separated. Dig during June, dry thoroughly and transplant. Large size bulbs, 35c each; \$3.50 per doz. Medium size bulbs, 25c each; \$2.50 per doz.

Yellow Calla

One of the most attractive flowers grown, suitable for outdoor bedding or for pot culture. The blossom is large and a deep golden yellow. The leaves are spotted white. Large size bulbs, each, 50c; doz., \$5.50. Medium size bulbs, each, 30c; doz., \$3.00.

New Pink Calla

These desirable plants grow to a height of about 18 inches, the flowers being miniature callas, 1½ inches to 2 inches across, of an attractive rose pink shade. They are grown very successfully out of doors in Southern California or they may be grown in pots for house decoration. 75c each; 5 for \$3.00.

Black Calla

A most remarkable and rare plant having flowers shaped like the ordinary Calla but is a crimson maroon color so dark that it appears to be black. The plant grows to a height of about 3 feet and the foliage is very decorative. Each, 65c.

Pancratium Maritimum

(Spider or Spirit Lily)

This attractive plant belongs to the Amaryllis family and forms clumps which, when in bloom, are a mass of clustered heads of pure white waxy flowers. The flowers are of peculiar and interesting structure and are borne 5 or 10 to the umbel. The fragrance is unsurpassed. Extra large bulbs, 15c each; \$1.50 per doz.

Scilla:

(Campanulata)

BLUE. The blue bell of England, being very attractive for beds or borders and when left undisturbed for several years they multiply rapidly and bloom freely. They succeed in shady places and are one of the attractive early Spring flowers. 50c per doz.; 100 for \$3.50.

ROSEA. Beautiful bright rose and very dainty. 75c per doz.; 100 for \$6.00.

ALBA. The pure white Scilla. Clean and attractive. 75c per doz.; 100 for \$6.00.

Sparaxis

A small bulbous plant bearing flowers very similar to the Ixias. The flowers are slightly larger and there is a great range of colors, making them very attractive as bedding plants. Plant them about 2½ inches deep and 2 or 3 inches apart. 3 for 25c; 75c per doz.; 100 for \$6.00.

Zephyranthes

(Fairy Lily)

CANDIDA. Beautiful white flowers and attractive foliage, making it a very desirable plant for borders and beds. Height about 1 foot. Long blooming season. Bulbs multiply rapidly. 75c per doz.; 100 for \$5.50.

ROSEA. A beautiful variety with rose-colored flowers. \$1.00 per doz.

Ixias

These beautiful flowers grow on graceful stems 12 inches to 18 inches high and require the same culture as Freesias. They are excellent for cutting and are increasing in popularity each year.

EMPEROR OF CHINA. Yellow with Black Center.

ENGLISHTON. Carmine rose.

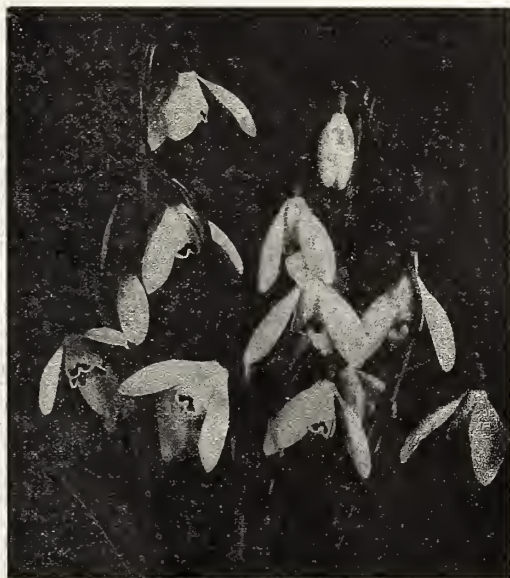
VIVIDIFLORA. Green with black center.

ROSEA. Double rose, very fine.

SMILING MARY. Beautiful cherry red.

The above varieties are put up in packages of not less than 1 doz. each at 75c per doz. or \$5.50 per 100 bulbs. Mixed, 75c per doz.; \$5.00 per 100.

Ixias.



Snowdrops.

Snowdrops

(Galanthus)

Dainty little pendulous flowers which bloom early in the Spring. The bell-shaped flower is white tipped with green. They prefer a cool, moist situation. 10c each; 75c per doz.; \$5.50 per 100.

Madeira Vine

A well known vine with waxy leaf and sweet scented flower. Once established they multiply the tubers very rapidly. Should be planted during the Winter months. 15c each; 3 for 35c; \$1.25 per doz.

Bulb Fibre

Bulb Fibre is excellent for use in pot culture of Hyacinths, Tulips, Narcissus, Chinese Lilies, etc. Our Bulb Fibre is especially prepared; it requires no drainage and may be used in all kinds of bowls and jardiniere. Quantity sufficient for 6- or 8-inch bowl, 15c. Larger quantity, 25c per lb.

Flower Seeds for Fall Planting

The various Flower Seeds here listed are especially recommended for planting in the Fall in California and similar climates. By sowing in August and September many varieties come into bloom in early Spring when the outlook is usually bare, and masses of brilliant colors brighten the gardens of those who have exercised a little foresight.

Acroclinium

Everlasting Flower, height 1 foot. Annual.
PINK AND WHITE. Pkt., 10c.
PINK. Pkt., 10c.

Alyssum

Blooms continuously, used for beds and borders. Annual.
LITTLE GEM. Height 6 inches. Pkt., 10c.
LILAC QUEEN. Pkt., 10c.
SWEET WHITE. Height 8 inches. Pkt., 10c.
SAXATILE YELLOW. Perennial. Pkt., 10c.

Anemone

(Windflower)

GIANT FRENCH SINGLE MIXED. This lovely flower may be grown from seeds as well as bulbs. Our seed has been saved from an extra fine strain and contains a very choice mixture of colors. Pkt., 25c.

Bartonia Aurea

Annual. Bright golden yellow flowers. Easy to grow. 2 to 3 feet high. Beautiful cut flower. Pkt., 10c.

Browallia

ELATA BLUE. Profuse flowering annual, blooming in early Spring if sown in August or September. Pkt., 15c.



Canterbury Bells, Single Mixed.

Aquilegia

(Columbine)

Perennial. Attractive foliage with graceful flowers on long stems. Succeeds well in shady locations. Must be planted in Fall for Spring blooming.
LONG SPURRED HYBRIDS. Elliott Strain. Mixed. Pkt., 35c.
LONG SPURRED. Blue. Pkt., 25c.
LONG SPURRED. Pink. Pkt., 25c.
LONG SPURRED HYBRIDS. Mixed. Pkt., 25c.
DOUBLE MIXED. Pkt., 10c.
SINGLE MIXED. Pkt., 10c.

Antirrhinum

(Snapdragon)

Perennial. If grown in the Fall it will be one of the earliest Spring flowers. Splendid for cutting. A & M. California Snapdragons are the finest strain obtainable.

Tall Maximum. The newest creation in Giant Snapdragons. Height 4 feet.
CANARY BIRD. Pkt., 25c.
COPPER KING. Pkt., 25c.
INDIAN SUMMER. Pkt., 25c.
OLD GOLD. Pkt., 25c.
PURPLE KING. Pkt., 25c.
SNOWFLAKE. Pkt., 25c.
THE ROSE. Pkt., 25c.
FINEST MIXED. Pkt., 25c; ½ oz., 50c.
COLLECTION 28F. One packet each of the above named seven varieties, \$1.50.

Semi-dwarf large flowering, height 18 inches.

AMBER QUEEN. Pkt., 15c.
CLIMAX. Orange scarlet. Pkt., 15c.
DEFIANCE. Scarlet. Pkt., 15c.
GLORIA. Rose. Pkt., 15c.
GOLDEN YELLOW. Pkt., 15c.
PINK PERFECTION. Pkt., 15c.
PURITY. White. Pkt., 15c.
SEMI-DWARF MIXED. Pkt., 10c; ¼ oz., 35c.

COLLECTION 28A. One packet each of the above named seven varieties, 85c.

Tall, large flowering. Height 3 feet.
MIXED. Pkt., 10c; ¼ oz., 25c.

Canterbury Bells

Hardy biennial. Beautiful flowers, which should be planted in early Autumn for Spring blooming.

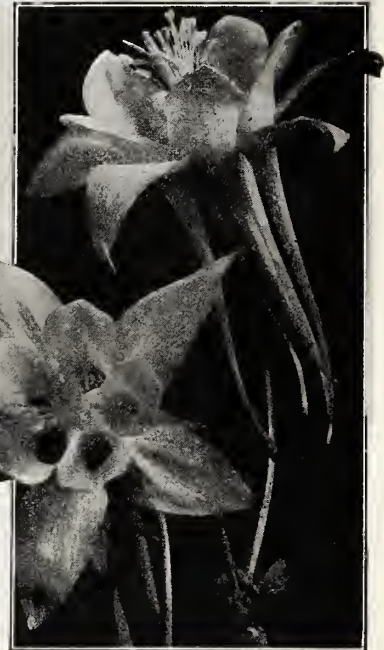
SINGLE. Rose, Blue or White. Pkt., 10c.
SINGLE MIXED. Pkt., 10c.
DOUBLE MIXED. Pkt., 15c.
CALYCANTHEMA MIXED (Cup and Saucer). Pkt., 15c.
CAMPANULA LONGISTYLA. Blue flowers. Height 20 in. Pkt., 25c.

Bellis Perennis

(Double English Daisy)

Perennial. Used for borders. About four inches high. Will flower all through Spring and Summer.

DOUBLE PINK. Pkt., 15c.
DOUBLE WHITE. Pkt., 15c.
DOUBLE RED. Pkt., 15c.
DOUBLE MIXED. Pkt., 10c.



Aquilegia, Elliott Strain.

Calendula

(Pot Marigold)

Hardy Annual. One of the very best Winter flowers. Of easy culture.

CAMPFIRE (New). Beautiful orange with scarlet sheen. Gives a sunlit effect to the garden and is unexcelled for cutting. Pkt., 50c.

THE BALL. Golden yellow. Pkt., 15c.

BALLS GOLD. Pkt., 15c.

ORANGE KING. Pkt., 10c.

LEMON QUEEN. Pkt., 10c.

CHOICE MIXED. Pkt., 10c.

Candytuft

Hardy annual. Twelve to eighteen inches high. Rapid grower. Flowers borne in umbels. Very fragrant. Useful for cut flowers and bedding. Mass in solid colors for best effect.

UMBELLATA. Crimson, lilac, rose or flesh. Pkt., 10c.

UMBELLATA. Mixed. Pkt., 10c.

WHITE HYACINTH FLOWERED. Pkt., 10c.

Perennial Candytuft

(Iberis)

GIBALTARICA. Flowers lilac; valuable for rock gardens and borders. Height 6 inches. Pkt., 10c.



Delphinium, A. & M. Sunbeam Hybrids.

Delphinium

(Perennial Larkspur)

One of the most popular border plants for Spring and Summer blooming, the riot of the varied blue tints being strikingly effective. Sow in flats from August to November and transplant when large enough.

- A. & M. SUNBEAM HYBRIDS. Wonderful color combination. Height 3 to 5 feet. Pkt., 50c.
- BELLADONNA. Turquoise, blue. Height 3 to 5 ft. Pkt., 25c.
- BELLAMOSA. Dark blue. Height 3 to 5 feet. Pkt., 25c.
- GOLD MEDAL HYBRIDS. Mixed. Height 3 to 5 feet. Pkt., 25c.
- CHINENSIS, AZURE FAIRY. Light blue. Height 2 feet. Pkt., 10c.
- CHINENSIS, BLUE BUTTERFLY. Dark blue. Height 2 feet. Pkt., 10c.
- CHINENSIS. Fine mixed. Pkt., 10c.
- DELPHINIUM CARDINALE. Scarlet. Pkt., 15c.

Carnation

CHABAUD'S EARLIEST FRENCH

Produces the largest carnations. Blooms quickly and freely. In separate colors of bright red, silvery pink, deep red, bright salmon pink, white, light yellow, deep rose and mixed. Pkt., 15c.

- MARGUERITE. Mixed. Hardy. Easy to grow from seed. Will bloom in four or five months. Pkt., 10c.

Cineraria

For exquisite beauty and range of color Cinerarias stand supreme. They are ideal for shady situations and they make graceful pot plants for house decoration. Seed should be sown in flats from July to November and the plants will bloom the following Spring.

- HYBRIDA GRANDIFLORA. Semi-dwarf mixed. Pkt., 75c.
- HYBRIDA GRANDIFLORA. Dwarf mixed. Pkt., 25c.

Calliopsis

Annuals. Profuse bloomers. Will bloom in ten weeks from seed.

- CRIMSON KING. Height 15 inches. Pkt., 10c.
- GOLDEN WAVE. Height 15 inches. Pkt., 10c.
- TALL DOUBLE MIXED. Height 3 feet. Pkt., 10c.
- TALL SINGLE MIXED. Height 3 feet. Pkt., 10c.

Centaurea Cyanus

(Cornflower or Bachelor Button)

This old-fashioned hardy annual is still a great favorite for cutting purposes.

- DOUBLE WHITE. Pkt., 15c.
- DOUBLE PINK. Pkt., 10c.
- DOUBLE BLUE. Pkt., 10c; ½ oz., 35c.
- DOUBLE MIXED. Pkt., 10c; oz., 40c.

Centaurea Imperialis

(Royal Sweet Sultan)

Annuals. One plant furnishes many flowers. Especially valuable for cutting. Has long blooming season. Rose, lavender, purple, white, mixed. Each pkt., 10c.

- Amaranth Red. Pkt., 15c.

Cyclamen

A tender, bulbous perennial, used in greenhouses and window gardens. It is easily grown from seed. Sow in the Fall or early Spring.

- EXTRA CHOICE MIXED. Pkt., 35c.

Coreopsis Lanceolata

Perennial. Plants of this beautiful yellow flower which are started in the Fall will produce large flowers during late Spring and Summer. Pkt., 10c.

Clarkia

Annual. Height 2 feet. Fall sown seed produces early Spring flowers. A beautiful, showy plant, very useful for cutting.

- DOUBLE SALMON QUEEN. Pkt., 10c.
- DOUBLE SCARLET. Pkt., 10c.
- DOUBLE BRILLIANT PINK. Pkt., 10c.
- DOUBLE CHAMOIS. Pkt., 10c.
- DOUBLE MIXED. Pkt., 10c.

Cosmos

Early Mammoth Flowering. Annual. This class of Cosmos will produce in late Winter and early Spring. The flowers are large and the plants about three feet high.

- EARLY. Crimson, pink or white. Pkt., 10c.
- EARLY MIXED. Pkt., 10c.

Dianthus or Pinks

These spicy little flowers are easy to grow.

- CHINENSIS. Double mixed. Pkt., 10c.
- PLUMARIUS. Double mixed. Pkt., 10c.
- PLUMARIUS. Single mixed. Pkt., 10c.
- DELTOIDES. Pkt., 25c.
- CAESIUS. Pkt., 15c.

Dimorphotheca

(Golden African Daisy)

The African Daisy. A showy annual from South Africa which has become a great favorite on account of its easy culture and beautiful orange colored flowers.

- AURANTIACA. Bright orange. Pkt., 10c.
- HYBRIDS. Shades of yellow and orange. Pkt., 10c.

Daisy, Shasta

Perennial. The seed of this popular flower should be sown in Fall to produce flowers in the following Summer.

- ALASKA. Pkt., 10c.

Digitalis

(Foxglove)

Hardy Perennial. Seed must be sown in Fall for Spring blooming. Will grow in shady locations. Grows 3 to 6 feet high.

- GIANT SHIRLEY. Mixed. Pkt., 10c.

Forget-Me-Not

(Myosotis)

Hardy Perennial. Seed must be sown in Fall for Spring blooming. Does best in shady location.

- ALPESTRIS. Light blue. Height 1 foot. Pkt., 10c.



Eschscholtzia—Ramona.

Gaillardia

Hardy Perennial. A plant every one should have in their garden. Splendid for cutting. Fall sown seed will start blooming early and continue till late Fall. Flowers large, brown and yellow in varying shades.

PORTOLA. Mammoth flowers. Pkt., 15c.

THE DAZZLER. Pkt., 15c.

INDIAN CHIEF. Pkt., 15c.

GRANDIFLORA. Single mixed. Pkt., 10c.

Geum

A beautiful hardy perennial producing flowers in profusion from Spring till Fall. It is an excellent cut flower, having long stems and keeping well.

MRS. BRADSHAW'S DOUBLE RED. Large bright orange-scarlet double flowers. Pkt., 15c.

LADY STRATHEDEN. Large striking double yellow flowers. Pkt., 25c.

Gladiolus Seed

The seed should be sown in a well-prepared seed bed where the young plants may be allowed to remain for a year. If covered with ¼ inch of sawdust and kept moist, the seed should germinate in two to three weeks. Many varieties will bloom the first year. Our seed is saved from the choicest varieties. Pkt., 25c.

Godetia

Hardy Annual. Sow late in Fall for Spring blooming. Very beautiful colors. Thrives in shady locations.

DWARF SINGLE. Mixed. Height 1 foot. Pkt., 10c.

TALL SINGLE. Mixed. Height 2 feet. Pkt., 10c.

AZALEA FLORA. Dwarf double variety suitable for pot culture. Pkt., 15c.

TALL DOUBLE CARMINEA. Pkt., 10c.

TALL DOUBLE ROSEA. Pkt., 10c.

TALL DOUBLE MAUVE. Pkt., 10c.

TALL DOUBLE CRIMSON. Pkt., 10c.

TALL DOUBLE MIXED. Height 2 feet. Pkt., 10c.

Gilia

CAPITATA. Graceful annual, height about 2 feet. Flowers are a rich lavender blue. Sow seeds in Fall where plants are to remain. Pkt., 10c.

Gypsophila

Small white and pink flowers borne in sprays. Universally used as filler in bouquets.

ELEGANS ANNUAL. White. Pkt., 10c.

ELEGANS ANNUAL. Carmine. Pkt., 10c.

ELEGANS ANNUAL ROSEA. Pkt., 10c.

PANICULATA PERENNIAL. White. Pkt., 10c.

DOUBLE SNOW WHITE. Perennial. Pkt., 25c.

Heuchera

SANGUINEA. Hardy perennial. 1¼ feet high. Crimson-scarlet flowers. Pkt., 15c.

Hollyhock

Hardy Perennial. Five to six feet. Fine for backgrounds. Sow the seed in Fall for Spring flowers. Double pink, double scarlet, double maroon, double yellow, double white and double mixed. Pkt., 10c.

Larkspur

This popular annual may be planted throughout the Fall and will bloom three to four months after sowing.

NEW AND EXCEPTIONAL VARIETIES

LA FRANCE. Salmon shades. Pkt., 50c.

IMPROVED EXQUISITE PINK. Pkt., 35c.

LUSTROUS CARMINE. Pkt., 20c.

AGERATUM BLUE. Pkt., 20c.

COLLECTION 23F. One pkt. each of the above four varieties, \$1.00.

STANDARD VARIETIES

TALL DOUBLE LIGHT BLUE. Pkt., 10c.

TALL DOUBLE DARK BLUE. Pkt., 10c.

TALL DOUBLE SCARLET ROSE. Pkt., 10c.

TALL DOUBLE LILAC. Pkt., 10c.

TALL DOUBLE WHITE. Pkt., 10c.

TALL DOUBLE EXQUISITE PINK. Pkt., 15c.

TALL DOUBLE MIXED. Pkt., 10c.

Eschscholtzia

Or California Poppy

Hardy Annual. Seed may be sown from October until April. Fall sown seed will bring large early flowers.

Plant more California poppies.

FLUTED AND RUFFLED VARIETIES

RAMONA (New). Glittering coppery gold with pink shadings. Pkt., 35c.

ORANGE FLAME. Vivid orange scarlet. Pkt., 15c.

BALLET GIRL. Petals outside carmine, inside cream. Pkt., 15c.

TANGO. Bronze red overlaid terracotta. Pkt., 15c.

MAUVE BEAUTY. Pure mauve. Pkt., 15c.

LOVELY. Rose pink suffused salmon. Pkt., 15c.

THE GEISHA. Gold and orange-crimson. Pkt., 15c.

SCARLET BEAUTY. Deep scarlet. Pkt., 15c.

VESUVIUS. Beautiful Wallflower red. Pkt., 15c.

EXTRA CHOICE MIXED. Contains all new colors. Pkt., 15c; oz., 90c.

Collection of Above Nine Named Varieties, for \$1.00.

STANDARD VARIETIES

ORANGE (Aurantiaca). Pkt., 10c.

CRIMSON. Pkt., 10c.

CHROME QUEEN. Pkt., 10c.

WHITE. Pkt., 10c.

GOLDEN WEST. Pkt., 10c.

MIXED. Pkt., 10c; oz., 30c; lb., \$2.50.

Hunnemannia

(Mexican Tulip Poppy)

Tender Perennial. The best cutting poppy. Long flowering season. Bright lemon-yellow cup-shaped flower. Will bloom early in Spring if sown in Fall.

Pkt., 15c.



Larkspur—La France.

Linum

SCARLET FLAX. Hardy Annual. A beautiful little flower. Height one foot. Splendid for bedding. Pkt., 10c.
BLUE FLAX. Perennial. Light blue flowers. Pkt., 15c.

Lupin

California native flowers. A great favorite. Should be planted in Fall for early flowers.
DARK BLUE. Annual. Pkt., 10c.
LIGHT BLUE. Annual. Pkt., 10c.
MIXED. Annual. Pkt., 10c; ½ oz., 25c.
NANUS. Dwarf blue. Pkt., 10c.
PERENNIAL. Mixed. Pkt., 15c.

Marigold

(French)

Hardy Annual. One of the best Fall and Winter flowers.
LEGION OF HONOR. Brown and gold. Pkt., 10c.
TALL FRENCH. Single brown. Pkt., 10c.
GOLDEN BALL. Golden yellow. Pkt., 10c.
DWARF FRENCH MIXED. Pkt., 10c.
TALL FRENCH MIXED. Pkt., 10c.

Matricaria

(Feverfew)

DOUBLE WHITE (Capensis). A perennial bearing small, double white flowers. Good for cutting. An old-fashioned garden flower. Pkt., 10c.
GOLDEN BALL. A compact dwarf plant, used for borders. The flowers are a double yellow and bloom freely. Pkt., 10c.

Mignonette

Annual. An old garden favorite which has been much improved. Giant spikes of fragrant flowers, produced freely on large plants, make this flower even more desirable than heretofore.
A. & M. COLOSSAL. Giant white. Pkt., 15c.
GOLIATH RED. Pkt., 10c.
ODORATA IMPROVED. Sweet. Pkt., 10c.

Nasturtium

Annual. If sown early in Fall will bloom until heavy frost. Easy to grow. A fine mixture of colors.
DWARF MIXED. Pkt., 10c; oz., 20c.
TALL MIXED. Pkt., 10c; oz., 20c.

Nemesia

Hardy Annual. Splendid Fall, Winter and Spring blooming plants. Many wonderful and beautiful color combinations. A quick grower. Splendid bedding flower.
TRIUMPH. Dwarf mixed. Pkt., 25c.
STRUMOSA SUTTONI. Mixed colors. Pkt., 25c.
COMPACTA (Blue Gem). Pkt., 25c.

Nemophila

Hardy Annual. Height 6 inches. Earliest native wild flower. Splendid for sowing in bulb beds.
INSIGNIA. Sky blue. Pkt., 10c; oz., 50c.
MIXED COLORS. Pkt., 10c; oz., 45c.

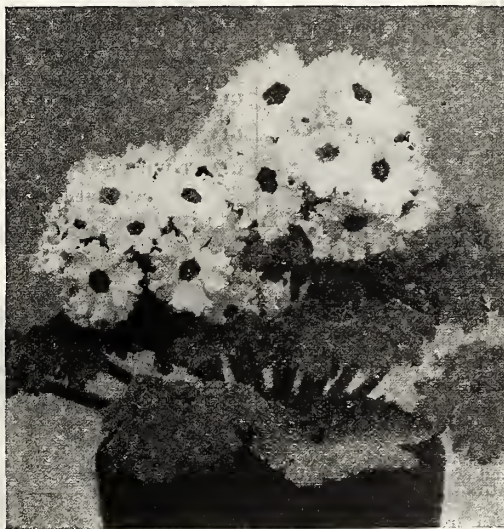


Single Iceland Poppy.

Painted Daisy

(Chrysanthemum)

Hardy annuals. A fine Fall, Winter and early Spring bloomer. Very decorative, easy to grow. Especially recommended. Special Collection of One Packet Each of Seven Colors, 50c.
SINGLE MIXED. Pkt., 10c.



Primula, Chinese Fringed.

Primula

Primulas are easily grown from seed and make splendid pot plants. They are also wonderful for mass effects in shady places.

CHINESE FRINGED PRIMROSE. Mixed. Pkt., 35c.
OBCONICA, GRANDIFLORA. Mixed. Pkt., 35c.
MALACOIDES. "Baby Primrose." Pkt., 25c.

A & M Poppies

The different varieties of poppies are always favorites for outdoor display and the cultivation of them being so extremely simple entitles them to a place in every garden. Seed should be sown where the plants are intended to flower, because it is difficult to transplant them with any measure of success.

SINGLE ANNUAL SHIRLEY

A. & M. SHIRLEY MIXED. Pkt., 10c.
FLANDERS POPPY. Pkt., 10c.
TULIP POPPY. Pkt., 10c.

DOUBLE ANNUAL

A. & M. GIANT EBELLE SALMON (New). Pkt., 25c.
A. & M. GIANT EBELLE WHITE (New). Pkt., 15c.
ELDORADO DOUBLE SHIRLEY. Mixed. Pkt., 10c.
CARNATION FLOWERED DOUBLE. Mixed. Pkt., 10c.

PERENNIAL POPPIES

ORIENTAL HYBRIDS. Mixed. Pkt., 10c.
ICELAND SINGLE. Mixed. Pkt., 10c.
ICELAND DOUBLE. Mixed. Pkt., 25c.

Physostegia

SPECIOSA (False Dragon Head). Hardy perennial. 4 to 5 feet. Pink shades. Pkt., 25c.

Polemonium

COERULEUM (Jacob's Ladder). Bell-shaped blue flower. Perennial. 2 feet. Pkt., 10c.

Pyrethrum

Hardy Perennials which are easily grown and make handsome plants. Valuable as cut flowers. Height 2 feet.
HYBRIDUM ROSEUM. Single mixed. Pkt., 10c.
HYBRIDUM ROSEUM. Double mixed. Pkt., 25c.
GOLDEN FEATHER. For edgings. Height six inches. Pkt., 10c.

Pentstemon

Hardy Perennial. Large spikes of beautiful gloxinia shaped flowers. Seed sown in the Fall will commence blooming early in Spring and continues most of the year.
GLOXINIODES, SENSATION. Large flowered. Mixed. Pkt., 15c.

Ranunculus

GIANT FRENCH MIXED. This very popular flower may be grown readily from seed though home gardeners have usually grown them from bulbs. The seed should be sown in good sandy loam, covered lightly with sand and kept moist. May be planted from early Fall to late Spring and will flower the first season from seed. Our mixture is a very fine semi-double strain and contains a splendid range of colors. Pkt., 25c.

Rhodanthe

MACULATA ROSEA. One of the most attractive everlasting flowers. The flowers hang like little bells on the stems and make a pleasing and dainty cut flower, either fresh or dried. Pkt., 10c.

A. & M. Pansies

Pansies thrive best in a moist sunny location and in rich, loamy soil. Seed should be sown in the Autumn for early Spring blossoms, or can be sown early in the year for good flowers later in the Spring. The plants must be transplanted twice in order to get the largest flowers; once from the seed box to a chosen bed, and again to the open garden. This is important for large size pansies; use manure liberally. The blossoms are usually larger in the Spring and again in the Fall, and while they bloom freely all Summer, the blossoms are small during the hot months.

It is much more interesting, satisfactory and inexpensive to grow your own pansies from seed. By so doing you may select and carry out your individual color scheme; you may also select your own types and take advantage of some of the finest varieties the plants of which are not offered for sale.



Pansy, A. & M. Super Maximum.

Scabiosa

(Mourning Bride)

ANNUAL VARIETIES

A garden favorite of easy culture, blooming in about four months from planting. Splendid cut flower. Height 3 to 4 feet.

- SHASTA. Giant improved white. Pkt., 20c.
- PEACH BLOSSOM. Giant pink. Pkt., 20c.
- AGERATUM. Blue. Pkt., 10c.
- AZURE FAIRY. Lavender blue. Pkt., 10c.
- BLACK PRINCE. Deep red. Pkt., 10c.
- FIERY SCARLET. Pkt., 10c.
- FLESH PINK. Pkt., 10c.
- ROSE. Pkt., 10c.
- SNOWBALL. Pkt., 10c.
- YELLOW. Light yellow. Pkt., 10c.
- MIXED. Pkt., 10c.

PERENNIAL VARIETIES

- Highly decorative and invaluable for cutting.
- ISAAC HOUSE HYBRIDS. Lilac and mauve shades, ruffled petals. Pkt., 35c.
- COLUMBARIA. Pink shades. Pkt., 35c.
- CAUCASICA. Soft heliotrope. Pkt., 25c.
- JAPONICA. Lavender. Pkt., 10c.

Statice

- SINUATA. Everlasting. Fine for cutting. May be dried as permanent bouquets. Keep seed moist until germinated. Bright yellow, white, blue, rose and mixed. Pkt., 10c.
- LATIFOLIA. Produces large spikes of very small lavender flowers. Used in bouquets as a filler. Perennial and everlasting. Pkt., 10c.
- CASPIA. Flowers are similar to Statice Latifolia, but a little larger. Pkt., 10c.
- PEREZIL. A very fine specimen plant, often grown in shrubberies. Flowers are blue and attain a height of 2 feet. Hardy perennial. Pkt., 10c.

A. & M. Super Maximum

A lovely and distinct strain bearing extra large flowers with long stems that hold them well above the foliage. We introduced this pansy particularly for those who want an extraordinary strain, and we are pleased to recommend them highly. Letters from many friends indicate they are very satisfactory, and our own trials are greatly admired by all who see them. Pkt., 50c; 3 pkts., \$1.25.

Miracle Mixed

A splendid mixture containing the finest types of the different strains, latest novelties, ruffled flowers, and many of the new Sunburst Pansies, all with fine long stems. Excellent for forcing or outside growing. Pkt., 50c.

Greenhouse Special

This mixture of fine Pansies, highly recommended for greenhouse or garden, needs no introduction to the florists of Los Angeles, where it has given unbounded satisfaction for several years. Large flowers in the most desirable colors, on long stems. Pkt., 50c.

A. & M. Mammoth Wonder

Not quite so large as our Super Maximum but much larger than the ordinary pansy and a selection of many exquisite colors. Pkt., 35c; ¼ oz., \$1.25.

A. & M. Mastodon Pansies

A very popular beautiful strain of pansies. They bloom two to four weeks earlier than most strains, produce very large showy flowers and are exceptionally fine for beds, borders and window or porch boxes.

- ADONIS. Lovely sky blue. Pkt., 25c.
- BRONZE MASTODON. Very large, with all the different shades from burnished brass to gold, with no two flowers exactly alike. Pkt., 25c.
- MADAME STEELE. Elks purple, of fine form and enormous size. Pkt., 25c.
- PANAMA PACIFIC. A huge deep yellow, some have the dark center, some without. A beautiful bedding color. Pkt., 25c.
- WHITE MASTODON. Snow white with a large center, very large and beautiful. Pkt., 25c.
- MASTODON MIXED. A wonderful collection of rich velvety shades, in great variety, with fine long stems. Pkt., 25c.

A. & M. Giant Pansies

Where masses of distinct colors are desired A. & M. Giant Pansies will prove of great value.

- GIANT AURORA. Pure white. Pkt., 10c.
- GIANT AZURE BLUE. Pale blue. Pkt., 10c.
- GIANT BRIDESMAID. Rose blotched. Pkt., 10c.
- GIANT EROS. Velvety brown with yellow margin. Pkt., 10c.
- GIANT GOLDEN QUEEN. Pleasing golden center. Pkt., 10c.
- GIANT MADAM PERRET. The lower petals are pale with rich rose color markings. Pkt., 10c.
- GIANT YELLOW (Black Eye). Pkt., 10c.
- GIANT PRINCE HENRY. Darkest blue, very large beautiful flower. Pkt., 10c.
- GIANT RUBY RED. Very large blooms in striking red shades. Pkt., 10c.
- GIANT WHITE (Purple Eye). Large well-formed flowers. Pkt., 10c.

Collection of the Above 10 Varieties for 80c.

- A. & M. GIANT FRENCH MIXED. A very showy mixture of vigorous compact growth. Fine bedding strain. Pkt., 10c.



California Grown Sweet Peas

Ask for Sweet Pea Culture Bulletin No. 11

Sweet Peas are a particular pride of California. Grown under ideal climatic conditions the seed is generally recognized as being superior in high percentage of germination and extraordinary vitality. Magnificent flowers borne on long stems predominate in the best varieties introduced from the Golden State, and without exception they please the most discriminating growers and Sweet Pea enthusiasts. From the hundreds of varieties in commerce we have confined ourselves to what we consider the most outstanding sorts covering a complete range of color.

Early or Winter Flowering Spencer Sweet Peas come into bloom at least one month earlier than the Late or Standard Spencers. For this reason they are particularly suitable for sowing in August and September for early Fall and Christmas blooming. However, the planting season in California extends from August 1st until January with a resultant wealth of bloom throughout the Spring and early Summer.

FOR BEST RESULTS INOCULATE SWEET PEA SEED WITH MULFORD CULTURE. Per bottle, 35c.

A. & M. Early Flowering Spencer Sweet Peas

New and Distinctive Varieties

BRIGHT LIGHT. One of the most vivid colors in Sweet Peas—a flaming scarlet. The flowers are of large size and good form. Pkt., 35c.

EARLY MAMMOTH ROSE. Beautiful rose pink variety. The immense blooms four and five on a stem, are indispensable for exhibition purposes. Pkt., 35c.

IMPERIAL PINK. Clear pink flowers of enormous size borne on long stems. Very vigorous grower and blooms abundantly over a long period. Pkt., 35c.

NEW BLUE. A splendid variety with large well frilled flowers of deep blue—a color which is always popular. Pkt., 25c.

COLLECTION 46F. One packet each of the above four distinctive varieties, \$1.00.

General List

ALL WHITE. Largest waved pure white. Pkt., 15c; ½ oz., 45c.

AMETHYST. Light purple. Very fine. Pkt., 15c; ½ oz., 45c.

ANGELUS. Salmon-pink on cream ground. Pkt., 15c; ½ oz., 45c.

AVIATOR. Dazzling crimson scarlet. Pkt., 15c; ½ oz., 45c.

BLUE BIRD. Violet blue. Extra large and one of the finest. Pkt., 15c; ½ oz., 45c.

CHEVALIER. Bright rose. Strong grower. Pkt., 15c; ½ oz., 45c.

COLUMBIA. Salmon rose. Standard with white wings. Pkt., 15c; ½ oz., 45c.

ELDORADO. New orange. Immense flowers and good stem. Pkt., 25c; ½ oz., 75c.

FAIR MAID. Blush pink suffused salmon. Pkt., 15c; ½ oz., 45c.

FLAMBEAU. Orange cerise. A bright and attractive color. Pkt., 15c; ½ oz., 45c.

GLITTERS. Cerise. One of the most popular for all purposes. Pkt., 15c; ½ oz., 45c.

GRENADIER. Dazzling scarlet. Extra fine. Pkt., 25c; ½ oz., 75c.

HARMONY. Finest lavender to date. Strong grower, extra large flowers and exceedingly long stems. Pkt., 15c; ½ oz., 45c.

HERCULES. Florist pink. Extra large, strong grower, fine stem. Pkt., 15c; ½ oz., 45c.

ILLUMINATION. Salmon cerise. A popular favorite. Good. Pkt., 15c; ½ oz., 45c.

MAUVE BEAUTY. Rosy mauve. A distinct color. Pkt., 15c; ½ oz., 45c.

MISS LOUISE GUDE. Brilliant pink. Fine exhibition and commercial variety. Pkt., 15c; ½ oz., 45c.

ORANGE KING. New. Glowing intense orange. The deepest orange we know. Pkt., 35c.

OTHELLO. Maroon. Strong grower, large flowers and good long stem. Pkt., 15c; ½ oz., 45c.

PENROSE. Clear rose pink. Handsome variety. Pkt., 15c; ½ oz., 45c.

PINK CHEROKEE. New. Pink suffused salmon, cream ground. Many stems with four flowers. Pkt., 25c; ½ oz., 75c.

PERFECTION. Rose. Good strong grower with fine flower and stem. Pkt., 25c; ½ oz., 75c.

ROSE CHARM. Large bright rose. Pkt., 15c; ½ oz., 45c.

ROSE DORE. Rose pink suffused orange. Pkt., 15c; ½ oz., 45c.

SNOWSTORM. Improved pure white. Pkt., 15c; ½ oz., 45c.

STARLIGHT. Pale lavender. A popular color and a good variety. Pkt., 15c; ½ oz., 45c.

SWEET LAVENDER. New lavender. Pure self lavender and very fine. Pkt., 25c; ½ oz., 75c.

THE BEAUTY. Fiery rose. No other color just like this one. Pkt., 15c; ½ oz., 45c.

TORCH. Salmon orange. A fine sweet pea in every way. Pkt., 15c; ½ oz., 45c.

TRUE BLUE. Medium blue. Good size and good stem. Pkt., 15c; ½ oz., 45c.

VULCAN. Vivid scarlet. A flower with some life to it. Glistening. Pkt., 15c; ½ oz., 45c.

ZVOLANEK'S ROSE. Giant rose pink, vigorous, extra large flowers and exceedingly long stems. Fine exhibition. Pkt., 15c; ½ oz., 45c.



A. & M.
Sweet Peas.

A. & M. EARLY FLOWERING SPENCER MIXED. A well balanced mixture of many fine varieties including some of the latest introductions and improved strains. Plant one ounce to a 30-ft. row. Pkt., 15c; ½ oz., 40c; oz., 75c; ¼ lb., \$2.50; lb., \$7.50.

RAINBOW COLLECTION NO. 1

6 Packets of Early Flowering Spencers, 75c

One packet each—Vulcan, Snowstorm, Harmony, Miss Louise Gude, The Beauty, Othello.

RAINBOW COLLECTION NO. 2

12 Packets of Early Flowering Spencers

\$1.50

One packet each—Aviator, Columbia, Flambeau, Hercules, Illumination, Mauve Beauty, Rose Dore, Harmony, All White, True Blue, Torch, Othello.

A. & M. Stocks

Stocks are one of our most fragrant Winter and early Spring garden plants. A few plants of these in bloom will fill the garden with sweet perfume, and the branching varieties that we offer make it possible to cut flowers for the house without destroying the beauty of the plant.

Plant the seed in flats, covering with Leaf Mold or other light material to the depth of about twice the breadth of the seed itself. Plant the seeds thin enough that the plants may be removed with a little soil on the root system and transplant them to the garden when the second or third set of leaves appear.

Planted in double rows about 22 inches apart and the plants 12 to 15 inches apart in the row, they will support each other and produce a mass of very fine blooms. In transplanting take the plants as they come, large and small, to insure getting an average percentage of doubles.

Perpetual Branching

GIANT PERFECTION. This type is of branching habit with long stems, making it very desirable for cutting. The percentage of double is high. Height 2 feet.

BLOOD RED. Pkt., 15c.

ROSE PINK. Pkt., 15c.

LILAC. Pkt., 15c.

DEEP PURPLE. Pkt., 15c.

WHITE. Pkt., 15c.

FLESH PINK. Pkt., 15c.

COLLECTION 44F. One packet each of the above 6 colors, 75c.

GIANT PERFECTION MIXED. Pkt., 15c.

Early Mammoth Branching Nice

This type is excellent for bedding and borders and is splendid for cutting. We offer fine varieties in a choice mixture. Height 18 inches.

GIANT NICE. Finest mixed. Pkt., 15c; ½ oz., 50c.

Ten Weeks Mixed

These should be used strictly for bedding purposes and not for cutting. They make a wonderful showing and are highly satisfactory for this purpose. Pkt., 10c; ¼ oz., 80c; oz., \$3.00.

Schizanthus

(Orchid Flower)

A dainty annual. The plant is a bouquet by itself. Attractive and unusual.

GRANDIFLORA MIXED. Pkt., 10c.

WISETONENSIS EXCELSIOR. Height 1 foot. Pkt., 25c.

RETUSSUS. Mixed. Pkt., 10c.

Sweet William

A hardy perennial, grows one to two feet high. Very good for cutting or bedding.

SINGLE MIXED. Very attractive. Pkt., 10c.

DOUBLE MIXED. Pkt., 10c.

ANNUAL SINGLE MIXED. A fine mixture blooming the first year from seed. Pkt., 10c.



Stocks, A. & M. Bismarck.

Viola Cornuta

"Tufted Pansies." The flowers are not so large as regular pansies but bloom so freely that for bedding effect they are unsurpassed. The colors are distinct and they also bloom for a long time.

BLUE PERFECTION. Deep bright blue. Pkt., 15c.

PAPILIO. Light blue. Pkt., 15c.

YELLOW. Pkt., 15c.

MIXED. Pkt., 10c.

Xeranthemum

DOUBLE MIXED. One of the most attractive and satisfactory everlasting flowers. The flowers are white, purple, yellow and rose and are pretty in the garden or dried. Plant in the open ground in a sunny situation. Pkt., 10c.

A. & M. Bismarck

This wonderful new strain of Stocks is of branching habit, making it possible to break long branches of flowers from the main stalk without injuring or destroying the beauty of the plant.

ANTIQUÉ COPPER. Hellebore red. Pkt., 25c.

APPLE BLOSSOM. Blush. Pkt., 25c.

CHAMOIS. Ivory, tinted rose. Pkt., 25c.

DARK BLUE. Near purple. Pkt., 25c.

FIERY BLOOD RED. Bright red. Pkt., 25c.

GOLDEN BALL. Light yellow. Pkt., 25c.

GOLDEN ROSE. Light golden rose. Pkt., 25c.

LAVENDER. Light lavender. Pkt., 25c.

LILAC. Dark lavender. Pkt., 25c.

PURPLE KING. Dark purple. Pkt., 25c.

ROSE. Deep rose pink. Pkt., 25c.

WHITE. Pure white. Pkt., 25c.

COLLECTION. One packet each of six selected separate colors, \$1.10.

A. & M. BISMARCK MIXED. All colors. Pkt., 25c; ½ oz., \$1.00.

Verbenas

These hardy perennials are of trailing habit and are used generally for beds and borders. The flowering season is exceptionally long. The flowers are fragrant and the Hybrid Giant strains make beautiful cut flowers. They do well in sunny locations.

HYBRIDA MAMMOTH

BLUE. Pkt., 10c.

DEFIANCE SCARLET. Pkt., 10c.

PINK. Pkt., 10c.

PURPLE. Pkt., 10c.

YELLOW. Pkt., 10c.

WHITE. Pkt., 10c.

FIREFLY. Scarlet with white eye. Pkt., 10c.

MIXED. Pkt., 10c; ½ oz., 65c.

COLLECTION 43F. One packet each of the above seven named varieties, 60c.

HYBRIDA GIANTS

A fine strain of verbenas with the same characteristics as the mammoth except that each flowerlet in the cluster is much larger. This gives the blooming plant a more brilliant effect.

LUCIFER SCARLET. No eye. Pkt., 15c.

ROSEA STELLATA. Rose pink with white eye. Pkt., 15c.

VIOLECEA STELLATA. Deep purple with white eyes. Pkt., 15c.

HYBRIDA GIANT MIXED. Pkt., 15c.

AURICULA EYED MIXED

Brilliant colors, each flowerlet having a large, white eye. Pkt., 10c.

VERBENA VENOSA

Hardy perennial, very useful for terrace and rock work. Flowers are a rosy purple. 1 foot. Pkt., 15c.

Wallflower

Delightfully fragrant flowers growing in spikes similar to stocks.

SINGLE ANNUAL MIXED. Pkt., 10c.

DOUBLE PERENNIAL MIXED. Pkt., 15c.

Wildflower Mixture. See Page 1.

Vegetables for Fall Planting



A. & M. Riverside Sweet Spanish Onion

This onion has been developed to perfection through years of careful selection and has now won popularity without parallel. For best results sow in seed beds in October to December and transplant when plants are 5 or 6 inches high. Sow 1½ to 2 lbs. of seed for each acre or 1 oz. for a hundred feet row. In sealed bags, pkt., 10c; oz., 60c; ¼ lb., \$2.00; 1 lb., \$6.00, postpaid.



A. & M. Cherry Rhubarb

The stems of this wonderful new Rhubarb grow 24 inches long and are a beautiful cherry red color. The variety is less tart than others and there is no coarse fibre. Yields are enormous. We have several thousand specially grown rooted plants which, set out in September, October or November, will bear the following Spring. Rooted plants, 50c each; \$4.85 per doz., postpaid. Write for quantity prices.

| | Postpaid | |
|-------------------------------------|----------|--------|
| | Pkt. | Oz. |
| A. & M. ASPARAGUS | | |
| Mary Washington | \$0.10 | \$0.35 |
| Argenteuil | .10 | .20 |
| Palmetto | .10 | .20 |
| A. & M. BEETS | | |
| Early Flat Egyptian | .10 | .15 |
| Early Blood Turnip | .10 | .15 |
| Early Wonder | .10 | .20 |
| Detroit Dark Red | .10 | .15 |
| A. & M. BROCCOLI | | |
| St. Valentine | .15 | 1.50 |
| A. & M. BRUSSELS SPROUTS | .10 | .30 |
| A. & M. CABBAGE | | |
| A. & M. Winnigstadt | .10 | .35 |
| Copenhagen Market | .10 | .50 |
| Cannon Ball | .10 | .40 |
| Early Flat Dutch | .10 | .35 |
| Drumhead Savoy | .10 | .35 |
| A. & M. Golden Acre | .10 | .75 |
| Red Dutch | .10 | .35 |
| CHINESE CABBAGE | .10 | .50 |
| A. & M. CARROTS | | |
| Chantensy | .10 | .20 |
| Danvers' Half Long | .10 | .20 |
| Oxheart | .10 | .20 |
| A. & M. CAULIFLOWER | | |
| Late California Pearl | .10 | 2.00 |
| Snowball | .25 | 2.50 |
| A. & M. COLLARDS | | |
| Southern Georgia | .10 | .20 |
| A. & M. EGGPLANT | | |
| New York Improved | .10 | .75 |
| Tree Eggplant | .10 | .75 |
| A. & M. ENDIVE | | |
| Green Curled Golden Heart | .10 | .20 |
| Batavian or Escarol | .10 | .20 |
| A. & M. HERBS | | |
| Leading varieties | .10 | |

| | Postpaid | |
|------------------------------------|--|----------|
| | Pkt. | Oz. |
| A. & M. KALE | | |
| Tall Green Curled Scotch | \$0.10 | \$0.25 |
| Jersey | .10 | .20 |
| Siberian | .10 | .20 |
| A. & M. KOHL RABI | | |
| Early White Vienna | .10 | .30 |
| Early Purple Vienna | .10 | .30 |
| A. & M. LEEK | .10 | .35 |
| A. & M. LETTUCE | | |
| Los Angeles Market | .10 | .20 |
| Paris White Cos | .10 | .20 |
| Chicken Lettuce | .10 | .20 |
| A. & M. MUSTARD | | |
| Southern Giant Curled | .10 | .20 |
| Ostrich Plume | .10 | .20 |
| Chinese Green | .10 | .40 |
| A. & M. ONIONS | | |
| Yellow Bermuda, Early | .10 | .30 |
| Crystal Wax, Early | .10 | .40 |
| New Queen, Early | .10 | .40 |
| Riverside Sweet Spanish | .10 | .60 |
| White Sweet Spanish | .10 | .75 |
| Australian Brown | .10 | .20 |
| White Portugal or Silverskin | .10 | .40 |
| Bunching Onion | .10 | .35 |
| Southport White Globe | .10 | .45 |
| A. & M. ONION SETS | | 1 Lb. |
| White | | \$0.40 |
| Brown | | .40 |
| A. & M. PARSNIP | | Pkt. Oz. |
| New French | \$0.10 | \$0.20 |
| Hollow Crown | .10 | .20 |
| A. & M. PARSLEY | | |
| Champion Moss Curled | .10 | .20 |
| Plain or Smooth Leaved | .10 | .20 |
| Extra Double Curled | .10 | .20 |
| Hamburg Turnip Rooted | .10 | .20 |
| A. & M. POTATOES | | |
| White Rose | } Ready in December. Write for prices. | |
| Early Red Rose | | |
| British Queen | | |

| | Postpaid | |
|------------------------------------|----------|----------|
| | 4 Ozs. | 1 Lb. |
| A. & M. PEAS | | |
| Admiral or Senator | \$0.15 | \$0.35 |
| American Wonder | .15 | .35 |
| Dwarf Telephone | .15 | .35 |
| Hundredfold | .15 | .35 |
| Laxtonian | .15 | .35 |
| Laxton's Progress | .15 | .35 |
| Nott's Excelsior | .15 | .35 |
| Stratagem | .15 | .35 |
| Tall Telephone | .15 | .35 |
| Yorkshire Hero | .15 | .35 |
| A. & M. PEPPERS | | Pkt. Oz. |
| Anaheim Chili | \$0.10 | \$0.50 |
| Cayenne | .10 | .80 |
| A. & M. Wonder Bell | .15 | 1.50 |
| A. & M. Chinese Giant | .10 | .90 |
| A. & M. Pimiento | .10 | .60 |
| Floral Gem | .10 | .75 |
| A. & M. RADISH | | |
| Crimson Giant | .10 | .20 |
| French Breakfast | .10 | .20 |
| White Tipped Scarlet | .10 | .20 |
| Long White Icicle | .10 | .20 |
| Early Long Scarlet | .10 | .20 |
| Early Scarlet Turnip | .10 | .20 |
| A. & M. RUTABAGA | | |
| Purple Top | .10 | .20 |
| A. & M. SPINACH | | |
| Prickly Seeded Winter | .10 | .15 |
| Bloodsdales | .10 | .15 |
| A. & M. SWISS CHARD | | |
| Lucullus | .10 | .15 |
| White Swiss | .10 | .15 |
| A. & M. TOMATOES | | |
| A. & M. First Early | .10 | .50 |
| A. & M. Improved Stone | .10 | .50 |
| A. & M. Wilt Resistant Stone | .10 | .60 |
| A. & M. Ponderosa | .10 | .70 |
| A. & M. Globe | .10 | .75 |
| A. & M. Marglobe | .15 | 1.00 |
| A. & M. TURNIPS | | |
| Purple Top Globe | .10 | .20 |
| Snowball | .10 | .20 |
| Purple Top Rutabaga | .10 | .20 |

A. & M. Lawn Grass Seeds

For Private Lawns, Country Clubs, Golf Links and Public Parks

The lawn is the finishing touch of the home and once planted it remains indefinitely, therefore, it is important that the proper selection of seed be made in the beginning and thus avoid disappointment. Pure seed of good germination is important and freedom from weed seed is necessary for best results. A. & M. lawn seeds and mixtures are cleaned thoroughly and are tested for purity and germination. When you plant A. & M. Lawn Grass Seed you are planting the best that the market affords. Write for Lawn Circular No. 18.



Many of the beautiful lawns of California are grown from A. & M. reliable seed. A. & M. Velvet Lawn Mixture is put up in sealed bags for your protection.

A. & M. Velvet Lawn Grass

Has been used for many years throughout the Southwest with highly satisfactory results. It is a blending of grasses best suited to the variation of temperatures to which the lawn is subjected during the twelve months period and contains the proper proportion of the best, fine-bladed grasses and white clover. If you are having your lawn planted by a landscape gardener, insist that he use A. & M. Velvet Lawn Grass. It requires 1 pound of A. & M. Velvet Lawn Grass Seed to plant a space 10 x 20 or 200 square feet. This is the least that should be used and a heavier seeding will give quicker results. 1-lb. carton, 75c; 5-lb. bag, \$3.50; 10-lb. bag, \$6.50, postpaid.

A. & M. Shady Lawn Grass

In planting a lawn under trees or on the north side of the house it is often difficult to obtain a satisfactory growth of grass. A. & M. Shady Lawn Grass, however, is a mixture of fine-bladed grasses especially blended for such places and will produce an even growth of beautiful grass wherever there is considerable shade. 1 lb., 75c; 5 lbs., \$3.50; 10 lbs., \$6.50, postpaid.

A. & M. Fancy Recleaned Kentucky Blue Grass

Every bag of our Kentucky Blue Grass Seed is tested for purity and germination. There is positively no guesswork about it. You know when you buy A. & M. Kentucky Blue Grass Seed that it is high grade in every respect. 1 lb., 65c; 10 lbs., \$6.00, postpaid. Write for quantity prices.

A. & M. White Clover

There are many grades of White Clover Seed and A. & M. is always the best one. We invite comparison of samples, for when they are examined side by side it is very easy to note the difference in quality. A. & M. White Clover is tested for purity and germination the same as our Kentucky Blue Grass. It may be used to good advantage in reseeding Bermuda Grass Lawns in the Fall of the year. 1 lb., 75c; 10 lbs., \$7.00, postpaid. Write for quantity prices.

Seaside Bent Grass

(*Agrostis Maritima*)

Several varieties of Bent Grass are now on the market, but from many comparisons we consider the strain we offer to be the best for California and similar climates. 1 lb., \$2.75, postpaid.

A. & M. Velvet Fertilizer

Used Everywhere With Best Results

Every California gardener should fully realize the necessity for fertilizing. Most growers are inclined to use too small an amount of fertilizer and particularly since it is somewhat difficult to secure barnyard fertilizer, there is too often a tendency to forget the matter entirely. This is a mistake and will often cause disappointment, not only in the lawn, but in the garden as well. A. & M. Velvet Fertilizer will give you very satisfactory results and for the new lawn it should be used at the rate of about 100 lbs. to 1,500 square feet and should be raked in before planting. This should be done several days in advance of seeding. For an established lawn broadcast evenly at the rate of 5 to 8 lbs. per 100 square feet and water thoroughly immediately after applying. For roses, use about ½ to 1 lb. per bush, depending upon the size of the bush; for trees and shrubs use a larger quantity. It will be found beneficial to all plant life and the results are quick and lasting. It is odorless and well balanced for general purposes. 25-lb. sack, \$1.15; 50 lbs., \$2.10; 100 lbs., \$4.00, f. o. b. Los Angeles.

Spray Pumps

BROWN'S AUTO-SPRAY No. 9

Sturdy compressed air sprayer, equipped with a heavy brass screw cap to lock pump in reservoir. The metal in the tank is lock-seamed, well riveted, soldered inside and out. May be obtained with brass or galvanized tank. Brass tank is strongly recommended as it will not rust and will withstand strong solutions. Capacity 4 gals., height 2 feet, diameter 7 inches. For spraying field crops, shrubs, vines, poultry houses; for removing wall paper, disinfecting, white-washing, creosoting shingles, applying floor oils and for general purposes. Two-foot extension with each machine, no extra price. New solid seamless brass pump and brass ball check valve. Furnished with angle nozzle. Weight empty 9 lbs. Packed for shipment 10 lbs.

No. 9-B. Brass Tank with Auto-Pop, \$10.00.

No. 9-D. Galv. Tank with Auto-Pop, \$7.00.

(F. O. B. Los Angeles).



BROWN'S AUTO SPRAY No. 50

Lighter Weight—Smaller Capacity

This sturdy machine is almost identical to Auto-Spray No. 9 in construction and manipulation, but with smaller capacity, holding about 2½ gallons. Height 18 inches, diameter 7 inches. It is entirely suitable for spraying on a smaller scale. It is particularly recommended for use where weight is a factor, as when the women folks or youngsters help out with the spraying. Furnished with angle nozzle.

Construction and uses same as No. 9. Equipment same as No. 9, except 18 inch extension in place of 2 feet. Solid seamless brass pump and check valve. Weight empty 6 lbs., loaded 23 lbs., shipping weight 7 lbs.

No. 50-B. Brass Tank with Auto-Pop, \$7.75.

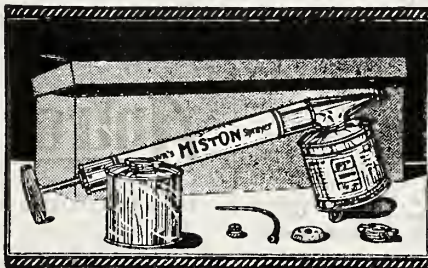
No. 50-D. Galv. Tank with Auto-Pop, \$5.75.

(F. O. B. Los Angeles).



THE MIST-ON CONTINUOUS SPRAYER

Highly perfected design of continuous sprayer. It has a variable nozzle that makes Mist-On an all purpose sprayer. A slight turn to right or left gives a nozzle adjustment that permits ever density of spray from delicate vapor mist to a solid steam. Mist-On is sold singly as a complete sprayer, or as an outfit consisting of one extra tank (for changing to another solution or color of lacquer) and many other extra parts.



Single Sprayer A, tin\$1.50 each
Single Sprayer C, brass 2.00 each
Mist-On Outfit 1A, tin 2.75 each
Mist-On Outfit 1C, brass 3.50 each

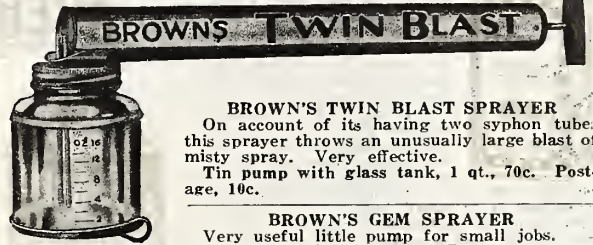
(Prices F. O. B. Los Angeles).

SPRAY HOSE

Heavy, high pressure hose for power pumps:
¾ inch25c per foot
½ inch30c per foot
Five-ply hose for use on small spray pumps:
¾ inch17c per foot
½ inch21c per foot
3-ft. Brass Extension Rods\$1.00 each

(F. O. B. Los Angeles).

For particulars of barrel and wheelbarrow sprayers, and large size dusters, see our General Catalog.



BROWN'S TWIN BLAST SPRAYER
On account of its having two syphon tubes this sprayer throws an unusually large blast of misty spray. Very effective.
Tin pump with glass tank, 1 qt., 70c. Postage, 10c.

BROWN'S GEM SPRAYER
Very useful little pump for small jobs.
All tin, ½-pint size, 40c. Postage, 10c.

BROWN'S AUTO-SPRAY No. 26

A continuous atomizer of unusual merits. The container can be detached for refilling and cleaning by simply unscrewing from the pump cylinder. The syphon tube is easily removed and quickly cleaned by removing the nozzle.

It Sprays Continuously



USES. For spraying garden crops, for use in greenhouses, for handling disinfectants and fly oils. It can be used with all spraying solutions.

No. 26-A. G. tin pump, 1-qt. glass tank, \$1.25. Postage, 10c.

No. 26-B. tin pump, 1-qt. brass tank, \$1.25. Postage, 10c.

No. 26-C, all brass, 1 qt., \$1.50. Postage, 10c.



A. & M. TROMBONE SPRAYER

Equipped with nozzle for fine spray or straight stream. May be used for garden spraying, whitewashing and disinfecting. With the smallest effort a powerful volume of spray is produced, capable of reaching the tops of average trees. It is made entirely of brass. Pump as shown above, with short hose, strainers and three spraying nozzles. Shipping weight, 5 lbs.

Each, \$5.00, f. o. b. Los Angeles.



DUSTER BROWN No. 1



Duster Brown No. 1 is adapted for use with sulphur and all insect powders. Because of its size and efficiency it is a favorite with the housewife in applying roach, ant and various bug powders. Also very practical for dusting rose bushes, etc., in small gardens. This little gun makes dusting a pleasure. Price, 50c. Postage, 10c.

DUSTER BROWN No. 2

A very practical duster of new design. It is especially adapted for use in applying insect powders. It is simply constructed and works on a new principle recently discovered. The extension is of sufficient length to enable the operator to spray ordinary crops without bending over. Very useful for dusting rose bushes and garden plots generally.



Duster Brown No. 2-C, quart, \$1.10. Postage, 10c.

A. & M. GREEN BAR SOAP

The efficiency of any spray insecticide is greatly increased by the use of a spreader. Unless a spreader is used the spray will collect on the plants in tiny globules and many parts will be left dry. A. & M. Green Bar soap is specially prepared and increases the efficiency of Evergreen, Black Leaf 40, etc. (See directions on wrapper). Price, 15c per bar.



Lilium Regale.



Lilium Tigrinum Splendens.

Lily Collection

ONE BULB of each of these Lilies \$1.00

THREE BULBS of each . . . \$2.75

For complete list of varieties, see Lily page.



Lilium Auratum.



Lilium Rubrum.



Narcissus, Aspasia.



Narcissus, Laurens Koster.



Narcissus Poeticus Ornatus.

NARCISSUS

COLLECTIONS

No. 1
3 Bulbs of each
(15 Bulbs)
\$2.25

No. 2
12 Bulbs of each
(60 Bulbs)
\$8.00

*for
Complete
List of
Varieties
see
Narcissus
Page*



Daffodil, Emperor.



Daffodil, Primrose Phoenix.

Aggeler & Musser

Seed Co.

*Los Angeles
California*