

Historic, Archive Document

Do not assume content reflects current scientific knowledge, policies, or practices.

62,73

LIBRARY RECEIVED
AUG 31 1948
U. S. Department of Agriculture
FALL 1948

B. F. Barr & Son Nurseries

Established 1893

R.D. No. 2 Marietta Road, Route 330, Lancaster, Pa.

A choice selection of Ornamental Trees and Shrubbery ready for Fall Planting. Local deliveries free

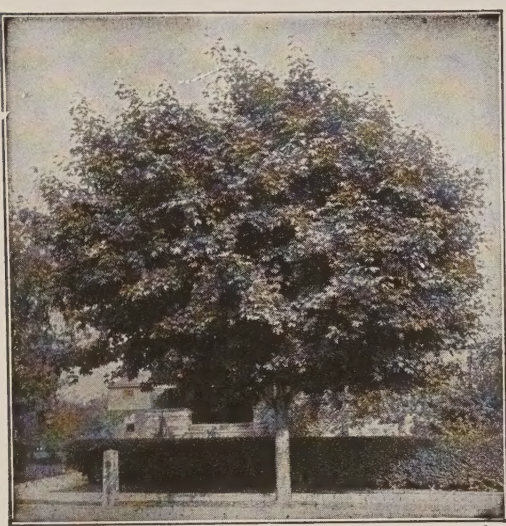
HEADQUARTERS FOR LARGE SHADE TREES

Save 8 to 10 Years Waiting For Shade.

Large Shade Trees may be planted in the winter months with perfect safety. Order now while stock is complete.

Specimen trees—Oaks, Maples, Sweet Gum, Ginkgo or Elms 12-15 years old, 5-8 inch caliper, 20-30 ft. high, 6-10 ft. spread, especially grown for transplanting. Only \$45.00 to \$90.00 according to size and variety.

Come in and make your selection NOW while they are in foliage. For Fall and Winter Planting



NORWAY MAPLE

Fall Is The Ideal Time To Plant

SHADE TREES, ROSES, SHRUBBERY, PEONIES, EVERGREENS, FRUIT TREES

Varieties listed herein contain only a small portion of the choice Trees and Evergreens we have to offer. Our Spring-1948 catalogs are now exhausted—watch for our big Spring March-1949 issue. In the meantime we shall appreciate receiving your want list for quotations.

SCHEDULE FOR FALL PLANTING*

- Lawn Seeding—Aug., Sept., and Oct.
 - Peonies—Until October 31.
 - Perennials and Roses—Until November 15.
 - Spring Flowering Bulbs—Until November 30.
 - Evergreens—Until December 10.
 - Trees, Shrubs, Vines—October 15 to December 20.
- *Average years depending on weather conditions.



For The Finest Quality Lawn Sow Barr's Grass Seed



BARR'S "GREEN MANTLE"

Produces an enduring, velvety, deep green mantle quickly under average conditions of soil and sunshine. 36.00% Kentucky Blue Grass 36.00% Red Top, 14.70% Rye Grass. 1 lb. 80c; 5 lb. \$3.60; 10 lb. \$7.25.

To start a new lawn or for rejuvenating an old one, the best results are obtained by seeding late August, September and October.

One pound will sow 250 square feet of lawn. Barr's Lawn Seed is especially prepared and free from chaff and weed seeds containing only the best fine growing grasses.

There is absolutely no Timothy or coarse grass in any of our formulas.

BARR'S "SUNNYSIDE"

Fine leaved, good color, lasting quality grasses makes up this special mixture for sunny locations. 59.50% Kentucky Blue grass, 14.70% Chewing Fescue, 14.20% Red Top. No timothy nor coarse-bladed grasses cheapen this mixture. 1 lb. 95c; 5 lb. \$4.70; 10 lb. \$8.90.

BARR'S "FANCY DUTCH WHITE CLOVER"

Fancy re-cleaned seed. Excellent for lawns. Mix 2 to 4 ounces with each pound of above named mixtures if you want clover on the lawn. 1/4 lb. 40c; 1/2 lb. 75c; 1 lb. \$1.25.

BARR'S "SHADY SIDE"

A formula of special grasses for over-coming the difficulty of growing grass in part shade. 34.30% Chewing Fescue, 29.70% Kentucky Blue Grass, 27.00% Red Top. 1 lb. 95c; 5 lb. \$4.70; 10 lb. \$8.90.

All Grass Sent Prepaid, Parcel Post

Everblooming Hybrid Tea Roses

FOR FALL PLANTING

Hardy First Size 2 Year Field Grown Plants Guaranteed to Bloom or Money Refunded

These are the cream of the several hundred varieties known to the flower industry. They include the most indispensable of the time-tested standard varieties and the best of the new and patented offerings.

You will have the fullest degree of pleasure in planting any of the varieties listed, for Barr's "Will Grow" Roses are guaranteed to grow and to bloom the first season, or will be replaced free.

Full planting and cultural directions furnished with each order.
ORDER EARLY to receive your plants in time for Fall planting.
SHIPPING CONDITIONS—All dormant plants are sent Parcel Post prepaid.

Everblooming Hybrid Tea Roses

First Size 2 Year Field Grown Plants

Ami Quinard—Deep maroon	1.25
Betty Uprichard—Orange carmine	1.25
Caledonia—White	1.25
Condesa de Sastago—Yellow and red	1.25
Christopher Stone—Vivid scarlet	1.25
Crimson Glory—Pat. 105—Deep bright crimson	1.50
Eclipse—Pat. 172—Golden yellow	1.50
Edith Nellie Perkins—Salmon pink	1.25
Etoile de Hollande—Brilliant scarlet	1.25
Golden Dawn—Sunflower yellow	1.25
Grande Duchesse Charlotte—Pat. Pending—Coral red	1.50
Horace McFarland—Pat. 730—Salmon pink	1.50
Kaiserine Auguste Viktoria—Ivory white	1.25
Margaret McGredy—Orange vermilion	1.25
McGredy's Ivory—Creamy white	1.25
McGredy's Scarlet—Brilliant scarlet	1.25
McGredy's Yellow—Buttercup-yellow	1.25
McGredy's Sunset—Pat. 317—Orange tones	1.50
Mme. Jules Bouche—White	1.25
Mrs. E. P. Thom—Canary yellow	1.25
Mrs. Pierre S. duPont—Deep golden yellow	1.25
Peace—Pat. 591—Cream, with pink edges	2.00
Pink Dawn—Lovely shade of pink	1.25
Poinsettia—Poinsettia red	1.25
President Herbert Hoover—Maroon, orange, gold	1.25
Radiance—Cameo pink	1.25
Red Radiance—Clear even shade of red	1.25
Soeur Therese—Daffodil yellow	1.25
Talisman—Scarlet orange and yellow	1.25
The Doctor—Silvery pink	1.25

Hardy Climbing Roses

Climbing American Beauty—Pink	1.25
Paul's Scarlet Climber—Vivid scarlet	1.25

Note—Additional varieties including new introductions for Spring 1949 Delivery.

ROSE FOOD 7-8-5

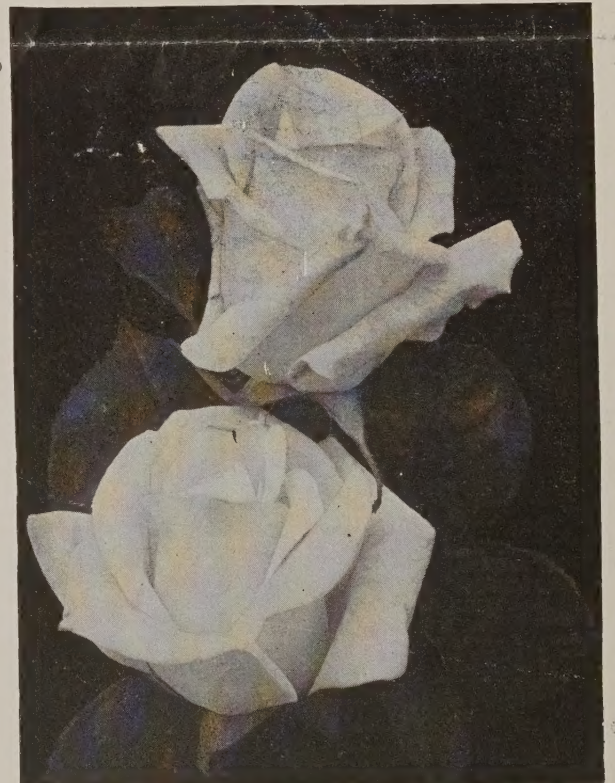
G & O Rose Food is used in carload lots by the leading rose growers in America. Continually feeds all through the season. Improves the stock each year. Produces better foliage and blooms because its an organic formula—100% Plant Food.

5 lb. Bag, 75c



Quantity Rates on 3 or More Roses Your Selection

Any 3 \$1.25 dormant roses 3 for \$3.35
Any 3 \$1.50 dormant roses 3 for \$4.00
Any 3 \$2.00 dormant roses 3 for \$5.00



PRESIDENT HERBERT HOOVER

Roses are greatly benefitted by the use of Peat Moss.

Peat Moss. (Ground) Applied as mulch, conserves moisture, keeps down weeds, mellows and acidifies the soil and beautifies at same time. Water well before and immediately after applying as a mulch. 1 bale covers 125 sq. ft. to depth of 2 inches. Large bales, \$5.00; Senior Bales, \$3.00.

The Popular Foundation Planting For The Small Home

Prefers a Sunny Location

POPULAR FOUNDATION VARIETIES

"Specimen Plants"

4 Pyramidal Arborvitae	(Upright Habit)	4 ft.	\$4.00	\$16.00
4 Retinospora—Green or Golden	(Medium Habit)	18-24 in.	2.50	10.00
2 Juniper dep. plumosa	(Dwarf Habit)	12-15 in.	2.50	5.00

Regular Price ----- \$31.00

10 Beautiful Shaped Plants—Regular Price \$31.00

Special Offer \$27.90—Transportation Not Prepaid

Free Local Delivery

ARISTOCRATS IN EVERGREENS

Nothing quite equals the Yew for foundation planting; thrives in full sun or semi-shade condition. Longest lived species. Exceptionally hardy and immune to insects.

"Specimen Plants"

4 Upright Yew (Tall Habit)	24-30" high	@	\$6.50	\$26.00
4 Spreading Yew (Medium Habit)	15-18" wide	@	3.90	15.60
2 Dwarf Brevifolia Yew (Dwarf Habit)	10-12" wide	@	2.50	5.00

Regular Price ----- \$46.60

10 Choicest Evergreens—Regular Price \$46.60

Special Offer \$42.00—Transportation Not Prepaid

Free Local Delivery

PERENNIAL PEONIES

Among the Best Known and Easiest to Grow Hardy Plants

(E) Early; (M) Midseason; (L) Late Blooming

Albatre. White, carmine lined (M)	\$1.00
Cherry Hill. Glistening garnet (E)	1.25
Edulis Superba. Old-rose-pink (E)	1.00
Eugene Verdier. Hydrangea-pink (M)	1.25
Monsieur Martin Cahuzac. Maroon (M)	1.75
Festiva Maxima. Snowy-white (E)	1.00
Lora Dexheimer. Bright crimson (M)	1.10
M. Jules Elie. Glossy shell-pink (M)	1.25
Walter Faxon. Vivid shell-pink (M)	1.35
Sarah Bernhardt. Soft pink (L)	1.35

One each of these 10 fine Peonies for \$10.00 postpaid. Orders for \$3.00 or more, postpaid



PLUME RETINOSPORA

Shade and Ornamental Trees

Does your home stand out in the bare sun, without background and unframed. Shade trees will make a wonderful transformation and give comforting shade as well.

Norway Maple: 6-8 ft.	\$3.00
Norway Maple: 8-10 ft., 1¼ to 1½ in. cal.	5.00
Norway Maple: 10-12 ft., 1½-1¾ in. cal.	6.00
Norway Maple: 14-16 ft., 2-2½ in. cal.	9.00
Sugar Maple	8-10 ft. 5.00
Schwedler (Red-leaf Maple)	6-8 ft. 5.00
Red Maple	6-8 ft. 4.00
White Ash	8-10 ft. 3.00
Dogwood (White)	3-4 ft. 4.00
Ginkgo	8-10 ft. 4.00
Scarlet Oak	8-10 ft. 5.00
Pin Oak	8-10 ft. 5.00
American Elm	10-12 ft. 5.00

FREE LOCAL DELIVERY

FRUIT TREES AND SMALL FRUITS

Apple	12 Best Varieties	2 yr.	5-6 ft.	@	\$1.50 ea.
Apricot	2 Best Varieties	2 yr.	4-5 ft.	@	2.00 ea.
Cherry Sweet	4 Best Varieties	2 yr.	5-6 ft.	@	2.50 ea.
Cherry Sour	3 Best Varieties	2 yr.	3-5 ft.	@	2.25 ea.
Peach	5 Best Varieties	2 yr.	4-5 ft.	@	1.50 ea.
Pear	4 Best Varieties	2 yr.	5-6 ft.	@	2.00 ea.
Plum	3 Best Varieties	2 yr.	5-6 ft.	@	2.35 ea.
Quince	1 Best Variety	2 yr.	4-5 ft.	@	2.35 ea.
Grapes	6 Best Varieties	3 yr.		@	.60 ea.
Raspberry	3 Best Varieties	2 yr.		3 for	2.40

Stop in, write, or telephone for varieties desired.

Free Local Delivery

STRAWBERRIES

The Strawberry will grow in any good garden soil.

Big Joe (Perfect). Berries large, conical shape, rich red, excellent flavor. Best mid-season.

Catskill (Perfect). Very productive, large. Excellent flavor. Mid-season.

Chesapeake (Perfect). Large, firm berries of delicious flavor, rich color. Best late variety.

Dorset (Perfect). New introduction, heavy yielding qualities. Early.

Premier (Perfect). Glossy, rich red color extending clear through. Best very early.

Fairfax (Perfect). Fruit bright red, glossy and attractive. Medium early.

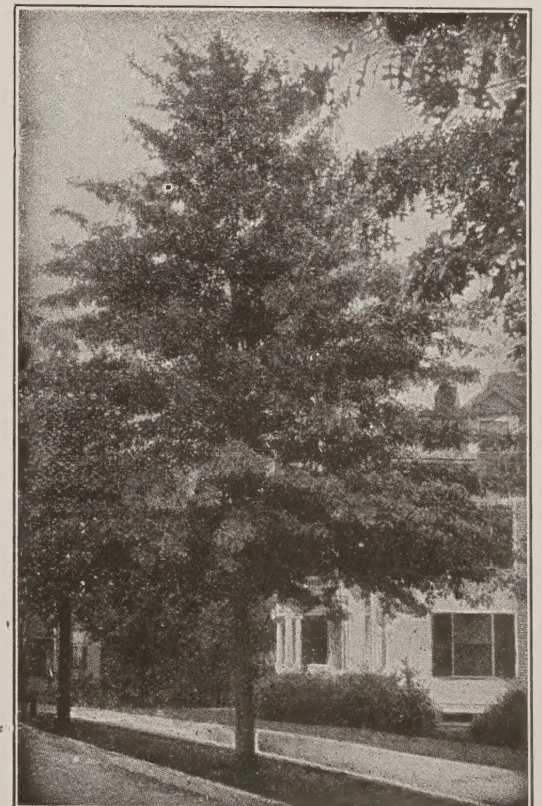
William Belt (Perfect). Firm, deep crimson, large. Late.

Strong, layer plants, 25 for \$1.10; \$3.50 per 100. Your selection.

EVERBEARING STRAWBERRIES

Mastodon. Large fruiting and most prolific. 25 for \$2.00; \$5.00 per 100.

All Strawberry plants prepaid parcel post.



PIN OAK

HARDY FLOWERING SHRUBS

Especially selected, attractive colors and habits

1 Spirea Frobela (Rose) -----	May Flg.	18-24"-----	\$1.00
1 Charles the 10th Lilac (Purple) ----	June Flg.	2-3'-----	1.25
1 Golden Bell Forsythia (yellow)----	April Flg.	2-3'-----	1.00
1 Weigelia Rosea (Pink)-----	May Flg.	2-3'-----	1.00
1 Bush Honeysuckle (Pink)-----	May Flg.	2-3'-----	1.00
1 Hydrangea P. G. (White) -----	Aug. Flg.	2-3'-----	1.00
1 Hydrangea Hills of Snow (White)---	July Flg.	2-3'-----	1.00
1 Spirea Van Houtte (White)-----	May Flg.	2-3'-----	1.00
1 Rosa Hugonis (Yellow)-----	May Flg.	2-3'-----	1.00
Regular Price -----			\$9.25



CHARLES THE 10TH LILAC

One each of these fine shrubs for \$8.10

Three each of these fine shrubs for \$24.00—Transportation

Not Prepaid. Free Local Delivery

EVERGREEN GROUND COVER PLANTS FOR DIFFICULT, SHADY PLACES

For difficult places under trees and on banks where it is impossible for grass to thrive a class of plants designated as "Ground Cover Plants" can be used with good results. These plants are also valuable in Evergreen and Shrub plantings, filling up the intervening spaces. Other advantages are that they always look well, yet require practically no attention; and being evergreen, are as effective in Winter as in Summer. Among the best plants for this purpose are English Ivy, Pachysandra and Periwinkle.

PACHYSANDRA (Spurge)

Under trees Pachysandra is the real answer to the problem of covering the bare ground with greenery. Another advantage is the protection to the roots of trees afforded by the Pachysandra. The glossy foliage is very attractive. Use 3 or 4 to 1 sq. ft. of the area to be covered.

	Per 100	Per 1000
1 yr. plants -----	\$10.00	\$ 90.00
2 yr. plants -----	\$12.00	\$110.00

ENGLISH IVY

The English Ivy is particularly effective used on banks, to edge walks and under trees. An advantage in using Barr's English Ivy is that it goes further in coverage, each pot containing two plants—a twofold advantage. Plant 10 to 12 inches apart and you will soon have a carpet of green.

	Per 10	Per 100
2½ in pot size -----	\$2.00	\$15.00
(Large or Small-leaved)		

PERIWINKLE (Myrtle)

Not only is the Hardy Periwinkle a good ground cover under trees and on hillsides, but its pretty blue flowers also make an appeal. The glossy, evergreen foliage remains beautiful the year round. When planting do not place the crown of the plant below the surface of the soil. Use 3 or 4 to 1 sq. ft. of area.

	Per 100	Per 1000
Strong, field-grown plants -----	\$10.00	\$ 90.00
Potted plants -----	\$12.00	\$110.00

25 Plants at the quoted 100 rate; 250 or more Plants at the 1000 rate.

Ground-cover plants should be planted before October 1st on account of danger of freezing out during winter if planted later in the Fall
Free Local Delivery. Transportation Not Prepaid



BARBERRY HEDGE

HEDGE PLANTS

California Privet

Plant 6 inches to foot apart	10	100
1½-2 ft., 2-yr. -----	\$1.60	\$15.00
2-3 ft., 3-yr. -----	2.50	20.00

Japanese Barberry

Plant 18 inches apart	Ea.	10	100
15-18 in., 3-yr. -----	\$.55	\$5.00	\$45.00
18-24 in. -----	.70	6.00	50.00

Red Barberry

	Ea.	10
15-18 in., bushy plants -----	\$.75	\$6.50
18-24 in., bushy plants -----	1.00	8.00

Transportation not prepaid.

Free Local Delivery

Visit Our Display of Garden Mums This Fall

Seventy-five varieties in our trial garden for your inspection and enjoyment.

The greatest number of varieties will be in bloom beginning early October until hard frost.

You are always welcome at Barrs for relaxation, information and inspiration.

Field plants for sale this Fall and potted plants in Spring 1949.

B. F. BARR & SON NURSERIES.