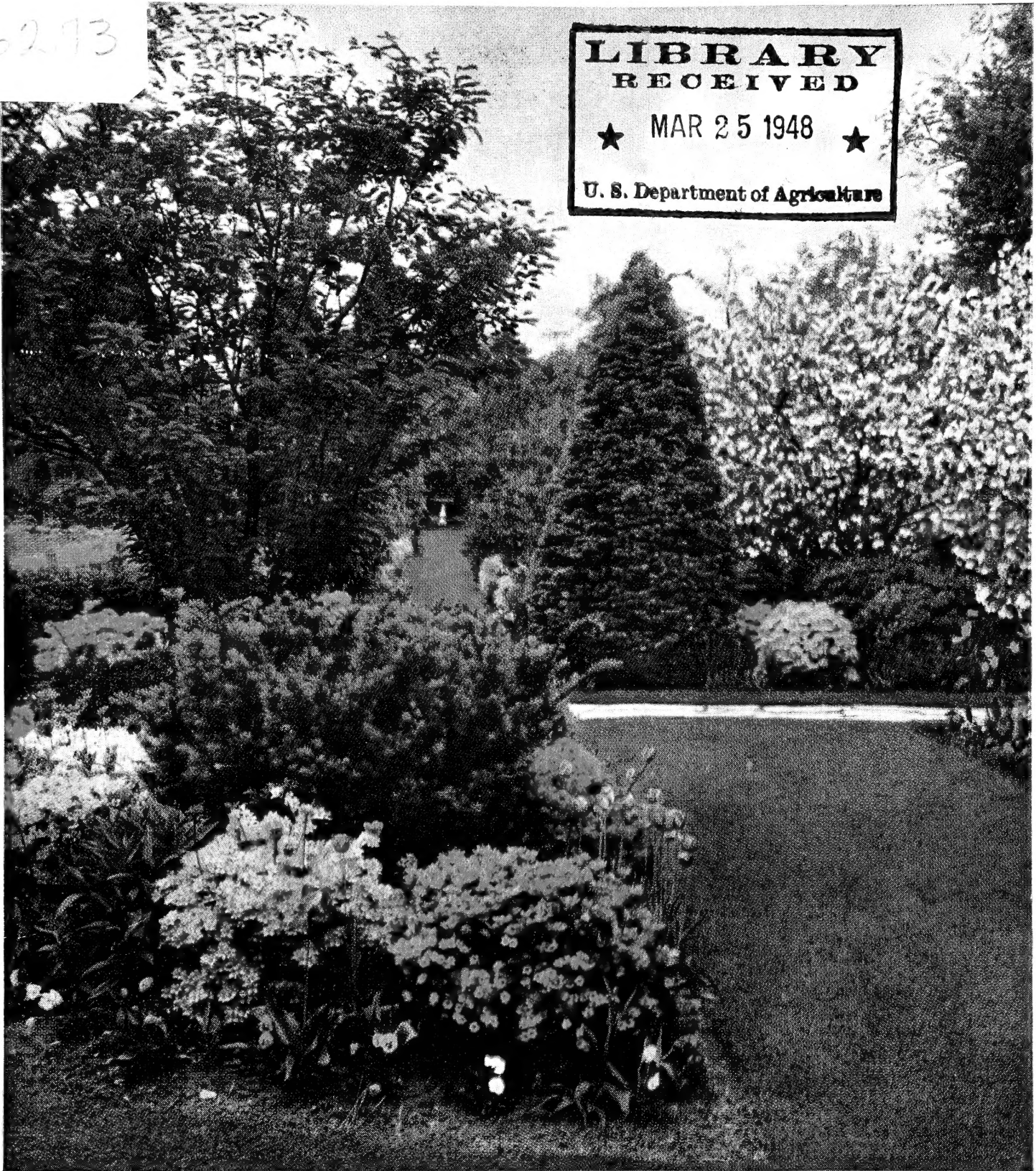


Historic, Archive Document

Do not assume content reflects current scientific knowledge, policies, or practices.

6273

**LIBRARY
RECEIVED**
★ MAR 25 1948 ★
U. S. Department of Agriculture



1893

Barr's
NURSERY CATALOG

1948

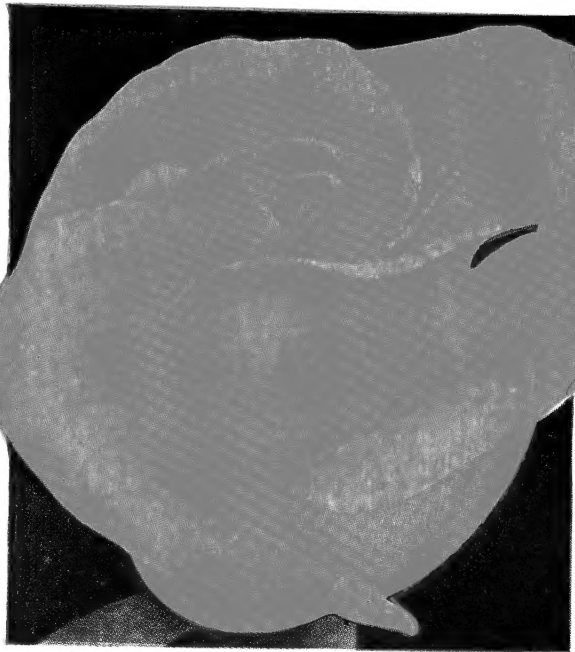
PLANT IND. SOILS & AGL. ENG.

How • When • Where and What to Plant

B. F. BARR & SON

Nurseries: R. D. 2, Marietta Road • Route 340

B. F. BARR Flower Shop • 116 N. Queen St. • LANCASTER, PA.



SOEUR THERESE. \$1.25 each; 3 for \$3.35



**McGREDY'S
SCARLET**
\$1.25 each; 3 for \$3.35

**5
fine
ROSES**

**You will want
to plant
in your garden**

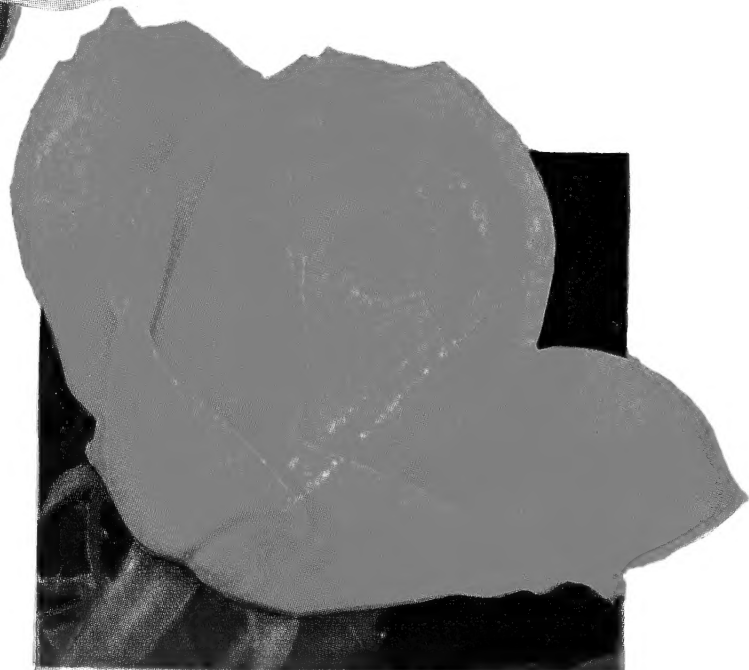


©
PEACE
\$2.00 each
3 for \$5.00

**ONE EACH
of these
5 fine ROSES
for
\$7.10
postpaid**



©
MIRANDY
\$1.50 each
3 for \$4.00



© **ECLIPSE.** \$1.50 each; 3 for \$4.00

Everblooming Hybrid Tea Roses

FIRST SIZE 2 YEAR FIELD GROWN PLANTS

Guaranteed to Bloom or Money Refunded

These are the cream of the several hundred varieties known to the flower industry. They include the most indispensable of the time-tested standard varieties and the best of the new and patented offerings.

You will have the fullest degree of pleasure in planting any of the varieties listed, for Barr's "Will Grow" Roses are guaranteed to grow and to bloom the first season, or will be replaced free.

Full planting and cultural directions furnished with each order.

ORDER EARLY to receive your plants in time to plant at the earliest date your soil is in condition to set them out.

SHIPPING CONDITIONS. We begin shipping dormant plants about March 10, weather permitting. If a preferred date of delivery is marked on your order you will be assured of receiving your plants when you want them; otherwise orders are filled in the same sequence as received. All dormant plants are sent Parcel Post prepaid.

POTTED ROSE PLANTS

After May 10 its usually too late to plant dormant roses, we can then supply potted Rose plants ready to put out into your garden in bud and full leaf. For these pot-grown plants add 50c each.

SHIPPING ORDERS. Please add 10c each for crating. All potted roses are not sent prepaid.

LANCASTER "RED ROSE CITY" COLLECTION

Ranging from vivid reds to pink and pastel shades. They are the most popular of the older Universal Favorites, highly recommended by leading rosarians. All high grade 2 year field grown dormant plants.

One Each of the Following

Betty Uprichard. Carmine and salmon.....	\$1.25
Edith Nellie Perkins. Orange pink	1.25
Etoile de Hollande. Brilliant scarlet	1.25
Kaiserine Auguste Viktoria. Creamy-white..	1.25
Lowell Thomas. Yellow	1.50
Margaret McGredy. Red-gold	1.25
Mrs. E. P. Thom. Clear yellow	1.25
Poinsettia. Brilliant scarlet-red	1.25
President Herbert Hoover. Multi-color	1.25

9 Dormant rose plants valued at\$11.50

SPECIAL OFFER \$10.25
Postpaid

Quantity rates on 3 or more roses your selection.

Any 3 \$1.25 dormant roses 3 for \$3.35
Any 3 \$1.50 dormant roses 3 for \$4.00
Any 3 \$2.00 dormant roses 3 for \$5.00
Plants established in pots for late planting add 50c each.

American Flagship. Pat. 676. High centered, well formed, double flowers of velvet-textured crimson red. Vigorous grower and free bloomer, with black-spot resistant foliage. Hold color in sun, \$2.00 ea., 3 for \$5.00.

Ami Quinard. Blackish maroon, opening into semi-double flowers of rich velvety red, with blackish luster—brilliant and unfading; has old-time fragrance. Strong, upright grower and fine producer. \$1.25 each; 3 for \$3.35.

Betty Uprichard. Carmine and salmon. In color, this rose is in a class by itself with its beautiful, harmonizing shades, rising from an orange base. Long pointed buds open to large semi-double blooms with a spicy fragrance. \$1.25 each; 3 for \$3.35.

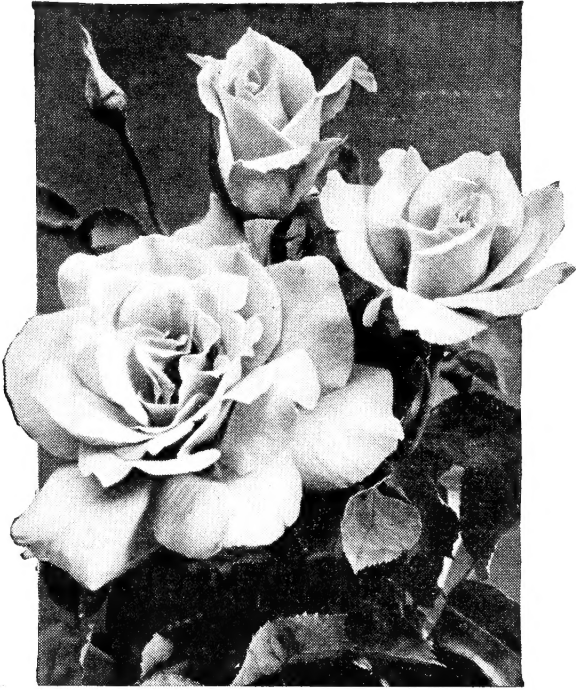
Caledonia. Large, very double, high-centered flower of pure white, born singly on long, strong stems, average growth, with dark green foliage. One of the best white Roses. \$1.25 each; 3 for \$3.35.



BETTY UPRICHARD

Condesa de Sagato. Bicolor. Delightfully fragrant flowers of yellow and raspberry-red are produced profusely on vigorous, healthy plants. \$1.25 each; 3 for \$3.35.

California. Pat. 449. Ruddy orange toned with saffron-yellow. Very large flowers, 5 to 6 inches across. Healthy foliage. \$1.50 each; 3 for \$4.00.



CALEDONIA

Charlotte Armstrong. Pat. 455. Blood-red pointed buds; magnificent long-stemmed, open flower, cerise in summer heat; richly fragrant. Very prolific and a continuous bloomer. Disease-resistant foliage. An All-American Rose. \$1.50 each; 3 for \$4.00.

Christopher Stone. Scarlet-crimson, well sustained; vividly colored new Rose with old-Rose perfume. \$1.25 each; 3 for \$3.35.

Crimson Glory. Pat. 105. Large urn-shaped buds opening into well-formed flowers of intense deep vivid crimson, shaded oxblood-red; soft, velvet nap. \$1.50 each; 3 for \$4.00.

Eclipse. Pat. 172. International sensation; awarded prizes in Rome, Paris, etc. Long streamlined buds are rich gold without shading. Strong upright plant with healthy dark green foliage. Gold Medal winner. \$1.50 each; 3 for \$4.00.

Edith Nellie Perkins. Long-pointed, rich orange-pink buds, opening salmon-pink with golden underglow; very fragrant, \$1.25 each; 3 for \$3.35.

Etoile de Hollande. Brilliant scarlet, fragrant flowers of large size, a constant joy as it is a continuous bloomer. One of the best reds. \$1.25 each; 3 for \$3.35.

Girona. Multicolored. Lovely buds of turkey-red and golden yellow, on 12 to 18 inch stems, open to alluringly fragrant blooms. \$1.25 each; 3 for \$3.35.

Golden Dawn. Sunflower-yellow with bud tinged carmine; deliciously fragrant. Robust grower with superabundance of foliage; a prolific bloomer. Bush and habit perfect. \$1.25 each; 3 for \$3.35.

Grande Duchesse Charlotte. Pat. Pending. The lovely burnt-carmine color of this new Rose is unmatched by any other. The enchanting, streamlined buds come freely on long, wiry stems, making them excellent for cutting. Carnation fragrance. \$1.50 each; 3 for \$4.00.

Hector Deane. Pat. 361. Crimson buds stained with orange, open to deep satiny pink flowers with an orange base to each petal. Very fragrant. Strong, healthy plants. \$1.50 each; 3 for \$4.00.

Heinrich Wendland. Bicolor. Fragrant flowers of an unfading nasturtium-red, reverse deep golden yellow. Very double and highly recommended. \$1.25 each; 3 for \$3.35.

Horace McFarland. Pat. Pending. Buff-salmon color. A sturdy and upright grower with large leathery foliage. Large, high-centered buds develop into immense, full flowers on erect stems. Free bloomer even in summer. Spicily scented. A splendid new Rose of distinctive color. Named in honor of the eminent rosarian from Harrisburg, Penna. \$1.50 each; 3 for \$4.00.

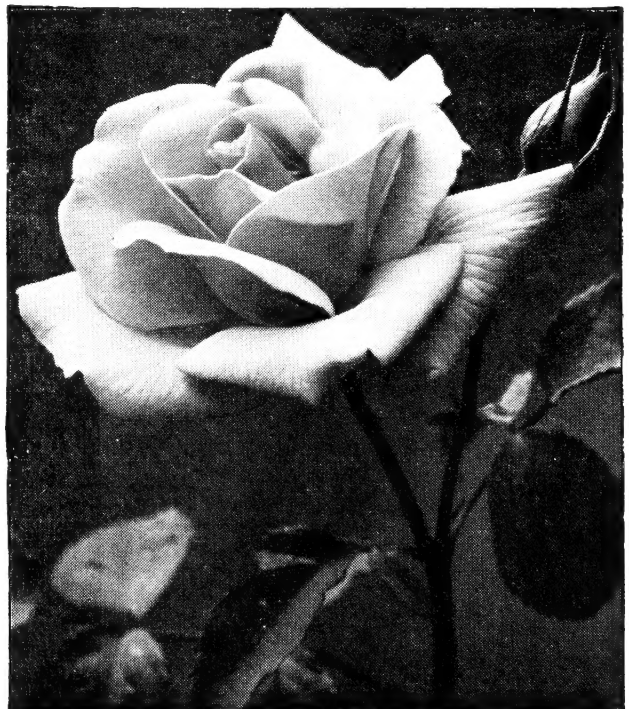
Kaiserine Auguste Viktoria. Creamy white, large blooms on long stems; fragrant; constant, majestic bloomer. \$1.25 each; 3 for \$3.35.

Lowell Thomas. Pat. 595. Vibrant leon-chrome color, vigorous growth. The 25-petaled blooms open from beautiful buds and have a high cupped center, with the petals rolling outward, making magnificent, glowing flowers, over 4 inches across when fully open. \$1.50 each; 3 for \$4.00.

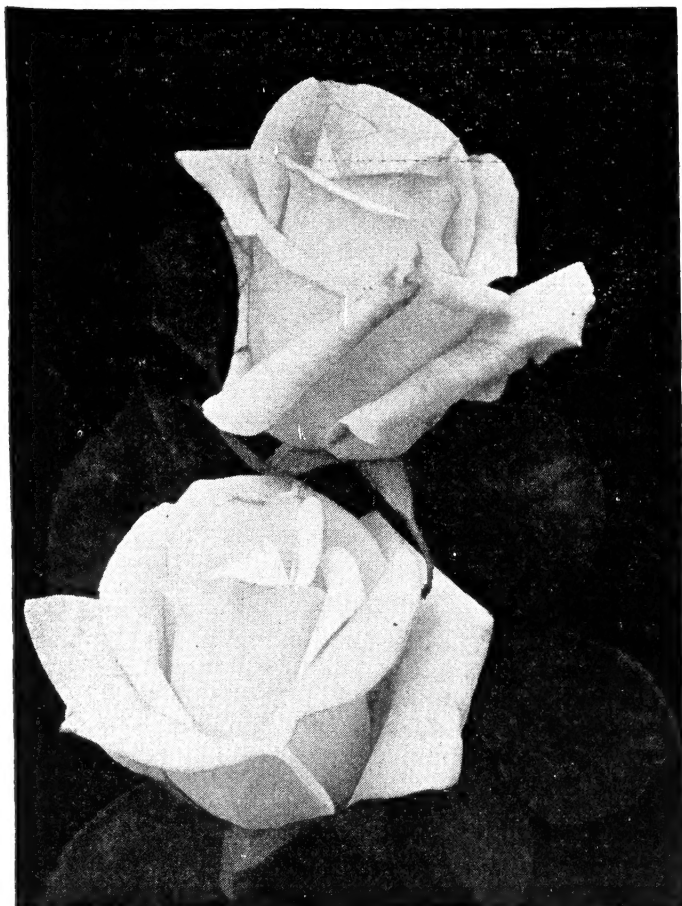
Margaret McGredy. Brilliant red petals on hinges of deep gold; buds upright; constant bloomer. Resistant to black-spot and mildew. Gold Medal winner. \$1.25 each; 3 for \$3.35.

McGredy's Ivory. Pure white, perfectly formed, long-pointed buds and high-centered double flowers with sweet fragrance. \$1.25 each; 3 for \$3.35.

McGredy's Scarlet. Rich, velvety, scarlet with orange base. Fragrant, full, double flowers of good size. Free blooming. \$1.25 each; 3 for \$3.35.

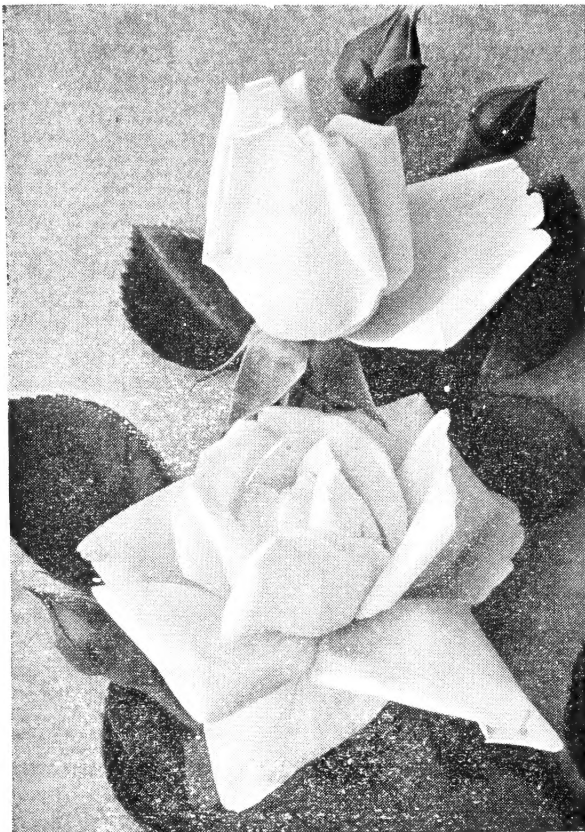


MCGREDY'S SCARLET



PRESIDENT HERBERT HOOVER

- McGredy's Yellow.** Bright buttercup-yellow flowers, perfectly formed; undamaged by rains. Glossy, dark bronze foliage. \$1.25 each; 3 for \$3.35.
- McGredy's Sunset.** Pat. No. 317. Saffron-yellow blushed with delicate orange. Beautiful buds, full shapely flowers, sweetly fragrant. Most vigorous plant and prolific bloomer. \$1.50 each; 3 for \$4.00.
- Mirandy.** Pat. 632. A glorious new Rose from California. Received the highest in the tests for the year 1945 in the All-American Rose Selection. Big, ovid buds, deep, rich, dark red with black shadings; beautifully formed blossoms with a delightful fragrance. \$1.50 each; 3 for \$4.00.
- Mme. Jules Bouche.** H. T. White. The large buds are creamy white and open with a dainty flush of pink in the center, changing to all white. \$1.25 each; 3 for \$3.35.
- Mrs. E. P. Thom.** Yellow. Buds are long-pointed and open to well-formed blooms of clear yellow without any carmine markings such as most yellow roses have. \$1.25 each; 3 for \$3.35.
- Mrs. Pierre S. du Pont.** Most continuous-blooming yellow. Buds long pointed, rich reddish-gold, almost orange in depths of petals. \$1.25 each; 3 for \$3.35.
- Mrs. Sam McGredy.** Glistening scarlet-copper-orange; deep red shadings. Fine form, double; fragrant. Graceful long-pointed buds. Disease resistant. \$1.25 each; 3 for \$3.35.
- Peace.** Pat. 591. Sensational new rose; buds open yellow edged cerise; glorious 5-inch blooms of firm, alabaster-white, each petal edged with pink that deepens as the flower opens. Very double, strong and vigorous grower with superb foliage. This new Rose appropriately heralds the dawn of Peace. \$2.00 each; 3 for \$5.00.
- Picture.** Beautiful, clear pink with just a trace of salmon to give it a warm glow. Delightfully fragrant, very vigorous and continuous bloomer. \$1.25 each; 3 for \$3.35.
- Pink Dawn.** Glistening deep rose, opening to lovely pink, tinted orange at base of petals; well-formed; double; fragrant. Vigorous and prolific. \$1.25 each; 3 for \$3.35.
- Poinsettia.** Upright, Radiance-like plants with beautiful blooms of brilliant scarlet-red. They are fragrant and are close to perfection in form. One of the best of the new Roses. Fragrant. 28 petals. \$1.25 each; 3 for \$3.35.
- President Herbert Hoover.** Contrasting shades of maroon, orange and gold; continuous bloomer; exquisitely formed buds; strong stems. Three-time medal winner. \$1.25 each; 3 for \$3.35.
- Radiance.** Beautiful light silvery pink on salmon-pink. A dependable pink; large and fragrant. \$1.25 each; 3 for \$3.35.
- Red Radiance.** Beautiful deep red form of Radiance. \$1.25 each; 3 for \$3.35.
- Rubaiyat.** Unchallenged winner of the 1947 All-American Rose Trials. The naming of this newest sensation of the Rose world was inspired by the celebrated quatrains of Omar Khayyam's "Rubaiyat." It is a brilliant red, with a profusion of long, graceful buds appearing early in June. Wealth of old Rose fragrance, a glorious riot of deep, scintillating crimson is revealed in the very hearts of the blooms. These plants are luxuriant in growth and have demonstrated their hardy, disease-resistant qualities in all climates. \$2.00 each; 3 for \$5.00.
- Soeur Therese.** Golden yellow, exquisite, long-pointed buds touched with orange-carmine. vigorous fine bloomer. \$1.25 each; 3 for \$3.35.
- Sterling.** Pat. 21. Bright pink, splendidly formed; delightfully fragrant. Fine for cutting. \$1.50 each; 3 for \$4.00.
- Talisman.** Brilliant orange-red buds, opening a glowing golden yellow, tinted copper-red and orange-rose; large and fragrant. \$1.25 each; 3 for \$3.35.
- The Doctor.** Long pointed buds of exquisite silvery pink open to enormous blooms of the same uniform color, with a fragrance so intense that it can be detected many yards away. \$1.25 each; 3 for \$3.35.
- Treasure Island.** Its unbelievably long bud makes it the most sought after of all Roses. The first blooms in the Spring will be a light pink and as the season grows warmer its color begins to have more and more yellow, making it finally into a two tone rose with quilled petals of a soft salmon pink toned copper, very similar to Countess Vandal. \$1.25 each; 3 for \$3.35.



DR. W. VAN FLEET

Victoria Harrington. Dark red and velvety. The magnificent color is unfading even in hot weather. The pointed blackish red buds have reflexed petals; in the open flower the petals curl back into a distinct cactus form, unlike any other rose. It has a very pleasing fragrance. \$1.25 each; 3 for \$3.35.

HARDY CLIMBING ROSES

Useful for covering porches, trellises, arbors, fences, walls and banks, making a superb display of bloom. Prune after flowering.

Blaze. Pat. 10. Scarlet-red flowers in great profusion and under favorable conditions it often repeats. \$1.50 each; 3 for \$4.00.

Climbing American Beauty. Rich carmine flowers, 3 to 4 inches across in abundance. \$1.25 each; 3 for \$3.35.

Dr. W. Van Fleet. Long-pointed, deep pink buds opening a lighter shade of pink; large and fragrant. \$1.25 each; 3 for \$3.35.

King Midas. Pat. applied for. Longest-blooming hardy yellow climbing Rose. Tight buds and lovely 4-inch Hybrid-Tea-like flowers in clusters 4 to 6 inches across on strong stems. Disease-resistant. \$1.50 each; 3 for \$4.00.

New Dawn. Pat. 1. The everblooming Dr. W. Van Fleet with which it is identical except that it blooms throughout the Summer and Fall. \$1.50 each; 3 for \$4.00.

Paul's Scarlet Climber. Vivid scarlet, shaded crimson; semi-double flowers in clusters borne in profusion. \$1.25 each; 3 for \$3.35.

EVERBLOOMING CLIMBING ROSES

These roses require winter protection in our climate.

Before cold weather untie the plant from its support, loosen the roots on one side, lay the branches on surface of soil and cover with 8 inches of earth. This procedure is carried out very successfully.

Climbing Etoile de Hollande. Brilliant red. \$1.25 each.

Climbing Talisman. Multi-color. \$1.25 each.

ROSE FOOD 7-8-5

G & O Rose Food is used in carload lots by the leading rose growers in America. Continually feeds all through the season. Improves the stock each year. Produces better foliage and blooms because its an organic formula—100% Plant Food.

5 lb. Bag, 75c.



ORDER EARLY. The sooner you send us your order after you receive your catalog, the better service we will be able to give you. Don't delay! Send your order today and be confident of receiving some of the finest Roses in America.

Garden Accessories

Bird Baths. Diameter of bowl 23 inches wide, 32 inches high. 220 lbs. \$18.00 each. Larger size \$23.00 each.

Eazy Wear Garden Gloves. Men's Sizes \$1.50 each. Ladies Sizes \$1.25 each.

Gazing Globes. 23 inches high, 12 inch globes \$13.00 each.

Garden Urns. \$4.00 to \$6.00 each.

Garden Trellises, Garden Benches, Sprayers, and Dust Guns. Prices on Application.



Complete all-purpose Rose Spray. Offers the first definite mildew and black spot control. Combining an insecticide it kills all insects, including sucking and leaf-eating types. Remains on foliage, repelling subsequent attacks. Stimulates plant growth, resulting in fine foliage and luxuriant blooms.

Kit "A" (Protects 12 to 20 roses a season) \$1.50
Kit "B" (Protects 50 to 75 roses a season) 4.00
Kit "C" (Protects 100 to 150 roses a season) 6.00
Kit "D" (Estate Kit, makes 128 gals.) 20.00

Triogen Dust. Serves same purpose as liquid Triogen only it is in dust form. 1 lb. 65c.; 5 lb. \$3.00.

HARDY PERENNIALS---MUMS

LOVELY HARDY CHRYSANTHEMUMS KNOWN AS HARDY GARDEN MUMS

No perennial has increased in popularity as rapidly as has the "Hardy Garden Mums" producing as they do, hundreds of brilliant blooms at so little a cost. They crown the Fall flower season, and your summer gardening efforts go out in a blaze of glory.

After testing over 100 varieties the past season, we eliminated all weak and late blooming varieties and those having other faults in order to offer only the best varieties in their respective color, habit and hardiness in our climate.

They thrive in any good garden soil and need little care other than guarding against insects, and applying a straw mulch in the late Fall for winter protection. To grow nice stocky plants, pinch the terminal shoots once or twice during the season to keep the plants sturdy and bushy. First pinching when the plant is 6 inches tall to induce lateral branches. When the lateral branches are 8 inches high, their tips may be pinched out again to produce more branches. Discontinue pinching by July 15th. The very early blooming varieties should not be pinched after July 10th. A well pinched or topped plant will grow strong and sturdy needing no staking and bloom abundantly. Avoid planting them in a shady location.

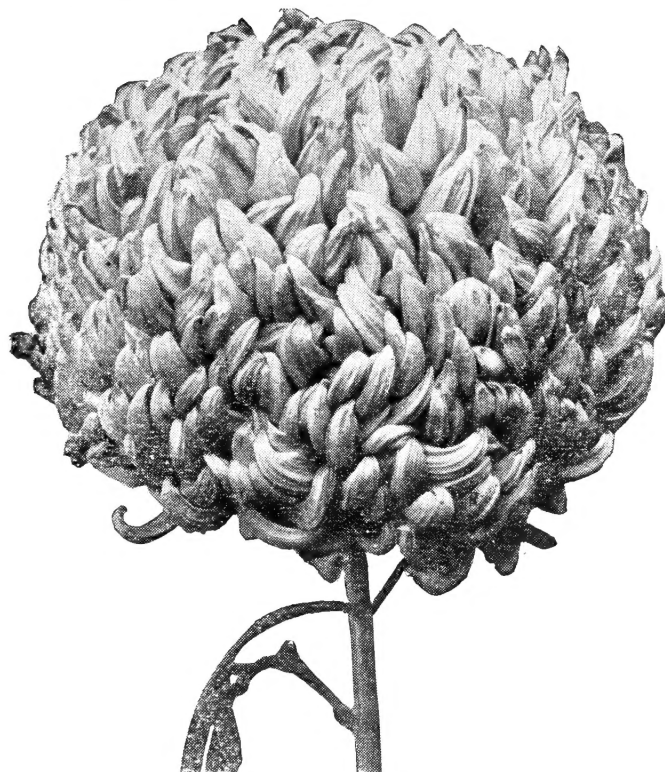
For best results, "Hardy Mums" should be divided every Spring.

Planting and cultural directions are sent with every order.

LOWER PRICES ON MANY VARIETIES FOR 1948

Strong plants from pots ready for delivery May 1st through June.

On order for \$3.00 or more, postage prepaid. Orders for less than \$3.00, please add 5c each for packing and postage.



MAJOR BOWES

Large Early Flowering

Each year we have more requests for the large greenhouse type chrysanthemums. These are not as hardy as the garden type mums but can be carried over winter very successfully in a cold frame under glass. To produce those big 5-6 inch blooms they require disbudding, leaving one to three flowers to each plant.

We offer only the best early varieties:

	Blooming Date to frost
Ambassador. Fine cream-white, incurved	Oct. 23
Mrs. H. E. Kidder. Deep lemon-yellow, incurved.	Oct. 15
Hilda H. Bergen. Large bronze-red.	Oct. 25
Major Bowes. Deep lavender-pink.	Oct. 20

Any of the above varieties, potted plants 50c each, 3 for \$1.25.

Azalea or Cushion Flowering Mums

Named azalea because of their habit of growth and masses of flowers covering the entire plant, growing as wide as high, perfectly hardy.

Blooming Date

Bronze Cushion	Aug. to frost
Pink Cushion	Aug. to frost
White Cushion	Aug. to frost
Red Cushion	Aug. to frost
Yellow Cushion	Aug. to frost
Apricot Cushion	Aug. to frost

Any of the above azalea mums: Potted plants 40c each; 3 for \$1.00.

Every plant we send out is guaranteed to be true to name, and free from disease and insects. All are **SURE TO BLOOM**. We will not substitute without your permission.

ORDER EARLY to be sure of your supply.



CUSHION MUMS

CHOICEST VARIETIES, MANY RECENT MUM INTRODUCTIONS

The following varieties includes the choicest Dr. Kraus, De Petris and Cumming's Grand Champions, recognized as being among the best authorities on new introductions. They were all tested in our trial grounds the past season.

**Blooming
Date to Frost**

- Allegro D.** (DePetris.) Glowing shrimp-pink suffused with coppery salmon. 50c each; 3 for \$1.25 Oct. 7
- Arctic Queen.** Excellent cut flower variety; bronze yellow with salmon shading. 50c each; 3 for \$1.25 Oct. 1
- Autumnsong D** (Kraus.) Large wine-rose shading to carmine. One of the most outstanding of the Chicago strain. 75c each; 3 for \$2.00. Sept. 20
- Autumn Sunlight D.** (Rosebud). A grand new, early, pure golden-yellow. 40c each; 3 for \$1.00 Aug. 27
- Avalanche D.** The world's best large, creamy white. Perfect blooms covering the plant from mid-September until frost. 50c each; 3 for \$1.25 Sept. 10
- Barbara Small D.** (Kraus). Clear lilac-pink, slightly brighter at the margins with a carmine center. 40c each; 3 for \$1.00 Sept. 6
- BETTY SD.** (C&P.) Splendid upright rose-pink without a trace of magenta. One of the finest new pinks. 50c each; 3 for \$1.25 Sept. 28
- Calcite D.** (Kraus.) Chalk-white with pale sulphur center. Very heavy bloomer. 50c each; 3 for \$1.25. Sept. 18
- Calendula.** Bright gold, metallic sheen, very double, medium size, September flowering; upright habit; a favorite variety in its color. 40c each; 3 for \$1.00. Sept. 10



MRS. P. S. DU PONT, III



AVALANCHE

- Candlelight D.** (Kraus.) Well-formed flowers of creamy ivory-white. Prolific bloomer; excellent plant habit. 60c each; 3 for \$1.50 Aug. 26
- Charles Nye D.** (Kraus 1946). The 'Mum of the Year' Large 3 inch fully double, rounded flowers of rich buttercup yellow and firm substance. One of the "Master Six". 60c each; 3 for \$1.50 Sept. 24
- Chippewa D.** (Longley). Giant, bright aster-purple, slightly incurved. 50c each; 3 for \$1.25 Sept. 4
- Coral Sea S.** (De Petris.) Dwarf salmon-buff suffused with coppery rose. Very hardy. Valuable for low borders and rock gardens. 50c each; 3 for \$1.25. Oct. 4
- Courageous D.** (Kraus). Bright, dark ruby-red, large, double flowers 3 1/2 in. in diameter. Strong, upright, healthy green foliage. The most promising new early, dark red. One of the "Master Six". 60c each, 3 for \$1.50. Sept. 19
- Dahlia 'Mum D.** Quilled petals like a cactus dahlia of a bright wine-red. 40c each; 3 for \$1.00. Sept. 10
- Drifted Snow D.** (Kraus.) A mound of large, double white flowers, shaded yellow at center. 60c each; 3 for \$1.50. Sept. 16
- Dubonnet.** Large single orchid pink. Good cut flower. 50c each; 3 for \$1.25. Oct. 1
- Early Harvest D.** (Kraus.) A mass of glowing mahogany-orange flowers for two months. Superior to any cushion variety. 60c each; 3 for \$1.50. Sept. 7
- Early Wonder D.** New, large, soft pink pompon. Excellent for cutting. 50c each, 3 for \$1.25. Sept. 30
- Eugene A. Wander D.** (Cumming). Without a doubt the largest and finest bright early yellow. Blooms 4 inches across. 50c each; 3 for \$1.25. Aug. 25
- Fred F. Rockwell D.** (Cumming.) Plant Patent 718. A pompon of beautifully blended bronze and orange tones. \$1.00 each; 3 for \$2.75. Sept. 24



SILVER MOON

- Pink Radiance D.** (Cumming.) Multi-tudes of luminous pink blossoms on rugged plants. **60c each; 3 for \$1.50.** Sept. 24
- Primula S.** (Kraus.) Graceful, free-flowering yellow single. We consider this the best of the yellow daisy type. **40c each; 3 for \$1.00.** Oct. 10
- Red Ridinghood D.** An outstanding bright red. Petals very frost resistant. **50c each; 3 for \$1.25.** Oct. 2
- Rembrandt D.** (Cumming.) A new art color in pompons. Rose mauve with copper blending. **60c each; 3 for \$1.50.** Sept. 28
- Sequoia D.** Exquisite rich mallow-ember. Very large flowers. One of the best. **40c each; 3 for \$1.00** Sept. 6
- Sienna D.** (Kraus, 1946.) Dark reddish orange tone burnt-sienna-brown. A heavy-textured, long-lasting flower. **60c each; 3 for \$1.50.** Sept. 16
- Silver Moon S.** (Cumming.) White, like a glorified Shasta Daisy with yellow center. **40c each; 3 for \$1.00.** Sept. 28
- Sunape D.** (U. of N. H.) A new golden yellow developed by Prof. Holley. **50c each; 3 for \$1.25.** Sept. 7
- Tanagerine D.** (Kraus 1150.) New 1947. Brilliant Spanish-orange — an entirely new color in Mums. **75c each; 3 for \$2.00.** Sept. 27
- Tussore SD.** (Kraus.) Exceptionally fine orchid-pink. We like this best of all singles. **40c each; 3 for \$1.00.** Sept. 30
- Twilight D.** (Kraus 1140.) New 1947. A pleasing fuchsia-purple with silvery reflex. Strong grower. **75c each; 3 for \$2.00.** Oct. 5
- Yellow Avalanche M.** (Lehman.) New 1947. "The Mum of the Year." A clear soft yellow bud sport of the white variety. **75c each; 3 for \$2.00.** Sept. 4
- Glowing Coals D.** (Kraus, 1946.) Bright deep cherry-red with orange reverse. Well-branched sprays. One of the best early reds. **60c each; 3 for \$1.50.** Sept. 18
- Heatherbloom D.** (Kraus.) Very double heather-pink center shaded rose-red with gold tipping. Outstandingly good. **60c each; 3 for \$1.50** Sept. 4
- Jean Treadway D.** Perfectly formed, very double pink, with deep rose center. **50c each; 3 for \$1.25.** Sept. 2
- Lavender Lady D.** (Cumming) Immense silvery-lavender. One of the "Master Six". **50c each; 3 for \$1.25.** Oct. 6
- Lavender Lassie D.** (Cumming) A grand new pompon with cushion-like growth. Color even better than Lavender Lady. **50c each; 3 for \$1.25** Sept. 10
- Magnolia.** Pink shading to creamy pink; pompon type. **60c each; 3 for \$1.50.** Oct. 1
- Mandalay D.** (Cumming.) Brilliant orange-bronze. Excellent for cutting. **50c each; 3 for \$1.25.** Sept. 22
- Marjorie Mills D.** 18 inch. Deep crimson when opening, shading to chestnut-crimson, later becoming suffused with rose and bronze tints. **50c each; 3 for \$1.25.** Sept. 20
- Maroon N' Gold D.** (Longley). New 1945. Prof. Longley's best since Chippewa. Immense 4 inch flower of bright mahogany, shaded maroon with golden reverse. **50c each; 3 for \$1.25.** Aug. 26
- Mrs. Pierre S. du Pont III. D.** Soft peach-pink, tinted rosy salmon bronze. One of the Dozen Best Mums. **50c each; 3 for \$1.25.** Oct. 5
- Olive Longland D.** (Kraus.) The 'Mum of the Year 1945. 3 inch apricot-toned salmon-pink flowers. The best of the so called pastel colors. One of the "Master Six". **60c each; 3 for \$1.50.** Sept. 26
- Pale Moon D.** (Cumming.) Large, fluffy soft yellow. Very free flowering. **50c each; 3 for \$1.25.** Sept. 20
- Peachblow SD.** (Cumming.) Blending of salmon-pink, bronze and fawn. Strong and sturdy. **40c each; 3 for \$1.00.** Sept. 19

Choice Standard Mums

The best of the old favorites. These are the time-tested, most indispensable varieties of the earlier introductions—vigorous, dependable and good colors.

- Algonquin. D.** A very hardy variety with healthy foliage and large, full golden yellow flowers. **Aug. 30**
- Burgundy. D.** Rich cerise-crimson; double; 2 inches across. **Oct. 15**
- Early Bronze. D.** Lively bronze-yellow. Dwarf. **Aug. 30**
- Ember.** Brilliant glowing bronze — a combination of coral and orange shades. **Oct. 1**
- Indian Summer.** Glowing orange flowers 3 inches across; double. Erect and free flowering. **Sept. 20**
- Judith Anderson.** Clear buttercup-yellow flowers nicely rounded, Button type, completely covering the plant. **Oct. 10**
- Louise Schling. S.** Bright, glowing salmon-red in color. Strong grower. **Oct. 10**
- Minnau. D.** Large, very double, white flowers. Button type. Compact plant. **Oct 10**
- Rose Glow. SD.** Lovely old rose becoming opalescent rose; semi-double **Oct 1**
- Ruth Cumming. D.** Rich bronze terracotta **Oct. 10**
- Snappy. D.** Red with golden reverse; semi-double. **Oct. 10**
- Sunny Boy. D.** Clear yellow pompon. **Oct. 10**

Any of the above varieties 40c each; 3 for \$1.00.

Great progress is being made toward more beautiful hardy chrysanthemums and in order to keep step with this development our trial grounds will contain more new varieties this fall for inspection.

Everyone is cordially invited to visit our trial ground display. Between September 15 and October 10th is usually when the display is at its best.

Perennial Peonies

Among the Best Known and Easiest to Grow Hardy Plants

Friendship Offer Peonies

Choicest Standard and Late Introductions (Strong 3 to 5 eye Blooming-Size Roots)

(E) Early; (M) Midseason; (L) Late Blooming

- Albatre. White, carmine lined (M)\$1.00
- Cherry Hill. Glistening garnet (E) 1.25
- Edulis Superba. Old-rose-pink (E) 1.00
- Eugene Verdier. Hydrangea-pink (M) 1.00
- Monsieur Martin Cahuzac. Maroon (M) ... 1.35
- Festiva Maxima. Snowy-white (E) 1.00
- Karl Rosenfield. Dark, velvety-crimson (M) 1.00
- Lora Dexheimer. Bright crimston (M) 1.00
- M. Jules Elie. Glossy shell-pink (M) 1.00
- Sarah Bernhardt. Dark rose-pink (L) 1.35
- Walter Faxon. Vivid shell-pink (M) 1.35

3 of any one variety less 10%. Orders for \$3.00 or more, postpaid.

Peonies are best planted in the fall or very early in spring.



PEONY, Sarah Bernhardt. \$1.35 each

Friendship Offer Hardy Phlox

Phlox embody all the qualities desirable in a plant—hardiness, upright carriage, pretty foliage, fragrance, beauty and variety of color. Besides, Phlox have the added merit of being in bloom during the summer when other plants are out of bloom. July-Sept.

We supply extra strong, field-grown plants that will bloom the first season.

Rosalinda. Trusses of soft pink flowers. New and unusually beautiful. Compact grower. 50c each; 3 for \$1.25.

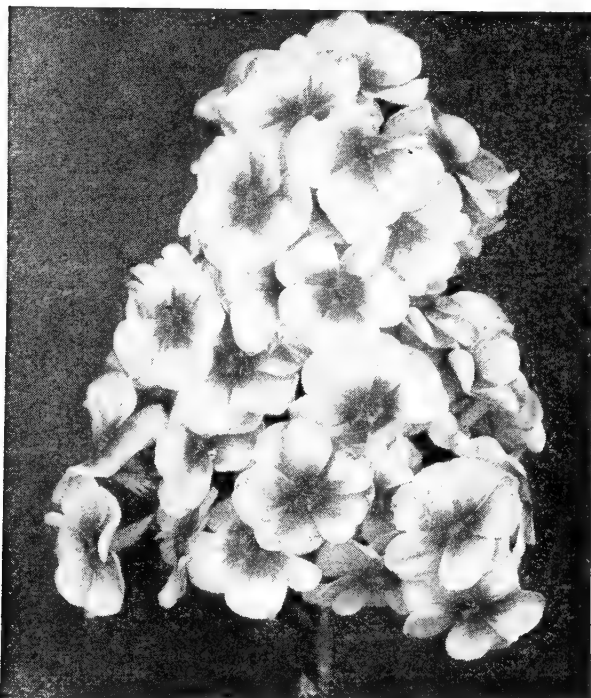
Thor. Large heads of beautiful salmon-pink flowers. Grows to a height of 18 to 24 inches. A much admired variety wherever grown. 50c each; 3 for \$1.25.

Fuerbrand. Brilliant orange-scarlet; medium; blooms very freely. 50c each; 3 for \$1.25.

Louis Abbena. Tall grower, producing large pure white flowers. One of the finest varieties. 50c each; 3 for \$1.25.

Painted Lady. Very attractive, large, soft salmon pink blooms. One of the best of its color. 50c each; 3 for \$1.25.

12 plants, your selection, \$5.00 postpaid.



PAINTED LADY, 3 for \$1.25

FRIENDSHIP OFFER

3 each—9 Finest Delphiniums, \$3.90 Postpaid

The Delphinium, or Perennial Larkspur, is one of the finest blue flowers cultivated, and among the most useful and effective of hardy plants. Especially fine for the hardy border, although very effective almost anywhere—in beds, in clumps, in the shrubbery. Ideal for cut flowers.

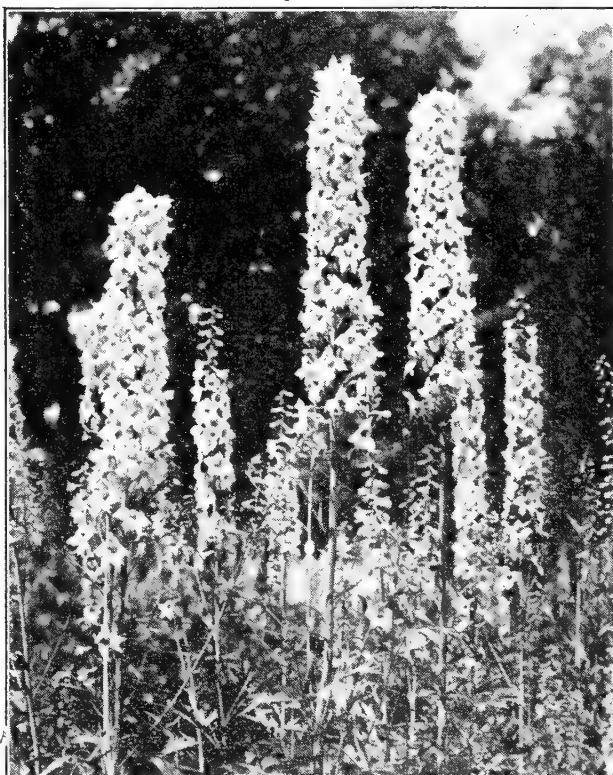
Plant in well-enriched soil and cut off the old flowering stems as they mature.

The Best Varieties are Included in this Offer as Follows:

3 Delphinium belladonna, large flowers of a rich deep blue shade. 50c each; 3 for \$1.20.

3 Delphinium bellamosa, beautiful sky-blue; flowers all summer until cut down by frost. 50c each; 3 for \$1.20.

3 Delphinium Giant Pacific Hybrids, large flowers on long spikes, in mixed shades of blue. 60c each; 3 for \$1.50.



GIANT PACIFIC DELPHINIUM

PERENNIALS (Continued)

Hardy Dependable Varieties

From early Spring to late Autumn there are always flowers to enjoy where Perennials are planted, and the blooms are equally enjoyable growing in beds or borders on the lawn or cut for table and home decoration. Once planted they continue to bloom and increase in beauty each succeeding year.

Perennials require little attention (weeding and watering during the growing season and mulching with fertilizer in the Fall) and, as each variety has a fixed period to flower, a succession of bloom can be enjoyed throughout the season. The following table makes easy the selection of desired varieties.

Botanical Name	Common Name	Time of Bloom								Color					Good for				Ultimate Height	Price for 3 Plants	
		April	May	June	July	August	September	October	White	Yellow	Pink	Red	Blue	Purple	Borders	Cutting	Part Shade	Rock Garden			
<i>Alyssum saxatile com.</i>	Goldentuft		*								*									1 ft.	\$1.25
<i>Aquilegia caerulea hybrida</i>	Hybrid Colorado Columbine		*	*																2-3 ft.	1.25
<i>Aster</i>	Beechwood Challenger						*				*									4 ft.	1.25
<i>Aster</i>	Harrington's Pink									*										4 ft.	1.25
<i>Aster</i>	Blue Eyes						*				*									3 ft.	1.25
<i>Chrysanthemum maximum</i>	Shasta Daisy			*	*	*	*		*											2 ft.	1.25
<i>Coreopsis grandiflora</i>	Big Coreopsis			*	*	*	*		*											2 ft.	1.25
<i>Dianthus plumarius</i>	Grass Pink		*	*																9 in.	1.25
<i>Eupatorium coelestinum</i>	Mistflower					*	*				*									2 ft.	1.25
<i>Gypsophila paniculata fl. pl.</i>	(Bristol Fairy)				*	*			*											2 ft.	1.50
<i>Heliopsis scabra zinniae-flora</i>	Zinnia Heliopsis			*	*	*	*		*											3 ft.	1.25
<i>Hemerocallis dumortieri</i>	Early Daylily			*	*				*											18 in.	1.25
<i>Hemerocallis flava</i>	Lemon Daylily			*	*				*											3 ft.	1.25
<i>Hemerocallis fulva kwanso</i>	Kwanso Daylily			*	*				*											4 ft.	1.25
<i>Hemerocallis thunbergi</i>	Japanese Daylily			*	*				*											3 ft.	1.25
<i>Hemerocallis (Marvels) coc-cineus</i>	Mikado			*	*				*											2 ft.	1.25
<i>Hibiscus (Marvels) coc-cineus</i>	Mixed colors			*	*				*											3-5 ft.	1.50
<i>Hosta caerulea (funkia)</i>	Blue Plantainlily			*	*				*											1½ ft.	1.25
<i>Hosta grandiflora (funkia)</i>	Big Plantainlily			*	*				*											2 ft.	1.50
<i>Lythrum salicaria roseum</i>	Rose Loosestripe			*	*				*											2 ft.	1.25
<i>Papaver orientale</i>	Oriental Poppy			*	*				*											2 ft.	1.50
<i>Papaver orientale (Levermere)</i>	Levermere O. Poppy			*	*				*											2½ ft.	1.50
<i>Papaver orientale (Mrs. Perry)</i>	Mrs. Perry O. Poppy			*	*				*											2½ ft.	1.50
<i>Plumbago</i>	Larpenline			*	*				*											6-9 in.	1.25
<i>Pyrethrum coccineum</i>	Coccineum			*	*				*											1 ft.	1.25
<i>Veronica</i>	Blue Spire			*	*				*											2 ft.	1.25

Price 50c each, when 3 plants of one variety are offered for \$1.25; 60c each, when 3 plants are offered for \$1.50.

Perennial orders valued at \$3.00 or more will be sent postpaid.

Orders under \$3.00 please add 30 cents if postpaid is desired to help defray expenses in handling and postage.

GERMAN BEARDED IRIS

NEW AND RARE VARIETIES

- Alta California** light yellow.
- California Gold.** Best deep yellow. Superb.
- Dolly Madison.** Soft, pastel shades.
- Easter Morn.** Large sparkling, satiny white.
- Indian Chief.** Tall, red and brown. Very large.
- Missouri.** True blue, large and fragrant.
- Pale Moonlight.** Soft sky blue. Gigantic.
- Red Dominion.** Popular red tone.
- Rubeo.** Velvety red of colossal size.

60c each. 6 Plants, your selection, \$3.40 postpaid.

9 Plants, your selection, \$5.00 postpaid.

PERENNIALS

Dicentra eximia. Dwarf, (Bleeding heart). Finely cut foliage and pink flowers all summer. Does well in sun or shade. **50c each; 3 for \$1.25.**

Anchusa Myosotidiflora. Blue forget-me-not flowers in May and June. Dwarf. Does well in shade. **50c each; 3 for \$1.25.**

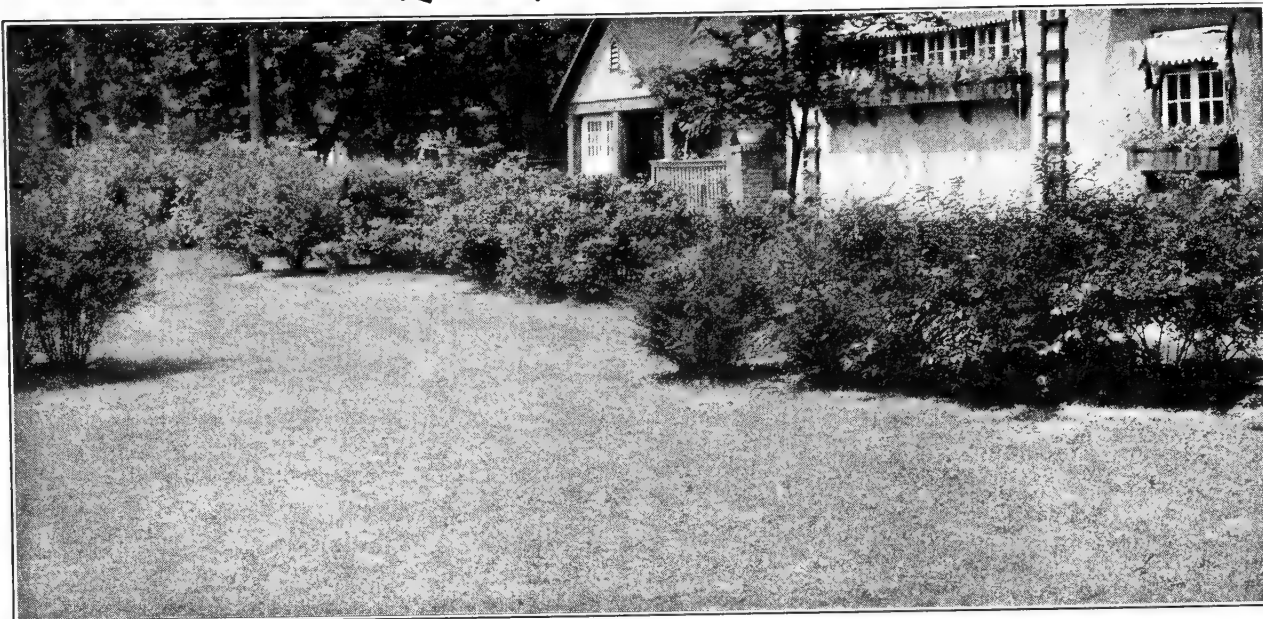
Gaillardia Dazzler. Dwarf, large golden yellow and maroon flowers on wiry stems. June and July, fine for cutting. **50c each; 3 for \$1.25.**

Peach Bottom, Pa.

I am very pleased with the Mahonia, it is a real beauty. However I have always found Barr's Trees satisfactory and in 20 years have never lost a single tree or shrub from you.

E. K.

For The Finest Quality Lawn Sow Barr's Grass Seed



Barr's Lawn Grass Seed Mixtures have been designed primarily to produce a lawn that is at once permanent, quick starting, and a good green color. They are guaranteed to be entirely free of Fall or Crab Grass seed. Recleaned by modern machinery, Barr's Lawn Grass Seed Mixtures are free from chaff, which makes these mixtures go twice as far. They test especially high in germination, providing a thick stand from the beginning which is essential in holding weeds in check.

One pound of seed will sow to 250 square feet of lawn. Keep ground constantly moist until grass is well started then water heavily at intervals during dry periods.

BARR'S Sunnyside Lawn Seed Mixture

This is a combination of the most desirable permanent grasses—dwarf, close-growing, fine-leaved—producing a good green lawn even in dry weather. As the chief ingredient of a good lawn is superfine Kentucky Blue Grass there is a larger proportion of this ideal grass in this mixture. No Timothy nor Rye nor coarse-bladed annual grasses are used to cheapen this mixture. It will germinate quickly and provide a neat, permanent lawn. Besides the Kentucky Blue Grass other varieties included are fine-leaved perennial grasses and some Chewing's Fescue, a higher-priced grass that holds weeds in check much better than other varieties.

1 lb. 90c; 5 lbs. \$4.20; 10 lbs. \$8.20; 25 lbs. \$20.00; 100 lbs. \$76.00. Prepaid.

BARR'S Fancy White Dutch Clover

Fancy recleaned seed. Excellent for lawns. Mix 2 to 4 ounces with each pound of above named mixtures if you want Clover on the lawn.

¼ lb. 40c; ½ lb. 75c; 1 lb. \$1.25.

BARR'S Green Mantle Lawn Seed Mixture

This is a splendid mixture of good grasses for average conditions of soil and sunshine. It has a large proportion of Kentucky Blue Grass; also other desirable grasses for a good, quick effect which helps to hold weeds in check. Will give the lawn an enduring velvety, deep green mantle. Very free from weed seeds.

1 lb. 75c; 5 lbs. \$3.50; 10 lbs. \$6.60; 25 lbs. \$16.00; 100 lbs. \$62.00. Prepaid.

BARR'S Shady Side Lawn Seed Mixture

Composed of shade-loving permanent varieties of fine-leaved grasses—no Timothy nor Ryegrass. Included are fine-leaved perennial grasses, including *Illahee Fescue* which have proved best adapted for situations of a difficult nature due to shade.

1 lb. 95c; 5 lbs. \$4.40; 10 lbs. \$8.60; 25 lbs. \$21.00; 100 lbs. \$82.00. Prepaid.

Feed lawns under trees heavily two times a year—spring and early fall. Failure under trees is due more to competition of tree roots than shade. Plenty of feed gives both grass and trees a chance to exist. Special Lawn Fertilizer. See page 33.

Practical Landscape Service For Prospective Clients

Pleasing and satisfactory results are only attained through a careful study of your home and surroundings, and the selection and planting of the proper material. Many local and distant homes have been successfully landscaped from plans and planting services rendered by us.

Where tentative plans are required locally or in cities close by, we make no charge for this service.

You are cordially invited to visit our Nursery—to enjoy its beauty—to consult us relating to your proposed plantings or to inspect our products a friendly welcome awaits you.

Sincerely, B. F. BARR, LEWIS E. BARR

Barr's "Will Grow" Evergreens

Figures following names indicate approximate height when 50 years old.

No other plants offer so much in value as Evergreens giving as they do enjoyment twelve months the year 'round. Then, too, they can be used in so many interesting ways and make a lasting improvement to any property.

White Fir

ABIES CONCOLAR, 60-75 ft. **White Fir**
 Leaves flat, long and of soft silvery hue usually curved; lemon scented. Very hardy.
 4-5 ft. -----\$10.00 5-6 ft. -----\$13.00

Douglas Fir

Medium-conical form and rapid growing. Foliage dark bluish-green, flat, very hardy. One of the best tall-growing evergreens. Use as specimen plant or in screens. Valued for its symmetrical, compact outline and persistence of lower branches.

PSEUDOTSUGA douglasi, 70-80 ft. **Douglas Fir**
 1½-2 ft. -----\$ 2.50 3-4 ft. -----\$ 5.50
 2-2½ ft. ----- 4.00 4-5 ft. ----- 9.00
 2½-3 ft. ----- 4.50 5-6 ft. ----- 11.00
 6-8 ft. -----\$16.00

The Retinospora

The graceful habit and the soft, fine foliage of the Retinosporas make them favorite Evergreens. These refined Evergreens attain unusual beauty. Recommended for foundation planting and as lawn specimens in sunny locations. Prefer moist soil.

C. obtusa nana, 4-5 ft. Dwarf Hinoki Cypress
 Exquisite, low Evergreen with short, curiously twisted, graceful, dark green branchlets; wide, irregular pyramid. Useful in rock gardens and low foundation plantings.
 2-2½ ft. -----\$5.00 2½-3 ft. -----\$6.00

C. plumosa, 20-30 ft. Plume Retinospora
 Wide, pyramidal; dense foliage, soft and plume-like; rich green; handsome and distinctive.
 18-24 in. -----\$2.50 2-2½ ft. -----\$3.25
 2½-3 ft. -----\$4.00 3-4 ft. -----\$5.00

C. pl. aurea, 10-15 ft. Golden Plume Retinospora
 Wide, pyramidal; bright golden foliage, soft and plummy. Valuable for contrast.
 18-24 in. -----\$2.50 2-2½ ft. -----\$ 3.25
 2½-3 ft. ----- 4.00 3-3½ ft. ----- 5.00

How To Use Evergreens

When considering Evergreens for a planting visualize first what shape the plant should have for that particular location, keeping in mind, too, the ultimate height. Following the botanical name of each variety listed on the following pages we show its ultimate height at maturity for your guidance in selection. By judicious pruning, many varieties may be kept dwarf.

Delivery And Packing On Evergreens

All Evergreens are dug with a ball and burlapped. Free packing and free delivery on local orders within three (3) miles. On shipping—orders, please add 12% to catalog prices for packing. Evergreens are satisfactorily shipped by freight, transportation collect. Delivery by truck beyond local area, 20c a mile, return—trip mileage. Trucking or calling for the stock eliminates the packing charges.



PLUME RETINOSPORA

C. pl. flavescens, 4-6 ft. Dwarf Silver-tipped Retinospora
 Broad, dense bush with bright green, plummy foliage, tipped silver.
 15-18 in. -----\$ 2.75

C. p. filifera, 10-12 ft. Thread Retinospora
 Deep green, thread-like, graceful, drooping foliage; bushy, egg-shaped form.
 2½-3 ft. -----\$4.00 3-4 ft. -----\$5.00

Discount on quantity rate 10% on 5 or more of one variety and size.

Junipers Worthily Fill Almost Every Planting Need



SILVER REDCEDAR

JUNIPERS

Junipers are valuable ornamental plants that thrive best in moist soils and sunny, open positions. The tall, columnar forms are used as accent plants; the low, bushy forms for foundations and massing; the prostrate forms for covering slopes, or in the rock garden, or in the foreground of foundation plantings. A very hardy class.

JUNIPERUS ch. pfitzeriana, 5-6 ft. Pfitzer Juniper

Wide growing; plumose, graceful horizontally spreading branches; foliage blue-green.

15-18 in. spr. --\$ 3.00 2-2½ ft. spr. --\$ 6.00
1½-2 ft. spr. -- 4.50 2½-3 ft. spr. -- 6.50

J. ch. sargentii, 1-2 ft. Sargent Juniper

Prostrate habit; grass green winter and summer. Good in rock gardens.

15-18 in. spr. -----\$ 4.00

J. ch. smithi, 6-8 ft. Smith Chinese Juniper

Graceful, bushy form; foliage light green, remaining fresh and bright Summer and Winter.

3-4 ft. -----\$ 6.00 4-5 ft. -----\$ 7.00

J. communis depressa plumosa, 1 ft. Purple Spreading Juniper

Spreading habit; foliage tinged with rich purple during fall and winter.

15-18 in. spr. --\$ 3.00 1½-2 ft. spr. --\$ 4.00
2-2½ ft. spr. -----\$5.00

J. excelsa stricta, 6-8 ft. Spiny Greek Juniper

Slow, compact grower; glaucous, blue color; narrow, pyramidal form.

12-15 in -----\$ 2.00 15-18 in. -----\$ 3.00

J. virginiana burkii, 8-10 ft. Burks Juniper

Dense, columnar form; distinctive blue color in summer, plum-colored winter.

6-8 ft. -----\$11.00

J. v. cannarti, 12-15 ft. Cannart Redcedar

Compact columnar habit; rich dark green foliage. Its blue berries in autumn give it a distinct ornamental advantage.

4-5 ft. -----\$ 9.00 5-6 ft. -----\$12.00
6-8 ft. -----\$15.00

J. v. glauca, 12-15 ft. Silver Redcedar

Columnar, vigorous grower; silvery blue, changing to bluish-grey. Good as a color accent among other Evergreens.

3-4 ft. -----\$ 7.00 5-6 ft. -----\$11.00
4-5 ft. ----- 9.00 6-8 ft. ----- 15.00

J. v. keteleeri, 12-15 ft. Keteleer Redcedar

Refined, symmetrical, compact pyramidal growth; intense green. In autumn bears large, showy slate-blue berries of considerable decorative value. Not susceptible to cedar apple rust.

4-5 ft. -----\$ 9.00 5-6 ft. -----\$12.00

Only One Grade "THE FINEST"

Each plant a field grown specimen, not to be compared with cheap bed-grown plants.

A large ball of Lancaster County's famous fertile soil goes with each "Will Grow" Evergreen which helps it in getting off to a good start and making continued satisfactory growth.

Because we ball and burlap and prepare "Will Grow" Evergreens for shipment by freight our customers have the advantage of this more economical method of delivery.

Ephrata, Pa.

I just wish you could see the setting of Evergreens you planted. It looks wonderful. I don't think you could buy same for \$1,000. I am a good booster for Barr's Nurseries.

Spruces are Most Effective on the Open Lawn

SPRUCES

Spruces are valued especially for specimen planting either singly, or in groups on large lawns; too large growing for foundation planting. These magnificent trees do best in suburban sections. The stately, regular, pyramidal outline of these hardy trees is strikingly effective.

***P. excelsa*, 60-80 ft. Norway Spruce**

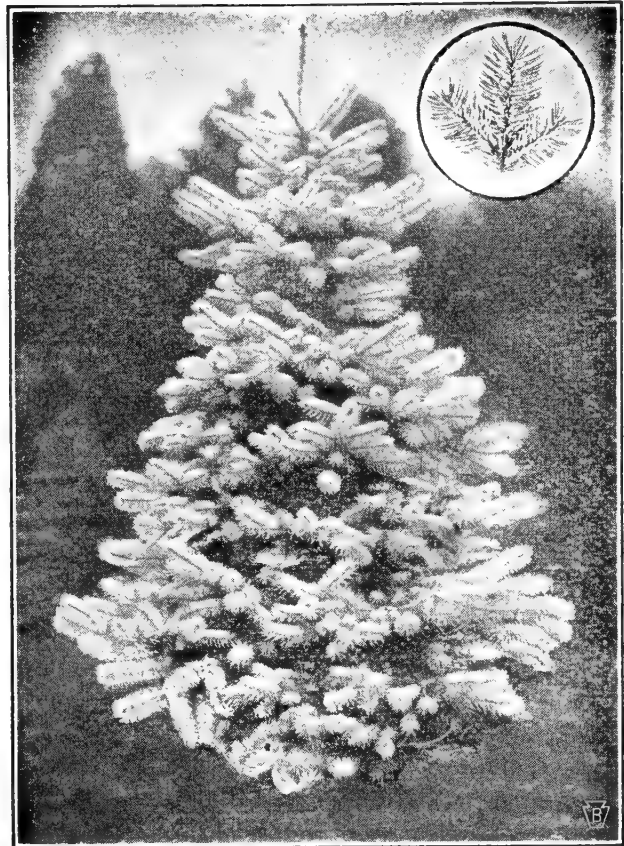
Fast growing; dark green; valuable for screens and hedges. When older makes a fine silhouette against the sky.

18-24 in. -----	\$ 2.25	4-5 ft. -----	\$ 6.00
2- 3 ft. -----	4.00	5-6 ft. -----	8.00
3- 4 ft. -----	5.00	6-7 ft. -----	12.00
8-10 ft. -----	\$20.00-\$25.00		

***P. orientalis*, 50-70 ft. Oriental Spruce**

Its classic outline and small, neat, glossy green needles closely clothing the branches make this a plant of uncommon beauty. One of the most beautiful of all spruces.

2-3 ft. -----	\$ 4.00	5- 6 ft. -----	\$11.00
3-4 ft. -----	5.00	8-10 ft. ---	\$25.00-30.00



MOORHEIM BLUE SPRUCE

***P. pungens*, 60-80 ft. Colorado Spruce**

Foliage light-green. Withstands heat and drought. Striking in appearance due to its perfect pyramidal outline and horizontally spreading branches.

1½-2 ft. -----	\$ 3.00	2½-3 ft. -----	\$ 5.50
2-2½ ft. -----	4.50	3 -4 ft. -----	6.50
4-5 ft. -----	\$ 8.00		

***P. p. glauca*, 60-80 ft. Blue Colorado Spruce**

Like above, except for a slight bluish tinge.

2-2½ ft. -----	\$ 6.00	3-4 ft. -----	\$ 8.00
2½-3 ft. -----	7.00	4-5 ft. -----	12.00
6-7 ft. -----	\$20.00		

***P. p. kosteri*, 60-80 ft. Koster Blue Spruce**

Beautiful silvery-blue, broad, symmetrical tree making a striking appearance as a specimen on the lawn, or planted in groups. Very hardy.

6-7 ft. -----	\$35.00	8-10 ft. -----	\$60.00
7-8 ft. -----	42.00	10-12 ft. -----	75.00

Most Intensely Blue Spruce

***P. p. moorheimi*, 60-80 ft.**

Moorheim Blue Spruce

More intensely blue than Koster Blue Spruce, and with larger needles making a glorious effect in color and form.

18-24 in. -----	\$10.00	2-2½ ft. -----	\$12.00
-----------------	---------	----------------	---------



DOUGLAS FIR See Page 13 for description



AUSTRIAN PINE

PINES

The Pines with their spreading branches bearing clusters of long, needle-shaped leaves, make valuable, majestic evergreens for permanent planting. They endure a wide range of soil and climate, and as they grow older gain in picturesqueness.

***Pinus montana mughus*, 4-5 ft. Mugho Pine**

Dwarf; many stems spreading outward and upward; erect new growth resembling candles. A low, compact plant, almost globular in outline. Suitable for foundation plantings, or in groups.

15-18 in. wide --\$ 3.75, 2½-3 ft. wide--\$ 6.60

***P. nigra*, 60-80 ft. Austrian Pine**

Heavily plumed, with long, rich, glossy, dark green, rigid needles. Will thrive in poor soil, or damp situations. Good for specimen, or mass planting; also for windbreaks.

3-4 ft. -----\$ 7.00 4-5 ft. -----\$10.00
5-6 ft -----\$14.00

***P. resinosa*, 50-60 ft. Red Pine**

Spreading, somewhat pendulous branches; dark green leaves. Good in massed background planting or as a specimen.

3-4 ft. -----\$ 7.50 6- 8 ft. -----\$16.00
4-5 ft. ----- 9.00 8-10 ft. ----- 25.00
5-6 ft. ----- 12.00 10-12 ft. ----- 40.00

***P. strobus*, 60-80 ft. White Pine**

A tall, straight, fast-growing, hardy tree with long, flexible, light green needles. Very graceful. Good as specimen or in groups.

2-3 ft. -----\$ 5.00 4-5 ft. -----\$10.00
3-4 ft. ----- 8.00 5-6 ft. ----- 13.00

***P. sylvestris*, 25-35 ft. Scotch Pine**

Fast growing, open, round-headed, picturesque tree; twisted needles with bluish-green hue. Resists smoky, city conditions.

3-4 ft. -----\$ 6.00 4-5 ft. -----\$ 8.00

YOU GET BEAUTY AND VIGOR
IN "WILL GROW" EVERGREENS

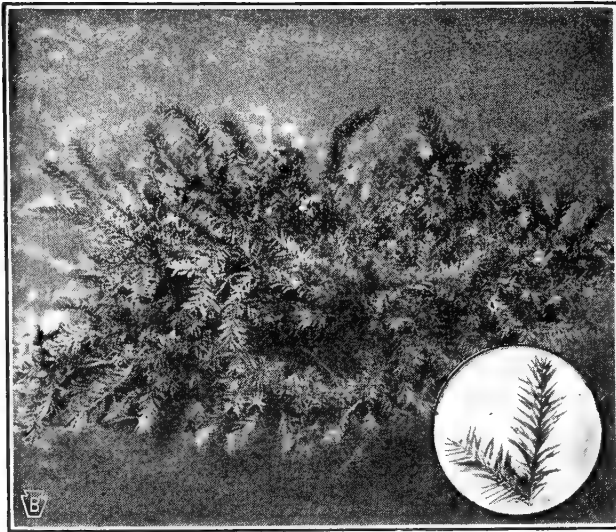
Barr's "Will Grow" Evergreens have a character all their own, due to our system of shaping, root-pruning and frequent transplanting, which results not only in a close, beautiful, compact growth so desirable in Evergreens, but aids in quick recovery after transplanting.

Being hand-dug when your order is received all roots are carefully secured. Taken fresh from the ground is assurance that your Evergreens will have their full vitality and that you can count on them giving you the most satisfactory results.



WHITE PINE

Yews Unexcelled In Either Sunny or Shady Places



SPREADING ENGLISH YEW

YEWS

Adaptability to part shade, semi-dwarf habit, handsome, dark green foliage winter and summer, give the Yews their high value as Evergreens for foundation and other ornamental planting. Best evergreen family for difficult city conditions and foundation planting. Any planting can be greatly enriched by a liberal use of Yews. Many of the Yews produce a profusion of red berries during the Fall.

TAXUS baccata repandens, 4-5 ft.

Spreading English Yew

Low gracefully spreading habit; long, glossy, blue-green foliage. Ideal as a low plant to face off groups. Thrives in shade.

10-12 in. spr. -----	\$ 3.00
12-15 in. spr. -----	4.00
15-18 in. spr. -----	5.00
18-24 in. spr. -----	7.00

T. cuspidata, 8-12 ft.

Common Spreading Yew

Most vigorous of the Yews; very hardy; dark, green foliage; excellent for foundation planting or hedges. Has a pleasing informal spreading habit. Lends itself well for group planting.

10-12 in. wide --\$ 2.00	2½-3 ft. wide --\$ 9.00
12-15 in. wide -- 2.90	3-3½ ft. wide --\$11.00
15-18 in. wide -- 3.90	3½-4 ft. wide -- 13.00
1½-2 ft. wide -- 5.00	4 -5 ft. wide -- 18.00
2-2½ ft. wide -- 7.00	5 -6 ft. wide -- 25.00

T. c. capitata, 15-20 ft.

Upright Yew

Symmetrical, upright and compact grower; foliage dark green; fruit, bright scarlet. Very hardy; invaluable for foundation planting; excellent in masses. Makes a rich hedge.

12-15 in. -----\$ 2.50	2½-3 ft. -----\$ 8.00
15-18 in. ----- 4.00	3-3½ ft. ----- 11.00
1½-2 ft. ----- 5.00	3½-4 ft. ----- 13.00
2-2½ ft. ----- 6.50	4 -5 ft. ----- 16.00
6-8 ft. -----	\$30.00-\$35.00

Yews Are the Most Satisfactory of All Evergreens. A Complete Planting Can Be Made of Them Alone.

T. c. nana (brevifolia), 3-4 ft. **Dwarf Yew**

Very handsome, slow growing, low, compact Evergreen, with short, rich, dark green needles. Splendid for foundation plantings. Unexcelled for permanence.

9-12 in. wide --\$ 3.00	15-18 in. wide --\$ 6.00
12-15 in. wide -- 4.25	18-21 in. wide -- 8.00
21-24 in. wide-----	\$10.00

T. media hatfieldi, 6-8 ft. **Hatfield Yew**

Compact, conical form, with upright branches, center full; very beautiful, hardy variety; rich black-green, darkest of all Yews.

15-18 in. -----\$ 4.00	2-2½ ft. -----\$ 8.00
1½-2 ft. ----- 5.00	2½-3 ft. ----- 11.00

T. m. hicksi, 8-12 ft. **Hicks Yew**

Upright, narrow, conical form; dense, dark green foliage. Effective accent plant. Very attractive in Fall for its profusion of red berries.

15-18 in. -----\$ 3.00	2½-3 ft. -----\$ 8.00
1½-2 ft. ----- 5.00	3-3½ ft. ----- 11.00
2-2½ ft. ----- 7.00	3½-4 ft. ----- 13.00
6-8 ft. -----	\$35.00

T. vermuelen, 12 ft. **Taxus Vermuelen**

Symmetrical, upright grower; compact; effective accent plant; very hardy. Unexcelled for foundation planting.

18-24 in. -----\$ 5.00	3-3½ ft. -----\$11.00
3½-4 ft. -----	\$13.00



UPRIGHT YEW

Arborvitae---Popular Evergreens At A Low Cost

ARBORVITAE

The clean, neat, compact appearance and soft foliage of the Arborvitae make them appropriate for foundation planting where they are almost indispensable for hedges, and for planting on small lawns as well as large areas. The Arborvitae are hardy and easy to transplant, but prefer moist soils. They offer a wide range of possibilities.

THUJA occidentalis, 15-25 ft.

American Arborvitae

Broad, conical tree; foliage bright green. Good for screens and hedges and accent purposes in evergreen plantings.

4-5 ft. -----	\$ 5.00	5-6 ft. -----	\$ 6.00
6-7 ft. -----	\$ 7.50		

T. oc. elegantissima, 15-20 ft.

Lee Golden Arborvitae

Compact, pyramidal plant; golden green foliage; hardy and vigorous in growth. Its bright color will enliven any evergreen planting.

2-2½ ft. -----	\$ 2.75
2½-3 ft. -----	3.00
3 -4 ft. -----	4.00
4 -5 ft. -----	5.00
5 -6 ft. -----	6.00

Arborvitae Are Widely Used for Economical Foundation Plantings, Open Lawn Specimens, or Evergreen Hedges.



PYRAMIDAL ARBORVITAE

T. oc. globosa, 3-4 ft.

American Globe Arborvitae

Grows naturally in ball-like form; light green foliage. Very hardy. Use as a low type for variety in foundation plantings, or as accent plant for colonial type house on each side of entrance step.

12-15 in. -----	\$ 2.00	15-18 in. -----	\$ 2.50
18-24 in. -----	\$ 3.50		

T. oc. spiralis, 10-15 ft.

Moss Arborvitae

Dense, attractive, blue-green, pyramidal variety. Very beautiful crested, obtuse foliage.

3-4 ft. -----	\$ 4.00	4-5 ft. -----	\$ 5.00
5-6 ft. -----	\$ 6.00		

T. oc. pyramidalis, 15-25 ft.

Pyramidal Arborvitae

Narrow columnar growth; denser and darker green than American Arborvitae. Most widely used tall, narrow type. Holds color well throughout year.

15-18 in. -----	\$ 1.25	3 -4 ft. -----	\$4.00
1½-2 ft. -----	1.75	4 -5 ft. -----	5.00
2-2½ ft. -----	2.25	5 -6 ft. -----	6.00
2½-3 ft. -----	3.00	6 -8 ft. -----	8.00
7-8 ft. -----	\$12.00		

T. oc. wareana, 10-15 ft.

Ware (Siberian) Arborvitae

Broad conical type; dense, slow growing, of rugged appearance. Pleasant bluish-green foliage unchanged by Winter. Very hardy.

15-18 in. -----	\$ 1.50	2-2½ ft. -----	\$ 3.25
1½-2 ft. -----	2.50	2½-3 ft. -----	4.00
3-4 ft. -----	\$ 5.00		

BIOTAS

Branchlets in vertical planes on slender, ascending branches from near the base.

T. or.—Biota aurea nana, 2-3 ft.

Dwarf Golden Oriental Arborvitae

Popular, low, conical plant; bright golden hue becoming bronze-tipped in winter. A spectacular living globe of gold and green.

10-12 in. -----	\$ 2.00	15-18 in. -----	\$ 2.50
1½-2 ft. -----	\$ 3.00		

T. orientalis, 5-6 ft.

Oriental Arborvitae

Conical plant of rapid growth, bronzy color in winter.

3-4 ft. -----	\$ 4.00
4-5 ft. -----	5.00

T. or.—Biota compacta, 4-5 ft.

Siebold Arborvitae

Compact, formal type like Biota aurea nana but with constant, fresh green foliage. Desirable for formal effects or hedges.

3-4 ft. -----	\$ 4.00
---------------	---------

Use Hemlocks For Their Graceful, Handsome Foliage

HEMLOCKS — A Leading Specialty at Barr's

The Hemlock with its graceful branches, and beautiful, neat, needle foliage can well be made the basis of many fine plantings. Its informality of outline is particularly pleasing. On the open lawn it makes a handsome specimen, but wherever planted it is never out of place. Will remain small many years if sheared regularly.

TSUGA canadensis, 60-80 ft.

Canada Hemlock

The soft, feathery, dark green, fernlike foliage of the Canada Hemlock will give a softening touch to any planting, and combined with its gracefully spreading branches makes of it a magnificent tree. It is the State Tree of Pennsylvania. For specimen planting or in groups on the open lawn, or for hedges.

2-2½ ft. -----	\$ 4.00	4½-5 ft. -----	\$10.00
2½-3 ft. -----	5.00	5 -6 ft. -----	12.00
3-3½ ft. -----	6.00	6 -7 ft. -----	16.00
3½-4 ft. -----	7.00	7 -8 ft. -----	20.00
4-4½ ft. -----	8.00	8-10 ft. -----	30.00
20-25 ft. -----	\$50.00-\$60.00		

T. caroliniana, 50-60 ft. Carolina Hemlock

More compact, darker green and smaller growing than preceding. Yew-like foliage. Its conspicuous, yellowish-brown cones in contrast with the dark foliage makes a most interesting effect.

10-12 ft. ----	\$40.00	14-16 ft. specimen--	\$50.00
----------------	---------	----------------------	---------

T. canadensis sargentii (*pendula*)

Sargent Weeping Hemlock

A compact, bushy form with weeping habit: breadth greater than height, a very rare specimen tree.

3-4 ft. wide, 3 ft. high -----	\$12.00 to \$15.00
--------------------------------	--------------------



CANADA HEMLOCK

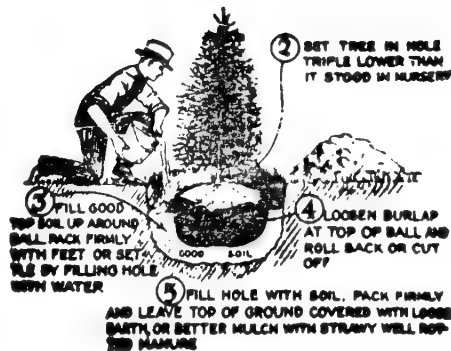
When Building A New Home

It is advisable to budget 4-5 percent for landscaping. Real estate men agree an investment of 4-5 percent of the cost of the house in Evergreens, Trees, and Shrubs increases the value at least 10 per cent and your enjoyment of your home to an immeasurable extent.

At the very beginning of operations put aside the amount you purpose spending for landscaping. Without good landscaping a house gives the appearance of "something wanting," or not being finished.

We shall be pleased to furnish estimates and sketches on contemplated plantings without cost. Our 54 years experience is yours for the asking.

When and How to Plant Evergreens



Evergreens transplant best during the Spring months, before and just as new growth is beginning, or for several months following August 15 when the new growth is completed and has become sufficiently hardened.

The excavation for planting should be considerably larger and deeper than the encased roots so as to allow liberal space around the ball for filling in with good soil. Do not remove burlap, only loosen it at top and roll back as indicated in illustration. Carefully pack soil under earth ball. Mix 10% Peat Moss or rotted manure in the soil used for back fill, and ½ lb. Vigoro, or BARR'S special fertilizer to a wheelbarrow load of soil. When hole is two-thirds refilled, FLOOD WITH WATER.

In restoring the remainder of the excavated soil allow a shallow basin to remain around the tree to collect the rain and enable it to soak into the ground. Mulch with well-rotted manure or Peat Moss to conserve the moisture in the ground and keep it from becoming hard. In the Fall mound the soil against the plants.

Nightly spray the foliage, water soil weekly and direct a STRONG force of water against the under side of the foliage, when the sun is not shining. This treatment preserves the vigor and beauty of the plant.

Shade and Flowering Trees

Figures following names indicate approximate height at maturity. "CAL." means thickness of trunk 10 inches from ground.

Does your home stand out in the bare sun, without background and unframed. Shade trees will make a wonderful transformation and give comforting shade as well.



NORWAY MAPLE

Acer—MAPLES

Maples are widely used for street and lawn planting, being one of the best shade trees known. Their great popularity is evidence of their reliability.

Acer platanoides , 50-75 ft.	Norway Maple
6- 8 ft. high	\$ 3.00
8-10 ft. high, 1 1/4-1 1/2 in. cal.	5.00
10-12 ft. high, 1 1/2-2 in. cal.	7.00
12-14 ft. high, 2 -2 1/2 in. cal.	10.00
12-14 ft. high, 2 1/2-3 in. cal.	12.00
14-16 ft. high, 3 -4 in. cal.	15.00
14-16 ft. high, 4 -5 in. cal.	22.50
18-22 ft. high, 5 -6 in. cal. B&B	45.00
20-24 ft. high, 6 -7 in. cal. B&B	60.00
A. P. schwedleri , 30-40 ft.	Schwedler Purple Maple
6- 8 ft. high	\$ 5.00
10-11 ft. high, 1 1/2-2 in. cal.	10.00
20-24 ft. high, 7 -8 in. cal. B&B	90.00
A. rubrum , 40-60 ft.	Red Maple
6- 8 ft. high, 3/4-1 in. cal.	\$ 4.00
8-10 ft. high, 1 1/4-1 1/2 in. cal.	6.00
10-12 ft. high, 1 1/2-2 in. cal.	8.00
14-16 ft. high, 2 -2 1/2 in. cal.	12.00
14-16 ft. high, 2 1/2-3 in. cal.	14.00
A. saccharinum wieri , 50 ft.	Wier Maple
14-16 ft. high, 4 -5 in. cal.	\$20.00
A. saccharum , 40-60 ft.	Sugar Maple
6- 8 ft. high	\$ 4.50
8-10 ft. high, 1 1/4-1 1/2 in. cal.	7.00
10-12 ft. high, 1 1/2-2 in. cal.	9.00
12-14 ft. high, 3 -4 in. cal.	20.00
18-22 ft. high, 5 -6 in. cal. B&B	65.00
20-22 ft. high, 7 -8 in. cal. B&B	90.00

JAPANESE RED MAPLE

Beautiful low growing trees. Attractive as single specimens on the lawn or in masses. Will grow and retain color best in full sun.

A. atropurpureum , 10-15 ft.	Bloodleaf Maple
12-15 in.	\$ 4.00
15-18 in.	6.00
18-24 in.	\$ 7.50
2 1/2-3 ft. B&B ...	12.00

Betula—BIRCH

Highly colored, silvery-white bark; small, triangular leaves; pyramidal in form.

Betula alba , 30-40 ft.	White Birch
6-8 ft. high ..	\$ 4.00
8-10 ft. B&B ...	\$ 6.50
B. a. laciniata , 30-40 ft.	Cut Leaf Weeping Birch
5-6 ft. B&B ...	\$ 6.00
6-8 ft. B&B ...	\$ 7.00

Cercis—REDBUD

Cercis canadensis , 12-15 ft.	Redbud (Judas Tree)
2-3 ft.	\$ 1.50
3-4 ft.	\$ 2.00

Cornus—DOGWOODS

One of the best small ornamental trees for lawn decoration; pretty in border with Evergreens, or in masses. Showy spring flowers, followed by bright-red berries and beautiful autumn foliage display.

Cornus florida , 12-20 ft.	White Dogwood
4- 5 ft.	\$ 4.00
5- 6 ft. B&B	6.00
6- 8 ft. B&B	8.00
8-10 ft. 1 1/2-2 in. cal. B&B	14.00
10-12 ft. 2 -2 1/2 in. cal. B&B	16.00
C. f. rubra , 12-18 ft.	Red Dogwood
2- 3 ft. B&B	\$ 6.00
4- 5 ft. B&B	9.00
5- 6 ft. B&B	12.00
6- 8 ft. B&B	16.00
8-10 ft. B&B	20.00

C. mas , 12-18 ft.	Cornelian Cherry
3-4 ft.	\$ 1.40
4-5 ft. B&B ...	\$ 4.00
5-6 ft. B&B	\$ 5.00

Crataegus—HAWTHORNS

Crataegus cordata , 12-16 ft.	Washington Thorn
4-5 ft.	\$ 4.50
10-12 ft. B&B ..	\$15.00
C. Pauli 12-15 ft.	Pauls Scarlet
4-5 ft.	\$ 4.50

Fagus—BEECH

Fagus americana , 40-50 ft.	American Beech
14-16 ft., 5-6 in. cal. B&B	\$75.00
F. sylvatica 40-50 ft.	European Beech
8-10 ft., 4-5 in. cal. B&B	\$25.00
F. s. heterophylla , 30-40 ft.	Fernleaf Beech
8-10 ft., 4-5 in. cal. B&B	\$25.00
F. s. pendula , 25-35 ft.	Weeping Beech
8-10 ft., 2-2 1/2 in. cal. B&B	\$20.00
F. s. riversi , 35-40 ft.	Rivers Purple Beech
5-6 ft. B&B	\$20.00
6-8 ft. B&B	\$25.00

Fraxinus—WHITE ASH

Fraxinus americana , 60-70 ft.	White Ash
8-10 ft.	\$ 2.00
10-12 ft., 1 1/4-1 1/2 in. cal.	4.00
12-14 ft., 1 1/2-2 in. cal.	6.00
12-14 ft. 4 -5 in. cal.	18.00

DELIVERY

Local delivery orders within three miles, delivery free. Shipping orders of Trees and Shrubs under 4 ft., packing free, are sent express collect. Balled and burlapped Trees and Evergreens, and bare-rooted Trees over 4 ft., please add 12% to list price to help pay packing and crating cost, are sent express collect. Balled and burlapped plants may be sent by freight, door-to-door delivery. Trucking is advisable on large Trees; trucking rates, 20c a mile, return-trip mileage up to 3-ton truck load.



LIQUIDAMBER, SWEET GUM

Ginkgo—GINKGO

Pyramidal tree with clean, straight trunk, and fan-shaped, Maidenhair Fern-like leaves; immune from insects. A most interesting and unusual tree where dense shade is not desired.

Ginkgo biloba , 50-70 ft.	Maidenhair Tree
8-10 ft., 1 -1 1/4 in. cal.	\$ 4.00
10-12 ft., 1 1/4 -1 1/2 in. cal.	5.00
10-12 ft., 1 1/2 -2 in. cal.	6.25
12-14 ft., 2 -2 1/2 in. cal.	8.00
12-14 ft., 2 1/2 -3 in. cal.	9.50
14-17 ft., 3 -3 1/2 in. cal.	12.00
16-18 ft., 4 -5 in. cal., B&B	35.00

Gledetsia intermis	Thornless Honey Locust
10-12 ft., 1 1/2 -2 in. cal.	\$ 5.00
10-12 ft., 2 -2 1/2 in. cal.	8.00

Laburnum—GOLDENCHAIN

Laburnum vossii , 20-30 ft.	Goldenchain
4-5 ft. high	\$ 5.00

Larix—LARCH

Larix europae , 50-60 ft.	European Larch
8-10 ft., 2 1/2 -3 in. cal., B&B	\$15.00

Liquidamber—SWEET GUM

Leaves star-shaped and glossy, changing to brilliant crimson in Fall making it an outstanding tree. Tall, pyramidal type, with interesting, corky bark.

Liquidamber styraciflua , 50-70 ft.	Sweet Gum
12-14 ft. high, 3 1/2 -4 in. cal. B&B	\$35.00
14-15 ft. high, 4 -4 1/2 in. cal. B&B	50.00

Liriodendron—TULIP TREE

Liriodendron tulipifera , 50-70 ft.	Tulip Tree
10-12 ft. high, 1 1/2 -2 in. cal. B&B	\$ 8.00
12-14 ft. high, 3 1/2 -4 in. cal. B&B	\$35.00

Magnolia—MAGNOLIAS

The Magnolias are small trees that give distinction to any lawn, being especially beautiful in foliage and in the large flowers.

Magnolia glauca , 15-20 ft.	Sweet Bay
5-6 ft. B&B ..\$10.00	6- 8 ft. B&B ..\$15.00
M. soulangeana , 12-18 ft.	Saucer Magnolia
3-4 ft. B&B ..\$10.00	6- 8 ft. B&B ..\$16.00
4-5 ft. B&B .. 12.00	8-10 ft. B&B .. 25.00

M. s. lennei , 12-18 ft.	Lenne Magnolia
3-4 ft. B&B ..\$10.00	8-10 ft. B&B ..\$25.00
M. s. nigra , 10-12 ft.	Purple Magnolia
3-4 ft.	\$15.00
M. stellata , 6-8 ft.	Star Magnolia
2 -2 1/2 ft. B&B	\$ 8.00
2 1/2 -3 ft. B&B	10.00
5 -6 ft., B&B Specimens	25.00

Malus—FLOWERING CRABS

The Flowering Crab is a most charming spring flowering tree and worthy of a place on every lawn.

Malus floribunda , 10-15 ft.	Pink Flowering Crab
5-6 ft. high	\$ 5.50
M. f. atrosanguinea , 10-15 ft.	Carmine Crab
5-6 ft. high	\$ 5.50
M. hoppi , 12-15 ft.	Red Flowering Crab
5-6 ft. high	\$ 5.50
M. ioensis plena , 10-15 ft.	Bechtel Crab, Double Pink
4-5 ft. high	\$ 5.50

Platanus—PLANETREE

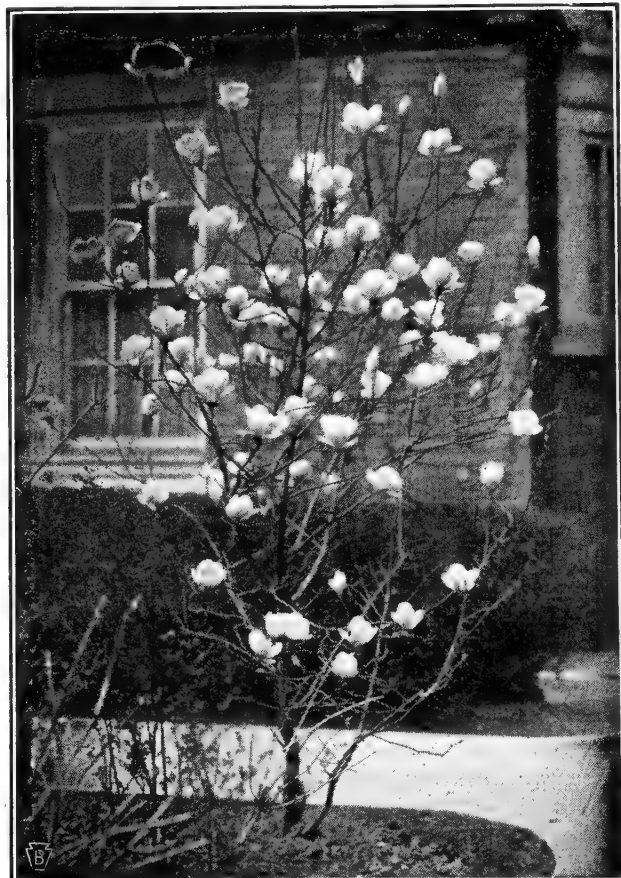
One of best shade trees for city conditions.

Platanus orientalis , 50-60 ft.	Oriental Plane
10-12 ft. high, 1 1/2 -2 in. cal.	\$ 7.50
12-14 ft. high, 2 -2 1/2 in. cal.	10.00
12-14 ft. high, 2 1/2 -3 in. cal.	14.00

Prunus—FLOWERING CHERRIES

Picturesque trees of exquisite color and fragrance are the Flowering Cherries and Plums.

Prunus serrulata (Kwansan) , 20-25 ft.	Double Rose Cherry
5-6 ft. B&B ..\$ 6.00	6-8 ft. B&B ..\$15.00
P. (Paul Wohler) , 20-25 ft.	Double Rose Cherry
8-10 ft. B&B (Pink)	\$15.00
8-10 ft. Specimen 2-2 1/2 in. cal. B&B	\$20.00
P. Naden , 20-25 ft.	Double Blush White Cherry
5-6 ft. B&B	\$ 6.00



MAGNOLIA

Prunus—FLOWERING PLUMS

Prunus bilariana, 8-10 ft. **Purpleleaf Plum**
5-6 ft. high\$ 4.00

Quercus—OAKS

Majestic trees, strongly formed and with beautiful foliage, particularly handsome in the autumn. Rank as outstanding trees for lawn and street planting.

Quercus coccinea, 70-90 ft. **Scarlet Oak**
8-10 ft., 1¼-1½ in. cal.\$ 6.00
10-12 ft., 1½-1¾ in. cal. 8.00
10-12 ft., 1¾-2 in. cal. 10.00
12-14 ft., 2 -2¼ in. cal. 13.00

Q. palustris, 40-60 ft. **Pin Oak**
10-12 ft. high, 1¼-1½ in. cal.\$ 6.00
10-12 ft. high, 1½-1¾ in. cal. 7.50
12-14 ft. high, 1¾-2 in. cal. 9.00
12-14 ft. high, 2 -2½ in. cal. 12.00
14-16 ft. high, 2½-3 in. cal. 15.00
14-16 ft. high, 3 -3½ in. cal. B&B 28.00
14-16 ft. high, 3½-4 in. cal. B&B 35.00
16-20 ft. high, 4 -4½ in. cal. B&B 50.00
16-18 ft. high, 5 in. cal. B&B 60.00
18-20 ft. high, 5½-6½ in. cal.

Prices on application

Q. rubra, 50-75 ft. **Red Oak**
8-10 ft. high, 1 -1¼ in. cal.\$ 5.00
10-12 ft. high, 1¼-1½ in. cal. 6.00
10-12 ft. high, 1½-1¾ in. cal. 7.50
12-14 ft. high, 1¾-2 in. cal. 10.00
12-14 ft. high, 2 -2½ in. cal. 13.00
14-16 ft. high, 3 -3½ in. cal. B&B 30.00
14-16 ft. high, 3½-4 in. cal. B&B 35.00
16-20 ft. high, 4 -4½ in. cal. B&B 50.00
16-18 ft. high, 5 in. cal. B&B 60.00
18-20 ft. high, 5½-6½ in. cal.

Prices on application

Salix—WILLOW

Particularly attractive near water; branches olive-green, slender and drooping.

Salix babylonica, 30-40 ft. **Weeping Willow**
5-6 ft.\$ 3.00
6-8 ft. 5.00

Tilia—LINDEN

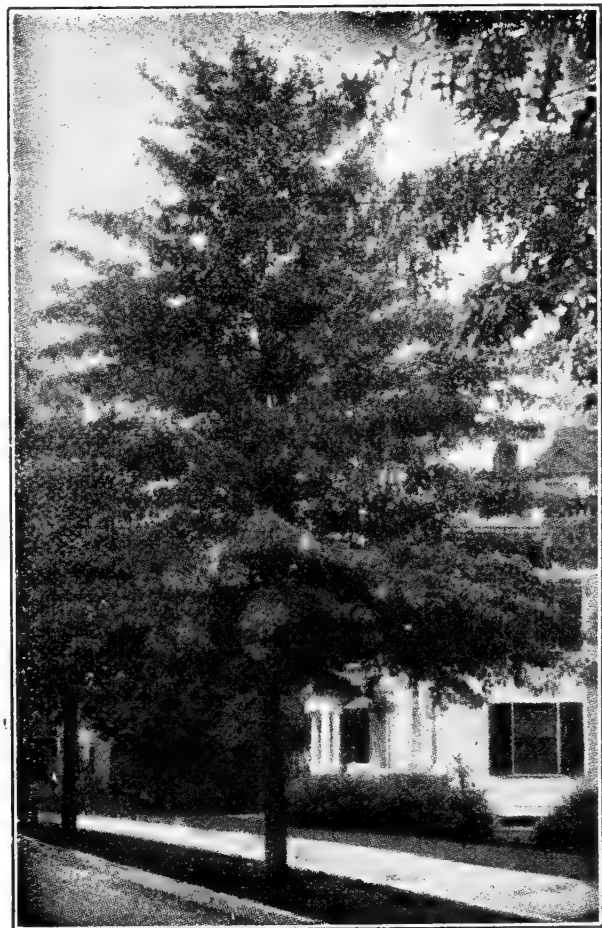
Fast growing shade trees for lawn, park or avenue planting; straight growth and symmetrical outline.

Tilia americana, 60-80 ft. **(Basswood) American Linden**
14-16 ft. high, 3-4 in. cal.\$14.00
14-16 ft. high, 4-5 in. cal. 18.00
T. cordata, 50-60 ft. **Littleleaf European Linden**
10-12 ft. high, 1½-2 in. cal.\$ 6.00
12-14 ft. high, 2 -2½ in. cal. 8.00
12-14 ft. high, 2½-3 in. cal. 10.00
12-14 ft. high, 3 -4 in. cal. 15.00

Ulmus—ELM

Graceful, majestic trees. Fine for avenues, parks and near homes. Good for use as a background or frame for the house over which its protection and beauty tower.

Ulmus americana, 60-80 ft. **American Elm**
10-12 ft. high, 1½-2 in. cal.\$ 5.00
12-14 ft. high, 2-2½ in. cal. 7.00
14-16 ft. high, 3-4 in. cal. 12.00



PIN OAK

U. a. vaseii, 60-80 ft. **Vase Elm**
12-14 ft. high, 1½-2 in. cal.\$ 5.00
12-14 ft. high, 2-2½ in. cal. 8.00
12-14 ft. high, 2½-3 in. cal. 10.00
U. mollnei, 60-75 ft. **Moline Elm**
12-14 ft. high, 3-4 in. cal.\$13.00
14-18 ft. high, 4-5 in. cal. 20.00

BALL and BURLAP CHARGES

When it is desired to have Trees or Shrubs balled and burlapped (B. & B.) there will be an extra charge for this additional treatment unless quoted as B. & B. This charge will be in conformity with the following schedule:

Size of Tree	Size of Ball	Extra for B&B
12-14 ft., 2 -2½ in. cal.	20-24 in.	\$ 6.00
12-14 ft., 2½-3 in. cal.	24-30 in.	9.00
14-16 ft., 3 -3½ in. cal.	30-35 in.	12.00
16-18 ft., 3½-4 in. cal.	36-40 in.	15.00
18-20 ft., 4 -5 in. cal.	45-50 in.	25.00

Blight-Resistant Chinese Chestnuts

Memories of childhood days, luscious brown, chestnuts can again be yours from the trees you plant this Spring. Wiped out by the blight that stripped our woods of native trees, with the advent of this blight-resistant variety, you can have chestnuts in two years after planting.

Best crops insured by planting two or more trees for pollination.

3½-4 ft., 5 years old \$3.00 each; 3 for \$8.00
Shipped Express Collect

Beautiful Broad-Leaved Evergreen Shrubs

These splendid plants hold their bright green foliage all the year round and many varieties make a magnificent showing of bloom. Shaded situations are preferred by most of the varieties, giving them an added value in making them available for planting about the foundation of houses or shady corners.

SHIPPING ORDERS. Please add 12% to catalogue price to help defray crating cost. Delivery not prepaid.

ABELIA

ABELIA grandiflora, 3-4 ft.

Glossy Abelia or Bush Arbutus

Graceful, arching branches; shining, dark green leaves; dainty, waxy, pinkish-white, fragrant flowers from June to November. Very attractive in foreground of foundation plantings; or for hedges.

12-15 in., B. & B. ----- \$ 1.50
1½-2 ft., B. & B. ----- 2.50

AZALEAS

Few flowering plants can excel the Azaleas for all around usefulness. They make a most brilliant color display, either singly or in groups, and can be used to good advantage in brightening the foundation planting, doing well among other evergreens.

A. hinodegiri, 3-4 ft.

Crimson Evergreen Azalea

Bright red, double flowers: very showy.
8-10 in., B. & B. \$2.50 10-12 in., B. & B. \$4.00
12-15 in., B. & B. \$5.00

A. Kaempferi

Hybrid pink. Early Spring.
15-18 in. ----- \$4.50

A. mollis, 2-5 ft.

Chinese Azalea

Deciduous Azalea. Brilliant flowers in clusters in flaming colors, ranging from orange to yellow in early Spring.
1½-2 ft. ----- \$3.50

A. yodogawa, 2-3 ft.

Yodogawa Azalea

Brilliant pinkish-lavendar, double flowers in early Spring. Very hardy.
15-18 in., B. & B. \$4.00 2-2½ ft., B. & B. \$6.00

BOXWOODS

Will thrive in full sunlight, or in shady locations where no other Evergreen will grow.

BUXUS sempervirens, 12-15 ft.

Boxbush

Bushy; deep rich color; slow growing. Frequently used for hedges.
18-24 in., B. & B. ----- \$ 6.00
2-3 ft., B. & B. ----- 8.00

B. suffruticosa, 3-4 ft.

Dwarf English Box

Especially adapted to edging walks or as a low hedge. This is the attractive variety growing in the formal gardens at Washington's home, Mt. Vernon.

	Ea.	Per 10	Per 100
3- 4 in., B. & B. -----	\$0.25	\$ 2.00	\$18.00
4- 6 in., B. & B. -----	.60	5.00	
6- 8 in., B. & B. -----	1.25	10.00	
8-10 in., B. & B. -----	1.75		
10-12 in., B. & B. -----	2.50		
15-18 in., B. & B. -----	4.00		

COTONEASTERS

COTONEASTER horizontalis, 1-1½ ft.

Rock Cotoneaster

Small, pink flowers; ornamental bright red fruit; shiny, green leaves; semi-evergreen.
12-15 in., potted plants ----- \$ 2.50

**How To Treat The Soil For Azaleas
Holly and Rhododendrons**

Rhododendrons and Azaleas require an acid soil. For best results, plant in a mixture of three parts leaf mould or Holland Peat to one part soil. In limestone localities ½ pound aluminum sulphate or Broadleaf fertilizer to each square yard of surface broadcast Spring and Fall, will prove beneficial in acidifying the soil.

C. francheti, 5-6 ft.

Franchet Cotoneaster

Semi-evergreen with gradually arching branches; fruit orange-red persisting greater part of Winter.
4-yr. potted plants ----- \$ 2.50

DAPHNE

DAPHNE, cneorum, 1 ft.

Rose Daphne

Covered in May with beautiful pink, tubular flowers; fragrant. A splendid rock garden plant.
6-9 in., B. & B. \$1.50 9-12 in., B. & B. \$2.50

EUONYMUS

EUONYMUS patens (sieboldianus), 6-7 ft.

Spreading Euonymus

Handsome, large, dark green foliage; white flowers July; red berries in Fall.
18-24 in., B. & B. ----- \$2.50
3- 4 ft., B. & B. ----- 4.00

E. r. vegetus, 3-4 ft.

Bigleaf Wintercreeper

(Evergreen Bittersweet). Bushy growth, bright scarlet fruits. Will climb, or grow as bush.
9-12 in., 3 yr. plant ----- \$1.00

E. r. colorato

Purpleleaved Wintercreeper

2 yr. plants ----- \$0.75



AMERICAN HOLLY See description next page

HOLLIES

***ILEX opaca*, 10-12 ft. American Holly**
 For berries in abundance one must plant both male and the female type, as it's only the female that produce berries. Hollies love a slightly acid and well enriched soil.

FEMALE BERRY-BEARING, B. & B.

2-3 ft. -----	\$ 4.00	5- 6 ft. -----	\$12.00
3-4 ft. -----	6.00	6- 8 ft. -----	14.00
4-5 ft. -----	8.50	8-10 ft. -----	30.00

NON-BEARING, (Male Trees), B. & B.

4-5 ft. -----	\$ 8.00	6-8 ft. -----	\$12.00
---------------	---------	---------------	---------

SEX UNDETERMINED, B. & B.

(50 to 60% of these plants will berry)

2-3 ft. -----	\$ 3.50	4-5 ft. -----	\$ 8.00
3-4 ft. -----	5.50	5-6 ft. -----	10.00

***ILEX crenata microphylla*, 5-6 ft. Small-leaved Holly**

Deep green, boxlike leaves. Black berries. Unusually attractive in foundation plantings or as specimens. Compact and slow growing.

2-2½ ft., B. & B.	\$6.00	2½-3 ft., B. & B.	\$7.50
3-3½ ft., B. & B.	--\$9.00		

***I. c. convexa (bullatum)*, 3-4 ft. Boxleaf Holly**

Exquisite, dwarf, spreading Evergreen Shrub with small, box-like, convex, glossy, persistent leaves. Small, black berries, remaining over Winter. Especially suitable for foundation planting in sun or shade.

15-18 in., B. & B.	\$4.00	18-24 in., B. & B.	\$5.00
--------------------	--------	--------------------	--------

***I. glabra*, 4-6 ft. Inkberry**

Deep green leaves turning metallic deep purple in Winter; black berries, attractive to birds.

15-18 in., B. & B.	\$ 2.00	1½-2 ft., B. & B.	\$ 3.00
2-3 ft., B. & B.	--\$5.00		

LAUREL

***KALMIA latifolia*, 4-8 ft. Mountain Laurel**
 (The Pennsylvania State Flower)

Bright, dark-green leaves; large showy clusters of rose-colored flowers. One of the most beautiful, most popular and most useful of native, woody plants.

18-24 in., B. & B.	\$4.20	2-2½ ft., B. & B.	\$5.25
--------------------	--------	-------------------	--------

LEUCOTHOE

***LEUCOTHOE catesbaei*, 3-4 ft. Drooping Leucothoe**

Attractive, fragrant, white flowers in May, borne in long, pendulous racemes.

15-18 in. clumps, B. & B.	-----	\$ 2.50
18-24 in. clumps, B. & B.	-----	3.50

EVERGREEN GROUND COVERS

For shady places. Pachysandra. (Spurge). English Ivy. Periwinkle. (Myrtle). See page 30.

ANDROMEDA

***PIERIS japonica*, 3-5 ft. Andromeda**

Bears graceful pendants of white flowers in early Spring. Glossy bright green foliage, especially attractive in Winter when bronze.

12-15 in., B. & B.	\$2.50	15-18 in., B. & B.	\$3.75
18-24 in., B. & B.	\$5.00		

FIRETHORN

***PYRACANTHA coccinea lalandi*, 6-8 ft. Laland Scarlet Firethorn**

Glossy foliage; white flowers, followed by large clusters of orange berries; very ornamental. Success is assured by planting potted plants.

2 yr. from pots	-----	\$ 2.50
4 yr. from 7 in. pots	-----	3.50

RHODODENDRONS

The Rhododendron is a very effective plant used in masses or groups or near dark foliage evergreens. It is excellent for the difficult shaded corner or on the north side of the house.

Hybrid Rhododendron

Handsomest of the Rhododendrons, the flowers being larger and of a bright, clearer color.

NAMED HYBRIDS

ALL CHOICE HARDY VARIETIES

<i>R. Catawbiense Alba</i>	White Blush Pink
<i>R. Everestianum</i>	Rosy Lilac
<i>R. Roseum Elegans</i>	Rose-pink
<i>R. Caractactus</i>	Crimson-carmine
<i>R. Dr. H. C. Dresselhuys</i>	Aniline-red
15-18 in.,	\$6.00; 18-24 in., \$7.50 each

***RHODODENDRON carolinianum*, 4-5 ft. Carolina Rhododendron**

Light rose flowers in early May. Foliage is relatively small and plant is broad and compact. Tolerates sunshine.

15-18 in., B. & B.	-----	\$ 3.75
1½-2 ft. clumps, B. & B.	-----	6.00

***R. maximum*, 6-10 ft. Rosebay Rhododendron**
 Native of Penna.

Flowers pale rose to nearly white. July. Good for mass planting.

18-24 in. plants	-----	\$ 4.00
2 - 2½ ft. clumps, B. & B.	-----	5.00
2½-3 ft. clumps, B. & B.	-----	6.00
3 - 4 ft. clumps, B. & B.	-----	8.00-10.00

Both the Trees received in Pittsburgh and at Claysville arrived in excellent condition and all of them have started growth, they are all straight and well formed. In fact, I was quite pleasantly surprised, as some catalogs lead one to believe things that are not so, while your trees exemplify all that you say of them.

WALTER HOWARD KELLEY.

Barr's Hardy Ornamental Shrubs

The hardy shrubs offer a constant change of scene that is always pleasing.

They may be used in many ways to beautify the lawn and garden where permanent plants are desired.

With very little attention they will grow and flower in their new location for years. By planting assorted varieties a succession of flowers may be had all summer.

SHIPPING ORDERS: All Shrubs under 4 ft. packing free. Express shipments, transportation collect.

* Denotes Varieties Thriving in Part Shade.

AMELANCHIER canadensis, 3-4 ft.

Downy Shadblow*

Its numerous white flowers make this a conspicuous plant among the leafless trees of early spring. Maroon-purple berries, relished by birds.

2-3 ft. ----- \$ 0.90

ARALIA pentaphyllum (acanthopanax)

6-8 ft. Five-Leaved Angelica*

Arching, spiny branches leaved to base; tolerates dust, smoke and shade.

18-24 in. ----- \$ 0.75

4-5 ft. ----- 2.00

AZALEAS

AZALEA calendulacea, 4-5 ft.

Flame Azalea*

Brilliant flowers about two inches across in flaming colors ranging from salmon to golden orange, appearing early Spring. Most beautiful.

1½-2 ft. clumps, B.&B. ----- \$ 5.00

3-4 ft. clumps, well-branched, B.&B. ----- 7.00

BUTTERFLY BUSHES

BUDDLEIA "Charming", 5-6 ft.

Lovely long sprays of lavender-pink blooms, which compared with other Buddleias are distinctly pink.

2 yr. plants ----- \$ 0.75

B. hartwegi, 5-6 ft.

A Buddleia of superior hardiness. Large, bright, lavender flowers, opening complete from the tip downwards.

2 yr. plants ----- \$ 0.75

B. Ile de France, 5-6 ft.

New variety with greater brilliance of color; fragrant; rose-purple.

2 yr. plants ----- \$ 0.75

B. Royal Red.

New variety, dazzling red; shaded purple.

2 yr. field plants ----- \$ 1.00

B. White Bouquet

A beautiful addition to the Butterfly family.

2 yr. plants ----- \$ 1.00

CALLICARPA purpurea, 3-4 ft.

Chinese Beauty Fruit

Valued for lilac-violet berries which crowd branches after leaves have fallen when this is a very unusual and attractive shrub.

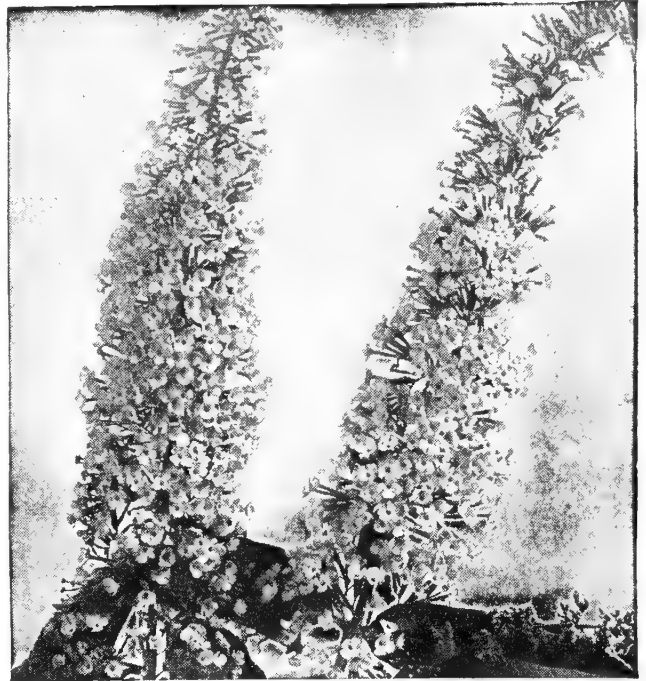
2-3 ft. ----- \$ 1.00

CALYCANTHUS floridus, 4-5 ft.

Sweetshrub or Strawberry Shrub*

Reddish-brown, heavily scented flowers, spring and summer. Also known as Carolina alspice.

2-3 ft. ----- \$ 1.00



ILE DE FRANCE—BUDDLEIA
BUTTERFLY BUSH

CLETHRA alnifolia, 4-5 ft. Summersweet*

Fragrant, white flower spikes terminating upright branches, July. (Sweet Pepperbush).

12-15 in. ----- \$ 1.00

CHIONANTHUS virginicus, 25 ft.

White Fringe

Tassel-like white flowers in May and June.

3-4 ft. ----- \$ 2.75

BUSH DOGWOODS

CORNUS paniculata, 5-6 ft. Gray Dogwood

Branches are in flat spreading tiers. White flowers in flat umbels, May; berries white or red stems.

3-4 ft. ----- \$ 1.50

C. stolonifera, 6-8 ft. Red-Osier Dogwood

Planted chiefly for the Winter effect of its blood-red branches. Very effective in planting banks. White flowers in May followed by white fruits in Autumn.

3-4 ft. ----- \$ 1.25

C. stolonifera lutea, 4-5 ft.

Goldentwig Dogwood*

Bright yellow bark, flowers creamy.

2-3 ft. ----- \$ 1.10

CORNUS mas 8-10 ft. Conelian Cherry

Small yellow April flowers. Red berries in fall.

4-5 ft. B.&B. ----- \$ 4.00

COTONEASTER divaricata, 5-6 ft.
Spreading Cotoneaster*
 Arching branches loaded with bright red fruit; leaves brilliant in Autumn.
 1½-2 ft., B. & B. -----\$ 2.25

C. francheti, 5-6 ft. Franchet Cotoneaster
 Its gracefully arching branches, bearing large clusters of brilliant, orange fruits, persisting the greater part of the Winter.
 1½-2 ft., Potted plants -----\$ 3.00

CYDONIA japonica, 4-5 ft. Flowering Quince
 Masses of scarlet flowers hug leafless branches in April. Sometimes called "Fire Bush."
 1½-2 ft. -----\$ 1.00 2-3 ft. -----\$ 1.50

CYDONIA pigmea, 2-3 ft.
Dwarf Flowering Quince
 Orange red blossoms.
 15-18 in. -----\$ 1.00

DEUTZIAS

DEUTZIA gracilis, 2-3 ft. Slender Deutzia*
 White flowers in graceful, upright clusters in May. Graceful bushy form. Very dwarf growing.
 15-18 in. -----\$ 1.00

D. lemoinei, 4-5 ft. Lemoine Deutzia*
 Large, dazzling white flowers in great abundance; June.
 2-3 ft. -----\$ 1.25

D. s. crenata, 6-8 ft. Double Pink Deutzia
 Double, light pink flowers, June.
 3-4 ft. -----\$ 1.25

ENKIANTHUS campanulatus, 8-10 ft.
Redvein Enkianthus
 Yellowish or pale orange, veined darker red, gracefully drooping flowers in racemes; brilliant red autumn foliage. Rare and unusual shrub.
 2-3 ft., B.&B. --\$ 3.50 3-4 ft., B.&B. --\$ 4.00

Gettysburg, Pa.

The Shrubbery arrived in fine shape. I am delighted with them. Everything is growing. The Deutzia, etc. didn't even wither.

V. A. S.

ONE OF OUR MOST SHOWY PLANTS

EUONYMUS alatus, 6-8 ft.
Winged Euonymus*
 In the Fall its foliage is a brilliant rose. Corky-winged branches; small, red fruits. A very striking plant.
 2-3 ft. -----\$ 1.50 4-5 ft. -----\$ 3.25

E. compacta, 3-4 ft. Df. Winged Euonymus
 More compact in habit than alatus.
 2-3 ft. -----\$ 2.25

EXOCHORDA grandiflora, 6-8 ft. Pearlbush
 Pearl-like, dazzling white, globular flowers in six to ten flowered racemes. April-May
 4-5 ft. -----\$ 2.50

Barberry and Privet can be used to advantage planted in groups or as specimens as well as for Hedges.

BARBERRY

BERBERIS thunbergi, 4-5 ft.
Japanese Barberry
 The best "all purpose" plant. In Fall has brilliantly colored foliage and many scarlet berries. Plant 18 inches apart for a nice hedge, or 3 to 4 ft. apart in shrubbery plantings.

	Ea.	10	100
10-12 in., 2-yr. -----	\$0.40	\$3.00	\$25.00
15-18 in., 3-yr. -----	.55	5.00	45.00
2-2½ ft., 4 yr. heavy -----	.80	7.00	60.00

B. t. atropurpurea, 4-5 ft.
Red-Leaved Japanese Barberry
 Foliage rich bronze-red Spring to Autumn; should have sunny situation.

	Ea.	10
12-15 in., bushy plants -----	\$0.75	\$6.50
1½-2 ft., bushy plants -----	1.00	8.00

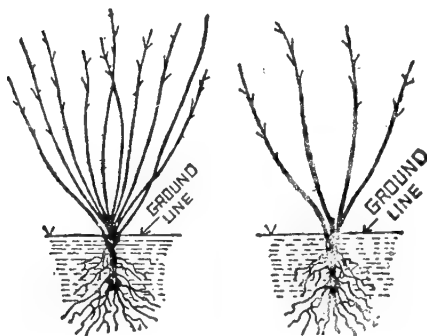
HEDGE PLANTS

LIGUSTRUM PRIVET

Ligustrum amurense, 12-15 ft. Amur Privet*
 Hardy northern-grown type; dark foliage.
 2-3 ft. -----\$0.35 100

Hedge (Continued next page)

How To Plant and Prune Ornamental Shrubs



Before Pruning

After Pruning

Remove about one-third of top growth of shrub at planting time if Spring planted, or following Spring, if Fall planted, to facilitate establishment of plant. Thereafter, pruning should be done to remove old wood and keep plant to size desired. Cut off damaged or frayed roots just above the point affected. Be careful to have roots exposed to air or sun as little as possible at any time.

The important point in planting is to have the hole large enough to accommodate the roots without crowding, and to get the soil well worked in among the roots. Space the larger growing Shrubs 4-5 ft. apart, medium growers 3-4 ft., low growers, 2-3 ft.

Always water abundantly and apply a mulch. A basin-shaped depression should remain around each plant to hold the water, at least the first summer.



BARBERRY HEDGE

HEDGE PLANTS (Continued)

- L. i. regelianum, 5-6 ft. Regal Privet***
 Dense shrub with low, horizontal branches; fragrant white flowers in June; attractive black berries. Splendid in foundation planting or hedges.
- | | | | |
|-------------------------|--------|--------|---------|
| | Ea. | 10 | 100 |
| 15-18 in. ----- | \$0.60 | \$5.00 | \$40.00 |
| 1½-2 ft. ----- | .65 | 6.00 | 55.00 |
| 4-5 ft. Specimens ----- | 2.00 | | |
- L. ovalifolium, 12-15 ft. California Privet**
 The most generally used hedge plant. Space six inches to a foot apart for a dense, full-to-the-ground hedge.
- | | | |
|------------------------|--------|---------|
| | 10 | 100 |
| 1½-2 ft., 2-year ----- | \$1.60 | \$15.00 |
| 2-3 ft., 3-year ----- | 2.50 | 20.00 |

FORSYTHIAS (Golden Bell)

- FORSYTHIA intermedia spectabilis, 5-7 ft. (Golden Bell) Showy Border Forsythia***
 Showiest of Golden Bells; open late enough to escape injury by frost. Most profuse blooming, large flower.
- | | | | |
|---------------|---------|---------------|---------|
| 2-3 ft. ----- | \$ 1.00 | 3-4 ft. ----- | \$ 1.25 |
|---------------|---------|---------------|---------|
- F. ovata, 5-6 ft. Korean Forsythia***
 From Northern Korea, hardier than other Golden Bells. Clothed with primrose-yellow flowers, produced ten days earlier than other sorts.
- | | |
|---------------|---------|
| 2-3 ft. ----- | \$ 1.00 |
|---------------|---------|
- F. suspensa, 4-6 ft. Weeping Forsythia**
 Long, drooping branches; bright yellow flowers, very early. Suitable for covering banks.
- | | |
|---------------|---------|
| 2-3 ft. ----- | \$ 1.00 |
|---------------|---------|
- F. s. fortunei, 6-8 ft. Fortune Forsythia***
 Finely arching branches, covered with rich yellow flowers.
- | | |
|---------------|---------|
| 2-3 ft. ----- | \$ 1.00 |
|---------------|---------|

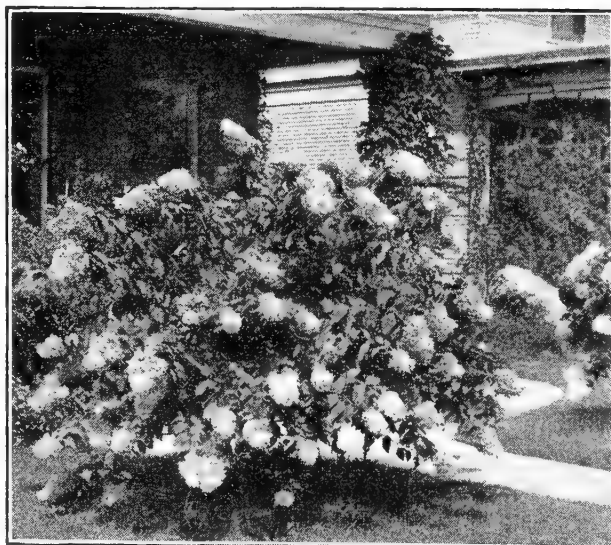
- HAMAMELIS vernalis, 10-12 ft. Witch Hazel***
 Yellow flowers as late as October and November. Excellent as a background shrub.
- | | |
|---------------|---------|
| 4-5 ft. ----- | \$ 2.50 |
|---------------|---------|

- HIBISCUS syriacus, 10-12 ft. Shrub Althea or Rose of Sharon**
 Hollyhock-like flowers in August-September. White or pink. State color desired.
- | | | | |
|---------------|---------|---------------|---------|
| 2-3 ft. ----- | \$ 1.00 | 4-5 ft. ----- | \$ 1.50 |
|---------------|---------|---------------|---------|

HYDRANGEAS

- HYDRANGEA arborescens grand., 4-5 ft. Snowhill***
 Upright branched shrub with pure white flowers like big snow-balls, June-September.
- | | | | |
|----------------|---------|---------------|---------|
| 1½-2 ft. ----- | \$ 1.25 | 2-3 ft. ----- | \$ 1.75 |
|----------------|---------|---------------|---------|
- H. opuloides acuminata, 2-3 ft. French Hydrangea**
 Blue or pink flowers in immense clusters. For blue flowers plant in acid soil or treat with Aluminum Sulphate or rusty iron.
- | | |
|----------------------------|---------|
| 3-year potted plants ----- | \$ 2.25 |
|----------------------------|---------|
- H. paniculata grand., 8-10 ft. Peegee Hydrangea**
 Immense cone-shaped heads of white flowers turning pink and bronze, September-October.
- | | | | |
|----------------|---------|---------------|---------|
| 1½-2 ft. ----- | \$ 1.25 | 2-3 ft. ----- | \$ 1.50 |
|----------------|---------|---------------|---------|
- H. quercifolia, 3-4 ft. Oakleaf Hydrangea***
 Leaves oak-like, beautifully colored in the Fall. Flowers pinkish-white, turning purplish, borne in narrow, upright clusters in June.
- | | |
|----------------|---------|
| 1½-2 ft. ----- | \$ 2.00 |
|----------------|---------|
- ILEX verticillata, 6-8 ft. Winterberry or Black Alder**
 Bright red fruits conspicuous until mid-winter. Plant in groups for berries—it's a Holly. Much used in early Winter decoration.
- | | | | |
|---------------|---------|---------------|---------|
| 3-4 ft. ----- | \$ 1.00 | 4-5 ft. ----- | \$ 2.50 |
|---------------|---------|---------------|---------|

- JASMINUM nudiflorum, 2-3 ft. Winter Jasmine**
 Golden yellow flowers before the leaves. Very first Shrub to bloom in the Spring. Very graceful and free flowering.
- | | |
|-----------------|---------|
| 15-18 in. ----- | \$ 0.75 |
|-----------------|---------|



PEEGEE HYDRANGEA

KERRIA japonica (Corchorus), 4-5 ft.
Kerria*
 June to September profusion of rich-yellow flowers with numerous stamens. Green branches make Winter show.
 18-24 in. -----\$ 1.20

A REAL BEAUTY BUSH

KOLKWTZIA amabilis, 5-7 ft. Beauty Bush
 Fountain-like mass of pink bloom in May. Thrives best in full sunlight.
 2-3 ft. -----\$ 1.00 4-5 ft. -----\$ 2.00

HONEYSUCKLE BUSHES

LONICERA fragrantissima, 6-8 ft.
Winter Honeysuckle*
 Small creamy-white, very fragrant flowers in March; red fruits. Semi-evergreen.
 15-18 in. -----\$ 0.75 2-3 ft. -----\$ 1.00

L. morrowi, 6-8 ft. Morrow Honeysuckle*
 White flowers May and June; translucent, blood-red berries, July-August.
 15-18 in. -----\$ 0.75 2-3 ft. -----\$ 1.00

L. tatarica rosea, 8-10 ft.
Pink Tatarian Honeysuckle*
 Pink flowers, May-June; attractive red fruit.
 15-18 in. -----\$ 0.75 2-3 ft. -----\$ 1.00

MYRICA carolinensis (cerifera), 3-4 ft.
Northern Bayberry
 Winter-decorative, wax-coated, gray berries attractive amidst dark green, glossy, fragrant leaves, which turn purplish-bronze.
 15-18 in., B. & B. -----\$ 1.25

MOCK ORANGES

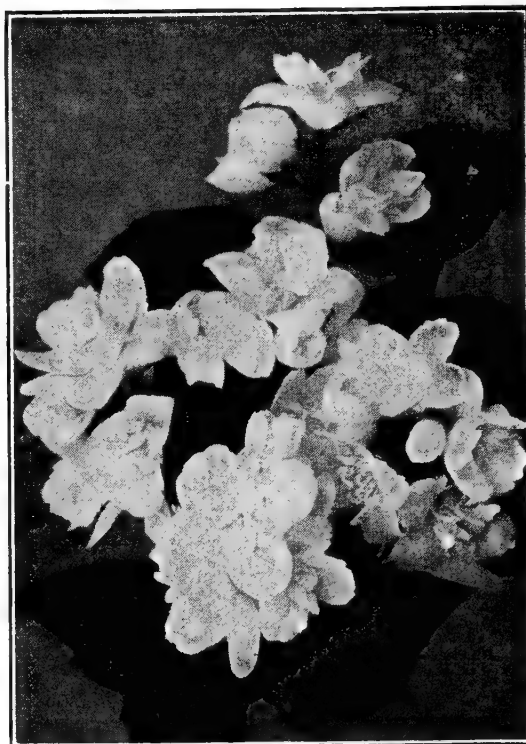
PHILADELPHIS lemoinei, 6-8 ft.
Lemoine Mock Orange*
 Flowers smaller, fragrant, in great profusion. Dwarf, graceful habit. Beautifully symmetrical plant.
 3-4 ft. -----\$ 1.25

BEST OF THE MOCK ORANGES

P. virginialis, 6-8 ft. Virginal Mock Orange
 Large, sweet, double, pure white flowers in May and June and intervals throughout Summer. Very striking and best of the Mock Oranges.
 2-3 ft. -----\$ 1.25 3-4 ft. -----\$ 1.50

PRUNUS (amygdalis) glandulosa alba, fl. pl., 5-7 ft. Double White Flowering Almond
 White, fully double flowers crowd the bare branches in early Spring; very picturesque.
 1½-2 ft. -----\$ 1.25

P. rosea, fl. pl., 5-7 ft. Double Pink Flowering Almond
 Very attractive pink form of preceding.
 1½-2 ft. -----\$ 1.25



**PHILADELPHIS VIRGINALES
 VIRGINAL MOCK ORANGE**

RHODOTYPOS kerrioides, 4-5 ft. Jetbead*
 White flowers in May followed by conspicuous, black bead-like fruits. Will grow satisfactorily in shade or sunny situations, or in poor soil.
 2-3 ft. -----\$ 1.00 3-4 ft. -----\$ 1.25

ROSA hugonis, 5-6 ft.
Hugonis Rose (Golden Rose of China)
 Long garlands of dainty, yellow flowers in May, followed by translucent red fruits.
 18-24 in. -----\$ 1.25 2-3 ft. -----\$ 1.50

R. rugosa, 4-5 ft. Japanese Rose
 Large, red flowers, followed by handsome, scarlet-crimson fruits.
 2-3 ft. -----\$ 1.25

SPIREA arguta, 4-5 ft. Garland Spirea
 Profusion of white flowers on slender, drooping branches; feathery foliage.
 1½-2 ft. -----\$ 1.00 3-4 ft. -----\$ 1.25

B. & B. FOR LATE PLANTING

After Shrubs have started growth in the Spring (about May 15th), planting can still be continued if plants are dug with ball of earth and burlapped. For this extra service there is an additional charge of 25 to 50 cents per plant, unless quoted B. & B.



PRUNUS AMYGDALIS
FLOWERING ALMOND

SPIREAS

- S. bumalda anthony waterer, 2-3 ft.** **Anthony Waterer Spirea**
Rosy-crimson flowers in flat-topped, terminal clusters, June to frost. Good plant for flowering hedge. Very dwarf.
15-18 in. -----\$1.00
- S. froebeli, 3-4 ft.** **Froebel Spirea**
Like Anthony Waterer except earlier and taller. Excellent foreground shrub for Summer flowering effects on the home grounds.
½-2 ft. -----\$1.00
- S. prunifolia, fl. pl., 6-8 ft.** **Bridal Wreath**
White, fully double, small button-like flowers, on slender, upright branches, April-May.
2-3 ft. -----\$1.25
- S. trichocarpa, 5-6 ft.** **Korean Spirea***
Graceful arching form like Van Houtte Spirea, but the profusely borne flowers are larger and two weeks later.
3-4 ft. -----\$1.00 4-5 ft. -----\$1.50
- S. van houttei, 6-8 ft.** **Van Houtte Spirea***
Graceful, arching branches wreathed in May-June with a profusion of pure white flowers.
18-24 in. -----\$.75 2-3 ft. -----\$1.00
3-4 ft. -----\$1.25

- STEPHANANDRA flexuosa, 5-6 ft.** **Cutleaf Stephanandra***
Graceful, spreading shrub; small, white flowers in clusters, June-July; dainty leaves, brilliant red in Autumn.
2-3 ft. -----\$1.00

- SYMPHORICARPOS chenaulti, 5-6 ft.** **Chenault Coralberry***
Bunches of coral-red fruits remaining until mid-winter. An improved type of Coralberry.
2-3 ft. -----\$.60 3-4 ft. -----\$.75
- S. racemosus, 5-6 ft.** **Snowberry***
Showy, waxy, white berries weigh down the willow branches in Autumn.
2-3 ft. -----\$.60
- S. vulgaris, 4-5 ft.** **Coralberry***
Purplish-red berries in clusters lining long slender branches Autumn and Winter. Good on steep banks. ("Indian Currant").
2-3 ft. -----\$.60

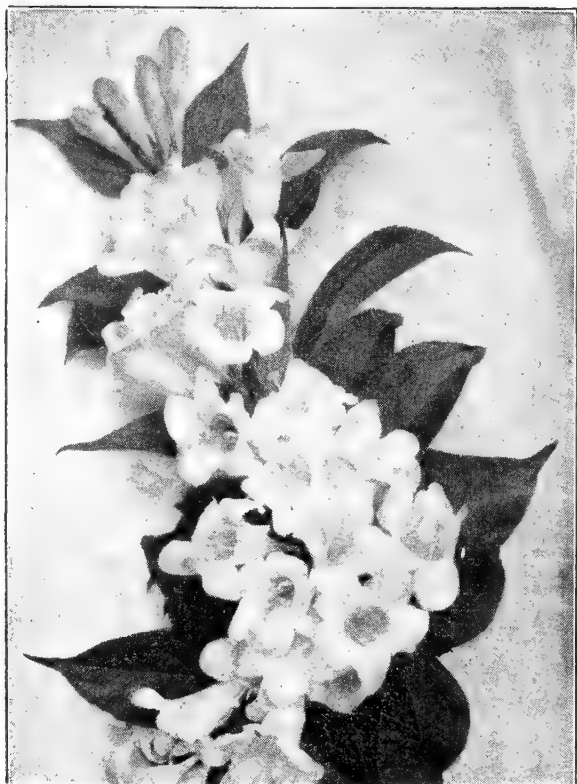
**LILACS—Always Cherished,
Fragrant Shrubs**

- SYRINGA chinensis (rothomagensis), 8-9 ft.** **Chinese Lilac**
Fragrant, reddish-purple flowers in large, open heads in May. Superior to the Common Lilac in gracefulness of branches, in the color, texture and density of its foliage, and just as free flowering.
2-3 ft. -----\$1.25 3-4 ft. -----\$2.00
- S. persica, 5-8 ft.** **Persian Lilac**
Slender, arching branches, bearing fragrant pale-lilac flowers in loose, broad panicles, appearing after the Common Lilac.
2-3 ft. -----\$1.50 3-4 ft. -----\$2.25
- S. vulgaris, 10-12 ft.** **Common Lilac**
Fragrant, purplish flowers in May in large, double clusters.
3-4 ft. -----\$2.25 4-5 ft. -----\$3.00

FRENCH LILACS

- The French Lilacs are recognized as the finest of the Lilac family. Perfection in size of bloom, color and form. Dug B-B at prices quoted.
- Alphonse Lavallee, double, violet-blue.**
4-5 ft. -----\$3.00 5-6 ft. -----\$4.00
- Charles Joly, semi-double, red mauve.**
2-3 ft. -----\$1.75
- Marie Legrage, single, white. Very choice variety.**
4-5 ft. -----\$3.00 5-6 ft. -----\$4.00
- Mme. Lemoine, double white.**
2-3 ft. -----\$1.75
- William Robinson, double, pinkish violet.**
3-4 ft. -----\$2.25 4-5 ft. -----\$3.00
- VIBURNUM carlesi, 3-4 ft.** **Fragrant Viburnum**
Lovely pink, fragrant flowers in dense clusters 2-3 in. in diameter, early April; blue-black berries.
1½-2 ft., B. & B. -----\$4.00
2-2½ ft. B.&B. -----5.00
- V. dilatatum, 8-10 ft.** **Linden Viburnum**
Attractive, spreading shrub, creamy-white flowers; abundant, small red fruits in September, long persisting.
3-4 ft. -----\$1.25 4-5 ft. -----\$2.50

Barr's "Will Grow" Shrubs Have the Dense Root Systems Necessary for Successful Growth



THE WEIGELA

- V. lentago, 16-20 ft. Nannyberry***
 Fragrant, white flowers, May-June in clusters 4-5 in. across; fruit blue-black, edible. Bronze foliage in Fall.
 3-4 ft. -----\$1.25 5-6 ft. -----\$2.00
- V. opulus, 8-10 ft. European Cranberry Bush**
 Showy white flower heads May-June; scarlet berries in the Fall. (High Bush Cranberry).
 3-4 ft. -----\$1.25 4-5 ft. -----\$2.00
- V. tomentosum, 6-8 ft. Doublefile Viburnum**
 Profuse, pure white flowers in large flat clusters, June. Red fruits changing to black.
 3-4 ft. -----\$1.35 4-5 ft. -----\$2.00
- V. t. plicatum, 6-8 ft. Japanese Snowball**
 Large, round heads, snowy white flowers, in abundance in June; dark green, crimped foliage.
 3-4 ft. -----\$1.25 4-5 ft. -----\$2.00
- VITEX macrophyllus, 4-5 ft. Chaste-tree**
 Very graceful, attractive plant; pretty lavender blue flower spikes 6 to 10 in. long, July to frost.
 12-18 in. -----\$0.75
- WEIGELA floribunda, 6-8 ft. Crimson Weigela**
 Tubular dark crimson, fragrant flowers, June.
 2-3 ft. -----\$1.25
- W. rosea, 6-8 ft. Pink Weigela**
 Flowers deep rose outside, paler within; May and June.
 18-24 in. -----\$1.00 3-4 ft. -----\$1.25

Selection of Vines For Any Place Made Easy

VARIETIES, SIZES AND PRICES

10% Discount when three or more of one kind are ordered.

Shipping orders packed free, Express collect.

	Each	Walls and Surfaces	Porches and Pergolas	Banks and Slopes	Flowering	Autumn Color	Evergreen
<i>Ampelopsis tricuspidata (veitchii)</i> —Boston Ivy, 2 yr. potted plants -----	\$0.85	*	*			*	
<i>Bignonia radicans</i> —Trumpet Creeper, strong 2 yr. potted plants -----	.80	*	*		*		
<i>Clematis paniculata</i> —Sweet Autumn Clematis, potted plants, 2 yr. old -----	.85		*		*		
<i>Clematis henryi</i> —Henry Clematis (white), 2 yr. potted plants -----	1.35		*		*		
<i>Clematis hybrid andre</i> —Madame Andre Clematis (red) 2 yr. potted plants -----	1.35		*		*		
<i>Clematis jackmani</i> —Jackman Clematis (purple), 2 yr. potted plants -----	1.35		*		*		
<i>Clematis ramona</i> —Ramona Clematis (lavender), 2 yr. potted plants -----	1.35		*		*		
<i>Euonymus radicans</i> —Wintercreeper, heavy, 2 yr. plants -----	.75	*				*	*
<i>Euonymus radicans var. vegetus</i> —Big Leaf Wintercreeper, 2 yr. plants -----	.85	*				*	*
<i>Hedera helix</i> —English Ivy, 2½ in. pots -----	.25	*		*			*
<i>Hedera helix cuspidata minor</i> —Small-Leaf English Ivy, 2½ in. pots -----	.25	*		*			*
<i>Lonicera japonica halliana</i> —Hall Japanese Climbing Honeysuckle, out of 4 in. pots -----	.75	*	*	*		*	*
<i>Lycium chinensis</i> —Chinese Matrimony Vine, 2 yr. plants -----	.75	*	*	*		*	*
<i>Wisteria sinensis</i> —Chinese Wisteria (blue), 2 yr. field grown (grafted plants) -----	1.50		*		*		
<i>Wisteria sinensis alba</i> —White Chinese Wisteria, 2 yr. field grown (grafted plants) -----	1.50		*		*		

Evergreen Ground Cover Plants For Difficult, Shady Places

For difficult places under trees and on banks where it is impossible for grass to thrive a class of plants designated as "Ground Cover Plants" can be used with good results. These plants are also valuable in Evergreen and Shrub plantings, filling up the intervening spaces. Other advantages are that they always look well, yet require practically no attention; and being evergreen, are as effective in Winter as in Summer. Among the best plants for this purpose are English Ivy, Pachysandra and Periwinkle.

PACHYSANDRA (Spurge)

Under trees Pachysandra is the real answer to the problem of covering the bare ground with greenery. Another advantage is the protection to the roots of trees afforded by the Pachysandra. The glossy foliage is very attractive. Use 3 or 4 to 1 sq. ft. of the area to be covered.

	Per 100
1 yr. plants	\$12.00
2 yr. plants	15.00

ENGLISH IVY

The English Ivy is particularly effective used on banks, to edge walks and under trees. An advantage in using Barr's English Ivy is that it goes further in coverage, each pot containing two plants—a twofold advantage. Plant 10 to 12 inches apart and you will soon have a carpet of green.

	Per 10	Per 100
2½ in. pot size	\$ 2.00	\$15.00
(Large or Small-leaved)		

PERIWINKLE (Myrtle)

Not only is the Hardy Periwinkle a good ground cover under trees and on hillsides, but its pretty blue flowers also make an appeal. The glossy, evergreen foliage remains beautiful the year round. When planting do not place the crown of the plant below the surface of the soil. Use 3 or 4 to 1 sq. ft. of area.

	Per 100
Strong, field-grown plants	\$10.00
Potted plants	15.00

25 Plants at the quoted 100 rate; 250 or more Plants at the 1000 rate.

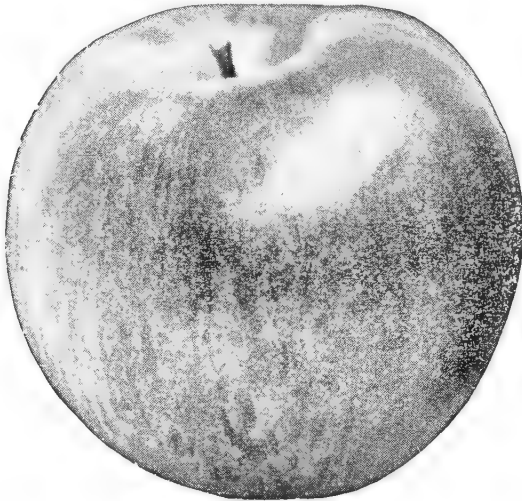
BARR'S FRUIT TREES

Are Sturdy, Heavy-Yielding

The trees listed here are the best in their respective varieties. They are the largest sizes that can be planted to best advantage, are straight trunked, true to name. By reason of their being northern grown they have unusual vigor, will transplant successfully, make good growth, and give an early and abundant yield. Plant cherry tree tap-root straight down.

Heavy, No. 1 grade selected trees; note large caliper (trunk diameter) of trees supplied.

Shipping Orders All Fruits Packing Free. Transportation not prepaid except where otherwise noted.



STAYMAN'S WINESAP APPLE

STANDARD APPLE

(D) Dessert variety; (C) Cooking variety.

- Baldwin.** Large; bright red; rich juicy. Winter (DC)
- Grimes' Golden Pippin.** Medium. Sub-acid. Winter. (DC).
- Jonathan.** Brilliant red; highly flavored. Winter. (DC).
- Lodi.** White to Pale Yellow. Flavor excellent. Strong grower. Summer (C).
- McIntosh.** Medium to large; deep red. Winter. (DC).
- Northern Spy.** Medium to large; red striped. Sub-acid. Winter. (DC).
- Rambo.** Large; yellow; rich and of good flavor. Autumn. (DC).
- Red Delicious.** Large; red striped. Winter. (D).
- Rome Beauty.** Large; juicy; mottled and striped different shades of red. Good baking apple. Winter. (C).
- Smokehouse.** Medium; red striped. Sub-acid. Winter. (DC).
- Stayman's Winesap.** Medium; bright red. Winter. (DC).
- Wealthy.** Red of good quality; good keeper. Acid. Autumn. (DC).
- Yellow Delicious.** Large; clear, bright yellow. Winter. (DC.)
- Yellow Transparent.** Pale yellow. Sub-acid. Summer. (DC).
- York Imperial.** Medium yellow, shaded red. Acid. Winter. (C).
- Extra large, 2 yr., 5 to 6 ft., 3/4-1 in. cal., \$1.50 ea. Any 3 for \$4.25.**

CRAB-APPLE

- Martha.** Medium, golden yellow, crimson cheek, September. Strong, stocky trees.
- 2 yr., 3/4-1 in. cal., \$1.50 ea., 3 for \$4.25.**

Shipping Orders All Fruits Packing Free. Transportation not pre-paid except where otherwise noted.

APRICOT

- Moorpark.** Large, deep orange. Rich. August. 2 yr., 4-5 ft., 3/4-1 in. cal., \$2.25 ea., 3 for \$6.45.

SOUR CHERRY

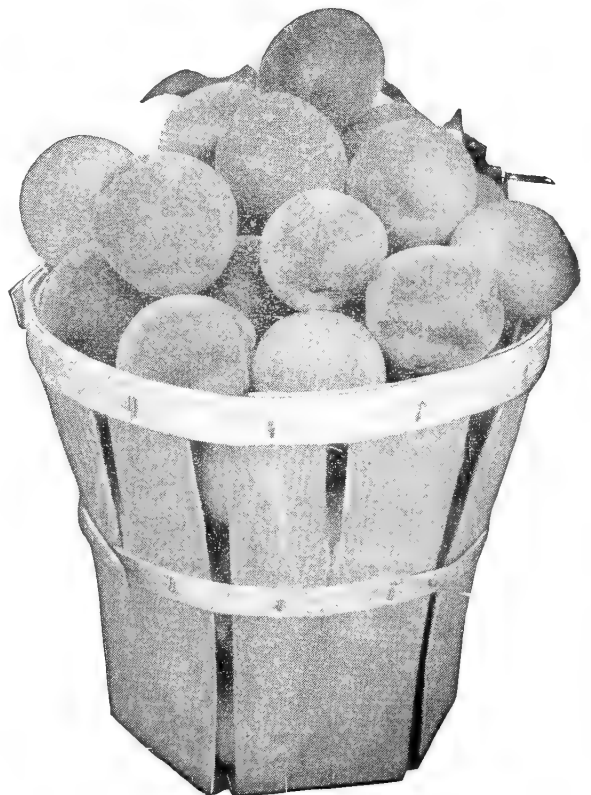
- Early Richmond.** Medium, deep red, rich, acid. Mid-June.
- English Morello.** Large, deep red, pleasant, acid. Late July.
- Montmorency.** Large; bright red; pleasing acid flavor. June. 2 yr., 3 to 5 ft.; 3/4-1 in. cal., \$2.25 ea. Any 3 for \$6.50.

SWEET CHERRY

- Black Tartarian.** Very large, purplish-black, rich. June.
- Governor Wood.** Large; yellow, shaded red. June.
- Napoleon Bigarreau.** Large, yellow-red, excellent. July.
- Schmidt's Bigarreau.** Large, red, rich and pleasant. July.
- Windsor.** (Oxheart). Large, liver-color, rich, July. 2 yr., 5 to 6 ft., 3/4-1 in. cal., \$2.50 ea. Any 3 for \$7.00.

PEACH

- Belle of Georgia.** White with red cheek; excellent flavor. Early September.
- Champion.** Very large; white; red cheek, delicious. Late September.



Basket of CHAMPION PEACHES

Barr "Will Grow" Fruit Trees Are Too Large to Mail.

PEACH (Continued)

Elberta. Very large, yellow; red cheek, juicy, rich. Middle of August.

Golden Jubilee. Large; yellow; freestone, Middle of August.

Hale Haven. Large Yellow. Very hardy, heavy bearer. Perfect freestone. Middle of August.

Champion. Very large; creamy white; red cheek, delicious. September.

1 yr., 4 to 5 ft., $\frac{5}{8}$ - $\frac{7}{8}$ in. cal., \$1.50 ea. Any 3 for \$4.00.

PEAR

Bartlett. Large, clear yellow, highly aromatic. Autumn.

Duchess d'Agnouleme. Large, greenish yellow, juicy. Autumn.

Kieffer. Large, golden yellow, sweet. Winter.

Seckel. Small, yellowish russet, spicy flavor. Autumn.

2 yr., 5 to 6 ft., $\frac{3}{4}$ -1 in. cal., \$2.00 ea. Any 3 for \$5.50.

PLUM

(European Varieties)

Abundance. Large and showy. Light yellow. Juicy, tender and sweet. First of August.

German Prune. Large; purple, sweet. September.

ASPARAGUS

Mary Washington. 2 yr. Select No. 1 roots. \$5.00 per 100; \$10.00 per 250; \$32.00 per 1000.

BLACKBERRY

Blowers. A hardy and productive variety. Fruit large, black and sweet. Good strong canes. 6 for \$1.25; 25 for \$5.00.

GRAPE VINES**Black**

Campbell's Early. One of the largest fruiting Grapes and extremely satisfactory.

Concord. The well-known black Grape. Can always be depended on to fruit heavily.

Worden. Bunch large and compact. Good large berries and an early fruiting variety.

Red and Purple

Catawba. A very nice berry, having an unusually sweet and aromatic flesh.

Salem. Berries larger than Catawba, flesh tender. juicy and sweet.

White

Niagara. Sweet and juicy, large, round berries; long, compact, heavy bunches; best white.

Selected, strong 2 yr. Grape Vines, 60c ea. Any 3 for \$1.70; \$5.00 per 10.

RASPBERRY

Cumberland. A well-known black-cap. Fruit large.

Cuthbert. Hardy, sweet and productive. Deep crimson.

Latham. Large, round, brilliant red; heavy yielding. Mosaic free and hardy. Strong plants, \$2.40 per 10; 25 for \$5.00.

Boysenberry. The largest berry ever produced. 3 for \$1.00; \$3.00 per 10.

RHUBARB

Strong 2 yr. roots, 3 for \$1.00; \$3.00 per 10.

(Japanese Varieties)

Burbank. Large; cherry-red; sweet. Last of August.

Satsuma. (Blood Plum). Large; purplish-red; juicy. Mid-July.

2 yr., 5 to 6 ft., $\frac{3}{4}$ -1 in. cal., \$2.35 ea. Any 3 for \$6.50.

QUINCE

Orange. Large and prolific; orange-yellow; delightfully fragrant. Early.

1 yr., 4 to 5 ft., $\frac{5}{8}$ - $\frac{7}{8}$ in. cal., \$2.35 ea., 3 for \$6.50.

"HANSEN BUSH CHERRY"

Ornamental and fruit producing plant. Good to eat; beautiful ornamental; easy to grow; quick to bear; dwarf habit; need little room; delicious preserves: fine for cordial; bears heavy and annually; very hardy. Fruit is large of a good flavor. Grows bush-like, rarely getting over four or five feet tall, branching and bearing from the ground up. Often bear the first year planted. Foliage is a beautiful silvery green turning to rich red and gold in the Fall. Plant 2 to 4 feet apart in rows 4 to 6 feet apart.

2-3 ft., \$1.00 ea.; 3 for \$2.70.

STRAWBERRIES

The Strawberry will grow in any good garden soil. Plant 1 foot apart in the row, the rows 3 to 4 feet apart.

Big Joe (Perfect). Vigorous grower and very productive. Berries large, conical shape, rich red, excellent flavor. Best mid-season variety.

Catskill (Perfect). Vigorous grower, very productive, large. Excellent flavor. Mid-season.

Chesapeake. (Perfect). Large, firm berries of delicious flavor. Glossy, rich color. Best late variety.

Dorset (Perfect) New introduction, heavy yielding qualities, delicious flavor. Early.

Premier (Perfect). Glossy, rich red color extending clear through. Deliciously flavored. Immensely productive. Best very early.

Fairfax (Perfect). Fruit bright red, glossy and attractive. Standard, medium early.

William Belt (Perfect). Firm, deep crimson, large, irregularly shaped berries of good taste. Late.

Strong, layer plants, 25 for \$1.10; \$3.50 per 100. Your selection.

EVERBEARING STRAWBERRIES

Mastodon. Large fruiting and most prolific, bearing continuously June to frost; good flavor. 25 for \$2.00; \$5.00 per 100.

All Strawberry plants prepaid parcel post.



DISH OF WILLIAM BELT STRAWBERRIES

Eat and Enjoy Some Fruit Grown by Yourself in Your Own Garden

INSECTICIDES AND FUNGICIDES

Arsenate of Lead. (Powdered) To combat leaf-eating insects. Use 1½ to 2 lbs. to 50 gals. of water. 1 lb., 50c.

Black Leaf 40. For aphids and all sucking insects. 1 oz., 35c; 5 ozs., \$1.00; 1 lb., \$2.50.

Bordeaux Mixture. For mildew, blight, black rot and other fungus diseases of fruits and plants. 1 lb., 40c; 4 lbs., \$1.00; 10 lbs., \$2.25.

Borerkil is a scientifically prepared paste that kills boring insects when injected into their burrows. Safe, convenient and simple to use. Indispensable as a dog repellent and poultry fumigant. Packed in handy tubes with injectors included. Garden Size, 75c.

C. P. O. Liquid insecticidal soap spreader that increases the efficiency of contact spray solutions. Odorless; non-poisonous; does not discolor foliage. 3 ozs., 25c; 1 qt., \$1.00; 1 gal., \$2.50.

Dogzoff. Will keep dogs, cats or rabbits from any place where they are not wanted. Not poisonous to plants. Will not injure animals. 4 oz. bottle, 60c postpaid.

Jap-Ro-Cide. Improved repellent for protecting foliage plants against Japanese Beetles. Safe to humans, birds and animals, leaves no deposit, easy to use, odorless, yet strongly repellent to Japanese Beetles. 1 lb. canister (sufficient for 20 gal.), \$1.25; 5 lb. canister, \$5.50.

Marvel Spray. Sure remedy for mealy bugs. Kills by penetrating the waxy coat of the insect. Stimulates plant growth; does not burn or stain. 2 oz. bottle, 50c.

Mologen. An "ogen" product in semi-powder form. Eliminates moles from lawns, flower and bulb beds, etc. Will not harm soil or grass. ½ lb. can, 50c.

Red Arrow. Fatal to both chewing and sucking insects, yet harmless to human beings and pets, such as dogs, cats and birds. 1 oz. makes 4 to 8 gal. of spray. 1 oz., 35c; ¼ pt., \$1.00; 1 pint, \$2.85; 1 qt., \$5.40.

Sunoco. Most effective spray for scale insects. 1 gal. makes 30 to 75 gal. of spray. 1 gal., \$1.40; 5 gal., \$5.50.

T A T Ant Trap. Recommended for the home due to exclusive safety feature. Destroys both sweet and grease eating ants. Worker ants enter traps and carry poison back to colony and soon the queen and every member is destroyed in their nests which usually are outside the house or in the foundations. 25c each.

Tree Tanglefoot. Easily applied, effective, economical and non-injurious protection for fruit, shade and ornamental trees against ants, caterpillars and all crawling insects. One pound is sufficient for 12 to 15 ft. of tree band. Also useful for waterproofing wounds in trees. 1 lb. can, 75c. Postage extra.

"One of the inexpensive possessions that we can continue to enjoy, come war and taxes, is our Shade and Decorative Trees."—Pathfinder.

Your Plants And Lawns Respond Best If Fertilized

When small quantities of fertilizers or insecticides are wanted by parcel post, please add postage as follows: 20c for 10 lbs., or less. Larger quantities will be sent by express or freight, collect.

Adco. Garden rubbish such as leaves, cuttings, straw, etc., is turned into a true manure (best of all fertilizers) when mixed with Adco. 25 lbs., Adco makes ¾ ton valuable manure, 7½ lbs., \$1.25; 25 lbs., \$2.50.

Aluminum Sulphate. Useful in creating acid soil conditions. Broadcast ½ to 1 lb. to each square yard of surface. 5 lbs., 75c; 10 lbs., \$1.25.

Bovung. Natural cow manure, thoroughly dehydrated and pulverized. Free of weed seeds. One pound is sufficient for 25 sq. ft. of area. 25 lbs., \$1.50; 50 lbs., \$2.75; 100 lbs., \$5.00.

Lawn Fertilizer (Agrico). Special formula that makes grass develop stronger and deeper roots to better compete with Crab Grass and other weeds, which are surface rooting. Gives good color and vigor to the lawn. Apply 1 lb. to 40 sq. ft., and water heavily. 25 lbs., \$1.50; 50 lbs., \$2.50; 100 lbs., \$4.00.

Leaf Mold. Nature's plant food. Mix with soil in which Rhododendrons and Azaleas are to be planted, 3 parts Leaf Mold to 1 part soil. 50 lbs., \$2.00; 100 lbs., \$2.50; 1 ton (2000 lbs.), \$35.00.

Lime, Pulverized. For lawn and field use where the ground has become sour. Two pound is sufficient for 25 sq. ft. of surface. 50 lbs., \$1.50; 100 lbs., \$2.00; 500 lbs., \$8.00.

Peat Moss. (Ground) Applied as mulch, conserves moisture, keeps down weeds, melloes and acidifies the soil and beautifies at same time. Water well before and immediately after applying as a mulch. 1 bale covers 125 sq. ft. to depth of 2 inches. Large bales, \$5.00; Senior Bales, \$3.00.

Rhododendron Food. (Agrico) Both acidifies the soil and provides plant food especially needed by Rhododendrons, Azaleas and other broad-leaved evergreens. Broadcast 1 lb. to each square yard two or three times a year. 10 lbs., \$1.00; 25 lbs., \$2.00.

Soil, Potting. Mixture of soil, sand and fertilizer. Ideal for potting purposes, or any place where especially good soil is needed. 1 bu. \$1.00; 2 bu., \$1.50; 3 bu., \$2.00; 5 bu., \$2.25; 1 ton, \$5.00.

Tobacco Stems, Cut. A combined fertilizer, mulch and insecticide for lawns and shrubbery, trees and evergreens. Unlike stable manure dose not introduce weed seeds. 100 lbs. will cover 500 sq. ft. thickly. \$1.75 per 100 lbs.; 500 lbs., \$6.75; \$22.50 per ton.

Tree Food (Barr's). Trees will make quick response to this special food and its action will also be long lasting. Especially valuable for Oak trees where leaves show tendency to turn yellow. Use 4 lbs. to each 1 in. caliper early spring, and again in July. Do not use as top dressing but insert in holes in ground as far as branches extend above. 5 lbs., \$1.00; 10 lbs., \$1.75; 50 lbs., \$4.00; 100 lbs., \$7.50.

Vigoro. Special prepared plant food. Vigoro supplies all 11 of the vital food elements all growing plants need from the soil. It is clean, odorless, sanitary and easy to apply. Use 1 lb. to 20-25 sq. ft. area. 10 lbs., \$1.00; 25 lbs., \$1.50; 50 lbs., \$2.50; 100 lbs., \$4.00.

It's Easy to Order by Mail

Customers are invited to read this page before ordering.

A Check, Post Office or Express Money Order may accompany your order. We are glad to open charge accounts on receipt of the usual trade references.

All Dormant Roses, Grass Seed and special offers prepaid. Perennials for \$3.00 or more are sent post paid.

Potted Roses, Shrubbery and Trees under 4 feet, dug without a ball of earth, catalog prices include free, expert, packing — Shipping charges not prepaid.

Evergreens and plants dug with a ball of earth, including trees, over 4 feet, packing additional. Please add 12% to list price to help defray the cost of crates and packing material. Unless plants and other materials are marked postpaid, they are sent by Railway Freight or Express, delivery charges collect, or, by truck at cost, or 20c a mile round trip mileage.

Balled plants (B&B) may be shipped safely by freight while plants not balled, express is recommended.

If we are unable to make full shipment of your order, and you do not allow substitution, we will make prompt refund of your over-payment.

The right is reserved to advance prices without notice depending on market or other conditions beyond our control.

Safe arrival guaranteed. Please report any dissatisfaction immediately.

Responsibility. While we exercise the greatest care in filling orders, we cannot give any warranty, expressed or implied. We will replace such material as proved not true to name, but it is agreed at no time will we be responsible for more than the original purchase price.

Replacement. All stock accepted as satisfactory, properly planted and cared for, if failing to grow, dies from reasons beyond our or the customer's control. Such losses (except the delivery and planting) occurring the first growing season are shared fairly on a 50-50 basis. Hence, we agree to replace once at one-half the original purchase price.



B. F. BARR & SON Phone 2-5415
 Main Office and Nurseries
 Marietta Road, R. D. 1, State Highway 340
 Lancaster, Pa.

Offices, salesroom, greenhouses and shipping department practically under one roof.

Business hours, open every week day from 8:00 a. m. to 5:30 p. m. Sunday, by appointment only. Visitors welcome daily.



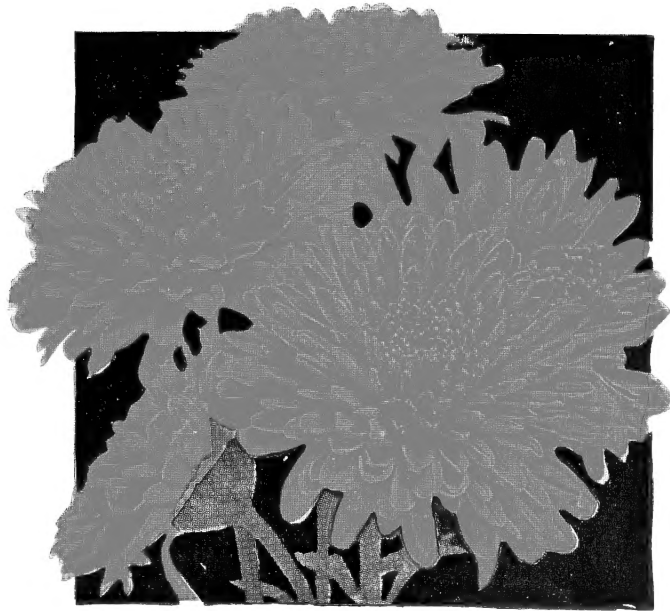
B. F. Barr Flower Shop Phone 3-3300
 116 North Queen Street
 Lancaster, Penna.

Specializing in Floral Arrangements, located in the heart of Lancaster, serving Lancaster and vicinity with fresh cut flowers and accessories daily, except Sunday. Open from 8:00 a. m. to 5:30 p. m.

Pioneer members of the Florist Telegraph Association. Flowers and plant orders are filled and relayed to all parts of the world through 7,500 bonded members, bringing cheer and a spiritual uplift in thousands of homes.

CONTENTS

Broadleaf Evergreens	23, 24
Chrysanthemums, Hardy Garden	7, 8, 9
Evergreens	13, 14, 15, 16, 17, 18, 19
Fertilizers	33
Flowering Shrubs	25, 26, 27, 28, 29, 30
Fruit Trees and Small Fruits	31, 32
Ground Covers	30
Hedge Plants	26
Insecticides & Fungicides	33
Landscape Service	12
Lawn Grass Seed	12
Perennials, Hardy	7, 8, 9, 10, 11
Rose Plants	3, 4, 5, 6
Shade & Flowering Trees	20, 21, 22
Terms and Delivery	34
Vines	30



OLIVE LONGLAND. 60c each; 3 for \$1.50



COURAGEOUS. 60c each; 3 for \$1.50

5 MUMS COLLECTION

*One of Each
and
1 Fred Rockwell*

\$3.20
postpaid



EARLY WONDER. 50c each; 3 for \$1.25



CHIPPEWA. 50c each; 3 for \$1.25



HEATHERBLOOM. 60c each; 3 for \$1.50



Lovely **MUMS**
for Your Garden!

SEE GENERAL MUM LIST
PAGES 7, 8, 9

COLLECTION

3 each of these 3 MUMS
(9 in all) for \$3.75 postpaid

6 each of these 3 MUMS
(18 in all) for \$7.15 postpaid



LAVENDER LADY. 50c each; 3 for \$1.25



MAROON 'N' GOLD
50c each; 3 for \$1.25



CHARLES NYE. 60c each; 3 for \$1.50

B. F. BARR & SON

Nurseries: R. D. 2, Marietta Road · Route 340

B. F. BARR Flower Shop, 116 N. Queen St., Lancaster, Pa.