

Historic, Archive Document

Do not assume content reflects current
scientific knowledge, policies, or practices.

62.09

1948

America's Finest

LIBRARY
RECEIVED

★ SEP 30 1948 ★

Fuchsia Collection



SEVENTEEN (See Page 21)

Berkeley *Horticultural Nursery*

GEORGE BUDGEN

1310 McGee Avenue

•

Berkeley, California

Fuchsias . . .

We maintain growing plants of all our Fuchsias for display purposes and our garden is a riot of color all during the summer and fall. The public is cordially invited to enjoy this display and here you may see the Fuchsias grown in the various forms; trailing in hanging pots, trained to tree form, and also espaliered. Each year we hold a Fuchsia Show at the Nursery open to the public when Fuchsias are at the height of bloom. This generally occurs in early September and at this time a preview is given of new varieties to appear the following spring. Keep this period in mind as we have thousands of people who eagerly look forward to this occasion.

VARIETIES—While we grow probably the largest number of varieties in the United States we have cut out many of the older varieties in favor of the many beautiful newer ones.

CULTURE—Fuchsias love the shade and moisture and for this reason are well adapted for the shady side of buildings where they give a wealth of bloom. They respond to a rich soil and applications of well rotted manure is advocated with additional feedings of more concentrated plant food. They will not stand an outside temperature below 20 degrees Fahrenheit.

PRICE—Price of all plants except where noted otherwise are as follows:

From 4-inch pots, 35c each.

Many varieties in larger sizes from 50c up.

Trailing varieties in 10-inch hanging pots, \$2.50 each.

SUBSTITUTIONS—When ordering by mail it would be wise to list a few substitute varieties in case certain ones ordered are out of stock. Otherwise we will use our discretion in making substitutions.

SALES TAX—All orders in California add 2½% Sales Tax to all prices. On orders from 15c to 59c add 1c; 60c to 99c add 2c tax; \$1.00 to \$1.39 add 3c tax; \$1.40 to \$1.79 add 4c tax; and for every 40c additional add 1c tax. Orders shipped outside of California are not subject to this tax.

SHIPPING—We prepay all cash orders over \$4.00 in California. Outside of California, shipping charges are to be paid by purchaser. Such orders will be sent charges collect if payment does not cover. For instance, four plants from four-inch pots will weigh three pounds packed for shipment and for each plant over four add one-half pound and rates from the different zones may be computed.

SAMPLE SHIPMENT—To help you get acquainted with these delightful flowering plants we make a special offer of 1 dozen plants all named and different for \$3.50. These plants to be of our selection, although you may designate varieties you already have and we will not duplicate.

SEE SPECIAL QUANTITY PRICES, PAGE 23

1948

Fuchsia Introductions

Descriptions are those given by the hybridizer.

BO-PEEP (Clement Schnabel)—This is a neat upright bush of medium vigor, well furnished with small leaves and smothered with dainty little flowers. The semi-double, pale orchid corolla is somewhat flaring, while the tube and well recurved sepals are white and touched with a faint blush. A dainty addition to the popular pastel group.

DULCINEA (Ralph Edwards)—This is a red and white double of exquisite form. The red tube is quite long and the sepals are the longest we have ever seen on a red and white fuchsia. The corolla is double and of a clean, clear white coloring and although it is of good size it is dwarfed by the beautiful long sepals. Reminiscent of Suzanne Pasquier, which is one of its parents, Dulcinea tops it with its even more elegant sepals. A graceful and distinguished plant of medium vigor.

ECSTACY (Tiret)—An exquisitely colored pale double variety which resembles Flirtation in its delicate coloring and form but the plant is of more willowy growth and the flowers are of even finer coloring. The inner petals are of hyacinth blue and the outer ones of the same color are splashed at the base with phlox pink. The horizontally reflexed broad granular sepals are neyron rose tipped green. The large flower has much more substance than Flirtation and the pale coloring is of a cleaner brighter quality. Tops in the marbled pastels. Should be tried as a semi-trailing variety.

GULLIVER (Reiter)—A large white-tubed single with dark Tyrian Rose petals. This plant is named for the breeder who obtained the first white tube and sepalled fuchsia, Venus-Victrix, in 1840. The tube and sepals are waxy white and the dark Tyrian Rose petals are full and overlap well. If anything, the plant is too free-blooming and it should be started early in the season. Best treated as a small bush.

IRISH ROSE (Reiter)—An entirely new coloring in fuchsia. A logical sequence to the development of the white fuchsia, this variety represents the first new break from the exploitation of the all whites. The medium sized flowers are fully double with pale chartreuse tube and sepals and with petalage of the tenderest rose. The perfectly proportioned pale rose and light chartreuse double flowers and the light green foliage present the most delicate coloring in all of fuchsia. There is no other fuchsia like it nor is there anything approaching its delicacy of color. Like the all whites, it must be grown under cool conditions.

JACK SHAHAN (Tiret)—A trailing variety named for a popular member of the American Fuchsia Society. This is a large single with long tube and sepals. The tube and pagoda shaped sepals are of the palest Rose Bengal and the petals of the same color are margined with a darker shade. A strong grower with a beautiful flower which should be easy to grow.

MANTILLA (Reiter) — A sensational new trailer which should grow to perfection in Southern California. For years we have tried to develop an F. triphylla trailer and in 1946 we presented a fairly good variety, the 25% F. triphylla hybrid, Trumper. This year we have finally created a 50% F. triphylla hybrid which is a perfect trailer. With soft willowy branching growth and beautifully shingled with bronzy foliage, Mantilla covers itself with long flowers of pure deep carmine. The flowers have the longest tubes we have ever seen, some having measured better than three and a half inches in length. The petals are spreading and the sepals pagoda like. The entire flower, tube sepals and petals are of the one color, deep carmine. During the trying 1947 summer Mantilla alone seemed to revel in the heat. A breeding triumph.

PINK SHOWER (Reiter)—A trailer with plenty of small branches and with small semi-double flowers of palest rose. The well-formed flowers appear with abandon on the very leafy branching plant. Recommended for the cool garden where a well furnished hanging pot is desired in the pastel shades.

SEA FOAM (Reiter) — A beautiful small bush with medium sized crispy flowers of semi-double petalage and upspreading sepals. The tube and sepals are white and sometimes flushed pale rose and the petals are marbled dark petunia purple and white tinted rose in the manner observable on receding ocean waves. The flower is of a crisp, prim character which makes it desirable for those who scrutinize their flowers closely. A flower of jewel quality. Should have shade.

SHARON (Tiret)—This semi-trailing variety named for the originator's daughter is of splendid growth and excellent foliage with large flowers in the "warm red" group. The flowers are double and well formed with a medium tube and broad reflexed sepals of palest scarlet. The petals are Rose Bengal splashed with extensions of geranium lake at the base. Blooms early and tolerates some sun. Garden tested.

VALENTINE (Reiter) — This is a large semi-double of a new form and coloring. It is notable because of its very long tube and huge widespreading sepals. The tube and sepals are white slightly flushed rose and the inner surface of the sumptuous sepals is of an iridescent granular quality. The semi-double spreading corolla is of the deepest Imperial purple fading to white at the base of each petal. As the flowers mature they fade to deep Cyclamin purple. Growth is strong and loose and the plant is free-blooming for flowers of such size. A glorified Nonpareil with extraordinary sepals and huge size. It should be tested as a hanging variety.

YULETIDE (Tiret)—A tall upright double red and white. Giant flowered with a large globular creamy white corolla, crimson tube and sepals.

ALL 1948 INTRODUCTIONS

\$1.00 each

Any 6 for \$5.00

All 12 for \$9.50



RADIANCE (See Page 20)

Trailing Fuchsias

For window box culture, hanging pots and baskets.

ABUNDANCE—Rose sepals, double pale Bishop corolla.

CARLA—Single, long thin flower, sepals pale flesh, corolla carmine.

AMERICA (Niederholzer) — Single orange red corolla with long sharp pointed sepals, deep rose pink on outside, bright rose red on inside. Greenish white tips. Long thin tube, flesh tinted rose pink. Good grower and with a little training will make a fine hanging Fuchsia.

ANNA (Reiter) — Sepals, tube and base of petals strong carmine, very large double corolla of magenta. Vigorous growth and the largest flower of self color group. 4-inch pots, 75c; 6-inch pots, \$1.50. In hanging boxes, \$2.50 each.

AUTUMNALE (Meteor) Highly colored foliage of bronze and orange flowers, scarlet sepals and purple corolla.

BRAZIER — Trailer — semi-double corolla of deepest carmine and sepals of pale carmine. A fine addition to the trailers. 75c each.

BUTTERFLY (Reiter Sr.) — Trailing single flowered glorified Muriel. Self color with sepals and corolla of Rose Bengal and crimson. Corolla is very large and spreading.

CAPRICE—Basket type, single small flower, Petunia purple corolla with sepals and tube of pale rose-madder.



ANNA

CHRYSANTHEA—Basket type, very large double, sepals red and corolla purple.

CLARET CUP (Dr. Legan)—A large single with a corolla of Rose Bengal edged deep magenta. The large recurved sepals are pale carmine. A striking plant in the garden where it gives a clear strong color.

Trailing Fuchsias—(Continued)

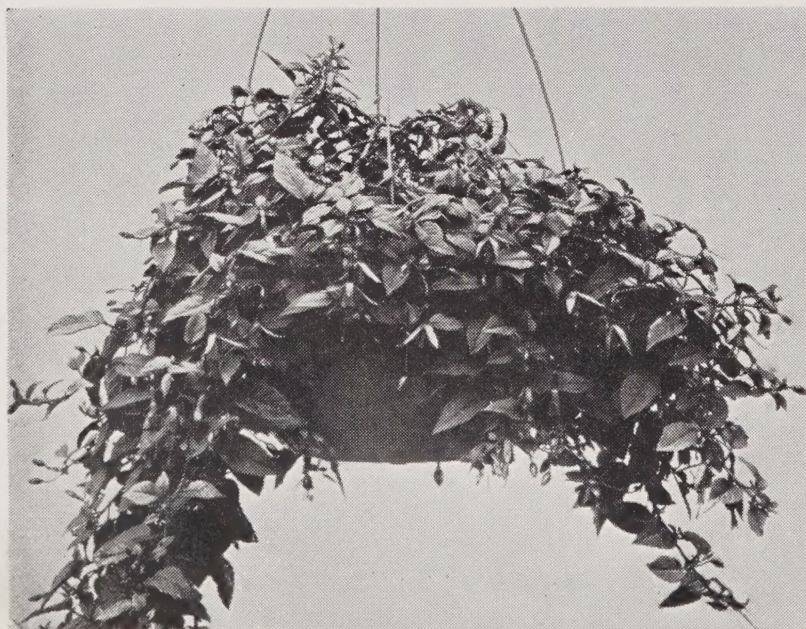
CASCADE (Dr. Legan)—One of the finest trailers produced, good grower and fine foliage. Masses of large single blooms, long pointed sepals white flushed carmine and deep carmine corolla, spread of sepals usually about six inches.

COQUETTE—Red tube, white sepals and bluish purple single corolla. A very fine Fuchsia that will make a good hanging pot variety.

DOLORES—Double, almost perfectly self-colored carmine-rose.

FALLING STARS (Reiter Sr.)—Trailing. A glorified Morning Mist. Tube and broad sepals of a pale carmine scarlet. Large corolla of deep brick orange red.

GALLI-CURCI—Large single flower; tube as long as corolla, sepals flaring and reflexed. Large oval bud of shell pink. Tube and sepals waxy shell pink, stained rose pink on reverse side. Petals pink suffused with violet pink. Habit is spreading and weeping. A vigorous grower; profuse and long bloomer.



HANGING POT

HANGING POTS

We are happy to be able to offer hanging pots, without plants, complete with wires for hanging up in the following sizes:

8 inch pots at.....\$1.00 each
10 inch pots at.....\$1.35 each
(10-inch size usually used for Fuchsias)
12 inch pots at.....\$2.00 each

HALLOWE'EN (Dr. Legan)—Very large single flower with deep rose single corolla and very lightly flushed pink sepals. A good mate for Cascade.

INCA MAIDEN (Schmidt)—Trailing, single corolla of violet blue, long narrow rose pink sepals. Medium sized flowers with free flowering habit.

MARINKA (Red Cup)—Almost a self color with rosy scarlet corolla and crimson scarlet sepals. Semi-trailing but making a fine display when staked up to show the blooms.

MRS. VICTOR REITER (Reiter Sr.)—A long tubed single bi-color. Corolla a pure crimson fading to white at base. Slender sepals and long tube of creamy white.

MELODY (Reiter Sr.) — Beautiful single flowered Fuchsia of soft pastel shade. Large flowers with the corolla of pale Cyclamen purple and recurved sepals of pale Neyron rose. With training might be developed as a hanging type.

MRS. G. G. HENRY — Trailing form with pale pink sepals and single white corolla.

Trailing Fuchsias—(Continued)

MRS RUNDLE—Very long tube and very long pointed sepals of flesh color, with vivid orange corolla. A real beauty.

MRS. W. H. WARE (Hazard & Hazard)—Sepals long reflexed white flushed pink, corolla blue violet, pink at base changing to beautiful red violet in aging flowers.

MURIEL—Scarlet sepals, large single twisted petals of rosy lilac. Fine.

PROCUMBENS—New Zealand. A trailing variety with tiny leaves and short orange tube with reflexed purple sepals, no corolla. Blue stamens. Fine for the rock garden in the shade. Red fruit.

RAMONA—Single long red flower.

RED SPIDER (Reiter Sr.)—Spidery flowers have a long tube and exceedingly long narrow sepals of deepest crimson and long pointing petals of deep rose madder veined and margined deep crimson. A very good trailer. 50c each.



CASCADE (See Page 6)

SAN FRANCISCO (Reiter, Sr.)—Trailing type. A rather thick translucent tube and the sepals are a pale carmine rose in the inside and carmine rose on the outside. Large single corolla of pure deep orange red.

TRAILING QUEEN—Trailing habit with fuchsia red corolla and long pointed bright scarlet tube and sepals. Very showy.

UTOPIA—Willowy grower, very large single, sepals extra wide spreading, corolla white suffused pink, veined red serrated.

WISTERIA (Neiderholzer)—Strong growing Fuchsia with a narrow long tube and oblong bud of almost white with very pale green tip. The inside of the sepals is tinged with Phlox pink. The single corolla is Mallow purple, irregular with each petal on a long peduncle. In addition each sepal rolled up carries a miniature petal on its base.

Note:

Trailing Fuchsias grown in hanging pots should be cut back severely each spring before growth begins, to promote new growth from the crown. Fertilize during the growing season each 5 or 6 weeks for best results with a good nitrogen fertilizer.

Single Flowered Fuchsias



FANFARE (See Page 9)

ALICE HOFFMAN—Compact bushy plant with masses of medium sized flowers with white corolla and rose colored sepals. Very fine.

ARBORESCENS (Syringae flora)—Mexico. Erect terminal panicles of small rosy lilac flowers. Different from all other Fuchsias. Strong growing.

ANTIGONE—Large loose growing plant with gorgeous single flowers of waxy white sepals and deep orange pink corolla. Individual in form and color of flowers. 50c each.

APRIL—Dwarf, compact habit with bright red sepals, single violet corolla.

AURORA SUPERBA—Sepals and tube of light orange apricot, corolla of deep orange peach. One of the very fine importations of a few years ago.

BELLISIMA—Very large single, long deep purple corolla—bright red sepals. Tall. 50c each.

BEAUTY OF SWANLEY (Villa Hebe)—Very soft rose corolla and long pointed white sepals very lightly tinted pink. A fine variety.

BEVERLY HILL (Evans & Reeves)—A strong grower with enormous single flowers and corolla of a wonderful shade of burgundy red. Long elegant sepals of glowing pink with white striping.

BLUE MOON (Niederholzer)—Large single deep blue purple corolla and red sepals.

BOLIVIANA (Brazilien-sis) — Bolivia. Standing more sun and heat, tall growing, free blooming over the summer, with clusters of long thin flowers of scarlet red.



LUSTRE IMPROVED (See Page 11)

Single Flowered Fuchsias—(Continued)

BRILLIANT—Masses of bloom with scarlet sepals and violet corolla.

CALIFORNIA (Evans & Reeves)—Tall vigorous grower with good sized flowers of bright orange and sepals of coral pink. A fine one for growing into tree form.

CARDINAL—Very strong grower, single rosy purple corolla, red sepals.

CHANG (Oriental) (Hazard & Hazard)—Single, floriferous. Coloring and form suggest the Orient. Tube and back of sepals tinted with same color. Inside of sepals is almost white. Petals are delft rose; sometimes scarlet, frequently a blending of scarlet and pomegranate purple. 75c each.

CHAS. ABRAHAM—Upright single medium size flower, sepals red and corolla purple.

CLAIRE DE LUNE (Moonlight)—Broad leaves similar to Monterey. Long narrow blooms of salmon-orange, corolla flaring out at end of tube.

CORYMBIFLORA ALBA—Peru. Tall growing like preceding with long thin white tube and sepals and short deep red corolla.

COUNTESS OF ABERDEEN (Schneewitschen)—A gem in the Fuchsias with small pale pink, sometimes white corolla, with white tube and sepals.



ERECTA NOVELTY



HENRI POINCARE (See Page 10)

DIANE (Hazard & Hazard)—A generous bloomer with a corolla of cameo pink and the sepals and tube a waxy white.

DIAWILLIS—Single pale rose corolla, sepals pale rose Bengal. Tall. 50c each.

DUCHESS OF ALBANY—Tall growing with masses of flowers, deep reddish pink corolla set upon waxy white sepals faintly tinted.

EARL OF BEACONSFIELD—Very long light carmine tube and sepals with short vermilion corolla.

ELFIN—Small dainty single white with soft pink sepals.

ERNEST RENAIN—Rich rose pink corolla shading to white at base, inflated tube and sepals waxy white.

ERECTA NOVELTY—Single white and light pink, corolla margined with rose. Flowers erect.

FANFARE (Reiter, Sr.) — Very large trumpet shaped flower with an amazing rich coloring. Exceptional vigor and fine foliage. The long narrow tube and sharply pointed sepals of a varnished turkey red. The large flaring corolla is of pure scarlet.

Single Flowered Fuchsias—(Continued)



DUCHESS OF ALBANY (See Page 9)

FLAME—Single ivory and brilliant orange.

FORMOSISSIMA—Tube and sepals creamy white, single soft rose corolla.

FULGENS—Mexico. Large hairy light green leaves with orange vermillion corolla, orange-pink tube with green tipped sepals.

GAY SENORITA—Single bell shaped corolla deep lilac flushed rose with distinct light border edging the petals. Sepals long and spreading, deep rose red. Good grower and free flowering.

GEISHA—Single twisted corolla of deep orchid, tube and sepals shiny red.

GLENDALÉ (Evans & Reeves)—A tall growing vigorous Fuchsia with a profusion of rather small dainty single coral pink flowers. Will stand full sun.

HARLEQUIN (Hazard & Hazard)—Unusual with rose red sepals, long slender curled and twisted (pinwheel-like) with corolla of madder violet much striped with rose red, base of petals rose red.

HARMONY (Niederholzer) — Light geranium lake sepals and single rose Bengal corolla.

HEAVENLY BLUE—Upright large single pale pink long narrow sepals rolled up, corolla pale blue.

HENRI POINCARÉ—Long violet blue corolla and pointed red sepals. Very fine.

HERON—Very large corolla of blue purple flushed carmine at base, broad scarlet sepals with deep crimson on reverse. Very fine medium grower.

ISIS—Mexico. Medium height, with small glossy blue-green foliage and a mass of tiny bright crimson flowers.

JANE EVANS (Evans & Reeves)—Large single blossoms of coral and salmon with petals a vivid shade of salmon and cerise. Vigorous grower.

JUNE CAROLYN (Evans & Reeves)—Long single flowers with corolla of coral blended with carmine and orange pink sepals. Tall grower with fine foliage.

JULIUS—Tube and sepals red, single rosy lavender corolla. Very attractive.

LIEBESFREUD—Upright single flowers, sepals pale ivory, inside faint pink, corolla pale imperial purple.

LITTLE BEAUTY—Dwarf compact bush, very free flowering with lavender blue corolla changing to rosy lavender, deep pink sepals.



AVIATOR

Single Flowered Fuchsias—(Continued)

LORD BYRON — Dwarf bushy habit with medium sized flowers of deep velvety purple corolla and short tube and sepals of bright scarlet.

LOS ANGELES (Evans & Reeves)—Beautiful long single flowers of waxy coral apricot and petals of deep orange suffused with vermillion.

LUCIENNE BREVAL — Single long slightly twisted corolla of white delicately shaded rose. Long pointed softly tinted sepals.



MACROSTEMMA ALBA

LUSTRE IMPROVED — Medium growing with bright orange red corolla and creamy white tube and sepals.

MME. AUBIN—Vigorous grower with deep orange pink corolla and soft salmon sepals.

MADAME THIBAUD—Strong tall growing with long pointed bud opening to cup-shaped corolla of bright violet rose. Long narrow deep rose sepals. Heavy masses of bloom.

MARIBETH—Single pink corolla tinted gold, soft pink sepals.

MACROSTEMMA ALBA—Chile. Tall upright growing variety with small leaves and small blooms of almost pure white in both corolla and sepals. It has the faintest lilac flush to the flower.

MAGELLANICA GRACILIS — Peru and Chile. Strong growing, almost climbing in habit. Small narrow leaves and small thin flowers with narrow red sepals and short purple corolla.

MAGELLANICA GRACILIS VARIEGATA —Flowers same as Gracilis above with silvery white variegated foliage.

MAZDA—Large single of crisp, deep carmine, spreading corolla and gracefully recurved sepals. A prize winner.

MME. CORNELISSEN—Long single white corolla with bright scarlet sepals.

MELODY (Reiter, Sr.)—Beautiful single flowered fuchsia of soft pastel shade. Large flowers with the corolla of pale Cyclamen purple and recurved sepals of pale Neyron rose. With training might be developed as a hanging type.

MINUET—Very floriferous in brilliant red sepals and purple single wide open corolla. Upright growth.

MONTEREY—Bright orange pink short corolla, narrow and sharply pointed sepals of soft pink delicately shaded orange. Broad leaves.

MRS. J. D. FREDERICKS (Evans & Reeves) —Fast growing plant with masses of dainty salmon pink blossoms. Should be allowed to grow into a large spreading specimen.

MU LAN (Hazard & Hazard)—A healthy strong growing fuchsia, naturally producing a tall well formed bush. Good foliage and very floriferous. Single corolla of creamy white veined light rose red with four large petals with edges picoteed. The long sepals light rose red inside, waxy dark rose outside. Much recurved.

MURIEL EVANS (Evans Gardens)—Medium sized single flowers, sepals and petals of rich scarlet.



SUNBURST (See Page 21)



MRS. J. D. FREDERICKS (See Page 11)

Single Flowered Fuchsias—(Continued)

NARCISSUS (Niederholzer) — Tube and long sepals of ivory and the single corolla is orchid purple. The name implies the form of flower. 50c each.

OTHERFELLOW (Hazard) — Unusual A rather different single, floriferous, beautiful fuchsia of medium size, of good form and fine texture. Tube and sepals a waxy white, translucent as pure alabaster, which the lovely flowers more often resemble. Corolla of 4 petals, white at base to French rose. Foliage a pleasing healthy green. Habit of easy growth responding readily to hands of amateur or professional. 50c each.

OLYMPIA—Pale rose pink sepals, single carmine scarlet corolla.

PAMELA—Single open carmine rose corolla, soft pink sepals tinted carmine.

PASTEL (Reiter, Sr.)—The great improvement over the introduction, Treasure Island. Short tube and large broad sepals of pale Neyron rose with the single corolla of old rose shaded lilac. Strong grower.

PEBBLE BEACH — Large single dark purple corolla, white tube and upturned sepals of pale rose madder. May be used as trailer. 50c each.

PERKY (Hazard & Hazard) — Sepals waxy white, very sharp pointed tips of deep pink. Corolla single pink. Habit of growth tall and upright. Foliage small and neat.

PLEROMET (Niederholzer)—Tall upright growth with sepals of Turkey red rolling up and single corolla of very dark violet. 50c each.

PRIMA DONNA — A perfect form flower with single very large white corolla and very pale pink sepals. A beautiful Fuchsia.

PRINCE OF ORANGE—A real gem of slow growth with deep orange vermillion corolla and soft carmine tube, sepals of deep salmon pink.

REFLEXUS—Small bushy plant with tiny flowers of orange scarlet and reflexed red sepals.

RICHARD DIENER—Upright, large single flowers, red sepals extra wide spreading, corolla white suffused pink, veined red, serrated.

ROSE OF DENMARK—One of the best with corolla of pale rose shading to deeper rose at edge of petals, reflexed pale blush sepals.

ROSE PILLAR (Reiter, Jr.)—The plant is strong and tall, resembling Pink Pearl in foliage and vigor. The flower is a single large saucer-shaped type. The entire flower is of clear Neyron rose edged with a thick margin of geranium lake.



SAN FRANCISCO (See Page 14)

Single Flowered Fuchsias—(Continued)

SACRAMENTO (Reiter Jr.)—Self colored single of beautiful light carmine. Inflated tube is waxy and the gracefully recurved sepals are of exceptionally fine quality. Petals long and straight with thin margin of deeper carmine.

SAN FRANCISCO (Reiter, Sr.)—Trailing type. A rather thick translucent tube and the sepals are a pale carmine rose in the inside and carmine rose on the outside. Large single corolla of pure deep orange red.

SERAPHINE—Large single wide spread corolla of dark cyclamen purple and upright sepals of deep pink. Distinct.

SERRATIFOLIA—Peru and Chile. Long tube white tinted carmine shading to green at tips of sepals, deep orange pink corolla shading to carmine base.

STANFORD (Hazard & Hazard) — Sepals red and corolla single white. New foliage beautiful bronzy color.

STARGAZER (Reiter Jr.) — Small bushy plant with upright flowers. The tube and sepals are pale rose madder and petals are rose madder heavily margined and marbled at their base with Imperial purple. Should be an excellent pot plant. 50c each.

SUEY HO—Single white corolla with rose veins at base, white green tipped sepals flushed rose. Dwarf. 50c each.

SUNRAY—Ornamental variegated foliage, silvery white and green. Rosy purple corolla and salmon sepals.

SUNSET (Niederholzer)—Single open saucer shaped flower of deep salmon orange.

SUNRISE (Reiter, Sr.)—Single corolla of clearest scarlet with tube and sepals white flushed rose tipped crimson. Upright strong growing plant of free blooming quality.

SWANLEY YELLOW—Extra long tube and sepals of light apricot and deep orange pink corolla.

SYMPHONY—Single pale orchid pink with white sepals tinted pink.

THYMIFOLIA—Mexico. Minute flowers in profusion with tiny crimson sepals and petals. Tube of lighter shade. Prominent white stamens. One of the smallest flowers of the group.

THE DOCTOR—Deep pink to deep rose corolla with long pointed sepals of soft salmon pink. Very fine and showy.

WHITE BEAUTY—Open saucer shaped corolla of single white petals lightly veined scarlet, scarlet sepals reflexed back against the short tube.

Triphylla Hybrids

CORALLE—Large clusters of rich orange salmon flowers. Blue green leaves.

GARTENMEISTER BONSTEDT—Flowers glowing brick red with orange shading. Dark bronze red foliage.

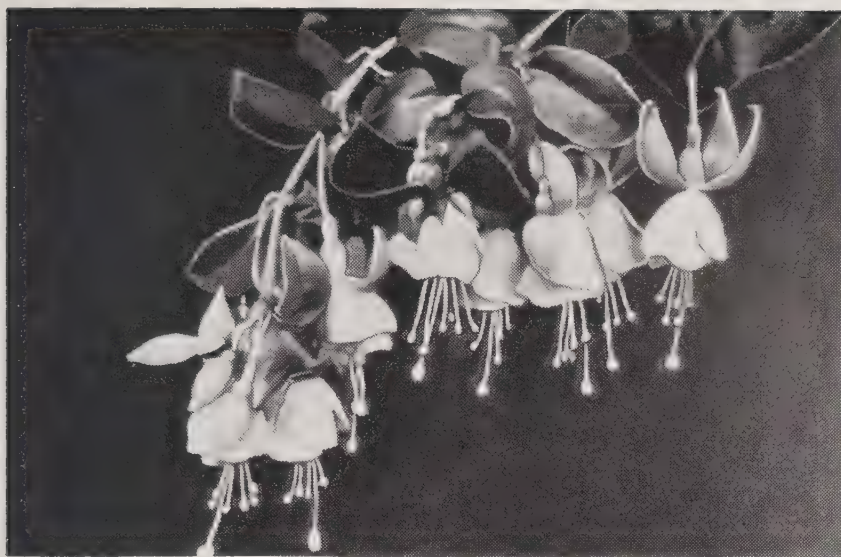
LEVERKUSEN (Triphylla hybrid)—Large single flowers with rosy salmon corolla and sepals. Free flowering. Very fine.

TRUMPETER (Reiter Jr.)—A notable Triphylla hybrid. Geranium Lake petals accentuate the long tube and sepals of slightly paler shade. We were delighted when we saw this one and feel sure of our client's approval too. See color plate back cover.

SOUVENIR DE HENRY HENKEL (Andenken a H. Henkel)—Long tube and sepals of deep pink, short orange pink corolla. Reddish foliage. Dwarf habit.

TAUDESCHEN BONSTEDT—Long tubular flowers in clusters of pale salmon pink color.

THALIA—Bronze green foliage and long orange scarlet sepals and short orange red corolla. Tall upright growth.



Double Flowered Fuchsias

ABBEY FARGES

ABBEY FARGES—Tall upright growth with masses of medium sized flowers, the corolla a silvery lilac and deep pink sepals.

ALICE EASTWOOD (Hazard & Hazard)—Large semi-double with heavy reflexed sepals of creamy white and washed rose red. Corolla white veined rose red.

ALFRED RAMBEAU—Double violet purple corolla and scarlet sepals.

ANITA (Niederholzer) — Very tall giant double. Turkey red sepals and violet corolla Splashed red. Very free flowering.

ANNA (Reiter)—Sepals, tube and base of petals strong carmine, very large double corolla of magenta. Vigorous growth and the largest flower of self color group. See color plate, page 16. 4-inch pots, 75c; 6-inch pots, \$1.50. In hanging boxes, \$2.50 each.

AVE MARIA (Reiter)—One of the finest of the close to all white Fuchsias. Double with only a tint of color in the sepals. Medium bushy growth. 4-inch pots, 75c each; 6-inch pots, \$1.50 each.

BALLET GIRL—Tube and sepals bright red, corolla white veined cerise at base of petals. Different from other whites.

BERLINER KIND—Large double white with carmine base, deep clear pink sepals. Low, almost trailing.

BERTRADE—Large double white flushed pink, red sepals.

BLUE GOWN—Deep blue corolla, light carmine tube and sepals. A fine variety.

BUFFON—Corolla blush white with scarlet sepals.

CAMELLIA—Large double white with spreading petals flushed cerise and crimson sepals.

CATALINA—Beautiful large double flowers of snow white, with long crimson sepals. A strong grower with fine foliage.



CAMELLIA

Double Flowered Fuchsias—(Continued)



GARTENMEISTER BONSTEDT (See Page 14)

CONSTANCE—One of our own hybrids from Pink Pearl, and is one we very highly recommend. Same upright habit with double blue shaded pink corolla and soft pink petals. Very free blooming.

CRESCENDO (Reiter, Sr.)—Double flowered with the outer one-third of corolla Peony Purple and the margins and lower two-thirds are Turkey Red. Sepals are Turkey Red. Shrubby upright type of good growth and continuous bloom. The most red double Fuchsia.

DAINTY LADY—A charming variety of neat bushy habit, semi-double corolla of white veined carmine at base, tube and sepals deep red.

COLLINGWOOD—Upright large double sepals pale pink, corolla perfectly white.

DANUBE BLUE—Double blue spreading corolla with deep pink sepals. Very fine.



MELODY (See Page 11)

DIADEM (Reiter Jr.)—Semi-double with tube and sepals creamy white overlaid with palest rose. Tufted petals of darkest Paeony purple. Excellent for pot culture.

DOLLAR PRINCESS—Short full double corolla, purple shaded rose at base changing to rosy purple, scarlet sepals.

DR. JOHN GALLWEY (Reiter, Sr.)—The flowers of this variety are exceptionally large with a full double corolla of a rich creamy white veined at the base with rose madder. The sepals are broad and large pointing upward and outward from the corolla of the pure rose madder throughout. The flower stems are quite long, allowing the large flowers to hang well out from the foliage.

ELECTRA—Upright large double, sepals red, corolla palest pink almost white veined rose.

Double Flowered Fuchsias—

(Continued)

FASCINATION (Irwin's Giant Pink)— Compact bushy plant with full corolla of soft rose petals, streaked and flushed deeper, deep pink sepals.

FLIRTATION (Leitner) — Sport from Lucky Strike. Tube and long reflexed sepals of pale rose madder with petals evenly tinted with the palest Petunia purple. 50c each.

FRANK E. HENRY—Fluffy large semi-double corolla of pure white with tube and sepals of very pale pink.

FRITZ KREISLER—Semi-double upright flower, crimson sepals, corolla rhodamine purple.

GENERAL ROBERTS (Phenomenal) — Large rich plum purple corolla streaked carmine at base, reflexed scarlet sepals.



GYPSY QUEEN (See Page 18)



SANTA MONICA (See Page 20)

G. MONK — Compact grower, fine for pot culture. Fine blue corolla and deep pink sepals.

GEORGE PORTESI — Violet blue corolla with scarlet veins, scarlet sepals. Very large flowers.

GLOIRE DE MARCHI — Medium grower with medium sized white corolla and deep pink sepals.

GLADIATOR — Dwarf habit with white petals flushed pink at the base. See color plate.

GRENADIER — Long pointed scarlet sepals and full double violet corolla. Very large.

Double Flowered Fuchsias—(Continued)

GUY DAUPHINE—Violet plum corolla splashed carmine, carmine sepals.

GYPSY QUEEN—A very fine Fuchsia. Enormous flowers with deep crimson sepals and rosy mauve petals. Highly recommended.

HAP HAZARD (Hazard and Hazard)—Rich deep purple with fine white line around edge of each petal, scarlet sepals.

HOLLYDALE (Fairlo)—Sport of Winston Churchill. The corolla is clear magenta but is same free branching and profuse blooming habit. 50c each.

HONEYMOON (Niederholzer) — Semi-double wide open veronica blue corolla and red sepals. Very fine blue type. 50c each.

JOHN McLAREN (Hazard & Hazard)—Large semi-double flowers with nicely shaped spiral tight corolla of light hyssop violet, sepals very heavy waxy texture, lacquered red outside and much lighter color inside. Both foliage and flowers of heavy waxy texture. Very fine and different from any other fuchsia. 50c each.

JOAN OF ARC (Reiter, Jr., 1947)—This variety is of a clearer white than Ave Marie, and is of better form with larger more double flowers. Plant differs in its looser, softer habit of growth, which makes it suitable for pillar or espalier work. Cool conditions are essential to its successful culture. 50c each.

JULES DALOGES—Corolla rich violet tinted red, very large double, reflexed scarlet sepals.

JULIETTE ADAMS—Tall upright grower with white and red streaked flowers and scarlet sepals. A fine variety.

KITTY O'DAY (Hazard & Hazard)—Very double. Tube and sepals rose red. Corolla white washed and veined rose red. Petals beautifully cupped or rolled in edges, rose-like. A handsome large very floriferous variety.

LAVENDER BEAUTY—Beautiful lilac suffused rose, carmine veins, broad, deep pink sepals.

LENA—Double rosy blue corolla with colored sepals.

LILAC QUEEN—Dwarf bushy habit with medium sized rosy lilac flowers, deep pink sepals.

LILANI (Niederholzer, 1947) — An odd flower. Double rhodamine purple corolla with all petals scalloped. Sepals and tube dark crimson; 4 feet tall.

LUCKY STRIKE — An unusual colored Fuchsia in rather striking combination of blue-purple-pink and gray tones. Globular in form and quite double.

MADAME DANJOUX—Fine double white heavily suffused carmine, red sepals.

MAUVE BEAUTY—Beautiful short corolla of lilac mauve with deep pink sepals. A real beauty.

MARIONETTE (Reiter Jr.)—Double white powder-puff petalage with tube and sepals suffused palest rose. Another good one of the Rolla group. 50c each.

MISS B. HESSE—Bushy habit with masses of white veined rose, scarlet sepals.

MISS PRIM—Large semi-double with petals of deepest Imperial purple fading to lighter shade. Sepals carmine.

Double Flowered Fuchsias—(Continued)

MME. JULES CHRETIEN—Double white corolla, red sepals.

MME. LANTELMA—Very large full corolla of soft pink with crimson sepals.

MME. J. FEUILLET—White heavily flushed pink with deep pink sepals. Very large.

MOLESWORTH—Full double snowy white, scarlet sepals.

MR. GLADSTONE—Very full plum purple corolla, crimson sepals.

MRS. DESMOND (Introduced by Hazard & Hazard)—Large flowers, sepals rose red inside, darker outside. Corolla light amparo purple exquisitely veined.

MRS. GLADSTONE—Very large double white veined crimson, bright clear pink sepals. One of the best.

OAKLAND (Reiter, Sr.)—Huge very double Fuchsia with a corolla of rosy white heavily veined with crimson. Short broad upright sepals of crimson. The plant is strong and compact, capable of producing the largest double white blooms.

PACIFICA (Neiderholzer)—Extremely floriferous with the crimson upright sepals slightly twisted. A single and semi-double corolla of orchid purple lighter at the base and darker on edges with fine crimson veins. See color plate, page 21.

PACIFIC GROVE (Niederholzer, 1947) — Very fine double flowers with bishop violet corolla and smaller pale crimson petals outside merging into darker crimson, leathery upright sepals, upright to 8 feet; a very strong grower.

PASTEUR — Tall upright growth with masses of silvery white flowers and reflexed deep pink sepals. Very popular.

PATTY EVANS (Evans & Reeves)—A vastly improved Rolla of which it is a seedling. The plants are extremely vigorous growing to a height of 5 to 6 feet with large double flowers with corolla white.



CONSTANCE (See Page 16)

PAVLOVA (Hazard & Hazard)—Single corolla light rose pink nicely veined with rose red. Sepals deep rose pink washed with rose red. Long broad sepals fold back against the tube and the corolla of just four large beautiful shaped flaring petals is outstanding.

PERLE MAUVE—Very fine violet blue corolla and deep pink sepals.

PHENOMENAL — See GENERAL ROBERTS.

PINK BALLET GIRL—Large blue pink corolla with white flushed carmine sepals. Very fine and very free blooming.

PINK PEARL—A real beauty in a tall upright plant with masses of clear double pink flowers and light pink sepals. A favorite with us. See page 20.

PINK PERFECTION (Niederholzer, 1947) —A beautiful medium size plant. Double flowers of pale pink corolla and dark pink upright sepals. Will trail. 50c each.

PORTOLA (Schnabel, 1947) — Fine small bush. Floriferous plant with long semi-double flowers. Petals of the unfolding flowers range from carmine at their base to tyrian rose. Tube white shaded pink. 50c each.

Double Flowered Fuchsias—(Continued)



PINK PEARL (See Page 19)

PRIDE OF EXETER—Long corolla with large broad petals of deep rose lightly suffused violet. Long pointed reflexed sepals of light rose. Tube white shaded pink.

RADIANCE (Reiter, Jr.)—This variety is of the long globular semi-double group and is notable for its apricot shadings. The waxy tube is crimson and sepals of crimson are long and gracefully recurved. The outer petals are crimson with the body of large petals Tyrian rose and crimson at base. See color plate, page 4.

ROSE PHENOMENAL—Very large flowers, very full corolla of violet lavender suffused rose and veined crimson, broad deep crimson sepals. A fine variety.

ROYAL PURPLE—Corolla most intense vivid purple, tube and sepals scarlet. Very showy.

RUBEO (Tiret, 1947)—Vigorous bush with large rugose foliage. Corolla ranging from deepest rose bengal on the center petals to deep crimson on the outer petals. Color intensity is heightened with flecks of marblings of geranium lake. Pale carmine tube and carmine sepals. 50c each.

SAN MATEO (Niederholzer)—Very large double victoria violet corolla with fuchsia pink splashes. Leathery pink calyx. Fine hanger.

SANTA MONICA (Evans Gardens)—Very large double flowers, bright red sepals, white petals changing to pink and veined cerise. Vigorous. See page 17.

REITER'S GIANT (Reiter, Sr.)—One of the largest double flowered Fuchsias. The tube is short and thick and the broad sepals of pure carmine. The corolla is globular, often exceeding three inches across with the color of the sepals splashing into the base of the corolla of crimson. The bulk of the corolla is of a deep blue purple. A good bush variety.

ROLLA — A very distinct variety with white corolla and white sepals suffused with pale pink.

ROSECROFT (Rosecroft Gardens)—Holly-leaved fuchsia. Foliage resembling holly leaves. Long beautifully formed blossoms of striped pink corolla and long curved sepals of carmine.

Double Flowered Fuchsias—

(Continued)

SCABIEUSE—A fine French importation with deep blue purple petals shaded lighter at the base, red sepals.

SCINTILLATION (Hazard & Hazard)—Sepals long, reflexed, tyrian rose inside, darker outside. Corolla single to semi-double with edges of petals picoteed. Strong grower.

SEVENTEEN (Reiter, Jr., 1947) — An entirely new double self-colored fuchsia of a real rose shade. The petals of the large double flower and the thick recurving sepals are clear rose madder. One of the finest fuchsias. See color plate on front cover. 50c each.

STORM KING—Elongated and inflated bud of bright scarlet tube and sepals, corolla double waxy white with crimson veins at base of petals.

SUZANNE PASQUIER—A very fine variety with fine foliage and large pointed buds, opening to white with scarlet sepals.

SUNBURST (Reiter, Jr.) — Tube creamy white veined pale carmine. Usually five sepals which are horizontal of pale carmine. Semi-double petals of crimson. Free blooming and upright growth. See color plate, page 12.



LENA (See Page 18)

TITANIC (Reiter, Jr.) — Double corolla ranges from carmine at base of petals to deep petunia purple toward the edges which have a light "bead" margin. Short carmine tube and thick recurved carmine sepals. Will trail. 50c each.



PACIFICA (See Page 19)

Double Flowered Fuchias—(Continued)

TORPILLEUR—Loose white petals flushed and definitely veined with carmine, scarlet sepals.

TREASURE (Neiderholzer)—Fine upright growth with plenty of flowers. Very pale orchid double corolla of large size; calyx neyron rose. One of the best. 50c each.

UNCLE JULES (Reiter, Jr., 1947)—Double violet blue, sepals crimson. Foliage is small and thick and the growth scandent. Giant double of fine "blue" coloring. Will trail. 50c each.

VICTORY (Reiter, Sr.)—A semi-double that rates at the top of the list. The very large flowers appear as a crimson self. The corolla, long incurved type, is of a solid Rose Madder. Flowers resemble Pride of Exeter but more refined and more evenness of color. Another you can't do without.

VINCENT D'INDIE—Enormous violet purple corolla, suffused carmine, carmine sepals. One of the fine doubles.

VIRGINIA BRUCE—Double violet blue corolla, deep pink sepals.

WHITE PEARL—Semi-double, sepals pale pink, corolla pure white.

WINSTON CHURCHILL—Double corolla magenta pink, shaded blue, upturned sepals rose pink. Strong medium high grower Good sized flowers and a continuous bloomer.

WONDERBLUE (Niederholzer)—Very double real blue corolla. Phlox pink calix. All petals are distinctly scalloped. A fine upright grower.

WOOD VIOLET (Schmidt) — A cross of Winston Churchill and G. Monk. Larger and more double than G. Monk with short tube and very broad half upturned sepals of dark red and spreading corolla of most alluring violet-blue. Free bloomer.

Other Berkeley Horticultural Specialties

CAMELLIAS

Besides our collection of America's Finest Fuchsias we have been building up a large assortment of Camellias and we now offer over 200 varieties, a long list of the most popular as well as the more unusual. A catalog list of these very lovely and very popular flowers will be sent you upon request.

TUBEROUS BEGONIAS

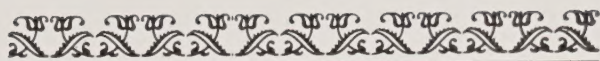
We offer bulbs of these up until the end of March in the following types: Camellia, Carnation, and Trailing type at 30c each or \$3.00 dozen in 1½- to 2-inch bulbs and 20c each or \$2.00 dozen in 1- to 1½-inch bulbs.

AZALEAS

We are at present building up our stock of Azaleas in the Kurume and Indica types and have what we consider a very choice collection in various sizes for outside planting in those areas adapted for these Azaleas. We do not issue a catalog on these but will be glad to quote on those you may be interested in.

CALIFORNIA NATIVE PLANTS

Here again you will find two or three times larger list than the average nursery of California Natives so suitable for that sunny and dry spot. We have 10 to 12 varieties of Ceanothus and several of Manzanita and all the other popular and lesser known plants of this group. No catalog issued on these.



Special Quantity Price

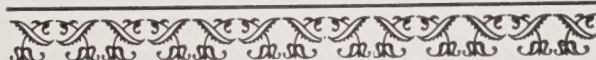


50 strong plants from 4 inch
pots (our selection) all differ-
ent for . . .

\$12.50, postpaid

in **CALIFORNIA, OREGON and
WASHINGTON**

Elsewhere add \$2.50 to above
amount.



FUCHSIA, BOLIVIANA (See Page 8)

OUR SALESYARD—

Our large landscaped salesyard with modern buildings offers us the opportunity to display our gorgeous Fuchsias with the very large list of choice trees and shrubs that we carry.

A cordial invitation is extended you to visit us and enjoy our flowers.

SALESYARD CLOSED EVERY THURSDAY



TRUMPETER (See Page 14)

Berkeley Horticultural Nursery

GEORGE BUDGEN

1310 MCGEE AVENUE

BERKELEY, CALIFORNIA



SWEENEY, KRIST & DIMM
HORTICULTURAL PRINTERS
PORTLAND, OREGON