

Historic, Archive Document

Do not assume content reflects current scientific knowledge, policies, or practices.



LIBRARY
VAD
0 1948
Department of Agriculture

Boyd's

PINK FLOWERING DOGWOOD

This is a tree of beauty, in the early spring is covered with large flowers of a deep rose pink to make it more showy, plant a White Flowering Dogwood nearby.

These trees will be dug and shipped bare roots, well packed.

	Each	Per 3
18-24 inch	\$2.00	\$5.50
2-3 feet	2.50	7.00
3-4 feet	3.25	9.50

Boyd Brothers

NURSERIES

Mail Order Division BOYD NURSERY CO. INC.

McMINNVILLE, TENNESSEE

Three Generations of Boyd's

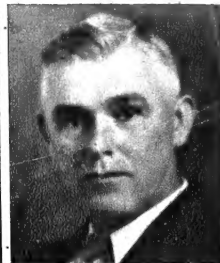
60 Years of Continuous Service to Our Customers

"IN THE NURSERY BUSINESS SINCE 1887"

To Our
Customers
and Friends...



The Late
J. H. H. Boyd



F. C. Boyd



J. Austin Boyd



Robert W. Boyd



Clark C. Boyd

- Three Generations of growing Nursery Stock gives 60 years of experience behind Boyd's and it tells, they know how to ship the best.
- Our Aim, is to ship the best quality of Nursery Stock at Reasonable prices.
- Our business was founded upon Honesty, Service and Quality.
- We do not have any order takers nor Agents representing us. We sell directly by mail and are in position to sell cheaper than we could by Agents.

OUR aim has always been to grow first class nursery stock at lowest possible prices, eliminating all unnecessary expenses in growing and marketing, selling direct to the planter fresh dug plants.

Those who have known and bought from the "Boyd's" in the past, many for a long term of years, of course, need no introduction. To those unacquainted with us, we are glad to give the following bit of information.

Back in the year 1887, J. H. H. Boyd, the founder of our business and father of F. C. Boyd, started gathering and selling tree seeds and soon after began gathering native trees and shrubs and growing them in the nursery. There were few schools at that time in the Cumberland Mountains, and little opportunity to attend, so his education was the result of his own efforts. His intimate and lifelong association with trees and plants, together with his interest and accurate and correct knowledge, made him a leader in the growing of nursery stock. He died in 1924, and left his work, the nursery, in the hands of his sons and grandsons who are trying to grow the best nursery stock and sell it at reasonable prices.

CLAIMS

Claims, to receive consideration must be made within ten (10) days to receive consideration.

WE DO NOT EMPLOY AGENTS

This is to warn our friends and customers against placing orders with any one that claims to represent us. We have had complaints of this nature in the past. Our business is strictly a mail order business and we want all customers to send orders direct to Boyd by mail.

TERMS

All orders should be accompanied by money order or cash. Prices listed in this catalogue are quoted F.O.B. McMinnville, Tenn., ready for shipment. Postage is to be paid by Customer and we suggest about 15% above catalogue price should be included in order for postage, and handling charges. Larger orders will be shipped by Express collect.

SHIPPING SEASON

Our shipping season usually ends about May 1st, and we cannot too strongly urge you to get your order to us before it is too late. Southern shipments can be made at almost any time, and shipments going north should be made at the earliest possible date after frost is out of the ground.

SALES TAX

TENNESSEE customers please add 2% to your order to cover the state Sales Tax.

FOR QUICKER SERVICE— USE CATALOG NUMBER

Boyd Brothers

FRUIT TREES

"The New Almeda"

Boyd's New Sensational Apple Discovery

This startling new apple was discovered growing near Hendersonville, Tennessee, by Mr. J. W. Savely, Orchardist and Horticulturist. Mr. Savely started experimenting with the Almeda, and now has a most beautiful bunch of trees growing in his orchard.

Having known of the Boyd's for a long time and knew that they like to give their customers the best of everything Mr. Savely called on us to introduce and market the new apple for him.

100 THE ALMEDA APPLE

It is a large, smooth, yellow apple that starts bearing about the middle of July. It is fine for eating and also an excellent cooking apple; is an annual bearer; a disease resister and a good keeping apple and it is self fertile; this apple has many good qualities and believe that it will prove very satisfactory for home use, or in commercial orchards.

GUARANTEE

We are very careful to keep each variety true to name as labeled and are ready at any time to replace, upon proper proof, any that may prove otherwise, free of charge, or refund the amount paid, but it is mutually agreed between the purchaser and ourselves that we shall at no time be liable for an amount larger than the original purchase price.

We do guarantee that we will ship healthy plants to arrive in good condition; if not, we will replace, after that our responsibility ends; should plants be other than as represented, please notify within 10 days to receive consideration.



U. S. Patent No. 327

PRICES ON THE ALMEDA APPLE

	Each	Per 3	Per 10
18-24 inch whips	\$.59	\$1.65	\$ 4.75
2-3 feet whips	.87	2.40	7.50
3-4 feet whips	.98	2.65	7.95
4-5 feet branched	1.39	3.75	10.00
5-6 feet branched	1.79	4.95	14.95

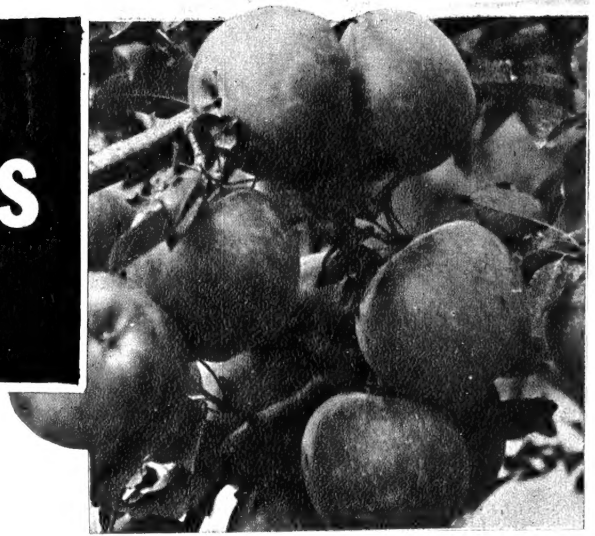
Attention, Please

It may be possible through duplication in addressing that you may receive more than one copy of our catalog. please give it to a friend or neighbor. We will appreciate it so much and your neighbor will too.

BOYD BROTHERS'

Apple Trees

*"By Their Fruit You
Shall Know Them"*



Summer Apples

101 ANOKA

Noteworthy for its beautiful red striped fruit and early bearing, often producing apples the second year after planting. This apple comes to us highly recommended. Fruit excellent quality; ripening shortly after the Transparent. It is worthy of trial. It should be more adapted to the central and northern districts than to the eastern seaboard fruit sections.

102 YELLOW TRANSPARENT

Earliest and best, white, tender and juicy, sprightly subacid, grows rapidly, bears young, and is very profitable. August.

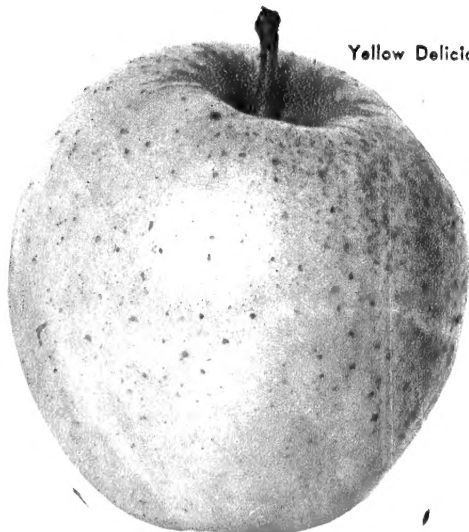
Fall Apples

103 RED JONATHAN

A beautiful, bright red apple, of excellent quality and highly flavored. It is tender, juicy and rich. A splendid tree for home orchardist and a very profitable apple for the market.

111 GRIMES GOLDEN

An extra fine quality apple. Golden color, good keeper; tree vigorous; productive.



Yellow Delicious

Winter Apples

105 DOUBLE RED DELICIOUS

The new, superior Delicious. Fruit extra large, bright red all over; flesh white and fine grained, rich, melting and juicy. Of the very highest quality. Tree young bearer, sometimes three years.

106 YELLOW DELICIOUS

A golden yellow apple with remarkably good flavor, popular for eating during the fall and winter months. Trees bear young and abundantly. Splendid keepers.

107 STAYMAN WINESAP

An extraordinary market apple. Keeps year around in storage. Bright red skin and firm, juicy, fine white flesh. Excellent for eating, cooking, canning, shipping.

108 RED WINESAP

One of the old-timers. A red apple with excellent flavor and one of the best apples to put up for home use or to put on the market. Strong grower, comes into bearing early; very long keeper, considered the best cold storage variety.

109 RED ROME BEAUTY

Large winter apple of good quality, has a solid deep red color, thick skinned, stands handling well, and a good keeper. Bears young.

Prices On Apple Trees

	Each	Per 10	Per 100
18-24 inch Whips -----	\$.29	\$2.50	\$20.00
2- 3 feet Whips -----	.39	3.00	25.00
3- 4 feet Whips -----	.59	4.75	37.50
4- 5 feet Branched -----	.89	7.50	70.00
5- 6 feet Branched -----	.98	7.95	75.00

Boyd Brothers Special.

5-N-1 Apple Tree

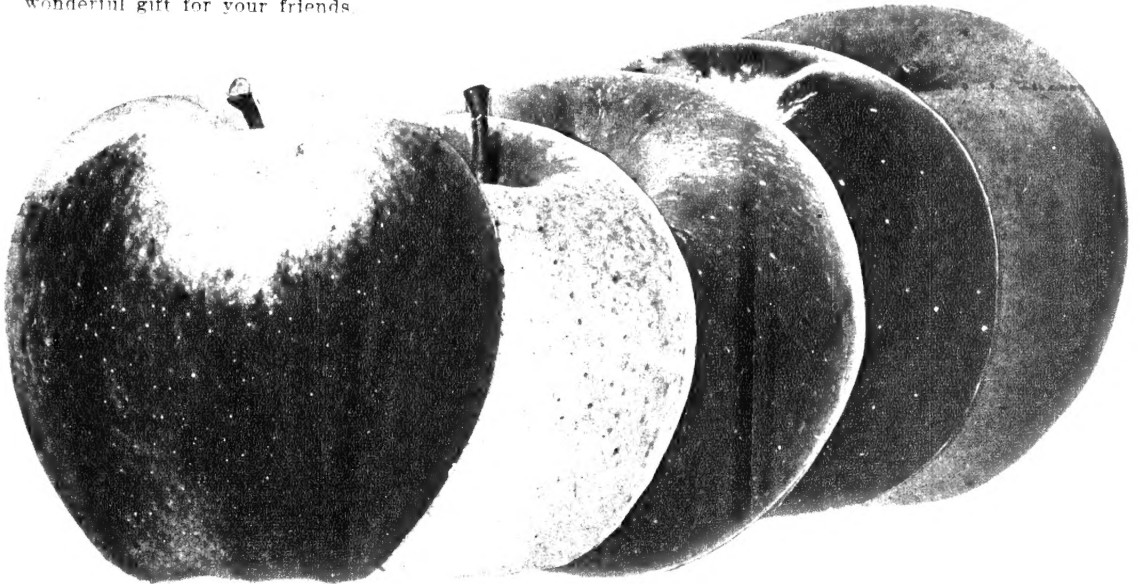
Scientifically Budded to Produce 5 Kinds of Apple Varieties
All on One Tree During the Season

150 FIVE-IN-ONE APPLE TREE

Just picture an apple tree in your front yard with five different kinds of apples bearing on it. This is what you get when your 5-N-1 tree starts bearing. Those luscious varieties that we bud into the limbs of this tree includes Double Red Delicious, Red Jonathan, Yellow Delicious, Anoka and Yellow Transparent. Start producing in early June and keeps bearing throughout summer—makes a wonderful gift for your friends.

5 VARIETIES
GRAFTED
ON ONE
APPLE TREE

- Double Red Delicious
- Yellow Delicious
- Red Jonathan
- Anoka
- Yellow Transparent



● Double Red Delicious ● Yellow Delicious ● Red Jonathan ● Anoka ● Yellow Transparent

4 to 6 Feet in Size — 2 Year Tree . . . Each **\$179** Per 3 **\$495** Per 10 **\$1495**

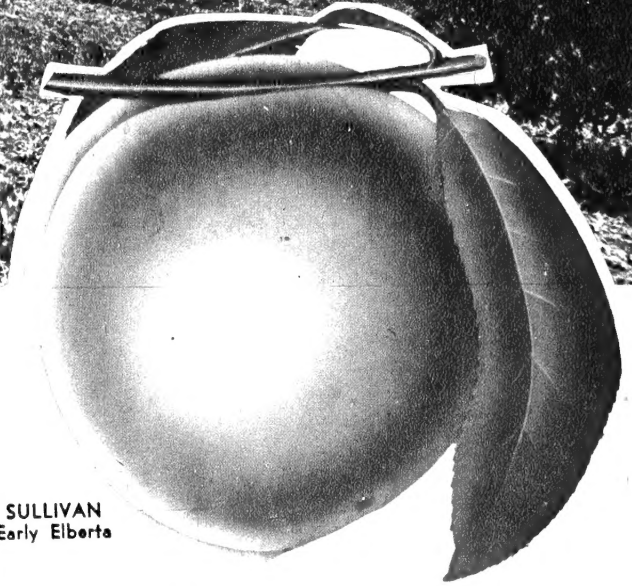
AGE OF BEARING—DISTANCE TO PLANT

	Age of Bearing	Distance Apart	Number Per Acre		Age of Bearing	Distance Apart	Number Per Acre
Apples—Standard	2 6 yr.	35x35 ft.	35	Pears—Standard	3 4 yr.	20x20 ft.	108
Apricots	3 yr.	15x15 ft.	193	Pecans	6 yr.	40x40 ft.	27
Blackberries	1 yr.	3x8 ft.	1815	Plums	3-4 yr.	20x20 ft.	108
Cherries—Sour	3-4 yr.	15x15 ft.	193	Quinces	4-5 yr.	20x20 ft.	108
Cherries—Sweet	3 4 yr.	20x20 ft.	108	Raspberries	1 yr.	6x4 ft.	1815
Figs	2 yr.	15x15 ft.	193	Rhubarb	1 yr.	4x3 ft.	3630
Grapes	2 yr.	8x8 ft.	680	Strawberries—Farm	1 yr.	4x1 ft.	10800
Peaches	2 yr.	15x15 ft.	193	Strawberries—Garden	1 yr.	2x1 ft.	21750

As the age of bearing depends so much upon variety, soil, climatic conditions and care given, this can only be an approximate table under average conditions.

We Do Not Have Any Traveling Agents or Order Takers

**Money Grows
on Peach Trees
Quick!**



SULLIVAN
Early Elberta

New Varieties of Peach Trees

We have gathered together information from some of the leading growers all over the country, and find that the following New Peaches are the most outstanding introductions for the past few years. Trees have been ordered and budded on our own seedlings, and we offer to you a limited supply of these trees. So place your order early to insure getting some of these outstanding new trees.

197 DIXIGEM

This new peach is medium sized, with attractive red blush, covering half the surface; the flesh is yellow, firm, fine texture, of excellent flavor, it is almost a freestone when fully ripe and is usually semi-free when at the shipping-ripe stage.

198 DIXIRED

A new early fleshed peach, about three fourths is covered with a bright, attractive red blush, the flesh is yellow, firm, medium texture, and of good flavor, medium size and self fertile. Ripens about two weeks ahead of Golden Jubilee.

199 GOLDEN EAST

Originated at the New Jersey Experiment Station, ripens early midseason, good color, large yellow-fleshed, freestone peach, ripens two weeks ahead of Elberta.

201 THE SULLIVAN EARLY ELBERTA

Here is another outstanding peach that we have added during the past year so that our customers can stay ahead with the newer, better varieties. It is a sport from the Early Elberta but is larger and considered a better keeper by orchardists that have tried them. A nice yellow freestone, firm, juicy and of high quality.

216 LATE ELBERTA

A peach of good quality. Big, yellow, freestone, very productive and fine for canning and freezing, it is considered the best late peach.

PRICES ON PEACH TREES

Prices on the following NEW PEACH trees, Sullivan, Elberta, Dixired, Dixigem, Golden East, Late Elberta:

	Each	Per 10	Per 100
12-18 in.....	\$.39	\$3.00	\$25.00
18-24 in.....	.47	4.00	29.50
2- 3 ft.....	.57	4.50	35.00

Grow Boyd's Commercial Varieties of Peaches

The Peach is the youngest bearing of all fruit trees. An investment now in Peach Trees will sure bring quick returns and nice profit. Peach Trees usually bear the second year after transplanting. Plant some of these Freestone or Clingstone Peaches now.

202 THE NEW RED HAVEN

The famous new Michigan Fruit Belt Peach. The first one-half bushel sold at opening market at Benton Harbor brought the unbelievable price of \$30.00.

Called by some famous growers as "The World's Rarest Peach." Red Haven has been tested by several large peach growers. It ripens early, colors bright red before ripening. Trees bear young and fruit is freestone and self-pollenizing. Flesh is fine, golden, sweet, juicy. Red Haven matures about a month before Elberta. Send your order now before we are sold out.

203 POLLY

The great Peach that was originated by the Iowa Experiment Station. The finest of all white peaches ever offered, according to Iowa growers. Best for home use and local markets. It is a great peach for the South, East and West. Tested for many years under temperatures as low as 20 below zero. It is hardy, delicious, freestone and productive bearer. Our supply is limited order now.

204 ELBERTA (Freestone)

Fruit large, yellow with red cheek. Flesh yellow, firm, juicy and of high quality. Does equally well in North or South of the U. S. A. Ripens about August 15th. Elberta still is the most popular peach in America.

Boyd's Prices on Peach Trees

	Each	Per 10	Per 100
15-24 in.	\$.29	\$2.50	\$20.00
2-3 ft.	.47	4.00	29.50
3-4 ft.	.57	4.50	35.00

We Do Not Have Any Traveling Agents or Order Takers



Boyd Nursery Company
McMinoville, Tennessee

White Pine, Tennessee
October 12, 1916

Dear Sirs:

I am enclosing a picture of a part of my peach trees I bought from your company.

I have planted trees from other nurseries for years, but these trees have done better by more than one hundred percent than anything I ever put out. They are twenty months old, eight feet high, and twelve feet in diameter. I put them back after setting in the spring of 1915 about 12 to 15 inches above the ground. My trees were set in rows 22 x 30.

This lot contains 110 peaches and 5 cherries. I want to enlarge it by 50 more this next spring.

Please send me prices on this number in 18" to 24" size. Of course I will order this fall and get my land ready then early in the spring will set them.

Your stock is far superior to other trees which cost from 30% to 50% more. Best assured I always recommend Boyd trees.

Yours very respectfully,

Ray A. Williams

205 HALE HAVEN (Freestone)

Second only to Elberta in popularity! It is one of the finest shipping and canning peaches ever grown. Hale Haven is a great big handful of luscious, rich, beauty, with a juicy flavor you will never forget. Ripens about 15 days ahead of Elberta, at a time when the market needs and pays for good peaches. It is a freestone and self-pollenizing.

206 SOUTH HAVEN (Freestone)

Famed from coast to coast for big yield annually. The great hardy peach for cold regions. Also produces as good as any other peach in warm climate. The fruit is deep yellow with an attractive crimson cheek. Recommended very highly. Ripens two weeks ahead of Elberta.

207 J. H. HALE (Freestone)

Extremely large fruit, extra fine quality and superior flavor. A beautiful golden yellow, highly colored with crimson blush. As J. H. Hale is semi-fertile, plant with South Haven for perfect pollenization. Ripens about same time as Elberta.

Indian
Cling
Peaches

Peaches for

THE MARKET or HOME

The reason we can offer these trees at such low prices is because we grow them here in our nursery. The peach is one of the surest crops in this section and our trees will bear fruit after being planted two years.

Early Peaches

208 CRAWFORD'S EARLY (Freestone)

One of the best of all early peaches. Clear yellow fruit, with blush.

209 EARLY ROSE (Semi-Cling)

A real good early peach for home use. Large red fruit that has a rich flavor.

210 MAYFLOWER (Semi-Cling)

The strongest growers of all early peaches. Fruit very large, red flesh, white skin. It is very rich and juicy.

Mid-Summer Peaches

211 BELLE OF GEORGIA

Skin white, with red cheek. Flesh white, firm and of excellent flavor. Trees rapid growers and very productive.

212 GOLDEN JUBILEE

One of the biggest-paying, heaviest-yielding of all peaches. It colors to bright orange, deeply blushed carmine-red. Flavor a real treat. Ripens early. Hardy wherever peaches are grown.

Clingstone Peaches

213 GIANT HEATH CLING

Large, creamy white with faint blush; fine quality and good keeper. One of the sweetest, juiciest and most luscious of all the peaches, the housewife's favorite for canning and preserving. Tree very hardy, productive and early bearer. Ripens a month later than Elberta.

214 INDIAN CLING

Known as the best of all pickling peaches. Large, with deep red veins. Flesh deep red.

215 RED BIRD

A very early peach. Fruit large and of high color; hardy grower and good bearer.

Collection 14

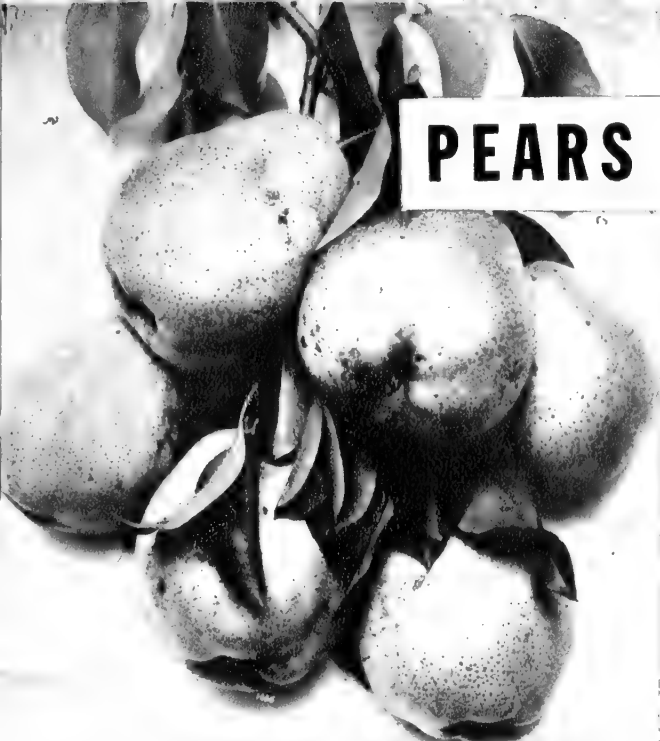
- 5 Elberta Peach
- 5 Red Haven Peach
- 5 Hale Haven Peach
- 5 Double Red Delicious Apple
- 5 Yellow Delicious Apple

1 to 2 ft.
Only

\$4.45

Prices on All Peaches Except Dixired, Dixiegem, Golden East, Sullivan, Elberta:

	Each	Per 10	Per 100
18-24 in. -----	\$.29	\$2.50	\$20.00
2- 3 ft. -----	.47	4.00	29.50
3- 4 ft. -----	.57	4.50	35.00



PEARS

250 BARTLETT

Bears early, very juicy and highly flavored. Strong grower, bears abundantly.

251 GARBER

An upright grower with heavy dark green foliage. Fruit large, juicy, melting, rich and fine. Does well nearly everywhere. September and October.

252 KIEFFER

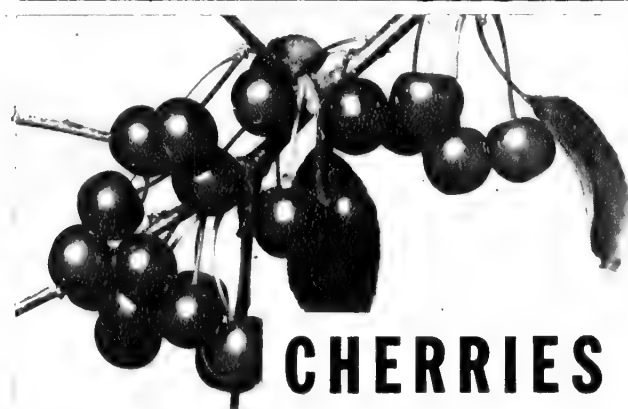
One of the most popular pear trees grown. Large golden yellow, often blushing in the sun; one of the best for preserving and canning. It is liable to over-bear; therefore, special pains should be taken to thin fruit.

253 PINEAPPLE

Has a distinct pleasing odor, resembling that of the pineapple. This pear is a very attractive yellow with conspicuous brown specks; is very beautiful and has been a popular seller. Ripens in August.

Prices on Pear Trees

	Each	Per 10	Per 100
18 to 24 in., one year-----	\$.69	\$ 6.00	\$ 52.50
2 to 3 ft., one year-----	.79	7.25	65.00
3 to 4 ft., one year-----	.89	7.50	70.00
3 to 4 ft., two year, br-----	1.39	10.00	90.00
4 to 5 ft., two year, br-----	1.69	15.00	135.00



CHERRIES

Sour Cherries

263 EARLY RICHMOND

A favorite sour cherry. It is the good dependable variety that yields such marvelous crops in the garden and lawn. The fruit is dark red, tender, juicy and of excellent quality.

264 MONTMORENCY

A large, light red cherry of the Richmond class. It is larger and more solid, about ten days late.

PRICES ON CHERRY TREES

	Each	Per 3	Per 10
18-24 in., one year-----	\$.98	\$2.65	\$ 7.50
2- 3 ft., one year-----	1.39	3.75	10.00
3- 4 ft., one year-----	1.49	4.25	12.50

Every home should have a few cherry trees. They require very little attention. Spraying is not necessary. They make a handsome shade tree. They can be grown in any waste space or corner. There are several varieties that bear luscious fruit. Their fragrant blossoms are the first sign of spring.

Sweet Cherries

260 BLACK TARTARIAN

A favorite sweet cherry, well adapted to almost any soil and climate. Lives to an old age, fruit medium size, brownish black, flesh purplish red, juicy, rich and for home use is one of the best.

261 GOVERNOR WOOD

Few cherries are equal to it in quality or productiveness. Fruit medium size, soft, and of fine flavor, pale yellow with blush.

262 NAPOLEON

Very large, pale yellow with bright red cheeks, very firm, juicy and sweet, vigorous grower and very productive. One of the best.

Bush Cherry

This new Cherry is becoming the nation's favorite fast. It produces fruit about the second year after transplanting. Tree is of dwarf habit and fruit can be easily picked.

380 DWARF OKA CHERRY

A mass of white blossoms in the spring time followed by an abundance of large plum-like fruit, red to the seed. The trees we send out should bear some fruit the following year. A most ornamental small tree for the lawn. For pollenization plant it in close proximity to a Rocky Mt. Cherry.

381 ROCKY MT. CHERRY

A small bush Cherry with branches a mass of cherry-like fruits one-half inch or more in diameter, excellent for jams and jellies. A perfect fertilizer for the Oka Cherry.

Prices on Bush Cherries

Prices:	Each	Per 3	Per 10
12 to 18 in.-----	\$.39	\$1.00	\$3.00
18 to 24 in.-----	.47	1.35	4.00
2 to 3 ft.-----	.59	1.65	4.75



Early Golden
Apricot

NOTICE: Almond, Apricot, Peach and Plum trees cannot be shipped into the following states: Arizona, California, Idaho, Nevada, Oregon, Utah and Washington.

Apricots

ARE VERY DELICIOUS WHEN
HOME-GROWN, TREE-RIPENED

300 EARLY GOLDEN

Small, pale orange in color, flesh orange, moderately juicy, sweet, good. Hardy, productive; profitable market sort. Ripens about August 5th

301 MOOREPARK

Fruit large, roundish about 2½ inches in diameter, skin orange in the shade, but deep orange, or bronzy red in the sun. Flesh quite firm, bright orange, parting from the stone. Ripens in August.

302 ROYAL

A fine, large French variety. Fruit roundish large oval slightly compressed. Skin dull yellow, with an orange cheek; very faintly tinged with red. Ripens latter part of July.

303 SUPERB

Fruit is beautiful, light salmon colored. Tree is large very thrifty, and extremely productive in fruit.

Prices on Apricots

	Each	Per 3	Per 10
18-24 in., one year	\$.59	\$1.65	\$4.75
2-3 ft., one year	.69	1.95	6.00
3-4 ft., one year	.89	2.40	7.50
4-5 ft., one year	.98	2.65	7.95

No matter how small your planting space you can find room for a few plum trees. They will pay a big dividend in fruit that is ideal for canning and are extra fine to eat from the hand. Plums thrive on almost any land bear a heavy crop of fruit that seldom fails.

350 ABUNDANCE

Tree a strong grower and an early and profuse bearer. One of the best known plums.

351 BURBANK

Fruit large and vigorous, productive, bears young. Excellent quality; cherry red.

352 KELSEY JAPAN

Color greenish yellow, flushed with red, very large.

353 WICKSON

One of Burbank's creations, fruit largest of the Japans. Handsome deep, maroon red, firm, long keeper and fine shipper.

354 SHROPSHIRE DAMSON

Late, medium size, dark purple. Flesh golden yellow. The popular old-fashioned Damson variety, excellent for preserving.

356 WILD GOOSE

An especially good plum for the south, of bright red color, very productive and of good quality, and medium sized.

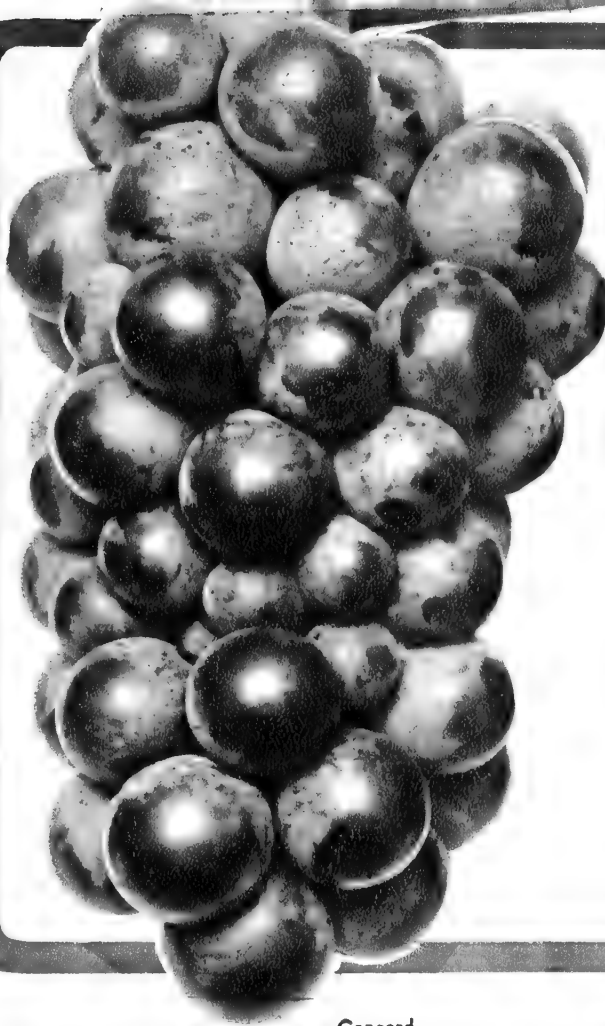
Prices on Plums

	Each	Per 3	Per 10
18-24 in., one year	\$.49	\$1.35	\$4.00
2-3 ft., one year	.69	1.95	6.00
3-4 ft., one year	.89	2.40	7.50

Plums

Burbank
Plum

Grapes



Concord
Grape

Grape vines will produce more fruit and furnish more real pleasure than any known fruit, considering investment.

400 CAMPBELL'S EARLY (Black)

A strong and hardy sort. Good shipper

401 CATAWBA (Red)

Large, sweet and aromatic.

402 CONCORD (Black)

Is considered one of the best grapes.

403 MOORE'S EARLY (Black)

Ripens early, good market berry.

404 NIAGARA (White)

One of the leading white grapes.

405 WORDEN (Black)

Ripens early, bunches large and compact.

406 AGAWAM (Red)

Large bunches. Good quality.

Prices on Grapes

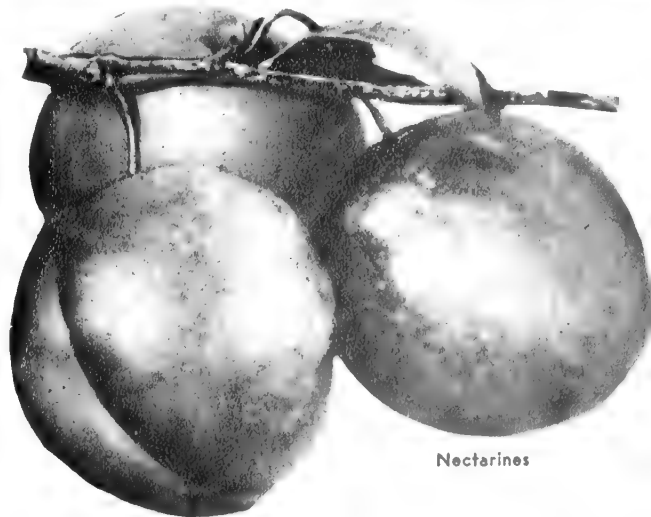
	Each	Per 10	Per 25
One year-----	\$.19	\$1.70	\$3.50
Two year-----	.29	2.50	5.50

NECTARINES

The Nectarine is about the size of the plum, with smooth skin. In other ways it is more like the peach, and is sometimes called the "Fuzzless Peach." It is of rich, delicious flavor, juicy and melting, and highly prized as a dessert fruit, as a dryer, and makes excellent preserves. The Nectarine is as hardy as the peach and requires the same culture.

375 NECTARINE, New White Variety

	Each	Per 3	Per 10
18 to 24 in.-----	\$.59	\$1.55	\$4.75
2 to 3 ft.-----	.69	1.95	6.00
3 to 4 ft.-----	.89	2.40	7.25

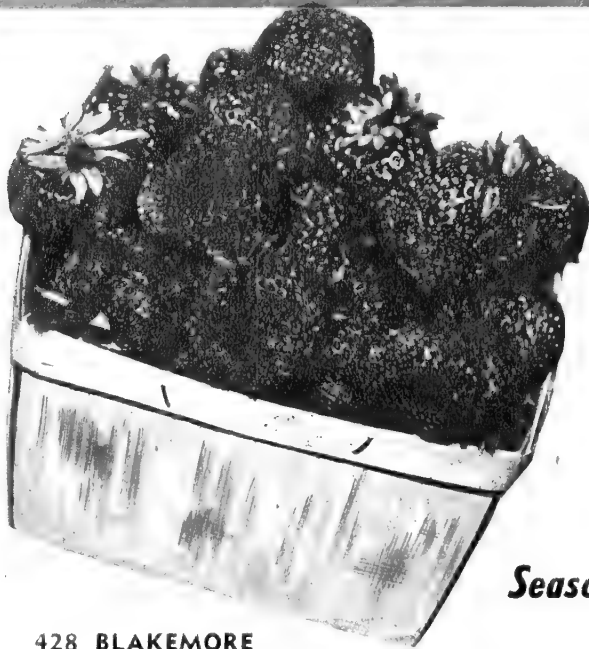


Nectarines

SALES TAX. Tennessee customers add 2% to your order for Sales Tax.

Our Fruit Stock has the advantage of both cold and warm climate, very often the temperature drops to zero and will rise twenty degrees the same week. Therefore, by actual growing condition you have a fruit tree that is fitted for all weather. when you buy it from us.

Plant Boyd's STRAWBERRIES



Everbearing Strawberries

425 GEM EVERBEARING

The Gem is one of the best of the Everbearing varieties. The fruit is long, firm, red all the way through and of good flavor and quality, and very attractive in appearance, hardy, disease resistant and big crop producer.

Per 25	Per 100	Per 500	Per 1000
\$1.50	\$4.00	\$13.00	\$20.00

435 STREAMLINER

The New Streamliner is proving to be one of our best strawberries, is very sweet and requires little sugar, good for canning, eating fresh and locker storage. Large fruit in abundance, a beautiful bright red berry of excellent quality. Bears early until late in the season.

Per 25	Per 100	Per 500	Per 1000
\$1.95	\$5.20	\$16.25	\$26.00

Seasonal Strawberries

428 BLAKEMORE

Healthy plants that bear early and produce big crops of bright red berries, which are firm, excellent for canning and locker storage and is one of the best shipping varieties. Our plants are free from yellows.

431 AROMA

The fruit is very large, roundish conical, glossy red of excellent quality and is one of our best late varieties

432 KLONDYKE

Rich, blood-red in color and of fine flavor of medium taste being neither sweet nor sour, and a good quality berry.

Per 25	Per 100	Per 500	Per 1000
\$.75	\$2.00	\$6.25	\$10.00

433 TENNESSEE SUPREME

This is one of the earlier varieties, the fruit is large round, uniform in size and shape, red throughout, firm but with juice, good flavor, subacid and especially desirable for freezing, the first and last berries of the season are all of the same good quality and flavor.

434 TENNESSEE BEAUTY

This variety is desirable where mid-season to late berries are desired, the foliage is free from leaf diseases, large, smooth and uniform berries are typical of Tennessee Beauty. The fruit is medium red, wedge shape, attractive, colors evenly, subacid flavor sprightly, good quality and one of the best yielding varieties, good for home and market.

Per 25	Per 100	Per 500	Per 1000
\$1.15	\$3.10	\$9.70	\$15.50



Asparagus

450 WASHINGTON ASPARAGUS

Giant, tender stalks keep popping out of the ground as fast as you cut them for 60 to 90 days every spring. First fresh vegetable of spring. It is very healthful, rich in minerals and vitamins. Only takes a little room, and is easy to grow. Plant in rich soil, 18 inches apart, in rows 4 feet apart.

Prices on Asparagus:	Per 10	Per 25	Per 100
1 year.....	\$.59	\$1.00	\$3.95
2 year (strong plants).....	.89	1.75	6.50

460 VICTORIA RHUBARB (Pie Plant)

Rhubarb, with its flavor of the springtime, is a valuable aid to the action of the gastric juices, adds novelty to the bill of fare, has the good points of a fruit, and combines deliciously as a dessert or conserve.

	Each	Per 10
1 year.....	\$.19	\$1.50
2 year.....	.25	2.00

461 RED RHUBARB

	Each	Per 10
	\$.69	\$6.00



Rhubarb (Pie Plant)

Berry Plants

Dewberries

480 LUCRETIA DEWBERRIES

The first to ripen. Ten days earlier than Blackberries. Berries are extra large, lustrous black, sweet and juicy. Unexcelled for canning.

Prices on Dewberries:

Per 10	Per 25
\$.89	\$1.59

Raspberries

485 CUMBERLAND BLACKCAP

The largest and most productive black Raspberry. Ripens medium-early and continues throughout the raspberry season. Very hardy and the most profitable market sort.

486 LATHAM RED

Largest red Raspberry; a thrifty grower that will withstand zero temperatures. Tremendously productive, and the large, attractive red berries are of the best quality.

487 ST. REGIS RED

Bright crimson berry of large size, firm and meaty. Fruit commences to ripen with the earliest and continues bearing on young canes until October. Very prolific and a good shipper.

Prices on Raspberries:

Per 10	Per 25
Red.....	\$1.69 \$3.39
Black.....	.98 1.89

Youngberry

495 YOUNGBERRY

This is a new berry and is much different from any berry grown in most parts of the country. It is a cross between the Loganberry and Dewberry. Color of fruit is a rich wine. Sizes 1 to 1½ inches. Flavor is pleasant, sweet with the tartness of the Blackberry.

Prices on Youngberry:

Per 10	Per 25
\$1.69	\$3.39

Boysenberry

496 GIANT BOYSENBERRY

Berries extra large, attractive and of fine flavor. Taking the buyers wherever offered. The tremendous yields the Boysenberry makes surely will cut down production cost, and if sold only at ordinary berry prices a good profit can be realized. The Boysenberry with us is perfectly hardy and we are of the opinion it can be grown successfully as far north as Vermont if given winter protection.

Prices on Boysenberry:

Per 10	Per 25
\$1.69	\$3.39

Blackberries

500 EARLY HARVEST

One of the earliest varieties; berry medium size. A good market sort.

501 ELDORADO

Berries are very large, black, borne in clusters—bears huge crops everywhere.

Prices on Blackberries:

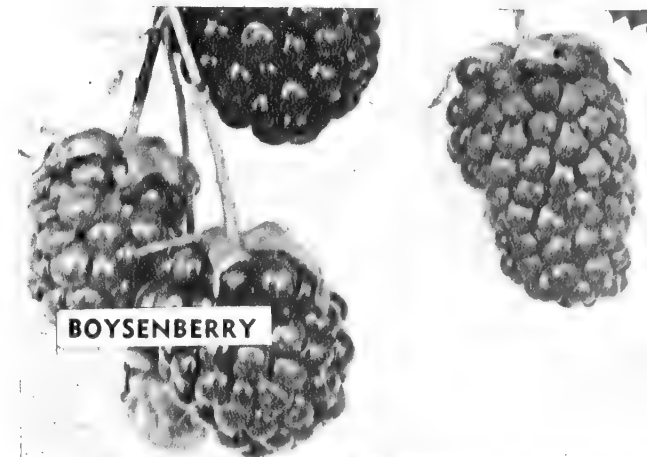
Per 10	Per 25
\$.98	\$1.89



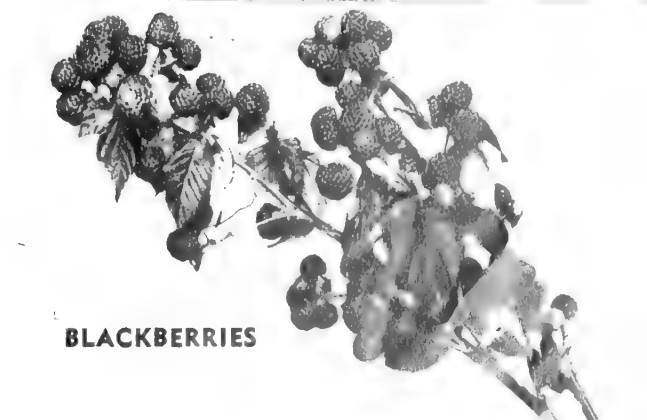
RASPBERRIES



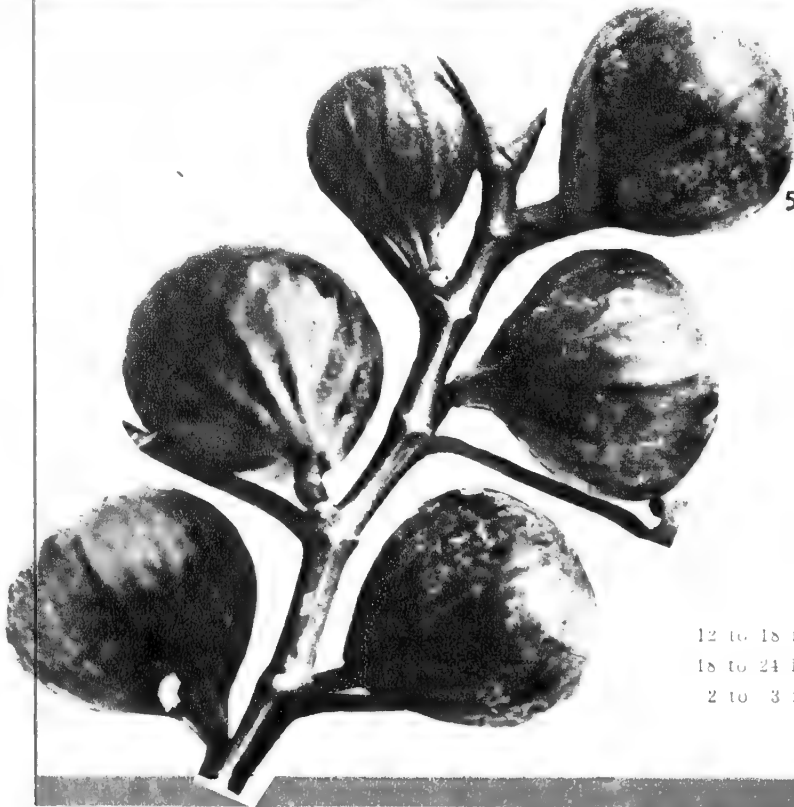
YOUNGBERRY



BOYSENBERRY



BLACKBERRIES



Figs

525 FIGS

Why not pick figs from your own trees? They are full of rich, tasty flavor; good for fresh fruit, as well as canning and cooking. Trees bear early, can be planted around trash piles in back yards, chicken runs and near buildings in a most satisfactory manner.

	Each	Per 10	Per 100
12 to 18 in.	\$.29	\$2.50	\$20.00
18 to 24 in.	.49	4.00	30.00
2 to 3 ft.	.59	4.75	37.50

QUINCE

530 QUINCE, CHAMPION

Orange-yellow, large oval fruit. Tree vigorous and very productive.

531 QUINCE, ORANGE

Fruit large, round, with a short neck; color bright yellow; flesh tender, juicy and of excellent flavor.

There is no finer fruit for syrup, jellies, preserving and canning than the Quince. Trees easy to grow, begin to bear at two and three years. Prices each variety:

	Each	Per 10
18 to 24 in.	\$.79	\$7.25
2 to 3 ft.	.98	7.95



PERSIMMON

540 AMERICAN PERSIMMON

A native of the Southern States, but fruit will ripen in the North. There is nothing more luscious than a well-ripened persimmon, and the tree is ornamental as well.

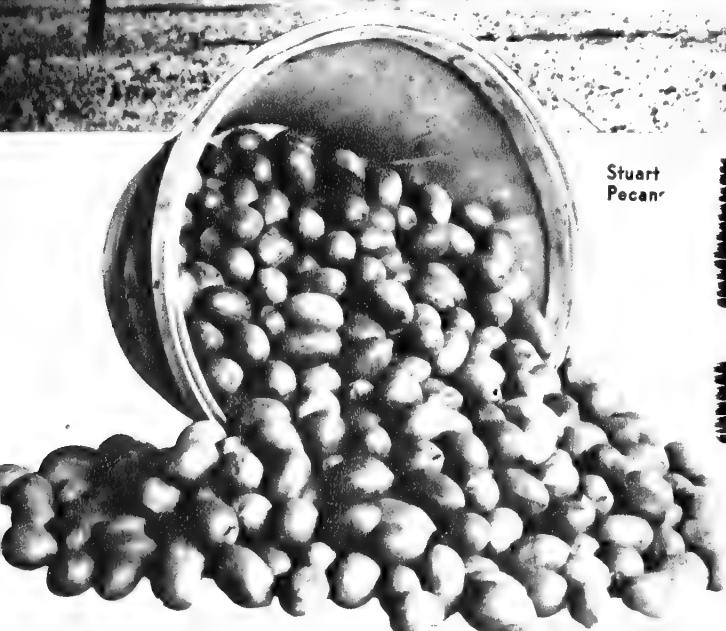
	Each	Per 3	Per 10
3 to 4 ft.	\$.59	\$1.65	\$4.75
4 to 5 ft.	.68	1.90	5.75

PAW PAW

545 PAW PAW

A small handsome tree with large purple flowers which are very beautiful and fragrant. Produces large yellow fruit which has the flavor and shape of the banana and is very delicious. Trees very hardy and productive; can be grown in all sections of the United States.

	Each	Per 3	Per 10
2 to 3 ft.	\$.60	\$1.70	\$5.00
3 to 4 ft.	.75	2.10	6.50



Stuart Pecan

Soft - Shell
PECANS
 Grafted Trees

We offer the best varieties, bearing nuts of large size, good flavor and thin shell.

550 STUART

Extremely hardy. Nuts good size, plump and well-filled.

551 SUCCESS

Resembles the Stuart, only larger. Nuts excellent flavor.

552 SCHLEY

Nuts of highest quality and very thin shell.

Prices on Grafted Pecans:	Each	Per 10
18 to 24 in.....	\$1.75	\$15.00
2 to 3 ft.....	2.25	20.00
3 to 4 ft.....	2.50	22.50

560 HARDY PECANS

This is a seedling variety that will grow in the Northern States. The nuts are not as large as the grafted varieties but they do have a sweet, oily nutritious kernel and usually bear more nuts than the grafted varieties. Recommended for all states north of the Ohio River.

Prices on Hardy Pecans:	Each	Per 10
12 to 18 in.....	\$.79	\$7.25
18 to 24 in.....	.98	7.95
2 to 3 ft.....	1.19	9.50

565 HARDY BLACK WALNUT

One of the best shade trees, valuable for timber as well as nuts. Grows rapidly.

	Each	Per 10	Per 100
2 to 3 ft.....	\$.39	\$3.00	\$25.00
3 to 4 ft.....	.59	4.75	37.50

570 HARDY HICKORY NUTS

Very valuable for market nuts and also the lumber is very valuable for spokes, fence posts and handles of all kinds for farming tools.

	Each	Per 10	Per 100
2 to 3 ft.....	\$.69	\$6.00	\$50.00

566 BUTTERNUT

White Walnut, valuable for shade and ornament, as well as for its nut yield. Produces a large nut with a sweet, oily, nutritious kernel.

	Each	Per 10	Per 100
2 to 3 ft.....	\$.69	\$5.75	\$50.00
3 to 4 ft.....	.85	7.50	60.00

571 HAZELNUT, AMERICAN FILBERT

Nuts borne in large fringed fruit husks. Kernels sweet and edible. A very hardy shrub-like tree with handsome foliage.

	Each	Per 10
2 to 3 ft.....	\$.47	\$4.00

PLANT BOYD'S NUT TREES FOR SHADE AND DECORATION

We Do Not Have Any Traveling Agents or Order Takers

Make Your House a Home With Beautiful Flowering Shrubs

500 PINK FLOWERING ALMOND

This lovely shrub blooms before the leaves appear in the spring, completely covered with small double pink rose-like blooms. Excellent for individual or group planting.

	Each	Per 3	Per 10
18 to 24 in.	\$.39	\$1.10	\$3.50
2 to 3 ft.59	1.65	4.75

601 BARBERRY THUNBERGI

Green leaf Barberry. Green foliage throughout the summer, turning to brilliant scarlet in autumn, covered with red berries all winter.

	Each	Per 3	Per 10
6 to 9 in.	\$.17	\$.45	\$1.30
9 to 12 in.25	.65	2.10
12 to 15 in.29	.80	2.50

601-A REDLEAF BARBERRY

Reddish purple foliage throughout summer, turning to fiery red in autumn, with red seed in fall and winter. Plant in full sunlight for best results.

	Each	Per 3	Per 10
9 to 12 in.	\$.35	\$1.00	\$2.95
12 to 15 in.40	1.15	3.75

602 RED-BARK DOGWOOD

Dark red stems and branches, small clusters of white flowers and blue black fruit and green leaves.

	Each	Per 3	Per 10
18 to 24 in.	\$.25	\$.65	\$2.10
2 to 3 ft.35	1.00	2.95



Butterfly Bush

Flowering



Grape Myrtle



Flowering Quince

604 YELLOW-BARK DOGWOOD

The branches are golden yellow with green leaves, small growing shrubs.

	Each	Per 3	Per 10
18 to 24 in.	\$.29	\$.80	\$2.50
2 to 3 ft.47	1.30	4.00

606 RED CRAPE MYRTLE

The famous Southern shrub, starts blooming in mid summer and blooms until frost. Large clumps of lace-like flowers. Has proven hardy in the Northern states. Blooms the first year planted.

	Each	Per 3	Per 10
18 to 24 in.	\$.39	\$1.10	\$3.50
2 to 3 ft.59	1.65	4.75

606-A PINK CRAPE MYRTLE

Same as the red except watermelon pink flowers. Blooms on one-year wood, an excellent shrub.

	Each	Per 3	Per 10
18 to 24 in.	\$.39	\$1.10	\$3.50
2 to 3 ft.59	1.65	4.75

608 CYDONIA or FLOWERING QUINCE

An early blooming shrub, some have vivid red blooms and others orange to red blooms, with quince-like fruit in the autumn.

	Each	Per 3	Per 10
12 to 18 in.	\$.29	.80	\$2.50
18 to 24 in.57	1.60	4.50

610 DEUTZIA, PINK FLOWERING

This upright shrub blooms early in the spring with semi-fragrant pink flowers.

	Each	Per 3	Per 10
18 to 24 in.	\$.25	\$.65	2.10
2 to 3 ft.29	.80	2.50

g Shrubs



Flowering Almond



Cydonia or Flowering Quince

Beautiful Flowering Shrubs to Bloom; Spring to Fall

622 PUSSY WILLOW

Classed as a shrub or small tree, grows from 10 to 20 feet tall; it blooms in the early spring before the leaves appear, with buds very large, closely sessile, enveloped in long silky hairs.

	Each	Per 3	Per 10
18 to 24 in.....	\$.29	\$.80	\$2.50
2 to 3 ft.....	.49	1.35	4.05

624 MOCK ORANGE (Philadelphus)

Named for the ancient Egyptian King, Ptolemy Philadelphus, who reigned from 285 to 247 B. C. Hardy upright growth with creamy white blooms in June.

	Each	Per 3	Per 10
18 to 24 in.....	\$.29	\$.80	\$2.50
2 to 3 ft.....	.45	1.20	3.95

626 WITCH HAZEL (Hamamelis)

The blooms are yellow with strap-shaped spreading petals in the fall, followed by capsular fruits, with medium sized ovate dark green leaves, very hardy.

	Each	Per 3	Per 10
18 to 24 in.....	\$.29	\$.80	\$2.50
2 to 3 ft.....	.35	1.00	2.95

611 ROSE ACACIA (Pink Flowering Moss Locust)

Long, graceful clusters of pea-shaped rose to purple shades of flowers in May and June.

	Each	Per 3	Per 10
18 to 24 in.....	\$.29	\$.80	\$2.50
2 to 3 ft.....	.47	1.30	4.00

612 ELDER (Sambucus Canadensis)

This upright shrub has yellowish gray branches, sharply serrate leaves, large heads of purplish black fruit.

	Each	Per 3	Per 10
18 to 24 in.....	\$.25	\$.65	\$2.10
2 to 3 ft.....	.29	.80	2.50

614 GOLDEN BELL (Forsythia)

One of the first shrubs to bloom in the spring. Golden bell shaped flowers cover the plant. Beautiful green foliage all summer.

	Each	Per 3	Per 10
12 to 18 in.....	\$.25	\$.65	\$2.10
18 to 24 in.....	.29	.80	2.50
2 to 3 ft.....	.49	1.35	4.05

616 JAPANESE SNOWBALL

Beautiful hardy shrub with large blooms of white globose balls covering the plant; the foliage is beautiful dark green.

	Each	Per 3	Per 10
12 to 18 in.....	\$.49	\$1.35	\$4.05
18 to 24 in.....	.60	1.70	5.00

618 PEPPER TREE (Vitex Agnus Castus)

Shrub or small tree with a strong aromatic odor, grayish long-stalked leaves with dense, sessile clusters of lilac flowers.

	Each	Per 3	Per 10
18 to 24 in.....	\$.29	\$.80	\$2.50
2 to 3 ft.....	.49	1.30	4.00

628 BUTTERFLY, PINK CHARMING

A new butterfly bush, with long sprays of beautiful pink flowers often 10 to 15 inches long, blooms all summer.

	Each	Per 3	Per 10
18 to 24 in.....	\$.39	\$1.10	\$3.50
2 to 3 ft.....	.49	1.35	4.05
3 to 4 ft.....	.77	2.15	7.00



Rose Acacia

COLORFUL Flowering Shrubs



Winterberry

629 WINTERBERRY (*Ilex Verticillata*)

Shrub with spreading branches, double serrate leaves from 1½ to 3 inches long. Bright red berries in fall, remaining until midsummer. A good hardy shrub.

	Each	Per 3	Per 10
18 to 24 in.....	\$.45	\$1.20	\$3.95
2 to 3 ft.....	.57	1.60	4.50

630 HYDRANGEA P. G.

The large flowers are massive cone-shaped, often measuring 10 inches in length, and have a pleasing variation of color, changing from the original pure white to pink and finally to beautiful rich, coppery red.

	Each	Per 3	Per 10
12 to 18 in.....	\$.39	\$1.10	\$3.50
18 to 24 in.....	.65	1.80	5.50

632 SPIREA VAN HOUTTEI

While in bloom it resembles the Hills of Snow, with pure white flowers borne in dense clusters along the whole length of the branches.

	Each	Per 3	Per 10
18 to 24 in.....	.25	\$.65	\$2.10
2 to 3 ft.....	.37	1.05	3.25

(For small sizes, see listings under Hedge Plants.)

633 STRAWBERRY BUSH, (*Euonymus Americana*)

An upright shrub with green bark, the leaves are green, serrate, slender, 1½ to 3 inches long; the flowers are yellowish red to green, with pink or red fruit in September.

	Each	Per 3	Per 10
18 to 24 in.....	\$.25	\$.65	\$2.10
2 to 3 ft.....	.29	.80	2.50

634 PURPLE LILAC

Bright green foliage with long purple flowers in large panicles in May. A favorite for many years.

	Each	Per 3	Per 10
18 to 24 in.....	\$.49	\$1.35	\$4.05
2 to 3 ft.....	.60	1.70	5.00

636 PERSIAN LILAC

This plant blooms the first year after planted usually; the flowers are in broad panicles 3 to 4 inches long; the deep reddish purple flowers are fragrant.

	Each	Per 3	Per 10
18 to 24 in.....	\$.49	\$1.35	\$4.05
2 to 3 ft.....	.60	1.70	5.00

638 PINK LONICERA (Bush Honeysuckle)

A beautiful upright shrub with handsome flowers in the spring followed with red to orange fruit in the fall.

	Each	Per 3	Per 10
18 to 24 in.....	\$.29	\$.80	\$2.50
2 to 3 ft.....	.39	1.10	3.50

640 SNOWBALL (*Opulus Sterile*)

This is a favorite to most people. A hardy upright shrub with large compact white balls covering the plant in the spring. The flowers are sterile. Every lawn or garden should have this lovely plant.

	Each	Per 3	Per 10
12 to 18 in.....	\$.49	\$1.35	\$4.05
18 to 24 in.....	.65	1.80	5.50

642 YELLOW KERRIA

Covered with golden yellow flowers in May or June; upright in growth, the bark is bright green with dark green leaves; a beautiful plant.

	Each	Per 3	Per 10
18 to 24 in.....	\$.49	\$1.35	\$4.05
2 to 3 ft.....	.75	2.10	6.50

643 TAMARIX

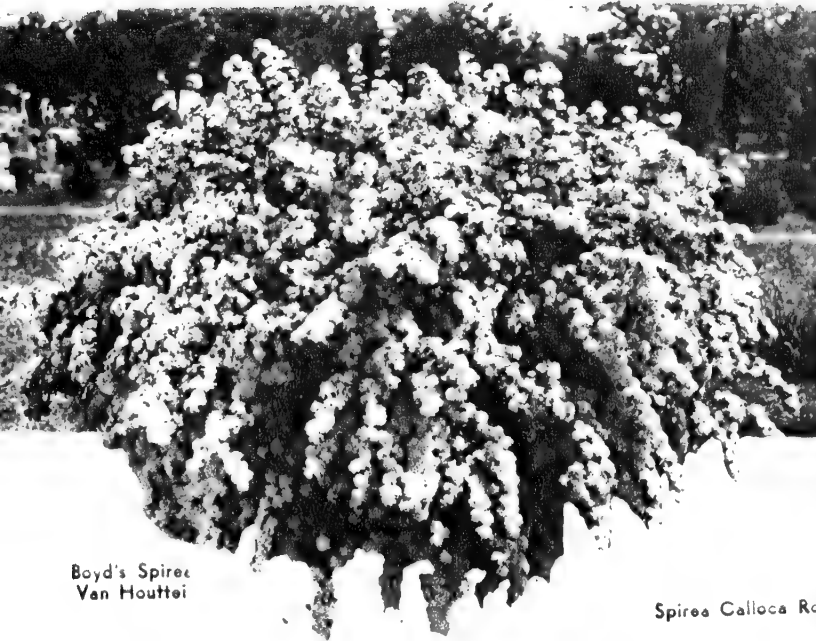
The Tamarix is a graceful shrub with feathery, silver-green foliage and brown bark; a good, hardy plant.

	Each	Per 3	Per 10
18 to 24 in.....	\$.39	\$1.10	\$3.50
2 to 3 ft.....	.50	1.35	4.05



Tamarix

**Flowering Shrubs of
Outstanding Beauty**



Boyd's Spirea
Van Houttei



Spirea Calloca Rosea

644 RED WEIGELA (Eva Rothke)

The blooms are very outstanding, being deep carmine red. This is a very beautiful and distinct variety, which blooms in June.

	Each	Per 3	Per 10
12 to 18 in.-----	\$.35	\$1.00	\$2.95
18 to 24 in.-----	.57	1.60	4.50

646 PINK WEIGELA

An upright shrub which produces an abundance of pink blooms from the bottom to the top of the spikes, in May. Hardy and, too, a popular shrub.

	Each	Per 3	Per 10
12 to 18 in.-----	\$.25	\$.65	\$2.10
18 to 24 in.-----	.29	.80	2.50
2 to 3 ft.-----	.40	1.15	3.75

648 SPIREA THUNBERGI

Covered with masses of small white blooms before the leaves appear in the early spring, the foliage thick and feathery.

	Each	Per 3	Per 10
12 to 18 in.-----	\$.25	\$.65	\$2.10
18 to 24 in.-----	.39	1.10	3.50
2 to 3 ft.-----	.57	1.60	4.50

French Lilacs

551 PRESIDENT GREVY

Double, light blue; immense panicles and symmetrical.

552 CHARLES X

Single, reddish-purple, very beautiful and one of the best and most popular of the single lilacs.

553 NEGRO

Single, dark violet purple, beautiful blooms.

554 WILLIAM ROBINSON

Purple and grows so that it can be used for cut flowers.

	Each	Per 3	Per 10
12 to 18 in.-----	\$.39	\$1.10	\$3.50
18 to 24 in.-----	.59	1.65	4.75

658 ABELIA GRANDIFLORA

One of our best and most beautiful broadleaf evergreens; the graceful drooping stems and branches are covered with dark green, glossy leaves from spring until frost. The blooms cover the plant with white flowers, flush with pink, which are borne in clusters.

	Each	Per 3	Per 10
18 to 24 in., bare root-----	\$.75	\$2.10	\$ 6.50
2 to 3 ft., bare root-----	1.00	2.65	7.95
3 to 4 ft., bare root-----	1.25	3.25	10.00

660 Highbush CRANBERRY

A handsome shrub, very decorative in fruit, which begins to color the last of July and remains on the plant and keeps its bright scarlet color until spring.

	Each	Per 3	Per 10
12 to 18 in.-----	\$.49	\$1.35	\$4.05
18 to 24 in.-----	.65	1.80	5.50

662 SWEET SHRUB (Calycanthus)

The branches are reddish-brown with large glossy leaves, and the blooms are spike-like, fragrant, double, chocolate-brown; a favorite for many years.

	Each	Per 3	Per 10
12 to 18 in.-----	\$.29	\$.80	\$2.50
18 to 24 in.-----	.47	1.30	4.00



French Lilac

Flowering Shrubs — continued

663 YELLOW HYPERICUM

A bushy, low-growing shrub, with golden yellow flowers in midsummer; grows well in rocky or sandy soil. Hardy.

	Each	Per 3	Per 10
18 to 24 in.-----	\$.37	\$1.05	\$3.25

664 WHITE SNOWBERRY

This is a very showy shrub, covered with small pink flowers, followed by large white berries covering the plant, which hang on the plant most of the winter.

	Each	Per 3	Per 10
18 to 24 in.-----	\$.47	\$1.30	\$4.00

665 CORALBERRY (Red Snowberry)

The foliage is a rich shade of green, in June full of pink flowers, and followed in the fall by clusters of small berries which hang on throughout the winter, attracting the birds.

	Each	Per 3	Per 10
18 to 24 in.-----	\$.18	\$.50	\$1.35
2 to 3 ft.-----	.29	.90	2.50

666 SPICE BUSH

The growth is upright; aromatic, green foliage, and blooms before the leaves appear, followed by bright colored fruits in the autumn.

	Each	Per 3	Per 10
18 to 24 in.-----	\$.39	\$1.10	\$3.50
2 to 3 ft.-----	.45	1.20	3.95

667 BEAUTYBERRY (Callicarpa)

A handsome shrub, covered with clusters of lovely purple berries in the fall and winter.

	Each	Per 3	Per 10
18 to 24 in.-----	\$.25	\$.65	\$2.10
2 to 3 ft.-----	.29	.80	2.50

WEIGELA

CORALBERRY

YELLOW KERRIA

THE Department of Agriculture estimates that insects do over a billion dollars' damage a year to our crops, while the value of birds in combating these insects is over 300 million dollars. Besides their value in destroying insects, many species help in keeping down weeds. Offer the birds board and lodging by planting berry producing shrubs, and you will have a host of willing helpers, working tirelessly for you throughout the whole year.



Write for our **BETZ TREE NEWS**, naming plants which produce berries giving food to feed the Birds.

668 WEEPING GOLDEN BELL (Suspensa)

This tall and spreading plant is attractive for its weeping and glinting masses of golden yellow flowers in the early spring.

	Each	Per 3	Per 10
12 to 18 in.-----	\$.29	\$.80	\$2.50
18 to 24 in.-----	.45	1.20	3.95
2 to 3 ft.-----	.50	1.35	4.05

670 VARIEGATED WEIGELA

The green leaves bordered with yellowish-white markings, a beautiful and conspicuous plant, with pink flowers.

	Each	Per 3	Per 10
12 to 18 in.-----	\$.29	\$.80	\$2.50
18 to 24 in.-----	.57	1.60	4.50

Collection 12

- 1 Purple Lilac
- 1 Golden Bell
- 1 Pink Weigelia
- 1 Spirea Van Houttei
- 1 Pussy Willow

1 to 2 feet

All 5 for

.98





Hedge

PLANTS

700 EVERGREEN PRIVET (Amur River South Privet)

The hedge has a distinct value in decorative planting. This is the finest hedge plant for the South. Compact habit, with dark green leaves, is easily sheared and remains evergreen all winter. We do not recommend planting north of the Ohio River.

Prices, hedging size:	Per 25	Per 100
12 to 18 in.-----	\$1.00	\$3.00
18 to 24 in.-----	1.50	4.00
2 to 3 ft.-----	2.00	6.00

702 AMUR RIVER NORTH PRIVET

The most popular hardy hedge, it makes a permanent hedge, it also protects your yard. Fine for dividing yards. The leaves rich dark green and hang on until very late in the fall.

Prices:	Per 25	Per 100
12 to 18 in.-----	\$2.00	\$ 6.00
18 to 24 in.-----	3.00	9.00
2 to 3 ft.-----	4.00	12.00

704 CALIFORNIA PRIVET

Its foliage is of the deepest, richest green and the leaves stay on until late winter.

Prices:	Per 25	Per 100
12 to 18 in.-----	\$1.00	\$3.00
18 to 24 in.-----	1.50	4.00
2 to 3 ft.-----	2.00	6.00

706 BUSH HONEYSUCKLE

An upright shrub, dark green foliage, and pink blooms in May, followed by red to orange berries in the early fall.

Prices:	Per 25	Per 100
6 to 12 in.-----	\$2.00	\$ 6.00
12 to 18 in.-----	3.00	9.00
18 to 24 in.-----	4.00	12.00

708 SPIREA VAN HOUTTEI

A beautiful hedge, with masses of pure white flowers in the early spring.

Prices:	Per 25	Per 100
6 to 12 in.-----	\$2.00	\$6.00
12 to 18 in.-----	3.00	9.00

710 ABELIA GRANDIFLORA

The Abelia is one of our best broadleaf evergreens for the South, makes a beautiful hedge. Can be pruned or let grow natural. The white flowers, tinged with pink, start in early summer and stay until frost.

Prices:	Per 25	Per 100
6 to 12 in.-----	\$4.00	\$12.00
12 to 18 in.-----	6.00	18.00

(For larger sizes of Abelia, see listings under Broad-leaf Evergreens.)

712 LOMBARDY POPLAR

Is used for screens where tall plants are needed. This is a rapid-growing plant, branches from the ground up. Can be pruned to the desired height.

Prices:	Per 10	Per 25	Per 100
2 to 3 ft.-----	\$4.00	\$8.00	\$24.00
3 to 4 ft.-----	5.00	10.00	30.00

714 OSAGE ORANGE

This tree is used extensively for wind-breaks, or to mark the boundaries of the farm; stands pruning. The fragrant fruit is about 6 to 7 inches in diameter.

Prices:	Per 25	Per 100
12 to 18 in.-----	\$1.50	\$4.00
18 to 24 in.-----	2.00	6.00

Write For Free Bulletin on Forest Tree Seedlings
For Reforestation.

No. 10 Special
1000

**SOUTH
PRIVET**

18-24 inch

\$2995



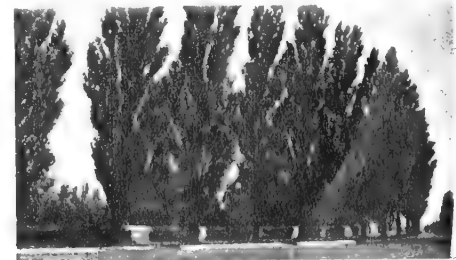
Bush Honeysuckle

No. 11 Special
1000

**NORTH
PRIVET**

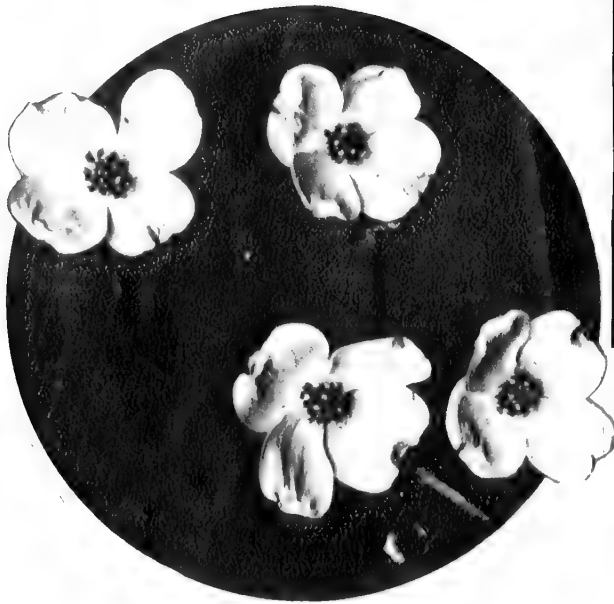
9 to 12 inch

\$3995



For Screen Use Lombardy Poplar

We Do Not Have Any Traveling Agents or Order Takers



White Dogwood

800 PINK FLOWERING APRICOT

Blooms profusely, blossoms are double pink, fragrant, and similar to the Pink Almond. The first tree to bloom after Christmas, sometimes blooms when the snow is on the ground.

	Each	Per 3	Per 10
18 to 24 in.....	\$.79	\$2.20	\$ 7.25
2 to 3 ft.....	1.10	3.15	9.50
3 to 4 ft.....	1.39	3.75	10.00

802 PINK FLOWERING DOGWOOD

This beautiful tree is very popular and in the spring is covered with flowers of a deep rose color; good in a group or as a specimen—when planted near a White Dogwood it is more showy. One of our best flowering trees.

	Each	Per 3	Per 10
18 to 24 in.....	\$2.00	\$5.50	\$17.50
2 to 3 ft.....	2.50	7.00	22.50
3 to 4 ft.....	3.25	9.50	30.00

804 WHITE FLOWERING DOGWOOD

This is a tree of beauty, in the spring covered with velvet white blossoms. Throughout the summer green leaves, turning to crimson in the fall, and full of red berries in the autumn.

	Each	Per 3	Per 10
2 to 3 ft.....	\$.59	\$1.65	\$ 4.75
3 to 4 ft.....	.89	2.40	7.50
4 to 5 ft.....	1.39	3.75	10.00

806 RED BUD (Judas Tree)

A fast-growing tree with large, leathery, heart-shaped leaves, and before the foliage appears the tree is covered with a profusion of reddish-purple flowers.

	Each	Per 3	Per 10
2 to 3 ft.....	\$.39	\$1.10	\$3.50
3 to 4 ft.....	.49	1.35	4.05
4 to 5 ft.....	.79	2.20	7.25

Flowering Trees

808 ROSE TREE OF CHINA (Double Flowering Plum)

In the early spring covered with double pink flowers. This is a good dwarf variety and used as specimen or in border.

	Each	Per 3	Per 10
18 to 24 in.....	\$.79	\$2.20	\$7.25
2 to 3 ft.....	.98	2.85	7.95

809 CISTENA PLUM

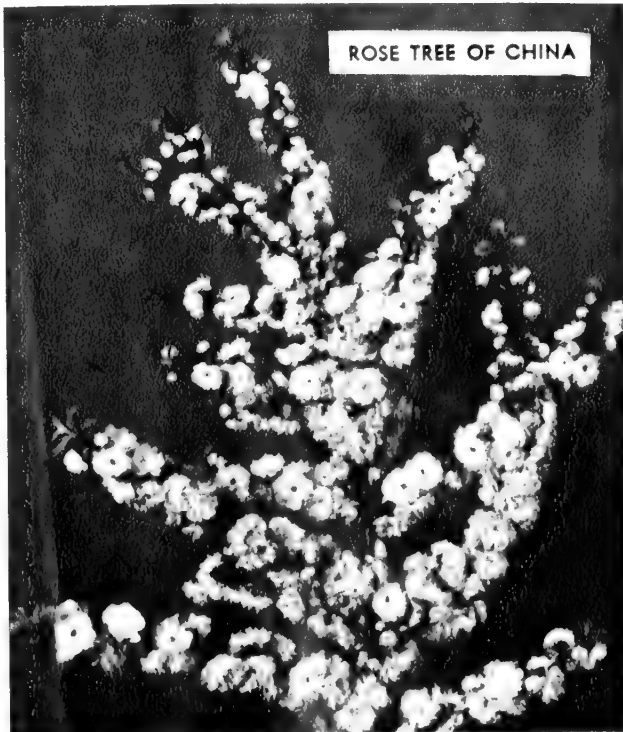
This variety is more dwarf than the other Purple-leaf varieties. Compact, with glossy leaves and more red in the purple, stays red all summer.

	Each	Per 3	Per 10
12 to 24 in.....	\$.39	\$1.10	\$3.50
2 to 3 ft.....	.49	1.35	4.05

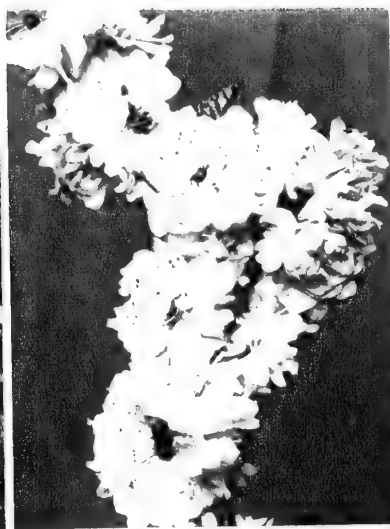
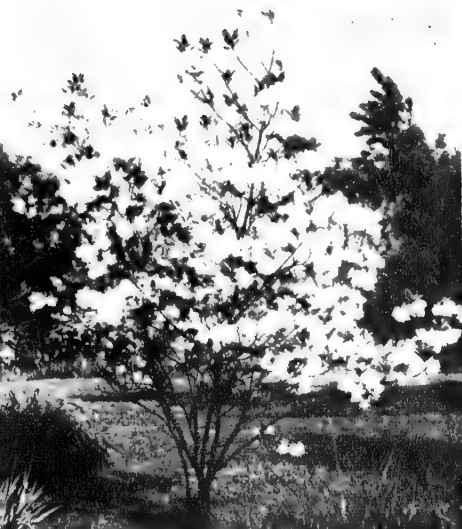
810 PURPLE-LEAF PLUM

A handsome plant, with deep purple leaves and deep wine-red fruit; holds its color all summer.

	Each	Per 3	Per 10
2 to 3 ft.....	\$.49	\$1.35	\$4.05
3 to 4 ft.....	.79	2.20	7.25
4 to 5 ft.....	1.15	3.15	9.50



Free List For the Asking. Plants With BRILLIANT AUTUMN COLORINGS.



White Fringe

Double Flowering Peach

Red Bud

811 NEWPORT PLUM (Purple)

A new Purple-leaf of greater refinement, the leaves smooth and more richly colored, strongly reddened, maturing to a deep bronze-purple in late summer, also red fruit.

	Each	Per 3	Per 10
18 to 24 in.....	\$.39	\$1.10	\$3.50
2 to 3 ft.....	.49	1.35	4.08

812 PEPPERMINT PEACH

This new flowering tree is becoming more popular as people are seeing it in bloom. The bloom is white semi-double with red stripes, resembling that of the peppermint stick of candy.

	Each	Per 3	Per 10
18 to 24 in.....	\$.59	\$1.65	\$4.75
2 to 3 ft.....	.79	2.20	7.25

814 DOUBLE RED FLOWERING PEACH

These trees are covered with an abundance of double red, fragrant blossoms in the early spring before the leaves appear.

	Each	Per 3	Per 10
18 to 24 in.....	\$.39	\$1.10	\$3.50
2 to 3 ft.....	.59	1.65	4.75
3 to 4 ft.....	.69	1.95	6.30

816 DOUBLE WHITE FLOWERING PEACH

This is very similar to the Double Red except its blossoms are double white and fragrant.

	Each	Per 3	Per 10
18 to 24 in.....	\$.39	\$1.10	\$3.50
2 to 3 ft.....	.59	1.65	4.75
3 to 4 ft.....	.69	1.95	6.00

818 HOPA FLOWERING CRAB

It develops into a beautiful, graceful, medium sized tree, and the tree when in bloom is covered with large, single, deep rose colored blossoms. Reddish fleshed fruits and reddish-purple foliage.

	Each	Per 3	Per 10
2 to 3 ft.....	\$.69	\$1.95	\$6.00
3 to 4 ft.....	.98	2.65	7.95
4 to 5 ft.....	1.19	3.15	9.50

110 RED SILVER CRAB

The foliage is a beautiful maroon red and silver underneath. The buds are red and the blossoms are a rich dark red; delicious fruit of the brilliant flaming red color.

	Each	Per 3	Per 10
2 to 3 ft.....	\$.69	\$1.95	\$6.00
3 to 4 ft.....	.98	2.65	7.95
4 to 5 ft.....	1.19	3.15	9.50

819 CORONARIA CRAB (Crabapple)

The foliage light green, rounded-head tree. The flowers are large and showy, white to light rose. The small apples produced in abundance can be used for preserves and jellies.

	Each	Per 3	Per 10
3 to 4 ft.....	\$.98	\$2.65	\$7.95
4 to 5 ft.....	1.19	3.15	9.50

820 WHITE FRINGE

Small tree 12 to 15 feet tall, very showy, with long lace-like white flowers, borne in graceful drooping panicles; sometimes called "Santa Claus' Beard." The leaves large, leathery-like.

	Each	Per 3	Per 10
18 to 24 in.....	\$.79	\$2.20	\$7.25
2 to 3 ft.....	.89	2.40	7.50
3 to 4 ft.....	1.19	3.15	9.50

822 PURPLE FRINGE (Smoke Tree)

Conspicuous, spreading, small tree, with large clusters of round leaves, overhung in midsummer with mist-like clouds of small flowers, light lavender in color and resembling smoke at a distance.

	Each	Per 3	Per 10
18 to 24 in.....	\$.89	\$2.40	\$7.50
2 to 3 ft.....	.98	2.65	7.95
3 to 4 ft.....	1.19	3.15	9.50

823 UMBRELLA TREE

Much planted for shade and ornamental purposes. Flowers in graceful panicles, and yellow berries in the fall. The drooping foliage gives the tree the appearance of a gigantic umbrella.

	Each	Per 3	Per 10
2 to 3 ft.....	\$.39	\$1.10	\$3.50
3 to 4 ft.....	.69	1.95	6.00

824 DWARF RED BUCKEYE

The blossoms are a purplish red, very ornamental. Throughout the summer dark green foliage, turning to yellow in the autumn.

	Each	Per 3	Per 10
15 to 18 in.....	\$.59	\$1.65	\$4.75

826 KENTUCKY COFFEE TREE

This rapid growing and upright tree has coarse branches, bluish-green foliage, white flowers followed by long pods which hang on the tree all winter.

	Each	Per 3	Per 10
2 to 3 ft.....	\$.89	\$2.40	\$7.50

Flowering Trees — continued

828 MIMOSA TREE (Silktree)

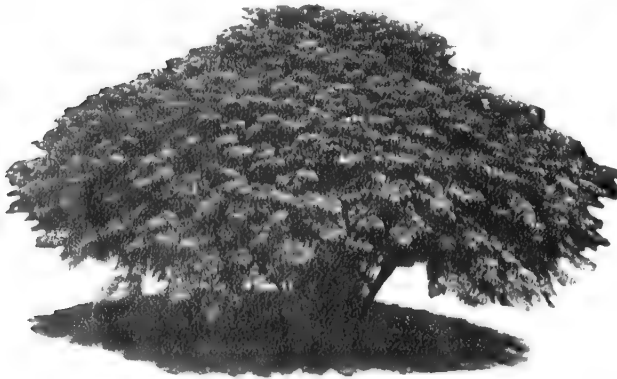
Sometimes called the sensitive tree. Fern-like foliage, with fragrant pink blossoms in round heads in June. The foliage resembles that of tropical plants. Do not plant north of the Ohio River.

	Each	Per 3	Per 10
2 to 3 ft.....	\$.98	\$2.65	\$ 7.95
3 to 4 ft.....	1.19	3.15	9.50
4 to 5 ft.....	1.89	5.25	15.95

830 SOURWOOD

A dwarf tree, with green leaves in the summer, turning to a brilliant scarlet in the fall. One of the best trees for autumn coloring. Bears masses of small white flowers in the spring.

	Each	Per 3	Per 10
2 to 3 ft.....	\$.89	\$1.95	\$6.00
3 to 4 ft.....	.98	2.65	7.95



Umbrella Tree

831 SILVER BELL TREE (Halesia)

Sometimes called Snowdrop. Pink bell-shaped buds are carried in drooping clusters in early spring from every limb, then develop into drooping pure white snowdrop-like flowers.

	Each	Per 3	Per 10
18 to 24 in.....	\$.89	\$1.95	\$6.00
2 to 3 ft.....	.87	2.40	7.50
3 to 4 ft.....	1.19	3.15	9.50

832 EUROPEAN MOUNTAIN ASH

This attractive tree has fern-like leaves and large flat corymbs of creamy white flowers; in the winter orange and scarlet berries hang on the tree, which makes it a picture of beauty.

	Each	Per 3	Per 10
4 to 5 ft.....	\$2.39	\$6.25	\$18.75
5 to 6 ft.....	2.89	7.85	24.75

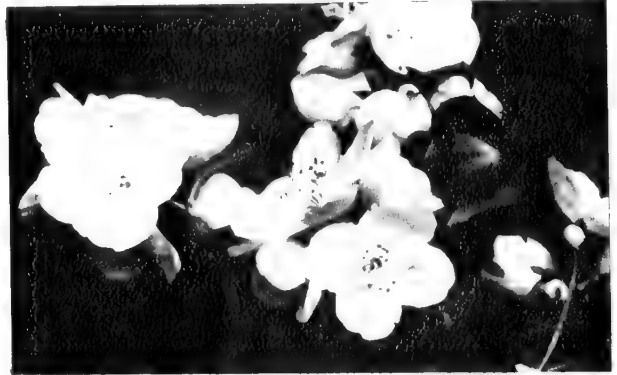
834 AMERICAN LINDEN

The Linden is noted for a shade tree more than for its cream-colored sweet flowers. It makes a large tree, with large dark green leaves, which turn to yellow in the autumn. Good lawn or street tree.

	Each	Per 3	Per 10
4 to 5 ft.....	\$1.39	\$3.75	\$10.00



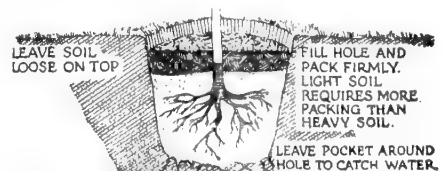
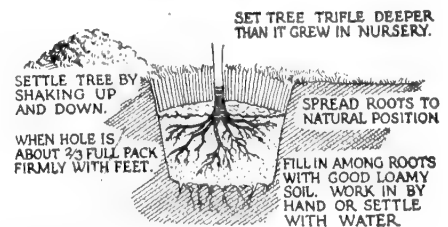
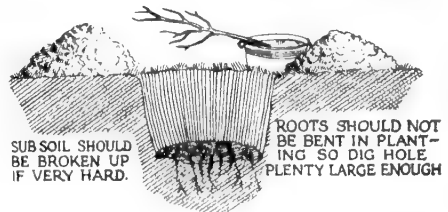
Mimosa Silktree



Flowering Crab

How to Plant a Tree

SET TREE IN TUB OF WATER WHILE DIGGING HOLE.



IMPORTANT: WE DO NOT ENCOURAGE THE USE OF MANURE. IF WELL DECAYED AND MIXED WITH SOIL IT SHOULD BE USED ONLY ON THE TOP

CONIFEROUS EVERGREENS

We have some junior size Evergreens, which are two-year-old field grown, which we can dig bare root and pack in moss and ship via express. These plants should be worked around the first year in order that they develop into specimen plants. If they are cared for properly they will quickly become specimen plants and will double or triple in value.



900 AMERICAN ARBOR VITAE

Bright green, pyramidal outline, good for individual or screen plantings.

Prices:	Each	Per 3	Per 10
12 to 18 in.....	\$.59	\$1.85	\$4.75
15 to 18 in.....	.75	2.10	6.50

901 BERCKMAN GOLDEN ARBOR VITAE

Beautiful, dwarf, compact variety, of golden color.

	Each	Per 3	Per 10
8 to 10 in.....	\$.75	\$2.10	\$6.50
10 to 12 in.....	.98	2.15	7.95

902 GLOBE ARBOR VITAE

Bright green color, globe shape; nice to use in door-step plantings.

	Each	Per 3	Per 10
9 to 12 in.....	\$.75	\$2.10	\$6.50
12 to 15 in.....	.89	2.40	7.50

903 EXCELSA ARBOR VITAE

A compact and bushy upright plant, bright green foliage.

	Each	Per 3	Per 10
9 to 12 in.....	\$.69	\$1.95	\$6.00
12 to 15 in.....	.89	2.40	7.50



Gardenia
(Cape Jasmine)

904 PYRAMIDAL ARBOR VITAE

A compact, narrow pyramidal plant, good for foundation planting, or as specimen on lawn.

	Each	Per 3	Per 10
9 to 12 in.....	\$.79	\$2.20	\$7.25
12 to 15 in.....	.98	2.65	7.95

906 AMERICAN HEMLOCK

A tall graceful evergreen with spreading branches, good for foundation corner planting, or as specimen on lawn.

	Each	Per 3	Per 10
9 to 12 in.....	\$.69	\$1.95	\$6.00
12 to 15 in.....	.75	2.10	6.50
15 to 18 in.....	.98	2.65	7.95

2 Yr. Field Grown Pfitzerana Juniper

908 IRISH JUNIPER

A sage green, slender, upright Juniper, good in any planting.

	Each	Per 3	Per 10
9 to 12 in.....	\$.69	\$1.95	\$6.00
12 to 15 in.....	.75	2.10	6.50
15 to 18 in.....	.89	2.40	7.50

910 GREEK JUNIPER

Appears to be light blue in color, well filled and compact; broad at base.

	Each	Per 3	Per 10
9 to 12 in.....	\$.75	\$2.10	\$6.50
12 to 15 in.....	.89	2.40	7.50

912 PFITZERIANA JUNIPER

The most popular of the spreading evergreens. Used for door-step planting and foundation.

	Each	Per 3	Per 10
9 to 12 in.....	\$.75	\$2.10	\$6.50
12 to 15 in.....	.89	2.40	7.50

914 SABINA JUNIPER

Spreading Juniper, dark green color, upright branches.

	Each	Per 3	Per 10
9 to 12 in.....	\$.69	\$1.95	\$6.00
12 to 15 in.....	.75	2.10	6.50

916 ANDORRA JUNIPER

Grayish-green foliage, turning to bronze-purple in winter.

	Each	Per 3	Per 10
9 to 12 in.....	\$.59	\$1.65	\$4.75
12 to 15 in.....	.69	1.95	6.00

BROADLEAF EVERGREENS

These plants are two-year field grown; shipped via express, bare root plants packed in moss.

950 SCOTCH BROOM (Golden Peacock Bush)

Green straw-like limbs with yellow flowers in early spring. A very striking and attractive shrub.

	Each	Per 3	Per 10
2 to 3 ft.....	\$.98	\$2.65	\$7.95

658 ABELIA GRANDIFLORA

Pinkish-white blooms from early spring until late fall. Truly one of the best Broadleaf Evergreens.

	Each	Per 3	Per 10
18 to 24 in.....	\$.75	\$2.10	\$ 6.50
2 to 3 ft.....	1.00	2.65	7.95
3 to 4 ft.....	1.25	3.25	10.00

(For smaller sizes, see listings under Hedge Plants.)

952 BOXWOOD

Its compact, dark green foliage and habit of growth makes this plant a Southern Aristocrat in its class.

	Each	Per 3	Per 10
9 to 12 in.....	\$.69	\$1.95	\$6.00
12 to 15 in.....	.98	2.65	7.95

We Do Not Have Any Traveling Agents or Order Takers

954 EUONYMOUS COLORATO
(Creeping Euonymous)

A remarkable ground cover plant. Green foliage when grown in shade, and reddish-purple when grown in the sunshine.

	Each	Per 3	Per 10
12 to 15 in.....	\$.49	\$1.35	\$4.05

957 GARDENIA (Cape Jasmine)

Glossy green leaves and double wax-like snowy white flowers, which are exquisitely fragrant. Tender shrub needs protection if planted outdoors.

	Each	Per 3	Per 10
9 to 12 in	\$.89	\$2.40	\$ 7.50
12 to 15 in	1.39	3.75	10.00

958 NANDINA DOMESTICA

An upright plant with green foliage, turning red in the fall, and clusters of berries hanging on until late winter.

	Each	Per 3	Per 10
12 to 15 in.....	\$.89	\$2.40	\$7.50

... PLANT ...

Shade Trees

**FOR BEAUTY
AND COMFORT**

A windbreak around your home and farm buildings will help make living more comfortable in winter and summer. It will take less fuel to heat your home and help break dust storms and biting cold winds and drifting snows.

Collection 15
DAHLIAS
KING OF RED HEADS

Blooms 4 to 6 inches Wide

25¢ Each \$500 for 25 plants

850 CHINESE ELM

A rapid growing shade tree, good in dry climates and also for wind breaks.

	Each	Per 3	Per 10
3 to 4 ft.....	\$.59	\$1.65	\$ 4.75
4 to 5 ft.....	.98	2.65	7.95
5 to 6 ft.....	1.39	3.75	10.00

852 SILVER MAPLE

One of the best fast-growing shade trees. Leaves bright green above and silver underneath, turning to pale yellow in the autumn. We recommend this for a good fast growing shade tree.

	Each	Per 3	Per 10
3 to 4 ft.....	\$.59	\$1.65	\$4.75
4 to 5 ft.....	.69	1.95	6.00
5 to 6 ft.....	.98	2.65	7.95

854 SUGAR MAPLE (Sugar Tree)

This is one of the best shade trees, slow growing, always erect, neat in appearance; long life. Foliage green, but in the autumn they range from orange to yellow to various colors of red and scarlet.

	Each	Per 3	Per 10
4 to 5 ft.....	\$1.39	\$3.75	\$10.00
5 to 6 ft.....	1.89	5.25	15.95

856 TULIP TREE (Tulip Poplar)

A splendid tree, upright in growth, large glossy leaves, and in the spring has large greenish-yellow tulip like flowers. Good for street or lawn tree.

	Each	Per 3	Per 10
4 to 5 ft.....	\$.49	\$1.35	\$4.05
5 to 6 ft.....	.79	2.20	7.25
6 to 8 ft.....	.98	3.65	7.95

858 LOMBARDY POPLAR

This slender, tall tree is very pyramidal from the ground up, branches from ground. One of the best for screens. Plant 6 feet apart to make good screen or background.

	Each	Per 3	Per 10
5 to 6 ft.....	\$.79	\$2.20	\$7.25
6 to 8 ft.....	.98	2.65	7.95



Silver
Maple

CHINESE ELMS MAKE A WINDBREAK IN JUST FIVE YEARS

860 SWEET GUM

An upright tree, with slender corky-ridge branches, with starry-shaped leaves; green throughout summer, turning to yellow and tones of scarlet throughout the autumn. One of the best for autumn colors.

	Each	Per 3	Per 10
3 to 4 ft.....	\$.69	\$1.95	\$6.00
4 to 5 ft.....	.98	2.65	7.95

862 GOLDEN WEeping WILLOW

This tree is proving to be very popular for its many good qualities. Its golden bark very showy in winter; is hardy, and also a good weeping tree.

	Each	Per 3	Per 10
4 to 5 ft.....	\$.89	\$2.40	\$7.50
5 to 6 ft.....	1.19	3.15	9.50

864 GREEN WEeping WILLOW

The Weeping Willow has been popular for generations throughout the South, and now is popular throughout the whole country. It makes a large tree, with weeping, slender, pendant branches, bright green leaves.

	Each	Per 3	Per 10
4 to 5 ft.....	\$.89	\$2.40	\$7.50
5 to 6 ft.....	1.19	3.15	9.50

866 RIVER BIRCH

An upright tree, with reddish-brown papery bark; deep green leaves, turning to yellow in the fall.

	Each	Per 3	Per 10
4 to 5 ft.....	\$.79	\$2.20	\$7.25

868 AMERICAN SYCAMORE

A large tree with silvery bark and large green leaves. Good shade tree, and will grow in smoky cities.

	Each	Per 3	Per 10
4 to 5 ft.....	\$.79	\$2.20	\$7.25
5 to 6 ft.....	.98	2.65	7.95

870 RED MAPLE (Scarlet Maple)

A large upright, hardy tree; light green leaves, in the autumn turning to brilliant shades of scarlet and orange.

	Each	Per 3	Per 10
4 to 5 ft.....	\$.89	\$2.40	\$7.50
5 to 6 ft.....	.98	2.65	7.95



Weeping Willow

CHINESE CHESTNUT

Blight Resistant—Bears in 3 to 4 years.

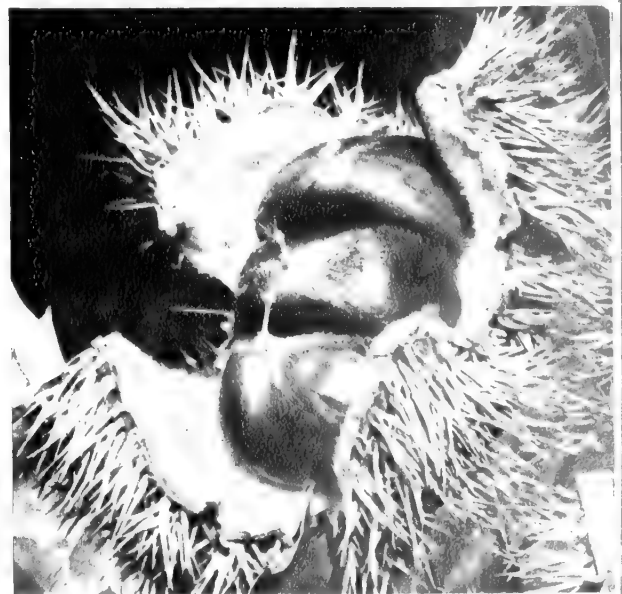
Plant in well drained soil, full sunlight if possible, for commercial planters plant 40 feet apart. Trees grow to a medium size, if possible use well rotted manure around them, when they bear use commercial fertilizer with high potash.

The meat of the nuts is excellent, compares favorable to the American Sweet Chestnut.

Our Supply Is Limited.

Order Early.

	Each	Per 3	Per 10
1 to 2 feet.....	\$1.49	\$4.25	\$12.50
2 to 3 feet.....	2.39	6.25	18.75





RED RADIANCE

We offer a few varieties of Roses of the different rose colors. These Roses will bloom first year after planting.

1001 RED RADIANCE

The flowers are large, clear, of deep rose-red.

1002 K. A. VICTORIA (White)

Cream colored buds opening into white flowers.

1003 PINK RADIANCE

Buds brilliant rose pink, opens to shiny pink.

1004 TALISMAN (Two-tone)

Combination of orange-red and yellow.

1005 MRS. P. S. DUPONT

Red-gold buds open to a beautiful yellow.

1006 CALADONIA (White)

Large white.

1007 PRESIDENT HOOVER

Long pointed buds, of maroon, orange and gold.

1008 PINK DAWN

Fragrant, rose-pink flowers, on long stems.

1009 LADY HILLINGTON (Yellow)

Apricot yellow shaded to orange.

1010 AMI QUINARD (Dark Red)

Dark crimson-maroon, semi-double flowers.

1000 PAULS SCARLET CLIMBER

Large, vivid scarlet flowers, semi-double, produced in clusters.



PINK DAWN



PRES. HERBERT HOOVER

\$1 Each
One Each of 11 for **\$9.90**

Vines AND Creepers



Hall's Honeysuckle

Gold Flame Honeysuckle

1050 GOLD FLAME HONEYSUCKLE

Masses of deep scarlet trumpets lined with gold, in fragrant clusters, from June to October.

2 year plants, 75 cents each; \$6.50 per 10

1051 SCARLET TRUMPET HONEYSUCKLE

Brilliant orange-red trumpet-shaped flowers, very showy.

2 year plants, 50 cents each; \$4.00 per 10

1052 HALL'S HONEYSUCKLE

A strong, vigorous vine, with pure white fragrant flowers, changing to yellow; foliage remains green until well into the winter.

2 year plants, 20 cents each; \$1.50 per 10

1053 ENGLISH IVY

Evergreen Ivy; deep green, glossy foliage. Good covering for stone or brick structures. Grows in dense shade. Can be sheared into edging for walks, or covering for graves.

2 year plants, 39 cents each; \$3.50 per 10

1054 BITTERSWEET

Glossy foliage and large clusters of beautiful orange-crimson berries, which hang on all winter. A favorite winter decoration.

2 year plants, 50 cents each; \$4.00 per 10

1055 TRUMPET VINE

A hardy climbing plant with large, trumpet-shaped scarlet flowers appearing in summer.

2 year plants, 40 cents each; \$3.00 per 10

1056 WISTERIA BLUE

Fragrant racemes of pea-shaped flowers, pale blue.

1057 WISTERIA WHITE

White flowers. Wonderful pergola vine.

2 year plants, 50 cents each; \$4.00 per 10

1058 VINCA MINOR

Common Periwinkle. A hardy, old-fashioned evergreen plant well adapted for ground covering and rockeries. Leaves dark green and glossy; flowers blue.

2 year plants, 30 cents each; \$2.50 per 10



English Ivy

Boyd Brothers SPECIAL OFFERS!

SPECIAL **1** OFFER

Hick's Everbearing Mulberry

The large black fruits are produced from June until September, is an annual bearer, the foliage is large.

2 to 3 feet **\$139** each

3 to 4 feet **\$165** each

SPECIAL **2** OFFER

Keiffer Pear

Bearing Size

\$249 each

SPECIAL **3** OFFER

Montmorency Cherry

Bearing Size

\$249 each

SPECIAL **4** OFFER

Almeda Apple

Bearing Size

\$200 each

SPECIAL **5** OFFER

Cushion Mums

5 for **\$135**

One each. Red, Pink, White, Bronze and Yellow

SPECIAL **6** OFFER

Seedling Peach Trees

If you desire you can bud these in your own orchard, also if un-budded they will bear small sized fruit in abundance, will bear young.

2 to 3 feet

6 for **\$139**

25 for **\$450**

SPECIAL **7** OFFER

Peach Trees

Bearing Size

We only have a limited variety in bearing size, so order early to be sure to get the big trees.

Red Haven Golden Jubilee
J. H. Hale Pineapple
Belle of Georgia Elberta
Hale Haven Nectarine

\$179 each **\$1650** Per 10

SPECIAL **8** OFFER

Apple Trees

Bearing Size

Our bearing size trees are very nice and believe you will be pleased with them.

Red Delicious Jonathan
Rome Beauty Winesap
Yellow Delicious

\$179 each **\$1650** Per 10

SPECIAL **9** OFFER

Cistena & Newport Plum

Dwarf Purple, Ornamental Trees. 4 feet Branched Trees. One each variety.

2 for **\$198**

Boyd's

Oka Cherry

(Dwarf Bush
Cherry)

Will Bear Fruit

Second Year After Planting

This is a good hardy, sweet cherry for the North and South and bears heavy annual crops of big, purplish red fruits of a wonderful, rich flavor.

Good to eat fresh, and fine for making jam and to dry like prunes and used like prunes.

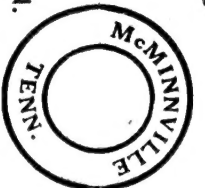
Plant near a plum or Rocky Mountain Cherry for pollinating, which will make them produce heavier crops of fruit.



Boyd Brothers

NURSERIES

McMINNVILLE • TENN.



Sec. 562, P. L. & R.
U. S. POSTAGE
PAID
Permit No. 14

Planting Guide and
Descriptive Catalog

● Mr. F. P. Schletter
Room 2806 South Bldg.
Dept. of Agri.
Washington, D. C.

POSTMASTER:

If undelivered please give this Catalog to some Home Owner, who may be interested in planting their home grounds.

EACH

PER 10

18 to 24 in. —

47¢

\$4.00

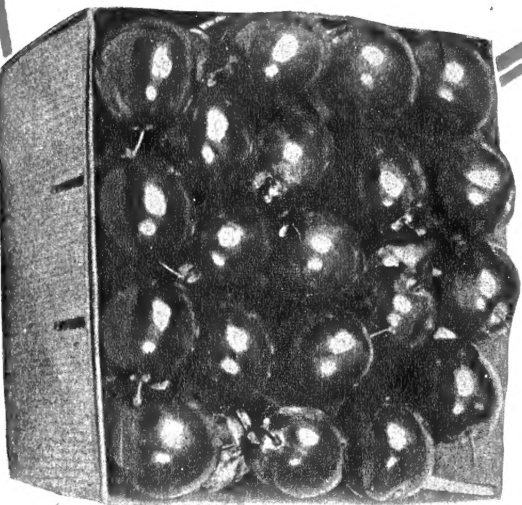
2 to 3 ft. —

59¢

\$4.75

Order Early . . .

While our stock is complete!



Oka Cherry