

Historic, Archive Document

Do not assume content reflects current scientific knowledge, policies, or practices.

62.93

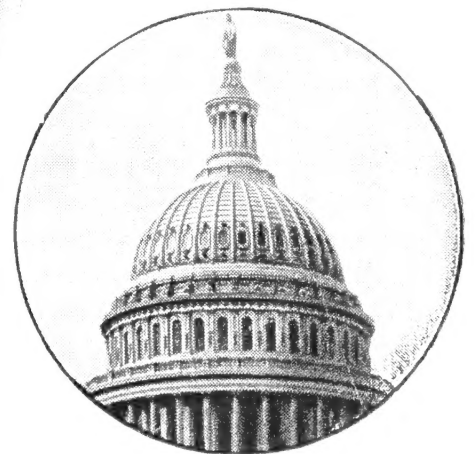
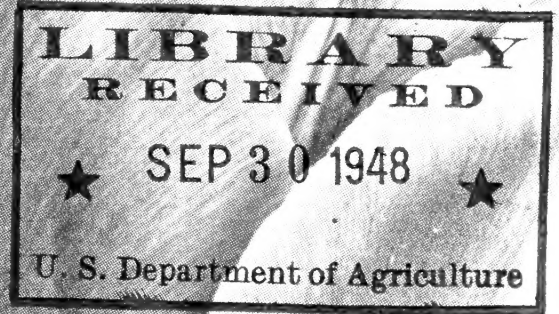
BOLGIANO'S

SELECTED

Bulbs • Plants • Seeds

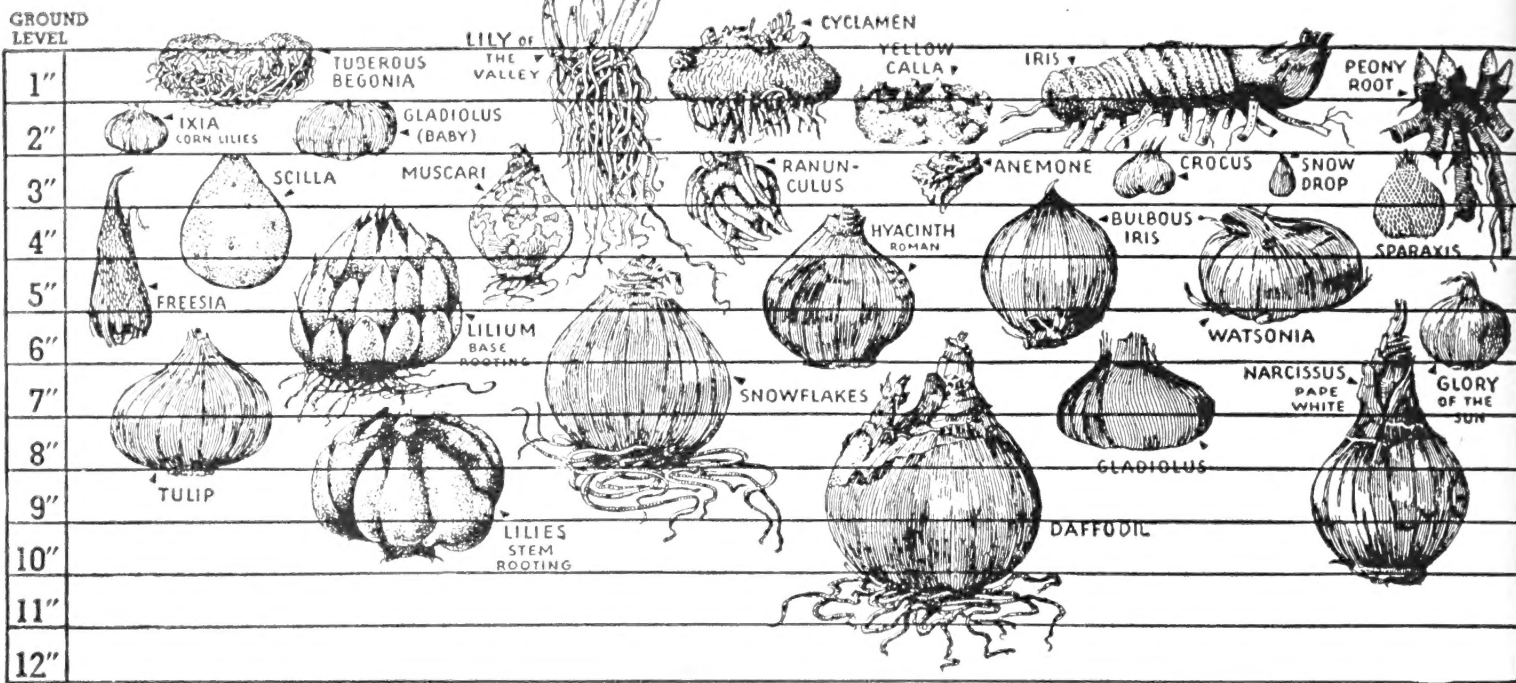
for 1948

Fall Planting



CAPITOL PARK
LAWN GRASS SEED

The Nation's Pride



How to Plant Bulbs

SAVE THIS CHART

It shows the depth at which different bulbs should be planted

Outdoor Culture. Plant the bulbs as soon after September as possible, to enable the roots to make good growth before the cold weather sets in. They require a moderately rich soil. For best results, apply Loma, Vigoro, Sheep Manure or Bone Meal. How deep to plant the different bulbs is shown in the accompanying chart.

Indoor Culture. Plant hyacinths, tulips and narcissus in a sandy soil. For forcing, bulbs should be planted from September until November; the earlier they are potted the better. After they are potted they may be set outdoors and covered with a few inches of soil until freezing weather, then brought into a cool cellar and watered occasionally. If not

possible to set them outdoors they may be placed in a cool cellar, covered with soil and watered regularly. When the roots are well developed the bulbs may be brought into a cool room where they will flower very quickly.

Growing Paper-White Narcissus in Water. Place a dozen bulbs in a shallow bowl, cover with small stones and keep filled with water. Place a few small pieces of charcoal in the bottom of the bowl to keep the water from fouling. Keep in a moderately temperate room. They keep on growing and produce beautiful flowers in about six weeks. Plant bulbs at two-week intervals for a succession of blooms.

HOW TO ORDER

Address All Mail to F. W. Bolgiano & Co., 411 New York Ave., N. E., Washington 2, D. C.

Your Name and Address should be written plainly on the Order Blank which accompanies this Catalog.

Our Terms with customers not having an account are always cash with order. We do not send nursery stock C. O. D.

Money can be sent at our risk by Post Office or Express Money Order, New York or Chicago Draft, or by Registered Letter. We cannot hold ourselves responsible for cash sent loose in letters.

Postage and Express Charges. All bulbs will be sent by Mail, charges prepaid, when ordered

at single or ten rates. At 100 rate and over add 5 per cent to the cost of the bulbs to cover carrying charges. Refer to page 16 for Postage and Packing on plants.

Give Full Directions always, whether shipment is to be made by Freight, Express or Parcel Post.

Express or Freight shipments should have the name of the station plainly given where different from the Post Office.

Non-Warranty. We give no warranty, expressed or implied, as to the productiveness of any seeds, bulbs or plants we sell, and we will not be in any way responsible for the crop. Our liability in all instances is limited to the purchase price of the seeds, bulbs or plants.

Orders Booked Now!

HOLLAND-GROWN BULBS

Tulips • Hyacinths • Crocus, Etc.

OREGON-GROWN DAFFODILS

Phone: Franklin 4800 or National 0091

BOLGIANO'S

Capitol Park

LAWN GRASS SEED

and Fall Seeding Makes Better Lawns The Nation's Pride

We can say with pride that it is the accumulated experience of sixty years that has made possible the development of the "Capitol Park" Lawn Grass Mixture. It contains a carefully selected, well-balanced blend of high-quality re-cleaned seed. Through the years we have learned that the finest lawns for the Washington area are those made of fine-bladed deep-rooting grass. It is an easy matter to have a good-looking lawn in spring but it is the year-round test that determines the quality of good lawn seed. We are proud of our Capitol Park Lawn Seed and we believe you will find this leader in the Washington area the answer to your lawn problem.

Lb. 75c.; 3 lbs. \$2.20; 5 lbs. \$3.65; 25 lbs. \$16.75; 100 lbs. \$65.00

BOLGIANO'S "WHITE HOUSE" SHADY LAWN GRASS SEED

The Grass That Will Grow in Shady Places

To provide a turf for shady places which would match the turf of our Capitol Park Lawn Grass in the sun, we experimented with grasses best adapted for growing in the shade until this formula was perfected. The resulting White House Shady Lawn Seed has removed cause for worry about those once bad places under trees.

Lb. 85c.; 5 lbs. \$4.15; 25 lbs. \$18.75; 100 lbs. \$72.50

BOLGIANO'S "FAIRGREEN" LAWN GRASS SEED

A Superior Mixture with Creeping Bent

Selecting grasses capable of producing a dense velvety lawn and resistant to dry summer weather, we believe we have in Fairgreen a permanent turf mixture which is unsurpassed, especially on slopes and terraces.

Lb. \$1.00; 5 lbs. \$4.85; 25 lbs. \$23.00; 100 lbs. \$90.00

HORMONE-TREATED LAWN SEED

Treating seeds with Rootone Hormone Powder serves to augment the natural hormones which stimulate root-formation and top-growth. In our Hormone-treated Lawn Grass Mixture we use only the best varieties of seed, including Bent Grass.

Lb. \$1.10; 5 lbs. \$5.35; 25 lbs. \$25.50

Prices quoted on grass seed do not include postage. If postage is included with order, seed will be sent by Parcel Post; otherwise shipment will be made by Express Collect:

LOMA. *Beautifies lawns and gardens. The best thing on earth for lawns and gardens.*

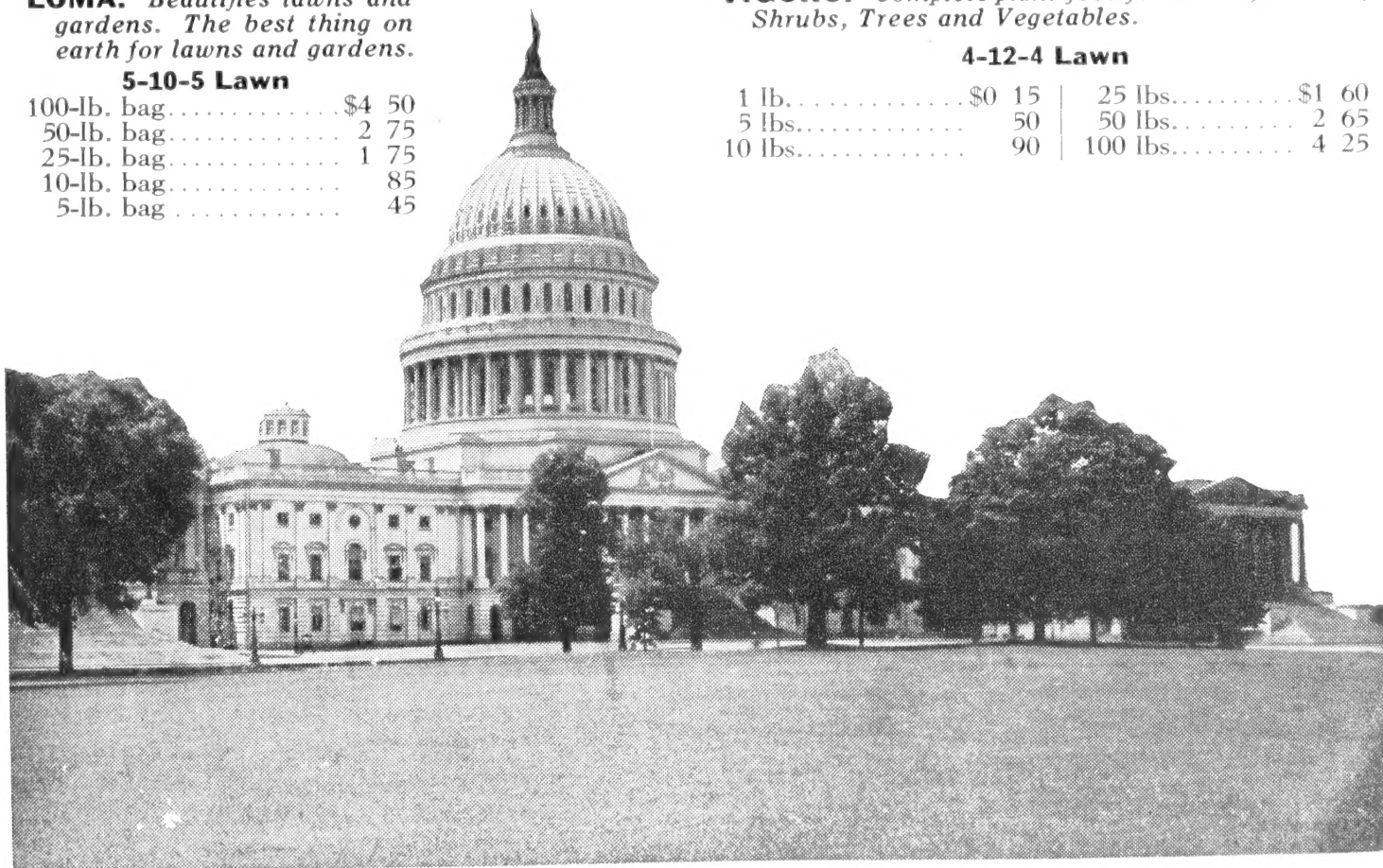
5-10-5 Lawn

100-lb. bag.....	\$4 50
50-lb. bag.....	2 75
25-lb. bag.....	1 75
10-lb. bag.....	85
5-lb. bag.....	45

VIGORO. *Complete plant-food for Lawns, Flowers, Shrubs, Trees and Vegetables.*

4-12-4 Lawn

1 lb.....	\$0 15	25 lbs.....	\$1 60
5 lbs.....	50	50 lbs.....	2 65
10 lbs.....	90	100 lbs.....	4 25



Write for Our Free Booklet "How to Make and Maintain a Lawn"

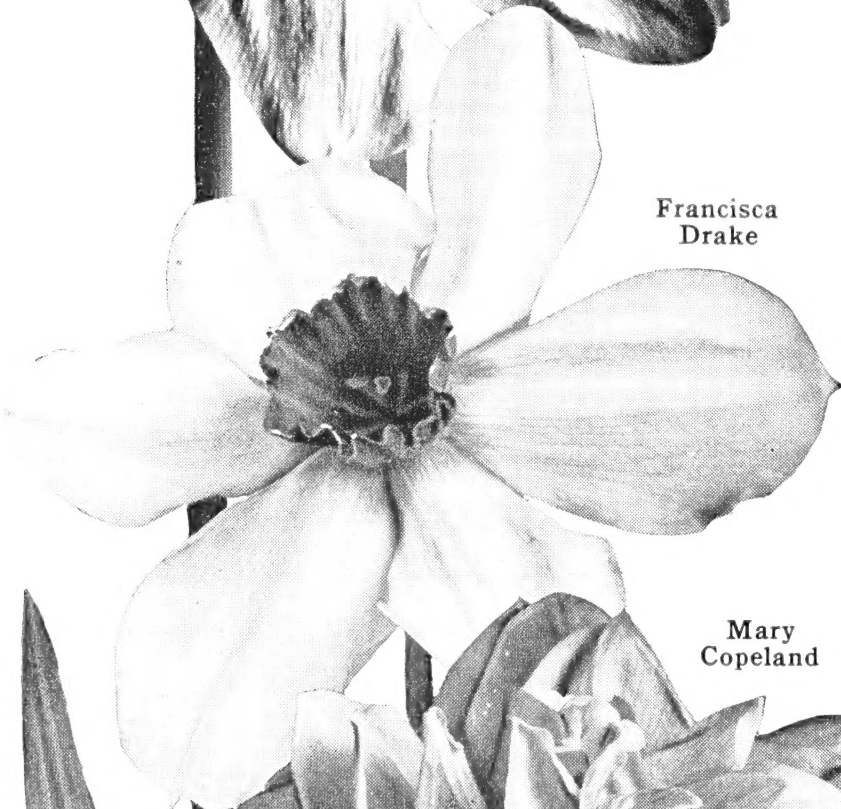
Mrs. Nette
O'Melveny



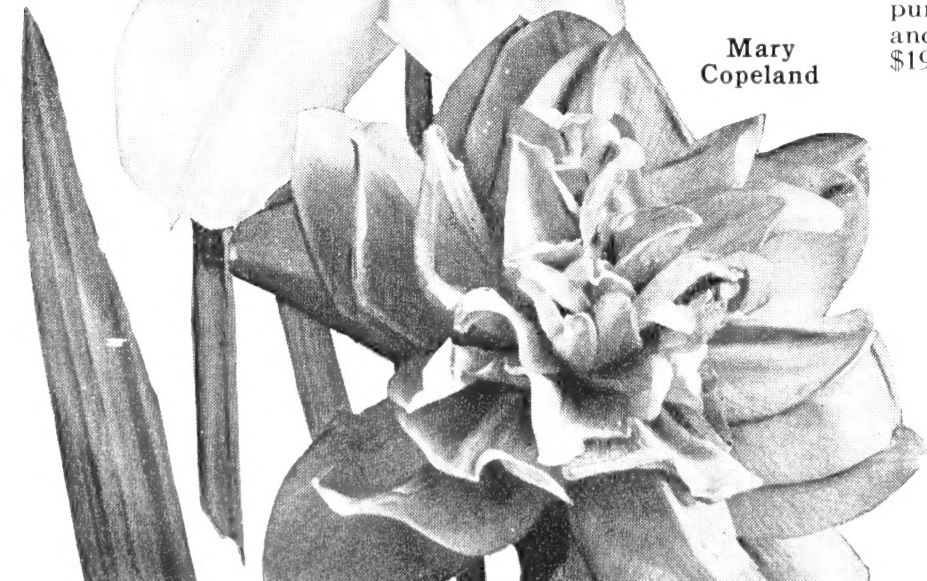
King
Alfred



Francisca
Drake



Mary
Copeland



Daffodils or Narcissus

No garden is complete without a liberal planting of Daffodils or Narcissus. Perfectly hardy, they grow and produce abundantly in almost any position, sun or shade, moist or dry. They are equally suited to pot-culture for winter flowering and are unsurpassed for naturalizing.

Note. The trumpet, crown, or cup is the center of the flower; the perianth is the surrounding row of petals or wings. (EE) Extra Early; (E) Early (M) Midseason; (L) Late.

Yellow Trumpet Daffodils

Aerolite. (E) A large flower of fine proportions. Perianth deep primrose, with a pure yellow trumpet that is put in bold relief by the broad pointed star formed by the flat opening outer petals. Very long lasting. \$1.35 for 10; \$12.00 per 100.

Ben Hur. (M) A glorious "loud speaker" trumpet, deeply frilled, of pure Roman gold, 2½ inches across at the mouth; in spite of its immense size the whole flower is finely proportioned. One of the best of the new giant trumpets. \$2.00 for 10; \$18.00 per 100.

Dawson City. (L) A fine garden variety of excellent quality and of value for exhibition. Broad flat perianth of smooth substance and a well-formed trumpet of golden yellow. \$1.50 for 10; \$13.50 per 100.

February Gold. (EE) Perianth reflexed like a cyclamen, golden yellow; trumpet straight and tube-like, fringed orange. Very attractive. \$1.25 for 10; \$10.50 per 100.

King Alfred. (M) One of the largest pure yellow Daffodils. Immense flowers of intense yellow; trumpet large and open with a deeply frilled mouth. Vigorous and free. 24 in. \$1.50 for 10; \$13.50 per 100.

White Trumpet Daffodils

Beersheba. (M) A magnificent flower with large, perfectly flat, white perianth; trumpet white, long and beautifully flanged at mouth. Nearly 5 inches across. A vigorous grower, excellent for exhibition. 40c. each; \$3.75 for 10; \$35.00 per 100.

Mrs. E. H. Krelage. (M) Often referred to as the "White King Alfred." This is one of the finest pure white trumpet varieties. Very free flowering and a splendid exhibition variety. \$2.00 for 10; \$19.00 per 100.

Bicolor Daffodils

Lovenest. (M) One of the very few members of the "pink Daffodil" class and among the daintiest of all the trumpets. Medium in height, with a starry-shaped perianth of informal type; nicely proportioned trumpet of saffron-yellow turning to apricot-pink. Delightfully charming at all stages; very early. 40c. each; \$3.50 for 10; \$32.50 for 100.

Spring Glory. (M) Clear white informal-type perianth; large trumpet of deep yellow, reflexing at the edge. A vigorous grower. \$1.65 for 10; \$14.50 per 100.

Short-Cup Daffodils

Cræsus. (M) Incomparabilis. A most striking Daffodil. Round, imbricated primrose perianth; widely expanded deep red crown. 16 in. \$1.10 for 10; \$9.50 per 100.

Damson. (E) A striking flower of brilliant color and fine substance. Broad creamy white perianth shaded yellow at base; long cup of intense deep fuchsia-red. \$1.25 for 10; \$11.50 per 100.

Francisca Drake. (M) It is impossible to describe adequately the beauty of this unusual flower of a distinct new type. The pure white perianth petals are of unusual substance, $1\frac{1}{2}$ inches wide, and tinted gold at the base, which shows through on the outside; the cup, wide and deep, is golden yellow at the base, changing gradually to flame-orange at the densely frilled edge. The flowers are held well above the fine foliage and give the effect of a flock of white seagulls taking flight; strong-growing and very free-flowering. \$1.35 for 10; \$12.00 per 100.

Helios. (E) Deep golden yellow perianth, semi-overlapping; the cup is a little darker and in a cool climate gradually changes to light orange. \$1.10 for 10; \$9.50 per 100.

John Evelyn. (M) A great favorite. Flatly opening perianth 4 to 5 inches across, with a flat cup nearly 2 inches in diameter, densely frilled. The perianth is pure white and the cup lemon-yellow, fluted to the base. Strong grower and free bloomer. \$1.65 for 10; \$14.50 per 100.

Red Shadow. (L) A bold, attractive flower. Perianth is creamy yellow and the cup dark yellow with orange-red margin. Unusually free flowering. Fine for exhibition and forcing. \$1.75 for 10; \$15.00 per 100.

Double Daffodils

Cheerfulness. Fine double, creamy white blooms of the cluster-flowering class; has faint suggestion of pale yellow at base. A splendid garden and exhibition variety. \$1.10 for 10; \$9.50 per 100.

Twink. (E) A lovely, double, pale primrose-yellow Daffodil with bright orange center. \$1.50 for 10; \$13.50 per 100.

Mary Copeland. (L) One of the finest. The long petals are pure creamy white, with a golden ray down the center, interspersed with shorter petals of lemon and brilliant orange, giving a three-color effect. Unsurpassed for the garden or the show bench. 35c. each; \$3.00 for 10.

Leedsii Daffodils

Daisy Schaeffer. (E) A splendid new variety. Flower is $4\frac{1}{2}$ inches across, with a cup nearly 2 inches. Perianth pure white with cup opening primrose and turning light canary-yellow, deeper at the base. A leader for years to come. \$2.50 for 10; \$22.50 per 100.

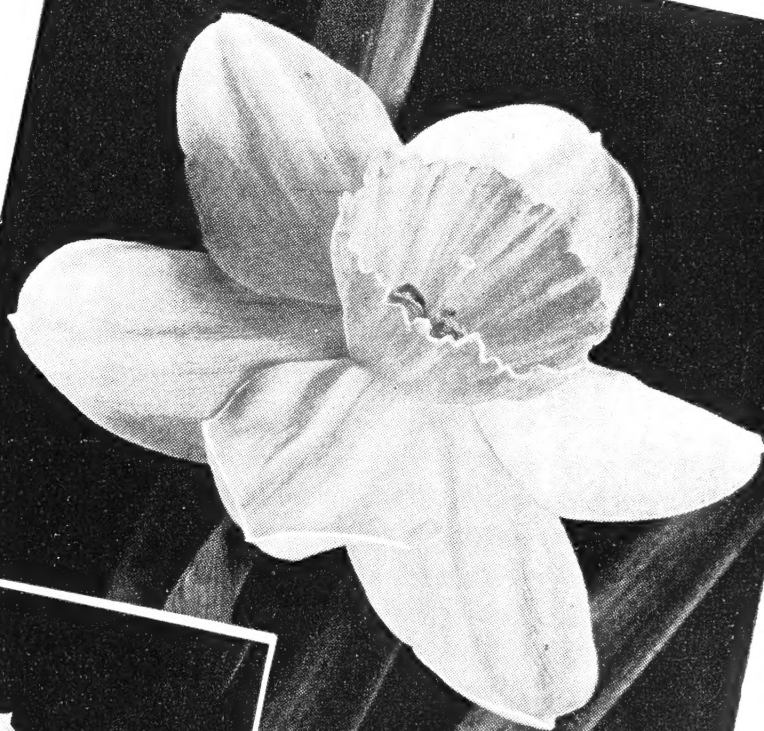
Mrs. Nette O'Melveny. (E) A lovely little Daffodil with pure white perianth and cup of clear lemon-yellow with orange picotee. Tall, graceful stem. Sure to be very popular. \$1.00 for 10; \$8.00 per 100.

Mrs. R. O. Backhouse. (L) This is the famous "pink Daffodil." Fine informal perianth of ivory-white and beautifully proportioned, slim long trumpet of apricot-pink, changing to shell-pink at the deeply fringed edge. Delicately beautiful but of exceptional substance; long lasting. Belongs in every collection. 50c. each; \$4.50 for 10.

Silver Star. (E) Fine broad white perianth; wide, deep trumpet of creamy white. Free flowering. \$2.00 for 10; \$17.50 per 100.

DAFFODILS

The First Call of Spring

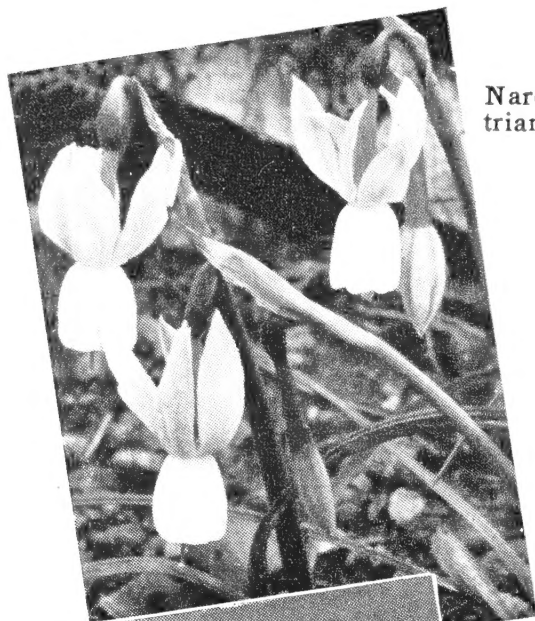


Bridegroom



Daisy Schaeffer

DAFFODILS • *The First Call of Spring*



Narcissus
triandrus

Barri Daffodils

Bridegroom. (L) A large flower with creamy perianth and yellow crown with a narrow edging of orange. Good substance. 45c. each; \$4.25 for 10.

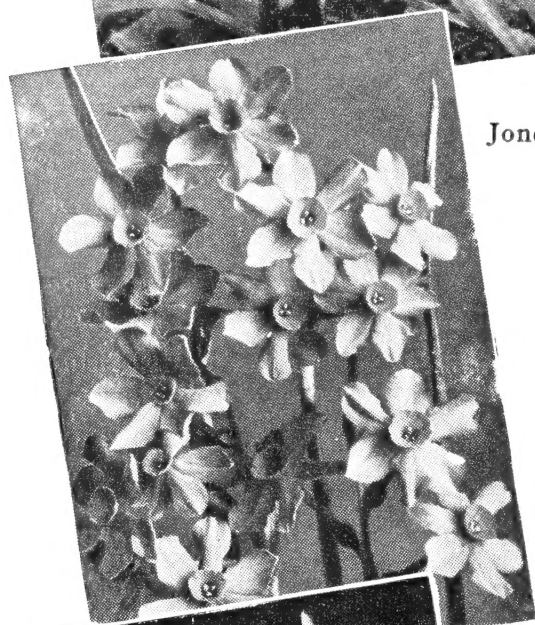
Mrs. Walter Brewster. (L) Fine reflexed perianth of pure white; flat cup of lemon-yellow, edged oxblood-red. A good, lasting flower. \$1.10 for 10; \$9.50 per 100.

Poet's and Poetaz Narcissus

Poeticus, Actaea. (E) The largest Poeticus in existence. Broad snow-white perianth of great substance and good form; the very large eye is broadly margined with dark red. A most beautiful exhibition flower. \$1.10 for 10; \$9.00 per 100.

Poeticus recurvus. (L) The old Pheasant's Eye Narcissus. Perianth pure white and reflexing, eye margined deep orange-red. Very fragrant. An old favorite. \$1.00 for 10; \$7.50 per 100.

Poetaz, Laurens Koster (Cluster-flowered Narcissus). (E) Clusters of 5 to 7 large, pure white blooms with orange-yellow cups. \$1.00 for 10; \$8.00 per 100.



Jonquils

Sweet-scented Jonquils

Jonquilla Simplex. (L) The true single sweet Jonquil. Bears clusters of small rich yellow flowers of delicious fragrance outdoors in May. Light, elegant growth. 90c. for 10; \$7.50 per 100.

Triandrus Hybrid Narcissus

Thalia. (E) Two or three lovely pure white flowers on a stem, making a beautiful cluster. Suitable for the rock-garden or for forcing. \$2.00 for 10; \$17.50 per 100.

Naturalizing Daffodils

A special mixture of all varieties for growing in masses or for mixed borders or among the shrubbery. A clump of these planted in your garden will produce a fine lot of flowers for table and house decorations. Particularly hardy and will flourish and increase for years. 90c. for 10; \$8.00 per 100.



Paper
White
Narcissus

Paper-White Narcissus

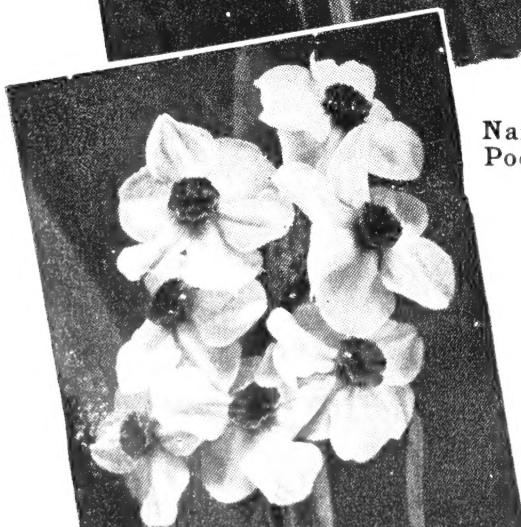
Dishes of these, grown in pebbles and water, can be had in bloom continuously from Thanksgiving until Easter. \$1.00 for 10; \$9.00 per 100.

Grand Soleil d'Or. "Yellow Paper-White" with deep orange cup. Fragrant. Treat the same as the regular Paper-Whites. 15c. each; \$1.40 for 10; \$3.00 for 25.

Silly White. The stem carries from eight to twenty graceful drooping creamy-white blooms with a delicate primrose cup. \$1.00 for 10; \$9.00 per 100.

Chinese Sacred Lily

Flowers in clusters very similar to those of the Paper-White Narcissus, but the cups within the petals are yellow. Its fragrance is as rich but distinct in sweetness and character. Planted in pots or bowls, in soil or in water with pebbles, they bloom in six to eight weeks. Plant bulbs at intervals of ten days up to Christmas. 15c. each; \$1.25 for 10.



Narcissus
Poetaz

Pebbles for planting Narcissus Bulbs, qt. 10c.; 4 qts. 35c.
Beautifully Colored Shell Chips for planting Narcissus Bulbs, lb. 10c.

ALL PRICES IN THIS CATALOG SUBJECT
TO CHANGE WITHOUT NOTICE

F. W. BOLGIANO & CO., WASHINGTON, D. C.

MAY-FLOWERING TULIPS

Darwin • Breeder • Cottage

Here we are combining in one list the Darwin, Breeder and Cottage Tulips. All bloom at the same time—in the month of May—and it is possible to have some magnificent borders by using these kinds together if you choose and group your colors carefully. Blooms are large, on 20 to 30-inch stems.

Advance. Cottage. Fiery poppy-red, blue center. 90c. for 10; \$8.00 per 100.

Afterglow. Darwin. Rosy orange, salmon edge. \$1.10 for 10; \$9.75 per 100.

Bacchus. Breeder. Plum-purple, powdered with fine dust of silver. Large, very fine. \$1.05 for 10; \$9.50 per 100.

Bartigon. Darwin. Carmine-red. 90c. for 10; \$7.50 per 100.

Bleu Aimable. Darwin. Bright violet-purple, shaded steel-blue. 95c. for 10; \$8.75 per 100.

Carrara. Cottage. Purest white; ivory stamens. 95c. for 10; \$8.50 per 100.

Cherbourg. Breeder. Golden bronze on chamois, faintly flushed lilac. Tall, large. An imposing Tulip. \$1.20 for 10; \$10.50 per 100.

City of Haarlem. Darwin. Cardinal-red, with distinct blue base; large. \$1.05 for 10; \$9.25 per 100.

Clara Butt. Darwin. Bright salmon-rose; lovely color and shape. \$1.05 for 10; \$9.25 per 100.

Dido. Cottage. Orange-red changing to orange-yellow. 95c. for 10; \$8.50 per 100.

Dillenburg. Breeder. Lovely orange-red with bronze-yellow edge, inside glistening orange; egg-shaped. 90c. for 10; \$8.25 per 100.

Dom Pedro. Breeder. Real brown, shaded maroon, inside mahogany; fragrant. \$1.00 for 10; \$9.00 per 100.

Farncombe Sanders. Darwin. Brilliant rose-scarlet. 95c. for 10; \$8.50 per 100.

Glacier. Ideal Darwin. A giant flower of pure white; anthers white also. Oval in shape; some petals are 6 inches long. \$1.40 for 10; \$12.00 per 100.

Indian Chief. Breeder. Coppery red, flushed purple, yellow stamens; large. \$1.00 for 10; \$9.00 per 100.

Insurpassable. Ideal Darwin. Enormous in size and of fine substance. Soft lilac. \$1.25 for 10; \$11.00 per 100.

Jubilee. Darwin. Deep rich blue, shaded purple; large, egg-shaped. 95c. for 10; \$8.75 per 100.

Kriemhilde. Ideal Darwin. Delicate creamy white flower with white base and anthers. Oval shape. \$1.00 for 10; \$9.00 per 100.

La Tulipe Noire. Darwin. Large; glossy black with maroon highlights. \$1.05 for 10; \$9.50 per 100.

Louis XIV. Breeder. Rich dark purple with a broad margin of golden bronze. \$1.00 for 10; \$9.00 per 100.

Marshall Haig. Cottage. Bright scarlet with yellow base. 95c. for 10; \$8.50 per 100.

MAY-FLOWERING TULIPS

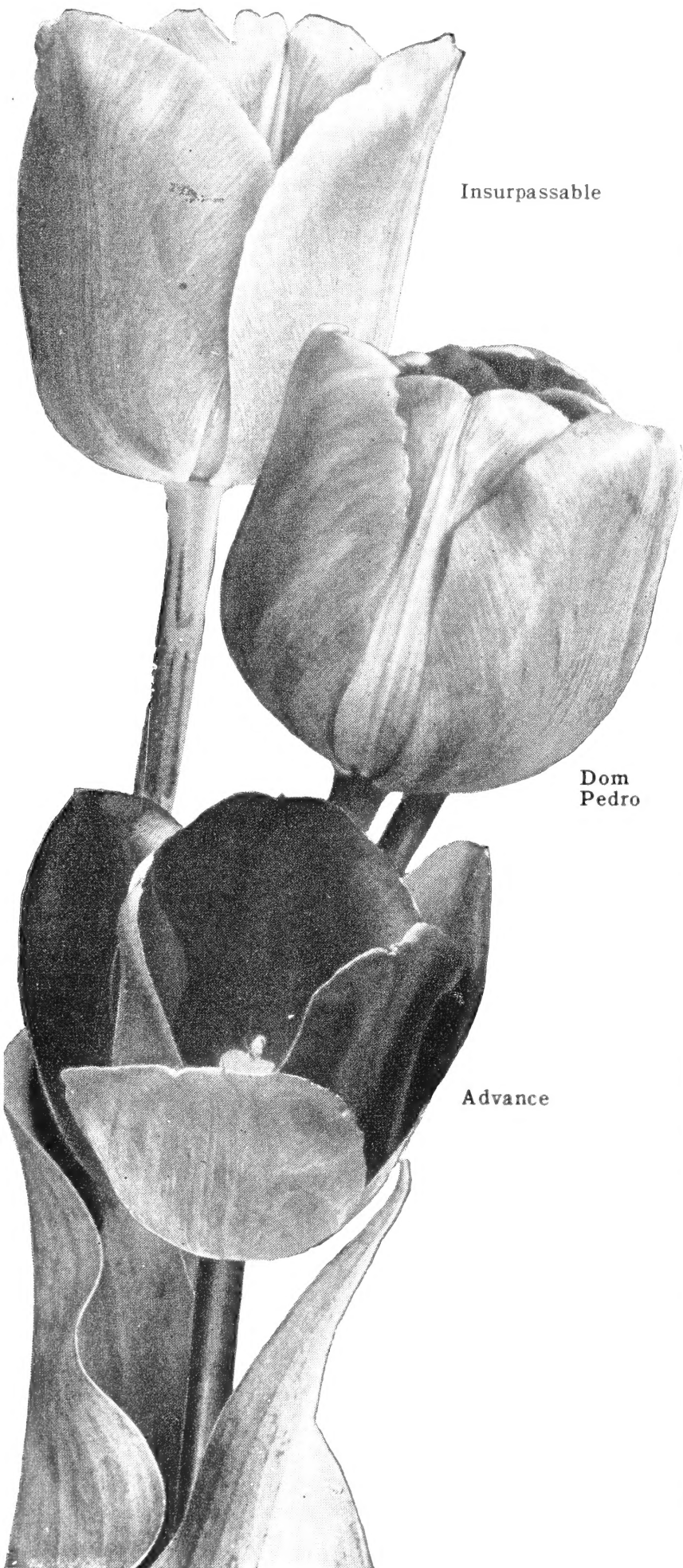
CONTINUED ON PAGE 8

City of Haarlem ➡

ALL PRICES SUBJECT TO CHANGE
WITHOUT NOTICE



MAY-FLOWERING TULIPS, Continued



Insurpassable

Dom
Pedro

Advance

Darwin • Breeder • Cottage

- Mrs. Moon.** Cottage. Deep yellow; reflexed, pointed petals. \$1.00 for 10; \$9.00 per 100.
- Mrs. John T. Scheepers.** Cottage. Stunning golden yellow; long, large petals. 95c. for 10; \$8.50 per 100.
- Picotée.** Cottage. White margined carmine-rose. \$1.05 for 10; \$9.50 per 100.
- Pride of Haarlem.** Darwin. Brilliant carmine-rose; very large. 95c. for 10; \$8.50 per 100.
- Pride of Zwanenburg.** Darwin. Pure salmon-pink; large. \$1.00 for 10; \$9.00 per 100.
- Princess Elizabeth.** Darwin. Soft rosy pink; very beautiful. A good forcing variety. 95c. for 10; \$8.50 per 100.
- Rev. H. Ewbank.** Darwin. Soft lavender-violet. 95c. for 10; \$8.75 per 100.
- The Bishop.** Darwin. Pure violet, white base. Very fine. \$1.05 for 10; \$9.50 per 100.
- Venus.** Darwin. Silvery rose. A tall, noble flower. 95c. for 10; \$8.75 per 100.
- William Pitt.** Darwin. One of the largest brilliant carmine sorts. 95c. for 10; \$8.50 per 100.
- Yellow Giant.** Darwin. New golden yellow Darwin. 90c. for 10; \$8.00 per 100.
- Zwanenburg.** Darwin. Large; pure white. \$1.00 for 10; \$9.00 per 100.
- Mixed May-flowering Tulips.** Top size. 90c. for 10; \$8.00 per 100.

Bolgiano's Special Mixture of Darwin Tulips. 50 first-size Darwin Tulips in lithographed bag. Package contains 5 Tulips each of 10 outstanding varieties. Special price, \$2.95 for 50 bulbs.

Triumph Tulips

This class combines the clear brilliant colors of the Early Tulips with the large size of the best Darwins. They bloom about ten days before the Darwins and are very striking planted in front of shrubbery.

SINGLE

- Alberio.** Cherry-red with narrow yellow edge changing to white; yellow base. 95c. for 10; \$8.50 per 100.
- Denbola.** Amaranth-red with creamy white edge. \$1.10 for 10; \$10.00 per 100.
- Elizabeth Evers.** Clean rose color with white base and yellow anthers. \$1.00 for 10; \$9.00 per 100.
- Kansas.** Pure white with yellow anthers; very large. \$1.00 for 10; \$9.00 per 100.
- Korneforos.** Pure red with white base. \$1.00 for 10; \$9.00 per 100.
- President von Hindenburg.** Blood-red with yellow edge and blue and white base. \$1.00 for 10; \$9.00 per 100.
- Telescopium.** An even tone of rose-violet. \$1.00 for 10; \$9.00 per 100.
- Ursa Minor.** Deep golden yellow. \$1.00 for 10; \$9.00 per 100.

DOUBLE

- Eros.** Clear rose color; very large and double. \$1.00 for 10; \$9.00 per 100.
- Mount Tacoma.** Semi-double; pure white. \$1.30 for 10; \$11.50 per 100.
- Ottowa.** Bright golden yellow. Very large flower. Easy to force. \$1.30 for 10; \$11.50 per 100.
- Uncle Tom.** Deep glossy red; large, peony-like. \$1.30 for 10; \$11.50 per 100.

ALL PRICES SUBJECT TO CHANGE WITHOUT NOTICE

TULIPS *make a parade of color in the garden*

Single Early Tulips

- Couleur Cardinal.** Rich, glittering cardinal-red. 90c. for 10; \$7.75 per 100.
- De Wet (Fireglow).** Golden yellow flushed with orange-scarlet. 85c. for 10; \$7.50 per 100.
- Keizerskroon.** Bright red with broad golden yellow border. 95c. for 10; \$8.50 per 100.
- Lady Boreel.** Large, purest white; grand for exhibition and for forcing. The finest white for bedding. \$1.00 for 10; \$9.25 per 100.
- Pink Beauty.** Deep rose with white flush outside. \$1.05 for 10; \$9.75 per 100.
- Rising Sun.** Deep golden yellow. 90c. for 10; \$8.00 per 100.
- Van der Neer.** Handsome violet-purple blooms. Long stems. \$1.05 for 10; \$9.50 per 100.

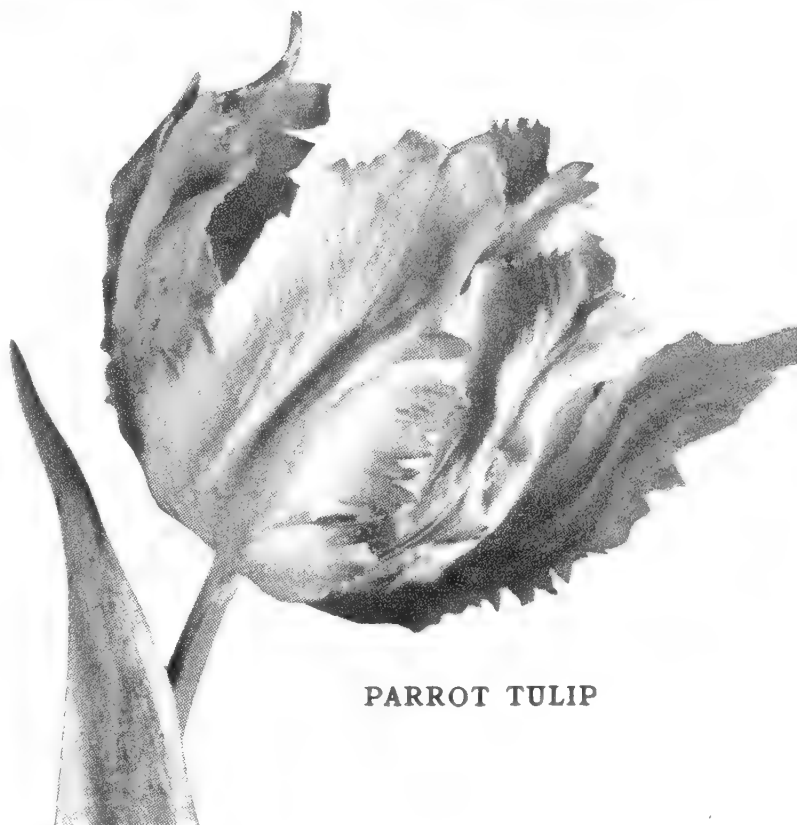
Double Early Tulips

- Boule de Neige.** Large, peony-like, pure white flower. 10 in. 90c. for 10; \$7.75 per 100.
- Imperator Rubrorum.** Fine bright scarlet; large flower; excellent for forcing and bedding. 10 in. 95c. for 10; \$8.75 per 100.
- Marechal Niel.** Silky soft yellow, tinted salmon. A fine new shade. 12 in. 90c. for 10; \$7.75 per 100.
- Mr. Van der Hoef.** Pure golden yellow; large flowers. Good forcer. 90c. for 10; \$7.75 per 100.
- Peach Blossom.** Deep rosy pink, deepening with age to a deep rose. 90c. for 10; \$7.75 per 100.

ALL PRICES SUBJECT TO CHANGE
WITHOUT NOTICE



TULIP, DE WET



PARROT TULIP

Tulip Species or Botanical Tulips

These Tulips are particularly adapted for rock-garden or borders. They show their bright colors early in the season and have graceful recurving petals. For the most striking effects, plant in masses or clumps.

- Clusiana (Lady or Candystick Tulip).** Outer petals cherry-red, inner petals creamy white with violet base. Very choice for massing in front of evergreens. 8 in. 95c. for 10; \$8.75 per 100.
- Eichleri.** Immense crimson-scarlet, shaded orange, with black center marked with gold. 11 in. 80c. for 10; \$7.00 per 100.
- Fosteriana, Red Emperor (Mad. Lefeber).** A beautiful scarlet with long petals. Very early. 15 in. \$1.25 for 10; \$11.00 per 100.
- Kaufmanniana.** One of the earliest varieties, blooming early in April; color creamy white tinged carmine. Wonderful effects may be had if planted under trees or naturalized in shady places. 5 to 7 in. 80c. for 10; \$7.00 per 100.
- Sylvestris (Florentina Odorata).** A handsome yellow variety, sweet scented; often has two flowers to a stem. 7 in. 95c. for 10; \$8.50 per 100.

Parrot Tulips

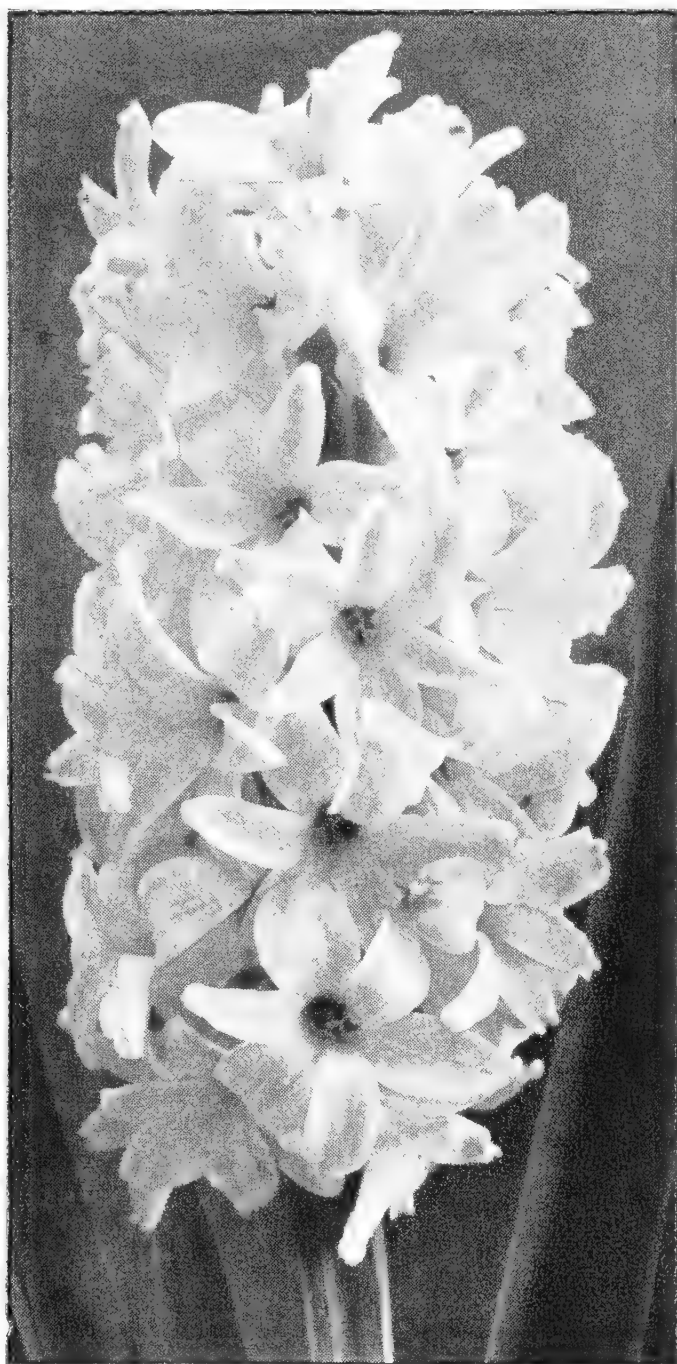
The petals are curiously fringed on the edges and they are very peculiarly marked and feathered. The form and coloring of the flower is especially attractive. We list only the choicest varieties.

- Blue Parrot.** Waved petals, clear violet-blue; very attractive. \$1.10 for 10; \$9.50 per 100.
- Cramoisi Brilliant.** Scarlet. 80c. for 10; \$7.00 per 100.
- Fantasy.** A beautiful warm pink that delights everyone. An outstanding rare variety. \$1.00 for 10; \$9.00 per 100.
- Red Champion.** Not quite so large as Fantasy. Deep red flower on a strong stem. Elegant form. \$1.75 for 10; \$16.50 per 100.
- Sunshine.** Pure butter-yellow. 25c. each; \$2.25 for 10.
- Violet Queen.** A violet-lavender flower. \$1.20 for 10; \$10.50 per 100.

Giant-flowered Dutch Hyacinths

We have condensed our list to only the very best of each particular shade or color. The varieties we list produce the largest and finest trusses of bloom and should always be selected for specimens in pots, for glass culture, for fiber culture and for garden bedding when the largest and most perfect blooms are desired.

First-size bulbs, \$2.50 for 10; \$22.75 per 100. Bedding size, \$1.75 for 10; \$15.00 per 100.



HYACINTH, L'INNOCENCE

For Indoor Planting

FRENCH ROMAN HYACINTHS. White, Blue or Pink. These are among the earliest bulbs to flower. Very easily grown. Each bulb will produce three or four lovely flower spikes of delightful fragrance. Excellent results may be obtained by planting three or four bulbs in a 5-inch pan. If potted up in September, they will be in bloom about Christmas time. Large bulbs, 30c. each; \$2.50 for 10.

Single Pure White

L'INNOCENCE. The very best white. Extra-fine truss with very large bells. A wonderful variety for glass and fiber culture, as well as excellent for bedding and forcing.

Single Red and Pink

LA VICTOIRE. Brilliant carmine-red; one of the very finest red varieties for bedding and forcing. It retains its superb color to the end.

QUEEN OF THE PINKS. Very bright, clear rose-pink; large spike with large bells.

Single Dark and Light Blue

BISMARCK. Large, broad spike of heavenly blue flowers. An excellent forcer.

DR. LIEBER. Lavender-blue tinged violet. A handsome spike. Very early.

GRAND MAITRE. Light blue with a violet stripe down the center of each floret; deep blue on reverse. Uniform color. Well-shaped spikes.

KING OF THE BLUES. Deep glossy blue, well-formed large spike, on short stem. Bells of medium size but of great substance.

Single Yellow

CITY OF HAARLEM. Slender, well-rounded spikes of pale yellow.

Hyacinth Glasses

For growing Hyacinths in water.

AMBER or LIGHT BLUE. 65c. each.

CRYSTAL. 60c. each.



FRENCH ROMAN HYACINTHS

ALL PRICES SUBJECT TO CHANGE WITHOUT NOTICE

SPRING-FLOWERING BULBS

For the Garden, Rock-Garden and Naturalistic Planting

Spring bulbs are among the most eagerly awaited flowers of the whole garden, for they announce a new growing season. They may be planted among perennials, at the edge of a shrub border, or on a grassy slope where they can produce a naturalistic effect. They add a great deal to the spring rock-garden.

CHIONODOXA (Glory-of-the-Snow). Brilliant sky-blue flowers that come into bloom soon after the snow is gone. They require no further care when once planted. 35c. for 10; \$2.75 per 100.

Spring-flowering Crocus

Ready for delivery in October

One of the earliest of flowers to bloom in the spring. Crocus will grow in any place—in the lawn, in flower borders, in rock-gardens, edge of shrubs, on the slopes of terraces, in sun or shade or even under trees. This little gem has endeared itself to all those who look to nature for signs of returning spring. Plant during the fall and cover the bulbs 2 to 3 inches deep. For mass effect, space the bulbs 2 to 3 inches apart.

Top-size Bulbs. White, Blue, Striped, Yellow. 45c. for 10; \$4.00 per 100.

Special Crocus Mixture

100 First-Size Crocus. 20 Crocus each of all 5 colors in lithographed bag

SPECIAL PRICE, \$2.15 per 100



Spring-flowering Crocus

ERYTHRONIUM (Dog's-Tooth Violet), **Mixed.** Charming woodland plants with nodding lily-like blooms that vary from greenish white to pure white, pink, lavender, lemon-yellow and orange-yellow. Foliage mottled brown in some sorts. These interesting spring flowers succeed in any light soil, especially in partial shade, and profit by a winter mulch of leaves or litter. Plant about 4 inches deep. Good mixture of colors. 85c. for 10; \$7.75 per 100.

FRITILLARIA imperialis (Crown Imperial). Tall stems with a tuft of narrow leaves at the top beneath which the drooping, clear yellow, bell-shaped flowers are arranged in a ring. 35c. each; \$3.25 for 10.

FRITILLARIA meleagris (Snake's Head or Guinea-Hen Flower). Pendent, bell-shaped flowers oddly marked and checkered. Does well in semi-shade and is perfectly hardy. 10 to 18 inches high. Blooms in the spring. 45c. for 10; \$3.75 per 100.

IRIS reticulata. An early variety blooming just before the crocuses. The blooms are a rich violet color with bright yellow markings and have a violet fragrance. Prefers a warm, well-drained location. Much recommended for early forcing. Plant 6 bulbs in a 5-inch pan. Hardy with protection. Top-Size, \$1.40 for 10; \$2.75 for 25.

IXIA (African Corn Lily). These charming flowers, with their rich and varied hues, make a brilliant display in the spring when planted outdoors in a protected place. They may be grown indoors for winter blooms also. 45c. for 10; \$3.50 per 100.

MUSCARI, Heavenly Blue (Grape Hyacinth). Numerous spikes of light blue flowers during April. Can be planted in masses or in the rock-garden, in either shade or sun. Be sure to plant a liberal amount to add color to your rock-garden. 45c. for 10; \$3.50 per 100.

MUSCARI botryoides album. Pure white Grape Hyacinth. 55c. for 10; \$4.75 per 100.

SCILLA campanulata (Wood Hyacinth). Bears bell-like flowers on 15-inch spikes during early May. Does very well in shady situations. White, Blue, or Rose. 50c. for 10; \$3.75 per 100.

SCILLA sibirica (Squills). Exquisite rich blue flowers in early spring. A charming effect may be had by planting in conjunction with yellow crocus, chionodoxas and snowdrops. 45c. for 10; \$4.00 per 100.

SNOWDROPS. In early spring a snowy white bed of graceful Snowdrops is a lovely sight. They may also be used effectively in the center or at the edge of a bed, intermingled with scillas or chionodoxas.

SNOWDROP, Single. Large lovely single white bells. 55c. for 10; \$5.25 per 100.

ALL PRICES SUBJECT TO CHANGE WITHOUT NOTICE



SCILLA sibirica. See page 11

SPRING-FLOWERING BULBS, continued

SNOWDROP, Double. Same as the single, but large, handsome double flowering. 65c. for 10; \$6.00 per 100.

WINTER ACONITE (*E. antbis byemalis*). Golden blossoms look charming resting on an emerald-green cushion of leaves. The foliage remains long after the flowers. Does well in a moist situation, such as under trees. 40c. for 10; \$3.00 per 100.

Autumn-flowering Crocus

Plant Now — Bloom This Fall

They are excellent for planting in the grass and on the borders of shrubbery. Given a sheltered and sunny position in the rock-garden, they add delightful color at a time when most rock-garden plants are out of bloom.

LONGIFLORUS. Beautiful rosy lilac blooms, large and showy. 65c. for 10; \$6.00 per 100.

SATIVUS (Saffron Crocus). A very showy, hardy, fall-flowering bulbous plant with beautiful purple-lilac flowers feathered with white and adorned with bright orange anthers. Plant the bulbs in early fall and they will bloom before frost. Splendid for the rock-garden. 40c. for 10; \$3.50 per 100.

SPECIOSUS. Graceful bright violet-blue flowers with contrasting orange-red anthers arising from a lovely yellow throat. It is well suited to growing indoors in pots or pans. 40c. for 10; \$3.50 per 100.

ZONATUS. This variety presents us with a lovely combination of rosy lilac with a yellow center surrounded by a bright orange zone. It may be grown indoors in pots or pans, where it will give a beautiful display. 40c. for 10; \$3.50 per 100.

COLCHICUM, Autumnale major. Autumn flowering. The flowers of this unusual plant resemble the Crocus. If planted in August or September the bulbs will flower in a very short time, but the foliage will not appear until spring. They will bloom without soil or water if placed in a sunny window and may be planted outside afterward. 35c. each; 3 for \$1.00.

BULBS FOR INDOOR CULTURE

AMARYLLIS, Giant American Hybrids. Amaryllis bulbs planted in October or November should come into bloom in March. The huge trumpets on their tall, strong stems are very cheery in late winter, and no trouble to grow. Mixed colors only. Jumbo bulbs, suitable for planting in a 6-inch pot, 75c. each (by mail, 95c.).

CALLA LILY, White (Aethiopica). Pure white blooms of an attractive, unusual form and one of our best window plants. Pot bulbs in 6 to 8-inch pots as soon as received. Give an abundance of water, light, and heat, and the results will be very satisfactory. 40c. each; \$3.50 for 10.

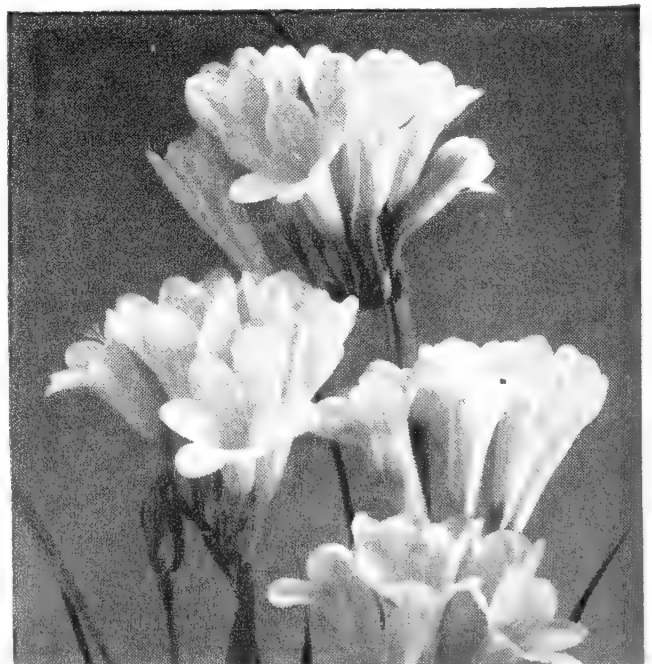
CALLA LILY, Yellow (Elliottiana). The Yellow Calla. Large, rich deep golden flowers often 4 to 5 inches across at the mouth. Habit of growth and foliage like the old favorite White Calla except that the leaves of Elliottiana are spotted with white. Makes a very distinctive potted plant that is interesting to watch as its blooms unfurl. Ready in November. 35c. each; \$3.00 for 10.

FREESIA, Golden Daffodil. Large, deep golden yellow. Long, strong stem. 75c. for 10; \$6.00 per 100.

FREESIA, Improved Purity. Produces large sprays of snow-white, extremely fragrant flowers. Plant the bulbs in a mixture of loam and coarse sand, with a little bonemeal. Extra large bulbs, 75c. for 10; \$6.00 per 100.

FREESIAs, Rainbow Mixture. Clusters of yellow, blue, violet, mauve, pink and lavender flowers. 75c. for 10; \$6.00 per 100.

OXALIS. Suitable for pot-culture and winter blooming. Large pink or lavender flowers, held well above dwarf sturdy growth. Keep close to light to prevent foliage growing too long. Bulbs, 5c. each; 45c. for 10; \$3.75 per 100.



FREESIAs

ALL PRICES SUBJECT TO CHANGE WITHOUT NOTICE

HARDY LILIES *for Fall Planting*

Most Lily bulbs are not ready for delivery until October and November. It is advisable to prepare the bed in early autumn and cover with 3 to 4 inches of mulch. This will prevent freezing and will enable you to plant bulbs safely on arrival.

Bellingham Hybrids. Oregon-grown. The result of crossing all available West Coast native Lilies. All are brilliantly colored, fine for the herbaceous border and woodland. Many are pure yellow. Does best in light shade. Plant 5 inches deep. 40c. each; \$3.50 for 10.

Candidum (Madonna Lily). Produces many fragrant snow-white flowers on long stems in May and June. Base-rooting. Plant as early as possible in the fall, covering not more than 3 inches. *September delivery.* Extra-fine large bulbs, 55c. each; \$5.00 for 10.

Centifolium, Olympic Hybrids. Oregon-grown. Types vary from the typical trumpet-shaped flowers to the widely opened bowl-shaped flowers with slightly twisted petals. The color range includes many new combinations—creamy yellow trumpets, soft fuchsia-pink and cool green. Blooms in July. Plant 5 to 6 inches deep. 40c. each; \$3.50 for 10.

Golden Chalice Hybrids. Oregon-grown. An exceptionally vigorous strain. No muddy colors; tones vary from clear lemon-yellow through rich gold and apricot-orange. Blooms in June; 2½ to 4 feet tall. Plant in full sun, at least 6 inches deep. \$1.00 each.

Formosanum. Large, fragrant, white tinted rose on outside. Perfectly hardy, it blooms in September. Does best in a sunny location. 3 to 4 ft. Stem-rooting. Plant 8 inches deep. *October or November delivery.* 35c. each; \$3.00 for 10.

Martagon (Purple Lily). Vigorous grower, 4 to 5 feet high, and produces 20 to 30 flowers of light purple with dark spots, in June. Base-rooting. Plant 4 inches deep. 65c. each; \$6.00 for 10.

Pardalinum giganteum (Sunset Lily). Oregon-grown. Large racemes of yellow flowers, 14 inches across, tipped bright red and spotted brown. Easily grown in full sun or partial shade. Blooms in July. Plant about 8 inches deep. *October delivery.* 40c. each; \$3.50 for 10.

Regale (Regal Lily). White, slightly suffused pink, with canary-yellow at the center. The fragrance is fascinating. A splendid, hardy Lily, often producing 5 to 8 blooms in July. Stem-rooting. Plant 6 inches deep. *October or November delivery.* Large bulbs, 30c. each; \$2.50 for 10. Jumbo bulbs, 45c. each; \$4.00 for 10.

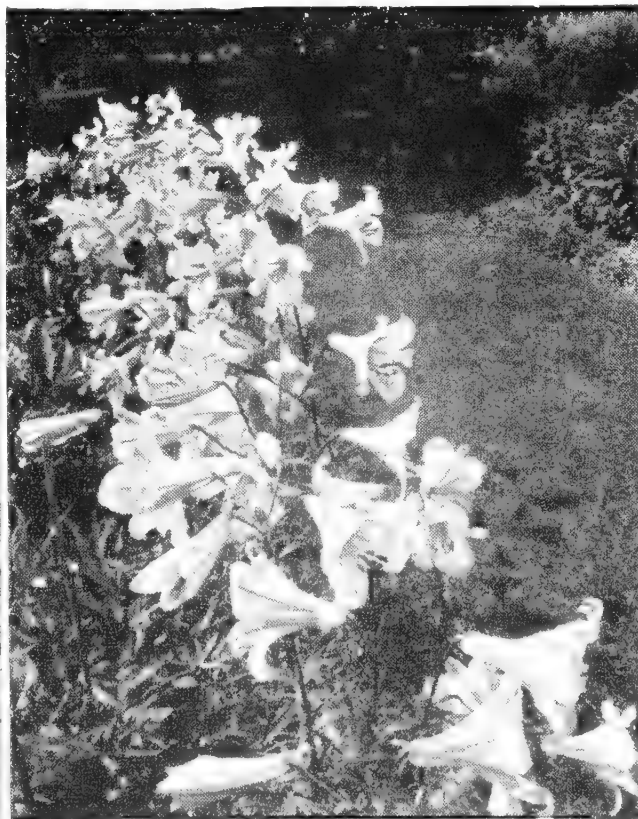
Speciosum rubrum or roseum. Petals reflexed; rose-white, heavily spotted rich crimson. Blooms in August and September. Stem-rooting. Plant 8 inches deep. **Extra fine bulbs.** *October or November delivery.* 85c. each; \$8.00 for 10.

Tenuifolium (Coral Lily). Early-flowering. Coral-red flowers and finely cut foliage. Petals strongly recurved, of a waxy texture. Ideal for that shaded section of your rock-garden. Stem-rooting. Plant 4 inches deep. Flowers in June. 20 in. 20c. each; \$1.75 for 10.

Tigrinum splendens (Tiger Lily). Large, shapely, rich dark salmon-orange spotted glossy black. Robust and of easy culture. Blooms nearly all summer. Stem-rooting. Plant 6 to 8 inches deep. *October or November delivery.* 35c. each; \$3.00 for 10.



TIGER LILY



REGAL LILY



MADONNA LILY

The varieties we offer are not difficult to grow in the home-garden. Plant them with hardy perennials or in front of a shrub border.

In setting out your Lily bulbs, be sure to dig the holes large enough; absolutely essential for all Lilies is a well-drained location. They will grow in the sun, but light shade is better, with a ground-cover over the roots to keep the soil moist.

ALL PRICES SUBJECT TO CHANGE WITHOUT NOTICE

PEONIES

We offer some of the world's finest in both double and single varieties. They make a good showing in the garden and are favorite flowers for cutting. In planting, the crown should never have over 2 inches of soil over it. If planted too deep, Peonies will not bloom.

Double Peonies

- Alice Harding.** 9.4. (M) Opens blush, turning to white; very pretty. Probably the largest Peony. \$2.50 each; 3 for \$6.50.
- American Beauty.** Deep rose-red, very large and distinct. \$2.50 each; 3 for \$6.50.
- Argentina.** 8.8. (L) Pure white, broad round petals; very large. One of the finest whites. \$2.25 each; 3 for \$6.00.
- Blanche King.** 8.9. (Very late) Very fine deep pink. Large, round flower. \$4.50 each; 3 for \$12.00.
- Candeur.** Silvery pink; very tall. \$2.00 each; 3 for \$5.25.
- Cherry Hill.** 8.6. (E) Dark crimson, showing yellow stamens. Very attractive. \$1.25 each; 3 for \$3.25.
- Claude Tain.** Pure white, large round flower. Beautiful. \$2.00 each; 3 for \$5.25.
- Clemenceau.** Deep pink, very large, round flower. Late, very tall. \$2.00 each; 3 for \$5.25.
- Desire.** Delicate mauve. \$1.75 each; 3 for \$4.75.
- Duchesse de Nemours.** 8.1. (E) Cream-white; very free flowering. \$1.10 each; 3 for \$3.00.
- Emile Debatene.** Bright deep rose. \$2.50 each; 3 for \$6.50.
- Felix Crousse.** 8.4. (M) Brilliant red. Free bloomer. One of the best reds for cutting. \$1.10 each; 3 for \$3.00.
- Festiva Maxima.** 9.3. (E) Fine double white, with few crimson flecks. One of the best whites for cutting. \$1.00 each; 3 for \$2.75.
- Glorious** (Kelway Glorious). 9.8. (M) White with creamy suffusion; rose-like fragrance. Exceptionally fine white variety. \$2.50 each; 3 for \$6.50.
- Hansina Brand.** 9.0. (L) Glistening flesh-pink, with salmon reflex. Very large flower. \$4.50 each; 3 for \$12.00.
- Inspecteur Lavergne.** 8.7. (E) Beautiful deep red. Very fine shape of flower like Mons. Jules Elie. \$1.25 each; 3 for \$3.25.
- Jeannot.** 9.2. (L) Light lavender-pink; very sweetly rose scented. \$1.50 each; 3 for \$4.00.
- Karl Rosenfield.** 8.8. (M) Bright crimson. Free bloomer. One of the best deep reds for cutting. \$1.10 each; 3 for \$3.00.
- La Lorraine.** 8.6. (M) Creamy white, tinted pink. \$1.50 each; 3 for \$4.00.
- Laura Dessert.** Outside petals soft rose, large yellow center. The best of the yellows. \$2.50 each; 3 for \$6.50.
- Le Cygne.** 9.9. (E) Finest pure white. The highest rated Peony. \$2.50 each; 3 for \$6.50.
- Madelon.** Deep rose-pink. Very fine flower; late. \$3.00 each; 3 for \$7.50.
- Marie Crousse.** 8.9. (M) Pale pink, shaded salmon. \$1.25 each; 3 for \$3.25.
- Martha Bullock.** 9.1. (L) Very large; bright old-rose-pink. \$2.25 each; 3 for \$6.00.
- Miss Eckart.** 8.8. (L) Very large. Deep pink on sturdy stems. Considered an improvement over Sarah Bernhardt. \$2.00 each; 3 for \$5.25.
- Mme. Jules Dessert.** 9.4. (M-L) Light opalescent pink. \$1.25 each; 3 for \$3.25.
- Mons. Jules Elie.** 9.2. (E) Immense flower of fine pink. One of the best pinks for cutting. \$1.25 each; 3 for \$3.25.
- Mons. Martin Cahuzac.** 8.8. (E-M) Dark maroon-red. The darkest Peony. \$2.25 each; 3 for \$6.00.
- Myrtle Gentry.** 9.1. (M-L) Rosy white, suffused salmon; rose scented. \$3.50 each; 3 for \$9.50.

- Philippe Rivoire.** 9.2. (E) Bright deep crimson. Very well-formed flower; sweet rose scented. \$2.50 each; 3 for \$6.50.
- Primevere.** 8.6. (M) Light creamy yellow. \$1.50 each; 3 for \$4.00.
- Richard Carvel.** 8.8. (M) Brilliant crimson. \$1.50 each; 3 for \$4.00.
- Solange.** 9.7. (L) Brownish cream. Very unusual color and well-formed flower. Don't miss it. \$2.00 each; 3 for \$5.25.
- Souvenir de Louis Bigot.** 9.1. (M) Vivid rose-pink, brightening to shell-pink in center. Recommended. \$1.50 each; 3 for \$4.00.
- Therese.** 9.8. (E-M) Very large; pale, translucent old-rose-pink, paling toward the base. \$2.00 each; 3 for \$5.25.
- Tourangelle.** 9.4. (L) Pale apple-blossom-pink. Beautiful. \$1.25 each; 3 for \$3.25.
- Walter Faxon.** 9.3. (M) Vivid shell-pink of luminous intensity. \$2.00 each; 3 for \$5.25.

Single or Anemone-flowered Peonies

- Ama-no-sode.** Delicate rose-pink, broad center of pink-tipped golden staminodes. Beautiful large flower. \$2.00 each; 3 for \$5.25.
- Emma.** Two rows of perfect, round, rose-cream petals. \$2.00 each; 3 for \$5.25.
- Francois.** Bright rose; staminodes cream with golden edges. Two rows of round petals. \$1.75 each; 3 for \$4.75.
- Geisha.** Clear bright red. Large; late. \$2.50 each; 3 for \$6.50.
- Hakodate.** Pure white petals of heavy substance; pretty yellow center. Late. \$3.00 each; 3 for \$7.50.
- Hani-Gidue.** Pure white with golden center, like a large white poppy. \$4.00 each; 3 for \$10.50.
- Jacoba.** Light rose, pure golden center. \$1.75 each; 3 for \$4.75.
- Jeanne Lapandry.** Pure white; flat cream center. \$2.50 each; 3 for \$6.50.
- King of England.** Deep carmine. \$1.25 each; 3 for \$3.25.
- Kinsui.** Light salmon-pink; pure golden center. Large flowers with two rows of petals. \$1.25 each; 3 for \$3.25.
- L'Etincelante.** Carmine with a silvery margin; gold center. \$1.25 each; 3 for \$3.25.
- Mikado.** Deep crimson; staminodes dark rose-red with golden edges. Large flowers. \$1.25 each; 3 for \$3.25.
- Mr. G. F. Hemerik.** Two rows of bright pink petals; large center of cream staminodes. \$2.00 each; 3 for \$5.25.
- Rigoletto.** The darkest red, white edged center. \$3.00 each; 3 for \$7.50.
- Rosy Dawn.** Beautiful single white; yellow center. Large flowers. \$2.00 each; 3 for \$5.25.
- Shoshi.** Two rows of clear bright red petals; staminodes red, edged yellow. Very fine and outstanding. \$2.00 each; 3 for \$5.25.
- Tamate-Boko.** Lively china-pink; golden center. \$4.50 each; 3 for \$12.00.
- The Pearl.** Very large creamy flowers with red edge; bright pink center. \$2.00 each; 3 for \$5.25.

ALL PRICES SUBJECT TO CHANGE
WITHOUT NOTICE

IRIS • Queen of Perennials

Iris Kaempferi (Oriental Iris)

These beautiful Iris prefer moist acid soil. The glorious flowers of the following varieties will surprise and please you.

(D) Double varieties with six-petalled flowers.

(S) Single varieties with three-petalled flowers.

Azure. (D) Bright sky-blue, heavily ruffled petals. Late flowering. 65c. each; 3 for \$1.65; 6 for \$3.00.

Betty F. Holmes. (D) Huge white blooms. A most beautiful variety. 65c. each; 3 for \$1.65; 6 for \$3.00.

Bluebird. (S) Lovely rich blue. 65c. each; 3 for \$1.65; 6 for \$3.00.

Blue Eagle. (D) Very large blue, white in center. \$1.00 each; 3 for \$2.75; 6 for \$5.00.

Chameleon. (D) White marbled and flamed blue; light and dark flowers on the same plant. 75c. each; 3 for \$2.00; 6 for \$3.50.

Doris Childs. (D) Pearl-white veined purple. 65c. each; 3 for \$1.65; 6 for \$3.00.

Flamingo. (D) Deep rose, white in center. A profuse bloomer. Rather tall. 75c. each; 3 for \$2.00; 6 for \$3.50.

Gold Bound. (D) A popular white with gold-banded center. 50c. each; 3 for \$1.25; 6 for \$2.25.

Light in the Opal. (D) Very light pink flushed and mottled darker bluish in center. \$1.00 each; 3 for \$2.75; 6 for \$5.00.

Pluton. (D) Beautiful blue shaded violet. Rather tall. 65c. each; 3 for \$1.65; 6 for \$3.00.

Purple & Gold. (D) Rich violet-purple with golden throat. 50c. each; 3 for \$1.25; 6 for \$2.25.

Red Emperor. (D) Very large, deep red flower. Early bloomer. \$1.00 each; 3 for \$2.75; 6 for \$5.00.

Red Riding-Hood. (S) A popular single red. 65c. each; 3 for \$1.65; 6 for \$3.00.

True Blue. (D) Very large flower of self true blue color. 75c. each; 3 for \$2.00; 6 for \$3.50.

Waving Waters. (D) Very light blue marked and flushed white. Heavy ruffled petals. Very large flower. \$1.00 each; 3 for \$2.75; 6 for \$5.00.

Dutch Iris Bulbs

One of the most easily grown bulbous plants. Place bulbs 4 to 6 inches deep in good sandy loam. Blooms in early June; lovely for cutting.

David Haring. A tall early white variety with gold center. 10 for 75c.; \$7.00 per 100.

Imperator. Brilliant deep blue with a golden yellow blotch on each standard. 10 for 85c.; \$7.75 per 100.

Wedgwood. Graceful large flowers of a beautiful even blue color. Easy to force. 10 for 55c.; \$5.00 per 100.

Yellow Queen. Both the standards and falls are bright golden yellow. 10 for 75c.; \$7.00 per 100.

Iris Sibirica (Siberian Iris)

Being smaller and more graceful, these are greatly admired as cut-flowers. They are also easy to grow and bloom in May.

Caesar's Brother. Rich black pansy-purple. 60c. each; 3 for \$1.50; 6 for \$2.75.

Perry's Blue. Clear blue. Stout stems. 50c. each; 3 for \$1.25; 6 for \$2.25.

Snow Queen. A beautiful white. Very free flowering. 50c. each; 3 for \$1.25; 6 for \$2.25.

Bearded Iris (Flag Iris)

The Rainbow Flowers are popular everywhere. Every garden should have a collection.

Alice Harding. 3½ ft. Large, satiny yellow. 50c. each; 3 for \$1.25; 6 for \$2.25; 12 for \$4.25.

Blue Triumph. 3 ft. Serene, smooth-textured light blue flowers on fine stems. 50c. each; 3 for \$1.25; 6 for \$2.25; 12 for \$4.25.

Cheerio. 3½ ft. One of the bulwarks of the red color section, a bicolor of great brilliancy and splendid form and size. 50c. each; 3 for \$1.25; 6 for \$2.25.

China Maid. 3 ft. Soft mallow-pink enhanced by an intriguing blending of golden buff at the haft and edges of the petals. 75c. each; 3 for \$2.00; 6 for \$3.50.

Dauntless. 3 ft. A standard red self. Deep rose-red with velvety falls. Good color and a fine performer. 50c. each; 3 for \$1.25; 6 for \$2.25; 12 for \$4.25.

Depute Nomblot. 3 ft. Among the best-known Iris. Rosy purple shot with bronze, falls brighter, with a fine gold beard. 50c. each; 3 for \$1.25; 6 for \$2.25; 12 for \$4.25.

Noweta. 2½ ft. This sprightly, frilly flower is a warm and melting shade of creamy pink. A wonderful garden plant. 50c. each; 3 for \$1.25; 6 for \$2.25; 12 for \$4.25.

Rameses. 3 ft. Stalwart golden buff and lilac-pink. A fine grower and prolific bloomer. A Dykes Medal Winner. 50c. each; 3 for \$1.25; 6 for \$2.25; 12 for \$4.25.

Shining Waters. 3 ft. Quiet as a mountain lake reflecting an unclouded blue sky. One of the loveliest of Iris, with an exquisite sheen. 50c. each; 3 for \$1.25; 6 for \$2.25.

Snow White. 3½ ft. A good white. Strong grower and free bloomer. 50c. each; 3 for \$1.25; 6 for \$2.25; 12 for \$4.25.

Fall-blooming Bearded Iris

These are the varieties that bloom in spring and fall under favorable conditions.

Autumn Elf. 1½ ft. Standards cream; falls soft lilac. 50c. each; 3 for \$1.25; 6 for \$2.25; 12 for \$4.25.

Autumn Queen. 1½ ft. Pure white. A sure bloomer in fall. 50c. each; 3 for \$1.25; 6 for \$2.25; 12 for \$4.25.

Black Magic. 2 ft. Intense deep violet-blue; free bloomer. 50c. each; 3 for \$1.25; 6 for \$2.25; 12 for \$4.25.

Lieut. de Chavagnac. 1½ ft. Another sure fall bloomer. Medium-sized flowers of brilliant violet. 50c. each; 3 for \$1.25; 6 for \$2.25; 12 for \$4.25.

October Blaze. 2 ft. Brilliant red tone somewhat similar to Dauntless. 75c. each; 3 for \$2.00; 6 for \$3.75.

Sangreal. 2 ft. Beautiful yellow, with large blooms. 65c. each; 3 for \$1.65; 6 for \$3.00.

Southland. 1½ ft. Very free bloomer; deep golden yellow flowers on sturdy stems. 65c. each; 3 for \$1.65; 6 for \$3.00.

Ultra. 1½ ft. Light lavender-blue standards, velvety blue falls. 50c. each; 3 for \$1.25; 6 for \$2.25; 12 for \$4.25.

ALL PRICES IN THIS CATALOG ARE SUBJECT TO CHANGE WITHOUT NOTICE

Hardy Perennials for Fall Planting

Culture: A deep, well-drained bed of enriched soil is essential to the proper growth of the plants. Care taken in providing a suitable bed will repay you many times as you watch the succession of various beautiful, fragrant blooms through the seasons, year after year. They should be planted for best results from August through November, according to variety.

PRICES: Unless otherwise noted, all plants are \$1.00 for 3 of one kind; \$1.95 for 6 of one kind; \$3.60 per doz. of one kind. Single plants, 45c. each.

POSTAGE ON PLANTS. Add for postage and packing: Single plants 10c.; 3 plants 20c.; 6 plants 30c.; 12 plants 40c. We accept no responsibility for delays or conditions that may prove injurious to the contents.

Aquilegia (Columbine)

One of the most valuable of the early-flowering perennials. The long-spurred blooms and lengthy stems are well adapted to use as cut-flowers, but they also produce a beautiful effect when massed in the garden. They do best in light soil in a sheltered location that gets the sunshine. 1 to 2 ft. May, June.

Cærulea. The Rocky Mountain blue Columbine.
Canadensis. 15 to 18 in. Our native Columbine. Reddish orange flowers in May and June.

Chrysantha (Golden Columbine). Yellow flowers with long spurs.

Chrysantha, Silver Queen. A top-notch pure white variety.

Crimson Star. Large flowers with rich crimson outer petals and pure white centers. Spectacular.

Longissima. 18 in. A native kind. Pale yellow coloring with amazingly long spurs. 55c. each; \$1.25 for 3; \$4.50 per doz.

Mrs. Scott Elliott's Strain. Outstanding for its wide range of color.

Rose Queen. Pink; long-spurred.

Astilbe

Fanal. The 1½-foot plant of this novelty carries wonderfully beautiful spikes of fiery crimson flowers during May and June. The foliage is very attractive. 85c. each; \$2.10 for 3.

Bletilla (Hardy Orchid)

Easily grown in ordinary garden soil with plenty of moisture. Prefers half shade. Blooms in spring.

Hyacinthina. A beautiful small Orchid that anyone can grow in the garden or in the house in a small pot filled with ordinary garden soil. Planted in November, it will bloom early in March. The plant may then be removed to the garden or can be forced into bloom again the following winter. Six to eight dainty Cattleya-colored flowers grow on a stem about 12 to 15 inches tall. These last from six to eight weeks. Grows as easily as Paper-White Narcissus. 60c. each; \$1.65 for 3; \$6.00 per doz.

Dicentra (Bleeding-Heart)

Shade-loving plants with flowers of unquestioned charm. Spectabilis is the Bleeding-Heart of old-time gardens and should be in every garden with a shady spot. Eximia is a low-growing native fitting in here and there and provides attractive ferny foliage when not in bloom. Makes a good ground-cover.

Eximia. Fern-like foliage and pink heart-shaped flowers all season. Partial shade or full sun. 55c. each; \$1.25 for 3.

Formosa, Sweetheart. Pure white flowers; plant bushy, 12 inches high. Blooms freely from spring to fall. An ideal plant for shade and also does well in sunny places provided the soil does not become too dry during the summer. \$1.15 each; \$2.65 for 3.

Spectabilis. Graceful pink, heart-shaped flowers on long slender stems in April and May. 70c. each; \$1.65 for 3.

Carnation, Hardy

Crimson King. Dazzling double crimson flowers from late spring until fall. 18 in.

Lucia. Deep rose-pink with salmon shadings. Excellent for cutting as well as garden use.

All Carnations, 55c. each; \$1.25 for 3 of one kind; \$2.40 for 6 of one kind; \$4.50 per doz. of one kind

Delphinium

(Perennial Larkspur)

We offer three distinct types of this popular flower: The hybrids provide the long spikes of beautiful bloom so popular for exhibition purposes; cut down after the first bloom, they will repeat in autumn. The Belladonna type is desirable to cut for mixed bouquets and blooms all season with the dwarf Chinensis providing desirable blue for bedding and cutting material all season. Delphiniums require rich soil in full sun.

Belladonna. Light blue. 3 to 4 ft.

Blackmore & Langdon Hybrids. Semi-double and double blooms in shades of blue, lavender, and purple. 4 to 5 ft. 55c. each; \$1.25 for 3; \$4.50 per doz.

Chinensis, Tom Thumb. Dwarf in habit, it produces several crops of exquisite blue flowers. 15 in.

Lamartine. Brilliant marine-blue. 3 to 4 ft. 55c. each; \$1.25 for 3; \$4.50 per doz.

New Giant Pacific Hybrids. This is an outstanding new strain with many shades of huge florets beautifully spaced on strong spikes. Mildew-resistant. The best Delphinium plants in existence. 60c. each; \$1.50 for 3; \$5.40 per doz.

Dianthus (Fragrant Pinks)

Reminiscent of other days when fragrant flowers were in vogue, the great number of Dianthus available today are still a source of color and delicious fragrance.

Bobby. Large flowers of deep pink with crimson centers. 8 in.

Bristol Purity. Double white flowers. 1 ft.

Little Joe. Large crimson blooms; delightful companion for Bobby. 6 in.

Meg Gardner. Large white flowers with distinct red centers. June, July. 15 in.

New Rose Unique Hybrids. All double flowers. Red, rose-pink and salmon. 60c. each; \$1.50 for 3; \$5.40 per doz.

Old Spice. Plant Patent No. 499. A new and choice introduction. Carnation-like salmon-pink flowers; clove-scented. Blooms freely in June and through the summer months. 1 ft. 60c. each; \$1.50 for 3; \$5.40 per doz.

Tiny Rubies. A dainty little plant with small carnation-like flowers borne on stems 4 to 5 inches high. The color is either pink or deep rose-pink, depending on the exposure to sun.

White Reserve. Another top-notch white Carnation. June, July. 16 in.

Unless otherwise noted, all plants are \$1.00 for 3 of one kind; \$1.95 for 6 of one kind; \$3.60 per doz. of one kind. Single plants, 45c. each

Hardy Perennials for Fall Planting

Doronicum (Leopards-Bane)

These gleaming yellow daisy-like flowers are a top-notch source of color in the spring border and rock-garden. For best results, grow them in partial shade.

Excelsum. 2 ft. The large yellow daisies are particularly effective in broad masses. April, May.

Mme. Mason. Compact in habit; noted for its large bloom. April, May.

All Doronicums, 55c. each; \$1.25 for 3 of one kind; \$2.40 for 6 of one kind; \$4.50 per doz. of one kind

Eremurus (Foxtail Lily)

Elwesi. Broad green foliage on a 10-foot plant. Enormous spike of soft pink bloom in June. 5-year-old roots, \$4.00 each.

Shelford Hybrids

Isobel. Coppery orange.

Moonlight. Pale yellow.

Rosalind. Bright pink.

White Beauty. Pure white.

\$2.50 each; any 3 for \$6.75; any 6 for \$12.50; any 12 for \$24.00

Gypsophila (Babys-Breath)

Bristol Fairy. 4 ft. A cloud of lovely white flowers in huge panicles. July and August. 70c. each; \$1.75 for 3.

Hemerocallis (Day-Lilies)

Thriving almost anywhere, and not being bothered by either insects or disease, this is about as near a fool-proof garden plant as can be found. By planting our collection you can have bloom from May on, all through summer.

Cinnabar. 2 to 3 ft. Orange base, sprinkled cinnamon, recurving sepals and petals. Very free blooming. July. 75c. each; \$2.00 for 3.

Dr. Regel. Rich orange-yellow flowers in May. Very fine for cutting.

Flava (Lemon Lily). Sweet-scented yellow flowers in June.

Florham. Large golden yellow flowers. Strong grower.

George Yeld. Flushed petals, sprinkled rose; rich orange sepals. 85c. each; \$2.10 for 3.

Hyperion. Large; canary-yellow. 85c. each; \$2.10 for 3.

Imperator. 4 ft. A distinct variety with rich orange-red coloring. July, August. 85c. each; \$2.10 for 3.

J. A. Crawford. Large; clear gold. 75c. each; \$2.00 for 3.

Kwanso. Large, double flowers of rich golden bronze shade.

Mikado. 3 ft. A glamorous combination—orange with a mahogany-red spot on each petal. Occasionally blooms in the fall. June, July. 85c. each; \$2.10 for 3.

Ophir. 4 ft. Its rich golden yellow coloring has made this a favorite variety. July. 85c. each; \$2.10 for 3.

Thunbergi. Much like Flava but flowers in July, a month later.

Helleborus (Christmas Rose)

They grow best in rich soil and a shady location. Attractive the year round.

Niger. 1 ft. Single white blooms flushed with pink, on sturdy stems. December to March. \$1.25 each; \$3.40 for 3.

Iberis (Hardy Candytuft)

Delightful little evergreen plants much used in rock-gardens. They make splendid border plants, furnishing closely packed white bloom in spring.

Sempervirens. A fine border plant with dark green foliage, covered with white flowers in the spring.

Snowflake. Large, pure white flowers on dwarf plants. 55c. each; \$1.25 for 3; \$4.50 per doz.

Mertensia (Bluebells)

Virginica. One of the desirable spring natives found in shaded or partly shaded locations. It thrives in shady spots in a garden with ordinary soil.

Papaver orientale (Oriental Poppy)

Hardy, easy to grow and lasting when well started. The pale varieties are enchantingly beautiful while the brightly colored ones are spectacular. Plant them in groups throughout the border for May and June color.

Barr's White. Large white flowers with purplish black spots. 70c. each; \$1.65 for 3; \$5.85 per doz.

Cavalier. Crinkly flowers of deep scarlet-red. 60c. each; \$1.50 for 3; \$5.40 per doz.

Glowing Embers. Deeply crinkled, cup-shaped blooms of medium red.

Gold of Ophir. Golden orange.

Helen Elizabeth. Big La-France-pink flowers without dark spots. Many people consider this the best pink. Rugged growth. 60c. each; \$1.50 for 3; \$5.40 per doz.

Henri Cayeux. Old-rose. 60c. each; \$1.50 for 3; \$5.40 per doz.

Jeannie Mawson. Sparkling geranium-pink.

Joyce. Charming soft red flowers in abundance.

Lachs Konigen. Peach-red, with pink cast.

Little Shrimp. Small shrimp-pink flowers without spots. A real little gem of unusual size and habit.

Nancy. Deep crimson with glossy black blotches at the base of each petal.

Orange Perfection. Flame-red tinted orange.

Purity. Pure soft pink.

Trilby. Dark lustrous red. Tall stems. 60c. each; \$1.50 for 3; \$5.40 per doz.

Wurtembergia. Brilliant glowing rose-red.

Unless otherwise noted, all above Poppies, 55c. each; \$1.25 for 3 of one kind; \$2.40 for 6 of one kind; \$4.50 per doz. of one kind.

Polemonium

Blue Pearl (Jacobs-Ladder). 12 in. A new dwarf Polemonium with great clusters of light blue flowers. The plants grow well in partial shade or sun. May. 55c. each; \$1.25 for 3; \$2.40 for 6; \$4.50 per doz.

Penstemon (Beard-Tongue)

Rose Elf. A hardy Penstemon producing masses of bloom on 2 to 3-foot stems. Blooms in June and July. The color is a lovely coral-pink. Excellent for cutting. 65c. each; \$1.65 for 3.

Unless otherwise noted, all plants are \$1.00 for 3 of one kind; \$1.95 for 6 of one kind; \$3.60 per doz. of one kind. Single plants, 45c. each.

Hardy Perennials for Fall Planting

Phlox decussata

Colorful, fragrant Phlox are the glory of the summer garden, the large heads of colorful bloom appearing in July and lasting through August. Height varies from 1½ to 3 feet.

Augusta. Pat. 252. American-Beauty red. 2½ ft. 60c. each; \$1.50 for 3; \$5.40 per doz.

Border Queen. Large florets of deep watermelon-pink. Early. 1½ ft.

Caroline Vandenburg. Lavender-blue hybrid. Midseason. 2 ft.

Charles H. Curtis. Sunset-red. 2½ ft. 60c. each; \$1.50 for 3; \$5.40 per doz.

Count Zeppelin. Each white floret has a red center. 2½ ft.

Daily Sketch. Salmon-pink florets marked with crimson. Midseason. 2½ to 3 ft.

E. I. Harrington. Salmon-pink. Midseason. 3 ft.

Flash. Carmine-crimson with an orange center. 2 ft. 60c. each; \$1.50 for 3; \$5.40 per doz.

Leo Schlageter. Scarlet-red with an orange cast. Midseason. 2½ ft.

Lillian. Best described as cameo-pink; each floret has a blue eye. Early. 2 to 2½ ft.

Miss Lingard. White flowers delightful for cutting. Very early. 2½ to 3 ft.

Progress. Light blue, with deeper purple-blue eye. 2½ ft. 60c. each; \$1.50 for 3; \$5.40 per doz.

Ruby Lee. Extra-large plum-red flowers. Healthy, vigorous growth. 2 ft. 60c. each; \$1.50 for 3; \$5.40 per doz.

Starlight. Violet-red florets shading lilac; white center. Midseason. 2 to 2½ ft.

Thor. The florets are a combination of salmon-pink with a scarlet glow and a red eye. Midseason. 2 ft.

Unless otherwise noted, all above Phlox are \$1.25 for 3 of one kind; \$2.40 for 6 of one kind; \$4.50 per doz. of one kind. Single plants, 55c. each.

Phlox subulata

(Moss or Mountain Pink)

Low spreading plants with attractive foliage. They cover themselves with a mass of tiny flowers in April and May. A leading rock-garden plant and desirable for wall gardening, or they can be used as edgings.

Blue Eyes. An outstanding lavender-blue variety.

Brightness. Attractive bright pink. Good grower.

Camla alba. A lovely new white form that blooms very freely again during fall months.

Vivid. A compact grower with fiery rose flowers.

All above Phlox are \$1.25 for 3 of one kind; \$2.40 for 6 of one kind; \$4.50 per doz. of one kind. Single plants, 55c. each.

Pansy Plants

Steele's Jumbo Pansies (Hilltop Garden Strain). Gorgeous flowers of immense size and rare colors. Fine form; heavy substance; long, strong stems.

Transplanting plants for setting out this fall for spring blooms. \$1.50 for 50; \$2.50 per 100; \$17.50 per 1000

Butterfly Hybrids (Hilltop Garden Strain). Rainbow collection of Butterfly Hybrids. Pastel colors; the center blotches have a magic sheen like that of rare butterflies. Pansies of distinction in lovely ruffled forms entirely new.

Transplanting plants for setting out this fall for spring blooms. \$3.00 for 50; \$5.00 per 100

Physostegia (False Dragonhead)

These handsome plants are well suited for the sunny border or the wild garden. They are of easy culture and the flowers are borne in terminal spikes from July to September.

Rosy Spire. 3½ ft. Showy spikes of deep rosy crimson bloom. September.

Summer Glow. 4 ft. The striking spikes of rosy crimson are often 18 inches long; top-notch cut-flowers. Late August, September.

Summer Snow. 3 ft. A new white variety; we need more spire-like flowers in summer gardens. July, August.

Rudbeckia (Coneflower)

Tall-growing plant, bearing large daisies with cone-like centers. They are easy to grow in full sun in ordinary soil. Good background plants.

Purpurea, The King. A crimson-red form that can be combined effectively with White Lustre. 75c. each; \$2.00 for 3.

White Lustre. A new Coneflower with pure white petals and a bronzy gold cone. Starts to bloom in June and continues all summer. Stiff, sturdy stems. 3 ft. 75c. each; \$2.00 for 3.

Tradescantia (Spiderwort)

For shaded places the Tradescantias are very desirable. Varieties may be chosen that will give blooms from spring to autumn.

Blue Stone. Low-growing. Large, rich blue flowers.

Pauline. Flowers are rosy mauve. A vigorous variety.

Purple Dome. A vigorous plant with large clusters of rich purple flowers.

All Tradescantias, 55c. each; \$1.25 for 3 of one kind; \$2.40 for 6 of one kind; \$4.50 per doz. of one kind.

PERENNIAL VINES

CLEMATIS

Duchess of Edinburgh. Large, double, elegant white blooms. \$1.00 each.

Henryi. Large, creamy white blooms. \$1.00 each.

Jackmani. Large, rich purple blossoms. \$1.00 each.

Mme. Baron Veillard. Large lavender flowers. \$1.00 each.

Mme. Edouard Andre. Splendid large flowers of a bright rosy carmine color. \$1.00 each.

Paniculata. Strong, rapid growth. Pure white, fragrant flowers. 65c. each; \$1.65 for 3.

Ramona. Lavender-blue. \$1.00 each.

ENGLISH IVY. 2¼-in. pot plants, \$1.75 per doz.; \$13.00 per 100.

GROUND-COVERS

PACHYSANDRA (Japanese Spurge). A trailing plant, 6 to 8 inches high, forming a complete cover of bright, glossy green foliage and small spikes of flowers during May and June. \$2.00 per doz.; \$15.00 per 100.

VINCA minor (Periwinkle; Trailing Myrtle). An excellent dwarf trailing plant for carpeting the ground where it is too shady for other plants to thrive. \$2.00 per doz.; \$15.00 per 100.

Unless otherwise noted, all plants are \$1.00 for 3 of one kind; \$1.95 for 6 of one kind; \$3.60 per doz. of one kind. Single plants, 45c. each

ROSES for Fall Planting

Our Standard Popular Varieties All Everblooming

Strong 2-yr.-old field-grown plants
\$1.25 each

Add 10 per cent for Express or Parcel Post orders

- Autumn.** Red, orange, and pink, in a glowing combination. Excellent for cutting.
- Betty Uprichard.** Salmon and carmine.
- Caledonia.** Large, long-pointed buds with a high center; very fragrant white flowers.
- Christopher Stone.** Scarlet-crimson. Lovely long-pointed buds. Very fragrant.
- Condesa de Sastago.** Spectacular fragrant flowers of burning copper with a yellow reverse.
- Editor McFarland.** Long-lasting, perfectly formed blooms of deep pink on fine stems.
- Etoile de Hollande.** Brilliant red.
- Golden Dawn.** Well-formed; sweet-scented; large; double; sunflower-yellow.
- K. A. Viktoria.** An old reliable white.
- Margaret McGredy.** Orange-scarlet.
- McGredy's Scarlet.** Deep rose-red; well formed and very large.
- Mme. Jules Bouche.** Large, sweet-scented, white blooms on vigorous plants.
- Mrs. E. P. Thom.** Clear yellow.
- Mrs. P. S. du Pont.** Deep golden yellow.
- Poinsettia.** Very brilliant rich scarlet.
- President Herbert Hoover.** Yellow, orange and scarlet.
- Radiance, Red.** Rosy red.
- Radiance.** Pink. Very reliable; globe-shaped flowers.
- Soeur Therese.** Golden yellow.
- Talisman.** Scarlet-rose and yellow.

Floribunda or Polyantha Roses

- Betty Prior.** Pat. 340. Carmine outside, pink inside. \$1.25 each.
- Bright Eyes.** Creamy yellow clusters, profuse and continuous. \$1.25 each.
- Cecile Brunner.** The Sweetheart Rose. Double, bright pink flowers in clusters. A free bloomer. \$1.25 each.
- Donald Prior.** Pat. 377. Scarlet flushed crimson. \$1.25 each.
- Floradora.** Pat. pending. Brilliant cinnabar-red blooms tinged with scarlet and geranium; \$1.25 each.
- Glorious.** Informal clusters of vermilion buds, opening to semi-double flowers of Tyrian rose. Very vigorous and well branched. \$1.25 each.
- Goldilocks.** Pat. 672. Top number in yellow Floribundas. Always in bloom and no foliage trouble. \$1.50 each.
- Gruss an Aachen.** Orange-salmon clusters, slightly fragrant. Rich green foliage. \$1.25 each.
- Margo Koster.** Clusters of orange-red flowers. A fine forcer. \$1.25 each.
- Ming Toy.** Small, deep rose-pink blooms in clusters; fragrant. Bushy and profuse. \$1.25 each.
- Pinkie.** Pat. 712. Double, Neyron rose, slightly fragrant. Dwarf and bushy. \$2.00 each.
- Pinocchio.** Pat. 484. Exquisite pointed buds, salmon, flushed gold. \$1.25 each.
- World's Fair.** Pat. 362. Large velvety scarlet flowers; very hardy. \$1.25 each.

New Hybrid Tea or Monthly Roses

PATENTED VARIETIES

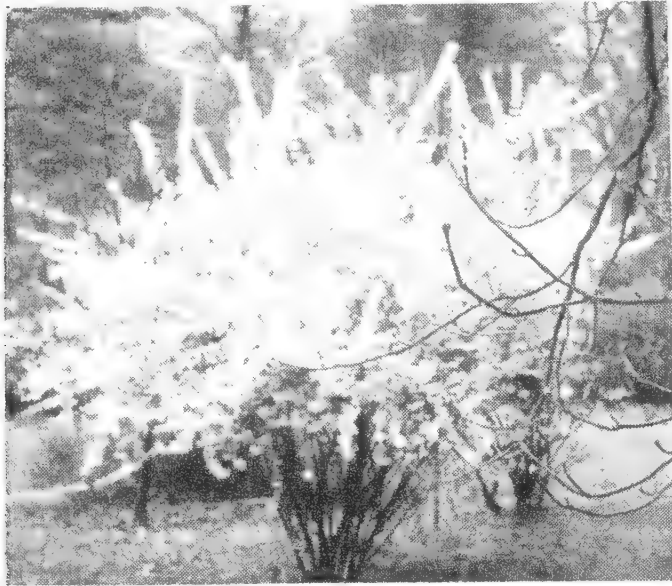
- American Flagship.** Pat. 676. Glorious rich crimson, fragrant blooms on a healthy plant with shining dark foliage. A masterpiece. \$1.50 each.
- Crimson Glory.** Pat. 105. Deep velvety crimson. The finest red Rose. \$1.50 each.
- Diamond Jubilee.** Pat. pending. Large, cupped, double flowers of buff-yellow. Tall, compact plant. \$2.00 each.
- Douglas MacArthur.** Pat. 581. Delft rose with bronze base; large, high centered. Very vigorous, upright bush. \$1.50 each.
- Eclipse.** Pat. 172. Rich gold; lovely long buds. \$1.35 each.
- Forty-Niner.** Pat. 792. Cherry-red with yellow reverse washed pink; large, open, fragrant. Strong, compact, slender plant 3 to 4 feet tall. \$2.50 each.
- Good News.** Pat. 426. Peach-pink. Extra-good plant. \$1.50 each.
- Katherine T. Marshall.** Pat. 607. Long pointed buds, opening slowly. Deep coral-pink, with suffusion of yellow. \$1.50 each.
- Lowell Thomas.** Pat. 595. A large, very double bloom of clear canary-yellow. Bushy, strong plant. \$1.50 each.
- Mirandy.** Pat. 632. Large, very double, rich maroon-red blooms freely borne. Long lasting in bouquets. \$1.50 each.
- Mme. Chiang Kai-Shek.** Pat. 664. Lemon-yellow, high centered, large. Leathery, glossy foliage. \$1.50 each.
- Mme. Cochet-Cochet.** Pat. 129. Beautiful coppery pink. Sturdy grower. \$1.50 each.
- Nocturne.** Pat. 713. Semi-double, fragrant, cardinal-red. An abundant bloomer all season. \$2.00 each.
- Peace.** Pat. 591. Very large, full-petaled flowers of soft yellow suffused and edged pink. Distinctive and charming. \$2.00 each.
- Rubaiyat.** Pat. 758. Rose-red, lighter outside. Large, full, very fragrant. Upright. \$2.00 each.
- Shangri-La.** Pat. 665. Silvery pink; large, double, very fragrant. \$1.50 each.
- Show Girl.** Pat. 646. Deep pink, large and fragrant. Very vigorous. \$1.50 each.
- Tallyho.** Pat. pending. Pink on inside of petals, varying to crimson or cardinal-red outside. \$2.50 each.

Climbing Roses

- Blaze.** Pat. 10. Scarlet-crimson. Often repeats bloom in fall under favorable conditions. \$1.50 each.
- Climbing American Beauty.** Deep rose-pink; large, double flowers. \$1.25 each.
- Doublons.** Pat. 152. Well-formed buds open to large, firm-textured blooms of saffron-yellow. \$1.50 each.
- Dr. W. Van Fleet.** An exquisite delicate pink Rose. Long, pointed, rich flesh-pink buds on stems 12 to 18 inches long. \$1.25 each.
- King Midas.** Pat. 586. Large double flowers, golden yellow flushed red. A beautiful new climber. \$1.50 each.
- New Dawn.** Pat. 1. The everblooming Dr. W. Van Fleet. Just like it in soft pink color but blooms intermittently all summer. \$2.00 each.
- Paul's Scarlet.** The popular scarlet climber. \$1.25 each.
- Spanish Beauty (Mme. Gregoire Staechelin).** Long-pointed, crimson buds open to deliciously perfumed, urn-shaped pearl-pink blooms on 12 to 15-inch stems. \$1.25 each.
- Silver Moon.** Beautiful semi-double, creamy white flowers. \$1.25 each.

Hardy Flowering SHRUBS

Prices quoted include delivery in Washington, D. C., and vicinity. We do not ship Nursery Stock. Because there are so many conditions upon which successful growth is dependent, and over which we have no control, we cannot guarantee our Nursery Stock in any way whatsoever.



Forsythia intermedia spectabilis

ALTHÆA frutex (Rose of Sharon). Double blooms from July until October. Pink, white, and violet-red. 3 to 4 ft., \$1.50 each. 4 to 5 ft., \$2.00.

BUDDLEIA, Charming (Butterfly Bush). Pink blooms all summer. 2-yr. plants, \$1.75 each.

B., Ile de France. Long spikes of brilliant rosy violet-purple flowers all summer. 3-yr. plants, \$1.75 each.

CALYCANTHUS floridus (Sweet-smelling Shrub). 3 to 4 ft. \$1.50 each.

CORALBERRY (*Symphoricarpos vulgaris*). Compact shrub 4 to 5 feet high, with many clusters of deep red berries through the winter months. 18 to 24 in., \$1.50 each. 2 to 2½ ft., \$2.00.

COTONEASTER divaricata (Spreading Cotonaster). 4 to 6 ft. Studded with scarlet fruit, this none too well-known shrub deserves a choice location in the shrub border. Being of vigorous spreading growth, with clean-looking foliage, it also makes a lovely hedge. 2 to 3 ft., \$3.00 each. 3 to 4 ft., \$3.50.

CYDONIA japonica. Scarlet flowers in early spring. 18 to 24 in., \$1.50 each. 2 to 3 ft., \$2.00.

DEUTZIA, Pride of Rochester. Large, double white flowers tinged with rose. 3 to 4 ft., \$1.50 each. 4 to 5 ft., \$2.00.

FORSYTHIA intermedia spectabilis (Golden Bell). Bright yellow, bell-like flowers in early spring. Strong, erect habit. 3 to 4 ft., \$1.50 each. 4 to 5 ft., \$2.00.

F. suspensa (Weeping Golden Bell). Tall shrub of willowy growth. Graceful, arching branches covered with golden bells in early spring. 3 to 4 ft., \$1.50 each. 4 to 5 ft., \$2.00.

HYDRANGEA arborescens grandiflorum. White flowers in almost round heads. Early. 3 to 4 ft., \$1.50 each. 4 to 5 ft., \$2.00.

H., Otaksa. Blue or pink, depending on soil acidity. 2-yr.-old plants. \$1.85 each.

H., Peegee. The old-time variety. 2 to 3 ft., \$1.50 each. 3 to 4 ft., \$2.00.

LILAC, Old-fashioned Purple. 2 to 3 ft., \$1.50 each. 3 to 4 ft., \$2.00.

LILACS, French Hybrids. Larger panicles and richer coloring than the old-fashioned varieties.

Marie Legraye. Pure white.

Katharine Havemeyer. Pink.

President Grevy. Light blue.

Souv. de Ludwig Spaeth. Dark purple.

Above 4 varieties, 2 to 3 ft., \$1.75 each;
3 to 4 ft., \$2.50

PHILADELPHUS coronarius (Sweet Mock-Orange). 3 to 4 ft., \$1.50 each. 4 to 5 ft., \$2.00.

SPIRÆA, Anthony Waterer. Crimson flowers all summer. Dwarf. 15 to 18 in., \$1.50 each. 18 to 24 in., \$2.00.

Spiræa Thunbergi. Fine-leaved foliage; arching branches. Long sprays of white flowers in early spring. 18 to 24 in., \$1.50 each. 2 to 3 ft., \$2.00.

S. Vanhouttei. The most showy variety. May, June. 3 to 4 ft., \$1.50 each. 4 to 5 ft., \$2.00.

VIBURNUM Burkwoodi. Large panicles of sweetly scented, white flowers in April. 18 to 24 in., \$2.50 each. 2 to 3 ft., \$3.50.

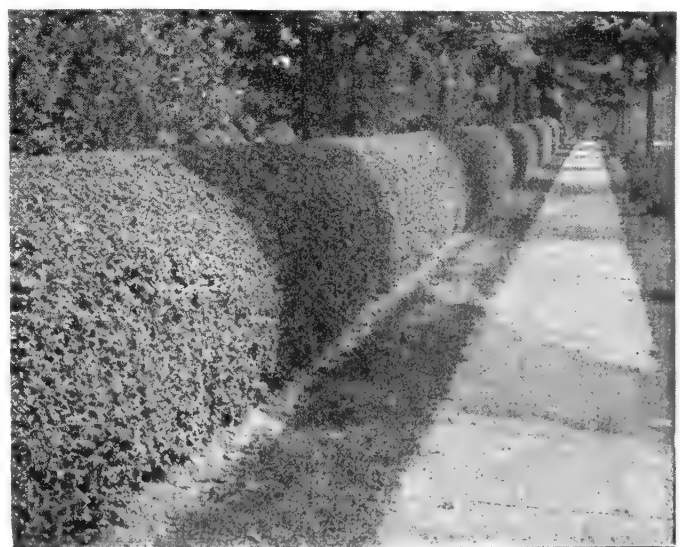
WEIGELA rosea. Beautiful, free-blooming shrub much used in borders and as specimen plants for the lawn. Pink flowers in May or June. 3 to 4 ft., \$1.50 each. 4 to 5 ft., \$2.00.

HEDGE PLANTS

BARBERRY, Green-Leaf. The best and most practical low hedge plant. It also makes a good footing or base planting near the house, or as a border plant in front of tall-growing shrubs. They can be allowed to grow naturally or pruned into any hedge form desired. 15 to 18 in., \$4.50 for 10; \$35.00 per 100. 18 to 24 in., \$6.00 for 10; \$50.00 per 100.

PRIVET, California. The best-known hedge plant. Dark green foliage which remains on the plant until midwinter. Well-branched heavy stock, 1½ to 2 ft., \$2.50 for 10; \$15.00 per 100. 2 to 3 ft., \$3.50 for 10; \$22.50 per 100.

P., Lucidum (Evergreen Privet). Compact plant with glossy green leaves and blue berries. 18 to 24 in., \$2.00 each. 2 to 3 ft., \$3.00.



Privet Hedge

BOLGIANO'S DWARF EVERGREENS

ARBORVITÆ, Globe. A round, compact-growing evergreen with dense foliage. 12 to 15 in., \$2.25 each. 15 to 18 in., \$3.00. 18 to 24 in., \$4.50.

JUNIPERUS chinensis Pfitzeriana. Low-spreading, dark green branches. 15 to 18 in., \$3.00 each. 18 to 24 in., \$3.75. 2 to 2½ ft., \$5.00.

J. depressa plumosa. Low and spreading. Hardy. Fine for rock-gardens and at base of taller evergreens. 15 to 18 in., \$3.00 each. 18 to 24 in., \$3.75. 2 to 2½ ft., \$4.50.

PINE, Mugho (Dwarf Pine). Short, thick foliage on compact plant. Leaves slightly twisted. 15 to 18 in., \$2.50 each. 18 to 24 in., \$3.50. 2 to 3 ft., \$5.00.

YEW, Spreading (*Taxus cuspidata*). A very hardy tree. 12 to 15 in., \$2.25 each. 15 to 18 in., \$3.00. 18 to 24 in., \$4.50. 2 to 3 ft., \$6.00.



BOLGIANO'S TALL EVERGREENS

ARBORVITÆ, American. Tall, rapid grower. 18 to 24 in., \$2.00 each. 2 to 2½ ft., \$3.50. 3 to 4 ft., \$5.00. 4 to 5 ft., \$6.75.

A., Pyramidal. Darker green, denser foliage and more slender of shape. 2 to 3 ft., \$3.50 each. 3 to 4 ft., \$5.00. 4 to 5 ft., \$6.50.

BIOTA compacta. A thick, columnar evergreen. 2 to 3 ft., \$3.00 each. 3 to 4 ft., \$4.00. 4 to 5 ft., \$5.00.

HEMLOCK. Best evergreen for shade. 18 to 24 in., \$3.00. 2 to 3 ft., \$4.00. 3 to 4 ft., \$7.50.

JUNIPER, Irish. Tall, narrow spires of blue-green foliage. Fast-growing. 2 to 3 ft., \$3.50 each. 3 to 4 ft., \$4.50.

RETINOSPORA plumosa. Graceful plume-like foliage of a pretty green. 2 to 3 ft., \$3.00. 3 to 4 ft., \$4.00. 4 to 5 ft., \$5.50. 5 to 6 ft., \$7.50.

SPRUCE, Norway. Dark green, handsome tree reaching 30 to 50 feet. Good for hedges. 2 to 3 ft., \$3.50. 3 to 4 ft., \$6.00. 4 to 5 ft., \$9.00.

YEW, Upright (*Taxus cuspidata capitata*). A fine fast-growing evergreen. 15 to 18 in., \$3.00 each. 18 to 24 in., \$4.00. 2 to 3 ft., \$6.00.

ORNAMENTAL and SHADE TREES

CATALPA Bungei (Umbrella-tree). 10 to 15 ft. Formal straight stems and round heads. 3-yr. heads, \$5.00 each. 5-yr. heads, \$7.50.

CRAB, Flowering (*Malus floribunda*). 4 to 5 ft., \$4.50 each. 5 to 6 ft., \$6.00.

DOGWOOD, Pink-flowering. 3 to 4 ft., \$6.00 each. 4 to 5 ft., \$9.00.

D., White-flowering. 2 to 3 ft., \$2.00 each. 3 to 4 ft., \$3.50. 4 to 5 ft., \$5.00. 5 to 6 ft., \$6.00. 6 to 8 ft., \$7.50.

MAGNOLIA grandiflora. Tall, handsome tree with glossy leaves. Large white flowers all summer. 5 to 6 ft., \$10.00 each. 6 to 8 ft., \$15.00.

MAPLE, Norway. 5 to 6 ft., \$3.75 each. 6 to 8 ft., \$5.00. 8 to 10 ft., \$9.00.

M., Red (*Acer rubrum*). A rapid-growing Maple with vivid fall coloring. This is not the Dwarf Japanese Red-leaf Maple. 5 to 6 ft., \$3.75 each. 6 to 8 ft., \$5.00. 8 to 10 ft., \$9.00.

M., Silver. 5 to 6 ft., \$3.50 each. 6 to 8 ft., \$5.00. 8 to 10 ft., \$8.00.

OAK, Red. The most rapid-growing Oak. Beautiful fall coloring. 5 to 6 ft., \$4.00 each. 6 to 8 ft., \$7.50.

WILLOW, Weeping. 6 to 8 ft., \$3.00 each. 8 to 10 ft., \$4.50.

Broad-Leaved EVERGREEN SHRUBS

ABELIA grandiflora (Bush Arbutus). Leaves dark green and glossy. Flowers white, funnel-shaped, tinged with pink, delicately sweet scented, borne in clusters from early spring until late autumn. 15 to 18 in., \$1.75 each. 18 to 24 in., \$2.50.

AZALEA, Hinodegiri. Brilliant scarlet. 8 to 10 in., \$2.25 each. 10 to 12 in., \$3.00. 12 to 15 in., \$3.75.

A., Kurume, Coral Bells. Clear pink. 8 to 10 in., \$2.25 each. 10 to 12 in., \$3.00. 12 to 15 in., \$3.75.

A., Snow. Pure white. 8 to 10 in., \$2.25 each. 10 to 12 in., \$3.00. 12 to 15 in., \$3.75.

BOXWOOD, American (*Buxus sempervrens*). 4 to 6 in., 35c. each. 6 to 8 in., 50c. 8 to 10 in., 75c. 10 to 12 in., \$1.00.

Boxwood, Old English (*B. suffrut'cosa*). 4 to 6 in., 35c. each. 6 to 8 in., 60c.

HOLLY, American (*Ilex opaca*). Berry-bearing. 2 to 3 ft., \$6.00 each. 3 to 4 ft., \$10.00. 4 to 5 ft., \$15.00.

NANDINA domestica (Heavenly Bamboo). Light green foliage tipped coppery in spring; deep wine color in winter. Tiny white flowers and bright scarlet fruit. 18 to 24 in., \$2.25 each. 2 to 3 ft., \$3.00. 3 to 4 ft., \$4.00.

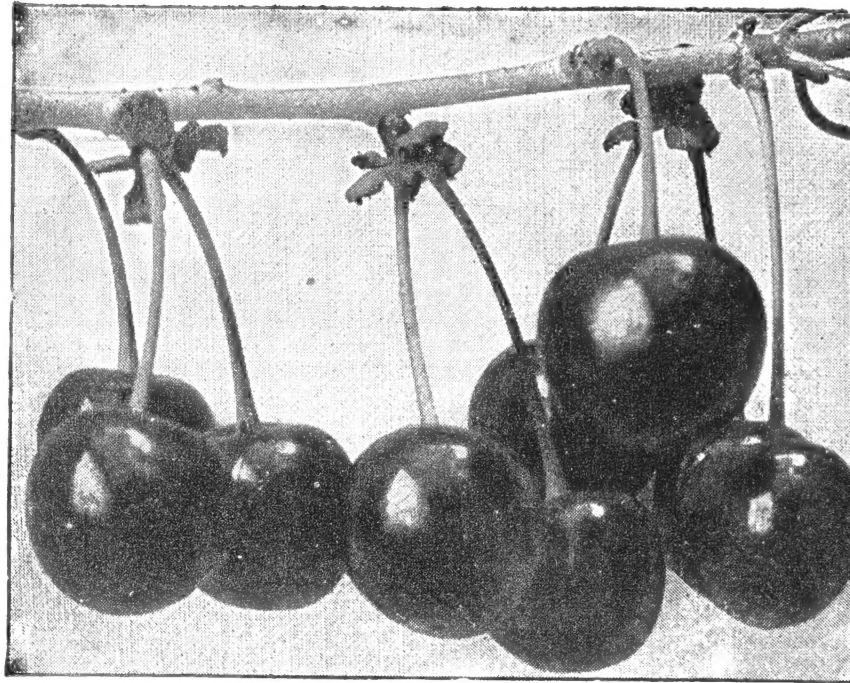
RHODODENDRON carolinianum. Pale to deep pink. 2 to 3 ft., \$5.00 each.

R., catawbiense. Large, purple flowers. 2 to 3 ft., \$5.00 each. 3 to 4 ft., \$7.50.

R. maximum. Large white flowers. 2 to 3 ft., \$5.00 each. 3 to 4 ft., \$7.50.

FRUITS for THE HOME GARDEN

A few fruit trees will be welcome on your grounds the year round. First of all, you plant them for their fruit, of course, and in these days anything you can grow for the family larder is so much to the good. But your fruit trees will also give you springtime bloom and summer shade—a real investment in pleasure and profit.



EARLY RICHMOND CHERRIES

Apple Trees

2-yr.-old, \$2.00 each

WINTER VARIETIES

Delicious. Red; fine grained.
Jonathan. Hardy; productive.
Red Rome Beauty. Vigorous; bears early.
Stayman (Imp. Winesap). Large.
Wealthy. Hardy; rather dwarf.
York Imperial. Greenish yellow.

AUTUMN VARIETIES

Grimes Golden. Good size; yellow.
Smokehouse. Thin yellow skin.

SUMMER VARIETIES

Early Harvest. Medium. Pale yellow.
Yellow Transparent. Earliest. White skin.
Lodi. Large, firm; yellow skin.

Pear Trees

2-yr.-old, \$2.50 each

Bartlett. The best large eating Pear.
Seckel. Small, sweet. Very popular.

Cherry Trees

2-yr.-old, \$2.50 each

Early Richmond. Sour, light red fruit.
Montmorency. Sour variety.
Napoleon. Large; sweet. Midseason.
Tartarian. Large, sweet, black Cherries.

Peach Trees

2-yr.-old, \$2.00 each

Belle of Georgia. Large; white flesh.
Carman. White flesh. Semi-clingstone.
Elberta. Large; yellow flesh. Freestone.
Golden Jubilee. Extra early; yellow. Freestone.

Plum Trees

2-yr.-old, \$2.50 each

Abundance. The popular early cherry-red.
Burbank. A well-known dark red, early.
Damson (Blue Shropshire).

Grape-Vines

2-yr.-old

Caco. Large wine-red berries. 75c. each.
Concord. The standard black.
Lucile. Light red wine Grape.
Moore's Early. Large; black. **Niagara.** White.
All Grape-Vines, except where noted, 60c. each;
\$3.00 for 6

BLACKBERRY PLANTS

Strong plants, postpaid

Eldorado	12	25	50	100
(Midseason).....	\$2 50	\$4 25	\$7 50	\$13 00

BLUEBERRY PLANTS

Cabot. Very early. Heavy bearing.
Jersey. Late. Large berries of fine flavor.
Rancocos. Midseason. Very heavy crop.
Rubel. Midseason. Very hardy; vigorous. 3 yr.,
12 to 15 in., \$2.00 each, \$15.00 for 10.

BOYSENBERRY PLANTS

Postpaid

1-yr. No. 1 Plants...	12	25	50	100
	\$3 50	\$5 50	\$8 50	\$15 00

RED RASPBERRY PLANTS

No. 1 Plants, postpaid

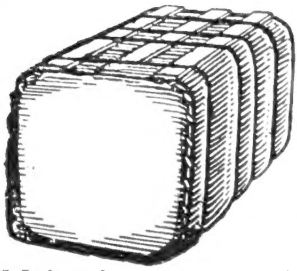
	12	25	50	100
Chief (Early).....	\$2 50	\$4 25	\$7 50	\$13 00
Latham (Late).....	2 50	4 25	7 50	13 00
Newburgh (Midseason).....	2 50	4 25	7 50	13 00
St. Regis (Everbearing)....	2 50	4 25	7 50	13 00

BLACK RASPBERRY PLANTS

Postpaid

Cumberland	12	25	50	100
(Midseason).....	\$2 50	\$4 25	\$7 50	\$13 00

FERTILIZERS • Insecticides, etc.



PEAT MOSS

Finely granulated, thoroughly dried material of good quality. The dependable source of necessary organic matter (humus) in the soil. Free from weed seed and injurious bacteria.

Maintains proper moisture content in soil, improving its condition; for propagating benches, and where layering is practiced; for leveling greenhouse benches in place of sand or ashes; in potting soil; for storing bulbs and tubers over dormant season; mulching flower and vegetable beds, evergreens, roses, shrubs, etc. For making lawns and keeping them in condition and for many other purposes. Standard size bales, burlapped and protected by wooden slats, wire bound. Size approx. 18 x 20 x 39 in. \$5.60. Small bale, approx. 18 x 14 x 30 in. \$4.10.

TERRA-LITE (Vermiculite)

Terra-Lite Plant Aid is a specially graded vermiculite designed for horticultural use. It is not a fertilizer, but has proved to be an ideal growing medium, for rooting cuttings, plant propagation, seed germination, mulch, and many other uses. $\frac{1}{8}$ bus. 40c.; $\frac{1}{2}$ bus. 85c.; 2 bus. \$1.75.

Gold Tag Bone Meal

100 lbs. \$4.75

Gold Tag Raw Bone

100-lb. bag \$5.45

Wizard Brand Sheep Manure

Wizard Brand Cow Manure

"Makes Nature Hustle" and builds up your soil at the same time. 10 lbs. 70c.; 25 lbs. \$1.45; 50 lbs. \$2.25; 100 lbs. \$4.25.

Michigan Peat Moss

Maintains moisture content in soil. Use for storing bulbs and tubers over dormant season, mulching flower and vegetable beds, making lawns and keeping them in condition, and for many other purposes. 100 lbs. \$3.25.



SEL-TOX. A selective crab-grass killer (containing Phenol Mercuric Acetate Solubilized), the latest step forward in the chemical control of crab grass. 16 ozs. treats 1500 to 2000 square feet. Simply mix with water and apply with watering can or sprayer. (Complete directions on each bottle.) 8 ozs. \$1.00; 16 ozs. \$1.50; qt. \$2.50; $\frac{1}{2}$ gal. \$4.50; gal. \$8.00.

Sudbury Soil-Test Kits

This Kit tests for nitrogen, phosphorus, potash and acidity. It will give the gardener, who wants the best results with the least expenditure on fertilizer, complete information about the requirements of his soil.

Home Gardener Kit.....\$2 50
Junior Professional..... 4 75
New De Luxe.....22 50



NATURE'S OWN SOIL ENRICHER

This is rich soil humus that has been aerated, sweetened and composted, making it an ideal top-dressing for lawns and flower-beds. Makes heavy soils light and porous, light soils heavy. Just what you need to promote plant and lawn development at the seashore. Gives immediate and permanent effect wherever used. No odor; no weeds.

For lawns use 200 lbs. to 1,000 square feet; for vegetables and flowers spread about 1 inch thick. It will work wonders. Lb. 10c.; 5 lbs. 20c.; 10 lbs. 35c.; 25 lbs. 65c.; 100 lbs. \$2.00; ton \$26.75.

MILORGANITE

Organic Fertilizer for Lawns, Trees and Flowers. Especially used in transplanting. 100 lbs. \$3.75.

DRICONURE

Three-quarters manure and one-quarter peat, for both soil-improvement and fertilizer. $7\frac{1}{2}$ -lb. bag 55c.; 50-lb bag. \$2.00.

Rootone

The hormone powder for rooting cuttings and dusting seeds and bulbs. Trial size 25c.; 2-oz. jar \$1.00; 1-lb. can \$5.00.

Transplantone

A vitamin-hormone stimulant for plants. Invigorates old roots, multiplies new roots, reduces wilting, reduces loss in transplanting. Trial pkt. 25c.; 3-oz. can \$1.00; 1-lb. can \$4.00.

JAPIDEMIC

Milky Disease Spore Dust

Controls Japanese Beetles

Treat your soil against these pests and save your turf from ruin. Will remain active in the soil for many years to kill the Japanese Beetle grubs. Japidemic is harmless to plants, human beings, and animals when used according to direction. One pound treats 4000 square feet. Ask about Japidemic now! $\frac{1}{2}$ lb. \$2.75; lb. \$4.95.

Write for prices on larger quantities



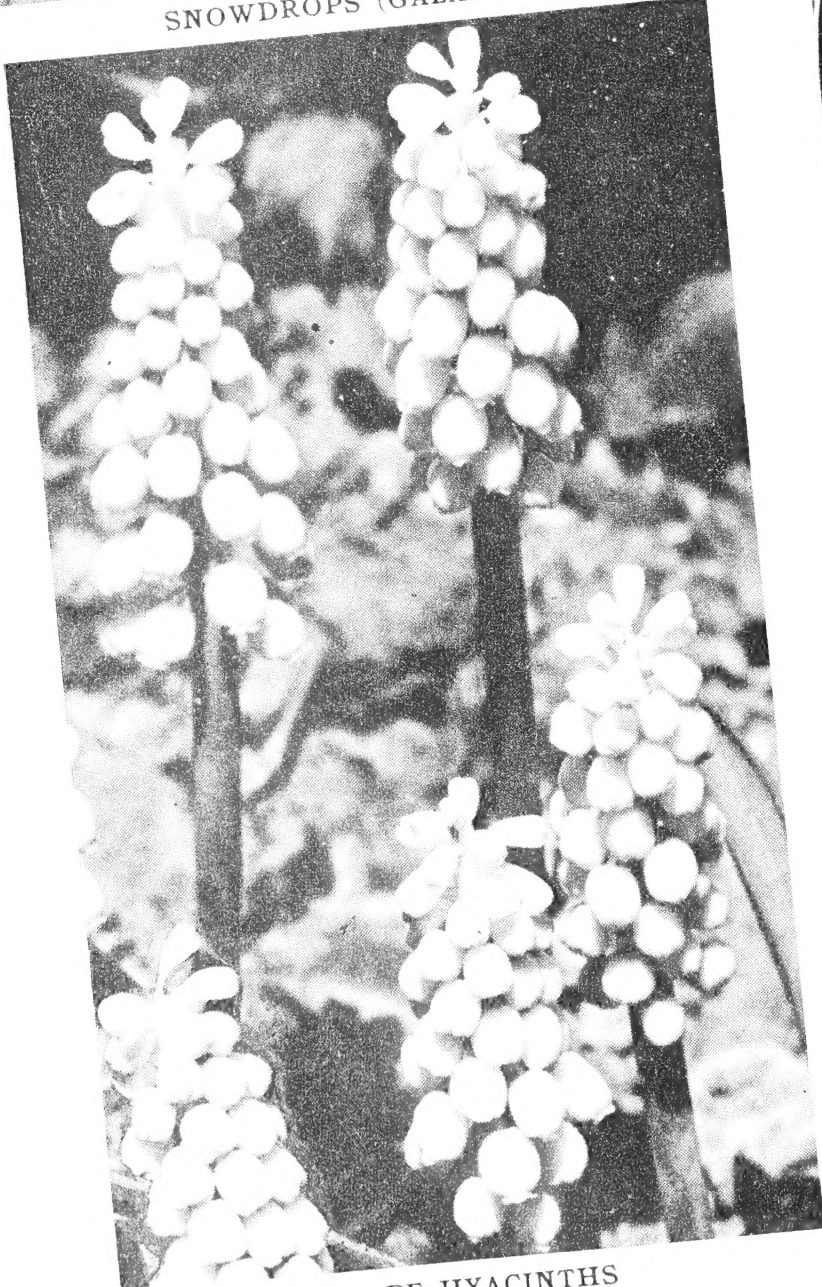
Compo is a mixture of chemical materials and is an excellent compost maker which speeds up the decomposition of leaves, grass clippings, vegetable and garden refuse. At the same time it enriches the compost, making it valuable as an organic fertilizer. $7\frac{1}{2}$ lbs. (makes 375 lbs. organic manure)....\$1 00
 25 lbs. (makes 1250 lbs. organic manure).... 2 00
 100 lbs. (makes $2\frac{1}{2}$ tons organic manure).... 7 50



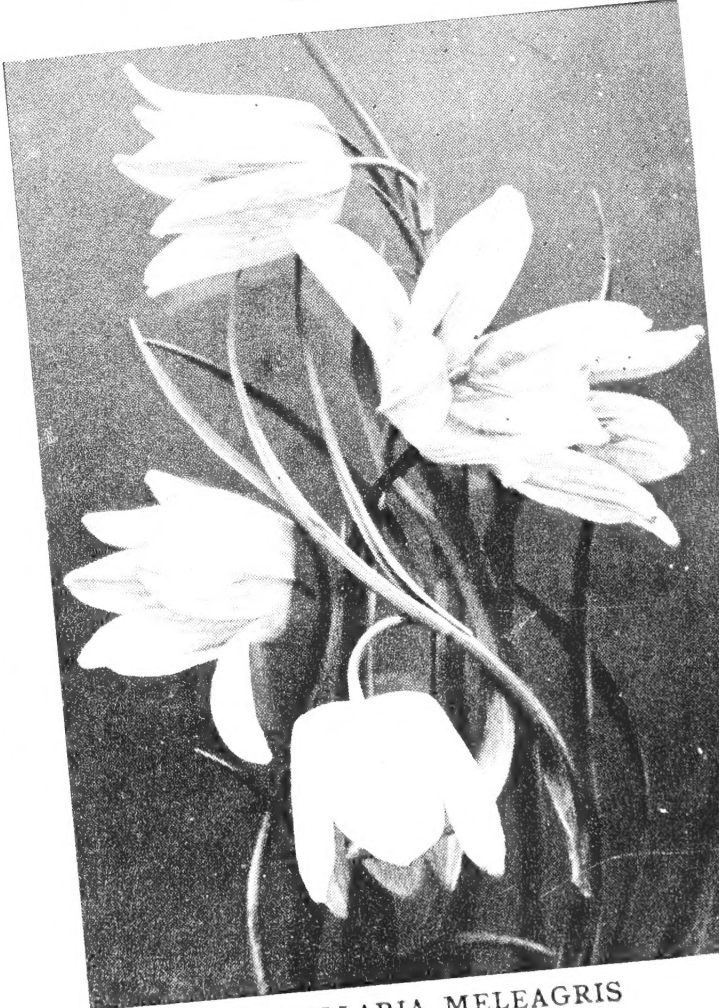
SNOWDROPS (GALANTHUS)



SCILLA SIBIRICA



GRAPE HYACINTHS



FRITILLARIA MELEAGRIS

F. W. BOLGIANO & CO.
WASHINGTON 2, D. C.