

## **Historic, Archive Document**

Do not assume content reflects current scientific knowledge, policies, or practices.



6227

LIBRARY  
RECEIVED  
U. S. Department of Agriculture

# SHERMAN

**NURSERY COMPANY, Charles City, Iowa**

*Spring 1947 Catalog*



**PINK RADIANCE AND RED RADIANCE ROSES**

(see page 16)

*Plant Hardy Northern Grown*

**FRUIT TREES • SHADE TREES • EVERGREENS  
ROSES • FLOWERING SHRUBS • BERRIES**

Established 1884

63 Years of Service

# SHERMAN'S APPLES

## EAT PLENTY OF VITAMIN RICH APPLES

Apples contain all essential Vitamins for health and vigor. Plant summer, fall and winter apples for fresh fruit nearly year-around. We recommend our Quick-Crop size for early bearing.

	Each	Per 3	Per 6
6-8 foot QUICK-CROP (Not postpaid).....	\$2.25	\$6.60	\$12.90
5-6 foot STANDARD (Not postpaid).....	1.75	5.10	9.90
4-5 foot FANCY (Not postpaid).....	1.35	3.90	7.50
3-4 foot GOOD (Postpaid).....	1.00	2.85	5.40



**QUICK CROP** 6-8 ft.      **STANDARD GRADE** 5-6 ft.      **FANCY GRADE** 4-5 ft.

**Quick-Crop Grade**—Extra large, 6-8 foot tall. Trees of this grade bear one to two years earlier than the Standard Grade. An ideal size for home owners who want quicker growth and early bearing.

### SUMMER APPLES

**ANOKA (Early Bearing)** — Bears very young, often fruiting the year after planting. Ripens a few days before Duchess. Attractive yellow, streaked red. Good flavor.

**DUCHESS** — An excellent early, summer apple for pie, cooking and general use. Bears young and heavily. Fruit large, striped red.

**YELLOW TRANSPARENT** — The old favorite, yellow summer apple. Very hardy and productive. Of high quality.

### "ORCHARD BELT" HOME ORCHARD

A fine collection of Apples, all well known to commercial orchardists. This group best adapted for planting South of Central Iowa.

- 1 RED DELICIOUS
- 1 JONATHAN
- 1 GRIMES GOLDEN
- 1 McINTOSH RED
- 1 WINESAP
- 1 YELLOW DELICIOUS

Bargain No. 8  
6 TREES (one each) \$9.50  
5-6 ft., for ONLY (Not Postpaid)

Bargain No. 9  
6 TREES (one each) \$4.95  
3-4 ft., for ONLY (Postpaid)

### FALL APPLES

**FAMEUSE (Snow)** — A crimson-striped apple with snow-white flesh. Delightful flavor.

**WEALTHY**—One of the leading apples. Ripens in September and keeps well for several weeks. Fruit is large, striped red.

### WINTER APPLES

**BRILLIANT**—A splendid, late-keeping apple of large size. Very popular commercial variety, demanding the highest prices. A brilliant, bright red color, fine grained and high in flavor. Keeps well until late spring.

**CORTLAND**—One of America's best apples. Of large size, beautiful red color. Superb in quality. Good both for eating and cooking. Bears abundantly.

**DELICIOUS**—Without doubt the "perfect apple." Fruit is large, rich red with slight yellow blend, of superb quality and flavor. Has delightful aroma, tender, juicy, creamy flesh.

**GRIMES GOLDEN**—A golden-yellow apple filled with rich, spicy flavor. Has been a great favorite for many years. Bears young and heavily. An extra-good all-around apple.

**HARALSON**—One of the greatest winter apples for the North. Exceptionally hardy. Large in size, solid red, tender, juicy flesh. Excellent quality and a good keeper.

**JOAN**—Very attractive and productive. Brilliant red in color. Fruit is large and of extra fine flavor. Hardy and dependable.

**JONATHAN**—Red. The best apple of all, known and liked by everyone. Bears young and abundantly. Bright red, high quality, crisp, tender and full of snap. Keeps well.

**McINTOSH RED**—An attractive, well colored apple. Beautiful red skin with snow-white flesh of very high quality. Fruit keeps until late winter.

**MINJON**—"A Minnesota Jonathan." Very hardy and dependable; brilliant all red apple. Bears abundantly and regularly. More suited for northern territory than its parent, Jonathan.

**NORTHWEST GREENING** — The popular, old-time, long-keeping greening. Giant in size. Yellowish-green with crisp, juicy flesh. Splendid for cooking.

**PATTEN GREENING**—A very hardy apple of large size. Green in color, of good quality for eating and cooking. Keeps until mid-winter.

**PRAIRIE SPY**—A medium size, late winter apple. Bright red over yellow. Originated in the North, this variety is extremely hardy. An excellent keeper.

**SHARON**—A super-fine winter apple for the North. Large, uniform fruit, attractively striped red over yellow, quality outstanding. Flesh tender, white, juicy, with mild aromatic flavor; young, heavy bearer. Splendid for eating and cooking.

**TOLMAN SWEET**—The best winter, sweet apple, of medium size. Color is rather pale yellow. Flesh white, fine grained. Trees are very hardy and productive.

**WINESAP**—An old favorite in every orchard. Bears well. Fruit keeps throughout entire winter months. Medium in size, red, juicy with fine flavor. Needs a sheltered location when planted in the north.

**YELLOW DELICIOUS**—The superb yellow winter apple. Handsome fruit of large size. Flesh firm, crisp, juicy and of distinct delicious flavor. Not recommended for northern plantings.

### CRAB APPLES

**HYSLOP**—A dark purplish-red crab. Very good for pickling and jellies.

**TRANSCENDENT**—A medium size, abundant bearing crab apple. Makes excellent pickles.

**WHITNEY**—Perhaps the most popular of all crab apples. Fruit large, light yellow, striped red. Flesh crisp. Fine for eating, pickling, or apple butter.

### FIVE-IN-ONE APPLE

"The City Man's Orchard"

Five excellent varieties — Delicious, Duchess, Jonathan, Yellow Transparent, and Wealthy, bud-grafted on hardy stock. This fine tree produces summer, fall and winter apples in just the right proportions.

(Note color illustration back cover)

5 in 1 Trees, 4-6 ft., ea. .... \$3.25  
2 Trees for ..... \$6.00

(Not Postpaid)



Yellow Transparent

6/125  
6/750



Whitney



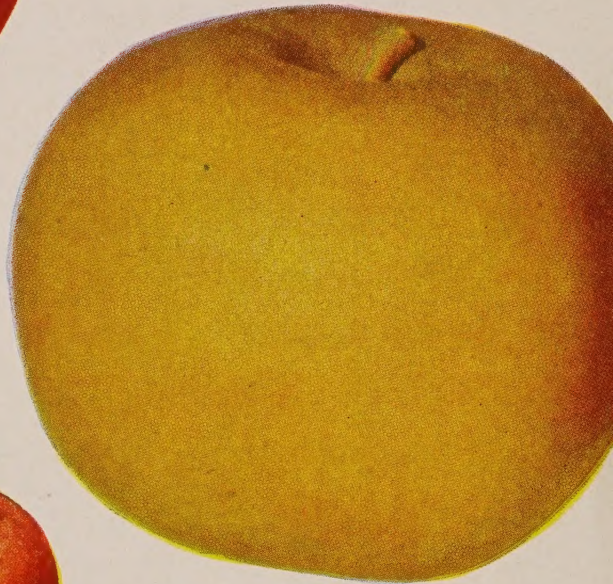
Delicious



Wealthy



Brilliant



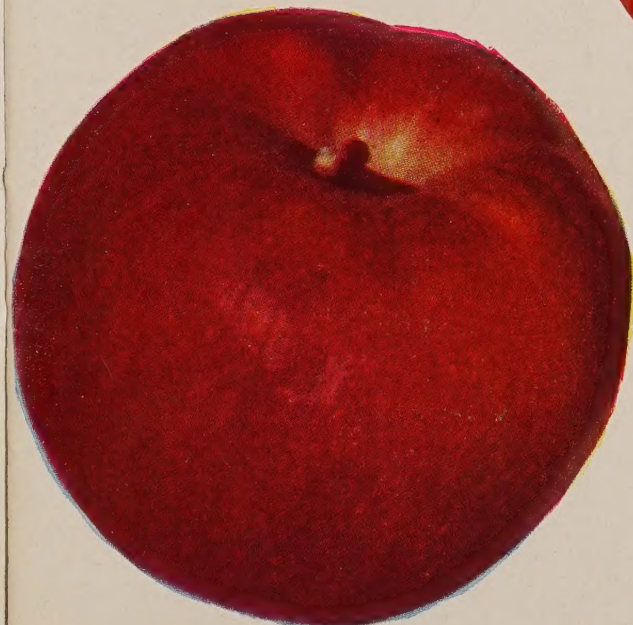
N. W. Greening

# APPLES

*"King of Fruits"*



McIntosh Red



Joan



Cortland

## "BLIZZARD-BELT" HOME ORCHARD

Six of our best producers and hardiest apples adapted for our customers in northern Iowa, Minnesota and Wisconsin.

- 1 DUCHESS (Early Summer)
- 1 WEALTHY (Fall, large size)
- 1 BRILLIANT (Early Winter)
- 1 HARALSON (Red Winter)
- 1 N.W. GREENING (Winter)
- 1 SHARON (Winter, excellent quality)

Bargain No. 10

6 Trees \$950  
5-6 ft., ONLY  
(Not Postpaid)

# PEAR, PLUM, CHERRY AND PEACH



Parker

## PEAR TREES

Pears are easy to grow right in your own yard. Plant only the hardy varieties north of Central Iowa.

	Each	Per 3	Per 6
5-6 foot (not postpaid).....	\$2.00	\$5.85	\$11.40
4-5 foot (not postpaid).....	1.75	5.10	9.90
3-4 foot (postpaid).....	1.50	4.35	8.40

**BARTLETT**—An outstanding variety. Golden yellow with red cheek. Has excellent flavor. Perhaps the best of all eating and canning pears.

**DOUGLAS**—A fine fall pear, bearing heavy crops of large, delicious fruit. Starts fruiting young, often the year after planting.

**KIEFFER**—The well-known canning pear. Fruit large, rich golden yellow. An early and abundant bearer.

**MENDEL (Hardy)**—A large golden yellow, sweet and juicy pear. Hardy everywhere.

**PARKER (Hardy)**—Fruit is medium size, yellow with blush. Tender, sweet and juicy.

**PATTEN (Hardy)**—A wonderful, large greenish yellow pear. Juicy, sweet and rich flavored.

## HARDY PEAR SPECIAL

- 1 MENDEL
- 1 PARKER
- 1 PATTEN



Patten

3 (Bargain No. 11) trees 5-6 foot; ONLY (Not postpaid) \$5<sup>50</sup>

3 (Bargain No. 12) trees 3-4 foot; ONLY (Postpaid) \$4<sup>15</sup>

## HARDY PLUMS

Sherman's plums bear large quantities of delicious, healthful fruit, usually the second year after planting.

	Each	Per 3	Per 6
5-7 foot (Not postpaid).....	\$2.00	\$5.85	\$11.40
4-5 foot (Not postpaid).....	1.75	5.10	9.90
3-4 foot (Postpaid).....	1.50	4.35	8.40

**FIEBING PRIZE**—A leading variety. Large, bright red fruit. Ripens early, of extra fine quality.

**OKA (Plum-Cherry)**—Very hardy, and one of the best. Attractive dark-red fruit of good quality. Flesh red. Bears young and heavily.

**OPATA (Plum-Cherry)**—Fruit medium in size, purplish red with green flesh.

**PIPESTONE**—The grand, big, new, purplish red plum from Minnesota. As large as tropical fruit but all hardy. Finest quality, excellent for canning.

**RED COAT**—Big, prune shaped plums of vivid scarlet. Rich, juicy, meaty flesh of delicious flavor. Tremendous cropper.

**SAPA (Plum-Cherry)**—Fruit dark red with wine-red flesh. Excellent for sauce or preserves.

**SUPERIOR**—One of the largest and best jumbo plums. Beautiful red color, large with firm flesh.

**UNDERWOOD**—Bears immense crops of large, rich red, delicious, freestone plums.

**WANETA**—Really a masterpiece. Large bright red fruit often exceeding two inches in diameter.



Oka Plum-Cherry

## PIE CHERRIES

Cherry pie is always a favorite. Our cherries bear young and each year. For best results, plant at least one tree of each variety.

	Each	Per 3	Per 6
4-6 ft. (Not postpaid) .....	\$2.00	\$5.85	\$11.40
3-4 ft. (Postpaid) .....	1.75	5.10	9.90
2-3 ft. (Postpaid) .....	1.50	4.35	8.40

**EARLY RICHMOND**—The favorite, early pie cherry. Juicy and rich flavored.

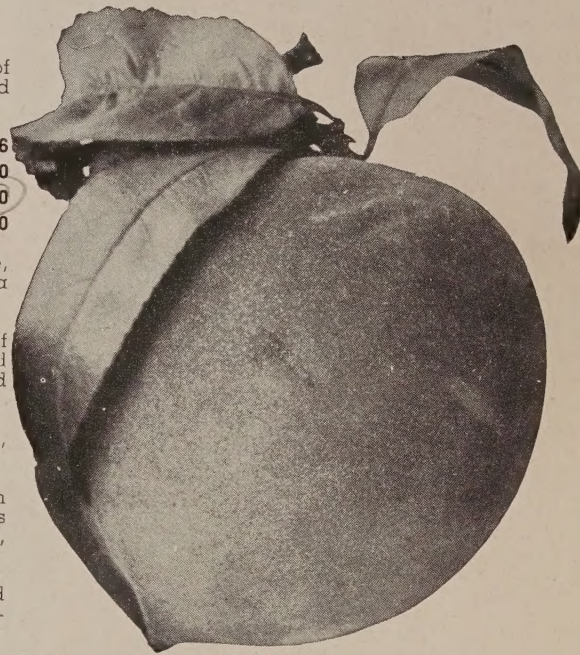
**MONTMORENCY** — An excellent, large red cherry. Ripens 10 days later than Early Richmond.

## SWEET CHERRIES

Excellent for eating out of hand.  
(Do not plant north of Central Iowa)

	Each	Per 3	Per 6
4-6 ft. (Not postpaid) .....	\$2.35	\$6.90	\$13.80
3-4 ft. (Postpaid) .....	2.10	6.15	12.00
2-3 ft. (Postpaid) .....	1.85	5.40	10.50

**BLACK TARTARIAN** — Very large, bright purple. Juicy, sweet, rich and fine. Ripens in early July.



Golden Jubilee

## PEACHES

Grow your own peaches to eat and can. We offer varieties of exceptionally high quality, but do not recommend planting Peach trees north of Central Iowa.

	Each	Per 3	Per 6
4-5 ft. (Not postpaid) .....	\$1.45	\$4.29	\$8.40
3-4 ft. (Postpaid) .....	1.10	3.24	6.30
2-3 ft. (Postpaid) .....	.65	1.89	3.60

**ELBERTA**—The grand canning peach. Freestone. Large yellow fruit, blushed red. Of high quality. Midseason.

**GOLDEN JUBILEE**—A bright orange fruit with dark carmine red cheeks. Tremendous yielder. Ripens early, has marvelous flavor. Freestone.

**HALE HAVEN**—A fine new peach. Produces heavily. Freestone. Fruit large, yellow, high in quality.

**J. H. HALE**—Always in demand. Extra large, round, highly colored, golden yellow fruit. Freestone. Brings a high price on the market.



Hansen's Bush

## HANSEN'S BUSH CHERRIES

Hardy everywhere. Recommended particularly for Northern climates. Trees are dwarf in size, bearing early, heavily and annually.

	Each	Per 3	Per 6
3-4 ft. (Postpaid).....	\$ .75	\$2.19	\$4.20
2-3 ft. (Postpaid).....	.65	1.89	3.60



Red Coat

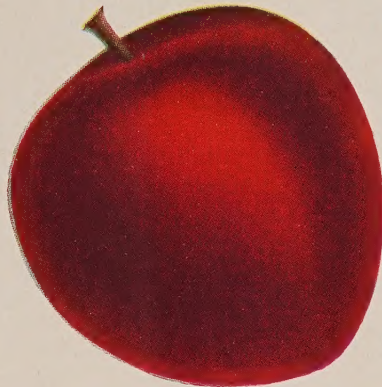
140  
6/840



Opata



Waneta



Pipestone



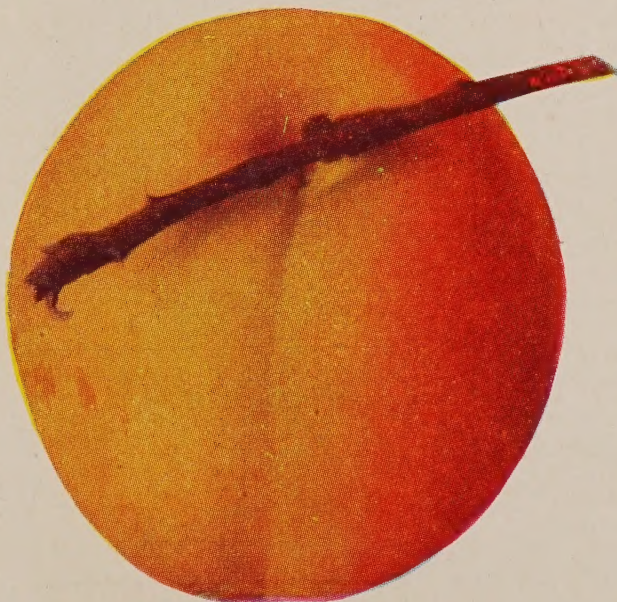
Montmorency



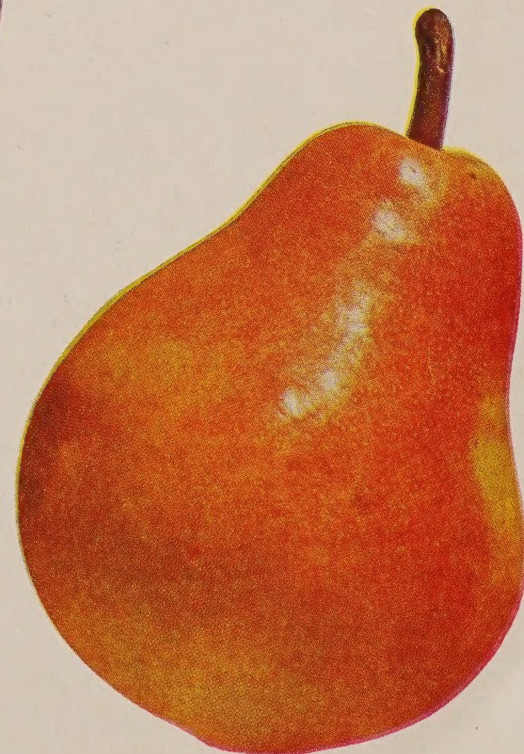
Early Richmond



Sapa



Elberta



Bartlett

### "PLUM-CHERRY" CLUSTER

Bargain No. 13

Sherman's Plum-Cherries bear quickly. Not much garden space is required as these varieties grow in dwarf, bush form. Plant trees in a triangle eight feet apart.

1 OPATA — 1 OKA — 1 SAPA

3 Trees (one each) \$4<sup>19</sup>  
3-4 ft., for ONLY  
Postpaid

# OUR SMALL FRUITS BEAR EARLY

## SURE-CROP RASPBERRIES

Sherman's heavy, well-rooted raspberries bear early. No fruit is more profitable to grow; more enjoyable to eat. Space plants 3 to 4 feet apart in rows 6 feet apart.

	Per 10	Per 25	Per 100
Chief, Latham, or Sunrise (Select Plants).....	\$1.45	\$3.50	\$13.50
Chief, Latham, or Sunrise (Heavy Plants).....	1.75	4.25	16.00
Cumberland (Select Plants).....	1.40	3.25	12.50
Indian Summer (Select Plants).....	1.65	3.85	14.50
Indian Summer (Heavy Plants).....	2.00	4.75	18.00
Sodus (Select Plants).....	2.00	4.75	18.00

Postpaid

**CHIEF (Red)**—A fine, new red variety ripening about 10 days earlier than Latham. Sweet and delicious. Commands high market prices because of early fruiting.

**CUMBERLAND (Black)**—The largest and finest black raspberry. Immense berries are firm, juicy and extra rich flavor. One of the most reliable varieties.

**INDIAN SUMMER (Everbearing Red)**—The best everbearing raspberry. Berries are large, conical, medium red and good quality. Ripens early, last week in June. Autumn crop starts in September and continues until severe frost. An abundant bearer.

**LATHAM (Red)**—The greatest and most popular red raspberry grown. Large, handsome red berries, full of rich quality and flavor. We offer bearing-age plants that will produce heavy crops annually.

**SODUS (Purple)**—A new, rich, delicious, extra special purple raspberry. Berries are large and beautiful rich wine-purple. Firm, of exceptionally rich flavor, sweet.

**SUNRISE (Early Red)**—Here is a raspberry which has a better, richer red color. Fine flavor and fine texture. Ripens about two weeks earlier than Latham. Highly recommended.

## HEAVY-CROPPER GRAPES

A few grape vines will supply your entire family large quantities of wholesome, healthful fruit for eating fresh, jelly, jam, sauce or juice. Grapes are easy to grow and, if pruned occasionally, will last a lifetime.

	Each	Per 4	Per 12
Caco (2-year Select).....	\$ .50	\$1.88	\$5.40
Concord (2-year Select).....	.25	.95	2.65
Concord (2-year XX Heavy).....	.35	1.25	3.60
Concord Seedless (2-year Select).....	1.25	.....	.....
Golden Muscat (2-year Select).....	1.00	.....	.....
Other Varieties listed (2-year Select).....	.35	1.25	3.60

Postpaid

**AGAWAM (Red)**—A large, dark red grape of rich, spicy flavor.

**BETA (Hardy)**—Fruit medium in size, black. Has tang of wild grape. Excellent for juice. A heavy bearer, especially recommended for northern plantings.

**CACO (Red)**—Extra large berries, rich and sweet. The finest of hardy red grapes. Very delicious, sweet flavor. Bears young and heavily.

**CONCORD (Blue-Black)**—The most popular of all grapes. Very productive. Berries are large, juicy, tender and of good flavor.

**CONCORD SEEDLESS**—A new, hardy, thrifty, practically seedless grape. Fruit resembles the standard concord in color and season of ripening. Clusters of berries somewhat smaller, but almost seedless. The first real satisfactory seedless grape in the Northwest.

**FREDONIA (Blue-Black)**—A new, early grape, producing very high quality fruit. Ripens three weeks earlier than Concord. Ideal for home planting. Hardy.

**GOLDEN MUSCAT (Golden-Amber)**—The new, extra fancy dessert grape. Large, tender, juicy berries of the sweetest, richest aromatic flavor. Attractive golden amber-white. A heavy producer, wonderful keeper and shipper.

**MOORE'S EARLY (Blue-Black)**—Ripens 10 days earlier than Concord. Large, blue-black berries of splendid quality. Excellent for marketing.

**NIAGARA (White)**—The hardiest and best of white grapes. Large berries in compact bunches. Excellent for jelly or wine. Very popular.

## STRAWBERRIES

	Per 25	Per 50	Per 100
Dorsett or Fairfax.....	\$1.15	\$2.00	\$3.50
Gem (Everbearing) ....	1.35	2.50	4.50
Senator Dunlap .....	.85	1.50	2.50

Postpaid

**DORSETT**—A popular June-bearing variety. Large, bright red berries, early in season.

**FAIRFAX**—Large, firm, deep red berries. Fruits over long period of time. A June bearer.

**GEM (Everbearing)**—The outstanding everbearing strawberry. Very productive. Large, deep red fruit, ripening evenly. A good commercial variety.

**SENATOR DUNLAP**—The best June-bearing variety for home use. Large, well-shaped red berries of delicious flavor.

## BLACKBERRIES

Per 10 Per 25 Per 100

All varieties  
(Select plants) .....\$1.40 \$3.25 \$12.00  
Postpaid

**ALFRED**—Berries are large, often 1½ inches long, of exceptionally fine flavor, almost coreless. A heavy bearer, extremely hardy.

**ELDORADO**—Large size, sparkling jet-black berries, nearly coreless. Sweet, delicious, hardy.

## BOYSENBERRIES

	Per 3	Per 10
Regular .....	\$.60	\$1.50
Thornless .....	.85	2.25

Postpaid

**REGULAR BOYSENBERRY**—The berry which created such a sensation all over America. Bears immense berries often as long as 2 inches, of highest quality. Excellent for use fresh, canned, in pies or jelly. The canes have thorns.

**THORNLESS BOYSENBERRY**—A new introduction meeting with great favor. Splendid large berries of excellent quality. The same berry as above, except the canes are THORNLESS.

## CURRANTS

Currant jelly cannot be beat.

Select Plants (Postpaid)

	Each	Per 3
Red Lake (2 yr.).....	\$.65	\$1.75
Other varieties (2 yr.).....	.55	1.50

**FAY'S PROLIFIC (Cherry-red)**—One of the best, old, dependable varieties.

**RED LAKE (Red)**—A new Minnesota variety. Larger, better, longer bunches of bright red berries.

**WILDER (Red)**—One of the best-grown. Bright red, of splendid quality.

## GOOSEBERRIES

Excellent for pies or sauce.

Select Plants (Postpaid)

	Each	Per 3
Champion (2 yr.).....	\$.75	\$2.00
Other varieties (2 yr.).....	.65	1.75

**CARRIE (Deep Wine)**—One of the best all around gooseberries. Bears young and heavily.

**CHAMPION (Green)**—Truly a champion. Berries of medium size, sweet, and high quality.

**DOWNING (Green)**—Fruit very large, flesh whitish green. Excellent flavor. A favorite.

## RHUBARB

(Pie Plant)

<b>VICTORIA</b> —Everyone's favorite.			
	Per 3	Per 6	Per 12
Large roots .....	\$.69	\$1.30	\$2.40

Postpaid

<b>MAC DONALD</b> —New, giant red.			
	Each	Per 3	
Large roots .....	\$.65	\$1.85	

Postpaid

## "TRI-COLOR" GRAPE OFFER

(Bargain No. 14)

2 Red Agawam  
2 White Niagara  
2 Blue Concord

6 Select Vines ONLY \$1.65  
Postpaid

## ASPARAGUS

Postpaid

**PARADISE**—Yields one year earlier than other varieties. Delicious, large, tender tips.

	Per 12	Per 25	Per 100
2 year .....	\$.75	\$1.25	\$3.95

**WASHINGTON RUST PROOF**—An outstanding asparagus. Shoots are thick and heavy. Very tender.

	Per 12	Per 25	Per 100
2 year .....	\$.65	\$1.00	\$3.35

## SHORTCAKE SPECIAL

Bargain No. 15

25 GEM (Everbearing)  
50 SENATOR DUNLAP

75 Plants Postpaid \$2.65

SMALL FRUIT GARDENS ARE VERY PROFITABLE

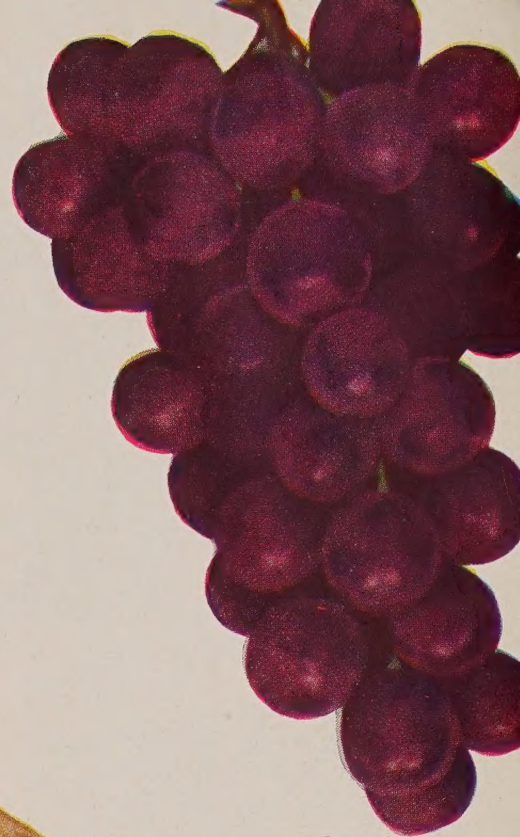




INDIAN SUMMER (Everbearing)



Senator Dunlap



Caco Grape



Sodus Raspberry



Champion Gooseberry



Paradise Asparagus

530  
25



Latham



Cumberland

See page 6 for descriptions and prices



Concord Grape



Red Lake Currant



Boysenberry



Beautify your home with evergreens

# SPECIMEN EVERGREENS

We are large growers of Specimen Evergreens and list below a fine assortment that will afford you permanent and lasting beauty. Sherman's Specimen Evergreens are transplanted from time to time to develop the required root system and pruned to give them shape. They are grown with extreme care in wide, well-cultivated rows.

Our evergreens are carefully dug with Sherman's whole root system and packed in wet moss. They are easy to plant, just as you would any ordinary tree or shrub.

If desired dug B&B (Balled and Burlapped) add \$2.00 per tree to cover additional cost of digging and packing for shipment. (x means times transplanted.)

EACH PRICES—NOT POSTPAID

**ARBOR VITAE, Globosa**—This beautiful and well known variety grows in a perfect ball shape without trimming.

12/15 inch xx .....\$2.25

**ARBOR VITAE, Pyramidal**—Tall, slender and stately in shape. Use as sentinel trees on either side of porch or walk, or at corners of house.

12/18 inch xx .....\$2.25  
18/24 inch xxx ..... 2.75  
24/30 inch xxx ..... 3.50

**ARBOR VITAE, Shermanii**—A fine new variety of pyramidal form. Rich dark green foliage. Very hardy and dependable.

12/18 inch xx .....\$2.00  
18/24 inch xxx ..... 2.75  
24/30 inch xxx ..... 3.50

**FIR, Balsam** — Attractive deep green needles, silvery underneath. A very symmetrical, pyramidal shaped tree.

18/24 inch xxx .....\$1.75  
2/3 foot xxxx ..... 2.50

**FIR, Concolor (White Fir)**—One of the finest of all Firs. Long, graceful needles of silvery-blue color.

18/24 inch xxx .....\$3.50  
2/3 foot xxxx ..... 4.50

**FIR, Douglas**—A native of the Rocky Mountains and Pacific Coast. Large, conical form, spreading branches, dark green above, silvery white below.

18/24 inch xxx .....\$2.50  
2/3 foot xxxx ..... 3.50

**JUNIPER, Cannarti**—A pyramidal tree of rich green foliage. Bears an abundance of attractive blue berries in fall.

30/36 inch xxxx .....\$5.95  
36/42 inch xxxxx ..... 6.95

**JUNIPER, Chinensis**—A splendid pyramidal tree. Foliage dark green with silvery tint.

18/24 inch xxx .....\$3.25  
2/3 foot xxxx ..... 3.95

**JUNIPER, Pfitzer**—An exceptionally beautiful, spreading tree with gray-green foliage. Graceful and very hardy.

12/15 inch xxx .....\$2.25  
15/18 inch xxx ..... 2.75  
18/24 inch xxxx ..... 3.25  
24/30 inch xxxx ..... 4.00

**JUNIPER, Savin**—Grows more upright than Pfitzer with fan-shaped branches. Deep green foliage. Very desirable for planting beneath windows along foundation.

12/15 inch xxx .....\$2.00  
15/18 inch xxx ..... 2.50  
18/24 inch xxxx ..... 3.00  
24/30 inch xxxx ..... 3.50

**JUNIPER, Scopulorum (Colorado)**—A very neat, compact pyramidal juniper with beautiful green foliage. Does not turn brownish over winter.

18/24 inch xxx .....\$3.50  
24/30 inch xxxx ..... 3.95  
30/36 inch xxxx ..... 4.95

**PINE, Mugho**—Most beautiful of all dwarf evergreens, growing in a low, round ball shape, often measuring twice as wide as high.

12/15 inch xxx .....\$2.95  
15/18 inch xxx ..... 3.50

**PINE, Norway**—A fast growing variety with lustrous green needles. Attractive russet-colored cones.

2/3 foot xxxx .....\$2.00  
3/4 foot xxxx ..... 3.00

**SPRUCE, Black Hills**—The most popular of Spruce. A hardy, slow growing variety, very dense. Dark green needles, often having bluish sheen.

12/18 inch xxx .....\$2.00  
18/24 inch xxxx ..... 2.50  
24/30 inch xxxx ..... 3.00  
30/36 inch xxxx ..... 3.50

**SPRUCE, Colorado Green** — An attractive tree with long, bright green needles. Grows symmetrical in shape. Very hardy. A native of the Rocky Mountains.

18/24 inch xxx .....\$2.50  
24/30 inch xxxx ..... 3.00

**SPRUCE, Colorado Select Blue**—Everyone's favorite. A very graceful tree with long, silvery blue needles. We mark our Select Blue trees during the summer months when they display a fine silver luster. (Trees sometimes do not have best color first year due to transplanting.)

12/18 inch xxx .....\$ 7.50  
18/24 inch xxxx ..... 10.00  
24/30 inch xxxx ..... 12.50

**SPRUCE, White**—In great demand due to its fine shape and unexcelled richness of color. A very hardy, dependable tree. Fine for either windbreak or ornamental plantings.

18/24 inch xxx .....\$2.00  
2/3 foot xxxx ..... 2.50

## HOME LANDSCAPE

(Bargain No. AA)

Here is an economical and beautiful home landscape planting.

- 2 Pyramidal A. V. 18/24"
- 2 Pfitzer Juniper 12/15"
- 2 Spirea Froebelli (red) 12/18"
- 2 Spirea V. H. (white) 18/24"

\$12.00 Value, for  
**ONLY . . . \$10.75**  
(Not Postpaid)





Pyramidal Arbor Vitae



Globosa Arbor Vitae

### SHERMAN'S ENTRANCE PLANTING



2 PYRAMIDAL A.V. 2-3 ft.  
2 JUNIPER PFITZER 12-15 in.  
(Packed in Moss)

Only \$10.95 (Collect)



Mugho Pine



Juniper Cannarti



Juniper Scopulorum



Douglas Fir



Juniper Pfitzer



Juniper Savin



Black Hills Spruce

# PLANT SHADE TR



American Linden

Sherman's shade trees offer cool comfort and refreshment from the heat of mid-summer sun. We offer an exceptionally fine assortment of heavy, well-branched, well-rooted, transplanted trees. These trees have been carefully spaced in wide rows to insure excellent root system as well as shapely tops. (Shipped by Express, charges to be paid by purchaser.)

**ASH, American Green**—Tall growing tree with dark green foliage, changing to gorgeous shades of purple and yellow during fall months.

	Each	2	5
4/5 ft. ....	\$ .50	\$ .90	\$2.00
5/6 ft. ....	.75	1.40	3.25
6/8 ft. ....	1.00	1.90	4.50
8/10 ft. ....	1.65	3.20	7.75



Chinese Elm

**BIRCH, Cut Leaf Weeping**—A tall, white-barked tree with graceful drooping branches. Leaves deeply cut.

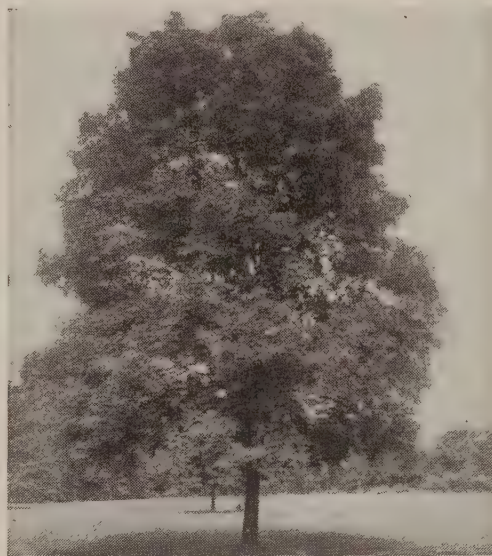
	Each	2	5
4/5 ft. ....	\$2.00	\$3.80	\$9.25
5/6 ft. ....	2.50	4.80	11.75
6/8 ft. ....	3.50	6.90	17.00

**BIRCH, European White**—Upright growing with attractive white bark in mature trees.

	Each	2	5
4/5 ft. ....	\$1.35	\$2.60	\$6.25
5/6 ft. ....	1.65	3.20	7.75
6/8 ft. ....	1.95	3.80	9.25

**CHESTNUT, Horse (Buckeye)**—A handsome tree with heavy, white flower spikes in June. Large, shiny buds on the terminal twigs in winter and unusual branch structure.

	Each	2	5
4/5 ft. ....	\$1.50	\$2.90	\$7.00
5/6 ft. ....	1.85	3.60	8.75



American Green Ash

**ELM, Chinese**—A fast growing neat appearing tree, making a beautiful ornamental shade tree. Our trees are heavy in caliper and well branched.

	Each	2	5
4/5 ft. ....	\$ .65	\$1.20	\$2.75
5/6 ft. ....	.75	1.40	3.25
6/8 ft. ....	1.10	2.10	5.00
8/10 ft. ....	1.75	3.40	8.25

**ELM, Moline**—A budded tree, recommended for street and yard plantings. uniform in growth, very attractive. Large, waxy green leaves.

	Each	2	5
5/6 ft. ....	\$1.50	\$2.90	\$7.00
6/8 ft. ....	2.00	3.80	9.25
8/10 ft. ....	2.50	4.80	11.75



Moline Elm

**ELM, White**—The grandest of all trees. Planted extensively for shade in the lawn or along the street in the parking. Tall with wide spreading top.

	Each	2	5
5/6 ft. ....	\$1.00	\$1.90	\$4.50
6/8 ft. ....	1.25	2.40	5.75
8/10 ft. ....	2.00	3.80	9.25

**LINDEN, American (Basswood)**—A tree of beautiful form and size. Fragrant, yellow flowers.

	Each	2	5
4/5 ft. ....	\$1.50	\$2.90	\$7.00
5/6 ft. ....	2.00	3.80	9.25
6/8 ft. ....	2.50	4.90	12.00
8/10 ft. ....	3.50	6.90	17.00



White Elm

**SHADE TREES WILL GIVE LASTING COMFORT AND BEAUTY TO**

# TREES FOR COMFORT



Silver Maple

**MAPLE, Hard**—A beautiful tree whose foliage is large, turning beautiful shades of orange-yellow in fall.

	Each	2	5
4/5 ft. ....	\$1.50	\$2.90	\$7.00
5/6 ft. ....	2.00	3.90	9.50
6/8 ft. ....	2.50	4.90	12.00
8/10 ft. ....	3.00	5.90	14.00

**MAPLE, Silver (or Soft)**—The fastest growing and largest of the Maples. Leaves are silver underneath.

	Each	2	5
5/6 ft. ....	\$1.00	\$1.90	\$4.50
6/8 ft. ....	1.50	2.90	7.00
8/10 ft. ....	2.00	3.80	9.25



Schwedler Maple (Alpine Currant Hedge)

**MAPLE, Schwedler's (Purple Leaf)**—Gleaming red and purple in spring. Purplish green in mid-summer and golden-yellow in autumn.

	Each	2	5
5/6 ft. ....	\$2.50	\$4.90	\$12.00
6/8 ft. ....	3.00	5.90	14.00

**MOUNTAIN ASH, European (Red Berries)**—A small tree with symmetrical round top bearing clusters of orange-red berries.

	Each	2	5
5/6 ft. ....	\$2.00	\$3.90	\$9.50
6/8 ft. ....	2.50	4.90	12.00

**OAK, Pin-Tail**, pyramidal shaped tree. Foliage glossy green, becoming brilliantly colored in autumn. Deeply cut, attractive.

	Each	2	5
5/6 ft. ....	\$2.50	\$4.90	\$12.00
6/8 ft. ....	3.50	6.90	17.00
8/10 ft. ....	5.00	9.80	24.00



Hard Maple

**POPLAR, Bolleana**—A fine, pyramidal form tree. Bark smooth, grayish white. Leaves silvery underneath. Slender.

	Each	2	5
5/6 ft. ....	\$2.00	\$3.90	\$9.50
6/8 ft. ....	2.50	4.90	12.00

**POPLAR, Lombardy**—A very popular tree for screen or corner plantings. Tall, pyramidal shape with limbs from ground up. Does not seed.

	Each	2	5
4/5 ft. ....	\$.50	\$.90	\$2.00
5/6 ft. ....	.75	1.40	3.25
6/8 ft. ....	.90	1.70	4.00
8/10 ft. ....	1.50	2.90	7.00



Lombardy Poplar

**WALNUT, Black**—One of the noblest trees in the American forests. Very valuable for its much favored wood.

	Each	2	5
4/5 ft. ....	\$.75	\$1.40	\$3.25
5/6 ft. ....	1.25	2.40	5.75

**WILLOW, Niobe Weeping (Golden)**—A very graceful weeping tree. Bark on twigs and branches attractive golden yellow.

	Each	2	5
4/5 ft. ....	\$.85	\$1.60	\$3.75
5/6 ft. ....	1.25	2.40	5.75
6/8 ft. ....	1.50	2.90	7.00

**WILLOW, Pussy**—A small tree with catkins on the branches in early spring.

	Each	2	5
3/4 ft. ....	\$.65	\$1.20	\$2.75
4/5 ft. ....	.75	1.40	3.25
5/6 ft. ....	1.00	1.90	4.50

**WILLOW, Wisconsin Weeping**—An attractive weeping tree with handsome, dark green bark.

	Each	2	5
4/5 ft. ....	\$.85	\$1.60	\$3.75
5/6 ft. ....	1.25	2.40	5.75
6/8 ft. ....	1.50	2.90	7.00



Niobe Weeping Willow

**YOUR HOME GROUNDS—PLANT SEVERAL TREES THIS SPRING**

# COLORFUL FLOWERING SHRUBS



**Hydrangea Arborescens**

Plant flowering shrubs for all-summer bloom. They add beauty to your home, value and enjoyment to your property. We offer shrubs that are good, strong, well-branched plants. Space dwarf growers 2 feet apart, taller sorts 3 feet apart, in a zig-zag arrangement for best effect.

## SPECIAL FLOWERING SHRUBS

Listed on this page are 10 of our most choice and best varieties of ornamental shrubs which will greatly enhance the beauty of your property. All varieties on this page (except Hansen's Purple Plum and French Lilacs) are priced as follows:

	Each	Per 2	Per 6
18/24 inch .....	\$.75	\$1.40	\$3.90
2/3 foot .....	1.00	1.90	5.40

Not Postpaid



**Hydrangea P. G.**

**BARBERRY, Red Leaf**—The most brilliantly colored of all shrubs. Lustrous red foliage throughout the entire summer. Red berries during winter months. Plant in a sunny location.

**HIGH BUSH CRANBERRY**—A very hardy, attractive shrub bearing white flowers early in the season, followed by clusters of bright red cranberry fruit.

**HYDRANGEA, Arborescens** — An ideal shrub for shady places. Blooms in mid-summer, resembling huge snowballs. Large, heart-shaped leaves. Medium in height.

**HYDRANGEA, Paniculata Grandiflora (P. G.)**—Large, cone-shaped blossoms of creamy white, changing to rose, then purple and bronze. Blooms in late summer. Should be planted in partial shade. Blooms make excellent cut flowers in late fall.



**Red Leaved Barberry**

**SNOWBALL**—One of the best loved spring flowering shrubs. Large, ball-like clusters of snow-white flowers.

**SYRINGA (Sweet Mock Orange)**—A beautiful hardy shrub. Blossoms pure white, very fragrant. Tall.

**SYRINGA, Lemoinei**—An attractive shrub of medium height and neat foliage. Produces dense racemes of small fragrant white flowers.

**SYRINGA, Virginalis (Double)**—Snowy-white double blossoms produced in profusion over a long blooming season.

**TAMARIX**—A shrub or small tree of very graceful form. Soft, feathery, cedar-like foliage. Dainty pink blossoms in early spring.

**WEIGELIA, Rosea**—Produces a mass of brilliant pink flowers in early spring. A beautiful shrub but not recommended for northwest climates. Should be planted in sheltered areas.

## FRENCH LILACS

Here is a fine assortment of grafted French Hybrid Lilacs. Many of these plants have already been blooming in our nursery fields.

	Each	Per 3
9/12 inch .....	\$.69	\$1.95
12/18 inch .....	.89	2.50

Postpaid

**ALPHONSE LA VALLE**—Lavender.  
**CHARLES X**—Dark reddish purple.  
**CHARLES JOLY** — Large, reddish purple.

**LUDWIG SPAETH**—Dark red.  
**MARIE LA GRAYE**—Excellent white.  
**MICHAEL BUCHNER**—Pale lilac.  
**MME. CASIMER PERIER** — Creamy white.

**MME. LEMOINEI**—Large white.  
**PERLE VON STUTTGART** — Pinkish lilac.  
**PRESIDENT GREVY** — Attractive blue.

**VOLCAN**—Beautiful red.

## HANSEN'S PURPLE PLUM

A beautiful glowing purple-maroon shrub attaining a height of four to five feet. Used extensively for color effect. Requires sunny location.

	Each	2
18/24 inch .....	\$.98	\$1.85
2/3 foot .....	1.25	2.25

Not Postpaid



**Lilac Charles X**



**Hansen's Purple Plum**

# BS ADD CHARM AND BEAUTY



Honeysuckle, Tatarian Pink



Forsythia Intermedia



Spirea Van Houttei

## GORGEOUS FLOWERING SHRUBS

The 10 splendid varieties of flowering shrubs listed on this page are offered at the following prices (Note special prices on Popular Spireas and Spirea Van Houttei).

	Each	Per 2	Per 6
18/24 inch .....	\$.50	\$ .98	\$2.70
2/3 foot .....	.65	1.24	3.60

Not Postpaid

**CYDONIA (Quince)**—A spiny shrub with bright green, glossy leaves, large, very showy orange-scarlet flowers.

**DOGWOOD, Red Branch**—A very attractive hardy shrub with showy dark red bark, bearing clusters of cream-white flowers in early spring. Grows tall.

**ELDER, Golden** — Bright yellow foliage throughout the entire summer. Planted extensively with Hansen's Purple Plum for color effect.

**FORSYTHIA, Golden Bell**—The first shrub to bloom in the spring. Bright yellow flowers cover entire shrub before leaves appear.



Spirea Anthony Waterer

**HONEYSUCKLE, Tatarian (Pink, Red or White)**—Specify color of bloom—A fine tall shrub which blooms freely and carries loads of bright red berries in mid-summer. Thrives well anywhere.

**LILAC, Persian Purple**—A neat growing shrub with small, attractive foliage. Profuse bloomer of purple flowers.

**LILAC, Rothomagensis**—A very popular lilac covered with masses of reddish purple flowers.

**SNOWBERRY, Red**—A graceful shrub with attractive red berries. Medium height, grows well in shade.

**SNOWBERRY, White**—Pink flowers in mid-summer, followed by large berries of snow white. Very showy.

**SPIREA, Thunbergii**—Very graceful with bright green, feathery foliage. Pure white flowers in very early spring.

## POPULAR SPIREAS

### Dwarf Varieties

	Each	Per 2	Per 6
12/15 inch .....	\$.49	\$ .95	\$2.69
15/18 inch .....	.69	1.35	3.89

Not Postpaid

**ANTHONY WATERER**—Our most popular low-growing shrub, blooming constantly all summer. Large, flat clusters of deep rose colored blooms.

**BUMALDA**—An attractive shrub with narrow foliage. Rose pink blooms.

**COLLOSA ALBA**—A spreading shrub with flat, pure white flowers. Blooms profusely. Very popular.

**FROBELLI**—A compact shrub attaining a height of about 3 feet. Striking maroon-red foliage on new growth. Bright rosy pink flowers from June until frost.

## HYDRANGEA SPECIAL

2 HYDRANGEA P. G.  
1 HYDRANGEA ARBOR  
3 12/18 inch grade \$1.89  
Plants ONLY  
Postpaid

## SPIREA VAN HOUTTEI (Bridal Wreath)

The most popular of tall spireas. Arching branches are covered with white blossoms in spring. Fragrant.

Shrub Grade:	Each	Per 3	Per 6
18/24 inch .....	\$.45	\$1.25	\$2.40
2/3 foot .....	.55	1.59	3.00

Not Postpaid

Hedging Grade:	Per 10	Per 25	Per 100
12/18 inch .....	\$1.75	\$4.00	\$14.00
18/24 inch .....	2.50	5.75	21.00

Not Postpaid

## "Old Reliable" SHRUB COLLECTION

- Forsythia Intermedia
- Red Leaf Barberry
- Hydrangea P.G.
- Spirea Anthony Waterer
- Hydrangea Arbor
- Cydonia Quince

(Bargain No. 16)

6 SHRUBS  
18-24 inch for ONLY \$3.29  
Not Postpaid



Cydonia, Quince



Plant Windbreaks This Spring for Protection—The Wind Costs You Money!

# WINDBREAK EVERGREENS

Be thrifty—plant an evergreen windbreak this spring. The savings in fuel and feed for livestock quickly pay for an evergreen windbreak. Make every dollar count. Buy now and plant an evergreen windbreak this spring.

Not Postpaid  
Per 25 Per 100

<b>ARBOR VITAE</b>			
American, 12/15 in. (sdlg)...	\$ 7.50	\$25.00	
<b>PINE</b>			
Jack, 15/18 in. (sdlg).....	4.50	15.00	
Norway, 12/15 in. (sdlg)....	4.50	15.00	
Scotch, 12/15 in. (sdlg).....	4.50	15.00	
<b>SPRUCE</b>			
Black Hills, 12/15 in. x (transp) .....	14.00	35.00	
Black Hills, 18/24 in. (heavy transp) xxxxx .....	\$2.00	each	
Black Hills, 24/30 in. (heavy transp) xxxxx .....	\$2.50	each	

## POTTED EVERGREENS

Grow your own fancy landscape evergreens. You may plant these small size potted trees in your garden and grow them into beautiful specimens for landscaping your home grounds. Trees have been grown in our greenhouses in a pot of dirt. The clay pot will be removed, but the pot ball of dirt will be preserved by wrapping in paper. These trees are small size, about 6/10 inches, but are certain to grow with ordinary care.

49c each; 3 for \$1.39; 6 for \$2.65 POSTPAID

**ARBOR VITAE, Globosa**—Grows in a perfect ball.

**ARBOR VITAE, Pyramidal**—Tall, slender pyramidal grower.

**ARBOR VITAE, Shermanii** — Dark green foliage, growing in rather broad pyramidal form.

**JUNIPER, Pfitzer**—An exceptionally beautiful, flat growing tree with grey-green foliage.

**JUNIPER, Savin**—A tree of medium height with fan-shaped, deep green branches.

## SEEDLING EVERGREENS

Evergreens from the seedling beds will succeed well if given proper care. Trees should be cultivated and shaded during the first summer. We suggest planting in beds about 4 by 8 feet for easy growing. Transplant to permanent locations after two years.

Postpaid  
Per 25 Per 100

<b>ARBOR VITAE</b>			
American, 4/6 inch .....	\$2.00	\$ 7.00	
<b>FIR</b>			
Balsam, 4/6 inch .....	2.40	8.00	
Douglas, 4/6 inch .....	2.70	9.00	
<b>PINE</b>			
Jack, 10/12 inch .....	1.50	5.00	
Norway, 6/10 inch .....	1.80	6.00	
Ponderosa, 6/10 inch .....	2.40	8.00	
<b>SPRUCE</b>			
Black Hills, 4/6 inch .....	3.75	12.50	
Colorado Blue, 4/6 inch ....	3.75	12.50	
Norway, 4/6 inch .....	3.00	10.00	
White, 4/6 inch .....	3.00	10.00	

## JUNIOR EVERGREENS

Many of our customers like to plant small trees and "watch them grow." The special group of evergreens we offer are just the same kinds we transplant in our nursery rows for developing into real specimen trees. These trees may be planted in your garden for a year or two until they develop into beautiful trees for replanting in their permanent locations. (All 10-12 inch).

<b>ARBOR VITAE</b>			
<b>BALSAM FIR</b>			
<b>BLACK HILLS SPRUCE</b>			
<b>COLORADO BLUE SPRUCE</b>			
<b>NORWAY SPRUCE</b>			
<b>WHITE SPRUCE</b>			
49c	6	\$2.75	
each	for		
10	for	\$4.19	
	Postpaid		

## DECIDUOUS WINDBREAKS (NOT POSTPAID)

Here are eight fine varieties which are just right for quick shelter, and valuable for woodlot or erosion control. Plant several rows of deciduous windbreak trees with your evergreens as protection until the evergreens mature. Deciduous trees should be spaced 3 to 4 feet apart in rows 10 feet apart. Allow 25 to 30 feet between planting of deciduous trees and evergreens. Plant evergreens on the inner side, always.

**ASH, Green**—The most dependable and most desirable of all windbreak trees. Hardy, rapid in growth, valuable for both wind protection and wood. Prune to an even height when planting to encourage branching close to ground.

	Per 25	Per 100
12/18 inch .....	\$1.00	\$3.00
18/24 inch .....	1.50	4.50
2/3 foot .....	2.00	6.00
3/4 foot .....	3.00	9.00

**ELM, Chinese (Northern Strain)**—A quick-growing tree. Neat in appearance and growth. Our trees are well branched and will be certain to please you.

	Per 25	Per 100
12/18 inch .....	\$1.00	\$3.00
18/24 inch .....	1.50	4.50
2/3 foot .....	2.00	6.00
4/5 foot (S grade)....	4.00	15.00

**ELM, White**—A sturdy, beautiful tree noted for strength and hardiness. A perfect tree for windbreak or grove.

	Per 25	Per 100
12/18 inch .....	\$1.00	\$3.00
18/24 inch .....	1.50	4.50
2/3 foot .....	2.00	6.00
3/4 foot .....	3.00	9.00

**POPLAR, Carolina**—A wonderful tree for a quick windbreak. Grows tall with many large branches and large, glossy leaves. Very hardy, neat — does not bear cotton like Cottonwood tree. Very rapid grower.

	Per 25	Per 100
2/3 foot .....	\$2.50	\$ 7.85
3/4 foot .....	3.75	10.00

**WILLOW, Laurel Leaf**—A rapid growing tree having large, shiny green leaves.

	Per 25	Per 100
2/3 foot .....	\$3.50	\$10.00
3/4 foot .....	5.00	13.50

**MAPLE, Soft**—An extremely fast-growing variety which affords protection in the least possible time. A valuable tree for both windbreak and woodlots.

	Per 25	Per 100
12/18 inch .....	\$1.00	\$3.00
18/24 inch .....	1.50	4.50
2/3 foot .....	2.00	6.00

**WALNUT, Black**—A sturdy and dependable tree. Not as rapid in growth as other varieties but very valuable for woodlot plantings.

	Per 25	Per 100
12/18 inch .....	\$1.85	\$6.50
18/24 inch .....	2.50	8.50

**WILLOW, Russian Golden**—A very attractive, fast growing tree with attractive, bright yellow bark and small leaves.

	Per 25	Per 100
2/3 foot .....	\$3.50	\$10.00
3/4 foot .....	5.00	13.50



# Ornamental Flowering TREES

Add beauty and charm to your home by planting attractive flowering trees. Dwarf in size, covered with masses of beautiful blossoms.



Hopa Crab

**CRAB, Eleyii**—Attractive reddish foliage in spring. Blossoms dark pink, very showy red fruit.

	Each	Per 2
4/5 ft. (Not Postpaid) .....	\$1.35	\$2.50
5/6 ft. (Not Postpaid) .....	1.65	3.10

**CRAB, Flame**—Bright fiery red flowers borne in great profusion. A very ornamental tree both in blossom and fruit.

	Each	Per 2
4/5 ft. (Not Postpaid) .....	\$1.35	\$2.50
5/6 ft. (Not Postpaid) .....	1.65	3.10

**CRAB, Hopa**—A beautiful tree bearing huge, deep rose-crimson blossoms. Fruit very bright red, borne in large clusters. The best of all flowering crabs.

	Each	Per 2
4/5 ft. (Not Postpaid) .....	\$1.35	\$2.50
5/6 ft. (Not Postpaid) .....	1.65	3.10



Prunus Triloba

**CRAB, Dolgo**—A very attractive tree with bright red fruit.

	Each	Per 2
4/5 ft. (Not Postpaid) .....	\$1.35	\$2.50
5/6 ft. (Not Postpaid) .....	1.65	3.10

**FLOWERING ALMOND, Pink**—A beautiful dwarf tree. Branches covered with beautiful flowers in early spring.

	Each	Per 2
2/3 ft. (Postpaid) .....	\$1.25	\$2.40
3/4 ft. (Postpaid) .....	1.50	2.90

**PRUNUS, Triloba (Rose Tree of China)**—Very attractive, covered with a profusion of handsome, double pink flowers.

	Each	Per 2
2/3 ft. (Postpaid) .....	\$1.25	\$2.25
3/4 ft. (Postpaid) .....	1.50	2.75

## HEDGES MAKE CHARMING BORDERS

Hedges are unsurpassed for protection, privacy and beauty. A living hedge sets off the house, makes the home not just another house in the block, but an individual place of beauty.

(Hedges are Not Postpaid)



Privet, Amoor River

**HEDGEWOOD (Salix)**—A very thrifty, rapid growing hedge. Olive green foliage and reddish-brown twigs. Excellent for a tall screen, but may be trimmed to any height desired.

	Per 10	Per 25	Per 100
18/24 inch .....	\$1.50	\$3.50	\$12.50
2/3 foot .....	2.75	5.85	18.50
3/4 foot .....	4.00	7.50	25.00

**PRIVET, Amoor River**—The most popular and most widely planted of all trimmed hedges. Leaves are lustrous green. May be trimmed to any desired height and always makes an attractive hedge.

	Per 10	Per 25	Per 100
12/18 inch .....	\$1.50	\$3.50	\$12.50
18/24 inch .....	2.50	5.00	17.50
2/3 foot .....	3.50	7.50	25.00

**SPIREA, Van Houttei**—A magnificent flowering hedge, making a solid bank of pure white when in bloom. Very desirable.

	Per 10	Per 25	Per 100
12/18 inch .....	\$1.75	\$4.00	\$14.00
18/24 inch .....	2.50	5.75	21.00

**ALPINE CURRANT**—Grows very dense, perfectly hardy and disease resistant. Does exceptionally well in northern climates. The first hedge to leaf out in the spring, the last to lose its leaves in the fall. Foliage small, dark green, dense and compact.

	Per 10	Per 25	Per 100
12/15 inch .....	\$4.50	\$10.50	\$40.00
15/18 inch .....	5.50	13.50	50.00

**GREEN BARBERRY**—A very popular, low-growing hedge. May be used trimmed for formal effect, or allowed to grow natural in a dense, round hedge. Beautiful red berries in fall.

	Per 10	Per 25	Per 100
9/12 inch .....	\$1.50	\$3.50	\$12.50
12/15 inch .....	1.75	4.00	14.00
18/24 inch .....	2.50	5.75	21.00

**ELEAGNUS (Russian Olive)**—Makes an attractive, tall growing hedge for screen effect. Olive green branches and leaves.

	Per 10	Per 25	Per 100
12/18 inch .....	\$1.35	\$3.00	\$10.00
18/24 inch .....	1.50	3.50	12.50



Green Barberry



**Soeur Therese**

Very attractive, rich double yellow.



**Chas. K. Douglas**

Crimson-scarlet buds and blooms. An erect grower.



**Grenoble**

Brilliant red with velvety crimson sheen.



**Golden Dawn**

Sunflower yellow, shaded old rose



**K. A. Viktoria**

Large double white, borne on long strong stems.



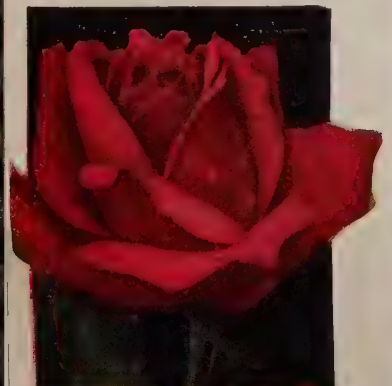
**Betty Uprichard**

Salmon pink, stained copper red.



**Briarcliff**

Beautiful deep rose shade.



**Rouge Mallerin**

Very deep red, double and fragrant.



**Paul's Scarlet Climber**



**F. J. Grootendorst**

## EVERBLOOMING ROSES

Strong, 2-year-old Field Grown Plants

	Each	Per 3	Per 6
2-Year Giant .....	\$1.10	\$3.20	\$6.25
2-Year Fancy .....	.85	2.45	4.80

Postpaid

## PREMIUM ROSE BARGAIN

### 12 Everblooming Roses

BETTY UPRICHARD	PINK RADIANCE
BRIARCLIFF	PRES. HOOVER
CHAS. K. DOUGLAS	RED RADIANCE
GOLDEN DAWN	ROUGE MALLERIN
GRENOBLE	SOEUR THERESE
K. A. VIKTORIA	TALISMAN

12 Bargain No. 17 2 yr. Giant Grade One Each, Postpaid \$11<sup>95</sup>

12 Bargain No. 18 2 yr. Fancy Grade One Each, Postpaid \$9<sup>15</sup>

## STERLING ROSE BARGAIN

1 GOLDEN DAWN	1 BRIARCLIFF
1 GRENOBLE	1 K. A. VIKTORIA
1 RED RADIANCE	1 TALISMAN

6 Bargain No. 19 Roses 2 yr. Giant Postpaid, Only \$6<sup>95</sup>

6 Bargain No. 20 Roses 2 yr. Fancy Postpaid, Only \$4<sup>65</sup>

## PAUL'S ROSE BARGAIN

Bargain No. 21

2 GROOTENDORST Everblooming (Hardy shrub form rose)

1 PAUL'S SCARLET CLIMBER

All 3 2 yr. Fancy Grade Postpaid for \$2.29



**Pink Radiance**

The most popular rose in America. Large, beautiful pink.



**Pres. Herbert Hoover**

New multi-colored rose. Vivid cerise-pink softly flamed with yellow, orange and scarlet.



**Red Radiance**

A beautiful, large red rose. Extra fine.



**Talisman**

A gorgeous rose of gold, apricot-yellow, blood orange, deep pink and old rose.

# Climbing Beauty ROSES

The climbing rose is loved by all. Grows on a trellis by the porch, in the yard, or to climb on an arbor. Produces masses of beautiful blossoms.

## Attractive Climbers

	Each	Per 3	Per 6
2-year Giant .....	\$1.10	\$3.20	\$6.25
2-year Fancy .....	.85	2.45	4.80

POSTPAID

**CLIMBING AMERICAN BEAUTY**—Brilliant carmine flowers of fine form and rich perfume, borne in clusters.

**CRIMSON RAMBLER**—The famous crimson-clustered climber. Flowers produced from the ground to the tip in large, pyramidal clusters.

**DOROTHY PERKINS**—Clear shell-pink flowers, borne in clusters. Fully double with crinkled petals.

**PAUL'S SCARLET**—Intense scarlet flowers of excellent shape and moderate size. Blooms very liberally.

## Special Climbers

	Each	Per 3	Per 6
2-year Giant .....	\$1.25	\$3.69	\$7.20
2-year Fancy .....	1.00	2.91	5.70

POSTPAID

**CLIMBING FRAU K. DRUSCHKI** — Very beautiful waxy, paper-white rose.

**CLIMBING MRS. P. S. DuPONT**—Excellent deep golden yellow flowers.

**CLIMBING RED DOROTHY PERKINS** — Large clusters of beautiful red flowers. Very ornamental.

**CLIMBING TALISMAN**—An unexcelled rose of gorgeous yellow and gold, blood orange and deep pink.



Crimson Rambler

# HARDY VINES

Plant vines for beauty, to soften hard, barren lines of walls, porch, trellis, etc. Very effective when used to screen unattractive views, or trail over fence.

2-Year Vines—ALL POSTPAID

**AMPELOPSIS ENGELMANII (Engelman's Ivy)**—A vigorous grower which clings well to brick, stone or wood. Very hardy. 59c each; 2 for \$1.10

**AMPELOPSIS VEITCHII (Boston Ivy)** — Graceful vine that clings to brick or stone. Small leaves, very colorful in fall. 89c each; 2 for \$1.70

**BITTERSWEET**—A native, twining vine. Large clusters of berries in fall with orange husks and bright red berries. For best results, plant in groups of two or more vines. 59c each; 2 for \$1.10

**CLEMATIS JACKMANII (Purple)** — Large purple flowers. Do not plant where soil remains too wet as this vine requires good drainage. \$1.00 each; 2 for \$1.90

**CLEMATIS PANICULATA (White)**—Sweet-scented, small fragrant white flowers produced freely in autumn. A rapid grower. 75c each; 2 for \$1.40

**HONEYSUCKLE, Gold Flame** — An ever-blooming Honeysuckle with flaming red flowers, bright yellow inside. \$1.00 each; 2 for \$1.90

**HONEYSUCKLE, Scarlet Trumpet**—One of the most desirable of vines. Glossy foliage. Flowers trumpet-shaped about 1½ inches long. Salmon shade on outside, bright red on inner side, borne in clusters. Blooms over long period of time. 89c each; 2 for \$1.70

**SILVER LACE**—Large, feathery sprays of creamy white flowers produced in late summer and fall. 89c each; 2 for \$1.70

**WISTERIA, Purple**—Long clusters of purple flowers in June and July. Attractive foliage, a rapid grower. 89c each; 2 for \$1.70



F. J. Grootendorst Rose

# HARDY ROSES

Strong, 2-year-old Field Grown Plants

	Each	Per 3
2-year Giant .....	\$1.10	\$3.20
2-year Fancy .....	.85	2.45

POSTPAID

**F. J. GROOTENDORST (Everblooming)**—A very beautiful red, cluster-type rose. Blooms continually all summer long. Used extensively for border plantings with shrubbery or evergreens.

**HANSA (Red)**—Beautiful reddish-violet rose. Very double. Absolutely hardy and requires no winter protection.



Clematis Jackmanii



B. Compte



Pantheon



R. P. Struthers



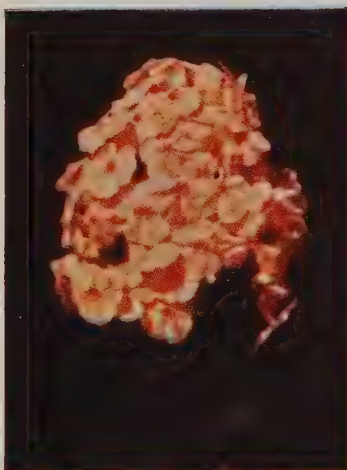
Mrs. Jenkins



Starlight



Dr. Chas. Mayo



Rokoko



Lothair



Francis Ortegat

**ALL-COLOR PHLOX  
COLLECTION**

Assorted varieties of our selection.

**6** Thrifty Plants Postpaid for **\$1.95**

**KARL ROSENFELD**



Truly a superb peony. Bright red in color, an abundant bloomer.

**98c** Each Postpaid



Festiva Maxima



Madam Ducil



Sarah Bernhardt



Louis Van Houttei

# HARDY PHLOX and PEONIES

## STERLING PHLOX

We are offering hardy, field grown phlox of the most exquisite colors and shades this spring. Plant a few of these delicate shades in your flower garden this spring.

39c each; 3 for \$1.10; 12 for \$4.20  
(Postpaid)

- B. COMPTE**—Vividly colored cherry red. Dwarf.
- DR. CHAS. H. MAYO**—White with crimson center.
- COLONIAL**—Extra large light blue flowers.
- E. I. FARRINGTON**—Salmon pink, rosy red blush.
- ECLAIREUR**—Bright rosy-carmine with light halo.
- GEN. VON HUETZ**—Salmon red with carmine center.
- H. O. WIJERS**—White with red center, very pretty.
- LOTHAIR**—Very fine, bright crimson.
- MORGENROOD**—Bright rose, deeper eye.
- MRS. JENKINS**—Pure white.
- PAINTED LADY**—Tall, silvery pink, red eye.
- PANTHEON**—Rose pink, a free bloomer.
- ROKOKO**—Clear soft pink.
- RIJNSTROOM**—Deep pink, a tall grower.
- R. P. STRUTHERS**—Rosy carmine with claret eye.
- SALADIN**—Brilliant orange red.
- STARLIGHT**—Purplish violet florets with white star.
- WIDAR**—Bright reddish-violet, white eye.

## Baron Von Heeckeren Phlox

An exceptionally beautiful, delicate salmon pink. Flowers large in size, often nearly as large as a silver dollar.

50c each; 3 for \$1.35  
(Postpaid)



Baron Von Heeckeren

## PICTURE PHLOX BARGAIN

(Bargain No. 22)

One each of the varieties pictured on opposite page.

- |                        |                       |
|------------------------|-----------------------|
| <b>B. COMPTE</b>       | <b>STARLIGHT</b>      |
| <b>PANTHEON</b>        | <b>DR. CHAS. MAYO</b> |
| <b>R. P. STRUTHERS</b> | <b>ROKOKO</b>         |
| <b>MRS. JENKINS</b>    | <b>LOTHAIR</b>        |

8 Superb Phlox ONLY (Postpaid) \$2.65

## SHERMAN'S PEONIES

A few of these magnificent peonies will add charm to your yard. Plant in a sunny location with the crown of the roots about 2 inches below the surface of the soil. (Beware of planting peonies too deeply.)

### GROUP A (Good Peonies)

65c each; 3 for \$1.80 Postpaid

- CAROLINE MATHER**—Bright rosy-red. When in full bloom has purplish tint.
- CHESTINE GOWDY**—Outer petals shell pink, inner petals rich cream.
- DUCHESS DE NEMOURS**—Double white, flowers large and fragrant.
- EDULIS SUPERBA**—Very early, shell pink. Fine for Decoration Day.
- FESTIVA MAXIMA**—Creamy white with small center of crimson.
- FRANCES ORTEGAT**—Very dark red, almost purple. Large and fragrant.
- LE MARTIN**—Deep rose-red; stamens forming collar of gold.
- MODESTE**—Deep rose, bright showy, fragrant.

### GROUP B (Best Peonies)

89c each; 3 for \$2.55 Postpaid

- FELIX CROUSSE**—Large, silky, brilliant crimson. Late.
- JUBILEE**—An extra large size white. Mid-season.
- LOUIS VAN HOUTTEI**—Deep velvety crimson, very fragrant.
- MADAM DUCIL**—Double shell pink. Desirable for cut flowers.
- MONS. JULES ELIE**—Glossy flesh pink, shading to deeper rose.
- RICHARD CARVEL**—Vivid crimson, bomb type, an early red.
- SARAH BERNHARDT**—Apple blossom pink, petals silver tipped.
- THERESE**—Pearly pink with golden center. A free bloomer.

## SHERMAN'S PEONY GARDEN

(Bargain No. 23)

This fine collection is made from choice plants, our selection, true to color. A good bargain.

1 Red 1 White 1 Pink

3 Large Peony Roots, ONLY (Postpaid) \$1.29

## AVALANCHE PEONY

Sherman's best. A magnificent large waxy white. An ideal show flower.

98c

each

Post-paid



Edulis Superba

## SHERMAN'S BUG-DUST

(The Perfect Insecticide—Non-Poisonous)

Gives A-1 protection to vegetables from a wide variety of both sucking and chewing insects and many plant diseases such as powdery mildew and black spot. Bug-Dust is non-poisonous to humans and domestic animals when used as directed. You can safely use it on your eatable vegetables.

2½ lbs. with duster.....\$1.00 (Postpaid)  
3 lbs. without duster .....\$1.00 (Postpaid)

## PETER-RABBIT REPELLENT

Protects Trees and Shrubs from rabbits and other rodents. A dark green, paint-like, non-poisonous material which can be painted or sprayed on trees and shrubs. Its bitter taste is offensive to rabbits. One application lasts throughout the winter. A quart will treat 30 to 40 young trees.

\$1.50 per quart (Postpaid)

## SIX BEAUTIES PEONY COLLECTION

(Bargain No. 24)

Here is a peony garden of unusual color and charm. We offer the six splendid varieties pictured on the opposite page at an unusual bargain price.

- 1 FESTIVA MAXIMA
- 1 FRANCIS ORTEGAT
- 1 KARL ROSENFELD
- 1 LOUIS VAN HOUTTEI
- 1 MADAM DUCIL
- 1 SARAH BERNHARDT

All 6 Peonies ONLY (Postpaid) \$4.50



Gaillardia



Carnations



Aquilegia (Columbine)

## HARDY PERENNIALS



Bleeding Heart



Multi-Flowered Mums



Delphinium (Hardy Larkspur)



Shasta Daisies

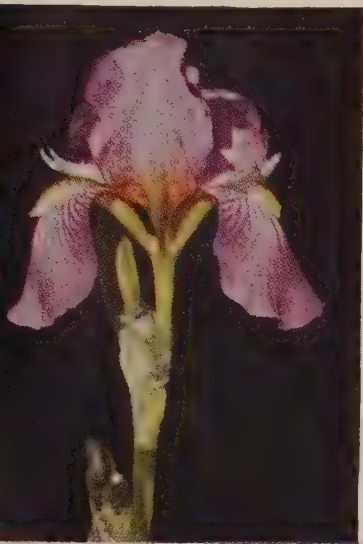
## SPLENDOR IRIS

25c each; 3 for 69c; 6 for \$1.19 (Postpaid)

- ABU HASSAN**—Standards gold, falls streaked brown and gold.
- FAIRY**—White with delicate blue tones.
- LENT A. WILLIAMSON**—Attractive violet blend.
- LORELEY**—Light yellow bi-color purple; falls bordered yellow.
- MME. CHEREAU**—White with violet penciling.
- MRS. A. W. BLAKELEY**—Yellow, tinged with pink.
- NUEE d'ORANGE**—Pale purple.
- PROSPER LAUGIER**—Standards fiery bronze; falls Indian purple.
- RHEIN NIXE**—Standards white, falls violet with white margin.
- SHERWIN WRIGHT**—Bright deep yellow.
- SIBERIAN BLUE**—Dainty rich solid blue.
- TROJANA**—Standards light lavender; falls dark violet.

### SHERMAN'S IRIS SPECIAL

12 Plants (Our Selection) ONLY \$1.95 (Postpaid)



Nuee d'Orange  
Trojana



Siberian Blue  
Abu Hassan



Lent A. Williamson



Sherwin Wright

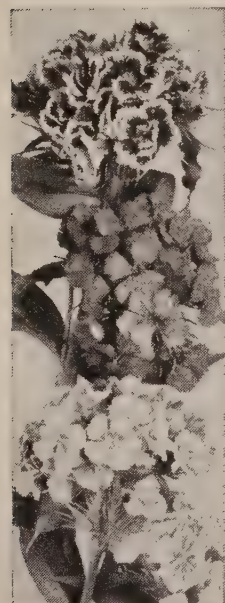
# SHERMAN'S HARDY PERENNIALS

Perennials are easy to grow and make your garden an array of beautiful colors all summer long. Plant in any sunny location in average soil.

35c each; 3 for \$1.00; 12 for \$3.65 (Postpaid)



Red Chrysanthemum



Sweet William

**ANCHUSA (Italian Blue)**—Blooms all summer.

**AQUILEGIA (Columbine)**—Assorted colors.

**BOLTONIA LATISQUAMA**—Pink.

**CANTERBURY BELLS**—Assorted colors.

**CARNATION (Hardy)**—Assorted colors.

**CHRYSANTHEMUM**—Yellow, Red, White, Bronze.

**DAISY, Painted**—Pink or Red.

**DAISY, Shasta**—Dwarf, white flowers.

**FEVERFEW**—White.

**FOXGLOVE**—Assorted colors.

**GAILLARDIA**—Orange red, margined yellow.

**HOLLYHOCK**—A tall grower, assorted colors.

**LARKSPUR (Delphinium) Belladonna** — Sky Blue.

**LARKSPUR (Delphinium) Bellamosa** — Dark Blue.

**LINUM (Hardy Flax)**—Assorted colors.

**PHLOX**—Assorted colors.

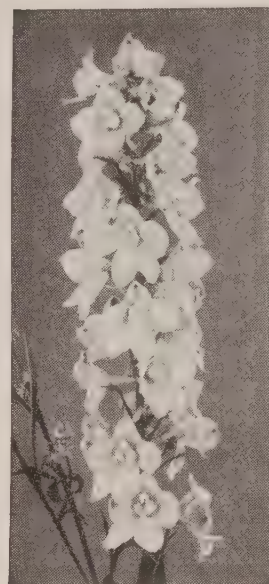
**PLATYCODON (Balloon flower)**—White or Blue.

**STATICE (Sea Lavender)**—Blue flowers, dwarf.

**SWEET WILLIAM**—Assorted colors.

**SWEET PEAS (Hardy)**—Assorted colors.

**YUCCA FILAMENTOSA**—Evergreen foliage, white blossom.



Delphinium



Yucca

## BLEEDING HEART

**OLD FASHIONED**—Rose colored, heart-shaped flowers in drooping spikes. Hardy. 69c each (Postpaid)

**EVERBLOOMING**—Cut fern-leaf foliage. A dwarf grower. 50c each (Postpaid)

## GRANDMA'S FLOWER GARDEN

(Bargain No. 25)

(One each of the 7 Perennials pictured top opposite page)

7 Sturdy Plants, ONLY \$2.49 (Postpaid)

## BEAUTIFUL SHADES OF LARKSPUR

3 for 89c

Postpaid

## MULTI-FLOWER MUMS

Grows in low, round bush form. Compact clumps are completely covered with flowers from late summer until frost. A gorgeous cushion-mass of bloom.

Bronze      Pink      Red

White      Yellow

39c each; 3 for \$1.10; 5 for \$1.50

(Postpaid)



Multi-flower Mums



Yellow King Humbert

## LOVELY CANNAS

Cannas lend height and beauty to your perennial border and flower beds. We offer a splendid assortment. (Must be dug up each fall and stored over winter.)

25c each; 3 for 69c; 6 for \$1.19 (Postpaid)

**KING HUMBERT YELLOW** — Yellow, speckled red.

**THE PRESIDENT**—Huge scarlet blooms.

**RICHARD WALLACE** — Canary yellow. Tall.

**CITY OF PORTLAND**—Pink.

**KING HUMBERT RED**—Bright red.



Regal Lily

# Gorgeous Lilies

(Blooming size bulbs)

35c each; 3 for \$1.00; 12 for \$3.60

Postpaid

- FUNKIA, Blue Day**—Flowers light blue on showy spikes. Beautiful glossy foliage. Blooms in late summer.  
**IOWA CORN**—Salmon color, tinged with red. Flowers borne in clusters. Very attractive.  
**REGAL**—The grandest lily in the garden. Magnificent blossoms of pure white with canary yellow center. Fragrant.  
**TIGER**—An old favorite. Orange-salmon, spotted dark brown.



**NEW—Sensational  
"RED ATOM"  
GLADIOLI**

Dark carmine. Large ruffled blooms on strong, straight spikes. Six to eight large florets open at one time, remaining buds showing color.

25c Each Per Doz. \$2.50

## Sherman's Splendor GLADIOLUS

We list below beautiful, name varieties of exquisite shades. Bulbs are large, blooming size. (Number refers to colored illustration.)

**3 for 35c; 6 for 65c; 12 for \$1.15; 25 for \$1.95 Postpaid**

- BEACON**—Rose-salmon with rich cream blotch extending deep into the throat. One of the very finest.  
**BERTY SNOW**—One of the most beautiful and best lavender shades.  
**BETTY NUTHALL (2)**—Glowing orange-pink with light yellow throat. Veins on lower throat petals carmine red.  
**FLAMING SWORD (1)**—Bright red. Rich in color with good height.  
**GOLD EAGLE (4)**—Deep yellow, an early blooming variety.  
**MAID OF ORLEANS (8)**—Pure white with touch of cream in throat.

- MARGARET FULTON (9)**—Rich dark salmon. A good cut flower.  
**PARADISE (6)**—Apricot yellow with narrow line of scarlet in throat.  
**PEGGY LOU (3)**—The very latest clear shrimp pink.  
**PELLIGRINA (10)**—The best dark blue. A first-class bloomer.  
**PHYLLIS McQUISTON**—Deep glowing pink. Very large flowers.  
**PICARDY (7)**—Florets massive of a flesh pink color.  
**RED PHIPPS (5)**—Soft red with lighter throat. Long flower heads.

### RAINBOW ASSORTMENT OF GLADIOLI

We offer a very fine assortment of mixed colors and varieties made up from the above list, but not labeled as to individual variety. Special prices listed below cover this fine assortment.

**12 for 95c; 25 for \$1.69**

Postpaid

### PICTURE SPECIAL

(Bargain No. 26)

10 beautiful, large flowering Glads as illustrated below.

Only **89c Postpaid**





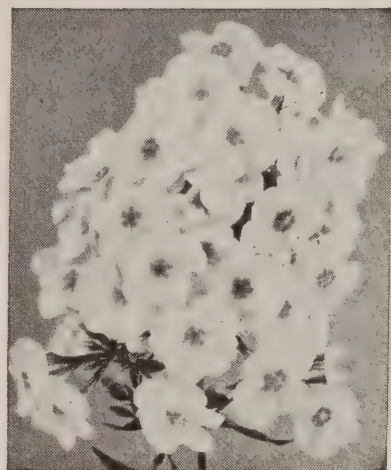
# It Pays to Send in Your Orders Early



Pink Spirea



Red Peony



Hardy Phlox

## Free Premiums

NAME \_\_\_\_\_  
 STREET OR R. F. D. \_\_\_\_\_  
 POST OFFICE \_\_\_\_\_  
 STATE \_\_\_\_\_

PLACE  
 STAMP  
 HERE



**SHERMAN NURSERY CO.**

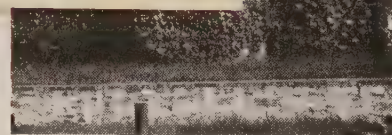
**CHARLES CITY, IOWA**



Gladiolus

### BUY DIRECT FROM THE GROWER

By buying nursery stock direct from the grower you not only receive nursery stock in fresh planting condition, carefully packed and scientifically handled, but you also save the middleman's profit. We offer every item in our list at "Rock Bottom" prices, high quality considered, to save you money.



Engelman's Ivy

### GENERAL INFORMATION

**QUALITY OF STOCK**—Our stock is carefully graded and properly packed in our large storage where it receives all possible protection. Should any part of any order be unsatisfactory to you when received, we will promptly refill and reship other stock without additional charge, providing you notify us immediately on receipt of stock.

**GUARANTEE**—We warrant our stock to be true to name, with the express understanding that should any not prove so, we will refund the money paid or replace it with other stock, but in no case shall we be liable for damages beyond the original purchase price.

**REPLACEMENTS**—Any stock failing to start to grow will be replaced at one-half price provided written notice is sent us by September 1st following planting, together with remittance covering the one-half price charge.

**SEVERE TRIMMING IS ESSENTIAL**—All nursery stock excepting evergreens, must be trimmed back at planting time and watered periodically. Nature demands proper balance be maintained between the root system and top of the plant. In digging the stock, it is impossible to secure all of the roots, therefore the tops must be trimmed back to correspond.

**TERMS**—Our terms are cash with order. Send check, money order or draft. Please send cash registered mail. On orders of less than \$1.00 add 25c to cover cost of packing and postage.

**SHERMAN NURSERY CO., CHARLES CITY, IOWA**



SHERMAN NURSERY OFFICE BUILDING

# *Sherman*

NURSERY COMPANY  
CHARLES CITY, IOWA



*Growers* OF HARDY  
FRUIT TREES  
SHADE TREES  
EVERGREENS  
ROSES AND  
FLOWERING SHRUBS



# SHERMAN NURSERY CO., Charles City, Iowa

## Sherman's Sensational Bargains

(GOOD ONLY FOR SPRING 1947)

- No. 1 Sherman's Phlox Offer—6 Plants ..... ONLY \$1.95
- No. 2 Big 3 Apple Orchard—3 6-8' Trees ..... ONLY \$5.00
- No. 3 Sherman's Peony Garden—4 Roots ..... ONLY \$1.65
- No. 4 Multi-Flower Mums—5 Plants ..... ONLY \$1.50
- No. 5 Supreme Rose Offer—5 Roses ..... ONLY \$3.65
- No. 6 Flowering Shrub Spec.—6 18-24" Shrubs ONLY \$2.95
- No. 7 Sherman's Berry Patch—15 Plants ..... ONLY \$1.95
- No. 8 Orchard Belt Home Orchard—6 5-6'  
Trees ..... ONLY \$9.50
- No. 9 Orchard Belt Home Orchard—6 3-4'  
Trees ..... ONLY \$4.95
- No. 10 Blizzard Belt Home Orchard—6 5-6'  
Trees ..... ONLY \$9.50
- No. 11 Hardy Pear Special—3 5-6' Trees ..... ONLY \$5.50
- No. 12 Hardy Pear Special—3 3-4' Trees ..... ONLY \$4.15
- No. 13 Plum-Cherry Cluster—3 3-4' Trees ..... ONLY \$4.19
- No. 14 Tri-Color Grape Offer—6 Vines ..... ONLY \$1.65
- No. 15 Shortcake Special—75 Plants ..... ONLY \$2.65
- No. 16 Old Reliable Shrub Collection—  
6 18-24" Shrubs ..... ONLY \$3.29
- No. 17 Premium Rose Bargain—12 Giant Roses ONLY \$11.95
- No. 18 Premium Rose Bargain—12 Fancy Roses ONLY \$9.15
- No. 19 Sterling Rose Bargain—6 Giant Roses .... ONLY \$6.95
- No. 20 Sterling Rose Bargain—6 Fancy Roses .... ONLY \$4.65
- No. 21 Paul's Rose Bargain—3 Fancy Roses .... ONLY \$2.29
- No. 22 Picture Phlox Bargain—8 Plants ..... ONLY \$2.65
- No. 23 Sherman's Peony Garden—3 Roots ..... ONLY \$1.29
- No. 24 Six Beauties Peony Collection—6 Roots ONLY \$4.50
- No. 25 Grandma's Flower Garden—7 Plants .... ONLY \$2.49
- No. 26 Gladioli Picture Special—10 Bulbs ..... ONLY \$ .89
- No. AA Home Landscape Planting—8 Plants .... ONLY \$10.75

### FREE GIFT

Send us 5 names of home owners and we shall include a surprise gift FREE with your order. (Please write plainly.)

## PETER-RABBIT REPELLENT

PROTECT TREES and SHRUBS FROM RABBITS and OTHER RODENTS

PETER-RABBIT REPELLENT is a green paint-like; non-poisonous material which can be painted or sprayed on trees and shrubs. Its bitter taste is offensive to rabbits. One application lasts throughout Winter. Quart will treat 30 to 40 trees one inch diameter.

QUART **\$1.50** (Postpaid)

Iowa Customers please add 3c Sales Tax to your remittance.

LARGER, BETTER CROPS IN YOUR GARDEN WITH

## VIGORO

Flower and vegetable gardens, to yield big gorgeous blooms, or tasty, mineral-rich vegetables, need regular feeding with VIGORO, the complete Plant Food.

- 5 lb. Package....75c (Includes packing and Prepaid Postage).
  - 10 lb. Package....\$1.00 (Includes packing. Shipped Express Collect).
  - 25 lb. Package....\$1.75 (Includes packing. Shipped Express Collect).
- (Iowa Customers add 2% Sales Tax)

SHERMAN'S

## BUG-O-DUST-CIDE

(The Perfect Insecticide—Non-Poisonous) Gives A-1 protection to vegetables from a wide variety of both sucking and chewing insects and many plant diseases such as powdery mildew and black spot. Bug-Dust-O-Cide is non-poisonous to humans and domestic animals when used as directed. You can safely use it on your eatable vegetables.

- 2½ lbs. with duster ....\$1.00 (Postpaid)
- 3 lbs. without duster ....\$1.00 (Postpaid)

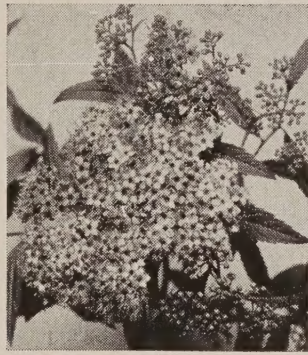
(Iowa Customers add 2% Sales Tax)

NAME	R. F. D. OR STREET	CITY	STATE

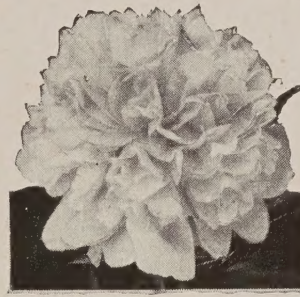
# It Pays to Send in Your Orders Early



Funkia Blue Day Lily



Pink Spirea



Red Peony



Hardy Phlox



Iris



Gladiolus



Regal Lily



Engelman's Ivy

## Free Premiums for Early Orders

We offer these Valuable Gifts FREE for ordering early.

- No. 1—Two Funkia Blue Day Lilies, (Worth 70c).
- No. 2—One Engelman's Ivy (clings to brick or stone), (Worth 59c).
- No. 3—Two Regal Lily Bulbs (blooming size), (Worth 70c).
- No. 4—Two Liberty Iris, Assorted, (Worth 50c).
- No. 5—Six Gladioli Bulbs, Assorted, (Worth 50c).
- No. 6—One Dwarf Pink Spirea Shrub, (Worth 69c).
- No. 7—One Red Peony, our choice, (Worth 65c).
- No. 8—Two Hardy Phlox Plants, our choice, (Worth 78c).

**FREE  
PREMIUM**  
Select  
Your Choice

On Nursery Orders of \$3.50 to \$5.00, ANY ONE of the above offers.  
On Nursery Orders of \$5.00 to \$7.50, ANY TWO of the above offers.  
On Nursery Orders of \$7.50 to \$10.00, ANY THREE of the above offers.  
On Nursery Orders of \$10.00 and up, ANY FOUR of the above offers.

### BUY DIRECT FROM THE GROWER

By buying nursery stock direct from the grower you not only receive nursery stock in fresh planting condition, carefully packed and scientifically handled, but you also save the middleman's profit. We offer every item in our list at "Rock Bottom" prices, high quality considered, to save you money.

### GENERAL INFORMATION

**QUALITY OF STOCK**—Our stock is carefully graded and properly packed in our large storage where it receives all possible protection. Should any part of any order be unsatisfactory to you when received, we will promptly refill and reship other stock without additional charge, providing you notify us immediately on receipt of stock.

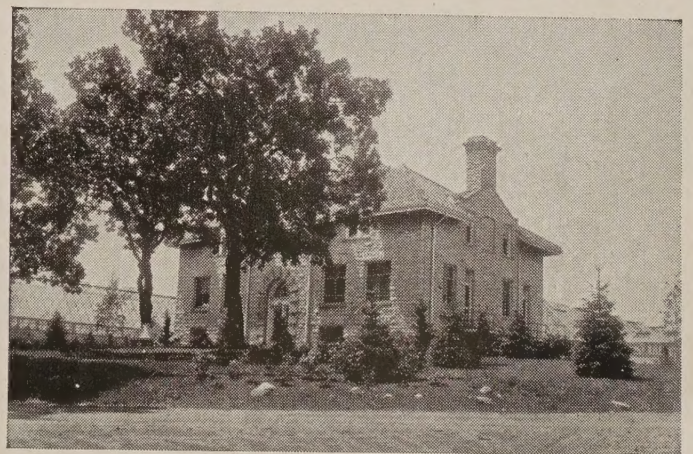
**GUARANTEE**—We warrant our stock to be true to name, with the express understanding that should any not prove so, we will refund the money paid or replace it with other stock, but in no case shall we be liable for damages beyond the original purchase price.

**REPLACEMENTS**—Any stock failing to start to grow will be replaced at one-half price provided written notice is sent us by September 1st following planting, together with remittance covering the one-half price charge.

**SEVERE TRIMMING IS ESSENTIAL**—All nursery stock excepting evergreens, must be trimmed back at planting time and watered periodically. Nature demands proper balance be maintained between the root system and top of the plant. In digging the stock, it is impossible to secure all of the roots, therefore the tops must be trimmed back to correspond.

**TERMS**—Our terms are cash with order. Send check, money order or draft. Please send cash registered mail. On orders of less than \$1.00 add 25c to cover cost of packing and postage.

**SHERMAN NURSERY CO., CHARLES CITY, IOWA**



SHERMAN NURSERY OFFICE BUILDING



FIVE-IN-ONE APPLE TREE

**FIVE-IN-ONE-APPLE**

"The City Man's Orchard"

Five excellent varieties—Delicious, Duchess, Jonathan, Yellow Transparent, and Wealthy, bud-grafted on hardy stock. This fine tree produces summer, fall and winter apples in just the right proportions.

5-in-1 Trees  
4-6 ft., ea. \$3.25  
2 Trees for \$6.00 Not Postpaid



COLORADO SELECT BLUE SPRUCE

**COLORADO SELECT BLUE SPRUCE**

Everyone's favorite. A very graceful tree with long, silvery blue needles. Carefully selected in our nursery for silver-blue color. (Wrapped in Moss.)

	Each
12/18 inch xxx	\$ 7.50
18/24 inch xxxx	10.00
24/30 inch xxxxx	12.50

Not Postpaid

**BIG 3 APPLE OFFER**

Extra Heavy, QUICK-CROP trees. Early to Bear. We offer three splendid varieties in this collection.

- 1 SHARON
- 1 DELICIOUS
- 1 McINTOSH

3 6/8 ft. (Extra Heavy) Trees for \$500

Not Postpaid



GOLD FLAME HONEYSUCKLE VINE

**BUTTERFLY BUSH**

(Summer Lilacs)

ILE DE FRANCE—Long spikes of dark claret-purple.

DUBONNET—Beautiful wine-red spikes.

PINK CHARMING—Large, compact pink spikes.

2 Year Heavy

59c each 3 for \$1.65

Postpaid



BUTTERFLY BUSH



SHERMAN'S QUICK-CROP Apple trees bear early and abundantly

**GOLD-FLAME HONEYSUCKLE VINE**

A fine, new vine which blooms constantly from early spring until late fall. Delightfully fragrant flowers in large, showy clusters. Blooms the first season planted. The flower trumpets are a flame-coral, lined with gold. One of the best vines grown today.

\$1.00 each 2 for \$1.90

Postpaid



F. J. GROOTENDORST ROSE

**F. J. GROOTENDORST ROSE**

(Hardy, Everblooming Red Rose)

A very beautiful, red, cluster type rose. Blooms continually all summer long. Needs no winter protection.

\$1.10 each 3 for \$3.20

Postpaid