

Historic, Archive Document

Do not assume content reflects current scientific knowledge, policies, or practices.

62,29

1947

SHAWNEE



and **NURSERIES**
Landscape Co. . .

7500 WEST N^o 50 & N^o 10 HIGHWAYS
SHAWNEE, KANSAS

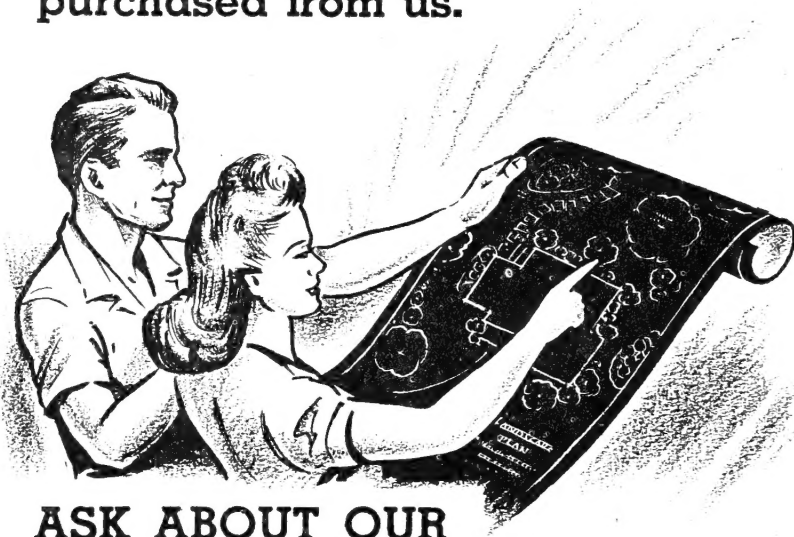


**Most MODERN and
Complete Nursery in
the Kansas City Area**

CATALOG

LANDSCAPING

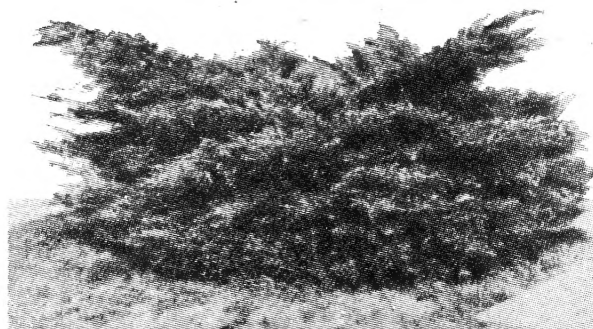
• Our LANDSCAPE PLAN SERVICE for systematic plantings is offered without charge when the material for planting is purchased from us.



ASK ABOUT OUR
LANDSCAPE PLAN SERVICE



Juniper. Scopulorum



Juniper. Pfitzeriana

... 17 Years Experience in the Nursery & Landscape Business

FRANK PFLUMM
OWNER & MANAGER

H. E. HURLEY
LANDSCAPE ARCHITECT

Our Guarantee—that you can depend on

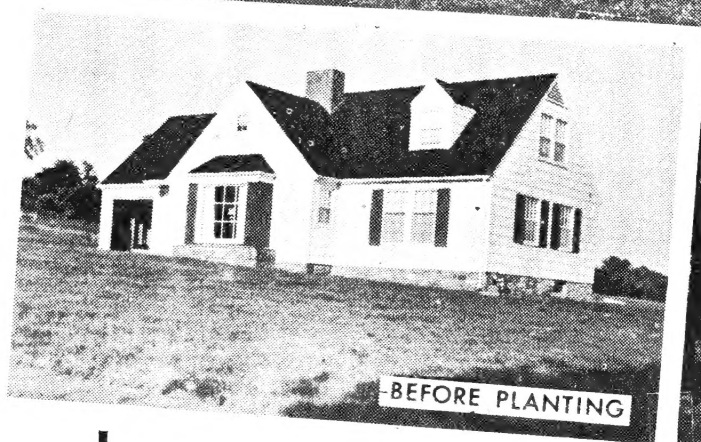
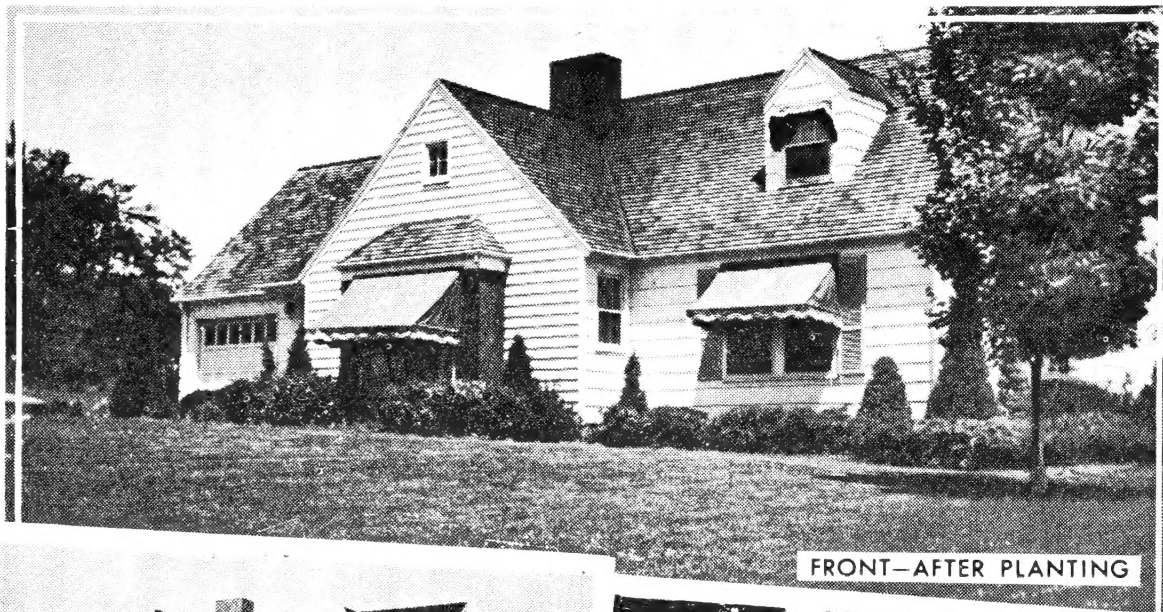
We guarantee all our Nursery Stock to be true to name, to be State inspected, and free from disease, and to reach you in a live, healthy, vigorous growing condition.

We will deliver or plant only Nursery Stock that is of the above qualities. The loss of this type of Nursery Stock is generally caused by improper planting, lack of care by the purchaser, or unavoidable weather conditions. Therefore, Nursery Stock planted by the customer carries no replacement guarantee. Nursery Stock planted by us, if given proper care by the customer, will be replaced at one-half the original price.

Your best guarantee is to purchase from a reputable established local Nursery.

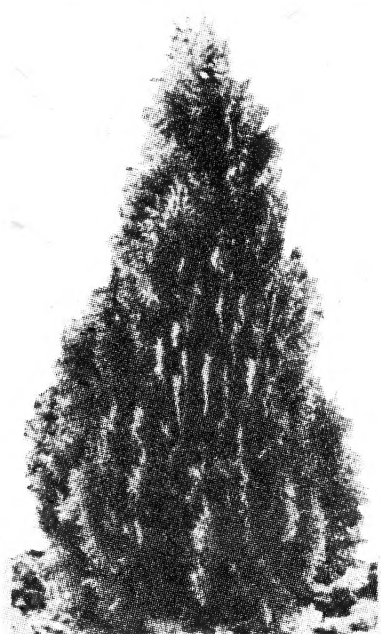
Adds Value to Your Property and Beauty to Your Home Grounds

YOUR HOME probably represents the largest investment in time and money of your entire lifetime. It is an investment that you are constantly adding to and doing your utmost to protect. PROPERLY PLANNED AND PLANTED LANDSCAPING can do more to increase its value and to enhance its beauty than any other improvement which you can make. Our especially trained men, using our Nursery Stock can transform your home grounds into a proper setting for your home—a place of beauty and an unending source of personal satisfaction.



OUR HARDY, FIELD-GROWN NURSERY STOCK as listed on the following pages is especially adapted to the growing conditions in this area. This stock plus proper planting is your best guarantee of complete satisfaction. CALL US TODAY.

EVERGREENS . . .



Berckman's Golden Arborvitae



Platte River Juniper



Cannart Juniper

Evergreens are becoming more popular each year. The home is not complete without evergreen plantings. Our stock is one of the most complete in this area and by growing them in our nursery at Shawnee we are able to sell them at a price within the reach of all. Most evergreens are selected by the customer at the nursery or by a personal call from someone from the nursery. Therefore we do not list the prices but will be glad to quote prices on special request or at the nursery. The listings below are some of the varieties we grow:

ARBORVITAE

ARBORVITAE, Berkman Golden. Compact slow growing. New growth very golden.

ARBORVITAE, Chinese. Soft green foliage, pyramidal growth.

JUNIPERS, UPRIGHT

JUNIPER, Glauca. Foliage is striking blue color all season. One of the best.

JUNIPER, Cannarti. Foliage deep rich green. Does not discolor in winter, but holds the same deep green year around. One of the best of the many grafted varieties.

JUNIPER, Hills Dundee. The gray-blue color of this narrow pyramidal Juniper changes to purple during fall and winter.

JUNIPER, Irish. Foliage glaucous green. An old, well known popular variety.

JUNIPER, Platte River. Upright growth, deep green foliage, sometimes silver. Excellent pyramidal

tree if kept sheared. Can be sheared into any form.

JUNIPER, Scopulorum. Silvery foliage and close symmetrical upright growth. Thrives in hot, dry weather when the color is brightest.

JUNIPER, Shotti. Foliage a rich green; does not discolor but holds the same rich green color the year around.

JUNIPER, Spiny Greek. Foliage glaucous green, dwarf in growth.

JUNIPERS, SPREADING

JUNIPER, Andorra. A low growing spreading dwarf evergreen. Beautiful silvery green in spring, turning to rich purple-bronze in autumn.

JUNIPER, Pfitzeriana. Handsome gray green foliage. A valuable hardy variety succeeding almost anywhere. The best spreading evergreen.

JUNIPER, Sabina. Spreading form with slender branches and dark green foliage. Excellent for foundation work and for underplanting.

JUNIPER, Virginia, Globosa. Rich dark green foliage, grown into a perfect globe.

for Year Round Beauty

PINES

PINE, Austrian. Deep rich green color. Growth close and compact. Valuable as a lawn tree.

PINE, Mugho. Deep green in summer and winter. Free from insects and pests. Will grow in almost any location. Dwarf, grows into a perfect globe.

PINE, Scotch. Light green in color. Rapid grower.

SPRUCE

SPRUCE, Black Hills. Hardest of all Spruces. Symmetrical, compact and bushy habit of growth. Foliage varies from green to bluish tint.

SPRUCE, Moerheim and Colorado Blue
A symmetrical grafted type of Blue Spruce. Superior in color and compactness.

BROAD-LEAF EVERGREENS

AMERICAN HOLLY. Dark shiny leaves and red berries; valuable as a specimen tree or foundation planting.

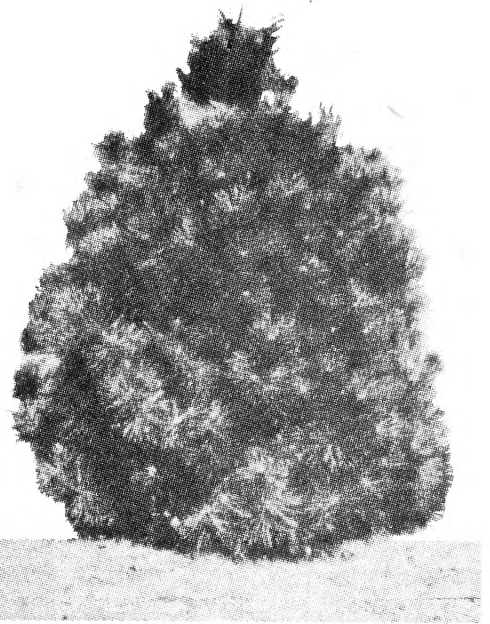
EUONYMUS, patens (Spreading Euonymus). (Large bright glossy-green leaves on spreading and ascending branches. Useful for massing or for trimming into low hedges or formal specimens.

MAHONIA (Oregon Holly). Low growing compact shrub with holly-like leaves which turn brilliant, followed by grape-like clusters of black berries.

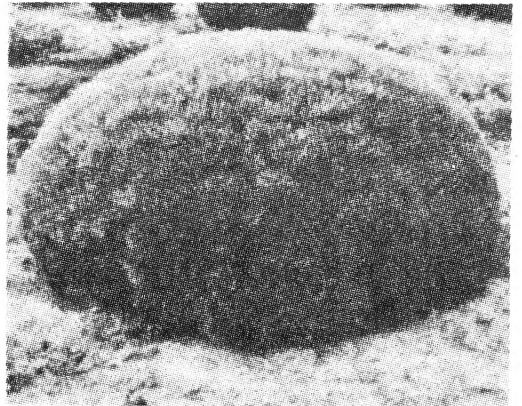
PERENNIALS



We also grow Perennials in many of the popular varieties. Our Perennials will be ready for planting by April 1st. List of our Perennials will be furnished on request.



Austrian Pine



Pine, Mugho

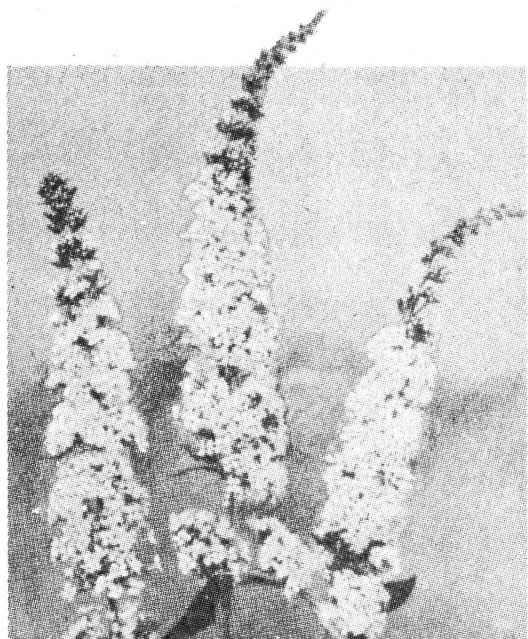


Oregon Holly

Plant Flowering SHRUBS

Flowering shrubs are used extensively for group plantings in back yards, corners of front yard and in foundation plantings. We grow a large variety of shrubs especially noted for their good blooming qualities, for beautiful fall colorings and ornamental berries. Prices listed are for two-year field-grown shrubs of a good size. Smaller grades are available in most varieties at a lower price.

Varieties marked (T) are tall growing shrubs, (M) medium, (D) dwarf.



Buddleia, Butterfly Bush

(M) **ALMOND, Pink.** *Prunus Glandulosa*. Flowers double pink. Very ornamental, limbs being covered with masses of flowers. April-May. \$1.00 Each

(M) **ARONIA Arbutifolia** (Chokeberry). White flowers, sometimes tinged with red. April-May. Bright black fruit and red foliage in autumn. \$1.00 Each

(M) **BARBERRY, Mentorensis.** Barberry *Mentorensis* is a plant with very rugged, strong, upright growing branches and heavy thorns. Its foliage is heavy and thick and of perfect color—a green as dark as the Japanese Yew. Plant Patent No. 99. \$1.25 Each

(D) **BARBERRY, Red Leaved Atropurpurea.** Variety of Barberry with bright red foliage. All summer. \$1.00 Each

(D) **BARBERRY, Thunbergi Green Barberry.** Pale yellow flowers. April-May. Brilliant red fruit and foliage in autumn. 75c Each

(M) **BUTTERFLY BUSH** (*Buddleia*). A perennial shrub, should be protected during winter with a mulch. Very attractive flowers and foliage, blooms all summer.

Charming. Pink. 50c Each

Dubonnett. Reddish purple 50c Each

Shawnee Red. Brilliant purple-red. 50c Each

White Bouquet. 75c Each

Potted Plants 25c Extra

(M) **CALLICARPA, Purpurea** (Chinese Beautybush). Clusters of attractive purple berries in the fall. Requires shade. 75c Each

(M) **COTONEASTER, Acutifolia.** Dark glossy leaves, black berries. \$1.00 Each

(D) **DEUTZIA, Gracilis.** Dwarf, blooms freely, small white flowers. \$1.00 Each

(M) **DEUTZIA, Pride of Rochester.** Free bloomer, double white flowers tinged pink. \$1.00 Each

(T) **DOGWOOD, Cornus Alba Siberica.** Hardy, vigorous, upright shrub producing small white flowers. April-May. Porcelain blue fruit. Bright red bark in winter. \$1.00 Each

(T) **EUONYMUS, Alatus.** Purple fruit and crimson foliage in autumn. \$2.00 Each



Honeysuckle, Pink Tartarian

(M) **FLOWERING QUINCE** (*Cydonia Japonica*). Bright red flowers in early spring, aromatic fruit. \$1.00 Each

(T) **FORSYTHIA, (Intermedia Spectabilis).** Showy Borden Forsythia. Improved form of *Intermedia*. Rich golden yellow flowers. \$1.00 Each

(T) **HONEYSUCKLE, Fragrantissima.** Winter Honeysuckle. Fragrant white flowers, March-April. Nearly evergreen. \$1.00 Each

(T) **HONEYSUCKLE, Morrowi.** Spreading habit, attractive foliage. White flowers, May-June. Red berries. \$1.00 Each

(T) **HONEYSUCKLE, Tartarian; rubra; Wheeling strain.** The best red honeysuckle yet introduced. Rose red flowers followed by bright red berries; flowers in April and May. \$1.00 Each

.. for Everlasting Beauty

(M) **HYDRANGEA, Paniculata grandiflora**; Peegee Hydrangea. Large trusses of showy double white flowers, blending into pink and bronze shades of autumn. July-October. Requires shade. **75c Each**

(M) **HYPERICUM, Aureum** (Golden St. Johnswort). Hardy shrub with bright yellow flowers. July-August. **75c Each**

(M) **ILEX, Verticillata** (Winterberry). Showy red berries. **\$1.50 Each**

(M) **KERRIA, Japonica**. Double yellow flowers June to September. **\$1.00 Each**

(T) **LILAC, Persian**. Upright vigorous grower; reddish purple flowers April-May. One of the best for general planting on account of its free blooming qualities and hardiness. **\$1.00 Each**

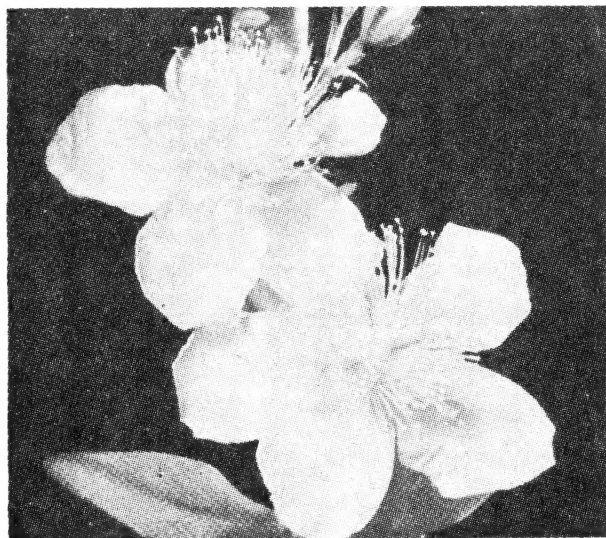
(T) **LILAC, French (Syringa)**. Valuable, hardy hybrids. Popular on account of attractive flowers of various colors and foliage in the following varieties:

Chas Joly. Purplish-red, double flowers.

Pres. Grevy. Light blue, double flowers.

Mme. Lemoine. White double flowers.

\$2.00 Each



Hypericum, Aureum

(M) **MOCK ORANGE (Philadelphia, Virginal)**. Loads down with beautiful fragrant semi-double flowers over a long season, beginning in May. **\$1.00 Each**

(T) **MOCK ORANGE, Coronarius**. Fragrant white flowers, vigorous. **\$1.00 each**

(M) **PRIVET, Regal**. Low growing dense shrub with horizontal spreading branches. **75c Each**

(M) **RHODOTYPOS, Kerrloides**. Jetbead (White Kerria.) Bright green foliage, single white flowers, April-May, black shiny fruit in autumn and winter. **\$1.00 Each**

(T) **RUSSIAN OLIVE (Elaeagnus Angustifolia)**. Attractive silver gray leaves. Small fragrant flowers. **\$1.00 Each**

(T) **SNOWBALL (Opulus, Sterilis)**. Common Snowball. Popular shrub; blooms profusely; large double white flowers, April. **\$1.50 Each**

(M) **SNOWBERRY, Chenaulti**. Very small leaves, graceful arching branches, pink flowers and red fruit. **75c Each**



Forsythia

(D) **SPIREA, Anthony Waterer**. A valuable dwarf shrub. Bright red flowers June-September. **75c Each**

(M) **SPIREA, Arguta**. White flowers; blooms very early; narrow lacy leaves. **75c Each**

(D) **SPIREA, Froebel**. Vigorous, spreading grower. Bright pink flowers, May-June; purplish tips in spring; beautiful autumn colors. Very hardy. Used extensively. **75c Each**

(M) **SPIREA, Van Houtte**. Well-known popular shrub. Graceful habit of growth. Sometimes called Bridal Wreath. Pure white flowers, April-May. Blooms profusely. **75c Each**

(D) **SPIREA, Thunbergi**. Low-growing shrub with slender spreading branches. Feathery bright green foliage. Snow white flowers, April. **75c Each**

(T) **TAMARIX, Odessana**. Bright silver foliage, pink flowers. **75c Each**

(D) **VIBURNUM, Carlesi**. A new variety, wonderfully fragrant flowers, clusters of white shaded pink. **\$2.50 Each**

(T) **WILLOW, Pussy (Discolor)**. Very popular for its grey catkins in early spring. **\$1.00 Each**

(M) **WITCH-HAZEL, Vernalis**. Bright red foliage in autumn and winter, brown and yellow flowers in February and March. **\$1.00 Each**

(M) **WEIGELA, Bristol Ruby**. New red flowers throughout summer and fall. **\$2.00 Each**

SHAWNEE ROSES . . . Calif

SHADES OF RED

AMI QUINARD. Profuse bloomer. One of the darkest red varieties, velvety crimson-maroon.

CHAS. K. DOUGLAS. Free flowering variety, scarlet-crimson.

CHRISTOPHER STONE. Fragrant, velvety, red; free blooming.

E. G. HILL. Large, extremely double, lasting deep scarlet. Vigorous, upright, profuse.

ETOILE DE HOLLANDE. Dark velvety red; a good grower. Large flowers fragrant.

GLOWING CARMINE. Carmine, strong grower; blooms freely.

NIGHT. Very fragrant, deepest crimson, shaded maroon.

PADRE. A strong grower; coppery scarlet blooms.

RADIANCE RED. A vigorous, glowing crimson sport of Radiance.

SENSATION. Large, double dark crimson blooms.

SOUTHPORT. A brilliant unshaded scarlet.

GRENOBLE. Popular because of its profusion of long-stemmed beautifully shaped blooms of scarlet-crimson.

GRUSS AN TEPLITZ. Intensely fragrant, medium sized blooms of dark, velvety scarlet.

HOOSIER BEAUTY. Continuous bloomer; deep scarlet with dark shadings.

HORTULANUS BUDDE. Beautiful buds, dark red.

McGREDY'S SCARLET. Brilliant scarlet shaded rose-pink.

MARGARET McGREDY. Continuous bloomer; large, double, orange-scarlet.

SHADES OF PINK

BRIARCLIFF. A clear pink sport of Columbia.

COLUMBIA. Long pointed bud, fragrant, deep pink.

DAME EDITH HELEN. A vigorous grower with large extremely double blooms, glowing clear pink.

EDITOR McFARLAND. Shapely buds and double brilliant pink blooms.

EDITH NELLIE PERKINS. Light cerise pink, inside suffused gold.

IMPERIAL POTENTATE. Large deep rose-pink; vigorous, profuse.

J. OTTO THILOW. Perfect buds and full flowers of rich rose-pink.

LOS ANGELES. Perfectly formed long-pointed buds and full flowers of luminous, flame-pink toned coral and gold at base.

LEONARD BARRON. Extremely large, full flowers, are buff pink tinted salmon.

MISS ROWENA THOM. Enormous double, rose-shaded old gold.

MRS. CHAS. BELL. Shell pink sport of Radiance; growth and bloom the same.

PICTURE. Warm pink, undertones of salmon; strong and vigorous.

RADIANCE PINK. Popular, free flowering, rosy opaline pink; very vigorous.

SHADES OF WHITE

ALICE STERN. One of the best white roses. Perfectly formed buds open to large flower; tinted ivory at base. Vigorous.

CALEDONIA. One of the best whites, long buds and large full, lasting flowers.

EDEL. Ivory white blooms with a very pleasing fragrance.

K. A. VICTORIA. Popular, snowy white with pale lemon yellow; profuse.

McGREDY'S IVORY. Large, well shaped, creamy white; fragrant.

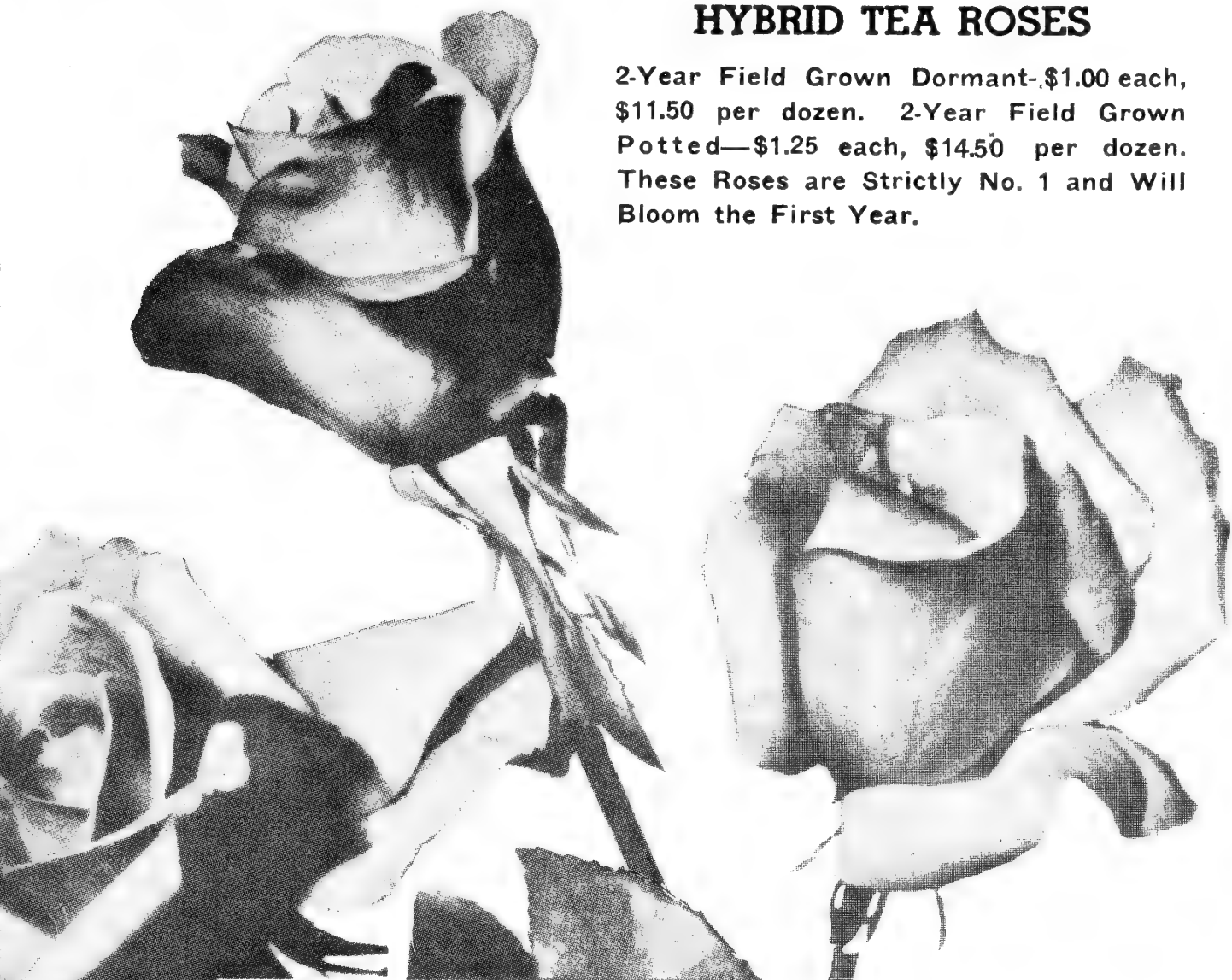
MME. JULES BOUCHE. White with blush tints in center.



California 2-year Field Grown

HYBRID TEA ROSES

2-Year Field Grown Dormant—\$1.00 each, \$11.50 per dozen. 2-Year Field Grown Potted—\$1.25 each, \$14.50 per dozen. These Roses are Strictly No. 1 and Will Bloom the First Year.



100 VARIETIES, 2-Year FIELD GROWN No. 1

Every rose listed in this catalog is strictly No. 1 two-year field California grown, and all Hybrid Tea Roses will bloom the First Year. No better roses can be bought at any price.

We advise planting Dormant Roses between the date of March 10th and April 16th, and planting Dormant Bushes in preference to potted bushes. When planting early, however, we have Potted Roses and recommend them for late planting.

CLIMBING ROSES

Prices the same as Hybrid Tea Roses.
See page 9.

- CL. AMERICAN BEAUTY.** Hardy variety of rich red to crimson.
- DR. W. VAN FLEET.** Large, flesh pink flowers, rosy tints in center.
- MARY WALLACE.** Well formed, large, rosy pink with salmon base.
- PAUL'S SCARLET CLIMBER.** Brilliant rose, vivid, shining scarlet.
- SILVER MOON.** Very effective; white with clear yellow stamens.

SHADES OF YELLOW

- FEU J. LOOYMANS.** Profuse; long pointed buds; yellow flowers toned apricot.
- GOLDEN DAWN.** An exceptionally strong growing yellow variety; very double fragrant blooms of sunflower-yellow.
- GOLDEN RAPTURE.** Beautifully formed buds, yellow, vigorous grower, long strong stems, fully double blooms, rich.
- JOANNA HILL.** Beautiful, distinctive shaped buds and blooms of light yellow with bronze shadings in center.
- LADY MARGARET STEWART.** Large, double rich yellow marked orange-red.
- LUXEMBOURG.** Double, bronzy yellow, profuse.
- MCGREDY'S YELLOW.** Bright, buttercup, yellow, perfect form, fragrant.
- MRS. PIERRE S. DUPONT.** Considered one of the best. A free flowering double, rich golden yellow blooms.
- MRS. E. P. THOM.** Rated as one of the best yellows. Blooms are fully double, pure yellow.
- PRESIDENT PLUMECOCQ.** Large cupped blooms of lasting, soft coppery-yellow and salmons; vigorous, upright grower, and profuse bloomer.
- ROSLYN.** Free flowering, vigorous; large double, deep golden yellow.
- SOUER THERESE.** A beautiful upright growing plant; rich yellow; buds are especially attractive.
- SUNBURST.** Beautifully shaped buds, double blooms of rich yellow.
- SUNKIST.** A coppery orange sport of Joanne Hill with the same good qualities.

SHADES OF TWO-TONE

- AUTUMN.** Rich autumn colors, burnt orange and yellow, splashed red, double; profuse bloomer.
- CONDOSA DE SASTAGO.** A very vigorous grower; double blooms; coppery, pink and golden.



Sure Starting

See illustration how to cover newly planted roses with earth. This prevents drying of wood and buds, gives roots a chance to get started. Earth protection may be gradually removed after buds have started to make new growth. Water freely.

DEQUESA DE PENARANDA. Apricot orange and pink; vigorous and profuse.

FREDERCO CASES. A free flowering variety of cinnamon pink reverse of petals toned gold; full, double blooms.

HEINRICH GAEDE. Bright vermilion toned gold; fragrant, and a strong grower.

HEINRICH WENDLAND. Distinctively two-toned, large double blooms. Inside of petals are nasturtium red; reverse golden yellow.

MEV. G. A. VAN ROSSEM. A distinctive color, orange-brown, fragrant double blooms.

MME. JOSEPH PERRAUD. Shade from shell-pink at the edge to orange.

PRESIDENT HERBERT HOOVER. Long stems beautifully colored buds and blooms of creamy yellow with pink and flame tints.

TALISMAN. Rich yellow and rose-red two-tone blooms. A vigorous grower.

POLYANTHAS or FLORIBUNDA ROSES

Prices the same as Hybrid Tea Roses.
See page 9.

CAMEO. Soft salmon pink suffused with gold. Continuous bloomer.

CECIL BRUNNER. The sweetheart rose.

CHATTILLON ROSE. Vigorous, bushy, immense clusters, clear pink.

ELSE POULSEN. A tall grower, continuous bloomers, semi-double flowers large for the type; two-tone rose-pink.

GLORIA MUNDI. A very striking variety; orange scarlet; a low grower.

GOLDEN SALMON. Large clusters of bright salmon-orange.

IDEAL. A good grower and continuous bloomer, large clusters, dark red.

IMPROVED LAFAYETTE. A vigorous grower; deep glowing crimson.

PINK GRUSS AN AACHEN. Large full flowers of glowing salmon-pink.

BUSH ROSES

Prices the same as Hybrid Tea Roses.
See page 9.

GROOTENDORST. A profuse bloomer; bright red.

PAUL NEYRON. Large pink.

SIR THOMAS LIPTON. Snowy white flowers of good size.

HUGONIS Yellow flowers, Early

PATENTED ROSES

CRIMSON GLORY. H. T. (Patent No. 105). Deep crimson with well formed buds and large flowers.

Dormant. \$1.50 Each; Potted, \$1.75

FLORADORA (Patent Pending). A new floribunda; blooms a bright cinnamon with shades of scarlet and geranium red, blooms continuously; double flowers, strong grower, glossy olive green foliage.

Dormant, \$1.50 Each; Potted, \$1.75

PINOCCHIO (Patent No. 484). Hardy plant, producing an abundance of pointed buds of salmon flushed gold, opening to a soft clear pink, and in great clusters.

Dormant, \$1.25 Each; Potted, \$1.50

WORLD'S FAIR (Polyantha) (Plant Patent No. 352). Large, spicy, fragrant, deep crimson fading to scarlet.

Dormant, \$1.25 Each; Potted, \$1.50

GOLDEN CLIMBER. Climber. (Plant Patent No. 28). Large open sunflower yellow; fragrant.

Dormant, \$1.50 Each; Potted, \$1.75

CLIMBING VINES

CLEMATIS, Pan. White; a good hardy vine; white, sweet scented flowers.

75c Each

HONEYSUCKLE, Goldflame. Almost evergreen, very hardy, blooms all summer; the larger flame-coral trumpets are very fragrant after nightfall.

2 year plants.....\$0.75 Each

2 year potted plants.. 1.00 Each

HONEYSUCKLE, Lonicera Purpurea

A vine that is almost an evergreen. Fragrant pink flowers, valuable as a ground cover for banks, etc. \$1.00 Each

HONEYSUCKLE. Vine. Hall's old-fashioned vine with fragrant blossoms.

50c Each

IVY, Veitchi (Boston Ivy). Small leaf ivy. Popular for covering walls, fireplaces, etc. Does best in shade.

Dormant, 75c Each; Potted \$1.00

SILVER LACE VINE. Covered with masses of foamy white flowers in late summer and autumn. Rapid grower.

Dormant, 75c Each; Potted, \$1.00

WISTERIA. Large clusters of lilac purple flowers.

50c Each



Privet, Amur River North

HEDGING PLANTS

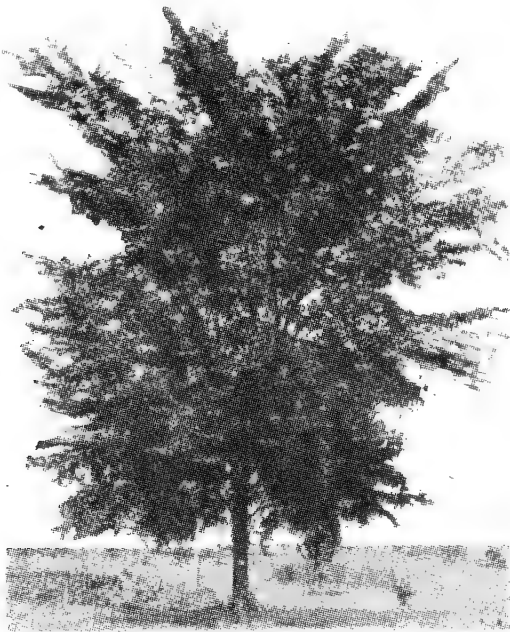
PRIVET, Amur River North. Most popular of all hedging as it is hardy; makes a dense hedge, will not freeze out.

6-12 in. tall, 2 branches...\$12.00 per 100

12-18 in. tall, 2-3 branches. 15.00 per 100

18-24 in. tall, 3-4 branches. 20.00 per 100

SHAWNEE'S SHADE and



American Elm



Silver Maple

Shade Trees are almost a necessity in the yard and along the streets. How inviting appears the home framed with beautiful shade trees. We grow a good selection of varieties adapted to this area. All of our shade trees are transplanted several times in the nursery to assure a fibrous root system, therefore, our trees are sure to grow when transplanted to your yard.

ELM, American. Always a favorite in this territory. A magnificent tree growing 80 to 100 feet high, with spreading branches.

7-8 ft., \$2.00 Each
8-10 ft., \$3.00 Each
10-12 ft., \$4.00 Each

ELM, Moline. Because Moline Elm are budded they are uniform and grow alike. Highly recommended for yard and street plantings. Entirely hardy, upright in growth.

6-8 ft., \$3.00 Each
8-10 ft., \$5.00 Each

HONEY LOCUST, Thornless. A rapid-growing native tree with delicate foliage; the greenish flowers appearing in early summer.

8-10 ft., \$4.00 Each

MAPLE, Hard or Sugar. A well known native tree. Very desirable as an ornamental lawn and shade tree. Foliage in autumn is rich with brilliant tones of orange and lemon.

6-8 ft., \$3.50 Each
8-10 ft., \$6.00 Each
10-12 ft., \$9.00 Each

MAPLE, Soft or Silver. A rapid growing tree of large size; irregular rounded form; foliage bright green above and silver underneath; a favorite street and park tree; a native and extremely hardy; makes vigorous rapid growth.

6-8 ft., \$2.00 Each
8-10 ft., \$3.50 Each
10-12 ft., \$6.00 Each

MAPLE, Schwedler (Purple Leaf Maple). A beautiful variety, red and purple in spring and golden yellow in fall.

6-8 ft., \$6.00 Each



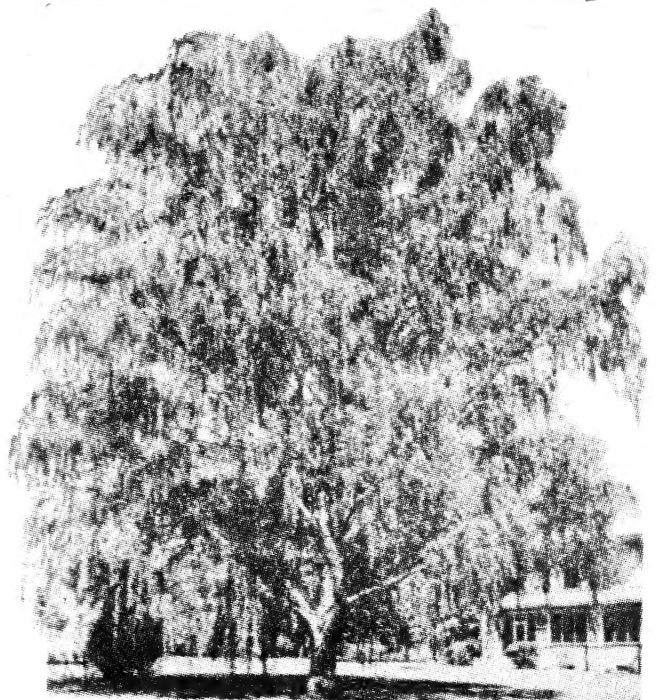
Weeping Willow

A GENERAL LINE OF

ORNAMENTAL TREES



Pin Oak



Cut-Leaf Weeping Birch

OAK, Pin. A magnificent tree for lawn and street planting, with deep green foliage which changes to rich scarlet and yellow in the fall. A most shapely and graceful tree.

6-8 ft., \$6.00 Each

8-10 ft. \$10.00 Each

POPLAR, Lombardy. For tall screens and backgrounds these trees are admirable. Pyramidal, giving them a stately appearance, limbs to the ground.

4-5 ft. \$ 50c Each

5-6 ft., \$ 75c Each

6-8 ft., \$1.00 Each

8-10 ft., \$1.50 Each

POPLAR, Silver Leaf. A tree of rapid growth and wide, spreading habit; leaves large, glossy green above and silver-white beneath; likes moist soil but grows anywhere.

5-6 ft., \$2.50 Each

WALNUT, Black. This species is a common and stately forest tree in the middle western states; grows from forty to sixty feet high.

5-6 ft., \$2.50 Each

6-7 ft., \$3.50 Each

We will quote prices on larger shade trees on request.

ORNAMENTAL TREES

BIRCH, White Cut-Leaf Weeping. Graceful slender drooping branches.

Priced from..... \$8.00 to \$15.00 Each

BIRCH, European White. White bark, very ornamental; 10 ft. tall. \$8.00 Each

CATALPA, Umbrella. Dense round heads. \$5.00 Each

FLOWERING DOGWOOD. Red flowering; 3-4 ft. size..... \$5.00 Each

FLOWERING CRABS. Hopa. Rose pink flowers, red fruit. 5 -6 ft. \$2.00 Each

FLOWERING PEACH. Red, 1-5 ft. \$2.00 Each

MAGNOLIA, Soulangeana. A hardy Magnolia with large pink tulip-shaped flowers in early spring. \$10.00 to \$18.00 Each

MOUNTAIN ASH. Very showy in late summer because of its huge clusters of bright red fruits. 6-8 ft., \$6.00 Each

RED LEAF PLUM. Purple red leaves all summer. 3-4 ft. \$1.50 Each

RED BUD. Heart-shaped leaves, reddish lavender flowers early spring. 3-4 ft., \$1.00 Each

ROSE ACACIA. Globe-shaped top, large clusters of bright pink flowers. \$4.50 Each

WEeping MULBERRY. Branches grow straight down to the ground. \$6.00 Each

WEeping WILLOW, Niobe. A weeping tree with bright yellow bark; very hardy. 4-5 ft., \$1.50 Each

6-8 ft., 2.50 Each

GRASS SEED

BLUEGRASS. Top grade, very fancy seed. \$1.25 per Lb.

RYE GRASS. Top grade. .30 per Lb.

RED TOP. Top grade. .40 per Lb.

WHITE CLOVER. Top grade. \$1.25 per Lb.

SPRAY MATERIALS

FERTILIZER, PEAT MOSS, SPRAY MATERIALS

SHEEP MANURE. Pulverized. \$1.15 per 50-lb. Bag

PEAT MOSS (Canadian). \$1.25 per Bushel

ROTTED CATTLE MANURE

50c per Bushel

VIGORO \$4.00 per 100 Lbs.

MILORGANITE \$3.25 per 100 Lbs.

LOMA \$4.00 per 100 Lbs.

SHAWNEE FRUITS and

We have spent much time in selecting varieties of fruits that will bear and grow well in this locality. We grow most all the fruit trees and small fruit plants we offer for sale here in our nursery at Shawnee, therefore they are acclimated to this area and should give you excellent results.

Due to the shortage in fruit trees this season, it may be impossible to furnish all sizes in the varieties listed.

APPLES

2-Year Trees, 5-6 ft. tall, \$1.50 Each.
2-Year Trees, 4-5 ft. tall, 1.00 Each.

ANOKA. Very early, red mottled yellow; good for cooking and eating.

DELICIOUS, Yellow. Fall apple; good keeper and for eating.

DELICIOUS, Red. Fall apple; good keeper and for eating.

EARLY HARVEST. Very early, yellow; good cooking and eating apple.

GRIMES GOLDEN. Midseason, yellow; good for cooking and eating.

JONATHAN. Fall; red; best all around apple; good for cooking, eating and keeping.

RED JUNE. Very early; red; good for cooking and eating.

WEALTHY. Fall apple; red striped; best cooking, and keeps well.

WINESAP, Staman's Red. Winter apple; good keeper.

YELLOW TRANSPARENT. Early; yellow; good for eating and cooking.

YORK IMPERIAL. Winter apple; good keeper.

RED SIBERIAN CRAB. Red fruit; good for jellies.

HYSLOP CRAB. Red and yellow fruit; good for jellies.

CHERRIES

2-Year Trees, 4½-5 ft. tall, \$2.00 Each.
1-Year Trees, 3½-4 ft. tall, \$1.75 Each.

MONTMORENCY. Large red fruit; the best cherry for this locality.

EARLY RICHMOND. Early red fruit; a good early variety.

BLACK TARTARIAN. The best black cherry for this locality; midseason.

APRICOTS

2-Year Trees, 4½-5 ft. tall, \$2.00 Each.

MOORPARK. Large yellow fruit of good quality.

SCOUT. A newer variety; very fine fruit.

SUPERB. An old fashioned variety; tart fruit; bears heavy.

PEARS

2-Year Trees, 5 -6 ft. tall, \$2.00 Each.
2-Year Trees, 4½-5 ft. tall, \$1.75 Each.

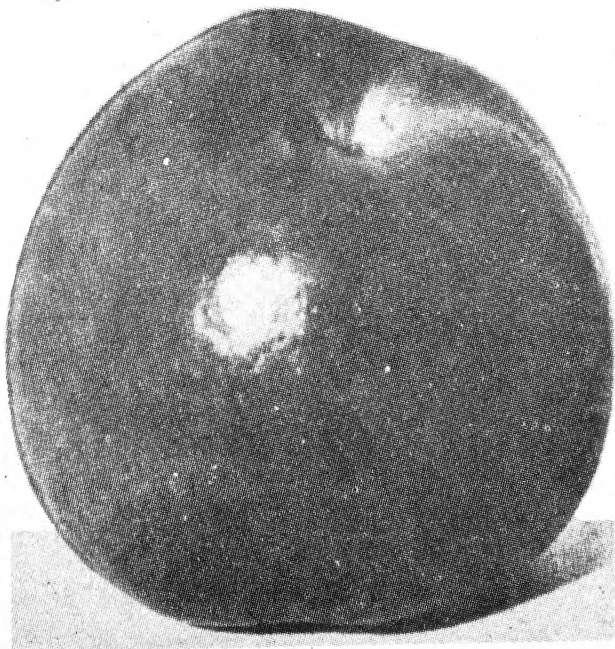
BARTLETT. Large fruit; good for eating.

DOUGLASS. Bears heavy, often second year; the best all around pear.

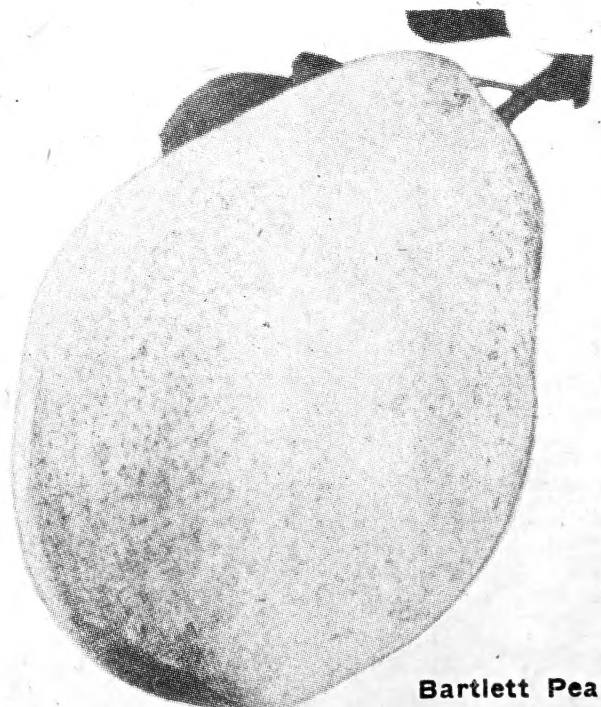
GARBER. Excellent eating pear; ripens on tree, September.

KIEFFER. Large fruit; bears heavy; very good canning pear.

SECKEL. Sugar pear; bears heavy and good eating.

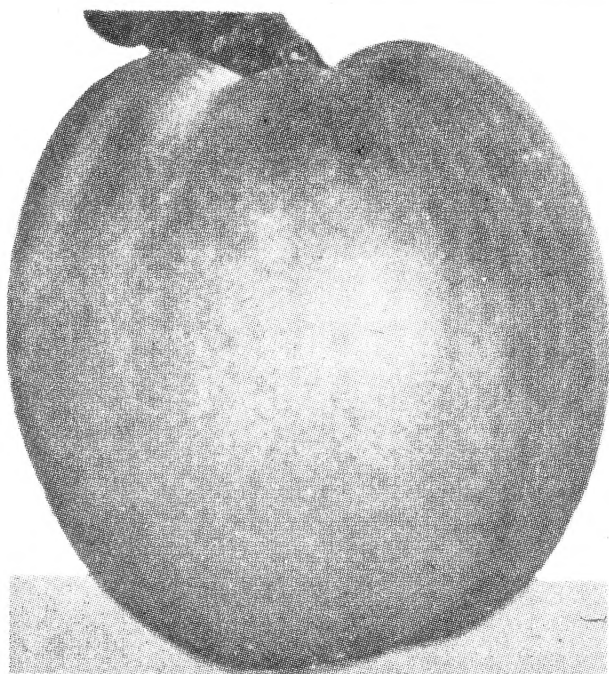


Jonathan Apple

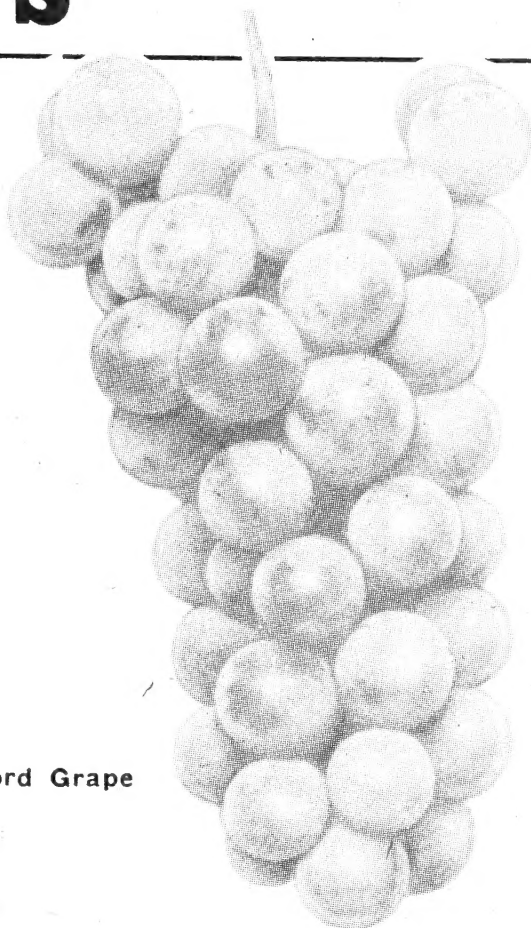


Bartlett Pear

SMALL FRUITS



Elberta Peach



Concord Grape

PEACHES

2-Year Trees, 5-6 ft. tall, \$1.50 Each.
2-Year Trees, 4-5 ft., tall, 1.00 Each.

BELL OF GEORGIA. White with red cheek, freestone; midseason.

CHAMPION. White fruit, freestone; midseason.

CHINESE CLING. An excellent white cling peach.

EARLY WHEELER. Extra early; red fruit, semi-cling.

ELBERTA. Yellow fruit, freestone; best for canning; midseason.

GOLDEN JUBILEE. Large yellow fruit. A new variety; very good; freestone.

J. H. HALE. Yellow fruit, freestone; one of our best varieties for general use.

ROCHESTER. Yellow fruit, freestone; midseason; good quality.

PLUMS

2-Year Trees, 4-5 ft. tall, \$2.00 Each.
2-Year Trees, 3-4 ft. tall, 1.50 Each.

AMERICAN. Red, bears heavy

DAMSON, Shropshire. Dark fruit; good for preserving.

GREEN GAGE. Yellowish green fruit; good for eating and canning.

SAPA. Dark purple fruit; bears heavy; sweet; good preserving plum.

WANETA. Large copper red fruit; leading plum for general use.

GOLDENROD. Large yellow fruit; very good quality.

GRAPE VINES

CONCORD. Large black fruit; leading variety.

2-year plants... 25c Each; \$2.50 per Doz.
\$20.00 per 100

MOORES EARLY. Large black fruit; excellent for eating.

2-year plants... 25c Each! \$2.50 per Doz.
\$20.00 per 100

NIAGARA. White fruit; the best white grape.

2-year plants, 30c Each

BRIGHTON. Red fruit; a good, hardy red grape.

2-year plants, 30c Each

CACO. A new red sweet grape for eating.

2-year plants, 30c Each

SMALL FRUITS

CURRENTS. 2-yr. No. 1 Plants, 30c Each

GOOSEBERRIES.
2-year No. 1 Plants, 40c Each

BLACKBERRIES.
No. 1 Plants, 15c Each; \$1.50 per Dozen

BLACK RASPBERRIES. No. 1 Plants,
15c Each; \$1.50 per Dozen; \$12.00 per 100

RED RASPBERRIES. No. 1 Plants,
15c Each; \$1.50 per Dozen; \$12.00 per 100

BOYSENBERRIES.
No. 1 Plants, 15c Each; \$1.50 per Dozen

STRAWBERRY PLANTS, Dunlap.
\$2.00 per 100

STRAWBERRY PLANTS, Everbearing.
\$3.50 per 100

RHUBARB ROOTS. Divisions from field-grown clumps. 20c Each; \$15.00 per 100

ASPARAGUS ROOTS.
2-year Roots, 10c Each; 75c per Dozen;
\$4.00 per 100

Special Delivery Service

All orders to be delivered will be grouped and deliveries made on Wednesday and Saturday of each week, beginning March 10. Orders received on time will be delivered on the first delivery day following receipt of order. We ask your cooperation by so arranging your time at home that you will be on hand when Nursery Stock arrives, assuring prompt handling of this material.

Orders to be planted by us will be delivered and planted in rotation as they are received.

Open Sundays and Evenings during the months of March, April and May.



SHAWNEE  **NURSERIES**
and
Landscape Co.
7500 WEST NO 50 & NO 10 HIGHWAYS
SHAWNEE, KANSAS

Sec. 562 P. L. & R.
U. S. POSTAGE
PAID
SHAWNEE, KANS.
Permit No. 4

Am. Assoc. Nurserymen
605 Southern Bldg.
Washington 5, D.C.

RETURN POSTAGE GUARANTEED