

Historic, Archive Document

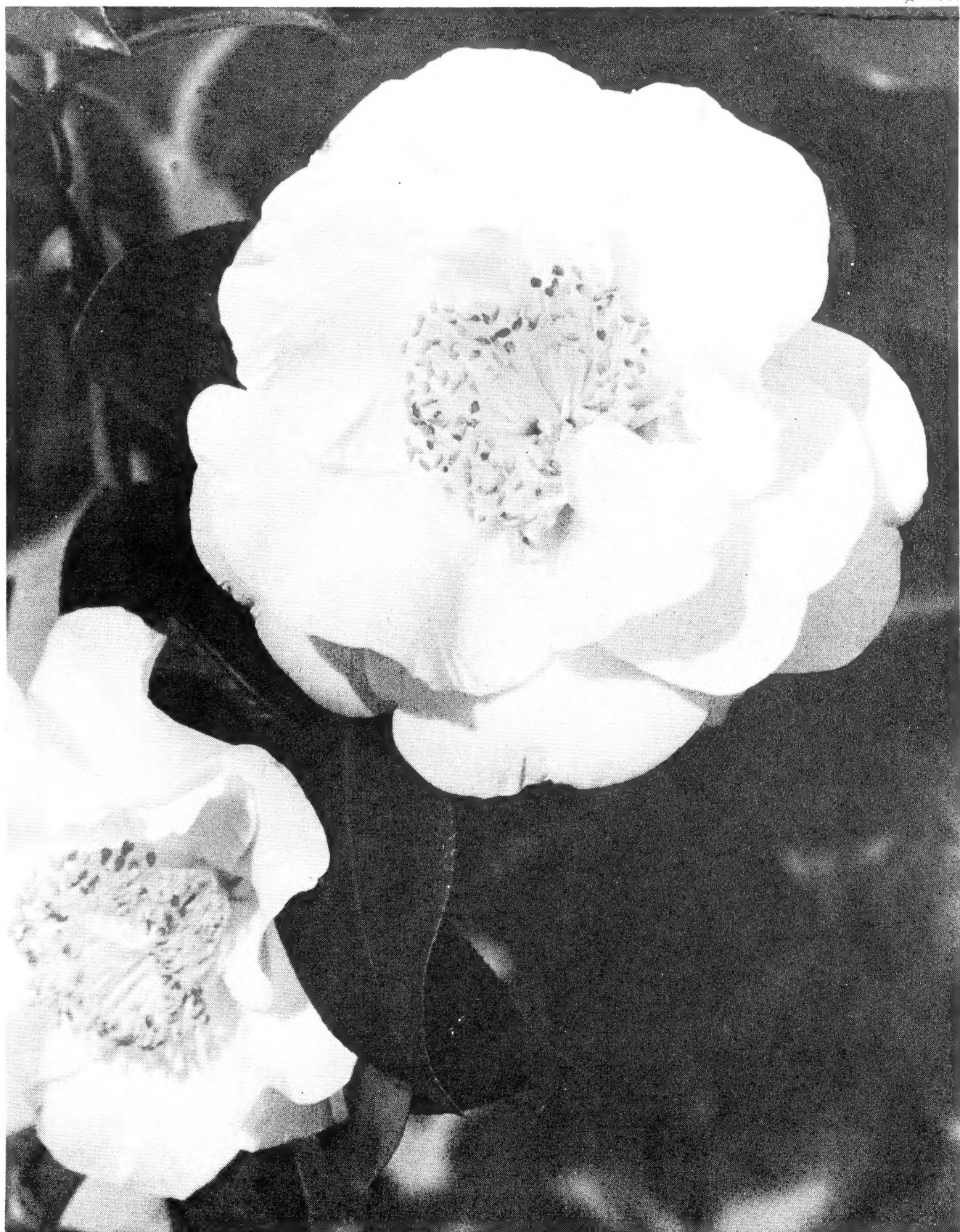
Do not assume content reflects current scientific knowledge, policies, or practices.

62109

Tormey's
Growers of Fine Camellias
Temple City California

JAN 17 1947

Department of Agriculture



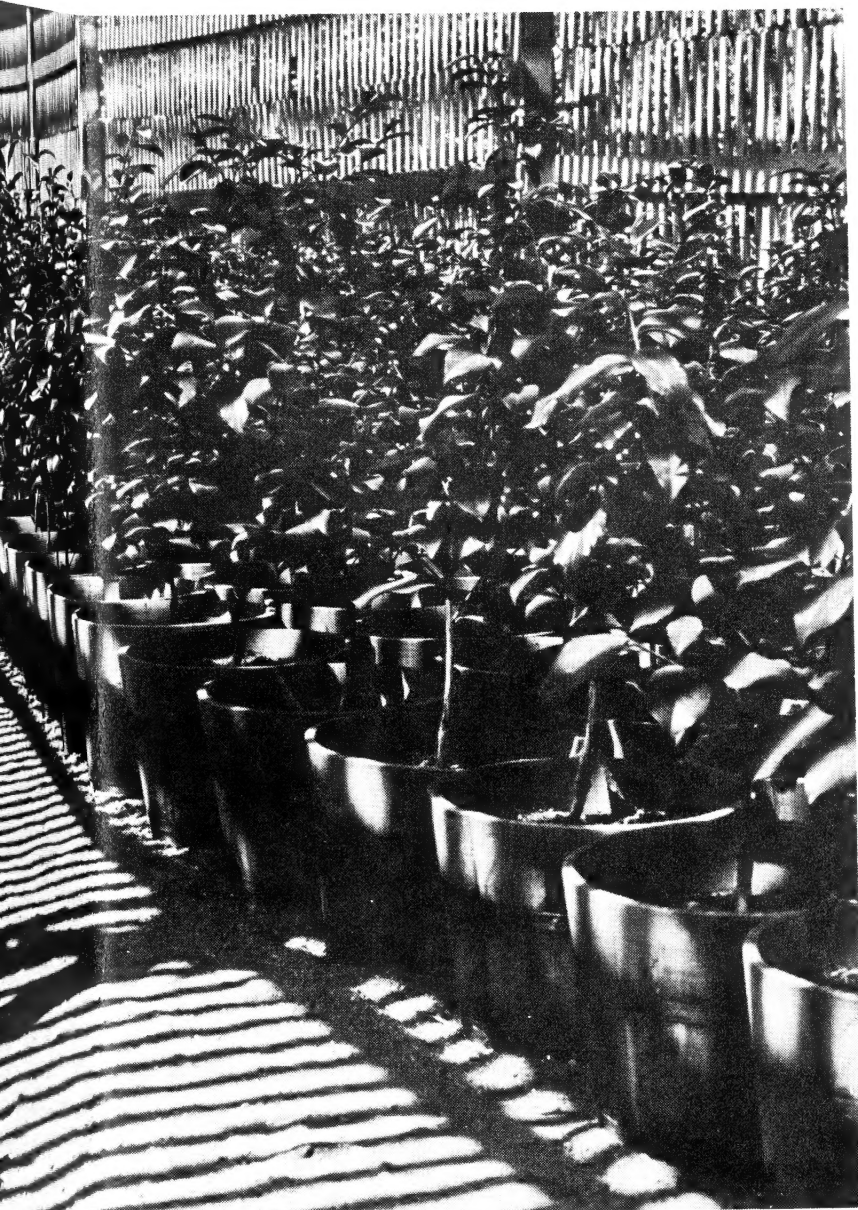
THE OUTSTANDING PURE-WHITE
CAMELLIA FINLANDIA
(actual size)

Tormey's - Growers of Fine Camellia

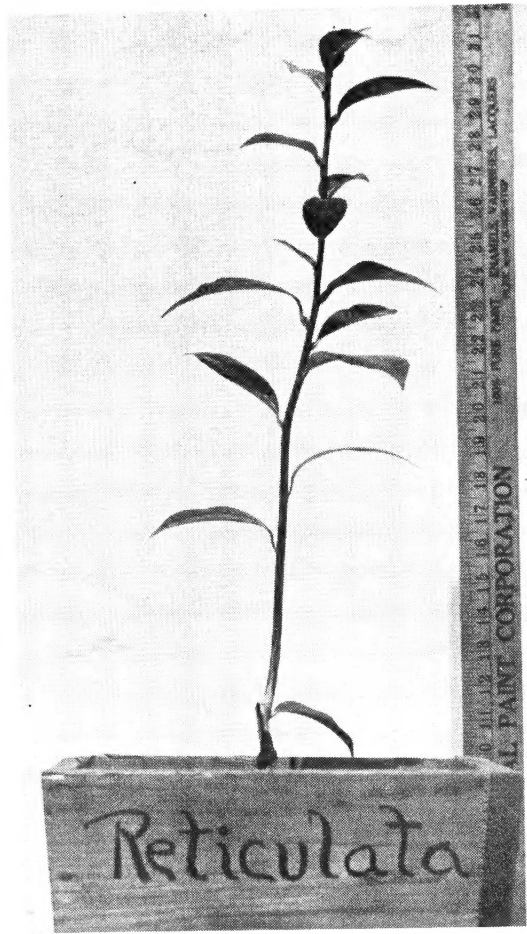


Tormey's Top Quality Contain

ne Camellias - Temple City, California



Quality Container Grown Camellias



Tormey's
Growers of Fine Camellias
Temple City California



(1) February 16, 1944

Container grown understock before
being cut down for grafting to the
outstanding variety -
White Laurel Leaf



(2) February 16, 1944

Container grown understock after
being cut down and scion has
been attached.



(3) November 12, 1944

Nine months after the graft was made
on the container grown understock
the plant is ready for delivery with
its root system completely intact
and undisturbed.



(4) October 10, 1945

Less than two years after graft was
made the container grown camellia
plant is well branched and soon will
grow into a fine specimen without
danger of loss or time delay as is
experienced with plants where their
root system has been disturbed by
being dug from a growing bed.

The Evolution of a Container Grown Graft