

## **Historic, Archive Document**

Do not assume content reflects current scientific knowledge, policies, or practices.



62.71

LIBRARY  
RECEIVED  
★ JAN 17 1947 ★  
U.S. Department of Agriculture

# Villa Ridge Nursery



Lots of fruit on Dwarf and Espalier Trees.

## 1946 - 1947 CATALOG

11333 S. W. 64th on Barbur Blvd.  
Portland 1, Oregon

# 1946 - 1947 Villa Ridge Nursery Catalog

11333 S. W. 64th on Barbur Boulevard  
Portland 1, Oregon

---

## APPLE TREES

---

- RED DELICIOUS**—Large, red, solid and very juicy. November to March.
- GRAVENSTEIN**—Large, striped; juicy, good sauce apple. August and September.
- JONATHAN RED**—Improved Jonathan; fine grained, tender, medium size. November to April.
- KING**—Large striped red and yellow; very hardy. October to November.
- McINTOSH RED**—White flesh, medium size, tender, juicy. November to February.
- NORTHERN SPY**—Large striped, flesh white and tender. January to May.
- WINESAP**—Medium size, red, good keeper. December to May.
- SPITZENBERG**—Medium to large, deep red, flesh yellow, good baking apple. November to April.
- GOLDEN DELICIOUS**—Beautiful yellow, vigorous, productive, fine flavor. December to April.
- RED ASTRACHAN**—Large, beautiful red, juicy. Excellent for dessert. August.
- YELLOW NEWTOWN PIPPIN**—One of the best, firm, juicy, crisp, delicious. December to May.
- YELLOW TRANSPARENT**—Tender, juicy, very popular, early. July and August.
- WHITNEY No. 20 CRABAPPLE**—Large, red productive, good eating. August.
- MULTIPLE APPLE TREES**—Three of five varieties in one tree.  
ANOKA striped red; RED DELICIOUS; YELLOW TRANSPARENT; JONATHAN RED; STAYMAN WINESAP. (No choice of combination), \$3.50 ea.

---

## PEARS

---

- BARTLETT**—Very juicy, fine flavor, most popular. August and September.
- BEAURRE BOSCH**—Large, russet, juicy and very delicious. September and October.
- BEAURRE D. ANJOU**—Large, buttery, melting. October to January.

Please write us for quantity prices of fruit and nut trees.

---

## CHERRIES

---

- BING**—Very large, black, firm, good canner and shipper. July.
- BLACK REPUBLICAN**—Firm, juicy, pollenizer.
- LAMBERT**—Large red, very good flavor, heart-shaped. July.
- ROYAL ANN**—Pale yellow with red, firm, juicy, sweet. July.
- EARLY RICHMOND (Kentish) Pie Cherry**, good cooking. June.
- MONTMORENCY**—Large red pie cherry, very fine flavor. July.

---

## PEACHES

---

- BELLE OF GEORGIA**—Very large, freestone, creamy white with red cheek, flesh white. A very fine white peach. Mid season.
- CRAWFORDS EARLY**—Freestone, large, yellow with red cheeks. August.
- ELBERTA IMPROVED**—Larger than the standard, freestone, excellent peach. August.
- ELBERTA STANDARD**—Large, freestone, bright color, flesh yellow. Late August.
- FISHER**—Ripens six weeks ahead of Elberta, smooth meat and a fine peach flavor. 20 cents per tree higher.
- GOLDEN JUBILEE**—Yellow meat and skin with bright red cheek. A beautiful peach, becoming very popular.
- J. H. HALE**—Very large, yellow with red, solid flesh, freestone.
- ORANGE CLING**—Beautiful, fine for eating and canning.
- ROCHESTER**—Semi-cling, very good flavor, fine for canning and shipping, very hardy, bears heavy. August.

---

## APRICOTS

---

- PERFECTION**—Extra large fruit, juicy, sweet, heavy producer. \$1.50 per tree.
- WENATCHEE MOORPARK**—Orange with red cheeks, firm, juicy, good flavor, large.
- TILTON**—Good color, rich flavor, large. July.

**NECTARINES**

**NEW WHITE**—Large, good flavor. August.  
**STANWICK**—Very large, pale green to a white. August.

**PLUMS**

**GREEN GAGE**—Small, good flavor. August.  
**SANTA ROSA**—Large, dark red, firm, juicy. August.  
**SATSUMA**—Large, skin and flesh blood-red, sweet, juicy.  
**YELLOW EGG**—Large yellow, a favorite for eating.  
**ITALIAN PRUNE**—Very large, purple, sweet and juicy.

**FIGS**

**BROWN TURKEY**—Large brown, flesh red, fine grained, sweet and juicy. \$1.50 to \$2.00.  
**WHITE ADRIATIC**—Fruit medium to large, red meat, very good. Heavy rooted. \$1.50 to \$2.00.  
**BLUE SUPERIOR**—One of best, large, very sweet and tasty. Branched. \$2.00 to \$6.00.

**FILBERTS**

**BARCELONA**—The standard nut grown throughout Oregon.  
**DUCHILLY**—Large long nut used for pollenizer to Barcelona.  
**DAVIANA**—Small nut, good pollenizer to Barcelona. Same as fruit tree prices.

**ALMONDS**

**IXL and NON PARIEL**—Both are large soft-shelled nuts. Should be together for pollenization. Br. \$2.00 each, prepaid.

**WALNUTS**

**FRANQUETTE**—Large, 4' to 6', \$3.00 each.  
 6' to 8', \$3.50 each.

**FRUIT TREE PRICES:**

3' to 4'.....\$1.00  
 4' to 6'..... 1.25  
 2 year..... 2.00

These prices apply to all fruit trees not otherwise marked. All berry plants and fruit trees will be shipped prepaid unless otherwise marked.

We have other varieties and larger sizes than listed. Come to our nursery and pick out your trees.

**BERRY PLANTS**

**STRAWBERRIES—**

**IMPROVED OREGON and MARSHALLS**—Both are outstanding, extremely large fruit, productive and very sweet. 25 for \$1.25; 100 for \$3.00.

**NEW GEM (Everbearing)**—An outstanding commercial variety. 25 for \$1.00; 100 for \$4.00.

**ROCKHILL (Everbearing and runnerless)**—Bears up to the freeze in the fall, productive and firm, sweet fruit, very large. 25 for \$3.00; 100 for \$10.00.

**NEW STREAMLINER (Everbearing)**—Will thrive where temperatures go to 30 below zero, fruit is large, sweet, bright red, very good and productive. 12 for \$2.00; 25 for \$3.75; 50 for \$7.00; 100 for \$12.00.

**GOOSEBERRIES—OREGON CHAMPION**—Large green, sweet, prolific. 35c each; 10 for \$3.00.

**BOYSENBERRIES, THORNLESS, and LOGANBERRIES, THORNLESS—**  
 Fruit same as standard varieties. 35c each; 10 for \$3.00.

**BERRIES—STANDARD VARIETIES**—25c each; 10 for \$2.00.

**BOYSENBERRIES**—Extra large, fine fruit, abundant producers.

**YOUNGBERRIES**—Large, sweet, fine for table, freezing, canning, etc.

**LOGANBERRIES**—This is the tart variety, favored by many.

**RASPBERRIES**—20c each; 10 for \$1.75.

**CUTHBERT**—Red, the old standby, sweet, prolific.

**LATHAM**—Red, large round fruit, sweet, long-bearing season.

**NEW WASHINGTON**—Large, red berry, sweet, most disease-resistant.

**RASPBERRIES**—35c each; 10 for \$3.00.

**WILLAMETTE**—This is the largest of red raspberries, outstanding for table, canning or freezing.

**INDIAN SUMMER**—Everbearing, a continuous bearer of good quality.

**BLACKCAPS — CUMBERLAND**—Large, purple-black berries, good flavor.

**BLACKBERRIES**—Thornless Evergreen. 35c each; 10 for \$3.00. An improved, late season berry of good quality.

Please write us for quantity prices of berry plants.



**CURRENTS —**

**RED LAKE** — Large red berries in cluster, very prolific. 50c each; 10 for \$4.00.

**RHUBARB—STRAWBERRY** 20c each; 10 for \$1.75.

**ASPARAGUS—WASHINGTON** Large, productive, tender. 2 year roots, 10 for 60c; 25 for \$1.00.

**GRAPES**

**GRAPES — JUICE VARIETIES** — 50c each; 10 for \$4.00.

**CONCORD**—Large blue, sweet, best-known.  
**CAMPBELLS EARLY**—Black, thin-skinned, very tasty fruit, growing in large fruit and much juice.  
**NIAGARA (White Concord)**—Large berries in large clusters.

**GRAPES—TABLE VARIETIES.**

**THOMPSON SEEDLESS**—Large white in long clusters, very tasty raisin grape. 50c each; 10 for \$4.00.

**GRAPES—NEW TABLE VARIETIES**—75c each; 10 for \$6.50.

**FREDONIA**—Extra large, blue fruit, plump and juicy, recommended through experiments, ripens early.  
**ONTARIO**—An early ripening large white grape of excellent quality.  
**PORTLAND**—Largest of the early white varieties, a very fine eating grape.  
**SHERIDAN**—One of the best of the new black grapes, early, follows Fredonia.

**GRAPES—CHOICE AND RARE VARIETIES**—\$1.00 each.

**GOLDEN MUSCAT**—A very new, hardy California grape, different, a delicious, golden fruit, recommended for Oregon.  
**SENECA**—A medium-sized tapering oval yellow grape, sweet, hardy, productive.

**SHADE TREES**

**BIRCH CUTLEAF**—A graceful cutleaf, weeping tree. Bark is white on older trees. 5 to 6 ft, \$2.00; 7 to 8 ft., \$3.00.

**BIRCH WHITE**—Upright, round leaf, white bark and very dense foliage. 5 ft., \$1.50; 7 to 8 ft., \$2.50; 10 ft., \$3.00.

Please write us for quantity prices.

**CHINESE ELM** — Beautiful, upright, fast grower, small leaf, compact foliage. 6 ft., \$1.50.

**MAPLE NORWAY**—Deep green foliage and grows into large, well-shaped trees. 6 ft., \$2.00.

**MAPLE SCHWEDLER**—Leaves are red, otherwise about the same as Norway Maple. 8 ft., \$3.50.

**MOUNTAIN ASH**—A very attractive shade tree that grows clusters of beautiful orange-red berries. 6 ft., \$2.00; 8 ft., \$3.00.

**POPLAR, LOMBARDY**—Erect, growing to 80 feet tall, a good windbreak. 7 ft., \$1.50.

**POPLAR, CAROLINA**—Very fast-growing, grows very large and wide spread, green foliage. 8 ft., \$2.50.

**WILLOW, BABYLON**—A very large growing, green weeping tree.

**GOLDEN WEEPING**—Similar to Babylon except bark is golden. 5 ft., \$1.50.

**FLOWERING TREES**

**CHERRIES KWANZAN**—Double dark pink blossoms, attractive, grows very large for shade. 5 ft to 6 ft., \$2.50.

**CRAB BECHTEL**—A very large double rose pink flower, fragrant, green leaves. 5 ft. to 6 ft., \$2.00.

**CARMINE**—A beautiful specimen, graceful, with carmine flowers and red branches. 5 ft. to 6 ft., \$2.00.

**BLIRIANA PLUM** — Large double pink flowers against purple bark. Red leaves.

**PISSARDI PLUM** —This is the most widely known flowering plum. Red leaves, pink blossoms. Beautiful when in full bloom. 5 ft. to 6 ft., \$2.00.

**HAWTHORN RED**—Scarlet blossoms against the green foliage. 4 ft., \$1.50; 6 ft., \$2.50; Branched, 5 ft and up, \$2.50 and up.

**PEACHES—RED**—Red blossoms, double. 4 ft. to 5 ft., \$1.50.

**PINK DOGWOOD**—Large pink flowers, foliage green, turning to red and purple before they drop in the fall. Partial shade. 30 in., \$3.00; 36 in., \$4.00.

**MAGNOLIA GRANDIFLORA (Evergreen)**—Blooms during summer and fall with large pure white fragrant blossoms. 3 ft. to 4 ft., \$6.00.

**SHRUBS**

**DECIDIOUS SHRUBS**—\$1.00 each; 3 for \$2.75.

**ALTHEA, ROSE OF SHARON**—In four colors: Red, Purple, White and Pink.

**FLOWERING QUINCE**—Firey red blossoms, more than one inch across.

**FORSYTHIA**—Blooms profusely with golden yellow flowers.

**KASHGAR TAMARIX**—Covered with bright pink sprays of flowers in July, August and September.

**WEIGELIA ROSEA**—Beautiful pink flowers in the spring.

**SNOWBALL COMMON**—2 to 3 ft., \$1.25 each.

**SPIREA:**

**ANTHONY WATERER**—Large, flat, crimson blooms.

**BRIDAL WREATH**—Small pearl-white double flowers.

**THUNBERGI**—Delicate white sprays on graceful branches.

**VANHOUETTE**—Upright, clusters of white blossoms.

**HYDRANGEA OTAKSA**—Large pink or blue balls of flowers, color depending on soil conditions.

**AZALEA—**

**ALTA CLARENSIS**—Bright yellow flowers. 15 in., \$2.50.

**MOLLIS**—Flame orange blossoms that cover the shrub. 15 in., \$2.50.

**OCCIDENTALLIS**—White, blooms in profusion; same as two above varieties. All are fragrant. 15 in., \$2.50.

**BROADLEAF EVERGREEN SHRUBS—**

Prices: \$1.50    \$2.00    \$2.50    \$3.00

Abelia Grandiflora. 18"	...	30"	...
Andromeda.....	12"	15"	18"
Aucuba, Golddust. . . . .	15"	18"	24"
Azalea Hinodigiri. . . . .	10"	12"	...
Azalea Hexe.....	10"	12"	...
Mexican Orange. . . . .	12"	...	18"
Euonymus.....	...	18"	...
Daphne.....	9"	12"	15"
Firethorn Lalandi. . . . .	18"	24"	...
Laurel English.....	18"	24"	30"
Laurestinus, 24" to 30",	\$3.00.		

Price: \$1.50    \$2.00    \$2.50    \$3.00

Nandina Heavenly	...	30"	...
Bamboo.....	...	30"	...
Oregon Grape.....	...	18"	24"
Cotoneaster	...	...	...
Franchetti.....	24"	36"	48"
Boxwood True-	...	...	...
Dwarf.....	12"	15"	...
Bush Honeysuckle . 24"	...	...	...
Spanish Broom, \$1.00 each;	3 for \$2.75.		
Heather, Winter-blooming, Dwarf,	\$1.50 each.		

**EVERGREEN CONIFERS:**

Arborvitae Berkman Golden—15 to 18 in., \$3.50; 18 to 24 in., \$4.00.

Arborvitae Pyramidal—30 to 36 in., \$3.75.

Cedrus Deodora—3 to 4 ft., \$4.50.

Cypress Blue—3 to 4 ft., \$4.50.

Cypress Green—3 to 4 ft., \$4.50.

Cypress Golden—30 to 36 in., \$3.75.

Juniper Phitzer—18 to 24 in., \$3.00; 24 to 30 in., \$4.50; 30 to 36 in., \$5.00.

Juniper Savins—18 to 24 in., \$3.00; 24 to 30 in., \$3.75.

Juniper Tamarix—15 to 18 in., \$3.00; 18 to 24 in., \$3.75; 24 to 30 in., \$4.50.

We have other varieties of conifers not mentioned.

**ROSES**

**PATENTED VARIETIES:**

Pasadena Tournament — New thornless, Cecil Brunner buds that open to good size, deep red flowers, everblooming and fragrant. \$1.50 ea.

Floradora Geranium Red—25-petaled blooms, produced all season, wavy, glossy foliage. \$1.25 each.

Madame Chiang Kai-Shek—Long pointed buds opening into large flowers, yellow. \$2.00 each.

California—Extra large flowers of orange-toned with saffron yellow. \$1.50 each.

Anzac—Very beautiful rose color, very double. \$1.50 each.

Lowell Thomas—Large long pointed buds, flowers of canary yellow. \$2.00 each.

**STANDARD VARIETIES—\$1.00 each; 10 for \$9.00.**

K. A. Victoria—Pearly white double.

Joanna Hill—Orange-yellow buds open to yellow. Very fragrant.

Christopher Stone—Very large scarlet flowers, bright green foliage.

Etoile de Holland—Best known dark red rose.

Mrs. Sam McGredy—Large long pointed buds, opening to a red, copper and orange.

Pres. H. Hoover—A combination of many shades, pink, flame scarlet and yellow.

Talisman—A combination of gold, apricot, pink and carmine.

**CLIMBING ROSES—\$1.00 each; 10 for \$9.00.**

American Pillar—Single red with white eye; mid-season.

Aviateur Bleriot—Bright yellow, single.

Baby Rambler—Red.—Continued

Please write us for prices on hedge plantings.

We have many varieties of Camellias and Rhododendrons in many sizes, ranging from \$2.50 to \$45.00. If you could plan a visit to our sales yard you could no doubt find what you want.

CLIMBING ROSES — Continued

- Dorothy Perkins—Soft shell pink.
- Excelsa—Double, scarlet.
- Gardenia—Yellow buds, creamy flowers with rich yellow.
- Hiawatha—Single crimson.
- Tausendschoen—Almost thornless, soft pink to white.
- Veilchenblau—Bluish flowers in clusters.
- White Dorothy—Small double flowers, creamy white, in clusters.
- Wichuriana—Clusters of white flowers.
- Talisman—Color same as bush rose.

ORIENTAL POPPIES—\$1.00 each; 10 for \$9.00.

- Orientalis—Large crimson scarlet.
  - May Sadler—Large orange with black center.
  - Papaver—Large crimson.
  - Salmon Glow—Large salmon.
  - Sass Pink—Very beautiful, large delicate pink.
- These poppies were grown in one of the best-known gardens in America.

Roses and Oriental Poppies will be shipped prepaid. All Evergreens and Conifers are baled and will be sent shipping charges collect.

Peonies—Red, pink and white. \$1.00 each.

ESPALIER FRUIT TREES

Please turn to inside of back cover for information you will want.

PRICE LIST:

- One-Tier Spread, 6 to 8 feet—  
Height 2 to 3 feet.....\$5.50
  - Two-Tier Spread, 6 to 9 feet—  
Height 3 to 4 feet..... 7.50
  - Three-Tier Spread, 6 to 10 feet—  
Height 4 to 5 feet..... 9.00
  - Four-Tier Spread, 7 to 10 feet—  
Height 5 to 6 feet.....11.00
- Older specimen trees in four, five and six-tier up to \$20.00. Four-tier trees and larger are too large to be shipped because they are too large to go through the door of the freight cars and trucks. Crating and shipping charges are extra.

We have larger trees not listed.

In any case you haven't received our pamphlet on care of Dwarf and Espalier trees, please write us. Dwarf Trees are prepaid.

Prices are subject to change without notice.

DWARF FRUIT TREES

PRICE LIST:

- Small  $\frac{3}{8}$  in. to  $\frac{1}{2}$  in. trunk..... \$2.00 each
- Medium  $\frac{1}{2}$  in. to  $\frac{5}{8}$  in. trunk..... 3.00 each
- Large  $\frac{5}{8}$  in. to 1 in. trunk..... 4.00 each
- Extra large 1 in. trunk and up..... \$5.00 and up

DWARF AND ESPALIER TREES LISTING

Dwarf and Espalier trees bear the same fruit that is grown on the standard fruit trees you are accustomed to seeing. Most of these varieties are described on page one in the standard tree list.

APPLES—Gravenstein; King David; Red Astrachan; Spitzenberg; Red Delicious; Golden Delicious; Yellow Transparent.

CHERRIES—Lambert; Bing; Royal Ann; Ostheimer Weichsel (Pie cherry).

PEARS—Bartlett; Flemish Beauty; Clapps Favorite; Williams Butter Pear.

PEACHES—Early Crawford; Elberta Improved; Improved Rochester; J. H. Hale; Rochester, Slappy (acidless); Strawberry (white flesh).

PLUMS—Beauty; Forest Rose; Monarch; Italian Prune.

We have larger trees not listed.

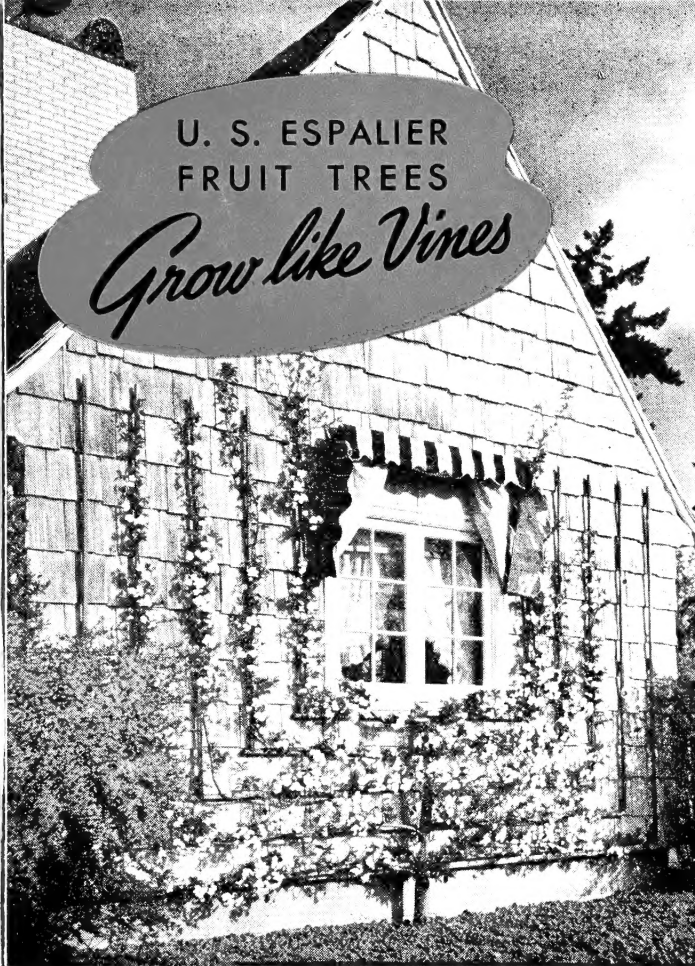
Planting Instructions:

Trees and shrubs should be planted so that the roots will grow into good top loam soil. Dig the hole large enough so the roots will not be crowded. Take clay and bottom soil out of the hole and replace with good soil. Care must be taken in using fertilizer, both commercial and green barnyard, as it will burn the roots if put in direct contact. Usually it is better to mix the fertilizer with the soil above the roots and allow the rain to wash it in, or wash it in with a hose. Many people try to be too good to their trees and kill them with fertilizer.



U. S. ESPALIER  
FRUIT TREES

*Grow like Vines*



...and Provide  
*Delicious Fruit*  
for Your Table



# Fruit and Beauty in a Small Space

**B**EAUTIFY your home with an "orchard" growing on vines! U.S. Espalier Fruit Trees grow in artistic vinelike patterns against any wall, trellis or fence. They yield an abundance of delicious fruit that is often larger and richer than fruit from regular trees. Developed in Switzerland where garden space is limited, these unique trees are now available in America and add a distinctive touch of beauty to any home or garden.

## *Espalier Trees Provide Blossoms In Spring, Fruit In Autumn*

The variety of designs into which Espaliers can be trained is almost unlimited. T-shapes, U-shapes, palmettes, candelabra, horizontal and vertical cordons, pyramids and many other interesting designs can be worked out to fit any space in your yard. Trained around windows, planted against a fence or as a hedge, U. S. Espalier Fruit Trees add new beauty to your home with their gorgeous blossoms, abundant foliage and ripening fruit.

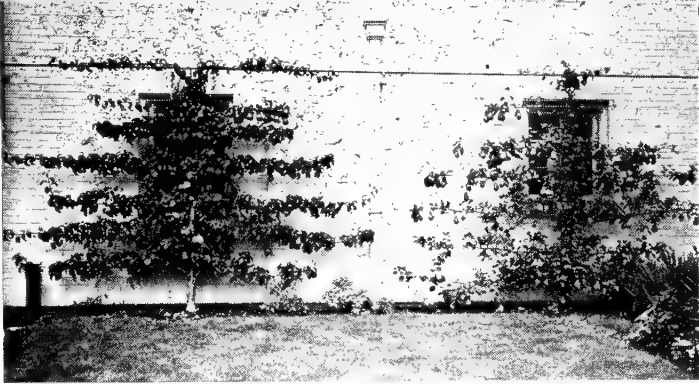
## *Espalier Trees Need Minimum Space And Care*

An Espalier tree needs no more space or care than a rose bush. Genuine U. S. Espalier Fruit Trees are propagated from true dwarf roots and scions which limit their size and growth. They come from the nursery ready-trained, with complete instructions for planting and care.

## *Genuine Dwarf Trees*

**D**WARF trees are grown from the same stock as our espaliered trees, and have most of their advantages. They require very little space—only one-fourth as much as an ordinary tree. Yet they yield an abundance of delicious fruit.

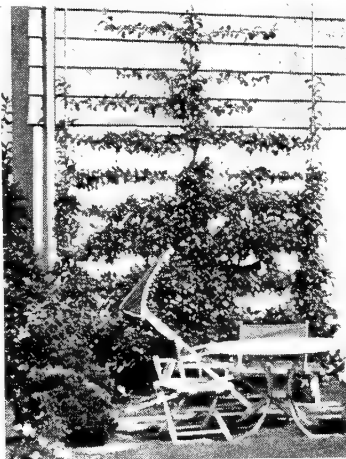
When fully grown, the maximum height of dwarf trees is not over 10 feet, and by proper pruning they can be kept down to six feet. This makes it easy to prune and spray them, and the fruit, which is of true variety, is within reach for easy picking.



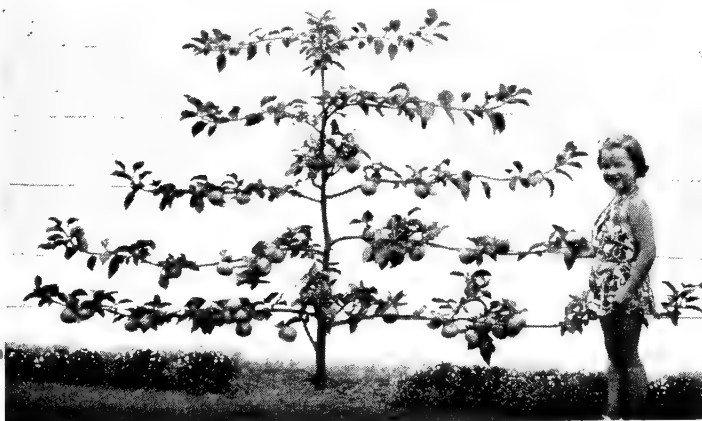
*Above:* Eight-year-old Espalier pear trees planted against a garage. Note heavy crop of large pears.



*Right:* This Espalier tree turned a blank wall space into a beautiful addition to this outdoor living room.



*Below:* Six-year-old Espalier apple tree planted as a background in this yard. Tree is less than five feet tall. Note the large apples.



# 40 VARIETIES of FRUIT from which to Choose

---

## *Apples*

Allington Pepping  
Baldwin  
Golden Renette  
Gravenstein  
King David  
McIntosh  
Red Astrachan  
Red Delicious  
Spitzenberg  
Winter Banana  
Yellow Delicious  
Yellow Transparent

## *Pears*

Bartlett  
Bosc  
Clapp's Favorite  
Comice  
D'Anjou  
Flemish Beauty  
Gellert  
Tongern  
William's

## *Plums and Prunes*

Beauty  
Climax  
Forest Rose  
Italian Prune  
Monarch  
Shiro  
Victoria

## *Cherries*

Bing  
Lambert  
Ostheimer Weichsel  
Royal Anne

## *Peaches*

Crawford  
Elberta  
Hale  
Rochester  
Slappy  
Strawberry

## *Apricots*

Blenheim  
Perfection

U. S. ESPALIER NURSERY CO., Portland 1, Oregon

---

AUTHORIZED DISTRIBUTOR

**VILLA RIDGE NURSERY**  
**11873 S.W. 6th : Barbur Blvd.**  
**PORTLAND 1, OREGON**



**Order Blank**  
**VILLA RIDGE NURSERY**

11333 S. W. 64th Avenue  
 Portland 1, Oregon

NAME \_\_\_\_\_

ADDRESS \_\_\_\_\_

Nearest Express Depot: \_\_\_\_\_

Quantity	Items Wanted	Unit Price		Amount	
See page 7 for terms and instructions for ordering.				Total	

**FRUIT - NUT - SHADE & FLOWERING TREES. BERRY PLANTS - SHRUBS - ROSES**  
**PEONIES - POPPIES - ESPALIER and DWARF FRUIT TREES - BULBS**



## TO OUR CUSTOMERS

In any business there must be a certain number of rules to follow. It is only reasonable that any buyer wants to know whether or not the stock he is buying is true to name, and in case the plant or tree dies, will the nursery replace it, etc. We want you to be pleased. Below is explained many of the things you want to know.

### IN ORDER

We are using extreme care to keep our stock well-tagged, keeping names of stock in the right order.

### ORDERS

In mail orders we guarantee the plants and trees to arrive to the customer in a good growing condition. In any case the shipment is held up and is not in good condition, do not sign the express or freight bill.

### REPLACEMENTS

This season we will replace stock that does not grow, to the extent of one-half its retail value, when the each price is paid, providing we are advised by June 15th and adequate proof is given.

### ORDERING

Customers receiving their stock at the nursery can help considerably and can also avoid waiting by placing their orders a day or more before picking up. You may call in your orders up to 9:00 p.m. Phone CHerry 2928 or mail your orders in, advising us when you will pick them up.

### TERMS

25% cash with order by mail, balance C.O.D. We pay shipping charges to the Rocky Mountains. Beyond please add 10%.

### SUBSTITUTES

In filling small retail orders we will substitute whenever possible unless advised not to by the customer.

### RESPONSIBLE

In no case will the Villa Ridge Nursery be responsible for more than the original selling value of any stock sold.

### CLOSED SUNDAYS

The nursery will be closed Sundays. In order to accommodate our customers we will be open late week days—until after dark during winter months and until dark while the days are long. Wednesday evening we will close at 6:00 p.m. We need your cooperation.

VERNON M. CHAUSSE  
Manager

Villa Ridge Nursery  
11333 S. W. 64th Ave.  
Portland 1, Oregon

~~Sec 562, P. I. and R.~~

**U. S. DEPARTMENT OF AGRICULTURE**

OFFICIAL BUSINESS

PENALTY FOR PRIVATE USE TO AVOID  
PAYMENT OF POSTAGE, \$300

GPO

~~LIBRARY~~

U. S. Department of Agriculture

Washington 25, D. C.