

Historic, Archive Document

Do not assume content reflects current scientific knowledge, policies, or practices.



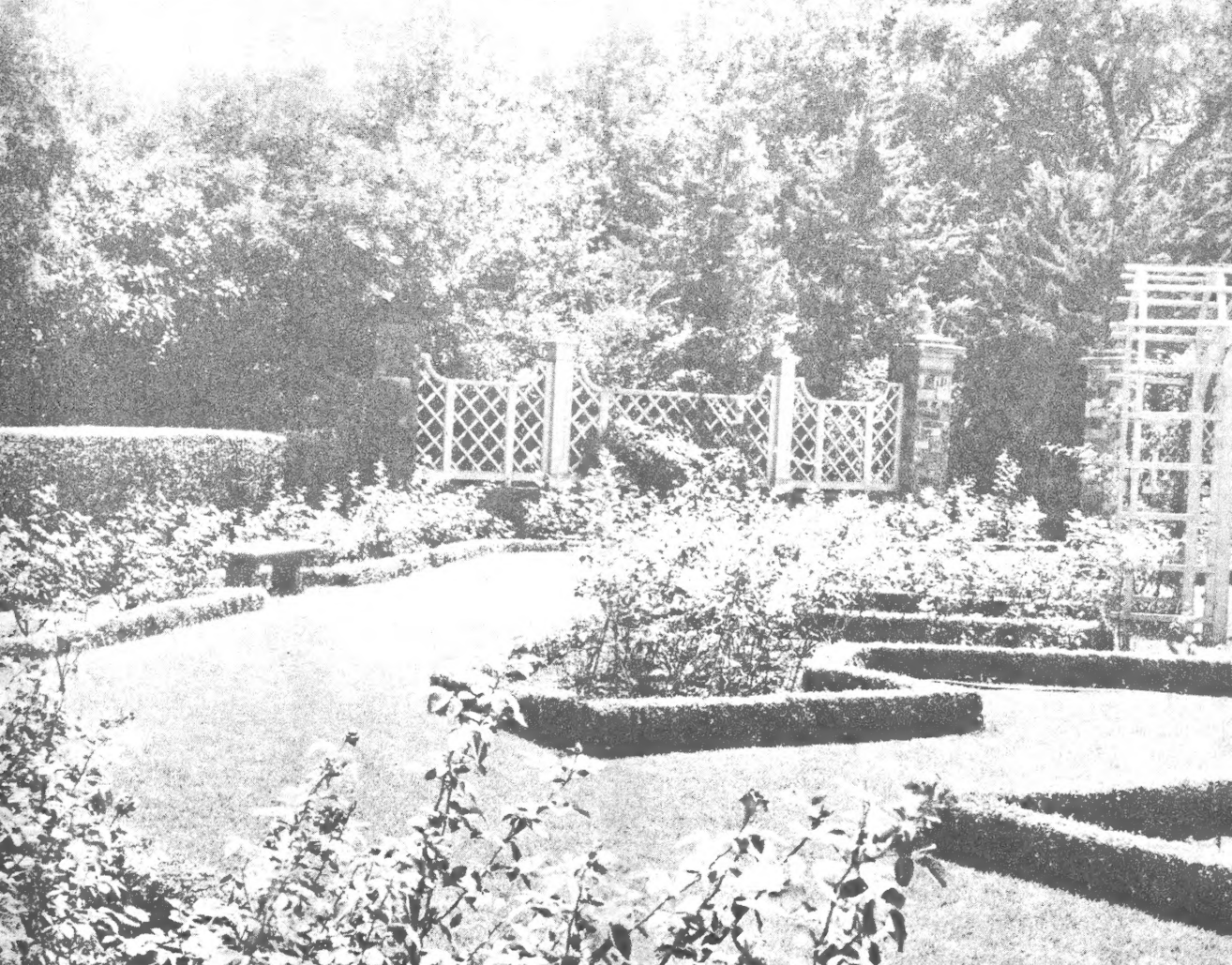
62-83

WAXAHACHIE NURSERY COMPANY

U. S. Department of Agriculture

LIBRARY
RECEIVED
NOV 25 1947

GENERAL CATALOG



FALL 1947 - SPRING 1948



FOREWORD

GUARANTEE

We guarantee our stock to be first class, free from disease and we exercise the greatest care in keeping our stock true to name. We give no warranty, however, express or implied, as to the description, life, or productiveness of our stock, and in no event will we be liable for any amount greater than the original purchase price.

LIABILITY

We shall not be liable for injury to stock from fire, hail, frost or other causes beyond our control. We accept all orders upon the condition that the order shall be void should any injury befall our stock over which we have no control. We are not liable for delays in transit. Our responsibility ceases upon delivery to transportation company.

CLAIMS

No claim for rejections or deficiencies will be entertained unless made within ten days after arrival of stock.

IMPORTANT NOTICE

Please do not mistake any other firm or firms, advertising from Waxahachie, Texas, with the WAXAHACHIE NURSERY COMPANY. We have no connections with any other nursery in Waxahachie, Texas, or elsewhere. We operate under only one name, and that being WAXAHACHIE NURSERY COMPANY.

TERMS AND CONDITIONS OF SALE

1. We do not do an open account business. We operate strictly on a cash basis. To avoid delay in the filling and shipping of your order be sure that your remittance accompanies order in full. Where convenient, use our order blank enclosed with this catalog and order by catalog number as well as name of plant. Write or print legibly so that we may keep errors to a minimum. Thanks.
2. We will ship stock C. O. D. provided 25% of the purchase price accompanies order, balance to come C. O. D.
3. All stock is shipped prepaid to customer. The prices quoted in this catalog are the prices delivered to you. Figure this in when comparing our prices.



Bulb and Perennial Department

DUTCH BULBS

All Dutch bulbs should be planted in the early Fall for best results. Most localities they can be planted as late as the middle of January, however, the earlier they are planted, the more satisfactory the results will be. Plant in beds that have good natural drainage. A fibrous loam supplied well with sharp sand is best. Tulips should be planted about five inches deep and six inches apart. Hyacinths should be planted about six inches deep and six inches apart. Plant Crocus about four inches deep and three inches apart. Daffodils and Narcissus should be planted seven inches deep and six inches apart. The miscellaneous Dutch bulbs we list including the Chinodoxa, Galanthus, Hyacinthus Muscari, Ixias, and Scilla Campanulata should be planted about four inches deep and about three inches apart.

DARWIN TULIPS

These are the most beloved of all Tulips. You will find listed among these Tulips a fine assortment of colors which include several of the newer varieties that can now be sold at the same low price as the standard, old-time favorites. All Darwin Tulips listed below are 11½-12½ cm. in circumference, sure to bloom the first season planted. PRICES ON ALL DARWIN TULIPS: 13c each; 10 for \$1.15; 100 for \$9.95.

- 101—AFTERGLOW: Salmon orange, one of the finest Tulips.
- 102—BARON DE LA TONNAYE: Vivid pink, very tall, fine bedder.
- 103—BARTIGON: Dazzling crimson-scarlet, the most popular Darwin.
- 104—BLEU AIMABLE: Heliotrope-lilac, inside violet, good for bedding.
- 105—CAMPFIRE: Blood-red sport of the well-known Bartigon.
- 106—CLARA BUTT: Apple-blossom pink, an old favorite.
- 107—ECLIPSE: Large tulip of a fine brown-red color. Excellent variety.
- 108—INGLESCOMBE YELLOW: The well-known yellow Darwin tulip.
- 109—KING HAROLD: Deep purple red. Good bedding tulip.
- 110—LA TULIPE NOIRE: (The black tulip). Deep black color.

- 111—MADAME KRELAGE: Bright lavender-pink, margined pale silvery pink.
- 112—OSSI OSWALDA: Creamy white, flushed rose, a very attractive tulip.
- 113—PHILLIP DE COMMINES: Deep velvety black. A real beauty.
- 114—PRIDE OF HAARLEM: Carmine-red, an enormous flower. Best bedder.
- 115—PRINCESS ELIZABETH: Soft deep rose, slightly edged.
- 116—SUNKIST: A newer variety of a deep golden-yellow color.
- 117—WILLIAM COPELAND: Lavender, the earliest of all Darwins.
- 118—YELLOW GIANT: Dark golden yellow, slightly tipped brown.
- 119—ZWANENBURG: Pure white Darwin on a long and strong stem.
- 120—MIXTURE: A mixture of all the above varieties and many other popular varieties and colors.

OTHER TULIPS

- 121—BREEDER TULIPS: Enormously strong and robust tulips, flowering at the same time as Darwin tulips. They are still larger and stronger, some sorts reaching a height of about 35 inches or more. Mixture containing many colors and varieties. Extra Top-Size bulbs. PRICES: 16c each; 10 for \$1.40; 100 for \$11.95.
- 122—COTTAGE TULIPS: (Mayflowering or Single Late Tulips). These excellent garden tulips are noted for their elegant shapes and rich outstanding coloring dominating in yellow and orange shades. Highly recommended for making fine and elegant groups and unrivalled for cut-flowers. Mixture containing many different varieties and colors. Top-Size bulbs. PRICES: 15c each; 10 for \$1.30; 100 for \$10.95.
- 123—PARROT TULIPS: The old Parrot tulips with their weak stems have been completely ousted by the newer varieties, which have strong and robust stems and which are showing the most perfectly formed flowers of great substance. A novelty no garden should be without. A

- mixture of the best varieties and colors. Top-Size bulbs. PRICES: 22c each; 10 for \$1.95; 100 for \$17.95.
- 124—DOUBLE TRIUMPH TULIPS: The giant flowering Peony tulips. These new Double Triumph tulips have extremely large, fully double flowers, on strong and straight stems of about 20 inches high, and are real wonders. Mixture of the best varieties and colors. Extra Top-Size bulbs. PRICES: 14c each; 10 for \$1.25; 100 for \$10.95.
- 125—DOUBLE EARLY TULIPS: Flowering time about the middle of April. These tulips give beautifully fine double flowers, somewhat resembling gigantic peonies. Fine for beds and groups. Mixture of all colors. Best First-Size bulbs. PRICES: 15c each; 10 for \$1.35; 100 for \$11.50.
- 126—SINGLE EARLY TULIPS: These pretty early Tulips flower from about the 10th of April, and keep flowering for over three weeks, bringing much joy into your early Spring garden. Mixture of many varieties and colors. Best First-Size bulbs. PRICES: 14c each; 10 for \$1.25; 100 for \$10.95.

HYACINTHS

Our Hyacinths are perfectly sound and well-ripened. They are sure to give enormously large and strong flowers. The Hyacinth bulbs we offer are the best size for out-door planting and can also be grown as pot plants in the house. Extra-Bedding-Size bulbs, 15-16 cm. in circumference. PRICES: 20c each; 10 for \$1.85; 100 for \$16.95.

- | | |
|---------------------------------------------------------------------------|-----------------------------------------------------------------------------------------------------------------------------------|
| 128—BISMARCK: Porcelain blue, broad large truss. Popular variety. | 135—L'INNOCENCE: The most popular of all. Pure white. |
| 129—CITY OF HAARLEM: Deepest of the yellows, dense spike good form. | 136—LORD BALFOUR: Light purple, tinted lavender-pink. Very early. |
| 130—EDELWEISS: Enormous large truss, very fine newer variety, pure white. | 137—MYOSOTIS: Light blue, very large flowers. |
| 131—GARIBALDI: Brilliant red, one of the earliest bloomers. | 138—PINK PEARL: Large, perfectly formed flower of a beautiful pink color. A remarkable variety, doubtless the best in this color. |
| 132—JAN BOS: The finest deep red hyacinth, and an excellent grower. | 139—PRINCE HENRY: Pale primrose yellow, fine dense spike. |
| 133—KING OF THE BLUES: Rich indigo-blue. | 140—MIXTURE: A mixture of all the above varieties. |
| 134—LA VICTOIRE—Beautiful cherry-red. | |

CROCUS

The prettiest and most popular early Spring flowers. Crocus can be planted in any place and they do not need any special care. Once planted they come back year after year with an increasing richness of flowers. For colorful groups, plant 10 to 25 bulbs in a clump, here and there, under shrubs and bushes, or on the lawn. First-Size bulbs, 9-10 cm. in circumference. PRICE ON ALL CROCUS: 10 for 35c; 100 for \$2.75.

- | | |
|-----------------------------------------------------|-----------------------------------------------------------|
| 141—ENCHANTRESS: Porcelain blue, very large. | 146—PALLAS: Light violet, white striped. One of the best. |
| 142—GOLDEN YELLOW: The finest of all yellow Crocus. | 147—REMEMBRANCE: Lavender blue, fine flowers. |
| 143—KING OF THE BLUES: Dark blue, fine flower. | 148—SNOWSTORM: A large pure white Crocus. |
| 144—KING OF THE STRIPED: White with blue stripes. | 149—MIXTURE: A mixture of all the above Crocus. |
| 145—MONT BLANC: Pure white, tall, very fine. | |

DAFFODILS AND NARCISSUS

Plant Daffodils and Narcissus for permanent beauty. Once planted, they thrive and bloom abundantly for years and years. Unexcelled for cut flowers.

- | | |
|-------------------------------------------------------------------------------------------------------------------------------------------------------------------------------------------------------------------------------------------------------------------------------------------------------------------------------------------------------------------------------|--------------------------------------------------------------------------------------------------------------------------------------------------------------------------------------------------------------------------------------------------------------------------------------------------------------|
| 150—KING ALFRED DAFFODILS: The most popular of all Daffodils, trumpet and perianths being rich golden yellow. Very large, frilled flowers. Best First-Size bulbs. PRICES: 15c each; 10 for \$1.35; 100 for \$11.50. | varieties of double Narcissus. No garden should be without these beautiful, double flowers. Best First-Size bulbs. PRICES: 15c each; 10 for \$1.35; 100 for \$11.50. |
| 151—MIXTURE SHORT CUP NARCISSUS: Star Narcissi with white and yellow colored perianths and striking contrasting cups or crowns, varying from yellow to deep red. Very attractive flowers, fine for garden decorations and for cut flowers. Contains mixture of many different types and combinations. Best First-Size bulbs. PRICES: 13c each; 10 for \$1.15; 100 for \$9.95. | 153—MIXTURE POETICUS NARCISSUS: Small white flowers with bright orange or scarlet eyes. Very free-flowering. Contains mixture of the better varieties. Best First-Size bulbs. PRICES: 10c each; 10 for 85c; 100 for \$7.50. |
| 152—MIXTURE DOUBLE NARCISSUS: A beautiful mixture of the more beautiful | 154—MIXTURE POETAZ NARCISSUS: Bunch flowering Narcissi, giving masses of flowers. Each stem bears from 4 to 6 beautiful flowers, forming little bouquets in itself. Consisting of more than 15 different varieties, all mixed together. Best First-Size bulbs. PRICES: 11c each; 10 for 90c; 100 for \$7.95. |

MISCELLANEOUS DUTCH BULBS

These various Dutch bulbs produce pretty little flowers which are so necessary to complete your garden, and so fine for planting under shrubs, in corners, or in rock gardens. Most sorts are quite hardy and once they are planted need no further attention. They will come back year after year, giving heaps of pleasure in the early Spring.

- | | |
|------------------------------------------------------------------------------------------------------------------------------------------------------------------------------------------------------------------------------|--------------------------------------------------------------------------------------------------------------------------------------------------------------------------------------------------------------------------------------|
| 156—GALANTHUS: (Snowdrops). Beautiful double flowers that will add cheer to every garden. Best First-Size bulbs. PRICES: 10 for 50c; 100 for \$4.50. | ration and giving wonderful cut flowers with long lasting qualities. Flowering time in May. A beautiful mixture of all imaginable colors. Top-Size bulbs. PRICES: 10 for 50c; 100 for \$4.45. |
| 157—HYACINTHUS MUSCARI: (Grape Hyacinths). We offer the Heavenly Blue variety of Grape Hyacinths, which we think is the most popular one, being a fine light blue color. Top-Size bulbs. PRICES: 10 for 25c; 100 for \$2.15. | 159—SCILLA CAMPANULATA: (Foresthya-cinths). Excellent for naturalizing or planting under shrubs, or in the rock garden. Flowering time in May. Mixture of white, blue, and pink. Top-Size bulbs. PRICES: 10 for 35c; 100 for \$2.85. |
| 158—IXIAS: (American Corn Lily). Elegantly shaped little flowers, fine for garden deco- | |

**DOMESTIC BULBS****BEGONIAS, TUBEROUS ROOTED**

The tuberous-rooted begonias we offer below are grown by a specialist in this field. The blossoms are large, well-formed, numerous, and borne on erect stems. Each type we list contains a mixture of white, red, scarlet, rose, pink, yellow, orange, salmon and apricot colors. We do not offer these in separate colors, but only in mixtures. 1½-2 inch diameter bulbs. PRICES: 39c each; 10 for \$3.25.

- 310—CARNATION OR DOUBLE FRILLED: In the form of a lovely Carnation and one of the most beautiful of all the Begonias.
- 311—CRISPA OR SINGLE FRILLED: Produces large profusely frilled and ruffled single flowers. Excellent single variety.
- 312—DOUBLE CAMELLIA FLOWERED: This is the true strain of Camellia flowered doubles, which have been developed through years of hybridization. The colors are true and uniform. The flowers are of the Camellia type and very large. Produces compact blossoms, keeping well when cut.
- 313—HANGING BASKET OR LLOYDII: This is the Pendula or Lloydii type. It is an unsurpassed strain containing double flowers only. Often hundreds of blossoms to a bulb. Excellent for rock garden work.

CALLA LILIES

A beautiful flower that can successfully be grown out-of-doors and that will add a lot of beauty to your garden. Once planted, they will come back each year; or, bulbs can be dug when the foliage dies and replanted the following year. These are steadily gaining in popularity and should not be omitted from your planting.

- 172—AETHIOPICA (LARGE WHITE): Beautiful large white Calla Lily. Contrary to general opinion, these can be grown successfully out of doors. 1½" to 1¾" diameter bulbs. PRICES: 35c each; 10 for \$3.15.
- 176—ARUM PICTUM (BLACK): Very large black flower fading to maroon. No disagreeable odor. 1¾" to 2" diameter bulbs. PRICES: 75c each; 10 for \$6.95.
- 174—RICHARDIA ALBO MACULATA (SPOTTED LEAVED WHITE): Large white Calla Lily, with spotted leaves. 2" to 2½" diameter bulbs. PRICES: 30c each; 10 for \$2.65.
- 173—RICHARDIA ELLIOTIANA (GOLDEN YELLOW): Deep, pure yellow. Does well outdoors. 2" to 2½" diameter bulbs. PRICES: 30c each; 10 for \$2.65.
- 175—RICHARDIA REHMANII (DWARF ROSE-RED): A beautiful dwarf growing red Calla Lily. Very unusual and very scarce. No. 1 Size bulbs. PRICES: 75c each; 10 for \$6.25.
- 177—RICHARDIA REHMANII SUPERBA (PINK): Large flowered, tall grower, light pink. 1½" to 2" diameter bulbs. PRICES: 65c each; 10 for \$5.75.

DAHLIAS

Dahlias are as easily grown as potatoes. Simply plant the strong tubers we offer. Give them plenty of fertilizer and water, and cut beautiful blooms through the Spring, Summer and Fall. The named varieties listed below represent practically all of the best Dahlias grown, many of them retailing much higher than the prices listed here. PRICES ON ALL DAHLIAS: 49c each; 10 for \$4.25.

- 213—A. D. LIVONI: Shell pink, show type.
- 214—AVALON: Decorative type. Large clear yellow.
- 228—JANE COWL: Decorative type. Bronzy buff and old gold.
- 226—JERSEY BEAUTY: Decorative type. Real rose pink. One of the best.
- 236—MRS. I DE VER WARNER: Decorative type. Very large orchid-pink.
- 241—PRIDE OF CALIFORNIA: Decorative type. Vivid red.
- 243—THOMAS A. EDISON: Decorative type. Brilliant royal purple.
- 245—WHITE KING: Decorative type. Best white Dahlia.

GLADIOLI

Nothing you can plant will give you more satisfaction, or more beautiful flowers for the money paid out, than Gladioli. Of the very simplest culture, they grow anywhere, for anybody, and are sure to bloom. Throughout the South the very best results are obtained by planting in the Fall. A bed of Picardy gladioli is a sight never to be forgotten, and it is one of the loveliest and most lasting of all cut flowers. 1¼" to 1½" diameter bulbs. PRICES: 7c each; 10 for 59c; 100 for \$4.95.

- 192—BAGDAD: Large, smoky old rose.
- 193—BEACON: Salmon-Scarlet, cream throat.
- 194—BIT O' HEAVEN: Rich orange, very tall.
- 196—FLAMING SWORD: Early, scarlet-red.
- 199—GOLD DUST: A fine soft clear yellow, early.
- 201—KING ARTHUR: Large ruffled rosy lavender.
- 203—MAID OF ORLEANS: Perfect creamy white, early.
- 205—MARGARET FULTON: Large rose-pink.
- 207—PHYLLIS McQUISTON: Large pure pink, lighter throat.
- 206—PICARDY: Sensational shrimp-pink. Best gladioli.
- 211—WANDA: Fine cream sort of Picardy.
- 212—MIXTURE: Mixture of all the above beautiful colors and varieties and many more.

GLOXINIAS

We offer the following varieties of Gloxinias in nice size bulbs, 1¼" to 1½" in diameter. Delivery on Gloxinias cannot be made until January. PRICES ON ALL GLOXINIAS: 45c each; 10 for \$3.95.

- 320—BROWN'S RED: Beautiful, vivid red.
- 321—EMPEROR FREDERICK: Upright flowers, scarlet with white band.
- 322—EMPEROR WILLIAM: Upright, deep violet, banded by a white margin.
- 323—OTHELLO: Stunning, deep purple.



RANUNCULUS

Splendid cut flowers, in a variety of lovely colors and mixture. Plant with the claws of bulbs down. Size of Ranunculus we offer are all one inch diameter and up. PRICES ON ALL RANUNCULUS: 15c each; 10 for \$1.25; 100 for \$11.25.

330—ORANGE
331—PINK

332—RED
333—WHITE

334—YELLOW
335—MIXTURE

MISCELLANEOUS DOMESTIC BULBS

- 180—AMARYLLIS BELLADONNA: (Resurrection Lily). One of the finest strains of Amaryllis in America. Rose-pink, a real floral treat. Large bulbs, 2½" to 3" in diameter. PRICES: 39c each; 10 for \$3.25.
- 171—ANEMONES: (Monarch de Caen, Mixture of colors). One of the most showy flowers in a gorgeous assortment of colors. ¾" diameter and up. PRICES: 9c each; 10 for 75c; 100 for \$6.95.
- 301—BLETILLA HYACINTHA (HARDY CHINESE ORCHID): Lavender. Hardy under all conditions. It bears 7 to 8 orchid-shaped flowers on a stem 12 inches tall. Good in pots, frequently used for corsages. PRICES: 85c each; 10 for \$7.25.
- 302—BLETILLA HYACINTHA (HARDY CHINESE ORCHID): White. Same as above, only white. PRICES: 85c each; 10 for \$7.25.
- 303—GALTONIA CANDICANS (SUMMER HYACINTH): Sometimes called Hyacinthus Candicans. Large, pure white, well-shaped flowers on four foot stems. PRICES: 15c each; 10 for \$1.35; 100 for \$11.50.
- 304—GUERNSEY LILY (RED RAIN LILY): Strictly at home in the South. In early Fall they throw tall spikes of bright red flowers resembling giant spiders. No. 1 size bulbs. PRICES: 15c each; 10 for \$1.35; 100 for \$11.50.
- 305—LILIUM REGALE (REGAL LILY): The Regal Lily is one of the most beautiful of the true, trumpet-shaped white lilies. Its buds are beautifully tinged with rosy purple on the outside, and the centers of the open flowers are glowing yellow. Grows to three to five feet high and about the middle of June, bears clusters of three to fifteen fragrant flowers about eight inches long, held horizontally. 5" to 6" circumference. PRICES: 20c each; 10 for \$1.75.
- 306—TRIGRIDIA PAVONIA (MEXICAN SHELL FLOWER): Beautiful tri-petaled flowers in a mixture of scarlet, rose, yellow, and orange. Exotically marked in contrasting colors. 1-inch size bulbs. PRICES 10c each; 10 for 85c; 100 for \$7.95.
- 307—TRITELEIA UNIFLORA VIOLACEA (STAR FLOWER): Produces star-like violet blue flowers in early Spring. Excellent for rock gardens, borders, or naturalizing. Grows to about 12 inches tall, very floriferous, and hardy. Large Bulbs. PRICES: 6c each; 10 for 50c; 100 for \$4.25.
- 181—TUBEROSES: We offer the genuine Mexican Tuberoses. No. 1, blooming size bulbs. PRICES: 8c each; 10 for 70c; 100 for \$6.25.

PERENNIALS

CANNAS

Nothing adds more color to a planting than a choice bed of Cannas, and they come back year after year, getting better all the time. The varieties we offer are the best and the most handsome in commerce today. Our Cannas are all strong, 3-5 eye divisions. PRICES ON ALL CANNAS: 19c each; 10 for \$1.65; 100 for \$13.95.

- 263—APRICOT: Green foliage, with lovely heads of apricot. One of the finest Cannas. Grows to 3½ feet tall.
- 264—CITY OF PORTLAND: The leading pink variety, having green foliage. Has large flowers of watermelon color. Grows to 4 feet tall.
- 265—EUREKA: Creamy white flowers, green foliage.
- 266—HUNGARIA: Heavy heads of pink flowers, green foliage. One of the finest pinks. Grows to 4 feet tall.
- 267—MME. CROZY: A dwarf, one of the finest little Cannas. Large heads of red with variegated border of orange.
- 268—RED KING HUMBERT: Heart-shaped leaves with purple-madder over bronze. Plants are crowned with immense heads

of orchid-like velvety orange-scarlet, rose-tinted and blossoms are incomparably beautiful. Grows to about 5 feet tall.

- 269—RICHARD WALLACE: Green foliage, canary-yellow flowers. One of the best yellows. Grows to 4 feet tall.
- 271—THE PRESIDENT: Glowing scarlet, blue-green foliage. Extra large trusses of brilliant red color. Fine red Canna, foliage free from disease. Grows to 4 feet tall.
- 270—WYOMING: Purple foliage. True-orchid flowering variety with magnificent orange colored flower. Grow to 5 feet tall.
- 272—YELLOW KING HUMBERT: Deep rich yellow, heavily spotted and flecked with deep red. Green foliage. Grows to 5 feet tall.

HEMEROCALLIS (DAY LILY)

Aside from these plants being very attractive in gardens, they are also very striking in floral arrangements, having good lasting qualities. PRICES ON ALL HEMEROCALLIS: 29c each; 10 for \$2.49; 100 for \$21.95.

- 350—CINNABAR: Cadmium-yellow, sprinkled rose-brown.
- 351—DR. REGEL: Pure orange-yellow with scarlet eye.
- 352—FLAVA: Clear lemon-yellow. Sweet scented.
- 353—GYPSY: Light orange.

- 354—MIDDENDORFFI: A very Striking variety, with huge, rich, orange-yellow flower.
- 355—MIKADO: Deep orange, maroon blotch.
- 356—MRS. J. R. MANN: Deep yellow with fluted petals.
- 357—ROYAL: Golden yellow, fragrant.



IRIS (BEARDED OR GERMAN)

These Bearded or German Iris are the Iris that are becoming so popular with lovers of Iris. Do not confuse these with the old-time Flags seen growing in your Grandmother's garden. They are as different from them as daylight is from dark.

STANDARD VARIETIES

- | | |
|-----------------------------------------------------------------|----------------------------------------------------------------------|
| 283—CRYSORO: Early, rich deep yellow. | 287—L. A. WILLIAMSON: Two shades of purple with bright yellow beard. |
| 284—ISOLDI: Light pink standards, falls rose. | 289—PRESIDENT THYERS: Tall two-tone purple. |
| 285—JUANITA: Tall medium blue. Beautiful specimen. | 290—PHEBUS: A beautiful soft cream. |
| 286—KOCHII: Early dark silky purple, very fragrant. A favorite. | 291—PIONEER: Late dark purple, very beautiful. |

PRICES ON STANDARD VARIETIES OF IRIS: 15c each; 10 for \$1.35; 100 for \$12.50.

NEWER VARIETIES

- | | |
|---------------------------------------------------------------|------------------------------------------------------------------------|
| 292—ABELARD: Very early, rich bright mahogany red. | 296—LOS ANGELES: Giant white stitched in blue. |
| 293—CALIFORNIA GOLD: A thrilling deep yellow. | 297—MARY GEDDES: A blend of rose and yellow. Dykes Medal winner. |
| 294—CROWN JEWEL: Burnt orange effect. Very bright. | 298—PICADOR: Yellow standards with velvety dark red falls. A favorite. |
| 295—INDIAN CHIEF: Gorgeous red tone. One of the most popular. | 299—ROSY WINGS: Soft pink blend. Dykes Medal winner. |

PRICES ON NEWER VARIETIES OF IRIS: 25c each; 10 for \$2.15; 100 for \$18.95.

PEONIES

Peonies will grow and do well in the South. Success depends upon selection of proper varieties, and buying strong roots. The varieties we offer are specially adapted in the South, and they will bloom for you, if planted before February 15th. All Peonies listed below are strong divisions with 3 to 5 eyes each. PRICES ON ALL PEONIES: 69c each; 10 for \$5.95.

- | | |
|--------------------------------------------------------------------------------------------------------------------------------------------|--------------------------------------------------------------------------------------------------------------------------------|
| 253—DUCHESS DE NEMOURS: Ivory-white, large, crown type. Fragrant, medium early to mid-season bloomer. Vigorous, good stems, blooms freely. | 256—FESTIVA MAXIMA: Very large, white, flecked carmine. Rose type, fragrant, early, tall. |
| 250—DUKE OF WELLINGTON: Large, sulphur becoming pure white. Bomb type, blooms freely. | 259—KARL ROSENFELD: Large, velvety dark crimson. Semi-rose type. Mid-season, blooms freely. |
| 254—EDULIS SUPERBA: Large, deep rose-pink. Very early, crown type. Very fragrant, growth strong, vigorous. Tall, blooms freely. | 251—MME. DE VERNEVILLE: Center slightly blush becoming pure white, flecked with carmine. Bomb type, very early. Blooms freely. |
| 255—FELIX CROUSSE: Large, rich even ruby red. Compact bomb type, mid-season bloomer. Blooms freely. | 258—OCTAVE DEMAY: Very large, delicate hydrangea-pink. Crown type, early bloomer. Blooms freely, fragrant. |
- 260—SPECIAL PEONY COLLECTION: A first class mixture of one dozen peonies in a beautiful array of colors and types. This collection will include as many different types and colors as possible, to give you a variety of blooms. Order as many of these collections as you wish. All peonies in this collection are strong, 3-5 eye divisions. PRICE ON COLLECTION OF 12 PEONIES: \$4.95 per collection.

PHLOX (HARDYPHLOX)

These beautiful plants are the most popular of all hardy Perennials. The varieties we offer have been tried and tested. They will bloom throughout the South. Ours are strong plants sure to bloom the first year; therein lies the success of Phlox.

- | | |
|-------------------------------------------------------|----------------------------------------------------|
| 360—AFRICA: Brilliant carmine-red with blood-red eye. | 364—GRAF ZEPPELIN: White with vermilion-red eye. |
| 361—BORDER GEM: Large violet blue, outstanding. | 365—LEO SCHLAGETER: Glowing brilliant scarlet red. |
| 362—DAILY SKETCH: Salmon-pink with vivid crimson eye. | 366—LILLIAN: Choice salmon-pink. |
| 363—ENCHANTRESS: Bright salmon-pink, darker eye. | 367—MRS. JENKINS: Early white. |
| | 368—R. P. STRUTHERS: Fine rosy red. |
| | 369—THOR: Deep shade of salmon-pink. |

PRICES ON ALL HARDY PHLOX: 29c each; 10 for \$2.49; 100 for \$21.95.



Fruit Department

No home is complete without a few fruit trees, grape vines, or berry plants growing around the yard. With proper planning and care it is possible to grow a variety of fruit on a comparatively small place. By doing so, one not only adds attractiveness and value to the home, but also derives fresh fruit during the season. True, that no home is too small for an orchard or a few fruit trees; neither is a farm or ranch too large for an orchard planting. There are three good reasons for planting an orchard on your farm. First, it will be a source of food for the home, giving fresh fruits in season and they can also be canned to offer cooked fruits throughout the year. Second, it will be a source of income that will help the financial problems of a farm. Third, it will help complete the farm and add to the value of it.

PEACHES

The peach is probably the most widely grown of all fruits, being produced over a wide variety of soils. No home should be without one or more trees of this valuable fruit. Select varieties to give a succession of ripening dates. Plant heavily in commercial orchards. Peaches should be planted 25 feet apart or 69 trees to the acre. The following list of varieties we offer are grouped according to the ripening dates. These dates are only estimates, as they will vary in the different sections of the country and under different climatic conditions.

PRICES ON ALL PEACH TREES

	Each	Ten	Hundred
Size, 2 to 3 feet.....	\$.55	\$ 4.95	\$45.00
Size, 3 to 4 feet.....	\$.70	\$ 6.25	\$57.50
Size, 5 to 6 feet.....	\$1.15	\$10.45	\$95.00

MAY PEACHES

- ALEXANDER:** Above medium in size, round, deep suture, greenish white, almost covered with red. Flesh juicy and tender, sub-acid. Quality good. A valuable market sort owing to its earliness and handsome color. Trees are prolific and bear when young. Ripens about May 20-25. Semi-cling. No. 501, 2-3'; No. 502, 3-4'; No. 503, 5-6'.
- EARLY WHEELER:** Also known as Red Bird Cling. The largest of the early varieties and most attractive. Tree is a fine grower but only a reasonably good bearer over most sections. Fruit is white with a red blush; quality medium. A good shipper, and because of its size, attractiveness, and time of ripening it is always in good demand. Ripens about May 20-25. Cling. No. 531, 2-3'; No. 532, 3-4'; No. 533, 5-6'.
- JAPAN DWARF:** Tree dwarf, very prolific. Skin and flesh red, freestone of best quality. Ripens last of May. Fine for Rio Grande Valley and warmer parts of country. No. 576, 2-3'; No. 577, 3-4'; No. 578, 5-6'.
- MAYFLOWER:** An early variety that has large well colored fruit of fine quality. Its earliness, high color, and excellent quality are strong points in its favor. Ripens about May 20-25. No. 591, 2-3'; No. 592, 3-4'; No. 593, 5-6'.

JUNE PEACHES

- ARP BEAUTY:** A variety of Texas origin. Similar to Elberta but ripening a month earlier. The best early yellow peach. Freestone. Excellent commercial variety. No. 504, 2-3'; No. 505, 3-4'; No. 506, 5-6'.
- BELLE OF GEORGIA:** Large freestone; white with red cheek. Fine quality, ripens two weeks before Elberta. No. 510, 2-3'; No. 511, 3-4'; No. 512, 5-6'.
- CARMAN:** Almost identical with Mamie Ross except that it is a freestone. Skin very tough. Flesh tender and white and of fine flavor. One of the hardiest in bud. No. 513, 2-3'; No. 514, 3-4'; No. 515, 5-6'.
- EARLY ELBERTA:** Identical to Elberta, except two weeks earlier. No. 522, 2-3'; No. 523, 3-4'; No. 524, 5-6'.
- EARLY HILEY:** Large creamy white and red freestone. Firm, juicy and sweet. Merits a trial. No. 528, 2-3'; No. 529, 3-4'; No. 530, 5-6'.
- GOLDEN JUBILEE:** Beautiful large yellow freestone of excellent quality. Sweet and juicy. Ripens 25 days before Elberta. No. 540, 2-3'; No. 541, 3-4'; No. 542, 5-6'.
- HALEHAVEN:** Fruit large, round, red and yellow freestone of the finest quality. Ripens about 17 days before Elberta. No. 546, 2-3'; No. 547, 3-4'; No. 548, 5-6'.
- HOBSON:** Fruit large, white with red cheek; flesh sweet and delicious. A valuable peach and good shipper. Cling. No. 567, 2-3'; No. 568, 3-4'; No. 569, 5-6'.
- HONEY:** Medium sized, skin marbled white and red. Flesh white, tender, juicy and sweet. Especially adapted to Rio Grande Valley, Coastal section, and warmer parts of the country. No. 570, 2-3'; No. 571, 3-4'; No. 572, 5-6'.
- MAMIE ROSS:** Large, white, almost covered with carmine. Flesh white, juicy, and of good quality. One of the best for family use and probably the best early commercial variety. Semi-cling. Ripens last of June. No. 585, 2-3'; No. 586, 3-4'; No. 587, 5-6'.
- PALLAS:** Rich, sweet and fine grained. Ripens about June 10th. Excellent for Rio Grande Valley, Lower Louisiana, Mississippi and Florida. No. 597, 2-3'; No. 598, 3-4'; No. 599, 5-6'.



JULY PEACHES

- CHAMPION:** Large, creamy white with light blush. Very hardy and a favorite wherever grown. Freestone. Ripens long season through June and July. No. 516, 2-3'; No. 517, 3-4'; No. 518, 5-6'.
- ELBERTA:** Probably the widest and best known of any peach grown. The best commercial variety and most valuable for home canning. Large, golden yellow with red cheek. Very handsome. Flesh yellow, flavor sub-acid and good quality. Tree vigorous and productive. Adapted to a wide range. Freestone. The old standby. No. 525, 2-3'; No. 526, 3-4'; No. 527, 5-6'.
- INDIAN BLOOD CLING:** This is the genuine, old-fashioned, large cling. Creamy white, mottled deep red. Flesh juicy and rich. No. 573, 2-3'; No. 574, 3-4'; No. 575, 5-6'.
- J. H. HALE:** Free, large in size and of somewhat better flavor than Elberta. Deep red skin, yellow meated. An excellent variety from every standpoint. Ripens a few days later than Elberta. No. 579, 2-3'; No. 580, 3-4'; No. 581, 5-6'.
- MINNIE STANFORD:** The queen of the peach family. This peach is large to a very large, yellow, oblong. Fruit buds are exceedingly hardy. Quality of fruit unsurpassed. Cling. Ripens last of July. No. 588, 2-3'; No. 589, 3-4'; No. 590, 5-6'.
- TEXAN:** Large, oblong, white with deep red cheek. Flesh white with red at stone. Firm and of excellent quality and flavor. Tree is a good grower and prolific. Cling. No. 609, 2-3'; No. 610, 3-4'; No. 611, 5-6'.

AUGUST PEACHES

- AUGBERT:** Yellow freestone, like Elberta. Ripens in August. No. 507, 2-3'; No. 508, 3-4'; No. 509, 5-6'.
- FRANK:** Very similar to Elberta, but much larger, and a big improvement on that fine variety. No. 534, 2-3'; No. 535, 3-4'; No. 536, 5-6'.
- OLD MIXON CLING:** Large, round, color creamy white with red cheek. Flesh creamy white, melting, juicy and rich. Flavor sub-acid and very pleasant. Tree a vigorous grower and fairly productive. Cling. No. 594, 2-3'; No. 595, 3-4'; No. 596, 5-6'.

SEPTEMBER PEACHES

- HART CLING:** By far the best late cling. Very large, creamy white and blush. Juicy, sweet and delicious. Ripens middle of September when peaches are scarce. No. 549, 2-3'; No. 550, 3-4'; No. 551, 5-6'.

COASTAL VARIETIES

- CARMAN:** See preceding description.
HONEY: See preceding description.
PALLAS: See preceding description.

SEMI-COASTAL VARIETIES

- MAMIE ROSS:** See preceding description.
OLD MIXON CLING: See preceding description.

PLUMS

Next to the Peach, the Plum is the most important fruit for the South and Southwest. In the varieties shown below, you will find varieties for all parts of the country, from Rio Grande Valley to the Northern part of the United States. If you are not certain what varieties will do best in your locality, leave the selection up to us, and we will send you trees that will bear fruit in your locality. Plant Plums 20 feet apart or 108 trees to the acre.

PRICES ON ALL PLUM TREES

	Each	Ten	Hundred
Size, 2 to 3 feet.....	\$.65	\$ 5.95	\$54.95
Size, 3 to 4 feet.....	\$.90	\$ 7.95	\$69.95
Size, 5 to 6 feet.....	\$1.35	\$11.95	\$94.95

MAY PLUMS

- METHLEY:** The earliest and best-flavored plum. Ripens about May 10th. Color bluish red and meat blood red. Fruit sells for a higher amount on the market than the other varieties. No. 633, 2-3'; No. 634, 3-4'; No. 635, 5-6'.

JUNE PLUMS

- ABUNDANCE:** (Botan). A beautiful lemon yellow with cherry red. Large, tapering to a point. Flesh yellow, melting and rich. Aromatic. No. 612, 2-3'; No. 613, 3-4'; No. 614, 5-6'.
- BRUCE:** This plum is largely planted in South Texas, as it seems to do better in that section than elsewhere. Ripens early, large red, fine quality. Ships extra well. No. 618, 2-3'; No. 619, 3-4'; No. 620, 5-6'.
- SHIRO:** One of the most desirable plums grown over large area. Large to very large, oblong, clear yellow. Quality unsurpassed. Ripens about June 30th in Central Texas. No. 639, 2-3'; No. 640, 3-4'; No. 641, 5-6'.
- SIX WEEKS:** Glowing red, large, meaty, of good quality. A very fine early plum for either commercial or home orchard. Tree is a good grower and profuse bearer. No. 642, 2-3'; No. 643, 3-4'; No. 644, 5-6'.



JULY PLUMS

- AMERICA:** Hybrid of Botan and Robinson. One of the very best for cooking. Large, yellow, changing to red where exposed to sun. Tree a good grower and very productive. No. 615, 2-3'; No. 616, 3-4'; No. 617, 5-6'.
- BURBANK:** Large greenish yellow covered with purplish red. Flesh yellow, sub-acid, quality good. Tree vigorous, spreading, and very productive. No. 624, 2-3'; No. 625, 3-4'; No. 626, 5-6'.
- GOLD:** Fruit large, yellow with some red. Flesh firm and of good quality. Tree is very productive. A good market variety. No. 630, 2-3'; No. 631, 3-4'; No. 632, 5-6'.
- SANTA ROSA:** Quality of fruit is unequalled. Plums are deep purplish crimson. Ripens two weeks earlier than the Burbank. No. 636, 2-3'; No. 637, 3-4'; No. 638, 5-6'.
- WICKSON:** Very large, dark red, firm and of finest quality. Tree is an upright grower and very productive. One of Burbank's hybrids. No. 645, 2-3'; No. 646, 3-4'; No. 647, 5-6'.

AUGUST PLUMS

- BLUE DAMSON:** Fruit large, dark purple, fine flavor. Highly esteemed for preserving and jams. Tart and separates partly from stone. A moderate grower. No. 621, 2-3'; No. 622, 3-4'; No. 623, 5-6'.

COASTAL VARIETIES

In that section of the South and Southwest Texas where a general assortment of Plums is not adapted, we recommend that selections be made from the varieties named as follows: Abundance, Burbank, Gold, and Six Weeks.

HANSEN HYBRID PLUMS

The varieties of plums shown below were originated by Prof. E. N. Hansen, one of the leading horticulturists of the United States. The outstanding features of these plums are:

- (1) Very hardy; will withstand any cold or heat.
- (2) Very productive; bear every year.
- (3) Bear early, frequently set crop year planted.
- (4) Bloom very late; escapes frost.
- (5) Stick on tree, hard to blow off; therefore fine for West Texas.

If you have had difficulty growing plums, try these; you will get plenty of fruit.

- COMPASS CHERRY:** Cross between Cherry and Plum. Fruit dark red, almost black, good size. Sure bearer. Good quality and excellent for cooking, preserving and jellies. Makes fine pies. Ripens in June. No. 651, 2-3'; No. 652, 3-4'; No. 653, 5-6'.
- HANSKA:** Cross between Apricot and Plum, from China. Very hardy, beautiful color, very fragrant, has strong apricot flavor. Bears young and is very prolific. No. 654, 2-3'; No. 655, 3-4'; No. 656, 5-6'.
- OPATA:** A beautiful sight when in bloom and is very fragrant. Fruit medium; purplish red, splashed with green; flesh greenish in color and very pleasant in flavor. Clingstone. Ripens last of June and first of July. Tree hardy, spreading grower, and bears quite young. No. 657, 2-3'; No. 658, 3-4'; No. 659, 5-6'.
- SAPA:** Tree somewhat dwarfish, thrifty, and often sets fruit in the nursery row at one year. Fruit large, dark purple with greenish splotches; flesh rich, dark purple-red, of rich flavor and with small pit. Excellent for cooking purposes. Clingstone. Ripens last of July. No. 660, 2-3'; No. 661, 3-4'; No. 662, 5-6'.

APRICOTS

The apricot is one of the most delicious fruits, and is as hardy as the peach and plum. Apricots have a tendency to bloom early, and get nipped by late freezes and frosts. However, the varieties we offer are late bloomers, and will usually bear a crop. Apricots seem to do better planted in the back yard, or somewhere where too much cultivation is not carried on. When they do make a crop they make up for lost time. Try some. Plant Apricots 18 feet apart, or 131 trees to the acre.

PRICES ON ALL APRICOT TREES

	Each	Ten	Hundred
Size, 2 to 3 feet.....	\$.75	\$ 6.75	\$ 62.75
Size, 3 to 4 feet.....	\$.95	\$ 8.75	\$ 79.95
Size, 5 to 6 feet.....	\$1.45	\$12.95	\$117.50

- CLUSTER:** Medium size, golden yellow, of excellent flavor. Originated in Texas from seed of Russian Apricot. Ripens in June. No. 668, 2-3'; No. 669, 3-4'; No. 670, 5-6'.
- EARLY GOLDEN:** Medium size, orange yellow fruit. Sweet, juicy, and highly flavored. A fine variety for Southern plantings. Bears last of May. No. 674, 2-3'; No. 675, 3-4'; No. 676, 5-6'.
- MOORPARK:** One of the largest. Orange with red, firm, juicy, and with rich flavor. Very productive. Free. Bears in June. No. 665, 2-3'; No. 666, 3-4'; No. 667, 5-6'.
- SUPERB:** A variety better adapted in Ozark section of the United States. Large, best quality. Late season. No. 671, 2-3'; No. 672, 3-4'; No. 673, 5-6'.

**CHERRIES**

Cherries have proven profitable over certain sections of the Southwest, and where such is the case this fruit should be planted extensively. Certain varieties have a wider range of adaptability than others. Assistance will gladly be given in the selection of varieties when desired. Plant cherries 18 feet apart or 131 trees per acre.

PRICES ON ALL CHERRY TREES

	Each	Ten	Hundred
Size, 2 to 3 feet.....	\$1.25	\$11.25	\$ 99.95
Size, 3 to 4 feet.....	\$1.75	\$15.75	\$147.50
Size, 4 to 5 feet.....	\$2.25	\$21.00	\$189.50

BLACK TARTARIAN: Sweet cherry. Large size of purplish black, excellent flavor. This is the large California Cherry that is sold everywhere on the market. Worthy of a trial. No. 683, 2-3'; No. 684, 3-4'; No. 685, 4-5'.

EARLY RICHMOND: Medium size, dark red, juicy, rich acid flavor. Hardy and reliable. One of the best early sour cherries. Bears in May. No. 686, 2-3'; No. 687, 3-4'; No. 688, 4-5'.

MONTMORENCY: Large red, ripening ten days after Early Richmond. Tree slow grower but prolific. Valuable sour cherry. Bears in early May. No. 677, 2-3'; No. 678, 3-4'; No. 679, 4-5'.

NEW CENTURY: We take pleasure in recommending this fine cherry for Texas and Southwest planting. Originated in Grayson County. Fruit medium to large, bright red, juicy, tart, fine flavored. Splendid for eating off the tree, cooking and pies. Tree strong grower and bears abundantly. If you like cherries, try New Century. No. 680, 2-3'; No. 681, 3-4'; No. 682, 4-5'.

APPLES

Apples can be successfully grown in the Southwest, if the right varieties are grown. The varieties shown below will thrive and bear fruit all over the South and Southwest; be sure and plant several apple trees around your premises. Plant Apples 40 feet apart, or 27 trees to the acre.

PRICES ON ALL APPLE TREES

	Each	Ten	Hundred
Size, 2 to 3 feet.....	\$.60	\$ 5.25	\$ 49.50
Size, 3 to 4 feet.....	\$.75	\$ 6.50	\$ 57.50
Size, 5 to 6 feet.....	\$1.15	\$10.35	\$ 89.50

SUMMER APPLES

EARLY HARVEST: Medium, flat, pale yellow. A good grower and bearer. Ripens in May. No. 717, 2-3'; No. 718, 3-4'; No. 719, 5-6'.

FLORENCE CRAB: This is the best crabapple for the South and Southwest. Medium size, yellow and red, very juicy and acid. Makes best jelly known. Ripens in August. No. 720, 2-3'; No. 721, 3-4'; No. 722, 5-6'.

RED JUNE: Medium, oblong, flesh tender and white. Excellent for table use. One of the best early apples. Brings top market price. Ripens in June. No. 729, 2-3'; No. 730, 3-4'; No. 731, 5-6'.

YELLOW TRANSPARENT: A Russian variety. Tree hardy and moderately vigorous. An early and good bearer. Fruit small, clear white turning to pale yellow. Flesh white, tender, juicy, sub-acid. Ripens in September. No. 744, 2-3'; No. 745, 3-4'; No. 746, 5-6'.

FALL APPLES

RED DELICIOUS: This famous apple does well all over the South and Southwest. Large, juicy and highly flavored. No. 726, 2-3'; No. 727, 3-4'; No. 728, 5-6'.

YELLOW DELICIOUS: Very similar to Red Delicious but seems to bear better in some localities. Of the same high quality. No. 741, 2-3'; No. 742, 3-4'; No. 743, 5-6'.

WINTER APPLES

ARKANSAS BLACK: Large, very dark red, flesh yellow, sub-acid, and a long keeper. One of the best for Pecos Valley and West Texas. Ripens in September and October. No. 714, 2-3'; No. 715, 3-4'; No. 716, 5-6'.

JONATHAN: Medium light yellow covered with red stripes. Flesh tender and juicy. Excellent for table and market. Favorite everywhere. Ripens in September. No. 723, 2-3'; No. 724, 3-4'; No. 725 5-6'.

WINESAP: An old favorite. Tree vigorous. Fruit medium, smooth surface, dark red on yellow ground. Flavor rich, acid. Quality probably the best for market, table use, and cooking. Very desirable on account of its productiveness. One of the best apples grown. No. 738, 2-3'; No. 739, 3-4'; No. 740, 5-6'.



PERSIMMONS

Persimmons are destined to become one of the leading fruits of the Cotton Belt and lower South. This may seem an extravagant statement, but as soon as there is enough of the fruit on the market for the people to learn the richness and deliciousness, the demand will increase far in excess of the supply. Where the Persimmon is known on the market, it will have ready sale.

PRICES ON ALL PERSIMMON TREES

	Each	Ten	Hundred
Size, 2 to 3 feet.....	\$1.75	\$14.95	\$135.00
Size, 3 to 4 feet.....	\$2.25	\$19.95	\$175.00
Size, 4 to 5 feet.....	\$2.75	\$24.95	\$215.00

EUREKA: Soft fruit, can be eaten as a salad fruit. Hardy and bears profuse crops of fruit which look like big red tomatoes. Almost seedless. Bears in November and December. No. 770, 2-3'; No. 771, 3-4'; No. 772, 4-5'.

TANE NASHI: The best known and most popular variety; large, conical, pointed. Early bearer, early ripening and productive. Seedless. No. 764, 2-3'; No. 765, 3-4'; No. 766, 4-5'.

YEMON: Large, flat, tomato-shaped. Somewhat four-sided. Skin light yellow changing to dull red, mottled with orange-yellow. Flesh deep, dull red, brown around the seeds of which there are usually a few. No. 773, 2-3'; No. 774, 3-4'; No. 775, 4-5'.

PEARS

We cannot recommend too strongly the advisability of planting pear trees for both home and commercial orchards. By exercising care in choosing varieties, there is hardly a section in the Southwest that cannot have an abundance of this fine fruit. For example, the Keiffer is at home in practically all soils and climates. Select varieties that will give you fruit for eating, canning and preserving from July until October. Plant pears 40 feet apart, or 27 trees to the acre.

PRICES ON ALL PEAR TREES

	Each	Ten	Hundred
Size, 2 to 3 feet.....	\$1.00	\$ 8.95	\$ 79.50
Size, 3 to 4 feet.....	\$1.35	\$12.50	\$114.95
Size, 5 to 6 feet.....	\$1.95	\$17.95	\$165.00

JULY PEARS

LE CONTE: Bell shape, skin smooth and of a rich creamy color. Valuable for shipping and is excellent for cooking. Fruit good when ripened well in shade. Ripens last of July and early August. No. 702, 2-3'; No. 703, 3-4'; No. 704, 5-6'.

SUGAR: This is a small pear, very sweet, tender and delicious. For home use only, too tender to ship. Ripens in July and August. No. 708, 2-3'; No. 709, 3-4'; No. 710, 5-6'.

AUGUST PEARS

BARTLETT: Tree thrifty and upright. Fruit large and buttery, rich flavor. Ideal for the home orchard as well as for marketing. An abundant bearer, ripening last of July and early August. No. 696, 2-3'; No. 697, 3-4'; No. 698, 5-6'.

PINEAPPLE: A strong, vigorous grower which is very productive. Tree is practically blight-proof, and has proven one of the very best for Southern planting. No. 699, 2-3'; No. 700, 3-4'; No. 701, 5-6'.

SEPTEMBER-OCTOBER PEARS

DOUGLAS: This pear is a big money-maker, and if planted extensively will re-establish the pear-growing industry in the South. Quality very finest, sweet, juicy, highly flavored and melting. Heavy bearer, blight-proof, ripens when pears bring a good price. Plant for home use and commercial orchard. No. 711, 2-3'; No. 712, 3-4'; No. 713, 5-6'.

GARBER: Resembles Keiffer in size and color, as well as quality. Large, clear yellow. Valuable market fruit, unsurpassed for preserves. Ripens in September and October. No. 693, 2-3'; No. 694, 3-4'; No. 695, 5-6'.

KEIFFER: The best variety for the Southwest. Almost entirely free from blight, and is a strong, upright grower. The most valuable sort for market and especially valuable for cooking. Large, yellow with rusty cheek. Matures from September to October. No. 690, 2-3'; No. 691, 3-4'; No. 692, 5-6'.

FIGS

Figs thrive in all portions of the Cotton Belt of the South as in no other section of the world; trees may be found growing in door-yards, near trash piles, in chicken runs, and near buildings in most luxuriant manner and producing enormous crops.

No home pantry is complete without canned and preserved Figs for Winter use. Figs come into bearing very early. With proper spraying to hold leaves on, fruit may be had from May to November.

They require good fertilization, and do best on firm hard ground, kept free from all other growth. Commercial Fig growing is extending throughout the South. They can be planted 10 to 18 feet apart and the yield is heavy, thousands of pounds of fruit being produced per acre. Plant Figs 15 feet apart, or 193 trees per acre.



PRICES ON ALL FIGS

	Each	Ten	Hundred
Size, 2 to 3 feet.....	\$.40	\$ 3.65	\$ 32.95
Size, 3 to 4 feet.....	\$.65	\$ 5.75	\$ 49.95

BROWN TURKEY: Large, very hardy, reliable; color brownish purple; fruit very sweet. Begins ripening last of June. No. 751, 2-3'; No. 752, 3-4'.

CELESTIAL: Sometimes called Little Sugar Fig. The sweetest of all varieties. Ripens in mid-season. No. 756, 2-3'; No. 757, 3-4'.

MAGNOLIA: Fruit very large and of rich straw color. Trees begin to bear when quite young. Begins to ripen the last of June and continues to put on new fruit until frost. No. 759, 2-3'; No. 760, 3-4'.

TEXAS EVERBEARING: Without a doubt, the best fig for all round purposes. It is the hardiest fig known and can be grown 100 miles farther North than any other variety. Is extra large and quality is unsurpassed, wonderfully productive. Bears early. Cuttings planted in nursery row in Spring will produce fruit same Summer. No. 762, 2-3'; No. 763, 3-4'.

GRAPES

Grapes are easily grown and produce a crop each year. The varieties we offer will thrive on any soil. There is always a ready market for whatever surplus you produce. By all means plant a few grapevines for home use, and if possible, plant a vineyard to bring in ready money in the Summer and early Fall. Our vines are heavy and thrifty, ready to bear the first year following planting. 2-year, No. 1 plants.

PRICES ON ALL GRAPE VINES

Each	\$.35	25 for	\$ 6.95
Three for	\$.95	100 for	\$24.95
10 for	\$ 3.00		

CATAWBA: Well known as the great wine grape. Bunches and berries large, of coppery red color, becoming purple when fully ripe. A sweet, rich, musky flavor. Ripens in August. Cat. No. 831.

CARMAN: Medium, round, black, of fine quality. Vigorous and productive. Ripens in August. Cat. No. 824.

CONCORD: The old stand-by. A large purple grape, moderately sweet and juicy. Hardy, productive, and adapted to almost any soil. Ripens in June. Cat. No. 821.

DELAWARE: Bunches small, compact, shouldered. Berries rather small, round, skin thin, light red. Flesh very juicy and without hard pulp. Flavor sweet, spicy and delicious. Ripens in June. Cat. No. 823.

FREDONIA: Blue-black grape. The vine is vigorous, hardy and productive. Clusters are medium in size, cylindrical and compact. Berries are very large and round. Flesh is juicy and tender, but solid, and skin is very firm. Cat. No. 832.

NIAGARA: Bunch medium to large, compact, sometimes shouldered. Berries large, skin thin but tough, pale green at first changing to pale yellow when fully ripe, with a thin whitish bloom. Flesh slightly pulpy, tender and sweet. It has a musky odor which disappears when fully ripe. Ripens in June. Cat. No. 822.

BLACKBERRIES AND DEWBERRIES

These fruits are easily grown and very valuable. The vines bear the second year after planting and yield fruit that is profitable for both home and market. Plant 4 by 8 feet, or 1345 plants per acre.

PRICES ON ALL BLACKBERRY AND DEWBERRY PLANTS

10 plants for.....	\$.50
25 plants for.....	\$ 1.15
100 plants for.....	\$ 3.95
1000 plants for.....	\$34.95

AUSTIN DEWBERRY: Large and finely flavored. Produces a full crop each year. Berry large, jet black, sweet and always makes a crop. Ripens in May and June. Cat. No. 872.

DALLAS BLACKBERRY: Very vigorous, drooping, thorny. Fruit large, round, juicy, and sweet. Ripens in June. Cat. No. 875.

EARLY WONDER BLACKBERRY: This is one of the best early blackberries grown in the Southwest. Ripens in June. Cat. No. 873.

LUCRETIA DEWBERRY: An extra fine berry for the Panhandle and the Northern part of Oklahoma, Kansas, etc. Berry large, black, sweet and luscious. An old standby. Cat. No. 879.

MCDONALD: A cross between the Dewberry and Blackberry. It stands up like a blackberry, but tips like a dewberry. This variety needs Austin, Dallas, or other perfect flowering sorts nearby to pollinate to make it productive. The berry is large and of excellent quality. Earliest of all, starts bearing in May. Cat. No. 874.

YOUNGBERRIES

882—**YOUNGBERRIES:** This remarkably productive new berry is about one inch long, dark purple color, with a delicious flavor of raspberry and dewberry. Very heavy bearer. Plants produce year after planting. It is adaptable to all and any kind of soil. Ripens in June. Plant 4 by 8 feet, or 1345 plants per acre.

PRICES ON YOUNGBERRIES

10 plants for.....	\$.75
25 plants for.....	\$ 1.75
100 plants for.....	\$ 5.95
1000 plants for.....	\$47.50

THORNLESS BOYSENBERRIES

881—**IMMENSE NEW BOYSENBERRY:** Cross between blackberry, raspberry and loganberry. Large berry, 1½ inches long, 1 inch in diameter, delicious flavor. Resembles raspberry. Very sweet and juicy, no sugar required. Bears 8 to 10 weeks during Summer and Fall. Will stand 15 degrees below zero. Very drought resistant. All in all, we think the largest and most delicious berry ever produced. Does exceptionally well all over the South. Plant 4 by 8 feet, or 1345 plants per acre. Thornless type.

PRICES ON THORNLESS BOYSENBERRIES

10 plants for.....	\$ 1.35
25 plants for.....	\$ 3.15
100 plants for.....	\$10.95
1000 plants for.....	\$79.50

STRAWBERRIES

Strawberries are, without a doubt, one of the best berry crops, as well as fruit crops you can grow. Whether they are in your back yard or grown commercially on the farm they will pay you large dividends compared with your initial cost of the plants. Strawberries always bring a good price on the market and are always in demand. The following standard varieties are the best for planting in the South.

PRICES ON STANDARD STRAWBERRIES

10 plants for.....	\$.15
25 plants for.....	\$.30
100 plants for.....	\$1.00
500 plants for.....	\$3.95
1000 plants for.....	\$6.95

AROMA: Perfect flowering. A splendid late berry; large, deep red, and of excellent flavor. The skin is somewhat tougher than the early varieties and the flesh is firm, making it good for marketing. Cat. No. 866.

BLAKEMORE: The U. S. Department of Agriculture originated this berry. Twice as productive as Missionary and Klondike. Large fruit, and excellent flavor. Fine for home use, and the most profitable berry for the South. Cat. No. 869.

KLONDIKE: Perfect flowering. The leading variety for the Southwest. One of the earliest, a good producer, and valuable for market or for home. Cat. No. 867.

MISSIONARY: The best berry for South Texas, South Louisiana, and the warmer sections of the country. Very prolific, good size, good quality and medium early. Cat. No. 868.

EVERBEARING STRAWBERRIES

871—**MASTODON EVERBEARING STRAWBERRIES:** A great, new berry. The largest and most productive of the everbearers, sweet, highly flavored and a good shipper. Ideal for the garden. All of the above varieties strong, specially grown plants may be ordered and planted in any month except July and the first half of August. Many of our customers prefer to plant early in the Fall for a crop of berries in the late Winter, and early Spring.

PRICES ON MASTODON EVERBEARING STRAWBERRIES

10 plants for.....	\$.30
25 plants for.....	\$.60
100 plants for.....	\$ 2.00
500 plants for.....	\$ 7.95
1000 plants for.....	\$18.95

Ornamental Department

ROSE BUSHES

Rose bushes are our specialty and we are glad to offer a large assortment of varieties. All roses offered in this list are two-year old, field-grown bushes, budded low on multiflora japonica understock. All roses offered in this list are No. 1 grade to insure you quick results. These roses will bloom the first season planted.

HINTS ON GROWING ROSES SUCCESSFULLY

- (1) Buy from a reliable source.
- (2) Avoid buying "cheap roses." You will be disappointed.
- (3) Cut rose bushes back to about 9 inches when planting.
- (4) Do not mix any fertilizer with soil.
- (5) Mound dirt up on bushes when planting; let stay about five days, and remove dirt.
- (6) Buy those roses known as Monthly Blooming, or Everblooming for Southern growing.
- (7) Put fertilizer on top of ground in late Winter (well decayed cowlot fertilizer is the best).
- (8) Keep roses well watered, not sprinkled.
- (9) Spray with sulphur to keep down black spot; and spray with Black Leaf 40 to keep down green lice.

If you will follow these directions you can grow good roses, with strong, long stems.

PRICES ON ALL ROSES IN THIS CATALOG: 75c each; \$7.50 per dozen; 100 for \$57.95, postpaid.

CODE TO ABBREVIATIONS OF ROSE TYPES

AB—Austrian Briar; CL.HT—Climbing Hybrid Tea; HP—Hybrid Perpetual; H.POLY—Hybrid Polyantha; HR—Hybrid Rugosa; HT—Hybrid Tea; HW—Hybrid Wichuraiana; MULT—Multiflora; NOIS—Noisette; POLY—Polyantha; and T—Tea.

BUSH ROSES

- 6505—AMERICAN BEAUTY (HP): Bud large, flower large and double. Fragrant, crimson-carmine shaded Neyron rose. Borne singly on long, strong stem. Growth vigorous.
- 6506—AMI QUINARD (HT): Deep velvety crimson, borne singly and several together on long stem. Long pointed bud. Bushy, upright grower. Abundant bloomer. Very hardy.
- 6919—ANTINEA (HT): Sunflower-gold, stained with flame color. Free, continuous bloomer.
- 6507—ANTOINE RIVOIRE (HT): Bud very large, ovoid. Flower double, fragrant, rosy flesh, shaded and edged with deep carmine, yellow base. Borne singly on long strong stem. Very hardy.
- 6508—AUSTRIAN COPPER (AB): Coppery red, hardy everywhere.
- 6509—AUTUMN (HT): Flower medium size, double, cupped, lasting. Moderately fragrant, burnt orange, streaked with red. Borne singly on medium-length stem. Free, continuous bloomer.
- 6512—BETTY UPRICHARD (HT): Delicate salmon-pink, reverse carmine with coppery sheen. Borne singly and several together on long stem. Growth very vigorous, bushy; profuse bloomer all season.
- 6517—BRIARCLIFF (HT): Sport of Columbia. Bud large, long-pointed; flower 4½ inches across. Moderately fragrant, deep rose-pink at center, passing to lighter on outer petals with a touch of citron-green at base. Borne singly on long, strong stem.
- 6518—CALEDONIA (HT): Flower large, very double, slightly fragrant. White, borne singly on long, strong stem. Growth vigorous, upright. Abundant, continuous bloomer all season.
- 6522—CHARLES K. DOUGLAS (HT): Flower large, full, double, fragrant. Flaming scarlet, flushed velvety crimson. Abundant bloomer all season.
- 6525—COLUMBIA (HT): intensely fragrant. Fresh, glistening rose-pink, borne singly on long, strong stem. Growth very vigorous, continuous bloomer.
- 6527—CONDESA DE SASTAGO (HT): Fiery copper inside. Reverse, rich gold. A real beauty.
- 6532—CYNTHIA (HT): Light red, with orange cerise glow. Free monthly bloomer.
- 6534—DAINTY BESS (HT): Flowers 3½ to 4 inches across, single, broad-petaled. Frimbriated edges, rose color, borne several together.
- 6535—DAME EDITH HELEN (HT): Intensely fragrant, pure glowing pink, borne singly on long, strong stem. Growth vigorous. Profuse, continuous bloomer all season.
- 6547—EDITH NELLIE PERKINS (HT): Double flowers of medium size. Moderately fragrant, lasting. outside of petals orient-red shaded cerise-orange, inside salmon-pink flushed orange. Borne singly on long, average-length stem. Continuous bloomer all season.
- 6548—EDITOR McFARLAND (HT): Bud long-pointed; flower semi-double, slightly fragrant, solid glowing pink, with a slight suffusion of yellow. Generally borne singly, on long, strong stem. Radiance type in plant-habit, ruggedness, persistency, and immunity of foliage, also continuity of bloom.
- 6549—E. G. HILL (HT): Beautiful bud; immense, lasting flowers of dazzling scarlet, shading to a deeper pure red as it develops, but never showing purple. Borne on long stem. Very free bloomer.
- 6556—ETOILE DE HOLLANDE (HT): Flower small to medium, semi-double. Fragrant, deep, bright red, borne singly on long, strong stem. Does well everywhere. Intermittent bloomer from June until August.

- 6557—F. J. GROOTENDORST (H.RUG): Slightly fragrant, bright red, edges of pedals serrated like a carnation. Borne in cluster on average-length stem. Growth vigorous, bushy; blooms profusely all season. Very hardy.
- 6561—FRANCIS SCOTT KEY (HT): Flower very large, extremely double, lasting, slightly fragrant. Dark Tyrian pink, reverse of petals lighter. Borne singly on long, strong stem. Abundant, continuous bloomer all season.
- 6560—FRAU KARL DRUSKI (HP): Flower very large, double, snow-white, sometimes light pink-flush at center, scentless. Profuse bloomer in May and June sometimes recurring in Autumn.
- 6564—GENERAL JACQUEMINOT (HP): Bud scarlet-crimson; flower medium size, intensely fragrant clear red, borne several together on long, strong stem. Blooms in June, sometimes again later in the season.
- 6569—GOLDEN OPHELIA (HT): Bud and bloom of medium size, golden yellow in center paling slightly on outer petals. Borne on long, strong stem. Vigorous grower, free bloomer.
- 6860—GRACE NOLL CROWELL (HT): Large, double, lasting flowers. Fragrant, rose-pink slightly shaded cream at base. Borne singly on long, strong stem. Profuse bloomer.
- 6571—GRENOBLE (HT): Good deep red, rated one of the best. Profuse monthly bloomer.
- 6572—GRUSS AN TEPLITZ (HT): Flower double, intensely fragrant, dark velvety scarlet. Edges of petals sometimes marked dark garnet. Borne several together on short weak stem. Vigorous grower, continuous bloomer all season.
- 6573—HADLEY (HT): Double flower, intensely fragrant, rich crimson, varying to deep velvety crimson. Borne singly on stem of average length and strength. Free, continuous bloomer all season.
- 6577—HEINRICH GAEDE (HT): Flower double, fragrant, copper-orange borne singly on long strong stems. Stunning. Continuous bloomer all season.
- 6590—JONKHEER J. L. MOCK (HT): Silvery rose-white, reverse carmine-pink. Borne singly on long strong stem. Growth vigorous, upright; free, continuous bloomer.
- 6591—JOANNA HILL (HT): Flower large, semi-double, deep creamy yellow. Similar to Sunburst, but a darker yellow. Borne singly on long, strong stem. Profuse bloomer.
- 6596—K. A. VIKTORIA (HT): Double flower, lasting, slightly fragrant. Snowy white with slight lemon tint at center. Borne singly on long stem. Intermittent bloomer all season.
- 6598—KILLARNEY DOUBLE WHITE (HT): Flower large, double, moderately fragrant. Snowy white, borne singly on long, strong stem. Growth vigorous; abundant, continuous bloomer all season. Excellent white.
- 6599—KILLARNEY PINK (HT): Bright sparkling pink, borne singly on long, strong stem. Long pointed buds. Double flowers, moderately fragrant. Free, intermittent bloomer.
- 6600—KONIGAN LOUISE (HT): Large, extremely double flowers, fragrant. White, borne singly and several together on long stem. Continuous bloomer all season. Hardy. Excellent white variety.
- 6602—LADY HILLINGDON (T): Semi-double flowers of medium size. Moderately fragrant. Deep apricot-yellow, borne singly and several together on long, strong stem. Upright, bushy grower. Continuous bloomer all season. Disease-resistant.
- 6610—LORD CHARLEMONT (HT): Large double flowers, perfectly shaped, fragrant. Clear deep crimson. Few thorns, very hardy. Continuous bloomer all season.
- 6867—LUXEMBOURG (HT): Yellow, toned pink. Long pointed buds on graceful stems. One of the best for the South. A real beauty.
- 6617—MCGREDDY'S SCARLET (HT): Large, full, fragrant flowers of brilliant scarlet, orange base, upper portion of petals lightly washed crimson. Borne on long, strong stem. Free bloomer.
- 6619—MAGNA CHARTA (HP): Flower very large, double, moderately fragrant. Bright pink, suffused carmine. Growth vigorous, compact. Profuse bloomer.
- 6621—MAMAN COCHET PINK (T): Large, long-pointed buds. Double, fragrant flowers of pale pink, becoming deeper in the center with lemon-yellow base. Borne singly and several together on long, strong stem. Intermittent bloomer all season. Hardy.
- 6627—MARY, COUNTESS OF ILCHESTER (HT): Large, double flowers. Deep rose-pink, borne singly on long strong stem, Growth very vigorous, upright, bushy. Free, intermittent bloomer all season.
- 6629—MEVROUW G. A. van ROSSEM (HT): Large, double, fragrant flowers. Heavily flamed and shaded orange and apricot on a dark golden yellow ground. Reverse of petals often dark bronze and nearly brown when first open. Borne on long, strong stem. Abundant bloomer.
- 6645—MRS. CHARLES BELL (HT): Sport of radiance, with all its good qualities, but shell-pink with shadings of soft salmon. Hardy. Continuous bloomer all season.
- 6646—MRS. CHARLES LAMPLOUGH (HT): Enormous buds and flowers, double, moderately fragrant. Very lasting, pale lemon yellow, borne on long, strong stem. Growth vigorous, free bloomer.
- 6647—MRS. DUDLEY CROSS (T): Pale chamois-yellow, beautifully illuminated in Autumn with rose and crimson. Borne on stem of average length and strength. Growth vigorous. Intermittent bloomer all season.
- 6648—MRS. E. P. THOM (HT): Large, long pointed bud. Flower large, perfectly formed, moderately fragrant, fully double. Clear deep canary-yellow without a trace of shading. Borne singly on long stem. Vigorous grower, profuse bloomer all season.
- 6650—MRS. HENRY MORSE (HT): Double, fragrant flowers of flesh-cream ground with a sheen of bright rose, deeply impregnated and washed vermilion with clear vermilion veining on petals. Vigorous grower, abundant bloomer.
- 6654—MRS. PIERRE S. DuPONT (HT): Semi-double, fragrant flowers of deep golden yellow, becoming slightly lighter with age. Borne singly or several together on stem of average length. Abundant foliage, disease-resistant. Continuous bloomer.
- 6657—NATALIE BOTTNER (HT): Flower large, full, double. Sulphur-yellow passing to cream-yellow, with flesh tints. Borne singly on long stem. Vigorous grower and an abundant bloomer.



- 6930—NIGHT (HT): Bud almost black. Flower medium size. Full, moderately fragrant. Very dark, blackish crimson of an even shade. Borne on long, strong stem. Free, continuous bloomer all season.
- 6659—NUNTIUS PACELLI (HT): Similar to K. A. Viktoria in form and color, but more vigorous. Fragrant, pure white flowers, center cream. Growth vigorous and bushy. Profuse bloomer.
- 6664—PAUL NEYRON (HP): Clear pink, shading to rose-pink. Large, double flowers borne singly on long, strong stems. Moderate bloomer in May and June.
- 6931—POINSETTIA (HT): Large, brilliant blooms of poinsettia-scarlet. Buds long and well formed. Erect plant. Vigorous, prolific bloomer.
- 6672—PRES. H. HOOVER (HT): Long-pointed buds. Flower large, semi-double, fragrant. Medium orange except for the two outside petals which fade to a lighter shade. Borne singly on long, strong stem. Foliage leathery, disease-resistant.
- 6675—RADIANCE, PINK (HT): Large, double flowers of cameo-pink, deeper toward center, reverse of petals thulite pink. Borne singly and several together on long stem. Upright, vigorous grower. Abundant, continuous bloomer all season, and in all climates. Hardy.
- 6676—RADIANCE, RED (HT): By far the best all-round red. Free, continuous, bloomer. Very hardy.
- 6677—RADIANCE, SALMON (HT): Satiny pink, shaded salmon. Radiance type.
- 6678—RADIANCE, SHELL PINK (HT): Bright shell pink. Radiance type.
- 6879—RADIANCE, WHITE (HT): Also known as Mary Nish. Large, double, fragrant flowers of white, tinted shell-pink in center. Borne singly on long stem. Vigorous grower, and an abundant bloomer all season.
- 6679—RAPTURE (HT): Glowing pink. Medium size flower borne singly on long stem. Strong grower.
- 6680—RED COLUMBIA (HT): Sport of Columbia. Large, extremely fragrant flowers of rich velvety scarlet. Very vigorous grower.
- 6940—RED TALISMAN (HT): Popular red sport of the Talisman rose. Solid red, double, fragrant. Continuous bloomer all season.
- 6692—ROSLYN (HT): Bud long-pointed, deep orange. Flower large, semi-double, slightly fragrant, golden yellow (more orange back of petals). Borne singly on long, strong stems. Vigorous grower, abundant bloomer.
- 6693—ROUGE MALLERIN (HT): Striking, well-formed, double blooms of lasting deep red. Free monthly bloomer.
- 6700—SENIOR (HT): One of the best, deep-red cut flower roses we have seen. Fine form and good bloomer.
- 6701—SENSATION (HT): Large, long-pointed bud. Double, lasting, moderately fragrant flowers. Scarlet-crimson with maroon markings. Borne singly on long, strong stem. Free branching, profuse bloomer, and is especially good in the garden in Autumn.
- 6706—SOUER THERESE (HT): Double flowers of lovely clear yellow. Fine cut flower variety. Vigorous grower.
- 6711—SUNBURST (HT): Medium-sized, long-pointed bud. Flower medium-sized, double, cadmium-yellow, passing to yellow-orange in center color varies). Few thorns. Growth moderate, upright. Intermittent bloomer.
- 6712—SUNKIST (HT): A deeper toned Joanna Hill and a lovely cut rose.
- 6713—SYRACUSE (HT): Large, pointed crimson bud. Flower double, extremely lasting, fragrant. Scarlet-crimson, borne singly on long stem. Vigorous, upright grower Continuous Bloomer. Very hardy.
- 6714—TALISMAN (HT): Long-pointed, richly colored bud. Double, medium-sized flower, very lasting, extremely fragrant, golden yellow and copper. Borne singly on long stem. Vigorous grower, free bloomer.
- 6715—TEMPLAR (HT): Double, lasting, bright red borne singly on medium-length stem. Upright, vigorous grower. Continuous bloomer. Few thorns.
- 6884—VICTORIA HARRINGTON (HT): Velvety, dark red rose. Intensely fragrant. One of the best for cut flowers.
- 6719—VILLE DE PARIS (HT): Large, double flower of sun-yellow, slightly tinted orange, deeper in center and at base. Lasts long in the sun. Borne on long, strong stem. Few thorns. Growth very vigorous. Hardy.
- 6932—YELLOW BUTTERFLY (HT): Bud and flower medium sized. Double, lasting, moderately fragrant. Orange at center, shading to yellow at outer edge. Borne singly on medium-length stem.
- 6933—YELLOW TALISMAN (HT): A clear yellow sport of Talisman. Continuous bloomer.

POLYANTHA OR BABY DOLL ROSES

- 6732—CRIMSON BABY (POLY): Small, semi-double, light crimson. Dense clusters. Free flowering, good pot plant. Dwarf, low grower.
- 6749—D. T. POULSEN (H.POLY): Medium size bud. Flower medium size semi-double, slightly fragrant, bright blood-red. Borne in cluster on strong stem. Growth vigorous. Profuse bloomer. Tall growing polyantha.
- 6735—GOLDEN SALMON (POLY): Bud opens well in all weather. Flower large, pure orange (does not burn), borne in huge trusses. Foliage mildew-proof. Growth very vigorous, bushy. Dwarf, low grower.
- 6754—GRUSS AN AACHEN (POLY): Bud salmon; flower very large, extremely double, full, lasting, slightly fragrant. Orange-salmon at center passing to white at edges. Borne several together on short, strong stem. Growth moderate, upright. Free, continuous bloomer. Tall growing polyantha.
- 6736—IDEAL (POLY): Medium size, double flowers. Lasting, slightly fragrant. Dark velvety crimson in the open (scarlet under glass). Borne in cluster on average stem. Few thorns, very hardy. Blooms abundantly all season. Low, bushy grower.

- 6757—SALMON SPRAY (HT): Medium size, bud and flower. Semi-double, moderately fragrant. Light salmon-pink, reverse carmine. Borne in cluster on long stem. Vigorous, bushy grower, profuse bloomer. Tall growing variety.
- 6911—SNOWFLAKE (T): Pure white and does not turn pink. Growth vigorous, free bloomer.

CLIMBING ROSES

- 6788—CL. AMERICAN BEAUTY (HW): Large, cupped flower. Lasting, fragrant, deep rose-pink, borne several together on long stem, hangs on when faded. Vigorous growing climber, abundant bloomer in June. Very hardy.
- 6760—CL. BRIARCLIFF (CL.HT): Climbing sport of Briarcliff.
- 6761—CL. CALEDONIA (CL.HT): Climbing sport of Caledonia. Best pure white climber, vigorous and free flowering.
- 6766—CL. ETOILE DE HOLLANDE (CL.HT): Climbing sport of popular bush form. Continuous bloomer.
- 6915—CL. HOOSIER BEAUTY (CL.HT): Climbing sport of Hoosier Beauty. Glowing crimson with darker shadings. Continuous bloomer all season.
- 6934—CL. MME. CAROLINE TESTOUT (CL.HT): Climbing sport of Mme. Caroline Testout. Bright satiny rose, darker center. Edges of petals bordered with soft salmon-pink. Borne singly on long stem. Continuous bloomer all season.
- 6772—CL. MRS. P. S. DUPONT (CL.HT): Sport of the popular bush rose. Golden-yellow buds of medium size opening to rich yellow blooms. Continuous bloomer. One of the best.
- 6773—CL. PINK RADIANCE (CL.HT): Climbing sport of Pink Radiance.
- 6774—CL. RED RADIANCE (CL.HT): Vigorous climbing sport of Red Radiance.
- 6935—CL. RED TALISMAN (CL.HT): Climbing sport of Red Talisman.
- 6779—CL. TALISMAN (CL.HT): Climbing sport of Talisman.
- 6795—FLOWER OF FAIRFIELD (MULT): Double bright crimson, borne in large pyramidal cluster. Very vigorous and hardy. Blooms in early Summer and sometimes again in Autumn.
- 6781—MARECHAL NEIL (NOIS): Large, full-pointed bud. Flower large, full, double, very fragrant. Golden yellow, borne singly and several together on good stem. Vigorous grower. Profuse bloomer. Hardy in the South and on the Pacific Coast, but should be grown under glass in the North.
- 6805—PAULS SCARLET (HW): Semi-double, medium size flower. Very lasting, vivid scarlet, shaded with bright crimson. Borne in large cluster. Vigorous growing climber. Very profuse bloomer. Very hardy. Most popular and dependable climbing rose.
- 6718—VANGUARD (CL.HT): Double orange-salmon, continuous bloomer. Very hardy.

\$5.95 SPECIAL \$5.95

ROSE ASSORTMENT

Our special rose assortment is made up of one dozen Hybrid tea roses, of No. 1 grade and quality, offering you an assortment of varieties and array of colors. We select the varieties and each of these assortments will include the following colors of continuous monthly blooming roses:

3 Red Varieties

3 Pink Varieties

2 White Varieties

2 Yellow Varieties

2 Two-Tone Varieties

Price on this collection of 12 roses is only \$5.95, postpaid. Order as many of these collections as you wish at this low price. All are named varieties, and each rose will be labeled as to the variety. We select the varieties in the above colors.

DECIDUOUS SHRUBS—FLOWERING AND ORNAMENTAL

No home or landscape is complete without some flowering or ornamental shrubs planted in and around the yard. Flowering shrubs can be used as specimen plants, as backgrounds, hedging or in groups. Not only are they valuable for their place in the landscape, but they are useful for their blooms which add color and beauty to the surroundings. The blooms are also desirable to cut and use in the home for arrangements and decorations. If you are planning to landscape a new home or add to the landscape of your present home, include an assortment of flowering shrubs in your plans. We list below a wide assortment of shrubs, all reasonably priced.

- 1000—ALMOND, PINK FLOWERING: (*Prunus glandulosa*). Dwarf growing shrub, blooming early in spring before leaves appear. Limbs covered with masses of double pink flowers. Price, 18-24" plants, each 79c.
- 1001—ALMOND, WHITE FLOWERING: (*Prunus glandulosa albi-plena*). Dwarf growing shrub, blooming early in spring before leaves appear. Limbs covered with masses of double white flowers. Price, 18-24" plants, each 79c.
- 1010—BARBERRY, JAPANESE (*Berberis thunbergii*): Hardy, free-blooming shrub. Pale yellow flowers early in spring with brilliant red berries during the Winter. In Autumn foliage turns to shades of orange, red, and yellow. Price, 18-24" plants, each 39c.
- 1011—BARBERRY, REDLEAF: (*Berberis thunbergii atropurpurea*). Variety of Japanese Barberry. Low shrub with bronze and red foliage. Outstanding accent plant. Evergreen in the South. Price, 15-18" plants, each 79c.
- 1012—BEAUTYBERRY, CHINESE: (*Callicarpa purpurea*). Clusters of attractive purple berries in the Fall. Tops kill back like Butterfly Bush. Price, 18-24" plants, each 69c.
- 1013—BEAUTY BUSH: (*Kolwitzia amabilis*). Shrub of graceful habit, with funnel shaped pink flowers borne in profusion. Price, 12-18" plants, each 89c.
- 1014—BIRD-OF-PARADISE: (*Caesalpinia gilliesii*). Also known as Poinciana. A fast growing, profuse blooming shrub. Splendid for Southern plantings. Has large yellow and red flowers, with striking gray-green foliage. Does well everywhere. Price 3-4' plants, each 49c.
- 1015—BOTTLE BRUSH: (*Callistemon rigidus*). Stiff narrow foliage. Deep red flowers resembling bottle brush, hence its name. Price, 15" plants, each 89c.
- 1016—BRIDAL WREATH, DOUBLE: (*Spirea prunifolia*). The true old-fashioned Bridal Wreath so much planted and admired in the old-time gardens. Small plum-like, double, white flowers. Hardy and profuse bloomer. Price, 18-24" plants, each 79c.
- 1021—CHOKEBERRY, BLACK: (*Aronia melanocarpa*). Attractive white flowers, smooth foliage. Shiny, black fruit in the Autumn. Price, 18-24" plants, each 59c.
- 1022—CHOKEBERRY, RED: (*Aronia arbutifolia*). A good shrub with fine green leaves. Gaily colored in Autumn. White flowers with masses of red berries. Price, 18-24" plants, each 49c.
- 1023—CORALBERRY: (*Symphoricarpos vulgaris*). Graceful, slightly drooping shrub. Purplish - red berries all winter. Foliage lovely green all Summer. One of the best low shrubs for planting near trees. Also known as Red Snowberry. Price, 2-3' plants, each 49c.
- 1024—CORALBERRY, IMPROVED: (*Symphoricarpos chenaultii*). Pink flowers and red fruit on graceful arching branches. Very small leaves. New Price, 18-24" plants, each 59c.
- 1025—CRANBERRYBUSH, EUROPEAN: (*Viburnum opulus*). Well known hardy shrub, single white flowers in April and May, followed by scarlet fruit. Large growing shrub. Price, 18-24" plants, each 79c.
- 1026—GRAPE MYRTLE, DWARF BLUE: (*Lagerstroemia indica nana caerulea*). Low spreading grower. Lavender-blue flowers in loose panicles which almost cover the plant. Stunning. Price, 2-3' plants, each 59c.
- 1031—DEUTZIA, DOUBLE PINK: (*Deutzia crenata*). Lovely double pink flowers. Price, 18-24" plants, each 39c.
- 1032—DEUTZIA, DOUBLE WHITE: (*Deutzia pride of Rochester*). White, tinted soft rose. Very First to bloom in the Spring and an excellent variety of *Deutzia*. Price, 18-24" plants, each 39c.
- 1033—DOGWOOD, BLOOD TWIG: (*Cornus sanguinea*). Dark green foliage, creamy white flowers. Blue-black berries in Fall, bright red bark lends cheer in Winter. Price, 2-3' plants, each 79c.
- 1034—DOGWOOD, RED OZIER: (*Cornus stolonifera*). Dark, wine-colored branches. White flowers in May-June. Flowers followed by white berries. Price, 2-3' plants, each 59c.
- 1035—DOGWOOD, WHITE FLOWERING: (*Cornus florida*). Bright green leaves turning red or scarlet in Autumn. Large white flowers tinged with pink, expanding in early Spring. Large growing shrub, or small tree. Price, 2-3' plants, each 69c.
- 1036—ELDER, GOLDEN AMERICAN: (*Sambucus canadensis aurea*). Hardy, rapid growing shrub. Bright golden yellow foliage. Price, 18-24" plants, each 59c.
- 1037—EUONYMUS, YEDDO: (*Euonymus yedoensis*). Large shrub with masses of pink and orange four-lobed fruit. Price, 18-24" plants, each 69c.
- 1038—FLOWERING QUINCE, PINK PRINCESS: (*Cydonia japonica rosea*). Same as the red flowering Quince, only it produces lovely pink flowers. Price, 12-18" plants, each 59c.
- 1039—FLOWERING QUINCE, RED: (*Cydonia japonica*). Also known as flowering Japonica. In early Spring a mass of vivid red flowers before foliage appears. Price 12-18" plants, each 39c.
- 1054—GOLDEN ST. JOHNSWORT: (*Hypericum aureum*). Hardy shrub with bright yellow flowers in Summer. Price, 18-24" plants, each 79c.
- 1059—HYDRANGEA, PEE GEE: (*Hydrangea paniculata grandiflora*). Very showy cone-shaped flowers. Large trusses of showy double white flowers, tinted pink. Price, 12-18" plants, each 79c.
- 1060—HYDRANGEA, SNOWHILL: (*Hydrangea arborescens grandiflora*). Double white ball-shaped flowers in profusion. Thrives in shady places. Price, 12-18" plants, each 89c.
- 1061—JASMINE, NIGHT SCENTED: (*Cestrum parqui*). Medium growing shrub with light green foliage and small blooms with heavy, exotic fragrance at night. Price 15-18" plants, each 99c.
- 1062—JASMINE, PINK: (*Jasminum stephenense*). A new Jasmine with very fragrant light pink flowers one inch in diameter. Hardy to Washington, D. C. Price, 18-24" plants, each 89c.

- 1063—JASMINE, WINTER: (*Jasminum nudiflorum*). Graceful, low spreading shrub. Bright yellow flowers in late Winter. Price 2-3' plants, each 59c.
- 1064—KERRIA JAPONICA, DOUBLE: (*Kerria japonica flore-pleno*). Outstanding flowering shrub. Double deep yellow flowers about the size of small roses. Price, 12-18" plants, each 89c.
- 1065—KERRIA JAPONICA, SINGLE: (*Kerria japonica*). Attractive flowering shrub, with pure deep yellow flowers about the size of small roses. Price, 12-18" plants, each 89c.
- 1066—LANTANA, HARDY PINK: (*Lantana camara rosea*). Hairy, prickly, low-growing perennial-like shrub. Aromatic foliage, prolific bloomer. Flowers flesh to salmon pink. Price, 2-yr. No. 1 plants, each 69c.
- 1067—LANTANA, HARDY RED: (*Lantana camara rubra*). Same as above, except red flowers. Price, 2-yr. No. 1 plants, each 69c.
- 1068—LANTANA, HARDY YELLOW: (*Lantana camara*). Same as above, except flowers are lemon to orange yellow. Price, 2-yr. No. 1 plants, each 69c.
- 1069—LILAC, CHINESE: (*Syringa rothomagensis*). Vigorous, upright grower with reddish purple flowers. Excellent for general planting because of its hardiness and free blooming qualities. Price 18-24" plants, each 69c.
- 1070—LILAC, COMMON PURPLE: (*Syringa vulgaris*). Purplish, single lilac flowers in large panicles. Hardy and blooms freely. Price, 18-24" plants, each 59c.
- 1071—LILAC, COMMON WHITE: (*Syringa vulgaris alba*). Panicles more slender than the common purple type. Flowers pure white and very fragrant. Price, 18-24" plants, each 59c.
- 1072—LILAC, DR. BREITENSCHNEIDER: (*Syringa*). Hardy upright grower, with large attractive leaves. Beautiful lavender flowers. Late bloomer. Price, 18-24" plants, each 89c.
- 1073—LILAC, PERSIAN PURPLE: (*Syringa persian*). Foliage small. Loose panicles of pale lilac. Free blooming and hardy. Price, 18-24" plants, each 59c.
- 1074—MAPLE, FLOWERING: (*Abutilon*). Half-hardy shrubs with maple-like leaves, and beautiful bell shaped pink flowers. Blooms constantly throughout Summer and Fall. Price, 18-24" plants, each \$1.49.
- 1078—PAW PAW: (*Assimina triloba*). Large, attractive leaves with purplish red flowers becoming yellow in the middle. Oblong, dark brown fruit. Flowers appear in the early Spring and the fruit in the Autumn. Novelty. Price, 18-24" plants, each 39c.
- 1079—PEARL BUSH: (*Exochorda grandiflora*). Beautiful shrub with light green foliage, pear-like buds, open in the pure white fragrant waxy flower. Price, 2-3' plants, each 79c.
- 1080—POMEGRANATE, DOUBLE RED FLOWERING: (*Punica granatum*). Clean, dark green foliage. Blood red flowers followed by large red fruit. Price, 2-3' plants, each \$1.19.
- 1081—ROSE-ACACIA: (*Robinia hispida*). This shrub is very popular because of its abundance of large, pink pea-like flowers. Charming. Price, 18-24" plants, each 69c.
- 1082—RUSSIAN OLIVE: (*Eleagnus augustifolia*). Very hardy shrub. Gray-green foliage, fine for West Texas. White berries. Used frequently for hedges and wind breaks. Grows extra tall. Price, 18-24" plants, each 59c.
- 1083—SIBERIAN PEA-TREE: (*Caragana arborescens*). Dwarf tree with yellow, pea-shaped flowers in Spring. Finely cut foliage. Price, 18-24" plants, each 39c.
- 1084—SNOWBALL, COMMON: (*Viburnum opulus sterilis*). The old-fashioned Snowball that flowers so abundantly. Large double white flowers in April and May. Price, 18-24" plants, each 89c.
- 1085—SNOWBALL, JAPANESE: (*Viburnum tomentosum plenum*). Large, pure white double flowers of globular form, much improved over the common Snowball. Price, 18-24" plants, each \$1.19.
- 1086—SNOWBERRY, COMMON: (*Symphoricarpos racemosus*). Attractive green foliage, pink flowers, in June and July. Large white fruit in clusters in Autumn. Price, 18-24" plants, each 49c.
- 1091—SUMAC, FRAGRANT: *Rhus canadensis* fragrant. Price, 2-3' plants, each 79c.
- 1092—SWEET SHRUB: (*Calycanthus floridus*). Dark green foliage, chocolate colored flowers in early Spring. Price, 18-24" plants, each 39c.
- 1093—TAMARIX, AFRICAN: (*Tamarix africana*). Feathery green foliage, pink flowers early in Spring before leaves. Tall growing shrub. Price, 2-3' plants, each 49c.
- 1094—VITEX, CHASTE-TREE: (*Vitex agnus catus*). Deep blue flowers borne in profusion throughout the Summer. Stands drought well. Sage-green foliage. Price, 2-3' plants, each 39c.
- 1095—WAYFARING TREE: (*Viburnum lantana*). Attractive shrub with white flowers in May, followed by red berries, changing to black. Price, 18-24" plants, each 49c.
- 1096—WEIGELA, PINK: (*Weigela rosea*). Popular shrub with beautiful showy pink flowers in May and June. Produces freely. Price, 2-3' plants, each 59c.
- 1097—WEIGELA, RED: (*Weigela Eva Rathke*). Rich ruby red flowers. Blooms in Spring and again in the Fall. Price, 18-24" plants, each 89c.
- 1098—WEIGELA, YELLOW: (*Weigela lutea*). Attractive novelty plant. Price, 18-24" plants, each 69c.
- 1099—WINTERBERRY: (*Ilex verticillata*). Medium size growing shrub. Bright red berries which remain until mid-winter. Price, 18-24" plants each 79c.

ALTHEA (BUSH ALTHEA)

Also called Rose of Sharon, the Althea is one of the most successful and popular of all the flowering shrubs. Upright shrub growing to a maximum height of about ten or twelve feet. They bloom profusely during the Summer. Outstanding shrub in all types of landscape work. 2-3' size plants. PRICES ON ALL ALTHEAS: 49c each; 10 for \$4.35.

- 1002—AMPLISSIMIA: Double red with carmine center.
- 1003—ANEMONAEFLORUS: Semi-double, bright rose.
- 1004—ARDENS: Double, clear violet.
- 1005—BOULE DE FEU: Double red.
- 1006—JEAN D'ARC: Double, pure white.
- 1007—PULCHERRIMA: Double, pink with carmine splotches.
- 1008—RUBIS: Single red.
- 1009—TOTUS ALBUS: Single, pure white.

BUTTERFLY BUSH (BUDDLEIA)

The Buddleia or Butterfly Bush is a popular flowering shrub growing to about four or six feet. It blooms during the Summer. Generally kills back during the Winter, but comes out again in the early Spring.

- 1017—CHARMING: (*Buddleia charming*). Long sprays covered with lavender-pink blooms which when compared with other varieties, appear distinctly pink. Price, 2-yr. No. 1 plants, each 79c
- 1018—DUBONNET: (*Buddleia dubonnet*). A new, dark wine, dubonnet colored Butterfly Bush with firm, large spikes and individual flowers of good size. Will not sunburn. Price, 2-yr. No. 1 plants, each 69c.
- 1019—ISLE OF FRANCE: (*Buddleia ile de france*). Claret-purple, long stems. Excellent for cutting. One of the best of all Butterfly Bushes. Price, 2-yr. No. 1 plants, each 69c.
- 1020—OXEYE: (*Buddleia davidi magnifica*). Graceful arching branches covered with lavender-purple flowers, with yellow eye. Price, 2-yr. No. 1 plants, each 59c.

CRAPE MYRTLE

This is the South's most beautiful shrub, reaching an ultimate height of twelve to fifteen feet. Lovely fringed and ruffled flowers throughout the Summer and Fall. Flowers are borne in dense panicles. PRICES ON ALL CRAPE MYRTLES: 2-3' plants, each 49c; or 10 for \$4.35.

- 1027—LAVENDER: (*Lagerstroemia indica purpurea*). A good clear lavender-purple and one that you will like.
- 1028—PINK: *Lagerstroemia indica rosea*). A clear bright pink. Very lovely.
- 1029—WATERMELON RED: (*Lagerstroemia indica rubra*). A real bright red. Unusually attractive. Most popular of all the Crape Myrtles.
- 1030—WHITE: (*Lagerstroemia indica alba*). Lovely white flowers in profusion throughout the Summer. A strong grower.

FRENCH HYDRANGEA

This is the Hydrangea with large white flower heads in white, pink, blue or red, so widely planted throughout the South. Nothing makes a more beautiful flowering plant, and they are very long-lived. There are no varieties that are a natural blue, but they can be made blue by making the soil acid. This is done by adding Aluminum Sulphate to the soil. PRICES ON ALL FRENCH HYDRANGEA S: 4" with two or more flowering shoots, each 89c; 10 for \$7.95.

- 1040—AMI PASQUAAR: Red, early bloomer.
- 1041—REGULA: White, blooms early.
- 1042—GOLIATH: Dark rose, blooms mid-season.
- 1043—LOUIS SAVAGE: Dark pink, late bloomer. Blues easily.
- 1044—M. BAARDSE: Salmon red, early bloomer.
- 1045—HAMBURG: Carmine, early bloomer.

FRENCH LILAC

The new French hybrid lilacs we offer are a vast improvement over the old varieties. Our list is selected to give a great variation in type and color as possible. Each variety is outstanding in its class. Attractive flowers of various colors and foliage. Grow to a height of fifteen feet, depending on variety and soil. PRICES ON ALL FRENCH LILACS: 12-18" plants, each 89c; 10 for \$7.95.

- 1046—ALPHONSE LAVELLE. Double violet.
- 1047—CHAS. X: Single, reddish purple.
- 1048—MME. LEMOINE: Double white.
- 1049—MT. BLANC: Single white.

GOLDEN BELL (FORSYTHIA)

Golden Bell or Forsythia is a brilliant yellow-flowering shrub which blooms in the early Spring, almost covering the branches. The upright branches are graceful and arching. PRICES ON ALL GOLDEN BELL: 2-3' plants, each 49c; 10 for \$4.35.

- 1050—BORDER: (*Forsythia intermedia*). Early in Spring, covered with profusion of deep yellow flowers.
- 1051—FORTUNE: (*Forsythia fortunei*). Upright, arching branches. Bright yellow flowers early in Spring.
- 1052—SHOWY BORDER: (*Forsythia intermedia spectabilis*). Improved form of Border Forsythia. Rich golden yellow flowers early in Spring.
- 1053—WEEPING: (*Forsythia suspensa*). Yellow flowers in profusion in May. Bushy, drooping plants.

HONEYSUCKLE (BUSH HONEYSUCKLE)

Bush Honeysuckle or *Lonicera tatarica* is one of the prettiest of flowering shrubs. In the Spring the plants are adorned with delicately shaped flowers and followed by showy berries.

- 1055—BRIDE: (*Lonicera grandiflora rosea*). Flowers bright pink. Hardy, strong, upright grower. One of the best bush honeysuckle. Price, 18-24" plants, each 69c.
- 1056—PINK TARTARIAN: (*Lonicera tatarica rosea*). Hardy, vigorous grower. Pink flowers, red fruit. Price, 18-24" plants, each 69c.
- 1057—RED TARTARIAN: (*Lonicera tatarica rubra*). Upright, very hardy. Rosy pink flowers in early Spring. Bright red fruit. Price, 18-24" plants, each 69c.
- 1058—WINTER BUSH: (*Lonicera fragrantissima*). Early Spring blooming plant. Flowers pink, red, or white followed by bright-colored fruits. Price, 18-24" plants, each 49c.



MOCK ORANGE (PHILADELPHUS)

Hardy long-lived shrubs. Lovely white flowers that add distinction to any garden.

- 1075—GRANDIFLORA: (Philadelphus grandiflora). Lovely white flowers in May. Price, 18-24" plants, each 39c.
- 1076—LEMOINE: (Philadelphus lemoinei). Semi-dwarf with attractive foliage, producing dense racemes of small fragrant white flowers. Price, 18-24" plants, each 69c.
- 1077—VIRGINAL: (Philadelphus virginial). Medium grower. Loads down with beautiful fragrant semi-double flowers over a long season, beginning in May. Large white flowers, yellow stamens. Price, 18-24" plants, each 69c.

SPIREA

There are many different varieties and colors of Spireas suitable for planting under all conditions. Below we list the best for blooming in the South and believe you will find these very satisfactory.

- 1087—ANTHONY WATERER: Dwarf growing shrub, with crimson red flowers. Very ornamental. Price, 18-24" plants, each 79c.
- 1088—FROEBEL: Vigorous, spreading grower. Bright pink flowers in May and June, purplish tips in Spring, turning to beautiful shades in Autumn. Hardy. Price, 18-24" plants, each 59c.
- 1089—THUNBERG: Graceful arching branches covered with small pure white flowers. Very first to bloom in the Spring. Price, 2-3' plants, each 59c.
- 1090—VAN HOUTTE: Graceful plants with abundance of snowy white flowers in clusters. Sometimes called Bridal Wreath in some localities. Price, 18-24" plants, each 39c.

HEDGE PLANTS

The hedge is more than its own excuse for being. It justifies its existence in various ways. Around a small yard of a cottage or the formal terrace of a city home, the hedge can be trimmed and kept in scale with the size of the lawn. If there is an ill-kept lot adjoining, or the sun room is near the street, then let your hedge plants grow rank. A hedge may serve to shield from view the chicken yard or the family wash, or suggest to the children that playhouse yard must end where a neighbor's lawn begins.

AMUR RIVER PRIVET (*Ligustrum amurensis*)

Most popular and best hedge for the South. Very beautiful evergreen, dense in growth, dark in one year. Very hardy and well adapted to general planting. Exceedingly beautiful and permits shearing to any height or shape.

PRICES ON AMUR RIVER PRIVET

Cat. No.	Size	Per 10	Per 50	Per 100
No. 1185	12-18"	\$.85	\$3.45	\$5.95
No. 1186	18-24"	\$1.15	\$4.45	\$7.45
No. 1187	2-3'	\$1.65	\$6.45	\$9.95

CALIFORNIA PRIVET (*Ligustrum ovalifolium*)

This beautiful hedge plant has a larger leaf than the Amur River Privet, and is very beautiful in Summer and Fall, lending itself admirably to shearing. However, we do not consider it as useful for planting in the South as Amur River Privet, because it loses some of its foliage in the Winter, whereas Amur River Privet will look pretty the year round.

PRICES ON CALIFORNIA PRIVET

Cat. No.	Size	Per 10	Per 50	Per 100
No. 1188	18-24"	\$1.25	\$5.65	\$10.65
No. 1189	2-3'	\$1.85	\$8.75	\$15.95

LODENSE PRIVET (*Ligustrum lodense*)

This is a dwarf, compact hedge plant evergreen, suitable for low hedges, edging, cemetery lots, etc. May be sheared to any form, but forms a natural compact plant without any attention.

PRICES ON LODENSE PRIVET

Cat. No.	Size	Each	Per 10	Per 50	Per 100
No. 1190	8-10"	\$.29	\$2.55	\$11.95	\$21.95
No. 1191	10-12"	\$.39	\$3.25	\$13.95	\$26.95

HARDY ORANGE (*Citrus trifoliata*)

Deciduous, but the thorny branches remain gray-green throughout the year. Makes an almost impenetrable hedge. White flowers and small orange fruits.

PRICES ON HARDY ORANGE

Cat. No.	Size	Each	Per 10	Per 50	Per 100
No. 1192	12-18"	\$.29	\$2.25	\$10.25	\$19.65
No. 1193	18-24"	\$.35	\$2.85	\$13.25	\$24.00



CLIMBING VINES

Below we present a complete list of the best climbing vines for use in the South and Southwest. The beauty of any home may be greatly increased by the careful use of these climbing vines. Plant these vines to grow on trees, trellises, chimneys, around door-ways, etc. They have many valuable and varied uses.

- 1201—CAROLINA YELLOW JESSAMINE: (*Gelsemium sempervirens*). This beautiful evergreen climbing vine has bright green foliage the year round, and is covered in the early Spring with sun-flower yellow flowers about the size of a 25c piece; of wondrous fragrance. If you have never tried this splendid climbing evergreen vine there is a rare treat in store for you. Price, 2-yr. No. 1 plants, each \$1.39.
- 1202—CHINESE MATRIMONY VINE: (*Lycium chinense*). Trailing grower, good for pillars or embankments. Soft, green foliage, small purple flowers. Scarlet fruits. Price, 2-yr. No. 1 plants, each 39c.
- 1203—IVY, BOSTON: (*Ampelopsis veitchi*). A vine that covers with overlapping foliage; self-clinging and will adhere closely to the smoothest surface. Leaves a deep green changing to crimson and yellow in Autumn. When once established requires no further attention. Ideal for planting on stucco or brick walls. Price, 2-yr. No. 1 plants, each 79c.
- 1204—IVY, ENGLISH: (*Hedera helix*). Evergreen vine, thick mottled gray-green foliage. Semi-hardy. Best in shady locations. Price, plants from 4" pots, each 49c.
- 1205—KUDZU VINE: The strongest growing climber we know of. It will grow 60 feet in one season. Has no equal for covering large space in short time. Price, 2-yr. No. 1 plants, each 69c.
- 1206—QUEEN'S WREATH: (*Antigonon leptopus*). One of the loveliest climbing vines for the whole South and will stand zero weather. Grows fast, affords dense shade, and in the Fall is covered with a mass of glowing rose-pink flowers of rare beauty. Dies down each year, but comes back stronger the next. Also known as Coral Vine and Mexican Rose. Price, 3-yr. No. 1 plants, each 59c.
- 1207—TRUMPET VINE: (*Bignonia radicans*). Trumpet-shaped scarlet flowers in Summer. Blooms persistently, very hardy. Price, 2-yr. No. 1 plants, each 49c.
- 1208—VIRGINIA CREEPER: (*Ampelopsis quinquefolia*). A rapid growing, hardy vine suitable for covering trellises, stone walls and verandas. Price, 2-yr. No. 1 plants, each 49c.
- 1209—WINTERCREEPER: (*Euonymus radicans*). Evergreen vine, shining deep green foliage. Upright habit. Needs some protection. Price, 2-yr. No. 1 plants each 79c.,

LARGE FLOWERING CLEMATIS

This is an aristocrat of all climbing vines, and in our opinion, nothing is more beautiful than *Clematis Jackmanii* in full bloom. Every home owner should plant a few of these large flowering Clematis.

- 1210—CLEMATIS HENRYI: Creamy white flowers. Price, 1-yr. plants from 2½" pots, each 59c.
- 1211—CLEMATIS, JACKMANII: Deep velvety purple flowers, large size. Price, 1-yr. plants from 2½" pots, each 59c.
- 1212—CLEMATIS, MME. EDOUARD ANDRE: Large crimson red flowers. Price, 1-yr. plants from 2½" pots, each 59c.
- 1213—CLEMATIS, RAMONA: New, lovely, light blue. Price, 1-yr. plants from 2½" pots, each 59c.
- 1214—CLEMATIS, SWEET AUTUMN: (*Clematis paniculata*). Flowers small, star-shaped; white in color and produced in enormous quantities. Very fragrant and easily established; Price, 2-yr. No. 1 plants, each 69c.

HONEYSUCKLE (*Lonicera*)

This old favorite still retains its deserved popularity. It is evergreen in the South. Makes a good climbing vine or can be used as a screen or a hedge. Delightfully fragrant flowers.

- 1215—HONEYSUCKLE, GOLD FLAME: (*Lonicera gold flame*). Ever-blooming trumpet-shaped flowers. Fragrant, bright red outside, yellow inside. Hardy. Price, 2-yr. No. 1 plants, each 89c.
- 1216—HONEYSUCKLE, HALL'S JAPAN: (*Lonicera japonica halleana*). Strong growing honeysuckle that is almost evergreen. Its flowers are white changing to yellow and very fragrant. Price, 2-yr. No. 1 plants, each 39c.
- 1217—HONEYSUCKLE, SCARLET TRUMPET: (*Lonicera sempervirens*). A brilliant variety with trumpet-shaped flowers of bright scarlet. Valuable for use on porches and trellises. Price, 2-yr. No. 1 plants, each 49c.
- 1218—HONEYSUCKLE, SUMMER KING: (*Lonicera heckrottii*). Large, fragrant, flame-red trumpets lined with gold are produced in immense showy clusters. Blooms from early Summer until Frost. Foliage is dark, blue-green, disease and pest free. Hardy. Price, 2-yr. No. 1 plants, each 89c.

WISTERIA

Without a doubt, one of the most beautiful flowering vines that can be found. Strong grower and vigorous, extra tall climber and spreads well. Foliage is heavy with flowers borne in pendulous racemes. If you want something charming and different, try some of these.

- 1219—WISTERIA, CHINESE BLUE: (*Wisteria sinensis*). Graceful, blue flowers. Price, 2-yr. No. 1 plants, each 79c.
- 1220—WISTERIA, CHINESE PURPLE: (*Wisteria sinensis*). The well known, single purple variety. Free blooming variety. Price, 2-yr. No. 1 plants, each 79c.
- 1221—WISTERIA, CHINESE WHITE: (*Wisteria sinensis alba*). Beautiful, white flowering Wisteria. Price, 2-yr. No. 1 plants, each 79c.
- 1222—WISTERIA, LONGCLUSTER: (*Wisteria multijuga*). Extra long clusters of blue flowers in May and June. Strong grower. Excellent variety. Price, 2-yr. No. 1 plants, each 79c.

EVERGREEN DEPARTMENT

The list of ornamental evergreens we offer is quite complete; varieties for every section of the South, Southwest and Gulf Coast sections. The plants we list are young stock in most instances, full of life and vigor. Plant carefully the day they are received. Water well when planting. Stake to keep wind from blowing plants around. You will get a lot of pleasure and satisfaction from watching these young plants grow and develop into lovely specimens. The five best plants for general beautification of home, in our opinion, are as follows: Baker's Arborvitae, Pfitzer Juniper, Yellow Jasmine, Abelia Grandiflora and Waxleaf Ligustrum. Arizona Cypress and Italian Cypress are good all-around evergreens to plant as specimens in the lawn, for backgrounds, and in the case of the Italian Cypress for foundation planting.

BROADLEAF EVERGREENS

- 1300—ABELIA, DWARF: (*Abelia sherwoodii*). This is similar in every respect to the Glossy Abelia, but is very dense in growth and much more dwarf. The flowers are pink and white, literally covering the plant. Price, 12-15" plants, each \$1.29.
- 1301—ABELIA, EDWARD GOUCHER: (*Abelia grandiflora* E. Goucher). Similar to the Glossy Abelia, except that the blooms are larger, and a lavender-pink when open. Price, 9-12" plants, each \$1.29.
- 1302—ABELIA, GLOSSY: (*Abelia grandiflora*). This is the old, well-known Abelia that is so useful in landscape work, and so generally planted throughout the South. Bright, glossy green leaves on purplish-red stems. Flowers are rosy-white and blooms throughout the season. Price, 12-18" plants, each 49c.
- 1304—CHERRY LAUREL, CAROLINA: (*Laurocerasus caroliniana*). A very hardy, rather large growing evergreen. Bright green foliage, white flowers in Spring followed by black berries. Price, 12-18" plants, each 89c.
- 1306—COTONEASTER, SPREADING: (*Cotoneaster divaricata*). Handsome shrub bearing pink flowers and red berries. Foliage is nearly evergreen. Attains height of from 5 to 6 feet. Price, 18-24" plants, each \$1.19.
- 1309—DAPHNE, ROSE: (*Daphne cneorum*). Attractive rose-pink flowers in April-May. An interesting evergreen shrub. Maximum height about two feet. Price, 6-9" plants, each \$1.99.
- 1310—ELEAGNUS: (*Eleagnus pungens*). Foliage bronzy-green on top, silver beneath. Yellow flowers in Spring, plum-shaped fruits. Sometimes fruit is borne in abundance, and fine for jelly. Price, light 8-12" plants, each 49c.
- 1311—ELEAGNUS, YELLOW EDGED: (*Eleagnus pungens variegata*). A spreading evergreen shrub with light colored, variegated foliage, that shows up well among darker evergreens. Price, light 8-12" plants, each 59c.
- 1312—EUONYMUS: (*Euonymus japonica*). Lovely, dark green glossy leaves. Very dense, and may be sheared to suit. Planted as low hedge, or as a specimen plant. A fine plant for the South. Price, 12-18" plants, each 99c.
- 1313—EUONYMUS, VARIEGATED: (*Euonymus japonica variegata*). Variegated form of *Euonymus Japonica*. Has highly colored leaves of yellow and green. In our opinion one of the prettiest broad-leaf evergreens in the class of novelties. Price, 10-12" plants, each 89c.
- 1314—EURYA: (*Eurya japonica*). Slow, compact-growing shrub, clothed thickly with small, dark green, glossy leaves of highly ornamental value. Highly recommended for those seeking a new evergreen of merit. Price, light 12-18" plants, each 59c.
- 1315—GARDENIA, FLORIDA: (*Gardenia florida*). Hardest of all Cape Jasmines. Flowers are large, pure white, highly scented. Dark green, glossy leaves. Blooms in May, and sometimes during the Summer. Price, 12-18" plants, each 89c.
- 1316—GARDENIA, FORTUNE: (*Gardenia fortunei*). Similar to *Gardenia Florida*, except that the flowers are more abundant and are borne over a long period from early Summer until late Frost. Price, 12-18" plants, each 89c.
- 1318—GARDENIA, RADICANS: (*Gardenia radicans*). Dwarf-growing Cape Jasmine with small leaves, and waxy-like, fragrant flowers. Price, 4-6" plants, each 49c.
- 1319—HOLLY, AMERICAN: (*Ilex opaca femina*). The native Christmas Holly tree, having dark shining leaves and red berries. As there are both male and female plants, seedling holly cannot be depended upon to bear berries. However, our American Holly is grown from cuttings made from known berry-bearing female plants. Price, 2-3' plants, each \$1.39.
- 1320—HOLLY, BUFORD'S: (*Ilex cornuta burfordi*). This is an unusually fine strain of Chinese Holly. Very compact and has an abundance of berries. Grown from cuttings made from berry-bearing plants. Price, 10-12" plants, each \$1.49.
- 1321—HOLLY, YAUPON: (*Ilex vomitoria femina*). A native small evergreen tree, with rather narrow, wavy, toothed leaves. Flowers are small and white in Spring with red berries in the Fall. Grown from cuttings taken from known berry-bearing plants. Price, light 12-18" plants, each 49c.
- 1323—JASMINE, PRIMROSE: (*Jasminum primulinum*). Very graceful, fast-growing, semi-erect evergreen shrub with yellow flowers. Price, 2-3' plants, each 89c.
- 1324—JASMINE, YELLOW: (*Jasminum floridum*). Arched branches clothed with dark green leaves and yellow flowers a good part of the Summer. Hardy south of Washington, D. C. Stands heat and cold, drought and wet weather. The A-No.1 outstanding broadleaf evergreen for the whole South in our opinion. Price, 12-18" plants, each 69c.
- 1328—LIGUSTRUM, JAPANESE: (*Ligustrum japonicum*). This is the best large growing broad-leaf evergreen. Has dark green leaves, large and dense. Best for high hedge, screens, or lawn specimen. Price, 18-24" plants, each 89c.

- 1330—**LIGUSTRUM, WAX-LEAF:** (*Ligustrum lucidum compactum*). Thick, heavy dark green leaves, very compact growth. White blossoms, black berries. No landscape planting is complete without this evergreen. The most popular and well known of the ligustrums. Price, 12-18" plants, each 89c.
- 1331—**MAHONIA:** (*Mahonia fortunei*). Also known as Oregon Grape. Dark, lustrous holly-like foliage which turns crimson in late Fall. Very hardy. Price, 10-12" plants, each \$1.19.
- 1332—**NANDINA:** (*Nandina domestica*). An erect shrub, with several cane-like stems. Finely cut foliage, turning to red in Autumn. White flowers followed by bright red berries. The best red-berried plant for landscape work, and favorite everywhere. Price, 9-12" plants, each 69c.
- 1333—**NANDINA:** (*Nandina domestica*). Same as above. Price, 12-15" plants, each 89c.
- 1335—**PAMPAS GRASS:** (*Cortaderia argentea*). This is the true Argentine Pampas Grass that does so well over the South, but is not hardy North. Lovely foliage, beautiful long silvery plumes. Price, 4-6" divisions, each 99c.
- 1337—**PHOTINIA, SERRULATA:** (*Photinia serrulata*). Very upright, but spreading. Foliage broad, dark shining green, particularly showy in Spring with its crimson-tipped shoots. The fragrant, creamy white flowers are in immense corycombs. Price, 12-18" plants, each 99c.
- 1341—**PYRACANTHA, ORANGE BERRIED:** (*Pyracantha coccinea lalandi*). A mass of white flowers in Spring, followed by orange berries in profusion. A very lovely evergreen for landscape specimen or planting in masses. May be trained to grow over arches, against buildings, etc. Price, 12-18" plants, each 99c.
- 1345—**ROSEMARY:** (*Rosmarinus officinalis*). Evergreen shrub from Europe. Flowers are blue, borne in the axils of the leaves, aromatic. Good border plant, or for planting in clumps. Price, sturdy 1-yr. plants, each 89c.
- 1349—**TEXAS ASH PLANT:** (*Leucophyllum texanum*). Also known as Senisa. Small oval leaves, ash-gray or silver color. Profusion of lavender colored flowers after each rain. One of the most outstanding shrubs that has been introduced in a number of years. Price, 12-15" plants, each \$1.19.
- 1350—**TRUE LAVENDER:** (*Lavendula officinalis*). This is the true English Lavender. Leaves gray-green, blue flowers. Leaves aromatic and sweetly scented. Makes a good accent plant in any planting, or good for borders. Price, sturdy 1-yr. plants, each 79c.
- 1351—**VIBURNUM, BURKWOOD:** (*Viburnum burkwoodi*). This is probably the most valuable novelty in flowering shrubs that has appeared for several years. This is a very hardy evergreen shrub, hardy to Canada. Attains height of six to seven feet, bearing very fragrant white flowers, tinted pink, in large heads four inches broad, and containing as many as 250 individual flowers. Rich glossy-green foliage turning purplish bronze in Winter. Price, 9-12" plants, each \$2.19.
- 1352—**YUCCA, RED:** (*Hesperaloe parviflora*). A native of the Southwest. The few leaves are pliant, fibrous and almost procumbent. Flower spikes slender, with small coral-red flowers in late Summer and Fall. Price, sturdy 1-yr. plants, each \$1.29.

AZALEAS (*Azalea indica*)

Azaleas, contrary to general belief, are by no means hard to grow, provided certain requirements are fulfilled. They may be grown without difficulty in all Gulf Coast regions, and the Atlantic Coast, as far north as North Carolina.

INSTRUCTIONS FOR GROWING AZALEAS

1. Provide acid soil, use plenty of leaf mold (Oak leaves most desirable), pond muck or peat moss.
 2. Lime or alkaline soil is poisonous; remove such soil to depth of two feet and fill in with acid soil, about one-third each leaf mold, good loam and peat moss. To this, add one four-inch pot of Aluminum Sulphate to wheelbarrow of soil.
 3. Keep well watered always; spray foliage often.
 4. Provide good drainage; fill in bottom of bed 10 inches with crushed brick, steel shavings, scrap iron, old bones, etc.
 5. Fertilize lightly, or not at all, using Vigoro or well decayed cow lot fertilizer in small amounts.
- 1353—**CRITERION:** Compact grower with flowers the color of strawberry ice cream, streaked with deeper pink and margin of white. Late bloomer and very attractive.
- 1354—**ELEGANS:** Light pink. Heavy foliage, fast-growing, well-shaped plant. Early bloomer.
- 1355—**FORMOSA:** Large purple flowers. Large, thick foliage. One of the fastest growers of all the Indica Azaleas.
- 1356—**INDICA ALBA:** Pure white. Light green, hairy foliage. Upright grower. Midseason bloomer, very hardy.
- 1357—**PRIDE OF DORKING:** One of the deepest reds of the entire group. Blooms late in the season and, while not very hardy, is yet one of the best.
- 1358—**PRIDE OF MOBILE:** Beautiful watermelon-pink. Probably the most popular of all Indica Azaleas. Large foliage; fast growth, similar to that of Formosa. In Mobile there are plants nearly one hundred years old that are still blooming profusely. The bloom so completely cover the plant at the height of the season that scarcely a leaf is to be seen.
- 1359—**SALMON:** Medium-sized, salmon colored flowers. Good upright growth, One of the best. Also known to some as Daphne Salmon.

PRICES ON ALL INDICA AZALEAS LISTED ABOVE: 8-10" blooming size plants, 99c each; 10 for \$8.59.

CAMELLIAS, (*Camellia japonica*)

Also known as "Japonica" in the South. Similar in climatic and soil requirements to Azaleas. Flowers of great beauty; fully double.

- 1360—ALBA PLENA: Snowy-white, very double, good-sized flowers. One of the best and most widely known japonicas.
- 1361—HERMES: Very large, loose peony-form blooms of elegant shape. Pink and red variegated with white margin.
- 1362—PINK PERFECTION: Very double, clear shell pink flowers of dainty form, liked by many. The plants start blooming when very young, coming early in the season and continuing in profusion for a long time.
- 1363—POPE PIUS: Large deep vermilion-red blooms are carried from mid-season until very late. A free-blooming strong-growing plant.
- 1364—PROF. C. S. SARGENT: Very thick, peony-form, solid crimson blooms of medium size.
- 1365—SARAH FROST: One of the most common and hardiest of Camellias, always gives some flowers. Rose-pink, of medium size. Very compact growing plant.

PRICES ON ALL CAMELLIAS LISTED ABOVE: Light 8-12" plants, \$1.29 each; 10 for \$11.59.

CONIFEROUS EVERGREENS

- 1400—ARBORVITAE, AMERICAN: (*Thuja occidentalis*). The American Arborvitae is the mother tree from which many distinct types have been developed. Stands shearing well, and is useful in both large and small hedges and in landscape work. Growth is bushy at the bottom, tapering toward the top. Foliage is soft and flexible and of a dark green color. Price, 12-15" plants, each 89c.
- 1401—ARBORVITAE, BAKER'S: (*Thuja orientalis bakeri*). For a tall, pyramidal symmetrical evergreen, this is the best one for the South. Plant at entrances, in background of other lower growing evergreens, as lawn specimens, etc. Price, 12-15" plants, each 99c.
- 1402—ARBORVITAE, BERKMAN'S GOLDEN: (*Thuja orientalis aurea nana*). A dense, cone shaped medium height evergreen, with green foliage tipped with gold. Used extensively in Southern plantings. Price, 12-18 inch plants, each 99c.
- 1403—ARBORVITAE, BONITA: (*Thuja orientalis bonita*). Dwarf, globe-shaped in form of a dark green color. Excellent for planting in urns, etc. where a small evergreen is needed. Price, 9-12" plants, each \$1.39.
- 1404—ARBORVITAE, GLOBE: (*Thuja occidentalis globosa*). This is a dwarf, round, dark green dense foliage evergreen. Used for planting in front of higher evergreens, also in urns and in cemeteries. Price, 9-12" plants, each \$2.19.
- 1405—ARBORVITAE, PYRAMIDAL: (*Thuja occidentalis pyramidalis*). Narrow columnar growth, dense and compact without trimming. Hardy, excellent for hedges. A most desirable arborvitae. Price, 10-12" plants, each 89c.
- 1406—ARBORVITAE, ROSEDALE: Cone shaped, medium height, fine silvery gray foliage, very desirable. Excellent for specimen planting and as foundation plant in landscape work. Price, 9-12" plants, each \$1.19.
- 1407—ARBORVITAE, WOODWARD: (*Thuja occidentalis woodwardi*). One of the old and well-known globe forms. Forms a good bushy, natural globe shaped tree of compact form and good color. Price, 8-10" plants, each 89c.
- 1409—CYPRESS, ARIZONA: (*Cupressus arizonica*). Large, fast growing evergreen, with silvery gray foliage. May be pruned to taste. The most hardy, dependable evergreen for the South, Southwest and West. Price, 12-18" plants, each \$1.19.
- 1410—CYPRESS, ITALIAN: (*Cupressus sempervirens pyramidalis*). Tall, symmetrical, stately evergreen of picturesque beauty. Plant against tall buildings, at corners, against chimneys, columns, etc. Slender, tall grower. Price, 2-3' plants, each \$1.89.
- 1412—FIR, DOUGLAS: (*Pseudotsuga douglasi*). This evergreen forms a narrow, symmetrically shaped specimen, varying in color from a yellowish green to a bluish green. Stands crowding well, considerable shade, and responds to trimming. Price, 12-15" plants, each \$1.19.
- 1413—HEMLOCK, CANADA: (*Tsuga canadensis*). A native American tree at home in the deep woods where it will stand severe cold. Valuable for landscape use in partial or heavy shade, or on north side of buildings. Makes a regular conical form, tapering evenly from a broad base to a long, thrifty shoot. Under favorable conditions it grows very rapidly and has long, graceful branchlets. It may be trimmed into hedges or other shapes. Price, 12-18" plants, each \$1.39.
- 1421—JUNIPER, IRISH: (*Juniperus communis hibernica*). An upright, densely growing Juniper. Foliage is bright green. Price, 18-24" plants, each \$2.19.
- 1423—JUNIPER, PFITZER: (*Juniperus chinensis pfitzeriana*). The most popular of spreading junipers. A medium, low, flat grower with gray-green foliage. This is the juniper you see planted so generally in all landscape plantings, and is one of the finest of all landscape plants. Price, 15-18" plants, each \$1.99.
- 1425—JUNIPER, SAVIN'S: (*Juniperus sabina*). Similar to Pfitzer Juniper, except having bright green foliage. Excellent for landscape work. Price, 9-12" plants, each \$1.29.
- 1426—JUNIPER, SPINEY GREEK: (*Juniperus excelsa stricta*). This beautiful variety forms a tall, dense, narrow, conical head tapering gradually from the ground to a sharp terminal point and is of a fine glaucous color. Price, 9-12" plants, each \$1.59.

- 1434—**SPRUCE, COLORADO:** (*Picea pungens*). The old familiar Colorado Spruce has long been an item of great importance in the Evergreen line. The plants were grown from seed collected in localities where the blue specimens predominate, but the stock of course, produces trees of both green and bluish tints. Price, 10-12" plants, each 89c.
- 1433—**YEW, UPRIGHT JAPANESE:** (*Taxus cuspidata capitata*). Will survive a dense shade as well as thrive in sunny locations. Fruit produced in form of a fleshy cup-shaped scarlet berry. Trees must be planted in groups in order to bear berries. Price, 8-10" plants, each \$1.29.

SHADE TREES

Here in the South and Southwest, where the sun does get hot, shade trees are a necessity. If best results are to be had in the planting of shade trees, consideration must be given to the selection of the tree as well as the planting and care of same thereafter. The trees we list below are native over a large area, and if planted carefully and given proper cultivation will succeed almost universally over the Southwest. While deep rich soil is best for all shade trees, some varieties should not be planted except on such soil.

- 1500—**ASH, ARIZONA:** (*Fraxinus velutina*). One of the most beautiful of all shades trees. Clean growth holds foliage until nearly Christmas, no leaf-littered lawn. Trunk very straight, foliage dark green, very glossy and beautiful. Recommended for extensive planting in Gulf States. Unexcelled for West Texas, New Mexico, Panhandle and Western Oklahoma planting. El Paso has adopted this tree as the universal street tree. Price, 4-5' trees, each \$2.00.
- 1501—**ASH, GREEN:** (*Fraxinus lanceolata*). Similar to White Ash, but does not grow but about half as tall. Shapely, round-headed trees with slender, spreading branches. Hardy. Price, 18-24" trees, each 35c.
- 1502—**ASH, WHITE:** (*Fraxinus alba*). Large rapid growing tree with rounded head and dark green foliage. Drought resistant. Grows to 120 feet tall. Price, 2-3' trees, each 45c.
- 1527—**BIRCH, WHITE:** (*Betula alba*). A picturesque native shade tree, white bark with dark green leaves that turn yellow in the Fall. Price, 4-5' trees, each \$1.25.
- 1503—**BOX ELDER:** (*Acer negundo*). Grows rapidly into large spreading tree. Makes fine shade trees, and valuable as shelter-belt planting in West and Southwest. Withstands heat and cold. In localities where other trees fail, use Box Elder. Price, 2-3' trees, each 55c.
- 1504—**BUTTER NUT:** (*Juglans cinerea*). The white walnut. A spreading tree with large leaves. Produces edible nuts of good quality. Price, 3-4' trees, each \$1.35.
- 1505—**CATALPA, UMBRELLA:** (*Catalpa bungei*). Foliage large and glossy. Top-grafter on tall stems it forms a perfect umbrella shaped head and makes an effective tree for formal planting. Price, 4-5' stems with 2-year heads, each \$2.95.
- 1506—**CATALPA, WESTERN:** (*Catalpa speciosa*). Conspicuous because of its large, broad leaves and massive panicles of white, fragrant flowers. Extensively used for timber plantings. As the wood is very enduring in the ground, it makes fine fence posts and should be planted on every farm for this purpose. Price, 4-5' trees, each 95c.
- 1507—**CHINA TEXAS UMBRELLA:** (*Melia azedarach umbraculiformis*). A dense spreading canopy tree which does not attain great height but with wide-spreading branches. Fragrant purple flowers are borne in Spring, followed by numerous creamy yellow berries. Price, 3-4' trees, each 95c.
- 1508—**ELM, AMERICAN:** (*Ulmus americana*). America's best street tree. Drought resistant and grows to 120 feet tall. Price, 2-3' trees, each 55c.
- 1509—**ELM, CHINESE:** (*Ulmus pumila*). A hardy, rapid-growing tree; small dense foliage. Drought-resistant. Price, 5-6' trees, each 95c.
- 1511—**GUM, AMERICAN SWEET:** (*Liquidambar styraciflua*). Shapely tree with slender, corky, ridged branches. Leaves deeply lobed, bright green, turning to crimson in Autumn. At home all over the South. Price, 3-4' trees, each \$1.35.
- 1510—**HACKBERRY:** (*Celtis occidentalis*). A rare native tree that is rapidly increasing in demand. Light, glossy green foliage; disease and drought resistant. Hardy, healthy, and thrives in all soils. Price, 5-6' trees, each \$1.25.
- 1512—**LINDEN, AMERICAN:** (*Tilia americana*). A stately, broad, uniform tree with large shining, cordate leaves. Fragrant yellow flowers late in June. Price, 5-6' trees, each \$1.65.
- 1513—**LOCUST, BLACK:** (*Robinia pseudoacacia*). Popular for shade in West and Southwest, as it endures long drought. Foliage lacy and fresh green. Flowers white and sweetly scented. Price, 5-6' trees, each 65c.
- 1529—**LOCUST, THORNLESS HONEY:** (*Robinia triacanthos inermis*). Tree with attractive pinnate leaves. Fragrant white flowers in May. Long lived, hardy tree. Succeeds on almost any kind of soil. Not affected by borers or drought. This variety is without thorns. Price, 2-3' trees, each 75c.
- 1530—**MAIDENHAIR TREE:** (*Ginkgo biloba*). This tree has tropical foliage, but is very hardy. A rapid grower, smoke and dust-proof. Grows to about 60 feet tall. Desirable for street planting. Price, 2-3' trees, each \$1.35.
- 1514—**MAPLE, AMUR:** (*Acer ginnala*). A graceful, small tree; bright green leaves turn red in Autumn. Fragrant yellowish flowers in April-May. Attains height of from 15 to 18 feet tall. Price, 3-4' trees, each \$1.45.
- 1515—**MAPLE, NORWAY:** (*Acer platanoides*). Hardy, popular tree. Fine for park and street planting. Spreading habit. Foliage bright green, turning golden-yellow in the Fall. Price, 4-5' trees, each \$1.15.
- 1525—**MAPLE, RED:** (*Acer rubrum*). Handsome small tree with elegant foliage and rich color. Reddish brown in Spring, gradually changing to dark green with bronze tints as the season advances. Partial to shady locations. Price, 3-4' trees, each \$1.35.
- 1516—**MAPLE, SCHWEIDLER:** (*Acer platanoides schwedleri*). Also known as Purple-Leaf Maple. The most beautiful of the large maples. Buds are brilliant orange. Young foliage is coppery changing to deeply stained with purple as leaves mature. Price, 4-5' trees, each \$1.85.

- 1526—MAPLE, SILVER: (*Acer dasycarpum*). Beautiful, fast growing tree. Bark light colored, foliage deeply lobed and variable. Excellent street tree. Price, 3-4' trees, each 95c.
- 1520—MAPLE, SUGAR: (*Acer saccharum*). The grandest of Maples, producing tall, stately trees of greatest beauty. Its foliage in Autumn is rich with brilliant tones of orange and lemon. For street and boulevard planting it has few equals. Price, 4-5' trees, each \$1.75.
- 1517—MULBERRY, RUSSIAN: (*Morus alba tartarica*). A very hardy drought resisting tree that will thrive and make excellent shade in the driest sections of the country. Price, 3-4' trees, each 85c.
- 1518—OAK, RED: (*Quercus rubra*). A monarch in the tree world. Heavy, shiny, deep green leaves turning crimson in the Fall. Grows to height of 50 to 80 feet tall. Price, 5-6' trees, each \$2.95.
- 1519—OSAGE ORANGE: (*Maclura pomifera*). Also known as Boise D'Arc. Attains height of sometimes 60 feet, with furrowed dark orange-colored bark. Bears round green fruit, from 4 to 6 inches across, ripening in Autumn and soon falling. Can be trained as a hedge. Very hardy in this section. Price, 3-4' trees, each 35c.
- 1532—POPLAR, BOLLE'S: (*Populus alba bolleana*). Also known as Silver Leaved Poplar. A rapid growing columnar tree with silvery foliage. Price, 5-6' trees, each \$1.65.
- 1533—POPLAR, CAROLINA: (*Populus eugenei*). Norway variety. Rapid grower. Succeeds over a wide territory. Bright green foliage, spreading crown, very hardy. Price, 6-8' trees, each \$1.85.
- 1521—POPLAR, LOMBARDY: (*Populus nigra italica*). Rapid, shire-like growth. Fine for screen and formal planting. Tall, slender, columnar tree. Excellent in landscape work. Price, 5-6' trees, each 85c.
- 1522—SYCAMORE: (*Platanus occidentalis*). Large round top tree with light colored bark, broad leaves. Attains height of from 130 to 170 feet tall. Excellent for street planting and for shade. Price, 4-5' trees, each 95c.
- 1523—WALNUT, BLACK: (*Juglans nigra*). Large compound leaves, edible nuts. Price, 18-24" trees, each 65c.
- 1524—WILLOW, WEEPING: (*Salix babylonica*). The variety we offer is the true weeping, with long pendulous branches, hardy to St. Louis, but not beyond. Price, 2-3' trees, each 65c.

ORNAMENTAL AND FLOWERING TREES

In the long succession of colorful pictures that are presented in our Southern gardens, the most impressive are those provided in February, March and April by flowering trees. Blooming before the appearance of foliage, as most of them do, their clear tones of color afford boundless opportunities for the creation of lovely garden scenes. Their graceful branches are exquisitely beautiful, either spread against backgrounds of sober evergreens, or matching their brilliant colors with beds of gay tulips, daffodils and other early flowers.

- 1604—CRAB, FLOWERING-BECHTEL: (*Malus ioensis plena*). Blooms May-June. The genuine double-flowering crab. Medium sized tree, growing to 15 feet. Hardy. Delicate pink, double, small rose-like flowers. Fragrant. Price, 18-24" trees, each \$1.15.
- 1605—CRAB, FLOWERING-ELEYI: (*Malus purpurea eleyi*). Attractive reddish foliage in Spring. Dark pink, single flowers and showy fruit. Price, 3-4' trees, each \$1.25.
- 1606—CRAB, FLOWERING-HOPA: (*Malus hopa*). Red flowering crab. Blooms April-May. One of the most desirable varieties. An attractive upright-growing tree that becomes literally covered with large, rose-colored flowers. Very hardy and free from disease. Price, 3-4' trees, each \$1.35.
- 1609—DOGWOOD, PINK FLOWERING: (*Cornus florida rubra*). Beautiful single deep rose-colored flowers give this well-shaped tree an unusual effect. Blooms in the early Spring. Thrives in sun or partial shade. One of the most lovely of the Dogwoods. Price, 18-24" trees, each \$3.75.
- 1610—DOGWOOD, WHITE FLOWERING: (*Cornus florida*). This is the large flowering white Dogwood in tree size for immediate effect in landscapes. Leaves bright green, turning red or scarlet in Autumn. Flowers large white, tinged pink, borne in early Spring. Fruit bright red. Price, 4-5' trees, each \$1.95.
- 1611—GOLDEN CHAIN TREE: (*Laburnum vossii*). A small tree with green bark and foliage like exaggerated clover leaves. Flowers are pure golden yellow, and formed in long racemes like Wisteria. Very beautiful and still very rare. Price, 4-5' trees, each \$2.75.
- 1615—MAGNOLIA, SOUTHERN: (*Magnolia grandiflora*). Majestic tree with large thick leaves of glossy green. Beautiful white flowers with heavy fragrance. Leaves should be clipped off when transplanting for best results. Price, 3-4' trees, each \$2.75.
- 1618—MIMOSA, (OR SILK TREE): (*Albizia julibrissin*). One of the most handsome and ornamental of all flowering trees. Tropical-like foliage with large flat, rose-colored flowers. Quite hardy. Price, 3-4' trees, each \$1.25.
- 1620—PEACH, FLOWERING-DOUBLE PINK: (*Amygdalus persica flore-plena*). Double, bright pink flowers. Price, 2-3' trees, each 85c.
- 1621—PEACH, FLOWERING-DOUBLE RED: (*Amygdalus persica rubro-plena*). Double, bright red flowers. Price, 2-3' trees, each 85c.
- 1622—PEACH, FLOWERING-DOUBLE WHITE: (*Amygdalus persica albo-plena*). Double, white flowers. Price, 2-3' trees, each 85c.
- 1623—PLUM, PURPLE LEAF: (*Prunus pissardi*). Small trees with purplish-red foliage. Pink flowers in great profusion in early Spring before foliage appears. Price, 4-5' trees, each \$1.95.
- 1624—RED BUD: (*Cercis canadensis*). American Red Bud. One of our loveliest native trees. Produces a mass of rosy-pink flowers in early Spring. Also known as Judas Tree. Price, 2-3' trees, each 65c.
- 1626—TULIP TREE: (*Liriodendron tulipifera*). A tall, robust tree of magnificent appearance. Leaves of unusual form. The blossoms are tulip-like in shape and size. Very showy. Price, 2-3' trees, each 55c.

Seed Department

Our flower seeds are grown by recognized specialists in California, and they are just as good as you can get, regardless of the growing descriptions, and high sounding adjectives used by many seed houses. This growing of flower seeds, under ideal conditions, is centered in a small district in California, where they are grown and shipped to every section of the world. Our seed are the best they grow; they are no better than you can get from other first-class seedsmen, but they are identical in every respect. We do not mix old crop seed with new crop, so you may expect to get nearly 100 per cent germination from the seed we send out. Also, you can save about one-half on your seed bill; that is something to remember.

- 4001—**AGERATUM, BLUE PERFECTION**: Fine bedding and border plant, with deep amethyst blue compact plants. Pkt., approximately 3300 seed, 10c.
- 4002—**ALYSSUM, CARPET OF SNOW**: Pure white flowers completely cover plant. Fine for beds, borders, etc. Pkt., approximately 5000 seed, 10c.
- 4003—**AMARANTHUS, JOSEPH'S COAT**: Tri-color. Rich maroon foliage, topped with head of yellow, green, and red. Pkt., approximately 2000 seed, 10c.
- 4004—**BALSAM, DOUBLE CAMELLIA-FLOWERED**: Bushy plants, lovely double blooms in pink, red, white and other colors in mixture. Pkt., approximately 250 seed, 10c.
- 4005—**BLUE LACE FLOWER**: Lavender blue flowers all Summer. Fine for cutting. Pkt., approximately 400 seed, 10c.
- 4006—**CALLIOPSIS**: Tall all-double mixed. Annuals. Beautiful double and semi-double flowers in brilliant combinations of yellow and mahogany. Pkt., approximately 6000 seed, 10c.
- 4007—**CAMPANULA**: (Annual Canterbury Bells). Mixed colors including pink, blue, violet, rose, etc. Pkt., approximately 4000 seed, 10c.
- 4008—**CARNATION, CHABAUD'S GIANT IMPROVED**: Bloom same year planted. Lovely large, double carnations, mixed colors including red, pink, white, yellow, etc. Pkt., approximately 200 seed, 10c.
- 4009—**AQUILEGIA, COLUMBINE**: Long-spurred Mrs. Scott Elliott's strain. Assortment of fine colors. Pkt., approximately 500 seed, 10c.
- 4010—**ASTER, IMPROVED CREGO**: Best aster for the South. Mixture of colors. Pkt., approximately 700 seed, 10c.
- 4011—**ASTER, ALL SORTS DOUBLE MIXED**: A mixture of all types and all colors of Asters. Pkt., approximately 500 seed, 10c.
- 4012—**BLUE BONNET**: Texas State Flower. Deep indigo blue, a clear rich color. Pkt., approximately 150 seed, 10c.
- 4013—**BIGNONIA RADICANS**: Trumpet vine. Trumpet-like flowers of brilliant orange-scarlet, blooming during July and August. Excellent for trellises, tree stumps, covering rocks and walls, etc. Perennial climber. Pkt., approximately 300 seed, 10c.
- 4014—**BURNING BUSH**: Resembles ornamental evergreen; soft green in summer, carmine in Fall. Pkt., approximately 6000 seed, 10c.
- 4015—**CALANDRINA, AMARANTH**: Crimson magenta, fine for rock garden or borders. Grows about five inches tall. Pkt., approximately 4000 seed, 10c.
- 4016—**CACTUS, MIXTURE**: Mixture of all varieties, classes and forms. Obtain best results by growing in the house. Pkt., approximately 25 seed, 10c.
- 4017—**CALENDULA, CHOICE MIXTURE**: Choice mixture of all varieties, and different shades. Extra fine. Pkt., approximately 800 seed, 10c.
- 4018—**CALIFORNIA POPPY**: Assorted shades of yellow, orange, and crimson. In great favor. Pkt., approximately 5000 seed, 10c.
- 4019—**CANDYTUFT**: Fine for edging, easily grown, profuse bloomers. Five lovely colors mixed. Pkt., approximately 1000 seed, 10c.
- 4020—**CANDYTUFT, GIANT HYACINTH FL. WHITE**: Large spikes of snowy white flowers, habit sturdy and compact. Pkt., approximately 1000 seed, 10c.
- 4021—**CHINESE FORGET-ME-NOT**: Produces long sprays of blue flowers resembling forget-me-nots. Pkt., approximately 900 seed, 10c.
- 4022—**CHRYSANTHEMUM, DOUBLE**: Fine mixture of double Chrysanthemums. Pkt., approximately 3000 seed, 10c.
- 4023—**CHRYSANTHEMUM, SINGLE**: Single mixture of showy Chrysanthemums in bright colors. Pkt., approximately 1000 seed, 10c.
- 4024—**COCKSCOMB, CELOSIA**: Old well loved varieties and many new ones. Mixture. Pkt., approximately 2000 seed, 10c.
- 4025—**COCKSCOMB, CHILDSII**: Chinese Wool Flower. Mixture of colors. Pkt., approximately 2000 seed, 10c.
- 4026—**COCKSCOMB, CRISTATA**: Mixture of colors. Dwarf growing. Pkt., approximately 1000 seed, 10c.
- 4027—**COREOPSIS**: Double new gold. Flowers large and fluffy, of rich golden yellow with long stems, ideal for cutting. 100% double. Pkt., approximately 1300 seed, 10c.
- 4028—**CORNFLOWER, MIXED**: New select double mixed in six fine colors. Pkt., approximately 750 seed, 10c.
- 4029—**CORNFLOWER, BLUE**: Double blue. Pkt., approximately 750 seed, 10c.
- 4030—**CORNFLOWER, RED**: Double dark red. Pkt., approximately 750 seed, 10c.
- 4031—**CORNFLOWER, ROSE**: Double rose pink. Pkt., approximately 750 seed, 10c.

- 4032—CORNFLOWER, WHITE: Double pure white. Pkt., approximately 750 seed, 10c.
- 4033—CORNFLOWER, BLACK MAROON: Double black maroon color. Pkt., approximately 750 seed, 10c.
- 4034—COSMOS, SINGLE MAMMOTH FL.: Choice mixture of extra early single mammoth flowering cosmos. Pkt., approximately 500 seed, 10c.
- 4035—COSMOS, LATE DOUBLE CRESTED: Annual growing to height of from 3 to 4 feet. Late blooming double flowers in a wide range of colors. Pkt., approximately 200 seed, 10c.
- 4036—COSMOS HYBRIDA, ORANGE FLARE: Golden orange, blooms throughout the season. Pkt., approximately 175 seed, 10c.
- 4037—DAHLIA, UNWIN'S DWARF HYBRIDS: Perennial. Semi-double flowers, partly curled and quilled. Wide range of colors. Pkt., approximately 50 seed, 10c.
- 4038—DAHLIA, COLTNESS HYBRIDS MIXED: Mixture of single flowering dahlias. Pkt., approximately 140 seed, 10c.
- 4039—DAHLIA, LARGE FL. DOUBLE MIXED: Large double flowering dahlias in a variety of colors Pkt., approximately 50 seed, 10c.
- 4040—DAISY, ARCTOTIS: New, showy, daisy-like flowers three inches in diameter like Gerbera, in shades of bronze, russet, terracotta., light and dark yellow, rose, etc. Pkt., approximately 100 seed, 10c.
- 4041—DAISY, BLUE EYED: A free flowering, annual, daisy-like plant which grows best in a sunny location. Flowers are silver white with sky-blue eyes and have a yellow halo around the center. Pkt., approximately 5000 seed, 10c.
- 4042—DAISY, PERSIAN: Pyrethrum. Fine cut flower. Choice mixture of single and double varieties in many colors. Pkt., approximately 200 seed, 10c.
- 4043—DAISY, SHASTA: Alaska. Large pure flowers. Pkt., approximately 1,000 seed, 10c.
- 4044—DAISY, TAHOKA: Strong growing, bushy plants with fern like foliage. Lilac blue in color with golden yellow center and resembles single Asters. Annual. Pkt., approximately 400 seed, 10c.
- 4045—DELPHINIUM, BELLADONNA: The standard light blue variety. Pkt., approximately 325 seed, 10c.
- 4046—DELPHINIUM, BELLAMOSUM: Standard dark blue variety. Pkt., approximately 325 seed, 10c.
- 4047—DELPHINIUM, SCARLET: Cardinale. Beautiful scarlet color. Pkt., approximately 400 seed, 10c.
- 4048—DELPHINIUM, BLACKMORE & LANGDON: Fine long stems, assorted colors for cutting. Pkt., approximately 500 seed, 10c.
- 4049—DUSTY MILLER: Annual. Fine ornamental foliage plant with finely divided leaves of wooly texture. Plants are silvery white in color, but the flowers are light lavender, appearing late in the season. Pkt., approximately 300 seed, 10c.
- 4050—FORGET-ME-NOT: A beautiful deep blue variety. Will bloom from seed if sown early the first year. Pkt., approximately 800 seed, 10c.
- 4051—FOXGLOVE (DIGITALIS): Mixture of colors. Pkt., approximately 6000 seed, 10c.
- 4052—FEVERFEW (GOLDEN BALL): Annual. Excellent border or pot plant of dwarf compact growth, covered during Summer and Fall with masses of small, double, golden yellow blooms. Pkt., approximately 1000 seed, 10c.
- 4053—FEVERFEW (SNOWBALL): Annual plant growing about a foot tall. White flowers. Pkt., approximately 1000 seed, 10c.
- 4054—GEUM (ROSE OF THE ROCKERY): Blooms June to September. Mixed colors of orange, yellow and scarlet, fully double. Pkt., approximately 200 seed, 10c.
- 4055—GERANIUM: Floradale fancy mixture. Pkt., approximately 25 seed, 10c.
- 4056—FOUR O'CLOCKS: Blooms through the Summer and Fall. Very showy. Colors red, pink, rose, lilac, yellow and white mixed. Pkt., approximately 50 seed, 10c.
- 4057—GAILLARDIA (BLANKET FLOWER): Large double white, red and yellow flowers, free blooming. Mixture. Pkt., approximately 325 seed, 10c.
- 4058—GLOBE AMARANTH, BACHELOR BUTTON: Everlasting flower with globe-shaped, clover-like flower heads in white, red and orange tones. Blooms profusely from mid-Summer on. Pkt., approximately 500 seed, 10c.
- 4059—GOURDS, SMALL: Fancy sorts, mixed. Pkt., approximately 150 seed, 10c.
- 4060—GOURDS, ORNAMENTAL MIXED: Mixture of different sizes and shapes of gourds. Pkt., approximately 135 seed, 10c.
- 4061—GYPSOPHILA (BABY'S BREATH): Pure white, fine, small bell-shaped flowers. For mixing with bouquets. Pkt., approximately 7500 seed, 10c.
- 4062—HIBISCUS, MALLOW MARVELS: Mixture of white, shades of pink, rose and crimson. Blooms late in Summer and Fall. Easily grown. Perennial. Pkt., approximately 200 seed, 10c.
- 4063—HOLLYHOCK, CHATER'S DOUBLE FLOWERING: Perennial. Mixture of colors. Flowers large and double. Pkt., approximately 100 seed, 10c.
- 4064—HOLLYHOCK, CHATER'S NEWPORT PINK: Large double flowers of an exquisite shade of bright pink. Long strong spikes. Pkt., approximately 100 seed, 10c.
- 4065—HOLLYHOCK, CHATER'S DOUBLE MAROON: Deep maroon color. Large double blooms closely set on a long spike. Pkt., approximately 100 seed, 10c.
- 4066—HOLLYHOCK, CHATER'S DOUBLE SCARLET: The brilliant scarlet double blooms combine into a solid tall spike of color. Pkt., approximately 100 seed, 10c.
- 4067—HOLLYHOCK, CHATER'S DOUBLE YELLOW: Rich shade of deep yellow. Pkt., approximately 100 seed, 10c.
- 4068—HOLLYHOCK, CHATER'S DOUBLE WHITE: Exquisite white petals combined into a large massive double bloom. Pkt., approximately 100 seed, 10c.
- 4069—LARKSPUR, BLUE-SPIRE: Dark blue, tall, compact, with long trusses of florets. Pkt., approximately 800 seed, 10c.
- 4070—LARKSPUR, CARMINE KING: Same as above, except a rosy carmine color. Pkt., approximately 750 seed, 10c.
- 4071—LARKSPUR, MISS CALIFORNIA: Salmon pink color. Pkt., approximately 800 seed, 10c.

- 4072—LARKSPUR, WHITE SPIRE: A pure white. Stunning. Pkt., approximately 800 seed, 10c.
- 4073—LARKSPUR, GIANT IMPERIAL MIXED: A mixture of different varieties and colors of giant imperial larkspur. Pkt., approximately 750 seed, 10c.
- 4074—MARIGOLD, AFRICAN DOUBLE MIXED: Almost ball shaped, fully double blooms in shades of yellow and orange. Annual, blooming from mid-Summer until frost. Pkt., approximately 400 seed, 10c.
- 4075—MARIGOLD, CROWN OF GOLD: Improved variety with odorless foliage. Flowers brilliant orange gold. Annual. Pkt., approximately 400 seed, 10c.
- 4076—MARIGOLD, GIANT PEONY FLOWERED: Supreme mixture containing shades of yellow and orange. Flowers resemble giant peonies. Pkt., approximately 400 seed, 10c.
- 4077—MARIGOLD, DWARF DOUBLE FRENCH: Grows to height of 12 inches. Mixture of varieties and colors. Pkt., approximately 650 seed, 10c.
- 4078—MARIGOLD, CARNATION FLOWERED: Mixture of colors. Annual. Flowers resemble carnations and have odorless foliage. Pkt., approximately 400 seed, 10c.
- 4079—NASTURTIUMS: Mixture of different colors. Flowers are double, semi-dwarf, and sweet-scented. Pkt., approximately 75 seed, 10c.
- 4080—PANSY: Trimardeau improved, mixture of colors. Unsurpassed for bedding purposes. Tall growing and extremely floriferous. Pkt., approximately 200 seed, 10c.
- 4081—PERIWINKLE, VINCA ROSEA: Annual, blooming in late Summer and Fall. Mixture of colors including rose, rose with white eye, pure white, and pink. Pkt., approximately 500 seed, 10c.
- 4082—PHLOX, DRUMMONDII GRANDIFLORA: Mixture of all the bright and showy colors represented in the annual Phlox. Large, closely formed flower-heads. Pkt., approximately 200 seed, 10c.
- 4083—PETUNIA, BALCONY: Mixture of different colors and varieties of balcony petunias. Fine for beds, porch baskets, etc. Pkt., approximately 4000 seeds, 10c.
- 4084—PETUNIA, DWARF BEDDING: Not as large growing as the balcony petunias, but ideal for edging, borders, boxes, etc. Mixture of about 15 splendid colors. Pkt., approximately 2000 seed, 10c.
- 4085—PETUNIA, RUFFLED GIANTS: Prize mixture. Wonderful blend of beautiful colors. Pkt., approximately 250 seed, 10c.
- 4086—PETUNIA, FLUFFY RUFFLES: Excellent color range, flowers are large, ruffled, and fringed. Pkt., approximately 200 seed, 10c.
- 4087—PINKS, DOUBLE MIXED: Splendid mixture of new and old-fashioned pinks. Pkt., approximately 2000 seed, 10c.
- 4088—PINKS, SINGLE MIXED: Mixture of single blooming pinks. Pkt., approximately 2000 seed, 10c.
- 4089—POPPY, BEGONIA FLOWERED: Annual growing two and one-half feet tall. Bearing begonia-like flowers. Pkt., approximately 8500 seed, 10c.
- 4090—POPPY, DOUBLE SHIRLY MIXED: All double mixture of shirly poppies. Pkt., approximately 15,000 seed, 10c.
- 4091—POPPY, AMERICAN LEGION: Dazzling orange scarlet colors. Pkt., approximately 20,000 seed, 10c.
- 4092—POPPY, SWEETBRIAR: Deep rose pink, double flowers. Annual. Pkt., approximately 9000 seed, 10c.
- 4093—POPPY, ICELAND: Perennial plant, with blooms being borne profusely during Spring and Summer. Exquisite mixture. Pkt., approximately 2500 seed, 10c.
- 4094—PINCUSHION FLOWER: Sweet Scabiosa or Mourning Bride. Exquisite mixture, all colors. Pkt., approximately 350 seed, 10c.
- 4095—PINCUSHION FLOWER, BLUE COCKADE: Deep azure blue. Heads conical in shape. Pkt., approximately 400 seed, 10c.
- 4096—PORTULACA, SINGLE: (Rose Moss). Single flowered mixed. About six colors. Pkt., approximately 12,000 seed, 10c.
- 4097—PORTULACA, DOUBLE: (Rose Moss). Double large flowered. Five distinct colors. Pkt., approximately 4800 seed, 10c.
- 4098—RUDBECKIA, GOLDEN SUNSET: Large flowers, three to four inches across. Flowers bi-colored golden yellow and rich mahogany. Free blooming. Pkt., approximately 1000 seed, 10c.
- 4099—SALPIGLOSSIS EMPEROR: (Painted Tongue). Rich velvety yellow, crimson and purple mixed. Pkt., approximately 4400 seed, 10c.
- 4100—SALVIA, GLOBE OF FIRE: Bushy plants about a foot and half tall. Upright spikes of brilliant scarlet flowers. Pkt., approximately 50 seed, 10c.
- 4101—SALVIA, BLUE BEDDER: Tall spikes of lovely blue flowers. Blooms all Summer. Pkt., approximately 200 seed, 10c.
- 4102—SNAPDRAGONS, MIXED: New rust-proof giant flowered snapdragons. Mixture of about twelve colors. Pkt., approximately 3000 seed, 10c.
- 4103—STOCKS, MIXED: (Gilliflower). Heavy spikes of fine, double fragrant flowers. Fine for cutting. Pkt., approximately 1200 seed, 10c.
- 4104—STOCKS, GIANT PERFECTION: Early and free blooming. Produces a high percentage of doubles. Choice mixture. Pkt., approximately 1000 seed, 10c.
- 4105—SUNFLOWER: Double, large golden yellow. Pkt., approximately 90 seed, 10c.
- 4106—SWEET PEAS, EARLY FLOWERING: Early flowering Spencer Sweet Peas. Exquisite mixture of colors and varieties. Pkt., approximately 115 seed, 10c.
- 4107—SWEET PEAS, SUMMER FLOWERING: Fine mixture of giant, ruffled, Summer flowering Sweet Peas. Best and newest Spencer varieties. Pkt., approximately 175 seed, 10c.
- 4108—SWEET PEAS, PERENNIAL: These live from year to year and bloom profusely through the hot Summer months. Mixture of rose, white and pink shades. Pkt., approximately 50 seed, 10c.
- 4109—SWEET PEAS, OLD FASHIONED: Choice mixture of old fashioned sweet scented Sweet Peas. Pkt., approximately 200 seed, 10c.



- 4110—SWEET SULTAN: Giant flowered type. Glorious blend of colors. Pkt., approximately 500 seed, 10c.
- 4111—SWEET WILLIAM: Many beautiful colors. Some starred and mottled. Others with clear white eyes. Pkt., approximately 1000 seed, 10c.
- 4112—SWEET WIVLESFIELD: New race of Pinks, like Sweet William but larger. Fine mixture of colors, in both single and double varieties. Annual, fine for beds, borders, cutting and pot plants. Pkt., approximately 300 seed, 10c.
- 4113—TOBACCO PLANT: (Nicotiana Affinis). Sweet scented, choice mixture. Annual growing to three feet. Pkt., approximately 16,000 seed, 10c.
- 4114—VERBENA, MIXED: Hybrid grandiflora. Mixture of colors. Pkt., approximately 300 seed, 10c.
- 4115—VERBENA, ETNA: Geranium red, with light yellow eye. Pkt., approximately 300 seed, 10c.
- 4116—VERBENA, FLAMINGO: Vivid rose pink. Pkt., approximately 300 seed, 10c.
- 4117—VERBENA, ROYALE: Royal blue with cream eye. Pkt., approximately 300 seed, 10c.
- 4118—VERBENA, DANNEBROG: Scarlet, with white eye. Pkt., approximately 300 seed, 10c.
- 4119—VERBENA, WHITE: Pure white verbena. Pkt., approximately 300 seed, 10c.
- 4120—VERBENA, LAVENDER GLORY: Lavender with cream eye. Pkt., approximately 300 seed, 10c.
- 4121—ZINNIA, GIANT DOUBLE DAHLIA FLOWERED, MIXED: Very fine assortment of colors. Giant, double flowers, resembling Dahlias. Pkt., approximately 200 seed, 10c.
- 4122—ZINNIA, GIANT DOUBLE DAHLIA FLOWERED, LUMINOSA: Flaming Rose, Pkt., approximately 200 seed, 10c.
- 4123—ZINNIA, GIANT DOUBLE DAHLIA FLOWERED, GOLDEN STATE: Golden yellow. Pkt., approximately 200 seed, 10c.
- 4124—ZINNIA, GIANT DOUBLE DAHLIA FLOWERED, PURPIE PRINCE: Deep purple. Pkt., approximately 200 seed, 10c.
- 4125—ZINNIA, GIANT DOUBLE DAHLIA FLOWERED, CANARY BIRD: Primrose color. Pkt., approximately 200 seed, 10c.
- 4126—ZINNIA, GIANT DOUBLE DAHLIA FLOWERED ORIOLE: Orange. Pkt., approximately 200 seed, 10c.
- 4127—ZINNIA, GIANT DOUBLE DAHLIA FLOWERED, WILL ROGERS: Bright scarlet red. Pkt., approximately 200 seed, 10c.
- 4128—ZINNIA, GIANT DOUBLE DAHLIA FLOWERED, POLAR BEAR: White. Pkt., approximately 200 seed, 10c.
- 4129—ZINNIA, LILLIPUT, MIXED: Baby or pompom zinnias. The small pompom like flowers are exquisite and most appealing. Grow to about one and half feet tall, bushy, compact, and free-flowering. Flowers about inch and half across. Mixture of colors. Pkt., approximately 350 seed, 10c.
- 4130—ZINNIA, LILLIPUT, CANARY YELLOW: Light yellow. Pkt., approximately 350 seed, 10c.
- 4131—ZINNIA, LILLIPUT, GOLDEN GEM: Charming golden orange color. Pkt., approximately 350 seed, 10c.
- 4132—ZINNIA, LILLIPUT, PURPLE GEM: Purple. Pkt., approximately 350 seed, 10c.
- 4133—ZINNIA, LILLIPUT, SCARLET GEM: Scarlet. Pkt., approximately 350 seed, 10c.
- 4134—ZINNIA, LILLIPUT, SALMON ROSE: Charming salmon-rose color. Pkt., approximately 350 seed, 10c.
- 4135—ZINNIA, LILLIPUT, WHITE GEM: Pure white. Pkt., approximately 350 seed, 10c.
- 4136—ZINNIA, FANTASY, MIXED: Looselike, large, lovely Chrysanthemum-like flowers. Unusual range of colors. Mixture. Pkt., approximately 300 seed, 10c.
- 4137—ZINNIA, SCABIOSA FLOWERED, MIXED: Entirely different. Very charming. Fine for cutting. Yellow and scarlet mixed. Pkt., approximately 250 seed, 10c.
- 4138—ZINNIA, CACTUS FLOWERED: An improved Fantasy type Zinnia, with flowers averaging 4½ inches across. Mixture of colors. Pkt., approximately 200 seed, 10c.
- 4139—WILD FLOWER GARDEN MIXTURE: A well balanced mixture of hardy annuals. Pkt., approximately 2500 seed, 10c.
- 4141—ROCK GARDEN PERENNIALS: Choice mixture of over 50 rare and choice rock garden perennials. Maximum height 6 inches. Pkt., approximately 600 seed, 10c.
- 4143—CARDINAL CLIMBER: Quick growing climber with scarlet blooms. Pkt., approximately 20 seed, 10c.
- 4144—IPOMEA, CORNELL: Large flowers, carnelian red bordered white, free blooming, heavy growth, attractive bright green foliage. Pkt., approximately 40 seed, 10c.
- 4145—MOONFLOWER, NIGHT BLOOMING, WHITE: Giant white, white seeded. Pkt., approximately 18 seed, 10c.
- 4146—CYPRESS VINE: Scarlet and white mixed. Pkt., approximately 70 seed, 10c.
- 4147—MORNING GLORY, MIXTURE: A mixture of all colors. Annual climber attaining height of 10 to 15 feet. Showy, quick-growing climber bearing thousands of showy flowers from mid-summer until frost. Pkt., approximately 200 seed, 10c.
- 4148—MOONFLOWER, GIANT WHITE: Strong growing annual climber. Large green leaves and immense white flowers, measuring 6 inches in diameter. Plant grows 20 to 30 feet tall. Pkt., approximately 20 seed, 10c.
- 4149—MOONFLOWER, PINK: Giant pink. Pkt., approximately 25 seed, 10c.
- 4150—MORNING GLORY, HEAVENLY BLUE: Large sky blue flowers. Pkt., approximately 70 seed, 10c.
- 4151—MORNING GLORY, SCARLET O'HARA: Large, blood red flowers. Striking novelty. Pkt., approximately 35 seed, 10c.



SPECIAL OFFER

We wish to obtain additional names of prospective customers for our mailing list. If you will send us the names and addresses of some of your friends or neighbors who do not already receive our catalog, we will include with your order, **FREE**, 1 rose bush of your selection. When submitting list of names, we ask that you please list names of people whom you know to be flower and garden lovers and who you think will be prospective customers. **TO AVAIL YOURSELF OF THIS OFFER YOUR ORDER MUST AMOUNT TO \$3.00 OR MORE AND REMITTANCE MUST ACCOMPANY ORDER IN FULL. PLEASE GIVE COMPLETE ADDRESSES AND PRINT OR WRITE LEGIBLY.**

1. Name _____

Address _____

City _____ State _____

2. Name _____

Address _____

City _____ State _____

3. Name _____

Address _____

City _____ State _____

4. Name _____

Address _____

City _____ State _____

5. Name _____

Address _____

City _____ State _____

6. Name _____

Address _____

City _____ State _____

7. Name _____

Address _____

City _____ State _____

8. Name _____

Address _____

City _____ State _____

9. Name _____

Address _____

City _____ State _____

10. Name _____

Address _____

City _____ State _____

Garden Books

- 1700—BASIC HORTICULTURE:** By Victor R. Gardner.
200 photographs; 441 pages; 6½ by 9½ inches. The serious gardener will welcome this thoroughly up-to-date, comprehensive book on the culture of fruits, vegetables, plants, trees and shrubs in all parts of the country. PRICE, \$5.50 per copy.
- 1702—FARM MANAGEMENT:** By Robert R. Hudelson.
Illustrated; 388 pages; 5½ by 8 inches. This detailed and practical book concentrates on modern farm management—on organization and planning, operating and financing. These problems are approached strictly from the viewpoint of the average farm owner who must face, day by day, the business side of his job, whether he specializes in grains, livestock, dairy products, or vegetables, or combines all of these. PRICE, \$3.00 per copy.
- 1703—GARDEN BULBS IN COLOR:** By McFarland, Hatton and Foley.
Illustrated with 275 color plates; halftones; 292 pages; 6¼ by 9¼ inches. This amazing book pictures in color 83 varieties of Tulips, 51 Narcissus, 25 Lilies, 12 Iris, and 60 others. Practical, brief cultural notes accompany the photographs. All year round you will be able to visualize your bulb garden through the pages of this beautiful book. Pictures and text, alphabetically arranged, form a helpful guide to aid the prospective buyer of bulbs, or the enthusiast anticipating new blossoms in his garden. PRICE, \$2.49 per copy.
- 1704—GARDENER'S HANDBOOK:** By L. H. Bailey.
Line drawings; 292 pages; 6¼ by 9½ inches. This comprehensive, encyclopedic manual of gardening is now available again. This handbook, on every phase of growing flowers, shrubs, vegetables, and fruits, indoors and out, from Abutilon to Zinnia, is as easy to use as it is satisfactory. It also has special advice on such topics as annuals, borders, rock-gardens, lawns, window-gardens, glass-houses, hotbeds, and control of insects and diseases. PRICE, \$1.98 per copy.
- 1705—GARDEN FLOWERS IN COLOR:** By Daniel J. Foley.
Imperial Edition. 350 photographs in full color; 320 pages; 6¼ by 9½ inches. Here is the only book to show the important garden flowers in accurately colored photographs. Several varieties of the same flowers and typical gardens at various blooming seasons are included. This volume is a guide book for the beginner and a reference book for the advanced gardener. It is a genuine help in clearing away the amateur's uncertainties since the carefully chosen flowers are typical of those grown in American gardens. It includes annuals, perennials, many outstanding flowering trees and shrubs, vines, bulbs, and roses. The hundreds of flowers in color will guide you in planting your garden, in planning color schemes, or combining plants in beds. Text and pictures are arranged alphabetically. PRICE, \$2.95 per copy.
- 1713—GARDENING FOR GOOD EATING:** By Helen Morgenthau Fox.
28. Line drawings; 263 pages. 6¼ by 8 inches. It is our patriotic duty to add vitamins to our diet in these days of stress and Mrs. Fox shows us how to add variety as well. In addition to the vegetables usually grown by the gardener, you will find in her book many forgotten vegetables, easy to grow and full of high food value and delicious flavor. Mrs. Fox not only tells in detail how to grow them, but also gives tips on nutrition and many delectable recipes. PRICE, \$2.50 per copy.
- 1706—HORTUS SECOND:** By L. H. Bailey and Ethel Zoe Bailey.
960 pages; 6¾ by 10 inches. This concise dictionary has now been drastically reduced in price from \$12.00 to \$6.00. This volume, identical with the \$12.00 edition, is a ready reference book for all who have occasion to use information about plants. It gives brief descriptions, correct botanical and common names, pronunciation, and notes on culture and propagation for every group of plants in cultivation in the United States and Canada. PRICE, \$6.00 per copy.
- 1707—HOW TO GROW ROSES:** By J. Horace McFarland and Robert Pyle.
32 pages full color illustrations; 132 pages; 5½ by 8 inches. For the 19th printing of this practical and beautiful book the authors have added many new illustrations. A book, which through the years has become a stand-by for amateur and experienced rose growers, it is a real rose classic with concise and tested answers for every problem. No gardener's shelf is complete without it. PRICE, \$2.00 per copy.
- 1708—LANDSCAPING THE HOME GROUNDS:** By L. W. Ramsey.
Illustrated with photographs; 170 pages; 5½ by 8¼ inches. Step by step, with photographs and plans that make each point clear, this book shows just how to develop your home grounds for greatest beauty. Each of the 175 illustrations tells a story or teaches an important lesson at a glance. The book is full of concrete suggestions and valuable ideas for home plots of every size and situation. PRICE, \$2.50 per copy.
- 1714—VEGETABLE GARDENING IN COLOR:** By Daniel J. Foley.
150 Color plates; 255 pages; 6¼ by 9½ inches. Here is a colorful parade of the most highly recommended varieties of vegetables and berries, compiled from lists of the United States agricultural experimental stations. This picture encyclopedia is alphabetically arranged with accompanying descriptions and practical cultural directions. In addition to the color plates, there are 50 photographs in black and white and 50 line drawings that show actual garden plans, correct spacing and other gardening operations. There are comprehensive sections on soil preparation, seed sowing, tools, insects and diseases, cooking hints, and winter storage. PRICE, \$2.49 per copy.



INDEX

A		J	
Abelia	22	Jasmine	17-18-22
Abutilon	18	Junipers	24
Almond, Flowering	17	K	
Althea	18	Kerria Japonica	18
Amaryllis	4	Kudzu Vine	21
Anemones	4	L	
Apples	9	Lantana	18
Apricots	8	Lavendula	23
Arborvitae	24-25	Ligustrum	20-22-23
Ash	25	Lilac	18
Azaleas	23	Lilac, French	19
B		Linden	25
Barberry	17	Locust	25
Beautyberry	17	M	
Beauty Bush	17	Magnolia	26
Begonias	3	Mahonia	23
Birch	25	Maidenhair Tree	25
Bird-of-Paradise	17	Maple	25
Blackberries	11	Maple, Flowering	18
Bletilla	4	Mimosa	26
Books, Garden	Inside Back Cover	Mock Orange	20
Bottle Brush	17	Mulberry	26
Box Elder	25	N	
Boysenberries	12	Nandina	23
Bridal Wreath	17	Narcissus	2
Buddleia	19	O	
Butterfly Bush	19	Oak	26
Butter Nut	25	Order Blank	31
C		Osage Orange	26
Calla Lilies	3	P	
Camellias	24	Pampas Grass	23
Cannas	4	Paw Paw	18
Carolina Yellow Jessamine	21	Peach	6-7
Catalpa	25	Peach, Flowering	26
Cherries	9	Pear	10
Cherry Laurel	22	Pearl Bush	18
China Texas Umbrella	25	Peonies	5
Chinese Matrimony Vine	21	Persimmons	10
Chokeberry	17	Phlox	5
Clematis	21	Photinia	23
Coralberry	17	Plum	7-8
Cotoneaster	22	Plum, Purple-Leaf	26
Crab, Flowering	26	Pomegranate, Flowering	18
Cranberrybush	17	Popular	26
Crape Myrtle	17-19	Privet	20
Crocus	2	Pyracantha	23
Cydonia Japonica	17	Q	
Cypress	24	Queen's Wreath	21
D		R	
Daffodils	2	Ranunculus	4
Dahlias	3	Red Bud	26
Daphne	22	Red Rain Lily	4
Day Lilies	4	Regal Lily	4
Deutzia	17	Rose-Acacia	18
Dewberries	11	Rosemary	23
Dogwood	17-26	Roses, Bush	13-14-15
E		Roses, Climbing	16
Elder	17	Roses, Polyantha	15-16
Eleagnus	22	Russian Olive	18
Elm	25	S	
Euonymus	17-22	Scilla	2
Eurye	22	Seed, Flower	27-28-29-30
Exochorda	18	Senisa	23
F		Siberian Pea-Tree	18
Figs	10-11	Snowball	18
Firs	24	Snowberry	18
Flowering Quince	17	Special Offer	32
Foreword	Inside Front Cover	Spirea	20
Forsythia	19	Spruce	25
G		Strawberries	12
Galanthus	2	Sumac	18
Galtonia	4	Sweet Shrub	18
Gardenia	22	Sycamore	26
Gladiolus	3	T	
Gloxinias	3	Tamarix	18
Golden Bell	19	Texas Ash Plant	23
Golden Chain Tree	26	Trigridia	4
Golden St. Johnsworth	17	Triteleia	4
Grapes	11	True Lavender	23
Guernsey Lilies	4	Trumpet Vine	21
Gum	25	Tuberoses	4
H		Tulips	1
Hackberry	25	Tulip Tree	26
Hardy Orange	20	V	
Hemlock	24	Viburnum	23
Hemerocallis	4	Virginia Creeper	21
Holly	22	Vitex	18
Honeysuckle, Bush	19	W	
Honeysuckle, Vine	21	Walnut	26
Hyacinths	2	Wayfaring Tree	18
Hyacinthus Muscari	2	Weigela	18
Hydrangea	17	Willow	26
Hydrangea, French	19	Winterberry	18
Hypericum	17	Winter Creeper	21
I		Wisteria, Vine	21
Iris	5	XYZ	
Ivy	21	Yew	25
Ixias	2	Youngberries	12
		Yucca	23