

## **Historic, Archive Document**

Do not assume content reflects current scientific knowledge, policies, or practices.



62.39  
Framingham  
Nurseries

J. L. B. ...  
RECORDED  
APR 14 1947  
Department of Agriculture



*Landscapes and Gardens*  
1947  
*Wyman's*  
FRAMINGHAM, MASS.



## *Wyman's Mountain Laurel*

The Mountain Laurel native to the Eastern States of North America is one of the most beautiful flowering evergreen shrubs of the world.

The foliage is very decorative at all seasons and contrasts well with the red and yellow of its branches. The exquisite symmetrical beauty of a single blossom enthralls us to the completeness and wonder of nature's handiwork. Each individual flower is a work of art, delicately formed.

In mid-June the broad dome-like clusters of bowl-shaped flowers, ranging from pure white to deep pink, make a wondrous picture. When massed in groups or used as a single specimen it is superb.

To complete any New England landscape, our native Laurel must be present. It is worthy of every home owner's thought and attention.

15 to 18 in.....	\$4.00 each
18 to 24 in.....	5.00 each
2 to 2½ ft.....	6.00 each
2½ to 3 ft.....	8.00 each

# Wyman's Rhododendrons

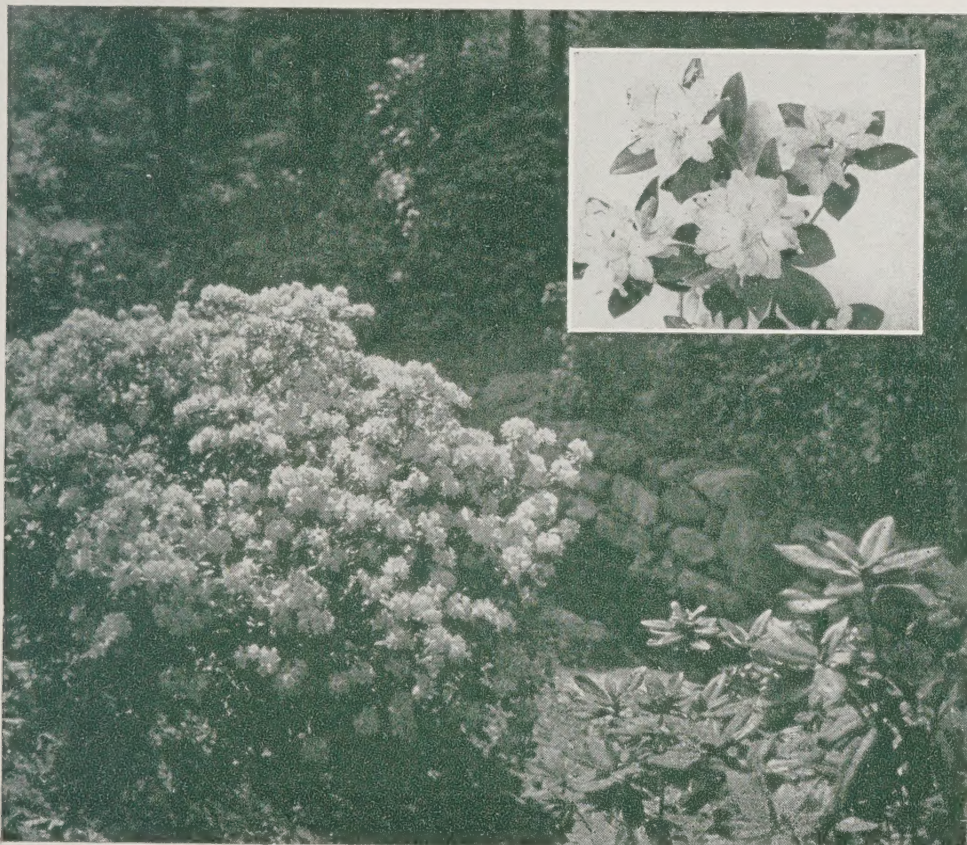
Words cannot possibly describe the meritorious qualities of this plant family. They are admittedly "the aristocrats" of the horticultural world. Gracefulness of form, indescribable coloring, and landscape adaptability leave nothing to be desired. Every plant is a complete jewel within itself—growing more and more magnificent as time passes.

## SEED-GROWN HYBRID RHODODENDRONS

Considered the most beautiful of the evergreen shrubs — unsurpassed for New England gardens. Large gorgeous flowers in May and June — Pink, lavenders and occasionally reds. Beautiful leathery leaves of dark green. Use in sunny or shady places.

15 to 18 in.....	\$4.75 each
18 to 24 in.....	5.75 each
2 to 2½ ft.....	7.25 each
2½ to 3 ft.....	9.50 each
3 to 3½ ft.....	12.00 each

*Mass planting of Carolina Rhododendrons*



## NAMED HYBRID RHODODENDRONS

These plants were grafted on exceptionally hardy understock in order to give you strong sturdy plants.

**Abram Lincoln** — Flowers of bright rosy crimson, very showy.

**Album Elegans** — Large bluish-white flowers.

**General Grant**—A strong grower with fine red flowers.

15 to 18 in.....	\$7.00 each
18 to 24 in.....	9.00 each
2 to 2½ ft.....	11.00 each
2½ to 3 ft.....	14.00 each

## CAROLINA RHODODENDRON—

Handsome dark green leaves, blooms in mid-May, usually ahead of other varieties. The most profuse bloomer of all Rhododendrons. Flowers range from pale to deep pink.

15 to 18 in.....	\$4.75 each
18 to 24 in.....	5.75 each
2 to 2½ ft.....	7.25 each

## CATAWBA RHODODENDRON

This handsome Rhododendron thrives in partially shaded places and produces compact clusters of dark rosy purple flowers.

2 to 2½ ft.....	\$7.25 each
2½ to 3 ft.....	9.50 each

## DWARF CATAWBA RHODODENDRON

Compact clusters of deep rosy purple flowers. Ideal where a low, compact evergreen is desired.

15 to 18 in. spread.....	\$5.50 each
18 to 24 in. spread.....	6.50 each

## ROSEBAY RHODODENDRON

The largest growing Rhododendron, with long, flat, glossy leaves and flowers of pale pink and white. It flourishes in dense shade or partial sun. Excellent for mass plantings in wooded areas.

18 to 24 in.....	\$4.50 each
2 to 2½ ft.....	5.50 each
2½ to 3 ft.....	7.00 each
3 to 3½ ft.....	9.50 each

## WILSON RHODODENDRON

A low dense rounding evergreen shrub with deep rose flowers blooming in late June. Because of its slow growing, compact habit, it is excellent in foundation plantings.

12 to 15 in. spread.....	\$4.50 each
15 to 18 in. spread.....	6.00 each
18 to 24 in. spread.....	7.50 each

# Wyman's Hardy Azaleas

The memory of one gorgeous blooming season easily extends to the next. Truly worth while and highly desirable plants for New England gardens.

We are proud of the fine sturdy plants growing in our nurseries — awaiting your selection.

## SWEET AZALEA

Flowers are white inside, pink outside and have red stamens, blooming in late June. Very fragrant. A broad compact plant. Excellent in mass plantings.

2 to 2½ ft. .... \$4.00 each  
2½ to 3 ft. .... 5.00 each

## FLAME AZALEA

A mass of flowers ranging from orange-yellow to flame red, blooming in early June. A vigorous grower developing into a broad bushy shrub of medium height.

18 to 24 in. .... \$4.50 each  
2 to 2½ ft. .... 5.00 each  
2½ to 3 ft. .... 6.00 each

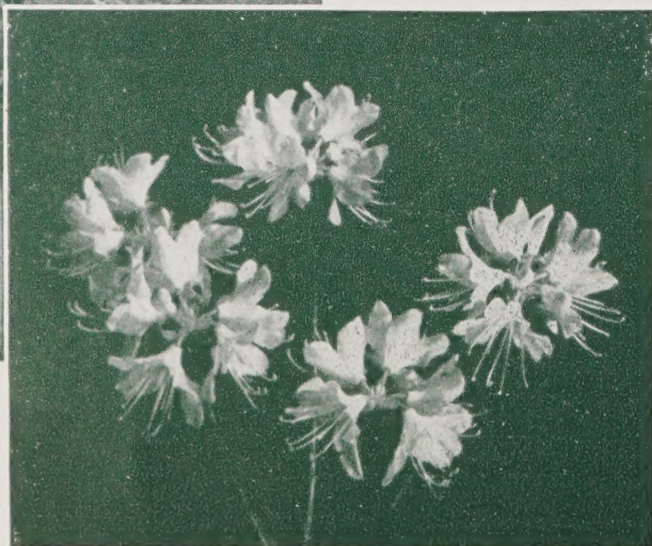
## TORCH AZALEA

From middle May a mass of flaming indescribable color, neither red, pink nor salmon, but a combination of all three. Very showy, a prolific bloomer.

15 to 18 in. .... \$4.50 each  
18 to 24 in. .... 5.50 each  
2 to 2½ ft. .... 7.00 each  
2½ to 3 ft. .... 9.00 each



Shell Pink Azalea



## DISPLAY GARDENS

Open week days from 9 to 5. Sales attendants on duty to assist you in making the proper plant selections.

## CHINESE AZALEA

The loveliest of all. Large clusters of bright orange flowers, occasionally red or yellow, followed by bright green decorative foliage. Blooms in late May.

15 to 18 in. .... \$3.50 each  
18 to 24 in. .... 4.50 each

## SNOW AZALEA

The showiest and best of the white azaleas, with beautiful large snow-white flowers.

15 to 18 in. spread. .... \$5.00 each

## SHELLPINK AZALEA

Delicate shell pink, blooming in early May. A native American Azalea of graceful irregular habit. In border and foundation plantings, it is at its best.

18 to 24 in. .... \$4.00 each  
2 to 2½ ft. .... 5.00 each  
2½ to 3 ft. .... 6.00 each  
3 to 4 ft. .... 7.00 each

*Wyman's Hybrid Yews*



A Field of Upright Taxus



Taxus Hatfieldi

## Wyman's Hybrid Yews

*Today's Pre-eminent Evergreen*

A most interesting new race of Yews. They are believed to be natural hybrids between the English Yew and Japanese Yew. Some of the beautiful features of the English Yews and the absolute hardiness of the Japanese Yews are combined. This race contains many individuals of hitherto unknown types; to the more spectacular forms, names

have been given and are listed below as varieties of *Taxus media*. One universal trait of these hybrids is that they invariably have full centers. All of them are very beautiful, highly desirable and of inestimable value in a planting of evergreens. In comparison to other evergreens, all members of the Yew family are slow growing plants.

### SPREADING HYBRID YEW

*Taxus media spreading*

Deep rich green foliage. Compact spreading form, absolutely hardy. Use them at the foundations, in group planting and hedges. This Yew has strong, full-centers. A most desirable feature.

### BIGHEDGE HYBRID YEW

*Taxus media hedgeform*

Our own introduction. Exceedingly beautiful form which promises to give us the Yew Hedges of Old England in a strain that is hardy in New England. Excellent color. Can be used to advantage in a foundation planting at the corners of a house.

12 to 15 in. spread.....	\$4.00 each
15 to 18 in. spread.....	4.75 each
18 to 24 in. spread.....	6.00 each
2 to 2½ ft. spread.....	8.00 each
2½ to 3 ft. spread.....	11.00 each

12 to 15 in.....	\$4.00 each
15 to 18 in.....	5.00 each
18 to 24 in.....	6.50 each
2 to 2½ ft.....	8.00 each
2½ to 3 ft.....	11.00 each



Spreading Hybrid Yew



Bighedge Yew



Wyman Yew



Hatfield Yew



Dwarf Hybrid Yew



Erect Japanese Yew



Dwarf Yew



Spreading Yew

**WYMAN HYBRID YEW**

*Taxus media Wymani*

Another Wyman introduction. This variety develops rapidly into a round bold form, as tall as broad, resembling ancient Boxwood trees as it matures. Highly desirable as individual specimens, also effective for broad compact hedges.

12 to 15 in.....	\$4.00 each
15 to 18 in.....	5.00 each
18 to 24 in.....	6.00 each

**HATFIELD HYBRID YEW**

*Taxus med. hatfieldi*

Erect in habit. The most compact erect variety of this extremely hardy family of aristocratic plants. Rich black-green needles, darkest of all Yews. Excellent used in foundation and hedge plantings.

12 to 15 in.....	\$4.50 each
15 to 18 in.....	5.50 each
18 to 24 in.....	7.00 each
2 to 2½ ft.....	9.00 each

**DWARF HYBRID YEW**

*Taxus med. nanagrond*

Very similar to the Dwarf Japanese Yew but more compact. Use it in foundation and group plantings.

12 to 15 in. spread.....	\$4.00 each
15 to 18 in. spread.....	5.00 each
18 to 24 in. spread.....	7.50 each
2 to 2½ ft. spread.....	12.00 each

**DWARF EDGING YEW**

*Taxus can. stricta*

Still another Wyman introduction. The only satisfactory dwarf edging Evergreen for the New England climate. Hardy, very dwarf, fine texture, dark, easily grown, shears perfectly. Can be kept trimmed to less than one foot indefinitely.

6 to 8 in. bare root.....	\$1.15 each
8 to 10 in. bare root.....	1.35 each
12 to 15 in.....	3.00 each
15 to 18 in.....	4.00 each

**ERECT JAPANESE YEW**

*Taxus cuspidata capitata*

Erect, symmetrical in habit, this plant can be held at any height indefinitely by shearing. Excellent for accents at the foundation.

15 to 18 in.....	\$5.50 each
18 to 24 in.....	6.50 each
2 to 2½ ft.....	8.00 each
2½ to 3 ft.....	11.00 each
3 to 3½ ft.....	14.00 each
3½ to 4 ft.....	18.00 each

**DWARF JAPANESE YEW**

*Taxus cuspidata nana*

Dense compact central body with occasional arm-like branches. Very dark green, black green in winter. A beautiful gem.

12 to 15 in. spread.....	\$4.50 each
15 to 18 in. spread.....	5.50 each
18 to 21 in. spread.....	7.50 each

**SPREADING JAPANESE YEW**

*Taxus cuspidata*

An old standby. One of the larger spreading forms easily conformed to any shape. Needles ½ to ⅝ inch, bright medium green.

15 to 18 in. spread.....	\$4.00 each
18 to 24 in. spread.....	5.50 each

*Write for quotations on Larger Specimens*



# Wyman's Evergreens



*Arizona Blue Fir*

## WARE ARBORVITAE

*Thuja occ. wareana*

Tough and rugged, exceptionally hardy, full of character. A dense low, broad pyramid, dark in color. A fine subject for foundation work and general planting.

18 to 24 in.....	\$3.50 each
2 to 2½ ft.....	4.00 each
2½ to 3 ft.....	4.50 each

## PYRAMID ARBORVITAE

*Thuja occ. pyramidalis*

A tall slender evergreen; excellent for tall accent or to emphasize height or contrast in the garden design. This variety holds its rich green color during the winter months.

3 to 4 ft.....	\$4.50 each
4 to 5 ft.....	6.00 each
5 to 6 ft.....	9.00 each



*Pyramid Arborvitae*

## COLUMNAR AMERICAN ARBORVITAE

*Thuja occ. columnaris*

An improved type of American Arborvitae; more compact and darker green in color. One of the most desirable tall-growing narrow evergreens.

2 to 3 ft.....	\$3.50 each
3 to 4 ft.....	4.50 each
4 to 5 ft.....	6.00 each
5 to 6 ft.....	9.00 each



*Douglas Pyramidal Arborvitae*

## DOUGLAS PYRAMIDAL ARBORVITAE

*Thuja. doug. pyramidalis*

A sharp spire of dark green. Fronds are twisted and curled. For landscape effect it is similar but superior to red cedar. Holds its color beautifully during the winter.

3 to 4 ft.....	\$4.00 each
4 to 5 ft.....	5.00 each



*Columnar Arborvitae*

## GLOBE ARBORVITAE

*Thuja occ. globosa*

These plants are naturally compact, and maintain a nearly perfect globe shape without pruning. Make a splendid low hedge requiring little attention.

15 to 18 in.....	\$3.00 each
18 to 24 in.....	4.00 each



*Globe Arborvitae*



*Fraser Fir*

**CANADIAN HEMLOCK**

*Tsuga canadensis*

Hemlocks are most versatile trees, rapid and large growing, developing into most beautiful specimens; however, are valuable in foundation plantings as they withstand severe pruning. The most graceful evergreen in North America. Dark rich green foliage, lacy in effect.

- 2 to 3 ft..... \$4.50 each
- 3 to 4 ft..... 7.50 each
- 4 to 5 ft..... 9.50 each

**COMPACT CANADIAN HEMLOCK**

*Tsuga microphylla*

A new introduction, similar to Canadian Hemlock in color and texture, but slower growing and more compact. Ideal for foundation and general plantings.

- 18 to 24 in..... \$5.00 each
- 2 to 2½ ft..... 7.00 each
- 2½ to 3 ft..... 9.00 each

You may discover many old-time plants conspicuous by their absence from this catalog. Age and commonness are not in themselves proof of undesirability in plants. Nor is newness alone a guarantee of superior merit.

However, many of the older varieties, for one reason or another, have become obsolete. These we have discontinued in favor of other improved and more satisfactory sorts.

We attempt to keep our stock up-to-date by growing only the best of the older as well as the best of the newer plants; particularly those which stand the test of use in our rugged New England climate.

**FRASER FIR *Abies fraseri***

Similar to the well-known Balsam Fir; however, the foliage is darker green, while the underneath side of the branches has a silvery hue.

- 4 to 5 ft..... \$7.00 each
- 5 to 6 ft..... 9.00 each
- 6 to 7 ft..... 12.00 each

**ARIZONA BLUE FIR**

*Abies arizonica*

A new fragrant rapid growing fir, having soft blue needles, richer blue than in Spruce. Flourishes in full sun or partial shade. Excels in moist soils.

- 18 to 24 in..... \$4.00 each
- 2 to 3 ft..... 5.00 each
- 3 to 4 ft..... 6.00 each
- 4 to 5 ft..... 7.00 each



*Canadian Hemlock*



*Arizona Blue Fir*

**JAPANESE HEMLOCK**

*Tsuga diversifolia*

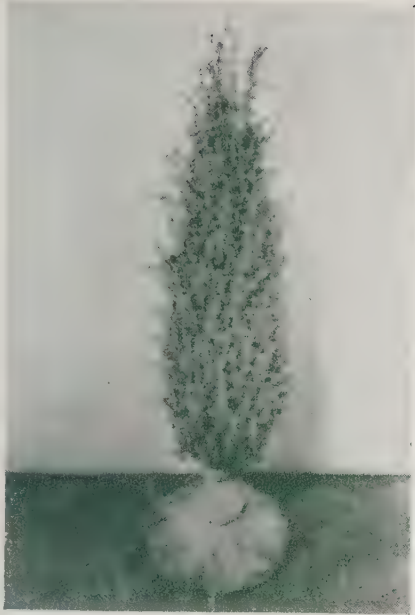
Unlike other Hemlocks, this variety is very dense, branches stiffer and pointing upward; foliage is the darkest green of all hemlocks. Retains a touch of the Orient. At a distance, it has more resemblance to a Yew than to our native Hemlock. A fine new plant.

- 15 to 18 in..... \$4.00 each
- 18 to 24 in..... 5.00 each
- 2 to 2½ ft..... 7.00 each
- 2½ to 3 ft..... 9.00 each

***We Are Closed to Business  
On Sunday***



*Japanese Hemlock*



*Irish Juniper*

**IRISH JUNIPER**  
*Juniperus hibernica*

A dense straight column with dark silvery green foliage. As accents in formal planting, this plant is at its best.

3 to 4 ft..... \$4.00 each  
4 to 5 ft..... 5.50 each

**DWARF IRISH JUNIPER**

*Juniperus hib. nana*

Foliage is very similar to Irish Juniper but this form is slower growing and develops into compact oval shaped specimens.

15 to 18 in..... \$2.50 each  
18 to 24 in..... 3.00 each  
2 to 2½ ft..... 4.00 each

**JAPANESE JUNIPER**

*Juniperus japonica*

Low spread creeping stems somewhat drooping habit. Rich green, with slight cast of gray. On banks and terraces they provide a beautiful carpet of evergreen foliage. Very hardy.

18 to 24 in. spread \$4.00 each  
2 to 2½ ft. spread 5.00 each

**GREEK JUNIPER**

*Juniperus exc. stricta*

A fine slow-growing Juniper, cone-shaped in habit. Foliage is made up of very small sharp needles of bluish steel green hue. A versatile plant.

15 to 18 in..... \$3.00 each  
18 to 24 in..... 4.00 each



*Pfitzer Juniper*

**PFITZER JUNIPER**

*Juniperus chin. pfitzeriana*

A graceful fan-shaped evergreen with horizontally spreading branches. Beautiful and interesting. Rugged and very hardy. Fits into any type of planting.

2 to 2½ ft. spread..... \$5.00 each  
2½ to 3 ft. spread..... 6.25 each  
3 to 3½ ft. spread..... 8.50 each

**TAMARIX JUNIPER**

*Juniperus tamariscifolia*

A dense compact evergreen, with silvery gray-green fronds arching gracefully. When seen from above, it often has a star-shaped appearance.

15 to 18 in. spread..... \$3.50 each  
18 to 24 in. spread..... 4.25 each

**SAVIN JUNIPER** *Juniperus sabina*

An excellent example of the low fan-shaped type. The basic green color of its arching branchlets is greatly enriched by a slight bronze cast. Useful for rock gardens and foundation planting.

18 to 24 in. spread..... \$4.00 each  
2 to 2½ ft. spread..... 5.00 each  
2½ to 3 ft. spread..... 6.25 each

**ANDORRA JUNIPER**

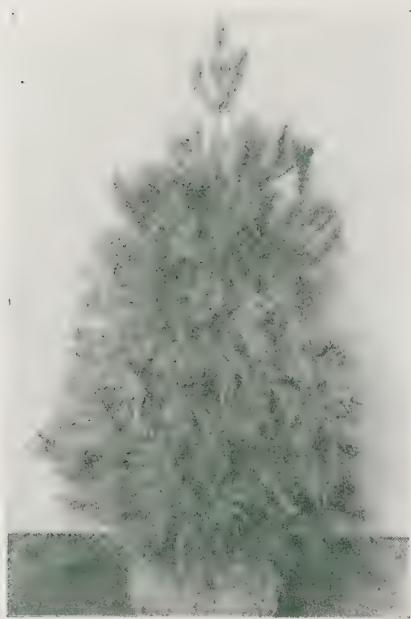
*Juniperus horiz. depressa plumosa*

A low-growing spreading dwarf plant of distinctive color and grace. Silvery green in spring, pinkish purple in autumn.

15 to 18 in. spread..... \$3.50 each



*Beautiful Spires of the Arborvitae*



White Pine

**PLUME CYPRESS**

*Cham. pis. plumosa*

The most popular Cypress. Its slender branchlets of feathery appearance bearing tiny, needle-like bright green foliage make it a favorite.

- 18 to 24 in..... \$3.50 each
- 2 to 2½ ft..... 4.50 each
- 2½ to 3 ft..... 5.75 each

**GOLDEN PLUME CYPRESS**

*Cham. pis. plumosa aurea*

A bright golden form of the Plume variety with similar characteristics. It is very useful for contrast with other evergreens.

- 18 to 24 in..... \$3.50 each
- 2 to 2½ ft..... 4.50 each
- 2½ to 3 ft..... 5.75 each

**THREAD CYPRESS**

*Cham. pis. filifera*

The exceedingly graceful thread cypress, completely different from all other evergreens, has long drooping threadlike branchlets of bright green which make it one of the best pendulous branched evergreens.

- 15 to 18 in..... \$2.40 each
- 18 to 24 in..... 3.25 each
- 2 to 2½ ft..... 4.00 each

**SAWARA CYPRESS**

*Chamaecyparis pisifera*

The foliage is arranged in flat, fan-like branchlets in horizontal planes, twisting beautifully at the tips, like the fiddle-heads of some woodland ferns. A graceful plant.

- 2 to 2½ ft..... \$3.50 each
- 2½ to 3 ft..... 4.75 each
- 3 to 4 ft..... 6.00 each

**LARGER PLANTS FOR IMMEDIATE EFFECTS**

We have an exceptionally fine stock of large evergreens. These trees are well-matured specimens which give immediate finished effects of breath-taking beauty to any landscape in which they are planted. Let us quote you on your specific requirements.



Colorado Blue Spruce

**WHITE PINE *Pinus strobus***

As the Pine is king of the evergreens, the White Pine is king of the Pines. Compact and symmetrical when young, it changes later to loose open tops with sweeping, spreading branches and straight sturdy trunks. No New England landscape is complete without a White Pine.

- 3 to 4 ft..... \$4.00 each
- 4 to 5 ft..... 5.00 each
- 5 to 6 ft..... 7.50 each

**BALKAN PINE *Pinus peuce***

A slow-growing evergreen, with ascending short branches of greenish-blue forming a narrow dense pyramid. A rare plant, very hardy in New England.

- 2 to 3 ft..... 5.50 each
- 3 to 4 ft..... 7.50 each

**TERMS OF SALE**

Our terms are cash. Charge accounts, for 30 days credit, may be opened upon receipt of satisfactory credit references — allowing us time for investigation. Prices shown in this catalog are F. O. B. Nursery. Delivery of plants can be arranged for at cost.

Prices herein cancel all previous lists and are subject to change without notice.

**DISPLAY GARDENS**

Open week days from 9 to 5. Sales attendants on duty to assist you in making the proper plant selections.



Remont Spruce



Serbian Spruce

**WHITE SPRUCE**

*Picea canadensis*

For individual specimens or in hedges, this conifer is most desirable. It holds its lower branches of silvery green as a mature tree.

- 18 to 24 in..... \$3.50 each
- 2 to 3 ft..... 4.00 each
- 3 to 4 ft..... 5.50 each

**BLUE COLORADO SPRUCE**

*Picea pungens glauca*

Perhaps the best known of all evergreens. Stiff horizontal branches, ranging from pale to strong blue, hang with graceful sweep when large. For ornamental purposes such as lawn specimens or garden accents, the Blue Spruce is at its best.

- 4 to 5 ft..... \$9.50 each
- 8 to 10 ft..... 40.00 each
- 10 to 12 ft..... 50.00 each
- 12 to 14 ft..... 65.00 each

**NORWAY SPRUCE**

*Picea excelsa*

The Christmas tree — An old favorite — Rapid in growth, it also makes a fine windbreak or hedge. Used extensively in reforestation.

- 2 to 3 ft..... \$3.50 each
- 3 to 4 ft..... 5.00 each

**DWARF ALBERTA SPRUCE**

*Picea glauca conica*

This dwarf spruce is the most distinct of all evergreens. As a dense symmetrical cone it has no equal. Its yearly growth rarely exceeds 1½ inches. A beautiful gem.

- 12 to 15 in..... \$3.50 each
- 15 to 18 in..... 4.50 each
- 18 to 24 in..... 5.75 each

**SERBIAN SPRUCE**

*Picea omorika*

Although this variety is not as well known as others, it may be considered the choicest large Spruce. When large, the limbs are festooned with hanging branchlets. Very fine.

- 2 to 3 ft..... \$6.00 each
- 3 to 4 ft..... 7.50 each
- 4 to 5 ft..... 10.00 each

**PROSTRATE SPRUCE**

*Picea exc. procumbens*

A dense hassock-type plant with dark green branchlets extending horizontally. An excellent plant for evergreen border plantings.

- 15 to 18 in..... \$5.00 each
- 18 to 24 in..... 6.00 each



*Dwarf Alberta Spruce*

We are closed to business on Sunday. Our nurseries are open to visitors every week day from 9 to 5.

**REMONT SPRUCE**

*Picea exc. remonti*

A dense cone-shaped dwarf evergreen of a very positive character. Because it may be used in foundation plantings, group plantings, or as individual specimens, it is one of the most versatile conifers.

- 15 to 18 in..... \$5.00 each
- 18 to 24 in..... 6.00 each
- 2 to 2½ ft..... 7.50 each





## Wyman's Evergreen Shrubs

A delightful group of flowering evergreen Shrubs, which retain their foliage throughout the entire year. Just the type of plants needed to complete a foundation or group planting.



*Rose Daphne*

### ROSE DAPHNE

A dainty little bush prized for unusually fragrant clear rose pink flowers in April and May. Often it blooms again in the fall. One of the most popular shrubs.

5 to 7 in..... \$1.00 each

### LEUCOTHOE

A graceful evergreen shrub with long arching sprays of glossy green leaves, turning mahogany color in autumn. The showy fragrant white flowers are borne in long clusters hanging from the base of each leaf.

18 to 24 in..... \$4.00 each  
2 to 3 ft..... 5.00 each

### MOUNTAIN LAUREL

It is one of the most beautiful plants in the world. Each individual flower is a work of art, delicately formed. In mass plantings, it is superb.

18 to 24 in..... \$5.00 each  
2 to 2½ ft..... 6.00 each

### MOUNTAIN ANDROMEDA

Sometimes called the "Lily-of-the-Valley" shrub, it opens its small white bell-shaped flowers at the very beginning of spring. Forms a compact dwarf plant with attractive dark green foliage.

15 to 18 in. spread..... \$4.00 each  
18 to 24 in. spread..... 5.00 each



*Mountain Andromeda*

# Wyman's Evergreen Ground Covers

This group of plants come into their own when used to underplant borders, conceal unsightly areas or walls, or cover that bare or rocky space on your property. A few plants placed correctly can perform wonders.

## WINTERCREEPER

An evergreen vine with rich green leaves adaptable for climbing chimneys, walls or for ground covering. All varieties are very easy to grow and very hardy.

**Wintercreeper**—small round leaves, excellent climber.

**Glossy Wintercreeper** — Leaves are lustrous green, distinctly veined.

**Bigleaf Wintercreeper**—Trails and climbs. In Autumn, adorned with bright scarlet and orange fruit.

2 year ..... \$ .75 each  
 3 year ..... 1.00 each

## BLUE MYRTLE

Showy bright blue flowers on handsome evergreen trailing vine. Best known ground cover, will grow on moist or dry soil, in sun or shade.

Pot and field grown..... \$3.50 for ten

## JAPANESE PACHYSANDRA

An evergreen groundcover producing a mass of leathery green foliage which holds its color perfectly all winter.

Easily recommends itself. Pachysandra is very beneficial to aged and undernourished trees—protecting the roots from hot, drying sun and winds. Wonderful for that spot where grass refuses to grow—develops rapidly into a permanent green rug for that Outdoor Living Room.

From 3 in. pots..... \$3.50 for 10 plants  
 \$30.00 for 100 plants

*Japanese Pachysandra*



*We Are Closed to Business on Sunday*



## Wyman's Flowering Trees

Ornamental flowering trees have long been recognized by landscape designers as a "must" in the creation of delightful backgrounds for the home. The numerous variations of foliage, blossoms, and form allow a wide range of application. When developing the landscape picture around your home, consider carefully the proper placing of these attractive accent trees.

### WHITE FLOWERING DOGWOOD

The White Dogwood (pictured above) is one of the handsomest of trees. In the Spring its large snowy white flowers are spectacularly beautiful; in the Autumn its glittering clusters of red berries and beautifully colored foliage put this tree in a class of its own.

4 to 5 ft. B&B.....	\$4.40 each
5 to 6 ft. B&B.....	6.00 each
6 to 7 ft. B&B.....	8.50 each
7 to 8 ft. B&B.....	10.00 each
8 to 10 ft. B&B.....	14.00 each



*Flowering Dogwood*

### RED FLOWERING DOGWOOD

Similar in all respects to the White Dogwood except that the flowers are various shades of pink.

3 to 4 ft. B&B.....	\$6.50 each
4 to 5 ft. B&B.....	8.00 each

### JAPANESE TREE LILAC

A very desirable flowering tree with broad downy foliage and enormous clusters of yellowish white flowers blooming in June or July.

6 to 8 ft.....	\$4.50 each
8 to 10 ft.....	6.00 each
10 to 12 ft.....	7.50 each
12 to 14 ft.....	8.50 each

### SOURWOOD

A graceful tree with a spreading round top covered with spiky panicles of white flowers in June and July. Foliage in Autumn becomes a brilliant orange and scarlet.

5 to 6 ft. B&B.....	\$6.50 each
6 to 7 ft. B&B.....	8.00 each
7 to 8 ft. B&B.....	10.00 each

### GREAT SILVERBELL

In full bloom, it is covered with small white bells which dangle in bewildering profusion from the lower side of the branchlets.

3 to 4 ft.....	\$2.50 each
4 to 5 ft.....	3.50 each



**SAUCER MAGNOLIA**

Anyone familiar with Beacon Street, Boston, knows this beautiful tree with its giant rose pink flowers which are white inside.

2 to 2½ ft. B&B..... \$6.00 each

**SWEET BAY MAGNOLIA**

A small tree producing large snowy white flowers 3 to 4 inches in diameter in May and June. Very fragrant.

2 to 3 ft..... \$4.50 each

3 to 4 ft..... 6.00 each

**STAR MAGNOLIA**

Delicately forms large white star-shaped flowers, very fragrant.

2 to 2½ ft. B&B..... \$6.00 each



*Saucer Magnolia*



*Japanese Flowering Cherry*

**PAUL'S SCARLET HAWTHORN**

A small ornamental tree with extra fine habit, having rich luxurious foliage and very double deep crimson flowers with a scarlet glow. Very fine.

6 to 7 ft. B&B..... \$8.00 each

7 to 8 ft. B&B..... 10.00 each

8 to 10 ft. B&B..... 12.00 each

**WASHINGTON HAWTHORN**

The best Hawthorn for showy fruit, its brilliant light scarlet berries remaining until late winter.

4 to 5 ft. B&B..... \$4.00 each

5 to 6 ft. B&B..... 6.00 each

6 to 7 ft. B&B..... 7.50 each

**JAPANESE FLOWERING CHERRIES**

Made famous in this country by the wonderful collection at Potomac Park in Washington, D. C. Flowering cherries are small trees, beautiful in flower, some double, some single — white to deep pink.

**Kwanzan**—Very showy with its double deep pink clusters.

**Yoshino**—Fragrant single white flower clusters.

3 to 4 ft. B&B..... \$4.50 each

4 to 5 ft. B&B..... 5.00 each

5 to 6 ft. B&B..... 6.00 each

6 to 7 ft. B&B..... 7.50 each



## Wyman's Flowering Crabapples

A magnificent family of small, usually broad-shaped trees. Literally covered with blooms in May. Very beautiful—and hardy, too. In the fall they bear heavy clusters of showy, waxy fruits, varying from bronze-green to orange, red and crimson, fitting naturally into any landscape.

**Arnold Crab**—Clusters of semi-double pink flowers on gracefully arching branches.

**Siberian Crab**—Large pure white fragrant flowers.

**Dolgo Crab**—Single white flowers. Brilliant red fruit.

**Eley Crab**—Flowers single rosy carmine, large broad petals.

**Japanese Flowering Crab**—Oldest known variety—Arching branches with pink flowers—profuse.

**Carmine Crab**—A splash of carmine in bloom.

**Hopa Crab**—Large deep pink blooms, leaves purplish.

**Pink Cascade Crab**—Our own introduction. Delicate pink flowers larger than apple blossoms. Profuse—fine.

**Redvein Crab**—Flowers single with large broad deep pink petals. Large red fruit in autumn.

**Purpleleaf Crab**—Leaves rich reddish purple. Deep pink flowers — Dark red berry — Very showy.

**Scheidecker Crab**—Flowers very profuse, very double, medium pink inside, deep pink outside.

### Prices on all Crabapples

4 to 5 ft. B&B.....	\$4.00 each
5 to 6 ft. B&B.....	5.50 each
6 to 8 ft. B&B.....	8.00 each
8 to 10 ft. B&B.....	10.00 each

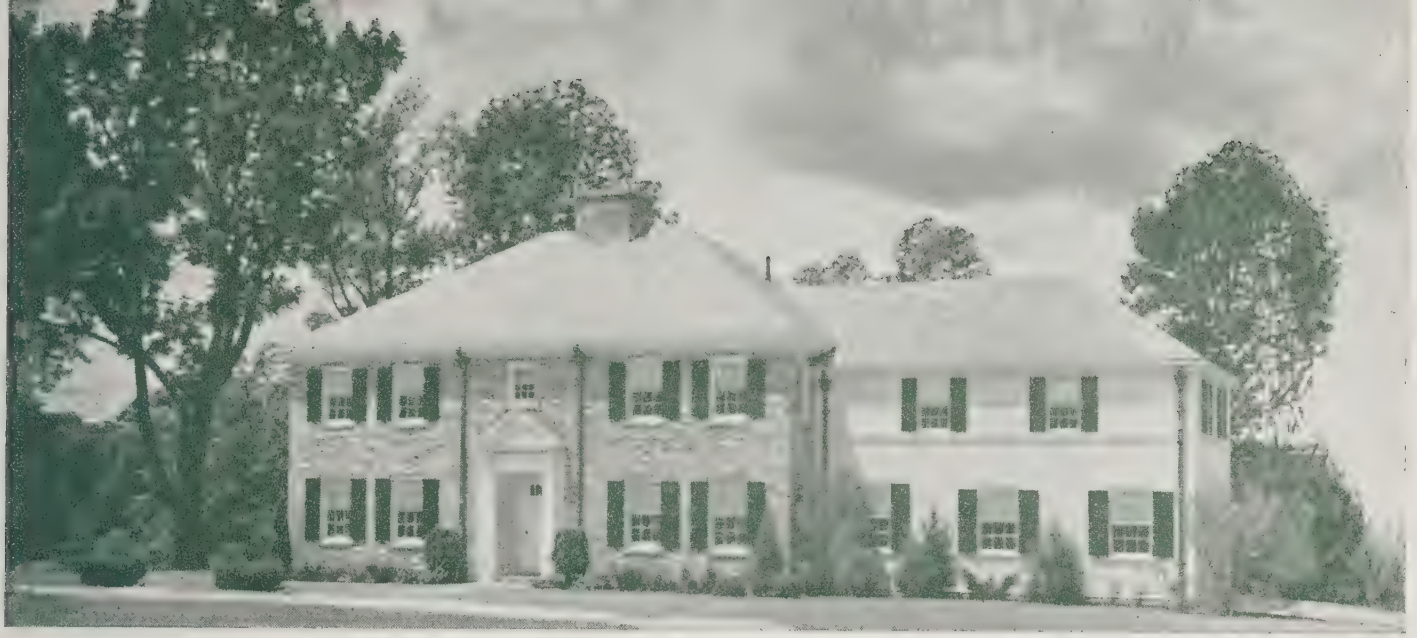
**Double Pink Chinese Crab** — Double pink blooms borne in great profusion.

**Tea Crab**—Connoisseurs' favorite — when in bloom, every twig and branch is buried in a cloud of rose-pink blossoms.

**Cutleaf Crab**—A mass of creamy white—beautiful orange and scarlet fruit.



*Decorative Fruits of the Flowering Crabapple*



## *Landscaping by Wyman's*

Beautiful landscapes are not obtained by the hit-or-miss planting of trees and shrubs. They result from careful planning by trained designers, based on the tenets of art. To this is added an expert knowledge of plants, their characteristics and suitability to any given location and condition.

Our designers, without obligation on your part, will be glad to help you develop a planting program, exploring all of the unusual landscaping possibilities of your property.



Whether your property is large or small, a well-planned garden is paramount to achieving a full measure of beauty, privacy, and enjoyment.

•

For appointment — telephone Framingham 6191



# Landscape Design is a Creative Art . . .

Enhance the value and enjoyability of your home — plant and furnish an Outdoor Living Room this year. Discover those hidden joys of living in the open — create pleasing vistas — plan on a whole season of blossoms, in varying forms and hues. The dividends from such a venture are tremendous. Try it.



*Magnolia Bloom*

*Wyman's*

FRAMINGHAM, MASSACHUSETTS



*Flowering Dogwood*

*Wyman's*

FRAMINGHAM, MASSACHUSETTS

Intimate garden areas near the house blend to make a completed landscape.

*. . . pleasing . . . . quiet . . . . dignified*

Informal, colorful borders are the satisfying result of thoughtful study.





# *Landscaping by Wyman's*

## *Consulting Services*

Whether you are planting for the first time, developing additional areas, or remodeling old ones, avail yourself of one of our designing services.

**PROFESSIONAL VISIT** to your home—merely return attached card. One of our landscape designers will arrange an appointment at your convenience.

**CONSULTING SERVICE** — Bring snapshots or other descriptive information to our offices. Our representatives will be pleased to advise you.

## *Planting Programs*

A landscaping program should be developed to fit the desires and resources of each individual home owner. If you wish to make **ONE PLANTING** or a **SUCCESSION OF PLANTINGS** in order to achieve a pre-determined unity in your landscape picture, our designers will gladly arrange such a program for you.

## *Planting Services*

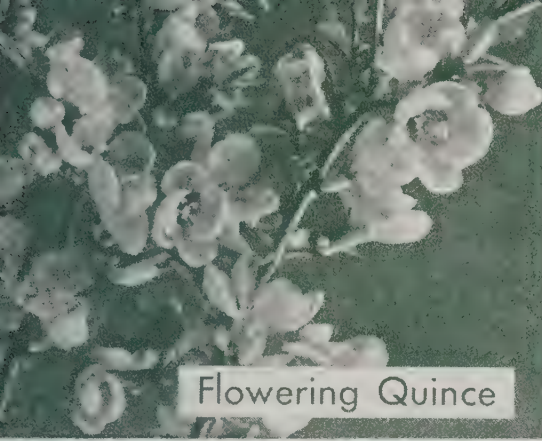
We offer you an excellent **PLANTING SERVICE**, headed by trained and experienced plantsmen, to carry out any landscaping program. Your program will be executed promptly, efficiently, and economically.

# *Wyman's*

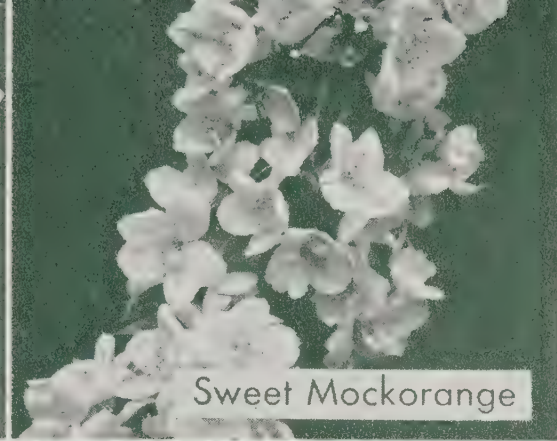
**LANDSCAPE DEPARTMENT**

**FRAMINGHAM, MASS.**

*Appointments Made at Your Convenience. Call Framingham 6191.*



Flowering Quince



Sweet Mockorange



Golden St. Johns



Vanhoutte Spirea



Beautybush



Forsyth

## Wyman's Flowering Shrubs

**T**HIS list of decorative shrubs contains a wide variety of large and small types. The proper selection will assure an entire season of bloom on your property from April to November. The most important features of Shrubs are the character of their leaves, flowers, and fruits — a very versatile plant family.

### ALMONDS

The double flowering Almonds are small shrubs literally covered with tiny chrysanthemum shaped flowers in early spring. Both varieties are very hardy.

#### Double White Almond

Small very double white rosettes crowded along each branch.

2 to 3 ft..... \$1.35 each

#### Double Pink Almond

Beautiful pink variety of the preceding.

2 to 3 ft..... \$1.35 each

3 to 4 ft..... 2.00 each

### FIVELEAF ARALIA

A graceful shrub of an arching habit. Excellent hedge plant.

18 to 24 in..... \$ .75 each

2 to 3 ft..... .90 each

### HOLLY-LEAF BARBERRY

An evergreen barberry, with leaf similar to holly, A graceful shrub.

15 to 18 in..... \$ .75 each

18 to 24 in..... 1.00 each

### BEAUTYBUSH

Masses of delicate pink trumpets on graceful arching branches in June. An erect bushy shrub.

18 to 24 in..... \$1.25 each

2 to 3 ft..... 1.50 each

3 to 4 ft..... 2.00 each

### BLUEBERRY, NATIVE

Native edible blueberry. Brilliant scarlet foliage.

3 to 4 ft. B&B..... \$3.50 each

4 to 5 ft. B&B..... 4.50 each

### BUDDLEIA ILE DE FRANCE

The most beautiful buddleia. Fragrant, brilliant rosy purple flowers, blooming in August.

2 year ..... \$1.25 each

### CORALBERRY

Slender arching shrub which is very showy in Autumn, when covered with bunches of small bright red fruit. Excellent for embankments.

2 to 3 ft..... \$1.25 each

### SPREADING COTONEASTER

A spreading shrub with small pink flowers in early summer and brilliant scarlet berries in the fall.

15 to 18 in. B&B..... \$1.25 each

18 to 24 in. B&B..... 1.75 each



*White Fringe*

**DEUTZIAS**

All Deutzias are showy flowering shrubs of a bushy habit, small to medium in size.

**Slender Deutzia**

A slender fountain-like bush covered with delicate snowy white flowers in May.

15 to 18 in..... \$1.25 each

**Lemoine Deutzia**

An early blooming vigorous shrub with pure white flowers in great sprays.

2 to 3 ft..... \$1.25 each

**Pride of Rochester Deutzia**

A fine old favorite, maturing into a tall wide-spread bush. In June it is a cloud of large double white flowers tinged with rose.

18 to 24 in..... \$1.00 each

**Fuzzy Deutzia**

One of the prettiest Deutzias, of a stiff, erect habit, very floriferous. Its white to blush pink flowers have a fringing appearance.

18 to 24 in..... \$1.00 each



*Yeddo Euonymus*

**DOGWOODS**

The shrub Dogwoods are sturdy large shrubs of bushy habit. Some have brilliant bark, some have showy flowers and fruit, all are hardy.

**Tatarian Dogwood**

An erect-stemmed shrub with bright red bark, especially fine in winter.

3 to 4 ft..... \$1.20 each  
 4 to 5 ft..... 1.50 each  
 5 to 6 ft..... 2.00 each

**Goldentwig Dogwood**

Branches are bright yellow. Excellent when planted with Tatarian Dogwood. Showy.

3 to 4 ft..... \$1.25 each  
 4 to 5 ft..... 1.65 each  
 5 to 6 ft..... 2.00 each

**EUONYMUS**

The shrub Euonymus give us several of our most spectacular autumn hues. Medium to tall plants, they provide the shrub border with fall foliage and fruit.

**Winged Euonymus**

An irregular shrub with large thin-textured leaves, turning deep warm crimson in autumn. Its twigs have four flat corky wings.

2 to 3 ft..... \$2.00 each  
 3 to 4 ft..... 2.50 each  
 4 to 5 ft..... 4.00 each

**Dwarf Winged Euonymus**

A dwarf type of the above, forming an extremely dense shrub. Brilliant fall foliage. An ideal low-growing hedge-plant.

15 to 18 in..... \$1.25 each  
 18 to 24 in..... 1.50 each  
 2 to 2½ ft..... 2.25 each

**Yeddo Euonymus**

Leaves scarlet, crimson in fall. Most spectacular variety in fruit—huge hanging clusters of orange scarlet berries showing through partly opened capsules of brilliant pink to dark red shade. Excellent.

2 to 3 ft..... \$ .90 each  
 3 to 4 ft..... 1.20 each  
 4 to 5 ft..... 1.50 each

**FORSYTHIA — GAYEST OF SHRUBS**

There is nothing more beautiful and more expressive of springtime than the early grace of a Forsythia.

**Primrose Forsythia**

Twigs clothed in lemon-yellow flowers.

**Showy Border Forsythia**

Large flowers, masses of them — a blaze of gold in April.

**Fortune Forsythia**

A graceful arching habit, flowers deep canary yellow.

3 to 4 ft..... \$1.20 each  
 4 to 5 ft..... 1.50 each  
 5 to 6 ft..... 2.00 each



**HONEYSUCKLES**

Handsome foliage shrubs, usually bushy and well formed. A floriferous plant of definite decorative value.

**Pink Tatarian Honeysuckle**

Its striking foliage is delicately cut and its bright pink flowers are followed by an abundance of scarlet berries.

- 2 to 3 ft..... \$ .90 each
- 3 to 4 ft..... 1.20 each

**White Tatarian Honeysuckle**

Similar to the Pink variety except for its white flowers. One of the earliest shrubs to leaf out.

- 4 to 5 ft..... \$1.50 each
- 5 to 6 ft..... 2.00 each

**HYDRANGEAS**

Mid-summer blooming shrubs with large showy flowers and large heavy leaves. One of the most popular American shrubs.

**Snowhill Hydrangea**

A shrub with enormous heads of pure white flowers, large foliage, blooming in August.

- 18 to 24 in..... \$ .90 each
- 2 to 3 ft..... 1.00 each

**Pink-Cone Hydrangea**

Massive, conical white flower heads in late July, turning pink in August and September.

- 2 to 3 ft..... \$1.00 each
- 3 to 4 ft..... 1.25 each
- 4 to 5 ft..... 1.75 each



*Winged Euonymus*

**GOLDEN ST. JOHNSWORT**

Dense habit. Large Golden Yellow flowers in August.

- 18 to 24 in..... \$ .75 each
- 2 to 3 ft..... .90 each
- 3 to 4 ft..... 1.20 each

**JAPANESE RED MAPLE**

A magnificent shrub with purple-red foliage, gracefully lacinated.

- 2 to 2½ ft..... \$4.50 each

*Border Planting of Van Houtte Spirea*





Rugosa Roses

**PLUMS**

Ornamental plums are handsome showy bushes, resembling in a miniature way the stately magnificence of the Japanese Flowering Cherries.

**Flowering Plum**

A vigorous-growing shrub with delightful pink double flowers thickly set on slender branches in May.

- 2 to 3 ft..... \$1.75 each
- 3 to 4 ft..... 2.00 each

**Pissard Plum**

A very fine variety, wine red flowers and purple leaves which hold their color well during the summer.

- 3 to 4 ft..... \$2.00 each

**FLOWERING QUINCE**

A brilliant mass of vermilion in mid-May. Golden fruit in Autumn.

- 2 to 3 ft..... \$1.25 each
- 3 to 4 ft..... 2.50 each

**Cardinal Red Flowering Quince**

Something new for the gardeners who love a splash of bright color. This plant has just been introduced. Large cardinal red flowers.

- 2 to 3 ft..... \$2.50 each

**ROSE SPECIES OR WILD ROSE**

Their flowers are single, beautiful in form, color and fragrance. Fruits are bright red. They have a place in every landscape.

**Father Hugo Rose**

Graceful arching branches covered with bright yellow flowers in May and June.

- 2 to 3 ft..... \$2.00 each

**Rugosa Rose**

Branches slightly spreading, leaves dark and glossy. Flowers single, rich pink, very fragrant.

- 18 to 24 in..... \$1.25 each

**ROSE OF SHARON — ALTHEA**

A strong branched shrub, producing large showy flowers in August when few shrubs are in bloom. We offer four varieties. White, Pink, Red and Purple.

- 2 to 3 ft..... \$1.50 each

**SNOWBERRY**

A very graceful small shrub with charming, delicate foliage and interesting tiny pink flowers in June. In Autumn the branches are covered with large snow-white berries.

- 2 to 3 ft..... \$1.25 each

**SPIREA**

A well-known plant family having many varieties of great beauty — there are two groups of Spirea, one group of medium to large size with white flowers from April to July and the other a small shrub with red, pink or white flowers in July and August.

**Anthony Waterer Spirea**

Dwarf shrub with bright crimson flowers borne freely in July and August.

- 15 to 18 in..... \$1.00 each

**Thunberg Spirea**

Arching branches with feathery foliage — white flowers in April.

- 2 to 3 ft..... \$1.20 each
- 3 to 4 ft..... 1.35 each

**Korean Spirea**

White flowers in rounding clusters blooming in June. Excellent.

- 3 to 4 ft..... \$1.20 each
- 4 to 5 ft..... 1.50 each
- 5 to 6 ft..... 1.80 each

**Van Houtte Spirea**

Best of all Spireas, graceful arching branches—a mass of white clusters at Memorial Day.

- 2 to 3 ft..... \$1.20 each
- 3 to 4 ft..... 1.35 each

**VIBURNUM**

An interesting family important as foliage shrubs in shrub border plantings — several varieties have exquisite flower and fruit effect.

**American Cranberrybush**

Large maple-like leaves, scarlet fruit from July through winter. White flower heads.

2 to 3 ft..... \$1.00 each  
3 to 4 ft..... 1.50 each

**Mayflower Viburnum**

Beautiful fragrant pink-white flowers in May. Looks and smells like Mayflowers.

18 to 24 in. B&B..... \$3.50 each  
2 to 3 ft. B&B..... 4.50 each

**Arrowwood**

Clusters of white flowers in June. Blue-Black fruit.

2 to 3 ft..... \$1.25 each  
3 to 4 ft..... 1.50 each

**Linden Viburnum**

Scarlet fruit throughout the winter — 6 inch snowy white flower heads in May and June.

18 to 24 in..... \$1.25 each

**Wayfaring Tree**

Large, leathery leaves — clusters of white flowers in June.

2 to 3 ft..... \$1.00 each  
3 to 4 ft..... 1.25 each

**Nannyberry**

Leaves brilliant-scarlet in Autumn — white flowers in June.

3 to 4 ft..... \$1.50 each  
4 to 5 ft..... 1.75 each

**European Cranberrybush**

Large clusters of glossy red berries.

2 to 3 ft..... \$1.25 each  
4 to 5 ft..... 1.80 each

**WEIGELA**

A widely used family of small beautiful shrubs bearing bell or trumpet shaped flowers.

**Dwarf Crimson Weigela**

Crimson flowers produced continuously from June to August.

2 to 3 ft..... \$1.25 each

**Pink Weigela**

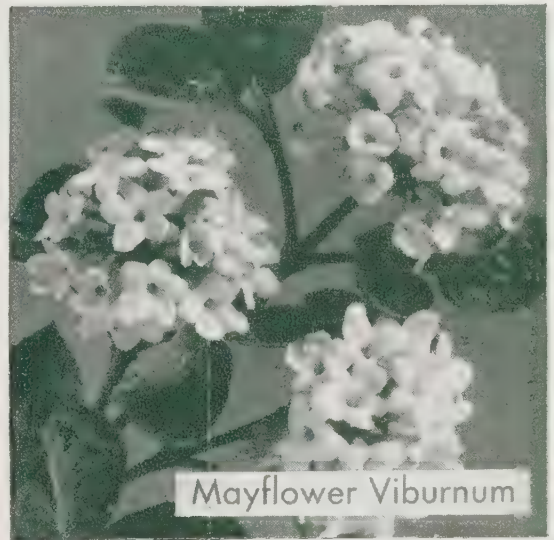
Delicate pink flowers in June.

2 to 3 ft..... \$1.25 each

**Bristol Ruby — New**

The best red Weigela, flowers throughout summer and fall.

18 to 24 in..... \$1.00 each  
2 to 3 ft..... 1.50 each

**SMOKETREE**

Small thread-like grayish purple flowers in large panicles during June give the plant the effect of being covered with haze of smoke. Unusual.

2 to 3 ft..... \$1.25 each  
3 to 4 ft..... 2.00 each  
4 to 5 ft..... 2.50 each

*Sprays of Weigela Blossoms*





# Lilacs . . .

LILACS have absorbed the affections and attention of people for centuries. Their large fragrant panicles of flowers and heart-shaped leaves are known to all.

## TREE-FORM LILAC

These hybrid tree-form lilacs have heavy well-developed heads on strong single trunks.

**Charles the Tenth** Single, reddish purple

**Hugo Koster** Single, dark reddish purple.

5 to 6 ft. B&B..... \$6.00 each

6 to 7 ft. B&B..... 7.25 each

## Hybrid Lilacs

Finest of all Lilacs — hybrids are developed from common lilac, and other species. Flowers are similar in shape, some varieties with large single florets, other with double petaled florets, but with a wide range of color.

18 to 24 in..... \$1.50 each

2 to 3 ft..... 2.50 each

3 to 4 ft. (not available in all varieties)... 3.00 each

4 to 5 ft. (not available in all varieties)... 4.00 each



**Aline Mocqueris** Single, large, carmine to purple.

**Amoena** Single, medium dark red.

**Berreyer** Double, mauve shading to red.

**Bleuatre** Single, light blue.

**Capitaine Baltet** Single, purple.

**Charles Joly** Double, dark purple-red.

**Charles the Tenth** Single, reddish purple.

**Condorcet** Semi-double, bluish.

**Edmund Boissier** Single, deep purple.

**Edouard Andre** Double, tourmaline pink.

**Jean Mace** Double, bluish mauve.

**Lamartine** Single, red to tourmaline pink.

**Lemonei** Double, pink.

**Le Printemps** Double, purple.

**Marceau** Large, single, dark purple.

**Michel Buckner** Double, pale lilac.

**Mlle Fernande Viger** Large, single, white.

**Mme. Antoine Buckner** Double, pink.

**Mme. Casimir Perier** Double, white.

**Mme. Florent Stepman** Large, single, white.

**Monge** Single, large dark purple.

**Necker** Single, medium pink.

**Paul Thirion** Double, large violet, late flowering.

**President Carnot** Double, two-tone mauve.

**President Grevy** Semi-double, light lavender.

**President Lincoln** Single, deep Wedgwood blue.

**President Poincare** Double, red buds, purple flowers.

**Princess Alexandria** Large, single, pure white.

**Princess Marie** Single, pink.

**Schermerhorn** Single, pale purple.

**Verschoffelt** Single, pinkish purple.

**Old Favorites**

**COMMON PURPLE LILAC**

Best known variety. Fragrant purple flowers at Memorial Day.

- 2 to 3 ft..... \$1.25 each
- 3 to 4 ft..... 1.50 each
- 4 to 5 ft..... 2.00 each

**COMMON WHITE LILAC**

White flowering form of preceding.

- 2 to 3 ft..... \$1.50 each
- 3 to 4 ft..... 2.00 each



*Single Hybrid Lilac*

**HENRY LUTECE LILAC**

Violet-purple flowers in large clusters, blooming after other Lilacs.

- 18 to 24 in..... \$1.00 each
- 2 to 3 ft..... 1.25 each
- 3 to 4 ft..... 1.60 each

**PERSIAN LILAC**

Pale purple flowers in loose broad panicles, very fragrant. Branches arching.

- 2 to 3 ft..... \$1.25 each
- 3 to 4 ft..... 1.50 each

**RED PERSIAN LILAC**

Similar to Persian lilac but has red flowers.

- 2 to 3 ft..... \$1.25 each
- 3 to 4 ft..... 1.60 each

**MOCKORANGE**

Often called the Sweet Syringa. All have white flowers, some large, some small, some fragrant, borne in early summer.

**Golden Mockorange**

Large white flowers—clear bright yellow foliage. Much used for color effects in border or deciduous shrubs.

- 15 to 18 in..... \$1.25 each

**Sweet Mockorange**

Fragrant white flowers in huge open panicles in June.

- 2 to 3 ft..... \$1.10 each
- 3 to 4 ft..... 1.25 each
- 4 to 5 ft..... 1.50 each

**HYBRID MOCKORANGE**

**Silver Streak Mockorange**

Large double white flowers.

- 2 to 3 ft..... \$1.50 each

**Lemoine Mockorange**

Pearl white flowers with wonderful fragrance. A compact plant of graceful habit.

- 18 to 24 in..... \$1.25 each
- 2 to 3 ft..... 1.50 each

**Virginal Mockorange**

Amazingly large semi-double flowers from June and continuing until mid-fall. Very fragrant.

- 2 to 3 ft..... \$1.50 each
- 3 to 4 ft..... 1.75 each



*Double Hybrid Lilac*

# Wyman's Hedges

**N**UMEROUS problems of the home garden are solved by the use of the proper hedge. Some offer protection, some privacy; still others, masses of progressive color.

Property lines can be gracefully and beautifully designated by a formal or informal treatment. Study and select the type of hedge which will develop the maximum use of your property.



*Japanese Barberry Hedge*

## JAPANESE BARBERRY

The low, dense bushy plants make a fine protective hedge. Leaves turn brilliant red in Autumn—scarlet berries nearly all winter.

12 to 15 in.....	\$3.50 for ten plants
15 to 18 in.....	4.50 for ten plants
18 to 24 in.....	5.50 for ten plants

## CALIFORNIA PRIVET

Excellent for medium height compact protective hedges. Leaves glossy green and dark.

18 to 24 in.....	\$3.00 for ten plants
------------------	-----------------------

## IBOLIUM PRIVET

Similar to California Privet, with a bushier habit.

2 to 3 ft.....	\$3.50 for ten plants
3 to 4 ft.....	5.50 for ten plants

## AMUR RIVER PRIVET

Makes a beautiful dense hedge, shears perfectly.

2 to 3 ft.....	\$4.00 for ten plants
3 to 4 ft.....	5.00 for ten plants

## FLOWERING HEDGES

Flowering hedges are exceedingly beautiful and can be used when a formally trimmed hedge is not required. Shrubs listed below make ideal hedges:

Anthony Waterer Spirea.....	page 24
Fiveleaf Aralia.....	page 21
Van Houtte Spirea.....	page 24
Sweet Mockorange.....	page 27
Rugosa Rose.....	page 24
Common Lilac.....	page 27

*Privet Hedge*

## EVERGREEN HEDGES

For year round beauty, evergreen hedges have no equal. Their green color adds warmth and beauty during the winter months.

*For small to medium sized hedges, we recommend:*

Dwarf Edging Yew.....	page 6
Bighedge Yew.....	page 5
Hatfield Yew.....	page 6
Ware Arborvitae.....	page 7
Canadian Hemlock.....	page 8

*For Large Hedges, screen or windbreaks, we recommend:*

White Spruce.....	page 11
Norway Spruce.....	page 11
Columnar American Arborvitae.....	page 7
White Pine.....	page 10
Canadian Hemlock.....	page 8

We can furnish smaller evergreens for hedges than those listed in this catalog. We shall be pleased to recommend and quote varieties and sizes to fit your specific need.





## Wyman's Roses

**S**TILL the most popular plant family in the nation. We have purposely reduced our list to a small number. It has been carefully compounded from some of the old proven sorts as well as the new, and contains varieties which will give a wide range of color, and by its brevity prevent confusion in selection.

### Tea Roses

Etoile de Hollande ..... Dark Red  
 Red Radiance ..... Light Red  
 Pink Radiance ..... Brilliant Pink  
 E. G. Hill ..... Deep Red  
 Caledonia ..... Pure White  
 Dame Edith Helen ..... Glowing Pink  
 K. A. Victoria ..... White

Frau Karl Druschki ..... Large White  
 Yellow Talisman ..... Yellow  
 Golden Dawn ..... Sunflower Yellow  
 Roslyn ..... Golden Yellow  
 Condessa de Sastago ..... Two-toned Coppery  
 Talisman ..... Golden Yellow and Copper

Price of above Roses \$1.50 each

### Climbing Roses

Climbing American Beauty ..... Large Rosy Crimson  
 Paul Scarlet Climber ..... Vivid Scarlet

Silver Moon ..... Semi-double, pure White  
 Dr. Van Fleet ..... Rose Pink  
 Primrose ..... Yellow

Price of above Roses \$1.50 each





*Sugar Maple*

**CHINESE ELM**

An excellent street tree, smaller than American Elm — Rapid growing.

- 6 to 8 ft..... \$3.50 each
- 8 to 10 ft..... 5.00 each
- 10 to 12 ft..... 7.50 each

**LITTLELEAF LINDEN**

Similar to preceding variety with small heart-shaped leaves.

- 8 to 10 ft..... \$6.00 each
- 10 to 12 ft..... 8.00 each
- 12 to 14 ft..... 15.00 each
- 14 to 16 ft..... 20.00 each

**EUROPEAN LINDEN**

Grows quickly into shade-giving proportions. Dark green leaves.

- 8 to 10 ft..... \$6.00 each
- 10 to 12 ft..... 8.00 each
- 12 to 14 ft..... 15.00 each
- 14 to 16 ft..... 20.00 each

**EUROPEAN MOUNTAIN ASH**

A symmetrical round-topped tree with foliage like that of sumac. In the Autumn it has enormous clusters of scarlet-orange berries, which attract birds.

- 6 to 8 ft..... \$4.00 each
- 8 to 10 ft..... 5.50 each
- 10 to 12 ft..... 8.50 each

# Wyman's Shade Trees

THE ever-friendly guardian of our homes, covering us with broad cool shade during the summer months. With their variety of shape and foliage, many pleasing landscape effects can be accomplished with a minimum of effort. Accent your sky-line with tall, stately shade trees.

**WHITE BIRCH**

Tall tree with snow-white bark.

- 6 to 8 ft. B&B..... \$6.00 each
- 8 to 10 ft. B&B..... 7.50 each
- 10 to 12 ft. B&B..... 11.00 each

**PAPER BIRCH**

Sometimes called Canoe Birch — White Bark.

- 10 to 12 ft. B&B..... \$11.00 each

**CUTLEAF WEEPING BIRCH**

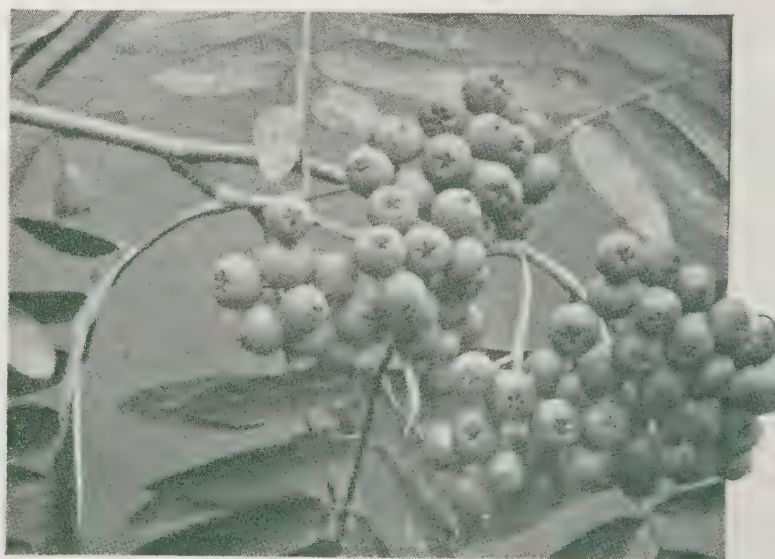
Leaves deeply cut — white bark. Branches droop gracefully.

- 10 to 12 ft. B&B..... \$12.00 each
- 12 to 14 ft. B&B..... 17.00 each

**AMERICAN ELM**

Best of all arching trees. A grand tree.

- 6 to 8 ft..... \$3.00 each
- 8 to 10 ft..... 4.00 each
- 10 to 12 ft..... 6.00 each
- 12 to 14 ft..... 10.00 each



*Fruits of Mountain Ash*

**BALL & BURLAP CHARGES (B&B)**

Unless otherwise indicated, shrubs and shade trees are regularly dug bare-root at the prices listed. The following charges will be made for those plants if wanted B&B.

- |                         |                         |
|-------------------------|-------------------------|
| 15 to 18 in. \$ .25 ea. | 3 to 4 ft... \$ .45 ea. |
| 18 to 24 in. .30 ea.    | 4 to 5 ft... .60 ea.    |
| 2 to 3 ft... .35 ea.    | 5 to 6 ft... .80 ea.    |



**NORWAY MAPLE**

Best shade tree, withstands city conditions.

6 to 8 ft.....	\$3.90 each
8 to 10 ft.....	4.80 each
10 to 12 ft.....	7.50 each
12 to 14 ft.....	10.00 each

**RED MAPLE**

Fiery red blossoms in Spring, crimson scarlet leaves in Autumn.

5 to 6 ft.....	\$3.00 each
6 to 8 ft.....	3.90 each
8 to 10 ft.....	4.80 each

**SCHWEDLER MAPLE**

Leaves dark red for first month turning to dark green, tinged with purple.

6 to 8 ft.....	\$5.00 each
8 to 10 ft.....	7.50 each

**SUGAR MAPLE**

Very symmetrical — Excellent for street use and lawn plantings.

6 to 8 ft.....	\$4.00 each
8 to 10 ft.....	5.00 each
10 to 12 ft.....	7.50 each

**PIN OAK**

A handsome tree with drooping branches adapted to lawn and avenue planting.

8 to 10 ft.....	\$7.00 each
10 to 12 ft.....	10.00 each
12 to 14 ft.....	12.00 each
14 to 16 ft.....	17.00 each

**SCARLET OAK**

Rapid growing tree with bright, shining green foliage turning to a fine scarlet in Autumn.

8 to 10 ft.....	\$7.00 each
10 to 12 ft.....	10.00 each
12 to 14 ft.....	12.00 each
14 to 16 ft.....	17.00 each

**BULBS FROM HOLLAND**

Write for our list of spring-flowering bulbs—Tulips, Narcissi, Crocus, etc. They will arrive in this country sometime in August — ready for Fall Planting.

**YOUR GARDEN-LOVING FRIENDS**

... May enjoy a copy of this illustrated catalog, too. Why not send us their names and we will be pleased to mail one to them. They may be planning to landscape a new home, or develop further the home-grounds of their present home. The timely receipt of this booklet may be of great assistance to them.



*Pin Oak*

**GOLDEN WEeping WILLOW**

A large tree whose long sweeping branches of bright golden yellow make it highly desirable. Particularly attractive during the winter months.

6 to 8 ft.....	\$4.00 each
8 to 10 ft.....	6.00 each

**AMERICAN SYCAMORE**

Often called Buttonwood Tree. Very useful tree, as its foliage resists smoke and dust.

6 to 8 ft.....	\$4.00 each
8 to 10 ft.....	5.00 each
10 to 12 ft.....	7.00 each



# Wyman's Vines

VINES have not been given the attention that they deserve. For concealing or softening harsh architectural faults or features, and for providing a general bower-like effect, Vines are supreme. Little need be said of their effective placing, — a few minutes study will reveal many spots which would be vastly improved by Vines.

## FIVELEAF AKEBIA

Small leaves divided into five lobes. Flowers are broad rosy purple, borne on slender stems in May. Dark purple fruit.

3 year ..... \$ .90 each

## ENGELMAN CREEPER

An excellent wall climber. Fall foliage brilliant to deep red.

2 year ..... \$1.00 each

## BOSTON IVY

Large broad dark green leaves with good fall color. A useful climber.

2 year ..... \$1.00 each

## HARDY ENGLISH IVY

A creeper rather than a climber. Makes a dense ground cover. Very hardy.

3 in. pots ..... \$ .55 each

4 in. pots ..... .75 each

## TRUMPETCREEPER

High climber. Large orange-scarlet trumpet shaped flowers in August.

3 year ..... \$1.25 each

## ORIENTAL BITTERSWEET

Strong arching drooping branches covered with orange fruit opening to show the crimson seed. Very showy.

4 year ..... \$1.25 each

5 year ..... 1.75 each

## SWEET AUTUMN CLEMATIS

One of the most satisfactory climbers, with pure white fragrant flowers.

2 year ..... \$1.00 each

## HALL'S HONEYSUCKLE

An excellent mass plant to prevent erosion of slopes. Fragrant yellow and white flowers.

3 year ..... \$ .70 each

4 year ..... .90 each

## PURPLE CHINESE WISTERIA

Long hanging clusters of purplish pea-shaped flowers in May — very fragrant. A beautiful vine.

2 year ..... \$1.20 each

4 year ..... 2.00 each

5 year ..... 3.00 each

## WHITE CHINESE WISTERIA

White flowering variety of the preceding.

2 year ..... \$1.50 each

4 year ..... 2.50 each



*Sweet Autumn Clematis*



## Wyman's Fruit Trees

### APPLES 2 year, 5 to 7 ft., \$1.75 each

- Baldwin—Bright red winter apple.
- Delicious—Large conical red and yellow winter apple.
- Gravenstein—Yellow and red autumn apple.
- McIntosh Red—Delicious, crisp, juicy fall apple.
- Red Astrachan—Bright red early apple.

### CRABAPPLES 2 year, 5 to 7 ft., \$1.75 each

- Hyslop—Dark red, late September.

### APRICOTS 2 year, \$2.25 each

- Early golden.

### PEARS 2 year, 5 to 7 ft., \$2.25 each

- Bartlett—Red and yellow—excellent flavor—September.
- Beurre Bosc—Russet—gold—bearing in October and November.
- Clapp's Favorite—Like Bartlett, maturing earlier.
- Seckel—Small sweet pear, October.

### PLUMS 2 year, \$2.25 each

- Abundance—Golden red, very juicy and sweet, July.
- Burbank—Larger fruit than Abundance.
- Fellenburg—Large oval fruit in September.

### SMALL FRUITS

#### GRAPES 2 year, \$.75 each

- |                     |                     |
|---------------------|---------------------|
| Agawam—Red          | Delaware—Red        |
| Brighton—Red        | Fredonia—Blue-black |
| Concord—Blue-black  | Niagara—White       |
| Worden—Purple-black |                     |

#### BEACH PLUM 2 to 3 ft., \$.90 each

- Hardy shrub thriving in the poorest soil — Fruit makes excellent jelly.

#### BLACKBERRIES

1 year, \$2.00 for ten plants

- Eldorado—Early, large fruit.

#### RASPBERRIES 1 year, \$2.50 for ten plants

- Latham—Large red.
- Taylor—New delicious red.
- Indian Summer—Large red, everbearing.
- Chief—Very large red.

#### STRAWBERRIES

- |                       |                      |
|-----------------------|----------------------|
| Mastodon—everbearing. |                      |
| Gem—new everbearing.  | \$3.50 for 50 plants |
| Howard 17—early.      |                      |
| Catskill—Mid-season.  | \$3.00 for 50 plants |

### CHERRIES 2 year, 5 to 7 ft., \$2.25 each

- Black Tartarian—Favorite black sweet cherry.
- Montmorency—Best red sour cherry.

### PEACHES 1 year, 4 to 5 ft., \$1.75 each

- Belle of Georgia—Beautiful early fruit.
- Early Crawford—Delicious golden yellow.
- Elberta—best popular yellow.



# Wyman's Hybrid Blueberries



**T**HE latest of native American fruits to be developed through breeding, blueberries now hold forth as the most popular bush fruit. Cultivated Blueberries grow in large clusters, plump, tender and practically seedless, with the delightful tang of the wild fruit. Foliage, blossoms, and fruit give novel beauty to every planting. Beautiful autumn foliage. For proper pollination, Hybrid Blueberries should be planted in groups of three.

- CABOT** —Earliest of hybrid blueberries, dwarf large berries.
- CONCORD** —Tall vigorous bush, bearing a few days later than Pioneer.
- JERSEY** —High bush, berries very large and good quality.
- RANCOCUS**—Medium high bush and good producer of flavored fruit.
- RUBEL** —Large berries, heavy bearer—winter twigs dark red.
- STANLEY** —A recent development, very productive.
- WAREHAM**—Abundant fruits on vigorous bushes, delicious.

2 year—10 to 12 in.....	\$1.50 each
18 to 24 in.....	3.50 each
2 to 3 ft.....	4.50 each

FIRST CLASS  
PERMIT No. 25  
(Sec. 510 P. L. & R.)  
Framingham, Mass.

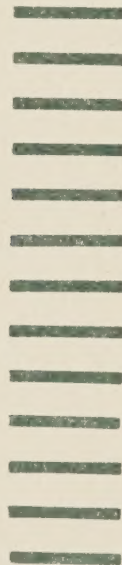
**BUSINESS REPLY CARD**

No postage stamp necessary if mailed in U. S. A.

POSTAGE WILL BE PAID BY

*Wyman's Framingham Nurseries*

*Framingham, Mass.*



Date.....

Gentlemen:

I am interested in landscaping my property. Kindly have your landscape representative arrange for an appointment with me at my home. I understand this does not obligate me in any way.

My telephone number is.....

Name.....

Street.....

City.....

*Wyman's . . .*



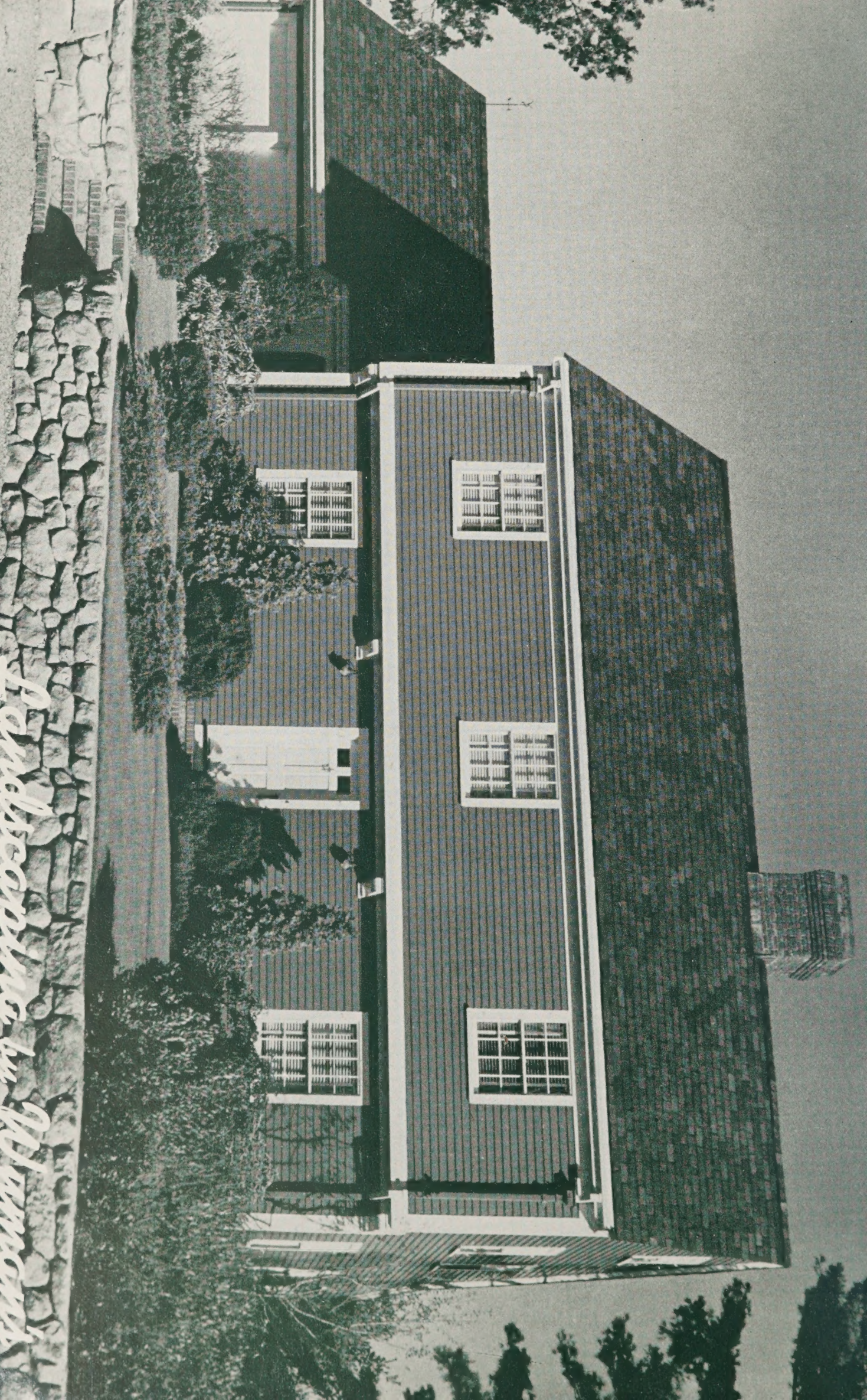
*Over  
Forty-Five Years  
of Horticultural  
Experience  
and Research*

*Over  
Two Hundred Acres  
of Fine Hardy  
Ornamental  
Plants*



*Staffed by  
Trained, Helpful  
Designers,  
Plantmen,  
and Sales  
Attendants*

*Telephone:  
Framingham 6191*



*For more information visit us at [www.fox.com](http://www.fox.com)*