

Historic, Archive Document

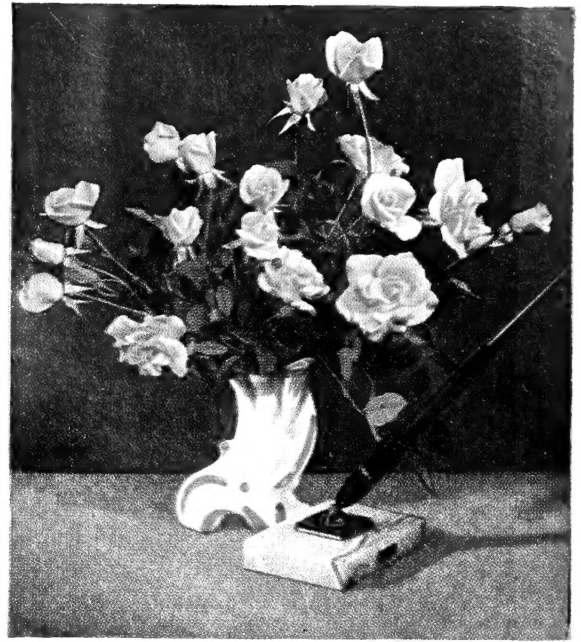
Do not assume content reflects current scientific knowledge, policies, or practices.

**THREE
All-America
Award Winners
for 1948**



TAFFETA
Pat. 716

Large, semi-double blooms—ranging from straw-yellow to begonia-pink. Fragrant. Blooms freely all season. \$2.00 each.



PINKIE

Your 1948 Guide to
Better Perennials, Bulbs, Roses, Etc.

CARROLL GARDENS
WESTMINSTER • MARYLAND

10th ANNIVERSARY
GREAT SAVING OFFER

See Page 3

COLLECTION

Offer 8S-1

1 each of the
3 illustrated for **\$5.00**

PINKIE. Pat. 712

(The Little Sweetheart of them all). Cupped, pink flowers of unusual charm. Dwarf, bushy; profuse bloomer. \$2.00 each.

NOCTURNE. Pat. 713

Cardinal-red shaded crimson. Large, cupped flower, long pointed in the bud stage. Strong grower to 3 or 4 feet. \$2.00 each.

NOCTURNE





Here is a specially selected list of Hardy Rock-Garden Plants for sunny as well as shady locations. Most of them are also ideal low border plants for the front of the perennial border.

All these and others are listed and described in various places throughout the catalog. See Index.
All varieties listed are 3 of one variety for \$1.25; 6 for \$2.25; 12 for \$4.25; 55c each, except where noted.

A Selection for Sunny Places

- Aethionema, Warley Rose.** 4 to 6 in. Rose-pink. May, June. 3 for \$1.75; 6 for \$3.25.
Alyssum saxatile compactum. 12 in. Gold. May.
Anemone Pulsatilla. 10 to 12 in. Violet-blue. March to May.
Armeria cephalotes rubra. 12 in. Deep pink. May, June.
Artemisia Schmittiana nana. Creeper. Lovely silvery foliage.
Aster alpeius, Triumph. 8 in. Blue daisies. June, July. 3 for \$1.50; 6 for \$2.75; 12 for \$4.75.
Campanula carpatica, Blue Carpet. 6 in. July on. 3 for \$1.50; 12 for \$5.00.
Coreopsis auriculata nana. 15 in. Golden yellow. May to September.
Coronilla cappadocica. Creeper. Yellow. June, July.
Dianthus, Bobby. 8 in. Deep pink with crimson center. May, June.
Dianthus, Meg Gardner. 15 in. White flowers with red centers. June.
Dianthus, Mrs. Dina Weller. 6 in. Pink with red center. May, June. 3 for \$1.50; 6 for \$2.75; 60c each.
Dianthus, Tiny Rubies. 4 to 5 in. Pink shaded to rose. May, June.
Dicentra eximia. 12 in. Pink. April to September.
Geranium lancastrinse. 6 in. Light salmon-pink. All summer.
Geranium, Russell Prichard. 6 in. Pink. All summer. 3 for \$1.50; 60c each.
Geum Borisi. 10 in. Scarlet. May, June. 3 for \$1.75; 65c each.
Gypsophila fratisensis. 8 in. Light pink. June, July.
Gypsophila repens Bodgeri, Rosy Veil. 15 in. Pink. All summer.
Helianthemum, Ben Ledi. 10 in. Crimson-lake. May to July.
Helianthemum, Buttercup. 10 in. Golden yellow. May to July.
Helianthemum rhodanthum carneum. 10 in. Pale pink. May to July.
Heuchera Rosamondi. 15 in. Pink. Late May to July.
Iberis, Purity. 6 in. Extremely showy; pure white. April, May. 3 for \$2.00; 6 for \$3.75; 12 for \$7.00.
Iberis sempervirens. Evergreen Candytuft. 12 in. April, May.
Iberis, Snowflake. 10 in. White. The best for foliage effect. May, June.
Lavandula, Carroll Variety. 12 to 18 in. Lavender-blue. June, July. 3 for \$1.65; 6 for \$3.00; 12 for \$5.50; 65c each.
Linum flavum compactum. 12 in. Yellow. June.
Nepeta Mussini superba. 6 in. Gray foliage; blue flowers. May to July. 3 for \$1.60; 6 for \$3.00; 12 for \$5.00; 60c each.
Phlox subulata, Blue Eyes. 6 in. Lavender-blue. April, May.

- Phlox subulata, Sampson.** 4 in. Deep rose with crimson center. April, May.
Polemonium, Blue Pearl. 12 in. Light blue. May.
Potentilla verna nana. 4 in. Yellow. May.
Santolina incana. 15 in. Silvery foliage; yellow flowers. June, July.
Saponaria ocymoides. Trailing. Pink. May, June.
Scabiosa, Dwarf Alpine. 6 to 10 in. Lavender-blue. May to July. 3 for \$1.75; 12 for \$5.00; 65c each.
Sedum Sieboldi. 6 in. Pink. September, October.
Sedum spurium, Dragon's Blood. 4 in. Bright carmine-red. June, July.
Thymus. Creeping, pink or white. Upright, 8 in., pink, green or variegated foliage. Some varieties are shrubby, woody types, while others are low growing and creeping. See page 35.
Tunica Saxifraga alba flore-plena. 6 in. Double; white. All summer.
Tunica Saxifraga rosea flore-plena. 6 in. Double; rose-pink. All summer.
Veronica incana. 12 in. Deep blue. June.
Veronica incana rosea. 12 in. Pink. June.
Veronica peustris. 4 in. Deep blue. Late May, June.
Veronica spicata nana. 6 in. June.
Veronica, True Blue. 12 in. Deep blue. May, June.
Viola, Catherine Sharp Improved. Blue. All summer. 3 for \$1.50; 6 for \$2.75; 12 for \$4.50.
Viola, Purple Glory. Rich purple. All summer.

A Selection for Shady Places

- Ajuga reptans.** 6 in. Blue. May.
Anchusa myosotidiflora. 15 in. Brilliant blue. April, May.
Anemone, September Sprite. 12 in. Pink. August to October.
Dicentra eximia. 12 in. Pink. All summer.
Dicentra formosa, Sweetheart. 12 in. White. All summer. 3 for \$2.50; 6 for \$4.75; 95c each.

- Doronicum, Mme. Mason.** 12 to 15 in. Yellow. April, May.
Epimedium. 8 in. Available in pink, yellow, white and lilac. May. 3 for \$1.75; 6 for \$3.00; 12 for \$5.00.
Helleborus niger. Christmas Rose. 12 in. White blooms flushed with pink. December to March. 3 for \$3.25; 12 for \$12.00; \$1.25 each.
Helleborus orientalis atropurpurea. 12 in. New red Lenten Rose. February to April. 3 for \$4.00; 6 for \$7.00; \$1.50 each.
Hemerocallis, Minor. 15 to 18 in. Lemon-yellow. May, June.
Myosotis palustris semperflorens. 8 in. Bright blue. All summer.
Plumbago Larpentæ. 12 in. Deep blue. July to September.
Primula, Various Kinds. See Primrose list, page 19.
Pulmonaria angustifolia azurea. 6 in. Blue. April, May.
Sedum Sieboldi. 6 in. Rose-pink. Late fall.
Spirea simplicifolia. 12 to 15 in. Pink. June, July. 3 for \$1.75; 70c each.
Violet, Prince of Wales. Purple-blue. Spring and fall.
Violet, Royal Robe. Purple-blue. Spring and fall.

Choice Shrubs Particularly Suitable for Larger Rock Gardens

- Azalea, Corsage.** Orchid.
Azalea Hinodegiri. Red.
Azalea, Sweet Brier. Rose-pink.
Cotoneaster apiculata. Extra-large red berries.
Cotoneaster Dammeri (humifusa). Creeping. Coral-red berries.
Daphne Cneorum. 10 in. Pink. Spring and fall.
Erica carnea rosea. 8 in. Rosy pink. March, April.
Erica, Springwood. 8 in. White. March, April.
Potentilla fruticosa Purdomi. Lemon Drops. 2 ft. Pale yellow. Spring to fall.
Spirea bullata. 15 in. A rare little shrub. Lovely deep pink flowers. Summer. 3 for \$2.00; 75c each.
 For prices of above shrubs see pages 29, 38 and 39

SPECIAL OFFERS FOR BEGINNERS

OFFER NO. 85-2: 12 Rock-Garden Plants for sunny locations. 2 each of 6 varieties, our selection for only . . . \$4

OFFER NO. 85-2A: 18 plants \$5.50 (3 each of 6 varieties) for . . .

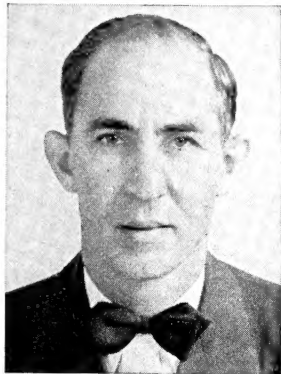
The same offer applies to shade-loving varieties. When ordering, please mention which you prefer—for sun or shade.

Slow-Growing, Low Evergreens Suitable for Rock Gardens

- Juniperus prostrata venusta.**
Retinospora obtusa nana.
Retinospora pisifera squarrosa pygmaea.
Taxus canadensis stricta.
Taxus cuspidata nana.

For prices of above evergreens see page 35

A Message from Carroll Gardens



P. DONOFRIO, Pres.

IT IS with great pleasure and pride that we offer our 10th Anniversary Spring 1948 Catalog, presenting one of America's finest collections of Perennials, Roses, Bulbs, etc. I personally would like to have every one of you participate in celebrating our 10th Anniversary and take advantage of the 10% discount offered you throughout the year 1948. It will give me great satisfaction to know that you celebrated with us and procured some of the finest plants at great savings.

May I also call your attention to the many new perennials offered for the first time in this catalog? In previous catalogs we have suggested the planting of perennials in groups of three or more of one kind. This year for your benefit as well as ours, we strongly urge that your orders be placed for three, six, or twelve of a variety. First of all, you will have a more effective garden display, and secondly, the savings in labor, packing and shipping materials can be passed on to you.

I want to thank our customers and express my deepest appreciation for the splendid support you have given Carroll Gardens in these our first ten years. We will continue to give you the best in both products and service. Should you at any time receive anything from us that is not satisfactory, please let us hear from you. Remember that we are not satisfied unless you are.

Yours for better gardening,
P. DONOFRIO, Pres.

SPECIAL 10th ANNIVERSARY DISCOUNT

New and old customers are cordially invited to participate in our 10th Anniversary Offer. During the year 1948 if your order amounts to \$5.00 or more, you may deduct 10% from the amount. For instance: if your order comes to \$5.00, deduct 50c and send us only \$4.50; if \$10.00, send us \$9.00, etc. In addition to the 10% discount, we wish to point out that in spite of the sky-high prices of 1947 our prices remain the same. Here's your chance to get good plants at reasonable prices.

Please Note—

Guarantee. We guarantee any plant we sell to be true to name and to reach you in fresh, healthy condition. On items that prove not to be as represented, we will replace or refund the purchase price.

Terms. Cash or satisfactory reference must accompany all orders from parties unknown to us. Complaints, if any, must be made in writing to us within five days after receipt of goods.

Transportation. We prepay transportation charges on orders amounting to \$3.00 or more, east of the Mississippi on practically all plants listed; west of Missis-

sippi please add 10 per cent to the amount of the order. Some special orders calling for large shrubs, evergreens, trees, potted roses, etc., will be shipped either by Parcel Post or Express Collect. Orders less than \$3.00, add 35 cts. for postage and packing.

Time of Shipment. Regardless of when your order is received, plants will be shipped at the proper planting time for your locality. If you prefer any special date to have your order shipped please write it on your order blank and we will try, if there is any way possible, to comply with your request.

INDEX

FRUITS	Page				
Blueberries	30	Artemisia	2	Helenium	13
Plums	31	Aquilegia	9,12	Helianthemum	2,13
Strawberries	30	Arabis	9	Helianthus	7,13
BULBS		Ameria	2,7,9	Heliothis	6
Acidanthera	33	Artemisia	2	Helleborus	2,23
Amaryllis	32	Asclepias	10	Hemerocallis	2,14
Begonia	33	Asters	2,9	Heuchera	2,13,21
Calla Lily	33	Astilbe	20	Hibiscus	13
Dahlia	32	Callirhoe	10	Hollyhock	13
Gladiolus	34	Campanula	2,10	Iberis	2,13
Gloriosa Lily	33	Carnation	6,10	Iris	11
Gloxinia	32	Catananche	10	Lathyrus	13
Ismene	32	Centaurea	10	Lavandula	2,35
Lilies	29,33	Chives	35	Liatris	8,13
Montbretia	32	Chrysanthemums	41-48	Lily-of-the-Valley	14
Oxalis	33	Chrysanthemum	maxi-	Linum	2,13
Tigridia	32	mum	36	Lupinus	15
Tuberose	33	Cimicifuga	10	Lycnis	21
EVERGREENS, Coniferous		Coreopsis	2,10	Lythrum	8,13
Arborvitae	35	Coronilla	2,10	Myosotis	2,14
Juniper	35	Delphinium	12	Nepeta	2,14
Retinospora	35	Dianthus	2,10	Nierembergia	15
Yews	35	Dicentra	2,10	Onothena	19
HERBS	35	Dictamnus	13	Penstemon	7,19
PERENNIAL BORDER,		Digitalis	13	Peony	11,19
How to Make a	4	Doronicum	2	Phlox	2,16,17
PERENNIALS and		Echinops	13	Physostegia	19
ROCK-PLANTS		Epimedium	2,23	Platycodon	19
Achillea	9	Funkia	13	Plumbago	2,19
Aconitum	9	Gaillardia	21	Polemonium	2,19
Aethionema	2,9	Geranium	2,13,35	Polygonum	19
Ajuga	2,9	Gerbera	13	Poppy, Oriental	18
Allium	9	Geum	2,7	Potentilla	2,19
Alyssum	2,9	Gypsophila	2,13,21	Primroses	19,23
Anchusa	2,23			Pulmonaria	2,19
Androsace	9			Pyrethrum	7,36
Anemone	2,6,9,23			Rosemary	35
				Rudbeckia	12,19
				Salvia	19,21
				Santolina	2
				Saponaria	2,19
				Scabiosa	2,6,19
				Sedum	2,15,19
				Shasta Daisy	36
				Silene	19
				Spirea	2,20
				Statice	20
				Stokesia	12
				Tarragon	35
				Thalictrum	6,20
				Thermopsis	20
				Thymus	2,35
				Tradescantia	20
				Tritoma	8,20
				Trollius	20
				Tunica	2,20
				Valeriana	20
				Verbascum	8,20
				Verbena, Lemon	35
				Veronica	2,8,20
				Vinca	20
				Viola	2,15,20
				Violet	2
				Yucca	20
				ROSES	1,24-27
				SHRUBS, Deciduous	
				Flowering	Page
				Buddleia	37,39
				Callicarpa	39
				Caryopteris	39
				Clethra	37
				Cydonia	39
				Elsholtzia	39
				Forsythia	38
				Franklinia	38
				Hypericum	39
				Potentilla	39
				Salix	38
				Viburnum	38
				Vitex	38
				SHRUBS, Evergreen	
				Abelia	29
				Azalea	2,38
				Berberis	29
				Buxus	29
				Cotoneaster	29
				Daphne	29
				Erica	29
				Pyracantha	29,38
				VINES	
				Ampelopsis	39
				Clematis	39
				Honeysuckle	39
				Hydrangea	39
				Silver Lace Vine	39
				Wisteria	39
				WILD FLOWERS	
				Cypridium	40
				Ferns	40
				Hepatica	40
				Mertensia	40
				Sanguinaria	40
				Shortia	40
				Trillium	40

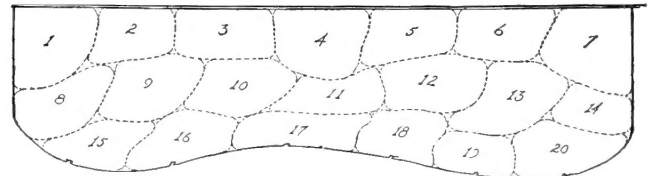


AN EFFECTIVE BORDER PLANTED WITH PERENNIALS AND BIENNIALS

Plan a perennial border as a part of your outdoor living-room. A well-planted border is colorful and fits into any garden scheme. You will be proud to show your friends the results of your efforts.

There are many ways to plant a perennial border. If you are planning on carrying out a formal garden, a straight-line border fits better in your scheme, such as shown above. But if you are trying to carry out an informal scheme, a curved border would be better, as shown on the plan below. A perennial border is always best planted along a border or dividing line, along a picket fence or in front of shrubbery. It is never advisable to put it in the middle of the lawn. The length as well as the width depends on the space that you have available. Our perennial booklet, offered free on our order sheet, will go more into detail regarding planting a perennial border. You will find it helpful.

Here's How— to Make a Perennial Border



Plan for a Border 5 feet wide and 20 feet long

FOR an abundance of color through the summer months, perennials are an indispensable part of the home garden, as well as a convenient source of cut flowers for indoor decoration. By planning your border in advance you can arrange perennials to make a pleasing picture. (The sketch above is a suggestion for grouping plants in irregular masses and may well serve as a guide for planning a border of any size.)

The plants we have selected in the three groups listed below were chosen for their free-flowering habit, their hardiness and their vigor. Although the sketch above provides for a border 5 feet wide and 20 feet long, it can easily be adapted to accommodate whatever space is available in your garden.

SEVENTY-FIVE BORDER PERENNIALS Any One of the Three Groups (75 Plants) for \$22.50, Postpaid

Group 8S-3A—75 Plants

Key	For Sunny Locations	No. of Plants
1	Chrysanthemum, Olive Longland	3
2	Phlox, San Antonio	3
3	Lythrum, Morden's Pink	5
4	Aster, Harrington's Pink	3
5	Chrysanthemum, Charles Nye	3
6	Delphinium, Belladonna	5
7	Chrysanthemum, Bokhara	3
8	Shasta Daisy, Majestic	3
9	Pyrethrum, Mixed	7
10	Phlox, E. I. Farrington	3
11	Penstemon, Rose Elf	3
12	Phlox, Miss Lingard	3
13	Heliopsis, Summer Gold	3
14	Phlox, Border Queen	3
15	Coreopsis, Golden Shower	5
16	Veronica, Blue Spire	3
17	Iberis sempervirens	5
18	Stokesia, Blue Moon	3
19	Dianthus, Bobby	6
20	Gypsophila repens Bodgeri, Rosy Veil	3

Group 8S-3B—75 Plants

Key	For Partly Shaded Locations	No. of Plants
1	Chrysanthemum, Kristina	3
2	Hemerocallis, Hyperion	3
3	Lythrum, Morden's Pink	3
4	Aster, Harrington's Pink	3
5	Anemone, Marie Manchar	6
6	Delphinium, Belladonna	6
7	Chrysanthemum, Apricot Glow	3
8	Shasta Daisy, Supreme	3
9	Pyrethrum, Mixed	6
10	Phlox, E. I. Farrington	3
11	Aquilegia, Mrs. Scott Elliott's Strain	3
12	Phlox, Miss Lingard	6
13	Coreopsis, Golden Shower	3
14	Phlox, Border Queen	3
15	Chrysanthemum, September Gold	3
16	Liatris spicata	3
17	Iris sibirica, Snow Queen	3
18	Stokesia, Blue Moon	3
19	Veronica, Blue Peter	3
20	Polemonium, Blue Pearl	6

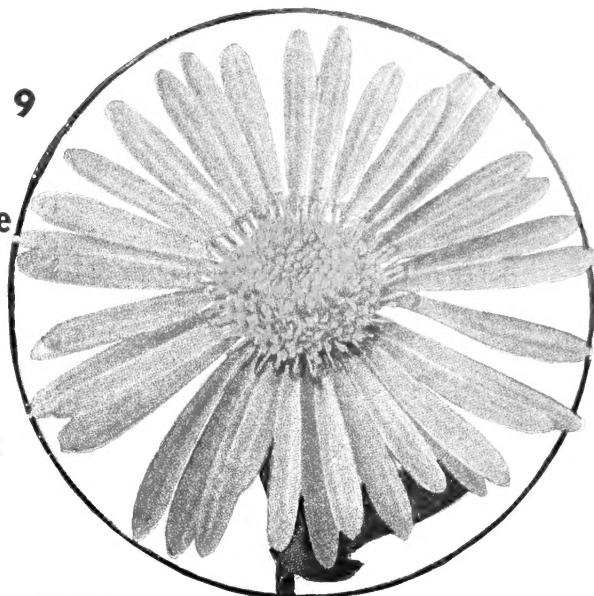
Group 8S-3C—75 Plants

Key	For Shaded Locations	No. of Plants
1	Tradescantia, Blue Stone	3
2	Thalictrum, Lavender Mist	3
3	Astilbe, Deutschland, White	3
4	Hemerocallis, Mikado	3
5	Anemone, September Charm	6
6	Tradescantia, Pauline	3
7	Cimicifuga racemosa	3
8	Anemone hupehensis	6
9	Funkia cœrulea	3
10	Hemerocallis, Goldeni	3
11	Tradescantia, Purple Dome	3
12	Funkia subcordata alba	3
13	Trollius Hybrids	3
14	Astilbe, Fanal	6
15	Primula, Munstead Giants, Mixed	3
16	Anchusa myosotidiflora	3
17	Iris sibirica, Snow Queen	3
18	Epimedium, Yellow	3
19	Spiraea simplicifolia rosea	9
20	Hemerocallis minor	3

IT IS EASY TO ORDER BY MAIL FROM CARROLL GARDENS

With this catalog you have received an order blank and an addressed envelope for your convenience in making out your order. Always print your name and address clearly, and list the name and price of all items wanted. We ship to every state and have received many favorable comments on our method of packing and the fine condition in which the plants arrive.

SEE
PAGE 9
For
Complete
List
of
Hardy
Asters



ASTER Frikarti, the popular all-summer bloomer.
3 for \$1.50

Hardy Asters

Hardy Asters are among those old favorite flowers that have been planted by many generations of gardeners. Yet new varieties are appearing from time to time that introduce new tints to the lovely harmony they make, and thus the family is kept rejuvenated and interesting. They are needed in every fall garden picture. See page 9 for complete list.

The Popular Aster Collection

Violet. Deep blue.
Lavender Giant. Light blue.
Mt. Everest. White.
Beechwood Challenger. Red.
Harrington's Pink.

OFFER No. 8S-E
One each of
the 5 for . . . \$2.50

OFFER No. 8S-F
3 each for . . . \$5.75



© **FALL ASTER, Violetta.**
3 for \$1.50



**FALL ASTER, Lavender
Giant.** 3 for \$1.50

4 Novelty Asters

Plenty.
Prosperity.
Little Red Boy.
Princess Margaret Rose.

OFFER No. 8S-G
One each of the 4
(Value \$3.00) for \$2.50



FALL ASTER, Harrington's Pink. 3 for \$1.50



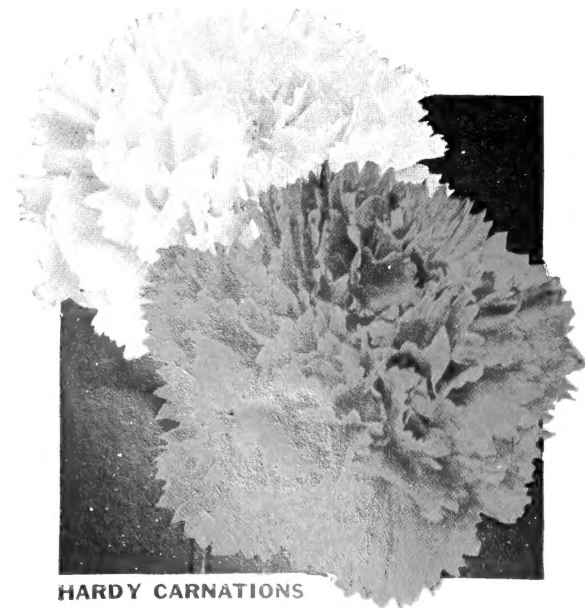
FALL ASTER, Prosperity. (1948 Novelty.) \$1.00 each;
3 for \$2.25.



SCABIOSA caucasica, Giant Hybrids

SCABIOSA

- ‡ **Caucasica, Giant Hybrids.** The hardy perennial Scabiosa. 2 ft. Lavender-blue flowers add interest to a mixed bouquet, or used alone make stunning arrangements. 3 for \$1.50; 6 for \$2.75; 12 for \$5.00.
- ‡ **Caucasica alba.** A white form. 3 for \$1.75; 75c each.
- ‡ **Blue Lady.** New and outstanding. Beautiful light blue. Same growth habit as above. 3 for \$1.75; 75c each



HARDY CARNATIONS



THALICTRUM (Meadow-Rue)

THALICTRUM (Meadow-Rue)

- ‡ **Lavender Mist (Rochebrunianum).** 4 ft. Garden makers, especially those who enjoy perennials, will be fascinated with this new Meadow-Rue. The foliage is like that of a maidenhair fern, delicate and beautiful. The large, loose flower-heads of lavender-purple will lend an unusual note in sun or partial shade. 3 for \$1.75; 6 for \$3.25; 75c each.

Carroll Gardens is a member of the American Association of Nurserymen.

ANEMONE japonica

Ideal late summer and fall-blooming plants. Their main requirement is good rich soil that retains some moisture. They grow well in sun or part shade and once established will live many years without trouble. Five outstanding varieties:

September Queen	Alba
Marie Mamchard	Alice
September Charm	

OFFER No. 8S-4: 10 plants, 2 each of the 5 varieties, \$3.75.

For complete Anemone list, see page 9

HARDY CARNATIONS

Cheerfulness. White with crimson.
Dubonnet. Crimson-red.
Lucia. Bright scarlet.
Salmon Unique. Salmon-pink.
Serena. White.
Sylvia. Pink.

OFFER No. 8S-5: 6 plants, 1 each of the 6 varieties, \$3.00.

For complete Carnation list, see page 10; also see Dianthus, page 10.



HELIOOPSIS incomparabilis, Summer Gold

Semi-double, golden flowers on a 3-foot plant. Withstands heat and drought and blooms freely all summer. 3 for \$1.25; 6 for \$2.25; 12 for \$4.25.

HELIOOPSIS

Also known as Hardy Zinnias. Indispensable plants growing about 3 feet high and blooming continuously all summer. They grow easily in any average soil and make excellent cut-flowers. In addition to the variety illustrated above, here are three other outstanding new ones:

- Immens.** Flowers double, rich chrome-yellow.
- Imbricata.** 3 ft. A rare, fully double-flowered, golden yellow variety. Very showy and a fine cut-flower. June to September.
- Patula.** A beautiful sort, nearly orange-yellow in color, with three rows of pointed, incised petals. Large, flat flowers.

Any of the above, 75c each; any 3 for \$2.00; 6 for \$3.75



ANEMONE japonica

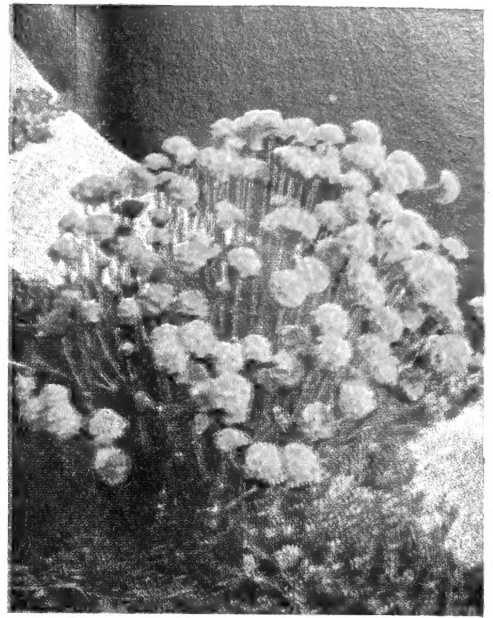


PYRETHRUM, Rose Mist

*Don't
Overlook
Our 10th
Anniversary
Great Saving
Offer*

See Page 3

ARMERIA →
Bees' Ruby



Large heads of ruby-red flowers on stiff, wiry stems. Bloomheads stand about 18 inches high. A solid bed or large border group in bloom in June is a spectacle. 3 for \$1.25; 6 for \$2.25; 12 for \$4.25.

For complete Armeria list, see page 9

PYRETHRUM
Rose Mist

An outstanding new Painted Daisy. Rose-carmin petals with double-crested rose center that appears to have been dipped in stardust, giving it a silvery appearance. Sturdy grower and prolific bloomer. Excellent for cutting. Only a few plants are available now; when our supply is exhausted, orders will be booked for fall delivery. 3 for \$2.00; 6 for \$3.75; 85c each.

For complete Pyrethrum list, see page 36



HELIANTHUS, Coronation

HELIANTHUS →
Coronation

Golden yellow flowers 4 inches across, with crested centers, on 4 to 5-foot plants. Blooms profusely in late summer and fall. 3 for \$1.25; 6 for \$2.25; 12 for \$4.25.

PENSTEMON, Ruby King (P.R.R.)

Flower spikes are 18 to 24 inches high and are produced freely even the first year. Eight or ten spikes bubble over with rich ruby, trumpet-shaped flowers held above the bushy plants. A novelty you will want in your garden. 3 for \$2.25; 6 for \$4.25; 85c each.

For complete Penstemon list, see page 19



PENSTEMON, Ruby King

HELIANTHUS →
Coronation

Golden yellow flowers 4 inches across, with crested centers, on 4 to 5-foot plants. Blooms profusely in late summer and fall. 3 for \$1.25; 6 for \$2.25; 12 for \$4.25.

GEUM

Geums are colorful hardy perennials blooming freely in June and July, preferring good rich soil in a sunny location. 18 to 24 in.

- Fire Opal.** Orange-scarlet.
- Princess Juliana.** Bright orange.
- Wilton Ruby.** Ruby-red.

OFFER No. 8S-6: 3 plants, 1 each of the 3 varieties, \$1.65.

OFFER No. 8S-6A: 9 plants, 3 of each, \$4.50.

Two Outstanding New Geums

- Borisi.** 10 to 12 in. Bright scarlet flowers in May and June. Excellent for rock garden and border.
- Bulgaricum.** Lovely buttercup-yellow flowers with orange cast on 12 to 15-inch stems. Late May to July.

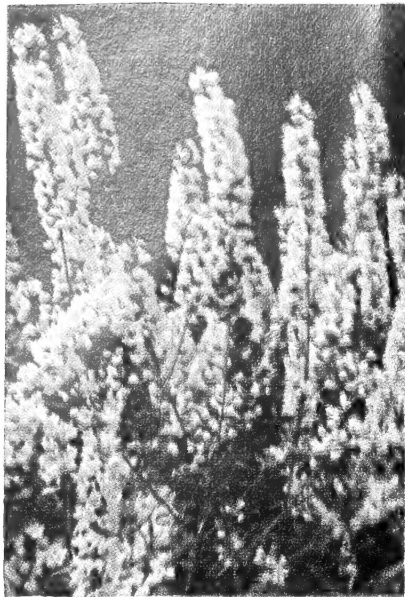
Either of the above, 65c each; 3 for \$1.75



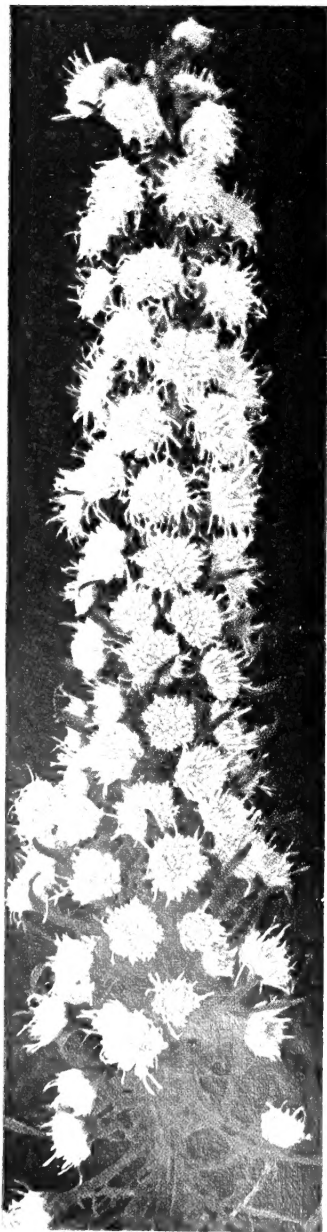
**GEUM,
Wilton Ruby**

SPIRE-LIKE PERENNIALS

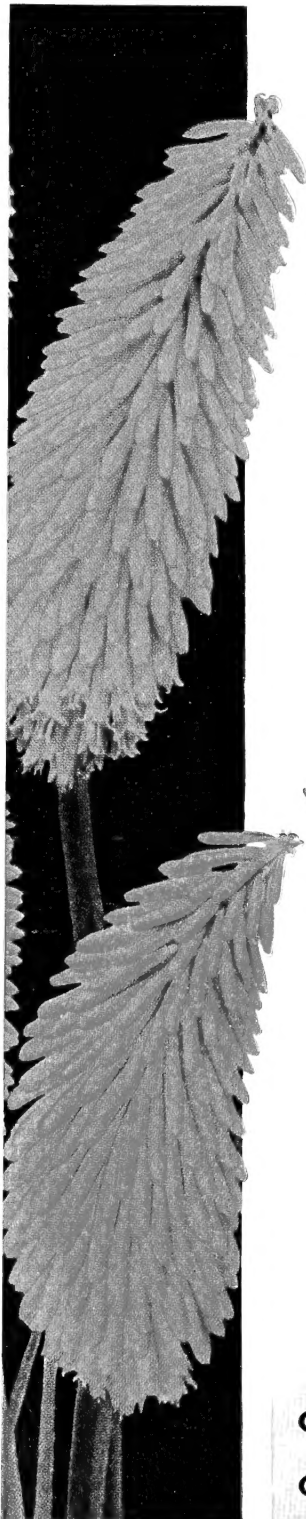
Every well-planned perennial border needs plants like those shown here, to provide accent for lower-growing kinds. These are all outstanding varieties that combine well with other plants. Generally they should be set at the rear of the border, although it is well to plant some of them in the mid-section for variety and in order to avoid too studied a tier effect. Also be sure to use at least three together; otherwise your border will have a spotty, hit-or-miss appearance.



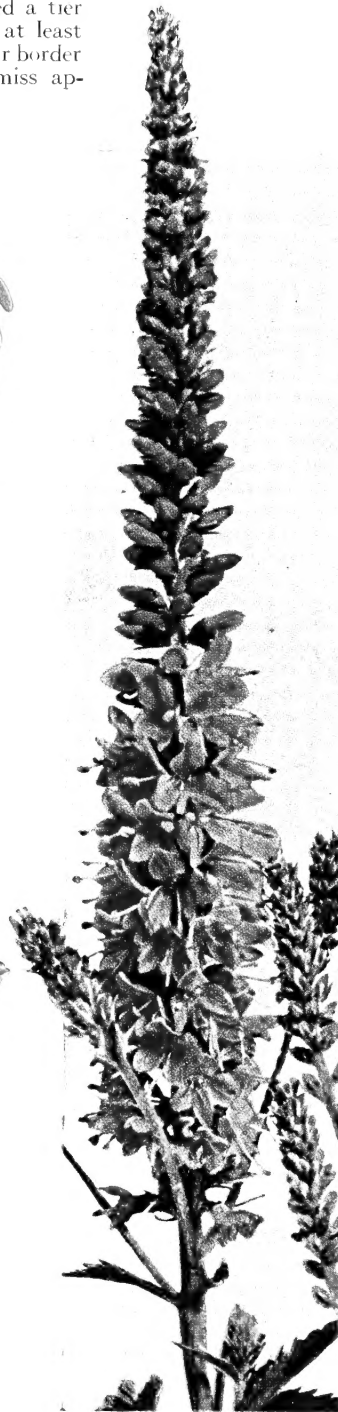
LYTHRUM, Morden's Pink
3 for \$1.65. See also page 13.



LIATRIS, White Spire
3 for \$1.65. See also page 13.



TRITOMA HYBRIDS
3 for \$1.25
See also page 20.

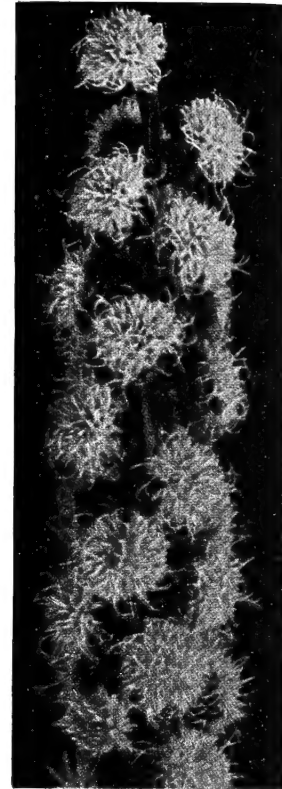


VERONICA, Blue Spire
3 for \$1.25.
See also page 20.

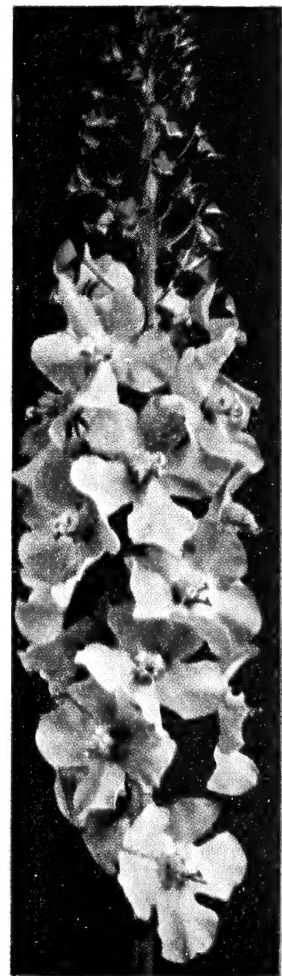
Offer No. 8S-7 . . . \$3.25
6 plants, 1 each of these 6 perennials

Offer No. 8S-7A . . . \$5.75
12 plants, 2 of each

Offer No. 8S-7B . . . \$7.25
18 plants, 3 of each



LIATRIS, September Glory
3 for \$1.50. See also page 13.



VERBASCUM, Pink Domino
3 for \$1.50. See also page 20.

GENERAL LIST OF PERENNIALS AND ROCK PLANTS

The following quantity prices apply to all perennials and rock plants when 3 or more of one kind are ordered. Refer to it to determine the each, six, and dozen price of all plants for which only the price for 3 is given in the catalog.

	3 plants of any one kind	6 plants of any one kind	12 plants of any one kind
Each	\$0 55	\$1 25	\$2 25
65	1 50	2 75	5 00
70	1 65	3 00	5 50
75	1 75	3 25	6 00
85	2 00	3 75	7 00

ACHILLEA (Yarrow)

‡**Filipendulina, Golden Plate.** (Novelty.) 3 ft. Large heads of bright yellow blooms on sturdy stems. Ideal for cut flowers. Grows easily in any soil and blooms during June and July. Offered for the first time this year. 75c each; 3 for \$1.75.

‡**Ptarmica, Perry's White.** 18 in. Clusters of double pure white flowers. A favorite for cutting all summer long, and a good filler plant. June to August.

ACONITUM (Monkshood)

Picturesque plants for shady gardens, preferring rich, moist soil.

‡**Bicolor.** 3 ft. A rare form with blue and white flowers; of easy culture. Picturesque flower in early fall. 3 for \$2.00; 6 for \$3.75.

‡**Fischeri.** 2 to 3 ft. Loose heads of dark blue flowers. September. 3 for \$1.50; 6 for \$2.75.

‡**Napellus, Spark's Variety.** 4 ft. Violet-blue. July, August. 3 for \$1.75; 6 for \$3.25.

‡**Wilsoni.** 4 to 5 ft. Attractive foliage and rich deep blue flowers. October. 3 for \$1.75; 6 for \$3.25; 12 for \$6.00.

ANTHEMIS (Golden Marguerite)

These rampant-growing perennials produce an abundance of cut flowers. They require little care and make a brilliant showing. Ideal in the foreground of shrub plantings.

‡**Moonlight.** 18 to 24 in. Light yellow.

ARABIS (Rock-Cress)

***Alpina fl.-pl.** 1 ft. Desirable double white form. April, May.

ANDROSACE (Rock-Jasmine)

Choose a well-drained location in the rock garden.

***Sarmentosa Chumbyi.** 4 in. The rosy lilac flowers, verbena-like in form, rise above rosettes of luminous foliage. May.

AETHIONEMA

***Warley Rose.** Loveliest of Persian Candytufts. Little rose-pink flowers with light veining. Prefers a sunny, well-drained place in the rock garden. 3 for \$1.75; 6 for \$3.25.

AJUGA (Bugle)

Genevensis, Rosy Spire. A choice and rare pink-flowering variety.

***Reptans.** 6 in. Familiar kind with blue flowers. An ideal plant for ground-cover under trees and other shady places. May.

ALYSSUM (Madwort)

Prefers sunny, rather dry locations.

***Saxatile compactum.** 1 ft. Every gardener is enthusiastic about "Basket of Gold," which combines well with many plants in the rock or wall garden or in your perennial border.

ANCHUSA. See page 23.

PRICES: Unless otherwise noted, all plants are \$1.25 for 3 of one kind; \$2.25 for 6 of one kind; \$4.25 per doz. of one kind. Single plants, 55c each

*Indicates alpines or rock plants; with few exceptions these plants are also ideal for broad masses in the foreground of your perennial border or for edging. †Indicates varieties which are useful for cutting.

ALLIUM

***Tibeticum.** 1 ft. The globular lilac flowers bring a welcome spot of color to the rock garden in summer. July, August.

ANEMONE (Windflower)

Spring-Flowering Kinds

***Pulsatilla.** Pasqueflower. 10 to 12 in. Violet-blue flowers are followed by silky seed-pods. A picturesque and curious plant.

***Pulsatilla alba.** A dainty white-flowering form. **Sold out for this season.**

Bulbous Anemones

Plant about 6 inches deep in a cool, moist but well-drained soil. Early spring planting is best in the North; fall planting in the South. Cover in winter with straw manure.

*†**Apennina.** 6 in. Single; bright blue. Fine for the rock garden and shady border. Naturalizes nicely in open woods or under shrubs

*†**Apennina alba.** Pure white.

‡**Blue Poppy.** Large, single blue flowers on long stems.

‡**De Caen.** Many fine shades of blue, white and scarlet.

‡**His Excellency.** 1 ft. Vivid velvety vermilion with silvery white base and blue-black center.

‡**St. Brigid.** A florists' favorite. Large flowers in a wide range of rich colors.

‡**White Poppy.** Large, single white blooms on long stems.

Any of the above, 12 for 75c; 25 for \$1.35; \$4.50 per 100

Fall-Flowering Kinds (Anemone japonica)

See color illustration on page 6

Beautiful fall-flowering plants. They begin blooming in early September and last until freezing weather cuts them down. Plant in rich, moist soil, partial shade or full sun. 2 to 3 ft.

‡**Alba.** Large, single flowers of purest white on splendid 4-foot plants.

‡**Alice.** 2 to 3 ft. Pale silvery rose-pink; very large.

‡**Marie Manchart.** Three-foot plants bearing semi-double blooms of clean white.

‡**September Charm.** A recent hybrid, from 2 to 2½ feet tall. It has lovely single silvery rose flowers.

‡**September Queen.** 2 ft. The rosy red flowers are semi-double and are freely produced.

‡***September Sprite.** 12 in. A charming pink variety of diminutive form. Outstanding for a moist place in the rock garden and border.

‡**HUPENSIS.** See color illustration on page 23.

AQUILEGIA (Columbine)

Columbines are "must" plants for every garden, however small. They adapt themselves easily and often self-sow, to the delight of most gardeners. Few plants are more graceful in form and the blooms are delightful for cutting. See color illustration on page 12.

‡**Cerulea.** 2 ft. The famous Rocky Mountain blue Columbine.

***Canadensis.** 18 in. A native kind with reddish orange flowers. May, June.

‡**Chrysantha.** 2½ ft. Choice long-spurred yellow flowers.

‡**Chrysantha, Silver Queen.** A top-notch pure white variety.

‡**Clematiflora.** 2 ft. Spurless blossoms resembling the Clematis in form; colors on the pastel side.

‡**Crimson Star.** Large flowers with crimson sepals and spurs accentuated with white petals. **Sold out for this season.**

‡**Longissima.** 18 in. A native kind. Pale yellow coloring with amazingly long spurs.

‡**Mrs. Scott Elliott's Strain.** Outstanding for its wide range of color. We offer these long-spurred Columbines with justifiable pride.

‡**Rose Queen.** Long-spurred pink flowers.

ARMERIA (Thrift)

***Bees' Ruby.** See color illustration on page 7.
***Cæspitosa Hybrids.** Large flower-heads in a pleasing variety of pink shades.
***Cephalotes rubra.** 1 ft. Deep pink; very showy. June.

HARDY ASTERS

For a brilliant mass of color in the garden, as well as for cut flowers for the home, very few plants equal the Hardy Asters. They are easily grown in any good average garden soil. The fall-blooming varieties are benefited if they are divided and replanted every other year.

Aster Frikarti. One of the finest of the Hardy Asters, starting to bloom early in July and continuing until fall. Large, lavender-blue daisies on branching, 2 to 2½-foot plants. See color illustration on page 5. 3 for \$1.50; 6 for \$2.75; 12 for \$4.75.

Alpellus, Triumph. 8 in. A lovely new Hardy Aster, a cross between *Alpinus* and *Amellus*, covered with sparkling blue daisies during June and July. 3 for \$1.50; 6 for \$2.75; 12 for \$4.75.

Novelty Fall Asters for 1948

Little Red Boy. A very compact plant 15 to 18 inches high, giving a mass of colorful red flowers in September. 50c each; 3 for \$1.35; 6 for \$2.50.

Plenty. 3 to 4 ft. The flowers are lovely soft blue and almost as large as *Aster Frikarti*. An outstanding novelty for your fall garden. \$1.00 each; 3 for \$2.25; 6 for \$4.25.

Princess Margaret Rose. A stiff and bushy plant 18 inches high. A mass of rose-colored flowers in September. 50c each; 3 for \$1.35; 6 for \$2.50.

Prosperity. A sensational new pink Aster, producing masses of flowers on sturdy, 3 to 4-foot plants. Blooms freely during September and October. See color illustration on page 5. \$1.00 each; 3 for \$2.25; 6 for \$4.25.

Popular Fall Asters

Beechwood Challenger. 3 ft. Masses of glowing crimson flowers. We consider this to be the finest red Aster.

Blue Plume. 2 ft. A choice and showy Aster with almost double flowers of deep blue. Blooms are carried in stately spikes.

Harrington's Pink. 4 ft. Flowers are perfectly flat, 1½ inches or more across, of clear soft pink, with not a hint of the magenta found in most pink Asters. See color illustration on page 5. 3 for \$1.50; 12 for \$5.00.

Lavender Giant. A new introduction of our own. Large, lavender-blue flowers completely cover the 3-foot plants in graceful sprays, making this variety ideal for cut-flower use. Early September to late October. See color illustration on page 5. 3 for \$1.50; 12 for \$5.00.

Mt. Everest. 4 ft. Pyramidal plants bearing snowy white flower with yellow eyes. Beautiful in the garden or when cut.

Violetta. 4 ft. New. The darkest Aster. Lovely flowers of deep violet-purple. Sturdy plants. See color illustration on page 5. 3 for \$1.50; 12 for \$5.00.

When to Order

Orders may be sent just as soon as you receive this catalog. If your order includes items that cannot be shipped immediately, they will be sent to you at the proper planting time. If you prefer any special shipping date, please write it on your order blank and we will try to comply with your request. Do not delay in sending your order. Oftentimes items are sold out before the season is over, and naturally the early orders are filled first.



Carnation

ASCLEPIAS (Butterfly-Weed)

‡**Tuberosa.** 2 ft. Brilliant orange flowers; a favorite for wild gardens as well as perennial borders. June, July.

ASTILBE. See Spirea.

CALLIRHOE (Poppy-Mallow)

***Involucrata.** 8 in. This delightful trailing plant belongs in every large rock garden. The rich crimson, poppy-like flowers appear freely all summer.

CARNATION, Hardy
(See also Dianthus)

Hardy Carnations prefer sunny, rather dry locations. See color illustration on page 6.
‡**Crimson King.** Red.

‡**Hardy Border, Mixed.** Delightful collection in a wide variety of colors, both single and double.
SPECIAL—Mixed Border Carnations.
5 for \$1.00; 12 for \$2.00

NEW ENGLISH COTTAGE CARNATIONS

These amazing new hybrids are important for their compact growth, their vigorous flowering habit and fragrance.

- ‡**Lucia.** 15 to 18 in. Beautiful bright salmon-scarlet, full double flowers. A sturdy grower. All summer. 3 for \$1.50; 6 for \$2.75.
- ‡**Sylvia.** The petals are pale rose-pink edged with silvery white, gradually deepening to rich salmon. 3 for \$1.50; 6 for \$2.75.
- ‡**New Rose Unique Hybrids.** These new hybrids are strong growers, with large double flowers. They bloom off and on all summer.
- *‡**Dubonnet.** 10 to 12 in. Very attractive, glowing deep crimson-purple flowers. Neat, compact plant. 3 for \$1.50; 6 for \$2.75.
- ‡**Salmon Unique.** Large double salmon-colored blooms on sturdy, 12 to 15-inch stems. 3 for \$1.50; 6 for \$2.75.
- ‡**Serena.** Our introduction of last year. A very free bloomer all summer long. The large, full double flowers are pure white and very attractive. Very fragrant. 3 for \$1.75; 6 for \$3.25; 12 for \$6.00.
- Cheerfulness.** Another novelty of merit. A neat grower of bushy, compact growth. The flowers are large, semi-double, a lovely combination of white and crimson, on wiry 12 to 15-inch stems. Blooms freely in June and a little throughout the summer. 3 for \$1.65; 6 for \$3.00; 12 for \$5.50.

PRICES: Unless otherwise noted, all plants are \$1.25 for 3 of one kind; \$2.25 for 6 of one kind; \$4.25 per doz. of one kind. Single plants, 55c each.

*Indicates alpiners or rock plants; with few exceptions these plants are also ideal for broad masses in the foreground of your perennial border or for edging. †Indicates varieties which are useful for cutting.

CATANANCHE (Cupid's-Dart)

‡**Cœrulea major.** 15 in. Delightful bright blue flowers appear freely from June to late August

CENTAUREA (Perennial Cornflower)

Dealbata Steenbergi. 18 to 24 in. A splendid novelty with purplish red flowers with white center. Truly close to orchid color. 3 for \$2.00; 6 for \$3.75; 75c each.

Montana. 18 in. Brilliant deep blue flowers in late spring and early summer.

CHIVES. See page 35.

CHRYSANTHEMUM. See pages 41 to 48.

CAMPANULA (Bellflower)

In your rock garden or perennial planting, or in the foreground of your shrub border, Campanulas can be used to good advantage. They provide bright spots of color, and the hardy plants can be depended upon to increase in size each year.

***Carpatica, Blue Carpet.** 6 in. Unusually compact and free-flowering. 3 for \$1.50; 12 for \$5.00.

‡**Glomerata.** 18 in. Heads of striking blue flowers. Very hardy.

‡**Medium.** Canterbury Bells. 2 ft. Mixed or separate colors—white, pink, and blue.

‡**Medium calycanthema.** Cup-and-Saucer Canterbury Bells. Mixed, or white, pink, and blue.

‡**Persicifolia.** 2½ ft. Delightful blue flowers are borne on spire-like stems. June, July.

‡**Persicifolia, Telham Beauty.** 3 to 4 ft. Very large, open, cup-shaped flowers of lilac-mauve. 3 for \$2.00; 75c each.

CIMICIFUGA (Bugbane)

Bugbane will help to solve many a problem in the shady garden. Plant in large groups, and enjoy a delightful display of white spire-like flowers from July to October.

‡**Davurica.** 3 to 4 ft. Very fine small spikes in much-branched panicles. July. 3 for \$1.65; 6 for \$3.00; 65c each.

‡**Japonica (acerina).** 2 to 3 ft. A late-flowering species of free-blooming habit. August and September.

‡**Racemosa.** 4 to 6 ft. Long white spikes of bloom in July and August. See color illustration on page 22.

‡**Racemosa simplex.** A showy fall-blooming variety. White spikes 3 to 4 feet long. Late September and October. 3 for \$2.00; 75c each

‡**Simplex, Armeleuchter.** A form of the above with larger individual flowers. 75c each.

COREOPSIS (Tickseed)

***Auriculata nana.** 15 in. A dainty species with clusters of golden yellow flowers. May to September.

‡**Baden-Gold.** New. 2 to 3 ft. Extremely large, golden yellow flowers 3 to 4 inches across. Tall, wiry stems make it an excellent cut flower. Blooms nearly all summer. Offered for the first time this year. 3 for \$2.00; 6 for \$3.50; 12 for \$6.50; 75c each.

‡**Golden Shower.** 18 to 24 in. A new introduction chosen for its freedom of bloom throughout the summer. Delicate star-like, brilliant yellow blossoms. Graceful foliage.

‡**Perry's Double.** 2½ ft. A semi-double flowering hybrid of unusually large size. Very free-flowering habit. June, July.

CORONILLA

***Cappadocica.** The glaucous foliage makes a compact mat; brilliant golden yellow flowers show in great abundance. May to July.

DAHLIA, Dwarf Summer. See page 32.

DELPHINIUM. See page 12.

DICENTRA (Bleeding-Heart)

‡**Eximia.** 1 ft. Finely cut foliage and pink flowers all summer. Does well in sun or shade.

Formosa, Sweetheart. A new and rare white form. The flowers are pure white and the plant makes bushy growth 12 inches high. Blooms freely from spring to fall. An ideal plant for shade and also does well in sunny places provided the soil does not become too dry during the summer. 3 for \$2.50; 6 for \$4.75; 95c each.

‡**Spectabilis.** The old-fashioned Bleeding-heart that everybody loves. Heart-shaped, pink flowers in long racemes. 3 for \$2.00; 6 for \$3.75; 12 for \$7.00; 85c each.

DIANTHUS (Fragrant Pinks)

Reminiscent of other days when fragrant flowers were in vogue, the great number of Dianthus available today are still a source of color and delicious fragrance. The Pinks are ideal low border or rock-garden plants that do best in a well-drained, sunny location.

***Bobby.** 8 in. One of our favorite plants, this compact-growing gem with glaucous foliage produces large flowers of deep pink with crimson centers off and on all summer.

*‡**Bristol Purity.** 1 ft. Double white flowers.

***Little Joe.** 6 in. Large crimson blooms; delightful companion for Bobby.

‡**Meg Gardner.** 15 in. A new introduction bearing large white flowers with distinct red centers. June, July.

***Mrs. Dina Weller.** 6 in. A new little Dianthus of very compact growth, covered with lavender-pink flowers with much deeper ring in the center. Late May and June. Ideal for the small rock garden or border. 3 for \$1.50; 6 for \$2.75; 60c each.

*‡**Old Spice.** Pat. 499. 1 ft. A new and choice introduction. Carnation-like, salmon-pink flowers; clove-scented. Blooms freely in June and through the summer months. 3 for \$1.50; 6 for \$2.75.

Pink Princess. 1 ft. Carnation-like, salmon-pink flowers; clove scent. Blooms freely in June and; through the summer. 3 for \$1.65; 12 for \$5.50; 65c each.

***Tiny Rubies.** The miniature plants produce carnation-like flowers on stems 4 to 5 inches high. In full sun the color is pink; with partial shade it approaches rose.

*‡**White Reserve.** 16 in. Another top-notch white Carnation. June, July.

For Rose Unique Hybrids and Cheerfulness, see Carnation, pages 6 and 10.

DIANTHUS BARBATUS
(Sweet William)

‡**Newport Pink.** Lovely salmon-pink.

‡**Scarlet Beauty.** Beautiful scarlet shade.

‡**White.**

‡**Mixed Hybrids.** Many shades.



Dianthus barbatus (Sweet William)

Peonies and Iris

We have what we believe to be one of the finest collections of Peonies and Iris in the world. Please refer to our Fall 1947 Catalog for complete list and prices.

Iris Collection

For late summer shipment

Buffawn
City of Lincoln
Elmohr
Garden Magic

Grace Mohr
Great Lakes
Jake
Lighthouse

Morocco Rose
Prairie Sunset
Treasure Island
Wabash

OFFER No. 8S-9: 12 plants, 1 each of the 12 varieties, **\$12.00**
(value \$15.75)



SINGLE PEONY, Jeanne Lapandry

Collection of Single Peonies

Eva. Lilac-crimson, gold center. **Jeanne Lapandry.** White, cream center.
Geisha. Bright red.
Kinsui. Salmon-pink, golden center.

OFFER No. 8S-8: 4 plants, 1 each of the 4 varieties, **\$5.75**
(value \$7.50)

For complete list of Single Peonies, see our Fall, 1947, Catalog, page 46



KARL ROSENFIELD. \$1.10 each



BEARDED IRIS, Golden Treasure. 75c each

THREE FINE PEONY COLLECTIONS

The Popular Collection

Festiva Maxima
Karl Rosenfield
Lady Alexandra Duff

Mons. Jules Elie
Mons. Martin Cahuzac

OFFER No. 8S-10: 5 plants, 1 each of the 5 varieties, **\$6.00**

The Fragrant Collection

E. C. Shaw
Glorious

Jeannot
Myrtle Gentry

Philippe Rivoire

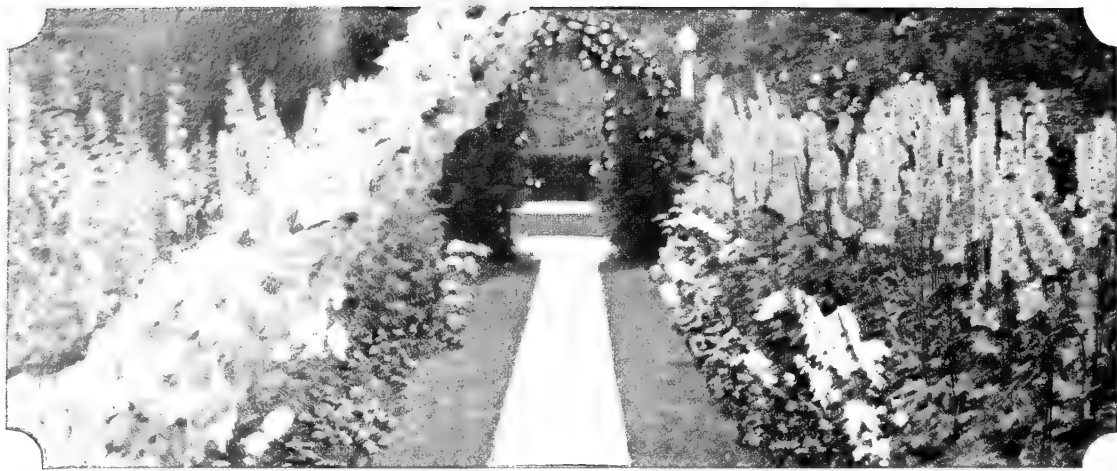
OFFER No. 8S-11: 5 plants, 1 each of the 5 varieties, **\$10.50**

The Rare Beauty Collection

American Beauty
Ella Christiansen
Hansina Brand

Le Cygne
Solange

OFFER No. 8S-12: 5 plants, 1 each of the 5 varieties, **\$12.50**



Delphiniums

Delphiniums are among the most stately and impressive of all perennials. They produce handsome spikes of gorgeously colored blooms that make a wonderful display in the border and are also fine for cutting. They should be planted in masses at the rear of the hardy border.

- ‡ **Belladonna.** 3 to 4 ft. Light blue.
 - ‡ **Blackmore & Langdon Hybrids.** 4 to 5 ft. Semi-double and double blooms in shades of blue, lavender and purple.
 - ‡ **Chinensis, Tom Thumb.** 15 in. Dwarf in habit, it produces several crops of exquisite blue flowers.
 - ‡ **Lamartine.** 3 to 4 ft. Large, single, dark gentian-blue flowers on branching plants.
- Any of the above, 3 for \$1.25; 6 for \$2.25; 12 for \$4.25, except where noted**
- ‡ **New Giant Pacific Hybrids, Mixed Shades.** 3 for \$1.50; 6 for \$2.75; 12 for \$5.00.
 - ‡ **Gold Medal Hybrid Delphiniums.** We have a large supply of these plants this year and are offering them at a very low price. Not less than 6 can be bought. 6 for \$1.50; 12 for \$2.50; 25 for \$4.00; 50 for \$7.50; \$12.50 per 100.

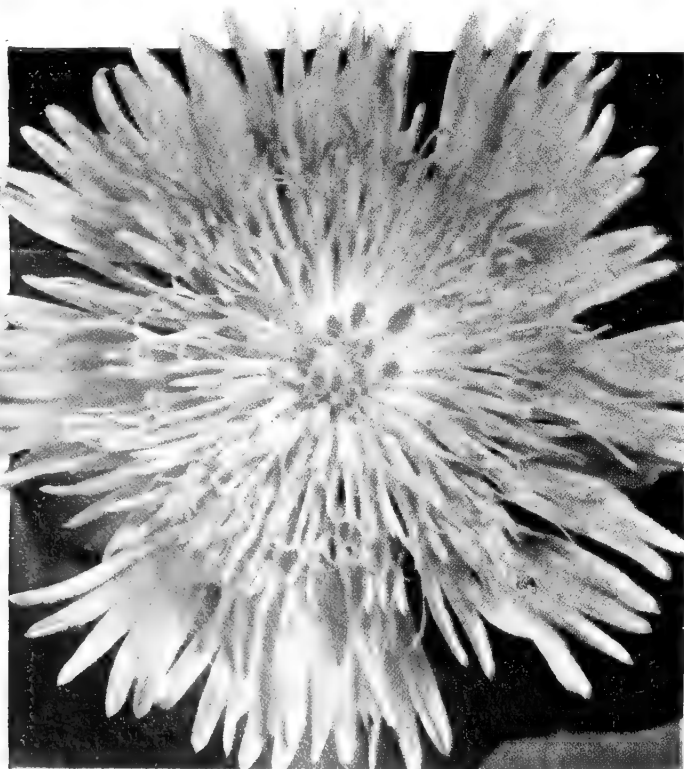
STOKESIA, Blue Moon. Choice perennial growing only 18 inches high, producing giant lavender blooms off and on all summer. Excellent for the border. Easily grown in sun or part shade. 3 for \$1.50; 6 for \$2.75.

RUDBECKIA purpurea, The King. Large, star-like, crimson-red flowers on stiff, 4 to 5-foot stems. Easily grown. 3 for \$1.75; 6 for \$3.25. For complete Rudbeckia list, see page 19.



AQUILEGIA (Columbine)
3 for \$1.25. See page 9.

*Carroll Gardens
is a member of the
American Association
of Nurserymen*



STOKESIA, Blue Moon



**RUDBECKIA
purpurea
The King**

DICTAMNUS (Gas Plant)

Albus. A hardy plant that will grow and remain in the garden for many years; best left undisturbed, as it improves with age. June, July, 3 for \$1.50.

Ruber. A red-flowering form of the above. 3 for \$1.50.

DIGITALIS (Foxglove)

‡**Ambigua.** 2½ ft. A true perennial Foxglove with yellow flowers. June, July.

‡**Giant Shirley, Mixed.** Fine selection of mixed colors.

ECHINOPS (Globe-Thistle)

Taplow Blue. 3 to 3½ ft. Very interesting globe-shaped blue flowers. Excellent for cutting and drying. 3 for \$2.00; 6 for \$3.75; 75c each.

EPIMEDIUM. See pages 22 and 23.

FUNKIA (Hosta)

Indispensable plants for gardens, the Funkias grow well in sun or shade. Their blooms are like small clustered lilies and their foliage has a rich and enduring quality which is especially decorative for ground-cover use. Especially recommended for shade.

Cærulea. 1 to 2 ft. Deep blue flowers on 3-foot stalks. Shiny dark leaves 18 inches long. July.

Glauc. The large leaves have a pleasing blue-gray cast; spikes of pale blue flowers. July, August. 3 for \$2.00; 75c each.

Lancifolia. 2 ft. Glossy narrow foliage; lilac-blue flowers. August.

Minor alba. 1 ft. A rare form of dwarf habit. White flowers on 1-foot stalks in midsummer. 3 for \$2.00; 75c each.

Subcordata grandiflora alba. The old-fashioned August Lily; one of the most permanent of perennials. Makes a delightful shady border. See illustration, page 23. 3 for \$2.00; 6 for \$3.75.

Thomas Hogg. 2 ft. Each large dull green leaf has a narrow silver edging; lavender flowers. August, September. 3 for \$1.65.

Undulata variegata. 2 ft. A form with variegated foliage; blue flowers in July.

GAILLARDIA. See page 21.

GERANIUM (Cranesbill)

***Lancastriense.** 6 in. Light salmon-pink blooms borne frequently all summer on 4 to 6-inch stems. Unusually hardy; a choice rock-garden plant. Easily grown.

GERBERA

‡**Jamesoni Hybrids.** Transvaal Daisy. This tender plant can be set out early in the spring to produce its large single brilliant daisy-like flowers in summer. It is not winter-hardy throughout most of the East. 3 for \$2.00; 12 for \$7.50; 75c each.

GEUM. See page 7.



Gerbera

GYPSOPHILA (Babys-Breath)

All Gypsophilas prefer a sunny, well-drained location.

‡**Bristol Fairy.** See color illustration on page 21.

***Fratensis.** 8 in. Glaucous foliage and light pink flowers. May to July.

‡**Oldhamiana.** 3 ft. A pale pink, this hybrid extends the season considerably. July to late September.

‡**Oldhamiana, Flamingo.** A new tall, double form. The lovely pale pink flowers are like Bristol Fairy in form and it grows just as tall but blooms four or five weeks later. 3 for \$2.00; 12 for \$7.50; 75c each.

‡**Repens Bodgeri.** 18 in. Earlier than Bristol Fairy, the white flowers are tinted pink. Compact in habit.

*‡**Repens Bodgeri, Rosy Veil.** A dwarf pink form treasured for the rock garden or the foreground of the perennial border.

HELENIUM (Sneezewort)

‡**Moerheim Beauty.** 2½ ft. A handsome and distinctive perennial with warm, glowing brown-red flowers from June to October. For best results divide the plants early every spring, replant the young shoots and discard the old plant. 3 for \$1.65; 12 for \$5.50; 65c each.

‡**Pumilum magnificum.** 18 to 24 in. Bright yellow flowers all summer. A good companion for Moerheim Beauty.

HELIANTHEMUM (Sun-Rose)

These delightful low-spreading, shrubby plants are indispensable in the rock garden and foreground of the hardy border. They prefer a sunny, well-drained location. Height is 6 to 8 inches and blooming season from late May to July.

***Apricot.** Apricot-yellow. One of the best.

***Ben Ledi.** A new hybrid with crimson-lake flowers.

***Buttercup.** Single; golden yellow.

***Double Yellow.** Double blooms of citron-yellow.

***Fireball.** Double; bright scarlet.

***Rhodanthum carneum.** Pale pink flowers on silvery foliage are a pleasing combination.

HELIANTHUS (Perennial Sunflower)

‡**Coronation.** See color illustration on page 7.

‡**Loddon Gold.** 4 to 5 ft. Large, rich yellow blooms from August to October.

HELIOPSIS. See page 6.

HELLEBORUS. See page 23.

HEUCHERA (Coral-Bells)

Light soil and full sun suit them best, but they will make an admirable show in partial shade. Blooming season from late May through July. Ideal for border and rock garden.

‡**Brizoides.** 18 to 24 in. Vigorous grower; light pink flowers.

Queen of Hearts. See color illustration on page 21.

‡**Rosamondi.** See color illustration on page 21.

‡**Sanguinea.** 15 to 18 in. A popular red-flowering variety.

Snowflake. See color illustration on page 21.

HIBISCUS (Rose-Mallow)

The 5-foot, shrub-like plants are particularly spectacular, with an abundance of large, single, hollyhock-shaped flowers, measuring 4 to 6 inches across in late summer.

Mixed Colors only.

You Are Welcome

We shall be delighted to have you visit our display grounds and nursery located on U. S. Route 140, at "Fairground Hill," on the southern edge of Westminster. We are only 28 miles from the city of Baltimore and 22 miles from historic Gettysburg, Pa.



Helium

HOLLYHOCK (Althaea rosea)

Double Pink, White, Red, Yellow, and Mixed.

HOSTA. See Funkia.

IBERIS (Candytuft)

***Purity (Custus).** A hardy Candytuft of merit.

The large, attractive flowers are pure white. Very free bloomer and compact grower only 6 inches high. Comes into bloom in late April and May. Truly a gem for the rock garden and an excellent low border plant for edging. 3 for \$2.00; 6 for \$3.75; 12 for \$7.00.

***Sempervirens.** 10 to 12 in. White flowers in early spring; evergreen foliage the year round.

***Snowflake.** 10 in. Large, pure white flowers on dwarf plants. The best variety for foliage effect as an evergreen edging plant.

IRIS. See page 11.

LAVANDULA. See page 35.

LATHYRUS

Latifolia. Often referred to as the Hardy Perennial Sweet Pea. Excellent to plant on banks and to train on fences as summer vines. Once started, they will live for many years. They bloom freely in summer; excellent for cutting.

SPECIAL. Pink, Red, White, and Mixed. 3 for \$1.00; 6 for \$1.50; 12 for \$2.50.

LINUM (Perennial Flax)

***Alpinum.** 15 in. Dwarf; brilliant sky-blue flowers in summer.

***Flavum.** 12 in. Golden yellow. May to July.

LUPINS, Russell. See page 15.

LYCHNIS. See page 21.

LYTHRUM

‡**Morden's Pink.** 2 to 2½ ft. Masses of rose-pink flowers on narrow spikes. Grows in full sun or part shade. Fine for cutting. June to September. 3 for \$1.65; 6 for \$3.00; 12 for \$5.50; 70c each. See color illustration on page 8.

‡**Prolific.** New. 3 ft. Clear Persian rose. 3 for \$1.50; 6 for \$2.75; 12 for \$5.00.

LIATRIS (Gayfeather)

‡**Pycnostachya.** 4 ft. The tall spikes of rich purple are outstanding in the summer garden. July, August.

‡**September Glory.** 6 ft. Giant spikes of rosy purple flowers, making a splendid effect. September. See color illustration on page 8. 3 for \$1.50; 6 for \$2.75.

Spicata. 3 ft. Similar to *L. pycnostachya* but earlier to bloom.

‡**White Spire.** A sport of September Glory. Pure white. Fine for garden and cutting. See color illustration on page 8. 3 for \$1.65; 70c each.

PRICES: Unless otherwise noted, all plants are \$1.25 for 3 of one kind; \$2.25 for 6 of one kind; \$4.25 per doz. of one kind. Single plants, 55c each.

*Indicates alpinas or rock plants; with few exceptions these plants are also ideal for broad masses in the foreground of your perennial border or for edging. ‡Indicates varieties which are useful for cutting.

PERENNIALS AND ROCK PLANTS, continued

PRICES: Unless otherwise noted, all plants are \$1.25 for 3 of one kind; \$2.25 for 6 of one kind; \$4.25 per doz. of one kind. Single plants, 55c each.

*Indicates alpiners or rock plants; with few exceptions these plants are also ideal for broad masses in the foreground of your perennial border or for edging. †Indicates varieties which are useful for cutting.

LILY-OF-THE-VALLEY (Convallaria)

Everybody knows and loves the white Lily-of-the-Valley. Grow it in the shade. 12 for \$1.50; \$11.00 per 100.

MYOSOTIS (Forget-Me-Not)

***Palustris semperflorens.** 8 in. Bright blue. Ideal for moist shady places, for your rock garden or border. Blooms all summer. See color illustration on page 22.

***Palustris, Pink Beauty.** A lovely pink form of the above.

NEPETA (Catmint)

***Mussini.** 12 in. Deep blue flowers and grayish foliage make a pleasing combination.

*†**Mussini, Six Hills Giant.** 18 in. Improved form; fine for an informal border or edging.

***Mussini superba.** A novelty of merit, very low and compact in growth. Covered with deep lavender-blue flowers in late spring and early summer. Ideal for the rock garden and border and excellent as an edging plant. 3 for \$1.60; 6 for \$3.00; 12 for \$5.00; 60c each.

NIEREMBERGIA hippomanica. See page 15

Your Garden Problem

We are sure that the two new booklets offered free to our customers on the order sheet will be of great help to you. However, you may wish advice in selecting varieties for particular places in your garden. We shall give your correspondence our careful attention. We often have plants that are not listed in this catalog.

HEMEROCALLIS (DAYLILY)

PRICES: Unless otherwise noted, all plants are \$1.25 for 3 of one kind; \$2.25 for 6 of one kind; \$4.25 per doz. of one kind. Single plants, 55c each.

*Indicates alpiners or rock plants; with few exceptions these plants are also ideal for broad masses in the foreground of your perennial border or for edging. †Indicates varieties which are useful for cutting.



The hybridizers have wrought wonders with the old-fashioned Daylily. The improvements include a wider color-range, an extended period of bloom, larger flowers, and sturdier plants. What is more, Hemerocallis are amazing in their adaptability; they are extremely hardy and will thrive under the most ordinary conditions, blooming in full sun or partial shade. Their vigor is especially evident in dry seasons and insect pests have little effect on them.

†**Dr. Regel.** Rich orange-yellow. May.

†**Flava.** Sweet-scented; clear yellow. June.

†**Florham.** Golden yellow.

†**Kwanso.** A distinct double-flowering form of rich golden bronze. July, August.

*†**Minor.** 18 in. A miniature form with pale yellow flowers. May, June.

†**Thunbergi.** Buttercup-yellow. July, August.

Any of the above, 55c each; 3 for \$1.25; 6 for \$2.25; 12 for \$4.25

New Giant-Flowering Hybrids

†Hyperion

This variety is one of the most popular and beautiful of all Daylilies, and we heartily recommend it for every garden. The large flowers are pale canary-yellow in color, and appear in July and August—just at the time when the summer garden needs rejuvenation. A prolific bloomer, Hyperion makes a spectacular showing. Plant at least three in a group, and watch them grow more beautiful every year. 3½ ft. See color illustration on page 15.

75c each; 3 for \$2.00; 5 for \$3.00

The New "Leonian" Hybrid Hemerocallis.

Magnificent new creations ranging in height from 3 to 5 feet. Giant-sized blooms in various shades from orange-red to maroon. This is an exclusive strain offered only by Carroll Gardens. Offered in mixed shades only. 3 for \$2.50; 5 for \$4.00; 12 for \$8.50.

†**August Pioneer.** 2½ ft. Chrome-orange blooms of medium size. Especially valuable for its late period of bloom—early August through September. \$1.25 each; 3 for \$3.50.

†**Bagdad.** 5 ft. Large flowers borne on plants of considerable height; coppery red petals with orange throat. July. \$1.50 each.

†**Boutonniere.** 2½ ft. Flourishing cluster of small flowers. The throat of each is orange-yellow with darker petals. August, September. 75c each; 3 for \$2.00.

†**Cinnabar.** 2 to 3 ft. Orange base, sprinkled cinnamon; recurving sepals and petals. Free blooming. July. 75c each; 3 for \$2.00.

†**Curly Pate.** 4½ ft. Medium-sized yellow, cup-shaped flowers; petals curled at ends. 55c each; 3 for \$1.25.

†**D. D. Wyman.** 3 ft. Golden yellow with tawny splashes. Late June, July. 65c each; 3 for \$1.65.

†**Dover.** 4 ft. Large; clear orange. June, July. 75c each; 3 for \$2.00.

†**Fulva Rosea.** 3 ft. Fulvous rose with a red zone and yellow shading at the base. A choice variety of subtle color. July, August. \$2.50 each.

†**George Yeld.** 4 ft. Distinctly large; the outer petals are rich orange-yellow and the inner flushed with rose. July, August. 75c each; 3 for \$2.00.

†**Goldeni.** 2 ft. Deep golden orange; attractive in form; very free-flowering. Late June to August. 55c each; 3 for \$1.25.

†**Imperator.** 4 ft. A distinct variety with rich orange-red coloring. July, August. 60c each; 3 for \$1.50.

†**J. A. Crawford.** Clear gold. 60c each; 3 for \$1.50.

†**J. R. Mann.** 2½ ft. Frosted apricot-yellow flowers. July, August. 65c each; 3 for \$1.65.

†**Linda.** 3½ ft. The crinkled petals are golden yellow with cinnamon markings. July, August. \$1.50 each; 3 for \$4.00.

†**Mikado.** 3 ft. A glamorous combination—orange with a mahogany-red spot on each petal. Occasionally blooms in the fall. June, July. 75c each; 3 for \$2.00.

†**Modesty.** 4 ft. Palest yellow; amazing in size. June. 75c each; 3 for \$2.00.

†**Mrs. A. H. Austin.** 2½ ft. Cup-shaped, deep orange-yellow blooms. August. \$1.00 each; 3 for \$2.50.

†**Mrs. W. H. Wyman.** 3½ ft. Best described as pale glistening yellow. August. 65c each; 3 for \$1.65.

†**Ochroleuca.** 3½ ft. Small, pale yellow flowers particularly effective in the evening. July, August. 55c each; 3 for \$1.25.

†**Ophir.** 4 ft. Its rich golden yellow coloring has made this a favorite variety. July. See color illustration on page 15. 75c each; 3 for \$2.00.

†**Serenade.** 4 to 5 ft. A subtle pastel combination of yellow and pink with petals that are twisted and crinkled. June, July. \$1.50 each; 3 for \$4.00.

†**The Gem.** 3 ft. An unusually popular yellow variety; large size. July, August. 3 for \$1.75; 6 for \$3.25.

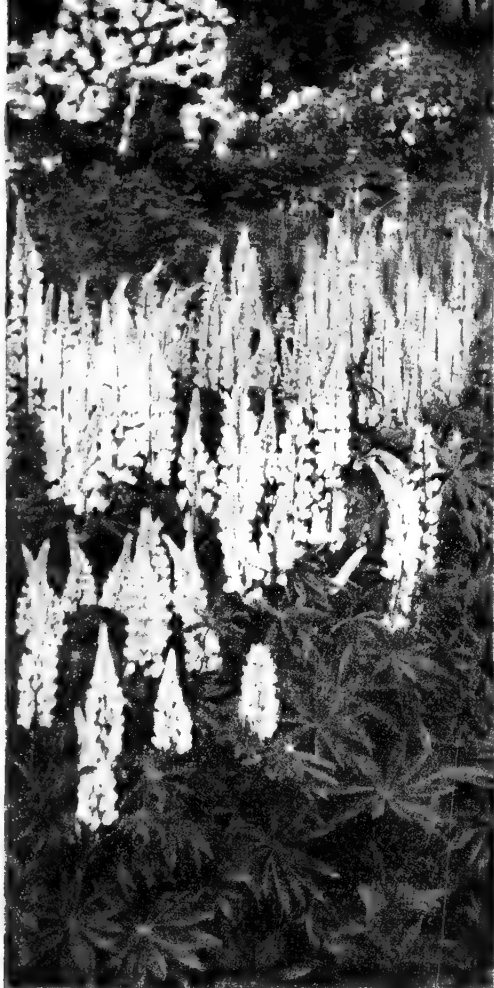
Special Collection of Daylilies

TO GIVE YOU BLOOMS FROM JUNE TO MID-SEPTEMBER

One each of August Pioneer, J. A. Crawford, Modesty, Goldeni
Imperator, Curly Pate, Mikado, and Mrs. W. H. Wyman

OFFER No. 8S-13: 8 Plants for \$4.85

OFFER No. 8S-14: 24 Plants, 3 each of the above 8 varieties, for \$11.50



RUSSELL LUPINS



Hyperion

Hemerocallis

Ophir

75c each. For complete Hemerocallis list, see page 14.

Russell Lupins

These wonderful plants grow 3½ feet high, with the upper 2 feet of the flower spike a solid mass of color, ranging through yellow, pink, blue, white and various blendings. Blooms in June and July. Partly shaded, rich soil free from lime is needed. We do not recommend Lupins for planting in the South. 3 for \$1.25; 6 for \$2.25.

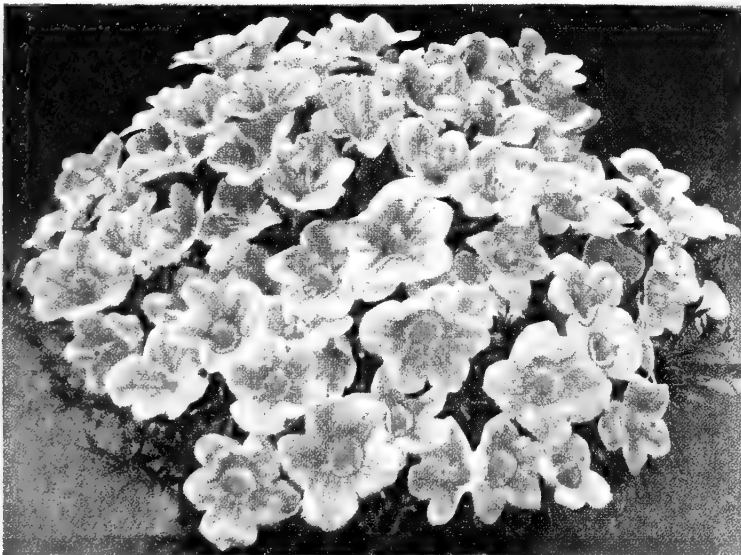
Sedum spectabile, Brilliant

18 in. A common but worthwhile perennial with large, flat heads of bright rose-pink flowers in September and October. 3 for \$1.25; 6 for \$2.25; 12 for \$4.25.



SEDUM spectabile, Brilliant

Carroll Gardens is a member of the American Association of Nurserymen.



NIEREMBERGIA hippomanica

Nierembergia hippomanica

Not Winter Hardy except in extreme South

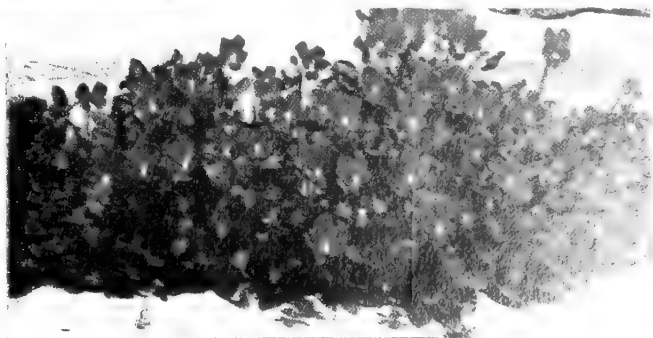
Our own strain, propagated from cuttings and much superior to seedlings. The dwarf, compact plants grow about 5 inches tall, with a spread of 8 to 10 inches, and bloom persistently throughout the summer. The cupped flowers of lavender-blue with a yellow eye are about an inch in diameter. Fine for border or rock garden. 3 for 75c; 12 for \$2.50; \$16.00 per 100.

Viola

Catherine Sharp, Improved. A splendid hardy blue Viola. The large flowers are carried on long, stiff stems well above the foliage. Two-year-old clumps are 18 to 24 inches in diameter and remain nicely compact, producing hundreds of flowers throughout the entire spring, summer and fall. The brilliant yellow eye gives the lovely flower additional sparkle. Does well in light shade and is fine in the rock garden. 3 for \$1.50; 6 for \$2.75; 12 for \$4.50.

Purple Glory. These attractive, large, rich purple flowers are freely produced from early spring to fall. Plants rather compact in growth. One of the easiest Violas to grow. 3 for \$1.25; 6 for \$2.25; 12 for \$4.25.

Velvet Giant. Another new Viola that you will want. The gigantic blooms are almost 2 inches across. Velvety purple with a glowing sheen. Blooms continuously all summer. One of the largest Violas so far introduced. 3 for \$2.00; 6 for \$3.75; 75c each.



VIOLA, Purple Glory





A hardy Perennial Border, showing the effective use of Hardy Summer Phlox

Hardy SUMMER PHLOX

Phlox can be depended upon to produce a great abundance of bloom over a long period. For a colorful display select early, midseason, and late kinds. Plant broad masses of white with the brighter colors. Three plants of an individual variety grouped together will make a brilliant showing. Hardy Summer Phlox prefers good, rich garden soil. If your soil is poor, add manure. This will provide the necessary food that these plants like. They are also benefited if they are watered during extremely dry seasons.

NOTE: Unless otherwise noted, all Phlox are \$1.25 for 3 of one kind; \$2.25 for 6 of one kind; \$4.25 per doz. of one kind; 55c each

Appleblossom. 2½ to 3 ft. Soft pink. Midseason.
Augusta. Pat. 252. 2½ ft. American-Beauty-red. 3 for \$1.50; 12 for \$5.50.
Border Queen. 1½ ft. Large florets of deep watermelon-pink. Early.
Caroline Vanderburg. 2 ft. Lavender-blue hybrid. Midseason.
Charles H. Curtis. 2½ ft. Sunset-red.
Count Zeppelin. 2½ ft. Each white floret has a red center.
Daily Sketch. 2½ to 3 ft. Salmon-pink florets marked with crimson. Midseason.
E. I. Farrington. 3 ft. Salmon-pink. Midseason.
Fairy King. 2 ft. Large rounded heads of soft lavender. Resistant to disease.
Leo Schlageter. 2½ ft. Scarlet-red with an orange cast. Midseason.
Lilian. 2 to 2½ ft. Cameo-pink; each floret has a blue eye. Early.
Mary Louise. 2½ ft. Best white. Vigorous growth, clean foliage. Late.
Mia Ruys. 1½ ft. Dwarf; pure white. Midseason.
Miss Lingard. 2½ to 3 ft. White flowers delightful for cutting. Very early.
Mrs. Jenkins. 2½ ft. An old white standby of medium height. Midseason.
Pinkette. A lovely new kind. White, tinted pink throughout.

Progress. 2½ ft. Light blue, with deeper purple-blue eye.
R. P. Struthers Improved. 3 ft. Bright rosy carmine blooms. Midseason.
Rosalinda. A pink form of Miss Lingard.
Ruby Lee. 2 ft. Extra large plum-red flowers. Healthy, vigorous growth; medium height.
Salmon Beauty (Eve Forster). 2 ft. Salmon-pink, accented with white eyes. Midseason.
San Antonio. Dark blood-red; outstanding.
Silverton. 2 ft. Clear lavender.
Starlight. Violet-red florets shading lilac; white center.

HARDY PHLOX Spring-Flowering Kinds Phlox subulata

For use in the rock garden or wall garden, on steep slopes, for ground-cover. Grows best in well-drained soil and full sun.

- *Alpine or rock plants
 ***Atropurpurea.** Very showy brilliant red.
 ***Blue Eyes.** An outstanding lavender-blue.
 ***Brightness.** New. Attractive bright pink.
 ***Camla.** An English novelty. The large flowers are glistening pink. Blooms again in the fall.

Here are 8 "Top-Notch" Varieties

Augusta
 Border Queen
 Count Zeppelin
 Fairy King
 Lilian
 Pinkette
 Progress
 Ruby Lee

OFFER No. 8S-15: 8 plants, \$3.00

1 each of the 8 varieties

OFFER No. 8S-15A: 16 plants, \$5.00

2 of each

OFFER No. 8S-15B: 24 plants, \$7.00

3 of each

Phlox subulata, continued

- ***Camla alba.** A lovely new white form that blooms very freely again during fall months.
 ***Rosea.** Pink.
 ***Sampson.** New. Deep rose with crimson center. Distinct and lovely.
 ***Vivid.** A compact and showy grower with fiery rose flowers.

Phlox divaricata. Star-shaped, lavender-blue flowers.
Phlox Arendsi Hybrids. These are new crosses between *Pblox divaricata* and Summer Phlox, beginning to bloom in June and continuing throughout the summer and early fall. Plant in full sun or part shade.
Marianne. Violet-blue flowers on 18 to 24-inch stems. 3 for \$1.65; 6 for \$3.00; 65c each.



Phlox Subulata

For use in the rock garden or wall garden, on steep slopes, for ground-cover. Grows best in well-drained soil and full sun. See page 16 for complete list.

BLUE PINK RED WHITE

3 for \$1.25; 6 for \$2.25; 12 for \$4.25

OFFER No. 8S-16: 12 plants, 3 of each color, \$3.95

Novelty Summer Phlox

Chesapeake. Pat. app. for. 15 in. Large heads of Tyrian rose flowers with a silvery white reverse. The lasting quality is excellent. 3 for \$2.00; 6 for \$3.75; 12 for \$7.00; 85c each.



CHESAPEAKE



Hardy Summer PHLOX

- (1) **Charles Curtis.** Sunset-red.
- (2) **Starlight.** Violet-red shaded lilac, white center
- (3) **Mary Louise.** White. Very vigorous
- (4) **Salmon Beauty.** Salmon-pink, white eye.
- (5) **Leo Schlageter.** Scarlet-red.
- (6) **Silverton.** Clear lavender.
- (7) **San Antonio.** Dark blood-red.

3 for \$1.25; 6 for \$2.25; 12 for \$4.25

Offer No. 8S-17 7 plants, each of 3 colors \$2.95

Offer No. 8S-17A 12 plants \$5.50

Offer No. 8S-17B 21 plants, 3 of each \$8.50



**SENSATIONAL NEW DOUBLE POPPY,
SALMON GLOW**

Oriental Poppies

For Late Summer and Fall Planting

Oriental Poppies, with their brilliant gigantic blooms, are among the very finest perennials for the garden, particularly now that soft pastel tints are available, ranging from the softest of pink to deep red and white. They are easily grown and once established will live for many years. The best time to plant them is late summer through early fall. Poppies should be planted deeper than the general run of perennials. Set the crowns approximately 2 inches below the level of the ground. Mulch the first winter after planting with excelsior, pine branches, or other material of similar nature. This mulch should not be applied until the ground is frozen, possibly November to December, depending on the locality. The plants offered here are strong, field-grown specimens and should bloom satisfactorily next year.

Prices on all varieties listed:

Any 3 plants for	\$2.00
Any 6 plants for	3.50
Any 12 plants for	6.50
Any 25 plants for	11.50

NEW AND BETTER POPPIES

- Barr's White.** Outstanding. Finest white to date.
- Cerise Beauty.** Medium-sized bloom of distinct cerise-pink.
- Crimson Pompon.** Fully double, blood-red flowers. Beautiful and distinct.
- Curtis Giant Flame.** Flame-red, extra-large blooms on very tall, heavy stems. One of the largest Poppies.
- Curtis Giant Flesh-Pink.** Flesh-pink with a lavender overlay; large blooms on tall, heavy stems. Better planted in light shade to hold lavender tint.
- Curtis Giant Salmon-Pink.** Large blooms; medium height; heavy stems.
- Curtis Giant Watermelon.** Distinct deep watermelon-pink.
- Glowing Embers.** Deeply crinkled, cup-shaped blooms of medium red.
- Glowing Rose.** Watermelon-pink, large.
- Helen Elizabeth.** Crinkle-petaled; salmon-pink with no base spots.
- Indian Chief.** Extra-large flowers of beautiful mahogany color. Strong grower.
- Jessie Curtis.** Mahogany-red. Many medium-sized blooms over a long season. Plant in light shade.
- Joyce.** Charming soft red flowers in great abundance on 48-inch stems. Sturdy growth.
- Lachs Koenigen.** One of the finest, strongest-growing, deep salmon-pinks.
- Little Shrimp.** Small shrimp-pink flowers without spots. A real little gem of unusual size and habit.
- Pink Radiance.** Strong grower. Deep cerise-pink.
- Purity.** Pure soft pink without any spots or markings. Very fine.
- Ridgewood Beauty.** A cup-shaped, ruffled-edge pink of heavy substance and distinctly original form.
- Salmon Glow.** Salmon-orange. First blooms very double; later ones only slightly double.
- Sass Pink.** Light flesh-pink.
- Snowflame.** Pat. 365. A curious bicolor. The lower half of the flower is pure white and the upper half flame-orange. New and different.
- Tangerine.** Pure bright orange.
- Wunderkind.** Brilliant watermelon-pink. Large and tall, with fine stiff stems.



**GLOWING
EMBERS**

**BARR'S
WHITE**

**HELEN
ELIZABETH**

OENOTHERA

***Missouriensis.** 10 in. A trailing plant bearing great quantities of big yellow flowers often 5 inches across. Deserves a prominent place in the rock garden. June to August.

PENSTEMON (Beard-Tongue)

- ‡**Firebird** (Cherry Glow). 2 ft. An outstanding new introduction to add color to summer gardens. The individual ruby-crimson blooms are unusually large and the long spikes of bloom are especially attractive in bouquets.
- ‡**Garnet.** 18 in. The graceful stems hold loosely arranged garnet blooms. June, September.
- ‡**Rose Elf.** A hardy Penstemon producing masses of bloom on 2 to 3-foot stems. Blooms in June and July. The color is a lovely coral-pink. Excellent for cutting. 3 for \$1.65; 6 for \$3.00; 65c each.
- ‡**Ruby King.** See color illustration on page 7.

TREE OR BUSH PEONIES

Strong 5-inch pot plants available for spring delivery

The stems do not die to the ground each year but in the course of many seasons they will reach a height of 3 to 4 feet. Most varieties bloom in early spring—late April to the end of May, depending on the locality. They are of easy culture and grow anywhere other Peonies do. It is best, however, to plant them where they are sheltered from sweeping winds.

- Archiduc Ludovico.** Large; flesh-pink, turning to soft lilac. \$5.00 each.
- Argosy.** Single; pure yellow. \$11.50 each.
- Athlete.** Glazed mauve, shaded rose. \$5.50 each.
- Flora.** Pure transparent white, slightly blotched violet, carmine at throat. \$1.50 each.
- Jules Pirlot.** Satiny pink, flushed carmine. \$6.00 each.
- La Lorraine.** Large, double flowers of soft sulphur-yellow with a salmon tinge when opening. \$8.50 each.
- Satin Rouge.** Double; blood-orange. An altogether new color in Peonies. \$12.50 each.
- Yaso-no-Mime.** Semi-double; pure white. \$35.00 each.

For other Peonies, see page 11

POPPIES, Oriental. See page 18.

PHYSOSTEGIA (False Dragonhead)

- ‡**Rosy Spire.** 3½ ft. Showy spikes of deep rosy crimson bloom. September.
- ‡**Summer Glow.** 4 ft. The striking spikes are often 18 inches long; top-notch cut flowers. Late August, September.
- ‡**Summer Snow.** 3 ft. A new white variety; we need more spire-like flowers in summer gardens. July, August.
- ‡**Vivid.** 18 in. Ideal dwarf kind with deep pink bloom. September.

PLUMBAGO (Leadwort)

***Larpentæ.** 12 in. Rich foliage and deep blue flowers in late summer; useful for sunny or shady ground-covers or for the rock garden. July to September.

PLATYCODON (Balloon-Flower)

- Grandiflorum cæruleum.** 3 ft. Pleasing lavender-blue. Blooms freely from June to August.
- ***Grandiflorum Mariesi.** 18 in. A useful dwarf kind for the foreground of the border. Deep violet-blue flowers.
- ***Grandiflorum Mariesi album.** A white-flowering perennial that is hard to beat.

New Shell-Pink. 18 in. Distinctive pale pink flowers. Blooms freely all summer. 3 for \$1.65; 12 for \$6.00; 65c each.

POLEMONIUM

***Blue Pearl.** Jacobs-Ladder. 12 in. A new dwarf Polemonium with great clusters of light blue flowers. Attractive, graceful foliage. The plants grow well in partial shade or full sun. May.

PULMONARIA (Lungwort)

In moist shady soil they are especially happy but they can be depended upon for almost any part of the garden that is not too dry. The plant is a source of perpetual interest. In the spring there are the Mertensia-like blooms and throughout the growing season the silver-spotted foliage is attractive.

***Angustifolia azurea.** Bears racemes of sky-blue flowers that are very attractive. Since the plant grows less than a foot high, it makes a good ground-cover, especially in damp, shady places. April, May.

Angustifolia, Salmon Glory. 6 in. A worthwhile addition to this family. Gorgeous with brilliant salmon-pink flowers in early spring. Solid green foliage. 3 for \$1.65; 6 for \$3.00; 65c each.

***Saccharata, Mrs. Moon.** The dark green foliage has silver spots and the flowers are a pleasing combination of salmon-pink and blue. April, May. 3 for \$1.35; 55c each.

PYRETHRUM (Painted Daisy). See pages 21 and 36.

PRIMULA

(Hardy Primrose; Cowslip)

All Primulas are best planted in fairly rich, moist soil and shade; however, many varieties of the Veris and Julia type will get along nicely in full sun if watered often during summer months.

Acaule, New Giant-Flowering. 4 in. A splendid strain with large flowers of many different shades and colors. 3 for \$1.25; 12 for \$4.25.

Acaule, Blue. A lovely blue. 3 for \$1.65; 65c each.

Acaule rubra. Large, brilliant crimson flowers, very freely produced. A good grower; rare. 3 for \$1.25; 12 for \$4.25.

Auricula Giant Hybrids. Unusual and distinct Primula. Large flowers in various colors on 6 to 8-inch stems. 3 for \$1.35; 12 for \$5.00.

Cashmeriana. Large, round heads of bright violet on 12 to 15-inch stems.

Julia, Edelstein. A new variety with red flowers. 3 for \$2.00; 75c each.

Julia, Mrs. McGillivray. Large flowers of old-rose. Rare. 3 for \$2.00; 75c each.

Julia, Primrose Lodge. Large, deep crimson flowers on 4 to 6-inch stems. Free and early bloomer. 3 for \$1.50; 60c each.

Julia, Wanda. Deep bluish purple, almost violet. Very free blooming. 3 for \$1.50; 60c each.

Littoniana. A rare form of the above with reddish lilac flowers. 3 for \$2.00; 75c each.

Polyanthus (Feris Polyanthus).

Munstead Giant Strain, Finest Mixed. See color illustration on page 23.

Munstead Giant Strain, Yellow Cream, or Red. 3 for \$1.25; 12 for \$4.25.

‡**Polyanthus Colossea.** A magnificent new development of this old garden favorite, with flowers of exceptional size—often 2 inches across. They are produced in great numbers and display an immense variety of coloring from white to cream, yellow, scarlet, purple, and crimson. Borne on strong stems, they are excellent for cutting as well as making a splendid show in the garden. 3 for \$1.75; 12 for \$6.50; 65c each.

PHLOX. See pages 16 and 17.

POLYGONUM

Reynoutria. Covered with fragrant, airy pink sprays during September. Light green foliage turns to brilliant bronze-red in fall. A good ground-cover for isolated rough places where the more refined perennials will not grow. It grows and spreads rapidly; therefore, avoid planting it in the perennial border or rock garden with other plants. 3 for \$1.65; 12 for \$6.00; 65c each.

POTENTILLA

***Verna nana.** 2 to 4 in. Also sold under the name of Cinerea and Matsumuræ. A very compact-growing plant covered with lovely golden yellow flowers in May and June.

RUDBECKIA (Coneflower)

Golden Storm. 15 to 18 in. An outstanding imported novelty offered for the first time this year. Golden yellow, daisy-like flowers with black center. Blooms nearly all summer. Easily grown in any soil.

‡**Maxima.** 5 ft. A distinctive and little-known species. Glaucous foliage sparsely arranged on long sturdy stems which are topped with large yellow blooms measuring 3 to 4 inches across and further accentuated with a 2-inch dark cone. June, July.

‡**Purpurea, The King.** See color illustration on page 12.

‡**White Lustre.** 2½ to 3 ft. White blooms borne freely on sturdy stems from late June to September. As the cone center grows larger, the petals flatten in daisy fashion and then turn downward. Bushy, compact. 3 for \$1.75; 6 for \$3.25.

ROSEMARY. See page 35.

SALVIA (Sage)

‡**Azurea.** 4 ft. The stems of each clump are terminated with loose panicles of sky-blue flowers. August, September.

Officialis. See page 35.

‡**Pitcheri.** See color illustration on page 21.

SAPONARIA (Soapwort)

***Ocymoides splendens.** The dense masses of pink flowers which appear in late spring add color to the rock garden.

SCABIOSA (Hardy Scabiosa)

***Dwarf Alpine.** Charming miniature plant with lavender-blue flowers, on 6- to 8-inch stems. A new and rare little gem for your rock garden. Blooms freely in early summer months. 3 for \$1.75; 12 for \$5.00; 65c each.

Blue Lady. See color illustration on page 6.

‡**Caucasica.** See color illustration on page 6.

SEDUM (Stonecrop)

***Sieboldi.** In late fall when rock gardens are dull, this unusual plant, curious in form, foliage, and flower, puts on a show.

***Spectabile, Brilliant.** See color illustration on page 15.

***Spurium, Dragon's Blood.** Bright carmine-red flowers appear above bronzy red foliage from July to September, creating charming contrasts. An excellent plant for the wall or rock garden.

SHASTA DAISY

See Chrysanthemum maximum, page 36.

SILENE

Among the very best of rock-garden plants; easily grown in average soil, preferably in full sun. However, they will stand a little shade.

Alpestris fl.-pl. A double-flowering form, choice and rare. The white flowers are very showy and are produced freely on 6 to 8-inch stems from late May to July.

Wherryi. 6 in. Showy large pink flowers in May and June. The plant is completely covered with bloom.

PRICES: Unless otherwise noted, all plants are \$1.25 for 3 of one kind; \$2.25 for 6 of one kind; \$4.25 per doz. of one kind. Single plants, 55c each.

*Indicates alpines or rock plants; with few exceptions these plants are also ideal for broad masses in the foreground of your perennial border or for edging. †Indicates varieties which are useful for cutting.

SPIREA (Astilbe)

Astilbes are ideal, colorful perennials for shaded locations in the garden. They also do well in the sun. They prefer rather rich, moisture-retaining soil; watering is essential during dry weather. Plants bloom freely in June and July and the foliage remains attractive for the rest of the summer. Height about 2 ft.

- America.** Lilac-rose.
- Gladstone.** White.
- Gloria superba.** Deep rose-pink.
- Peachblossom.** Peachblossom-pink.
- Rhineland.** Bright crimson.
- ***Simplicifolia rosea.** An attractive dwarf species with pink flowers in June and July. Suitable for the shady rock garden or border. Any above 6 varieties, 3 for \$2.00; 6 for \$3.75; \$6.75 per doz.

Fanal. 18 in. Glowing dark garnet-red flowers. Grows well in shade or sun, in rich, moisture-retaining soil. June and July. See color illustration on page 22. 3 for \$2.00; 6 for \$3.75; 12 for \$7.00; 85c each.

STATICE (Sea-Lavender)

- ‡**Latifolia.** 2 ft. The large loose heads of purplish bloom are soft and pleasing in color. July, August.
- ‡**STOKESIA, Blue Moon.** See color illustration on page 12.
- TARRAGON.** See page 35.
- THALICTRUM, Lavender Mist.** 4 ft. A new Meadow-rue with foliage like that of a maidenhair fern, delicate and beautiful. The large, loose flower-heads of lavender-purple are lovely. Grows in sun or part shade. 3 for \$1.75; 6 for \$3.25; 75c each. See page 6.

**THERMOPSIS
(Carolina Yellow Lupine)**

- ‡**Caroliniana.** 3 ft. A good yellow accent plant with spikes of pea-like flowers. June, July.
- THYMUS.** See page 35.

TRITOMA (Red-Hot Poker)

These striking spire-like blooms make effective accents in the perennial border and are charming in flower arrangements. Plant in a well-drained, sunny place and give the plants a light mulch of excelsior or any other suitable material for winter protection. See color illustration on page 8.

- ‡**Coral Sea.** A graceful variety growing only 18 inches high and producing many coral-red blooms in June. Small, graceful foliage. 3 for \$1.65; 6 for \$3.00; 65c each.
- ‡**Golden Scepter.** 3 ft. Hardy, vigorous variety with saffron-yellow spikes during late June and early July. Beautiful planted with light blue delphiniums. 3 for \$1.75; 12 for \$6.00; 75c each.
- ‡**New Hybrids.** Flowers of various shades of cream, yellow, orange, and scarlet, on 2 to 3-foot spikes, in June and July.
- ‡**Pfitzeri.** 3 ft. Orange-scarlet spikes abundantly produced. August to October.
- ‡**Primrose Beauty.** Beautifully formed spikes of clean primrose-yellow stand over 3 feet tall. Blooms in late summer and has been surprisingly hardy. 3 for \$1.75; 75c each.
- Robin Hood.** A new giant hardy Tritoma with better color, larger blooms, and more hardiness than the well-known Red-Hot Poker. Strong stiff stems 2½ feet high. Blooms freely in late summer months. 3 for \$1.75; 75c each.
- ‡**Springtime.** Pat. 318. Contrasting coral-red and cream; blooms in late June and July. 3 for \$1.75; 75c each.
- ‡**White Fairy.** 2 ft. An unusually good hybrid. The pure white bloom spikes are open and graceful. June, July. 3 for \$1.75; 75c each.
- ‡**White Giant.** 3 to 4 ft. An outstanding novelty with extra-large, creamy white blooms. Produces almost continuously the entire summer. 3 for \$2.00; 75c each.

PRICES: Unless otherwise noted, all plants are \$1.25 for 3 of one kind; \$2.25 for 6 of one kind; \$4.25 per doz. of one kind. Single plants, 55c each.

*Indicates alpines or rock plants; with few exceptions these plants are also ideal for broad masses in the foreground of your perennial border or for edging. †Indicates varieties which are useful for cutting.



Tradescantia

TRADESCANTIA (Spiderwort)

The common old-fashioned forms were known to our grandmothers, who had many names for them. The hybridizers have been at work improving them not only in color and size of bloom, but they have considerably lengthened the period of bloom.

***Brevicaule.** A dwarf species with rose-pink flowers. May to July.

New Tradescantias

Ideal Plants for Shady Locations

- Sent to us by the U. S. Department of Agriculture
The descriptions are those of the Department.
Height 15 to 20 inches.
- Blue Stone.** Low-growing. Large, rich blue flowers.
 - Iris Pritchard.** White flowers, heavily stained with azure-blue; blue center. Late bloomer.
 - James Crawford Weguelin.** 18 in. Large flowers of a uniform light azure-blue. Very pleasing.
 - James Stratton.** A variety with large flowers, 2½ inches from tip to tip; color deep delphinium-mauve, slightly shaded with rose.
 - Leonora.** The very fine flowers are a deep rich glowing violet.
 - Pauline.** Flowers are rosy mauve. A vigorous variety.
 - Purple Dome.** A vigorous plant with large clusters of rich purple flowers.

TROLLIUS

All Trollius prefer rather rich and moist soil, and at least partial shade. These giant buttercup-like flowers are very showy and create much interest.

- Europæus, Pritchard Giant.** Showy, very large, globe-shaped, orange flowers on 2-foot stems during May and June and occasionally again in the fall. 3 for \$2.00; 6 for \$3.75; 12 for \$7.00; 75c each.
- Europæus, Lemon Queen.** Similar to the above but with lemon-colored flowers. 3 for \$2.00; 6 for \$3.75; 12 for \$7.00; 75c each.
- Europæus Hybrids.** Large, globular, lemon-yellow and orange, buttercup-like flowers. 3 for \$1.75; 65c each.
- Ledebouri, Golden Queen.** 3 ft. A handsome variety with large open flowers of beautiful golden yellow. In bloom about three weeks later than Lemon Queen. See color illustration on page 22. 3 for \$2.00; 6 for \$3.75; 12 for \$7.00; 75c each.

TUNICA (Tunic-Flower)

- ***Saxifraga alba flore-pleno.** 6 in. A rare new double white form.
- ***Saxifraga rosea flore-pleno.** 6 in. Lovely double rose-pink flowers from June to November, like a tiny baby's-breath.

VALERIANA

- ‡**Coccinea (Centranthus ruber).** 18 to 24 in. A grand border plant. Showy rose-colored flowers produced freely in May and June, with few flowers appearing all through the summer.
- ‡**Coccinea alba.** A lovely white-flowering form.
- ‡**Officinalis.** 4 ft. Fragrant hardy garden Heliotrope.

VERBASCUM (Mullein)

- For many years first in English gardens, these spire-like perennials are a welcome addition to American gardens, producing an abundant display of color in the summer. 3 feet tall.
- ‡**Cotswold Gem.** Tall, slender, branching spikes of soft amber-yellow flowers with purple centers.
 - ‡**Cotswold Queen.** A lovely Mullein with tall spikes of old-rose and buff-pink flowers. A fine background and border plant.
 - ‡**Pink Domino.** Spikes of rose-pink flowers on strong, healthy plants. See color illustration on page 8. 3 for \$1.50; 6 for \$2.75.

VERONICA (Speedwell)

- Showy late spring and summer-blooming plants easily grown in any average soil, in full sun or partial shade.
- ‡**Blue Peter.** This novelty has greatly impressed us because of its compact growth; the spikes of deep blue flowers are borne on stiff stems 18 inches long. 3 for \$1.50; 12 for \$5.50; 60c each.
 - ‡**Blue Spire.** 2 ft. Deep blue. July, August. See color illustration on page 8.
 - ***Incana.** 12 in. Silver-gray foliage. Deep blue flowers in June.
 - ***Incana rosea.** New. Same as above variety, with lovely pink flowers.
 - ‡**Longifolia subsessilis.** Charming summer-blooming herbaceous plant that deserves a place in every garden, large or small. Beautiful blue flowers in 18 to 24-inch spikes. July to September.
 - ***Rupestris.** Creeping habit. Deep blue flowers in late May and June.
 - ‡**Spicata alba.** Graceful white flowers on 18-inch spikes. June, July.
 - ***Spicata nana.** 6 in. An attractive dwarf form blooming freely during June.
 - ***True Blue.** 12 in. A lovely deep blue variety. Very attractive. May and June.

VINCA (Periwinkle)

- Minor, Bowles' Variety.** Glossy green foliage. Large deep blue flowers on outstanding ground-cover for shady places. 3 for \$1.00; 12 for \$3.00; \$20.00 per 100.

VIOLA ODORATA (Sweet Violet)

- ***Double Russian.** Very sweet-scented, double flowers. Best planted in shade.
- ***Rosina.** The new pink fragrant Violet. Lovely pink and rose shades. Blooms freely in the spring and again in the fall.
- ***Royal Robe.** A distinct addition to the Violet family that deserves a place in the shady rock garden and as a ground-cover. See color illustration on page 22.
- ***Semperflorens.** This perpetual-flowering variety blooms in spring, summer and autumn, giving quantities of fragrant flowers. The plants are hardy and grow well, but seem to thrive best in partial shade. For other Violas, see page 15.

YUCCA (Adams-Needle)

- Variiegata.** The foliage is golden variegated, resembling the greenhouse Pandanus. Hand-some as a specimen plant or for grouping effects. White flowers. 3 for \$2.00; 6 for \$3.75.



HEUCHERA

Queen of Hearts, Snowflake, Rosamondi

HEUCHERA

Queen of Hearts. Deep glowing coral-scarlet; large individual flowers. Blooms freely over a long period.

Rosamondi. 18 in. Coral-pink. A good grower. May to July.

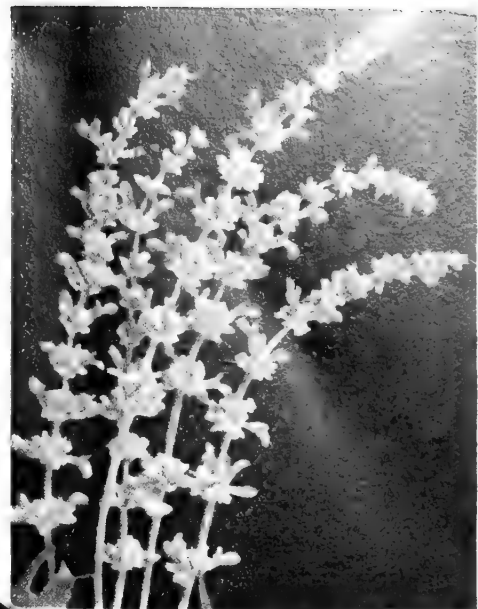
Snowflake. 18 in. A new pure white variety. Blooms freely and is very satisfactory.

OFFER NO. 8S-H

3 Plants, 1 each of the 3 varieties

\$1.75

For complete Heuchera list, see page 13.



SALVIA Pitcheri

All-Season Babys- Breath Collection

Four outstanding varieties to give bloom from early June till fall. Two tall and two low growing:

Repens Bodgeri
Rosy Veil
Flamingo
Bristol Fairy

Offer No. 8S-I
4 Plants, 1 of each
\$2.50

Offer No. 8S-J
8 Plants, 2 of each
\$4.50



GAILLARDIA and BABY'S-BREATH

GAILLARDIA

New Giant Monarch Strain. Unusually large blooms in a variety of colors. 3 for \$1.25; 6 for \$2.25; 12 for \$4.25.

GYPSOPHILA (Baby's-Breath)

Bristol Fairy. 4 ft. A cloud of lovely white flowers in huge panicles. July and August. 3 for \$1.75; 6 for \$3.25; 12 for \$7.00. For complete Gypsophila list, see page 13.

LYCHNIS

Chalcedonica plena. Double, very brilliant scarlet blooms in clusters on 18 to 24-inch stems. Blooms freely in June. Sun or part shade. 3 for \$2.50; \$1.00 each.

Viscaria splendens fl.-pl. 15 to 18 in. Double, rose-pink flowers. Excellent for border or rock garden. 3 for \$1.25; 6 for \$2.25; 12 for \$4.25.

SALVIA

Pitcheri. 4 ft.

In autumn the branching stems are covered with deep blue flowers of gentian-like loveliness. A highly admired fall perennial.

3 for \$1.25;
6 for \$2.25;
12 for \$4.25.

For complete Salvia list, see page 19.

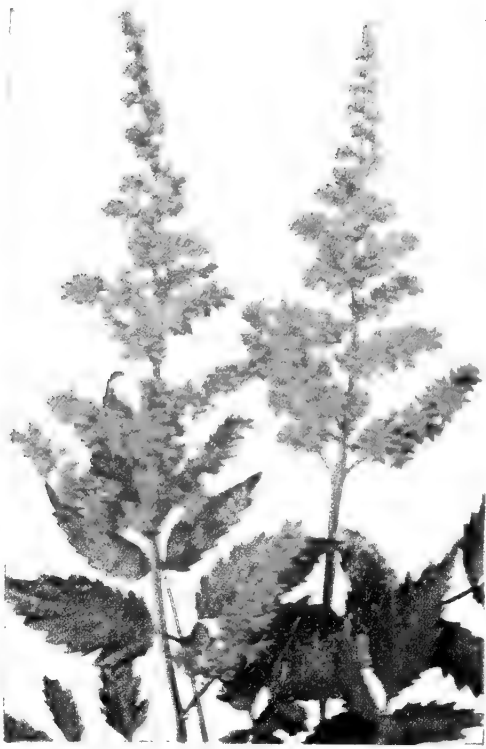


PYRETHRUM, Single Mixed

3 for \$1.25. For complete list, see page 36.



LYCHNIS viscaria splendens fl.-pl.



SPIREA, Fanal

3 for \$2.00. See also page 20.



CIMICIFUGA racemosa

3 for \$1.25. See also page 10.



SWEET VIOLET, Royal Robe

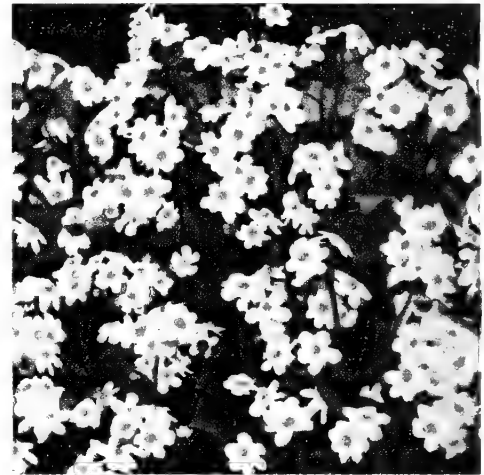
3 for \$1.25. See also page 20.

Shade-loving PERENNIALS



EPIMEDIUM

Attractive low growing plants for shaded locations.
3 for \$1.75. See page 23.



MYOSOTIS palustris semperflorens

3 for \$1.25. See also page 14.



TROLLIUS Ledebouri, Golden Queen

3 for \$2.00. See also page 20.



ANCHUSA myosotidiflora

ANCHUSA

Myosotidiflora. The flowers resemble forget-me-nots but come earlier in spring and are a deeper shade of blue. Blooms with forsythia and narcissus and combines beautifully with yellow and white and pink spring-flowering shrubs and bulbs. Grows about 15 inches tall. When the blooming season is past, the somewhat rough, heart-shaped leaves make an attractive shady ground-cover throughout the season. 3 for \$1.25; 6 for \$2.25; 12 for \$4.25.

Italica, Dropmore. 4 to 5 ft. Gentian-blue flowers in May and June. Useful as a cut flower. 3 for \$1.25; 6 for \$2.25; 12 for \$4.25.

ANEMONE

Huphensis. Flowers in shades of rose-pink are carried on 2-foot stems. Petals have a satiny texture. An ideal plant for the foreground of the perennial border. Foliage is soft and downy. Grows best in partial shade, in a rich but well-drained soil. A good covering of leaves over winter is advisable. Blooms in August and September. 3 for \$1.25; 6 for \$2.25; 12 for \$4.25.



ANEMONE huphensis



HELLEBORUS niger (Christmas Rose)

HELLEBORUS (Christmas Rose)

Niger. This hardy perennial attracts great interest wherever it is grown, because of its lovely single white flowers and its unique blooming season—December to March. The flowers are flushed with pink and are borne on sturdy stems. A partly shaded location is necessary, and the soil should be enriched with equal parts of manure, leaf-mold, sand and good loam. Watering is essential during dry periods in the summer. 3 for \$3.25; 12 for \$12.00; \$1.25 each.

Two New Christmas Roses

Niger Buis. Very large, pure white flowers distinguish this new variety. 3 for \$3.50; 6 for \$6.25; \$1.35 each.

Orientalis atropurpurea. A new red Lenten Rose producing crimson-purple flowers from February to April. Numerous blooms on 12 to 15-inch stems. An easy and strong-growing variety. 3 for \$4.00; 6 for \$7.00; \$1.50 each.



Funkia subcordata grandiflora alba
3 for \$2.00. See also page 13.

EPIMEDIUM (Barrenwort)

These are fine low-growing plants for the shade, for they are of easy culture and perfectly hardy. The attractive leathery green foliage turns bronzy red in the fall, which is an added advantage. The dainty flowers are produced in great profusion in early spring. Plant Epimedium in the rock garden, the hardy border or use it as a ground-cover. You will not be disappointed.

Alpinum rubrum. Red with white spurs.

Lilacina. Lilac-rose.

Macranthum niveum. Lovely white.

Macranthum, Rose Queen. Pink.

Pinnatum elegans. Golden yellow.

Sulphureum. Pale yellow.

Any of these six outstanding varieties, 3 for \$1.75; 6 for \$3.00; 12 for \$5.00



PRIMROSE, Munstead Giant Strain

PRIMROSE Munstead Giant Strain

A splendid strain of primrose of great size. The flowers are a through wonderful shades of yellow from cream to rich orange as well as white and charmingly variegated in different colors. They are produced in spring. Plant them in a well-shaded spot. 3 for \$1.25; 6 for \$2.25; 12 for \$4.25.

*Don't overlook
the 10% discount offered*

SEE PAGE 3

EVERBLOOMING HYBRID TEA ROSES

Any of the following, \$1.25 each; 3 for \$3.35; 6 for \$6.25; 12 for \$12.00

Everblooming Roses produce beautiful flowers over a long season, from about ten weeks after they are planted in spring until late frosts. Those planted in the fall produce their finest blooms early in the next summer and continue throughout the season. Practically all Everblooming Hybrid Tea Roses are fragrant at some time of the day. Most of them are hardy all over the United States if protected in winter.

From the long list of varieties in commerce we offer those that have survived the test for plant-vigor and good blooming habit in most parts of the United States.

Ami Quinard. Branching plants with medium sized, semi-double flowers of deep velvety crimson; strong, lasting fragrance.

Autumn. Compact, very double flowers of burnt-orange streaked with red; moderately fragrant. Close-growing, upright plants with heavy foliage. Superb fall bloom.

Betty Uprichard. Semi-double, delicate salmon-pink flowers, with a coppery carmine reverse; verbena fragrance. Tall, branching plants.

Caledonia. Large, very double, high-centered flower of pure white, borne singly on long, strong stem. Average plant with leathery, dark green foliage.

Christopher Stone. Bright velvety scarlet-red flowers of good form. Its golden stamens appear as the bloom opens. Damask fragrance. Vigorous, upright grower, free flowering, and does not appear to be troubled by heat.

Condesa de Sastago. Cupped flowers of fiery copper inside and rich gold on the reverse. Enticing raspberry fragrance. Vigorous plants.

Dainty Bess. Probably the most popular single Rose. The flowers have only five petals but they are wide and satiny, slightly ruffled, and of a beautiful soft pink color with a cluster of maroon stamens in the center of the bloom.

Duquesa de Penaranda. Spectacular double flowers of cinnamon-peach color; very fragrant. Strong plants with attractive foliage.

Editor McFarland. Perfectly formed, fragrant flowers of clear brilliant pink, with strong stems for cutting. One of the longest-lasting cut flowers we have. Plants are healthy and bloom freely.

Etoile de Hollande. Large crimson flowers with velvety finish and especially fine fragrance. Branching plants with very large, healthy foliage. One of the finest red Roses. The very large, fragrant flowers are superb when in the half-open state.

Girona. Multicolored turkey-red and golden yellow.

Golden Dawn. Glorious double flowers of lemon-yellow, nicely formed and deliciously fragrant. Petals of bud are edged carmine. One of the healthiest plants.

Hinrich Gaede. A striking orange-yellow variety with a nasturtium tint. Very large, double and fragrant. Vigorous plant.

Joanna Hill. Cream-yellow with orange center. Very pleasing in bud form. A popular cutting variety.

Kaiserin Auguste Viktoria. Creamy buds and perfect, snow-white blooms tinted lemon-yellow at center; fragrant. Medium, upright growth.

Margaret McGredy. Double, cup-shaped flowers open orange-scarlet, turning a peculiar shade of carmine-rose. Blooms constantly.

McGredy's Scarlet. Large, loosely formed, vivid rose-red flowers. Plants are healthy and large. This Rose is not scarlet—it is red, and one of the best. Very slight Tea fragrance. Blooms almost continually.

McGredy's Yellow. Unfading canary-yellow flower of excellent form with a mass of gold anthers. Plants vigorous and free blooming, with dark, glossy, holly-like foliage. A fine cup-shaped Rose of lovely, clean color.

Mme. Joseph Perraud. Long, slender buds of nasturtium-orange opening to sweetly fragrant flowers of nasturtium-buff, with a hint of pale pink at the petal edges. Popular all over the country. An excellent flower for exhibition purposes.

Mme. Jules Bouche. Perfectly formed, long-pointed buds and high-centered flowers of pure white with a slight pink tint in the center at first; moderately fragrant. Healthy plants, always in bloom. Many rosarians believe this to be the finest white Rose.

Mrs. Erskine Pembroke Thom. Pure unfading, fragrant yellow flowers of fine form. Beautiful growth. Very hardy.

Mrs. Sam McGredy. Large flowers of cheerful bright scarlet-copper color with heavy red tints on the reverse. Fragrant, long-stemmed blooms on strong plants. Reddish bronze foliage.

Pedralbes. A large white Rose often 5 inches across. Creamy before the full sleek bud unfolds, but becomes lighter and lighter until the finished flower is pure white with a yellow center. Delicate airy fragrance. Generously borne in clusters of four or five buds on long, strong stems. Plant is spreading, about 30 inches high.

Poinsettia. Semi-double flowers of a bright rich scarlet produced freely all season on vigorous plants of fairly tall growth. Rich Tea fragrance.

President Herbert Hoover. Large flowers of flaming scarlet and yellow in the bud, opening to soft creamy yellow with scarlet markings. Extra vigorous plants with flowers on 2-foot stems.

President Macia. Very long buds of a lovely shade of pink, with heavy veins of darker pink, on splendid stems for cutting. When open, the face of the petals is pale flesh, warmed with a yellow flush toward the base, the reverse the rich pink of the buds. Fruity scent.

Radiance. Globular, cupped flowers of two-toned pink, a light silvery tone inside and deeper on outside. Vigorous, free blooming. The standard pink Rose. Deliciously fragrant.

Red Radiance. A deep rose-red sport of Radiance and exactly like its parent in everything but color; fragrant.

Sœur Therese (Sister Therese). Exquisite buds and semi-double, cupped flowers of golden yellow, with edges of petals spotted madder-carmine. Sweetbriar fragrance. Strong growth; good foliage.

Talisman. Variable flowers ranging from rich scarlet and gold to deep rose and pale yellow; fragrant. One of the earlier multicolored Roses. In most localities it yields good flowers for cutting.

All \$2.00 Roses are 3 of one kind for \$5.00;

\$1.50 Roses are 3 of one kind for \$3.75;

\$1.35 Roses are 3 of one kind for \$3.50;

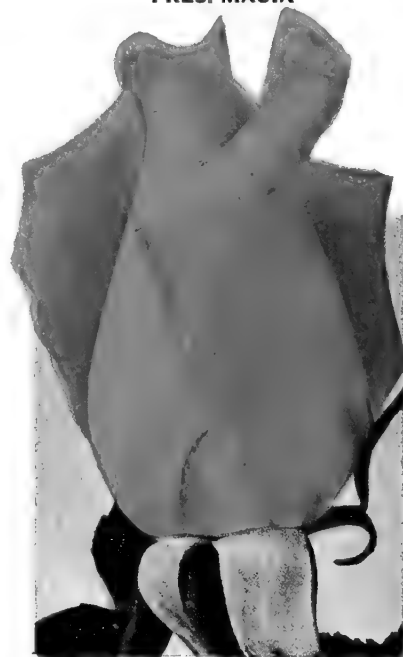
\$1.25 Roses are 3 of one kind for \$3.35.



GOLDEN DAWN



PRES. MACIA



CHARLOTTE ARMSTRONG

Novelty HYBRID TEA ROSES

Here are presented some of the best of the newest Roses, the product of hybridizers the world over. We recommend them for the thrill they will give you in your own garden.



© MARY MARGARET McBRIDE

American Flagship. Pat. 676. Attractive, urn-shaped buds open to high-centered, double blooms of velvety crimson-red, deeply shaded rich oxblood color. Holds color in sun and does not blue. Fragrant. \$1.50 each.

Better Times. Pat. 23. Bright cerise-pink flowers, excellent for cutting. Large and high centered. Sold in quantities by florists but is also a splendid garden variety. \$1.35 each.

California. Pat. 449. Large, loose flowers of bronzy apricot with an iridescent sheen, reverse coppery pink; delicious fragrance. 30 petals. \$1.50 each.

Charlotte Armstrong. Pat. 455. Warm red buds opening to cerise in hot weather and spectrum-red in cooler weather. Its pointed bud opens into a long-lasting, fragrant flower 3 to 4 inches in diameter. Foliage deep green and highly resistant to mildew. \$1.50 each.

Countess Vandal. Pat. 38. Long-pointed bud and high-centered, fragrant flower of coppery bronze, suffused with soft gold, developing added beauty during its long life. \$1.35 each.

Crimson Glory. Pat. 105. A beautiful crimson flower shaded deep red and mellowed by a velvety nap. Wonderful fragrance. Acclaimed as the best dark, velvety crimson-red garden Rose for the United States. \$1.50 each.

Diamond Jubilee. Pat. pending. Large, very double flowers of buff-yellow. Cupped in form; fragrant. Tall and compact in growth. One of the very newest. \$2.00 each.

Dicksons Red. Pat. 376. Large, well-formed, scarlet flowers; very fragrant. Holds its color well in the sun. Hardy and free blooming. \$1.35 each.

Eclipse. Pat. 172. The very long, slender, and elegant yellow buds open to loose flowers with 25 to 30 golden yellow petals, which hold their color well. Fragrant. \$1.35 each.

Enchantment. Pat. 737. Shell-pink flowers with a yellow base for each petal. Slightly fragrant, large and full. Free and continuous in bloom all season. \$2.00 each.

Ernie Pyle. Pat. 673. Dedicated to the memory of the famous correspondent. Profuse, warm rose-pink flowers of great size; unusually fragrant. Bushy, vigorous. Slow opening, long lasting in bloom. \$1.50 each.

Fantasia. Pat. 590. Flowers are semi-double, with 16 to 18 petals of golden yellow. Very sweet fragrance. Glossy foliage on a bushy, 2½-foot plant. \$1.50 each.

Good News. Pat. 426. Full, perfectly formed, tea-scented flowers of peach-pink changing to silvery pink. Vigorous grower and constant bloomer. An extra-good Rose. \$1.50 each.

Grande Duchesse Charlotte. Pat. 774. The long, streamlined buds are rich claret color, gradually opening to a lovely begonia-rose. 25 petals form a graceful flower. Tall, upright growth; disease resistant. \$1.50 each.

Heart's Desire. Pat. 501. Intensely fragrant, large, double flowers of rich crimson-red on long stems. Dark green, leathery foliage. 25 petals. \$1.50 each.

Hector Deane. Pat. 361. Flowers of orange and salmon-pink. Double, high centered, and unusually fragrant. Tall, stately plant. \$1.35 each.

Horace McFarland. Pat. 730. Flowers produced freely all season. Rich orange-pink buds opening to deep apricot-pink and salmon-buff. Large blooms with 45 petals. Rich dark green foliage. \$1.50 each.

Katherine T. Marshall. Pat. 607. Long-pointed, coral-pink buds suffused yellow, opening to large, cupped blooms with a fruity fragrance. Tall, vigorous plants with good dark foliage. \$1.50 each.

All \$2.00 Roses are 3 of one kind for \$5.00; \$1.50 Roses are 3 of one kind for \$3.75; \$1.35 Roses are 3 of one kind for \$3.50; \$1.25 Roses are 3 of one kind for \$3.35.

Carroll Gardens is a member of the American Association of Nurserymen.

Mary Margaret McBride. Pat. 537. Buds deep coral-pink with gold base, opening to high-centered, double, clear pink flowers. Foliage smooth, dark and leathery. \$1.50 each.

McGredy's Sunset. Pat. 317. Saffron blooms touched with orange and rich scarlet; sweet fresh fragrance. Resists sun, hot weather and disease. \$1.35 each.

Mirandy. Pat. 632. Maroon-red buds and blooms of good substance. This new Rose is very fragrant. Very double; attractive at all stages. \$1.50 each.

Mme. Cochet-Cochet. Pat. 129. Long-pointed, coppery pink buds, flushed with orange, open to fragrant, cupped flowers of soft salmon-pink, glistening with a satiny sheen. \$1.50 each.

Mme. Marie Curie. Pat. 727. Large, high-centered blooms of clear yellow, unfolding in the sun, carried on good cutting stems. Unusually strong and bushy plants, free in bloom. \$1.50 each.

Nocturne. Pat. 713. Cardinal-red shaded crimson—a rich, glowing color. Large, cupped flower, long pointed in the bud stage. A very strong, upright grower to 3 or 4 feet. Blooms freely all summer. See color illustration on front cover. \$2.00 each.

Panorama. Pat. 614. Deep rose-pink and silvery buff, slightly suffused with pink on reverse; distinct silvery tones. Rich, dark green foliage. Very large, full-petaled blooms present a striking contrast in all stages. \$1.50 each.

Peace. Pat. 591. Very large, full-petaled flowers of soft yellow suffused and edged pink. Distinctive and charming. Growth is extra strong; foliage richest dark green. \$2.00 each.

Rex Anderson. Pat. 335. Pale lemon-yellow shaded gold at the base. Large and fragrant. The blooms are not plentiful but are exquisite when they do appear. \$1.50 each.

Rubaiyat. Pat. 758. Long buds with a delicate crimson-pink exterior, which open slowly to rich crimson-red blooms. Old-Rose scent. Extremely hardy, extra tall; luxuriant dark green foliage. \$2.00 each.

San Fernando. Pat. pending. A glorious scarlet Rose of high-centered form and large size. Plentiful blooms are carried on the sturdy plant. Fragrant. \$2.00 each.

Shades of Autumn. Pat. 542. One of the parents of this new Rose was *Condesa de Sastago*. The orange-copper and carmine shadings are rather similar but the petals are more gracefully arranged. One of the most beautiful color combinations yet produced in Hybrid Teas. \$1.75 each.

Show Girl. Pat. 646. Fragrant, semi-double, cupped flowers of deep pink, borne on long stems. Very upright and vigorous, with large foliage. \$1.50 each.

Sterling. Pat. 21. Strong, upright growth. Foliage apparently free from disease, with perfect-shaped, fragrant flowers of brilliant pink, which do not fade. 35 petals. \$1.50 each.

Taffeta. Pat. 716. A large, semi-double bloom ranging from straw-yellow to begonia-pink. Fragrant. Blooms freely all season. See color illustration on front cover. \$2.00 each.

Texas Centennial. Pat. 162. Long-pointed buds of vermilion-red on an especially tall, vigorous plant. \$1.25 each.

The Chief. Pat. 456. A beautiful Rose with some of the rich flame color of President Hoover. Bushy, spreading growth. \$1.50 each.

White Briarcliff. Pat. 108. Lovely bud of purest white; very double and fragrant. Vigorous and free blooming. \$1.35 each.



AMERICAN FLAGSHIP

ROSES CONTINUED ON PAGE 26



Lovely

TREE ROSES

The following are \$5.50 each

For description, see page 25

Charlotte Armstrong. Cerise.
Glorious. Floribunda. Tyrian Rose
Nocturne. Crimson.
Peace. Yellow edged pink.
Taffeta. Bicolor.

The following are \$5.00 each

For description, see page 24

Etoile de Hollande. Red.
Golden Dawn. Yellow.
K. A. Viktoria. White.
Picture. Pink.
Soeur Therese. Yellow.

FLORIBUNDA ROSES

These are bush Roses producing clusters of bloom without interruption from early summer until late frosts. They are all very easy to grow and exceptionally hardy. Besides using them informally in beds, plant Floribundas in the foreground of hardy shrub borders. As a hedge, they are a very fine substitute for the more common privet and barberry.

Plant Floribundas 15 to 18 inches apart and prune lightly to the desired height, removing old flower clusters and thinning out dead wood. They grow 2 to 2½ feet tall.

Betty Prior. Pat. 340. Outside of petals, dark carmine, inside several shades lighter. Blooms are borne in large clusters on strong stems. 5 petals. \$1.25 each.

Donald Prior. Pat. 377. Large clusters of red flowers on branching plants about 1½ feet high. Damask fragrance. A continuous bloomer. \$1.25 each.

Floradora. Pat. pending. Ovoid buds of pinkish orange, opening to perfect camellia-formed blooms evenly colored cinnabar-red and orange-scarlet. Extremely vigorous grower and bloomer. \$1.25 each.

Goldilocks. Pat. 672. The only true golden yellow Floribunda. The buds are ovoid, resembling miniature Hybrid Teas in form, and rich golden yellow in color. Flowers are cupped in the early stages and gradually open to 3½ inches across. The firm petals number 45 on most buds. Dense, spreading growth to 2½ feet. \$1.50 each.

Marionette. Pat. 569. This is a sport of the well-known and popular Pinocchio. Flowers and plant habit are similar but the buds are creamy yellow, becoming white as they open. \$1.25 each.

Permanent Wave. Pat. 107. Wavy-edged, semi-double flowers, cochineal-red on the outside and lighter on the inside. A constant bloomer. \$1.25 each.

Pink Gruss an Aachen. Orange-red and yellow buds and large, light flesh-pink and salmon-yellow flowers, fading lighter. A fine distinct bedding type. \$1.25 each.

Pinkie. Pat. 712. Cupped, pink flowers of unusual charm. Dwarf, bushy plant that blooms in greatest profusion. See color illustration on front cover. \$2.00 each.

Pinocchio. Pat. 484. Pink suffused with golden salmon. Beautiful buds and flowers in long sprays; splendid for corsages and bouquets. A very prolific bloomer from late spring until late fall. Fruity fragrance. \$1.25 each.

Summer Snow. Pat. 416. Pure white flowers borne in large clusters. Very neat and low-growing and an extremely prolific bloomer. Where masses of white are needed, this is the Rose to use. \$1.25 each.

Triomphe Orleansais. Bright cherry-red, long-lasting, almost fadeless, large flowers borne in clusters. The finest cherry-red for border and hedge planting. \$1.25 each.

World's Fair. Pat. 362. Velvety black-scarlet flowers in large heads nearly 4 inches across. 18 to 20 petals; fragrant. Hardy. \$1.25 each.

HYBRID PERPETUAL OR JUNE ROSES

In this class large flowers, fragrance, disease resistance, and strong growth are outstanding features. While most varieties bloom only in June and July, many will repeat throughout the summer and fall, and a few even repeat heavily enough to rival some of the Hybrid Teas. Those that repeat are marked (R).

Hybrid Perpetuals spaced 2½ to 3 feet apart can be grown as bedding Roses at a height of 3 to 4 feet, or allowed to grow into shrubs up to 6 feet tall. A few of the most vigorous can be trained as pillars, giving wonderful displays of bloom in June and July. They also make fine specimen plants on the lawn. If wanted for bedding, prune to 15 to 18 inches; for shrubs, 2 feet or over. For a pillar Rose, allow the plant to grow as tall as desired, then cut out only dead wood or enough to keep the bush within bounds. Hybrid Perpetuals sometimes outgrow the space allotted them, in which case the canes should be cut back to 2½ feet. This summer pruning often encourages more repeat blooming.

Any of the following, \$1.25 each; 3 for \$3.50; 6 for \$6.50; 12 for \$12.50

American Beauty. Pink shaded smoky carmine; deliciously fragrant. 50 petals. R.

Frau Karl Druschki. Magnificent snow-white blooms. Repeats freely. The most popular white Rose. 35 petals. R.

General Jacqueminot. Scarlet-crimson buds and clear red flowers; intensely fragrant. R.

Magna Charta. Bright pink, very large, double flowers, suffused carmine; heavy perfume. Strong, erect growth. An excellent free-flowering Rose for greenhouse forcing in pots; just as good in the garden.

Paul Neyron. Dark lilac-rose of immense size; remarkable fragrance. 50 petals. R.

Ulrich Brunner. Large; bright carmine-red; very fragrant. 30 petals.

FREE WITH YOUR ROSE ORDER

The American Association of Nurserymen has published an informative, handy and attractive booklet on Rose planting and culture. If you would like to have a copy of it included FREE with your Rose order, please indicate on the Order Sheet.

Join The American Rose Society

Membership gives you many distinct advantages. Annual dues only \$3.50. Write The Secretary, The American Rose Society, Box 687, Harrisburg, Penna.



CLIMBING ROSE, GOLDEN CLIMBER

LARGE-FLOWERED HARDY CLIMBING ROSES

This modern type of climber is disease resistant and many varieties produce flowers on long stems suitable for cutting. These plants flower best on the older canes, so it is not advisable to cut out the canes that have bloomed. Cut back the side shoots after they have bloomed, remove old worn-out canes and train up only enough young canes to cover the space desired.

Any of the following, except where noted, \$1.25 each; 3 for \$3.35; 6 for \$6.25; 12 for \$12.00

All \$1.50 Roses are 3 of one kind for \$3.75

Blaze. Pat. 10. Vivid scarlet flowers identical in color and form with Paul's Scarlet. Recurrent bloomer during midsummer and early fall, after becoming well established. \$1.50 each.

Climbing American Beauty. Deep rose-pink; large, double flowers.

Doublons. Pat. 152. A hardy, vigorous, yellow Climber. Shapely buds and large, saffron-yellow flowers. Canes grow 10 to 12 feet long. \$1.50 each.

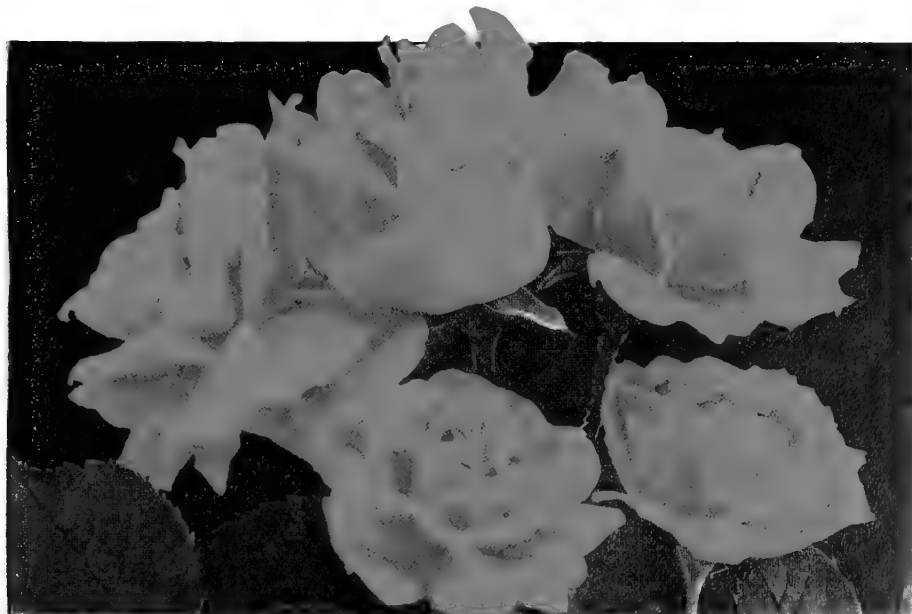
Dr. J. H. Nicolas. Pat. 457 Immense, very double, deep rosy pink blooms with lasting fragrance. Hardy and vigorous. Makes a fine pillar Rose. \$1.50 each. **Sold out.**

Dr. W. Van Fleet. Abundant, long-stemmed, well-formed flowers of soft pale flesh-pink, the equal of a fine Hybrid Tea. This has been a favorite for many years.

Golden Glow. Pat. 263. Yellow flowers like a Hybrid Tea Rose, 3 to 4 inches across. Tea fragrance. Very hardy. \$1.50 each.

King Midas. Pat. 586. Large, double flowers of golden yellow flushed red. Rich dark foliage. Fragrant. \$1.50 each.

Mrs. Arthur Curtis James (Golden Climber). Pat. 28. A strong climbing plant that does not bloom until it is well established for two or more years. Then it produces many perfectly formed, golden yellow flowers of Hybrid Tea quality and fragrance, on 1½ to 2-foot stems. \$1.50 each.



CLIMBING ROSE, BLAZE

LARGE-FLOWERED HARDY CLIMBING ROSES, continued

Mary Wallace. Large, cupped flowers of lovely rose-pink. A hardy plant and an early bloomer.

New Dawn. Pat 1. The everblooming Dr. W. Van Fleet. Just like it in soft pink color but blooms intermittently all summer. \$2.00 each.

Paul's Scarlet Climber. Intensely red flowers borne in loose clusters. Best used as a pillar because of its restricted height. Highly recommended.

Silver Moon. Handsome foliage and big, saucer-shaped, moon-white flowers with brilliant yellow centers.

Spanish Beauty (Mme. Gregoire Staechelin). This "Queen of the Pink Climbers" is a thrilling sight when it blooms. Long-pointed, crimson buds open to great, urn-shaped flowers of iridescent pearl-pink with splashes of ruby-carmine on the outside of the petals. Delightfully fragrant. Early blooming.

SHRUB ROSES

Very valuable for hedges or shrubbery borders in seashore gardens and regions where the winters are especially severe. Erect, very spiny stems. Plant 1½ to 2 feet apart for hedges. In pruning, cut out old canes and shorten new canes to 4 feet; for pillars cut out only oldest canes.

Any of the following, \$1.25 each; 3 for \$3.35; 6 for \$6.25; 12 for \$12.00

F. J. Grootendorst. Small, bright red, fringed flowers. Large clusters freely produced throughout the season. 4 ft.

Grootendorst Supreme. Deep crimson-red form of F. J. Grootendorst.

Hugonis. Lemon-yellow flowers 2 inches wide, on long graceful branches. Blooms very early. 6 ft.

Persian Yellow. A very vigorous shrub Rose with small, semi-double, bright yellow flowers along the canes.

Pink Grootendorst. Clusters of small, fringed, light shell-pink blooms the entire flowering season. 4 ft.

EVERBLOOMING CLIMBING HYBRID TEA ROSES

In Southern States these bear huge crops of Hybrid Tea flowers all season, but farther north they often do not bloom later than May or June and are not always hardy. In these colder regions they may be wintered over by untying the canes from their supports, loosening the roots on one side, then laying the canes on top of the ground and covering them with 6 inches of soil. In pruning, keep both old and new wood, cutting out only dead or exhausted canes.

Any of the following, \$1.25 each; 3 for \$3.35; 6 for \$6.25; 12 for \$12.00

Climbing Ami Quinard. Rich dark maroon flowers, exceptionally velvety.

Cl. Golden Charm. Deep yellow flowers.

Cl. Mme. Joseph Perraud. Coppery yellow blooms on a good climbing plant.

Cl. President Hoover. Flaming scarlet and yellow in the bud, opening to soft creamy yellow with scarlet markings.

Cl. Radiance. Two-toned pink—light silvery on the inside and deeper on the outside.

Cl. Red Radiance. A strong climber with flowers like Red Radiance.

Cl. Talisman. Bicolored flowers like the original.

PILLAR ROSE

High Noon. Pat. 704. Loosely cupped flowers with 25 to 30 petals carrying a spicy fragrance. Color is lemon-yellow tinted red. Midway between a bush and a climber. Upright and vigorous in growth. \$2.50 each



ESTATE. 3 for \$3.00



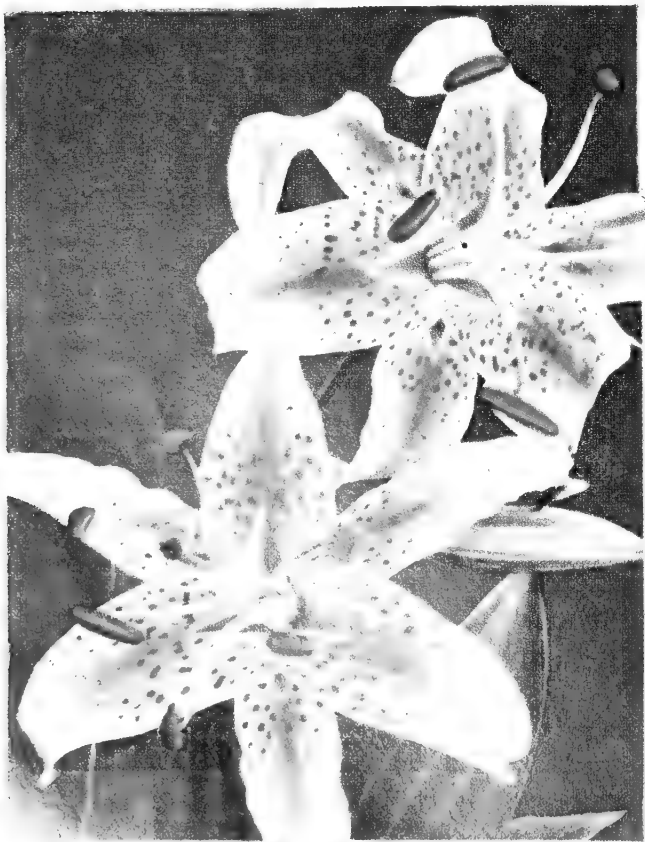
REGALE. 3 for \$1.50.



HENRYI. 3 for \$1.50.

See also
page 29

COLLECTION: *Offer 8S-18* 5 bulbs, 1 each of the 5 varieties illustrated **\$3.50**
Offer 8S-18A 10 bulbs, 2 of each **\$6.50**
Offer 8S-18B 5 bulbs, 3 of each **\$9.00**



SPECIOSUM RUBRUM. 3 for \$3.00



UMBELLATUM GRANDIFLORUM. 3 for \$1.50.



Lilium regale

Hardy Garden Lilies

See color illustrations on page 28

An outstanding selection of species and varieties chosen especially for their beauty and easy culture in the garden and cut flowers for the home.

Culture. Plant the bulbs about 6 inches deep in well-drained soil. If the ground is heavy, it is advisable to put some sand under each bulb.

All bulbs are large size, sure to bloom well this summer

AMABILE. An attractive species from Korea which grows easily in this country. It bears as many as six vivid red turk's-cap flowers spotted with black. 3 to 4 ft. June. 3 for \$1.50; 6 for \$2.75.

CERNUUM. Nodding Lily. Recurved, small, lilac-colored blooms with wine-purple spots. 2 ft. Early June. 3 for \$1.50; 6 for \$2.75.

ELEGANS. Erect flowers in shades of orange-red, lightly spotted with blackish purple. 3 for \$1.25; 6 for \$2.25.

ESTATE. A magnificent new Lily for mid-summer bloom. The extra large, pure white flowers are freely produced on 4-foot stems. Don't overlook this beautiful new Lily. We know you will be pleased with it. Plant the bulbs 6 to 8 inches deep in any good average garden soil. Large blooming-size bulbs, 3 for \$3.00; 6 for \$5.50; \$1.10 each.

HENRYI. A splendid garden plant, vigorous in growth, failing very seldom. One of the best border Lilies, reaching over 6 feet in height when established and bearing more than 20 flowers of a rich, deep orange-yellow. August, September. 3 for \$1.50; 6 for \$2.75.

MAXWELL. A new hybrid, being a cross between *Lilium Leichlini Maximowiczii* × *L. Willmottiae*. In its general habit and pyramidal inflorescence this hybrid is similar to *L. Willmottiae*, but the blooms are lighter in color, the stamens are longer, and the anthers are orange-red. The spike is tall and very strong but gracefully slender, bearing as many as 30 or more large, recurving flowers 6 to 7 ft. Late July. 3 for \$1.50; 6 for \$2.75.

PHILIPPINENSE FORMOSANUM. Large, white, trumpet-shaped flowers, delightfully fragrant. 2 ft. September. 3 for \$1.50; 6 for \$2.75; 12 for \$5.00.

REGALE. Gorgeous, bell-shaped, white flowers with a touch of canary-yellow in the throat and a shading of lilac-pink on the outside. One of the most beautiful and easily grown Lilies. July. 3 for \$1.50; 6 for \$2.75; 12 for \$5.00.

REGALE ALBUM. A new improved pure white Regal Lily. 3 for \$3.25; \$1.25 each.

Well-rotted manure worked into the soil between them is about all the food they need, with the exception of a light application of commercial fertilizer in early spring. Work it into the soil and then water well, just as soon as growth appears. Be sure to keep the fertilizer away from the foliage.

SPECIOSUM. Again these magnificent Lilies are available. We are able to get a fair supply of large bulbs from Holland that are sure to bloom this coming summer.

SPECIOSUM ALBUM. Beautiful snow-white with a golden green stripe through the center of each petal; anthers a coppery color. In form and habit this is one of the most beautiful Lilies. 3 for \$3.25; 6 for \$6.00; \$1.25 each.

SPECIOSUM RUBRUM. Frosted white, suffused rose-pink and spotted crimson. August, September. 3 for \$2.50; 6 for \$4.75; 95c each.

TENUIFOLIUM. Coral Lily. Dwarf, very graceful Lily, with clusters of recurved flowers of brilliant coral-red. 18 in. June. 3 for \$1.25; 6 for \$2.25.

TENUIFOLIUM, GOLDEN GLEAM. A beautiful, robust and floriferous hybrid bearing numerous flowers of a pure apricot-yellow. 3 for \$1.50; 6 for \$2.75.

TIGRINUM FLORE-PLENO. The double Tiger Lily is very free flowering in late summer. Very easily grown in any garden soil. 4 to 5 ft. 3 for \$1.25; 6 for \$2.25.

UMBELLATUM. Candlestick Lily. The upright-blooming varieties are the easiest to grow outdoors. Large, straight, funnel-shaped flowers of burning red-orange color. 2 ft. June, July. 3 for \$1.50; 6 for \$2.75.

UMBELLATUM, GOLDEN FLEECE. Yellow with occasional light tan spots. The only variety of this shade. 3 for \$2.00; 6 for \$3.75.

UMBELLATUM GRANDIFLORUM. A very free-flowering Lily of easy culture. Carries large umbellate heads of light orange-red flowers. 3 for \$1.50; 6 for \$2.75.

UMBELLATUM INCOMPARABILE. Bold upright flower of dark carmine-red. Very conspicuous. 3 for \$1.65.

UMBELLATUM, ORANGE TRIUMPH. Orange shading to crimson at tips. 3 for \$2.75.

UMBELLATUM, REFULGENCE. Large, orange-red. 2 ft. 3 for \$1.65.

UMBELLATUM, VERMILION BRILLIANT. Large, crimson-blood-red spotted black. 2 ft. 3 for \$1.65.

WILLMOTTIAE IMPROVED. Szechwan Lily. Recurved, medium size. Orange-red dotted black. Sun or part shade. 4 ft. 3 for \$2.00; 6 for \$3.75.

EVERGREEN SHRUBS

ABELIA (Bush Arbutus)

Grandiflora. 4 ft. Useful in foundation plantings and mixed with other shrubs and evergreens. Flowers are white, flushed pink. Glossy evergreen foliage. Blooms from June to November.

Small plants, 50c each; 3 for \$1.25; 12 for \$5.00
AZALEA. See color illustration and list on page 38.

BERBERIS (Evergreen Barberr)

JULIANÆ. Wintergreen Barberr. 5 ft. A valuable evergreen shrub with narrow-toothed spiny leaves that on the new shoots are several shades of green.

Triacanthophora. Three-spine Barberr. 3 ft. In our opinion this is the finest of the evergreen Barberries.

Verruculosa. Warty Barberr. 3 ft. A semi-dwarf, slow-growing kind with dark glossy green leaves, whitish underneath. Flowers primrose-yellow.

Any of the above choice Evergreen Barberries, strong pot plants, 65c each; 3 of any one kind for \$1.50; 12 assorted plants for \$5.00.

BUXUS (Boxwood)

Suffruticosa (nana). True dwarf hedging Boxwood. 4 to 6 in., 12 for \$5.00; \$35.00 per 100.

COTONEASTER

(Rock Spray; Quinceberry)

Selected evergreen and deciduous varieties.

Apiculata. Cranberry Cotoneaster. One of the finest. Extra-large red berries.

***Dammeri (humifusa).** 8 in. A creeping shrub for the rockery. A perfect prostrate species with bright evergreen foliage and coral-red berries.

Salicifolia. Willow-leaf Cotoneaster. 5 ft. Semi-evergreen. Graceful, drooping branches. White flowers in May and June; red fruit. Very handsome.

Any of the above Cotoneasters, strong 2 1/4-in. pot-plants, 50c each; 3 of any one kind for \$1.25; 12 assorted plants for \$5.00.

DAPHNE (Garland-Flower)

Cneorum. 10 in. Fragrant pink flowers in clusters on a spreading evergreen shrub. Plant it in light soil in a sunny spot. 1-yr. plants. 65c each; 3 for \$1.65; 12 for \$6.00.

ERICA (Heath)

***Carnea rosea.** These miniature shrubs, seldom more than 8 inches high, are covered with rosy pink flowers in March and April. Hardy, free blooming, and excellent in the rock garden. 1 and 2-yr. young plants, 60c each; 3 for \$1.50; 12 for \$5.00.

Carnea, Springwood. A lovely white form of the above. 60c each; 3 for \$1.50; 12 for \$5.00.

PYRACANTHA coccinea Lalandi. See color illustration, page 38.



Berberis, Verruculosa

The Newest and Best STRAWBERRIES for Quickest Fruit

CULTURE. Strawberry plants are easy to grow and will succeed in almost any kind of soil. Of course, fertilizer will help unless the soil is quite rich. Regular commercial fertilizer or barnyard manure will be satisfactory. The soil should be thoroughly worked at planting time just as you would prepare for any seed bed. The plants may be set as close as 2 feet apart in the row and the rows 3 or 3½ feet apart to allow for easy cultivation. At a planting distance of 2 by 3½ feet, 6,300 plants will be required for one acre.

Do not plant Strawberries too deep. The crown of the plant must be above the level of the ground and the soil carefully firmed around each plant. After planting, shallow cultivation is important. Many growers mulch their Strawberry plants with straw during the winter. This is applied late in the season when the ground is frozen, and may be left on in the spring as a protection for the fruit.

In picking the fruit it is best to delay until the dew dries off or until the berries are dry, as they will hold up longer. After fruiting, the plants may be cut with a mower, raked off and burned, but be sure that the burning is done where it will not injure the plants.

Streamliner

This new jumbo-size everbearing Strawberry, most modern of all, has sped its way to popularity. Never has a Strawberry had such an enthusiastic welcome. The Strawberry you will enjoy without sugar is finally here! Sweet as honey, fresh as a June day, the Streamliner gives you everything. The berries are jumbo size, glossy red and delicious, conical in shape, and very uniform in size throughout the season. Production of fruit begins in June and extends until hard freezing weather. Up to a quart of berries per plant has been known for Streamliner. This is the ideal everbearer for your garden. Tops for shortcake and canning, requiring a minimum of sugar. Streamliner is one of the best for quick freezing. Every garden should have at least fifty Streamliner plants for each member of the family. 25 for \$2.25; 50 for \$5.25; 100 for \$8.50.

Gemzata Everbearing

The new Gemzata Strawberry is the outstanding everbearer of today for both high quality and heavy production throughout the late spring, summer and fall. It produces extra-large Strawberries right up to heavy freezing time. The berries are unusually large, with rich red meat all the way through, firm and of fine texture. Gemzata has proved successful on a wide range of soils and succeeds better under adverse conditions than other everbearers we have tested. University and state experimental tests show it to be superior to Gem and Mastodon in both quality and production. Gemzata produces well the first season. A cross of the well-known Gem and Wayzata, it is a triumph in Strawberry plant breeding. Every garden should have at least fifty Gemzata plants for each member of the family. 25 for \$3.00; 50 for \$4.00; 100 for \$7.50; 250 for \$15.50.

Robinson

The new medium late Robinson (Scarlet Beauty). Finest June-bearing berry to date, originated in the heart of the Michigan fruit-producing belt and is rapidly taking favor over other berries. The fruit is large, conical shape, scarlet-red all the way through. It is very firm and glossy, taking a premium on the markets. This is definitely the most outstanding June-bearing variety we have ever seen for heavy production of fruit. Delicious for table use, a wonderful canner and preserver. A new berry you positively should have. 25 for \$1.85; 50 for \$3.00; 100 for \$4.50; 250 for \$9.50.

Special All-Season Strawberry Collection

Robinson (late) **Fairfax** (midseason)
Premier (early) **Gemzata** (everbearing)

OFFER No. 8S-19

100 plants, 25 each of the above 4 varieties,
\$6.50

OFFER No. 8S-19A

200 plants, 50 each of the above 4 varieties,
\$10.75

Ambrosia

One of the largest and latest Strawberries known today. The berries are sparkling bright red, uniform, semi-pointed shape. Delicious flavor. Ripens three weeks later than other varieties and brings a premium on the market. Berries are borne on very sturdy and tall fruit stems, keeping them clean and making easy picking. The plants have large leaves and are vigorous growers. Ambrosia and Robinson make a highly profitable team. 25 for \$1.85; 50 for \$3.00; 100 for \$4.50; 250 for \$9.50.

Blakemore

Produces extra-early berries of bright red color and is perhaps the best shipping variety. It produces enormous quantities of fine quality fruit. In great demand by packers; ideal for cold packing. We recommend it as a most satisfactory berry for general planting, especially in the South. Our Blakemore plants are of the yellows-free strain. 25 for \$1.25; 50 for \$2.00; 100 for \$3.25; 250 for \$6.50.

Majestic

Pat. 345

We consider Majestic the best of the newer June-bearing varieties for home use; easily grown, outstanding for its large berries, which are deep scarlet-red to the core. Fruit stems stand upright, keeping the berries clean for easy picking.

Majestic is adapted to a wide variety of soils and climates, and to date no other variety has equaled its bearing record. The plant has vigorous, dark green foliage, with heavy root system which provides a capacity for a large yield. The high sugar content of the Majestic variety makes it one of the finest for the table and canning. Extremely hardy and easily grown. Recommended for quick freezing. 25 for \$1.85; 50 for \$3.00; 100 for \$4.50; 250 for \$9.50.

Premier

This very early and standard variety has stood the test; still one of the most widely planted varieties. A great money-maker with an early crop of fruit, bringing top prices. We find it very healthy and deep-rooted. An excellent producer of large, bright red berries of firm texture. Recommended for home use or commercial sales. 25 for \$1.85; 50 for \$3.00; 100 for \$4.50; 250 for \$9.50.

Fairfax

Leading the parade of quality, Fairfax is one of the finest Strawberries in the commercial field today. Its sweet flavor and darkest red color make it a favorite for the home and roadside stand. A vigorous plant, with fruit that ripens in midseason and has a long picking season. Ideal for the home garden. 25 for \$1.85; 50 for \$3.00; 100 for \$4.50; 250 for \$9.50.

Dunlap

An old standby variety which is still extensively planted. Regarded as one of the finest Strawberries. Berries are medium size, dark red, pointed in shape. Fruit is highly flavored and ideal for canning. Plants are vigorous and tremendous yielders, resisting drought and cold weather better than most varieties. 25 for \$1.25; 50 for \$2.00; 100 for \$3.25; 250 for \$6.50.

New Way Strawberry Bed. Mark four parallel rows 25 feet long and 18 inches apart. Set plants a foot apart in each row. This bed, 25 feet long and 6 feet wide, will require just 100 plants, 25 to the row. As young runners develop, allow them to take root between mother plants so that all plants, young and old, will be spaced approximately 6 inches apart. Keep runners cut off thereafter. Mulch between plants with straw, lawn clippings, leaves, etc. Surround bed with 4-inch board on edge to make frame to hold mulch. Saves moisture, keeps down weeds and makes a good appearance.

Blueberries

GROW YOUR OWN BLUEBERRIES— PICK THEM FRESH OFF THE BUSH

Cultivated Blueberries are hardy shrubs of rare beauty; they are doubly valuable because they are fruitful and ornamental all year.

Every home garden, no matter how small, has room for at least a few of these Blueberry plants. It takes only a few to produce all the berries an ordinary family will need. As a commercial proposition it is one of the most profitable fruits to grow. There is a big market for these delicious Blueberries. They make good money in a very short time, for you can begin picking the second or third season after planting.

Blueberries are also ornamental shrubs of rare beauty. They may well be used in association with their close relatives, laurel and rhododendron. In pleasant contrast to the rich evergreen masses of the latter, Blueberries give lightness, grace, and color. Plant them in rows, in clumps on the lawn or in the shrubbery border. A hedge of Blueberries is both profitable and ornamental.

Choose a piece of ground easily supplied with moisture during dry summer months; it should not, however, at any time become water-logged. Plant in full sun if possible; they will also do well in partial shade. Be sure the soil is acid. Give only shallow cultivation, not over 2 to 3 inches deep, so as to leave the roots undisturbed.

New Blueberries

See color illustration on page 31

Cabot. The earliest variety to fruit. Plants seldom exceed 3 feet in height, making a broad, low bush. Delicious subacid flavor.

Concord. Bush of upright habit, at maturity exceeding 6 feet in height. The berries are large.

Jersey. Very large and vigorous in habit. The light blue berries are very large.

Rancocas. Slender, vigorous, upright habit, rarely surpassing 5 feet in height. The berries are earlier and larger than Rubel.

Rubel. Well-developed bushes stand 6 feet or more high. The large berries are of fine blue color; can be depended on for a good crop every year. Ripens about two weeks later than Cabot.

Stanley. New. Most delicious of all the Blueberries. Produces good yields of large berries in midseason. Bush of upright growth.

3-year-old plants, 12 to 18 in. high, any 3 for \$4.50; 12 for \$16.50

OFFER No. 8S-20

6 plants, 1 each of the above 6 varieties,
\$7.25

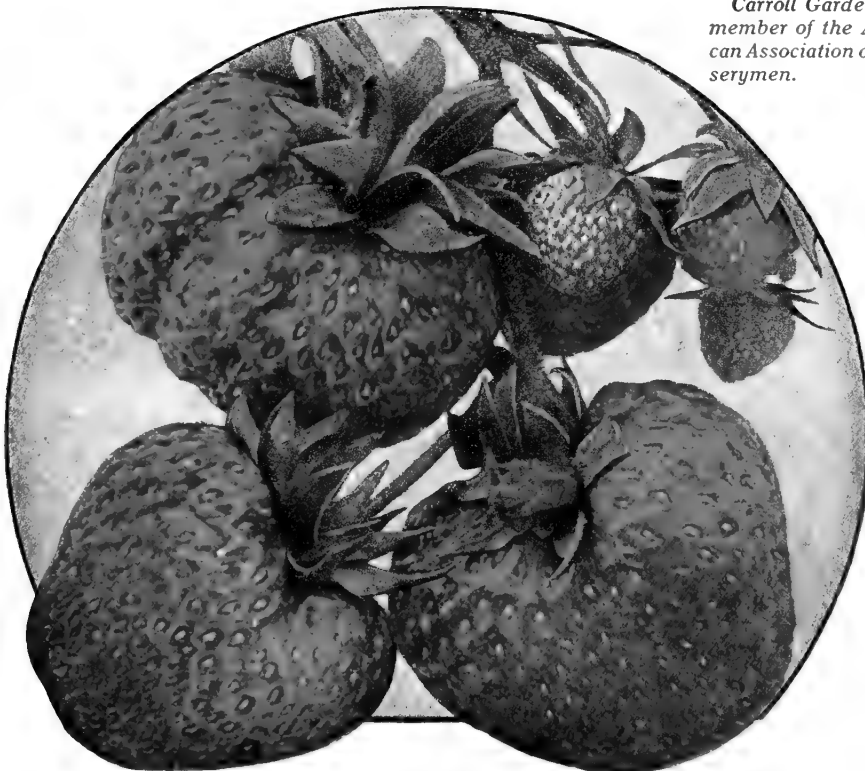


NEW BLUEBERRIES. Imagine the old-fashioned Blueberry or "Huckleberry" grown to three-quarters of an inch in diameter. That's what these new varieties will do; yield has also been increased. See page 30.

Fruits for the Home Garden



Carroll Gardens is a member of the American Association of Nurserymen.



STRAWBERRIES. See page 30.

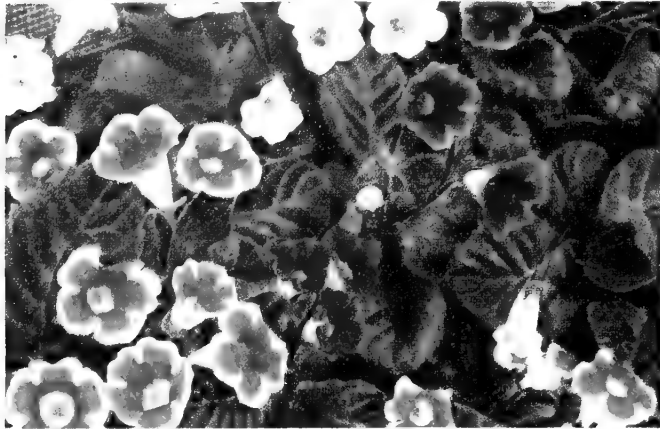
The New **Howard MIRACLE PLUM**

This is a grand new Plum far ahead of all varieties on the market. The tantalizing and delicious flavor, great size; firm, amber flesh and miniature seed, combined with the red and yellow maple-leaved color make it truly outstanding. The tree is a very fast grower. Fruit matures in July and August and keeps well for a longer time than most Plums. It is difficult to describe the taste of the new Miracle Plum. Some people compare it to pineapple; others say it is like plum and nectarine combined. All agree that it is wonderful, and from their exclamations of delight has come the name the Miracle Plum. Its introduction into commerce marks a milestone in the advance of fine fruits for the table.

**Healthy, strong plants, \$2.00 each;
3 for \$5.75; 12 for \$20.00**



MONTBRETIA. One of the brightest of the summer-flowering bulbs, giving a profusion of bloom ranging in color from golden yellow to brilliant scarlet, from July to frost. The single flowers are gracefully arranged along a clear, stiff stem about 2 feet long. A very desirable cut flower. 6 for 85c; 12 for \$1.50; 25 for \$2.85.



GLOXINIA. A splendid summer-blooming tuberous-rooted plant recommended for pot culture. Large, open, inverted bell-shaped flowers are freely borne above the velvety foliage. Mixed colors: white, blue, rose, purple, red, some self-colored, some edged, others spotted or mottled. Assorted colors. 3 for \$1.25; 12 for \$4.25.

DWARF SUMMER DAHLIAS, Unwin's Strain. Graceful, semi-double flowers in a wide range of colors, starting to bloom in early summer and continuing until frost. Strong plants, mixed colors. 3 for \$1.00; 6 for \$1.75; 12 for \$3.25; 25 for \$6.00.



ISMENE calathina (Peruvian Lily). Showy, sweet-scented, pearly white trumpet flowers borne three on a stem, similar to the amaryllis. Prefers a sunny location. Planted in May, they will commence flowering in July. 65c each; 3 for \$1.65; 12 for \$5.50.

Summer-blooming BULBS

AMARYLLIS, Giant Hybrid. Vigorous stems with several giant blooms of lily-like form. Colors range from the richest self-colors of crimson and red to pink, red, and scarlet markings on white ground. 75c each; 3 for \$2.00; 12 for \$6.75.

See fall catalog for more information on Amaryllis.

TIGRIDIA. Plant in a sunny position in flower border or bed, in well-drained soil. Set out in May, they give a continuous display of beautiful colors in midsummer. Each 2-foot stalk produces several flowers. 3 for 65c; 6 for \$1.10; 12 for \$2.00.





BEGONIA, Single Red

BEGONIA

Tuberous - rooted

Very popular for window-boxes, as house plants, and in beds in moist, shaded areas. Gigantic flowers appear uninterruptedly from July to frost. Bulbs may be lifted in autumn and stored in a cool place over winter for planting the following spring. Single: **orange, yellow, scarlet, pink, white, salmon.** Double: Same colors as single. No. 1 blooming-size bulbs. Separate colors, 3 of any one color for 75c; 12 for \$2.50. Mixed colors, single or double, 12 for \$2.25; 25 for \$4.25.

Offer No. 8S-23 for

6 bulbs, double varieties (1 each of above 6 colors but not kept separate) . . . \$1.50

Offer No. 8S-23A (2 of each)

12 bulbs for \$2.75

Offer No. 8S-23B for \$4.50

18 bulbs (3 of each). Single varieties, same price as above.

ACIDANTHERA bicolor Murielæ. New introduction from western Abyssinia. Rigid stems, 3 feet and taller, with many very sweetly scented, 4-inch, white flowers with crimson-maroon blotch. Excellent for cutting. Mid-August, September. 3 for \$1.00; 12 for \$3.50.

CALLA LILIES. Dark green foliage, spotted silvery. Grows 1½ feet tall. Planted out in April or May, will bloom in August or September. Large bulbs.

Alba maculata. Large, white. 3 for \$1.35; 12 for \$4.50.

Golden Roosevelt. Rich golden yellow. 3 for \$1.35; 12 for \$4.50.

Pink Calla. Dwarf pink. 3 for \$2.25; 12 for \$8.00.

3 bulbs (1 of each variety) for \$2.00; 6 bulbs (2 of each) for \$3.50; 9 bulbs (3 of each) for \$4.50.

OXALIS. Free-blooming plants which are fine for edging walks or flower beds and for the rock garden.

Adenophylla. Hardy Oxalis. A lovely hardy species from China, forming small, compact rosettes of foliage and dainty small, lilac-pink flowers opening in the sun. Plant in the rock garden or grow in pots in the house from end of August to November. A rare hardy variety, easily grown. Height 3 inches. 12 for \$1.25; 25 for \$2.25; \$7.50 per 100.

Lasiandra. A beautiful carmine-red. 12 for 95c; 25 for \$1.65; \$5.25 per 100. Mixed colors, 75c per doz.; 25 for \$1.25; 100 for \$4.50.

TUBEROSE. Lovely flowers of thick, wax-like texture set close to the 3-foot spike. A fine summer-blooming plant in the garden and for cutting. Rich, exotic fragrance. 6 for \$1.50; 12 for \$2.75.



This rare gem is as easy to grow as Gladiolus.
See page 32

ACIDANTHERA bicolor Murielæ



TUBEROSE



OXALIS



CALLA LILY

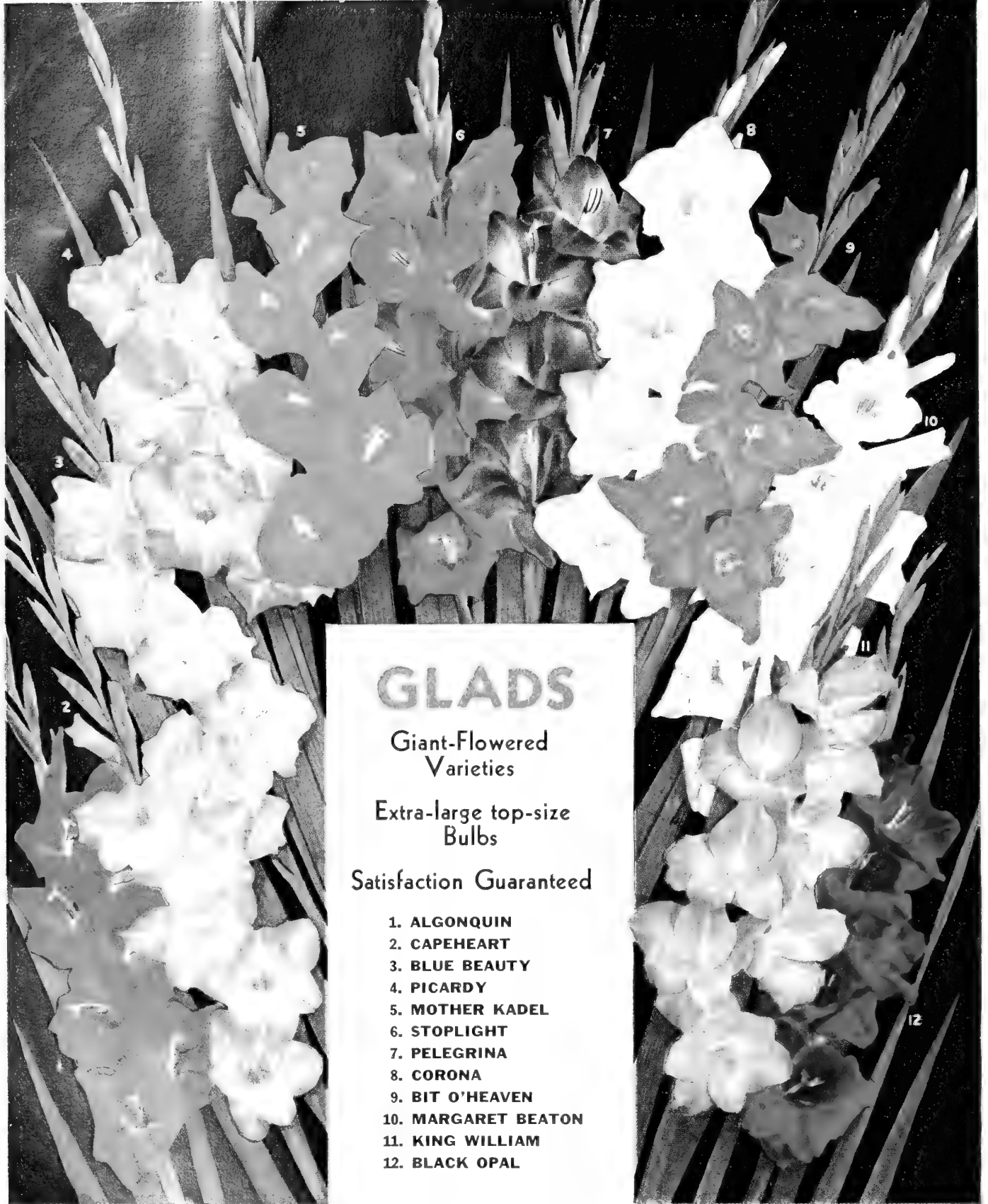


GLORIOSA LILY

A splendid low climber, easy to grow in the garden; it does well in sheltered spots out-of-doors. Grows 2 to 3 feet high, producing a dozen or more gorgeous lily-like flowers of bright yellow and red. In bloom through the summer and autumn months. Store tubers in winter like Gladiolus. 3 for \$2.75; 12 for \$10.00; \$1.00 each.



BEGONIA, Double Yellow



GLADS

Giant-Flowered
Varieties

Extra-large top-size
Bulbs

Satisfaction Guaranteed

1. ALGONQUIN
2. CAPEHEART
3. BLUE BEAUTY
4. PICARDY
5. MOTHER KADEL
6. STOPLIGHT
7. PELEGRINA
8. CORONA
9. BIT O'HEAVEN
10. MARGARET BEATON
11. KING WILLIAM
12. BLACK OPAL

COLLECTION

OFFER No. 8S-24: 12 bulbs, 1 each of the 12 varieties but not kept separate, \$1.75.

OFFER No. 8S-24A: 24 bulbs, 2 of each but not kept separate, \$3.25.

OFFER No. 8S-24B: 36 bulbs, 3 of each but not kept separate, \$4.75.

OFFER No. 8S-24C: 72 bulbs, 6 of each—each color packed separately, \$9.75.

MIXTURE

Made up of the above varieties and others. A riot of colors. All top-size bulbs. **12 for \$1.50; 25 for \$2.95; 50 for \$5.50; 100 for \$9.75.**

Price of separate varieties: 6 of any one variety 90c; 12 of any one variety \$1.65; 25 of any one variety \$3.10.

HERBS for Cooking and Sweet Fragrance

Prices on Herbs are: 3 of any one kind for \$1.25; 6 for \$2.25; 12 for \$4.25; 55c each, except where noted.

Fashions change, and so do gardening trends. Again we find the old-time herbs of our grandmothers' gardens in favor. American homemakers are rediscovering the practical value of herbs in cooking, and realizing that beauty and fragrance may be added to their flower borders by the planting of unusual, decorative, and fragrant herbs.

Most herbs have simple requirements. Average, well-drained soil in full sun will suit most varieties listed, unless otherwise noted. May we suggest that the culinary herbs especially be planted where you will have easy and frequent access to them. Then, as the occasion arises, you may easily secure a few fresh leaves for your cooking needs, and many a delightful, appetizing dish will grace your table.

PERENNIAL HERBS

BALM, Lemon (*Melissa officinalis*). 2 ft. Dark green leaves, deliciously scented like Lemon Verbena. Used for tea, or as a garnish for cool summer beverages. Rich moist soil, sun or part shade.

BERGAMOT or BEEBALM (*Monarda didyma*). 3 ft.

Cambridge Scarlet. Brilliant crimson-scarlet flowers.

Croftway Pink. This new pink Bergamot is a sturdy grower and the most exquisite, glowing rose-pink. Entirely different from any other new varieties in existence. \$1.25 each; 3 for \$3.50.

Salmon Queen. Salmon-pink flowers; delightfully fragrant foliage.

Sunset. 2 to 3 ft. A new variety with deep purple-red flowers. \$1.00 each; 3 for \$2.50.

CHIVES (*Allium Schoenoprasum*). 12 in. The smallest variety of the Onion family. Try adding the finely chopped leaves to your omelets and salads. Grow in rich soil.

COSTMARY (*Chrysanthemum Balsamita*). 3 ft. Also known as Sweet Mary, All Spice, Bible Leaf. Long, narrow, pale green leaves; yellow flowers. Reputed to repel moths. Full sun.

GERMANDER (*Teucrium Chamadys*). 12 in. An excellent edging for your herb garden. Can be clipped like boxwood. Dark, glossy, closely set leaves; rose flowers.

HELIOTROPE, HARDY (*Valeriana officinalis*). 4 ft. Showy heads of rose-tinted flowers are produced during June and July, with a delightful heliotrope fragrance.

LAVENDER-COTTON (*Santolina*). To 18 in. **S. incana**. The silver-gray foliage is attractive the entire year; button-like, yellow flowers. Full sun.

LAVENDER (*Lavandula*). 12 to 18 in.

L. vera. An herb garden is not complete without one of the forms of Lavender. This one has intensely fragrant foliage and flower-spikes. When the center buds start to open, the flower spikes are gathered and then dried. When fully dry, sachets can be made and placed with linens, to which the Lavender imparts a clean, fresh scent.

L. vera rosea. New. Similar to above, but the blooms are a delicate silvery pink.

L. vera, Twinkle Purple. A definitely improved form of *L. vera*. Compact, well-formed plants with purple flowers.

Lavender, Carroll Variety. A new form of our own, of dwarf, compact growth. Masses of lavender-purple flowers on bushy plants. The silvery gray evergreen foliage remains attractive the year round. Excellent for edging or as groups or single specimens in the hardy border and rock garden. 65c each; 3 for \$1.65; 6 for \$3.00; 12 for \$5.50; \$40.00 per 100.

MARJORAM (*Origanum*). 18 in. **Pot Marjoram** (*O. Onites*). Reddish branching plant with small clusters of pinkish flowers. Leaves are used for flavoring meat dishes and starchy foods.

MINT (*Mentha*). Mints thrive best in moist soil and part shade. The leaves are generally useful in teas, and should be brewed, not boiled. A Mint-bed is sure to prove delightful and useful.

Apple Mint (*M. rotundifolia*). Round woolly leaves; showy lavender flowers.

Apple Mint, Variegated (*M. rotundifolia variegata*). A beautiful variegated form of the preceding. Decidedly decorative in the herb garden or hardy border.

Peppermint (*M. piperita*). 2 ft. The true old-fashioned peppermint-flavored variety that is used for making tea, flavoring candy, and garnishing summer drinks.

Spearmint (*M. spicata*). A few of the uses for this fine Mint are flavoring drinks and confections, and above all, making the well-known Mint jelly to serve with lamb.

ROSEMARY (*Rosmarinus officinalis*). Tender perennial, except in the far south, but can be wintered indoors in the window garden. This indispensable herb has narrow, dark green leaves, gray beneath, of a sweet spicy fragrance. The leaves are delicious added to sandwich fillings and soups.

RUE (*Ruta graveolens*). 2½ ft. A decorative garden plant with finely cut, blue-green foliage and yellow flowers.

SAGE (*Salvia officinalis*). 2½ ft. Always attractive and interesting in the herb patch or garden. Gray, pebbly foliage; purple-blue flower-spikes. Leaves are used for flavoring meats.

SAVORY (*Satureia montana*), **Winter**. 12 in. This fine herb, of neat habit, is valuable for edging purposes or in the wall or rock garden. Used for seasoning meat dishes and soups.

SORREL (*Rumex scutatus*). The large leaves are used in omelets and salads.

TARRAGON (*Artemisia Dracunculus*). 2 ft. Narrow dark green, glossy leaves, very aromatic. This is one of the most useful of the culinary herbs, used to flavor vinegar, fish dishes, soups, and salads.

THYME (*Thymus*). Thyme, in its many forms, is one of those universally loved, fragrant plants. Some varieties are shrubby, woody types, while others are low growing and creeping. All are interesting for various garden uses, as noted. All varieties do best in well-drained, sandy soil in full sun.

Caraway-scented (*T. herba-barona*). 4 in. Trailing type, useful for flavoring beef dishes.

Common (*T. vulgaris*). 12 in. Upright, somewhat spreading habit of growth; narrow leaves and purplish flowers. The most widely used Thyme for flavoring poultry dressing.

Crimson (*T. Serpyllum coccineus*). 4 in. Prostrate, creeping habit of growth; crimson flowers. Used in wall plantings, rock gardens, and in the crevices of stone walks. Dark green foliage.

Lemon (*T. citriodorus*). 6 in. Blue-green leaves with a distinct lemon fragrance and flavor.

Lemon, Golden-edged Variegated (*T. citriodorus aureus variegatus*). The dark green leaves are edged with gold. Thick bushy plants.

Lemon, Silver-edged Variegated (*T. citriodorus argenteus variegatus*). Similar to *T. citriodorus*, but the slightly smaller leaves are margined with silver.

Pink (*T. Serpyllum carneus*). Creeping type with flesh-pink flowers.

White (*T. Serpyllum albus*). Thick close mats of bright green foliage are covered in early summer with tiny pure white flowers. Best of the creeping types for winter effect.

Woolly (*T. lanuginosus*). Gray, woolly foliage; especially good for very dry places.

WOODRUFF, SWEET (*Asperula odorata*). 4 in. An unusual ground-cover for shady places. Leaves are scented like new-mown hay, and are used in flavoring wine.

WORMWOOD (*Artemisia*). The Wormwoods are mainly ornamental foliage plants, always decorative. Many pleasing effects and contrasts will result by planting them among your other perennials.

Wormwood, Fringed (*A. frigida*). 12 in. The daintiest of the Wormwoods, with soft silvery foliage.

Silver King (*A. albulu*). 3 ft. Graceful silvery white plant, also known as "Ghost Plant." The dried foliage is attractive for winter bouquets.

SWEET-SCENTED GERANIUMS

Lemon, True, Finger Bowl (Prince Rupert; *crispum*). 12 to 18 in. One of the choicest, lemon-scented. Curious leaves with crisped edges. Pink flowers.

Rose (*graveolens*). 2½ ft. Large, much-divided leaves; rose flowers. Grandmother frequently placed a leaf in the bottom of her glasses of apple jelly, thus imparting an additional flavor.

LEMNON VERBENA (*Lippia citriodora*). A tender herb, with refreshing lemon-scented leaves. Dried leaves are excellent for teas, pot pourri, and old-fashioned sweet bags.

CHOICE AND RARE CONIFEROUS EVERGREENS

We offer young potted plants of the following varieties. The size following the name indicates the approximate height at maturity.

ARBORVITAE (Thuja)

***Occidentalis, Little Gem**. 2 ft. A dwarf variety excellent for the rock garden. 3 for \$1.00; 6 for \$1.75.

YEWS (Taxus)

Baccata fastigiata. Irish Yew. 25 ft. Symmetrical, upright growth. Not very hardy in the North.

Baccata repandens. Spreading English Yew. 3 ft. A good rock-garden variety.

Canadensis stricta. 18 in. Suitable for edging and where low plants are needed.

Cuspidata. Spreading Yew. 5 ft. One of the most commonly used evergreens for foundation and group plantings.

Cuspidata capitata. Upright Yew. 25 ft. Although this beautiful evergreen grows to 25 feet in height, it will stand much pruning, and can therefore be kept to any height or shape desired.

Cuspidata nana. Dwarf Yew. 3 ft. A popular dwarf variety for rock gardens and in front of taller evergreens.

Media. 4 ft. One of the finest of the spreading Yews. Bushy.

Media Hatfieldi. Hatfield Yew. 10 ft. Compact bush of broad, upright growth.

Media Hicksi. Hicks Yew. 15 ft. Of narrow, upright growth. This new variety will replace the old Irish Juniper where narrow, upright trees are needed.

All the above Yews, young potted plants, 4 to 10 in. high, depending upon the habit of growth of the various kinds, 4 of any one kind for \$2.00; any 12 assorted kinds for \$5.00; 100 for \$35.00.

JUNIPER (Juniperus)

Prostrata venusta. Blue Creeping Juniper. An ideal little creeping evergreen. Splendid in the rock garden. Glaucous blue foliage. 75c each; 3 for \$2.00; 6 for \$3.50.

RETINOSPORA (Chamaecyparis)

Obtusa nana. Dwarf Hinoki Cypress. 3 ft. A little gem with graceful dark green foliage. Dense, bushy growth. 75c each; 3 for \$2.00.

Pisifera squarrosa pygmaea. "Little Silver Ball." 18 in. An unusual little evergreen. Thick, bushy growth, forming small globe-shaped plants. Foliage silvery green. Fine for rock gardens. 75c each; 3 for \$2.00; 6 for \$3.50.

SHASTA DAISIES

CHRYSANTHEMUM MAXIMUM

The Shasta Daisies are among the most desirable of all cut-flower material, and are easily grown. The long-stemmed flowers are long lasting when cut. They are all nice clean whites that are unusually useful to work in with other flowers in bouquets and decorations.

5 BEAUTIFUL SHASTAS

Double Supreme
Esther Reed

Marconi
Majestic

Mt. Shasta

OFFER NO. 8S-25 : 5 plants, 1 of each, \$3.00

OFFER NO. 8S-25A: 10 plants, 2 of each, \$5.50

OFFER NO. 8S-25B: 15 plants, 3 of each, \$8.00



Shasta Daisy, Esther Reed

NOVELTY

Shasta Daisy, Aglaia

A sensational new Shasta. Large double flowers with fringed petals. Blooms nearly all summer. A sturdy grower and perfectly hardy. **3 for \$2.75; \$1.00 each.**

PYRETHRUM

(Painted Daisy)

New and Better Varieties

Pyrethrums are special favorites with us because of their simple beauty of form, their wide use as cut flowers, and their attractive appearance in the garden.

All Pyrethrums are: Any 3 for \$2.00; any 6 for \$3.75; any 12 for \$7.00, unless otherwise noted.

‡**Brilliant.** Red; almost double blooms.

‡**Crimson Glow.** The large, pure scarlet blooms are accentuated with golden yellow centers.

‡**Pink Bouquet.** A delightful pink variety with a crested center. Sold out for this spring.

‡**Rosary.** *New.* Double bright pink; known for its sturdy growth.

‡**Rose Mist.** See color illustration on page 7.

‡**Silver Tips** (Barbara Shum). *New.* The double red blossoms have tiny white markings at the tips of the petals.

‡**Single, Mixed.** A delightful strain for broad masses. 3 for \$1.25; 6 for \$2.25; 12 for \$4.25.



Shasta Daisy, Majestic

Beaute Nivelloise. A fine new Shasta Daisy with large flowers, having two rows of lacinated petals and a clear yellow center. 18 to 24 in. All summer. 3 for \$1.20; 12 for \$4.40.

Double Supreme. An outstanding new Daisy. Very hardy; excellent grower. Blooms are large, with double row of fringed petals. Blooms off and on all summer. 3 for \$1.65; 6 for \$3.00; 70c each.

Edgebrook Giant. A new variety of merit with 5 to 6-inch blooms on long straight stems. Overlapping, closely set petals with a clear yellow center. 3 for \$2.00; 85c each.

Esther Reed. Fully double white flowers of good lasting quality. The blooms are 3 to 4 inches in diameter, and come rather freely on the sturdy plants. 1½ to 2 ft. Summer and fall. 3 for \$1.50; 6 for \$2.75; 65c each.

Majestic. Large white flowers, 5 to 6 inches across, with a small yellow center, are produced intermittently throughout the summer. Petals are straight, overlapping, and do not droop, stems are stiff and stand up well. Easily grown, it withstands adverse conditions. By far the finest single Shasta Daisy. 18 to 24 in., 3 for \$2.00; 6 for \$3.75; 85c each.

Marconi. A novelty with extra-large, double flowers about 5 inches across. We have the true stock propagated from divisions and feel sure you will be pleased with it. 2 to 3 ft. All summer. 3 for \$1.65; 12 for \$6.00; 65c each.

Mt. Shasta. Full double white flowers 3 to 4 inches in diameter with a high crested center. Stems 18 to 24 inches long make it excellent for cutting. Blooms off and on all summer. 3 for \$1.65; 6 for \$3.00; 70c each.

Supreme. Extra-large, single white flowers. 2 ft. June, July. 3 for \$1.25; 6 for \$2.25.



Shasta Daisy, Supreme

Five Outstanding BUTTERFLY BUSHES (Buddleia)

Buddleia, Empire Blue. Pat. 557. Deep blue with a delicate lilac tone. 75c each; 3 for \$2.00.

Buddleia, Fascination. A hybrid of dainty coloring. 75c each; 3 for \$2.00.

Buddleia, Orchid Beauty. Well-formed spikes of bloom; delicate fragrance. 60c each; 3 for \$1.50.

Buddleia, Royal Red. Pat. 556. The closest approach to red yet achieved in Buddleias. 75c each; 3 for \$2.00.

Buddleia, White Cloud. A new white Butterfly Bush of our own origination—a truly magnificent shrub. It grows 4 to 5 feet high and develops into a very symmetrical and compact bush, producing hundreds of well-formed, pure white blooms with tiny bright yellow eyes. It is perfectly hardy, a very free bloomer and a vigorous grower. 75c each; 3 for \$2.00; 12 for \$7.50.

Newest Butterfly Bushes

Empire Blue Fascination Orchid Beauty
Royal Red White Cloud

5 Plants (1 each of above varieties) **\$3.00**
(Value \$3.60) for only

ASK FOR OFFER NO. 85-26

CLETHRA

(Sweet Pepperbush)

Alnifolia rosea. Tall spikes of foamy pink flowers on a handsome shrub covered with rich green leaves. Blooms late in summer. Nice strong potted plants, \$1.75 each; 3 for \$4.75. See illustration.



CLETHRA alnifolia rosea
(The rare pink Sweet Pepperbush)

One each of the four Buddleias illustrated on this page for \$2.50 (value \$2.85). Or you may select any 3 for \$2.00



BUDDEIA, Royal Red



BUDDEIA, Orchid Beauty



BUDDEIA, White Cloud



BUDDEIA, Fascination

Distinctive Selections of

EVERGREEN and DECIDUOUS SHRUBS

BETTER AZALEAS

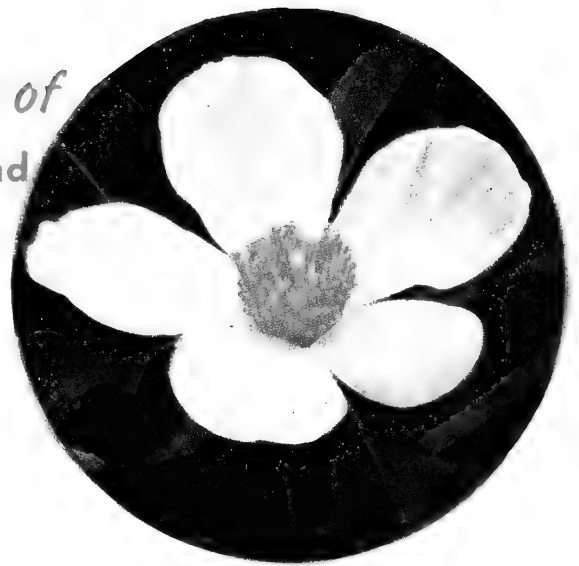
Corsage. Single; large; orchid flowers almost cover the bush. \$1.25 each; 3 for \$3.35.

Hinodegiri. The popular red Azalea. Brilliant scarlet flowers on a compact plant. \$1.00 each; 3 for \$2.75.

Sweet Brier. One of the hardiest Kurumes. Attractive rose-pink flowers. \$1.00 each; 3 for \$2.75.

OFFER No. 8S-27: 3 plants, 1 each of the above, \$3.00.

OFFER No. 8S-27A: 9 plants, 3 each of the above, \$8.00.



FRANKLINIA alatamaha. 15 ft. Short-stemmed, very fragrant, white flowers. Foliage glossy green, turning scarlet in the fall. Blooms from mid-August until frost. Strong, sure-to-grow potted plants, 12 in. or more high, \$1.65 each; 2 for \$3.00.



PYRACANTHA coccinea Lalandi. 8 ft. Beautiful evergreen shrub covered with white flowers in early spring, followed by bright orange berries which hang on nearly all winter. Nice potted plants, 75c each; 3 for \$2.00.



FORSYTHIA, Spring Glory. Loveliest of all the Golden Bells. Large pale yellow flowers completely cover the branches. 75c each; 3 for \$2.00.



VIBURNUM Burkwoodi. Outstanding new shrub. Flower-heads unusually large and deliciously fragrant. Makes a fine specimen plant. 8 to 12-in. plants, \$1.00 each; 3 for \$2.50.

VITEX macrophylla. Chaste Tree. 5 ft. Spikes of lavender-blue flowers. June to September. \$1.00 each; 3 for \$2.75.



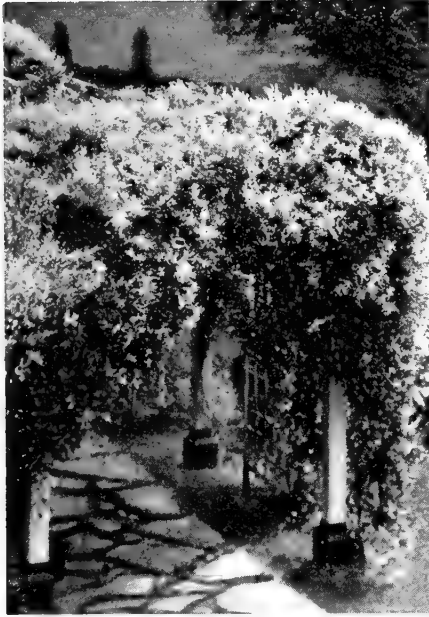
VITEX macrophylla (Chaste Tree)



AZALEA mollis

Large masses of yellow and apricot bloom in spring on 3 to 4-foot plants. Deciduous; hardy and dependable. Mixed shades only. 6 to 10-in. plants, 75c each; 3 for \$2.00; 6 for \$3.50.

DECORATIVE AND USEFUL VINES



Silver Lace Vine

AMPELOPSIS (Boston Ivy)

Veitchi. The most satisfactory vine for use on brick walls, for it clings to the smoothest surface. Glossy green leaves turn scarlet and crimson in the fall. 75c each; 3 for \$2.00.

LARGE-FLOWERING CLEMATIS

A sunny spot in fertile, well-drained soil produces the best results with these popular climbers.

Henryi. Large, creamy white blooms.

Jackmani. Rich purple. A long-time favorite.

Mme. Baron Veillard. Large lavender flowers.

Mme. Edouard Andre. Bright rosy carmine.

Most attractive

Ramona. Lavender-blue.

Any of the above Clematis, 95c each;
any 3 for \$2.65

SWEET AUTUMN CLEMATIS

Paniculata. Pure white, fragrant bloom mantles the plant in August and September. A vigorous climber producing a most graceful, showy effect. 65c each; 3 for \$1.65.

HYDRANGEA

(Climbing Hydrangea)

Petiolaris. A climber reaching 50 feet if given support; otherwise a somewhat straggling bush. Round, flat clusters of bloom. 3-in. pot-plants, \$1.00 each.

NEW HONEYSUCKLE

(Lonicera)

Goldflame. Bright flame-pink, trumpet-shaped flowers with creamy golden yellow color inside. Grows as a vine or bush and has a very long blooming season. 75c each; 3 for \$2.00.

SILVER LACE VINE

(Polygonum)

Auberti. Foamy white sprays of flowers completely cover the plant in late summer and early fall. The vigorous, hardy vines reach 25 feet in height. Easily grown; does well in sun or shade. 2-yr. plants, 75c each; 3 for \$2.00.

WISTERIA

Long-clustered Wisteria (*Wisteria multijuga*).

These varieties are most spectacular, for they produce clusters of bloom 18 to 24 inches long. Our grafted plants are sure to bloom.

Multijuga rosea. Pink.

Multijuga purpurea. Purple.

Multijuga alba. White.

Multijuga violacea-plena. Violet-blue; double.

Any of the above Wisterias, \$1.25
each; any 3 for \$3.50

Vines help to soften walls and the harsh lines of buildings. Often they can be used on fences and walls to good advantage.

DECIDUOUS FLOWERING SHRUBS

We cordially invite correspondence regarding any plants in which you may be interested, but which you do not find listed in this catalog.

Due to lack of space in this catalog, and transportation costs on the larger-sized shrubs evergreens, and flowering trees, we are listing only a few of the newer kinds, in small sizes suitable for mail orders. However, larger sizes than those listed, as well as many more varieties, are available, particularly to our local customers who can call at the nursery and to those living within the area reached by our trucks.

The size following the variety name indicates approximate height at maturity.

BUDDLEIA (Butterfly Bush)

A shrub that needs little care if planted in a sunny location in well-drained soil. Panicles of flowers are produced profusely.

Charming. 5 ft. Long sprays of lavender-pink blooms in late summer. A hardy plant that can endure cold weather. 75c each; 3 for \$2.00.

Empire Blue. See page 37.

Fascination. See color illustration on page 37.

Ile de France. 4 ft. Bright rosy purple, suffused violet. Blooms freely. 75c each; 3 for \$2.00.

Orchid Beauty. See color illustration on page 37.

Royal Red. See color illustration on page 37.

White Cloud. See color illustration on page 37.

CALLICARPA (Beauty Berry)

Purpurea. 5 ft. A gracefully branching shrub covered with small, pink-tinted flowers in August. Violet-purple berries lasting until midwinter. 75c each; 3 for \$2.00.

CYDONIA

New Flowering Quinces

Five selected varieties. Any variety, 10 to 12-in., 2-yr. field-grown plants, \$1.25 each; 3 of any one kind for \$3.50; 1 each of the 5 varieties for \$5.00.

Columbia. Flowers bright red; fruit greenish yellow, fragrant. Late.

Grandiflora rosea. Flowers lemon-colored, tinted pink, turning deep rose with age. Very large fruit; foliage bronze-tipped.

Grandiflora rubra. An early bloomer, and a favorite. Large, deep red flowers.

Moerloosei. Pink and white. Blooms late.

Nivalis. Blooms large, snowy white.

CARYOPTERIS (Blue Spirea)

Blue Mist. Covered from August until autumn frost with clusters of powdery blue fringed flowers. Perfectly hardy. Truly an outstanding shrub for late summer bloom. 75c each; 3 for \$2.00; 12 for \$7.50.

CLETHRA alnifolia rosea. See page 37.

ELSHOLTZIA (Mintshrub)

Farquhari. 2 ft. Dense spikes of bright pink flowers in late summer. Aromatic foliage and flowers. Blooms best if planted in a sunny location. Potted plants, 65c each; 3 for \$1.65.

FORSYTHIA. See page 38.

FRANKLINIA (Gordonia) alataamaha. See color illustration, page 38.

HYPERICUM (St. Johns-Wort)

Moserianum. Large, golden yellow flowers all summer. A hardy shrub, easily grown. 50c each; 3 for \$1.25; 12 for \$4.00.

POTENTILLA

Fruticosa Purdomi. Lemon Drops. A small shrub 2 feet high, blooming continuously from May to September. Excellent for the rock garden or in front of taller-growing shrubbery. Bright sulphur-yellow blooms. 75c each; 3 for \$2.00; 12 for \$7.50; \$50.00 per 100.



Hypericum (St. Johns-Wort)

HARDY OUTDOOR FERNS



Cinnamon Fern

Six of the finest varieties. Ideal plants for shady spots in the garden.

MAIDENHAIR FERN. One of the most distinct and beautiful Ferns. Prefers a moist, shady location.

LADY FERN. Exceedingly showy and vigorous. Shade.

TOOTHED WOODFERN. Almost evergreen. Fine effects when massed. Shade.

CINNAMON FERN. Strong, vigorous growing, suited to varied locations. Shade or semi-shade.

CHRISTMAS FERN. Evergreen. Extremely ornamental for massing in shade or partial shade.

OSTRICH FERN. Bold growing, usually along streams. Very ornamental in a moist, shady location.

The above Ferns are 50c each; 3 of one kind \$1.25; 12 for \$4.25

Special Collection: OFFER No. 8S-28: 1 of each variety \$2.50
 OFFER No. 8S-28A: 3 of each variety \$6.00

WILD FLOWERS *Deserve a Place in Your Garden*

These ten varieties provide a wonderful selection.

CYPRIPEDIUM. Lady Slipper. These natives can be made a part of a woodland garden or some shady corner of your garden where the soil is moist.

Acaule. Pink.

Pubescens. Yellow.

Spectabile. Charming pink species.

HEPATICIA (*Anemone hepatica*). A ground-cover for moist shaded places around the home and the rock garden.

MERTENSIA virginica. Virginia Bluebells. 15 in. The loveliest of all blue spring-flowering plants. Plant them in broad masses with daffodils. Fall delivery only.

SANGUINARIA canadensis. Bloodroot. Deciduous. Large, pure white flowers in early spring. Large, leathery leaves appear later. Plant in clumps in the shady rock garden.

SHORTIA galacifolia. Oconee-Bells. Rare evergreen ground-cover with leaves bright green. Flowers dainty creamy white, bell-shaped. March and April. Requires a moist, shady location. 3 for \$1.75; 6 for \$3.25; 12 for \$6.00.

TRILLIUM grandiflorum. The welcome white blooms of this early spring native plant are indispensable in the shady garden.

Sessile luteum. Yellow. This plant requires no care when given its two requirements—shade and fairly loose woods soil. The leaves are large and broadly ovate, being dark mottled green. Flowers are lemon-yellow and have a long blooming season in April and May.

Stylosum. A desirable rare mountain species. Large, nodding, rose-pink flowers in early spring. Plant in semi-shade in woodland, border or rock garden.

The above varieties are 50c each; 3 for \$1.25; 12 for \$4.25, except where noted

Special Collection

OFFER No. 8S-29: 1 each of the 10 varieties . . \$4.00

OFFER No. 8S-29A: 2 each of the 10 varieties . . \$7.00

OFFER No. 8S-29B: 3 each of the 10 varieties . . \$10.00



Trillium grandiflorum



PARTIAL VIEW OF OUR CHRYSANTHEMUM FIELD

Hardy Chrysanthemums

Hardy Chrysanthemums are among the most dependable flowers in the autumn garden, providing glorious color and spicy fragrance from early September (August with some varieties) until heavy frost.

There are Chrysanthemums of many types, from the Cushion Mums for low mounds of color in borders and rock gardens to the long-stemmed kinds for cutting.

We feel that we have one of America's finest and most up-to-date Chrysanthemum collections. Our list includes selected varieties from the University of Minnesota, University of Chicago, and Bristol collections, and from several other sources in different parts of the country, including some of our own introductions.

Due to lack of space, we are listing only the most important varieties that we have. Many other sorts are available. Write us if you are interested in them.

CULTURE. Chrysanthemums will grow in any good average garden soil which has been enriched with manure or good commercial fertilizer. Plant them 15 to 18 inches apart. Cultivate the soil between them, particularly while they are in the young stage. You can pinch the plants up to July 15 if they are tall and spindly. Don't pinch any more after that date. Hardy Chrysanthemums do best if grown in full sun. If they are planted in the shade, they will grow too tall, have weak stems, and produce inferior blooms.

Here are the best in their Color Class

RED COLLECTION

Courageous	Mrs. C. R. Hasting	Valiant
Glowing Coals	Red Riding Hood	Violet
Hearthfire	Twilight	

OFFER No. 8S-30: 8 plants, 1 each of the 8 varieties, \$4.50

WHITE COLLECTION

Candlelight	Drifted Snow
Chris Columbus	White Wonder

OFFER No. 8S-31: 4 plants, 1 each of the 4 varieties, \$2.25

YELLOW COLLECTION

Charles Nye	Meadow Gold	Zantha	Goldlocks
Gold	Yellow Avalanche		

OFFER No. 8S-32: 5 plants, 1 each of the 5 varieties, \$2.75

BRONZE COLLECTION

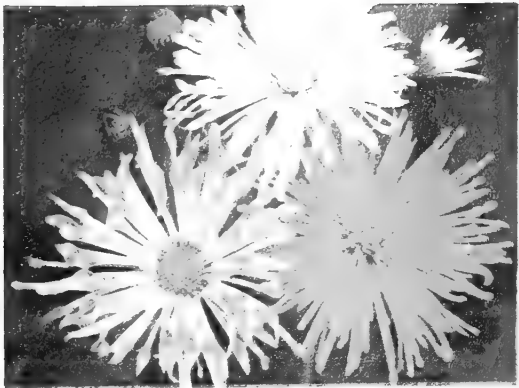
Autumn Tide	Fred F. Rockwell	Olive Greenhead
Evening Sun, (Single)		Southern

OFFER No. 8S-33: 5 plants, 1 each of the 5 varieties, \$3.00

PINK COLLECTION

Barbara Small	Murmurs	Winsome Sing
Betty	Tiffany Rose	

OFFER No. 8S-34: 5 plants, 1 each of the 5 varieties, \$2.50



Lovely Free-blooming "Spoons"

See page 45.

Here
Are
a Few
Good
"Mum"
Collections



LAVENDER LADY

3 for \$1.25. See page 45.

**"SPOON"
COLLECTION**

Pink Spoon White Spoon
Yellow Spoon

OFFER NO. 8S-35

3 Plants, 1 each of the 3 colors

\$1.25

See page 45.

**JEWEL
COLLECTION**

OrchidJewel WhiteJewel
PurpleJewel YellowJewel

OFFER NO. 8S-36

4 Plants, 1 each of the 4 colors

\$2.00

See page 46.

**Four Splendid
Single Mums**

Dubonnet Primula
Evening Sun Winsome

OFFER NO. 8S-37

4 Plants, 1 each of the
4 varieties

\$2.00

OFFER NO. 8S-37A

12 Plants,
3 of each

\$4.50



APRICOT GLOW CUSHION MUM

3 for \$1.25. See page 46.



ORCHID JEWEL

See page 46.



PRIMULA

3 for \$1.25. See page 46.



EVENING SUN

DUBONNET

WINSOME

Each variety, 3 for \$1.25. See page 46.



SOUTHWIND



COURAGEOUS

*Carroll Gardens
is a member of the
American Association
of Nurserymen.*

BETTY. Double blooms of apple-blossom-pink with deeper center. Long stems, fine for cutting. 2½ ft. Early October. 3 for \$1.25; 6 for \$2.25; 50c each.

COURAGEOUS. Dark ruby-red, large, double flowers. Strong, healthy plant. 2 ft. Mid-September. 3 for \$1.25; 6 for \$2.25; 50c each.

ELSIE. Single blooms 3½ inches across; buttercup-yellow. 2½ ft. Early October. 3 for \$1.25; 6 for \$2.25; 50c each.

LOLA. Large, double flowers of glittering gold. Very attractive. 2½ ft. September. 3 for \$1.25; 6 for \$2.25; 50c each.

SOUTHWIND. Large, Chinese-red blooms toned salmon-huff, borne in large masses on sturdy, much-branched plants. 20 in. Late September. 3 for \$2.00; 6 for \$3.75; 75c each.

**OFFER
NO. 8S-38**

**5 Plants, 1 each of
the 5 varieties
for
\$2.75**

(Top) **ELSIE**
(Left) **LOLA**
(Bottom) **BETTY**



6

Early- Blooming MUMS



VIOLET



(Top) **MURMURS** and (Below) **POLAR ICE**



EUGENE A. WANDER

The varieties pictured here are among those that start the Chrysanthemum season. All will be in full bloom in September, and some begin to flower as early as August. This collection offers a splendid range of color and will form a good basis for a Chrysanthemum garden.

Autumn Song. Large, wine-rose flowers shading to carmine. Outstanding in every way. 2 ft. Mid-September. 3 for \$2.00; 75c each.

Eugene A. Wander. Extra large, double blooms of glistening yellow, 4 inches across. The finest early bright yellow. 1½ ft. Late August. 3 for \$1.25; 50c each.

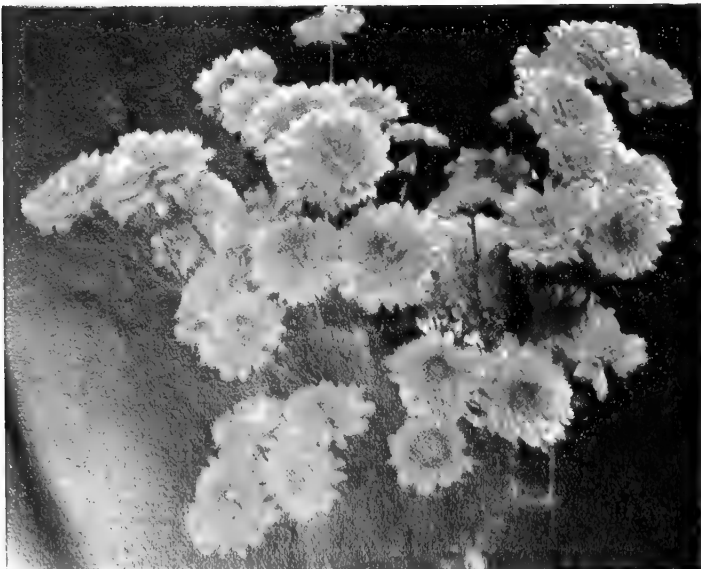
Meadow Gold. Large double flowers 3 inches or more across. Soft light yellow. 1½ to 2 ft. Late September. 3 for \$1.65; 6 for \$3.00; 65c each.

Murmurs. Amaranth-pink buds changing to clear mallow-purple. Broad, incurved petals. Very early, starting to bloom about the first of September. 1½ to 2 ft. 3 for \$2.00; 6 for \$3.75; 75c each.

Polar Ice. Clear blue-white without a trace of cream color; 3 inches in diameter. Very free flowering. 1½ to 2 ft. September 1. 3 for \$1.25; 6 for \$2.25; 50c each.

Violet. Full double, dahlia-like bloom of good color and substance. 2 ft. Late August. 3 for \$1.25; 6 for \$2.25; 50c each.

Offer No. 8S-39: 6 PLANTS, 1 each of the 6 varieties, **\$2.75**



AUTUMN SONG



MEADOW GOLD

Hardy Chrysanthemums—3 Bristol Novelties for 1948

Carnival. Distinct among its garden companions throughout the long Mum season is this gay newcomer. "Glowing burnt-orange" best describes the play of bronze, red and golden bronze shades; literally it gleams. The full double blooms, 3½ inches across, carried on long, slender, nicely branched sprays, are perfect for cut arrangements, and the heavily branched plant is amazingly productive. With dark green foliage carried right down to the ground, the plant alone is a garden ornament. 2½ to 3 ft. October 10. 3 for \$2.75; 12 for \$10.00; \$1.00 each.

Karl A. Reiche. This trim, tidy little pompon, tested over several years under all conditions, soil and weather, is without question one of the most durable and hardy of all garden pompons. It is a densely branched, erect-growing, shapely, 2-foot plant loaded with bloom from late September on, surviving the killing frosts that mar other varieties. The color is a unique art blending of old-rose, red, mauve and ripe strawberry shades. Deserves its own special spot in the garden. 3 for \$2.00; 12 for \$7.50; 75c each.

Mellow Glow. Mellow indeed is this matchless suffusion of soft orange-buff, peach-pink and bronze nasturtium tints. Briefly, it is a "bronze with personality" and by far the most appealing Mum we have seen in its color. A sturdy, upright-growing, nice green plant with an abundance of 2½ to 3-inch, full double blooms on well-branched sprays. Splendid for cutting. 2½ ft. October 5. 3 for \$2.00; 12 for \$7.50; 75c each.

Special: OFFER No. 8S-K: 1 each \$2.00 of the 3 for \$2.00

General List of Hardy Chrysanthemums

Any except where noted, any 3 for \$1.25; any 6 for \$2.25; any 12 for \$4.25; 50c each.

Allegro. Glowing shrimp-pink suffused with coppery salmon. 2 ft. October.

Apple Blossom. Medium double flowers of a lovely pale pink tint. 2½ ft. Late September on. See color illustration on page 47. 3 for \$2.00; 6 for \$3.75; 75c each.

Autumnside. Double. Early blooms vary from rich burnt-orange to vermilion and gradually change to apricot blended with coral, with a golden undertone. 1½ ft. Mid-September on.

Avalanche. Large, well-formed, double white flowers. 2½ to 3 ft. Late September.

Aviator. Double, medium-sized flowers of rich coppery red. A vigorous and easy grower. 2 to 3 ft. Early October.

Barbara Small. Large, double blooms of dark lavender-pink with deeper center. Stiff, upright stems. 2½ to 3 ft. Late September on.

Betty. See color illustration on page 43.

Bokhara. Blending of soft crimson and wine shades. Full double, perfectly formed flowers on stiff, well-branched stems. Very hardy, upright plants. 2 ft. October 10. See color illustration on page 47. 3 for \$2.00; 6 for \$3.75; 75c each.

Bronze Pyramid. Large double blooms on a tall plant. Glowing deep bronze. Rather late blooming. 3 for \$2.00; 6 for \$3.75; 75c each.

Burma. Large, double; glistening bronze with soft orange tints and coppery overtones. Late September on. 3 for \$2.00; 6 for \$3.75; 75c each.

Charles Nye. Multitudes of dome-shaped, shining golden yellow flowers on sturdy, upright stems. 1½ to 2 ft. Late September to early. See color illustration on page 47.

Chippewa. Giant, bright aster-purple flowers, slightly incurved. Does especially well in the North. 2 ft. Early September. 3 for \$1.60; 60c each.

Chris Columbus. A most attractive white with cream center. Sturdy grower and free bloomer. 2 to 3½ ft. Early October.

Egg Shell. A distinct egg-shell shade, slightly deeper in the center. Flowers 3½ inches across. Strong stems. 3 ft. Late September.

Elsie. See color illustration on page 43.

Eugene A. Wander. See color illustration on page 44.

Eureka Giant. Semi-double, 2½-inch blooms of brilliant golden orange. Strong, compact plants spreading 18 to 24 inches. Early October.

Garnet. One of the darkest red Chrysanthemums. The fully double, shaggy blooms are 2½ to 3 inches across. A very free bloomer. 2 ft. October 10.

Gold. Large double yellow. Very free bloomer and excellent as a cut flower. 2 to 3 ft. Late.

Harbor Lights. Soft yellow and creamy white tints; double. 2 ft. Late September.

Ida Brewster. Large, brilliant crimson flowers with yellow center; semi-double. 3 ft. October 10. 3 for \$2.00; 6 for \$3.75; 75c each.

King Midas. Double flowers 4 inches across, of soft yellow, sometimes touched with bronze. Strong, free-blooming plants. 2 to 3 ft. Late September.

Korean Princess. Pat. 640. The first anemone-flowered Hybrid Korean Mum. Shapely blooms, 2½ inches across, of rich bronze-red with golden bronze cushion center, changing to soft strawberry-crimson. 2 ft. Mid-October. 3 for \$2.00; 6 for \$3.75; 75c each.

Lavender Lady. Double; true lavender, in graceful sprays. Fine branching plants. 3 ft. Early October. See color illustration on page 42.

Lola. See color illustration on page 43.

Mandalay. Brilliant orange-bronze; fine for cutting. 2 ft. Mid-September.

Maroon 'n' Gold. Very large, fully double blooms, beautifully blended mahogany and maroon with golden reverse. 1½ ft. Late August on.

Meadow Gold. See color illustration on page 44.

Mme. Chiang Kai-shek. Pat. 634. Well-formed flowers with stiff petals of old-gold. 2 to 2½ ft. Late August on. 3 for \$2.75; 12 for \$8.50; \$1.00 each.

Mrs. Pierre S. du Pont III. A blend of peach-pink, rosy salmon and fawn. Fine for cutting. Rich butternut fragrance. Strong, healthy grower. 2 ft. Early October.

Olive Longland. Apricot-toned, salmon-pink flowers 3 inches across. 2 ft. Late September. See color illustration on page 47.

Pink Radiance. Three-inch blooms of Radiance pink. A lovely and free bloomer. 2 ft. Late September.

Polar Ice. See color illustration on page 44.

Red Riding Hood. Fully double flowers 3½ inches in diameter, of iridescent bright red. Strong growth. 2 to 2½ ft. Early October.

Red Velvet. Double flowers of medium size, opening velvety crimson and becoming darker. Rich fragrance. 2 ft. Early October.

September Dawn. Double pink flowers about 3 inches across. Hardy, vigorous and free flowering. 2 ft. Mid-September.

Sunape. A new golden yellow developed by Prof. Holley of the University of New Hampshire. Outstanding in our trials. 2 ft. Early September.

Symphony. Three-inch, double blooms of mauve-rose overcast with soft coppery rose. 3 to 4 ft. Early October.

The Chief. Large, semi-double flowers of bright scarlet and gold. 3 ft. Mid-October.

Tiffany Rose. Double, 3-inch, deep rose flowers with faint cream undertones, with a golden halo at the base. 2 ft. Late September.

Violet. See color illustration on page 44.

White Knight. Large double white blooms 3 inches in diameter, with a slight creamy tinge at the center. Loose, upright plant. 2 ft. Mid-September.

Yellow Avalanche. Large, fluffy, double flowers of brilliant soft yellow. A sport of the popular Avalanche. 2 ft. Early September. 3 for \$2.00; 6 for \$3.75; 75c each.

Yellow Emperor. Semi-double, golden yellow blooms. 1½ to 2 ft. Late September on. 3 for \$2.00; 6 for \$3.75; 75c each.

Zantha (Goldilocks). Well-formed, ball-shaped flowers of canary-yellow. Very fine. 2 ft. Early September. 3 for \$2.00; 6 for \$3.75; 75c each.

Spoon Chrysanthemums

An interesting type with dainty single and semi-double flowers. The petals are tubular, flattening out near the tip so that each petal resembles a miniature spoon. 2 to 3 ft. All come into bloom in early October.

See color illustration, page 42.

Bronze Spoon. Bronze.

Jasper Spoon. Yellow tubes with red spoons.

Orchid Spoon. Light pinkish lilac.

Pink Spoon. Improved semi-double pink.

Rose Spoon. Luminous old-rose.

Red Spoon. Very beautiful. Late.

White Spoon. Double; white with creamy center.

Yellow Spoon. Double; brilliant yellow.

Any of the above, 3 for \$1.25; 6 for \$2.25; 12 for \$4.25; 50c each.



Chrysanthemum Border

Outstanding New Chrysanthemums from the University of Chicago

Autumn Song. See color illustration on page 44.

Calcite. Hundreds of double flowers in graceful sprays, excellent for cutting. White with pale sulphur-yellow center. 2 ft. Late September.

Candlelight. Double; creamy white. Prolific bloomer. 2 ft. Late August.

Courageous. See color illustration on page 43.

Drifted Snow. A mound of large, double white flowers shaded yellow at center. 2 ft. Late September.

Early Harvest. Double blooms of glowing mahogany-orange. One of the best early bronze Mums. 1½ ft. Late August to October.

Glowing Coals. Bright deep cherry-red with orange reverse. Nice habit; well-branched sprays. 26 in. Early October.

Heatherbloom. Very double, heather-pink flowers; center shaded rose-red with gold tipping. 2 ft. Early September to November.

Hearthfire. Double, bright red flowers showing a small yellow center when fully open. Excellent for cutting. 2 ft. Late September to frost. See color illustration on page 47. 3 for \$2.00; 6 for \$3.75; 75c each.

Murmurs. See color illustration on page 44.

Snowfall. Double white flowers, slightly tinted cream in center. 1½ to 2 ft. Late September. 3 for \$2.00; 6 for \$3.75; 75c each.

Southwind. See color illustration on page 43.

Tangerine. Beautiful orange-bronze, large, fluffy flowers, distinctively different. 2 ft. Late September on. 3 for \$2.00; 6 for \$3.75; 75c each.

Twilight. Large double blooms of attractive fuchsia-purple; center petals curve inward. 2 ft. Late September on. 3 for \$2.00; 6 for \$3.75; 75c each.

Valiant. Semi-double flower with long petals of bright rose-scarlet and small bright golden center. An outstanding novelty, greatly admired. 2 ft. Late September on. 3 for \$2.00; 6 for \$3.75; 75c each.

Any of the above, except where noted, any 3 for \$1.25; any 6 for \$2.25; any 12 for \$4.25; 50c each.

Any 3 of the 75c varieties for \$2.00

New English Mums. See back cover.

Button-flowered varieties

Irene. Dainty little pure white buttons. Without a doubt the finest white button. 2 ft. Early October.

Judith Anderson. Well-rounded, 1½-inch blooms of clear buttercup-yellow. A fine little show plant as well as a good garden variety. 2 ft. Early October.

Ouray. Masses of rich bronze flowers with a coppery glow. A reliable, hardy variety. 2½ ft. Early October.

Yellow Irene. Same as Irene but the color is a lovely pale yellow.

Any of the above, any 3 for \$1.25; any 6 for \$2.25; any 12 for \$4.25; 50c each

The New Jewel Mums

These are healthy growers and very free bloomers. The flowers are ball-shaped, averaging 1½ to 2 inches in diameter and come on stiff, long stems; excellent for cut-flower use. Height is about 3 feet. In full bloom in early October.

Orchid Jewel. See **White Jewel.**

color illus. on page 42. **Yellow Jewel.** Yellow with bronze undertones.

Purple Jewel.

Any of the above, any 3 for \$1.65; any 6 for \$3.00; any 12 for \$5.00; 60c each

CHRYSANTHEMUMS, continued

Newer Azalea or Cushion Mums

Apricot Glow. Double, 2½-inch, apricot-bronze flowers, nicely formed and produced in abundance. Grows about 18 inches tall and spreads 2½ to 3 feet; a symmetrical and graceful plant. Very hardy. Begins to bloom early and continues all autumn. See color illustration on page 42. 3 for \$1.75; 65c each.

Aurora. Combination of red, bronze and yellow. 14 in. Late August.

Dahliaium. Quilled petals like a cactus dahlia, of bright wine-red. 1½ ft. September on.

Early Harvest. Masses of mahogany-orange flowers, large and fully double. 15 to 18 in. Early September. 3 for \$1.65; 60c each.

Early Major Cushion. A new pink form of very compact growth and free-blooming habit. 15 in. September. 3 for \$1.65; 60c each.

Nanook. Dwarf, compact plant with medium double, white flowers. Free blooming. 15 in. September, October. 3 for \$1.65; 60c each.

Newman Yellow. The most-admired yellow cushion Mum in our collection. A most brilliant color. 15 in. 3 for \$2.00; 75c each.

Pink Cushion Improved. Deeper color than the old Pink Cushion or Azaleamum.

Serene. Lovely semi-double; white tinted with peach. Vigorous and very hardy. Early October.

Spitfire. Brilliant red. Bushy grower and very free bloomer. 1½ ft. September on.

Supreme Yellow. Very bright yellow flowers on cushion-like plants. A profuse bloomer. Early September until frost.

Any of the above, except where noted, any 3 for \$1.25; any 6 for \$2.25; any 12 for \$4.25; 50c each.

Collection of Newer Cushion Mums

Apricot Glow	Early Major Cushion
Early Harvest	Nanook
	Newman Yellow

OFFER NO. 8S-40: 5 plants, 1 each of the 5 varieties, \$2.50.

OFFER NO. 8S-40A: 15 plants, 3 of each, \$5.75.

Single or Daisy Type Mums

Evening Sun. Large single flowers carried erect on shapely, well-rounded plants. Carnelian-red shading to burnt-orange with golden center and lemon-yellow halo. 2 ft. Late September on. See color illustration on page 42.

Nancy. Large single flowers of bright crimson at first opening, changing to deep pink. 1½ ft. Early October.

North Star. Single, pure white flowers. Early, and extremely hardy. 2 ft. September.

Primula. Lovely single, lemon-yellow flowers 2 inches in diameter, in a long, much-branched cluster. Very free flowering. 2½ ft. Late September to November. See color illustration on page 42.

Red Bank. Nearly single, 2 to 2½ inches across; clear bright red with yellow center. The mass effect is very brilliant. 18 to 20 in. Mid-September to late October.

Summertime. Pat. 689. Brilliant yellow, single flowers, 2 inches or more across. Noticeably fragrant. Compact plant, 20 inches high and over 2 feet wide. Mid-July to October. 3 for \$2.00; 6 for \$3.75; 75c each.

Super-Hardy Daisy Mum Arcticum Hybrids

Dubonnet. Lovely single amaranth-pink blooms with beautiful glossy foliage. Insect and frost resistant. See color illustration on page 42.

Pollyanna. Graceful single flowers of luminous Mayflower-pink with a rosy salmon sheen. Vigorous; perfectly hardy.

Winsome. Soft peach-blossom-pink. Hardy and very free flowering. See color illustration on page 42.

Any of the above, except where noted, any 3 for \$1.25; any 6 for \$2.25; any 12 for \$4.25; 50c each.

Five Cushion Pompons

Cushion-like plants completely covered with ball-shaped, 1 to 1½-inch blooms. Ideal for border and rock garden. 15 to 24 in. September.

Dwarf Jewel. A Jewel type flower on a compact, cushion-shaped plant. Soft lavender blooms, just as perfectly formed as Jewel but larger and borne in enormous quantities. Height about 14 inches and width 20 inches. Late September.

Lavender Lassie. Like Lavender Lady but in a smaller pompon form. Two-inch, lavender flowers. Height 2 feet; width 2 to 2½ feet. Mid-September.

September Bronze. Shapely little pompons of golden bronze shading to a warmer bronze, completely covering the plant. 1½ ft. Mid-September.

September Cloud. Beautifully rounded, white blooms with primrose shading in the center. Very free blooming. 1½ ft. Mid-September.

September Gold. Huge sprays of brilliant golden yellow flowers cover the plants. 1½ ft. Mid-September.

Any of the above, except where noted, any 3 for \$1.25; any 6 for \$2.25; any 12 for \$4.25; 50c each.

OFFER NO. 8S-41: 5 plants, 1 each of the 5 varieties, \$2.00.

OFFER NO. 8S-41A: 15 plants, 3 of each, \$4.75.

Seven Lovely Pompons

Ball-shaped flowers averaging 1½ to 2 inches across, carried on 2 to 4-foot plants.

Captain Cook. Clear deep rose-colored petals, tipped with golden bronze. A dependable old variety. 4 ft. Late October.

Fred F. Rockwell. Pat. 718. A gorgeous blend of bronze and orange-scarlet. Often has as many as 75 blooms in a single spray. Very hardy. 2 ft. Early October. See color illustration on page 47. 3 for \$2.00; 75c each.

Pink Doty. Light pink pompon on long stems. 3 to 3½ ft. Mid-October.

Rembrandt. Rosy mauve tinted copper and suffused with strawberry color. 1½ to 2 ft. October.

Ruby Pompon. Ruby-crimson blooms in large sprays on upright plants. A fine bloomer. 2½ ft. Early October.

White Doty. Large heads of pure white pompons on tall, straight spikes. Fine for cutting. Late.

White Wonder. Exquisitely formed, ball-shaped blooms of soft creamy white, opening to a crisp clean white. Heavily branched sprays. Very sturdy plant. 3 ft. Late September. 3 for \$2.00; 6 for \$3.75; 75c each.

Any of the above, except where noted, any 3 for \$1.25; any 6 for \$2.25; any 12 for \$4.25; 50c each.

Daffodil and Tulip Time at Carroll Gardens

Plan now to visit our gardens in May to see one of America's finest collections of new and better Daffodils, Tulips and other spring-flowering bulbs. You will see many novelties in bloom produced by bulbs that were sent to us by one of Holland's leading hybridizers. Of course, those who live too far away to visit our gardens will have to watch for these new varieties in our fall catalog, which will feature many of them. It will pay you to see this catalog before placing your 1948 fall order.

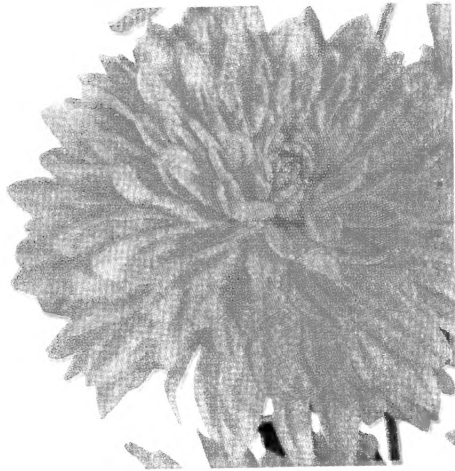
Here Are 6 Newer MUMS



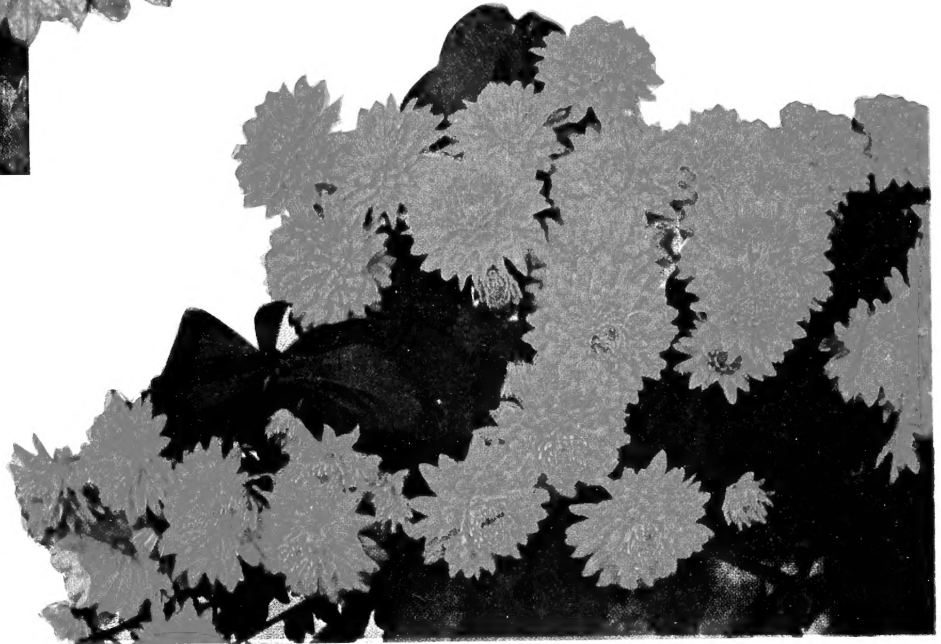
BOKHARA. 3 for \$2.00.



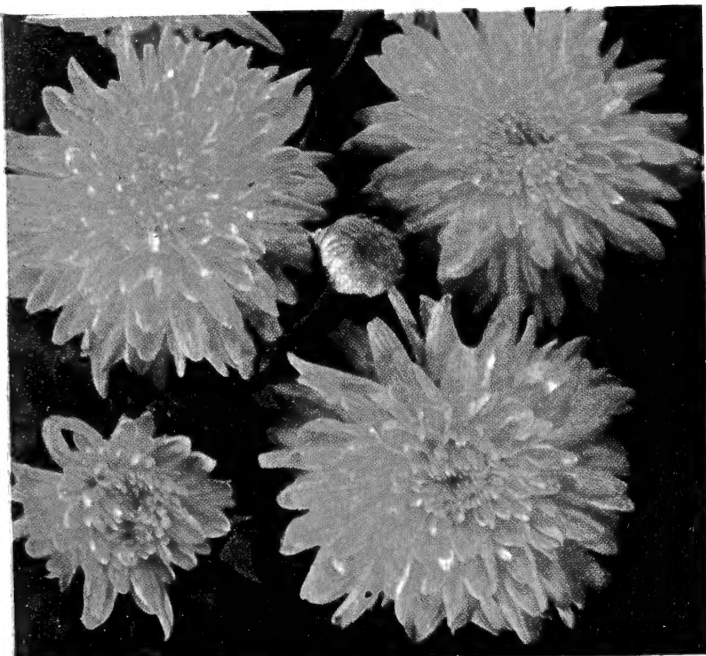
HEARTHFIRE. 3 for \$2.00.



OLIVE LONGLAND. 3 for \$1.25.



FRED F. ROCKWELL. 3 for \$2.00.



CHARLES NYE. 3 for \$1.50.

**Offer
No. 8S-42**
6 plants,
1 each of these
6 varieties
\$3.85

**Offer
No. 8S-42A**
18 plants,
6 each of these
6 varieties
\$8.50

See pages 45 and 46 for descriptions.



APPLE BLOSSOM. 3 for \$2.00.



LEDA

ROSE PRINCESS

GOLD MINE

INDIANA

New English Chrysanthemum

OFFER No. 8S-43: 6 plants, 1 each of the 6 varieties, \$2.75

ALABASTER. Extra large, 5-inch, incurved wide blooms of snowy white. Early.

GARNET GEM. Fairly large, double flowers of glowing maroon-red. One of the finest Chrysanthemums in our garden last fall.

GOLD MINE. Gleaming yellow blooms of good size. Very showy.

INDIANA. Another beauty with large crimson flowers; center darker.

LEDA. Large blooms of lavender-pink. Very much admired.

ROSE PRINCESS. Striking salmon-rose, flushed gold at base.

Prices of the 6 varieties listed: Any 3 for \$1.50; any 6 for \$2.75; any 12 for \$4.50

OFFER No. 8S-44: 1 each of the 4 illustrated for \$2.00