

Historic, Archive Document

Do not assume content reflects current scientific knowledge, policies, or practices.

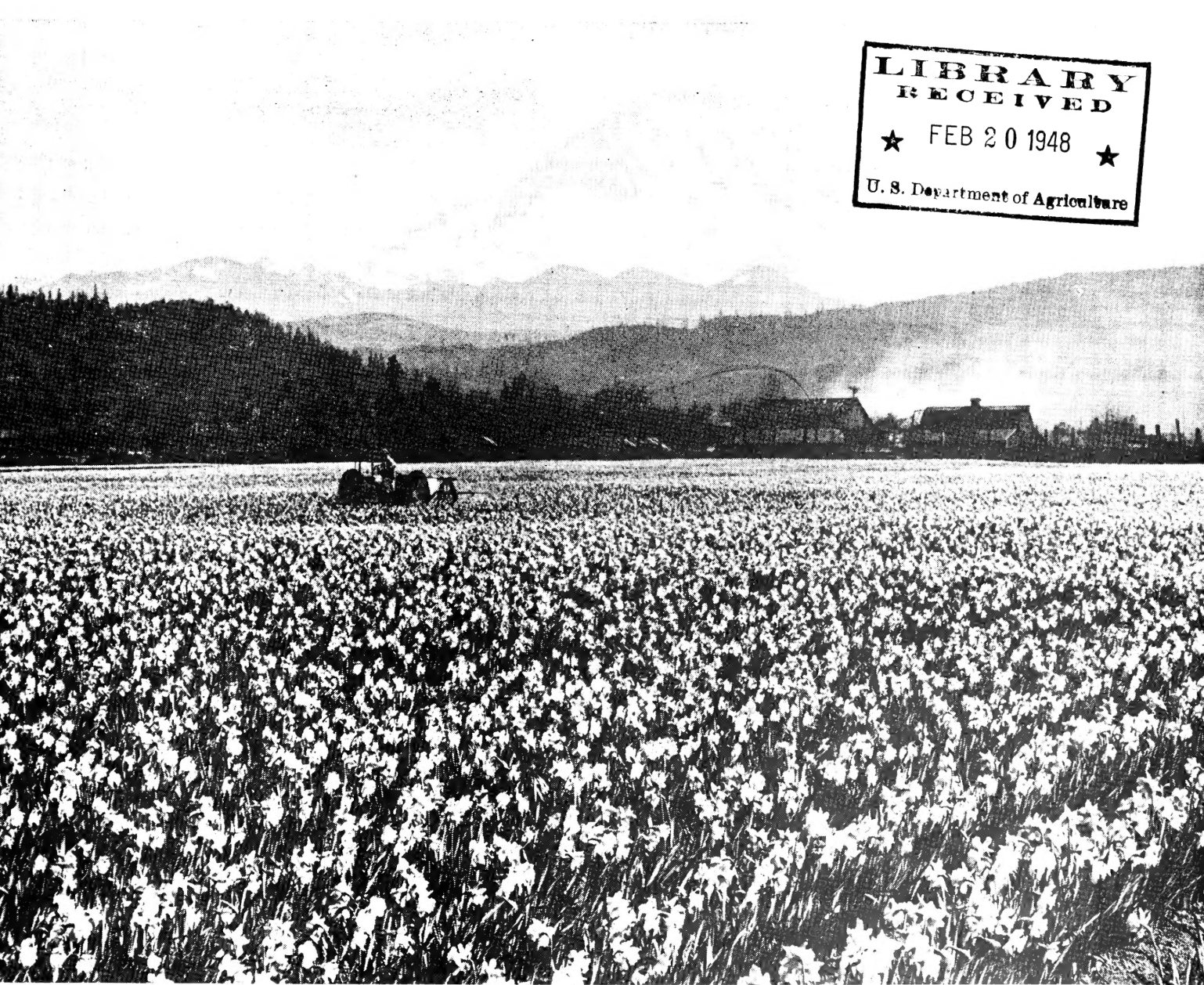
62.91

Cameron's SEAL OF QUALITY Bulbs

for Fall and Winter :: 1947-1948

PRICE LIST TO THE GREENHOUSE AND RETAIL STORE TRADE

**LIBRARY
RECEIVED**
★ FEB 20 1948 ★
U. S. Department of Agriculture



CAMERON

AND

COMPANY

2133 WESTERN AVENUE



SEATTLE 1, WASHINGTON

In the Heart of America's Great Bulb Industry

Narcissi, Including Daffodils

(NORTHWEST GROWN)

It is with considerable pride that we offer one of the finest and most complete stocks of Northwest Narcissi, grown literally at our "back door". We have brought together, to the best of our ability, many varieties suited for the best retail trade and for greenhouse forcing. Our stock of novelties is unusually wide. Our classification of types follows that of the Royal Horticultural Society of England, the standard one adopted throughout the trade. We use the term "Narcissus" as an all-inclusive one to include Daffodils.



A Puget Sound Pre-Daffodil Festival Scene

DIVISION 1a—YELLOW TRUMPET DAFFODILS

Varieties with yellow or lemon-yellow trumpet, and perianth of same shade.

Distinguishing characteristic—Trumpet or crown as long or longer than the Perianth segments.

	D-N No. 1	D-N No. 2		
	Price per	or Rd No.1	Price per	
	100	1000	100	1000

AEROLITE

Deep primrose perianth with medium yellow trumpet. Splendid keeper. An excellent forcer. Try this along with King Alfred13.00 110.00

	D-N No. 1	D-N No. 2		
	100	1000	100	1000

ALASNAM

Frilled deep yellow trumpet with lighter perianth. Very early. Suitable forcer.12.00 100.00

EMPEROR

Primrose perianth with deeper colored yellow trumpet. Good forcer.11.00 90.00 8.50 69.00

THE FIRST

Yellow trumpet with creamy perianth. Very early forcer. 8.50 70.00 6.50 50.00

King Alfred Daffodils

Puyallup Valley Grown

Acknowledged by the trade as the finest obtainable stock. Order immediately as remaining supply is limited. Delivery to greenhousemen in early August to reach you in ample time for precooling.

JUMBO		
Per 100		Per 1000
\$15.00	Packed in crates of 250	\$120.00
	Heavy D-N No. 1	
\$11.00	Packed in crates of 500	\$95.00
	D-N No. 2, Rd No. 1	
\$ 9.50	Packed in crates of 750	\$75.00
	D-N No. 3	
\$ 7.50	Packed in crates of 1,000 or 1,500	\$59.00

DIVISION 1a—YELLOW TRUMPET DAFFODILS (Continued)

	D-N No. 1	D-N No. 2	or Rd No. 1	D-N No. 3
	100	1000	100	1000
GOLDEN SCEPTRE Early golden yellow. An old variety but still a widely-used forcer.....	7.50	70.00	6.00	55.00
MINISTER TALMA Golden yellow with edge of trumpet fringed. Very early forcer and good grower.	11.00	89.00	8.50	69.00
TRESSERVE Deep canary yellow trumpet of large size with pale yellow perianth. Giant flower. Trumpet very wide at mouth	11.00	100.00	8.00	75.00

Novelty Narcissi and Daffodils

Available in limited quantities

	Per 100
	DN No. 1
REMBRANDT —Very large deep yellow trumpet daffodil. Medium early.	12.00
MUSTAPHA —Exquisite large fancy yellow trumpet.	12.00
LA VESTALE —Lovely white trumpet daffodil.	15.00
LOVE NEST —White daffodil with trumpet tinged amber pink.	15.00
MRS. R. O. BACKHOUSE —Creamy white petals with shell pink trumpet. Leedsii type.	60.00
JOHN EVELYN —White petals with frilled trumpet of soft apricot. Incomparabilis type.	15.00
SILVER STAR —Leedsii type.	15.00
MRS. BARCLAY —Barrii type.	10.00
NANNY NUNN —Barrii type.	8.50
GLORIOUS —Pure white petals with orange-red cup. Poetaz type.	10.00
CARLTON —Giant Incomparabilis of soft yellow. Early. An altogether beautiful flower.	14.00
FORTUNE —Clear yellow petals with glowing orange crown. Incomparabilis type.	16.00
TUNIS —White petals with golden amber crown. Leedsii type.	16.00

DIVISION 1b—WHITE TRUMPET DAFFODILS

Varieties with white trumpet and perianth. Distinguishing characteristic—Trumpet or crown as long or longer than the perianth segments.

	D-N No. 1	D-N No. 2	or Rd No. 1	D-N No. 3
	Price per	Price per	Price per	Price per
	100	1000	100	1000
MRS E. H. KRELAGE Long, waxy white trumpet with white perianth. Excellent form	14.00	120.00		

DIVISION 1c—BICOLOR TRUMPET DAFFODILS

Varieties having a white perianth and a trumpet colored yellow, lemon or primrose. Distinguishing characteristic—trumpet or crown as long or longer than the perianth segments.

GLORY OF SASSENHEIM White perianth with rich yellow trumpet. Forces well.	11.50	95.00	8.50	69.00
SPRING GLORY White perianth with long golden yellow trumpet. Forcer.	11.50	95.00	8.50	69.00

VICTORIA — Bold yellow trumpet with perianth of creamy white.	11.50	95.00	8.50	69.00
--	-------	-------	------	-------

DIVISION 2a—INCOMPARABILIS NARCISSUS—YELLOW

Yellow shades with or without red coloring on the cup. Distinguishing characteristic—cup or crown not less than one-third but less than equal to the length of the perianth segments.

HELIOS Golden yellow perianth with light orange cup. Early forcer. Can be precooled. Should be flowered cool. An outstanding variety for greenhouse use and retail trade.....	9.50	75.00	7.50	59.00
SIR WATKIN Perianth of sulphur yellow; cup deep yellow with orange tinge. One of the best standard popular sellers...	9.50	75.00	7.50	59.00

DIVISION 2b—BICOLOR INCOMPARABILIS NARCISSUS

Bicolor varieties with whitish perianth and self-yellow, red-stained, or red cup. Distinguishing characteristic—cup or crown not less than one-third but less than equal to the length of the perianth segments.

BERNARDINO Creamy white perianth with yellow frilled cup, edged orange. A popular variety.	9.50	75.00	7.50	59.00
---	------	-------	------	-------

DIVISION 3a—YELLOW BARRII NARCISSUS

Yellow shades with or without red coloring on the cup. Distinguishing characteristic—cup or crown less than one-third the length of the perianth segments.

DIANA KASNER Creamy perianth with large fluted yellow cup, frilled blood-red. Good late forcer.	8.50	69.00	7.50	55.00
--	------	-------	------	-------

DIVISION 3b—BICOLOR BARRII NARCISSUS

Bicolor varieties with whitish perianth and self-yellow, red-stained or red cup. Distinguishing characteristic—cup or crown less than one-third the length of the perianth segments.

FIRETAIL Broad, wavy, white perianth with large orange cup frilled scarlet-orange. Very popular	12.00	99.00	9.50	79.00
---	-------	-------	------	-------



DIVISION 4a—LEEDSII NARCISSUS—LONG CROWNED

White perianth with cup white, cream or pale citron, sometimes tinged with pink or apricot. Distinguishing characteristic—cup or crown not less than one-third but less than equal to the length of the perianth segments.

	D-N No. 1		D-N No. 2 or Rd No. 1	
HERA	100	1000	100	1000
Creamy white, star-shaped perianth with frilled, creamy cup edged light primrose. Very beautiful.....	8.50	75.00	7.50	55.00

DIVISION 4b—LEEDSII NARCISSUS— SHORT CROWNED

Cup or crown less than one-third the length of the perianth segments. Distinguishing characteristic —perianth white, and cup or crown white, cream or pale citron, sometimes tinged with pink or apricot.

QUEEN OF THE NORTH				
White perianth with cup of light primrose changing to ivory.....	8.50	75.00	7.50	55.00
WHITE LADY				
Splendid white perianth with small light yellow frilled cup	8.50	75.00	7.50	60.00

DIVISION 5—NARCISSUS TRIANDRUS HYBRIDS

Flowers tend to be of drooping form and graceful habit. Ideal for rockeries.

THALIA—The "Orchid Narcissus" \$22.00 per 100

DIVISION 6—CYCLAMINEUS HYBRIDS

Perianths reflexed; straight, tube-like trumpets are of rich yellow.

FEBRUARY GOLD				
Golden yellow perianth with sharply reflexing petals. Very early and suitable for forcing in pots.	10.00	89.00	8.50	66.00

DIVISION 7—JONQUIL HYBRIDS

All varieties of Narcissus Jonquilla parentage.

JONQUILLA CAMPERNELLE				
Bright golden yellow clusters of fragrant flowers	7.50	60.00	6.50	48.00

MINIATURE DAFFODILS

Charming Hoop-Petticoat Daffodils (Bulbocodium Conspicuous) bold yellow flowers, tiny in stature, ideal for rockeries and borders.

\$6.00 per 100 \$50.00 per 1000

DIVISION 8—TAZETTA AND TAZETTA HYBRIDS

Including Polyanthus Narcissi, Poetaz Narcissi and Tazetta Hybrids.

POETAZ NARCISSUS

The result of crosses between Poeticus Ornatus and the Polyanthus.

	D-N No. 1		D-N No. 2 or Rd No. 1	
LAURENS KOSTER	100	1000	100	1000
Cream white perianth with yellow cup. Much used for retail trade and greenhouse use Can be precooled. R-2 at \$39.00 per 1,000.	7.50	60.00	6.50	48.00

ORANGE CUP

Yellow perianth, frilled orange cup. Good florists' variety. 8.50 65.00 6.50 52.00

DIVISION 9—POETICUS NARCISSUS

GLORY OF LISSE				
Pure white perianth with yellow cup, edged red. Forcer	7.50	59.00	5.50	42.00

RECURVUS (Pheasant's Eye)

Reflexed pure white perianth with deep scarlet-margined eye. Sweet-scented. A favorite 7.50 59.00 5.00 42.00

DIVISION 10—DOUBLE NARCISSUS

ALBUS PLENUS ODORATUS				
Snow white, gardenia-shaped, sweet-scented flower. A favorite. Called the "Gardenia Narcissus"	7.50	65.00	6.50	52.00

ARGENT

Semi-double white and canary yellow in the form of a carnation.... 8.50 69.00 6.50 55.00

CHEERFULNESS

The double poetaz Elvira. White with creamy center. Fragrant. Very well named. 7.50 60.00 6.00 48.00

MARY COPELAND

Semi-double. Creamy white golden-hued petals interspersed with shorter lemon & deep orange segments, creating a striking effect. Ideal for exhibition. 15.00

DIVISION 10—DOUBLE NARCISSUS (Continued)

	D-N No. 1		D-N No. 2
	Price per		or Rd No. 1
	100	1000	Price per
			100
			1000

THE PEARL

Creamy white perianth segments interspersed with sulphur - yellow coronal segments. 8.50 79.00 6.75 60.00

TWINK

Beautiful primrose-yellow perianth segments with alternating soft primrose and clear orange coronal segments. Very outstanding and decorative, Good forcer. 13.50 120.00 11.50 96.00

VAN SION

Pure double golden yellow daffodil. Forcer. Still a strong favorite. 9.50 85.00 7.50 60.00

MIXED DAFFODILS AND NARCISSI

Ideal for Naturalizing and Mass Planting.

MIXED DOUBLE-NOSED NO. 1 MIXTURE

Our finest quality in a well-balanced selection from the various types.

Per 100	6.50
Per 1000	59.00

MIXED ROUND NO. 1 BULBS

Our Finest Quality in a Medium Size Bulb.

Per 100	5.50
Per 1000	48.00

MIXED COMMERCIAL GRADE BULBS

A well-balanced mixture of smaller round bulbs suitable for Specials or less expensive trade.

Per 100	4.50
Per 1000	35.00

POLYANTHUS

CR BUNCH FLOWERED NARCISSI

CHINESE SACRED LILY

Snowy white flowers with yellow cups. Suitable for water culture.

12-14 ctm.		14-16 ctm.		16-18 ctm.	
Price per		Price per		Price per	
C	M	C	M	C	M
4.00	39.00	5.50	49.00	7.00	60.00

GRAND SOLEIL D'OR

Golden perianth with deep orange cup. Suitable for forcing, pot use, or water culture.

13-14 ctm.		14-16 ctm.		16-18 ctm.		18-20 ctm.	
Price per		Price per		Price per		Price per	
C	M	C	M	C	M	C	M
4.00	35.00	6.00	49.00	7.00	60.00	8.50	75.00

PAPERWHITES

Pure, snowy white flowers of unusual fragrance borne in compact trusses. Ideal for early forcing and water culture.

13-14 ctm.		14-15 ctm.		15-16 ctm.	
Price per		Price per		Price per	
C	M	C	M	C	M
4.00	35.00	5.50	45.00	7.00	55.00

Write for prices on larger sizes.



Washington Grown Tulips

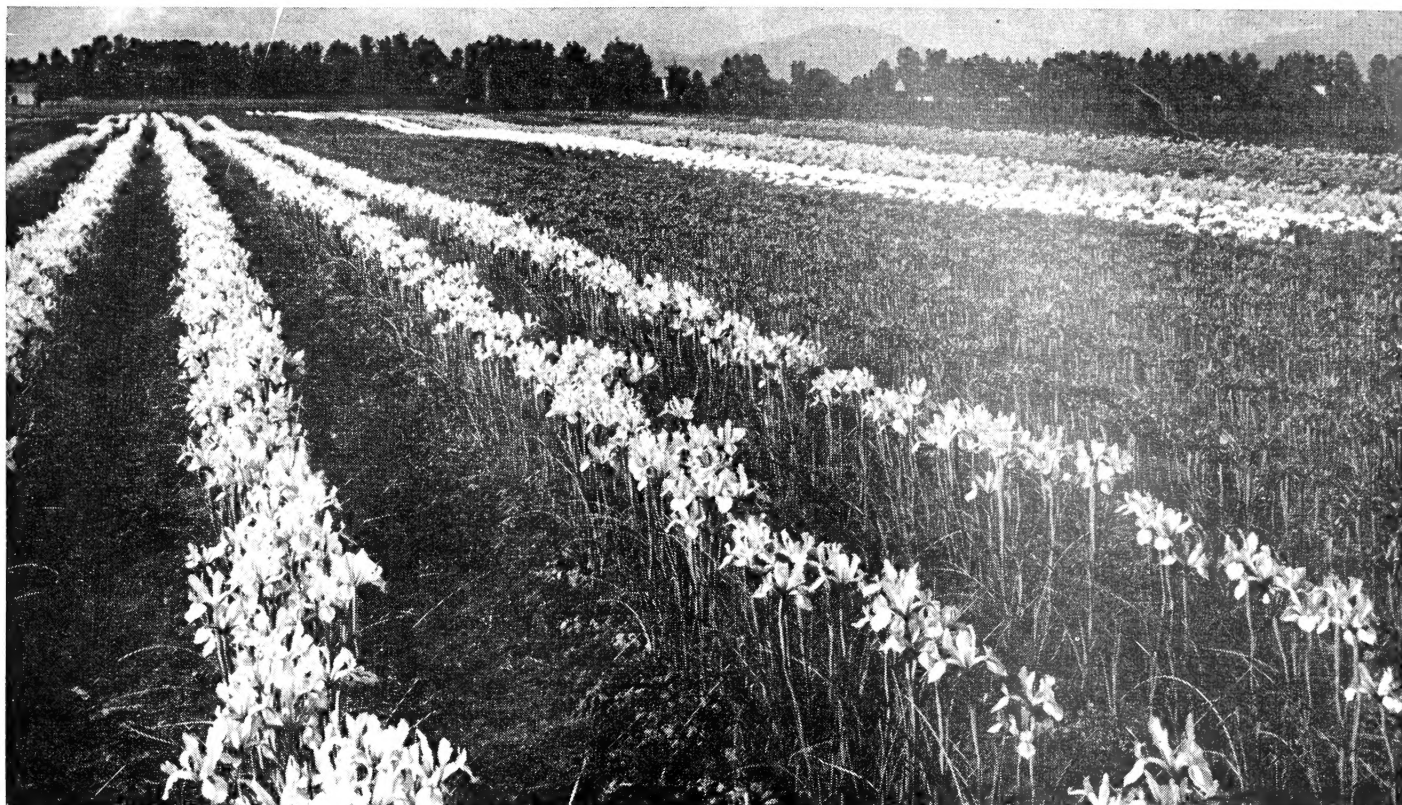
Premium Northwest Stock for Early Bird Delivery in August

Important— Early delivery in August. Almost a month and a half earlier than imported stock. It's worth that extra difference for precooling and early counter sales.

	Price per 1,000	
	Top Size 12-14 ctm.	First Size 11-12 ctm.
ALBINO —pure white. Most popular white forcer. (Cottage)	\$55.00	\$45.00
ALLARD PIERSON —Earliest deep red Darwin forcer (Darwin).....	55.00	45.00
ALBERIO — cherry red. Early forcer. (Triumph)	55.00	45.00
ADVANCE —extra large orange scarlet. Excellent cut flower. (Cottage).....	55.00	45.00
ANNIE SPEELMAN —large white tall-stemmed Darwin. (Darwin.)	60.00	50.00
BARTIGON —crimson red. A standard forcer (Darwin)	55.00	45.00
BELLE JAUNE —deep Indian yellow. An exquisite egg-shaped flower on strong stem. (Cottage)	69.00	59.00
BLUE PARROT —vivid blue-violet of exquisite form. Parrot characteristics are not as strong as in some other varieties. (Parrot)	85.00	75.00
BRONZE QUEEN (CLIO) — rosy buff-bronze with inside golden bronze. A time-honored favorite. (Breeder)	55.00	45.00

WASHINGTON GROWN TULIPS (Continued)

CAMPFIRE —carmine red sport of Bartigon. (Darwin)	55.00	45.00	LE NOTRE —bright pink, early forcer. (Darwin)	55.00	45.00
CARRARA —white with yellow anthers. Late forcer and splendid bedder. 20 in. high. (Cottage)	65.00	55.00	MRS. GRULLEMANS — tall creamy white. (Darwin)	65.00	55.00
CENTENAIRE —deep pink with claret flush. (Darwin)	55.00	45.00	MRS. JOHN SCHEEPERS —outstanding large yellow for bedding and cutting. (Cottage.)	65.00	55.00
CITY OF HAARLEM —deep scarlet. A strong favorite. (Darwin)	60.00	50.00	MRS. MOON —deep yellow with pointed petals slightly reflected. (Cottage)	65.00	55.00
CLARA BUTT —popular salmon pink. (Darwin)	60.00	50.00	MOTHER'S DAY —splendid soft yellow forcer. (Cottage)	60.00	50.00
CORNEFORUS — Carmine red with white base. An excellent Valentine's Day forcer. (Triumph)	60.00	50.00	NIPHETOS — soft primrose yellow with inside a deeper warm yellow. Large oblong flower. One of the finest in its color class. 29 in. high. (Darwin)	65.00	55.00
COULEUR CARDINAL — deep scarlet. (Single early)	75.00	65.00	NORTHERN QUEEN —white with pink edge (Cottage)	60.00	50.00
CROWN IMPERIAL —red with gold band. Splendid even forcer. (Triumph)	60.00	50.00	ORANGE KING —deep reddish orange with inside of orange-scarlet. Slightly sweet-scented. (Cottage)	55.00	45.00
DEMETER — deep plum purple with white base. Large, well-shaped flower. The earliest of all Darwins. A fine Christmas forcer. (Darwin)	65.00	55.00	ORANGE NASSAU —fiery reddish orange. (Double early)	75.00	65.00
DIDO —orange red with salmon flush. An altogether beautiful tulip and one of the best for bedding. 30 in. high. (Cottage)..	69.00	59.00	PEACH BLOSSOM — deep rose-pink and white. (Double early)	75.00	65.00
MARSHALL HAIG — glowing scarlet with yellow base. A truly fine red destined for real acclaim. Splendid bedder. 28 in. high. (Cottage)	69.00	59.00	PHILIP SNOWDEN — light carmine-rose. Bartigon sport. (Darwin)	60.00	50.00
DILLENBURG —glowing salmon-orange with apricot edge. One of the finest for outside cutting and an excellent keeper. 26 in. high. Highly recommended (Breeder)	69.00	59.00	PRIDE OF HAARLEM —vivid rosy carmine. Very popular. (Darwin)	60.00	50.00
EDITH EDDY —carmine with narrow white border. Forcer (Triumph)	60.00	50.00	PRINCE OF AUSTRIA —orange scarlet. Forcer (Single early)	75.00	65.00
ELMUS — cherry red with cream border. (Triumph)	60.00	50.00	PRUNUS —lovely coral pink sport of Bartigon (Darwin)	60.00	50.00
EROS —old rose. Excellent cut flower. (Double Triumph)	65.00	55.00	PRINCESS ELIZABETH — vivid rose pink. Popular forcer. (Darwin)	55.00	45.00
EUROPE —medium red and a favorite for bedding. (Darwin)	55.00	45.00	RED CHAMPION —bright red sport of the Darwin Bartigon. One of the finest in red parrots. (Parrot)	85.00	75.00
FANTASY —salmon pink with green markings. (Parrot)	65.00	55.00	ROSE COPELAND — lilac rose sport of William Copeland. (Darwin)	55.00	45.00
FARNCOMBE SANDERS — Carmine scarlet (Darwin)	55.00	45.00	SUNDEW — vivid red with petal edges fringed with tiny, crystal-like edgings. A Darwin with parrot characteristics.....	55.00	45.00
FRED MOORE —terra-cotta orange, sweet-scented. Early forcer. 16 in. high. (Single early)	75.00	65.00	SUNSHINE — beautiful golden yellow with light green markings. Parrot sport of the Cottage tulip Bouton d'Or (Parrot)	105.00	95.00
GLORY OF NOORDWYK —deep rose with white base. Very showy. A splendid two-tone variety. (Triumph)	55.00	45.00	THERESE — vivid carmine parrot sport of the Darwin Farncombe Sanders. Very colorful. (Parrot)	90.00	80.00
GENERAL DE WET —sweet scented orange (Single early forcer)	75.00	65.00	UNCLE TOM — glossy maroon double. (Double Triumph)	65.00	55.00
GLORIA SWANSON — cherry red. Tall (Darwin)	60.00	50.00	UTOPIA —vivid cardinal red, probably the brightest red for bedding. Very showy. (Darwin)	65.00	55.00
GOLDEN HARVEST — the leading yellow forcer. (Cottage)	55.00	45.00	VAN DER EERDEN —fiery rose red. Forcer (Mendel)	60.00	50.00
HER GRACE —white with deep pink marking. Very early forcer. (Mendel)	65.00	55.00	VICTOIRE D'OLIVIERA —valentine red. Forcer (Darwin)	55.00	45.00
IBIS —deep rose. Single early forcer.	75.00	65.00	WHITE GIANT —large pure white. (Darwin)	60.00	50.00
INGLESCOMBE YELLOW —popular medium yellow. (Cottage)	55.00	45.00	WHITE SAIL — creamy white changing to pure white when in full bloom. Yellow anthers. Very early forcer. Can be brought in for Christmas. (Mendel)	65.00	55.00
KAUFMANNIANA ELLIOTT —creamy white with carmine outside. Very early. One of the most charming species type (Species)	85.00	75.00	WHITE SWAN —pure white. Exquisite egg-shaped flower. Good for bedding and late forcing. (Single Early)	75.00	65.00
KEIZERSKROON —scarlet with broad yellow band. (Single early)	75.00	65.00	WILLIAM COPELAND — bright lavender. Early forcer (Darwin)	55.00	45.00
KRELAGE'S TRIUMPH —early forcing red. (Mendel)	55.00	45.00	WILLIAM PITT —the leading scarlet red forcer. (Darwin)	55.00	45.00
LA TULIPE NOIRE (The Black Tulip) — velvety deep black maroon. Very dark. (Darwin)	65.00	55.00	YELLOW GIANT — deep golden yellow with black anthers. Flower is large on erect, tall stem. (Darwin)	60.00	50.00
			YELLOW EMPEROR — deep golden-yellow. Large egg-shaped flower on sturdy stem. 24 in. high. (Cottage)	69.00	59.00



SMALLER SIZE TULIPS

For Outside Planting or Counter Trade Specials

9 - 10 ctm	\$25.00 per 1000
10 - 11 ctm	35.00 per 1000

Order by Color in Bags of 250

Red - Pink - Yellow - Bronze - Orange

White - Lavender - Mixed

Less 5% on 5000 lots, 10% on 10,000 or more.

HYACINTHS

Early dug Northwest stock ready for August delivery. Available in white, deep blue, light blue, pink and mixed. Splendid for early trade.

	Per 100	Per 1,000
Medium size	\$18.00	\$160.00
Bedding size	12.00	110.00

COLCHICUM

Our Lake Washington grown strain. Large bulbs producing superior flowers.

This unusual novelty, consisting of large cinnamon-colored round-shaped bulbs, flowers a few weeks after planting, blooming without foliage. The flowers are like slender, tapering goblets in shades and tints of violet, white, lavender and mauve, and will also bloom on shelf or table. An excellent selling novelty for the store trade. Early August delivery.

	Per 25	Per 100
AUTUMNALE —lavender	22c each	\$18.00
ALBUM —pure white	29c each	25.00

English and Spanish Irises

See our imported catalog for listings.

VERY IMPORTANT

TO SAVE TIME AND ELIMINATE COSTLY BACK ORDERING WE WILL SHIP EQUALLY GOOD VARIETIES IN THE EVENT THE ITEM YOU ORDER IS SOLD OUT OR UNAVAILABLE, UNLESS YOU SAY "NO SUBSTITUTES" ON YOUR ORDER.

WEDGWOOD IRIS

PUGET SOUND GROWN

America's Leading Florist Iris

Grown to perfection in America's leading Iris belt. Flowers very early. Can be brought into flower in December and January.

	Per 1000
7-8 ctm. (for outside in warmer climates)	\$15.00
Packed in bags of 1000	
7 1/8-8 ctm. packed in bags of 1000	18.00
8-9 ctm. (cold frames)	23.00
Packed in bags of 500	
8 1/2-9 ctm. (a splendid producer at an inexpensive price)....	30.00
Packed in bags of 500	
9-10 ctm. (recommended for earlier markets)	45.00
Packed in bags of 250	
10-11 ctm. (a fine precooling size)	59.00
Packed in bags of 250	
11-12 ctm. (for early, superior flowers).....	63.00
Packed in bags of 250	
12 ctm.-up (a premium size for premium results).....	69.00
Packed in bags of 250	

DUTCH IRISES

NORTHWEST GROWN

	5-6 ctm.	6-7 ctm.	7-8 ctm.	8 ctm. up
HUCHTENBURG — Large white, orange-yellow bi-color		\$21.00	\$38.00
IMPERATOR — Large dark blue. Late forcer.	15.00	19.00	34.00	45.00
JACOB DeWIT — One of the largest blue Dutch Irises.	15.00	20.00
POGGENBEEK — Deep bright blue. Early.	20.00
WHITE EXCELSIOR — Large pure white. Early.	27.00	45.00	59.00
YELLOW QUEEN — Pure golden popular forcer.	15.00	27.00	45.00
Note: Yellow varieties, in their nature, run a size smaller than other colors.				
MIXED — a well-balanced color selection.	21.00	30.00

Now Booking on Easter Type Lilies

We will have complete stocks of the following:

CROFT—experience has proven this to be the best all-purpose pot lily.

ESTATE—a taller lily which is ideal for cutting purposes.

CREOLE—another fine all-purpose lily.

FLORIDI—an improved strain of this popular cutting type which is gaining fast in popularity.

Also **HARRISII**, **MEXICAN** and **HOWARDII** will be available.

Your inquiries concerning the above will be welcomed.

Our **Seal of Quality** on each case is your assurance of the following in the purchase of Lily Bulbs.

1. Utmost precaution to assure best strains.
2. Rigid maintenance of grading and packing standards.
3. Extensive investigation and inspection, the result of many miles of traveling.
4. Carefully maintained modern cold storage control.

You can, with assurance plant **Seal of Quality** FIELD AND WAREHOUSE CHECKED BULBS from the Far West's leading house.

Reservations are now being made, subject to customer's confirmation of prices when definitely set. All bulbs shipped in season F. O. B. field or assembly points in the U. S. A. An extra 15% will be added for broken case lots to cover extra labor and packing.

TRY THESE PROVEN TYPES FOR POTS AND CUT FLOWER PURPOSES

CREOLES

An unusually fine strain of this popular lily.

bulbs per case		bulbs per case	
6 - 7.....	400	9 - 10.....	200
7 - 8.....	300	10 up.....	150
8 - 9.....	250		

CROFTS

Experience has shown this to be the best all-purpose pot lily. Available in the following sizes:

7-8"	9-10"
8-9"	10-11"

Please order in multiples of 100.

MEXICAN

This least expensive of all the Easter Lily bulbs is suitable for pots or cut flower purposes and is easily forced.

bulbs per case		bulbs per case	
6½ - 7.....	350	9 - 10.....	200
7 - 8.....	300	10 - 11.....	150
8 - 9.....	250	11 - 12.....	100

HARRISH

This Bermuda-grown lily is in high favor with a considerable number of growers.

bulbs per case		bulbs per case	
6 - 7.....	335	9 - 11.....	150
7 - 9.....	200	10 - 12.....	50
8 - 10.....	150		

ESTATE

Tall Northwest-grown Easter-type lily unexcelled for greenhouse cutting and also outdoor planting. Available in the following sizes: 7-8", 8-9", 9-10".

Please order in multiples of 100



ADVANTAGES OF GROWING OTHER EASTER TYPE LILIES ALONG WITH CROFTS

Some varieties can be marketed from mid-winter on. For example, Mexicans planted in October are ready for mid-winter sale. Thus, by successive plantings a continuous market is assured through the winter and and spring when cut and pot flowers bring premium prices. To a great degree this eliminates much of the risk usually feared in lily growing. For, by having successive plants of different varieties spread over the winter and spring, the greenhouseman is assured of good profit and volume and therefore not necessarily dependent on a "one-time" main Easter crop.

The greenhouseman is assured of best obtainable stock. On Creoles, Floridii, Harrisii, and Mexicans, we are working in conjunction with one of America's most reputable houses which has made a long and thorough study of lily culture, production and greenhouse forcing in this field.

Grow a diversified group of Easter type lilies for
winter and spring volume.

Cane Stakes

Pencil Thickness—Dyed Green

New carload shipment of this highly popular greenhouse and garden store retail item due in shortly. Many orders already have been booked so do not delay in putting in your reservation.

Sizes available, all packed 2,000 to the bale—

1½ ft.	2 ft.
2½ ft	3 ft.
	4 ft.

CALLA LILIES

WHITE CALLA

The well-known Aethiopica white. A long-stemmed flower and a standard greenhouse item. Delivery, August on.

	Per 100	Per 1000
1 1/4-1 1/2" diameter	\$12.00	\$ 95.00
1 1/2-1 3/4" diameter	25.00	190.00
1 3/4-2" diameter	30.00	250.00
2"-up diameter	40.00	325.00

GOLDEN YELLOW CALLA

(Richardia Elliottiana). Bright green foliage spotted gray. Flower a beautiful golden yellow. Excellent for pots. October-March delivery.

1 3/4 - 2" diameter	12.00	100.00
2 - 2 1/2" diameter	18.00	150.00
2 1/2 - 3" diameter	28.00	260.00
3" up	45.00	375.00

PINK CALLA (Richardia Rehmannii Superba).

Large, light pink flower with tall stem. October-February delivery.

1 - 1 1/4" diameter	18.00	160.00
1 1/4 - 1 1/2" diameter	21.00	195.00
1 1/2 - 1 3/4" diameter	28.00	260.00
1 3/4 - 2" diameter	35.00	300.00
2" up diameter	50.00	375.00

BLACK CALLA (Arum Pictum)

Large blackish flowers which fade to maroon. No offensive odor. August delivery.

1 1/2 - 2" diameter	27.00	245.00
2 - 2 1/2" diameter	40.00	350.00
2" up	45.00	375.00

MADONNA LILIES

L. Candidum

Island Queen stock—August delivery on. Lovely sweet-scented snow-white trumpets with golden yellow anthers. Madonna is one of the finest and most popular white lilies. Height 4 to 6 feet. Choice Puget Sound grown bulbs.

	Per 100	Per 1000
6-7"	\$22.00	\$200.00
7-8"	29.00	270.00
8-9"	37.00	350.00
9-10"	45.00	400.00
10-12"	50.00	450.00
12-up (Jumbo)	55.00	490.00

HARDY LILIES

FOR FLORIST AND RETAIL GARDEN TRADE

Time now to consider lilies from the Northwest's great fields. All bulbs are of blooming size. In some instances sizes are not indicated because of the irregular nature or shape of the bulb or because, due to the nature of the variety, the bulb is of one size.

L. BELLINGHAM HYBRID SEEDLINGS. A new race produced by the late Dr. Griffiths, ranging from 3 to 6' in a gorgeous array of orange-yellow to rich orange-red. Of Pardalinum parentage. Blooms June-July.

	Per 100	Per 100
4-6"	\$25.00	\$35.00

L. CANADENSE FLAYUM (Canada Lily). Produces graceful bell-like flowers of vivid yellow, spotted brown. Blooms in July on tall stems from 2 to 5 feet.

Flowering size \$22.00 per 100

L. DAVIDI. A reflexed cinnabar-red lily similar to Willmottiae. Blooms in July on stems up to 6 feet, bearing as many as 20 blossoms. Very distinctive.

Flowering size \$22.00 per 100

L. DAVMOTTIAE. Reflexed cinnabar-red flowers, the result of crossing L. Davidi with L. Willmottiae. Flowers July.

Flowering size \$22.00 per 100

L. MAXIMOWICZI WADAI. Deep orange-red flowers dotted mahogany on tall stems reaching up to 6 feet. A very showy variety from Manchuria. Blooms June-July.

Flowering Size \$22.00 per 100

L. FORMOSANUM EARLY VARIETY (Philippine Lily—Wilson strain). Pure white trumpet with emerald-green throat on stems 24 to 30" high. A great favorite with the greenhouse trade. Blooms September - October outside.			
	per 100		per 100
3 - 4"	\$12.00	5 - 6"	\$18.00
4 - 5"	15.00		

L. PARDALINUM GIGANTEUM or SUNSET LILY. Flowers are deeper red than L. PARDALINUM with petals purple spotted and gold centered. Blooms in July.

	Per 100		Per 100
4 - 5"	\$12.00	6 - 7"	\$18.00
5 - 6"	15.00		

L. REGALE SEED. Carefully selected and gathered.

Per oz

L. SUPERBUM (American Turk's Cap Lily). Recurved flowers of bright orange suffused yellow and spotted brown. Stems average 5 to 6 feet. Flowers July-August.
\$25.00 per 100

L. WILLMOTTIAE. Beautiful recurved rich orange-red flowers blooming on stems 4 to 6 feet high. Blooms in July with up to 20 flowers on a plant.

Flowering size \$25.00 per 100

L. TENUIFOLIUM (Coral Lily). 1 1/2' stems bearing bright scarlet flowers. Ideal for rockeries or borders. Blooms in June. Bulb sizes run small.

	Per 100		Per 100
2 - 2 1/2"	\$6.00	3 1/2-4"	\$ 9.50
2 1/2 - 3"	7.50	4 - 5"	12.00
3 - 3 1/2"	8.50		

FREESIAS

Slender stems bearing numerous tubular fragrant waxy flowers in a wide variety of colors. Very popular as a greenhouse subject and used extensively for corsage work. Not hardy, they are an indoor subject in the Northwest. Late August delivery on.

Freesias are sold in the following packs:

1/2-5/8"	1,000	3/4-7/8"	250
5/8-3/4"	500	7/8" up	250

We regret that we cannot break the above bag lots.

STANDARD VARIETIES

PURITY SUPERFLORA —popular early forcing white	1/2-5/8" \$12.50	5/8-3/4" 19.50	3/4-7/8" 30.00
ELDER'S GIANT WHITE —late blooming large white	20.00		
GOLDEN DAFFODIL —large early clear yellow	12.50	19.50	30.00
SUNSET —rich orange yellow. Late..	12.50	19.50	30.00
ACHIEVEMENT —golden yellow with deep orange throat	15.00	22.50	30.00
GOLDEN WONDER —rich golden yellow.	15.00	22.50	30.00
SEAL OF QUALITY MIXED —a well-blended assortment.	12.50	19.50	30.00

REGALE LILIES

L. REGALE—Regular strain. A great hardy American favorite. Large white trumpet with yellow throat and wine-red markings on the outside. Suitable for greenhouse or outside planting. Blooms June-July outside. Our strain is in great favor with greenhouses and retailers throughout the U. S.

	100	1000		100	1000
4 - 5"	8.00	\$75.00	9 - 10"	\$25.00	\$225.00
5 - 6"	9.00	85.00	10 - 11"	29.50	285.00
6 - 7"	10.50	95.00	11 - 12"	38.50	375.00
7 - 8"	14.00	130.00	12 - 13"	55.00	500.00
8 - 9"	18.00	170.00			

Distinctive New

Freesia Varieties

1 1/2 - 5/8"	\$27.50 per 1,000
5/8 - 3/4"	36.00 per 1,000
3/4 - 7/8"	55.00 per 1,000
7/8" - up	60.00 per 1,000

EARLY WHITE CHAMPION—a beautiful large early blooming white. Flower is exceptionally sturdy on stiff tall wiry stems.

EARLY YELLOW CHAMPION—similar to Golden Daffodil but vastly improved.

ORIOLE—an exquisite deep golden orange and one of the earliest freesias to bloom. Available in 5/8-3/4" size only.

These varieties with large flowers and strong stems are just the thing for the grower who wants the very best.

Seal of Quality Highlander Hybrids

BONNIE —pure white, always popular	}			
HIGHLANDER — bright red. A splendid color with much car sage possibility.				
HEATHER —rich rose pink		1/2-5/8"	5/8-3/4"	3/4-7/8"
TARTAN —light yellow.		\$22.00	\$30.00	\$39.00
KILTIE —medium blue				
LORNA DOONE — lovely orchid lavender				
HYBRID MIXED				

CALADIUMS

FANCY LEAVED

Delivery September on

These striking flat leaves shaped like elephant's ears come in a wide variety of shades varying from white to red, with exotic markings, ribbings and borders.

	per 100	per 1,000
Top size	22.00	210.00
First size	19.00	180.00

LESS 10% F.O.B. FLORIDA

Available in white (Candidium), pink and red shades. Write for list of varieties.

MISCELLANEOUS BULBS, ROOTS AND PLANTS

ALSTROMERIA AURANTIACA (PERUVIAN LILY)

Delivery December to April

A well-known flower with lance-like leaves are large, bright orange trumpets marked with reddish brown. Good subject for greenhouse.

Per 100, \$9.50	Per 1000, \$85.00
-----------------	-------------------

ALSTROMERIA CHILENSIS HYBRIDS (CHILEAN LILY)

Delivery September to November

Beautiful pastel shades ranging from cream to pink and from salmon to red.

Per 100, \$15.00	Per 1000, \$135.00
------------------	--------------------

AMARYLLIS BELLADONNA

Delivery September to December, May to June

Fragrant, deep rosy-pink flowers in umbels of 6 to 8 with strap-shaped leaves. A very popular bulb for retail sale.

Extra Large	\$25.00 per 100
Large	18.00 per 100
Medium	15.00 per 100

BABY GLADIOLUS

Showy piquant flowers of great beauty. Ideal for bouquets and a wide range of floral work.

SEAL OF QUALITY MIXED	\$6.00	\$45.00
CARDINAL , very brilliant red	6.00	45.00
PEACH BLOSSOM , popular pink. A gem.	6.00	45.00
SPITFIRE , bright coral	6.00	45.00

See our Imported List for additional varieties.

GIANT AMARYLLIS

CALIFORNIA HYBRIDS

November delivery on

MIXED: An exceptionally fine strain containing mixed red, white, and striped flowers of great substance. Good for house and pot use.

	per 100	per 1,000
2 1/2 - 2 3/4" diameter	\$25.00	\$225.00
2 3/4 - 3" diameter	35.00	227.00
3 - 3 1/2" diameter	40.00	325.00
3 1/2" up	55.00	450.00

CALOCHORTUS (MARIPOSA OR BUTTERFLY TULIP)

Beautiful cup-shaped flowers of three petals wonderfully marked with dots, eyes and pencilings in a gay, gorgeous array of rich colors. September delivery.

GLOBE TYPES MIXED	Per 100	Per 1000
Pendant bell-shaped flowers on 12 to 18 inch stems.		
Large	6.00	45.00
Medium	5.00	37.50

CANNAS

These large, tall plants in vivid shades of red, yellow, orange, pinks, and white, are often used for bedding (particularly circle beds) and backgrounds. Strong roots. Delivery January on.

The following varieties will be available:

- CITY OF PORTLAND**—An outstanding medium pink.
- EUREKA**—Creamy white with green foliage. This variety is more dwarf in size and it is well recommended for home gardens.
- KING HUMBERT**—Orange scarlet with bronze leaves.
- MADAM CROZY**—Variegated red and yellow, large.
- RICHARD WALLACE**—Yellow with green foliage.

WRITE FOR PRICES IN FALL

ERYTHRONIUM (DOG'S TOOTH VIOLETS OR TROUT LILIES)

Hardy small lily-like flowers with richly mottled leaves. Splendid for naturalizing and for rockeries. Height 6-8 inches. Flowers come in delicate shades of pink, yellow, rose and cream.

5.00	40.00
------	-------

IXIAS

September Delivery

Brilliant cup or star-shaped flowers, often with dark blotches at the base of the petals in a wide variety of colors. May be grown in pots for winter blooms. Height: 1 to 2 feet.

MIXED— A splendid blend of white, orange, red, yellow, pink, and rose

5.00	40.00
------	-------

LEUCOCORYNE IXIODES ODORATA (GLORY OF THE SUN)

August Delivery

Graceful clusters of fragrant delicate blue flowers shading to white. Height 12-18 inches. Exceptionally good keepers.

1/2 - 5/8"	5.00	35.00
5/8 - 3/4"	6.00	45.00

LEUCOJUM (SNOWFLAKE)

Delicate, pendant white bells tipped green on 12" stems, which bloom in early spring. Splendid for rockeries, borders, or naturalizing. Delivery September on.

1 - 1 1/4"	4.50	35.00
1 1/4 - 1 1/2"	6.00	45.00

MUSCARI

(GRAPE HYACINTHS)

Delicate flowers bunched grape-like on spires which taper to a point. Splendid for borders and rockeries.

ARMENIACUM , splendid cobalt blue.		
5 - 7 ctm.	2.50	15.00
7 - 8 ctm.	3.00	20.00
8 - 9 ctm.	3.50	30.00
HEAVENLY BLUE , showy dark blue.		
6 - 7 ctm.	2.50	15.00
7 - 8 ctm.	3.00	20.00
8 - 10 ctm.	4.00	35.00

Tuberous Rooted Begonias

The following are varieties and prices, delivery February on.

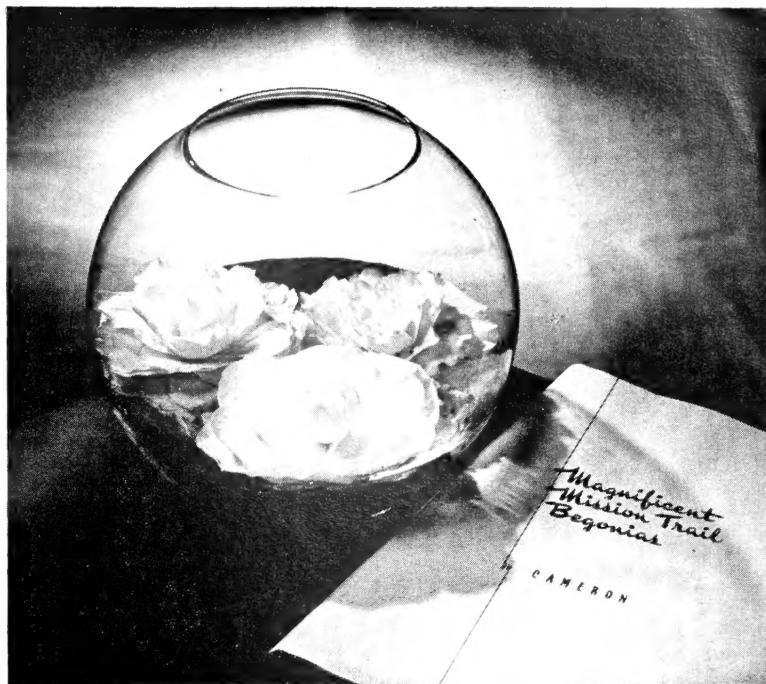
CAMELLIA DOUBLE— in the form of a giant ruffled camellia. Available in yellow, pink shades, red shades, apricot and salmon shades, orange, white and mixed.

CARNATION or **DOUBLE FRILLED TYPE**—in the form of a compact carnation. Available in yellow, pink shades, red shades, apricot and salmon shades, orange and mixed, and white.

CRISPA or **SINGLE FRILLED TYPE**—Petal edges ruffled and frilled. Available in yellow, pink shades, red shades, apricot and salmon shades, orange, mixed and white.

GIANT SINGLE TYPE—With large single blossoms. Available in yellow, pink shades, red shades, apricot and salmon shades, mixed orange and white.

Sizes	Per 100	Per 1000
1 to 1 1/4"	\$ 9.00	\$ 85.00
1 1/4 to 1 1/2"	12.00	115.00
1 1/2 to 2"	16.50	150.00
2 to 2 1/2"	22.00	195.00
Jumbo	29.00	280.00



Anemones - Seal of Quality Superb Strains

Delivery September on. Our strains are particularly suited for greenhouse use.

	(No. 3)		(No. 2)		(No. 1)		(Tops)		(Jumbo)	
	Per 100	Per 1000	Per 100	Per 1000	Per 100	Per 1000	Per 100	Per 1000	Per 100	Per 1000
MONARCH DE CAEN Mixed. Excellent poppy-type strain in a wide range of colors.	2.00	12.00	2.50	18.00	4.00	30.00	5.00	39.00	6.00	49.00
ST. BRIGID MIXED Brilliant, large semi-double flowers. Splendid for table decorations	2.00	14.00	3.00	23.00	4.00	35.00	5.00	45.00	6.00	55.00
THE BRIDE Attractive, large, pure white. Single	2.00	14.00	3.00	23.00	4.00	35.00	5.00	45.00	6.00	55.00
BLUE POPPY Large, bright blue. Single	2.00	14.00	3.00	23.00	4.00	35.00	5.00	45.00	6.00	55.00
HIS EXCELLENCY Large, vivid scarlet with showy white base. Very popular.	2.00	14.00	3.00	23.00	4.00	35.00	5.00	45.00	6.00	55.00

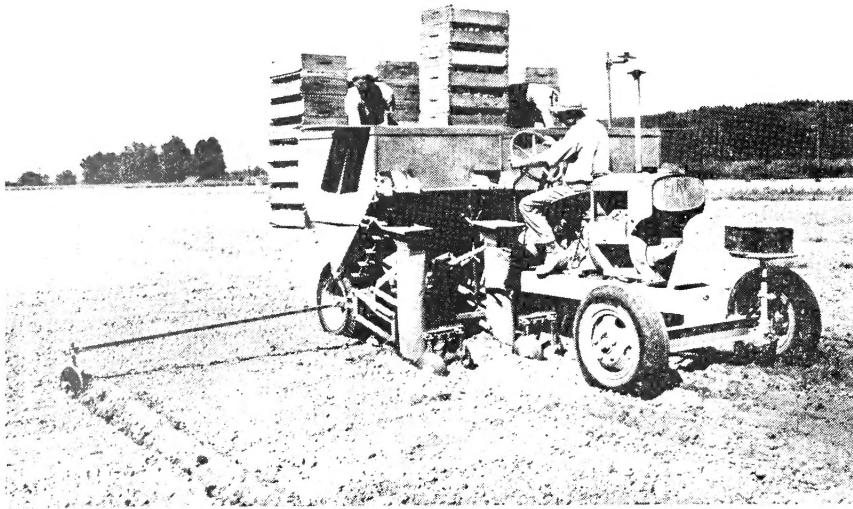
Ranunculus

September Delivery on

Beautiful double and semi-double buttercup-like flowers in an amazing variety of bright colors and shades, Ranunculus must be seen to be appreciated. Their vivid colors and waxy texture make them an item of instant appeal, and more and more greenhouse men are coming to find them a profitable plant to sell in bloom late in the spring. Our Seal of Quality Giant Strain produces magnificent flowers.

	3/8-1/2"		1/2-5/8"		5/8-3/4"		3/4-7/8"		7/8-1"		1" up	
	100	1000	100	1000	100	1000	100	1000	100	1000	100	1000
SEAL OF QUALITY GIANT MIXED	2.00	12.00	2.50	18.00	4.00	28.00	5.00	35.00	6.00	45.00	7.00	60.00
HUNTSMAN Brilliant double red	2.00	14.00	3.00	23.00	4.00	35.00	5.00	42.00	6.00	55.00	8.00	66.00
BONNIE LASSIE Lovely double pink	2.00	14.00	3.00	23.00	4.00	35.00	5.00	42.00	6.00	55.00	8.00	66.00
SUNSET Vivid double reddish orange.	2.00	14.00	3.00	23.00	4.00	35.00	5.00	42.00	6.00	55.00	8.00	66.00
GOLDEN LADY Yellow gold and deepest gold	2.00	14.00	3.00	23.00	4.00	35.00	5.00	42.00	6.00	55.00	8.00	66.00
CHINA YELLOWS A splendid blend of many shades of yellow	2.00	14.00	3.00	23.00	4.00	35.00	5.00	42.00	6.00	55.00	8.00	66.00
GRENADIER A beautiful array of various tones of orange.....	2.00	14.00	3.00	23.00	4.00	35.00	5.00	42.00	6.00	55.00	8.00	66.00

NOTE: Larger sizes will be very short this year. Please allow us leeway in sizes in filling your order.



**Here's How
It's Done
Out Where the
*Best Begins***

