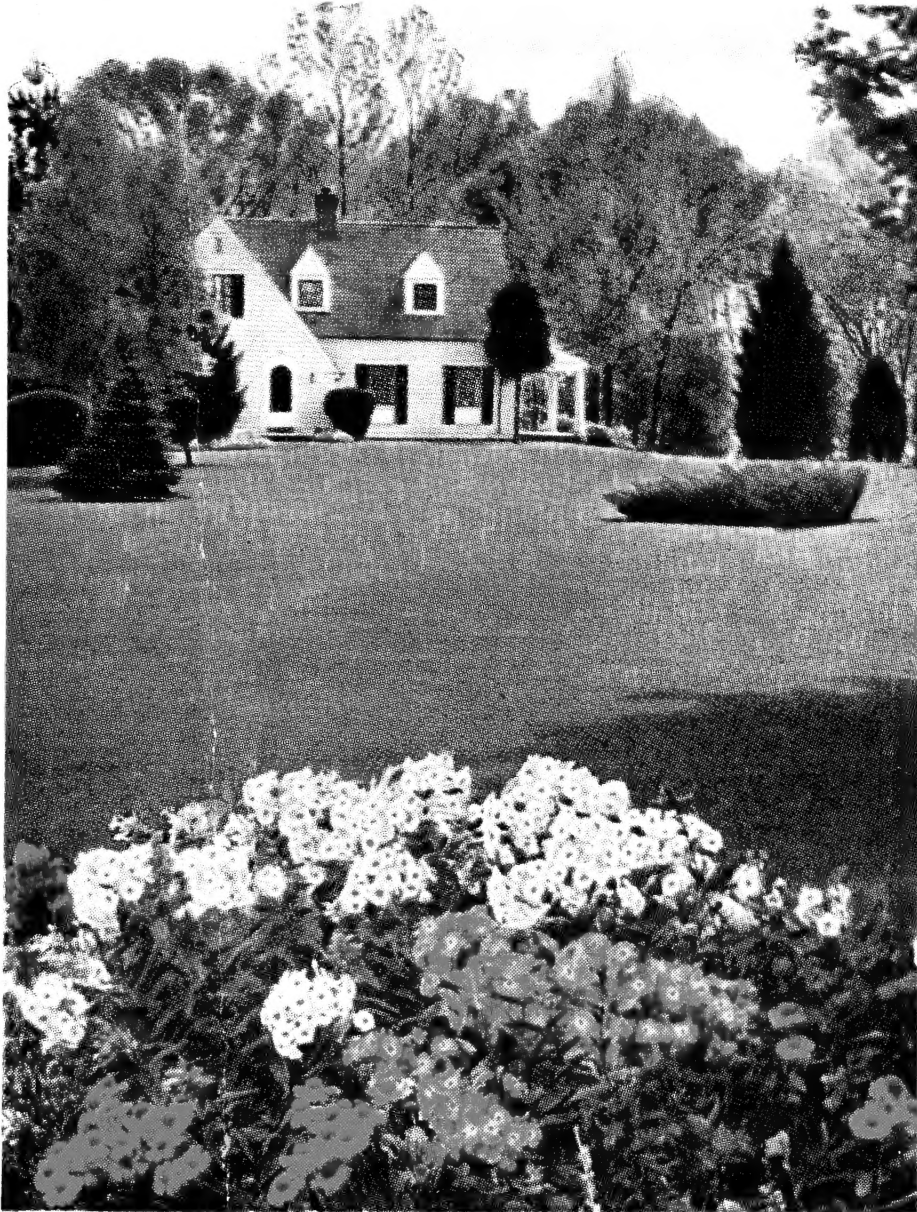


Historic, Archive Document

Do not assume content reflects current scientific knowledge, policies, or practices.

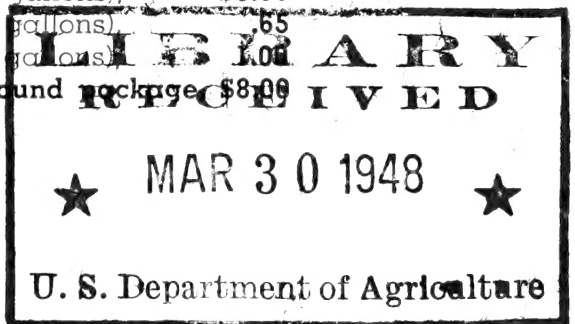
Dixco

The Modern Plant Food and How to Use It



DIXCO comes in handy packages.

1/4-pound package (enough for 5 gallons), \$0.35
1/2-pound package (enough for 10 gallons), .65
1-pound package (enough for 20 gallons), 1.00
5-pound package, \$4.50. **10-pound package**, \$8.00



What is *Dixco*?

DIXCO is a plant food, quick in action and direct in results for nearly all growing things.

Lawns, Roses, evergreens, vegetables, house plants all do better if given regular **feedings** of quickly available plant food and **DIXCO** is the plant food to use.

DIXCO is a highly concentrated plant food and must be dissolved in water for best results. It dissolves immediately and can be used at once.

All the needed chemical nutrients are in **DIXCO** and when diluted at the directed rate will furnish ample plant food to give the vegetation to which it is applied an immediate increase in growth.

DIXCO, when diluted as directed, can be applied to all types of plant life, even in dry weather with the assurance that all of the chemical nutrients are immediately available to the plant structure.

Sufficient diluted **DIXCO** should be applied to each plant to saturate the soil taken up by the root area.

DIXCO should be used supplemental to the usual procedure of cultivation, weeding, watering etc.

**If your dealer cannot supply you WRITE
The Marion Chemical Co., Box 394, Marion, Ohio.**

TO MAKE DIXCO SOLUTION

ALWAYS dissolve **DIXCO** in water.

One tablespoonful to one gallon of water.

$\frac{1}{4}$ pound in 5 gallons of water.

$\frac{1}{2}$ pound in 10 gallons of water.

1 pound in 20 gallons of water.

Successful Uses of *Dixco* on Lawns

DIXCO feeds the grass. Use it on home lawns, golf greens and fairways, cemeteries, athletic fields, public building approaches, parks, etc.



DIXCO is a fine plant food for new and old lawns. Apply it to young newly planted grass to keep it growing. Use it on old lawns to keep them in thrifty condition.

HOW—For new or old lawns. Dissolve **DIXCO** with water (see page 1.)

Use sprinkling can or sprayer to apply **DIXCO** solution.

Sprinkle the surface of the lawn until the soil is well dampened. Repeat every two weeks during April, May and June, also every two weeks during August and September.

Grass likes **DIXCO** and will thrive on it.

Fruit Trees, Shade and Ornamental Trees



In planting new trees dip or sprinkle the roots with **DIXCO** solution (see page 1.) After planting feed each fruit tree with two gallons of **DIXCO** solution, more for a larger shade or ornamental tree.

Feed with two to four gallons of **DIXCO** solution every two weeks during the first growing season.

DIXCO is good for larger trees too.

Tobacco

In the seed bed on young plants use one tablespoonful for each gallon of water. Use a sprinkling can to feed the **DIXCO** solution. Sprinkle well until the top of the earth is well dampened. Feed every two weeks until the plants are large enough to transplant.

Transplanting—when transplanting with a mechanical transplanter use **one pound** of **DIXCO** for each 50 gallon tank of water.

If transplanting with a hand planter use **one tablespoonful** of **DIXCO** for each gallon of water.

DIXCO makes healthier and sturdier plants and hastens the maturity date of tobacco.

From

Name _____

Address _____

Town _____, State _____

THE HARMON NURSERY

Growers of Better Trees and Plants

PROSPECT,
OHIO

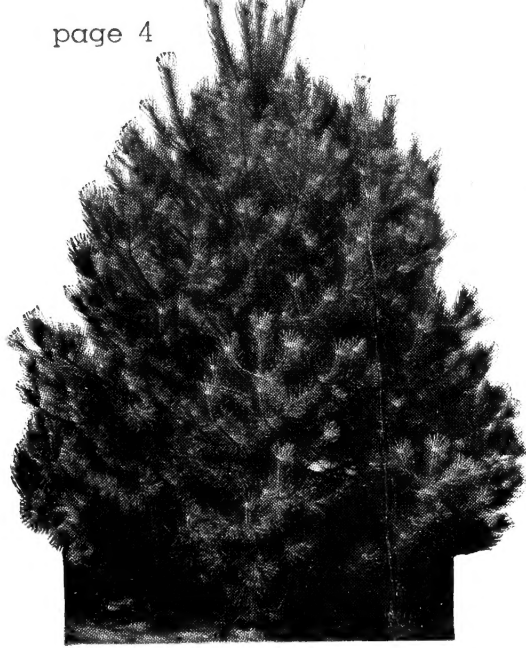
Distributors of

PLANT



FOOD





Evergreens

DIXCO keeps evergreens in a thriving green condition. When planting use plenty of **DIXCO** solution (see page 1) on the ball of earth.

Newly planted trees should be fed once a month for the first summer. Pour the **DIXCO** solution slowly into the loosened earth around the tree. Use 1 to 2 gallons for a 3 to 4 foot tree. More for larger trees.

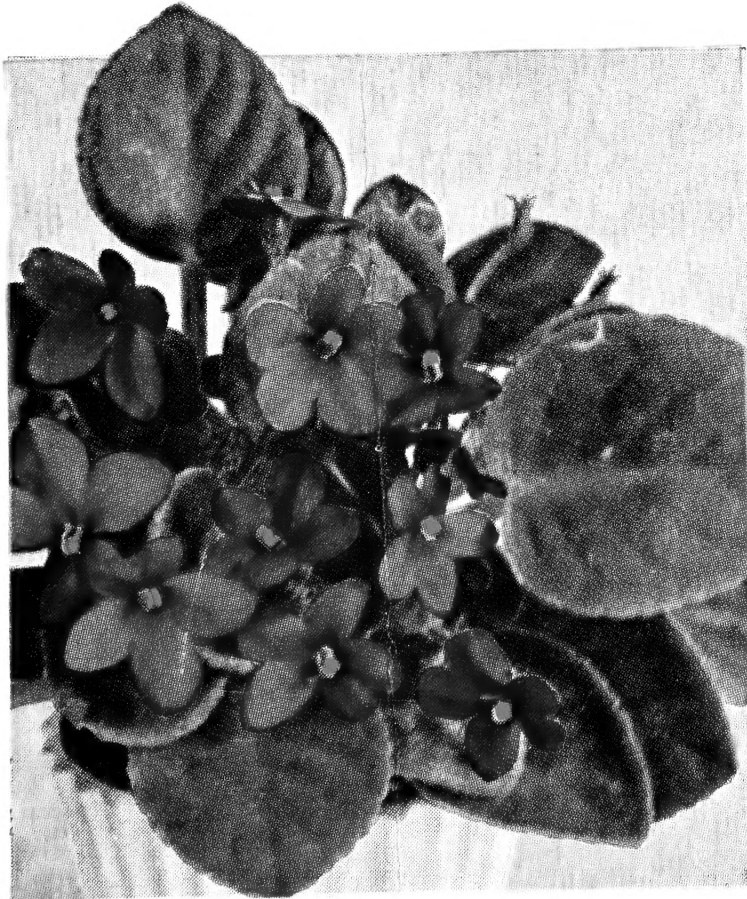
Older trees are helped immensely with **DIXCO**.

Use two gallons of **DIXCO** solution on a 3 to 4 foot tree. More on a larger tree.

Repeat every ten days for four feedings and then feed once a month.

Roses

Roses bloom better and have better foliage when fed **DIXCO**. Feed a Rose one quart of **DIXCO** solution (see page 1) at a time. Feed on May 1st, May 15th, June 1st, June 15th and then feed once a month. Loosen the soil and then pour the **DIXCO** solution around the Rose bush slowly allowing it to penetrate to the roots. **DIXCO** will not burn roots or foliage.



African Violets and Other House Plants

African Violets do very well on **DIXCO**. Feed once a month with two to twelve tablespoonfuls of **DIXCO** solution (see page 1) according to the size of the plant. A three inch pot needs 4 tablespoons of **DIXCO** solution. Begonias, Ferns and other house plants fed at the same rate according to the size of the plant.

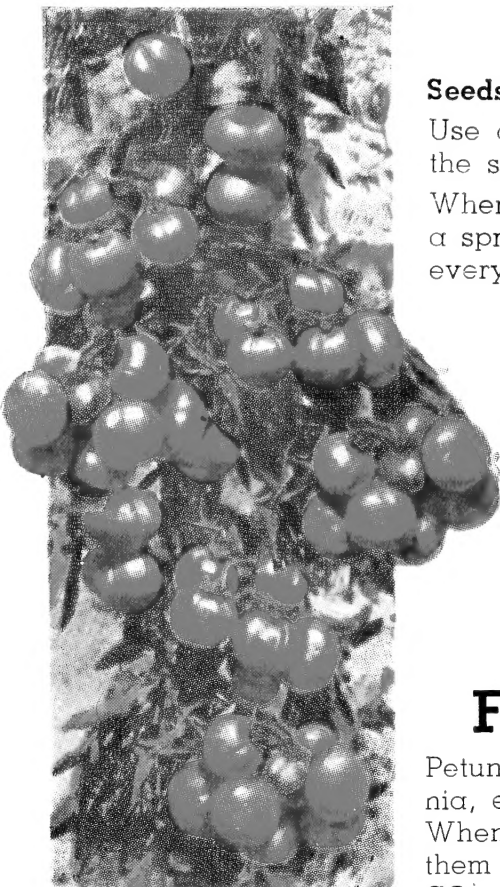
Vegetables

Seeds—(Radishes, Beans, etc.)

Use a sprinkling can for **DIXCO** solution (see page 1.) Soak the soil on top of the row as soon as the seeds are covered. When the plant appears feed along the sides of the row with a sprinkling can which has the sprinkling head removed. Feed every two weeks.

Plants. On transplants (Tomatoes, Cabbage, Brussels Sprouts, Peppers, etc.) pour one pint of **DIXCO** solution (see page 1) around each plant when setting them out in the field.

If you raise your own plants, use **DIXCO** solution at ten day intervals after the plants appear, for four feedings. On large scale commercial plantings use **one pound of DIXCO** for each 50 gallon tank of the transplanter.



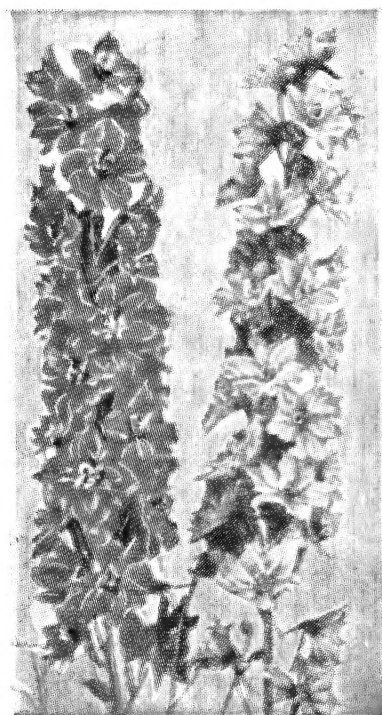
Annual Flower Plants

Petunias, Salvia, Marigold, Zinnia, etc.

When planting the plants, dip them for a second or two in **DIXCO** solution (see page 1.) After planting, give each plant a half cupful of **DIXCO** solution. Feed each plant, every two weeks, one half cupful of **DIXCO** solution pouring the solution into the loosened soil around the plant.

Nasturtiums, Sweet Peas, etc., thrive on **DIXCO**.

Apply as soon as the plants come through the ground and then feed every two weeks.



Hardy Flowers

Delphinium, Phlox, Chrysanthemums and all others do better when fed **DIXCO**.

When planting new plants, or transplanting, dip the roots in **DIXCO** solution (see page 1) for a few seconds.

After planting, feed each plant with a pint of **DIXCO** solution and repeat these feedings every two weeks throughout the season.

DIXCO does not burn the roots or foliage.

If your dealer cannot supply you, write
Marion Chemical Co. Box 394, Marion Ohio.