

## **Historic, Archive Document**

Do not assume content reflects current scientific knowledge, policies, or practices.



62.23

1887

LIBRARY  
RECEIVED  
★ FEB 27 1948 ★  
U. S. Department of Agriculture

1948



*The Home Nursery*

**LAFAYETTE, ILLINOIS**

PEORIA OFFICE - 407 FIRST NATIONAL BANK BLDG. - PHONE 9889



**BLUE SPRUCE**



**NORWAY SPRUCE**



**AUSTRIAN PINE**



**SCOTCH PINE**

# INDEX

	PAGE		PAGE
Apple. . . . .	18,19,20	Pear. . . . .	20
Apricot. . . . .	21	Planting Hints. . . . .	24
Asparagus. . . . .	23	Plum. . . . .	21
Blackberry. . . . .	22	Quince. . . . .	21
Boysenberry. . . . .	22	Raspberries. . . . .	22
Cherry. . . . .	21	Rhubarb. . . . .	23
Currant. . . . .	22	Roses. . . . .	16,17
Evergreens. . . . .	2 to 8	Shade Trees. . . . .	9,11
Gooseberry. . . . .	22	Shrubs. . . . .	12 to 15
Grapes. . . . .	23	Strawberries. . . . .	23
Peach. . . . .	20	Vines. . . . .	17

# OUR GUARANTEE

## ON ALL TREES, SHRUBS AND EVERGREENS

DOES NOT INCLUDE ROSES, PERENNIALS OR SMALL FRUIT PLANTS

We guarantee stock to be just as represented, and must reach you in good growing condition or orders will be refilled free, providing reports are made within ten days after receipt of goods. After ten days, it is mutually agreed that stock is satisfactory.

All stock is nursery grown, and State inspected, but continued growth depends upon soil, climatic conditions, planting and care--conditions beyond our control. We will, however, replace plants at half price if reports are made during current season. It is mutually agreed that in any event we will not be liable for more than purchase price of stock.

PRICES QUOTED ARE NET, F. O. B. NURSEY, AND SUBJECT TO CHANGE WITHOUT NOTICE.

SALES TAX - All orders are subject to an additional 2 per cent State Tax.

SHIPPING SEASON - Our Spring shipping season usually begins early in April and until about the first of June everything can be transplanted. Perennials and stock dug with a ball of earth can be moved at any time during the Summer. Our Fall season starts with the digging of evergreens in August, followed in October by Deciduous trees and shrubs.

OPEN SUNDAYS - Cash and carry stock on hand and can be packed on Sundays. Leave your digging orders.

ALL DELIVERY AND PLANTING CHARGES AT COST.

# Evergreens

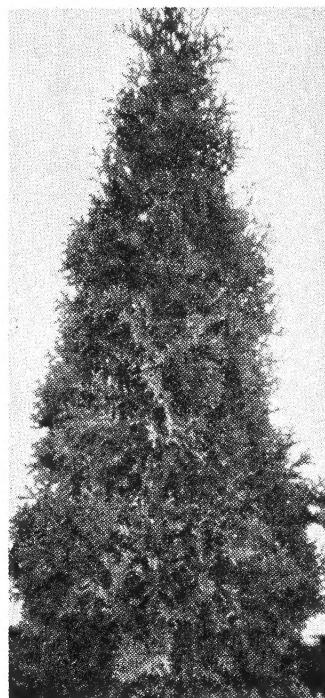
We offer the most complete line of evergreens that can be seen in the mid-west.

Evergreens are invaluable for beautifying grounds. They are used for specimens on the lawn and also extensively for massing, shelter-belts, screens, and hedges.

For planting around the house as a foundation planting, they give a color and warmth that cannot be obtained with any other tree. Only an inspection of our stock can give an adequate idea of the variety of color effect they present.

A good many fail with evergreens on account of improper treatment. **EVERGREENS MUST BE HANDLED FRESH. FREQUENT WATERING AND CULTIVATION** during the first year will guarantee success.

## ARBOR VITAE



**PYRAMID, ARBOR VITAE**

**AMERICAN**--One of the most valuable of the native evergreens. It thrives in a moist situation. Fine for windbreaks, and for ornamental hedges, as it shears well and makes a very dense hedge. Called the post cedar in Wisconsin.

2-3 ft. - - - - - each \$2.50

**BERKMAN GOLDEN**--A very compact, slow growing dwarf type. The flattened leaf-clusters face outward edgewise, presenting a beautiful surface of vertical fluted lines. Foliage is a deep green edged with gold.

18-24 in. - - - - - each \$3.00

24-30 in. - - - - - each \$4.00

**PYRAMIDAL**--A dwarf variety of compact growth and very narrow upright habit, and of a deep green color. Makes a straight narrow column. Hardy everywhere except in dense shade and splendid for formal plantings.

18-24 in. - - - - - each \$ 2.50

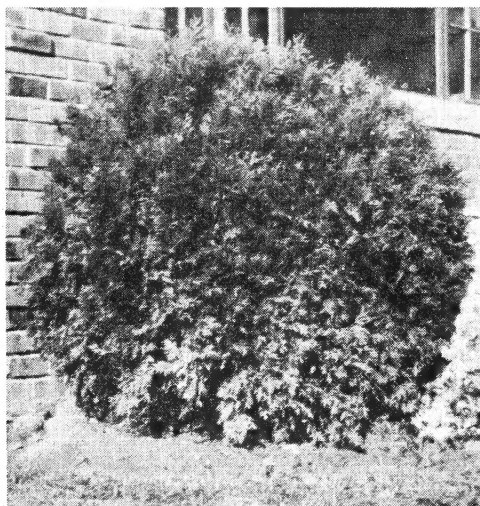
24-30 in. - - - - - each \$ 3.50

30-36 in. - - - - - each \$ 5.00

3-3½ ft. - - - - - each \$ 6.00

3½-4 ft. - - - - - each \$ 8.00

4-4½ ft. - - - - - each \$10.00



**GLOBE ARBOR VITAE**

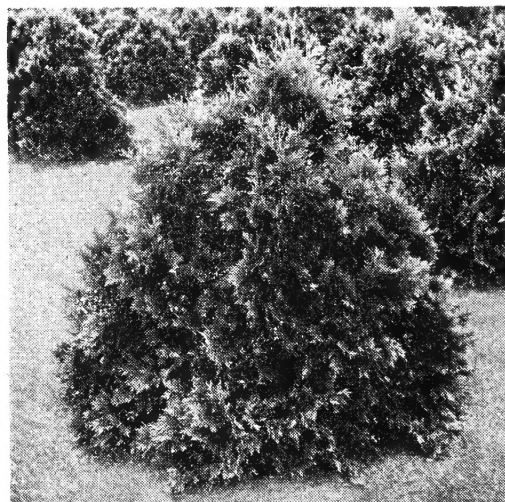
**GLOBE**--This dwarf variety of very dense, compact growth maintains a natural globe shape without trimming. Grows very dense, and round; is admirably adapted for foundation planting.

15-15 in. - - - - - each \$2.50

18-18 in. - - - - - each \$3.25

24-24 in. - - - - - each \$4.00

30-30 in. - - - - - each \$5.00



**SIBERIAN ARBOR VITAE**

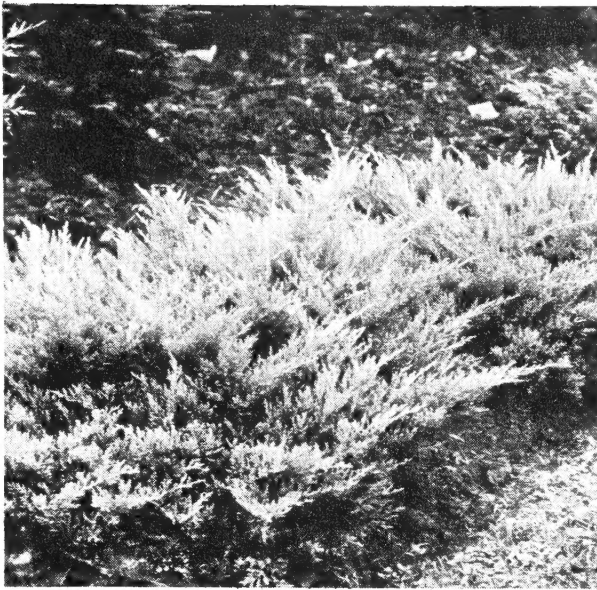
**SIBERIAN**--Hardy variety, somewhat similar to the American Arbor Vitae, being much heavier and deeply crested, branches short and stiff. Of slow growth being classed with the dwarfs. In conical in outline, foliage of fine, deep green color, and very dense. This variety is used extensively for background in foundation planting where dense bushiness is required rather than height.

18-24 in. - - - - - each \$2.50

24-30 in. - - - - - each \$3.50

30-36 in. - - - - - each \$5.00

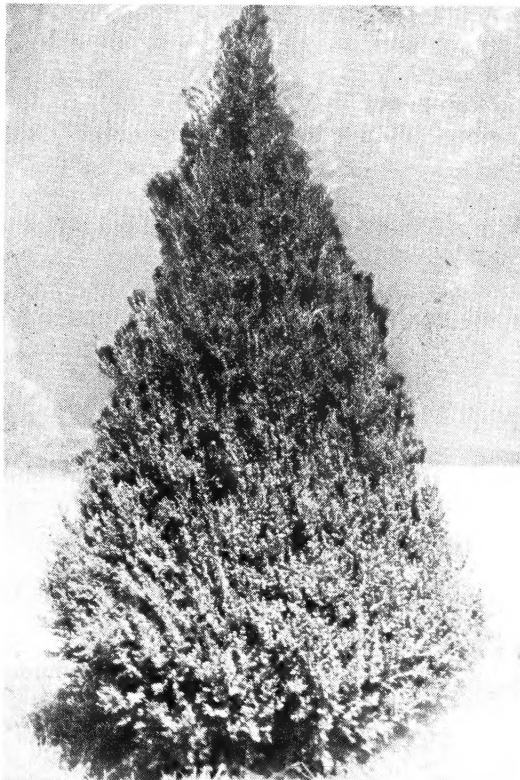
## Junipers



**ANDORRA JUNIPER**

ANDORRA--A low growing, spreading, dwarf evergreen, that is excellent for terrace and rock garden plantings. Color of foliage is blue-green in summer and orchid in winter.

- 12-15 in. - - - - - each \$1.50
- 15-18 in. - - - - - each \$2.50
- 18-24 in. - - - - - each \$3.00
- 24-30 in. - - - - - each \$3.75
- 30-36 in. - - - - - each \$4.50



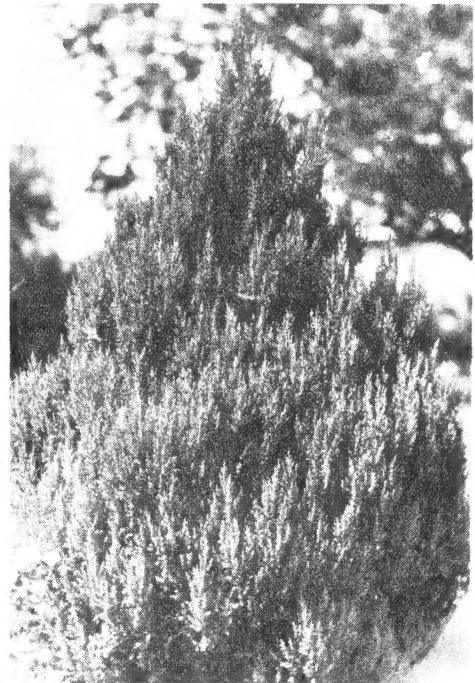
**CHINESE JUNIPER**

CHINESE--This variety was introduced by the U.S. Dept. of Agriculture. Originated in China. It forms a very narrow pyramid with all leaves needle shaped, foliage steel-blue. One of the hardiest evergreens.

- 4-5 ft. - - - - - each \$12.00
- 5-6 ft. - - - - - each \$15.00

DOUGLAS--A trailer of low dense habit, covering the ground while not growing over 6 in. in height. The color of the foliage is a soft blue in the summer, but changes to a rich purple during the winter.

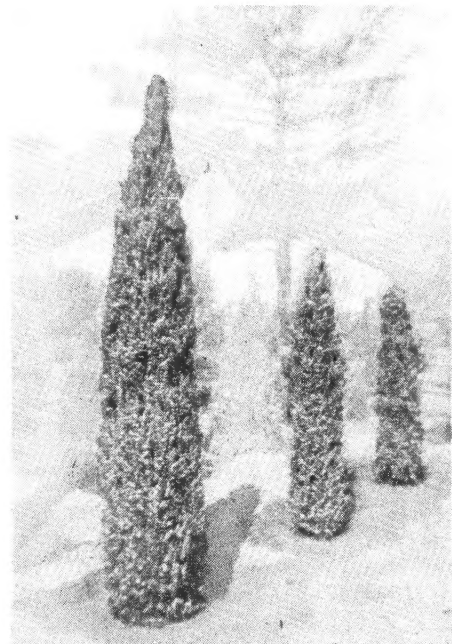
- 18-24 in. - - - - - each \$2.50



**GREEK JUNIPER**

GREEK--A native of Greece forms a tall, dense narrow, conical head, tapering gradually from the ground to a sharp terminal point; fine glaucous color with very close growing needles.

- 18-24 in. - - - - - each \$ 5.00



**IRISH JUNIPER**

IRISH--Dwarf growing Juniper of very upright, dense, columnar habit, with bluish - green foliage. Makes a narrow column. Indispensable for gardens, beds, and formal grounds.

- 18-24 in. - - - - - each \$2.00
- 24-30 in. - - - - - each \$2.50
- 30-36 in. - - - - - each \$3.50



**MEYER'S JUNIPER**

**MEYER'S**--A new variety of unusual merit, an irregular grower. The foliage appears of different shades of blue when viewed from various angles. It never fails to attract attention.  
 15-18 in.-----each \$5.00  
 18-24 in.-----each \$6.00

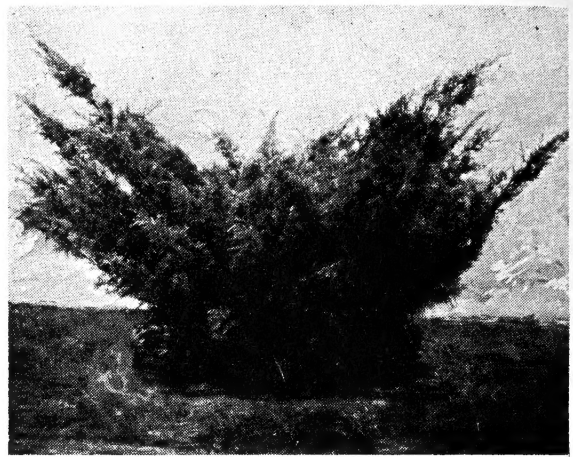
**POLISH**--Is an excellent upright growing Communis Juniper which has a similar habit to the Ashford.  
 18-24 in.-----each \$2.00  
 24-30 in.-----each \$3.00



**PFITZER JUNIPER**

**PFITZER**--Low, irregular, spreading, vase-shaped of bush-like form, with dense gray-green foliage of soft, feathery appearance. Extremely hardy, and will grow anywhere. Very valuable for foundation and group plantings.

12-15 in.-----each \$ 3.00  
 15-18 in.-----each \$ 4.00  
 18-24 in.-----each \$ 5.00  
 24-30 in.-----each \$ 7.00  
 30-36 in.-----each \$ 8.50  
 3-4 ft.-----each \$12.00



**SAVIN JUNIPER**

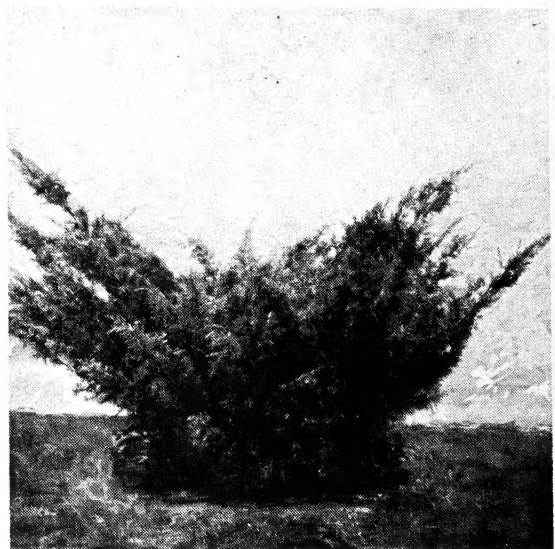
**SAVIN**--A low, much-branched, spreading shrub 2 to 3 feet in height; its branches well supplied with short straight, tufted branchlets which are well covered with dark-green foliage.

15-18 in.-----each \$2.50  
 18-24 in.-----each \$4.00  
 24-30 in.-----each \$5.00  
 3-4 ft.-----each \$6.00

**SQUAMATA**--One of the most interesting of all trailers. A native of the Himalayas. When young, the plants are prostrate and trailing, but as it increased in age, it assumes a compact, conical form, making a pleasing appearance.  
 18-24 in.-----each \$2.50

**TAMARAX**--A low form of the Junipers, spreading habit, and is noted for its excellent green winter color. Very hardy and popular wherever grown.  
 15-18 in.-----each \$2.25  
 18-24 in.-----each \$3.25

**VIRGINALIS**--A new interesting variety of the spreading form of Junipers. May be grown natural in a Sabina shape but by trimming, may be easily developed into perfect balls. The foliage is remarkable robust and healthy, a fine deep green color at all season.  
 18-24 in.-----each \$3.50



**VIRGINALIS JUNIPER**



**Cedars**



**CANNARTI CEDAR**

CANNART--The most popular of the cedars, having a rich green foliage keeping a fine green winter color. It makes a pyramidal specimen of the medium growth. Some trees bear blue berries in the fall.

- 2½-3 ft. - - - - - each \$ 9.00
- 3-3½ ft. - - - - - each \$10.00
- 3½-4 ft. - - - - - each \$11.00
- 4-4½ ft. - - - - - each \$12.00
- 4½-5 ft. - - - - - each \$15.00
- 5-5½ ft. - - - - - each \$17.50

HILL'S DUNDEE--One of the most interesting of the new evergreens. Foliage is a bluish-green in spring and summer, changing to plum-like color in the fall and winter. Grows dense and formal without much shearing.

- 2-3 ft. - - - - - each \$9.00

SILVER--Is always popular favorite due to its unusual silver-blue color. Brightest in spring but attractive at all season. Similar in growth and habit to the Cannarti.

- 3-3½ ft. - - - - - each \$ 9.00
- 3½-4 ft. - - - - - each \$10.00
- 4-4½ ft. - - - - - each \$11.00

VIRGINIANA--A well-known evergreen of compact pyramidal growth. The dense foliage is a bright bluish-green when fresh, maturing to a deep bronze-green during the winter. It can be trimmed in any desired shape or form, and is used a good deal in topiary work.

- 24-30 in. - - - - - each \$ 5.00
- 30-36 in. - - - - - each \$ 6.00
- 3-3½ ft. - - - - - each \$ 7.00
- 3½-4 ft. - - - - - each \$ 8.50
- 4-4½ ft. - - - - - each \$10.50

**Firs**

CONCOLOR FIR--The showiest of all firs, being a rich bluish-green. The new growth in the spring is of silvery whiteness, thus, the common name of "Silver Fir".

- 12-15 in. - - - - - each \$ 4.00
- 2-3 ft. - - - - - each \$10.00
- 3-3½ ft. - - - - - each \$12.50



**DOUGLAS FIR**

DOUGLAS FIR--It is a rapid grower and has long, graceful branches, less still than spruce. The foliage is soft, flexible, and fragrant. Will grow almost anywhere and stand adverse conditions.

- 18-24 in. - - - - - each \$3.50
- 2- 3 ft. - - - - - each \$6.00
- 3-3½ ft. - - - - - each \$7.50



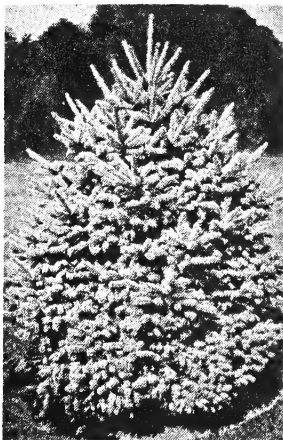
## Spruces



**NORWAY SPRUCE**

**NORWAY SPRUCE**--Large fast-growing tree of Northern Europe, very symmetrical and of pyramidal habit, dark green foliage, often with drooping branches. Its extreme hardiness and adaptability to all situations make it a most valuable tree when planted for shelter and screen, as well as a single lawn specimen.

18-24 in. - - - - - each \$2.50  
 2-3 ft. - - - - - each \$3.50  
 3-4 ft. - - - - - each \$5.50  
 4-5 ft. - - - - - each \$7.50



**BLACK HILL'S SPRUCE    WHITE SPRUCE**

**BLACK HILLS SPRUCE**--A native of the Black Hills in Dakota, and well adapted to dry and rigorous conditions. Very symmetrical, compact and bushy in habit of growth. Color a bluish-green.

15-18 in. - - - - - each \$2.50  
 18-24 in. - - - - - each \$3.50  
 24-30 in. - - - - - each \$6.00

**WHITE SPRUCE**--A small-sized- pyramidal-shaped tree of slow and compact growth. The foliage is a light green with a bluish tint. This variety is seen on the market as Christmas Trees brought from the north in preference to any other kind. Its slow, dense growth makes it valuable for foundation as well as for grouping with other stronger growing kinds.

13-24 in. - - - - - each \$3.50  
 2-3 ft. - - - - - each \$5.00  
 3-4 ft. - - - - - each \$6.50

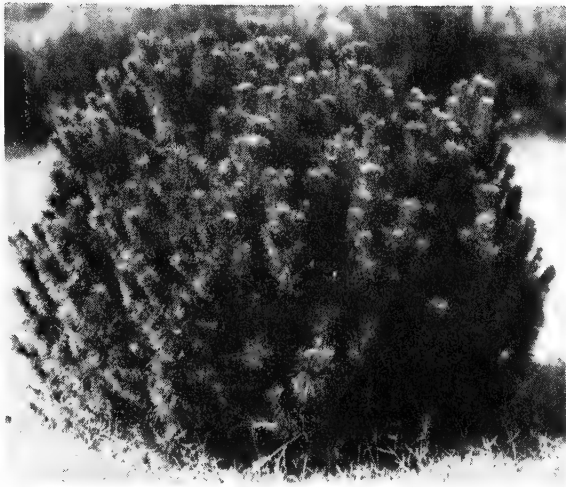
**COLORADO BLUE SPRUCE**--A very hardy and handsome tree from Colorado, of sturdy, upright growth; color of foliage bluish-green to silvery-white. The trees have heavy, horizontal, stout branches in remote whorls, which become drooping as they get older. Excellent for specimen planting.

15-18 in. - - - - - each \$ 5.00  
 18-24 in. - - - - - each \$ 7.50  
 24-30 in. - - - - - each \$10.00



**BLUE SPRUCE**

**Pines**



**MUGHO PINE**

**MUGHO PINE**--A dense low, round, shrub-like Pine of dark green foliage; extremely slow growth. Fine for planting in front of other groups of evergreens.

- 12-12 in.----- each \$3.50
- 15-15 in.----- each \$5.00
- 18-18 in.----- each \$6.00



**AUSTRIAN PINE**

**AUSTRIAN PINE**--Very hardy growing, with massive needles 6 to 10 inches long of deep green color on the surface and bluish-white underneath. Habit of growth tall and well-rounded. One of our outstanding specimen trees.

- 2-3 ft.----- each \$ 5.00
- 3-4 ft.----- each \$ 7.00
- 4-5 ft.----- each \$ 8.50
- 5-6 ft.----- each \$10.00



**SCOTCH PINE**

**SCOTCH PINE**--A valuable timber tree of Northern Europe, familiarly known in Scotland as "Scot's Fir". It is one of the fastest growing of the pines and makes a very beautiful tree while young, but is inclined more to the picturesque when aged. A very hardy, rugged tree.

- 2-3 ft.----- each \$4.00
- 3-4 ft.----- each \$6.50
- 4-4½ ft.----- each \$7.50

**WHITE PINE**--Hardy ornamental Pine of very rapid growth. Leaves soft bluish-green, long and slender. Easily moved by the slightest breeze, so that a constant sighing and moaning is kept up which has long been the theme of the poets.

- 18-24 in.----- each \$3.00
- 2-3 ft.----- each \$4.50
- 3-4 ft.----- each \$7.00

**Cypress**

**SAWARA CYPRESS**--A beautiful hardy evergreen from Japan, with soft feathery foliage, with drooping branches. They are similar to the Arbor Vitae, but have finer texture of foliage and more spreading habit.

- 3-4 ft.----- each \$5.00
- 4-5 ft.----- each \$6.00



## Yews

**PLUME CYPRESS**--A dwarf growing variety with dark green, dense plume-like foliage with spreading, conical habit. Relatively rare, but very desirable.

3-4 ft. - - - - - each \$5.00  
4-5 ft. - - - - - each \$6.00

**GOLD PLUME CYPRESS**--Same as above but tips of branches a golden-yellow during the growing season. Contrast well with other evergreens in groupings.

12-14 in. - - - - - each \$2.00

**GOLD THREAD CYPRESS**--With thread-like foliage of a bright lemon-yellow, of low spreading habit, very dwarf; fine for borders and foundation planting.

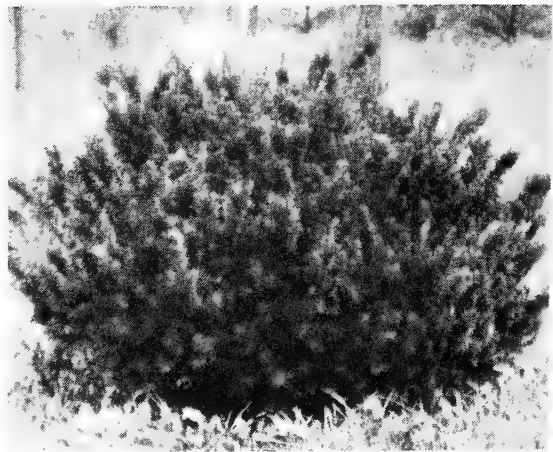
15-18 in. - - - - - each \$3.50



**HEMLOCK**

**HEMLOCK**--This handsome evergreen is in a class by itself. It seems to grow equally well in the shade as in the open. There is probably no more beautiful evergreen than the Hemlock. It does not have the stiff, formal appearance of many of the evergreens, but is graceful and stately at the same time. With its dark green dense foliage, pyramidal shape and light drooping branchlets, it is admired in every situation.

18-24 in. - - - - - each \$5.00  
2-3 ft. - - - - - each \$7.50



**SPREADING YEW**

**SPREADING YEW**--Similar to the upright type, except its spreading habit, growing slightly higher than the spreading Junipers. Like all Yews, grows in shady locations.

15-18 in. - - - - - each \$8.50  
18-24 in. - - - - - each \$12.00

**DWARF YEW**--Similar to the Spreading Yew, and compact grower. Absolutely hardy. It contains its rich, dark green color throughout the year. Will remain dwarf and grow more attractive with age.

12-15 in. - - - - - each \$7.50  
15-18 in. - - - - - each \$8.50



**HICK'S YEW**

**HICK'S YEW**--A very interesting Yew of an upright type, growing in an extreme, narrow, column bush. It is fairly rapid growing and has a deeper green color than most Yews.

1½-2 ft. - - - - - each \$ 9.00  
3-3½ ft. - - - - - each \$ 15.00

## Shade and Ornamental Trees

Note: Sizes are given as average height, i.e., 5-6 ft., or measured by the diameter of the stem twelve inches above the ground, i.e., 2-2½ in.

Prices following are based on the trees being dug naked root, except where noted as B. and B.

B. and B. means that the tree is dug with a solid ball of earth. With this method, the small hair roots are not disturbed.

Special quotations will be made on any of the trees B. and B.

**ASH, MOUNTAIN**--Hardy tree, head dense and regular, beautiful fern-like foliage, distinctly ornamental. Covered with clusters of bright red berries from July until winter. The combination of foliage and clusters of fruit make it a very beautiful tree for lawn planting.

6-8 ft. - - - - - each \$3.50  
 8-10 ft. - - - - - each \$5.00  
 10-12 ft. - - - - - each \$7.50



**BIRCH, CUT LEAF WEEPING**

**BIRCH, CUT LEAF WEEPING**--Its tall, slender, yet vigorous growth, graceful drooping habit, silvery white bark and delicately cut foliage presents attractive characteristics rarely met in a single tree.

7-8 ft. - - - - - each \$6.00  
 8-10 ft. - - - - - each \$8.50

**BIRCH, COMMON CANOE**--One of the native birches of the north woods. As the tree grows, the bark peels. Likes a moist situation.

6-8 ft. - - - - - each \$3.50

**BIRCH, EUROPEAN WHITE**--A graceful tall tree, showing a white bark as it matures. A fine ornamental tree in any position, especially in evergreen groups where the bark shows up most effectively.

6-8 ft. - - - - - each \$5.00  
 8-10 ft. - - - - - each \$7.50

**CATALPA BUNGEI (Umbrella Catalpa)**--a bush form of the Catalpa from China. When grafted on stems 5 to 6 feet high it makes an umbrella-shaped top and is used primarily for producing formal effects.

3 yr. heads - - - - - each \$4.00

**ELM, AMERICAN WHITE**--A splendid native tree of great size and wide spread, with graceful drooping branches. Classed among the rapid growing trees and is not easily damaged by storms. On account of its wide spread, is one of the best for streets and parks.

6-8 ft. - - - - - each \$2.50  
 8-10 ft. - - - - - each \$3.50  
 10-12 ft. - - - - - each \$5.00  
 12-14 ft. - - - - - each \$7.50

**ELM, CHINESE**--Of recent introduction from China, is native of Turkestan to Siberia. Of extremely rapid growth while young, but does not make a large tree. Foliage is small and dense; growth symetrical and compact. Especially adapted to arid regions, succeeds everywhere.

1-1½ in. or 6-8 ft. - - - - - each \$2.50  
 1½-1¾ in. or 8-10 ft. - - - - - each \$5.00

**ELM, LAKE CITY**--An improved form of the American Elm which is more compact in habit, and has heavier foliage.

6-8 ft. - - - - - each \$2.50  
 8-10 ft. - - - - - each \$5.00

**ELM, MOLINE**--Variety of late introduction found growing at Moline, Ill. Of very compact, upright and fast growing habit, with large leaves of distinct dark green shade. One of our finest trees.

6-8 ft. - - - - - each \$2.50  
 8-10 ft. - - - - - each \$5.00  
 10-12 ft. - - - - - each \$6.00

**BECHTEL'S CRAB**--During May and June it is loaded with delicate pink, double flowers, looking like small roses; An old popular variety.

4-5 ft.----- each \$3.50

**ELEYI CRAB**--A very showy hybrid with a reddish foliage. The flowers are extra large rose-pink, softening to white, followed by dark purple fruit.

5-6 ft.-----each \$3.50

**HACKBERRY**--A native tree of the Illinois River Valley. Has narrow pointed leaves, slender branches and rough bark. An excellent tree for City planting.

5-6 ft.----- each \$2.50

6-8 ft.----- each \$3.50

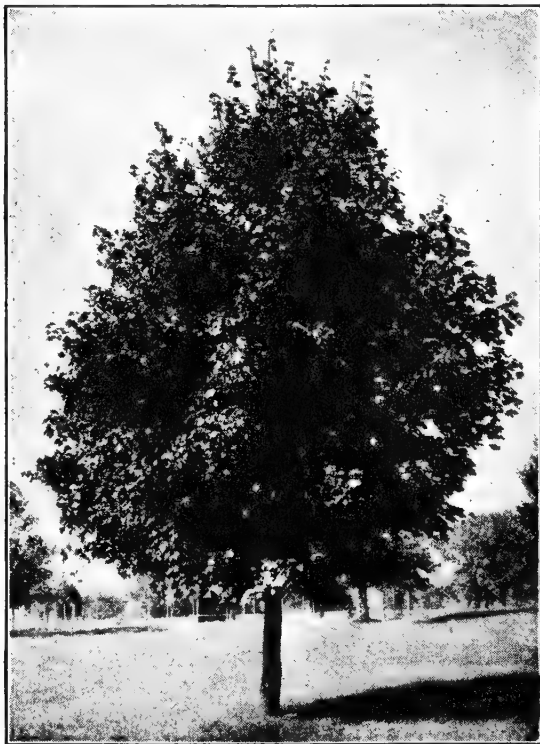
8-10ft.----- each \$5.00

10-12ft.----- each \$6.00

**LINDEN (Basswood)**--A rapid growing large sized tree, native to this country. It forms a round, compact top; this, with its broad leaves, makes a dense shade. Has very fragrant flowers, to which the bees are attracted.

6-8 ft.-----each \$3.00

8-10 ft.-----each \$4.00



**HARD MAPLE**

**MAPLE, HARD or SUGAR**--Makes a round dense top, medium rapid growth and one of the best for shade. Rather slow about getting started after being planted, but when once established, makes a rapid growth. The leaves give beautiful autumn tints of yellow and scarlet. Has no equal for shade.

8-10 ft.-----each \$ 5.00

1½-2 in.-----each \$ 7.50

2-2½ in. dia.-----each \$15.00



**NORWAY MAPLE**

**MAPLE, NORWAY**--A native of Europe. Grows similar in habit to our native hard Maples, but more dense and of slower growth. Its compact habit, broad, deep green foliage render it one the most desirable for streets and lawns.

8-10 ft.-----each \$7.50

**MAPLE, RED LEAF or SCHWEDLER**--Noted for its beautiful foliage. Comes out a rich ruby-red in spring, gradually changes to purplish green, then in fall colors to bright red and purple.

7-8 ft.-----each \$ 5.00

8-10ft.-----each \$10.00

**MAPLE, SILVER**--Well-known rapid growing free valuable where quick shade is wanted. It is among the first trees planted for shade by the early settlers. Their life is limited to about 40 or 50 years.

6-8 ft.----- each \$3.50

8-10ft.----- each \$4.00

10-12ft.----- each \$5.00

2-2½ft.----- each \$7.50

**MAGNOLIA SOULANGEANA (Saucer Cup Magnolia)**--By far the best of the hardy Magnolias, producing a wealth of delicate shaded blooms, just before the leaves open. The flowers open light purple at the base, shading to pink at the tips, with inside petals clear pink to white. One of our most beautiful ornaments.

3-4 ft.-----each \$15.00

4-5 ft.-----each \$20.00



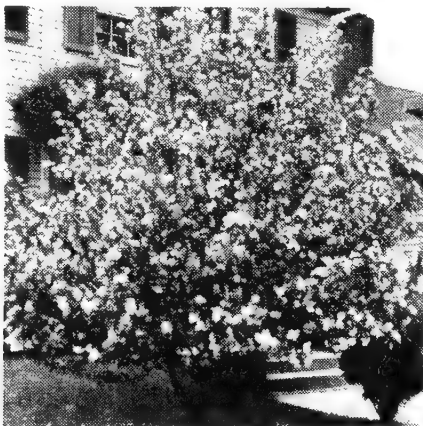
**PIN OAK**

**OAK, PIN**--Likes a rather moist situation. Has broad pyramidal head. Foliage is deeply cut, turns rich crimson-maroon in the autumn, and a large part hangs on until spring.

6-8 ft.-----each \$7.50

**PLUM, RED LEAF**--Outstanding because of its brilliant red foliage throughout the growing season. Has a small pink bloom in spring.

3-4 ft.-----each \$2.25



**FLOWERING PLUM**

**PLUM, FLOWERING**--(Tree Flowering Almond)--The small, double, quilled, bright pink flowers stud every twig and branchlet in the spring before the leaves appear.

3-4 ft.-----each \$2.25

**POPLAR, LOMBARDY**--Very tall, rapid growing tree with spire like habit. Its tall, narrow lines make it picturesque compared to the more rounded forms of other trees. Used extensively in screens, or to accent shrubbery groups.

6-8 ft.-----each \$1.25

8-10 ft.-----each \$1.50

10-12 ft.-----each \$2.00

**RED BUD**--Before the leaves come out, the branchlets are covered with clusters of small purplish pink pea blossoms. Native of Ill. River Valley. The foliage consists of medium size, heart-shaped leaves. Very ornamental.

4-5 ft.-----each \$3.00

**TEA'S WEEPING MULBERRY**--One of the most perfect weeping trees yet introduced. With long, slender willowy branches, reaching the ground; full of fruit during the early part of the summer.

2 yr. head-----each \$5.00



**WEEPING WILLOW**

**WILLOW, WEEPING**--The well-known graceful Weeping Willow whose long drooping branches densely covered with fresh green leaves, make it one of the best loved trees. Very rapid grower. Likes moist situations.

6-8 ft.-----each \$3.00

8-10 ft.-----each \$4.00

**WILLOW, MARCEL**--Originated near Paris, France. Introduced by U. S. Dept. of Agriculture. An erect growing willow, in a fairly round shape, with long narrow leaves. Branches curled like a corkscrew. New.

3-4 ft.-----each \$1.50

6-8 ft.-----each \$1.75

## Shrubs



ALTHEA

ALTHEA (Rose of Sharon)--Upright growing shrub noted for its profusion of large blooms in Sept. and Oct. This is the only shrub which produces varied color in the border for fall. Named colors: Red, Pink, White, and Blue. 3-4 ft.-----each \$1.00

ALMOND, FLOWERING--Very early spring flowering shrub, gaily in bloom before the leaves appear. The flowers are an attractive bright double pink. 24-30 in.-----each \$1.00

ARALIA, FIVE LEAVED--Of compact, graceful outline with bright green and shining foliage, attaining a height from 5 to 7 feet. Well adapted to dark, shady places, where other shrubs fail. 2-3 ft.-----each \$0.65

BARBERRY, THUNBERGI--Is no shrub in existence more commonly used for foundation and hedge plantings. Autumn paints the foliage crimson and bronze, and studs the branches with red berries which hang all winter. 18-24 in.-----each \$0.65

BARBERRY, RED LEAF--A shrub of medium height, with distinctly red foliage throughout the year. It needs a sunny location to bring out the color of the leaves. 18-24 in.-----each \$0.75



THUNBERG BARBERRY

BARBERRY, TRUE HEDGE COLUMNBERRY --Plant Patent No. 110. The quick, erect compact growth of Columnberry results in a self-made hedge. It retains its neat, well-groomed appearance with very little trimming. The leaves are larger, thicker, and of much deeper, glossier, healthier shade of green than the common Barberry. 24-30 in.-----each \$0.85

BEAUTY BUSH--This plant is a slender but erect shrub of bushy habit, with downward sweeping branches of very graceful aspect. Its flowers are like tiny fox-gloves, bright shell pink, and produced in bewildering profusion. 2-3 ft.-----each \$1.50

BUDDLEIA (Butterfly Bush)- A semi-herbaceous plant which begins to bloom in July and continues until frost. The flowers are of a pleasing shade of violet-mauve and borne in dense cylindrical spikes. Very fragrant and attractive to the butterflies. 2 yr. heads-----each \$1.00

COTONEASTER--A beautiful hardy shrub of recent introduction from Northern China with spreading slender branches and beautiful dark green foliage persistent until into the winter. 2-3 ft.-----each \$0.75

DEUTZIA, GRACILIS--A dwarf, low-growing bush, never taller than 3 feet. Is covered very early in the spring with pure white flowers. Very desirable where a low-growing shrub is wanted. 15-18 in.-----each 00.75

DOGWOOD, YELLOW--A shrub of medium size with yellow bark in the winter. Good green foliage. 2-3 ft.-----each \$0.75

DOGWOOD, RED--A shrub with blood-red branches in the winter. Fruit bright blue and flowers white. Attractive to desirable birds. 3-4 ft.-----each \$1.00

ELDER, GOLDEN--Its golden-yellow leaves contrast beautifully with other shrubs. Flowers white, in flat-topped cymes. A heavy, rank grower. 3-4 ft.-----each \$0.75

EUONYMOUS AMERICAN (Indian Wahoo)--A native shrub with greenish branches of upright growth, bearing small white flowers in early spring and full of showy red fruit during the winter. Because of the fruit, sometimes called strawberry bush. 4-5 ft.-----each \$1.00



**EUONYMOUS ALATUS (Winged Euonymous)**  
 --Has dwarf compact habit; hood very corky, which gives it the name of cork bark. Has small delicate flowers in late spring, followed by red berries in fall. Foliage turns a brilliant red in the fall.  
 2-3 ft. - - - - -each \$1.00

**EUONYMOUS EUROPEAN (Burning Bush)**--  
 A tall, slender shrub of tree-like habit. Has bright red foliage in autumn and pink fruits in the fall.  
 2-3 ft. - - - - -each \$1.50

**FORSYTHIA INTERMEDIA (Golden Bell)**--  
 One of the most desirable for foundation and border planting, because of its very graceful habit. Flowers yellow and bell-shaped, bloom along the entire length of the branches in early spring before the leaves appear.  
 3-4 ft. - - - - -each \$1.00

**FRINGE, WHITE**--White flowers in May and June which resemble mist. Large glossy foliage.  
 3-4 ft. - - - - -each \$1.50



**HONEYSUCKLE**

**HONEYSUCKLE, TARTARIAN**--A tall, bushy shrub, with red, pink, or white flowers in the spring followed by red berries. Its dense foliage and rank growth makes it one of the most popular screening shrubs in use.  
 2-3 ft. (True Red) - - - - - each \$0.75  
 3-4 ft. (True Red) - - - - - each \$1.00

**HONEYSUCKLE, FRAGRANT**--The fragrant honeysuckle is a delightful shrub because of the delicious scent of its tiny waxen flowers in the spring. The bushes grow quickly and make a fine mass of decorative foliage which remains a good rich green, persisting until mid-winter.  
 2-3-ft. - - - - -each \$1.00



**HARDY HYDRANGEA**

**HYDRANGEA ARBORESCENS (Hills of Snow)**  
 --The flowers are similar to snowballs in appearance, white and imposing, blooming throughout the season. Excellent for solid low borders and foundation planting. One of the few shrubs which blooms well in shade.  
 18-24 in. - - - - -each \$1.50

**HYDRANGEA P. G. (Hardy Hydrangea)**--A well-known shrub that blooms from August until late fall. The blooms are first white, then turn pink on the exposed side. It produces the largest flower head of all the shrubs. Will bloom in shady situations. **DO NOT PLANT ON SOUTH FOUNDATIONS.**  
 2-3 ft. - - - - -each \$1.50

**HYPERICUM AUREUM (St. John's Wort)**--Medium growing shrub with attractive blue-green foliage. Flowers are large yellow and are borne during July. It likes a rocky ground and will thrive in shady places.  
 2-3 ft. - - - - -each \$1.00

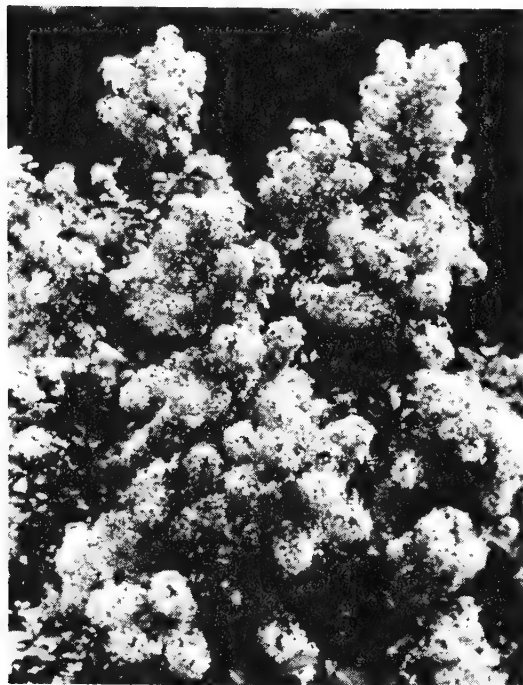
**KERRIA JAPONICA FLORAPLENA**--(Double Yellow Kerris)--Often called Globe Flower, because the innumerable clustered petals give the blooms a ball-like shape. Stems are a bright green which shows up well in the winter.  
 18-24 in. - - - - -each \$1.50

**KERRIA JAPONICA (Single Yellow Kerria)**  
 2-3 ft. - - - - -each \$1.25

**KERRIA, WHITE (Rhodotypus)**--Sometimes called Jetbead because of the shining black-berries which cover the plant during the winter. Has very attractive foliage and blooms in June with a white single bloom which has a yellow center.  
 2-3 ft. - - - - -each \$1.00

LILAC (Syringa) COMMON PURPLE--Large old-fashioned shrub with bluish-purple flowers. Very sweet scented. The most popular and earliest to bloom of all lilacs. 3-4 ft.-----each \$1.00

LILAC, COMMON WHITE--Similar to above but bears large double white blossoms. 3-4 ft.-----each \$1.00



PERSIAN LILAC

LILAC PERSIAN PURPLE--The finest lilac for screen planting. Blooms the first year planted. Very dense growing and the foliage does not mildew. 3-4 ft.-----each \$1.50

LILAC, FRENCH--Named varieties in Red, Purple, and White. These lilacs are more dwarf growing than the others and are all grafted to insure pure color as well as guarantee blooms soon after planting. 2-3 ft.-----each \$1.50  
3-4 ft.-----each \$2.00

MOCKORANGE, SWEET--Familiar shrub with vigorous erect habit that has white blossoms near Decoration Day. The breath of orange blossoms--of such entrancing fragrance--intense from the multitude of bloom, that is a necessity to a garden, and works splendidly in all sorts of plantings. 3-4 ft.-----each \$1.00

MOCKORANGE, VIRGINALIS--A magnificent new variety, far exceeds any other Mock Orange in beauty and form. Flowers are semi-double and cover the entire bush in early June. Has scattered blossoms the balance of the year. 2-3 ft.-----each \$1.50

NINEBARK, DWARF--A medium growing shrub of very dense habit. Fine for fronts of borders or as a hedge. 2-3 ft.-----each \$0.75

PRIVET, AMUR RIVER HEDGING--Well-known formal hedge plant for shearing. One of the hardiest types of plants grown. Does not winter kill like the California Privet. 18-24 in. 3 Canes - -per 100, \$25.00

PRIVET, LODENSE (Dwarf Privet)--Very compact growing and required little shearing. The foliage is very dark-green and hangs on until mid-winter. Excellent for edging formal gardens. 15-18 in.-----each \$0.50

PRIVET, REGAL'S--A low spreading form with gracefully drooping branches. The dense growth and dark green persistent leaves make it a desirable shrub for foundation or border planting, growing in shade and other impossible places. 24-30 in.-----each \$0.75

QUINCE, FLOWERING--Old fashioned shrub with glossy leaves and scarlet flowers in great profusion in early spring before the leaves appear and followed by small quince-shaped fruit, which are quite fragrant. 2-3 ft.-----each \$1.00

RUSSIAN OLIVE--Rather large growing shrub with silvery foliage. Fine for planting in screen plantings for contrast with other shrubs. Has small yellow blossoms in June. 4-5 ft.-----each \$1.00

ROSA GROOTENDORST (Hardy Red Rose)--This plant is one of the showiest hardy roses in existence. It is covered the entire season with clusters of semi-double red roses. Vigorous growing and can be used almost anywhere in the border. 2 yr. No. 1-----each \$1.50



PRIVET HEDGE



**SNOWBALL-COMMON**

**SNOWBALL**--Old-fashioned shrub that grows anywhere and blooms well. Characterized by its large clusters of white flowers at Decoration Day.

3-4 ft.-----each \$1.25

**SNOWBERRY, RED (Improved Corralberry)**--Graceful shrub with corral-colored berries that hang on during the winter. Its graceful habit and fine texture of foliage and twigs make it fine for foundation planting. Will grow in shade locations.

2-3 ft.-----each \$0.75

**SNOWBERRY, WHITE (Common Snowberry)**--Medium sized shrub with bluish-green foliage and rose colored flowers in June followed by large clusters of white, waxy fruit that hangs on far into the winter.

2-3 ft.-----each \$0.75

**SPIREA ANTHONY WATERER (Rose Spirea)**--Low growing type of very compact, dense habit, with flat topped clusters of rose-colored flowers throughout the season. Excellent for low foundation plantings.

15-18 in.-----each \$1.00

**SPIREA THUNBERGI (Snow Garland)**--A shrub with thin, arching branches plentifully besprinkled in very early spring with tiny, single, snow-white flowers. It is a dainty and very beautiful shrub, with feathery, fresh green foliage that in autumn turns scarlet and orange.

2-3 ft.-----each \$0.75

**SPIREA VAN HOUTTEI (Bridal Wreath)**--One of the finest of flowering shrubs, and none so popular or widely planted. Its adaptability to almost any soil or situation makes it one of the most desirable shrubs under cultivation.

2-3 ft.-----each \$0.65

3-4 ft.-----each \$0.75

4-5 ft.-----each \$1.00

**SPIREA FROEBELI (Froebel Spirea)**--Compact shrub of medium height producing numerous flat-topped clusters of orchid-pink flowers during the summer and later the foliage turns to autumn colors.

18-24 in.-----each \$0.75

**SUMAC, FRAGRANT**--A vigorous, spreading shrub with aromatic leaves and showy heads of yellow flowers in the spring. Little bunches of coral red fruits, covered with silky hairs, appear in the summer.

2-3 ft.-----each \$0.75

**TAMARIX**--Heavy growing shrub with reddish-purple branches and bluish-green feathery foliage. Flowers in large pink panicles in August.

3-4 ft.-----each \$1.00

**VIBURNUM DENTATUM (Arrow Wood)**--Upright growing with light green dentata leaves. Flowers greenish-white followed by black fruit. A fine shrub for massing or foliage effect.

3-4 ft.-----each \$1.00

**VIBURNUM OPULUS (Highbush Cranberry)**--Tall and upright, with good foliage and especially decorative red fruit in large clusters which resemble cranberries and hand on well into the winter.

3-4 ft.-----each \$1.00

**WEIGELIA EVA RATHKE (Hybrid Weigelia)**--Dwarf but erect shrub with deep-carminere flowers through most of the summer.

2-3 ft.-----each \$1.50

**WEIGELIA ROSEA (Rose Weigelia)**--Very free flowering shrub. Pink flowers are produced in so great profusion as to almost hide the foliage. A well-known shrub, fine for massing or for single specimen.

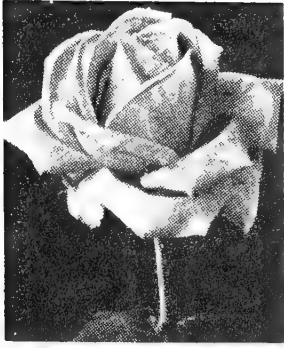
3-4 ft.-----each \$1.00

**WILLOW, PUSSY**--A fast-growing shrub tree, blooming very early in the spring before the leaves come out. The fern-like catkins borne along the branches make it very attractive. Loves moist places.

3-4 ft.-----each \$0.75



**SPIREA VAN HOUTTEI**



GRUS EN TEPLITZ



## Roses

### HYBRID TEA ROSES

Select Jumbo Size - - - - - \$1.75

2 yr. No. 1 - - - - - each \$1.50

AMI QUINARD--Semi-double flowers of velvety crimson-maroon with a soft black luster. Vigorous grower; free bloomer; fragrant.

AUTUMN--Cupped double flowers of novel coloring, burnt orange streaked with red.

GEN. MacARTHUR--Wonderful scarlet crimson blooms. Bears continuously. Highly perfumed. Erect plant, fine foliage. Very good.

BETTY UPRICHARD--Semi-double, salmon pink flowers stained with copper pink on the outside.

ETOLIE DE HOLLANDE--A brilliant dark red rose of magnificent size and perfect form.

PRESIDENT HOOVER--A lovely blending of orange-yellow, flame, vivid rose-pink and scarlet.

TALISMAN--Golden yellow, stained coppery red.

GRUS EN TEPLITZ--Brilliant red. One of the most prolific bloomers of all.

E. G. HILL--Long, perfectly formed buds and full double flowers of dazzling scarlet.

RED RADIANCE--A bright, cheerful and even shade of pure red. Vigorous grower.

PINK RADIANCE--Bright rose-pink, shining flowers of wonderful shape and fragrance. Strongest grower, of all hybrid teas.

K. A. VICTORIA--Delicate creamy white flowers of beautiful form.

EDITH HELLIE PERKINS--Buds long and pointed, petals cream and blush and salmon pink shades to golden orange at base.

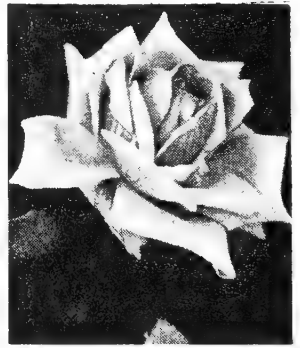
EDITOR MCFARLAND--Clear, brilliant pink on long cutting stems.



AMI QUINARD



ETOILE DeHOLLANDE



EDITH NELLIE PERKINS



K. A. VICTORIA



TALISMAN



PINK RADIANCE



RED RADIANCE

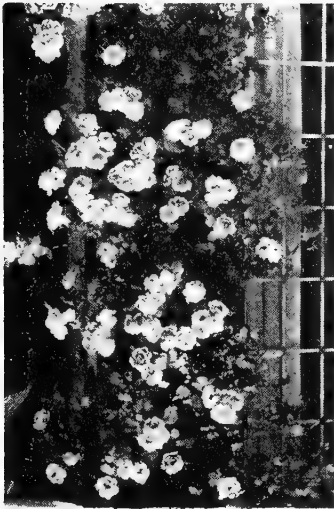


PRESIDENT HOOVER



AUTUMN

**Climbing Roses**



**PAUL'S SCARLET**

Price- - - - -each \$1.50

**PAUL'S SCARLET**--Large, well-shaped flowers of a vivid scarlet-red that does not fade.

**AMERICAN BEAUTY**--Large double rosy-crimson flowers freely produced in June.

**DR. VAN FLEET**--A delicate shade of flesh-pink. Borne on long stems.

**AMERICAN PILLAR**--Of extremely vigorous habit of growth; foliage lively green the season through. It has a profusion of bright pink, semi-double flowers in clusters which are followed by clusters of attractive red berries.

**IVY-BOSTON**--The most popular climbing plant for covering brick, stone, or wooden walls. The color is a fresh deep green in the summer, changing to autumn tints in the fall.  
3 yr. No. 1- - - - -each \$1.00

**ENGLEMAN IVY**--Similar to Virginia Creeper as well as the common Woodbine. Heavy, coarse growing and will climb to almost unbelievable heights.  
2 yr. No. 1- - - - -each \$0.65

**CLEMATIS-JACKMANI**--Hardy vine with very large purple flowers. They like a rich, moist situation and not too sunny a location. Do not plant very deep.  
2 yr. No. 1- - - - -each \$1.50

**CLEMATIS PANICULATA**--The Sweet Autumn or Virgin's Bower is a strong luxuriant grower. Small white fragrant flowers in feathery panicles, blooming in late summer.  
2 yr. No. 1- - - - -each \$1.00

**BITTERSWEET**--Well, known native climber, handsome glossy foliage and large clusters

**Polyantha Roses**

Price- - - - -each \$1.50

**GLORIA MUNDI**--New, double, lasting flowers of glowing orange-scarlet, borne in large clusters.

**TRIUMPH de ORLEANS**--Semi-double crimson flowers borne in clusters. Long blooming period.

**LA FAYETTE**--Flowers large as "Paul's Scarlet". Produced in enormous clusters, as many as forty flowers in a cluster. Color brilliant cherry crimson.



**La FAYETTE POLYANTHA ROSE**

**Climbing Vines**

of beautiful orange-crimson fruit retained all winter.  
3 yr. No. 1- - - - -each \$0.75

**HONEYSUCKLE-HALL'S**--Strong grower, holds foliage until early winter. Flowers white, changing to yellow; very fragrant.  
2 yr. No. 1- - - - -each \$0.65

**HONEYSUCKLE-FLAMING RED**--New climbing honeysuckle of unusual merit. Flowers much larger and brighter than the old Trumpet Honeysuckle.  
2 yr. No. 1- - - - -each \$1.00

**SILVER LACE VINE**--The most vigorous and rapid growing of all climbers, when blooming is covered with foamy sprays of creamy white flowers.  
2 yr. No. 1- - - - -each \$1.00

**WISTERIA-PURPLE**--One of the best of the hardy climbers, producing dense drooping clusters of pea-shaped flowers in May and occasionally during the fall. Color violet blue.  
2 yr. No. 1- - - - -each \$1.00



## Fruits

Illinois is one of the leading apple growing states in the Union, and the fruit produced here is far superior in flavor and keeping qualities than any from the South or West. And unlike other fruits, its period of ripening extends throughout the year. So that by a selection of kinds one may have this most valuable fruit of his own growing in a fresh condition the year round. Don't kid yourself that apples do not grow here and that planting an orchard would be a waste of time and money.

As a dessert fruit, the pear is of great value. When properly ripened there is none of the tree fruits more luscious. It is an old saying that "He who plants pears plants for his heirs." The pear is a very much longer lived tree than the apple, and, as a rule, comes into bearing much later. However, we now have varieties that come into bearing soon after planting. The dwarf trees often bear in the nursery row, and commence bearing very soon after planting, and are annual bearers.

Peaches are the earliest to come into bearing after planting of any of the tree fruits. Trees have been known to bear fruit within eighteen months from the time the seed sprouted, and it is not uncommon for them to bear in three years from the seed. Trees planted out usually come into bearing the second year and come into full bearing from three to four years.

The Plum being a native fruit, is of the most easy culture and an abundant bearer. There is an endless variety of colors and flavors as well as different times of ripening, extending from the middle of July to late fall.

The Apricot is one of the earliest of the tree fruits and is the first tree in the spring to show bloom. A rich, delicious fruit, coming between cherries and peaches. Very much like the peach in outward appearance, but like the plum in texture and quality. Aside from its value as a fresh fruit, the Apricot is fine for canning or drying, and vast quantities are used in this way every year.

The Cherry begins to bear when only a few feet in height, and is an annual bearer. The fruit is fine and delicious, and one of the earliest of the tree fruits. The Oxheart, or Sweet Cherry, does not succeed in this section. We have frequent calls for this valuable kind, and regret very much that they cannot be grown here.

We have tested a number of kinds and offer only the best. Our trees are budded upon the Mahaleb stock, which dwarfs them to some extent, so that the trees do not grow so tall or rapid and do not sprout from the root.

### Apples

Price each, 5 to 6 ft., \$2.00  
Price each, 4 to 5 ft., \$1.50

### Summer Varieties

**OLDENBERG**(Duchess of Oldenburg)--One of the most hardy and profitable kinds in cultivation. Trees among the hardiest, and one of the few that will stand the climate of northern Iowa, Minnesota, Montana and other cold locations. Medium sized, red striped and a favorite on account of its rich acidity and splendid cooking qualities. Season the last of July to September. Regular and abundant bearer.

**YELLOW TRANSPARENT**--This variety was introduced from Russia in 1870 by the U.S. Department of Agriculture and is one of the very hardiest and earliest bearers grown; usually bears the second year after planting and sometimes bears in the nursery row. Of vigorous upright growth, but never makes a large tree. Fruit medium, skin clear white at first, becoming pale yellow when fully matured. Fruit may be used from 10 days to two weeks earlier than any other kind. Extremely productive.

**ANOKA**--Noteworthy for its beautiful red striped fruit and early bearing; often bears year after planting. Excellent quality, ripening shortly after Yellow Transparent.

### Fall Varieties

**AUTUMN STRAWBERRY**--Medium upright spreading tree, an abundant bearer, one of the old reliable kinds. Fruit light red, striped. Flesh yellowish white, very tender, juicy, pleasant vineous, subacid. Ripens September and October.

**MAIDEN BLUSH**--Well-known variety that needs no description. A good hardy tree and splendid bearer. Fruit of uniformly large size, smooth, with a delicate waxen appearance, pale yellow in the shade and with a brilliant crimson cheek next the sun. Flesh whit, sprightly, tender, pleasant subacid. Has no equal for cooking or drying. Season September.

**SNOW** (Famuse)--Gets its name from the snow-white color of its flesh. It is an excellent, productive autumn apple and is especially valuable in northern latitudes. Fruit of medium size, roundish, mostly red in the sun. Flesh remarkably white, very tender, juicy and with a slight perfume. For eating out of hand it is in a class by itself. Season October to December.



**YELLOW DELICIOUS**

**WEALTHY**--Vigorous spreading tree, extremely productive. This beautiful moderate sized, brilliant red apple is of fine quality, one of the best of its season. It is a relatively good keeper, and owing to the hardness of the tree, its adaptability to cold climates and early bearing habit makes it a very profitable kind. Flesh white and tender, reddish stained and of excellent flavor. Season October to December.

**POUND SWEET**--A very large, round, yellow russet apple, very rich and sweet. Tree a vigorous and rapid upright grower: October and November.

**Winter Varieties**

**DELICIOUS**--Tree very hardy, strong upright grower and comes into bearing soon. Fruit large, nearly covered with brilliant dark red. Flesh fine-grained, crisp, and melting. Juicy, with a delightful aroma; of very highest quality. This is no doubt the most popular and highest priced eating apple on the market. Season December to March.

**GRIMES GOLDEN PIPIN**--Tree is vigorous grower and a hardy late bloomer. Comes into bearing young. Fruit medium to large, cylindrical in shape; flesh tender, juicy and rich, and old time favorite, never losing its popularity. A favorite in all markets and invariably brings the highest price. Color a transparent golden yellow. Season December to April.

**JONATHAN**--For years the standard of quality by which other sorts have been gauged. Trees are long lived, productive and an early bearer. A brilliant red apple, highly flavored and of excellent quality--being tender, juicy, spicy and rich--a splendid family sort and highly profitable for market. Season December to April.

**WINESAP**--Well known variety and one of the leading export apples. Fruit medium large, skin thick and very tough, almost entirely covered with dark red; flesh yellow, fine-grained, firm, rich, crisp, slightly subacid, quality excellent. Season December to April.

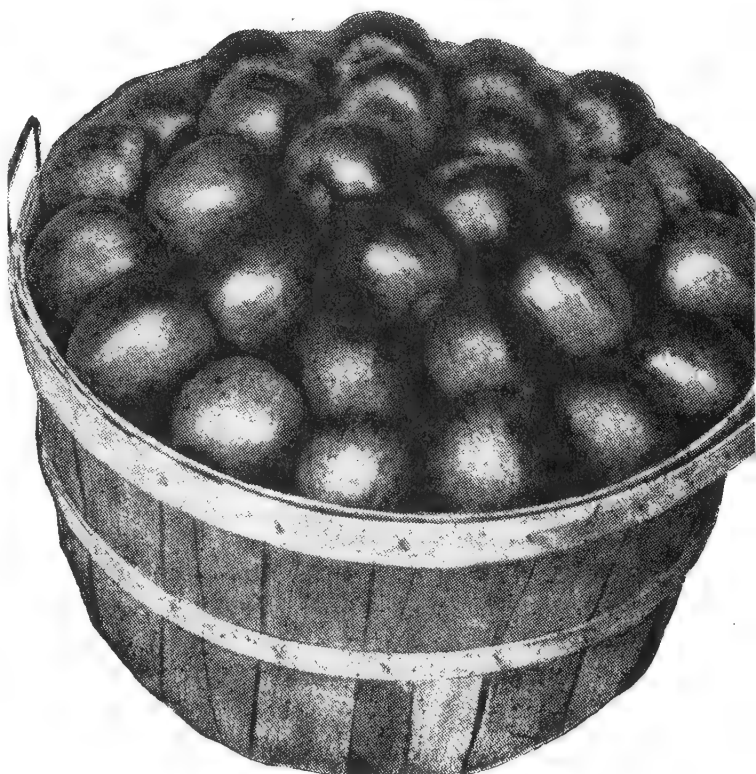
**BELLFLOWER**--An old time favorite. Large yellow with reddish blush. Excellent keeper. October.

**KENTUCKY SWEET**--Size medium to large; color, red with distinct stripe-like markings, resembling the Delicious, very sweet, an old time favorite. Hardy and a dependable producer.

**YELLOW DELICIOUS**--The Yellow Delicious is identical in shape and size with the red variety apple. Is completely yellow in appearance. Flavor sweet, and flesh is very firm, crisp and juicy. A splendid market apple.

**STAYMANS WINESAP**--Tree vigorous, hardy, spreading. An early and very productive fruit, medium size, roundish, approaching conic; skin smooth, greenish yellow, splashed and striped with red and purple; flesh yellow, firm tender, juicy, rich, subacid, aromatic; quality best. Splendid late keeper. Season December to April.

**MINKLER**--Medium size, nearly covered with dark red. Flesh white, tender, juicy and crisp. Similar to common McIntosh but colors earlier. Tree hardy, vigorous and health-



**MINKLER**

## Crab Apples

**HYSLOP**--A large deep crimson crab, very popular on account of its size and beautiful color. And commands a fancy market price. The tree is a moderate grower and makes a nice round topped tree; fruit borne on clusters.

**TRANSCENDENT**--This variety is one of the best of the Siberian crabs, is popular over the entire country, being perfectly hardy everywhere and an immense bearer, yielding large crops every year. A very rapid grower and comes into bearing soon after planting. Fruit is large and round; skin smooth, rich yellow, shaded with red. Flesh firm and crisp, yellowish fine-grained, and very juicy. Fine for jellies and pickles.

**WHITNEY**--One of the largest; skins smooth, glossy green, striped and splashed with carmine; flesh firm, juicy and rich. Tree a vigorous handsome grower, with dark green foliage.

**DOLGO**--A handsome hardy red crab apple. Vigorous and productive. Very juicy, jellies easily, and makes a rich, ruby red jelly of beautiful color and excellent flavor. Makes exceptionally good cider. September 1-10th.

## Pears

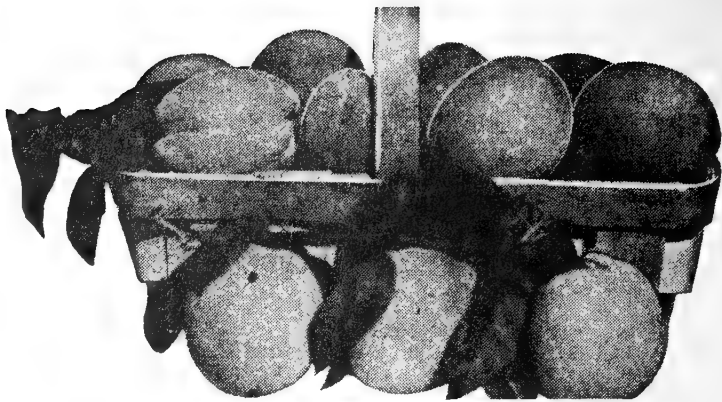
Standard Trees, 4 to 5 ft., each, \$2.50

**BARTLETT**--The leading commercial variety; one of the most popular for dessert and canning. Large, clear yellow, with blush on sunny side. Flesh white, fine-grained, juicy and sweet. Tree is vigorous, very productive, hardy, bears young.

**KIEFFER**--A large, handsome pear and an excellent keeper. The trees are very hardy and being to bear when quite young. The fruit is a rich yellow with a reddish cheek. If picked about October 1st, when it takes on a slight yellow tint, and put in a dark place to ripen, they are fine eating out of hand and superior to most pears for canning. Its excellent flavor and handsome appearance make it a desirable market variety.

**LINCOLN**--A very fine large, yellow, blush-red, late summer pear which bears young and heavily, and is delicious for eating and canning. Fine keeper. Succeeds where others fail. Fast grower, extremely hardy. Ripens in October.

**DUCHESS**--October-Fruit large, color; dull yellow with russett, flesh; white, firm, juicy, very sweet. Tree vigorous, hardy, abundant bearer, favorite for home planting bears early, very reliable and profitable producer.



**ELBERTA PEACHES**

## Peaches

Price Each, 4 to 5 ft. \$1.50

**BELLE OF GEORGIA**--Very large. White with red cheek. Firm and of fine quality. It is a rapid grower, very productive and a good shipper. Early September.

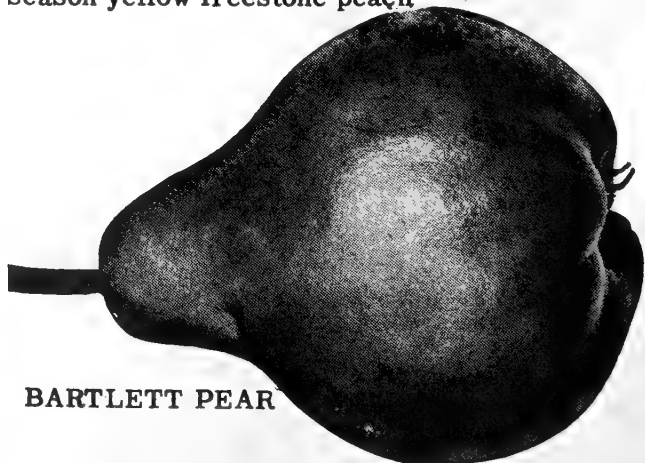
**CHAMPION**--Fruit very large and creamy white, with red cheek; ripens early in August. Sweet, juicy, very high flavor. Its extreme hardiness and fine flavor make it one of the favorites.

**ELBERTA**--Large to very large; yellow, with beautiful blush; firm, a little coarse, but tender and good. While quality is not the highest, it has made more money for the orchardist than any other peach. In all probability no peach has met with equal success in so wide a range of territory as this variety. Season medium early, following closely the early Crawford. Hardier in bud than most kinds, therefore a more uniform cropper.

**CRAWFORD'S EARLY**--Yellow, freestone, large size sweet flavored, highly prized for canning. Trees strong grower and prolific bearer. One of the oldest time commercial varieties.

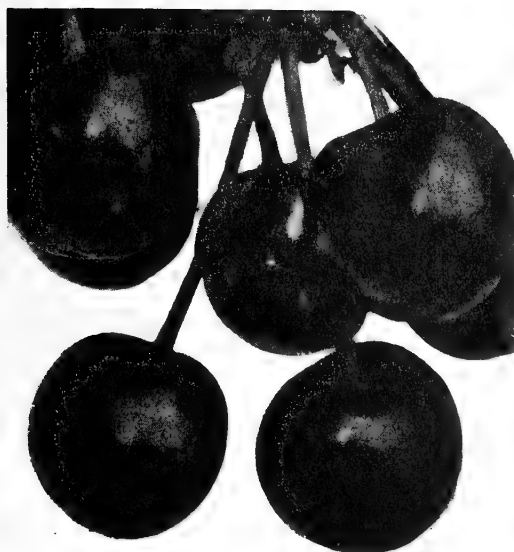
**J. H. HALE**--Extra large, yellow, freestone, beautiful red coloring, finest flavored, highest quality. Tree somewhat dwarf and a moderate grower. Originated by J. H. Hale of Connecticut, one time Peach King of America.

**ROCHESTER**--Yellow, freestone, large covered with mottled red blush; flesh yellow stained with red at pit, very good quality, prolific bearer. One of the best early mid-season yellow freestone peach.



**BARTLETT PEAR**





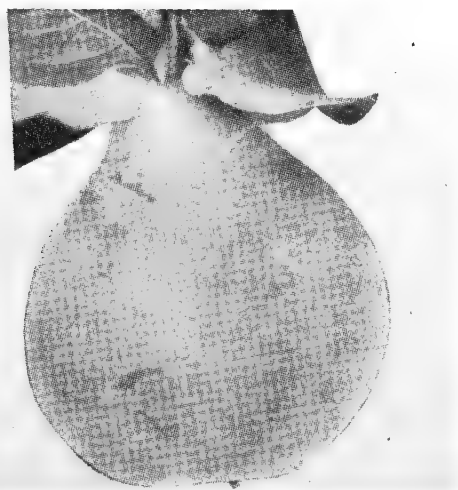
**MONTMORENCY CHERRY**

**Cherries**

Price, 3-4 ft., trees, each \$2.25  
 4-4½ ft. trees, each \$3.00

**EARLY RICHMOND**--This is perhaps the most popular and valuable cherry yet produced. It is very prolific and bears bright red, juicy fruit, rather acid in flavor and unexcelled for cooking. Tree very hardy. Ripens about 10th of June.

**LARGE MONTMORENCY**--A large and bright red, very attractive Cherry. A very pleasant acid flavor. Ripens about 10 days after the Richmond. The fruit is much sought after on account of its large size and fine flavor.



**QUINCE**

**ORANGE**--Its pre-eminence as a fruit for jellies and preserves make the quince a profitable tree for the fruit grower, the farmer or even in the small garden. The quince does not take up much room as it is a dwarfish grower. The Orange variety is the most popular. Hardy.

Price 3 to 4 ft. - - - - each \$2.00

**Plums**

Price, 4 to 5 ft. trees, each \$2.50

**BURBANK**--Large, roundish fruit, bright red when ripe. Flesh is yellow, sweet, of excellent quality, and has a pleasant odor. The tree is hardy and bears very freely of this delicious fruit.

**DAMSON**--A very productive and popular old variety, bearing quantities of medium-sized, tart fruit, dark purple when ripe, covered with a heavy blue "bloom". One of the best plums for canning and preserving. Ripens in September.

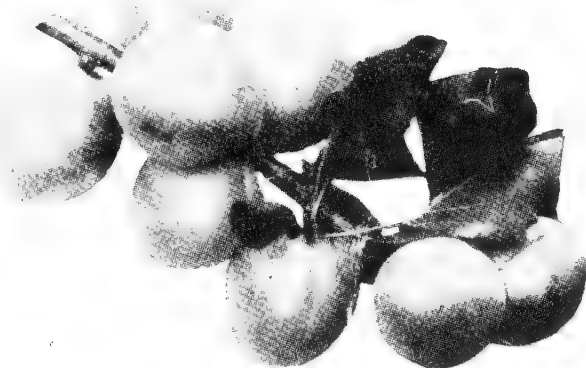
**FELLENBERG (French or Italian Prune)**--A desirable late Plum, oval; freestone. The purple fruit is juicy and delicious, and is excellent for drying. Ripens in September.

**SUPERIOR**--A big, new red Plum originated in Minnesota, which is rapidly gaining popularity throughout the northern fruit growing country. Trees are extremely hardy, and usually bear fruit early. Fruit sometimes measure two inches in diameter. Attractive heart shaped. Ripens to dark red color, richly flavored, wonderful keeper. We consider it one of the very best plums that have ever been introduced in recent years.

**UNDERWOOD**--Considered one of the finest of the Minnesota Hybrids. Originated at the Minnesota Plant Breeding Station. The fruit is large and of an attractive red color, juicy and sweet. Comes into bearing very young and a heavy producer. Midseason.

**WANETA**--Color, a reddish purple; size, about 2 inches in diameter, and of delicious flavor. One of Professor Hansen's best products. No doubt, one of the largest and best of the native hybrids.

**MOORPARK APRICOT**



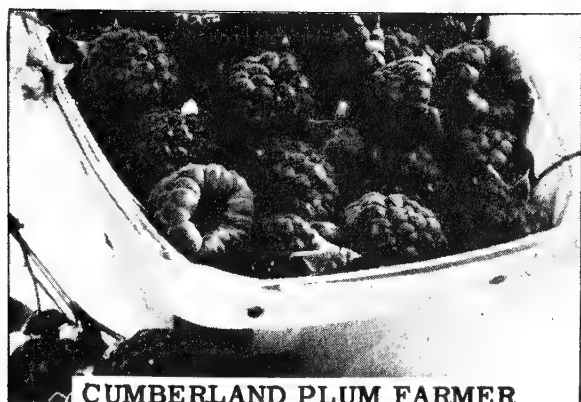
**Apricots**

Price, 3 to 4 ft. trees, each \$2.50

**MOORPARK**--Very large, yellowish green with red on sunny side. Flesh bright orange and freestone.

**SUPERB**--The best flavored, most productive Apricot yet produced. Medium size, light salmon color, excellent quality.

## Small Fruits



**CUMBERLAND PLUM FARMER**

### Raspberries

The Raspberry is one of the early garden fruits, and of the most easy culture. It may be found growing in a wild state most anywhere along the edge of a grove or thicket, it produces bountifully under cultivation. And the fruit finds a ready sale in the markets at nearly double the price of any other fresh berries.

**CUMBERLAND PLUM FARMER**--After growing and testing a large number of Blackcap Raspberries during the past year, we find that this variety is far ahead of any in its class. The fruit is black and large, with a rich flavor, and the canes are exceptionally free from disease, and is a vigorous grower. The crop is all ripened within a few days, making it a valuable market sort. We are now growing only this variety of Blackcap.  $\frac{1}{2}$  Two-year transplants, bearing age. Price per 100, \$10.00

**LATHAM**--After growing this variety, we find it to be the largest and finest red berry we have ever had on our grounds. It originated at the Minnesota Fruit Breeding Farm, and is now recognized as the best of all the reds. It was first sent out as Minnesota No. 4. It is of extraordinary large size, bright red color and excellent flavor, and the fruiting season lasts over six weeks. While most of the red raspberries are inclined to winter-kill at times, this variety has proven extremely hardy in the far north. The large size, fine flavor and hardiness puts it ahead of any kind yet introduced. The canes are very strong and sturdy and stand up well.

Price per 100- - - - - \$12.50

### Blackberries

Blackberries require about the same culture as Raspberries and follow them closely in time of ripening. This is a native fruit, and responsible readily to high culture. The growing of this very delicious and healthful fruit is attended with so little trouble and expense that no garden should be without at least a small planting.

**SNYDER**--The standard Blackberry for the north. Canes reddish brown, stocky, hardy, and very productive. Berries medium to large, round, firm, and of very good quality. Valuable for home use and market.

Price per 100, \$10.00

**NEW! THORNLESS BOYSENBERRY**--Canes smooth as velvet. Ripens 10 days to two weeks earlier than the common Boysenberry. The Thornless strain has retained all the good characters of its parent including its rugged, thrifty growth. It's a pleasure to pick these large berries, without a chance of scratching your hands.

Price per 10, \$2.00; per 100, \$15.00

### Currants

Many people are prevented from growing either gooseberries or Currants on account of the currant-worm that eats the foliage and prevents the fruit from maturing. These pests are the easiest controlled of any of the insects that feed on the foliage of plants and trees. The worms go into the chrysalis state on the ground under the bushes and the eggs are laid on the leaves near the base on the inside of the bush. The small worms commence to feed as soon as the leaves are developed. During their early existence they are not noticed, but in a few days of warm weather they spread all over the bush and then seem to eat up every leaf in a day. The remedy is to sprinkle the bush with water to which a little Paris-green has been added--just enough to give it a sea-green color--as soon as the leaves are fully grown, and repeat the dose in a week or ten days, to make sure of the worms.

**RED LAKE**--Berries sometimes more than half an inch in diameter. Bunches short. Vigorous and productive when grown on good soils and well cultivated.

Price, each 50¢

**WILDER**--Bush vigorous, somewhat spreading; productive. Clusters long; berries large to very large, averaging large; of very attractive color, mild flavor, and good quality. A good table variety.

Price each 50¢

### Gooseberries

**HOUGHTON**--An American variety; clear red when fully ripe; very prolific and profitable.

Price each 50¢

**DOWNING**--Native variety; fruit large, round, light green with distinct veins; juicy and fine flavored; skin smooth. Bush very productive.

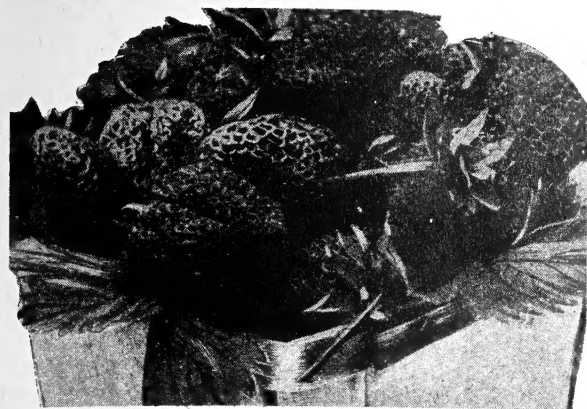
Price each 65¢

**POORMAN**--The fruit of the Poorman is the largest of any American Gooseberry. The berries are of a good red color and is a splendid all round berry as it produces one of the largest, healthiest and hardiest bushes of any worth-while variety. Well adapted to all except very light sandy soil.

Price each 65¢

**JOSELYN**--Large size, smooth, prolific and hardy red berries of best quality. Free from mildew.

Price each 65¢



**DUNLAP  
Strawberries**

Strawberries will produce more fruit to the square rod and in less time than any other fruit we can grow. They grow wild in every section of the country from Alaska to Florida. It has always been a mystery to me why so many people do not raise this most refreshing and early fruit. A few square rods will produce all that one family can possibly use.

Price, per bunch of 25 plants, 75¢  
Per 100, \$2.25; Per 1000, \$20.00

**PREMIER P.**--This is the most popular early  $\frac{1}{2}$  strawberry of the day. The berries are very large, long pointed, light red in color and present a good appearance in the basket and in market. No other early strawberry is anything near equal to it in productiveness.

**DUNLAP**--A perfect-flowered variety that fruits without being planted with other kinds, is proving to be the most valuable Strawberry yet introduced, and is now planted all over the United States, and is a favorite everywhere. The berries are very large, bright, red, well formed and highly flavored. Being a great plant producer, it does not require as many plants to set a row as other kinds.

**MASTODON** (Everbearing variety)--A lately introduced Everbearing variety of very large size and excellent flavor. We have tested this new variety and find it the best of this class. With us it produced a good crop of large berries right through the hottest and driest part of the summer. It commences to bear at the same time as other kinds and continues throughout the entire season until freezing weather. A very shy plant producer, and should be planted closer than other kinds. Plants should be set about 16 inches apart each way, as they do not spread much. The past season we enjoyed fresh berries from our Mastodon plants from August until into November.

Price per 25 plants, \$1.25; per 100 \$4.50

**GEM**(EVERBEARING)--Gem is the only everbearing variety that will make plants freely. The berry is dark, red, pointed--about the size of Dunlap, of excellent quality and has a sweet tart flavor. Gem commences to bear about 60 days after planted, and will continue to do so all summer and up until cold weather sets in. It can be grown on soil where an ordinary everbearing would be a failure.

Price per 25 \$1.25 ; per 100, \$4.50

**Grapes**

The vines we have to offer are all two-year-old, grown from cuttings taken from bearing vines, and are first-class in every particular.

**AGAWAM**--Bunches large, compact, shouldered; berry large dark red; flesh tender, juicy, vinous, and good quality. One of the best of the red grapes.

Price each, 50¢

**CACO**--Fruit is very large, rich wine-red in color. Flavor of the finest, very rich and sweet. Excellent quality. Ripens in September. Vines are hardy, strong and vigorous growers, very prolific.

Price each, 50¢

**CONCORD**--The fine old market leader, with handsome clusters of large and luscious fruit. Color a purplish black and of a most excellent flavor. Entirely hardy and productive; succeeds over a very great extent of country. One of the best known grapes and one that all toher varieties are compared with. The grape for the million.

Price each, 35¢

**MOORE'S EARLY**--Excellent hardy variety, bearing very large berries with a heavy blue bloom. Valuable on account of its extreme earliness. Ripens from 2 to 3 weeks ahead of the Concord.

Price each 50¢

**NIAGARA** (White)--A popular commercial sort. Berries and bunches are large; greenish-white in color, changing to pale yellow when fully ripe.

Price each 50¢

**POCKINGTON**--Very large and showy white grape. Very compact of beautiful golden color. Quality about as Concord, with which it ripens; vine vigorous and very healthy, hardy, and productive.

Price each 50¢

**Garden Roots**

**ASPARAGUS**

**WASHINGTON**--A universal favorite. One of the best, and most popular of all varieties. Is rust resisting, grows very fast and comes up very thick. The heads are crisp, solid and compact.

Price, strong roots, per 10, 50¢  
per 100, \$4.50

**RHUBARB**

**RUBY RED**--Is far superior to any other kind of rhubarb. It is bright cherry-red in color the full length of the stalk, very large and a huge producer. Is extremely tender and a fine flavor. The greatest commercial variety ever put on the market.

Price, each 75¢ per 10, \$7.00

**VICTORIA**--This is an old standard variety. It is very early; is tender with a sub-acid flavor. The stalks have a green appearance and of fair size. One of the best home garden varieties.

Price, each 25¢; per 10, \$2.00



# Planting Hints . . .

"Give fools their gold, and knaves their power,  
Let fortune's bubbles rise and fall;  
Who sows a field, or trains a flower,  
Or plants a tree, is more than all."

—Whittier.

**PREPARATION OF THE SOIL**—The most desirable soil for fruit trees is a rich loam, which should be either dug or plowed deep and well worked up. Where preparation by plowing is not practical the holes should be dug at least two feet wide and 16 inches deep. In filling the holes use only fine dirt against the roots. Allow no trace of manure to come against them. The top soil should be well worked up for a space two feet each way around the tree and well cultivated the entire season.

Where trees are planted in plowed ground, a hoed crop may be grown between the trees with profit. No crop should be planted within five feet of the trees. Do not set a tree as you would a post and expect results. It must have cultivation. If the soil is coarse and crumbly a good soaking will be beneficial.

**SELECTION OF TREES**—A good many people are led to believe that a one-year-old apple tree will come into bearing as soon as a three-year-old planted at the same time. Experience has proven this to be incorrect for this latitude. It might be true in the South or in some of the favored irrigated valleys, but in this region the three-year-old tree will come into bearing at least two years sooner. This will apply to all fruit trees as planted in this section.

**PREPARATION OF TREES**—If trees appear dry when received, from being long on the road, place them with their roots in water, or bury root and top in moist dirt for a few days until revived, before planting. Ordinarily stock should be planted as soon as received. If the ground is not ready, or for some reason you are not ready, the trees may be heeled in for a few days without injury, by covering the roots with moist dirt and shading the tops. Do not expose roots to sun and wind for any length of time. It is highly injurious and fatal to evergreens. Go over the roots just before putting in the hole, and

with a sharp knife cut back to good live tissue, as they will start much quicker from a freshly cut surface than from an old wound.

**TIME OF PLANTING**—The proper time for transplanting nursery stock is often a disputed question. It is well known that deciduous trees, or those that shed their leaves, may be transplanted at any time after the leaves drop in the fall until the growth starts again in the spring. However, in this latitude any trees that are inclined to be a little tender are liable to winter injury if planted in the fall, so that, owing to our cold winter, spring planting, as a rule, is preferable this far north. Where fall planting is practiced it should be deferred as late as possible to allow the wood to ripen fully. This will be usually the fore part of November.

**CULTIVATION**—To get good results from your trees, keep them well cultivated at all times. Where planted in sod this is very important, as the grass will soon occupy all the space and choke the trees. A coarse mulching would be of benefit to keep down the grass and the ground cool and moist. Keep down all water-sprouts or suckers that come up around the base of the tree. The first two years at least the orchard should be well cultivated. Bear in mind that a thrifty tree is usually immune from most insect pests.

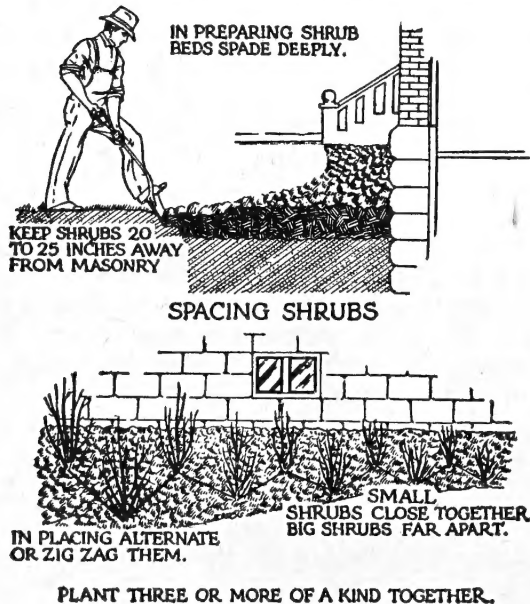
**SPRAYING**—Our Spraying Department will gladly offer practical advice on equipment and materials for your individual spraying needs or, if you prefer, will make arrangements to do the work for you with our own power spray equipment. The State Experimental Station issues a Bulletin giving information on methods and means of controlling insect and fungus diseases. This Bulletin is free—address Illinois State University, Urbana, and ask for the Bulletin on Spraying.

## DISTANCES FOR PLANTING

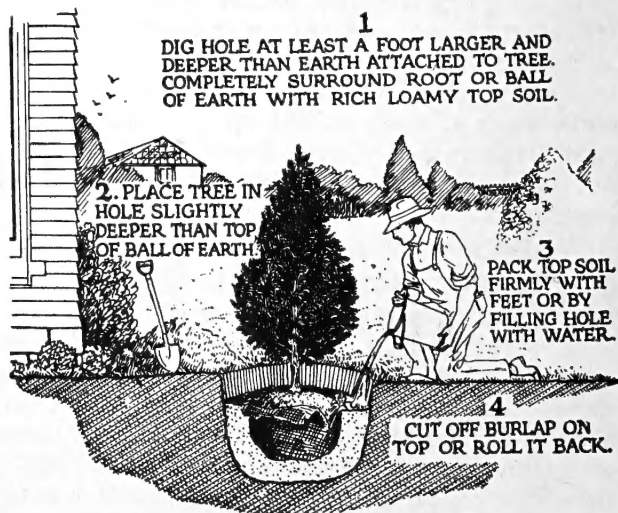
	Rows Apart	Apart In Rows
Blackberry .....	8 feet	2 feet
Gooseberry .....	6 feet	4 feet
Currant .....	6 feet	4 feet
Strawberry .....	3 feet	2 feet
Asparagus .....	3 feet	2 feet

	Rows Apart	Apart In Rows
Apple .....	30 feet	20 feet
Pear .....	16 feet	12 feet
Plum .....	20 feet	16 feet
Peach .....	16 feet	10 feet
Grape .....	7 feet	6 feet
Raspberry .....	7 feet	3 feet

## How to Plant Shrubs



## How to Plant Evergreens

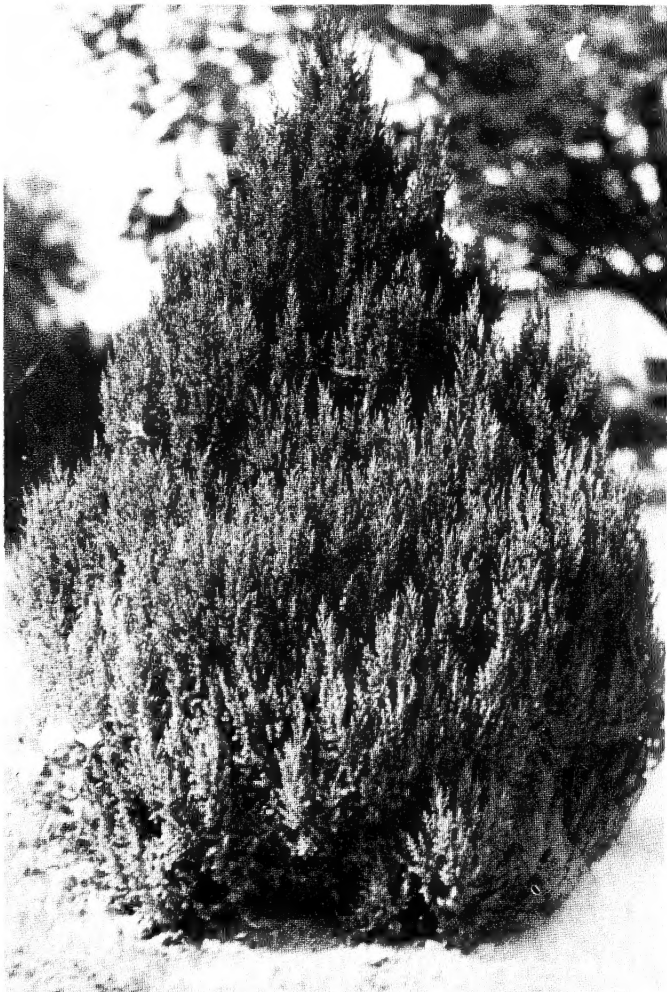




**GLOBE ARBOR VITAE**



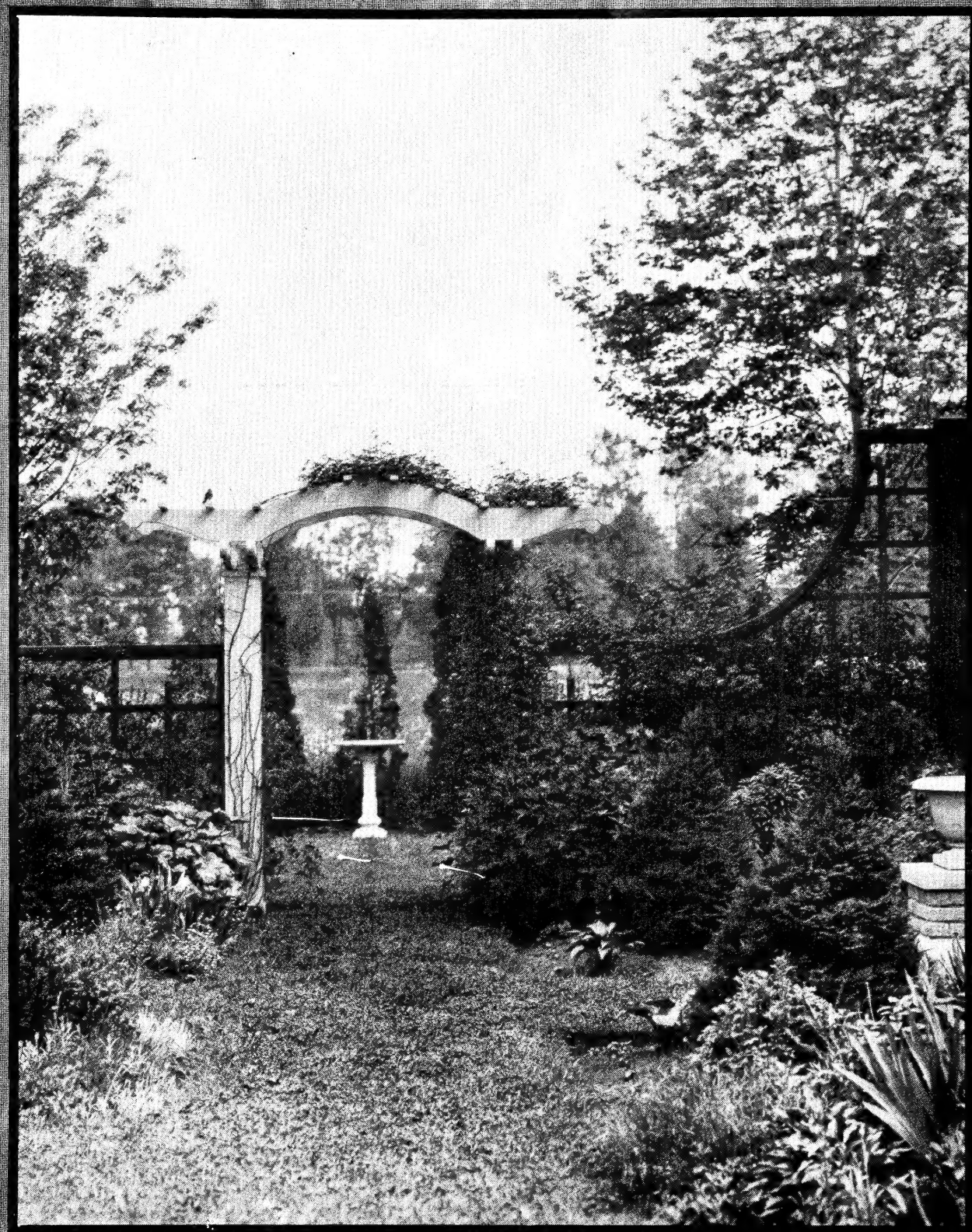
**SAWARA CYPRESS**



**GREEK JUNIPER**



**CHINESE JUNIPER**



# Home Nursery

La Fayette, Illinois

JAMES INGELS, Owner

PEORIA OFFICE  
407 FIRST NATIONAL BANK  
PHONE 9889