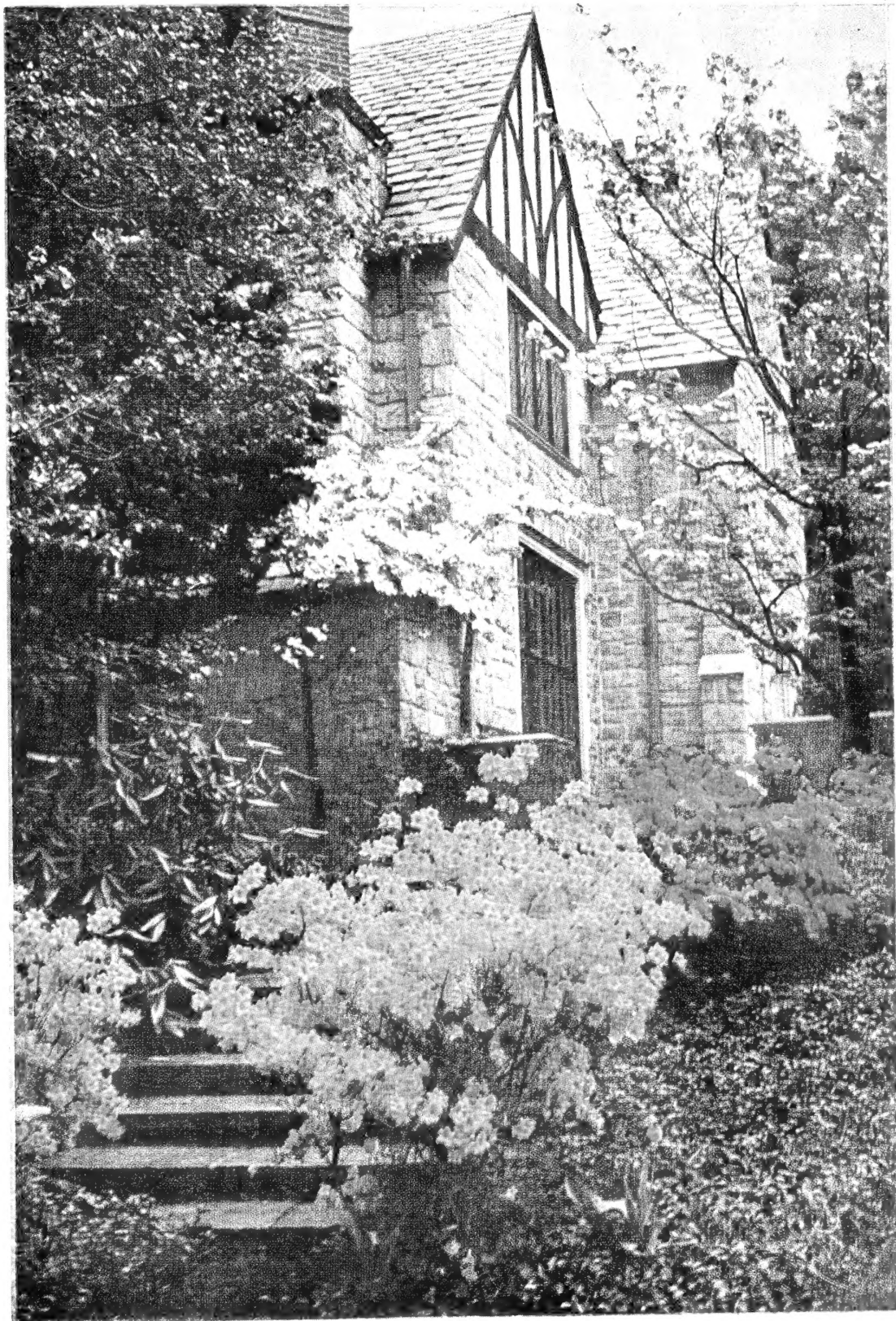


Historic, Archive Document

Do not assume content reflects current scientific knowledge, policies, or practices.

52.57
Gardening In New England
for 1948

★ APR 15 1948 ★
U. S. Department of Agriculture



Lexington Nurseries, Inc.

1265 Massachusetts Avenue

Lexington, Mass.

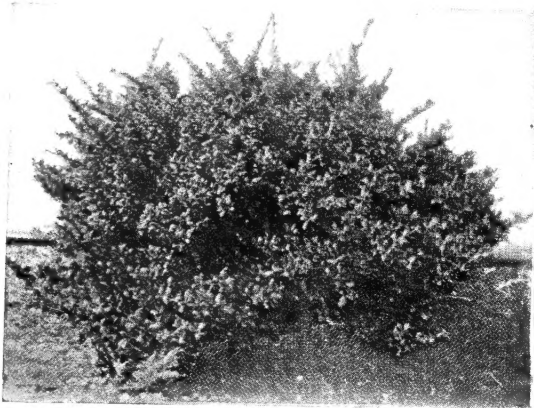
EVERGREENS AND EVERGREEN SHRUBS

THE BASIS FOR COLORFUL PLANTINGS WHICH PROVIDE YEAR-ROUND BEAUTY. WIDE RANGE OF COLOR, FORM, AND TEXTURE.

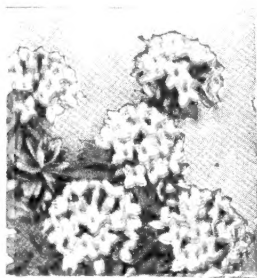
Pictured below are only a few of the great many items of Evergreens and Evergreen Shrubs which we grow. For complete list of sizes and descriptions see pages 4, 5 and 8.



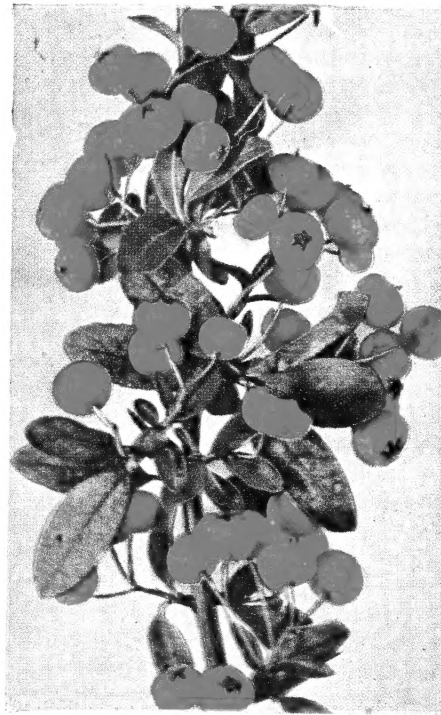
MOUNTAIN LAUREL. See page 8.



ILEX CONVEXA. See page 8.



ROSE DAPHNE. See page 8.



PYRACANTHA COCCINEA. See page 8.



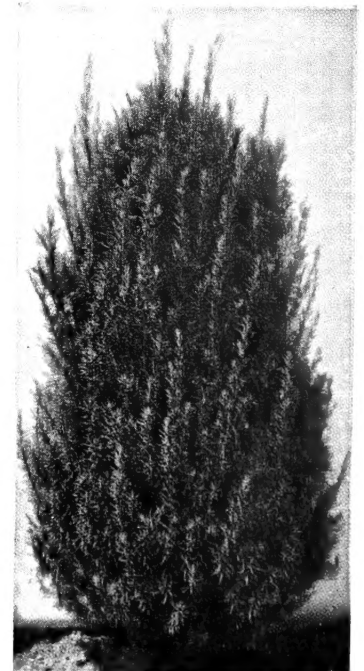
PIERIS JAPONICA.
Japanese Andromeda. See page 8.



NORWAY SPRUCE. See page 4.



PFITZER JUNIPER. See page 4.



TAXUS HATFIELDI. See page 5.

Plants . . .

. . . **The Everlasting Gift**



Plants . . .

A lasting Gift of Beauty

A Gift that increases in Value

For Birthdays, Weddings, Births, Anniversaries,

Mother's Day, Father's Day, Christmas

. . . all holidays

. . . always appreciated

Now available through our GIFT CERTIFICATE PLAN the year 'round

Redeemable at over 1,100 nurseries from coast to coast.



“Buy From Your Local Grower”

It is our pleasure to meet you all through the pages of “Gardening In New England.” We are not content, however, to let our acquaintance rest merely on a cold, mail-order basis. We urge all of you to visit our Garden Center which is the most complete in New England, and which will delight you with the unlimited varieties and quantities of items necessary to successful gardening.

“Buy From Your Local Grower.” We cannot stress too strongly the sound logic which lies behind our slogan. We, as *your* local grower, know as few others can the many problems presented by New England’s soil and weather. We raise only the plants that you can grow. We are equipped to diagnose, prescribe for, and cure any and all ailments to which your plants may be subject. Our interests lie with yours, for you are responsible for the degree of our success. Therefore, our dealings with you are not impersonal, but are carried on with your satisfaction in our plant materials and services in mind.

Whether you merely browse around Lexington Nurseries enjoying the beauty of the growing trees, shrubs, and flowers, or make a definite purchase, we will always be pleased to see you and to serve you.



LEXINGTON NURSERIES, Inc.

1265 MASSACHUSETTS AVENUE, LEXINGTON 73, MASSACHUSETTS

TELEPHONE: LEXINGTON 9-1700

Evergreens

Most commonly used for foundation plants, Evergreens serve a great many other purposes. Taller-growing varieties make ideal wind-breaks and screens, or serve as stately specimens to accentuate focal points in landscape. Because of their many textures and types of foliage, as well as the great variety of colors, a planting of Evergreens is attractive during all twelve months of the year. Lexington plants are of superb quality, transplanted many times to promote fibrous root growth, and are dug with a firm ball of earth to insure transplanting success.

CHAMAECYPARIS

(*Retinospora*)—(*The Cypresses*)

An outstanding family of ornamental evergreens highly esteemed for their graceful, feathery foliage and interesting variety of form. They make excellent subjects for foundation plantings as their growth and individual forms are easily checked by periodic pruning.

Pisifera filifera (*Thread Retinospora*).

The pendulous, thread-like foliage of this variety is most unusual. An excellent foundation shrub and quite tolerant of shade.

18-24 in. . . . \$2.75 | 3-4 ft. . . . \$6.00

Pisifera filifera aurea (*Golden Thread Cypress*). Same as above except foliage is golden.

18-24 in. . . . \$3.00 | 3-4 ft. . . . \$7.00

Pisifera plumosa (*Plume Retinospora*).

A very popular and beautiful form of the Sawara *Retinospora* with soft, feathery foliage. Upright in growth. We recommend regular pruning to retain its compact, symmetrical form.

15-18 in. . . . \$2.25 | 2½-3 ft. . . . \$4.50

18-24 in. . . . 2.75 | 3-4 ft. . . . 6.00

2-2½ ft. . . . 3.50 | 4-5 ft. . . . 9.00

Pisifera plumosa aurea (*Golden Plume Retinospora*). An attractive, golden foliated variety with the same general characteristics as the Plume *Retinospora*.

15-18 in. . . . \$2.25 | 3-4 ft. . . . \$6.50

18-24 in. . . . 2.75 | 4-5 ft. . . . 9.00

Pisifera plumosa lutescens (*Pale Cypress*). Dwarf, creamy yellow, globe shaped. Excellent for foundation planting.

18-24 in. . . . \$5.00

JUNIPERUS (*The Junipers*)

Natives of rocky pastures and dry, barren hillsides, the Junipers play a very important role in our New England landscapes. Interesting in foliage and form—some tall stately trees, others spreading, prostrate, or semi-prostrate shrubs. An abundance of sunlight and good drainage are their only requirements.

Chinensis pfitzeriana (*Pfitzer Juniper*).

An outstanding shrubby variety with gray-green foliage and horizontal, spreading branches. Attractive as a specimen or in group plantings. Withstands shade better than any other variety of Juniper.

18-24 in. . . . \$4.50 | 2-2½ ft. . . . \$5.00

2½-3 ft. . . . \$7.00

Columnaris (*Columnar Juniper*). Of narrow, pyramidal habit, needles fine; bluish-green in color. Ultimate height 15 to 20 feet.

5-6 ft. . . . \$10.00 | 6-7 ft. . . . \$12.00



Juniperus Columnaris

Communis depressa plumosa (*Plumed Prostrate Juniper*).

At its best in an under-planting or as ground cover at the edge of shrub borders or on rocky banks, this handsome variety may be highly recommended. Compact, blue-green foliage.

18-24 in. . . . \$2.75 | 2½-3 ft. . . . \$5.00

2-2½ ft. . . . 3.50 | 3-4 ft. . . . 8.00

Communis hibernica (*Irish Juniper*).

A very slender, columnar form with blue-green foliage. Thrives best in full sunlight and not too windy exposures.

2½-3 ft. . . . \$2.50 | 3-4 ft. . . . \$3.50

Excelsa stricta (*Spiny Greek Juniper*).

Generally used in foundation plantings where it grows as a bushy pyramid from two to four feet high and almost as broad. Attractive spiny, gray-green foliage.

12-15 in. . . . \$2.25 | 15-18 in. . . . \$3.00

Horizontalis douglasi (*Waukegan Juniper*).

A typical creeping Juniper with blue-gray foliage changing to grayish purple in the Fall. Makes an excellent ground cover in open, sunny situations.

18-24 in. . . . \$5.00

Keteleeri (*Keteleer Redcedar*).

A broadly-columnar tree of medium rate of growth; foliage sharp-needled, dark bluish-green.

4-5 ft. . . . \$10.00

Sabina (*Savin Juniper*).

A favorite shrubby variety with rather stiff ascending branches and used extensively in foundation plantings. Good gray-green foliage all season.

18-24 in. . . . \$4.00 | 2-2½ ft. . . . \$5.00

PICEA (*The Spruces*)

The Spruces, as a family, comprise one of the most adaptable and useful groups of hardy evergreens. Except for a limited number of dwarf forms, they naturally grow into large trees; and this fact should be carefully weighed before including them in foundation plantings. On the other hand, when planted in a hedge and closely sheared, the White and Norway Spruces become dense walls of green. As individual specimens, all the Spruces attain a dignity that is impressive.

Canadensis (*White Spruce*). A native of our North woods and a handsome symmetrical tree of compact, dense growth and silvery-green foliage. Makes an excellent specimen subject and also used for hedges.

2-3 ft. . . . \$3.00 | 3-4 ft. . . . \$4.00

4-5 ft. . . . \$6.00

Excelsa (*Norway Spruce*). Rugged in outline with arching branches becoming pendulous with age. Dark green, shiny foliage. An outstanding variety for exposed locations and windbreaks.

2-3 ft. . . . \$2.50 | 4-5 ft. . . . \$5.00

3-4 ft. . . . 3.50 | 5-6 ft. . . . 7.50

Picea glauca conica (*Dwarf Alberta Spruce*).

This formal little evergreen is very slow-growing, adding scarcely an inch to its height in a season. It is well adapted to rock-garden planting, and for other uses where a really dwarf evergreen is required. Very dense and symmetrical.

12-15 in. . . . \$4.00 | 15-18 in. . . . \$5.00

PSEUDOTSUGA (*Douglas Fir*)

Stately magnificent trees from our Western States where they are highly valued for lumber. Related somewhat to the Spruces which they resemble in appearance, their habit of growth is less broad and their rate of growth much more rapid. They make excellent specimens and may also be used for screening purposes.

Douglasi (*Douglas Fir*).

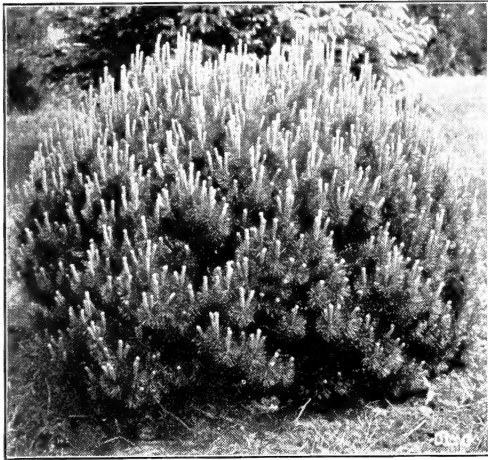
A magnificent specimen tree with blue-green foliage and very symmetrical form. A valuable fast-growing Evergreen deserving of wide popularity, for a variety of purposes.

3-4 ft. . . . \$8.00

The varieties and sizes listed represent but a few of our wide selection of choice Evergreens

OPEN SUNDAYS AND EVENINGS DURING APRIL, MAY AND JUNE

EVERGREENS--Continued



Pinus Montana Mughus

PINUS (The Pines)

Here again, we have a group of hardy evergreens that displays not alone an ornamental, but even more, an intrinsic economic value. The dwarf forms make good subjects for the foundation-planting; but the others are chiefly timber trees that, if given opportunity, make big specimens of forest proportions. They may, however, be confined by pruning and thus adapted to many special purposes.

Montana mughus (*Mugho Pine*). The only dwarf variety we grow. The rather coarse, stiff foliage is most pleasing in combination with the softer, more graceful evergreens. Compact and symmetrical in growth, the true Mugho makes a fine foundation planting subject.
15-18 in. \$3.75 | 18-24 in. \$4.50

Nigra (*Austrian Pine*). A stiff-needed Pine of great hardiness even tolerating the bleak, salty atmosphere of the seashore. An excellent variety for specimen or group planting.
3-4 ft. \$7.00

Strobus (*White Pine*). A native of New England and much valued for its lumber. A handsome evergreen with soft, silvery-green foliage and very rapid in growth. Excellent for naturalizing and much used for hedges and windbreaks as it withstands considerable pruning.
3-4 ft. \$4.00 | 5-6 ft. \$8.00

TAXUS (The Yews)

All except one of these Yews are of foreign origin; but they have assumed a place of importance amongst our hardy planting material. Of relatively slow growth, with good substance and color that remains unchanged throughout the Winter, the Japanese varieties can be depended upon to grow successfully in many difficult spots where other evergreens would be unreliable.

Cuspidata (*Japanese Yew*). Spreading Variety—Native of Japan but one of our finest evergreens. Really a plant investment appreciating in value with age, of compact spreading habit and handsome black-green foliage the year round. At home in either sun or shade and extremely tolerant of unfavorable soil or atmospheric conditions.
15-18 in. \$4.25 | 18-24 in. \$5.50
2-2½ ft. \$7.00

Cuspidata capitata (*Upright Japanese Yew*). A handsome broad-pyramidal form of the Japanese Yew with all the fine characteristics of the latter plant. Superb for foundation or group planting and a hedge-subject par excellence.
18-24 in. \$6.00 | 2-2½ ft. \$8.00
2½-3 ft. \$10.00

Intermedia (*Hybrid Yew*). Combines hardiness of Japanese Yew with attractive dark green foliage of English Yew. Low growing, spreading, very dense. Excellent for foundation planting.
18-24 in. \$6.00 | 2-2½ ft. \$8.00
2½-3 ft. \$10.00

Media hatfieldi (*Hatfield Yew*). An upright Yew of slow growth, with ascending branches that give it a broadly columnar shape. Dark green, rather coarse foliage; hardy.
15-18 in. \$6.00 | 18-24 in. \$7.00

Media hicksi (*Hick's Yew*). More vase shaped than the preceding, attractive red fruit in Fall. Excellent medium height hedge.
18-24 in. \$6.00 | 2½-3 ft. \$9.00

THUJA (The Arborvitae)

The Arborvitae hardly needs an introduction, so familiar has it become to garden lovers everywhere. As a family it is versatile in the many handsome forms and varieties it offers for the beautification of our New England homes and gardens. Ample moisture and sunlight are its chief requisites.

Occidentalis (*American Arborvitae*) (White Cedar). A native variety of upright, bushy growth extensively used for foundation planting; also a fine hedge or screen material.
2-3 ft. \$3.00 | 4-5 ft. \$6.00
3-4 ft. 4.50 | 5-6 ft. 8.00

Occidentalis globosa (*American Globe Arborvitae*). Perfectly globular in shape and very popular as a dwarf plant for specimens or in group plantings.
15-18 in. \$3.00 | 18-24 in. \$4.00

Occidentalis hoveyi (*Hovey Arborvitae*). Quite similar to the Globe variety, only more oval in shape and with flat sheaf-like foliage. A dwarf and compact form.
2-2½ ft. \$4.50

Occidentalis elegantissima (*Golden Tipped Arborvitae*). A superior form of the American with heavier foliage and bushy upright growth. The tips of the new growth turn from yellow to a golden hue as the season advances.
3-4 ft. \$6.50

Occidentalis pyramidalis (*American Pyramidal Arborvitae*). This narrow, columnar form is essential for many restricted locations where slender height is desired. Its foliage is a deep, rich green which seldom "browns" in Winter. Unsurpassed for formal evergreen groups.
2-3 ft. \$3.00 | 4-5 ft. \$6.00
3-4 ft. 4.50 | 5-6 ft. 9.00

Occidentalis wareana (*Ware Arborvitae*). The Ware or Siberian Arborvitae is an outstanding variety of slow, compact growth and broad conical form. Attractive thick, glaucous-green foliage all season. Makes an excellent hedge.
15-18 in. \$2.25 | 2-2½ ft. \$3.25
18-24 in. 2.75 | 2½-3 ft. 3.75
3-4 ft. \$6.00

TSUGA (The Hemlocks)

Of all our native evergreens, the Hemlock is outstanding for a certain graceful elegance that adapts it to a wide range of uses, ornamental as well as utilitarian. When given room to develop, it grows into a big, shapely tree; but it may be confined by shearing to conform with the heavier parts of a foundation-group, under which conditions it becomes compact and dense. Hemlock is one of the best evergreens for a hedge. Naturally a tree of the deep woods, the Hemlock is not always a success when planted in a wind-swept situation.

Canadensis (*Canada Hemlock*). The native Hemlock of the northern states, commonly used for ornamental planting, hedges, and screens. Symmetrical, rapid growth; responds readily to pruning or close shearing.
18-24 in. \$3.75 | 2-3 ft. \$4.50
3-4 ft. \$8.00

Diversifolia (*Japanese Hemlock*). Very dwarf, forms dense mass of foliage. Very desirable for foundation plantings, slow growing.
2-2½ ft. \$7.00 | 3-3½ ft. \$12.00



Taxus Cuspidata Capitata



Evergreens in Our Nursery

Flowering Shrubs

To this popular group belong many of the old standby New England plants. They are economical to plant, yet one can, by careful selection, have a border or group of these plants that will bloom from early Spring until well into the Fall. Many have colorful foliage, and bear attractive fruit in addition to their lovely blossoms.

Although we list only one size and price for each variety, we do offer smaller and larger plants than those listed.

ACANTHOPANAX

Pentaphyllum (*Five-leaved Aralia*). Arching shrub of medium growth; rich green foliage on spiny branches; useful for hedging. 2-3 ft., \$1.10 each.

ARONIA

Brilliantissima (*Chokeberry*). Tall growing; dark green, shining foliage; white or pink flowers followed by bright red fruits. 2-3 ft., \$1.25 each.

AZALEAS

This group of shrubs, closely related to the Rhododendrons, is notable for masses of brilliantly-colored bloom in early Spring. The Azaleas should be planted in sheltered spots, preferably in soil that is slightly acid and moist.

Arborescens (*Sweet Azalea*). Fragrant white and pink flowers; upright habit of growth. Blossoms appear after leaves unfold. 18-24 in., \$3.50 each.

Calendulacea (*Flame Azalea*). Upright growth; large clusters of blooms ranging from flame-yellow and orange to scarlet. 18-24 in., \$5.00 each.

Kaempferi (*Torch Azalea*). Japanese variety; flowers varying from vivid torch-red to salmon-pink. 15-18 in., \$4.00 each; 18-24 in., \$5.00 each.

Mollis (*Chinese Azalea*). Massive blooms; dwarf habit of growth; colors range in all shades of red, orange, and yellow. 15-18 in., \$4.00 each.

Mucronulatum (*Mongolian*). Tall, upright; rosy-purple; early. 18-24 in., \$4.00 each.

Vaseyi (*Pinkshell Azalea*). Tall-growing; hardy. Profusion of shell-pink blossoms in May. 15-18 in., \$2.75 each; 18-24 in., \$3.50 each.

BERBERIS

Thunbergii. Regular Japanese Barberry used mainly for hedging; also valuable as dwarf shrub. Slow, compact habit of growth; needs little pruning. 15-18 in., 10 for \$4.50; 100 for \$35.00.

Thunbergii atropurpurea (*Red-leaved Japanese Barberry*). Bright red foliage; of robust growth; prefers sun. 15-18 in., 90c. each.

BUDDLEIA

The Buddleias are invaluable shrubs for Midsummer bloom, bearing spikes of showy flowers from June until frost. They prefer a sunny location with rich soil.

Heavy pot plants 75c. each. One each of following varieties \$2.00

Charming. New pink variety of great merit.

Ile de France. Improved variety with rosy purple flowers.

Dubonnet. Glowing dark red spikes, unusually pleasing.

GALYCANTHUS

Floridus (*Common Sweetshrub*). Old-fashioned shrub; pineapple-scented, chocolate-colored flowers. 2-3 ft., \$1.35 each.

CORNUS

Alba (*sibirica*) (*Red-barked Dogwood*). Coarse upright shrub valued for bright red branches; clusters of bluish-white fruit. Good for mass plantings with Golden-twig Dogwood. 3-4 ft., \$1.20 each.

Mas (*Cornelian Cherry*). Yellow flowers in April before leaves appear; scarlet fruit; very showy. 2-3 ft., \$1.60 each.

Stolonifera flaviramea (*Golden-twig Dogwood*). Wonderful contrast for Red-twigged variety. Golden yellow branches, particularly attractive in Winter. 3-4 ft., \$1.20 each.

CLETHRA

Alnifolia (*Summersweet*). Native shrub; glossy leaves; very fragrant white flowers in late Summer. Good for shady, moist places. 4-5 ft., \$2.50 each.

CYDONIA (*Chaenomeles*)

Japonica (*Flowering Quince*). Bright flowers from orange-scarlet to pink and rose; clean, glossy foliage; spreading habit of growth; good for hedge. 18-24 in., \$1.20 each; 3-4 ft. \$2.00 each.

DEUTZIA

Gracilis (*Slender Deutzia*). Dwarf shrub; graceful habit of growth; mass of snow-white flowers in June. 15-18 in., \$1.20 each.

Lemoinei (*Lemoine Deutzia*). Medium-growing; prized for abundance of creamy-white clusters of blooms. 18-24 in., \$1.25 each.

Scabra (*Pride of Rochester*). Tall habit of growth; sprays of delicate white and pink, double flowers in June. 2-3 ft. 90c. each; 3-4 ft., \$1.20 each.



Deutzia Lemoinei

ELAEAGNUS

Longipes (*Cherry Elaeagnus*). Attractive foliage dark green above and silvery beneath; tolerant of seashore exposure and smoky city conditions. 2-3 ft., \$1.60 each.

EUONYMUS

Alatus (*Winged Burning Bush*). Attractive foliage changes to pinkish-red in October; branches are clothed with corky, wing-like ridges of bark; ideal for screen planting. 2-3 ft., \$1.50 each.

FORSYTHIA

Intermedia spectabilis (*Showy Forsythia*). Unrivalled for profusion of bright golden blossoms; upright growth neater than older varieties. 3-4 ft., \$1.20 each.

Suspensa (*Weeping Forsythia*). Weeping variety with graceful arching branches and yellow flowers in early Spring. 3-4 ft., \$1.20 each.

HIBISCUS

Syriacus (*Rose of Sharon*). Handsome shrub with excellent foliage; very showy bloom; desirable for late Summer bloom. Double and single varieties in white, pink, red, blue, or purple. 3-4 ft., \$1.40 each.

HYDRANGEA

Arborescens grandiflora (*Snowhill Hydrangea*). Much-branched low shrub; masses of snow-white flowers in Midsummer; valued for exceptionally long period of bloom. Grows in sun or shade. 2-3 ft., \$1.50 each.

Paniculata grandiflora (*"Pee Gee" Hydrangea*). Enormous cone-shaped blooms pure white, later turn to shades of pink and purple; will grow in poor soil. 2-3 ft., \$1.50 each.

HYPERICUM

Aureum (*St. John's Wort*). Dwarf shrub of neat habit; yellow flowers practically all Summer. 18-24 in., \$1.00 each.

ILEX

Verticillata (*Winterberry*). Glossy green foliage; tall-growing; valued for bright red berries in Fall. 3-4 ft., \$1.50 each.

KERRIA

Japonica flore-pleno (*Double Kerria*). Dwarf shrub; blooms all Summer, ball shaped yellow flowers, very green, wiry branches. 18-24 in., \$1.20 each.

KOLKWITZIA

Amabilis (*Beauty Bush*). Beautiful graceful shrub wreathed in pinkish-yellow trumpet-shaped blooms in June. 3-4 ft., \$1.60 each.



Philadelphus Virginalis

LONICERA

- Fragrantissima** (*Winter Honeysuckle*). Fragrant, creamy-white flowers; develops into large spreading bush; will grow in poor, dry soil. 2-3 ft., 90c. each.
- Morrowi** (*Morrow Honeysuckle*). Decorative, downy foliage; bright red fruits. Flowers creamy-white, sometimes yellow. 2-3 ft., 90c. each.
- Tatarica rosea** (*Tatarian Honeysuckle*). One of first shrubs to leaf out in Spring. Flowers pink, followed by light red fruits; excellent for shade or poor soil. 3-4 ft., \$1.25 each.

PHILADELPHUS

- Coronarius** (*Sweet Mockorange*). Tall growing plant with attractive pure white flowers of exquisite fragrance. 3-4 ft., \$1.25 each.
- Bouquet Blanc**. Dwarf hybrid; fragrant white blossoms. 2-3 ft., \$1.25 each.
- Lemoinei** (*Lemoine Mockorange*). Medium growing hybrid; profuse bloomer with very fragrant white flowers. 2-3 ft., \$1.25 each.
- Virginal** (*Virginal Mockorange*). Tall growing; double, snow-white, orange-blossom scented flowers of rare beauty. 2-3 ft., \$1.25 each.

PRUNUS

- Glandulosa rosea** (*Double Pink Almond*). Double, pink, rose-like flowers closely set among the branches in early Spring; medium growth. 18-24 in., \$1.50 each.

RHODOTYPOS

- Kerrioides** (*Jelbead*). Bushy, medium growing shrub; attractive foliage; single white flowers during Summer followed by shining black seeds. 2-3 ft., \$1.25 each.

SPIREA

- Arguta** (*Garland Spirea*). Early flowering; masses of pure white flowers before foliage appears; medium growing shrub. 3-4 ft., \$1.25 each.
- Bumalda** (*Anthony Waterer*). Dwarf pink variety. Bushy, compact habit of growth; occasional blooms throughout the Summer. 18-24 in., \$1.20 each.
- Vanhouttei** (*Vanhoutte Spirea*). Popular variety commonly called Bridalwreath. Clusters of tiny white flowers in May, completely covering the graceful, arching branches. 3-4 ft., \$1.20 each.

SYMPHORICARPOS

- Racemosus** (*Common Snowberry*). Bushy habit of growth; small pink flowers followed by showy, white fruits. 3-4 ft., \$1.25 each.
- Vulgaris** (*Coralberry or Indian Currant*). Medium growing shrub with attractive foliage; clusters of purple-red fruit. Will grow in sun or partial shade. 3-4 ft., \$1.25 each.

SYRINGA (Lilac)

- Villosa** (*Late Lilac*). Large leaved, tree-like variety of late-blooming habit; rosy-white blossoms; ideal for mass planting. 3-4 ft., \$1.60 each.
- Vulgaris** (*Common Lilac*). Clean, upright growth with fragrant Lilac flowers in May or early June. 3-4 ft., \$1.50 each.
- Vulgaris alba** (*Common White Lilac*). Same as above with white flowers. 2-3 ft., \$1.50 each.

HYBRID LILACS

- Of somewhat slower growth than the common Lilacs, but of varied colors.
- Katherine Havemeyer**. Double, lilac-pink.
- Ludwig Spaeth**. Single, dark red.
- Michel Buchner**. Double, pink opening to pale lilac-blue.
- Mme. Lemoine**. Double, white.
- President Grevy**. Double, blue.
- Extra heavy, 3-4 ft., balled and burlapped \$5.00 each**



Rhodotypos Kerrioides



Syringa (Hybrid Lilac)

VIBURNUM

- Carlesi** (*Fragrant Viburnum*). Outstanding dwarf shrub, known as Mayflower Viburnum; bears a profusion of rosy-white flower clusters in early Spring; very fragrant. 2 1/2 ft., \$4.00 each.
- Cassinoides** (*White-rod*). Long, narrow leaves, white flowers June and July. Blue-black fruit attractive to birds. 3-4 ft., \$1.60 each.
- Dentatum** (*Arrowwood*). Large shrub; glossy foliage; white flowers in June, followed by blue berries. Will thrive in partial shade. 3-4 ft., \$1.60 each.
- Dilatatum** (*Linden Viburnum*). White flowers May and June; red fruit Fall and Winter. 3-4 ft., \$2.00 each.
- Lentago** (*Nanny Berry*). Creamy white flowers in May; glossy black fruit in Fall. 4-5 ft., \$2.00 each.
- Opulus sterile** (*Common Snowball*). Old-fashioned Snowball; large shrub with ball-shaped clusters of pure white flowers in May. 3-4 ft., \$1.40 each.
- Sieboldi** (*Siebold's Viburnum*). Best of all screen plants; scarlet fruit turning to black; vigorous grower. Like all Viburnums, it thrives in shady spots. 2-3 ft., \$2.00 each.

WEIGELA

- Bristol Ruby**. Soft ruby-red blossoms during Summer and Fall. Very hardy and perfectly formed shrub. 18-24 in., \$1.20 each.
- Candida** (*Snow Weigela*). Tall habit of growth; trumpet-shaped white flowers in June. 3-4 ft., \$1.20 each.
- Eva Rathke**. Dwarf, spreading habit, bearing dark red flowers. 2-3 ft., \$1.50 each.
- Feeri**. Grows to 6 feet; masses of pink flowers. 3-4 ft., \$1.50 each.
- Gustav Mallot**. Vigorous upright growth; crimson-red flowers in June. 3-4 ft., \$1.50 each.
- Rosea** (*Pink Weigela*). Upright habit of growth with pink flowers. 2-3 ft., \$1.00 each.



Rhododendron Planting

DAPHNE (Garland Flower)

Cneorum (Rose Daphne). More familiarly known as the Garland Flower, this low, bushy shrub bears a profusion of sweetly scented, bright pink flowers in clusters in May and often during the Summer and Autumn. 6-9 in., \$1.50 each; 9-12 in., \$2.50 each.

EUONYMUS

This family includes these popular Wintercreepers, our hardiest Evergreen vines, suitable for covering walls and as evergreen ground-covers.

75c. each, 3 for \$2.00, 10 for \$6.00

Radicans (Wintercreeper). A good clinging variety, less shrubby and woody than other forms. Dull green foliage.

Radicans carrierei (Glossy Wintercreeper)
An attractive, shrubby variety prized for its handsome glossy foliage.

Radicans coloratus (Bronze Wintercreeper). Valued for its bright red Winter foliage. An interesting form very similar to "radicans" in habit. \$1.00 each, 3 for \$2.70, 10 for \$9.00.

Radicans minimus (Baby Wintercreeper). A small leaved variety, excellent in the Rockery or as a light ground-cover. Somewhat slow in growth.

Radicans vegetus (Bigleaf Wintercreeper). Considered, by many, as the best variety. Quite shrubby and woody, with round, glossy leaves and bearing orange-scarlet fruits in the Autumn. Makes a good, heavy vine or may be easily grown and trimmed into shrub form. Excellent for a low, evergreen hedge.

HEDERA (Ivy)

Helix (English Ivy). Generally hardy in Massachusetts when grown on the north side of a building or shaded from the Winter sunlight. Also an excellent, rapid-growing ground-cover under shrubbery or evergreens. 4 in. pots, 90c. each, 3 for \$2.50, 10 for \$7.50.

KALMIA (Laurel)

Latifolia (Mountain-Laurel). This, our native Laurel needs no introduction. A very fine shrub thriving in either sun or shade. Requires acid soil and moderate moisture. Pink and white flowers in June. 15-18 in., \$3.00 each; 3 for \$8.00. 18-24 in., \$4.50 each; 3 for \$11.00. 2-2½ ft., \$5.50 each; 3 for \$15.00.
Special quotations on quantities.

LEUCOTHOE (Andromeda)

Catesbaei (Drooping Leucothoe). An attractive, native shrub with glossy, laurel-like foliage on arching, drooping branches. Excellent for naturalizing. Racemes of creamy-white blossoms in Spring. 18-24 in., \$4.50 each; 3 for \$12.00.

ILEX

Glabra (Inkberry). A compact, upright shrub with dark green oval foliage much like Boxwood in appearance. Small flowers followed by inky-black fruits in the Fall. 18-24 in., \$5.00 each.

Convexa. Very bushy, completely covered with shiny, boxwood-like foliage. Showy. Grows anywhere. 15-18 in., \$5.00 each.

PIERIS (Andromeda)

Floribunda (Mountain Andromeda). Popularly known as Lily-of-the-valley Shrub because of the striking resemblance of its flowers. Of low, compact habit of growth with very small, laurel-like leaves. The blossoms are borne in erect panicles above the foliage in May. 15-18 in., \$4.00 each; 18-24 in., \$5.00 each.

Japonica (Japanese Andromeda). A lovely glossy foliaged variety bearing drooping sprays of Lily-of-the-valley flowers. Of upright habit, it works in beautifully in broadleaf plantings. 18-24 in., \$5.00 each.

Evergreen Shrubs

In this group fall those desirable plants that bloom, yet remain green all Winter. Most are slow-growing and do not attain great height. All will do well in the shade.

RHODODENDRONS

Handsome evergreen, flowering shrubs of unrivalled beauty and charm without which no garden is complete. There are interesting native and hybrid varieties ranging in colors from white and pink to lilac, purple, and red shades. Of easy culture under proper soil conditions, which should be acid and moist but well-drained. Some varieties prefer shade while many others will flower best in a partly sunny but protected location.

Catawbiense (Catawba Rhododendron).

One of the best of our native Rhododendrons. Excellent dark green foliage studded with large, lilac-purple flowers in early June. Will bloom best if planted in a partly sunny location. 18-24 in., \$6.00 each; 3-4 ft., \$10.00 each.

Maximum (Rosebay Rhododendron).

The largest of our native types with long, pointed leaves and white flowers. An excellent variety for naturalizing. It prefers complete shade, where the foliage will assume a rich, dark green. The blossoms are generally partly obscured by the new foliage, opening, as they do, in late June. 2-3 ft., \$7.50 each; 3-4 ft., \$9.00 each; 4-5 ft., \$12.00 each; 5-6 ft., \$15.00 each.

HYBRID RHODODENDRONS**(Seed Grown)**

We can supply seed grown plants of the better known Hybrid Rhododendrons, colors ranging from dark red to pink and white. 12-15 in., \$4.00 each; 15-18 in., \$5.00 each; 18-24 in., \$6.50 each.

HYBRID RHODODENDRONS**(Grafted)**

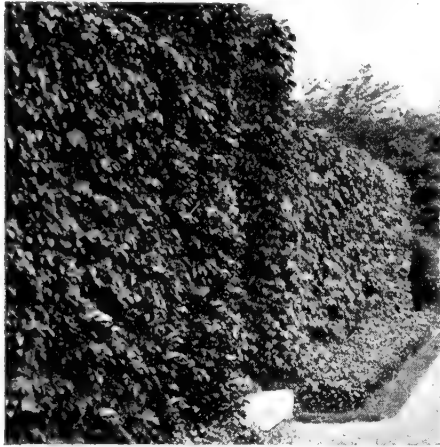
Unlike Seed Grown Hybrids, plants can be selected for color. Heavy, full plants, well budded, red, pink, white, or lavender. 2½-3 ft., \$20.00 each.

PYRACANTHA COCCINEA**(Firethorn)**

Coccinea (Firethorn). Showiest of evergreen shrubs, bright scarlet berries from September through Winter. Tender; plant only in sheltered locations, and protect during Winter. This finest of plants is well worth additional care necessary for culture here in New England. 2-2½ ft., \$4.50 each; 2½-3 ft., \$6.00 each.

Vines and Climbers

Every garden should have one or more vines. They take up little space, blossom profusely, and in addition, many varieties are fragrant and flower when most shrubs are through blooming. Their use is extremely varied, such as covering walls, garages, fences, trellises, and providing privacy. Plant one or more this year. It will prove a wonderful garden investment.



Ampelopsis

ACTINIDIA

Arguta (*Bower Actinidia*). An excellent strong-growing vine with attractive, sharp-pointed, glossy green leaves. White flowers with purple centres are followed by edible fruit. 90c. each, 3 for \$2.50, 10 for \$6.50.

AKEBIA

Quinata (*Fiveleaf Akebia*). A rapid-growing Japanese vine with clover-like foliage and rosy-purple flowers in early Summer. 90c. each, 3 for \$2.50, 10 for \$6.50.

AMPELOPSIS (*The Woodbines*)

Heterophylla (*Porcelain Ampelopsis*). A handsome vine prized for its attractive, grape-like foliage and exquisite porcelain-blue berries. Not a heavy grower, it is admirably suited for light trellising. 90c. each, 3 for \$2.50, 10 for \$6.50.

Quinquefolia engelmanni (*Engelmann Creeper*). Rapidly taking the place of the Common Woodbine to which it is much superior. Smaller, neater foliage and better clinging properties than the common variety. 90c. each, 3 for \$2.50, 10 for \$6.50.

Tricuspidata (*Japanese Creeper or Boston Ivy*). The Boston Ivy requires no introduction. Perhaps the best and most popular vine for covering brick or masonry walls, to which it clings tenaciously. Very quick growing and tolerant of adverse conditions. 90c. each, 3 for \$2.50, 10 for \$6.50.



Bignonia Radicans

BIGNONIA (*Trumpet Vine*)

Radicans (*Trumpet-creeper*). Better known as the Trumpet Vine. An excellent old-time with good foliage and handsome, orange-red, trumpet-shaped flowers in August. 90c. each, 3 for \$2.50, 10 for \$6.50.

Madame Gallen. Blossom continuously throughout Summer and Fall, producing enormous flowers of spectacular tawny orange. Easy to grow, hardy. \$1.10 each, 3 for \$3.00, 10 for \$9.50.

CELASTRUS

Orbiculatus (*Oriental Bittersweet*). Superior, as a climber, to the common variety. Attractive in foliage and with familiar orange-scarlet fruits in clusters close to the stems. Showy after the foliage falls in Autumn. \$1.00 each, 3 for \$2.75, 10 for \$8.50.

CLEMATIS

Clematis of all types like rich soil and plenty of sunlight.

Paniculata (*Sweet Autumn Clematis*). The handsome, well known White Clematis and one of our showiest vines. Pure white, fragrant flowers in greatest profusion completely covering the foliage in September. 90c. each, 3 for \$2.50, 10 for \$7.50.

Large-Flowered Clematis

To insure success with Clematis, especially the Hybrids, stake the slender stems as soon as they are set out and provide a well-drained, sweet soil by mixing sand and lime into the planting areas.

\$1.50 each

Henryi. An excellent variety with large, creamy-white flowers.

Jackmani. Perhaps the most popular variety with broad, velvety purple flowers all Summer.

Madame Edouard Andre. A free bloomer with rich, purplish carmine flowers.

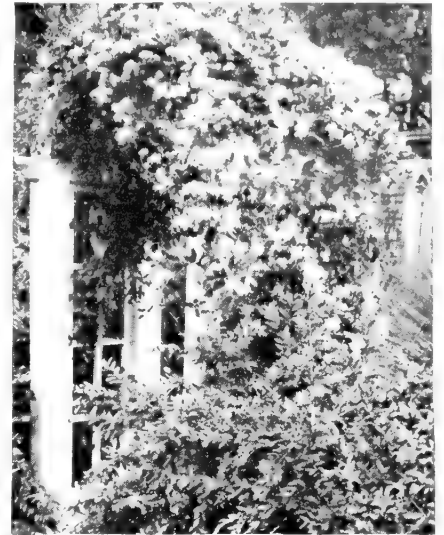
Ramona. Handsome, light blue flowers.

LYCIUM (*Matrimony Vine*)

Chinense (*Chinese Matrimony-vine*). A strong growing, arching, climber thriving on poor soils and bearing scarlet berries in the Fall. Requires plenty of room and excellent for covering unsightly banks or stone heaps. 90c. each, 3 for \$2.50, 10 for \$7.50.

POLYGONUM (*Fleceevine*)

Auberti (*Chinese Fleceevine*). Unexcelled for rapidity of growth combined with attractive foliage and feathery, white sprays of flowers. An excellent vine for trellis or fence. \$1.00 each, 3 for \$2.75, 10 for \$9.00.



Clematis Paniculata

LONICERA (*Honeysuckle*)

Japonica halliana (*Hall's Japanese Honeysuckle*). An old-fashioned favorite, prized for its very fragrant, white and yellow flowers and almost evergreen foliage. Makes an excellent ground-cover for difficult slopes and banks. 90c. each, 3 for \$2.50, 10 for \$7.50.

Heckrotti (*Trumpet Honeysuckle*). A fine everblooming variety, with showy, orange-scarlet flowers in clusters at the tips of the branches. Attractive foliage. \$1.00 each, 3 for \$2.70.

WISTERIA

Sinensis (*Chinese Wisteria*). The familiar, popular variety with pendant, pea-shaped clusters of bluish-violet blooms. A very vigorous climber which requires a substantial support on which to grow. 5 yr. heavy, \$3.00 each.



Wisteria Sinensis

OPEN SUNDAYS AND EVENINGS DURING APRIL, MAY AND JUNE

Summer Flowering Annual Plants

Color-bearers in the parade of garden blossoms, Annuals easily fill in the gaps left when perennials stop blooming. Of equal importance is the readiness with which Annuals lend themselves to cutting and arranging for indoor bouquets. A planting of Annuals here and there in your garden will provide a whole Summer's enjoyment of their brilliant color both outdoors and in the home.

- AGERATUM, Dwarf Blue.** Deep blue; 8 inches. \$1.50 per doz., \$10.00 per 100.
- ALYSSUM, Little Gem.** Pure white, for edgings. 6 inches. \$1.50 per doz., \$10.00 per 100.
- ASTERS (Annual).** Plants from flats, not potted.
- American Branching.** White, pink, blue, crimson.
- Crego Mixed.** Fluffy, interlaced petals.
- Early Giant.** Large flowered, wilt-resistant. Deep purple, deep rose, white, scarlet.
- Above: 75c. per doz., \$5.00 per 100
- BEGONIAS.** For bedding.
- Gracilis.** For sun or shade. 10 inches. White, red, and pink. \$3.50 per doz., \$30.00 per 100.
- Tuberous-rooted.** Best flowering plants for deep shade. Double flowers in many bright colors. 3 for \$1.75, \$6.50 per doz.
- BACHELOR BUTTON.** Red, white and blue.
- Jubilee Gem.** Dwarf, deep blue. Above: \$1.50 per doz., \$10.00 per 100
- BROWALLIA speciosa major.** Beautiful; perpetual flowering; bright violet-blue flowers. \$3.00 per doz., \$22.00 per 100.
- CALENDULA, Giant Orange, Lemon Queen, and Apricot Queen.** \$1.50 per doz., \$10.00 per 100.
- CLEOME, Pink Queen.** Blooms from June to frost. Huge heads known as Spider Plant. \$1.50 per doz., \$10.00 per 100.
- COLEUS.** Foliage crimson edged with green, golden yellow, crimson with golden edge, and crimson. \$1.50 per doz., \$10.00 per 100.
- COSMOS, Mid-summer Giants.** White, pink, red.
- Orange Flare.**
- Sensation.** Giant pink and white flowers; all Summer.
- Above: \$1.50 per doz., \$10.00 per 100
- CYNOGLOSSUM amabile (Chinese Forget-me-not).** Blue flowers resembling Forget-me-nots. 18 inches. \$1.50 per doz., \$10.00 per 100.
- DAHLIA, Unwin Hybrids.** Unexcelled for bedding; single and double flowers in fine mixture of colors. 18 inches. \$2.00 per doz., \$15.00 per 100.
- DIDISCUS (Blue Lace Flower).** \$1.50 per doz., \$10.00 per 100.
- DRACAENA.** Ornamental palm-like foliage. 5 inch pots. \$1.25 per doz.
- FUCHSIA.** Various colors, double and single. \$3.50 per doz.
- HELIOTROPE, Mrs. Bushinger.** Enormous heads of dark purple flowers; very fragrant.
- Old-fashioned Sweet-scented.**
- Above: \$2.50 per doz., \$18.00 per 100
- Standard or Tree Form.** \$4.50.
- GERMAN IVY.** For hanging-pots or window boxes. \$1.50 per doz.
- IMPATIENS.** Soft pink flowers in constant bloom. \$2.50 per doz.
- LANTANA.** Orange-scarlet, white. \$4.50 per doz.
- LARKSPUR, Imperial.** Blue, pink, or white. \$1.50 per doz., \$10.00 per 100.
- LEMON VERBENA.** Fragrant foliage. \$4.50 per doz.
- LOBELIA, Blue Gown.** Dwarf. Dark blue.
- Sapphire.** Trailing. Dark blue.
- Above: \$1.75 per doz., \$12.00 per 100
- MARIGOLD, Yellow Supreme.** Moonlight yellow.
- Limelight.** Primrose yellow.
- All Double Orange.** Perfectly double, large flowered.
- Dwarf French, Mixed.**
- Harmony.** Orange and maroon.
- Spry.** Golden orange.
- Yellow Pygmy.** Free flowering dwarf.
- Above: \$1.50 per doz., \$10.00 per 100
- MIGNONETTE, Selected Mchet.** Sweet-scented. \$1.50 per doz., \$10.00 per 100.
- MORNING-GLORY, Crimson Rambler.** Bright crimson.
- Heavenly Blue.** Blue.
- Pearly Gates.** White.
- Above: 30c. each; \$3.25 per 12.
- NICOTIANA (Tobacco Plant).**
- Crimson Bedder.** Rich wine-red.
- Snowstorm.** Pure white.
- Above: \$1.50 per doz., \$10.00 per 100
- NEMESIA.** Mixed colors, early blooms, large flowers. \$1.50 per doz., \$10.00 per 100.
- PETUNIA.**
- Prices unless otherwise noted
- \$1.50 per doz., \$10.00 per 100
- California Giant Rainbow Strain.** \$2.00 per doz., \$15.00 per 100.
- Canadian All-Double.** Superior to all other doubles. \$2.00 per doz., \$15.00 per 100.
- Dwarf Giant.** Huge flowers on neat, low plants. \$2.00 per doz., \$15.00 per 100.
- Elk's Pride.** Velvety purple.
- Elk's Star.** Velvet crimson with white star.
- Golden Jubilee.** Carmine rose with white throat.
- Rosy Morn.** Rose pink.
- Salmon Supreme.**
- White Cloud.** White.
- White Queen.** Huge wavy white.
- Giant Rainbow Strain.** Mixed colors.
- SALPIGLOSSIS.** Large, trumpet-like flowers in gorgeous, iridescent colors with gold markings. \$1.50 per doz., \$10.00 per 100.
- SALVIA, Bonfire.** Scarlet.
- Firebrand.** Early scarlet.
- Royal Blue.**
- Above: \$2.00 per doz., \$15.00 per 100
- SCABIOSA (Mourning Bride).** Blue, white and cherry red. \$1.50 per doz., \$10.00 per 100.
- SCHIZANTHUS (Butterfly Flower).** Ideal for cutting. \$0.00 per doz., \$00.00 per 100.
- SNAPDRAGON.** Tall rose, scarlet, white, and yellow. 2-2½ feet. \$1.50 per doz., \$10.00 per 100.
- STOCKS, Perfection ("Cut-and-come-again").** Yellow, dark violet, pale blue, pink, white, and Apricot Beauty. \$1.50 per doz., \$10.00 per 100.
- TORENIA Fournieri.** Dwarf blue; for edging. \$1.50 per doz., \$10.00 per 100.
- VERBENA, Mammoth.** Pink, white, blue, scarlet. \$1.50 per doz., \$10.00 per 100.
- Mayflower.** Exquisite pink. \$3.00 per doz., \$22.00 per 100.
- VINCA, Major variegata (Periwinkle).** Variegated-leaved trailer for vases and boxes. 4-inch pots. 50c. each, \$5.50 per doz.
- ZINNIAS.** Bold, bright colors all Summer.
- Giant Mammoth: Golden Queen, Scarlet Queen, Miss Wilmott (Rose), Purity (White).**
- Pastel Shades Mixed.**
- Haageana Double Hybrids.** Small, mahogany with gold and orange tints.
- Lilliput.** Yellow, crimson, salmon, white. 2 feet.
- Dahlia Flowered.** Yellow, crimson, rose and white.
- Fantasy.** Rose, lavender, scarlet and yellow.
- Above: \$1.50 per doz., \$10.00 per 100

GERANIUMS

- LeBlanc.** Unbelievably striking cerise blooms. Exceptionally fine habit of growth.
- Olympic Red.** Finest of all reds. Clean, compact bushy grower.
- Ricard.** Semi-double; bright vermilion-scarlet.
- Annie Vincent.** Semi-double; bright pink.
- Beaute Poitevine.** Semi-double; light salmon-pink.
- Pride of Camden.** Brilliant red.
- Mrs. Lawrence.** Soft pink.
- Radio Red.** Double; dazzling, dark scarlet.
- Pink Fiat.** Lovely soft pink.
- Wallingford.** Deep salmon-pink.
- Above varieties, grown in 3½-in. pots 60c. each, \$6.50 per doz., \$50.00 per 100

*Gorgeous Color
All Summer with*

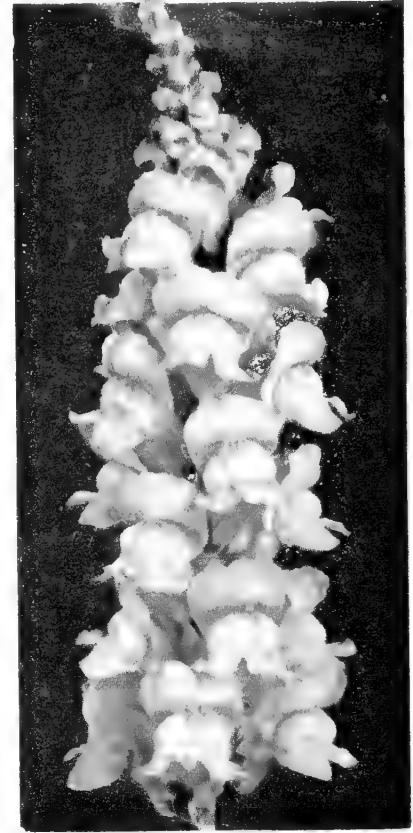
**LEXINGTON
ANNUAL
PLANTS**



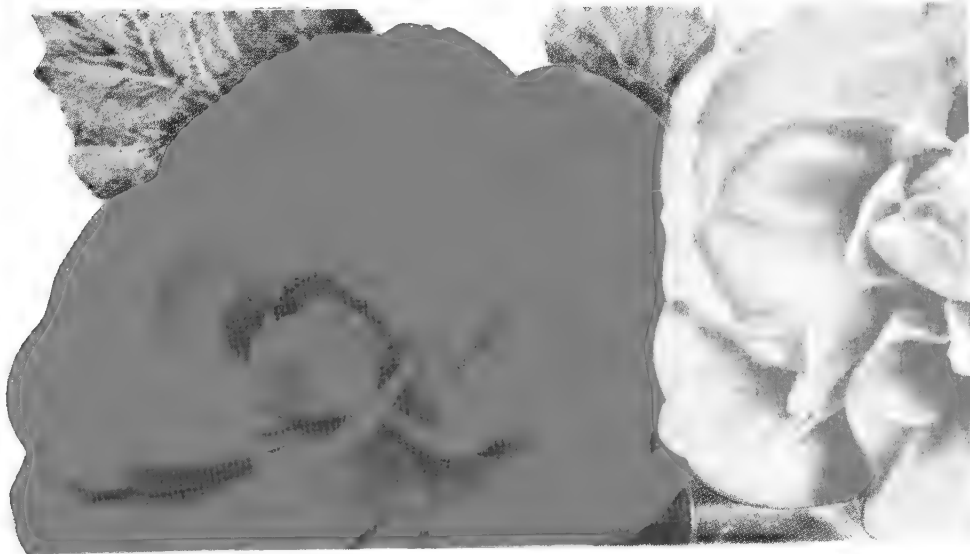
UNWIN DAHLIAS



COSMOS, SENSATION DAZZLER



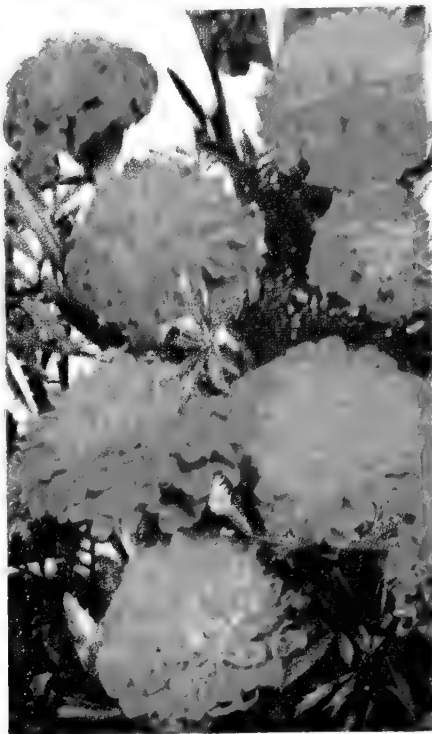
SNAPDRAGON



CAMELLIA FLOWERED TUBEROUS ROOTED BEGONIAS



RED, WHITE AND BLUE MORNING-GLORIES



MARIGOLD, SPRY

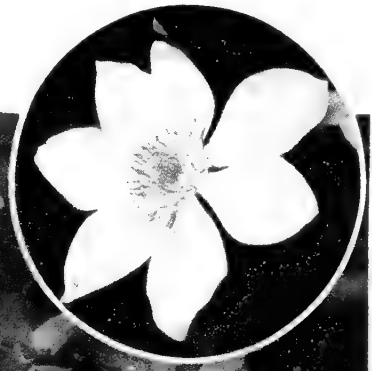


ZINNIA, CRIMSON MONARCH AND
NICOTIANA SNOWSTORM

Flowering
TREES and
SHRUBS
 for A Lifetime
 of Beauty



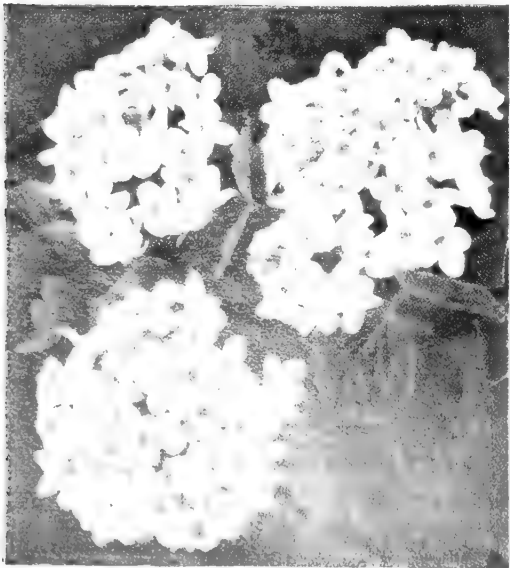
HALL'S HONEYSUCKLE
 See page 19



CLEMATIS, LARGE FLOWERING. See page 9.



SIBERIAN ELM. See page 19.



FRAGRANT VIBURNUM. See page 7



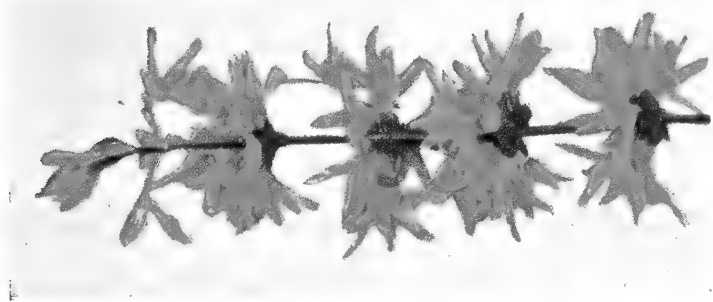
HYPERICUM AUREUM. See page 6.



PINK FLOWERING DOGWOOD. See page 18.



GOLDEN ROSE OF CHINA. See page 21.



FORSYTHIA SPECTABILIS. See page 6.

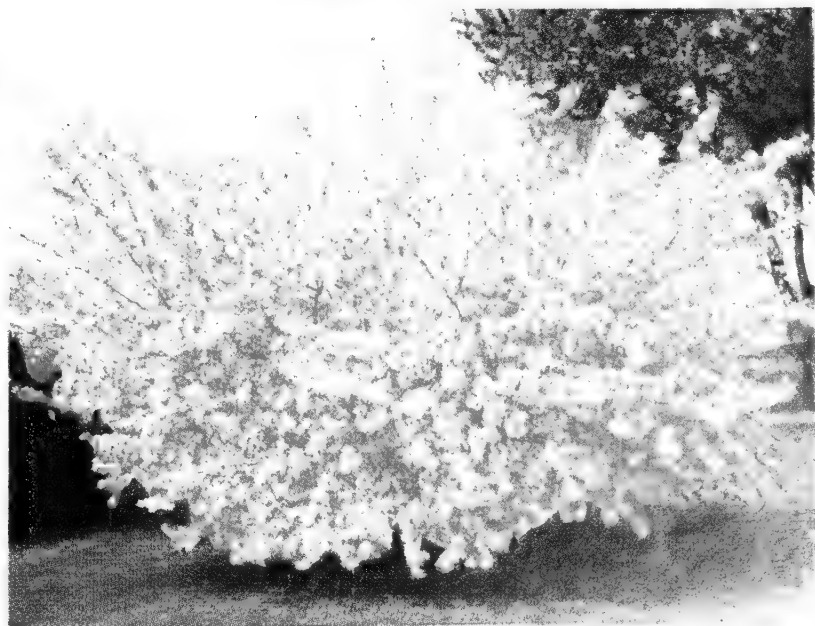
Pictured here
are only a
few of the
great many
varieties of
Flowering
Trees and
Shrubs
which we
have to offer.



JAPANESE QUINCE. See page 6.



WEIGELA, Bristol Ruby. See page 7.



FLOWERING CRAB. See page 18.



HARDY CHRYSANTHEMUMS

Perennial Favorites

Faithful Performers for Years to Come. Lexington Offers the Finest Selection of Hardy Varieties



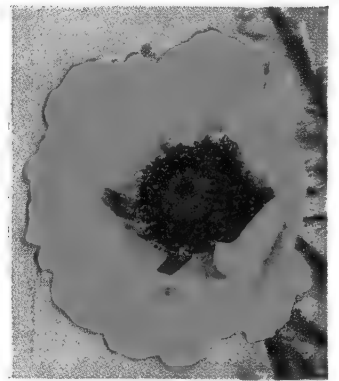
HARDY FALL ASTERS



AQUILEGIA, LONG SPURRED HYBRIDS



HARDY DIANTHUS

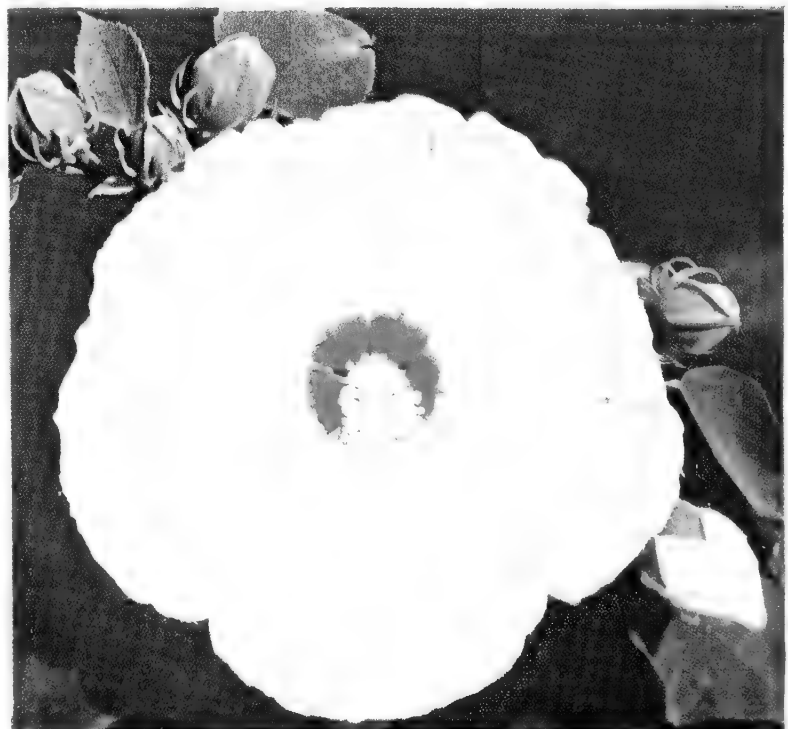


ORIENTAL POPPIES



GAILLARDIA (Perennial PORTOLA HYBRIDS)

Listed on pages 15, 16 and 17 you will find various Perennial Collections designed to fit your purse and purpose.



MALLOW MARVELS

Perennials

These perennial and biennial plants cover a wide range of types, colors and heights of growth. Descriptions are condensed; but we have endeavored to state the essential characteristics. Varieties marked with a (*) are suitable for rock-garden planting. **PRICES, except as otherwise noted 45c. each, 3 for \$1.25, 10 for \$3.50.**

- ACHILLEA** (*Yarrow*).
Ptarmica "Perry's White." Double white flowers; June to August.
- ACONITUM** (*Monkshood*).
Fischeri. Flowers pale blue; waxy foliage. 18 in. 50c. each, 3 for \$1.35.
Napellus. Tall, dark blue; June. 50c. each, 3 for \$1.35.
- AJUGA** (*Bugles*).
Rosea. Pink, dense spikes.
- ALYSSUM** (*Gold Dust or Golden Tuft*).
***Saxatile compactum.** Gray-green foliage, yellow flowers in May. 8 in.
- ANCHUSA** (*Bugloss*).
Dropmore. Tall spikes of rich blue flowers.
***Myosotidiflora.** Low-growing plants with flowers like Forget-me-nots. 1 ft.
- ANEMONE** (*Windflower*)
***Pulsatilla.** Dwarf, early, purplish-blue.
- AQUILEGIA** (*Columbine*)
***Caerulea.** Dwarf; blue and white flowers. 12 in.
***Chrysantha.** Long-spurred yellow flowers. 2½ ft.
Long-spurred Hybrids. Mixed colors; large flowers in May and June. 2½ ft.
Snow Queen. Extra large pure white flowers. One of the outstanding long-spurred hybrids.
- ARABIS** (*Rock-cress*)
***Alpina.** Dwarf edging or rock-plant, clusters of white flowers in April. 8 in.
- ARMERIA** (*Sea Pink or Thrift*)
***Maritima.** Grassy foliage; flowers purplish-pink, in May. 6 in.
- ARTEMESIA** (*Ghost Plant*)
***Silver King.** Silvery gray foliage, 2 ft.
- HARDY ASTERS**
Beechwood Challenger. Crimson. 2½ ft.
Blue Gown. Rich blue. 3 ft.
Harrington's Pink. Deep rose-pink; a new, true shade. 60c. each, 3 for \$1.50.
Mount Everest. Dense pyramidal growth, a mass of pure white Daisies in late August. 3 ft.
Peggy Ballard. Rose mauve. 3 ft.
Red Rover. Rosy-red; vivid and effective. 3 ft.
- Dwarf Hybrid Asters.** Low, spreading plants smothered in bloom in late August and September. Finest of the late flowers.
Lady Henry Maddocks. Pale pink.
Nancy. Pearly pink to gray.
Victor. Clear violet-blue.
Any 4 of above Asters, except as noted, \$1.50
- BELLIS** (*English Daisy*)
***Perrenis.** Dwarf, flowering in May. Colors red, white, and pink.
- CALLUNA** (*Heather*)
***Vulgaris.** Dwarf pink Heather; best suited for rock gardens. 75c. each, 3 for \$2.00.
- CAMPANULA** (*Bell-flower*)
***Carpatica.** Tufted foliage; blue-bell flowers on 10-in. stems.
***Carpatica alba.** Flowers white.
Medium (Canterbury Bells). In colors: Blue, white, pink. 3 ft.
Medium Calycanthema (Cup-and-saucer). Blue, White, and pink. 3 ft.
***Rotundifolia.** Blue Bells of Scotland. June. 12 in.
- Persicifolia.** Long stems covered with lavish delicate blue double flowers; exceptionally good for cutting as well as color in the border.
Persicifolia White. Double white bells on 2½ to 3 foot stems. Very hardy; good for sun or light shade. A must for the all-white garden or effective contrast for other colors.
- CENTAUREA** (*Cornflower*)
Montana. Showy; easily grown. Large violet-blue flowers from July to September.
- CERASTIUM** (*Snow-in-Summer*)
***Tomentosum.** Woolly leaves; small white flowers; a trailing ground-cover.
- CHIVES.** A herb used for seasoning soups, salads, cheeses. A delicate Onion flavor.
- CONVALLARIA** (*Lily-of-the-valley*)
Majalis. For bedding in shady spots. 3-inch pots.
- COREOPSIS** (*Tick-seed*)
Grandiflora. Bright yellow, good for cutting. All Summer. 2 ft.
Double Sunburst. Extra-large flowers with faint fragrance. 2 ft.
- DELPHINIUM** (*Larkspur*)
Belladonna. Light blue. 3 ft.
Bellamosa. Cobalt-blue. 2½ ft.
Chinense. Dwarf, clear dark blue; fine-cut leaves.
Chinense album. Dwarf, with white flowers.
Pacific Hybrids. Extra-long spikes of variably-double flowers in mixed shades of blue, pink, and white. 60c. each, 3 for \$1.60.
- DIANTHUS** (*Hardy Pinks*)
***Alpinus.** Tufted foliage; large pink flowers.
Barbatus (Sweet William). Clusters of showy flowers, single or double, in pink, crimson, white, and scarlet.
- DIANTHUS** —*Continued*
***Plumarius** (Scotch Pink). Low growth; pink and white flowers.
***Semperflorens.** Everblooming; fragrant dark pink.

HARDY HYBRIDS

- *Abbotsford.** Rich crimson with white markings.
Beatrix. Lovely soft pink.
***Furst Bismarck.** Deep lilac-pink.
***Her Majesty.** Double white, large flowers.
***Old Spice.** Deep, clear pink; large flowers. 60c. each, 3 for \$1.60.

DICENTRA

 (*Bleeding Heart*)

- Spectabilis.** Long sprays of well-known heart-shaped, pendulous deep pink flowers in May. Field grown plants, \$1.00 each.

DIGITALIS

 (*Foxglove*)

- Purpurea.** Tall; spikes of flowers in shades of purple and white.
Purpurea alba. Pure white flowers.
Purpurea rosea. Pure pink flowers.
Shirley Hybrids. Giant spikes of immense flowers ranging from white to deep rose; many with crimson blotches.

ECHINACEA

 (*Coneflower*)

- Purpurea.** Huge, dark purplish-pink Daisies in late Summer.

GAILLARDIA

 (*Blanket Flower*)

- Grandiflora.** Large; crimson and gold. All season. 2 feet.
Portola Hybrids. Coppery-scarlet, margined golden yellow.
Dwarf Hybrids. Same as above, but very low growing. Blooms all Summer. 9 inches.

GEUM

 (*Avens*)

- Lady Strathedon.** Semi-double; golden yellow; July-August. 18 inches.
***Mrs. Bradshaw.** Deep scarlet-crimson. June to September. 15 inches

GYPSOPHILA

 (*Baby's Breath*)

- Paniculata.** Sprays of misty white flowers.
Paniculata, Bristol Fairy. Finest variety. Flowers, large, double, and white. Field-grown plants, \$1.00 each.

HELIANTHEMUM

 (*Sunrose*)

- *Aureum.** Wiry little shrub with dazzling double yellow flowers.
***Rose Queen.** Large, single pink flowers.

HEMEROCALLIS

 (*Day-Lily*)

- Flava** (Lemon Day-Lily). Fragrant, lemon-yellow flowers in June.
Thunbergii. Tall; buttercup-yellow flowers.

(Continued on page 17)

PERENNIAL BORDER COLLECTION . . . Price: 30 plants, \$9.95

This group of plants is designed for an area of approximately 40 square feet. In selecting the list, contrasts in heights, blooming season, and colors were the primary consideration.

- | | | |
|---|--|--|
| 3 Aquilegia Chrysantha. Yellow. | 3 Cerastium. White. | 3 Lupinus Downer's Hybrids. Mixed colors. |
| 3 Aster Red Rover. Red. | 3 Heuchera sanguinea. Rose. | 3 Nepeta Six Hills Giant. Blue. |
| 3 Chrysanthemums Pygmy Gold. Yellow. | 3 Iberis sempervirens. White. | 3 Oriental Poppies. Scarlet. |
| | 3 Liatris pycnostachya. Orchid. | |

Hardy Chrysanthemums

In the season's flower parade, the Chrysanthemums march as a major section. They are the outstanding glory of the late Summer and Fall garden. For Spring planting we supply pot-grown stock which will bloom the following Fall; and of our thirty or more varieties we suggest the following as especially pleasing.

Price: 45c. each, 3 for \$1.25, 10 for \$3.50

YELLOW

Algonquin. Very double; 18 inches; September. An early, brilliant yellow of exceptional hardness.

Eugene A. Wander. Full, double; 2 feet; early September. The golden yellow flowers are large and of graceful, informal shape.

Golden Dream. Gorgeous large, golden yellow blossoms which keep their color under adverse conditions. Neat habit of growth, and prolific bloomer.

Judith Anderson. Button Pompon; 18 inches; October. The best yellow "button" Chrysanthemum for late bloom. Free-flowering.

King Midas. Large fully double soft yellow, tinted bronze; very profuse bloomer. Late September.

My Lady. Double flowers of yellow shading into orange. Distinctive because of its warm coloring.

Pygmy Gold. Double; 16-18 inches; early September. The low, spreading growth of this bright yellow variety and its long season of bloom, make it of distinct value for borders and for the rock garden.

Treasure Trove. Absolutely hardy; beautiful double clear yellow, rich foliage, vigorous growth. A treasure among Mums.

PINK AND LAVENDER

Dean Kay. Medium sized double blossoms of a pink seldom found among flowers. Very popular.

Lavender Lady. Full-double; 2½ feet; early October. Pure lavender, large, perfect flowers. Rugged, hardy growth. One of the most distinguished Chrysanthemums ever produced.

Mrs. P. S. Du Pont III. Double; 2½ feet; October. A gorgeous blend of peach-pink; rosy salmon and fawn. Flowers fully double and finely formed. The favorite of all the recent hybrids.

Symphony. Beautiful coppery pink and soft lavender. Flowers very large, double. One of the finest Mums in this color class. Wonderful keeping qualities, both in garden and as cutflowers.

6 FINE CHRYSANTHEMUMS \$2.25

Special Collection Offer

Symphony. Outstanding among pinks and lavenders.

Mrs. P. S. Du Pont. Large, perfect flowers.

Golden Dream. Gorgeous large golden-yellow.

Burgundy. Double crimson-red.

Lavender Lady. Double soft lavender.

Ruth Hatton. Double ivory-white.

This is the most sensational collection of outstanding Mums ever to be offered at this low price. Every variety is the finest in its particular color class and will afford a wealth of blooms for the border. They are all especially good for cut flowers because of their magnificent colors and long-lasting qualities.

RED SHADES

Burgundy. Large double; 2½ feet; early October. A rare shade of glowing wine-red. Long, strong stems; a prolific bloomer.

Carnation Rose. Literally covered with hundreds of small blossoms of a unique shade of rose. One of the finest cushions.

Red Velvet. Soft, shapely velvety red blossoms, fully double. Strong heavy plants; blooms in mid-season.

WHITE

Ruth Hatton. Double Pompon; 2 feet; late September. Ivory white touched with lemon-yellow. The blossoms are of medium size but well-formed and borne in great numbers until the end of the season.

White Doty. Pure white Pompon; 18 inches. September.

BRONZE

Apollo. Single Korean; 2½ feet; October. Sparkling orange-bronze flowers with gold centers, like glorified Daisies.

Autumn Lights. Semi-double; 2 feet; September. Coppery, dull bronze with orange shadings. One of the new, hardy introductions.

Bronze Beauty. Highly attractive; profusely covered with hundreds of tawny blossoms; wonderful border plant.

Early Bronze. Pompon; 18 inches; late August. An improved strain, one of the earliest of the hardy 'Mums. Rich, golden bronze.

Louise Schling. Outstanding among bronze Mums. Plants are covered with semi-double blooms of a most attractive shade.

Marjorie Mills. Profuse blooms of red shading to orange; highly attractive; early.

Sunset. A new Chrysanthemum of exceptionally brilliant orange-bronze, with the glow of an Autumn sunset. The flowers are large, Pompon-type, borne profusely in long, upstanding sprays. 2½ feet; late September.

CUSHION CHRYSANTHEMUMS

This interesting group of low-growing Chrysanthemums is marked by an unusual wealth of bloom, on plants that are of broad, mounded habit and less than 2 feet high. A mature plant, with its hundreds of blossoms, has the appearance of an exhibition Azalea.

Pink Cushion (Amelia). Varying shades of pink; September.

Red Cushion. Coppery red.

Bronze Cushion. Reddish bronze.

Yellow Cushion. Golden yellow.

White Cushion. Covered with snow-white flowers.

Bronze Beauty. Cushion type with orange-yellow flowers turning to yellow.

GROUP OFFER

All 6 (One Each of List) \$2.25

ALL SEASON CUT-FLOWER GARDEN

This collection has been selected to provide cutflowers all season long for the average home. Each variety has been selected for its blooming qualities, neatness of growth, keeping qualities after cutting, and hardness. This collection planted now should provide you with cutflowers for many years to come. Approximately 25 square feet of area should be used.

3 **Coreopsis Double Sunburst.** Yellow.

3 **Chrysanthemums Lavender Lady** Lavender.

2 **Gaillardia grandiflora.** Dazzling scarlet and orange.

3 **Liatris pycnostachya.** Lavender.

3 **Pyrethrum roseum.** Pink.

3 **Shasta Daisy Mayfield Giant.** White.

3 **Phlox E. I. Farrington.** Pink.

Price: 20 plants, \$8.00

HARDY PERENNIALS—Continued

Prices, except as noted: 45c. each, 3 for \$1.25, 10 for \$3.50

HEMEROCALLIS—Continued

- Ophir.** Tall. Deep yellow. July and August. 75c. each.
- Cressida.** Bronzy orange. July and August. 75c. each.
- Mrs. W. H. Wyman.** Pale lemon-yellow. July to late August. 75c. each.

HEUCHERA (Coral Bells)

- ♦**Sanguinea.** Graceful sprays of scarlet flowers.

HIBISCUS (Mallow)

- Mallow Marvels.** Shrubby plants with enormous flowers. Crimson, pink, and white.

IBERIS (Candytuft)

- ♦**Sempervirens.** Shrubby plants covered with pure white flowers in Spring.
- ♦**Sempervirens, Snowflake.** Compact type for rock garden.

LAVANDULA (Lavender)

- Officinalis (Vera).** Fragrant, lavender
- Spica (Spike Lavender).** Later flowering, less shrubby.

LIATRIS (Gay Feather)

- Pycnostachya.** Spikes of purple flowers in July and August. 5 feet.
- Scariosa.** Same as above. Blooms August and September.

LINUM (Flax)

- ♦**Perenne.** Bright blue flowers.

LOBELIA (Indian Paintbrush)

- Cardinalis.** One of the showiest perennials. Brilliant crimson spikes of flowers 24 to 30 inches long. Likes plenty of moisture.

LUPINUS (Lupin)

- Polyphyllus.** Deep blue, pure white, or soft pink.
- Downers Hybrids.** Enormous spikes of gorgeous flowers.

50c. each, 3 for \$1.35

LYCHNIS (Campion)

- ♦**Viscaria splendens fl.pl.** Rose-pink flowers in clusters.

MERTENSIA (Virginia Bluebells)

- ♦**Virginica.** Drooping, bright blue flowers in early Spring.

MONARDA (Bee-Balm)

- Didyma.** Large, ragged scarlet flowers. 3 feet.
- Cambridge Scarlet.** Brighter and larger than above.

NEPETA (Catnip)

- ♦**Mussini (Six Hills Giant).** Velvety foliage. Lavender flowers.

PACHYSANDRA (Japanese Spurge)

- ♦**Terminalis.** Erect, evergreen ground-cover for shady places. 25 for \$7.00, \$27.00 per 100. 3 inch pots.

PENTSTEMON (Beard-Tongue)

- Torreyi.** Graceful plants with long sprays of scarlet, tubular flowers.
- Pink Beauty.** Beautiful shell pink.
- Heart's Desire.** Gorgeous red blossoms on long, graceful stems. Blooms all season. Do not plant in wet location.

PLATYCODON (Balloon Flower)

- Grandiflora.** Large; showy; deep blue. 3 feet. July.
- Grandiflora alba.** Same as above. Flowers white.
- Mariesii.** Bright blue. Dwarf. 1 foot.

PEONIES

Price of Peonies (strong divisions)
\$1.25 each

Double Pink, Double Red,
Double White

When planting Peonies, plan on 2 inches of soil above the crown.

HARDY POPPIES

ICELAND POPPIES (Papaver nudicaule). Delicate, satiny flowers on wiry stems a foot high, practically all Summer. These are in mixed colors, orange, yellow, and white. Good rock garden plants.

- Giant Orange.** Solid orange.
- The Emperor.** Tangerine orange.
- Yellow Wonder.** Buttercup yellow.

ORIENTAL POPPIES (Papaver orientale). Enormous, cup-shaped flowers in May; brilliant colors with metallic black centers. Height about 2½ feet. 50c. each, 3 for \$1.35.

Beauty of Livermore. Dark blood-red; extra-large flowers.

- Fairy.** Pale pink; flowers medium size.
- Mrs. Perry.** Salmon pink; of the finest.
- Perry's White.** Satiny white with crimson base.

Orange Beauty. Brilliant orange scarlet, very showy.

- Peggy Joyce.** Clear salmon-rose.
- Wurtembergia.** Glowing rose-red, flower extra large.

SPECIAL OFFER

Any 6 of these named Poppies, for Spring planting only, for \$2.50

HARDY PHLOX

Selected varieties of these popular garden flowers, invaluable for late Summer bloom. All are hardy and of easy culture.

- Bridesmaid.** White, light pink eye.
- Count Zeppelin.** White, vermilion-red eye.
- Daily Sketch.** Extra-large flowers; light salmon-pink.
- E. I. Farrington.** Light pink.
- Frau von Lassburg.** Pure white.
- Hauptman Koehl.** Blood-red.
- Miss Lingard.** Early. White.
- Rheinlander.** Salmon-pink, claret-red eye.

MISCELLANEOUS PHLOX

- ♦**Divaricata.** Charming soft blue in early Spring.
 - ♦**Subulata (Moss Pink).** Bright rose.
 - ♦**Subulata alba.** White.
 - ♦**Subulata lilacina.** Lavender-pink.
- For Rust on Phlox use No. 3 of Triogen or Bordeaux or Sulphur. Treat the soil

PYRETHRUM (Feverfew)

- Roseum.** Bright pink, red, and white Daisies on long stems. Early.

ROSMARINUS (Rosemary)

- Officinalis.** Herb used for seasoning. 50c. each.

SALVIA (Meadow Sage)

- Officinalis.** Sage, an Herb used for seasoning.

SANTOLINA (Lavender Cotton)

- Incana.** Dwarf, gray foliage, blue flowers.

SCABIOSA (Pin Cushion Flower)

- House Hybrids.** Soft violet flowers on long stems; June to September.

TARRAGON. Herb used for seasoning and making vinegar. 50c. each. 3 for \$1.35.

SHASTA DAISY 50c. each, 3 for \$1.35
Mayfield Giant. Immense Daisy-like flowers. Wonderful for cutting.

Chiffon. Dainty ruffled Daisies; yellow center.

Esther Reed. Frothy pure white double flowers; always in bloom.

TEUCRIUM (Germander)

- ♦**Chamaedrys.** Evergreen, shrubby plant which can be clipped any height. Flowers purple. Excellent dwarf hedge.

THERMOPSIS

Caroliniana. Sometimes called Yellow Lupin. Long spikes of bright yellow pea-shaped flowers in June and July. 4 feet.

THYMUS (Thyme)

Citriodorus. Dark pink flowers. Fragrant foliage.

♦**Serpyllum lanuginosus.** Downy gray-white aromatic foliage. A trailer.

Vulgaris. A sweet herb with purplish flowers and fragrant foliage.

TRILLIUM (Wood-Lily)

Grandiflorum. Large, three-petaled white flowers.

Stylosum. Pink flowers.

VERONICA (Speedwell)

Longifolia Blue Fay. Heavy grower, lovely blue spike. Excellent for cutting.

Spicata. Well-known popular violet-blue flowers on stems two feet tall. Blooms all Summer.

VINCA (Myrtle)

Minor. Evergreen ground-cover for shady places. Violet-blue flowers in June. 35c. each, 10 for \$2.50, \$20.00 per 100.

VIOLA (Violet)

Arkwright Ruby. Flowers all Summer, ruby red.

Chantreyland. Soft apricot-orange, exceptionally free-flowering.

Floraire. Pale blue. Flowers all Summer.

♦**Jersey Gem.** Pure violet-blue flowers produced freely on 6-inch stems. Blooms profusely from early Spring to frost.

White Perfection. One of the prettiest of the Violas, and faintly scented.

ROCK GARDEN COLLECTION . . . Price: 10 plants, \$3.45—20 plants, \$6.50

An ideal collection for filling the empty spaces in established Rock Gardens.

- | | | |
|---------------------------------------|-------------------------------------|---|
| 1 Alyssum saxatile compactum. Yellow. | 1 Campanula carpatica. Blue. | 1 Iberis Sempervirens Snowflake. White. |
| 1 Arabis alpina. White. | 1 Dianthus Beatrix. Pink. | 1 Sedum acre. Yellow. |
| 1 Armeria maritima. Pink. | 1 Geum Mrs. Bradshaw. Burnt orange. | 1 Thymus vulgaris. Purple. |
| | | 1 Viola Jersey Gem. Blue. |

Shade and Flowering Trees

In order to preserve and promulgate one of the chief scenic attractions of New England, it behooves all of us to plant trees. We owe it to ourselves and to future generations to plant these beautiful living memorials which will keep our memories alive far more vividly than anything else could do. The old Colonial custom of joyfully planting a tree at the birth of each child, and having the child's progeny play among its branches, is one which is richly deserving of being revived.

CERCIS (*Redbud*)

Canadensis (*American Redbud* or *Judas Tree*). Rose-pink flowers clustered in profusion along its branches in early Spring; medium size tree with heart-shaped leaves. 4-5 ft., \$2.50 each.

CORNUS (*Dogwood*)

Florida (*Flowering Dogwood*). Beautiful both in flower and foliage. Medium height with masses of white flowers in early Spring before leaves appear; spreading, open habit; likes partial shade. 4-5 ft., \$4.50 each; 5-6 ft., \$7.50 each.

Florida rubra (*Pink Flowering Dogwood*). Lovely pink-flowered form; habit of growth and foliage similar to White Dogwood. 4-5 ft., \$8.50 each; 5-6 ft., \$12.00 each.

CRATAEGUS (*Hawthorn*)

Cordata (*Washington Hawthorn*). Small tree with colorful red Autumn foliage and gorgeous clusters of fruit which do not drop readily. 4-5 ft., \$4.00 each.

Oxycantha splendens (*Paul's Scarlet Hawthorn*). Fine luxuriant foliage and very double scarlet flowers. Likes sunlight and sweet, rich soil. 4-5 ft., \$6.50 each.

GINGKO (*Maidenhair-Tree*)

Biloba (*Maidenhair-tree*). Fine ornamental tree for specimen or for street planting; develops into magnificent broad specimen; lovely green foliage resembling Maidenhair Fern changing to soft yellow in Fall. 8-10 ft., \$7.00 each.



Betula Alba Pendula Gracilis

BETULA (*The Birches*)

Alba (*European White Birch*). Handsome, rapid growing tree of graceful habit; silvery white bark at maturity. 8-10 ft., \$5.00 each.

Alba pendula gracilis (*Cullleaf Weeping Birch*). Shapely tree with pendulous branches and lacy cutleaf foliage; excellent for specimen planting; rapid growing. 8-10 ft., \$6.00 each.



Shade Trees Growing in our Nursery

HALESIA (*Silverbell*)

Tetraptera (*Great Silverbell*). Pleasing and unusual small tree; branches thickly hung with silvery-white bells in May. 3-4 ft., \$2.50 each.

LIQUIDAMBAR (*Sweet Gum*)

Styraciflua (*Sweet Gum*). Fine shade tree with broad, spreading head; star-shaped leaves turn bright red in Fall. 8-10 ft., \$7.50 each; 10-12 ft., \$9.00 each.

MAGNOLIA (*Magnolia*)

Soulangeana (*Saucer Magnolia*). Vigorous medium sized tree; covered with a profusion of large pink shading to purple blossoms in early Spring; leaves large and shiny. 3-4 ft., \$10.00 each.

MALUS (*Crab*)

Atrosanguinea (*Carminé Crab*). Small tree covered with single, rich crimson flowers; excellent where bright color is desired. 4-5 ft., \$3.50 each.

Floribunda (*Japanese Flowering Crab*). Deep pink flowers followed by pinkish-red fruits; early blooming. 4-5 ft., \$3.50 each.

Eleyi (*Eley Crab*). Red foliage, very attractive; clusters of dark red flowers; apricot-colored fruits. 5-6 ft., \$4.00 each.

Hopa (*Hopa Crab*). Single, rich pink flowers; foliage tinged with purple; taller growing than most Crabs. 4-5 ft., \$3.50 each.

Sargentii (*Sargent Crab*). Rather dwarf, spreading variety; clusters of pure white flowers followed by showy red fruit. 4-5 ft., \$4.50 each.

Scheideckeri (*Scheidecker Crab*). Early flowering; semi-double, pale pink flowers followed by showy yellow fruits. 5-6 ft., \$4.00 each.



Acer Saccharum

ACER (*The Maples*)

Palmatum purpureum (*Japanese Red Maple*). Dwarf, shrubby habit; foliage blood-red, varying to purplish-red. Plant in sheltered place, with full sunlight; protect first Winter. 18-24 in., \$3.50 each.

Platanoides (*Norway Maple*). Widely used for lawn and street planting; outstanding for hardiness, symmetry, and dense green foliage; resistant to disease and insects; yellow-bronze foliage in Fall. 12-14 ft., \$9.00 each; 8-10 ft., \$5.00 each.

P. Schwedleri (*Schwedler's Maple*). A Norway Maple with distinctive foliage, deep red first, gradually changing to bronzy-green; becomes very shapely with maturity. 10-12 ft., \$8.50 each.

Rubrum (*Red Maple*). Showy clusters of red blossoms in early Spring; bright scarlet foliage in Fall; irregular habit of growth; develops into rugged broad tree. Will grow in dry or wet soil. 8-10 ft., \$5.00 each; 10-12 ft., \$6.50 each.

Saccharum (*Sugar Maple*). Bright yellow Fall foliage; round-headed tree for lawn or street planting; somewhat slower grower than other Maples. 8-10 ft., \$5.50 each. 10-12 ft., \$6.50 each.

SHADE AND FLOWERING TREES—Continued



Plantanus Orientalis

MORUS (Mulberry)

Alba tatarica (*Russian Mulberry*). Rapid, upright growing variety; rich, glossy green foliage. Bears sweetish, edible fruits liked by birds. 10-12 ft., \$6.00 each.

PLANTANUS (*Plane Tree*)

Orientalis (*European Plane Tree*). Excelled as a street or park tree; broad, round-headed tree; rapid grower; large leaves and bright scaling bark. 8-10 ft., \$6.00 each.

POPULUS (*Poplar*)

Nigra italica (*Lombardy Poplar*). Columnar shaped variety; good for screening; very fast growing tree. 8-10 ft., \$2.00 each.

PRUNUS (*Japanese Cherries*)
Beni Higan (*Beni Higan Cherry*). Single pale pink flowers. 5-6 ft., \$5.00 each.
Kwanzan (*Kwanzan Cherry*). Finest of double-flowered varieties; vigorous upright growth with clusters of large, double pink blossoms. 5-6 ft., \$5.50 each.
Shirofugen (*White Goddess*). Double-flowering; blossoms open clear pink, fade to white; later-blooming than single forms; spreading habit of growth. 5-6 ft., \$5.50 each.
Subhirtella autumnalis. Unusually profuse bloomer; pink to white flowers; black fruit in Fall. 5-6 ft., \$5.00 each.

QUERCUS (*Oak*)

Palustris (*Pin Oak*). Graceful habit of growth; attractive lustrous green foliage; rapid growing. 8-10 ft., \$6.00 each.
Rubra (*Red Oak*). Broad-headed tree with all true characteristics of Oak family. Good foliage, purplish-scarlet in the Fall. 8-10 ft., \$6.00 each.



Liquidamber



Salix Niobe

SALIX (*Willow*)

Niobe (*Golden Weeping Willow*). Long, pendulous, golden yellow, thread-like branches; broad, spreading habit of growth. 6-8 ft., \$4.00 each; 8-10 ft., \$5.00 each.

SORBUS (*Mountain Ash*)

Aucuparia (*European Mountain Ash*). Handsome, showy clusters of bright red berries borne on the ends of somewhat pendulous branches in early Autumn. Attractive feathery much-divided foliage and pleasing upright growth. 10-12 ft., \$7.00 each.

TILIA (*Linden*)

Vulgaris (*Common European Linden*). Compact, symmetrical tree; bright green foliage; rapid growth. Good for street plantings in cities. 8-10 ft., \$6.50 each.

ULMUS (*Elm*)

Americana (*American*). Heritage of New England. Upright, arching branches form large spreading top; good for specimen planting, and for street trees. 8-10 ft., \$4.00 each; 10-12 ft., \$6.00 each.
Pumila (*Siberian Elm*). Fast growing; spreading; small leaves and shapely habit. Different in shape from our American variety. 8-10 ft., \$4.50 each.



Japanese Barberry Hedge

Hedge Plants

Material for a hedge is selected to conform with the purpose and ultimate height intended. Many varieties of shrubs and evergreens lend themselves to close shearing and are thus adaptable to use for hedges. Following are common hedge materials.

FOR LOW HEDGES

Japanese Barberry	10	100
15-18 in.....	\$4.50	\$35.00
18-24 in.....	5.50	40.00
Red leafed Japanese Barberry		
15-18 in.....	\$8.00	\$60.00
18-24 in.....	10.00	70.00

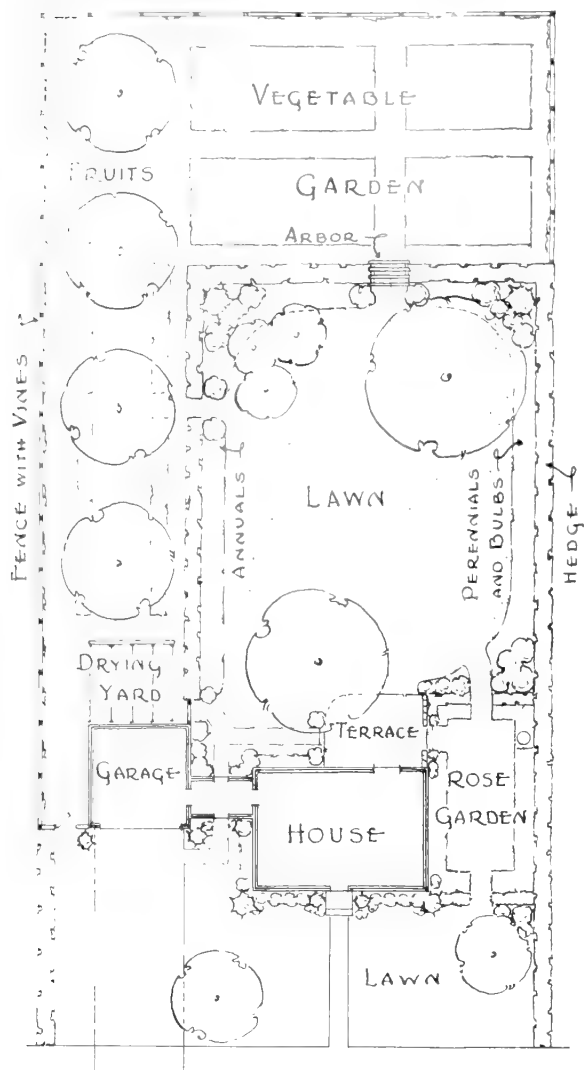
FOR MEDIUM TO TALL HEDGES

Amur River Privet	10	100
18-24 in.....	\$3.50	\$25.00
3- 4 ft.....	7.50	60.00
California Privet		
18-24 in.....	\$3.00	\$18.00
2- 3 ft.....	4.00	25.00
Ibodium Privet		
18-24 in.....	\$3.00	\$20.00
2- 3 ft.....	4.00	25.00

Hedge plants should be planted one foot apart in a single row.

The following flowering shrubs make excellent hedges or screens, Acanthopanax, Cydonia, Deutzia, Lonicera, Philadelphus and Syringa. See descriptions and prices on pages 6 and 7.

LANDSCAPE DEPARTMENT



Typical Lexington Nurseries Garden Design

CONDITIONS OF SALE

Our terms are net cash. Charge accounts for 30 days credit may be opened upon receipt of satisfactory credit arrangements. On landscape plantings, special deferred payments may be arranged for—see information elsewhere on this page. All prices F.O.B. Lexington, Mass., except for limited free delivery area as shown. All orders accepted subject to stock being sold. Prices subject to change without notice.

DELIVERY SCHEDULE

NO. 1—MONDAY and THURSDAY

Bedford	Lexington
---------	-----------

NO. 2 WEDNESDAY and SATURDAY

Arlington	Somerville
Cambridge	Winchester
Medford	Woburn

NO. 3 -TUESDAY and FRIDAY

Auburndale	Newton
Belmont	Waban
Brighton	Waltham
Brookline	Watertown
Chestnut Hill	Waverley

Delivery made to above areas during planting seasons on this schedule, balance of year one delivery per week—No. 1 on Wednesdays; No. 2 on Fridays and No. 3 on Thursdays

TODAY American Living is moving out of doors. The Garden is recognized as the extra living room of the home. Truly a real family room, decorated with nature's own wonderful materials. The modern concept of a properly designed garden ties the outside and the inside of the home into one unit. The design is simple yet each area is clearly defined. When planning such a garden, consideration should be given to a terrace for eating or just relaxing, a lawn area for recreation or sun bathing, flower beds for color or cut-flowers for decoration, shrubs and evergreens for privacy, large trees for shade as well as beauty, a vegetable garden with fruits both small and large to keep the "inner" man well-fed while the "outer" man has the opportunity to revel in nature at its best. Ease of maintenance will make this area a joy instead of a place of drudgery.

We have all of the facilities to help you create such a spot, or to help you on any other landscape problems you may have. Our Landscape Department complete with designers, plantmen and equipment plus a Nursery chock full of guaranteed specimen plant material, make a combination that insures you success in your gardening. Write or phone us today and our Landscape Representative will contact you.

The Lexington EXTENDED PAYMENT PLAN

In answer to numerous requests from our customers, we have made arrangements for offering an extended payment plan. Because the planting seasons are relatively short, it is often inconvenient to pay for a landscape planting under our regular terms, and many of our customers will find this budget plan desirable. It provides for a moderate 25% payment upon completion of the work, the balance plus a small interest charge spread over four, six or eight months, or up to a year with regular payments to suit your income.

Ask our Landscape Representatives about the plan, or write to Lexington Nurseries, Inc., P. O. Box No. 89, Lexington 73, Mass., for full particulars.

Guarantee

We guarantee the plants we sell to be healthy, free from injurious pests, true to name, and to meet all the standards of the American Association of Nurserymen. Any complaints on the above score must be made immediately on receipt of the goods. In no case do we assume liability for more than the purchase price. Plants planted by our Landscape Department are guaranteed for one transplanting season, provided they receive reasonably proper care. Plants purchased from us and planted by others will be replaced at one half our retail price if they fail to grow within sixty days. All guarantees are contingent upon the original invoice being paid in full within thirty days after date of invoice, unless other contract arrangements have been made. GUARANTEE applies only on plants purchased at retail prices.

LEXINGTON 4-Star ROSES



Lexington FOUR STAR ROSES have that quality look. Heavy root systems, full tops bursting with buds, stored under perfect conditions and handled by experts, these Roses are without question the best Roses offered at any price in New England.

Price except as noted \$1.25 each for
TOP QUALITY PLANTS



Frau Karl Druschki

EVERBLOOMING TEA ROSES

- Betty Uprichard.** Coral-pink outside, flesh-pink inside petals. Very fragrant.
- Briarcliff.** Very large, high-centered, fragrant. Deep rose pink at center, lighter on outer petals.
- Caledonia.** Large, white, very double, hardy and longlasting, slightly fragrant.
- Condesa de Sastago.** Two-tone, coppery pink inside, golden tint outside, Raspberry fragrance.
- Dame Edith Helen.** Pink, large and full. Intensely fragrant. Continuous bloomer.
- Edith Nellie Perkins.** The outside of the petals is translucent red shaded with cerise-orange, inside salmon-pink flushed with orange-gold.
- Editor McFarland.** Glowing clear pink with slight yellow suffusion. The opening bud is beautifully formed, on long, thornless stems; the mature blooms are large, semi-double, and very fragrant.
- E. G. Hill.** Deep, dark red; inside velvety. Deliciously fragrant.
- Etoile de Hollande.** Scarlet-crimson buds, opening to glowing red flowers.
- Frau Karl Druschki (Snow Queen, White American Beauty).** Its paper-white blossom a glorious thing, it succeeds almost universally for the novice as well as for the professional grower. Its flowers often measure 5 inches across.
- General Jacqueminot.** Blossoms all Summer long; rich crimson scarlet; sweetly fragrant.
- Golden Dawn.** Golden yellow, stained with coppery-red in the bud. One of the best yellows.
- Heinrich Wendland.** True two-tone; bright red inside; outer petals yellow.
- K. A. Viktoria.** White, buds stained with lemon yellow. Fragrant.
- Mme Joseph Perraud.** A rose which is gaining in popularity because of its beautiful two tone effect; nasturtium orange; refreshingly fragrant.
- Margaret McGredy.** A high-centered, large, fragrant flower of unique orange-scarlet. Vigorous grower.
- McGredy's Scarlet.** Velvety crimson-scarlet. Flower is high-centered, double.
- Mrs. E. P. Thom.** Fine buds, perfect rich yellow flowers, delicate fragrance.
- Mrs. P. S. du Pont.** Pointed buds red-dish gold, flower golden yellow.

- Mrs. Sam McGredy.** A Rose notable for its lovely bronzy foliage as well as the gorgeous scarlet orange flowers which become coppery as they mature.
- Mirandy (Pat. 632).** Finest of red Roses; long-pointed rich red buds opening to a lighter shade. Deliciously fragrant. \$1.75 each.
- Paul Neyron.** Carmine-pink, very large, fragrant flowers. Long stems; grows to 4 feet.
- Picture.** Clear rose pink touched with salmon. Very double.
- Pink Radiance.** Intensely fragrant; exquisite soft pink double blossoms.
- Poinsettia.** Here is a Rose that will provide constant bloom of bright, un-fading scarlet flowers. Compact, vigorous grower.
- President Hoover.** Long pointed bud, flower with varying orange shades inside, outside petals lighter. Tall growth, abundant bloomer.
- Sister Therese.** Very large golden yellow blossoms, edges marked with carmine bronze, leathery foliage.
- Snowbird.** Perfectly formed; pure white. Excellent for massing.

POLYANTHA or FLORIBUNDA ROSES

- Chatillon.** Strikingly large clusters of salmon-pink, semi-double flowers; prolific bloomer.
- Dagmar Spaeth.** Lovely, dainty snow-white blossoms edged with clear pink; outstanding.
- Edith Cavell.** Showy scarlet with suggestion of crimson velvet.
- Else Poulsen.** Deep pink, flowers constantly. One of best Floribunda types.
- Ideal.** Very aptly named; covered with dark red blooms all season.
- Poulsen's Yellow.** Deeply fragrant; copper bud changing to yellow as the flower opens.

CLIMBING ROSES

- The Hardy Climbing Roses have a distinct place as decorative plants. They grow best in a sunny location, with rich, not too dry soil. The climbers usually bloom on the previous year's growth.
- American Pillar.** A never-to-be-forgotten sight when in bloom. Huge clusters of large single flowers; scarlet with white centers. An outstanding variety.
- Climbing American Beauty.** Double carmine-pink; a dependable climber. Very large flowers.

CLIMBING ROSES—Continued

- Dorothy Perkins.** One of the old-fashioned Rambler Roses, soft pink.
- Dr. W. Van Fleet.** Pale flesh-pink; flowers well-shaped, double, with long stems, making them good for cutting.
- Flash (Pat. No. 396).** Unusually brilliant with its bright orange scarlet petals; golden anthers emphasize center. Long season of blooming.
- Mary Wallace.** This much-loved climber has large flowers of warm rose-pink, semi-double, cup-shaped, fragrant. Its blooming season is June to July.
- New Dawn.** Ever-blooming blush-pink, covered with blossoms. \$2.00 each, potted.
- Paul's Scarlet Climber.** Surely the most vivid color of all the climbing Roses. Scarlet, shaded with bright crimson. The large flowers are abundantly produced in June, loosely clustered on vigorous canes that often reach a 'teen height. 3 yr. heavy, \$2.00 each.
- Primrose.** Pale yellow, full-double blossoms of medium size. Good grower.
- Silver Moon.** The large, semi-double, wide-open flowers are ivory white, with an amber glow at the base of each petal and alluring sulphur-yellow stamens.

MISCELLANEOUS SHRUB ROSES

- Rosa hugonis.** The "Father Hugo Rose" or "Golden Rose of China." This shrub rose is very decorative, with arching branches loaded with short-stemmed, single yellow blossoms in early Spring. Dense, vigorous growth reaching six feet or more in height; foliage resembling that of a brier Rose. Dormant plants, \$1.50 each.
- Rosa rugosa (Species).** The original wild type from northern Japan. The large single flowers are usually reddish-pink, but somewhat variable in color. Foliage luxuriant, deep green. Showy red seed-hips in late Summer and Fall. This shrub-rose is much used for hedges.
- Rosa rugosa alba.** Same as *R. rugosa*, but with single white flowers.
- Wichuraiana.** Especially good ground-cover for difficult slopes; very hardy. Dainty white clusters bearing red seed-hips in Fall.

\$1.00 each, 6 for \$5.50

FRUIT TREES

Lexington offers only the hardiest and finest fruits for New England, all certified top quality true to name trees and plants. Every garden large or small should have some of these plants for their lovely fragrant blossoms and delicious fruits.

APPLES

2 year, \$1.65 each, 10 for \$15.00

Quantity prices to orchardists on application

UMMER

Red Astrachan. Crimson, 2 year.
Yellow Transparent. Yellow. Fine quality.

AUTUMN

Gravenstein. Striped. 2 year.
McIntosh Red. Waxy red. 2 year.

WINTER

Baldwin. Bright red. Fine keeper. 2 year.
Cortland. Red. Fine new variety. 2 year.
Delicious. Dark red. Fine quality. 2 year.
Northern Spy. Red; crisp and juicy. Good keeper.

CRAB APPLES

Hyslop. 2 year. Yellow with crimson overlay. Late September to October. 2 year, \$2.00 each, \$17.50 for 10; 3 year, \$2.75 each, \$25.00 for 10.

CHERRIES

\$2.50 each, \$22.50 for 10

Bing. Very sweet; solid black flesh, grows almost anywhere.
Black Tartarian. Early, very large black juicy fruit, sweet rich flavor prolific bearer.
Hansen's Bush Cherry. Sensational new fruit; delicious Cherries borne on arching branches; grows from 4 to 5 feet tall. Often bears the first year planted. Can be used for ornamental as well as practical purposes. Covered with white blossoms in early Spring; foliage silvery green turning to red and gold in the Fall. \$2.00 each, 3 for \$5.50.

PEACHES

\$1.50 each, \$13.50 for 10

Champion. Early August. A white Peach of superior quality.
Elberta. Early August. Orange-yellow, flushed red. A fine commercial Peach.
Hale Haven. Early midseason. Yellow freestone.
J. H. Hale. Early August. Large golden-yellow fruit of high quality.

PEARS

\$2.50 each, \$22.50 for 10

Bartlett. Yellow and red.
Beurre Bosc. Russet.
Seckel. Brown.

PLUMS

\$2.50 each, \$22.50 for 10

Abundance. Dark red, yellow flesh, juicy and tender. Adaptable to many soils.
Fellenberg. Dark purple, medium size, freestone, delicious eating. Late.

ASPARAGUS ROOTS

2-year roots, 25 for \$2.00, 50 for \$3.00, 100 for \$5.00

Mary Washington. A rust-resistant, tender variety considered the standard home-garden sort. Roots should be set about a foot apart and 12 inches or more deep. Light, sandy loam is best for growing Asparagus. Dress with a good vegetable fertilizer each Summer after the cutting season.

BLACKBERRIES

\$2.00 for 10, \$18.00 per 100

Eldorado. Tall, spreading plants; fruit large, jet black, pleasantly flavored. Quality very good. Early midseason.

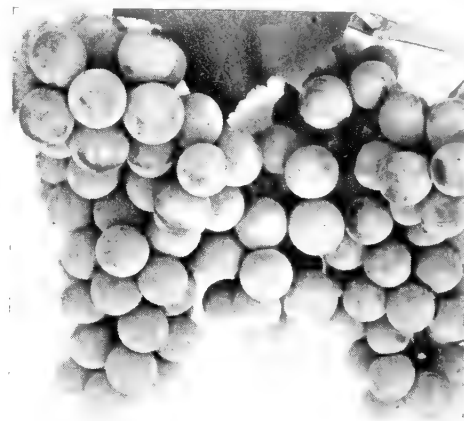
RASPBERRIES

\$2.00 for 10, \$18.00 per 100

Chief. Red; early; firm fruit. Very hardy plants, mosaic proof.
Indian Summer. Fine, large red; ever-bearing. A recent introduction of merit.
Latham. Very large, bright red, the preferred berry for home use. Late.

GRAPE VINES

In proportion to the small space they occupy Grapes yield unusual dividends in fruit that has many uses. The ideal soil for Grapes is a gravelly clay; but they grow well in any good loam which does not dry out in Summer. Bonemeal or crushed bone is the best fertilizer. Set the vines at least 10 feet apart, in a sunny place. Grapes are a good source of Vitamin B-1.
3-year plants, \$1.00 each, 3 for \$2.75
Brighton. Red; midseason. Large fruit of pleasing sweetness.
Concord. Black; late. An old and popular variety.
Fredonia. Black; early. Extra good quality.
Niagara. White; late. Best white Grape for New England.
Worden. Black; early. Fine quality.



Niagara Grapes

VEGETABLE PLANTS

Though we lack space for listing vegetable plants, we are growing and selling them as in previous years. Prices remain the same as in 1947.

USE SUMMER-FLOWERING ANNUALS

as "fillers" in the perennial border

Their continuous bloom supplies much-needed Mid-summer color. Their varied hues make possible the development of definite color schemes in the garden.

Pot-grown plants are preferable; space them a foot apart.

Garden Supplies

Our store is a mecca for the experienced gardener. We handle the most complete line of quality garden supplies available anywhere in New England.

We stock lawn seed, vegetable, annual and perennial flower seeds, bulbs of all kinds in season, soil conditioners, fertilizers, insecticides, tools and implements, power equipment of all kinds. Customers new and old are constantly astounded by the scope and completeness of our garden center; the expression most often heard is "I didn't realize there was anything like this anywhere." Come to us with your gardening problems, we have the know how and materials to solve them.

GENERAL INDEX *Page*

Annuals.....	10
Evergreens.....	4-5
Evergreen Shrubs.....	8
Fruits, Berries.....	22
Guarantee-Terms.....	20
Hedges.....	19
Landscape Department.....	20
Perennials.....	15-16-17
Roses.....	21
Shrubs.....	6-7
Trees, Flowering and Shade.....	18-19
Vines.....	9

TOP QUALITY AT A FAIR PRICE
IS THE BEST VALUE

OPEN SUNDAYS AND EVENINGS DURING APRIL, MAY AND JUNE

Badge No. _____

Cert. No. _____

Gift Certificate

Value \$ _____

Date _____

American Association of Nurserymen, Inc.

THIS CERTIFICATE redeemable in plants of the value of _____ DOLLARS
at any retail member nursery of the AMERICAN ASSOCIATION OF NURSERYMEN, INC.

Issued to

ISSUING NURSERY _____

ADDRESS _____

REDEEMING NURSERY _____

*Payments to redeeming Nursery
guaranteed by The Employers
Liability Assurance Corp., Ltd.*

Donor _____

ISSUING NURSERY RECORD

Lexington Nurseries, Inc.

1265 Massachusetts Avenue

Lexington 73, Massachusetts

Date _____

Gentlemen:

Please send me GIFT CERTIFICATES made to the following names in amounts shown: (No certificate issued for less than \$5.00).

_____	_____	\$ _____
_____	_____	\$ _____
_____	_____	\$ _____
_____	_____	\$ _____

Enclosed check to cover

Charge my account

Signed _____

Address _____

Cultivated BLUEBERRIES

Too few people are aware of the two-fold use for Cultivated Blueberry Plants. In addition to bearing delicious fruit, they are delightful shrubs for ornamental planting. The leaves which are a lustrous bright green in Summer assume gorgeous hues at the first approach of Fall. The blossoms, similar to Lily-of-the-Valley, are borne on graceful racemes. The fruit is large, firm, and abundant. Order some each of early, midseason, and late varieties to provide fruit during the entire season. We offer 3-year, bearing-age plants.

Cabot. Early; low-growing type; large berries. 18-24 in. \$1.50 each, 3 for \$4.00, 10 for \$12.00.

Concord. Midseason; tall-growing; unusually large berries. 2-2½ ft. \$1.75 each, 3 for \$4.75, 10 for \$15.00.

Rancocas. Midseason; slender upright habit; sweet berries. 2-2½ ft. \$1.75 each, 3 for \$4.75, 10 for \$15.00.

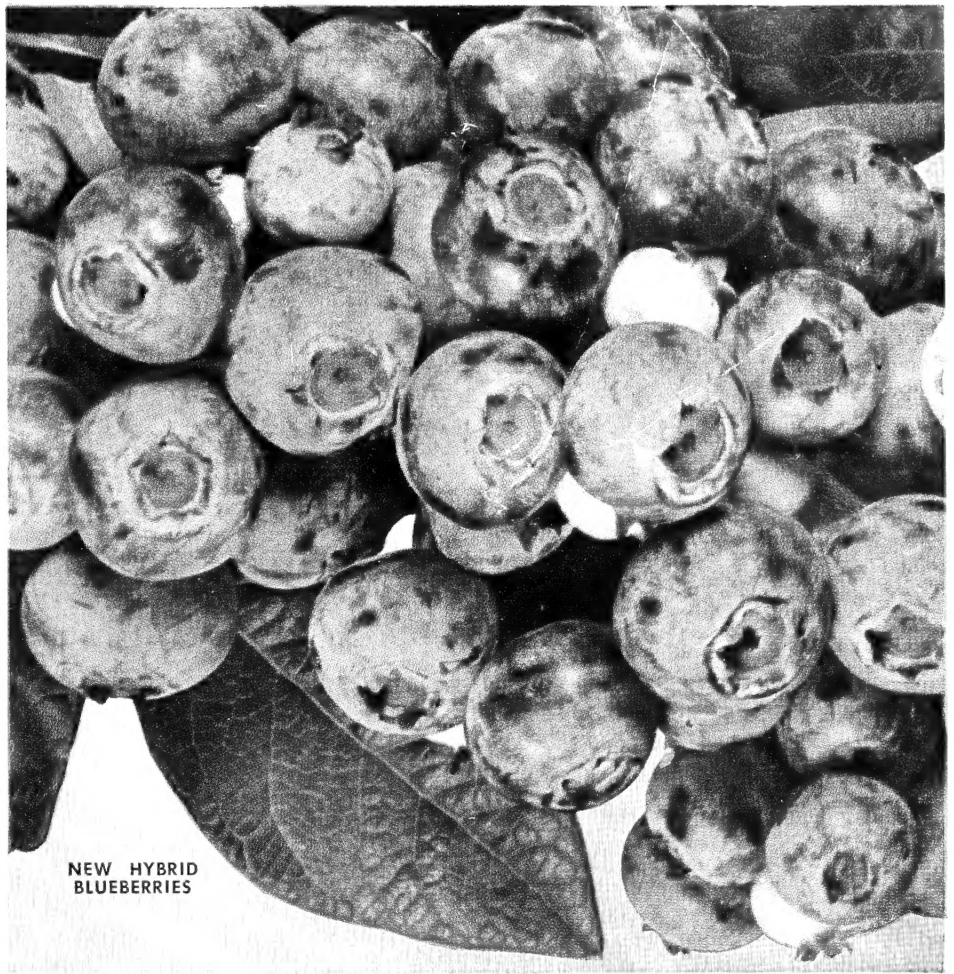
Rubel. Fruits first week in July; sturdy bushes; prolific bearer. 2-2½ ft. \$1.75 each, 3 for \$4.75, 10 for \$15.00.

Jersey. Ripens almost same time as Rubel; light blue berries of large size. 18-24 in. \$1.50 each, 3 for \$4.00, 10 for \$12.00.

GROUP OFFER

1 plant each of the 5 varieties listed
\$7.50

2 plants each of the 5 varieties listed
\$14.00



NEW HYBRID
BLUEBERRIES

STRAWBERRIES

25 for \$2.00, 100 for \$6.00

except where noted

To many of us, Summer is incomplete without dishes of luscious Strawberries and cream. Since this fruit is of such easy culture, almost anyone can have a "berry patch." The following are the varieties most successful in New England. Runner plants sold in April and May only.

Catskill. Midseason. Yields heavily in all sections of New England. Berries of good size, excellent quality.

Dorsett. Early; very prolific bearer; large, sweet berries. Can be grown on fairly poor soil.

Fairfax. Midseason. Grows best in warm, sandy loam, not too dry. Large, dark red berries unexcelled in rich, sweet flavor.

Gem. An improved "everbearing" Strawberry that carries fruit well into September especially if the first blossoms are picked off in June. The berries are dark red, sweet and of uniformly good size. 25 for \$2.50, 100 for \$9.00.

Streamliner. Sensational new "everbearing" Strawberry. One of the finest ever produced. Large, sweet, delicious fruit from July to frost. 25 for \$3.50, 100 for \$12.00.



Lexington

4-STAR

Roses

\$1.25
each

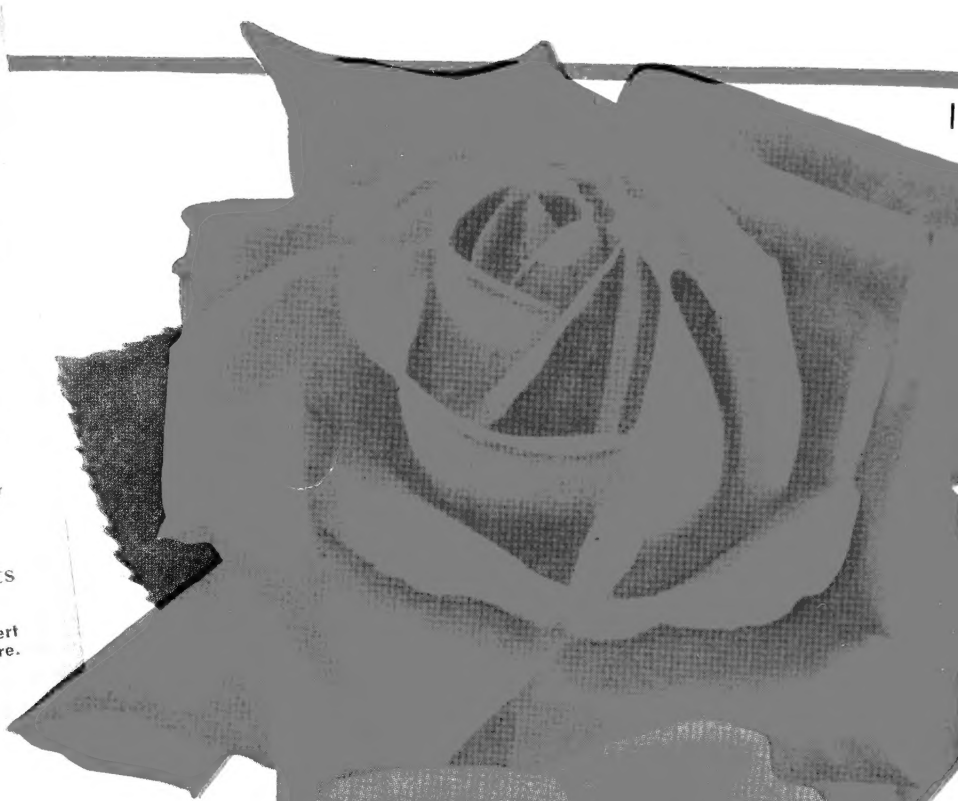
Year's
Price

Now Lexington Roses can become part of every-
one's garden. Priced within the reach of all, they
offer a wealth of beauty seldom found at this low price.

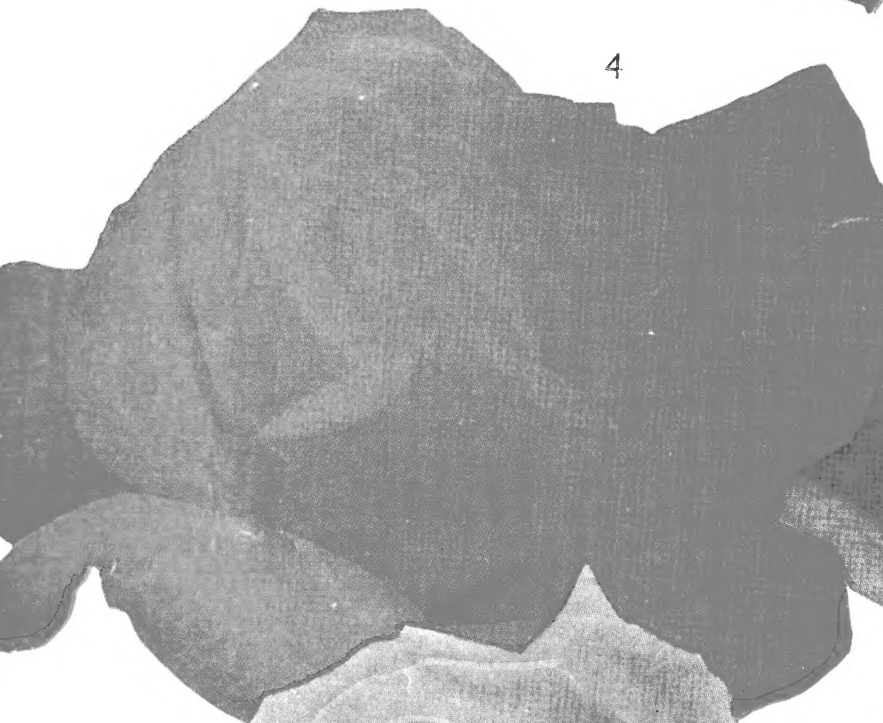
- ★1 Finest Quality No. 1 Plants Both Tops
and Roots
- ★2 Time Proven Varieties Hardy in New
England
- ★3 Lowest Prices for Finest Grade
- ★4 Ready for Planting—Both Top and Roots
Pruned Just Before Delivery

Illustrated are, (1) Etoile de Hollande, (2) Pres. Herbert
Hoover, (3) K. A. Viktoria, (4) Mrs. E. P. Thom, (5) Picture.

See Complete List and Descriptions Page 21



2



4



3



5

