

Historic, Archive Document

Do not assume content reflects current scientific knowledge, policies, or practices.

62.09

LIBRARY
RECEIVED
★ JUN 23 1948 ★
U. S. Department of Agriculture



HIBISCUS, CROWN OF BOHEMIA

1948 GARDEN GUIDE



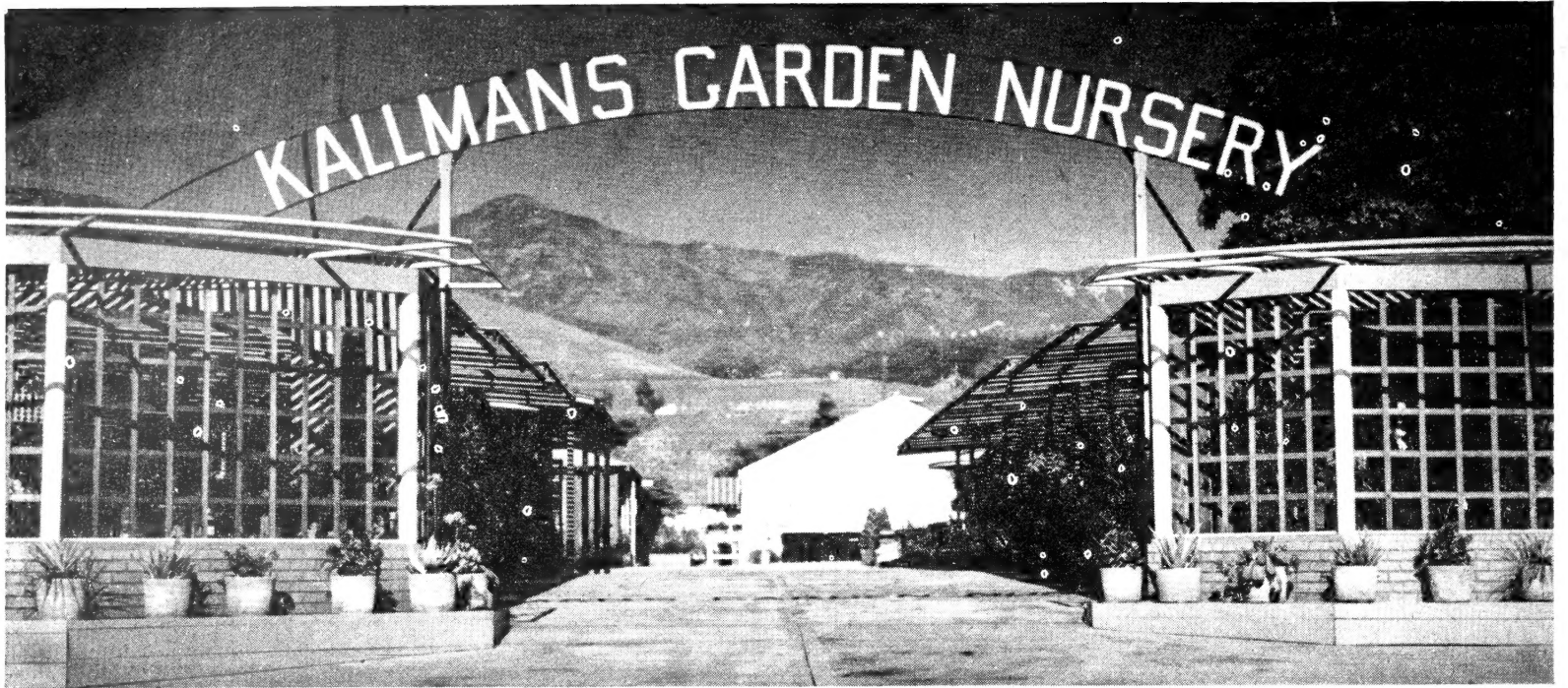
PYRACANTHA DUVALI, FIRETHORN

CAMELLIAS, AZALEAS
FLOWERING SHRUBS
TREES, VINES, FRUITS
NUTS AND BERRIES

KALLMANS GARDEN NURSERY

"Everything for the Garden"

228 N. Milpas Street, SANTA BARBARA, CALIFORNIA



Santa Barbara's Modern Nursery

"Everything for the Garden"

Here you will find one of the most complete and modern nurseries in California. We offer not only the best in plants but also a complete line of all seeds, garden tools, fertilizers, insecticides and other garden sundries.

VISIT OUR GIFT SHOP

Here too, you will find many novelties to solve your gift problem.

Make Kallmans Your Garden Headquarters

OPEN SUNDAYS

YOUR INSPECTION IS WELCOME AT ALL TIMES

Member California Association of Nurserymen
Member American Association of Nurserymen



CYMBIDIUM ORCHIDS

Cymbidiums are easy to grow. Plant in a shady, sheltered location or in lathhouse with good drainage—plenty of leafmold, peat and gravel or they can also be grown in pots. If the temperature goes below 30 degrees pots would be the easiest to protect. One can hardly wait from season to season to count the bloom spikes as they start showing. Blooms start showing in December and continue until June, according to the variety.

Our stock of Cymbidiums IS very complete. Visit us when they are in bloom. See the thousands of healthy plants growing in our nursery. There you will find the common varieties as well as some of the newest seedlings and hybrids. Prices of back bulbs begin at \$1.50 each up to the larger specimens.



CYMBIDIUM OR SPRAY ORCHID



RARE AND UNUSUAL PLANTS

Santa Barbara is well known for its unusual and rare plants. In our nursery you will find some plant that is not commonly found.

We are always happy to talk over your garden problems and advise you what is new and different. Be one of our satisfied customers.

Flowering Evergreen Shrubs

The largest number of ornamental plants available to gardeners in California are Evergreen Flowering Shrubs. This group includes subjects for every possible position; sun or shade, wet soils and dry. The coastal areas, inland valleys and lower mountains can all use them. Many have showy flowers, some useful for cutting, while some are only grown for their foliage. Many, like *Pyracantha*, *Barberry*, *Arbutus*, etc., make a show in fruits later in the season. Following descriptions we give the approximate temperature at which the plant is hardy. Use this as a guide only to choose plants for the location to be planted.

Items in this section vary in price from 65c and up, depending on the variety and the size selected. Larger sizes are priced from \$2.50 up.

ABELIAS

Glossy Abelia, *Abelia grandiflora*. Graceful evergreen shrub with arching branches, bronzy foliage and dainty fragrant white bells in spring and early summer. Sun or light shade. Very hardy.

Abelia Edw. Goucher. Pinkish lavender bells in summer. One of the best of the newer shrubs. Excellent foliage, compact habit of growth. Hardy.

FLOWERING MAPLE

Abutilon hybrids. Popular old-fashioned shrubs with maple-like leaves and cup-shaped flowers hanging all over the plants. In assorted colors, red, yellow, orange, and white. Sun or shade, hardy. 25°.

GLOSSY PAPER PLANT

***Aralia sieboldi*.** Wonderful shrub for tropical effects. Bold glossy foliage. Makes an excellent tub plant. Hardy.

STRAWBERRY TREE

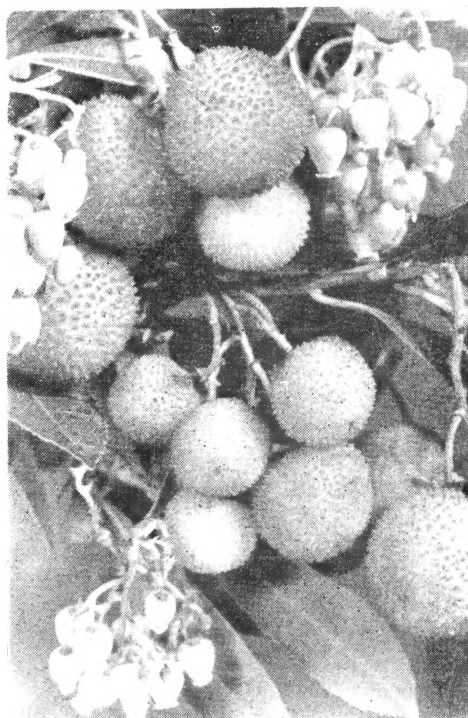
***Arbutus unedo*.** One of the finest medium-growing shrubs on the list. Deep green foliage and brilliant red strawberry-like fruits ripening about Christmas time. Very hardy.

GOLD DUST PLANT

***Aucuba japonica variegata*, Gold Dust Plant.** Slow growing plant for shaded places or tubs. The large glossy pointed leaves are spotted or speckled with gold. Give plenty of water. Grows in the deepest shade where other plants fail. Hardy.



ABELIA EDWARD GOUCHER



ARBUTUS UNEDO



AZALEA PAUL SCHAME

AZALEAS

For sheer beauty the masses of flowers produced by Kurume Azaleas in late winter and spring with the end of the Camellia season, they have no equal. Quite often rains will threaten the bloom but they are a hardy lot and soon recover, showing no damage. They are essentially lovers of an acid soil which should possess an excellent drainage and quantities of peat. Pure peat, if the beds are large enough, would be best. Keep lime in any form away from them, even acid fertilizers should be used that are especially prepared for Azaleas. Light shade and plenty of water at all times.

\$1.00 and up.

Kurume Azaleas. We will have a good selection.

INDICA AZALEAS

These are by far the choicest of the Azalea family with closely formed bushy growth, neat dark green leaves and the flowers! a gorgeous display of large flowers, mostly double but of delicate pleasing quality, not gaudy as in some Kurumes (above), often blended with other colors and plain or ruffled.

Albert Elizabeth. Double, white with pale pink margins.

Charles Encke. Dwarf. Single. Dark salmon, striped with white.

Mme. Vandercruysen. Large clear salmon pink.

Niobe. Pure white.

Paul Schame. Double. Lustrous coral salmon. Most popular.

Pink Pearl. One of the most popular. Large delicate pink flowers, daintily doubled and spotted.

Professor Walters. Single ruffled. White with deep blotches on upper petals.

Vervaeneana. Double. Rose Bengal with deep spots. Choice.

Other varieties available.

BOUVDIAS

Bouvardia Albatross. Handsome low growing shrub with spreading slender branches of waxy green foliage. Fragrant waxy white flowers, have exceptionally long tubes and four flaring petals. Last well when cut. Trim back to encourage new growth and flowers. Sun or part shade. 25°.



GERALDTON WAX FLOWER—
CHAMAELAUCIUM CILIATUM

YESTERDAY AND TODAY

Brunfelsia floribunda, Yesterday and Today. Bushy, well rounded shrub with lustrous green foliage and flowers throughout the year. Flowers open blue-violet fading through lilac to almost pure white. Fragrant, they last well when cut. Sun or partial shade. 20°.

BOXWOODS

Buxus japonica, Japanese Box. Best taller growing Box for Southern California. Rounded glossy green leaves and lush dense growth. Always neat and attractive. Trimmed specimens available. Sun or shade. Hardy.

BOTTLEBRUSH

Callistemon viminalis. Beautiful large weeping shrub with brilliant red brushes on drooping branches. An excellent shrub for specimen since it will stand more water. Hardy to 15°.

Camellias

Rare and Unusual Varieties

\$3.00 and up, depending on size and variety.

Many other varieties, including novelties, available at the Nursery.

Alba plena. Finest of all white camellias. Fully double flowers often 6 inches across. Lovely and delicate.

Colonel Firey. The finest of all red camellias. The flat flowers are a rich glowing crimson often 6 inches across.

Dearest (Finlandia). Popular semi-double white of exceptional beauty. Porcelain texture of the petals is beautiful with yellow of stamens.

Debutante. One of the finest newer varieties with beautiful fully double ball-shaped flowers in a delicate shade of pink. Ideal as a corsage flower.

Emperor of Russia. One of the more unusual red camellias. Large outer petals appear to enclose two or three smaller flowers, which really are the twisted and recurved smaller central petals. Bright scarlet. Dwarf habit.

Julia Drayton. Huge flowers, often 7 inches across, are uniformly brilliant scarlet, beautifully veined. Double with high pointed center. Very fine.

Kumasaka. Large loose double rose-pink flowers with a pleasing fragrance. Center petals curled and twisted but showing the golden stamens. Many large flowers; good growth.

Pope Pius IX. Large double red flowers. Good growth, light colored foliage. New and rare, one of the best in our list.

Prof. Sargent. Unusual scarlet flowers. Fully peony-type. Free flowering variety. Semi-dwarf. Rates among the top few of camellia elite.

Standard Camellia Varieties

\$1.50 and up, depending on size and variety selected.

Alba superba (John G. Drayton). Best semi-double white. Pure white with enormous petals. Flowers 4 to 5 inches across.

Amabilis. Tall growing shrub producing dainty single white flowers. Early flowering.

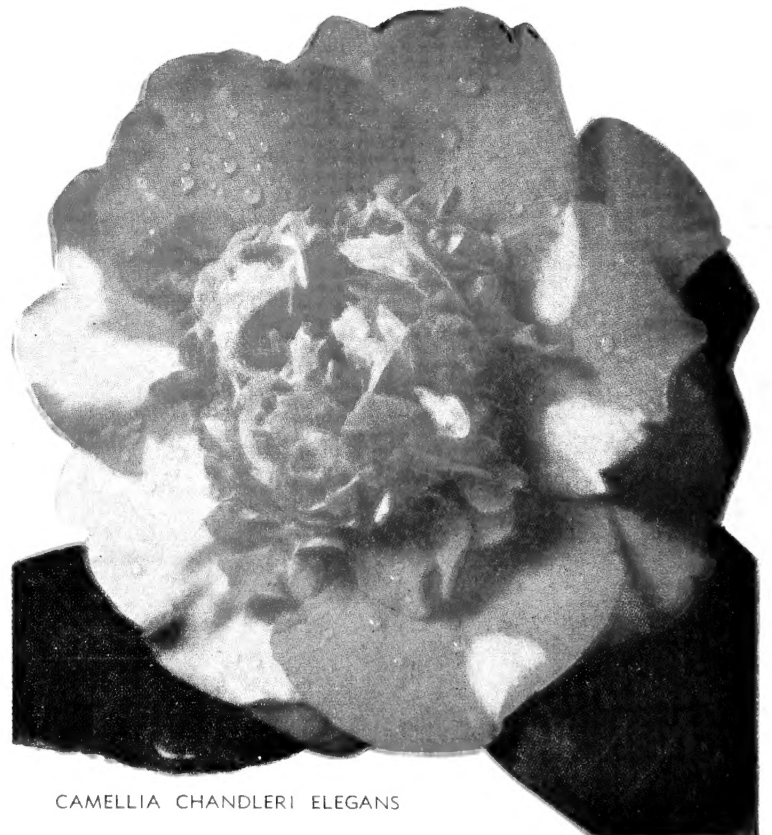
Belle Romana. Large light pink double flowers profusely striped, splashed and pencilled with crimson. Popular and rare.

Chandleri elegans. Largest and most popular peony-flowered camellia. Soft rose with a center of tightly curled petals, often showing white markings.

Cheerful. Clear bright cherry red. Very double medium size flowers. Late and profuse in bloom. Sturdy shrub.

Ornamental evergreen shrubs of exquisite beauty and highly prized for their flowers during the winter months. After blossoming the dark green glossy foliage and dense habit of growth make an attractive appearance in the garden. Many varieties listed here are much sought after for their scarcity is well known.

Camellias are easy to grow in a shady, sheltered location, an acid soil with good drainage in which generous quantities of leaf mold or peat have been added. They require generous amounts of water during the growing season but this should never become stagnant for lack of drainage. Withhold water and fertilizer during the dormant season when the flowers appear. All are hardy in southern California.



CAMELLIA CHANDLERI ELEGANS

Covina. Compact and free-flowering variety. Flowers informal double rose-red, a non-fading bright color.

Daikagura. Earliest of the larger sorts to flower. Double with a center of small twisted petals, bright rose with white splashes. Fragrant.

Jordan's Pride. Delightfully fragrant flowers 5 to 6 inches across. Semi-double, petals large, broad, light pink with broad irregular border of white around each.

Nobilissima. Snow white peony-flowered camellia. The large, broad petals make a splendid background for the tuft of smaller petals in the center.

Pink Perfection. Fully double flowers of medium size, clear light pink petals neatly arranged. One of the most popular pink camellias.

Princess Bacciochi. Large modified peony-type of rich carmine red with bright yellow stamens. Compact growth.

Purity. Symmetrical double flowers of large size and snow-white purity. Often 6 inches across. Very popular white.

Rosita. Vigorous variety with perfectly formed rose-pink flowers of medium size. Very double. Petals neatly and symmetrically arranged.

Tricolor. Large semi-double flowers varying in color, usually red or white but quite often striped red and white, with yellow stamens in the center.

CASSIA

Cassia artemisioides. Small rounded shrub with finely cut greyish leaves covered in spring with masses of golden-yellow pea-shaped flowers. Excellent for hot dry sunny places. Hardy to 15°.

CALIFORNIA LILACS

These are perhaps the most famous of all native plants, having been hybridized extensively in Europe where they are prized for the lilac-like flowers. The varieties listed here are showy hardy shrubs, well adapted to wild plantings where little care is intended as on hillsides. They need good drainage and little moisture after established.

Ceanothus arboreus, True Lilac. Large shrub or small tree of rapid growth. Large glossy leaves and showy trusses of light blue flowers. Hardy.

Ceanothus cyaneus. Beautiful native of San Diego County. Small dark green leaves and dark blue fragrant flowers in late spring. Hardy.



CAMELLIA COLONEL FIREY



EUGENIA SMITHI

CESTRUMS

Cestrum elegans, Red Cestrum. Quick growing shrub with large downy leaves and masses of red tubular flowers in spring and early summer. Hardy to 25°.

Cestrum parqui, Night Scented Jasmine. Rapid growing shrub with light green leaves and inconspicuous flowers but very fragrant in the evening. The delightful perfume lends enchantment to any outdoor living room. 27°.

GERALDTON WAX FLOWER

Chamaelaucium ciliatum. One of the finest shrubs introduced to California in recent years. Showy attractive pink flowers with red central cups cover the heather-like foliage in graceful sprays. Excellent as a cut flower, lasting several weeks in water. January to April. Sun. In Red and Pink. Hardy to 25°.

MEXICAN ORANGE

Choisya ternata. Bright green neat foliage; a neat rounded shrub of good proportions, easy to grow in sun or shade. Clusters of fragrant white flowers in spring. Hardy.

FLAME PEA

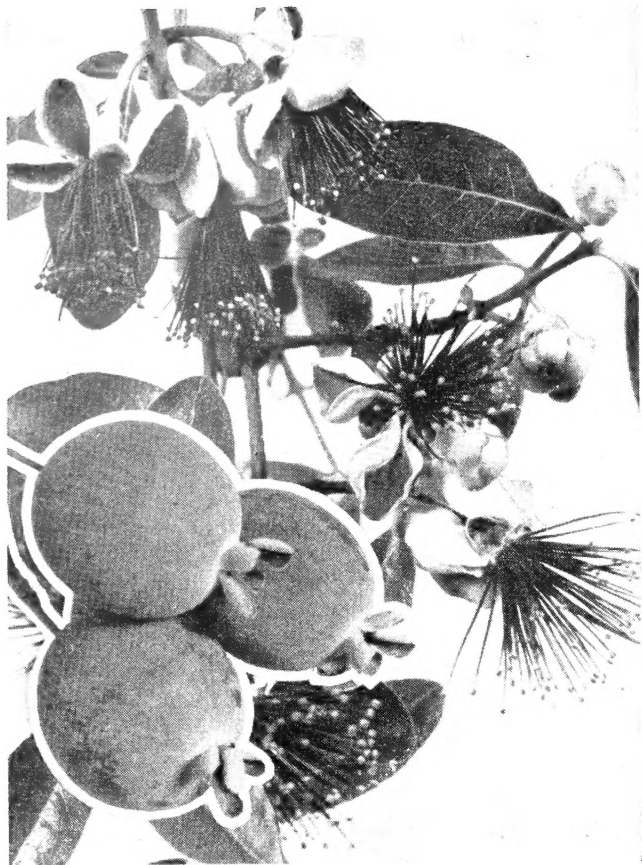
Chorizema varium. Rounded dark green leaves and pea-shaped orange-red flowers distinguish this variety. Makes an excellent low shrub for the foundation planting. Hardy to 20°.

COCCULUS

Cocculus laurifolius. Large specimen shrub with long pointed waxy green leaves with a pleasing lustre. An outstanding foliage shrub. Hardy, except in cold locations.

AUSTRALIAN FUCHSIA

Correa pulchella. Marvelous new 2-foot shrub with spreading bushy habit, deep olive green foliage and graceful display of dainty pink bell-shaped flowers in winter and spring. Recommended as a foundation planting shrub. Sun.



PINEAPPLE GUAVA—Feijoa sellowiana

ROCK ROSES

Hardy shrubs. All require sun and good drainage.

Cistus corbariensis. Low spreading shrub with attractive sage green leaves and pure white flowers, averaging 2 inches across. Wonderful to cover slopes in sunny places.

Cistus ladaniferous maculatus, Brown Eyed Rockrose. Long deep green narrow leaves with the appearance of recent varnishing. Large crepey white flowers with showy brown spots at the base of petals. Sun.

Cistus purpureus. One of the finest Rockroses. Low and spreading with beautiful crepey pink flowers with maroon blotches at base of petals. Sun.

COTONEASTERS

Very useful group of shrubs with white flowers and pretty red berries that lend an attractive color note to the garden. Many have distinctive growing habits which lend nicely to rockeries, bank planting, or in front of other shrub planting, but especially among rocks. The taller varieties make good all-around ornamental shrubs. All are useful, hardy shrubs.

Cotoneaster horizontalis, Rock Cotoneaster. Flat spreading shrub with tiny glossy green leaves and bright red berries. Partly deciduous it assumes brilliant colors in cold winters.

Cotoneaster parneyi, Parney Cotoneaster. Very showy taller variety with handsome berries, largest of all, in immense clusters. Large glossy leaves.

Other varieties available at the Nursery.

LOOKING GLASS PLANT

Coprosma baueri. Unique round highly polished dark green leaves cover this medium-size shrub. Useful in foundation planting. Not much for flowers but the little orange berries are attractive. Does better in sea-coast districts.

CANARY BIRD BUSH

Crotalaria agatifolia, Canary Bird Bush. Small tree or large shrub famous for the large, light, yellow flowers that appear like flocks of "Canary Birds" resting on the branches. Foliage light green and attractive. Sun. Hardy to 28°.

FRAGRANT DAPHNE

Daphne odora marginata. Dense low shrub with rich green, cream-margined leaves and clusters of exquisitely fragrant waxy white or pink flowers from January to March. Good drainage is necessary. Shade or partial shade. Very hardy.

BREATH OF HEAVEN

Diosma pulchrum. Dwarf compact bushy shrub with fine foliage like Heather covered with masses of tiny pink flowers during spring and summer. Sun. Very showy and graceful. Hardy to 20°.

Diosma reevesi. Same as the pink but with white flowers. Excellent shrubs to lighten the effect of heavy foliage masses in the shrub plantings, especially in foundations. Hardy to 20°.

PINK SNOWBALL

Dombeya wallichii. Luscious maple-like leaves coarse enough to give a tropical effect. In spring lovely balls of bright pink flowers hang among the leaves. Sun. 25°.

HEATHERS

Lovely fine foliaged shrubs with showy masses of brilliant flowers. There are two types, one with tubular flowers (South African) and the other with small globular flowers (southern European). Both do well in sun but require a soil of pure peat with a little sand for drainage. Keep lime away from them and acidify the soil once a year with soil sulphur. All hardy to 15°.

Erica Felix Faure. Most brilliant of the French heathers. The huge tube-shaped flowers of bright red in large long clusters. Foliage needle-shaped, very fine.

Erica hyalina. Like Felix Faure except for color of flowers, which is a lovely coral color.

Erica melanthera rosea. Flowers of deep pink. A tall growing shrub with masses of fine textured, plummy leaves and clouds of pink flowers.

ESCALLONIAS

Excellent evergreen shrubs of neat growth and good dark green foliage. Some have showy flowers in large clusters. For open situations. Escallonias do especially well along the coast.

Escallonia montevidensis. Large glossy leaves and good size clusters of pure white flowers. About 6 feet high. Late summer and fall.

Escallonia organensis. The finest Escallonia yet introduced and one of the best ornamental shrubs. Luxuriant glossy green leaves of medium size showing bronzy red tints. Flowers pink to white, like small apple-blossoms in large clusters.

Escallonia rosea-nana. Dwarf compact shrub with small dark green leaves. Profuse clear pink flowers. Attractive.

Escallonia rubra. Low compact shrub probably the best of the group; shining leaves and showy rich red flowers. Like a shady location.



CANARY BIRD BUSH—Crotalaria agatiflora

EUGENIA

Evergreen shrubs or trees with privet-like foliage much used as clipped specimens. While young they stand clipping well. Useful as hedges and windbreaks, or as columnar shrubs as accents. The fruits of some varieties make odd jellies. Sun or partial shade. Hardy to 25°.

Eugenia myrtifolia, Brush Cherry. Dense growing shrub, the most popular of all Eugénias. New growth reddish, later turning green. Sun or shade. Purple berries are very attractive.

Eugenia smithi. More refined and better suited to foundation planting than the common Eugénia is this handsome shrub whose orchid or lavender-pink porcelain-like berries are very charming and distinct.

EUONYMUS

Euonymus. Slow growing evergreen foliage shrub well suited to planting in the drier sections where it is used about the home as a foundation or specimen plant or as clipped specimens. We offer

Euonymus japonicus, deep green; **E. aureo-marginatus**, with yellow margins and **E. argenteo-marginatus**, with silvery markings. All hardy and easy to grow.

PINEAPPLE GUAVA

Feijoa sellowiana, Pineapple Guava. Not nearly enough grown as an ornamental, this gray foliaged shrub glorifies the garden in spring with its waxy white flowers with plumes of bright red stamens in the centers. Fruits green, oval in shape, with 4 little ears left over from the flower and strongly scented of Pineapple. Very hardy.

FLANNELBUSH

Fremontia mexicana. One of our finest native shrubs. Deeply cut woolly leaves and yellow-orange cup-shaped flowers in early spring are a glorious combination. Full sun and dry porous soil make it useful for semi-wild plantings in dry places. Hardy.

FUCHSIAS

The highly colored yet delicate flowers of Fuchsias are so varied and beautiful that they are highly prized all over the country. In California they are hardy outdoors in shaded places. Give them a rich soil with plenty of leaf mold or humus and keep moist but not wet. They are best along the coast but do well inland with frequent spraying during hot spells.

See complete selection at nursery. Prices according to size and variety.

GARDENIAS

Glossy leaved shrubs famous for their waxy white flowers. Delightfully perfumed and much used for corsages and when cut simply to perfume the house. They are easy to grow in sun or partial shade when planted in a soil composed of leaf-mold, peat and sand. Drainage should be the best. Don't cultivate around the roots, instead spread a mulch of leaf-mold to keep the soil moist at all times. Hardy to 18 or 20°.

Gardenia grandiflora. Mystery. Improved form with large double flowers. Profuse during summer, off and on throughout the year.

GENISTA, BROOMS

Genista fragrans, Canary Broom. Bushy shrub with tiny grass-green leaves and quantities of yellow pea-shaped flowers. Sun. Very hardy.

GREVILLEA

Grevillea banksi. Bushy spreading shrub densely covered with fern-like leaves and large showy red flowers appear at the ends of the branches. Suggestive of Bottle Brush but more substantial. Sun or part shade, tolerant of dry soil. Hardy to 20°.

Grevillea thelemanniana. Hummingbird Bush, Jewel Flower. Bushy shrub of medium size with feathery, finely cut leaves and bright ruby-red flowers off and on throughout the year. Sun but must have a dry well-drained soil.

HYPERICUM

Hypericum patulum henryi. Medium sized shrub of fairly rapid growth, retaining its compact form with little additional care. Large yellow flowers. Sun or partial shade. Very hardy.

Hypericum moserianum. Low growing shrub sometimes three feet high and as much across, with good dense habit, dark green leaves and yellow flowers. Very hardy.



HIBISCUS RED MONARCH

GUAVAS for Jelly and Ornament

We often think of Guava as a fruiting shrub almost in the same sense as we would mention Blackberries. They are decidedly attractive shrubs for ornamental purposes, requiring nothing more than frost-free areas to grow. Excellent when used as hedges where their close growth, fine foliage and colorful fruits vie with each other in making their stay worthwhile. Use the fruits for jellies and preserves.

Lemon Guava (Psidium guajava). Large yellow-green pear-shaped fruits. Slightly tender.

Red Strawberry Guava (Psidium cattleianum). Large deep red fruits of fine flavor. Hardy.

Yellow Strawberry Guava (Psidium lucidum). Fruits yellow, somewhat firmer than the Red Strawberry. Hardy.

See also Pineapple Guava (Feijoa).

HIBISCUS

One of the most popular shrubs in Southern California, especially along the coast, although some varieties do well inland if sheltered from hot dry winds. Lush glossy green foliage and abundant bloom in summer. Give plenty of sun and a rich soil. All are tender but if frosted quickly recover.

Agnes Gault. The most popular large flowered single pink. Flowers often measure 6 or 7 inches across.

Apricot. Single, rich apricot shaded orange-yellow.

Crown of Bohemia. Choice yellow double with rich autumn tones of orange and bronze. Very popular.

Honolulu. Large single flowers best described as a salmon Agnes Gault.

Orange Double. Fine shades of orange.

Kona (Double Agnes Gault). Fully double, large attractive flowers in the same beautiful pink of the single type.

Red Double. Excellent dark rich crimson flowers.

Red Monarch. Finest of all double Hibiscus with deep dark red fully double flowers of good size.

San Diego Red (Scarlet Single). Popular clear red single.

White Wings (White Single). Good single pure white.

Yellow Single. Unusual pure yellow flowers.

Other varieties available.



DOUBLE FLOWERED TEA TREE

HOLLY

***Ilex aquifolium*, English Holly.** For Christmas decorations this Holly resembles the traditional American Holly with its spiny leaves, bright glossy dark green and bright red berries on the female plants. Porous soil, preferably partly shaded. Hardy.



MEYER LEMON

Two Very Useful Ornamentals



RED STRAWBERRY GUAVA—Edible and Ornamental

***Ilex cornuta*, Chinese Holly.** Differs in the broader leaves with fewer spines. Nice dark green foliage and as a berry bearing shrub very showy. Perhaps a little more desirable than the English Holly for California gardens. Very hardy.

***Ilex cornuta burfordi*.** This holly is adapted to the milder climates. Has the deep dark green foliage although almost without spines and clusters of bright red berries in winter. Excellent for Christmas berries. Very hardy.

SWEET SPIRE

***Itea ilicifolia*, Holly-leaved Sweet Spire.** One of the finest dwarf shrubs—to 3 feet and spreading. The holly-like dark green leaves densely clothe the graceful stems and conceal the tiny fragrant white flowers. Hardy to 15°.

LANTANAS

***Lantana camara*.** One of the indispensable shrubs for California. The uses to which it may be put in the landscape scheme are simply astounding—to cover banks, trained against walls as a vine, as a ground cover, in pots, and even as a specimen shrub. It glorifies the space it occupies with brilliantly colored flowers that seem to change shades as they mature but never become unsightly. Full sun, little care will make them at home. Of course they like a drink now and then. Hardy to 25°.

Dwarf varieties. Yellow, white, Radiation (orange-red), pink.

Tall varieties. Orange, white, and pink.

***Lantana sellowiana*, Trailing Lantana.** Mauve flowers cover this foot high trailer most of the summer. Freezes out in places but readily comes back. Sun.

TEA TREE

***Leptospermum laevigatum*, Australian Tea Tree.** Graceful shrub with long curving branches, fine greyish-green leaves, and small white flowers in spring. Dry soils with good drainage and sun. Makes an excellent windbreak. Hardy.

***Leptospermum reevesi* (*L. laevigatum compactum*).** A compact growing shrub with slightly greener foliage. White flowers. Hardy.

***Leptospermum scoparium flore pleno*, Double Tea Tree.** Erect branches, finely cut foliage and double bright rose-pink flowers often $\frac{3}{4}$ inch across make a very showy shrub in spring. Hardy.

TEXAS RANGER

***Leucophyllum texanum*.** Dwarf shrub growing 3 to 4 feet high with soft bluish green leaves and violet-purple flowers in late summer. Full sun, it is fine for dry places. Very hardy.

MEYER LEMON

Lemon, Meyer Dwarf. A valuable ornamental shrub for its pearly white, lavender flushed flowers and showy lemons which follow. Lemons are of high quality and can be used as any other lemons. Quite hardy.

PRIVETS for Hedges

Ligustrum japonicum, Japanese Privet. Large shrub with dark green leaves. One of the finest privets for all hedges or large specimen shrubs.

Ligustrum texanum, Wax-leaf Privet. Tall erect shrub with large glossy dark green leaves, very much like Lilac. Fragrant waxy-white flowers in spring. Specimens for parking strips, or as tall or medium height hedge. Hardy.

Ligustrum sinensis, Old Type Nepal Privet. Dense growing shrub with small light green leaves. Makes an excellent hedge if trained between 2 and 6 feet high. Hardy.

Ligustrum ovalifolium variegatum, Golden Privet. Upright growing privet with bright golden yellow leaves. Good as a specimen shrub. Very hardy.

HOLLY-GRAPE

Mahonia aquifolium, Oregon Holly-Grape. Medium size shrub with bronzy holly-like leaves. Rich yellow flowers in spring followed by bluish grape-like berries. Hardy.

BOTTLEBRUSHES

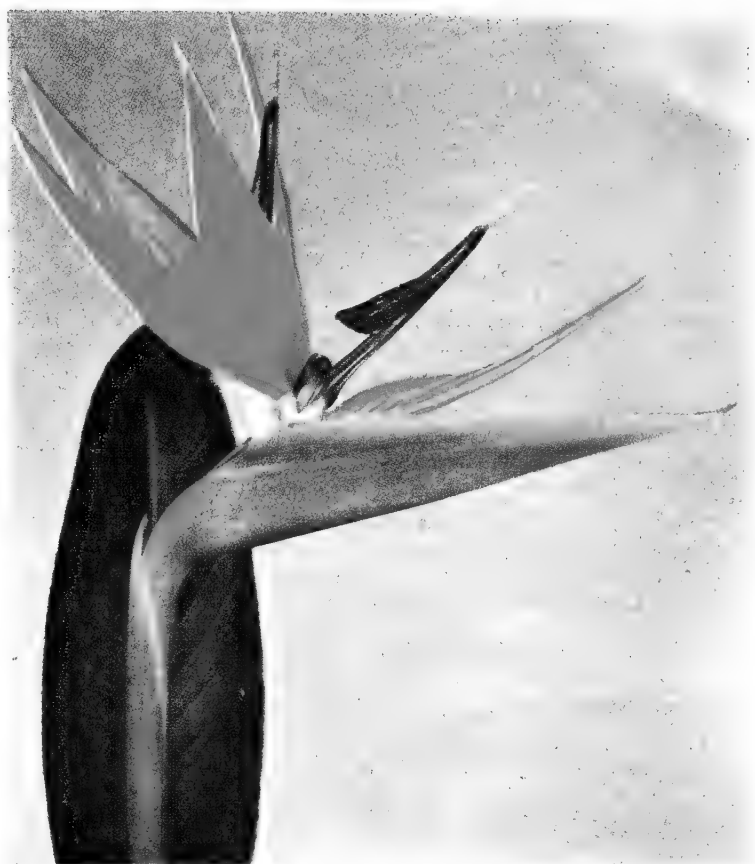
An easily grown group of large shrubs, mostly with small leaves, graceful arching stems and flowers mostly arranged in such a way as to suggest bottle brushes. These are the Small Flowered Bottlebrushes generally more graceful and ornamental than Callistemon. All prefer sun, in a well drained soil.

Melaleuca hypericifolia, Scarlet Bottlebrush. Dark green leaves and rich deep red flowers. 15°.

Melaleuca nesophila, Pink Bottlebrush. Bright green leathery leaves and lilac-rose flowers. 15°.



OLEANDERS



BIRD OF PARADISE, STRELITZIA

AFRICAN BOX

Myrsine africana. Close growing shrub resembling boxwood but much more colorful. Deep glossy green leaves are closely set on slightly reddish stems. Useful as a low hedge. Stands shearing. 15°.

MYRTLES

Myrtus communis, Common Myrtle. Splendid small leaved shrub much used as a hedge plant and for foundation planting is very good. The tiny leaves are dark green, glossy and aromatic. Flowers white in late spring and summer followed by blue black berries.

Myrtus communis buxifolia, Boxleaf Myrtle. Large leaved variety with showy white flowers, the stamens forming a plummy tuft in the center. Excellent shrub for foundation planting.

Myrtus communis compacta. Small, pointed leaves in dense masses on this compact shrub. Excellent for low hedges. 15°.

HEAVENLY BAMBOO

Nandina domestica. Not a Bamboo in any sense of the word but the foliage does resemble a small variety in many ways. Leaves light green tipped with pink and copper in early spring and assumes a vivid red in autumn. Bright crimson berries in generous clusters are showy. Very hardy.

OLEANDERS

Nerium oleander. Large bushy shrubs freely blooming all summer, during the hottest weather. Do well along the coast and in the hot dry interior valleys. Long slender leathery leaves. In various colors, single and double. 15°.

Cherry Red. Single cherry red.

Dark Red. Single, fine dark color.

Dark Red. Double, good size flowers.

White. Single white.

Mrs. Roeding. Fine double salmon pink.

Rosea. Double pink.



PITTOSPORUM TOBIRA

OSMANTHUS

Osmanthus fragrans, Sweet Olive. Dark green glossy leaves, creamy white flowers most abundant in autumn. Very fragrant. Hardy to 10°.

CALIFORNIA HOLLY, TOYON

Photinia arbutifolia. Glorious native shrubs whose beautiful dark green foliage and bright red berries has made it known to many as Christmas Berry. Does well under cultivation but is sometimes difficult to establish. Well worth any effort to get it started. Very hardy.

Photinia serrulata, Chinese Photinia. Large broad toothed leaves often assuming pretty red or bronze tints especially when young or during cold weather. Berries in large clusters. Very hardy.

PITTOSPORUM

This group of large shrubs forms the backbone of most California plantings. Some varieties are large shrubs or small trees. All are easy to grow, and hardy except in cold places. Some have showy sweet scented flowers.

Pittosporum phylliraeoides, "Desert Willow". Small tree with slender weeping branches suggesting Weeping Willow. The small yellow flowers are fragrant. 20°.

Pittosporum rhombifolium. Small symmetrical tree to 25 feet. Excellent for street planting or may be trained as a shrub. Flowers fragrant, white in large clusters followed by ornamental orange berries. 20°.

Pittosporum tobira. Handsome spreading shrub with glossy dark green leaves, clusters of fragrant white flowers in spring, followed by small yellowish pods which open to show the bright red seeds. One of the most useful ornamentals for the west coast. 15°.

Variety variegata. Dwarf spreading shrub with greyish leaves having silvery-white margins. Very attractive.

Pittosporum undulatum, Victorian Box. Beautiful round headed tree or large shrub. Useful also as a hedge. Rich green leaves with wavy margins, yellowish-white flowers, very fragrant at night. 22°.

PRINCESS FLOWER

Pleroma grandiflora. Velvety bronze hairy leaves, reddish stems and very large purple flowers, often 3 inches across, in fall and winter. Showy and beautiful, does best in slightly acid soil. Tender, 27°.

BLUE PLUMBAGO

Plumbago capensis. Excellent ornamental shrub of refined habit, good foliage and showy blue flowers all summer and at a time when good flowers are scarce. Easy to grow and happy under all condition. Semi-climbing; it can be easily trained as a vine. Hardy to 20°.

Plumbago griffithi, Burmese Plumbago. Low bushy 2-foot shrub spreading to about 4 feet. Bronzy foliage and covered with brilliant rich blue flowers throughout the fall.

Plumbago willmottiana. Dwarf, rounded plants almost 2 feet high. Ideal for partially shaded gardens and patios where it supplies an unusual display of blue flowers in summer. Hardy to 10°.

DOUBLE POINSETTIAS

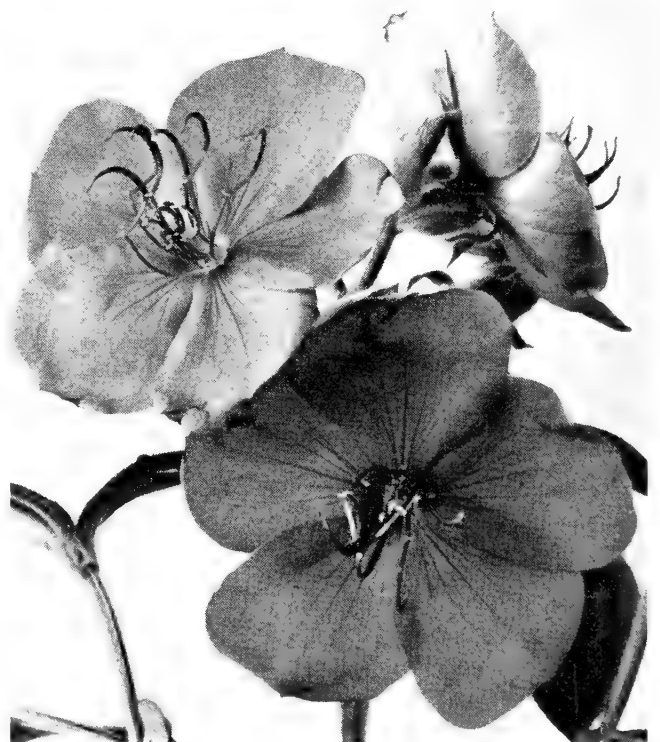
Poinsettia Henrietta Ecke. This is the famous double Poinsettia. Actually has so many bright bracts that it appears to have a double center.

POLYGALA

Polygala dalmaisiana. Small rounded shrub with tiny yellow-green leaves and pretty orchid-like purple flowers all year around.

LAURELS

Prunus laurocerasus, English Laurel. A fine broad-leaved evergreen shrub used mostly for specimen planting and hedges. The oval leaves always present a cool refreshing green color.



PRINCESS FLOWER

FIRETHORNS for Colorful Berries

Pyracantha. Strong growing sturdy shrub with erect or spreading thorny branches and narrow dark green leaves and clusters of white flowers in spring. The real glory of these shrubs is the colorful abundance of berries in fall and winter. Rich fairly moist soil. Sun or partial shade.

Pyracantha Duvali (Pat.). Berries very large, bright red, remaining on the shrub for considerable time. Specimens are so heavily berried as to conceal the stems and foliage.

Pyracantha graberi. Gracefully arching stems covered with large bright red berries. Dark glossy foliage. Heavy bearer.

Pyracantha Lewisi. A new selection of this lovely berried shrub. Dark green glowing foliage and bright red berries, larger than usual, and in quantity.

Pyracantha Rosedale. Berries of average size, dark red but in sufficient quantity for splendid show. Can be trimmed to pyramid or globe shape.

Pyracantha Victory. NEW. Late fruiting variety with very large berries, rich red with a bright sheen. Robust shrub makes an excellent specimen plant. Latest to color.

Pyracantha yunnanensis. 4- to 6-foot shrub spreading to 12 feet. Deep red berries. Fine for covering banks, stands sandy soil.

ROSEMARY

Rosmarinus officinalis. Another in the group of fragrant foliaged plants. Used since ancient times as an "herb". Neat narrow dark green aromatic leaves and light blue, almost white, flowers. Very hardy.

SARCOCOCCA

Sarcococca ruscifolia. Medium size shrub (4 feet), attractive dark green shiny rounded leaves. Useful in partially shaded places as a foliage shrub, the beauty of which is augmented by dark scarlet berries. Very hardy.

PARAGUAY NIGHTSHADE

Solanum rantonetti. One of the best shrubby Solanums. Neat, clean green foliage and quantities of yellow centered blue flowers, almost 1 inch across. Well recommended. Tender.



A GROUP OF POPULAR VERONICAS



SARCOCOCCA RUSCIFOLIA

BIRD OF PARADISE

Strelitzia reginae. Lush green oval leaves on stiff erect stems. Forms a good size clump over which the orange and blue birds perch on stiff stems. Very showy, popular plant for tubs or in the garden. Hardy to 24°.

VERONICAS

Veronica andersoni. Makes a small rounded bush with bright green leaves and covered with small spikes of clear blue flowers. Best near the coast.

Veronica imperialis. Like andersoni but with bright purple-crimson flowers. Blooms all summer, stands more sun and heat and is much hardier.

Veronica decussata. Small compact shrub, gray-green leaves set close together in four rows, and violet-blue flowers throughout the year. Partial shade.

VIBURNUMS

A hardy lot of good substantial shrubs useful in foundation planting, shrub borders, or as hedges. Some have fragrant flowers, others ornamental berries.

Viburnum japonicum. Fast growing shrub. Large glossy leathery leaves suggest English Laurel.

Viburnum odoratissimum. Very handsome. Large oval leaves of dark green often reddish and very fragrant pure white flowers in large clusters. Part shade.

Viburnum suspensum, Sandankwa. Medium size shrub with lush leaves, neat foliage; white to rose pink flowers and scarlet berries. Neat, slow growth and attractive either as a specimen or hedge.

XYLOSMA

Xylosma senticoso. One of the finest foliage shrubs of recent introduction. Leaves are small, oval and pointed. Light cheerful green reflecting the gold of sunlight pointed out by subtle tints of red. Used as a ground cover, as specimen shrub and well suited to training on a wall as espalier.

CONIFEROUS EVERGREENS

The coniferous evergreens all have either needle-like or scale-like leaves, and most all have cone for fruits, except Junipers and Yews which bear berries. All forms and shapes are available from low spreading Junipers, formal little Arborvitae, through medium sized shrubs to very large trees. They are a hardy lot, thriving from the mountains through the warm valleys to the sea coast.

Available in many sizes from 65c up, according to size and variety.

PINE TREES

Pinus canariensis, Canary Island Pine. Narrow symmetrical tree with horizontal branches evenly spaced in whorls about the straight trunk. Long needles in large tufts. One of the best Pines for California.

Pinus halepensis, Aleppo Pine. Dense, spreading tree with short dense needles. Widely planted and thriving on neglect.

Pinus radiata, Monterey Pine. Tall bushy symmetrical tree with deep green foliage. Rapid growth, succeeds anywhere in California.

IRISH YEW

Taxus baccata fastigiata. Narrow columns of deepest green foliage. Slow upright growth. An excellent shrub for accents.

FERN PINE

Podocarpus elongatus. Here is a good foliage plant with fern-like light green leaves that will tolerate sun or shade from light to dense. Useful as a tub plant specimen.

Podocarpus macrophyllus. Slightly larger deeper green leaves make this erect shrub outstanding. Slower growing. Stands shearing well. Excellent formal specimens, especially in shaded places.

SEQUOIAS and REDWOODS

Sequoia gigantea, California Big Tree. Beautiful trim pyramidal tree with blue green foliage. Thrives anywhere except on the desert.

Sequoia sempervirens, Redwood. More rapid growing, this cousin of the Big Tree has longer needle-like dark green leaves and the same bright reddish bark. In young trees the branches fall gracefully and fan out at lower levels.

ARBORVITAE

Thuja aurea nana, Berckman's Golden Arborvitae. Popular dwarf golden variety. Tips of the branches bright golden yellow throughout most of the year. Hardy to cold and dry conditions.

Thuja Beverleyensis, Golden Column Arborvitae. Tall, narrow bright golden yellow column, 15 to 20 feet high. Requires full sun to keep the color. Fine as a specimen shrub.



PFITZER'S JUNIPER

BERCKMAN'S GOLDEN ARBORVITAE

STATELY DEODAR

Cedrus deodara, Deodar. Widely planted in Southern California for its magnificent shape and light green foliage. Many are used as living Christmas Trees, for avenue planting and specimens where sufficient room is available.

BLUE LAWSON CYPRESS

Chamaecyparis lawsoniana allumi. Dense growing blue form. Suitable for accents in the foundation planting.

CYPRESS

Cupressus arizonica, Arizona Cypress. Narrow pyramidal tree with blue green foliage. Makes a fine windbreak in the warmer sections or use as a specimen.

Cupressus Forbesi, Forbes Cypress. The new substitute for Monterey Cypress for hedge planting. Introduced because of its resistance or immunity to the fatal cypress fungus. It is identical to the Monterey Cypress in growth and appearance.

Cupressus macrocarpa, Monterey Cypress. One of the most famous California Evergreen trees. Dark green foliage often blown into picturesque shapes by the wind. Much used as a hedge or windbreak, especially along the coast.

Cupressus sempervirens, Italian Cypress. Tall slender spires of deep green invaluable as accents in planting. Useful along private driveways. Narrow compact type grown from cuttings only.

THE VERSATILE JUNIPERS

Spreading Types

Juniperus sabina tamariscifolia, Tamarix Juniper. Spreading close to the ground with blue-green short needles. Good in contrast to the above. More refined in habit. Useful as a low shrub for foundation planting.

Juniperus pfitzeriana, Pfitzer Juniper. Bushy, wide-spreading shrub with horizontal branches, ultimately 5 feet high and 6 or 7 wide. All Junipers can be restricted in growth by pruning. Useful in foundation planting when grown into a formal shrub.

Erect Type

Juniperus torulosa, Hollywood Juniper. An irregular growing shrub with decidedly Japanese outline. Beautiful in rock garden back-grounds or as specimens where the form and dense tufts of green foliage show to advantage.

VINES

Vines should be considered in all plantings, some for their foliage and others for their exquisite bloom. There are vines that will cling to masonry and wood without any additional support such as *Ampelopsis*, *Ficus* and *English Ivy*. Others are dependent on trellis work on which they will naturally twine—*Cissus*, *Honeysuckle*, *Bignonia* and many others. They are extremely valuable to add interest to blank walls, to provide shade on arbors and summer houses, others to cover fences and walls. Many have useful and colorful bloom. All are hardy unless indicated.

Prices on vines vary from 85c up, depending on variety and size selected.

VIRGINIA CREEPER

***Ampelopsis quinquefolia*, Virginia Creeper.** Large five fingered leaves turning intensely scarlet in fall. Rapid climber, clinging to walls, very hardy, therefore useful in the mountains.

BOSTON IVY

***Ampelopsis veitchii*, Boston Ivy.** Clings to any rough surface without help, covering large areas with delicate light green foliage, which in fall turns many brilliant hues of red. Very hardy and deciduous.

QUEEN'S WREATH

***Antigonon leptopus*, Rosa De Montana.** Beautiful climber for warm sunny places. Makes a rapid growth from the ground each season, producing quantities of rose-pink flowers in summer. Better each year.

EASTER LILY VINE

***Beaumontia grandiflora*, Easter Lily Vine.** Evergreen vine for tropical effects with evergreen glossy leaves and fragrant white trumpet-shaped flowers like Easter Lilies. A wonderful long bloomer. Plant in reasonably frost free areas. Sun or shade. Tender.

TRUMPET VINES

Strong, rapid growing evergreen climbing vines useful in many places for their ability to cover large areas and for the showy trumpet-shaped bloom. Will stand temperatures to about 25°.

***Bignonia cherere*.** Perhaps the showiest of the group. Free growing vine with deep green glossy evergreen foliage and large clusters of 4-inch trumpets; bright red with yellow throat and tints of lavender on the tubes. Reliable bloom.



CAROLINA JESSAMINE—GELSEMIUM SEMPERVIRENS



BOUGAINVILLEA CRIMSON LAKE

***Bignonia tweediana*, Yellow Trumpet Vine.** Clinging vine for wood or masonry. Hardy. Flowers about 2 inches long, bright canary yellow in generous clusters.

***Bignonia violacea*, Painted Trumpet Vine.** An excellent vine for sunny or shady places. Produces quantities of delicate lavender trumpets with deeper veins. Always dainty and nice. Fine glossy foliage.

BOUGAINVILLEA

No vine is more typical of California than Bougainvillea with its lavish display of color, from the dry desert regions to the sea coast, on Spanish type houses and over walls and fences. In planting be careful not to break ball of soil when removing from containers. This injury may cause them to die. We suggest cutting off the bottom of the container and planting with the side intact, allowing the metal to rust away. Otherwise they are free and rapid growers. Tender, particularly new growth.

Bougainvillea A-Merrick-An. Vigorous growing vine with brick red flowers. Slow to bloom but after planting quickly makes a rapid growth and becomes very floriferous.

Bougainvillea Barbara Karst. Compact bushy vine of medium growth being a most consistent bloomer, even when quite young. The color is slightly lighter than Crimson Lake but very pleasing.

Bougainvillea braziliensis. Large showy rosy-purple flowers of a pleasing color produced in quantity most of the year, heaviest show in winter and spring. Hardest of all. Sun.

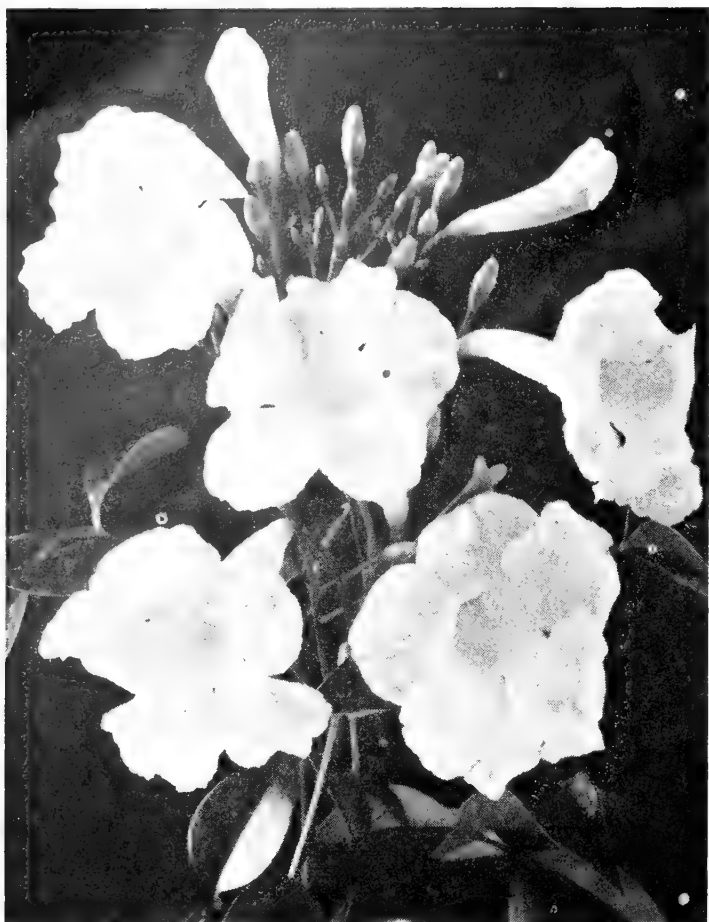
Bougainvillea Crimson Lake. Rich bright deep crimson flowers most of the year. Very popular variety. Vigorous but fairly tender. Full sun.

EVERGREEN GRAPE

Cissus rhombifolia. Dark green leaves with three leaflets cover this strong growing evergreen vine. One of the best plants for pot culture in dark rooms or in the open.

CREEPING FIGS

Ficus repens. Wonderful rich green, large heart-shaped leaves. Hardy, vigorous growth. Clings closely to walls.



TECOMA JASMINOIDES ROSEA

CAROLINA JESSAMINE

Gelsemium sempervirens. Beautiful evergreen twiner. Small tubular yellow flowers with an elusive fragrance and wide flaring mouths cover the vine in great abundance, starting in December and for several months. Sun.

IVIES

Hedera helix, English Ivy. English Ivy makes a delightful ground cover of glossy dark green leaves. It is useful to train over a wire fence whence it makes a dense impenetrable hedge needing little care. Useful for pot culture indoors, in patios and shade houses. Sun or shade.

Hedera canariensis variegata. The leaves are variegated with white in many interesting patterns. A nice vine to use against dark walls where the white and green make a lively combination.

JASMINES

Jasminum gracillimum, Pinwheel Jasmine. One of the best of the group with soft light green foliage and clusters of fragrant white pinwheel shaped flowers in summer. Neat and dainty vine of compact habit.

Jasminum grandiflorum, Spanish Jasmine. A slender vigorous vine with clusters of large fragrant white flowers from June to November. Very fine vine for trellises or to clamber over fences.

Jasminum primulinum, Primrose Jasmine. Fast growing old-fashioned vine with double yellow flowers in winter. Fine for covering steep unsightly banks. Minimum of water. Sun.

CHILEAN JASMINE

Mandevilla suaveolens, Chilean Jasmine. Hardy, vigorous vine with large, long pointed leaves and great clusters of long tubular white, deliciously fragrant flowers. Very showy.

STAR JASMINE

Rhynchospermum jasminoides, Star Jasmine. Evergreen vine bearing clusters of showy white star-like flowers with lovely fragrance. One of the finest vines for shady places. Grows equally well in sun. June, particularly fragrant in the evening. Splendid foliage. Excellent in tubs.

CLIMBING HONEYSUCKLES

Lonicera halliana, Hall's Japanese Honeysuckle. An old favorite. Vigorous vine useful for its evergreen foliage and soil binding roots as a ground cover or on fences. Fragrant flowers white, fading to yellow.

PASSION FRUIT

Passiflora edulis, Passion Fruit. Grown mostly for the fruit which is eaten fresh or more recently made into fruit juices. The ripe fruit resembles deep purple plums.

Passiflora pfordi. Graceful ornamental vine with large 4- to 5-inch flowers showing white with shades of lavender or pink in the petals, deep blue corona and green flower parts. Give it a place of prominence on arbor, fence or trellis.

COPA DE ORO

Solandra guttata. Large growing spectacular vine with large yellow trumpets often 6 inches across, fragrant. Foliage luxurious, deep green. Sun.

TRUMPET VINES

Tecoma jasminoides rosea. One of the choicest vines on our list. Foliage a lovely light green, not heavy nor too rampant and producing large clusters of pale pink trumpets each with a ruby red throat.

Tecoma capensis, Cape Honeysuckle. Leaves are shiny deep green, always neat in appearance and very nice with the clusters of bright orange-red flowers, suggestive of honeysuckles. Hardy. Sun.

THUNBERGIAS

Thunbergia grandiflora, Blue Sky Flower. Twining vine of rapid growth densely clothed in long pointed heart-shaped leaves. Flowers trumpet-shaped like Bignonias but in a beautiful sky blue. Prefers a semi-shaded location. 25°.

WISTERIAS

Deciduous vines well known in all parts of the country for their long hanging clusters of pea-shaped flowers of delicate coloring and exquisite fragrance. Makes a delicate tracery of stems on arbors and in spring, before the leaves appear in a sudden burst of color. Grafted plants, **Chinese Wisteria** in purple or white, \$3.75 each and up. **Multijuga, Japanese Wisteria.** Long pendant flower clusters in purple or white. \$4.00 each and up.



PASSIFLORA PFORDI—PASSION FLOWER

LAWN SEED



Fine lawns are made only by careful preparation of the seed bed and relentless attention to mowing, watering and weeding in the early stages. Use only the best grade of seed; it pays. Carefully spade and level the ground by raking. Roll or tamp until level. Carefully loosen the surface with the rake and sow seed. A mulch of steer manure or peat is very beneficial to maintain an even moisture content. First mowings should be made with the mower blades set 1 1/2 inches high. Never mow a lawn close.

We offer the finest grade of grass seed obtainable at regular market prices. You can depend on our seed for the highest purity and germination.

Annual Rye. Tough annual grass makes a quick temporary lawn but better used as a nurse crop with other slower grasses, in which case use a small percentage of rye to the whole mixture.

SPECIAL LAWN SEED MIXTURES

A lawn grass seed mixture, properly blended, is essential to a good-looking and lasting lawn. Different soils and growing conditions require the use of special mixtures of seed.

We offer specially prepared mixtures designed to produce the best lawns for our locality. These mixtures contain the proper proportions of the longer-lived dependable lawn grasses, thus insuring the best possible lawns.

Shady Lawn Mixture. Special mixture of grasses doing well in shady locations so combined as to make the best possible lawn. Sow approximately 1 pound to 200 sq. ft.

Perennial Rye. An all purpose grass. Withstands heat and dryness. Does well in partial shade. 1 pound to 100 sq. ft.

Red Top. Used alone makes a short lived lawn. Its purpose in lawn mixtures is as a nurse crop until other grasses become established.

White Clover. Quick to germinate it makes a green cover before the grass seed starts. Only a cover crop, never makes a lawn by itself, although it will look good for a season or two. Use about 10% of clover by weight to seed mixture.

Bermuda. A dependable grass for hot and dry places. Deep rooted it makes an excellent soil retainer on banks. Rake and clip the surface runners once a year. 1 pound to 200 sq. ft.

Kentucky Blue. Makes the finest turf for lawns. Good dark green, requires care and moisture to keep in good condition, but worth the effort. 1 pound to 150 sq. ft.

Seaside Bent. Makes a lovely velvet textured lawn. Requires plenty of water and care to make a beautiful turf. Sow 1 pound to 300 sq. ft.

Now *Scott's* Lawn Care Products Are Here

The grass is always greener with these nationally renowned lawn products. Give your turf this beauty treatment—a nourishing meal of Scott's Lawn Food, a sowing of Scott's Lawn Seed, and follow the maintenance suggestions in free Lawn Care bulletins.



FREE 2-year Subscription LAWN CARE

Bulletins published several times yearly. Brimful of timely hints and new ideas to help you grow a beautiful lawn. Just send mailing address for future issues.

SCOTT'S LAWN SEED. Top quality blend choice perennial grasses that build permanent turf. For sun or light shade. 99.91% weed free. 1 lb. box \$1.00, 5 lb. box \$4.95.

SCOTT'S DENSE SHADE. Special perennial grasses for areas receiving less than half day of sunlight. 1 lb. box \$1.00, 5 lb. box \$4.95.

SCOTT'S LAWN FOOD. Tailor-made feeding especially for lawns. Not a general fertilizer. Enough for 2500 sq. ft., \$2.45.

SCOTT'S 4-X. Pre-measured packets for spraying away broad leaved weeds without harm to grass. No. 2 box \$1.00, No. 3 box \$3.25.

SCOTT'S LAWN FOOD PLUS WEED CONTROL. Feeds and weeds lawns in one simple operation. Enough for 2500 sq. ft., \$3.50.

Scott's Precision Spreaders for apply Lawn Food and sowing seed. Scott's Bentgrass Seed and Scott's Plump Lawn Clover Seed.

ROSES . . .

For the Garden

Of the multitude of new roses offered each season, only a few have merit enough to stay with us. The following are selected for distinctive individuality. Their garden merit has been well proven, therefore, satisfactory performance has established their popularity. Many others are obtained at the nursery. Grade No. 1.

\$1.00 each unless otherwise indicated.
Priced slightly higher in containers.



© 1935

PATENT
 NOV. 17, 1935

ECLIPSE

RED ROSES

Charlotte Armstrong (Pat. 455). Beautiful, long, pointed buds of clear cerise-pink, opening to neatly tailored flowers. Petals margined with a thin silvery line. Vigorous mildew-resistant foliage, vigorous and free branching. \$1.50 each.

Christopher Stone. Large semi-double vivid scarlet flowers overlaid with velvety crimson. It is unsurpassed for intense damask fragrance. Of vigorous, upright growth with bright green foliage.

Crimson Glory (Pat. 105). Large double flowers from long pointed buds. Deep velvety crimson intensely fragrant and long lasting. Abundant leathery foliage. Continuous bloom. \$1.50 each.

Grand Duchesse Charlotte (Pat. Pending.) Buds a rich claret red changing as the flower opens to a lovely begonia rose. Richly fragrant and unusual in color. \$1.50 each.

Heart's Desire (Pat. 501). Awarded highest honors as the All-America Rose Selection of 1942. Long-stemmed buds open to shapely blooms of pure, luminous red that are exquisitely fragrant. The color is sun proof. A vigorous grower, free blooming, and free from disease. \$1.50 each.

Mary Hart (Pat. 8). Striking red sport of Talisman. One of the finest patent roses and still popular. Upright growth and plenty of fragrant blood red flowers. \$1.25 each.



CHARLOTTE ARMSTRONG (Pat. 455)

Mirandy (Pat. 632). Winner of All-America Rose Selections 1944. A fully double deep red rose from nicely pointed buds. Open flowers high-centered, excellent form, especially in cooler weather. \$1.50 each.

Texas Centennial (Pat. 162). Blood red sport of Pres. Hoover. Tight buds and high centered flowers toned cerise at center. More carmine in hot weather. \$1.25 each.

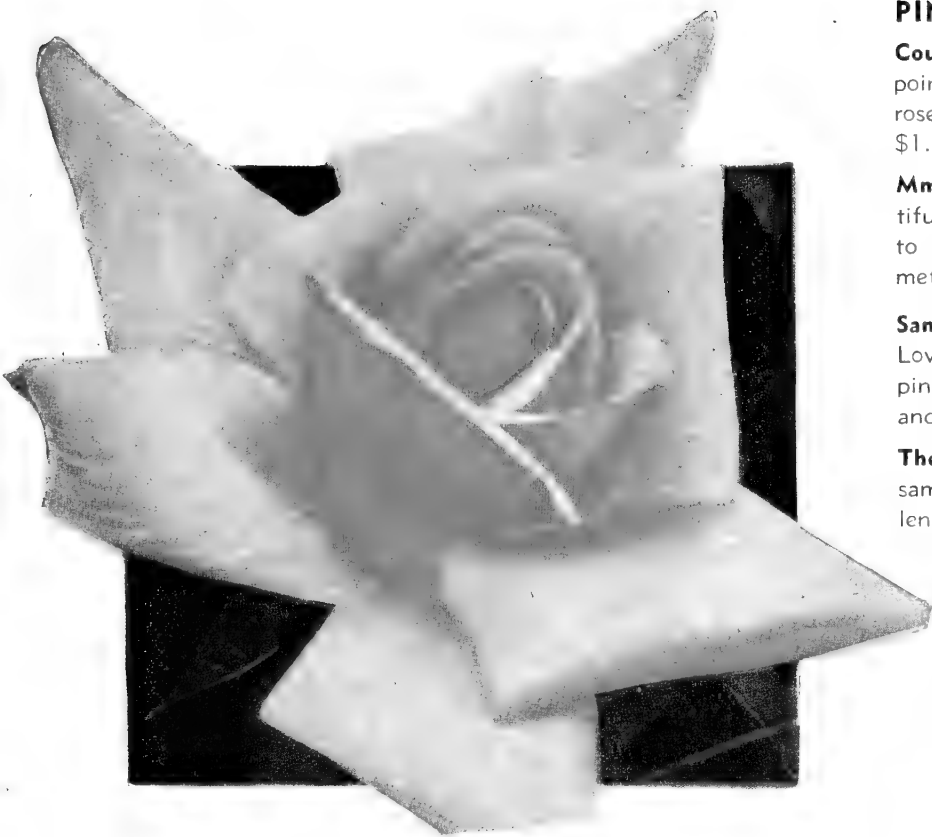
Other Non-patented RED Roses Available

E. G. Hill
Etoile de Hollande
General MacArthur
Gypsy Lass
Hadley

Hoosier Beauty
Margaret McGredy
Night
Southport
Victoria Harrington



MME. HENRI GUILLOT (Pat. 337)



COUNTESS VANDAL (Pat. 38)

PINK ROSES

Countess Vandal (Pat. 38). A lovely salmon-pink rose. Long, pointed buds open to a glorious form hardly equalled in any other rose. Shows rich shades of copper and gold within the flower. \$1.35 each.

Mme. Henri Guillot. A distinctive and sensational variety. Beautifully formed buds, reddish orange with undertone of gold, opening to rich, deep pink flowers of camellia-like form. Vigorous, symmetrical plants and glossy light green foliage. Pat. 337. \$1.50 each.

Santa Anita (Pat. 539). Produces quantities of perfect flowers. Lovely clear pink, excellent for cutting. This is one of the finest pink roses for Southern California—rich, clear color, shapely buds and open flowers. \$1.25 each.

The Doctor. A beautiful silvery pink rose with huge blooms of the same color. The fragrance of this flower is very intense. An excellent cut flower.

Other Non-patented PINK Roses Available

Dainty Bess (Single)
Dame Edith Helen
Imperial Potentate
Irish Charm
J. Otto Thilow

Los Angeles
Picture
Pink Dawn
Radiance
Rose Marie

WHITE ROSES

Frau Karl Druschki. Popular everblooming white. Immense buds tinged pink on outside. Flowers large, pure snow-white.

K. A. Victoria. Pure ivory white buds opening to full, well-shaped flowers on fairly long stems. An old favorite.

McGredy's Ivory. Long-pointed buds, large perfectly formed creamy ivory-white flowers. Sweetly fragrant.



GRAND DUCHESS CHARLOTTE
 (Prop. Rights Reserved)

YELLOW ROSES

Eclipse (Pat. 172). Popularized and well known as the "Streamlined Rose", for the long tapering yellow buds enhanced by the narrow green calyx and truly streamlined. Rich golden yellow without shading. \$1.35 each.

Lowell Thomas (Pat. 595). Very double high centered flowers in a lasting canary yellow. Large, long-pointed buds. Vigorous compact bush—upright habit and leathery foliage. \$1.50 each.

Mme. Chiang Kai-Shek (Pat. 664). Buds large, long-pointed opening to long-lasting very large flowers of Empire yellow fading to lemon yellow as the flower matures. Excellent leathery, glossy dark green foliage covers this vigorous bush. \$1.50 each.



CHRISTOPHER STONE

COPYRIGHT THE
 CONARD-PYLE CO

Peace (Pat. 591). All-America Selection 1946. Large, fully double flowers opening from well shaped buds. Often a clear pleasing yellow, sometimes only yellow at the base, fading to a lighter tint and a delicate pink where the petals turn over. \$2.00 each.

Other Non-patented YELLOW Roses Available

Duchess of Athol	McGredy's Yellow
Golden Emblem	Mrs. E. P. Thom
Golden Dawn	Mrs. P. S. DuPont
Golden Rapture	Sir Henry Seagrave
Lady Margaret Stewart	Sister Therese
Ville de Paris	

ORANGE and MULTICOLOR ROSES

Apricot Queen (Pat. 464). Orange and apricot at base blending to salmon-rose and pink. Vigorous growth, perfect buds and gorgeous blooms. \$1.50 each.

California (Pat. 449). Sensational and outstanding rose. The fully open flowers are as beautiful as a rose could be, ruddy orange and saffron yellow, saffron rose on the reverse of petals. Long pointed buds and enormous flowers. It is a distinctive addition to the rose garden. \$1.50 each.

Fred Edmunds (Pat. Pending). Beautiful buds of burnt-orange open to lasting blooms of reddish apricot blended with rose, gold and salmon. A very vigorous free-blooming rose. \$1.50 each.

Girona. Full, exquisite formal buds and delightfully fragrant long stemmed flowers in combinations of red, pink and yellow. Vigorous and remarkably disease free.

Pinocchio (Pat. 484). One of the most popular baby roses of recent introduction. Seldom over 2 feet high, producing clusters of dainty little roses of salmon-orange flushed with gold. \$1.25 each.

Signora (Pat. 201). Long buds of warm sienna, opening to a mandarin orange. Tall growing, producing long-stemmed buds. Handsome foliage. \$1.35 each.

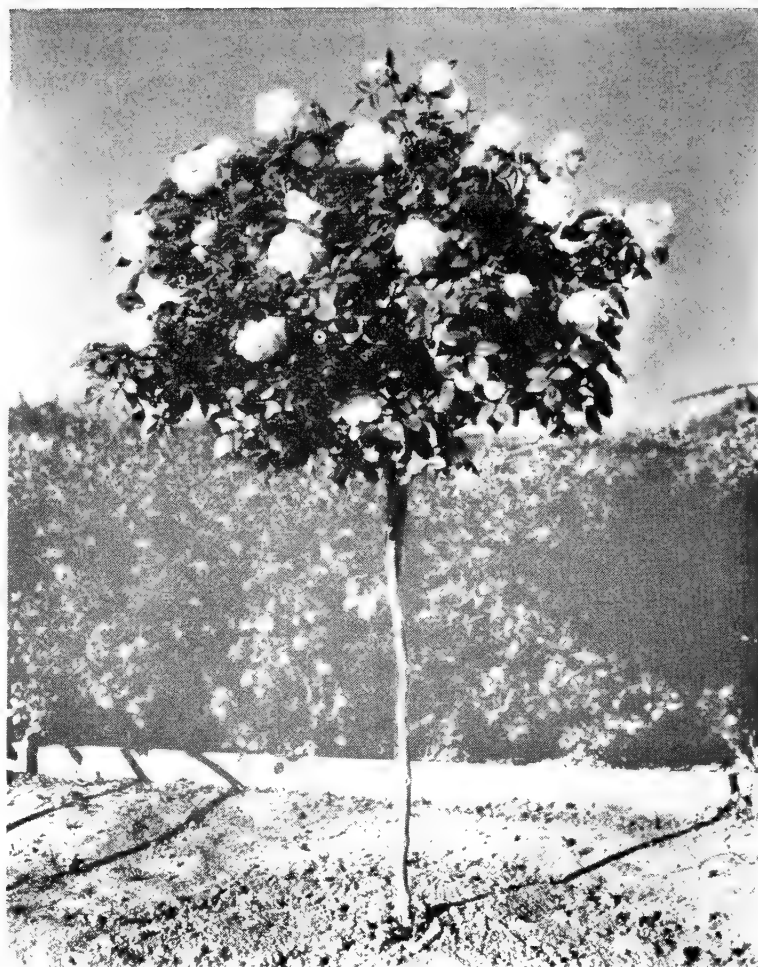
The Chief (Pat. 456). Long gigantic buds opening to well formed flowers of delightful color. Flame, coral and copper, aging to orange-pink. Fragrant. \$1.35 each.

Other MULTICOLOR Roses Available Include

Autumn	Heinrich Wendland
Condesa de Sastago	Lulu (Single)
Duquesa de Penaranda	Mrs. Sam McGredy
Feu Joseph Looymans	President Hoover
Hinrich Gaede	Talisman



AUTUMN



TREE ROSES

Grade No. 1, Each \$3.50 and up—Slightly higher in containers.

Autumn. Burnt orange buds, autumn colored fragrant blooms.

Christopher Stone. One of the best, deep vivid reds.

Condesa de Sastago. Clear gold and scarlet flowers.

Dame Edith Helen. Clear rose-pink.

Duchess of Athol. Rich old rose with bronze shadings.

Duquesa de Penaranda. Coppery apricot with bronze shadings.

E. G. Hill. An old favorite—deep bright red, fragrant.

Etoile de Hollande. Deep red.

F. J. Looymans. Double apricot.

Golden Emblem. Full golden yellow.

Golden Rapture. Pure yellow, large and double.

Hadley. Rich crimson red. Flowers nicely fragrant.

Hinrich Gaede. Orange-red. Beautiful in bud and open flower.

Hoosier Beauty. Deep scarlet with velvety texture.

J. Otto Thilow. Continuous bloomer. Rose pink.

K. A. Victoria. Pure ivory white shapely buds and full flowers.

Los Angeles. Beautiful flame pink flowers. Very popular.

Lulu. Single with dainty slender coral pink buds.

Mrs. E. P. Thom. Rich golden yellow.

Mrs. P. S. DuPont. Reddish gold buds; deep yellow flowers.

Mrs. Sam McGredy. Copper orange blended with scarlet.

Picture. Popular shapely rose. Pink in color and fragrant.

Pres. Herbert Hoover. Multicolored, cerise, flame and yellow.

Rose Marie. Fragrant dark pink.

Sister Therese. Fragrant. Bronze-yellow buds. Free flowering.

Southport. Long slender buds. Brilliant scarlet.

Talisman. Orange scarlet with golden yellow. Old favorite.

Victoria Harrington. One of the best reds. Very dark, non-fading.

We will have patented varieties available at planting time. If your favorite variety is not in the above list please ask.

CLIMBING ROSES

Beautiful subjects to train against walls on trellises or allowed to clamber over rough fences. They have been traditionally used on arbors and pergolas where the bloom can be seen at a distance and easily examined close by. Cut out old wood after blooming, thus encouraging new vigorous growth from the base. This will bloom the next season.

\$1.25 Grade No. 1

Belle of Portugal. Beautiful vigorous grower offering a profusion of pearl pink blossoms from January to June. Buds are enormous, often reaching 3 to 4 inches in length.

Cl. Cecil Brunner. Very popular climber. Vigorous with dainty pink blossoms.

Cl. Dainty Bess. Strong clean growing, producing flowers the year around. Single delicate pink flowers with central crimson stamens.

Cl. Dame Edith Helen. A climbing variety of this popular pink rose. Flowers exactly like those of the bush variety.

Cl. Etoile de Hollande. The best red climber. This deep red climber produces the finest roses of any. Buds often larger and longer than the bush variety. Vigorous clean grower.

Cl. Hadley. Vigorous climber at least twice as prolific as the bush variety in producing velvety red flowers. An excellent buy for those interested in the bush type of Hadley.

Cl. Hinrich Gaede (Pat. 244). Vigorous free-blooming and showy climbing rose. Flowers very brilliant, orange-vermilion. Has a remarkably long season of bloom. \$1.50 each.

Cl. Hoosier Beauty. Climbing form of this popular bush variety. Beautifully formed deep scarlet flowers intensely fragrant and velvety in texture. Very vigorous.

Cl. K. A. Victoria. Most satisfactory of the white climbers is this free-flowering vine. Perfectly formed enormous paper-white buds, very fragrant.

Mermaid. Beautiful glossy green foliage and large single light sulphur-yellow flowers with golden centers make a beautiful sight during the rose season; a rank, rambling grower.



PAUL'S SCARLET—A Popular Climbing Rose

Cl. Mme. Henri Guillot (Pat. applied for). Long shapely buds of orange-red and rose opening to large camellia-like flowers of rich raspberry red suffused with gold. \$2.00 each.

Cl. Mrs. E. P. Thom. A rapid growing climber producing quantities of glorious yellow flowers, much more than the bush variety. Rated the best yellow climber.

Paul's Scarlet Climber. Semi-double blossoms of vivid scarlet are borne in clusters of 5 to 20 and envelope the vine in a wealth of brilliant color in spring.

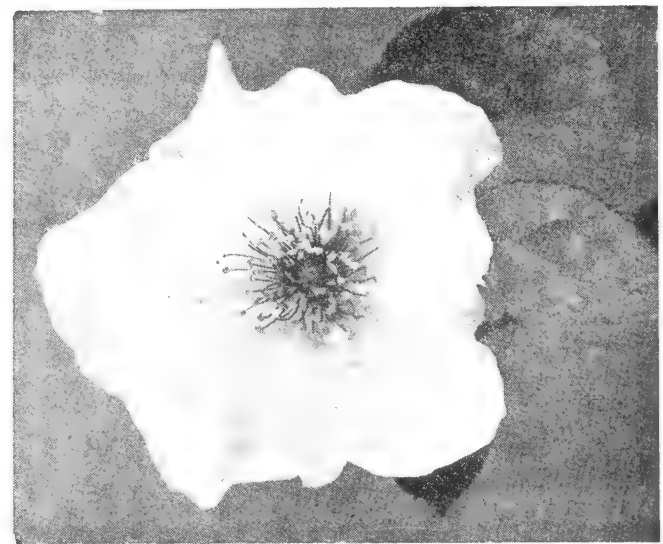
Cl. President Herbert Hoover. One of the best multi-colored climbers. Flame, pink, and buff. A rampant climber.

Cl. Red Talisman. Typical Talisman buds and flowers in a gorgeous shade of deep red.

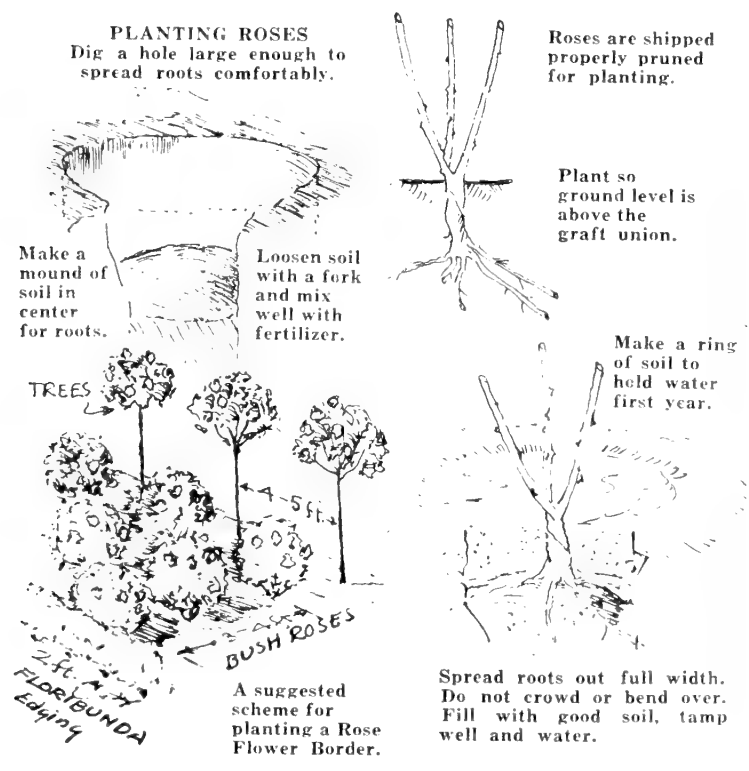
Cl. Rose Marie. Splendid rose. Large fragrant full double flowers are borne in quantity. Lovely rose pink.

Cl. Talisman. This well known rose hardly needs description. It is just like the bush form but a vigorous climber. Lovely red and gold.

Cl. Ville de Paris. Large, glossy dark green foliage and beautiful bright yellow flowers are exceptionally fine.



CL. DAINTY BESS—A Most Attractive Single Pink



DECIDUOUS SHRUBS

The flowering shrubs listed in this group will lose their leaves for a short time each year but never for long periods. They are the hardiest of shrubs, withstanding heat and cold. In fact, their extreme hardiness makes them desirable for mountain homes. Others because they are not so large can be used where definite height of growth is a consideration in the garden. Many produce showy flowers, without which the garden would lack much in interest and sparkle.

Priced from 75c each and up, depending on size and variety.

THE DWARF FLOWERING ALMONDS

Amygdalus nana. Small shrubby tree with long slender branches laden in spring with delicate very double flowers like small roses. Available in pink or white.

ROSE OF SHARON

Althea syriacus, Shrub Althea. Very hardy shrub with dark green foliage and beautiful mallow-like flowers in good showy quantities. Summer and autumn. Available in lavender, single and double; mauve; pink, double, and all white.

BARBERRY

Berberis thunbergii atropurpurea, Red Leaf Japanese Barberry. Rich lustrous bronzy-red foliage and brilliant red berries. Dense bushy shrub best in sun.

FLOWERING DOGWOOD

Cornus florida, White Flowering Dogwood. Small tree, most effective in shaded locations for the attractive white flowers. Petals, like the Poinsettia, are bracts encircling the tiny flowers in the center. Early spring.

Cornus florida rubra, Red Flowering Dogwood. The most spectacular with light red or pink flowers. Peat or leaf mould in the soil to insure an acid reaction. Partial shade. Grafted.

FLOWERING QUINCE

The old fashioned flowering quinces with their bright red flowers in early spring were showy in their day but never equal to the newer varieties listed here. They are much more showy, stay in bloom longer, and make fine cut flowers. Very hardy shrubs.

Cydonia japonica, pink and scarlet.



DWARF PINK FLOWERING ALMOND



MAGNOLIA SOULANGEANA

HYDRANGEAS, for the Shade

Excellent shrubs for shady places where the soil can be slightly acid. Some varieties will produce blue flowers if the soil is treated to a light application of alum or iron sulphate.

French Hybrids. We offer many new French Hybrids in various colors: blue, carmine, red and pink. All large flowered, choice varieties.

Hydrangea hortensis. Dense 6-foot shrub with bold dark green leaves and masses of pink or blue flowers in ball-shaped clusters. The color depends on the soil and type of fertilizer used. Popular shrub for shaded places.

LEMON VERBENA

Lippia citriodora. Not much of a show but has been popular a long time because of the lemon fragrance of the foliage and flowers. Flower sprays have a delicate structure and perfume.

CREPE MYRTLES

Lagerstroemia indica. Large shrubs or small trees, with showy masses of lovely crepe-like flowers in summer. They withstand heat very well, which accounts for their wide-spread popularity in the drier areas. Sun.

Rosea. Pink.
Rubra. Red.

Lavender. Lovely lavender.
White. Pure white.

MAGNOLIAS

Magnolia soulangeana. The large lily-like flowers of Chinese Magnolias are becoming more esteemed each year. They come at the end of the winter before the leaves. Outstanding flowers, beautiful rose-red margined with white. Give plenty of water and a good soil.

Magnolia soulangeana nigra. Large dark purple flowers. Inside of cup-shaped flower lighter purple in color.

Magnolia stellata, Star Magnolia. Neat growing small tree or large shrub. Free flowering in spring. Flowers 3 to 4 inches across, composed of many narrow pinkish white petals.

MOCKORANGE

Philadelphus Virginal. Few shrubs give such a glorious display of flowers in early summer. Masses of large, double and semi-double pure white fragrant flowers cover the shrub for quite a long time. Hardy and reliable bloomer.

POMEGRANATES

Punica granatum, Double Flowered, Flowering Pomegranate. A good size shrub with light green foliage and many double bright red flowers all summer. Drought resistant after established. Does well in interior areas.

Punica granatum nana, Dwarf Flowering Pomegranate. Never reaches a large size. Excellent for low formal hedges or as a low shrub in foundation plantings. A lively little plant with red flowers, interesting red fruits, but small stature.

SPIRAEAS or BRIDAL WREATHS

Spiraea Anthony Waterer. Low 3-foot shrub, covered with masses of flat topped clusters of rosy-red flowers. Summer. Very hardy.

Spiraea reevesiana, Double Bridal Wreath. Hardy shrub with graceful branches, light green leaves and masses of showy white double flowers of exquisite beauty.

Spiraea vanhouttei. This well known shrub is grown in every part of the country. Hardy even in the most severe places, it graces the long arching branches with pure white flowers in such profusion as to suggest snow banks.

LILACS

Syringa persica laciniata, Cut-leaf Persian Lilac. The most reliable of all Lilacs for bloom in California. Good size clusters of real lilac flowers in spring and early summer. Blooms consistently.

French Lilacs. Grafted plants of the best varieties in the following colors: **White, lavender, purple** and **blue** in both single and double.

COMMON SNOWBALL

Viburnum opulus sterile. This well-known hardy shrub is easy to grow in California. Abundant white globular flowers in May and June. Sun.

WEIGELAS

Weigela Bristol Ruby (Pat. 492). Rich ruby red trumpet-shaped flowers all summer. This new Weigela is one of the best yet developed and far superior to the old Eva Rathke. Hardy. Sun.

Weigela rosea. Large clusters of bright pink flowers in spring and early summer.

All Deciduous Shrubs are hardy in Southern California.



CREPE MYRTLE

Popular Evergreen Trees

The trees in this group are widely planted in California for street and shade trees, as lawn specimens or for the lovely flowers of some kinds. The year around foliage is excellent to conceal objectionable views from the house and garden. In this list you will find trees for any possible purpose. All are hardy in Southern California except at higher altitudes.

Priced from 85c up, depending on size and variety.

ACACIAS

Acacia baileyana. Popular small tree with feathery blue green foliage and clouds of light yellow flowers in spring. The seed pods, which follow, are light lavender purple and give a nice misty tone to the trees.

Acacia floribunda. Small round-headed tree with long narrow green leaves and fluffy little yellow flowers intermittently throughout the year.

Acacia latifolia. A large shrub or tree for hiding objectionable views outside the garden. Leaves long and narrow, polished and densely clothing the stems. Flowers golden yellow.

Acacia melanoxylon, Black Acacia. Popular street tree. Makes a close tight crown of dark green leaves. A medium to large tree.

ORCHID TREE

Bauhinia purpurea, Purple Orchid Tree. A glorious small tree when in bloom. Large orchid like flowers appear in such a mass as to conceal the foliage left before new growth starts. Also white variety.

CAMPHOR

Camphora officinalis, Camphor Tree. Widely planted street tree with round top of light green foliage, aromatic of camphor when crushed. Trees often make a delightful tracery of lower branches.

CAROB

Ceratonia siliqua, Carob. Hardy, rounded tree with neat dark green foliage. Much planted as a street tree. Free of insects and disease. Drouth resistant.

QUEEN PALM

Cocos plumosus, Queen Palm. Beautiful feather palm with long arching leaves and tall slender smooth trunk. Popular now as a street tree.

LOQUAT

Eriobotrya japonica, Loquat. Although essentially a fruit tree prized for its pear-like fruits in early summer, this round headed tree with dark green leaves is often desirable in the background planting. Long leathery leaves, woolly beneath, give a feeling of permanence to the garden.

EUCALYPTUS or GUM TREES

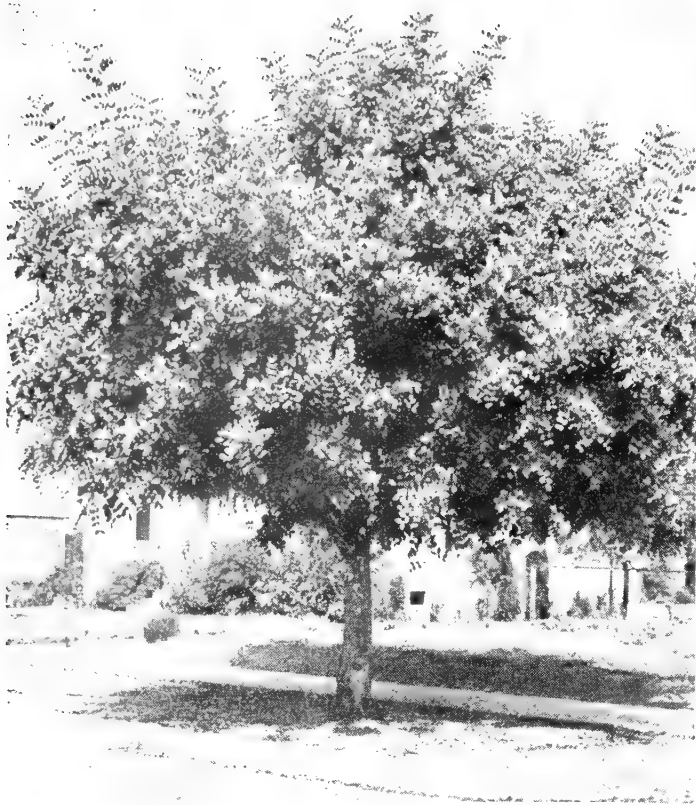
Eucalyptus citriodora, Lemon-scented Gum. Tall growing tree with graceful crown of long narrow lemon-scented leaves and picturesque white trunk.

Eucalyptus ficifolia, Scarlet Flowering Gum. Low growing dwarf flowering tree. Large pointed leaves of dark green and great clusters of crimson or scarlet flowers. One of the showiest varieties of Eucalyptus.

Eucalyptus globulus, Blue Gum. Rapid growing tree with broad blue leaves later turning deep green. Much planted for windbreaks and a source of firewood.

Compact Blue Gum. Dwarf bushy tree forming a symmetrical head without a main trunk.

Other standard and novelty varieties available.



CERATONIA SILIQUA—Provides Dense Shade

SILK OAK

Grevillea robusta, Silk Oak. Large tree with pyramidal, narrow crown of fern-like foliage lightened in early summer with masses of fluffy golden yellow flowers. Fine as a street tree.

JACARANDA

Jacaranda mimosaeifolia, Jacaranda. Handsome flowering tree with attractive light green fern-like foliage making a rounded crown. The entire tree bursts into a mass of violet-blue tubular flowers in June. Fine street or specimen tree.

SUGAR PLUM TREE

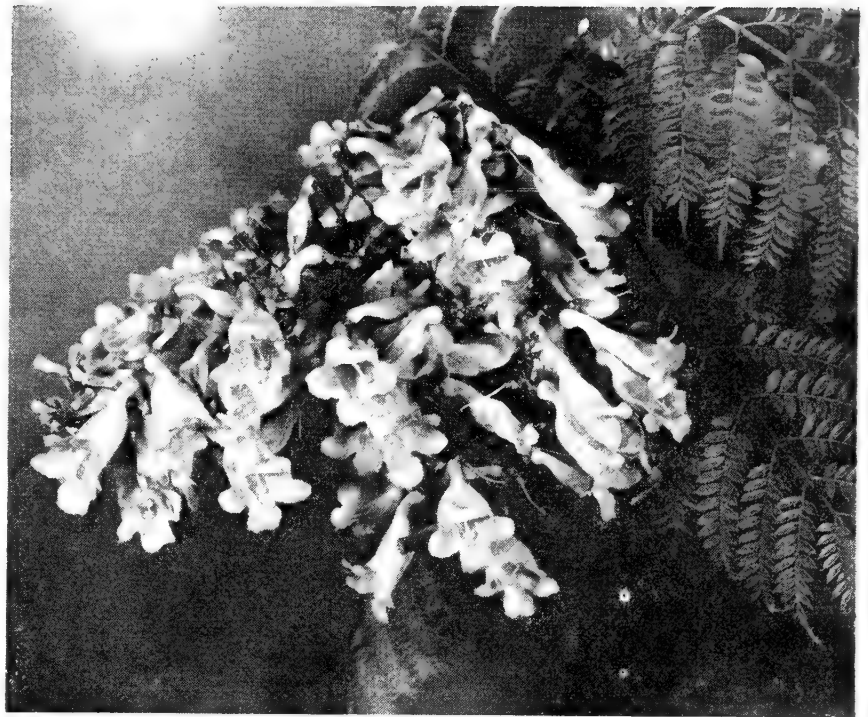
Lagunaria pattersoni. Small narrow tree, often a shrub, with handsome grey-green foliage and neat mallow-like flowers of rose-pink. Recommended for sea-coast planting but does well inland too!

MAGNOLIA

Magnolia grandiflora, Southern Magnolia. Large growing evergreen trees always neat in its glossy foliage. The immense white fragrant water-lily-like flowers appear throughout the summer. Give generous amounts of water for better blooms.

MISSION OLIVE

Olea europea, Manzanillo variety. The ornamental value of Olives has been recognized a long time but not practiced as much as it should. The old gnarled, picturesque grey trunks and wide spreading masses of greyish green foliage are a prize in themselves. Even if we don't grow them for the fruits an olive grove with trees 25 feet apart in even rows is attractive beyond description. Olives almost thrive on neglect once they are established. Hardy.



JACARANDA MIMOSAEFOLIA

FOR DRY HOT CLIMATES

Parkinsonia aculeata, Jerusalem Thorn. Small tree, especially useful in dry hot places, particularly on the desert. The fluffy green appearance of the foliage with the green bark is enlivened in early summer by beautiful yellow flowers in equally airy panicles.

STURDY OAKS

Quercus agrifolia, California Live Oak. One of the finest trees for the home grounds or street planting, the native Oak, with its picturesque habit and evergreen foliage is easy to grow if given care and careful watering.

CAROLINA CHERRY

Prunus caroliniana, Carolina Cherry. Dwarf round headed tree or large shrub with excellent bronze tipped green foliage and fuzzy white flowers followed by black cherries. Wonderful as street trees or in the background.

PEPPER TREES

Schinus molle, California Pepper Tree. Rapid growing trees with gnarled trunks and graceful weeping branchlets of feathery texture have long been popular in Southern California. Pretty with their red berries in winter. Hardy, thriving in poor, light soil.

Schinus terebinthifolius, Brazilian Pepper. Smaller tree with pink berries. The leaves are darker green and less feathery. Hardy. Very clean habit of growth.

EVERGREEN ELM

Ulmus sempervirens. Small tree with spreading crown of slender drooping branches and bright green leaves. Rapidly becoming popular as a street and shade tree. Hardy.



EVERGREEN ELM

DECIDUOUS TREES

For Shade and Flowering

The trees listed here are called deciduous because they naturally lose their leaves during the winter months. All are hardy anywhere, for among them are such familiar trees as Birch, Poplar, Sycamore and Elm. Their value lies chiefly in giving cool shade in summer and allowing the warm rays of the sun to pass through the branches in winter, when it is desirable. Some are popular flowering trees like Catalpa, Red Bud, Cherries, Crabapples, Peaches and Locust. All are easy to grow and some make very rapid growth.

Priced from \$2.50 up, depending on size and variety.
Slightly higher in containers.

SILVER MAPLE

***Acer dasycarpum*, Silver Maple.** Very rapid growing large shade tree. The under side of the leaves are a silvery white, whence the name Silver Maple. Turns a rich golden yellow in fall.

WHITE BIRCHES

***Betula alba*, European White Birch.** Popular fast growing tree with beautiful white bark marked with horizontal black lines. Light green foliage shimmers with the slightest breeze. Fine near pools or in front of dark trees.

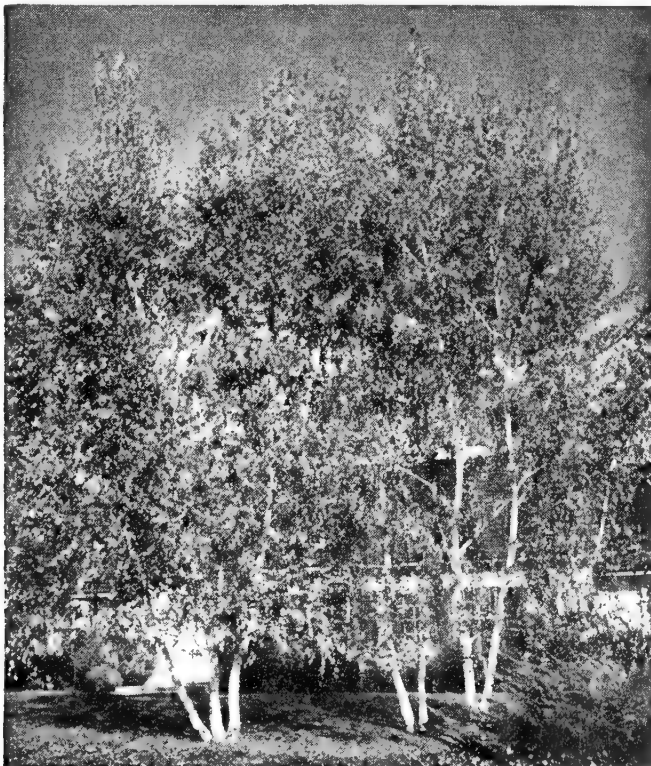
***Betula alba laciniata*, Cut Leaf Birch.** Graceful weeping branches and delicately cut leaves make this an exquisitely beautiful tree for lawn planting. Bark same as White Birch and most effective against a dark background.

GINKGO

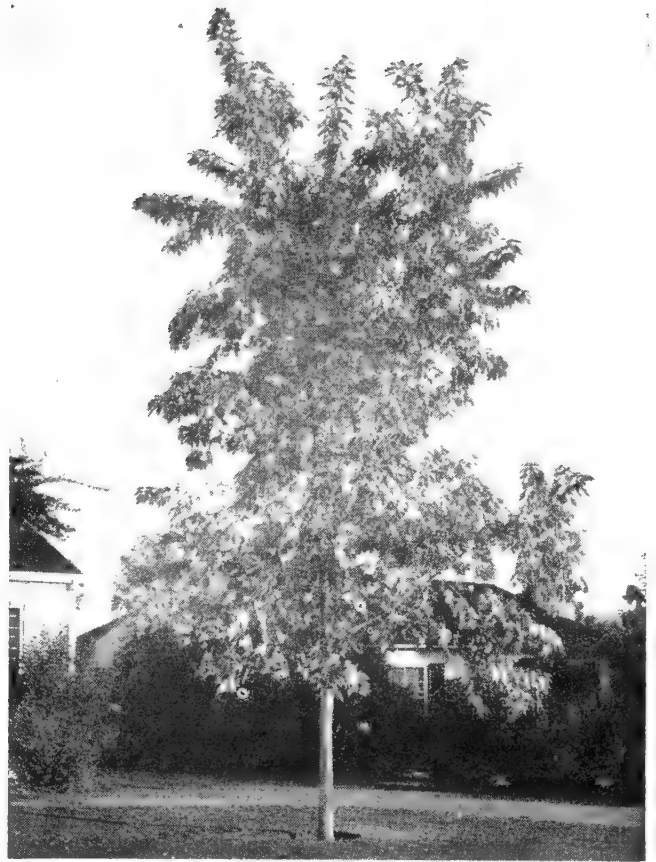
***Ginkgo biloba*, Maidenhair Tree.** Very unlike any other tree grown—this unique and interesting tree, with its fan-shaped leaves, like those of Maidenhair Fern, but larger of course, make a beautiful specimen for lawn or street planting. Foliage turns bright yellow in fall.

ASH

***Fraxinus velutina glabra*, Modesto Ash.** Fast growing shade tree of graceful habit making a dense crown of dark green foliage. Thrives equally well in warm interior valleys or at the coast.



WHITE BIRCH IS MORE EFFECTIVE PLANTED IN GROUPS



SILVER MAPLE—An Excellent Shade and Specimen Tree

SWEET GUM for Fall Color

***Liquidambar styraciflua*.** Few trees will color well in California as does the Sweet Gum. Slow growing tree with maple-like leaves useful in parkway plantings or as lawn specimens. Clean, neat growth but glorious in November and December when arrayed in its autumnal tints of orange, red, gold and deeper shades.

TULIP TREE

***Liriodendron tulipifera*.** Tall growing symmetrical tree with straight trunk and dark green leaves. Flowers are similar to Magnolia, white, cup-shaped. Desirable shade tree. Always neat and trim.

FLOWERING CRABAPPLE

***Malus ioensis plena*, Bechtel Crab.** Small tree to 15 feet. Crowded in spring with large, fragrant, double pale pink flowers. The bright green leaves which follow are neat all year.

TEXAS UMBRELLA TREE

***Melia azedarach umbraculiformis*, Texas Umbrella.** Rapidly growing to about 35 feet forms a flat-topped, umbrella-like crown of dense fern-like leaves. Panicles of lavender flowers in summer.

PISTACHIO, for Fall Color

***Pistacia chinensis*, Pistachio Nut.** If no nuts ever formed on this medium sized round-headed tree it would be worth planting for the autumn color alone, which even here takes on glowing yellow, scarlet and crimson.

MULBERRIES

***Morus nigra*, Persian Mulberry.** Small round headed tree. Valuable for the fruit. Large black, juicy berries, fine for juices and preserves.

***Morus Kingan*, Fruitless Mulberry.** Does not set fruit and is therefore not objectionable as a shade tree. Popular for its rapid growth. Makes a wide spreading head of large glossy leaves. Fine for dry areas although they will grow anywhere.



FLOWERING PEACH
One of the Most Dependable
of All Spring Flowering Trees.
Colorful and Popular.

FLOWERING PEACH TREES

Beautiful low growing trees wonderful for spring bloom before the leaves. Large double flowers in great masses, clothe every stem. Excellent for cutting. After bloom is over prune heavily for next season's bloom. Hardy.

Any of following \$1.50 up.

Early Red. Magnificent ruby-red flowers.

Early Pink. Earliest; beautiful rose-pink.

Early White. Large snow-white flowered variety.

Peppermint Variegated. Striped red and white.

Late Pink.

Late Red.

SYCAMORES or PLANE TREE

Platanus orientalis, European Sycamore. Handsome symmetrical shade tree widely planted on streets and avenues. Dense light green maple-like leaves and greenish white mottled bark on older trees. One of the best street trees for California.

Platanus racemosa, California Sycamore. Rapid growing tree, often making a clump of several trunks, much less formal. Leaves with long finger-like divisions. Mottled bark is always a pleasant variation and source of interest.

POPLARS

Populus nigra italica, Lombardy Poplar. Tall slender column excellent as a tall accent tree. Requires little room to grow. Frequently used as windbreak, or street trees.

PURPLE-LEAVED PLUMS

Priced \$1.50 up.

Prunus blireiana. Brilliant red foliage later turning greenish. Flowers dainty soft pink and double line the long slender stems in spring.

Prunus pissardi, Purple Leaf Plum. Small tree, deep purple leaves and small pale pink flowers in spring. Deep red branches and twigs are interesting even in winter.

Prunus Vesuvius, Burbank's Purple Leaf Plum. The best purple leaf plum. The leaves are larger and more brilliant red. A fine ornamental tree of small to medium size. Colored all season.



MEYER LEMON

FLOWERING LOCUSTS

Robinia decaisneana, Pink Locust. Tall rapid growing variety of Black Locust with long racemes of fragrant pink flowers.

ELMS

Ulmus americana, American Elm. Well known Eastern Elm makes a wonderful spreading shade tree in California. Leaves much larger than the Chinese Elm. Planted as street trees they will make a canopy of branches over the average width street.

Ulmus pumila, Chinese Elm. Very rapid growing, extremely hardy tree. Tolerant of most adverse soil and water conditions. Holds leaves until very late in fall.



PRUNUS PISSARDI—Flowers, Foliage, Fruit

CITRUS FRUITS

Prices of Citrus Trees \$4.00 up.

ORANGES

Washington Navel. The famous winter ripening orange. Large fruits easily peeled and broken into segments. Thrives best a few miles from the coast. Can be grown any place in California where citrus is grown. December to May.

Valencia Orange. Best summer orange, ripens from April to December after the Navel season is over. Thus ripe oranges can be had through the summer and fall. Juicy, sweet and few seeded.

LEMONS

Eureka. The leading lemon for commercial and home planting. Fruit uniformly medium size, juicy, and few seeded. Most of the fruit is ripened during the summer but bears throughout the year.

Meyer Lemon. Semi-dwarf. Fruit large, oval and deeply orange yellow in color. Hardy throughout most of California. Laden with fruit most of the year.

LIMES

Bearss Seedless. Finest and largest of all limes. Seedless, juicy fruits ripen mostly during the summer, when limes are in demand. Large, vigorous and almost thornless.

Rangpur Lime. Fruits look very much like Tangerines, both skin and pulp being reddish-orange. Acid fruit. November to March. Standards and Bush forms.

Mexican Lime. Small light green fruits, oval in shape, strongly acid but highly flavored. Semi-dwarf, ripens fruits most of year but main crop comes in spring.



VALENCIA ORANGE



HOWARD MIRACLE PLUM
(Patent Applied for)

LIMEQUAT

Eustis. The parents of this citrus fruit are Mexican Lime and Kumquat. One of the finest of small citrus. Fruits are like small thin skinned yellow limes, very juicy and almost seedless. Excellent for beverages.

KUMQUAT

Nagami. Semi-dwarf tree giving abundant crops of small egg-shaped golden orange fruits most of the year. Hardy and very ornamental.

TANGELO

Sampson. Golden yellow fruits with delicious orange-red juice combining the flavor of tangerine with grapefruit. February to May.

GRAPEFRUIT

Marsh Seedless. Compact growing variety widely planted in California. Fruit juicy, seedless, very good. May-August.

TANGERINE

Algerian. Very early ripening tangerine. Fruits very sweet and fine flavored, medium size. One of the best to plant in the home orchard.

Dancy. Medium to large flattened fruits. Very juicy and of fine flavor. February to May.

Satsuma. One of the hardiest oranges. Fruits ripen very early, usually before Christmas (October). Large, flat, loose-skinned, deep orange in color.

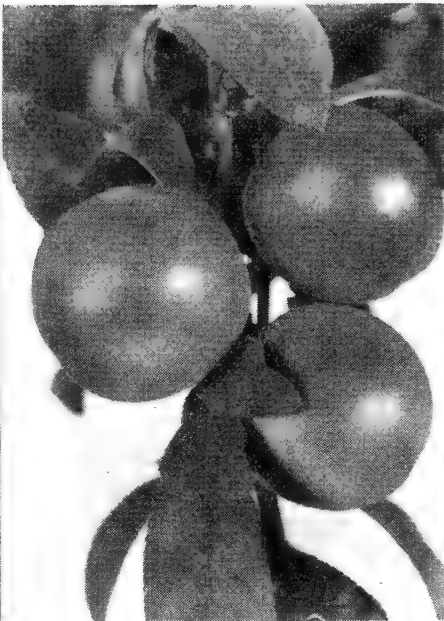
Young citrus trees need protection of bark from hot sun until they are shaded by their own foliage. For best fruit regular fertilizing and careful watering are essential.



AVOCADO FUERTE



APRICOT ROYAL



NECTARINE GOWER



PRUNE FRENCH IMPROVED

Sub-Tropical Fruits

AVOCADOS

Avocados priced \$5.50 up.

Fuerte. Popular winter avocado. Pear-shaped fruits with very delicious flesh. Heavy bearing and frost resistant. October-May.

Nabal. Round shaped fruits with smooth leathery skins and small seeds. Best for frost-free areas. June to September.

Ryan. The summer Fuerte ripening from May to October, thus extending the Fuerte season. A thrifty spreading tree bearing consistently year after year. Fruit like the Fuerte in quality.

CHERIMOYA

Cherimoya, Custard Apple. For those who like small trees and sub-tropical fruits of unusual quality the Cherimoya is hard to beat. Fruits heart-shaped, green in color with many plate-like "scales" enclosing a custard-like flesh which is most unusual in flavor and difficult to describe. Eat chilled.

GUAVAS

For Guavas see under Ornamental Evergreen Flowering Shrubs, page 7.

SAPOTE

White Sapote. Strong growing evergreen trees not unlike the Avocado in appearance. Fruits similar to green apples in shape but possessing a rich flavor to the custard-like flesh. Particularly good when chilled.



WHITE SAPOTE FRUITS

DECIDUOUS FRUIT TREES

In these times, with high prices of fruits and vegetables, as well as other commodities, many are turning to home gardening as a means of cutting the cost of living. And rightly so, for the quality of home grown fruit is much superior to that from the market. These few back yard trees add such a glorious touch to the spring garden with their handsome blossoms and later with their colorful fruits.

Trees are priced bare root at \$1.35 and up.
Slightly higher in containers.

ALMONDS

For frost-free areas with hot summer temperatures. Almonds produce one of California's important crops. They need different varieties to give pollen to the better varieties for better crops.

Ne Plus Ultra. Popular kind with large soft shelled nuts. Pollenates Nonpareil.

Nonpareil. Is the leading commercial variety. Popular for its paper thin shells.

APPLES

Few apples do well in California where the climate is too mild to provide the necessary winter rest period. However, a few give good crops, others just fair. We offer only varieties selected for this area.

CRABAPPLE

Transcendent. Good size, August ripening. Yellow fruits blushed red. The best variety for California.

APRICOTS

Few fruits give as satisfactory returns to the home gardener as do the apricots. Small trees bearing enormous crops in early summer.

Blenheim. Large, well formed attractive fruits. Delicious. One of leading California varieties. June.

Moorpark. Large round deeply colored fruits. Best for eating. Fine along the coast. Shy bearer. July.

Newcastle. Early variety bearing in May and early June. Medium size fruits of good flavor, are fine for eating. Prolific.

Royal. Sweet deep orange flesh. Excellent variety for home use.

Tilton. Richly colored heart-shaped fruits. One of the latest to ripen. Best in dry hot valleys.

PLUMCOT

Apex. Novelty fruit resulting from crossing Apricot with Plum. Pinkish-red fruits with light amber colored flesh. Early June.

CHERRIES

Bing. Large heart-shaped sweet fruits. Glossy skin. Firm flesh, almost black. Fine canning variety. June.

Black Tartarian. Sweet juicy purplish black cherry. Heavy bearing, large tree. Pollenizes other sweet cherries.

English Morello. One of the best home varieties. Small round headed tree with dark red fruits, almost black when ripe.

Royal Anne. Large light amber cherries suffused with red when ripe. Fine for canning.

FIGS

Brown Turkey. Large, long rich purplish-brown fig. Strawberry red flesh is sweet and juicy. Prune heavily.

Mission, California Black Fig. Medium size to large figs long necked deep violet-black figs with brownish-red flesh. Prune lightly. Does well in all sections.

Kadota. All-purpose white fig—drying, pickling or eating fresh. Medium pale yellow skin, sweet amber flesh.

Thompson. Similar to the Brown Turkey in every way—shape, color and flavor. Said to be sweeter and to produce larger, juicier fruits soon after planting. Excellent for preserves.

NECTARINES

Goldmine. Juicy white flesh. Large red and yellow fruits of fine flavor. Early August.

Gower. Large firm pale green fruits with deep red blush. Early June.

Stanwick. Pale green shaded with purple. Commercial variety. Early August.

PEACHES (Freestone)

Australian Saucer. Oddly shaped flat fruits, with white skin and white flesh. Well adapted to our mild winters. Early June.

Babcock. Very popular. Consistent bearer, even after mild winters. Smooth red cheeks and delicious white flesh. June.

Elberta. Oval peaches of good size. Yellow with red cheeks. Yellow flesh of excellent flavor. Early July.

Early Elberta. Large yellow freestone ripening early in June. Like the Elberta except for early ripening.

Indian Blood. A most unusual peach of medium size, deep red in color and with deep red, fine flavored flesh. July.

J. H. Hale. Popular large round peach. Fruit very beautiful. Flesh firm, yellow and of fine flavor. Late July.

Millers Late. Heavy bearing yellow peach of fine quality. November.

Ask us about other varieties, if you do not find the kind you want listed.

PEACHES (Clingstone)

Sims Cling. Medium size golden yellow fruits with yellow flesh. One of leading orchard varieties. Late August.

White Heath Cling. Light cream colored fruits with pink cheeks. Juicy, tender and of rich flavor. September.

Orange Cling. Large, orange-yellow peach with deep yellow flesh. Best for canning. Ripens late August.

PEARS

Bartlett. Summer and winter varieties available. Fine keeping pear. Fruits small and sweet. Good eating.

Beurre d' Anjou. Large greenish pear with russet tints and fine juicy flavorful flesh. One of the best fall ripening pears.

Seckel. Small but juicy fruits which are spicily flavored. Very choice and one of the finest pears for eating fresh or for pickling.

Winter Nelis. Small delightfully flavored fruits. Excellent along the coast. December. Good bearer and pollenizer.

PERSIMMON

Hachiya. The best and most popular variety. Large cone-shaped bright orange-red fruit with sweet, rich, soft flesh. Puckery only when not completely ripe. \$3.00 and up each. Scarce.

PLUMS

Plums are satisfactory small trees for the home grounds. They bear consistent, good crops, make excellent preserves and some kinds are delicious to eat fresh. A few varieties are listed below.

Damson. Small tart purple fruits; amber flesh. Finest variety for jams.

Green Gage. Greenish yellow rounded fruits with rich, sweet, firm flesh.

Howard's Miracle. New. Large fruits with very small pit. Flavor delicious, suggestive of pineapple. Plant a pollinizer such as Wickson or Satsuma. July-August. (Pat.) \$2.50.

Improved Satsuma. Tender juicy fruits with blood-red skin and flesh. Fine flavor. July.

Santa Rosa. Popular variety with oval fruits, maroon skin and amber flesh veined with crimson. Delicious. Late June.

Satsuma. Deep blood red fruits in quantity. August.

Wickson. Yellow heart-shaped fruits with red cheeks. Very fine quality. Pollinizer. Late August.

Other varieties available.

POMEGRANATE

Wonderful. Attractive large shrub with red flowers and attractive odd shaped fruits. Easy to grow, doing very well in dry hot places.

PRUNES

French Improved. Large deep purple fruits. The standard drying variety. September.

Sugar. Large sweet and mild purple fruits. Excellent tree for home use. Does well in all sections. August.

WALNUTS

\$2.50 and up.

Placentia. Rounded oval, thin shelled medium-size nuts. Prolific early bearer.

Eureka. Large elongated nuts. Very hardy.



PERSIMMON

BERRIES AND GRAPES

Berries and Grapes are plants for small properties where in a little space they produce quality fruit.

BLACKBERRIES

25c each, \$2.00 per 10

Cory Thornless. Because of the thornless habit this berry can be grown in the back yard where space is limited. Fruit jet black, sweet, tasty and small seeded.

Crandall's Early. Medium size sweet blackberry. Bushes erect, need no further support. June-July.

Kosmo (Patent 39). Large, sweet, juicy berries produced in enormous crops. One of the best for Pacific Coast. 35c each.

BOYSENBERRY

The large berries are often 1½ inches long, have excellent keeping and shipping qualities. Fine for home use in pies, jellies and preserves, or fresh with cream. 25c each, \$2.00 per 10.

Boysenberry (Thornless). Like the older Boysenberry in quality and production of large luscious berries but without thorns. Each 35c, doz. \$3.50.

RASPBERRIES

25c each, \$2.00 per 10

Cuthbert. Red raspberry. Large tender deep red fruits of fine flavor.

St. Regis. Medium size, firm bright red berries. Long ripening season. Excellent shipping quality.

BLACKCAP RASPBERRIES

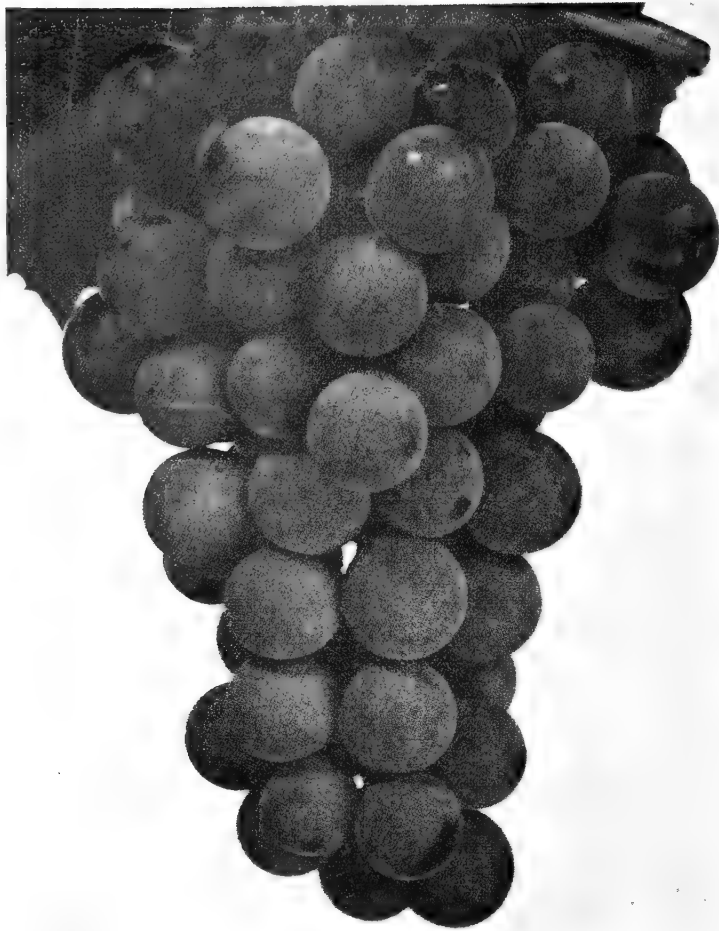
Cumberland Blackcap. Fine large berries, purple in color. Excellent for table and preserving.

Munger. Black cap. Large delicious black raspberries.

YOUNGBERRY

Rapid growing vines bearing heavy crops of deep purple berries. Almost seedless. Fine flavor. 25c each, \$2.00 for 10.

Thornless Youngberry. 35c each.



CONCORD GRAPE

LOGANBERRY

25c each, \$2.00 per 10.

Vigorous vines producing quantities of dark red delicious fruits. Excellent for jams and jellies.

Loganberry (Thornless) (Pat. 82). Vigorous vines with heavy crops of dark red delicious berries. One of the best for home garden. 35c each.

GRAPES, AMERICAN

50c each.

Eastern Concord. Favorite blue grape for jelly, juice and preserves.

Pierce (California Concord). Like the Concord but the bunches and berries larger.

GRAPES, EUROPEAN

25c each. Ask for quantity prices.

Black Hamburg. Large round black table grape. Late September.

Black Monukka. Black, seedless. August.

Flame Tokay. Rich red. September.

Fresno Beauty (Ribier). Blue-black. Large, sweet. August.

Malaga. Sweet, white. August.

Muscat. Very sweet raisin grape. White. September.

Rose of Peru. Vigorous vine. Appealing black grapes. Fine for eating.

Thompson Seedless. Small sweet white. August.

ASPARAGUS

Paradise. Heavier crops of tastier asparagus are obtained from this new variety. Rust-resistant. 25 for \$1.25.

Martha Washington. Early variety. Fine tender tips. Rust-resistant. 25 for \$1.25.

HORSERADISH

35c each.

RHUBARB

Cherry. Large bright red stalks of fine flavor. 35c each.

Strawberry. Stalks light pink. Vigorous and hardy. 35c each.

STRAWBERRIES

50c per 10, 25 for \$1.00, except Rockhill.

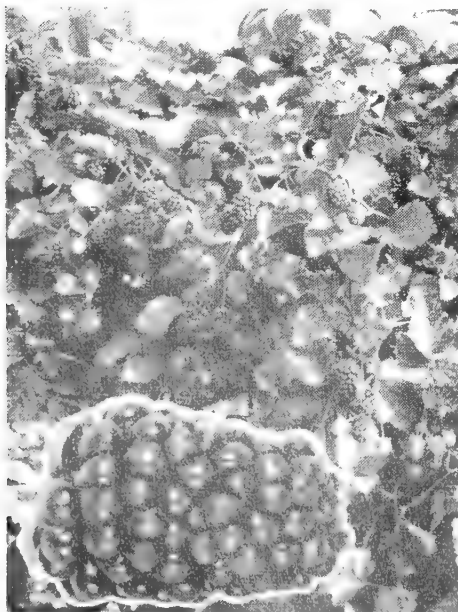
Blakemore. Large, early. Fine quality.

Gem Everbearing. Beautiful sweet berries. Bears good crops in fall after spring varieties have finished. 75c per 10; \$1.50 for 25.

Klondyke. Vigorous. Highly flavored berry, bright red. April to July.

Rockhill. Everbearing Bush Strawberry. Large colorful berries. No runners. Ornamental when used in strawberry jars. 25c each, \$15.00 per 100.

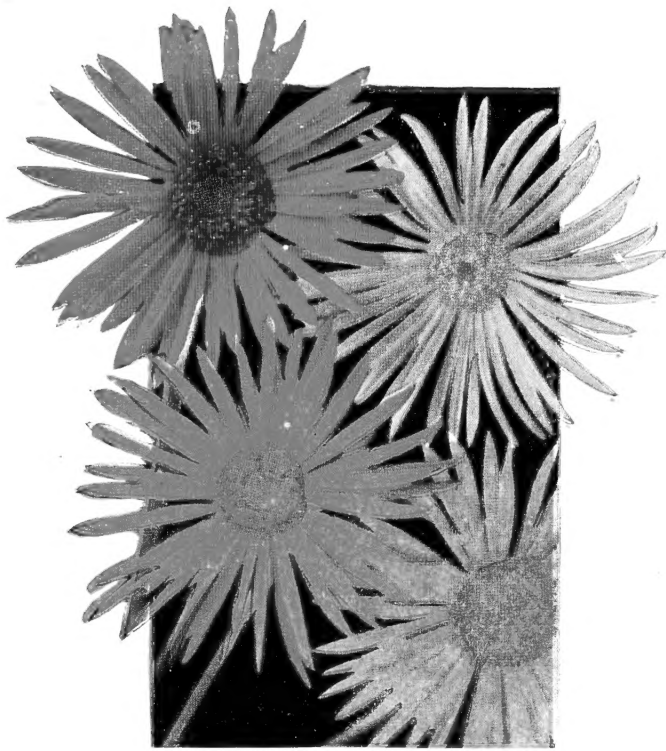
Streamliner. Everbearing. Radiant red berries, richly colored and full of flavor. Firm flesh. Excellent for canning and quick freezing. New introduction rapidly gaining popularity. \$1.25 per doz., 25 for \$2.00, 50 for \$3.75, 100 for \$6.75.



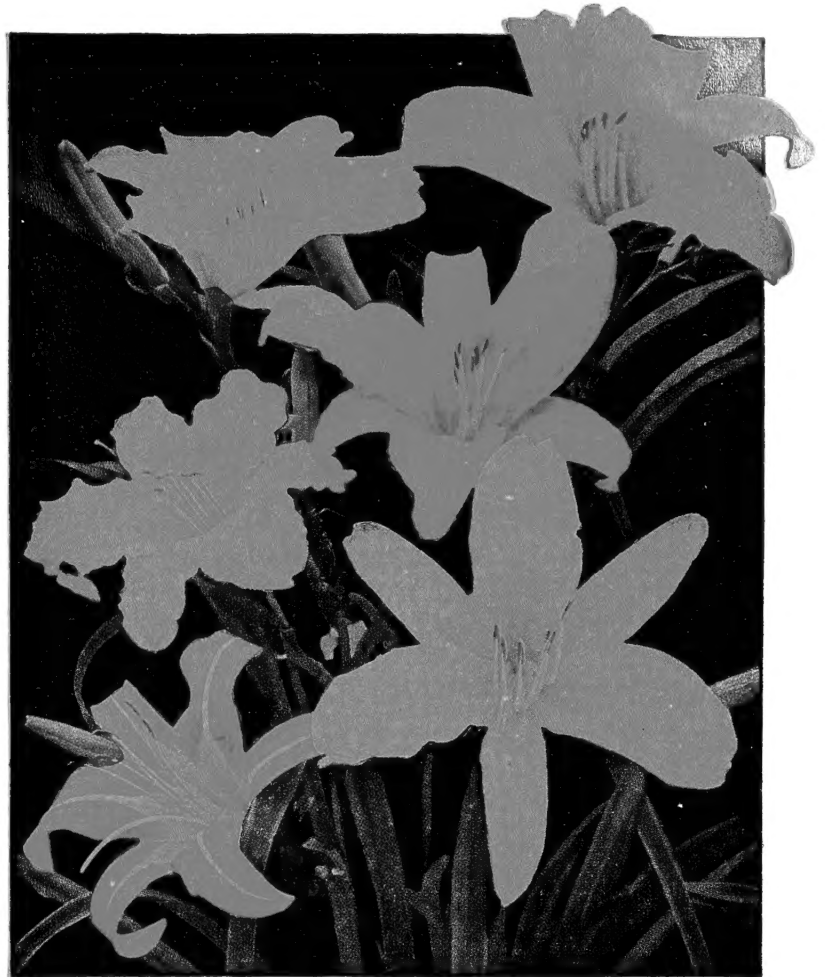
BOYSENBERRY



STRAWBERRY STREAMLINER



GERBERA—TRANSVAAL DAISY



HEMEROCALLIS—Provide Maximum Bloom with Little Attention

PERENNIALS

*For seasonal touches of color in
your garden*

Priced at Nursery.

Agapanthus umbellatus, Blue Lily of the Nile. On stout yet graceful stalks this plant bears large umbels of lovely blue lily-like flowers in great profusion in summer. 3 feet. Leaves long and narrow, in nice clumps. Also white flowered form.

Aster frikarti, Wonder of Staffa. Bushy plants, alive with 2-inch lavender-blue asters from June to December. Rich green foliage. 2½ feet. Full sun.

Campanula isophylla. Trailing perennial for hanging baskets or rock garden. Small grey green leaves and trailing stems of saucer shaped white or blue flowers. Free flowering.

Campanula poscharskyana, Serbian Bluebell. A most charming low growing perennial, seldom over 6 inches in height, making a dense carpet of blue saucer-shaped flowers in early summer. Use it as a ground cover in lightly shaded places or as a border plant in the flower garden.

Ceratostigma plumbaginoides (Plumbago larpentae). Dwarf spreading plant with nice green foliage and bright blue flowers with red bracts in late fall. 1 foot, sun.

Clivia miniata. Long broad strap-like leaves of dark green piling one on the other in a fan-shaped growth, from which the flower stalks appear with their bright orange clusters of flowers. Dense to light shade and plenty of even moisture. Don't disturb the roots when planting. \$1.50 each up.

Convolvulus mauritanicus, Blue Morocco Creeper. Light grey-green creeper with quantities of pale lavender cups all summer. Excellent ground cover for sun. 6 inches. Not weedy.

Gerbera jamesoni hybrids, Transvaal Daisies. One of the finest garden and cutting flowers

for California. Low tufts of leaves and long stemmed crisp, long-lasting daisies in a brilliant array of colors, pastel and bright. Sun.

Heliotrope. Old fashioned garden flowers. Very sweetly perfumed, blue to violet in late summer and fall. Light shade.

Hemerocallis, Day Lilies. Handsome clumps of foliage graced with brilliant lilies in yellow and orange shades. Essential to the border as are delphinium and phlox. Easy, sun or shade.

Lavandula vera, English Lavender. Dwarf compact shrubby plant with greyish aromatic foliage and tall slender spikes of bluish-violet flowers. Very hardy. Sun.



ASTER FRIKARTI

Marguerite. We offer this popular bushy perennial in both white and yellow flowered types. Flowers, 2-inch daisies, are freely produced and long lasting. An indispensable plant.

Penstemon Sensation. 2 to 3 foot with large showy trumpet-shaped flowers in pink, red, white or combinations. Free blooming and good for cutting. Full sun.

Phlox paniculata, Garden Phlox. Perhaps the showiest summer perennial for the border or in masses against the shrubbery. Never fails to give masses of glorious color throughout the summer and fall. 2 to 3 feet; sun. Red, pink, lavender, and white.

Reinwardtia trigyna, Yellow Flax. Dwarf ever-green perennial with luscious green foliage and rich yellow trumpet-shaped flowers. Sun or shade.

Salvia leucantha, Mexican Sage. Low growing with narrow pointed green leaves and spikes of rosy-violet flowers. Summer and fall.

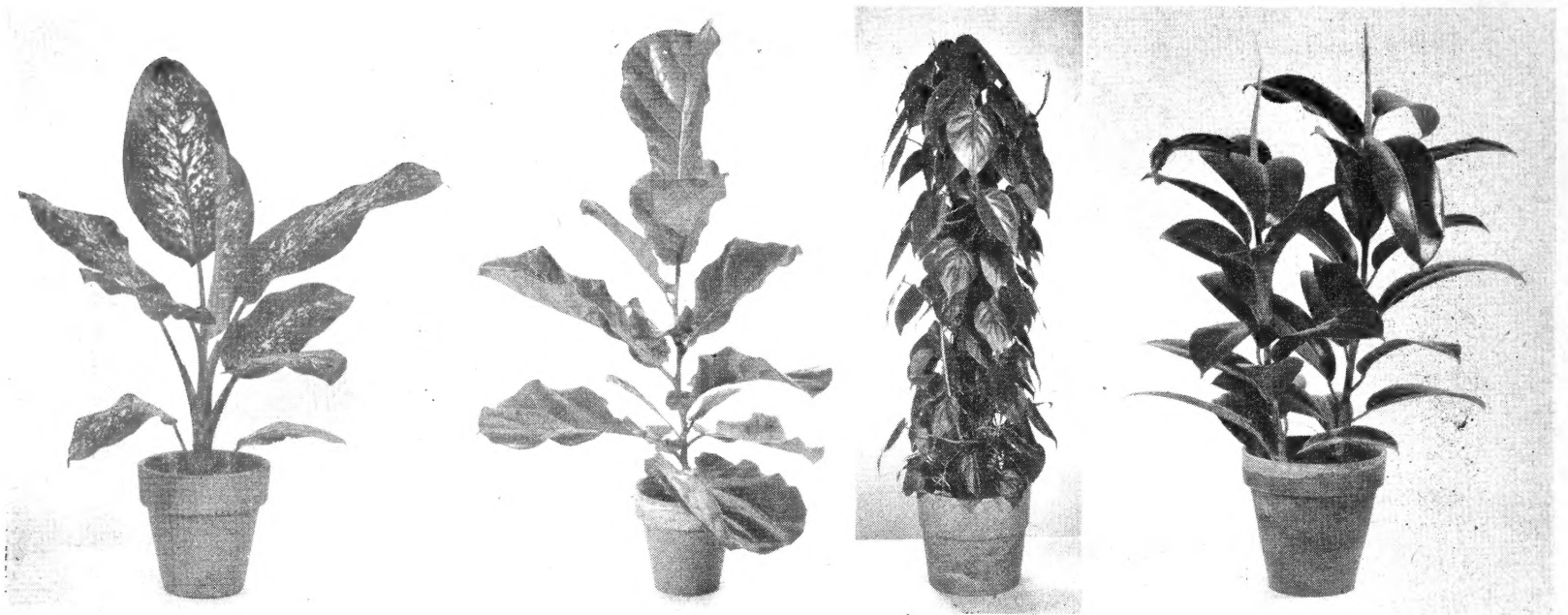
Saxifraga crassifolia. Large round leathery leaves making an excellent show all year in shaded places. Spikes of pink flowers in fall or winter, in broad rounded clusters. 75¢ each.

Shasta Daisy. Popular white flowered perennials. Single or double.

Shasta Daisy Esther Reed. Flowers peony-flowered with pompon center surrounded by longer ray flowers. Very lovely for cutting.

Shasta Daisy Marconi. Fully double flowers of immense size.

Statice perezii. Shrubby perennial with silvery leaves in a tuft at the base and large showy masses of purple-blue flowers. Sun.



Distinctive Foliage Plants Add Charm to Interiors. Left to right: *Dieffenbachia picta*, *Ficus pandurata* "Fiddle Fig", *Philodendron caudatum* "Totem Pole", and *Ficus elastica*, the Rubber Tree.

Foliage Plants

for Home, Store and Office

Modern architecture and modern living calls for the inclusion of plants as part of the interior decoration. Plants suitable for indoor culture in pots, tubs, etc., and hardy enough to stand the growing conditions indoors are listed below. These are all excellent foliage plants, many having brightly colored leaves.

Select a light airy place for the plants. Dark corners are generally unsuitable. Keep the pots watered so the soil is moist but not soggy wet. Generally a watering schedule will be developed as one notices the regularity of watering required. *Philodendrons* trained on "totem poles" of sphagnum moss should be watered both at the pot and the moss. Leaves collect dust which should be sponged gently off or sprayed once in a while so they can breathe. Use plain water only.

If you do not find the plants you need listed, please ask us about them, specimens of most kinds are available.

***Aralia elegantissima*.** Hardy house plant with tropical appearing foliage, narrow leaflets of deep green with red tints. \$1.50 up.

***Crotons*.** Outstanding for the brilliantly colored leaves, usually reds and yellow predominating. Various formations of leaves as narrow, broad and corkscrew give one a choice in selecting *Crotons*. Give more water than other plants. *Crotons* cannot stand to dry out. 50c up.

***Dieffenbachia*.** These are really stately plants for large pots or tubs. The foliage, tropical in appearance, is large and often attractively colored. Hardy for indoor culture.

***picta*.** Broad leaves of deep green with variable yellow spots. \$1.50 up.

Silver Leaf. Very attractive form. \$1.50 up.

Rudolph Roehrs. Very showy light green broad leaves with a margin of deep green. Slow growing and very choice. \$2.50 up.

***Dracaena*.** Growth habit resembles a pineapple or yucca in that the long gracefully arching or twisting leaves radiate from a common center. Growth is slow and plants are very hardy to indoor culture.

***massangeana*.** One of the best of all house plants. Leaves deep green with variable yellow stripes down the center rib. Specimen plants from \$2.50 up.

***fragrans*.** Similar to the above but the leaves are solid green. \$2.50 up.

***craigi*.** Excellent pot plant with rich deep green leaves. \$2.50 up.

***godseffiana*.** Leaves with irregular white spots. 85c up.

***sanderiana*.** Deep green leaves with broad white margins. 85c up.

Warnecki. Narrow rich green leaves with showy white stripes. A faster growing type than the others. Specimen plants \$4.00 up.

Ferns. Plants of this group have long enjoyed a prominent place in the home and office. Their hardiness to indoor conditions, the delicacy of their leaf form and their pleasing green together with the ease with which they can be grown are all in their favor. We offer various kinds: **Maiden-hair**, **Bird's Nest**, **Boston Fern**, and many small *Pteris* types. 50c each and up.

Ficus. Rubber Plants. Among the foliage plants the Rubber Tree is hard to beat. Slow growing, with neat, thick deep green polished leaves it is extremely hardy to indoor conditions.

***elastica*.** The regular type. Deep green leaves. \$1.80 and up.

***doescheri*.** Foliage variegated with yellow. A very showy form and unusual in appearance. \$2.00 up.

***pandurata*.** Most majestic of all the rubber plants with large fiddle-shaped deep green leaves. Slow growing. \$5.00 up.

***Hedera, Ivy*.** Special dwarf growing forms with interesting leaf forms are ideal for indoor culture. Among the *Ivies* we offer are

Hahn's Self Branching. Close growing, with small leaves and requiring no training, 30c up; and **Maple Queen** (Pat.). A novel new kind with attractive and different leaves. 60c and up.

***Kentia Palm*.** *Kentia forsteriana*. A much used dwarf palm for interior decorations in hotels, churches, etc. Slow growing with graceful deep green leaves. Specimens \$8.50 and up.



DRACAENA MASSANGEANA



HIBISCUS

This most popular flowering shrub is available in many colors both in single and double flowered forms. It has a very long season of bloom and if the flowers are picked they last a whole day without water. For a complete list see page 7.

FREMONTIA

One of the choicest of native Californian shrubs, Fremontia is used to dry conditions in full sun. When in bloom it makes a very showy specimen. See page 7.



CISTUS PURPUREUS

CISTUS PURPUREUS

For dry sunny places this is one of the best. Low and spreading with dense growth of dull green crinkled leaves and liberally covered with three-inch pink flowers. See page 6.



FREMONTIA