

Historic, Archive Document

Do not assume content reflects current scientific knowledge, policies, or practices.

EVERBLOOMING HYBRID TEA ROSES

All our Roses are grown in Northern Ohio. They are strong, two-year-old field-grown, budded stock, selected from No. 1 grade plants. Field-grown, budded Roses are stronger and better prepared for the garden than other Rose plants.

CULTURE: Give Roses the best location possible, with at least a half day's full sunlight. They want well drained soil, prefer a rich clay loam, but will grow in any soil if fertilized with either manure, bone meal, or Rose Food. Rose Food is especially prepared for Roses. These fertilizers should be applied at the time of planting and every two months during the growing season.

When the flower buds begin to show color, liquid manure or some quick-acting chemical fertilizer is given once a week. Liquid manure is made by soaking sheep or cattle manure in water.

MULCHING: During the summer months mulching is beneficial. It eliminates cultivation and retains moisture in the soil. We recommend ground corn cobs or peat moss for mulching Roses.

SPRAY or DUST with Triogen, Pomo-Green with Nicotine or PHYGON ROSE DUST to control Black Spot, Mildew and insects.

PRICES OF THE FOLLOWING ROSES \$1.25 EACH

Three of One Kind \$3.45
10 Roses, Our Selection, \$10.00

BETTY PRICHARD: Vigorous, healthy plants with semi-double flowers of good size and substance, brilliant orange-carmine inside, reverse light salmon.

CHAS. K. DOUGLAS: Large full, double flowers of flaming scarlet. The plants are strong, with healthy foliage.

CHRISTOPHER STONE: Big loose, scarlet-crimson flowers with delicious fragrance on a big bushy plant with grand foliage.

CONDESSA DE SASTAGO: A strong growing red and yellow rose. Free flowering and deliciously fragrant.

EDEL: Strong plants and immense white flowers of perfect form. It is very double and does best in a dry season.



ETOILE DE HOLLANDE: It's fairly full, brilliant red flowers open in all weathers and have wonderful fragrance. Vigorous habit and clean foliage.

GOLDEN RAPTURE: A splendid yellow rose of upright growth. The pure yellow buds are of ideal form.

McGREDDY'S YELLOW: Perfectly formed, bright buttercup-yellow flowers of large size. It is a strong erect grower with bronzy green foliage.

MME JULES BOUCHE: Long pointed, high centered white flower slightly tinted with pink. The plants are quite tall.

MRS. E. P. THOM: Pure yellow flowers of splendid form are freely produced on sturdy plants. Fragrant.

PINK DAWN: Long pointed buds and fully double, sweet-scented flowers of a lovely shade of pink running to an orange base, strong grower with excellent foliage.

PICTURE: A rose of exquisite form. Every bloom a "Picture". The color is rich pink with warm undertones of salmon. A splendid rose for cutting. Produces quantities of fragrant blooms.

RADIANCE: Globular, cupped flowers of two-toned pink, light silvery tone on the inside and deeper on the outside. Vigorous, free blooming plants.

RED RADIANCE: A sport of Radiance and exactly like its parent except in color, which is a cerise red. Very popular and dependable. Easily grown.

SNOWBIRD: The long pointed buds open into full double, high centered, very fragrant snow-white blooms. Leathery foliage. Compact bushy growth, profuse bloom.

SISTER THERESE: A vigorous grower, producing long-pointed, chrome-yellow buds marked with carmine, opening to daffodil-yellow flowers.

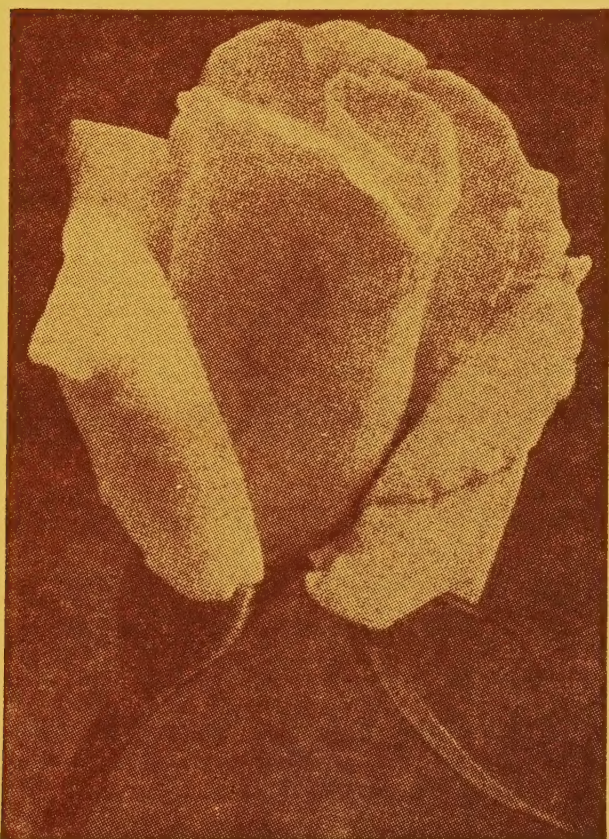
NOVELTY ROSES OFFERED ON
OPPOSITE SIDE OF CARD

McCULLOUGH'S SEEDS

230 East Fourth Street

Parkway 2600

Cincinnati 1, Ohio



NEW HARDY EVERBLOOMING HYBRID TEA ROSES

- CRIMSON GLORY** (PATENT No. 105)—Deep, velvety crimson. Rich in color, perfect in form, and delightfully fragrant. Thrifty grower of spreading habit and a free bloomer. Rated the best red. \$1.50 each, 3 for \$4.25
- GOOD NEWS** (PATENT No. 426)—Peach-pink changing to silvery pink in the open bloom. Full, perfectly formed, tea-scented flowers. Vigorous, bushy and a constant bloomer.....\$1.50 each, 3 for \$4.25
- HEART'S DESIRE** (AARS 1942) (PATENT No. 501)—A pure luminous red color, very sweet fragrance, long stems for cutting, vigorous growth and good foliage.....\$1.50 each, 3 for \$4.25
- ECLIPSE** (PATENT No. 172)—Long, stream-lined bud of rich golden yellow. Vigorous, upright grower producing mildly fragrant flowers on long stems. Unusual and distinctive.....\$1.40 each, 3 for \$3.95
- MME COCHET-COCHET** (PATENT No. 129)—Coppery pink. Beautiful form exquisite coloring and sweetly fragrant, splendid grower and free flowering.....\$1.50 each, 3 for \$4.25
- PEACE** (AARS 1946) (PATENT No. 591)—Sensational new Rose. Buds open yellow, with edges picoted cerise; glorious 5-inch blooms of firm alabaster-white, each petal edged with pink that deepens as the flower slowly opens. Very double, showing a center heart of tawny yellow. The individual petals are large and of great substance. The large exhibition blooms are borne singly on strong straight stems. The plant is supremely strong and vigorous with superb foliage.....\$2.00 each, 3 for \$5.50
- STERLING** (PATENT No. 21)—Beautiful pink. The big long-pointed bud of brilliant deep pink, with yellow at base, opens into a large bloom, lasting when cut; fragrant.....\$1.50 each, 3 for \$4.25
- TEXAS CENTENNIAL** (PATENT No. 162)—A sport of the rose President Herbert Hoover with all of the splendid plant qualities of that rose and quantities of shapely flowers of bright red turning to cerise-red center.....\$1.40 each, 3 for \$3.95

FLORIBUNDAS—Large Flowering BEDDING ROSES

- BETTY PRIOR** (PATENT No. 340)—Bright red buds open to single flowers of shell-pink, giving glorious two-tone effect. Prolific bloomer.....\$1.10 each, 3 for \$3.00
- FLORADORA** (AARS 1945)—Dazzling bright cinnabar color with shades of scarlet. A spectacular show especially in mass planting. Buds are exquisitely formed, produced in profusion on a neat symmetrical bush. Foliage glossy olive-green.....\$1.25 each, 3 for \$3.45

OUR 64-PAGE CATALOGUE OFFERS FERTILIZERS TO FEED YOUR ROSES, INSECTICIDES AND FUNGICIDES TO PROTECT THEM FROM DISEASES AND INSECTS. PEAT MOSS FOR MULCHING.



McCULLOUGH'S SEEDS

230 East Fourth Street
P. O. Box 146
Cincinnati 1, Ohio

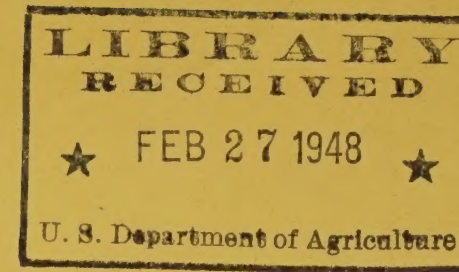
POSTMASTER: If undeliverable FOR ANY REASON, notify sender stating reason, on FORM 3547, postage for which is guaranteed.

SECTION 562, P. L. & R.

United States Postage

PAID

CINCINNATI, OHIO
Permit No. 444



Library

U. S. Dept. of Agriculture
Washington 25, D. C.