

Historic, Archive Document

Do not assume content reflects current scientific knowledge, policies, or practices.



62,61

← Complete Spike
Had 18 Buds

LIBRARY
RECEIVED
★ JAN 30 1948 ★
U. S. Department of Agriculture

Gladiolus

LILIES
DAHLIAS
GARDEN FRUITS

1948 Edition

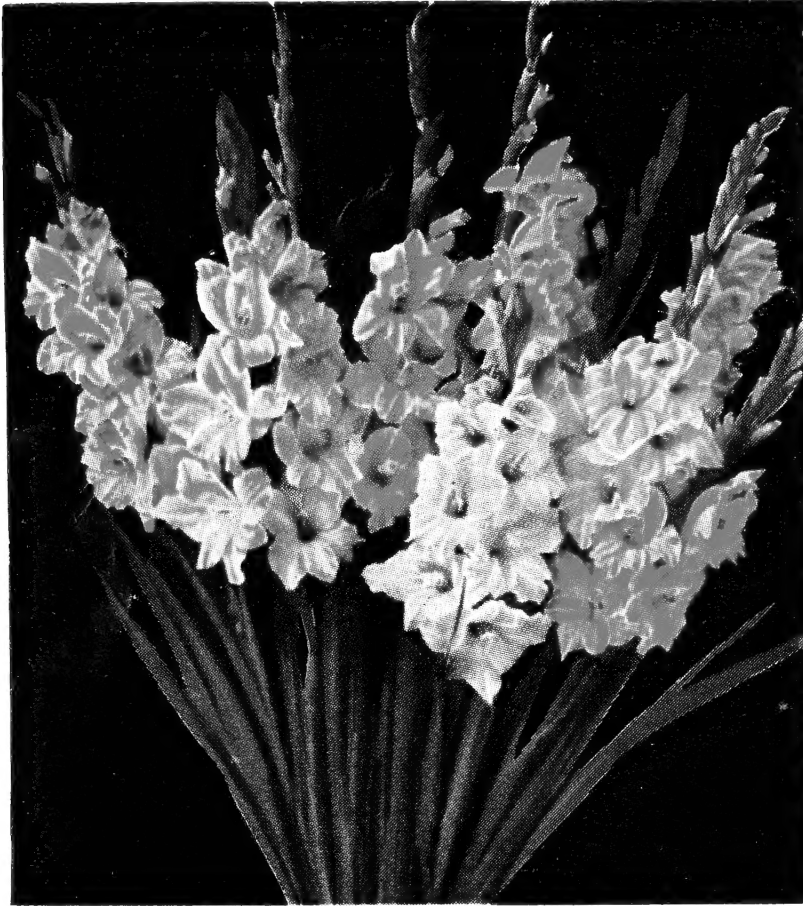
*Elizabeth, the Queen
Gladiolus*
A Stately and Constant
Performer—That
Supersedes "Minuet"



A Genuine Kodachrome from Life

Alfred L. Moses - Lima, N. Y.

Rainbow Gladiolus Collection



25 Special Labeled Varieties: Our selection but in every color of the rainbow and including all top notch new varieties. An amazing collection that you will marvel at. Big flowering size bulbs, 1¼ inches up.

3 BULBS EACH
25 Varieties for
\$4.85

12 BULBS EACH
25 Varieties for
\$16.50
No Discount

FAMOUS GLADIOLUS

Big Jumbo 2-Inch Bulbs

Big Jumbo bulbs (2 inches up). Many will produce three spikes or more of immense bloom in every color from purest white to blackest red. Some varieties in this collection would cost, if bought separately, up to 30c each. You will receive at least 15 different modern varieties. Not labeled.

50 Jumbo Bulbs
for only . . . **\$4.00**

100 Jumbo Bulbs
for only . . . **7.50**

Prepaid — No Discount

DELUXE ASSORTMENT

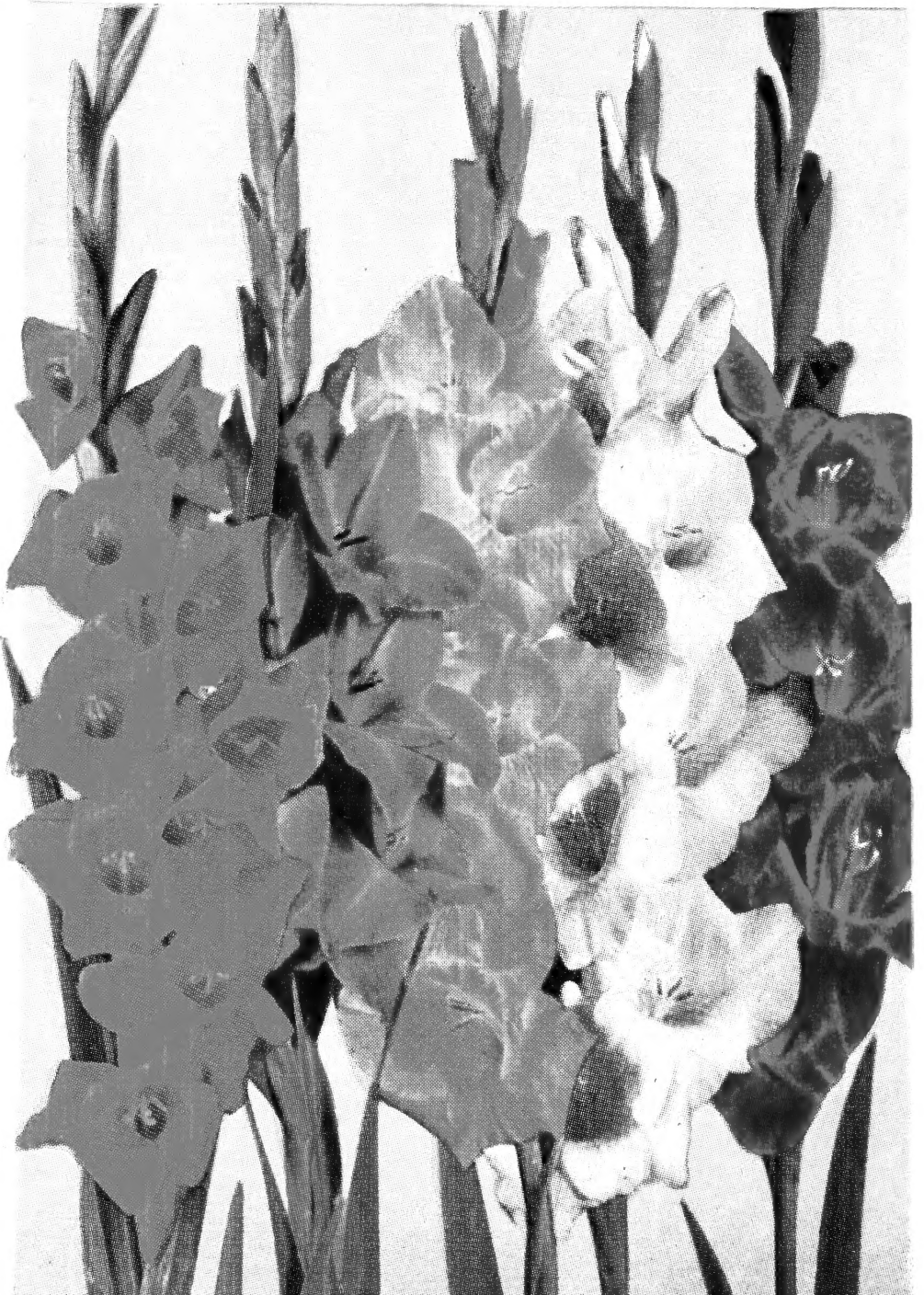
A hand-made mixture. Not less than 30 different varieties, such as Picardy, Gold Dust, Snow Princess, Rocket, and Blue Beauty, go into this wonderful collection.

Top Size Bulbs,
100 for **\$4.95**

Flowering Size
Bulbs (1 inch
diameter).

100 for **3.45**

No Discount



50¢ Glad Specials

These specials will be made up of different size bulbs, but will include at least one large size. You will find that your season of bloom will be greatly extended as small and medium bulbs will take a little longer to bloom. Each 50c item is one variety and will not be an assortment. You may receive more bulbs of one variety than some others. This depends on the value of the variety, but you will receive a real good value.

Any 5 items for \$2.25; 10 items for \$4.25; 15 items for \$6.25

**Abu Hassan
Algonquin
Badger Beauty
Big Top
Black Opal
Blue Beauty
Chamouny
Corona
Cover Girl
Dr. Whiteley**

**Ethe! Cave-Cole
Elizabeth the Queen
Fair Angel
Greta Garbo
H. B. Pitt
Heavenly White
High Finance
Indian Princess
Intermezzo
King Lear**

**King William
Red Charm
Lady Jane
Leading Lady
Legend
Margaret Beaton
Mohawk
Pink Radiance
Spotlight
Stoplight**

Dahlia Collections

ONE TUBER EACH of
10 varieties of the Pompon type, in all colors, for
\$2.65

ONE TUBER EACH of
5 varieties of the Cactus type, in all colors, for
\$3.00

ONE TUBER EACH of
5 varieties of Decorative type or Giant
Dahlias, for
\$3.50

Send for our descriptive list of 50 Dahlia varieties.

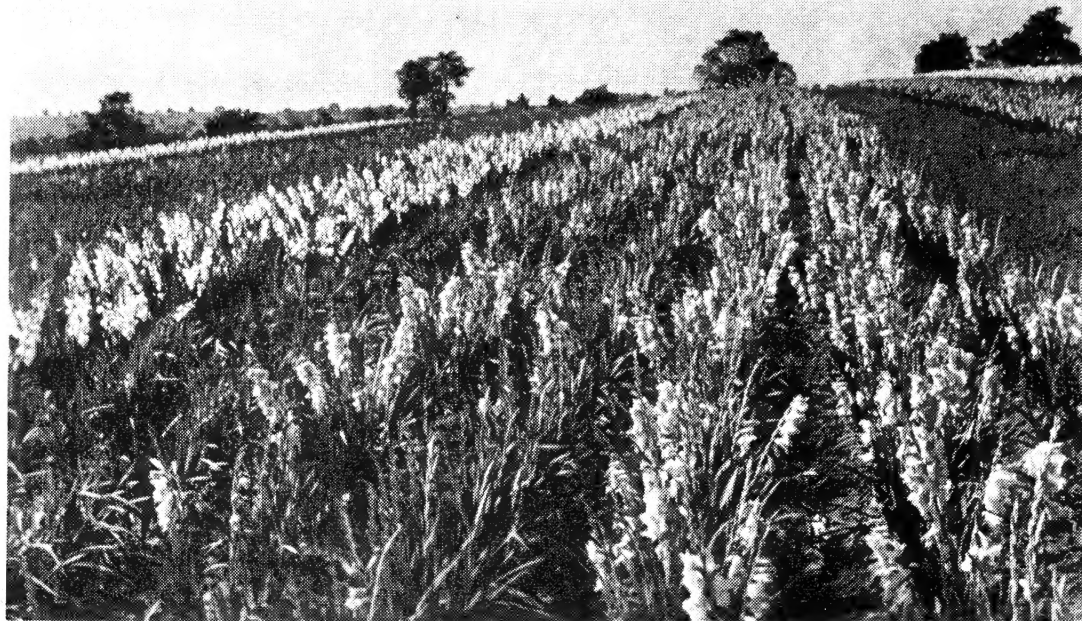
No discounts on any collections.

We can supply a variety of materials for dipping, spraying or dusting. Include them in your bulb or nursery order. See pages 36, 37.



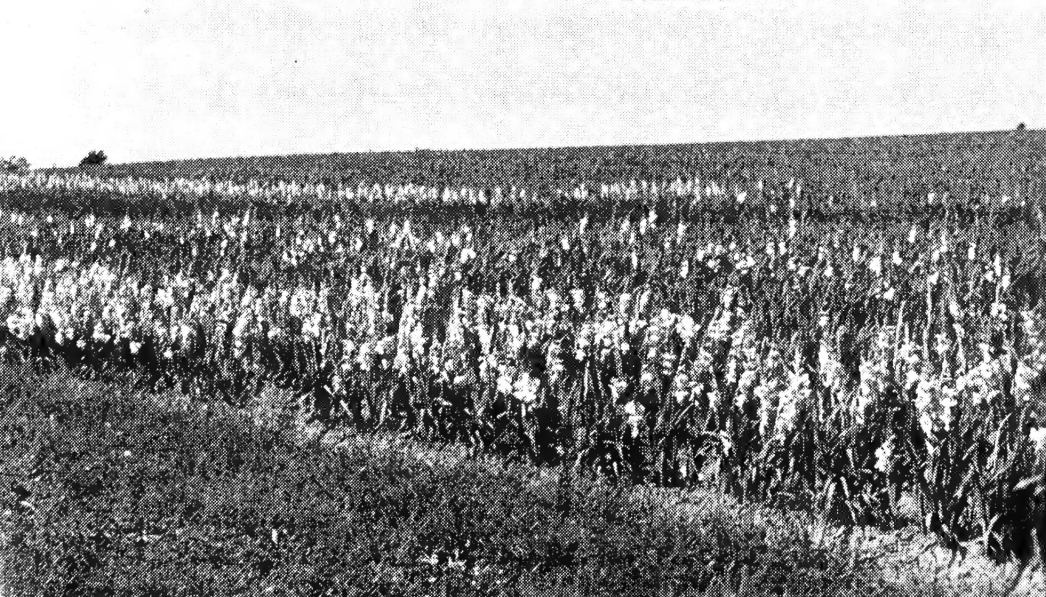
**Golden
Beauty
Dahlia**

Glads by the Millions



**A Sectional Planting
of the Ever Popular
Pink Radiance
Elizabeth the Queen
Red Charm**

**Over 600 rows,
each 1200 feet long
in this field.**



**A Few Snaps
of our 1947
Gladiolus
Plantings**

the

"Glad Growers"

I have introduced myself and have been introduced many, many times and been greeted with: "Oh! I thought you were an older man." Several years ago, I introduced myself to a Massachusetts grower. He shook hands and exclaimed: "Old Man Moses."

Nope, folks, you're wrong, I'm only 39 years old, lived in Lima all my life and am of the sixth generation in this town. My forefathers landed at Plymouth and eventually settled in Connecticut. About 1791 part of them moved to Western New York.

I have raised, sold cut flowers and bulbs since 1921. Still raise a few—about fifty acres. I enjoy watching and selecting color and plant sports of which I have some very fine ones on the way.

In addition to producing fine Glads, we own and operate a Nursery and complete Landscape Service. We develop plans, do all kinds of architectural stone work, build sidewalks, drives, specialize in fine lawns as well as the actual planting. Enough for any man's spare time.

Mrs. Moses

Gwendolyn, Age 9

Roger, Age 6

Roy, Age 2

and

"Yours Truly"





Snow Flurry

3 Magnificent New Gladiolus

1948 Introductions—No Discount

SNOW FLURRY (Picardy Sport.) (Clark-Moses.)
Clean, pure white, with very little cream; nicely ruffled, buds ivory, 18-20 buds. Blooms flat against the stem. Will not compete with Silver Wings or Leading Lady, as the blooms are slightly smaller than either, bringing it definitely in the 400 class rather than 500. It is easily handled, as it has excellent attachment with wide open rather than hooded florets. Commercially it should be of great value. It has excellent growth habits, growing clean, with deep green foliage. It is a Picardy sport having changed size and habit of growth as well as color although a pink (Picardy) strip appears in the petal now and then, the same as other Picardy sports. **Large bulbs, \$1.00 each; medium, 75c each; small, 50c each; bulblets, 10 for \$1.00; 100 for \$7.00.**

GROWERS UNITS

No. 1—10 large, 10 medium, 10 small, 200 bulblets—for \$30.00
No. 2—25 large, 25 medium, 25 small, 1 pint bulblets—for 80.00
No. 3—25 large, 50 medium, 100 small, 1 quart bulblets—for 165.00

COTILLION (Sdlg. 40642.) (Beacon x J. S. Bach.) (Butt-Moses.) Deep pink with a creamy yellow throat. Not an unusual color, but a very useful one, especially for the florist. What makes this variety most valuable is that it will open very easily 10 perfectly placed florets at once, often more. Tall grower, 55 inches, with 25-26 inch flower heads, and 18-20 buds. Slightly frilled florets about 5½ inches across. A few spikes will come crooked like Beacon, but one spike is a real bouquet and will be difficult to top this for best spike in the show. Mid-season. **Bulbs, any size, \$3.00 each. No bulblets.**

A NEW MINIATURE

We are proud to present a distinctly new Glad in Twinkles. This is a small-flowered miniature, with heavily ruffled florets of attractive form and color.

It is not an overstatement to say that a basket of this miniature at the show in Binghamton, New York, was the center of attraction and literally "stole the show." Everyone who saw it expressed a desire to purchase bulbs and on every side you could hear people saying that for the first time they had found a small-flowering variety which they really like and which was beautiful.

First orders will receive the largest bulbs, but if we have to send smaller sizes, please remember that they bloom early, and you will get good bloom. It is a healthy grower and increases well.

TWINKLES (Sdlg. 40371.) (Harlekin x Crinklette.) (Butt-Moses.) Dark orange, pink on the outer petals with a deep yellow center on which are reddish lines. A very attractive color. Early, deeply ruffled and of heavy substance. Averages 36-38 inches in height with 16-18 inch flower heads. 17-18 buds of which 5-7 florets open at once, usually but not always well arranged. A fine garden variety as it is a sturdy grower and large bulbs give many spikes. This variety has created a sensation whenever it has been shown, and visitors to our gardens pick it out as their favorite. **Bulbs, any size, \$5.00 each. No bulblets.**



Best Commercial Gladiolus

Gladiolus Varieties Suitable for Cut Flower Production are the Money Makers

Too many novelties are making their appearance each year. We figure there are about 15 per cent of the existing varieties that pass completely out of the picture each year now, while that many more make their appearance. This is altogether too many, but who is going to say that this or that variety is another Picardy, a Minuet, or a Valeria. In reality, a variety has to be grown in immense quantities before it can be considered a world beater.

PRACTICAL, APPROVED VARIETIES

Too many fine points are being overlooked by hybridizers, points that are invariably curtains for many varieties. Each year, we have dozens of new seedlings and this year a hundred new varieties on trial. We can't help but notice that some hybridizers have been especially careful in selecting vigorous parents, others specialize in rich colors. Both these points are very important but not enough emphasis has been placed on disease resistance, as this is the one thing that Mr. Public doesn't see until after he has been bitten. A fault that commonly prevails in 50 per cent or more of the new introductions and the very first thing I look for, is loose attachment. This simply means that a floret is not strong enough to stick on the stem in a wind, or brushing against it in the row, and is extremely mean to handle. Remember, a commercial man has to work fast. He can't handle each spike as a baby. He has to slap a dozen together, pile from 8 to 20 dozens on his arm in carrying them out of the rows, pack the whole or part in pails, which means that they are tight. Half open florets are nearly as bad. Handle a few thousand dozen open spikes instead of half a dozen with kid gloves on, and you will understand this problem as I do.

It is exceptionally bad on my disposition to arrive at the wholesale florist and find certain varieties with crushed petals or completely broken florets, twisted buds, stems waving around like a 100-foot flag pole in a gale, after a 70-mile trip to market. I have seen other varieties piled 15 to 18 bunches deep without breaking a petal. This is the type that I like. The old Olive Goodrich is a variety that has long passed on, but I'll never forget it for its wonderful handling qualities. A new one just as good is none other than Elizabeth the Queen as an example.

In summing up, I suggest you dig out our catalogs for the past two years as a means of information on commercial varieties and the changes made in the past three years. It may be of help in following the trend.

FIRST EARLIES

We are asked dozens of times each year what are the EARLY varieties, or to give a list of the ten best all around commercials. The following lists may help, and while the price range varies, and taking into consideration that the public likes new shades and colors, it will be up to you from there on.

Anna Mae, White Butterfly, Blue Beauty, Carillon, Early Gold, Gold Dust, Rosa Van Lima, Heavenly White, Midnight Red, Pink Radiance (from Jumbo bulbs), Valeria, Pink Charm, Red Penny, White Gold, Ethel Cave-Cole, General MacArthur, Abigail, Huntress, Lantana.

ALL AROUND BEST COMMERCIALS

WHITE: Anna Mae, Snow Princess, Leading Lady, Surfside.

WHITE WITH MARKING: Margaret Beaton (for shipping), Silentium (home market).

CREAM: Lady Jane, Intermezzo.

CREAM and PINK: Corona.

LIGHT PINK: Magnolia, Ethel Cave-Cole, Dolores.

SALMON-PINK: Picardy, Junior Miss, King William, Nadia.

Moses' Best Commercial

PINK and ROSE-PINK: Pink Radiance, Lipstick, Pink Paragon, Carillon, Big Top, Rosa Van Lima, Jeanie.

ROSE: Chamouny, Rose O'Day, Rose Glow, Miss Wisconsin.

LAVENDER: Elizabeth the Queen, Lavender Prince, Peggy, Badger Beauty, Lavender and Gold, Lavender Queen.

BLUE: High Life, Blue Beauty, Abu Hassan.

PURPLE: Purple Supreme, Lancaster, Mrs. Marks Memory.

YELLOW: Spotlight, Mother Kadel.

ORANGE: Trocadero, Orange Gold, October Sunshine, Gratitude, Daisy Mae, Lantana, Flicker.

SCARLET: Valeria, Ohio Non Pariel.

MEDIUM RED: Red Charm, Stoplight, Rocket, Birch Red.

DARK RED: Midnight Red, Mohawk.

A LOOK IN THE SHOW GARDEN

Remember, remarks in these paragraphs are the candid opinion of the writer. We do not accept bouquets nor do we hand out any. There are four trial ground systems in North America but they are not receiving the full co-operation of all originators. Information contained herein should come from such systems, but instead, every wide awake, up-to-date commercial grower is conducting his own trials. In my opinion, every hybridizer should at the present time be growing one hundred or more of the newest varieties each year, in order to check with his own seedlings. That costs money, it costs us money, too, and we are not doing any hybridizing either.

I am still keeping well in mind the commercial qualities of the varieties to follow, and all have outstanding points. However, some may be tossed out another year, and some may prove better garden and show flowers than commercials. I was not far off last year in picking the real good varieties for this list as most of them are mentioned in these paragraphs again this year. Those eliminated may make their appearance next season. Those remaining on this list for two years running are sure of sticking for a while on our growing list.

Leading Lady Alpine Snow Flurry

LEADING LADY is another Picardy. Here and here to stay. I'm still in love with little ALPINE for charm and beauty. Had nothing real new in the white class that was outstanding, except SNOW FLURRY which, of course, we think is "tops."

Connecticut Yankee

There were so many varieties in the pink class that it is difficult to place them in order. CONNECTICUT YANKEE was very outstanding as usual, and destined to be one of our best show flowers. LIPSTICK is a class contender with a bright color and has a chance of becoming the best of the two commercially. Only a few SUMMER GAL have bloomed at this writing, and are a little disappointing as was BENGASI; both come with short flower heads. DEBORAH SAMPSON is a very pleasant surprise. Looks bigger and better than E. C. Cole. Very strong, heavy grower. MARION PEARL seems to come consistently well but will remain high as it is a slow propagator. TRUE LOVE, a very clean, lovely color, and worthy of a place in your garden.

Lipstick

Summer Gal Bengasi

Deborah Sampson Marion Pearl

True Love

Gladiolus

Phantom Beauty

PHANTOM BEAUTY is very outstanding as a spiker and rugged grower. Soft, blushing pink that some feel is too light, but I like pastels. Can't say I'm fond of FABULOUS, but it makes real spikes. I prefer CAPSICUM with a distinct blotch and peppering in the throat. Growing MYSTERY for the first time I feel I have missed something in the past.

Fabulous

Capsicum

Mystery

Topflite

Wedgewood

Lavender Prince

Peggy

Myrna Fay

Huntress

Birch Red

Revlon

Royal Windsor

J. C. Konynenburg

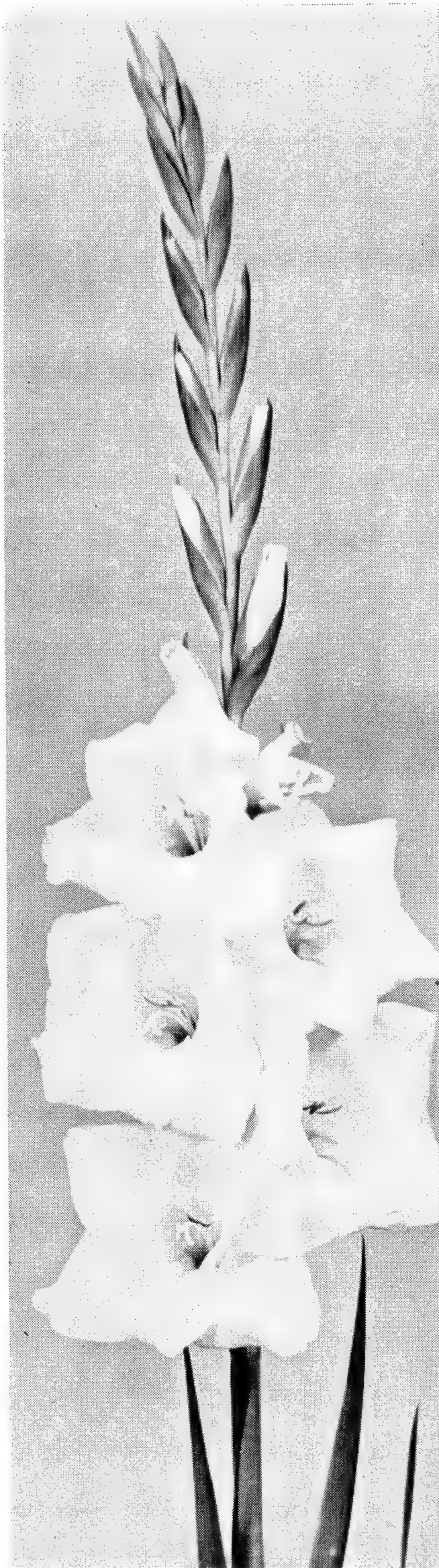
Dieppe

Journey's End

I'm convinced that the lavender class has reached at least one phase of perfection. With Elizabeth the Queen taking the lead as usual, it will be hard to beat TOPFLITE in a different and unusual shade of rose-lavender. I can't help but place emphasis on this variety for real beauty. Another is little WEDGEWOOD in the 300 class. A heavily ruffled, sparkling lavender blending to a clean light yellow throat. You will simply fall in love with it. LAVENDER PRINCE will take its place as a mauve-lavender commercial. PEGGY is a clean, pure lavender self, and a mighty fine addition to this class. MYRNA FAY is not as clean as I had hoped, but a fine grower. HUNTRESS was disappointing this year.

BIRCH RED was again outstanding and a favorite in the medium dark red. Had some most wonderful spikes of REVLON while ROYAL WINDSOR in the scarlet class had charm, and should make a fine show flower. I really like this one.

J. C. KONYNENBURG is another nice scarlet. Very tall and stately. DIEPPE and JOURNEY'S END go hand in hand for dazzling color. Their colors are hard to equal but both have minor faults.



Wax Model

Best Commercial Gladiolus

Hiawatha

Only one spike of HIAWATHA has bloomed up to now, but it has a long, heavy flower head, with a color similar to old Red Phipps. ATOM is the most outstanding small flower variety we have tried this season.

Atom

Burma

Rose Glow

Venida

BURMA will still remain the principal deep rose show flower but it is not always good for us and is difficult to handle. ROSE GLOW has a better spike, taller and will be very popular. VENIDA is a very pleasing shade of light rose with a cream throat. A color I have been searching for. DIADEM, a very similar color was nice and fragrant, too. LANCASTER was new to us this year and one of the best we grew.

Diadem

Lancaster

Porcelain Blue

Blue Ice

High Life

Nothing new in blues that I haven't mentioned in former catalogs. PORCELAIN BLUE, BLUE ICE and HIGH LIFE have been the best I ever grew. Porcelain Blue, standing 4 feet or better, with that wide open, round floret, is exquisite. Nothing will surpass Blue Ice for color and real beauty, although High Life is real nice in a smaller size group. A little deeper color, but a consistent grower and spiker.

Trocadero

Daisy Mae

Orange Gold

October Sunshine

Flicker

We have had some exceptional orange varieties. TROCADERO simply dazzles everyone who sees it. One of those robust, tall growers that stands right up level with your eyes. DAISY MAE takes no back seat in this respect, as it was the tallest of anything in the field. Even Big Top held its head in shame. ORANGE GOLD is nearest to true orange and a definite color break. Not too long a flower head, but a plant that reaches for the sky. OCTOBER SUNSHINE is almost in a different color class, being nearer to Lantana in color, but a smooth, clean blending of orange and yellow. I have seen nothing better than FLICKER in the 200 class. Its round, flat, wide open flower is a "must have."

Sparks

Sunspot

Donna

I only had a few bulbs of SPARKS, which is a very interesting blotched buff. SUNSPOT took the shows by storm, and really makes beautiful spikes, while DONNA is the dream Glad in the buff class.

Golden Arrow

There have been many new yellows make their appearance, but I have seen very few that are clean. GOLDEN ARROW is the exception, but haven't bloomed it from large bulbs.

Green Mantel

GREEN MANTEL was an interesting novelty. It makes beautiful spikes with nicely ruffled florets of a distinct greenish yellow color. This was exceptionally outstanding at the Canadian Show. Another nice thing was ORION from Chase in Florida. Light yellow self, very large, wide open florets with recurved petals.

Orion

Mrs. C. W. Gannett

Pastel

Margaret Wood

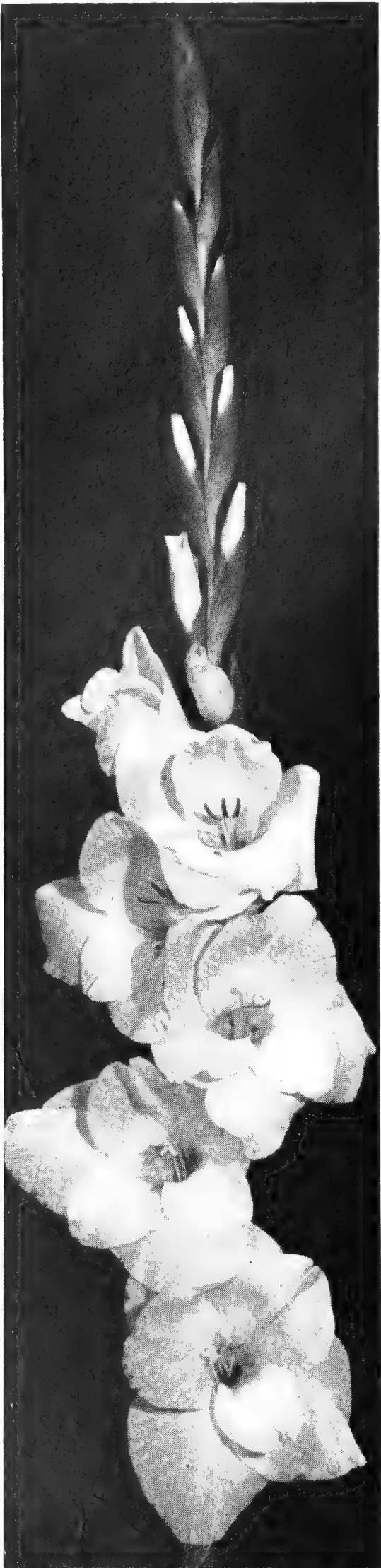
MRS. C. W. GANNETT was very nice this season with some spikes as high as my head. PASTEL (Both) is a favorite smoky with its soft pastel shading, and MARGARET WOOD was promising as a new shade of purple.

The varieties mentioned in this article are the high lights of this season's growing, but many others showed up well and may be mentioned later.

GLADIOLUS — Best for the Last 10 Years

Variety and Description	Per	Large	Medium	Small	Bulblets
ABIGAIL (Myers) 366-85 Early. Resembles Minuet in color. Opens 8 nice blooms on very tall plant.	1	\$3.00	\$2.00	\$1.00	3—\$1.00 10— 3.00
ABU HASSAN (Holland-47) 378-77 Dark violet-blue about the color of old Pelegrina. Large flowers; straight, strong stems.	1 10	.25 2.00	2— .25 1.00	3— .25 .50	15— .25 100— 2.00
ALGONQUIN (Palmer-39) 536-80 Brilliant glowing scarlet with large, wide open blooms. One of the best scarlets.	2 10	.25 1.00	4— .25 .50	8— .25 .30	25— .20 100— .50
ALPINE (Palmer-44) 300-75 Very fine medium sized, ruffled, creamy white. More class and refinement than most whites.	1 10	.50 4.00	.35 2.80	.25 2.00	5— .25 100— 4.00
ANNAMAE (Pommert-40) 400-70 Very early pure white. A good commercial and a heavy producer of bulblets which grow readily.	2 10	.25 1.00	3— .25 .60	4— .25 .40	25— .20 100— .50
BADGER BEAUTY (Krueger-41) 466-85 Very fine light lavender with creamy throat. Florets are well placed on a tall, wiry stem. Blooms in midseason. Medium producer of bulblets which grow well.	1 10	.20 1.60	2— .25 1.00	4— .25 .50	20— .25 100— .60
BEACON (Palmer-35) 436-90 Clear bright fiery scarlet with large cream blotch. Distinctive.	3 10	.25 .75	5— .25 .45	50— .25 100— .40
BENGASI (Cave-43) 530-85 Beautiful La-France-pink, deepening toward outer edges; white throat, heavily ruffled. Flower head up to 30 inches. Opens eight to ten, 6-6½ inch florets. Excellent parent for hybridizing.	1 10	3.00	2.00 16.00	1.00	1— .25 10— 2.00
BEAUTY'S BLUSH (Fischer-46) 540- Melody in color, rhythm and style. Cool, soft blushing pink with lots of sparkle. Stands heat well. 7-8 flat, 5-inch, saucer-like florets open on a tall 18-20 bud spike. Healthy, disease-resistant.	1	1.50	1.25	1.00	3— .25 12— 1.00
BIG TOP (Rich-42) 541-75 Really immense in size. Light pink with small carmine feather. Opens 7 on a 20-bud spike.	1 10	.20 1.60	2— .30 1.20	2— .20 .80	15— .25 100— 1.50
BIRCH RED (Rich-45) 552-90 Smooth, pure medium red with no marking. Excellent texture, stands heat well. Opens from tight bud. Opens 7 on a 19-bud flower head.	1	3.00	2.00	1.00	1— .25 10— 2.00
BLACK CHERRY (Rich-48) 554- Black-red with 6-inch blooms. 19-20 buds. Up to 9 open. No burning; tall, with 24-inch flower head. This is very promising in its class.	1	4.00	Any size No Discount		1— .50 10— 4.00

GLADIOLUS *Best Varieties*



Heavenly White



Caroline W. Gannett

for the Last 10 Years

Variety and Description	Per	Large	Medium	Small	Bulblets
BLACK DIAMOND (Gelser-42) 354-92 Intensely ruffled, black glistening red. Very dark.	1 10	\$0.20 1.60	2—\$0.30 1.20	2—\$0.20 .80	20—\$.25 100—1.00
BLACK OPAL (Errey-36) 354-92 Sensational, very dark red. 8-10 open on a long flower head. Fine show flower.	2 10	.25 .90	3— .20 .60	4— .20 .40	25— .20 100— .50
BLUE ADMIRAL (Christ-33) 478-85 Tall, dark blue-violet. Probably the best of the darker blues.	2 10	.20 .80	3— .25 .60	4— .20 .40 100— .50
BLUE BEAUTY (Pfitzer-36) 476-75 One of the heaviest and largest of the medium blues. Highly recommended.	2 10	.20 .80	3— .25 .60 100— .50
BLUE ICE (Butt-45) 576-85 Light, medium, Oriental blue with a slightly deeper throat edged yellow. The nearest approach to true blue we have seen. 6-7 well placed, very large florets open on an 18-20 bud spike. Tall, dark green, thrifty plants that make nice bulbs and plenty of increase.	1 10	7.50 50.00	4.50 30.00	3.00 20.00	1— .50 10— 4.00
BURMA (Palmer-43) 462-85 Very large, deep rose, shading to lighter throat. Ruffled. Opens up to ten. Outstanding.	1 10	.25 2.00	2— .25 1.00	4— .25 .50	15— .20 100— .70
CAPSICUM (LaSalle-45) 432-85 Deep pink with pink peppering on a cream blotch. Opens six blooms, 4½ inches in diameter. Tall spike. Good cut flower.	1 10	.50 4.00	.35 2.80	.20 1.60	5— .25 10— .50
CARILLON (Palmer-38) 442-90 Ruffled light rose, large white throat. Good commercial.	3 10	.25 .80	5— .25 .45	50— .25 100— .40
CAROLINE W. GANNETT (Chamberlain-39) 580-108 Introduced at \$100 in 1939. Massive medium rose with cherry blotch. Outer petals flaked lavender. Has been grown to 8½ inches in diameter.	1 10	.50 4.00	.35 2.80	.25 2.00	8— .25 100— 2.50
CHAMOUNY (Baerman-38) 460-85 Tall, dark rose bordered with silver. Opens 8-10 medium sized florets. Color exceptionally and strikingly beautiful.	1 10	.25 2.00	2— .25 1.00	4— .25 .50	15— .20 100— .70
COLONIAL MAID (Zimmer-38) 366-85 Very tall, strong light lavender. Opens 10-11 medium sized florets. When well grown a winner in any show.	3 10	.25 .70	4— .20 .4530 100— .35
CONNECTICUT YANKEE (Schenetsky-44) 441-90 One of the most beautiful Glads I have seen. Light pink with red throat blotch that blends well. Many open and perfect placement. A "must have."	1 10	2.00 16.00	1.50 12.00	1.00 8.00	1— .25 10— 2.00 100—16.00

GLADIOLUS — Best

Variety and Description	Per	Large	Medium	Small	Bulblets
CORONA (Palmer-40) 560-80 Well known pink with rose picotee edge. Distinctive and beautiful.	2 10	\$0.25 1.00	4—\$0.25 .5030 100— .25
COVENTRY (Glass-47) 511-80 New rich yellow with contrasting feather of carmine. 6-8 open and nicely waved. 5½ inches in diameter; individual florets very beautiful. A fast propagator.	1	2.50 No Discount	1.50	1.00	1— .25 10— 2.00
COVER GIRL (LaSalle-45) 442-90 Medium pink, opens 10-12 blooms on a 30-inch flower head. Very tall, heavy foliage. Wins many ribbons.	1 10	.50 4.00	.35 2.80	.25 2.00	5— .25 100— 2.50
CRINKLE CREAM (Ellis-40) 410-86 Very large light yellow; ruffled. Opens four on an average spike.	1 10	.25 2.00	2— .30 1.20	2— .20 .80	15— .25 100— 1.25
DAISY MAE (Lins-45) 420-90 An outstanding commercial. An orange-pink with a rose-red throat blend. Vigorous, tall and stretchy.	1 10	1.00 8.00	.75 6.00	.50 4.00	2— .25 10— 1.00
DEBORAH SAMPSON (Scheer-47) 440-85 Pastel blend of soft pink and creamy buff. Tall, strong grower. 7-10 large, well placed and well attached blooms. Excellent show flower and good commercial.	1	2.50 No Discount	1.50	1.00	1— .25 10— 2.00
DIEPPE (Hassell-45) 432-85 Pfitzer's Triumph type. Opens 8 salmon-scarlet florets nearly 5½ inches wide. Increases easily and has commercial possibilities.	1 10	.75 6.00	.50 4.00	.35 2.00	12— .50 100— 3.00
DONNA (Pruitt-40) 416-95 Lovely ruffled golden buff. Belongs in every ruffled collection.	1 10	.20 1.60	2— .25 1.00	3— .25 .50	10— .25 100— .70
DR. WHITELEY (Riley-43) 516-85 Large, yellowish apricot or buff. Outstanding in its class.	1 10	.25 2.00	2— .25 1.00	4— .25 .50	15— .20 100— .70
EARLY GOLD (Butt-45) 410-60 The earliest of all varieties in our fields. Very deep yellow on long, slender stems. Opens 6-7 nicely formed florets of medium size. Valuable as an early commercial.	1 10	.20 1.60	2— .25 1.00	3— .25 .80	10— .25 100— 2.00
ELIZABETH THE QUEEN (White-41) 566-86 In our opinion the best and most beautiful lavender. Not exceptionally tall but fancy even when short. Grows 48 inches tall consistently for us. Opens 7-8 beautifully ruffled, somewhat needle-pointed florets on an 18-bud spike.	1 10	.20 1.60	2— .25 1.00	4— .25 .50	20— .20 100— .60

Varieties for the Last 10 Years

Variety and Description	Per	Large	Medium	Small	Bulblets
ETHEL CAVE-COLE (Cave-41) 440-80 Light pink that sometimes flakes. Massive spikes with 8 open and most all other buds showing color. Good commercial.	3 10	\$0.25 .75	3—\$0.20 .50	4—\$0.20 .35 100— .35
FABULOUS (LaSalle-46) 443-85 If you like blotch varieties, this one will look right for you. Pink with deeper pink throat on cream foreground.	1 10	2.00 16.00	1.50 12.00	1.00 8.00	1— .25 10— 2.00 100—16.00
FAIR ANGEL (Hatch-42) 400-85 Creamy white shading to deeper cream throat. Nicely ruffled and opens 8 at a time. Outstanding.	2 10	.25 1.00	4— .25 .50	6— .25 .35	50— .25 100— .40
FRANCIS M. IRWIN (Wilson-41) 460-95 Fine light rose with darker blotch. Wins ribbons often.	1 10	.25 2.00	.20 1.60	2— .20 .80	15— .25 100— .75
GENGHIS KHAN (Scheer-41) 432-80 Striking deeply ruffled, pure pink with no marking. Florets very large up to 6 inches, and considered outstanding.	1 10	1.00 8.00	.75 6.00	.50 4.00	4— .25 10— .50
GOLDEN ARROW (Pruitt-47) 510-85 Pure pastel yellow, no marking, no greenish cast. Straight. Eight 5½-inch florets open. Good propagator. Vigorous grower.	1 10	2.00 16.00	1.50 12.00	.75 6.00	1— .35 10— 2.80
GOLDEN STATE (Wheeler-42) 512-90 Introduced as a yellow Picardy. Said to have everything desired in a yellow.	1 10	.50 4.00	.35 2.80	.25 2.00	5— .25 10— .50 100— 4.00
GRATITUDE (Fischer-46) 424-75 Improved Barcarole. Salmon-orange with a sharp yellow throat. 5-7 open, 5½ inches in diameter. Tall. Growing habits very good.	1 10	.75 6.00	.60 4.80	.50 4.00	5— .25 25— 1.00
GREEN MANTLE (Sisson-47) 406-85 Ruffled greenish white. Opens 7 on a 16-18 bud spike. Good grower with excellent habits.	1	.60 No Discount	.40	.25	6— .25 100— 3.00
GRETA GARBO (Pfitzer-37) 440-85 Very beautiful massive spike with 8-9 blooms in a soft light rose with creamy lip.	2 10	.25 1.00	2— .20 .60	4— .20 .35	50— .25 100— .40
HAWKEYE RED (Heaton-44) 450-85 A commercial medium red. A sport of Vagabond Prince. Outstanding.	1 10	.30 2.40	.20 1.60	2— .25 1.00	10— .25 50— 1.00
H. B. PITT (Both-41) 430-80 Immense orange-pink blending to deep cream throat. Very good placement with blooms opening flat. 18-bud flower head on a 43-inch spike.	2 10	.25 1.00	3— .20 .60	5— .25 .40	50— .25 100— .40

GLADIOLUS — Best

Variety and Description	Per	Large	Medium	Small	Bulblets
HEAVENLY WHITE (Moses-44) 440-70 Rosa Van Lima sport. Sparkling pure white with no trace of cream. Sometimes has lavender overcast. Small lavender feather in throat. Opens 6-7 on a good flower head. Good propagator and very early.	1 10	\$0.40 3.20	\$0.30 2.40	\$0.20 1.60	10—\$0.40 100— 3.00
HIAWATHA (Beardmore-47) 436-90 Large scarlet, deeper scarlet on lower petal. Up to 8 open, 5½ to 6 inches, lightly ruffled. 22-24 buds. Never crooks; good propagator and bulblets germinate well.	1 10	5.00 40.00	4.00 32.00	3.00 24.00	1— .50 10— 4.00 No Discount
HIGH FINANCE (Wilson-40) 580-95 Soft, smoky and very beautiful. Tall grower and show table winner.	1 10	.20 1.60	2— .25 1.00	4— .25 .50	25— .20 100— .50
HIGH LIFE (K. & M.-46) 476-70 New light violet-blue with deeper throat that really pleased us this summer. Good placement with 5-6 open.	1 10	.25 2.00	2— .30 1.20	2— .20 .80	15— .25 100— 1.75
HUNTRESS (Jack-45) 466-75 New, very early lavender. Color on the pink side of lavender and beautifully ruffled. 6-8 large florets open on spike of medium height.	1 10	1.00 8.00	.70 5.50	.45 3.50	2— .15 12— .75
INDIAN PRINCESS (Zimmer-37) 362-85 Deep rose-red, intensely ruffled. Open five on a wiry stem. A sweetheart.	2 10	.30 1.20	2— .20 .80	4— .20 .50	20— .25 100— .50
INTERMEZZO (Quackenbush-42) 407-85 A very consistent deep cream with lavender feather. Outstanding as a cut flower performer.	2 10	.25 1.00	3— .25 .6050	25— .20 100— .50
JEANIE (Pruitt-41) 440-85 Beautiful clean pink with white midribs and creamy yellow throat. Very tall and fine.	2 10	.25 1.00	4— .25 .50	8— .25 .30	25— .20 100— .50
J. V. KONYNENBURG (K. & M.-47) 450-85 New grand vermilion-red. Said to be the best of the European varieties since the war. 6-8 open, strong stem. Excellent grower and propagator.	1 10	1.00 No Discount	.60 No Discount	.40	1— .10 10— .80
JOURNEY'S END (Kadel-44) 532-75 Very deep salmon-red. Pfizer's Triumph type. Very fine, early and a winner.	1 10	1.00 8.00	.75 6.00	.50 4.00	1— .10 10— .80 No Discount
KING LEAR (Palmer-38) 570-75 Wonderful exhibition purple of large size and beautifully ruffled.	3 10	.25 .75	5— .25 .5035	50— .20 100— .30

Varieties for the Last 10 Years

Variety and Description	Per	Large	Medium	Small	Bulblets
KING WILLIAM (Schenetsky-40) 530-85 Soft salmon and apricot, blending to a clear cream throat. A Picardy seedling and in many ways more beautiful. A fine commercial.	2 10	\$0.25 1.00	3—\$0.25 .70	5—\$0.20 .40	50—\$0.25 .40
LADY ANNE (Buchanan-48) 500-67 White, blended canary throat. Lustrous and lightly ruffled. Opens seven 6-inch florets on a balanced 27-inch flower head. Very early. A \$5.00 Glad for \$1.00.	1 10	1.00 8.00	.75 6.00	.50 4.00	2— .25 10— 1.00 100— 8.00
LADY JANE (Lake-41) 406-85 Clear light cream with yellow lip. Appears to be a light yellow. Fine commercial and show flower.	2 10	.25 1.00	4— .25 .50	8— .25 .30	50— .25 100— .40
LADY LUCK (Harris-44) 540-80 Sport of Picardy. Very nice peaches-and-cream color, similar to Greta Garbo, but longer head. Different than other Picardy sports. A real beauty worth trying.	1 10	.50 4.00	.35 2.80	.25 2.00	5— .25 100— 4.00 No Discount
LANCASTER (Palmer-44) 470-85 Clear dark purple with 8-10 lightly waved and ruffled blooms open on a tall, straight stem. An improvement in the purple class.	1 10	.75 5.00	.50 3.35	.30 2.40	5— .25 100— 2.50
LANTANA (Palmer-43) 420-75 Early orange and yellow. Opens 6-8 rather large florets on a medium stem. About the best in this color combination.	2 10	.25 2.00	4— .25 1.00	8— .25 .50	30— .25 100— .60
LAVENDER AND GOLD (Baerman-43) 366-70 Early. 5-7 open, frilled, yellow-throated lavender; blooms on a tall, wiry, straight stem. Good grower and propagator. Excellent commercial value.	2 10	.30 1.20	2— .20 1.00	2— .15 .60	25— .25 100— 1.00
LAVENDER PRINCE (LaSalle-44) 466-90 Taller and better than King Arthur and a little lighter shade of lavender. Looks good and should make a good commercial.	1 10	.50 4.00	.35 2.80	.25 2.00	5— .25 10— .50 100— 4.00
LAVENDER QUEEN (Arenius-37) 366-82 Deep lavender-mauve that flakes in real hot weather. Very strong grower and a good show flower. We like it.	2 10	.25 1.00	4— .25 .50	6— .25 .35	50— .25 100— .40
LAVENDER RUFFLES (Wilson-39) 366-85 Medium size flower and plant. Pinkish lavender and somewhat frilled. Early.	3 10	.25 .75	3— .20 .50	4— .20 .35	50— .25 100— .40

GLADIOLUS — Best



Voodoo



October Sunshine



Beauty's Blush

Variety and Description	Per	Large	Medium	Small	Bulblets
LEADING LADY (Johnston-42) 506-87 Most popular Picardy sport. Grown commercially for cut flowers in all parts of the country. Leading white. Creamy white with no marking. Clean and an excellent grower.	1 10	\$0.25 2.00	2—\$0.30 1.20	3—\$0.25 .75	25—\$0.25 100— 1.00
LEGEND (Fischer-40) 440-90 Very large light pink with recurved petals. Heavy plant and spike. Very beautiful and heavy propagator.	2 10	.25 1.00	3— .20 .60	5— .20 .40	40— .25
LUCKY (Jack-47) 466-85 Clear lavender with small cream throat. 20 buds, 6-7 open, 5-inch blooms, flower head 25 inches. Good placement, healthy and good propagator.	1 10	1.50 12.00	1.00 8.00	.50 4.80	2— .25 10— 1.00
			No Discount		
MAGNOLIA (Palmer-40) 460-85 Light soft creamy rose; blooms large and round. Beautiful.	2 10	.25 1.00	4— .25 .50	6— .25 .35	40— .25 100— .40
MARGARET BEATON (Twomey-37) 501-85 Snow-white with very small, orange-scarlet blotch. Distinctive and fine commercial.	2 10	.25 1.00	4— .25 .50	6— .25 .35	40— .25 100— .40

Varieties for the Last 10 Years

Variety and Description	Per	Large	Medium	Small	Bulblets
MARGARET WOOD (Marshall-47) 470-80 Deep wine colored Glad. Blooms up to 7 inches in diameter. Straight, of average height, healthy in foliage and bulb. Good propagator and opens well when cut in bud.	1 10	\$1.00 8.00	\$0.75 6.00	\$0.50 4.00	1—\$0.10 10— .80
			No Discount		
MARION PEARL (Benedict-42) 442-85 One of the most beautiful pink, blending to a lighter throat, I have ever seen. Fine placement and a real show Glad. Slow propagator.	1 10	.75 6.00	.50 4.00	.25 2.00	3— .10 25— 2.00 100— 7.50
MAYLING (Hatch-43) 440-85 Ruffled flesh-pink with a lavender tint. Opens 8 medium size blooms, beautifully ruffled. Fine grower and show flower.	2 10	.25 1.00	4— .25 .50	6— .25 .35	25— .20 100— .50
MIDNIGHT RED (Rich-40) 454-70 Very dark maroon-red with white lines on lower petals. Six open and perfectly placed.	2 10	.20 .80	4— .20 .6030	25— .50 100— .50
MISS WISCONSIN (Krueger-43) 460-90 Shade of rose not common in Glads, but badly needed. 6-8 open on an 18-bud spike. Tall, healthy grower and average increaser.	1 10	.50 4.00	.35 2.80	.20 2.00	5— .25 10— .50
MISTY DAWN (Rich-41) 580-95 Soft smoky gray or bluish salmon with a smoky orange-red blotch. 6-7 inch blooms on a tall plant. Fine show flower.	2 10	.25 1.00	4— .25 .50	6— .25 .35	25— .25 100— .60
MOHAWK (Stevens-40) 454-85 Deep glistening maroon that opens up to 10 blooms at a time. Outstanding.	2 10	.30 1.20	2— .20 .80	4— .25 .50	25— .25 100— .60
MOTHER KADEL (Kadel-41) 410-77 Our best commercial yellow; steady winner of blue ribbons. Medium yellow without any foreign color. Like wax to the very depth of the throat. Good shipper.	2 10	.25 1.00	3— .25 .6040	25— .25 100— .50
MRS. MARKS MEMORY (K. & M.-41) 570-88 Large florets of reddish violet or rose-purple with a small carmine blotch. Tall and real nice.	2	.25	4— .25	6— .25	25— .25
MT. INDEX (Miller-42) 501-68 A giant white with a yellow throat mark. An excellent color. Very tall and increases well.	1 10	.25 2.00	2— .25 1.00	2— .20 .80	10— .30 100— 2.00

GLADIOLUS — Best

Variety and Description	Per	Large	Medium	Small	Bulblets
MYRNA FAY (Lines-46) 466-85 Rich orchid-lavender, 9-11 open, 5 inches in diameter. Long spike of 19-21 buds, always straight and sturdy. Opens well when cut in tight bud.	1	\$3.00	\$2.00	\$1.00	1—\$.25 10— 2.00
MYSTERY (Stinson-44) 541-81 Lively shade of pure pink with small rose blotch. Opens 7-9 large blooms with several showing color. 6-7 inches in diameter. Good propagator and germinator.	1 10	.50 4.00	.35 2.80	.20 1.60	10— .50 100— 4.00
MARLENE BOTH (Both-43) 430-76 A glorious light salmon-pink with perfectly blended deep creamy buff throat. Beautiful giant with decorative qualities. Long, stretchy flower head and one of the first to bloom.	1 10	.35 2.50	.25 2.00	.20 1.70	10— .20 100— 1.50 No Discount
OCTOBER SUNSHINE (Quackenbush-47) 420-85 Because of its beauty, its high color value, its ability to open when cut in bud, its growing habits, and its ease of propagation, we present this to cut flower growers and home gardeners. The color is orange blending to golden yellow throat, with 6 open and 18 buds.	1	2.00	1.00	.50	1— .20 10— 1.60 No Discount
OGARITA (Wilson-42) 532-90 Rose-salmon shading to a golden throat. Opens 8 very large blooms on an exceptionally tall plant. Long flower head and opens well from bud. You can certainly win with this one.	2 10	.30 1.20	2— .25 1.00	3— .25 .60	20— .30 100— 1.00
OHIO NON PARIEL (Wilson-41) 550-85 Large, bright clear scarlet. Opens up to 9 blooms on a long flower head. Tall, strong grower. Good show flower and commercial cutter. Heavy propagator.	1 10	.20 1.60	2— .25 1.00	4— .25 .50	20— .25 100— .60
ORANGE GOLD (Marshall-45) 442-80 Genuine orange self. 5-6 large blooms, wide open. Bit O' Heaven color, but many times larger. Giant plants, strong and healthy. Heavy propagator.	1 10	1.00 8.00	.75 6.00	.50 4.00	1— .10 10— .80
ORANGE PRINCE (Snyder-45) 324-80 Sport of Vagabond Prince. Same growth, floret size and productiveness. But color is dazzling orange with flame throat marking. Doesn't burn in hot sun.	1 10	.50 4.00	.30 2.40	.20 1.60	40— 1.00 100— 2.00 No Discount
PASTEL (Both-42) 480-95 Perfect pastel blend of smoky, rosy, velvety gray with petals edged steel-blue. Color soft, without glitter.	1 10	.50 4.00	.40 3.20	.25 2.00	10— .50 100— 4.00
PEGGY (West-46) 366-80 True clean lavender self with never a fleck. Blooms not large, about 4 inches, with 6-7 open. Tall plants that increase well.	1	3.00	2.00	1.00	1— .40 10— 3.00

Varieties for the Last 10 Years

Variety and Description	Per	Large	Medium	Small	Bulblets
PHANTOM BEAUTY (Bastian-47)					
		540-85			
Shell-pink with medium size florets. 10-12 open on a beautifully built show spike. This will win for you.	1	\$7.00	\$ 5.00	\$ 3.00	1—\$0.75
	10	56.00	40.00	24.00	10— 6.00
PICARDY (Palmer-31)					
		530-90			
The most popular variety grown. Very tall salmon-pink. Used by hybridists with great success.	3	.25	5— .25
	10	.75	.40	.25	100— .25
PINK CHARM (LaSalle-46)					
		542-80			
Waxy, medium deep pink that darkens deep in throat. 6-7 good sized florets open. Not too tall but extremely early. Makes a good early cut flower.	1	2.00	1.25	.50	1— .25
	10	16.00	10.00	4.00	10— 2.00
PINK PARAGON (Cassebeer-43)					
		342-90			
Bright, clean, pure pink with cream throat. Opens 5-6 florets 4 inches in diameter. Looks like good commercial.	2	.25	3— .25	25— .20
	10	1.00	.60	.40	100— .50
PINK PICARDY (Earl-46)					
		542-88			
Picardy sport a little deeper than Picardy. Growth habits better. Healthier and better than Picardy.	1	.25	2— .30	2— .20	10— .20
	10	2.00	1.20	.80	100— 1.50
PINK RADIANCE (Quackenbush-41)					
		440-85			
Reported North, South, East and West as outstanding pink commercial. 11 open on a 24-inch flower head.	2	.25	3— .25	25— .20
	10	1.00	.60	.40	100— .50
PINOCCHIO (Evans-40)					
		390-75			
A novelty of green-orange and yellow. Heavily ruffled. Very choice.	1	.20	2— .25	4— .25	25— .25
	10	1.60	1.00	.50	100— .75
PIONEER (LaSalle-45)					
		532-85			
Deep salmon-pink blending to a deep cream throat. Shade a little different than most salmon-pinks. Opens 6-8 very large, wide open florets in even double row placement. Distinct and beautiful.	1	.50	.35	.20	5— .25
	10	4.00	2.80	1.60	10— .50
PORCELAIN BLUE (Rich-44)					
		478-90			
Medium dark violet or pansy-blue with a clean creamy white throat feather. Very large, wide open blooms. Opens five. Bulblet germination fair. We like this.	1	1.50	1.00	.50	2— .25
	10	12.00	8.00	4.00	10— 1.00
PURPLE SUPREME (Wilson-42)					
		470-85			
Very outstanding medium purple with silver edge on the petals. Will open 10 on a shoulder-high plant. Superb cut flower and blue ribbon winner.	1	.25	2— .25	4— .25	25— .25
	10	2.00	1.00	.50	100— .75
RAVEL (K. & M.-47)					
		377-77			
Violet-blue with reddish brown marking. Healthy grower and excellent propagator. Very tall, upright spikes. Its many florets are of heavy texture and are well spaced and placed.	1	3.00	2.00	1.25	1— .40
					10— 3.00
				No Discount	

GLADIOLUS — Best

Variety and Description	Per	Large	Medium	Small	Bulblets
R. B. (Upton-40) 590-90 Huge rusty golden brown on old rose. A novelty but a sure winner in its color class.	2 10	\$0.30 1.20	2—\$0.20 1.00	4—\$0.25 .50	40—\$0.25 100— .50
RED CHARM (Butt-39) 452-85 Exhibition and commercial red of outstanding merit. Will open 10 on a tall, well built plant.	1 10	.20 1.60	2— .25 1.00	4— .25 .50	25— .25 100— .75
REVLON (Milo-44) 452-88 A consistent red that shows promise as a cut flower. Medium red self. Very large flower and tall, straight stems.	1 10	.50 4.00	.35 2.80	.25 2.00	5— .25 10— .50
RIMA (Mitsch-37) 540-90 Soft lavender in a beautiful shade. A marvelous Glad but slow propagator.	2 10	.25 1.00	4— .25 .50	6— .25 .35	25— .25 100— .75
ROCKET (Palmer-41) 450-85 Standard commercial scarlet-red that opens 7-9 large blooms.	3 10	.25 .75	5— .25 .4530 100— .30
ROSA VAN LIMA (Pfitzer-40) 460-80 Standard commercial. Early, large rose-pink.	3 10	.25 .75	5— .25 .4530 100— .30
ROSEGLOW (Klein-47) 560-90 Brilliant Neyron-rose without any flecking. Clean, sparkling color. Tall, strong, healthy grower. 17-19 buds, 6-inch, frilled florets with 5 open. Good placement and does not crook.	1 10	1.50 12.00	1.00 8.00	.60 4.80	3— .25 10— .80
ROSE O'DAY (Fischer-44) 566-70 An unusual shade of rose-lavender. Opens up to 10 large blooms in a double row. Very tall and different.	1 10	.50 4.00	.35 2.80	.25 2.00	10— .25 100— 2.00
ROYAL WINDSOR (Beaton-46) 450-80 Bright spectrum-red. Opens 8-10 blooms 5¼ inches in diameter, on a 20-bud spike. Not tall but about 4 feet. Fine color and makes a ribbon of bloom. Exhibition type.	1	1.50	1.00	.75	1— .20 10— 1.50
					No Discount
SAHARA (Palmer-35) 490-85 Light russet with soft cream blotch. Will open 10 on a well built spike. Different.	2 10	.30 1.20	2— .20 1.00	4— .25 .50	40— .25 100— .50
SALUTATION (Baerman-44) 440-80 Clean, light pink with dot of deeper pink in throat. Very nice color and a different pink.	1 10	.25 2.00	.20 1.60	2— .25 .80	20— .25 100— 1.00
SILENTIUM (Pfitzer-41) 401-80 Similar to Margaret Beaton in color. Opens 6-8 on a perfectly built spike for cutting. White with carmine feather.	2 10	.20 .80	3— .20 .6035 100— .25

Varieties for the Last 10 Years

Variety and Description	Per	Large	Medium	Small	Bulblets
SILVER WINGS (Ritsema-44) 500-88 Picardy sport that is whiter than its sister "Leading Lady," but our new introduction is still whiter and much better attachment.	1 10	\$1.00 8.00	\$0.75 6.00	\$0.50 4.00	3—\$0.25 10— .80
SNOW FLURRY (Clark-47) 400-85 Clean, pure white Picardy sport, nicely ruffled, 18-20 buds. Blooms flat against the stem. Excellent attachment. Opens 6-8 well placed florets. Should make excellent commercial.	1	1.00	.75	.50	10— 1.00 100— 7.00
SNOWSHEEN (Snyder-42) 300-75 Glistening pure white with no trace of cream. Very tall plant. Flowers medium size and slightly ruffled. Commercial possibilities.	1 10	.25 2.00	2— .30 1.60	2— .20 .80	35— .25 100— .60
SNOW PRINCESS (Pfitzer-39) 400-80 Creamy white that will surpass Maid of Orleans as a commercial. Opens better when cut in tight bud.	3 10	.25 .75	5— .25 .5030 100— .25
SPARKS (Glass-47) 507-95 Sister seedling to Coventry, but a little lighter in color and later to bloom. Cream with orange-scarlet feather on three lower petals. Opens 7 large, fluted, triangular florets of glistening color. 16-18 buds, 5½ inches in diameter. Fair multiplier.	1	3.00	2.00	1.00	1— .25 10— 2.00 No Discount
SPIC AND SPAN (Carlson-46) 432-80 Ruffled deep pink which wins on number open and flower head. 20-22 buds, 10 open, nice placement. Excellent commercial spikes from small bulbs. Heavy germinator and good propagator. Makes nice baskets.	1	3.50	3.00	2.50	1— .35 10— 2.80 No Discount
SPOTLIGHT (Palmer-44) 413-88 Very large, wide open, round flower in deep yellow with small scarlet blotch. Free bloomer and good propagator.	1 10	.50 4.00	.35 2.80	.25 2.00	8— .25
STOPLIGHT (Lins-42) 452-90 Don't confuse this red with the yellow listed above. Names are similar but varieties different. Equally valuable in their class. This is clear ruffled red, opening 6-8 blooms on a tall, wiry stem. Heavy producer and recognized commercial.	2 10	.30 1.20	2— .20 .80	4— .20 .50	25— .25 100— .50
SUMMER GAL (Zimmer-44) 542-80 Sensational show flower. Beautiful ruffled Geranium-pink. 8 open, 6-inch blooms on a 5-foot plant. Real good grower and the best in the deep pink class.	1	3.00	2.00	1.00	1— .25 10— 2.00
SUNLIGHT (Spiller-46) 416-87 This is a good commercial prospect in the light orange class. Outer edges of petals are really pink. Nice grower, well built plant and heavy propagator. 7 open, well placed. Makes beautiful spike.	1 10	2.50 20.00	2.00 16.00	1.50 12.00	1— .30 10— 2.40

GLADIOLUS — Best

Variety and Description	Per	Large	Medium	Small	Bulblets
SUNSPOT (Roberts-45) 417-80 Light apricot-buff with rose spot in throat. 7-9 open, 5 inches in diameter, ruffled. Propagates well, germinates nearly 100 per cent and wins prizes consistently.	1 10	\$2.00 16.00	\$ 1.50 12.00	\$1.00 8.00	1—\$0.25 10— 2.00
SURFSIDE (Winsor-37) 400-92 Very consistent commercial ruffled white with slight penciling in the throat. Heavy grower.	2 10	.20 .80	3— .20 .60 100— .25
THEMESONG (Klein-47) 470-88 Mild purple with cyclamen-purple blotch. Very unusual and distinctive. Ruffled florets, 17-19 buds, 7-8 open. Placement and attachment excellent. Always straight.	1 10	1.50 12.00	1.00 8.00	.60 4.80	3— .25 10— .80
TIVOLI (K. & M.-47) 460- Lovely, clear light rose, the color of the old Coryphee, but this time straight. Tall, upright, 8-10 open, well spaced and placed. A valuable addition.	1	2.50	1.50	1.00	1— .25 10— 2.00
No Discount					
TOPFLITE (LaSalle-46) 560-85 A sensation. Truly a beautiful, smooth, rosy pink with a small feather in the throat. 5-inch florets in a double row on a 55-inch plant. A basket of these is out of this world. This is a "must have."	1	5.00	4.00	3.00	1— .75 10— 5.00
TROCADERO (Lins-46) 424-87 Warm, mellow, carrot-salmon-orange. Monotone but lovely. Good propagator. This was one of the finest in our tests this year.	1 10	1.50 12.00	1.25 10.00	1.00 8.00	1— .20 10— 1.50
No Discount					
TRUELOVE (Klein-45) 440-70 Good early commercial. Clean pink, 22-inch flower head, height 48 inches, 17 buds, 6 open. Good grower with a well balanced spike.	1 10	.75 6.00	.50 4.00	.25 2.00	3— .25 10— .60
TUNIA'S MAHOMET (Both-43) 580-75 Smoky plum-rose with some orange in the throat. Immense florets. Can be grown to 8-inch diameter, but you will have to feed it, water it, to get that size. Double row facing with 8 open.	1 10	.50 3.75	.40 3.25	.35 2.75	6— .20 10— .30
No. Discount					
VAGABOND PRINCE (Palmer-34) 390-80 Gorgeous mahogany-brown with a flame blotch.	3 10	.25 .75	5— .25 .5030 100— .25
VALERIA (Pruitt-38) 436-85 An improved Dr. Bennett in a beautiful shade of light red. Very strong, healthy grower.	2 10	.20 .80	3— .20 .6035 100— .25
VARIATION (Krueger-41) 340-75 Medium size light pink that opens 6-10 flowers on a tall spike. Should be good commercial.	2 10	.20 .80	3— .20 .6040	40— .25 100— .50

Varieties for the Last 10 Years

Variety and Description	Per	Large	Medium	Small	Bulblets
VENIDA (Milo-47) 460- Beautiful rose with lavender cast. Deep cream blotch. 50-60 inches tall with 24-28 buds on a very long flower head. 8 open, 5 inches in diameter, ruffled and fluted. Good grower and propagator.	1 10	\$4.00	\$3.00	\$2.00	1—\$.075 10— 2.00
			No Discount		
VOODOO (Kadel-44) 580-80 Very large, intensely ruffled and fluted smoky. Interesting novelty and consistent performer.	1 10	.50 4.00	.35 2.80	.25 2.00	5— .20 100— 3.20
VULCAN (Stevens-42) 470-82 6-inch blooms of medium purple on a tall spike. You should try this one.	1 10	.20 1.60	2— .25 1.00	2— .20 .80	20— .25 100— 1.00
WAX MODEL (Krueger-46) 400-75 Glistening white with small lavender spears in throat. 5-inch florets, 17 buds, flower head 22 inches. Tall grower.	1 10	2.00 16.00	1.50 12.00	1.00 8.00	1— .25 10— 2.00
WAR PAINT (Kadel-47) 436-95 New scarlet which opens up to 10 large florets on a 22-bud spike. Because of its strong, straight stem and long flower head, it makes an excellent garden Glad as well as cut flower variety. Does not burn or crook. Bulblets germinate well, and make good strong plants.	1 10	3.00 24.00	2.00 16.00	1.00 8.00	1— .30 10— 2.40
			No Discount		
WEDGWOOD (Fischer-47) 366-80 A silent message of grace, purity and refinement. Waxy, ruffled lavender with cream throat. Robust grower, disease free. Every bloom to the very tip a picture of beauty and grace. Suggests the beauty and delicacy of old Wedgwood pottery.	1	1.50	1.50	1.50	no bulblets
			No Discount		
WHITE CHALLENGE (Arnett-47) 501-90 White with pale rose blush and a rose throat mark. Heavy substance, informal placement, straight, free from crooks, 22 buds, 8-10 open. Increases easily and wins prizes regularly.	1		\$5.00 any size		1— .50
			No Discount		
WHITE GOLD (Scheer-41) 506-70 Much advertised huge cream. Good grower.	1 10	.20 1.60	2— .25 1.00	4— .25 .80	20— .25 100— 1.00

Explanation

After each variety name in parenthesis () is the originator's name and date of introduction. The other numbers (216-80), the first series is the classification number and the second the average number of days to bloom.

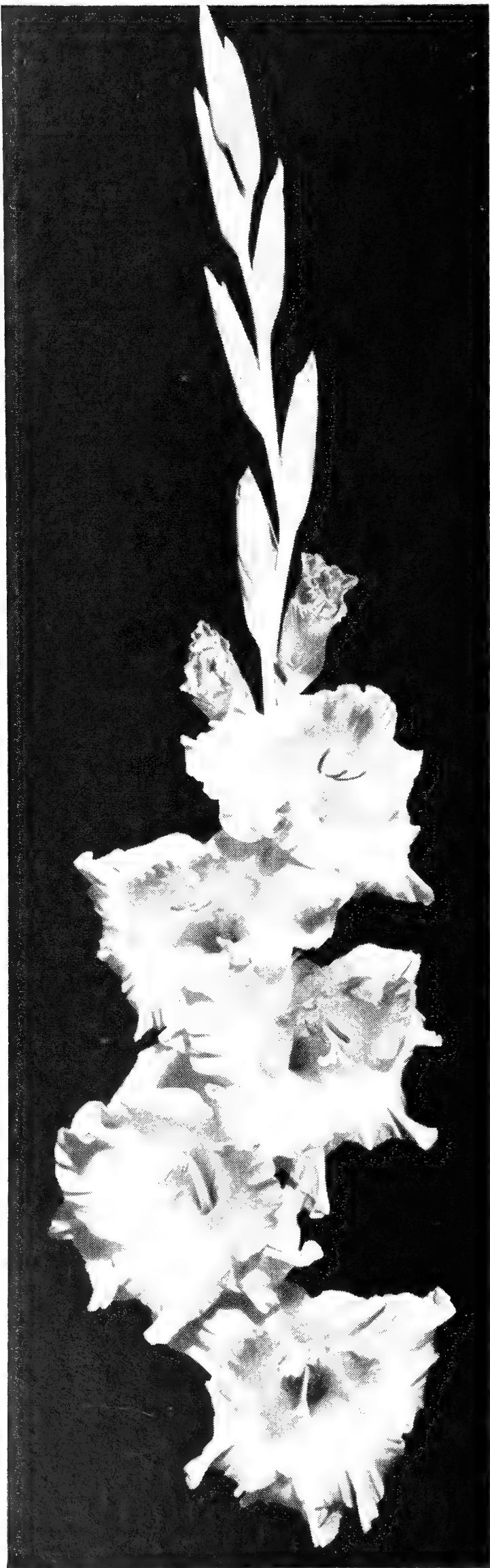
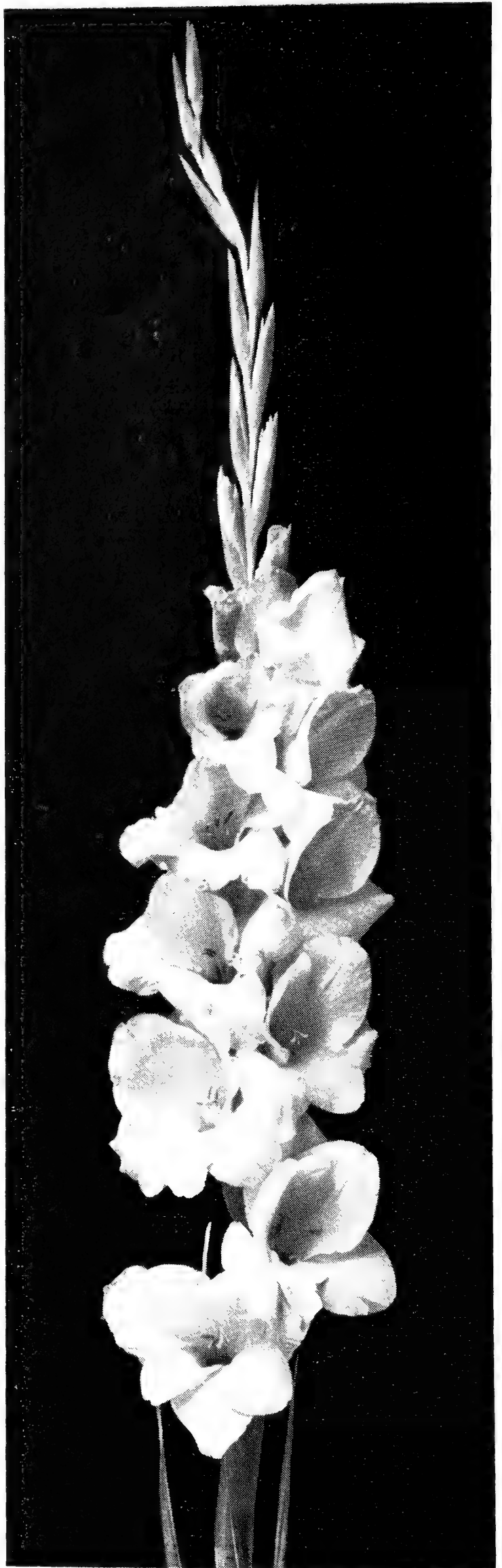


PHOTO COURTESY OF NOWETA GARDENS

Wedgwood



Purple Supreme

Wholesale Gladiolus

We sell 25 bulbs at the 100 rate and 250 bulbs at the 1000 rate. 1 pint of bulblets at the quart rate. For the 1/2-pint rate, add 20% to the quart rate and divide by four.

All quotations are subject to prior sale. We ask 25% down payment with the order and the balance before shipment. Bulblets are sold by **DRY** measure.

ALL SHIPMENTS FROM THIS LIST ARE F.O.B. LIMA, NEW YORK

Variety	Per	No. 1	No. 2	No. 3	No. 4	No. 5	No. 6	Qt.	Pk.	Bu.
* Abu Hassan ..	100	\$10.00	\$ 8.00	\$ 5.50	\$ 4.00	\$ 3.00	\$ 2.00
	1000	32.00	24.00	16.00	15.00	75.00	250.00
Algonquin	100	5.00	4.50	3.50	2.50	1.50	1.00	3.00	20.00
* Annamae	100	6.00	5.00	4.00	3.20	2.50	2.00	6.00	35.00
Badger	100	6.00	5.00	4.00	3.20	2.50	2.00	8.00	45.00	160.00
Beauty	1000	48.00	40.00	32.00	25.00	20.00	16.00
* Beacon	100	4.00	3.50	3.00	2.50	1.50	1.00	3.00	18.00	60.00
	1000	30.00	25.00	20.00	15.00	10.00	6.00
* Big Top	100	8.00	7.00	6.00	5.00	4.50	3.00	10.00	60.00	200.00
	1000	64.00	56.00	48.00	40.00	35.00	24.00
* Birch Red	100	190.00	160.00	125.00	90.00	64.00	40.00	200.00
Black Opal ...	100	5.00	4.50	3.50	2.50	3.00
Blaze	100	4.00	3.50	3.00	2.50	1.50	1.00
	1000	30.00	25.00	20.00	15.00	10.00	6.00	3.00	18.00	60.00
* Blue Admiral ..	100	6.00	5.00	4.00	3.20	3.00
* Blue Beauty ..	100	5.00	4.50	3.50	2.50	1.75	1.25	2.50	20.00	75.00
Burma	100	15.00	12.00	10.00	7.00	5.00	4.00	25.00
C. W. Gannett	100	32.00	28.00	22.50	18.00	16.00	12.00	32.00
Casablanca ..	100	6.00	5.00	4.00	3.20	2.50	2.00	4.00	25.00	80.00
	1000	48.00	40.00	32.00	25.00	20.00	16.00
Chamouny ...	100	6.00	5.00	4.00	3.20	2.50	2.00	4.00	25.00
	1000	48.00	40.00	32.00	25.00	20.00	16.00
Connecticut										
Yankee	100	125.00	110.00	95.00	80.00	65.00	50.00
* Corona	100	5.00	4.50	3.50	2.50	1.75	1.25	2.50	15.00	50.00
	1000	40.00	35.00	28.00	20.00	14.00	8.00
* Cover Girl ...	100	30.00	26.00	22.00	18.00	14.00	10.00	30.00
Daisy Mae ...	100	50.00	42.00	35.00	30.00	25.00	20.00	75.00
Dieppe	100	50.00	42.00	35.00	30.00	25.00	20.00	75.00
Dr. Whiteley ..	100	10.00	8.00	6.00	5.00	4.00	3.00	25.00
* Elizabeth	100	8.00	7.00	6.00	5.00	4.00	3.00	10.00	70.00	280.00
The Queen ...	1000	64.00	56.00	48.00	40.00	32.00	24.00
Ethel	100	4.00	3.50	3.00	2.50	1.50	1.00	3.00	18.00	60.00
Cave-Cole ...	1000	30.00	25.00	20.00	15.00	10.00	6.00
Fabulous	100	100.00	90.00	80.00	70.00	60.00	50.00
* General										
MacArthur ...	100	18.00	16.00	14.00	12.00	8.00	7.00	25.00
Gold Dust ...	100	4.00	3.50	3.00	2.50	1.50	1.00	3.00	18.00	60.00
	1000	30.00	25.00	20.00	15.00	10.00	6.00
Golden Arrow	100	100.00	85.00	70.00	55.00	40.00	30.00	125.00
Gratitude	100	48.00	42.00	32.00	24.00	16.00	12.00	75.00

(* Varieties found to be resistant to Leaf Spot Disease)

Wholesale Gladiolus

Variety	Per	No. 1	No. 2	No. 3	No. 4	No. 5	No. 6	Qt.	Pk.	Bu.
* Greta Garbo ..	100	\$ 4.00	\$ 3.50	\$ 3.00	\$ 2.50	\$ 1.50	\$ 1.00	\$ 3.00	\$ 18.00	\$ 60.00
	1000	30.00	25.00	20.00	15.00	10.00	6.00
Hawkeye Red	100	12.50	10.00	8.00	5.00	4.00	3.25	25.00
H. B. Pitt	100	6.00	5.00	4.00	3.20	2.50	2.00	4.00	25.00	80.00
	1000	48.00	40.00	32.00	25.00	20.00	16.00
* Heavenly White	100	25.00	22.00	18.00	15.00	12.00	10.00
	1000	200.00	176.00	144.00	120.00	96.00	80.00	30.00	220.00
* High Finance ..	100	6.00	5.00	4.00	3.20	2.50	2.00	4.00	25.00
Huntress	100	38.00	32.00	28.00	24.00	120.00
Indian Princess	100	6.00	5.00	4.00	3.20	2.50	2.00	8.00	45.00
	1000	32.00	25.00	20.00	15.00
Intermezzo ..	100	6.00	5.00	4.00	3.20	2.50	2.00	12.00	75.00	250.00
	1000	50.00	45.00	40.00	35.00	24.00	16.00
* Jeanie	100	4.00	3.50	3.00	2.50	1.50	1.00	3.00	18.00	60.00
	1000	30.00	25.00	20.00	16.00	12.00	8.00
King Lear	100	4.00	3.50	3.00	2.50	1.50	1.00	2.50	15.00	45.00
	1000	30.00	25.00	20.00	16.00	12.00	8.00
King William ..	100	5.00	4.50	3.50	2.50	1.75	1.25	3.00	18.00	60.00
	1000	40.00	35.00	25.00	20.00	15.00	10.00
Lady Jane	100	6.00	5.00	4.00	3.20	2.50	2.00	5.00	30.00	100.00
	1000	48.00	40.00	32.00	25.00	20.00	15.00
Lady Luck	100	50.00	45.00	40.00	35.00	25.00	16.00
* Lantana	100	8.00	7.00	6.00	4.00	3.00	2.00	10.00	70.00
Lavender Prince	100	30.00	26.00	22.00	18.00	14.00	10.00
* Lavender Queen	100	4.00	3.50	3.00	2.50	1.50	1.00	3.00	20.00	70.00
	1000	30.00	25.00	20.00	16.00	12.00	8.00
Leading Lady ..	100	15.00	12.00	10.00	8.00	6.00	4.00	25.00	150.00	500.00
	1000	90.00	80.00	70.00	60.00	45.00	30.00
* Magnolia	100	4.00	3.50	3.00	2.50	1.50	1.00	3.00	20.00	70.00
	1000	32.00	28.00	24.00	20.00	12.00	8.00
Margaret Beaton	100	4.00	3.50	3.00	2.50	1.50	1.00	2.50	15.00	45.00
	1000	30.00	25.00	20.00	16.00	12.00	8.00
Midnight Red	100	4.00	3.50	3.00	2.50	1.50	1.00	3.00	20.00	70.00
	1000	30.00	25.00	20.00	16.00	12.00	8.00
Misty Dawn ..	100	5.00	4.50	3.50	2.50	1.75	1.25	4.00	25.00
* Mohawk	100	6.00	5.00	4.00	3.20	2.50	2.00	5.00	30.00	100.00
	1000	48.00	40.00	32.00	25.00	18.00	12.00
Mother Kadel	100	6.00	5.50	5.00	4.50	3.00	2.00
	1000	50.00	45.00	40.00	35.00	25.00	16.00	12.00	75.00	250.00
Mt. Index	100	12.00	10.00	8.00	6.50	5.00	4.00	20.00	150.00
Myrna Fay	100	128.00	100.00	80.00	64.00	48.00	32.00
Nadia	100	8.00	7.00	6.00	5.00	4.00	3.00	8.00
Ogarita	100	8.00	7.00	6.00	5.00	4.00	3.00	8.00	56.00
* Ohio Non Pariel ...	100	6.00	5.00	4.00	3.20	2.50	2.00
	1000	48.00	40.00	32.00	25.00	20.00	12.00	6.00	40.00	130.00
Orange Butterfly	100	4.50	3.50	3.00	2.50	1.50	1.00	3.00	20.00
* Peggy	100	200.00	160.00	130.00	100.00	70.00	50.00

(* Varieties found to be resistant to Leaf Spot Disease)

Wholesale Gladiolus

Variety	Per	No. 1	No. 2	No. 3	No. 4	No. 5	No. 6	Qt.	Pk.	Bu.
Picardy	100 1000	\$ 4.00 30.00	\$ 3.50 25.00	\$ 3.00 20.00	\$ 2.50 16.00	\$ 1.50 12.00	\$ 1.00 8.00	\$ 2.00	\$12.00	\$35.00
* Pink Charm ..	100	90.00	80.00	70.00	60.00	50.00	40.00
* Pink Paragon ..	100	12.00	10.00	8.00	6.50	5.00	4.00	20.00
Pink Picardy ..	100	8.00	7.00	6.00	5.00	4.00	3.00	8.00
Pink Radiance	100 1000	6.00 50.00	5.50 45.00	5.00 40.00	4.50 35.00	3.00 25.00	2.00 16.00	12.00	75.00	250.00
* Pioneer	100 1000	30.00 240.00	26.00 208.00	22.00 176.00	18.00 144.00	11.50 112.00	10.00 80.00	30.00
* Purple Supreme	100 1000	7.00 56.00	6.00 48.00	5.50 44.00	4.50 35.00	3.50 25.00	2.50 15.00	8.00	50.00	150.00
R. B.	100	5.50	4.50	3.50	2.50	8.00
Red Charm ..	100 1000	8.00 64.00	7.00 55.00	6.00 45.00	5.00 36.00	4.00 26.00	3.00 20.00	8.00	56.00
* Rocket	100 1000	4.00 30.00	3.50 25.00	3.00 20.00	2.50 16.00	1.50 12.00	1.00 8.00	2.00	12.00	35.00
* Rosa Van Lima	100 1000	4.00 30.00	3.50 25.00	3.00 20.00	2.50 16.00	1.50 12.00	1.00 8.00	2.00	12.00	35.00
* Silentium	100 1000	4.00 30.00	3.50 25.00	3.00 20.00	2.50 16.00	1.50 12.00	1.00 8.00	2.00	12.00	35.00
Silver Wings ..	100	32.00	28.00	22.50	18.00	16.00	12.00	150.00
Snow Baby ..	100	8.00	7.00	6.00	5.00	4.00	3.00	8.00
Snow Flurry ..	100	64.00	56.00	48.00	40.00	32.00	24.00
* Snow Princess	100 1000	4.00 30.00	3.50 25.00	3.00 20.00	2.50 16.00	1.50 12.00	1.00 8.00	2.00	12.00	35.00
Spic and Span ..	100	224.00	208.00	192.00	176.00	160.00	144.00	350.00
* Spotlight	100 1000	35.00 280.00	30.00 240.00	25.00 200.00	18.00 144.00	14.00 112.00	10.00 80.00	75.00	450.00	1600.00
Stoplight	100 1000	7.00 56.00	6.00 48.00	5.50 44.00	4.50 35.00	3.50 25.00	2.50 15.00	8.00	50.00	150.00
Summer Gal ..	100	160.00	130.00	110.00	90.00	60.00	50.00	300.00
Surfside	100 1000	4.00 30.00	3.50 25.00	3.00 20.00	2.50 16.00	1.50 12.00	1.00 8.00	3.00	18.00	60.00
* Valeria	100 1000	7.00 55.00	6.00 45.00	5.50 35.00	4.50 28.00	3.50 20.00	2.50 12.00	6.00	40.00	150.00
Variation	100	5.00	4.50	4.00	3.00	2.00	1.25	5.00	35.00
White Gold ..	100 1000	6.00 40.00	5.00 35.00	4.00 30.00	3.50 20.00	2.50 15.00	1.50 10.00	5.00	35.00	120.00
Fancy Assorted	100 1000	4.00 30.00	3.50 25.00	3.00 20.00	2.50 16.00	1.50 12.00	1.00 8.00	3.00	18.00	60.00

(* Varieties found to be resistant to Leaf Spot Disease)

NEW VARIETY COLLECTION

We will omit up to 3 varieties and add two others of about the same price range, if you so desire. Your suggestions will help.

Abigail	Connecticut Yankee	Golden Arrow	October Sunshine
Bengasi	Coventry	High Life	Peggy
Birch Red	Daisy Mae	Huntress	Pink Charm
Blue Ice	Fabulous	J. V. Konynenburg	Ravel

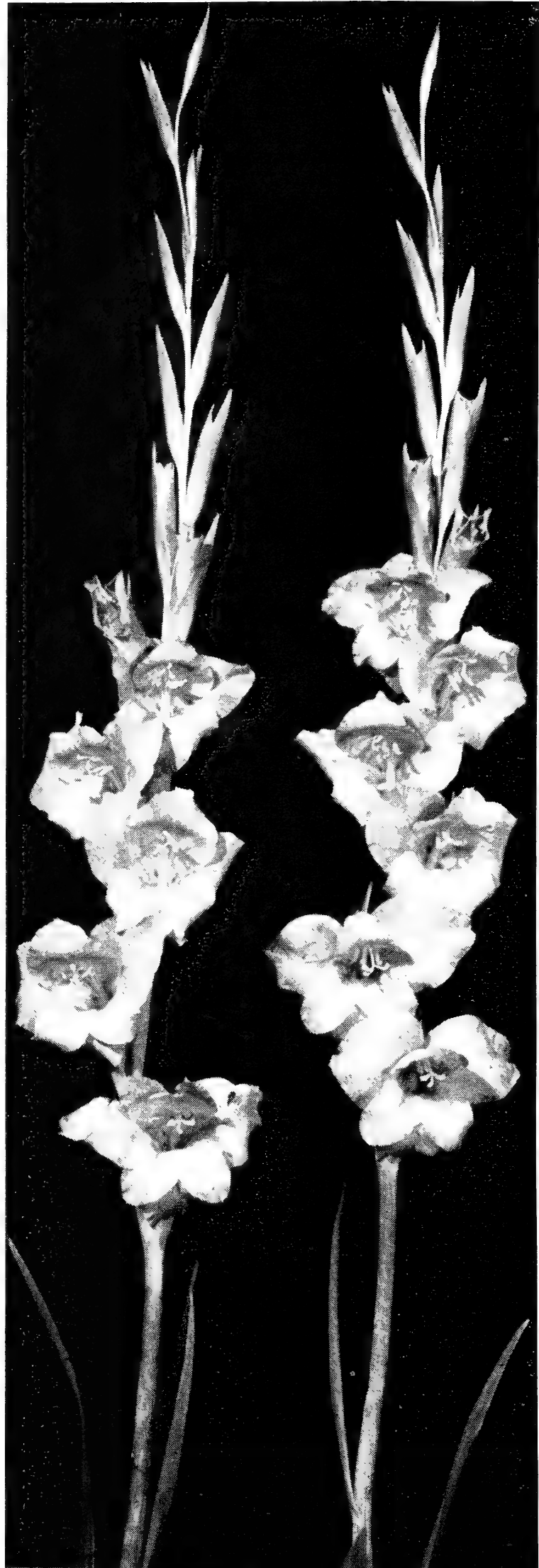
A saving of about 20%

1 Medium Bulb of each for	\$24.00
1 Small Bulb of each for	13.75
10 Bulblets of each for	28.75

Small Flowering Gladiolus



Nadia



Flicker

Used by the ladies for center pieces, corsages and vases where lighter and more dainty material is appropriate. Garden Club members find these little fellows very useful. For decorative purposes they are really more useful than the larger Glads.

Variety and Description		Per	Large	Medium	Small	Bulblets
ATOM (Hedgecock-46) Scarlet edged white. New.	336-80	1 12	\$2.50 25.00	\$1.65 16.25		
DAINTY MISS (Stancer-41) Blush or light pink.	240-90	2 10	.20 .80	4— .25 .60	5— .15 .30	25— .25 100— .80
DOLORES (Vasaturo-43) Popular bright pink blending to white throat.	240-70	1 10	.25 1.75	2— .25 1.10	3— .25 .60	10— .25 100— .75
FAIRY (Kuhn-46) Light lavender.	266-75	1 10	.35 2.80	.25 2.00	2— .25	10— .25 100— 2.00
FILIGREE (Kuhn-45) Wide open, ruffled and lacinated. Opens five to six 3¼-inch flowers. New and distinctive.	216-80	1 10	.50 4.00	.50 4.00	.35 2.80	10— .25 100— 3.00
FLICKER (Kuhn-46) Medium orange, yellow throat with bright scarlet blotch. 5 to 6 open.	221-75	1 10	.35 2.80	.25 2.00	2— .25	10— .25 100— 2.00 1000—16.00
FLUFFY RUFFLES (Brown-26) Pale yellow, ruffled, lacinated.	206-75	2 10	.20 .75	4— .25 .50		40— .25
ITO (Brown) Lovely orange, red and yellow.	120-75	2 10	.20 .75	4— .25 .50	.35	40— .25 100— .50
KEWPIE (Brown-30) Red, picotee edge.	150-68	2 10	.20 .75	4— .25 .50	.35	40— .25 100— .50
NADIA (Leffingwell-37) Upper petals bright salmon; lower petals yellow. 6-8 open.	231-90	1 10	.25 2.00	2— .25 1.25	3— .25 .75	10— .25 100— 2.00
ORANGE BUTTERFLY (Salbach-27) Opens eight to ten 2-inch flowers in a ribbon of color.	222-95	2 10	.20 .75	4— .20 .50	5— .15 .35	25— .25 100— .50
PINK RIBBON (Spencer-42) Opens several light pink flowers with peppered throat.	240-90	1 10	.20 1.80	.15 1.20		
QUEEN OF BREMEN (Zimmer-28) Wonderful color. Lavender-pink with white throat.	266-75	2 10	.20 .75	4— .25 .50		
ROSETTE (Kuhn-42) Light rose, ruffled, deep rose feather. 6-8 open.	260-	1 10	.35	.25	2— .25	10— .25
RUBY (Kuhn-46) Medium red. Opens 5-6 on a 16-18 bud spike. Grows to 47 inches and is very early.	252-70	1 10	.35	.25	2— .25	10— .25
SILVERSIDES (Kuhn-47) Bright, deep rose with silvery reflexes. 18 buds, 6 open.	262-70	1 10	.75	.75	.40	3— .25
SNOW BABY (Stancer-41) Pure white; tall; a little beauty.	200-75	1 10	.20 1.60	2— .25 1.00	4— .25 .50	25— .20 100— .60
WILL'S SCARLET (Brown-30) Nice, tall orange-red.	236-68	2 10	.20 .75	4— .25 .50		
YELLOW BIRD (Kuhn-46) Outstanding yellow that opens 3¼-inch florets on a 26-inch flower head. 16-18 buds. Florets round, slightly curved.	210-80	1 10	.75	.75	.40	3— .25 10— .60

Gladiolus Care and Culture

(Revised to September, 1947)

When bulbs are received they should be opened at once and stored in a cool, dry place. The best temperature for storage is about 40 degrees.

PLANTING TIME: Is in general when the soil is warmed up in the spring. It may be in Central New York from April 15th to July 1st, depending somewhat upon the time bloom is wanted, and the variety planted. The average planting date here is about June 1st. When Maple leaves begin to open is probably the earliest.

THE BEST PLACE TO PLANT: Is where they will have full sun, as they do best if they have no competition from trees and shrubs nearby. A soil that will grow good Potatoes will be most satisfactory, but Glads are very tolerant in their soil requirements. Good drainage is quite essential to best performance, as Glads like lots of water during the period before bloom, but they don't like wet feet. They grow best in neutral soil, but will also do well where it is slightly sweet or acid.

DISINFECTING: Bulbs should be clean when planted. If there are thrip on them, they should be killed by DDT Dust, 5% in storage. There is no use planting thrip to grow. Bulbs should be disinfected regardless of where they were obtained. Also those you already have may have fungus spores on them. We recommend in order of preference the following dips. These do not necessarily kill thrip. They are intended to control Gladiolus diseases.

NEW IMPROVED CERESAN: One ounce of New Improved Ceresan, 3 teaspoons of Grasseli Spreader-Sticker, 3 gallons of water. For larger quantities: $\frac{1}{2}$ lb. of New Improved Ceresan, 5 tablespoons of Grasseli-Spreader-Sticker, 25 gallons of water. Soak **BULBS** 15 minutes; soak **BULBLETS** 30 minutes. Let drain and plant the same day, while wet if possible. Do not exceed the time specified and if you cannot plant the same day, rinse the bulbs off thoroughly.

IMPORTANT — FOLLOW DIRECTIONS CAREFULLY

To mix easily, add the Spreader-Sticker to the Ceresan with a small amount of water and stir until a smooth paste is formed; then add the remainder of the water. When stirring this do not use the hands, as the concentrated mixture can cause serious burns. Use a wooden paddle. Bulbs treated in the weak solution can be handled safely. Do not forget you may lose your bulbs if you leave them in this solution longer than the 15 minutes for bulbs, or 30 minutes for bulblets.

LYSOL: For most amateurs this is probably the easiest and safest dip to use. One teaspoon Lysol to 1 quart of water; 4 tablespoons to three gallons of water; 1 pint of Lysol to 25 gallons of water. Soak bulbs in solution three to six hours; bulblets 12 to 14 hours. Plant the same day as treated, while wet if possible.

CRESOL COMPOUND: This may be substituted for Lysol in the above formula—same quantity. Your local druggist will have a supply of LYSOL. We can supply you with CRESOL COMPOUND. As far as is known at least five lots of bulbs or bulblets can be treated effectively in any of the above dips.

Have a Supply of Dipping Materials Shipped With Your Order

SOIL PREPARATION: A good coat of rotted cow manure plowed or spaded under the fall before planting will make a very fine start. The soil should be spaded or plowed rather deep to give the roots opportunity to secure food and moisture at a lower level. As it is difficult to obtain manure generally, we would use in place of it, peat moss as a humus along with a good fertilizer such as 4-8-8 or 4-12-8 for bloom production, and 4-8-12 for production of bulbs. Any garden compost will serve as good humus or if possible a crop of rye, clover, soybeans or rye grass, plowed under the year before is excellent.

For bloom production, on medium to heavy soil, one half the fertilizer should be broadcast on top before plowing or spading, and the balance before fitting the ground. This should give excellent results. For exhibition blooms some like to place part of the fertilizer in the bottom of the trench, mixed with the soil, and an inch or so of peat moss on top for humus. Most of our soils are deficient in humus and peat moss is an excellent aid in building up this lack, retaining moisture in light, sandy soils, and loosening up the heavier clay types. Most of our special planting plots would be much improved by this method. It is especially valuable in growing bulblets or Gladiolus seed.

PLANTING BULBS: Bulbs may be planted three to six inches apart in the row, with the rows twenty inches to three feet apart. For choice show blooms, six inches apart is probably best, with rows at least thirty inches apart. Depth for large bulbs varies with the type of soil, four to five inches in heavier soil, and up to six inches in lighter, sandy types. Small bulbs about three inches, and bulblets one and one-half to two inches deep. Be sure to give plenty of water during and before the blooming season.

BULBLET GROWING. Small lots of valuable bulblets may be peeled or cracked, with quicker and surer start to be expected. Larger lots that may need help in starting can be aided by soaking at night and sunning in a cloth bag by day, for a week or so. When bulblets have been peeled we would advise dipping as if they were bulbs, if using New Improved Ceresan or Lysol.

CARE: After planting, cultivating once a week and weeding will help growth. Cultivation may be deeper at first, but later very shallow, to avoid cutting off feeder roots. Hilling up before these roots get too long, (when about a foot high) will aid in holding the blooming spikes erect during windy weather. When spikes are up to a foot or more they should have heavy watering once a week if there is no rain.

FOR EXHIBITION BLOOMS: To give these an extra boost, fertilizer may be side-dressed when the plants are nearly in the bud stage. Scattering about a handful each three feet along the side of the row. Place this about three inches from the plants, just before a rain or heavy watering, and cultivate in well.

SPRAY: From the time the spikes or plants are six inches high, they should be sprayed or dusted for thrip. Thrip may be planted on your bulbs having lived over in storage or been brought in on bulbs you got from your neighbor. They may blow in from some distance, or fly in, as at one stage of their existence they can fly as far as one-half mile. Therefore, even if your planting is assumed to be clean, you should spray or dust for thrip control. A spray that has been widely accepted and has been very effective is the Tartar Emetic Spray. This is made up as follows: 1 ounce Tartar Emetic (about $4\frac{1}{2}$ teaspoons) 2 ounces brown sugar, 3 gallons of water. (3 tablespoons of molasses or corn syrup may be substituted for sugar.)

Gladiolus Care and Culture

DDT. We are finding DDT very effective as a thrip control. Either dust or spray is effective. We have been using 5% dust at the rate of 30 lbs. per acre each time over. We use a power machine, but a hand duster that will make a dust fog around the plants will be just as good. But remember to kill the thrip, the dust must touch the insect and as they are normally inside the sheath, one dusting or two will not clean them out. Three to five applications is usually necessary. The Glads can be dusted even when in bloom without harm to the bloom. The 5% dust comes ready mixed and can be used without other preparation.

Many prefer a liquid spray and we have 50% Wettable Powder DDT which should be diluted with water to about 5% DDT strength. 1½ lbs. to 100 gallons of water is about right or about 4 level teaspoons to 3 gallons of water.

The best part of a DDT spray or dust is that there is no danger in using too much or too strong a concentration. The active ingredient is harmless to anything but insects. A toxic condition may develop from inhaling too much of the dust or spray, but it has no permanent effects. Ordinary care is usually sufficient to insure no damage to the person making the application.

LEXONE or GAMMEXANE: A new treatment for the elimination of wire worms in the soil is now on sale. This is Lexone or Gammexane, the trade names for practically the same materials as put out by two separate firms. The material has a very bad odor and must be handled carefully for that reason. This can be mixed with DDT dust and applied to plants as usual at the rate of 12 lbs. per acre or sprayed directly on the ground and cultivated in at the rate of 5 lbs. to 100 gallons of water. This is new and we will elaborate on this treatment as soon as we get more information.

WHEN CUTTING: Flower spikes, a small knife blade slid down the stem on each side between the stalks and the leaves and cutting across at the bottom, will enable you to leave a safe four to six leaves and also a good stem on the spike. Spikes are best cut in the morning when one or two blooms are open.

DIGGING: Bulbs can be dug 30 days after the flower is gone, or before freezing weather sets in. Don't wait until the foliage turns brown. The tops should be cut off at once as close to the bulb as possible, pruning shears doing this very nicely. If some stalks turn brown prematurely the bulb is probably diseased and should be destroyed with all the foliage.

STORING: Bulbs may be stored in flat boxes to dry and cure. They should not be more than four inches deep so they will dry well. If wooden boxes with wire bottom are used, curing will be hastened if bulbs are washed in one of the wire-bottom boxes with a stiff hose spray. Be sure and use reasonable care so that husks are not torn off. Bulbs will be much easier to clean later and there will be very little dirt in the bulblets. As soon as the bulbs are dry and in the cellar (about three weeks after digging) they should be treated with Napthalene Flakes or DDT Dust. The dust may be put on at any time, either dusted on with a hand duster or a small amount placed in a paper bag and shaken to distribute the material over the bulbs completely.

Napthalene Flakes should be put on them in a bag or container so the fumes can be confined. A temperature of 70 degrees for three or four weeks should be maintained. About one ounce per hundred bulbs is the best proportion. Be sure and remove the flakes before the root growth starts in the spring or the new roots will be damaged.

The bulbs should be cleaned either before or after this treatment. Cleaning means removing the roots and old bulb from the base and throwing away all diseased bulbs. Bulblets may be separated at this time, also.

Again let me emphasize the fact that if your bulbs have thrip, it is your fault, regardless of whether you bought the thrip or hatched them in your own planting. DDT Dust 5% will effectively kill thrip on contact. The problem is getting contact. In the storage the bulbs must be covered and in the field the plants must be covered after every rain.

The best spray for aphids and other soft bodied insects is Black Leaf 40. We will be glad to include your spray and treating materials with your bulb order at the following prices:

CRESOL COMPOUND

1-pt. bottle (postpaid)	\$0.90
1-qt. bottle (postpaid)	1.65
1-gal. glass jug (f.o.b. Lima)	3.90
5-gal. can (f.o.b. Lima)	16.50

NEW IMPROVED CERESAN

4-oz. can (postpaid)	\$0.35
1-lb. can (postpaid)90
4-lb. can (postpaid)	2.95
40-lb. pail (f.o.b. Lima)	26.40
100-lb. drum (f.o.b. Lima)	61.05

GRASSELLI STICKER-SPREADER

1-pt. bottle (postpaid)	\$1.00
1-gal. can (f.o.b. Lima)	5.85

TARTAR EMETIC

1-lb. can (postpaid)	\$1.15
5-lb. pail (postpaid)	4.60
125-lb. drum (f.o.b. Lima)	80.00

(Prices subject to change)

DEENATE (Dupont) 50% DDT

A Wettable Powder

1-lb. can (postpaid)	\$1.00
4-lb. bag (postpaid)	3.20
100-lb. bag (f.o.b. Lima)	67.50

5% DDT and TALC DUST

The dust in general use for control of thrip.

5-lb. package (postpaid)	\$ 1.20
10-lb. package (postpaid)	1.90
50-lb. bag (f.o.b. Lima)	5.50
100-lb. bag (f.o.b. Lima)	9.75
Ton (f.o.b. Lima)	165.00

BORDEAUX MIXTURE

An effective fungicide spray for blight, mildew, rust, etc.

4 lbs. (postpaid)	\$1.00
-------------------------	--------

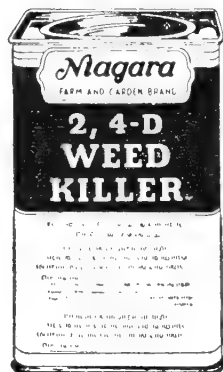
Gladiolus Care and Culture



KOLO

Fruit tree dust or spray. A sure kill on most all fruit insects as well as being effective against fungous diseases. Controls codling moth, tent caterpillars, rose chafer, plant bugs, Japanese beetle, apple maggot, scab, mildew, brown rot of stone fruit, etc. Contains DDT.

3-lb. bag (postpaid) \$1.35
4 lbs. 1.70



2, 4-D WEED KILLER

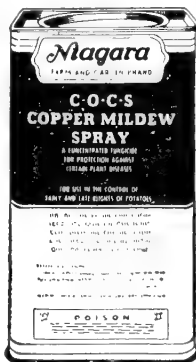
70% active, 2, 4-D completely kills most any kind of weed but does not injure grass. Does a fine lawn de-weeding job. 4 ozs. will treat 4500 sq. ft.

4-oz. canister (postpaid) .. \$1.40
20-oz. canister (postpaid) .. 2.55

BLACK LEAF 40

The best spray for aphids and other soft-bodied insects.

1 oz. (postpaid) \$0.40
5 ozs. (postpaid) 1.10



C-O-C-S COPPER MILDREW SPRAY

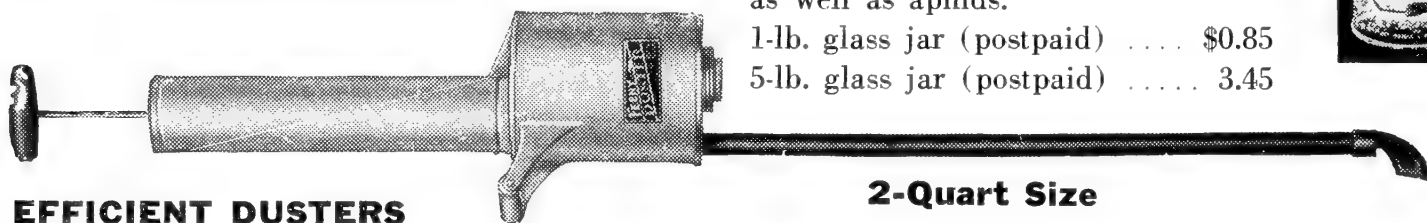
Highly effective against garden crop diseases such as blights on Tomatoes and Potatoes, leaf spot on Cherries and vine crops, black spot and mildew on Roses, etc.

1-lb. canister (postpaid) \$0.75
3-lb. bag (postpaid) 1.15

POMO-GREEN with NICOTINE

A combined insecticide and fungicide, leaf green in color that leaves no unsightly residue. Controls black-leaf and mildew, and chewing insects as well as aphids.

1-lb. glass jar (postpaid) \$0.85
5-lb. glass jar (postpaid) 3.45



EFFICIENT DUSTERS

2-Quart Size

Ideal for vegetable and flower gardens, shrubs, and small fruits. Special flared nozzle comes with the two-quart size for Mexican bean beetle control where the under side of foliage must be dusted.

Duster—2-qt. size (postpaid) \$3.45 Duster—1-qt. size (postpaid) \$1.45

Announcement of 2 Big Glad Shows

BIG INTERNATIONAL GLADIOLUS SHOW

Kalurah Temple, Binghamton, N. Y.

August 17 and 18, 1948

EMPIRE STATE REGIONAL SHOW

Lima, New York

September 4 and 5, 1948

Don't fail to attend at least one of these shows.

Become A Member of a Glad Society

Empire State Gladiolus Society	\$1.00
New England Gladiolus Society	2.00
North American Gladiolus Council	1.00
Combination: Empire State and New England Societies	2.50
Combination: Empire State Society and North American Council	1.75
Combination: Empire State Society, New England Society, and North American Council	3.25

Any one of these memberships is good. The entire combination of three societies gives you the very latest information in the Gladiolus world.



PLEASE READ CAREFULLY BEFORE ORDERING

ACKNOWLEDGEMENT OF ORDERS: As soon as your order is received, it is booked in a triplicate order pad. You will be mailed a copy as acknowledgement. The second copy goes to the warehouse for filling your order and the original remains in our office for reference. In writing regarding your order, please mention the order number. It saves us a lot of work in the office. (An order for less than \$1.00 causes us so much headache, you had better send two Aspirin tablets with it. They take as much time as one for \$100.00 and cause more trouble. MINIMUM ORDER \$2.00.)

TERMS AND DISCOUNTS: Terms are cash with order or 25% down, and balance before shipment. If not paid in full before shipping date, they will be sent C.O.D.

On retail orders of \$3.00 to \$10.00 you may add 5% of the total in extra bulbs, and 10% on orders from \$10.00 up. This discount does **not** apply to orders taken from the quantity list **nor** does it apply to assortments, collections or to items marked "No Discount." On these the discount has already been deducted to give you a better price. If you have a preference as to varieties we should add as discount or extras, please mention them. Be sure to name second choice as we may not be able to give you extras in just what you want. But we will try. We always try to give extras on every order for trial. These are given in proportion to the size of the order.

SHIPMENT: All retail orders are shipped parcel post unless otherwise specified. They are shipped prepaid. Usually retail orders are not shipped until after March 15th when parcel post is safer.

WHOLESALE orders are shipped express collect unless otherwise specified, and as express is insured against frost, we ship wholesale orders at any time after cleaning is finished. However, we have found that from March 15th to May 1st we are rushed, and there may be some delay of a few days, so if your order does not arrive on time, we hope that you will understand.

BULB SIZES: Bulbs are graded into six different sizes from No. 1 to No. 6. No. 1 size is 1½ inches and up. Jumbos are 2 inches and up. No. 2 bulbs run from 1¼ inches to 1½ inches, with ¼ inch variation in each size down to No. 6 size, which is ½ inch or under. In the retail list we sell bulbs under the Large, Medium and Small sizes. Large size consists of No. 1 and No. 2 sizes, and we will use No. 1 as far as we can. Medium size consists of No. 3 and No. 4 sizes, with No. 3 used as far as possible. Small size includes No. 5 and No. 6, and No. 5 size is used until they are all gone. If your order is for Medium size and you get part or all in No. 4 size bulbs (¾ to 1 inch), please don't write to us saying you have the wrong size. It is simply because we are out of No. 3 size, and we have had to use No. 4 which is also included in the medium size.

Medium size bulbs will bloom although the spike will not usually have as many buds as the large size. Small size bulbs will bloom if they have a good growing season in which to grow.

We list in our retail list, 5 bulbs at the 10 rate, but we do not sell less than the smallest quoted unit. If a variety is listed 2 bulbs for 20c, we will not sell one bulb at 10c, as the clerical work, filling and packing orders is too expensive.

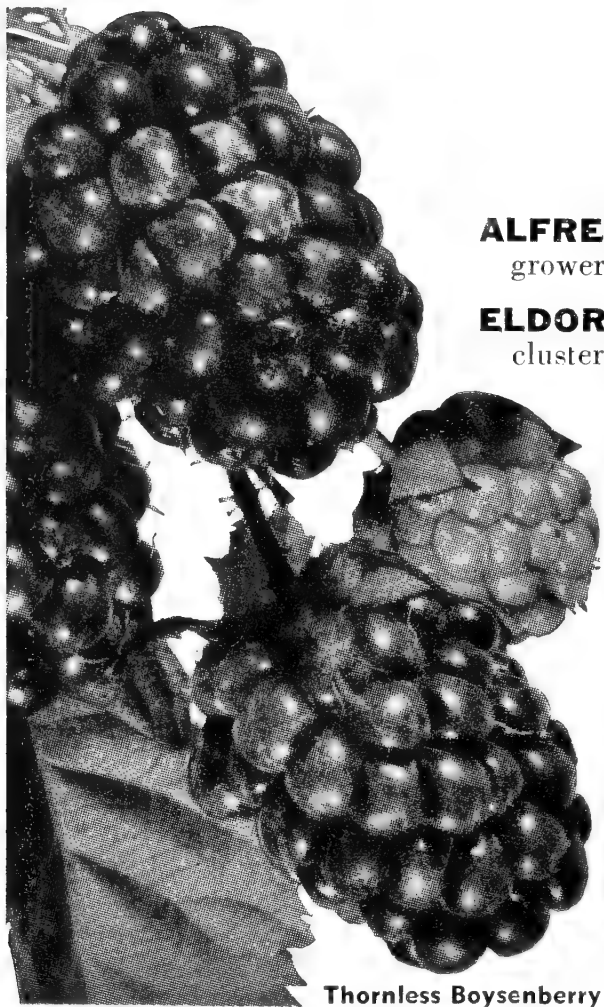
GUARANTEE: Above all we take great pains to keep stock absolutely true to name. In spite of this, mistakes or errors are made, sometimes when we know nothing about it. We are ready to replace, refund or make an adjustment in some way. But tell us so that we can make a correction.

We have declared war on bulb diseases, and feel confident that we are winning the battle. Thorough treating, an extensive roguing program throughout the season, and up-to-date methods of curing and storing, make our bulbs the best that money can buy.

We do not warrant in any way, expressed or implied, the contents or the description, quality, productiveness, or any other matter of any seeds, bulbs, or plants sold by us, and we will not in any way be responsible for the crop. If the purchaser does not accept these goods on above terms, no sale is made and goods must be returned within three days.

SUBSTITUTIONS: We do not substitute varieties unless you give express permission. We do occasionally substitute the next size when we are out of the size ordered, and give you value in bulbs to the amount you send. It helps us if you give permission to substitute and we will always try to substitute in color if so permitted. Very often you win because we send you something better than you ordered.

Moses Select Small Fruits



Thornless Boysenberry

BLACKBERRIES

Prices:

1-yr., No. 1, select plants, 25 for \$3.30; 100 for \$9.90; 500 for \$34.50.

ALFRED. Early July. Very good for home use as the plant is a hardy grower and heavy bearer.

ELDORADO. August. Largest of the hardy Blackberries. Berries in clusters and sweet.

THORNLESS BOYSENBERRY. This berry has received much acclaim mainly because of its 1½-inch berry. Can be used same as any Blackberry: fresh, canned, pies or jellies. Bears in late July. **Prices: 2-yr., No. 1, selected plants, 6 for \$2.40; 10 for \$3.00; 25 for \$5.50.**

ASPARAGUS

MARY WASHINGTON. More rust-resistant and stronger grower than any variety of Asparagus. Every home garden should contain at least a small bed. Culture is simple and one planting lasts many years. **Prices: 2-yr., No. 1 plants, 25 for \$2.00; 100 for \$5.40; 1000 for \$30.00.**

RHUBARB

MacDONALD. Grown from divisions, it will outyield any other variety. It is only mildly acid and takes less sugar than the others. **Prices: No. 1 divisions, 75c each; 3 for \$2.00.**

GRAPES

Prices (except as noted):

2-yr., No. 1, strong, well rooted vines,

Each 55c 3 for \$1.50; 10 for \$4.00; 50 for \$14.00.

CATAWBA. Red. Very late and a good keeper.

CONCORD. Most popular of the black Grapes. Berries large, sweet and juicy.

CONCORD SEEDLESS. Same as Concord, minus seeds. **Each \$1.25; 3 for \$3.45.**

DELAWARE. Small, delicious red Grape.

FREDONIA. Good, early black Grape.

GOLDEN MUSCAT. Golden color. A vigorous grower and producer. **Each \$1.00; 3 for \$2.70.**

ONTARIO. Early white; very productive.

NIAGARA. A popular and delicious white Grape.

PORTLAND. Very early, large white Grape.

WORDEN. Early and bigger, but similar to Concord.

COLLECTION No. 1

The Strawberry Bed:

This collection gives you fine berries for maximum length of time.

25 Dorsett. Early. **25 Catskill.** Midseason.
25 Chesapeake. Late. **25 Evermore.** Everbearing.

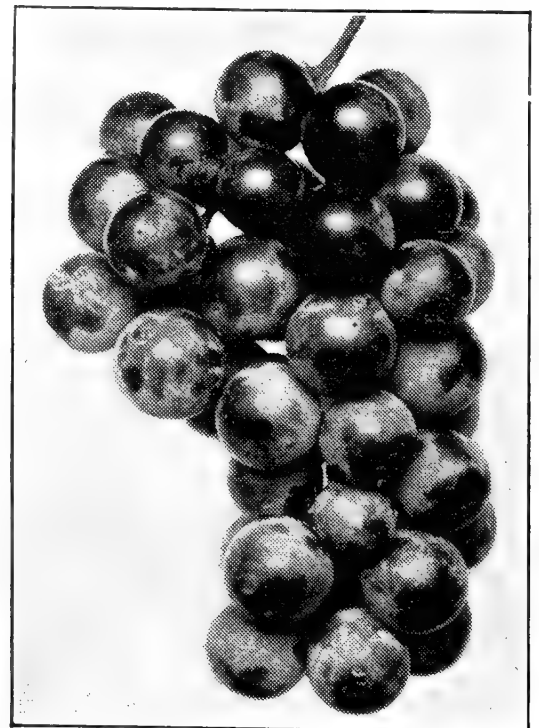
All 100 for \$5.50, postpaid at planting time.

COLLECTION No. 2

The Grape Arbor:

1 Concord. Black. **1 Catawba.** Maroon.
1 Niagara. White. **1 Golden Muscat.**
1 Delaware. Red.

All 5—2-yr., No. 1 vines for \$2.10, postpaid at planting time.



Concord Grapes

and Berries

BLUEBERRY

By careful breeding these are far superior to the wild Blueberries. Two to six bushes will supply a family with berries for pies and canning. They last a lifetime, increasing yield each year. Two different varieties should be planted to pollinate the plants. Likes acid soil, so add some peat moss or partially rotted vegetable matter around the plants. We find sawdust mulch to be very successful. Can be used as an ornamental shrub in a border.

3-yr. plants, 12-18 in., \$1.70 each; 10 for \$12.50.

3-yr. plants, 18-24 in., \$2.40 each; 10 for \$16.50.

CABOT. Earliest. Low growing type.

CONCORD. Midseason. High bush; largest berries.

RANCOCAS. Midseason. Upright grower; very heavy producer.

RUBEL. Latest and heaviest bearing of all. Best for canning.



7 Excellent Raspberries

Prices (except as noted):

1-yr., No. 1 select plants, 25 for \$4.10; 100 for \$12.15; 1000 for \$75.00.

BRISTOL. Very good Black Raspberry. Large, firm berries in early July. A hardy, vigorous grower especially in New York State.

INDIAN SUMMER. Everbearing Red Raspberry. Two heavy crops per year, between July and October. **25 for \$5.00; 100 for \$13.00; 500 for \$45.00.**

LATHAM. Red Raspberry. Once you have grown this berry you will want more, as it is excellent as a jam maker.

MORRISON. Black Raspberry. Large, juicy, black berry. Having almost no seeds, it is excellent as a jam maker. **25 for \$5.00; 100 for \$13.00; 500 for \$45.00.**

SODUS. Purple. Berries are large and good flavor. Plants especially adaptable to poorer soil conditions. Mid-July.

SUNRISE. Red. Berries bright red, turning dark upon ripening. Combines earliness, hardiness and quality.

TAYLOR. Red. Long, firm berry and one of our heaviest bearers. Early July.



Grow
Your Own
Garden-Fresh
Raspberries

Taylor

Hardy Garden LILIES



Lilium Speciosum Rubrum

Lilies can create more interest in your hardy borders or rock gardens than any other genus of plants, mainly because of their wide range of varieties. Characteristics of plant, shape of flowers, colors, preference as to soil, and a blooming range from June to late fall, make Lilies especially interesting. Though we give a few cultural hints under individual varieties, it can be generally said that Lilies prefer a cool, moist soil, produced by a mulch of leaves, peat moss or a thick, low growing ground cover. Unless otherwise noted, plant 4 to 6 inches deep and about 10 to 12 inches apart. Lilies can be used

almost anywhere in your garden. Plant in groups among perennials, low border shrubs, or banked against low evergreens. Some especially good combinations are Candidum with Delphinium, Henryi with evergreens or Buddleia, and Regals with climbing Roses.

We are taking especial care to produce and sell only mosaic free bulbs. This is one of the principal reasons for failure with Lilies. Careful roguing and propagating from seed, where possible, is your assurance of healthy bulbs. All bulbs shipped are top size.

VARIETIES

LILIUM AURATUM ESPERANZA (Gold Band Lily)

White spotted crimson with gold band. Flowers late July to September. Large bowl type on plants 4 to 6 feet high. Does best in partial shade. Very fragrant

Each 3 for 12 for

\$1.75 \$4.75 \$18.00

LILIUM CONCOLOR (Morning Star Lily)

Scarlet-orange, erect flowers from June to July on stems 1 to 2 feet high. Plant 3 inches deep, 6 inches apart in sun. Useful in rock gardens and cut flowers

Each 3 for 12 for

\$0.65 \$1.75 \$6.50

LILIUM CANDIDUM (Madonna Lily)

Many large, fragrant, fine, white, funnel-shaped flowers on plants 3 to 5 feet high. Prefer full sun and is especially striking when used with Delphinium. Plant bulbs only 2 inches deep

.50 1.35 5.25

LILIUM ELEGANS, MAHOGANY (Cottage Lily)

Large, deep mahogany-crimson flowers in June and July on stems 1 to 2 feet. Likes either sun or a partially shady location

.45 1.10 4.50

ALL LILIES ARE TOP SIZE BULBS

EMPIRE STATE GLADIOLUS SOCIETY MEMBERSHIP BLANK

To:
 Dr. Gordon R. McKenney, Sec'y
 175 Croydon Rd. Rochester 10, N. Y.



Remit to the
 Empire State Gladiolus Society
 by check, money order or cash

Empire State Gladiolus Society Membership \$1.00

Empire State membership brings you six bulletins each year containing news and views, cultural hints, notes on hybridizing and the like. Each member is entitled to exhibit at the Annual and all Regional Shows and to vote at the Annual Meeting.

Affiliate Membership With New England Gladiolus Society \$2.50

This membership entitles you to all benefits of E.S.G.S. Membership noted above, PLUS supplement membership in the New England Society (largest in the world). This brings you a deluxe copy of the yearbook, Quarterly Supplements and full voting and exhibiting privileges of the Society. This represents a \$3.00 (and more) value for only \$2.50.

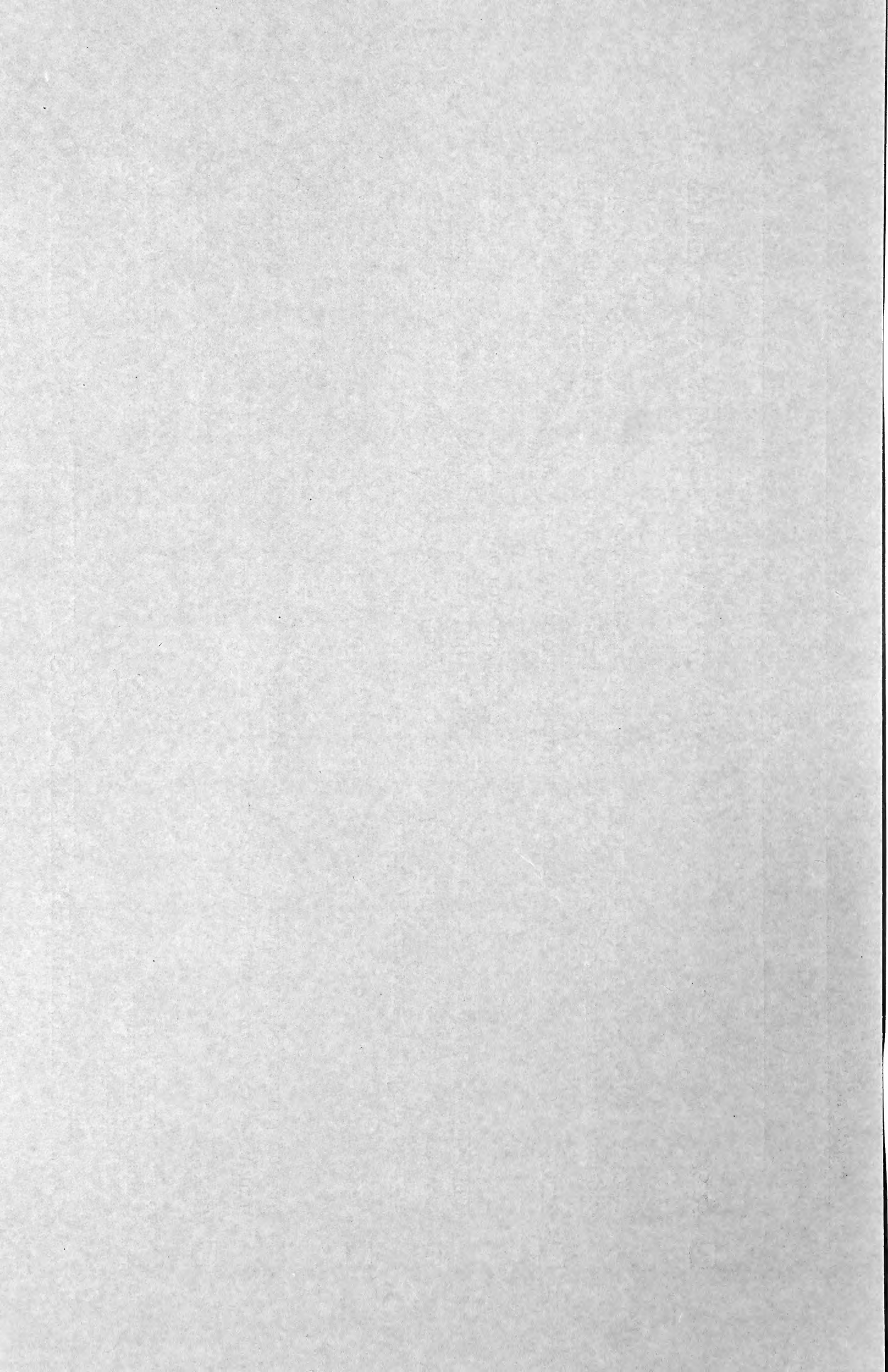
Affiliate Membership With The North American Gladiolus Council \$1.75

This membership entitles you to all the benefits of E.S.G.S. noted above PLUS supplement membership in N.A.G.C. This brings you a Quarterly Magazine and full privileges of the Society. A \$2.00 value for only \$1.75.

ALL THREE — E.S.G.S., N.E.G.S., and N.A.G.C. (\$4.00 value) \$3.25

Name _____ PLEASE PRINT

Address _____ Street or R.D. No. _____ Post Office _____ State or Province _____



The Flowers You Always Adore

LILIUM HENRYI Each 3 for 12 for
(Orange Speciosum Lily)
 Bright orange-yellow, spotted brown. Flowers of medium size, recurved type, on stems 5 to 8 ft. Prefers partial shade, blooms plentifully in August. A good beginner Lily as it is our easiest grower.
 GIANT JUMBO BULBS ..\$0.70 \$1.75 \$7.00

LILIUM MAXWILL
(Maxwill Lily)
 Medium size, bright orange-red, spotted black, of recurved type on stems 4 to 6 feet. Blooms profusely in July, up to 40 blooms per plant. Adapts itself to almost any soil conditions55 1.45 5.50

LILIUM PARDALINUM GIGANTEUM
(Sunset Lily)
 Large blooms of crimson to deep gold at throat with deep purple spots. Grows 5 to 7 feet in full sun or partial shade. Heavy producer of bulbs and clumps should be divided often. Blooms in July. .65 1.75 6.50

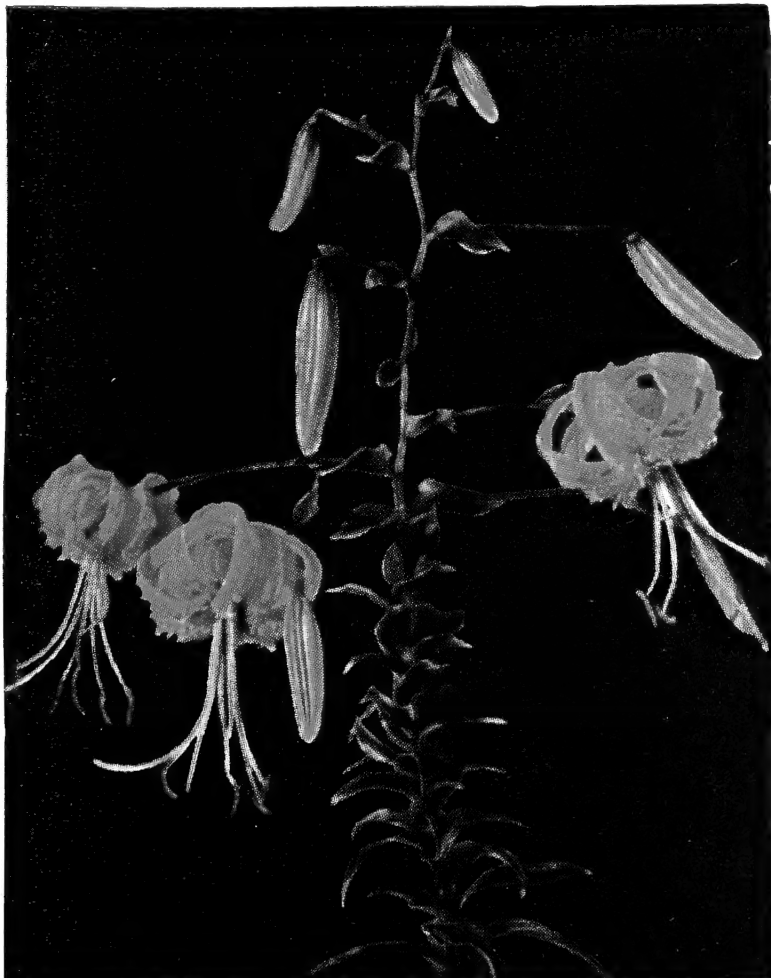
LILIUM REGALIANUM
(Regal Lily)
 Large, white, fragrant blooms with a purple-rose flush. Trumpet type, blooms in June and July. Grows 3 to 6 feet. Plant 6 to 8 inches deep. LARGE BULBS45 1.25 4.50

LILIUM SPECIOSUM RUBRUM Each 3 for 12 for
(Pink Showy Lily)
 Large recurved blooms varying from rose-pink to carmine-pink, spotted crimson. Fragrant. Plants 3 to 5 feet tall and likes partial shade. \$0.90 \$2.50 \$9.75

LILIUM TIGRINUM FLORE-PLENO
(Double Tiger Lily)
 This old-fashioned standby has large, dark salmon-orange blooms spotted with mahogany. Blooms in August and grows 5 feet tall40 1.00 3.50

LILIUM UMBELLATUM ERECTUM
(Candlestick Lily)
 Large orange-red blooms face upwards in clusters on top of 1- to 2-foot plants. One of the earliest bloomers in June45 1.25 4.00

LILIUM WILLMOTTIAE
(Swehwan Lily)
 Medium size, orange-red blooms, dotted with black on plants 3 to 6 feet tall. Blooms in July. One of the unusual varieties sure to cause comment among garden visitors. .45 1.25 4.50



Lilium henryi



Lilium auratum (Gold-Banded Lily)

Strawberries -

STANDARD VARIETIES

Prices: 25 for \$1.75; 100 for \$3.90; 1000 for \$20.00.

CATSKILL. Midseason. Excellent keepers. Will produce a heavy crop annually. Berries large and bright red.

CHESAPEAKE. Late. Best of the market berries. Does best in moist, fertile soil.

DORSETT. Early. Probably the best of the early, heavy cropping varieties.

FAIRFAX. Medium early. Richly flavored, large fruiting variety.

PREMIER. Early. Berries are very large and exceptionally red. For jam making it has no equal.

RED STAR. Extremely late. Large, firm, red berries. Plants vigorous growers, and very productive. Extends your Strawberry season as no other type will.

EVERBEARING VARIETIES

EVERMORE. A new ever-bearing Strawberry. Fruit is rather dark red, of very good flavor and has excellent keeping quality.

Prices: 25 for \$3.00;
100 for \$8.90; 1000
for \$50.50.

STREAMLINER. A new introduction soon to become a leader, as it has improved firmness over other ever-bearers, and yet equal in size, flavor and color.

Prices: 25 for \$3.50;
100 for \$10.00; 1000
for \$77.00.



Streamliner