

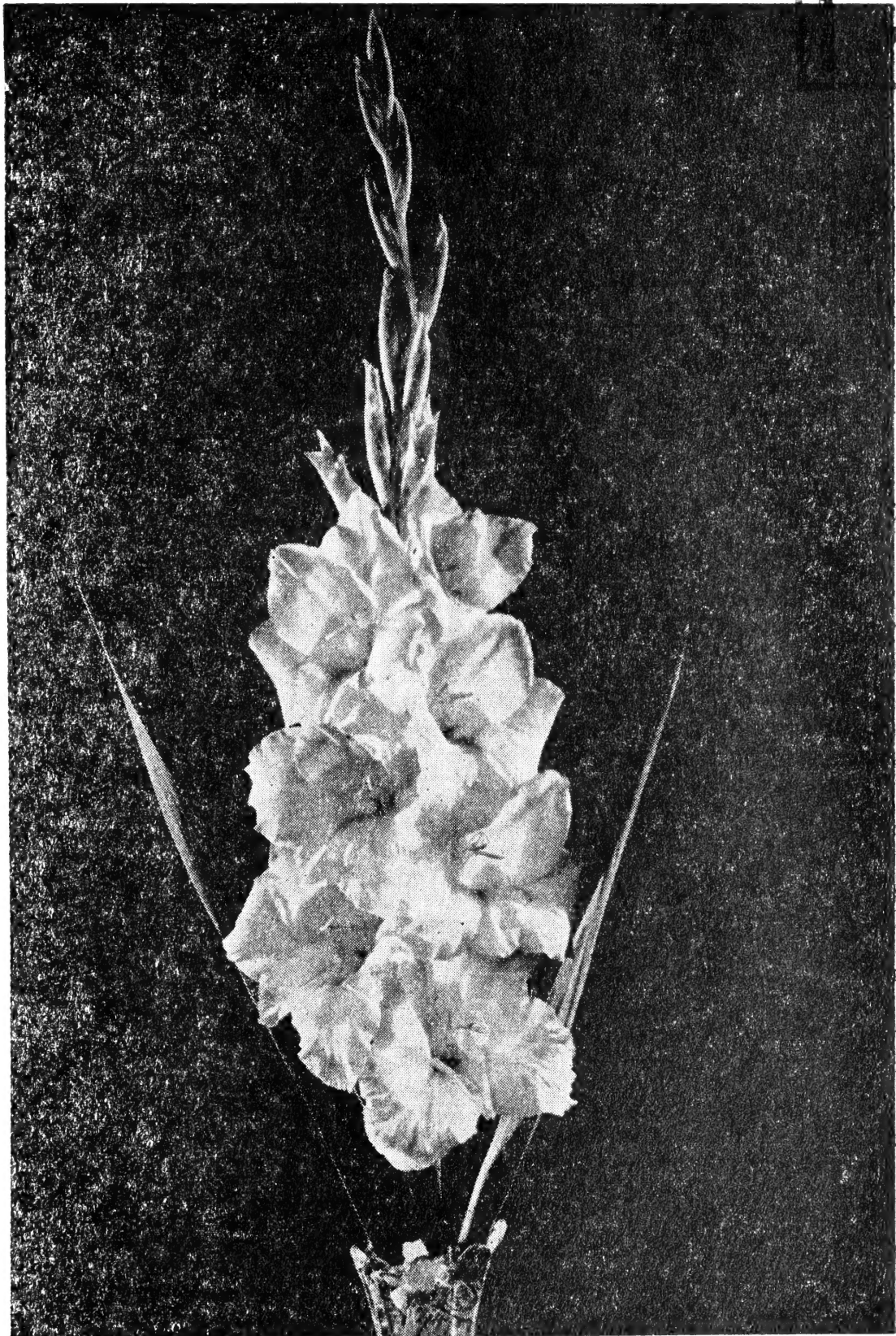
Historic, Archive Document

Do not assume content reflects current scientific knowledge, policies, or practices.

62.85

1948 GLADIOLUS *Exhibitors and Hybridists Handbook*

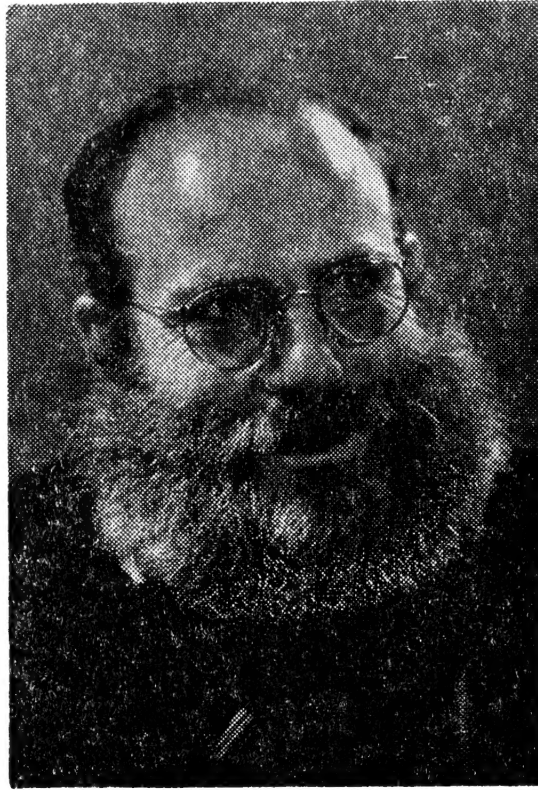
LIBRARY
RECEIVED
MAR 25 1948
U. S. Department of Agriculture



DIADEM
Wonderful new fragrant gladiolus.

Nuttall's Gladview Gardens

R. D. NO. 2 PROVO, UTAH



W. REED NUTTALL, July 24, 1947.

The Centennial beard grew almost as well as the glads.

GLADIOLUS VARIETIES are listed in the following sections of this catalog. The titles of the sections are self explanatory, however, as many varieties qualify under more than one heading, ie., Crinkles is an "Old Timer," a "Famous Parent" and a "Prize Winner;" to save duplication they will be listed under but one heading with an explanation of the other qualities being mentioned in the description.

	Page
SECTION I	
New Introductions	8
SECTION II	
Large flowered prize winners	9
SECTION III	
Famous parents	29
SECTION IV	
Other large flowered standard and novelty varieties	33
(Includes many hard-to-get collectors' items)	
SECTION V	
Small flowered winners	37
SECTION VI	
Other good baby glads	38
SECTION VII	
Famous old timers	39

1948 GLADIOLUS Exhibitors and Hybridists HANDBOOK

Nuttall's Gladview Gardens

R. F. D. 2, Provo, Utah

Dear Glad Fans:

It is with pleasure that we send you our 1948 Handbook of Gladiolus prices and information. Many thanks for the fine orders of last season and for the expressions and compliments on our service and the quality of our bulbs. Your letters have furnished the inspiration needed to show us the way for additional features and services for 1948.

Visitors are Welcome

We extend a hearty welcome to visitors, not only to our gladiolus fields, but to our beautiful State as well. Utah, in the heart of the Rockies, is the central point for visitors to our beautiful Western National Parks and Monuments, namely: Zions, Bryces, Grand Canyon, Yellowstone, Arches, Natural Bridges, Dinosaur, Cedar Breaks, Capitol Reefs, Timpanogos Cave, and others. We hope many of you will be induced to travel in Utah this summer.

Late last autumn we were able to purchase a new and much larger place, so this summer our fields will be situated just two miles southeast of Provo, approximately two blocks east of Springville Road (Highway 91) on 13th South Street. Right at the foot of the lofty Wasatch Mountains. Make it a point to come and see them. The complete planting consists of over 1500 named varieties and many seedlings. They will be in bloom during July, August and September.

Join a Gladiolus Society

The New England Gladiolus Society is the oldest and largest Gladiolus Society on the Continent, has many departmental activities, and worldwide membership of over 6000. Each year they publish "The Gladiolus" containing numerous articles, many written especially for the Backyard Gardener, on gladiolus care, culture, selection of varieties, hybridizing, etc. This is a deluxe, flexible, imitation leather bound, illustrated book for your library. The society also publishes, each year, six issues of the "Gladiolus Magazine," containing timely hints and all the latest about glads. For only \$2 you get both the book and six issues of the magazine. Send to A. N. Drake, Secretary N.E.G.S., Horticultural Hall, Boston 15, Mass. (Note: Members of the Utah Gladiolus Society groups may receive membership for \$1.50 if they apply thru one of the Secretaries of our local Utah Groups; P. W. Carroll, RFD 2, Orem, Utah, (Secretary of the Wasatch Gladiolus Society) or Blaine Boudrero, 175 N. 1st West, Logan, Utah, (of the Bonneville Gladiolus Society) or Wesley Smith, 1041 South 8th West Street, Salt Lake City, Utah.)

Three years ago another group of Gladiolus growers started the North American Gladiolus Council. For \$1 sent to Alfons Bazdorf, Lincoln Park, New Jersey (Membership Secretary), you will receive four fine quarterly

bulletins filled with the best gladiolus information.

Most states, some cities, counties, etc., also have active gladiolus societies. We will gladly help you get in touch with the society in your locality.

The Utah Gladiolus Society now consists of three associated groups: The Bonneville Gladiolus Society for Northern Utah and Southern Idaho, the Salt Lake Gladiolus Society for the area near Salt Lake City and the Wasatch Gladiolus Society for the south end of the State. These three groups work together and membership in one entitles one to full mem-

ber privileges in all three. Each group will hold a show this summer and each holds regular meetings. Dues are \$1.50 and includes affiliate membership in the NAGC as well, which means that each member will also get the NAGC Quarterly Bulletins. For \$3.00 you may get the combination of NEGS, NAGC and Utah G. S. memberships, which will bring you about the finest current gladiolus information printed, membership privileges, etc., and at a saving of \$1.00. Utah Secretaries are listed in the notes at the beginning of this heading.

JOIN A GLADIOLUS SOCIETY

Remarks

We are probably the only growers who make a definite effort to list all top winners and believe we list the most complete list of current winners offered by anyone in the U. S. A.

On the show table Picardy has been at the top for almost fifteen years, but is finally giving ground to a few other varieties that are equally as good or better when well grown. Some of these are: Algonquin, Burma, Corona, Eglantine, Elizabeth the Queen, Leading Lady, Margaret Beaton, Red Charm, Silver Wings, Spotlight, Summer Gal, White Gold, and a few others. When stocks of these are more widely distributed, their winnings will be much greater. It should be understood that winnings of the newer varieties are few because their newness and higher price has prevented their being grown and entered in very many shows. A safe rule to follow is: Any variety costing over 25c that is able to win 5 awards or more is as good or better than cheaper varieties winning many prizes. Also a variety that can win firsts and championships in shows all over the

continent is bound to be good in your own garden.

Using the NEGS and other reliable reports of the major shows held in 1946 and 1947 and tabulating only first prizes we find that over 280 varieties were able to win 5 or more awards. Most of these are listed in this catalog. The variety name is preceded by the number of prizes won.

Because in a few cases two or more varieties have been given the same name and in at least two cases a variety is listed under more than one name, also to aid those interested in following up work of certain breeders and various other reasons we are listing the originator's name. In a few cases where the originator's name was unknown, we have inserted the name of the introducer or the country from which the variety was introduced. Originator's name follows the variety name.

Next comes the year of introduction. A candid opinion here may be of help: Because a variety is a few years old does not necessarily mean that it is inferior or outdated. Many

of the new expensive varieties are definitely inferior to older varieties of the same color, and have been placed on the market only because they were somebody's baby or because the introducer was unacquainted with the fine varieties already on the market. As proof of the above, check the winnings of Crinkles, originated by Kundred and introduced in 1916; Minuet 1922, still mighty hard to beat; Mother Machree 1927, still winning plenty of prizes. There is a long list that would be longer if we were not so prone to discard the old in favor of the new. This does not mean that there are no good new glads, but merely that all new ones are not necessarily the best. Where competent judges are used, the ability to win is a very good criterion.

The National Classification Committee size and color class number, as used and recognized by most Gladiolus Societies in the U. S. and Canada, follows the date of introduction. In the shows, varieties compete in these color and size classes. Under this classification the 100 series includes the tiny miniatures with florets under 2½ inches in diameter. The 200 series is for small glads with florets 2½ to 3¼ inches in diameter. The 300 class is for medium sized glads with florets of 3¼ to 4¼ inches. The 400 class is for large glads with florets of 4¼ but under 5½ inches and the 500 class is for giants with florets 5½ inches and over in diameter. The last two figures of this number indicate the color group to which the variety belongs. Those ending in even numbers have pure self colors or blend to lighter throats and those ending in odd numbers are marked with a deeper or contrasting shade. These figures are based on average growth under good culture.

- 00-09 Pure white to cream.
- 10-14 Light to deep yellow.
- 16-19 Light to deep buff.

- 20-29 Light to deep orange.
- 30-35 Light to deep salmon.
- 36-39 Shades of scarlet.
- 40-49 Light to deep pink.
- 50-59 Light red to black red.
- 60-65 Light to deep rose.
- 66-69 Lavender shades.
- 70-75 Purple shades.
- 76-79 Light to deep violet.
- 80-89 Smoky shades.
- 90-99 Any other color: greys, browns, greens, etc.

Most bulb growers supplying the retail trade use three bulb sizes. Large bulbs (indicated by Lge. in this catalog) are sorted so that the minimum is 1¼ inches in diameter; however, most are much larger. It usually takes two years to grow a bulb to this size from a bulblet, altho quite a large percentage of certain varieties under good culture will attain this size the first year. Bulbs three years old or over are no longer considered young bulbs. Medium (Med.) sized bulbs or yearlings as they are called in Australia and New Zealand, measure ¾ to 1¼ inches in diameter. This size often makes almost as good bloom as the larger size but usually takes longer to bloom. Small bulbs (Sml.) or planting stock, are those measuring less than ¾ of an inch in diameter. While this size often gives a fairly large percentage of bloom in certain varieties, they are usually much later, smaller and often not quite up to par in color. Ruffled varieties often lack this quality in blooms from small bulbs. The advantages of buying medium or small size bulbs are in the saving on the price as they usually sell for 25% to 75% less than large bulbs; then the smaller sizes usually produce more bulblets per bulb than larger sizes where the bulk of the bulb strength goes into producing a fine flower. The purchasing of yearling bulbs enables the bulb grower to furnish young vigorous bulbs of good size to

his customers the next year.

The color and size descriptions of most varieties are our impressions of the way the variety grows here in Utah. Blooming dates were tabulated for several years with the conclusion that they are not accurate enough to use in timing a variety for a future show date. Some varieties varied as much as three weeks in our variable Utah weather. Usually most varieties bloom in 80 to 100 days. Those frequently blooming in less than 80 days are designated as early and those taking much over 100 days as late. We are keeping records on the number of florets opening in the field, average height, health, propagation (Under this heading are experiments to determine whether bulblets of a variety germinate better planted the first or second spring after harvesting, whether bulblets need to be peeled, etc.) and other data. Tabulations may be complete enough to include some of this in our 1949 catalog.

Parentages and Progeny

A leading feature of our catalog is the listing of the parents, if known, and a partial list of the progeny of the more famous varieties. As will be realized, some varieties that are exceptional on the show bench may be good parents or may not. Also some varieties might be able to pass to their offspring fine qualities that are not apparent in their own makeup. It has been quite definitely proven by livestock breeders and others that the ability and value of a parent is best proven by the records of the progeny of that parent. Or, as the Bible states, "By their fruits ye shall know them." Except for the few varieties that are the result of inbreeding or self crosses, we know that all glads

have two parents, even tho one or both may be unknown and that a good glad may get most of its good qualities from but one of its parents. Also realizing that in all probability some of the new unproven varieties may be as good or better breeders than the best of these older ones on which we already have records. This in no way reduces the value of the Proven Parents. Picardy, Commander Koehl, Emile Auburn, Apricot Glow and others will be useful for many years. It must be realized too that the picture is never complete. New varieties are coming along every year whose progeny keeps piling up more and more with an ever-increasing number of winnings. One wonders if any variety will ever catch up with Picardy. On Jan. 1st, 1947, the writer was able to tabulate the following record: (Note: Every catalog and publication on glads has additions to this list). In the six years, 1940 to 1945 inclusive, using sources available, Picardy has won 342 first prizes, of her 21 sports, six have won 210 prizes. She is the seed parent of 240 varieties of which 96 prize winners won 2521 first prizes. Among the 139 varieties of which Picardy is the pollen parent are 43 winners with 943 prizes. This makes a grand total of 4016 prizes for Picardy, her sports and her children. Independent of the above tabulation, two Dutch catalogs list 77 Picardy seedlings for introduction in the United States this year.

Correspondence will be welcomed from those wishing complete progeny lists or other information pertaining to this catalog.

Much of the foregoing information has been compiled from the NEGS Yearbooks and is used by permission of the New England Gladiolus Society, Inc., Copyright owner.

How New Varieties Are Born

There is no phase of flower growing more fascinating than developing new varieties. All that is needed is a keen sense of observation, a well developed curiosity, and a pair of deft hands. Of course, a yen for keeping records and a few simple tools will aid in the scientific aspects. As most gardeners are well supplied with these qualities, the only other thing needed is a knowledge of the mechanics of hybridization which are so easy they can be performed by a child.

Flowers have two essential sexual parts, the stigma and the anthers. The stigma is the female part. The anthers are the male parts carrying the pollen. On glads these parts in the center of every floret are quite discernable and easily distinguished from one another.

To properly cross glads one should have a supply of the small blank price tags with strings attached like those used by department stores, a pair of tweezers, a supply of small envelopes and paper bags and of course a lead pencil, soft lead preferable.

Go into the garden early on the morning the florets you intend to use first open. With the tweezers remove the anthers. If of a desired variety these can be dropped into a properly labeled envelope and used later on other specimens. Next, tie a label (price tag) to the floret loosely so as not to interfere with future growth of the seedpod. The label is applied now to aid in finding the prepared floret the next day. To be thoroughly accurate and scientific, a paper bag should now be tied over the floret so bees and humming birds cannot reach the stigma with unwanted pollen. Bagging is not always done as it has been found that if all but the top hood petal is cut or broken away the bees and birds seldom bother it. Many breeders merely remove the anthers, hoping

that the few chance crosses may give as good or better results as their own. The stigma is seldom receptive the first day so when the desired number of florets are prepared you wait until the next day to do the actual crossing. Crosses are most successful if made during the warmer part of the day, from about noon 'till 5 o'clock, and seldom take during rainy or damp weather. Upon returning the next day, pollen of the desired variety is dusted carefully on the end of the stigma of the previously prepared floret. When properly receptive, the three tiny prongs of the stigma will be open and covered with a slightly sticky substance. Close observance will soon teach you the right time to apply the pollen. Now, write the name of the stigma or seed bearing parent followed by the name of the pollen parent on the label. If your crosses are successful, in three or four weeks there will be fat seed pods that must now be watched so that they may be harvested as soon as the pods begin to split open. Place the pods in properly labeled bags and store them in a cool dry place. When dry, clean the pod shells and the small wafer-like disks off the seed during spare time. In the spring plant the seed not over one inch deep in well prepared fertile beds, again labeling properly. Keep well watered throughout the season as only a few hours dry will often kill the tiny seedlings once they start to grow. In sections where the weather is hot and dry a lath shade will be found helpful. If successful, in the fall you will be able to harvest a small bulb for each seed that grew. They now require the same care as other glad bulbs. With good care many of these should bloom the second summer and you will become a confirmed "Glad Fiend."

It will be found that each seedling has developed into something different. Many may be inferior to exist-

ing varieties. The clever breeder, with luck, may be able to pick one or two good ones from several thousand seedlings. The ratio is not high, but

the thrill when you do get a good one is great.

Note: Sports are not developed from seed, but are mutations or freaks that develop in bulb division.

Read Carefully Before Ordering

The bulbs listed are true to name, young, healthy and sure to bloom. While we make no guarantee, we do want satisfied customers and will make every effort to correct errors or misunderstanding. All prices prepaid anywhere in the U. S. Orders will be filled and shipment made in order of rotation. All stock offered and orders accepted subject to prior sale. Right to limit number of bulbs per customer of scarce items reserved. Terms: Cash with order. No mail orders for less than \$1.00 and no single item for less than 10c. Also state your preference as to whether you desire substitution or refund in case we are sold out of any of the varieties you select.

Prices are for large bulbs; no medium or small bulbs except as listed. 25 bulbs or more of one variety may be purchased at the 100 rate,

which is 8 times the 10 rate. As we have well over 1000 varieties, we probably have all your favorites even tho they are not listed, so just send your order at current prices and we'll do our best. We DO have a surplus of bulblets of some varieties. Write if interested.

EXTRAS—On orders of \$1.00 or more, we always add extra bulbs of newer varieties for trial. The larger the order the greater the value of the extras. Look for them. Note: if you would rather have overcount of the varieties you order, please state so.

If your order amounts to much more than 100 large bulbs, it is often advantageous for us to ship by express. If your mailing address is different than your express office, please list both. If you prefer Parcel Post, state so.

GLADVIEW SPECIALS

EXHIBITOR'S COLLECTION—10 large bulbs each of 10 of the better large flowered varieties, each labeled, but our choice of varieties picked from the prize winners. A collection of superior quality for those who want something special for their garden this summer, but are unacquainted with gladiolus varieties. 100 large bulbs, Prepaid \$6.00

One half collection, 50 large bulbs, 10 varieties, Prepaid \$3.25

\$1 SPECIAL—Red, White, Blue and all colors, each a different variety, but unlabeled, 25 large bulbs, Prepaid \$1.00

GLAD GARDEN MIXTURE—Best varieties for mass effect in the garden. 100 bulbs, 1-inch and over, Prepaid \$5.00

Section I NEW INTRODUCTIONS 1948

BONNEVILLE ROSE—(F. D. Daines) (Salbach's Pink x King Arthur). Due to an accidental mixup by Dr. Daines last year, very few bulbs of this variety were distributed. The Customers got Western Star instead. Therefore I am listing it as a 1948 introduction. Those few in the East who did see it have written me that they consider it one of the great glads of the decade. It is a very ruffled deep lavender rose. Probably will be classified as a 462 altho it can easily be grown large enough to go into the 562 class. It is as ruffled as its parent King Arthur but with larger, more wide open and much better

placement of florets. In color it is a bit more lavender than Miss Wisconsin. It carries sixteen buds on a twenty-two inch flower head, six open and several lovely buds in color. It produces an abundance of easy to germinate bulblets, many of them jumbos which always bloom the first year. Top awards in its color class wherever exhibited. Prices: Lge. \$4.00 each, 10 for \$32.00, Med. \$2.50 each or 10 for \$20.00, Small \$1.50 each or 10 for \$12.50. Jumbo bulblets .75 each or 10 for \$6.00. Large bulblets .50 each or 10 for \$4.00 For larger quantities write for wholesale prices.

1947

WESTERN STAR (Daines) (Sport of Picardy). Almost identical salmon pink as Picardy, but blending to a clean soft yellow throat. Entirely free of the red penciling so much in evidence in Picardy and her seedlings. For the breeder, Western Star is a "must have" as it imparts to its seedlings the identical good qualities as Picardy with the added advantage of clean throats. Western Star grows like the best Picardy stock and identical in propagation, keeping quality, etc. The late J. R. Hopkins tested, recommended and promised to introduce Western Star. This is a new glad with real promise for the Hybridist, the Exhibitor and the Commercial Grower. Prices: Lge. \$1.00 each or 10 for \$8.00, Med. .75 each or 10 for \$6.00, Small .50 each or 10 for \$4.00. Bulblets 12 for \$1.00 or \$6.00 per hundred.

DIADEM (Lines) This beautiful, fragrant glad in class 462 is a two-toned rose blend. Opens 6-8, lightly ruffled 5 inch florets, firmly attached to a 16-18 bud spike. Its earliness, size, beauty and large number open make it the only fragrant commercial. Fragrance is more pronounced after it has been cut a day or two. It is an excellent shipper and keeper. Field height 48-52 inches. Bulblet production fair, germination good. Prices: Lge. \$10.00 each, three for \$25. Med. \$7.50 each, three for \$20.00. Small \$5.00 each, three for \$12.50. Bulblets \$1.00 each, 10 for \$8.00.

1946

ODORA (Nuttall) (E. J. Shaylor x ?) Classified in 341. A rather deep pure pink shading lighter on the upper petals and a large red blotch on the lower petal. Opens 6-8, 4½ inch florets on a 16 bud spike that attains a height of 45-48 inches in the field. Its odor or woody fragrance is easily perceptible which along with its good general characteristics should make it of special interest to the Hybridist as it sets seed readily. Prices: Lge. .25 each, 10 for \$2.00. Med. 2 for .25, 10 for \$1.00. Small 3 for .20, 10 for .50.

EUROPEAN VARIETIES

Many new European and Domestic varieties will be found listed in Section II which follows.

Section II

LARGE FLOWERED PRIZE WINNERS

In Sections II and V are listed nearly every variety that was able to win 5 or more 1st prizes in United States and Canadian shows during the last two years. Many of these are also "Famous Parents." As a complete listing of the offspring of these parents would take many pages, only the noted ones are mentioned. The number following the offspring's name is the number of prizes won by this variety since 1940.

Prizes	Name, Originator and Parentage	Date	Class	Size	Price
2	ABE —Ellis	1935	422	Lge. 3-	.25 10- .70
	Tall late salmon orange, many open.				
10	ABIGAIL —Meyer, (Picardy x Mildred Louise)	1946	466	Lge. 1-	3.00
	Tall lavender, earlier than Minuet				

1	ABNAKI —Funk, (Wasaga x Camona) Early vivid orange.	1945	421	Lge. 1-	.25	
6	ABU HASSAN —K & M Fine dark violet blue, tall and vigorous, called an improved Pelegrina	1946	378	Lge. 1- Med. 1-	.25 .15	
4	ACCA LAURENTIA —Holland Early blooming orange	1942	320	Lge. 2-	.25	10-1.00
4	AGLOW —Ridley Salmon buff shading deeper on petal edge.		316	Lge. 1-	.25	
50	ALADDIN —Palmer, (Picardy x Royal York) Huge deep salmon with a cream throat and intense ruffling, a beauty.	1938	532	Lge. 3- Med. 3-	.25 .15	10- .70 10- .40
6	ALETA —Grout, (Picardy x Golden Chimes) Big peach red orange, parent of Lovelace, Perdita, etc.	1945	520	Lge. 1-1.	1.25	
96	ALGONQUIN —Palmer, (Picardy x Com. Koehl) Big brilliant clear scarlet, nicely ruffled. Parent of Minstrel (6)	1939	436	Lge. 3- Med. 3-	.25 .20	10- .70 10- .50
16	ALSACE —Benedict, (Mrs. Sisson x Picardy) Ruffled buff and apricot	1941	416	Lge. 1-	.25	
10	AMADOR —Kingsley Bright fiery red	1930	352	Lge. 2-	.25	
13	AMBERGLOW —Palmer, (Orange Queen x Souvenir) x Golden Dream seedling) Deepest pure yellow	1936	412	Lge. 2-	.25	10-1.00
8	AMERICAN COMMANDER —New, (Commander Koehl x ?) Large deep pure red, good cutflower	1938	452	Lge. 3- Med. 3-	.25 .15	10- .70 10- .40
10	AMULET —Palmer, (Picardy x Wasaga) Intensely ruffled light brown	1938	416	Med. 3-	.20	10- .50
6	ANNAMAE —Pommert, (Maid of Orleans x ?) Early pure white	1940	400	Lge. 2-	.25	10-1.00
1	AOTEAROA —Burns Tall creamy white, yellow throat. (Name means "The long white cloud," Maori for New Zealand.)		406	Lge. 1-	.25	
17	ARCTIC SNOW —Harris, (Maid of Orleans x Picardy) Tall new ruffled white		300	Lge. 1-	.15	10-1.25
13	ARETHUSA —Fischer, (Brightsides x Rosemarie Pf.) Intensely ruffled buff. Parent of Discovery, Gleam, Ophir (3), etc.	1938	416	Lge. 2-	.25	10- 1.00

11	ARIADNE —Mitsch, (Picardy x Red Lory)	1937	401	Lge. 3-	.25	10-	.70
	Tall large white blotched with red. Parent of Old Nick						
17	ATHLONE —B. L. Palmer (Lady Winsome x Albatros) x (Purple Glory x Pf. Triumph)	1943	416	Lge. 1-	.50		
	Beautiful pinkish buff to flesh						
4	ATLAS —Pfitzer	1939	378	Lge. 2-	.25	10-	1.00
	Good deep blue.						
9	AVALON —Marshall, (Wm. Cuthbertson x Picardy)	1940	441	Lge. 2-	.25	10-	1.00
	Ruffled pink and cream						
5	AVE MARIA —Pfitzer	1927	377	Med. 4-	.20	10-	.40
	Blue flecked with lilac. Parent of Azurine, Bluet (14), Capeheart (16), etc.						
28	BADGER BEAUTY —Krueger, (Minuet x Bagdad)	1941	466	Lge. 3-	.25	10-	.70
	Tall lavender, cream throat						
29	BAGDAD —Palmer, (Emile Aubrun x Apricot Glow)	1930	480	Lge. 3-	.25	10-	.70
				Sml. 4-	.15	10-	.30
	Giant Smoky old rose, late. Parent of, Badger Beauty (52), Honolulu, Oklahoma (4), etc.						
3	BALLAD —Palmer, (Premier Henry x Picardy)	1942	460	Lge. 2-	.25	10-	1.00
	Ruffled salmon rose, cream throat.						
	BANCROFT WINSOR —Winsor, (Betty Nuthall x Picardy)	1941	423	Lge. 2-	.25	10-	1.00
	Good deep orange, deeper throat.						
10	BARBARA —Stockton, (Salbach's Orchid x (Albatros x Mrs. Tom Rattray)	1941	461	Lge. 1-	.25		
	Nice rose pink from Canada						
10	BARCAROLE —Palmer, (Picardy x Wasaga)	1937	424	Lge. 3-	.25	10-	.70
	Ruffled clear deep orange						
48	BEACON —Palmer, (Picardy x Mrs. Langford)	1935	436	Lge. 3-	.25	10-	.70
				Sml. 4-	.15	10-	.30
	Large light scarlet with cream throat. Parent of, Crimson Tide, Block Buster, Snowbank						
17	BELTRAMI —E. H. Lins, (Picardy x Commander Koehl)	1943	480	Lge. 2-	.25	10-	1.00
	Big rose mulberry						
14	BENGASI —Cave, (Rosemarie Pf. x Picardy)	1943	530	Lge. 1-	3.00		
	Ruffled salmon pink, white throat						
5	BEVERLEY —Wright	1940	470	Lge. 3-	.25	10-	.70
	Very good rosy purple						
48	BIG TOP —Rich, (Picardy x Truly White)	1942	541	Lge. 2-	.25	10-	1.00
	One of the largest glads, tall pink. Parent of Lorna Doone						

33	BINGO —Canine, (Sport of Picardy) Giant buff colored Picardy	1938	517	Lge. 2-	.25	10-1.00
3	BIRCH RED —Rich, (Picardy x (Morocco x Superior) Excellent pure red, opens 7 or more.	1945	552	Med. 1-	2.00	
56	BIT OF HEAVEN —Crow, (Orange Queen x Joyful) Tall early orange, many open. Parent of Daphne, Debutante	1937	320	Lge. 3-	.25	10- .70
				Sml. 4-	.15	10- .30
14	BLACK DIAMOND —Gelser Ruffled black red. Parent of Black Witch.	1942	354	Lge. 1-	.25	
71	BLACK OPAL —Errey, (Morocco x Lucifer) Leading black red, many florets open at once. Parent of, Paul Robeson (3), Rosy Red, etc.	1936	454	Lge. 3-	.25	10- .70
				Med. 3-	.15	10- .40
9	BLAZE —E. H. Lins, (Picardy x Southern Cross) Brightest big light red.	1940	450	Lge. 3-	.25	10- .70
				Med. 3-	.15	10- .40
7	BLAZE —Marshall, (Salbach's Pink x Pf. Triumph) Shining light scarlet, huge.	1941	536	Lge. 1-	.25	
11	BLEEDING HEART —Brown Pale pink with red blotch. An old timer that wins regularly.	1927	341	Lge. 3-	.25	10- .70
				Med. 3-	.15	10- .40
4	BLOEMFONTAINE —K. & M. Big salmon with yellow blotch.	1946		Lge. 1-	.35	
14	BLUE ADMIRAL —Christ, (Muriel x Heavenly Blue) Deep violet blue. Parent of, Porcelain Blue, Shangri-La.	1933	378	Lge. 3-	.25	10- .70
76	BLUE BEAUTY Pfitzer Best light blue. Parent of, Concord, Royal Blue.	1934	476	Lge. 3-	.25	10- .70
				Med. 3-	.15	10- .40
	BLUE ICE —Butt, (Josef Hayden x (Joyful x Pfitzer's Triumph) Probably the largest blue to date, good clean color.	1945	576	Lge. 1-	7.50	
8	BLUET —Mitsch, (Blue Danube x Ave Maria) Tall dark blue, blotched white.	1939	378	Lge. 1-	.15	
4	BOBBY DAZZLER —Both Giant scarlet orange.	1941	520	Lge. 1-	.20	6-1.00
5	BOLERO —Leffingwell, (W. H. Phipps x ?) x Picardy) Ruffled smoky orange, red blotch.	1941	425	Lge. 1-	.15	
2	BONNEVILLE —Ellis Deep salmon.	1933	332	Lge. 3-	.25	10- .70
8	BRIGHTSIDES —Prestgard Very early intensely ruffled bright orange, yellow throat. Parent of, Arethusa (24), Flame Thrower.	1934	324	Lge. 3-	.25	10- .70
				Med. 3-	.15	10- .40
				Sml. 3-	.10	10- .25

36	BUCKEYE BRONZE —Wilson, (Picardy x Aflame) Intensely ruffled rosy bronze.	1942	486	Lge. 2-	.25	10-	1.00
3	BUENA VISTA —Pruitt, D. S. Giant glistening deep rose red, 8 open.		562	Lge. 1-	.35	3-	1.00
10	BUFFETTE —Winsor, (Apricot Glow x Esme Desailly) Large light buff.	1937	417	Lge. 3-	.25	10-	.70
73	BURMA —Palmer, Premier Henry x King Lear) Tightly ruffled deep rose.	1943	462	Lge. 1-	.25		
38	CALIFORNIA —Salbach, (Picardy x Seedling) Big deep pink. Patented.	1939	543	Lge. 1-	.35	3-	1.00
3	CALYPSO —Scheer Giant ruffled pink, worth trying.	1944	542	Lge. 1-	1.00		
10	CAMILLIA —Palmer, (Lady Eaton x Picardy) Blushed white with scarlet blotch.	1937	341	Lge. 3-	.25	10-	.70
3	CAMROSE —Twomey, (Emile Aubrun x Gloriana) Nice clear pure pink.	1938	340	Lge. 3-	.25	10-	.70
34	CANDY HEART —Salbach, (Picardy x Grand Opera) Flesh pink with deeper feather.	1938	441	Lge. 3-	.25	10-	.70
5	CANDY SPLASH —Almey, (Rosemarie Pf. x Miss New Zealand) Near white splashed with red.	1943	401	Lge. 1-	1.00		
11	CAPEHEART —Windsor, (Ave Maria x A. E. Amos) A big pure pink.	1938	540	Lge. 2-	.25	10-	1.00
1	CAPISTRANO —Hatch, (Shirley Temple x Uncas) Beautiful ruffled orange, late.	1943	420	Lge. 1-	.40		
9	CARIBOU —Kerr, (Picardy x Mammoth White) Tall white with rose blotch.	1940	401	Lge. 1-	.50		
5	CASABLANCA —Majeski Tall good new white.	1944	400	Lge. 2.	.25	10-	1.00
41	CHAMOUNY —Bearman, (Red Lory x Picardy) Tall rose pink that has made a big gain in popularity and winnings.	1938	460	Lge. 1-	.15	10-	1.25
				Med. 3-	.25	10-	.70
10	CHARLES DICKENS —Pfitzer Tall purple. Parent of Lexington, Purple Supreme (43), Silver Star (8), etc.	1925	370	Lge. 3-	.25	10-	.70

22	CHARMAINE —New, (Jacoba van Bierjeren x Picardy)	1940	360	Lge. 3-	.25	10-	.70
	Deep rose pink.						
3	CHERRY JAM —Zimmer, (Picardy x ?)	1943	443	Lge. 1-	.50		
	Ruffled deep pink with large cherry red blotch.						
9	CHIEF MULTNOMAH —Ellis	1935	481	Lge. 2-	.25	10-	1.00
	Big rosy plum purple, red blotch.						
25	COLONIAL MAID —Zimmer, (Mary Jane x Queen of Bremen)	1938	366	Lge. 3-	.25	10-	.70
	Light lavender edged and feathered with rose.						
3	COLOR MARVEL —Krueger, (Picardy x Fata Morgana) x (Diane x Golden Goddess)	1946	320	Lge. 1-	2.00		
	Yellow shading to pink on petal edges.						
10	COLOSSUS —Mitsch, (Picardy x Oregon)	1937	530	Lge. 2-	.25	10-	1.00
	Giant light salmon. Parent of Alcan.						
5	COMMANDER KOEHL —Pfitzer, (From Heinrich Kanzleiter)	1928	452	Lge. 3-	.25	10-	.70
	Fine pure red. Parent of, Algonquin (197), Com-mando (4), Firefly (33), Red Charm (173), Rocket (53), Vagabond Prince (230), and many others.						
16	CONNECTICUT YANKEE —Schenetsky	1944	441	Lge. 1-	2.00		
	Beautiful pink, deeper feather.						
9	CORAL GLOW —Ellis	1937	424	Lge. 1-	.15	10-	1.25
	Deep Coral orange.						
120	CORONA —Palmer, (Picardy x Miss New Zealand)	1940	540	Lge. 3-	.25	10-	.70
	Big blushed cream-edged pink. Parent of Brittany, Tarawa.						
				Med. 3-	.15	10-	.40
11	COUTT'S ORCHID —Coutts, (Picardy x Mrs. Langford)	1940	560	Lge. 1-	.25		
	Beautiful creamy orchid rose.						
15	COVER GIRL —La Salle	1945	542	Lge. 1-	.50		
	Beautiful deep pink.						
8	CRACKER JACK —Allen, (Picardy x Wasaga)	1946	425	Lge. 1-	.50		
	Orange with strawberry blotch.						
				Med. 1-	.35		
4	CREVE COUER —Young	1936	323	Lge. 3-	.25	10-	.70
	Deep burnt orange, feathered throat.						
	CRIMSON TIDE —Roberts, (Beacon x Flaming Meteor)	1945	452	Lge. 1-	1.50		
	Ruffled and fluted deep crimson.						
29	CRINKLE CREAM —Ellis	1940	410	Lge. 1-	.25		
	Very good ruffled light yellow, late.						
18	CRITERION —Krueger, (Picardy x Pearl of Cal.)	1942	440	Lge. 2-	.25	10-	1.00
	Big pure light pink, good.						
9	CRYSTAL —Both						
	Big pure white. Parent of Alice Ayer, Gorgeous Glad, Snow Cruiser, etc.						

7	DAWN GLOW —Jack, (Rose) Delight x (Picardy x Rosemarie Pf.) Soft ruffled rose pink.	1945	560	Lge. 1-	.20
10	DEBONAIR —Palmer Apricot Glow x Wm. Badger) Tall La France pink. Parent of Colleen (5), etc.	1932	430	Lge. 3- Med. 3-	.25 .70 .15 .40
3	DELILAH —Scheer, (Mrs. S. A. Errey x Picardy) New large orange salmon.	1944	532	Lge. 1-	1.50
4	DESTINY —Butt Big orange scarlet.	1943	536	Lge. 1-	.30 10-2.50
3	DIANE —Krueger, (Picardy x Betty Nuthall) Deep orange, good. Parent of Show Queen.	1939	422	Lge. 1-	.15 10-1.25
12	DIEPPE —Hassel, (Probably Premier Henry) New salmon red with blotch.	1945	432	Lge. 1-	.50
	DISCOVERY —Baerman, (Arethusa x Carioca) Big ruffled light yellow, red throat.	1943	511	Lge. 1-	.25 10-2.00
4	DIXIE GOLD —Ford, (Prairie Gold x Apricot Glow) Nice decorative deep golden orange.	1940	322	Lge. 1-	.25
5	DONNA —Pruitt, (Wasaga x Shirley Temple) Nicely ruffled golden buff.	1940	316	Lge. 1-	.15 10-1.25
15	DREAM OF BEAUTY —Zimmer, (E. J. Shaylor x Henry Ford) True American Beauty rose red. Parent of King Bee (18), Miss Wisconsin (34), Rose O'Day (10), Silvery Teton (13), and many others.	1931	362	Lge. 3-	.25 10- .70
10	DR. F. E. BENNETT —Diener, (From Mrs. Francis King) Famous scarlet cutflower. Parent of Mrs. R. McGovern (45), Valeria (48), etc.	1922	436	Lge. 3-	.25 10- .70
	DR. VAN DOBBEN DE BRUYN — Van Dobben de Bruyn, (Picardy x ?) Big white, looks good from small bulbs .	1948	500	Lge. 1-	.60 10-5.00
10	DR. WHITELEY —Riley, (Picardy x Coronation) Giant ruffled golden apricot.	1943	516	Lge. 1-	.25
14	DRUM MAJOR —Wilson, (Com. Koehl x Tangerine) Large pure orange.	1942	423	Lge. 1-	.50
6	DUNKIRK —White, (Picardy x (White Zombie x Eve) Large new light rose.	1942	460	Lge. 1-	.25
5	DUSTY MILLER —Elliot, (Rosemarie Pf. x Vagabond Prince) Smoky rose and cream.	1945	486	Lge. 1-	.75
18	EARLY ROSE —Jack Glistensing deep rose pink. Parent of Felicity, Rose Delight, Myeerah, etc.	1936	362	Lge. 3- Med. 3-	.25 .70 .15 .40

3	EDVARD GRIEG —Prestgard	1940	376	Lge. 1-	.25	
	Medium grayish blue.					
4	EGLANTINE —Scheer,	1943	530	Lge. 1-5.00		
	(Picardy x (Coryphee x Mrs. P. W. Sisson)					
	Ruffled pink, white throat. Most beautiful glad in our garden.					
10	ELANORA —Errey, (Red Lory x ?)	1937	470	Lge. 1- .15	10-	1.25
	Good rosy purple, many open.					
6	ELEGANT LADY —Jack,	1945	401	Lge. 1-	.50	
	(Rose Delight x Picardy Seedling)					
	Ruffled blush white.					
118	ELIZABETH THE QUEEN —White	1941	566	Lge. 2- .25	10-	1.00
	(Eve x Salbach's Orchid)			Med. 3- .25	10-	.70
	Outstanding ruffled lavender giant. Parent of Evangeline.					
50	ETHEL CAVE COLE —Cave,	1941	440	Lge. 3- .25	10-	.70
	(Maid of Orleans x Picardy)			Med. 3- .15	10-	.40
	Pure pink, many florets open at once.			Sml. 3- .10	10-	.25
6	EXCLUSIVE —Krueger,	1945	501	Lge. 1-	.50	
	(New Era x Solvig)					
	Huge ruffled white with rose feather.					
5	FABULOUS —La Salle	1946	433	Lge. 1-2.00		
	New deep pink with red blotch.					
19	FAIR ANGEL —Hatch,	1942	406	Lge. 1- .15	10-	1.25
	(Marleen x Shirley Temple)					
	Cream white.					
5	FAY —Jack,	1945	560	Lge. 1-	.30	
	(Early Rose x Picardy) x J. S. Bach)					
	Early salmon rose.					
13	FIREBRAND —Butt, (Hindenburg's	1944	452	Lge. 1-	.50	
	Memory x (Commander Koehl x Picardy)					
	New glowing ruffled deep red.					
3	FIREBRAND —Ellis	1942	351	Lge. 1	.50	
	Brilliant bronzy red, deeper feather.					
17	FIREFLY —Palmer,	1938	336	Lge. 3- .25	10-	.70
	(Picardy x Commander Koehl)					
	Brightest fiery scarlet. Parent of Clara Joanna, Evelyn May.					
	FIRST LADY —Robertis,	1945	440	Lge. 1-	.50	
	(Wings of Song x Georgette)					
	Intensely ruffled pink, white throat.					
15	FLAGSHIP —Butt,	1938	451	Ige. 1-	.25	
	(Rosemarie Pf. x Our Selection)					
	Big light red, feathered throat.					
10	FLYING FORTRESS —Wilson,	1943	580	Lge. 1-	.75	
	(Peggy Lou x Marmora)					
	Giant smoky grey.					
7	FUSHIA BELLE —Almey,	1945	462	Lge. 1-1.25		
	(Red Lory x Tip Top)					
	Good fushia rose red.					
12	GARDENIA —Scheer,	1938	406	Lge. 3- .25	10-	.70
	(Apricot Glow x Maid of Orleans)					
	Cream cutflower.					

8	GENGHIS KAHN—Scheer, (Beltane the Strong x Picardy) Big ruffled pure pink.	1941	532	Lge. 1-	.75	
5	GAYLORE—Harris Tall deep salmon pink with cream throat.		432	Lge. 1-	.25	
3	GERTRUDE SWENSON—Swenson Nice rosy lavender. Parent of Grand Opening.	1928	366	Lge. 3-	.25	10- .70
14	GLAMIS—Palmer, (Premier Henry x Picardy) Ruffled salmon and cream.	1940	430	Lge. 2-	.25	10-1.00
33	GLOAMING—Zimmer, (Queen of Bremen x Henry Ford seedling) Rosy deep purple, light throat. Parent of Poet's Dream.	1937	370	Lge. 3-	.25	10- .70
3	GLOBE TROTTER—Pfitzer Vermillion with white throat.	1939	450	Lge. 1-	.25	
7	GOLD DUST—Pfitzer Early large deep yellow.	1935	412	Lge. 3-	.25	10- .70
13	GOLDEN CHIMES—Ellis Big ruffled light yellow. Parent of Aleta (6), Gold Standard, Random Harvest.	1929	410	Lge. 3-	.25	10- .70
3	GOLDEN DREAM—Groff Tall late deep yellow. Parent of Golden Cup (8), Golden Goddess (72), Misty Dawn (26), etc.	1923	312	Lge. 3-	.25	10- .70
14	GOLDEN GODDESS—Salbach, (Golden Dream x Prim Seedling) Patented yellow. Parent of Golden State.	1935	312	Lge. 1-	.25	5-1.00
15	GOLDEN STATE—Wheeler, (Picardy x Golden Goddess) One of the largest yellows.	1942	512	Lge. 1-	.50	
13	GOLDEN TETON—Zimmer, Big deep yellow, edged deeper.	1942	412	Lge. 1-	.15	10-1.25
3	GRAND MASTER—Love Velvety deep rose red.		354	Lge. 2-	.25	10-1.00
5	GRAND OPERA—Salbach, (Festival Queen x Picardy seedling) Patented pink. Parent of Candy Heart (58), Helen of Troy (177), King of Hearts (46), etc.	1938	540			for sale by Originator
10	GRAND OPENING—Kuhn, (Helena x Gertrude Swenson) Tall deep lavender, opens 10 or more.	1946	367	Lge. 1-5	0.00	
1	GREEN LIGHT—Pfitzer Ruffled, opens light green, fades to white.	1934	306	Lge. 2-	.25	10-1.00
63	GRETA GARBO—Pfitzer Tall light shell pink. Parent of Evangeline.	1937	440	Lge. 3-	.25	10- .70
5	HALLOWEEN—Lins, (Picardy x Pf. Triumph) x Miss New Zealand) Deep orange, red throat.	1943	423	Lge. 1-	.15	10-1.25
18	HARMAU—Both, (Picardy x Crystal) x Tunia's Triumph Rosy scarlet, deeper blotch.	1940	537	Lge. 2-	.25	10-1.00
13	HARVEST MOON—Jack, (Yellow Perfection x Betty Nuthall) Very good tall yellow, late.	1937	410	Lge. 3-	.25	10- .70

10	HAWKEYE RED —Heaton, (Sport of Vagabond Prince) Bright scarlet red, many open.	1944	451	Lge. 1-	.20	10-1.75
75	HELEN OF TROY —Salbach, (Picardy x Grand Opera) Giant buff, patented.	1939	516	Lge. 1-	.35	3-1.00
14	HIGH FINANCE —Wilson, (Minuet x Picardy) Big smoky orange.	1939	580	Lge. 1-	.15	10-1.25
2	HILDRED —Love Lavender with deeper throat, 8 to 10 open.	1938	366	Lge. 3-	.25	10- .70
25	HINDENBURG'S MEMORY —Pfitzer Giant pure red. Parent of Firebrand (13), Evelyn May.	1937	550	Lge. 3-	.25	10- .70
				Med. 3-	.15	10- .40
3	HOLLAND'S GLORIE —K & M Ruffled deep salmon, cream throat.	1946	420	Med. 1-	.25	
11	HUNTRESS —Jack, (Rose Delight x J. S. Bach) Very good pinkish lavender.	1945	466	Lge. 1-	1.00	
21	HURRICANE —Evans, (Rosemarie Pf. x Picardy) Salmon orange and cream.	1942	425	Lge. 1-	.20	10-1.75
9	INTERMEZZO —Quackenbush, (Minuet x Picardy) Deep cream with lavender feather.	1942	407	Lge. 2-	.25	10-1.00
11	INTREPID —Jack, (Mother Machree x Picardy) Smoky orange, 10 or more florets open.	1937	480	Lge. 2-	.25	10-1.00
12	INTRUDER —Krueger, (J. S. Bach x Picardy) Good new red.	1944	550	Lge. 1-	1.50	
16	IRAK —Mitsch, (Sport of Bagdad) Big clear silvery gray. Parent of Carrara.	1937	480	Lge. 3-	.25	10- .70
				Med. 3-	.15	10- .40
7	ISOLA BELLA —Pfitzer, Soft bluish lavender, many open.	1934	466	Lge. 2-	.25	10-1.00
38	IVY ROBERTSON —Barrett, (Pf. Triumph x Golden Measure) x (Eve x Gloriana) Pink and cream, feathered deeper.	1943	407	Lge. 1-	.20	10-1.75
				Sml. 3-	.25	10- .70
3	JALNA —Palmer, (Picardy x Roi Albert) Big silvery pink, flaked with gray.	1936	480	Lge. 3-	.25	10- .70
				Med. 3-	.15	10- .40
24	JEANIE —Pruitt Almost a pure pink with white throat.	1942	430	Lge. 2-	.25	10-1.00
6	JEANIE JAMES —Van Voorhis, (Aida x Ave Maria) Tall deep blue, opens well.	1938	378	Lge 1-	.25	
	JOHAN VAN KONYNENBURG — K. & M., (Picardy x ?) Big new pure scarlet from Holland.	1947	536	Lge. 1-	1.50	
				Med. 1-	1.00	
8	J. S. BACH —Pfitzer Early rosy scarlet, many open. Parent of Intruder (15), Huntress (11), etc.	1931	436	Lge. 3-	.25	10- .70
5	JUNIOR MISS —Canine, (Picardy x Pfitzer's Triumph) Good ruffled salmon, cream throat.	1944	432	Lge. 2-	.25	10-1.00

7	KESTRAL—Palmer		522	Lge. 1-	.75	
	Light salmon orange with cream throat.					
9	KING BEE—Krueger,	1941	450	Lge. 2-	.25	10-1.00
	(Picardy x Dream of Beauty)					
	Light red flecked deeper, many open.					
22	KING CLICK—Wilson,	1941	452	Lge. 2-	.25	10-1.00
	(Red Lory x Picardy)					
	Very good big red.					
72	KING LEAR—Palmer,	1938	470	Lge. 3-	.25	10- .70
	(Rameses x Picardy)					
	Tall ruffled purple. Parent of Burma (83), Lancaster (11), Royal Robes, etc.					
9	KING MIDAS—Herridge, (Golden	1940	312	Lge. 3-	.25	10- .70
	Dream x Primrose Princess) x (Canberra x W. H. Phipps)					
	Good yellow					
7	KING OF HEARTS—Salbach,	1939	531	Lge. 1-	.35	3-1.00
	(Picardy x Grand Opera)					
	Patented giant salmon. Parent of Ace of Hearts.					
4	KING'S RANSOM—Almey,	1938	432	Lge. 3-	.25	10- .70
	(Apricot Glow x Mrs. Sisson)					
	Ruffled deep salmon. Parent of Laburnum, Parma.					
25	KING TAN—Wilson,	1941	490	Lge. 3-	.25	10- .70
	(Red Phipps x Marmora)					
				Med. 3-	.15	10- .40
	Very tall rosy tan.					
24	KING WILLIAM—Schenetsky,	1940	430	Lge. 2-	.25	10-1.00
	(Picardy x Picardy)					
	Salmon pink, cream throat. Much like Picardy.					
5	LADY HELEN—Woodward,	1945	530	Lge. 1-	1.00	
	(Betty Nuthall x Picardy)					
	Big salmon pink.					
27	LADY JANE—Lake, (Golden	1941	406	Lge. 2-	.25	10-1.00
	Measure x Belinda) x (Maid of Orleans x Picardy)					
	Big rich cream, many open.					
4	LA FIESTA—Salbach,	1936	322	Lge. 3-	.25	10- .70
	(Gay Hussar x Seedling)					
	Tall orange. Parent of Burning Star.					
11	LANCASTER—Palmer,	1944	470	Lge. 1-	.75	
	(Minuet x King Lear)					
	The best purple to date.					
17	LANTANA—Palmer,	1943	420	Lge. 2-	.25	10-1.00
	(Picardy x Premier Henry seedling)					
	Early ruffled orange and gold.					
3	LARIME—Wilson,	1943	425	Lge. 1-	1.00	
	(Tangerine x Peggy Lou)					
	Large deep orange, does not fade.					
9	LAVENDER AND GOLD—Baerman,	1943	366	Lge. 2-	.25	10-1.00
	(Queen of Bremen x (Sweetheart x Rosemarie Pf.)					
	Beautiful early lavender and gold. Parent of Ocean Spray, Wedgewood.					
5	LAVENDER PRINCE—La Salle,	1944	466	Lge. 1-	.50	
	(King Arthur x ?)					
	Tall ruffled lavender.					
33	LAVENDER QUEEN—Arenius,	1937	366	Lge. 3-	.25	10- .70
	Tall deep lavender.					
				Med. 3-	.15	10- .40

8	LAVENDER RUFFLES—Wilson, (Janet x Minuet) Nicely ruffled clear light lavender.	1939	366	Lge. 3- .25 Med. 3- .15	10- .70 10- .40
155	LEADING LADY—Johnson, (Sport of Picardy) Big creamy white. This year's top winner.	1941	506	Lge. 1- .25	10-2.00
	LEEUWENHORST—Salman, (Picardy x ?) Big new rose pink, marked throat.	1947		Lge. 1- .60 Med. 1- .40	
3	LEGEND—C. Fischer, (Picardy x Maid of Orleans) Husky light pink with cream throat. Parent of Elegy, Ocean Spray.	1940	440	Lge. 1- .15	10-1.25
8	LEONA—Pruitt Tall deep rose red, many open.	1937	462	Lge. 3- .25	10- .70
7	LIPSTICK—Ballentine, (Picardy x Schwaben Girl) Pure pink with rose red blotch.	1941	441	Lge. 1- .25	
4	LUCKY—Jack, (Minuet x Seedling) Tall early lavender.	1947	366	Lge. 1-2.50 Med. 1-1.75	
5	MAGNOLIA—Palmer, (Maid of Orleans x Picardy) Many have overlooked this lovely pink.	1940	440	Lge. 3- .25	10- .70
19	MAID OF ORLEANS—Pfitzer (Europa x Prim. Species) Pure white. Parent of Arctic Snow (17), Ethel Cave Cole (78), Gardenia (16), Magnolia (10), Myrna (256), Mt. Index (19), White Gold (93), and many others.	1930	400	Lge. 3- .25 Med. 3- .15	10- .70 10- .40
9	MALTA—Palmer, (Picardy x Miss New Zealand) Large tall rose.	1942	462	Lge. 1- .15	10-1.25
	MANSOER—Salman, (Picardy x ?) Deep bronzy red.	1947	484	Lge. 1- .40 Med. 1- .30	
2	MARGARET BARRETT—Barrett, (Pfitzer's Triumph x Golden Measure) x Picardy) Large tall growing white, scarlet blotch.	1943	401	Lge. 1- .25	
74	MARGARET BEATON—Twomey Big white, scarlet blotch. Parent of Beauty's Blush, Market Queen.	1937	401	Lge. 3- .25 Med. 3- .15	10- .70 10- .40
44	MARGARET FULTON—Ogrodnichek (Prince of Wales x Golden Measure) Deep salmon. Parent of Capri, Emma Joy, Morning Serenade, Sunlight, etc.	1932	332	Lge. 3- .25 Med. 3- .15	10- .70 10- .40
	MARGARET WOOD—Beaton, Giant flowers of medium wine purple.	1947	570	Lge. 1-1.25	
34	MARGUERITE—Pommert, (Picardy x Wurtembergia) Ruffled deep rosy salmon, white throat.	1939	532	Lge. 2- .25	10-1.00
7	MARIMBA—Palmer, (Maid of Orleans x Picardy) Very tall light buff.	1942	416	Lge. 2- .25	10-1.00

23	MARION PEARL —Benedict, (Pearl of California x Picardy) Grand big salmon pink.	1942	532	Lge. 1-	.75	
7	MARLENE BOTH —Both Giant salmon with buff throat.	1942	530	Lge. 1-	.50	
4	MARQUEETA —Lins, (Picardy x ?) Beautiful light orange, deeper throat.	1943	421	Lge. 1-	.25	
8	MARSELLAISE —Scheer, (Aida x Pelegrina) Husky bright scarlet.	1941	536	Lge. 1-	.25	
9	MARTHA DEANE —Guille New tall yellow. Good commercial.	1946	410	Lge. 1-2.00		
9	MARY ELIZABETH —Stevens, (Snow Glory x Richard Diener) Ruffled cream. Parent of Myrna (256), White Magic, etc.	1930	306	Lge. 3-	.25	10- .70
7	MASTER MYRON —Krueger, (Commander Koehl x Picardy) Tall rich pure red.	1940	450	Lge. 2-	.25	10-1.00
7	MAX REGER —Pfitzer Good light blue. Parent of Azurine, Medallion.	1935	376	Lge. 3-	.25	10- .70
6	MAXWELTON —Baerman, (Picardy x Red Lory) Fine large soft rose.	1936	460	Lge. 2-	.25	10-1.00
6	MERCURY —Lins, (Picardy x Commander Koehl) Clear vermilion red.	1941	436	Lge. 1-	.25	
3	MERMAID —Palmer, (Maid of Orleans x Picardy) Splendid deep pink.	1941	442	Lge. 1-	.15	10-1.25
6	MINSTREL —Palmer, (Minuet x Algonquin) One of the largest of the lavenders.	1944	566	Lge. 1-1.50		
34	MINUET —Coleman, (Charlemagne x ?) The best lavender for nearly 25 years.	1922	466	Lge. 3- Med. 3-	.25 .15	10- .70 10- .40
12	MISS BLOOMINGTON —Kunderd, This good yellow is staging a comeback.	1929	310	Lge. 3-	.25	10- .70
33	MISS WISCONSIN —Krueger, (Picardy x Dream of Beauty) Beautiful soft rose pink, grand.	1943	460	Lge. 1-	.50	
10	MISTY DAWN —Rich, (Picardy x Golden Dream) Smoky gray giant. Parent of Bronze King.	1941	580	Lge. 2-	.25	10-1.00
13	MOHAWK —Stevens, (Morocco x Emile Auburn) Large deep red, good.	1940	454	Lgs. 2-	.25	10-1.00
5	MONEETA —Stockton, (Betty Nuthall x Picardy) Clear yellow with red blotch.	1939	411	Lge. 2-	.25	10-1.00
2	MOONSTONE —Canine, (Picardy Sport) Large cream sport of Picardy.	1941	406	Lge. 2-	.25	10-1.00

5	MOROCCO—Pfitzer	1928	354	Lge. 2-	.25	10-1.00
	Black red. Parent of Black Opal (158), Jules Amott (18), Malay Chief (29), Mohawk (39), and many more.					
36	MOTHER KADEL—Kadel, (Picardy x Spray of Gold)	1941	312	Lge. 2-	.25	10-1.00
	One of the best, medium yellow.					
30	MOTHER MACHREE—Stevens, (Aviatrix x Corunna)	1927	480	Lge. 3-	.25	10- .70
	Golden lavender, many open. Parent of Jack Pot (8), Intrepid (39), Mrs. R. McGovern (45), Sahara (27), and many others.					
	MOUNTAIN GEM—Requa, (Picardy x Commander Koehl)	1946	436	Lge. 1-1.00		10-8.00
				Med. 1-	.75	10-6.00
	Fine new scarlet, petals edged with silver line.					
8	MRS. C. W. GANNETT— Chamberlain	1939	580	Lge. 1-	.40	
	Giant smoky salmon.					
38	MRS. MARKS MEMORY—Pfitzer	1939	570	Lgs. 2-	.25	10-1.00
	Ruffled purple giant. Parent of Kardinal Spellman.					
19	MRS. RICHARD McGOVERN— Wilson, (Dr. Bennett x Mother Machree)	1940	336	Lge. 3-	.25	10- .70
				Med. 3-	.15	10- .40
	Soft coral scarlet, many open. Parent of Victory Queen.					
19	MT. INDEX—Miller, (Magna Blanca x Maid of Orleans)	1942	501	Lge. 1-	.20	10-1.75
	Very good tall white and cream. Parent of Twilight.					
87	MYRNA—Pruitt, (Maid of Orleans x Mary Elizabeth)	1939	400	Lge. 3-	.25	10- .70
				Med. 3-	.15	10- .40
	Ruffled and frilled white. Parent of Signet (3), Orchid Belle, White Christmas, etc.					
4	MYRNA FAY—Lines, (Colonial Maid x Early Rose)	1946	466	Lge. 1-2.00		
				Med. 1-1.50		
	New early lavender, good propagator.					
12	MYSTERY—Stinson, (Picardy x Rosemarie Pf.)	1944	441	Lge. 1-	.50	
	Tall pink with small red blotch.					
9	NEW ERA—Ellis	1936	440	Lge. 2-	.25	10-1.00
	Frilled pure pink, sometimes slightly fragrant. Parent of Diadem, Exclusive (6), etc.					
	NEW EUROPE—	1947	436	Lge. 2-	.25	10-1.00
				Med. 3-	.20	10- .50
	New scarlet from Europe. Looks good.					
3	NORMANDIE—Dr. Miller, (Fata Morgana x Coryphee)	1941	440	Lge. 1-1.00		
	Large creamy pink.					
5	OBERBAYERN—Pfitzer	1939	378	Lge. 1-	.25	
	Deep blue, large cream blotch in throat.					
20	OGARITA—Wilson	1942	532	Lge. 2-	.25	10-1.00
	Giant deep salmon with cream throat.					
16	OHIO NONPARIEL—Wilson, (Picardy x Commander Koehl)	1941	550	Lge. 2-	.25	10-1.00
	Very good giant red. Parent of Gracie Allen.					

4	OKLAHOMA —Wilson, (Lavender Ruffles x Marmora) Very good lavender gray.	1945	490	Lge. 1-	.80	
3	OPHIR —Baerman, (Areithusa x Carioca) Exquisitely ruffled light yellow.	1944	410	Lge. 2-	.25	10-1.00
5	ORANGE PRINCESS —DeGroot, (Pfitzer's Triumph x ?) Ruffled orange with deeper blotch.		423	Lge. 3-	.25	10- .70
7	ORANGE SOVEREIGN —Steves Ruffled buff orange that does not fade.	1934	322	Lge. 3-	.25	10- .70
12	ORANGE GOLD —Marshall Beautiful ruffled deep orange and gold.		522	Lge. 1-	1.00	
7	ORANGE PRINCE —E. B. Snyder (Sport of Vagabond Prince) Rich burnt orange, many open.	1945	325	Lge. 1-	.50	
6	OREGON GOLD —Majeski, (Picardy x New Era) Big light yellow, late.	1941	410	Lge. 1-	.15	10-1.25
6	OREGON RED —R. H. Pruitt Giant scarlet red.	1940	550	Lge. 1-	.25	
13	ORIENTAL PEARL —Carlson, (Picardy x ?) Sensational new giant cream, a winner.	1946	506	Lge. 1-	2.00	
4	PACIFICA —Wheeler, (Picardy x Maid of Orleans) Large white, Picardy type.	1941	406	Lge. 2-	.25	10-1.00
5	PALERMO —R. H. Pruitt Ruffled flame orange giant.		521	Lge. 2-	.25	10-1.00
13	PARADISE —Pruitt, (Gloriana x Betty Nuthall) Grand, buff and apricot, many open. Delightful, Sunny South.	1936	416	Lge. 3-	.25	10- .70
				Med. 3-	.15	10- .40
				Parent of		
4	PARMA —Almey, (Rosemarie Pfitzer x ?) Beautiful white with purple feather.	1945	401	Lge. 1-	.25	
				Med. 1-	.15	10-1.25
4	PARNASSUS —Ristow, (Morocco x Minuet seedling) Large deep purple.	1942	570	Lge. 2-	.25	10-1.00
3	PAUL ROBESON —Cave, (Black Opal x Picardy) Giant black red.	1943	554	Lge. 1-	2.00	
4	PEARL HARBOR —Kinyon Medium sized white, opens 8 or more.	1942	300	Lge. 2-	.25	10-1.00
24	PEGGY LOU —Wilson, (Apricot Glow x Emile Aubrun) Deep rosy pink. Parent of Beauty Clynic (10), Daniel Boone, (4), Flying Fortress (16), Larime (19), Style Plus, and many others.	1938	442	Lge. 3-	.25	10- .70
				Med. 3-	.15	10- .40
				Sml. 3-	.10	10- .25
8	PELEGRINA —Pfitzer Deepest velvety blue. Parent of Marsellaise (8), Tara, etc.	1930	378	Lge. 3-	.25	10- .70
				Med. 3-	.15	10- .40

132	PICARDY —Palmer, (Apricot Glow x Emile Aubrun)	1931	530	Lge. 3- .25 Med. 3- .15	10- .70 10- .40
	Giant salmon pink. Parent of more than 140 prize winning varieties.				
17	PINK PARAGON —Cassebeer, (Sonatine x Heritage)	1943	442	Lge. 1- .15	10-1.25
	Bright pink, good commercial.				
3	PINK PICARDY —Earl, (Sport of Picardy)	1945	430	Lge. 1- .20	
	Deeper pink and more ruffled Picardy				
8	PINK RADIANCE —Quackenbush, (Picardy x Minuet)	1941	440	Lge. 2- .25	10-1.00
	Very good ruffled pure pink.				
10	PIONEER —La Salle	1945	532	Lge. 1- .50	
	Large deep pink with cream throat.				
7	PRUESSEN'S GLORIA —Pfitzer	1938	454	Lge. 1- .25	10-2.00
	Blackest red with white line on each petal.				
12	PURPLE BEAUTY —Roozen	1938	470	Lge. 3- .25	10- .70
	Good clear deep purple.				
31	PURPLE SUPREME —Wilson, (Dickens x Paul Pf.)	1942	470	Lge. 2- .25	10-1.00
	One of the best purples.				
6	RADIANCE —Butt, (J. S. Bach x Picardy)	1942	350	Lge. 1- .25	10-2.00
	Early salmon red, opens 8 or more at once.				
45	R. B. —Upton, (Picardy x Royal York)	1941	583	Lge. 2- .25	10-1.00
	Massive rusty golden brown.				
24	RECADO —Palmer, (Picardy x Royal York)	1937	480	Lge. 2- .25	10-1.00
	Smoky grey, petals tipped with rose red.				
123	RED CHARM —Butt, (Commander Koehl x Picardy)	1939	452	Lge. 2- .25	10-1.00
	One of the best reds.				
13	RED LIGHTNING —R. H. Pruitt	1941	450	Lge. 2- .25	10-1.00
	Red with cream throat, ruffled.				
6	RED LORY —Errey, (Emile Aubrun seedling)	1928	463	Lge. 3- .25 Med. 3- .15	10- .70 10- .40
	Rose red with purple blotch. Parent of Ariadne (36), Chamouny (83), Elanora (32), King Click (66), Fuschia Belle (7), and many others.				
14	RED PHIPPS —Briggs, (W. H. Phipps seedling)	1932	350	Lge. 3- .25	10- .70
	Light red, many open. Parent of King Tan (64), Charter Oak, etc.				
6	RED RASCAL —Graff, (Picardy x (Baron Munchausen x Beltane)	1945	552	Lge. 1-3.00	
	Husky ruffled red.				
26	REWI FALLU —Fallu, (Bill Sowden x Emile Aubrun)	1935	554	Lge. 3- .25 Med. 3- .15 Sml. 3- .10	10- .70 10- .40 10- .25
	Giant deep blood red. Parent of Giant (6), Madrid, Rosy Red, etc.				

3	RICH RED —Rich	1943	554	Lge. 1-	1.00	
	Big deep red. Parent of Black Cherry.					
10	RIMA —Mitsch,	1937	440	Lge. 2-	.25	10-1.00
	(Picardy x (Longfellow x Pearl of Cal.) Beautiful light lilac rose. Parent of Wax Model.					
9	RIO RITA —Lins,	1941	523	Lge. 1-	.15	10-1.25
	(Picardy x Pfitzer's Triumph) Large ruffled orange. Parent of Hi Hat, Daisy Mae, Dream Castle.					
27	ROCKET —Palmer,	1941	436	Lge. 3-	.25	10- .70
	(Picardy x Commander Koehl) Large bright scarlet. Best in cool weather.					
29	ROSA VAN LIMA —Pfitzer	1940	440	Lge. 3-	.25	10- .70
	Glistening pure pink. Parent of Treasure Island. Med. 3- .15 10- .40					
10	ROSE DEFIANT —Wilson,	1940	462	Lge. 1-	.15	10-1.25
	(Comm. Koehl x Picardy) Deep rose pink. Parent of Tony.					
10	ROSE O'DAY —Fischer,	1944	566	Lge. 1-	.50	
	(Rosemarie Pf. x Dream of Beauty) Nice rosy lavender.					
2	ROSE RUFFLES —Hatch	1942	560	Lge. 1-	.35	3-1.00
	Big rosy salmon, opens well.					
4	ROSY LIGHT —Jack,	1946	460	Med. 1-	.85	
	(Rose Delight x (J. S. Bach x Early Rose) Medium rose, ruffled.					
9	ROSY MORN —Marshall,	1941	460	Lge. 1-	.25	
	(Emile Aubrun x Mr. Wm. Cuthbertson) Rich rosy pink, good.					
3	ROSY MORN —Riley,	1940	442	Lge. 1-	.15	10-1.25
	(Mammoth White x Serenade) Deep coral pink, white throat.					
9	ROYAL GOLD —Pfitzer	1935	510	Lge 2-	.25	10-1.00
	Big light yellow, many open. Parent of Golden Shire, Lemon Ice.					
14	SAHARA —Palmer,	1935	490	Lge. 2-	.25	10-1.00
	(Evensong x Mother Machree) Large desert tan, many open.					
	SALMAN'S GLORY —Salman,	1947	507	Lge. 1-	.35	3-1.00
	(Picardy x ?) Big cream, red blotch in center.					
3	SANDRA —Palmer,	1937	431	Lge. 3-	.25	10- .70
	(Picardy x (Glendale x Pf. Triumph) Med. 3- .15 10- .40 Big Picardy type with deeper flesh pink color.					
10	SENSATION —Marshall,	1939	560	Lge. 2-	.25	10-1.00
	(Picardy x (Comm. Koehl x Purple Glory) Giant rosy salmon pink.					
12	SHIRLEY TEMPLE —Pruitt,	1937	406	Lge. 3-	.25	10- .70
	(Picardy x Ruffled Beauty) Tall ruffled late cream, crooks. Parent of Donna (19), Fair Angel, (22), Exemplar (4).					
9	SILENTIUM —Pfitzer	1938	401	Lge. 2-	.25	10-1.00
	Good white with carmine blotch.					

8	SILVER STAR —Snyder, (Picardy x Chas. Dickens) Giant white with purple heart.	1945	501	Lge. 1-	.50	
3	SILVER SWORD —Hatch, (Picardy x Marleen) Big pure white.	1943	500	Lge. 1-	.25	10-2.00
4	SILVERY TETON —Zimmer, (Dream of Beauty x Pythia) Rose red, petals edged with silver line.	1939	462	Lge. 1-	.25	10-2.00
24	SILVER WINGS —Ritsema, (Sport of Picardy) The wonderful white ruffled Picardy.	1944	500	Lge. 1-	1.00	
38	SIR GALAHAD —Salbach Giant yellow, patented.	1938	511	Lge. 1-	.35	3-1.00
9	SMILING MAESTRO —Christ, (W. H. Phipps x ?) Big scarlet salmon.	1931	432	Lge. 3-	.25	10- .70
	SNOW CRUISER —Evans, Giant white.	1943	500	Lge. 1-	1.00	10-8.00
31	SNOW PRINCESS —Pfitzer Good white. Parent of Great Lakes, Igloo, White Magic.	1937	400	Lge. 3-	.25	10- .70
				Med. 3-	.15	10- .40
17	SNOW SHEEN —Snyder, (Picardy x Mrs. Sisson) Ruffled pure white.	1942	300	Lge. 1-	.25	
5	SNOW MOUNTAIN —Wilson, (Collossus x Pearl Necklace) Giant white.	1945	500	Lge. 1-	2.00	
3	SNOW WHITE —Palmer, (Picardy x Reverie) Nice white.	1939	400	Lge. 2-	.25	10-1.00
	SOLE MIO — Yellow, carmine throat.	1947	311	Lge. 1-	.25	10-2.00
9	SOUTHERN DRAMA —Wilson, (Picardy x Commander Koehl) Giant scarlet.	1943	536	Lge. 1-	.25	
17	SPITFIRE —Evans, (Rosemarie Pf. x Picardy) Deep salmon, good.	1942	432	Lge. 1-	.75	
40	SPOTLIGHT —Palmer, (Picardy x ?) Blotched deep yellow, most outstanding.	1944	413	Lge. 1-	.50	
8	STAR OF BETHLEHEM —Pfitzer Good tall white. Parent of Beautiful Lady, Mary, Snow Cruiser, etc.	1931	400	Lge. 3-	.25	10- .70
11	STELLA ANTISDALE —Evans, (Albatros x Picardy) Giant pure pink.	1940	540	Lge. 1-	.20	10-1.75
18	STOPLIGHT —Lins, (Picardy x Seedling) Very good ruffled red.	1942	452	Lge. 2-	.25	10-1.00

19	SUMMER GAL —Zimmer Highly rated ruffled pink.	1944	542	Lge. 1-3.00	
3	SUNLIGHT —Spiller, (Margaret Fulton x Hercules) Beautiful new buff.	1946	516	Lge. 1-2.50	
4	SUNNY DAYS —Barrett, (Picardy x Eve) New Canadian Yellow.	1943	412	Lge. 1-1.00	
	SUN SPOT —Roberts (Picardy x (Gloriola x ?) Grand Champion buff, rose blotch.	1945	416	Lge. 1-2.00	
30	SURFSIDE —Winsor, (Picardy x Burwood Gem) Tall white, superior cutflower.	1937	401	Lge. 2- .25	10-1.00
6	SUSAN —Webster Smoky light tan.	1938	380	Lge. 1- .15	10-1.25
16	SUSQUEHANNA —Herridge, (Heritage x Picardy) Peach buff and cream.	1939	442	Lge. 1- .25	
3	SWEET ALIBI —Canine, (Picardy x Pfitzer's Triumph) Rich pink with deeper throat.	1939	442	Lge. 3- .25	10- .70
	SWEET SEVENTEEN —Blom Soft rosy peach, lighter throat.	1947	460	Lge. 1- .25	10-2.00
3	TAHLAHNEKA —Miller Deep yellow, one of the largest.	1942	412	Lge. 1- .25	
9	TAKINA —Burns Giant light purple. Parent of Diplomat, Flying Yankee, Porcelain Blue, etc.	1937	570	Lge. 2- .25	10-1.00
8	TIMBUCTOO —Zimmer Deep rose red.	1938	462	Lge. 2- .25	10-1.00
8	TIP TOP —Pfitzer Giant scarlet, many open. Parent of Black Panther (5), Cherry Red, Fushia Belle (7), etc.	1932	537	Lge. 2- .25	10-1.00
4	TITAN —Palmer, (Picardy x Royal York) Giant rosy salmon.	1939	532	Lge. 1- .20	
20	TUNIA'S MAHOMET —Both, (Tunia's Triumph x ?) Plum colored giant.	1941	580	Lge. 1- .75	
14	TUT'S BOTH —Both Good scarlet orange.	1942	422	Lge. 1-1.00	
82	VAGABOND PRINCE —Palmer, (Picardy x Comm. Koehl) Garnet brown, red throat. Parent of Dusty Miller, Rhett Butler, Tony, etc.	1934	390	Lge. 3- 25 Med. 3- .15	10- .70 10- .40
16	VALERIA —Pruitt, (Erica Morini x Dr. Bennett) Good tall light rosy scarlet.	1933	436	Lge. 2- .25	10-1.00
11	VANGOLD —Van Voorhis, (Seedling x Mrs. Hamill) Very early deep yellow.	1940	312	Lge. 1- .50	

6	VARIATION—Krueger, (Glen x Heritage) Softest orchid pink, nice color.	1941	340	Lge. 2- .25	10-1.00
5	VEECREAM—Van Voorhis, (Picardy x Jimmy Biddle) Rich ruffled cream, with red throat.	1939	407	Lge. 2- .25	10-1.00
	VINCENT Van GOGH—Van Waveren Bright light scarlet.	1948	436	Lge. 1- .25	10-2.00
32	VISTA BONITA—Ellis Big geranium pink. Parent of Diadem, Pay Day.	1936	432	Lge. 3- .25	10- .70
9	VOODOO—Kadel Smoky plum, striped with bronze.	1944	480	Lge. 1- .50	
15	VULCAN—Stevens, (Arabella x (Purple Challenge x Marmora) Large clear red purple.	1942	470	Lge. 1- .20	6-1.00
21	WANDA—Snyder, (Sport of Picardy) Big cream with red penciling in throat.	1941	406	Lge. 2- .25	10-1.00
3	WASAGA—Palmer, (Apricot Glow x Mrs. Sisson) Ruffled Buff. Parent of Amulet (41), Barcarole (25), Donna (19), Cracker Jack (8), etc.	1932	416	Lge. 3- .25	10- .70
	WHITE CHALLENGE—Arnett This new white performed exceptionally well. Opened up to 10 six inch florets on good straight spikes.	1947	501	Lge. 1-5.00 Med. 1-5.00 Blts. 1- .50	
13	WHITE EAGLE—Ellis, (Picardy x ?) Very early ruffled white, cream throat.	1939	300	Lge. 1- .15	10-1.25
48	WHITE GOLD—Scheer, (Maid of Orleans x Picardy) Early giant cream with yellow throat.	1941	506	Lge. 2- .25	10-1.00
40	WINGS OF SONG—Ellis, (Picardy x ?) Deep pink and cream. Parent of First Lady.	1936	443	Lge. 2- .25	10-1.00
9	WINSTON—Palmer, (Picardy x Wasaga) Ruffled creamy white.	1941	406	Lge. 2- .25	10-1.00
3	XERXES—Mitsch, (Picardy x Lighthouse) Grayed pinkish buff, six inch florets.	1939	416	Lge. 2- .25	10-1.00
10	YANGTZE—Harris Betty Nuthall x Golden Dream) Deep empire yellow.		312	Lge. 2- .25	10-1.00
10	YELLOW PARADISE—Canine, (Sport of Paradise) Big light yellow, many open.	1943	412	Lge. 2- .25	10-1.00
15	ZUNI—Mitsch, (Picardy x Lighthouse) Smoky plum purple and orange, many open.	1937	480	Lge. 1- .25	

Section III

HYBRIDIST'S LIST OF FAMOUS PARENTS

Many of these would be listed among the winners if they were more widely known and exhibited. Many others have a long list of winnings to their credit, but are now replaced on the show bench by their progeny. Genetically these varieties may be of great value by providing short cuts to desired qualities thru back-crossing and inbreeding. Most of them are still producing fine varieties thru the usual method of outcrossing. **NOTE: Back-crossing is crossing the progeny with some ancestor. Inbreeding is the crossing of brother and sister or the progeny with its immediate parent, and outcrossing is the crossing of individuals not closely related.**

Name, Originator and Parentage	Date	Class	Size	Price
AFLAME —Hornberger Large very early scarlet. Parent of Buckeye, Bronze (63), Flaming Meteor, etc.	1928	436	Lge. 2-	.25 10-1.00
AIDA —Pfitzer Early deep blue, red throat. Parent of Jeanie James (10), Marsellaise (8), Navy Blue, etc.	1926	378	Lge. 2-	.25 10-1.00
ALBATROS —Pfitzer Purest white. Parent of Stella Antisdale (34), Dream Pink, Chrysalis, etc.	1926	300	Lge. 2-	.25 10-1.00
AMRITA —Palmer, (Picardy x Wasaga) Very ruffled light buff. Parent of Gratitude, King Alfred, etc.	1937	416	Med. 3-	.20 10- .50
APRICOT GLOW —Palmer, (From Prim. Stock) Very tall soft apricot buff. Parent of Bagdad (56), Peggy Lou (141), Picardy (410), and many others.	1928	316	Lge. 3-	.25 10- .70
BETTY NUTHALL —Salbach, (Richard Diener x Salbach's Prim) Salmon pink, yellow and orange, tall and late. Parent of Diane (31), Harvest Moon (48), Paradise (56), and many others.	1928	420	Lge. 3- Sml. 3-	.25 10- .70 10- .25
BLUE DANUBE —Pfitzer Nearer blue than most, tall. Parent of Bluet (M) (14), Blue Skies, Wintermoon, etc.	1929	377	Lge. 1-	.20
CARIOCA —Bones Husky deep orange. Parent of Discovery, Ophir.	1938	422	Lge. 1-	.15
CORONATION —Palmer, (Mrs. Sisson x Gloriana) Tall salmon, Parent of Dr. Whitely (15), Mother Nature Piquante, etc.	1932	330	Lge. 3-	.25 10- .70
CORYPHEE —Pfitzer Pure pink, crooks. Parent of Normandie (5), Sincerity (Butt), Winsome, etc.		340	Lge. 1-	.25
DR. MOODY —Kinyon, (America x Scarsdale) Silvery Lavender. Parent of Honor, Reflection, So Big, etc.	1926	366	Lge. 3-	.25 10- .70
E. J. SHAYLOR —Kunderd Early ruffled deep rose pink. Parent of Dream of Beauty (48), Odora, etc.	1914	342	Lge. 3-	.25 10- .70

EMILE AUBRUN—Lemoine	1910	480	Lge. 1-	.25	
Smoky light red. One of the five most famous Parents. Parent of Peggy Lou (141), Picardy (410), Red Lory (63), and many others.					
EUIDES—Errey, (Gertrude Errey x W. H. Phipps)	1933	406	Lge. 2-	.25	10-1.00
Ivory white edged pink. Parent of Mrs. G. G. Errey, Beauty Baby, Rosea, etc.					
FATA MORGANA—Pfitzer	1928	430	Lge. 1-	.25	
Light salmon. Parent of Normandie (5), Lady Astor.					
FESTIVAL QUEEN—Salbach, (Magna Blanca x ?)	1934	560	Lge. 2-	.25	10-1.00
A big tall slightly rosy pink. Parent of Grand Opera (31), Buckeye Queen, etc.					
FLAMING METEOR—Mitsch, (Pf. Triumph x Aflame)	1932	450	Lge. 3-	.25	10- .70
Flaming scarlet red. Parent of Centennial, Kenwood, Crimson Tide, etc.					
GATE OF HEAVEN—Pfitzer	1931	412	Lge. 2-	.25	10-1.00
Big ruffled yellow. Parent of Gayway, Happy Days, etc.					
GAY HUSSAR—Salbach	1928	320	Lge. 3-	.25	10- .70
Bright orange. Parent of La Fiesta (26).					
GIANT NYMPH—Coleman		440	Lge. 3-	.25	10- .70
Old favorite pink, still good. Parent of Early Peach, Heritage, Pink Ribbon, etc.					
GLORIANA—Betscher		330	Lge. 2-	.25	10-1.00
Deep orange salmon. Parent of Camrose, Duna (8), Paradise (56), etc.					
GOLD EAGLE—Austin		312	Lge. 3-	.25	10- .70
Early yellow. Parent of Bernece, Early Gold, Yakima Apricot, etc.					
GOLDEN FRILLS—Kunderd	1925	312	Lge. 3-	.20	10- .50
Early ruffled yellow, red throat. Parent of Barbarita, Little Toots, Yellow Jewel, etc.					
HERCULES—Crow, (Golden Dream x Souvenir)	1930	416	Lge. 2-	.25	10-1.00
Tall late ruffled tan and buff. Parent of Lois (6), Sunlight (3), etc.					
HERITAGE—Ristow, (Giant Nymph x W. H. Phipps)	1935	442	Lge. 2-	.25	10-1.00
Pink, white throat, many open. Parent of Dream Castle, Pink Paragon (17), Susquehanna (17), etc.					
JANET—Crow	1929	480	Lge. 3-	.25	10- .70
Ruffled rosy tan. Parent of Beauty Clynic (4), Brides Delight (11), Daniel Boone (4), Jack Pot (8), Lavender Ruffles (49), Oklahoma (4), many others.					
J. VAN TETS—Pfitzer	1929	400	Lge. 2-	.25	10-1.00
White, many open. Parent of Aurora, Emblem of Purity, Margo, etc.					
KING ARTHUR—Arenius	1930	466	Lge. 3-	.25	10- .70
Intensely ruffled deep lavender. Parent of Bonneville Rose, Lavender Prince, etc.					

LADY EATON—Palmer, (Lady Byng x Pf. Triumph)	1933	441	Lge. 3-	.25	10-	.70
Pink, feathered throat. Parent of Camillia (30), Humoreske, etc.						
LA PALOMA—Duisenberre	1929	322	Lge. 3-	.25	10-	.70
Near true orange. Parent of Brown Orchid, Ginger Rogers, Laora, etc.						
LAVENDER BRIDE—Bride	1928	466	Lge. 3-	.25	10-	.70
Tall smoky lavender. Parent of Burning Beauty, Emile Bride, Tawhanka.						
LESCHI—Kaylor, (Purple Glory x Semiahmoo)	1936	354	Lge. 2-	.25	10-	1.00
Ruffled rosy black red. Parent of Black Cherry, Kulshan, Thunderbird, etc.						
LOYALTY—Austin	1922	410	Lge. 3-	.25	10-	.70
Tall late ruffled light yellow. Parent of Pirates Gold, Sierra Sue, etc.						
LUCIFER—Errey, (Emile Aubrun x ?)	1930	425	Lge. 2-	.25	10-	1.00
Husky deep scarlet orange. Parent of Black Opal (158), Brunette (3), etc.						
MAGNA BLANCA—Salbach, (White Giant x Mary Pickford)	1929	406	Lge. 1-	.25		
Very tall cream. Parent of Mt. Index (19), Old Nick, Sequoiah Blue, etc.						
MAMMOTH WHITE—Pfitzer	1922	500	Lge. 3-	.25	10-	.70
Giant white. Parent of Caribou (9), Laddie (28), Rosy Morn (R) (15), and many more.						
MARLEEN—Hatch, (Rosemarie Pf. x Canberra)	1939		Lge. 1-	.20	10-	1.75
A fine cream. Parent of Fair Angel (22), Gen. D. MacArthur, Silver Sword (3), etc.						
MARMORA—Errey, (Sport of Emile Aubrun)	1927	480	Lge. 3-	.25	10-	.70
Marble gray, plum blotch. Parent of Flying Fortress (16), King Tan (64), etc.						
MILDRED LOUISE—Wentworth	1933	430	Lge. 3-	.25	10-	.70
Salmon Pink of good size. Parent of Abigail (10), Cooney Lass (4), etc.						
MILFORD—Rides	1934	476	Lge. 1-	.25		
Large blue. Parent of Blue Lagoon (2), Great Lakes.						
MING TOY—Kunderd		316	Lge. 3-	.25	10-	.70
Ruffled buff. Parent of Lois (6), Yellow Crinkles, Pink Butterfly.						
MISS NEW ZEALAND—Julyan, (Mrs. Douglas x Emile Aubrun)	1933	532	Lge. 1-	.20		
Enormous peach. Parent of Candy Splash (22), Corona (199), Malta (12), and many others.						
MOORISH KING—Pfitzer	1928	454	Lge. 1-	.20		
One of the best black reds, scarce. Parent of Black Panther (5), Purple Robe, The Detroit News, etc.						
MRS. DR. NORTON—Kunderd	1915	440	Lge. 2-	.25	10-	1.00
Creamy lavender. Parent of Bob White, Dictator, Mrs. T. E. Langford.						

MRS. LEON DOUGLAS—Diener	1920	432	Lge. 2-	.25	10-1.00
Giant rosy salmon. Parent of Diener's Triumph, Miss New Zealand (55), Signal Tower, many others.					
MRS. P. W. SISSON—Coleman	1924	440	Lge. 3-	.25	10- .70
Ruffled pure pink. Parent of Christobel (3), Duna (8), Reverie, Wasaga (29), many others.					
MRS. S. A. ERREY—Errey, (Victor x Emile Aubrun)	1927	422	Lge. 2-	.25	10-1.00
Deep scarlet orange, 13 open. Parent of Delilah (3), New Zealand Splendor (11), Padre, many others.					
ORANGE QUEEN—Pfitzer	1919	323	Lge. 3-	.25	10- .70
Light orange. Parent of Bit of Heaven (159).					
OREGON—Ellis		540	Lge. 2-	.25	10-1.00
Huge ruffled pink. Parent of Colossus (19), Fair Elaine.					
OUR SELECTION—Ball, (Joe Coleman x ?)	1928	490	Lge. 3-	.25	10- .70
Light coral red, many open. Parent of Flagship (15), Full Hand, etc.					
PAUL PFITZER—Pfitzer	1924	370	Lge. 3-	.25	10- .70
Intensely ruffled purple. Parent of Guerdon, Purple Classic (31), Purple Supreme (47),					
PFITZER'S TRIUMPH—Pfitzer, (From Trudel Grotz)	1925	436	Lge. 1-	.25	
Giant ruffled scarlet with blotch. Parent of Ellen Marie (10), Blaze (M) (7), Rio Rita (22), many others.					
PHYLLIS McQUISION—Stewart, (W. H. Phipps x Catherine Coleman)	1935	440	Lge. 3-	.25	10- .70
Big pure pink, good. Parent of Dolores, La Grace, Mrs. W. P. Chrysler, etc.					
PRIMATE—Crow, (Golden Dream x ?)	1929	310	Lge. 3-	.25	10- .70
Very tall yellow. Parent of Yellow Bird (6), Alice Wilson, etc.					
PURPLE GLORY—Kunderd	1916	471	Lge. 1-	.25	
Ruffled deep maroon purple with black blotch. Parent of Bill Sowden, Leschi (7), Ramesses, Sultan, and many others.					
REGENT—Palmer, (Picardy x Com. Koehl)	1936	436	Lge. 2-	.25	10-1.00
Deep scarlet. Parent of Brittany, Tarawa.					
REVERIE—Palmer, (Apricot Glow x Mrs. Sisson)	1934	340	Lge. 3-	.25	10- .70
Ruffled shell pink. Parent of Mellowglow (3), Snow White (3), etc.					
ROSE DELIGHT—Jack, (Early Rose x Picardy)	1939	462	Lge. 1-	.20	10-1.75
Beautiful deep rose pink. Parent of Dawn Glow (7), Elegant Lady (8), Huntress (11), etc.					
ROSEMARIE PFITZER—Pfitzer	1930	406	Lge. 1-	.20	10-1.75
Cream blushed with pink. Parent of Arethusa (24), Bengasi (14), Candy Splash (22), Flagship (15), Rose O'Day (10), and many others.					
ROSEX—Palmer, (Pf. Triumph x W. H. Phipps)	1935	461	Lge. 1-	.25	
Tall salmon rose, many open. Parent of Star Dust, White Chieftain.					

ROYAL YORK—Palmer, (Stuttgardia x (Catherine Coleman x Pfitzer's Triumph) Deep bronzy scarlet. Parent of Aladdin (154), R. B. (101), Recado (52), Titan (10), etc.	1936	436	Lge. 1-	.25	5-1.00
RUFFLED PRINCESS—Pruitt Intensely ruffled light pink. Parent of All Ruffles.	1940	440	Lge.2-	.25	10-1.00
SALBACH'S ORCHID—Salbach Soft orchid lavender. Parent of Barbara (10), Changeable Silk (4), Elizabeth the Queen (169), etc.	1930	460	Lge. 1-	.25	
SCHWABEN GIRL—Pfitzer Early pure pink. Parent of Lipstick (7), Town Talk, June Day.	1928	340	Lge. 2-	.25	10-1.00
SEÑORITA—Salbach Ruffled bright orange. Parent of Opal Queen, Vassar (7), etc.	1928	423	Lge. 3-	.25	10- .70
SOUTHERN CROSS—Whiteley Bright red, many open. Parent of Blaze (13).	1933	352	Lge. 3-	.25	10- .70
SPRAY OF GOLD—Palmer, (Golden Dream x (Golden measure x Orange Queen) Pure yellow. Parent of Golden Lace, Mother Kadel (78).	1931	312	Lge. 3-	.25	10- .70
TUNIA'S TRIUMPH—Both Giant bronzy scarlet. Parent of Harmau (26), H. B. Pitt (6), Tunia's Mahomet (28), etc.	1937	536	Lge. 3- Med. 3-	.25 .15	10- .70 10- .40
TYCKO ZANG—Austin Pink with white throat. Parent of Purple Classic (31), Signal Ohio.	1928	342	Lge. 1-	.25	
WURTEMBERGIA—Pfitzer Big scarlet with white throat. Parent of Mrs. C. W. Gannett (12), Marguerite (63), etc.	1929	436	Lge. 3-	.25	10- .70

Section IV

OTHER LARGE FLOWERED STANDARD AND NOVELTY VARIETIES

(Includes many hard-to-get collector's items.)

The following are all excellent varieties just as beautiful as many of the prize winners. Indeed, some are yet to reach the show table in sufficient number and will soon be on the winning list.

Name, Originator and Parentage	Date	Class	Size	Price
ALCHEMIST—Pfitzer Very early deep yellow, 6 to 8 open.	1935	312	Lge. 3-	20 10- .50
ALCHEMY—Mitsch, (Golden Spray x Picardy) Nicely ruffled clear yellow, tall.	1940	310	Lge. 3-	.25 10- .70
AVIGNON—Errey, (Sport of Mrs. S. A. Errey) Silvery pink, full spike open.	1937	441	Lge. 2-	.25 10-1.00
BEAUTIFUL DREAM—Canine (Picardy x Pirate) Nice deep pink, lighter throat.	1939	442	Lge. 3-	.25 10- .70

BETSY BOB-UP—Canine, (Sport of Betty Nuthall) Tall late light yellow, good.	1936	316	Lge. 3-	.25	10-	.70
BETTY COED—Briggs Light pink, cream throat. ((That schoolgirl complexion."))	1934	340	Lge. 3-	.20	10-	.50
			Med. 3-	.10	10-	.30
BIG BOY—Jack, (Rosemarie Pf. x Miss New Zealand) Very tall greenish cream, late.	1943	406	Lge. 1-	.25		
BRIDES DELIGHT—Wilson (Picardy x Janet) Big light creamy pink, ruffled.	1941	541	Lge. 2-	.25	10-	1.00
COLLEEN—Troyer, (Laverne x Debonair) Tall medium sized pure pink.	1939	340	Lge. 3-	.25	10-	.70
DANNY BOY—Julyan Chocolate brown, orange throat, many open.		490	Lge. 1-	.25		
DEARBORN—Vaughan Big lily shaped florets of bright orange.	1930	421	Lge. 3-	.25	10-	.70
DEL RAY—Burtner, (Orange Flame x Pfitzer's Triumph) Good sized red with white throat.	1930	450	Lge. 2-	.25	10-	1.00
DOROTHEA KAHN—Troyer, (Dream of Beauty x Fascination (T)) Lovely deep rose.	1940	362	Lge. 3-	.25	10-	.70
EARLY MELODY—Arenius Very tall early lavender, cream throat.	1934	366	Lge. 3-	.25	10-	.70
			Med. 3-	.15	10-	.40
EARLY PEACH—Pruitt, (Giant Nymph x Betty Nuthall) Very tall early peach pink.	1935	432	Lge. 3-	.25	10-	.70
EXQUISITE—Both Tall salmon rose.	1938	560	Lge. 3-	.25	10-	.70
GOLDEN BROWN—Kunderd Ruffled medium brown and old gold. Said to be good breeder.	1929	396	Lge. 1-	.15	10-	1.25
GOLDEN POPPY—Prestgard This deep yellow has the nicest color, like a California poppy.	1934	312	Lge. 3-	.20	10-	.50
			Med. 4-	.15	10-	.35
GOLDEN YELLOW—Snyder (Sport of Betty Nuthall) Tall late yellow, good breeder.	1943	312	Lge. 3-	.25	10-	.70
GOV. PINCHOT—Kunderd Very nice deep rose pink, with deeper feather in throat.	1932	362	Lge. 3-	.20	10-	.50
			Med. 4-	.15	10-	.35
H. B. PITT—Both, (Picardy x Crystal) x Tunia's Triumph) Big salmon pink with cream throat, good.	1940	430	Lge. 3-	.25	10-	.70
HIGH COMMAND—Barrett, (Picardy x White Zombie) Very husky growing giant pink.	1943	540	Lge. 1-	.25	10-	2.00

HONOR—Kinyon, (Mrs. Sisson x Dr. Moody) Good lavender with a white feather in throat. Good propagator.	1934	466	Lge. 3- .25 Med. 4- .15	10- .70 10- .35
IVORY KEYS—Ellis Very good white with cream throat.	1935	406	Lge. 3- .25	10- .70
JERSEY CREAM—Evans Good florist's cream.	1935	406	Lge. 3- .25	10- .70
KASSEL—Pfitzer Big brilliant pure scarlet.	1931	436	Lge. 3- .25 Med. 4- .15	10- .70 10- .35
KENWOOD—Lins, (Picardy x Pfitzer's Triumph) x Flaming Meteor) One of the nicest clean pure reds.	1943	450	Lge. 2- .25	10-1.00
LADDIE—H. E. Wilson, (Mammoth White x Picardy) Pure pink, deeper throat. Very good.	1940	440	Lge. 3- .25	10- .70
LAVENDER DELIGHT—Arenius Deep lavender with white throat.	1931	366	Lge. 3- .20 Med. 4- .15	10- .50 10- .35
LIBERATOR—Baerman, (Sultan x Flaming Meteor) Slightly ruffled orange scarlet.	1940	436	Lge. 3- .25	10- .70
LONDONDERRY—Christ Large deep slightly smoky orange.	1935	424	Lge. 3- .25	10- .70
LORETTA YOUNG—Crymble, (Apricot Glow x Pfitzer's Triumph) Nicely ruffled pure salmon.	1940	430	Lge. 3- .25	10- .70
LOVELY LADY—Barrett Exquisitely ruffled deep pink.	1943	442	Lge. 1- .25	10- 2.00
MAMMOTH OHIO—Wilson, (Commander Koehl x Pfitzer's Triumph) Scarlet, one of the largest, crooks.	1941	536	Lge. 3- .25	10- .70
MARY ANSTEEN—Young Light pure pink with deeper blotch.	1936	342	Lge. 3- .20	10- .50
MAUVE MAGIC—Arenius Tall deep rosy lavender.	1933	366	Lge. 3- .20 Med. 3- .10	10- .50 10- .30
MERRY WIDOW—Evans Giant light pink, often has florets 8 inches or over.	1938	540	Lge. 1- .20 Med. 1- .10	10-1.75 10- .80
MIDNIGHT RED—Rich, (Morocco x Marmora) Good black red.	1940	454	Lge. 2- .25	10-1.00
MISS AMERICA—Salbach Flesh pink with deeper markings.	1938	440	Lge. 3- .25 Med. 3- .15	10- .70 10- .40
MODERN BEAUTY—Kunderd Tall ruffled lavender, cream throat.	1930	366	Lge. 3- .20 Med. 3- .10	10- .50 10- .30
MRS. G. WADE—Whitley Good ruffled yellow.		410	Lge. 3- .25	10- .70
MRS. LULU HUNT— Early geranium pink cutflower.	1936	430	Lge.3- .25	10- .70
MRS. R. P. CHASE—Miller, (Elf x Le Marechal Foch) x Imperator) Extra early big cream.	1930	406	Lge. 3- .20 Med. 3- 10	10- .50 10- .30

NERISSA—Errey		433	Lge. 3-	.20	10-	.50
Large light coral red, many open.						
ORANGE FIRES—Kunderd	1930	323	Lge. 3-	.25	10-	.70
Deep scarlet orange, intensely ruffled.						
PINNACLE—Arenius	1934	360	Lge. 3-	.20	10-	.50
Rose pink opening eight or more medium			Med. 3-	.10	10-	.30
sized florets on a long straight stem.						
POLAR ICE—Pfitzer	1931	400	Lge. 3-	.25	10-	.70
Purest white, very early.			Med. 3-	.15	10-	.40
PURE GOLD—Dehnhoff		312	Lge. 3-	.20	10-	.50
pure deep yellow.						
PURPLE VICTORY—Gilrey		470	Lge. 3-	.25	10-	.70
Big ruffled rosy purple.						
QUEEN HELEN II—Salbach,	1934	430	Lge. 3-	.20	10-	.50
(Betty Nuthall x Helen Jacobs)			Med. 3-	.10	10-	.30
Big salmon. Does best if bloomed in cool weather. Plant about June 1st.						
RAVENNA—Kunderd	1929	454	Lge. 3-	.25	10-	.70
Deep black red.			Med. 3-	.15	10-	.40
RECOVERY—Blake	1935	432	Lge. 3-	.20	10-	.50
Light coral red, many florets open.			Med. 3-	.10	10-	.30
RED ADMIRAL—Rozen	1933	436	Lge. 3-	.25	10-	.70
Early scarlet.						
RED RUFFLES—Arenius	1934	450	Lge. 3-	.25	10-	.70
Nicely ruffled light red.						
ROBERT THE FIRST—Wilkus	1935	390	Lge. 2-	.25	10-	1.00
Tall rosy lavender, opens many.						
ROSE SPLENDOR—Kunderd	1929	461	Lge. 3-	.20	10-	.50
Deep rose red cutflower.			Med. 3-	.10	10-	.30
ROSE STANDISH—Kinyon	1935	460	Lge. 3-	.20	10-	.50
Crinkled rose pink.			Med. 3-	.10	10-	.30
RUDOLF SERKIN—Pfitzer	1936	378	Lge. 3-	.25	10-	.70
Deepest pansy blue, almost black.						
SCHUBERT—Pfitzer		417	Lge. 3-	.20	10-	.50
Buff with scarlet feather.						
SHENANDOAH—Pearson,	1938	480	Lge. 3-	.25	10-	.70
(Marmorata x Mother Machree)						
Smoky gray shading to orange, many open.						
SNOWSPRITE—Fischer	1944	300	Lge. 3-	.25	10-	.70
(Sweetheart x Minuet) x (Brightsides x Star Lily)						
Medium sized white, creamy throat.						
SOLITA—Palmer	1940	320	Lge. 3-	.25	10-	.70
Medium sized pure orange that does not fade.						
SPIRIT OF ST. LOUIS—Mueller	1929	320	Lge. 3-	.25	10-	.70
Early deep orange.						
TAIAROA—Miller		431	Lge. 3-	.20	10-	.50
Good sized smoky salmon pink.						
T. A. WESTON—Kunderd	1928	340	Lge. 3-	.20	10-	.50
Early ruffled pink, white throat We have			Med. 3-	.10	10-	.30
some nice seedlings from this.						
TAWNY—Vaughan	1927	480	Lge. 3-	.25	10-	.70
Big strap petaled tawny brown.						
TAWNY GOLD—Kunderd	1930	390	Lge. 3-	.25	10-	.70
Like the name.						

TOBERSUN—Austin	1928	312	Lge. 3-	.25	10- .70
Formal late yellow, opens 8 or more.					
VREDENBURG—Pfitzer	1937	400	Lge. 3-	.25	10- .70
Pure white, good florists white.					
WINTER DAY—Kunderd	1936	401	Lge. 3-	.25	10- .70
Exquisitely ruffled creamy white.					
YELLOW FRILLS—Kunderd	1930	312	Lge. 3-	.20	10- .50
Ruffled and frilled bright deep yellow.					

Section V

SMALL FLOWERED WINNERS (Classes 100 and 200)

These varieties naturally produce florets of three inches or less in diameter. They are used extensively for bridal bouquets, small floral pieces, table decorations, sprays, corsages, etc. They are often called baby gladiolus. Their beauty when used alone or with other flowers is unsurpassed. Other advantages are: more spikes per bulb, more bulbs per dollar, earlier blooms from most varieties and less care as the wind never tips them over. The bulbs are smaller in some varieties than those of the large flowered glads.

Prizes—	Name, Originator and Parentage	Date	Class	Size	Price
18	CRINKLES—Kunderd Intensely ruffled deep rose red. ..Parent of Rose of Michigan, Rosette (8), Credulity, etc.	1916	263	Lge. 1-	.15 10-1.25
7	DAINTY MISS—Stancer, (Sweetheart x Baby Betty) Good small pure pink.	1941	240	Lge. 2-	.25 10-1.00
13	FLUFFY RUFFLES—Brown Dainty ruffled and lacinated cream.	1926	206	Lge. 3-	.25 10- .70
22	KEWPIE—Brown Tiny red, petals edged with cream. Parent of Atom, Gilt Edge.	1930	150	Lge. 2- Med. 3-	.25 10-1.00 .25 10- .70
9	ITO—Brown Light orange with deeper lip.		220	Lge. 1-	.15 10-1.25
11	LOVELINESS—Koerner Tiny light shell pink, blushed deeper.	1942	140	Lge. 2-	.25 10-1.00
3	MILADY IMOGENE—Austin Miniature exhibition white.	1928	200	Lge. 2-	.25 10-1.00
6	MILDRED PETTMAN—Brown Early light pink, cream throat.		240	Lge. 3-	.25 10- .70
27	NADIA—Leffingwell, (Lady Dainty x Orange Butterfly) Light salmon with many open, long flower head.	1937	231	Lge. 1-	.20 10-1.75
11	OLIVE MARIE BROWN—Brown Light bronzy orange.	1934	222	Lge. 3-	.25 10- .70
21	ORANGE BUTTERFLY—Salbach Very good bronze orange, many open. Parent of Gnome, Laora, Nadia (43), etc.	1927	222	Lge. 3- Med. 3-	.25 10- .70 .15 10- .40
8	PERKY—Hubler Tiny scarlet.	1942	236	Lge. 1-	.25
19	PINOCCHIO—Evans Very ruffled light greenish orange and pink.	1941	290	Lge. 2-	.25 10-1.00
20	QUEEN OF BREMEN—Zimmer, (1910 Rose x (G. Primulinus x Baron Hulot) Tall lavender, cream throat. Parent of Colonial Maid (74), Gloaming (79), Starlet (6), etc.	1928	266	Lge. 3- Med. 3-	.20 10- .50 .10 10- .30

8	ROSETTE—Kuhn, (Crinkles x ?) Ruffled light rose pink, formal type.	1942	260	Lge. 1-	.35	
14	SUBDEB—Evans Small informal white.	1941	200	Lge. 2-	.25	10-1.00
5	SNOWBABY—Stancer, (Seafoam x Maid of Orleans) Dainty cream white. Parent of Gnome.	1941	200	Lge. 1-	.25	5-1.00
6	STARLET—Baerman, (Zona x Baby Decorah) x Queen of Bremen) Beautiful small ruffled white.	1944	200	Lge. 1-	.25	
5	SWEETHEART—Prestgard Baby pink and white. Parent of Cavalier, Dainty Miss (10), Puritan, Sardis, etc.	1933	240	Lge. 3-	.20	10- .50
9	TWEEDLEDEE—Van Voorhis Wine red and gold. Parent of Purple Tweedle.	1938	250	Lge. 2-	.25	10-1.00
13	TWEEDLEDUM—Van Voorhis Deep rose and yellow. Parent of Red Tweedle, etc.	1938	262	Lge. 3-	.25	10- .70
17	WHITE BUTTERFLY—Kunderd Tall early white. Parent of Dream Pink, La Grace.	1922	200	Lge. 3- Med. 3-	.20 .10	10- .50 10- .30

Section VI

SOME OTHER GOOD BABY GLADS

Name, Originator and Parentage	Date	Class	Size	Price
ACCOLADE—Kunderd Lacinated deep salmon.		232	Lge. 3-	.20 10- .50
AIRY FAIRY—Koerner Tiny rose pink, very small.	1943	140	Lge. 3-	.25 10- .70
ANNIE LAURIE—Brown Ruffled lavender pink, lighter throat.	1929	240	Lge. 3-	.20 10- .50
BABY DECORAH—Prestgard Small ruffled white.	1935	200	Lge. 3-	.20 10- .50
BLUE LILY—Kunderd Blue with markings in the throat.	1921	276	Lge. 3-	.20 10- .50
CLIMAX—Kunderd Ruffled and lacinated deep salmon and blue.	1932	233	Lge. 3-	.20 10- .50
CRINKLETTE—Butt, (Brightside x Roi Albert) Intensely ruffled glistening deep orange.	1941	224	Lge. 2-	.25 10-1.00
DRACOCEPHElus—Species Tall wild variety with green flowers.		190	Lge. 1-	.25
FADDIST—Brown Buff with scarlet feather.	1929	217	Lge. 3-	.25 10- .70
GOLD BUG—Kunderd Small ruffled deep yellow on tall stem.	1928	212	Lge. 3-	.20 10- .50
GOLDEN SNAPDRAGON—Kunderd Earliest glad we grow, blooms in 60 days. Ruffled cream. A beauty for corsages.	1926	206	Lge. 3- Med. 3-	.20 .10 10- .50 10- .30
HONEY DEW—Prestgard Lacinated and ruffled tall buff.		216	Lge. 3-	.10 10- .50
JAP—Kunderd Earliest ruffled deep yellow.	1927	210	Lge. 3-	.20 10- .50
LITTLE WARRIOR—Wilson (Morocco x Red Lory) Lacinated deep red.	1942	254	Lge. 2-	.25 10-1.00

LOUIS HEMON—Lemoine		290	Lge. 3-	.20	10-	.50
Red, white and yellow, called the "Clown".						
LULLABY—Kunderd	1928	220	Lge. 3-	.20	10-	.50
Tiny yellow with deep orange lips.						
MORAVIAN—Kunderd	1928	266	Lge. 3-	.20	10-	.50
Delightful ruffled lavender, feathered throat.						
MRS. CALVIN COOLIDGE—Kunderd	1927	240	Lge. 3-	.20	10-	.50
Ruffled pink with lighter throat.						
ORANGE DELIGHT—Kunderd	1940	222	Lge. 3-	.20	10-	.50
Brightest orange, ruffled and laciniated.						
PATTY BERG—Koerner	1942	162	Lge. 3-	.25	10-	.70
Tiny rose pink and white on thin stem.						
SULPHUR FRILLS—Kunderd	1923	206	Lge. 3-	.25	10-	.70
Small tall ruffled deep cream.						
TAURUS—Kunderd	1925	270	Lge. 3-	.25	10-	.70
Tiny brilliant wine purple.						
THOS. E. WILSON—Koerner	1942	132	Lge. 3-	.25	10-	.70
Deep reddish salmon, white throat.						
WHITEHALL—Vaughan		200	Lge. 3-	.25	10-	.70
Good tiny pure white.						
WILL SCARLET—Brown	1930	236	Lge. 3-	.25	10-	.70
Dainty bright scarlet, primulinus type.						
WINTER CARNIVAL—Koerner	1943	107	Lge. 3-	.25	10-	.70
Pretty white, petals edged rosy pink.						

Section VII

SOME FAMOUS OLD TIMERS

Because of their value for comparison, hybridizing, historical data, sentiment, etc., we have been trying for several years to obtain the names of the twenty-five best glads of each decade, and will welcome correspondence with any "fan" who can help in compiling a good list of "Old Timers" or other information along this line. We will also pay cash or trade equal value from this catalog, for any of the following: Aviatrix, Baron Hulot, Bellevue (N), Blue Jay, Capt. Boynton, California (Burbank), Chateau Thierry, Coral Bells, Europa, Eve, Herada, Highland Mary, Gold, Jane Addams, Kunderdii Glory, Lighthouse, Longfellow, Mary Fennell, Mary Pickford, Marie Kunderd, Niagara, Paisley, Pink Wonder, Princeps, Rouget de Lisle, Pythia, Queen Louise, Queen Mary, Richard Diener, Schwaben, Stately Lavender, Tangerine, Tidbit, Twin Fires, Victor (Errey), Sir Galahad (Stephens), White Giant, and the following botanicals and early hybrids: Colvillei, Concolor, Cardinalis, Gandavensis, Hirsutus, Psittacinus, Purpurea-Auratus, Recurvus, Saundersii, Tristus, Maculatus, Oppositiflorus. These must be guaranteed true to name and healthy. Preferably small or medium sizes grown from bulblets. In lots of 3 to 100 bulbs. State price, amount, size, and varieties in first letter.

We have small stocks of the following "Old Timers" to offer for sale:

Name, Originator and Parentage	Date	Class	Size	Price
ALICE TIPLADY—Kunderd	1915	320	Lge. 3-	.20 10- .50
Saffron orange, feathered throat, early.				
BREAK OF DAY—Bill	1924	440	Lge. 3-	.20 10- .50
Very early light salmon pink.				

BUCKEYE—Kunderd	1921	461	Lge. 2-	.25	10-1.00
Big ruffled rose pink with deep blood red eye.					
CARDINAL PRINCE—Kunderd	1924	352	Lge. 3-	.25	10- .70
Pure cardinal red, won many prizes.					
CARMEN SYLVIA—Prestgard	1918	301	Lge. 2-	.25	10-1.00
Pure white with carmine feather.					
CHICAGO WHITE—Kunderd	1913	301	Lge. 2-	.25	10-1.00
White with pink penciling.					
CRACKER JACK—Groff		455	Lge. 2-	.25	10-1.00
Famous old deep red with yellow throat.					
DR. VAN FLEET—Kunderd	1922	441	Lge. 3-	.25	10- .70
Very early veined pink, tall.					
ECSTASY—Kunderd	1928	353	Lge. 3-	.25	10- .70
Cherry red with striking deeper blotch.					
EMMA—Velthuys	1927	433	Lge. 2-	.25	10-1.00
Deep salmon rose with deeper blotch, many open.					
EXCELLENCE—Kunderd	1927	336	Lge. 3-	.25	10- .70
One of the earliest scarlets.					
FLAMING SWORD—Krelage	1923	336	Lge. 3-	.20	10- .50
Still popular flaming scarlet.					
FRANK J. McCOY—Briggs	1925	442	Lge. 2-	.25	10-1.00
Tall pink, many open. Still wins for most open.					
GOLDEN KING—Black	1914	313	Lge. 2-	.25	10-1.00
Deep golden yellow, blotched red.					
GRAPHIC—Kunderd	1928	372	Lge. 2-	.25	10-1.00
Very early deep lavender, good.					
HALLEY—		432	Lge. 3-	.25	10- .70
Popular old early salmon pink.					
HINEMOA—Doney	1925	490	Lge. 1-	.20	6-1.00
Striking deep chocolate with large yellow center.					
J. T. PIRIE—Kunderd	1922	490	Lge. 3-	.20	10- .50
Tall Mahogany brown, flashy throat markings.					
JUBILEE—Kemp	1926	566	Lge. 1-	.20	
Giant lavender, slender petals.					
LE MARECHAL FOCH—Hopman	1919	460	Lge. 3-	.25	10- .70
Beautiful soft rose pink, good size.					
LOELLA—Kunderd	1918		Lge. 3-	.25	10- .70
Smoky silvery pink, deeper throat.					
LOS ANGELES—Houdyshel		341	Lge. 3-	.20	10- .50
flesh pink with scarlet feather. "Cut and					
come again" glad. Often sends up second spike.					
LUSTRE—Kunderd	1918	336	Lge. 3-	.20	10- .50
Lusterous bright scarlet.					
MAIDEN'S BLUSH—Grullemans	1916	240	Lge. 3-	.25	10- .70
Small pure flesh pink.					
MRS. FRANK PENDLETON—Kunderd	1910	441	Lge. 1-	.25	5-1.00
Soft rose pink with big deep maroon blotch.					
NANCY HANKS—Salbach		323	Lge. 3-	.25	10- .70
Deep apricot orange with red feather.					
ORAN—Kunderd	1918	366	Lge. 3-	.25	10- .70
Ruffled silvery lavender.					
PEACE—Groff	1899	401	Lge. 2-	.25	10-1.00
Probably the oldest variety still in commerce. As nice as many new ones. White with lilac feather.					

PREDOMINATOR—Kunderd	1915	436	Lge. 3-	.25	10-	.70
Very tall scarlet with 8 florets open.						
PRIDE OF WANAKA—Chriswell	1925	466	Lge. 3-	.20	10-	.50
Very nice deep rosy lavender. Still widely grown for florists use.						
ROMANCE—Kunderd	1918	480	Lge. 3-	.25	10-	.70
Smoky salmon, petals edged steel gray.						
ROSE ASH—Diener	1921	380	Med. 2-	.25	10-	1.00
Tall ashes of roses, an old favorite.						
RUFFLED GOLD—Goodrich	1925	310	Lge. 3-	.25	10-	.70
Tall ruffled yellow.						
RUTH HUNTINGTON—Kunderd	1923	367	Lge. 1-	.20		
Ruffled rosy lavender.						
SCARLET WONDER—Groff - Cowie		436	Lge. 2-	.25	10-	1.00
Tall scarlet, similar to Dr. Bennett.						
SCARLET PRINCEPS—Kunderd	1917	336	Lge. 2-	.25	10-	1.00
Famous old scarlet, opens many florets.						
SWEET LAVENDER—Coleman	1922	466	Lge. 2-	.25	10-	1.00
Pale creamy lavender shaded and blotched deeper.						
TWILIGHT—Kunderd	1921		Lge. 3-	.25	10-	.70
Pink and ivory, throat feathered red.						
WAR—Groff, Cowee		452	Med.1-	.25	5-	1.00
Famous old blood red companion to Peace.						
WHITE ORCHID—Purple	1926	301	Lge. 3-	.25	10-	.70
Very early ruffled white, deep lavender feather.						
WHITE WONDER—Kemp	1921	300	Lge. 3-	.20	10-	.50
Medium sized white.						
YELLOW FAVORITE—Kunderd	1921	313	Lge. 3-	.20	10-	.50
Buff yellow, light red throat blotch.						

Gladiolus Culture

CARE OF BULBS

If you own or purchase bulbs in the fall, be sure they are well dried or cured before putting them into storage. Purchased bulbs should be opened on receiving and inspected, as they may mold if left tightly wrapped for any length of time. Bulbs in storage should be kept between 35 to 50 degrees F., in open trays or boxes with the bulbs piled not more than 3" or 4" deep. Be careful of frost as they are very tender. If your storage room has a dirt floor (preferable), place a couple of 2x4's under the boxes so air can freely circulate. If storage is in a cement basement in which your heating plant is situated, your bulbs may dry out too much, reducing their vitality or even killing them. Watch and if the husk has loosened or the cleaned

bulbs crackle and rattle when handled, place a wet burlap sack near them or sprinkle them lightly with water remembering to stir them the next day so that molding will not start among the bottom bulbs in the tray. Look at your bulbs often and repeat the above treatment every week or so, if necessary.

Unless you are sure that no thrips are present on your bulbs it is well to treat them for thrips. Thrips (*Taeniothrips gladioli* M. and S.) is a tiny, barely visible insect. The young are cream, or light orange in color and the adult black and white. They hop and fly considerable distances, so they may attack your glads when least expected. Because one has not observed thrips in one's garden is no assurance that they will not get to your glads next summer or that

they are not already present on your bulbs in storage. Storage treatment consists of dusting cured bulbs with 5% D.D.T. powder. Leave this on the bulbs until planting time. If you have proper storage the above treatment will seldom be necessary as thrips and their eggs die if held for three months or longer at temperatures below 45 or 50 degrees.

At planting time, regardless of where your bulbs came from, give them the following treatment: soak in Lysol solution for three to six hours and plant immediately while the bulbs are still wet. This solution is insecticidal, fungicidal and a decided stimulant. If one fails to treat bulbs during the winter storage you should not miss treating them before planting.

Formula for Lysol Solution

1 teaspoonful Lysol to 1 quart of water, or

1 $\frac{1}{4}$ tablespoonsful Lysol to 1 gallon of water, or

1 pint of Lysol to 25 gallons of water.

Solution is more effective if water is around 70 or 80 degrees F. Solution should be replaced after being used two or three times. Cresol or Cresolis Compound are similar to Lysol.

WHEN AND WHERE TO PLANT

Successive plantings about three weeks apart should be made from the time the trees first show their leaves in the spring until the early part of July (for Provo and similar climate). Where frost comes earlier or later you can plant as long as you have 90 days before the first killing frost. At Provo glads can be bloomed during about a 100 day period from early July until October.

Glads will grow any place a garden will do well. There are a few spots in Utah where the soil is too alkaline.

Such areas should be avoided. They do best in a soil that is neutral or slightly acid, but are very tolerant to other soils. They do best in full sunshine but will bloom in partial shade. Avoid foundation or wall plantings as these situations are either too hot or too shaded.

HOW TO PLANT

In deeply prepared soil make furrows or holes 4 to 6 inches deep, place the bulbs root end down 4 to 6 inches apart in rows two feet apart. If at the time of late plantings the soil is dry, irrigate before planting. The water may be run right down the furrow and the bulbs planted immediately after water has been shut off. Small bulbs, less than 1 inch in diameter, should be planted 3 to 4 inches deep and apart. Bulblets, the tiny fellows that are clustered in the roots, are sown thickly like peas in a furrow about two inches deep. Bulblets seldom bloom the first year but make good bulbs and blooms the second year.

CULTIVATION, IRRIGATION AND FERTILIZATION

Glads do best if cultivated and irrigated once a week after they come up until they are in bloom. It may be difficult while they are in bloom but a good cultivation after they are through will be found very beneficial. Continue to water and care for your glads for at least a month after they are through blooming. At blooming time the new bulb that will later be dug and saved for the next year is only about the size of a thimble and is watery and immature. If for lack of water, removal of too many leaves when cutting blossoms, or any other reason growth is stopped at this stage, the bulbs will keep poorly and lack vitality the next season.

Barnyard manure is excellent if applied in the fall or early spring.

The addition of about 100 lbs. of superphosphate to each ton of manure will increase the value of both. According to the latest information, the best Commercial fertilizer for Stah is a 4-16-4 mixture; that is, 4% Nitrogen, 16% Phosphorous and 4% Potash or mixtures of similar proportions, applied as a side dressing after the plants are up and immediately followed by an irrigation. Successive applications may be applied with good results, providing plants are well watered after each application. Apply 2 to 4 pounds per 100 feet of row. If more than two applications are used, less fertilizer per application is needed. NOTE: Do not let manure or other fertilizer come in direct contact with the bulb or plant, as serious injury will result.

SPRAYING

If allowed to, thrips may attack glads at any stage, in storage or in the field, so it is well to spray or dust the young plants as soon as they are up six to eight inches high and every two weeks thereafter until they bloom, as a preventative measure. If thrips are definitely present, spray every week.

Spray Formula:

D.D.T. wettable dust as per directions, or 2½% to 5% D.D.T. dusting powder.

DIGGING AND CURING

Six to eight weeks after the bulbs are through blooming, they should be ready for digging. Most varieties can be left longer but should be dug while there is still some green in the foliage as dormant bulbs have little or no resistance to disease or insect attack if left in the ground after growth stops. The little bulblets drop loose from the mother bulb as it ripens, thus making these much more difficult to harvest if the bulbs are left too long. It is also much easier to harvest the

bulbs if the tops are green enough to insure their having strength to lift the bulbs from the ground as they are loosened with a shovel or spading fork. Cut off tops close to the bulbs and place in trays or other containers. Do not pile them more than two or three bulbs deep and place them in a warm airy place where they will be protected from storm and frost until they are dry. If conditions are right, they should dry in two to four weeks. It is now time to clean the old roots and mummified bulb from last year off the new bulb. If cleaning is done at the right time it is much easier than if attempted too soon or late. It is best to burn this discarded material as well as the tops, as they are sources of thrips and other infestations if left on the ground. As soon as the bulbs are cleaned they are ready for winter storage.

CARE OF BLOOMS

As cut flowers, glads are supreme. Cut them when one or two florets are open, use a sharp knife slipping the blade down the sides of the stem to loosen the foliage if long stems are desired, then a turn of the wrist and a little pressure will sever the stem and leave the leaves with the bulb which is so necessary to produce a large healthy bulb for the next year. At least five leaves must remain on the bulb to insure its continued growth. As soon as possible after the flowers are cut place them in a deep, clean container of cold water. Each day change the water, cut about one inch off the stem and remove any wilted florets. Treated this way glads will be attractive for ten days to two weeks.

If left in the field, remove the wilted florets each day and cut out the flower head or spike when through blooming; this will cause the plant to put all its effort toward making a better bulb.



