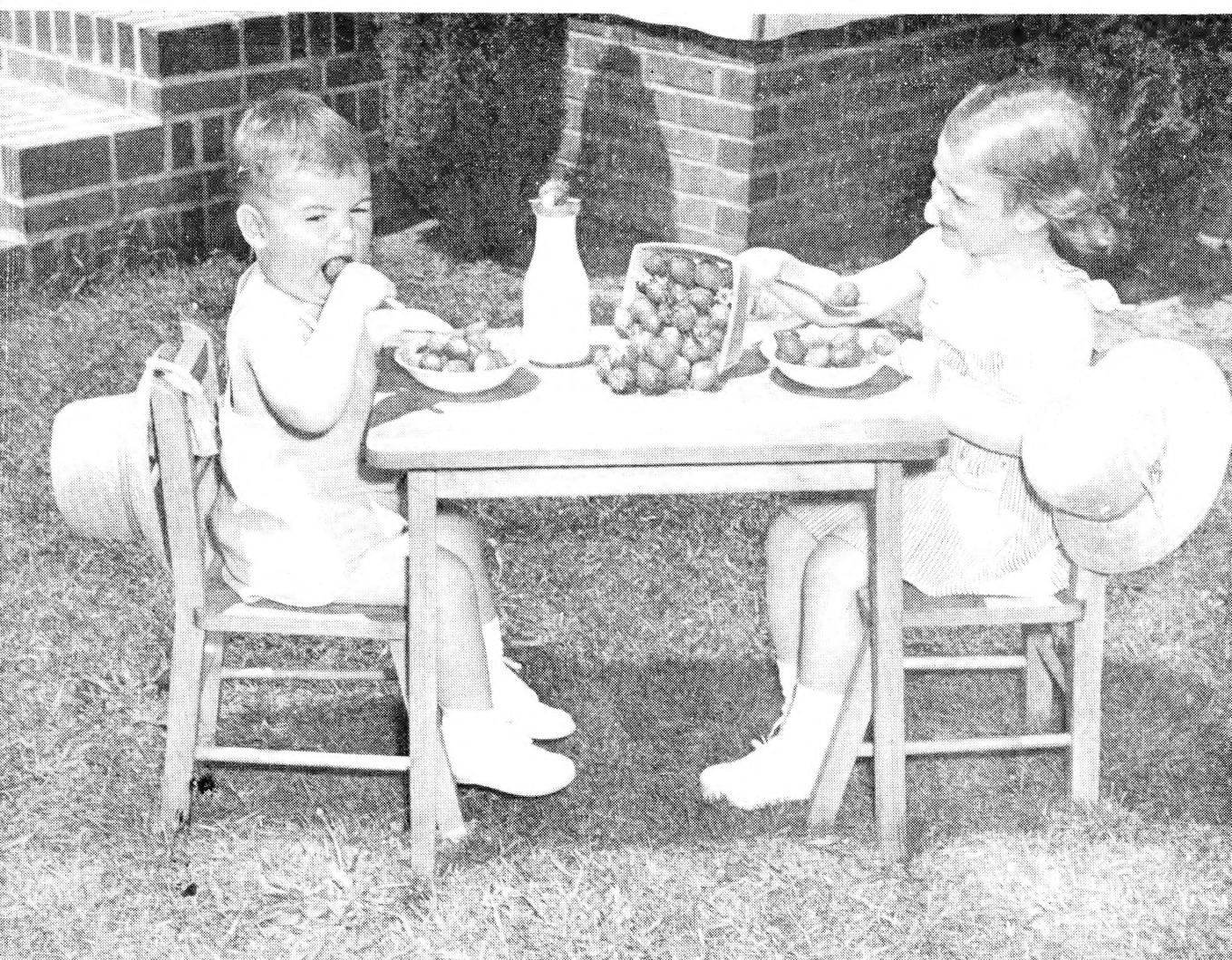


Historic, Archive Document

Do not assume content reflects current scientific knowledge, policies, or practices.



The above is Don and Betty Lou Richardson enjoying the delicious strawberries fresh from their Grandpop's farms. Grandchildren and strawberries fulfills a high place in nature.

H. D. RICHARDSON & CO., Willards, Md.

Introduction

Dear Farmers and Friends:

I am proud to be in a position to deal with a class of people who have such records as farmers do. They have carved this great nation out of a wilderness and always have had the best fed and best clothed nation in the world. Still the products from the American farms have found their way into every port that the sun ever shone. They have fed every civilized nation of the globe regardless of race, color or creed.

There is no ocean ever sailed that the farmer's sons haven't sailed upon it. There have been no wars fought that the farmer's sons haven't helped win. In fact there are no occupations ever held by the human race that haven't been held by the sons of the farmers.

The farmers are a tribe of business people that have never closed their shops, never had a lay-off or strikes. They have never laid down their arms in surrender. They faced floods and droughts, depressions and wars, but they fought on until they won.

Some say this is going to happen—and some say that is going to happen—I don't know what is going to happen. But we do have another Calendar year of 1948 which is like a new book. Every time the sun rises she unfolds another page of time. We are going to the school of experience as the pages unfold. But at that we never graduate or get a diploma. It may be that we get them at the "Pearly Gates."

Now if that sun continues to travel on time as she has been doing for quite awhile, I wouldn't be surprised if those tree buds didn't unfold again this spring. If they do, you will be wanting to know where your Strawberry Plants are coming from and if they will be delivered on time. Now, it is true that there are less Strawberry Plants this year than there were a year ago and the supply will be exhausted before all the orders are filled. Now it seems to me the thing to do is to mail your order in as soon as you possibly can. That way there will be no doubt of getting your plants or getting them on time.

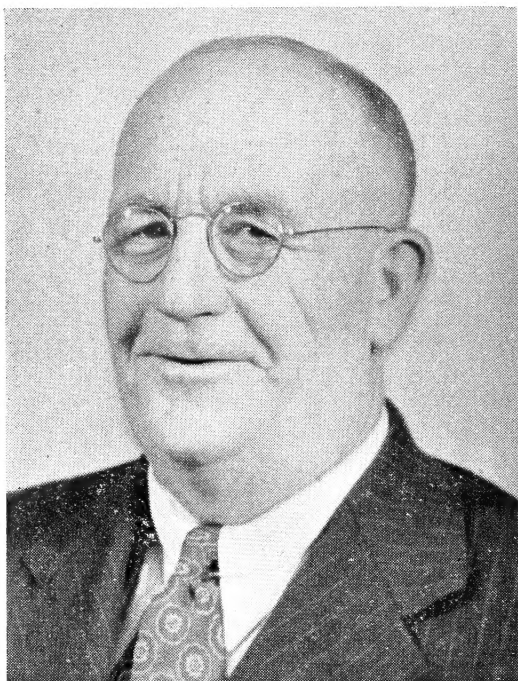
H. D. RICHARDSON & CO.



PREMIER

PREMIER. Premier, nationally known and have to'd their own story from coast to coast. For a number of years it has been considered the leader among the early varieties, and it must still be as the Premier plant is the leading seller among all strawberry plants today. It is mostly grown in the northern and western states and is as good a cropper and berry today as it ever was. When it comes to furnishing good, well rooted Premier plants we have really got them.

THE NEW BLAKEMORE. The new Blakemore was originated by the U. S. Dept. of Agriculture and it is really resistant to the Yellows commonly found in Blakemore. For that reason, or some other reason it produces a lot more berries, and much larger berries, which makes it a real strawberry, worthy of any growers best piece of land, as this berry carries extremely well, and is in demand in every market in this nation.



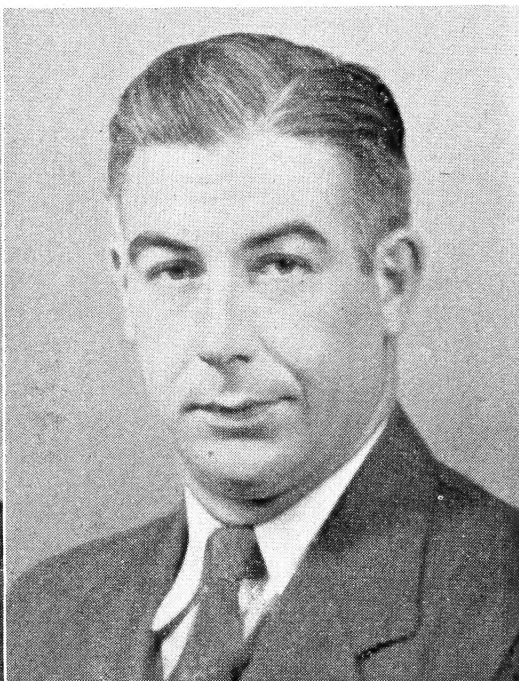
HARRY D. RICHARDSON
FOUNDER

I never would put my picture in the catalogue because I was afraid it might not take so good and hurt my business. However, since the boys were fresh home from the service they thought that being we were all together we should have all of our pictures in the catalogue. You know what happened? My picture came out better than any of them.

Some of my old girls, who are around 75, say that I look as well as I ever did. As much as I like to hear it I think the trick is that their eyes have failed about as fast as I have wrinkled.

I'm not kidding about the strawberry plants. We never had better plants, and no other company ever had any better plants. We have a lot of them. We have taken care of our commercial growers when plants were scarce. He made a pocket-full of money. We never let him down because we could sell small orders for more money. Our customers come back and bring their neighbor. This method of doing business never grows old.

HARRY D. RICHARDSON



WELTON A. RICHARDSON
GENERAL MANAGER

I happen to be another farm boy that served a nitch in the U.S. Navy. I was more fortunate than many other sailors. I left San Diego on an old ship called The Indian Island. She missed a lot of bombs and mines but finally hit a mine. Then I got another ship called The U.S.S. Dixie. She is well known and well liked by all sailors.

The Dixie total sea voyage was four years and had never docked at a home port. On December 5, 1945, was my happiest day in Shanghai, China, when the 1100 foot long homeward bound penant was raised which represented her crew of 1100 men. My duties were in the engine room. When the orders came to stand by to get underway and the bell rang to give one-third forward I gently opened the throttle.

Then the ship slowly moved off and the music began to play. I then thought "Maybe it is true that we are homeward bound".

When she bumped the wharf at Seattle, Wash., Pier 91, I said, "This is home," although I had 3,000 more miles.

WELTON A. RICHARDSON



VAUGHN E. RICHARDSON
LAWYER

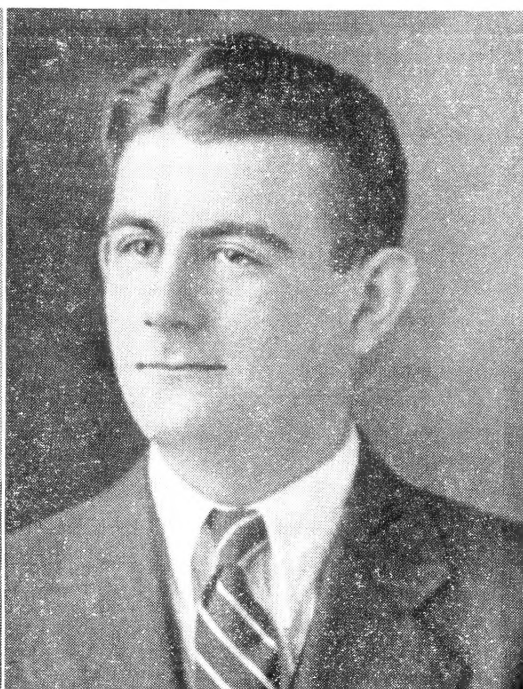
This is Vaughn E. Richardson who served nearly five years in the U.S. Army and traveled many thousands of miles.

I never had but one real pleasure trip. That was when I was seated on the train that was homeward bound. Looking the passengers over I saw some looking strong, some weak, some who had left part of their bodies over in the jungles, and some of my best buddies were entirely lost.

While crossing this great country I looked out the car windows at the great wheat fields nodding in the breeze, contented cows grazing by the brook, the happy children playing in the yards, and a trainload of homeward bound soldiers who protected this great nation, then I was proud of my country even though I did not own a dollar's worth of it.

I still feel that I was very fortunate and blessed in many ways.

VAUGHN E. RICHARDSON



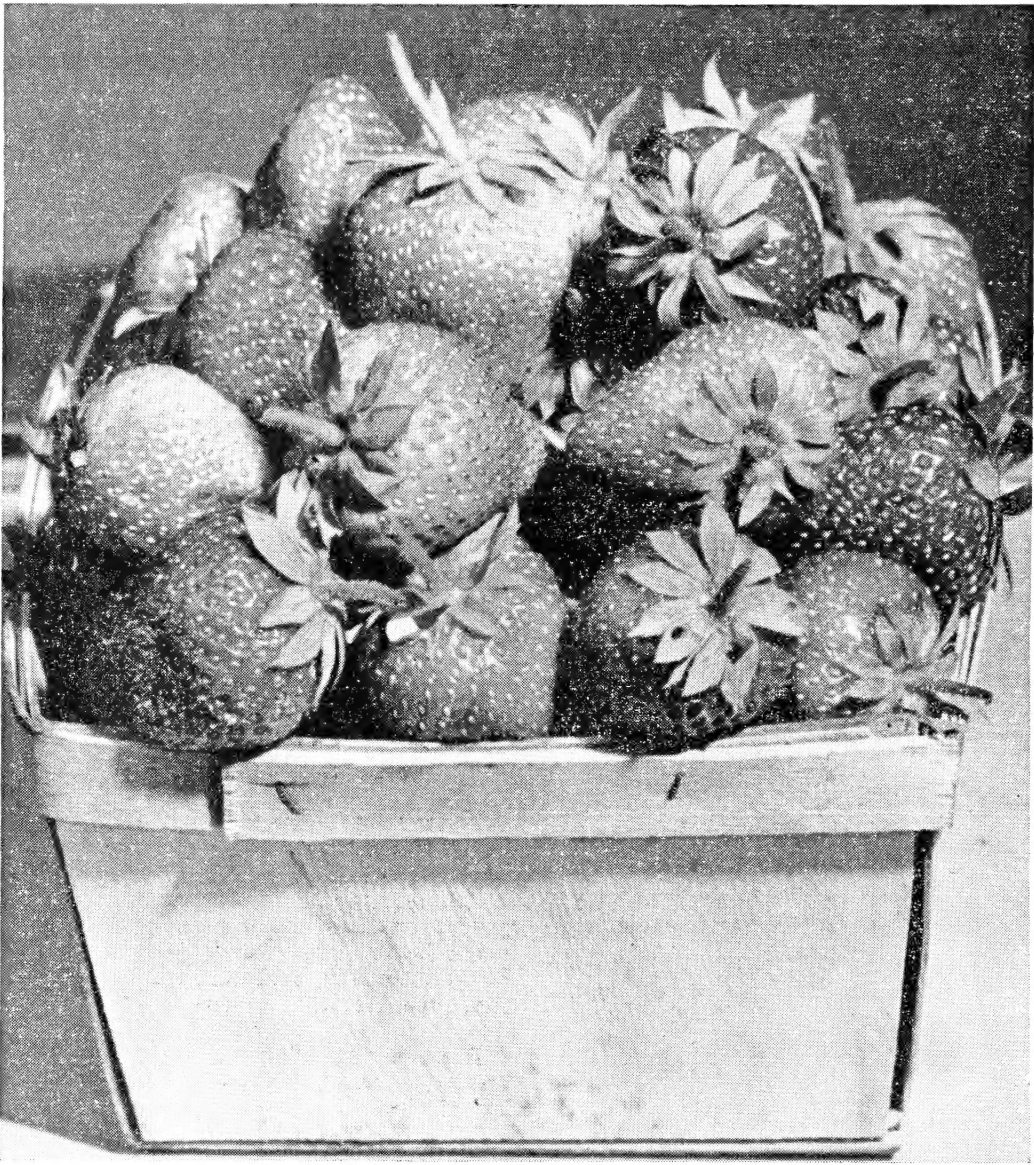
HOWARD D. RICHARDSON
AG. SPECIALIST

I have spent my entire life on the farm except four years which I spent in College at University of Maryland where I graduated in agriculture. I learned some there, some here on the farm, some from our customers, and still have a lot more to learn.

I class agriculture the broadest subject known to mankind. A tiller of the soil is a bright man. He is dealing with the earth which has never harmed anyone. The Earth provides us with homes, the best of food, clothing, medicine, and heat for the home; also with power that puts the ship across the ocean the power to put the train over mountains and power to put cars over the highways.

The scientists agree that they have learned very little about what the earth possesses but it takes care of us while we are here, also when we are gone, and never harms anyone.

HOWARD D. RICHARDSON



PATHFINDER

PATHFINDER. Now boys, I have been telling you about this new berry for the Northern and Western states.

New Haven, Conn., Experimental Station, Dr. D. F. Jones, reports a yield of 15,000 quarts per acre, this is over 600 crates. I call it a good crop, and I believe his report to be true. Pathfinder was the outstanding variety in 1939. It must be all right. My wife says it is the best looking berry in the dish that she ever put on the table; and the best tasting berry of any variety. As far as I am concerned, that table story is settled. I am not going to argue about it; in fact, I am afraid to.

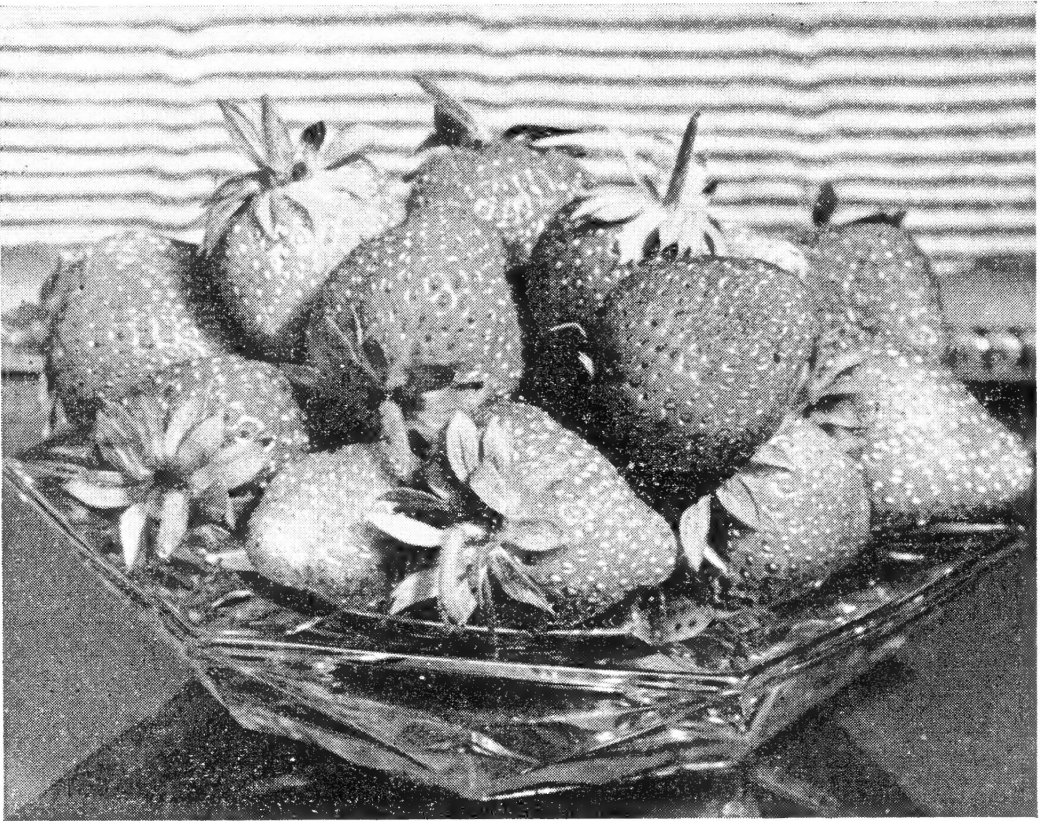
CATSKILL. We were the first to boast about Catskill. We believed in it and led our ad in farm papers with it and still do recommend it. We sold to an Association in Connecticut, in 1938, large quantities of Catskill. I understand they had wonderful success with our Catskills, and still, we are recommending Pathfinder where Catskills are good. It is a bigger cropper and better berry and picks longer.



MIDLAND. The Midland berry is alright. It is in the class with any berry. In fact, at the present time it stands out above any early berry.

All varieties of strawberries require plenty of moisture and a well drained soil. A fair supply of organic matter will give marvelous results; this has been proven to us during the many years we have been using cattle manure from our dairy farms. We not only recommend poultry and cattle manure for strawberries but we use it ourselves. We broadcast every acre of our plant ground before we set it in plants, this is why we can furnish you with such superior quality plants at such low cost. This is one of the great things that has helped us in building our trade from coast to coast. You need no telling that a plant that has been properly fed has more energy than one that has not had the proper plant food. Our plants are full of life and are in demand from coast to coast.

REDSTAR. Redstar (U.S.D.A.) is an extra late berry. Is new, pretty, it grows anywhere and will stand shipping long distances. Sells anywhere and is a fine late berry.



TEMPLE

We quote: Since 1937 a cooperative strawberry Breeding project between the University of Maryland and the U. S. Department of Agriculture has been in effect. The purpose of this program is to obtain new strawberry varieties with resistance to the red stele disease as well as the qualities necessary for a commercial strawberry. All crosses are made at Beltsville, Maryland by George M. Darrow, which most of the growers selections and propagation are done by W. F. Jeffers on the Eastern Shore of Maryland — (End of quotation).

There is a lot more history to this new berry and it is all true. But I am so interested in it that I want to say something about it myself, knowing that I have no chance to claim any credit for breeding this wonderful berry. I wish I did. But at any rate I am personally acquainted with Dr. Jeffers and Dr. Darrow and with Dr. Temple, I have been associated with them on many occasions pertaining to strawberries and my thoughts of them all was always pleasant and I give them all the credit for their Master Stroke. But do expect to make a lot of money fruiting the Temple berry. Now I tell you why I do; the first thing it resists disease like leaf scratch and others as well and it is a good plant maker. It takes one half as many plants to the acre and that's a great saving and it grows off faster than other berries makes it easier to till. Does well in damp land and above all when strawberry time comes you have a bumping crop of big, cone shaped, sparkling red strawberries with a big, fresh green cap. Seeds stand out so it will not chafe the berry in shipping it solid. In shipping quality and flavor there is nothing left out. This berry smacks in good with any kind of bread or cake.

When packed in crates with berries all the same and near the same size they just out style other berries so much that the buyers stretch their necks out to see if you got Temple on. Now you want to know why I say more

about this berry than other companies. Well the test plot is only about one mile from my house and I go by it several times a day going from home to another farm, and I have been watching this berry since the first berry was grown. The market is only one mile from my home where all the Temple Berries are sold. I not only see what my berries bring, but I see what every kind and everybody bring, and I believe ninety percent of all plants set in this section will be Temple.

Now if you think I have gone above the limit about this new berry just lay this little book away until some of your neighbors fruit them. Then read this again and you will see my story comes true. The 1947 frost didn't change my mind. The above is still true.

Chesapeake Is The Real Money-Maker

This is a stylish old variety. It has all the good points that you could wish for, except it is very choicy about the type of soil. It does well in dark, deep and rich soil.

STARBRIGHT. Starbright (U.S.D.A.) is a cross between Chesapeake and Fairfax. You know it has good parents and when you grow it you will then know it inherited the good quality of them both. If you have been wanting to grow Chesapeake and the soil does not suit them this Starbright will grow there.

GEM (Everbearing). A new and much advertised everbearing variety. Is a better plant maker than Mastodon, but with us it did not crop with the Mastodon. Some growers praise it very highly.

BIG JOE. A good midseason variety coming on a few days earlier than Chesapeake and for this reason we recommend it.

Big Joe berries are large in size with an attractive green cap, good cropper, sells well and a fairly good shipper to nearby markets.

A good grower and cropper on most all types of soil.

FAIRFAX. The queen of quality. Was introduced in 1932 and is another scientific cross of Royal Sovereign and Premier by the U. S. Department of Agriculture. We fruited it on our ideal strawberry soil and found it has the most delicious flavor of any berry we grow. We are not advising our customers to go back on the Premier which has been so dependable, but we do advise you to try our Dorsett and Fairfax in your planting.

MASTODON (Everbearing). This is undoubtedly the best everbearing variety. Produces a good crop of berries the same summer you set the plants. We have customers near large cities who claim it very profitable. We have tried many kinds of the everbearers but are only recommending the Mastodon as it seems to do well in most all sections of the country.

FAIRLAND. A brand new early berry developed by U. S. Department of Agriculture. Been tested for six years in practically all the experimental stations. We have seen this ourselves and believe it will be the best early berry. I would try a few of them.

DORSETT. This is another of the new U. S. Department of Agriculture strawberries, introduced in 1933. A cross of Premier and Royal Sovereign. We think Dorsett will speedily win the friendship of the quality grower for the following reasons: It will come nearer suiting all types of soil as far as making healthy fruiting beds, than any plant we know of. I have visited around here in Maryland to see what it would do on different types of soil and I have never seen a bad patch yet. We fruited it here on our farm where we have a natural strawberry soil and it was a real berry; beautiful when packed in crates; light in color and with the most delicious flavor. Sold better than other kinds.

CLAIMS. All claims for stock received not as represented should be reported promptly. We cannot entertain claims made after stock has been accepted in good faith, or when a report is not made in some form within a period of 15 days after arrival of stock.

No. 1
 Premier
 Catskill
 Temple
 Red Star
 Mastodon
 25 each
Special \$3.00

Order these garden orders by numbers. They will get special attention.



PLOT NO. 1

Above is a field of Catskill Strawberry plants just as you would see them if you were to come down and look our farms over. These pictures were all taken by a customer of ours, Mr. E. H. Rohr of Buckhannon, W. Va.

I recommend Catskill for heavy production for Northern and Western States.

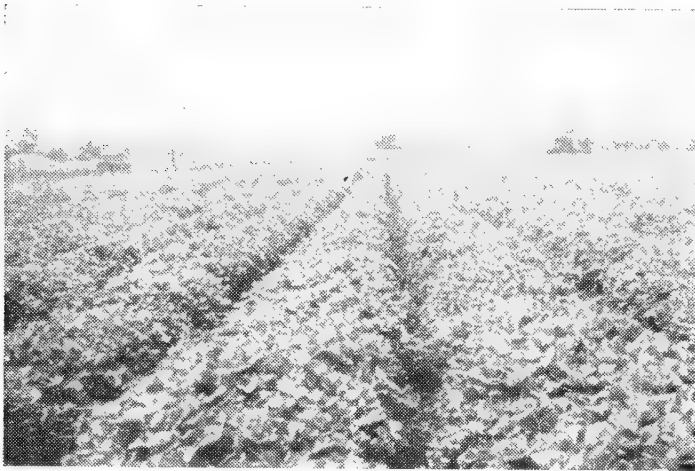


No. 3
 Premier
 Dorsett
 Temple
 Big Joe
 Gem
 25 each
Special \$3.00

We are proud of these plants. You will be also when they arrive.

PLOT NO. 3

This is a field of Midland, a new early berry that all plant companies are thrilled about. No one has been able to fill their orders for this new berry. I think we will be able to take care of your orders, large or small. I have no doubt you will pride it as much as any berry you ever grew.

**No. 2**

Premier
Catskill
Temple
Red Star
Mastodon
50 each

Special \$5.00

Each of these garden orders are selected Early Mid-season, Late, and Everbearing.

PLOT NO. 2

Above you will notice a field of new Temple that was supervised by Mr. George Jessup, who has made a life study of nature. He is the type of man who takes great pride in his work. The picture shows he didn't miss doing a good job. This is positive proof of the Temple's ability to make a good bed in most all types of soil, uphill or downhill. Of course, all strawberries prefer moisture.

There is no art work about this field of plants or about this catalogue. I like everything that's genuine. That probably is one of the things I admire about farmers. They are plain and genuine people.

No. 4

Premier
Dorsett
Temple
Big Joe
Gem

50 each

Special \$5.00

Sparkling, Red,
Strawberries fresh
from your garden
tops all fruit.

**PLOT NO. 4**

This is a picture of one of our fields of solid Premier at the time we were laying them by. The colored man that you see in the picture is named Henry Lewis. He does no other kind of work during the growing season. The mule has been doing the same kind of work for 21 years. Henry argues that he and "Kate" (the mule) are specialists.



Streamliner

A new everbearing strawberry and is very good here, but we don't have enough reports from our customers to be sure what we are doing when we recommend it to you too highly. We are just telling you what it does here. It makes plenty of plants but if you keep the runners off and leave the mother plants to bear only, it will grow as large a berry as any variety and a nice lot of them. I would like for you to try a few of them. We have a plenty of them that is why we made the price so cheap.

Gemzata

Another new everbearing strawberry and our knowledge of it is the same as the streamliner as to what it will do on various types of soil. It doesn't make so many plants, but does grow a nice lot of berries. In adding up just what we know about it, I prefer Mastodon and Gem for everbearing. We still want you to try a few of the new kind.

SPARKLE

The Sparkle berry has proved outstanding in New York State, no doubt it will do equally as well in other Northern States. It is like the pathfinder in many ways. One of the greatest berries grown if it is grown in his native land.

FAIRPEAKE

A cross between Fairfax and Chesapeake and has the good qualities of both parents. It has kept the wonderful flavor of the Fairfax and the firmness of the Chesapeake. The Fairpeake requires damp rich soil same as the Chesapeake.

LUPTON. Lupton is a fancy late berry and one of the best shippers known. Has a beautiful red color and shows up well when packed in crates. They grow well on most all soils, making a good fruiting bed. No flavor.

If your soil does not suit Chesapeake, try Lupton. It is a good berry but if you can grow Chesapeake we would place Chesapeake first.



This is our daughter-in-law, Mrs. Aline Richardson, as she proudly views her canned strawberries. She also freezes them and thinks her table is blessed when she has strawberries to serve.

GARDEN OF EDEN

It does seem to us that a little Garden of Eden with strawberries, blueberries, grapes, raspberries, gooseberries, and other small fruits serves the greatest purpose that any piece of land can serve. It furnishes your table with the highest grade of fresh fruits from early spring to late summer.

The greatest pleasure you ever had is to have all these fruits growing so that when your children and grandchildren are around you can take them out to your little Garden of Eden and see them pick the fruit right fresh from the vine making their own selection. You have then fulfilled the highest place in God's nature. That will be proved to you by the children's rating you above all other human beings because you have fulfilled their heart's desire. Just recall to your childhood days what family wrote their name in your heart with a small gift of some kind of fruit.

RED RASPBERRIES**Latham**

The Latham raspberry seems to be the most popular. It looks so good when they get to the market, also yields a heavy crop, stands long distance shipments well.

Indian Summer Everbearing

The Indian must get its name from the word Indian Summer as it does deliver a spring crop and then grows a new set of canes and delivers another late autumn crop at the season of the year that is called Indian Summer.

Taylor

A well-known, red, coned-shaped raspberry has tree like canes bearing beautiful fruit and a heavy cropper.

Chief

A dark red raspberry like the Indian. Again like the Indian being the first in America and the Chief the first in the market; also stands all kinds of weather and climate like the Indian Chief.

Sunrise

The Sunrise is early and bright like the sun, dependable. If the sun continues to travel regular she will deliver a beautiful crop of raspberries on time.

RED RASPBERRY PRICE LIST

	12	25	50	100	200	250
Latham No. 1	\$2.60	\$4.10	\$7.10	\$12.35	\$22.50	\$26.80
Indian Summer No. 1	2.60	4.10	7.10	12.35	22.50	26.80
Taylor No. 1	2.60	4.10	7.10	12.35	22.50	26.80
Chief No. 1	2.60	4.10	7.10	12.35	22.50	26.80
Sunrise No. 1	2.60	4.10	7.10	12.35	22.50	26.80
		300	400	500	750	1000
Latham No. 1	\$30.35	\$37.50	\$43.10	\$59.05	\$75.00	
Indian Summer No. 1	30.30	37.50	43.10	59.05	75.00	
Taylor No. 1	30.35	37.50	43.10	59.05	75.00	
Chief No. 1	30.35	37.50	43.10	59.05	75.00	
Sunrise No. 1	20.35	37.50	43.10	59.05	75.00	

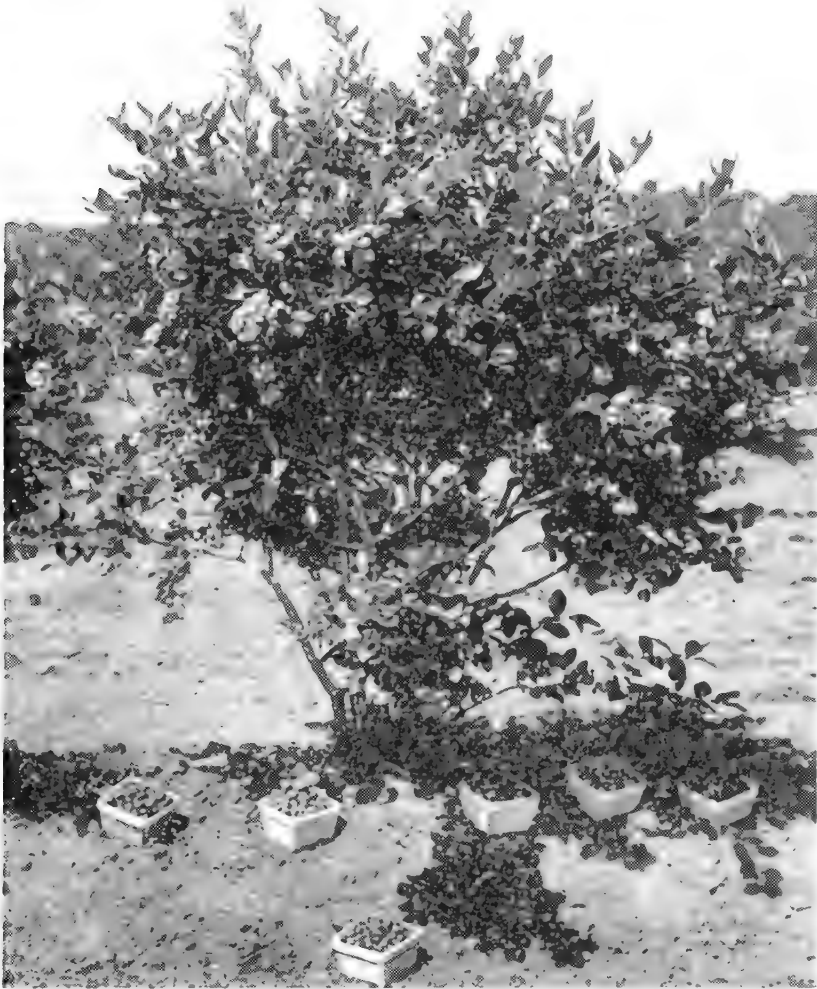
BLACK RASPBERRIES**Cumberland**

An old dependable black variety, it comes so near meeting with the approval of the black raspberry grower that we don't see the use of confusing him with another black raspberry and another black raspberry, etc., until we learn that we have it equal or a better variety. You see there may be a better variety but we have not learned of it yet.

BLACK RASPBERRY PRICE LIST

	12	25	50	100	200	250
Cumberland No. 1	\$2.10	\$3.30	\$5.70	\$9.90	\$18.00	\$21.00
		300	400	500	750	1000
Cumberland No. 1	\$24.30	\$30.00	\$34.50	\$47.25	\$60.00	

In planting, growing, packing and shipping our thoughts are always of our customers to make sure we do him a good job.



BLUEBERRIES

The above picture shows you what you can do for yourself with very little trouble and very little expense. Two bushes will supply a small family.

FRESH FRUIT		CANNING		QUICK FREEZE	
Weymouth	E	Rancocas	E	Rubel	M
June	E	Rubel	M	Jersey	L
Cabot	E	Jersey	L	Burlington	L
Jersey	L				
Burlington	L				

Our method above of classifying Blueberries has been confirmed by one of the great authorities on Blueberries. Star varieties.

WEYMOUTH — The earliest blueberry, vigor growing bush, has beautiful foliage, fruit is round, dark blue firm berry. Excellent for canning.

JUNE — Another early berry ripens a few days before the Cabot. It will fulfill your highest hope of fresh fruit blueberries, also an ornamental bush.

CABOT — This variety is early and doesn't make a big tall bush. Usually about 4 to 5 feet tall. It has the style and flavor to match any fruit and any market.

JERSEY — A late big blueberry. It is a good canning, freezing, and shipping berry. Really a general purpose berry. As an ornamental bush it has the style of any ornamental tree.

BURLINGTON — Bush vigor and upright. Spread with large leaves. The fruit is a good blue color. It's flavor carries the dessert qualities of any fruit. Doesn't leave your taste wishing for something else.

RANCOCAS — A big rugged bush shoulder high. It is dependable in production, in qualities, style, and beauty. I wish to say it will give a lot of pleasure and profit and no trouble to grow.

RUBEL — We believe the Rubel is about the widest planted blueberry that we know of. It is hardy and productive, light blue, very firm, and ships well. The bush grows up in a desirable manner.

The Blueberries are a comparatively new branch of agriculture to the farmers of America. The U. S. Department of Agriculture test plot is located right here in the neighborhood. We are personal friends of the manager of the government test plot. He is also a large grower of Blueberries.

The blueberry has alarmed the land in pleasure, profit and food value. Large canning and freezing plants buy them by truck loads here. The secret of growing them is to keep the ground worked shallow so that the air can penetrate into the soil.

Blueberry Culture

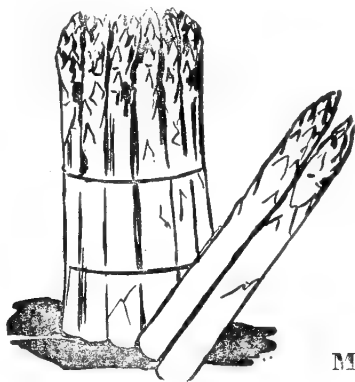
You should have two different varieties near each other then they are both benefited through the blossom pollination.

The land should be damp, but well drained with the plants set either 4 feet by 10 feet or 6 feet by 6 feet and remember that it is to bear fruit for 70 years or more.

This is one subject that we should be in a position to answer your questions having the government test plot for our neighbor.

Blueberry Price List

	each	3-9	10-29	30-99	100 or more
1 yr., 3 to 6 in.	\$.65	\$.60	\$.50	\$.40	\$.35
2 yr., 6 to 12 in.	1.25	1.05	.90	.75	.65
2 yr. 12 to 18 in.	1.65	1.40	1.20	1.05	.90
2 yr. 18 to 24 in.	2.50	2.10	1.80	1.60	1.35



MARY WASHINGTON

Mary Washington asparagus has been so satisfactory that other varieties are practically forgotten. I want to mention that the Mary Washington stocks come out of the ground plumb straight. When you go to bunch them they lay in the form straight as pencils.

MARTHA WASHINGTON

We can discover very little difference between Mary and Martha Washington, but as long as the seed comes to us labeled Mary and Martha it is no trouble to keep them separate and we sell them as we buy the seed.

We prefer one year old selected roots. Years of experience have taught us that the older any plant is the more shock it has from transplanting. This proof has been so definite that it seems there is very little to gain in buying older stock. At the same time, you understand, we can furnish it.

Asparagus Price List

	25	50	100	250	500	750	1000
1 yr., No. 1	\$1.30	\$2.15	\$3.40	\$6.80	\$10.65	\$14.05	\$17.00
2 yr., No. 1	2.05	3.35	5.40	10.80	16.90	22.30	27.00

Instructions to Customers

TIME TO ORDER. As soon as convenient after receiving this catalogue, for late in the season we may be out of some varieties, but if you order early you will get just what you want, without any trouble or delay. Plants will be reserved and shipped when the proper planting time comes. Be sure to **PLANT AS EARLY** as possible for this may mean success or failure.

TIME OF SHIPMENT. From October 20th to May 1st. Shipping through the winter to Southern states. Spring is the best time to set your strawberry plants in the Middle and Atlantic states. The earlier your plants are shipped and planted the better they are for they will stand digging, shipping and planting much better early than after the growth has started. May 1st ends our shipping season. We will, however, fill a limited number of orders shortly after that date, and with a late season the plants will go through in good condition, but we do not advise planting this late in the season and will fill orders only at the purchaser's risk after this date. We will use every precaution in our power to put the plants through in good condition.

PAYMENT. Money Order, Registered Letter, Bank Draft or Personal Check in full payment with order or ¼ cash with order and balance before date of shipment. We will book orders and wait a reasonable length of time for remittance.

GUARANTEE. That all orders will be delivered to the carriers in first-class condition. All claims should be made promptly on receipt of goods and if just will be made satisfactory. If shipment has been delayed on the road and has spoiled, refuse same and notify us at once, or if you decide to accept same, have agent make notation on your receipt as to condition.

TRUE TO NAME. We use every precaution to have our plants true to name, and if any should prove otherwise we will replace it, but in no case will we be responsible for any sum greater than that paid for the plants.

YOU ARE TAKING NO RISK. We send just what you order or refund your money, unless you tell us to substitute your order with the nearest to it we have, should we be out of the varieties you order.

ALWAYS REMEMBER. We are at your service and will always be glad to hear from you and will give you any and every possible assistance.

OUR PLANTS ARE FRESH DUG FOR YOUR ORDER. From new beds that have not borne fruit, tied in bundles of 25 and packed in light ventilated crates with plenty of damp moss so they will carry safely. We make no extra charges for crates or packing.

SHIPMENT. On all orders of 500 plants or more after the third zone the rate is usually cheaper by express than by parcel post, and as the Post-office Department demands a minimum charge of 17c for C. O. D. collection and money order fee it is cheaper for our customers to remit the amount of postage with order if plants are to be shipped by parcel post, otherwise shipment will be made by express. Parcel post charges can be figured by the following table.

	Zones	Zone	Zone	Zone	Zone	Zone	Zone
	1-2	3	4	5	6	7	8
100 Plants	\$0.12	\$0.15	\$0.21	\$0.27	\$0.33	\$0.41	\$0.48
200 Plants16	.23	.35	.49	.61	.77	.92
300 Plants21	.31	.49	.70	.89	1.13	1.36
400 Plants25	.39	.63	.91	1.17	1.49	1.80
500 Plants29	.47	.77	1.12	1.45	1.85	2.24
600 Plants34	.55	.91	1.33	1.73	2.21	2.68
700 Plants38	.63	1.05	1.55	2.01	2.57	3.12
800 Plants43	.71	1.19	1.76	2.29	2.93	3.56
900 Plants47	.79	1.33	1.97	2.57	3.29	4.00
1000 Plants51	.87	1.47	2.18	2.85	3.65	4.44

from _____

H. D. RICHARDSON & CO.

Strawberry Plants

WILLARDS, MD.

STARD

15

1

1

1948 Price List of Strawberry Plants

WRITE FOR SPECIAL PRICES ON LARGER ORDERS. Farm bureaus and associations' orders not to exceed 500,000. Orders that are to be moved by truck should give us their date early so as to not have several trucks here on the same day.

	25	50	100	200	250	300	400	500	750	800	1000
Early Varieties											
Premier	\$1.00	\$1.70	\$2.70	\$4.75	\$5.40	\$6.10	\$7.30	\$8.45	\$11.15	\$11.65	\$13.50
Howard 17	1.00	1.70	2.70	4.75	5.40	6.10	7.30	8.45	11.15	11.65	13.50
Blakemore75	1.25	2.00	3.50	4.00	4.50	5.00	6.25	8.25	8.65	10.00
Dorsett	1.00	1.70	2.70	4.75	5.40	6.10	7.30	8.45	11.15	11.65	13.50
Fairfax	1.10	1.80	2.90	5.10	5.85	6.50	7.85	9.05	11.95	12.50	14.50
Pathfinder95	1.60	2.60	4.55	5.00	5.85	7.05	8.15	10.75	11.25	13.00
Midland	1.10	1.85	2.85	5.15	5.85	6.60	7.90	9.15	12.00	12.55	14.50
Fairland	1.50	2.50	4.00	7.00	8.00	9.00	10.00	12.50	16.50	17.30	20.00
Midseason Varieties											
Catskill	1.00	1.70	2.70	4.75	5.40	6.10	7.30	8.45	11.15	11.65	13.50
Temple95	1.60	2.60	4.55	5.00	5.85	7.05	8.15	10.75	11.25	13.00
Big Joe	1.00	1.70	2.70	4.75	5.40	6.10	7.30	8.45	11.15	11.65	13.50
Starbright	1.05	1.75	2.80	4.90	5.60	6.30	7.55	8.75	11.55	12.10	14.00
Sparkle	1.05	1.75	2.80	4.90	5.60	6.30	7.55	8.75	11.55	12.10	14.00
Late Varieties											
Chesapeake	1.15	1.95	3.10	5.40	6.20	6.95	8.35	9.70	12.75	13.75	15.50
Red Star	1.10	1.85	2.85	5.15	5.85	6.60	7.90	9.15	12.00	12.55	14.50
Lupton95	1.60	2.60	4.55	5.00	5.85	7.05	8.15	10.75	11.25	13.00
Fairpeake	1.15	1.90	3.00	5.25	6.00	6.75	8.10	9.40	12.40	12.95	15.00
Fall Everbearing											
Mastodon	1.90	3.15	5.00	8.75	10.00	11.25	13.50	15.65	20.65	21.60	25.00
Gem	1.90	3.15	5.00	8.75	10.00	11.25	13.50	15.65	20.65	21.60	25.00
Gemzata	1.90	3.15	5.00	8.75	10.00	11.25	13.50	15.65	20.65	21.60	25.00
Evermore	1.90	3.15	5.00	8.75	10.00	11.25	13.50	15.65	20.65	21.60	25.00
Streamliner	2.25	3.75	6.00	10.50	12.00	13.50	16.50	18.75

LOOK! Now let's get straight on this. We have helped you in these prices and our plants are all certified of the best grade. The above prices are F.O.B., Willards, Md.



You see Betty Dennis and Jeanette Collins picking Blueberries for their weekend pies which will meet the requirements of any human beings' mouth.

H. D. RICHARDSON & CO., Willards, Md.
1948 CATALOGUE