

Historic, Archive Document

Do not assume content reflects current scientific knowledge, policies, or practices.

62.45 = 1948

Plant the Cotton *Preferred* by the Mills



TRADE MARK REG.

STONEVILLE Pedigreed Seed Co.



STONEVILLE, MISS.

STONEVILLE PEDIGREED SEED COMPANY

... A Service Institution, Founded on Faith, Determination and Hard Work

THE World wide renown of Stoneville and Delfos cottons, products of the highly developed Modern Cotton Breeding Program, of the STONEVILLE PEDIGREED SEED CO. are a gratifying tribute to the FAITH, DETERMINATION AND HARD WORK of the company's founder—Mr. G. B. Walker. These three cornerstones, together with a sincere desire to be of service to the cotton farmer, made up the foundation of an organization that is today recognized throughout the world for its contributions to the development of Modern Cottons.

Mr. Walker, as one of the first Directors of the Delta Experiment Station at Stoneville, Miss., headed the very commendable work done at this institution in developing new cottons to combat the threat of the boll weevil. He realized, however, that this development of new cottons was of little practical value to the farmers unless the seed could be produced and made available in sufficient quantities to meet their needs.

The challenge presented by this situation was such that Mr. Walker felt that it could not be ignored. Consequently, in 1922 together with a few associates he founded the STONEVILLE PEDIGREED SEED COMPANY. This new company was dedicated to the purpose of developing high type cottons to meet the needs of the times and, furthermore, of increasing the seed therefrom in sufficient quantities that the cotton farmers might receive the benefits of such cottons.

The high standing of STONEVILLE COTTONS in the esteem of both the cotton farmer and the spinner of cotton is solid proof of the soundness of Mr. Walker's ideals of Service, of his Faith, Determination and Hard Work.



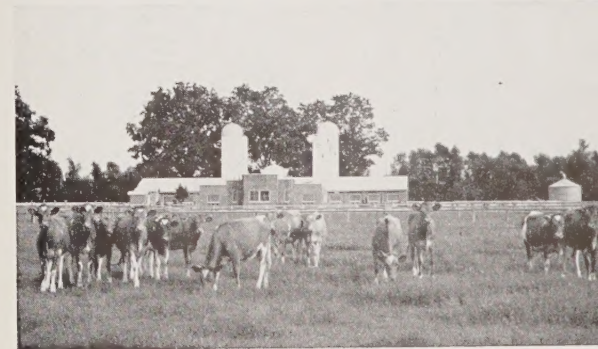
MR. G. B. WALKER, president of Stoneville Pedigreed Seed Company, is shown above. In addition to his duties as active head of the STONEVILLE PEDIGREED SEED COMPANY, WALKER FARMS DAIRY and WALKER PLANTATIONS, Mr. Walker finds time to serve as State Senator; president, Mississippi Guernsey Cattle Club; president, Washington County Farm Bureau, and member of the National Dairy Committee of the American Farm Bureau Federation.

Walker Farms Dairy Balances Farm Program at Stoneville

Realizing the growing importance of livestock in a well balanced farm program Mr. Walker turned his attention to the breeding of registered Guernsey cattle and the production of quality milk. Beginning in 1927, in a very modest way, Walker Farms Dairy today is one of the outstanding dairy farms of Mississippi with one of the finest herds of Guernsey cattle in the south.

The herd made up of over 250 registered animals and headed by two outstanding sires, Flying Horse Royal Piper and Reigeldale Mck Barnard, is a splendid example of scientific breeding.

The cash income derived from the Dairy during the depression years helped materially in carrying our organization through those troubled times and proved conclusively that the practical application of scientific breeding pays off in every phase of farm activity.



STONEVILLE 2-B

In High Favor—Grower, Buyer and Spinner

- PLANT TYPE**—Medium vigorous, spreading and prolific.
BOLL SIZE—Large, 60 to 70 per pound of seed cotton.
MATURITY—Early, one of the few early, maturing big boll cottons.
PICKING QUALITIES—Excellent—Large fluffy bolls, opens well.
 Has high percentage of five lock bolls.
STAPLE LENGTH—Valley Lands 1-1/16 to 1-1/8 inch.
 High Lands—1 to 1-3/32 inch.
LINT PERCENTAGE—Valley Lands—34 to 36%.
 High Lands—35 to 38%.
LINT CHARACTER—Fine fibre, very strong, hard and uniform.
FOLIAGE—Medium Light.
STORM PROOFNESS—Good.
SEED SIZE—Average 3500 per pound
SEED MILLING VALUE—Very high—See table on back of sheet.

For twenty years, since the first selections of the Stoneville strains were made, we have endeavored to improve them by selection only. To the old No. 2 strain we have added the 2-A and more recently the 2-B, both of which were meritorious selections. This year we have in production our selection No. 8275, which will be sold as 2-B, following up our policy of improving our established strains without confusing the public by continually offering new strain numbers.

This strain is very uniform in plant type, has wide spreading branches, a medium round boll and slightly better lint percentage than our former strains of 2-B. Laboratory tests of the past three years productions show a high degree of uniformity of staple fibre lengths and an unusually high bundle or tensile strength, with low percentage of mill waste.

It has been outstanding in yields of seed cotton and lint per acre in our own tests and in the official tests where it has been included at several Experiment Stations. We offer it with full confidence that it will please both the growers of fine cotton and the mills that want uniformity in both length and strength of fibre.

RESULTS VARIETY TESTS

Yield and other data from Cotton Variety test — Seven Delta Locations — Three years averages 1943-45†

VARIETY	YIELD PER ACRE		Gin Turnout	Staple Length	Bolls Per Lb. Seed Cotton	Percent Picked First Picking	Fiber Tensile Strength	Total Money Value Strict Low Middling
	Seed Cotton	Lint						
	Lbs.	Lbs.						
Bobdel	1738	553	31.7	35.2	75.3	71.0	83,076	130.50
Bobshaw No. 1	1875	641	34.0	34.3	73.2	66.9	82,433	146.83
Coker 100*	1697	609	35.7	35.0	75.2	66.2	79,183	142.50
Delfos 444	1837	530	28.8	36.1	84.7	67.7	74,183	131.83
Delfos 531C	1754	568	32.3	35.8	81.1	69.8	77,550	138.50
Delfos 651	1767	576	32.5	35.5	78.8	67.7	77,716	138.16
Deltapine 14	1717	679	39.4	34.4	79.5	58.8	76,150	155.66
Miller	1804	647	35.7	32.1	64.5	65.0	77,200	143.66
Stoneville 2-B	1966	677	34.3	34.8	66.8	64.3	80,233	157.50
Wilds 15**	1437	444	30.7	39.8	74.5	57.8	88,350	132.16

*Coker 100-7 in 1943; Coker 100-8 in 1944; Coker 100-9 in 1945.

**Wilds 15 in 1943; Wilds 16 in 1944; Wilds 17 in 1945.

†Conducted by Miss. Delta Experiment Station.

DELFO 9169

A New and Valuable Delfos Strain

PLANT TYPE—Medium vigorous, spreading and prolific

BOLL SIZE—65 to 75 per pound of seed cotton. Extra large for Delfos.

MATURITY—Early for a big boll cotton, but slightly later than 531-C.

PICKING QUALITIES—Good bolls, rather round, mostly five lock, and opens well.

STAPLE LENGTH—1-3/32 to 1-5/32.

LINT PERCENTAGE—35 to 38 percent.

LINT CHARACTER—Medium in fineness, strength and uniformity.

FOLIAGE—Medium though heavier than 531-C.

STORM PROOFNESS—Good.

SEED SIZE—Average 4000 per pound.

SEED MILLING VALUE—Extra high—see back of sheet.

Delfos 9169 is a selection from Delfos 531-C and has been selected and increased in response to the demand for a Delfos cotton with larger boll, better picking qualities, more plant vigor, and high acre yield of lint. From this standpoint 9169 is really an outstanding cotton. Shows high wilt resistance.

In official cotton variety tests throughout the cotton belt, Delfos 9169 has consistently ranked near the top in lint and money value per acre.

Delfos 9169 should please the most exacting planter — High yield, High lint percentage, High quality lint, and extra high seed milling value. We know of no other cotton that ranks so high in all these qualities.

THE STONEVILLE PEDIGREED SEED COMPANY has been operating for almost a quarter of a century dedicated to the principle that—"Sound cotton farming economy depends upon the ability of the cotton farmer to produce economically, cotton which best meets the needs of the cotton processor." Practical application of such a principle has called for close cooperation with the research staffs of State Experiment Stations, the U. S. Department of Agriculture and the Spinning Industry. Such cooperation has been, is, and will continue to be an integral part of the operation of this concern. Information gained from this cooperation has resulted in the STONEVILLE cottons of today with their outstanding superiority in yield and in spinning qualities. We of the STONEVILLE PEDIGREED SEED COMPANY herewith pledge ourselves to continue this cooperation not only with the spinning industry and Government Agencies, but also with the farm implement manufacturers in order that we may continue to work diligently to breed into our cottons the qualities necessary to meet the constantly changing needs of producer and consumer. To carry out this pledge we have what we believe to be the outstanding cotton breeding staff of the world employed in this work. This staff is made up of Mr. C. A. Tate, Dr. Geo. Rea Walker, and Dr. J. Winston Neely. The experience and knowledge of these men are available to you for any particular problem in this field with which you may be faced. We invite you to visit our office and breeding fields at any time to discuss your problems and to bring us any suggestions you may have for improving our service to you.

(Signed) G. B. Walker, *Pres.*

STONEVILLE PEDIGREED SEED CO.

Proper Balance

Is Keynote of Success of Stoneville Cotton!

The characteristics of a TOP NOTCH COTTON are:

**HIGH YIELD!
EASE OF PICKING!
CONSISTENT FIELD
PERFORMANCE!
UNIFORM STAPLE LENGTH!
GOOD LINT PERCENTAGE!
EXCELLENT MILL
PERFORMANCE!
HIGH TENSILE STRENGTH!
HIGH GRADE SEED!**

IT is generally agreed that a cotton which is characterized by a PROPER BALANCE of these eight characteristics is superior to cottons that are outstanding in only one of them. STONEVILLE COTTONS have this proper balance as a result of years of intensive SELECTIVE BREEDING. This balancing of the qualities desired by the farmer and demanded by the textile and oil mills illustrate vividly the program of PLANNING FOR THE FUTURE introduced by the STONEVILLE PEDIGREED SEED CO. at the time of its organization and carried forward each year.

Realizing the need of the cotton breeder to know intimately the needs of the textile industry this company has had a leading part in efforts to bring the spinner and the cotton breeder together. That these efforts have been successful is evidenced in the yearly meetings of spinner and breeder now being held. That the plant breeders of the STONEVILLE PEDIGREED SEED CO. have made use of the information gained thereby is evidenced in the MILL PREFERENCE for STONEVILLE COTTON.

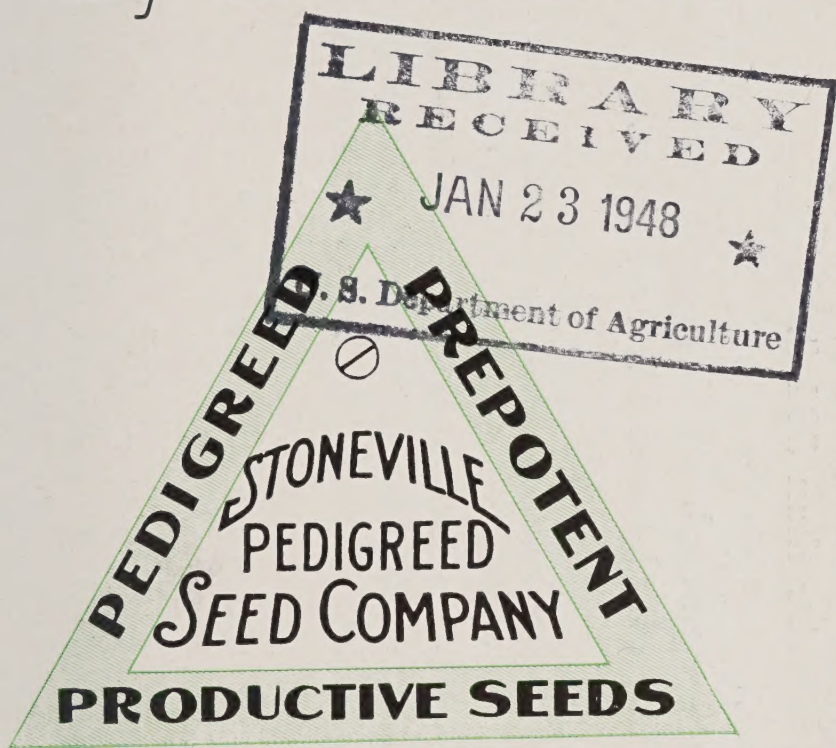
STONEVILLE COTTON

today represents the perfect blending of the spinners requirements with the farmers desires.

62.45

=1948

Plant the Cotton *Preferred* by the Mills



TRADE MARK REG.

STONEVILLE Pedigreed Seed Co.



STONEVILLE, MISS.



Mechanical pickers in operation on the Henson Planting Company's plantation near Charlotte, Miss. Stoneville 2-R is only one attached to this plantation.