

## **Historic, Archive Document**

Do not assume content reflects current scientific knowledge, policies, or practices.





# T & T SEEDS 1948

SEED  
DIGEST

GRAND FORKS, N.D.

U.S.A. Headquarters

Copyright, 1948.

## Six New Exclusive

# T & T INTRODUCTIONS FOR YOUR 1948 GARDEN

- **PEA, GARDEN**—Arctic Sweet  
Earliest, Sweetest
- **BEAN, BAKING**—Idaho 123  
Bigger, Higher Yields
- **LETTUCE, LEAF**—Slobolt  
Drought, Heat Resistant

- **CUKE**—Siberian 27  
Earliest, Higher Yields
- **WATERMELON**—Sweet Sensation  
Earliest, Sweetest, Reddest
- **TOMATO**—Improved Chatham  
More Uniform, Higher Yields

BE GUIDED  
AND BUY  
ON THE



RED STARS

See Page 3

## QUALITY

Fresh, Dated Seeds  
Bursting with Life.  
Scientifically Bred for  
Northern Gardens.

## QUANTITY

T & T Print Packet  
weights. There's more  
seed in T & T packets.  
Better Dollar Value.

### GUARANTEE

MONEY PROMPTLY REFUNDED IF NOT  
COMPLETELY SATISFIED

American orders are rushed to you from

**GRAND FORKS, N.D.**

We Pay Delivery Charges

Our prices are delivered unless otherwise  
stated. Enclosed Order Form tells how  
to make your best seed buy in 1948.





# BETWEEN OURSELVES

## Dear Friend:

Again our thanks for your thousands of orders and encouraging letters. 1948 is again a T & T year. Your orders for T & T Seeds poured in last season until we were nearly swamped, and all summer and fall we have been receiving wonderfully encouraging letters telling how T & T Seeds have led in your gardens and districts.

T & T Early Northern Improved Seed is bred and developed by experts for Northern short season districts. The new 6 Vegetables plus new fruits and flowers for '48 are outstanding additions to the list of T & T leaders.

These new originations are proven on our Test Plots; and are certain to make friends. You can count on the T & T experts to keep your garden up to date with earlier, better Vegetables, Flowers and Fruits.

At our Winnipeg and Grand Forks, North Dakota branches, we have an outstanding group of able progressive plant breeders and seed production men. They pool their technical knowledge to operate our Test Plots and manage our Seed production acreages. T & T Seed experts travelled the

Continent and spent thousands of dollars to develop these new varieties and to improve and re-select the old favorites. The T & T label is the Hall Mark of quality in early, vigorous Northern Improved Seeds.

Your best dollar for dollar value is the big T & T oversize Brown and Gold Packet. T & T print packet weights to assure you both value and fair play. T & T packets in many cases are two to four times heavier. Your orders and repeat orders have shown that your interest is in quality Seed, and the T & T oversize fresh packed new crop Seed is your assurance for better gardening.

T & T Seed is new crop, dated, tested for purity and vigor. Our Vegetable packets carry the control Certificate test number.

T & T packets are really generous oversize packets, we refuse to compromise on quality or quantity.

The T & T Seed Digest contains only the earliest, most outstanding varieties so they will be the first and finest in your garden.

Your enthusiastic support of T & T Seeds proves we are on the right track. Let us work together in 1948 for the best gardens ever.

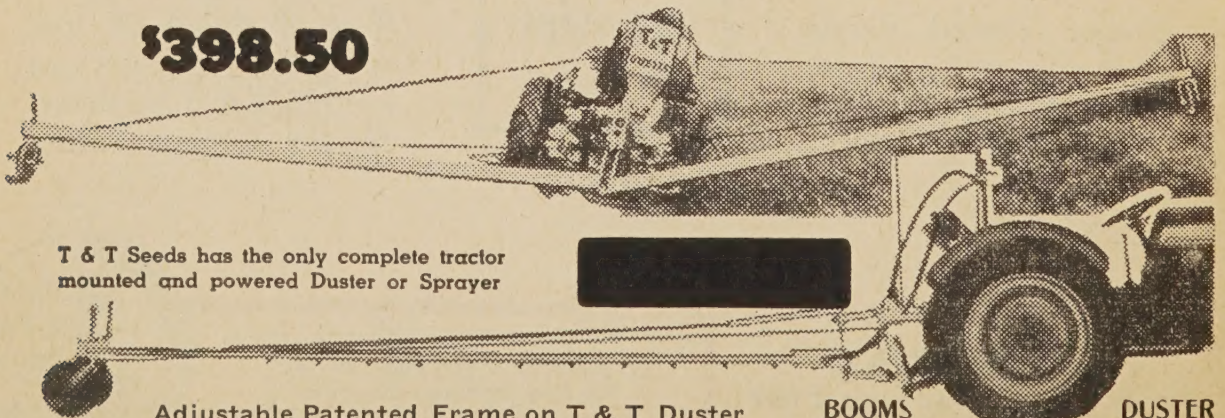
## Special 2-4-D Weed Control for **FLAX & GRAINS**

### T & T PIONEERED THE USE OF 2,4-D

Here's how you can get Weed Control for well under \$1. per acre with your own T & T Machine.

**FARMERS:** Write today for FREE Illustrated Booklet explaining T & T Duster, Sprayer, 2, 4-D Esters, Amines, Sodium Salt for Flax, Grains, Pastures, Roadsides.

**\$398.50**



T & T Seeds has the only complete tractor mounted and powered Duster or Sprayer

Adjustable Patented Frame on T & T Duster — T & T Sprayer fits all models and makes of Tractors.

**BOOMS DUSTER  
FOLD BEHIND on T & T SPRAYER**



**COUNCIL OF EXPERTS RECOMMENDED  
VARIETIES MARKED WITH A LARGE STAR**

These are their choices of the best proven varieties for Northern Conditions. **T & T Plant Breeders** have covered the outstanding Government Authorities and Leading Gardeners in the Northern U.S.A. and Canada, to compile a "**Council of Experts**" list of truly outstanding Northern Varieties. Follow the

★'s and be guided by the men who know vegetables best.



**ASPARAGUS**

Ounce sows 50 ft. of row; 4 to 5 lbs. per acre.

**SPECIAL DELIVERED PRICES**

Oversize pkt. (¼ oz.) 4c; 1 oz. 12c;  
¼ lb. 36c; 1 lb. 98c.



**10. Mary Washington**

Delicious tender tips assured from this heavy yielding selected strain of this standard variety.

**BEANS—Wax Podded**

1 lb. sows 100 ft. of row.

**SPECIAL DELIVERED PRICES**

Each variety, unless otherwise quoted:

Oversize pkt. (1 oz.) 6c; ¼ lb. 19c; ½ lb. 29c;  
1 lb. 48c.

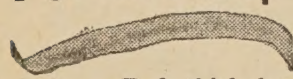
**50. Golden Brittle Wax—Early**

Excellent and popular wax bean. Meaty, stringless, tender, brittle, high quality—Best for canning. Special prices start of Beans.



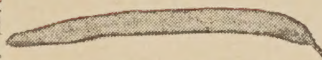
**70. Sure Crop Wax**

Most vigorous, rapid grower, disease resistant, flat stringless pods, high yielding. Pods thick, broad, brittle. See special prices start of Beans.



**75. Pencil Pod Black Wax**

Our choice as best wax bean — Pods round stringless and flavorful. Heaviest yielding wax bean. Special prices start of Beans.

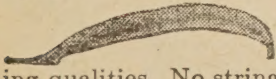


**BEANS—Green Podded**

Green beans are higher in vitamins.

**80. Tendergreen**

New! Healthiest, Highest yielding of all wax or green beans. Pods thick, meaty, sweet, excellent eating qualities. No strings. Special prices start of Beans.



**90. Stringless Green Pod**

Old favorite, rich green pod color. Stringless and tender, yields bumper crops if kept picked. Special prices start of Beans.



**BEANS—Lima**

**SPECIAL DELIVERED PRICES**

Each variety, unless otherwise quoted

Oversize pkt. (1 oz.) 7c; ¼ lb. 22c; ½ lb. 32c;  
1 lb. 54c.

**100. Early Baby Potato**



Earliest Lima. Beans lively green color. Delicious, distinctive flavor, boiled green or baked. Grows 20" tall, loaded with pods. Healthiest bean in garden. Prices above.

**BEANS—Pole**

**105. Blue Lake**



New, outstanding advance; fleshy 7 in. pods flavored like Tendergreen. Grows 6' tall. ★★ Amazingly heavy yield in small space. Early strain. See special prices at start of Lima Beans.

**110. Kentucky Wonder**

Standard, vigorous, high yielding. Pods brittle, tender. See special prices start of Lima Beans.



**130. Scarlet Runner**

Best as ornamental; bright red flowers. Easy, quick grower to 14'. Excellent eating qualities. Special prices start of Limas.



**BEANS—Broad**

**140. Broad Windsor**

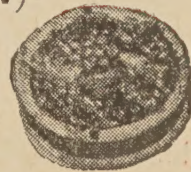
Earliest available. Large, meaty beans. Delicious when cooked green. Grows 2-3' tall. Prices start of Limas.



**BEANS—Baking**

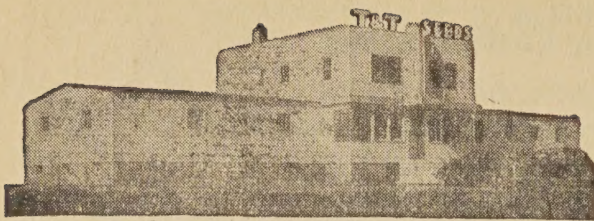
**165. Idaho 123 (New)**

New University of Idaho release. Heavier yielding, bigger beans, more disease resistance; set this variety apart as the outstanding baking bean for Northern gardens. Special prices start of Wax Beans.



Mrs. "V" of Blackie, Alberta, says, "I never could grow beans until I bought bean seed from T & T. The new Howe's Russet Potatoes were something out of this world, so large and such a heavy yielder."





New T & T Office at Grand Forks will help handle the rush for T & T Northern Improved Seeds. T & T combine Quality and Value. T & T Northern Improved Seed in the Big Oversize Brown and Gold Packets is your Best Value in 1948.

## SOY BEANS

### 190. Kabott

Delicious shelled and cooked green like lima beans; or dried for winter baking. Wonder plant of the Orient for high food value. Univ. of Minn. recommends as best early, most delicious edible Soybean. Postpaid pkt. (1 oz.) 5c; ½ lb. 26c; 1 lb. 39c.



## BEETS

1 oz. sows 50 feet of row

### SPECIAL DELIVERED PRICES

Oversize pkt. (¼ oz.) 5c; 1 oz. 16c; ¼ lb. 48c; ½ lb. 78c; 1 lb. and over \$1.48.

### 200. Detroit Perfected



Here's intense red flesh, uniformity and flavour developed by generations of breeding from original Detroit strains. With cool growth and ample moisture produces exceptional crops. Tall foliage, excellent for early season greens. The crown is small in this beet. Spec'l prices start of Beets.

### 205. Short Top Detroit (New)

Here's the perfection of flesh color and flavor of Detroit refined by skillful breeding to produce a small top, narrow necked beet. Beautifully uniform, dainty round beets are tops for canning and pickling. Choice Postpaid oversized pkt. (¼ oz.) 9c; 1 oz. 26c; ¼ lb. 69c; ½ lb. \$1.12; 1 lb. and over \$1.78.



### 210. Detroit Dark Red

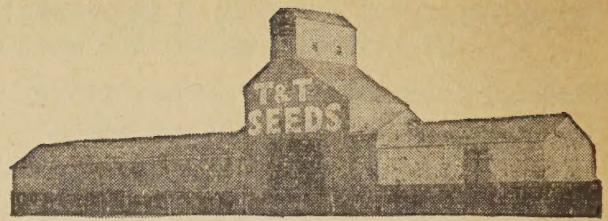
Most popular, all purpose beet, for early garden or storage use, market gardening, shipping and canning. Does well on all types of soil. Deep red flesh, indistinct zones, clean crowns. Flavour best when 2½" across. Our T & T special strain from selected mother beets. See special prices at start of Beets.



### 220. Good For All



Dual purpose beet for early greens or general root uses. Has a bright and lively red root color, most desirable for canning purposes. Crown or neck is small. Yields well seeded early and mid-summer. T & T special strain from selected mother beets. See special prices at start of Beets.



New T & T Vegetable Seed Mill just completed, 305 feet wide. It cleans 120,000 lbs. of Vegetable seed in 8 hours. Skilled plant Scientists Breed and Develop, Produce and Process T & T Seed in the North for assured success in Northern Gardens.

## SWISS CHARD

Cut and come again greens. Tops cook like Spinach, stems like Celery or Asparagus. 1 oz. sows 50 ft. of row

### 250. Giant Lucullus

Earliest chard 50 days to maturity. Light green foliage with large crisp thick pure white stems. Leaves are crumpled like Bloomsdale spinach. Does not go to seed readily and thus can be used for an extended period. Excellent for home canning. See special prices start of Beets.



### 260. Fordhook Giant



Recent introduction. Extremely vigorous and blocky, with thick crumpled dark green leaves of fine quality. Wide crisp stems. Does well on all types of soils. 57 days to maturity, if cut will come again. See special prices start of Beets.

## BROCCOLI

If you like Cauliflower, try this easy grower Handle like Cabbage or Cauliflower

### 270. Early Green Sprouting

Earliest and best broccoli for the northern districts. Large heads of deep green, tender sprouts. Cooked like cauliflower though milder flavor. Seasoned with butter and salt—a delicacy that all gardeners should try. Delivered prices—Oversize pkt. (1/16 oz.) 6c; 1 oz. 33c.



## BRUSSELS SPROUTS

Tender Buds—Old Country Favorite

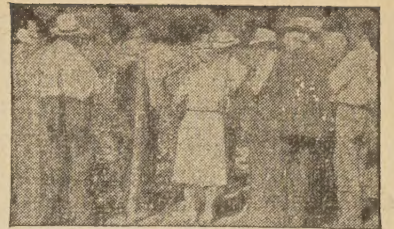
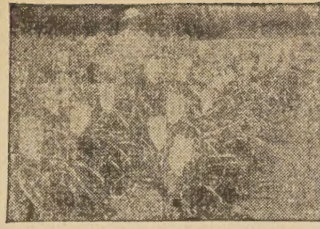
### 290. Dwarf Perfection

Our Test Plots prove this as earliest, most drought resistant type. Cook tender buds like cabbage. 75-100 buds 1" across per stalk. Hardier than cabbage. Delivered prices—Oversize pkt., (1/16 oz.) 6c; 1 oz. 49c.



Beets for Cattle—See Mangels 1000.  
Beets for Sugar-syrup—See No. 1050.





Our Jerry Twomey and Jim Taintor inspect 30 acres of **T & T Pencil Pod Wax Beans**. Scientifically selected seed, Northern grown, isolated and dusted.

Our Bill Silversides bagging and self-pollinating inbred corn strains. This is one of the many steps in scientific corn production. See new Hybrid Sugar Prince Page 7.

Test Plot visitors may marvel at the quality and earliness of the vegetables but hate to leave the Sweet Pea Tests above till they have a bouquet.

## CABBAGE—Early

Pkt. sows 50 ft. of row.

### SPECIAL DELIVERED PRICES

Each variety unless otherwise quoted:

Oversize pkt. ( $\frac{1}{8}$  oz.) **6c**; 1 oz. **35c**;  $\frac{1}{4}$  lb. **\$1.05**;  $\frac{1}{2}$  lb. **\$1.88**; 1 lb. and over **\$3.38** per lb.

### 310. Early Vienna (New)

Heads non-splitting. Absolutely the best early cabbage for home or market garden. Most drought resistant of all. Tops for the prairies. The crispness and firmness of these round heads will amaze you. Postpaid Oversize pkt. ( $\frac{1}{8}$  oz.) **9c**; Pkts. only. Scarce, no bulk seed.



### 320. Early Jersey Wakefield

This improved strain is the finest early ox-heart type in existence. Produces uniform, pointed, solid, well-flavored heads. The leaves are medium thin and of fine quality. This type is sweeter and more tender than the round-headed kinds. Be sure to try this special strain in the garden this year. See special prices start of Cabbage.



### 330. Golden Acre

Round-headed type of early cabbage, a market garden favorite. Early as Jersey Wakefield. Heads average 3 lbs. Fine grained, well flavored. Developed from Early Copenhagen types. See special prices start of Cabbage.



## CABBAGE—Midseason

### 340. Copenhagen Market

Best mid-season market variety. Excellent quality, average heads about 4 lbs. with small core. Plant stem is short, leaves compact, allows for thick planting. About a week later than Golden Acre. See special prices start of Cabbage.



Mr. H. J. B. of Yorkton, Saskatchewan, says, "This is the first year I have had the pleasure of growing **T & T Seeds**. I must say I was well satisfied with them. I will be pleased to use your seed again next season as I find it very good for our part of the country."

## CABBAGE—Midseason—Cont'd

### 345. Einkuizen Glory

Tops for Kraut because of its extra sweetness and crispness. A heavy yielding mid-season cabbage can be sown late for fall storage. Large heads about 8 inches across. Weight 6 lbs. Few outer leaves. Special prices start of cabbage.



## CABBAGE—Late

### 350. Danish Ballhead

An excellent winter keeper, widely adapted. Heads are round, solid and large. Seed in open at potato-planting time to produce a bumper crop for storage. Ideal for kraut. See special prices start of Cabbage.



### 360. Penn State Ballhead

Most uniform late cabbage. This special strain is most prolific. Alike in size, shape and color. Heads hard and heavy. One of the few varieties that is solid when small and remains so all season. See special prices start of Cabbage.



### 382. Red Acre (New Early)

At last the earliness and reliability of Golden acre combined here with rich red color and exceptional quality of red cabbage. Excellent for pickling. Shy seeder—scarce. Postpaid Oversized pkt. ( $\frac{1}{8}$  oz.) **9c**; 1 oz. **58c**;  $\frac{1}{4}$  lb. **\$1.88**;  $\frac{1}{2}$  lb. **\$3.38**.



### 390. Chinese—Chihili

Easy grower; can be sown outside; for finest salads ever. Not a freak—its flavor combines the best of lettuce, celery, cabbage. Best sown outdoors in June or July—its growth will amaze you. Keeps better than head lettuce. See special prices start of Cabbage.



### 396. Caragana

Most reliable—drought resistant hedge or low growing windbreak and living snowfence for the North. Quick growing. Postpaid Oversized pkt. ( $\frac{1}{4}$  oz.) **6c**; 1 oz. **18c**;  $\frac{1}{4}$  lb. **54c**.



## CARROTS

1 oz. seeds 250 ft. of row.

High in vitamins. Selected for sweetness.

### SPECIAL DELIVERED PRICES

Each variety, unless otherwise quoted:

Oversize pkt. (1/4 oz.) 5c; 1 oz. 16c; 1/4 lb. 58c; 1/2 lb. \$1.05; 1 lb. and over Special \$1.98.

### 420. Red Cored Chantenay



Outstanding favorite. Orange-red color extends clear to the centre. Flesh fine grained, sweet. Easily pulled on heavy soils. 2 1/4" thick, 6" long. Keeps well if stored in peat moss. Its sugar content has been recorded as high as 7.2%. Plant generously; store ample quantities for next winter. **Special prices start of Carrots.**

### 430. Danvers Half Long

Supreme Strain



Favorite main-crop carrot. Produces heavy yields on all soils. Tops heavy, for easy pulling. Our strain smooth rooted, 1 3/4" thick, 6 1/2" long, blunt point. Flesh sweet, crisp and tender, unexcelled for table or storage. **Special prices start of Carrots.**

### 440. Nantes Coreless



Early, handsome favorite. Orange scarlet, 1 1/2" thick cylindrical, 7" roots. Delicate flavor, tender and coreless. Home garden favorite, tops small, allows for close planting. It actually measures as high as 7.8% sugar content. It is also high in Vitamin A, the important vitamin for growing children. **Special prices start of Carrots.**

## CAULIFLOWER

1 pkt. produces over 150 plants.

Strains Northern Proven—Uniformly choice. Shortage is over. If you pay more than T & T prices it's too much.

### SPECIAL DELIVERED PRICES

Each variety, unless otherwise quoted:

Over size pkt. (1/16 oz.) 9c; 1/4 oz. 35c; 1 oz. \$1.25; 1/4 lb. \$4.50; 1/2 lb. \$8.75.

### 460. Early Snowball "A"



Best early Snowball strain we have ever tested of this most widely used variety. Dependable, produces closest to 100% solid, pure white, fine quality heads. Excellent shipper. **Special prices start of Cauliflower.**

### 4630. KIDDIES BIG ASSORTMENT PKT. 1c.

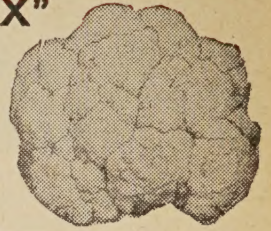
We put a little bit of seed of every kind into it. This is for boys and girls only. It must be their own 1c and must be included in Mother and Dad's Order. Boy, it's fun to have your own garden. Thousands of children last year had the time of their life with their T & T Garden.

Mrs. W. L. W., Peace River, Alberta, says, "T & T should stand for Tried and True." Thanks Mrs. "W" for your splendid suggestion!

## CAULIFLOWER—Cont'd

### 470. Snowball "X"

Special early strain of Snowball. Excellent, medium size 2 lb. heads. Ready nearly a week earlier. Use this for several plantings in season. **Special prices start of Cauliflower.**



### 475. Erfurt Improved



Heads hard and compact. Leaves long to shade and self-blanch. Ready after Snowball X. Gives longest season of cutting, therefore, home and market garden favorite. **Special prices start of Cauliflower.**

## CELERY

Don't chill or dry seedlings. It causes bolting.

### SPECIAL DELIVERED PRICES

Each variety, unless otherwise quoted.

Oversized pkt. (1/16 oz.) 5c; 1/2 oz. 34c; 1 oz. 58c; 1/4 lb. \$1.89.

### 500. Cornell No. 19 (New)

New, outstanding. From Minneapolis north and west this is best blanching, celery for home or market gardener. For uniformity, non-bolting, size and crispness, you should try it. Postpaid. Oversize pkt. (1/16 oz.) 9c; 1/2 oz. 58c; 1 oz. \$1.08.



### 505. Golden Self Blanching

Popular favorite. Exceptionally fine flavor, crisp, tender and stringless. Early strain, tall. Particularly suited for home gardeners, as it blanches readily. **Special prices start of Celery.**



## CELERY—Green

### 520. Utah or Salt Lake

Our favorite; green celery is higher in vitamins, meaty, stringless and crisp; easiest grown, as they don't require blanching. Earliest and best green home and market garden favorite. See special prices start of Celery.



### 525. Celery Seed

For rheumatism and especially soup flavoring. See packet. Non germinating. Postpaid, oz. 23c; 1/4 lb. 59c.

## CHICORY

### 540. Whitloof (Coffee Sub.)

Grow like parsnips. Slice, dry and roast. Instructions on packet. Postpaid, pkt. (1/8 oz.) 6c.







Charlie Walkof shows off new Sugar Prince and Golden Midget Sweet Corn. B. Silversides checks new Comet Radish.

Improved Minecu Cuke — Exclusive T & T introduction.

Jim Taintor in 22 acres of new T & T Golden Midget Bush Corn. Jerry Twomey, July 18, selects bush tomatoes.

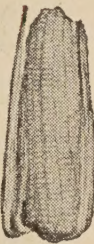
## SWEET CORN—Hybrid

1 lb. to 100 hills—per acre sow 10 lbs.

Hybrid Sweet Corns are quickly gaining popularity. Extra hybrid vigor, larger ears, are more uniform, deeperkerneled and sweeter. Plants more drought and wind resistant. They are surprisingly early.

### 548. Sugar Prince (New)

Exclusive T & T introduction. Developed by C. Walkof, Morden Exp. Farm, this Hybrid combines the quality of Golden Bantam with the vigor and earliness of Sunshine. 7 years Northern breeding for its deeper color and improved flavor and sweetness make it the heaviest yielding hybrid for prairies. Ready Winnipeg Aug. 7. Postpaid pkt. 1 oz. **13c**; 2 pkts. **25c**. Scarce—only 2 pkts. per customer.



### 550. Spancross (Early)

Bred by Dr. Singleton of Conn. for Northern gardens—10-12 rows, tender, very sweet and meaty kernels, filled well to tip. Tested 14% sugar. Ready Winnipeg Aug. 1. Postpaid, oversize pkt. 1 oz. **9c**; ½ lb. **33c**; 1 lb. **56c**.



### 560. Marcross (Midseason)

Tops as mid-season hybrid for canning and table use—14-16 rows, tender, deep, high quality, golden kernels. Extremely uniform. Ready Winnipeg Aug. 10. Analyzed 14.6% sugar. Very drought-wind resistant. Postpaid oversize pkt. 1 oz. **9c**; ½ lb. **33c**; 1 lb. **56c**.



## SWEET CORN—Cont'd

### 600. Golden Bantam (Burbank)

Sweetest of all. Special reselected T & T strain 1 week earlier than any other, tested 17.4% sugar. Ready Winnipeg Aug. 16. Large ear size, tops for table or canning. Holds color well after cooking. Amazing sugar yield is credit to Burbank. Prices start of Corn.



### 610. Gill's Early Sweet

Biggest and best early market corn. High yield for such earliness. Large 10-12 rowed tender ears. Widely adaptable and dependable. Particularly suited for market garden trade. See prices start of Corn.



### 615. Dorinny

This is the sweetest earliest corn on our list. Analyzed 16% sugar, as sweet as a Sugar Beet. Developed by Canadian Exp. Farms for northern arctic conditions; matures 3 weeks earlier than Bantam—matures 1500 miles north of the American border. Small core, exceptionally deep kernels, a real find. Prices start of Corn.



### 640. Sunshine

Developed by Prof. Yeager while at North Dakota. 10-14 days earlier than Bantam. The large ears, 12 rowed, 7" long and wonderful flavor, make this the best home garden sweet corn for the western plains. See special prices start of Sweet Corn.



## SWEET CORN

Northern grown—hand rogued—early strains.

### SPECIAL DELIVERED PRICES

Each variety, unless otherwise quoted:

Oversize pkt. (1 oz.) **5c**; ¼ lb. **15c**; ½ lb. **24c**; 1 lb. **39c**; 5 lbs. and over **36c** per lb.

### 590. T & T Golden Midget (New)

New Midget Bush Corn. Grows 2½-3 feet high. A space saver for the small garden. It's the earliest, sweetest, tenderest corn ever introduced. Heavy yield of medium sized ears. Ready Winnipeg July 24. We're proud of this introduction; its real merit is certain to make it a Northern favorite. Don't miss trying. Seed scarce and expensive to produce. Postpaid Oversized pkt. 1 oz. **11c**; 2 pkts. **21c**. Only 2 pkts. per customer.



## POP CORN

### 665. Siberian Rice (New)

Best early popper. By its extreme earliness, greatly improved popping qualities, it replaces Tom Thumb, etc. Pop your own delicious home grown corn this winter. Postpaid oversize pkt. **7c**; 2 pkts. **13c**. Only 2 pkts. per customer.



## CRESS—Garden

### 690. Fine Curled

Earliest, most crinkled, compact, deep green cress grown. Used for garnishing salads, in soups, etc. Postpaid, pkt. (½ oz.) **5c**.



## CUCUMBER—Dual

1 oz. seeds 200 feet of row.

### SPECIAL DELIVERED PRICES

Each Variety unless otherwise quoted:

Oversize pkt. ( $\frac{1}{8}$  oz.) **5c**; 1 oz. **20c**;  $\frac{1}{4}$  lb. **69c**;  
 $\frac{1}{2}$  lb. **\$1-18**. Special price 1 lb. and over  
**\$2-10** per lb.

### 703. Early Siberian Select Strain No. 27 (New)

Years of breeding and selecting on the prairies have refined Siberian strains to this outstanding introduction. Earliest of all cucumbers. T & T No. 27 is uniformly the highest yielding, most compact early cucumber. Excellent for early dills. Can be sown late in the spring for a good fall crop. Extreme northern gardens can use this sweet slicer when other varieties can't be matured. Seed very scarce—only one (1) packet to a customer. Postpaid pkt. (50 seeds) **11c**.



### 705. Early Siberian Regular Strain

Earliest type of cucumber grown on the prairies. Tremendous yielder on short 4' vines. Best when fruits are 2-3" long. Excellent for pickles or slicing. Prices start of Cucumbers.



### 710. Earliest Green

An early variety, ready 8-10 days before first bush tomatoes ripen. Fruits blunt. Excellent for dill pickles. Used extensively for slicing. Flesh thick white, skin deep green, a heavy yielder. See special prices start of Cucumbers.



### 711. Improved Mincu (New)

Exclusive T & T introduction. Absolutely best highest yielding, most uniform top quality, early dual purpose cuke ever offered. T & T stock grown from special new foundation seed from Dr. Hutchins, Univ. of Minn. Short vines, compact, amazing yielder. No one else has this improvement. Scarce—One pkt. to a customer. Postpaid pkt. 50 seeds **13c**.



## CUCUMBERS—Slicing

Slicers have white splines.

### 720. Straight 8



Gold Medallist. The outstanding medium early cucumber to date. Follows early picklers with consistent 8" cylindrical fruit. Just what the market ordered. Flesh is thick, creamy white—flavor is excellent. Special prices start of Cucumbers.

### 750. Early Fortune

Excellent table type. Grown extensively by market gardeners. Vigorous, disease resistant—heavy yielder. Ships well and keeps dark green colour longer than most. Crisp flesh. Ready when tomatoes begin to ripen. See special prices start of Cucumbers.

Eight



## CUCUMBERS—Pickling

### 755. Marketer (New)

Try this new one for outstanding flavor and quality. Flesh pearly white, crisp and firm. Beautiful large fruits. Ready when most other varieties are past their prime. This earliest of the heavy yielders will be the pride of the neighborhood. Dark green, cylindrical and attractive. Special Postpaid prices pkt. ( $\frac{1}{8}$  oz.) **7c**; 1 oz. **25c**;  $\frac{1}{4}$  lb. **78c**;  $\frac{1}{2}$  lb. **\$1.48**; 1 lb. **\$2.40**.



### 780. National Pickling

Best for gherkins and small pickles. Developed by Michigan State College. Ideal for gherkins, 5 to 6 days after plants start flowering you'll find 1 $\frac{1}{2}$ -2" cukes. Special prices start of Cucumbers.



### 785. Boston Pickling

This variety used by pickling companies extensively.



Best for dills. Blunt end type; at 3-3 $\frac{1}{2}$ " makes crispest most flavorful dill pickles. A heavy yielder.

Be sure to pickle enough to last the family all fall and winter. Special prices start of Cucumbers.

### 790. Chicago Pickling

Best for sweet pickles. Use when 1 $\frac{1}{2}$  to 2" long, for the tenderest pickles that you've ever tasted. Keep pickled and they will set and set. See special prices start of Cucumbers.



## EGG PLANT

Plant and handle like tomatoes.

### 800. Black Bountiful

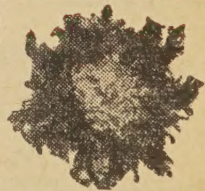
Earliest—two weeks ahead of its closest rival, large fruits, flavor delicious—drought resistant. Postpaid. Oversize pkt. **8c**.



## ENDIVE

### 820. Green Curled

Delicious as a salad or cooked like Spinach. Beautiful green feathery leaves. If tied they blanch to a creamy yellow. Oversize pkt. ( $\frac{1}{8}$  oz.) **5c**



## HERBS

Spice of Life. Include some herbs with your order, to add that tasty appetizing flavor that completes a meal. Easy to grow.

### DELIVERED PRICES

Each variety. Oversize pkt. **6c**.

**840-Caraway.** Seeds, flavor cake, bread, etc.

**842-Dill.** Famous flavor for dill pickles.

**846-Sage.** Favorite in meat-poultry dressing.

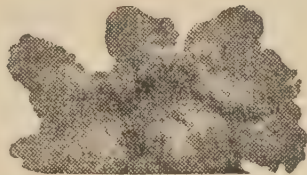
**847-Summer Savory.** For salads, stews and gravies.



## KALE

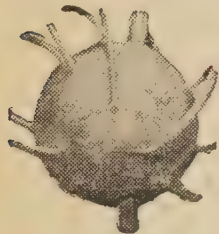
### 860. Short Green Curled Scotch

Earliest tender kale. Dwarf, green, late fall. Frost improves tasty cabbage flavor. Postpaid, oversize pkt. **4c**;



## KOHL RABI

### 870. Triumph of Prague



Our strain mildest flavored. Cook when small, like turnips. Successful in drought when turnips are woody. Plant and handle like cabbage. Postpaid, oversize pkt. ( $\frac{1}{8}$  oz.) **5c**; 1 oz. **33c**.

## LEEKs

### 880. Giant Musselburgh

Hardest variety for the prairies. Start indoors for fine flavored, pure white,  $1\frac{1}{2}$ " stalks. Ready when Bantam corn usable. Used in soups, stews, or with a cream sauce. Postpaid, oversize pkt. ( $\frac{1}{2}$  oz.) **8c**; 1 oz. **43c**.



## LETTUCE - Loose Leaf

1 oz. sows 300 ft. of row.

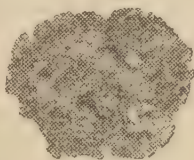
### SPECIAL DELIVERED PRICES

Each variety, unless otherwise quoted:

Oversize pkt. ( $\frac{1}{8}$  oz.) **4c**; oz. **18c**;  
 $\frac{1}{4}$  lb. **54c**;  $\frac{1}{2}$  lb. **92c**; 1 lb. **\$1.65**.

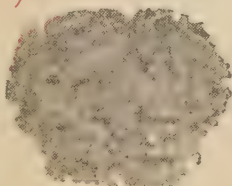
### 900. Grand Rapids

Finest flavored, loose leaf, early. Leaves bright green, broad, thin and tender. Attractively frilled and crumpled. Excellent for outdoors or forcing. See special prices start of Lettuce.



### 905. Slobolt (New)

New U.S. Government release. The first break in leaf lettuce in years. This type offers prairie heat and drought resistance by its holding its delightful crisp, sweet flavor much longer than the other leaf lettuce varieties. Doesn't bolt seed stocks and become bitter. Eventually all gardeners will grow Slobolt. Why not try it now? Only one packet to a customer. Postpaid, oversize pkt. (1000 seeds) **11c**.

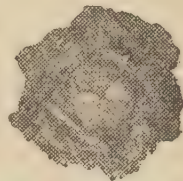


## LETTUCE - Head

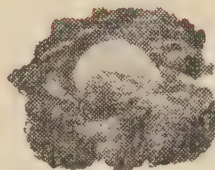
This is the finest list of Head Lettuce ever offered Canadian Gardeners. Bred and Selected under hot-dry-long day Northern summers. Each variety in its season will amaze you with its high percentage of firm crisp heads. You can now be sure of prime head lettuce from June till September, with these Plant Breeder triumphs.

### 940. New York No. 12

Here's a select northern strain of this old favorite; reliable header, excellent quality under cool conditions. Heads compact, sweet. Special prices start of Lettuce.



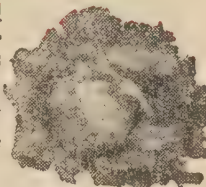
### 960. Sweetheart (New) Re-selected



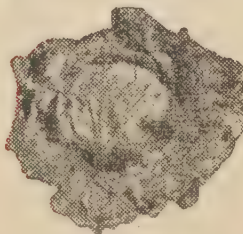
New exclusive T & T introduction. This strain was increased from a single outstanding mother plant. Most excellent, consistent, hard headed, very early head lettuce. Widely adaptable. Delivered, Oversized pkt. ( $\frac{1}{8}$  oz.) **9c**; 1 oz. **48c**;  $\frac{1}{4}$  lb. **\$1.41**.

### 965. Early Great Lakes (New)

Ten days earlier than standard Great Lakes. Careful plant breeding under Northern conditions has fixed earliness, yet preserved the tremendous vigor, heat and drought resistance of Great Lakes. Is early consistent producer of solid, long lasting heads. Choice. Delivered, Oversized pkts. ( $\frac{1}{8}$  oz.) **11c**; 1 oz. **52c**;  $\frac{1}{4}$  lb. **\$1.56**; 1 lb. **\$4.65**.



### 970. Great Lakes (New)

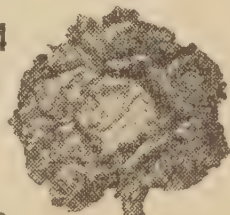


Outstanding break. Here's head lettuce by which all others will be judged. Leaves heavy as cabbages, yet crisp and tender; amazing. Heads solid as baseballs, even in hottest weather. We're proud of this introduction and the special seed we have of it. Seed scarce. Quality tops.

Delivered, oversized pkt. ( $\frac{1}{8}$  oz.) **8c**; oz. **42c**;  
 $\frac{1}{4}$  lb. **\$1.25**; 1 lb. **\$3.95**. Our strain won First Prize, United States Govt. 1947 Trials.

### 980. Imperial No. 44

Bit earlier than Great Lakes. Consistent header. Resistant to tip burn and slimy heads even in hottest weather. Heads solid, well flavored. Outstanding on our test plots. Spec'l prices start of Lettuce.



QUALITY AND QUANTITY OF T & T SEEDS WILL ASSURE YOU A BETTER GARDEN THAN EVER IN 1948.



## MANGELS

Cheapest Livestock Feed. Sow 5 lbs. per acre.

### SPECIAL DELIVERED PRICES

¼ lb. 23c; ½ lb. 44c; 1 lb. 69c.

#### 1000. Barres Sludstrup



Heavy yielder—long reddish yellow roots that grow ½ above ground make it one of the easiest

to harvest. See special prices above.

#### 1020. Half (White) Sugar

Here a mangel—sugar beet hybrid, combining Mangel yields with the high food value of sugar beets. Sticks well out of ground. See special prices above.



## SUGAR BEETS

#### 1050. Early Northern



Earliest Sugar beet—make syrup at home—instructions on packet—Sugar content too high for cattlefeed. Seespecial prices start of Mangels.

## MUSKMELON

Bred in the North and are really Early  
1 oz. sows 100 ft. of Row.

### SPECIAL DELIVERED PRICES

Each variety, unless otherwise quoted:

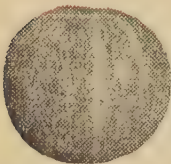
Standard Oversize pkt. (⅓ oz.) 6c; 1 oz. 19c;  
¼ lb. 65c; ½ lb. \$1-17.

#### 1100. Trial Plot Hybrids

Seed collected from the earliest and best quality muskmelons out of the hundreds of strains grown in our breeding work on our trial grounds last season. Here you will find melons of various shapes and sizes—they will all be early. Have fun. Select the earliest, sweetest types for your district. See special prices above.



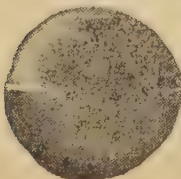
#### 1105. (Reselected) Farnorth



Outstanding, earliest, sweetest muskmelon. On our trial plots tested 14½% sugar almost as high as sugar beets. Flesh firm, rich salmon, pleasant flavour. Extremely early—ripens with Bounty Tomato. Try it. Compact heavy yielding vines. Prices start of

Muskmelon.

#### 1125. Honey Gold (New)



T & T introduction with extremely deep, sweet salmon flesh. Size and season between Far North and Early Champlain. Real Quality in a melon. Early enough for any Northern garden. Seed scarce—Only 2 pkts. to a customer. Postpaid pkt. (⅓ oz.) 9c;

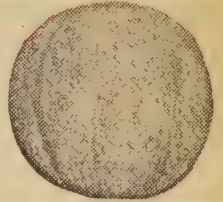


T & T Melons have real quality and earliness. Our plant breeders have refined and re-selected our stock seeds so we can guarantee top quality and uniformity. T & T Melon seed is grown and ripened in Manitoba so we know it's early. There is no late southern seed here.

## MUSKMELON—Cont'd

#### 1140. Early Champlain

Splendid early—fine quality muskmelon. Ripens 7 to 10 days after Far North. Oval netted, 5" fruits. Flesh salmon deep and tasty. 13% Sugar. See special prices\_start of Muskmelon.



## WATERMELON

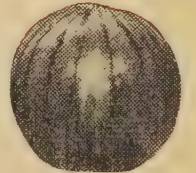
#### 1200. Trial Plot Hybrids

A wide collection of types and colors from our early Breeding experiments. Experiment—choose your favorite. See special prices start of Muskmelon.



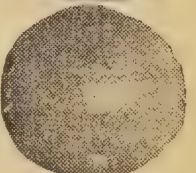
#### 1230. Sweet Sensation (New)

Earliest of all Watermelons. Leads the field for size. Bright red flesh, small seeds, outstanding sweetness. T & T have spent years selecting this stock. Seed very scarce. 1 pkt. to customer. Postpaid oversize pkt., (⅓ oz.) 12c



#### 1240. Early Canada

This Watermelon ripens just after Bounty Tomatoes. 10" fruits, medium rind, bright red, sweet, juicy flesh. See special prices start of Muskmelon.



#### 1250. Northern Sweet

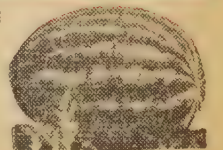
Early—larger than Early Canada, one week later. Yellow sweet flesh—medium rind—heavy yielder—market gardener favorite. Uniform strain. See special prices start of Muskmelon.



## CITRON

#### 1300. Red Seeded

Makes delicious clear preserves or marmalade. Not eaten raw. This strain is earliest and easily grown. For lots of preserves try this. See special prices start of Muskmelon.



## OKRA

#### 1330. Dwarf Early Green (Gumbo)

The only Okra for Northern Districts. Delicious in soups. Try it. Postpaid Pkt. 6c;





## ONION—Yellow

1 oz. seeds 100 ft. of row.

### SPECIAL DELIVERED PRICES

Each variety, unless otherwise quoted:

Oversize pkt. (1/8 oz.) 6c; 1 oz. 35c; 1/4 lb. \$1.17; 1/2 lb. \$2.13; 1 lb. \$3.60; 5 lbs. and over \$3.20 lb.

### 1430. Early Y. Globe

By 10 days earliest Danvers onion for northern gardens. Yellow, thin scales; mild, excellent flesh. See special prices start of Onions.



### 1440. Y. Globe Danvers

Our strain hardiest, best keeping, early ripening Danvers. Sweet flavor, standard northern winter storage. Special prices start of Onions.



### 1450. Brigham Yellow Globe

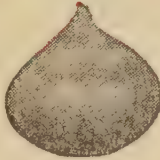
New variety with outstanding storage qualities. Longest keeper, doesn't bruise. Excellent eating and cooking quality. High yielder. See special prices start of Onions.



## ONIONS—Spanish

### 1465. T&T Arctic Sweet Spanish

Onion experts visiting our breeding plots have been amazed at earliness of this new exclusive T & T Spanish development. Here's a beautiful, big, mild Sweet Spanish Onion, 2 weeks earlier than average. Fastest growing onion ever introduced. Bred in North to take advantage of our long days. Sown outdoors in the North it's as early as yellow types and can be fully cured outside for perfect storage. A real T & T advance. Seed scarce. Only one (1) packet to a customer. Postpaid pkt. (100 seeds) 14c.



### 1470. Riverside Sweet Spanish

Popular, most widely grown mild-flavored, sweet spanish for North. If started indoors, transplanted, grows to 3 lbs. Delicious slicer. Delivered Prices Oversized pkt. (1/8 oz.) 7c; 1 oz. 44c; 1/4 lb. \$1.45; 1/2 lb. \$2.75; 1 lb. \$4.98



## ONIONS—Special

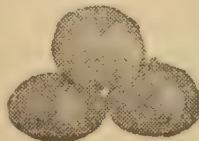
### 1475. Red Wethersfield

The oldest and best red onion. Large bulbs, small neck, heavy yielder. Red onions are famous keepers. See special prices start of Onions.



### 1480. Silverskin W. Port

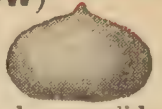
Best pickling onion. When young, round pure white. When full grown, excellent for slicing. Not a winter keeper. Same prices as 1470 Riverside Spanish.



## ONIONS—Special—Cont'd

### 1485. Ebenezer (Yellow)

Best keeping onion ever developed. Standard variety for sets. Follow packet instructions; it's easy to grow your own sets at home. If grown like regular yellow onion gives large, solid, mild, perfect winter keepers. See prices start of Onions.



### 1490. Welsh Winter

Perennial. Hardy, produces delicious early green onions first thing in the spring. Doesn't form bulbs. Special prices start of Onions.



## CHIVES

1495—Hardy perennial, all should grow. Produces fine, mildly pungent leaves. Flavors stews, soups and salads. Postpaid, oversize pkt. (1/16 oz.) 8c.

## ONION SETS

Write for special quotation on large lots.

Choicest—Lowest Cost—  
1 lb. sows 30 ft.

Handpicked—Sound Dry.

### SPECIAL DELIVERED PRICES

1 lb. 34c; 2 lbs. 66c; 5 lbs. \$1.59; 10 lbs. \$3.09.

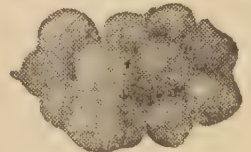
### 1496—Yellow Onion Sets.

First spring planting gives you earliest green onions, or table size in 6-8 weeks. If left in the ground all season will give you Jumbo Onions for winter storage. Special variety, firmest keeper of all. See special price above.



1497—Multipliers or Potato Onion Sets. Excellent quality for early green onions. Produces 10-15 bulbs in single cluster. Special prices above.

1498—Garlic Bulbs or Sets. Most pungent taste and strongest odor of all onions. A little goes a long way in flavoring soups, stews, salads, etc. Special delivered prices. 1/2 lb. 29c; 1 lb. and over 49c per lb. A real T & T Special.



## PARSLEY

### 1500. Moss Curled

Adds tasty appetising garnish to meals. This is best parsley. Outstanding tender, densely curled, bright green leaves. Postpaid, oversize pkt. (1/8 oz.) 5c; oz. 17c.



### 1520. Lrg. Rooted Hamburg

Easily grown; produces delicious parsnip sized roots, used like celery for delicious and tasty flavoring in soups and stews. Postpaid, oversize pkt. (1/8 oz.) 5c.



Mrs. S. C. T. of Calgary, Alberta, writes, "I received my garden seeds and am delighted with the results. My garden is lovely; I think every seed must have grown. Everyone asks where I got my seeds, so I expect you'll have more orders next year from here and I'm sure you will have mine."



## PARSNIPS

½ oz. sows 100 ft. row; 2 to 3 lbs. per acre.

### SPECIAL DELIVERED PRICES

Each variety, unless otherwise quoted:

Oversize pkt. (¼ oz.) 5c; 1 oz. 14c; ¼ lb. 43c; ½ lb. 67c; 1 lb. and over \$1-19 lb.

### 1550. Hollow Crown Guernsey

A standby and favorite of most gardeners. Roots white and fine grained—Roots long, 10-12". Best for light land. See special prices start of Parsnips.

### 1570. Short Thick

Ideal on heavy and clay soils. Has short, easy to pull roots, 5-7" long. Tender and sweet. Outstanding for earliness. See special prices start of Parsnips.

### 1580. All American (New)

Outstanding in quality; few or no side roots. Very small core. Roots intermediate size, ideal for winter storage. See special prices start of Parsnips.

## PEAS—Early

1 lb. to 150 ft. of row

### SPECIAL DELIVERED PRICES

Each variety unless otherwise quoted:

Oversize pkt. 1 oz. 5c; ¼ lb. 13c; ½ lb. 21c; 1 lb. 35c; 5 lbs. \$1-53.

### 1610. Little Marvel

Well known favorite standard early pea. Short vine, compact pods, well filled, very high sugar content (13½%). See special prices above.

### 1615. T & T Arctic Sweet (New)

An exclusive T & T introduction. Bred and developed for the prairie—5 days earlier than Little Marvel. Sets full pods of ten peas. Confirmed heavy yields and pod size with early maturity. Fine flavor. Seed scarce. Only one oversize packet to a customer. Postpaid pkt. (1 oz.) 13c.

## PEAS—Midseason

New—Don't pass up this advance.

### 1620. T & T Triumph

(New) This exclusive introduction is a real accomplishment—outstanding quality, top yields, vigorous vines—analysed 14½% sugar on our test plots, highest of any pea on the market. Cooks lively green, sweetest, tenderest ever. Postpaid Oversize pkt. (1 oz.) 7c; ¼ lb. 16c; ½ lb. 26c; 1 lb. 47c; 5 lbs. \$1-88.

### 1630. Homesteader (Lincoln)

Highest yielder, favorite for western plains, excellent quality, large pods vigorous—drought resistant vines. This should be your standard—grow it. Special prices start of Peas.

### 1640. Laxtons Progress

Pea and pod size as large as the latest, but is ready a few days after Little Marvel. Runs 13% sugar, dwarf vines. See special prices start of Peas.

Twelve



T & T Arctic Sweet is another of the new group of improved quality peas coming to you from the T & T Plant Breeders. Bred for Northern Long days they have greater sweetness and quality—full set pods—drought resistance.

## PEAS—Midseason

### 1650. American Wonder

A home garden favorite—with dwarf, drought resistant vines, combines real flavor with extreme earliness. See special prices start of Peas.

## PEAS—Soup

### 1685. Arthur

Enjoy delicious bowls of nourishing pea soup. Special recipe on packet. New Arthur is great improvement over Dashaway, etc. Has larger peas—bigger yield—better quality—early and more weather resistant. Postpaid Oversize pkt. (1 oz.) 4c; ½ lb. 18c; 1 lb. 29c; 5 lbs. \$1-15.

### 1690. Guenivere (New)

Newest of the soup peas. Progress is coming fast. This new variety has just been released from the University of Saskatchewan. This is the most vigorous, heavy yielding pea ever released. The vines are 5 ft. high—large pods, and seed is of top quality. It's as great an advance over the variety Arthur as Arthur was over Dashaway. Start now, it's scarce. Postpaid Oversize (1 oz.) pkt. 8c; ½ lb. 36c.

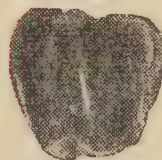
## PEPPERS—Sweet

Grow like Tomatoes!

### SPECIAL DELIVERED PRICES

Oversized pkt. (⅓ oz.) 7c; 1 oz. 63c.

### 1720. King of the North



Earliest sweet pepper. Heavy yielder of fleshy, walled, mild flavored blunt fruits. Best for northern gardens. Use in salads, stuffed and baked or in pickles. See special prices above.

### 1730. Harris' Earliest

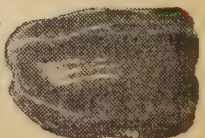
Earliest of the large fruited peppers. Dwarf compact plants. Excellent flavor. Tremendous yielder. 10 days later than King of the North. Special prices start of Peppers.



## PEPPERS—Hot

### 1750. Hamilton Market

Best hot pepper for northern gardens. Ripens with Earliana Tomato. Grow your own for pickles and flavoring. See special prices Start of Peppers.







Here are 3 happy experts in a large field of T & T re-selected Golden Bantam. T & T retained Burbank quality, yet it's one week earlier than any Bantam.



Self-propelled combine harvesting our New Comet Radish. Scientific breeding plus mechanized production means T & T Northern Improved Seed at a saving. This saving we pass on to you.

## PUMPKIN—Pie

### SPECIAL DELIVERED PRICES

Each variety, unless otherwise quoted:

Oversize pkt. (¼ oz.) 6c; 1 oz. 23c; ¼ lb. 83c; ½ lb. \$1.39; 1 lb. and over \$2.40 per lb.

### 1820. Early Cheyenne Bush



New development—with all advantages of Early Cheyenne, plus compact 4' bushy vines. Excellent for small home garden. Plant, yields 3-4 excellent fruits each. See special prices start of Pumpkin.

### 1830. Sugar

Most productive pumpkin available—extra fine flavor and sweet—10" fruits keep well. Sweet for pies. Special prices start of Pumpkins.



### 1850. Winter Queen

Tremendous size—will store till Xmas. Flesh bright orange, fine textured and sweet. Best of the large pumpkins. See special prices start of Pumpkins.



## RADISHES

1 oz. sows 100 ft. of row.

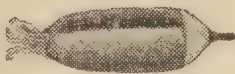
### SPECIAL DELIVERED PRICES

Each variety, unless otherwise quoted.

Oversize pkt. (¼ oz.) 4c; 1 oz. 12c; ¼ lb. 29c; ½ lb. 47c; 1 lb. and over 79c per lb.

### 1900. French Breakfast

Favorite and best, early, deep, spring or forcing radish. Bright scarlet, white tip. Sweet and excellent quality. Use early. See special prices above.



### 1910. White Icicle

Favorite summer radish; long white roots; stands heat better than most round varieties. When ½" across flavor best, mild and crisp. See special prices start of Radishes.



### 1940. Cavalier (New)

Outstanding quality for winter or spring forcing. Roots bright red, tops short. Excellent sweet flavor. Seed scarce. Delivered, oversize pkt. (¼ oz.) 6c; 1 oz. 14c; ¼ lb. 36c; ½ lb. 56c; 1 lb. and over 96c per lb.



## RADISHES—Cont'd

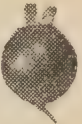
### 1950. Comet (New)

On our plots best round summer radish. Outstanding ability to remain solid, even in hot weather. Bright red; flesh solid, quality excellent. Seed scarce. Use prices for Cavalier (No. 1940).



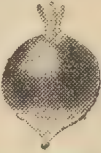
### 1960 Saxa

Old favorite for forcing in frames or early spring outdoors. Grows quickly; roots bright red; flesh white, crisp and sweet. See special prices start of Radishes.



### 1970. Sparkler

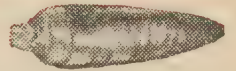
Excellent bi-color red and white roots. Market garden favorite for early use. Flesh sweet and pleasant. See special prices start of Radishes.



## RADISHES—Winter

### 1990. Black Spanish

Spicy, pungent winter radish; store like carrots in cool, damp moss. Black skin; white, crisp flesh. See special prices start of Radishes.



### 1995. China Rose

Late fall or early winter radish. Early frosts improve spicy flavor. Scarlet skin; sweet, crispy, white flesh. See special prices start of Radishes.



## RHUBARB

### 2000. Rhubarb

Red and Mixed Hybrids. Easily Grown Seed of these early, high sugar and red hybrids will surprise you in their productiveness. Bred for low acid. Delivered, oversize pkt. 7c.

## SALSIFY

### 2020. Mammoth Sandwich Islands

Excellent winter crop. This is the earliest salsify or oyster plant. Yields large firm roots for winter storage. Flavor suggestive of fried oysters. Post-paid, pkt. (½ oz.) 7c; 1 oz. 26c.

"T & T's booklet, 'Life's Extras,' was wonderful. It gave us a good feeling inside to think of a company having enough faith and courage to send Christian literature to customers."—Mrs. R. G., Fairfield, Montana.





**T & T Experts** close in on an outstanding single plant Bush Tomato selection, for stock seed. New Test Plot Hybrids Page 15 are 2 weeks earlier than Chatham, with larger fruit.

## SPINACH

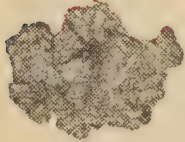
1 oz. seeds 100 ft. of drill.

### SPECIAL DELIVERED PRICES

Each variety, unless otherwise quoted:

Oversize pkt. (¼ oz.) 4c; 1 oz. 13c; ¼ lb. 36c; ½ lb. 49c; 1 lb. and over 79c.

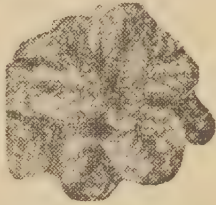
### 2050. Long Standing Bloomsdale



Leaves extremely curled, dark green and high quality. Our strain stands up and doesn't go to seed like the other Bloomsdale types. **Special prices above.**

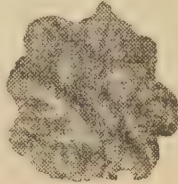
### 2060. King of Denmark.

Quality is tops; large, rich green, comparatively smooth, dense leaves. Stands summer heat surprisingly well. **Special prices start of Spinach.**



### 2070. Nobel

Outstanding variety, stands extreme heat of western plains. Less seed bolting than any other variety. Our strain has thick, smooth, dark green leaves. Quality excellent. **See special prices start of Spinach.**



## SQUASH—Summer

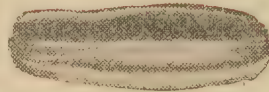
### SPECIAL DELIVERED PRICES

Each variety, unless otherwise quoted:

Oversize pkt. (¼ oz.) 6c; 1 oz. 23c; ¼ lb. 83c; ½ lb. \$1.39; 1 lb. and over \$2.40.

### 2100. Black Bush Zucchini

Best summer squash. Compact bush, black skin fruits are best used 4-5" long. Sliced and prepared like asparagus. Quality excellent. **Special prices above.**



## SQUASH—Fall



### 2120. Acorn (Table Queen)

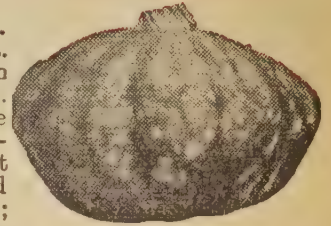
Our strain. Vigorous vines. Heavy yielder, 5" fruits; ideal when cut in two, baked for two servings. Well flavored, excellent texture; ideal sweet potato substitute. Stores well. **See special prices start of Squash.**

**Don't forget the Kiddies' Packet No. 4630 1c.**

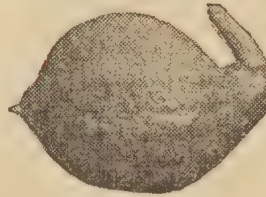
## SQUASH—Cont'd

### 2130. Buttercup

Introduced by Dr. Yeager at Nth. Dakota. Best home garden squash for the market. Very thick, firm orange flesh. Dry, mealy; excellent flavor. First class keeper. Postpaid oversize pkt. ¼ oz. 7c; 1 oz. 27c; ¼ lb. 93c.



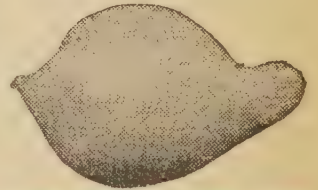
### 2140. Green Hubbard



Standard for excellence and flavor; the flesh golden orange, tender and free from fibre. Large fruits on vigorous vines. Reliable winter keeper. **See special prices start of Squash.**

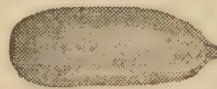
### 2150. Boston Marrow

Best pie maker we have seen. Flesh dry, thick and very sweet. Very large orange colored fruits. Keeps well in the fall. **Special prices start of Squash.**



## VEGETABLE MARROW

### 2220. White Bush (New)



Short, bushy growth; ideal for small garden. Heavy yielder of tender white fruits. Small 5" fruits, ready to use when Bush Beans usable. **See special prices start of Squash.**

### 2230. Vegetable Spaghetti

A real treat—this is not a freak but a delicious vegetable. Can be used when small like vegetable marrow, or can be baked in the shell when mature for the delicious vegetable-like spaghetti exclusive taste. Delivered, oversize pkt. 6c.

## TOBACCO

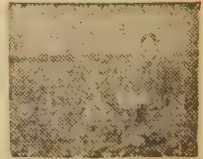
### 2250. Early Northern

Does well at Winnipeg. Grows up to 4' tall; requires only 65 days in the field. When cured for 4-6 weeks produces highly aromatic pipe tobacco. Detailed instructions on packet. Postpaid, oversize pkt. 8c.

## SUNFLOWERS

### 2270. Sunrise

New Canadian Govt. development. Early dwarf; high oil. Grown like corn and combined. Or grow in your garden for chicken feed. Meats are a tasty nut substitute in cooking. Postpaid Oversize pkts. 4c; ¼ lb. 12c; ½ lb. 19c; 1 lb. or over 29c per lb.







Hundreds of tons of ripe Manitoba grown tomatoes were processed through T & T seed extractors above for early northern improved tomato seeds listed here.



Mr. Verscheure, Winnipeg, with T & T early Bounty. His yield 10 lbs. ripe tomatoes per plant. Total crop 11,000 lbs. ripe fruit on 1/4 acre above.

## TOMATOES - Bush

Early bush (non-staking) tomatoes are the outstanding advance in vegetables of the last 10 years. Ripening 2-5 weeks earlier than staking sorts, these compact, tremendous yielders make the

## TOMATOES - Cont'd

job of staking and suckering seem old fashioned and needless. Now that the extreme earliest of Farthest North has been combined with Earliana size as in Bounty, these are the tomatoes for the northern garden.

### SPECIAL DELIVERED PRICES

Each variety unless otherwise quoted.

Oversize pkts. (1/16 oz.) 6c; 3 pkts. 15c; 1/2 oz. 33c; 1 oz. 58c; 2 oz. 98c; 1/4 lb. \$ 1.69.

### 2305. Early Test Plot Hybrids

Seed saved from our experiments to develop even larger fruits and maintain extreme earliness and bushy growth. Here's the forerunner of some world-beaters. Buy a packet and experiment along with us. Seed scarce. See special prices above.



### 2310. Extra Slicer (Bush Hybrids)



Deeper fruits give you an extra slice. Here with our breeding experiments we have combined extreme earliness and bush non-staking growth, with large deep extra slicer fruits. Here's choice seed saved from the deepest fruiter on our experimental plots. It's scarce — it's good. See special prices start of Tomatoes.

### 2320. Farthest North

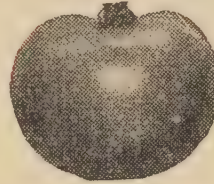
Earliest tomato on the seed market. Introduced by Dr. Yeager, when at North Dakota. Fruits often ripen 4 to 5 weeks after transplanting. Seeded outdoors after potatoes, ripens with transplanted tomatoes. Bushy plants loaded with 100's of golf-ball sized fruits. Excellent flavor. for table or juicing. Spec'l prices start Tomatoes.



### 2335. Early Chatham Select No. 8

Especially selected early strain of the favorite Early Chatham. Bred and selected here in Manitoba for conditions in the north. This bush type is very compact and the fruits are even larger than the regular Early Chatham. Our plant breeders selected this early strain out of the regular Early Chatham three years ago and have been increasing it in an isolated area and saving the seed with great care. Although our seed supply is still very small we are releasing it in packets only because it has caused so much interest in our test plots. Seed scarce. One (1) packet to a customer. Postpaid pkt. (1/16 oz.) 11c.

### 2340. Early Chatham



Compact; tremendous yielder; 2 1/2" lively red, deep bodied fruits. Ripens 10 days after Farthest North. Tops for the garden in northern districts. Makes best juice of the Bush types. See special prices start of Tomatoes.

### 2360. Bounty Select Strain

Only large fruited 3 1/2" bush tomato available. Vigorous stalky plants. Heavy cropper. Ripens bright red fruits a week after Early Chatham. This is good, it will please and amaze and save you work. See special prices start of Tomatoes.



## TOMATOES - Staking

### 2400. Earliana



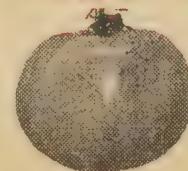
Earliest of the staking types. Stands drought well. Fruits smooth, deeply colored, well flavored. Excellent for the small garden where pruning and staking can be done. Special prices start of Tomatoes.

### 2420. Stokesdale "A"

Choice strain of an extremely uniform, smooth fruited, medium sized heavy cropper. Needs sheltered warm locations for Northern gardens. Fruit deep red, exceptionally well flavored. Market garden favorite. See special prices start of Tomatoes.



### 2485. Morden Yellow (New)



New introduction from Charlie Walkoff, Morden Exp. Station. Early bush plant. Large, smooth, yellow fruit. Real advance. Best yellow for the north. Seed scarce. Postpaid pkt. 50 seeds 8c. One pkt. per customer.



## TURNIPS Rutabaga

The rutabaga or swedes are the large fall and winter storage types. Store like potatoes.

### 2520. Laurentian



The best heavy yielding rutabaga. Market gardeners' favorite. Uniform — excellent quality — stores well. Special prices above.

1 oz. sows 100 ft. of row.

**SPECIAL DELIV. PRICES**  
Our pkts are over twice as heavy as Can. 1946 Govt. ceilings require.

Each variety, unless otherwise quoted:

Oversized pkt. (¼ oz.) 4c; 2 pkts. 7c; 1 oz. 9c; 2 ozs. 16c; ¼ lb. 24c; ½ lb. 36c; 1 lb. 59c; 2 lbs. \$1.10; 5 lbs. \$2.50.



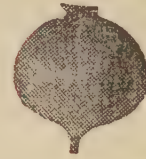
### 2540. Canadian Gem

Earliest and best rutabaga for northern districts. Roots round to oval; sweet and pleasantly flavored. Harvest in late fall; excellent keeper. See special prices above.

## TURNIPS Summer

Use only when small (2-2½" across) for the spring and early summer table.

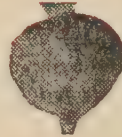
### 2500. Purple Top



Earliest turnip for northern areas — rapid grower. Crisp, white flesh; pleasing flavor. See special prices above.

Plant Breeding Pays Off. Try Our Uniform, Mild, Crisp Strains.

### 2510. Golden Ball



Finest yellow fleshed type. Roots round, golden; flesh sweet-crisp and fine textured. Heavy yielder. Ready a week after No. 2500. See special prices above.

## VEGETABLE

### 1. 24 Oversize Pkts. — \$1.00

Your Best Buy in 1948—we will say no more. Here's all our Vegetable bargains combined—33 oversize pkts. bursting with seed, plus pkt. Wild Flower Garden. Will cost you many times more elsewhere, and for smaller pkts. too.

One oversized pkt. of each number below:

**Beans**—No. 70 Sure Crop Wax; No. 90 Stringless Green Pod. **Beets**—No. 210 Detroit Dark Red; No. 220 Good for All. **Cabbage**—No. 320 Early Jersey Wakefield; No. 345 Einkuizen Glory. **Carrot**—No. 420 Red Cored Chantenay; No. 430 Danvers Half Long. **Corn**—No. 600 Burbank Golden Bantam; No. 640 Sunshine; No. 665 Popcorn. **Siberian Rice Cucumber**—No. 705 Early Siberian; No. 785 Boston Pickling. **Lettuce**—No. 900 Grand Rapids; No. 980 Head; No. 44 Imperial. **Onion**—No. 1440 Yellow Globe Danvers; No. 1490 Welsh Winter. **Peas**—No. 1610 Little Marvel; No. 1630 Lincoln. **Radish**—Fr. Breakfast; No. 1970 Sparkler. **Tomato**—No. 2340 Early Chatham; No. 2360 Bounty. **Flower Garden**—No. 3000 Surprise.

24 Oversized Bursting Seed Packets, Postpaid — \$1.00.

## COLLECTIONS

### 2. Farm Garden Collection — \$2.98

T & T Northern Improved Seed in bulk to plant a complete large garden. Here's more than 50% more for your money from T & T. Choice bulk selections of best T & T early and mid-season Northern Improved varieties for a balanced, really successful garden. Plenty of seed here for several plantings of the summer varieties and a full crop for winter storage and canning.

**Beans**—Tendergreen ½ lb.; **Beets**—Detroit Dark Red 1 oz.; **Swiss Chard**—Lucullus 1 oz.; **Cabbage**—Penn State 1 oz.; **Carrot**—Danvers ½ Long 1 oz.; **Cauliflower**—Snowball "X" pkt.; **Corn**—Sunshine ½ lb.; **Cuke**—Straight 8 1 oz.; **Cuke**—Boston Pickling 1 oz.; **Lettuce, Leaf**—Grand Rapids 1 oz.; **Lettuce, Head**—Great Lakes pkt.; **Muskmelon**—Far North pkt; **Watermelon**—Northern Sweet pkt.; **Onion**—Early Yellow Globe 1 oz.; **Onion**—Spanish 1 pkt.; **Parsnip**—Guernsey 1 oz.; **Peas**—Little Marvel ¼ lb.; **Peas**—Homeleader ½ lb.; **Pumpkin**—Sugar 1 pkt.; **Radish**—Comet 1 oz.; **Spinach**—King of Denmark pkt.; **Squash**—Green Hubbard pkt.; **Tomato**—Early Chatham pkt.; Plus a touch of color—Mixed Flower Garden—1 pkt.

## Flower Collections

### 9020. Rockery Bargain 8 Pkts. 41c

T & T Oversize Pkts. Selected for their dwarfness, hardiness. All season bloom. Complete Rockery  
4010. Ageratum, Mgt. 5380. Dianthus, Perennial  
4020. Alyssum, L. Gem 6150. Lobelia, Dwf. Blue.  
4720. Candytuft, Dwf. 6700. Nemesia, Tri. Mxd.  
5150. Forget-me-not. 7700. Portulaca, Dbl. Md.

### 9070. Rare House Plants 7 Pkts. 47c

Rare. Seeds of plant breeders latest Improvements. Have an indoor garden the year round.  
7 Oversize Pkts.  
4590. Cactus, Mixed. 6405. Ice Plant.  
4600. Calceolaria Hyb. 7900. Schizanthus, Badgr.  
4860. Cineraria L. Fd. 7940. Jerusalem Cherry.  
4250. Asparagus Fern, Sprengeri.

Sixteen

### 9040. Sweet Pea 10 Spencers 49c

Our complete listing of world Finest Spencers (see Page 27). You can't beat these colors, types.  
8060. Gigantic, White. 8110. Sunrise, Salmon.  
8070. Mastercream. 8120. Redboy, Red.  
8080. Ascot, Pink. 8130. Amethyst, Blue.  
8090. Smiles, Salm. Pk. 8140. Highlander, Mve.  
8100. Welcome, Scarlet. 8150. Olympia, Purple.

### 9050. Zinnia Bargains 8 Pkts. 39c

Sown outdoors, Zinnias best Annual for Northwest. All types. All colors. Complete Garden,  
8500. Giant, Oriole 8650. Pom-pom Choice.  
8520. Giant, Crimson. 8700. Lilliput, Mixed.  
8540. Giant, W. Rogers' 8750. Tom Thumb, Mxd.  
8600. Indian Sum, Mxd. 8820. Fantasy Fld, Mxd.



# TAINTOR

# TWOMEY 1948

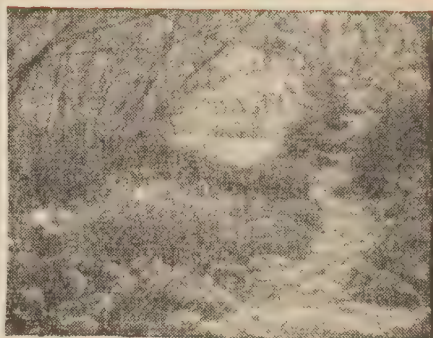
# FLOWER SEEDS



**FLOWER SEEDS**  
NORTHERN IMPROVED

**EACH VARIETY  
POSTPAID  
6¢ PER PKT.**

Unless otherwise  
quoted.

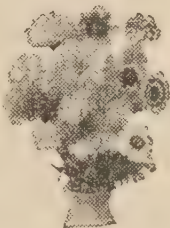


## FLOWER BLENDS

T & T Flowers are packed as generously as Seed costs will allow. A try and you will agree T & T Flower packets are really oversize.

### 3000. Surprise Flower Blend

A splendid mixture of easy to grow annuals—can be sown outdoors. They will surprise you with their earliness. All season bloom. Beautiful colors.



### 3030. Cut Flr. Blend

Special blend of long stemmed varieties. Excellent for table decoration and house bouquets. Bloom all summer. Sow outdoors.

### 3045. Fragrant Flower Blend

All these varieties are noted for their delightful aroma. Dainty in color and perfume. Early. Sow outdoors.

### 3060. Wild Flower Blend

Excellent blend of early, easy to grow wild flowers. Bright colors, delicate perfume. Include this in your order.

### 3075. Everlasting Blend

Crisp, dainty, paper-like flowers in many types. Easily dried to make novel looking winter bouquets. Sow outdoors. Grows 2-3 ft.

### 3090. Perennial Rockery Blend

Many rare and novel compact free-flowering rock garden importations are included in this special blend.

## AGERATUM

### 4010. Midget Blue

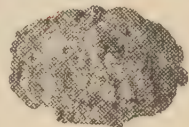
Free Blooming—Blue Edging Favorite (Award of Merit). Best most uniformly compact bright blue Ageratum. Never stops flowering. Start indoors for earliness.

## ALYSSUM

Continuous flowering border plant. Start indoors.

### 4020. Little Gem

6 in., pure white and very fragrant. Will flower all summer.



### 4030. Violet Gn.

New 6 in. dainty Violet color. Mix with Little Gem for startling effects. Postpaid—Oversize pkts. 8c.

## SNAPDRAGON—ANTIRRHINUM

RUST RESISTANT TYPES

Tall Giant Flowered, 3-4 ft.

### 4075. Mixed

Tallest most vigorous of all Snaps. Large flowered, wide mixture, of pastel shades, make this an ideal cut-flower. Postpaid—Oversize pkts. 7c.



Dwarf or Tom Thumb, 6-8 in.

### 4100. Dwarf Rockery Mixed

Bright colored blend of the most dwarf of all snaps. Excellent for edging or rockeries. Postpaid—Oversize pkt. 8c.

Maximum Giant Flowered, 3 ft.

### 4110. Max. Hybrids, 3 ft.

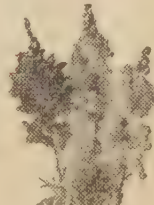
Large thick petalled flowers. One of the best all-round types for Northwest gardens. Mixture of delicate pastel shades. Postpaid—Oversize pkt. 8c.



Majus Grandiflorum, 2 ft.

### 4130. Rosalie

Outstanding amongst all named snaps. New color rich rose pastel yellow throat. Excellent cut flower or for bedding. Postpaid—Oversize pkt. 8c.



### 4140. Mixed, 2 ft.

This specially blended stock has been chosen from outstanding varieties in our test plots. Well balanced in color—ideal for cut flowers and bedding.



## COLUMBINE -Aquilegia

### 4200. Dobbie's Hyb. (Lg. Spurred)

Mixed. Hardy perennial, 2 ft. A definite advance in flower size, spur length and colors. Flowers dainty and delicate, plants are hardy under severe conditions. Our strain is re-selected and sure to please. Postpaid—Oversize pkt. 7c.



## AFRICAN DAISY

### 4230. Large Flowered Mixture



Hardy annual grows 1 ft. Ideal flower for bedding. Excellent background for dwarf plants. Sometimes called Blue-eyed African Daisy. Our strain mostly red and white. Postpaid—Oversize pkts. 8c.

## ASPARAGUS FERN

IDEAL HOUSE PLANTS

### 4240. Plumosus Nanus

1 to 2 ft. Graceful house plant with bright very fine feathery green fronds. Postpaid—Oversize pkt. 8c.

### 4250. Sprengeri

(Emerald Feather), 4 to 6 ft. Ideal for hanging baskets or in flower stands. Delicate green branches droop down. Slow germinating, expensive Seed. Postpaid—Oversize pkt. 8c

## ASTERS

EARLY GIANT WILT-RESISTANT!

For early and large bloom start Asters inside. Wilt-resistance assured.

### 4300. Light Blue, 1½ ft.

(Award of Merit). A large flower, free bloomer, bright blue. Adapted to short season districts. Postpaid—Oversize pkt. 8c.

### 4310. Rose Marie

(Award of Merit). Delicate rose shade large full double flowers early. Postpaid—Oversize pkt. 8c.

### 4350. Early Wonder

(Mixed.) The earliest Aster available; Ideal for cut flower. Flowers in bloom before ordinary asters show color. Excellent range of color.

### 4385. Hts. of France

Outstanding favorite. Blooms later in August, 2 ft. Branching habit; best of the rich deep red varieties. Oversize pkt. 7c.

### 4400. Wilt-resistant

Finest Mixed, 18 in. A wide mixture of popular delicate shades.

Eighteen

**FLOWER SEEDS**  
NORTHERN IMPROVED

**EACH VARIETY  
POSTPAID  
6¢ PER PKT.**

Unless otherwise  
quoted.

## ASTERS -Cont'd

ROYAL EARLY BRANCHING

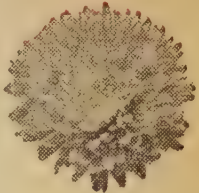
### 4425. Mixed, 2½ ft.

One of the finest mixtures we grow. Branches well for cutting.

NOVELTY VARIETIES

### 4450. Cal. Giant

Mixed, 2½ ft. Fine blend colors. Tallest and largest flowered of all types. Postpaid—Oversize pkt. 7c.



### 4475. Crego's Giant

Mixed. 2 ft. The finest of the fluffy flowered Comet Asters.

### 4500. Daisy Flowered

Wilt-resistant. Mixed, 2 ft. Soft pastel colors. Somewhat like Shasta Daisies in appearance. Wonderful cut flower.



## SWAN RIVER DAISY

### 4570. Finest, Mixed

Start indoors, grows 9 in. Blue, rose and white shades. Dainty compact plants, free flowering and easy to grow.

## CACTUS

### 4590. All Varieties, Mixed

Interesting house favorites. All sizes, types and shapes in this choice blend of the Easy-to-grow varieties. See packet for growing hints.

## CALCEOLARIA—Slipper Flower

### 4600. Finest Hybrids

All types. Most beautiful and unusual of house plants. Orchid-like. Seed very scarce and expensive. Postpaid—Oversize pkt. 10c.

## CALENDULA

These hardy annuals will grow anywhere. Colorful and attractive. Seed outside, they flower all summer.

### 4610. New Art Shades

2 ft. This mixture will delight you. It contains choicest of hybridizers new colors.

### 4620. Orange Shaggy

18 in. (Gold Medallist). Outstanding shaggy type, petals fringed, bright orange.



### 4630. KIDDIES BIG ASSORTMENT PKT. 1c

We put a little bit of seed of every kind into it. This is for boys and girls only. It must be their own 1c and must be included in Mother and Dad's Order. Boy, it's fun to have your own garden. Thousands of children last year had the time of their life with their T & T Garden.



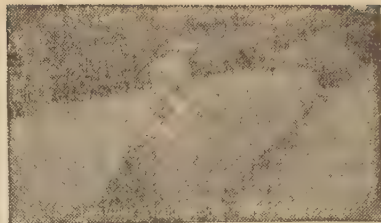


Rock gardens such as this are rapidly gaining popularity in the North. Make a corner of your garden a permanent showplace.

**VEGETABLE SEEDS**  
NORTHERN-IMPROVED

**EACH VARIETY  
POSTPAID  
6¢ PER PKT.**

**Unless otherwise  
quoted.**



A neatly clipped hedge is the mark of a well kept home. They are easily grown and require little care. See No. 5890 Kochia for a quick growing annual hedge.

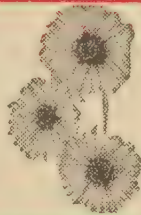
## CALLIOPSIS

### 4640. Golden Crown

(Award of Merit). 14 in. Yellow flowers with Maroon centre. Will bloom all summer; likes the sun.

### 4660. Giant Mayfield

Hardy Perennial 2½ ft. Rich golden yellow. Double giant flowers.



## CAMPANULA

### 4670. New Annual Bell Flower

Start these early inside, and you will have bell flowers in the garden all season. Rose, white and blue shades. They'll be your favorites.

### 4680. Cup and Saucer

Striped, Mixed. Hardy Biennial 2½ ft. The finest type of Bell flower. Comes in rose, blue and striped shades. Postpaid—Oversize pkt. 7c.

### 4690. Dbl. Finest Mxd

Hardy Biennial, 2½ ft. Double and single flowers, usually have 7-9 spikes.

### 4695. Persicifolia-Perennial (New)

Improved new hardy hybrids. Grows 2 ft.—free flowering July till frost. Covered with 1½-2 in. blue and white single and double flowers. T & T reselected and proven hardiness. Postpaid Oversize pkt. 11c.



## CANDYTUFT

### 4700. Gt Hyacinth

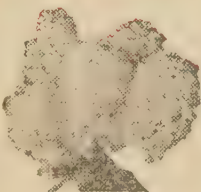
Flowered, White 2 ft. Delightful plant for flower-bed. Can be used for edging or mass planting. Flowers most of the summer.

### 4710. Our Special

Blend of all Colors. Largest flowering types. Sow outdoors.

### 4720. Dwarf Hybrids Mixed

6 in. Our special strain is a dwarf branching type. Large flowers in rows, white, purple and pink.



## CARNATIONS

### 4750. Chabaud's Gt

Improved Early Perpetual, 1½ ft Earliest and best outdoor type. Large 3 in. colorful, fragrant flowers. Postpaid—Oversize pkt. 8c. Start Early Indoors.



## CELOSIA—Cockscomb

### 4775. Cristata

Choicest Dwarf Mixed. Start indoors for largest combs. 1 ft. Colorful mixture, huge broad decorative combs.

## Corn Flower—Bachelor's Button

Amazing new types of the old favorite. Sow outdoors, they never stop blooming.

### 4785. Jubilee Gem

(Award of Merit). Double flowers, 12 in. compact plants. Mass of delightful bright blue. Easy to grow.

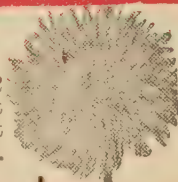
### 4795. Choicest Mixed

Best white, blues and pinks in doubles and singles. Excellent cut flower.

## SWEET SULTAN—CENTAUREA

### 4800. Imperialis

Finest Mixed. Sow outdoors. 2 to 3 ft. Blue and white, ideal cut flowers. Quick grower, excellent for borders. Long quilled petals. Resemble large Scottish thistles.



## CHRYSANTHEMUM—ANNUAL

### 4825. Superb Sgl. Mix.

Wide combination of orange, yellow and white; long stems. Start indoors for early bloom, or grow in pots for inside.

### 4835. New Korean Hyb.

Massive bloomers. Semi-double, single flowered. Needs winter cover in North. west. Can be taken indoors and will continue to bloom. Seed very expensive. Postpaid—Oversize pkt. 18c.



## SHASTA DAISY

### 4840. Shasta Daisy

3 ft. Single Flowers. Hardy perennial. Flowers pure white, large, splendid for bouquets. Blooms freely, frost resistant.

### 4850. Deiner's Dbl.

Shasta. Hardy perennial. This is really good. 2½ ft. Full double, pure white, long clean stems. Outstanding. Doubles set little seed, thus expensive. Postpaid—Oversize pkt. 13c.





## CINERARIA Houseplant

### 4860. Large Flowered

Choice Mixed. Ideal pot plant. Continuous bloom, extremely large daisy-like flowers. Lasts well. Post-paid—Oversize pkt. **10c.**



**FLOWER SEEDS**  
NORTHERN IMPROVED

**EACH VARIETY  
POSTPAID  
6¢ PER PKT.**

Unless otherwise  
quoted.



Mr. W. S. Carson, Hudson's Bay Co. Post Mgr. at Fort Good Hope, 1,300 miles north of U.S. Border, proudly displays some prize Northern grown vegetables. Early Chatham tomatoes ripened here.

### CLARKIA—Double

Sow outdoors, hardy annual. Beautiful colors. Full of surprises. Does well in shade.

**4870. Apple Blossom**  
Delicate appealing pink.

**4880. Purple Prince**  
Rich ruby purple.

**4890. Firebrand**  
Bright scarlet, very colorful.

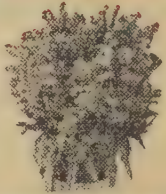
**4900. Novelty Mixed**  
Only choicest colors have gone into this mixture. All colors, all double, easy to grow.



### Forget-me-nots

### 5150. Amable Dwf.

**Firmament (Award of Merit).** The ladies' favorite. Dainty and neat. 12 in. This dwarf selection will please with its mass of intense blue flowers. Forget-me-nots should be in every garden. Sow outdoors.

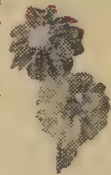


### DAHLIA

Easily grown dwarf bedding dahlias are one of the most important plant developments of recent years. Start indoors in March, transplant after frost. Will give a mass of showy blooms all season. Certain to satisfy, tubers can be saved for next year.

### 5200. Unwin's Early

**Dwarf Hybrids.** Double and semi-double, mixed. 18 to 24 in. All shades. This is the best dwarf bedding dahlia.



### CLIMBERS

- T & T Climbers—Best for the Northwest
- 130. Scarlet Runner Bean
  - 5600. Gourds—Ornamental
  - 6430-6460. Morning Glory Newest Types
  - 6560. Nasturtium—Lobb's Climbing
  - 8060.-8285. Sweet Peas—All Types

### COSMOS

Makes an ideal hedge or background plant sown outdoors. Early blooms, large flowered types, produce masses of flowers until freeze-up.

### 5050. Orange Ruffles

(New). Early rich orange with a large percentage of double flowers, grows 2 ft. high. A prize-winner every time. Postpaid—Oversize pkt. **7c.**

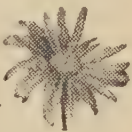


### 5060. Sensation—Mixed

(Award of Merit). Finest shades of pink and white, really early. Immense flowers. Grows 3 to 4 ft. tall.

### 5070. Sensat'n Dazzler

Showy large, brilliant crimson flowers. Earliest of large flowering types. Ideal for decorative purposes



### DELPHINIUMS

Our specially selected strains will surprise you. The extra large florets, long stiff spikes will be the pride of your garden. Our doubles are really double. Hardy perennial.

### New Pacific Giant Hybrids

These American developments are most uniform.

### 5300. Clear White

Glistening white florets up to 2 in. across. 100% doubled. Heavy stocks make this line wind-resistant. Postpaid—Oversize pkt. **13c.**



### 5310. Pacific Giants, Mixed

The best of the new colors have been included. An outstanding selection. Postpaid—Oversize pkt. **12c.**

### WREXHAM FLOWERED

Best of the English Delphiniums

### 5320. The Finest Mixed

6 ft. Our choice mixture includes single and doubles in both dark and light shades. Extra long tapering spikes. Postpaid—Oversize pkt. **10c.**



**KIDS 1 CENT PKT.**

**4630. SEE KIDDIES  
BIG ASSORTMENT PKT.**

Page 18 for details how the kiddies can have a great big garden of flowers and vegetables just like Mother and Dad for only **1c.**



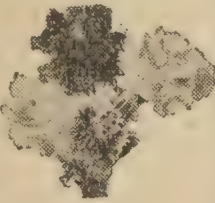


## Dianthus or Pinks—Annual

Sweet-scented, easily grown old favorites in new dresses. Start indoors for best results.

### 5350. New Giant

Flowered, extra double mixed. A favorite for the garden. Rich double flowers, bright colors.



### 5360. Royal Pinks

Choicest mixed. 1 ft. The frilled flowers with distinct markings. Sure to please.

### 5370. Heddewigii Laciniatus

Double mixed. Petals cut and frilled. Colors range from white through pink to red.

## DIANTHUS—Perennial

### 5380. Allwoodii Alpinus

Hardy perennial 6 to 8 in. If started early will flower first year. Ideal for rockery; fragrant and colorful.

## California Poppy—Eschscholtzia

Sow Outdoors for Continuous Bloom!

### 5460. Prize Hybrids

1 ft. Choice mixture of single and double flowers. Ideal for bedding. Reds, pinks and orange shades.



### 5470. Double Fird.

Finest Mixed. These new doubles are sure to please. Wide range of color. Full, long-lasting flowers.



### 5480. New Double Art Shades

8 in. This dwarf type ideal for bedding or edging. Delicate salmon and pink shades. Postpaid—Oversize pkt. 8c.

## GAILLARDIA

### 5520. Picta

New giant double flowered hybrid. Sow outdoors, 18 in. Large flower. stiff stems, bright yellow, salmon and orange. Annual.



### 5530. Grandiflora

New regal hybrids. Sow outdoors, 2 ft. Maroon and orange flowers. High percentage of doubles. Annual.

### 5535. Goblin Hybrids (New)

Choice hardy Perennials. T & T reselected for hardiness. Compact 1-2½ ft. Free flowering. Large yellow and Orange and crimson, all double flowers. Best in hot dry spot. Choice. Postpaid Oversize pkt. 22c.

**VEGETABLE SEEDS**  
NORTHERN-IMPROVED

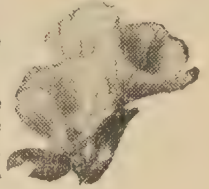
**EACH VARIETY POSTPAID**  
**6c PER PKT.**

Unless otherwise quoted.

## GODETIA

Easily Grown. Sow Outdoors  
**5580. Double Dwf. Mixed**

12 in. Compact free flowering. Delicate salmons and pinks. Should be grown more.



**5590. Tall Mixed**  
All Colors Mixed. A rainbow of delicate pastel shades.

## GOURDS

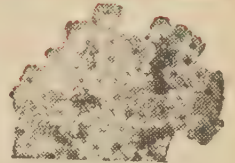
### 5600. Ornamental

All types and all sizes mixed. Grows rapidly to cover fences and porches. Dried fruits in novelty shapes, very decorative indoors.

## GYPSOPHILA—BABY'S BREATH

### 5620. Elegans

London Market. 2 ft. Sow at intervals during summer for constant supply of dainty flowers for bouquets. Annual.



### 5630. Elegans—Carminea

Delicate pink. Blends well with your cut flowers. Sow at intervals; Mix with white elegans. Annual. Seed Expensive. Postpaid Pkt. 6c.

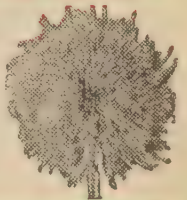
### 5640. Paniculata (Perennial)

Double snow white. Hardy perennial, 3 ft. New type of everyone's favorite. Cut before fully open and dry for winter bouquets.

## SUNFLOWERS—Ornamental

### 5650. Dwarf Double

Chrysanthemum Flowered. Hardy, sow outdoors. 4 to 6 ft. Double golden yellow flowers make ideal background plant. Showy, free blooming, quick growing, good. Postpaid pkt. 7c.



## HELICHRYSUM

### STRAWFLOWER

### 5670. Monstrosum

Sow outdoors. Quick grower, bright shiny colors. Cut when centres open and dry for lovely winter bouquets.

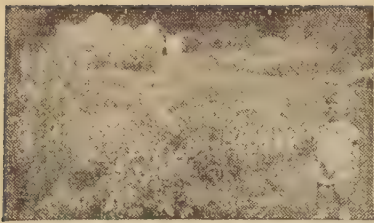


## HELIOTROPE

### 5680. Lemoine's Giant Mixed

Start indoors for elegant fragrance. Dainty bright blue flowers. Likes the sun. Postpaid—Oversize pke. 7c.



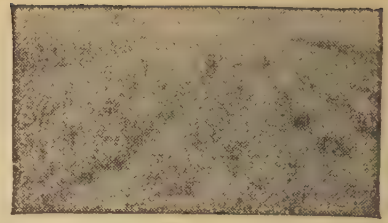


A Flower Garden helps healthy children develop healthy minds. Watching things grow and helping Mother and Dad, they learn the principles of good citizenship.

**FLOWER SEEDS**  
NORTHERN IMPROVED

**EACH VARIETY  
POSTPAID  
6¢ PER PKT.**

Unless otherwise  
quoted.



Roguing Bush Tomatoes for T & T. Every plant on T & T isolated Seed Plots is inspected 3 or 4 times during the growing season for Uniformity and earliness.

## HOLLYHOCKS

PERENNIAL

### 5700. Imperator

New Begonia flowered. 5 ft. Delightful large double frilled flowers. Up to 6 in. across. Postpaid pkt. 7c.

### 5710. Chater's Double

**Finest Mixed.** These extremely double flowers in a complete color range. Choice. Postpaid pkt. 7c.

### 5715. Pastel Singles Mixed

Hardest most easily wintered of all Hollyhocks in wide ranges of cleanest colors.

ANNUAL

### 5720. Indian Spring, 5 ft.

(Award of Merit). New earliest annual. 6 in. pale pink to red florets.

### 5730. Double Annual Mixed

Delicate pastel shades. Extremely tall vigorous grower.

IPOMOEA (See Morning Glory)

## KOCHIA—Burning Bush

### 5890. Childsi

Improved Trichophyllia. 3 ft. Rapid grower. Best annual hedge we know. Trimmed easily to any shape. Plants turn bright red in the fall.



## LARKSPUR—Annual

Easily grown, sown outdoors. Consistent bloom all summer. Ideal for the Northwest.

### 5900. Imperial Giant

**Flowered,** tall double finest mixed, 3 ft. Base branching, look like small delphiniums. All colors, white, pink, purple and pastels.

### 5920. Super Majestic

**Rose Pink,** the tallest most outstanding Larkspur. Long delicate spikes, double pink flowers. Blend excellently with other flowers when cut. Postpaid—Oversize pkt. 8c.



### 5930. Stock Flowered Mixed

3 ft. Blooms completely double. Thick, compact stock-like spikes. Beautiful blends of lavender, blue and white.

Twenty-two

## LATHYRUS

### 6000. Mixed (Everlasting Sweet Pea)

Use as an annual. Climbs quickly, 6-8 ft. to cover fences or trellis. Flowers red, white and pink.

## LILIES—Hardy

### 6060. Regal Lily

Hardy perennial, 3 ft. A mass of white blooms, yellow throats. Largest of the lilies. Up to 50 blooms per plant. Seed blooms 3 years after planting. Expensive and rare. Postpaid—Oversize pkt. 8c.

### 6065. Hardy Hybrids (New)

Special seed of new expensive Northern Originations—Yellow-reds and oranges in all types and seasons. Sorry, can't supply.

## LINUM SCARLET FLAX

### 6100. Large Flowered Red

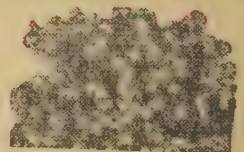
1½ ft. Sow outdoors, quick grower. A mass of bright scarlet all summer.

## LOBELIA—Borders

### 6150. Crystal

Palace Compacta. 4-5 in. Start indoors for best deep blue consistent blooms.

Window Box Favorite



### 6170. Pendula

Sapphire trailing. Bright blue, used for hanging baskets or window boxes.

## LUPINE (Perennial)

### 6180. Russel Lupines (Reselected)

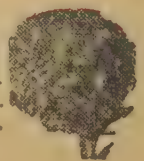
**Mixed (Gold Medallist).** Outstanding new, largest and best. Startling colors. Never before seen in Lupines. Selected strain for Northern Hardiness. Postpaid—Oversize pkt. 8c.

## LYCHNIS

**Scarlet Lightning or Jerusalem Cross.** Fiery. Hardy Perennial.

### 6195. Sartori (New)

Choice large rose-pink blooms—1½-2 ft. tall plants, free flowering heads 2½ in. across. Hardy—disease free—reliable. Postpaid Oversize pkt. 16c.





## MARIGOLDS

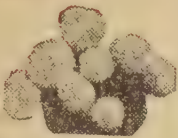
Easy to grow. Start inside and they will bloom all summer. The more you pick the more they'll bloom. We offer all types for all purposes.

### DWARF GIGANTIA

**6200.**

#### Pot O'Gold

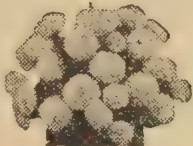
18 in. Like its name it forms masses of double flowers that literally cover the plant. Flowers measure 3-4 in. across. Postpaid—Pkt. **8c.**



### New Dwarf Border Marigolds

**6220. Sunkist**

One of the outstanding flower developments of recent years. Outstanding border plant. Very dwarf 6 in. plant. Covered all season. Full double 1½ in. flowers.



### DWARF DOUBLE AFRICAN

**6240. Large Fld.**

Mixed. 2 ft. Extremely vigorous plants, massive bloom. Full double, orange and yellow flowers. An old favorite.



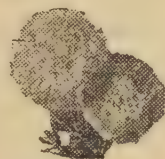
### LATEST INTRODUCTIONS

**6260. French Dwf.**

Double Harmony. Blooms all summer. Maroon and orange flowers. Easy grower.

**6300. Mission Gts.**

Goldsmith (Award of Merit). Largest of all marigolds. Flowers like golden orange chrysanthemums. Here's one to grow to show the neighbors. Postpaid—Pkt. **8c.**



### Marvel of Peru—FOUR O'CLOCK

**6400. Mirabilis Jalapa**

Sow outdoors. Easily grown. Drought-resistant bush plants, can be used as a hedge. Flowers open late in afternoon.

## ICE PLANT

**6405. Mesembryanthemum**

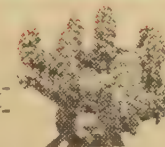
Old favorite. Silvery foliage—house plant or bedding. 6 in. Ideal for hot dry situations. Now back in supply again. Postpaid Oversize pkt. **8c.**

## MIGNONETTE

Perfume for Every Garden

**6410. Allen's Def.**

Sow outdoors. Very fragrant. Excellent for cutting. Stems long and covered with bloom.



**6420. Special Mixture**

All varieties in a splendid blend. Fragrance and cut flowers for all summer.

## MORNING GLORY

Most Reliable Climber

**6425. White Magic**

Large flowered. Solid white, showy. Delightful when mixed with reds and blues.



**6450.**

#### Heavenly Blue

A new shade of pastel blue. For earliest bloom, start inside. New and different.



**6460. Scarlet O'Hara**

(Gold Medal Winner). Bright red flowers. Blend this with Heavenly Blue for dazzling effect.

## NASTURTIUMS

Do Well in Poor Soil. Sow Outdoors  
DWARF DOUBLE GEM VARIETIES

**6520. Scarlet Gem**

Fiery scarlet shading to mahogany. Semi-double, mass of bright flowers 12 in. high. Postpaid Oversize pkt. **8c.**



### SINGLE NASTURTIUMS

**6540. Dwarf Mixed**

Newest shades. A choice mixture of beautiful pastels. Ideal for beds or borders.

**6560. Lobb's Climbing Mix.**

Quick-growing. Excellent for covering fences or trellises. Colorful.

### NOVELTY VARIETIES

**6600. Double Golden Globe**

Extremely dwarf compact. Sweet-scented. Very large, semi-double and double golden yellow flowers. Mix with Lobelia and Petunias in window boxes. Postpaid—Oversize pkt. **7c.**

**6610. Double Sweet-scented Golden Gleam**

New, startlingly large, double and semi-double flowers. Strong perfume. Golden yellow.

**6620. Double Scarlet Gleam**

Choicest stock available. Outstanding bright scarlet for beds. Maybe few yellows present.

**6640. Indian Chief**

New. Brilliant scarlet flowers. Foliage dark reddish. Attractive in beds.



**6660. Glorious Gleam Hybrids**

All doubles. A delightful blend of assorted colors in these new prize-winning types.

T & T Famous Flower Seeds are grown by specialists from the finest selections of the newest, most up-to-date Varieties. None better at any Price.



## NEMESIA

### 6700. Triumph Mixed

Start indoors for earliest deep red, orange and blue flowers. Compact 8 in. plants for edging a rock garden. Drought-resistant.

## NICOTINE

### 6750. White, Sweet Scented

Start indoors, grows 3 ft. Pure white. Ease of growth, outstanding perfume, make this a "must have." Mix with Zinnias.

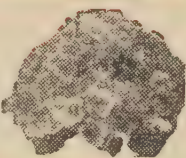
### 6770. Affinis-Hybrids

2½ ft. blooms in white, lavender, purple and red. Ideal background plant.

## NIEREMBERGIA

### 6800. Purple Robe

Reselected Purple Robe. New plant type everyone should try. 6 in. compact plants, covered all season. Beautiful dainty purple flowers.



## PANSIES

Seed in early March. Will give you early summer flowers. Plant April or May for late summer flowers. Pansies do well in cool shady spots.

### 6900. Triumph Mix.

Choicest large flowering strain from Canada. Immense bloom, compact plants. Wide color range. Postpaid—Oversize pkt. 13c.



### 6920. Masterpiece

A lovely frilled type. Colors vary, in mostly dark rich and velvety types. Postpaid—Oversize pkts. 9c.

### 6940. Swiss Giant

Coronation Gold (Award of Merit). A delightfully large yellow, really beautiful. Postpaid—Oversize pkt. 9c.

### 6960. Swiss Geneva

Super Giants. Plants 8 in. tall, spread to 12-15 in. Extra long stems. Excellent cut flower. Rich and beautiful mixture. Postpaid—Oversize pkt. 11c.



### 6980. Englemann's Special

Super Giants Mixed. 8 in. This is one of our favorites. Flowers are extra large and frilled. Postpaid—Oversize pkt. 11c.

### 7000. Roggli Hybrids Super Swiss Giant

We've re-selected specimen plants for a delightful mixture. Postpaid—Oversize pkt. 9c.

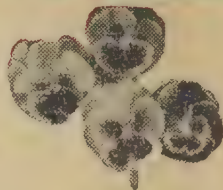
Twenty-four

## PANSIES Cont'd

### 7020.

### Maple Leaf Giants

Canadian Giants. Hardy, vigorous plants for the north. A sure prize-winner. Ideal for market or home gardener. Postpaid—Oversize pkts. 8c.



Quality and Quantity in Our Flower Seed Packets assure you a better Garden in 1948.

**VEGETABLE SEEDS**  
NORTHERN-IMPROVED

**EACH VARIETY POSTPAID**  
**6¢ PER PKT.**

Unless otherwise quoted.

## ICELAND POPPY

Free Blooming, Hardy Drought-Resistant Perennial.

### 7120. Mixed New Hybrids

Beautiful selection of the new art shades, includes salmons and pinks. Ideal for perennial border or beds.

## ANNUAL POPPIES

Sown Outdoors, a Favorite in the Northwest

### 7170. Single Shirley

Finest Mixed. A delightful mixture of the finest shades available. Will delight and please you.



### 7180. Double Shirley

Newest Art Shades. 2 ft. Delightful shades in pastels. The doubled flowers are outstanding.



### 7190. Tall Double Flame

Peony Flowered. 2 ft. Gigantic flowers that remind one of Peonies. Showy and quick growing. Bright scarlet.

CALIFORNIA POPPY (See No. 5460)

## PETUNIAS

### 100% DOUBLE PETUNIAS

The two hand pollinated 100% Double Petunias we list are Canadian Originations. They are both American Award Winners. The finest Double Petunias ever offered.

Plants are extremely vigorous, often spreading 2 ft. across. Compact, stiff, wind resistant growth, distinguish these from the old tall sprawling Japanese doubles. Our 100% Double Petunias are covered with bloom from early summer till freeze-up.

The **COLOSSAL SHADES OF ROSE** are the largest (5 in. flowers) 100% Double Petunias ever produced.

The **ALL DOUBLE ROSE OF HEAVEN** has beautiful very double rosette flowers, carnation size. New, Reselected, larger. Extremely free flowering, ideal for bedding.

We offer these two All-American Winners in our Oversize (Double Sealed Petunia Packet) at a fraction of their regular price.

(See Top of the Next Page)





**FLOWER SEEDS**  
NORTHERN IMPROVED

**EACH VARIETY  
POSTPAID  
6¢ PER PKT.**

Unless otherwise  
quoted.



A warm sunny spot and T & T Special Cactus Collection (No. 4590) make a most interesting corner of the garden. Easy Quick growers.

T & T Onion Sets are Northern Grown, sun cured. Large scale, efficient production assure you top quality at a real saving. (Page 11)

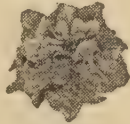
## PETUNIAS - Contd.

Doubles are wonderful long lasting cut flowers.

### 7200. Double Rose of Heaven

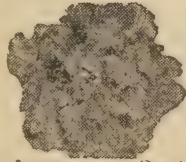
New Improved Larger Flowered Strain.

All American winner. Plant simply covered with medium sized rose-like blooms. Will bloom all summer. Color delicate and appealing. Outstanding. Postpaid—Oversize pkt. (65 seeds) **18c.**



### 7240. Colossal Shades of Rose

(Silver Medal Winner). New. The largest Double Petunia ever introduced. Blooms 5 in. or more across. Color from rich rose thru salmon pink to rosy mauve. Most wind resistant, vigorous, free-flowering double ever released. This will cost you many times more elsewhere. Postpaid—Oversize pkt. (65 seeds) **21c.**



## GIANT RUFFLED PETUNIAS

### 7280. Giant Ruffled Fringed

Extra Fine Mixed. 12-18 in. tall. Immense blooms in a collection of the best, large frilled and ruffled types. Postpaid—Oversized pkt. **8c.**

## LARGE FLOWERING PLAIN EDGED

### 7300. Snowstorm

Lovely mass of velvety white bloom. Spreads 2 ft. across. Use as a border or in beds. No better white. Postpaid—Oversized pkt. **10c.**



## LARGE FLOWERING FRINGED

### 7320. Theodosia Improved

Beautiful, orchid pink, veined darker, with heavy crumpled edges. Large. Postpaid—Oversized pkt. **10c.**

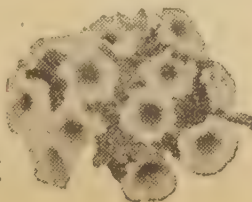
### 7340. Super Fluffy Ruffles

Mixed. Really ruffled. Petals are so ruffled they appear double. Large and showy. Colors outstanding in their brilliance. Postpaid—Oversized pkt. **10c.**

## FIMBRIATA

### 7360. Giant Flowered Mixed

Contains the most beautiful shades of the largest flowering ruffled types.



## PETUNIAS - Cont'd

## GIANTS OF CALIFORNIA

### 7380. Dwf. Ramona

Plants 8-10 in. Ideal for potting as they are stiff and bushy. Immense showy 6 in. blooms. Postpaid—Oversized pkt. **11c.**



### 7400. Tall Supreme

Taller plants than above, but flower size is tremendous. Delicate pastel shades. Large veined and frilled flowers. Postpaid—Oversized pkt. **10c.**

## POPULAR BEDDING PETUNIAS

### 7420. Martha Washington

(Award of Merit). Delicate pink fringed edges, shading to darker centre. Ideal for all purposes, potting, bedding and borders. Postpaid—Oversized pkt. **7c.**

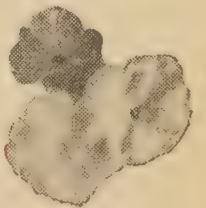
### 7440. Ruffled Grdfl. Nana

Compacta Mixed. Excellent color range, combines ruffling of larger types with vigor of bedders. Postpaid—Oversize pkt. **8c.**



### 7480. Rose of Heaven

Deepest and best shade of pink, in this the most popular of all bedding petunias. Dwarf growth, loaded with bloom.



## BALCONY PETUNIAS

### 7500. Mixed

This is the best choice for window boxes. You will find these splendid shades, colorful from early summer till freeze-up.

## Phacelia—CALIFORNIA BLUE BELL

### 7580. Campanularia

Start outdoors. Grows 8 in. Deep gentian blue flowers, quick growing, ideal for edging or rockeries.

Our Seeds are not Travelling Seeds. Not sold in stores but direct, and we pass this saving on to you. Your best buy in 1948 is T & T Dated Fresh Packed Seeds.



## PHLOX

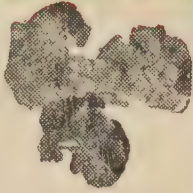
Free Flowering—  
Drought  
Resistant

### 7600. Dwf. Compact

Mixed. 6-9 in. tall. Delightful shades of pink, scarlet, rose, violet, etc. Use to advantage in window boxes, edging, rockeries, and in flower beds.

### 7620. Tall Supreme

Mixed. Flowers are extra large plants, 12-16 in. Beautiful mixture of best of this type.



**FLOWER SEEDS**  
NORTHERN IMPROVED

**EACH VARIETY  
POSTPAID  
6¢ PER PKT.**

Unless otherwise  
quoted.

## Scabiosa—PINGUSHION FLOWERS

Sow Outdoors Favorite Cut Flower

### 7850. Blue Moon

Outstanding shade of lovely blue. Large flowers on long clean stems make perfect bouquets.

### 7860. Giant Flowered

Hybrids Mixed. 2-3 ft. Large, ball-shaped flowers and range of color will amaze you. Drought resistant.

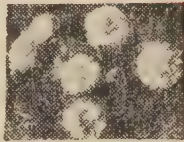


## PORTULACA

Sow Outdoors in Warm Sunny Spot

### 7700. Dbl. Mixed

4 in. Bright showy colors, in this popular rockery or border flower. Double flowers, remind one of little roses.



### 7720. Grandiflora Dbl. Mixed

Outstanding double extra flowers on dwarf compact plants, really drought resistant. Postpaid—Oversized pkt. 8c.

## PRIMULA

### 7750. Abconica

New large flowered deep pink and rose shades of this favorite house plant. Seed expensive. Scarce. Postpaid—Oversized pkt. 18c.

## CASTER-OIL BEAN

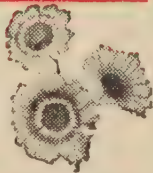
### 7775. Ricinus Zanzibariensis

Gigantic, quick growing, waxy, ornamental foliage. Leaves 18 in. across, grows 6-10 ft. high. Postpaid Oversize pkt. 7c.

## RUDBECKIA

### 7780. Hardy Perennial Hybrids (New)

Mass of yellow, orange, bronze, and crimson daisy like blooms till frost. Free flowering, grows 2-3 ft. Postpaid Oversize pkt. 11c.



## SALPIGLOSSIS

Free Flowering—Sown Outdoors

### 7820. Tall Emperor

Extra large flowered mixed. Long stemmed, rich velvety blooms. Use as a cut flower or in beds.



## SALVIA—Scarlet Sage

### 7840. Blaze of Fire

Early Salvia is essential for Northwest. This is the earliest and best available. Vigorous compact plants. A blaze of fiery red all summer. Start indoors. Postpaid—Oversize pkt. 9c.

## SCABIOSA—Perennial

### 7880. Caucasica Hybrid

Giant Isaac House Strain. This hardy perennial grows 2 ft. One of the most beautiful of all cut flowers. Immense blooms. Postpaid—Oversized pkt. 10c.

## Schizanthus—Butterfly Flower

### 7900. Dr. Badger's

Giant Flowered Hybrids. The immense butterfly blooms in this improved strain will be one that you will want to use as a pot plant or sow outside. Postpaid—Oversized pkts. 7c.



## SOLANUM—JERUSALEM CHERRY

### 7940. Hlavenek's Masterpiece

Outstanding strain of this Xmas pot plant. Bright berries on this small 1 ft tree-like plant are a delight. Postpaid—Oversize pkt. 9c.

## STOCKS Gilliflower

Stocks for Perfume are a Must-have

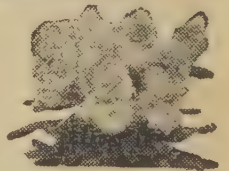
EARLY DWARF 10 WEEKS  
Blooms from Outdoor Sowing

### 8000. Crimson

Brightest and best color.

### 8010. Choice Mix.

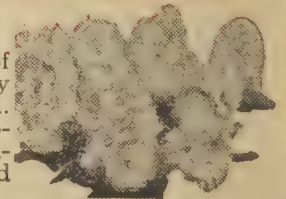
All of the most delightful shades—flowers large and plants truly quick growing.



DOUBLE EARLY GIANT IMPERIAL

### 8020. Mixed

2 ft. tall stately spikes of this fragrant favorite. Very large double sweet scented. Make this an ideal cut flower or bedder. Start inside. Postpaid—Oversized pkt. 7c.



DOUBLE GIANT NON-BRANCHING

### 8030. Mixed

Clean non-branching, 2 1/2 ft. Spikes. Ideal cut flower. All the delicate shades for a perfect bouquet. Postpaid—Oversized pkt. 9c.



## SWEET PEAS

Sweet Peas are our largest seller. We take pride in offering you only the best of the various types and at a real saving. Remember there are early, mid-season, and later types. Be sure to choose some of each so that you will have steady bloom all season. The more you pick the better they grow. Follow specially written planting instructions on our Big Oversized T & T Packets.

### SUMMER FLOWERING SPENCERS

World Wide Favorites. Large delicate flowers with attractive waved edges. Long stemmed

### SPECIAL DELIVERED PRICES

All named Spencer Sweet Peas. Postpaid—Oversize pkt. (1/8-oz.) **6c**; 1 oz. **49c**.

#### 8060. Gigantic—WHITE

Purest and best white. True exhibition type. Black seeded. See Prices Above.

#### 8070. Master-Cream—CREAM

A rich creamy color that blends well with dark shades. Black seeded. Many 4's. See Prices Above.

#### 8080. Ascot—PINK

Delicate soft pink. Very large flowers, a favorite everywhere. See Prices Above.

#### 8090. Smiles—PINK

New beautiful salmon-shrimp pink. Does not burn in the sun. See Prices Above.

#### 8100. Welcome—SCARLET

(Silver Medalist). A surprising scarlet shade with long stems. Many carry 4 or more flowers. An exhibition winner. See Prices Above.

#### 8110. Sunrise—ROSE SALMON

Lovely clear un-flecked cerise salmon. Vigorous. Healthy and long stemmed. See Prices Above.

#### 8120. Redboy—RED

(Award of Merit). True to its name a deep red, that makes a great show when mixed with pure white. Try them together. See Prices Above.

### MAUVE-LAVENDER AND BLUE

#### 8130. Amethyst

A bright clear blue that is exceptionally large, beautiful and frilled. See Prices Above.

#### 8140. Highlander

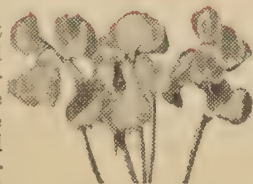
Lavender is the ladies favorite, and this the best mauve lavender that we have ever tested. See Prices Above.

#### 8150. Olympia

Deep rich purple, extremely vigorous grower. Show your neighbors this one. See Prices Above.

#### 8220. Giant Orchid-Flowered Spencer Choice Mixed

World famous. Our largest selling sweet pea mixture, and rightly so. Long stems, vigorous vines, large orchid-like blooms. Spencer's are the standard of excellence and this is a hand-blended mixture of the best shades and colors. Postpaid—Oversize pkt. (1/8-oz.) **4c**; 1 oz. **24c**; 1/4 lb. **64c**; 1/2 lb. **\$1-37**



Ripe, Farthest North Tomatoes on shore of Arctic Ocean at Hudson's Bay Co. Fort Tuktuk, parallel with Magnetic North pole; 2,000 miles north of U.S. Border.

## SWEET PEAS—Ruffled

### Ruffled—Frilled—Beautiful Double-like Flowers

The extremely thick petals have more substance and better lasting qualities.

#### 8240. Crinkles (Ruffled)

One of the most beautifully ruffled sweet peas. Cerise rose shading to coral pink. Heavy substance and large flowers. Postpaid—Oversize pkt. (1/8-oz.) **7c**.

#### 8250. Ruffled Choice Mixed

One of the loveliest. All fully ruffled with their outstanding double appearance. Only the best colors on long stems included. Postpaid—Oversize pkts. (1/8-oz.) **7c**; 1 oz. **51c**; 1/4 lb. **\$1-53**.

### CUPID DWARF—6 in. Bedding

#### 8275. Cupid Mixed

Here's an excellent bedding or edging annual often overlooked. Grows 6 in. tall, 8 to 10 in. wide. Thick compact foliage with a mass of dainty Sweet Peas in all shades of the rainbow. Delivered—Oversize pkts. 1/8-oz. **9c**.

### Early Northern Sweet Peas

THREE WEEKS EARLIER THAN SPENCERS Extra Early Northern. This new long stemmed large flowered type is the best Sweet Pea for the cool Northwest summers.

#### 8285. Extra Early North. Mix.

This new improved type has the color range, flower size and stem length of the later types and gives you bloom three weeks ahead of the Spencer types. Continues to bloom until frost. Just keep them picked. Seed of this exclusive mixture is expensive. Don't confuse this with other so-called "Early Spring Flowering Sweet Peas." This is the best Sweet Pea for Northern districts. Choice blend. Postpaid—Oversize pkts. (1/8-oz.) **6c**; 1 oz. **37c**; 1/4 lb. **94c**.

## FARM MACHINERY

### IDEA BOOK 35c

9999. Illustrated subjects covering operating adjustments for ONEWAYS, CULTIVATORS, MOWERS, and COMBINES. TRACTOR OPERATING SUGGESTIONS—Ignition overhaul, better fuel economy, less slippage, longer motor life through better lubrication.

Plans for changing horse machinery to small tractor machinery. Plans for building haying machinery, sweeps and stackers, grain elevators and other labor-saving equipment. Numerous similar suggestions to give you better operating efficiency.

Written by S. L. Tallman, B.S.A., formerly Machinery Specialist for Manitoba Extension Service. Give your friends a copy. Postpaid—**35c. per copy; 3 for \$1.00.**



## SWEET WILLIAM

Perennial (If Started Early Blooms 1st Year)

### 8300. Single Mix.

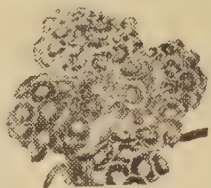
16 in. A delightful blend of only the finest. All colors.

### 8320. Holborn

Glory Mixed. 1½ ft. Large flowered. This strain has a distinct eye in each flower. Sure to please. Postpaid—Pkt 6c.

### 8340. Choice Double Mixed

New. 1½ ft. The double flowers in this type are large and continuous blooming. Truly delightful. Postpaid—Pkt. 7c.



## SWEET WIVELSFIELD

Biennial (Start Indoors Early for Bloom the 1st Year)

### 8360. Choice Dbl.

Mixed. Scented and large flowered. All attractive colors included in wide range of forms.

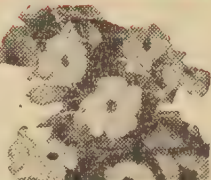


## THUNBERGIA

(BLACK-EYED SUSAN)

### 8380. Alata Mix.

Annual trailer. Used for hanging baskets. The flowers are a yellow orange with a deep brown eye. Colorful and sure to please.



## VERBENA

Grows best in sunny spots. Start indoors for early bloom. Large flowered, ideal in borders or for cut flowers.

### 8390. Giant Flowered Finest

Mixed. Only the most delightful colors have gone into this blend. The flowers are extra large and the florets on the spikes often measure over 1 in.

## VIOLAS Tufted Pansy

Set aside a corner in your garden and they will multiply indefinitely.

### 8400. Large Flowered Mixture

Ideal mixture of splendid colors. Will bloom first thing in the Spring and continue to bloom all summer. Flowers large. Delivered—Oversize pkt. 8c.

## WALLFLOWERS

### 8420. Early Wonder Annual

Mixed. Start indoors. All colors and shades in this special mixture.

**T & T SPECIAL FLOWER SEEDS**  
Each Variety Postpaid  
Packet 6c.  
**UNLESS OTHERWISE QUOTED**

## ZINNIAS

Zinnias are the most colorful, free flowering, easily grown, drought resistant annual for the Northwest. Sow outdoors in late May. Use several of our types and colors for beautiful successful flower beds.

### POSTPAID ZINNIA PRICES

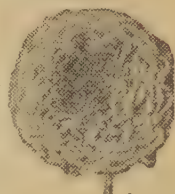
Each variety unless otherwise quoted. Oversize pkt. 6c; ¼-oz. 37c; ½-oz. 59c.

### Mammoth Dahlia Fld., 2-3 ft.

HUGE ALL-DOUBLED FLOWERS

### 8500. Oriole

Orange and yellow giant flowers, golden centres, lighter at petal edges. warm pleasing color. Postpaid—Oversized pkt. 7c; ¼-oz. 39c.



### 8520. Crimson Gt.

Monarch. Bright orange, scarlet. Blaze of color. Blends well with lighter shade cut flowers. Postpaid—Oversize pkt. 7c; ¼ oz 39c.

### 8540. Will Rogers

Most startling deep red shade we have ever seen in Zinnias. Simply dazzling. Sturdy plants do well under dry, hot conditions. Postpaid—Oversize pkt. 7c; ¼-oz. 39c.

### California Gt. Doubles, 3-4 ft.

### 8600. Ind. Summer

Mixture. Taller than the Dahlia flowered with longer stems for cutting. Brilliant complete blend of new warm colors in an outstanding mixture. Good. See special prices start of Zinnias.



DOUBLE ELEGANS, 2 ft.

Pom-Pom or Cut and Come Again

### 8650. Choice Mix'd Pom-Poms

Flowers are deep double like Pom-Pom Dahlias. 2½ in. in diameter. This is the best cutting Zinnia of this new improved type. See special prices start of Zinnias.

ZINNIA-LILLIPUT 18 in.

### 8700. Lilliput, Colors Mixed

Extremely healthy compact plants, early, free flowering, covered with dainty double blooms all summer. Excellent as a border or planted in clumps with other annuals. See special prices start of Zinnias.

ZINNIAS—TOM THUMB, 6-10 in.

### 8750. Tom Thumb Choice

Mixed. Dwarf, free blooming border Zinnia. Excellent complete color range. Easily grown. Early. See special prices start of Zinnias.

FANTASY FLOWERED, 2 ft.

### 8820. Fantasy Mxd.

(Award of Merit). A new shaggy chrysanthemum type of Zinnia in appealing different pastel shades. These are the largest flowering of this type. Excellent cut flower See special prices start of Zinnias.





# D. D. T. MIRACLE INSECT KILLER

Developed during the war and just released. It's quick sure death to mosquitoes, flies, bed-bugs, cockroaches, gladiolus and other thrip, lice on dogs, cats, horses, poultry, etc., flea beetles, leaf-hoppers, house moths, potato beetles, etc. Rain and water does not wash away D-D-T, hence its effect lasts indefinitely.

## One powder for all purposes

At last here is a single product that can be used for ridding you of insects in the garden, the home and the barn. The wettable D.D.T. powder prepared especially for us is of extra strength and will do the job. Just mix with water. Instructions on Pkts.

Weight of Pkt.	Flower or Veg. Spray Makes	Livestock Spray Makes	For Barn or House Spray
1 oz.	3 gals.	1 qt.	1 qt. does 400 sq. ft.
4 oz.	12 gals.	1 gal.	1 qt.
1 lb.	48 gals.	4 gals.	1 gal.
5 lbs.	240 gals.	20 gals.	5 gals.

To make the recommended 5% D.D.T. General Garden Dust add 9 parts of household flour to 1 part of above Conc. D.D.T.

## 9740. Conc. D.D.T. Above

Special Delivered Prices: 1 oz. pkt. **10c**; 4 oz. pkt. **33c**; 1 lb. pkt. **94c**; 5 lb. pkt. **\$3.98**.

## 9745. Rototec

**Rototec Garden Spray.** Most efficient Rotonone spray yet devised. Deadly to insects—non-poisonous to humans. Safe on Vegetables. Delivered Prices—1 oz. (makes 3-5 gals.) **35c**; 4 ozs. (10-20 gals.) **\$1.00**; 16 ozs. **\$2.75**.

## 9750. Nicotine-Sulphate 40%

Standard reliable favorite, sure killer for green fly outdoors, and all indoor plants showing insect damage. Delivered Prices—1 oz. **30c**.

# FERTILIZERS

## 9752. Vigoro Plant Pills

Peps up run-down house plants. Put one in every potted plant once a month, and you will be amazed. Delivered Price—Packet, **15c**.

## 9754. The Old Gardener Fertilizer

Concentrated—A completely balanced plant food which is dissolved in water and applied in liquid form. Ideal for house plants and garden use. Fortified with Vitamin B. Directions on each pkt.

1 oz. size makes 7 quarts.....Postpaid **\$0.10**  
 3 oz. size makes 21 quarts.....Postpaid **.25**  
 8 oz. size makes 56 quarts.....Postpaid **.50**

# TOMATO FIX



Untreated with seeds

Treated no seeds

## 9758—Tomato Fix

Unbelievable new chemical, sprayed on tomatoes, cucumbers, peppers egg plants, etc. makes every flower set a fruit, and with no seeds in them. Assures full set of

first blossoms. Details of easy use and improved fruit quality on each container. Spray very fine mist on blossoms. Special delivered price—

Size A, treats at least 50 plants....Postp'd **\$0.25**  
 Size B, treats at least 300 plants....Postp'd **\$1.00**

# SEED TREATMENTS

**9764. Semesan**—For flower and vegetable seeds. This chemical prevents root-rots, damping-off. Instructions on packet. Delivered Prices—Pkts. (1/3 oz. treats 25 pkts. of seed) **10c**; 2 oz. **45c**.

**9765. Semesan-Bel**—For dipping potatoes before planting—controls disease. Delivered Prices—2 oz. (treats 8-10 bus.) **30c**; 1 lb. **\$1.75**.

**9766. Semesan Jr.**—For seed corn only—prevents kernels rotting in cool soil. Delivered Prices—Pkt. (1½ oz. treats 1 bus. corn) **15c**; 1 lb. **85c**.

**9767. Nitragin Legume Inoculator**—Increases yield of Sweet Peas, Garden Peas, Garden Beans, Lime Beans and Soy Beans. Full directions. Postpaid (treats 8 lbs. seed) **10c**.

**9768. Re Root No. 1 Balanced Hormones**—Vitamins for quick rooting of cuttings. Instructions on pkt. Postpaid (¾ oz.) **25c**; 2 oz. **50c**.

**9769. Transplant Hormone Tablets**—Avoid transplant shock for all annuals, perennials, quicker, surer growth. Postpaid, pkt. **25c**; large size **50c**.

**9770. Free Plant Hormones**—Makes quicker, stronger germination of all seeds and bulbs. Postpaid, pkt. (treats 6 lbs. seed) **25c**.

**9771. No Sprout Storage Hormones**—Stops sprouts on potatoes, carrots, turnips, beets, etc. Amazing results, dust on stored vegetables. Postpaid, 2 oz. pkt. (plus instructions, treats 400 lbs.) **\$1.15**.

## 9772—BACTO—FOR COMPOST OR OUT HOUSES

Fertilizer from waste material. A quick acting mixture of beneficial bacteria for use in compact heaps. 5 lbs. will convert 2½ tons of refuse into rich soil—building humus—Bacto keeps compost heaps from smelling—Also ideal for use in out-house and privies. Just mix 1 lb. Bacto with 5 lbs. earth and sprinkle in toilet as required. Keeps smell down. Replaces lye. Delivered Prices—1 lb. can **50c**; 5 lb. can **\$1.98**.

# NEW RAT KILLER

**TAT Antu**—New Tasteless Rat Poison. One lick kills an adult rat. Sprinkle powder in rat burrows or runways. Picked up on feet which they lick, or sprinkle on food for quick kill. Complete instructions on pkt.

**9775. Introductory size**—2 pkts., 1 of feeding bait, 1 of concentrated powder. Postpaid, **35c**.

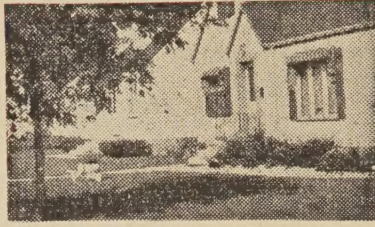
**9780. Shaker Can**—1¾ oz. for preparing mixed foods, drinking bait or for tracking control. Postpaid, 1¾ oz. size, **\$1.00**.



# Lawn Grass Seed

## T & T PLUMP HEAVY NEW CROP SEED GIVES A RICH LASTING LAWN AT A SAVING

All T & T Grass Seed is extra heavy. Thoroughly re-cleaned, of highest quality, tested, and graded for Control Certificate Test No.'s. Detailed instructions on every bag for seeding new or old lawns.



Sow 1 lb. to 200-300 sq. ft. for a successful new lawn.

**T & T SEEDS  
TREATED WITH 2, 4-D  
OVER 150,000 ACRES  
OF GRAIN AND FLAX  
LAST SEASON**

See 2-4D Information  
Page 2

### 9500. T & T City Club

This special Blend, tested and proven to make best lawn under Northern conditions. Blended of fine bladed, hardy, quick easily grown strains of Kentucky Blue Grass 70%, Red Top 25%, Genuine Prince Edward Island Bent 5%. **Special Postpaid Prices.** ½ lb. **43c**; 1 lb. and over **78c** per lb.

### 9510. T & T City Club

with White Dutch Clover. City Club Blend with 5% White Dutch Clover. **Prices same as 9500.**

### 9540. T & T Shady Club

Select mixture for that shady spot. Use this in a shady area for a vigorous green. **Special Delivered Price same as 9500.**

## NEW SUPER-CONCENTRATED 2-4-D WEED KILLER

### 9550. New Miracle Weed Killer 80% Concentrated Sodium Salt.

Use this special concentrated 2-4-D either as a Dust or Spray. Read complete details and instructions on each container. One dusting or spraying kills all dandelions, plantains, chickweed, pigweeds, thistles, poison ivy, etc. **HARMLESS TO GRASS.** Specially manufactured for T & T—offers quicker killing power at a much greater saving. T & T Concentrated 2-4-D covers a greater area per dollar spent.

#### SPECIAL DELIVERED PRICES

Pkt.		Postpaid
"A"	—1 oz. treats 1,000 sq. ft. ....	<b>25c</b>
"B"	—2½ oz. treats 2,500 sq. ft. ....	<b>49c</b>
"C"	—10 oz. treats 10,000 sq. ft. ....	<b>\$1-68</b>

## STRAWBERRIES



**Postpaid in  
Early Spring**

T & T Strawberries are Northern Grown. Packed and shipped by recognized experts.

### 9920. WAYZATA (N.D. Certified)—The finest everbearing

strawberry so far created. Its fruit always commands top price and has no equal in deliciousness and flavor. Fruit most attractive, being large, beautifully colored both inside and out. It's an everbearer and fruits all summer. See special Nursery Order Form. **Special Delivered Price—**  
**Bundles of 25, \$1.89; 50 for \$3.59.**

Thirty



**\$4.98**

### 9950. ROSS ROOT FEEDER

Feed your plants, shrubs and grass the direct, quick method. Put the Plant Food around the roots where it is needed. Revolutionary method of applying Fertilizers and water direct to the root zones of flowers, lawns, vegetables and trees. **Postpaid—\$4.98, with one dozen Fertilizer cartridges. (Additional cartridges, \$1.00 per doz.)**



# POTATO EYES

T & T EYES ARE LARGEST—HEALTHIEST—BIGGEST YIELDERS

## RENEW AND IMPROVE YOUR POTATOES WITH T & T CERTIFIED EYES

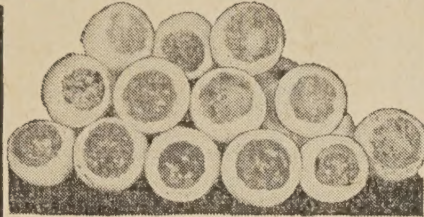
T & T Certified Eyes are the cheapest, easiest way to get into disease free stocks of the best.

## INCREASE YOUR POTATO YIELDS

Don't re-plant table stock, its usually full of disease (softrots and hidden viruses). Certified potatoes on an average produce over twice the yield of those grown from table stock.

## SIMPLE—SURE—EASY

T & T Oversize Eyes are easy to grow. Plant and handle like ordinary potatoes. Complete planting instructions with each order.



In Canada Certified Eyes have done more to improve the quality of Home Grown Potatoes than any other factor.

T & T Eyes are center cut with plenty of feeder flesh. Yield as heavy as potato pieces.

## SPECIAL DELIVERED PRICES

Delivered to you at planting time.

Order with your seed on O. Form. Ea. var. unless otherwise quoted.

25 Eyes \$ .39	200 Eyes \$ 2.49
50 Eyes .69	500 Eyes 5.29
100 Eyes 1.29	1000 Eyes 9.90

## START WITH CERTIFIED SEED FOR VERY LITTLE MONEY

All T & T Eyes are cut from cert. (3 times Govt. inspected) stocks grown by ourselves under northern isolated conditions, in the Red River Valley. These are not odd lots picked up in the Eastern or Southern warm growing areas.

## EARLY—TESTED—PROVEN VARIETIES

Here's a complete list of the best high yielding varieties, for the Northwest. Pick out your favorites for your soil and district.

## CERTIFIED EYES AT A SAVING

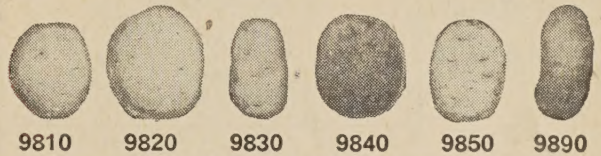
Purchase reasonably priced T&T Hand Cut No. 1 Eyes. Keep your potato patch in good shape. Increase yields 20% with DDT Page 30.

## 9800. Columbia Russet (New)

Exclusive T & T Selection. This outstanding variety was recently introduced from British Columbia. This variety has been an outstanding Test Plot yielder for the past three years. It has a heavy russeted skin which makes it resistant to bruising and scab. Here you are assured of an early russeted potato. Our strain of Columbia Russet is 10 days earlier than the regular strains. Ideal for baking. TRULY A CANADIAN FIRST. Only 50 eyes to a customer. SPECIAL—25 Eyes—59c.

## 9805. Canus (New)

New origination from the Lacombe, Alberta Experimental Farm. Bred for Northern long day conditions, it promises to be our outstanding main crop potato. Very broad deep green leaves and heaviest foliage growth of any potato. Its extreme vigor assures highest yields and drought resistance. Tuber shape like Cobblers, but eyes are much shallower. Produces higher percentage of No. 1 tubers per hill. Eventually we will all count on Canus for our main crop, so start now. It's scarce. Only 25 eyes to a customer. POSTPAID SPECIAL—25 Eyes—69c.



## 9810. Warba

Earliest potato grown. Developed by Dr. Krantz, Univ. of Minn. Sure cropper in short season dry districts. Best farm garden variety, always matures a crop. White skin. Excellent flavor. Good keeper.

## 9820. Irish Cobbler

Old favorite for home and market garden. Top yielder on all soil types. Quality always dependable. Mealy fine flavored, excellent for baking. White skin and flesh. Light purple flowers.

## 9830. Early Ohio

If this is a favorite of yours here is some new true, disease-free stock. In recent years, newer, smoother, more disease-resistant types are replacing this old favorite. Oval pink tubers are table favorites.

## 9840. Bliss Triumph

This earliest of the main croppers, is gaining more friends in the Northwest every year. Outstanding yields of red-skinned, shallow-eyed, oval tubers, excellent keeper, smooth, consistently uniform. Distinctive flavor.

## 9850. Chippewa

Developed by the U.S. Dept. of Agriculture. This is the earliest of their heavy yielders. Due to be a main cropper in the Northwest. Flat, easily peeled, shallow-eyed white tubers. Housewives favorite.

Thirty-one





# Gladiolus



This **T & T** Glad List is the best 24 Glads available at any price. Our Jerry Twomey in his Glad breeding work tests dozens of the new ones every year. These 24 varieties will clean up any show or give you the finest cut flowers ever. Bulb increase makes Glads a permanent investment. All **T & T** bulbs are hand picked, top quality 1 1/4 in. in diameter or over. Specially wrapped and shipped in the Spring. Detailed Cultural Guide with order. D.D.T. controls Thrip.

**9120—MARGARET BEATON SPECIAL**—Originated by our Jerry Twomey, this strikingly beautiful creamy-milk white with bright scarlet blotch is now grown by the millions throughout the world. Enormous spikes. Wonderful cut flower. Delivered Prices—Large bulbs 3 for **24c**; 6 for **44c**; 12 for **80c**; 24 for **\$1.50**; 50 for **\$2.95**

**9130—GRETA GARBO SPECIAL**—Beautiful waxy clear Pastel Pink. Has been Champion at Winnipeg Show for several years. By far the best pink for exhibition or cut flower. Early, easy grower. Delivered Prices—Large bulbs 3 for **27c**; 6 for **48c**; 12 for **95c**; 24 for **\$1.85**; 50 for **\$3.65**.

## WORLD'S BEST NEW GLADS

**9104—LEADING LADY**—Enormous, glistening white with clear cream throat. A Sport of Picardy. Proven choice. It's the fastest selling Glad on list. Postpaid, large bulb, each **36c**; 3 for **\$1.00**.

**9105—PURPLE SUPREME**—New best bright clear purple. Beautiful formal spikes. A show in itself. Postpaid, large bulb, each **25c**; 3 for **65c**.

**9106—ELIZABETH THE QUEEN**—Big ruffled lavender. Best lavender at any price. Is winning many championships. Postpaid, large bulb, each **18c**; 3 for **48c**; 6 for **95c**.

**9107—STOPLIGHT**—Wonderfully reliable. Clean ruffled red that's catching on like wildfire. Postpaid, large bulb, each **15c**; 3 for **42c**; 6 for **80c**.

**9108—WHITE GOLD**—Largest glad grown. Tremendous vigour. Early enormous creamy white with Golden Throat. Down in price. Postpaid, large bulb, each **15c**; 3 for **42c**; 6 for **80c**.

**9109—CORONA**—Giant blushed cream with picotee pink edge. One of the most beautiful of all Glads. Big and reliable. Postpaid, large bulbs, each **15c**; 3 for **42c**; 6 for **80c**.

## CHOICE NAMED GLADS

Special Delivered Prices. Each variety large bulbs delivered 3 for **21c**; 6 for **39c**; 12 for **74c**; 25 for **\$1.29**; 50 for **\$2.69**.

**9160—BEACON**—Scarlet with clean white Throat. Early easy grower. Bright and striking.

**9161—BLUE BEAUTY**—Best blue at any price. Tall strong reliable grower. Clear blue violet.

**9162—ETHEL CAVE COLE**—Enormous large flowered early salmon pink. Early disease resistant.

**9163—JOHN S. BACH**—Big rosy scarlet; all open at once. One of earliest to bloom.

**9164—KING LEAR**—Tall heavily ruffled, rich deep purple. A showy and sure bloomer.

**9166—PICARDY**—Best of all; rich salmon giant. Most widely grown Glad in the world.

**1969—SNOW PRINCESS**—Earliest best white with cream throat. First glad to bloom; cuts well to mix with all other colours.

**9170—EXHIBITION MIXTURE**—We feel this is the Best Glad mixture offered at any price. Named varieties and new selected seedlings from our Breeding work are hand selected and blended in a superb mixture. Bulbs are scarce order early. Postpaid—Large bulbs 6 for **32c**; 12 for **58c**; 24 for **\$1.05**; 48 for **\$1.98**; 100 for **\$3.98**.

Sec. 562, P. L. & R.  
U.S. POSTAGE

**1c. Paid**

Grand Forks, N.D.

Permit No. 137

RETURN  
POSTAGE  
GUARANTEED

P. SAIRD  
N. GREAT PLAINS FIELD STA  
MANDAN, N. DAK.  
Z 3