

Historic, Archive Document

Do not assume content reflects current scientific knowledge, policies, or practices.

62,89

WOOD'S

LIBRARY
RECEIVED
★ OCT 29 1948 ★
U. S. Department of Agriculture

Fall Catalogue 1948



T. W. WOOD & SONS

Seedsman Since 1879

RICHMOND, VIRGINIA

WOOD'S LAWN GRASSES

MADE WITH ONLY THE FINEST QUALITY TURF-PRODUCING GRASSES



To Make a Lawn

The Fall months are always considered as being particularly favorable for the seeding of new lawns or the reseeding of old ones. For new lawns, preparation of the seed bed is of the greatest importance and too much care cannot be given to this. The ground should be broken and thoroughly pulverized to a depth of at least six inches. If the land needs lime it should be applied at this time and well worked in. Repeated raking of the surface at intervals of several days will aid in killing any volunteer foreign growth and help to provide a clean seed bed. One or two days before seeding, work a good application of **Wood's High-Grade Sheep Manure** into the top two or three inches. Broadcast the seed evenly, half one way and half the other, cover lightly either by raking or with a drag and roll with a light roller. Keep moist, using a fine spray to avoid washing and after germination is well started, water only when necessary. Pull out any weeds that appear.

What Grass to Sow

In Virginia and farther north, in westerly sections of the Carolinas and farther west, sow **Wood's Super-Green**, **Wood's Evergreen** and **Shady Park Lawn Grasses**. In other parts of South sow **Wood's Emerald Park Grass**. Under trees and shaded places sow **Wood's Shady Park Lawn Grass**.

Renewing Old Lawns

Every Fall and Spring sow more seed. Cut the grass close, apply a good fertilizer and rake in and broadcast the seed evenly, one pound or more per 500 square feet, according to the stand and again run the mower over the lawn. This will put the seed into the soil. Water freely.

How to Cut Your Lawn

Cut when two to three inches high and keep cut regularly but never shorter than one and one-half inches unless during cool weather. Be sure your mower is kept sharp. A dull mower bruises and injures the grass. During hot weather it is advisable to raise the mower blades.

Wood's Winter-Green Lawn Grass

As its name implies, this Lawn Mixture will produce a beautiful green lawn through the winter months when many other grasses are dormant or not at their best. Especially recommended for broadcasting on top of established lawns to freshen them up during the cold months. To seed, simply cut the existing lawn close, rake with a sharp rake, broadcast 1 to 2 lbs. of **Wood's Winter Green Lawn Grass** per 100 square feet and again run the mower over the lawn. The result will be a velvety green lawn through the winter months. For best results, seeding should be done not later than October, although later seeding will produce good results if the weather remains open.

By mail postpaid, 1 lb. 55c.; 5 lbs. \$2.25; 10 lbs. \$4.35; 25 lbs. \$9.90. Not postpaid, 1 lb. 45c.; 5 to 24 lbs. 40c. lb.; 25 to 99 lbs. 37c. lb.; 100 lbs. 35c. lb.

Wood's Evergreen Lawn Grass

1 lb. sows 200 square feet; 90 to 100 lbs. sows an acre

No one grass is suitable for making a lawn, so we have put into our **Evergreen** a well-balanced mixture of grasses that are at their best at all seasons, and will make a rich, deep green velvety lawn in as short a time as possible. It contains no coarse grasses.

By mail postpaid, 1 lb. 85c.; 5 lbs. \$3.75; 10 lbs. \$7.35; 25 lbs. \$17.40. Not postpaid, 1 lb. 75c.; 5 to 24 lbs. 70c. lb.; 25 to 99 lbs. 67c. lb.; 100 lbs. 65c. lb.

Wood's "Super-Green" Lawn Grass

1 lb. sows 200 square feet; 90 to 100 lbs. sows an acre

A combination of the finest turf grasses available. Contains only Certified Bent Grass, Cheving's Fescue, Kentucky Blue Grass, and Red Top; no Clover. All seeds are our Super Grades and of the highest possible quality, and will produce a thick, even, velvety turf, even in shady locations. Recommended for lawns in Virginia, Piedmont and mountain sections of the Carolinas and Georgia, and all states north of Virginia. Should be used where particular care can be given.

By mail postpaid, 1 lb. \$1.00; 5 lbs. \$4.50; 10 lbs. \$3.85; 25 lbs. \$21.15. Not postpaid, 1 lb. 90c.; 5 to 24 lbs. 85c. lb.; 25 to 99 lbs. 82c. lb.; 100 lbs. 80c. lb.

Wood's Emerald Park Lawn Grass

1 lb. sows 150 square feet; 125 lbs. sows an acre

A splendid mixture of fine quick-growing grasses that are adapted to the Middle and South Atlantic States. It contains none of the coarse grasses, nor those that grow in tufts. It is a good all-around general purpose lawn mixture for large areas, parks, athletic fields, etc.

By mail postpaid, 1 lb. 70c.; 5 lbs. \$3.00; 10 lbs. \$5.85; 25 lbs. \$13.65. Not postpaid, 1 lb. 60c.; 5 to 24 lbs. 55c. lb.; 25 to 99 lbs. 52c. lb.; 100 lbs. 50c. lb.

Shady Park Lawn Grass

Few grasses thrive in shade. Our mixture is composed of dwarf grasses especially adapted to shady places under trees and around the house. Under trees apply a double quantity of fertilizer.

By mail postpaid, 1 lb. 95c.; 5 lbs. \$4.25; 10 lbs. \$8.35; 25 lbs. \$19.95. Not postpaid, 1 lb. 85c.; 5 to 24 lbs. 80c. lb.; 25 to 99 lbs. 77c. lb.; 100 lbs. 75c. lb.

White Dutch Clover

By mail postpaid, 1 lb. 95c.; 5 lbs. \$4.35; 10 lbs. \$8.55; 25 lbs. \$20.65. Not postpaid, 1 lb. 85c.; 5 to 24 lbs. 82c. lb.; 25 to 99 lbs. 80c. lb.; 100 lbs. 78c. lb.

Rye Grass—For Winter Lawns

A beautiful green lawn during the winter and early spring months can be obtained by broadcasting Rye Grass Seed over any existing lawn. The growth is quick. Before seeding it is necessary to cut the lawn, rake it lightly and sow the seed evenly at the rate of one pound to 100 square feet and run the mower over the lawn again. Seeding is best done in late September or early October.

By mail postpaid, 1 lb. 30c.; 5 lbs. \$1.10; 10 lbs. \$2.05; 25 lbs. \$4.40. Not postpaid, 1 lb. 20c.; 5 to 24 lbs. 17c. lb.; 25 to 99 lbs. 15c. lb.; 100 lbs. 13c. lb.

FERTILIZERS FOR LAWNS

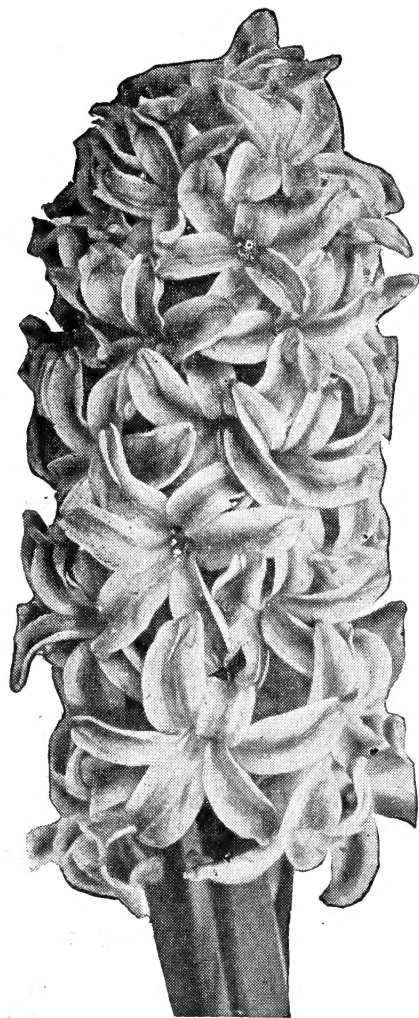
WOOD'S HIGH-GRADE SHEEP MANURE

The supreme natural fertilizer finely pulverized. Unequaled for lawns, gardens and shrubbery. Fine for mulching or as a liquid manure. Use 10 lbs. to 100 square feet for mixing in soil and half that quantity for top dressing. 25 lbs. \$1.00; 50 lbs. \$1.75.

WOOD'S PULVERIZED AND SHREDDED COW MANURE—25 lbs. \$1.00; 50 lbs. \$1.75.

VIGORO—Regular Stock for Lawns and Flowers. Analysis: 4% Nitrogen, 12% Phosphoric Acid, 4% Potash. Prices, F.O.B. Richmond: 5 lbs. 50c.; 10 lbs. 90c.; 25 lbs. \$1.60; 100 lbs. \$4.25.

WOOD'S HYACINTHS



CULTURE IN POTS: Use any good soil, mixed with sand, potting so as to leave the top of the bulb even with the soil. For a single plant use 4 or 5-inch pot; but the effect will be prettier if several bulbs are planted in a larger pot, and still more effective if all are of one color. Press the soil firmly around the bulbs, but do not pack it underneath. Sink the pot in the earth about 6 inches, covering with soil, choosing a location that is not too wet. For a succession of bloom, bring the first out about December 1st, and every two weeks thereafter, until February 1st. Keep moderately warm and when they begin to bloom, give plenty of water, and as much fresh air as possible. Too much heat dries up the flower and shortens the blooming period.

CULTURE IN OPEN GROUND: Any good garden soil will suit. If clay or very heavy, do not cover more than 3 inches; if light, from 4 to 6 inches. Protect with manure, leaves or coarse litter to prevent freezing.

CITY OF HAARLEM. A very beautiful, large, pure yellow, compact bloom of fine form and substance; the best yellow Hyacinth for bedding and pots.

DR. LIEBER. A distinct bright blue, long compact truss. One of the best of the bright blues. Good for bedding and forcing.

GERTRUDE. Deep rose-pink, fine compact spike with bells of medium size; very handsome variety for all purposes.

GRAND MAITRE. Very pleasing shade of deep lavender-blue, the immense large and broad truss is of great beauty and substance; one of the best blue Hyacinths under cultivation; recommended for all purposes.

KING OF THE BLUES. A very dark blue, bearing a splendid spike with large bells; excellent for late forcing or bedding.

LA VICTOIRE. Brilliant rose-crimson, when forced a fine dark pink. This variety grows a large spike of perfect form and is unsurpassed for all purposes.

L'INNOCENCE. Pure white, fine large truss, produced on a strong stem with large bells of great beauty and substance; the best white Hyacinth for massive bedding and forcing.

MARCONI. Bright deep rose, faintly shaded rosy-white, producing a large broad spike, borne on a stiff stem; particularly good for bedding.

PERLE BRILLANTE. A very fine lavender-blue; produces large broad spike on stiff stem; good form.

PINK PEARL. One of the finest new clear pink Hyacinths. It is a valuable improvement of Gertrude, a large spike with closely set bells of a very distinct rose-pink; a splendid bedder and a very good one for indoors.

The above Hyacinths may be had in two sizes:

WOOD'S EXHIBITION HYACINTHS—EXTRA LARGE BULBS
30c. each; \$3.25 per dozen; \$21.50 per 100

WOOD'S SUPERIOR BEDDING HYACINTHS
3 for 60c.; \$2.00 per dozen; \$14.00 per 100

ROMAN HYACINTHS—White, Pink & Blue

The flowers, while smaller than those of the Dutch Hyacinths, are borne in much greater abundance, each producing about 6 graceful spikes of blooms, which makes it a most valuable sort for cutting. They can be forced very easily, and if planted early and brought into the house at intervals of about two weeks, will yield a succession of blooms from Christmas to Easter. 3 for 60c.; \$2.00 per dozen; \$14.50 per 100.

Dutch Iris

The flowers of Dutch Iris are broader, the falls usually wider apart, and the lips larger than the Spanish type. They are about two weeks earlier, blooming right after the Cottage Tulips. They are wonderful for cutting, opening nicely even if cut in bud, and lasting a long time.

All Varieties: 3 for 25c.; 75c. per dozen; \$5.00 per 100

A. BLOEMAARD. Standards dark purple, falls lighter blue. Very large flower. Early.

D. HARING. Grayish white, tinted lilac; falls pure white. Large flower. Early.

IMPERATOR. The finest, largest Iris for all purposes. A strong growing, free blooming, clear blue Iris.

POGGENBEEK. Standards and falls uniform, dark blue. Very early.

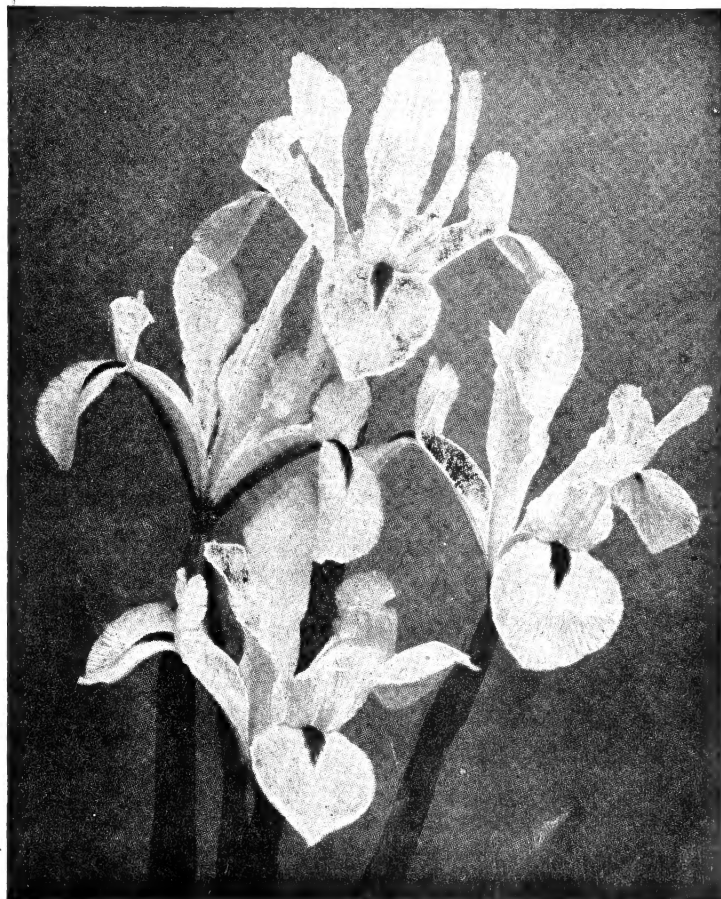
WEDGEWOOD. Standards blue, falls beautiful pale blue with a yellow blotch.

WHITE EXCELSIOR. Extra large, snow-white; lips carry feathers of golden orange.

GOLDEN HARVEST Deep golden yellow, extra large. Very early.

VAN EVERDINGEN. White blotched with yellow. A very fine Iris.

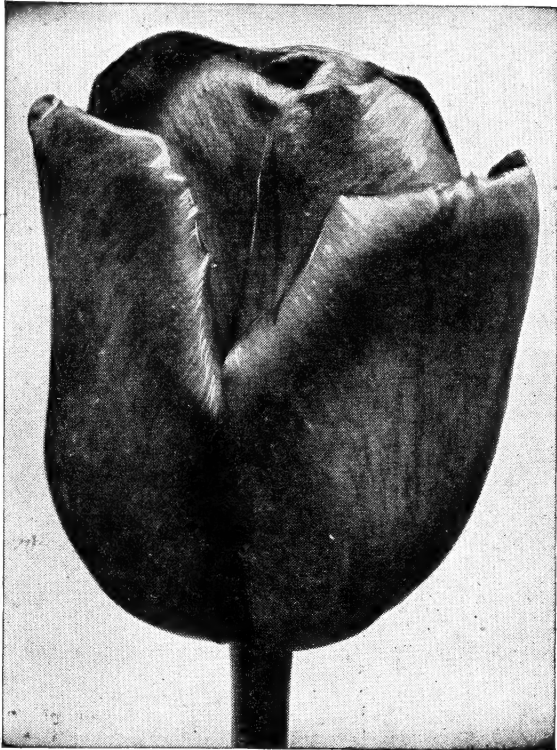
WOOD'S SPECIAL MIXED DUTCH IRIS. 60c. per dozen; \$4.00 per 100.



Wood's Giant May-Flowering Tulips

TOP SIZE BULBS—GROWN IN HOLLAND

These gorgeous new late or May-Flowering Tulips are very stately and beautiful, producing immense flowers on tall, sturdy stems, and bearing beautiful globular flowers of remarkably heavy texture, in a large range of colors. They embrace almost every conceivable tint in rose, heliotrope, claret, maroon, crimson and other rich and rare shades. Unsurpassed for bedding and cutting. Letter after variety denotes class of Tulip. (B) Breeder (C) Cottage (D) Darwin.



Tulips of Special Merit

The Tulips listed below are new varieties, introduced by the growers in Holland just before the war and were quoted at considerably higher prices than we are asking today:

- AMERICAN FLAG (Rembrandt).** 28 inches. Dark red with broad white lines. Large long flower of good substance. Each flower has similar markings. Straight, strong stem. Outstanding novelty. 3 for 40c.; \$1.40 per dozen; \$10.00 per 100.
- ARISTOCRAT (D).** 32 inches. Enormous, strong and tall Tulip, soft purplish violet-rose, lighter edged. Really an aristocrat. 3 for 60c.; \$1.85 per dozen; \$13.50 per 100
- CHARLES NEEDHAM (D).** 26 inches. Brilliant scarlet red with blue base; strong, tall stem, large flower. The best of the red Darwin Tulips. 3 for 40c.; \$1.40 per dozen; \$10.00 per 100.
- DEMETER (D).** One of the largest Darwins ever seen, reaching a height of at least 30 inches and carrying an enormous violet flower. 3 for 60c.; \$1.85 per dozen; \$13.50 per 100.
- ECLIPSE (D).** 28 inches. Glowing deep blood-red with white margined dark blue base. An elegant, very attractive large flower. 3 for 40c.; \$1.75 per dozen; \$10.00 per 100.
- GEORGE GRAPPE (B).** 30 inches. Enormous uniform lavender-blue flower, distinct heavenly-blue base, straight tall stem. A great favorite in all gardens. 3 for 40c.; \$1.40 per dozen; \$10.00 per 100.
- INSURPASSABLE (D).** 24 inches. Lovely lilac, turning slightly lighter toward edges. Very large flower of great substance. Far superior to Wm. Copeland. 3 for 40c.; \$1.40 per dozen; \$10.00 per 100.
- MRS. JOHN T. SCHEEPERS (C).** 24 inches. Pure yellow with yellow anthers. A giant flower on a tall, sturdy stem. The largest and best yellow Tulip. 3 for 40c.; \$1.40 per dozen; \$10.00 per 100.
- OSSI OSWALDA (D).** 24 inches. A striking new novelty, of creamy white, edged rose, resembling Picotee; changing by the day, until at its height it is a pure rose. 3 for 40c.; \$1.40 per dozen; \$10.00 per 100.

PRIDE OF ZWANENBURG (D). 26 inches. Very pleasing old rose, turning lighter towards the edges; inside reddish pink, with white base and purplish black anthers. Very large, attractive flower of great merit. 3 for 40c.; \$1.40 per dozen; \$10.00 per 100.

QUEEN OF THE NIGHTS (D). 26 inches. The darkest black of all black Darwins, most outstanding of all the black Tulips. 3 for 60c.; \$1.85 per dozen; \$13.50 per 100.

SCARLET LEADER (D). 27 inches. Its name expresses its appearance perfectly. Color is of beautiful fiery scarlet, without any markings. We find this variety a wonderful

improvement of the Scarlet Beauty. 3 for 40c.; \$1.40 per dozen; \$10.00 per 100.

WILDLUST (Glacier) (D). 26 inches. Pure white; white base with yellow anthers. Long, oval flower of gigantic size with lasting qualities. The largest white Tulip. 3 for 50c.; \$1.85 per dozen; \$13.50 per 100.

WHITE GIANT (D). 27 inches. One of the largest pure white Darwin Tulips under cultivation, white base and black anthers; the large, well shaped flowers has fine, lasting qualities. 3 for 40c.; \$1.40 dozen; \$10.00 per 100.

Select Single Early Tulips

These Tulips will bloom from two to three weeks earlier than the May-Flowering Tulips. They are 10 inches to 15 inches in height. 3 for 40c.; \$1.40 per dozen; \$10.00 per 100.

GENERAL DE WET (Fireglow). Golden yellow, splashed and stippled deep orange, giving the general effect of a clear orange; sweet scented. Sport from "Prince of Austria." Recommended for forcing as well as for bedding.

KEIZERSKROON (Grand Duc). Bright crimson scarlet with broad golden yellow border; bold cup shaped flower on stout stem. Good for medium late forcing. Very effective bedder.

PRINCE OF AUSTRIA. One of the best early Tulips, both for bedding and for forcing. Well-shaped and strong flower of a fine deep orange-red color.

PINK BEAUTY. Deep rose with broad stripe of white on center of petals; a bi-colored Tulip; very large, stately flower of pleasant appearance on strong stem. Excellent bedder.

SUNBURST. Yellow with red. A very striking and attractive variety. Very strong and long lasting, which make it an excellent garden Tulip.

VAN DER NEER. A very good bedding Tulip of perfect flowering habits. Large deep violet flower on a short stem.

WHITE HAWK. White Falcon. Milk-white; large globular flower of great substance with crinkled petals on stout stem. Very good keeper. Recommended for early forcing.

New Parrot Tulips TOP SIZE—GROWN IN HOLLAND

The New Parrot Tulips are a great improvement upon the older family. They are all of free-flowering and erect habit. We strongly recommend them to Tulip lovers and some are now within the reach for every garden. A batch of Fantasy is something unique and particularly beautiful.

BLUE PARROT. 24 inches. A noble flower of unsurpassable beauty, held on an erect stem; color bright violet outside with a purplish interior; when grown under glass it is a warm mauve and opens up to an enormous size. It is a sport of "Bleu Amaible." 3 for 40c.; \$1.40 per dozen; \$10.00 per 100

FANTASY. 20 inches. A remarkably beautiful Parrot sport of the famous Clara Butt Tulip; color beautiful soft rose with faint stripes and featherings of apple-green on outer petals. The flowers expand to an enormous size and attract great attention. Of very free-flowering habit, highly recommended. 3 for 40c.; \$1.25 per dozen; \$9.00 per 100.

GEMMA. 15 inches. A Parrot sport of the Early Single Tulip La Reine. Color pure white with faint pinkish

margin. Large flower; may be forced. 3 for 45c.; \$1.65 per dozen; \$12.50 per 100.

RED CHAMPION. 24 inches. This newly introduced novelty is a fine Parrot sport of the good Darwin Tulip Bartigon; the flowers are of quaint yet beautiful form with both inner and outer petals heavily lacinated, opening to enormous size when fully developed. Its color is a uniform warm deep blood-red with only tiny faint white markings at the tip of outer petals. Small white base; good, strong grower. 3 for 60c.; \$1.85 per dozen; \$13.50 per 100.

VIOLET QUEEN. 24 inches. A beautiful soft violet, flushed lavender with very deeply cut petals. A Parrot Tulip of remarkable size, which is carried on a tall and strong stem. Outer petals strongly marked bronzy-green. The white markings in the center are quite attractive. Highly recommended. 3 for 60c.; \$1.85 per dozen; \$13.50 per 100.

Wood's Standard May-Flowering Tulips TOP SIZE BULBS GROWN IN HOLLAND

3 for 35c.; \$1.20 per dozen; \$8.50 per 100

AFTERGLOW (D). 24 inches. A cup-shaped flower of clear dark salmon, edged light orange. This excellent variety makes a gorgeous effect if planted in masses with blue ground cover.

ARETHUSA (C). 25 inches. Chrome-yellow, edged dark yellow. Large well formed flower, petals slightly reflexing, straight stem.

BARONNE de la TONNAYE (D). 26 inches. Bright rose, margined blush rose. A sturdy variety, excellent for bedding.

BLUE EAGLE (D). 26 inches. Shining deep purple. An outstanding variety. Improvement over Blue Amiable.

CARRARA (C). 24 inches. Pure white with ivory anthers. Large globular flower. An outstanding variety.

BARTIGON (D). 22 inches. Fiery crimson with white base; very strong grower. One of the best in this color.

CAMPFIRE (D). 24 inches. A very handsome, large globular flower of a deep blood-red shade and of great substance; base pure white with broad ring of deep blue. Strongly recommended for bedding.

CLARA BUTT (D). 20 inches. Clear salmon-pink; a beautiful and charming bedding Tulip.

DILLENBURG (B). 26 inches. A new variety best described as a glorious salmon-orange, with large, showy, well formed flowers of great substance.

DIDO (C). 26 inches. Orange red, slightly flushed cerise, with amber-orange edges; inside salmon-orange with yellow base.

FARNCOMBE SANDERS (D). 24 inches. Scarlet, with a rosy gloss; broad petaled flowers of perfect shape.

GOLDEN AGE (D). 24 inches. Deep yellow, inside slightly lighter; yellow base and yellow anthers. Large flower of true Darwin shape, on tall, strong stem. An outstanding variety.

INGLESCOMBE YELLOW (C). 20 inches. Clear golden yellow. One of the best May-flowering yellows, has given universal satisfaction.

J. BOUWMAN (B). 24 inches. Large. Tomato-red, flushed claret, edged yellow. Mid-May.

LA TULIPE NOIRE (D). 24 inches. The nearest approach to the so-called Black Tulip; deep maroon-black, with a velvet sheen. One of the darkest varieties.

LEMON QUEEN (Mother's Day) (C). 24 inches. Magnificent variety of recent introduction, producing large flowers of erect habit; color a lovely pale yellow self, anthers yellow with slightly deeper yellow base. Recommended.

LOUIS XIV (B). 30 inches. Rich purple, with an edge of golden bronze, producing a fine blending of tone. Immense flower, and a great favorite.

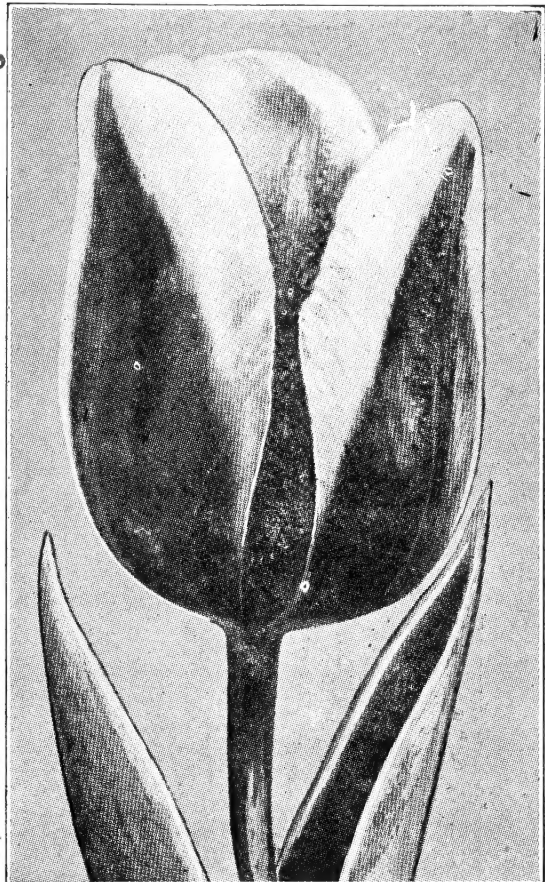
MARSHALL HAIG (C). 25 inches. Brilliant scarlet with glittering red interior, yellow base. Highly recommended.

MR. VAN ZIJL (D). 24 inches. Deep rose pink, broadly edged white, with white base. Improved Rose Bella Cottage Tulip.

MRS. MOON (C). 24 inches. This is beyond a doubt one of the finest late yellow Tulips, vase-shaped, with pointed petals; distinctly perfumed.

PRIDE OF HAARLEM (D) 25 inches. Brilliant American Beauty Red; most popular Darwin; sweet scented.

PRINCESS ELIZABETH (D). 24 inches. Clear deep pink; changing to rose-pink. A well shaped flower, giving it added attraction.



PROFESSOR RAUWENHOF (D). 27 inches. Deep cherry red with salmon glow inside, strong stem. May be used for bedding or forcing.

REV. EWBank (D). 26 inches. Lavender lilac, deeper towards the edges, white base. Good sized flower.

TANTALUS (B). 28 inches. Outer petals dull lilac on yellow ground passing to yellow towards edges. Inside is the yellow color predominating. Very large cup-shaped flower on tall stem.

UTOPIA (D). Large, cardinal-red, good forcing variety as well as for outdoors. 20 inches.

ZWANENBURG (D). 27 inches. A pure white Tulip with black anthers. A good white for many purposes.

WOOD'S SPECIAL MIXED DARWIN TULIPS. Composed entirely of named sorts and contains a great variety of all colors and shades. 90c. per dozen; \$6.25 per 100.

Triumph Tulips Top Size—Grown in Holland

They are exceedingly valuable for the flower garden, in borders, etc., on account of their strong stems, vigorous habit and wonderful colors. **Triumph Tulips** flower about ten days later than Early Single Tulips, thus bridging the gap between the early and late varieties nicely.

3 for 35c.; \$1.20 per dozen; \$8.50 per 100

AVIATEUR. 22 inches. Brilliant carmine red bordered silver; flowers are of good size. A very fine bedding Tulip.

CRATER. 16 inches. A strong variety of dark vermilion-red. Very effective.

CROWN IMPERIAL. 20 inches. Bright mahogany, with golden yellow edge. Very attractive.

ELIZABETH EVERS. 24 inches. A tremendously large flower of Fuchsia-red, flushed with lines of silver and white, and a white base. Very strong grower, and the flowers last a long time.

ELMUS. A grand Tulip, producing very large globular flowers of a pleasing shade of warm cherry-red, deeply edged pure white, really a happy combination of color; large, pure white base, tall sturdy grower.

KANSAS. 22 inches. Snow white, with lemon-yellow base and yellow stamens. One of the best white Tulips for outdoor planting.

TELESCOPIUM. 20 inches. A very elegantly shaped flower of a reddish-violet, of large size and great beauty; the blooms are borne on tall stems.

LATE DOUBLE TULIPS--Peony Flowered

They are May-flowering Tulips and represent almost an entirely new group. Much time has been devoted to the production of new colors and the result has been the creation of very beautiful varieties, which are delightful for bedding or planted in groups in the border or among evergreens, etc. They are 18 inches to 22 inches in height.

3 for 40c.; \$1.40 per dozen; \$10.00 per 100

MOUNT TACOMA. Resembling a large, double white Chinese Peony, immense large flowers, which are produced on fairly tall, strong stems.

LIVINGSTONE. Bright red with light yellow base. Very strong grower. One of the best of this color.

COXA. Carmine-red, edged vermilion, very small white border, large flower; extra for border or bedding.

EROS. Very large, substantial flowers of a clear old rose color. This is indeed one of the best doubles under cultivation and will certainly command attention when flowering in the garden.

UNCLE TOM. A very beautiful Tulip with large full-double flowers of a uniform deep glossy maroon-red color, really a distinct shade in Tulips.

Daffodils and Jonquils

Among early spring flowers these are in the front rank of popularity. Appearing just after winter, they animate our gardens with masses of gold and silver, while their fragrant blossoms in the home are invaluable for decorative purposes.

Culture Out-of-Doors: All varieties of *Narcissus* should be grown in clumps and patches in every suitable spot, and there is not a spot where grass will grow in which *Narcissus* will not succeed. In planting be guided by the size of the bulb, allowing 4 to 5 inches between small sorts and 6 to 8 inches between large varieties. The bulbs will soon completely fill the space, forming a compact mass, and it is then their flowers are produced the most freely. Plant about 5 inches deep, according to the size of the bulb.

BEERSHEBA. Perianth and trumpet of magnificent proportions. Sturdy foliage and stem; height 20 to 22 inches. Its color is pure white and expressive of purity in the highest sense. Those who are forming collections of fine *Narcissi* rate Beersheba at the top of the large white Trumpets. Large size, 40c. each; 3 for \$1.00; \$3.60 per dozen.

DAWSON CITY. A fine garden and exhibition variety of wonderful form and substance. Broad, flat perianth and well formed flanged trumpet. Golden yellow. Large size, 3 for 50c.; \$1.40 per dozen; \$9.00 per 100.

GOLDEN HARVEST. An all golden yellow trumpet variety, of fine form. An improvement over the older variety. Golden Spur. Very early blooming, both in the garden and for forcing. Large size, 3 for 50c.; \$1.50 per dozen; \$10.00 per 100.

KING ALFRED. One of the finest and largest deep golden trumpet varieties. A tall, strong grower, with magnificent frilled trumpet and large perianth, all of a rich golden yellow. Jumbo size, 3 for 60c.; \$2.00 per dozen; \$14.00 per 100. Large size, 3 for 40c.; \$1.15 per dozen; \$8.00 per 100.

LORD WELLINGTON. Very large magnificent deep golden yellow flower with broad petals and a large trumpet; tall stiff stem. Much larger and ten days later than King Alfred. Large size, 3 for 60c.; \$1.75 per dozen; \$12.00 per 100.

MRS. E. H. KRELAGE. The perianth and trumpet are pure white and this is one of the finest white Daffodils. Large size, 3 for 50c.; \$1.40 per dozen; \$9.00 per 100.

ROBINHOOD. A new departure in Giant Trumpets. Deep orange trumpet with a golden yellow perianth. Outstanding introduction. Large size, 3 for 50c.; \$1.50 per dozen; \$10.00 per 100.

QUEEN OF THE BI-COLORS. Broad, overlapping, pure white perianth, fine golden yellow trumpet; a large flower of great merit; very early. Large size, 3 for 60c.; \$2.00 per dozen; \$14.00 per 100.

JONQUILS

CAMPERNELLE REGULOSUS. Rich deep yellow flowers, broad imbricated perianth, with straight wrinkled cup. 3 for 30c.; 90c. per dozen; \$6.00 per 100.

NELL. Two to four bright yellow flowers per stem. Identical in form to the famous Simplex, but two to three times as large and with a tall stem. 3 for 60c.; \$1.75 per dozen; \$12.00 per 100.

JONQUILLA SIMPLEX. Dainty heads of small, rich, golden-yellow flowers; much praised for their delicious scent. 3 for 40c.; \$1.10 per dozen; \$7.00 per 100.

DAFFODILS FOR NATURALIZING

Suitable for garden display, woodland plantings or cutting. Practically any soil has been found suitable, and they are grown equally well in the open as among trees and in woodland. Contains a mixture of large Trumpets, Leeds, Barri, Poeticus and Poetaz types, making a mixture that cannot be beaten for value.

80c. per dozen; \$5.00 per 100

TERRA-LITE

Aids in creating a dependable reservoir of plant root moisture; air-conditions the ground; fluffs stiff soil to prevent cooking, packing and hardening; tends to reduce need for watering and cultivation; provides a satisfactory medium for cuttings, seedlings and transplantings. Ideal for storing bulbs, particularly dahlias and for vegetable winter storage. Postpaid, 4-qt. pkg., 50c.; 1/2-bus. bag, \$1.00. Not postpaid, 2-bus. bag, \$1.75.



Narcissus

BARRI TYPE

- ELLY NEY.** Pure white perianth with very broad petals, fine lemon yellow cup with picoteed edge of deep red. Remarkable flower of perfect form. 3 for 50c.; \$1.40 per dozen; \$9.00 per 100.
- CARMINOWE.** Striking large overlapping broad flat snow white petals and a flat crimson eye for a cup. A striking late bloomer. 3 for 40c.; \$1.20 per dozen; \$8.00 per 100.
- GOVERT FLINCK.** Fine pure white perianth, semi-frilled cup banded deep scarlet. A large striking flower and a prodigious bloomer. 3 for 40c.; \$1.20 per dozen; \$8.00 per 100.
- LATONIA.** Very round, perfectly flat, pure white perianth, large flat cup of deepest red, shading to dark yellow at center. Very tall stems. 3 for 60c.; \$1.75 per dozen; \$12.00 per 100.
- MARQUIS.** Lovely well formed pale yellow perianth with an expanded cup of solid intense deep red. Tall, strong grower. 3 for 50c.; \$1.50 per dozen; \$10.00 per 100.

INCOMPARABILIS TYPE

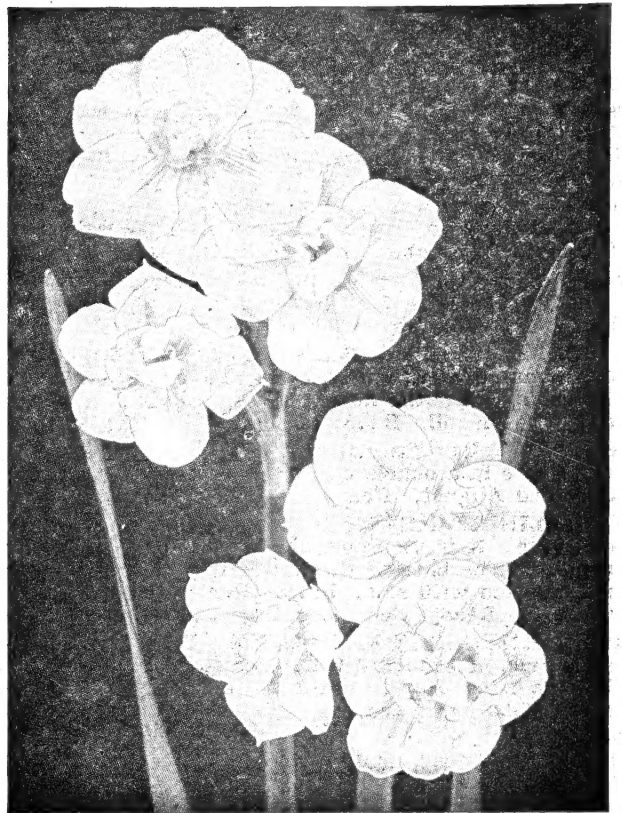
- DICK WELLBAND.** White semi-overlapping perianth, deep orange-red cup of remarkable quality; does not fade. 3 for 60c.; \$2.00 per dozen; \$14.00 per 100.
- FORTUNE.** Recognized as the best Daffodil of its type that has yet been produced. It has a beautiful color of clear deep lemon-yellow and a splendid flat, overlapping perianth with a very large and long bold cup of coppery red orange; is of good substance, a two foot stem and perfect carriage. 30c. each; 3 for 65c.; \$2.50 per dozen; \$16.00 per 100.
- FRANCISCUS DRAKE.** Pure white perianth of unusual substance, tinted gold at base. The wide deep cup is golden yellow at the base and changes gradually to flaming red at the densely frilled edge. A striking flower on a tall stem. 3 for 50c.; \$1.40 per dozen; \$9.00 per 100.
- HELIOS.** Deep golden yellow perianth; the cup opens a little darker than the petals. 3 for 35c.; \$1.00 per dozen; \$6.00 per 100.
- JOHN EVELYN.** Deservedly an international favorite and an outstanding variety among this class. Opening flat, the pure white perianth measuring 4 to 5 inches in diameter, with the cup densely frilled and fluted or shirred to the base. 3 for 40c.; \$1.15 per dozen; \$3.00 per 100.
- KILLEGREW.** Fine long petaled yellow perianth with a lively deep orange-red cup which holds its color well. Very tall and early. 3 for 50c.; \$1.50 per dozen; \$10.00 per 100.
- NAOMI.** Fine large ivory white perianth, bowl shaped red edged gold cup. New and different. 3 for 60c.; \$1.75 per dozen; \$12.00 per 100.
- SCARLET ELEGANCE.** Deep yellow perianth with vivid orange-red cup. Tall stem and a strong grower; outstanding. 3 for 50c.; \$1.40 per dozen; \$9.00 per 100.

POETICUS TYPE

- ACTAEA.** Broad overlapping white perianth of great substance and fine form. The large flat cup has a broad margin of the deepest red. Rated the largest and best Poeticus. 3 for 40c.; \$1.20 per dozen; \$8.00 per 100.
- DULCIMER.** Fine flat overlapping white perianth, large flat red cup with a green center; very late; tall stem. 3 for 50c.; \$1.40 per dozen; \$9.00 per 100.

LEEDSI TYPE

- DAISY SCHAEFFER.** One of the best of the remarkable new Giant Leeds type; the flower 4½ inches across, with cup nearly 2 inches. Resembles a Giant Trumpet, but much more graceful in form; perianth pure white, with cup opening primrose and turning to light canary-yellow deeper at the base. Long, lemon-yellow stigma and styles add to the color harmony of this remarkable flower. 3 for 50c.; \$1.50 per dozen; \$10.00 per 100.
- MRS. R. O. BACKHOUSE.** This is the famous "Pink Daffodil." Fine informal perianth of ivory-white, and beautifully proportioned slim, long, trumpet of apricot-pink, changing to shell-pink at the deeply fringed edge, delicately beautiful but of exceptional substance; long lasting, early. Belongs in every collection. 45c. each; 3 for \$1.25; \$4.25 per dozen.
- MRS. NETTIE O'MELVENAY.** Pure white perianth, yellow cup with a dainty edge of light orange. One of the largest in this group. Tall. 3 for 50c.; \$1.50 per dozen; \$10.00 per 100.
- TUNIS.** A magnificent garden plant of exceptional merit; very tall and vigorous grower; flowers are of great size; when first opening they are white, crown lemon turning to milk-white all over, with a well-marked frill of coppery-gold at the edge of the crown. 3 for 60c.; \$1.75 per dozen; \$12.00 per 100.



DOUBLE VARIETIES

- DAPHNE.** Magnificent double, pure white flower with exquisite fragrance. 3 for 40c.; \$1.20 per doz.; \$8.00 per 100.
- VALENCIA.** Deep yellow outer petals, inner petals of bright orange; a very large, striking flower, on a sturdy stem. 40c. each; 3 for 90c.; \$2.75 per dozen; \$18.00 per 100.
- TWINK.** A double of the semi-full type with alternating petals of soft primrose and clear orange and so arranged as to give the flower a most attractive appearance. 3 for 50c.; \$1.40 per dozen; \$9.00 per 100.

POETAZ TYPE

- CHEERFULNESS.** Clearly defined perianth of good white, semi-double cup of white and yellow. Two to 5 flowers per stem. 3 for 35c.; 90c. per dozen; \$5.00 per 100.
- ELVIRA.** Three to four large flowers with light yellow cups. Very late and tall. 3 for 40c.; \$1.10 per dozen; \$7.00 per 100.
- GLORIOUS.** Four to six flowers on a stem. Large pure white perianth with beautiful red edged orange cup. Grand exhibition flower. 3 for 40c.; \$1.15 per dozen; \$8.00 per 100.
- LAURENS KOSTER.** Bearing on tall, graceful stems heads of 5 to 6 large flowers with solid rounded perianth and pale yellow cup. 3 for 35c.; \$1.00 per doz.; \$6.00 per 100.
- RED GUARD.** Medium large. Yellow perianth flushed apricot, cup deep orange-red. Medium early. 3 for 50c.; \$1.50 per dozen; \$10.00 per 100.
- TRIANDUS-THALIA.** In addition to a peculiar attraction at first sight, this flower leaves one with an impression that it is white, yet it is whiteness that is not white. The recurving petals and the angle of the three trumpets are unlike the conventional short-cupped Daffodil. The stem is dark green, round and reed-like thin. Called the "Orchid-Flower" Narcissus. 35c. each; 3 for 90c.; \$3.00 per dozen; \$20.00 per 100.



BULB PLANTER

The "Hole-In-One" Bulb Planting Tool. Removes the soil up to a depth of five inches, making a perfect planting hole for many kinds of bulbs.

75c., postpaid

HYPONEX

With Hyponex and water, plants grow luxuriantly, flower abundantly and develop sturdy growth, regardless of the poorness or sterility of the soil.

With Hyponex they will grow and flourish in clean sand, cinders or barren earth. Hyponex is ideal for hydroponics.

3-oz. pkg., 25c.; 1-lb. can, \$1.00; 10-lb. drum, \$8.00

Hardy Lilies

These are unsurpassed by any of the class of hardy plants. They begin flowering in May, and the various species continue in uninterrupted succession until autumn. Can be planted in the garden, either in the fall or early spring; fall planting is better.

CANDIDUM (Annunciation, Madonna, or St. Joseph's Lily). An old favorite garden Lily, with snow-white fragrant blooms. It is good for forcing and blooms in the open ground in May. Ready in September. 40c. each; \$4.00 per dozen.

ESTATE (the Outdoor Easter Lily). A pure white Lily of Easter Lily type, growing 3 to 4 feet in height, producing 4 to 6 large blooms. Ready November 1st. 65c. each; \$7.00 per dozen.

GUERNSEY (Spider). Bears from 10 to 20 bright crimson flowers on stems 10 to 15 inches long. Blooms in early fall, the leaves appearing after the flowers. Easily grown in the South in ordinary garden soil. Ready in September. 15c. each; \$1.50 per doz.

HENRYI (Yellow Speciosum). Gorgeous rich apricot-yellow flowers, 6 to 8 in a bunch, carried on stalks 4 to 5 feet high. Blooms July and August. Ready in December. 40c. each; \$4.00 per doz.

PARDALINUM GIGANTEUM. This is one of the easiest lilies to cultivate. It is vigorous, dependable, very hardy and multiplies rapidly. The base of the flower is yellow with petals of sunset red, spotted with small brown dots. Height 5 to 6 feet. Blooms in July. Ready December 1st. 30c. each; \$3.00 per dozen.

PHILIPPINENSE FORMOSANUM. This Lily bears 3 to 5 blooms at a time, of beautiful white flowers with emerald green throat. Blooms from August until frost. Ready December 1st. 25c. each; \$2.50 per dozen.

REGALE. Pure waxy white with yellow throat. One of the finest of all hardy Lilies. Blooms June and July. Ready in November. 30c. each; \$3.00 per dozen.

SUPERBUM. The color in this desirable Lily varies from pale yellow to deep crimson, more or less spotted on the inner surface of the petals. Height 6 to 8 feet. Blooms in July. Ready December. 35c. each; \$3.50 per dozen.

SPECIOSUM RUBRUM. Delicate pink, almost white, spotted with red, flowers in August. Ready December 1st. 75c. each; \$8.00 per dozen.

TENUIFOLIUM (Coral Lily.) Handsome bright scarlet flowers, borne on slender stems. Excellent for rock gardens. Blooms May and June. Ready December 1st. 25c. each; \$2.50 per dozen.



UMBELLATUM. The colors range through shades of red from rose to blackish crimson, yellow, buff, orange, many being spotted. Blooms June. Mixed colors. Ready December 1st. 30c. each; \$3.00 per dozen.

TIGRINUM SPLENDENS (Improved Tiger Lily). Very hardy Lily; bright orange-red, spotted black. Blooms August. Ready December 1st. 30c. each; \$3.00 per dozen.

TIGRINUM FLORE PLENO (Double Tiger Lily). Handsome double flowers, the same color as the above. Blooms August. Ready December 1st. 30c. each; \$3.00 per doz.

Peonies

The best time for planting Peonies is during October. The roots should be set so that the top or upper eyes are about 2 or 3 inches below the level of the soil, from 3 to 4 feet apart each way.

90c. each; 3 for \$2.50

BENJAMIN FRANKLIN. Medium size, double dark crimson. The center is composed of smaller overlapping petals. Mid-season.

EDULIS SUPERBA. Very early, crown type; clear mauve-pink, with a beautiful silvery sheen.

FELIX CROUSSE. Rose type, brilliant ruby-eyed. One of the best and most popular kinds.

FESTIVA MAXIMA. Paper-white, crimson markings to center; very large and full rose type; very tall. Early.

FRANCES WILLARD. Rose type; exquisite blush-white, with an occasional carmine touch, changing to pure white. Among the world's most beautiful Peonies.

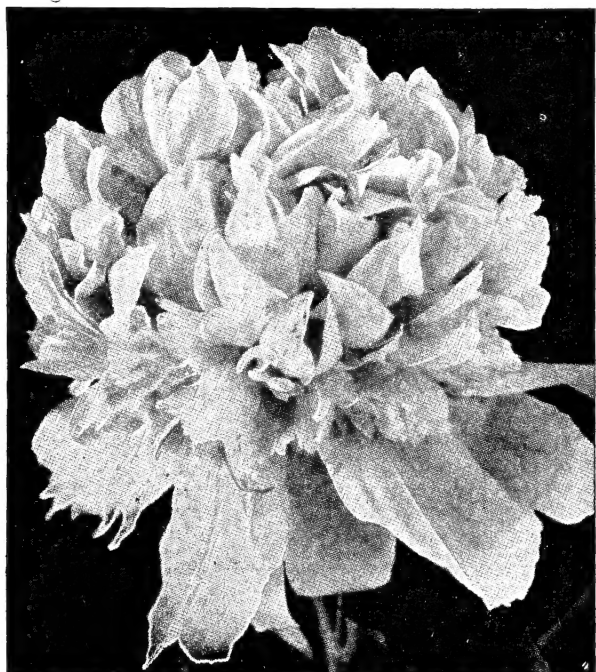
KARL ROSENFELD. Very large flower; globular, semi-rose type. Extremely vigorous grower, tall and free flowering. As an early red it has no equal.

MONSIEUR KRELAGE. Extra large, brilliant red, medium height and a prolific bloomer. Mid-season.

REINE HORTENSE. A uniform hydrangea-pink, with guard and center petals marked crimson. This is a variety that gives universal satisfaction and is both a show and garden variety. The plant is tall with long stiff stems.

SARAH BERNHARDT. A late blooming semi-rose type; flowers of remarkable size. Beautiful mauve-rose with silvery tips.

PEONIES BY COLOR. Red, white and pink. 75c. each; 3 for \$2.00; \$7.00 per dozen



Rainbow Collection of Tulips

50 Bulbs

FIVE EACH, SEPARATELY BAGGED AND LABELED
OF 10 FAMOUS VARIETIES, FOR ONLY

\$3.75

AFTERGLOW. Deep Rosy Orange
BARONNE de la TONNAYE
BLUE EAGLE. Deep Purple.
CAMPFIRE. Bright Red
GOLDEN AGE. Golden Yellow

INGLESCOMBE YELLOW
LA TULIPE NOIRE. Deep Maroon
MR. VAN ZIJL. Rose Pink
PROFESSOR RAUWENHOF
ZWANENBURG. White

100 Bulbs, 10 Each of the Above, for \$7.00

Bulbs for the Rock Garden

ANEMONES

Anemones should be planted the latter part of October, 3 inches deep and about 6 inches apart. They will do well on any well drained loam soil—so long as it is not lacking in lime.

ST. BRIGID (Semi-Double). Mostly double, with finely divided petals, and the most brilliant and varied shades, all having a handsome blue-black central base. Very graceful. 85c. per dozen; \$6.00 per 100.

DE CAEN. Taller in growth than the St. Brigid and more single. They contain many fine shades of blue, white and scarlet. 70c. per doz.; \$5.00 per 100.

CHIONODOXA

GLORY-OF-THE-SNOW. One of the earliest of our spring flowers. Bright blue, with large, clear white center. 35c. per dozen; \$2.00 per 100.

BLEEDING HEART

(DIELYTRA SPECTABILIS). One of the most showy of the old-fashioned flowers. The flowers are heart shaped, vary from light pink to a rosy crimson color, and are produced in sprays along the stem. They can be grown in either shady or sunny places, although they are more at home in the shade. Ready November 15th. Large roots, 65c. each; \$7.00 per dozen.

CROCUS—Large Bulbs

One of the earliest blooming spring flowers and very effective in lawns and borders. They show off very prettily when planted in the lawn. Make a small hole about 2 inches deep with a dibble or sharp-pointed stick, and then cover with a little extra soil. They are also very useful to plant in Hyacinth or Tulip beds between the rows, thereby giving a succession of early flowers. Set the bulbs 2 inches deep and 2 to 3 inches apart and plant as early in the fall as possible.

MONT BLANC. Pure white, tall; very fine.

PURPUREA GRANDIFLORA. Purple. The largest in this color.

QUEEN OF THE BLUES. A very fine light blue.

SIR WALTER SCOTT. Striped.

MAMMOTH YELLOW. Golden yellow. Very large.

All named varieties of Crocus: 50c. per dozen; \$3.00 per 100

Mixed Crocus: 45c. per dozen; \$2.50 per 100

LEUCOJUM

VERNUM (Snowflake). A white flower, resembling the Snowdrop, but much larger. Plant in clumps, 3 inches deep. \$1.10 per dozen; \$7.00 per 100

SCILLA

CAMPANULATA (Wood-Hyacinth). Bears spikes 15 inches high of bell-like flowers, during early May. Plant 5 or 6 inches deep in shady situation. Very effective for borders; will grow under fir or pine trees. White, Blue and Rose. 50c. per dozen; \$3.00 per 100.

SCILLA SIBERICA. Spring Beauty. Large delft blue blooms on spikes 4 to 5 inches high, fine for massing in borders or naturalizing. Plant 3 to 4 inches deep. Blooms outside in April. 75c. per dozen; \$5.00 per 100.

RANUNCULUS

Plant and treat same as Anemones. Mixed Colors, 85c. per dozen; \$6.00 per 100.



Scilla Campanulata

SNOWDROP

The first flower to proclaim the coming of spring, frequently blooming in the snow. The pure white, bell-shaped blooms come before winter departs. 75c. per dozen; \$5.00 per 100.

FRITILLARIA MELEAGRIS

The Fritillaria Meleagris produces a very fine effect when naturalized in grass on banks, in shady glens or under large trees. They may also be planted to obtain charming effect in groups in the border and clumps in the rock garden. Plant 3 inches deep. Mixed colors 40c. per dozen; \$2.50 per 100.

MUSCARI

ARMENIACUM. Bright deep blue, larger than the well-known Heavenly Blue. A good variety for planting outdoors or forcing. 50c. per dozen; \$2.75 per 100.

BOTRYOIDES ALBUM (White Grape Hyacinth). Bearing pretty, little, fragrant, pure white flowers, valuable for the garden and for pot culture. 75c. per dozen; \$5.00 per 100.

PLUMOSUM (Ostrich Feather). Producing in May splendid spikes of a violet-blue color; the flowers have the appearance of a feather plume, very attractive and interesting. 60c. per dozen; \$4.00 per 100.

Botanical Tulips

The following Tulips are all wild species. They are beautiful and will be highly appreciated by lovers of hardy bulbous plants. Their right place is the rock garden, where their flowers are seen to advantage.

CLUSIANA (The Lady Tulip). 8 inches. A charming little Tulip; outer petals cherry red with inner petals white; violet base. Plant in a warm and sheltered position. 3 for 35c.; \$1.20 per dozen; \$8.00 per 100.

FOSTERIANA (Red Emperor). 22 inches. Positively the most beautiful Tulip under cultivation; it produces colossal blooms on erect strong stems; color is fascinating and is of the loveliest shade of glowing scarlet imaginable; base yellowish. Very sturdy grower. Strongly recommended. 3 for 40c.; \$1.40 per dozen; \$10.00 per 100

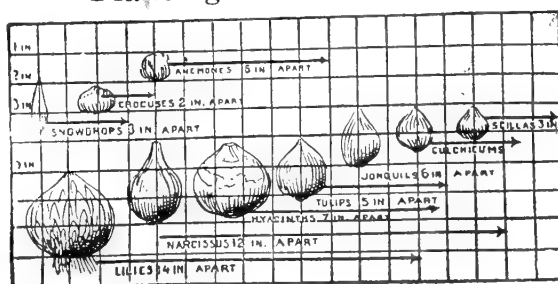
CHRYSANTHA. 6 inches. A pretty little species similar to Tulipa Clusiana. Color yellow with red on outside of outer petals. Recommended. 3 for 35c.; \$1.20 per dozen; \$8.00 per 100.

KAUFMANNIANA (Waterlily Tulip). 6 inches. A charming species, producing in March large flowers of elegant form and remarkable beauty, opening out to a great size in the sun; color soft creamy white centre slightly marked with carmine-red; strongly recommended for planting in groups in borders and in rock gardens. 3 for 35c.; \$1.20 per dozen; \$8.00 per 100.

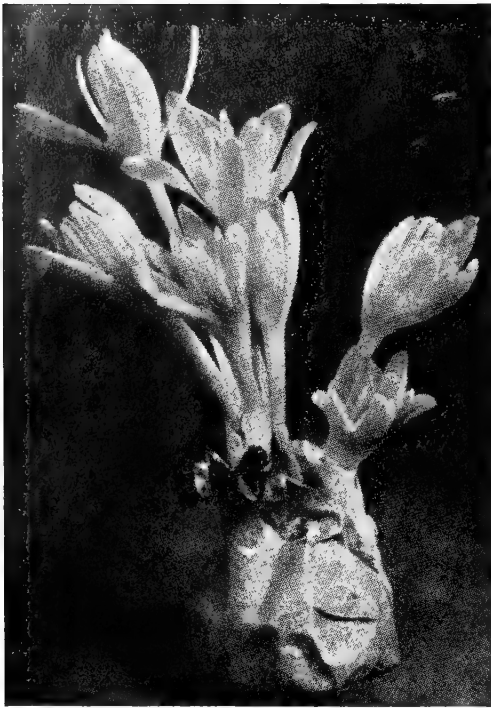
EICHLERI 11 inches. A very beautiful species with fairly large blooms of a lovely crimson-scarlet color and a glistening base, golden margined. 3 for 35c.; \$1.20 per dozen; \$3.00 per 100.

MARJOLETTI. 18 inches. Producing pretty little flowers of a creamy-white flaked with pink. Very fine for cutting. 3 for 40c.; \$1.40 per dozen; \$10.00 per 100

Planting Chart for Bulbs



Bulbs for Indoor Culture



Colchicum

COLCHICUM

A bulb that you don't have to plant. Will bloom in from two to three weeks. Just place the bulb on window sill and they will produce beautiful lavender-pink, crocus-like blossoms, 1½ to 2 inches in diameter. After blooming the bulbs may be planted outside, where they will make very pretty foliage in the spring. Order early, as our supply is limited. 40c. each; 3 for \$1.00; \$3.25 per dozen.

RISING SUN NARCISSUS

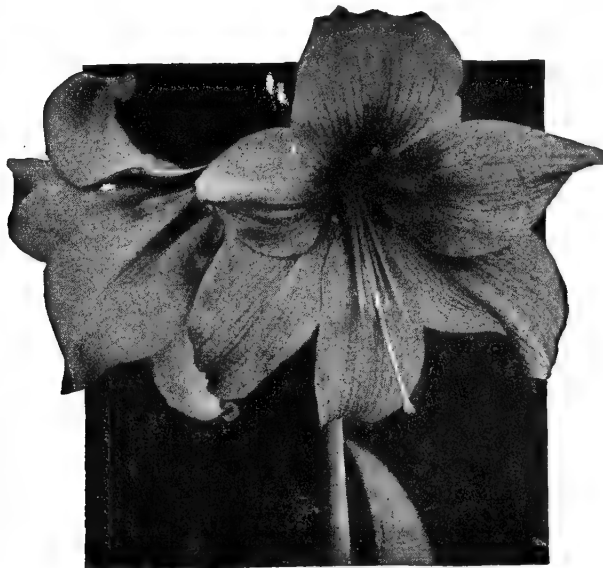
This is a Yellow Narcissus exactly like the Giant White, except the flowers are a rich yellow instead of white, and a little later in blooming. Excellent for growing in water, and when grown this way will bloom in from 8 to 10 weeks. Plant 6 to 8 bulbs in a bowl and give the same treatment as Giant White Narcissus. Large bulbs, 20c. each; \$1.75 per dozen; \$12.50 per 100.

Paper-White Grandiflora Narcissus

These are excellent for growing in water and rocks, provided they are not planted too early. From our experiments. November, December and January plantings give best results. 3 for 25c.; 85c. per dozen; \$6.00 per 100.

GIANT HYBRID AMARYLLIS

A reselected strain of the very largest flowered sorts, ranging in color from almost pure white, through various shades of pink, to the deepest scarlet; some with beautiful markings and mottled throats. Can supply in mixed colors only. Ready November 1st. 35c. each; \$3.75 per dozen.



Giant Hybrid Amaryllis

Giant White Narcissus

The Most Satisfactory
Winter-Blooming
House Plant

They will bloom in water from 6 to 8 weeks from time of planting, if not planted too early. The flowers are large, attractive in color and very fragrant. A very unique and simple way to grow them is to place 6 or 8 bulbs in a shallow bowl with water; support the bulbs with pebbles, and place the bowl in the dark until the roots have started, when they should be brought into the light. Change the water occasionally to keep it pure. From our experiments, November, December and January plantings give best results.

3 for	Doz.	100
35c.	\$1.15	\$8.00



OXALIS

One of the finest winter-flowering bulbs grown. A single plant well grown will fill a 6-inch pot, throwing up 50 to 70 stems, which bear an immense number of flowers.

BERMUDA BUTTERCUP. Bright yellow. 3 for 20c.; 50c. per dozen; \$3.50 per 100.

GRAND DUCHESS. Pink and Lavender. 3 for 20c.; 50c. per dozen; \$3.50 per 100.

GLOXINIAS

Makes a very satisfactory and most unusual house plant when planted in pots and bowls. The plants may also be set in rock garden in semi-shaded places after danger of frost. Do not over water, but keep the soil slightly moist at all times. May be had in the following colors: Scarlet, Violet, White, Scarlet and White, Violet and White. Ready in December. 25c. each; \$2.50 per dozen.

FREESIAS

One of the most charming bulbs known for winter flowering and cut flowers. The blooms are grown on long, graceful stems and are delicately scented and very pretty. They force very easily and can be brought into bloom by Christmas.

TECOLOTE GIANT HYBRID FREESIAS. Flowers of immense size, wide open and delightfully fragrant. Plants of unusual strength and vigor. Tall, strong stems. Much finer than the standard commercial varieties. May be had in the following colors: Pink, Talisman, Lavender, Red, White. 3 for 30c., 90c. per dozen; \$6.00 per 100.

GOLDEN DAFFODIL Large flowers of bright golden yellow. 3 for 20c.; 60c. per dozen; \$4.00 per 100.

PURITY. Pure white. 3 for 20c.; 60c. per dozen; \$4.00 per 100.

LILIES

CALLA LILIES. Well known house plants of great popularity. Our bulbs are large California dry roots, which are best for forcing. Mammoth roots, 45c. each; \$4.75 per dozen

YELLOW CALLA LILIES. A beautiful yellow blooming Lily, for growing indoors during the winter months. May be safely planted outside in the spring after danger of frost. Ready for delivery during December. 30c. each; \$3.00 per dozen.

All Bulbs In This Catalog Will Be Sent Prepaid



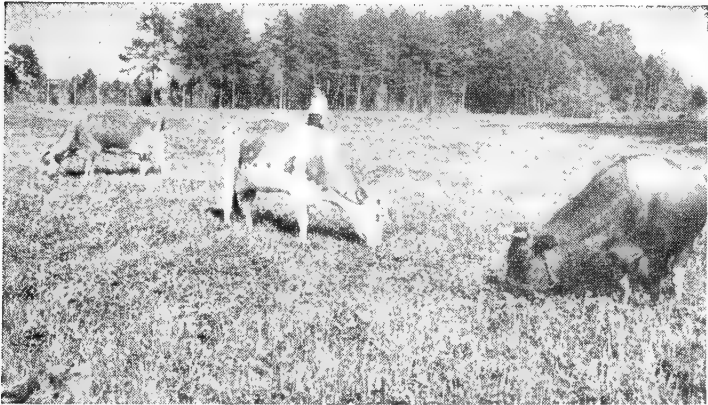
The U. S. Dept. of Agriculture credits T. W. Wood & Sons with introducing Leap's Prolific, which has remained popular longer than any other wheat, due to its consistent big yields and high milling quality. It has the largest, most beautiful head, and strong straw, easily combined. Medium early. It has set many records for bumper crops.

WOOD'S GRAIN HAY MIXTURE

The best early hay mixture possible to sow. Makes a much heavier yield that is far more palatable and nutritious than oats or any other wheat, due to its consistent big yields and high milling quality. It has the largest, most beautiful head, and strong straw, easily combined. Medium early. It has set many records for bumper crops.

WOOD'S GRAIN PASTURE MIXTURE

Furnishes more grazing in less time and at less cost than any other fall crop. The grains are balanced with legumes to supply protein for growth and warmth during the winter. Includes every ingredient for continuous grazing throughout fall, winter and spring. Contains the ideal proportions of hairy vetch, Austrian winter peas, crimson clover, rape, abuzzi rye, winter barley, winter oats and smooth wheat. Relished by all livestock it is particular popular for poultry and hogs, as it contains rape properly balanced with grain so it cannot cause bloating. Its use has increased enormously in all sections of the South and East, proving its wonderful value and dependability. Sow 100 lbs. per acre.



Grazing Wood's Grain Pasture Mixture in early spring before other pastures are ready. Small grains, combined with winter legumes furnish fall and winter grazing, which saves labor, reduces grain requirements, provides cheaper feed, makes healthier animals and returns greater profits. Pasture is the most economical feed for livestock.

ALTA or KENTUCKY 31 FESCUE

The Best Pasture or Hay Grass for the South or East
Clemson, S. C.: "Most promising grass in our generation. Heavy producer, very winter hardy. Year-round grazing. Grew 6 months under water in S. C. In Fla. 300 acres on poor, sandy soil furnished green grazing in a long drought that killed weeds and briars. Alta and Ky. 31 are identical." At N. C. State it made 5 cuttings per summer, yielding 5,161 lbs. dry matter per acre, nearly double orchard grass. Highest hay yield of all forage crops in a 6-year state test. It furnishes pasture in winter, producing heavily in early spring and late fall when other grasses are dormant. 50 dairy cattle could not graze down 10 acres from April to July, giving a wonderful milk production. They are plowing up the best blue grass sods in Ky. to seed it. Palatable to all livestock and equal in food value to the best grasses. It crowds out weeds. Sow in any month, Sept. and Oct. are best, 15 lbs. per acre alone, or 10 lbs. mixed with clovers.

Wood's Special Grass and Clover Mixtures

For Permanent Hay and Pasture Crops Contain Ladino Clover and Alta Fescue

Fall is the Best Time for Seeding Grass and Clover

Plants make a strong root growth during the cool months and are better established to withstand summer heat than if sown in the spring. They can be seeded safely until the middle of October, but early fall seeding is best if weather permits. Soil should be limed and well prepared, fine but firm. If a cultipacker is used more seeds will come up. Heavy applications of fertilizer at seeding time and as a top dressing each year, pay big dividends.

Sow 30 to 35 lbs. per acre of Wood's Special Grass and Clover Mixtures. For over half a century they have proved their superiority as economical, heavy and permanent producers of nutritious hay and pasture crops. We have added Ladino Clover and Alta Fescue to insure vigorous growth in cold or hot weather, in dry or wet seasons. Slow to establish, they are long lived and increase in productivity with age. Other ingredients in our mixtures grow quickly, assuring good crops from the start. Our mixtures are far superior to seeding these two crops alone.

WOOD'S PERMANENT PASTURE MIXTURES Nos 1 to 3

Contains grasses and clovers which make their maximum growth at different times throughout the year, furnishing abundant nutritious, year-round grazing.

- No. 1. For light gravelly or sandy soil
- No. 2. For good loam soil.
- No. 3. For moist bottom land.

WOOD'S PERMANENT HAY MIXTURES Nos. 6 to 8

Contains grasses and clovers which mature at the same time, making bumper hay crops, which are easily cured.

- No. 6. For light gravelly or sandy soil
- No. 7. For good loam or clay soil
- No. 8. For moist bottom land

Wood's Permanent Hay Mixtures produce tremendous yields of the finest quality hay. They continue to bear abundantly for many years, minimizing the original seeding cost. They contain Ladino Clover, Alta Fescue and a wide assortment of the finest grasses and clovers which mature together for hay for several big cuttings each year in good or bad seasons. The grasses are properly balanced with alfalfa, clovers and lespedezas, increasing the palatability, protein and feeding value. The hay is relished by all livestock.

Wood's Southern Permanent Pasture and Hay Mixture No. 12

A fine mixture for hay or pasture in the Southern Coastal and Gulf States. Suitable to both light and heavy soils.

LADINO CLOVER

The Wonder Pasture Clover. Produces a heavy tonnage of rich succulent feed relished by all livestock. Furnishes up to 12 months' grazing. Many purebred stock growers use it for hay exclusively for its excellent quality, rich in protein and food value. A giant strain of White Dutch Clover, it grows faster, over a foot tall, and recovers quickly when mowed or heavily grazed. A perennial it reseeds and thickens each year but is not a pest. Thrives best on fertile lowlands. Grows well on fertile uplands if limed. Use a heavy application of balanced fertilizer. Inoculate and seed in early fall, 4 to 6 lbs. alone. It is better to seed 3 lbs. in grass mixtures on well prepared seedbeds and cover with cultipacker, or broadcast on old sods, harrowing before and after seeding. Adapted throughout the South and East.



D. D. Adams, U. S. Soil Conservationist, and A. G. Birdsall, Co. Agt., Gloucester, Va., admiring ladino clover 15 inches tall in early June that had been cut for hay a month earlier.



Preferred

LONG DISTANCE TELEPHONE 3-2138
WE MAKE NO CHARGE FOR BAGS

ON THE BEST FARMS

WOODS
TESTED
SEEDS

Always Dependable

T.W. WOOD & SONS

RICHMOND, VIRGINIA

SEEDSMEN SINCE 1879

WOOD'S SEEDS ARE TESTED

And we know that they will grow before they are sent out. Even then they occasionally do not come up due to causes over which we have no control, such as covering too deeply or not deeply enough, too little or too much manure; cold weather, insects, or a crust through which the sprouts cannot penetrate, etc.; therefore, T. W. Wood & Sons give no warranty, express or implied, as to the description (name and kind), productiveness or any other matter of any seeds (bulbs or plants we sell, and will not be in any way responsible for the crop. Our liability in all instances is limited to the purchase price of the seed.

	—Prices F.O.B. Richmond—			Postpaid Prices			
	100-lb. lots, 25 to 99, 5 to 24, per lb.	25 to 99, 5 to 24, per lb.	5 to 24, per lb.	25 lbs.	10 lbs.	5 lbs.	1 lb.
CLOVERS							
CRIMSON CLOVER, 20 lbs. acre.	\$.30	\$.31	\$.33	\$8.40	\$3.65	\$1.90	\$.40
RED CLOVER, Sow 12 lbs. acre.	.59	.60	.62	15.65	6.55	3.35	.75
MAMMOTH CLOVER (Sapling)	.59	.60	.62	15.65	6.55	3.35	.75
ALFALFA, 25 lbs. acre. Kansas Grown—Sold Out							
Oklahoma Grown, Approved	.57	.58	.60	15.15	6.35	3.25	.75
ALSIKE CLOVER, 5 to 8 lbs. acre	.48	.49	.51	12.90	5.45	2.80	.65
WHITE SWEET CLOVER	.27	.28	.30	7.65	3.35	1.75	.45
WHITE DUTCH CLOVER, Lb. 85c.	.78	.80	.82	20.65	8.55	4.35	.95
Wood's Dixie, Lb. 85c.	.80	.82	.84	21.15	8.75	4.45	.95
LADINO CLOVER, Lb. \$2.55	2.40	2.45	2.50	61.90	25.35	12.75	2.65
Cert. Blue Tag Ladino, Lb. \$2.90	2.65	2.70	2.75	68.15	27.85	14.00	2.90
LESPEDEZA—100-lb. bags:							
Korean, Sow 25 lbs. acre.	.14	.15	.16	4.40	2.05	1.10	.30
Kobe and Sericea—Write							
HAIRY VETCH, Sow 25 lbs. acre.	.27½	.28	.30	7.65	3.35	1.75	.40
DWARF ESSEX RAPE	.18	.19	.21	5.40	2.45	1.30	.30
AUSTRIAN WINTER PEAS	.11	.11½	.13	3.50	1.65	.90	.25
GRASS SEEDS							
TIMOTHY, 15 lbs. acre. 20c. lb.	.16	.16½	.18	4.75	2.15	1.15	.30
RYE GRASS, Domestic. 20c. lb.	.13	.15	.17	4.40	2.05	1.10	.30
Perennial Rye Grass. 30c. lb.	.17	.18	.20	5.15	2.35	1.25	.35
ORCHARD GRASS, Onion Free	.29	.30	.32	8.15	3.55	1.85	.45
KENTUCKY BLUE 85% pure	.62	.63	.65	16.40	6.85	3.50	.80
CANADIAN BLUE GRASS	.58	.60	.62	15.65	6.55	3.35	.75
RED TOP or HERDS. 92% pure	.67	.68	.70	17.65	7.35	3.75	.85
CHEWINGS FESCUE, 30 lbs. acre.	.57	.58	.60	15.15	6.35	3.25	.75
CREEPING RED FESCUE	.60	.61	.63	15.90	6.65	3.40	.75
ALTA FESCUE (Similar Ky.-31)	.52	.53	.55	13.90	5.85	3.00	.70
Certified Alta Fescue	.55	.56	.58	14.65	6.15	3.10	.75
MEADOW FESCUE	.25	.26	.28	7.15	3.15	1.65	.40
BENT GRASS—Colonial	.90	.95	1.00	24.40	10.35	5.25	1.15
Certified Seaside Bent	.95	1.00	1.05	25.65	10.85	5.50	1.20
Certified Highland Bent	.90	.95	1.00	24.40	10.35	5.25	1.15
Certified Astoria Bent	.95	1.00	1.05	25.65	10.85	5.50	1.20
BERMUDA GRASS—Unhulled	.85	.90	.95	23.15	9.85	5.00	1.10
Hulled	1.20	1.25	1.30	31.90	13.35	6.75	1.45
SUDAN GRASS, 25 lbs. acre	.12½	.13	.15	3.90	1.85	1.00	.30
No. 23 Sudan Grass	.18	.19	.21	5.40	2.45	1.30	.35
Sweet Sudan Grass	.20	.21	.23	5.90	2.65	1.40	.35
DALLAS GRASS, Imported	.50	.52	.55	13.65	5.85	3.00	.65
WOOD'S HAY GRAIN MIXTURE	.10	.10½	.12	3.30	1.55	.85	.25
WOOD'S GRAIN PASTURE MIXT.	.10	.10½	.12	3.30	1.55	.85	.25
WOOD'S SPECIAL GRASS & CLOVER MIXTURES:							
Permanent Pasture Mix. Nos. 1 to 3	.39	.40	.42	10.65	4.55	2.35	.55
Permanent Hay Mix. Nos 6 to 3.	.39	.40	.42	10.65	4.55	2.35	.55
Southern Permanent Mix. No. 12.	.39	.40	.42	10.65	4.55	2.35	.55
WOOD'S LAWN GRASSES							
Wood's Evergreen, Lb. 75c.	.68	.70	.72	18.65	7.55	3.85	.85
Wood's Emerald Park, Lb. 60c.	.53	.55	.57	14.40	6.05	3.10	.70
Wood's Super-Green, Lb. 90c.	.82	.84	.86	21.65	8.95	4.55	1.00
Wood's Dixie, Lb. 75c.	.68	.70	.72	18.15	7.55	3.85	.85
Shady Park, Lb. 85c.	.77	.79	.81	20.40	8.45	4.20	.95
Wood's Winter Green, Lb. 45c.	.35	.37	.40	9.90	4.35	2.25	.55
WOOD'S BIRD SCATTER FOOD	.10½	.11	.13	3.40	1.65	.95	.25

ONION SETS

1-Bushel Open Mesh Bags Included

10-bus. lots, per bus.,	Per bus.
YELLOW EBENEZER.	\$4.00 \$4.10
WHITE SIVER SKIN.	4.20 4.30

Shipped by express or truck line only. Railroad freight too slow for perishables.

WOOD'S SEED INOCULATION

Specify Group Wanted, Prices Postpaid

GROUP 1 —Alfalfa, Sweet Clover, Bur Clover	1 bus. .50 2½ bus. 1.00
GROUP 2 —Clovers, Red Crimson, Alsike, Ladino, Dixie and White Dutch	1 bus. .50 2½ bus. 1.00
GROUP 3 —All Lespedezas	100 lbs. .50
GROUP 4 —Soybeans, all varieties	2 bus. .30 5 bus. .55 25 bus. 2.50 30 bus. 3.00
GROUP 5 —Cowpeas, Peanuts, Lima Beans, Velvet Beans, Crotalaria, Kudsu, Sesbania, Beggar Weed	2 bus. .30 5 bus. .55 25 bus. 2.50 30 bus. 3.00
GROUP 6 —Beans, Snap, Wax, Pole, Navy, Kidney	1 bus. .35
GROUP 7 —Vetch Peas: Austrian, Canada, Garden, Sweet	1 bus. .35 100 lbs. .55
GROUP 8 —Garden Beans, Peas, Sweet Peas, Lupine	5 lbs. or less .15

WOOD'S FERTILIZERS

WOOD'S SPECIAL ALL CROP FERTILIZER—Analysis: 5% Nitrogen; 10% Phosphoric Acid, 5% Potash. Prices: 25 lbs., \$1.00; 100 lbs., \$2.75.

WOOD'S HIGH-GRADE SHEEP MANURE—The Great Natural Fertilizer. Prices, F.O.B. Richmond: 25 lbs., \$1.00; 50 lbs., \$1.75. Cannot be mailed.

WOOD'S HIGH-GRADE COW MANURE—Prices, F.O.B. Richmond: 25 lbs., \$1.00; 50 lbs., \$1.75. Cannot be mailed.

HYDRATED LIME—Prices F.O.B. Richmond: 10 lbs., 25c.; 50 lbs., 60c.

VIGORO—Regular Stock for Lawns and Flowers. Analysis, 4-12-4. Prices, F.O.B. Richmond: 5 lbs., 50c.; 10 lbs., 90c.; 25 lbs., \$1.60; 100 lbs., \$4.25.

IRISH PEAT MOSS—Large bale, \$4.95.

STEAMED BONE MEAL—\$4.50 per 100-lb. bag, \$2.35 per 50-lb. bag.

POSTPAID PRICES above apply to Va., N. C., W. Va., Md., Del., N. J., Penn. POSTAGE ON FIELD SEED TO OTHER STATES: To S. C., Ga., Ky., Tenn., Ohio, Ind., N. Y., New England and Mich., add 2c. per pound to postpaid prices. To Ala., Ark., Fla., Ill., Iowa, La., Miss., Mo., and Wis., add 4c per pound. To Texas, Okla., Kansas and Neb., add 6c. per lb. to postpaid prices.

Wood's Treated Grain

99% Pure. Over 90% Germination

Triple Cleaned to Eliminate Weeds and Shrivelled Grains. Grows More Vigorously. Make Bumper Crops of High Quality Grain that Brings Top Prices on the Market. All Wood's Seed Wheat, Oats and Barley are Ceresan Treated.

We are the largest Southern breeders and growers of small grain seed. Our experienced plant breeders, assisted by Experiment Station officials, constantly improve our strains of small grains, producing breeder Foundation seed. We hot water treat our foundation seed of wheat and barley to prevent loose smut. Registered seed is grown from our Foundation stocks. All fields are carefully rogued free of mixture. The State Crop Improvement Association closely inspects our breeding and production fields. They permit no crop mixture, objectionable weeds or seed borne disease in the field or bin inspection for Foundation or Registered seed. We can sell a little Registered seed above our own needs.

SEED OATS 3-bu. bags. Bu., 32 lbs. 20-bu. lots, Per Sow 2 bu. per acre. per bu. bu.
WOOD'S IMPROVED LEE COLD PROOF. \$2.05 \$2.10

Most popular Oat in Va., Md. and Upper South. Extreme winter resistance. Heavy yield of high test weight grain. Tall, strong stalk. Excellent for hay, pasture or combine.

LETORIA 2.25 2.30

Developed from Lee. Has all its good qualities but stronger straw, 2 ins. shorter, 3 days earlier, greater disease resistance and yields. Va., Carolina and Md. recommend it. Resists cold, rust and smut. Heavy grain, less hull.

WINTER TURF—None Available. Use Forkedeer.

CERTIFIED FORKEDEER. 4-bus. bags.... 2.65 2.70

Highest yield at the 5 Va. Experiment Stations, 103 bu. per acre in one test. Highest in the N. C. Mountain and Piedmont tests and 1947 Pee Dee, S. C. test. Most winter hardy. Highly recommended and is replacing other oats in the upper winter oat belt. More cold proof than Lee, earlier, has less smut, more grain and hay. A mid-season red oat selected from Winter Fulghum, average tall, stiff straw, easy to combine. Resists Victoria blight. Has heavy grain

STANTON 2.35 2.40

A new variety with all good qualities of Fulgrain but more disease resistant and greater yield, taller and makes more hay and pasture. Highest yielding Oat in Southern Coastal area. Made 106.3 bu. per acre in S. C. Experiment Station test. In 1946 N. C. Experiment Station tests it made more grain and hay than any other Oat, averaging 73.5 bu. per acre in ten tests and 5,400 lbs. hay per acre in 8 tests.

FULGRAIN 1.90 1.95

FULGRAIN OATS—Strain 6 2.00 2.05

Fulgrain Oats mature very early before hot weather or rust damage. It has stiff, storm resistant straw, ideal for combining. It resists leaf rust, smut and cold. It tillers profusely. Heads are long, well balanced and heavily fruited. Grains are plump, heavy, of high feeding value.



A fine crop of Certified Wong Barley. The new wonder Barley that is producing such tremendous yields. Made 61 bu. per acre in the 1947 Clemson, S. C. test, and 87.6 bu. per acre at a Va. Experiment Station. It has strong, stiff straw, easy to combine. It is highly resistant to cold, rust, mildew and leaf spot. Heavy tiller, wide leaves, superior to rye for winter grazing. Good feed substitute for corn.

WONG BARLEY 2-bu. bags, bu. 48 lbs. Sow 2 bus. acre.... 2.35 2.40

CERTIFIED WONG BARLEY 2.60 2.65

A new semi-beardless barley of exceptional merit. Very heavy yielder, frequently 60 to 70 bus. per acre. Strong, stiff straw, easy to combine. Led other barleys in field and experiment tests throughout the East and Upper South.

BEARDLESS BARLEY 2.70 2.75



A bumper crop of **THORNE**. It has outyielded all other wheats and has highest recommendation by experiment stations in the Upped South and East, where it is replacing other wheats as rapidly as seed is increased. It is more smut and rust resistant, winter hardy, stands up better and combines easier. Has large heads, big, plump grain, high test weight per bu. It averaged 35 bu. per acre, highest at the 6 Va. expt. stations, 4 bu. more than Vahart and 12.6 bu. more than Redhart; was more rust resistant, showed no smut. It outyielded other wheats 7 years at 3 N. C. Expt. Stations.

SEED WHEAT Sow 1½ bus. acre. Bus., 60 lbs. 2-bus. bags. 20-bus. lots, Per

BEARDLESS VARIETIES: Per bus. bus.,

VAHART. Recommended by V. P. I. \$4.60 \$4.70

CERTIFIED VAHART 4.90 5.00

THORNE 3.70 3.80

CERTIFIED THORNE 3.95 4.05

FORWARD 3.60 3.70

CERTIFIED FORWARD 3.85 3.95

Very popular in the Upper South and East. Large, beautiful heads and kernels. Stiff straw, combines easily. It averaged 8 bu. per acre more than Redhart at 6 Va. Experiment stations, yielding 48 bu. per acre at Williamsburg.

NURED 3.70 3.80

Improved Forward, more smut and rust resistant, should replace it. Has some maturity, tall, stiff straw; long, full heads and big, plump grain. Second highest wheat at the 6 Va. Experiment Stations, 49.2 bu. at Williamsburg, a record.

LEAP'S PROLIFIC 3.60 3.70

CERTIFIED LEAP'S PROLIFIC 3.85 3.95

REGISTERED LEAP'S PROLIFIC 4.35 4.45

Big, beautiful heads. Fairly tall. Extremely smut resistant. Highest yielding wheat for 3 years at Md. Expt. Station.

REDHART 3.60 3.70

CERTIFIED REDHART 3.85 3.95

Earliest maturing and most popular wheat in the Southern Coastal area. Resists smut, combines well. Heads erect.

RED MAY (Type) 3.60 3.70

HARDIRED 3.60 3.70

CERTIFIED HARDIRED 3.85 3.95

Highest yielding wheat in Southern Coastal Plains. Medium early. High milling value. Made the record yield of 46.9 bus. per acre in 1947 Clemson, S. C. test. Outyielded other wheats 4 years in 19 N. C. experiment station tests. At 6 Va. experiment stations for 2 years it averaged 7 bus. per acre over Redhart, was more resistant to rust and mildew.

BEARDED VARIETIES:

NITTANY or PENN 44, CERTIFIED 3.95 4.05

Heaviest yielding bearded wheat. The only one recommended for Piedmont and Eastern Va. Also recommended for Va. and N. C. mountains. Improved strain of Fulcaster.

FULCASTER (Type) 3.60 3.70

STONER (Type) 3.60 3.70

V. P. I. No. 131 WHEAT 3.60 3.70

CERTIFIED V. P. I. No. 131 3.85 3.95

ABRUZZI RYE 2-bu. bags. Bu. 56 lbs. Sow 1½ bu. acre.... 2.85 2.90

CERTIFIED ABRUZZI RYE 3.10 3.15

REGISTERED ABRUZZI RYE 3.50 3.60

Gives quicker growth, more winter pasture, earlier grazing and larger yields of grain than ordinary rye. We are the only recognized foundation breeders of Abruzzi Rye. Our strain made 54.6 bu. per acre in the 1947 Clemson, S. C., test.

BALBOA RYE 2.90 2.95

Similar to Abruzzi but is more winter resistant, tillers more in cold weather, forming a thick turf protecting the soil. It grows taller and yields more grain, particularly in the southern uplands. Excellent for winter pasture.

Order Wood Hybrids Now

Since 1927 Bred and Grown in the South.

Stalk rot damaged the N. C. Yellow Hybrids so bad Carolina agricultural leaders visited our testing station in Eastern S. C., to see if our hybrids were affected. S-210, S-240, etc., have been exposed to the disease in the South so long they did not suffer, while N. C. 27 beside them was almost destroyed. The demand for our hybrids is so great we suggest you order now for next spring delivery.

Prices F.O.B. Richmond, Treated, 90% Germ., Flats.
5-bus. lots 25c. per bus. less. Quart, 2 lbs., postpaid, 75c.
Postpaid, add \$1.25 bu. 40c peck 25c 1/2 peck

WOOD'S HYBRIDS: 1-bu. cotton bags. Bus. Peck, 1/2 pk.
Hybrid Yellow Sweepstakes and 56 lbs. 14 lbs. 7 lbs.
Hybrid Red Sweepstakes Ensilage... \$9.50 \$2.75 \$1.50
S-210, V-50, V-45, V-40, V-35, V-25..... 9.50 2.75 1.50
S-240, S-360, S-350, S-315, V-125, V-120 10.25 2.95 1.60

OPEN FORMULA HYBRIDS. Certified tags on request.
Yellow: N. C. 27, N. C. 1032, U. S. 262... \$10.25 \$2.95 \$1.60
U. S. 357, U. S. 99, U. S. 13, Iowa 939 9.50 2.75 1.50
N. C. 26, Dixie 44, Ill. 448, Ill. 200... 9.50 2.75 1.50
White: Dixie 17, Tenn 10, Ky. 203, Ind. 750 10.25 2.95 1.60



Wood's S-210 with 8 big ears on 4 stalks from one root



S-240, 3 big ears, long husk

Wood's S-240 Flinty Yellow

Our most weevil resistant, heaviest yielding yellow hybrid for crib or silage in the Southern Coastal area. Long, tight shucks. Hard, flinty grain, high in vitamins, protein and feeding value. Later than S-210, more prolific and weevil resistant. Wide, long leaves, close together. At the S. C. Coast Experiment Station it withstood a severe storm that flattened most everything else but S-360. All who saw the big field we grew for seed in S. C. declared it the best corn they ever saw. G. P. Templeton, Barnwell Co., S. C., said: "My S-210 made 108 bu. per acre, but will plant S-240 next year." Highest yield in Fla. tests. It made 125.2 bu. acre in Camden, N. C. test.

Wood's S-315 Hybrid Red Cob Prolific

Big, deep, white grain; brings premium for milling. Very prolific. High yield at Clemson, S. C. N. C. recommends it. For 2 years the highest yielding pure white corn in the 5 N. C. Coast Expt. Sta. tests, making 135.6 bu. per acre in Camden Co., 115 bu. in Currituck, 110.1 bu. in Onslow, and 102.1 bus. in the Piedmont test. Made 119.5 bu. per acre, 13 bu. more than Tenn. 10, in a Ga. Expt. Sta. test. Made 113.2 bu. per acre with very light weevil damage at the Alabama Expt. Sta.

Wood's S-350 Hybrid White Prolific

For the Cotton Belt. Makes finest corn meal. Very prolific. Deep grain, small cob, good shuck. In 7 N. C. Expt. Sta. tests, rated tops in grain quality, shuck protection, insect resistance and yielded 111.4 bu. in Camden Co., and 100 bu. in Onslow. High yield in S. C.

Wood's S-210 Hybrid Golden Prolific

Most popular weevil resistant, prolific yellow hybrid in the Cotton Belt and early feed in the Deep South. Developed from leading Southern corns by 20 years' breeding. Has deep roots, dark green color, ears placed low, strong, compact stalk. Extremely heat, drought and storm resistant. Small cob, high shelling %. Clemson recommends S-210 for S. C., particularly the Piedmont, as it outyielded all other yellow corns in their 1947 tests, making 8 bu. per acre more than N. C. 27. In the S. C. Coastal test it made 5.1 bu. more than N. C. 27. It made 111.6 bu. acre with very little insect damage in a N. C. Coastal test. Won 4-H contest for D. Rhyne, Gaston Co., N. C., 110 bu. acre. It won the 5-acre contest for Ben Wright, Jefferson, Ga., 120 bu. acre. Made 104.1 bu. acre at Alabama Experiment Station.

Wood's S-360 Flinty White Hybrid

Predicted most popular white weevil resistant hybrid. Its hard, flinty grain makes finest pure white meal, high in protein. Very prolific. Dark green. Vigorous. Strong, leafy stalk. Deep spreading roots. Disease resistant. Good poor-land corn. A farmer in S. C. lost his regular corn due to drought and lack of labor and fertilizer, but made a good crop of S-360. It yielded well in Fla. Experiment Station tests. Made 119.8 bu. acre at Alabama Expt. Sta., with very light weevil damage. In N. C. tests it made 133.7 bu. per acre in Camden Co., and 104.5 bu. per acre in Currituck Co., and had extra good grain and shuck.

WOOD'S BABY CHICKS

100% Live Delivery Guaranteed

Highest bred Chicks from culled, blood tested flocks, selected for laying and strong bodies, insures health, sturdiness and quick growth. Sold out through August. Book Your Order Now. Specify second choice if we are

sold out of your first choice. Hatch days, Tuesdays & Fridays.

POSTPAID PRICES:	Per 25	Per 50	Per 100
BARRED ROCKS	\$5.00	\$9.25	\$17.50
RHODE ISLAND REDS	5.00	9.25	17.50
WHITE ROCKS	5.00	9.25	17.50
BUFF ORPINGTONS	5.00	9.25	17.50
NEW HAMPSHIRE REDS	5.00	9.25	17.50

WOOD'S BIRD SCATTER FOOD

Attracts song birds to your home; doves, quail and wild turkey to your farm; ducks and geese to your marshes. Feed it regularly in winter, especially in snows when little native food is left. Birds range far to find it. It furnishes nourishment and warmth in the coldest weather. Native birds will remain and repay you many times over with the insect pests they destroy the next summer. Migrating birds will return to your marshes the following winter. Birds never forget where they found food when they needed it.

Birds need a variety of food to keep healthy and able to withstand the hardships of winter. Our formula, prepared by highest authority, has a wide assortment of seeds sought after by birds. It is used by many bird clubs.

WOOD'S FEEDS

Mash and Mixed Feeds in Print Cloth Bags

For Making Dresses, Curtains, etc. Worth about 75c. Each

CHICKEN FEEDS, Etc. F. O. B. Richmond.

	10 lbs.	50 lbs.	100 lbs.
HOLLYBROOK LAYING MASH			
With Dried Milk	\$.60	\$2.60	\$5.05
HOLLYBROOK GROWING MASH			
With dried milk and cod liver oil..	.60	2.65	5.15
HOLLYBROOK STARTING MASH			
With cod liver oil and dried milk..	.60	2.65	5.15
PAMUNKEY SCRATCH55	2.40	4.65
Includes cracked corn, wheat, etc., but no grit or shell.			
HOLLYBROOK CHICK GRAINS....	.65	2.65	5.15
HOLLYBROOK DEVELOPING FOOD	.65	2.60	5.05
PAMUNKEY PIGEON, With Corn..	.65	3.00	5.75
HOLLYBROOK PIGEON, No Corn..	.75	3.45	6.70
YELLOW CRACKED CORN55	2.40	4.70
WHITE CRACKED CORN55	2.40	4.60
POULTRY GRIT, coarse, fine, medium	.20	.60	1.00
OYSTER SHELLS—For Poultry20	.65	1.15
FAUST PIGEON HEALTH GRIT...	.35	1.40	2.60
CHARCOAL—Medium, Fine, Coarse..	.65	2.50
RABBIT PELLETS75	3.00	5.90
GAME BIRD SCATTER FOOD	1.10	4.50	8.50
HEAVY WHITE OATS—\$1.75 per bus., 32 lbs.			

DOG FOODS 5 lbs. 10 lbs. 25 lbs. 50 lbs. 100 lbs.

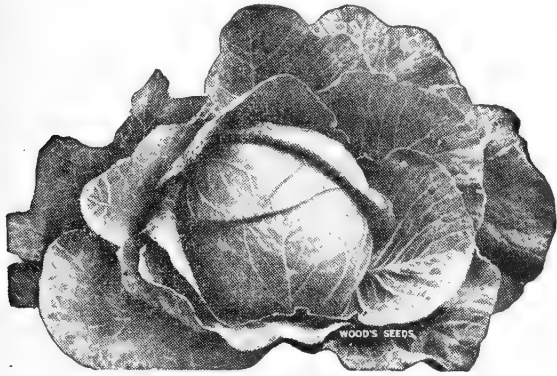
Hunt Club Cubes	\$.65	\$1.20	\$2.60	\$5.00	\$9.75
Hunt Club Dog Food65	1.20	2.60	5.00	9.75
Pard Dog Food, Swift's—1-lb. can, 15c.; 48 cans, \$6.75					
Sunday Shower—Kills ticks, fleas. Pint, \$1.00, postpaid, \$1.25					

WOOD'S High Grade

GARDEN SEEDS

GARDEN BEETS Plant now for winter storage. 1 oz. will plant 50 ft. row. 6 to 8 lbs. one acre.

	Postpaid			
	Pkt.	Oz.	¼ lb.	Lb.
Early Wonder, 50 days	.10	.15	.40	1.40
Crosby's Egyptian, 50 days	.10	.15	.40	1.40
Improved Early Blood, 55 days	.10	.15	.40	1.40
Detroit Dark Red, 55 days	.10	.15	.45	1.50
Crimson Globe, 55 days	.10	.15	.40	1.40
Extra Early Egyptian, 45 days	.10	.15	.45	1.50



Copenhagen Market

CABBAGE One ounce will plant 100-foot row and will produce about 2,000 plants; 6 to 8 ounces will make enough plants for 1 acre.

	Postpaid			
	Pkt.	Oz.	¼ lb.	Lb.
Copenhagen Market, 70 days	.10	.25	.70	2.50
Wood's Sel. Ey. Jersey Wakefield, 65 days	.10	.25	.70	2.50
Wood's Charleston Wakefield, 75 days	.10	.25	.70	2.50
All Head Early, 85 days	.10	.25	.70	2.50
Golden Acre, 65 days	.10	.25	.85	3.00
Enkhuizen Glory, 80 days	.10	.25	.70	2.50
Early Flat Dutch, 85 days	.10	.25	.70	2.50
Perfection Drumhead Savoy, 90 days	.10	.30	.85	3.00
Chinese Petai or Celery Cabbage, 80 days	.10	.20	.60	2.00

YELLOWS RESISTANT CABBAGES

	Postpaid			
	Pkt.	Oz.	¼ lb.	Lb.
Marion Market, 75 days	.10	.30	.95	3.50
Wisconsin All Seasons	.10	.30	.95	3.50

CARROTS One ounce will plant 100 feet of drill, 3 to 4 pounds to the acre.

	Postpaid			
	Pkt.	Oz.	¼ lb.	Lb.
Red Cored Chantenay, 70 days	.10	.15	.45	1.50
Danvers Half Long, 75 days	.10	.15	.45	1.50
Wood's Scarlet Intermediate, 75 days	.10	.20	.60	1.75
Imperator, 75 days	.10	.15	.45	1.50
Large White Belgium	.10	.15	.45	1.50
Improved Long Orange, 85 days	.10	.15	.45	1.50

COLLARDS

	Postpaid			
	Pkt.	Oz.	¼ lb.	Lb.
Carolina Header	.10	.20	.60	2.25
North Carolina Short Stem, 80 days	.10	.15	.35	1.00
White or Cabbage, 80 days	.10	.15	.30	.90
Georgia or Southern, 80 days	.10	.15	.30	.90

CRESS Upland, 60 days

Upland, 60 days	.10	.15	.45	1.50
Curled or Pepper Grass, 40 days	.10	.20	.60	2.00

ENDIVE

	Postpaid			
	Pkt.	Oz.	¼ lb.	Lb.
Green Curled, 90 days	.10	.15	.50	1.50
Broad Leaved Batavian, 35 days	.10	.20	.60	1.75

KOHL RABI

	Postpaid			
	Pkt.	Oz.	¼ lb.	Lb.
Early White Vienna	.10	.30	.95	3.50

LEEK

	Postpaid			
	Pkt.	Oz.	¼ lb.	Lb.
Large Flag	.10	.45	1.40	5.00

LETTUCE One ounce produces about 1,500 plants; 2 lbs. an acre.

	Postpaid			
	Pkt.	Oz.	¼ lb.	Lb.
Wood's Cabbage, 65 days	.10	.20	.65	\$2.25
Improved Big Boston, 75 days	.10	.15	.50	1.75
Iceberg, 80 days	.10	.25	.75	2.50
Great Lakes, 82 days	.10	.40	1.40	5.00
Bibb, 60 days	.10	.20	.60	2.00
Imperial, 44 days	.10	.25	.85	3.25
Cos or Romaine, 65 days	.10	.15	.50	1.75
Early Curled Simpson, 50 days	.10	.15	.50	1.75
Grand Rapids, 45 days	.10	.15	.50	1.75
Black Seeded Simpson, 50 days	.10	.15	.50	1.75
Chicken Lettuce, 55 days	.10	.15	.50	1.75

MUSTARD One ounce will plant 100 feet of row. 5 to 6 pounds per acre.

	Postpaid			
	Oz.	¼ lb.	Lb.	
Southern Giant Curled, 35 days	.10	.25	.85	
Chinese Broadleaved, 40 days	.10	.25	.85	
Florida Broad Leaved, 40 days	.15	.30	1.00	
Fendergreen or Mustard Spinach, 25 days	.10	.25	.75	

ONION

	Postpaid			
	Pkt.	Oz.	¼ lb.	Lb.
Extra Early White Pearl, 85 days	.10	.40	1.35	\$5.00
Prize Taker or Spanish King, 100 days	.10	.40	1.35	5.00
Valencia Sweet Spanish	.10	.40	1.35	5.00
Yellow Globe Danvers, 110 days	.10	.35	1.15	4.00
Silver Skin or White Portugal, 100 days	.10	.40	1.35	5.00

ONION SETS—See Page 10



Early Curled Siberian or Blue Kale.

KALE One ounce plants 100 feet of drill; 8 pounds to the acre broadcast; 4 to 5 pounds in drills.

	Postpaid			
	Pkt.	Oz.	¼ lb.	Lb.
Early Curled Siberian, 65 days	.10	.15	.40	1.25
Curled Scotch or Norfolk	.10	.15	.45	1.50
Spring Kale or Hanover Salad, 30 days	.1015	.45

PARSLEY One ounce will plant 100 feet.

	Postpaid			
	Pkt.	Oz.	¼ lb.	Lb.
Champion Moss Curled, 70 days	.10	.15	.40	1.25
Plain or Single, 70 days	.10	.15	.45	1.50
Hamburg Parsnip Rooted, 90 days	.10	.15	.45	1.50

WINTER RADISHES One ounce will plant 50 feet, 8 to 10 pounds an acre.

	Postpaid			
	Pkt.	Oz.	¼ lb.	Lb.
Rose China Winter, 60 days	.10	.15	.40	1.25
Chinese or Celestial, 60 days	.10	.15	.40	1.25
Long Black Spanish, 60 days	.10	.15	.40	1.25

SPINACH Two ounces will plant 100 feet of drill; 12 to 15 lbs. one acre.

	Postpaid			
	Pkt.	Oz.	¼ lb.	Lb.
New Zealand, 55 days	.10	.15	.40	1.25
Norfolk Savoy or Bloomsdale, 45 days10	.20	.60
Long Standing Bloomsdale, 50 days10	.20	.60
Virginia Blight Resistant10	.20	.60

TURNIP One ounce plants 100 feet of drill; 1½ lbs. plants 1 acre in drills; 2 lbs. 1 acre broadcast; salad varieties, 3 pounds to the acre.

	Postpaid			
	Pkt.	Oz.	¼ lb.	Lb.
Improved Purple Top White Globe	.10	.15	.35	1.10
Mammoth Purple Top White Globe	.10	.15	.30	1.00
Purple Top Strapleaf	.10	.15	.30	1.00
Early White Flat Dutch	.10	.15	.30	1.00
Pomeranian White Globe	.10	.15	.30	1.00
Large White Norfolk Globe	.10	.15	.30	1.00
Long White Cowhorn	.10	.15	.30	1.00
White Egg	.10	.15	.30	1.00
Purple Top, Yellow Aberdeen	.10	.15	.30	1.00
Large Amber or Yellow Globe	.10	.15	.30	1.00
Golden Ball	.10	.15	.30	1.00
Seven Top (Salad Variety)10	.20	.60
Southern Prize (Salad Variety)10	.20	.60
Shogoin (Japanese Salad)	.10	.15	.30	1.00

RUTABAGA

Improved Purple Top Yellow	.10	.15	.35	1.10
Purple Top Yellow	.10	.15	.30	1.00

ASPARAGUS ROOTS Ready for delivery after Nov. 15th. Book your order now.

Washington—Postpaid, 25 for 95c; 50 for \$1.65; \$3.00 per 100. Not postpaid, 25 for 85c; 50 for \$1.50; \$2.75 per 100; \$20.00 per 1,000.

Palmetto—Postpaid, 25 for 85c; 50 for \$1.50; \$2.75 per 100. Not postpaid, 25 for 75c; 50 for \$1.35; \$2.50 per 100.

VEGETABLE PLANTS

WE DO NOT SHIP PLANTS C. O. D.

CABBAGE PLANTS—Wakefield. 65c per 100; 500 for \$2.75; \$5.00 per 1,000, postpaid. Not postpaid, 50c per 100; 500 for \$2.40; \$4.50 per 1,000.

INSECTICIDES



CODLING MOTH

Arsenate of Lead

For all Leaf-Eating Insects. Sticks to the leaf. Use 1 to 2 pounds to 50 gallons of water (one level tablespoonful to gallon), for general spraying. By mail postpaid, 1-lb. pkg. 60c.; 4-lb. pkg. \$1.65. Not postpaid, 1 lb., 50c.; 4 lbs., \$1.40.

Barsprout

A sprout inhibitor for treating potatoes and other root crops from sprouting and reduce shrinkage in storage. Postpaid, 12-oz. sifter top, \$1.15; 5-lb. size, \$5.75. Not postpaid, 12-oz. sifter top, \$1.00; 5-lb. size, \$5.50.

Black Leaf 40

For Sucking Insects and Poultry Lice. Kills plant lice on roses, shrubbery, fruits and vegetables. A concentrated solution of nicotine sulphate. Dilute 1 to 2 teaspoonfuls to a gallon of water as directed. By mail postpaid, 1-oz. bottle, 45c.; 5-oz. pkg., \$1.15; 1-lb., \$2.60; 2 lbs. \$4.40. Not postpaid, 1 oz. 36c.; 5 ozs., \$1.05; 1-lb., \$2.45; 2 lbs., \$4.15.



Japanese Beetle

Blue Stone

Copper Sulphate or Blue Vitriol (Pulverized Snow). For early spraying, for making bordeaux mixture and copper solution.

By mail postpaid, 5 lbs. \$1.60; 10 lbs. \$2.60. Not postpaid, 5 lbs. \$1.25; 10 lbs. \$2.35; 25 lbs. \$4.50; 50 lbs. \$8.25; 100 lbs. \$16.00.

Bordeaux Mixture

For Blight, Scab, Mildew, etc. Prevents blight, scab, rust, mildew, black-rot and other fungus diseases of plants and fruits and improves the quality and increases the yield. Apply on all vine crops, grapes, cucumbers, melons, tomatoes, potatoes and fruit trees, etc. 8 pounds to 50 gallons water makes a 4-4-50 mixture (3 level tablespoonfuls to 1 gallon). By mail postpaid, 1-lb. 55c.; 4-lb. pkg. \$1.25. Not postpaid, 1-lb. 45c.; 4-lb. pkg. \$1.00.

Carbon Bisulphide

Kills weevil, bugs and insects generally in beans, peas and grains while in storage. When placed on top of either bulk or sacked grains the fumes permeate the entire bulk. 2½-lb. size, \$1.00. Cannot be mailed.

Copper Carbonate

For Treating Wheat. 2 to 3 ounces will treat one bushel. By mail postpaid, 1-lb. pkgs., 40c. each; 5-lb. pkgs., \$1.50 each. Not postpaid, 1-lb. pkgs., 30c. each; 5-lb. pkgs., \$1.25 each.

New Improved Ceresan

For Oats, Barley and Wheat. Effective in controlling covered smut and stripe of barley, oat smuts, and bunt or stinking smut of wheat. It improves the stand and yield of grains 1 to 5 bushels to the acre. A pound treats 32 bushels at cost of 1½ to 2½ cents a bushel. By mail postpaid, 4-oz. pkg., 40c.; 1-lb. pkg., \$1.05; 4-lb. pkg., \$3.20. Not postpaid, 4-oz. pkg. 35c.; 1-lb. pkg., 90c.; 4-lb. pkg. \$3.00.



RED SPIDER

Cyanogas

Easy to use, quick in action and thorough in effectiveness. A calcium cyanide which liberates hydrocyanic-acid gas when exposed to the moisture in the air.

CANOGAS A DUST. Kills field mice, moles, rats, cray fish, ground hogs, bed bugs, clothes moths, ants, wasps, yellow jackets, grape leaf hopper, grasshopper, locusts, etc. By mail postpaid, 1-lb. can, \$1.15; 5-lb. can, \$4.00. Not postpaid, 1-lb. can, \$1.00; 5-lb. can, \$3.75; 25-lb. \$12.50; 100 lbs., \$30.00.

CYANOGAS G FUMIGANT. For Greenhouse, Flour Mill and Grain Fumigation. Kills whitefly, aphids, moths, weevil, rats and mice. By mail postpaid, 5-lb. can, \$4.00. Not postpaid, 5-lb. can, \$3.75; 25-lb. pkg., \$12.50; 100-lb. pkg., \$30.00.

CYANOGAS DUSTERS. Foot Duster. Postpaid, \$1.30. Not postpaid, \$1.00.

Cyanogas Ant Killer

For ants in the garden and lawn. Kills millions. By mail postpaid, 50c. Not postpaid, 40c.

Ant Traps

Kills both Sweet and Grease Eating Ants. Safe and effective. Controls ants in the home, out-of-doors and in greenhouses. By mail postpaid, 20c. Not postpaid, 15c.

"Dogzoff"

Repels dogs, cats, moles, mice and rabbits. Protects shrubs, plants, porch furniture and trees. A single application lasts several weeks. By mail postpaid, 70c. Not postpaid, 60c.

Rootone

Makes Cuttings Easy to Root. Dip cuttings in Rootone before planting to give faster and better rooting. Stimulates root growth on cuttings, quickens germination of seed and bulbs, reduces damping off, and wards off fungus attack. ½-oz. pkg. (treats 400 cuttings), 25c.; 2-oz.-jar, \$1.00; 1-lb., \$5.00, postpaid.



MEXICAN BEAN BEETLE

Triogen

Destroys leaf-eating insects like rose slugs, caterpillars, webworm, red spider, plant lice, aster beetles, etc.; controls mildew, black spot, canker, and rust on roses and other plants; yellows and fungus diseases on many flowering plants.

By mail postpaid Not Postpaid

Economy kit; makes 8 quarts	\$1.00	\$.90
A—Small kit, makes 16 quarts	1.65	1.50
B—Medium kit, makes 64 quarts	4.25	4.00
C—Large kit, makes 32 gallons	6.40	6.00
D—Estate size, makes 128 gallons	20.00	20.00

Zinc Sulphate

For control of peach bacterial spot and possibly brown-rot and scab. The recommended formula is 4 pounds each of zinc sulphate and fresh hydrated or slaked lime to 50 gallons water. The addition of 1 pound zinc sulphate to 100 gallons lead arsenate spray corrects the spray injury. By mail postpaid, 5 lbs., \$1.15; 10 lbs., \$1.90; 25 lbs., \$3.65. Not postpaid, 5 lbs. 85c.; 10 lbs., \$1.60; 25 lbs., \$3.00.

For San Jose Scale. The most generally used and very effective remedy for San Jose Scale.

Dry Lime-Sulphur

Exactly like lime-sulphur solution, except that the water has been taken out. For fall and spring spraying use 12 to 15 lbs. to 50 gallons water. Summer spraying, 2½ to 3 lbs. to 50 gallons water. By mail postpaid, 1 lb. 50c.; 5 lbs. \$1.80; 12½ lbs. \$2.50. Not postpaid, 1 lb. 40c.; 5 lbs. \$1.55; 12½ lbs. \$2.00; 100 lbs. \$14.00.



APHIS

Lime-Sulphur Solution

Our solution retains its strength indefinitely and does not crystalize if kept from air and freezing. For fall and spring spraying use 1 gallon to 8 gallons of water. For summer spraying, 1½ gallons to 50 gallons of water. 50-gallon barrel, \$15.00.

Scalecide

For San Jose Scale. A high-grade miscible oil spray, that is one that mixes perfectly with cold water; it is especially recommended for spraying trees, shrubs, etc., while in the dormant state. Kills aphids and red mites and destroys the eggs and larvae wintering in inaccessible places on the bark of trees. It spreads rapidly into cracks and crevices and covers rough bark thoroughly. Mix one part Scalecide with fifteen parts water. By mail postpaid, 1 quart, \$1.25; 1 gallon, \$2.90. Not postpaid, 1 quart, \$1.00; 1 gallon, \$2.40; 5 gallons, \$8.10; 15 gallons, \$19.00; 55-gallon drum, \$45.00.

Dusting Sulphur

Apply it for red spider, brown rot, scab, mildew, leaf-spot, rust and other fungus diseases. Use it on potatoes when cut for planting to prevent scab and bleeding. Dusting peanuts with sulphur increased the yield 35% at the Holland, Va., experiment station. By mail postpaid, 5 lbs. 70c.; 10 lbs. \$1.10. Not postpaid, 5 lbs. 45c.; 10 lbs. 75c.; 25 lbs. \$1.50; 50 lbs. \$2.80; 100-lb. bag, \$5.25.

Para-Scalcide

For controlling peach tree borers. Para-Scalcide is applied in the early fall or in the spring when the ground temperatures are not colder than 60 degrees F. It can be applied by spraying or pouring directly to the trunk, circling the tree four to six inches above the ground, allowing it to run down to the ground. Promptly throw several shovelfuls of earth against the base of the tree, lightly mounding to hold down the fumes. Dilute one gallon Para-Scalcide with seven gallons of water. One gallon treats approximately 125 one to two-year-old trees, 64 three to four-year-old trees. By mail postpaid, 1 quart, \$1.50; 1 gallon, \$2.80. Not postpaid, 1 quart, \$1.25; 1 gallon, \$2.50; 5 gallons, \$9.10; 15 gallons, \$21.80.

Para-di-Chloro-Benzene

For controlling peach tree borer. Apply when the ground is dry, in September or October. This will have to be used at once when ordered, on account of evaporation. One pound treats ten trees. By mail postpaid, 1-lb. pkg. 60c.; 2½-lb. pkg. \$1.20; 5-lb. pkg. \$2.00. Not postpaid, 1-lb. pkg. 50c.; 2½-lb. pkg. \$1.00; 5-lb. pkg. \$1.75.

Paris Green

For Leaf-Eating Insects. Mix one pound to 50 pounds of plaster, or with water to 150 gallons. On vines and tender vegetables use a larger proportion of plaster and water. By mail postpaid, 1 lb. 30c.; 1 lb. 75c.; 5 lbs. \$3.30. Not postpaid, 1 lb. 25c.; 1 lb. 65c.; 5 lbs. \$3.00.

PlanTabbs

Contains Vitamin B1 and analyzes 11% nitrogen, 15% phosphoric acid and 20% potash, just the proper plant food to encourage a vigorous, healthy growth. A complete plant food in odorless, ready to use tablet form. 30 tablets, 25c.; 75 tablets, 50c.; 200 tablets, \$1.00; 1,000 tablets, \$3.50, postpaid.

WEED KILLERS

Ammate Weed Killer

Kills Poison Ivy. Exterminates weeds in walks, driveways, tennis courts, etc. Deadly to vegetation but harmless to humans, animals and birds. Entirely free from fire and explosion hazards, and exerts only temporary soil sterilization. 1 lb. to a gallon of water kills poison ivy; 1 to 3 lbs. to a gallon kills deep rooted perennials and is enough for 100 square feet of heavy growth. By mail postpaid, 2-lb. pkg. \$1.00; 6-lb. pkg. \$2.55. Not postpaid, 2-lb. pkg. 85c.; 6-lb. pkg. \$2.25; 50-lb. drum, \$12.00.

Weedone—2-4-D Weed Killer

Kills weeds underground as well as above ground, right down to the root tips. Kills poison oak, poison ivy, wild morning glory, Japanese honeysuckle, sassafras, black locust, choke cherry and many other weeds. By mail postpaid, 6-oz. bottle, 90c.; qt. \$2.75. Not postpaid, 6-oz. bottle, 75c.; qt. \$2.50; gal. \$7.50; 5 gals., \$25.00.

DDT SPRAYS and DUSTS

Pratt's 50% DDT Dry Wettable Dust

A dry wettable 50% DDT powder that mixes readily. 2 lbs. of Pratt's 50% DDT in 100 gallons of water is generally used to control codling moth, Japanese beetles, oriental peach moth and other insects. Postpaid, 1-lb. size 90c.; 4-lb. size, \$2.25. Not postpaid, 1-lb. size, 75c.; 4-lb. size, \$2.00.

D-X Rotenone-Pyrethrum Spray

With 5% DDT.—A pyrethrum and rotenone contact spray for aphids, Japanese beetles, Mexican bean beetles, tent caterpillars, canker worms, thrips, and web worms, chewing and sucking insects; kills and repels cabbage worms, leaf hopper and many similar insects. Dilutes 1 to 800 for aphid—stronger for more resistant insects. By mail postpaid, 1½-oz. size, 55c.; ½-pt. size, \$1.90; 1-qt. size, \$5.70. Not postpaid, 1½-oz. size, 50c.; ½-pt. size, \$1.75; 1-qt. size, \$5.25; 1-gal. size, \$13.50.

Poultry, Animal and Dog Remedies



Pratt's Animal Regulator

For continuous use in the daily feed of all livestock. Supplies the indispensable Trace Elements and Vitamin D which feeds may lack. In larger doses it is also an excellent tonic. **Postpaid, 1-lb. pkg. 45c.; 2½-lb. pkg. 85c.; 6-lb. pkg. \$1.70. Not postpaid, 1-lb. pkg. 35c.; 2½-lb. pkg. 70c.; 6-lb. pkg. \$1.40; 35-lb. pkg. \$7.50.**

Pratt's Poultry Regulator Famous old reliable product whose "Trace Elements" help make more eggs when feed is deficient. Also an excellent tonic for birds convalescing from disease. **By mail postpaid, 18 ozs. 40c.; 2½ lbs. 75c.; 6 lbs. \$1.45. Not postpaid, 18 ozs. 30c.; 2½ lbs. 60c.; 6 lbs. \$1.20; 12½ lbs. \$2.25; 25 lbs. \$3.75; 100 lbs. \$12.00.**

Pratt's "Split Action" Worm Capsules

Pennies for worming bring back dollars. Wormy birds seldom lay well. Get rid of worms with Pratt's "Split-Action" Worm Capsules that do the work of two ordinary worm treatments at one low cost. They contain Phenothiazine and get cecum worms too. **By mail postpaid, adult size, 50-tablet pks. 85c.; 100 tablets, \$1.50; 500 tablets, \$6.00; 1,000 tablets, \$11.25. Chick size, 50 tablets, 55c.; 100 tablets, \$1.00; 500 tablets, \$4.25; 1,000 tablets, \$7.25.**

Pratt's C-KA-Gene Stops heavy losses from bloody coccidiosis. A highly effective flock treatment that works by the new immunity (permanent protection) method. **By mail postpaid, 50-chick size, \$1.00; 100-chick size, \$1.75; 250-chick size, \$3.75; 500-chick size, \$6.50. Not postpaid, 50-chick size, 90c.; 100-chick size, \$1.60; 250-chick size, \$3.50; 500-chick size, \$6.25.**

Pratt's Poultry Worm Powder New Improved. Controls both large and round and cecum worms. Contains Phenothiazine. Just add it to the mash feed. **By mail postpaid, 4-oz. size, 75c.; 8-oz. size, \$1.45; 1½-lb. size, \$3.25; 2½-lb. size, \$5.75. Not postpaid, 4 ozs. 70c.; 8 ozs. \$1.35; 1½ lbs. \$3.00; 2½ lbs. \$5.50.**

Pratt's Powdered Lice Killer With DDT. For dusting poultry, cows, horses, dogs and other livestock. **Postpaid, 14-oz. size, 50c.; 2-lb. size, 95c. Not postpaid, 14-oz. size, 40c.; 2-lb. size, 80c.**

Pratt's Roost Paint With DDT. Kills poultry lice by fumes and contact. Just apply to the tops of the roosts and cross arms. Effective under all hen house conditions. **By mail postpaid, 3½-oz., 70c.; ½ pint, \$1.00; 1 pint, \$1.65; 1 quart, \$2.75. Not postpaid, 2½ oz., 60c.; ½ pint, 85c.; 1 pint, \$1.40; 1 quart, \$2.50; 1 gallon, \$8.00.**

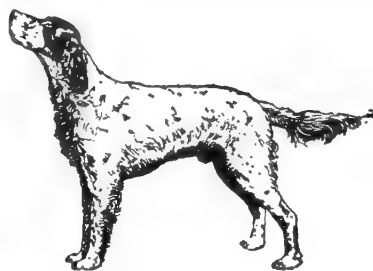
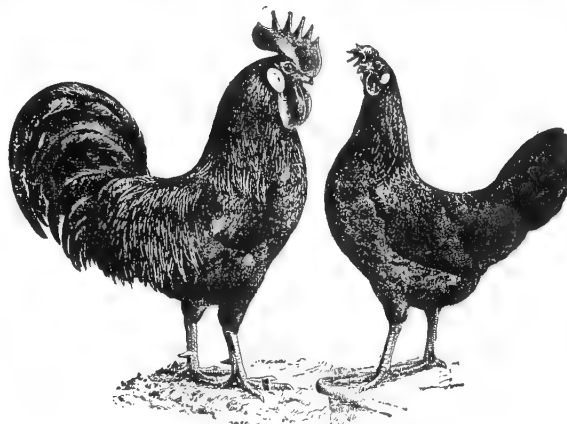
Pratt's Cow Tonic Give your milk check a tonic by adding this appetizer, tonic and mineral supplement to the feed of your dairy cows. **By mail postpaid, 1½-lb. size, 85c.; 3½-lb. size, \$1.60. Not postpaid, 1½ lbs., 70c.; 3½ lbs., \$1.40.**

Pratt's Hog Powder A tonic and mineral supplement formulated especially for swine. Supplies Vitamin D. **By mail postpaid, 3-lb. size, 90c.; 7-lb. size, \$1.65. Not postpaid, 3 lbs. 70c.; 7 lbs., \$1.40.**

Pratt's Disinfectant A standard coal tar disinfectant such as all authorities recommend. For use on all poultry and livestock farms. **By mail postpaid, 1 pint, 75c.; 1 quart, \$1.10. Not postpaid, 1 pint, 60c.; 1 quart, 85c.; 1 gallon, \$2.15.**

Lime Nest Eggs They look like real hen's eggs. Made from pure sterilized sulphate of lime. A product well known among poultry raisers for its value in keeping nests in a clean, healthful condition. **By mail postpaid, 6 for 25c.; 40c. per dozen. Not postpaid, 6 for 20c.; dozen, 30c.**

Glass Nest Eggs Made of first-class flint glass, the same size and color of a hen's egg. They do not break easily. Will last a lifetime. Keep one egg in every nest. **By mail postpaid, 3 for 20c.; 60c. per dozen. Not postpaid, 50c. per dozen.**



Sergeant's DOG MEDICINES

Sergeant's Skip-Flea Powder Kills fleas and lice on dogs and cats. Not nauseating; not injurious. **2-oz. size, 35c.; Economy size, 4-oz. size, 50c., postpaid.**

Sergeant's Skip-Flea Soap For pups and dogs. Kills fleas and lice. Soothes skin, leaves coat soft and fluffy. **30c. postpaid.**

Sergeant's Tick Killer New formula. Kills ticks (American and Brown Dog Ticks), on dogs, including engorged (swollen) ticks. **75c. postpaid.**

Sergeant's Sarcoptic Mange Medicine For treating Sarcoptic Mange. Also for use on human scalp. **3-oz. size, 35c. Economy size, 6 ozs., 65c., postpaid.**

Sergeant's Skin Balm For relief of a condition of itching of the skin, often called "Summer Eczema." Also effective in treating Sarcoptic Mange. **\$1.00, postpaid.**

Sergeant's Sure-Shot Capsules For large roundworms (ascarids) and hookworm in puppies and dogs weighing over ten pounds. **60c. postpaid.**

Sergeant's Puppy Capsules For large roundworms (ascarids) and hookworms in puppies and dogs weighing under ten pounds. **60c., postpaid.**

Sergeant's Tapeworm Medicine For tapeworms in pups and dogs. **60c. postpaid.**

Sergeant's Vitamin Capsules (Vitapets) A supplement to the daily diet, supplying needed quantities of vitamins required for your dog's vitamin balance. As important during good health as in illness. **60c. postpaid.**

Sergeant's Condition Pills Tonic and alterative for pups and dogs. **60c. postpaid.**

Sergeant's Pepsin and Aromatic Tablets Increases protein meat digestion. Relieves colic in pups and dogs caused by improper food. Splendid for pups at weaning time. **60c. postpaid.**

Sergeant's Laxative Tablets For treating constipation in pups and dogs. **60c. postpaid.**

Sergeant's Intestinal Astringent Checks too frequent bowel action in cases of diarrhea. **60c. postpaid.**

Sergeant's Sedative Tablets For relief from excitement and nervous irritability. **60c. postpaid.**

Sergeant's Special Medicine For reduction of fever in pups and dogs in cases of distemper and pneumonia. **\$1.00, postpaid.**

Sergeant's Eye Wash For minor irritations and slight injuries of the eyes and eyelids. **60c. postpaid.**

Sergeant's Canker Wash For internal and external Ear Canker. **60c. postpaid.**

Sergeant's Expectorant Medicine For coughs due to cold in pups and dogs. **60c. postpaid.**

Sergeant's Disinfectant It's Fragrant of Pine. Deodorizing, flea-killing disinfectant. Pleasant odor. Will help rid kennels, sleeping quarters and premises of flea and lice. Also fine for general household use. **4-oz. size, 25c.; 12-oz. size, 60c., postpaid.**

Sunday Shower The quick dog bath. Sprinkle on, rub it in, wipe it off; the dirt wipes off too. Kills ticks, fleas and dog odor. Guaranteed or your money refunded. **Pint size, \$1.25, postpaid.**

Sergeant's Dog Book FREE
on request—Ask for it



Walko Tablets Especially valuable for diarrhoea and loose bowel trouble among incubator chicks. They tend to prevent digestive disturbances and should be given in all drinking water from the time the chicks are out of the shell. Also recommended for swellings of roup in the head and simple catarrh among older birds. **Price, postpaid, small size, 50c.; large size, \$1.00.**

SPRAYERS AND TOOLS



No. 44-G. Big Head Sprayer

Heavy galvanized steel tank, high-pressure. Easy to fill, to open, to seal, to drain, to clean. 4-gallon capacity with 2-ft. extension rod, adjustable shut-off nozzle. **Postpaid, \$12.50. Not postpaid, \$12.15.**

No. 34-G. Big Head Sprayer

The Big Head provides a large opening for filling and permits the user to clean and remove all residue from the tank. 3½-gal. capacity, with 2-ft. extension rod and automatic shut-off nozzle. **Postpaid, \$19.25. Not postpaid, \$9.90.**

No. 3170. Wheelbarrow Spray Pump

An efficient portable spraying outfit, designed for shrubbery, garden, truck, vineyards, orchards, greenhouses, and for spraying all insecticides and disinfectants. Used in industrial plants, dairy barns, poultry houses and all farm buildings. 12 gal. capacity, furnished with 6 ft. ¾-in. pressure hose, 2-ft. extension rod and nozzle. **\$22.40. Cannot be mailed.**

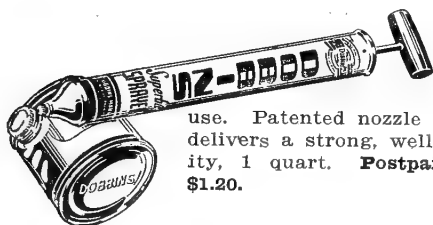


Copper Continuous Sprayer

The tank is heavy copper, the pump cylinder is seamless brass to insure long wear. Slow pumping gives a continuous unbroken spray. Twin nozzles for straight and angle spraying. **By mail postpaid, \$3.70. Not postpaid, \$3.50.**



No. 704. Continuous Type Sprayer



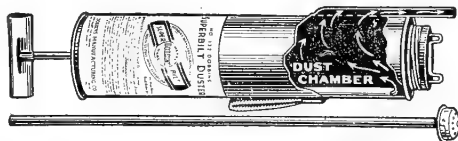
For spraying oils, chemical fly sprays, disinfectants and general household use. Patented nozzle with special whirl vanes delivers a strong, well atomized spray. Capacity, 1 quart. **Postpaid, \$1.35. Not postpaid, \$1.20.**

Spray Hose

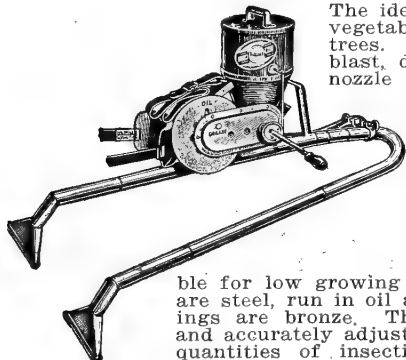
¾ inch (diameter of hole), 14c. per foot; 1 inch, 15c. per foot. Postage, 2c. per foot extra.

No. 132. Garden Duster

A serviceable duster for small gardens, one that distributes dry powder insecticides perfectly to the last particle either on top or under the leaves. The filler cap is easy to remove for refilling. **By mail postpaid, \$1.75. Not postpaid, \$1.55.**



No. 200. Crank Duster



The ideal duster for large areas of vegetables, tobacco, cotton and fruit trees. It develops powerful air blast, delivering enough air at the nozzle to prevent clogging and breaks the powder into a fine floating dust. It can be adjusted to feed exactly the amount of insecticide required. Will handle any powder, light or heavy. Dusts either in front or behind the operator, either under or above the foliage. The discharge tubes are adjustable for low growing and tall plants. The gears are steel, run in oil and are dustproof; the bearings are bronze. The indicator can be quickly and accurately adjusted for either large or small quantities of insecticide. The tubes are long enough to reach into fairly large trees. **By mail postpaid, \$21.60. Not postpaid, \$21.10.**

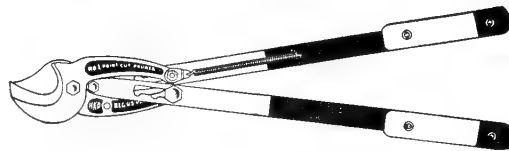
Hedge Shears

Made of the finest grade tool steel, 8-inch blades for cutting small branches. One blade has a saw edge, handles of hardwood.



By mail, postpaid, \$2.75. Not postpaid, \$2.50.

Point Cut Pruner



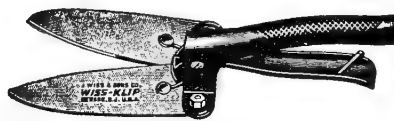
Cuts close and clean without the slightest injury to the bark, cuts that heal quickly. Both blades have sharp cutting edges. Has slide shift power slot for tough, heavy branches that gives 50 to 100 per cent increase in cutting power. **By mail, postpaid, \$5.75. Not postpaid, \$5.50.**

Alligator One-Hand Pruning Shears

A well made and satisfactory pruning shear, 12½ in. long. The length makes it easy for those hard-to-get-places. The hardened and tempered cutting blades are kept in line by a lock nut and leaves a clean, perfect cut. **Postpaid, \$1.75. Not postpaid, \$1.50.**



Wiss Klip Grass Shears



A shear with equal cutting pressure at every point of the blade. Will get into the space between flag stones and into small corners. The offset handle prevents skinning the knuckles; does not tire the operator. **By mail postpaid, \$1.90. Not postpaid, \$1.75.**

A shear with equal cutting pressure at every point of the blade. Will get into the space between flag stones and into small corners. The offset handle prevents skinning the knuckles; does not tire the operator. **By mail postpaid, \$1.90. Not postpaid, \$1.75.**

Garden Trowel

A well balanced tool for use in any garden or greenhouse. 11 inches long; 3½ inches wide.



Transplanter

A narrow trowel, expressly made for transplanting purposes. 11 inches long; 2 inches wide.



Cultivator and Bulb Tool

A handy tool for use in the garden, weeding or planting bulbs.



Made of Cast Aluminum Will Last a Lifetime Postpaid, 65c. Each Set of 3, \$1.75

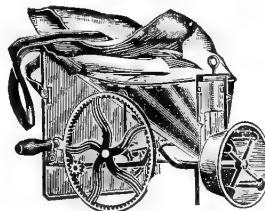
National Eezy Wear Garden Gloves



Large for women; Medium and Large for men. Specify the size wanted. **By mail postpaid, \$1.25 per pair.**

Made from special imported hides processed to render them amazingly soft and pliable. Permit almost bare-hand freedom, yet provide complete all-leather protection. Dust-proof, durable, washable. Five sizes: Small, Medium and Large.

Cahoon Broadcast Seed Sower



This seeder will sow any of the seeds that are usually sown broadcast, such as clovers, grasses, millet, buckwheat, vetch, turnips and all grains, and will do it more evenly and uniformly than you can possibly seed them by hand. It sows 4 to 6 acres an hour, or about as fast as you walk. The quantity per acre can be regulated for thick or thin seeding, as you prefer. Holds 22 qts. **By mail postpaid, \$8.35. Not postpaid, \$8.00.**

Cyclone Seed Sower

The Cyclone is a splendid seed sower that will pay for itself in a few days in the time it will save, besides sowing grass and clover seeds and grain of all kinds faster and more evenly and uniformly than is possible by hand. It will sow as fast as you can walk, and the quantity can be regulated to any amount to the acre. **By mail postpaid, \$3.50. Not postpaid, \$3.25.**



From _____

Always register letters containing money

T. W. WOOD & SONS

SEED GROWERS AND MERCHANTS

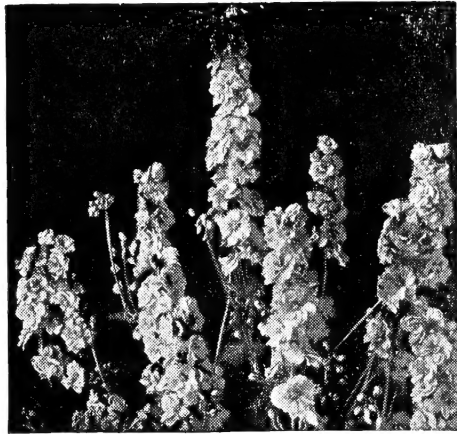
P. O. BOX 6--0

RICHMOND 19, VA.

BEFORE SEALING THIS ENVELOPE

**Be sure you have written your name,
postoffice and shipping point plainly on
your order.**

HARDY ANNUALS FOR FALL PLANTING



Giant Imperial Larkspur

CALENDULA

- No. 658. **Sunshine or Chrysantha.** The large double flowers are an exquisite clear buttercup yellow, with long, loosely arranged drooping petals. Pkt. 10c.; $\frac{1}{2}$ oz. 25c.; $\frac{1}{2}$ oz. 40c.
- No. 657. **Campfire or Sensation.** The largest of all Calendulas; brilliant orange with a scarlet sheen and full yellow center. Pkt. 10c.; $\frac{1}{2}$ oz. 25c.; $\frac{1}{2}$ oz. 40c.
- No. 656. **Orange Shaggy.** A distinct type with long deeply fringed petals, the long fringed petals overlap each other in a rather irregular fashion and build up a bloom with a shaggy appearance. The color is an intense orange, shading to lighter orange at the center. Splendid long stems; grows 18 inches high. Pkt. 10c.; $\frac{1}{2}$ oz. 25c.; $\frac{1}{2}$ oz. 35c.; oz. 60c.
- No. 659. **Pastel Shades.** Many shades of apricot, salmon, cream, orange and lemon. Pkt. 10c.; $\frac{1}{2}$ oz. 25c.; $\frac{1}{2}$ oz. 40c.
- No. 660. **Double—Mixed Varieties.** A fine mixture of all the best varieties. Pkt. 10c.; $\frac{1}{2}$ oz. 25c.; oz. 40c.

Flowering Centaureas

(RAGGED ROBIN OR CORNFLOWER)

Universal favorites for cut flowers, deliciously scented; long stemmed, will last for days. Sometimes called Bachelor's Button. Hardy annual.

- No. 710. **Cyanus Double Rose Pink.** Pkt. $\frac{1}{2}$ oz. 25c.; $\frac{1}{2}$ oz. 35c.; oz. 60c.
- Cyanus Red Boy—Double Red.** Pkt. 10c.; $\frac{1}{2}$ oz. 25c.; $\frac{1}{2}$ oz. 35c.; oz. 60c.
- No. 711. **Cyanus Blue Boy—Double Blue.** Pkt. 10c.; $\frac{1}{2}$ oz. 25c.; $\frac{1}{2}$ oz. 35c.; oz. 60c.
- No. 712. **Cyanus Double Mixed Colors.** Pkt. 10c.; $\frac{1}{2}$ oz. 20c.; $\frac{1}{2}$ oz. 30c.; oz. 50c.

LARKSPUR

For bedding, for growing among shrubbery and as cut flowers, Larkspurs are strikingly beautiful. Early plantings bloom from July till frost, but several plantings are recommended. Transplant 12 inches apart. Height 3 feet. The germination is improved if chilled for several days in refrigerator.

GIANT IMPERIAL LARKSPURS

This strain represents the most marked advance in improving Larkspurs, both in the fullness of the flower spikes, the size of the flower and in the shades of color. The branching habit has been intensified, giving a greater number of branches to each plant, each branch producing a solid mass of color. The 3 to 4 foot flower spikes render them ideal for cut flowers that keep for a long time.

- | | |
|----------------------------------|------------------|
| No. 931. Rose King | } Each pkt. 10c. |
| No. 932. White King | |
| No. 933. Carmine King | |
| No. 934. Dark Blue Spire | |
| No. 941. Lilac or Lavender Spire | |
- No. 942. **Mixed Colors.** Pkt. 10c.; $\frac{1}{2}$ oz. 30c.; oz. \$1.00.

STOCK FLOWERED LARKSPURS

- No. 936. **Double Dark Blue.** Pkt. 10c.; $\frac{1}{2}$ oz. 35c.; $\frac{1}{2}$ oz. 60c.
- No. 938. **Double Light Blue.** Pkt. 10c.; $\frac{1}{2}$ oz. 35c.; $\frac{1}{2}$ oz. 60c.
- No. 937. **Double Pink.** Pkt. 10c.; $\frac{1}{2}$ oz. 35c.; $\frac{1}{2}$ oz. 60c.
- No. 939. **Double Mixed Colors.** Pkt. 10c.; $\frac{1}{2}$ oz. 30c.; $\frac{1}{2}$ oz. 50c.; oz. 85c.

ESCHOLTZIA

(CALIFORNIA POPPY)

Easily grown annuals, producing bright, poppy-shaped flowers from spring till frost. A bed in full bloom makes a brilliant effect.

- No. 834. **Scarlet.** Rich deep golden orange. Pkt. 10c.; $\frac{1}{2}$ oz. 30c.
- No. 836. **Golden West.** Pkt. 10c.; $\frac{1}{2}$ oz. 25c.
- No. 837. **All colors mixed.** Pkt. 10c.; $\frac{1}{2}$ oz. 30c.; oz. 50c.

No. 840. **Bush Escholtzia, or Hunneman-nia (Santa Barbara Poppy).** Bears large cup-shaped yellow flowers, 3 inches across, on 12-inch stems; will keep for two weeks. Pkt. 10c.; $\frac{1}{2}$ oz. 35c.

ANNUAL POPPIES

No. 1140. **WOOD'S SUPERB POPPY MIX-TURE.** A grand mixture of all the newest and best double and single annual Poppies, all varieties and every color. The wonderful variety and brilliant coloring make an effective display. Pkt. 10c.; $\frac{1}{2}$ oz. 30c.; oz. 50c.

No. 1141. **Special Mixed Single Poppies.** Contains only select varieties that will give a dazzling display of colors. Pkt. 10c.; $\frac{1}{2}$ oz. 20c.; $\frac{1}{2}$ oz. 35c.

No. 1142. **Special Mixed Double Poppies.** An elegant collection of the largest blooms and most gorgeous colors. Pkt. 10c.; $\frac{1}{2}$ oz. 20c.; $\frac{1}{2}$ oz. 35c.

No. 1144. **Tulip Poppy.** Large single bright scarlet blooms, 3 inches across; as dazzling as scarlet tulips; brilliant in massed beds. Pkt. 10c.; $\frac{1}{2}$ oz. 30c.

SHIRLEY POPPIES. Remarkably brilliant and free-flowering; delicately fringed.

No. 1139. **Scarlet.** Pkt. 10c.; $\frac{1}{2}$ oz. 25c.; $\frac{1}{2}$ oz. 40c.

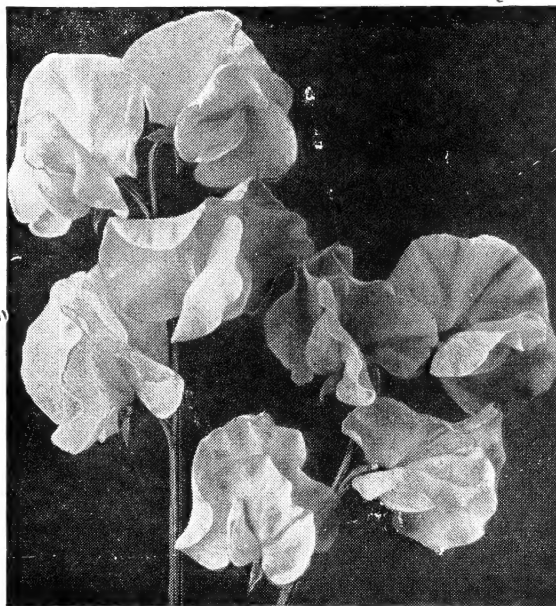
No. 1145. **Mixed Colors.** Pkt. 10c.; $\frac{1}{2}$ oz. 20c.; $\frac{1}{2}$ oz. 30c.; oz. 50c.

No. 1148. **Double Shirley.** Double and semi-double in an endless variety of color. Pkt. 10c.; $\frac{1}{2}$ oz. 25c.; $\frac{1}{2}$ oz. 40c.; oz. 70c.

Wood's Spencer or Orchid Flowering Sweet Peas

ALL VARIETIES: Pkt. 10c.; oz. 25c.; $\frac{1}{2}$ lb. 75c.; lb. \$2.25, postpaid.

1329. **Avalanche.** No pure white sweet pea makes as large a flower, nor blooms that will last as long; a strong grower and a profuse bloomer.
1332. **Black Diamond.** Dark maroon. The largest and best of its color.
1331. **Capri.** An outstandingly fine light blue; the color is clear, the flower is large and long stemmed.
1330. **Charming.** Bright glowing cerise with a scintillating salmon sheen; large flower.
1335. **Chieftan.** A showy and attractive pure satiny mauve. Free from purple shading.
1350. **Crony.** Soft golden salmon. An "Award of Merit" winner.
1341. **Elstree.** Bright salmon pink on cream ground. The frilled blooms have extra long, strong stems; profuse bloomer.
1343. **Flagship.** Deep navy blue. The large blooms are borne on long stems.
1337. **Fortune.** A brilliant waved flower with violet standard and dark blue wings; a lovely combination.
1342. **Gigantic.** A beautiful frilled, long stemmed, pure white; an extra large and exquisite flower.
1351. **Glen Eagles.** An exquisite lavender blue; the flowers are unusually large and daintily frilled.



Spencer Sweet Peas.

1333. **Grand National.** The large frilled flowers are a rich deep cream; an "Award of Merit" winner.
1345. **Highlander.** A perfectly formed, lovely, pure, clear lavender.
1334. **Olympic.** Large, waved royal purple flower; deep and rich, vigorously and free bloomer.
1347. **Pinkie.** The largest and finest rich rosy pink; beautifully waved flowers.
1348. **Prince of Orange.** Unquestionably the finest in its color class. Large and beautiful rich glistening orange.
1340. **Red Boy.** Pure rich deep crimson flower; four blooms on long stems; does not sunburn.
1336. **Red Rover.** Long stemmed, brilliant dark crimson.
1346. **Reflection.** A magnificent clear cornflower blue with no trace of violet; bears 3 to 4 blooms on sturdy stems.
1339. **Sweet Afton.** A sparkling shade of deep silvery pink.
1344. **Welcome.** The most dazzling and glowing scarlet; the large bold flowers are sunproof.
1349. **Windsor Blue.** A clear, heavily waved mid-blue.

Early Flowering Spencer Sweet Peas

These bloom weeks earlier and remain in bloom longer than other Spencers. The blooms are equally as large, are beautifully waved and are borne on long stems. They are especially well adapted for outdoor planting in the South as well as for greenhouse culture. We have had spring plantings bloom earlier than fall plantings of other kinds, yielding plenty of blooms before hot weather arrives.

All Varieties: Pkt. 15c.; oz. 40c.; $\frac{1}{2}$ lb. \$1.25; lb. \$4.00, postpaid

1361. **American Beauty.** So named because the color is the same as the American Beauty rose, glowing crimson-rose.
1360. **Cascade.** A beautiful pure white flower; borne on long stems.
1363. **Giant Rose.** An unusually large flower; a beautiful rose pink; a robust grower.
1362. **Memory.** The large waved blooms are clear rosy lavender.
1364. **Mrs. Herbert Hoover.** "The California Blue." Clear deep blue.

Sweet Peas in Mixtures

1374. WOOD'S EARLY FLOWERING SPENCER MIXTURE

They bloom 3 to 4 weeks earlier than the summer flowering Sweet Peas and are especially recommended for growing in the warmer parts of the South. In cold climates they do splendidly in the greenhouse. We offer a well-balanced mixture of all colors from pure white to deep maroon. Pkt. 10c.; oz. 30c.; $\frac{1}{2}$ lb. \$1.00; lb. \$3.00, postpaid.

1376. WOOD'S SUPERB SPENCER MIXTURE

The Spencers are the finest type of Sweet Peas in cultivation. Our mixture is a well-balanced blend of colors from the purest white to the deepest maroon, one that will please the most exacting lover of Sweet Peas. It will give a lavish display in an almost endless range of colors. Pkt. 10c.; oz. 20c.; $\frac{1}{2}$ lb. 60c.; lb. \$2.00, postpaid.

T. W. WOOD & SONS,

SEEDSMEN SINCE 1879

Richmond, Virginia

RETURN POSTAGE GUARANTEED.

Section 562, P. L. & R.

U. S. POSTAGE

PAID

RICHMOND, VA.

Permit No. 142

WOOD'S SEEDS

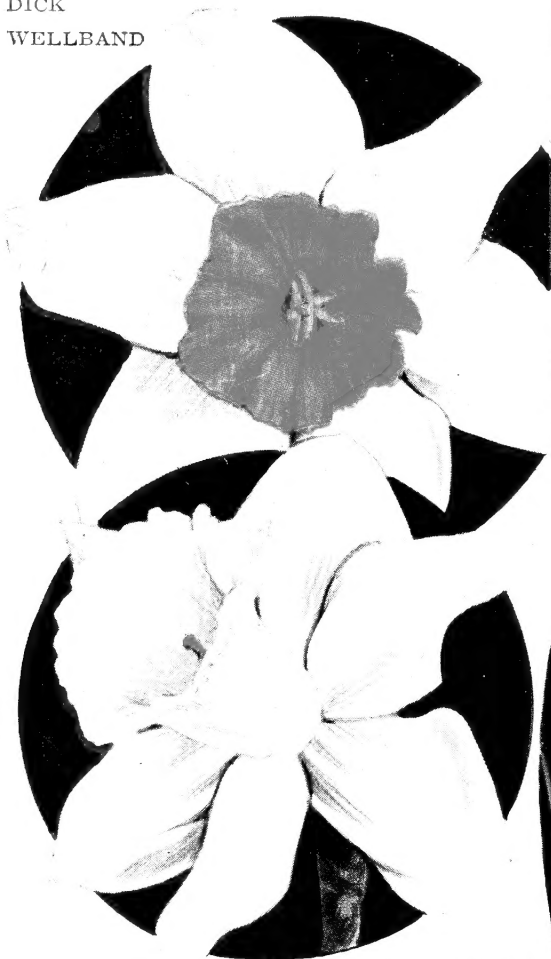
The Sign of Good Seeds

LIBRARIAN, U. S. DEPT. OF AGRI.
WASHINGTON, 25, D. C.

DAISY SCHAEFFER

MRS. R. O. BACKHOUSE

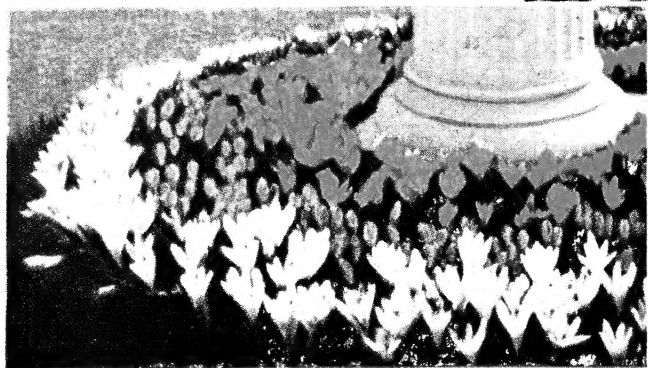
DICK
WELLBAND



BEERSHEBA



SCILLA
SIBIRICA



MIXED CROCUS



T. W. WOOD & SONS

Seedsman Since 1879

RICHMOND, VIRGINIA

T. W. WOOD & SONS,

SEEDSMEN SINCE 1879

Richmond, Virginia

RETURN POSTAGE GUARANTEED

Section 562, P. L. & R.

U. S. POSTAGE

PAID

RICHMOND, VA.

Permit No. 142

WOOD'S
SEEDS

*The Sign of
Good Seeds*

LIBRARIAN, U. S. DEPT. OF AGRI.
WASHINGTON, 25, D. C.

DICK
WELLBAND



DAISY SCHAEFFER

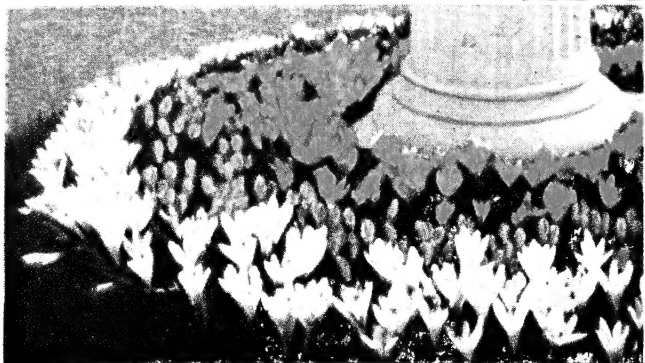
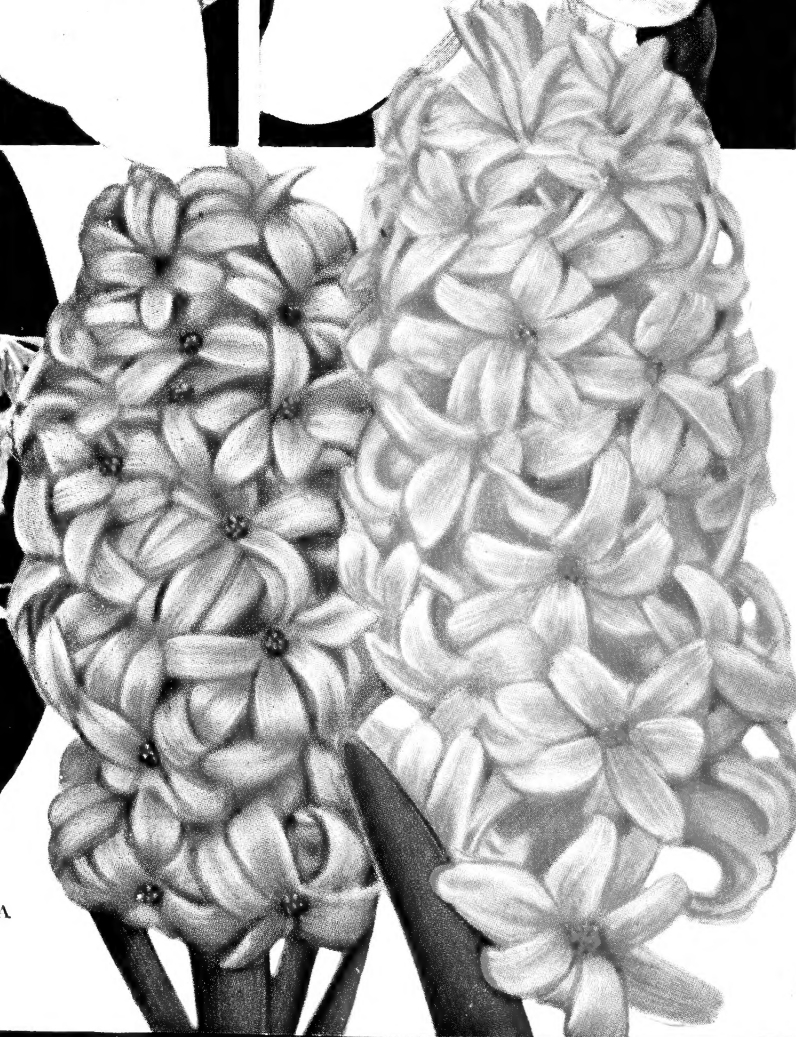
MRS. R. O. BACKHOUSE



BEERSHEBA



SCILLA
SIBIRICA



MIXED CROCUS

T. W. WOOD & SONS

Seedsman Since 1879

RICHMOND, VIRGINIA