

Historic, Archive Document

Do not assume content reflects current scientific knowledge, policies, or practices.

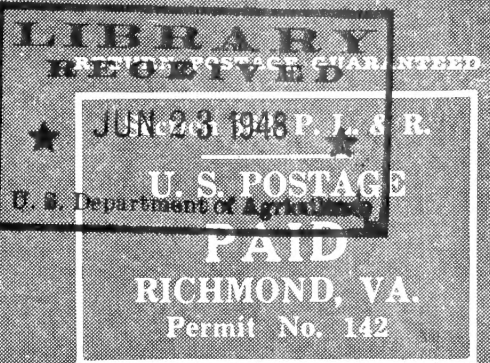
16287
T. W. WOOD & SONS,

SEEDSMEN SINCE 1879

Richmond, Virginia

**WOOD'S
SEEDS**

*The Sign of
Good Seeds*



May 19, 1948
LIBRARIAN, U. S. DEPT. OF AGRI.
WASHINGTON, 25, D. C.

WOOD'S S-210 Hybrid Golden Prolific

MOST POPULAR FOR LATE PLANTING IN THE SOUTH

Matures in less time than other weevil resistant prolific Southern corns. Has made big yields of high quality feed corn even when planted very late. Developed by 20 years breeding in the South from leading Southern yellow varieties. It has deep roots, wide leaves, and deep green color. Ears are placed low on a strong compact stalk. Extremely heat, drought and storm resistant. Resists August droughts and September hurricanes. Small cob; high shelling per cent.

S. C.: S-210 outyielded all other yellow corns in the Clemson, S. C., Experiment Station tests last year, making 8 bus. per acre more than N. C. 27. In the Clemson Coastal test it made 5.1 bus. more than N. C. 27. Clemson recommends S-210 for S. C., particularly for the Piedmont.

N. C.: In a 1947 N. C. Coastal Experiment Station test S-210 yielded 111.6 bus. per acre, with very little insect damage, and good grain quality. It yielded 110 bu. per acre, winning the 4-H contest for D. Rhyne, Gaston Co., N. C. It enabled farmers throughout Coast and Piedmont, N. C., to join the 100 bu. Corn Club. The N. C. Experiment Station approves S-210 for Piedmont and Coast. In the 1947 Rowan Co. corn championship two prizes went to S-210, 107.3 bus. per acre made by A. C. Fluck, and 104.7 bus. an acre made by J. C. Shulenburger.

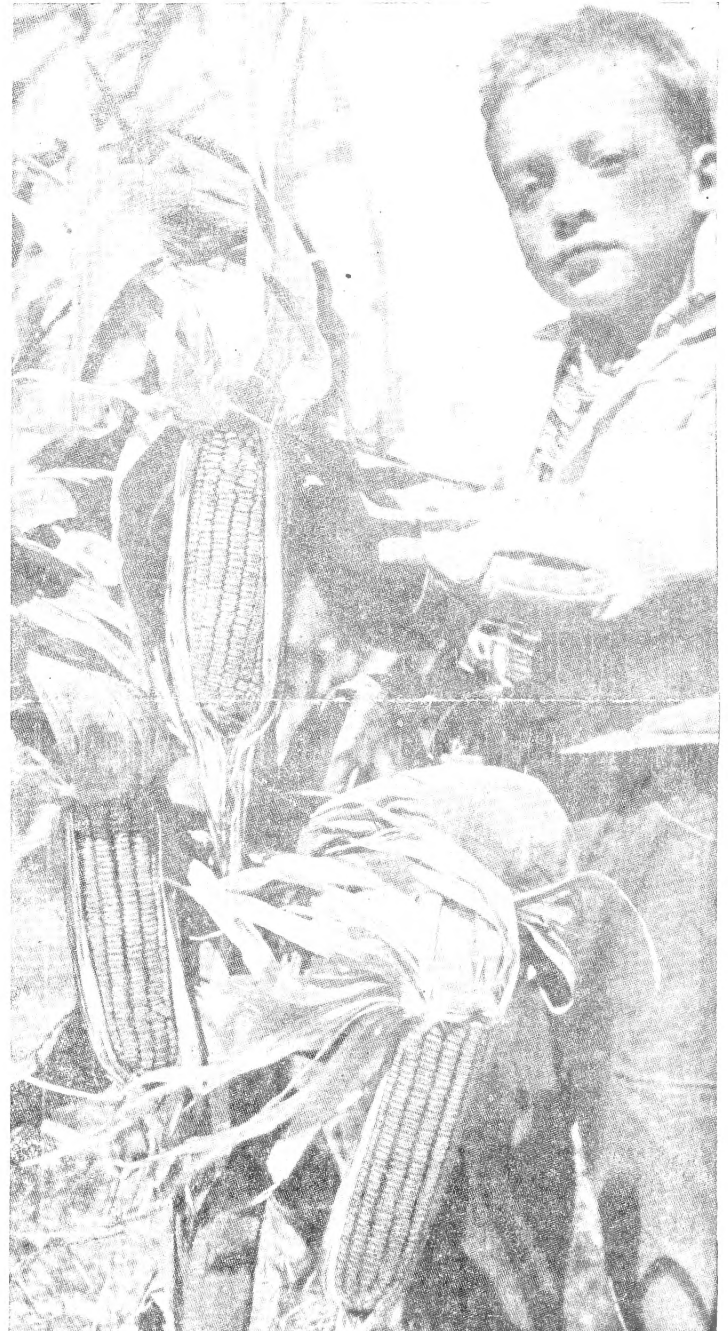
Georgia: S-210 averaged 120 bushels per acre, winning the 5 acre corn contest for Ben Wright, Jefferson, Ga. F. D. Allen, Cleveland, Ga., tied for second prize using S-210. It made 100.7 bushels per acre winning the Georgia 4-H championship and a trip to Chicago for L. Hull, Rockdale Co.

Alabama: S-210 yielded 104.1 bushels per acre in 1947 Experiment Station test with "very light" weevil damage.

Wood's Hybrid Red Sweepstakes



Silage 105 days. **Ideal silage corn for late planting.** Combines large stalk, abundant foliage, and heavy tonnage of Virginia ensilage corn with the earliness and heavy grain yield of the best Corn Belt Hybrids, and more nutrients per acre than either. Usually 2 big ears per stalk. "Planted June 19th in one of the coldest, worst seasons, it made the only good sound corn on our farm, yielding over 20 tons per acre, twice as well as any ensilage corn I ever grew."—I. Gilum, Montgomery Co., Md.

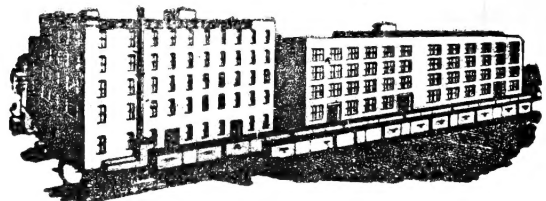
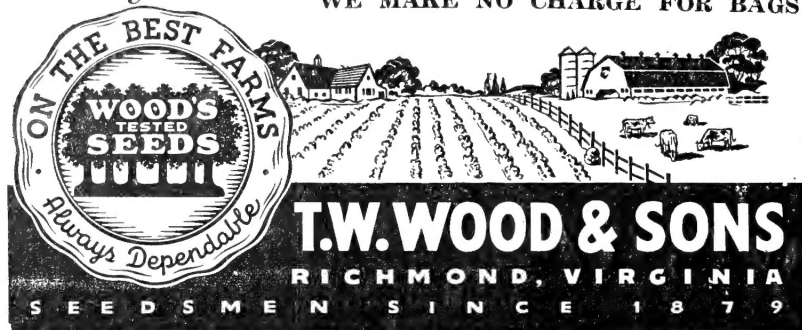


Wood's Hybrid Red Sweepstakes, in a state experiment station test where it made a record yield. It's strong stocky stalks stand up better and are easier to harvest and put in the silo.

3 big solid ears placed low on a stalk of S-210. Note long tight shuck and large beautiful golden grain, high in protein, vitamins and feeding value.

Preferred

LONG DISTANCE TELEPHONE 3-2138
WE MAKE NO CHARGE FOR BAGS



WOOD'S SEEDS ARE TESTED

And we know that they will grow before they are sent out. Even then they occasionally do not come up due to causes over which we have no control, such as covering too deeply or not deeply enough; too little or too much moisture, cold weather, insects, or a crust through which the sprouts cannot penetrate, etc.; therefore, T. W. Wood & Sons give no warranty, express or implied, as to the description (name and kind), productiveness or any other matter of any seeds, bulbs or plants we sell, and will not be in any way responsible for the crop. Our liability in all instances is limited to the purchase price of the seed.

CLOVER and GRASS SEEDS

No Charge for Bags	—Prices F.O.B. Richmond—			—Postpaid Prices—			
	100-lb. lots, 25 to 99	5 to 24, per lb.	per lb.	25 lbs.	10 lbs.	5 lbs.	1 lb.
RED CLOVER							
U. S. Grown. Sow 12 lbs. acre.	\$.60	\$.61	\$.63	\$15.90	\$6.85	\$3.40	\$.75
MAMMOTH CLOVER (Sapling)	.60	.61	.63	15.90	6.85	3.40	.75
ALFALFA. 25 lbs. acre. Premium Quality.							
Argentine Grown. 99½%25	.26	.28	7.15	3.15	1.65	.40
Oklahoma Grown. Approved32	.33	.35	8.90	3.85	2.00	.50
Kansas Grown35	.36	.38	9.65	4.15	2.15	.50
ALSIKE CLOVER. 5 to 8 lbs. acre	.50	.51	.53	13.40	5.65	2.90	.65
WHITE SWEET CLOVER	.21	.22	.24	6.15	2.75	1.45	.35
WHITE DUTCH CLOVER	.62	.64	.67	16.65	7.05	3.60	.80
Wood's Dixie67	.69	.72	17.90	7.55	3.85	.85
LADINO CLOVER. Lb. \$2.65.	2.50	2.55	2.60	64.40	26.35	13.25	2.75
Cert. Blue Tag Ladino. Lb. \$3.00	2.85	2.90	2.95	71.90	29.85	15.00	3.05
ALYCE CLOVER—Sold Out							
LESPEDEZA—100-lb. bags:							
Korean. Sow 25 lbs. acre15	.16	.18	4.65	2.15	1.15	.30
Korean. Dodder Free16	.17	.19	4.90	2.25	1.20	.30
Certified Korean17	.18	.20	5.15	2.35	1.25	.30
Kobe Lespedeza22	.23	.25	6.40	2.85	1.50	.35
Sericea, hulled, scarified, 20 lbs. a.	.33	.34	.36	9.15	3.95	2.05	.50
Sericea, unhulled. 35 lbs. acre.	.27	.28	.30	7.65	3.35	1.75	.40
CRIMSON CLOVER. 20 lbs. acre.	.27½	.28	.30	7.65	3.35	1.75	.40
HAIRY VETCH. Sow 25 lbs. acre.							
Fancy, Domestic Grown25	.26	.28	7.15	3.15	1.65	.40
AUSTRIAN WINTER PEAS	.09½	.10	.12	3.15	1.55	.85	.25
DWARF ESSEX RAPE	.18	.19	.21	5.15	2.35	1.25	.30
GRASS SEEDS							
TIMOTHY 15 lbs. acre. 20c. lb.	.09¾	.10	.12	3.15	1.55	.85	.25
RYE GRASS. Domestic. 20c. lb.	.11½	.12	.15	3.65	1.85	1.00	.30
Perennial Rye Grass. 30c. lb.	.20	.21	.23	5.90	2.65	1.40	.35
ORCHARD GRASS. Onion Free.	.22	.23	.25	6.40	2.85	1.50	.40
KENTUCKY BLUE. 85% pure.	.40	.42	.44	11.15	4.75	2.45	.60
Super Grade. 98% Pure52	.53	.55	13.90	5.85	3.00	.70
RED TOP or HERDS. 92% Pure.	.26	.27	.29	7.40	3.25	1.70	.40
Super Grade 98% pure27	.28	.30	7.65	3.35	1.75	.45
CHEWINGS FESCUE. 30 lbs. acre	.50	.51	.53	13.40	5.65	2.90	.65
CREEPING RED FESCUE	.50	.51	.53	13.40	5.65	2.90	.65
ALTA FESCUE (similar Ky.-31)	.52	.53	.55	13.90	5.85	3.00	.70
Certified Alta Fescue57	.58	.60	15.15	6.35	3.25	.75
ALTA FESCUE—Rye Grass Mixture:							
87% Alta Fescue, 12% Rye Grass	.45	.46	.48	12.15	5.15	2.75	.60
MEADOW FESCUE	.25	.26	.28	7.15	3.15	1.65	.40
BENT—Colonial	.90	.95	1.00	24.40	10.35	5.25	1.15
BERMUDA GRASS—Unhulled	.62	.63	.65	16.40	6.85	3.50	.80
Hulled85	.86	.88	22.30	9.15	4.75	1.00
SUDAN GRASS. 25 lbs. acre.	.12½	.13	.15	3.90	1.85	1.00	.30
No. 23 Sudan Grass18	.19	.21	5.40	2.45	1.30	.35
Certified No. 23 Sudan19	.20	.22	5.65	2.55	1.35	.30
Sweet Sudan Grass20	.21	.23	5.90	2.65	1.40	.35
DALLAS GRASS, Imported	.60	.62	.65	16.15	6.85	3.50	.80
Wood's Hay Grain Mixture10	.10½	.12	3.30	1.55	.85	.25
Wood's Grain Pasture Mixture10	.10½	.12	3.30	1.55	.85	.25
WOOD'S SPECIAL GRASS & CLOVER MIXTURES							
Permanent Pasture Mix., Nos. 1 to 3	.29	.30	.32	8.15	3.55	1.85	.45
Permanent Hay Mix., Nos. 6 to 8	.29	.30	.32	8.15	3.55	1.85	.45
Southern Permanent Mix. No. 12.	.29	.30	.32	8.15	3.55	1.85	.45

ONION SETS

PROMPT SHIPMENT

	Per lb.	Per peck	Per bu., 32 lbs.
White Silver Skin . . . \$.25	\$1.10	\$4.00
Yellow Ebenezer, Yellow Danvers and White Multiplier—Sold Out			
10-bus. lots and over, 10c. bus. less			
Postpaid prices add 10c. lb.; peck 30c.; bushel 80c.			



Be Sure to Specify the Group Wanted
Prices Are Postpaid

GROUP 1—Alfalfa, Sweet Clover, Bur Clover and Black Medic	1 bus.	.50
	2½ bus.	1.00
GROUP 2—Clovers, Medium Red, Crimson, Mammoth, Alsike, Ladino, Dixie, White and White Dutch.	1 bus.	.50
	2½ bus.	1.00
GROUP 3—Lespedeza, all varieties: Sericea, Korean, Common, Kobe and Tennessee No. 76	Up to 100 lbs.	.50
GROUP 4—Soybeans, all varieties.	2 bus.	.30
	5 bus.	.55
	25 bus.	2.50
	30 bus.	3.00
GROUP 5—Cowpeas, Peanuts, Lima Beans, Velvet Beans, Crotalaria, Kudzu, Sesbania, and Beggar Weed.	2 bus.	.30
	5 bus.	.55
	25 bus.	2.50
	30 bus.	3.00
GROUP 6—Field Beans, Wax, String, Navy, Snap, Kidney and Scarlet Runner—Garden Beans	1 bus.	.35
GROUP 7—Large Package: All Vetches: Spring, Wild, Common, Hairy or Winter and Hungarian	1 bus.	.35
Peas: Austrian, Canada, Garden, Sweet and Canning Peas	100 lbs.	.55
Broad Bean. Lentil		

WOOD'S FERTILIZERS

WOOD'S SPECIAL ALL CROP FERTILIZER—Analysis: 5% Nitrogen; 10% Phosphoric Acid, 5% Potash. Prices: 25 lbs., \$1.00; 100 lbs., \$2.75.

WOOD'S HIGH-GRADE SHEEP MANURE—The Great Natural Fertilizer. Prices, F.O.B. Richmond: 25 lbs., \$1.00; 50 lbs., \$1.65; 100 lbs., \$3.00. Cannot be mailed.

WOOD'S HIGH-GRADE COW MANURE—Prices, F.O.B. Richmond: 25 lbs., \$1.00; 50 lbs., \$1.65; 100 lbs., \$3.00. Cannot be mailed.

HYDRATED LIME—Prices F.O.B. Richmond: 10 lbs., 25c.; 50 lbs., 60c.

VIGORO—Regular Stock for Lawns and Flowers. Analysis, 4-12-4. Prices, F.O.B. Richmond: 5 lbs., 45c.; 10 lbs., 85c.; 25 lbs., \$1.50; 100 lbs., \$4.00.

PEAT MOSS—F.O.B. Richmond: ¼ bale, \$1.75; ½ bale, \$2.85; ¾ bale, \$3.35; bale, \$4.50.

STEAMED BONE MEAL—\$5.00 per 100-lb. bag; \$3.00 per 50-lb. bag.

POSTPAID PRICES OF FIELD SEED apply to Va., N. C., W. Va., Md, Del., N. J., and Penna.

POSTAGE TO OTHER STATES: To S. C., Ga., Ky., Tenn, Ohio, Ind., N. Y., New England and Mich., add 2c. per pound to postpaid prices.

To Ala., Ark., Fla., Ill., Iowa, La., Miss, Mo., and Wis., add 4c. per pound. To Texas, Okla., Kansas and Neb., add 6c. per lb. to postpaid prices.

SOY BEANS

—Prices F.O.B. Richmond—

Packed in 2-bushel bags.	Per bu., 60 lbs.	½ bu., 30 lbs.	Peck 15 lbs.
Wood's Yellow (Late)	\$5.00	\$2.60	\$1.40
Tokio	5.00	2.60	1.40
Pocahontas	5.00	2.60	1.40
Virginia Brown	5.25	2.75	1.45
Wilson Black	5.00	2.60	1.40
Ogden	5.25	2.75	1.45
Mixed Soy Beans	4.60	2.40	1.30

Sold Out Other Varieties Soja and Velvet Beans

EDIBLE PEAS

100-lb. lots, 25 to 99, 5 to 24.

	per lb.	per lb.	per lb.
Early Wilt-Resistant Ramshorn....	\$.26	\$.27	\$.29
Giant Wilt-Resistant Ramshorn....	.28	.29	.31
Blue Goose or Grey Crowder24	.25	.27
Brown Sugar Crowder30	.31	.33
Red Speckled Crowder30	.31	.33
Early Six Weeks Browneye30	.31	.33
Blackeye White Crowder29	.30	.32
Large Black Peas26	.27	.29
Conch30	.31	.33
Dixie Queen Browneye28	.29	.31
Rice or Lady30	.31	.33

COW PEAS

—Prices F.O.B. Richmond—

Packed in 2-bushel bags.	Per bu., 60 lbs.	½ bu., 30 lbs.	Peck 15 lbs.
Mixed Cow Peas	\$7.50	\$3.85	\$2.00
Black Peas, Medium Size	8.50	4.35	2.25
Mixed Cow Peas and Soy Beans....	6.10	3.15	1.65

SEED POTATOES

—Prices F.O.B. Richmond—

	Per 100- lb. bag	Bus., 60 lbs.	½ bus., 30 lbs.	Peck 15 lbs.
IRISH COBBLER:				
Certified Maine Grown	\$5.35	\$3.30	\$1.75	\$1.00
CHIPPEWA —Certified, Maine	5.35	3.30	1.75	1.00
KATAHDIN —Certified, Maine	5.35	3.30	1.75	1.00
GREEN MOUNTAIN —Cert., Maine	5.35	3.30	1.75	1.00
CHUFAS —Bus. 40 lbs., peck 10 lbs....	9.25	4.75	2.50	
ARTICHOKES —Sold Out				

SEED POTATOES

JUNE AND JULY SHIPMENT

Orders now booked for shipment from Cold Storage during June at 25c. per bag and July at 50c. per bag over prices quoted.

A deposit of \$2.00 per bag required on all booked orders.

Wood's Feeds

Mash and Mixed Feeds in Print Cloth Bags

Our Scratch and Mash Feeds are shipped in print cloth bags, costing us approximately 40c. each for Scratch bags and 45c. each for Mash bags. Naturally with the high price of cotton bags now prevailing this should be taken into consideration when comparing prices. These bags are fine for making dresses, curtains, and many other items. The materials used should retail from 60c. to 75c. per bag.

10c. per 100-lb. bag off for Store Door Delivery on Mash and Grain Feeds.

MASH FEEDS

	10-lb. bag.	50-lb. bag.	100-lb. bag.
HOLLYBROOK LAYING MASH			
With Dried Milk	\$.60	\$2.70	\$5.25
HOLLYBROOK GROWING MASH			
With dried milk and cod liver oil..	.60	2.75	5.35
HOLLYBROOK STARTING MASH			
With cod liver oil and dried milk..	.60	2.75	5.35

SCRATCH FEEDS

	10-lb. bag.	50-lb. bag.	100-lb. bag.
PAMUNKEY SCRATCH55	2.50	4.85
Includes cracked corn, wheat, etc., but no grit or shell.			
HOLLYBROOK CHICK GRAINS65	2.75	5.35
HOLLYBROOK DEVELOPING FOOD	.65	2.70	5.25

WOOD'S PIGEON FEEDS

	10-lb. bag.	50-lb. bag.	100-lb. bag.
PAMUNKEY PIGEON, With Corn ..	.65	3.05	5.95
HOLLYBROOK PIGEON, No Corn ..	.75	3.55	6.90

MISCELLANEOUS FEEDS

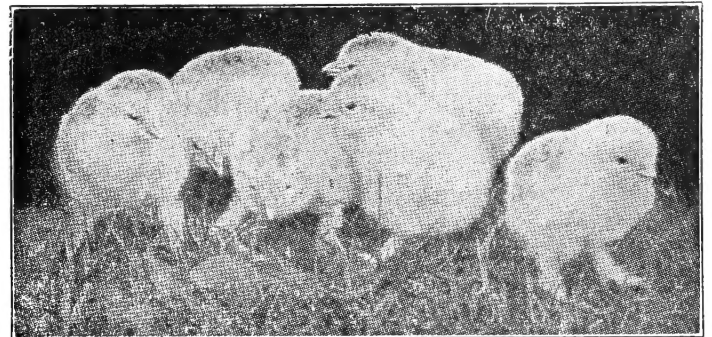
	10-lb. bag.	50-lb. bag.	100-lb. bag.
YELLOW CRACKED CORN55	2.50	4.85
WHITE CRACKED CORN55	2.50	4.75
POULTRY GRIT, coarse, fine, medium	.20	.60	1.00
OYSTER SHELLS—For Poultry20	.65	1.15
FAUST PIGEON HEALTH GRIT35	1.40	2.60
CHARCOAL—Medium, Fine, Coarse ..	.65	2.50	...
RABBIT PELLETS75	3.50	6.75
GAME BIRD SCATTER FOOD	1.10	4.50	8.50
HEAVY WHITE OATS —\$1.75 per bus., 32 lbs.			

Wood's Baby Chicks

100% LIVE DELIVERY GUARANTEED

TERMS: CASH WITH ORDER

HATCH DAYS—TUESDAYS AND FRIDAYS



Our High Quality CHICKS are from blood-tested flocks, and the parent flocks are carefully culled to select birds for laying characteristics and for sturdy, healthy bodies. The many repeat orders we receive every year prove that our CHICKS give satisfaction.

POSTPAID PRICES:

	Per 25	Per 50	Per 100
BARRED ROCKS	\$4.25	\$7.75	\$14.50
RHODE ISLAND REDS	4.25	7.75	14.50
WHITE ROCKS	4.25	7.75	14.50
WHITE WYANDOTTES	4.25	7.75	14.50
NEW HAMPSHIRE REDS	4.50	8.25	15.50
NEW ENGLAND CROSS	4.50	8.25	15.50
HEAVY ASSORTED	4.00	7.50	14.00

SEASONABLE INSECTICIDES

Arsenate of Lead For all Leaf-Eating Insects. Sticks to the leaf. Use 1 to 2 pounds to 50 gallons of water (one level tablespoonful to gallon), for general spraying. By mail postpaid, 1-lb. pkg., 60c.; 4-lb. pkg., \$1.60. Not postpaid, 1-lb. pkg., 50c.; 4-lb. pkg., \$1.40.

Black Leaf 40 For Sucking Insects and Poultry Lice. Kills plant lice on roses, shrubbery, fruits and vegetables. A concentrated solution of nicotine sulphate. Dilute 1 to 2 teaspoonfuls to a gallon of water as directed. By mail postpaid, 1-oz. bottle, 45c.; 5-oz. pkg., \$1.15; lb., \$2.60; 2 lbs., \$4.10. Not postpaid, 1 oz. 36c.; 5 ozs., \$1.05; lb., \$2.45; 2 lbs., \$3.92.

Bordeaux Mixture For Blights, Scab, Mildew, etc. Prevents blight, scab, rust, mildew, black-rot and other fungus diseases of plants and fruits and improves the quality and increases the yield. Apply on all vine crops, grapes, cucumbers, melons, tomatoes, potatoes, and fruit trees, etc. By mail postpaid, lb., 50c.; 4-lb. pkg., \$1.20. Not postpaid, lb. 40c.; 4-lb. pkg., \$1.00.

Red River Potato Mix With D.D.T.—A complete spray in one operation at one cost. Kills potato bugs quicker, drives off flea beetles and leafhoppers; prevents blight, stimulates foliage, making more and better potatoes. May be used as a dust or spray. By mail postpaid, 1-lb. pkg., 70c.; 4-lb. pkg., \$2.00. Not postpaid, 1-lb. pkg., 55c.; 4-lb. pkg., \$1.75.

Rose Dust DuPont Product—A fungicide. Stops black spot, rust, mildew and other blights; also protects carnations, chrysanthemums, snapdragons and tulips. Postpaid, 1-lb. sifter top, \$1.15; 4-lb. size, \$3.25. Not postpaid, 1-lb. sifter top, \$1.00; 4-lb. size, \$3.00.

.75 Rotenone Dust Kills insects on vegetation, but leaves no poisonous residue. Controls bean beetle, cabbage worm, asparagus, cucumber and flea beetles, potato bug, tomato worm, rose slug, leaf hopper, thrips, red spider, plant lice and other garden pests. Apply 15 to 20 pounds per acre. May be applied either as a dust or spray. By mail postpaid, 1-lb. pkg., 60c.; 4-lb. pkg., \$1.40. Not postpaid, 1-lb. pkg., 50c.; 4-lb. pkg., \$1.10; 50 lbs., \$10.00.

Tomato Dust Contains copper in fungicidal form. Controls early and late blight, worms and fruit worms, flea beetles and chewing insects. By mail, 1-lb. sifter top can, 65c.; 4-lb. pkg., \$1.75. Not postpaid, 1-lb. sifter top can, 50c.; 4-lb. pkg., \$1.40.

DuPont 5% D.D.T. Insect Spray Sprayed on or brushed on—it leaves an invisible coating—kills 'em when they come. Its killing power lasts for weeks. Sure death for flies, bedbugs, mosquitoes, cockroaches and several other household pests. People buy it to kill the bugs that are present and to kill the bugs that come. Postpaid, 1-pt. bottle, 60c.; 1-qt. bottle, \$1.00. Not postpaid, 1 pt., 45c.; 1 qt., 75c.

Weedone—2-4-D Weed Killer Kills weeds underground as well as above ground, right down to the root tips. Kills poison oak, poison ivy, wild morning glory, Japanese honeysuckle, sassafras, black locust, choke cherry and many other weeds. By mail postpaid, 6-oz. bottle, \$1.15; qt., \$2.75. Not postpaid, 6-oz. bottle, 75c.; qt., \$2.50; gallon, \$7.50; 5-gallon drum, \$25.00.

WOOD'S High Grade GARDEN SEEDS

GREEN PODDED BEANS

	Postpaid			
	Pkt. ½ lb.	Lb.	2 lbs.	5 lbs.
Tendergreen Stringless Green Pod...	.10	.30	.50	1.95
Full Measure Stringless Green Pod...	.10	.30	.50	1.85
Giant Stringless Green Pod10	.25	.45	1.80
Bountiful or Early Six Weeks.....	.10	.30	.50	1.85

WAX PODDED BEANS

	Postpaid			
	Pkt. ½ lb.	Lb.	2 lbs.	5 lbs.
Bountiful Wax10	.30	.50	\$2.05
Rustless Golden Wax10	.30	.50	2.05
Pencil Pod Black Wax10	.30	.50	2.05

POLE or CORNFIELD BEANS

	Postpaid			
	Pkt. ½ lb.	Lb.	2 lbs.	5 lbs.
Lazy Wife10	.30	.50	1.85
Kentucky Wonder or Old Homestead	.10	.30	.50	1.85
Nancy Davis or Striped Creaseback.	.10	.30	.50	1.85

LIMA BEANS

	Postpaid			
	Pkt. ½ lb.	Lb.	2 lbs.	5 lbs.
Henderson Bush Lima10	.30	.50	2.05
Small Pole Lima or Butter Beans.	.10	.30	.50	1.85
Florida Speckled Pole Butter Beans.	.10	.30	.50	1.85

GARDEN BEETS 1 ounce will plant 50-ft. row. 6 to 8 lbs. one acre.

	Postpaid			
	Pkt. Oz.	¼ lb.	Lb.	
Early Wonder, 50 days10	.15	.40	1.40
Detroit Dark Red, 55 days10	.15	.45	1.50

BROCCOLI

	Postpaid			
	Pkt. Oz.	¼ lb.	Lb.	
Calabrese Green Sprouting Italian, 90 days	.10	.25	.70	\$2.50
Italian Salad, 100 days10	.15	.30	1.00

BRUSSELS SPROUTS

	Postpaid			
	Pkt. Oz.	¼ lb.	Lb.	
Long Island Improved, 100 days.....	.10	.40	1.40	\$5.00

CABBAGE One ounce will plant 100-foot row and will produce about 2,000 plants; 6 to 8 ounces will make enough plants for 1 acre

	Postpaid			
	Pkt. Oz.	¼ lb.	Lb.	
Copenhagen Market, 70 days10	.25	.70	2.50
Wood's Sel. Ey. Jersey Wakefield, 65 days	.10	.25	.85	3.00
Wood's Charleston Wakefield, 75 days...	.10	.25	.70	2.50
Early Flat Dutch, 85 days10	.25	.70	2.50

YELLOW RESISTANT CABBAGES

Marion Market, 75 days10	.25	.85	3.00
Wisconsin All Seasons10	.30	.95	3.50

CARROTS One ounce will plant 100 feet of drill, 3 to 4 pounds to the acre.

	Postpaid			
	Pkt. Oz.	¼ lb.	Lb.	
Red Cored Chantenay, 70 days10	.15	.45	1.50
Danvers Half Long, 75 days10	.15	.45	1.50

COLLARDS

	Postpaid			
	Pkt. Oz.	¼ lb.	Lb.	
Carolina Header10	.20	.60	2.25
White or Cabbage, 80 days10	.15	.30	.90

GARDEN CORN Roasting ears taste delicious when gathered from the garden just before cooking. One pound will plant 100 hills; 10 to 15 pounds plants an acre.

	Postpaid			
	Pkt. ½ lb.	Lb.	5 lbs.	
Extra Early Adams10	.25	.40	\$1.40
Trucker's Favorite10	.20	.35	1.20
Country Gentleman10	.25	.45	1.65
Stowell's Evergreen10	.25	.45	1.65

EGG PLANT One ounce produces about 1,000 plants

	Postpaid			
	Pkt. Oz.	¼ lb.	Lb.	
Florida High Bush, 125 days10	.45	1.60	6.00
Black Beauty, 120 days10	.45	1.60	6.00

LETTUCE One ounce produces about 1,500 plants; 2 lbs. an acre.

	Postpaid			
	Pkt. Oz.	¼ lb.	Lb.	
Wood's Cabbage, 65 days10	.20	.65	\$2.25
Improved Big Boston, 75 days10	.15	.50	1.75
Iceberg, 80 days10	.25	.75	2.50

MUSTARD One ounce will plant 100 feet of row, 5 to 6 pounds per acre.

	Postpaid			
	Oz.	¼ lb.	Lb.	
Southern Giant Curled, 35 days10	.25	.75	
Chinese Broadleaved, 40 days15	.30	1.00	
Florida Broadleaved, 40 days15	.30	1.00	
Tendergreen or Mustard Spinach, 25 days...	.10	.25	.75	

PARSLEY One ounce will plant 100 feet

	Postpaid			
	Pkt. Oz.	¼ lb.	Lb.	
Champion Moss Curled, 70 days10	.15	.40	1.25
Plain or Single, 70 days10	.15	.45	1.50
Hamburg Parsnip Rooted, 90 days10	.15	.45	1.50

RADISH One ounce will plant 50 feet 8 to 10 pounds an acre.

	Postpaid			
	Pkt. Oz.	¼ lb.	Lb.	
Extra Early Scarlet Globe, 25 days10	.15	.30	.90
Early White Tipped Scarlet Turnip.....	.10	.15	.30	.90
Long White Icicle, 30 days10	.15	.30	.90
Brightest Long Scarlet, 30 days10	.15	.30	.90

SPINACH Two ounces will plant 100 feet of drill, 12 to 15 lbs. one acre.

	Postpaid			
	Pkt. Oz.	¼ lb.	Lb.	
New Zealand, 55 days10	.15	.30	1.00
Norfolk Savoy or Bloomsdale, 45 days...	.10	.20	.60	
Virginia Blight Resistant10	.20	.60	

OKRA or GUMBO

	Postpaid			
	Pkt. Oz.	¼ lb.	Lb.	
White Velvet, 60 days10	.15	.35	1.00
Dwarf Long Green, 60 days10	.15	.40	1.25
Perkin's Mammoth Long Green, 60 days.	.10	.15	.40	1.25
Clemson Spineless, 60 days10	.15	.45	1.50

PARSNIP Sugar or Hollow Crown, 100 days

	.10	.15	.40	1.25
--	-----	-----	-----	------

PEPPER One ounce will produce about 1,200 plants

	Postpaid			
	Pkt. Oz.	¼ lb.	Lb.	
Ruby Giant or World Beater, 115 days..	.10	.45	1.60	6.00
Pimento, 110 days10	.50	1.85	7.00
California Wonder, 120 days10	.50	1.85	7.00
Long Red Cayenne, 125 days10	.40	1.35	5.00
Red Chili, 140 days10	.40	1.35	5.00

TOMATO One ounce makes about 1,500 plants; 4 ounces will make enough plants for one acre.

	Postpaid			
	Pkt. Oz.	¼ lb.	Lb.	
Wood's Famous Brimmer, 110 days.....	.15	1.00	3.50	12.00
Certified Marglobe, Wilt-Resistant10	.40	1.25	4.50
Break O'Day, Wilt-Resistant, 95 days....	.10	.50	1.60	6.00
Certified Rutgers, Wilt-Resistant, 100 days	.10	.40	1.25	4.50
Certified Pritchard, 95 days10	.45	1.40	5.00
Oxheart, 110 days15	1.15	4.00	15.00
June Pink, 95 days10	.50	1.85	7.00
Stone, 110 days10	.35	1.10	4.00
Bonnie Best, 100 days10	.40	1.30	4.75
Golden Ponderosa, 110 days10	1.00	3.50	12.00

TURNIP

	Postpaid				
	Oz.	¼ lb.	Lb.	per lb.	
Extra Early White Milan.....	.15	.35	1.25	1.15	1.05
Extra Early Purple Top Milan15	.35	1.25	1.15	1.05
Improved Purple Top White Globe15	.35	1.10	1.00	.95
Mammoth Purple Top White Globe10	.30	1.00	.90	.80
Early Red or Purple Top10	.30	1.00	.90	.80
White Egg10	.30	1.00	.90	.80
Large White Norfolk Globe.....	.10	.30	1.00	.90	.80
Pomeranian White Globe10	.30	1.00	.90	.80
Early White Flat Dutch10	.30	1.00	.90	.80
Large Amber or Yellow Globe....	.10	.30	1.00	.90	.80
Purple Top Yellow Aberdeen10	.30	1.00	.90	.80
Golden Ball10	.30	1.00	.90	.80
Long White Cowhorn10	.30	1.00	.90	.80
Mixed Turnip Seed10	.30	1.00	.90	.80

SALAD TURNIPS

Shogoin (Japanese Salad)10	.30	1.00	.90	.80
Southern Prize10	.20	.60	.55	.50
Seven Top10	.20	.60	.55	.50

RUTABAGA or SWEDE

Improved Purple Top Yellow.....	.15	.35	1.10	1.00	.95
Purple Top Yellow10	.30	1.00	.90	.80

Vegetable Plants

READY FOR IMMEDIATE DELIVERY

WE DO NOT SHIP PLANTS C. O. D.

CABBAGE PLANTS—Wakefield and Early Flat Dutch: 65c. per 100; 500 for \$2.75; \$5.00 per 1,000, postpaid. Not postpaid, 50c. per 100; 500 for \$2.40; \$4.50 per 1,000.

COLLARD PLANTS—65c. per 100; 500 for \$2.50; \$4.50 per 1,000, postpaid. Not postpaid, 50c. per 100; 500 for \$2.25; \$4.00 per 1,000.

EGG PLANTS—50 for \$1.00; \$1.70 per 100; 500 for \$6.75; \$12.50 per 1,000, postpaid. Not postpaid, 35c. per dozen; 50 for 85c.; \$1.50 per 100; 500 for \$6.50.

PEPPER PLANTS—California Wonder: 40c. per dozen; 50 for 90c.; \$1.50 per 100; 500 for \$5.25; \$10.00 per 1,000, postpaid. Not postpaid, 30c. per dozen; 50 for 75c.; \$1.35 per 100; 500 for \$5.50; \$9.50 per 1,000.

SWEET POTATO PLANTS—Porto Rico. Ready Now. By mail postpaid, 80c. per 100; 500 for \$3.50; \$6.00 per 1,000. Not postpaid, 70c. per 100; 500 for \$3.00; \$5.00 per 1,000.

TOMATO PLANTS—Rutgers and Marglobe. Ready May, June and July: 35c. per dozen; 50 for 60c.; 90c. per 100; 500 for \$3.50; \$6.50 per 1,000 postpaid. Not postpaid, 25c. per dozen; 50 for 50c.; 75c. per 100; 500 for \$3.25; \$6.00 per 1,000.

Sorghum--Millet--Peanuts, Etc.

For Prices on Cow Peas, Soy Beans,
Edible Peas and Seed Potatoes,
See Inside Page

	—Prices F.O.B. Richmond—			—Postpaid Prices—			
	100-lb. lots, 25 to 99, 5 to 24, per lb.	per lb.	per lb.	25 lbs.	10 lbs.	5 lbs.	1 lb.
SORGHUM —Early Amber	.12	.13	.15	\$3.90	\$1.85	\$1.00	\$.30
Early Orange, 50 lbs. acre	.11½	.12	.14	3.65	1.75	.95	.30
Sugar Drip, for syrup, 8 lbs. acre	.15	.16	.18	4.65	2.15	1.15	.30
Texas Seeded Ribbon Cane, Germination 50 to 60%	.10	.11	.13	3.40	1.65	.90	.25
HEGARI , Certified	.08½	.09	.11	2.90	1.45	.80	.25
Certified Martin's Combine Milo	.09½	.10	.12	3.15	1.55	.85	.25
Certified Caproc Combine Milo	.10	.11	.13	3.40	1.65	.90	.25
Certified Early Combine Hegari—Sold Out							
SHALLU or EGYPTIAN WHEAT	.14	.15	.17	4.40	2.05	1.10	.30
MILLET —Tenn. Cultivated German	.10	.11	.13	3.40	1.65	.90	.25
Pearl or Cattail, Drill 5 lbs. acre	.20	.21	.23	5.90	2.65	1.40	.35
Proso or Hog Millet, 50 lbs. acre	.08½	.09	.11	2.90	1.45	.80	.25
Brown Top Millet—Sold Out							
BROOM CORN —Early Dwarf	.17	.18	.20	5.15	2.35	1.25	.35
Standard Evergreen, Drill 6 lbs.	.17	.18	.20	5.15	2.35	1.25	.35
TEOSINTE , drill 3 lbs. Lb. 75c.	.65	.67	.70	17.40	7.35	3.75	.85
BUCKWHEAT , Japanese, 50 lbs.	.08½	.09	.11	2.90	1.45	.80	.25
PEANUTS —White Spanish	.19	.20	.22	5.65	2.55	1.35	.35
Holland Jumbo	.22½	.23	.25	6.40	2.85	1.50	.40
Certified Holland Jumbo	.23½	.24	.26	6.65	2.95	1.55	.40
CROTALARIA 100-lb. Bags							
Giant Striata	.20	.21	.23	5.90	2.65	1.40	.35
Late Spectabilis and Intermedia—Sold Out							
Wood's Quail Planting Mixture	.16½	.17	.19	4.90	2.25	1.20	.30
Wood's Bird Scatter Food	.10½	.11	.13	3.40	1.65	.95	.25
SESBANIA	.26	.27	.29	7.40	3.25	1.70	.40
BENE	.32	.33	.35	8.90	3.85	2.00	.50
CANADA FIELD PEAS	.10	.11	.13	3.40	1.65	.90	.25
DWARF ESSEX RAPE	.18	.19	.21	5.15	2.35	1.25	.30
SUNFLOWER —Mammoth Russian 100-lb. Bags							
Fancy Recleaned	.25	.26	.28	7.15	3.15	1.65	.40
NAVY BEANS —Michelite Strain	.20	.21	.23	5.90	2.65	1.40	.35

Dog Foods



HUNT CLUB DOG FOOD was originally developed for the use of breeders and kennel owners who know the importance of proper feeding. The chief ingredients of Hunt Club are beef and liver, making it equal to a two-thirds fresh meat diet. In addition, it contains 17 other ingredients in correct dietetic proportions to provide all the nutritive elements and vitamins necessary to keep a dog in perfect condition.

HUNT CLUB DOG FOOD—5 lbs., 65c.; 10 lbs., \$1.20; 25 lbs., \$2.60; 50 lbs., \$5.00; 100 lbs., \$9.75.

HUNT CLUB CUBES—5 lbs., 65c.; 10 lbs., \$1.20; 25 lbs., \$2.60; 50 lbs., \$5.00; 100 lbs., \$9.75.

PARD DOG FOOD (A Swift & Co. Product)—Dehydrated: 1-lb. can, 15c.; 48 cans, \$6.75.

SUNDAY SHOWER

Guaranteed to kill every tick and flea on dogs. Ticks will die and drop off in 3 days. Sprinkle all over dog, rub in thoroughly and wipe off. When once used, you will never be without Sunday Shower. Pint, \$1.00; postpaid, \$1.25.

WOOD'S TREATED COTTON SEED

Bus. 30 lbs.	Per 100-lb. bag.	F.O.B. Richmond	Postpaid
Deltapine 14	\$10.25	\$10.50	\$3.40
Cert. Deltapine 14, delinted	12.50	12.75	4.00
Cert. Coker 100, wilt, delint.	12.50	12.75	4.00
Coker 100, Wilt	9.50	9.75	3.10
Coker 100, Wilt, delinted	10.25	10.50	3.40

SEED OATS

	—Prices F.O.B. Richmond—			
	30-bu. lots, per bu.	32 lbs., per bu.	16 lbs., per bu.	8 lbs., per bu.
Treated with Ceresan Packed in 3-bushel bags.				
Columbia Spring	\$2.00	\$2.10	\$1.10	\$.65
White Spring	2.00	2.10	1.10	.65
Fulgrain	2.00	2.10	1.10	.65

Open Pollinated Varieties

Quart (2 lbs.), postpaid 60c., on all Varieties
Bag Lots (2 bushels), 10c. bus. less.

WHITE VARIETIES

	—Prices F.O.B. Richmond—		
	Bus., 56 lbs.	Peck, 14 lbs.	½ Peck, 7 lbs.
Improved White Dent	\$4.50	\$1.40	\$.85
Oklahoma Silvermine	4.50	1.40	.85
Wood's Dixie	4.50	1.40	.85
Latham's Double	4.50	1.40	.85
Southern Snowflake	4.75	1.45	.90
Tenn. Red Cob and Neal's Paymaster	4.75	1.45	.90
Tuxpan	4.75	1.45	.90
Whatley's and Douthit's Prolific	5.00	1.50	.90
Hickory King	5.25	1.55	.95
Iowa Silver King (Extra Early)	6.50	1.90	1.15
Mexican June and Hasting's Prolific—Sold Out			

YELLOW VARIETIES

Virginia Yellow Dent	4.50	1.40	.85
Improved Golden Dent	4.75	1.45	.90
Certified Improved Golden Dent	5.25	1.55	.95
Strawberry Copper	4.75	1.45	.90
Reid's Yellow Dent	4.75	1.45	.90
Lancaster Sure Crop	4.75	1.45	.90
Wood's and Jarvis' Golden Prolific	5.00	1.50	.90
Certified Jarvis' Golden Prolific	5.50	1.65	1.00
Clarage Ey. Yellow and Imp. Leaming	5.00	1.55	.95
Indian Chief	5.00	1.55	.95
Wood's 90-Day Golden 8-Row Flint	5.50	1.65	1.00

ENSILAGE VARIETIES

Old Virginia and Big Golden	4.50	1.40	.85
Leaming Ensilage	4.50	1.40	.85
Red Cob Ensilage and Early Eureka	4.75	1.45	.90
Wood's Mammoth Ensilage	4.75	1.45	.90
West Branch and Yellow Sweepstakes	4.75	1.45	.90
Virginia Eureka and Blue Ridge	5.00	1.50	.90
Wood's Pamunkey Ensilage	5.25	1.55	.95

Hybrid Corn Prices

STRICTLY
CHOICE FLATS

99% GERM. TREATED. 1-BUSHEL COTTON BAGS.
5-bus lots, 25c. per bus. less. Quart, 2 lbs., postpaid, 75c.
Choice Round Kernels, \$2.50 Bus. Less, Cxcept Marked *
Postpaid, add 25c. ½ Peck, 40c. Pk., \$1.25 Bu.

WOOD'S HYBRIDS

	—Prices F.O.B. Richmond—		
	Bus., 56 lbs.	Peck, 14 lbs.	½ Peck, 7 lbs.
Hybrid Yellow and Hybrid Red Sweepstakes Ensilage	\$ 9.25	\$2.70	\$1.50
V-120 and V-125, White Dent	10.75	3.10	1.70
S-350 and S-360, White	10.50	3.00	1.65
S-315, Red Cob Prolific, White	10.25	2.95	1.60
Wood's S-210, Hybrid Golden Prolific	9.75	2.85	1.55
V-50, V-60, V-40, V-35, Yellow Dent	9.50	2.75	1.55
V-25 Hybrid, Extra Early, Yellow	10.75	3.10	1.70
V-45 Hybrid Yellow Dent	9.50	2.75	1.55

OPEN FORMULA HYBRIDS

Subject to **CERTIFICATION**. Passed field inspection. Due to delay in Certified tags after final inspection, certified tags are not attached unless order specifies "Certified."

YELLOW

N. C. 26	9.50	2.75	1.55
Dixie 44	9.50	2.75	1.55
Illinois 448, Kentucky Y-102	9.50	2.75	1.55
Ill. 200, Ky. 103	9.50	2.75	1.55
U. S. 262	10.50	3.00	1.65
U. S. 265	9.75	2.85	1.55
*Cornell 29-3, N. Y. Certified	9.50	2.75	1.55
U. S. 13 and U. S. 99—Sold Out. Plant V-45.			

WHITE

Ky. 203	10.75	3.10	1.70
Tenn. 10	10.75	3.10	1.70
*Tenn. 14, *Tenn. 15	10.25	2.95	1.60
Ind. 750	10.75	3.10	1.70

WOOD'S CROP SPECIAL

Giving Timely Information and Prices of Seasonable Seeds

PUBLISHED BY T. W. WOOD & SONS SEEDSMEN RICHMOND VA.

WOOD'S V-45 For Late Planting

Planted late V-45 grows quickly and by frost can mature bumper crops of highest quality golden yellow feed corn high in protein, vitamins and feeding value. For years it has been most popular for late planting in the Mid-Atlantic and Upper South. It frequently makes two long solid ears per stalk. It's grain is deep, flinty and tightly packed on a

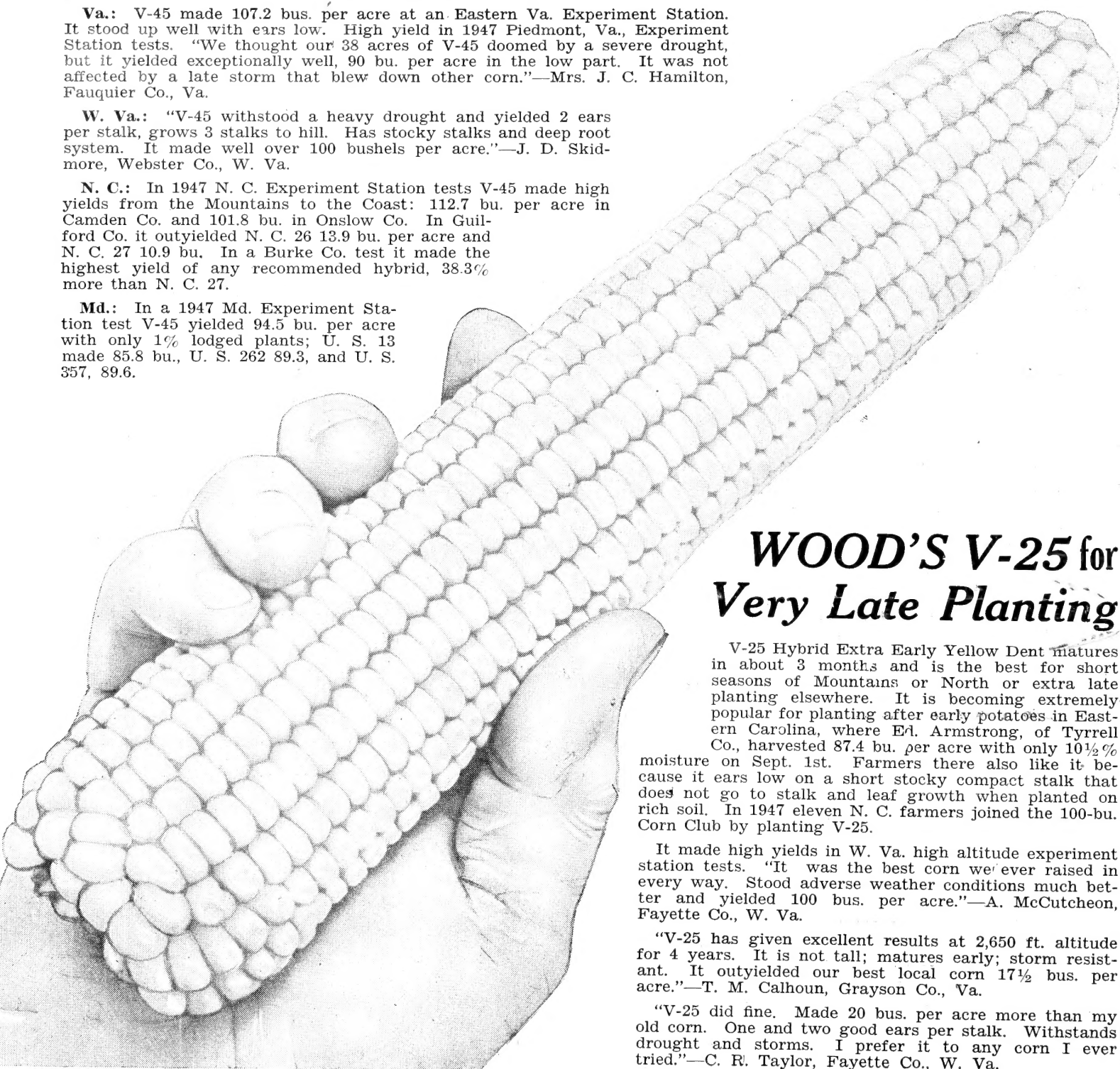
Va.: V-45 made 107.2 bus. per acre at an Eastern Va. Experiment Station. It stood up well with ears low. High yield in 1947 Piedmont, Va., Experiment Station tests. "We thought our 38 acres of V-45 doomed by a severe drought, but it yielded exceptionally well, 90 bu. per acre in the low part. It was not affected by a late storm that blew down other corn."—Mrs. J. C. Hamilton, Fauquier Co., Va.

W. Va.: "V-45 withstood a heavy drought and yielded 2 ears per stalk, grows 3 stalks to hill. Has stocky stalks and deep root system. It made well over 100 bushels per acre."—J. D. Skidmore, Webster Co., W. Va.

N. C.: In 1947 N. C. Experiment Station tests V-45 made high yields from the Mountains to the Coast: 112.7 bu. per acre in Camden Co. and 101.8 bu. in Onslow Co. In Guilford Co. it outyielded N. C. 26 13.9 bu. per acre and N. C. 27 10.9 bu. In a Burke Co. test it made the highest yield of any recommended hybrid, 38.3% more than N. C. 27.

Md.: In a 1947 Md. Experiment Station test V-45 yielded 94.5 bu. per acre with only 1% lodged plants; U. S. 13 made 85.8 bu., U. S. 262 89.3, and U. S. 357, 89.6.

small cob. It's heavy root system and strong compact stalk helps it resist late summer heat, drought and wind or early frost. It makes a luxuriant plant growth with dark green color. It is excellent for grain or silage. V-45 had the highest yield and strongest stalk of any yellow corn in the four 1947 North Georgia experiment station tests.



WOOD'S V-25 for Very Late Planting

V-25 Hybrid Extra Early Yellow Dent matures in about 3 months and is the best for short seasons of Mountains or North or extra late planting elsewhere. It is becoming extremely popular for planting after early potatoes in Eastern Carolina, where Ed. Armstrong, of Tyrrell Co., harvested 87.4 bu. per acre with only 10½% moisture on Sept. 1st. Farmers there also like it because it ears low on a short stocky compact stalk that does not go to stalk and leaf growth when planted on rich soil. In 1947 eleven N. C. farmers joined the 100-bu. Corn Club by planting V-25.

It made high yields in W. Va. high altitude experiment station tests. "It was the best corn we ever raised in every way. Stood adverse weather conditions much better and yielded 100 bus. per acre."—A. McCutcheon, Fayette Co., W. Va.

"V-25 has given excellent results at 2,650 ft. altitude for 4 years. It is not tall; matures early; storm resistant. It outyielded our best local corn 17½ bus. per acre."—T. M. Calhoun, Grayson Co., Va.

"V-25 did fine. Made 20 bus. per acre more than my old corn. One and two good ears per stalk. Withstands drought and storms. I prefer it to any corn I ever tried."—C. R. Taylor, Fayette Co., W. Va.