

Historic, Archive Document

Do not assume content reflects current scientific knowledge, policies, or practices.

ACKERMAN

Offers

TWO PROVEN

Red Stele Resistant **Strawberries**

No more worry about RED STELE!
Plant Temple or Fairland and grow abundant
and profitable crops even on infected land.

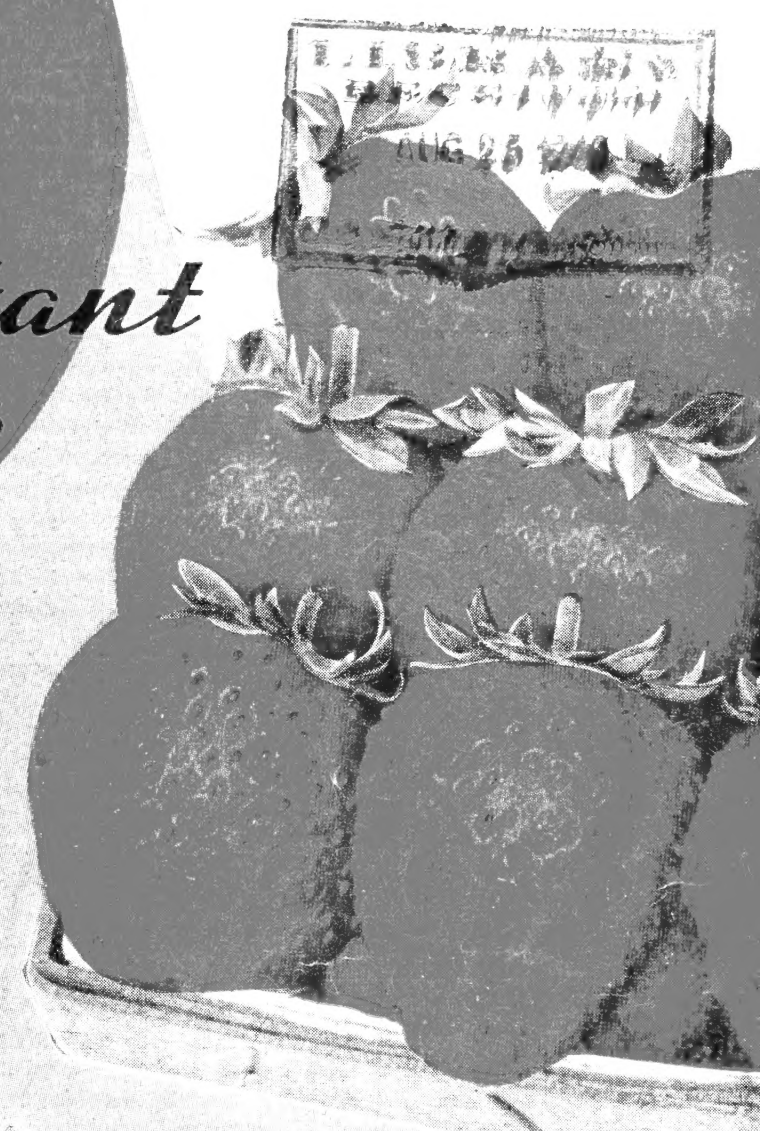
NEW TEMPLE

Red Stele Resistant—Tolerant to Wet Conditions.

This new variety "made-to-order" to take care of the Red Stele menace, has been perfected after many years of crossing and testing. Exceptionally vigorous variety, producing unusually tall plants and perfectly healthy growth. It is an excellent plant maker. Tests have proven it will grow and produce on soils infested with Red Stele.

Temple is very productive. Berries are medium to large, and beautiful red in color, blunt, conic, smooth, uniform and have large attractive caps. Berries are of very good quality, and an excellent shipper. Ripens nearly as early as the well-known Blakemore—one of the first to ripen in the Central States, often the last week in May.

PRICE: 25 for \$0.95; 50 for \$1.65; 100 for \$2.75; 250 for \$5.85; 500 for \$8.75; 1,000 for \$16.00.



NEW FAIRLAND

The Fairland is an Aberdeen-Fairfax cross released for distribution by the U. S. D. A., University of Maryland in the late fall of 1947. A variety that has made its own name and its own record. Fairland is an early-midseason variety, ripening just a few days after Premier. Berries are medium to large, bright light-red; excellent freezing qualities; firm, carrying well to distant markets.

Fairland is highly productive, ranking with Premier, Catskill and Temple, and is destined for Leadership in the Strawberry family. Recent trials have proven Fairland to be adaptable in all Premier growing areas, and more productive than Premier in many sections. It is a heavy plant producer; on rich, moist soils, set farther apart than other varieties. Healthy foliage usually free of leaf spot, scorch; resistant to Red Stele and root disease.

Plant both Temple and Fairland this year and give these two worthwhile future Leaders a chance to prove you can forget all about Red Stele and root disease.

PRICE: 25 for \$1.25; 50 for \$2.00; 100 for \$3.15; 250 for \$6.45; 500 for \$10.00; 1,000 for \$18.00.

Bargain No. 1

50 TEMPLE
50 FAIRLAND

\$2.50

For only Not prepaid

ACKERMAN NURSERIES
Bridgman, Michigan

**Do Your Planting This Fall
And Be Way-Ahead Next Spring**

Ackerman's Small Fruit Plants

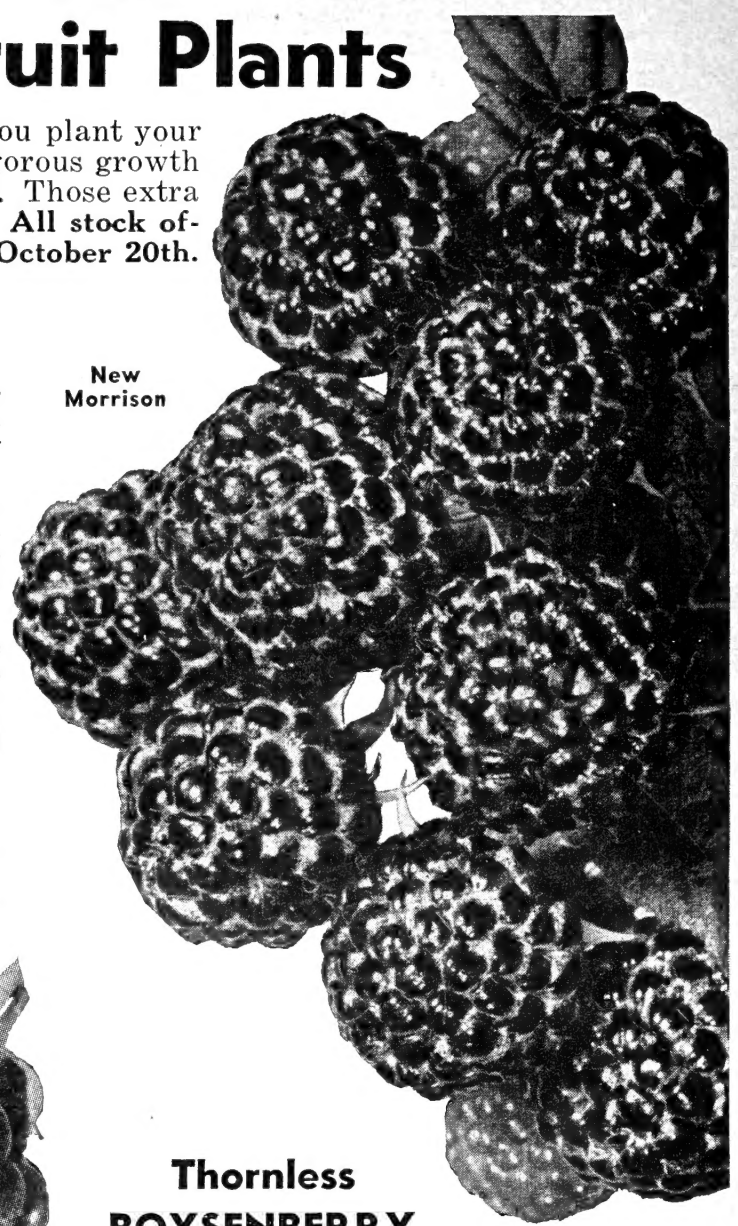
Fall is the ideal time to set your Fruit Plants. If you plant your Fruit stock this fall, your bushes will be making a vigorous growth in the Spring before others can even work the ground. Those extra weeks of growth mean more and finer fruit for you. **All stock offered on this page will be ready for shipment about October 20th.** Prices quoted are f.o.b. Bridgman.

BLACK RASPBERRIES

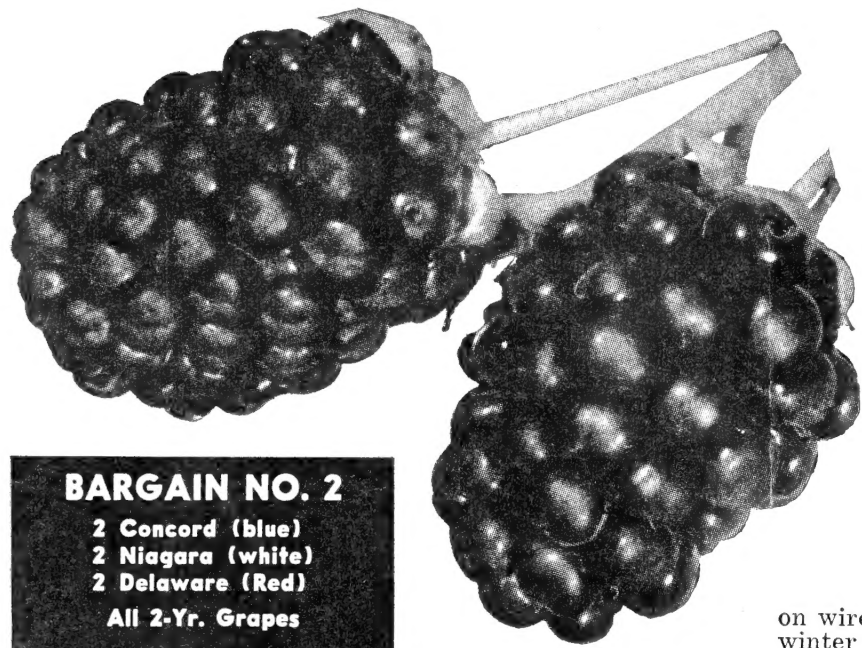
CUMBERLAND. The very Best Midseason Kind. Heavy yielder of large, rich, black berries of delicious flavor. **PRICE:** 1-Yr. No. 1 plants, 12 for 85c; 25 for \$1.50; 50 for \$2.75; 100 for \$4.95; 250 for \$11.25; 500 for \$20.00; 1,000 for \$37.50.

NEW MORRISON. The giant of the Black Raspberry family. Jet black berries, nearly an inch in diameter. Ripens mid-season to late. **PRICE:** 1-Yr. No. 1 plants, 6 for \$1.15; 12 for \$1.95; 25 for \$2.85; 50 for \$4.75; 100 for \$8.50; 250 for \$20.00; 500 for \$35.00; 1,000 for \$65.00.

NEW LOGAN. Most Dependable Early Black Raspberry. The berry ripens one week earlier than Cumberland. It is an extra heavy yielder, with berries as large or larger than Cumberland. **PRICE:** 1-Yr. No. 1 plants, 12 for 85c; 25 for \$1.50; 50 for \$2.75; 100 for \$4.95; 250 for \$11.25; 500 for \$20.00; 1,000 for \$37.50.



New Morrison



Thornless BOYSENBERRY

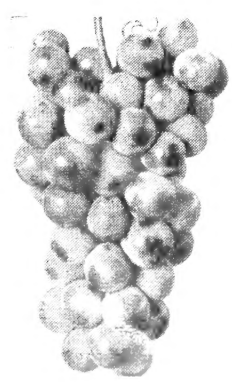
Entirely thornless! Think of picking real large berries without a chance of scratching your hands! These large, sweet, juicy berries are often 2 inches in length, and are a dark maroon in color. Has a rich, tangy flavor all its own. They are just as easy to grow as blackberries—plant 6 feet across; train on wires the same as dewberries. Absolutely hardy—will not winter kill. Excellent canner, and valuable for table use, jellies and pies—ideal for freezing. Ripens midseason. **PRICE:** 1-Yr. No. 1 plants, 6 for \$1.15; 12 for \$1.95; 25 for \$2.85; 50 for \$4.75; 100 for \$8.50; 250 for \$20.00; 500 for \$35.00; 1,000 for \$65.00.

Thornless Boysenberry

BARGAIN NO. 2
 2 Concord (blue)
 2 Niagara (white)
 2 Delaware (Red)
 All 2-Yr. Grapes
\$1.25
 Not Prepaid

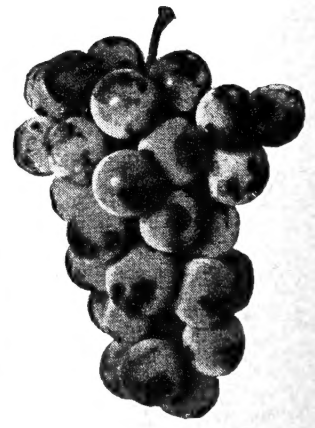
—HARDY GRAPE VINES—A Lifetime Investment—

For fall planting, we offer: **Concord** (Late Blue); **Fredonia** (early Blue-black); **Niagara** (white); **Delaware** (small-kernel Red).

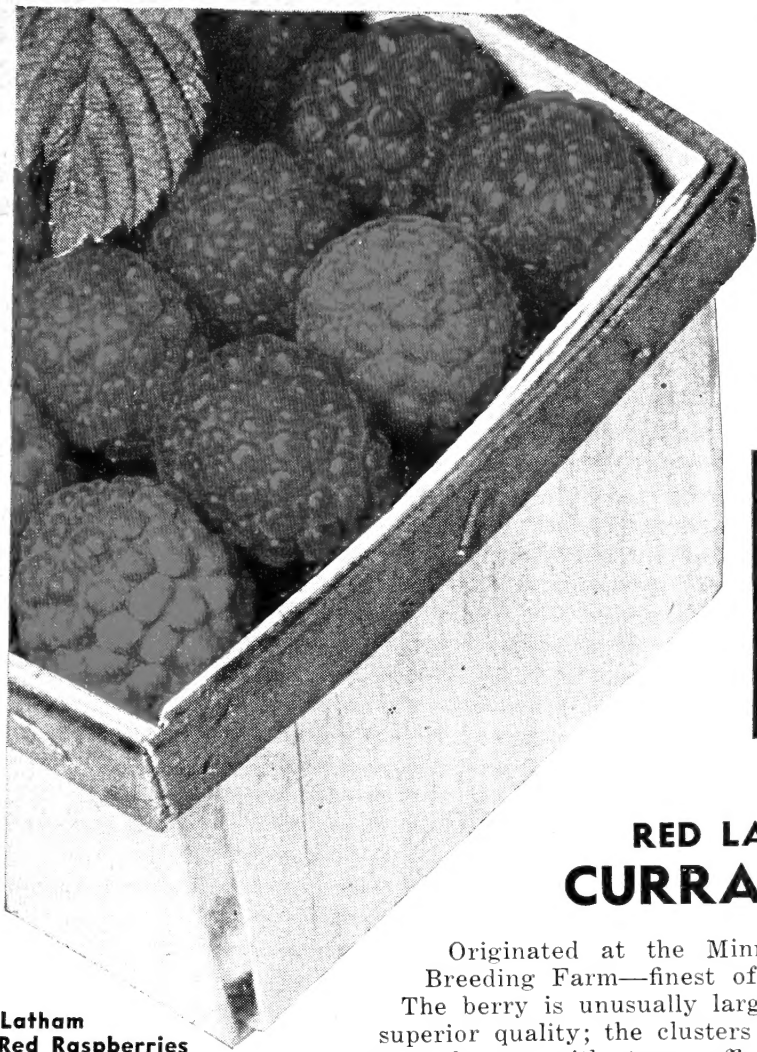


Fredonia

Price, not prepaid:	Each	Quantity							
		6	12	25	50	100	250	1,000	
Concord, 1-Yr...	\$0.20	\$1.15	\$1.95	\$2.85	\$ 4.75	\$ 8.50	\$20.00	\$ 65.00	
Concord, 2-Yr...	.30	1.60	2.40	3.75	6.50	12.50	30.00	100.00	
Concord, 3-Yr...	.35	1.95	3.45	6.25	11.50	20.00	45.00	135.00	
Delaware, 2-Yr...	.30	1.60	2.50	4.50	8.15	15.00			
Delaware, 3-Yr...	.35	1.80	3.45	6.25	11.50	20.00			
Fredonia, 1-Yr...	.20	1.15	1.95	2.85	4.75	8.50	21.00	70.00	
Fredonia, 2-Yr...	.30	1.60	2.40	3.75	6.50	12.50	30.00	100.00	
Fredonia, 3-Yr...	.35	1.95	3.45	6.25	11.50	20.00			
Niagara, 1-Yr...	.20	1.15	1.95	2.85	4.75	8.50	21.00	70.00	
Niagara, 2-Yr...	.30	1.60	2.40	3.75	6.50	12.50	32.00	110.00	
Niagara, 3-Yr...	.35	1.95	3.45	6.25	11.50	20.00			



Concord



Latham Red Raspberries

IMPORTANT—We ship Currant plants only to Michigan, Illinois, Indiana, Kansas, Missouri, Iowa, Nebraska, Oklahoma, North Dakota, South Dakota, Kentucky, Texas and Colorado. Currant plants are permitted entry into some of the other states providing you do not live in an area where Pine are grown. Write to your State Entomologist, advise him where you wish to plant, the variety and amount. If you are located in a non-control area, he will issue a special permit. Send this permit along when placing your order and we shall be glad to supply.

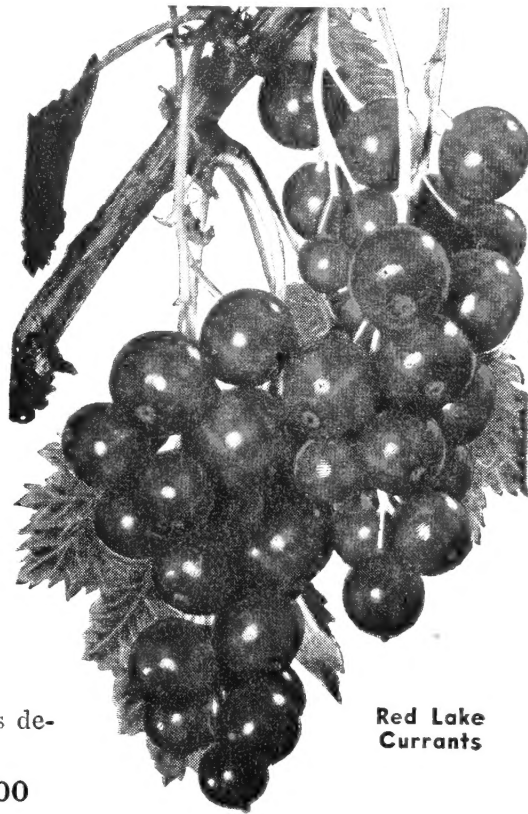
LATHAM RED RASPBERRIES

First Choice of Commercial Growers

A popular favorite in all large fruit-growing sections. Extra large, rich red berries, some measuring an inch in diameter. Bears a tremendous crop of best quality fruit. Finest berry for canning. Perfectly hardy. Commands highest prices. Plants are state inspected, disease-free, of finest quality, heavy and well-rooted.

PRICE: 1-Yr. No. 1 plants, 6 for 80c; 12 for \$1.25; 25 for \$2.50; 50 for \$4.50; 100 for \$7.50; 250 for \$16.50; 500 for \$27.50; 1,000 for \$50.00.

BARGAIN NO. 3
 12 Latham (Red)
 12 Cumberland (black)
 1-Year plants
\$1.50 Not prepaid



Red Lake Currants

RED LAKE CURRANTS

Originated at the Minnesota State Fruit Breeding Farm—finest of all Red Currants. The berry is unusually large in size and of a superior quality; the clusters are long and filled out to the top, with stems sufficiently long to make picking easy. Berries are a clear light red, and quality excellent. The bush is vigorous, upright, and productive. Ripens early midseason, but holds on over a long period so it can be used or marketed, as desired.

PRICE: Each	6	12	25	50	100	
1-Yr.	\$0.15	\$0.70	\$1.25	\$2.25	\$4.00	\$ 7.00
2-Yr.	0.25	1.20	2.15	4.25	8.00	14.00

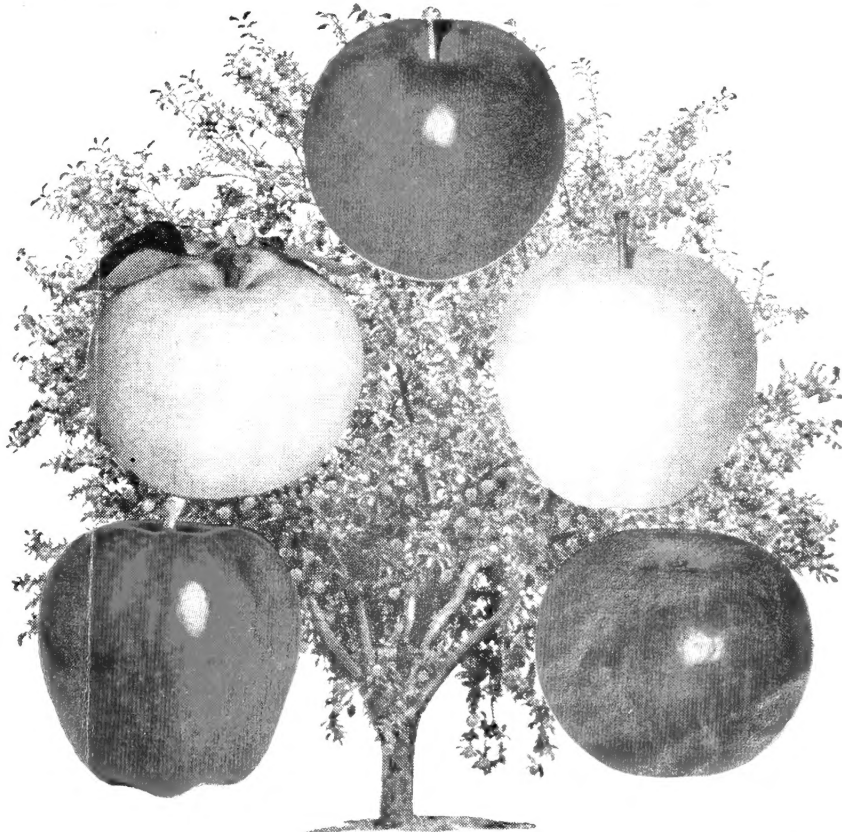
5-N-1 APPLE TREES

Five Kinds of Apples on One Tree!
Ideal for Home Gardens

A Whole Orchard at Your Own Doorstep

The only Apple tree for the small home owner. No yard too small; can be planted in the front yard as well as the back. Will furnish plenty of shade, be highly ornamental, and also will produce a bountiful supply of five different kinds of Apples. The varieties are: Red Delicious, Yellow Delicious, Anoka, Jonathan and Stayman's Winesap. These are five of the best standard varieties of Apples—practically covering the entire season. An outstanding novelty in your community.

PRICE: 3-Yr., branched 9/16 in., 4-5 ft. trees, \$1.65 each; 2 for \$3.00. Extra heavy, 4-Yr. branched 5-6 ft. trees, \$2.65 each; 2 for \$5.00.



Giant Cultivated BLUEBERRIES



Plant Blueberries This Fall — Eat Them Next Summer

One of the biggest money-makers as a commercial proposition. An attractive ornamental from early spring until late fall. Heavy producer—four bushes in your yard will provide enough berries for Blueberry pie throughout the season. As an ornamental shrub, the Blueberry cannot be surpassed; are full of pink buds which open into bell-shaped, white flowers starting in June. Blueberries must have an acid or semi-acid soil, good drainage and moderate supply of moisture. Cultural instructions on the planting of Blueberries included with every order.

The 4-, 5-, and 8-year-old bushes will produce next summer. Remember, the older the bush, the more berries and profit you will receive. **We cannot guarantee varieties in 4-, 5- and 8-year-old, but they will consist of all good kinds.**



PRICES OF BLUEBERRIES—Not Prepaid

We offer three varieties in the 2- and 3-year. Rancocas (early to midseason), Jersey and Rubel (midseason to late).

	2	4	10	25	100
2-Yr., 6-12 inch.....	\$1.40	\$2.50	\$ 6.00	\$13.75	\$50.00
3-Yr., 12-18 inch.....	2.40	4.00	9.00	21.25	75.00
4-Yr., 18-24 inch.....	4.00	7.60	17.50	40.00	
5-Yr., 20-30 inch.....	6.00	11.40	27.50	62.50	

BARGAIN NO. 4 2 CULTIVATED BLUEBERRIES

Here's your chance to save time and money—buy this bargain if you want berries next summer.

1 4-year-old and
1 5-year-old plant
\$3.75
A \$5.00 Value for only Not prepaid

Specimen JUMBO Blueberry Plants

8-year-old—no waiting for fruit. Actual photo of 8-Yr. Blueberry bush in full bearing, above, which is in the peak of production. Remember, more fruit and larger profits the first year from this jumbo bush. Price: 8-Yr., 2-3 ft., extra heavy branched stock, \$4.00 each; 2 for \$7.00.

Profit-Wise Growers Buy Ackerman's Husky Plants

New **ROBINSON**

A BEST LATE

The best medium to late—10 days to 2 weeks later than Premier. The largest berry we have ever seen—30 berries will fill a quart. Has produced a wonderful crop of fruit every year under most unfavorable conditions—farmers netted over \$1,000.00 an acre from this variety.

Berries are extremely large, and honey-sweet. Color is decidedly a cardinal-red, and this berry may be offered under this name. Berries have a firm, tough skin, making it an excellent shipper to distant markets. An excellent plant maker on most any kind of soil.

Premier and Robinson, two of the best varieties, will give you berries over the entire season.

PRICE: 25 for 95c; 50 for \$1.65; 100 for \$2.75; 250 for \$5.75; 500 for \$8.50; 1,000 for \$15.00.



THRIFT
GARDEN
BARGAIN NO. 5

50 Premier 50 Robinson

\$2.25

Not Postpaid

Famous **PREMIER**

BEST EARLY

A standard of excellence with all growers, and the earliest worth-while Strawberry of the older varieties. A great money maker, for it yields its fruit crop at a time when strawberries are in great demand and sell at fancy prices. Premier is as nearly frost-proof as any strawberry can be. It is unusually healthy, being free from leafspot and other diseases. Its deep heavy roots enable it to withstand dry weather and mature a full crop of big berries when many varieties are a complete failure. Large, bright red, firm berries of fine texture and flavor.

PRICE: 25 for \$1.10; 50 for \$1.85; 100 for \$2.85; 250 for \$6.15; 500 for \$9.00; 1,000 for \$17.00.

Tried and Tested **FOR 47 YEARS**

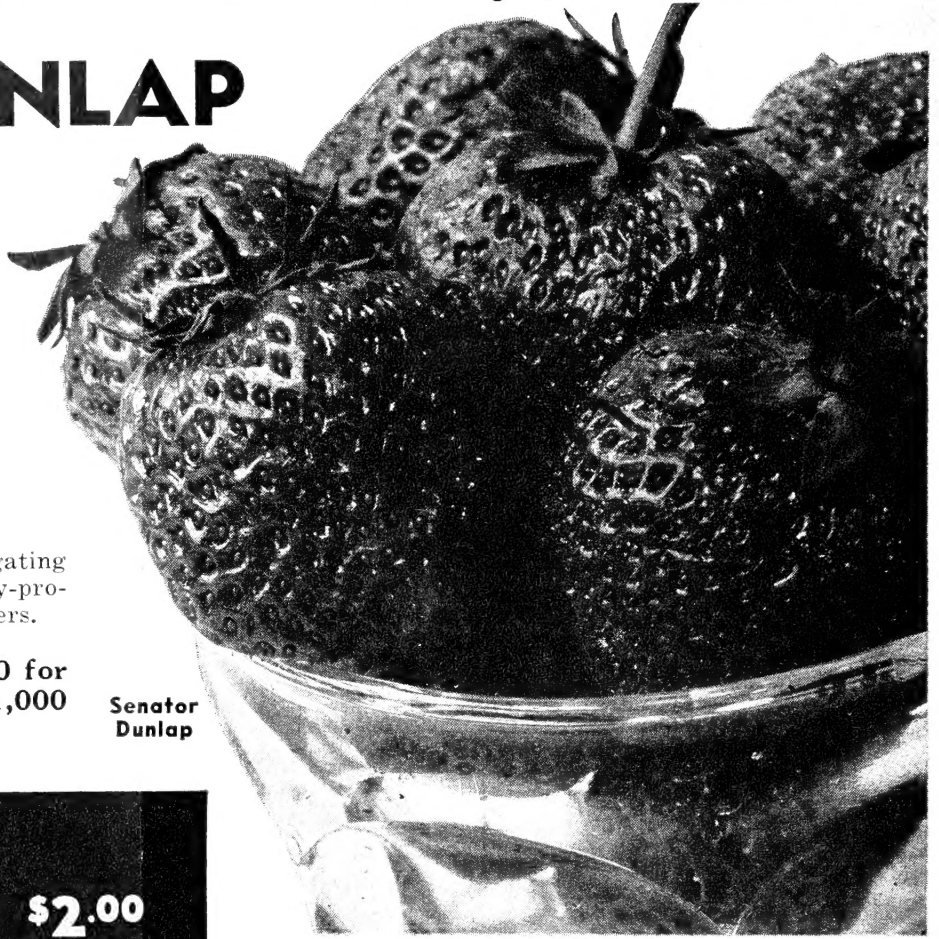
SENATOR DUNLAP

One of the oldest and best varieties—a variety your grandmother canned when you were a child. New varieties have come and gone, but the old Standby "Dunlap" is still with us. Have been sold for 47 years, and still outsells other varieties—they must be good! Will grow on any kind of soil—grown in every State in the Union—better known than any other variety.

The fruit is medium large, conical in form, regular in size, and never misshapen; dark, glossy red in color. Excellent for home use. The best color—the best flavor and best of all—so sweet it requires but very little sugar.

Plants are unusually healthy and vigorous, adapting itself to any soil or climate. Our propagating plants have been especially selected from heavy-producing patches, making this strain heavy producers.

PRICE: 25 for 85c; 50 for \$1.35; 100 for \$2.15; 250 for \$4.00; 500 for \$7.25; 1,000 for \$13.50.



Senator Dunlap

**Your "Fall" Garden
BARGAIN NO. 6**

25 Minnesota #1166	25 Gem	\$2.00
Everbearing Strawberry		Not prepaid

MINNESOTA No. 1166

Everbearing Strawberry (Evermore)

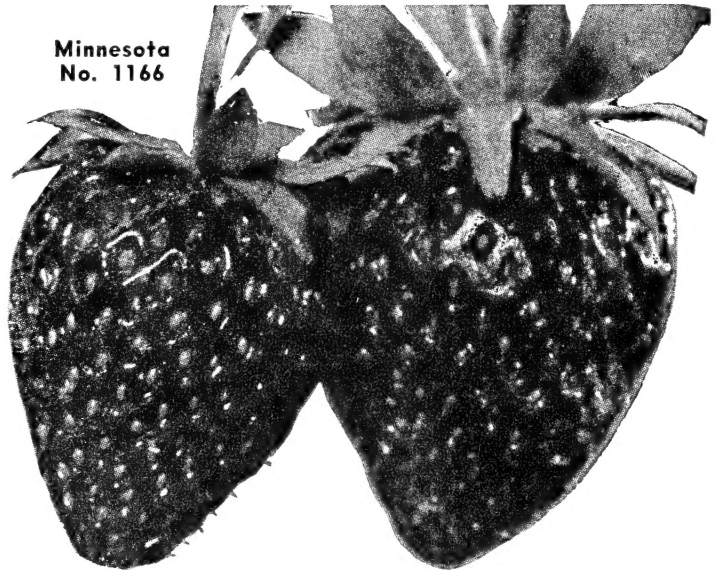
Another Everbearer that produces 60 to 90 days after planting in the Spring. Starts producing the middle of July and continues on until frost stops it in the Fall, followed by a fine crop the following June. Plants are hardy, and produce runners freely. Berries are large, long and pointed—in appearance it looks like the Missionary berry that is so well known in the South. Berries are dark in color and perfectly red clear through—no green tips. Fruit is firm and very sweet.

PRICE: 25 for \$1.50; 50 for \$2.25; 100 for \$3.75; 250 for \$7.50; 500 for \$13.75; 1,000 for \$25.00.



Gem

Minnesota No. 1166



GEM EVERBEARING STRAWBERRIES

Two Crops Each Year

The Berry That Really Produces. Plant this fall—pick all next summer and fall—you'll get back the price paid for the plants **and, most important, a big profit besides.** You'll harvest another fine crop the following June—two crops in one year. Will produce approximately 100 crates per acre.

Unlike most everbearers, this variety is an excellent plant maker. The plants are very healthy and vigorous, producing an abundance of runners, which bear fruit the first season. The berries are large, bright red, firm, roundish in shape, rather tart but of good flavor and quality. Good for dessert or culinary uses. Very attractive in appearance and sell well on the fresh fruit markets. Our original stock was secured direct from the originator.

PRICE: 25 for \$1.50; 50 for \$2.15; 100 for \$3.50; 250 for \$6.50; 500 for \$12.00; 1,000 for \$22.00.

The ACKERMAN NURSERIES.

Superfection EVERBEARING STRAWBERRIES

Bears from June until Frost



Superfection

BARGAIN NO. 7
 New Everbearing Garden
 25 New Superfection
 25 Streamliner
\$2.45 Not prepaid

The new Everbearer was originated and named by Mr. Keplinger, of northern Michigan, the man who discovered the famous Gem everbearer. Berries are large, roundish in shape; are dark red all the way through, with a very fine, sweet flavor. Berries are of firm texture, will withstand long-distance shipping without discoloration or softening of berries, which is quite common with most all everbearers. Ripe berries 90 days after planting when set in the spring; heavy yielder—produces an abundance of large berries until snow flies, plus another bumper crop the following year. An excellent plant maker on most any soil.

Our experience with this variety has proven it to be far superior to other Everbearers as the fruiting period extends over a much longer period than other varieties, holding its size well unto the end of the season. Our planting stock was secured direct from the originator.

PRICE: 25 for \$2.00; 50 for \$3.50; 100 for \$5.50; 250 for \$12.50; 500 for \$23.75; 1,000 for \$45.00.

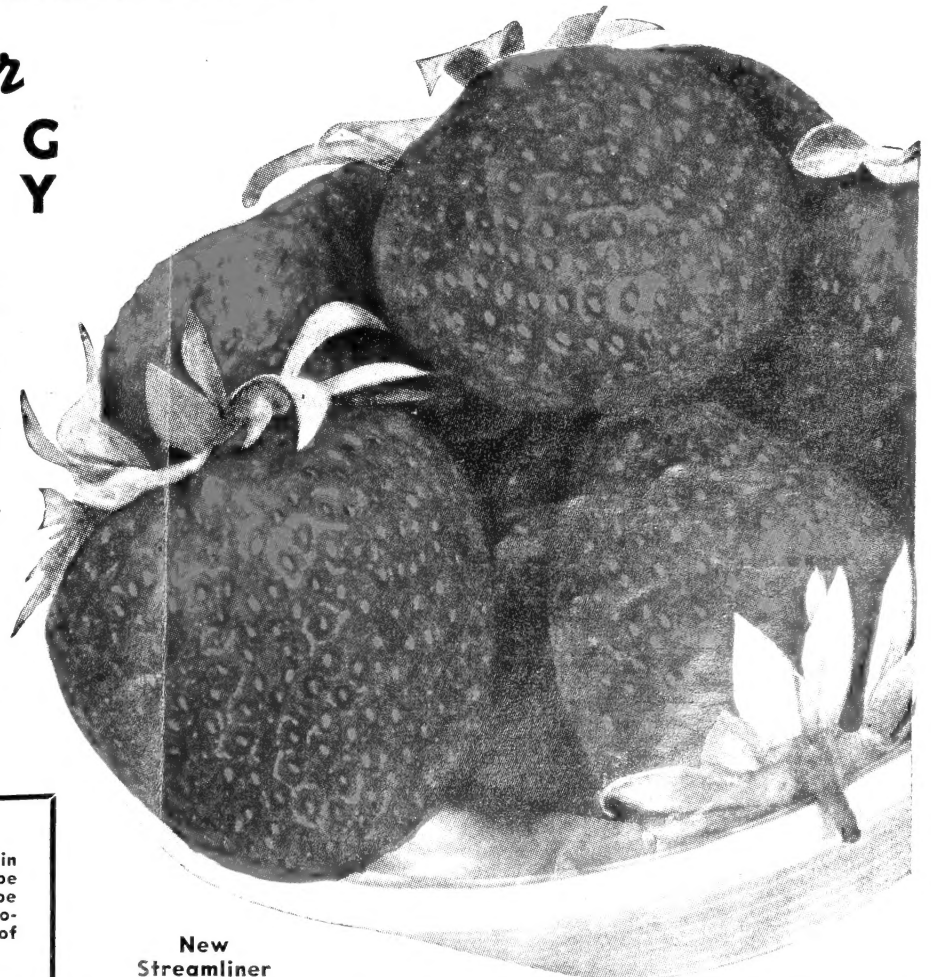
New Streamliner

EVERBEARING STRAWBERRY

An Everbearer that has everything! Enormous size, beautiful coloring, good flavor, excellent shipping qualities and a good producer. It is of exceptionally large size. Berries are almost round, glistening scarlet color and are sweet as honey—full strawberry flavor. No green tips, for it ripens into a beautiful, rich-red all at one time. Its firm qualities make this an excellent shipper. A wonderful variety for freezing.

This variety is also an excellent plant maker, producing very sturdy plants with luxurious green foliage; plants are healthy and produce an abundance of runners.

PRICE: 25 for \$1.75; 50 for \$3.00; 100 for \$5.00; 250 for \$10.00; 500 for \$19.00; 1,000 for \$37.50.



New Streamliner

NOTICE

STRAWBERRY PLANTS WILL BE SHIPPED

Strawberry plants will be fully matured and dormant and in good condition for shipment October 10th, and can then be planted until the ground freezes. Strawberry plants will be shipped separate from the balance of your order, about October 10th; therefore, do not become alarmed if the balance of your order does not accompany them.

ACKERMAN'S

Hardy Northern Grown

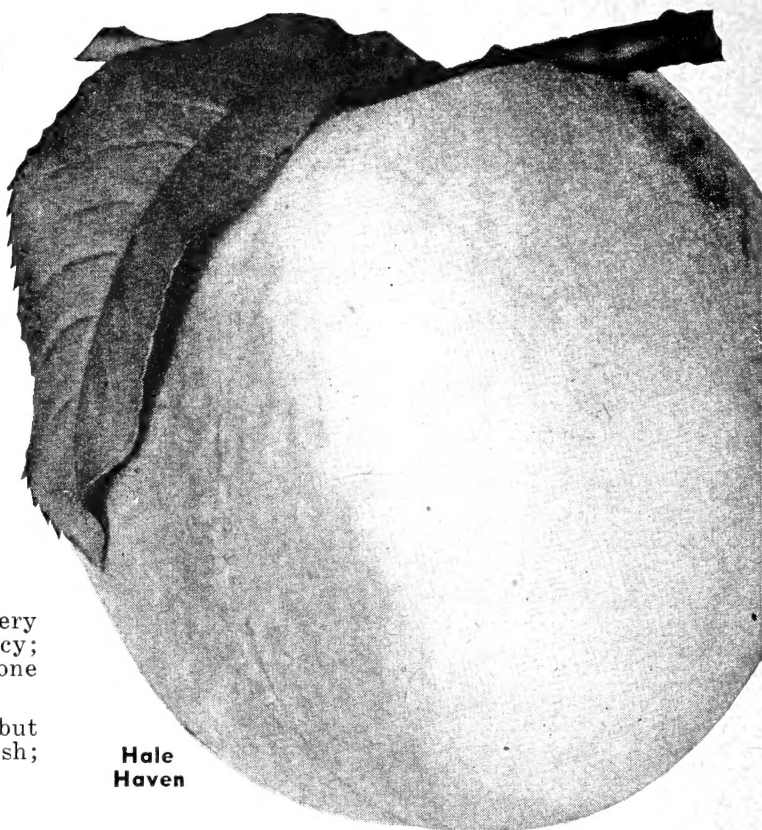
PEACH TREES

Fall is an excellent time to plant Peaches. You will receive freshly dug trees and also be sure to secure the size and the varieties you wish. Avoid disappointment and order early. All fruit trees will be ready for shipment October 15th to 20th. Prices quoted are not prepaid.

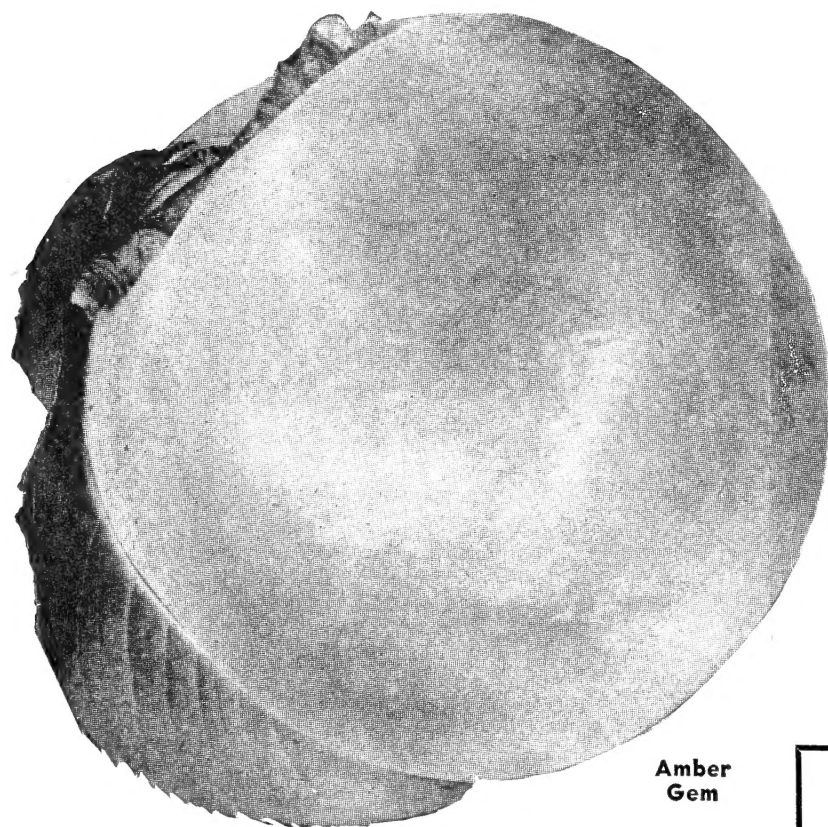
AMBER GEM. A semi-cling; shaped like an Elberta and ripens same time. Beautiful yellow flesh with deep red blush; delicious, honeysweet flavor. One of the best canning varieties—used extensively by all canning factories. Hardy.

ELBERTA. Standard market peach of the entire country. Very large; yellow with red blush; flesh is yellow, tender and juicy; very highly flavored. Ripens middle of September. Freestone and self-fertile.

GOLDEN JUBILEE. Tree habits and fruit resemble Elberta but ripens about a month earlier. The skin is yellow with red blush; flesh is golden yellow, juicy. Freestone.



Hale Haven



Amber Gem

BARGAIN NO. 8
6 PEACH TREES
 All 3 to 4 ft.
\$3.00
 Not prepaid
 1 each, 6 varieties listed on this page.

HALE-HAVEN. A cross between South Haven and J. H. Hale. Freestone. Strong grower, very hardy, heavy bearer; excellent fine flavor. Ripens 15 days earlier than Elberta. **The best yellow freestone.**

J. H. HALE. Ripens 5 days earlier than Elberta, is larger, practically round, and superior flavor; beautiful golden yellow with carmine blush; smooth, fuzzless. Freestone.

RED HAVEN. Ripens 30 days earlier than Elberta. Almost completely covered with brilliant red coloring. Freestone; sweet in flavor. Good shipper and the best early peach.

PRICE OF PEACH TREES—Not Prepaid
—All Varieties Listed.

	Each	10	100
1-yr., 3-4 ft. trees.....	\$0.70	\$6.00	\$50.00
1-yr., 4-5 ft. trees.....	.80	7.00	60.00

OUR GUARANTEE

We guarantee all of our nursery stock to be just as represented in our catalog, fully up to grade, of good quality, free from disease, and absolutely true to name; also to reach the customer alive and in perfect growing condition. Furthermore, we will at our option either replace free of charge or refund purchase price of any stock that arrives in bad condition, provided claims are made 10 days after arrival, accompanied by a signed statement from the express agent or postmaster at destination, showing extent of loss or damage. After 10 days, it is mutually agreed that stock is satisfactory. Do not return plants unless so instructed by us.

Remember, trees, plants and vines are living things, and subject to attacks by insects, drought and disease. Continued growth depends upon soil, climatic conditions, planting and care—conditions we cannot control—hence is not guaranteed.

It is mutually agreed that in any event we will not be liable for more than the purchase price of the stock. It is understood and agreed between the customer and ourselves that the purchaser's order, and our acknowledgment of its receipt, shall constitute a mutual acceptance of the above terms and conditions.

IMPORTANT!

All prices in this catalog are quoted f.o.b. Bridgman—customer to pay transportation, unless otherwise specified. Orders will be acknowledged same day received, and shipped in season or as per instructions you give. We will also return your original order as placed, together with any papers you might send; therefore, should you find it necessary to write us relative to order at any time, be sure to return ALL PAPERS sent to you, including the shipping tags on your shipment. (Do not return papers when sending postage remittance—only the postage card with your remittance.) WE WILL BE UNABLE TO TAKE CARE OF ANY ADJUSTMENTS OR CHANGES UNLESS ALL PAPERS AND TAGS ARE RETURNED. PLEASE REMEMBER THIS—THIS IS VERY IMPORTANT.

REFERENCES

State Savings Bank, Bridgman, Mich.; Farmers & Merchants National Bank, Benton Harbor, Mich.; Dun & Bradstreet.

new RED LEAF PEACH

The Sensational New Ornamental

Something entirely new in an ornamental! Many ornamental trees have been offered with colored foliage, but never an ornamental peach tree with **RED FOLIAGE**—bright red early in the spring, gradually dulling to a deep maroon towards fall. Its deep rose blossoms against the red foliage create a most pleasing contrast with your other plantings.

These trees produce a full crop of perfectly round, inch and a half diameter peaches—just the size for pickling. Fruit has an all-over red coloring, flesh is white with a delicious sweet flavor. Ripens with the Gold Drop—real late.

Plant this two-purpose tree this fall so it will be all ready to jump right in and grow when spring rains arrive. A grand ornamental which also produces a full crop of edible peaches.

PRICE: 1-yr., 3-4 ft. trees, \$1.50 each; 2 for \$2.50, not prepaid. 2-yr., well-branched trees, \$3.00 each; 2 for \$5.00. Not prepaid.



BARGAIN NO. 9

1 Red Leaf Peach, 1-Yr., 3-4 ft.
1 Montmammoth Cherry, 2-3 ft.

\$2.25 Not prepaid

New MONTMAMMOTH *Cherry*



When introducing this fine variety five years ago, we predicted it would eventually take the place of all other sour Cherries; since then we have sold thousands and thousands of these trees all over the country, and the growers have more than verified our prediction.

This wonderful variety is a sport of the Montmorency. Produces high quality fruit, often the second year. Tree is very hardy and vigorous. Try the new Montmammoth this year and you will agree it is the finest sour cherry ever developed.

Here's Why **MONTMAMMOTH** *Is So Popular*

IMPORTANT

Each year we increase our stock of Montmammoth. Sometimes, however, we run out due to its wide popularity. So be sure to get yours . . . order now! Remember—**MONTMAMMOTH** is sold only by *Ackerman Nursery*.

✓ **NO WAITING—BEARS SECOND YEAR**

The Montmammoth bears sooner after planting than any other popular sour cherry. A heavy producer—3 to 5 cherries per spur—it bears very large fruit, often measuring an inch in diameter. The parent tree, a sport of the Montmorency, produced a 6-gallon crate of fruit the third year after planting.

PICKED FROM GROUND—CUTS LADDER WORK

Because the Montmammoth tree is dwarf and spreading in growth, it eliminates almost all dangerous ladder picking. Most of the crop is within easy arm reach and can be harvested right from the ground.

PRICE: 1-Yr., 2-3 ft. trees, \$1.50 each; 3 for \$4.35; 10 for \$14.00, not prepaid.

TREE FRUITS

are **HEALTHFUL-PROFITABLE**

PEARS

BARTLETT. Large; coloring when fully ripe, to waxy yellow with red blush, juicy, melting, highly flavored. Bears early. Ripens in September.

BEURRE BOSCH. Fruit very large, of distinct gourd shape, roundish end, with long tapering neck. Golden russet color; juicy and melting. Ripens late September.

FLEMISH BEAUTY. Medium-large size pear; pale yellow with a reddish-brown cheek. Flesh is fine grained, juicy and very sweet. Very hardy. September ripening.

KIEFFER. Ripens in October and November. Fruit large, of good quality.

SECKEL. (Sugar Pear). Small size; yellowish russet, with red cheek. Flesh white, buttery, very juicy and melting. Ripens late September.

PRICE OF PEAR TREES (All Varieties Listed):

2-Yr., 9/16 in., 4-5 ft. trees, \$1.45 each; 10 or more at \$1.25 each.

2-Yr., 11/16 in., 5-6 ft. trees, \$1.70 each; 10 or more at \$1.50 each.

PLUMS

BURBANK. A large red variety, ripening in August.

BLUE DAMSON. The well-known small blue preserving Plum, ripening late August.

SANTA ROSA. Exceptionally large, round, purplish-red fruit of high quality. Ripens early.

STANLEY PRUNE. The best Prune. Large, deep bluish purple, very sweet and bears at an early age; September ripening.

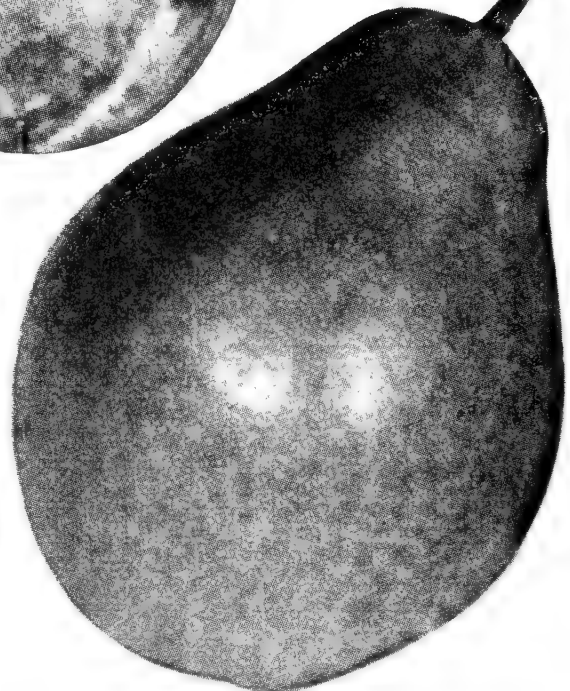
PRICE OF PLUM TREES (All Varieties Listed): 3-4 ft. trees, \$1.20 each; 10 or more at \$1.00 each.

APRICOT

This is the Hardy Northern Variety. Hardy as a Peach. Ripens in August. Large, orange-yellow-colored fruit with red cheek; sweet and juicy and delicious. Freestone. **PRICE:** 2-Yr., 3-4 ft. trees, 85c each; 2 for \$1.50; 6 for \$4.00.



Stanley Prune



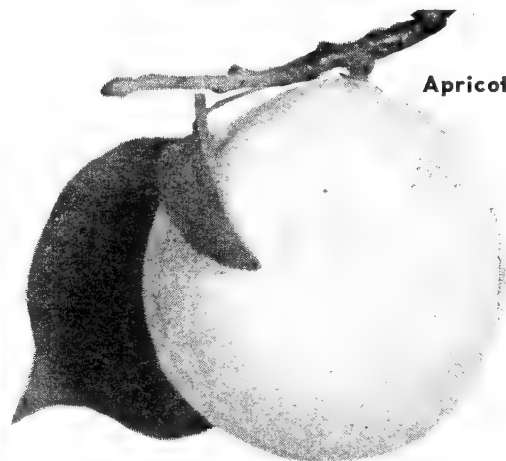
Bartlett Pear



Dwarf PEAR TREES

TAKE LITTLE SPACE
BEAR BIG FRUITS

BARTLETT. Fruit the same size and quality as described above. These Dwarf Pear Trees bear at a very early age—often the second and third year. Seldom mature more than 10-15 feet high. Require less space and produce much quicker than standard fruit trees. **PRICE:** 2-Yr., 2-3 ft. trees, \$1.60 each; 2 for \$3.00; 4 for \$5.00; 3-4 ft. trees, \$2.50 each; 2 for \$4.75; 4 for \$9.00.



Apricot

BARGAIN NO. 10

1 Stanley Prune, 3-4 ft.
1 Bartlett Pear, 2-Yr., 9/16 in.

\$2.00 Not prepaid

BARGAIN NO. 11

1 Dwarf Bartlett Pear, 2-3 ft.
1 Black Sour Cherry, 7-9/16 in.

\$2.25 Not prepaid

New SOUR BLACK CHERRY

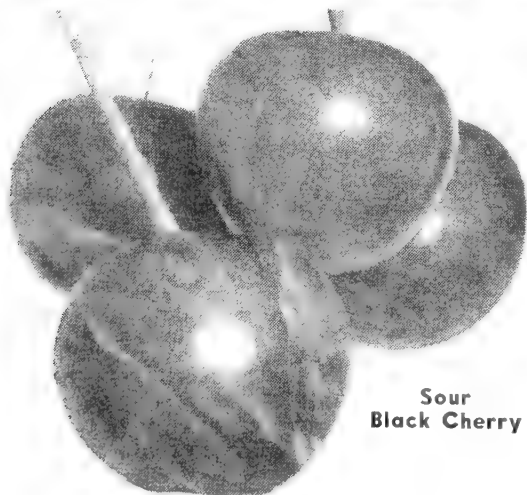
Truly a Black Beauty. A Real Novelty. A Sour Cherry that is black—believed to be the first of its kind grown in the United States. The original seeds were imported from Rumania, from which 13 trees were grown. These seedling trees produced the fourth year.

Manner of growth is identical with the Montmorency, and the fruit is about the same size. Cherries are black with red juice; semi-sour in flavor. Fruit

ripens one week later than the Montmorency. Tree is hardy and a medium grower.

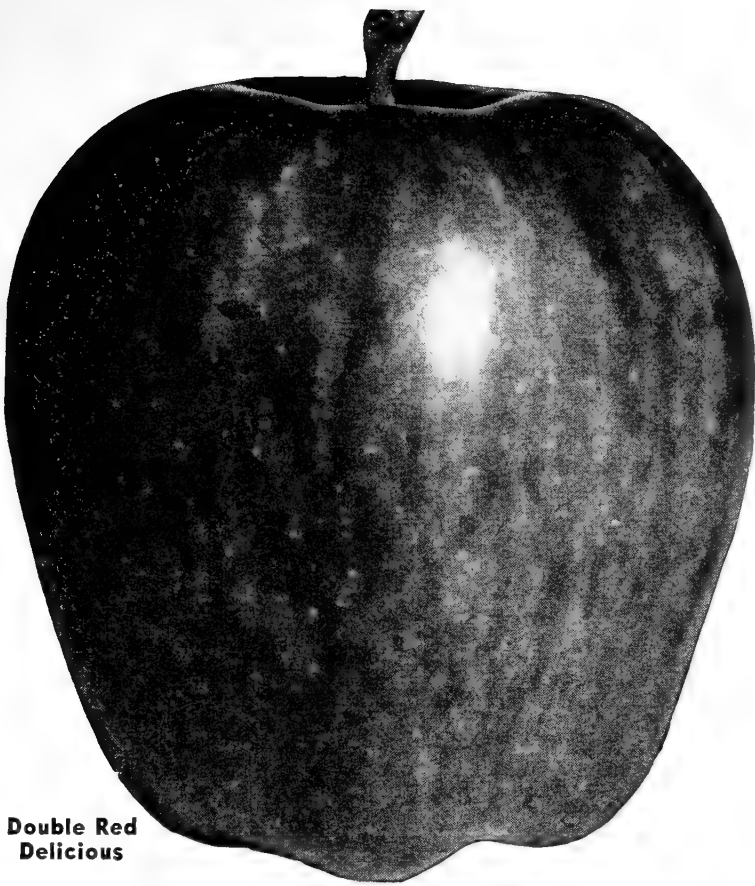
Supply is limited—order early and be sure to be the first to have one of these trees in your neighborhood.

Price:	Each	3	10
7- 9/16 in.	trees\$1.65	\$4.75 \$15.00
9-11 16 in.	trees 1.95	5.75 18.00



Sour Black Cherry

Northern Grown APPLE TREES



Double Red
Delicious

We offer the following varieties in Apples:

- ANOKA.** The Old Folks Apple! The second year, big, full-sized crop; earliest and heaviest bearing apple. Hardy in all climates. Ripens in August, but can be used a month earlier. Beautifully colored. Best early summer apple.
- CORTLAND.** An offspring of the McIntosh, but fruit larger, more highly colored, richer in flavor, firmer but fully as juicy. Ripens late Sept. Fine for cooking. A good shipper. Bear 2 to 3 years after planting.
- RED McINTOSH.** One of the finest early fall apples. Medium size, nearly covered with dark red. Flesh white, tender, juicy and crisp. Tree hardy.
- RED JONATHAN.** Excellent red winter apple. Bright, solid red. Flesh white, sometimes tinted with red; firm, fine, crisp and tender. Tree bears early and is long-lived.
- RED DELICIOUS.** This variety needs no description. See photo at left. Fruit is red all over. Extra fine flavor. Good winter variety.
- RED ROME BEAUTY.** Large winter apple of deep red color; large and of good quality. Thick skinned, stands handling well, and a good keeper. Bears young.
- STAYMAN'S WINESAP.** An early winter apple. Large fruit, bright red color with a slight hint of yellow. Flesh is tinged with yellow; firm, crisp, with rich acid flavor. Good keeper.
- YELLOW DELICIOUS.** Best yellow winter apple. Waxy golden color. Luscious flavor. Bears very early, in 2nd and 3rd year. Keeps until late spring without becoming mealy. Very hardy.
- YELLOW TRANSPARENT.** Ripens in July. Skin clear white, changing to pale yellow when ripe. Flesh white, tender, sub-acid. Good cooking apple.

PRICES OF APPLES—Not Prepaid

	2-Year	Each	10	100
7/16 in., 3-4 ft. trees.....		\$0.65	\$6.00	\$50.00
9/16 in., 4-5 ft. trees.....		.75	7.00	60.00
Special Super-size, 11/16 in.....		.95	8.50	75.00

BARGAIN NO. 12
Apples—Summer, Fall and Winter!
1 Yellow Transparent
1 McIntosh
All 7/16 in.

1 Jonathan

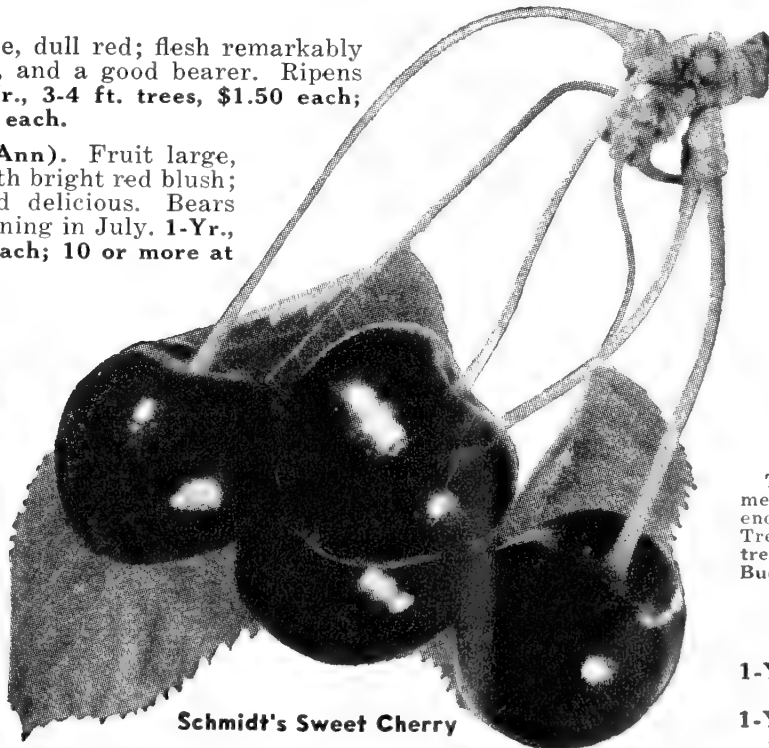
\$1.45
Not prepaid

Ackerman's CHERRY TREES SWEET CHERRIES

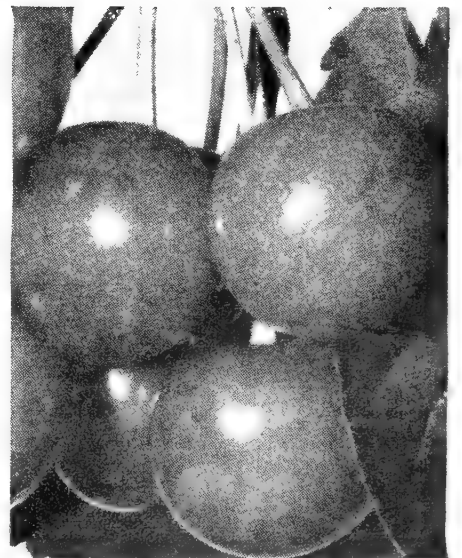
SCHMIDT'S BIGGAREAU. Especially noted for coming into bearing at an early age. Immense size; deep black; flesh dark, tender, very juicy, fine flavor. Ripens in July. 2-Yr., 9/16 in. trees, \$1.75 each; 10 or more at \$1.60 each.

WINDSOR. Fruit large, dull red; flesh remarkably firm, of fine quality, and a good bearer. Ripens middle of July. 1-Yr., 3-4 ft. trees, \$1.50 each; 10 or more at \$1.35 each.

NAPOLEON (Royal Ann). Fruit large, yellow and amber with bright red blush; flesh firm, juicy and delicious. Bears enormous crops, ripening in July. 1-Yr., 3-4 ft. trees, \$1.50 each; 10 or more at \$1.35 each.



Schmidt's Sweet Cherry



Montmorency

MONTMORENCY Sour Cherry

The leader of all Sour Cherries. Ripens midsummer. One of the finest flavored Sour Cherries. Bears enormous crops of beautiful red Cherries regularly. Trees bears two or three years from planting. All trees propagated from certified virus-disease-free Budwood.

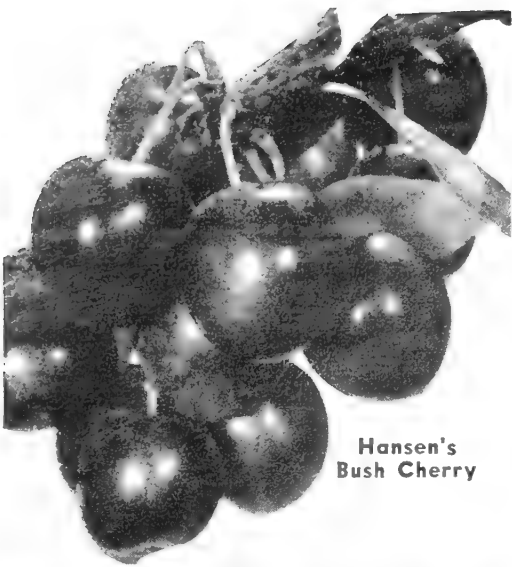
PRICE:	Each	10 to 49 trees Each	50 or more Each
1-Yr., 2 1/2-3 ft. trees.....	\$1.45	\$1.25	\$1.15
1-Yr., 3-3 1/2 ft. trees.....	1.65	1.40	1.30

BARGAIN NO. 13
4 CHERRY TREES
2 Montmorency, 3-3 1/2 ft.
2 Schmidt's, 9/16 in.

\$4.65
Not prepaid

Field Grown Shrubs

ALL STRONG 2 TO 3 YEAR OLD WELL ROOTED



Hansen's Bush Cherry

Any Shrub on This Page 45c each; 3 for \$1.20.

Not Prepaid.

ALTHEA (Rose of Sharon). Beautiful tree-like shrub, blooming late in August and September with a profusion of large and brightly-colored flowers. Grows 10 to 12 feet high. Attractive as a specimen or for hedges. Your choice of pink or red. All double flowering.

FORSYTHIA. Earliest blooming. Lights up the garden with masses of yellow flowers, often before the snow is gone. Tall grower.

HANSEN'S BUSH CHERRY. An ornamental shrub producing delicious fruit! Snow-white flowers in early spring, followed by fruit as large as any sweet cherry, but plum-shaped; good flavor; delicious to eat from the bush; fine for sauce, jams and jellies. Very hardy. Grows 4 to 5 feet tall.

MOCK ORANGE. (Philadelphus Coronarius). Tall, hardy and vigorous. Blooms in May, in graceful sprays of large, white, fragrant flowers. Grows 8 to 10 feet tall.

RED SNOWBERRY. Often called Coralberry or Indian Currant. Similar to White Snowberry but with red berries. Grows 3 to 4 feet tall.

SPIREA YELLOW NINEBARK. This is a very vigorous Spirea. Striking white blooms. The leaves of this variety are a golden yellow. After the flowering season is over, the flowers are followed with orange-colored pea-pods. Matures 5 to 6 ft.

ROSE-ACACIA (Moss Locust). Elegant shrub, with light green pinnate leaves, and long, graceful clusters of pea-shaped, rose-colored flowers in June and often later. An attractive addition to any plants. 4 to 5 feet at maturity.

DEUTZIA, PRIDE OF ROCHESTER. Large, white flowers tinged with rose. Profuse bloomer. Very hardy. Grows 6 to 8 feet tall. Useful for specimens or background.

HONEYSUCKLE, PINK TARTARIAN. Bright pink flowers, followed by red berries in late summer and early fall. Bushy, upright. Grows 8 to 10 feet high. The berries of this shrub are known to be eaten by 118 kinds of birds.

RED CHOKEBERRY. Pretty, white flowers in April and May, with bright red berries and foliage in autumn. Grows to 6 feet at maturity. Attracts dozens of birds.

PURPLE LILAC. It is hard to outclass this old-fashioned purple Lilac. Early prolific bloomer, very fragrant. Very fast grower.



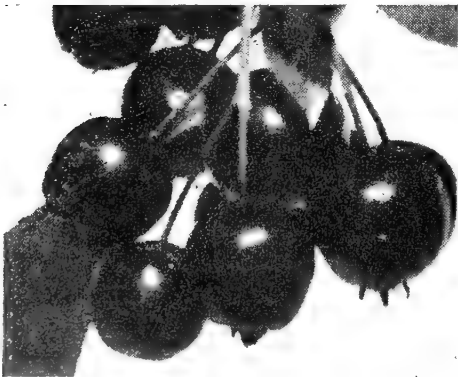
Mock Orange



Spirea Yellow Ninebark



Forsythia



Red Chokeberry



Red Snowberry



Double Althea



Rose-Acacia



Deutzia, Pride of Rochester

BARGAIN NO. 14

10 SHRUBS

\$3.25

Not prepaid

Your choice of varieties listed on pages 12 and 13.

~ Ready ~ to Bloom

WELL BRANCHED SPECIMENS ~ GREAT VALUES

Any Shrub on This Page 45c each; 3 for \$1.20

(Except as noted after description)

WEIGELA ROSEA. Beautiful pink, trumpet-shaped flowers, May to June. Grows 5 to 6 feet tall. A good shrub; good flowers, good foliage, easy to grow. Similar to Hendersoni, but blooms are pink instead of red.

FRENCH PUSSY WILLOW (*Salix Discolor*). A large tree-like shrub with long, narrow leaves. Its popular appeal is the conspicuous silky catkins which bud in the fall and make such delightful, springlike bouquets just as the snow is melting away.

HYDRANGEA P. G. This lovely, showy shrub produces in abundance during August and September clusters of white flowers which gradually change to pink. Valuable for winter decorations if flowers are allowed to dry on bush. Hardy. **2-Yr., 18-24 in. shrubs, 55c each; 3 for \$1.50.**

YELLOW WEIGELA (*Diervilla Lutea*). A very attractive and desirable shrub. An uncommon Weigela with pure yellow flowers. Foliage has a decidedly reddish cast during the summer, becoming more pronounced in the fall.

WHITE SNOWBERRY. A desirable shrub with small, pink flowers, followed by large, white wax-like berries which hang on the plant through most of the winter. Is very showy and succeeds everywhere. Does well in shade. Grows 3 to 4 feet tall.

RED JAPAN QUINCE. The Red Firebush! Very early in the spring, this fine, attractive shrub is completely covered with dazzling orange to scarlet flowers, followed by small, fragrant, quince-shaped fruits. Foliage dark, glossy green. Grows 5 to 7 feet tall.

SPIREA BILLARDI ROSEA. A distinct variety of the Spirea family. Long, lacy, conical spikes of rose-pink flowers from June to August. Hardy. Matures 4 to 5 feet. Covered with beautiful, bright-pink bloom during the entire summer.

SPIREA VAN HOUTTEI. The flowers are pure white, and borne in dense clusters along the whole length of the branches. Excellent as a hedge plant or for grouping. Well branched. **2-Year, 18-24 in. bushes, 20c each; 6 for \$1.00; 12 for \$1.85. Heavy, 2-3 ft. bushes, 30c each; 6 for \$1.60; 12 for \$3.00; 50 for \$11.00.**

REDTWIG DOGWOOD. Free flowering; very handsome when in bloom, and with its white berries on red stems in the fall. Grows 6 to 10 ft. tall.

TAMARIX AFRICANA. Tall shrub 8 to 10 ft. high, with fine, feathery foliage and small, bright pink flowers in slender racemes in April and May. Splendid for damp places or other places.

ALL PRICES QUOTED ARE NOT PREPAID.



Weigela Rosea



Spirea Van Houttei



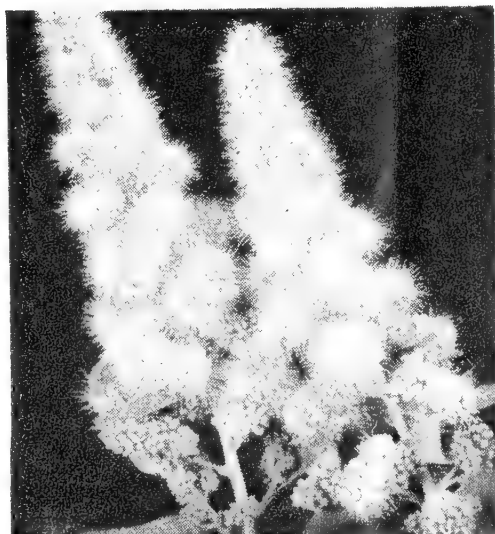
White Snowberry



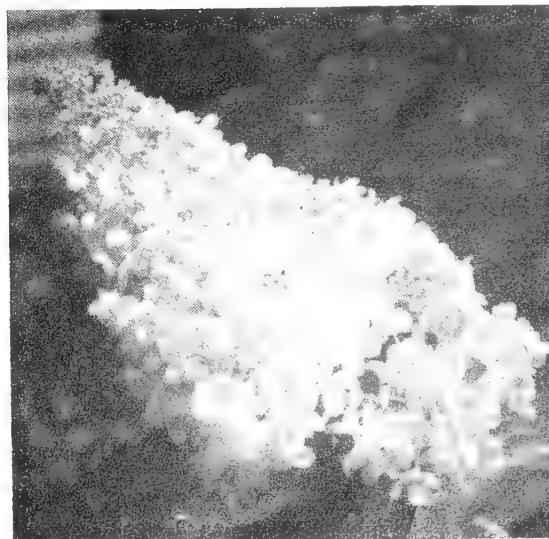
Pussy Willow



Red Japan Quince



Spirea Billardi Rosea



Hydrangea P.G.

BARGAIN NO. 15

30 SPIREA VAN HOUTTEI

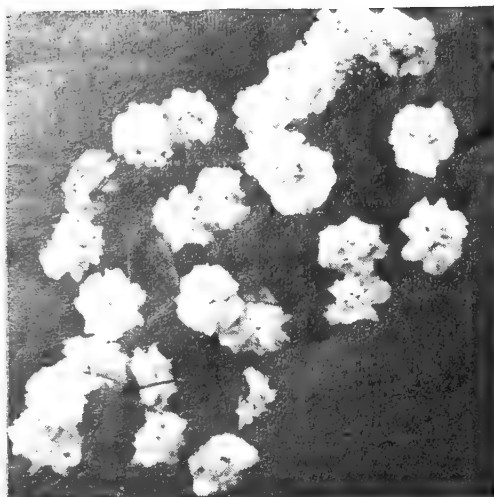
2 to 3 ft., 2 Yr., Ready to Bloom

\$5.40

Not prepaid

Colorful-Inexpensive BEAUTIES

You Will have Blooms Next Spring if Planted This Fall



Spirea Prunifolia

SPIREA PRUNIFOLIA. (The True Old-Fashioned Bridal-wreath.

Small, tight, pure-white blossoms borne in great profusion in early spring. Glossy, round, green leaves during summer, which turn to pleasing shades in autumn. 8 feet when fully matured. **2-Yr., 18-24-in. shrubs, 55c each; 3 for \$1.50.**

PERSIAN PURPLE LILAC. A shrub with slender, arching branches, attaining a height of 8 to 10 ft. Foliage is small, the flowers bright orchid to purple. Blooms in May and June. Does not sprout so much as the common. **2-Yr., 18-24-in. shrubs, 55c each; 3 for \$1.50.**

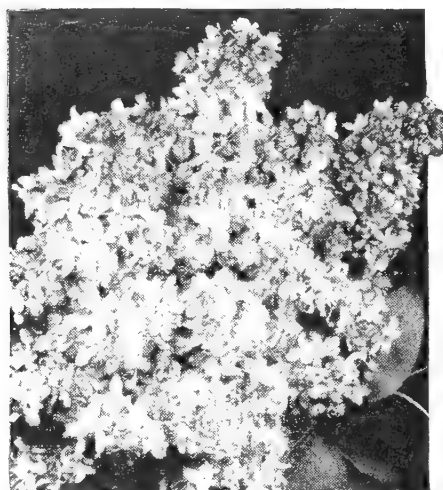
KOREAN SPIREA. (Trichocarpa). Acclaimed the best of all Spireas. Grows 4 to 6 feet tall, forming a big, dome-shaped bush, covered in spring with large, rounded clusters of snow-white flowers marked with darker eyes. Very hardy. Blooms two weeks later than Van Houttei. **Price 2-Yr., 18-24-in. shrubs, 55c each; 3 for \$1.50.**

HYDRANGEA A. G. (Hills of Snow). Large, flat clusters of white blooms from June to September. Very hardy. Excellent for solid low borders. Especially useful for shady places. **2-Yr., 15-18-in. shrubs, 60c each; 3 for \$1.65.**

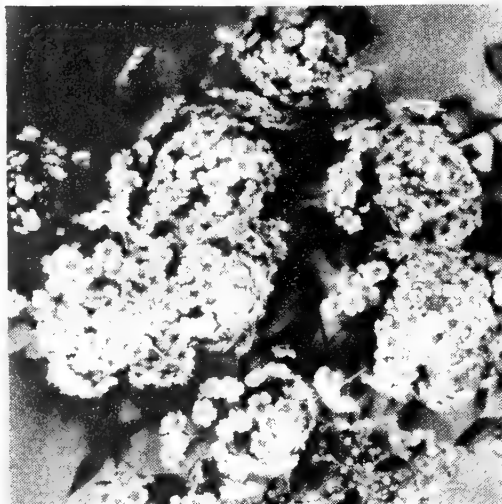
PHILADELPHUS VIRGINALIS. Large, sweetly scented, pure white flowers in clusters of six or seven; closely resembles a bride's bouquet of orange blossoms. Single flowers on 1-year wood; double flowers on 2-year wood. 8 ft. at maturity. **2-Yr., 18-24-in. shrubs, 65c each; 3 for \$1.80.**

BLUE ALTHEA. A rather scarce color in flowering shrubs. Has charming, large, single flowers of deep blue shade with a crimson eye. Blooms freely from early summer to late fall. **2-Yr., 18-24-in. shrubs, 55c each; 3 for \$1.50.**

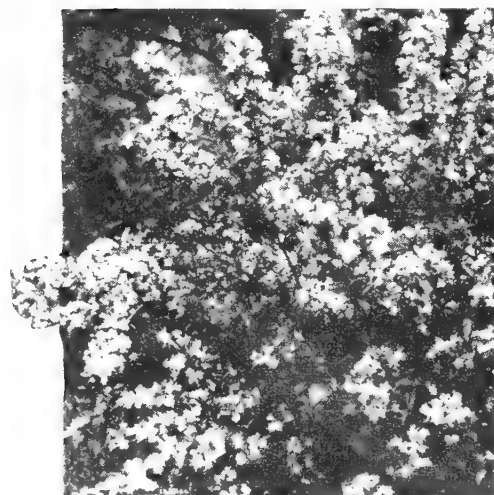
WEIGELA VARIEGATED. Sprays of rosy pink flowers like Floribunda above, except they are deep pink. Leaves are beautifully variegated green and white. Grows only 2 to 3 feet high. Very beautiful. **2-yr., 18-24-in. shrubs, 55c each; 3 for \$1.50.**



Persian Purple Lilac



Korean Spirea

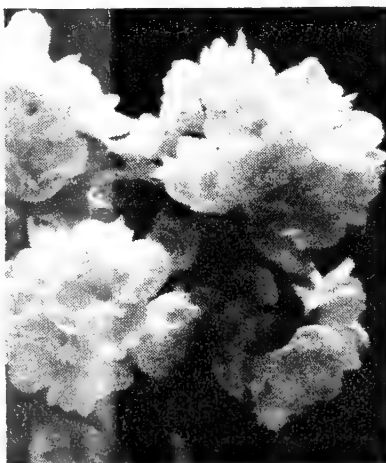


Weigela Floribunda

BARGAIN NO. 16
5 SHRUBS: One each, **\$2.25**
your choice varieties listed on this page. **Not prepaid**



Hydrangea A. G.



Phila. Virginialis



Blue Althea

Ackerman's Hardy

ORNAMENTAL TREES

PRUNUS TRILOBA (Double-Flowering Plum). The flowers on this small-growing tree are like the Flowering Almond, double, rose-like, and hugging the naked branchlets so closely and so profusely it is impossible to see the branches; are a bright shade of pink. Hardy and seldom grows taller than 8 feet. **2-Yr., 3-4 ft. trees, \$1.00 each; 2 for \$1.75.**

PRUNUS CISTENA (The Purple-Leaf Plum). Shows more red in colored leaves, lower growth and more compact than the common variety; glossier leaves. The dwarf tree comes out red in the spring, stays red all summer, and bronze-red in the fall. Beautiful, single, pink flowers in May. **2-Yr., 2-3 ft. trees, 60c each; 2 for \$1.00. 2-Yr., 3-4 ft. trees, 85c each; 2 for \$1.50.**

ELM, CHINESE (*Ulmus Pumila*). Very rapid grower. Will give ample shade in only 5 or 6 years. Dense, dark-green foliage. First to leaf out in the spring. Very hardy. **2-Yr., 3-4 ft. trees, 50c each; 3 for \$1.35. 5-6 ft. trees, 75c each; 3 for \$2.10.**

MAPLE, SILVER. Very hardy, rapid-growing tree. Their irregular growing leaves are silvery-green, which turn yellow and bronze in the fall. **2-Yr., 3-4 ft. trees, 55c each; 3 for \$1.50. 6-8 ft. trees, \$1.85 each; 3 for \$5.25.**

POPLAR, LOMBARDY. Tall, tapering tree, rapid grower; dark green leaves with lighter surface underneath. **2-Yr., 3-4 ft. trees, 50c each; 3 for \$1.35. 4-5 ft. trees, 75c each; 3 for \$2.10.**

WILLOW, WISCONSIN WEEPING (*Salix blanda*). A graceful tree of large size. Its long, fine leaves on slender branches are a fresh, bright green tint. Rapid grower. **2-Yr., 4-5 ft. trees, 45c each; 3 for \$1.20. 5-6 ft. trees, 65c each; 3 for \$1.75.**

BUTTERNUT. Native tree, producing long, large nut. Has a sweet, oily, nutritious kernel. **2-Yr., 18-24 inch trees, 40c each; 3 for \$1.00.**



Wisconsin Weeping Willow

MAPLE, DWARF RED LEAF. Hardy, dwarf-growing tree, seldom maturing over 10 feet. Their indented leaves are vivid blood-red in spring, which dulls to bronzy purple-red or bronze-green in fall. **Fine 12-15 inch trees, \$2.25 each; 2 for \$4.00.**

JUDAS TREE (Redbud). Beautiful bright pink blossoms in early spring before leaves appear. Medium size tree with large, irregular head and heart-shaped leaves. Very hardy. **2-Yr., 15-18 inch trees, 45c each; 3 for \$1.20.**

PURPLE TREE WISTERIA. A tree of sheer beauty when in full bloom; gorgeous, long clusters of purple flowers hang from this dainty tree, lasting a long time. Grafted form, stays small. Blooms in May. **2-Yr., 3-4 ft. trees, \$2.85 each; 2 for \$5.50.**

MAGNOLIA TRIPETALA. Immense leaves, usually 12 to 24 inches long and from 7 to 10 inches wide. Leaves grow in clusters about the large white flowers and rose-colored cones. Matures to a height of 30 to 40 feet. **Price: Fine, 12-18 inch trees, \$1.15 each; 2 for \$2.00.**

ENGLISH WALNUT. The nuts are thin-shelled just like those you get from the West Coast. Nuts are filled with full-meated kernels of delicious flavor. Tree is hardy and productive. **Fine, 2-3 ft. trees, \$2.50 each; 2 for \$4.50.**

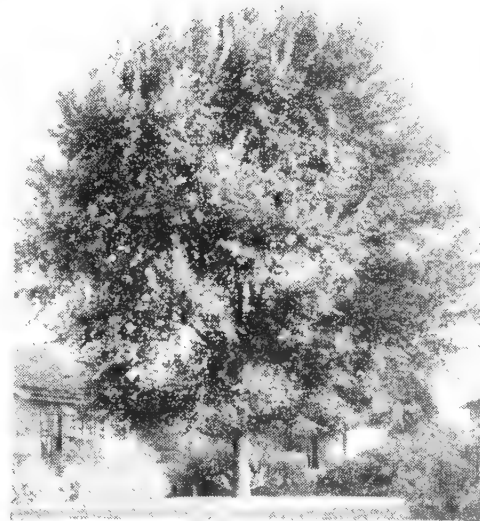
THIN-SHELLED BLACK WALNUT. This walnut is hardy, a fast grower, and early-bearing, often the third year after planting. Nuts crack easily, often in halves; individual nuts and kernels are large, light-colored and of very good quality. **2-Yr., 4-5 ft. trees, \$2.50 each; 2 for \$4.75.**



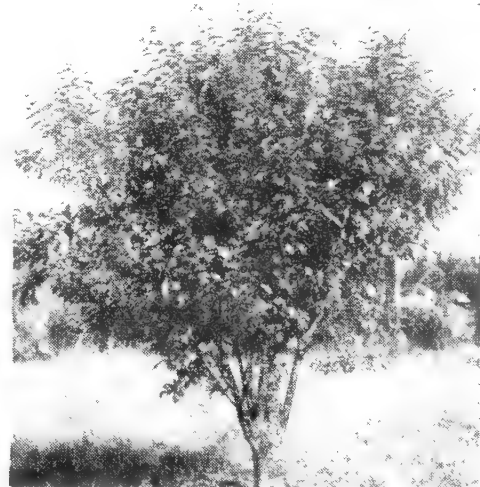
Dwarf Red Leaf Maple



Prunus Triloba



Chinese Elm



Prunus Cistena

BARGAIN NO. 17

2 Chinese Elm 2 Silver Maple
all 3-4 ft. trees

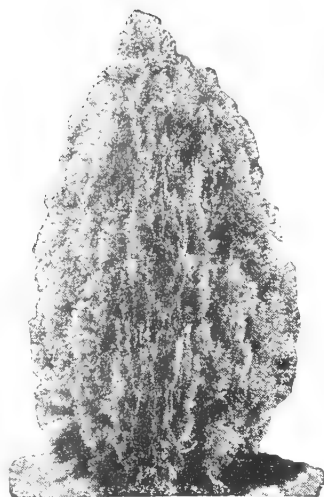
\$1.50 Not prepaid

Evergreens

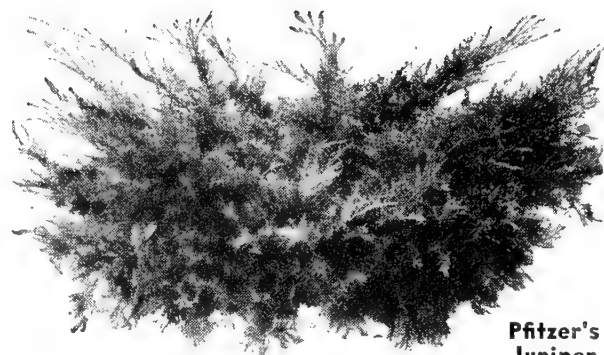
For FALL PLANTING

BIOTA AUREA NANA.

Dwarf type. The flattened leaf-clusters face outward edge-wise. Fresh yellow-green in color. Price: 24-36 in., \$3.50 each; 2 for \$6.50. Baby size, 8-10 in., 60c each; 2 for \$1.00.



Biota Aurea Nana



Pfitzer's Juniper

PFITZER'S JUNIPER.

Low, spreading type. Hardy. Price: 24-30 in. XXX trees, \$4.50 each; 2 for \$8.00. Baby size, 8-10 in., 55c each; 2 for 1.00.

SPINY GREEK JUNIPER.

Broad base, gradually tapering to a tall, dense conical head. Color is a fine glaucous blue. 3-4 ft. XXXX trees, \$4.50 each; 2 for \$8.00. 18-24 in., \$2.75 each; 2 for \$5.00. Baby size, 8-10 in., 50c each; 2 for 90c.

SPREADING YEW.

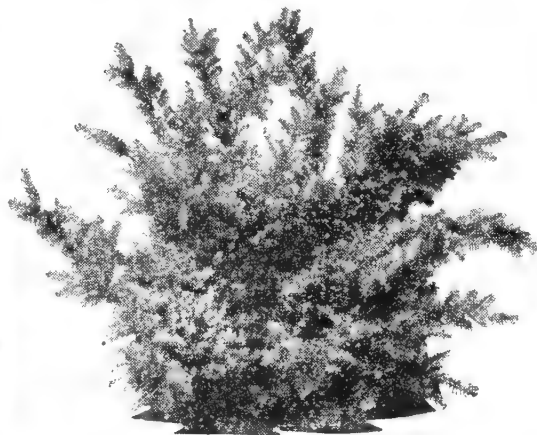
Spreading type. Dark green, rich waxy foliage; red berries all winter. Withstands shade. 18-24 in. XXXX trees, \$4.50 each; 2 for \$8.00. Baby size, 6-8 in., 60c each; 2 for \$1.00.

IRISH JUNIPER.

Erect and slender, formal and columnar in form. Light, bluish-green color. 2-3 ft. XXX trees, \$2.75 each; 2 for \$5.00. Baby size, 8-10 in., 50c each; 2 for 90c.



Irish Juniper



Spreading Yew

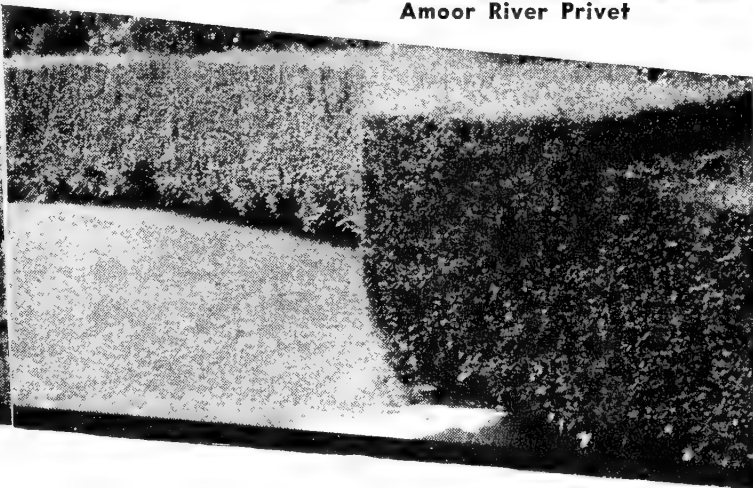
BARGAIN NO. 18

4 Baby Evergreens for **\$1.80**
8 Baby Evergreens for **\$3.25**
Your choice of varieties listed in baby size on this page.
Not prepaid

Amor River Privet



Green Barberry



HEDGE PLANTS

GREEN BARBERRY. (Berberis Thunbergi). Immune from rust. Dwarf growing, uniformly bushy and rounded in form, numerous leaves covering thorny twigs. As a filler edging for shrubbery, as foundation screen in front of porches, as a hardy, low hedge, it is unsurpassed. These are field-grown, transplanted bushes, and are not to be confused with the usual spindly plants taken out of beds. 2-Yr., 15-18 in., 6 for \$1.80; 12 for \$3.00; 25 for \$4.75; 50 for \$8.50; 100 for \$15.00. 2-Yr., 18-24 in., 35c each; 6 for \$1.95; 12 for \$3.60; 25 for \$6.75; 50 for \$11.00; 100 for \$20.00.

RED BARBERRY. Similar to Green Barberry in all respects except color is a brilliant red. Early spring, assumes a deep, bronzy-red color, which it retains until fall, when it changes to vivid orange, scarlet and red shades, far more brilliant than the ordinary Japanese Barberry. These are field-grown, transplanted bushes, not to be confused with the usual spindly plants taken out of beds. 2-Yr., 15-18 in., 35c each; 6 for \$1.95; 12 for

\$3.60; 25 for \$6.85; 50 for \$12.00. 2-Yr., 18-24 in., 50c each; 6 for \$3.25; 12 for \$6.25; 25 for \$12.00; 50 for \$21.00.

AMOR RIVER NORTH PRIVET. One of the best hedge plants because of its extreme hardiness. Of fine, upright growth with lustrous dark green foliage, nearly evergreen. Grows quickly, making a hedge the first year, and succeeds in practically all soils. Especially valuable for hedges and borders in cold, exposed locations. When planting, cut back to 4 inches above ground to make hedge bushy at bottom. Price: 2-Yr., 12-15 inch, 6 for 90c; 12 for \$1.35; 25 for \$2.50; 50 for \$4.50; 100 for \$8.00. 2-Yr., 18-24 inch, 6 for \$1.50; 12 for \$2.25; 25 for \$3.95; 50 for \$7.00; 100 for \$11.50.

BARGAIN NO. 19

75 Amor River Privet, 18-24 in.

\$8.00

Not prepaid

Ackerman's Hardy Perennial Plants

Oriental Poppies

BARR'S WHITE. Large pure white flowers with purplish black spots. Free blooming. Price: 75c each; 3 for \$2.10. Not prepaid.

GLOWING EMBERS. This outstanding Poppy is a bright, Nopal-red; petals are beautifully ruffled. Free blooming. Price: 60c each; 3 for \$1.65. Not prepaid.

GOLD OF OPHIR. Flowers are a golden orange; this color becomes more pronounced as the plant grows older. Medium height. Unique. Price: 65c each; 3 for \$1.75. Not prepaid.

HELEN ELIZABETH. Large, La-France-pink flowers on strong, 34-inch stems. The very best pink variety. Price: 65c each; 3 for \$1.75. Not prepaid.

HENRY CAYEUX IMPROVED. The large blooms are a peculiar tint of ashes of roses. Price: 75c each; 3 for \$2.10. Not prepaid.

OLYMPIA. Flaming red. Double, and earliest to bloom. 50c each; 3 for \$1.35. Not prepaid.

SALMON GLOW. (Double). This is the most outstanding double Poppy found in our gardens. Flowers are exceptionally large, double blooms, fully 6 to 8 inches across; are twice as double as any other variety, and are produced on stiff upright stems. Color is a clear lustrous salmon pink. Price: 75c each; 3 for \$2.10. Not prepaid.

SNOWFLAME. Very unique. Lower half of the flower is pure white, the upper half a flame-orange. The width of orange band varies with each flower. Blooms freely. Flowers are large. Protected by Plant Patent No. 365. Price: 65c each; 3 for \$1.75.



Fall is the Best Time of the Year to Make New Perennial Plantings

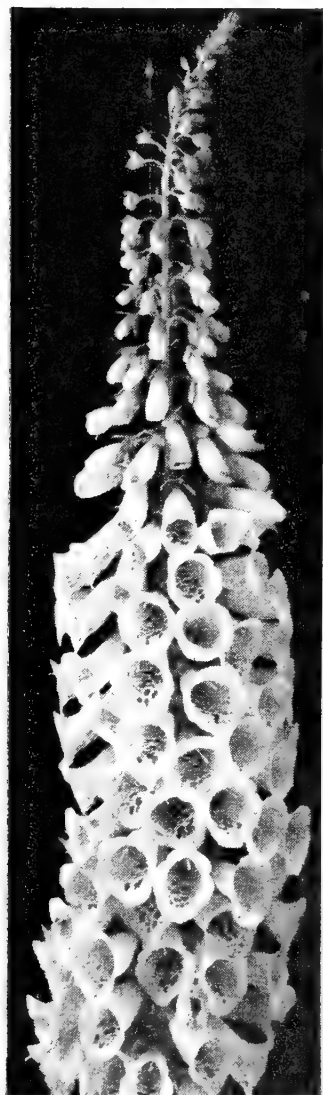
Snowflake

BARGAIN NO. 20

5 GORGEOUS POPPIES

1 Salmon Glow 1 Barr's White
1 Olympia 1 Helen Elizabeth
1 Snowflake

\$2.75 Not prepaid



Foxglove

RUSSELL LUPINES. Tall spikes of bloom, often 3½ feet high, from June to September. Flower spikes resemble a closely-set well-rounded column of sweet peas. A vast range of color. A most superior strain. PRICE: Field-grown plants, 45c each; 3 for \$1.25; 6 for \$2.25.

FOXGLOVE (Giant Shirley Hybrids). The flower heads are over 3 feet long, crowded with big, bell-shaped blossoms. Colors range from white and shell-pink to deepest rose, many attractively dotted crimson or chocolate. PRICE: 40c each; 3 for \$1.00; 10 for \$3.00.

CANTERBURY BELL. Plants attain 2½ feet in height, profusely covered with large, bell-shaped flowers. Bloom May to July. Beautiful range of color, ranging from white, pink, rose, through all shades of blue and purple. No color guarantee, for we furnish these in mixed only. The well-known "Cup-and-Saucer" Perennial. Price: 35c each; 3 for \$1.00; 6 for \$1.80.

BLEEDING HEART (Dicentra spectabilis). Hardy old favorite with heart-shaped, rose-colored flowers in drooping spikes. Field-grown plants, with 3-5 eyes, 60c each; 3 for \$1.65.

DELPHINIUM (Pacific Hybrids). Giant stalks 4 to 6 feet tall, bearing enormous flower spikes. Individual blooms are double to semi-double; exceptionally large, often measuring 2 inches across. Delightful shades of blues, lavenders and mixed colors. Free blooming and hardy. No color guaranteed. 35c each; 3 for 90c; 6 for \$1.75; 12 for \$3.25.

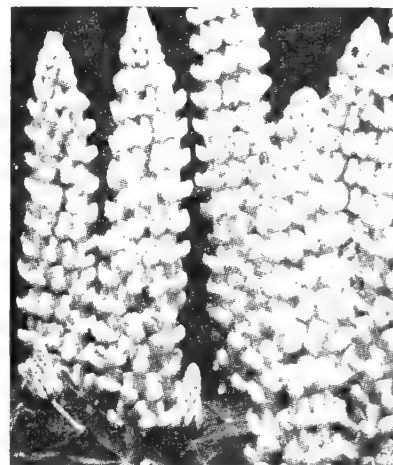
(Prices quoted are not prepaid)

BARGAIN NO. 21

12 Exquisite Perennials
3 each:

Russell Lupines Foxglove
Canterbury Bells Delphinium

\$3.00 Not prepaid



Russell Lupines



Bleeding Heart



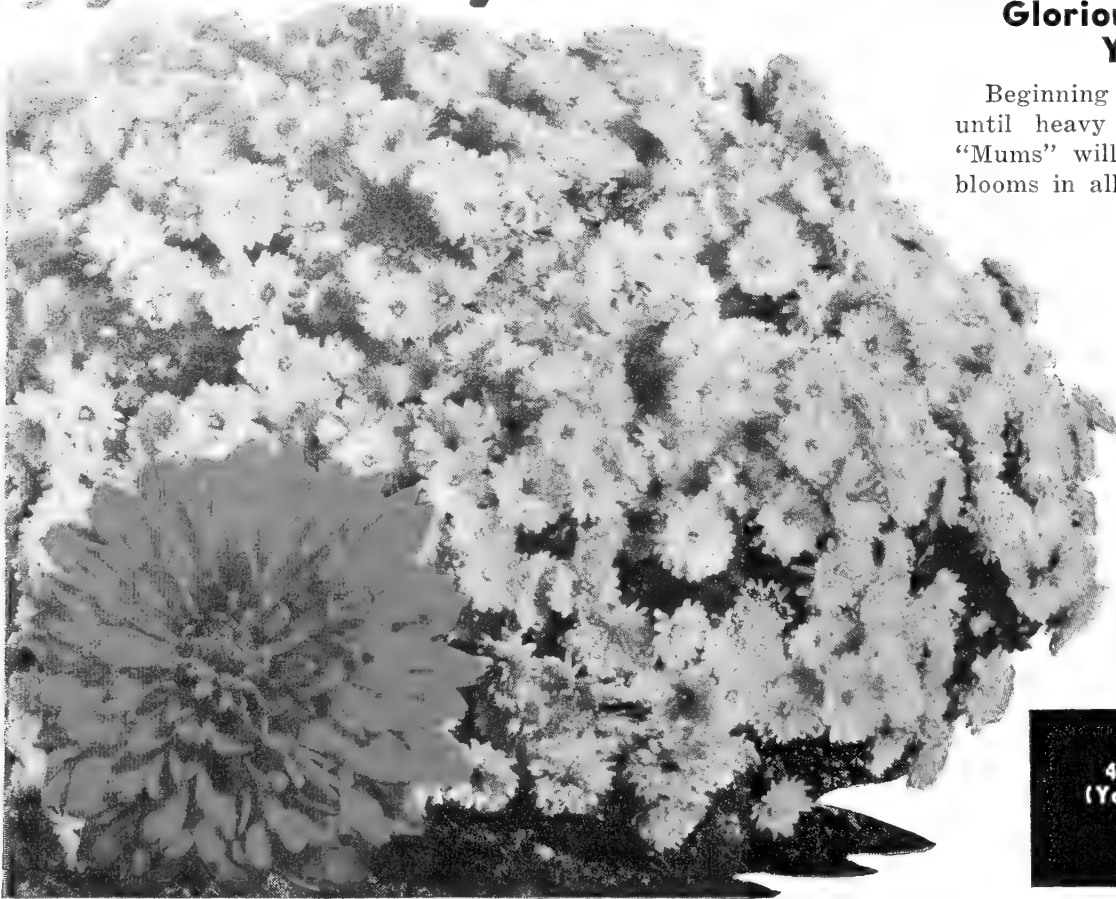
Hybrid Delphinium

Hardy Cushion MUMS

**Glorious Colors To Brighten
Your Fall Garden**

Beginning in late summer and carrying on until heavy frost, these delightful Cushion "Mums" will bring you a glorious display of blooms in all colors. Plant yours this fall for earlier growth and more bloom next year.

These beautiful, showy "Mums" make a rounded, compact bush of immense size, producing hundreds of flowers at one time, and bloom continuously from August to Thanksgiving. Hardy and easy to grow. We offer these in **BRONZE, PINK, RED, WHITE** and **YELLOW**. Specify color wanted. Strong, field-grown plants, 35c each; 3 for 90c; 6 for \$1.50.



BARGAIN NO. 22
4 Cushion Mums 4 Phlox
(Your choice of color in Mums and
varieties in Phlox)
\$1.65 Not prepaid

Perennial PHLOX

Plant Phlox this fall to insure next year's bloom. We are now pleased to offer an especially fine collection—10 of the best and newest varieties of the popular kinds offered today—each a different color. All strong, field-grown plants, which will bloom next summer.

PRICE, All varieties listed: 35c each; 5 for \$1.50; 10 for \$2.50. Not prepaid.

BRIGHT EYES. New, bright rose pink, dark red eye.

CHIEFTAIN. Dark red. Flowers large and striking.

EVA FORRESTER. Bright salmon rose, white eye. Dwarf growing, exceptionally large trusses, and an early bloomer.

FLASH. Large, rosy red, one of the best Phlox.

FRAU ALFRED VONMAUTNER. Salmon orange flowers, crimson eye. A delightful addition to the Phlox family.

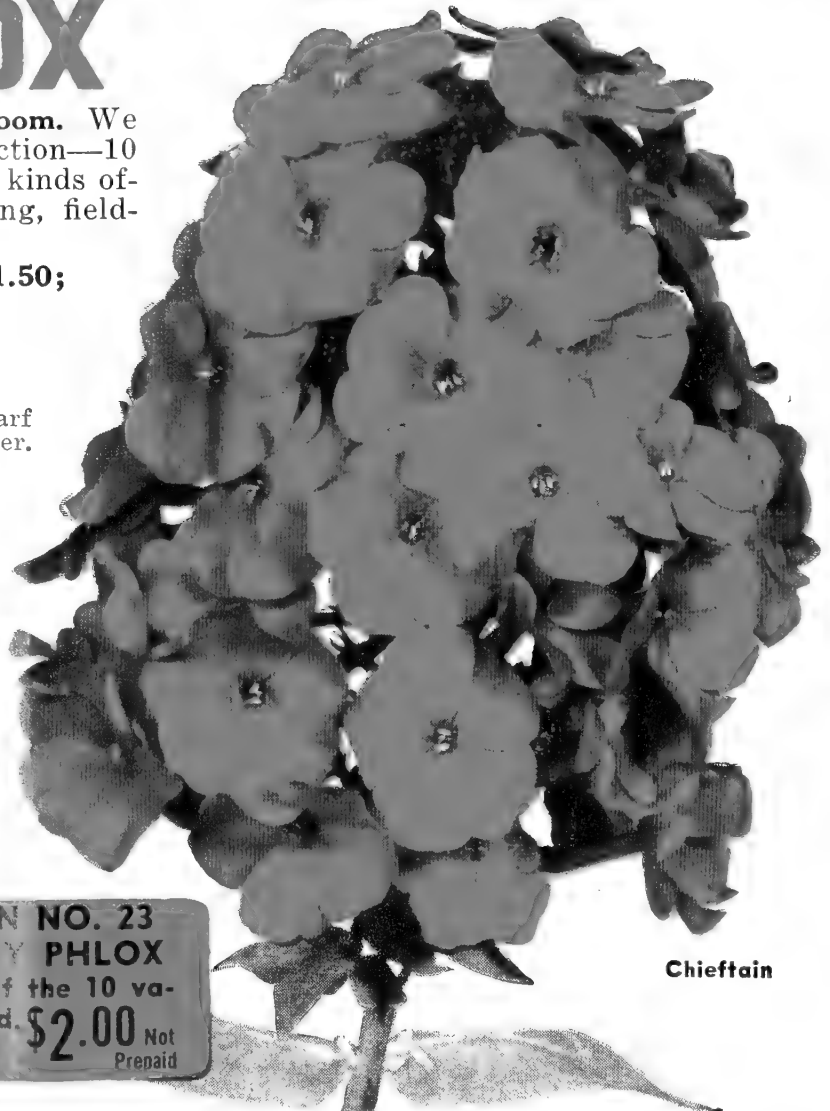
POLKADOT. A delightful white, petals of which have a very slight pinkish tinge, which harmonizes with the dainty fuchsia-colored eye. A beautiful head with extra large florets.

PROGRESS. Gorgeous, large florets of dainty light blue with dark blue eye.

ROYAL PURPLE. A very rich purple, deep at the edges, shading to violet in center of petals, then deep reddish-purple at eye. An early bloomer.

ROSY BLUE. This is one of the finest in this color grouping—soft lavender-blue with delicate pink undertones—never a sign of objectionable purple or violet tinting. Well-filled, symmetrical heads with unusually large individual florets. Tall grower and early bloomer.

VON LASSBURG. A lovely, white phlox of sturdy growth, with large flower heads.



Chieftain

BARGAIN NO. 23
10 HARDY PHLOX
One each of the 10 va-
rieties listed. **\$2.00** Not
Prepaid

HARDY PERENNIALS

Give You

Permanent Garden Beauty

(Prices quoted are not prepaid)

SCABIOSA CAUCASICA

(Isaac House Hybrids)

Lovely, lavender flowers on 18- to 24-inch stems from June to September. Hardy. Excellent for cut flowers. Strong, field-grown plants, 45c each; 3 for \$1.20; 6 for \$2.10.

AQUILEGIA

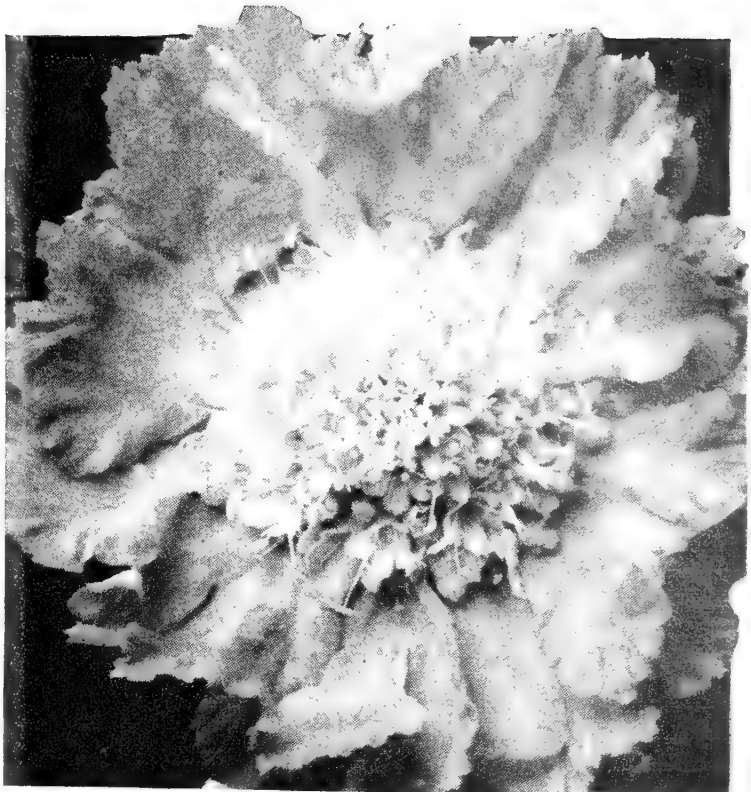
(Long-spurred Hybrids)

One of the best perennials. Dainty, showy and desirable as cut flowers. Bloom in June and July. Prefers partial shade. A fine mixture of all shades. Field-grown plants, 35c each; 3 for 90c.

VERONICA

(Blue Spire)

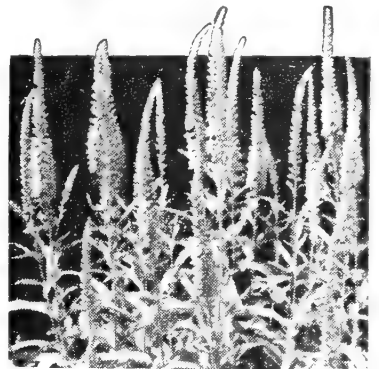
(Spicata) The most dependable of the Veronics. An unusual shade of blue, comparable with the cool blues found in deep pools of the Western Lakes—a violet blue. Beautiful blue spires will light up your garden during July and August. Hardy, increases in strength and beauty each year. Excellent for cutting. About two feet tall, especially good in the foreground of a perennial border. Strong, field-grown plants, 40c each; 3 for \$1.00; 6 for \$1.80.



Scabiosa Caucasica

SWEET WILLIAM

Popular garden flower, showing a wonderful array of vivid colors in fancy patterns. Flowers are colored, clustered and shaped much like Phlox, the markings being more sharply defined. Blooms from late spring and practically throughout the entire summer. Strong, field-grown plants, 30c each; 3 for 80c; 6 for \$1.50.

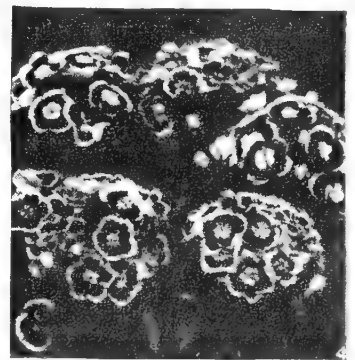


Veronica

FEVERFEW

(Matricaria)

A most useful dwarf edging plant. Fine double white flowers resembling tiny pompon Chrysanthemums. Very free flowering from June until October. Field-grown plants, 35c each; 3 for 90c; 6 for \$1.50.

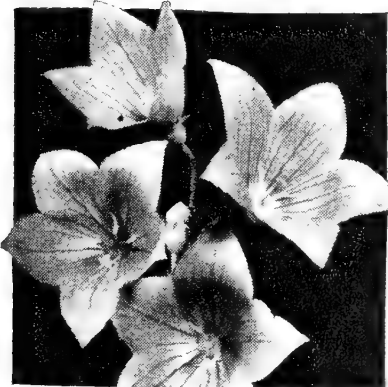


Sweet William

BLUE PLATYCODON

(Blue Balloon Flower)

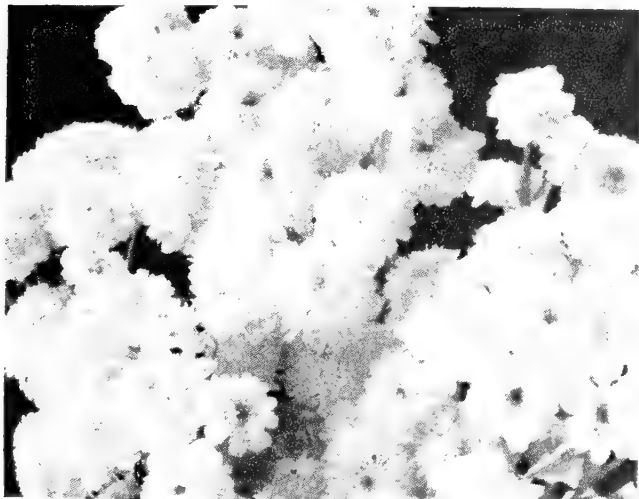
Large, deep-blue, bell-shaped or broadly cupshaped flowers, growing 1½ to 2 feet tall. Handsome, dark green foliage. Very hardy. Will do well in both sun and shade, and will grow on any well-drained soil. Blooms July and August. Field-grown plants, 35c each; 3 for 90c; 6 for \$1.50.



Platycodon, Blue

HARDY CARNATIONS

Exotically perfumed flowers in great abundance all summer. Large flowers. Choice of Pink, Red, White or Yellow. State color wanted. Strong, field-grown plants, 25c each; 6 for \$1.35.



Feverfew, Matricaria



Hardy Carnation



Aquilegia, Scott-Elliott Hybrids

BARGAIN NO. 24
6 Perennials
2 Each:
Scabiosa Caucasica
Aquilegia
Veronica
\$1.75
Not Prepaid

ACKERMAN'S

SUNSET TULIP COLLECTION

100

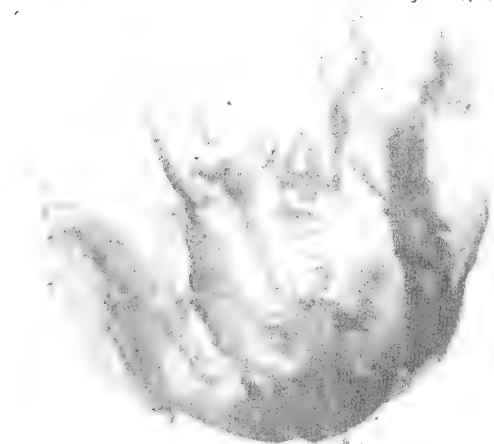
**FLOWERING TULIP
BULBS IN MIXED COLORS**

\$3.25
Postpaid
in U. S.

We are sure each and everyone of you have enjoyed the beautiful sunsets in the late summer months—the exquisite coloring so vivid, the picture remained for days. This is the impression you will receive when looking at a bed of bloom supplied by these mixed varieties of Tulips—an unusual range of color in reds, yellows, purples, pinks, white, etc. A real money-saving value in high quality bulbs. These are not the usual so-called "Bargain" bulblets. Each bulb measures about 4 inches around—the size of a 50c piece. **GUARANTEED TO BLOOM NEXT SPRING.** We wish space permitted our printing some of the many fine letters we received this past spring regarding the wonderful results our customers had with this collection which they purchased last Fall. We cannot stress too strongly that you order early for the supply is limited. **PRICE: 25 for \$1.00; 50 for \$1.75; 100 for \$3.25, prepaid in U. S.**

THREE UNUSUAL TULIPS

All Holland-grown, 11-12 centimeter bulbs



PARROT TYPE TULIP

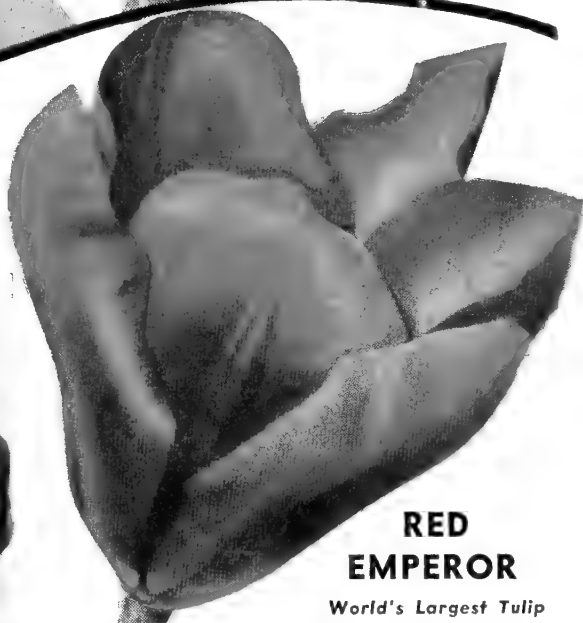
Large, striking flowers of fantastic form and brilliant colorings. Petals deeply lacinated and fringed. We offer this type in four varieties. Blue Parrot. Large, violet blue. Fantasy. Clear pink, flaked with apple-green. **PRICE for above 2 varieties: 3 for 50c; 6 for 85c; 12 for \$1.60; 25 for \$3.00. Postpaid.** Orange Favorite. Bright orange, green blotches. Red Champion. Bright crimson, shaded rosy red. **PRICE: Orange Favorite and Red Champion: 3 for 75c; 6 for \$1.35; 12 for \$2.65; Ppd.**



PEONY-FLOWERED TULIP

(Double Triumph)

You will not believe your eyes the first time you see these beautiful flowers. The immense blooms are very double, and actually as large as peonies, which they resemble. The sensation of all Spring flowers. We offer three varieties. Eros. Very deep, bright pink. Mount Tacoma. Pure white. Uncle Tom. Rich-maroon-almost black. **PRICE: 3 for 60c; 6 for \$1.15; 12 for \$2.15; 25 for \$4.00, Postpaid.**



RED EMPEROR

World's Largest Tulip

Largest Tulip of all! The bloom itself is often well over 4 inches tall, 8 inches across when wide open. Flowers are a dazzling vermilion-red, with yellow base. Blooms the earliest of all Tulips. When half opened, the flower shows its marvelous butterfly-heart, colored deep black with yellow edge. Protect it against hard winds. **PRICE: 20c each; 3 for 55c; 12 for \$2.00, Ppd.**

BARGAIN NO. 25

- 6 Peony-Flowered Tulips (2 of each variety)
 - 8 Parrot Tulips (2 of each variety)
 - 6 Red Emperor Tulips
- All 11-12 Ctm. bulbs

\$2.75
Postpaid

The ACKERMAN NURSERIES

Plant These Bulbs—Enjoy Early Spring Beauty

GRAPE HYACINTHS

(Muscari)

We offer the **Heavenly Blue** variety, which is a clear, sky-blue color; flowers are closely-set, grape-like clusters in form. Very sweet scented. Prices: 12 for 50c; 25 for 85c; 50 for \$1.50; 100 for \$2.85. Not prepaid.

DUTCH HYACINTHS

Everyone loves Hyacinths with their bright and cheerful colors that appear in the spring long before most Tulips. Beautiful, closely-set spikes of bloom, which are extremely fragrant. We offer these in yellow, porcelain blue, deep blue, bright scarlet, pink and white. Be sure and specify color wanted. Price: 15-16 Ctm. bulbs, 3 for 75c; 6 for \$1.25; 12 for \$2.40; 25 for \$4.50.

NARCISSUS (Daffodils)

Cheerfulness. (Gardenia Flowered). Creamy white, double flowers resembling the Gardenia; sweet scented. Price: 3 for 75c; 12 for \$2.25; 25 for \$3.75; 100 for \$12.00.

Croesus. Large round primrose perianth; striking orange red crown. Free flowering, medium early. Price: 3 for 85c; 12 for \$2.65; 25 for \$4.50; 100 for \$14.50.

King Alfred. The super-giant of the yellow trumpets. Rich golden yellow color and elegant form; trumpet measures 2½ inches in diameter and is beautifully frilled. Tall, and vigorous bloomer. Price: 3 for 85c; 12 for \$2.75; 25 for \$5.00; 100 for \$15.00.

Stresa. Large pure white perianth, creamy trumpet frilled at mouth. Early forcer. Price: 3 for \$1.00; 6 for \$1.75; 12 for \$3.25; 25 for \$6.00.

Twink. (Double). Outer petals creamy white, with center bright orange. Exceptionally attractive. Price: 3 for \$1.00; 6 for \$1.75; 12 for \$3.25.

Assorted Daffodils We offer an assortment of the best varieties of yellow trumpets and whites. Truly a fine mixture. Price: 6 for 75c; 12 for \$1.25; 25 for \$2.25; 100 for \$7.25.



Grape Hyacinths

BARGAIN NO. 26

2 Cheerfulness
2 Croesus
2 King Alfred

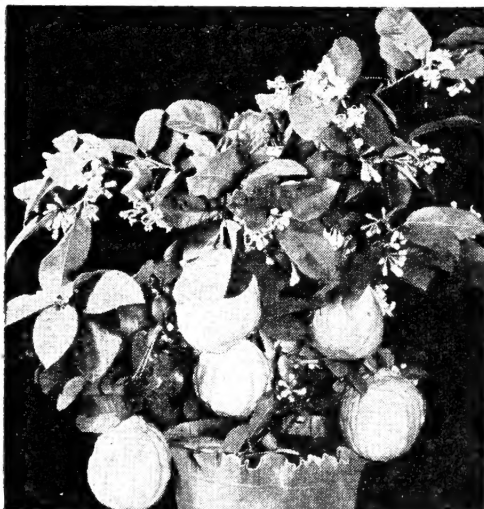
All for
\$1.25

Not Prepaid

DUTCH CROCUS

These colorful little Darlings are the first to bloom in the spring. They come up year after year. We offer a mixture of attractive colors: Yellow, Blue, White, Striped. No guarantee as to color furnished. Price: Top size bulbs, 12 for 65c; 25 for \$1.15; 50 for \$2.15; 100 for \$3.50.

Plants to Grow in Your Home this Winter



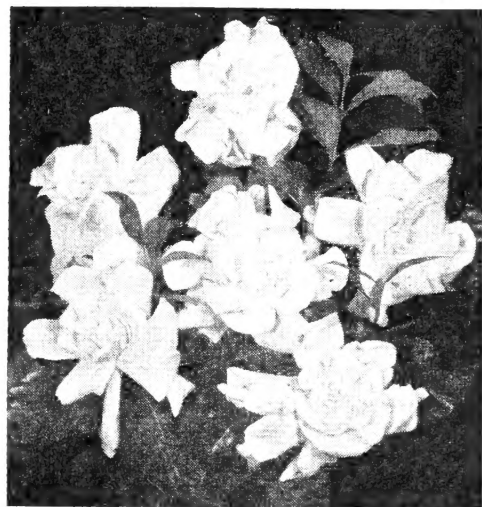
American Wonder Lemon

AMERICAN WONDER LEMON (Grows Lemons Indoors on Small Plants). Sometimes offered as Ponderosa Lemon. The most unique plants ever offered for indoor culture. Covered with waxy white flowers several times each year, nearly as large as Tuberoses and as fragrant as Orange Blossoms. Flowers are followed by large lemons of high quality. Fruit often weighs more than a pound. Strong plants from 2¼-inch pots, 55c each; 2 for \$1.00. 4-inch pots, \$1.50 each; 2 for \$2.75.



New Dwarf Orange

NEW DWARF ORANGE (Otaheite Orange). A grand pot plant of great beauty and novelty. Its glossy green leaves, fragrant waxy white, faintly tinted with pink, blossoms create a most pleasing sight. Although it attains a height of 3 to 4 feet, it is not uncommon to have 6-inch plants full of bloom and producing a few oranges. Fruit is about one-fourth the size of an ordinary orange. A 5-inch pot has been known to carry 10 to 12 oranges at one time. Strong plants from 2¼-inch pots, 55c each; 2 for \$1.00. 4-inch pots, \$1.50 each; 2 for \$2.75.



The Rose Gardenia

THE ROSE GARDENIA (Gardenia Veitchi). The Gardenia is the most popular and fashionable flower—the flower of romance! It makes a grand house plant. Blooms from early spring until fall. Flowers are waxy white; foliage rich glaucous green. Plants prefer living room temperatures. Culture same as Geraniums. Price: Strong plants, from 2¼-in. pots, 65c each; 2 for \$1.20. 3-in. pots, \$1.15 each; 2 for \$2.00.

BARGAIN NO. 27

All out
of 2¼ in.
Pots

1 Lemon Plant
1 Orange Plant
1 Gardenia Plant

\$1.40

Not
prepaid

(Prices as quoted on this page are not prepaid).

ACKERMAN'S *Money-Saving*

TULIP COLLECTION

Of Unusual Colors that
All Your Friends Will Admire

Bargain No. 28

48 Large Bulbs that Will
Bloom Next Spring **\$3.85**

POST
PAID
in U. S.

(Imported from Holland—all 11-12 Ctm. Bulbs)

6 Fantasy (page 20)	6 Mr. Van Zyl
6 Bleu Aimable	6 Mrs. Grullemans
6 Northern Queen	6 Mrs. J. T. Scheepers
6 Marshall Haig	6 Queen of Night

(See pages 20 and 23 for full description)

A \$5.80 Catalog Value

Free! With each Collection—One bulb
RED EMPEROR

World's earliest and largest tulip!

City of
Haarlem

Mr. Van Zyl

Queen of
the Night

Northern Queen

Imported
TULIPS

Direct from Holland

**PATRIOTIC TULIP GARDEN
BARGAIN NO. 29**

6 Red

*

6 White

*

6 Blue

and

6 Fantasy Parrot Tulip

24 Bulbs

For \$2.00

Postpaid
in U. S.

Make Your Next Spring Garden Colorful!

Plant **TULIPS** Now

We are offering Holland-grown Tulips in all named varieties listed on pages 20, 22 and 23—all large 11-12 centimeter bulbs. We have selected the best in the unique Parrot types, the Peony-Flowered, Darwin, Cottage, Triumph, as well as the World's Largest Tulip. The choicest and most beautiful kinds in tall-stemmed May-flowering Tulips.

BLACK EAGLE. (Darwin). Most beautiful of the deep Purple; tall grower.

BLEU AIMABLE. (Darwin). A heliotrope-lilac, inside violet. The nearest to blue in Tulips.

CITY OF HAARLEM. (Darwin). Large, cardinal-red. Very showy.

MARSHALL HAIG. (Cottage). A very fine brilliant scarlet tulip of high merits.

MRS. GRULLEMANS. (Darwin). Ivory with cream undertones; yellow base and anthers.

MRS. JOHN T. SCHEEPERS. (Cottage). Elegantly formed long-shaped bloom of exceptional size, in a deep golden yellow.

MR. VAN ZYL. (Darwin). A beautiful shade of deep pink, with slightly lighter edge.

NORTHERN QUEEN. (Cottage). A large white and pink; lower part of petal white, tapering up to center of petal to a rose-pink.

PRICE FOR ABOVE TULIPS, Any One Variety: 6 for 65c; 12 for \$1.25; 25 for \$2.25; 50 for \$4.25; 100 for \$8.25. Prepaid.

QUEEN OF THE NIGHT. (Darwin). A recent introduction, and one of the best "black" Tulips. Flowers are large, of rich black-maroon color, and are held on very tall, erect stems. Price: 3 for 45c; 6 for 85c; 12 for \$1.50; 50 for \$5.65. Prepaid.

SEE PAGE 20 FOR MIXED, PARROT and PEONY-FLOWERED TULIPS.



BARGAIN NO. 30
 24 All 11-12 Ctm. bulbs
 6 City of Haarlem 6 Black Eagle
 6 Mr. Van Zyl 6 Mrs. J. T. Scheepers
Gorgeous Tulips **\$2.00** Postpaid

LILIES Add DISTINCTION To Your Garden



Regal Lily

REGAL

Tall spikes of white flowers, slightly suffused with pink, with a beautiful glow of canary-yellow at center. Starts blooming end of June. Blooming size bulbs, 35c each; 3 for 90c; 12 for \$3.00. Not prepaid.

MADONNA (Candidum)

Waxy, pure-white flowers produced in clusters of 5 to 15 blooms on a single stalk. Fragrance perfumes entire garden. June blooming. Delightful effect when planted against a background of Delphinium. Very hardy. Blooming size bulbs, 55c each; 3 for \$1.50; 6 for \$2.70. Not prepaid.



Madonna Lily

BARGAIN NO. 31
 3 Regal Lily
 3 Madonna Lily
\$1.85 Not prepaid

Hybrid Tea Roses

**PLAY SAFE! Plant Roses This Fall—
Be Sure of Flowers Next Summer**

**PRICES: All Varieties of Roses listed on this page,
80c each; 3 for \$2.25, not prepaid**

We are offering fourteen of the choicest varieties of Hybrid Tea Roses which will bloom continuously next summer.

DUQUESA DE PENARANDA. Copper-apricot in summer, cinnamon-peach in fall. Fragrant.

EDITOR McFARLAND. Perfectly formed flowers are clear, brilliant, unfading pink. Erect stems. Very fragrant.

E. G. HILL. Double, high-centered flower of dazzling scarlet; beautiful long bud.

F. K. DRUSCHKI. (Perpetual Hybrid). Pure white in color; perfect in form. Free flowering.

GOLDEN PERNET. Most satisfactory yellow rose. Strong, sunflower-yellow, even deeper toned at centers. Buds long and pointed.

K. A. VICTORIA. Large, double, very fragrant white flowers, borne on long, stiff stems.

HINRICH GAEDE. High-centered, double flowers of vermilion shaded with yellow. Rich fruity fragrance.

MRS. CHAS. BELL. This variety belongs to the Radiance family. Beautiful blooms of clear, light salmon.

POINSETTIA. One of the most brilliant reds—a true Poinsettia color. Long pointed buds, open into full-petaled flowers.

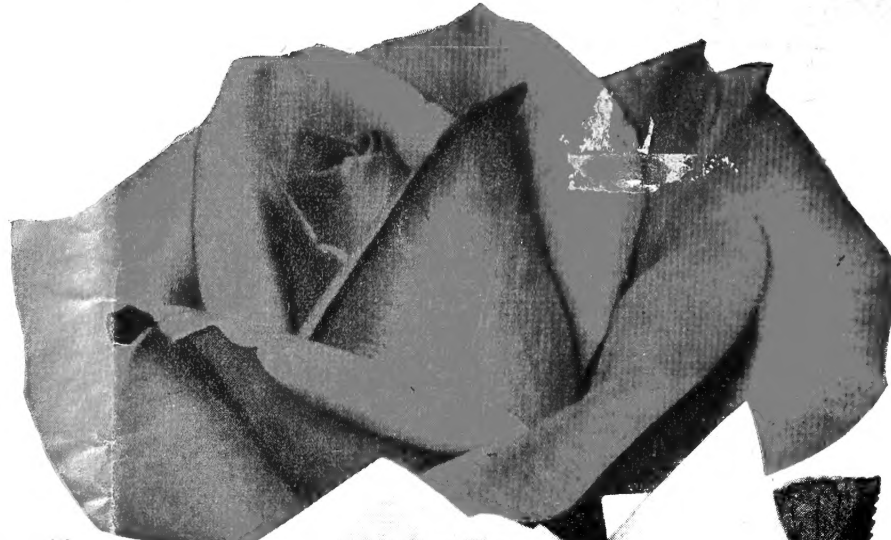
PRES. HERBERT HOOVER. Multi-colored. Large flowers of scarlet, yellow, cerise, pink and flame. Perfect rose for cutting.

RADIANCE, Pink. Large, globular flowers, Blending of carmine-rose with shades of opal and copper.

RADIANCE, Red. Large, globular flower of an even, clear red, constantly in bloom.

SOEUR THERESE. Long, pointed buds are chrome-yellow, heavily marked with carmine; the open flower is rich, daffodil-yellow. Sweetbriar fragrance.

TALISMAN. Orange-red buds open to large, fragrant, high-pointed blooms of glowing golden-yellow stained with copper-red and orange-rose on inside of petals. As the petals unfold they become bright apricot-gold, deep rose-pink or old rose.



E. G. Hill



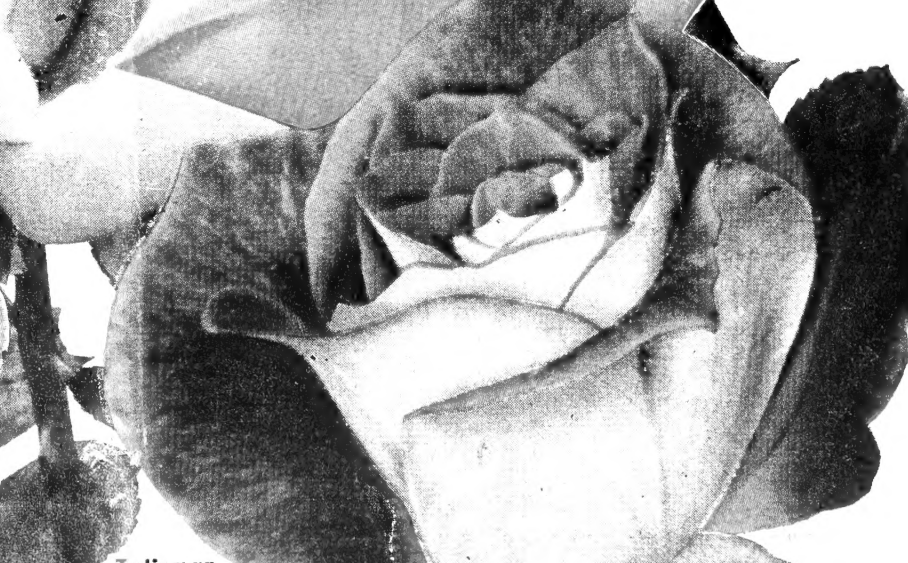
K. A. Victoria



Golden Pernet



Editor McFarland



Pres. Hoover

Talisman

**BARGAIN
NO. 32**

**6 HYBRID TEA
ROSE BUSHES**

**1 each, 6 varieties
pictured on this page.**

\$3.95

Not prepaid