

Historic, Archive Document

Do not assume content reflects current scientific knowledge, policies, or practices.

2939

LIBRARY
RECEIVED
★ MAR 31 1949 ★
U. S. Department of Agriculture

*Better
Gardens
for
1949*

Bay State Nurseries, Inc.
INCORPORATED
NORTH ABINGTON, MASSACHUSETTS



Better Gardens for 1949

For more than half a century Bay State Nurseries has meant your guarantee of quality of merchandise and services and your assurance of progress in the development and marketing of nursery stock. An examination of this catalog will reveal to you many new varieties of evergreens, trees, shrubs and flowers, some of which are being offered for the very first time anywhere; after years of trial in our nurseries.

Graduate Landscape Architects

Bay State Nurseries long ago recognized that not every one has the knowledge or time to undertake his own landscape planning and planting. Therefore, there has been developed a qualified landscape organization composed of men who are graduate Landscape Architects capable of preparing practical and attractive plans and experienced landscape plantmen equipped to produce the best results.

Budget Your Landscape Work

Perhaps the complete development of your property is more than you care to undertake at one time. In that case the only really logical solution is to have a comprehensive plan prepared and then proceed to develop the property by sections. This assures you that each plant will be placed in its permanent position at the outset and be a part of a pleasing composition, resulting in considerable savings and greater enjoyment. Call or write for one of our landscape representatives to call on you without obligating yourself in any way.

Location of Our Nurseries

The Bay State Nurseries are located at North Abington, Massachusetts; 18 miles South of Boston on highways 18 and 58 to Cape Cod.

We cordially invite visitors to our Nurseries. See for yourself the many acres of trees, evergreens, flowering shrubs and perennials we have growing here.

General Index

	<i>Page</i>
EVERGREENS	2
EVERGREEN SHRUBS	7
RHODODENDRONS	9
SHADE AND FLOWERING TREES	10
AZALEAS	16
FLOWERING SHRUBS	17
VINES AND CLIMBING PLANTS	28
PERENNIALS	29
CHRYSANTHEMUMS	30
HERBS	35
GRASS SEED	35
FRUIT TREES	36
ROSES	37
CONDITIONS AND TERMS OF SALE	40



Bay State Nurseries, Inc.

NORTH ABINGTON, MASSACHUSETTS

Donald D. Wyman, *President*

Willard M. Bond, *Vice President*

Harold D. Stevenson, *Secretary*

Telephones: { 26
 { 27
Rockland { 28

Evergreens

There are no more beautiful things in nature than well-grown, well-cared for Evergreens. They are gracious and cool-looking in summer and cozy and comfortable in winter, to heighten the beauty of our New England landscapes.

There is no end to their varieties and uses. The dwarf, slow-growing types nestle around the foundations of your

home, or group artistically at the corners of steps. Other, larger-growing types enclose private portions of the grounds, act as windbreaks or form the background for formal gardens.

All Evergreens are dug balled and burlapped (B&B) at no additional charge.

Abies — Fir

The Firs are a family of stately trees that develop into majestic subjects. Symmetrical in form they grow to great height.

Abies concolor		White Fir	
The most beautiful of the North American Firs, with flat dark-green needles with silvery blue tinge. It grows rapidly and will withstand the heat and drought.			
	Each		Each
3 to 4 ft.	\$6.00	5 to 6 ft.	10.00
4 to 5 ft.	8.00		

Abies concolor conica		Conical White Fir	
A more dense, cone-shaped form of the White Fir.			
	Each		Each
6 to 7 ft.	\$15.00	7 to 8 ft.	\$18.00

Chamaecyparis — False Cypress

This group includes many delightful shrubby evergreens that can be used in various manners. With variety in foliage, they trim well into dense, cone-shaped forms for foundation plantings. They also make excellent backgrounds for gardens.

Chamaecyparis pisifera		Sawara False Cypress	
An upright graceful tree with flat foliage slightly pendulous at the end of branches.			
	Each	Per 10	
18 to 24 in.	\$3.50	\$33.00	
2 to 2½ ft.	4.50	42.00	
2½ to 3 ft.	5.50	50.00	

Chamaecyparis plumosa		Plume False Cypress	
Conical in habit, this plant with its soft feathery light green foliage is popularly used in foundation plantings.			
	Each	Per 10	
15 to 18 in.	\$3.00	\$27.00	
18 to 24 in.	3.50	33.00	

Chamaecyparis plumosa aurea		Goldplume Cypress	
This is the golden form of the preceding. Rich yellow soft foliage.			
	Each	Per 10	
15 to 18 in.	\$3.00	\$27.00	
18 to 24 in.	3.50	33.00	



Chamaecyparis plumosa
Plume False Cypress

Chamaecyparis pisifera
Sawara False Cypress

Juniperus — Junipers, Cedars

There is a wide variety of forms and textures presented among the Junipers. Many are of the tall columnar type unexcelled for accent points or sentinels in the garden. Others are the low spreading type branching to the ground for use on bankings, terraces, or in the foreground of other evergreen plantings.

Juniperus chinensis pfitzeriana		Pfitzer Juniper	
A dwarf, fan-shaped low spreading evergreen with gray-green foliage. This is a very versatile evergreen that can be used in a host of places; on bankings, in foundation plantings, and in the foreground of other plantings. Very hardy and satisfactory in exposed situations. Easy to grow.			
	Each	Per 10	
18 to 24 in.	\$5.00	\$45.00	
2 to 2½ ft.	6.00	55.00	

Juniperus communis hibernica		Irish Juniper	
A slender, columnar tree with bluish-green foliage. It makes an excellent accent point in formal plantings. Prefers a sunny location.			
	Each	Per 10	
18 to 24 in.	\$2.00	\$18.00	
2 to 3 ft.	2.50	22.50	

Juniperus excelsa stricta		Spiny Greek Juniper	
A dense steel blue-green plant, broad at the base and tapering to a point. Stands out in contrast in foundation plantings. Often used at entrances or to accentuate corners.			
	Each		Each
15 to 18 in.	\$3.50	2 to 2½ ft.	\$6.00
18 to 24 in.	4.50	2½ to 3 ft.	7.50

Juniperus h. depressa plumosa *Plumed Spreading Juniper*

A rich green flat growing form that takes on a warm purple color in the winter. This interesting color contrast is very effective among other evergreens in a group planting. Also excellent to cover slopes or bankings. It transplants more readily than *J. horizontalis*.

	Each	Per 10		Each	Per 10
15 to 18 in.	\$3.50	\$33.00	18 to 24 in.	\$4.50	\$40.00

Juniperus squamata meyeri *Meyer Juniper*

A very desirable dwarf variety both erect and spreading in habit. Its silvery-blue color creates an effective contrast with other evergreens.

	Each	Per 10
15 to 18 in.	\$3.50	\$33.00

Juniperus virginiana *Redcedar*

The well known and well loved tree which is so characteristic of open landscapes throughout eastern North America. It is best em-

ployed as a tall columnar accent or planted closely in screen plantings. It is a tree that can be used freely in narrow quarters with the assurance that it will not overgrow its space too soon. Its bright, rich, blue-green foliage and its waxy berries make it particularly desirable as a specimen plant.

	Each	Per 10		Each	Per 10
4 to 5 ft.	\$5.00	\$45.00	6 to 7 ft.	\$9.00	\$85.00
5 to 6 ft.	7.00	65.00	7 to 8 ft.	12.00	110.00

We can furnish Redcedars in larger sizes. Write us for prices.

Juniperus v. canaerti *Canaert Cedar*

A plant with extremely rich, dark green foliage, heavily tufted. Valuable because it retains its rich color during the winter.

	Each	Each
3 to 4 ft.	\$6.50	4 to 5 ft. \$8.00

Picea — Spruce

Magnificent in Groups — Effective Windbreaks

The beautiful spires of the Spruces are most effective in landscape and garden planting. They are similar to the Firs, making splendid avenue effects, magnificent groups, and grow rapidly into efficient windbreaks. There are, also, among the Spruce, true dwarfs and pygmies eminently suited to the foundation planting. The latter include some of the rarest and most desirable of dwarf evergreens.

The Spruces are of exceeding hardiness, withstanding severe growing conditions. Succeeding best in full sun, they prefer medium soils and will endure tremendous droughts or poor soils.

Picea abies (excelsa) *Norway Spruce*

A hardy rapid-growing evergreen that adapts itself to almost any soil. Dark green foliage. Very satisfactory for hedges, windbreaks and screens.

	Each	Per 10		Each	Per 10
3 to 4 ft.	\$5.00	\$45.00	5 to 6 ft.	\$8.00	\$75.00
4 to 5 ft.	6.00	55.00	6 to 8 ft.	12.00	

Picea glauca *White Spruce*

A tall compact-growing tree with blue-green foliage. It is one of our best North American conifers and will grow on the water's edge. Plant as specimens or in hedges for windbreaks or tall-growing screen plantings. Grows rapidly.

	Each	Per 10		Each	Per 10
18 to 24 in.	\$3.00	\$27.00	3 to 4 ft.	\$6.50	\$60.00
2 to 3 ft.	4.50	42.00			

Picea pungens glauca *Blue Colorado Spruce*

A native of the Rocky Mountains with stiff horizontal branches of grey blue foliage. A very hardy tree that will thrive in exposed locations.

	Each
18 to 24 in.	\$6.00

Pinus — Pine

We who live in New England are inclined to take our Pines for granted. Certainly their warm green foliage, contrasting textures and interesting habits contribute tremendously to the charm of our countryside.

Some varieties are well suited to planting in windswept places. The outstanding Pine for such a location is the *Pinus thunbergi* which has been tested for many years on the seashore under adverse conditions.

Pines are best used as large specimens, for hedges, windbreaks or screens.

Pinus mugo mughus *Mugho Pine*

A low, round dense evergreen growing broader than tall. Foliage medium to dark green. Very hardy, good for use on slopes and in foundation plantings.

	Each	Each
15 to 18 in.	\$4.50	18 to 24 in. \$5.50

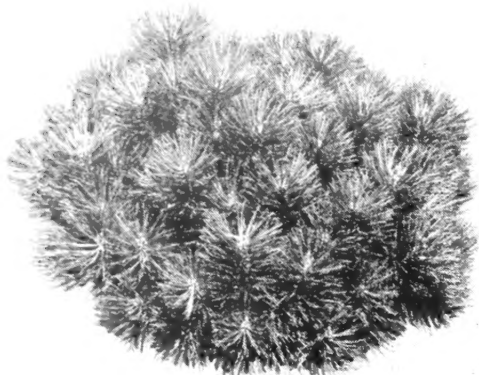
Pinus nigra (austriaca) *Austrian Pine*

The Austrian Pine has long dark green needles and boldly spread branches. Thrives in almost any soil and particularly at the seashore. It is good for planting in groups for screens, and backgrounds.

	Each
6 to 7 ft.	\$15.00



Picea glauca — White Spruce



Pinus mugo mughus — Mugho Pine

Pinus tabulaeformis

We have been growing and observing these trees for several years and now offer them for the first time.

At first glance they resemble the Austrian Pine but are much bushier and our experience indicates that they transplant more readily.

Especially desirable for specimen or screen purposes.

	Each		Each
3 to 4 ft.	\$12.00	4 to 5 ft.	\$15.00

Mongolian Pine

Pinus thunbergii

This is the outstanding tree for planting close to salt water and it withstood the salt water sprays of the recent hurricanes better than any other evergreen. In fact, it succeeds near the water no matter how bleak the situation and languishes inland. It is a graceful wide-spreading tree with a broad irregular head of brilliant green foliage.

	Each	Per 10		Each
2 to 3 ft.	\$6.00	\$55.00	4 to 5 ft.	10.00
3 to 4 ft.	8.00	75.00		

Japanese Black Pine

Japanese Black Pine transplants

Many of our customers want to plant a quantity of these fast growing Pines for background, windbreaks, and to prevent erosion. Shipped with roots wrapped in sphagnum moss.

2 yr. transplants 6 to 8 inches	3 yr. transplants 9 to 18 inches
10 for \$4.00	10 for \$12.50
25 for 7.50	15 for 25.00
100 for 25.00	

Pseudotsuga douglasi

The Douglas Fir is a tree of majestic appearance and growing to considerable height. The foliage resembles a Spruce but the needles are softer and longer and vary from medium to dark green to grayish blue. Plant for specimen or screen use.

	Each		Each
3 to 4 ft.	\$6.00	4 to 5 ft.	\$8.00

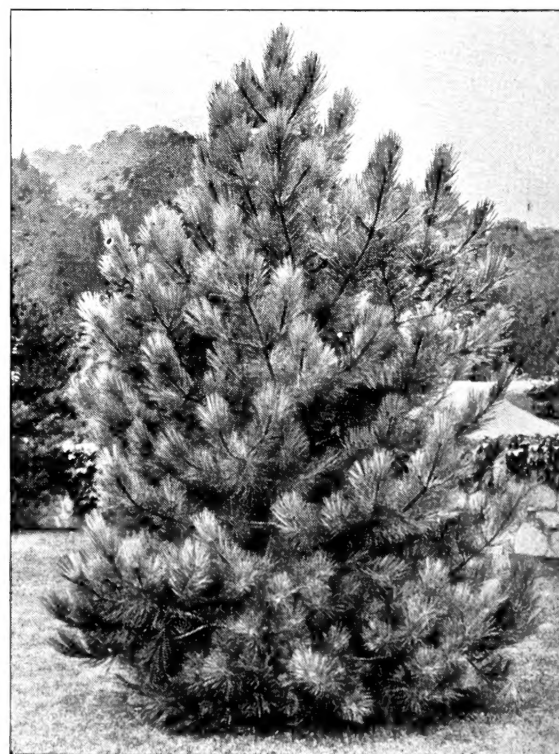
Douglas Fir

Sciadopitys verticillata

An unusual dark green pyramid with its many upright branches terminating in a whorl or umbrella of extra long glossy green flat needles. This habit of growth is distinctive and remarkable.

	Each		Each
2 to 3 ft.	\$8.00	4 to 5 ft.	\$16.00
3 to 4 ft.	12.00	5 to 6 ft.	20.00

Umbrella Pine



Pinus resinosa — Red Pine

Pinus resinosa

The leaves of the Red Pine are the longest of any of the Pines. It is an attractive rapid-growing evergreen with lustrous green foliage. The tree is equally good for planting as an individual or in groups, or for screens or windbreaks.

3 to 4 ft.	\$6.00	\$55.00
-----------------	--------	---------

Red Pine

Pinus strobus

This is the Pine which adds so much to our New England countryside. The foliage is deep green with a silvery bloom, providing a warm, rich appearance. A row of these kept sheared make a beautiful screen.

	Each	Per 10		Each	Per 10
3 to 4 ft.	\$4.00	\$35.00	6 to 7 ft.	\$11.00	\$100.00
4 to 5 ft.	5.00	45.00	7 to 8 ft.	14.00	130.00
5 to 6 ft.	7.50	65.00			

White Pine

Pinus sylvestris

A strikingly attractive tree with loose irregular branches bearing long green to gray-blue needles.

	Each		Each
3 to 4 ft.	\$6.00	5 to 6 ft.	\$10.00
4 to 5 ft.	8.00		

Scotch Pine

Evergreens are dug Balled and Burlapped (B-B) at the prices quoted.
Prices: 5 or more plants of one kind and size will be furnished at the 10 rate.

LARGE EVERGREENS

Do you need large evergreens for screens, windbreaks, etc?
Yes indeed, we have them. We will be pleased to quote on any sizes or quantities in which you are interested.



Taxus capitata — Upright Japanese Yew

Taxus — Yew

Each year the Yews gain in popularity. This is readily understandable because of their hardiness, their adaptability and their rich and dignified appearance. They withstand our variable climate with its extreme cold and extreme heat and thrive, whether in shade or in sun. But their rich dark green foliage, densely covered by their many branchlets is the outstanding characteristic. All of the varieties are dwarf and slow growing, mostly of a spreading nature. They are easily trimmed and pruned so they are of great value wherever low material is needed, whether for foundation plantings, garden borders, low hedges or individual accent points.

Taxus canadensis stricta *Dwarf Edging Yew*

The most satisfactory dwarf edging evergreen for our climate. Hardy, very dwarf and slow-growing. Can be kept trimmed to one foot indefinitely.

	Each	Per 10
8 to 10 in. Bare roots	\$1.50	\$13.50
10 to 12 in. Bare roots	2.00	18.00

Taxus cuspidata (spreading form) *Japanese Yew*

A spreading variety with attractive dark green foliage which is used effectively in plantings around the home. It is especially interesting in the spring, covered with tassels of brilliant olive green new growth in distinct contrast to its black green year round foliage. A mature plant, in the fall, sparkles with its myriad bright red fruits.

	Each	Each
12 to 15 in.	\$3.50	18 to 24 in. \$6.00
15 to 18 in.	5.00	2 to 2½ ft. 8.00

Taxus cuspidata (capitata) (upright form) *Japanese Yew*

An erect symmetrical pyramidal form of the Spreading Yew. It lends itself easily to trimming and makes a most compact hedge, withstanding the rigors of winter and at all times is a beautiful deep green almost black foliage. Individual specimens or pairs can be kept a symmetrical conical dwarf tree with foliage dense, hiding all but the small terminal branches.

	Each	Each
15 to 18 in.	\$5.50	2½ to 3 ft. \$11.00
18 to 24 in.	6.50	3 to 3½ ft. 16.00
2 to 2½ ft.	8.00	

Taxus cuspidata intermedia *Hybrid Yew*

More dense and compact than *Taxus cuspidata* with glossy, vividly-green foliage.

18 to 24 in.	Each	\$9.00
-------------------	------	--------

Taxus cuspidata nana *Dwarf Japanese Yew*

A spreading form of *Taxus cuspidata* of more dwarf habit with short, dark green foliage on dense, compact branches. Hardy, unsurpassed for beauty and permanence. For sheer beauty of color, texture, and form, as well as health and longevity, it is one of the useful and valuable dwarf ornamental trees.

	Each	Each
10 to 12 in.	\$3.00	18 to 24 in. \$10.00
12 to 15 in.	5.00	2 to 2½ ft. 15.00
15 to 18 in.	7.50	

Taxus media hatfieldi *Hatfield Yew*

The Hatfield Yew is one of the finest forms of Yew. It is somewhat bee-hived in shape of dense habit and dark green foliage. It is a slower grower than *Taxus capitata*, but more dense in habit and a darker green.

	Each	Each
15 to 18 in.	\$5.50	2 to 2½ ft. \$10.00
18 to 24 in.	7.00	

Taxus media hatfieldi *Spreading Hatfield Yew*

This is the recently developed spreading form of the Hatfield Yew with the same rich dark green foliage. The habit is arching halfway between the upright and the spreading type. The center is much fuller than the normally low spreading Yew.

	Each	Each
15 to 18 in.	\$6.00	2 to 2½ ft. \$12.00
18 to 24 in.	9.00	2½ to 3 ft. 16.00

Taxus media hicksi *Hicks Yew*

A columnar form with upright branches and green foliage. May be used as accent plant or specimen.

	Each	Each
18 to 24 in.	\$6.00	2½ to 3 ft. \$9.00
2 to 2½ ft.	7.50	

Tsuga — Hemlock

The Hemlock is the most graceful and beloved tree of eastern North America. With its low graceful sweeping branches covered with flat short needles bending willingly with the winds, its charm cannot be surpassed. Winter or summer, sunlight or deep shade it grows to maturity a specimen conical shaped tree broad at the base. Survives in shady places and prefers a moist rich soil.

Tsuga canadensis *Canada Hemlock*

A broad pyramidal medium sized tree of dense deep green growth, particularly graceful at any size. Can be kept low for many years with pruning making it especially useful for foundation plantings. Because it will thrive as well in the shade as in the sun, its usefulness is twofold. Makes excellent screenings giving a charm, grace and depth at the rear of the garden or lawn or as a background to a planting of Dogwoods or Hawthorns.

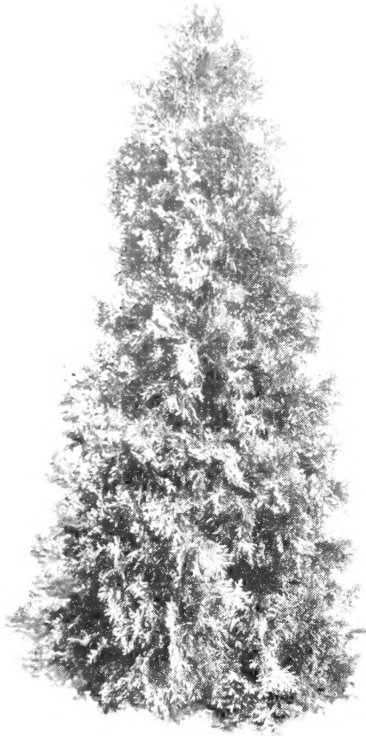
	Each	Per 10	Each	Per 10
18 to 24 in.	\$3.50	\$30.00	3 to 4 ft.	8.00 75.00
2 to 3 ft.	5.00	45.00		

PLANTING SUGGESTIONS

All our Evergreens are shipped with the roots in a ball of earth securely wrapped in burlap. It is important not to let this ball of earth become dry. When planting be sure to dig a hole big enough to receive ball without breaking or forcing. Remove the burlap before filling in with good soil. If the ground is dry, the hole should be partly filled with well-trodden earth and then filled with water. When the water has soaked in, put in more earth and more water, repeating the process until completed. If a slight depression is left about the base of the plant, it will help in future watering.

Thuya — Arborvitae

The Arborvitae is the most common of all the evergreens. With its greatly diversified varieties varying in height from lofty trees down to the low cushion shaped plants it adapts itself to many positions in landscape design. In color, the broad flat leaves vary from rich green to golden yellow and grow in profusion on minor branchlets, giving a solid foliage effect at all times. There is a distinct odor given off from the leaves. All forms enjoy a seasonal trimming and therefore can be held at desirable heights if used in a hedge or screen or if used in foundation plantings.



Thuya occidentalis — Arborvitae

Thuya occidentalis

American Arborvitae

The common, upright flat-leaved Evergreen so commonly used in plantings. Conical in form with base wider and its terminal branchlets growing profusely and fairly rapidly it is used to good advantage in making tall screens. May be kept at any height by shearing. It thrives on moist as well as dry land, and endures city conditions.

	Each	Per 10		Each	Per 10
2 to 3 ft.	\$4.00	\$36.00	4 to 5 ft.	\$8.00	\$75.00
3 to 4 ft.	5.50	52.50			

We have larger sizes available. Ask for quotation.

Thuya occ. douglasi pyramidalis

Douglas Pyramidal Arborvitae

The foliage and form of this variety is quite distinct. It is upright in growth with sharp spire effect, the darker green leaves grow in whorls about the branches. Very effective for contrast in foundation plantings.

	Each		Each
5 to 6 ft.	\$10.00	6 to 7 ft.	\$12.00

Thuya occ. globosa

Globe Arborvitae

Properly named, this low growing dense globe-shaped variety is extensively used in plantings where height is undesirable.

	Each	Per 10		Each
15 to 18 in.	3.00	27.00	2 to 2½ ft.	5.00
18 to 24 in.	4.00	36.00		

Thuya occ. hoveyi

Hovey Arborvitae

A globular form more erect than the Globe Arborvitae, with a lighter yellow-green foliage.

	Each	Per 10		Each	Per 10
18 to 24 in.	\$4.00	\$36.00	2 to 3 ft.	\$6.00	\$55.00

Thuya occ. nigra

Wintergreen Pyramidal Arborvitae

Commonly called the Dark American Arborvitae, a true description. With foliage dark green and very dense, it keeps this color throughout the winter months. Pyramidal in growth, it is an excellent variety for screen, hedge, and specimen planting.

	Each	Per 10		Each	Per 10
2 to 3 ft.	\$4.50	\$42.00	4 to 5 ft.	\$8.50	\$80.00
3 to 4 ft.	6.00	57.00			

Thuya occ. pyramidalis

American Pyramidal Arborvitae

A densely branched variety of distinct columnar growth with rich dark glossy green foliage. Good for foundation plantings and for hedges of medium height.

	Each	Per 10		Each	Per 10
2 to 3 ft.	\$4.50	\$42.00	4 to 5 ft.	\$8.50	\$80.00
3 to 4 ft.	6.00	57.00			

Thuya occ. vervaeneana

Vervaene Arborvitae

Another upright broad pyramidal form with light yellowish green dense foliage. It is the hardiest of all the Arborvitae and can be used advantageously in exposed plantings.

	Each	Per 10		Each	Per 10
2 to 3 ft.	4.00	\$36.00	3 to 4 ft.	\$6.00	\$55.00

Thuya occ. wareana

Ware Arborvitae

This Siberian Arborvitae is broad, very dense, slow-growing and upright. Foliage is grayish blue-green. Also a hardy specimen useful for hedges, screens, and accent points in group plantings.

	Each	Per 10		Each	Per 10
18 to 24 in.	\$4.00	\$36.00	2 to 2½ ft.	\$5.00	\$45.00

Thuya occ. woodwardi

Woodward Arborvitae

This is one of the best globe Arborvitaes. It retains its form without trimming and grows sturdily with many branches of dense fine foliage. It gives the appearance of a firm compact ball.

	Each	Per 10		Each	Per 10
15 to 18 in.	\$3.00	\$27.00	18 to 24 in.	\$4.00	\$36.00

Thuya orientalis aurea nana

Berckmanns Golden Biota

A small plant, round and compact in form, with golden yellow feathery fronds.

	Each		Each
15 to 18 in.	\$3.50	18 to 24 in.	\$4.50



Euonymus carteri — Wintercreeper

Euonymus — Wintercreeper

An interesting and valuable group of evergreen shrubs and vines, the *Euonymus* can be trained to be a ground cover, a creeping vine over stone buildings, foundations, or walls, or an excellent dwarf shrub in hedge form. With their brilliant glossy green leaves, they grow readily whether in shade or sun or in poor soil. Listed here are the plants that have green leaves the complete twelve months — there is also another interesting and unique group listed under the deciduous shrubs.

Euonymus fortunei radicans *Wintercreeper*

The smaller leaf variety, a prolific grower, covers walls or foundations closely and will cling to masonry. Leaves are dull green above with whitish veins.

	Each	Per 10
3 yrs.	\$1.00	\$9.00

Euonymus f. carteri *Glossy Wintercreeper*

A stronger grower than Wintercreeper with larger, more glossy pointed green leaves. Planted by itself, it will grow as a bush but if given support will grow like a vine. It also makes an attractive low hedge if given an occasional shearing.

	Each	Per 10
2 yrs.	\$1.00	\$9.00

Euonymus f. coloratus *Purpleleaf Wintercreeper*

A prostrate variety with a brilliant bronze foliage in the winter. Also a very rapid spreading vine making an excellent ground cover.

	Each	Per 10
3" pots	\$.75	\$6.50

Euonymus f. kewensis *Prostrate Baby Wintercreeper*

A very small dark green delicate vine that creeps close to the ground. Excellent for rock garden or as an edging for small pool. It also is a fine ground cover for shady places or under small trees.

	Each	Per 10
3" pots	\$.60	\$5.00

Evergreen Shrubs

WE who live in the eastern United States are fortunate to have a group of plants that enjoy the acid soil that exists generally. This group is known as the broad-leaved evergreens.

Our gardens are benefited extensively because of the delightful members of this group of evergreens. With their permanent year round broad green foliage, they have many uses in pleasing contrasts with other types of evergreen plantings. Many also are low in growth and make handsome edges or borders or creeping ground-covers. Most all of them thrive happily in partial or deep shade and fill that needed want of something to grow on the north side or under tall trees or in shaded areas where many plants are less likely to succeed. In addition, many have beautiful and showy flowers.

Berberis julianae

Wintergreen Barberry

A slow-growing evergreen shrub suitable for foundation plantings and the mixed evergreen border. Grows to about 4 feet; and will thrive in sunny or partially shaded locations. Leaves are spiny and glossy green.

	Each	Per 10
18 to 24 in.	\$5.00	\$48.00

Daphne cneorum

Rose Daphne

A delightfully sweet-scented pink flowered dwarf evergreen shrub with dark blue-green foliage; each shoot tipped with delightfully fragrant pink flowers in May and June, and on and off the rest of the summer. It is an ideal rock plant, succeeding best in full sunlight in a well-drained soil.

	Each	Per 10
9 to 12 in. B-B	\$1.50	

Euonymus f. vegetus

Bigleaf Wintercreeper

A trailing or climbing evergreen shrub with round, glossy, green leaves. Produces an abundance of orange-scarlet berries in the fall, splendid for use as a ground cover, or may be trimmed into bush form. This is the best fruiting form of wintercreeper.

	Each	Per 10
2 yrs.	\$1.00	\$9.00

Hedera helix

English Ivy

Vigorous climber with dark green triangular leaves growing exceptionally well over chimneys or masonry on the North side of the house.

	Each	Per 10
3½" pots	\$.75	\$6.50

Hedera helix baltica

Hardy English Ivy

A hardier variety of the English Ivy somewhat smaller in leaf, darker and richer in color and better suited to New England.

	Each	Per 10
3" pots*	\$.75	\$6.50

Ilex crenata convexa

Box Leaf Japanese Holly

An upright spreading shrub with many branches covered densely with brilliant glossy green leaves that resemble Box. It fairly glistens in the sunlight and brightens up a planting that might otherwise be too sombre.

	Each	Per 10
15 to 18 in. B-B	\$4.00	
18 to 24 in. B-B	6.00	

Ilex glabra

Inkberry

An excellent dark glossy shrub for low plantings. Named for its shiny black berries. It grows successfully in sun or shade. With dense foliage and upright rounded growth it is used favorably in mixed group plantings.

	Each	Per 10	Each	Per 10	
15 to 18 in. B-B	\$3.50	\$30.00	2 to 2½ ft. B-B	\$6.50	\$60.00
18 to 24 in. B-B	4.50	40.00			

Ilex opaca *American Holly*

The familiar Holly of Christmas time. A narrow pyramidal tree with numerous short spreading branches of dark green leaves with prominent spines. Glittering scarlet fruit borne abundantly in the fall provided they are planted in groups of three or more. It prefers cool moist soil in partial shade.

	Each
2 to 3 ft. B-B	\$6.00
3 to 4 ft. B-B	8.00
8 to 10 ft. B-B	30.00

Mountain Laurel — Kalmia

Kalmia latifolia *Mountain Laurel*

A showy and most beautiful shrub bursting out in June with billows of pink and white clusters of crinkly waxy flowers. Somewhat irregular in growth, with glossy green leaves in clusters about the numerous branches.

	Each	Per 10
12 to 15 in. B-B	\$3.00	\$27.00
15 to 18 in. B-B	4.00	36.00
18 to 24 in. B-B	5.00	45.00
2 to 3 ft. B-B	6.00	55.00
3 to 3½ ft. B-B	7.50	70.00



Mahonia aquifolium — Oregon Hollygrape

Leucothoe catesbaei *Drooping Leucothoe*

An open evergreen shrub with broad shiny green pointed leaves that change to bronze-red in the winter. Pendulous flowers of white, fragrant and waxy, droop beneath each leaf in May. A fine arching low growing shrub to mix in with evergreens.

	Each	Per 10		Each	Per 10
15 to 18 in.	\$3.00	\$27.00	18 to 24 in.	\$4.00	\$36.00

Mahonia aquifolium *Oregon Hollygrape*

An upright shrub with glossy green Holly-like leaves, with prominent spines. Interesting small yellow flowers tucked in among the leaves bloom in May. Another unique plant to use with other evergreens.

	Each		Each
15 to 18 in. B-B	\$3.00	2 to 2½ ft. B-B	\$5.50
18 to 24 in. B-B	4.00		

Pachysandra terminalis — See page 9

Pieris floribunda *Mountain Andromeda*

An early blossoming evergreen shrub of spreading habit. Referred to, often, as the Lily-of-the-Valley Shrub, its large drooping clusters of striking white flowers open in mid-April and bloom for 4 to 5 weeks in mid-spring. Dwarf, round and compact in habit of growth, blossom buds form in the fall, giving the appearance of flowers throughout the winter.

	Each	Per 10		Each	Per 10
12 to 15 in.	\$3.00	\$27.00	15 to 18 in.	\$4.00	\$39.00

Pieris japonica *Japanese Andromeda*

This variety also blossoms early but grows more upright with leaves in a unique whorl arrangement.

	Each		Each	
12 to 15 in.	\$3.00	\$27.00	18 to 24 in.	\$6.00
15 to 18 in.	4.00	39.00		



Kalmia latifolia — Mountain Laurel

Vinca — Myrtle

A creeping evergreen vine spreading into a thick mounded mass of glossy green with blue bell shaped flowers lifting their heads jauntily above the green.

Vinca minor *Common Periwinkle*

A handsome evergreen ground cover with showy bright blue flowers borne freely in early spring and at intervals throughout the summer and autumn. It is perfectly hardy and thrives splendidly under trees where it makes a dense mat.

	Per 10	Per 100
Field grown	\$2.50	\$21.00

Vinca minor, Bowles' Variety

An excellent variety of the above with broader, somewhat crinkly glossy green leaves. Flowers large, of a deep rich blue color, borne in remarkable profusion. An unsurpassed ground cover.

	Per 10	Per 100
Field Grown ...	\$4.50	\$36.00

Ground Cover Plants

You will observe that we grow a number of plants for ground cover purposes. None are more practical than Pachysandra and Vinca which we grow in quantity.

Wherever you have an area too shady for grass to grow successfully or too small to bother to mow, a green carpeting of either of these plants is a good treatment and provides an attractive effect at any season. They are ordinarily planted at the rate of 3 plants to each square foot of area for reasonably quick results.

Rhododendrons

BEYOND doubt, the showiest and most beautiful evergreen shrubs, with large, permanent, glossy green leaves and lovely flowers in early summer. They should have partial shade, although they do well in full sunlight, and a north exposure is especially adapted to them. It will pay well to go to some trouble to prepare beds for them as they demand an acid soil entirely free of lime or fresh manure. Groups of Rhododendrons planted in foundation plantings, borders, or under trees give untold returns in the all-year beauty of their foliage and their lovely flowers in early summer.

All Rhododendrons are balled and burlapped (B-B) without additional charge.

Rhododendron catawbiense *Catawba Rhododendron*

This is the parent of most of our best hybrids and is distinctly valuable. The flowers, borne profusely in very large round trusses, come in various shades of dark rosy lilac the early part of June. It thrives best in partial shade and is very hardy.

	Each
18 to 24 in.	\$6.50
2 to 2½ ft.	8.00
2½ to 3 ft.	10.00
3 to 3½ ft.	12.00

R. maximum *Rosebay Rhododendron*

This is the handsome Great Laurel or Rosebay of the Appalachian Mountains. Flowers white to blush pink, produced in late June and July. Foliage very smooth and glossy, and twice as large as that of any other sort. Handsome for big bold masses, creating a landscape effect of dignity and elegance.

	Each	Per 10		Each
2 to 2½ ft.	\$5.50	\$52.50	3½ to 4 ft.	\$12.50
2½ to 3 ft.	7.00	67.50	4 to 5 ft.	16.00
3 to 3½ ft.	10.00		5 to 6 ft.	20.00

Hybrid Rhododendrons

Cunningham's White

Large white flowers borne profusely on stocky compact plants. Leaves are large, shiny dark green, Very heavy specimens. Do not plant in exposed locations.

	Each		Each
18 to 24 in.	\$12.00	2 to 2½ ft. ft.	\$15.00



Rhododendron catawbiense — *Catawba Rhododendron*

Named Hybrids

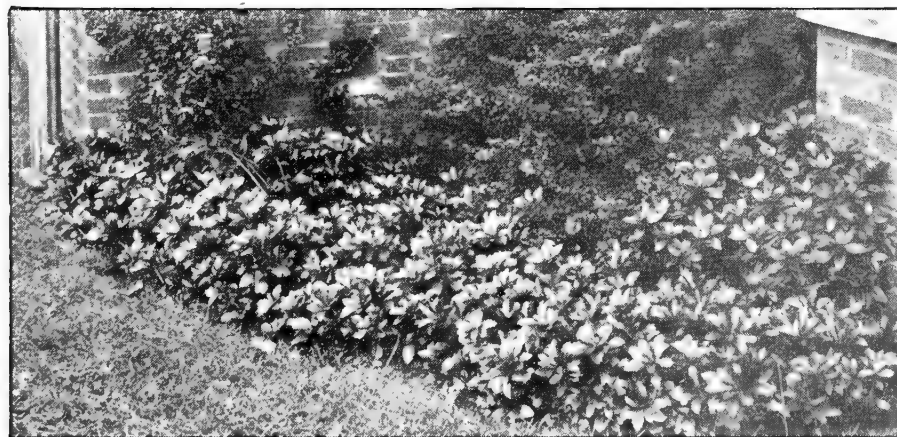
Caractacus Rich, dark crimson.	Parson's Gloriosum Clear rose-pink.
Dr. Dresselhuys Light red, one of the best.	Roseum Elegans Beautiful pink from lilac-pink buds.
Ignatius Sargent Light clear red.	

Prices of these hybrids:

	Each		Each
15 to 18 in.	\$8.00	2 to 2½ ft.	\$12.00
18 to 24 in.	10.00		

Hybrid Seedlings

Mixed colors: lilac, lavender, pink.			
	Each		Each
15 to 18 in.	\$5.00	2 to 2½ ft.	\$8.00
18 to 24 in.	6.50		



Pachysandra terminalis — *Japanese Pachysandra*

PACHYSANDRA

Pachysandra terminalis

Japanese Pachysandra

One of the best evergreen ground covers to use in spots where grass is difficult to grow — under shade trees for instance. Makes an excellent edging to face down plantings to the ground—spreading by its roots into solid mass effect. The whorl of rich green leaves on stems about 6 in. high are topped in June with a short spike of white flowers. Will thrive in deep shade.

	Per 10	Per 100
2½" pots	\$2.50	\$21.00

Shade and Flowering Trees

THERE are many varieties of trees that are long lived that increase in beauty as they develop in size. Select the enduring kinds that grow old gracefully as they may be a part of your life and association for many years to come. The Flowering Trees are delightful in the colors they provide and for use as accents in the garden. They harmonize well with the sombre evergreens and the larger growing shade trees.

Acer palmatum atropurpurea *Japanese Red-leaved Maple*

A small tree growing to about 15 feet whose deep red, gracefully cut, foliage makes it a handsome colorful specimen throughout the summer.

	Each	
2½ to 3 ft.		\$9.00

A. platanoides *Norway Maple*

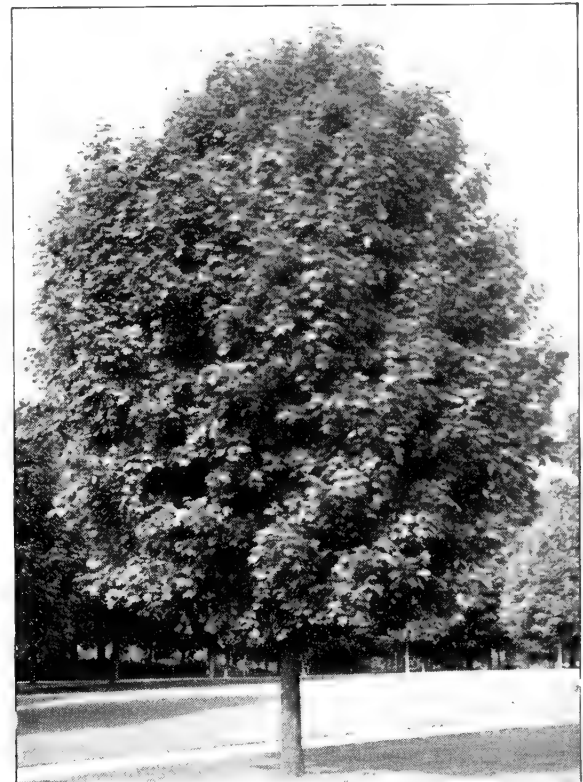
Very broad, rounding head. Large, rich dark green leaves. Perfectly hardy. Does well under city conditions and grows at the seashore.

	Each	Per 10		Each	Per 10
6 to 8 ft.	\$4.00	\$36.00	10 to 12 ft.	7.50	\$70.00
8 to 10 ft.	5.00	45.00	12 to 14 ft.	12.00	110.00

A. p. schwedleri *Schwedler Maple*

A form of Norway Maple with leaves strong red in Spring, later turning dark green.

	Each	Per 10		Each
8 to 10 ft.	\$8.00	\$75.00	10 to 12 ft.	\$12.00



Acer platanoides — Norway Maple

A. rubrum *Red Maple*

This is the tree which more than any other single species, gives our New England landscape its brilliant autumn hues of red, crimson and scarlet, roughly round-headed. Do not confuse this tree with the Schwedler Maple, which has red leaves in late spring and early summer.

	Each	Per 10		Each	Per 10
6 to 8 ft.	\$4.00	\$36.00	10 to 12 ft.	\$7.00	\$65.00
8 to 10 ft.	5.00	45.00	12 to 14 ft.	9.00	85.00

A. saccharum *Sugar Maple*

An excellent shade and street tree, somewhat higher-headed than the Norway Maple, with dense foliage that turns bright yellow and scarlet in Autumn.

	Each	Per 10		Each	Per 10
6 to 8 ft.	\$5.00	\$45.00	10 to 12 ft.	10.00	\$95.00
8 to 10 ft.	7.00	65.00			

Betula — The Birches

This is a small family of trees with a grace and charm all its own. Mostly used as lawn specimens or in effective positions upon the grounds; they are also splendid mingled with other varieties in an open woodland, and the light-barked kinds are beautiful grouped at the edge of a thicket or forest.

Careful watering after planting usually helps them to succeed.

Betula pendula (alba) *European White Birch*

A tall, graceful tree with spray-like branches and snow-white bark that is effective in winter. It assumes an elegant drooping habit.

	Each		Each
5 to 6 ft.	\$1.00	6 to 8 ft.	\$5.00

Betula pendula gracilis *Cutleaf Weeping Birch*

An unusually graceful, drooping tree, particularly adapted to lawns. The foliage is deeply cut and the bark silvery white at maturity.

	Each
6 to 8 ft.	\$5.00

Big Trees

You Don't Have to Wait Years for Shade and Beauty

In many varieties we have larger specimens than those listed in this book which we are unable to describe here because of unlimited space. If you are interested in larger trees we shall be glad to quote on your requirements.

We suggest that if any trees are being planted as Memorials that larger sizes will be more appropriate.

We have equipment for moving large trees and we will be glad to quote prices for the trees delivered and planted if desired.

B. populifolia **Gray Birch**

A slender tree with smooth, grayish white bark and glossy leaves. Rapid grower.

	Each	Per 10		Each
6 to 8 ft.	\$3.00	\$25.00	6 to 8 ft. clumps	\$10.00
8 to 10 ft.	4.00	35.00	8 to 10 ft. clumps	15.00
10 to 12 ft.	5.00	45.00		

All Birches are dug balled and burlapped (B-B) at the prices quoted.

Carpinus betulus **European Hornbeam**

Small tree branching to ground like Beeches. Useful for screens.

	Each	Each	
8 to 10 ft. B-B	\$10.00	12 to 14 ft. B-B	\$18.00

C. caroliniana **American Hornbeam**

Small densely foliaged tree with tough, wiry branches. Does well in neglected places and endures drought. Both varieties of Hornbeam turn yellow in fall.

	Each	Per 10		Each	Per 10
5 to 6 ft. B-B	\$6.00	\$55.00	8 to 10 ft. B-B	\$12.00	\$110.00

Catalpa speciosa **Western Catalpa**

A rapid growing tree with leaves 10 inches long. Handsome white flowers in large clusters in June.

	Each	Per 10		Each	Per 10
8 to 10 ft.	\$4.00	\$36.00	12 to 14 ft.	\$8.00	\$75.00
10 to 12 ft.	5.00	45.00			

Cercidiphyllum japonicum **Katsura Tree**

A striking tree of pyramidal form, with medium-sized heart shaped leaves pink when unfolding, rich medium green in Summer and brilliant shades of orange-scarlet in Fall.

	Each	Each	
8 to 10 ft.	\$6.00	12 to 14 ft.	\$12.00
10 to 12 ft.	9.00	14 to 16 ft.	15.00

Cercis canadensis **Redbud or Judas Tree**

One of our beautiful ornamental trees. It truly fits the name Redbud because in the spring it is covered with small, red pear-shaped blossoms close to the branches before the leaves appear.

	Each	Each	
5 to 6 ft.	\$4.00	6 to 7 ft.	\$5.50

Chionanthus virginicus **White Fringe**

This beautiful shrub-like tree is one of the best ornamental trees for the lawn. It has large glossy dark green foliage that forms a superb setting for the delicate sprays of white, fringy flowers of early summer. Delicately fragrant. Flowers each year with great regularity.

	Each	Per 10		Each	Per 10
3 to 4 ft.	\$1.75	\$15.00	6 to 7 ft.	\$5.00	\$45.00
4 to 5 ft.	2.50	22.50	7 to 8 ft.	7.00	65.00
5 to 6 ft.	3.50	32.50	8 to 10 ft.	9.00	85.00

Cladrastis lutea **Yellow Wood**

A splendid tree of the Locust family with feathery leaves and clusters of fragrant white flowers, like pea-blossoms in June.

	Each	Each	
5 to 6 ft. B-B	\$10.00	8 to 10 ft. B-B	\$15.00
6 to 8 ft. B-B	12.00		

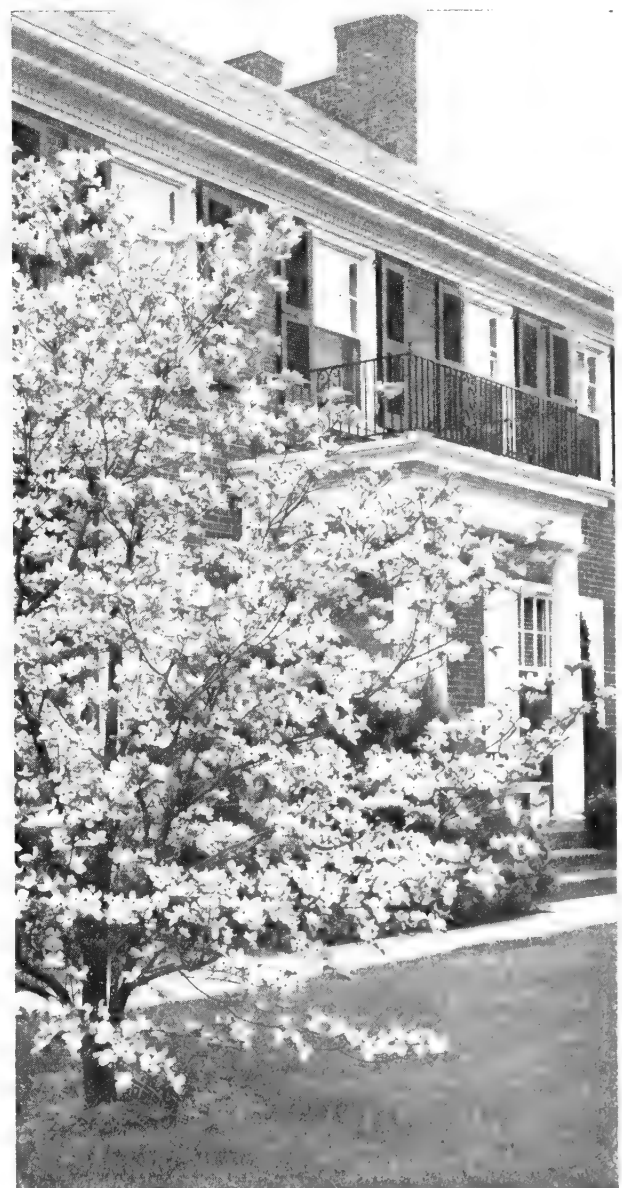
Cornus — Flowering Dogwoods

Thrive in low, moist, fertile soils, preferring semi-shaded locations. Small trees desirable from every point of view. In the spring they make a picture of unforgettable beauty with their drifts of showy flowers at the edge of a woodland or against a background of evergreens. The foliage turns dark red in autumn and brilliant red berries make it a decorative tree during the fall.

Cornus florida **White Flowering Dogwood**

The native Dogwood tree of eastern North America, which produces large, snowy white flowers in May before the leaves appear. In autumn its glittering red berries cluster in a nest of glossy foliage which turns various shades of pink, crimson, scarlet, and maroon. During the winter the twiggy branches make a lacy pattern of intricate beauty. No other tree appears so attractive throughout all the seasons.

	Each	Per 10		Each	Per 10
3 to 4 ft. B-B	\$4.50	\$42.00	7 to 8 ft. B-B	\$12.00	\$110.00
4 to 5 ft. B-B	6.00	55.00	8 to 10 ft. B-B	15.00	140.00
6 to 7 ft. B-B	10.00	95.00			



Cornus florida — Flowering Dogwood

C. florida rubra *Red Flowering Dogwood*

One of the finest flowering trees blossoming even in small sizes. It produces deep rose colored flowers in the early spring. Planted by itself it is a wonderment of beauty with its early flowers and early leaves but it is particularly effective when planted with the white flowering variety.

	Each		Each
3 to 4 ft.	\$7.00	5 to 6 ft.	\$12.50
4 to 5 ft.	9.50	6 to 7 ft.	16.00

C. kousa *Kousa Dogwood*

Attractive small tree, growing to 25 feet, with large, creamy-white flowers in June.

	Each
7 to 8 ft. B-B	\$15.00

C. kousa chinensis *Chinese Kousa Dogwood*

An even finer specimen than C. kousa, having larger, and broader, creamy-white flowers that open in a striking radial pattern in late June and create a beautiful picture for more than a month. The red strawberry-like fruits add to its attractiveness in autumn.

	Each
5 to 6 ft. B-B	\$10.00

Crataegus arnoldiana *Arnold Hawthorn*

A small, broad-crowned tree, with ascending and spreading branches. White flowers in May and abundant, bright crimson fruit in fall.

	Each	Per 10		Each	Per 10
6 to 7 ft. B-B	\$6.00	\$55.00	10 to 12 ft. B-B	\$10.00	\$90.00
8 to 10 ft. B-B	8.00	75.00			

C. crusgalli *Cockspur Thorn*

Long sharp thorns and glossy green foliage, which turns brilliant orange and scarlet in the Fall, makes this a valuable variety for hedges. Best thorn for planting near seashore.

	Each	Per 10		Each
5 to 6 ft.	\$5.00	\$45.00	8 to 10 ft. B-B	\$10.00
6 to 8 ft. B-B	7.50	70.00	10 to 12 ft. B-B	15.00



Magnolia Soulangeana — *Saucer Magnolia*

C. oxyacantha pauli *Paul's Double Scarlet Hawthorn*

A small tree of fine habit, with rich, luxuriant foliage and very double deep crimson flowers with a scarlet glow.

	Each	Per 10		Each	Per 10
4 to 5 ft.	\$5.00	\$48.00	5 to 6 ft.	\$6.00	\$57.00

C. phaenopyrum (cordata) *Washington Hawthorn*

Beautiful autumn foliage and large clusters of bright red fruit, remaining through late winter. The best Hawthorn for showy fruit, and considered by many the finest of our native Hawthorns.

	Each	Per 10		Each	Per 10
3 to 4 ft. B-B	\$3.50	\$30.00	6 to 7 ft. B-B	7.00	65.00
4 to 5 ft. B-B	4.50	40.00	8 to 10 ft. B-B	12.00	110.00
5 to 6 ft. B-B	5.50	50.00	12 to 14 ft. B-B	20.00	180.00

Fagus — Beech

The Noblest Trees of Creation

Beeches are long-lived, symmetrical, and beautiful at all seasons of the year. They make excellent, mature specimens casting a dense shade. The colored leaf forms are among the finest ornamentals for lawns or avenues. Beeches are best moved in the spring, when we ship them with the roots carefully balled and burlapped. (B-B)

Fagus grandifolia (americana) *American Beech*

Large, spreading tree of symmetrical habit. Its rich yellow autumn foliage and smooth, gray bark add to its attractiveness.

	Each	Per 10		Each	Per 10
10 to 12 ft. B-B	\$20.00	\$180.00	12 to 14 ft. B-B	\$27.00	\$250.00

F. sylvatica *European Beech*

Choice symmetrical trees branching close to the ground. They have smaller leaves than the American Beech which are retained into the late winter. Excellent for screens, clipped hedges or specimen trees.

	Each	Per 10		Each	Per 10
5 to 6 ft. B-B	\$8.00	\$75.00	10 to 12 ft. B-B	\$20.00	\$190.00
7 to 8 ft. B-B	12.00	110.00	12 to 14 ft. B-B	25.00	225.00
8 to 10 ft. B-B	16.00	150.00	14 to 16 ft. B-B	30.00	270.00

Fraxinus americana *White Ash*

This well known native Ash has a straight, clean trunk and soft, mellow green foliage, changing in the autumn to rich golden-yellow. A desirable shade or street tree because it furnishes shade quickly and is comparatively long-lived.

	Each	Per 10		Each	Per 10
8 to 10 ft.	\$3.50	\$32.00	12 to 14 ft.	\$7.00	\$65.00
10 to 12 ft.	5.00	45.00			

Ginkgo biloba *Maidenhair Tree*

A beautiful tree of upright habit, with a clean, straight trunk and spreading branches. The leaves are fan shaped, resembling the Maidenhair Fern, and in the fall become rich golden yellow. An excellent lawn and avenue tree, very satisfactory in cities. Insects avoid it.

	Each	Per 10		Each	Per 10
7 to 8 ft.	\$4.50	\$42.00	8 to 10 ft.	\$6.00	\$55.00

Gleditsia triacanthos *Common Honeylocust*

A fast-growing tree with fragrant pea-like flowers. Thrives along the ocean despite spray, wind or poor soil.

	Each	Per 10		Each	Per 10
5 to 6 ft.	\$3.00	\$27.50	8 to 10 ft.	\$6.00	\$55.00
6 to 8 ft.	4.00	36.00	10 to 12 ft.	9.00	80.00

Halesia tetraptera **Great Silverbell**

A tree of medium size with attractive gray bark and quantities of small pearly white blossoms in May.

	Each	Per 10		Each	Per 10
3 to 4 ft.	\$2.50	\$20.00	4 to 5 ft.	3.00	\$25.00

Laburnum vossii **Golden Chain Tree**

Exquisite, long clusters of golden yellow flowers just like Wistarias. The hanging clusters 18 to 20 inches long, are borne very profusely in late Spring.

	Each	Per 10
5 to 6 ft.	\$6.00	\$55.00

Magnolia

Large Cup Flowers — Admired by Everyone

One of our most ornamental flowering trees, requiring a sheltered location here. Best transplanted in spring.

Magnolia soulangeana **Saucer Magnolia**

A sturdy, picturesque tree of moderate size, covered in spring with giant rose-pink flowers before the large, glossy, dark green leaves appear.

	Each		Each
18 to 24 in.	\$5.00	4 to 5 ft. B-B	\$15.00
3 to 4 ft. B-B	12.50		

M. soulangeana alba superba **White Saucer Magnolia**

Pure white form of the Saucer Magnolia and used to great advantage with it. Unusual and exceedingly beautiful.

	Each
18 to 24 in.	\$10.00

M. stellata **Star Magnolia**

A rare plant covered in early Spring with large, pure white, star-like flowers of unusual fragrance. Really a beautiful plant.

	Each
2 to 3 ft.	\$10.00

Flowering Crabs

The Flowering Crab Apples are small trees literally covered with blossoms in May. In the fall they bear heavy clusters of showy, waxy fruits varying from pale green to orange-red. They transplant readily and are satisfactory under a wide range of conditions. They are fine planted either singly or in groups.

Malus atrosanguinea **Carmine Crab**

Like most Flowering Crab Apples, it makes an excellent specimen or lawn tree, for in Spring it is a mass of single crimson blooms of such richness of color that it is easily the brightest of the rose-tinted Crabs.

	Each	Per 10		Each	Per 10
3 to 4 ft.	\$3.50	\$32.00	6 to 7 ft. B-B	\$8.00	\$75.00
4 to 5 ft.	4.00	36.00	7 to 8 ft. B-B	10.00	90.00
5 to 6 ft.	5.50	50.00			

M. baccata **Siberian Crab**

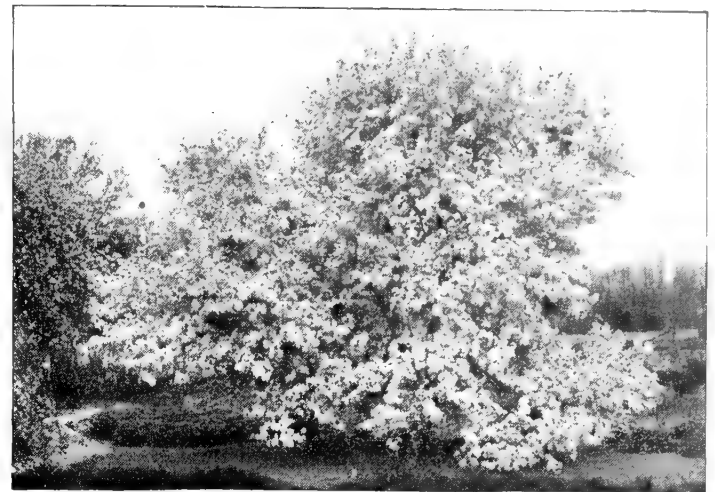
Flowers pink in bud opening pure white and fragrant. Fruit yellow spotted red.

	Each	Per 10		Each	Per 10
4 to 5 ft.	\$4.00	\$35.00	6 to 7 ft.	\$8.00	\$75.00
5 to 6 ft.	5.00	45.00			

M. floribunda **Japanese Flowering Crab**

One of the best early, spring-flowering bushes or small trees. The deep pink flowers appearing with the leaves, are produced in great abundance, followed by very showy pinkish red, pea-sized fruit on long, slender stems, making it very ornamental in autumn.

	Each	Per 10		Each	Per 10
4 to 5 ft.	\$4.50	\$42.50	6 to 8 ft. B-B	\$8.00	\$75.00
5 to 6 ft.	6.00	55.00	8 to 10 ft. B-B	15.00	140.00



Malus — Flowering Crab Tree

M. halliana parkmani **Parkman Crab**

Considered by many as the showiest of the Flowering Crab Apples. Free flowering early in May, it is a most attractive tree with beautiful semi-double bright pink blossoms. Has reddish brown fruit in the fall.

	Each	Per 10		Each
4 to 5 ft.	\$4.00	\$36.00	6 to 7 ft. B-B	\$8.00
5 to 6 ft.	5.50	50.00		

M. hopa **Hopa Crab**

A sturdy upright tree with single deep pink flowers that are delightful. Leaves are slightly tinged with purple and has showy fruits in late summer. This tree makes a perfect specimen.

	Each	Per 10		Each	Per 10
3 to 4 ft.	\$3.00	\$27.00	4 to 5 ft.	\$4.00	\$36.00

M. ioensis plena **Bechtel Crab**

An upright vase-shape tree, producing double fragrant flowers of delicate pink resembling small roses.

	Each	Per 10
3 to 4 ft.	\$3.00	\$27.00

M. micromalus **Kaido Crab**

Feathery sprays of semi-double clear pink transform this slender compact tree into a rosy cloud in early Spring.

	Each
3 to 4 ft.	\$3.50

M. Pink Weeper Crab

A fountain-like effect is created by the upright main stem and the pendulous branches reaching the ground. The blood-red buds open to form a crimson cascade.

	Each
4 to 5 ft.	\$4.00

M. purpurea **Purpleleaf Crab**

The brilliant foliage of rich reddish purple makes this type most desirable when a touch of color is desired. The flowers are single, brilliant deep red and the fruit is red also.

	Each	Per 10		Each	Per 10
6 to 8 ft. B-B	\$9.00	\$85.00	10 to 12 ft. B-B	\$17.00	\$155.00
8 to 10 ft. B-B	13.00	120.00	12 to 14 ft. B-B	21.00	

M. purpurea eleyi **Eley Crab**

One of the best of the red-foliaged Crabs with large clusters of reddish-purple flowers, and brilliant apricot colored fruits. Arresting both in foliage and flowers.

	Each	Per 10		Each	Per 10
3 to 4 ft.	\$3.50	\$32.00	6 to 7 ft. B-B	\$8.00	\$75.00
5 to 6 ft.	5.50	50.00			

M. Red Silver Crab

Another red-foliaged tree but with cut leaves overtone with a silvery color. Flowers are clusters of red bloom. In the fall, the small red fruit is delightful.

	Each
5 to 6 ft.	\$5.50
6 to 7 ft.	\$8.00

M. sargentii

Sargent Crab

A dwarf tree much more like a large, twiggy shrub making a billowy drift of snowy white when covered with its mantle of blooms. In autumn it is again made attractive and bright by the abundant red fruit. We strongly recommend this tree for its bushy growth, beautiful flowers and showy fruits.

	Each	Per 10		Each	Per 10
3 to 4 ft.	\$3.50	\$32.00	5 to 6 ft.	\$7.00	\$65.00
4 to 5 ft.	5.00	45.00	6 to 7 ft. B-B	10.00	

M. scheideckeri

Scheidecker Crab

A very pleasing early-flowering variety with double pink blooms and yellow fruit the size of a cherry. Distinctly upright and slender in habit of growth.

	Each	Per 10		Each	Per 10
3 to 4 ft.	\$3.50	\$32.00	5 to 6 ft.	\$5.50	\$50.00
4 to 5 ft.	4.50	40.00	6 to 7 ft. B-B	8.00	

M. toringoides

Cutleaf Crab

A shrubby tree with beautiful, slightly cut foliage and irregular, picturesque habit, covered in late May with a cloud of creamy white flowers in dense masses along every pendulous branch and twig. In autumn its many orange and scarlet, pear-shaped fruits glitter in the sunlight like jewels. This is one of the most decorative of the Flowering Crabs.

	Each	Per 10		Each	Per 10
4 to 5 ft.	\$4.00	\$36.00	6 to 7 ft.	\$8.00	\$75.00
5 to 6 ft.	5.50	50.00			

Oxydendrum arboreum

Sourwood

Slender and graceful as a Birch, the tree will fill a narrow corner or fit in with shrubs. Flowers come in long curving racemes, like drooping bouquets of Lily-of-the-Valley, in July and August. First tree in Autumn with scarlet foliage. Will grow in shady places.

	Each	Per 10		Each	Per 10
2 to 3 ft. B-B	\$2.00	\$17.50	4 to 5 ft. B-B	\$4.00	\$36.00
3 to 4 ft. B-B	3.00	27.50			

Populus nigra italica

Lombardy Poplar

This well-known, upright, and extremely rapid-growing tree has light pale green leaves, lighter beneath, and branches down to the ground. It is used very satisfactorily for screen purposes.

	Each	Per 10		Each	Per 10
5 to 6 ft.	\$1.25	\$11.00	8 to 10 ft.	\$2.25	\$21.00
6 to 8 ft.	1.50	14.00	10 to 12 ft.	3.30	30.00

Quercus — Oak

Splendid trees, rather slow growing at first, but when once established develop amazingly within a few years. They are of noble proportions and give an impression of boundless strength and vigor. They make well-proportioned, dignified trees for boulevard or street planting and they cast a welcome shade as lawn specimens. Oaks hold their richly colored foliage well into the winter.

Quercus borealis (rubra)

Common Red Oak

A majestic broad-headed tree with attractive foliage of glossy dark green which turns dark red in the fall. One of the finest quick-growing specimens, once it has become established. It should be planted more frequently along streets as it is a durable long lived tree. It is one of the trees which best withstood the recent hurricanes.

	Each	Per 10		Each	Per 10
6 to 8 ft.	\$5.00	\$47.50	10 to 12 ft.	\$10.00	\$90.00
8 to 10 ft.	7.00	65.00	12 to 14 ft.	14.00	130.00

Q. palustris

Pin Oak

This very handsome long-lived tree is one of the very best shade trees. It has horizontal drooping branches and finely divided shiny dark green leaves which turn red in the Fall. A rapid grower.

	Each	Per 10		Each	Per 10
6 to 8 ft.	\$5.00	\$45.00	10 to 12 ft. ...	\$12.00	\$110.00
8 to 10 ft.	7.50	70.00	12 to 14 ft.	18.00	175.00

Larger sizes are available from 3 to 5 inches in caliper, nice full specimens. Ask for quotations.

Q. robur fastigiata

Pyramidal English Oak

Upright branching, forming a columnar tree that is an unusual type of Oak especially good for a narrow planting area.

	Each	Per 10		Each	Per 10
12 to 14 ft. B-B	\$30.00		14 to 16 ft. B-B		\$35.00

Salix — Willow

Trees of medium height and graceful habit. They grow rapidly and prefer medium to very moist soils but will grow in any ordinary soil. Leaves mostly very narrow on slender, drooping branchlets.

Salix babylonica

Babylon Weeping Willow

It has very drooping, long, slender branches of olive-green.

	Each	Per 10		Each	Per 10
5 to 6 ft.	\$2.00	\$18.00	6 to 8 ft.	\$3.00	\$27.00



Salix niobe — Golden Weeping Willow

Salix caprea var. French Pussy Willow

Not the wild Pussy Willow but the cultivated French variety, with longer, more lustrous silvery-pink catkins, which can be cut to sparkle in your home all winter.

	Each		Each
5 to 6 ft.	\$2.50	6 to 8 ft.	\$4.00

S. niobe Golden Weeping Willow

A large tree of weeping habit with branches sweeping to the ground. Its slender branchlets are a bright golden yellow, particularly conspicuous during the winter.

	Each	Per 10	Each	Per 10
6 to 8 ft.	\$3.50	\$33.00	10 to 12 ft.	\$7.50 \$70.00
8 to 10 ft.	5.00	45.00		

S. pentandra Laurel Willow

An ornamental tree of upright, dense growth, with leaves of dark glossy green, much like the California Privet. Excellent for seashore planting where it will thrive vigorously in either wet or dry soil.

	Each	Per 10	Each	Per 10
4 to 5 ft.	\$1.25	\$11.00	6 to 8 ft.	\$2.50 \$20.00
5 to 6 ft.	1.50	12.50	8 to 10 ft.	3.50 27.00

Sophora japonica Chinese Scholar Tree

An interesting slow-growing tree with irregular branch and trunk growth covered with deep corrugated bark. Dark green leaves with silver underneath and panicles of cream-colored blossoms drooping beneath each leaf, flowering in August.

	Each	Each	
5 to 6 ft. B-B	\$7.50	6 to 8 ft. B-B	\$9.00

Sorbus aucuparia European Mountain Ash

A small tree bearing large, flat heads of white flowers in May but best known for its broad, flat clusters of scarlet berries borne in abundance from July to winter.

	Each	Per 10	Each	Per 10
6 to 8 ft.	\$5.00	\$45.00	8 to 10 ft.	\$7.50 \$70.00

Syringa amurensis japonica Japanese Tree Lilac

A narrow-headed tree with ten-inch panicles of cream white to light yellow flowers in late June and early July when no other flowering tree is in bloom.

	Each	Per 10	Each	Per 10
6 to 8 ft.	\$4.00	\$35.00	10 to 12 ft.*	\$7.00 \$65.00
8 to 10 ft.	5.50	50.00		

Trees for Seaside Plantings

Not every tree will succeed when exposed to violent winds.

The best trees for this purpose are the Honey Locust, *Gleditsia triacanthos*, the Amur Maple, *Acer ginnala*, Cockspur Thorn, *Crataegus crus-galli*, Red Maple, *Acer rubrum*, European Linden, *Tilia europaea* and the Laurel Willow, *Salix pentandra*.

The soil in such locations is often rough and barren and it is essential that in planting any trees they be given soil pockets of ample size filled with good loam, peat moss and organic fertilizer. Also during the first year at least, the trees should be staked to keep them well anchored so their roots will be given opportunity to become established.

Tilia — Linden

The Lindens are very satisfactory, rapid growing ornamental trees, often planted as lawn specimens or for street or avenue effects.

Tilia europaea (vulgaris) European Linden

This broad-headed, symmetrical tree has small dark green leaves and develops rapidly into a shade-giving specimen excellent for general planting or for street trees. It has fragrant blooms in June.

	Each	Per 10
6 to 8 ft.	\$6.00	\$57.00
8 to 10 ft.	8.00	75.00
		Each
2 to 2½" caliper		\$15.00

Ulmus — Elm

The Elms are famous trees and have a rural, pastoral air that fits admirably into landscape planting schemes. They almost always look best in a wide-spaced row, or isolated in a field or on a hillside, and some of the finest of our New England villages owe their beauty to their Elm-bordered streets.

Ulmus americana American Elm

The most beautiful of the Elms. It is lofty and spreading, with drooping branches and is very hardy. At maturity it attains great character and individual beauty.

	Each	Per 10	Each	Per 10
6 to 8 ft.	\$3.00	\$27.00	10 to 12 ft.	\$5.50 \$50.00
8 to 10 ft.	4.00	36.00	12 to 14 ft.	7.50 70.00

U. procera English Elm

A round-topped and sometimes open-headed tree that is often used for avenues. The foliage is dark green, remaining several weeks longer in the autumn than that of *U. americana*, and is more delicately cut.

	Each	Per 10	Each	Per 10
10 to 12 ft.	\$6.00	\$55.00	12 to 14 ft.	\$9.00 \$80.00

U. pumila Siberian or Chinese Elm

An extremely rapid growing tree branching freely with many slender twigs covered with bead-like buds in the winter. Leaves are small but so abundant they make a quick and most desirable shade tree.

	Each	Per 10	Each	
8 to 10 ft.	\$5.00	\$45.00	2½ to 3 in. cal.	\$15.00
10 to 12 ft.	7.50	70.00	3 to 4 in. cal.	\$20.00
14 to 16 ft.	12.00	110.00		



Quercus palustris — Pin Oak

The Colorful Azalea

JUST as the Rhododendron is the King of the Evergreen Shrubs, so are its cousins, the Azaleas, the aristocrats of the Deciduous Shrubs. In color, the Azaleas give an assortment of hues in much wider range than in the Rhododendrons — and flowering periods from mid-April to early July. While classed as acid soil plants they thrive in soils of considerable range, particularly the Asiatic sorts, which even prefer some lime in the soil.

The opportunities for using deciduous Azaleas are almost unlimited. Their graceful habit appears to good advantage in informal groups either in wooded areas or in shrub borders, while many are most decorative in the foundation planting where evergreens create a dark background for their vivid colors. They succeed equally well in sun or shade, preferring a moderately moist soil or a mulch of leafmold.

All Azaleas will be balled and burlapped (B-B) without extra charge.

Azalea arborescens *Sweet Azalea*

The charm of this Azalea lies not in its pinkish white flowers, but in their intense and delicious fragrance which is wafted through the open windows during its flowering season, mid-June. The plants are low, broad and dense, and particularly desirable for mass effects.

	Each	Per 10
18 to 24 in.	\$5.00	\$45.00
2 to 3 ft.	6.50	60.00



Azalea vaseyi — Pinkshell Azalea

A. kaempferi *Torch Azalea*

A very handsome, tall growing variety with flowers which vary from bright orange-red to salmon-pink from middle to late May. It thrives in partial shade and is benefited by small applications of lime. Exceptionally desirable and we believe it is one of the best of all for brilliancy, refinement of color, and abundance of flowers.

	Each
2 to 3 ft.	\$8.00

A. mollis *Chinese Azalea*

Resembles a dwarf Rhododendron, with good foliage and bears flowers in bright shades of orange and yellow. Perfectly hardy, thriving in sunny positions anywhere, and is excellent in masses. A superbly satisfactory Azalea.

	Each	Per 10		Each	Per 10
12 to 15 in.	\$3.00	\$27.00	18 to 24 in.	\$6.00	\$57.00
15 to 18 in.	4.00	36.00	2 to 2½ ft.	7.50	72.00

A. mollis Louise Hunnewell

Perfectly hardy hybrid. Flowers brilliant salmon-red or orange, in tremendous quantity.

	Each
15 to 18 in.	\$6.00

A. mollis — red

Brilliant shades of red flowers.

	Each	Per 10
15 to 18 in.	\$4.50	\$45.00
18 to 24 in.	\$6.50	\$65.00

A. mucronulata

Mongolian Azalea

One of the very first Azaleas to flower, opening rosy-lavender flowers as early as April 20th; thus lengthening by several weeks the blooming period of the Azaleas. It will succeed in dry locations and likes some lime.

	Each	Per 10
15 to 18 in.	\$5.50	\$55.00
18 to 24 in.	\$7.00	\$70.00

A. schlippenbachi

Royal Azalea

A dense plant growing 3 to 5 feet high and almost as broad. The flowers are showy, clear rose-pink, and almost as large as Rhododendron flowers. One of the earliest to flower. Does well in shade. Our plants are very heavy specimens.

	Each	Per 10
18 in. tall	\$6.00	\$60.00
2 ft. tall	7.50	75.00

A. vaseyi

Pinkshell Azalea

Of graceful, irregular habit. Slender stems carry small, compact clusters of delicate, shell-pink flowers early in May, appearing before the leaves. The foliage turns brilliant scarlet in autumn.

	Each
2 to 3 ft.	\$7.00

A. yedoensis poukhanensis

Orchid Azalea

A compact, low-growing Azalea blooming with a profusion of fragrant orchid-like flowers from middle to late May. One of the best for form, color and attractive foliage throughout the summer.

	Each	Per 10		Each
9 to 12 in.	\$3.00	\$30.00	2½ to 3 ft.	\$9.00
2 to 2½ ft.	7.50	75.00	3 to 4 ft.	12.00

Flowering Shrubs

THERE is a tremendous number of beautiful shrubs which embrace flowering forms of every conceivable variety. While some are admired for their fruits, or for their foliage, others are admired for their interesting forms or texture.

Groups or Borders

They should always be planted in groups or borders; rarely as single specimens, unless very large. A good arrangement invariably provides open stretches of lawn bordered with irregular masses of shrubs against the boundary line or building. Their outlines and habits differ so very much that best effects always come from planting large restful colonies of one kind or closely related sorts.

A Shrub For Every Purpose

Their various shrubby forms contrast with the more set forms of the accent plants, and their bare stems in winter give agreeable contrast form, and lend accent to the evergreen trees. Among the shrubs are found varieties with wide divergencies in their ultimate heights. Obviously, the larger sorts should be planted in the larger spaces and in the back rows; the medium ones in the middle rows. The small ones should be used as facers in the front rows of a planting.

Except those varieties specifically marked B-B, Flowering Shrubs are regularly dug bare rooted at the prices given. If desired, we will dig other sorts B-B, making the following charges:

15 to 18 in.	\$.25 each
18 to 24 in.30 each
2 to 3 ft.35 each
3 to 4 ft.45 each
4 to 5 ft.65 each
5 to 6 ft.80 each

Abelia grandiflora

A semi-evergreen medium growing shrub ideally suited to Cape Cod and Nantucket Island. Flowers white tinged with pink persist throughout the summer. For foundation and mass plantings in sheltered locations. Not hardy in the Boston area.

	Each	Per 10
18 to 24 in. B-B	\$4.00	\$36.00

Acanthopanax sieboldianus (pentaphyllum) Fiveleaf Aralia

An upright shrub, with arching, spiny branches and bright green, shining foliage. Excellent in shady places, on rocky banks and slopes and in smoky city areas. Especially good for prickly hedges.

	Each	Per 10	Each	Per 10
3 to 4 ft.	\$1.25	\$11.00	4 to 5 ft.	\$1.50 \$13.50

Amelanchier canadensis

Downy Shadblow

A large graceful tree-like shrub, with snowy white flowers in early spring. Fruits in late June, deep purple.

	Each	Per 10	Each	Per 10
4 to 5 ft.	\$2.00	\$18.00	5 to 6 ft.	\$3.00 \$27.00

Amorpha canescens

Lead Plant

Handsome low shrub with showy spikes of small blue flowers in June.

	Each	Per 10
2 to 3 ft.	\$1.50	\$13.50
3 to 4 ft.	2.00	18.00

Aronia melanocarpa

Black Chokeberry

Similar to *A. arbutifolia*, but fruits are glossy black.

	Each	Per 10	Each	Per 10
3 to 4 ft.	\$1.00	\$9.00	5 to 6 ft.	\$1.50 \$13.50
4 to 5 ft.	1.25	11.00		

Berberis — Barberry

Berberis mentorensis

Mentor Barberry

A new hedge barberry of erect habit. Its semi-evergreen leathery dark green leaves grow dense, clear to the base. This with its long thorns make it an attractive as well as an effective hedge.

	Each	Per 10
18 to 24 in.	\$1.00	\$9.00

B. thunbergi

Japanese Barberry

The best known hardy hedge plant and slow-growing shrub. Its foliage is of a rich green color in the summer turning to bright red in the fall. The fruit is equally showy and remains on the plants from the last of summer until mid-winter.

	Each	Per 10	Each	Per 10
12 to 15 in.	\$.40	\$3.50	18 to 24 in.	\$.60 \$5.50
15 to 18 in.50	4.50		

B. thunbergi atropurpurea

Red-leaved Japanese Barberry

Exactly like the Japanese Barberry, except the foliage is a dark red and maintains this color throughout the season. This makes a splendid plant for a situation where something bright and cherry is desired, and one that needs no coddling or special care, beyond ordinary soil and unobstructed sunshine.

	Each	Per 10	Each	Per 10
18 to 24 in.	\$1.00	\$9.00	2 to 2½ ft.	\$1.25 \$11.00

B. thunbergi erecta (Plant Patent No. 110)

Truehedge Columnberry

A wonderful recent improvement of the old dependable Japanese Barberry with darker foliage that remains dark in spite of severe drought; its fall color is even richer and deeper; and its scarlet berries are borne with still greater profusion. Its dense, erect, bushy, columnar shape, makes a perfect hedge the instant it is planted, and needs little pruning to keep it perfect. Makes an ideal dwarf shrub.

	Each	Per 10
12 to 18 in.	\$.90	\$8.00

B. verna

Verna Barberry

A desirable rather arching variety with a more open habit. Its foliage is small and attractive, and its wiry, spiny branches are beautifully bespangled in autumn with clusters of pink berries which remain in attractive condition almost until spring.

	Each	Per 10	Each	Per 10
18 to 24 in.	\$.90	\$8.00	2½ to 3 ft.	\$1.50 \$13.50
2 to 2½ ft. ...	1.25	11.00	3 to 4 ft. ...	1.75 16.00

5 or more Shrubs of one kind and size will be priced at the 10 rate.

Buddleia — Butterflybush

A beautiful group of flowering shrubs bearing throughout the late summer and autumn, elegant long sprays of lovely flowers. All Buddleias attract a great many colorful butterflies — a feature which accounts for the popular name of this showy shrub.

Buddleias are partially tender, with most varieties killing back to the ground each winter but the roots survive and send up new tops. They decidedly prefer a sunny location.

For abundant flowers, we suggest pinching off the first flower spikes which develop in July.



Buddleia — Butterflybush

Buddleia Charming

A glorious shrub with large spikes or panicles of brilliant pink. Foliage gray-green.

Field Grown \$1.00 Each \$9.00 Per 10

B. Ile de France

Fragrant, brilliant rosy purple flowers in Aug. and Sept. One of the most vivid.

Field Grown \$1.00 Each \$9.00 Per 10

B. Royal Red (Patent No. 556)

Produces an abundance of rich dark royal purple sprays, 2 feet in length.

Field Grown \$1.00 Each \$9.00 Per 10

B. White Bouquet (Patent No. 536)

An arresting shiny white blossom of strong fragrance, from July until frost. Excellent for white effects and for cut flowers.

Field Grown \$1.00 Each \$9.00 Per 10

Calycanthus floridus

Sweetshrub

Will thrive in partial shade. It has large glossy foliage and pineapple scented, chocolate-colored flowers that last far into the summer.

2 to 3 ft. Each \$1.25

Caragana arborescens

Siberian Pea-Tree

A very hardy tall shrub with bright green leaves, and an abundance of yellow flowers in June. It is splendid for tall hedges and will flourish in light, sandy soil.

	Each	Per 10		Each	Per 10
5 to 6 ft.	\$2.50	\$22.50	6 to 7 ft.	\$3.50	\$33.00

Chaenomeles lagenaria (Cydonia)

Flowering Quince

One of the first shrubs to bloom in the spring, and very showy because of its glossy leaves and flowers that vary in color from orange to vermilion, followed by quince-shaped, fragrant, golden yellow fruit. It has spreading, spiny branches, and makes a handsome and impenetrable flowering hedge.

	Each	Per 10		Each	Per 10
12 to 18 in.	\$.75	\$7.00	2 to 3 ft.	\$1.25	\$11.00
18 to 24 in.90	8.00	3 to 4 ft.	2.00	18.00

Chionanthus virginicus

White Fringe Tree

(See description under Trees)

Clethra alnifolia

Summersweet

The native Sweet Pepper bush with spikes of creamy white, fragrant flowers throughout July and August. Excellent for shady and damp places.

	Each	Per 10		Each	Per 10
18 to 24 in.	\$1.00	\$9.00	2 to 3 ft.	\$1.25	\$11.00

Cornus — Dogwood; Cornel

The twiggy Dogwoods present a continual display of beauty in flower, leaf, foliage, fruit and twig. The flowers, of various colors, are produced in the Spring, followed by showy fruits which persist for a considerable period.

Cornus alba

Tatarian Dogwood

An erect-stemmed shrub with good, clean foliage and bright blood-red branches and blue-white berries, making it very showy in shrub-beries, especially in winter.

	Each	Per 10		Each	Per 10
3 to 4 ft.	\$1.25	\$11.00	4 to 5 ft.	\$1.50	\$13.50

C. mas

Cornelian Cherry

Handsome shrub-like tree with yellow flowers before the leaves, and studded in Autumn with immense quantities of scarlet fruits. It makes a stunning display of autumn color in the landscape, yet is most valuable for its early spring flowers which rival Forsythia in color.

	Each	Per 10
4 to 5 ft.	\$2.50	\$22.50

C. racemosa

Gray Dogwood

One of the most handsome, white flowering native shrubs of excellent habit. Its white fruits and red stems are showy in the fall.

	Each	Per 10		Each	Per 10
3 to 4 ft.	\$1.25	\$11.00	5 to 6 ft.	\$2.50	\$22.50
4 to 5 ft.	1.50	13.50			

Cotinus coggygia rubrifolius *Bronze-leaved Smoke Tree*

Few shrubs cause more comment than this new variety of Smoke Tree, which is a bronze-leaved form and has a bronze colored plume or "smoke."

	Each
4 to 5 ft.	\$3.00

Cotoneaster

This large Asiatic family has many members of high value for landscape planting. They vary tremendously in habit, yet all are attractive, and especially decorative when covered with their brilliant or glossy fruits. The larger types make excellent specimen shrubs while the low, prostrate forms are fine for use in the rock garden or against walls.

Cotoneaster apiculata *Cranberry Cotoneaster*

Beautiful hardy dwarf Cotoneaster, growing about four feet high with pendulous branches covered in the fall with masses of shiny crimson fruits.

	Each	Per 10
12 to 15 in.	\$3.00	\$27.00

C. divaricata *Spreading Cotoneaster*

Best suited for planting in groups or as an individual specimen in the open. Long arching branches studded with tiny rose-pink flowers in June, followed by brilliant scarlet fruits, which persist into the winter.

	Each	Per 10		Each	Per 10
9 to 15 in.	\$1.50	\$13.50	2 to 3 ft. B-B	\$3.00	\$27.00
18 to 24 in. B-B	2.00	18.00			



Cotoneaster divaricata — Spreading Cotoneaster

Cydonia — (see Chaenomeles)

Daphne mezereum *February Daphne*

A low-growing shrub ultimately 3 feet high, flowering in late March with rosy purple blossoms, that have a Gardenia-like fragrance.

	Each	Per 10
15 to 18 in. B-B	\$2.50	\$22.50

Deutzia

Few shrubs are of such easy culture and give such universal satisfaction. The dazzling white and soft pink of their myriad bell-shaped flowers yield many handsome effects in garden or border arrangements. They prefer medium to dry soils and full sun. In acid soils they like occasional applications of lime.

Deutzia gracilis *Slender Deutzia*

A small, compact shrub whose slender, arching branches are profusely covered by pure white flowers in early summer.

	Each	Per 10
15 to 18 in.	\$1.25	\$11.00

D. lemoinei *Lemoine Deutzia*

An early blooming, vigorous, floriferous shrub, with pure white flowers in great sprays along its stout branches.

	Each	Per 10		Each	Per 10
18 to 24 in.	\$1.50	\$13.50	2 to 3 ft.	\$2.50	\$18.00

D. scabra, Pride of Rochester

Perhaps the best known and most popular of all the Deutzias. It makes a tall, wide-spreading bush, covered with a cloud of large, double, fringed pink and white flowers in June.

	Each	Per 10		Each	Per 10
3 to 4 ft.	\$1.25	\$11.00	4 to 5 ft.	\$1.50	\$13.50

Elaeagnus

Elaeagnus angustifolia *Russian Olive*

A spreading, somewhat spiny bush with gray, almost woolly leaves and fragrant yellow flowers. Especially good for the seashore. Very attractive when in fruit.

	Each	Per 10
3 to 4 ft.	\$1.25	\$11.00



Chaenomeles lagenaria (*Cydonia japonica*) — Flowering Quince



Euonymus alatus compactus — Dwarf Euonymus

Enkianthus campanulatus

Redvein Enkianthus

A splendid shrub of interesting features at all seasons of the year. The young twigs are a brilliant deep red. The flowers are small drooping bells, pale yellow, with deep pink stripes in May. The leaves are about one inch long of dark green which in the Fall become pink, red, scarlet, orange, and yellow. A shrub of compact habit and a cousin to the Azalea.

	Each		Each
3 to 4 ft. B-B	\$6.50	5 to 6 ft. B-B	\$12.00
4 to 5 ft. B-B	9.00		

Euonymus

The Evergreen varieties of Euonymus are listed under Evergreen shrubs. Here are listed the upright, deciduous shrub types whose decorative value lies in their brilliantly colored foliage and attractive fruits of autumn.

Euonymus alatus

Winged Euonymus

Most desirable shrub of densely branched, compact habit, with yellowish flowers, followed by red fruit. The foliage turns a brilliant red in autumn. Twigs have four corky wings. Useful for thick screens or showy masses of foliage.

	Each	Per 10		Each	Per 10
18 to 24 in.	\$2.00	\$18.00	2 to 3 ft.	\$3.00	\$27.00

E. alatus compactus

Dwarf Winged Euonymus

A dwarf type of the above, forming an extremely dense, slow growing shrub whose foliage in autumn is even more brilliant than E. alatus, and in the Arnold Arboretum it has caused as much comment for its brilliancy as any shrub growing there. Its dense habit of growth makes it an ideal shrub for use in much the same manner as the evergreen Boxwood is used, either as specimens or accents in a garden. It is also ideal for use as a low growing dense hedge.

	Each	Per 10		Each	Per 10
15 to 18 in.	\$1.50	\$13.50	2 to 3 ft.	\$3.00	\$27.00
18 to 24 in.	2.00	18.00			
3½ to 4 ft. Heavy specimens				Each	\$7.00

E. yedoensis

Yeddo Euonymus

The showiest of all the bush Euonymus family. Leaves brilliant red in fall. Scarlet berries surrounded by pink husks are produced in great profusion.

	Each	Per 10
18 to 24 in.	\$1.25	\$11.00

Forsythia — Goldenbell

Spring is really spring when the Forsythias bloom! Somehow they are the most welcome of the early shrubs because their tender yellow blossoms so definitely belong to that season and no other; and while they seem no stronger than a cloud of yellow butterflies, they defy and defeat winter at the door of spring! One Forsythia shining against a clump of evergreens is a pretty sight, but a clump of them, a border, or a hedge of them is a miracle of loveliness, from mid-April to early May. In acid soils, Forsythias benefit from fair applications of lime.

Forsythia intermedia

Border Forsythia

An erect-growing shrub, but when full grown the branches arch gracefully, and bear clouds of deep yellow flowers.

	Each	Per 10		Each	Per 10
3 to 4 ft.	\$1.25	\$11.00	5 to 6 ft.	\$2.00	\$17.50
4 to 5 ft.	1.50	13.50			

F. intermedia spectabilis

Showy Border Forsythia

Much more profuse-flowering than the original type, and several shades richer in its glorious deep yellow. Plants vigorous and compact.

	Each	Per 10		Each	Per 10
3 to 4 ft.	\$1.25	\$11.00	4 to 5 ft.	\$1.50	\$13.50

F. primulina Spring Glory

Forsythia Spring Glory

This Forsythia is just beginning to be known — and appreciated. It produces a far greater number of blossoms than the ordinary Forsythia. Its color is a brilliant lemon yellow and it has withstood colder weather better than the ordinary sorts. What would Spring be without the glorious Forsythias?

	Each	Per 10
4 to 5 ft.	\$2.00	\$18.00

F. suspensa

Weeping Forsythia

This variety has long, drooping branches, with bright yellow flowers early in April. Particularly good on bankings.

	Each	Per 10		Each	Per 10
3 to 4 ft.	\$1.00	\$9.00	5 to 6 ft.	\$1.50	\$13.50
4 to 5 ft.	1.25	11.00			



Forsythia intermedia spectabilis — Showy Forsythia

Fothergilla monticola

Alabama Fothergilla

This beautiful little shrub is a jewel of the rarest merit. Its charm lays in its bushy compact habit of growth. A profusion of creamy white flowers in May borne like buttons on the ends of the stem lend it unusual distinction.

	Each
2 to 3 ft. extra heavy	\$7.50

Hamamelis vernalis

Vernal Witch-Hazel

One of the earliest shrubs to flower, with numerous yellow flowers in late February or March. Its habit is bushy and compact, reaching a height of 7 feet.

	Each	Per 10
3 to 4 ft.	\$2.00	\$18.00

Hibiscus — Rose of Sharon

An erect, sturdy, treelike shrub ultimately 10 to 12 feet high, with a broad head and rather formal appearance. It produces large, showy flowers in August when few other shrubs are in bloom. Excellent for specimen or screen plantings, and succeeds in all soils. The use of lime will help overcome its slight tenderness in northern New England.

Hibiscus syriacus

Rose of Sharon; Althea

Double Pink, Double Red, Double White, Single White.

	Each	Per 10
3 to 4 ft. Specify color desired.	\$1.25	\$11.00
Single Blue, 18 to 24 in.	1.25	11.00

Tree form: Double Pink, Double Red, White with red eye.

	Each
4 to 5 ft.	\$2.00

Hydrangea

Woody shrubs with coarse, heavy leaves, blooming in late summer, their showy white flowers changing to pinkish brown. They succeed in most situations and are indifferent to soil or climate. Pruning should be done in early spring if necessary, as Hydrangeas differ from most shrubs in producing their flowers on new wood.

Hydrangea arborescens grandiflora

Snowhill Hydrangea

Its large clusters of pure snow-white flowers, averaging 4 to 5 inches in diameter, appear from June to the middle of September. Suitable for shady or sunny positions. Few plants will bloom as well in shade.

	Each	Per 10
18 to 24 in.	\$1.25	\$11.00

H. macrophylla otaksa

Double Blue Hydrangea

Handsome large double flowers of glistening blue in June and July. The plants are compact and dwarf-growing.

	Each	Per 10
Bushes with 10 to 12 stems	\$3.00	\$27.00



Kolkwitzia amabilis — Beauty Bush

H. paniculata grandiflora

Peegee Hydrangea

This variety is well-known. Its large, conical heads of white flowers become pink and red with age. It should have plenty of water, and be severely pruned every spring to produce large flowers.

	Each	Per 10
2 to 3 ft.	\$1.25	\$11.00
Tree form, 3 to 4 ft.	2.50	22.50

Hypericum frondosum (aureum)

Golden St. Johnswort

A showy shrub of stiff, dense habit. The golden yellow flowers are produced from August to October.

	Each	Per 10		Each	Per 10
2 to 3 ft.	\$.90	\$8.00	3 to 4 ft.	\$1.00	\$9.00

Ilex verticillata

Common Winterberry

A very ornamental shrub with upright branches and light green foliage. Spectacularly beautiful in fruit with its brilliant scarlet berries which remain well into the winter.

	Each	Per 10		Each	Per 10
3 to 4 ft.	\$1.50	\$13.50	5 to 6 ft.	\$2.00	\$17.50
4 to 5 ft.	1.75	16.00			

Kerria japonica pleniflora

Double Kerria

Very double flowers which look like little balls of gold. It blooms constantly from June to September. Its stems are bright green.

	Each	Per 10
18 to 24 in.	\$1.50	\$13.50

Kolkwitzia amabilis

Beauty Bush

A handsome shrub from Korea, hardy in New England, making long sprays of graceful foliage and completely buried in delicate pink flowers like tiny Weigela blossoms, tinted with yellow in the throat in June.

	Each	Per 10		Each	Per 10
18 to 24 in.	\$1.25	\$11.00	3 to 4 ft.	\$2.00	\$17.50
2 to 3 ft.	1.50	13.50	4 to 5 ft.	3.50	33.00

Ligustrum — Privet

When properly planted and trimmed this group of plants makes handsome and inexpensive hedges and screens. They grow vigorously in good soil or poor, will stand considerable shade, and dry barren soil. Ibota and Regel privet are frequently used as individual shrubs in mixed borders.

Ligustrum amurense *Amur Privet*

A tall growing, upright shrub with dark lustrous leaves. Perfectly hardy. This plant has been used for hedges to a tremendous extent in the past few years and has given general satisfaction. It also forms an excellent quick-growing screen.

	Per 10	Per 100		Per 10	Per 100
2 to 3 ft.	\$3.50	\$25.00	4 to 5 ft.	\$7.50	\$60.00
3 to 4 ft.	5.00	30.00	5 to 6 ft.	12.50	

L. ibolium *Ibolium Privet*

This very hardy Privet is a hybrid between Ibota and California Privet, having the rich, glossy green leaves of the latter and the bushiness and hardiness of the former. Popular for hedge planting but also makes an excellent specimen, almost evergreen shrub in some locations.

	Per 10	Per 100		Per 10	Per 100
18 to 24 in.	\$2.50	\$20.00	3 to 4 ft.	\$4.00	\$30.00
2 to 3 ft.	3.50	25.00			

L. obtusifolium (ibota) *Ibota Privet*

One of the hardiest and most graceful sorts. It has spreading, curving branches, grayish green leaves, and fragrant white flowers in June, followed by black berries. Useful for specimens or hedges.

	Each	Per 10		Each	Per 10
2 to 3 ft.	\$.50	\$4.50	3 to 4 ft.	\$.75	\$7.00

L. o. regelianum *Regel Privet*

A low, absolutely hardy shrub, with almost horizontal branches. It is graceful and sufficiently dense for hedges without trimming, or makes an excellent specimen plant.

	Each	Per 10		Each	Per 10
18 to 24 in.	\$.90	\$7.50			
2 to 2½ ft.	1.00	9.00			
2½ to 3 ft.	1.20	11.00			
3 to 4 ft.	1.50	13.50			

L. ovalifolium *California Privet*

The common hedge plant of narrow habit with glossy oval leaves.

	Per 10	Per 100		Per 10	Per 100
2 to 3 ft.	\$3.50	\$25.00			
3 to 4 ft.	4.00	30.00			

Lonicera — Honeysuckle

Graceful shrubs with interesting foliage and habit, charming flowers which in many cases are very fragrant, and delightful berries, all combine to make this group one of the favorites.

Lonicera ruprechtiana *Manchurian Honeysuckle*

A large growing shrub of dense, upright habit with wide spreading branches bearing creamy yellow flowers in June, followed by lustrous red berries. Excellent for masses of color in the shrub border or in large, informal screen plantings.

	Each	Per 10		Each	Per 10
2 to 3 ft.	\$1.00	\$9.00	3 to 4 ft.	\$1.25	\$11.00

L. tatarica alba *White Tartarian Honeysuckle*

Similar to L. tatarica, but has large, pure white flowers followed by an abundance of crimson fruits.

	Each	Per 10		Each	Per 10
3 to 4 ft.	\$1.25	\$11.00	4 to 5 ft.	\$1.50	\$13.50



Lonicera tatarica — Honeysuckle

L. tatarica rosea *Rosy Tartarian Honeysuckle*

A big, graceful bush that bears a profusion of pink flowers in June, which show up well against the foliage. These are followed by an abundance of light red berries. It flourishes in partial shade.

	Each	Per 10		Each	Per 10
2 to 3 ft.	\$.90	\$8.00	3 to 4 ft.	\$1.25	\$11.00

L. tatarica zabelii *Red Bush Honeysuckle*

This is a true Red Bush Honeysuckle. It is covered with attractive red blossoms in late May and red berries from mid-summer until frost.

	Each	Per 10		Each	Per 10
2½ to 3 ft.	\$1.25	\$11.00	3 to 4 ft.	\$1.50	\$13.50

Myrica pensylvanica (carolinensis) *Northern Bayberry*

A low, spreading native shrub which thrives in sandy places. It is a sub-evergreen, much admired for its glossy dark green, fragrant foliage.

	Each	Per 10		Each	Per 10
18 to 24 in.	\$1.50	\$13.50			

Philadelphus — Mockorange

The Mockorange, or Sweet Syringa, has been a familiar plant in gardens for many years. However, the Hybrid varieties have intensified fragrance and beauty of flower combined with more pleasing habit.

Philadelphus coronarius *Sweet Mockorange*

A tall-growing shrub with a profusion of white, fragrant flowers in June and handsome, dark green foliage. Grows even in shady locations.

	Each	Per 10		Each	Per 10
3 to 4 ft.	\$1.25	\$11.00	4 to 5 ft.	\$1.50	\$13.50



Philadelphus — Mockorange

Physocarpus — Nine bark

Physocarpus intermedius parvifolius

Dwarf Ninebark

Of densely branched, upright habit, bearing small bright green leaves. Small white flowers borne in June.

	Each	Per 10		Each	Per 10
2 to 3 ft.	\$1.25	\$11.00	3 to 4 ft.	\$1.50	\$13.50

Prunus

This is a group of delightful early-flowering shrubs and small trees beaming with beauty and cheerfulness. Their earliness commends them to all discriminating planters.

Prunus glandulosa alba

Small, very double white rosettes produced abundantly along the stems in late April and early May.

	Each	Per 10
2 to 3 ft.	\$1.25	\$11.00

P. glandulosa rosea

Produces very double, rose-colored flowers in great profusion in the spring. One of the most charming old-fashioned early-flowering shrubs. Our stock of Double Pink Almond is grown on its own roots.

	Each	Per 10
2 to 3 ft.	\$1.25	\$11.00
3 to 4 ft.	1.75	16.00

P. maritima

A handsome plant of picturesque growth and is spectacularly beautiful when covered with its billows of glossy white flowers in early spring. Desirable shrub for seaside planting and dry situations.

	Each	Per 10
18 to 24 in.	\$1.25	\$11.00

P. triloba

A vigorous shrub, having broad, pointed leaves and covered with delightful, light pink double flowers in mid-May.

	Each	Per 10
3 to 4 ft.	\$2.50	\$22.50

Hybrid Mockorange

Philadelphus Atlas

Pure white blossoms as large as those of Dogwood; magnificent for cutting:

3 to 4 ft.	Each	\$3.00
------------	------	--------

P. Belle Etoile

Star-like white flowers with a flush of light purple. Intensely fragrant, compact growth, up to 5 feet tall.

3 to 4 ft.	Each	\$2.50
------------	------	--------

P. Cole's Glorious

Fragrant mammoth white flowers on dense upright stems; foliage glossy green.

18 to 24 in.	Each	\$1.50
--------------	------	--------

P. Innocence

Long, arching branches laden with single, alabaster white flowers of penetrating fragrance. The purest of whites.

3 to 4 ft.	Each	\$2.50
------------	------	--------

P. Minnesota Snowflake (Patent No. 538)

Pure white, very double blossoms more fragrant than *P. coronarius*, and of a much more pleasing habit of growth. Perfectly hardy. Flowers in June and July.

3 to 4 ft.	Each	\$2.50
------------	------	--------

P. Virginal

A handsome, erect shrub which covers itself with very large, semi-double flowers in June and continues to bloom at the tips of the new shoots all summer and fall. It is the favorite of all lovers of these beautiful shrubs and is especially fragrant.

3 to 4 ft.	Each	Per 10
	\$1.75	\$16.00

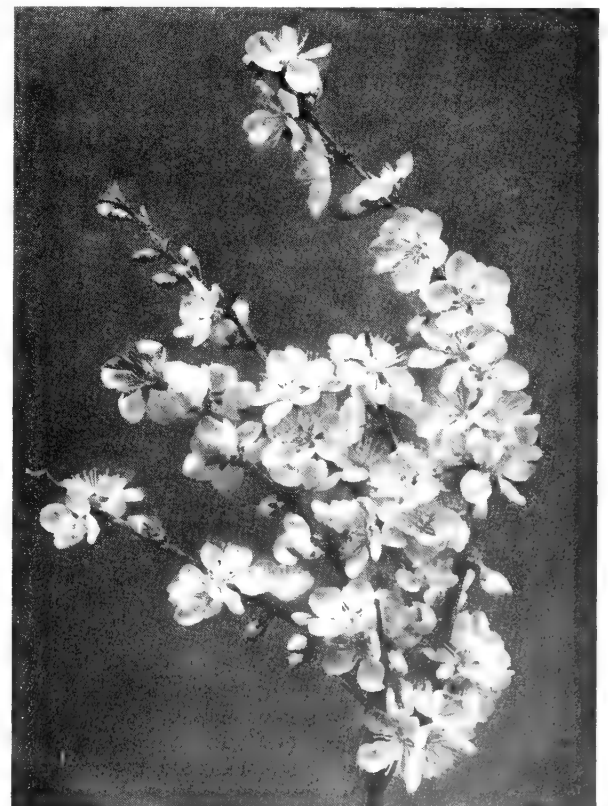
Photinia — Christmasberry

Photinia villosa

Chinese Christmasberry

An upright shrub growing to 15 ft. in height, with slender spreading branches. Flowers white in broad flattened heads with clusters of bright scarlet fruits.

	Each	Per 10		Each	Per 10
4 to 5 ft.	\$2.00	\$18.00	5 to 6 ft.	\$2.50	\$22.50



Prunus triloba — Flowering Plum

Pyraecantha coccinea Ialandi

Attractive large clusters of white flowers in late spring, but more renowned for the abundance of fiery orange — scarlet berries which remain most of the winter. Can be trimmed for foundation planting in dry soil, or trained as a vine.

	Each	Per 10
5 in. pots	\$2.50	\$22.50

Rhamnus cathartica

Common Buckthorn

Fine spiny shrub, with dark green foliage, white flowers and small black fruits. Excellent hedge or screen plant. Will thrive in partial shade, and will succeed in wind swept situations.

	Each	Per 10	Per 100
3 to 4 ft.	\$1.00	\$9.00	\$75.00
4 to 5 ft.	1.25	11.00	90.00
5 to 6 ft.	1.50	13.50	120.00

Rhodotypos scandens (kerrioides)

Black Jetbead

This spreading dwarf shrub of crinkly heavy veined leaves blossoms with snowy white flowers in May followed by sets of shiny black berries cupped in leaves. Excellent for facing down in front of a tall shrub.

	Each	Per 10
2 to 3 ft.	\$.90	\$8.00

Rhus — Sumac

A family of coarse-foliaged shrubs with large, irregular branches. They deserve notice wherever boldness and decisiveness of effect are wanted. Their display of autumn colors is unequalled. Thrives in poor light soil.

Rhus aromatica (canadensis)

Fragrant Sumac

A spreading shrub with clusters of short spikes of small, yellow flowers before the leaves. The thick, fragrant foliage turns crimson in autumn. This Sumac is valuable for planting on embankments or slopes to prevent erosion.

	Each	Per 10		Each	Per 10
2 to 3 ft.	\$.90	\$8.00	3 to 4 ft.	\$1.25	\$11.00



Rosa rugosa — *Rugosa Rose*

Firethorn

R. copallina

Flameleaf Sumac

A large shrub or small tree with compound, dark, glossy foliage and dense clusters of scarlet fruits in autumn. Succeeds on dry banks, and is very handsome.

	Each	Per 10		Each	Per 10
18 to 24 in.	\$.75	\$7.00	3 to 4 ft.	\$1.25	\$11.00
2 to 3 ft.90	8.00			

R. cotinus (see Cotinus coggygia)

ROSA — Roses for Shrub Use

Many types of Roses lend themselves to use as flowering shrubs; in front of taller shrubs in the border, in foundation plantings, massed along paths and walks, etc. Roses used in this way will surpass in beauty the majority of the flowering shrubs because of their greater range of colors, the vividness of the colors and the longer season of bloom.

The Rugosas are especially fine for bold masses, particularly at the seashore. For grouping in the garden, no plants will afford as much pleasure as the Floribunda Roses. (See page 38-39 for complete list.)

Rosa hugonis

Golden Rose of China

This handsome, arching shrub, with spiny stems and delicate foliage, blooms very early in May in long garlands of bright yellow, single flowers which are followed by red, translucent fruits. The best single yellow Rose for shrub use, especially in the background of the rock garden. Give it a warm, sunny exposure to induce it to flower early. The plant is perfectly hardy.

	Each	Per 10
2 to 3 ft.	\$1.25	\$11.00
3 to 4 ft.	2.00	18.00

R. rugosa

Rugosa Rose

A stout, upright shrub, densely covered with prickly spines, and having bold, wrinkled foliage. The flowers are very large, single, rose-red, and very fragrant, followed by crimson-scarlet fruit. Excellent near the seashore.

	Each	Per 10		Each	Per 10
15 to 18 in.	\$1.00	\$9.00	18 to 24 in.	\$1.25	\$11.00

R. rugosa alba

White Rugosa Rose

The habit and foliage are similar to the preceding, but the fragrant flowers are pure white. Makes a splendid hedge, particularly at the seashore.

	Each	Per 10
18 to 24 in.	\$1.50	\$13.50

R. rugosa Blanc Double de Coubert

Hybrid Rugosa Rose

This is a shrub rose with fully double flowers. Creamy white blossoms in profusion on a vigorous, extremely hardy, free-blooming shrub which is ideally suited for use in the shrub border or as background for other roses.

	Each
2 yr.	\$1.50



Rosa hugonis — Golden Rose of China

Salix purpurea nana *Dwarf Blue-leaf Arctic Willow*

This dwarf Willow will thrive in wet, heavy soils as well as in drier surroundings, in poor soil and difficult locations. Its low, compact habit makes it an ideal plant for rock gardens as a specimen or accent, at steps and entrances, as an edging for paths and walks, and as a low hedge, either trimmed or left natural. The many slender branches are densely covered with narrow leaves of a unique and pleasing blue-gray color.

	Each	Per 10	Each	Per 10
18 to 24 in.	\$1.25	\$11.00	2 to 3 ft.	\$1.75 \$16.00

Spiraea — Spirea

A vast and important family of extraordinarily beautiful shrubs. All have great charm of foliage and the profusion of flowers they produce is remarkable. The Spireas fall into two main groups: (1) medium and large sorts with white flowers, ranging from April to July; (2) dwarf sorts with red, pink, or white flowers in July and August. The spring flowers are borne all along the branches; the summer flowers in small heads at the ends of the branches. The spring-flowering sorts thrive in all soils; the summer-bloomers like lime.

Spiraea arguta *Garland Spirea*

The best early-flowering Spirea, producing in May sheets of minute flowers like drifts of snow. Very hardy and beautiful, it is one of the best of the very early-flowering shrubs.

	Each	Per 10	Each	Per 10
2 to 3 ft.	\$.90	\$8.00	4 to 5 ft.	\$1.50 \$13.50
3 to 4 ft.	1.25	11.00		

S. bumalda anthony waterer *Anthony Waterer Spirea*

A very free-flowering dwarf, compact shrub, with bright rosy crimson flowers in broad flat heads throughout the summer and fall.

	Each	Per 10
18 to 24 in.	\$1.25	\$11.00

S. trichocarpa *Korean Spirea*

A wide bush of compact, rounded habit, with outer branches gracefully arching to the ground. The flowers are borne abundantly, in showy, dome-shaped clusters, transforming the branches into swaying wands of blossoms, in June and July. It is a choice contribution to our gardens from Korea, extending the flowering season, as it does, nearly 3 weeks after *S. vanhouttei*.

	Each	Per 10	Each	Per 10
2 to 3 ft.	\$.90	\$8.00	3 to 4 ft.	\$1.25 \$11.00

S. vanhouttei *Vanhoutte Spirea*

Vanhoutte Spirea is the variety commonly called Bridal Wreath. Its gracefully arching branches are covered at Memorial Day with large clusters of beautiful white flowers. Even when not in flower, its handsome, blue green foliage makes it very desirable either as a specimen in the shrub border or in an informal unclipped hedge.

	Each	Per 10	Each	Per 10
2 to 3 ft.	\$.90	\$8.00	4 to 5 ft.	\$1.50 \$13.50
3 to 4 ft.	1.25	11.00		

Symphoricarpos

Symphoricarpos albus (racemosus) *Common Snowberry*

A fine, bushy shrub with decorative leaves and slender branches which bend gracefully under a load of white, waxy berries in autumn. It flourishes in partial shade.

	Each	Per 10	Each	Per 10
18 to 24 in.	\$.75	\$7.00	2 to 3 ft.	\$.90 \$8.00

S. vulgaris *Coralberry*

Very arching branches covered with lustrous dark red berries. Will grow in sun or shade. Its habit of growth makes it fine for planting on banks.

	Each	Per 10	Each	Per 10
2 to 3 ft.	\$.90	\$8.00	3 to 4 ft.	\$1.25 \$11.00



Spiraea vanhouttei — Vanhoutte Spirea

Syringa — Lilac

Perhaps the common Lilac is one of the best known plants in the world, and certainly it has gained the affection and attention of New England planters for years. However, the entire family includes many choice species and delightful hybrids whose merits should be better known, to prolong the blooming season of the family, and for the value of their colorful variety.

The heart-shaped, clean, green foliage makes them desirable, not only as specimen plants, but also as screen hedges. The species Lilacs are particularly worth while and should be found more commonly in gardens. All Lilacs are benefited by applications of lime.

Syringa microphylla superba *The Daphne Lilac*

A Chinese Lilac with the delicious fragrance of the Rose Daphne. Graceful shrub with slender branches bearing panicles of light and deep pink flowers producing a pleasing two tone effect. Ordinarily blooms again in the fall.

	Each	Per 10		Each	Per 10
18 to 24 in.	\$2.00	\$18.00	3 to 4 ft.	\$3.00	\$27.00

S. japonica (See Shade Trees)

S. josikaea *Hungarian Lilac*

A sturdy, vigorous shrub of tree-like growth, with dark, shining leaves, and bluish purple flowers in June. It is especially valuable for its late bloom which prolongs the Lilac season.

	Each	Per 10
3 to 4 ft.	\$1.50	\$13.50

S. villosa *Late Lilac*

A stoutly-branched shrub with bright green foliage like that of the White Fringe tree. The flowers, which are borne in panicles, are light purple in bud, rosy white when open, and very fragrant. It is worth while for its shapely, good looking form and its late period of June flowering.

	Each	Per 10
2 to 3 ft.	\$1.50	\$13.50

S. vulgaris *Common Lilac*

The best known of all Lilacs. It is a strong, vigorous, upright shrub, with rich dark green foliage and large panicles of very fragrant purplish flowers in late May. A desirable plant for a flowering hedge or large masses.

	Each	Per 10		Each	Per 10
2 to 3 ft.	\$1.50	\$13.50	4 to 5 ft.	\$2.50	\$22.50
3 to 4 ft.	1.75	16.00			

S. vulgaris alba *Common White Lilac*

Similar, yet more slender than *S. vulgaris*, with white flowers a week earlier than those of any other variety. It is also desirable for a flowering hedge or bold clump.

	Each	Per 10
2 to 3 ft.	\$2.00	\$18.00
3 to 4 ft.	2.50	22.50
4 to 5 ft.	3.50	33.00

The Fragrant Hybrid Lilacs

To those of us who are familiar with only the common white and purple Lilacs of old dooryards, the hybrid varieties, which have come from the crossing of the common Lilac with other Lilac species seem too splendid to be true. They bear huge trusses of single or double florets, many intensely fragrant. Unlike the preceding varieties, they bloom when very young, and grow to moderate size so that they may be planted in fairly limited space.

Syringa Clarke's Giant (Pat. No. 754)

Huge flowers of gentian blue, borne in enormous pyramidal clusters up to 12 inches long. Extremely fragrant as well.

	Each
2 to 3 ft.	\$5.00

Syringa Esther Staley (Pat. No. 768)

Extremely choice since it is the best pink to date, without the usual lavender tinge. Good sized clusters produced freely in mid season.

	Each
3 to 4 ft.	\$6.00

The following six lilacs are available in 2 to 3 ft. size @ 2.50 each.

Alphonse Lavallee: double, purplish lilac.

Charles Joly: double, dark violet purple.

Ludwig Spaeth: single, dark reddish purple.

Mme. Lemoine: double white.

Michel Buchner: double, pale lilac.

Olivier de Serres: double, blue.

The following eight lilacs are available in two sizes:

	Each	Each
4 to 5 ft.	\$6.00	5 to 6 ft. \$7.50

Georges Bellair: double dark lavender.

Ludwig Spaeth: single, dark reddish purple.

Michel Buchner: double, pale lilac.

Mme. Abel Chatenay: double, white.

Mme. Casimir Perier: double white.

Mme. Lemoine: double, lilac.

President Grevy: double, blue.

Marie Legraye: single, white.

Tamarix pentandra Summer Glow *Tamarisk*

The airy wine red flowers open in July and continue all summer. Foliage is a beautiful silvery blue-green. It will do well near the seashore, withstanding spray and wind much better than most shrubs.

	Each	Per 10
18 to 24 in.	\$2.00	\$18.00



Syringa vulgaris — Common Lilac



Viburnum tomentosum — Doublefile Viburnum

Vaccinium

Vaccinium corymbosum *Highbush Blueberry*

A handsome, native shrub of real character, much valued for its large, blue-black berries of excellent flavor but favored even more for its brilliant colored fall foliage which gives a distinct naturalistic effect and for the bright red color of the twigs during the winter months.

	Each	Per 10		Each	Per 10
2 to 3 ft.	\$1.50	\$13.50	4 to 5 ft.	\$2.50	\$22.50
3 to 4 ft.	2.00	18.00			

Viburnum

Here is a group of interesting shrubs embracing a great variety. Most of them are prolific bloomers, do well in semi-shade, and follow their flowers with a profusion of handsome fruits of varying colors.

Viburnum carlesii *Mayflower Viburnum*

A low round bush of compact growth bearing, in early spring, charming clusters of pale rosy-white flowers of the most delicious fragrance.

	Each		Each
2 ft. B-B	\$4.00	3 to 4 ft. B-B	\$8.50

V. dentatum *Arrow-wood*

A very handsome, native shrub with glossy green foliage and white flowers in June, followed by berries which turn blue in autumn. Like the other Viburnums, it will flourish in partial shade.

	Each	Per 10		Each	Per 10
3 to 4 ft.	\$1.25	\$11.00	5 to 6 ft.	\$2.00	\$17.50
4 to 5 ft.	1.50	13.00	6 to 7 ft.	2.50	

V. dilatatum *Linden Viburnum*

The Chinese Viburnum is a decorative free-flowering shrub producing 6 inch clusters of snow-white flowers in May and June. It is very attractive in early winter because of its scarlet fruits.

	Each	Per 10
3 to 4 ft.	\$2.00	\$18.00

V. lentago *Nannyberry*

A vigorous shrub which may become a small tree. It has creamy white, very fragrant flowers, light glossy green foliage, and bluish black fruit.

	Each	Per 10		Each	Per 10
3 to 4 ft.	\$1.25	\$11.00	5 to 6 ft.	\$1.75	\$16.00
4 to 5 ft.	1.50	13.50	6 to 8 ft.	2.50	22.50

V. opulus *European Cranberry Bush*

One of the best shrubs for general planting. It has white flowers in panicles and red berries, resembling cranberries, which remain until early winter. The foliage is large and seldom attacked by insects.

	Each	Per 10		Each	Per 10
2 to 3 ft.	\$.90	\$8.00	4 to 5 ft.	\$1.50	\$13.50
3 to 4 ft.	1.25	11.00	5 to 6 ft.	1.75	16.00

V. opulus sterile *Common Snowball*

Large round heads of white flowers in May - June.

	Each	Per 10		Each	Per 10
2 to 3 ft.	\$1.00	\$9.00	3 to 4 ft.	\$1.50	\$13.50

V. prunifolium *Blackhaw Viburnum*

A tall-growing variety with white flowers in April and May, followed by blue-black fruits. Makes a wonderful tall hedge or screen.

	Each	Per 10
3 to 4 ft.	\$3.00	\$27.00

V. tomentosum *Doublefile Viburnum*

The most beautiful of all the Viburnums. A superb flowering shrub covered in June with a profusion of dazzling white flowers arranged in radial clusters. The flowers are followed by red berries which later change to blue-black. One of the most breath-taking of all shrubs.

	Each	Per 10
3 to 4 ft.	\$2.00	\$18.00

V. tomentosum plicatum *Japanese Snowball*

Pure white flowers arranged in a round ball about 4 inches across. Branches arching, reaching a height of about 8 feet.

	Each	Per 10
2 to 3 ft.	\$2.50	\$22.50

Vitex

Vitex macrophylla (*agnuscastus latifolia*)

Hardy Lilac Chastetree

A tall-growing shrub with bold foliage and great spreading clusters of intensely violet-blue flowers in late summer; very decorative and fine for cutting. One of the finest blue-flowering shrubs.

	Each	Per 10
3 to 4 ft.	\$1.75	\$16.50

Weigela

A decorative family of small shrubs bearing bell or trumpet-shaped flowers 1 to 1½ inches long. Very beautiful but somewhat tender; in our acid soils the use of lime seems to partially overcome this tenderness.

Weigela Bristol Ruby (Pat. No. 492)

Sparkling ruby-red to crimson flowers produced in immense quantities in the spring and again throughout late summer and fall. Makes a perfectly round specimen about 6 feet tall.

	Each	Per 10
3 to 4 ft.	\$2.50	\$22.50

W. florida (*rosea*) *Pink Weigela*

A very free-flowering shrub somewhat similar to the preceding with larger, bright pink flowers.

	Each	Per 10
2 to 3 ft.	\$1.25	\$11.00

W. wagneri *Eva Rathke*

Perhaps the most showy of all, with dark brownish red flowers, brightened by a light center. Flowers profusely nearly all summer.

	Each	Per 10
18 to 24 in.	\$1.25	\$11.00

Vines and Climbing Plants

VINES are an important class of plants, as they contribute a lasting appeal in the positions to which they may be assigned.

Actinidia arguta

Bower Actinidia

A strong-growing Japanese vine with rather large, handsome leaves. The flowers are white with purple center; and the berries are conspicuous and edible. Clings to support.

	Each	Per 10
3-ft. runners	\$1.25	\$11.00

Aristolochia siphon

Dutchman's Pipe

A rapid growing vine which makes a dense screen. The flowers are brown and pipe-shaped.

	Each	Per 10		Each	Per 10
2 yr.	\$1.50	\$13.50	3 yr.	\$2.00	\$18.00

Campsis Mme. Galen

Hybrid Trumpet Vine

A gorgeous hybrid vastly superior to the common variety. Large, 2½ to 3 inch flowers of rich apricot and orange in large clusters all summer.

	Each
2 yr.	\$3.00

Celastrus scandens

American Bittersweet

A native climber, with glossy leaves which turn bright yellow in autumn, and big showy clusters of orange and crimson fruit.

	Each	Per 10
3 years	\$.75	\$7.00
4 years	.90	8.00

Clematis paniculata

Sweet Autumn Clematis

By far the showiest of the fall-blooming species. It thrives best in sunny situations, making a luxuriant grower with lustrous foliage. The flowers are medium sized pure white, borne in late summer and autumn in feathery masses, with a rich vanilla-like fragrance.

	Each	Per 10
3 years	\$1.00	\$9.00



Lonicera heckrottii — Summer King Honeysuckle

Clematis tangutica

Golden Clematis

Spectacular bright yellow flowers four inches across in June and again in late summer.

	Each	Per 10
2 yr.	\$1.75	\$16.00

Large - Flowering Hybrid Clematis

These hybrid varieties have a delicacy of form which makes them objects of rare and unusual beauty.

	Each	Per 10
2 years pot-grown	\$2.00	\$17.50

Henryi

Huge creamy white flowers often 8 inches across in July and August.

Jackmani

Large, velvety, violet-purple flowers borne profusely throughout the summer.

Mme. Edouard Andre

A profuse bloomer during mid-summer with rich purplish red flowers of extraordinary texture.

Mrs. Robert Brydon

Billowy masses of pale blue flowers in August and September. One of the newest.

Ramona

Lavender-blue accentuated by a darker disk of central anthers. Blooms abundantly.

Lonicera heckrottii

Summer King Honeysuckle

A wonderful vine with large fragrant flowers in immense clusters blossoming throughout the summer.

Flowers are flame-red on outside and golden apricot within. Foliage is attractive gray-green.

	Each	Per 10
2 years, heavy selected	\$1.25	\$11.00

L. japonica halliana

Hall Japanese Honeysuckle

A vigorous grower with fragrant yellow and white flowers from mid-summer until frost. This makes a good ground cover, in sun or shade and is an excellent plant to prevent erosion of rough slopes.

	Each	Per 10	Per 100
3 years	\$.75	\$6.00	\$50.00
4 years	.90	8.00	65.00

Parthenocissus tricuspidata (Ampelopsis)

Boston Ivy

The favorite climber, clinging firmly to brick walls, masonry, rocks and stumps. The dark glossy foliage stands smoke and dust well and turns to a brilliant orange and scarlet in the fall.

	Each	Per 10		Each	Per 10
2 years	\$.90	\$8.00	3 years	\$1.25	\$11.00

P. tricuspidata lowi

Miniature Boston Ivy

A finer, more delicate vine than Boston Ivy with smaller leaves twisted along slender stems. Clings closely to walls, stone posts, etc.

	Each	Per 10
3 in. pots	\$1.25	\$11.00

Polygonum auberti

Chinese Fleece Vine

A tall growing, hardy vine with bronzy young leaves which turn green. The tiny white flowers are borne abundantly in feathery sprays from August to October. Makes tremendous growth in one season; the best hardy vine for immediate effects.

	Each	Per 10
2 years heavy selected	\$1.25	\$11.00

Schizophragma hydrangeoides

Jap. Hydrangea Vine

Bright green foliage and loose clusters of fragrant white flowers. Clings to brick or wood without support.

	Each	Per 10
2½ in. pots	\$1.75	\$16.00

Perennials

WE believe you will find the following chart helpful in making your selection of Perennials. It has been arranged for your convenience in making comparisons as to color, height, and time of bloom.

Perennials are \$.60 each, 3 of one kind \$1.50, 10 of one kind for \$4.50, except as otherwise noted.

	Color	Hgt. In.	Time of Bloom
ACHILLEA			
ptarmica, Snowball	Pure White	18	Jul.-Sep.

ACONITUM			Monkshood
The stately spikes of the Monkshood add blue to the garden, whether sunny or shady, at the season when blue is so often needed.			
fischeri	Dark Blue	24	Sep.-Oct.
f. wilsoni	Violet	60	Sep.-Oct.
n. Sparks	Dark Blue	36	Jul. Oct.

Prices of all Aconites: \$.65 each, 3 for \$1.75, 10 for \$5.00

AJUGA			Bugle
Most ground covers grow best in the shade, but the Ajugas enjoy either sun or shade. Their rich showy leaves and spikes of bright flowers make them one of the most useful of the creeping plants.			
genevensis	Bright Blue	8	May-Jun.
g. rosea	Pink	8	May-Jun.
reptans rubra	Blue	6	May-Jun.

ALTHAEA			Hollyhock
Hollyhocks are familiar friendly flowers with that home-like old-fashioned air so desirable in the garden.			
rosea, Double: Newport Pink, Rose, Scarlet,			
White, Yellow, Chamois, Lilac.			
Single mixed	Various	84	Jul.-Aug.

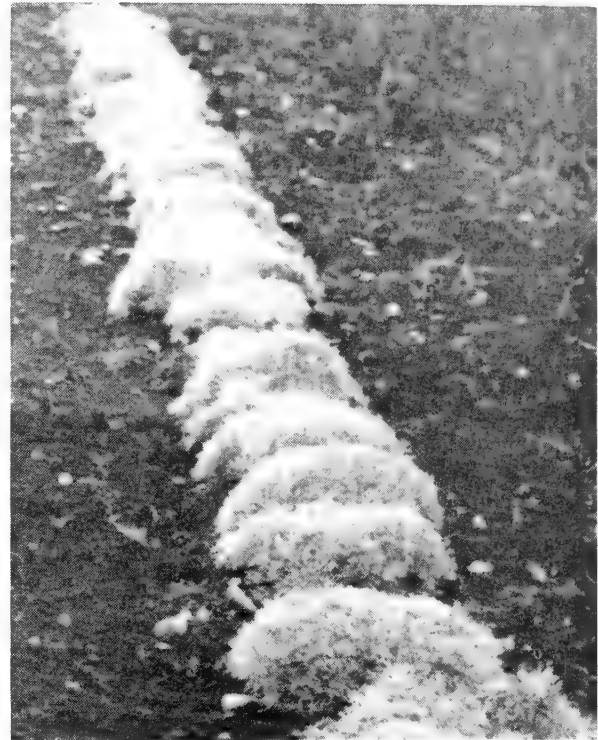
ALYSSUM			Dwarf Goldentuft
The well known "Pot-of-Gold" that adds so much brightness to the sunny rock garden or edge of the perennial border in the early season.			
saxatile compactum	Yellow	12	Apr.-May
saxatile, Lemon	Pale Yellow	12	Apr.-May

AQUILEGIA			Columbine
This plant is worthy of its high rank in popularity among perennials. The wide range of color, attractive flower form and ease of culture make it deserving of a place in every garden, whether in the sun or shade.			
caerulea	Blue	36	May-Jun.
chrysantha	Yellow	36	Jun.-Jul.
c. Silver Queen	White	36	Jun.-Jul.
Crimson Star,	Free flowering Crimson	20	Jun.-Jul.
Mrs. Scott Elliot, Long-Spurred Hybrids.	Wonderful varied colors	36	Jun.-Jul.
Rose Queen	White & Rose	36	Jun.-Jul.

ARABIS			
alpina-Rockress. Gray-green foliage.	White	6	Apr.-May

ARMERIA			Thrift, Sea Pink
The globular flowers spring from interesting tufts of leaves making colorful rock garden or edging plants.			
maritima	Lavender-Pink	6	May-Jun.
pseudoarmeria rubra	Red	12	Jul.-Aug.

ASCLEPIAS			
tuberosa—Butterflyweed. Bright clusters of orange		24	Jul.-Aug.



ARTEMISIA, Silver Mound (schmidtiana nana)
Soft, feathery gray plants of low compact habit. Distinctive as an edging plant, and is excellent in rockeries or for pleasing accents in the garden.
\$.75 each, 3 for \$2.00, 10 for \$6.00

	Color	Hgt. In.	Time of Bloom
ARTEMISIA			
albula, Silver King.	Gray foliage	36	All-season
ASTER			Aster or Michaelmas Daisy
The variety of color, ease of culture, and late blooming habit have made Asters one important part of the well-planned perennial garden, and indispensable if you wish plenty of color in the Fall.			
alpinus	Violet	9	May-Jun.
Beechwood Challenger	Brilliant Crimson-red	36	Sep.-Oct.
Blue Gown	China Blue	48	Sep.-Oct.
Countess of Dudley	Pink	9	Sep.
Harrington's Pink	Clear Pink	36	Sep.-Oct.
Lilac Time	Soft Lilac	12	Sep.-Oct.
Little Red Boy	Red	15	Sep.-Oct.
Mt. Everest	White	48	Sep.-Oct.
Royal Blue	Blue	36	Sep.-Oct.
Snowsprite	White	9	Sep.-Oct.
Victor	Lavender-Blue	9	Sep.-Oct.
Violetta	Violet-Blue	36	Sep.-Oct.

ASTILBE			Perennial Spirea
Handsome perennials with feathery plumes and lacy foliage. Will thrive in sun or shade.			
Europa	Pink	24	Jul.
Fanal	Red	30	Jul.
White Glory	White	30	Jl.

All Astilbes \$.90 each

5 or more plants of one variety will be furnished at the 10 rate.

Garden Chrysanthemums

Chrysanthemums will make your September and October perennial garden in many ways more colorful, gay and sparkling than at any other time of year.

Visitors to our Nursery this past Fall helped us select these varieties from over 150 varieties growing in our fields. They were delighted with the quality, size and quantity of the blooms, sturdy growth of the plants and the amazingly wide range of radiant, gorgeous colors.

Plant a number this Spring and enjoy them in your garden this Fall.

All varieties \$.60 each, 3 for \$1.50, 10 for \$4.50. On Chrysanthemums, the quantity rate is allowed on orders for assorted varieties. Prices for Spring only.

Allegro	Large double, Shrimp-pink, Salmon and Copper	30
Avalanche	Large double, White, Cream center	24
Barbara Small	Double, Deep Lavender	30
Betty	Large double, Pure Pink	36
Bokhara	Large double, Rose, Crimson and Wine	21
Bronze Pyramid	Large, recurved double, Walnut Bronze	30
Burma	Large double, Bronze, Copper and Pink	30
Caliph	Large double, Deep Red	30
Carnival	Large double, Burnt Orange	30
Charles Nyc	Double, Deep Yellow	30
Chippewa	Large double Purple	24
Chiquita	Pompon, Deep lemon Yellow	24
Chris Columbus	Pompon, White, Cream-center	30
Courageous	Large double, Crimson	30
Crimson Buttercup	Large double, Bronze Crimson	30
Cydonia	Large double, Orange-mahogany	30
Dahliaium	Double, Purple	20
Early Ace	Large double, Light Buff	30
Ember	Large double, Orange-red	30
Eugene A. Wander	Large double, Golden Yellow	20
Ganna	Large double, lavender	30
Glowing Coals	Double, Deep Cherry red	24
Gold Standard	Large double, Golden Yellow	30
Harbor Lights	Large double, Pale Yellow	24
Indiana	Large double, Orange-red	24
Irene	Button, White	20
Ivory Glow	Large double, Ivory-white	30
Jayeff	Large double, Deep Pink	24
King Midas	Large double, Bronze Yellow	30
Kristina	Large single, Rose	30
Lavender Lady	Large double, Lavender	24
Magnolia	Large double, Pink and Yellow	28
Margie	Double, Deep Crimson	24
Mellow Glow	Large double, Orange, Peach and Bronze	30
Morning Glow	Double, Lavender pink	30
Mrs. Merle Averell	Large double, Bright Rose pink	24
Mrs. P. S. Dupont III	Large double, Salmon and Bronze	30
Murmurs	Double, Lavender-purple	20
Olive Longland	Large double, Apricot and Salmon	24
Orange Glow	Large double, Orange and Yellow	30
Oriental Gold	Large double, Orange-red	30
Pepita	Pompon, Eggshell white, darker center	24
Pink Radiance	Large double, Pink	30
Polar Ice	Large double, Pure White	24
Red Riding Hood	Large, double, Red, Yellow center	24
Red Velvet	Large double, Dark Crimson	32
Silver Moon	Large single, White	36
Silver Tips	Large double, Carmine, petals tipped silver	24
Snowball	Pompon, White	28
Sunapee	Double, Golden Yellow	24
Tampico	Large double, Bright Bronze	36

Twilight	Large double, Fuchsia-purple	26
White Wonder	Pompon, White	30
Yellow Avalanche	Large double, Buttercup Yellow	24
Yellow Irene	Button, Yellow	28

Cushion Chrysanthemums

Amber Glow	Double, Peach pink	24
Apricot Glow	Double, Apricot Bronze	20
Brighter Days	Double, Lemon Yellow	18
Bronze Cushion	Double, Bronze	18
Chestnut Burr	Double, Chestnut	24
Coheco	Double, Lavender-pink	18
Copper Cushion	Double Copper	18
Coral Sea	Double, Salmon, Rose and Copper	24
Egypt	Double, Reddish amber	20
Fleur	Double, Amaranth purple	18
Golden Carpet	Pompon, Yellow	12
Janet	Double, Buff	24
Lavender Lassie	Button, Lavender	15
Pink Cushion	Double, Pink	28
Red Cushion	Double, Red	28
Tints of Fall	Double, Orange, Yellow and Bronze	18
White Cushion	Double, White	20
Yellow Cushion	Double, Yellow	18
Yellow Supreme	Double, Bright Yellow	24

CHRYSANTHEMUM

coccineum (Pyrethrum roseum)	
Single mixed	Pink, Red, White 24 May-Jun.

Painted Daisy

CHRYSANTHEMUM

maximum, Alaska	Large, Single White	30 Jun.-Jul.
maximum, White Swan	Double White	24 May-Jun.

Shasta Daisy



Cushion Mums

BRUNNERA

Graceful clusters of blue flowers that resemble Forget-me-nots, amongst heart shaped leaves. An effective plant in sunny or shady spots.

Brunnera

	Color	Hgt. In.	Time of Bloom
macrophylla (Anchusa myosotidiflora)	Blue	12	May-Jun.

CAMPANULA

Bellflower

A large and much varied family, containing plants of interest and beauty for every purpose. They differ in habit from creeping to tall plants. The well known bell-shaped flowers have been favorites since olden days.

	Color	Hgt. In.	Time of Bloom
carpatica	Clear Blue	12	Jul.-Aug.
carpatica alba	Pure White	12	Jul.-Aug.
garganica	Starry flowers, Light Blue	5	Jun.-Aug.
medium, Canterbury Bell	Blue, Pink, White	30	Jun.-Jul.
medium calycanthema, Double Canterbury Bell	Blue, Pink, White	30	Jun.-Jul.
persicifolia	Violet	36	Jun.-Jul.
persicifolia alba	Glistening White	36	Jun.-Jul.
poscharskyana	Blue	8	Jun.-Sep.

CERASTIUM

Snow-in-Summer

tomentosum	White	6	May-Jun.
------------	-------	---	----------

CONVALLARIA

Lily-of-the-Valley

majalis	White	8	May-Jun.
---------	-------	---	----------

Heavy clumps 3 for \$1.75, 10 for \$5.00

COREOPSIS

grandiflora, Sunburst,	Large bright Yellow	30	Jul.-Sep.
verticillata nana,	Orange	8	Jun.-Sep.

DELPHINIUM

Larkspur

Always one of the most admired perennials, the Delphinium is now more desirable than ever, for the work of the hybridizers has brought great improvements.

Belladonna, Improved	Light Blue	30	Jun.
Bellamosum, Improved	Dark Blue	30	Jun.
grand. chinense album	White	30	Jun.-Jul.
grand. chinense Cambridge Blue	Light Blue	30	Jun.-Jul.
Pacific Hybrids	Dark Blue, Light Blue, Lavender and White	60	Jun.-Jul.
Pacific Hybrids Round Table	Various	60	Jun.-Jul.

Pacific Hybrids are 3 for \$2.00, 10 for \$6.00

DIANTHUS

Pink, Carnation

This group of plants furnishes a wide variety of flowers, ranging from the tiny blooms of the creeping sorts to the large double flowers of the Hardy Pinks. Their blossoms have a distinctive fragrance and good qualities as a cut flower.

barbatus, Sweet William	Pink, Red, White	18	Jun.-Jul.
Hardy Garden Pinks			
Beatrix	Pink	8	Jun.-Sep.
Bristol Purity	White	12	Jun.-Jul.
Furst Bismark	Deep Pink	8	Jun.-Sep.
Her Majesty	White	12	Jun.-Jul.
Old Spice, 3 for \$1.80, 10 for \$5.00	Salmon Pink	12	Jun.-Sep.
Pink Princess	Salmon Pink	12	Jun.-Sep.
Rock Haven Red	Red	8	Jun.-Sep.
Sammy	Deep Rose	2	Jun.-Sep.
Wallace Red	Deep Red	12	Jun.-Sep.

DICENTRA

Bleeding Heart

Old fashioned perennials with bright heart-shaped flowers. These plants do well in all parts of the garden.

eximia, Fringed Bleedingheart	Rose	18	Jun.-Aug.
e. Sweetheart,	White	18	Jun.-Aug.
\$1.00 each, 3 for \$2.75, 10 for \$8.50			
spectabilis, Bleedingheart	Rose	24	May-Jun.
\$1.00 each, 3 for \$2.75, 10 for \$8.50			

DIGITALIS

Foxglove

The long erect spikes of this old fashioned favorite furnish accent points which eliminate monotony of form in the garden.

	Color	Hgt. In.	Time of Bloom
purpurea	Purple	36	Jun.-Jul.
p. rosea	Rose-Pink	36	Jun.-Jul.
p. Shirley Hybrids	Magnificent strain Various	36	Jun.-Jul.

DORONICUM

plantagineum, Leopardbane	Orange	24	May-Jun.
---------------------------	--------	----	----------

EUPATORIUM

coelestinum. Ageratum-like flowers,	Lavender	24	Sep.-Oct.
-------------------------------------	----------	----	-----------

GAILLARDIA

Gaillardia

aristata, Portola Hybrids.	Yellow & Red	30	Jun.-Oct.
----------------------------	--------------	----	-----------

GYPSOPHILA

Baby's Breath

Indispensable for well arranged bouquets. Its light airy sprays add a contrasting texture to other plants.

Bristol Fairy	Double, White	36	Jun.-Sep.
repens, Rosy Veil	Double, Pink	24	Jun.-Sep.

Both Gypsophilas are 3 for \$2.00, 10 for \$6.00

HELLEBORUS

Christmas Rose

niger, \$1.00 ea. 3 for \$2.70, 10 for \$8.50	White	8	Winter
---	-------	---	--------

HELENIUM

Sneezeweed

As flowers become rarer at the end of summer the Heleniums furnish masses of rich Autumn colors.

autumnale Dwarf	Yellow	18	Aug.-Sep.
tenuifolium-Riverton Gem	Terracotta & Mahogany	36	Aug.-Sep.

HELIANTHUS

Loddon Gold	Orange	36	Aug.
-------------	--------	----	------

HELIOPSIS

scabra, Summer Gold	Yellow	36	Jun.-Aug.
---------------------	--------	----	-----------

HEMEROCALLIS

Daylily

flava	Fragrant, Lemon-yellow	36	Jun.
fulva	Dusty-Orange	48	Jul.-Aug.

HYBRID HEMEROCALLIS

Goldeni	Deep-Orange	36	Jul.-Aug.
Hyperion \$. 75 ea.	Pale Lemon-Yellow	30	Jul.-Aug.
Mrs. W. H. Wyman	Pale Lemon-Yellow	30	Jul.-Aug.



Hardy Carnation

Perennials are \$.60 each, 3 for \$1.50, 10 for \$4.50 except as otherwise noted.



Hosta — Plantainlily

HEUCHERA

Coralbells

Tiny bells swaying gracefully along slender stems that spring from attractive rosettes of leaves, make the Coralbells enjoyable rock garden or edging plants in either sun or partial shade.

	Color	Hgt. In.	Time of Bloom
sanguinea, Pink Delight	Pink	18	Jun.-Sep.
s. alba	White	18	Jun.-Sep.
s. Pluie de Feu	Crimson	18	Jun.Sep.

HIBISCUS

Rosemallow

These tall bold plants with large flowers are useful in the background or along the wall or fence.

palustris	Pink, Red, White	48	Aug.-Sep.
-----------	------------------	----	-----------

HOSTA

Plantainlily

The Plantainlilies are valuable, not only as foliage plants for edging or general use, in either sun or shade, but also for their graceful sprays of blue or violet flowers.

caerulea	Violet Blue	18	Jul.-Aug.
fortunei	Lilac	24	Jun.-Jul.
glauca	Pale Lilac	24	Jun.-Jul.
plantaginea—\$1.00 each, 3 for \$2.70	White	18	Aug.-Sep.
robusta	Lavender	30	Jun.-Jul.

IBERIS

Candytuft

The perennial Candytuft is well known for its excellent qualities that make it one of the best rock garden or edging plants.

sempervirens	Pure White	12	May-Jun.
--------------	------------	----	----------

IRIS

Iris

All of the members of this family have retained their popularity through the years, largely because of the wide variety of color of the beautifully textured flowers and because they can be depended upon each year for profusion of bloom.

germanica, Bearded Iris. Assorted			May-Jun.
kaempferi, Asiatic Iris. we have choice varieties in	Blue, Purple, White	36	Jul.
sibirica, Perry's Blue	Sky-Blue	30	May-Jun.
Snow Queen	Showy White	30	May-Jun

LIATRIS

Gayfeather

Gayfeather is an appropriate name, for it well describes the long spikes that prevent monotony of form in the garden. It ranks as one of the best cut-flowers.

	Color	Hgt. In.	Time of Bloom
spicata	Clear Purple	36	Jun.-Aug.

LILIUM

Lily

candidum—Madonna Lily.	Pure White	36	Jun.-Jul.
regale—Regale Lily	White	42	Jul.
speciosum rubrum \$1.25 each	Red and White	36	Aug.-Sep.

\$.75 each, 10 for \$7.00
3 for \$1.65, 10 for \$5.00

LUPINUS

Lupine

The long spikes of pea-shaped flowers of this ever-popular plant were formerly grown mostly in pink, blue and white but in the Russell Hybrids rich shades of red, orange and yellow have been added.

polyphyllus	Blue-Violet	30	Jun.
p. albiflorus	White	30	Jun.
p. roseus	Rosy-Pink	30	Jun.
p. Russell Hybrids	Various	36	Jun.

LYTHRUM

Mordens Pink	Pink	30	Jul.-Sep.
--------------	------	----	-----------

MERTENSIA

Bluebells

virginica.	Blue to Pink	18	Apr.-May
------------	--------------	----	----------

MYOSOTIS

scorpioides semperflorens, Dwarf			
Perpetual Forget-me-nots.	Blue	10	Jun.-Sep.
s. Pink Beauty	Pink	10	Jun.-Sep.

NEPETA

Nepeta

The lilac flowers and grayish foliage of the Nepetas make a pleasing combination. They will thrive in dry rock gardens and borders.

mussini	Lavender	12	May-Sep.
---------	----------	----	----------

OENOTHERA

missouriensis, Ozark Sundrops	Yellow	10	Jun.-Aug.
-------------------------------	--------	----	-----------

PACHYSANDRA

Spurge

This evergreen with its glossy green leaves solves the problem of what to plant where a carpet of green is needed in a shady spot. Under trees or shrubs — as an edging for the shady garden — where grass will not grow — Pachysandra thrives and improves as the years pass. Planted six to eight inches apart each way, it will soon fill in to make a solid mat.

terminalis	White	10	May-Jun.
2½ inch Pots		10 for \$2.50 — 100 for \$21.00	

PAPAVER

Poppy

nudicaule Hybrids, Iceland Poppy	Various	24	May-Aug.
----------------------------------	---------	----	----------

Hybrid Oriental Poppies

We will have an assortment of good varieties for Fall shipment. All Oriental Poppies \$.65 each 10 for \$6.00

PAEONIA

Peony

The Peonies we offer are chosen from the best of the newer varieties and from those which time has proved to be the most popular and dependable. Bloom in May and June.

Duchess de Nemours, large fragrant	Ivory White	30	Midseason
Edulis Superba	Rose-Pink	30	Early
Felix Crousse	Compact large, Ruby-Red	30	Late
Festiva Maxima	Large Ivory-White	30	Midseason
Karl Rosenfield	Rich Dark Crimson	24	Midseason

The above 5 varieties of Peonies are \$1.25 each—10 for \$11.00

Louis Bigot	Extra large Salmon Pink	30	Midseason
Mme. Jules Dessert, Tinted with Pink,			

	Creamy-White	30	Late
Mons. Jules Elie	Silvery tinge, Deep Pink	30	Midseason
Sarah Bernhardt	Appleblossom Pink	30	Late
Tourangelle	Pearly White tinted with salmon	30	Late
Walter Faxon	Glowing Rose-Pink	30	Midseason

The above 6 varieties of Peonies are \$1.50 each—10 for \$13.50

Perennials are \$.60 each, 3 for \$1.50, 10 for \$4.50 except as otherwise noted.

PENTSTEMON

A new variety, lower growing and more compact in habit.
 barbatus, Rose Elf

Color	Hgt. In.	Time of Bloom
		Pentstemon
Rose	30	Jun.-Aug.

PLATYCODON

The large bells of the Balloonflower rank with the Bellflowers in furnishing this delightful flower form. "Shell Pink" is a new variety, adding a much needed color to this group of plants.

	Color	Hgt. In.	Time of Bloom
			Balloonflower
grandiflorum	Blue-violet	36	Jul.-Aug.
grandiflorum album	White	36	Jul.-Aug.
g. Shell Pink	Soft Pink	36	Jul.-Aug.

PHLOX PANICULATA — Hardy Phlox

Phlox are the most showy plants in the garden. They are perfectly hardy and flower throughout the summer when perennial blossoms are needed most.

Caroline Vandenberg	Lavender-Blue	30 in.
Chieftain	Ruby Red	36 in.
Count Zeppelin	White, Red-Eye	36 in.
Daily Sketch	Pink	36 in.
E. I. Farrington	Salmon Pink	24 in.
Enchantress	Salmon Pink	36 in.
Firebrand	Crimson	30 in.
Flash	Rosy Red	36 in.
George Stipp	Salmon Pink	24 in.
July Lights	Carmine	30 in.
Leo Schlageter	Scarlet	36 in.
Mary Louise	White	30 in.
Mia Ruys	Dwarf, Pure White	18 in.
Milly von Hoboken	Light Pink	30 in.
Progress	Light Blue	30 in.
Royal Purple	Purple	30 in.
Spitfire	Salmon Orange	30 in.

Phlox — Spring Flowering

These are the early spring-flowering types with masses of bloom with pretty moss like, evergreen foliage. They are splendid ground covers, edging plants and rock plants.

PHLOX

nivalis camla, compact grower.	Pure Pink	9	May-Jun.
			\$.75 each, 10 for \$6.50
subulata	Rose	6	May
s. Sky Blue	Blue	6	May
s. atropurpurea	Rose-purple	6	May
s. Alexander's Pink	Pink	6	May

s Emerald Cushion, Blue Blue 6 May
 s Emerald Cushion, Pink Pink 6 May

Two new varieties with foliage that remains a beautiful rich green throughout the season.

Both varieties 3 for \$1.75, 10 for \$5.00

PHLOX glaberrima (suffruticosa) Miss Lingard

The best early white Phlox, flowering throughout the summer.

White 24 Jul.-Aug.



Primula — Munstead Strain

PRIMULA

polyantha, Munstead Strain	Various	10	May-Jun.
veris	Yellow	8	May

SCABIOSA

A group of these will provide a wealth of flowers for cutting.

caucasica	Blue	24	Jun.-Jul.
caucasica alba	White	24	Jun.-Jul.
c. Houses Hybrids Mixed, Blue Lavender or White		24	Jun.-Jul.

THYMUS vulgaris

Border Gem (Sicily)

Border Gem Thyme is a plant of many purposes. Since we introduced it a year ago, many customers have planted it and are enthusiastic about the results.

Border Gem Thyme is a low (6 to 9 inches) distinctly spreading type forming a low mound 15 to 18 inches or more in diameter.

It is evergreen for year round attractiveness.

It will grow and spread where grass will not succeed and prosper in warm sunny places and on dry bankings.

Border Gem Thyme is ideal for a low border in the garden along a path or in front of evergreen and shrub plantings.

Because of its rapid growth its cost is low compared with other evergreen ground covers or border plants.

Prices — 10 for \$6.00

25 for \$12.50

Plant some of the newer Phlox

Discard your old magenta — colored Phlox and buy a group of these newer exciting colors. Phlox are perfectly hardy anywhere in New England. Plant them freely for July and August flowers.

5 or more plants of one variety will be furnished at the 10 rate.

SEDUM **Stonecrop**

A group of plants that succeed in dry sunny places. The taller kinds are effective in the border.

	Color	Hgt. In.	Time of Bloom
spectabile, Brilliant	Red	18	Aug.-Sep.

STOKESIA **Stokesia**

The charm of the Stokesia, either in the garden or as a cut-flower, is rapidly increasing its popularity.

laevis	Blue	18	Aug.-Sep.
--------	------	----	-----------

TEUCRIUM **Germander**

A small shrub-like plant of moderate growth with dark shiny leaves. Its evergreen foliage resembles Dwarf Boxwood but may be used in places where Boxwood is not hardy. Teucrium is ideal for an edging and can be trimmed to any height up to one foot. When planted six inches apart it rapidly makes a solid edging. We grow them by the thousands.

chamaedrys	Rose	18	Jul.-Aug.
------------	------	----	-----------

THALICTRUM

dipteroarpum	Violet	48	Aug.-Sep.
--------------	--------	----	-----------

THERMOPSIS

carolinianum	Lemon Yellow	48	Jun.-Jul.
--------------	--------------	----	-----------

TROLLIUS **Globeflower**

europeus, Yellow Globe,	Yellow	18	May-Jun.
-------------------------	--------	----	----------

VERONICA **Speedwell**

The various habits of the members of this family, make it one of the most important. All have excellent foliage and will do as well in partial shade as in the sun.

incana (Gray foliage)	Blue	10	Jun.-Jul.
maritima (longifolia) subsessilis	Violet	32	Jul.-Aug.
			\$.75 each, 3 for \$2.00, 10 for \$6.00
spicata, Blue Spire	Deep Blue	15	Jun. Aug.
			\$.65 each, 3 for \$1.75, 10 for \$5.00
s. rosea	Rose-Pink	18	Jun.-Jul.

VINCA **Periwinkle, Myrtle**

The dark evergreen glossy foliage of the Myrtle completely covers the ground in shady places. Add to this quality, its attractive flowers, and we can understand its popularity as a ground cover. Planted six or eight inches apart they soon grow into a solid mat.

minor 10 for \$2.50 — 100 for \$21.00	Violet	8	May-Jun.
minor, Bowles Variety Larger blooms of	Violet	8	May-Jun.
10 for \$4.50 — 100 for \$36.00			

VIOLA **Violet**

cornuta. Tufted Pansies.			
Blue Perfection	Blue	8	May-Sep.
Chantreyland	Apricot	8	May-Sep.
Jersey Gem	Violet	8	May-Sep.
Lutea Splendens	Yellow	8	May-Sep.
White Perfection	White	8	May-Sep.
odorata. Sweet Violets.			
Double Russian	Blue	6	May-Jun.
			3 for \$1.75, 10 for \$5.00
Rosina	Pink	8	Apr.-Sep.
Royal Robe	Deep Violet Blue	8	Apr.

We have the following plants not listed in our main Perennial section.

**\$.50 each, 3 of one variety \$1.35,
10 of one variety \$3.50**

Achillea ptarmica, The Pearl	Platycodon mariesi
Anemone pulsatilla	Pulmonaria angustifolia azurea
Arenaria montana	Phlox Beacon
Armeria caespitosa	B. Come
Artemisia lactiflora	Blue Hill
Aster Blue Eyes	Boule de Feu
Aster Blue Plume	Camillo Schneider
Aster Climax	Jules Sandeau
Aster Skylands Queen	Le Mahdi
Bergenia cordifolia	Morgenrood
Centaurea dealbata	Painted Lady
Centaurea montana	Rheinlander
Clematis recta	Rinjstroom
Delphinium chinense	Thor
Dianthus delt. Brilliant	Widar
Digitalis ambigua	Phlox stoloniferum
Echinacea purpurea	Salvia azurea
Echinops ritro	Sedum spectabile, pink
Epimedium niveum	Valeriana officinalis
Eupatorium coelestinum	Veronica spicata rubra
Gaillardia Dazzler	Viola, Single Russian
Helenium autumnale	Herbs
Hemerocallis thunbergi	Costmary
Hemerocallis Ochroleuca	Toothed Lavender
Hosta japonica	Curly Mint
Hosta japonica variegata	Bergamot Mint
Limonium latifolium	Grayleaved Peppermint
Pentstemon, Pink Beauty	White Mugwort
Physostegia virginiana	Sweet Flag



Helleborus niger — Christmas Rose

Herbs

MANY gardeners have been surprised at the pleasure they have derived from growing herbs. The plants themselves have added interest to their gardens. The use of the herbs in soups, salads, with meats and vegetables have made those dishes more interesting and tasty.

Plants which grow in partial shade are marked PS.

Plants which grow in the shade are marked S.

Perennial Herbs

Prices are \$.60 each, 3 for \$1.50, 10 for \$4.50

		Hgt. In.	Location
BALM, LEMON	Melissa officinalis	18	PS
Leaves used for lemon flavor in drinks, salads, sauces and liqueurs.			
BEEBALM	Monarda didyma	36	
Leaves make a tea.			
BURNET, SALAD	Sanguisorba minor	18	PS
Leaves used for cucumber flavor in salads, vinegar and drinks.			
CATNIP	Nepeta cataria	30	
Leaves used in medicinal tea.			
CHIVE	Allium schoenoprasum	18	
Leaves used for onion flavor in salads, cheese, soup and potatoes.			
HOREHOUND	Marrubium vulgare	30	
Leaves used to make candy and a healthful tea.			
HYSSOP	Hyssopus officinalis	15	PS
Leaves used in soups, salads, liqueurs, medicinal tea and vegetables.			
LAVENDER COTTON	Santolina chamaecyparissus	24	
Fragrant gray-green edging plant.			
LAVENDER, TRUE	Lavandula vera	24	PS
Dried flowers of all Lavenders used in sachets, linens and potpourris.			

ALLTURF SUNNY

Contains 90% extra re-cleaned permanent lawn grasses, including fancy Kentucky Blue Grass, superior Illahee Fescue and Highland Bent. No clover.

Allturf Sunny, 2-lb. bag	\$2.70
5-lb. bag	6.50

ALLTURF SHADY

A carefully prepared mixture of choice grasses selected for their permanence and ability to flourish under shady conditions. Includes Kentucky Blue grass, Chewing's Fescue and Illahee Fescue. No clover.

Allturf Shady, 2-lb. bag	\$2.70
5-lb. bag	6.50

		Hgt. In.	Location
MARJORAM, POT	Majorana onites	18	
With vegetables and meat.			
MARJORAM, SWEET	Majorana hortensis	18	
Leaves in soups, dressing, and in tomato and meat dishes.			
MINT, APPLE	Mentha rotundifolia	30	S
PEPPERMINT	Mentha piperita	30	S
PINEAPPLE	Mentha rot. variegata	18	S
SPEARMINT	Mentha spicata	24	S
Leaves of all mints used in jelly, sauce, drinks, juleps, vinegar.			
ROSEMARY	Rosmarinus officinalis	24	PS
Leaves used in soups, stews, fish sauce, with creamed potatoes, and to make "Rosemary Biscuits."			
SAGE, GARDEN	Salvia officinalis	24	
Leaves, dried and ground, used in stuffing, sausage and cheese. Fresh leaves in soups.			
SAVORY, WINTER	Satureia montana	12	PS
Leaves, dried and ground, used in stuffing, and gravy. Dried leaves, ground, are a substitute for pepper.			
SOUTHERNWOOD	Artemisia abrotanum	48	
Dried leaves burned to dispel cooking odors. Leaves used in salads and cooking.			
SWEET WOODRUFF	Asperula odorata	8	S
Leaves used in "May Drink" punch, champagne and white wine.			
TARRAGON	Artemisia dracunculus	24	
Leaves used in vinegar, salads, fish sauce, mayonnaise, and chicken dishes. Ours is the true French type.			
THYME, COMMON	Thymus vulgaris	8	
Leaves used in soup, meat and fish sauces, and vegetable dishes.			

LAWN SEEDS

BEAUTYLAWN SUNNY

This mixture will form beautiful lawns under average conditions. Selected Kentucky Blue grass, Highland Bent, and Red Top. No clover.

Beautylawn Sunny, 2-lb. bag	\$2.30
5-lb. bag	5.50

BEAUTYLAWN SHADY

A well-balanced mixture of selected, clean grass seed tolerant of shady locations, where it will produce a fine permanent lawn. Includes Kentucky Blue grass, Chewing's Fescue and Creeping Red Bent.

Beautylawn Shady, 2-lb. bag	\$2.30
5-lb. bag	5.50

Fruit Trees

	Size	Each	Per 10
APPLES	2 year	\$1.50	\$13.50
Baldwin.	Bright red Winter apple; good for eating and cooking.		
Cortland.	Bright red, like McIntosh, but keeps into the Winter.		
Delicious.	Large, conical and striped red and yellow. Winter apple.		
Gravenstein.	A delicious red and yellow striped Autumn variety.		
McIntosh Red.	A red Autumn apple with crisp flesh and delicious flavor.		
Northern Spy.	Large red and yellow Winter apple for eating and cooking.		
Red Astrachan.	Bright red early apple for Summer. Quick growing and early bearing.		
Rhode Island Greening.	Rich acid flavor, tender and juicy; yellow in color sometimes having a red cheek. A very delicious winter apple of good keeping quality.		
Yellow Transparent.	Early yellow, good for eating and cooking.		
Wealthy.	Large and attractive; quality excellent. Ripens ahead of McIntosh. A good variety, extremely hardy and heavy bearer.		

3, 4, and 5 year trees available in some varieties.

Dwarf Apples:	3 to 3½ ft.	\$3.00 each
Red Delicious		
Red Northern Spy		
Yellow Delicious		

CRAB APPLES	Each
Hyslop.	Dark red or purplish fruits. One of the best known Crabs. Late Sept. and Oct. 2 year \$2.00

PEARS	2 year	\$2.25
Bartlett.	Yellow and red. Fine shape and color, and excellent flavor. Sept.	
Beurre Bose.	Russet-gold exquisite flavor, bears abundantly in October and November.	
Clapp's Favorite.	Large, lemon-colored fruit with brown dots; flesh rich and sweet. Early August.	
Seckel.	A delicious sweet pear, small russet-brown, ripens in October.	

Dwarf Pears:	3 to 4 ft.	\$2.50 each
Bartlett		
Clapp's Favorite		
Seckel		

CHERRIES	
Black Tartarian.	Black, sweet early favorite. 2 year \$2.50
Montmorency.	Large red sour cherry: most popular sour cherry in America. 2 year \$2.00

PEACHES	2 yr. \$1.25 ea.	\$11.00 per 10
Elberta.	Large, yellow with deep red cheek, midseason.	
Golden Jubilee.	Large, yellow and early.	
Hale Haven.	Large, yellow fleshed, beautifully colored.	
South Haven.	Large, yellow fleshed, excellent flavor, early midseason; very hardy.	

All are free stone

PLUMS	2 year	\$2.25
Abundance.	Light yellow fruits of excellent flavor.	
Burbank.	Dark violet-red, middle August.	
Fellenberg.	Late, medium size, freestone; dark purple, delicious. Fine for drying.	

QUINCE	2 year	\$2.00
Orange.	Heavy light yellow of excellent flavor.	

Small Fruits

ASPARAGUS ROOTS	2 yr.	\$1.75 for 25, \$4.75 per 100
Mary Washington.	The best variety grown, it is rust-resistant, rich flavored and tender.	

RHUBARB ROOTS	75c each, \$6.50 per 10
MacDonald,	extra sweet, rich flavor, heavy producer.

GRAPES	3 year	\$.90 each, \$7.50 for 10
Blue-Black	Red	White
Concord	Brighton	Niagara
Fredonia	Catawba	
Worden	Delaware	

BLACKBERRIES	\$1.80 per 10, \$12.00 per 100
---------------------	--------------------------------

Erie. Early variety.

Eldorado. A very early variety with large, handsome fruits.

RASPBERRIES	\$2.00 for 10, \$18.00 per 100
--------------------	--------------------------------

Indian Summer. Large red berries of the everbearing type. June and Sept.

Latham. Brighter red, exceptionally large, late-June, mid-July.

Our Raspberries are strong transplants.

HYBRID BLUEBERRIES 12 to 15 in.	Each	Per 10
Cabot.	\$1.60	\$15.00

Good-sized berries, excellent flavor. Juicy fruit. Plants low and spreading.

Pioneer. Medium high growth. Fruit middle of July.

Rubel. A vigorous productive variety. Well-developed bushes, large berries of fine color. Ready to pick the first week in July.



McIntosh Red Apple Tree

Roses

Hybrid Tea Roses

THESE are the everblooming roses which produce the beautiful long-stemmed flowers everyone so much admires. They should be planted about 15 inches apart in rather narrow beds and in lots of not less than three, and preferably a half-dozen or more of one kind.

Red Roses

- | | |
|---|---------------|
| | Each |
| Better Times (Pat. #23) | \$1.50 |
| Buds crimson opening to brilliant cerise-red flowers. Fragrant, free-blooming, fine for cutting. | |
| Charlotte Armstrong (Pat. #455) | 1.75 |
| All America Rose Selection. Long, pointed, blood-red buds forming bright red, 3 to 4 inch. flowers. | |
| Christopher Stone | 1.25 |
| Scarlet-red flowers of velvety texture. Vigorous upright grower. Old fashioned damask fragrance. | |
| Crimson Glory (Pat. #105) | 1.75 |
| Voted the most fragrant rose, this sturdy plant with its quantities of deep crimson flowers will be one of your favorites. | |
| Etoile de Holland | 1.25 |
| Long pointed glorious scarlet-crimson buds, opening to glowing red flowers. Intensely fragrant. | |
| McGredy's Scarlet | 1.25 |
| A tall-growing plant bearing abundant flowers of rose-red to scarlet. | |
| Red Radiance | 1.25 |
| Bright cerise-red. | |
| Rose of Freedom (Pat. #791) | 1.75 |
| Highest scoring red rose in the nation in 1947. Long stemmed, extremely double flowers borne freely on a vigorous, disease resistant upright shrub. | |

Pink Roses

- | | |
|--|-------------|
| Betty Uprichard | 1.25 |
| A vigorous and dependable rose. Good-sized buds open to salmon suffused with orange on the inside, coppery carmine on the outside. | |
| Katherine T. Marshall (Pat. #607) | 1.75 |
| The All-America Pink Rose. The delicate, open, glowing pink blossoms are borne on stems so long that they stand clear above nearby plants. | |



Rose, Betty Uprichard



Rose, Better Times

- | | |
|--|-------------|
| Picture | 1.25 |
| Very free-blooming. The flowers are a clear rose-pink with attractively curving petals. | |
| Pink Dawn | 1.25 |
| A vigorous rose and heavy bloomer with extra-long deep pink rose-buds opening to lovely pink blooms. | |
| Radiance | 1.25 |
| Carmine-pink. A fine rose for hot weather, blooms throughout the season. | |



Rose, Etoile de Hollande

Rose, *Charlotte Armstrong*

White Roses

- K. A. Viktoria** Each **1.25**
 The standard white for 40 years. Pearly color, splendid in form, exquisitely perfumed.
- Mme. Jules Bouche** **1.25**
 Considered by many to be the best white, with large well-shaped double white blossoms, faintly tinged with pink at center.

Yellow Roses

- Golden Dawn** **1.25**
 An ideal yellow rose. Buds are sunflower-yellow strongly splashed with crimson, buds of the flowers are lemon-yellow, sweetly fragrant and long-lasting.
- Joanna Hill** **1.25**
 The long-lasting flowers are a clear yellow, with an orange-yellow heart.
- Soeur Therese** **1.25**
 Rich daffodil-yellow blossoms which hold their color very well and are borne freely on long, sturdy stems; fine for cutting.
- Yellow Sastago** **1.25**
 Yellow form of Condesa de Sastago with the same very large, double flowers. Very fine.

Multi-Colored Roses

- Condesa de Sastago** **1.25**
 A splendid two-toned rose with very large, double flowers. Oriental red inside and rich gold without.
- Forty-Niner (Pat. #792)** **2.50**
 This newest introduction will arouse more admiration and comment than any other rose in your garden. Startlingly different, with its dazzling chrome-yellow exterior petals contrasting with the vivid orient-red interior.
- Mme. Joseph Perraud** **1.25**
 The buds are nasturtium-orange opening to buff with shell-pink shading at the edges.
- President Herbert Hoover** **1.25**
 Multi-colored. Buds open to dark pink and rose, orange, streaked with red, shadings of salmon apricot.
- Talisman** **1.25**
 A multi-colored rose ranging from scarlet and gold to deep rose and pale yellow. Fragrant.

Rose, *Crimson Glory*

Floribunda and Polyantha Roses

- | | Each | Per 10 |
|--|-------------|--------------|
| Anne Vanderbilt | 1.75 | 17.00 |
| True hybrid tea semi-double flowers of dazzling coppery-orange. | | |
| Bright Eyes | 1.50 | 13.50 |
| A new yellow Floribunda; canary-yellow buds opening to fragrant, double creamy yellow flowers tinged with silver at outer edges. Destined to become outstandingly popular. | | |
| Chatter (Pat #739) | 1.50 | 13.50 |
| A lively, bright rose with velvety crimson petals making a constant display. This plant is extremely resistant. | | |
| Cheer | 1.25 | 11.00 |
| The deep rose-pink variation of World's Fair. The numerous semi-double flowers are borne in clusters of 5 to 11 on compact plants about 24 inches tall. | | |
| Crimson Rosette | 2.00 | 18.00 |
| A gay, exciting crimson Floribunda especially suited for solid masses of color. The long-lasting blossoms are ideal for flower arrangements. | | |
| Curly Pink | 1.75 | 17.00 |
| Large, full, recurled flowers in immense clusters. | | |
| Else Poulson | 1.25 | 11.00 |
| Large, semi-double flowers of bright rose-pink, on erect-growing, thrifty plants. | | |
| Floradora | 1.25 | 11.00 |
| Geranium red in large clusters. Blooms from early June to late Fall. | | |
| Glorious | 1.50 | 13.50 |
| Extremely vigorous and hardy. Presents an amazing display of vermilion buds expanding into semi-double flowers of Tyrian rose. Flowers literally cover the plant. | | |
| Goldilocks (Pat. #672) | 1.75 | 16.00 |
| Here is the long-awaited yellow Floribunda. The numerous clusters of golden yellow, double roses are especially colorful and showy. Delightfully fragrant. | | |
| Improved Lafayette | 1.00 | 9.00 |
| Profuse blooms of deep, glowing red suffused with vivid crimson. | | |
| Permanent Wave (Pat. #207) | 1.50 | 13.50 |
| Semi-double flowers of beautiful two-toned red. | | |

Pinkie Each 2.00 Per 10 18.00

One of the more fragrant Floribundas. Dainty in appearance, both if plant and flower. The bright pink flowers have 14 to 16 petals on long stems ideal for cutting.

Pink Rosette 2.00 18.00

Clear, soft pink in bud and flower with so many in a cluster that they appear as a solid mass of color. Disease resistant and hardy.

Pinocchio (Pat. #484) 1.50 13.50

Pointed salmon-pink and gold buds opening to full blooms of clear, bright pink. The long-lasting flowers are charming for cut-flower arrangements. Sturdy and free-branching.

Summer Snow (Pat.#416) 1.25 11.00

Most prolific of white Floribundas. Flowers as clean as snow, with 15 or more buds to the cluster.

World's Fair (Pat. #362) 1.50 13.50

Velvety red flowers in large clusters; flowers size of tea roses. Excellent for mass planting.

Climbing Roses

American Pillar Each 1.00

Lusty climber, bold waxy foliage, clusters of large, sparkling pink, single flowers.

Blaze (Pat. #10) 1.50

Large clusters of vivid scarlet flowers. Gives a fine display in June and then blooms again in the fall.

Climbing American Beauty 1.10

Handsome buds and flowers of American Beauty red, good form and early flowering.

Dorothy Perkins 1.00

The familiar old-time pink climber. Because of many requests for a vigorous grower, particularly on bankings and under adverse conditions we are again offering this old favorite.

Golden Climber (Mrs. A. C. James) 1.75

A yellow rose that many consider the finest yellow climber. Fragrant ideal for picking, very long stiff stems.

Golden Glow (Pat. #263) Each 1.75

Very large fragrant pure yellow, double flowers of extreme beauty, freely produced on plants with rich dark green foliage.

Mary Wallace 1.10

Another climber on type of Dr. W. Van Fleet, but blooms are brilliant pink with a yellow undertone. Very rich.

New Dawn (Pat. #1) 2.00

Everblooming and improved form of Dr. Van Fleet. Large double flowers of clear soft pink. An amazing new climbing Rose.

Paul's Scarlet Climber 1.10

This is the most popular and satisfactory Scarlet Climbing Rose. It has huge clusters of brilliant scarlet flowers. Beautiful rich foliage.

Silver Moon 1.10

A very strong climber with beautiful waxy green foliage and very large, pure white, semi-double flowers with golden yellow stamens.

Shrub Roses

Grootendorst Supreme 1.10

An improved variety. Extremely hardy and vigorous bush with large cherry red flowers that are borne continuously from Summer to late Autumn. Excellent in the shrub border and outstanding as a flowering hedge.

Rosa hugonis. "Father Hugo Rose" *Golden Rose of China*
See Page 24

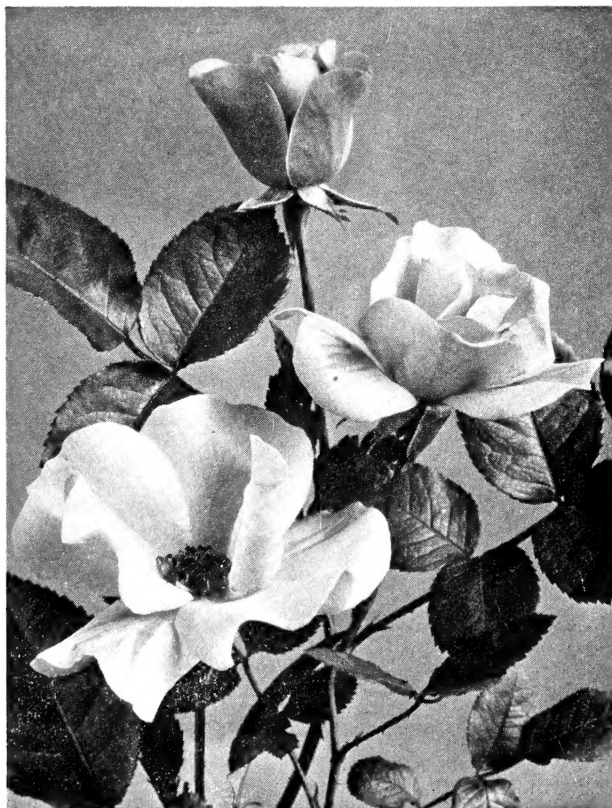
Rosa rugosa *Rugosa Rose*
See Page 24

R. rugosa alba *White Rugosa Rose*
See Page 24

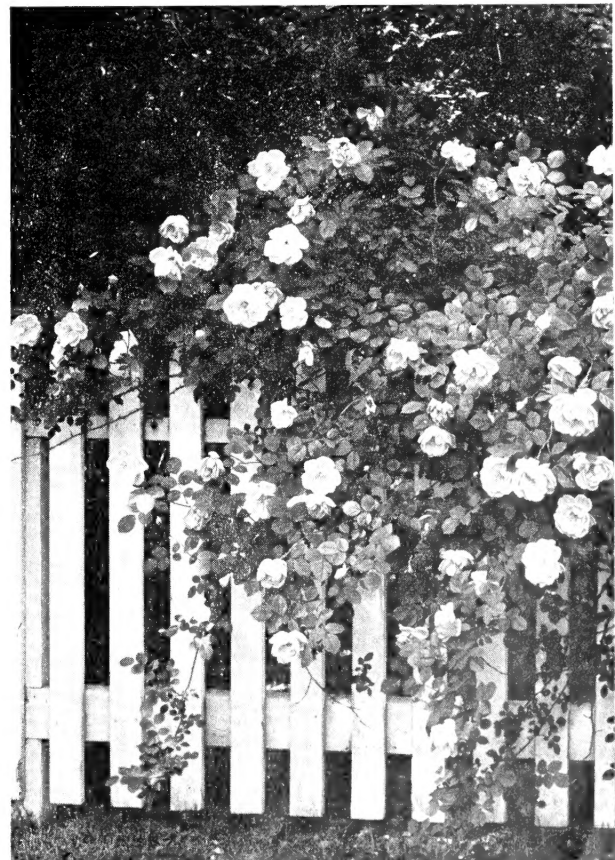
Rosa rugosa Blanc Double de Coubert

This is a shrub rose with fully double flowers. Creamy white blossoms in profusion on a vigorous, extremely hardy, free-blooming shrub which is ideally suited for use in the shrub border or as background for other roses.

2 yr. \$1.50



Else Poulsen



Silver Moon

List of Materials Available in Limited Sizes and Quantities

Abies fraseri	Fraser Fir	5 to 8 ft.	Lonicera morrowi	Morrow Honeysuckle	2 to 5 ft.
Acer ginnala	Amur Maple	3 to 10 ft.	Magnolia nigra	Purple Magnolia	2 to 3 ft.
Acer negundo	Boxelder	6 to 12 ft.	Malus theifera	Tea Crab	4 to 7 ft.
Actinidia arguta	Bower Actinidia	3 ft. runners	Nyssa sylvatica	Tupelo	3 to 12 ft.
Akebia quinata	Five-leaf Akebia	3 and 4 yrs.	Ostrya virginiana	American Hophornbeam	10 to 16 ft.
Amorpha fruticosa	Indigo bush	3 to 6 ft.	Picea abies remonti	Remont Spruce	5 to 10 ft.
Azalea canescens	Piedmont Azalea	15 in. to 3 ft.	Picea pungens kosteriana	Koster Blue Spruce	10 to 16 ft.
Azalea viscosa	Swamp Azalea	1½ to 4 ft.	Pinus mugho	Swiss Mountain Pine	5 to 8 ft.
Betula nigra	River Birch	6 to 10 ft.	Phellodendron amurense	Amur Cork Tree	6 to 18 ft.
Campsis (Bignonia) radicans	Trumpet Vine	3 and 4 yrs.	Phellodendron sachalinense	Saghalin Cork Tree	10 to 16 ft.
Celtis occidentalis	Hackberry	5 to 10 ft.	Physocarpus opulifolius	Ninebark	4 to 8 ft.
Chamaedaphne calyculata	Leatherleaf	15 in. to 2½ ft.	Physocarpus opulifolius aureus	Goldleaf Ninebark	3 to 8 ft.
Cornus amomum	Silky Dogwood	3 to 4 ft.	Prunus pissardi veitchi	Veitch Purpleleaf Plum	4 to 5 ft.
Cornus sanguinea	Bloodtwig Dogwood	3 to 5 ft.	Prunus subhirtella	Higan Cherry	5 to 10 ft.
Cornus stolonifera	Redosier Dogwood	3 to 4 ft.	Ptelea trifoliata	Hop Tree	5 to 10 ft.
Cornus stoloniflavoramea	Yellowtwig Dogwood	2 to 5 ft.	Quercus bicolor	Swamp White Oak	10 to 16 ft.
Corylus americana	American Filbert	3 to 6 ft.	Rhamnus frangula	Glossy Buckthorn	3 to 10 ft.
Corylus avellana	European Filbert	2 to 8 ft.	Robinia pseudoacacia	Black Locust	6 to 10 ft.
Crataegus coccinea	Thicket Hawthorn	5 to 14 ft.	Salix discolor	Pussywillow	4 to 8 ft.
Crataegus nitida	Glossy Hawthorn	8 to 10 ft.	Sambucus canadensis	American Elder	3 to 6 ft.
Crataegus oxycantha	English Hawthorn	5 to 16 ft.	Sorbaria sorbifolia	Ural False Spirea	2 to 3 ft.
Diervilla florida venusta	Venus Weigela	3 to 4 ft.	Sorbus americana	American Mountain Ash	4 to 8 ft.
Elaeagnus longipes	Cherry Elaeagnus	2 to 5 ft.	Spiraea thunbergi	Thunberg Spirea	2 to 3 ft.
Elaeagnus umbellata	Autumn Elaeagnus	4 to 8 ft.	Taxus hunnewelliana	Hunnewell Yew	15 to 18 in.
Fagus sylvatica riversi	Rivers Purple Beech	3 to 4 ft.	Taxus media wymani	Wyman Globe Yew	15 to 24 in.
Forsythia viridissima	Greenstem Forsythia	3 to 6 ft.	Tilia vulgaris,	European Linden	6 to 12 in. cal.
Genista tinctoria	Woadwaxen	1½ to 4 ft.	Tsuga diversifolia	Dwarf Japanese Hemlock	1½ to 3½ ft.
Hamamelis virginiana	Witchhazel	3 to 10 ft.	Viburnum cassinoides	Withe-rod	3 to 5 ft.
Hypericum densiflorum	Dense St. Johnswort	1½ to 5 ft.	Viburnum molle	Kentucky Viburnum	2 to 5 ft.
Hydrangea petiolaris	Climbing Hydrangea		Vitis aestivalis	Summer Grape	5 yr.
Juniperus virginiana elegantissima	Goldtip Redcedar	5 to 9 ft.	Vitis vulpina (cordifolia)	Frost Grape	5 yr.
Larix laricina	Eastern Larch	14 to 16 ft.	Wistaria sinensis	Chinese Wistaria	2 to 6 yr.
Lespedeza bicolor	Shrub Bushclover	2 to 3 ft.			

Guarantee

We guarantee our plants to be healthy and free from injurious insects, to be dug carefully and packed properly for safe shipment. If damaged in transit, a claim should be made upon receipt, notifying carrier and us of the circumstances. If plants prove to be other than true to name, we will supply new ones at the next proper planting season, but in no case do we assume liability for more than the original purchase price.

IMPORTANT

Conditions of Sale

The articles herein listed will be furnished in accordance with the following schedule:

1 to 4 plants of one kind and size will be priced at the each rate, when an each rate is given.

5 to 24 plants of one kind and size will be priced at the ten rate, when a ten rate is given.

25 or more plants of one kind and size will be furnished at the hundred rate, when a hundred rate is given.

Specimen plants, selected by the customer or by his representative, will be priced according to their individual values.

With few exceptions the plant names used conform to "Standardized Plant Names" 1942 edition.

Shipping Directions

When no route or method of shipment is designated by

the customer, we shall exercise our best judgment. Shipments may be made by express, freight or parcel post. Truck deliveries are subject to special arrangements. Our prices are f.o.b., North Abington, Massachusetts. Transportation and delivery are additional; except that, when remittance accompanies order, we will prepay delivery of roses, vines and perennials.

Terms

Our terms are cash. Charge accounts, for 30-day credit, may be opened upon receipt of satisfactory credit references. All accounts unpaid after due date will be subject to sight draft without further notice. C. O. D. express shipment will be made (with collection charges added to the bill) only when order is accompanied by a deposit of at least 25% of the amount of the bill.

Prices are subject to change without notice.



