

## **Historic, Archive Document**

Do not assume content reflects current scientific knowledge, policies, or practices.



62.57

**MODERN NAMED  
PELARGONIUMS  
and GERANIUMS**

*“The favored flower  
of a century.”*

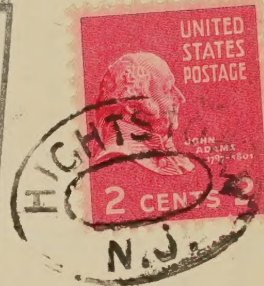
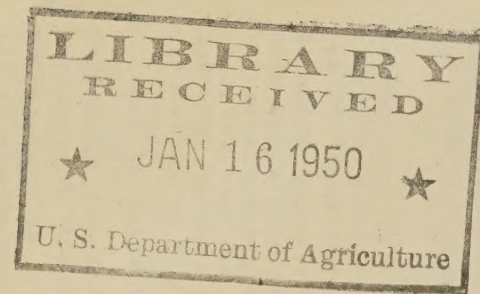
Ivy Leaved, Scented, Novelties,  
Variegated Foliage and many  
Standard, New and Choice Vari-  
eties of Zonale Classes.

1949

CARLTON VILLA

P. O. BOX 247 HIGHTSTOWN, N. J.

Phone HIGHTSTOWN 1048



Be

Library, U.S. Dept. of Agriculture  
Washington, 25, D.C.

## GENERAL INFORMATION ON ORDERING

We ship out only strong started plants with good roots. We do not sell cuttings of any kind. Our plants are husky pot plants, lots of roots and ready to grow fast. They are ready for the flower bed outside or 4" pots inside. Each plant is shipped planted in a 3" composition pot. You get 10 pounds compost soil in each 12 pots. Upon arrival they should be watered thoroughly and placed in a light shady window for two or three days to recover from the shock of travel.

Please specify 3 or 4 substitutions as many varieties are always in propagating beds and may not be ready for shipment when your order arrives. We may delay shipment for three or four weeks in order to give you stronger plants but we will notify you when shipment will be made. We start shipping plants for spring season about March 15th if weather permits. We cannot accept an order for less than \$2.00. Remittance must accompany order. No C.O.D. shipments.

Order as early as you can. Specify shipping date.

We cannot accept any responsibility for damage in transit. Make claim immediately on carrier.

Plants can be shipped much better in multiples of 6 or 12 properly packed in special containers to fit them. Try to order this way.

Plants shipped parcel post prepaid in 1st and 2nd zone. By express collect to all other points. Shipping weight 12 pounds per 12 plants.

All plants labeled on pot. Check list catalogue and planting instructions enclosed in each order.

On all Geraniums the leaves may turn yellow on long or delayed shipments. Some leaves will recover but new shoots will form quickly at all leaf joints and make a better and bushier plant.

Try to visit our greenhouses any day of the week except Monday, Tuesday and Wednesday, between 9 A.M. and 5:00 P.M. during Spring season and select your own plants in bloom from thousands. We have tried to make this hobby the largest and best in the Eastern United States. Come early before shipments deplete our collection for the season.

DIRECTIONS - Hightstown is on Route 25, use Route 1 from Philadelphia or N. Y. City to junction point where Route 25 joins it. Go to Peddle School on Main Street in Hightstown and turn off Main Street onto Etra Rd. Our place is on the right about 1000 feet from Main Street. Watch for our sign.

This catalogue cancels all previous price lists.

## GERANIUM PLANT FOOD

Geraniums grow fast and are heavy feeders. Soil in pots is soon exhausted unless replenished by complete plant food. Too much Nitrogen makes weak spindly growth. We have tried all kinds of fertilizer formulas but this one is the best for sturdy plants, lots of side shoots and flower branches. It is mostly organic material and will not burn if properly used. It brings blossoms out in their true clear bright colors and intensifies the color. It corrects soil condition and frees valuable plant food. It works best when scratched into surface soil of pots. Stops mold and moss from forming.

6 ounce can postpaid...60¢

## ZONALE OR GARDEN VARIETIES

1	ALPHONSE RICARD	Very large semi-double pure scarlet flowers. Large strong plant.....	\$.35
2	OLYMPIC RED	Very bright light scarlet large flowers. Heavy Plant.....	.40
3	MME. BUCKNER	A free flowering easily grown bushy plant. Double white flowers.....	.35
4	BEAUTE DE POITEVINE	Strong bushy plant. Flowers salmon-pink. Semi-double, very good.....	.35
5	BETTER TIMES	Beautiful double flowers of bright crimson. A vivid display in beds.....	.35
6	SALMON IDEAL	Lovely deep apricot-salmon with high lights. A bushy, strong growing plant.....	.35
7	MME LANDRY	Flowers Apricot-salmon, very free blooming. Withstands extreme heat.....	.35
8	RADIO RED	Rich velvety red, flowers profusely the en- tire year. Excellent for beds.....	.40
9	JEAN VIAUD	Dwarf compact plant. Flowers large of mauve rose, shading to white.....	.40
10	MONTMORT	Beautiful deep crimson with white in center. Large flowers, striking variety.....	.40
11	IRVINGTON BEAUTY	Soft rosy-pink flower. Light green foliage. Ideal pot plant.....	.40
12	AMERICAN BEAUTY	Vivid scarlet-cerise. Large flower. A showy pot variety. Blooms freely.....	.50
13	APPLE BLOSSOM	Large soft pink flowers shading lighter at edge. A profuse bloomer.....	.50
14	JEAN PABON	A compact French-type Geranium. Vivid red flowers with white eye.....	.40
15	BERTHE DE PRESILLY	Handsome light green foliage with soft glow- ing silver rose-pink double flowers.....	.50
16	DOUBLE DRYDEN	Unique color, crimson with coral white cen- ter and shadings of lilac.....	.50
17	RED FIAT	Beautiful foliage and flowers of very clear red. Heavy producer.....	.40
18	JEAN OBERLE	Double pink shading out to white. Huge heads of flowers.....	.40
19	CASTELLANE	Heavy rich cherry red. Very large semi- double flowers.....	.40
20	LOUISE	Largest Geranium known. Great large flowers semi-double. Clear scarlet.....	.40

ZONALE OR GARDEN VARIETIES (Cont'd)

21	MME BARNEY	Blooms very freely in a lively shade of pure pink.....	.50
22	MISS F. PERKINS	Well known favorite with rosebud pink shading to white throat.....	.50
23	MRS. LAWRENCE	Loveliest of all salmon-pink Geraniums. Wonderfully free blooming.....	.40
24	MRS. RICHARD GLOEDE	Real large flowers of clear American beauty. Foliage dark green.....	.40
25	PINK ABUNDANCE	Wonderful flower of rich rose-salmon-pink blend. Free bloomer.....	.35
26	PINK PHENOMENA	Giant flower of mauve pink with white throat. Compact plant.....	.50
27	PRIDE OF CAMDEN	Old variety of excellent deep crimson. Tall plant. Blooms constantly.....	.35
28	MAGENTA RUBY	Dark sparkling red wine color. Flowers medium size. Free bloomer.....	.40
29	S. A. NUTT	Flowers velvety dark red. Tall plant. Often seen in park display beds.....	.35
30	SUZANNE	Flowers of cerise-magenta. Very sharply zoned two-color foliage.....	.40
31	SALMON SUPREME	Semi-double flowers of light salmon-apricot. Fine for pots.....	.40
32	PICARDY	Very fine salmon pink. Extra large semi-double flowers.....	.50
33	DOUBLE LA FRANCE	Every shade of pink and white beautifully blended. Large very double flowers.....	.40
34	FLORENCE DEMPSEY	Vivid pink with each petal feathered white. Strong bushy plant. Single flowers.....	.40
35	MARYLAND	Fiery red blossom of marvelous beauty. Compact, dark green, bushy plant.....	.40
36	MICHELLE SENSATION	Soft scarlet blooms on long stems. Best for cut flowers.....	.40
37	SANTA MONICA	Large single flower of scarlet, shading to white center. Beautiful variety.....	.40
38	MAXIME KOVALEVSKY	Vigorous plant. Large single flowers beautiful orange. Very bright and striking color.	.50
39	MARGARET DELAYLE	Flowers snow white, single, in large clusters. Constant bloomer.....	.40
40	MRS. E. G. HILL	An exquisite shade of large single, dark salmon flowers. Favorite plant.....	.40
201	WYONA	An extra fine semi-double scarlet red. Very large flowers.....	.40

## ZONALE OR GARDEN VARIETIES (Cont'd)

202	MARVEL Double flowers of scarlet-red. A brilliant old standard variety.....	.40
203	DOUBLE ORANGE Large double flowers of orange and white. Beautiful pot plant.....	.60
204	CALIFORNIA BEAUTY Smart new shell pink with white throat. Splendid pot plant. Very double.....	.50
205	LADY JANE Petite single flowers of salmon rose pink on long stems for cutting.....	.35
206	PAUL CAINE Light scarlet-red single flowers of fine form. Compact plant.....	.35
207	SALMON QUEEN Single Salmon flowers in large clusters. Strong growing ever flowering plant.....	.40
208	JUDY REED Wide open single flowers of dainty Ivory pink to light shrimp.....	.40
209	ANGELUS Pale orchid pink single flowers shading to white center. Free blooming.....	.40
210	ANNE VINCENT A beautiful blend of pink, coral, salmon and white. Double flowers. Excellent pot plant.	.50
211	EDMUND BLANC Very vivid double crimson and purple blend. Compact free blooming plant.....	.50
212	HAASE SCARLET New Patented double sparkling red-scarlet. Beautiful large flower heads and compact plant. Best red to date.....	.60
213	PRINCE VIOLET New Patented flower of violet purple. Distinctive shade. Very vivid color.....	.60
214	ORANGE BEAUTY New Patented shade of Florida Oranges. Large flowers, fully double.....	.60
215	DAYBREAK Beautiful semi-double flowers of salmon, coral and pink with small curled petals in the center.....	.50

## ZONALE FANCY NOVELTIES

41R	RED POINSETTIA Beautiful deep red double flower with narrow rolled and twisted petals. Each flower resembles a miniature cactus type Dahlia flower	.75
41P	PINK POINSETTIA Same as above but soft delicate pink blooms.	.75
42	CARNATION The margins of the petals are toothed, resembling small Carnations. Each flower is a bright salmon. Interestingly different...	.50
43	LITTLE DARLING A dwarf type Geranium with single rose-pink flowers with white center. Naturally very short and compact. 2 inch plants.....	1.00

## ZONALE FANCY NOVELTIES (Cont'd)

- 44 STARS AND STRIPES  
Sometimes called "Peppermint Stick" because each flower is bright red and snow white and each petal is different. This is really a novelty, very interesting..... 1.00
- 45 NOEL "WHITE CACTUS"  
New pure white cactus flowered Geranium. Strong stems and more branching habit than the red poinsettia. Free blooming, even small plants in small pots will bloom. A real novelty..... 1.50
- 46 FIAT QUEEN  
Carnation type, similar to number 42, but a beautiful double salmon pink. Each petal of each flower very distinctly toothed around the edge. Very bushy and compact and very free flowering. Highly recommended..... .60
- 47R DARK RED ROSEBUD  
The flowers never open wide, they resemble clusters of tiny, half open roses. Very double flower..... .60
- 47P PINK ROSEBUD  
Larger flowers, same type as above but lovely pure pink..... .75
- 47S SCARLET ROSEBUD  
Bright light scarlet buds of type above..... .75
- 250 PINK SNOW  
Large open flat flowers of snow white with pink edges on each petal..... .60
- 251 CANADIAN PINK AND WHITE  
Similar to Pink Snow but flower opens as Rosebud Type..... .60
- 252 PIGMY  
Tiny plant, with miniature cherry red flowers and pretty light green zoned leaves. Smallest of all zonales. 1 inch plants..... 1.00

### HYDRANGEA FLOWERED ZONALES

This beautiful class of Geraniums is the result of our hybridizing program last year. The outstanding feature - huge umbels of flowers held high above foliage on long stiff stems like Hydrangeas. Clusters of flowers 10 inches in diameter are not uncommon. Individual florets  $2\frac{1}{2}$ " across are semi-double or single. Plants grow large and healthy. All colors are exceptionally clear and clean and all blend together to make magnificent cut flower bouquets and corsages. 3" pot plants of this class will be very scarce this year until we have time to propagate further.

- H300 PAT AUDETTE  
The leader and forerunner of this class and probably the largest flowered. Color light mauve pink with clean white center. Huge clusters of long pointed buds on long heavy stems..... 1.00
- H301 CHEERIO  
Clear Cherry Scarlet with white center. Strong growing plant..... 1.00
- H302 AMITOLA  
Beautiful soft salmon pink with darker veins in the petals. Flowers large, round and wide open..... 1.00



## HYDRANGEA FLOWERED ZONALES (Cont'd)

- H306 AMBROSIA  
Pure white frilled flower with bright orange pollen. Large clusters of long pointed buds 1.00
- H307 EXCLUSIVE  
Huge clusters of pure pink flowers with small white centers. Best pink to date..... 1.00
- H308 ALLURE  
Large clusters of white flowers with heavy pink veining in petals. Long pink buds..... 1.00
- H309 SUNRISE  
Beautiful clusters of large frilled flowers of brilliant deep fire pink. A new color.... 1.00
- H310 MAYDAY  
Large flat salmon pink flowers with large white center. Looks like a pansy..... 1.00
- H311 INDIAN CHIEF  
Fiery orange red. Large flowers on long stems..... 1.00
- H312 RED VELVET  
Very deep blood red. The darkest red we have seen in Geraniums..... 1.00
- H314 AMBASSADEUR  
Large flat flowers of cherry red with small white eye. Very attractive plant with heavy red brown zone on crinkly leaves. A new type of leaf..... 1.00
- H316 PINK SATIN  
Large beautiful flesh pink wide open flowers. Large clusters on long stems..... 1.00
- H320 PINK OPAL  
A large single light pink with white center. Compact plant with scalloped light green leaves..... 1.00
- H322 ANGELICA  
Very vivid large clear apricot pink. Long pointed buds..... 1.00
- H327 PINK SHIMMER  
Very large snow white wide open flower with a thin pencil line of pink around the edge of each petal. Dark green ruffled leaves... 1.00
- H328 GEORGIA BELLE  
A new color combination of white with lots of heavy veins of deep peach brown in each petal..... 1.00
- H331 RED ROBIN  
Beautiful extra large cherry red with small white center. Very clear color..... 1.00
- H332 CORAL GEM  
Large clusters of very clear medium large light coral flowers with big white center blending into coral. Long stem and long pointed buds..... 1.00
- H333 LADY MULBERRY  
Very large flat wide-open flowers of pure burgundy red. Large clusters of long vivid red buds. A new color for Geraniums..... 1.00
- H334 DAZZLER  
Huge heads of fiery red flowers in solid color. Long stems, good keeping quality when cut..... 1.00
- H336 COROPINK  
Long pointed red buds opening to a delicate shade combination of pink, white, coral and shrimp. Very large clusters held on medium length heavy stems..... 1.00

## IVY LEAF GERANIUMS

48	LAVENDER ROSE Pale lavender double flowers. Plant of medium bushy growth with dark foliage.....	.50
49	SCARLET BEAUTY Semi-double, brilliant deep orange scarlet. Long growth, large flowers.....	.40
50	CHARLES MONSELET Double cerise rose-red. Large flowers of rosebud type.....	.50
51	ALLIANCE Large double white suffused with lilac. Small red spots in center. Rosebud type buds.....	.50
52	CHARLES TURNER The most popular double rose-pink. A free bloomer of large flowers.....	.35
53	ENCHANTRESS A lively shade of Orchid Pink with stripes and spots of deep rose pink.....	.50
54	GORDONS GLORY Semi-double bright red. Free bloomer. Short growth. A good pot plant.....	.40
55	JEANNE D'ARC Medium size flowers of pale lilac with red stripes in top petals. Dark glossy foliage.	.35
56	JOSEPH WARREN Beautiful double flowers of rich royal purple. Suitable for shady locations.....	.50
57	INTENSITY Large flowers of brilliant deep orange scarlet.....	.50
58	BRILLIANT A clear bright salmon-red flower of large size. A good trailing plant for hanging pots.....	.35
59	MRS. BANKS Large pure white flower with a touch of lavender in the throat. Good trailer.....	.35
60	BLUSH A delicate clear light pink single flower. Blooms freely. A fine hanging vine.....	.35
601	CEASAR FRANK Brilliant rose-pink with orange markings. Large semi-double flowers. Short heavy growth.....	.40
602	COMTESSE DE GREY Soft satin pink with top two petals marked light violet. Long bushy growth and a free bloomer.....	.50

## MARTHA WASHINGTON OR DOMESTICIUM

61	MARIE ROBER Large ruffled magenta purple shading to black. A beauty.....	.50
62	SUE JARRETT Large flowers shaded from rose to dark maroon.....	.50
63	HAIME SELASSI Beautiful dark rose and violet pansy with light center. Very rich.....	.50

MARTHA WASHINGTON OR DOMESTICIUM (Cont'd)

64	CARMEN QUEEN	Vivid carmen red with dark blotches on lower petals.....	.50
65	EASTER GREETINGS	Very early flowers of soft cerise pink with black markings.....	.50
66	EDITH NORTH	Beautiful salmon pink, shading deeper into dark brown blotches.....	.50
67	AZALEA	Bright rosy-red marked crimson and rose-pink	.50
68	MRS. LAYAL	Beautiful, perfect pansy flowers of purple, rose and white.....	.50
69	SPRINGTIME	Popular ruffled beauty of dainty pink with white throat.....	.50
70	GERMAN GLORY	Huge pink flowers with spots of violet like an Orchid.....	.50
71	SANTA MONICA	Soft delicate pink with red markings.....	.50
72	SALMON SPRINGTIME	Excellent early variety of salmon, rose-pink	.50
73	MARIE VOGEL	Large ruffled bright red and salmon with dark brown blotches.....	.50
74	PINK VOGEL	Beautiful shrimp pink with red blotches on upper petals.....	.50
75	ORCHID EDITH NORTH	Beautiful orchid pink with dark blotches on upper petals.....	.50
76	LUCY BECKER	Large ruffled flowers of lavender pink with crimson veins.....	.50
77	PROF. CORRENS	Bright cherry red with large black dots on lower petals.....	.50
78	ANDENKONAN MOSLOW	Large dark royal purple pansy flowers with darker center.....	.50
79	MACKENSEN	Large rose-pink with crimson and orange markings.....	.50
80	GERALDINE	Large ruffled flowers of clear pink with white centers.....	.50
81	LUCY ANNE LESLIE	Large ruffled flowers of deep pink with red veining and crimson center.....	.50
82	DARK ORIENTAL	Very good combination of purple and magenta. Very attractive.....	.50
83	MRS. MARY BARD	Beautiful snow white with fine cerise markings at base of petals.....	.50
84	GRANDMA FISHER	Beautiful large ruffled salmon flowers penciled with dark brown.....	.50

## SCENTED LEAF VARIETIES

85	SOUTHERNWOOD LEAVED Slender wiry growth with grey green leaves and small white flowers. Aromatic...	.75
86	MAPLE LEAVED Large light green five-lobed leaves with a pungent spicy scent. Lavender arrow shaped flower.....	.50
87	BLANDFORDIANUM Deeply cut fern like leaves of silver grey. White flowers with pink markings.....	.50
88	TRUE CAPITATUM Round crinkly, wooly leaves with strong scent. Prostrate grower or good climber...:	.75
89	FERN LEAF Pine scented, finely cut fern like leaves. Small pink and white flowers.....	.50
90	MRS. TAYLOR Mild aromatic scent. Brilliant deep red flowers. Attractive cut leaves.....	.50
91	GODFREY'S PRIDE A strong and delightful mint scented pros- trate grower. Light pink flower.....	.50
92	LITTLE LEAF ROSE Small cut leaves on low compact plant. Strong rose scent. Good rose flowers.....	.50
93	ROUND LEAF ROSE Graceful large plant with heavily rose scented round leaves and lavender pink flower.....	.50
94	GOOSEBERRY LEAVED Small crisp crinkled variegated leaves of green and yellow. Pale lavender flowers. Strong fragrance.....	.75
95	LADY MARY Mildly scented small leaf. Compact growing plant. Pink and Magenta blooms. Splendid pot variety.....	.50
96	LOGEEI'S Compact upright growth. Deeply lobed grey green leaf with pungent old spice fragrance.	.50
97	KEW GARDENS #36 Very good compact specimen plant with round wooly leaves and pleasant rose scent.....	.60
98	MRS. KINGSLEY Large curled and ruffled leaves. Slightly pungent, minty scent. Flowers rich deep cerise.....	.50
99	CROWFOOT Fine fern like cut leaf variety with greyish green leaves. Compact growth. Small rosy flower. Good bloomer.....	.50
100	ROLLINSON'S UNIQUE A mint and pepper scent. Rangy grower. Will climb if tied. Brilliant magenta flowers...	.50
101A	GIANT OAKLEAF Very pungent five lobed Oak leaves. Older leaves with deep purple veins. Medium rose flowers.....	.50
101B	FAIR ELLEN OAK Excellent pungent scent. Low, rangy, spread- ing growth. Small lavender flowers.....	.40

## SCENTED LEAF VARIETIES (Cont'd)

101C	BEAUTY OAK Long rangy growth suitable for hanging baskets. Lovely dark veined leaves. Heavy pungent scent. Small rose flowers.....	.50
101D	SKELTON'S UNIQUE OAK Rangy, prostrate growth. Round hairy leaves with purple center. Very pungent.....	.40
101E	VILLAGE HILL OAK Very pleasant pungent scent. Five lobed narrow cut leaves. Showy lavender flowers..	.50
102P	TOMENTOSA Heavy dark green velvet hairy leaves with strong peppermint scent. Tiny white flowers	.75
102J	JOY LUCILLE Large deeply lobed velvet leaf. Tall vigorous grower. Very strong pleasant peppermint scent and pink flowers.....	.50
103	OLD FASHIONED ROSE Grandma's favorite. Heavy rose scent. Fine cut dark green leaves. Lavender flowers....	.40
103R	RUMSON ROSE Beautiful new strain of the Old Fashion Rose. Same strong rose scent but plant is much more compact and shapely and the leaves are much finer cut. New leaves resemble curled parsley.....	.50
104	PINE SCENTED Heavy fragrant conifer scent. Beautiful pot plant. Fine cut leaves, very bushy.....	.50
105	FINGER BOWL GERANIUM Very tiny crisp leaves like curly parsley. Grows tall like miniature Christmas trees. Heavy lemon scent.....	.40
106	NUTMEG Small round scalloped light green leaves with silver cast. Very compact plant. Covered with clusters of tiny white flowers.	.40
107	APRICOT Fruity scent. Dark, glossy rather pointed leaf, deeply toothed and irregular. Large, lovely, brilliant deep rose flowers.....	.50
108	CAMPBOR ROSE Combination of rose and camphor scent. Five lobed leaf, lavender rose flowers.....	.40
109	CLORINDA Eucalyptus scent. Rather large three lobed leaves. Very large pink flowers.....	.50
110	COCOANUT Fresh cocoanut scent. Round shiny leaves and tiny pink flowers.....	.50
111	LIME SCENTED Very good compact pot plant, pretty lavender flowers. Very pleasing lime scent. Small, smooth, dark green leaves.....	.50
112	PRINCE OF ORANGE Fruity scented. Small, shiny sharp-toothed leaves. Compact showy plant with pale orchid flowers of good size.....	.60
113	APPLE SCENTED Very refreshing fresh apple fruit scent. Crisp, velvety, light green oval leaves. Very compact pot plant. Always in bloom with tiny white flowers.....	.75

## SCENTED LEAF VARIETIES (Cont'd)

114	LITTLE GEM	Pungent Evergreen scent. Light green, three lobed leaf. Compact plant, lavender rose flower.....	.50
115	PRETTY POLLY	Scent of Almonds. Very pretty pot plant. Showy lovely pink flowers.....	.50
116	SCHOTTESHAM PET	Filbert Nut scent. Five lobed light green leaves and bright rosy flowers.....	.50
117	GINGER SCENTED	Pungent spicy ginger scent. Shiny green leaves with toothed edge. Very pretty lavender rose flower. Very good pot plant.....	.50
118	MAPLE LEAF	Good spicy scent. Leaves resemble Maple Shade tree. Large plant, lavender flowers..	.50
119	PRINCE RUPERT	Pleasant lemon scent. Small crisp, crinkly leaves. Handsome pot plant. Good lavender flowers.....	.50
120	P. GRISPUM	Strong lemon scent. Small curled and fluted leaves close to stem. Tall narrow plant. Pale lavender flowers.....	.50
121	DR. LIVINGSTON	Lemon Rose scent. Large seven lobed finely cut leaves. Lavender flowers. Good pot plant.....	.40
122	ROBER'S LEMON ROSE	Spicy lemon rose scent. Irregularly lobed leaves like small oak. Medium lavender flowers. Good pot plant.....	.40
123	LEMON	Pungent lemon scent, rather large maple type leaves, compact bush. Lavender flowers.....	.40
124	OLD SCARLET UNIQUE	Spicy scent. Handsome foliage with dark center. Scarlet flowers. Good climber.....	.50
125	LADY PLYMOUTH	Nice rose scent. Grey green leaves with silver edge. Very good pot plant.....	.50
126	VARIEGATED LADY PLYMOUTH	Strong minty rose scent. Very pretty green and snow white leaves. Compact excellent pot plant.....	.50
127	SNOWFLAKE	Splendid rose scent. Beautiful large round leaves streaked and spotted white. Very good pot plant.....	.50
128	BRILLIANT	Spicy scent large toothed leaves and brilliant crimson red flower.....	.50
129	STRAWBERRY	Fresh strawberry scent. Small crinkled trilobed leaves. Compact plant with crimson purple flowers.....	.75
130	PHEASANT'S FOOT	Strong pungent scent. Tall vigorous plant. Five lobed toothed leaves. Rose flower.....	.50
400	CAPRI	Mild spicy scent. Large crisp crinkled leaves. Very pretty crimson flower.....	.50

## SCENTED LEAF VARIETIES (Cont'd)

401	LEMON BALM Lemon balm scent. Handsome sturdy plant. Light green tri-lobed leaves and lavender flowers.....	.40
402	BUTTERFLY Very pleasant scent. Attractive light green leaves. Compact plant. Lavender and white flowers.....	.75
403	RENEFORME Not available until Fall.....	
404	DECIPIENS Pungent scent. Wide light green leaves. Free flowering with small rose flowers. Will climb.....	.60
405	DENNISIANUM Very pleasant pungent scent. Long lobed leaf. Light green. Spreading growth. Lavender flowers.....	.50
406	CODY'S FRAGRANT Very fragrant spicy scent. Small crinkled leaves with grey cast. Low growing plant. Clusters of tiny white flowers.....	1.00
407	FRAGRANT ROSE Penetrating sweet rose scent. Lobes crenate rather than deeply cut. Lavender blooms....	1.00
408	RED FLOWERED ROSE Mild rose scent. Small crenate leaf, very crinkly when small. Bright cerise flower. Compact plant.....	.75
409	MINT SCENTED ROSE Deeply lobed, grey green leaf, creamed edge. Lightest foliage color of all scented varie- ties. Lavender flowers.....	.75
410	FILICIFOLIUM Strong pungent scent. Sticky, finely cut, fern like leaves. Entire plant a filmy mass of foliage. Tiny pink flowers.....	.60

## VARIEGATED OR FANCY LEAVED GERANIUM

131	HAPPY THOUGHT (The Yellow Butterfly Geranium) Very good light green leaves with irregular golden center surrounded by deep olive ring. The gold center resembles large yellow but- terflies. Bright cerise red flowers.....	.60
132	MADAME SALLERON Small crinkly leaves of soft light green edged with a white border. Plant grows slowly, is low and bushy and much used for formal border bed designs.....	.60
133	MISS BURDETTE COUTTS The finest silver tri-color and one of the most beautiful fancy leaf Geraniums. Leaves two toned green center surrounded by irreg- ular bands of rich olive, bright red, yellow, white, pink and green. Each leaf bordered with creamy yellow or white. Low bushy growth. Light red flowers.....	1.50
134	MRS. LANGUTH Silvery green leaves with snow white border and a faint zone of purple. One of the best potting plants. Very attractive double cherry red flowers.....	1.00

VARIEGATED OR FANCY LEAVED GERANIUMS (Cont'd)

- 135 SKIES OF ITALY  
Maple leaves of two toned green center and circled by wide zone of bronze, salmon-red, green and white splashes of color. Each leaf has creamy yellow edge. Light red flowers..... .75
- 136 CLOTH OF GOLD  
Beautiful scalloped leaves of rich golden yellow and yellow green combinations. Leaf coloring changes under different growing conditions. Bright scarlet flowers. A beautiful pot plant..... 1.00
- 137 DISTINCTION  
Large, round, toothed, dark green leaves with sharp narrow purple zone changing to reddish brown. Makes a striking well shaped pot plant. Rosy red flowers..... .60
- 138 MOUNTAIN OF SNOW  
One of the best silver greenleaf types of good size. Each leaf bordered with gold or white. Bright red blooms..... .60
- 139 MRS. POLLOCK  
The best known of the golden tri-colored Geraniums. Each leaf has a green center surrounded by wide irregular zone of bronze, salmon-red and deep green. Each leaf is edged with a bright light golden band. Bright orange-scarlet flowers..... .75
- 140 FRENCH LACE  
To this Old World French type Geranium we have given the above name because it so aptly describes it. Some of our specimen plants are truly magnificent. The entire plant completely covered with small curled and fluted leaves of a beautiful shade of green edged by wide border of cream, gold or white. Hundreds of these leaves enmasse resemble dainty lace of intricate design. Flowers resemble wood violets of delicate lavender. Very compact, slow growing plants. 2 to 3" plants..... .75  
5 to 6" plants..... 2.50  
Other sizes (can not be shipped) from \$5.00 to \$25.00. Please note: This plant must be seen to be appreciated.
- 141 BRONZE BEAUTY  
Leaves are yellow-green with a bright rust-red horse shoe zone. Each leaf is beautifully scalloped. Compact plant with bright salmon flowers..... .60
- 142 FLOWERS OF SPRING  
Each leaf of soft silvery green with a white border and daintily scalloped. Bright vermilion flowers. A tall and shapely pot plant..... .75
- 143 MARSHAL MCMAHON  
A very vivid combination of rust and red on a light yellow green leaf. A very striking combination of color. Bright red flowers in abundance..... .75
- 144 MARY ANN  
One of the prettiest of the "Silver Leaf" varieties. A very compact plant. Each leaf bright apple green with a wide border of snow white. Flowers bright red. Some plants develop pure white albino shoots..... .60





CARLTON VILLA

P.O. Box 247

Hightstown, N.J.

Please send the collection of Geraniums checked below on or about \_\_\_\_\_

Name \_\_\_\_\_

Street \_\_\_\_\_

Post Office \_\_\_\_\_ Zone \_\_\_\_\_

State \_\_\_\_\_

Enclosed find cash check M.O. P.N.

NOTE: Some Geraniums are always out of stock at certain times of the year. List the numbers of those we can substitute. Use reverse side for letter or instructions.

ZONALE OR GARDEN VAR.

- 1 ALPHONSE RICARD
- 2 OLYMPIC RED
- 3 MME. BUCKNER
- 4 BEAUDEDE POITEVINE
- 5 BETTER TIMES
- 6 SALMON IDEAL
- 7 MME. LANDRY
- 8 RADIO RED
- 9 JEAN VIAUD
- 10 MONTMORT
- 11 IRVINGTON BEAUTY
- 12 AMERICAN BEAUTY
- 13 APPLE BLOSSOM
- 14 JEAN PABON
- 15 BERTHE DE PRESILLY
- 16 DOUBLE DRYDEN
- 17 RED FIAT
- 18 JEAN OBERLE
- 19 CASTELLANE
- 20 LOUISE
- 21 MME. BARNEY
- 22 MISS F. PERKINS
- 23 MRS. LAWRENCE
- 24 MRS. R. GLOEDE
- 25 PINK ABUNDANCE
- 26 PINK PHENOMENA
- 27 PRIDE OF CAMDEN
- 28 MAGENTA RUBY
- 29 S. A. NUTT
- 30 SUZANNE
- 31 SALMON SUPREME
- 32 PICARDY
- 33 DOUBLE LA FRANCE
- 34 FLORENCE DEMPSEY
- 35 MARYLAND
- 36 MICHELLS SENSATION
- 37 SANTA MONICA
- 38 MAXIME KOVALEVSKY
- 39 MARGARET DELAYLE
- 40 MRS. E. G. HILL

- 201 WYONA
- 202 MARVEL
- 203 DOUBLE ORANGE
- 204 CALIFORNIA BEAUTY
- 205 LADY JANE
- 206 PAUL CAINE
- 207 SALMON QUEEN
- 208 JUDY REED
- 209 ANGELUS
- 210 ANNE VINCENT
- 211 EDMUND BLANC
- 212 HAASE SCARLET
- 213 PRINCE VIOLET
- 214 ORANGE BEAUTY
- 215 DAYBREAK

ZONALE FANCY NOVELTIES

- 41R RED POINSETTIA
- 41P PINK POINSETTIA
- 42 CARNATION
- 43 LITTLE DARLING
- 44 STARS AND STRIPES
- 45 NOEL WHITE CACTUS
- 46 FIAT QUEEN
- 47R DARK RED ROSEBUD
- 47P PINK ROSEBUD
- 47S SCARLET ROSEBUD
- 250 PINK SNOW
- 251 CAN. PINK & WHITE
- 252 PIGMY

HYDRANGEA FLOWERED ZON.

- H300 PAT AUDETTE
- H301 CHEERIO
- H302 AMITOLA
- H306 AMBROSIA
- H307 EXCLUSIVE
- H308 ALLURE
- H309 SUNRISE
- H310 MAYDAY
- H311 INDIAN CHIEF
- H312 RED VELVET

H314 AMBASSADEUR  
H316 PINK SATIN  
H320 PINK OPAL  
H322 ANGELICA  
H327 PINK SHIMMER  
H328 GEORGIA BELLE  
H331 RED ROBIN  
H332 CORAL GEM  
H333 LADY MULBERRY  
H334 DAZZLER  
H336 COROPINK

IVY LEAF GERANIUMS

48 LAVENDER ROSE  
49 SCARLET BEAUTY  
50 CHARLES MONSELET  
51 ALLIANCE  
52 CHARLES TURNER  
53 ENCHANTRESS  
54 GORDONS GLORY  
55 JEANNE D'ARC  
56 JOSEPH WARREN  
57 INTENSITY  
58 BRILLIANT  
59 MRS. BANKS  
60 BLUSH  
601 CEASAR FRANK  
602 COMTESSE DE GREY

M. WASHINGTON OR DOMES.

61 MARIE ROBER  
62 SUE JARRETT  
63 HAILE SELASSI  
64 CARMEN QUEEN  
65 EASTER GREETINGS  
66 EDITH NORTH  
67 AZALEA  
68 MRS. LAYAL  
69 SPRINGTIME  
70 GERMAN GLORY  
71 SANTA MONICA  
72 SALMON SPRINGTIME  
73 MARIE VOGEL  
74 PINK VOGEL  
75 ORCHID E. NORTH  
76 LUCY BECKER  
77 PROF. CORRENS  
78 ANDENKONAN MOSLOW  
79 MACKENSEN  
80 GERALDINE  
81 LUCY ANNE LESLIE  
82 DARK ORIENTAL  
83 MRS. MARY BARD  
84 GRANDMA FISHER

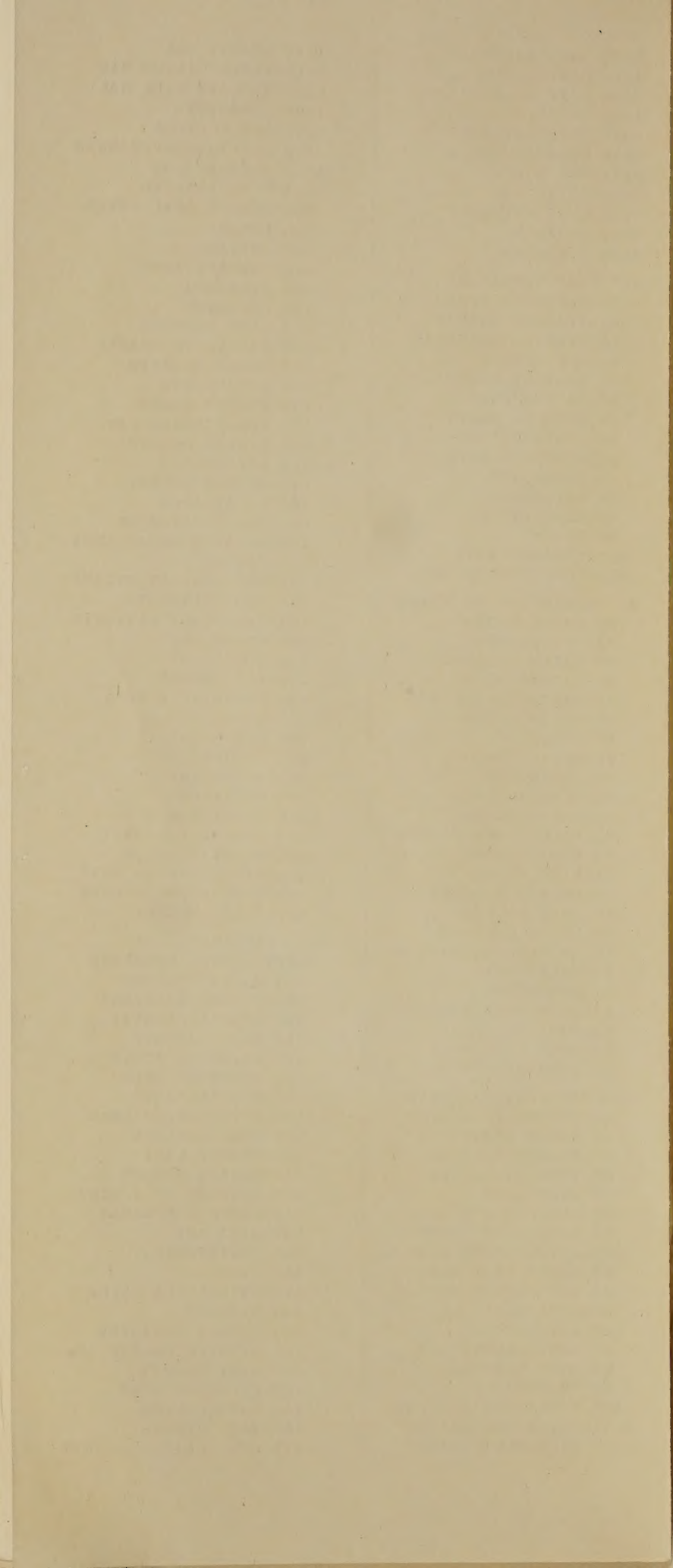
SCENTED LEAF VARIETIES

85 SOUTHERN. LEAVED  
86 MAPLE LEAVED  
87 BLANDFORDIANUM  
88 TRUE CAPITATUM  
89 FERN LEAF  
90 MRS. TAYLOR  
91 GODFREY'S PRIDE  
92 LITTLE LEAF ROSE  
93 ROUND LEAF ROSE  
94 GOOSEBERRY LEAVED  
95 LADY MARY  
96 LOGEEI'S  
97 KEW GARDENS #36  
98 MRS. KINGSLEY  
99 CROWFOOT  
100 ROLLINSON'S UNIQUE  
101A GIANT OAKLEAF  
101B FAIR ELLEN OAK

101C BEAUTY OAK  
101D SKEL. UNIQUE OAK  
101E VILLAGE HILL OAK  
102P TOMENTOSA  
102J JOY LUCILLE  
103 OLD FASHIONED ROSE  
103R RUMSON ROSE  
104 PINE SCENTED  
105 FINGER BOWL GERAN.  
106 NUTMEG  
107 APRICOT  
108 CAMPHOR ROSE  
109 CLORINDA  
110 COCOANUT  
111 LIME SCENTED  
112 PRINCE OF ORANGE  
113 APPLE SCENTED  
114 LITTLE GEM  
115 PRETTY POLLY  
116 SCHOTTESHAM PET  
117 GINGER SCENTED  
118 MAPLE LEAF  
119 PRINCE RUPERT  
120 P. GRISPUM  
121 DR. LIVINGSTON  
122 ROBER'S LEMON ROSE  
123 LEMON  
124 OLD SCARLET UNIQUE  
125 LADY PLYMOUTH  
126 VAR. LADY PLYMOUTH  
127 SNOWFLAKE  
128 BRILLIANT  
129 STRAWBERRY  
130 PHEASANT'S FOOT  
400 CAPRI  
401 LEMON BALM  
402 BUTTERFLY  
403 RENEFORME  
404 DECIPIENS  
405 DENNISIANUM  
406 CODY'S FRAGRANT  
407 FRAGRANT ROSE  
408 RED FLOWERED ROSE  
409 MINT SCENTED ROSE  
410 FILICIFOLIUM

VARIEGATED OR  
FANCY LEAVED GERANIUM

131 HAPPY THOUGHT  
132 MADAME SALLERON  
133 MISS B. COUTTS  
134 MRS. LANGUTH  
135 SKIES OF ITALY  
136 CLOTH OF GOLD  
137 DISTINCTION  
138 MOUNTAIN OF SNOW  
139 MRS. POLLOCK  
140 FRENCH LACE  
141 BRONZE BEAUTY  
142 FLOWERS OF SPRING  
143 MARSHAL McMAHON  
144 MARY ANN  
145 FRUTETORIUM  
146 ALPHA  
147 BECKWITH'S PRIDE  
148 BISMARCK  
149 GOLDEN TREASURE  
150 CRYSTAL PALACE GEM  
151 DARK BEAUTY  
152 HILLS OF SNOW  
153 LADY CULLUM  
154 MRS. PARKER  
155 SIL. LEAF S. A. NUTT



VARIEGATED OR FANCY LEAVED GERANIUMS (Cont'd)

- 145 FRUTETORIUM  
Maple shaped leaves of dark green with a wide deep purple zone. Very attractive color combination. A good pot plant with large salmon-pink flowers..... .60
- 146 ALPHA  
Dwarf Compact plant. Leaves golden green with attractive red brown zone. Bright single red flowers. Slow growing specimen type pot plant. 2" plants..... .75
- 147 BECKWITH'S PRIDE  
Beautiful compact plant with large old rose red flowers. Dark green attractive leaves informally splashed with ivory white. Each leaf different. Some snow white..... .75
- 148 BISMARCK  
Tall growing attractive plant with large yellow-green leaves with a wide band of brown or red. A distinctly beautiful color combination. Bright red flower..... .60
- 149 GOLDEN TREASURE  
A very fine hibrid seedling of our own. Bright shiny yellow leaves with scalloped edge. New leaves have broad bands of pale red which gradually fades out as leaves mature to pure gold. Colors intensified under good conditions and feeding. Very compact, slow growing plant. Ideal for pots..... .75
- 150 CRYSTAL PALACE GEM  
An English variety of pale gold with large green center. Very large flat leaves. Green center closely resembles butterfly wings. Makes very attractive pot plants..... 1.00
- 151 DARK BEAUTY  
Beautiful deep green leaves with a very large rich purple center. On well grown specimen center is almost black. A rare color arrangement for Geraniums. Attractive salmon colored flowers in profusion.... .75
- 152 HILLS OF SNOW  
Tall attractive plants with large silvery green leaves edged with a fine pencil line of white. Attractive rosy pink double flowers..... .75
- 153 LADY CULLUM  
Green leaves edged cream-yellow with a bright brown zone somewhat splashed red. The color zone is narrow and distinct. Single scarlet flowers..... .75
- 154 MRS. PARKER  
A very choice silver edged green leaf variety. Some leaves mottled green and white. Very attractive clear double pink flower.... .75
- 155 SILVER LEAF S. A. NUTT  
A very attractive silver edged green leaf sport of the well known S. A. Nutt zonale Geranium. A slow growing plant with good clusters of double cherry red flowers..... .75

## HAVE FUN GROWING GERANIUMS FROM SEED

Each year we offer prizes to any one who raises an outstanding variety of Geranium from seed purchased from us. It's lots of fun to watch these seeds develop into sturdy blooming plants in about 6 months.

Our contest is just for fun with no hard and fast rules. We are always anxious to add new varieties to our ever growing list. We would be glad to pay \$25.00 for the finest outstanding variety produced each year from our seed and \$5.00 each for the next 10 best varieties. We have over 200 varieties on hand now and we are to be the sole judge as to whether your specimen is sufficiently different from these to merit a prize. The names to be given to the prize winners can be selected by the ones who grew them. All prize winning plants become our property. All outstanding varieties up to 11 in number to be awarded \$5.00 prizes when accepted by us. When all are in we will then judge them all and select the best one and award the additional \$20.00 in prizes. This contest ends March 1st, 1950. All winners will be listed in our next catalogue.

All plants competing for prizes must be brought to our greenhouses when in bloom in order to be properly judged. We cannot be responsible for plants shipped in by common carrier.

We will reserve for all prize winners a 3" pot plant of their variety "free of charge" after the stock plant has been propagated and we have at least 10 cuttings.

Special packet of finest mixed Geranium seeds (about 35 seeds) 50¢ postpaid. Cultural sheet accompanies each order.

