

Historic, Archive Document

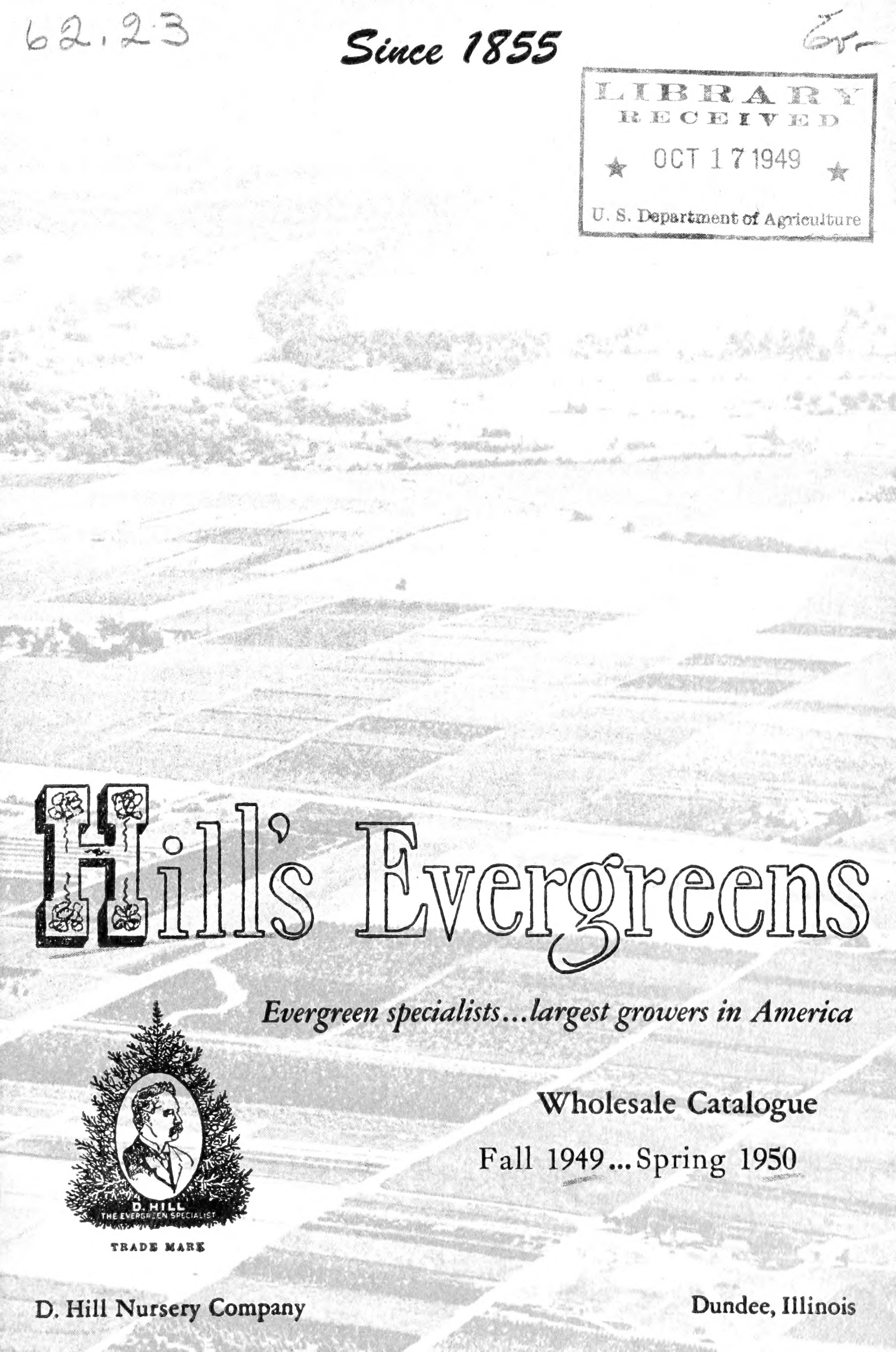
Do not assume content reflects current scientific knowledge, policies, or practices.

62.23

Since 1855

65-

LIBRARY
 RECEIVED
 ★ OCT 17 1949 ★
 U. S. Department of Agriculture



Hill's Evergreens

Evergreen specialists...largest growers in America



TRADE MARK

Wholesale Catalogue

Fall 1949... Spring 1950

D. Hill Nursery Company

Dundee, Illinois

D. HILL NURSERY CO.

Evergreen Specialists—Largest Growers in America

DUNDEE, ILLINOIS

This List Cancels All Previous Editions

TERMS and INFORMATION

TERMS OF PAYMENT:

Cash Plan: Where cash is required in full payment of Fall orders by September 15th, and on Spring orders by March 15th, a 3% discount will be allowed.

Open Account: Goods will be supplied open account to customers of approved credit who supply satisfactory trade and bank references. Time must be allowed for investigation. Terms are 2% 10 days, net 30 days.

C.O.D. Orders: All C.O.D. orders must be accompanied with one-third down payment.

NOTE: When retail customers are sent to our sales yard to buy on a wholesale account, they must have either a letter or purchase order from the firm sending them. The discount on sales of this kind is 25% off the retail.

SHIPPING SEASONS:

The Fall season begins usually about the 15th of September or at that time when we have had sufficient rain to put the ground in proper condition for digging. The Fall season usually closes November 15th.

The Spring season begins just as soon as all the frost is out of the ground—usually around April 1st. By May 15th, the stock is normally too far out in growth to transplant successfully.

PRICES:

The prices in this catalog are limited to the Fall of '49 and the Spring of '50. This supersedes all previous lists and all PRICES ARE SUBJECT TO CHANGE WITHOUT NOTICE.

RATES:

B&B Stock

5 of the same variety and size at the 10 rate

25 of the same variety and size at the 100 rate

Clean Root Stock

25 of the same variety and size at the 100 rate

250 of the same variety and size at the 1000 rate

Sold in multiples of 25 only.

Seedlings in multiples of 50 only.

LOCATION: We are situated 45 miles northwest of Chicago, on Highway No. 31, just north of the intersection with No. 72. Visitors are always welcome.

EXTRA CHARGE FOR PERSONAL SELECTION:

Prices in this catalog are for first quality stock, fully up to size and as represented. Customers who wish to make personal selection and tag trees in the nursery may do so at 25% extra charge.

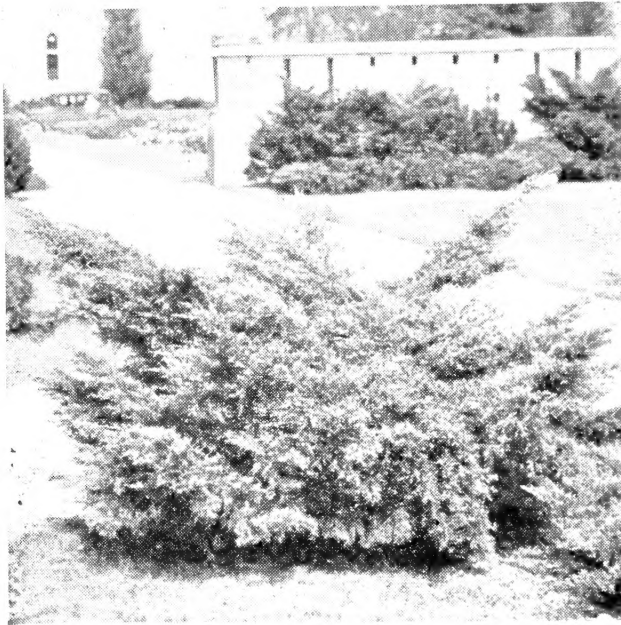
SPECIAL NOTICE:

Correspondents are requested to use their printed letterheads. This catalog is for the trade only and in justice to our trade customers, we will make every effort to limit the distribution of trade prices to those we know entitled to receive them.

All orders are accepted upon the condition that they shall be void should any injury befall the stock from causes over which we exercise no control. THESE PRICES DO NOT INCLUDE ANY GUARANTEE WHATSOEVER AS TO GROWTH.

BALLED AND BURLAPPED EVERGREENS

JUNIPERS



Juniperus chinensis pfitzeriana
(Pfitzer Juniper)

This is one of the most important ornamental varieties of Evergreens ever produced. It is widely planted throughout America, and is an important part of ornamental landscape planting in every section of the country.

It originated about 40 years ago in Pfitzer Nursery near Berlin, Germany, and was introduced to planters by Ludwig Spaeth, prominent German nurseryman and horticulturist.

The tree naturally grows in a low wide spreading habit, but is frequently staked up when small in nurseries so that it grows into a somewhat taller tree. It will stand considerable shade and crowding, which makes it a great favorite for foundation planting.

Juniperus chinensis pfitzeriana (Pfitzer Juniper)

		10	100
1½-2 ft. xxx.....	B&B	\$3.65	\$3.40
2-2½ ft. xxx.....	B&B	4.80	4.55
2½-3 ft. xxx.....	B&B	5.40	5.15

Hill Golden Pfitzer Juniper (*Juniperus chinensis pfitzeriana aurea*)

This exquisite new yellow form of the widely known Pfitzer Juniper was introduced to the trade in the fall of 1937. It has been widely acclaimed throughout the entire country. The foliage comes out a clear canary yellow interspersed with green. Many of the stems are also yellow. It loses some of its bright color during the late summer but comes out again in the spring with the brilliant gold. This is a new, valuable novelty, propagated and introduced by the D. Hill Nursery Co.

1½-2 ft. xxx.....	B&B	\$3.75	\$3.50
2-2½ ft. xxx.....	B&B	4.90	4.65

5 of same variety and size at 10 rate; 25 at 100 rate.
Each x indicates one transplanting. B&B signifies balled and burlapped.



Juniperus communis depressa vase-shaped
(Vase Shaped Prostrate Juniper)



Juniperus excelsa stricta
(Spring Greek Juniper)

JUNIPERS (continued)

Juniperus com. depressa—vase shaped (Vase Shaped Prostrate Juniper)

An improvement over the old seeding variety, introduced by the D. Hill Nursery Company. It has a semi-erect and regular form as shown in the picture. The color is grayish green. To a large extent this tree overcomes the tendency of the seedling form to develop dead branches and it is a notable improvement over the old native species.

		10	100
1½-2 ft. xxx.....	B&B	\$3.40	\$3.15

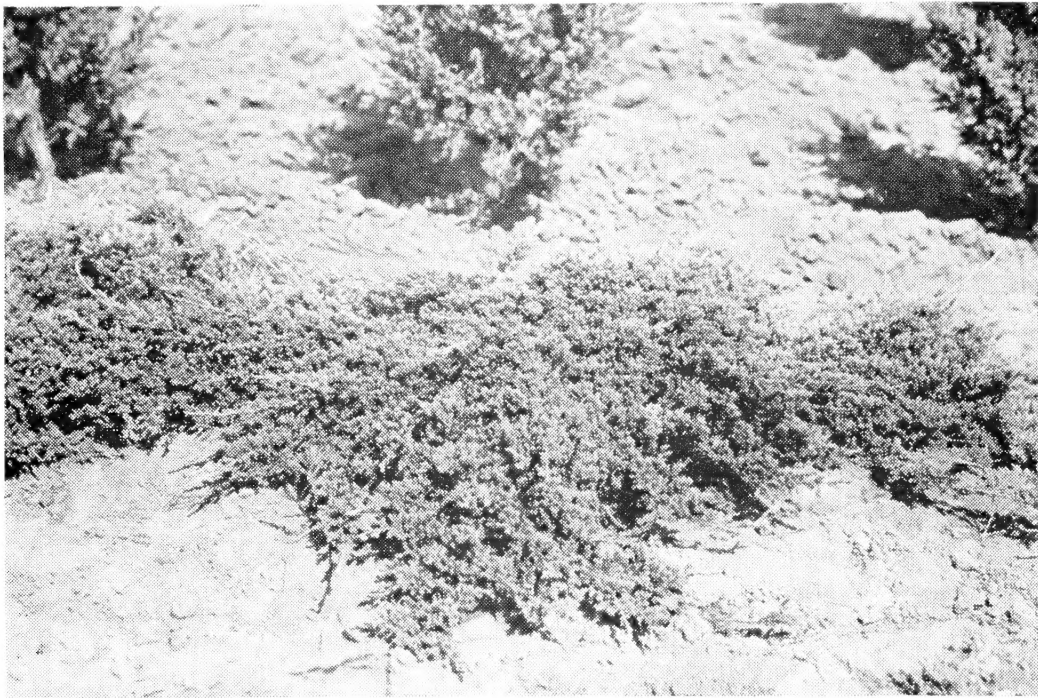
Juniperus excelsa stricta (Spiny Greek Juniper)

“This beautiful variety forms a tall, dense, narrow, conical head tapering gradually from the ground to a sharp terminal point; and is of fine glaucous color. It originated in the nursery of Messrs. Rollenson at Tooting, England, and is quite hardy.”—Gordon.

The mother tree, *Juniper excelsa*, is a native of Greece and Asia where it is an old well-known variety. The growth is slow so that the tree is well adapted for foundation plantings, rock gardens, or other situations where small or dwarf trees are required.

15-18 in. xx.....	B&B	\$1.60	\$1.50
-------------------	-----	--------	--------

5 of same variety and size at 10 rate; 25 at 100 rate.
Each x indicates one transplanting. B&B signifies balled and burlapped.



Juniperus procumbens (Japanese Juniper)

JUNIPERS (continued)

Juniperus procumbens (Japanese Juniper)

This tree is a favorite with many nurserymen. A good, hardy, thrifty, rapid growing, prostrate Juniper with fine color both winter and summer. Introduced many years ago from Japan. Also known for many years under the name *Juniperus japonica*. Old specimens reach a considerable size in the spread of branches but it seldom grows more than 8 to 12 inches high. Foliage is on the bluish order, having distinct blue green color. Has sharply pointed leaves, marked on the upper surface by two white lines.

		10	100
10-12 in. xx.....	B&B	\$1.50	\$1.40

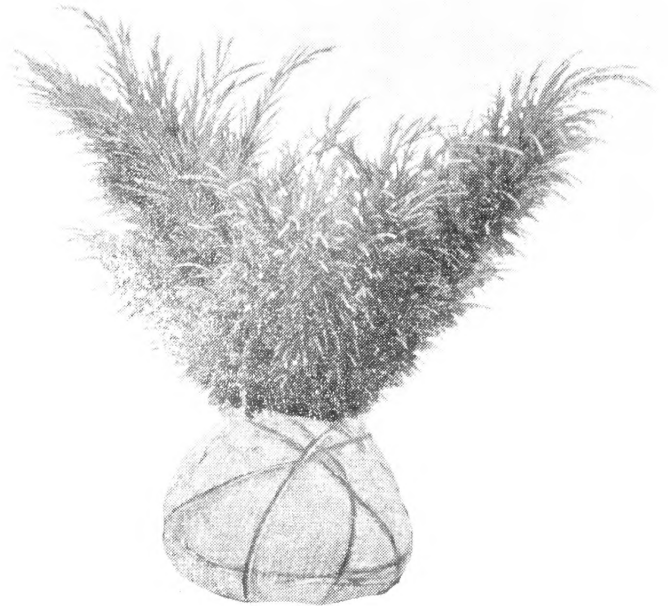
5 of same variety and size at 10 rate; 25 at 100 rate.
 Each x indicates one transplanting. B&B signifies balled and burlapped.



In the Hill Nursery there are 30 separate greenhouses devoted exclusively to the propagation of Evergreen cuttings and grafts in choice horticultural varieties.



Juniperus Sabina Vonehron
(Vonehron Juniper)



Juniperus sabina (Savin Juniper)

JUNIPERS (continued)

Juniperus sabina (Savin Juniper)

The old familiar, low, many-branched shrub. Sometimes reaches four feet in height but usually of small stature. A native of a wide area in Europe. Well covered with short, tufted, dark green foliage and frequently displays blackish or purplish berries. One of the oldest of the ornamental evergreens.

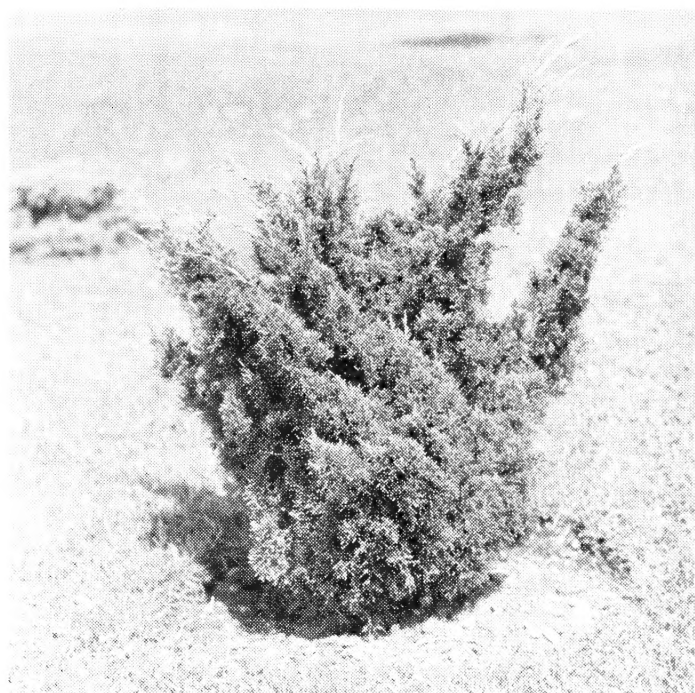
		10	100
15-18 in. xx.....	B&B	\$1.90	\$1.80

Juniperus sabina vonehron (Vonehron Juniper)

A horticultural variety of Savin Juniper, of extremely rapid growth. Heavily clothed branches with dark green needles. Bears both juvenile and adult foliage. Considered by many nurserymen as a big improvement over the native type.

2-2½ ft. xxx.....	B&B	\$4.40	\$4.15
2½-3 ft. xxx.....	B&B	4.90	4.65

5 of same variety and size at 10 rate; 25 at 100 rate.
Each x indicates one transplanting. B&B signifies balled and burlapped.



Juniperus Virginalis—Dark Green
(Dark Green Hillbush Juniper)



Juniperus Virginiana Canaerti
(Canaert Juniper)

JUNIPERS (Continued)

Juniperus virginalis (Hillbush Juniper)

We are growing this interesting tree in two forms, which are offered below. Specimens were originally obtained from Japan about twenty years ago. May be grown naturally in a Sabina shape by trimming, may easily be developed into perfect balls. The foliage is remarkably robust and healthy looking, a fine deep rich green color at all seasons. We can assure our customers this is a variety well worth trial in any section of the country as it is perfectly hardy.

		10	100
15-18 in. xxx.....	B&B	\$3.40	\$3.15
1½-2 ft. xxx.....	B&B	3.90	3.65

Juniperus virginalis globosa (Hillbush Juniper)

This is a variety having an extremely dark green foliage and more of a natural globe form.

1½-2 ft. xxx.....	B&B	\$4.90	\$4.65
-------------------	-----	--------	--------

Juniperus virginiana canaerti (Canaert Juniper)

This horticultural variety of Redcedar has long been one of the leading favorites. It grows in a symmetrical, pyramidal shape, well covered with heavy green foliage, which runs to the whipcord type rather than needle form. It has bluish and powdery berries which frequently occur in large clusters and give the tree a striking appearance. Stands trimming very well and frequent trimming in the nursery is necessary to produce compact shapely specimens. A tree of perfect hardiness, widely known and appreciated throughout the trade.

3-3½ ft. xxx.....	B&B	\$5.15	\$4.90
3½-4 ft. xxx.....	B&B	6.15	5.90
4-4½ ft. xxx.....	B&B	7.15	6.90
5-5½ ft. xxx.....	B&B	10.15	9.65
5½-6 ft. xxx.....	B&B	12.65	12.15
6-6½ ft. xxx.....	B&B	15.25	

5 of same variety and size at 10 rate; 25 at 100 rate.

Each x indicates one transplanting. B&B signifies balled and burlapped.



HILLSPIRE JUNIPER
 NEW HILL INTRODUCTION

Juniperus virginiana cupressifolia (Hillspire Juniper)

Shapely upright pyramid of attractive gray green foliage. Fine cypress-like foliage of whipcord type. Can be easily trimmed into narrow shape. A new Hill introduction.

		10	100
3½-4 ft. xxx.....	B&B	\$6.15	\$5.90

5 of same variety and size at 10 rate; 25 at 100 rate.
 Each x indicates one transplanting. B&B signifies balled and burlapped.

HILL DUNDEE JUNIPER



Hill Dundee Juniper



Hill Dundee Juniper sizes three to four feet.

We consider this tree the most valuable Juniper introduced in recent years. Originated from a specimen found in the D. Hill Nursery. It makes a compact, symmetrical pyramid of moderate size. Its spring and summer color is greyish green, slightly on the bluish tint. The fall and winter color is a purplish-plum shade. This is not the bronze color of the ordinary redcedar, but a most attractive shade, unlike the winter color of any other Juniper.

This remarkable tree is one of the few varieties that we grow which is adapted to almost all parts of the country. It thrives well in the deep South, on the Pacific Coast, as well as in the Eastern and Central States.

		10	100
18-24 in. xx.....	B&B	\$1.70	\$1.60
3-3½ ft. xxx.....	B&B	4.90	4.65
3½-4 ft. xxx.....	B&B	5.90	5.65
4-4½ ft. xxx.....	B&B	6.90	6.65

5 of same variety and size at 10 rate; 25 at 100 rate.

Each x indicates one transplanting. B&B signifies balled and burlapped.

HILL'S NEW JUNIPER



This newest variety of the ever popular "Virginiana Type" Juniper promises to become just as much of a favorite as the familiar Canaert, Dundee, etc.

The foliage of Hill's New Juniper is a soft green color and nearly all of the acicular or needle type. The growth is unusually uniform and regular — the specimens in the illustrations are exactly as this new variety grows with no shearing and no staking.

An excellent item for all Sales Yard, and Cash and Carry operations. This New Juniper has all the sales appeal of the Southern grown varieties and yet is perfectly hardy in our Northern latitude.

Juniperus Virginiana Nova
(Hill's New Juniper)

Juniperus Virginiana Nova — A Hill Introduction

		10	100
1½-2 ft. xxx.....	B&B	\$2.25	\$2.00
2-2½ ft. xxx.....	B&B	2.85	2.60
2½-3 ft. xxx.....	B&B	3.25	3.00

5 of same variety and size at 10 rate; 25 at 100 rate.
Each x indicates one transplanting. B&B signifies balled and burlapped.



Picea excelsa
(Norway Spruce)



Picea glauca conica
(Dwarf Alberta Spruce)



Picea pungens kosteriana
(Koster Blue Spruce)

SPRUCES

Picea excelsa (Norway Spruce)

It is a symmetrical, well-formed pyramid, with graceful drooping branches. Makes a good screen or wind break and also may be trimmed in hedge form. Widely used as an understock for grafting Spruces.

			10	100
3-4	ft. xxx.....	B&B	\$3.40	\$3.15
4-5	ft. xxx.....	B&B	4.40	4.15
5-6	ft. xxx.....	B&B	5.40	5.15

Picea glauca conica (Dwarf Alberta Spruce)

One of the most interesting oddities among Evergreens. A perfectly shaped tree in miniature. Grows with an extremely close, pyramidal growth, thickly covered with short, close-set, twiggy branches and clothed in the grass-green leaves. Discovered in the Canadian Rockies by Mr. J. G. Jack of the Arnold Arboretum in 1904. Perfectly hardy and able to withstand severe cold. A perfect type of tree for window boxes, table Christmas Trees and miniature gardens.

12-15	in. xxx.....	B&B	\$2.90	\$2.65
-------	--------------	-----	--------	--------

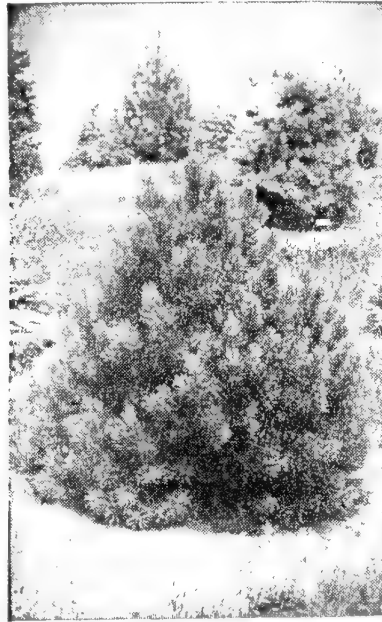
Picea pungens kosteriana (Koster Blue Spruce)

Probably the most in demand of any ornamental Evergreen because of its spectacular color. Widely known and appreciated throughout the country. No nurseryman can afford to be without a good stock of this important tree.

1½-2	ft. xxx.....	B&B	\$6.40	\$6.15
2-2½	ft. xxx.....	B&B	7.40	7.15
2½-3	ft. xxx.....	B&B	10.15	9.65
3-3½	ft. xxx.....	B&B	13.65	13.15
3½-4	ft. xxx.....	B&B	16.65	16.15
8-10	ft. xxxx.....	B&B	\$100.00	Each

5 of same variety and size at 10 rate; 25 at 100 rate.
Each x indicates one transplanting. B&B signifies balled and burlapped.

PINES



Pinus montana uncinata
(Large Swiss Pine)

Pinus montana uncinata (Large Swiss Pine)

An upright form of the Mountain Pine, midway in habit between the Upright Pine and Mugho Pine. Makes a low, beehive shaped tree of slow growth and small in stature. Well adapted for use in foundation plantings and other places where a Pine of small size is needed. It has a single stem with short branches, growing close together. Good dark green color.

		10	100
1½-2 ft. xxx.....	B&B	\$3.15	\$2.90

5 of same variety and size at 10 rate; 25 at 100 rate.
Each x indicates one transplanting. B&B signifies balled and burlapped.

HILL MUGHO PINE

(*Pinus Mughus*)



Hill Mugho Pine

Hill Mugho Pine is grown from a selected strain of seed which produces the true, many-stemmed, low-branched, dwarf type. In a very limited locality in the mountains of central Europe the seed of this true type is gathered. It is a high altitude plant which grows high up on the mountain sides.

It does not have one main stem or trunk, but numerous stems which branch out close to the ground, spreading horizontally and then turning upward in even, regular growth. The color is deep green in summer and winter.

It seldom grows over 4 to 5 feet tall, but spreads out 6, 8 or more feet in diameter when full grown. By annual shearing it can be kept as small as desired. The growth is dense and the plants are thickly covered with heavy, dark green needles.

It is fairly tolerant of shade and it will grow on the north side or the shady side of a building quite successfully. It is without question the outstanding dwarf Evergreen tree for all-round uses.

		10	100
10x10 in. xxx.....	B&B	\$1.65	\$1.50
12x12 in. xxx.....	B&B	2.15	1.90
15x15 in. xxx.....	B&B	2.90	2.65



Specimen Mugho Pine

DOUGLAS FIR



Pseudotsuga douglasi
(Douglas Fir)

Pseudotsuga douglasi (Douglas Fir)

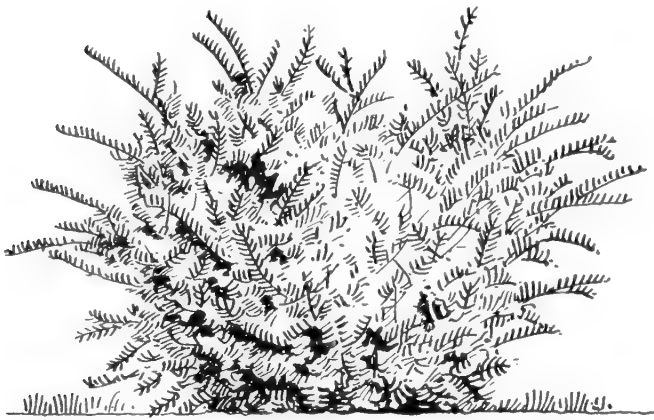
In many respects this is the most important of our tree-like Evergreens. It forms narrow, symmetrically shaped specimens, varying in color from a yellowish green to a bluish green. Most of the trees are of dark green color, but it produces many variations. It stands crowding well, considerable shade and responds to trimming.

		10	100
15-18 in. xx.....	B&B	\$1.30	\$1.20
18-24 in. xx.....	B&B	1.50	1.40
3-4 ft. xxx.....	B&B	4.90	4.65
4-5 ft. xxx.....	B&B	6.40	6.15
5-6 ft. xxx.....	B&B	10.15	9.90

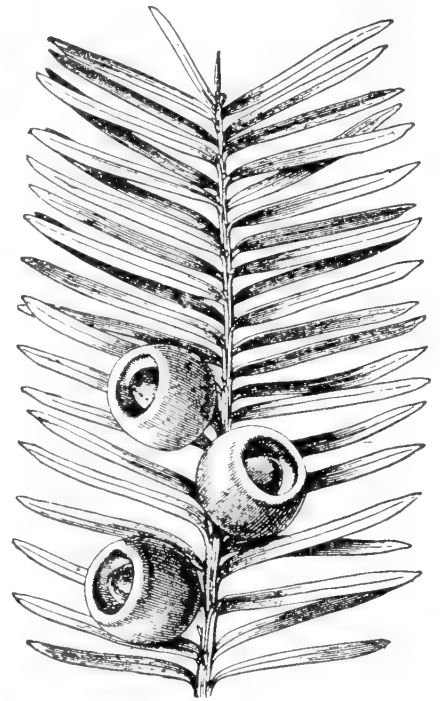
5 of same variety and size at 10 rate; 25 at 100 rate.
Each x indicates one transplanting. B&B signifies balled and burlapped.

JAPANESE YEW

Japanese Yews have in recent years rapidly attained the position of first importance among the Evergreens. In an effort to provide the wholesale trade with Evergreens in greatest demand, we have developed a large stock of the various forms, several of which are illustrated on this page. Further illustrations and full descriptions are given on the following pages. All of these forms are strictly hardy, strong, vigorous growers which we can recommend to our customers.



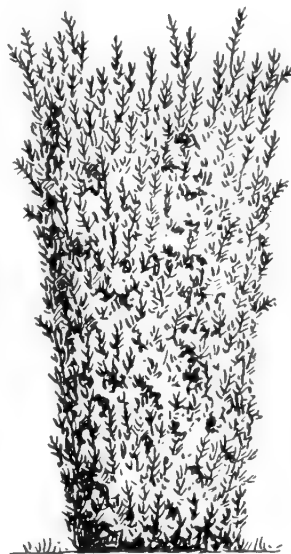
Spreading Japanese Yew



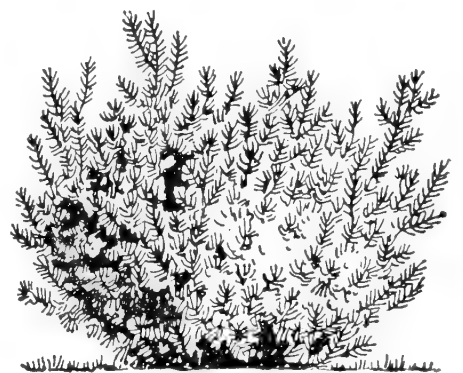
Yew Foliage



Brown's Yew



Hatfield Yew



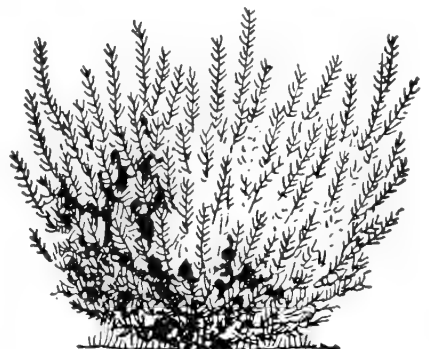
Dwarf Japanese Yew



Upright Japanese Yew



Hick's Yew



Intermedia Yew



Taxus cuspidata
(Spreading Japanese Yew)



Taxus cuspidata
(Upright Japanese Yew)

YEWS (continued)

Taxus cuspidata (Spreading Japanese Yew)

This type is usually propagated from cuttings. This fact accounts for the great variation which exists in different strains sold under this name. Some are lower growers than others, and the color varies. The rate of growth is also a distinct point of difference. In general this type is wider than tall, branching out from the bottom with several stems and developing into a low bushy formation.

An unfounded opinion which is rapidly being corrected is the belief that the Japanese Yews are of questionable hardiness. Here in the Hill Nursery we have severe extremes of temperature ranging from 100 degrees in the summer to a normal 15 degrees below zero in the winter. The Japanese Yews have not suffered unduly from our conditions of climate.

		10	100
10-12 in. xx.....	B&B	\$1.45	\$1.35
15-18 in. xxx.....	B&B	4.15	3.90
1½-2 ft. xxx.....	B&B	5.40	5.15

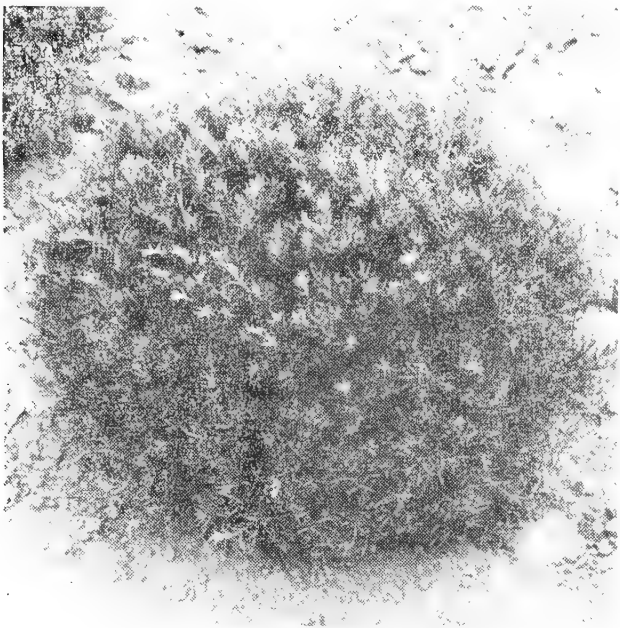
Taxus cuspidata capitata (Upright Japanese Yew)

Seedling form of the native Yew of Japan growing in an upright habit. Some trees are single stemmed, others have a tendency to produce many stems. For some uses the single stem is more desirable and trees can be grown in either way with careful attention to early pruning. Generally grown from seed. Although some selected types have been reproduced by other means. There are numerous horticultural variations of this tree listed in this catalog. Like all the Yews, this form is able to survive a dense shade but will also grow in sunny locations.

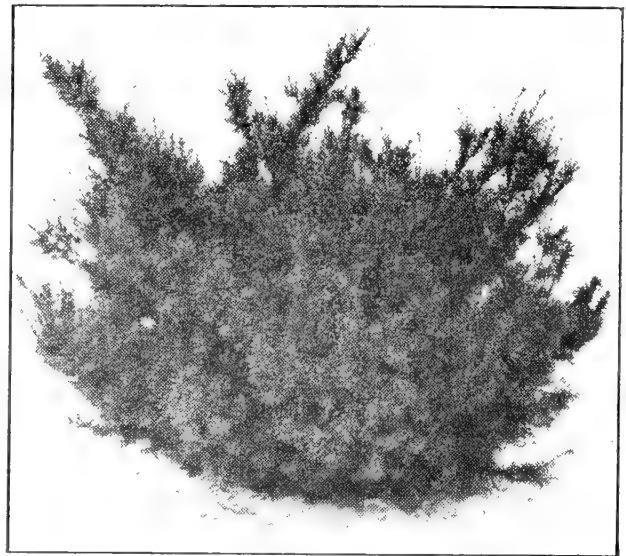
All of the Japanese Yews have certain characteristics in common. The needles are all quite similar in appearance. They produce their fruit in the form of a fleshy cup-shaped scarlet berry. The male and female flowers are produced on separate trees. In order to have fruiting specimens the trees must be planted in groups.

2-2½ ft. xxx.....	Spring Only.....	B&B	\$5.90	\$5.65
2½-3 ft. xxx.....	Spring Only.....	B&B	7.90	7.65
3-3½ ft. xxx.....	Spring Only.....	B&B	9.90	9.65
3½-4 ft. xxx.....	Spring Only.....	B&B	13.15	12.90

5 of same variety and size at 10 rate; 25 at 100 rate.
Each x indicates one transplanting. B&B signifies balled and burlapped.



Taxus cuspidata globes
(Trimmed Globe Yew)



Taxus cuspidata nana
(Dwarf Japanese Yew)

YEWS (continued)

Taxus cuspidata globe (Japanese Yew Trimmed Globes)

There is a great need for a globe-shaped Evergreen which can be trimmed into perfect ball shape. The Japanese Yew fits this need perfectly. It is necessary, of course, to continue trimming at frequent intervals so you will maintain the globe form. Specimens offered are upright types of Yew trimmed.

		10	100
18x18 in. xxx.....	B&B	\$4.50	\$4.25
24x24 in. xxx.....	B&B	6.50	6.25

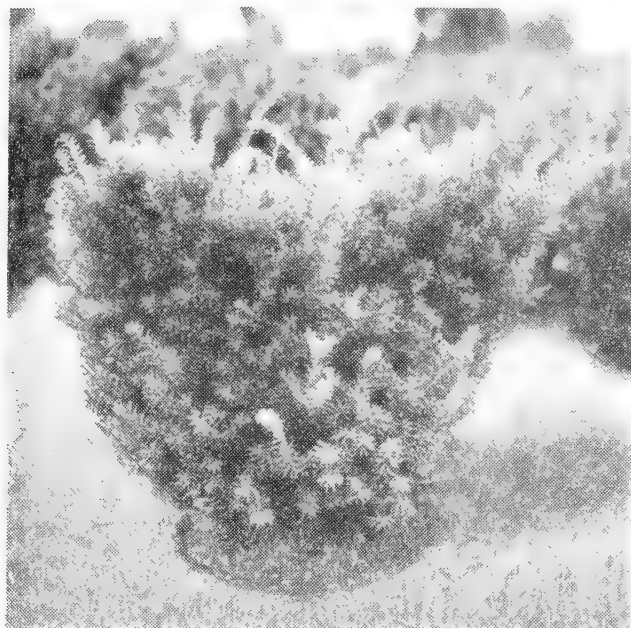
Taxus cuspidata nana (Dwarf Japanese Yew)

This is one of the oldest horticultural forms of Japanese Yew, having been widely known and planted for many years. It is almost blackish in color, of extremely slow growth, forming a low irregular and picturesque outline. Old specimens bear a closer resemblance to Boxwood than any other Evergreen. It was formerly known under the name of *Taxus cuspidata brevifolia*, which name was later changed to *Taxus cuspidata nana*. There are at least two distinct forms sold under this name.

15-18 in. xxx.....	B&B	\$4.15	\$3.90
1½-2 ft. xxx.....	B&B	5.40	5.15

5 of same variety and size at 10 rate; 25 at 100 rate.

Each x indicates one transplanting. B&B signifies balled and burlapped.



Taxus cuspidata brownii
(Brown's Yew)



Taxus cuspidata hatfieldi
(Hatfield Yew)

YEWS (continued)

Taxus media brownii (Brown's Yew)

This is a selected seedling of *Taxus Cuspidata* named for the late Mr. Robert Brown of the Cottage Gardens Nursery. It has dark heavy waxy green foliage, is a rapid grower and has a most attractive habit. The normal development is somewhat more upright than the true *Taxus Cuspidata*, although the exact form may vary somewhat with trimming.

We have sold this variety now for a number of years and it has already proven to be popular and a valuable addition to the Yew Family.

		10	100
10-12 in. xx.....	B&B	\$1.45	\$1.35
15-18 in. xxx.....	B&B	4.15	3.90
5x5 ft. xxxx.....	B&B	\$100.00 each	

Taxus media hatfieldi (Hatfield Yew)

This is one of the more widely known of the hybrid forms developed by the late Mr. Hatfield, for many years superintendent of the Hunnewell Estate of Wellesley, Massachusetts. In habit it resembles the Hick's Yew somewhat, usually growing with several upright perpendicular stems with the top slightly more broad than the bottom. The color is extremely dark green. The foliage is very heavy and luxuriant. It is a tree of distinct habit which will fill a great need in certain landscape effects. We find it thoroughly hardy in every respect.

1½-2 ft. xxx.....	Spring Only.....	B&B	\$4.15	\$3.90
2-2½ ft. xxx.....	Spring Only.....	B&B	4.65	4.40

5 of same variety and size at 10 rate; 25 at 100 rate.

Each x indicates one transplanting. B&B signifies balled and burlapped.



Thuja occidentalis pyramidalis
(Hill's Pyramidal Arborvitae)



Thuja occidentalis woodwardi
(Woodward Arborvitae)

ARBORVITAE

Thuja occidentalis pyramidalis (Hill Pyramidal Arborvitae)

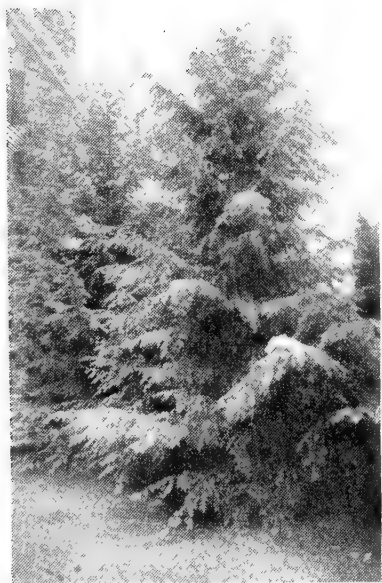
A dense, compact type of good green color, narrow and pyramidal in habit. It reaches fifteen to twenty feet and usually measures not more than two feet in diameter at the base. One of the leading upright growers for foundation plantings and other landscape uses. Has a tendency to grow with more than one stem, but can be trimmed to single stem if required.

		10	100
2-2½ ft. xx.....	B&B	\$2.10	2.00

Thuja occidentalis woodwardi (Woodward Arborvitae)

One of the old and well-known globe forms. It originated many years ago and introduced by the Reading Nurseries, of Reading, Massachusetts and was named for Mr. J. Woodward Manning. Forms a good bushy natural globe shaped tree of compact form and good color.

10x10 in. xx.....	B&B	\$1.30	\$1.20
-------------------	-----	--------	--------



Tsuga canadensis
(American Hemlock)

Tsuga canadensis (Hemlock)

A native American tree at home in the deep woods where it will stand severe cold. We obtain our seed from northern Wisconsin, assuring a strain of tree much more hardy than plants from more southern localities. Valuable for landscape use in partial or heavy shade, or on north side of buildings. Makes a regular conical form tapering evenly from a broad base to a long thrifty shoot. Under favorable conditions it grows very rapidly and has long, graceful branchlets. It may be trimmed into hedges or other shapes.

18-24 in. xx.....	B&B	\$1.70	\$1.60
-------------------	-----	--------	--------

JAPANESE PACAYSANDRA

(*Pachysandra terminalis*)

A splendid Evergreen ground cover with thick glossy foliage, forming a dense mat, making low growing cover plant, excellent for edging. Does well in dense shade. Hardy.

It is the plant which gives a finishing touch to any landscape planting. The practice should be made to sell *Pachysandra* in connection with all landscape foundation planting, groups, etc., as a ground cover.

Grows about six inches high. It will grow in the sun or in a shady spot. Will grow equally well in moist or dry situations.

It does not have any noticeable flowers, but is favored for its cool, pleasing green leaves. It is not a vine and cannot be expected to climb trellises or walls.



Pachysandra terminalis (Japanese Pachysandra)

	100	1000
6- 8" xx Fr.....	.15	.12



Japanese Pachysandra as a border

Euonymus radicans vegetus (Bigleaf Winter-creeper)

A very useful ground covering Evergreen that trails or climbs. Can also be trained into a low attractive shrub. Glossy green leaves the year around with orange-scarlet berries in the Fall.

	100	1000
6- 8" xx Fl.....	.17	.14

5 of same variety and size at 10 rate; 25 at 100 rate.
Each x indicates one transplanting. B&B signifies balled and burlapped.

HILL'S LINING-OUT EVERGREENS

	100	1000		100	1000
Juniperus Chinensis			Juniperus Virginiana Canaerti		
Chinese Juniper			Canaert Juniper		
6-8 in. 2 yr. 0.....	.09	.08	15-18 in. xx fld.....	1.00	
8-10 in. 2 yr. 0.....	.11	.10	Juniperus Virginiana Cupressifolia		
Juniperus Chinensis Pfitzeriana			Hillspire Juniper		
Pfitzer Juniper			15-18 in. xx fld.....	1.00	
8-10 in. xx fr.....	.41	.38	Juniperus Virginiana Glauca		
10-12 in. xx fr.....	.46	.43	Silver Cedar		
Juniperus Chinensis Pfitzeriana Aurea			12-15 in. xx fld.....	.90	
Hill Golden Pfitzer Juniper			15-18 in. xx fld.....	1.00	
10-12 in. xx fr.....	.46	.43	Larix Europea		
Juniperus Communis Depressa			European Larch		
Vase Shaped Juniper			6-8 in. 2 yr. 0.....	.03	.02
8-10 in. xx fr.....	.40	.37	8-10 in. 2 yr. 0.....	.04	.03
10-12 in. xx fr.....	.42	.39	10-12 in. 2 yr. 0.....	.05	.04
Juniperus Communis Hibernica			Picea Excelas		
Irish Juniper			Norway Spruce		
10-12 in. xx fld.....	.35	.30	10-12 in. xx fr.....	.30	.27
Juniperus Excelsa Stricta			Picea Glauca		
Spiny Greek Juniper			White Spruce		
10-12 in. xx fld.....	.45	.40	8-10 in. xx fr.....	.25	.22
12-15 in. xx fld.....	.55	.50	10-12 in. xx fr.....	.30	.27
Juniperus Horizontalis Plumosa			Picea Glauca Conica		
Andora Juniper			Dwarf Alberta Spruce		
10-12 in. xx fr.....	.42	.39	4-6 in. xx fr.....	.30	.27
Juniperus Procumbens Nana			8-10 in. xx fr.....	.50	
Dwarf Japanese Juniper			Picea Glauca Densata		
10-12 in. xx fld.....	1.00		Blackhill Spruce		
Juniperus Sabina			6-8 in. xx fr.....	.22	.19
Savin Juniper			8-10 in. xx fr.....	.25	.22
10-12 in. xx fld.....	.45		10-12 in. xx fr.....	.30	.27
Juniperus Sabina Von Ehron			Picea Pungens		
Von Ehron Juniper			Colorado Spruce		
10-12 in. xx fr.....	.42	.39	6-8 in. xx fr.....	.27	.24
Juniperus Squamata Meyeri			Pinus Mughus		
Meyers Juniper			Mugho Pine		
10-12 in. xx fld.....	1.00		3-4 in. x flat.....	.13	.11
Juniperus Virginialis Globosa			Pinus Nigra		
Globe Hillbush Juniper			Austrian Pine		
10x12 in. xx fld.....	1.00	.95	4-6 in. x flat.....	.13	.11
Juniperus Virginiana			8-10 in. xx fr.....	.33	.30
Red Cedar			10-12 in. xx fr.....	.35	.32
8-10 in. 3 yr. 0.....	.08	.07	12-15 in. xx fr.....	.37	.35
(Understocks)			Pinus Resinosa		
3 yr. 0.....	.12	.10	Red Pine		
12-15 in. xx fld.....	.35	.30	10-12 in. xx fr.....	.33	.30
15-18 in. xx fld.....	.40	.35	12-15 in. xx fr.....	.35	.32
18-24 in. xx fld.....	.50	.45			
2-2½ ft. xx fld.....	.60	.55			

Each x indicates one transplanting Fr.—Frame Grown.
Fld.—Field Grown. 25 at the 100 rate; 250 at the 1000 rate.

HILL'S LINING-OUT EVERGREENS (Continued)

	100	1000		100	1000
Pinus Strobus			Taxus Media Hatfieldi		
White Pine			Hatfield Yew		
10-12 in. xx fr.....	.33	.30	6- 8 in. xx fr.....	.42	.39
12-18 in. xx fld.....	.40	.35	8-10 in. xx fr.....	.45	.42
18-24 in. xx fld.....	.50	.45			
Pseudotsuga Douglasi			Taxus Media Hicksi		
Douglas Fir			Hicks Yew		
8-10 in. xx fr.....	.30	.27	6- 8 in. x flat.....	.20	.17
10-12 in. xx fr.....	.35	.32	12-15 in. xx fld.....	.80	.75
12-15 in. xx fld.....	.55				
15-18 in. fld.....	.65		Thuja Occidentalis		
			American Arborvitae		
Taxus Cuspidata Capitata			8-10 in. xx fr.....	.25	.22
Upright Japanese Yew			10-12 in. xx fr.....	.28	.25
8-10 in. xx fr.....	.65	.60	12-18 in. xx fld.....	.45	.40
10-12 in. xx fr.....	.75	.70	18-24 in. xx fld.....	.50	.45
Taxus Cuspidata			Thuja Occidentalis Nigra		
Spreading Japanese Yew			Dark Green American Arborvitae		
6- 8 in. x flat.....	.17	.14	15-18 xx fld.....	.65	.60
6- 8 in. xx fr.....	.32	.29	18-24 in. fld.....	.70	.65
8-10 in. xx fr.....	.42	.39			
12-15 in. xx fld.Ex. Hvy.	.75	.70	Thuja Occidentalis Pyramidalis		
			Pyramidal Arborvitae		
Taxus Cuspidata Nana			4- 6 in. x flat.....	.17	.14
Dwarf Japanese Yew			6- 8 in. xx fr.....	.30	.28
8-10 in. xx fr.....	.50	.47	8-10 in. xx fr.....	.35	.32
			10-12 in. xx fr.....	.39	.36
Taxus Cuspidata Nana			12-18 in. xx fld.....	.65	.60
Pyramidalis Hilli			18-24 in. xx fld.....	.75	.70
Hill Dwarf Pyramidal Yew					
6- 8 in. xx fr.....	.32	.29	Thuja Occidentalis Wareana		
8-10 in. xx fld.....	.50		Siberian Arborvitae		
10-12 in. xx fld.....	.60		8-10 in. xx fr.....	.35	.32
Taxus Media Browni			Thuja Occidentalis Woodwardi		
Browns Yew			Woodward Globe Arborvitae		
6- 8 in. xx fr.....	.35	.32	8-10 in. xx fr.....	.35	.32
8-10 in. xx fr.....	.42	.39	10x10 in. xx fld.....	.70	.65
10-12 in. xx fld.....	.90	.85			
			Tsuga Canadensis		
			Canadian Hemlock		
			8-10 in. xx fr.....	.32	.29
			10-12 in. xx fr.....	.37	.34
			10-12 in. xx fld.....	.42	.37
			12-18 in. xx fld.....	.52	.47
			18-24 in. xx fld.....	.62	.57

Each x indicates one transplanting. Fr.—Frame Grown.
Fld.—Field Grown. 25 at the 100 rate; 250 at the 1000 rate.

Pre-Staked and Tied EVERGREEN Grafts

Our grafts are ready for field planting and cultivation when shipped. No grafts broken in shipping or cultivation. No expensive field staking or tying necessary.

Before your graft is shipped from Hills, a light but strong bamboo stake is inserted into each pot beside the graft; the rubber strip is replaced with grafting tape that encircles both the stake and the graft, and the tip of each graft is secured to the stake with a patent tie. The pot itself is then replaced with a light weight wrapping to save shipping expense and to insure that the graft reaches you in the best possible condition.

2 Yr. Grafts 8-10 in.

\$1.25 ea. per 100

Abies Concolor Pyramidalis
Pyramidal Concolor Fir

Abies Lasiocarpa Arizonica
Arizona Corkbark Fir

Picea Omorika
Serbian Spruce

Pseudotsuga Douglasi Pyramidalis
Pyramidal Douglas Fir

Taxus Cuspidata Nana Compacta
Compact Dwarf Japanese Yew

Taxus Cuspidata Tardiva Aurea
Shortleaf Yellow Yew

GRAFTS, 65c each per 100, 60c each per 1000

Juniperus Chinensis Keteleeri
Keteleer Juniper

Juniperus Chinensis Pfitzeriana Blue
Blue Pfitzer Juniper

Juniperus Chinensis Pfitzeriana Aurea
Hill Golden Pftizer Juniper

Juniperus Chinensis Sargentii Green
Green Sargent Juniper

Juniperus Communis Depressa Aurea
Golden Prostrate Juniper

Juniperus Communis Depressa
Vase Shape

Vase Shaped Prostrate Juniper

Juniperus Procumbens
Japanese Juniper

Juniperus Procumbens Nana
Dwarf Japanese Juniper

Juniperus Virginalis Globosa
Globe Hillbush Juniper

Juniperus Virginiana Canaerti
Canaert Juniper

Juniperus Virginiana Cupressifolia
Hillspire Juniper

Juniperus Virginiana Glauca
Silver Cedar

Juniperus Virginiaiana Hilli
Hill Dundee Juniper

Juniperus Virginiana Horizontalis
Glauc
Blue Coast Juniper



LILACS

	10	100		10	100
Syringa Persica Laciniata			Syringa Vulgaris Marechal Lannes		
Cutleaf Persian Lilac			D. Violet		
18-24 in.....	.43	.40	10-12 in.....	.35	.32
Syringa Vulgaris Berryer			12-18 in.....	.38	.35
D. Mauve			Syringa Vulgaris Miss Ellen Wilmott		
10-12 in.....	.35	.32	D. White		
12-18 in.....	.38	.35	10-12 in.....	.35	.32
18-24 in.....	.43	.40	12-18 in.....	.38	.35
Syringa Vulgaris Charles Joly			18-24 in.....	.43	.40
D. Crimson			Syring Vulgaris Pres. Carnot		
12-18 in.....	.38	.35	D. Lavender		
18-24 in.....	.43	.40	12-18 in.....	.38	.35
Syringa Vulgaris Congo			18-24 in.....	.43	.40
S. Wine Red			2-2½ ft.....	.48	.45
10-12 in.....	.35	.32	Syringa Vulgaris Pres. Grevy		
12-18 in.....	.38	.35	D. Blue		
Syringa Vulgaris Decaisne			18-24 in.....	.43	.40
S. Azure			2-2½ ft.....	.48	.45
10-12 in.....	.35	.32	Syringa Vulgaris Pres. Lincoln		
Syringa Vulgaris Gen. Sheridan			S. Blue		
D. White			10-12 in.....	.35	.32
12-18 in.....	.38	.35	12-18 in.....	.38	.35
18-24 in.....	.43	.40	Syringa Vulgaris Souv. De Ludwig		
Syringa Vulgaris Mad. Abel Chatenay			Spaeth		
D. White			S. Red		
12-18 in.....	.38	.35	8-10 in.....	.33	.30
18-24 in.....	.43	.40	10-12 in.....	.35	.32
2-2½ ft.....	.48	.45	12-18 in.....	.38	.35
Syringa Vulgaris Mad. Florent Stepman			18-24 in.....	.43	.40
S. White			Syringa Vulgaris Thunberg		
10-12 in.....	.35	.32	D. Mauve		
12-18 in.....	.38	.35	10-12 in.....	.35	.32
18-24 in.....	.43	.40	12-18 in.....	.38	.35
2-2½ ft.....	.48	.45	18-24 in.....	.43	.40
Syringa Vulgaris Mad. Lemoine					
D. White					
10-12 in.....	.35	.32			
12-18 in.....	.38	.35			
18-24 in.....	.43	.40			

FLOWERING CRABS

	10	100		10	100
Malus Adstringens			Malus Ringo		
Deep Rose			Pink		
2- 3 ft.....	.45	.42	12-18 in.....	.35	.32
3- 4 ft.....	.55	.52	18-24 in.....	.40	.37
			2- 3 ft.....	.45	.42
Malus Dolgo			Malus Sargentii		
White			Dwarf White		
18-24 in.....	.40	.37	18-24 in.....	.40	.37
2- 3 ft.....	.45	.42			
Malus Floribunda Atrosanguinea			Malus Scheideckeri		
Pink			Rose		
18-24 in.....	.40	.37	18-24 in.....	.40	.37
2- 3 ft.....	.45	.42	2- 3 ft.....	.45	.42
Malus Floribunda Purpurea			Malus Theifera		
Red			Soft Pink		
18-24 in.....	.40	.37	18-24 in.....	.40	.37
2- 3 ft.....	.45	.42			
Malus Purpurea Aldenhamensis			Malus Zumi Calocarpa		
Red			White		
18-24 in.....	.40	.37	18-24 in.....	.40	.37
2- 3 ft.....	.45	.42	2- 3 ft.....	.45	.42
			3- 4 ft.....	.55	.52
Malus Purpurea Eleyi					
Red					
18-24 in.....	.40	.37			
2- 3 ft.....	.45	.42			

