

Historic, Archive Document

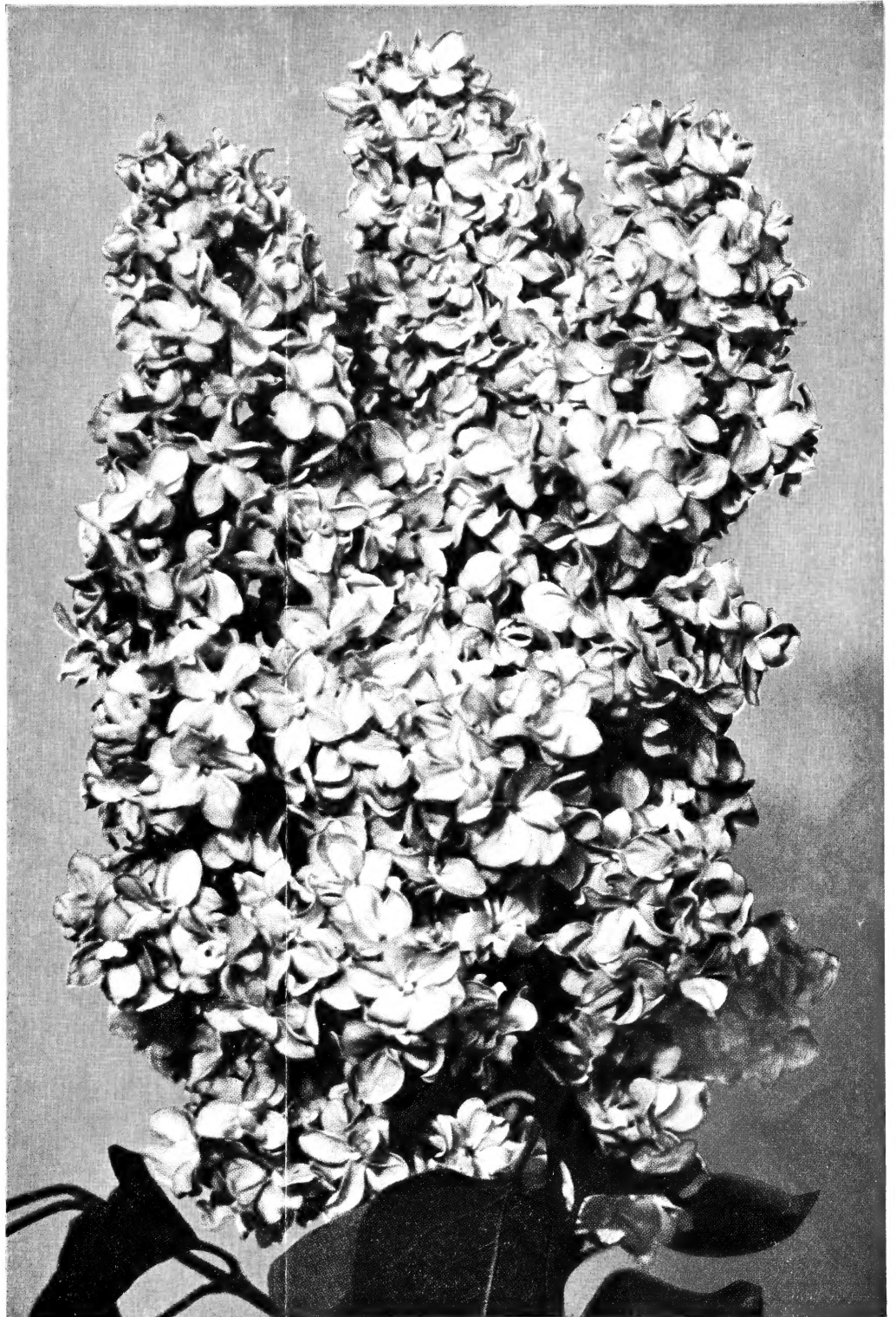
Do not assume content reflects current scientific knowledge, policies, or practices.

62.91

Kelly's

LIBRARY
RECEIVED
★ MAR 31 1949 ★
U. S. Department of Agriculture

ANNUAL
CATALOG
1949



LILAC
KATHERINE
HAVEMEYER
See page 4

KELLY PLANT GARDENS

E. 4100 SPRAGUE

PHONE LAKEVIEW 6531

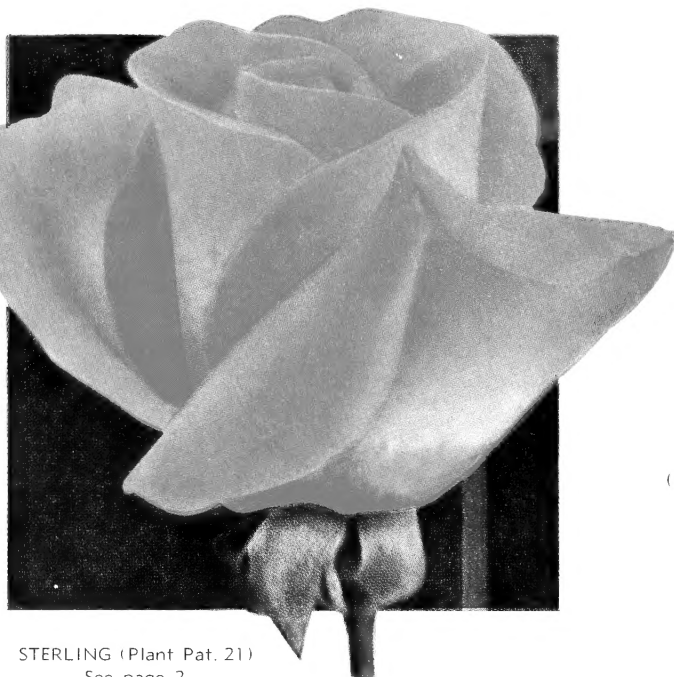
SPOKANE 15, WASH.



PEACE (Plant Pat. 591). See page 2



CHARLOTTE ARMSTRONG
(Plant Pat. 455). See page 2



STERLING (Plant Pat. 21)
See page 2

BLAZE
Climber
(Plant Pat. 10)
See page 1



COPYRIGHT



MME. HENRI
GUILLOT
(Plant Pat. 337)
See page 2

ROSES—The Queen of Flowers

Among all the flowering shrubs that make for beauty, grace and ornamentation, there is none that can compare with the rose. The wide range of color, shape and size of the blooms and the diversity and character of the foliage give it a wider range for decoration than any other single group of plants.

NOTE—In spite of our earnest effort, it often occurs that we are sold out of a variety ordered. To avoid disappointment, delay and inconvenience, we shall substitute varieties of similar color and characteristics, and only when they are as GOOD or BETTER than kinds ordered, unless you mark your order "NO SUBSTITUTE".

PRICES of all Kelly's 2-year No. 1 Roses are: Each \$1.00, pre-paid, except patented Roses, prices of which are given with each description.

BETTY UPRICHARD—Blended coppery orange and salmon pink.

CALEDONIA—Exceptionally long, pointed buds, opening to very double, high-centered, pure white, moderately fragrant flowers.

CHRISTOPHER STONE—Fine crimson red.

CONDESA DE SASTAGO—Two toned, coppery pink and gold.

DUQUESA DE PENARANDA—Blended apricot-orange with pink.

EDITOR McFARLAND—Pink, long pointed buds.

E. G. HILL—Massive blooms of deep crimson and scarlet, velvety on inside.

EDITH NELLIE PERKINS—Long pointed buds of oriental-red, shaded cerise-orange, opening to lasting double blooms salmon-pink inside and cerise-orange on the outside.

ETOILE DE HOLLANDE—Brilliant crimson red.

FRAU KARL DRUSCHKI—Large flowered white.

JOANNA HILL—Long pointed buds, creamy yellow.

KAISERIN VICTORIA—Creamy white opening to pure white.

LOS ANGELES—Flame pink toned with coral.

MARGARET McGREDDY—Oriental red.

McGREDDY'S IVORY—Long buds, ivory white, sweet scented.

McGREDDY'S SCARLET—Vivid deep scarlet buds on long stems; every one long and slender and beautifully shaped.

MME. JULES BOUCHE—A splendid double white rose, occasionally tinted with a touch of blush pink.

MRS. E. P. THOM—Pointed buds, light yellow.

MRS. PIERRE S. DUPONT—Medium-sized, long-pointed buds of reddish gold, opening to semi-double flowers of rich golden yellow. Continuous bloomer.

MRS. SAM McGREDDY—Beautiful coppery-scarlet-orange, heavily flushed with Lincoln red on the outside of the petals. Delicately perfumed.



MRS. E. P. THOM

OREGON CRIMSON—The pointed buds open to full double blooms of deep red. A good, strong bush that is in bloom throughout summer. Bright green shiny foliage.

PICTURE—Medium size but exquisite form. Rich pink with warm undertones of salmon which make the color cheerful and glowing. Produces continuous blooms all through the season.

PINK DAWN—Fine pink.

PRES. HOOVER—Blended orange and pink. Vigorous grower.

RED HOOVER—A red Pres. Hoover. Exactly like its parent plant except for color. One of the best for cutting.

SISTER THERESE—Fragrant yellow.

TALISMAN—Blended orange, yellow and rosy red.

THE DOCTOR—Long pointed buds of exquisite silvery pink, open to enormous blooms of the same uniform color, with intense fragrance.

FLORIBUNDA ROSES

PINOCCHIO (Plant Pat. 484)—Very easy to grow, always in bloom. Pointed buds are rich salmon, blushed with gold at base, gradually changing to soft clear pink as the flowers open. \$1.25 each.

ROSE ELFE—Silvery rose-pink. Gardenia-like flowers about 2½ inches across, extremely double, coming freely all summer.

HARDY CLIMBING ROSES

BLAZE (Plant Pat. 10)—Everblooming scarlet climber. \$1.50 each.

DR. W. VAN FLEET—The pointed buds open to large double fragrant blooms of cameo-pink, fading flesh white.

PAUL'S SCARLET (H. W.)—A vivid scarlet shaded crimson. Makes a brilliant display over a long period. One of the very best climbers.

RUTH ALEXANDER (Plant Pat. 978)—Most popular. Especially suited to this climate. Flowers attractively shading from chromium yellow through orange to red. \$1.50 each.

CL. PRES. HERBERT HOOVER—Cerise-pink, flame, scarlet, and yellow.

PRIMROSE—Double canary yellow flowers. Hardy.

SILVERMOON—Large, creamy white, cup-shaped flowers.

CL. TALISMAN—Yellow with copper and red tones. \$1.25 each.

GRUSS AN TEPLITZ—Intense scarlet blooms, shading to velvety crimson. Always in bloom. Good in cold climates.



CL. PAUL SCARLET

Write for Special Quotations on Larger Quantities

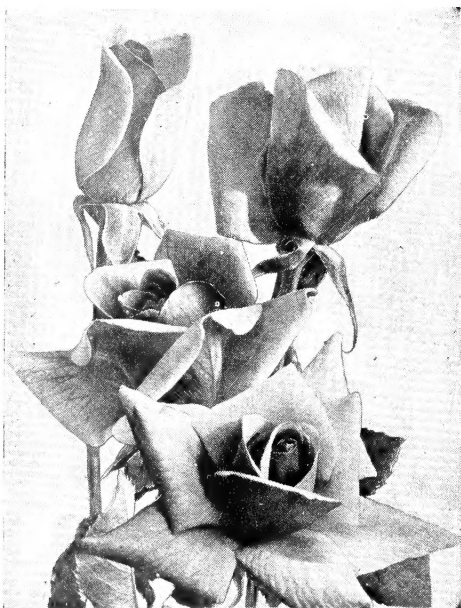
PATENTED ROSES



CHARLOTTE ARMSTRONG (Pat. 455)

AARS CHARLOTTE ARMSTRONG (Plant Pat. 455)—Blood-red in the bud, opening to cerise in hot weather and to spectrum-red in cool weather. AARS winner. \$1.50 each.

COUNTESS VANDAL (Plant Pat. 38)—Long buds of coppery bronze, suffused with soft gold. \$1.35 each.



COUNTESS VANDAL
(Plant Patent No. 38)

BED OF →
PEACE ROSES



CRIMSON GLORY (Plant Pat. 105)—A beautifully modeled rose of deep crimson with a dark velvety sheen. Intensely fragrant. \$1.50 each.

AARS FRED EDMUNDS (Plant Pat. 731)—P.R.R. winner of 1944 All America Regional Award. The beautiful long-shaped buds of burnt orange open to glorious blooms of glowing, coppery orange which slowly changes to soft apricot. Rich fruity fragrance. \$1.50 each.

AARS GRANDE DUCHESSE CHARLOTTE (Pat. applied for)—The beautiful long streamlined buds are a rich claret color. The open blooms gradually change to begonia-red. AARS winner. \$1.50 each.

AARS LOWELL THOMAS (Plant Pat. 595)—The long slender buds open to a vibrant lemon-chrome flower with a high cupped center. \$1.50 each.

McGREY'S SUNSET (Plant Pat. 317)—The outside of the petals is a clear buttercup yellow, tipped orange, and the inside is chrome yellow flushed with scarlet. \$1.35 each.

AARS MIRANDY (Plant Pat. 632)—All American winner for 1945. This gorgeous, fragrant red rose has large, ovoid buds of a rich dark red that unfold to a huge, perfect flower of entrancing fragrance. \$1.50 each.

MME. HENRI GUILLOT (Plant Pat. 337)—Beautiful urn-shaped buds of delightful watermelon pink color. Glistening, waxy foliage. \$1.50 each.

AARS PEACE (Plant Pat. 591)—All American 1946. The large gardenia-like blooms open from long, sun gold buds, changing to a pale yellow on through a soft rose and finally bursts forth with an alabaster white bloom ruffled with pink scallops. \$2.00 each.

AARS RUBAIYAT (Pat. applied for)—All America 1947. A brilliant flower of rose-red to crimson. Buds are long and shapely; gracefully held on strong stems. Flowers, when full, have an open center and somewhat ruffled petals. \$1.50 each.

SIGNORA (Plant Pat. 201)—Long bud of burnt sienna, opening to a lighter hue toward mandarine. \$1.35 each.

STERLING (Plant Pat. 21)—Long pointed buds of striking pink open to well formed flowers with gold at the base of the petals. Very fragrant, does not turn blue when old. \$1.25 each.

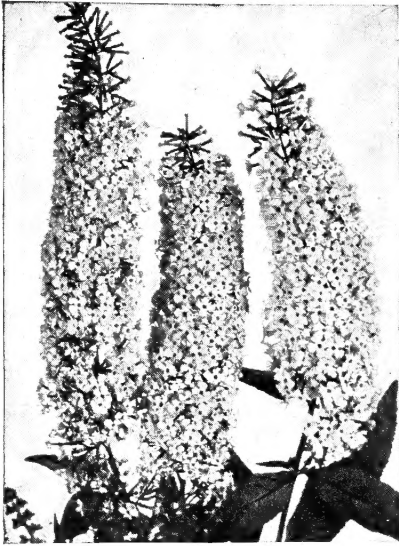
CULTURAL DIRECTIONS FOR BUSH ROSES

Roses require a plentiful supply of organic matter in the soil and thorough drainage. Excavate the bed at least 2 feet deep. If your soil does not drain well place a layer of gravel on the bottom, then alternately fill with layers of soil and manure until the bed is filled. Roses like a heavy soil.

The hole should be dug large enough to admit all of the roots without cramping. The graft (i.e., the point where the root joins the top) should be placed at least 3 inches below the ground level. Prune after planting. Cut back to 2 or 3 stems with 3 or 4 buds on each stem. Water heavily until growth starts.

WINTER PROTECTION—In late fall mound up the dirt around each plant, then after ground freezes cover mound with several inches of leaves or litter to prevent alternate freezing and thawing. In the following spring remove the mulch and soil mound gradually. This will permit the soft, protected stems to toughen. After soil has been removed to natural level cut plant back to 3 or 4 stems with 4 or 5 buds on each stem.

FLOWERING SHRUBS



BUDDLEIA (Butterfly Bush)



FORSYTHIA



JAPANESE QUINCE

ALL FLOWERING SHRUBS SHIPPED EXPRESS COLLECT.

Ornamental shrubs are the foundation of all landscape plantings. In selecting your shrubs, bear in mind their ultimate height of growth. Place tall growing varieties in the background or in corners where height is needed. Use medium height growing varieties between taller sorts, and dwarf kinds, under windows and in front of the taller varieties.

Our advice on planting difficulties is available at all times. Write us. It's free.

ALMOND

PINK FLOWERING—One of the showiest of all flowering shrubs. Plant is compact in growth, blooms with a profusion of pink colored flowers along each stem. Grows 6-8 ft. high. 2-3 ft. size, \$1.25.

BERBERIS (Barberry)

THUNBERGI (Japan Barberry)—Where a dwarf deciduous hedge is wanted nothing equals this beautiful Barberry. Requires but little pruning to keep in shape. The leaves are small, light green, and towards fall assume rich, brilliant colors, the fruit or berries becoming scarlet. Absolutely hardy. Plant 12 to 15 inches apart. 12-15 inch, each 75c, 10 for \$6.50; 18-24 inch, each \$1.00, 10 for \$8.50.

BARBERRY (Japan Red Leaf)

A valuable recent introduction identical with Thunbergi except the color of its foliage. Instead of the green of Thunbergi it comes out a brilliant bronzy red. The heat of summer intensifies this color and autumn adds many other rich tints. 12 to 15 inch, each \$1.00; 18 to 24 inch, \$1.25.

BEAUTY BUSH

BEAUTY BUSH (Kolkwitzia Amabilis)—A charming new shrub from China's High Mountains. Perfectly hardy. Has beautiful trumpet and bell shaped pink flowers with orange veins in June, July. Will be a great companion to our Spireas and a pink bloomer is really a prize in spring shrubs. Every lover of blooming shrubs should have this fine new plant. 2-3 ft. \$1.25.

BUDDLEIA (Butterfly Bush)

Plants grow three to four feet and are covered with long racemes of lilac-like flowers in July. The best location is in good, rich, well drained soil in a sunny situation. It attracts the butterflies, and as many as fifty have been counted about a plant in a single afternoon. Each 85c.

CHARMING—New pink Butterfly bush. Each 85c.

ILE DE FRANCE—Large flowers of rich, reddish-purple, borne in long panicles.

CONCORD—A new Buddleia with dark red eye, shading lighter toward the edges of the petals.

ELEANOR—Wine purple.

CARAGANA

CARAGANA ABORESCENS (Siberian Pea Shrub)—A double green leaved tasty plant and numerous clusters of yellow flowers followed by striking pea pods. This plant is fine for hedges. Specimen Plants—18 to 24 inch, each 65c; doz. \$6.60.

DEUTZIA

PRIDE OF ROCHESTER—Dainty blooming bell or tasse flowers, born in wreaths along the branches in June and July. Outer petals tinged with pink. Fine specimen shrubs. 2-3 ft. \$1.00.

DOGWOOD

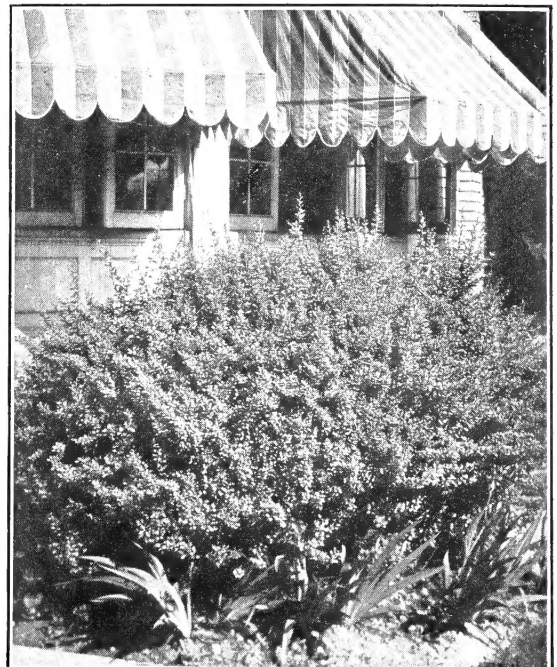
CORNUS (DOGWOOD) Sibirica—Most valuable for their brilliant colored bark and foliage variations. They live the somber winter aspect of leafless shrubbery. 18-24 in., each 75c; 2-3 ft., each \$1.00.

FORSYTHIA (Intermedia)

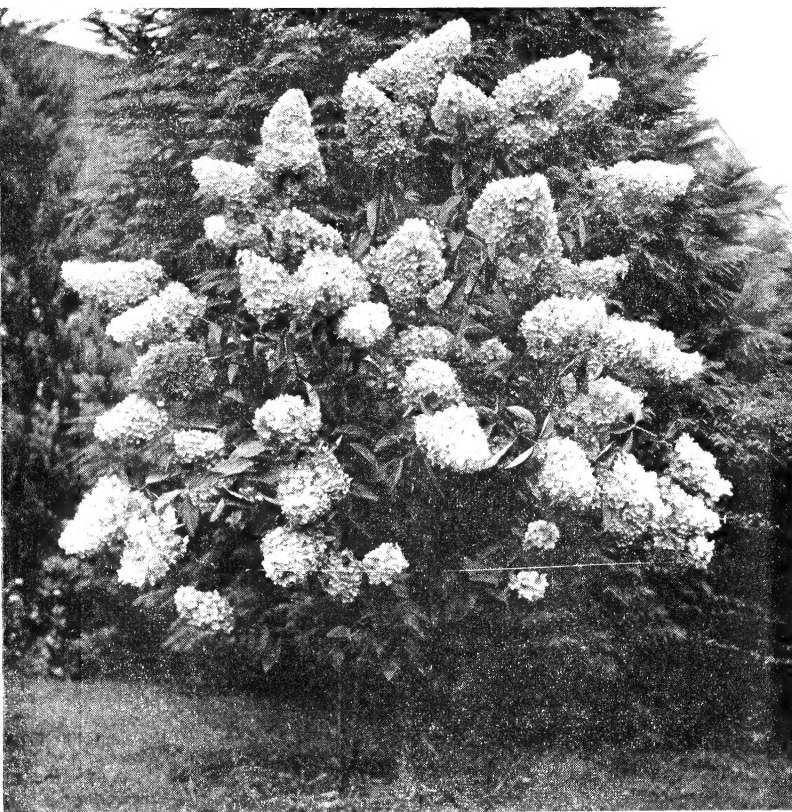
Among the first to bloom and their bright yellow flowers seem the very spirit of spring opening before the leaves appear. They attain an ultimate height of eight or ten feet. Fine specimen shrubs. 18-24 in., each 60c; 2-3 ft., each \$1.00.

HONEYSUCKLE

TARTARIAN—A beautiful flowering shrub. One of the hardy growing hedge and screen plants. Probably the most rapid grower of all the hardy shrubs, often attaining a height of ten or more feet in a few years. 18-24 in., each 60c; 10 for \$5.00; 2-3 ft., each \$1.00; 10 for \$8.50; 3-4 ft. \$1.25.



THUNBERG'S BARBERRY



HYDRANGEA, PANICULATA

LILACS (Syringa)

COMMON PURPLE—A harbinger of spring shrub. Easily grown and admired. 2-3 ft., \$1.00.

COMMON WHITE—An old favorite and a wonderful shrub for screen or hedge planting. 18-24 in., each 85c; 10, \$7.50; 2-3 ft., each \$1.25.

PERSIAN PURPLE—Dwarf growing, slender branches, narrow leaves. Specimen plants, 2-3 ft., each \$1.00.

LILAC (French Grafted)—There is no comparison between our common Lilac, as pretty as they are, to those of the French Hybrids in the texture, size, color tones, mixture of shades, fragrance and luster of the blooms. The rather bad habit of succoring in the common Lilac is unknown in the French Lilacs.

BELLE DE NANCY—Double Rose.

KATHERINE HAVEMEYER—Double pinkish lavender.

LUDWIG SPAETH—Single Purplish Red.

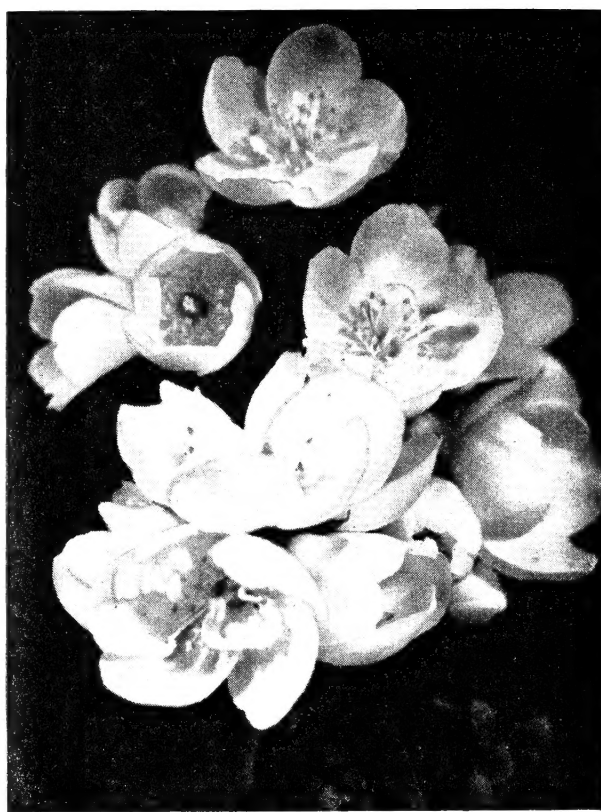
MME. LEMOINE—Double white.

PRES. GREVY—Double blue.

Prices of French lilacs: 2-3 ft., each \$1.50.

HYDRANGEA

PANICULATA—A beautiful, tall shrub, with leaves of bright, shiny green; flowers borne in huge panicles from 8 to 12 inches long, light pink, changing to brown later in the fall; blooms in August and September; can be grown in tree form successfully and makes a very desirable lawn ornament. Height about 7 feet. 18-24 in., each \$1.00; 2-3 ft., each \$1.50.



MOCKORANGE, PHILADELPHUS VIRGINAL

ARBORESCENS (Hills of Snow)—Conspicuously white and imposing Hydrangea. Mounds of snow white blooms July to September. 2-3 ft., each \$1.50.

PHILADELPHUS (Mock Orange)

VIRGINALIS—A magnificent new variety. The flowers are the largest, most fragrant and longest blooming immaculate white bloom, yellow stamens. Summer blooming. 18-24 in., each 85c; 2-3 ft., \$1.50.

KERRIA

JAPONICA—Double flowered. A fine shrub for most any location. Abundant double yellow flowers like half opened rose buds. Specimen plants, 2-3 ft., each \$1.25. 85c.

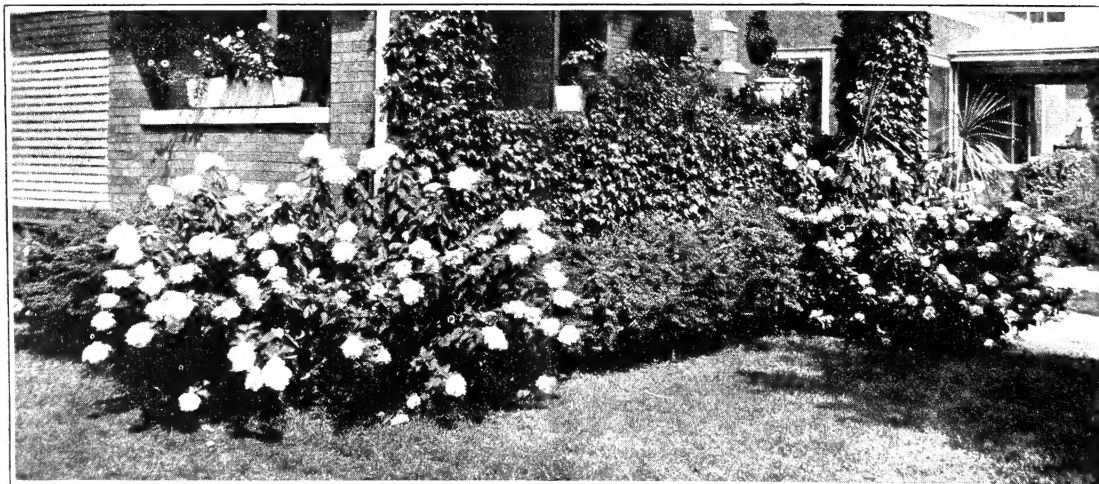
PRIVET (English Hedging)

PRIVET (Ligustrum Vulgaris)—This hardy privet will make the most beautiful and lasting hedge. Used as a border it will complete the lasting and natural beauty of your home and grounds.

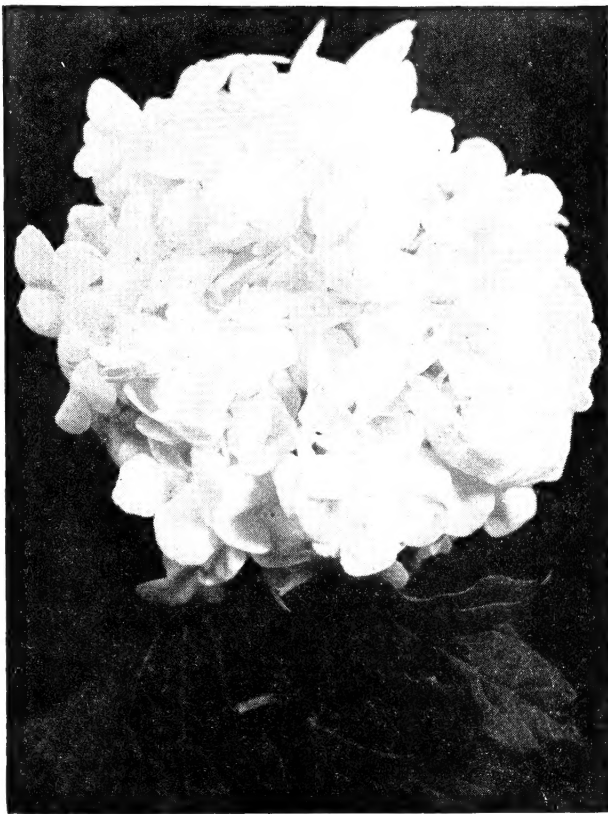
18-24 in., per 10, \$2.75; 100, \$25.00.

QUINCE

CYDONIA JAPONICA (Japan Quince)—This fine old shrub makes a bushy growth and in early spring is covered with scarlet flowers. 18-24 in., each \$1.00; 2-3 ft., each \$1.25.



HYDRANGEA
and
SHRUBBERY



COMMON SNOWBALL (*Viburnum Sterilis*)



WEIGELA EVA RATHKE

SPIREA

All the SPIREAS bloom in a riotous extravagance. Style and color differ in varieties which make this plant most acceptable to all.

ANTHONY WATERER—A fine dwarf Spirea with dark crimson flowers. Height, 2 to 3 feet. 12-15 in., \$1.00.

ARGUTA—Earliest spirea to bloom. Graceful, semi-pendulous branches, covered with pure white flowers. 2-3 ft., each \$1.00.

BILLARDI—Erect growing with dense spikes of rose-pink flowers. Blooms from July till September. 2-3 ft., each \$1.00.

PRUNIFOLIA (Bridal Wreath)—One of the earliest to bloom. Plum leaved foliage turning to brilliant red in fall. Double white clustered flowers. Each, 2-3 ft. \$1.25.

THUNBERGI—A beautiful display of white flowers in the early spring ahead of the leaves. Soft feathery foliage. 18-24 in., each \$1.00.

VAN HOUTTEI—The grandest of all the Spireas, and one of the very best of all shrubs. A complete fountain of pure white bloom in May and June. Each, 18-24 in. 75c; 2-3 ft. \$1.00.

TAMARIX

AFRICANA—Tall growing slender shrub with feathery foliage and pink flowers in racemes. Blooms in May. Prepaid, 2-3 ft., \$1.00.

HISPIDA—Similar in growing habit to Africana, but blooms almost continuously during summer. Each, 3 ft., \$1.00.

WEIGELA

Very thrifty shrub with delightful blooms during summer, May to September.

EVA RATHKE—Distinct and most attractive variety. Flowers deep carmine red. Each, 2-3 ft. \$1.25.

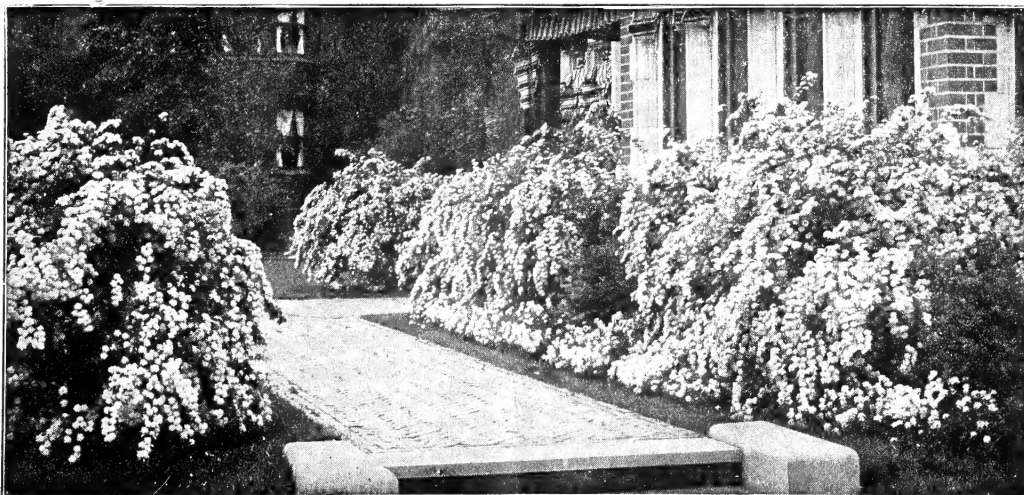
ROSEA—Very popular. Pink flowers. Each, 18-24 in. 60c; 2-3 ft., \$1.00.

VIBURNUM

COMMON SNOWBALL (V. Opulus Sterilis)—Grows 6 to 8 feet high, the old-fashioned snowball; its large globular clusters of pure white flowers are produced in May and June and make a very attractive appearance. Very ornamental. 18-24 in. 75c; 2-3 ft., each \$1.25.

OPULUS (Cranberry)—Grows 8 to 10 feet high. Bright crimson berries in clusters all winter. Flowers are in dense cymes about 4 inches across, pure white. 18-24 in., each 75c; 2-3 ft., each \$1.25.

BURKWOODI—Truly a garden aristocrat. Compact growing, 4-5 ft. high. Has glossy green leaves which remain on the plant in mild winters. Flowers are 4 to 5 in. across, pinkish white with delightful fragrance. Each, 12-15 in. \$2.00.



SPIREA
VAN HOUTTEI

VINES—Prepaid

AMPELOPSIS

AMPELOPSIS (Boston Ivy)—For covering cement, brick, stone or wood and clings to the smoothest surface. Beautiful foliage. 2 yr., prepaid, each 75c.

ENGELMAN'S IVY OR WOODBINE (A. quinquefolia, var. Engelmanni)—A type of quinquefolia which has long been desired. It has shorter joints and smaller and thicker foliage. It is better equipped with tendrils, by which it will climb walls of stone or brick as closely as the Veitchii (Boston Ivy). It should be planted in the Northwestern states, in place of Veitchii, as it is perfectly hardy, withstanding heat and cold much better. 2 yr., prepaid, each 75c.

VIRGINIA CREEPER — A famous and universally used climber. Has pretty cut leaves that turn a brilliant crimson in fall. Prepaid, each 60c.

ARISTOLOCHIA

SIPHO-DUTCHMAN'S PIPE—A fine climber in protected locations. Has immense heart shaped leaves that are unusually attractive. Makes a thrifty, uniform growth. Each \$1.25.

BIGNONIA RADICANS

TRUMPET FLOWER—A robust, woody vine, twining tightly with roots along the stems. Its orange-scarlet, trumpet shaped flowers cluster at the tips of branches. The flowers are of large size, and are borne abundantly in the summer after the plants obtain a fair size. A fine climber for every purpose. 2 yr., 75c.

CELASTRUS SCANDENS

BITTERSWEET—Showy orange fruit from October through the whole winter. 2 yr., each 75c.

CLEMATIS

PANICULATA—Probably the most popular of the small flowering sorts: vine is a rapid grower with glossy green foliage; in September the flowers appear in a perfect mass of white, giving the appearance of a bank of snow; the fragrance is most delicious and penetrating. Prepaid, 2 yr., each 75c.

LARGE FLOWERING CLEMATIS

The following are certainly the most beautiful of the flowering vines in our section. Flowers in masses, 5 to 7 inches in diameter.

LARGE FLOWERING CLEMATIS—Continued

HENRYI—Large, pure white. Extremely popular, especially when planted in between the other colors for contrast. Prepaid, 3-in. pots, each 85c.

JACKMANI—Immense flowers of an intense violet-purple color; bloom continually all summer. Perhaps the best known Clematis. Prepaid, 3-in. pots, each 85c.

RAMONA—Another huge flowered clematis. Color sky-blue. 3-in. pots, each 85c.

MME. BARON VEILLARD—Large flowering pink. Prepaid, 3-in. pots, each 85c.

MME. EDOUARD ANDRE — Large flowering with pretty crimson red flowers. 3-in pots, each 85c.

ENGLISH IVY

The old Evergreen Ivy. Foliage thick. Prepaid, each 75c.

HONEYSUCKLE

HALL'S JAPAN—Color an intermingling of white and yellow. Extremely fragrant and most satisfactory. Prepaid, 2 yr., 50c.

GOLD FLAME—Large cluster of flame pink and golden yellow fragrant blooms. Blooms freely from spring to fall. 2 yr., \$1.00.

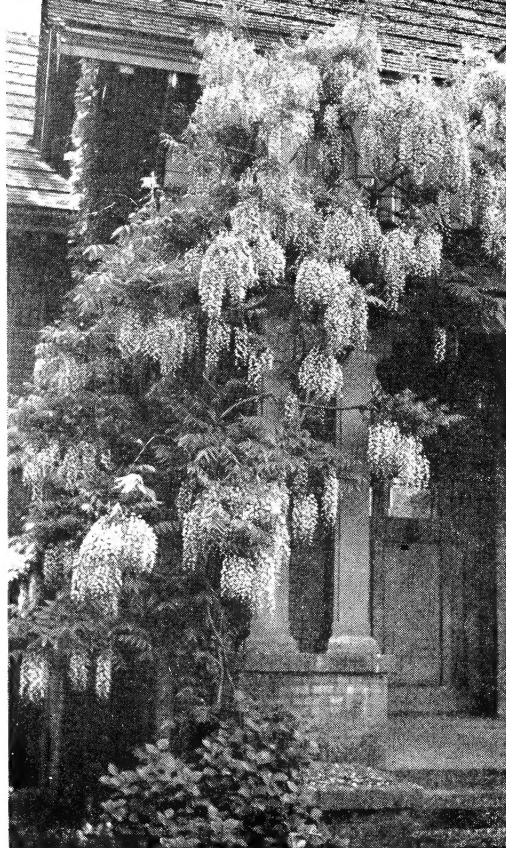
SCARLET TRUMPET—Magnificent large scarlet trumpets. Blooms from spring until frost. 2 yr., ea. 75c.

POLYGONUM

AUBERTI (Silver Lace Vine) — A very beautiful, graceful climber. Grows rapidly and needs support. It produces masses of lacy, misty white flowers over the entire plant. The blooming period is longer than the average vine which makes it a plant well worth having. Prepaid, each 75c.

WISTERIA

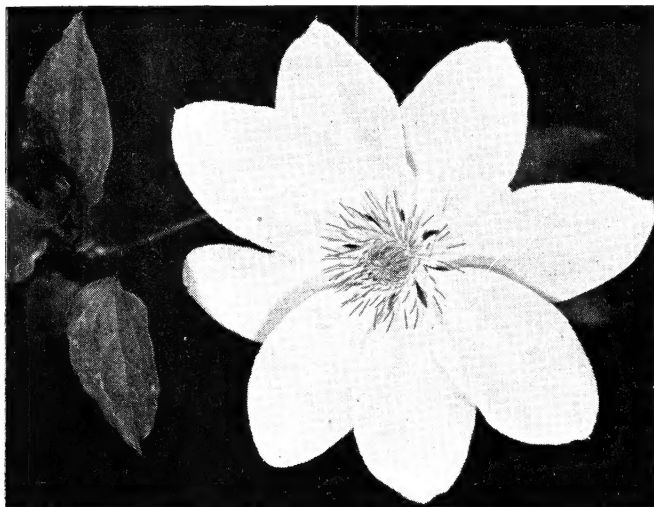
An old aristocrat that will never lose favor. When grown on a trellis or any other support, will attain great height. When in bloom it thrills you with large panicles of purple flowers—a great profusion of them hanging gracefully all over the plant. It is a popular plant for an arbor, for the fine flowers hang down through the roof with a beautiful effect. Prepaid, each \$1.00.



WISTERIA



SILVERLACE VINE



LARGE FLOWERED CLEMATIS

KELLY'S EVERGREENS

To flank an entrance, the taller growing varieties are particularly effective; for rock walls, terraces and rockeries, the prostrate types should be used. As single specimens out in the lawn, there is no more beautiful than the Colorado Blue Spruce. For windbreaks and backgrounds, use the Norway and Colorado Blue Spruce.

Remember our help and advice in beautifying your home is positively free, hence feel free to write us on any of these questions. We are sure that we can assist you.

All of our Evergreens are dug with a large ball of earth about the roots to insure safe transplanting.

All Evergreens sent by express, or auto freight, collect.

ARBOR VITAE

BERCKMAN'S GOLDEN—A very compact, dense, slow growing type. This conspicuous plant always attracts the eye. The flattened leaf surfaces always face edgewise and the yellow color merging with the green calls for admiration. 10-12 in., each \$3.00.

WOODWARD'S GLOBE—Wonderfully attractive in pairs at home entrance or graceful and attractive in tubs or pots. 12-15 in., each \$2.50; 15-18 in., each \$3.50.

PYRAMIDAL—The most compact and erect of the species. Foliage a deep green retaining its color. Always beautiful and always admired. 3 ft., \$3.50; 4 ft., \$5.00; 4-5 ft., \$7.50.

JUNIPER

EXCELSA STRICTA—A dense, cone-shaped mass of bristle-tipped, luminous, blue-green leaves. Tolerant of average garden conditions, though not a fast grower. 18-24 in., each \$4.00.

IRISH—Grows to 20 or more feet high and seldom over two feet in diameter. Bright glaucous green color. Fine for columnar architecture. 2-3 ft., each \$4.00.

PFITZER—Low, broad type of irregular form. Used greatly as a filler between other taller growing varieties. 18 in., each \$3.00; 2 ft., each \$4.00.

SAVIN—Grows not more than 2 or 3 feet high. It forms an excellent border to larger evergreens in the background. Dark green color. 18 in., each \$3.00; 2 ft., each \$4.00.

TAMARISCIFOLIA—A creeping dwarf variety. Average height about 1 foot, spreads 6 to 8 feet. Forms a perfect mat. Bluish and gray green. 12-15 in., each \$3.00; 15-18 in., each \$4.00.

RETINOSPORA

PLUMOSA AUREA—One of the most beautiful evergreens related to the cypress. Foliage and form quite distinct. 2 ft., each \$3.50.

PINE

MUGHO PINE—This low, spreading type of pine is very valuable in landscaping. It is compact in growth, rich dark green in color, hardy, fast growing and gives complete satisfaction. 18-24 in., each \$4.00.

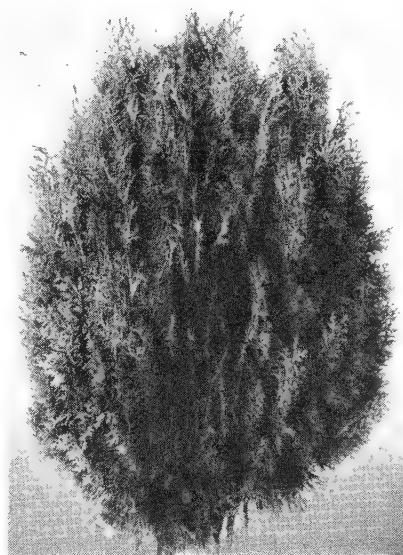
SPRUCE

COLORADO BLUE—Pyramidal form. Its steel blue foliage a sensation wherever grown. One of the showiest and most impressive evergreens. 2-3 ft., each \$7.50; 3-4 ft., each \$12.00.

COLORADO GREN—Open pyramidal habit. Its color is a rich dark green. Is commonly used for Christmas trees. 3-4 ft., each \$6.00; 4-5 ft., each \$8.00.



PYRAMIDAL
ARBORVITAE



BERCKMAN'S
GOLDEN
ARBORVITAE



PYRACANTHA

BROADLEAF EVERGREENS

BOXWOOD

Ideal shrub for hedges. The closely set small leaves stand shearing well. Full shade cause lanky growth.

SEMPERVIRENS—Tall upright growth. 12-15 in., each \$2.50.

SUFFRUTICOSA—True dwarf Boxwood. Makes one of the finest low hedges. 4-6 in., each 65c; 8-10 in., each \$2.00.

DAPHNE

CNEORUM (Rock Daphne) — Dwarf, spreading, evergreen plant. Covered in spring with fragrant pink flowers. 6 in., each \$1.50.

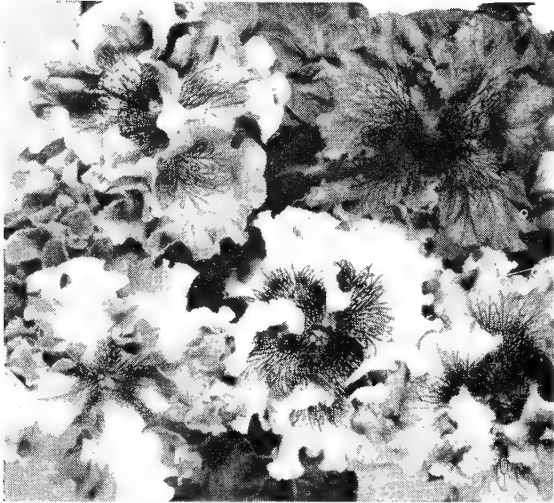
MAHONIA AQUIFOLIA

OREGON GRAPE (Holly Leaved)—An evergreen shrub with smooth, shining holly leaves changing their color capriciously during the year, from green to reds and bronze. 18-24 in., each \$2.50.

PYRACANTHA

LOLANDI—Pointed dark glossy green leaves. White flowers in large clusters in the spring. Orange berries in fall and winter. Grows to 15 ft. 18 in., each \$2.00.

KELLY'S ANNUAL FLOWERING PLANTS



PETUNIA, GIANTS OF CALIFORNIA

AGERATUM—One of the best summer blooming plants. Their bright blue flowers are produced in the greatest profusion. Prepaid, doz. 40c; 50, \$1.25.

ALYSSUM, Little Gem—Snow-white Carpet Plant. The plants, pletely covered with snow-white blossoms. Prepaid, doz. 40c; 50, \$1.25.

ALYSSUM, Violet Queen—Masses of violet colored flowers on very dwarf, compact plants. Excellent for borders. Prepaid, doz. 40c; 50, \$1.25.

ASTERS

GIANT CREGO—A vastly improved type of crego aster. Flowers are very large, fluffy, with numerous long, slender, curly-tipped petals, full centered and of good substance. Stems are long, making Giant Crego a wonderful cut flower. We can supply the following separate colors: Shell pink, deep rose, crimson, lavender, purple, white or mixed. Prepaid, doz. 40c; 50, \$1.25; 100, \$2.00.

HEART OF FRANCE—A very interesting and beautiful shade of dark blood red. Prepaid, doz. 40c; 50, \$1.25; 100, \$2.00.

CANNAS—Giant flowering. Excellent for use in the center of flower beds. Huge leaves, with large flowers emerging majestically above. Available in Bronze or Green foliage. Prepaid, each 35c; doz. \$3.50.

CALENDULA (Pot Marigold)—One of the best and showiest free-flowering hardy annuals, growing in any good garden soil. Prepaid, doz. 40c; 50, \$1.25.

COLEUS—Broad-leaved, bushy foliage plants, unmatched for brilliancy and unique arrangement of colors. Prepaid, each 25c; doz. \$2.50.

COSMOS—This beautiful annual is one of the most showy and useful of our garden plants. Prepaid, doz. 40c.

CARNATION—A new strain in all colors. Will produce greenhouse size blooms outside from our plants. Red, rose, white. Prepaid, doz. 40c; 50, \$1.25.

DAHLIA, UNWIN'S IDEAL BEDDING MIXTURE—Miniature double and semi-double flowers on dwarf bushy plants, 18 to 24 in. tall. Prepaid, each 25c; doz. \$2.50.

GERANIUM—For intensity of color and profusion of bloom there is no flower that equals the showy geranium. It cannot be supplanted for window box, basket, cemetery or park planting. Available in Shrimp Pink, Salmon, Cerise, Scarlet and Crimson. Prepaid, each 40c; doz. \$4.00.

IPOMEA (Morning Glory), Heavenly Blue—Ideal for climbing over fence or trellis. Large flowers, beautiful sky-blue in color. Prepaid, pots, each 15c; doz. \$1.50.

MARIGOLD (French Dwarf)—Profusion of small double flowers on plants 10 to 12 inches high. Prepaid, doz. 40c; 50, \$1.25.

MARIGOLD (Tagetes Little Giant)—A distinct type of dwarf Marigold. Grows only 4 or 6 inches high. Masses of small yellow flowers. Prepaid, doz. 40c; 50, \$1.25.

MARIGOLD (Gigantea Sunset Giants)—The most valuable introduction to the Marigold family. Huge flowers, long stems, odorless, bright orange and yellow in color. By all means try this variety. Prepaid, doz. 40c; 50, \$1.25; 100, \$2.00.

LOBELIA (Dwarf)—No garden is complete without an edging of blue Lobelia, and for a long season of bloom there is nothing that can take its place. Doz. 40c; 50, \$1.50; 100, \$2.50.

LOBELIA TRAILING—Desirable for pots, hanging baskets. Prepaid, doz. 40c; 50, \$1.25.

LARKSPUR—These handsome Larkspurs are very effective in borders and planted among shrubs. Prepaid, doz. 40c.

PHLOX (Drummondii)—For a splendid mass of color and constant display nothing excels this annual. Prepaid, doz. 40c; 50, \$1.25.

PORTULACA (Sun Plant)—Fine for massing in beds, edging or rock work. Doz. 40c; 50, \$1.25.

SALPIGLOSSIS—Undoubtedly one of the most attractive annuals; should be in every garden. Prepaid, doz. 40c; 50, \$1.25.

SALVIA (Scarlet Sage)—These salvias will delight every one by the profusion and distinctness of their red flowers during the whole summer until frost. The most attractive red flowering plant. Be sure to include these in your order. Doz. 60c; 50, \$2.00.

SCABIOSA (Mourning Bride)—Commonly known as the Pincushion plant. Prepaid, doz. 40c; 50, \$1.25.

SCHIZANTHUS (Butterfly Flower)—A long lasting blooming plant of daintiest flowers. Prepaid, doz. 40c; 50, \$1.25.

STOCKS—Giant Imperial—A lovely, popular annual. Tall spikes of flowers in many shades. Fine for cutting. Prepaid, doz. 40c; 50, \$1.25.

VERBENAS (Mammoth Mixed)—Producing in handsome umbels flowers of large size in beautiful shades of white, rose, scarlet, blue, purple. Prepaid, doz. 40c; 50, \$1.25.

VINCA—The most popular trailing vine for porch baskets, urns, window boxes, etc. Beautiful variegated green and white leaves. Prepaid, each 35c; doz. \$3.50.

PETUNIAS

Ruffled Edged—Giants, Single

GIANTS OF CALIFORNIA—The finest of all single ruffled Petunias; has brilliant color range.

PRIDE OF PORTLAND—Beautiful ruffled pink.

ELKS PRIDE—Not ruffled but large flowered. Beautiful velvety purple.

Above varieties, prepaid. Doz. 75c; 50, \$2.50.

Seed—All above varieties Petunias. Pkt. 25c.

Dwarf Single

CELESTIAL ROSE—A wonderful dwarf Petunia for borders or bedding. Rich deep pink.

ROSY MORN—A popular variety, light pink with white throat.

SNOW QUEEN—Compact growing. Pure white. Fine for borders.

BLUE BEDDER—Soft mid-blue. All dwarf single Petunias, prepaid. Doz. 40c; 50, \$1.25; 100, \$2.00.

Tall Single

GEN. DODDS—Very floriferous. Blood red.

HOWARD'S STAR—Purplish red with white star.

MIXED—A well balanced mixture of tall single bedding Petunias.

Above varieties, prepaid. Doz. 40c; 50, \$1.25.

SNAPDRAGON

There are few flowers that equal the Snapdragon in productiveness, variety of color, and general satisfaction as a summer cut flower. The flowers are produced in profusion on long, straight spikes. They bloom steadily throughout the summer. We can supply the following straight colors—rose pink, copper, crimson, white, yellow or mixed. Prepaid, doz. 40c; 50, \$1.25; 100, \$2.00.

ZINNIAS

GIANT DAHLIA FLOWERED—This splendid new and distinct race is without doubt the greatest improvement in Zinnias yet developed, and will greatly increase the popularity of this flower. The plants are of strong, vigorous habit, produce mammoth flowers 4 to 6 inches across. In separate colors. Crimson, lavender, orange, pink and mixed. Prepaid, doz. 40c; 50, \$1.25.

LILLIPUT (Pastel Mixture)—A lovely mixture of soft, delicate shades. Flowers are dainty and small, and are borne in profusion on plants about 2 feet high. Lilliput Zinnias keep well after cutting and are one of the most satisfactory of the summer annuals. Prepaid, doz. 40c; 50, \$1.25.

SUPER CROWN O' GOLD—Pastel tints. A lovely blend of large flowered, tall growing zinnias. Each flower has an underlying gold sheen at the base of the petals, giving the flower an unusually rich appearance. This type contains the softer pastel shades only. Prepaid, doz. 40c; 50, \$1.25.

HARDY PERENNIALS

PRICES:
All perennials, unless otherwise specified, are:
25c each. Prepaid.

Varieties carrying asterisk (*) are suitable rockery plants.

ALYSSUM

***ALYSSUM SAXATILE**—An excellent perennial covered with masses of bright yellow flowers in early spring.

ARABIS (Rock Cress)

***ALPINA**—Pure white, very useful for rock garden or edge.

AQUILEGIA (Columbine)

LONG SPURRED HYBRID—Thrives luxuriantly in any good soil; suitable for the open garden, permanent beds of borders or edges of shrubbery. Blooms during May and later when flowers are scarce. Plants grow 2 to 3 feet high. Prepaid.

Pink, Blue, Mixed—Field clumps, each 35c.

ASTER PERENNIAL, Michaelmas Daisy

BEECHWOOD CHALLENGER—Brilliant crimson flowers produced freely on 3-foot stems from Sept. to Nov.

CLIMAX—The old favorite. Large lavender flowers with golden yellow disc.

HARRINGTON'S PINK. The best pink hardy Aster yet produced.

* ASTER, Dwarf Varieties

NANCY—Lavender pink.

VICTOR—Dwarfest of all. Clear lavender blue flowers.

SNOWSPRITE—Clear white.

BLEEDING HEART

DIELYTRA SPECTABILIS—(Hardy. Grows 24 inches. Plant in sun or shade. Blooms in May.) These pretty spring bloomers with their graceful drooping sprays of heart-shaped pink and white flowers are very ornamental, and bloom freely early in the season. Fine for cemetery plant. Postpaid, each 50c; doz. \$5.00.

DICENTRA EXIMIA—Showy racemes of waxy pink flowers, finely cut foliage.

CAMPANULA

CANTERBURY BELLS (Cup and Saucer)—This is one of the most popular and hardiest forms. Single cup-shaped flower set in a saucer-like calyx. Entire flower one color. Blue, white, pink.

PERSICIFOLIA BLUE—Tall spikes with open blue flowers.

* CERASTIUM

SNOW IN SUMMER—Charming creeping plant, silver foliage, fine border, white flowers.



PINK CUSHION CHRYSANTHEMUM

HARDY CHRYSANTHEMUMS

Tall

ALADDIN—Bronze.
ALABASTER—White.
ALGONQUIN—Yellow.
AVALANCHE—White.
CARIBOU—Rose.
OPHELIA—Orange red.
EARLY BRONZE—Button bronze.
EUGENE WANDER—Yellow.
GARNET—Red.
GOLDEN WAVE—Yellow.
LAVENDER LADY—Lavender.
JUDITH ANDERSON—Button yellow.
PINK NORMANDIE—Pink.
POMPONETTE—Dwarf button yellow.
MODESTY—Pink.
MOOR—Red.
MRS. SMIRDEN—Red.
TOM ANGELO—Bronze.
TREADOR—Red.
WHITE BUTTON.

***Dwarf Cushion**

Bronze, Pink, Red, White, Yellow

COREOPSIS

LANCEOLATA GRANDIFLORA—This is one of the finest of hardy plants with large, showy, bright yellow flowers produced in the greatest abundance from June till frost.

DAPHNE

***CNEORUM (Rock Daphne)**—One of the loveliest of all plants. Evergreen, covered with rich pink flowers, deliciously fragrant. Prepaid, each \$1.50.



DELPHINIUM PACIFIC STRAIN

DELPHINIUM (Hardy Larkspur)

PACIFIC GIANTS—A mildew resistant strain introduced recently by a Pacific Coast grower. In addition to its mildew-resistant qualities, it possesses a greater variety of colors and shades than any other strain of Delphinium. Prepaid. Each 35c; doz. \$3.50. (See color section.)

PACIFIC GIANTS, WHITE—The loveliest pure white Delphinium introduced to date. Prepaid. Each 35c; doz. \$3.50.



PERENNIAL PHLOX

DIANTHUS

***PLUMARIUS (Clove Pinks)**—The old favorite for borders edgings and rockeries. Various shades of pink flowers on graceful stems.

***DELTOIDES**—Beautiful creeper for rockeries with crimson flowers in summer.

DORONICUM

LEOPARD'S BANE—Large bright yellow flowers; one of the most effective early spring flowering perennials.

FOXGLOVE

FOXGLOVE (Digitalis)—Plant in sun or partial shade. Blooms June and July. The strong flower stalks, 4 to 6 feet high, rise from rich and luxuriant masses of leaves. Colors: Purple, rose, mixed.

GEUM

***MRS. BRADSHAW**—A splendid new variety, with large, double flowers of a fiery red, blooming nearly all summer. Peculiarly attractive. 18 inches.

GYPSOPHILA

BABY BREATH—Free flowering plants, the flowers of which are in great demand for cutting or combining with other flowers.

***REPENS**—A low growing rock plant with dainty white flowers.

HEMEROCALLIS, Imperial Day Lily

MARGARET PERRY—Cornelian red, yellow throat.

MIKADO—Orange, mahogany throat.

OPHIR—Golden yellow.

Above varieties, each 50c.

HOLLYHOCKS

CHATERS DOUBLE—Large rosettes of paper-like tissue, very compactly layered. We offer them in the following separate colors: Red, yellow, pink.

LIATRIS

PYCNOSTACHYA—Tall stalks of fragrant rosy purple flowers.

LUPIN

RUSSELL LUPINS—This remarkable strain of Lupins, first introduced in 1938, has created more interest than probably any plant in recent years. It has a very wide range of colors, including yellows, pinks, blues and reds. Many of them bi-colors.

LINUM

PERENNIAL FLAX—A very pretty blue flowering plant that pleases. Spring plants.

POPPY

***ICELAND POPPY**—A neat dwarf-like plant, from which spring graceful leafless stems with charming cup-shaped flowers.

ORIENTAL POPPY—Nothing in the hardy plant line can compare with the Oriental Poppy for brilliancy and beauty. With their large fiery scarlet flowers, they are conspicuous in any position.

*Suitable Rockery Plants.

JEAN MOWSON—Pink.

LULU A. NEELY—Red.

MANDARIN—Chinese red.

PHLOX (Hardy Perennial)

The perennial phlox should have a place in every flower garden. Succeed in almost any soil with a minimum of care and are long continuous bloomers.

AETNA—Dark red.

B. COMPTE—Wine red.

BEACON—Cherry red.

BRIDESMAID—White, crimson eye.

LEO SCHLAGETER—Brilliant scarlet.

LILLIAN—Soft pink.

MARY LOUISE—Large pure white.

MISS LINGARD—Extra early white.

PAINTED LADY—Light pink, cherry eye.

PROF. VIRCHOW—Salmon pink.

ROSENBERG—Pink, darker eye.

SALMON BEAUTY—Fine salmon.

STARLIGHT—Purple, white eye.

All phlox, except where noted, prepaid, each 35c; doz. \$3.50.

PHLOX SUBULATA—Fast growing creeping plant. Pink flowers.

PYRETHRUM (Painted Daisy)

Nothing can surpass the Pyrethrums in profusion of flowers during the summer.

JAMES KELWAY—Single blood red.

SCABIOSA

Charming flowers for the sunny border.

ISAAC HOUSE HYBRIDS—Deep blue.

SHASTA DAISY

A much improved hardy daisy, bearing a profusion of large, white flowers from early summer until late in the fall. Fine for cut flowers.

ALASKA—Huge, shaggy flowers.

DOUBLE—Profusion of double white flowers.

SWEET WILLIAMS

Hardy; grows 18 inches tall, plants multiply in size yearly. Large fragrant flowers of extreme richness. Pink or red.

TRITOMA

RED-HOT POKER, FLAME FLOWER OR TORCH LILY—The early, free and continuous blooming qualities of this variety have made it one of the great bedding plants. Hardy if given protection.

TROLLIUS

EUROPEUS—One of the most popular perennials. Globe shaped yellow flowers. Plants grow 2 ft. high.

*VERONICA

Bushy plants about 2 feet high with dense spikes of deep blue flowers. A beauty in the garden.

SPICATA—One of the best.



PANSIES

SWISS GIANTS—This strain is the largest and most floriferous type grown. Flowers are immense, beautifully marked petals in a very large range of colors. Because of their free-flowering habit, Pansies are one of our most popular blooming plants. Order Kelly's Swiss Giants and you will receive the finest type of this popular flower. Prepaid. Doz. 75c.

DECORATIVE DAHLIAS

The named varieties of Dahlias listed below are all the mammoth exhibition type. Select your choice of colors and enjoy these monsters.

CAVALCADE—Rich mulberry pink. Each 50c.

DELICE—Beautiful shade of pure even pink. Each 35c; doz. \$3.00.

JANE COWL—A prize winner throughout America. Immense size; bronzy buff-salmon in color. Each 35c; doz. \$3.00.

JEAN KERR—One of the finest whites. Blooms well. Each 35c; doz. \$3.00.

JERSEY BEAUTY—A beautiful shade of pink; flowers of immense size. Each 35c; doz. \$3.00.

JERSEY BEACON—A companion to Jersey Beauty; same large size and in color Chinese scarlet with lighter reverse. Each 35c; doz. \$3.00.

MRS. I. de VER WARNER—One of the three best Dahlias grown. Orchid lavender; good stem, exceptionally large. Each 35c; doz. \$3.00.

PRIDE OF CALIFORNIA—Bright shade of solid red. Each 35c; doz. \$3.00.

PRIDE OF STRATFORD—Best large reddish orange. Each 35c; doz. \$3.00.

SAGAMORE—A fine exhibition type of golden color, shaded toward the center with warm salmon-rose. Each 35c; doz. \$3.00.

THOMAS EDISON—Color is gorgeous, rich, royal purple with a soft velvety finish. Each 50c.

DWIGHT W. MORROW—Mammoth flowers, velvety dark red. New. Each 50c.



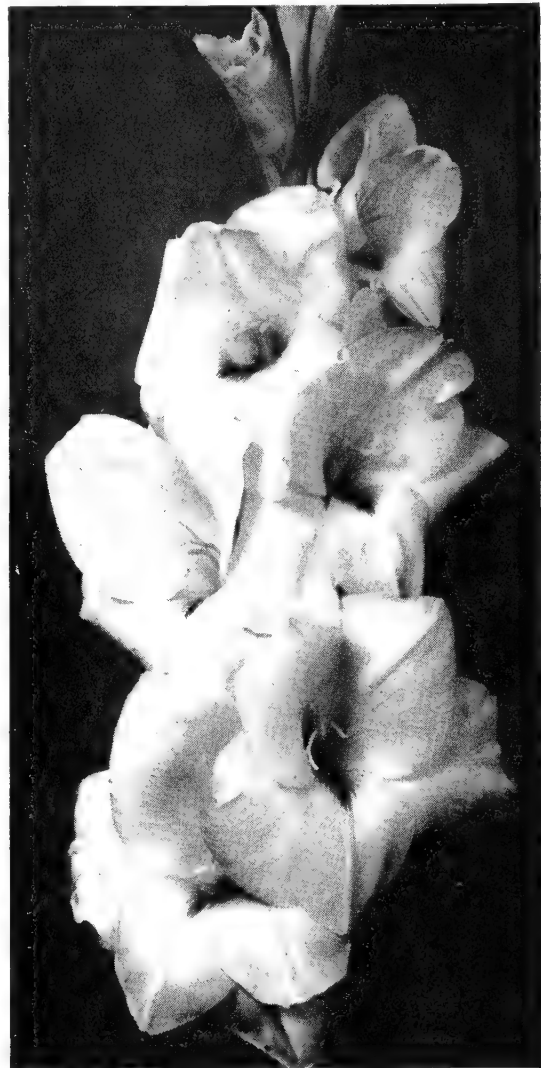
TUBEROUS BEGONIAS

(Illustrated Inside Back Cover)

These brilliant colored summer flowering bulbs of easy culture are ideal for shady locations. We start the bulbs for you so that at planting time (May) you receive a partially grown plant almost ready to bloom.

For best results prepare the soil carefully and add liberal quantities of peat moss or well decayed leaves. Keep well watered and fertilized. After light frost in the fall, dig and store bulbs in dry peat moss over winter.

DOUBLE CAMELLIA TYPE—Colors: yellow, white, rose, apricot, crimson. Plants from 3-inch pots. Prepaid. Each 45c; doz. \$4.80.



KELLY'S GLADIOLI

Prepaid. Each, 8c; dozen 75c.

BLAZE—Bright scarlet red.
BEACON—Tall salmon scarlet, cream throat.
BIT O' HEAVEN—Fine tall orange.
CORONA—Tall creamy white with cerise edge.
EDITH CAVE COLE—Light pink.
LADY JANE—Cream with yellow tip.
MARGARET BEATON—Large white, scarlet blotch.
MARGUERITE—Watermelon pink.
PARADISE—Tall large buff.
PICARDY—Large light salmon pink.
ROCKET—Scarlet red.
ROSA VAN LIMA—Tall light rose pink.
SNOW PRINCESS—White.
SUMMER WEALTH—Fine dark pink.
TAKINA—Dark lavender.

MIXED GLADIOLUS

MIXED—Jumbo bulbs, doz. 75c; 50, \$2.50; 100, \$4.50.
MIXED—No. 1 size, doz. 60c; 50, \$2.15; 100, \$4.00.
MIXED—No. 2 size, doz. 50c; 50, \$1.75; 100, \$3.00.

SHADE AND ORNAMENTAL TREES

FOR LAWN, STREET AND SHADE PLANTING
(Sent Only by Express) — Not Prepaid

ASH

MOUNTAIN ASH—Handsome small tree with pinnate foliage. White flowers in late spring followed by large clusters of attractive red berries all summer and fall. Nice for lawn or curb planting. Each, 6-8 ft., \$3.00.

BIRCH

CUTLEAVED WEEPING—Its graceful drooping habit, vigorous growth and silvery bark with nicely cut foliage is rarely met with in a single tree. 6-8 ft., each \$3.50.

EUROPEAN WHITE—Medium size tree; upright habit; small dense foliage; white bark. 6-8 ft. \$3.00.

CATALPA

SPECIOSA—A very rapid grower. Large heart shaped downy leaves and panicles of blooms. Each, 6-8 ft. \$3.50.



CHINESE ELM

ELM

CHINESE or ASIATIC—A wonderfully rapid growing pyramidal tree. Introduced by U. S. Government especially for semi-arid sections. 25 feet tall and one foot in diameter in five years from plantings is recorded. 5-6 ft. \$1.50; 6-8 ft. \$2.50; 8-10 ft. \$3.50.

FLOWERING CHERRY

KWANZAN—Double dark pink blossoms. 30 ft. Attractive foliage. 4-5 ft. \$2.50.

WEEPING DOUBLE FLOWERING PINK—A beautiful weeping tree. The blossoms come before the leaves giving the appearance of a pink fountain. 5-6 ft., each \$3.50.

FLOWERING CRAB

BETCHELS FLOWERING DOUBLE—A medium sized tree of rather upright growth covered in early spring with large clusters of pink double flowers. Each, \$2.00.

ATROSANGUINEA—Very profuse bloomer. Graceful habit; carmine flowers; red branches. Each, \$2.00.

FLOWERING PEACH

PINK—Large double pink flowers. Strong growing tree. \$2.00.

RED—Rich ruby red. Very large blossoms. \$2.00.

FLOWERING PLUM

BLIREIANA—The blossoms, appearing early in May, are deep pink, double and fragrant. Dark purple foliage. Upright growth, up to 15 ft. at maturity. Each, \$2.00.

THUNDER CLOUD—Excels through its most beautiful foliage of rich red, turning gradually darker to a very rich purple. Each, \$2.00.

TRILOBA—Similar to flowering almond flower, but this variety makes a small tree. Lovely pink flowers. 3-4 ft. \$1.50 each.

HAWTHORNE (English)

PAUL'S DOUBLE RED—Rich brilliant scarlet red flowering tree. Fine for lawns. 6-8 ft., each \$3.50.

HORSE CHESTNUT

WHITE FLOWERING—Beautiful white spikes of flowers in spring. It makes a solid compact head though slower growing than some varieties. 5-6 ft., each \$3.50.

PINK FLOWERING—A slow growing dense shade tree with beautiful pyramidal cones of pink flowers. 5-6 ft., each \$6.50.

LOCUST

BLACK—Native tree of large size. Fragrant small flowers. Fine for windbreak. 6-8 ft., each \$2.50; 8-10 ft. \$3.50.

GLOBE—Has a beautiful round head which can be sheared each year to keep it small when space is limited. Budded on a straight 6-ft. standard. Each \$5.00.

MAPLE

NORWAY—Probably the most suitable tree for street planting. Has a general recommendation by landscape architects and park departments. 6-8 ft., each \$3.00; 8-10 ft. \$4.00.

SCHWEDLER—Especially beautiful in spring when their leaves open up to a brilliant dark red and purple, gradually turning to green in summer. 6-8 ft., each \$3.50.

SYCAMORE

EUROPEAN—A lofty, widespreading tree; highly ornamental; handsome foliage; free from insects and disease. 6-8 ft., each \$3.00.

WILLOW

WEEPING—A graceful tree. Fresh green tint and wavy branches are very attractive. 6-8 ft., each \$2.50.



BECHTEL'S DOUBLE FLOWERING CRAB

FRUIT TREES—Express Not Prepaid

APPLES

Summer and Autumn

DUCHESS OF OLDENBURG—Medium sized, juicy, white-meated, good flavor. Striped red on yellow.
YELLOW TRANSPARENT—The earliest and best. White, tender, juicy, sub-acid. August maturing.
RED JUNE—Red and a delicious early.
GRAVENSTEIN—Considered the finest quality fall apple.

Winter Varieties

JONATHAN — A vigorous grower and high quality fruit. Known everywhere.
RED DELICIOUS—Probably the most favored apple in America.
WAGNER—Deep red on sunside. Prolific and high quality on many soils.
RED ROME BEAUTY—One of the most positive croppers of fine quality fruit.
WINESAP—Late winter. Dark red. A favorite.
McINTOSH—Dark red fruit. Flesh white, juicy and of fine flavor. Medium size.
WINTER BANANA—One of the most popular apples in the west. Fruit large yellow with pinkish blush. Fine flavor, and good keeper.
WEALTHY—Almost full red in color. The flesh is white with trace of red. Fruit is very juicy and has a delicious flavor.
YELLOW DELICIOUS—A wonderful apple; an early bearer of beautiful yellow apples; good shipper.

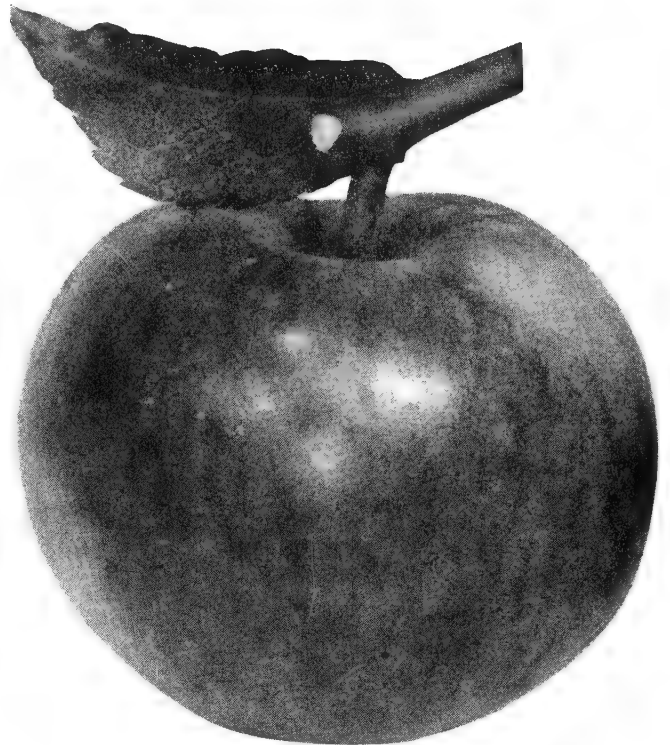
CRABAPPLES

RED SIBERIAN—Heavy producer, fruit medium sized, juicy; fine red color.
TRANSCENDENT—Fruit is large golden yellow with red cheek. Flesh yellow, crisp and juicy.

PRICES OF APPLES — Sent by Express

All Varieties	Each	10
4-6 ft.	\$1.50	\$12.00

Write for Prices on Larger Quantities.



WINESAP APPLE



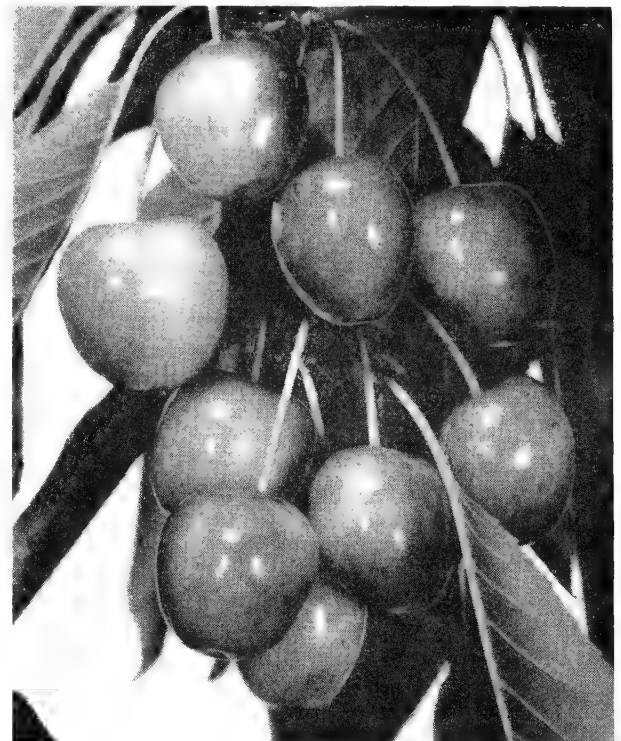
MOORPARK APRICOT

APRICOTS

MOORPARK—The largest and best known variety. Deep orange color, very juicy.
TILTON—Fruit is large and of good form. Tree vigorous and productive.

PRICES OF APRICOTS—Sent by Express

All Varieties	Each	10
4-6 ft.	\$1.50	\$12.00



ROYAL ANNE CHERRY

CHERRY—Sweet

BING—Very large. Dark brown. Delicious.
LAMBERT—Heavy bearer. Black when dead ripe and rich quality.
ROYAL ANNE—A magnificent large yellowish fruit with reddish cheek. Popular everywhere.
BLACK REPUBLICAN—A fine dark cherry and a valuable pollinizer.
BLACK TARTARIAN—Fruit dark red, medium size, juicy, good quality. Good for home and nearby markets. Tree vigorous and prolific. Fine pollinizer.

PRICES SWEET CHERRIES — Sent by Express

4-6 ft., each \$2.00

CHERRY—Sour

MONTMORENCY—A very large red productive fruit that has succeeded to the highest place in a canning or sauce fruit.
LATE DUKE—Large light red. Flesh tender, mildly acid and better quality than earlier sorts. One of the most popular sour cherries.
MAY DUKE — Fruit good sized, dark red with small pit. Ripens early. Fruit ships well. Tree is vigorous, hardy and healthy.
EARLY RICHMOND — Very popular early cherry, medium size.

PRICES SOUR CHERRIES—Sent by Express

3-4 ft., each \$2.00



BARTLETT PEARS



ITALIAN PRUNES

PRUNES

HUNGARIAN—Dark red, juicy and sweet.

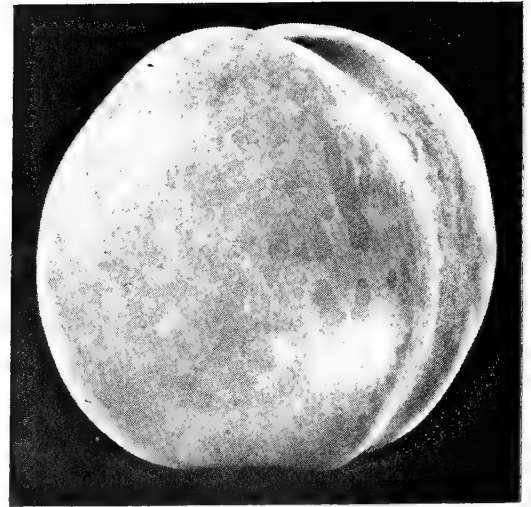
ITALIAN—A large oval dark purple freestone. Flesh greenish yellow, best for canning and drying.

DATE PRUNE—A much improved petite. Very sweet. Fruit brownish-red color.

PETITE—Universally used for jam. Small and very sweet.

PRICES OF PLUMS and PRUNES—Sent by Express

All Varieties	Each	10
4-6 ft.	\$1.50	\$12.00



J. H. HALE
PEACH

PEACHES

EARLY CRAWFORD—Freestone. A bright yellow with red cheek. Universally known.

ELBERTA—Freestone. Considered to be the best in peaches.

GOLDEN JUBILEE—An excellent, early canning peach: a good firm shipper. Rich yellow meat and yellow skin with a bright red cheek. Becoming very popular.

ROCHESTER—An extremely early Peach that has great promises in this vicinity.

J. H. HALE—One-third larger than Elberta. A good keeper and shipper. Fine flavor, juicy and sweet. Freestone.

SLAPPY—Fruit yellow, good keeper; excellent flavor, fine grained, rich. Hardy, early yellow peach. Excellent quality.

PRICES OF PEACHES—Sent by Express

All Varieties: 4-6 ft., each \$1.50

PEARS

BARTLETT—The king of early pears. Nothing better.

FLEMISH BEAUTY—Very hardy. Juicy and productive.

PRICES OF PEARS — Sent by Express

All Varieties: 4-6 ft., each \$1.50

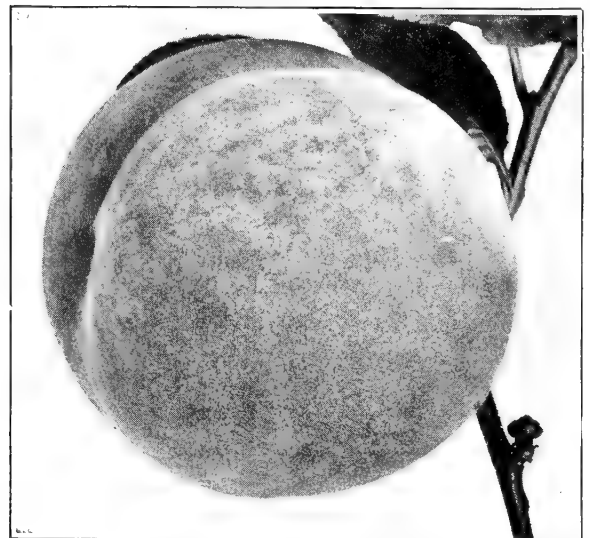
PLUMS

BURBANK—Hardy and prolific. Large, well colored fruit; sweet, aromatic. September.

GREENGAGE—An old favorite. Fruit medium sized, sweet and juicy.

PEACH PLUM—Very large brownish red. Freestone. Well known.

YELLOW EGG—Deep golden color skin, best quality.



ELBERTA PEACH

KELLY'S SMALL FRUIT PLANTS

BERRIES

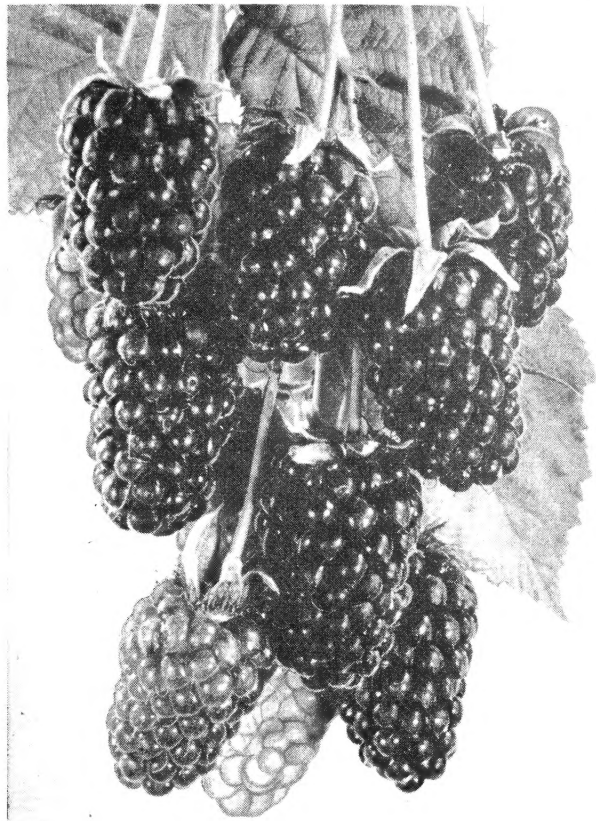
BLACKBERRIES

✓ **SNYDER**—This is the standard early blackberry for the North country. Prepaid, each 25c; 10, \$2.00.

BLUEBERRIES

Plant in partial shade; mix peat moss or leaf mold into soil. Enjoy this delightful "shrub berry".

✓ **RANCOCAS—RUBEL**—Prepaid, each, \$1.50; 10 for \$12.50.



BOYSENBERRY

THORNLESS BOYSENBERRY

The new Boysenberry is a truly glorified Youngberry. Similar in flavor, but much larger than the Youngberry. It is a triple cross involving the Loganberry, Blackberry and Raspberry. You will be amazed at its enormous size and the wonderful quality of its fine fruit. We know you will agree they are the finest addition to the small fruit class of plants. Prices, prepaid, each 30c; 10 for \$2.50.

CURRANTS

PERFECTION—The largest and best red currant. 2-year-old plants. Prepaid, each 35c; 10, \$3.00.

CHERRY—A fine, large currant. Very popular for jelly making. Prepaid, each 35c; 10, \$3.00.

RED LAKE—This marvelous new currant has the size, color, and quality of Perfection but is unique in its large, long stemmed clusters which increase picking speed to 50%. Berries are resistant to sunburning. The bush is a strong, upright grower, a heavy producer. Each 50c; 10, \$4.00.

DEWBERRIES

LUCRETIA—Best variety for the Northwest. 2-year-old plants. Prepaid, each 25c; 10, \$2.00.

GOOSEBERRIES

CHAMPION—The best standard variety. 2-year-old plants. Prepaid, each 35c; 10, \$3.00.

NOTE—Owing to Federal Quarantine regulations, Currants and Gooseberries cannot be shipped after April 1 and before November 1.

LOGANBERRIES

LOGANBERRY—This fruit partakes of the blackberry in shape and form and has the flavor of the blackberry and raspberry combined. 2-year-old plants. Prepaid, each 25c; 10, \$2.00.

RASPBERRIES — BLACK

CUMBERLAND—The best black cap. Prepaid, each 25c; 10, \$2.00.

LOGAN (Black Cap)—Of good size, fine quality, very productive and hardy. Prepaid, each 25c; 10, \$2.00.

RASPBERRY — RED

INDIAN SUMMER—A new everbearing variety—rich red color and large fruit.

NEWBURG—This variety, developed recently, is mosaic resistant. Trials of Newburg show it to be a heavy bearer of large red berries with fine flavor. Plants are strong and stocky. We believe it will prove an ideal garden and commercial variety.

TAYLOR—Popular new variety. Fruit large, firm, bright color—heavy yield.

WASHINGTON—Valuable commercial variety recently introduced in our own state. Abundant producer of excellent quality fruit and almost everbearing.

Prices all Red Raspberries above: Each 15c; 10, \$1.25, prepaid.

STRAWBERRIES

Everbearing Varieties

GEM—This is the outstanding commercial everbearing strawberry for Western growers.

Prices, everbearing varieties: 25, \$1.00; 100, \$3.00.

STREAMLINER—Firm, radiant red, richly flavored berry with excellent canning and freezing qualities. 25, \$2.00; 100, \$6.50.

ROCKHILL—A very productive plant of sweet, rich red berries. Plants bear young and over a long season. Does not produce runners and is propagated by crown divisions. Doz., \$1.50; 100, \$12.00.

Standard or One-crop Strawberries

NEW OREGON—A western variety and seemingly combines the splendid characteristics of the Hood River and Glen Mary types in its fruit. It is grown extensively with complete satisfaction.

MARSHALL—A well known popular berry.

DORSETT—An early berry, very firm and a heavy producer. Color a bright red, a color the market likes.

Prices all standard varieties: 25, 75c; 50, \$1.25; 100, \$2.50.

GRAPES

AGAWAM—Ripens early, berries are large, reddish color and thick skin. Pulp soft and sweet.

CAMPBELL'S EARLY—Handsome black berries with purple bloom; rich, keeps very well.

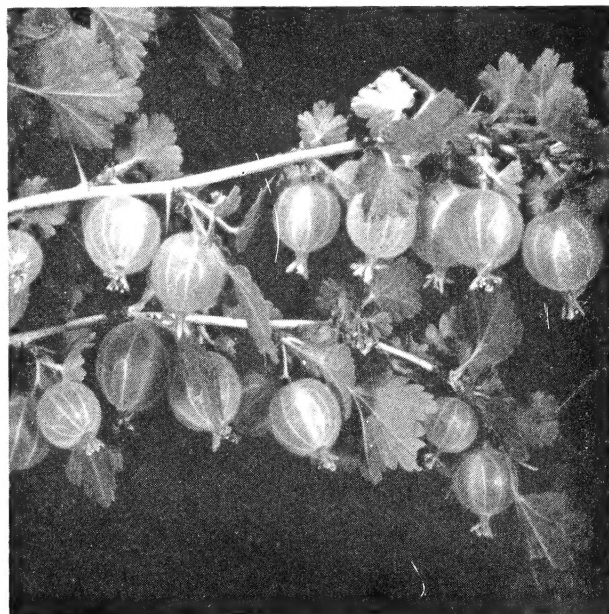
CONCORD—A large, black, well known grape. 2 year plants.

FREDONIA—Leading new black variety. Similar to Concord but earlier. Highly recommended.

MOORE'S EARLY—Earliest best grape for the Inland Empire and Rocky Mountain section. 2-year-old plant.

NIAGARA—Earliest, best white grape.

Prices all Grapes. Prepaid, each 50c; 10 for \$4.00.



GOOSEBERRY

VEGETABLE PLANTS — Prepaid



ASPARAGUS

	Doz.	50	100	1000
Martha Washington—1 yr.	35c	\$.90	\$1.50	\$10.00
Martha Washington—2 yr.	50c	1.50	2.50	20.00
Martha Washington—3 yr.	75c	2.00	3.50	30.00

CABBAGE

Copenhagen Market—Midsummer				
Danish Ballhead—Late				
Early Jersey Wakefield—Early				
Golden Acre — Early	30c	.85	1.35	10.00
Red Rock				
Brussels Sprouts				
CABBAGE, FIELD GROWN—Field grown plants of all cabbage varieties, usually ready on June 15 and later. PLANTS, prepaid: Doz. 20c; 50, 65c; 100, \$1.00. Not prepaid: 1000, \$5.00.				

CAULIFLOWER

Early Snowball	40c	1.25	2.00	15.00
CAULIFLOWER — Field grown. Ready June 1 to 15. PLANTS, prepaid. Doz. 25c; 50, 75c; 100, \$1.25. Not prepaid: 500, \$4.00; 1000, \$8.00.				

CELERY

Utah Green				
Golden Self Blanching	40c	1.25	2.00	15.00

EGG PLANT

Black Beauty	40c	1.25	2.00	15.00
--------------------	-----	------	------	-------

LETTUCE

New York Head	30c	.85	1.35	10.00
---------------------	-----	-----	------	-------

ONION

Sweet Spanish30	2.00
---------------------	--	--	-----	------

PEPPERS

Ruby King				
Pimento				
California Wonder	40c	1.25	2.00	15.00
Cayenne Hot				

RHUBARB

Victoria—1 yr.				each 15c; doz. \$1.25
Victoria—2 yr.				each 25c; doz. \$2.50
Victoria—3 yr.				each 35c; doz. \$3.00
Strawberry				each 25c; doz. \$2.50

SWEET POTATOES

	Doz.	50	100	1000
Nancy Hall—Popular type	35c	1.00	1.75	12.50

TOMATOES

Earliana—Earliest				
John Baer—Large medium early				
Bonny Best—Early standard	40c	1.25	2.00	15.00
Wasatch Beauty—New early				

KELLY'S LAWN GRASS SEED

BENT

This wonderful grass produces positively the finest turf that can be formed. Its creeping stolon habit makes a close knit turf, choking all weeds. Bent thrives in an acid soil. If you want the best lawn and the least weed trouble use this seed. Our Bent seed is grown in Washington and is the true creeping type. There are several varieties and the cheaper kinds are not creeping. One pound of our seed sows about 500 or 600 square feet of lawn surface. 1 lb. \$1.40; 5 lbs. \$6.75; 10 lbs. \$13.50.

KENTUCKY BLUE GRASS—A hardy grass and found in all mixtures. It makes an excellent lawn. 1 lb. \$1.25; 5 lbs. \$6.00; 10 lbs. \$12.00.

CHEWINGS FESCUE—Small low growing grass forming a dense turf on all types of soils. 1 lb. \$1.00; 5 lbs. \$4.50; 10 lbs. \$9.60.

CLOVER, WHITE DUTCH—Excellent for lawns when mixed with grasses in right proportions. 1 lb. \$1.50; 5 lbs. \$7.00; 10 lbs. \$14.00.

KELLY'S FINEST MIXTURE

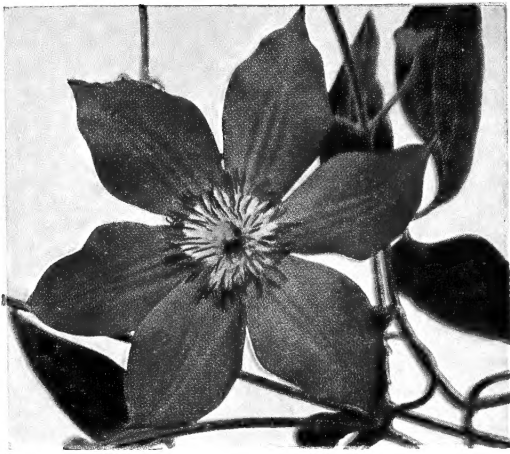
A well balanced blend that will produce a fine turf in a short time. Sow 1 pound to about 300 square feet. 1 lb. \$1.25; 5 lbs. \$6.00; 10 lbs. \$12.00.

KELLY'S SHADY LAWN MIXTURE

This mixture is intended for and will thrive under conditions where there is partial or complete shade, such as under trees or in shadows of buildings. 1 lb. 85c; 5 lbs. \$4.00; 10 lbs. \$8.00.

Prices Postpaid by Us



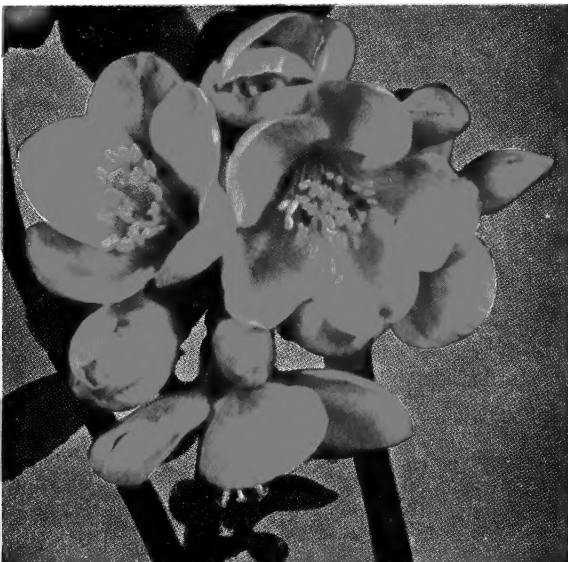


CLEMATIS JACKMANI. See page 6



PINK FLOWERING ALMOND
See page 3

QUINCE. See page 4



FLOWERING CHERRY, KWANZAN
See page 12

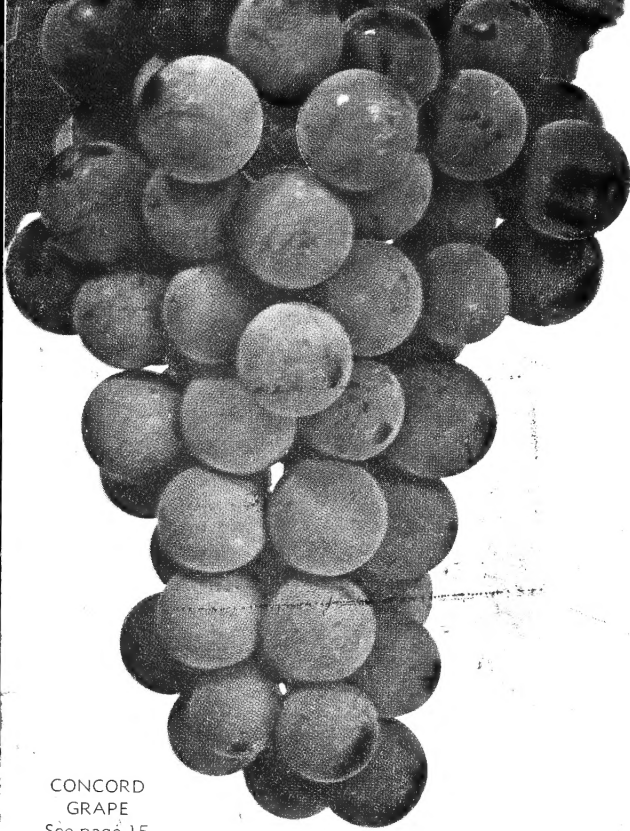
**You'll Always Find a Choice Selection of
Ornamental Plants at Kelly's**



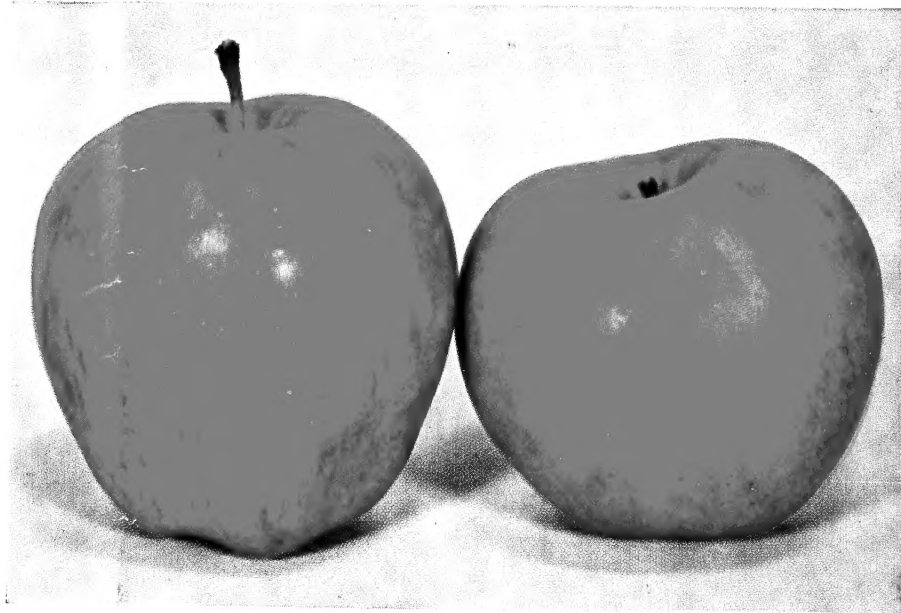
TUBEROUS
BEGONIA
See page 11

KELLY PLANT GARDENS

SPOKANE 15, WASHINGTON



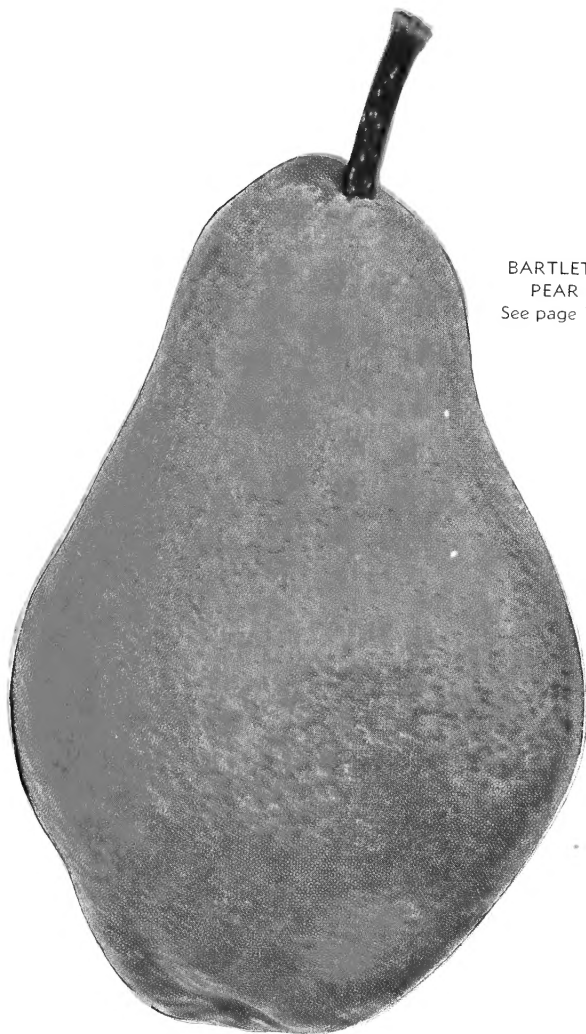
CONCORD
GRAPE
See page 15



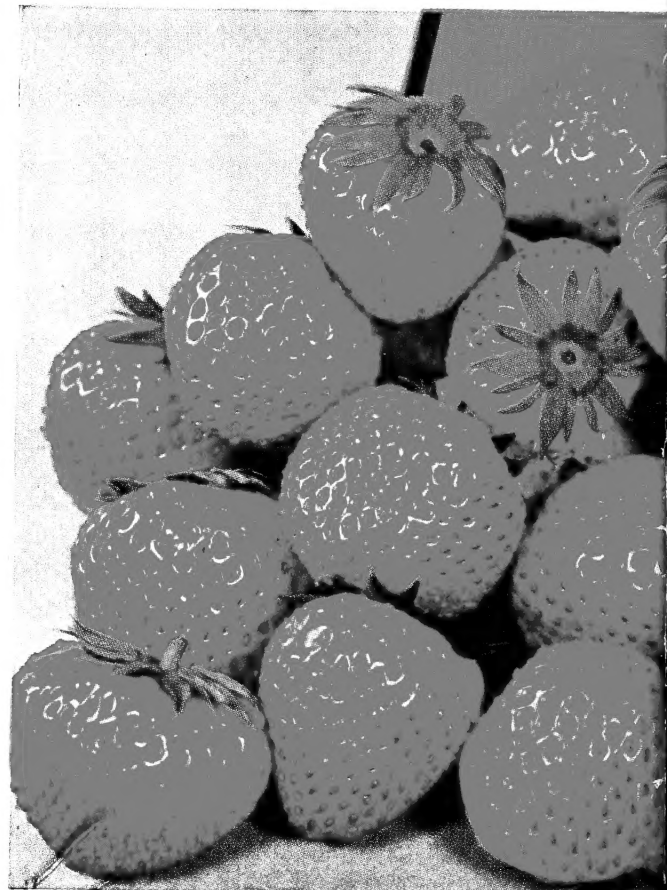
RED DELICIOUS AND WINESAP APPLES. See page 13

**Visit Our Gardens and Flower Shop at
E. 4100 Sprague in Spokane.**

*Make This Your Headquarters for Every Type of
Plant Material.*



BARTLETT
PEAR
See page 14



ROCKHILL
STRAWBERRY
See page 15