

Historic, Archive Document

Do not assume content reflects current scientific knowledge, policies, or practices.

RECEIVED
133
★ AUG 25 1949 ★
U. S. Department of Agriculture



COLOR COLLECTION
OF ALL THE
DARWIN TULIPS
PICTURED ABOVE
Order No. 144

Our finest Tulip Collection!
You will have every one of Darwin Tulips above. Each variety is outstanding in its color class. All are giant flowered and tall growing. Just look at those ten beauties. Order them today. Every bulb will bloom.

3 Each of 10 Pictured
ALL 30 BULBS
ONLY \$2.25 POSTPAID

DARWIN TULIPS

These giant Darwins will bring you the first and most colorful flowers of early Spring. So big, so beautiful, so stately on tall sturdy stems. For a distinctive, commanding show of floral loveliness plant these grand varieties . . . plant them along a border, in a special tulip bed, along the foreground of other plantings, or in clumps among your shrubs or evergreens. Every bulb we send you is sure to bloom. Remember, you must plant them this Fall for glorious bloom next Spring. They will be sent to you at the proper planting time, along with complete instructions. Make out your order and send it to us today.

- 130. Bartigon
- 135. Black Eagle
- 186. Orange Perfection
- 185. Camp Fire
- 133. Yellow Giant

- 131. William Copeland
- 132. Phillip Snowden
- 187. Princess Elizabeth
- 136. Zwaanenburg
- 134. Pride of Haarlem

6 for 60c; 12 for \$1.00; 25 for \$2.00, Postpaid

RAINBOW COLLECTION
OF DARWIN TULIPS

Order No. 126. A grand mixture of named varieties, bold and beautiful Darwin colors for your garden. Reds, Pinks, Yellows, Whites, Lilacs, Purples . . . all large flowering and long stemmed! And, every bulb is sure to bloom.

12 for 95c; 25 for \$1.85;
50 for \$3.50; Postpaid



PEONY FLOWERED TULIPS

You'll think your eyes are deceiving you when you see these immense and very showy blooms. The flowers are very double and actually as large as peonies, on stems 20 to 22 inches tall. Count upon them to be the sensation of your Spring flowers.

- 82. UNCLE TOM. Rich maroon.
- 80. EROS. Salmon pink.
- 81. MT. TACOMA. Pure White.

3 for 55c; 6 for 95c, Postpaid.

SPECIAL COLLECTION. Order No. 85. Two each of the 3 above. ALL 6 ONLY 85c, POSTPAID.



SUNBURST

166. A sensationally flashy new tulip. Brilliant tongues of flaming red extend from the base up into petals of brightest golden yellow. An early bloomer which is certain to thrill all who see it. 3 for 39c; 6 for 70c; 12 for \$1.25, Postpaid.

IMPORTED HOLLAND BULBS

All of our Tulip Bulbs and other Spring Flowering Bulbs are imported from Holland . . . the finest, sure-to-bloom quality.

EARL MAY SEED CO.
Shenandoah, Iowa



DOUBLE TULIPS

Bloom 2 Weeks Earlier Than Others. The full, very double flowers of these Tulips are strikingly beautiful. They are large, rich in color, and come on long, strong stems. Your choice of three excellent varieties.

Your choice, alike or assorted.

- 171. Beacon Fire, deep red.
- 172. Golden King, rich yellow.
- 173. Peach Blossom, soft pink.

3 for 45c; 6 for 70c; 12 for \$1.35
Postpaid

DOUBLE TULIP SPECIAL

Order No. 175. Four each of 3 Double Tulips above.
All 12 Only \$1.25, Postpaid.



EARL E. MAY
1888 - 1946
Founder



EDWARD W. MAY
President

**These
Valuable
Premiums
with
EARLY ORDERS**



**Premium
Number 1**
One Blue Phlox
ETHEL PRITCHARD
Worth 39c



**Premium
Number 2**
One Fine Hybrid
ORIENTAL POPPY
Worth 45c



**Premium
Number 3**
Two Blooming Size
REGAL LILY BULBS
Worth 50c



**Premium
Number 4**
One Beautiful
RED PEONY
Worth 75c

Dear Friends:

Since the early weeks of Spring it seems like I have had one foot in my vegetable garden and the other one in my flower beds. I know one evening I planted 3 rows of beans and 4 rows of sweet corn and then planted more than a dozen Chrysanthemums. It was getting dark when I cleaned my spade. I guess that happens to all of us who like gardening and flowers.

But, the rewards are already coming in and making all the work worthwhile. We have had all of the early vegetables we could possibly eat and can . . . and from the first Crocus on we haven't been out of flowers. Of course, as I write this letter we have seen "only the beginning".

There is so much more to come from the garden and the parade of flowers won't be over until frost puts an end to it. Can hardly wait to get my first sweet corn and tomatoes. By the time you are reading this, I will sure be eating lots of them.

In spite of cool weather and quite a lot of moisture we have had a wonderful growing season for everything . . . including, of course, the weeds that always come uninvited. I hope all your things are doing as well as ours.

The business has been good to us again this year, too. Bigger than ever before and I want to personally thank all of you for your orders and for your confidence. All the folks working with me join in this appreciation and we all resolve anew to deserve your continued good will.

I hope you will be sending us an order this Fall, and, as usual, I hope you will send it early, real early. Ordering early is a sort of thing that blooms on both sides of the fence. On your side, you are assured of getting first pick of everything you want and gaining weeks of extra growth. On our side, we get an opportunity to maintain better service for everyone without expensive rushes. Early orders are so important that we give fine premiums to all of you who send them to us. These premiums are listed below. Order early and take your choice of them.

Time to close and I will do it by wishing you and yours a fine harvest and pleasant year.

Sincerely,

Edward May

As usual, we want to show our appreciation of early orders with a real practical "thank you." That is why we offer the premiums listed below. While the orders are not sent to you until the proper planting time, all the "book work" on the early order can be done ahead of time with a real saving to us.

If you send your order before October 1st you are welcome to your choice of premiums. If you send it after that date but still reasonably early, we will send a premium of our choice. In either case, be sure you ask for your premium or none will be sent. (Premiums are limited to nursery orders from this catalog.)

Your choice of the following premiums, alike or assorted.

Any 1 premium with a \$4.00 to \$6.00 order.
Any 2 premiums with a \$6.00 to \$8.00 order.
Any 3 premiums with an \$8.00 to \$10.00 order.
Any 4 premiums with an order for \$10.00 or more.

ORDERS FROM OUR 1949 SPRING CATALOG

Yes, you can order anything you want from our Spring catalog. We will fill your order on everything which can be successfully shipped and planted this Fall. Anything which cannot be sent this Fall will be booked for delivery next Spring and we will advise you accordingly.



**IT IS SURE TO
POP**

SURE TO POP AND SURE TO HIT THE SPOT FOR FLAVOR. Our pop-corn is moisture conditioned **TWO WAYS.** First, in the Laboratory we make scientifically certain it carries that just-right moisture content for perfect popping. Actual popping tests of every lot prove this. Then, we pack it in sealed moisture-proof plastic bags, the kind you use for food storage in your refrigerator. It is sure to reach you in sure-to-pop shape. It is sure to thrill you with greater popping volume and with delicious flavor. Orders yours today.

**HYBRID
YELLOW JUMBO
5 lbs. \$1.00**

POSTPAID in Iowa, Nebraska, Kansas and Missouri. Elsewhere please add 5c per pound for postage.

**HYBRID
JAP HULLESS
4 lbs. \$1.00**



ELECTRIC POPPER

Chrome plated. A good one, made to sell for almost double this low price.

\$2.95, POSTPAID



EE-ZEE POPPER

The old favorite stove-top popper. Certainly does the job, too.

\$1.65, POSTPAID



TOP SET ONIONS

ORDER NO. 538

You should all have some of these old fashioned-top set onions. Replants itself year after year. And they get green and are ready to use very early in the spring, right with the last wet snows of late winter. 1/2 lb. 30c; lb. 45c, Postpaid.

For Brighter, Gaye, Richer Colors, Plant These Beautiful Tulips



BRIGHT PASTELS

You'll thrill to the sparkling gayety of these three lovelies. They will bring brilliant beauty to your planting.

Your Choice, Alike or Assorted

142. Advance

141. Marjorie Bowen

143. Belle Jaune

3 for 35c; 6 for 65c; 12 for \$1.15
Postpaid

PASTEL SPECIAL

Order No. 145. Four each of the Bright Pastel Tulips above.

All 12 for Only \$1.05, Postpaid

RICHER SHADES

Here are three of the richest colored of all tulips, famous for rare blending of deep hues.

Your Choice, Alike or Assorted

137. Louis XIV

138. Alice Keith

139. Baachus

3 for 45c; 6 for 75c; 12 for \$1.25
Postpaid

RICHER SHADES SPECIAL

Order No. 140. Four each of the Richer Shaded Tulips above.

All 12 for Only \$1.15, Postpaid

CONTRASTING COLORS

Beautiful two-tone tulips with contrasting colors and delicate feather-edge effects.

Your Choice, Alike or Assorted

102. Rijnland

101. Rose Beauty

100. Aviator

3 for 35c; 6 for 65c; 12 for \$1.15
Postpaid

Contrasting Colors Special

Order No. 105. Four each of the Contrasting Color Tulips above.

All 12 for Only \$1.05, Postpaid

SPECIAL TULIP GARDEN

Order No. 107

Four each of the 9 Tulips pictured above. All 36 Bulbs Only \$2.85, Postpaid.

World's Largest Tulip



RED EMPEROR

99. So big and so brilliant that you aren't going to believe it until you see it with your own eyes. The blooms alone are often well over 4 inches tall, 8 inches across when wide open. And the color is the brightest, most brilliant red you can imagine. Red Emperor is more than a novelty. It is a flower of amazing size and great brilliance and thrilling beauty. Plant Red Emperor for sure. Sure-to bloom bulbs.

Each 17c; 4 for 60c;
8 for \$1.00, Postpaid.

PARROT TULIPS

ORANGE FAVORITE

Delightfully different from all the rest! Petals are exotically feathered and irregularly shaped. Colors are very attractive.

Your Choice, Alike or Assorted

110. Blue Parrot

111. Orange Favorite

112. Miss Kay

Each 27c; 3 for 65c; 6 for \$1.15
Postpaid

PARROT SPECIAL

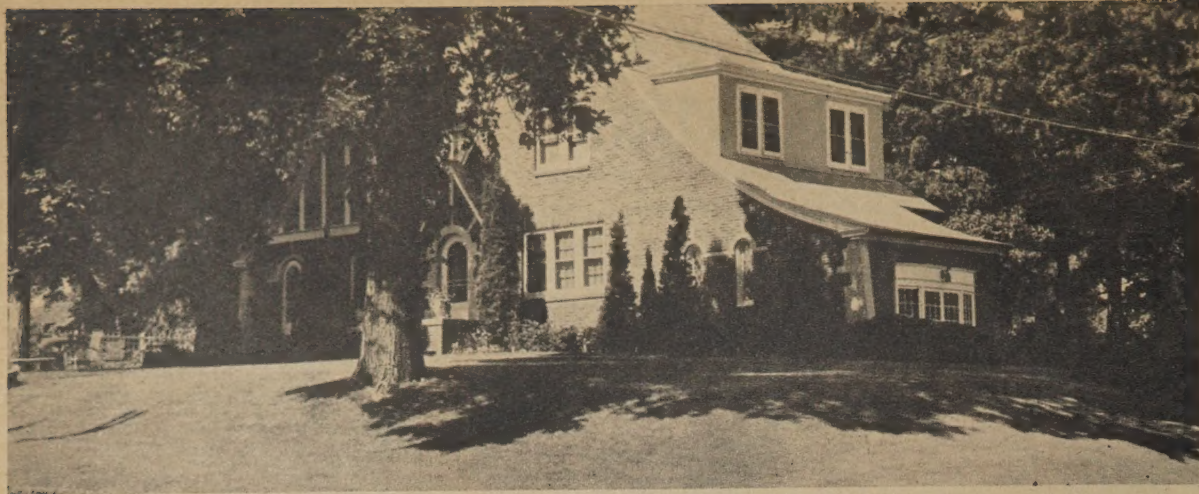
Order No. 115. Two each of the Parrot Tulips pictured at right.

All 6 Only \$1.00, Postpaid



BLUE PARROT

MISS KAY



Home Beautification Begins RIGHT OUT IN THE LAWN

OUR FINEST "TAILOR MADE" LAWN SEED

Maypark



2010. This special blend is "tailor made" from the finest adapted grasses to make a grand lawn under a wide variety of conditions. Fine heavy-weight Kentucky Blue Grass is the base of this blend. There's a generous quantity of White Dutch Clover. It also contains just the right amount of fine, quick growing grasses. It is all new crop seed, clean, pure, high in germination. Count on it to make you a thick heavy, permanent lawn. Order extra early. Then, plant extra early. It pays.

Lb. 75c; 3 lbs. \$2.15
5 lbs. \$3.35; 10 lbs. \$6.50
Postpaid

ROOTONE TREATED MAYPARK

2016. For a faster start and quicker, more vigorous growth, plant this Maypark Lawn Grass Mixture which has been ROOTONE TREATED. Makes a heavier rooted, thicker sodded lawn. Already treated, ready to sow right from the bag.

Lb. 85c; 3 lbs. \$2.25; 5 lbs. \$3.65; 10 lbs. \$6.95, Postpaid.

HOW MUCH YOU NEED

Figure one pound of seed for every 200 square feet for a new lawn. To thicken up your present lawn, plant one pound to every 400 square feet. Complete detailed instructions on the Planting and Care of Your Lawn will be sent along FREE with each order for lawn grass seed.

FALL IS NATURE'S SEEDING TIME

NATURE'S WAY of sowing grass seed is to get it started early in the Fall. The Fall rains give it the ideal cool, wet start and it will be getting green again under those last late snows next spring. If you want a heavy, permanent, carpet-like lawn, sow your grass seed this fall. We select only the finest, clean, heavy New Crop seed for our customers. It has demonstrated real superiority on thousands and thousands of lawns. It will succeed for you, too. Send us your order today.

Home Beautification starts right out in the lawn. It's the first thing seen by everyone going by your home. A barren or scraggly lawn spoils the appearance of many beautifully designed and otherwise attractive properties. You CAN have a good lawn. Good seed and common sense care will make you a lush, velvety, carpet-like lawn. Our seed is all new crop, pure, clean seed . . . tested for strong healthy germination. Order it right now. For best results plant it extra early. Send in your order today.

KENTUCKY BLUE GRASS

The deep rooted lawn grass that makes the best permanent lawns. A dark green velvety carpet of grass, the favorite everywhere. The seed we offer you is selected from the best heavy sodded Kentucky Blue Grass meadows. Our seed is 7 to 9 pounds heavier than the 14 pound per bushel standard. Extra heavy, strong germinating seed that grows quick.

2011. HEAVY WEIGHT FANCY. Lb. 75c; 3 lbs. \$2.15; 5 lbs. \$3.35; 10 lbs. \$6.50, POSTPAID.

2030. MAYWORTH EXTRA FANCY. Plant this grade for the best success. Lb. 85c; 3 lbs. \$2.45; 5 lbs. \$3.85; 10 lbs. \$7.50, POSTPAID.

CREeping BENT GRASS

2015. Makes a soft, permanent green carpet. Extremely hardy and multiplies both from creeping roots and branching tops. Makes a beautiful permanent lawn, growing richer and more luxuriant each season.

1/2 lb. 65c; lb. \$1.25; 3 lbs. \$3.45;
5 lbs. \$5.45, POSTPAID.

2013. CREEPING BENT GRASS MIXTURE. Contains a large amount of the best hardy Bent Grass and in addition, a plentiful supply of extra clean, pure Kentucky Blue Grass with other good lawn grasses.

Lb. 95c; 3 lbs. \$2.75; 5 lbs. \$4.50;
10 lbs. \$8.85, ALL POSTPAID.

SHADY LAWN GRASS MIXTURE

2012. Grass for the shady spots. Thrives in the shade where other grasses fail. This mixture is a blend of the best fine bladed grasses which we know from experience will thrive in the shade. We have tested it time and again and we are confident it will do the same for you.

Lb. 85c; 3 lbs. \$2.45; 5 lbs. \$3.85; 10 lbs. \$7.50, ALL POSTPAID.

WHITE DUTCH CLOVER

2014. This white blossom lawn clover is a great help in getting grasses established. It grows quickly to hold the soil and protect the young grass. It produces nitrogen in the soil which makes excellent food for the grasses. And, it makes a beautiful lawn combination with Blue Grass. One pound will be enough for the average city lot.

1/2 lb. 65c; lb. \$1.25; 3 lbs. \$3.45,
Postpaid.

For Earlier
More Abundant
Bloom
Next Year
PLANT
FLOWER
SEED
THIS FALL

Just cover the seed very lightly before the ground freezes. Then these annual flowers will be out of the ground bright and early next Spring. You'll have armloads of earlier, larger bloom. See special price on these 6, at the right.

Page 4



1077. CALLIOPSIS. These gay colored two-toned flowers are produced in great clusters on bushy plants. Their tall stout stems make them fine for cutting. The more you pick the harder they bloom. Pkt. 10c; 3 for 25c, Postpaid.



1159. LARKSPUR. Tall stately spikes packed solid with bloom. Excellent for cutting. A fine mixture of blues, lavenders, pinks and whites. Grow 3 to 4 feet tall. Pkt. 10c, Postpaid.



1231. RAINBOW PETUNIAS. Our own excellent mixture of the finest Balcony and Bedding types. You'll have a wondrous show of brilliant colors with worlds of bloom from late Spring to frost. Pkt. 15c, Postpaid.



1020. SNAPDRAGONS. Large flowers densely line the long strong stems of this special strain. Generous bloom from Summer till frost. Rustproof. A wonderful all-color mixture. Pkt. 10c, Postpaid.



1057. CALENDULA. (P o t Marigold). 18 inch. A favorite mixture of the finest new colors, including apricot, orange, canary yellow, dark mahogany. Pkt. 10c; 3 for 25c, Postpaid.



DOUBLE ROSE MOSS

1242. FORTULACA (left) Special double flowering strain in a brilliant mixture of colors. Blooms continuously even on the hottest days and in poor soil. Great for sunny spots. Pkt. 10c, Postpaid.

SPECIAL COLLECTION

Order No. 30. One packet each of the six flowers pictured (A 65c Value).

ALL 6 PKTS. ONLY 50c, POSTPAID



BEAUTIFUL BLOOM EVERY YEAR

WITHOUT TROUBLE OR CARE

Yes, the Peony is the most gorgeous and most dependable of all the Perennials. Enormous blooms are a marvel of beauty on the bush and they are unexcelled for cut flowers. Peonies are easy to grow, too, thriving and blooming abundantly year after year even when completely neglected. Plant them this Fall for bloom next Spring. Our generously big 3 to 5 eye root divisions will grow and thrive and thrill you with abundant bloom. That's why we guarantee them 100%.

PEONIES BY COLOR

At a Bargain Price

Choose any colors you prefer—Red (3364), Pink (3365), and White (3366), alike or assorted. We'll send them labeled as to color and guaranteed to please you. You may get finer, more expensive varieties where we have them in quantities too scarce to list. We will send you our regular Big 3 to 5 Eye Root Divisions.

**YOUR CHOICE BY COLOR
3 for \$1.50 Postpaid**

Order No. 3314. 1 Each of Red, Pink, and White—Only \$1.35, Postpaid.



FESTIVA MAXIMA

MEMORIAL DAY FAVORITES

Lawns and cemeteries throughout this part of the country give glorious testimony to the beauty and abundant blooming habits of the three Peonies pictured above. Each of these varieties is a free bloomer. The big 3 to 5 eye plants we send you this Fall will bloom next Spring and go on to bring you years of pleasure and pride.

YOUR CHOICE: 85c EACH, POSTPAID

3310. FELIX CROUSSE is a deep crimson of beautiful form.

3311. EDULIS SUPERBA is a massive and magnificent pink.

3312. FESTIVA MAXIMA in one of the finest whites, attractively flecked with crimson.

Order No. 3313

ALL 3 ABOVE ONLY \$1.95 POSTPAID

Three of the WORLD'S FINEST

Here we are listing three of the very finest peonies in all the world. Outstanding for wondrous coloration, immense size, and perfection of form. They will bring unmatched beauty to your garden.

3325. AVALANCHE. Most remarkable coloration makes this an exceptionally attractive peony. A collar of creamy white petals surrounds a center delicately tinted with a lilac blush and occasionally edged carmine. The blooms are very large, very compact. An enchanting cut flower and excellent for show purposes. Blooms late. Each \$1.10, Postpaid.

3335. MARTHA BULLOCH. Blooms often measure from 8 to 10 inches across and the color is old-rose-pink. Rated 9.1 and many claim it is easily the greatest of all the pinks. The flower is the cup rose type. They are borne well above the foliage, on strong sturdy stems. Truly a wonder peony. Worthy of an honored place in your garden. Each \$1.25, Postpaid.

ORDER ALL THREE

Order No. 3304. One each of Avalanche, Martha Bulloch, and Auguste Dessert. (A \$3.45 Value).

ALL 3 ONLY \$3.00, POSTPAID



3315. AUGUSTE DESSERT. Very large, brilliant rose-red blooms. The large round petals are each edged with a distinct narrow silver border. Blooms are beautifully formed, too, and the medium height plant flowers very prolifically in midseason. You'll always take pride in this outstanding beauty. Each \$1.10, Postpaid.

A FAMOUS FOURSOME

Each of the four peonies below and at the right is known and enthusiastically recommended by every peony authority.

3323. MARY BRAND. Always among the winning reds in every peony show! The distinct red carries a livening trace of purple. The blooms are immense and will last a week if cut in the bud. Each 95c, Postpaid.

3338. BARONESS SCHROEDER. Nearly all agree that this is the finest of white peonies. The buds first open with a delicate blush and become milky white in full flower. It certainly deserves a place in every peony planting. Each \$1.00, Postpaid.

3307. KARL ROSEFIELD. An early midseason bloomer that will thrill you with its brilliant red color and generous bloom. The very large blooms are semi-rose type . . . excellent both as a cut flower and show flower. Each 95c, Postpaid.

PLANT ALL FOUR

Order No. 3309. One each of Mary Brand, Baroness Schroeder, Karl Rosefield, and Sarah Bernhardt. (A \$3.90 Value).

ALL 4 ONLY \$3.25, POSTPAID



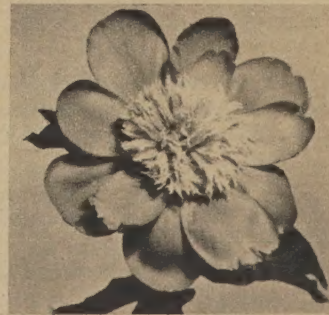
3328. SARAH BERNHARDT. Always prominent among the winners at peony shows. The grand big blooms are a true apple-blossom pink and each petal is entrancingly tipped with silver. You'll always be proud of your Sarah Bernhardt. Each \$1.00, Postpaid.

EDULIS SUPERBA



FELIX CROUSSE

EXQUISITE NEW PEONY



MIKADO

3345. A rare beauty, one of the most beautiful of all anemone flowering peonies. The large outer petals are vibrant glowing red. The densely double, high crowned center is golden yellow. Big 3 to 5 eye root divisions. Each \$1.50, Postpaid.

A GIFT FOR YOU

As a special gift to Peony lovers who order \$5.00 worth or more of Peonies this fall we will send Mikado without extra cost. We know you will treasure it as one of the very loveliest flowers in your yard.

**Four New
Sensationally
Beautiful
Tulips**



**Plant all 4 for
bloom from
mid-April to
mid-May.**

1. MARSHALL HAIG. (89) Immense scarlet blooms with an orange-yellow base. Blooms 2nd week in May. 3 for 40c; 6 for 70c; 12 for \$1.20, Postpaid.

2. PRINCE CARNAVAL (88) Exotic blendings of flaming red and brilliant yellow. Blooms in mid-April. 3 for 45c; 6 for 75c; 12 for \$1.35, Postpaid.

3. INSURPASSABLE (87) Beautifully shaded lilac lavender. Blooms in early May. 3 for 50c; 6 for 90c; 12 for \$1.75, Postpaid.

4. AMERICAN FLAG (90) Lovely combination of blood red and white with a blue star inside the base. Blooms in mid-May. 3 for 35c; 6 for 65c; 12 for \$1.15, Postpaid.

**12 OF THE ABOVE TULIPS
(Order No. 92)
3 each of all 4 tulips above.
ALL 12 ONLY \$1.50, POSTPAID**

WATER LILY TULIP

91. (Kaufmaniana) This lily-like tulip is especially attractive for border plantings and for rock gardens. It grows only about 6 inches high and blooms exceptionally early . . . about April 1st. The blooms are very showy, yellowish white tinted carmine pink on the outside.

3 for 65c; 6 for \$1.19;
12 for \$2.00, Postpaid.



**HARDY EVERBLOOMING
HYBRID TEA ROSES**

Here are 5 of our most beautiful, most dependable Hybrid Teas. Plant them this Fall. They will be making vigorous growth weeks before others can work the ground. Order early.

- 1. Golden Dawn (5040)
- 2. Poinsettia (5043)
- 3. McGredy's Ivory (5067)
- 4. Editor McFarland (5026)
- 5. Talisman (5005)

Standard 2-year Bushes
Each 85c; 3 for \$2.40; 6 for \$4.65
Select 2-year Bushes
Each \$1.00; 3 for \$2.80; 6 for \$5.25

ROSE GARDEN OF ALL 5

Order No. 5258. One each of all 5 Hybrid Teas in our Standard 2-year Bushes.

ALL 5 ONLY \$3.50, POSTPAID

Order No. 5259. One each of all 5 Hybrid Teas in our Select 2-year Bushes.

ALL 5 ONLY \$4.25, POSTPAID



**PERENNIAL
FLOWER SEED
for
FALL PLANTING**

GIANT SWISS PANSIES

1210. Largest flowering of all Pansies and they come in a mixture of wonderful colors. You'll be delighted with their large size and their grand colors. **Packet 15c, Postpaid.**

PERENNIAL SWEET PEAS

1502. Larger than the annual varieties and they live on year after year. Fine for cutting and very prolific with bloom. Red, white and pink mixed. **Packet 15c, Postpaid.**

GAY SMILING VIOLA

1518. The little "baby face" pansies which bloom so generously and are so



bright and gay. Everblooming and perennial. **Packet 15c, Postpaid.**

PACIFIC HYBRID DELPHINIUM

1508. Our grand strain grows very tall spikes, densely packed with bloom. This mixture of the best colors will bring you thrilling bouquets of bloom. **Packet 25c, Postpaid.**

PAINTED DAISIES

1507. (Pyrethrum) Beautiful and long stemmed flowers come on abundantly early in June. Excellent for cutting. **Packet 15c, Postpaid.**

ALL 5 PERENNIALS ABOVE

Order No. 15. One packet each of the perennials above. (an 85c Value)
ALL 5 ONLY 70c, POSTPAID

Shipment of Rose Bushes is made after the plants go dormant in late October or early November. Or, if you prefer we will ship your roses to you next Spring. Please state on your order which delivery you prefer.

CLIMBING ROSES



CLIMBING PAUL'S SCARLET

5134. The finest climbing rose. Dazzling scarlet blooms cover the entire bush with often as many as 500 to 1000 blooms on an individual plant. It's hardy, too. There are many of them in Shenandoah and each year they are admired by all of us. We know you'll be mighty proud to have Paul's Scarlet blooming gloriously in your yard.

5131. AMERICAN BEAUTY. Favorite of all the pink climbing roses. Large buds open to loveliest rose pink and the bush is very prolific with bloom.

5135. PRIMROSE. Rich yellow, very double, and long lasting. A vigorous grower and free bloomer.

Your choice of Climbing Roses above,
Alike or Assorted

Standard 2-Year Bushes

Each 75c; 3 for \$2.10, Postpaid.

CLIMBING ROSE SPECIAL

Order No. 5216. One each of the Climbing Roses above.

All 3 Only \$2.00, Postpaid.



67. RED HANGING BEGONIA

Something new and very attractive for your shady porch boxes and hanging baskets. This distinct type of Begonia makes a hanging growth which produces lovely flowers. The "weeping" growth and pretty blooms are also very charming in a rock garden. Plant indoors for winter bloom.

Each 39c; 3 for \$1.10, Postpaid.

FOR IN-DOOR BEAUTY THIS WINTER



**PAPER WHITE
NARCISSUS**

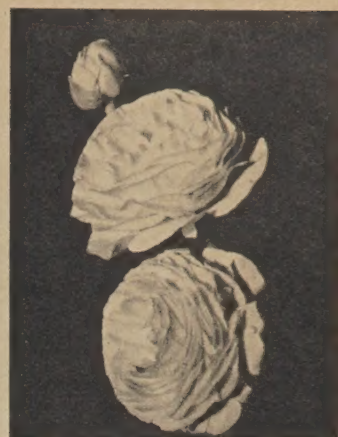
156. It is easy to have lovely fragrant clusters of Paper White Narcissus. A shallow bowl, some coarse pebbles to support the bulbs, and plenty of water. Plant some two or three weeks apart and you can enjoy them through all the cold, dreary Winter months. Keep in a cool place for the first three weeks. Then bring them out in the sun of a window. Select Blooming-size Bulbs. 3 for 25c; 6 for 39c; 12 for 69c, Postpaid.



ANEMONE

Order No. 78

Here's a flower to bring sparkling new color to your showing of house plants. This hybrid strain produces large semi-double flowers in bright blue, scarlet, red, white and burnt orange. Plant 3 bulbs to each 4 or 5-inch pot and within a few weeks you'll be thrilled by one of the most beautiful, colorful house plants you've ever had. 6 for 50c; 12 for 85c, Postpaid.



RANUNCULUS

Order No. 79

Another house plant which will bring you vivid flowers in shades of red, pink, orange, and yellow. The blooms are double and semi-double, 2 inches or more across. Plant 3 bulbs to each 4 or 5-inch pot. Complete instructions for easy care included with your order. 6 for 45c; 12 for 75c, Postpaid.



GLORY OF THE SNOW

50. These dainty little lily-like flowers are deep sky-blue and they come out very early in the Spring. They are completely hardy, come on year after year. Plant them in groups of 5 to 10 in the foreground of your borders, between your evergreens, or in your rock garden. Grows 5 in. high. 10 for 39; 25 for 80c, Postpaid.

*For
Bloom
in
Earliest
Spring*



SNOWDROPS

51. These large white flowers are often in bloom before the last wet snow melts away. They are attractively bell-like in shape and will prove very attractive planted in groups most anywhere in your yard. Grow 10 inches high. 10 for 60c; 25 for \$1.20, Postpaid.

Landscape Service

ALL YOU NEED TO DO

If you want professional help in planning the planting of your property, we have just what you are looking for. Our Landscape Architects will work out a carefully balanced plan to exactly fit your property.

COST IS CANCELLED

There is a fee for preparing a Landscape Plan especially for you, but it is later applied on your order and the Landscape Plan is then **ACTUALLY FREE**. We make a charge of \$10.00. However, when you order \$75.00 or more worth of planting materials from us, that \$10.00 will be deducted from the total bill.

Just write and ask for complete information. It is free. We will send you a Sketch Sheet along with complete instructions. We will also send you a check list which will give you an opportunity to tell us the things you especially want included in the Landscape Plan we create for your home. For example, you can tell us which shrubs you like best and other things you would like to have included. You can specify that you want a Rose Garden, an Outdoor Living Room, a Perennial Border, or any other special treatment. All of your preferences will receive careful consideration and, if they are consistent with good Landscape Architecture, they will be included in your plan.

NOW IS THE BEST TIME

This is the ideal time to start working on your Landscape Plan. Too many people wait until a few weeks before time to plant and there simply isn't time for us to get the plans drawn. All Landscape Plans are prepared in the order in which they are received. So, write now for the Sketch Sheet and Check List. We will send it to you without charge. Write for them today.

WUNDERKIND

PERRY'S WHITE

RED FLAME



Gorgeous and Massive

ORIENTAL POPPIES

For sheer brilliance and dazzling color no other flower matches the Oriental Poppy. Often the immense blooms are 10 to 12 inches across and are borne on stems 3 feet long. They command attention and breathtaking admiration wherever they are seen.

And they are very easy to grow, sure to bloom, extremely hardy, and become more beautiful with each year. They'll bloom in May and June next year and you will be admiring them and enjoying them for years to come.

We will send you No. 1 Hardy Outdoor Grown Plants, sure to grow and sure to please you. They will be shipped to you at the proper planting time together with easy planting instructions. Select those you want and send us your order today.

2811. Perry's White
Each 85c; 2 for \$1.50

2806. Wunderkind
Each 95c; 2 for \$1.75

2824. Red Flame
Each 70c; 2 for \$1.25

2800. Henry Cayeaux
Each 75c; 2 for \$1.35

HENRY CAYEAUX

PICTURE COLLECTION

Order No. 2828

One each of the four poppies pictured here.

A \$3.25 Value

ALL 4
ONLY \$3.00
Postpaid

HARDY LILIES



REGAL

3706. **REGAL.** America's favorite. A most prolific bloomer, often a single stem will display 18 to 25 blooms. They are sweetly fragrant. Grows 3 to 4 feet high. Blooms in June and July.

Large 5 to 6 inch Bulbs
Each 30c; 3 for 75c, Postpaid
Jumbo 6 to 8 inch Bulbs
Each 35c; 3 for 90c, Postpaid

3702. **DOUBLE TIGER.** Large and attractively double blooms come on stems 4 or 5 feet high. Blooms in June and July.

Each 30c; 3 for 75c, Postpaid

3704. **RED CORAL.** Waxy glistening bright scarlet blooms are only about 1½ inches across. 6 to 8 blooms on a stem growing about 18 inches high.

Each 30c; 3 for 75c, Postpaid

3700. **RED RUSSIAN.** Flowers come abundantly in bloom-covered upright clusters. As many as 15 flowers on a single stem. Grows 18 to 20 inches high. Blooms early in the summer.

Each 55c; 3 for \$1.35, Postpaid.



RED CORAL

LILY GARDEN

Order No. 3736. One each of the 4 Lilies pictured here
ALL 4 ONLY \$1.10, POSTPAID



RED RUSSIAN



DOUBLE TIGER

SPECIAL. Order No. 3709. Six blooming size Regal Lily bulbs for \$1.00, Postpaid.



New Shades - New Brilliance - Immense Size
Earl May DREAM PHLOX

**TO ORDER
 BY VARIETY**

For individual selection of the varieties pictured order by number as shown below:

- 2014. Leo Schalageter
- 2005. Antoinette Six
- 2044. Progress
- 2021. Starlight
- 2036. Cheerfulness
- 2051. Irene

Alike or Assorted
Each 39c
3 for \$1.00
Postpaid

You just haven't really seen Phlox until you are acquainted with the newer, so greatly improved varieties of this "Dream Collection." These modern Phlox are marvels of beauty. New shades. New tones. New brilliance. And the heads of bloom are more massive, more compact. The size of the individual florets is 2 to 3 times as large as the varieties of grandmother's day. Plant them this Fall for years and years of beauty and enjoyment. They will bloom in late Summer and early Fall when other flowers have passed their period of bloom.

We will send you plants that will be vigorous, completely hardy, and sure to start blooming for you next year. They have bloomed already this Summer. Get acquainted with the new beauty of modern Phlox. Order today.

**COMPLETE
 GARDEN
 OF DREAM
 PHLOX**

Order No. 2038

One each of 6
 Dream Phlox,
 labeled separately

All 6 Only \$1.65
POSTPAID

SILVER DOLLAR PHLOX

Every one of these three fine varieties will produce florets as large as a silver dollar! Huge compact heads of bloom and really wondrous colors. They will bloom for you next year and develop into gorgeous clumps as the years go by. Plant our Silver Dollar Phlox for sensational beauty.

Your Choice, Alike or Assorted
Each 40c; 3 for \$1.10, Postpaid

- 2012. Charles Curtis
- 2020. Purple Heart
- 2034. Apple Blossom

Order No. 2045. One each of all 3 Silver Dollar Phlox . . . Only 95c, Postpaid.



The Glorious RUBRUM LILY

3723. (Speciosum Magnificum) Judged by many to be our most magnificent lily. The carmine pink blooms are delicately edged with white and exotically mottled with deeper red coloring. Rubrum is a very vigorous grower, prolific with bloom, and soon grows into a fine clump. (If our imported bulbs arrive too late for Fall planting, we will hold yours for early Spring delivery). Sure-to-bloom bulbs.

Each 90c; 2 for \$1.65, Postpaid



Loveliest of the White Lilies

MADONNA

3718. (Candidum) The broad, funnel-shaped blooms of the Madonna are purest white. The stamens are rich yellow. Each stem may have 5 to 11 blooms when well established. Very fragrant, too. Plant in a sunny location, about 3 inches deep. Sure-to-bloom bulbs.

Each 60c; 2 for \$1.00, Postpaid



CREeping PHLOX

(Subulata), pictured above, is an ideal plant for borders, rock gardens, and for a ground cover. It grows only 4 to 6 inches high and "hugs" the ground. In very early Spring, sometimes with the last wet snow, the plants are literally one solid mass of colorful bloom. The foliage is moss-like and evergreen. Here are 4 very fine varieties:

- Your choice: Each 40c; 3 for \$1.10, Postpaid**
- 2365. Blue Hills
 - 2366. Crimson Beauty
 - 2367. Rosy Pink
 - 2368. Snowflake

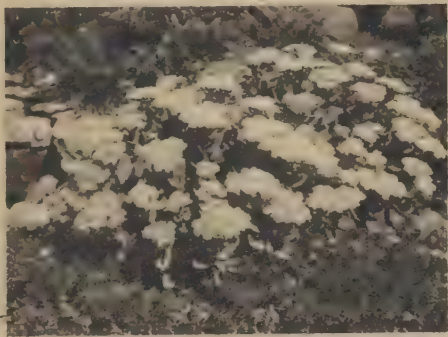
CREeping PHLOX SPECIAL

Order No. 2347. One each of all Creeping Phlox listed above.

ALL 4 ONLY \$1.35, POSTPAID

Especially For Your ROCK GARDEN

For color picture of
CREEPING PHLOX, see
the preceding page.



SEDUM

Pictured above, is another favorite plant for rock gardens, borders and edgings. The plants grow only 6 to 8 inches high and spread out along the ground and over the rocks. They bloom profusely.

Your Choice: Each 35c; 3 for 89c,
Postpaid

2361. Pure White 2363. Orange-yellow
2362. Rosy Purple 2364. Rose Pink

SEDUM SPECIAL

Order No. 2359. One each of all 4 Sedums listed above.

ALL 4 ONLY \$1.00, POSTPAID



FORGET-ME-NOTS

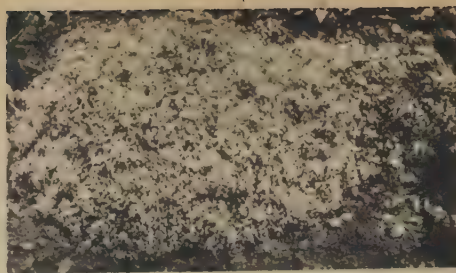
2317. **BLUE EYES.** These darling little baby-blue flowers have been admired for generations. Very dainty and attractive in floral arrangements as well as in the foreground of other plantings. Grows only 6 inches high. **EACH 35c; 3 FOR 89c, POSTPAID.**

2315. **PINK BEAUTY.** A new and lovely Forget-Me-Not. Like the old-fashioned one you all know except that the flowers are rose-pink in color. Not hardy in the North. Potted plants only. **EACH 59c; 2 FOR \$1.10, POSTPAID.**



BABY CARNATIONS

2329. **DOUBLE DIANTHUS (Scoticus).** These dainty, intensely fragrant little "carnations" bloom abundantly in June and on into the Summer. Grow only 10 to 12 inches high and are grand for bouquets. This special Scoticus strain produces many double flowers. Colors range from pink and rose and salmon to white with occasional touches of brilliant crimson. Completely hardy. **Each 39c; 3 for \$1.10, Postpaid.**



BABY'S BREATH

This delicate flower is one of our rarest beauties. The body of the plant grows close to the ground, then shoots up numerous feathery panicles of white or pink flowers on thread-like stalks during early summer. They are beautiful to mix in with bouquets of other flowers and are fine for winter bouquets.

2501. **BRISTOL FAIRY.** Large, pure white, very double. Blooms all summer. 1½ to 2 feet. **Each 90c, Postpaid.**

2502. **ROSY VEIL.** Double like Bristol Fairy. Flowers open white and change to delicate pink as season advances. Is 2 weeks earlier than Bristol Fairy. **Each 60c, Postpaid.**

2503. **PANICULATA.** This is the old fashioned favorite with tiny white single flowers which give it a gauze-like appearance. **Each 35c; 3 for \$1.00, Postpaid.**

BABY'S BREATH SPECIAL

2504. One each of 3 above, \$1.50, Postpaid.



PAINTED DAISES (Pyrethrum)

A most gratifying perennial. The lovely long stemmed blooms are most attractive in the garden, are unexcelled as cut flowers. Blooms very generously throughout Spring.

Each 39c; 3 for \$1.10, Postpaid.

2385. **Robinson's Red.** Brilliant red with bright gold center.

2386. **Roseum.** Bright pink, contrasting golden center.

2387. **Semi-Double.** Colors from brightest pink to deepest red.

PAINTED DAISY SPECIAL

Order No. 2388. One each of above . . .

ALL 3 ONLY \$1.00, Postpaid



HARDY OUTDOOR FERNS

One of the most attractive hardy plants. The dense growth of beautiful foliage is always lovely. Will thrive in the shady places close to your house where other plants fail to grow. Ferns give a planting effect of Nature's own way. We have four fine varieties for you:

EACH 39c; 3 for \$1.00, POSTPAID

2510. **OSTRICH PLUME.** Tallest growing of all. The long graceful leaves resemble an ostrich feather, grow to 3 feet.

2511. **GOLDIE'S WOOD FERN.** Arched and spreading type. Very vigorous. Grows 2 feet tall.

2512. **MAIDEN HAIR.** Most attractive and rarest. Very wiry, slender, black stems with delicate green fronds. 12 to 18 inches tall.

2513. **INTERRUPTED.** Grows 2 to 4 feet tall. Good for foundation plantings, shade or semi-shade.

FERN GARDEN

Order No. 2514. One each of the 4 Ferns above . . . All 4 Only \$1.25, Postpaid.

2516. 10 Assorted Ferns, our selection, \$2.75, Postpaid.



SHASTA DAISIES

For generous bloom and for long stemmed cut flowers you will surely want to plant Shasta Daisies. They will give you a beautiful show in your garden and provide most lovely bouquets.

2314. **Giant Alaska.** Large glistening white single flowers, golden centers. Bloom late Spring and into the Summer. **Each 35c; 3 for 89c, Postpaid.**

2335. **Deiner's 8-inch.** Largest flowering Shasta. Single white blooms reach the astounding size of 8 inches across. **Each 50c; 3 for \$1.35, Postpaid.**

2384. **Deiner's Grand Marconi.** Fully double and beautifully frilled flowers, on stiff stems. Often as large as 4 inches across. **Each 40c; 3 for \$1.10, Postpaid.**

SHASTA DAISY SPECIAL

Order No. 2311. One each of above

All 3 only \$1.00, Postpaid.



PINCUSHION FLOWER

2380. **HYBRID SCABIOSA.** Lovely flowers in an attractive range of colors including shades of blue, lavender, and white. Grows 2 feet high, is very hardy, and thrives in full sun. You'll be enjoying blooms from June clear through September. **Each 45c; 3 for \$1.25, Postpaid.**



SWEET WILLIAM

Brilliantly colorful in early spring. Trusses densely packed with bloom, comes on stems 12 to 18 inches tall. Your choice of the following. **Each 35c; 3 for 89c, Postpaid.**

2339. **SCARLET BEAUTY.**

2341. **PINK BEAUTY.**

2343. **PURPLE BEAUTY,** deep bright purple.

2550. **FIREBIRD.** Brilliant red.

SWEET WILLIAM GARDEN

Order No. 2354. One each of Sweet Williams above . . . all 4 for only \$1.10, Postpaid.



COLUMBINE

These large flowered, long spurred Columbine will bring you an abundance of beautiful bloom in late May and June. All of them hardy. **ALL POST-PAID.**

2560. CRIMSON STAR. Brilliant red flowers with snow white inner petals. Each 39c; 3 for \$1.00.

Your choice of the following, Each 35c; 3 for 89c, Postpaid

2559. BLUE SHADES. Loveliest shades of blue.

2564. ROSE QUEEN. Soft rose pink.

2563. SNOW QUEEN. Pure White.

COLUMBINE GARDEN

Order No. 2567

One each of the 4 Columbine above.

ALL 4 ONLY \$1.10, POSTPAID

2554. Scott Elliott Long-Spurred Hybrids. Wonderful colors, extremely long spurs. 4 for \$1.00, Postpaid.



FERN LEAFED BLEEDING HEART (left)

OLD FASHIONED BLEEDING HEART

2556. (above) Fern-like foliage is very attractive. Blooms all summer long, in sun or partial shade. Grows 1 ft. high. Each 45c; 3 for \$1.25, Postpaid.

2557. OLD FASHIONED BLEEDING HEART. Heart-shaped flowers on long arching stems. Blooms May and June. Grows 2 ft. high. Each 80c; 3 for \$2.10, Postpaid.

BLEEDING HEART GARDEN. Order No. 2558. 1 Old Fashioned and 2 Fern Leafed Bleeding Hearts **ALL 3 ONLY \$1.45, POSTPAID.**



HARDY ASTERS

Order No. 2207

One each of the Asters pictured.

ALL 4 ONLY \$1.40, POSTPAID

HARDY ASTERS

Brilliant and lovely autumn flowering perennial. Unexcelled for cut flowers. Varieties listed are large flowered, very vigorous growers and prolific with bloom. Strong thrifty plants.

2202. BECHWOOD CHALLENGER. Best red Aster

2203. BLUE GOWN. Clear Blue

2201. MT. EVEREST. Pure White

2204. ADORABLE. Deep clear pink.

Alike or Assorted

Each 49c; 3 for \$1.25, Postpaid.



PRINCE OF WALES ENGLISH VIOLETS

2575. (Prince of Wales.) The largest flowering violet that grows! Blooms are rich, royal purple and they are very sweet scented. Very long stems. Will grow anywhere, but do best in partial shade. We guarantee good, strong hardy roots.

Each 35c; 3 for 89c, Postpaid



HARDY CARNATIONS

Beautiful, spicy-fragrant blooms on long stems, ideal for cutting. Generous with bloom from early Summer until frost. They will bloom the first year. Your choice:

Each 39c; 3 for \$1.10, Postpaid

2530. KING OF THE BLACKS

2532. ROSE QUEEN

2533. SNOWDRIFT

2529. GOLDEN SUN

SPECIAL

Order No. 2534. One each of 4 Carnations above.

ALL 4 ONLY \$1.25, POSTPAID



PERENNIAL SWEET PEAS

Larger than the annual, long stems, ideal for cutting. Blooms in abundance in Spring and early Summer. Lives for years and succeeds everywhere.

2324. Crimson King

2325. Rose Queen

2326. White Queen

Each 35c; 3 for 89c, Postpaid



PACIFIC HYBRID DELPHINIUM

2523. Long Spikes. Large, double flowers in May and June. Pale blues, deepest indigo, royal purples, pastel tones of mauve and purple. **Each 45c; 3 for \$1.25, Postpaid.**

2520. Belladonna (Clivedon Beauty). Sky blue flowers. **Each 35c; 3 for \$1.00, Postpaid.**

2521. Bellamosa (La Martine). Indigo blue with white Bee. **Each 35c; 3 for \$1.00, Postpaid.**

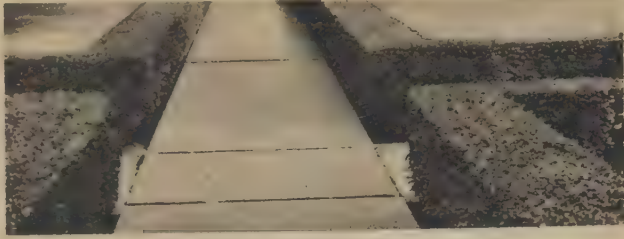
DELPHINIUM GARDEN

Order No. 2543

One each of Delphiniums above . . . **ALL 3 ONLY \$1.00, POSTPAID.**

HEDGING . . . For Fall Planting

Gain weeks of growth next Spring by setting your hedge plants this Fall. Varieties listed below are fully hardy and will start vigorous growth with the first breath of Spring.



HARDY AMOOR PRIVET

5506. Best of all for a compact trimmed hedge from 10 inches to 6 feet high. Hardest of all the Privets, too! The foliage is dark glossy green and becomes very dense with repeated trimming. Trim it any-time. Shape it any way you please. Set the plants one foot apart.

2-Year Size, Well Branched Plants				
Prepaid	12	25	50	100
12 to 18 inch	\$1.85	\$3.00	\$5.50	\$10.00
18 to 24 inch	2.65	4.95	9.50	18.00



BRIDAL WREATH (Spirea Van Houtte)

5511. Like a snow bank when in full bloom. Makes an ideal hedge from 4 to 5 feet high and almost that wide. For maximum bloom, do not trim Bridal Wreath. For full growth plant 3 feet apart, for trimmed hedge 2 feet apart.

2-Year Size, Well Branched Plants				
Prepaid	12	25	50	100
12 to 18 inch	\$2.50	\$4.50	\$8.50	\$16.50
18 to 24 inch	3.00	5.75	11.00	21.00



HONEYSUCKLE (Tatarian)

5508. Best of all for taller screening type hedge. Grows naturally to 10 or 12 feet high but can be trimmed and held to 5 or 6 feet. Blooms in May with pink or white flowers followed by attractive red berries. Extremely hardy. For natural growth plant 5 feet apart, for trimmed hedge plant 2 feet apart.

2-Year Size, Well Branched Plants				
Prepaid	12	25	50	100
12 to 18 inch	\$2.00	\$3.75	\$6.75	\$12.50
18 to 24 inch	2.50	4.95	9.25	17.50



GREEN LEAF BARBERRY

5505. Very attractive hedge from 1½ to 4 feet high. The foliage is lustrous dark green and, at frost time turns to beautiful reds and browns. Attractive red berries hang on all winter. For natural growth, plant 2½ to 3 feet apart, for clipped hedge 1 foot apart.

2-Year Size, Well Branched Plants				
Prepaid	12	25	50	100
12 to 18 inch	\$2.25	\$4.25	\$7.75	\$15.00
18 to 24 inch	2.75	5.25	10.00	19.50

5502. RED LEAF BARBERRY. Most attractive rich-red foliage all Spring and Summer. Colors gloriously in the Fall. Red berries all winter. Very excellent for a dense hedge up to 30 inches. Plant 1 foot apart. 15 TO 18 INCH PLANTS; 12 for \$3.75; 25 for \$7.00; 50 for \$13.50; 100 for \$25.00, POSTPAID.

SHADE TREES - for Life-Long Beauty

For new beauty to your home and comforting shade for you and your family, plant Shade Trees. Plant them this Fall. They gain extra weeks of growth by being out there ready to start with the first breath of Spring. Our Shade Trees are expertly grown to give you a shapely tree. They are heavy rooted, well developed, sure to succeed for you. Complete planting instructions sent free. Order today.



LOMBARDY POPLARS

5804. At the left, you see the stately pyramidal growth of the Lombardy. It is a wonderful tree for planting along a border and is the finest tree for screening purposes. The leaves go clear down to the ground and the tree makes very fast growth.

NOT PREPAID	Each	Per 4	Per 12
5 to 6 ft. size	\$0.70	\$2.50	\$6.75
6 to 8 ft. size	.89	3.10	8.50
8 to 10 ft. size	1.15	4.20	11.00



AMERICAN LINDEN

5819. One of the finest of all shade trees, admired both for its shapely pyramidal habit of growth and for its attractive dense foliage. A fast growing tree which thrives and is hardy everywhere.

NOT PREPAID	Each	Per 2
6 to 8 ft.	\$2.75	\$5.25
8 to 10 ft.	3.75	7.00



AMERICAN ELM

5800. Truly the monarch of the plains. It does not make such rapid growth as the Chinese Elm but it develops into a great and noble tree. The picture above shows you the American Elm towering away above everything and providing wonderful shade over a wide area.

NOT PREPAID	Each	Per 2
6 to 8 ft.	\$1.50	\$2.65
8 to 10 ft.	2.15	3.75



5815. NIOBE GOLDEN WEeping WILLOW.

Gracefully drooping branches and a golden colored bark make Niobe Golden Weeping Willow a most attractive tree in both winter and summer. The branches often droop clear to the ground and the golden bark is lovely to see the year around. Niobe is a rapid grower. Attractive when planted in a prominent place as shown in the picture, and especially attractive near a lily pool or a rock garden.

NOT PREPAID	Each	Per 2
4 to 5 ft. Size	\$0.79	\$1.25
5 to 6 ft. Size	1.20	2.20
6 to 8 ft. Size	1.70	3.10



PIN OAK

5808. Fastest growing of the hardwood trees and Pin Oak always makes a most shapely attractive growth. Bright green foliage is deeply cut, and it colors rich browns and reds in the Fall.

NOT PREPAID	Each	Per 2
6 to 8 ft. Size	\$3.75	\$7.00
8 to 10 ft. Size	4.75	9.00



CHINESE ELM

5801. Fastest growing of them all. Before the first year is past you will begin to have the shade you want. And growth continues at a very rapid rate. You can't beat the Chinese Elm for fine shade in a hurry. Selected, shapely, well developed trees.

NOT PREPAID	Each	Per 2
6 to 8 ft. Size	\$1.50	\$2.65
8 to 10 ft. Size	2.15	3.75

Beautify Your Home With Flowering Shrubs

Everyone admires those homes which are planted with beautiful shrubs . . . and beauty isn't all . . . because planted homes are more valuable, actually worth more money. Select your shrubs from the outstanding varieties pictured here. **PLANT THEM THIS FALL.** By Fall Planting you gain several weeks of growth next Spring. Our hardy, outdoor grown shrubs will thrive and succeed for you. Complete planting instructions sent with each order.



WHITE HYDRANGEA (A.G.)

5432. This beautiful shrub is the answer to your need for one that thrives on the north side of your home or in shady places. From June to August it is covered with great big snow white balls of bloom, often 8 to 10 inches across. The large leaved foliage of light green is very attractive, too. Perfectly hardy . . . and our sturdy plants will certainly succeed for you.

2 and 3-Year Plants

Postpaid	Each	2	4
18 to 24 inch	\$0.95	\$1.80	
2 to 3 ft.	1.10	2.00	



PINK HYDRANGEA (P.G.)

5433. The blooms of P.G. are simply enormous, often a foot long and 6 to 8 inches across the base. The flowers open white and slowly take on pink and bronze hues. Bloom comes abundantly from July until frost. Pink Hydrangea does very well in the shade and thrives in full sun. One of our showiest shrubs, one that is sure to thrill you.

2 and 3-Year Plants

Postpaid	Each	2	4
18 to 24 inch	\$0.85	\$1.65	
2 to 3 ft.	1.00	1.85	



TAMARIX

5324. (Hispid) There will never be a day you don't admire your Tamarix. The feathery silvery-blue foliage is beautiful all season long. And throughout the Summer you'll be thrilled by the great plume-like spikes of rosy pink bloom. Tamarix thrives in either sun or shade. (12 ft. unless pruned.)

2 and 3-Year Plants

Postpaid	Each	2	4
18 to 24 inch	\$0.60	\$1.10	\$2.00
2 to 3 ft.	.75	1.40	2.55



FRENCH LILACS

These budded plants of the finest French varieties are a sensational improvement over the old fashioned lilac. The massive trusses of densely packed bloom are often 5 to 8 inches long. The bush grows only 6 to 8 ft. high. The bloom has a most delightful fragrance. The varieties listed are all Double Flowered.

2 to 3-year Size Plants

Postpaid	Each	2	4
12 to 18 inch	\$0.90	\$1.50	\$2.80
18 to 24 inch	1.25	2.25	4.25

- 5486. Victor Lemoine (Lavender)
- 5455. Charles Joly (Purplish red)
- 5463. President Grevy (bluish lilac)

FRENCH LILAC SPECIAL

Order No. 5482

One each of French Lilacs above.

12 to 18 inch.

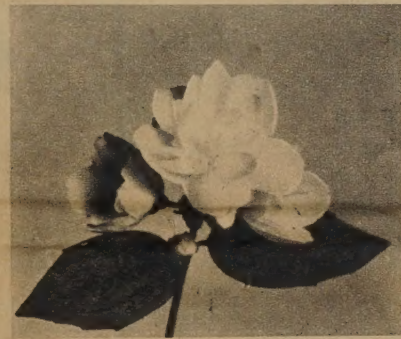
All 3 only \$2.25, Postpaid.



SNOWBALL

5450. In May and June this old favorite blooms so generously with "snowballs" that the bush looks almost white. Very popular for bouquets. It is a thrifty growing shrub, completely hardy, and will reach to a height of 10 to 12 feet.

Postpaid	Each	2	4
18 to 24 inch	\$0.90	\$1.70	
2 to 3 ft.	1.10	2.00	



SEMI-DOUBLE MOCK ORANGE

5477. (Syringa Virginal) Loveliest of all the Mock Orange family. The flowers are very large and semi-double and delightfully fragrant. Becomes heavy with bloom in late Spring and blooms off and on through the Summer. (3 to 5 ft.)

2 and 3-Year Plants

Postpaid	Each	2	4
18 to 24 inch	\$1.00	\$1.80	\$3.50
2 to 3 ft.	1.25	2.25	4.00



RED LEAF BARBERRY

5420. The rich, bronzy-red foliage of the Barberry has no equal in the family of shrubs. In the Fall it takes on still different beauty as it turns to shades of orange and scarlet. Bright red berries decorate the shrub through Fall and Winter. Outstanding in hedge use and specimen plantings. (3 to 5 ft.)

2 and 3-Year Plants

Postpaid	Each	2	4
15 to 18 inch	\$0.60	\$1.10	\$2.00
18 to 24 inch	.70	1.30	2.40



BRIDAL WREATH

5444. Gracefully arching branches are lined and heavily laden with snow white bloom, in May and June. Surely you should have this shrub in your yard. It is hardy everywhere, thrives in the sun or partial shade. Plant it this Fall . . . for an informal hedge, for a foundation or specimen planting. Fall plantings often start blooming the first year.

2 and 3-Year Plants

Postpaid	Each	2	4
18 to 24 inch	\$0.50	\$.85	\$1.45
2 to 3 ft.	.65	1.15	2.10



PINK FLOWERING ALMOND

5404. Darling little pink rosette flowers densely line each branch and twig of this Flowering Almond. And this attractive show is made in earliest Spring, before even the foliage has formed. Everyone will admire your planting of this lovely shrub. (4 to 5 ft.)

2 and 3-Year Plants

Postpaid	Each	2	4
18 to 24 inch	\$0.70	\$1.30	\$2.40
2 to 3 ft.	.85	1.60	3.00



RED FLOWERING QUINCE

5322. Red flowers will so densely cover the branches of this Quince that the shrub will appear to be aflame. Very attractive in your yard and excellent for sprays of cut flowers. You and your neighbors will be admiring them in earliest Spring, before the foliage shows. (5 to 6 ft.)

2 and 3-Year Plants

Postpaid	Each	2	4
18 to 24 inch	\$0.60	\$1.10	\$2.00
2 to 3 ft.	.75	1.40	2.55



SPIREA ANTHONY WATERER

5436. One of the most attractive of all low growing shrubs. The rosy-red flowers of this Spirea come on wide flat heads, and they come again and again through July until frost. A shrub of continuing beauty. Growing only 2 to 3 ft. high it is ideal for foreground plantings and low, informal hedging.

2 and 3-Year Plants

Postpaid	Each	2	4
12 to 15 inch	\$0.60	\$1.10	\$2.00
15 to 18 inch	.75	1.40	2.55



BEAUTY BUSH

5478. (Kolkwitzia) A June flowering shrub of special beauty. From the upright growth, branches arch gracefully and are covered with bell-shaped, pink flowers. The foliage is very pretty, too. Grows and thrives everywhere and is completely hardy. Will grow 7 to 8 ft.

Postpaid	Each	2
18 to 24 inch	\$0.90	\$1.70
2 to 3 ft.	1.10	2.00

HEARTHFIRE



CHARLES NYE



JOAN HELEN

POLAR ICE

CHRYSANTHEMUMS

This grand selection of Chrysanthemums was chosen for you from dozens of available varieties . . . because (1) they begin blooming in mid-September and are then in glorious full bloom within a few days . . . (2) they are the true cut-flower type; the blooms often 3 inches across and very densely double . . . (3) they are very free blooming; so bloom-packed that the foliage will be completely covered . . . and (4) they are thrifty vigorous growers; all perfectly hardy. Order yours right now. When they bloom next Fall you'll have a thrilling abundance of bloom. Send your order today.

2167. *Hearthfire*

2164. *Charles Nye*

2170. *Joan Helen*

2163. *Polar Ice*

2165. *Olive Longland*

Allike or Assorted

Each 50c; 3 for \$1.35, Postpaid

CHRYSANTHEMUM GARDEN OF ALL 5

Order No. 2177

One each of this perfect color assortment of early flowering, cut-flower Chrysanthemums.

**ALL 5 ONLY \$1.95
POSTPAID**



OLIVE LONGLAND

Early Flowering Varieties
Especially Selected To Give You
ABUNDANT BLOOM
and the
FINEST BOUQUET FLOWERS



POMPON BUTTON MUMS

Here are the little darlings of the Chrysanthemum family. The intensely double blooms are beautifully rounded and are only 1 to 1½ inches across. Just a single spray may have as many as 25 blooms. The plants make a shapely growth and cover themselves with bloom from September until killing frost. They make beautiful and long lasting bouquets. Grow 18 to 24 inches high. Listed below are three of the finest, richest colored varieties.

Each 40c; 3 for \$1.10, Postpaid

2155. *RUBY*. Ruby Red

2156. *SEPTEMBER GOLD*. Bright yellow

2157. *ORCHID JEWEL*. Orchid pink

POMPON MUM SPECIAL

Order No. 2160

One each of three listed above.

ALL 3 ONLY \$1.00, POSTPAID

Earl May "MILLION MUMS"

These Cushion Type Chrysanthemums grow in low, rounded bush form only 12 to 18 inches high. And when blooming time comes you will see a solid cushion of bloom. From the ground to the top and all around, hundreds and hundreds of blooms. Then you'll know why we call them "Million Mums." Plant them this Fall for years of wondrous beauty.

2112. *Bronze*

2114. *Red*

2113. *Pink*

2115. *Yellow*

Allike or Assorted

EACH 35c; 3 FOR \$1.00, POSTPAID

"MILLION MUM" Garden

Order No. 2116

One each Red, Pink, Yellow and Bronze.

All 4 Only \$1.25, Postpaid





GLOXINIAS

Gorgeous velvety flowers in brilliantly beautiful colors! Gloxinias are truly a most wonderful flower. The blooms open to 2½ to 3 inches across and they come on week after week. And, they are about the easiest of all house plants to grow. You can plant your Gloxinia bulbs from February until late May and have a succession of flowers.

Use a 5-inch pot and get good rich sandy loam. Plant the bulb about one inch deep. Place it in a warm sunny window. Water it sparingly until growth appears and then water every day. After flowering the bulbs should be saved for planting another season and so on for many years. Here are four of the finest.

GLOXINIA SPECIAL

Order No. 75

One each of 4 at the right

ALL 4 ONLY

\$1.25, POSTPAID

Each 39c; 3 for \$1.00

69. **EMPEROR FREDERICK**

Scarlet bordered white

70. **KING OF REDS**

Deep blood red

76. **QUEEN WILHELMINA**

Soft rose pink

73. **PRINCE ALBERT**

Ruffled dark violet



LARGE FLOWERING TUBER BEGONIAS

*Most gorgeous
brilliant flowers
for both
indoors and
outdoors*

Plant the tubers in the garden, preferably in the shade. Keep them well watered. After frost take them up again and let them rest for 6 to 8 weeks. Then, plant them in pots indoors and they will bloom during the winter. Large blooming size bulbs of a superior large-flowering strain. 41. Scarlet Camellia. 42. Yellow Camellia. 43. Pink Camellia. 44. Orange Camellia.

Each 35c; 3 for 95c, Postpaid

TUBER BEGONIA SPECIAL

Order No. 66. One each of Begonias above.

All 4 Only \$1.00, Postpaid

POTTING SOIL

FOR HOUSE PLANTS. Potting soil especially prepared for growing plants and bulbs indoors. Promotes luxurious foliage growth and gorgeous colorful flowers. Easy to use, just pour soil into containers, plant bulbs or flowers, nothing to add but water. Contains humus, garden soil, rotenone, vitamins B1 and B2, rootone, cuperous oxide and further enriched with additional amounts of nitrogen, phosphorus and potash to make a highly balanced nutritional soil for bulbs and house plants.

½ Gallon \$1.00; 1 Gallon \$1.50, Postpaid.

HOUSE PLANTS

(Begin shipping about September 1st and will continue until severe freezing weather.)



GERANIUMS

Best, heavy blooming, free branching varieties.

35-H. Red 45c 36-H. Pink 45c
37-H. White 45c

**SPECIAL! (38-H) ALL 3 ABOVE
ONLY \$1.20, POSTPAID.**

VELVET PLANT

45-H. Thick, velvety leaves have iridescent sheen of reddish purple. Stems and mid-ribs of leaves are green. Each 49c.

REX BEGONIA

44-H. Giant of this family. Leaves often brilliantly colored, large and showy. Each 69c.



EVERBLOOMING BEGONIAS

Often called Wax Leaf because of the beautiful glossy foliage. Prefers a sunny window. Bloom continuously.

16-H. BRONZE LEAF 45c
17-H. ROSY PINK 40c
18-H. PURE WHITE 40c

**SPECIAL! (19-H) ALL 3 ABOVE
ONLY \$1.15, POSTPAID**

ANGEL-WING BEGONIAS

22-H. MAPLE LEAF. Very bushy with leaves shaped like a maple leaf. Pink flowers are fragrant. Each 75c.

23-H. WHITE. Glossy light green foliage, wing-shaped. White flowers on graceful drooping stems. Each 40c.

24-H. PINK. Long leaves are bronzy green, have silver markings and are wing-shaped. Pink flowers. Each 40c.

**SPECIAL! (25-H) ALL 3 ABOVE
ONLY \$1.25, POSTPAID**

OLD MAN CACTUS

33-H. Covered with long white hair-like growth. Very unusual. Each 45c.

34-H. HEN & CHICKENS. Each 35c.

39-H. SNAKE PLANT. Sword-like leaves of variegated green. Grows almost anywhere. Each 40c.

40-H. PEPEROMIA. Bushy foliage plant with round, thick, waxy-green leaves. Sunny or shaded window. Each 45c.

41-H. EUONYMUS. Busy, branching plant with variegated green and white foliage. Each 40c.



VINING PLANTS

26-H. PHILODENDRON. Heart shaped leaves are glossy green. Grows in water as well as soil. Each 45c.

27-H. NEPHTHYTIS. Rich green leaves, shaped like an arrow-head. Often called "Emerald Gem." Each 45c.

28-H. GRAPE IVY. Bronzy green divided foliage. New growth is fuzzy. Each 65c.

29-H. PARLOR IVY. The favorite new small-leaved, branching variety. Each 45c.

SPECIAL! (31-H). 1 Grape Ivy, 1 Parlor Ivy, and 1 Philodendron. ALL 3 ONLY \$1.45. POSTPAID.

COLEUS PLANT

(43-H). Grandma's favorite "foliage" plants. Grow fast. Many attractive variations of color. 6 PLANTS, ALL DIFFERENT, ONLY \$1.00, POSTPAID.



AFRICAN VIOLETS

Most popular of all house plants. Thrive in windows where there is no direct sunlight. Bloom profusely and almost continuously.

95c Each

10-H. BLUE BOY 11-H. PINK BEAUTY
12-H. WHITE LADY

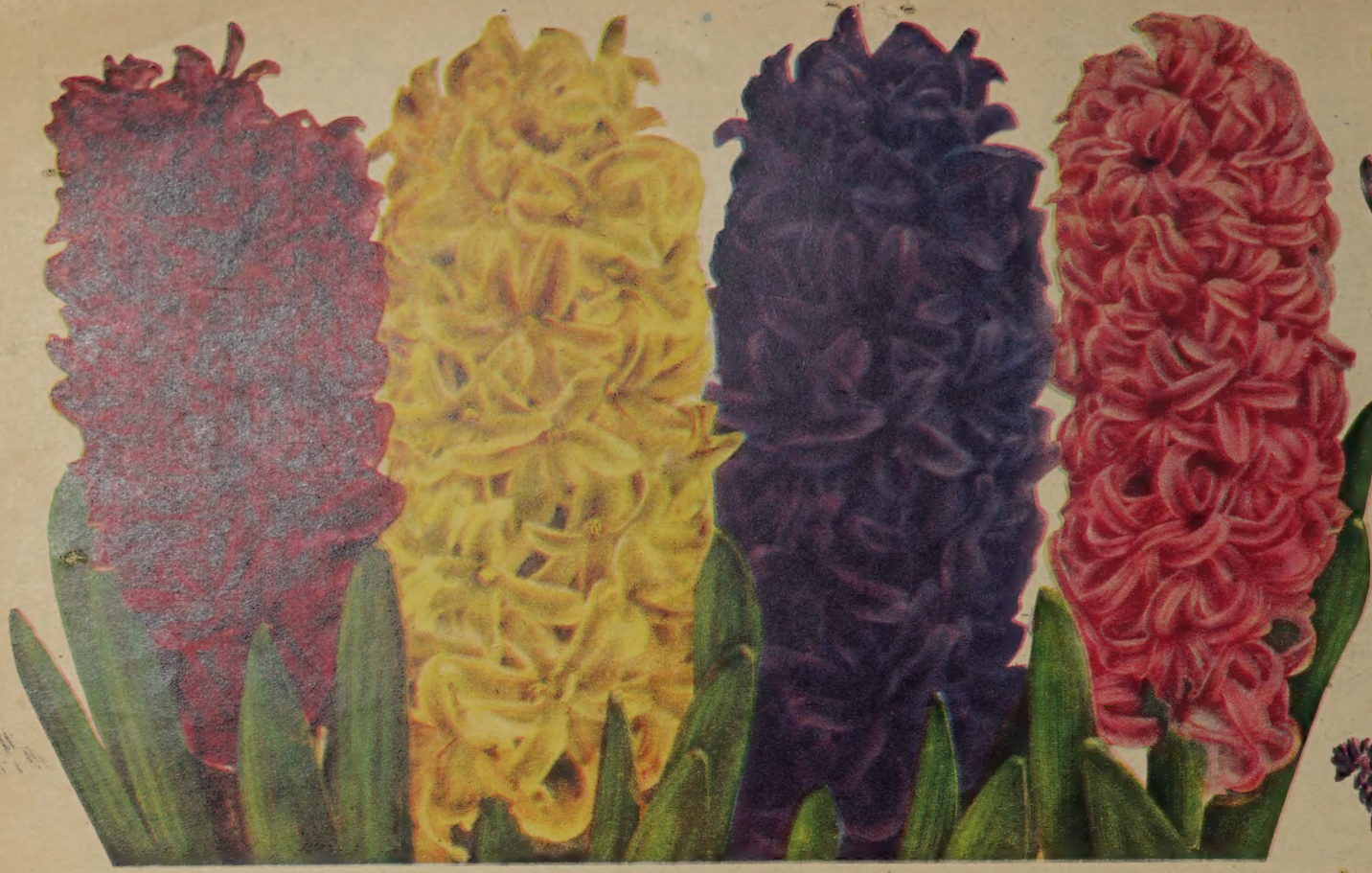
**SPECIAL! (15-H) ALL 3 ABOVE
ONLY \$2.50, POSTPAID**

WINDOW GARDEN SPECIAL

Order No. 31-H

8 assorted Cacti and Succulents

**Only \$1.50
Postpaid**



LA VICTOIRE

CITY OF HAARLEM

KING OF BLUES

QUEEN OF PINKS

HYACINTHS . . . *Fragrant and Beautiful*

They bloom along with the Tulips in 'early spring . . . and what blooms! The trusses of bloom are large, compact with bloom, often 6 inches of solid florets. They are delightfully fragrant. Attractive in clumps, borders, and beds. Plant them this Fall for sure bloom next Spring.

- | | |
|-------------------------|---------------------|
| 190 La Victoire | 192 City of Haarlem |
| 191 King of Blues | 193 Queen of Pinks |
| 194 L'Innocence (White) | |

Your choice, alike or assorted.
3 for 65c; 6 for \$1.20; 12 for \$2.10,
Postpaid.



GOLDEN HARVEST



CHEERFULNESS



INGLESCOMBE



ORANGE GLOW



MRS. E. H. KRELAGE



KING ALFRED

NARCISSUS

(Daffodils.) Bright, gay, and colorful and one of the first to flower in the Spring. Easy to grow, come year after year. Plant them this Fall for glorious bloom next Spring. Six of the very loveliest are pictured here. Order them today.

Your choice of the Narcissus below.
6 for 75c; 12 for \$1.29; 25 for \$2.50,
Postpaid.

- 155. Golden Harvest
- 154. Mrs. E. H. Krelage
- 151. Cheerfulness
- 153. Inglescomb
- 152. Orange Glow
- 150. King Alfred

NARCISSUS GARDEN

Order No. 162
Two each of all 6 Narcissus pictured.
12 Bulbs Only \$1.15,
Postpaid.

Mixed Narcissus

Order No. 158. Various colors and types
12 for \$1.00; 20 for \$1.65, Postpaid.



CROCUS

182. First to bloom in the Spring. Grows only 4 or 5 inches high. Your choice:

10 for 35c; 25 for 70c
50 for \$1.25, Postpaid.

Blue Purple Yellow Striped White

Order No. 181. 5 each of above Crocus . . . all 25 Bulbs Only 65c, Postpaid.



GRAPE HYACINTH

159. (Muscari.) Bloom very early in the Spring, often right after the last late snow, 6 to 7 inches high. Planting instructions with your order. 10 for 39c; 25 for 80c; 50 for \$1.45, Postpaid.



SCILLA

157. (Wood Hyacinth, Bluebells.) Bright blue flowers, 6 to 7 inches high and they will be blooming for you in earliest Spring. 10 for 39c; 25 for 80c; 50 for \$1.45, Postpaid.

HYACINTH GARDEN
Order No. 199
One each of all 5 Hyacinths, 4 above and pure white L'Innocence (not pictured).
ALL 5 ONLY \$1.00
Postpaid
(2 Each of above) 10
bulbs \$1.85, Postpaid.

EARL MAY'S 1949 FALL CATALOG

Earl E. May Seed Co.
Shenandoah, Iowa
Nursery Stock
Seeds and Bulbs

Sec. 562, P. L. & R.
U. S. POSTAGE
PAID
Permit No. 15
Shenandoah, Iowa

UNITED STATES DEPT
OF AGRICULTURE LIBRARY
WASHINGTON 25 D.C.