

## **Historic, Archive Document**

Do not assume content reflects current scientific knowledge, policies, or practices.

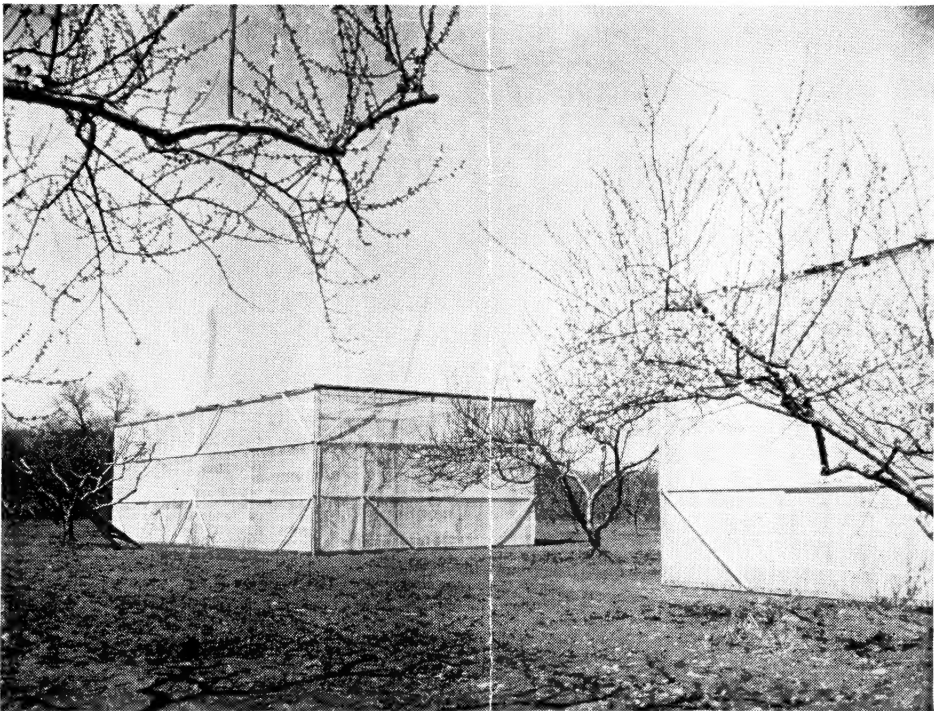


62,53 Index

**LIBRARY**  
**RECEIVED**  
★ OCT 17 1949 ★  
U. S. Department of Agriculture

**PEACHES AND NECTARINES**

**Bred and Tested in New Jersey**



**TENTS USED IN PEACH BREEDING**

*Propagated and Distributed by*  
**THE NEW JERSEY PEACH COUNCIL, INC.**  
NEW BRUNSWICK, N. J.

*Fall, 1949 - Spring, 1950*

## EARLY VARIETIES RIPENING BEFORE HILEY

### **MAYBELLE (N. J. 164)**

A medium to large, white-fleshed peach ripening a few days before N. J. 133 and about one week before Redbird. It is as hardy or hardier than Elberta. It is of good quality for such an early peach. It is a semi-cling under most conditions and as firm as other very early varieties.

### **EARLY EAST (N. J. 134)**

A medium to large, yellow-fleshed peach of high quality. It ripens about ten days before Golden Jubilee. The fruits develop an attractive red color, while still firm, and in long distance shipping condition. The dormant fruit buds are hardier than Elberta. Tree-ripened Early East are freestones. It has hardiness, productiveness, and attractiveness combined with good size, color, and quality. A good variety for the home or commercial orchard.

### **JERSEYLAND (N. J. 135)**

This large, firm, attractive, yellow-fleshed freestone ripens a few days before Golden Jubilee. It hangs well to the tree, and is an excellent shipper. It is far superior to Golden Jubilee as a commercial variety for shipment to wholesale markets. The tree is hardy, sets fruit buds freely, and comes into bearing early. It was a profitable early variety in New Jersey in 1948 and 1949.

### **CHERRYRED (N. J. 129)**

Large, round, non-melting yellow-fleshed clingstone which ripens at the same season as Redbird. The flesh is orange-yellow, deeply stained with red. It can be picked and handled much the same as Redbird. This variety is essentially an attractive yellow-fleshed Redbird.

### **RARITAN ROSE (N. J. 97)**

A firm, attractive, white-fleshed freestone of good quality, ripening a few days before Golden Jubilee. The tree is vigorous, hardy, and productive. The best early white of its season for the roadside trade.

### **WILDROSE (N. J. 118)**

The best white-fleshed freestone to follow Raritan Rose. The fruit is large, round oval, well colored with red, and has a clear white flesh of high quality.

### **TRIOGEM (N. J. 70)**

A firm, yellow-fleshed freestone of high quality, ripening two to three days later than Golden Jubilee. Very attractive and a good shipper. An excellent commercial variety to follow Golden Jubilee.

### **NEWDAY (N. J. 79)**

A firm, yellow-fleshed peach of good quality, ripening a few days later than Golden Jubilee. It resembles Elberta in color and shape, and the average size is larger than Triogem. It is resistant to bacterial spot.

### **SUNHIGH (N. J. 82)**

A large, firm, attractive, yellow-fleshed variety of good quality ripening a few days earlier than Goldeneast. Generally it is a freestone, but sometimes the firm flesh adheres slightly to the pit when the fruit is hard ripe. A popular variety to precede Goldeneast.

### **REDROSE (N. J. 98)**

A firm, attractive, highly-colored white-fleshed freestone of high quality ripening with Goldeneast. The trees are vigorous, productive, and hardy. For those who desire a firm, white-fleshed, attractive peach to follow Wildrose, this variety can be recommended.

## MID-SEASON VARIETIES

### **GOLDENEAST (N. J. 87)**

A very large, firm, attractive, yellow-fleshed freestone of high quality ripening about two weeks before Elberta. This has been a profitable variety in New

## ORDER BLANK

Date....., 19

To THE NEW JERSEY PEACH COUNCIL, INC.,  
R. F. D. No. 3, Princeton, New Jersey:

I would like to place an order for the following trees:

<i>VARIETY</i>	<i>No. Trees</i>	<i>Grade Preferred</i>	<i>VARIETY</i>	<i>No. Trees</i>	<i>Grade Preferred</i>
Maybelle.....					
Early East.....			White Hale.....		
Jerseyland.....			Afterglow.....		
Cherryred.....			Laterose.....		
Raritan Rose.....			Fallate.....		
Wildrose.....			Goodcheer.....		
Triogem.....			Constitution.....		
Newday.....			Autumn.....		
Sunhigh.....			Frostqueen.....		
Redrose.....			Nectarose.....		
Goldeneast.....			Garden State.....		
Summerrose.....			Nectaheart.....		
Summercrest.....			Nectacrest.....		
			Nectalate.....		

### LIABILITY AGREEMENT

Great care is used to avoid mistakes, but in case any trees prove to be untrue to the name under which they are sold, the original order will be replaced or the amount actually paid for such stock at the time of purchase will be refunded. The purchaser agrees to accept the trees on these terms.

Signed.....

Address.....

I will call for the trees at.....  
when notified they are ready.

Please ship the trees to:.....

Enclosed find { Check  
Money order } for.....

*Make checks and money orders payable to the New Jersey Peach Council, Inc.*

1917

1917

1917

1917

1917

1917

1917

1917

1917

1917

1917

1917

1917

1917

1917

1917

1917

1917

1917

1917

1917

Make checks and money orders payable to the First Liberty Loan Fund

Jersey because of its firm flesh, large size, and attractive appearance. An excellent variety to follow Sunhigh.

#### **SUMMERROSE (N. J. 101)**

The best large, oval, white-fleshed freestone to follow Redrose in New Jersey. The fruits resemble well-colored Belle of Georgia in shape and appearance, but are firmer, larger, and earlier.

#### **SUMMERCREST (N. J. 94)**

A large, oval, yellow-fleshed freestone ripening just before Elberta. A popular home canning peach. The tree is vigorous and hardy. An excellent variety to precede Elberta.

#### **WHITE HALE (N. J. 63) (U. S. Plant Patent 31)**

A large to very large, white-fleshed freestone of good quality ripening with Elberta and J. H. Hale. The tree is more vigorous than J. H. Hale and the flowers are perfect. It meets the demand for a large, showy, white-fleshed peach during the Elberta season.

#### **REDCREST (N. J. 126)**

In view of the fact that this variety has failed to meet the standards established by the Peach Council for a commercial peach, it is no longer being propagated by the Peach Council and the trees budded in 1948 for sale this Fall and next Spring will be destroyed. This is in accordance with a resolution approved by the Directors of the New Jersey Peach Council at a meeting held on August 13, 1949.

### **LATE VARIETIES RIPENING AFTER ELBERTA**

#### **AFTERGLOW (N. J. 84)**

A large, high-quality, yellow-fleshed freestone ripening immediately after Elberta. The trees are vigorous, hardy, and productive. An excellent variety to prolong the Elberta season.

#### **LATEROSE (N. J. 109)**

This is now the most popular white-fleshed freestone ripening a few days after Elberta and White Hale. Hardy, productive and attractive. It has high quality for canning and freezing as well as for slicing fresh.

#### **FALLATE (N. J. 183)**

An attractive, white-fleshed freestone peach of high quality and good size, ripening a week to ten days after Elberta or about with Goodcheer and Constitution. It is a promising white peach to follow Laterose.

#### **GOODCHEER (N. J. 152)**

A large, attractive, yellow freestone of good quality, ripening about a week after Elberta. A promising variety to prolong the Elberta season.

#### **CONSTITUTION (N. J. 161)**

A large, yellow-fleshed, freestone of high quality ripening a week to ten days after Elberta or about with Goodcheer. It combines some of the fruit size of J. H. Hale with the flavor and tree size of Late Crawford. It rates high for both freezing and canning. It is a competitor for Goodcheer as a variety to follow Afterglow.

#### **AUTUMN (N. J. 145)**

The latest, large, yellow freestone ripening fully ten to fourteen days after Elberta. Later than Late Crawford, or Rio-Oso-Gem. The tree is a very vigorous grower and should be planted on well-drained, good peach soil.

#### **FROSTQUEEN (N. J. 185)**

A white-fleshed, freestone peach ripening about a week after Fallate and at least two weeks after Elberta. An excellent white peach to follow Fallate. It should ripen before the first frost in northern New Jersey during a normal season.

## NECTARINES

### NECTAROSE (N. J. 9)

A large, white-fleshed freestone, ripening just before the Garden State, or about with the Sunhigh peach.

### GARDEN STATE (U. S. Plant Patent 92)

A large, firm, yellow-fleshed freestone of high quality ripening with the Goldeneast peach. It is very desirable for slicing, canning, and freezing.

### NECTAHEART (N. J. 10)

A large, white-fleshed freestone completely shaded with red, ripening immediately after Garden State. Some specimens grown at New Brunswick have been over 2½ inches in diameter.

### NECTACREST (N. J. 8)

This large, attractive, white-fleshed freestone usually ripens with the Summercrest peach at New Brunswick or about one week after Nectaheart.

### NECTALATE (N. J. 4)

This is the latest variety to ripen among all the nectarines offered by the New Jersey Peach Council. It usually ripens with the Afterglow peach, or nearly two weeks later than Nectacrest.

## LOW ACID PEACHES

Low acid peaches should be of special interest to persons who are troubled with hyper-acidity or peptic ulcers, since they may be eaten by such persons without the discomfort that follows the consumption of fruits having a normal amount of acid.

Trees of two low acid varieties of peaches developed at the New Jersey Agricultural Experiment Station have been named and are now being offered by the New Jersey Peach Council. Both varieties ripen about a week after Elberta, or with Afterglow and Laterose:

HONEYGEM, yellow freestone of medium size.

NEWCHEER, white freestone of medium size.

### GRADES AND PRICES, FALL 1949—SPRING 1950

GRADE	1 to 9 trees	10 to 24 trees	25 to 99 trees	100 to 249 trees	250 to 499 trees	Over 500 trees
18 to 24 inches.....	—	—	\$0.70	\$0.55	\$0.45	\$0.35
2 to 3 feet.....	—	—	.75	.60	.50	.40
3 to 4 feet.....	\$1.50	\$1.25	.85	.70	.60	.50
4 to 5 feet.....	1.50	1.25	.85	.70	.60	.50
5 to 6 feet.....	2.00	1.50	1.15	1.00	—	—

These prices include truck delivery to some central point in New Jersey, such as Moorestown, Hammonton, or Glassboro, if the number of trees ordered makes such delivery practical. Trees also may be secured at the C. H. Steelman Nursery on the Clarksville-Port Mercer Road, about one-quarter mile from State Highway Route 26, or U. S. Route 1. Telephone Princeton 1935-J-1. Small shipments to distant points, including all orders for less than 25 trees, will be sent by express collect unless otherwise specified on the order blank. Write for special prices on orders for over 1,000 trees.

### PLACING ORDERS

All orders for trees should be sent to the New Jersey Peach Council, Inc., R. D. No. 3, Princeton, New Jersey. Orders for Fall delivery will receive first consideration.

A deposit equal to 10 per cent of the total cost of the trees is required with each order and the balance before delivery.