

Historic, Archive Document

Do not assume content reflects current scientific knowledge, policies, or practices.

62,109

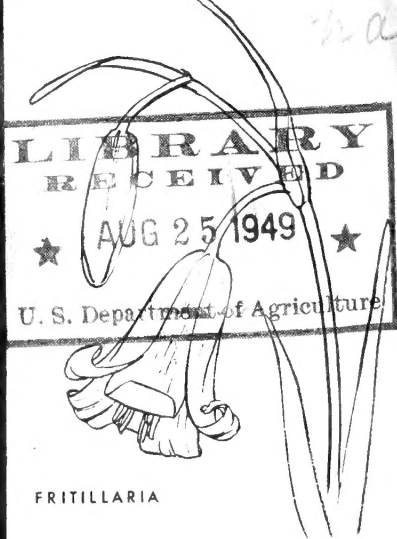
CALIFORNIAN AND OTHER WESTERN AMERICAN *Bulbs and Plants*

FALL 1949 • SPRING 1950

LIBRARY
RECEIVED
★ AUG 25 1949 ★
U. S. Department of Agriculture



CALOCHORTUS
Amabilis



FRITILLARIA



ERYTHRONIUM
TULIP



CYPRIPEDIUM



CALOCHORTUS VESTA



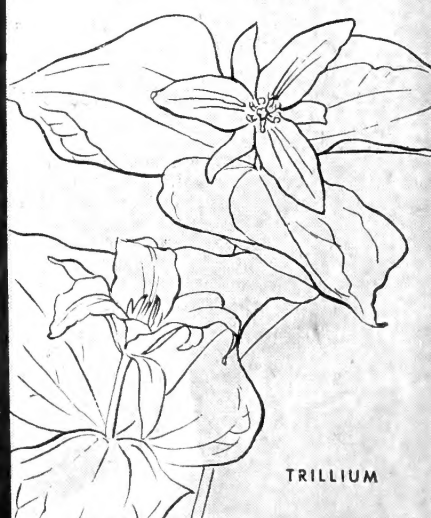
CALIFORNIA
NATIVE
IRIS



MARIPOSA
TULIP



WILD
FLOWER
GROUP



TRILLIUM

• SEED SPECIALISTS •

RARE SHRUBS • HARDY PERENNIALS

• WILD FLOWER SEEDS •

Carl Purdy

GARDENS ESTABLISHED 1879
• UKIAH, CALIFORNIA

ROCK GARDEN PLANTS AND SEEDS

Greetings to Garden-Lovers Everywhere

It is my intention to make firm friends of every person who entrusts me with an order. I have thousands of such friends now, and I fully expect to add you, the first-time reader of this catalog, to that list.

To do this I must first of all be truthful, and grow good plants and deliver them to my customers in good condition. But, in addition to this primary service, it is my practice to give close study to my customers' needs and problems, to give planting directions which will be very helpful, and still more, to go as far as a catalog can go in teaching the best use of plants.

If I add that every complaint is met in a spirit of reason, and that I always go farther than I promise in rectifying any errors or oversights, have I not said enough?

The cultural directions in this catalog seem to be much appreciated. To save space they are abbreviated as follows: **Michaelmas Daisies.** *Sit.* (situation), *Sun*, *Soil*, any loam. *Pl.* (plant), October to April. *Prop.* (propagate), divisions.

TERMS AND DELIVERY

Delivery Dates: California Bulbs, except Lilies, must be planted in fall and I will not send any of these later than January 1, except lilies to February 1, Orchids to late March. Lewisias any month in the year. All Perennials can be shipped from September 1 to May 1. If ordered early we can retard many things to be delivered later than May 1. Semperviviums and Sedums can be sent throughout the year.

At the Terraces the season is fully six weeks later than about San Francisco Bay or Southern California. Plants like Phlox or Delphiniums, which are a foot or more high there in early April, are, as a rule, about as dormant on April 1 here as in winter. Our stock is in excellent shipping condition until early April. In fact, I have had shipments dug in Vermont after spring opened which were further advanced than the same things in the open ground here. This is because we have many cold nights until early April, and the cold winds harden and retard growth.

Quantities. Six, all of one kind at dozen rate. Three, all must be one kind, at 3 rate. In every case one plant of a variety must be at the "each" rate.

Remittances can be made by personal check, money order, or, if less than one dollar, in stamps.

Delivery Cost. Except where items are priced otherwise orders of over \$5.00 are shipped postpaid. Except on seeds, you must add 25c on orders under \$2.00 and 40c on orders of from \$2.00 to \$5.00 to help with postage and packing. Postage increases have hit us hard, especially on smaller orders. It is either raise prices or let you help with postage and the latter is far cheaper for you. Please cooperate by including the small amounts asked for in your remittance. We will ship by express only when requested and at your expense.

For quickest delivery add 25c for Special Handling.

Quality of Stocks. Our plants are field-grown, hardened and stocky; except some items found to be best grown in pots. I do not believe that better plants are sent out by anyone in America. This may not be true of every item, for in growing over 700 items some may fail to grow to expectations, but I think that it is true of by far the larger number.

Errors of any sort are carefully corrected. Do not complain to your friends if something seems wrong, but come straight to me.

If upon receipt of a shipment there are any shortages, please do not make complaint for at least four days. In the rush times our office cannot keep pace with shipments and credits, and explanations may be delayed a mail or two.

"GOOD WILL is the disposition of the pleased customer to return to the place where he has been well treated."—*U. S. Supreme Court.*

TO OUR FRIENDS

Our founder, Carl Purdy, passed from life on August 8, 1945, aged 84 years. This has always been a family business and as he had planned his children, Mary Purdy Robinson, Mabel Purdy Mahurin and Elmer C. Purdy carry on under the direction of Elmer C. Purdy, manager since 1925. We continue in his traditions as established in the foregoing paragraphs.

POLICY AS TO CATALOGS: This Catalog is Priced at 25c

The object of a catalog is to sell goods. Old customers and purchasers during past two years will receive free catalog without request.

We would like to continue sending a free catalog to the thousands who want our catalog for the hundreds of cultural hints and for its great reference value but extreme printing costs prohibit our longer doing so.

You will be notified when your name is to be dropped from list. You may then receive next catalog (ready August 1 of each year), for 25c coin. This may be deducted from first order.

TO THOSE WHO WOULD VISIT OUR GARDENS

Our gardens are nine miles from Ukiah, part of the distance over a steep mountain grade, but a road that will give no concern to anyone used to mountain roads. Visitors are always welcome, but it is requested that you telephone before leaving Ukiah, so that someone will be on hand to attend you.

CALIFORNIA CUSTOMERS NOTE!

California law requires that 3% Retail Sales Tax be paid on every purchase. Please add 3% to your order before making remittance. If omitted we must tell you about it before making shipment. Required on shipment to California addresses only.

If proposed increase is imposed, add new rate.

All Customers must add Federal Tax if such tax is later imposed.

HARDINESS OF STOCK IN THE EAST AND FAR NORTH

The hardiness of all of our California and West American Bulbs in even the coldest parts of this country has been well proven. You need have no fear of success with them if you will follow the cultural directions always sent with the bulbs and given in this catalog. Calochortus and Brodiaea bulbs are best dug after flowering and stored dry for replanting in fall. All others may be left in the ground.

Unless specially excepted in the description of a given subject, all perennial and rock garden plants offered are hardy anywhere in America.

IN THIS CATALOG I introduce the color plates as nearly as possible with the reading matter. In some cases this puts subjects out of the familiar alphabetical order but I am sure you will approve.

A few fine things we have had to drop but we still grow them. If you do not find what you want a postal card request will either price it for you or tell you where it may be had.

PLEASE USE THE ORDER BLANK PROVIDED. IT HELPS US AND SPEEDS DELIVERY. ADDITIONAL BLANKS SENT UPON REQUEST.

TABLE OF CONTENTS

California Native Bulbs, including Brodiaeas, Mariposa, Star and Globe Tulips, Orchids, Trilliums and Lilies will be found.....	Pages 4 to 11
California Wild Flower Seed.....	Page 3
Perennial and Rock Garden Plants and Seeds	Pages 13 to 31
Seed Specialties	Page 12
Unusual Plants and Shrubs.....	Page 32

Additional Plants and Notes, See Colored Insert.

"If your plants are anything like your catalog they must be well worth while. The catalog is the most explicit one that I have ever read."

CALIFORNIA WILD FLOWER SEEDS

California is unrivaled in the number and beauty of its wild flowers but it is the colorful annuals that so attract visitors and I offer the loveliest of these. These lovely annuals have two most valuable uses:

1. As Garden Annuals they vie with the World's finest and should be in every garden. Dainty, colorful and lasting as cut flowers and in the garden and most easy to grow. Sow when and just as you would hardy garden annuals in boxes or easiest where they are to bloom.

2. For naturalizing, beautifying vacant lots and odd spaces nothing excels or gives more lasting effects. (It's useless to sow among weeds or grass,—I do not sell seeds for that.) Hoe off weeds and dig two inches deep,—plowing or spading will greatly enhance results. In East and at Lake Tahoe sow as early as you can in Spring and up to June 15. In California and mild regions, where unwatered, Oct. 1 to Feb. 1; early Fall is best. Where watered up to May 1 and watering will prolong bloom into August.

(Full cultural directions accompany seeds.)

Quantities: 5 lbs. per acre; 1 lb. 5000 sq. ft.; 1 oz. 200 sq. ft. (½ oz. sold at ounce rate.)

BARTONIA Aurea. "Blazing Star." 2-3 ft. Large cups of pure gold with orange center, it is a spot of splendor in any garden. Pkt. 10 cts.; oz. \$1.

CALANDRINIA Menziesii. 6 in. Spreading plants with cup of rose red. Sun. Pkt. 15 cts.

CLARKIA Pulchella alba. 18 in. Large lobed flowers of purest white and very lovely. Pkt. 20 cts.; ¼ oz. 60 cts.

COLLINSIA BICOLOR. 8-12 in. Flowers in whorls are bright rose, tipped white. Lovely in sun or half shade. Pkt. 10 cts.; oz. \$1.25.

COREOPSIS Stillmanii. 1-2 ft. Fine cut foliage. Large deep yellow flowers. There is no finer single Coreopsis. Pkt. 20 cts.; oz. \$1.25. & Gold". Pkt. 10 cts.; oz. 50c; ¼ lb. \$2.00;

ESCHSCHOLTZIA "California Poppy". The flower that gave California its name "Golden State". Loveliest varieties are:

Californica. The large brilliant golden orange blooms that adorn our hills and fields in such profusion each spring. Pkt. 10 cts.; oz. 50 cts.; ¼ lb. \$1.50; per lb. \$4.00.

Maritima "Golden West" is as lovely; the color golden yellow with the center deep orange. Pkt. 10 cts.; oz. 50 cts.; ¼ lb. \$1.50.

FLOERKIA Douglasii "Meadow Foam". Spreading 6-8 in. Large cups are yellow at center, cream at edges. Likes moisture. Pkt. 15c.; ½ oz. 75 cts.

GILIA Capitata "Queen Anne's Thimble". 1-2 ft. Branching plant. Lovely soft blue flowers. Late. Pkt. 10 cts.; oz. 50 cts.; ¼ lb. \$2.50.

GILIA Achillaeifolia. Large heads of bright blue flowers are profusely borne on 18-20 in. graceful stems. Long lasting cut flowers. Pkt. 15 cts.; ¼ oz. 50c.

GILIA Tricolor "Bird's Eyes". 8 in. Charming Phlox-like flowers of smoky lilac with yellow halo, center purple. Pkt. 10 cts.; oz. 75 cts.; ¼ lb. \$2.25.

GODETIA Amoena "Farewell to Spring". 15-24 in. Slender branching erect stems. Large flowers of silvery-rose, red blotched at center. Pkt. 15 cts.

LUPINUS Nanus "Dwarf Blue Lupine". 6-10 in. Flowers rich blue, tipped white. This with California Poppy makes our pattern of "Blue & Gold". Pkt. 10c.; oz. 50c cts.; ¼ lb. \$2.00; per lb. \$6.00.

NEMOPHILA. Charming low plants, the flowers open cups an inch across. Grand bedding plants.

Insignis. "Baby Blue-Eyes". Deep blue with lighter center. Pkt. 10 cts.; oz. 60 cts; ¼ lb. \$2.00; per lb. \$6.00.

Maculata "Five Spot". White, the tip of each petal spotted purple. Pkt. 15 cts.; oz. \$1.00.

OENOTHERA Hookerii. 1 ft. Spreading plants with large cups of soft lemon-yellow. Pkt. 15 cts.; ¼ oz. 75 cts.

PAPAVER Californica "California Wind Poppy". 15 in. Slender stems; the flowers like fluffs of brilliant orange-scarlet silk. Stands drouth. Pkt. 25 cts.

PHACELIA Campanularia "Bell-flowered Phacelia". 6-15 in. Delightful open bells of intense blue. Pkt. 10 cts.; oz. 70 cts.

PHACELIA tanacetifolia. "Fiddle Neck". 2 ft. with close spikes of soft blue. Stunning. Pkt. 10 cts.; oz. 60c.

PHACELIA Whitlavi. (15 in.) Deep blue flowers resembling the "Canterbury Bell". Pkt. 10 cts.; ¼ oz. 50 cts.

PLATYSTEMON Californica "Cream Cups". 6-10 in. Flowers are rich cream colored tiny poppies. Lovely. Pkt. 15 cts.; ¼ oz. \$1.00.

SALVIA Carduacea "Thistle Sage". 1-2 ft. Attractive woolly, thistle-like foliage and large heads of lavender-blue. A most lovely flower. Full sun. Pkt. 10 cts.; ¼ oz. 30 cts.

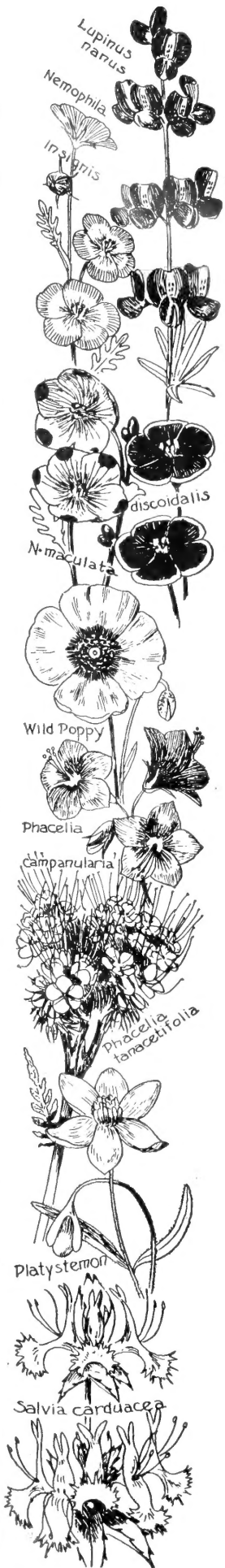
SPECIAL: Your choice any 12 10c pkts. for \$1.

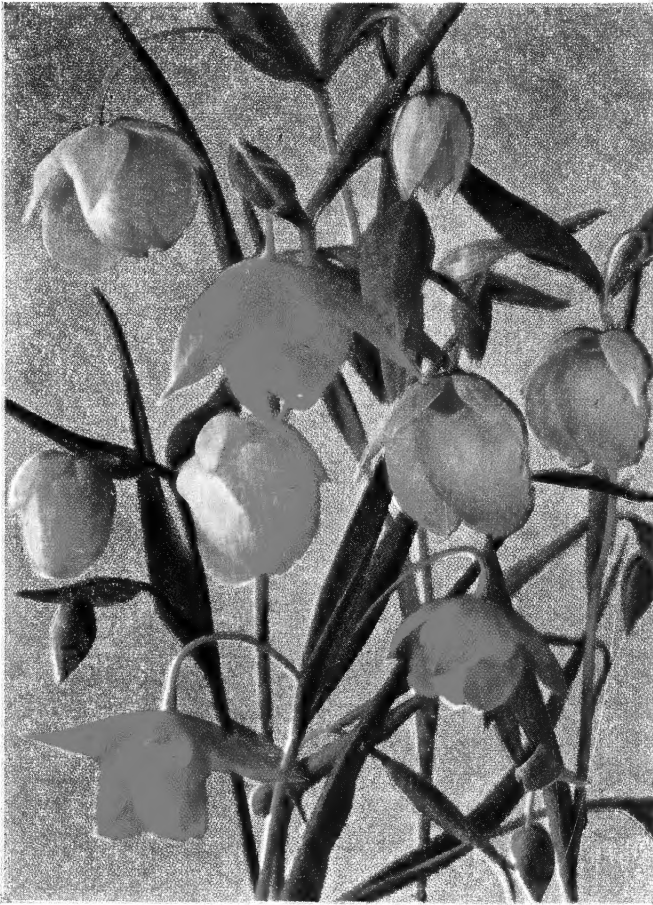
CALIFORNIA FLOWER GARDEN. My personal selection, 13 pkts. \$1.10.

PURDY'S SUPREME WILD FLOWER

MIXTURE. A personally prepared blend from separate named varieties based on my long experience in wild flower sowing of what will do well in all localities.

Oz. 70 cts.; 2 oz. \$1.25; ½ lb. \$3.75; lb. \$7.00.





*Calochortus Amabilis, C. Amoenus,
C. Albus*

LOVELY GLOBE TULIPS

(*Calochortus*)

Words convey only a faint idea of these flowers. Their form is similar, but there is a great difference in color. All are exquisite in tints and the perfection of grace in form. The plants are rather tall and slender, with leaf-wrapped stems of odd shape. They are natives of woodlands, delighting in loose soil and liking leaf-mold and light shades. At the same time, most of them will do well in heavy soils, and are fine subjects to naturalize among rocks or in shaded woods. In the East, as well as the West, they succeed very well if given the care suggested in cultural directions.

Flowering Time of Globe Tulips is late March to early May, according to locality.

These bulbs may be planted Sept. to Dec. only.

AMOENUS. Please do not order. None 1947.

Albus, Fairy Lanterns. Sorry. None, 1947.

Amabilis, Diogenes Lanterns. The picture shows but a small measure of its loveliness. The well-branched stems are 15 inches high, bearing many of the rich deep yellow flowers. Each 10 cts.; 70 cts. per doz.; \$4.00 per 100.

Globe and Star Tulips in Mixture. 60 cts. per doz.; \$4.00 per 100.



*Calochortus Lilacinus, C. Maweanus Major,
C. Maweanus Purpurascens, C. Benthamii*

JAUNTY STAR TULIPS

(*Calochortus*)

Slender woodland plants well shown in picture above. Fine for naturalization in rock work and woodland. They revel in same condition described for Globe Tulips.

Flowering Time of Star Tulips. March-April, according to locality.

These bulbs may be planted Sept. 1 to Dec. 1 only.

Benthamii. 3 to 8 inches high, with bright yellow flowers, often marked black at base. 10 cts. each; 60 cts. per doz.; \$4.00 per 100.

Maweanus Major. See halftone above. Larger than last and white with soft lavender hairs, thick on inner surface. 10 cts. each; 60 cts. per doz.; \$4.00 per 100.

Maweanus Purpurascens. Flowers of deep violet purple. Same price.

MAWEANUS Roseus. More slender and soft lilac-pink. Same price.

Lilacinus is not a woodland plant, but grows in meadows which are wet in winter and very moist until after the flowering season. The plant grows to 8 inches with many very fine lilac flowers which open full, and fragrant and handsome. Of easy culture either here or in the East and quite hardy. Any garden soil, preferably a sandy loam. 10 cts. each; 60 cts. per doz.; \$4.00 per 100.

Star Tulips Mixed. 50 cts. per doz.; \$4.00 per 100.

Six of one kind at dozen rate; 50 of one kind at 100 rate.



Charming Mariposa Tulips

MARIPOSA OR BUTTERFLY TULIPS (*Calochortus*)

Bulbs may be planted Sept. 1 to Dec. 1 only.

My picture gives but a sketchy idea of the grace, charm and loveliness of color found in this flower. Early Spanish explorers called them "Mariposa", their word for Butterfly, because the spots and markings resembled those on a butterfly's wings.

Cup-shaped flowers, 4 to 6 inches across when full open, marked with eyes and dots and pencillings in richest colors are characteristic. Long stems make them excellent cut flowers. Plant in sun or light shade. They flower May-June.

Full cultural instructions are sent with the bulbs.

Venustus Citrinus. A most satisfactory hardy species with deep rich yellow flowers with a black eye. Most excellent. 10 cts. each; 70 cts. per doz.; \$5 per 100.

Venustus Oculatus, like *Citrinus*, but wonderfully varied in whites and creams, more or less tinted purple, and with very rich eyes. I have had the flowers 4 inches across. The plant is a good grower and the flowers are most satisfactory. 10 cts. each; 70 cts. per doz.; \$5 per 100.

Vesta. Simply superb, this species is taller with more and larger flowers which are white, flushed lilac or rose and at the center there is either a large spot or a broad zone of rich velvety brown. **Very large Bulbs, 10 cts. each; \$1.00 per doz.; \$7.50 per 100. Fine Bulbs, 7 cts. each; 70 cts. per doz.; \$5 per 100.**

(Six of one kind at dozen rate; 50 of one kind at 100 rate.)

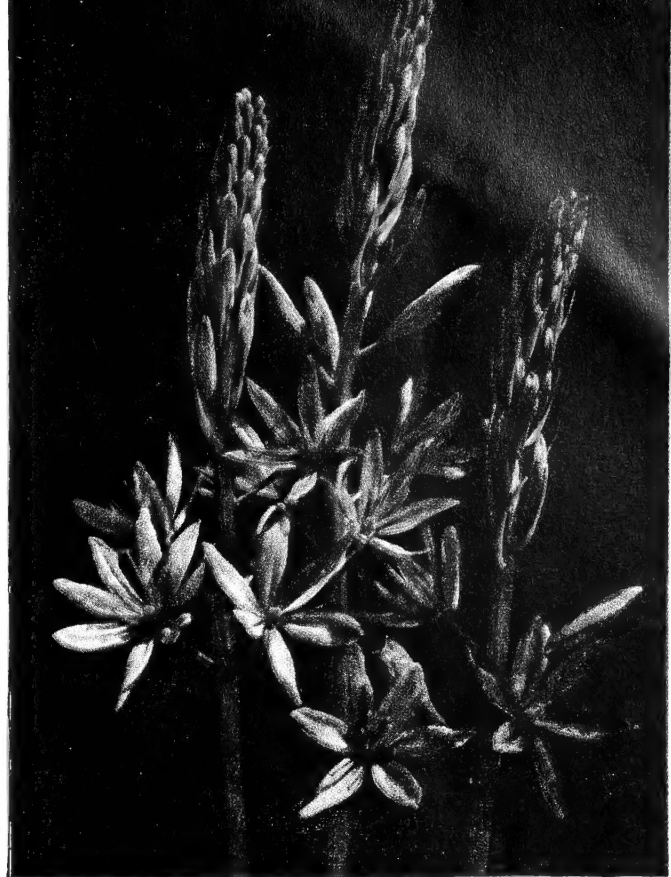
"Get Acquainted" Collection Mariposa Tulips. 8 each of 3 varieties, named separately, 24 bulbs for \$1.40.

MARIPOSA TULIP COLLECTIONS. I put up collections of 3 species, 34 bulbs each, 102 in all, named, for \$5 and will supply a half collection for \$2.75.

MARIPOSA TULIPS IN MIXTURE. A mixture of fine Mariposa Tulips for 60 cts. per doz. and \$4.00 per 100.

CALOCHORTUS MIXTURE. Includes "Globe", "Star" and "True Mariposa" Tulips. 60 cts. per doz.; \$4.00 per 100.

Greencastle, Penna.: "The flowers I received from you last spring were packed so well that they arrived in better condition than some of same kinds from New Jersey."



Camassia Leichtlinii

CAMASSIAS

Shipped Sept. 1 to Dec. 1 only.

Most attractive in bloom they are full-hardy anywhere without protection. Few bulbs thrive in a wider range of soil and climatic conditions whether it be in California, in the East or in Europe. Splendid in the hardy border or in bulb beds in either sun or light shade or for naturalizing along streams or margins of ponds or in moist meadows or open woodlands they are unexcelled. Best planted 4 to 6 inches apart in groups of dozens to hundreds and 3 to 4 inches deep. Long lived and unnecessary to lift after flowering. Lasting cut flowers.

Leichtlinii may grow to 4 feet in height and have as many as a hundred flowers. The petals are even and form a perfect star-shaped flower as much as an inch and a half across. The flowers appear in long succession. Reports from delighted customers everywhere justify us in most thoroughly recommending all Camassias for common garden culture. There are two fine colors.

Leichtlinii Blue. The colors in those I now have range from lavender blue to aconite-blue. Very fine bulbs. 10 cts. each; 95 cts. per doz.; \$7.00 per 100. Immense bulbs for show effects. 12 cts. each; \$1.10 per doz.; \$9 per 100.

Quamash. Clear deep blue with golden anthers, it gives one of finest blue mass effects of any flower I know, whether in groups of a dozen or hundreds and the single stems are showy and lasting cut flowers. For naturalizing in moist areas it is unsurpassed. Do not let the low price mislead you as to its quality for it is one of the finest flowers we offer. We produce cheaply and sell at low prices to encourage mass plantings of this fine subject. 10 cts. each; 50 cts. per doz.; \$3 per 100; \$27.50 per 1000.

Camassias are ready from September to December 1.

ZYGADENUS

ZYGADENUS Fremontii, called **False Camass**, is related to the *Camassias*, with the same attractive basal leaves; with stout erect stems bearing a raceme of many yellow flowers an inch across and of real beauty. Hardy anywhere. It is very early flowering, and like the *Camassias*, adapts itself to any sunny spot with loamy soil. 10 cts. each; \$1 per doz.

Cultural Directions are inclosed with all bulbs.

ORDER EARLY! In all fairness we must ship orders in sequence as received. When we start shipping in late September hundreds of orders have accumulated to which we must give preference over those currently received. On short items, first come, first served.

Brodiaeas will be shipped Sept. 1 to Dec. 1 only.

(Harvest Brodiaeas). All of the following group must be in full sun. All flower late—late May to July.

Californica is one of the two Harvest Brodiaeas, flowering in June to July. The largest and tallest of Brodiaeas, 1 to 2 ft. high, with stout stems, crowned with an umbel of 8 to 12 flowers. Very lasting. Two colors. Specify which.

Deep blue, tinted lilac. 10 cts. each; 50 cts. per doz.
Soft Lilac-Pink. 10 cts. each; 60 cts. per doz.

Grandiflora, another Harvest Brodiaea, has an umbel of a few large, glossy, purple flowers of much beauty and great lasting qualities. Naturalizes easily in any clay soil, especially if moist. 10 cts. each; 50 cts. per doz.

Eastwoodii. Tall, 18 in., with dense umbels of milky-white, lilac veined flowers. Loves a moist spot where it rapidly increases by bulb offsets to make dense colonies. 10 cts. each; 60 cts. per doz. Very stately.

Woodland Brodiaeas. The following do well in sun but are best and last longer in light to moderate shade.

Bridgesii. See No. 3 in color plate, page 43. It is like *B. Laxa*, but with flowers widely spreading and a very fine reddish-violet color. Makes a large umbel, at its best with as many as 50 flowers. Each 10 cts.; 60 cts. per doz.

Capitata is called **California Hyacinth** and has slender stems 6 to 12 inches high, capped with a close cluster of violet-blue flowers. See color plate. 10 cts. each; 50 cts. per doz.

Coccinea or "**Floral Firecracker**". Color plate shows how stunning is this graceful variety with its vivid flowers on one to two foot stems. Sorry, none this year.

Crocea. "**Golden Brodiaea**". Similar to *B. Ixioides* in color plate but color is richest gold. 10 cts. each; 60c per doz.

Lactea. See picture, page 4, and No. 8 in color plate. The flowers are cupped and milky white with green mid-vein. Forces easily and most lasting. 10 cts. each; 50 cts. per doz.

Laxa. See colored plate, No. 1. 1 to 2 feet high, with very many fine blue flowers. One of California's finest blue flowers. 10 cts. each; 60 cts. per doz.

Volubilis, the **Twining Hyacinth**, is most interesting of all. The flowering stem begins to climb at once, and may grow up on other plants or bushes to 3 or 4 feet. Flowers are pink and very lasting. See colored plate No. 7. 10 cts. each; \$1 per doz.

Brodiaea Superb Mixture. 50 cts. per doz.; \$3.25 per 100.

GET ACQUAINTED OFFER. So that you may know them better I will send Collection, 5 finest sorts, five bulbs each, packed and named separately, for \$1.40.

Brodiaea Collection. 100 bulbs, 5 varieties, each named, my selection, \$4.00; 50 bulbs, \$2.25.

Brodiaeas per 100. Vars. priced at 50 cts. per doz., \$3.50 per 100; at 60 cts. per doz., \$4 per 100; at 70 cts. per doz., \$5 per 100; at \$1 per doz. \$7.50 per 100.

Six of one kind at dozen rate; 50 of a kind at 100 rate. Cultural directions are inclosed with bulbs.

The above prices are postpaid to your door.

BRODIAEAS. I feel that these lovely and easily grown bulbs should be more planted and appreciated. Pictures do not do justice to them, but they are very charming, very easy, and as cut flowers, wonderfully lasting.

New Zealand, Jan., 1935: "You will be pleased to know that, thanks to your care, not only in packing but in catching a mail boat, the plants arrived in perfect condition without a single loss. The *Lewisia*s already look healthy and green and are growing. The *Cypripedium*s are in growth and are well out of the ground."



Brodiaea Bridgesii

Brodiaea Lactea

Special Suggestion and Offer for Woodsy Bed

For that shaded woodland bed or corner a combination of Globe and Star Tulips, Brodiaeas, Dogtooth Violets, Dodecatheon, Mertensia, Sanguinaria, Jack in Pulpit, Trillium ovatum, Iris cristata, Tellima, Heuchera, Asarum and other foliage plants will give a spring-long succession of dainty bloom with fine foliage effect all summer. I will make a collection varied to suit your locality and conditions you describe.

WOODSY BED OFFER No. 1—\$6.00 value for \$5.00 postpaid.

WOODSY BED OFFER No. 2. In addition to above will include suitable selection Hardy Orchids (order only if you have good moisture conditions)—\$12.00 value for \$10.00 postpaid.

Note: Customers constantly receive with their orders special cultural and planting information for which there is not room in catalog. Such will be included with above offers for all items requiring them.

BRODIAEA

See color plate on back cover for the beauty of these flowers, and half-tones (above and page 7) for their graceful habit.

Brodiaeas have a small bulb producing grassy basal leaves and very slender, but stiff, naked stems bear heads of waxy flowers of great beauty and lasting qualities. All are pretty. They grow exactly like *Calochortus* and their culture is the same as for that bulb. They are very hardy and very easy to grow. In California, they are easily naturalized in almost any soil. Plant them 2 inches deep and leave them alone. They are especially happy in the light shade of deciduous trees, in crevices in rocks, or in rough gritty soils.

Reports from many Eastern points indicate that Brodiaeas are perfectly hardy. Mr. Stephen Hamblin of Harvard Botanic Gardens lists **Capitata**, **Lactea**, and **Laxa** as being absolutely hardy and long-lived. As these do not differ in habits from a number of others, I would extend his remark to include all.

Brodiaeas are easily grown in any well-drained soil, either in beds or in pots or boxes. Cultural directions are inclosed with the bulbs.

Time of Flowering. *B. Capitata* is one of the earliest Spring flowers, coming here in March. Other species flower in April and May while *Californica*, *Grandiflora* and *Purdyi* flower into July.

DODECATHEON

DODECATHEONS or **Shooting Stars**, also called **Wild Cyclamens** and **Cowslips**, are among the finest of early flowering plants throughout the West, and are also among the high Alpines of the West. All alike form close rosettes of broad leaves, from which naked stems arise with umbels of Cyclamen-like flowers. They die down by early summer. The dry roots should be planted quite shallow, and 1½ to 2 inches depth is enough. A colony in a pocket of the rock garden is a joy. Except *D. Meadia*, earliest of spring flowers. **Shipped Sept. to March 10.**

Clevelandii. I think, the very loveliest. Stems 1-2 ft. Flowers soft pink, beautifully zoned and very fragrant. **Each 25 cts.; 3 for 65 cts.; \$2.50 per doz.**

Hendersonii, a Californian, has proved hardy in the East. Loveliest of all "Shooting Stars". It forms a rosette of handsome leaves and in earliest spring has slender stems with umbels of rose flowers. Handsome and fragrant. Dies to the ground later. Nice clumps, **25 cts. each; 3 for 60 cts.; \$1.50 per doz.** Ripe roots, fall planting only, per 100, \$10.00; per 50, \$5.50.

Meadia. I flowered a beautiful form of this, the Eastern *Shooting Star* with which all fell in love. About 1 foot high, with broad basal leaves and rose colored flowers, cream at center and with reddish stamens. It likes a moist well drained soil and a rich loam suits it. Flowers in May or June. **25 cts. each; 3 for 65 cts.; \$2.50 per doz.**

CLINTONIA Andrewsiana. A California woodland plant with 5 to 6 broad, emerald green leaves in a rosette 7 to 14 inches across, and a spike 15 to 30 inches high of red lily-like flowers, followed by berries of most intense glossy purple lasting long. One of those plants that is worth a lot of trouble to grow well. Culture: Shade to dense shade. Soil, loam rich in humus and either neutral or acid. Pl., dormant roots in fall only. **30 cts. each; 3 for 75 cts.** Fall only.

The subjects listed on this page are all woodland plants suited to woodland planting or shaded beds. The Dodecatheons are particularly lovely in the shaded rock garden as well. On page 29 you will find a further list of woodland plants and ground covers for shaded situations.

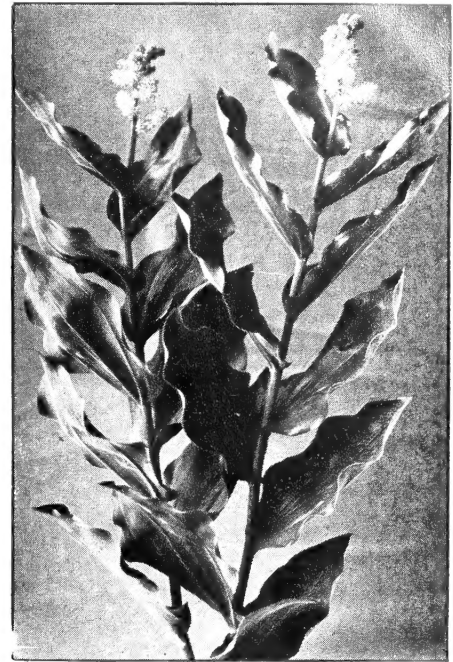


GRACEFUL BRODIAEAS

This picture shows the habit and flower heads of these graceful flowers while in the color plate on back cover you will find the separate florets in actual size and color.

1. *Ixioides splendens*
2. *B. Capitata.*
3. *B. Laxa.*
4. *B. Volubilis.*

JACK-IN-THE-PULPIT. Odd Eastern Calla-like plant, the flower a hooded spathe in which stands the "Jack", like an austere priest, in spring, followed by brilliant red berries in summer. Likes a moist shaded situation and is fine pot novelty. **30 cts. each; 3 for 75 cts.** Shipped Oct. to April.



Western Solomon's Seal

SMILACINUS Amplexicaulis, *Western Solomon's Seal.* A quite decorative member of the lily family it forms large clumps with stems one to two ft. long bearing terminal sprays of creamy-white flowers in late spring; followed by cluster of glossy light red berries which persist until frost. Thrives in any shaded situation and splendid in woods or fern bed. Soil, any. Plant fall only. Cover roots three inches. **Each 25 cts.; 3 for 65 cts.; \$2.50 doz.**

DISPORUM Hookerii, *Fairy Bells.* The yellow stems are much branched sprays with contrasting bright green leaves and under the tip of each branch hang the clusters of little greenish white bells in spring. These are followed by bright red berries. Desirable for woods, shaded border or fern bed. Plant fall only. Cover roots 3 inches. Give shade and any soil. **Each 25 cts.; 3 for 65 cts.; \$2.00 per doz.**

STANDARD CYCLOPEDIA OF HORTICULTURE

By L. H. Bailey

My set has been worth thousands of dollars to me. If I could have but one gardening book it would be this. Stretch your garden budget to include this for the information it gives will save many times its cost through the years. The one universal horticultural authority. Every gardening question answered, every plant listed and described with over 4000 illustrations all arranged in one simple alphabetical order. Three Volumes. Revised printing (now available). **\$35.00.**

HORTUS SECOND. Concise dictionary of gardening. Lists all plants in cultivation in U.S.A. to 1940, with notes on culture, hardiness. I would not be without it. **Postpaid \$6.00 in West. (East of Rockies \$6.60.)**
(Book Prices Cannot Be Guaranteed Beyond Present Stock)

OTHER BOOKS. I can supply all standard books. List on application.



The delicate tints of *Erythroniums* make them one of the most charming plants in a garden. The varieties here illustrated are: *Giganteum*, *Grandiflorum robustum*, *Citrinum*, *Hendersonii*, *Revolutum Pink Beauty*, *Californicum White Beauty*, *Johnsonii*. (See pages 8 and 9)

DOG'S-TOOTH VIOLET — TROUT LILIES

(*Erythroniums*)

Words of praise seem futile with the charm of these delightful woodland subjects so well pictured above. Colonies should be planted in every shaded spot in the garden for with shade, moderate moisture and a woody soil they are easily grown and permanent. Perfectly hardy even in the coldest parts of the country. They flower in the West Feb. 15 to April 15; in the East April 1. These Western species bloom profusely the first and every year. *Erythroniums* are shipped Sept. 1 to Dec. 1 only.

FIRST GROUP

Californicum has large cream-colored flowers. Leaves richly mottled. Easy to grow, and a large colony is a beautiful sight. Large bulbs, 10 cts. each; 70 cts. per doz.; \$4.50 per 100; smaller bulbs cheaper.

Californicum Bicolor (Helena), as its name signifies, has two vividly contrasting colors. The outer half of the petal is pure white, the inner bright chrome yellow, while the stamens are a rich gold. All *Erythroniums* have a faint fragrance, but "Bicolor" has a pronounced and delicious fragrance, enough so that from a few sprays the fragrance is noted across a room and from a bed in the open instantly catches one's attention. It is an exceptionally good grower. Altogether one of the very best of all. 10 cts. each; 70 cts. per doz.; \$4.50 per 100.

Citrinum is rather more erect in habit, with flowers almost pure white with strongly contrasting deep citron on lower third. One of the loveliest of all. 10 cts. each; 70 cts. doz.; \$4.50 per 100.

Hartweggii is as pretty as *Californicum*, with more yellow in the flower, and each flower on a separate stalk. Very early and stands much heat. Good for pots. Large bulbs, 10 cts. each; 70 cts. per doz.; \$4.50 per 100.

Hendersonii. Like *Californicum*, but the flowers are a lovely light purple, with centers a deep maroon, almost black. Most striking. 10 cts. each; 75 cts. per doz.; \$5.00 per 100.

Tuolumnensis is quite new to both the garden and science.

Large leaves, not mottled, and golden yellow flowers. The bulbs are very large and by off-setting from large clumps. Not too free flowering, but very distinct. 10 cts. each; \$1 per doz.; \$7.50 per 100.

REVOLUTUM, DOG'S-TOOTH VIOLETS

The stems are long, the flowers large and exquisitely tinted, often single, never more than four to a stem, and the leaves are mottled in white and green. While the plants thrive in garden loam, they do well in heavy soils which are quite wet in winter.

Johnsonii. The exquisite deep rose red pictured above. Strong growing. Like cool treatment. Each 15 cts.; Doz. \$1.20; \$8.50 per 100.

Lilac-Pink Beauty. The exact shade of "Pink Beauty" in color plate. Often 18 in. tall, strong and easily grown and altogether very lovely. Contains a few white spots. 12 cts. each; \$1.15 per doz.; \$8.00 per 100.

Purdy's White is a pure white, rather than a lavender white. It is very richly marked at the base and has an unusually stout stem and large bold flower. An Eastern *Erythronium* lover writes that it was the most admired of all in her collection. 12 cts. each; \$1 per doz.

Praecox (Oregonum) is an early blooming unusually fine variety. The leaves are mottled in browns, the flowers are large and of a very fine rich-cream color, richly banded maroon. One of the finest of all. 10 cts. each; \$1 per doz.; \$7.50 per 100.

Rose Beauty. Very strong and an exquisite deep rose-pink. Flowering three weeks earlier than Pink Beauty, it greatly extends the season of this grand group. 12 cts. each; \$1.25 per doz.; \$8.50 per 100.

Cultural Directions are inclosed with all bulbs.

Late in the season some kinds may be sold out. A list of alternates from which we may substitute or permission to substitute will save us the time of making refund, and usually you would prefer other things, anyway.

MIXTURES AND COLLECTIONS OF ERYTHRONIUMS

First Group, Splendid Collection of 20 bulbs each of five species (100 bulbs), named, for \$4.25. Half collection for \$2.50.

Special 25 bulbs offer, 5 each, 5 varieties, each named, \$1.40. (Includes 1st group only.) (Varieties in above are my selection only.)

Superfine Mixture of First Group. Made from separate named varieties. 65 cts. per doz.; \$4.00 per 100.

A Fine Mixture of the Revolutum group will be sent at \$1 per doz.; \$7.50 per 100.

Collections and mixtures are made from first size bulbs. They are super value.

NAMED ERYTHRONIUMS FOR NATURALIZATION

We offer a smaller size of **Erythrונים** for naturalizing. Experience in our garden shows that up to 70 per cent will flower the first year. Unusual value.

(Not less than 100 of a kind sold.)

	100	500	1000
Californicum, Cream	\$2.00	\$8.00	\$15.00
Californicum Bicolor, White and gold	2.00	8.00	15.00
Citrinum, Cream and Lemon	2.00	8.00	15.00
Hendersonii, Lavender	2.00	8.00	15.00

A little money spent on Wild Flower Seeds and a very little care will make beauty spots of your old corners. See list, page 3.

FRITILLARIAS

These bulbs are shipped Sept. 1 to Dec. 1 only.

FRITILLARIAS are lovely bulbous plants of the West belonging to the lily family, and bear such appropriate local names as "Mission Bell", "Red Bell", "Yellow Bells" and "Brown" or "Chocolate" lilies. They flower March-April, according to locality. Since the character and requirements vary so much I must for clarity divide them into two groups.

FRITILLARIA SPECIES

(Species pictured but not listed; cannot be supplied)

GROUP 1

Group 1 Fritillaria are woodland plants and must be in shade. The stems somewhat like those of a true lily are tall and leafy. They require a well drained woodsy soil and are quite easily grown. They have the habit of resting a year or two after flowering so only a part of a planting may be expected to flower any year. Those resting have no stem but have a broad single ovate leaf flat on the ground. The finest are:

Lanceolata is from 1½ to 3 ft. high, with a few to many flowers. They are green and brown, mottled prettily. 10 cts. each; \$1 per doz.; \$7.50 per 100.

Recurva much resembles a lily and is the finest of the world's Fritillaria. 1½ to 3 ft. in height with stout stems nodding at top. The strongly recurved flowers are orange scarlet, the throat flecked with yellow. 10 cts. each; \$1 per doz.; \$7.50 per 100.

We pay postage on orders over \$5.00. See page 2.



FRITILLARIAS

1 and 4, *Lanceolata*. 2, *Recurva*. 3, *Pudica*. 5, *Liliacea*. 6, *Pluriflora*. 7, *Purdyii*, varied form.

GROUP 2

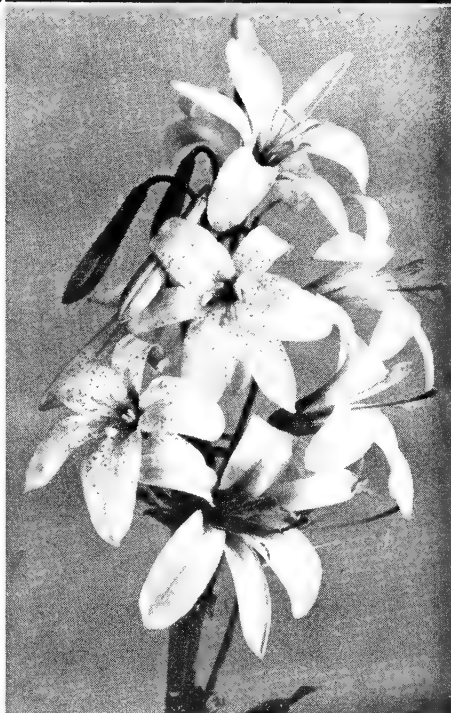
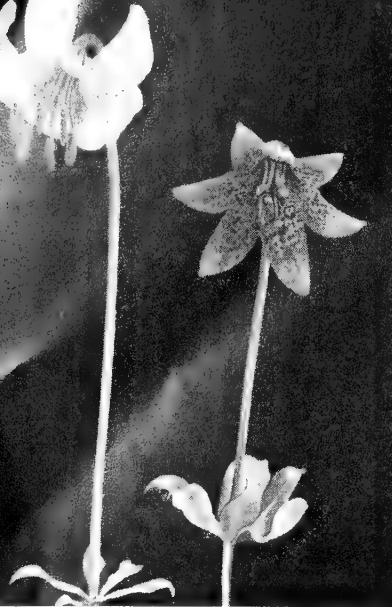
Group 2 Fritillarias are natives of open spaces and must be in full sun or at most very light shade. Stems are from 6 to 10 inches high with few leaves and with flower heads of one to several broad open bells. They thrive in a friable well drained loamy or gritty soil.

Pluriflora grows 6 to 12 in. high, leafy at base with many very beautiful large open bells of a lovely deep rose. Next to *F. Recurva*, our most beautiful Fritillaria. None this year.

Pudica. From 4 to 6 in. high, with rather large basal leaves and erect stems, bearing 3 to 6 nodding bells 1¼ to 1½ in. long and pure gold in color. Absolutely hardy and a gem for the rock garden. 10 cts. each; \$1 per doz.

Very Large Bulbs of any of These at Double Price

Purdyii in this original form, was discovered and named 30 years ago, its locality lost and I am now able to offer for the first time. It is 4 to 9 inches tall with one to seven lovely large bells, waxy white, flecked scarlet. Unusually fine and very rare. None this year.



L. Kelloggii *L. Bolanderii*
L. Pardalinum

L. Parviflorum
L. Washingtonianum Purpureum

CALIFORNIA LILIES

(Shipped Oct. to Jan. Only)

There may be larger lilies but there are none more colorful or lovely than those of California and the West. They do in some cases require special treatment which is not difficult. There are three groups requiring somewhat different culture and we divide them accordingly.

LILIUM HUMBOLDTII AND ALLIED SPECIES

These will thrive in either full sun or light shade. Soil may be any well-drained clay or loam, with no humus but a surface mulch of leafmold and a little well rotted manure is very desirable. Cover bulbs 8 inches.

HUMBOLDTII. A grand Lily, growing as tall as 10 feet, but usually 4 to 5 feet high, with very stout stem and many large orange flowers, spotted with small maroon spots. This species does well in the adobe soils prevailing about San Francisco Bay. Immense bulbs, 75 cts. each; 3 for \$2.00; \$7.00 per doz.

HUMBOLDTII MAGNIFICUM. One of the world's grandest lilies. 4-5 ft. tall, easily grown, it is stem-rooting and flowers first year. Flowers are clear orange, dotted maroon and each dot circled with crimson. We have a splendid supply of fine bulbs. Fine bulbs, each 75 cts.; 3 for \$2.00. Large bulbs, each \$1.00; 3 for \$2.85. Super size, \$1.25 each.

LILIUM WASHINGTONIANUM AND NEAR SPECIES

These are woodland lilies and should have a complete high shade that gives plenty of light. Best soil is a moderately heavy clay or loam with some acid humus. Drainage must be perfect. Surround bulbs with an inch of sand. Cover 8 in.

WASHINGTONIAUM PURPUREUM. The celebrated Mount Hood Lily of the Northwest. From 3 to 5 and often to 7 feet high with stout stems and many leaves in whorls and often with 25 flowers to a stem. The flowers are broad open trumpets opening pure white and often changing to deep wine color and are most spicily fragrant. A wonderful lily that has brought fine reports from all parts of the East where happily situated and proper care as to soil has been given. Very fine bulbs. Large size, 75 cts. each; 3 for \$2.00; \$7.00 per doz. See cut.

RUBESCENS. "Redwood Lily". This very lovely and fragrant lily is 2 to 7 ft. tall with upright flowers of waxy white, maroon dotted, turning pink then wine with age. Very scarce. Each \$1.00.

KELLOGGII. I regret there is no supply of this fine lily in good quality in sight at this date. I may secure in early fall. Postcard will bring you information and price.

BOLANDERI. One of the rarest of Lilies; 1 to 3 feet high, slender, with bell-shaped, deep crimson-red flowers, dotted purple. Very strong garden grown bulbs, 90 cts. each; 3 for \$2.50; \$9 per doz. See cut.

The stem-rooting Magnificum flowers the first year. Others above probably not until the second year.

LARGE FLOWERED BOG LILIES

Light to moderate shade. Perfect drainage but they must have constant liberal moisture. A stream side or moist shaded border is ideal. Any friable soil with some humus, slightly acid. Surround bulbs with sand. Cover 5 inches.

PARDALINUM. Back cover picture shows color and what a grand lily this is. Low in price yet there is not a finer, more brilliant or easily grown lily, even under ordinary garden conditions. It increases rapidly to form dense colonies. It grows 4 to 7 ft. tall with very many flowers. It excels in rich moist soil on stream side or in shaded border. Large bulbs, 50 cts. each; 3 for \$1.25; doz. \$4.00.

PARRYII. Quite rare, it is one of the loveliest of lilies. Its slender leafy stems are 3 to 5 ft. tall and bear a few to 25 very fragrant funnel-form flowers with petals slightly flaring at tips. Color is soft lemon-yellow, some flowers with faint brown spots and some without spots. It must be in shade and prefers a sandy loam soil with some humus and in cold regions should have some protection. Splendid disease free bulbs cultivated right on its native streams. Extra large bulbs at \$1 each. Fine flowering size, 70 cts. each; 3 for \$1.90; \$7.00 per doz.

ROEZLII CRIMSON. Related to Pardalinum, it is more graceful with slender stems 3-5 ft. tall and slender leaves in crowded whorls. The flower has a small orange central zone, finely dotted maroon with the outer portion a rich crimson. 50 cts. each; 3 for \$1.25.

ROEZLII YELLOW. Very rare and lovely, it is like last except color deep orange yellow. 50 cts. each; 3 for \$1.25. Bog Lilies usually flower well the first year.

CULTURE OF CYPRIPEDIUMS

They must always be in shade and in California very dense, complete shade. Best soil is natural woodland soil but to prepare use 1/2 gritty or sandy loam, 1/2 leafmold, preferably from conifers, or finely screened peat moss, rotted wood or chopped sphagnum. In dry regions a 1-inch mulch of pine or redwood shavings. Cover crowns but 1 inch. Constant moderate moisture is essential. Soil should be neutral or acid and for Californicum and Acaule must be acid.

We pay postage on orders over \$5.00. See page 2.

Orchids shipped October 1-April 1.
(Cultural directions always inclosed.)

WESTERN LADY'S-SLIPPERS (Cypripedium)

In the Far West we have three true Lady's-Slippers, and *Calypso borealis* and *Epipactis gigantea* so closely related that they are popularly taken for Lady's-Slippers.

CALIFORNICUM is a true bog plant, found only in nature in wet bogs of the Northern mountains, or in the streams issuing from such bogs, and having a rather sandy peat soil. It makes strong clumps, with stout leafy stems 18 inches to 2½ feet high, with rather small (proportionately) white flowers. Strong roots (divisions). 50 cts. each; \$5.00 per doz. Clumps, undivided, at 45 cts. per eye.

(Minimum charge, \$1.35.) Such clumps have from 5 to 20 eyes. For a real show buy a large clump rather than a number of divisions.

MONTANUM is a most lovely Orchid, found in the forest region from Sonoma County, Calif., northerly. It is not unlike the Eastern *pubescens* in habit. The large flowers have white sacs and brownish sepals. Very fragrant, with the odor of vanilla. Extra strong plants, 50 cts. each; \$5.00 per doz. Clumps, undivided, of from 4 to 15 eyes at 45 cts. per eye. (Minimum charge \$1.35.) Supply of clumps limited and I reserve right to send value in plants when clumps are sold out.

FASCICULATUM is a low-growing sort, with much the same habits as the preceding, but the flowers are brownish. Quite interesting. This variety is offered at the same prices as *Montanum*.

CALYPSO BOREALIS is an exquisite pink Orchid often taken for a Lady's-Slipper. It is almost always found either in mold and moss on rotted logs or in like soil on the ground in shaded woods. It does not root in the ground; the root is a little white bulb. It is not difficult to flower the first year. 25 cts. each; \$2.00 per doz.

EPIPACTES GIGANTEA is a strong-growing Orchid which spreads by underground runners to form large, close masses. It loves a silty loam near water, and its many racemes of brownish Lady's-Slippers are quite ornamental. Culture is not at all difficult. 25 cts. each; \$2 per doz.

EAST AMERICAN LADY'S-SLIPPERS

CYPRIPEDIUM Pubescens grows to less than a foot in height with handsome foliage and large slippers of light yellow. A plant of great beauty which I have been able to make happy in a shaded situation with moist soil rich in humus. Extra strong, 75 cts. each; \$7.50 per doz.

Spectabile grows much taller and stronger than the last with large pink flowers. Clumps, \$1.00 each. Plants, 40 cts. each; \$4.00 per doz.

Acaule has opposite leaves with a single rose colored flower of great beauty. Must have a soil and situation like *Pubescens*, but the soil must be acid. Rarely more than 1 eye. Extra strong, 75 cts. each; \$7.50 per doz.; Light, 40 cts. each; \$4.00 per doz.



Cypripedium Spectabile



Trillium sessile increases and becomes more valuable year by year.

TRILLIUMS

Trilliums are very attractive plants of the Lily family. The forms known as Wood Lilies or Wake-Robins are well known in the East and are fine woodland plants. Of these the best is *grandiflorum*, to be had from most Eastern dealers. In the forms of *sessile*, we have an altogether different tribe and a much better one from the standpoint of easy culture and ability to hold their own for years in the garden. There is a colony of Trilliums at Ukiah which, with no care, has increased in beauty for at least fifteen years, and I have seen many such.

Time of Flowering. Trilliums are among the earliest of spring flowers. Shipped Sept. 1-Jan. 1 only.

SOILS PREFERRED AND CHARACTERISTICS

A better plant for the shaded corner, damp woodland, border of streams where the soil is moist, or for the shaded parts of the garden, does not grow. It takes a year for them to take hold, but they will then improve for years. There is no better bulbous plant to naturalize, and I have them in perfection in gravel, loam, sandy, and heavy clay, and in each case, with no care whatever, and with our dry California summer.

SESSILE CALIFORNICUM. A strong plant a foot high, with the separate leaves 5½ inches long, by 4½ inches wide, and the petals 3½ inches long. Flowers pure white. Very fragrant. Forms masses of many individuals. See above.

SESSILE RUBRA. Of same type with flowers of rich maroon red. Strong and vigorous. We have it this year.

SESSILE SNOW QUEEN. A pure white form having broader petals and leaves and larger flowers. Exceptionally fine.

OVATUM. Nearly related to the Eastern *grandiflorum* but larger. Flowers open pure white, gradually tinge pink, and finally become deep wine-purple. Requires leaf mold and shade. For the redwood regions the best to naturalize. None of the Trilliums are finer than ovatum; the change in color is an added charm. See picture, page 30.

PRICES OF ABOVE SPECIES: Fine bulbs, 15 cts. each; \$1.25 per doz.; \$6.50 per 100. Very large bulbs, 25 cts. each; \$1.50 per doz.; \$10.00 per 100.

RIVALE. A most dainty little sort from Southwestern Oregon and very rare. The delicate mauve flowers are borne on separate stems, and the plants at most are 6 inches high. 10 cts. each; \$1.00 per doz.

PURDY'S BEST. This is a new form of *Sessile* with very broad leaves and broad ovate petals. Color is creamy white with deeper cream at center. 15 cts. each; \$1.25 per doz. Extra large, 25 cts. each; \$1.75 per doz.

We pay postage on orders over \$5.00. See page 2.



Aster Frikarti
(See page 25)

***PHLOX DIVARICATA "My Choice".** A chance plant among hundreds. It is taller, the fragrant flowers larger (1½ in. across), a clear, soft violet-blue. They come on airy 12-in. stems from April on for weeks with some all summer. Sun or shade. Best in a well drained, moist loam rich in humus. While the soft blue form on page 24 is a "must" with us, this selection is truly "My Choice". Each 60c; 3 for \$1.50.

ACONITUM Sparks Var. "Monks Hood". Spikes of the lovely hooded dark blue flowers come on 3-4 ft. stems in late summer. They are related to Larkspurs and have tuberous roots. Left undisturbed they make stately clumps. Sun, but shade or semi-shade best. Soil moist loam. Pl. Fall best or early Spring. Prop., offsets. Each 40c; 3 for \$1.00.

ACONITUM Bakeri. Bold spikes of large true blue flowers on 2½ ft. stout stems, July-August. Lustrous foliage. Cultivate as for Sparks. Requires no staking. Very effective. Each 45 cts.; 3 for \$1.10.

ASTER LITTLE PINK LADY. The dainty pure glistening pink flowers literally smother the neat 20-inch plants in September. A Michaelmas Daisy that is neither a dwarf or tall, it will be a delightful addition to your garden. Cult. see page 25. Each 60c; 3 for \$1.50.

***AUBRETIA Purdy's Brilliant** is by far the finest variety I have seen. Large flowers are stunning bright rose-pink and best of all it has been in full bloom from early Feb. to date, May 1, and bids fair to continue for weeks while there was some bloom all last summer. Each 40 cts.; 3 for \$1.10.

***GOLDEN DROPS (Onosma tauricum).** From the compact masses of rough hairy greyish foliage 12-18 in. across come the many 12 to 15 in. stems bearing clusters of wonderfully fragrant soft yellow bells. Likes full sun; a light soil. Lovely and entirely unique. Each 50 cts.

AMARYLLIS Belladonna (Resurrection Lily). Of habit similar to Lycoris and likewise tender but stems are 2 to 3 ft. tall and bear umbels of many huge pink lilies in Aug.-Sept. Large bulbs (Sept. to Jan.), 40 cts. each; 3 for 90 cts. Customers East of Rockies add postage, 10 cts. per bulb.

ALSTROEMERIA, Peruvian Lily. 2 to 3 ft. tall with many stems bearing clusters of really lovely flowers. Showy in garden, excellent cut. Require deep rich soil. In East pot in fall and store indoors. Plant tubers 4 to 6 in. deep. Shipped Sept. 15 to Jan. 1 only.

Aurantiaca. Brilliant orange, spotted brown. 30 cts. each; 3 for 75 cts.; \$2.50 per doz.

Chilensis Pink Hybrids. A new strain in lovely shades of pink of surpassing loveliness. Each 40 cts.; 3 for \$1.

WHITE LILY OF THE NILE. (Agapanthus umbellatus albus.) From an avalanche of graceful ornamental foliage the stems rise to 2-3 ft. crowned with large clusters of pure white lily-like flowers. June to October. Elegant subjects for pots or tubs or in sun or light shade in border. Give a rich soil. Hardy to 15 degrees. Where colder must be stored indoors. Strong plants, each \$1.00; 3 for \$2.75.

BLUE LILY OF THE NILE. Identical with the white in all characteristics except the color is a most divine porcelain-blue. Very showy, large plants. Each \$1.00; 3 for \$2.75.

PLANTS FOR POTS AND TUBS? The above are most effective potted in very rich soil. Winter stored in colder climates.

PHLOX Setacea Camia. A gem worthy the best spot in your garden. Leaves like Phlox subulata but does not creep and plant is always neat. Flowers completely smother the plant May-June. Cult., see P. subulata, page 24. Camia. One inch flowers of purest pink. Each 50 cts. Camia Alba. As large and pure white. Each 50 cts.

FLOWER SEED SPECIALTIES

(Countless customers say these strains surpass all others.)

SNAPDRAGON, Super Majestic Mixture (Rust Resistant). The finest strain for gardens with huge spikes in all colors known to Snapdragon. Sow Sept, for early bloom, spring for summer bloom. Pkt. 25 cts.; 1/16 oz. 50 cts.

ICELAND POPPIES. 3 ft. Vibrant airy flowers on wiry stems, marvelous in garden and cut. Seeds sown Fall or early Spring flower first summer and continuously. (Perennial.)

Imperial Jewels Mixture. Oranges, pinks, salmons, cream, rose, reds, apricots, buff in scintillating array of color. Finest strain yet produced. Pkt. 25 cts.; 1/16 oz. 65 cts.

VIOLA Supreme Formula Mixture. A blend of gay colors, bright reds, yellows, blue and apricot with many unusual shades. Truly a supreme mixture. Pkt. 25 cts.

DO NOT OVERLOOK. We again have the grand *Lilium Humboldtii Magnificum*. See page 10.

REDWOOD BURLS? Yes, see page 26.

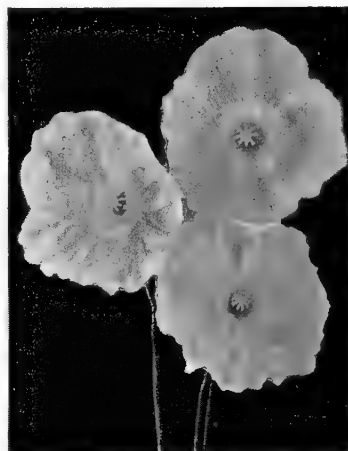
PANSY. Perhaps the best known and most universally loved flower in all the world. For superb Pansies: rich soil, constant moisture and close picking. Sow early Spring in boxes or best August-October to produce vigorous plants for Spring bloom. Best sown in boxes and transplanted.

"My Choice" Supreme Swiss Giants. This I consider the finest strain for all localities. Color range is superb, flowers are large and mostly beautifully frilled. Longest and freest flowering strain I know and customers say they have found no strain so fine. Pkt. 40 cts.; 1/32 oz. \$1.

GORGEOUS TIGRIDIAS. We cannot offer bulbs for lack of help but have seed of finest hybrids. Pkt. 25 cts.



Pansy



Iceland Poppy, Imperial Jewels

SECTION 2

Hardy Perennial and Rock Plants and Seeds

SEE PAGE 30 AND COLOR INSERT FOR OTHER
PERENNIALS

Perennial plants must be given an important place in any flower garden for there can be no permanent success without them. Long lived, with moderate care they bring a maximum of beauty over a long period. They range from the tall stately plants for the background down to the intermediates and the low plants for a neat edging or border. Their generous use will bring untold pleasures.

A number of fine things have been dropped this year because sale did not pay for space to describe them. Most of them are still grown and if you want them order from older catalogs.

*This indicates plants suited to the rock garden. But do not overlook that plants so marked are also the very finest of low border, edging and trailing plants.

**This indicates tiny plants or those suited only to the rock garden.

SPECIAL OFFER: Where selection of varieties is left to me I will give \$6 worth of plants for \$5.00; \$12.00 value for \$10.00. For larger amounts 20% additional value will be sent. Such selections can be made for: Perennial Border; Rock Garden; Shaded and Difficult Corners. Just state your problem and soil, and other conditions when ordering.

AETHIONEMA, Persian Candytuft. Most fascinating dwarf rock plants which are in reality tiny shrubs, and most valuable in the rock garden, odd corner or border. Bluish green leaves and woody stems, bearing an umbel of most charming flowers, May to June. They are treasurers in bloom and the evergreen foliage most attractive the year around.

***Coridifolium** makes a prostrate mass of pretty foliage a foot or so across and a solid mass of deep pink flowers. 30 cts. each; 3 for 75 cts.

***Kotchii.** A true dwarf, the compact mass of needle-like greyish foliage scarce 2 inches high, from which in late spring arise many 3-inch stems, each topped with the mound-shaped umbels of clear, very soft pink flowers. A must for the rock garden. None this year.

***Persicum.** Quite similar to *Coridifolium* but the foliage more bluish and the flowers very soft pink. 30 cts. each; 3 for 75 cts.

***Pulchellum** makes a flattish half trailing mass a foot or so across, with many clear rose pink flowers. 30 cts. each; 3 for 75 cts.

***Warley Rose—True.** Very rare and simply exquisite. Compact bushes a foot high are masses of bloom May-June. This is not light centered like the familiar one of this name but the color is a solid deep rose. 60 cts. each.

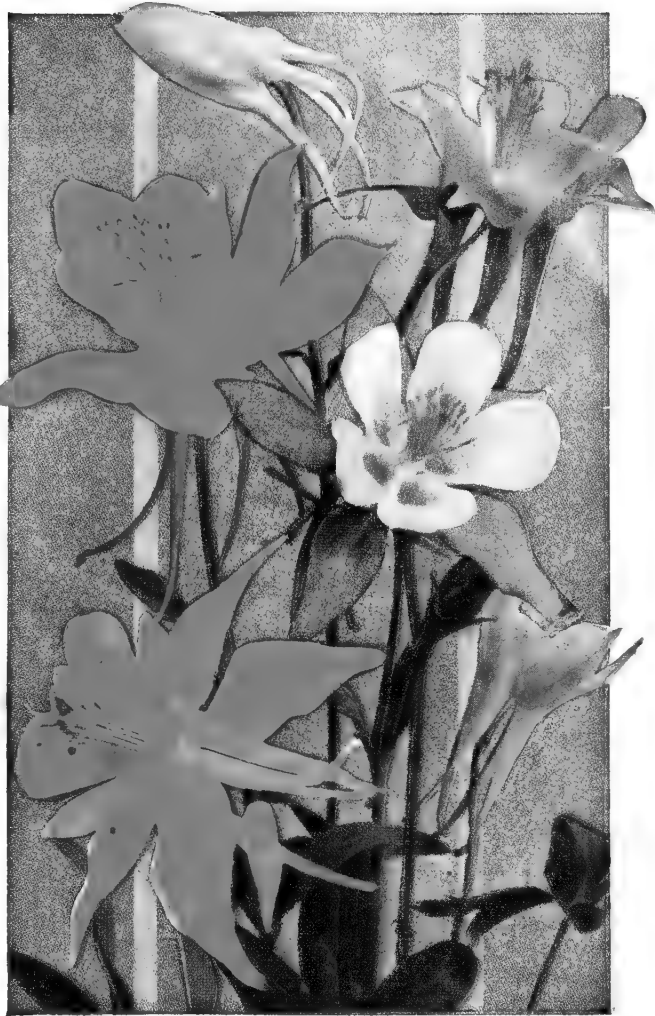
Cult.: Sit., sun, thrive in a hot dry place. Soil, deep and any loose and well drained. Prop., seeds (2 years to flower) or cuttings. Pl., Fall to Spring. Shear flowering stems to foliage at once after flowering.

WEST AMERICAN COLUMBINES

***AQUILEGIA truncata.** Lovely woodland species with rather short spurred flowers, red outside and yellow at center. Fine for woody corners. 25 cts. each; 3 for 65 cts.; \$2.00 per doz.

***AQUILEGIA** or **COLUMBINE** is a little large for the small rock garden but in the medium to large one produces delightful effects.

DO NOTE! The "Three" price applies only to three identical plants—never 1 each of 3 kinds. One plant of a variety must always take the "Each" price. Please comply with this rule.



AQUILEGIA, Columbines

AQUILEGIA, Columbine. These remarkably beautiful and graceful plants with most charming flowers are so well known as to need little description. With handsome foliage, fine flowers and ease of culture, few flowers satisfy so many needs. Then, too, they harmonize with most anything and are particularly beautiful with ferns and woody things. They give color effects in deepest shade where it is so valuable. Cult.: Sun or shade, but are finer and last much longer in shade. Soil, any, but finest results obtained with a rich, well drained loam. Pl., fall to spring. Prop., seeds. Seed should be sown in fall or very early spring. Seeds offered are the finest strains obtainable.

"My Choice" Long Spurred Hybrids. Huge flowers in a balanced mixture of all colors with many colors possessed by no other strain. Simply superb. Plants, 30 cts. each; 3 for 75 cts. Seeds, pkt. 25 cts.; 1/16 oz. 80 cts.

Long-Spurred Blue Shades. The finest strain I have ever seen with flowers often 2 inches across. Seeds, 25 cts. per pkt.; 1/16 oz. 80 cts. Plants, 30 cts. each; 3 for 75 cts.

Supreme Pink Shades. Loveliest of soft and clear pink tones. Plants next spring, 30 cts. each; 3 for 75 cts. Seeds, pkt. 25 cts.; 1/16 oz. 80 cts.

Coerulea Mrs. Nicholls. The lovely Colorado Blue Columbine in a form easily grown without petting. Really choice. Plants, 30 cts. each; 3 for 75 cts. Seeds, pkt. 25 cts.

Long-Spurred Purdy's Sulphur Yellow. Delightful soft sulphur yellow flowers on strong plants of fine foliage. Each 30 cts.; 3 for 75 cts.; \$2.50 per doz. Seeds, pkt. 30 cts.

***NEW DWARF ALASKAN.** A rare little Columbine from Alaska as yet unnamed; it is a foot high with lovely short-spurred medium blue flowers for weeks even in full sun. I prize it highly and all visitors are charmed by it. Elegant in rock garden. 50 cts. each.

***Akitensis.** Charming and intriguing dwarf 6-12 in. high. Silvery foliage and up facing flowers of clear soft blue rimmed with white. Each 35 cts.; 3 for 90 cts.; Seeds, 35 cts. per pkt.



Anemone Pulsatilla

***ANEMONE Pulsatilla**—**Pasque Flower**. A delight in spring with the 2-inch cups above the silky foliage. Give well drained soil in light shade, rock garden or border. Violet-blue only. **40 cts each. Seeds, pkt. 30 cts.**

***ANCHUSA Myosotidiflora** (Chinese Forgetmenot). Acclaimed by all who see it, it is a delight in any shaded border or rock garden, flowering for weeks in spring and again in fall. The exquisite clear blue forgetmenot-like flowers are in airy 12-18 in. sprays above the large heart-shaped leaves. Sit., light shade; Soil, good loam, well drained but always moist. Prop., seeds. **30 cts. each; 3 for 75 cts. Seeds, pkt. 25 cts.**

ANTHEMIS Sancta Johanna. Has the most vivid orange flowers I have ever seen. Two ft. high with erect stiff stems, the large center and short rays of the blooms a uniform bright orange. **Plants, 30 cts. each; 3 for 75 cts. Seeds, pkt. 25 cts.**

ANTHERICUM Liliago. Grassy foliage, 2 ft. stalks of lovely small pure white lily-like flowers. Nice in border. Sun or light shade. Moist loam. **Each 40 cts.; 3 for \$1.00.**

****ANDROSACE Chumyii**. **Rock Jasmine**. Fascinating little relatives of the Primula they are the choicest of alpiners. The little rosettes of silvery foliage branch out on tiny runners to make a colony eventually up to 12 in. across from which the multitude of three inch stems arise with umbels of loveliest soft pink primula-like flowers. Require cool moist but well drained soil, never acid. Neat always. A dream in late spring. **Each 40 cts.; 3 for \$1.00.**

***ARMERIA Purdy's Low Pink**. Evidently a chance hybrid, the neat rosettes of awl-shaped leaves are completely smothered for weeks in late spring with the many large heads of silvery pink flowers on 2 in. stems. Pl. fall or spring; sun. Soil, any well-drained. **30 cts. each; 3 for 75 cts.**

***ARTEMISIA frigida**. Bushy evergreen plants 1-2 ft. tall. Its great beauty is in the shimmering silvery foliage throughout the year. Rare. **Each 50 cts.; 3 for \$1.25.**

Germantown, Penn.: "The *Calochortus albus* and *arabilis* both bloomed. *Camassias* seem to do well in this climate as the same bulbs have flowered three years."

ARUNCUS Sylvestris, **Goats Beard**. Splendid strong growing Western native plants allied to *Astilbes* and *Spirea*. 3 to 6 ft. much branched, with handsome pinnate leaves and stout stems, crowned in July with a fleecy mass of cream flowers. Admirable for the shaded spot with ferns and fine as a background in the open border. Cult.: Sun or shade. Soil, any loam but responds to ample moisture. Pl., fall or spring. Prop., div. **40 cts. each; 3 for \$1.**

ASCLEPIAS tuberosa, **Butterfly Weed**. A most attractive many-branched plant 2 to 3 feet high, crowned in mid-summer with umbels of brilliant orange flowers. Most noticeable. Cult.: Sun, sandy loam, and stands drouth. Pl., fall to spring. Prop., seeds. **25 cts. each; 3 for 65 cts. Seeds, pkt. 25 cts.**

ARALIA Californica, the **California Spikenard**. A large and stately plant with pinnate leaves 3 to 4 ft. long and its creamy flowering spikes 5 to 6 feet. A marvelous background plant in moist situations in either sun or shade. Large roots, **75 cts.**

ASPERULA, **Woodruff**.

***Odorata** (Sweet Woodruff or Waldmeister). Grows to 8 in. and spreads underground to make an open carpet. A delightful ground cover especially with such plants as *Columbines*, *Heucheras* and like heights. Foliage is a delightful bright green and the small white flowers dainty. Loved by everyone. Cult.: Sit., light to deepest shade. Compact in sun, but keep moist. Pl., fall to spring. Prop., div. **25 cts. each; 3 for 65 cts.**

You will find at center of catalog a colored order-blank insert on which are listed many lovely things we could not work into this section; *Achillaea*, *Alyssium*, *Asperula* and many other lovely and useful plants.



Aubrietia

***AUBRIETIA**. One of the most valuable rock plants. The mounds of slightly greyish foliage are smothered with the bright and attractive blossoms from early spring and on into the summer. In warm climate from late winter on. No plant gives a finer early effect to the rock garden or on well drained banks or for border edgings. Cult.: Sit., sun, stand drouth well. Soil, any. Pl., fall to spring. Prop., seeds.

***Purdy's Blush**. Compact. Soft blush-pink. **Each 40 cts.**

***Purdy's Large Flowered Hybrids**. Brightest colors. **25 cts. each; 3 for 65 cts. Seeds, pkt. 25 cts.**

***Purdy's Brilliant**. See page 12. **Each 40 cts.**

***Pink Parachute**. Large flowered, bright rose-pink. **Each 50 cts.**

***Leichtlinii**. Compact plants with large flowers of rosy lilac. **Each 30 cts.; 3 for 75 cts. Seeds, pkt. 25c.**

We pay postage on orders over \$5.00. See page 2.

**Indicates plants well suited to rock gardens.

**Indicates plants suited to the rock garden only.

***BELLIUM Minutum** is the tiniest of all daisies. Its tufts are barely ½ in. high and 2 in. across. The dainty little single flowers are white tinted pink on stems 2 in. high. Flowers all summer. Cult.: Sit., sun or light shade. Soil, any good, but never dry. Pl., fall to spring. Prop., div. 30 cts. each; 3 for 75 cts.

***BRODIAEAS** in little groups of 3 to 6 bulbs, add a most delightful late spring effect to the rock garden. See under bulbs, page 6.

***CALIFORNIA FUCHSIA.** See *Zauschneria*.

***CALOCHORTUS** of the Globe and Star tulip forms dotted into the rock garden are truly enchanting. See page 4.

CAMASSIAS in bold groups in the borders will be a source of enchantment for many weeks in late spring. See page 5.

CATANANCHE Coerulea. A most effective garden and cut flower. Stands drouth yet excels in good soil. Its 18-in. stems bear heads of deep blue from July-Sept. Long lasting silvery pods are fine everlasting. Each 25 cts.; 3 for 65 cts.; \$2.25 doz. Seeds, sow Fall or Spring. Pkt. 25 cts.

***CERATOSTIGMA Plumbaganoides,** makes a close mass 6 inches high and undisturbed becomes quite large. On longer stems many plumbago blue flowers appear from late summer on. A striking blue and a wonderful plant for fine late rock garden effects. A splendid border plant as well. Cult.: Sit., sun. Soil, any rich loam. Pl., fall to spring. Prop., div. Each 30 cts.; 3 for 75 cts.

CHRISTMAS ROSES. See *Hellebore*.

***CONVOLVULUS Mauritanicus.** One of the finest of plants for the rock garden or hot banks. A low broad tuft a few inches high and often two feet across bears very many large clear blue morning glory flowers from June to frost. A little trimming keeps it in place although it never seeds or spreads by underground runners. Has wintered for years at Poughkeepsie, N. Y., and on Long Island and is hardy from Philadelphia southward. Cult.: Sit., sun. Endures heat and drouth but better for some watering. Soil, any well drained. Prop., rooted cuttings. Pl., fall to spring. Spring in East. I would not be without it. 30 cts. each; 3 for 75 cts.

COREOPSIS Perry's Semi-Double. Imagine this popular perennial with flowers like semi-double roses on neat bushes 20 to 30 inches high, the golden yellow flowers 2½ inches across on long, slender stems, throughout the summer. Lovely as cut flowers. Cult.: sun. Soil: a good loam. Pl., fall to spring. 30 cts. each; 3 for 75 cts.

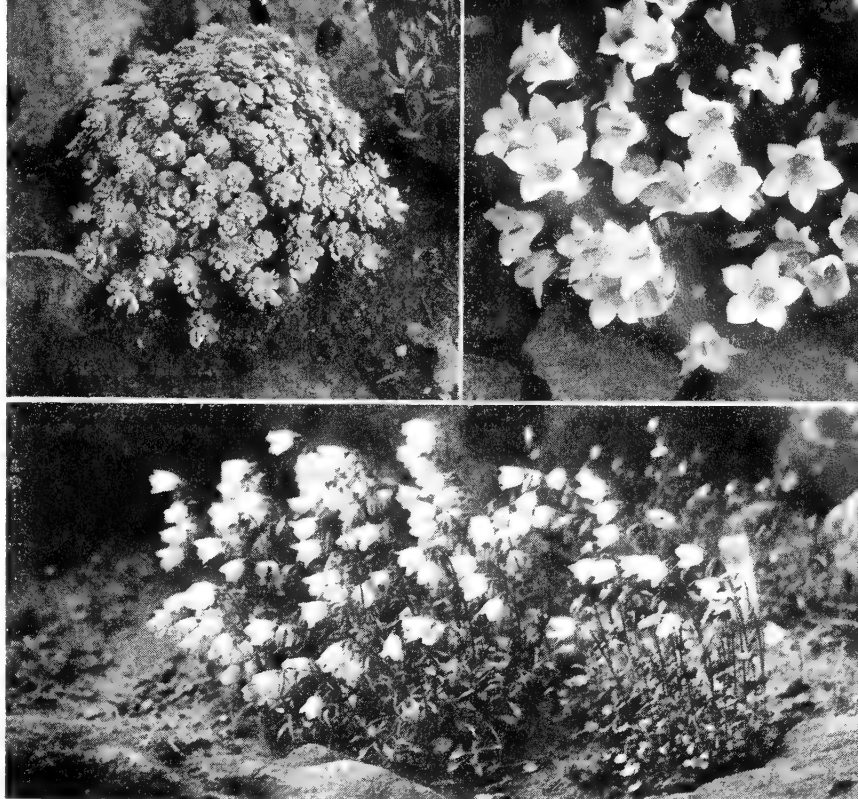
COREOPSIS Double Sunburst. Full double golden flowers on long stems from mid-summer until frost. Plants, 30 cts. each; 3 for 75 cts. Seeds, 20 cts. pkt.; ¼ oz. 50 cts.

CYNOGLOSSUM grande, Hounds Tongue. A Californian plant related to *Anchusa*. A handsome plant, especially in moderate shade. Leaves in broad basal clump, the many flowered branching stem rising 1 to 3 ft. Lovely *Forget-me-not* flowers of fine blue with white ring at center. Early spring. Sit., light shade. Soil, any well drained. Pl., dormant roots in fall. 30 cts. each; 3 for 75 cts. Very large roots, 50 cts. each. Sent Fall to March 1.

COWSLIP. See *Dodecatheon*, page 7.

CYPRIPEDIUM, Orchids. See page 11.

CYCLAMEN Hederaefolium. One of those rare, delightfully scented little dwarfs from Europe. Its pink wavy blossoms push through the bare soil in autumn and are later followed by the mottled, ivy-like leaves. Too small now but we will have them next year.



Sedum Spathulifolium

Campanula Pusilla Alba

Campanula Muralis

DWARF CAMPANULA—Bellflower. You will love them for a border or edging, in your window boxes and pots and they are equally fine in rock garden. They like cool moist soil either sun or shade. Neat and compact and 4 to 6 in. tall. Buy a wide selection to extend their lovely bloom through many weeks in summer. Divide and reset every two years.

***Carpatica Convexity.** 6 in. Compact tufts a foot across. Quite large flowers of medium mauve-blue with distinct white markings on the divisions, the petals reflexed to form a large star. New and a delight. 50 cts. each.

***Carpatica Princess.** 6 in. Flat open saucers of clear soft blue slightly recurved in outer margin. A delightful plant. Each 40 cts.

***Fanny Senior.** Soft blue flowers stud the slender trailing stems of ruddy tinted foliage for weeks in summer. Delightful hanging basket subject or on walls in rock garden. Very hardy and reliable. Each 50 cts.

***Garganica.** Emerald green tufts, the flowers medium-blue stars on 2 in. stems. July. A gem. Each 35 cts.

***Istriaca.** Dainty mounds of bluish heart-shaped leaves 2 in. high, the flowers China-blue stars just above foliage, June-July. Each 35 cts.

***Muralis Bavarica.** From a dense low spreading foliage mass arise 5 in. stems on which are borne the 1 in. bells, making a blue purple mound from June on for many weeks. 30 cts. each; 3 for 75 cts.

***Poscharkyana.** From Siberia comes this lovely and entirely new campanula. There is a neat basal tuft and from this spread many 10 in. trailing stems studded with pale blue star-like flowers. If cut it flowers three times, May, July and September. 30 cts. each; 3 for 75 cts.

***Pusilla (Caespitosa)** is another real gem in very dwarf plants. Spreading to make a very dense mass hardly 2 in. high, the nodding blue bells are carried on erect 4 in. stems well above foliage appearing from July to October. A delight in a cool pocket in rock garden. 30 cts. each; 3 for 75 cts.

***Pusilla alba.** A pure white form of preceding. Same price.

***Pseudo-Rainerii** is rather finer than *Rainerii* and unlike it, quite easy to grow. It is a dainty, compact and quite miniature tuft 1½ in. high, with the large fine, blue flowers borne above the foliage. July to Aug. 35 cts. each; 3 for \$1.00.

***Rotundifolia, Purdy's Form.** 18 in. graceful stems bear a mass of broad blue bells May to July. By far the best form. Stands shade. Each 30 cts.; 3 for 70 cts.; doz. \$2.50.

DELPHINIUMS

The usefulness and beauty of the Delphinium is well known for they are the most popular of all perennials. Justly so, too, for what gives more stately garden masses or a longer succession of fine cut flowers? Give them a well-drained, rich soil and moderate moisture, and plant 18 to 24 inches apart to give plants plenty of air and light. Manure is the best fertilizer but they respond to any nitrogenous fertilizer.

PACIFIC GIANT DELPHINIUMS. Finest in the world is the verdict of all experts and I confine my offer to this strain to give my customers the best. Outstanding in all respects; practically 100 per cent double, the flowers 2½ to 3 inches across, beautifully spaced in long spikes. Thin wood stems, 60 to 90 per cent mildew resistant.

Black Knight. We find this so far superior to King Arthur that we are this year offering it instead. The same color, brilliant royal violet with black bee.

Guinevere Series. Light lavender pink with white bee.

Summer Skies Series. Clearest light blue with white bee.

Galahad. Large glistening white, full double; thrifty.

Plants of above: 30 cts. each; 3 for 75 cts.; \$2.75 per doz.

Seeds of above: Pkt. 80 cts. Large pkt. \$1.25.

Pacific Giants Mixed. Many lovely shades. **Plants, 25 cts.; 3 for 65 cts.; \$2.50 per doz. Seeds, pkt. 65 cts.; large pkt. \$1.00.**

Note: New crop Delphinium seeds are ready August 1. Sown at once they will produce fine flowering plants for next spring.

DELPHINIUM Chinensis Blue Butterfly. Has fine feathery foliage in compact plants a foot high with many spikes of large flowers of rich ultramarine blue completely covering the plants for weeks. It is a gem for low borders or in the rock garden. Loved by all who see it here.

DELPHINIUM Chinensis "Azure Fairy". Identical with Blue Butterfly in height and habit but color is a lovely azure-blue. Choice.

Delphinium Chinensis Cambridge Blue. 2-3 ft. with the same feathery foliage and fine spikes of large flowers of a clear light blue. Lovely in bouquets.

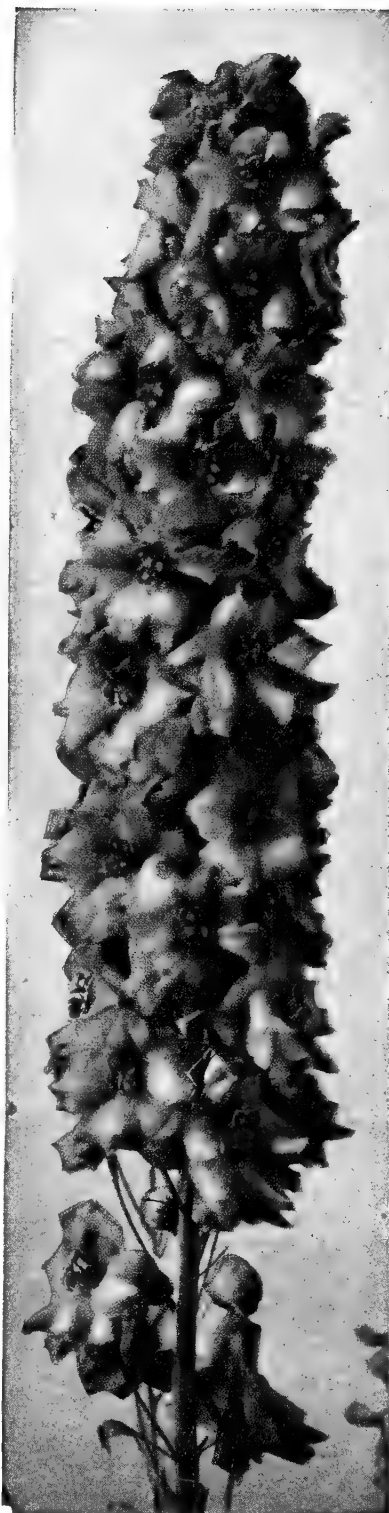
Prices: **Plants, 25 cts. each; 3 for 50 cts.; \$1.40 per dozen. Seeds (flower in three months), pkt. 25 cts.; ⅓ oz. 40 cts.**

DELPHINIUM, West American Larkspur. Here in California and Western America we have a large number of very lovely Larkspurs. Quite varied in color, stature and form and entirely hardy and withstanding very dry difficult conditions; they give some of our most beautiful plants for the wild garden, with taller ones suited to the border, while the dwarf species, prefixed by a star, are among the most lovely of rock garden plants. After flowering these Delphiniums ripen to the ground and the root lies dormant until the next fall or spring. For this reason the location should be well marked or the roots should be dug, cured and stored dry. The roots retain full vitality after being stored as much as three years. In the East is best to dig and store the roots and replant the following spring. Soak roots two hours before planting. Culture of this group: Sit., sun. Soil, any, but good loam gives finer results. Pl., dry roots in fall, or in cold region hold for spring planting. Prop., seed, third year to flower. Unless otherwise stated the following have a single many flowered stem. All flower May to July.

TALL SORTS of Western Delphinium

Cardinale. The Giant Scarlet Larkspur of southern California grows 3 to 7 ft. tall, the vivid scarlet flowers in long spikes and makes one of the most brilliant effects I know. With full directions included with orders; may be grown anywhere with sharp drainage and full sun. **Ripe Roots, 30 cts. each; 3 for 75c; \$2.50 per doz.**

***Nudicaule.** One of the two native "Scarlet Larkspurs". In this region it is characteristic of rock masses in shaded situations and is a lovely subject for partially shaded rock gardens. It is most stunning naturalized on shaded slopes, particularly among rocks, and it is very effective in the cool border. It does well in full sun but the flowers last much longer in light to moderate shade. Oftener 8 to 12 inches but may grow to 2 feet. Foliage is glossy and prettily mottled and the deep scarlet flowers come in spring and if watered, for many weeks. **20 cts. each; 3 for 50 cts.; \$1.75 per doz.**



Guinevere

CAMPANULA Telham Beauty (True). Huge clear blue cups 4 to 5 in. across on 3 to 5 ft. stems during July and Aug. Sun or light shade. Deserves rich moist soil. You will adore this glorified peach-leaved Bellflower. **50 cts. each; 3 for \$1.25.**

We pay postage on orders over \$5.00. See page 2.

*Indicates plants well suited to rock gardens.

**Indicates plants suited to the rock garden only.

CORYDALIS Lutea. 8 in. The soft green fern-like foliage is delightful and sets off to perfection the masses of yellow tiny bleeding heart flowers. Best in a cool moist situation in shade. **30 cts. each; 3 for 75 cts.**

DWARF DIANTHUS — Pinks. Spicily fragrant, always neat, they give masses of finest color in early summer. Unexcelled for borders or edgings, they are the backbone of every successful rock garden. Pl., fall to spring. Soil, any, best moist but stand much drouth once established. You will want a wide variety to prolong the bloom.

***Deltoides Brilliant "Erect".** You will love this new form with profusion of bright carmine-rose flowers. June and July, borne above the bright green foliage mats on 8 in. erect stems. **30 cts. each; 3 for 65 cts. Seeds, pkt. 25 cts.**

***Glacialis Albus.** Low grassy tufts of slender leaves with airy white flowers on 4 in. stems. May-June. **Each 40 cts.; 3 for \$1.00.**

****Glauca compacta.** Tiny silvery tufts with many 2-in. stems bearing bright pink flowers. A gem. **40 cts. each.**

***Knappii.** A dainty species, unique in being the only yellow Dianthus, it bears clusters of very pretty small yellow flowers on slender stems, 15 in. tall. Rare. **30 cts. each; 3 for 75 cts. Seeds, pkt. 25 cts.**

***Low Rose.** Has a compact cushion of bluish deep green foliage, always neat. The soft rose flowers are borne above foliage in great numbers. A favorite. **25 cts. each; 3 for 65 cts.**

***Monspelianus Carmine.** One of the best with cushions an inch high and six inches across. Bright carmine flowers in June. A gem and most lovely in crevices. **30 cts. each; 3 for 75 cts. None this year.**

***Neglectus.** The loveliest of all alpine pinks. Has low grassy tufts which are completely obscured in June and again in fall by the flowers which are 1" discs of bright pink, buff on reverse. Sun. Gritty, well drained soil. **Each 60 cts.; 3 for \$1.50.**

***New Pink.** Its cushion may be as broad as 18 inches and the eight-inch stems bear many very fine large soft pink flowers most spicily fragrant. June. **25 cts. each; 3 for 65 cts.**

Persteri. Foliage tufts are blue-green, stems 4 in. tall, while for weeks in spring comes the flowers, rather large toothed discs of lively cerise rose. **Each 30 cts.; 3 for 75 cts.**

Rosyii. Cushion scarce an inch high while 2 in. stems bear deep carmine flowers, June. Very like Monspelianus but deeper color. **Each 30 cts.; 3 for 75 cts.**

***Subcaulis.** Of an unusual shade of mauve-pink, flowers are borne on an abundance of 5-in. stems, over very low blue green mounds of foliage. Very neat. **Each 30 cts.**

Superbus "Loveliness". This exquisite new pink with delicate fringed flowers of pure mauve on long graceful stems is the delight of every visitor to my gardens. One of the very loveliest of flowers for filmy, graceful bouquets and most spicily fragrant. **Strong plants, 30 cts. each; 3 for 75 cts. Seeds, pkt. 25 cts.; 1/64 oz. 70 cts.**

***DIANTHUS COLLECTION.** Choice Rock Garden varieties, my selection of 1 each, 8 varieties, labeled. **Each \$2.25.**

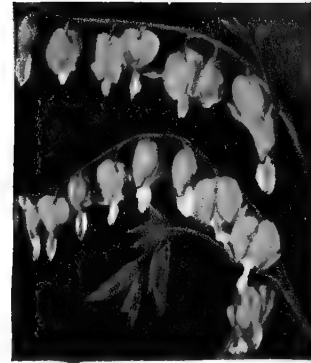
DODECATHEONS, see page 7, are a delight in the shaded rock garden or in a cool well drained situation.

On page 29 is a special list of plants for shaded bed and woodland. Plants lovely in any shaded situation.

On orders over \$5.00 we pay postage. See page 2.

*Indicates plants well suited to rock gardens.

**Indicates plants suited to the rock garden only.



Dicentra Spectabilis

DICENTRA, Bleeding Heart. Most delightful plants, all having graceful fern-like foliage and enchanting flowers. There is nothing more lovely for the fern bed, moist shaded situation, or the cool border, and the dwarfier ones are most effective in the cool and shaded rock garden. Cult.: Sit., cool or shaded. Soil, any moist loam. Pl., fall to spring. Prop., div.

***Formosa, Western Dutchman's Breeches.** Filmy fern-like foliage and soft pink flowers, making it a splendid foreground for the shaded garden, and as an complement or foil for ferns, Columbines and other woosy plants. Alone it is a splendid ground cover. **15 cts. each; 3 for 40 cts.; \$1.25 per dozen.**

Spectabilis, Bleeding Heart, a most noble plant, favorite of our mothers and grandmothers and equally as popular now. It grows to 2 ft. with graceful branches, fern-like foliage, arching stem with lovely heart-shaped pendant flowers of a rosy pink. It thrives in any shaded situation, but in the well planned bed, in combination with ferns, Columbines and Heucheras, it is most charming. Strong roots, **80 cts. each; 3 for \$2.00.**

****ERINUS Alpinus.** 4 in. Neat plant for rock garden or low edging with dense mounds of feathery foliage smothered with lavender-rose flowers in June. **30 cts. each; 3 for 75 cts.**



Dwarf Dianthus

"Can you ship plants so far?" Eastern friends often ask. That I do deliver safely to all parts of the world and guarantee safe delivery should satisfactorily answer this question. Customers who buy from me cannot lose.



Helleborus Orientalis Hybrids—See page 21

ERIOPHYLLUM lanatum. See Eriophyllum Oregon Sunshine, page 22.

***ERODIUM Chamaedryoides Roseum.** A gem. From a deep tap root it branches to make feathery mats an inch high which throughout summer are studded with flowers that are bright rose stars. Sun and deep light soil. Pl., fall or spring. Stunning on a sunny ledge. **Each 40 cts.; 3 for \$1.**

***ERODIUM Cheilanthifolium.** 8 in. Delicate ferny blue-gray foliage. Flowers are like soft pink geranium marked with two brown spots. A delight both in and out of flower. Culture as for next above. Quite rare. **Each 40 cts.; 3 for \$1.**

***ERYTHRONIUMS.** Can you imagine anything more enchanting in your shaded rock garden than little pockets of Erythroniums as pictured in color, page 8.

EUPATORIUM Coelestinum. 15 in. stems bear a profusion of Ageratum-like fluffy heads of soft violet-blue from July to frost. Lasting cut flowers. Sun or shade, any soil if moist. Vastly popular. **30 cts. each; 3 for 65 cts.**

***FELECIA Petiolata Rosea.** Best trailer I know for moist bank, crevice, over a wall or in hanging basket. Bright green small leaves. Profusion of bright pink daisy-like flowers all summer. Not hardy in East. Any soil, sun or shade. **25 cts. each; 3 for 65 cts.; \$2.00 doz.**

ERIGERON Speciosa "Idaho". The disc of very many narrow petals of pure lilac mauve surround a center of gold making this one of the loveliest of this very lovely family. Very lasting cut flowers. Sun or shade; any moist soil. **35 cts. each; 3 for 95c.**

ERIGERONS. For other fine varieties see page 30.

***FLAX.** See *Linum*, pages 12 and 22.

FERNS, Hardy Native. See page 28.

***FRITILLARIAS** are most effective in rock gardens, see page 9.

FUNKIA, See *Hosta*.

***GEUM, Purdy's Low Orange.** Abundant deep orange flowers on one foot stems in May-June. Luxuriant basal foliage neat always. We never seem to produce enough plants to go around and visitors too often clean us out before catalog time. **Each 30 cts.; 3 for 75 cts.**

HOUNDS TONGUE. See *Cynoglossum*.

***HYPERICUM Coris.** Pretty heath-like foliage smothered with large soft yellows, flower June-July. Stunning for rock garden or border. 6 in. Moist loam. Sun. **35 cts. each; 3 for 80 cts.**

GYPSOPHILA Bristol Fairy. By far the best *Baby's Breath*. Bushes 2 to 3 ft. high and as much as 4 ft. across, freely branching, with multitudes of fully double white flowers. Cult.: Sun, good loam. Pl., fall to spring. Give room. **Fine Grafted Roots, 75 cts. each; 3 for \$2.00.**

GYPSOPHILA Oldhamii. This delightful new variety grows to 40 in., somewhat like *paniculata* but the flowers are deep rosy-pink. Exceptionally fine. Sown early indoors flower first year from seed. **Plants, 30 cts. each; 3 for 75 cts.; \$2.50 per doz. Seeds, 25 cts. per pkt.**

GYPSOPHILA Repens Rosea. Low trailing foliage masses always neat, bear airy trailing sprays of soft pink flowers in May and June and if moist, well into summer. Unexcelled for rock walls, drapes in rock garden and border edgings. Sit., sun, stand drouth; Soil, any; Pl., fall to spring; Prop., seeds. **25 cts. each; 3 for 65 cts. Seeds, pkt. 25 cts.**

GLAUCIUM. See *Horned Poppy*, page 22.

HELENIUM Chipperfield Orange is 3-4 ft. tall and in August and September when such flowers are so welcome gives stunning masses of richly colored flowers rather like single *Chrysanthemums* which are a picture in copper and gold. Plant fall to spring. Any good soil, moderately moist. **Each 30 cts.; 3 for 75 cts.**

HELENIUM Riverton Gem. 3-4 feet. Same habit and culture as above. Flowers are old gold suffused terra cotta turning to wallflower-red. The color adds richness to the fall garden and is fine in the house. **30 cts. each; 3 for 75 cts.**

HOSTA (Funkia), Plantain Lily. Beautiful hardy plants with handsome, broadly spreading large ovate leaves. The beautiful half-nodding lily-like flowers are in graceful spikes on stout stems and well above foliage. Splendid plants for the border or partially shaded bed. Cult.: Sit., in the East either sun or partial shade. In the West, partial to deep shade. Soil, a moist loam, well enriched with rotted manure. Pl., fall to spring. Prop., div.

Coerulea (Lanceolata). Luxuriant broad green leaves and blue flowers in July and August. **35 cts. each; 3 for 90 cts.; \$3 per doz.**

Subcordata grandiflora. Large fragrant, pure white flowers on 2 ft. stems from August to October. **65 cts. each.**

Lancifolia. Narrow lance-shaped emerald green leaves in an attractive basal cascade. Two foot stems bear the spikes of soft lilac flowers July-Aug. Strong grower and quickly makes splendid groups. **35 cts. each; 3 for 90 cts.**

Variegata. Strikingly variegated silver and green. Soft lilac flowers in August. **Each 40 cts.; 3 for \$1.**

****LAVENDER, Dwarf Munstead.** A compact little deep green shrub with deep lavender flowers in July. Wonderfully effective either in the rock garden or border. May be trimmed to little round headed trees. Cult.: Sun to light shade. Soil, any. Pl., fall to spring. **35 cts. each; 3 for \$1.00. Seeds, pkt. 25 cts.**

***LITHOSPERNUM Heavenly Blue.** Heavenly indeed is this tiny low shrub, transformed from April to Aug. to the most gorgeous deep blue I know. Should be in every rock garden. Fine in little shaded or sunny nooks. Well-drained neutral or acid soil best. **Each 60 cts.; 3 for \$1.50. Pot-grown.**

EVERGREEN LEWISIA, Rock Rose

In all the world there is not a more interesting group of rock plants and they are worth any effort to grow them well. They vary widely, each species distinct and interesting and desirable. All have low rosettes of fleshy leaves, but in each species they are intriguingly different. Plants have a few to many stems, 6 to 12 inches high, each bearing from five to numerous flowers. Very hardy without protection even to Montreal.

Culture: In the wild they grow into rocky slopes or cliffs with roots almost horizontal and kept cool by the rocks. You must simulate such conditions to grow them in the open. Otherwise plant them in pots which you can tilt at 45 degree angle. The ideal soil is a silty loam rich in fine acid humus. Loam, sand and peat moss equal parts would approach this. Give liberal moisture Sept. 1 to May 1, partly dry off to rest plants in summer. Situation should be light shade, in damp regions full sun. Pl. fall to spring, in East spring.

****Finchii.** This species varies considerably and I have now selected its very finest strain. In this the foliage is deep emerald green with leaves overlapping closely to make a solid rosette often 8 in. across. Its few to 20 scapes each bear 5 to 40 flowers and plants have been seen with 600 flowers. The buds are bright orange. Open, the flowers are soft pink with rose strips and the petals margined orange. A fine specimen, is a wonderful sight. **Each 40 cts.; 3 for \$1.00.**

****Hecknerii** is perhaps the best marked of the group. First, the broad dark green leaves, red beneath, are margined with slender spines each tipped brown. These tiny spines give the effect of a silky fringe. Then the fine large flowers are a solid rose pink, without stripe. The bracts and sepals are margined like the leaves with even finer spines. A plant bears from a few to many scapes each having a few to 12 flowers. Very distinct and desirable. **Each 40 cts.; 3 for \$1.00.**

****Hecknerii "Elegans".** A most outstanding new variety (1937) with strong rosettes as much as 8 in. across. The very dark green leaves have charmingly undulated margins and these are lined with slender spines as in Hecknerii. The scapes bear 14 to 40 flowers each, of large size and a lovely medium rose without stripe. A decided acquisition. **Strong plants, 50 cts. each; 3 for \$1.25.**

****Howellii.** Leaves beautifully crisped and crinkled on margin, are deep green much tinted red. Its many scapes carry 3 to 10 flowers of pink, margined white and with a broad purplish violet central band. **40 cts. each; 3 for \$1.00.**

Tweedyii. I very much regret that I will be unable to supply this lovely species for the duration.

PLEASE! Due to continuing labor shortage and very great demand a number of our stocks are limited. Won't you name several alternate selections which we may send in case some items on your order are sold out?

Chihuahua, Mexico: "The plant on my order came in splendid condition, much better than any I have received from the East. Thank you very much for the extra ones. I am sorry that I did not discover you earlier."



Lewisia Howellii

DECIDUOUS LEWISIA, Bitterroot

Lovely and distinctive West American plants and a real acquisition for the alpine and rock garden. All grow in early spring, flowering in April to May. The leaves ripen as the flowers fade and the roots lie dormant through the summer. Fine in pots.

Culture of Deciduous Lewisias. All grow where it is decidedly moist during the growing season or where roots may reach into moist rock crevices. Drainage should be perfect; soil, best a light loam; situation, full sun; moisture, liberal during growing season but may be dried off after flowering. The scree is ideal for them. Cover tip of root 1 in. Shipped fall only, but you may hold the dormant roots for spring planting if desired.

****Oppositifolia** has linear leaves, broadened at tip, and few in number. Stems 6 to 12 inches high arise erectly and bear a number of beautiful white flowers an inch across. A most beautiful little species. **15 cts. each; 3 for 40 cts.; \$1.50 per doz.**

****Rediviva is Bitter Root.** Many slender, round leaves, an inch or two long, crown the root to make a dense rosette. Through these leaves arise many stems, each bearing a single flower. The flowers are white to pink, an inch and a half across and have the satiny texture of the *Cactus* flower. An admirable species and most effective in little raised pockets in the rock garden. See picture, page 35. **25 cts. each; 3 for 60 cts.; \$2 per doz.**

MOST HELPFUL BOOKS

FAVORITE FLOWERS IN COLOR: Seymour. 640 pages with 800 full color illustrations with valuable text. **Postpaid \$6.25.**

NEW GARDEN ENCYCLOPEDIA: Seymour. 1400 pages; 1500 pictures; 10,000 articles in plain language. It is the most valuable work I know for the home gardener. **Postpaid \$5.25.**

SUNSET GARDEN BOOKS. Western cooking, outdoors, gardens and a wide variety of subjects. **Send for Special List.**

CYCLOPEDIA OF HORTICULTURE AND HORTUS. See page 7.

We pay postage on orders over \$5.00. See page 2.

*Indicates plants well suited to rock gardens.

**Indicates plants suited to the rock garden only.



Heuchera (Coral Bells)



Iris Cristata



Helianthemum

CALIFORNIA NATIVE IRIS

The world offers no lovelier iris than these natives. Excellent in rock garden, shaded border, fern bed or woodlands. Long glossy evergreen leaves in cascading masses make the plants striking at all times while no iris has more daintily lovely flowers. Pl. fall to spring. Light to deep shade, clayish or loam soil rich in acid humus with good moisture.

SEEDS: Easy from seeds sown Feb. to Aug. where to remain or in pots. Seeds of species marked with (†) Pkt. 25 cts.

Special Mixture of many kinds, Pkt. 25 cts.; ¼ oz. 60 cts.

- *†*Bracteata*. 12 in. Evergreen foliage and fine golden-yellow flowers. Prefers acid soil.
- *†*Californica Varied*. 8 in. Varied in many rich shades, no two alike, in blues, yellows, bronzes, violets.
- *†*California Blue*. 6 in. Rather dwarf with deep blue flowers.
- *†*Douglasiana*. 12 in. A bold species with broad evergreen foliage and creamy flowers. Of very easy culture.
- *†*Hartweggii*. 6 in. Sparse bluish foliage and soft yellow flowers.
- *†*Purdyii*. 8 in. Glossy deep green foliage and handsome, creamy flowers, tinted yellow and purple veined.
- *†*Purdyii Varied*. Dark, glossy foliage. Stems are 12 to 15 inches tall. The broad open flowers are white or cream ground, variably tinted lilac to plum, all veined violet with a band of gold on mid-rib. Plant prices as below. Seeds, pkt. 50c.
- *†*Tenax*. One of the most dwarf of all iris, 3 inches high, with reddish-purple flowers. Quite striking. Like moist loam.
- *†*Watsoniana*. 12 in. Broad soft green leaves and rich deep blue flowers. In rich moist border they grow to 18 in. and are highly effective. Quite easy to grow.

Prices of above, 25 cts. each; 3 of one kind, 65 cts.; doz. \$2.50.
Your choice 4 each of 3 kinds for \$2.50.

OTHER IRISES

- **IRIS Cristata*. 3 in. A gem for the shady rock garden or shady bed with rich amethyst flowers in May. Prefer a moist loam. Choice. 30 cts. each; 3 for 65 cts.
- IRIS Foetidissima*. Gladwyn. Masses of luxuriant deep green foliage two ft. tall. Flowers inconspicuous but followed by very ornamental bright red seeds which may be cut and kept for months as everlasting. 50 cts. each; 3 for \$1.15.
- IRIS Siberica Perry's Blue*. 40 in. Splendid border iris with large flowers of clear sky-blue. 30 cts. each; 3 for 75 cts.
- **IRIS Tectorum*, Japanese Balcony Iris. 12 in. tall with delicately crested blue flowers. Excellent for rock garden border or moist wall. 40 cts. each; 3 for \$1.00.
- IRIS Pseudoacorus Gigantea*. Its brilliant emerald green foliage makes it one of the finest background plants I know either sun or shade. May be grown directly in stream or pool. 50 cts. each; 3 for \$1.25.

WINTER FLOWERING IRIS

- IRIS Stylosa*, the beautiful Algerian Iris, has charming grassy, evergreen leaves, and the most delightful, fragrant soft violet-blue flowers from mid-winter until spring. Hardy south of Philadelphia. 40 cts. each; 3 for \$1.00.

***HEUCHERA, Alum Root.** Thriving in any well drained soil, sun to deep shade with lovely begonia-like foliage and filmy flowers, they meet every need for a fine low plant.

***Micrantha.** Lovely begonia-like foliage that attains deep bronzy shades in winter. Filmy white flowers.

***Sanguinea. Coral Bells.** Bears panicles of rich coral bells in profusion in spring and often again later.

All Heucheras: 30 cts. each; 3 for 75 cts.; \$2.50 per doz.

***HELIANTHEMUM "Sun Rose"**. Showy trailing, small evergreen shrubs, which from May to July are almost hidden with flowers, like little single roses. Showy, long lived, drouth resistant, they are excellent for rock garden, front line effects on rock walls, and for covering difficult banks, etc. Sit., sun; Soil, any, but best a deep well drained one; Pl., fall to spring. Shear half back after blooming. Prop., cuttings. Following include the finest of the new varieties:

American Beauty. Very large bright rose flowers.

Appeninum Roseum. Strong grower with large soft pink flowers.

Apricot. Luxuriant foliage and very large soft apricot.

Ball of Gold. Soft yellow with full double flowers.

Boule de Feu. Full double deep red. Very fine.

California. Golden-yellow, center deep orange.

Dazzler. Strong, attractive foliage and vivid blood red.

Goldilocks. Very large flowers of brightest yellow.

Flame. Luxuriant soft foliage. Very large brilliant flame-pink flowers. Superb.

Mitchell's Red. Very large bright red flowers. New.

Rose Queen. Very large flowers. Glistening pink.

St. Mary's. Very large pure white. New.

Seattle. Very large flowers of rich apricot-bronze. New.

Stanford. Large flowers of true cardinal-red.

Prices: 30 cts. each; 3 for 75 cts.; per doz., 4 or more of 1 kind, \$2.75. Fine Mixture, \$2.50 per doz.

Collection. 1 each of 12 finest varieties for \$3.25. 1 each of 5 varieties, my choice, for \$1.35.

Seeds Mixed, saved from finest named varieties, pkt. 25 cts.

We pay postage on orders over \$5.00. See page 2.

*Indicates plants well suited to rock gardens.

**Indicates plants suited to the rock garden only.

HEMEROCALLIS—DAY LILIES

Bloom from May to late August will be yours if you plant a wide variety of these easily grown old time favorites. Hardy anywhere and stand drouth. Permanent. Cultivation: Sun or light shade. Plant Fall to Spring. Well drained loam with ample moisture gives finest flowers.

NEW INTRODUCTIONS AND SUPERFINE VARIETIES

Calypso. Without question one of the very finest; in fact a foremost authority on Hemerocallis so rates its. Grows to 42 inches high with flowers 5 to 7 inches across. The petals recurve broadly from the base, the larger petals wavy on upper margin. Color is light canary yellow, with a fine satiny sheen. In milder climates it has flowered from July to December. Usually flowers late July. 50 cts. each; 3 for \$1.25.

Chengtu. 36 in. July-Aug. Brilliant coppery-red with velvety carmine mid zone. Very rich and outstanding. Each 75 cts.

Craemore Henna. A rich coppery henna shade hard to describe. Unusual and attractive. I like it. \$1.00.

Hyperion, a magnificent variety, which in rich moist loam grows to 45 inches in height, the flowers 5 to 7 inches broad, with satiny sheen and a clear, medium canary. \$1.00 each. Tallest and largest of all.

Maggie Perry. 48 in. July-Aug. Very large, deep orange-scarlet. The nearest red of day lilies. 50 cts. each.

Mrs. Austin. 36 in. Very large golden-yellow blooms in late July. Each 75c.

Mikado. 30 in. July. Two-toned, bright orange-yellow with a soft deep red zone. Splendid. 60 cts. each.

Soudan. 36 in. July-Aug. 4 in. empire-yellow flowers, very full and of recurved lily type with creped petals. Each 75 cts.

A FURTHER LIST OF FINEST DAY LILIES WILL BE FOUND ON COLORED INSERT.

SUPER HEMEROCALLIS COLLECTION: From my large private collection of super-fine varieties and the above I will send 10 plants, 1 each of 10 varieties, labelled, \$5.00; 5 varieties, \$2.75. This is a super value.

SPECIAL VALUE COLLECTION. The same varieties to give the same superb garden effect. 10 plants, 10 varieties, but not labeled for \$3.50.

HELLEBORES

HELLEBORES, Christmas Rose; Lenten Rose. Hardy perennials admired for their attractive early flowers and for their handsome leaves. There are two quite distinct types. **H. Orientalis Hybrids, the Lenten Rose,** have many large palmate leaves, rising from a heavy root to make a bold evergreen clump, 18 inches high and as wide in old plants. Once established they continue for years. The flowers are in many beautiful shades and often 3 inches across. They last fresh for many months, here in California from October to April and in colder regions each milder spell in winter brings out the buds. I imported from Millet of France his finest varieties and these are now ready to sell. My collection of over 25 named varieties is doubtless the largest in America and here conditions for their growth are unusually good. Cult.: They thrive in ordinary garden soil but for best results use rich loam and coarse sand, with a top dressing or rotted manure. A moist well drained, partly shaded situation is preferable. In California give rather deep shade. I offer the following Millet Hybrids:

Corsicus. A species hellebore with orange stems and petioles and lance-shaped leaves with spiny margins. Flower opens green but usually turns pure white. A unique and striking plant. Each \$4.00.

Hellebore Orientalis Seedlings. From our finest named varieties. They haven't flowered but should give a fine range of colors. 3 Year, should flower next winter, Each \$1.15; 3 for \$2.90. Smaller, 2 Year, Each 80 cts.; 3 for \$2.00; \$6.00 per doz.



Hemerocallis. Mikado

HELLEBORE ORIENTALIS VARIETIES

Baroness. In this the background is greenish-white, but it is so closely flecked with purplish mauve as to appear a solid color. Very fine. \$3.00 each.

Butterfly. Unusual, the inner petals white, the outer lilac-mauve. Free blooming. Each \$5.00.

Delicatissima. Very floriferous. Large flowers, white pencilled and flecked rose. Lovely. Each \$4.00.

Mad. Linnard. Abundant flowers of creamy white, spotted and veined violet. Each \$4.00.

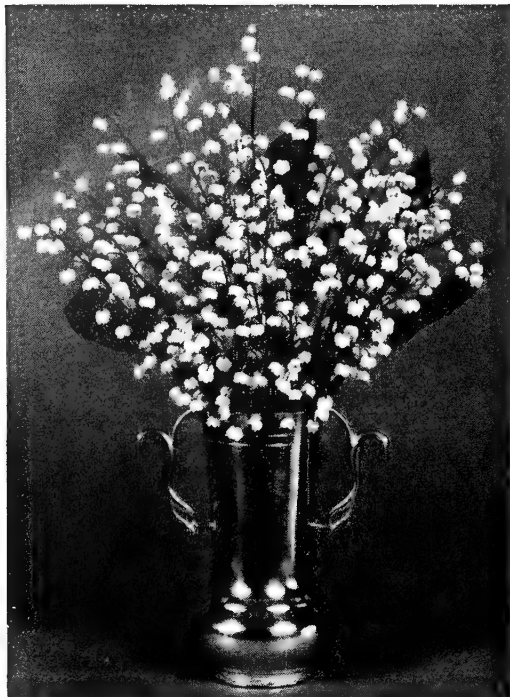
Mme. De Aquin. White, spotted and pencilled deep plum. Free flowering. 5 only. Each \$4.00.

Suzette. White, tinted and flushed soft rose. Tall and very free-flowering. Each \$5.00.

Note: I am sorry there will be no plants available of the many other fine varieties.



California Native Iris (See p. 20)



Lilies of the Valley

LILY-OF-THE-VALLEY clumps have been hard to secure for several years. I now have a fair supply. They require a light to medium shade and a rich, loose soil kept moderately moist. Well-rotted manure and leaf mold should form at least a part of it and I think that the best of soils is a sandy loam so enriched. The beds should be top-dressed with well-rotted manure every fall. They should be reset about the third year, and the fall is generally considered the best time for resetting. Clumps of several pips, or growing buds, 30 cts. each; \$3 per doz.

LINUM Narbonense "Heavenly Blue". Many slender 18 to 24 in. stems with much larger flowers than any other; it is the finest of all Flax. The clear deep sapphire flowers come from May-Sept. They do not drop each day but last several days. A real beauty. **Plants, 30 cts. each; 3 for 75c; \$2.50 per doz. Seeds** (sown fall or early spring flower first summer), **Pkt. 30 cts.** Sun, any soil.

TURFING DAISY—*Matricaria Tschitatchewii*. White daisies on 4 in. stems stud the green turf-like mats. Effective as lawn or carpet, or on bank or ledge. Established, stands drouth and poor soil. Set small divisions 12 in. apart. **Divisible plants, 30 cts. each; 3 for 75 cts.; doz. \$2.50.**

MERTENSIA Virginica—Blue bells. For cool moist woody beds with well drained acid loam it is a delight. The 10 in. branched stems bear clusters of porcelain-blue bells in spring. Plant Sept. to Mar. Cover dormant roots 2 inches. 30 cts. each; 3 for 75 cts.; doz. \$2.50.

***MONARDELLA villosa**, of the Mints, is one of our finest late flowering Californian plants in hot dry situations. Forms broad mats from which arise very many 8-inch stems bearing lavender flowers from July to Oct., the flowers somewhat resembling a verbena. Most valuable for hot dry spots in the rock garden where a fine mass of blooms is of great beauty after spring bloom wanes. **Cult.: Sun. Soil, any even to gravelly. Pl., fall to spring. Prop., divisions. 25 cts. each; 3 for 65 cts.**

HORNED POPPY is *Glaucium flavum tricolor* and no plant that we grow pleases visitors more or gives more effect for so little trouble. The foliage is pretty and plant stout and much branched, carrying very many showy flowers from a clear yellow to flame color through a long period. After bloom cut it back and another crop comes and then a third. Heat just suits it, it is one of the very best drouth resisters. An average plant is 3 ft. high and as broad and in flower there is no more brilliant effect. 25 cts. each; 3 for 65 cts.; \$2.50 per doz. **Seeds, pkt. 25 cts.**

***NEPETA Glechoma**. 2 in. high with deep green foliage and blue flowers it spreads rapidly to make a carpet. One of the best ground covers under trees. Stands poor soil and minimum of moisture. **Plants 25 cts. each.** Small sections for carpeting, **\$5 per 100;** plant 12 in. apart.

***NIEREMBERGIA rivularis**. From a dense carpeting mantle of spoon-shaped leaves many 3-inch stems arise, each bearing a 1-inch creamy cup-shaped flower with yellow center. Flowers all summer. Most choice. **Cult.: Sun, light soil. Pl., fall to spring. 30 cts. each; 3 for 75 cts.**

OENOTHERA, Evening Primrose. Among this varied genus are a number of American species which form low masses and which are very fine for the rock garden. I do not know anything more lovely than *Oe. America* or *Oe. Missouriensis* in a deep pocket unless it is *Oe. Caespitosa*. The flowers open at dusk and last until the next noon.

***Burbanks America**. An introduction of the late Luther Burbank. It has a deep seated root, not spreading, and the few branches, eventually long and trailing, bear many pure white flowers 5 inches across from May to frost. As they fade they turn pink. Quite rare. None this year.

***Missouriensis**. From a central deep seated root many leafy prostrate stems spread, eventually to make a clump up to 2 ft. across and 10 inches high. The flowers are 3 to 5 inches across and the most lovely clear yellow I know. See cut, page 27. **30 cts. each; 3 for 75 cts. Seeds, pkt. 25 cts.**

***Tetraptera** is a South American species with deep seated root and a few rather openly leafy ascending stems, bearing pure white flowers two inches across. Very floriferous through the long season from May to October. **25 cts. each; 3 for 65 cts.**

Culture: Soil, any but preferably a good loam. Will stand much heat and drouth but it is with moderate moisture that they show their real beauty. **Pl., fall to spring. Prop., seeds.**



Oregon Sunshine

"SOMETHING NEW UNDER THE SUN"

***OREGON SUNSHINE**. Not really new, for this superb plant has adorned the slopes of Oregon and California for ages, yet it has been almost entirely overlooked by man in his quest for fine garden flowers. Entirely hardy anywhere in the U. S. and most drouth resistant. Thrives in any well drained soil (even the poorest) in full sun, and may be planted either fall or spring. The basal tuft of ever-green foliage is neat throughout the year and from this arise in May many 12 to 15 in. stiff stems which are crowned throughout the long summer with masses of the most delightful golden yellow daisies. Fine cut. You will adore it. (Botanically, *Eriophyllum lanatum*.) **Strong plants, 25 cts. each; 3 for 65 cts.; \$2.50 per doz. Seeds, sown early spring, flower late summer. Pkt. 25 cts.**

PENTSTEMON—Native Californian. Natives of hot dry banks, when once established there is no plant that gives a longer early summer bloom in driest situations but give them moderate moisture in border, on banks or in rock garden and they excel and seem never out of bloom from May on. Any well drained soil. Pl., fall to spring. Prop., seeds.

*California "Blue Bedder" (*Heterophyllus Purdyii*). Discovered by Carl Purdy and introduced under this appropriate common name, it was later named in his honor. It is a decumbent form particularly suited to rock gardens and banks. A low mass 6 in. high and often 2 ft. broad with a profusion of deep blue flowers from May to fall if not allowed to seed. 25 cts. each; 3 for 45c; \$1.50 per doz. Seeds, pkt. 25 cts.

Heterophyllus "Erectus", has all of the charm and beauty of California Blue Bedder, but is of erect habit, making it a most fitting plant for the hardy border. 12 to 18 inches high with blue flowers. 25 cts. each; 3 for 45 cts.; \$1.50 per doz. Seeds, pkt. 25 cts.

Laetus var. *Typicus*. 18 in. high, with slender erect stems and long spikes of deep blue flowers, with contrasting white stamens. A splendid garden and cut flower. Plants, 25 cts. each; 3 for 65 cts. Seeds, pkt. 25 cts.

Hirsutus (*Pubescens*). A much neglected and very worth while species. From a base of ruddy lanceolate leaves 12 to 24 inches, stems arise, bearing very long panicles of soft porcelain blue flowers from June to September. Fine for a bold mass in the rock garden and a lovely border plant. 25 cts. each; 3 for 65 cts. Seeds, pkt. 25 cts.

PHLOX—Perennial and Dwarf. See page 24.

***POLEMONIUM carneum**. A delightful native plant 12 to 20 inches tall; fern-like, pinnate foliage and graceful stems carrying large flowers, opening creamy or flesh color and soon turning to deep rose. Most beautiful of Polemontums. Cult.: A good moist loam. Prefers partial shade. 35 cts. each; 3 for 90 cts.; \$3.00 per doz.

POLEMONIUM Reptans. Clusters of lovely medium blue flowers on 12-in. stems over the feathery foliage from May-July. Sun or light shade. Prefers moist loam. Plant Fall to Spring. Each 35 cts.; 3 for 90 cts.; \$3.00 per doz.

PRIMROSES or **PRIMULA**. See color, page 28.

***PTEROCEPHALUS parnassi** forms low dense clumps, grayish foliage and above this produces many lilac-pink, scabiosa-like flowers through the summer. Cult.: Sun. Soil, any. Pl., fall to spring. Prop., div. 25 cts. each; 3 for 65 cts.

PYRETHRUM Roseum. "Painted Daisy". Enchanting garden and cut flowers with the large daisy-like flowers in mixture of loveliest shades of red, pink, white on slender 18-24 in. stems, May-June and again in fall. Sit., sun or light shade; Soil, rich, moist loam; Pl., fall to spring; Prop., Div. or seeds. **Supreme Single Mixed**. Plants 25 cts. each; 3 for 65 cts. Seeds, pkt. 25 cts. There is no lovelier flower! Why don't we see more of them?

SALVIA Greggii—Crimson Sage. Visitors here all like it and I know you will. Erect evergreen half shrub 3 to 4 ft. tall, with bright crimson flowers at tips of branches all summer. Any soil, stands drouth but finer with moisture. Pl., fall to spring. 30 cts. each; 3 for 75 cts.

We pay postage on orders over \$5.00. See page 2.

*Indicates plants well suited to rock gardens.

**Indicates plants suited to the rock garden only.

Rozelle Park, N. Y.: "You will doubtless be pleased to learn that the last lot of bulbs arrived on time and all did quite well. The purple Washingtonianum Lily had about a dozen flowers, and the Fairy Lanterns all did well."



Oenothera Missouriensis

SALVIA in Blue. Many people ask for blue flowers and there are no finer blues than in these Salvias. Gracefully branched woody plants with beautiful masses of flowers and very drouth resistant, except *S. patens*. Cult.: Sun and any soil. Pl., fall to spring.

Azurea. With many stout and wiry stems this makes a bush-like mass with flowers of clear azure-blue after midsummer. 25 cts. each; 3 for 65 cts.; \$2.50 per doz. Seeds, pkt. 25 cts.

Bracteata Rosea makes a much branched plant, 3 to 4 ft. in height with heavy bluish basal leaves. On the branches are many lavender bracts which give the effect of flowers in June and July. Striking and a favorite with visitors here. 25 cts. each; 3 for 65 cts. Seeds, pkt. 25 cts.

Farinacea Blue Bedder. This splendid new variety with its deep blue flower throughout the summer is indispensable in the border and a fine cut flower. It grows 2-2½ ft. tall with slender, wiry stems. 30 cts. each; 3 for 75 cts. \$2.50 per doz. Seeds, sown early will flower first season, pkt. 25 cts.

Pitcherii, 2-4 ft. tall, in habit like the *Azurea* but the color is an intense deep blue. Blooms Aug. to frost. One of the very best late fall flowers and one of the finest blue flowers. Each 45 cts.; 3 for \$1.25.

***SAPONARIA Ocymoides splendens** is a most useful plant. Makes a broad carpet, even to 3 ft. across, on the level, and, planted at top of walls will drape as much as ten feet in a year. The foliage is good and the show of pink flowers in spring very attractive. Splendid for dry banks. Cult.: Sun or light shade. Soil, any, to poorest. Pl., fall to spring. 25 cts. each; 3 for 65 cts. Seeds, pkt. 25 cts.

***SATUREIA Alpina**. A splendid plant for sunny situations, 4 in. high with spreading mats of deep green rounded leaves obscured through June to September with deep blue flowers. Soil, any but best moist. Prop. Div. spring or fall. Each 30 cts.; 3 for 75 cts.

***SATUREIA pygmaea**. Like a tiny erect shrub, 8 to 12 inches high, with narrow leaves of softest green and dainty flowers of shimmering clear pink in August and September. Cult.: Sun and any soil to very poor. Most delightful. 40 cts. each; 3 for \$1.00.

***SATUREIA Intricata**—Savory Scented. Trailing evergreen branches curl and twist in an interesting fashion in early season and bear head of deep pink flowers July and Aug. Sun and any fairly moist soil. Nice. Each 30 cts.

PENTSTEMON Garnet. A hybrid strain, hardy in the north. The large gloxinea-like flowers of rich garnet are borne in spikes continuously through the summer. 2 ft. Cut to ground early spring. Excels in rich border soil. Fine cut. Each 40c, 3 for \$1.00.



Phlox Thor

HARDY PERENNIAL PHLOX

One of the most valuable of flowers for summer bloom, giving unsurpassed mass effects in fine colors.

Give a well prepared and enriched soil and plenty of water and where there is much summer heat, a mulch of manure or peat moss is invaluable to protect their sensitive surface roots. Plant 16 in. apart. Here are unsurpassed old varieties and some of the finest new ones.

(These fine Phlox are all 24 to 30 inches tall)

- Border Gem.** Very fine deep purple.
- Charming.** Lovely salmon-pink, red eye.
- Colonial.** A lovely clear lavender. A favorite.
- Defiance.** Very strong. Salmon-orange with deeper eye.
- Graf Zeppelin.** Very lovely. Pure white, red eye.
- Leo Schlagater.** Stunning clear brilliant scarlet.
- Lillian.** Lovely cameo-pink, faintly blue at center.
- Mary Louise.** The finest large pure white.
- Spitfire** (Chas. Curtis). Brilliant orange. Brightest of all.
- Thor.** Splendid salmon-pink. An old favorite.

COLLECTION: One each of above, labeled, for \$3.75.

PHLOX PRICE 40 cts. each; 3, all one variety, 95 cts.
 Per doz. (6 or more of one variety), \$3.60.
 Fine Mixed, \$3.25 per doz.

When this copy is written, May 1, it is difficult to foretell crops. Please state if we may substitute equally fine varieties in similar colors if a variety is sold out.

PHLOX DIVARICATA. Blue Phlox. Commencing to flower in April and here continuing into summer, the 10-inch stems bear airy clusters of quite large fragrant, clear soft blue flowers. For some unknown reason we never grew this until a year ago and we find it one of the most charming subjects as do all visitors. Sun, or best light shade and here a well drained but moistened soil rich in humus suits it best. **Each 40 cts.; 3 for \$1.10.**

***ASTER Alpinus Goliath.** In my rock garden and border in May and June nothing more attracts visitors than its showy 2 in. discs of bluish violet flowers on erect 10 in. stems. The low leafy basal mats of foliage are always neat and thrives in a mellow loam soil. **30 cts. each; 3 for 75 cts.**

ASTER, "Burbank's Charming". Little did I dream when I introduced this as a novelty in 1929 of its increasing popularity from year to year or of the joy it would bring to countless visitors here in late August and September. Its stout bushes are 3-4 ft. tall, much branched with lovely arching one sided fan-like sprays of soft pink flowers; a stunning mass in any garden and most effective cut. **40 cts. each; 3 for \$1.00.**



Phlox Subulata

LOVELY MOSSY PHLOX

- *AMOENA.** Shining foliage mats with a wealth of salmon-rose flowers in May and at intervals through summer. Sun or shade. Best moist loam. **Each 30 cts.; 3 for 75 cts.**
- *Subulata, the Mossy Creeping Phlox,** of which finest varieties are described below, with its neat evergreen foliage and shimmering color masses is a high light for rock garden and low border. 4 in. high, a plant may be 2 ft. across. Cult.: Sun or light shade. Soil, any but best light. Withstands drouth. Shear each spring. Prop., layers.
- *Blue Hill.** Compact; showy soft blue flower in spring and again in fall. Choice. **40 cts. each; 3 for \$1.00.**
- Brilliant.** This most brilliant of all is clear crimson-red. **Each 40 cts.**
- *Lavender.** Robust plants, always attractive, are in season a shimmering mass of the soft lavender blooms. Very delightful. **Each 40 cts.; 3 for \$1.00.**
- *Sensation.** Shimmering lilac. Very profuse and colors in winter. Strong grower. **30 cts. each; 3 for 75 cts.**
- *Snow White.** Compact mounds of bright green, with large purest white flowers. **30 cts. each; 3 for 75 cts.**
- *Vivid.** Compact plants always neat. Flowers brilliant pink, deeper eye. The choicest of all. **Each 55 cts.**

PHLOX Camla and Camla Alba—See page 12.

We pay postage on orders over \$5.00. See page 2.

*Indicates plants well suited to rock gardens.

**Indicates plants suited to the rock garden only.

SOME NEW ... SOME OLD -- ALL DEMAND YOUR NOTICE



Sempervivum

SEMPERVIVUMS

On page 27 you will find notes as to use and culture. Here I list some seldom seen and most interesting varieties. It is hard to describe the differences except as to size, type and color of leaves but each is different, and worth while.

- Acuminatum.** 4 inch blue green rosette, tipped red. Each 35 cts.
- Arachnoideum Minor.** Tiniest of all cobweb varieties. Each 40 cts.
- Arenarium.** Tiny rosettes, bright green tipped red. Each 30 cts.
- Atropurpurea.** 4 inch rosettes of dark green narrow pointed leaves. Very fine. Each 40 cts.
- Atroviolaceum.** 3 inch dark green rosettes, the leaves tipped purple. An old favorite. Each 35 cts.

The following "Three Greeks" are hybrids between the cobweb and other varieties, hard to differentiate in words but each a gem. Rosettes are 2-3 inch across, leaves in shades of dark red, lined green with cobweb tips.

- Alpha, Beta, and Gamma.** Any one 40 cts; all 3 for \$1.00.
- Barbalutum.** 3 inch light green, center pink, tips purple. Seldom seen. Each 45 cts.
- Calcareum.** 3 inch grey-green rosettes, leaves lined and tiny, reddish brown. My favorite. Each 35 cts.
- Crassicaule.** 5 inch pale green, tipped violet. Each 40 cts.
- Cantalicum.** 3 inch one-sided rosettes of green, tipped violet. Covered with fine white hairs. Each 40 cts.
- Doellianum.** 3 inch globular rosettes, tipped red, little red chicks perching all over them in spring. Each 40 cts.
- Laggeri.** 1-2 inch rosettes densely covered with cobweb hairs. Makes lovely colonies. Each 35 cts.; 3 for 90 cts.
- Mettentianum.** Flat rosette, 4 inches, grey-green. Good. Each 40 cts.
- Powellii.** 4 inch rosette, center deep purple, leaves tipped and edged green. Striking. Each 50 cts.
- Rosy Purple Beauty.** 7 inch rosettes, deep purple throughout. Keeps color all year in sun or shade. Each 65 cts.
- Rubicundum Hybridum.** 3 inch, center bright red, tips and margins of leaves green. Very unusual. Each 40 cts.
- Verlotii.** 3 inch rosettes, emerald green, red tip. Each 45 cts.
- Violescens.** 6 in greyish rosettes, tinted violet. One of the very finest. Each 65 cts.

SEMPERVIVUM COLLECTIONS. See page 27. If you have none we would duplicate, they are super value.

PLEASE NOTE: If later imposed, any Federal Sales or Luxury Tax must be added to your remittance.

"Just Fine and Mighty Worth While," described the plants on this page most aptly. They are all things you will like and find mighty useful in your garden."

***ACHILLEIA Tomentosa.** 6 inches. Here is one plant I simply cannot be without in my garden and visitors all like it too, but seem never able to put it across in words. The emerald green of wooly foliage are neat all the year and the fine head of golden-yellow flowers on 6 inch stems make the brightest spot in a garden. June-July. Very drouth resistant. Each 30 cts.; 3 for 75 cts.

***ARENARIA Caespitosa.** "Velvet Lawn" makes dense moss-like carpets an inch high and is most useful between stepping stones or in pockets in rock garden. Any soil. Sun or light shade. For carpeting divide to small bits. Each 30 cts.; 3 for 75 cts.

***ARENARIA Montana.** I rate one of 12 best rock plants. Close tufts of deep green, always neat, are smothered with silvery white flowers April-June. Sun and any fair soil. Wonderful on crest of a rock. Each 35 cts.; 3 for 90 cts.

***ASPERULA Cyananthina.** Very useful and interesting, with mounds of deep green very slender foliage 10 inches high, crowned for weeks in summer with filmy masses of pink-tinted white flowers. Any soil; sun or shade, best fairly moist. Delightful. Each 25 cts.; 3 for 65 cts.

***ASTER Star of Eisenbach.** Bright lavender-blue flowers 2 to 3 inches across are borne on 15-inch stems over the low basal foliage June-July. Of alpinus type. Excellent for rock garden or border. Sun, any soil. Plant Fall or Spring. 30 cts. each; 3 for 75 cts.

***POTENTILLA Calabrica.** Rather compact, very low plants with rather small leaves of lovely silvery color, and creamy yellow flowers in May that has always attracted visitors here. We have just learned how to propagate it so offer for first time. Each 40c; 3 for \$1.

***SEDUM Spectabilis.** The lovely old "stonecrop" so favored by our grandmothers for pots, tubs, and in the border. Blue green showy foliage to two feet high crowned in summer by large heads of fine pink flowers. Sun or light shade. Any soil. Really showy. Each 30 cts.; 3 for 75 cts.

***LYSIMACHIA Nummularia.** Leafy trailing stems of emerald green make neat mats while the flowers, June-August, are little yellow primroses, to which family it belongs. Easily curbed, specimen plants are fine in the dry rock garden while as a ground cover for the most difficult soils, either sun or shade, it is unexcelled. Must have some moisture. 30 cts. each; 3 for 75 cts.

PLEASE!

Please do read under "Terms", page 2, as to Delivery Cost. The increased postal rates have hit us hard. It is either raise prices or ask you to help with the delivery costs. We do not want to raise prices because a blanket increase would cost you much more than the amounts requested for postage on small orders. (All seeds are postpaid.)

Three of one variety take three rate, six the dozen rate. Assortment at these rates is not permitted.

Do name some alternates to be sent in case a selection is sold out. It saves time in writing and sending refunds and greatly hastens shipment of your order.

California law imposes a sales tax of 3% on all orders shipped to California address. Add 3% before making your remittance. If omitted we must tell you about it before shipping.

FORGOTTEN WORTHIES

For years I have tried to put over these fine things without much success and I can no longer afford the space. Here they are with very brief descriptions for those who know, value and want them.

***ACHILLAEA Ageratifolia.** Neat evergreen, silvery foliage, white flowers on 12 inch stems. **Each 30 cts.; 3 for 75 cts.**

***ACHILLAEA Umbellatum.** Close mounds of lacy grey with head of white flowers. 8 in. **Each 30 cts.; 3 for 75 cts.**

***ACHILLAEA Argentea.** White; fine in bouquets. **Each 30 cts.; 3 for 75 cts.**

***ALYSSUM Saxatile.** 12". Profuse gold. Spring. Fine on banks or margins. **Each 25 cts.; 3 for 65 cts. Seed 25 cts. pkt.**

***ALYSSUM Serpyllifolium.** Semi-creeping foliage, masses of soft yellow in Spring. **Each 30 cts.; 3 for 65 cts. Seeds 25 cts. pkt.**

ALYSSUM Moellendorffianum. 20 in. Sprays of soft yellow for garden or cut. **Each 30 cts.; 3 for 75 cts. Seeds 25 cts.**

ASTER, New England, in following five varieties:

Hilda Morris. 4 ft. Violet-purple. **Each 30 cts.; 3 for 75 cts.**

Lil Fardell. 4 ft. Rosy-pink. **Each 30 cts.; 3 for 75 cts.**

Mrs. Raynor. The nearest to red. **Each 35 cts.; 3 for 75 cts.**

Mrs. S. T. Wright. Rich purple. **Each 35 cts.; 3 for 75 cts.**

Rosea Superba. 5 ft. Rose pink. Stunning. **Each 35 cts.; 3 for 75 cts.**

ASTER Noviae Belgiae. Each of these 30 cts. each; 3 for 75 cts.

Springside. My pet. Clear soft blue. 3 ft.

Blue Eyes. 4 ft. The best tall aster. Pure violet.

Climax. 5 ft. Very finest soft blue. 1-inch discs.

CENTAUREA Montana. 2 ft. I like it better each year. Spidery violet-blue Cornflowers all summer. Fine cut. Easy to grow in border. **Each 30 cts.; 3 for 75 cts.**

***ERIGERON Mucronatus.** Excellent for trailing and low masses. Smothered with tiny daisies all summer. Hardy only in the West. Sun or shade. **Each 30 cts.; 3 for 65 cts.**

MELISSA—Lemon Balm. Fragrant garden herb. **Each 30 cts.; 3 for 75 cts.**

***NEPETA Mussini.** 12 in. Exceptionally soft lavender Catnip for any situation. Easy. **Each 30 cts.; 3 for 65 cts.**

***POTENTILLA Repens.** Finest of low creepers, ruddy foliage, yellow flowers. **Divisible Plants, 30 cts.; 3 for 75 cts.**

***SISYRINCHIUM Bellum.** Starry deep blue flowers, 12 in. stem. Grassy foliage. April-July. Moist loam. **Each 30 cts.; 3 for 75 cts.**

***VERONICA Repens Rosea.** Velvety grey carpet all year, deep rose flowers, July. Sun, moist. **Each 30 cts.; 3 for 75 cts.**

HEMEROCALLIS OR DAY LILIES

See page 21 for other fine Day Lilies and Culture.

Cinnabar. Three feet tall, the flower is cinnabar-red with a yellow throat. The recurving petals have the outer half sprinkled with rosy brown. August. **Each 50 cts.**

Fulva Maculata. 4 ft. July to late August. A blending of burnished copper and soft yellow with a decided pink tone in the center of the open cup-shaped flower. **Each 50 cts.**

Golden West. 4 ft. July-August. The very large flowers are bright yellow and of splendid substance. **Each 75 cts.**

J. A. Crawford. 4 ft. Very large flowers of cadmium-yellow, shaded apricot through a very long season, June-August. **Each 75 cts.**

Queen of May. 38 inches. The very large canary-yellow flowers come first in May and usually again in July and October. **Each 50c.**

Radiant. 42 in. Flowers are large, petals recurving, the color clear rich orange with remarkable substance and sheen. One of the flowers I have rarely offered because prior to gas rationing visitors bought all I could grow. **Each 75 cts.**

RUDBECKIA Newmannii. The finer and perennial form of the beloved "Black-Eye-Susan". Deep orange-yellow flowers on wiry stems up to three ft. long all summer. Thrives in any soil with moderate moisture. **30 cts. each; 3 for 75 cts.**

RUDBECKIA Purpurea. 3 ft. Blooms July to October which alone commends it. A fine mass effect. Rosy-purple flowers with brown cone center. Plant Fall or Spring. Any soil, sun or shade. Divide each third year. **Each 30c; 3 for 75c.**

DWARF HARDY ASTERS are offered on page 25. Do not overlook these most valuable fall flowers.

PENSTEMON Grandiflora. A very useful border perennial. The luxuriant basal foliage is rich green, often tinted red. Large flower spikes 18 inches tall bear soft lavender-blue flowers for weeks in summer. Thrives in any good garden soil. **Each 30 cts.; 3 for 75 cts.**

TWO SPLENDID GROUND COVERS FOR DIFFICULT SOILS

VINCA Alpina. Small pointed leaves on closely trailing stems which quickly spread by runners to give a solid ground cover. Flowers are a hard to describe shade which I would call a dark reddish purple, odd but attractive. Foliage has a ruddy tint from late summer to spring. **30 cts. each; 3 for 75 cts.; 15 for \$2.50; 50 for \$3.75.**

VINCA Minor Alba. Smallish leaves of emerald-green closely set on trailing stems that quickly root at joints to give a solid cover. Flower white. **Each 30 cts.; 3 for 75 cts.; 15 for \$2.50. Divisions, 50 for \$3.75.**

You can quickly increase your ground cover by plucking out and planting the rooted stems. It takes some moisture to establish a cover of Vinca but once thoroughly matted they will go through the driest summer almost bone dry, although more luxuriant with moderate moisture. Stand even heavy shade. For finest effect shear off to the ground in early spring before new growth starts.



Rudbeckia Purpurea

HARDY ASTERS

ASTER, Michaelmas Daisies. Lovely autumn flowering plants of inestimable value in the border and for cutting, or in a border all their own. In the mixed border they blend well with anything. Cult.: Sun or light shade in warmer climates. Soil, any but a rich loam is best, ample moisture. Pl., fall to spring and most effective in groups of 3 or more of a kind. Prop., divisions, divide every year.

Novae Belgiae Asters make leafy, much branched bushes of soft and often ruddy tinted foliage and are literally smothered with flowers from Sept. to Nov. Here are some of the lovely new ones under trial here which we commend to you. They have the same profuse bloom as the Dwarf Aster pictured below smothering the 3 to 4 ft. plants.

Beechwood Challenger. Brilliant crimson red flowers freely produced on 3 ft. stems. The deepest red yet produced. 40 cts. each; 3 for \$1.00.

Blue Gown. (New from England.) 4 ft. Very large flowers of a lovely clear medium blue. Each 35 cts.

Chas. Wilson. 3 ft. A lovely sight with its masses of lustrous deep pink. Each 50 cts.

Gayborder Blue. 4 ft. Semi-double rich violet blue. 50 cts.

Hon. Vic. Gibbs. 2 ft. Tiny blue flowers smother the plant, calling to mind a heather. 50 cts. each.

James Kelway. 4 ft. Brown stems and leaf veins give attractive foliage effect. Fine deep blue. Each 45 cts.

Mrs. Davis Evans. 3-4 ft. Luxuriant foliage and the large flowers a clear azure blue. Each 35 cts.

Mt. Everest. 3-4 ft. The finest white. Large flowers in abundance on stately plants. Each 40 cts.; 3 for \$1.00.

Pink Nymph. 4 ft. Flowers open rosy red later changing to bright pink. 60 cts. each.

Queen Mary. 4 ft. Large flowers are blue, tinted lavender in graceful panicles. Each 30 cts.

Royal Blue. 3-4 ft. Strong growing. Rich deep purple-blue, seemingly double at first but opening to form a distinct cup with gold disc at bottom. Stunning. 35 cts. each.

HARDY ASTER GARDEN. Collection, 1 each of 10 varieties, my selection, for \$3.00. **Double collection,** 2 each, for \$5.50.

SEE COLORED INSERT FOR OTHER FINE ASTERS

DWARF HARDY ASTERS

These new dwarfs are compact, low counterparts of their taller sister. But 12 in. high they are shimmering mounds of color in Sept. Elegant for color hedges or edgings, in rock garden and in front of the tall ones. Effective in tubs and large pots.

Countess of Dudley. Clear pink. **Daphne.** Soft pink.

Marjorie. Late blooming bright rose-pink. Dainty.

Nancy. Loose discs of true sky blue. **Niobe.** White.

Ronald. Dark rose buds opening to lilac pink. Stunning.

Above, Each 30 cts.; 3, must be all one variety, for 75 cts.

Blue Bouquet (See picture). Violet blue on 12 inch stems. 40 cts. each; 3 for \$1.00.

Victor. 6 in. Most dwarf. Lavender-blue. Each 35 cts.; 3 for 90 cts.

Snowsprite. 12 in. Double flowers of pure white. 40 cts. each; 3 for \$1.00.

DWARF ASTER GARDEN. 1 each of 6 varieties, my selection, \$1.60. **Double Collection,** 2 each of 6 varieties, \$3.15.

ASTER Frikarti Wonder of Stafa. One of the loveliest and most persistent blooming of all plants, the 2-2½ in. flowers come from June to Nov. on graceful well branched plants. Sun or light shade. Well drained yet constantly moist rich loam best. Each 60 cts.; 3 for \$1.50.



Aster, Harrington's Pink

HARRINGTON'S PINK. The first truly pink Aster. Plants are 3-4 ft. tall and sturdy branches bear the huge blossom clusters. The picture supplies the rest of the adjectives. Truly superb. 60 cts. each; 3 for \$1.50.



Dwarf Hardy Aster



Lewisia Rediviva

SAXIFRAGA Pelata. 3 to 5 ft. with very large round leaves of richest green terminating tall stems, is one of the finest of background or foliage plants for deep shade. Likes moisture and will grow in water. Your choice of **Pink Flowers, Each 50 cts., or Rare Pure White, Each 50 cts.**

***SILENE Californicum.** A sight indeed is mass of the cardinal-red flowers on a dry bank of a California roadside. Plants are a foot across and stems 8 to 18 in. high with masses of the brilliant flowers through the long hot summer months. Best light shade. The long root must be set with its tip covered 2 in. Any deep well drained soil. Plant fall to Feb. **25 cts. each; 3 for 65 cts.; \$2.50 per doz.**

***SILENE Hookerii.** One of the world's most delicately lovely plants. Laterals push thru the ground to make it what seems a colony of many little plants each bearing the exquisitely lacinated flower up to 2 in. across, clear pink with a white center. Cult.: see S. California, page 26. **Each 25 cts.; 3 for 65 cts.**

***SILENE Schaftii—Autumn Catchfly.** When flowers are so scarce July to Oct. it is a mass of bright clear pink. Plants 4-6 in. high. A very neat and charming rock garden and border plant. Sun, any soil, stands drouth. Pl., fall to spring. **30 cts. each; 3 for 65 cts. Seeds, pkt. 25 cts.**

***STATICE artica Californica, Sea Peak.** 6 in. Neat tufts of grassy foliage and bright pink flowers all summer. Fine for rock garden or edging. Sun. Soil, any. **25 cts. each; 3 for 65 cts.**

STATICE latifolia. 18 inch airy sprays of tiny lavender flowers. Fine in garden and a "must" for floral arrangements. Dried, a "top" everlasting. Sun, any soil. **Each 30 cts.; 3 for 75 cts.; \$2.50 doz. Seeds (easy) Pkt. 25 cts.**

THALICTRUM Diptercarpum. 3-4 ft. The most daintily graceful tall plant I know. Elegant ferny foliage. Flowers in airy sprays are lilac-mauve lightened by lemon stamens, July to Oct. Light shade, well-drained rather heavy soil, constant moisture. Pl., fall to spring. Prop., seeds. **Strong plants, 40 cts. each; 3 for \$1. Seeds, pkt. 25 cts.**

THALICTRUM Aquilegifolium, Purdys. Purple. **\$1.25.**

***Golden Thyme.** *Thymus aureus.* This seems to be new in America. A rather compact creeper with bright golden yellow leaves. Mine never flower. **Each 35 cts.**

CALIFORNIA REDBUD (*Cercis occidentalis*). Stunning deciduous shrub or small tree with small rounded leaves, smothered April-June with clusters of deep rose pealike blooms. Sun, any well drained soil. Stands drouth but if you water do so continuously. **Oct.-March 1, 15-18 in. bare root plants, postpaid \$1.15. (For Pacific Coast Only.)**

THYMUS, Thyme. The dwarf (Thymes) are splendid creeping plants, fine between flagging, for a mantle over a rock or for edging the border and they make delightful masses in nooks among rocks. The taller ones are nice in the the border and the herb garden. Cult.: They thrive either in sun or light shade and in poorest soils. Pl., fall to spring. All flower in June and July.

***Albus.** Dense carpets of emerald green ½" high covered with pure white flowers in spring.

***Marchallanus.** Dense masses of needle like leaves, ruddy in winter. Flowers pink. An outstanding thyme. It is fine between flagging.

***Lanuginosa, the Woolly Thyme.** With its soft grey foliage it is most attractive as a mantle or in a pocket.

Nummularia. A very pretty almost unknown species with glossy deep green ovate leaves and pinkish flowers.

***Serpyllum coccineum.** Foliage is a low carpet of small dark green leaves. Flowers rosy-red in great profusion.

***Serpyllum, Purdy's Var.** (right name doubtful), grows 2 in. high, spreading rapidly to make a dense mass and has lavender-pink flowers in a fleecy cloud. Always neat, it is alike valuable to drape over a bank or rock to even 3 or 4 feet down or to fill a pocket. Easily kept in bounds by trimming. A wonderful ground cover.

Except as noted, **Creeping Thymes are 30 cts. each; 3 of any one variety, 65 cts. Collection of 5 varieties, my choice, \$1.25.**

TALLER THYMES. Neat specimens and edging plants.

***Lanicaulis.** Entirely distinct with leaves like tiny mouse ears in a flat mass while the very pretty flowers which are 1½ inch balls of soft pink are on 6 in. stems. Very desirable. **30 cts. each; 3 for 75 cts.**

***Nitida** makes a very compact, tiny tree-like shrub of greyish-green. Flowers are lavender and it has the most delicious fragrance of any Thyme, which alone should sell it. Fine in rock garden, herb garden or border. Cult.: Sun. Soil, any. Pl., fall to spring. Prop., Cuttings. **25 cts. each. Seeds, pkt. 25 cts.**



Thalictrum diptercarpum

TRADESCANTIA, "Spider Wort". Handsome perennials, dependable and hardy and flowering for weeks through summer. Foliage is grassy while on 18 in. stems are borne the large clusters of flowers, which are three petaled open cups with a feathery tuft at center. Sun to deep shade and a rich moist loam is best. Exceptionally fine cut. Following new varieties are in lovely shades and much larger flowered. You have missed something if you have not tried them. They are a "must" for shaded beds.

Iris Prichard. White tinted violet, violet tuft. 40 cts.

Lilac Time. Pure deep lilac and very fine. Each 50 cts.

James Stratton. Abundant rich deep blue flowers. 40 cts.

J. C. Weguelin. Porcelain-blue. Very choice. Each 50 cts.

Leonora. Deep rich glowing violet. 40 cts. each.

Pauline. Late. Purest rosy-mauve. 35 cts. each.

Purewell Giant. Largest flowered and strongest growing of all. Color is pure azure blue. 40 cts. each.

Purple Dome. Vigorous. Large clusters of rich purple. 35 cts. each.

Any one of above, 3 for \$1.00; \$3.50 per doz.

Collection of 7 varieties, my choice, \$2.50.

***VERONICA Teucrium Nana.** A true dwarf with rich green prostrate foliage and true blue flowers just above the foliage all summer. Rare. Each 35 cts.; 3 for 90 cts.

VIOLETS, Viola

VIOLA. In any garden Violas should have a conspicuous position, for the most modest are delights. Cult.: Sun or light shade. Soil, a rich loam with constant moisture for finest effects. Pl., fall to spring. Seeds.

***VIOLA Papilionacea.** One of the very loveliest of violets; almost evergreen, true violet leaves and large pure violet-blue flowers on long picking stems. Each 30 cts.; 3 for 75 cts.

***Pedata,** the Bird's Foot Violet, is a gem. 4 inches high with leaves cut like a bird's foot. Large handsome flowers are a delightful shade of violet with lighter halo at center. They flower well in May, and several times through the summer. 25 cts. each; 3 for 65 cts.

***Pedata Bicolor.** Varies from Pedata in having the two upper petals deep violet, while the lower ones are lilac. Irresistible in its beauty. 35 cts. each; 3 for 90 cts.

VIOLA odorata, Sweet Violets. Lovely old-fashioned garden violets, thriving in any good light loamy soil in shade. Below are the loveliest varieties:

Avalon. Compact clumps, no runners; the very large violet-blue flowers on long stems. Long blooming. Each 40 cts.; 3 for \$1.00.

Double Russian. Rare. Fragrant double blue violet. Supply uncertain. 40 cts. each.

Czar. Very free flowering, single white. 25 cts. each; 3 for 60 cts.

***Marie-Louise.** An improved form of the lovely, old-fashioned, very fragrant, double light blue Violet. 25 cts. each; 3 for 60 cts.

***Rosina.** A new fragrant deep rose violet, flowering both spring and fall. Delights in light shade and good moisture. 25 cts. each; 3 for 65 cts.; \$2.50 per doz.

Pomeranian or Blue Czar. Very hardy, free-blooming. Fragrant single flowers of clear deep blue. Each 30 cts.; 3 for 65c.

***Princess of Wales.** Very deep blue single flowers on long stems. Strong grower. 25 cts. each; 3 for 60 cts.

***CONFEDERATE VIOLET.** Really nice with large true violet leaves and large flower, white, veined heavily with lilac-mauve. Excellent in shaded bed, pots or in the rock garden. 25 cts. each; 3 for 60 cts.

VIOLET "Charm". Neat little clumps of fluted, true violet leaves with impish little flowers of pure white, often edged or backed mauve through many weeks in spring. Each 40 cts.

*WEST AMERICAN VIOLETS

The West has some forty species, all dainty and lovely, but owing to war conditions I am sorry I can now offer but three rather choice ones. All ripen to a tiny spidery root and must be planted Sept. to Feb. when dormant. In planting cover tip of root 1½ to 2 in. A rather firm soil is best for these. Ocellata must have shade, the others full sun. Nice in pots.

***Ocellata.** Forms clumps 5 inches across and as high of true violet leaves. Jaunty flowers are white with purple spot at center and purple back. Each 25 cts.; 3 for 50 cts.

***Chrysantha** has finely cut leaves. Flower rich yellow within, maroon on back. A beauty. A customer in Virginia says it flowers all summer there. Each 20 cts.; 3 for 45 cts.

***Purpurea.** Rounded, grayish leaves. Rich yellow flowers, with the outside of flower a deep purple. A favorite. 20 cts. each; 3 for 45 cts.

One dozen of any of above (no assortment allowed) \$1.50.



Lithospermum Heavenly Blue See page 18

SEMPERVIVUMS, "Hen and Chickens"

Sempervivums are intriguing little plants for rock garden, for walls or for special little colonies and every garden has a place for some of them. Cult.: Perfect drainage. Sit.: Sun or shade but colored ones retain color longer in shade. Soil: A rich friable loam with some humus.

Named Varieties. See insert between pages 24 and 25. Many of you have asked for special list of named varieties and I lost part of the list of those requesting it. To keep my promise I am giving space to a list of what I believe are unusually fine and most of them rarely seen varieties. If demand warrants I will increase it.

COLLECTION, 16 FINE SORTS. Most of them highly colored, each named and packed separately, for \$5.00.

COLLECTION, 12 SEMPERVIVUMS, each named and packed separately. Selected for well marked differences, for \$3.00. My most popular collection.

ZAUSCHNERIAS are West American plants locally called Wild Fuchsias. They make dense masses of foliage from 6 inches to 2 feet high, according to species, and in fall are a solid mass of the most brilliant scarlet. Here they are oftener found on rock faces where there is a little seepage. Fine for border plants, too.

***Californica** is about 6 inches, with light green foliage.

***Californica var.,** a little taller, with grayish leaves.

Cana grows from 1½ to 2 feet, with grayish foliage. A wonder when in flower.

All are hardy in Europe and presumably in the East. 25 cts. each; 3 for 65 cts.; \$2.50 per doz.



Primrose, Heavenly Blue

LOVELY PRIMROSES



Primula Helenae

SHASTA DAISY, MOUNT SHASTA.

Identical in form to Esther Read, flowers are larger, stems 24 to 30 inches tall. Plant vigorous, hardy and long lived. Splendid cut flower.

Each 50 cts.; 3 for \$1.25.

***PRIMULA or PRIMROSES.** *Primula acaulis* is the English primrose and differs from the **Polyanthus** in having each flower on a separate stem and they continue to flower over a much longer season. They thrive in any situation in light or medium shade and in ordinary rich soil. Splendid alike in shady border and rock garden. Pl., fall or spring. I offer the following rare sorts:

***Primrose Heavenly Blue.** So rare and beautiful that they always attract. Of the *Acaulis* type, with stems 6 to 8 inches with flowers in varying shades of very deep blue. 40 cts. each; 3 for \$1.00.

***Primrose "Double Lavender".** They are like full double baby roses, one to a stem and of deep lavender. After seven years I have found some. I paid too much and I am ashamed to ask such a price but at that I guess they are worth it if you have never had one. Each \$1.25.

Primrose Double Blush. None this year.

***PRIMULA JULIAE HYBRIDS.** Little jewels they prefer a moist loam and shade from sun in summer. They form spreading mats of glossy leaves and a profusion of starry flowers on 2-3 in. stems in spring and often again in fall.

***Helenae.** Very dwarf. Burgundy red flowers. 50 cts. each.

***Juliae.** Starry flowers of claret red with golden eye. Very low and truly a gem. 50 cts. each; 3 for \$1.25.

***Wanda.** A sprightly violet-blue, the flowers completely smother the plant for weeks. Each 50 cts.; 3 for \$1.25.

HARDY NATIVE FERNS

There has been so great a call for ferns that I list here the most dependable of our Western native species for the fern bed, naturalizing along streams or under trees. For an effective planting one must have color with the ferns as well as strong background plants and the following are all hardy, and well proven plants for this purpose. Columbines, Aconites, Lily of Valley, Michaelmas Daisies, Trilliums, Bog Lilies, Aruncus, Aralia, and for foreground colonies of Erythroniums, native *Silenes*, *Synthyris*, and for carpeting, *Boykinia*, *Tellima*, *Tolmeia*, *Asarum*. Colonies of *Erythroniums* are very effective.

ADIANTUM Pedatum, Five Finger Fern. Well known and particularly lovely in the foreground. Splendid in pots or hanging baskets.

ASPIDIUM Munitum, Sword Fern. Dark green, evergreen frond that looks well at all times. Most satisfactory either in fern bed or in boxes or pots.

ASPIDIUM Aculeatum lobatum. The lace fern, and in my opinion one of our handsomest ferns, the fronds fine cut and most graceful. Rare and scarce. 75 cts. each.

ASPIDIUM rigidum. The Soft Brake of the florists, soft green in color and thrives well even in dry places.

Except as noted, supplied in three sizes: Small, 25 cts. each; 3 for 65 cts. Medium, 50 cts. each; 3 for \$1.25. Large, \$1.00 each; 3 for \$2.25; or \$2.00, \$4.00 or \$8.00 per dozen.

WOODWARDIA radicans, Giant Sweet Scented Chain Fern. Makes bold plants to 9 feet high of a soft green. One of the finest of background ferns. Large plants, 50 cts. each; extra large plants, \$1.00. East of Rockies add 50% to price for postage.

PTERIS. The Brake. A very common fern yet one of the most pleasing of all with its soft green restful foliage. Each 25 cts.; \$2 per dozen.

Quantity prices on all ferns sent upon application.



Shasta Daisy, Esther Read

SHASTA DAISY Esther Read — *Chrysanthemum Esther Read*. A thrill will be yours when this blooms in your garden. The huge flowers of this first fully double Shasta Daisy are very lasting and are produced freely from June to Oct. on stiff 18 in. stems. An outstanding garden and cut flower of today. Each 50 cts.; 3 for \$1.25; doz. \$4.00.

CHRYSANTHEMUM White Swan. The white flowers are formed much like those of Esther Read, but are smaller and more dainty, and stems are slender and wiry. Called Memorial Day Daisy because on that day one can usually cut 20 to 30 blooms from one plant. A delight in garden and cut. Visitors here love it. Cult., see Shasta Daisy. Each 30 cts.; 3 for 75 cts.; \$2.50 doz.



Shasta Daisy, Double Fringed

SHASTA DAISY. Superbly effective in the border or in long rows, nothing gives more bloom, either in the garden or for cutting, with so little trouble. Cult.: Sun; fair to good loam. Pl., fall to spring. Divide every second year.

Shasta Daisy, "Double Fringed" or "Chiffon Daisy". 2 ft. high with very double flowers of pure white, the petals shredded, quilled, and incurved to give a most enchanting effect. Most effective as a cut flower. Strong plants, 35 cts. each; 3 for 90 cts.; \$2.75 doz.

Shasta Daisy, "Burbank's Alaska". 18 to 24 in. high, of graceful habit. The pure white flowers are 4 to 5 inches across. 30 cts. each; 3 for 75 cts.; \$2.50 per doz.

LOVELY WESTERN PLANTS FOR SHADED BED AND WOODLAND

I group here our lovely Western foliage and ground cover plants suited to any well shaded situation and for color suggest a number of lovely things described on other pages. All thrive in a soil rich in humus, best acid and moderately moist.

ASARUM Caudatum—Ginger Root. Strong woodland creepers or ground covers with large heart shaped, ginger scented leaves like huge violet leaves. Fine with ferns. 20 cts. each; 3 for 45 cts.; \$1.50 per doz.; \$7.50 per 100.

ASARUM Hartweggii. The same large leaves, beautifully veined white. Each 25 cts.; 3 for 60 cts.

***BOYKINIA occidentalis** forms a neat clump with bright green, ivy shaped leaves. The flowers are filmy white panicles on stems to 18 in. and are fragrant. Admirable for heavy shade with moisture or on stream margins or in other moist spots. Flowers in May. Cult.: Sun or shade. Soil, any if moist. Pl., fall to spring. Prop., div. 25 cts. each; 3 for 65 cts.

***OXALIS Oregona**. In the Redwood region of California it often densely carpets large areas in the deepest shade. Most useful to carpet shady places, either under trees or on north exposures and is a most lovely associate of taller woodland plants. To make a mass, plant the runners flat, covered two inches and ten inches apart. The large rose colored flowers are handsome. 20 cts. each; 3 for 40 cts.; \$1.50 per doz.; \$5.00 per 100.

SYNTHYRIS are delightful Western plants for shaded beds. The neat evergreen foliage clumps are always lovely.

***Cordata**. A few long cordate leaves, deep green above, purple beneath. The dainty pink flowers come in April-May. 25 cts. each; 3 for 60 cts.

***Rotundifolia**. No prettier woodland plant in foliage. The round leaves make a close mound a few inches high and the very many soft blue flowers appear in early spring. 25 cts. each; 3 for 60 cts.

SANGUINARIA Canadensis. "Blood Root". 4-6 in. high with lovely snow white flowers, followed by the large maple-like leaves of blue green. A jewel for the deeply shaded bed with ample moisture, acid soil rich in humus. Pl., fall or early spring; Prop., div. 30 cts. each; 3 for 75 cts.; \$2.50 per doz.

***TELLIMA grandiflora**. A Western woodland plant to be prized for its lovely begonia-like foliage and splendid for the shaded rock garden or with ferns. Makes beautiful clumps 6 in. high and a foot across. Cult.: Any soil in shade. 25 cts. each; 3 for 60 cts.

TOLMEIA Menziesii. This hardy Californian plant has soft, green, heart-shaped leaves and creeps by underground runners to make broad low masses. A lovely foil or ground cover in the moist woodland garden. 25 cts. each; 3 for 60 cts.; \$2 per doz.

VANCOUVERIA Hexandra—"Redwood Ivy". Easily the prettiest of American foliage and ground cover plants. Perfectly hardy. Plants spread by slender underground runners and form a dense mass of very glossy pinnate leaves. Lay roots flat, covered 3 inches. 20 cts. each; 3 for 45 cts.; \$1.50 per doz.; \$7.50 per 100.

JACK-IN-A-PULPIT. Queer Eastern Calla-like plant for which I am often asked. 30 cts. each; 3 for 75 cts. See page 7.

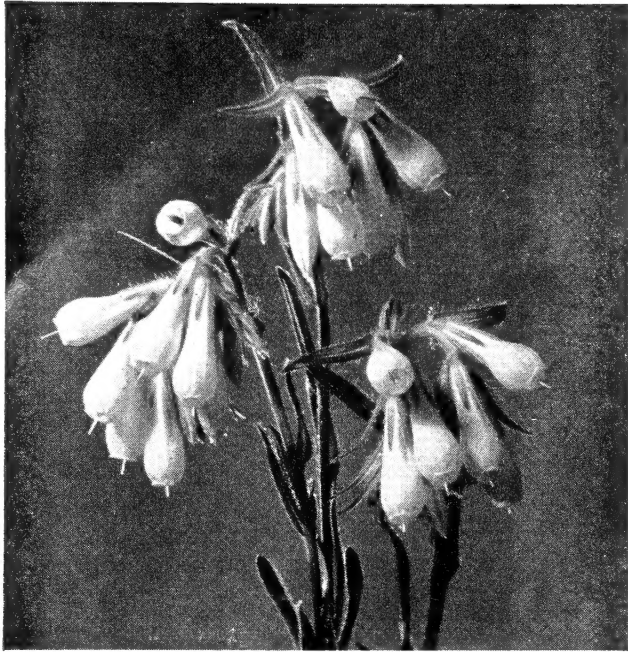
Color Suggestions for Shade: Erythroniums, Trilliums, Columbine, Polemonium, both Eastern and Western Lady-slippers, Iris, Trientalis, Delphinium nudicaule and Ferns. Blending fine with these the cultivated Aconite Primroses, Michaelmas Daisies and Violets, Tradescantia.

See also page 6 for further hints and special offers.

We pay postage on orders over \$5.00. See page 2.

*Indicates plants well suited to rock gardens.

**Indicates plants suited to the rock garden only.



Onosma Tauricum—See page 12

OUTSTANDING

Since it is desirable to have descriptions near pictures on alternate color pages we cannot maintain alphabetical order or get all items in proper place. A lot of new offerings appear through the pages, more are on page 12 and on the colored insert between pages 24 and 25. On this page are some very fine and outstanding flowers.

***ACHILLAEA Argentea.** Quite feathery silver fine cut foliage mounds are always neat, bear in May 12 in. sprays of quite large pure white flowers which are nice cut. Splendid rock garden subject and fine for edgings. **Each 30 cts.; 3 for 75 cts.**

DICTAMNUS Fraxinella Rubra. Gas Plant. Noble border plant 2½ ft. high and as broad with ruddy fragrant foliage. Very showy spikes of darker veined rosy pink flowers June and July. Culture as for dephinium. **Each 60 cts.; 3 for \$1.50.**

DICTAMNUS Albus. The white flowered variety of above, much sought for cutting. **Each 60 cts.; 3 for \$1.50.**

ERIGERON The Quakeress. At last I can again offer this splendid border and cutting variety. The many flowered 18 in. stems bear the discs of soft lavender-pink for weeks May-Oct. **30 cts. each; 3 for 75 cts.**

ERIGERON Speciosa Grandiflora. A splendid garden and cut flower, the 18 in. stems bear a profusion of rosy mauve flowers May to July. **Each 25 cts.; 3 for 65 cts.**

ERIGERON Dr. Lemperg. Shrubby-like plant with the large lavender blue flowers in abundance on 18 to 24 in. stems. Showy border and cut flower. **30 cts. each; 3 for 75 cts.** (Erigerons like fair moisture, either sun or light shade.)

SOLIDAGO Golden Wings. 3-4 ft. Its immense spreading panicles of gold give a 5-star color effect in my garden in late summer and early fall, its bed a mecca for all visitors. Any fair soil, sun or light shade. Divide plants every spring. **30 cts. each; 3 for 75 cts.**

***VERONICA Armena.** Rare acquisition with low spreading but not rampant fine leaved deep green foliage and deep blue head of flowers from April to Oct., the whole not more than 2 in. high. Most charming. **Each 40 cts.; 3 for \$1.00.**

***VERONICA Filiformis.** This little bit of heaven literally dropped in from the skies. Suspected as a new weed it proved to be a dream of an emerald green carpet dotted in winter and thru spring with a cloud of sky blue flowers, the whole but an inch high. Sun or shade; soil any fairly moist. **Little Mats, each 35 cts.; 3 for 90 cts.**

VERONICA Teucrium "Sky Blue". Neat emerald green foliage mats, the 12 to 15-inch stems in June-July bear spikes of purest sky-blue flowers. Shear off at once bloom fades and you may get a second bloom. There is no poor Veronica and this one is especially fine. **30 cts. each; 3 for 75 cts.**

VERONICA Spicata Rosea. 18 in. A profusion of rosepink flowers in long spikes June-August above the neat silvery-green foliage make this a valuable border perennial. Sun, good loam, moderate moisture. **Each 35 cts.; 3 for 90 cts.**

EDGING PLANTS ADD REFINEMENT TO ANY GARDEN.

Straggly margins on beds and borders give your garden an unfinished look no matter how well grown the plants. Edgings of plants neat in foliage through the year either in variety or a succession of nice things gives your garden finish and refinement.

I have found excellent for edgings, Achillaea on this page, Aubrietia, upright Thymes, Aethionema, Campanula garganica varieties, low Dianthus, Satureia pygmaea, Lavender Dwarf Munstead, Bellium minutum, Corydalis lutea in shade, Silene Schaftii.



Trillium Ovalum (See page 11)

***WEST AMERICAN SEDUMS.** Not rampant, they make compact little colonies which are fine for years. Natives of cool slopes in light to moderate shade. They like a sandy or gritty soil rich in humus. A delight as pot subjects.

Divergens. Very low. Red stems closely crowded with leaf-like ruddy leaves. Nice. **Each 30 cts.; 3 for 75 cts.**

Purdyi. The gem of all with densely crowded rosettes which throw out little red threads on which are the tiny new plants. **Each 30 cts.; 3 for 75 cts.**

Spathulifolium. Pictured, page 15. Rosettes are blue-green often richly bronze tinted in winter while in spring the yellow flowers on red stems are striking. Make stunning colonies on rocks. **Each 30 cts.; 3 for 75 cts.**



Darlingtonia Californica

DARLINGTON CALIFORNICA "Pitcher Plant" or "Cobra Plant"

This unique plant in nature lives almost entirely on insects caught in its tubes. Grown as pictured, in a dish of water and fed bits of meat, it will thrive indefinitely. Rare and interesting oddity for house and an exciting gift.

Each \$1.00; 3 (in one pkg.) for \$1.50. With full cultural directions. (Offered for indoor culture only.) Shipped Sept. to May 1.

You will probably have to help with postage as these are more often ordered separately. See page 2.

HELP US GIVE YOU SERVICE

Most Important! Be Sure Your Address Is Complete.

Mail service is good. If you want extra fast service add 25c for Special Handling. If you want orders by a specified date, order well in advance. Many such orders reach us after the specific date of arrival.

You can help expedite your order in several ways:

1. Use the catalog order blank (more blanks on request). Put all instructions on the blank, using the reverse if necessary, in which case so indicate on the front.
2. I will still find time to answer your questions and give advice but please put such requests on a separate sheet so it can go directly to the Query File to get quickest attention.
3. Name some alternate selections to use in case some items on order are sold out or give me permission to substitute. Your order can thus go in one shipment and save me making two packages and time for correspondence.
4. Before writing wait ten days for explanations of shortages. In rush times it may take that long to get explanation or refunds out.
5. I guarantee safe arrival and pack to secure it. However, delays and exposures beyond my control may cause wilt. Immersing wilted plants in cold water for two hours prior to planting will usually freshen them completely. It is a good practice with all plants you may receive. If irremediable report at once and I will replace.
6. California customers do please include Sales Tax. All must include Federal Tax if later imposed. (It is ruled we must collect such taxes before shipping.)
7. Read your order over to be sure you have given—name, local address, town, state, and all necessary instructions. Any one omitted may mean hours to run down. Your cooperation along these lines will help us both.

SOME UNUSUAL SHRUBS AND VINES

As a rule shrubs are out of my line but I have growing here several lovely things that have greatly attracted visitors and as they are not found elsewhere I have propagated them to meet the demand. I feel that you, too, will want to know about them.

THIBETAN TREE HONEYSUCKLE. This lovely tree Honeysuckle came to me from Thibet and I have lost its name. I have always enjoyed it and visitors love it at sight. It makes a round headed deciduous tree 8 to 15 ft. high with refreshing soft green foliage and white flowers but the real glory is the brilliant coral red berries that smother it in autumn. Hardy and easily grown in any soil, sun or shade. **Fine plants.** Bare root Nov. to Feb. \$1.00 each. Sent separately, postage extra: 25 cts. in West, 45 cts. to East.

NATIVE AZALEA. We hope to have a few next Fall. If interested write for prices. No Rhododendrons this year.

MATILJA POPPY—*Romneya Coulterii*. Noble deciduous shrub with glaucous foliage and 4-5 in. pure white poppy flowers. Any well drained soil, moderate moisture. Sun.

Gallon can size only at \$1.25 by Express Collect. If wanted by post west of Rockies add 50 cts. East of Rockies add \$1.20.

CALIFORNIA REDBUD. See page 26.

CALYCANTHUS Occidentalis—Spice Bush. Deciduous shrub 5-8 ft. tall with luxuriant bright green foliage and through summer has odd but attractive rich crimson blossoms. All parts very spicily fragrant. **Bare root, 18-24 in.,** Nov. to Mar. 1. \$1.00, postpaid West of Rockies. **To East, postage extra, 37 cts.** Other months, in gallon cans, \$1.00, by express collect. Sun or shade where moist.

ROSA Spithamea. Creeping by underground runners this lovely native rose forms little scattered colonies. Never over 6 in. high, and its bright pink blooms are lovely. 50 cts. each, postpaid.

CARPENTERIA Californica. One of the finest of all evergreen flowering shrubs, it grows to 8 ft. Always attractive, its glossy deep green leaves, lighter beneath but when studded with its large anemone-like fragrant blooms of purest white in June-July, it is a glory indeed. Best light shade and deep well drained soil. **18-24 in. in gallon cans, \$2.00 each, express collect.** (Hardy on Pacific Coast and in South only.)

ARCTOSTAPHYLOS Stanfordiana. Lovely Mountain Manzanita with rounded bushes 3 to 6 ft. Bright green leaves are slender and pointed and flowers deep pink. Full sun; any well drained soil. **Shipped on Pacific Coast only. Balled plants 6-8 in., \$1.00 each. Postage, see page 2.**

ARCTOSTAPHYLOS Nummularia. A gem you would not recognize as Manzanita. It forms a perfect mound 3 ft. high and as broad of tiny glossy deep green leaves, tinted red. Flowers are soft pink. Suited to cool situations only on Pacific Coast. Soil must be acid. **6-in. balled plants, 75 cts. each. Postage, see page 2.**

BITTERSWEET—*Celastrus scandens*. A splendid deciduous climber. Luxuriant emerald green leaves and brilliant berries in autumn. Likes cool situation, liberal moisture and liberal mulch of leafmold. **Fine Plants** (shipped to West only) \$1.40 each. **See page 2 as to postage.** Berries cannot be guaranteed, especially on single plants.

AKEBIA QUINATA. "A Vine Supreme." Evergreen with slender twining stems and luxuriant growth of small five parted leaves of soft green. Its odd paste' rose bloom in spring is partly hidden by foliage but spicily fragrant for rods around. It thrives on hot south chimney in poor soil and a cold damp north side equally well. Not at all rampant, yet quickly covers the support provided. Nov. to March 1. **bar root plants, \$1.00. See page 2 as to postage.**



BRODIAEA—See page 4 for complete list.

- | | | | |
|----------------------|---------------------|------------------------------|------------------------|
| 1. <i>Laxa</i> | 4. <i>Capitat</i> | 7. <i>Volubilis (in bud)</i> | 10. <i>Grandiflora</i> |
| 2. <i>Candida</i> | 5. <i>Coccinea</i> | 8. <i>Lactea</i> | 11. <i>Californica</i> |
| 3. <i>Bridgessii</i> | 6. <i>Douglassi</i> | 9. <i>Ixiodes splendens</i> | |

● Brodiaeas are Californian bulbous flowers than which the world offers few finer. Hardy, as easy to grow as Tulips, they thrive in poorest soils. All are most lasting, both in the garden and as cut flowers.

You will find those pictured together with many more equally as fine, described on page 6.

Brodiaeas are among the loveliest of cut flowers and they are among the most lasting of all cut flowers. They are most charming when placed in little colonies either in sun or light shade of deciduous trees and in little pockets in the rock garden. They must have good drainage but thrive in even the poorest of soil.

GET ACQUAINTED
BRODIAEA OFFER

So that you may know them better I will send you a collection of five finest varieties, five bulbs of each, named separately, for only \$1.40, post-paid.

From
CARL PURDY GARDENS
UKIAH, CALIFORNIA

Library
U.S. Dept. of Agri
Washington 25, D.C.

Sec. 562, P. L. & R.

U. S. POSTAGE
PAID
PORTLAND, ORE.
Permit No. 86

Return Postage Guaranteed.