

## **Historic, Archive Document**

Do not assume content reflects current scientific knowledge, policies, or practices.







We are proud of having this berry patch on our own farms, but we would be much prouder if the girls were our own. From left to right are Diane Monaghan, Opal Hayes and Mattie Lee Hildreth. If you can guess which one is not married we will send you free 25 plants.

**H. D. RICHARDSON & CO., Willards, Md.**



# *Introduction*



Dear Farmers and Friends:

This is our new 1949 catalogue. It is made according to our nature. We hope we don't leave the impression that we are bigger, better, smarter, and older than anyone else because we know we are not.

You will notice our pictures are true photographs and not a great display of gay colors that are painted by artists. We will admit they can do a wonderful job, but the word genuine in anything speaks louder, stronger, and more dependably in the business world than anything yet discovered. We may be old-fashioned, but we believe the customer had rather have that amount of money spent giving him a better grade of plants. Then he can grow a picture on his own farm that an artist can't improve.

We have not taken up page after page with testimonial letters to prove we are honest and square-dealing people and that we ship some good plants. The reason we did not is we are yet without a complaint about the grade of our plants from a single customer, and for that reason we are, so far, not guilty of shipping any of our customers plants that were unfair to them. We have no intention of doing so and for that reason we don't need to defend ourselves nor do we need witnesses and more witnesses to testify that we had good plants and dealt with our customers honestly. If you want reference we can give it to you from all parts of America. We believe the farmers will understand the common sense we are using as they are a tribe of business people.

Now if that sun continues to travel on time as it has been doing for quite awhile, we wouldn't be surprised if those buds didn't unfold again this spring. If they do, you will be wanting to know where your Strawberry Plants are coming from and if they will be delivered on time. Now it seems to us the thing to do is to mail your order in as soon as you possibly can. That way there will be no doubt of getting your plants or getting them on time.

**H. D. RICHARDSON & CO.**



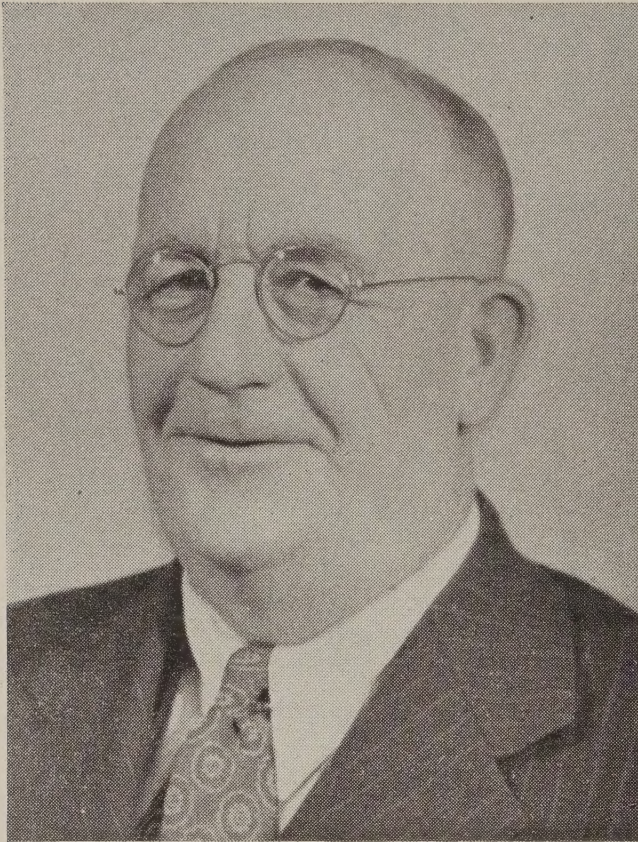


### **PREMIER**

**PREMIER.** Premier, nationally known and have told their own story from coast to coast. For a number of years it has been considered the leader among the early varieties, and it must still be as the Premier plant is the leading seller among all strawberry plants today. It is mostly grown in the northern and western states and is as good a cropper and berry today as it ever was. When it comes to furnishing good, well rooted Premier plants we have really got them.

**THE NEW BLAKEMORE.** The new Blakemore was originated by the U. S. Dept. of Agriculture and it is really resistant to the Yellows commonly found in Blakemore. For that reason, or some other reason it produces a lot more berries, and much larger berries, which makes it a real strawberry, worthy of any growers best piece of land, as this berry carries extremely well, and is in demand in every market in this nation.





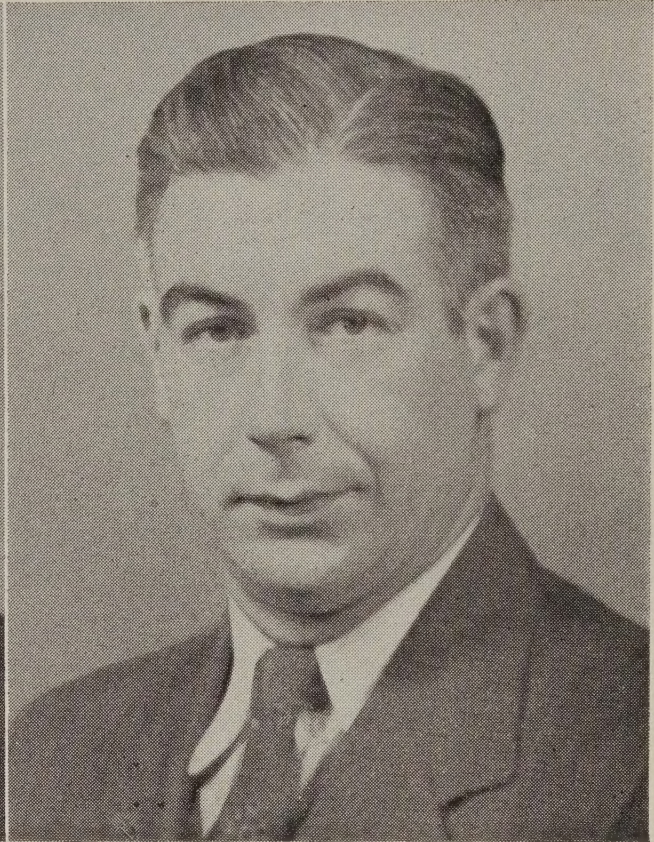
**HARRY D. RICHARDSON**  
FOUNDER

I never would put my picture in the catalogue because I was afraid it might not take so good and hurt my business. However, since the boys were fresh home from the service they thought that being we were all together we should have all of our pictures in the catalogue. You know what happened? My picture came out better than any of them.

Some of my old girls, who are around 75, say that I look as well as I ever did. As much as I like to hear it I think the trick is that their eyes have failed about as fast as I have wrinkled.

I'm not kidding about the strawberry plants. We never had better plants. and no other company ever had any better plants. We have a lot of them. We have taken care of our commercial growers when plants were scarce. He made a pocket-full of money. We never let him down because we could sell small orders for more money. Our customers come back and bring their neighbor. This method of doing business never grows old.

HARRY D. RICHARDSON



**WELTON A. RICHARDSON**  
GENERAL MANAGER

I happen to be another farm boy that served a hitch in the U.S. Navy. I was more fortunate than many other sailors. I left San Diego on an old ship called The Indian Island. She missed a lot of bombs and mines but finally hit a mine. Then I got another ship called The U.S.S. Dixie. She is well known and well liked by all sailors.

The Dixie total sea voyage was four years and had never docked at a home port. On December 5, 1945, was my happiest day in Shanghai, China, when the 1100 foot long homeward bound pennant was raised which represented her crew of 1100 men. My duties were in the engine room. When the orders came to stand by to get underway and the bell rang to give one-third forward I gently opened the throttle.

Then the ship slowly moved off and the music began to play. I then thought "Maybe it is true that we are homeward bound".

When she bumped the wharf at Seattle, Wash., Pier 91, I said, "This is home," although I had 3,000 more miles.

WELTON A. RICHARDSON





**VAUGHN E. RICHARDSON**  
LAWYER

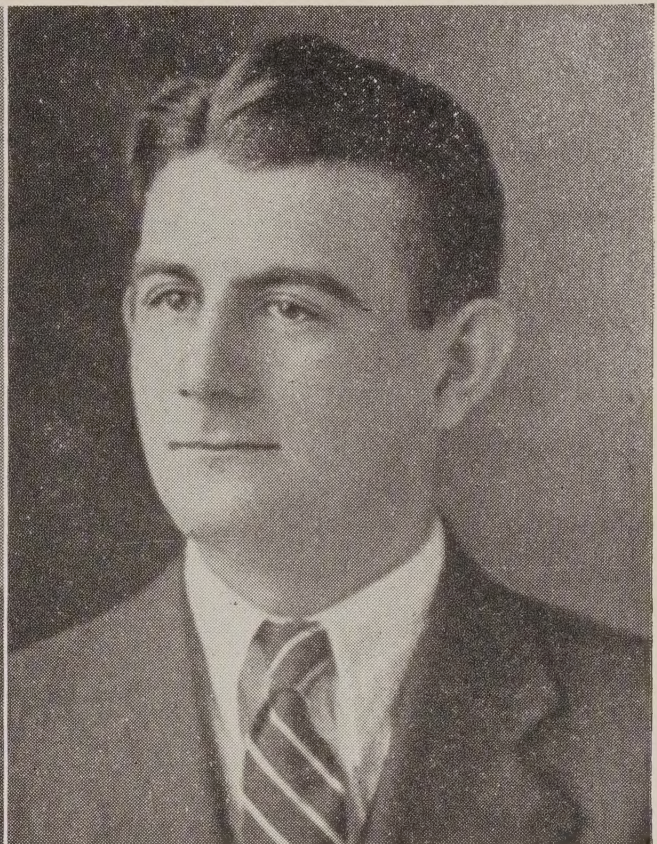
This is Vaughn E. Richardson who served nearly five years in the U.S. Army and traveled many thousands of miles.

I never had but one real pleasure trip. That was when I was seated on the train that was homeward bound. Looking the passengers over I saw some looking strong, some weak, some who had left part of their bodies over in the jungles, and some of my best buddies were entirely lost.

While crossing this great country I looked out the car windows at the great wheat fields nodding in the breeze, contented cows grazing by the brook, the happy children playing in the yards, and a trainload of homeward bound soldiers who protected this great nation, then I was proud of my country even though I did not own a dollar's worth of it.

I still feel that I was very fortunate and blessed in many ways.

VAUGHN E. RICHARDSON



**HOWARD D. RICHARDSON**  
AG. SPECIALIST

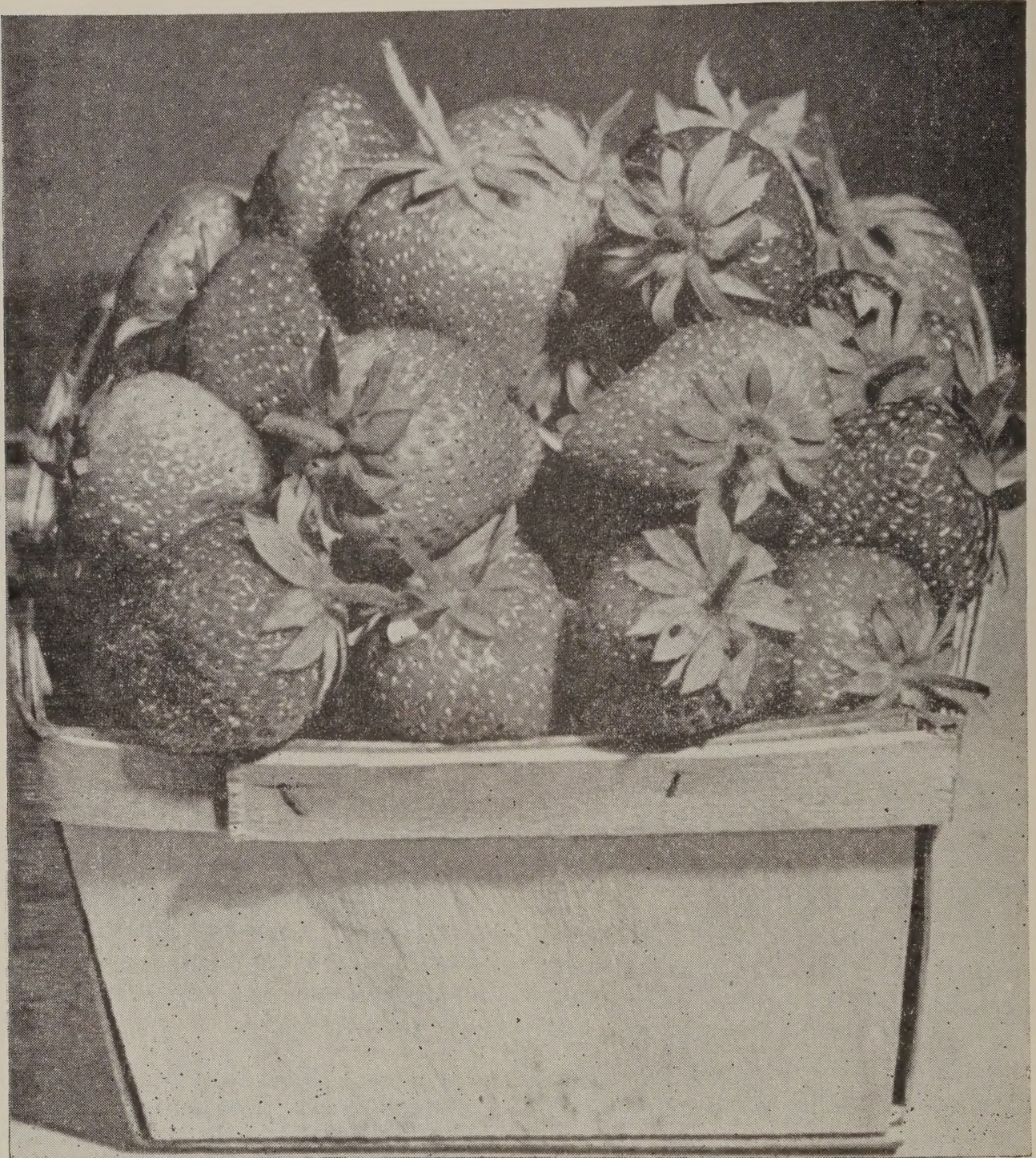
I have spent my entire life on the farm except four years which I spent in College at University of Maryland where I graduated in agriculture. I learned some there, some here on the farm, some from our customers, and still have a lot more to learn.

I class agriculture the broadest subject known to mankind. A tiller of the soil is a bright man. He is dealing with the earth which has never harmed anyone. The Earth provides us with homes, the best of food, clothing, medicine, and heat for the home; also with power that puts the ship across the ocean the power to put the train over mountains and power to put cars over the highways.

The scientists agree that they have learned very little about what the earth possesses but it takes care of us while we are here, also when we are gone, and never harms anyone.

HOWARD D. RICHARDSON





### PATHFINDER

**PATHFINDER.** Now boys, I have been telling you about this new berry for the Northern and Western states.

New Haven, Conn., Experimental Station, Dr. D. F. Jones, reports a yield of 15,000 quarts per acre, this is over 600 crates. I call it a good crop, and I believe his report to be true. Pathfinder was the outstanding variety in 1939. It must be all right. My wife says it is the best looking berry in the dish that she ever put on the table; and the best tasting berry of any variety. As far as I am concerned, that table story is settled. I am not going to argue about it; in fact, I am afraid to.

**CATSKILL.** We were the first to boast about Catskill. We believed in it and led our ad in farm papers with it and still do recommend it. We sold to an Association in Connecticut, in 1938, large quantities of Catskill. I understand they had wonderful success with our Catskills, and still, we are recommending Pathfinder where Catskills are good. It is a bigger cropper and better berry and picks longer.





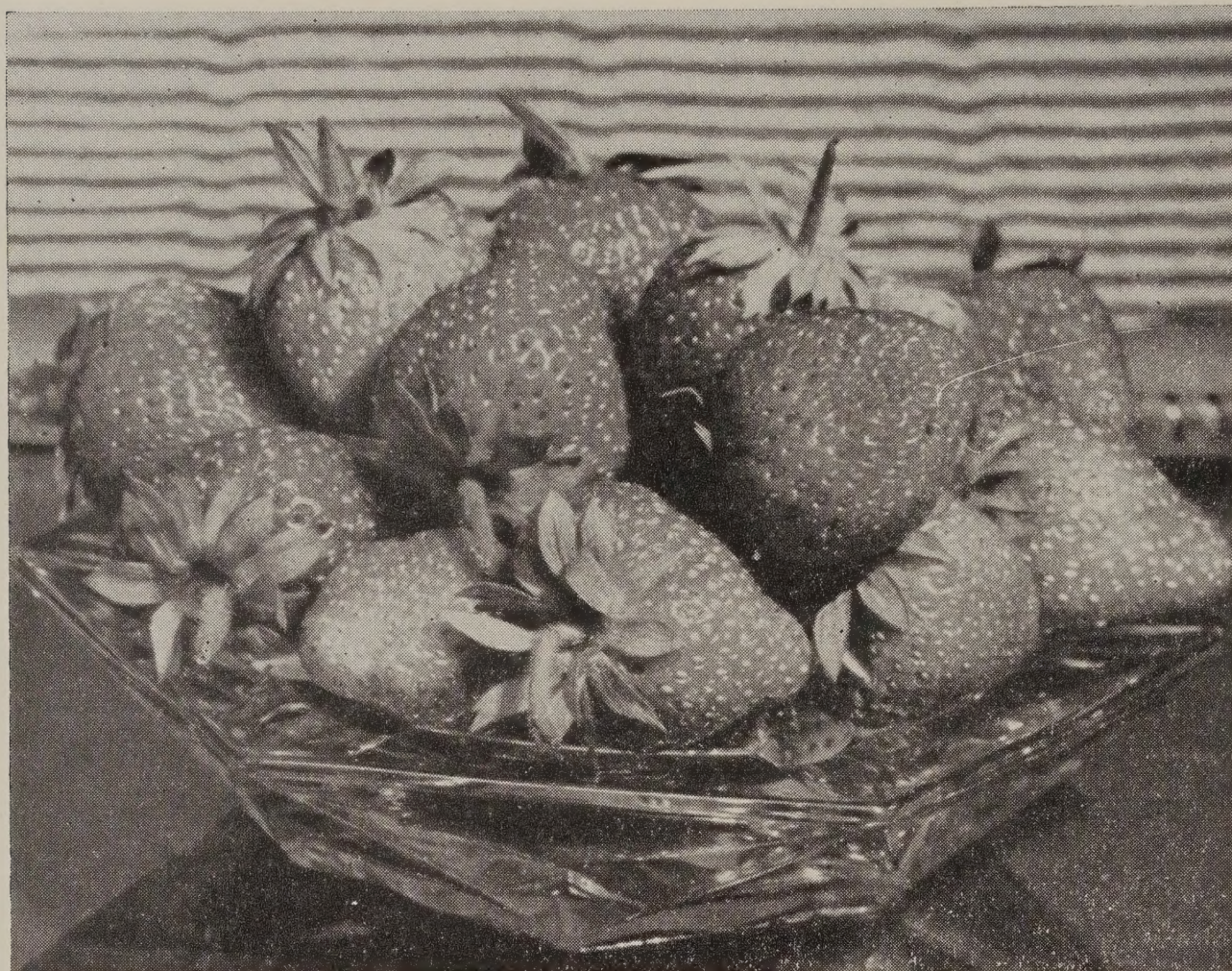
### MIDLAND — *is not*

The Midland berry is alright. It is in class with any berry. In fact, at the present time it stands out above any early berry. The plants are big and strong and don't grow too thick in the row. The berry is a very large cone-shaped berry that really sparkles and has a large green cap. When packed in the crate it is decorated with red and green and really looks like healthy strawberries which will give the grower the thrill that he has done what he was trying to do.

### RED STAR

Red Star (U.S.D.A.) is an extra late berry. It is new and pretty. It grows anywhere and will stand shipping a long distance. Sells anywhere and is a fine late berry. It has flavor and the biggest green caps that we ever saw grow on strawberries. We have never said so before, but the Red Star has put the famous old Chesapeake on the back seat. read this again and you will see my story comes true.





### TEMPLE

We quote: Since 1937 a cooperative strawberry Breeding project between the University of Maryland and the U. S. Department of Agriculture has been in effect. The purpose of this program is to obtain new strawberry varieties with resistance to the red stele disease as well as the qualities necessary for a commercial strawberry. All crosses are made at Beltsville, Maryland by George M. Darrow, which most of the growers selections and propagation are done by W. F. Jeffers on the Eastern Shore of Maryland — (End of quotation).

There is a lot more history to this new berry and it is all true. But I am so interested in it that I want to say something about it myself, knowing that I have no chance to claim any credit for breeding this wonderful berry. I wish I did. But at any rate I am personally acquainted with Dr. Jeffers and Dr. Darrow and with Dr. Temple, I have been associated with them on many occasions pertaining to strawberries and my thoughts of them all was always pleasant and I give them all the credit for their Master Stroke. But do expect to make a lot of money fruiting the Temple berry. Now I tell you why I do; the first thing it resists disease like leaf scratch and others as well and it is a good plant maker. It takes one half as many plants to the acre and that's a great saving and it grows off faster than other berries makes it easier to till. Does well in damp land and above all when strawberry time comes you have a bumping crop of big, cone shaped, sparkling red strawberries with a big, fresh green cap. Seeds stand out so it will not chafe the berry in shipping it solid. In shipping quality and flavor there is nothing left out. This berry smacks in good with any kind of bread or cake.

When packed in crates with berries all the same and near the same size they just out style other berries so much that the buyers stretch their necks out to see if you got Temple on. Now you want to know why I say more



about this berry than other companies. Well the test plot is only about one mile from my house and I go by it several times a day going from home to another farm, and I have been watching this berry since the first berry was grown. The market is only one mile from my home where all the Temple Berries are sold. I not only see what my berries bring, but I see what every kind and everybody bring, and I believe ninety percent of all plants set in this section will be Temple.

Now if you think I have gone above the limit about this new berry just lay this little book away until some of your neighbors fruit them. Then read this again and you will see my story comes true.

---

### CHESAPEAKE

This is a stylish old variety. It has all the good points that you could wish for, except it is very choicy about the type of soil. It does well in dark, deep and rich soil.

**STARBRIGHT.** Starbright (U.S.D.A.) is a cross between Chesapeake and Fairfax. You know it has good parents and when you grow it you will then know it inherited the good quality of them both. If you have been wanting to grow Chesapeake and the soil does not suit them this Starbright will grow there.

**GEM (Everbearing).** A new and much advertised everbearing variety. Is a better plant maker than Mastodon, but with us it did not crop with the Mastodon. Some growers praise it very highly.

**BIG JOE.** A good midseason variety coming on a few days earlier than Chesapeake and for this reason we recommend it.

Big Joe berries are large in size with an attractive green cap, good cropper, sells well and a fairly good shipper to nearby markets.

A good grower and cropper on most all types of soil.

**FAIRFAX.** The queen of quality. Was introduced in 1932 and is another scientific cross of Royal Sovereign and Premier by the U. S. Department of Agriculture. We fruited it on our ideal strawberry soil and found it has the most delicious flavor of any berry we grow. We are not advising our customers to go back on the Premier which has been so dependable, but we do advise you to try our Dorsett and Fairfax in your planting.

**MASTODON (Everbearing).** This is undoubtedly the best everbearing variety. Produces a good crop of berries the same summer you set the plants. We have customers near large cities who claim it very profitable. We have tried many kinds of the everbearers but are only recommending the Mastodon as it seems to do well in most all sections of the country.

**DORSETT.** This is another of the new U. S. Department of Agriculture strawberries, introduced in 1933. A cross of Premier and Royal Sovereign. We think Dorsett will speedily win the friendship of the quality grower for the following reasons: It will come nearer suiting all types of soil as far as making healthy fruiting beds, than any plant we know of. I have visited around here in Maryland to see what it would do on different types of soil and I have never seen a bad patch yet. We fruited it here on our farm where we have a natural strawberry soil and it was a real berry; beautiful when packed in crates; light in color and with the most delicious flavor. Sold better than other kinds.

---

**CLAIMS.** All claims for stock received not as represented should be reported promptly. We cannot entertain claims made after stock has been accepted in good faith, or when a report is not made in some form within a period of 15 days after arrival of stock.





The above picture is Premier on display at the great farm show and which captured the first prize amounting to \$350.00 in honor of the father and son whom you see in the picture also. Now folks we are proud of this. In the first place we are proud of having these people as our customers. We are proud of this man because he is an intelligent farmer. Another thing we pride about him is that he is proud of his son and wants to bring him up with an understanding of nature and qualify him to know how things are done and be willing to go do them. As long as our young men grow up with this kind of training and this type of blood continues to flow in their veins, America will continue to be a great nation. We always look with great pride upon a young man who shows this mark of quality knowing he is for America and will love and prothis great nation which was carved out of a wilderness by his forefathers. He is one of the many young men who will never forget H. D. Richardson & Co. because it was the firm where he got his plants that won for his father and him the first prize.





The above picture is Catskill strawberries. You will also see Bob Hall and his companion and the sweepstake ribbon which captured the \$400.00 prize. Bob looks like he is kind of proud of it and we don't blame him. He is no prouder of his prize than we are of his companion and him and seeing his berries bid off at \$1.25 per quart or \$5.00 per gallon.

This is positive proof that Bob has a good idea about where to get his plants and he knows what to do with them after he gets them. He also knows how to pick and display them. Such affairs as this have a great meaning to a community. It shows that the middle-aged people still like to win especially when they can apply themselves to the Creator's nature to such extent that they can deliver the best that there is there. This causes us to feel that we have been rewarded for the careful selections we have been making in our strawberry plant adventures. It means a lot to us to have the confidence of these customers and to have their good words in the community where they have won the sweepstake prize with Richardson plants. It saves us from spending thousands of dollars advertising in farm papers which we have never been compelled to do in order to sell all the plants we could produce.





This is another photograph of a tremendous strawberry show where the judges are at work. When the final decision was passed the sweepstake prize and the first and second prizes were handed down to our customers who grew their berries with our plants. We would like to tell you more but the space is limited.

#### **FAIRPEAKE**

A cross between Fairfax and Chesapeake and has the good qualities of both parents. It has kept the wonderful flavor of the Fairfax and the firmness of the Chesapeake. The Fairpeake requires damp rich soil same as the Chesapeake, but it is by far a better plant maker than Chesapeake. The advantage of Fairpeake is that it is not choicy about its soil. It will make enough plants in any type of soil, uphill or downhill.

#### **LUPTON**

Lupton is a fancy late berry and one of the best shippers known. Has a beautiful red color and shows up well when packed in crates. They grow well on most all soils, making a good fruiting bed. No Flavor. If your soil does not suit Chesapeake, try Lupton. It is a good berry but if you can grow Chesapeake we would place Chesapeake first.

**TIME OF SHIPMENT.** From October 20th to May 1st. Shipping through the winter to Southern states. Spring is the best time to set your sttrawberry plants in the Middle and Atlantic states. The earlier your plants are shipped and planted the better they are for they will stand digging, shipping and planting much better early than after the growth has started. May 1st ends our shipping season. We will, however, fill a limited number of orders shortly after that date, and with a late season the plants will go through in good condition, but we do not advise planting this late in the season and will fill orders only at the purchaser's risk after this date. We will use every precaution in our power to put the plants through in good condition.





**SPARKLE**

Sparkle has its right name. It actually sparkles when it is in the crate. It is a smooth red berry with a big, fresh, green cap and brown seed that stand out. We are going to say it is a coming midseason berry. Its native soil would be where Premier, Catskill and Pathfinder are grown. The Sparkle berry has proved outstanding in New York State, no doubt it will do equally as well in other Northern States. This is enough for us to say about it. You will be hearing and learning of it from your neighbor if you have not had some of them.

**No. 1** — Premier, Catskill, Temple, Red Star, Mastodon; 25 each; **Special \$3.00.** Order these garden orders by numbers. They will get special attention.

**No. 2** — Premier, Catskill, Temple, RedStar, Mastodon; 50 each; **Special \$5.00.** Each of these garden orders are selected Early, Mid-season, Late, and Everbearing.

**MARY WASHINGTON**

**MARTHA WASHINGTON**

We can discover very little difference between Mary and Martha Washington, but as long as the seed comes to us labeled Mary and Martha it is no trouble to keep them separate and we sell them as we buy the seed.

We prefer one year old selected roots. Years of experience have taught us that the older any plant is the more shock it has from transplanting. This proof has been so definite that it seems there is very little to gain in buying older stock. At the same time, you understand, we can furnish it.

**Asparagus Price List**

|                    | 25     | 50     | 100    | 250    | 500     | 750     | 1000    |
|--------------------|--------|--------|--------|--------|---------|---------|---------|
| 1 yr., No. 1 ..... | \$1.30 | \$2.15 | \$3.40 | \$6.80 | \$10.65 | \$14.05 | \$17.00 |
| 2 yr., No. 1 ..... | 2.05   | 3.35   | 5.40   | 10.80  | 16.90   | 22.30   | 27.00   |





### FAIRLAND

The Fairland is a berry which has made it's own record and made it.s own name. It has demanded a place in the strawberry world like no other berry has ever done. We understand the originator in the beginning thought well of it. He also thought he had other berries as good or better, so for that reason he did not name it nor permit any one to sell it. He had it tried out on experimental plots in many Universities throughout the country. No doubt he had many favorable reports in the beginning. The experimental stations continued to grow a great many of them and the berry proved to have the wonderful qualities of flavor, style, and beauty and also was a highly disease-resistant plant. In all growing sections where Premier, Catskill, and Pathfinder did well there was a demand created for this new berry without a name. To be fair to this wonderful berry they named it Fairland. We think it has the right name. It proved to be fair to the grower, picker, shipper, and the consumer.

**No. 3** — Premier, Dorsett, Temple, Big Joe, Gem; 25 each; **Special \$3.00**. We are proud of these plants. You will be also when they arrive.

**No. 4** — Premier, Dorsett, Temple, Big Joe, Gem; 50 each; **Special \$5.00**. Sparking, Red, Strawberries fresh from your garden tops all fruit.





**SCARLET BEAUTY OR ROBINSON**

We don't know why this berry has two names unless the name Robinson came from the originator and he named it Scarlet Beauty. Now we are going to tell you why we carry this berry. It is that our customers wanted their plants to come from our natural strawberry soil and they had had so much success with this berry that they asked us to grow enough of them to supply their needs. Now if it is good for them why won't it be good for you. With us it turned out exactly as they had told us. It is a top-notch berry. It is good in Ohio, Michigan, Kansas, and New York State or anywhere the Premier grows well. If we were you, we would set out a few rows, then look them over for yourself.

**YOUR CHOICE SELECTION**

|  |                 |
|--|-----------------|
| 100 Strawberry Plants .....              | \$ 3.00         |
| 25 — 1 yr., No. 1 Asparagus Plants ..... | 1.30            |
| 1 — 1 yr., No. 1 Grapevine .....         | .45             |
| 1 — 2 yr., No. 1 Currant .....           | .70             |
| 1 — 2 yr., No. 1 Gooseberry .....        | .90             |
| 6 — No. 1 Red Raspberries .....          | 1.80            |
| 6 — 6-9 Blueberry .....                  | 3.60            |
| 6 — 1 yr., No. 1 Boysenberry .....       | 2.05            |
| 6 — 1 yr., No. 1 Dewberry .....          | 1.20            |
| <b>CATALOGUE PRICE .....</b>             | <b>\$ 15.00</b> |

**OUR BARGAIN SPECIAL ..... \$12.50**

We have figured out how we could give you this bargain so you could grow this delicious fruit on a very small piece of land to supply your own table fresh from your own soil. I don't know of anything that will give you any more pleasure or profit or make you any more friends from the little children of your family and neighborhood children. I should tend to this.





### **STREAMLINER**

The genuine Streamliner is a rather new everbearer. It is the only everbearer we have ever undertaken to class with the Mastodon and Gem. We have classed them the three top everbearing varieties. We think we are justified in doing this considering the reports we have had from our customers from coast to coast. You can have berries from the fourth of July until snowfall.

---

### **A FEW SUGGESTIONS FOR BEGINNERS ON HOW TO PLANT STRAWBERRIES**

We would never print in our catalogue a long story on how to grow strawberries to tell someone how a thousand miles from where we farmed it because we thought if he had made a living on his farm, spent his time there, and concentrated on his business we thought he would know his farm best.

However, we do have some beginners who write us seeking information on how to set their plants and this is what we tell them: Plow your land, make your rows  $3\frac{1}{2}$  to 4 feet apart, set your plants about 14 inches apart in the row, put the roots in the ground well and leave the bud above the ground. If you will cultivate and hoe them the same as other crops the plants will do the balance. Now as to fertilizing them when you set them out that is not necessary. Most any garden soil is rich enough to grow a bed of strawberry plants. The best time to put the fertilizer on is in August right on top of the bed while the plant-leaves are dry. Then it is not necessary to fertilize them again in the Spring.





You will notice this picture shows a roadside market and a customer buying strawberries where some of the quarts are sold out of the crates. This little boy is looking them over with the expression that he has found the Garden of Eden.

#### GARDEN OF EDEN

It does seem to us that a little Garden of Eden with strawberries, blueberries, grapes, raspberries, gooseberries, and other small fruits serves the greatest purpose that any piece of land can serve. It furnishes your table with the highest grade of fresh fruits from early spring to late summer.

The greatest pleasure you ever had is to have all these fruits growing so that when your children and grandchildren are around you can take them out to your little Garden of Eden and see them pick the fruit right fresh from the vine making their own selection. You have them fulfilled the highest place in God's nature. That will be proved to you by the children's rating you above all other human beings because you have fulfilled their heart's desire. Just recall to your childhood days what family wrote their name in your heart with a small gift of some kind of fruit.





The above picture shows you a field of Blueberries which returned a tremendous profit; in fact, more profit than any land returned in this section.

| FRESH FRUIT |   | CANNING   |   | QUICK FREEZE |   |
|-------------|---|-----------|---|--------------|---|
| Weymouth    | E | Rancocas  | E | Rubel        | M |
| June        | E | Rubel     | M | Jersey       | L |
| Cabot       | E | Jersey    | L | Burlington   | L |
| Jersey      | L | Pemberton | M | Atlantic     | L |
| Burlington  | L | Dixie     | L | Pemberton    | M |
| Dixie       | L |           |   | Dixie        | L |
| Atlantic    | L |           |   |              |   |

Our method above of classifying Blueberries has been confirmed by one of the great authorities on Blueberries. Star varieties.

**WEYMOUTH** — The earliest blueberry, vigor growing bush, has beautiful foliage, fruit is round, dark blue firm berry. Excellent for canning.

**JUNE** — Another early berry ripens a few days before the Cabot. It will fulfill your highest hope of fresh fruit blueberries, also an ornamental bush.



**CABOT** — This variety is early and doesn't make a big tall bush. Usually about 4 to 5 feet tall. It has the style and flavor to match any fruit and any market.

our customers to make sure we do him a good job.

**JERSEY** — A late big blueberry. It is a good canning, freezing, and shipping berry. Really a general purpose berry. As an ornamental bush it has the style of any ornamental tree.

**BURLINGTON** — Bush vigor and upright. Spread with large leaves. The fruit is a good blue color. It's flavor carries the dessert qualities of any fruit. Doesn't leave your taste wishing for something else.

**RANCOCAS** — A big rugged bush shoulder high. It is dependable in production, in qualities, style, and beauty. I wish to say it will give a lot of pleasure and profit and no trouble to grow.

**RUBEL** — We believe the Rubel is about the widest planted blueberry that we know of. It is hardy and productive, light blue, very firm, and ships well. The bush grows up in a desirable manner.

**DIXIE** — The largest blueberry ever introduced. They are larger than a nickel. You can't doubt it as we have plenty of proof. Not as extensively planted as Rancocas, Rubel, and Jersey.

**ATLANTIC** — Next to Dixie in size, bush grows like you want a bush to grow. The berries are firm and have good dessert qualities. It also has the shipping qualities.

**Pemberton** — Ranks them in size and a very healthy growing bush. A large producer with all of the good qualities for dessert.

The Blueberries are a comparatively new branch of agriculture to the farmers of America. The U. S. Department of Agriculture test plot is located right here in the neighborhood. We are personal friends of the manager of the government test plot. He is also a large grower of Blueberries.

The blueberry has alarmed the land in pleasure, profit and food value. Large canning and freezing plants buy them by truck loads here. It is fun to grow them and fun to show them to your neighbors. When you go to eat them there is so much nature to the looks of them and to the flavor that you will forget all other fruits and think about the great Blueberry.

**BLUEBERRY CULTURE**

You should have two different varieties near each other, then they are both benefited through the blossom pollination.

The land should be damp, but well drained, with the plants set either 4 feet by 10 feet or 6 feet by 6 feet and remember that it is to bear fruit for 70 years or more. Blueberries will grow from North Carolina to Alaska. Anywhere huckleberries, Azeleas or Mountain Laurel grows so will blueberries. Don't use lime or stable manure, but if you do want to have the best blueberries in your community get leaves and rotted limbs from the swamp and put around the plant. This keeps weeds down and moisture up. The secret in growing them is to keep the ground worked often and shallow so that the air can penetrate into the soil.

This is one subject that we should be in a position to answer your questions about as we have the government test plot for our neighbor.

**BLUEBERRY PRICE LIST**

|                          | each       | 3-9    | 10-29  | 30-99  | more<br>100 or |
|--------------------------|------------|--------|--------|--------|----------------|
| 1 yr., 3 to 6 in. ....   | \$ .40     | \$ .35 | \$ .30 | \$ .25 | \$ .20         |
| 2 yr., 6 to 9 in. ....   | .70        | .60    | .55    | .45    | .40            |
| 2 yr., 9 to 12 in. ....  | 1.00       | .90    | .80    | .70    | .60            |
| 2 yr., 12 to 18 in. .... | 1.45       | 1.25   | 1.05   | .90    | .80            |
| 3 yr., 18 to 24 in, .... | 2.20       | 1.85   | 1.60   | 1.35   | 1.20           |
| 1 to 9 —                 | \$.90 each |        |        |        |                |
| 10 to 49 —               | \$.80 each |        |        |        |                |



**RED RASPBERRIES****Latham**

The Latham raspberry seems to be the most popular. It looks so good when they get to the market, also yields a heavy crop, stands long distance shipments well.

**Indian Summer Everbearing**

The Indian must get its name from the word Indian Summer as it does deliver a spring crop and then grows a new set of canes and delivers another late autumn crop at the season of the year that is called Indian Summer.

**Taylor**

A well-known, red, coned-shaped raspberry has tree like canes bearing beautiful fruit and a heavy cropper.

**Chief**

A dark red raspberry like the Indian. Again like the Indian being the first in America and the Chief the first in the market; also stands all kinds of weather and climate like the Indian Chief.

**Sunrise**

The Sunrise is early and bright like the sun, dependable. If the sun continues to travel regular she will deliver a beautiful crop of raspberries on time.

**RED RASPBERRY PRICE LIST**

|                           | 12      | 25      | 50      | 100     | 200     | 250     |
|---------------------------|---------|---------|---------|---------|---------|---------|
| Latham No. 1 .....        | \$2.60  | \$4.10  | \$7.10  | \$12.35 | \$22.50 | \$26.80 |
| Indian Summer No. 1 ..... | 2.60    | 4.10    | 7.10    | 12.35   | 22.50   | 26.80   |
| Taylor No. 1 .....        | 2.60    | 4.10    | 7.10    | 12.35   | 22.50   | 26.80   |
| Chief No. 1 .....         | 2.60    | 4.10    | 7.10    | 12.35   | 22.50   | 26.80   |
| Sunrise No. 1 .....       | 2.60    | 4.10    | 7.10    | 12.35   | 22.50   | 26.80   |
|                           |         | 300     | 400     | 500     | 750     | 1000    |
| Latham No. 1 .....        | \$30.35 | \$37.50 | \$43.10 | \$59.05 | \$75.00 |         |
| Indian Summer No. 1 ..... | 30.30   | 37.50   | 43.10   | 59.05   | 75.00   |         |
| Taylor No. 1 .....        | 30.35   | 37.50   | 43.10   | 59.05   | 75.00   |         |
| Chief No. 1 .....         | 30.35   | 37.50   | 43.10   | 59.05   | 75.00   |         |
| Sunrise No. 1 .....       | 20.35   | 37.50   | 43.10   | 59.05   | 75.00   |         |

**BLACK RASPBERRIES****Cumberland**

An old dependable black variety, it comes so near meeting with the approval of the black raspberry grower that we don't see the use of confusing him with another black raspberry and another black raspberry, etc., until we learn that we have it equal or a better variety. You see there may be a better variety but we have not learned of it yet.

**BLACK RASPBERRY PRICE LIST**

|                        | 12      | 25      | 50      | 100     | 200     | 250     |
|------------------------|---------|---------|---------|---------|---------|---------|
| Cumberland No. 1 ..... | \$2.10  | \$3.30  | \$5.70  | \$9.90  | \$18.00 | \$21.00 |
|                        |         | 300     | 400     | 500     | 750     | 1000    |
| Cumberland No. 1 ..... | \$24.30 | \$30.00 | \$34.50 | \$47.25 | \$60.00 |         |

In planting, growing, packing and shipping our thoughts are always of our customers to make sure we do him a good job.







### POSTAL RATES AND INSTRUCTIONS TO CUSTOMERS

**PAYMENT.** Money order, Registered Letter, Bank Draft or Personal Check in full payment with order or  $\frac{1}{4}$  cash with order and balance before date of shipment. We will book orders and wait a reasonable length of time for remittance.

**GUARANTEE.** That all orders will be delivered to the carriers in first class condition. All claims should be made promptly on receipt of goods and, if just, will be made satisfactory. If shipment has been delayed on the road and has spoiled, refuse same and notify us at once, or if you decide to accept same, have agent make notation on your receipt as to condition.

**TRUE TO NAME.** We use every precaution to have our plants true to name, and if any should prove otherwise we will replace them, but in no case will we be responsible for any sum greater than that paid for the plants.

**YOU ARE TAKING NO RISK.** We send just what you order or refund your money, unless you tell us to substitute your order with the nearest to it we have, should we be out of the varieties you order.

**ALWAYS REMEMBER.** We are at your service and will always be glad to hear from you and will give you any and every possible assistance.

**POSTAL RATES.** Your State shows your zone number. Column shows the rate of various plants.

|                |                 |                  |                    |
|----------------|-----------------|------------------|--------------------|
| Alabama 5      | Kentucky 4      | Brunswick 3)     | South Carolina 4   |
| Arizona 8      | Louisiana 5     | New Mexico 7     | South Dakota 6     |
| Arkansas 5     | Maine 4         | New York 3       | Tennessee 5        |
| California 8   | Maryland 1 & 2  | (north of        | Texas 6            |
| Colorado 7     | Massachusetts 4 | Albany 4)        | Utah 6             |
| Connecticut 3  | Michigan 4      | North Carolina 3 | Vermont 4          |
| Delaware 1 & 2 | Minnesota 5     | North Dakota 7   | Virginia 3         |
| Dt. Columbia 2 | Mississippi 5   | Ohio 4           | (east of Staunton, |
| Florida 5      | Missouri 5      | Oklahoma 6       | Danville 1 & 2)    |
| Georgia 4      | Montana 7       | Oregon 8         | Washington 8       |
| Idaho 8        | Nebraska 6      | Pennsylvania 3   | West Virginia 3    |
| Illionois 5    | Nevada 8        | (Counties south  | (Charleston and    |
| Indiana 4      | New Hampshire 4 | and east of      | south and west 4)  |
| Iowa 5         | New Jersey 2    | Harrisburg 2)    | Wisconsin 5        |
| Kansas 6       | (north of New   | Rhode Island 4   | Wyoming 7          |

### STRAWBERRIES, ASPARAGUS ROOTS

Quantity of Plants

|                 | 1 & 2 | 3     | 4     | 5     | 6     | 7     | 8     |
|-----------------|-------|-------|-------|-------|-------|-------|-------|
| 25 Plants ...   | \$.11 | \$.12 | \$.15 | \$.18 | \$.20 | \$.24 | \$.27 |
| 50 Plants ...   | .12   | .12   | .18   | .23   | .27   | .33   | .38   |
| 100 Plants ...  | .14   | .18   | .25   | .34   | .41   | .52   | .61   |
| 200 Plants ...  | .17   | .24   | .36   | .50   | .63   | .79   | .95   |
| 300 Plants ...  | .19   | .28   | .43   | .61   | .77   | .98   | 1.17  |
| 400 Plants ...  | .28   | .44   | .72   | 1.05  | 1.35  | 1.72  | 2.08  |
| 500 Plants ...  | .34   | .55   | .90   | 1.32  | 1.71  | 2.18  | 2.65  |
| 750 Plants ...  | .42   | .71   | 1.18  | 1.75  | 2.29  | 2.93  | 3.55  |
| 1000 Plants ... | .53   | .90   | 1.51  | 2.25  | 2.94  | 3.76  | 4.57  |

### GRAPE VINES, RASPBERRIES, BLACKBERRIES, BLUEBERRIES

Quantity

|                 | 1 & 2 | 3     | 4     | 5     | 6     | 7     | 8     |
|-----------------|-------|-------|-------|-------|-------|-------|-------|
| 3 to 6 Plants   | \$.14 | \$.18 | \$.35 | \$.34 | \$.41 | \$.52 | \$.61 |
| 7 to 12 Plants  | .16   | .22   | .32   | .44   | .56   | .70   | .83   |
| 13 to 20 Plants | .18   | .26   | .39   | .56   | .70   | .89   | 1.06  |
| 21 to 30 Plants | .20   | .30   | .46   | .66   | .84   | 1.07  | 1.29  |

Use these postage rates for plants listed above and 2 yr. Blueberry plants. One-half of above rates for 1 yr. Blueberry plants. Double above rates for 3 yr. blueberry plants.



# PRICE LIST FOR 1949

**WRITE FOR SPECIAL PRICES ON LARGER ORDERS.** Farm bueraus and associations' orders not to exceed 500,000. Orders that are to be moved by truck should give us their date early so as to not have several trucks here on the same day.

## Early Varieties

|            | 25     | 50     | 100    | 200    | 250    | 300    | 400    | 500    | 750     | 800     | 1000    | 5000    |
|------------|--------|--------|--------|--------|--------|--------|--------|--------|---------|---------|---------|---------|
| Premier    | \$1.00 | \$1.70 | \$2.70 | \$4.75 | \$5.40 | \$6.10 | \$7.30 | \$8.45 | \$11.15 | \$11.65 | \$13.50 | \$12.50 |
| Howard 17  | 1.00   | 1.70   | 2.70   | 4.75   | 5.40   | 6.10   | 7.30   | 8.45   | 11.15   | 11.65   | 13.50   | 12.50   |
| Dorsett    | 1.05   | 1.75   | 2.80   | 4.90   | 5.60   | 6.30   | 7.55   | 8.75   | 11.55   | 12.10   | 14.00   | 13.00   |
| Fairfax    | 1.10   | 1.80   | 2.90   | 5.10   | 5.85   | 6.50   | 7.85   | 9.05   | 11.95   | 12.50   | 14.50   | 13.50   |
| Pathfinder | 1.00   | 1.70   | 2.70   | 4.75   | 5.40   | 6.10   | 7.30   | 8.45   | 11.15   | 11.65   | 13.50   | 12.50   |
| Midland    | 1.10   | 1.80   | 2.90   | 5.10   | 5.85   | 6.50   | 7.85   | 9.05   | 11.95   | 12.50   | 14.50   | 13.50   |
| Fairland   | 1.00   | 1.70   | 2.70   | 4.75   | 5.40   | 6.10   | 7.30   | 8.45   | 11.15   | 11.65   | 13.50   | 12.50   |
| Blakemoire | .90    | 1.50   | 2.40   | 4.20   | 4.80   | 5.40   | 6.50   | 7.50   | 9.90    | 10.35   | 12.00   | 11.00   |
| Missionary | .75    | 1.25   | 2.00   | 3.50   | 4.00   | 4.50   | 5.00   | 6.25   | 8.25    | 8.65    | 10.00   | 9.00    |

## Midseason Varieties

|            |      |      |      |      |      |      |      |      |       |       |       |       |
|------------|------|------|------|------|------|------|------|------|-------|-------|-------|-------|
| Catskill   | 1.00 | 1.70 | 2.70 | 4.75 | 5.40 | 6.10 | 7.30 | 8.45 | 11.15 | 11.65 | 13.50 | 12.50 |
| Temple     | .95  | 1.60 | 2.60 | 4.55 | 5.00 | 5.85 | 7.05 | 8.15 | 10.75 | 11.25 | 13.00 | 12.00 |
| Big Joe    | .95  | 1.60 | 2.60 | 4.55 | 5.00 | 5.85 | 7.05 | 8.15 | 10.75 | 11.25 | 13.00 | 12.00 |
| Sparkle    | 1.10 | 1.85 | 2.85 | 5.15 | 5.85 | 6.60 | 7.90 | 9.15 | 12.00 | 12.55 | 14.50 | 13.50 |
| Starbright | .95  | 1.60 | 2.60 | 4.55 | 5.00 | 5.85 | 7.05 | 8.15 | 10.75 | 11.25 | 13.00 | 12.00 |
| Robinson   | 1.05 | 1.75 | 2.80 | 4.90 | 5.60 | 6.30 | 7.55 | 8.75 | 11.55 | 12.10 | 14.00 | 13.00 |

## Late Varieties

|            |      |      |      |      |      |      |      |      |       |       |       |       |
|------------|------|------|------|------|------|------|------|------|-------|-------|-------|-------|
| Chesapeake | 1.15 | 1.95 | 3.10 | 5.40 | 6.20 | 6.95 | 8.35 | 9.70 | 12.75 | 13.75 | 15.50 | 14.50 |
| Red Star   | 1.15 | 1.95 | 3.10 | 5.40 | 6.20 | 6.95 | 8.35 | 9.70 | 12.75 | 13.75 | 15.50 | 14.50 |
| Lupton     | .95  | 1.60 | 2.60 | 4.55 | 5.00 | 5.85 | 7.05 | 8.15 | 10.75 | 11.25 | 13.00 | 12.00 |
| Fairpeake  | 1.10 | 1.85 | 2.85 | 5.15 | 5.85 | 6.60 | 7.90 | 9.15 | 12.00 | 12.55 | 14.50 | 13.50 |

## Fall Everbearing

|             |      |      |      |      |       |       |       |       |       |       |       |       |
|-------------|------|------|------|------|-------|-------|-------|-------|-------|-------|-------|-------|
| Mastodon    | 1.90 | 3.15 | 5.00 | 8.75 | 10.00 | 11.25 | 13.50 | 15.65 | 20.65 | 21.60 | 25.00 | 24.00 |
| Gem         | 1.90 | 3.15 | 5.00 | 8.75 | 10.00 | 11.25 | 13.50 | 15.65 | 20.65 | 21.60 | 25.00 | 24.00 |
| Streamliner | 1.90 | 3.15 | 5.00 | 8.75 | 10.00 | 11.25 | 13.50 | 15.65 | 20.65 | 21.60 | 25.00 | 24.00 |

**LOOK!** Now let's get straight on this. We have helped you in these prices and our plants are all certified of the best grade. The above prices are F.O.B., Willards, Md.





You see Betty Dennis and Jeanette Collins picking Blueberries for their weekend pies which will meet the requirements of any human beings' mouth.

**H. D. RICHARDSON & CO., Willards, Md.**  
**1949 CATALOGUE**