

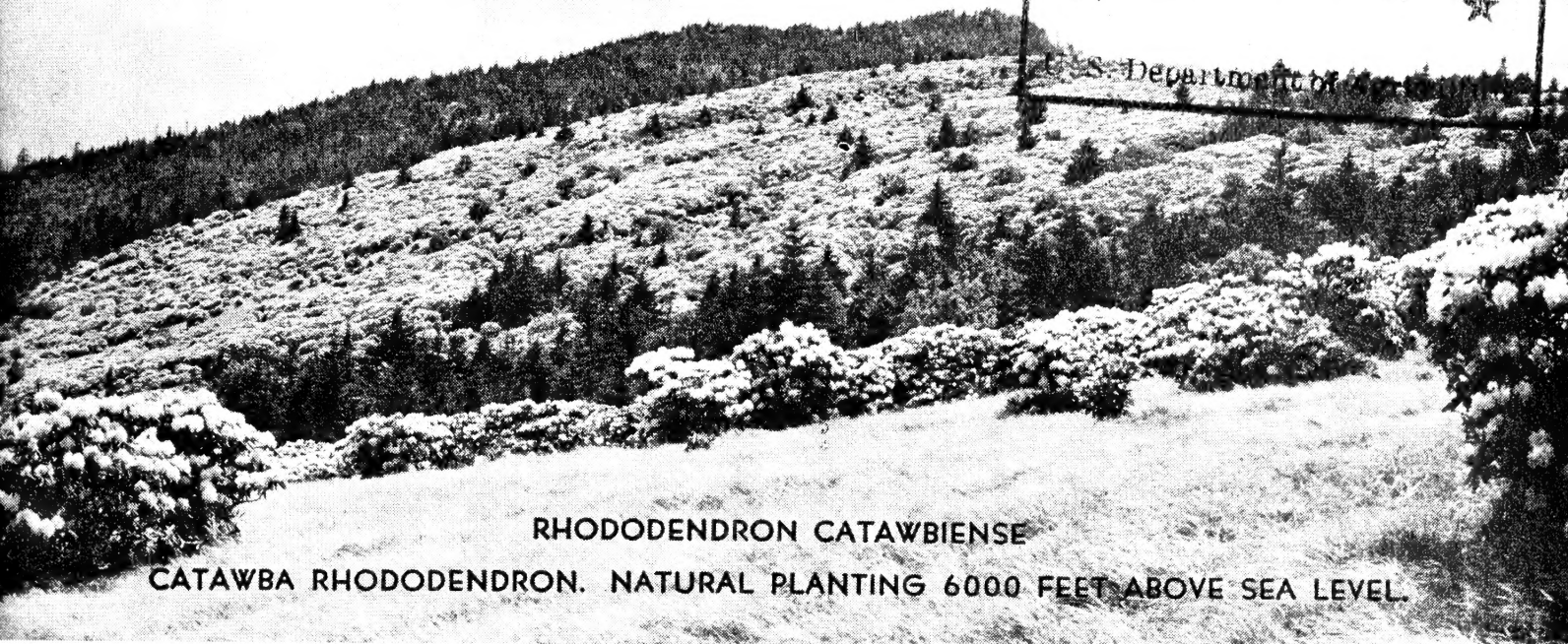
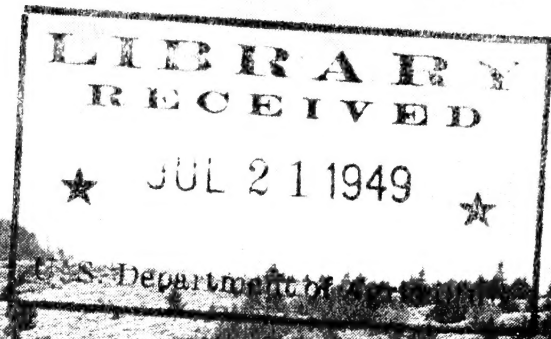
## **Historic, Archive Document**

Do not assume content reflects current scientific knowledge, policies, or practices.



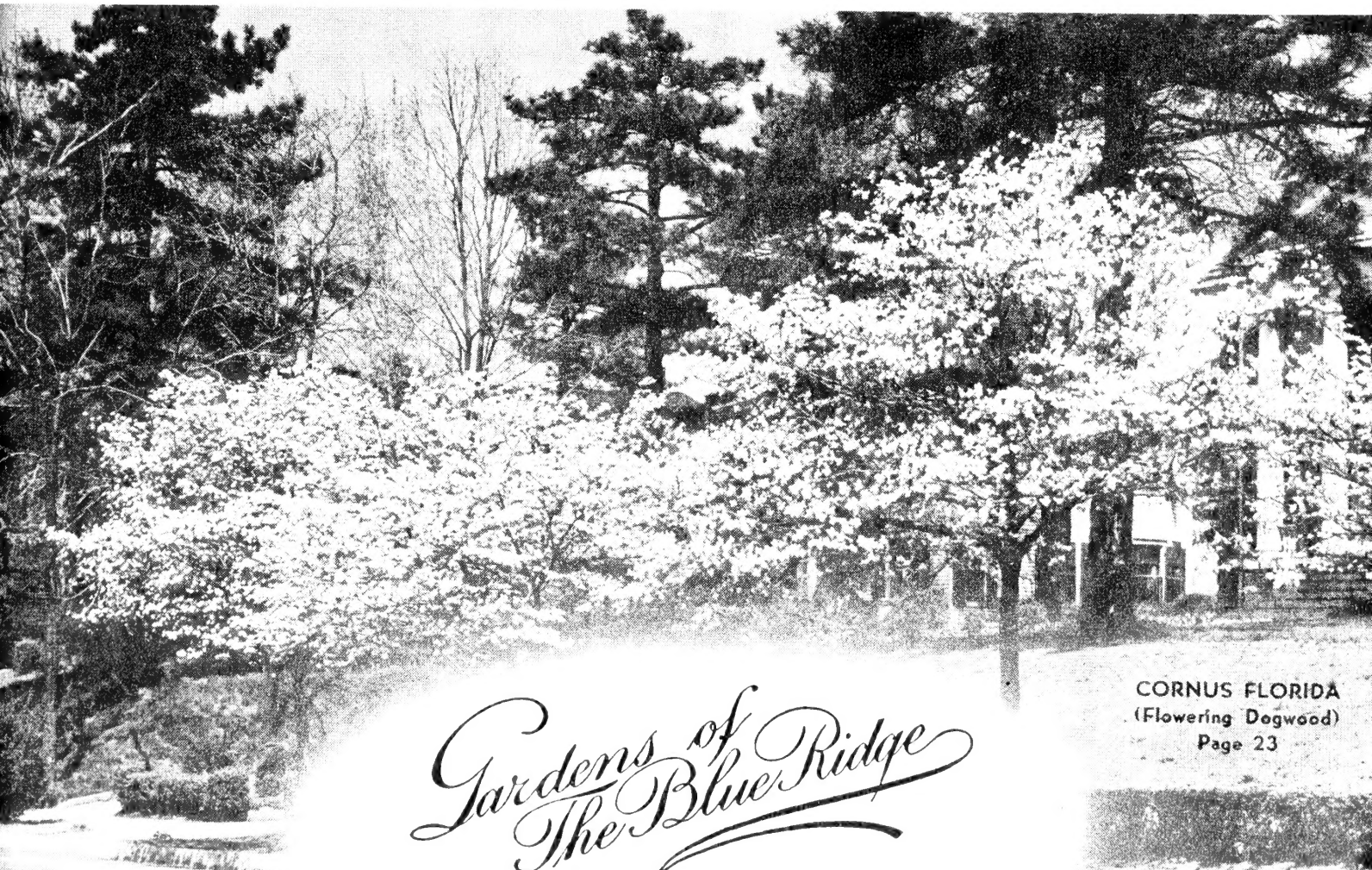
62,63

Fall 1949



RHODODENDRON CATAWBIENSE  
 CATAWBA RHODODENDRON. NATURAL PLANTING 6000 FEET ABOVE SEA LEVEL.

# HARDY TREES, SHRUBS, PLANTS AND BULBS



*Gardens of  
 The Blue Ridge*

E. C. ROBBINS, Nurseryman  
 ASHFORD, McDOWELL COUNTY, N. C., U.S.A.

CORNUS FLORIDA  
 (Flowering Dogwood)  
 Page 23

Western Union Telegraph and Long Distance Connection. Wire Orders When in a Hurry, to Avoid Delay.

## NOTE TO CUSTOMERS

### OUR LOCATION

Is in the heart of the Blue Ridge Mountains, "the most beautiful mountain region on the continent," in western North Carolina, nearly 4,000 feet above sea-level. My permanent headquarters is Ashford, McDowell County, North Carolina, on the scenic Clinchfield Railroad and U. S. Highway No. 221.

### QUOTATIONS

**This list cancels all previous offers. Do not order from old catalogues. Send for new copy. All offers of stock are made subject to conditions beyond my control**

### PACKING AND GRADING

Will be done in the most careful way. Orders will be packed to insure arrival in good condition. Shipments will be delivered to the local freight, express, or post office at prices named in this Catalogue. Packing will be charged at cost on charge orders. All shipments delivered at cost and risk of customer. Certificate of inspection attached to all shipments. We specialize in carload lots.

### REMITTANCE OR REFERENCE

Should accompany orders from unknown correspondents. Discount of 5 per cent on cash orders amounting to \$5.00 and over only. All bills due and payable 30 days from date of invoice. Interest charged after 30 days. Add 10% to Parcel Post orders. Any excess will be returned.

### SHIPPING INSTRUCTIONS

Should always be given fully, unless you prefer to leave to our best judgment. In this we assume no risk, our responsibility ceasing upon receipt of signed bill of lading by forwarders. All Claims for damages in transit must be handled by consignee.

### CLAIMS

All claims for errors must be reported upon receipt of goods and will be rectified promptly. Unless this is done we cannot accept responsibility of any kind.

No GUARANTEE is made that stock will grow, whether planted by us or not. As we have no control over after-treatment or weather conditions, the purchaser must assume all risks after stock leaves our Nursery in good condition.

In no case shall we be held for damage exceeding original purchase price and only to this extent when proper proof is furnished that stock has been wrongly labeled.

**All orders are accepted and filled on these terms, unless otherwise agreed.**

**ORDERS NOT ACCEPTED FOR LESS THAN \$1.00**

---

FALL PLANTING SEASON begins in August and extends usually till about December 1, according to weather conditions.

SPRING SHIPMENTS are forwarded according to customers' wishes and subject to conditions beyond our control, March 1 to May 15. PLEASE ORDER EARLY.

Send Us Your Want List for Quantity Quotations

*Gardens of  
The Blue Ridge*

E. C. ROBBINS, Nurseryman

ASHFORD, McDOWELL COUNTY, N. C., U.S.A.

# PRICE LIST FOR FALL 1949

## Hardy Native Herbaceous Perennials

This list contains a variety of Herbaceous plants furnishing a succession of bloom from early spring to late autumn, all having been tried out with success in cultivation. The height indicates the approximate height of each plant as found in wild state. The time of blooming naturally depends on locality.

NOTE: "DECIDUOUS" indicates that tops die down annually. "EVERGREEN" remaining green the year round. Both represent Perennials, lasting many years.

	PRICE EACH			
	1-9	10-24	25-250	1000
<b>ACONITUM</b> <i>reclinatum</i> . Trailing Monkshood. Stem 2-4 ft. Flowers greenish yellow. Hood-shaped. Moist shady location.....	\$ .25	\$ .20	\$ .18	\$
<b>ACONITUM</b> <i>uncinatum</i> . Clambering Monkshood. 3-5 ft. Smooth, vine like stem. Blue hood-shaped showy flowers in mid-summer. Shade or partial shade. Strong.....	.24	.19	.16	.15
<b>ACTAEA</b> <i>alba</i> . White Baneberry. Deciduous. 2-3 ft. Racemes white flowers followed by white conspicuous berries. Fine for rock work or shady corner. Strong	.23	.20	.18	
<b>ACTAEA</b> <i>rubra</i> . Red Baneberry. 2-3 ft. Herbaceous. White Flowers, followed with showy red fruit in late summer. Plant in shade or partial shade.....	.30	.26	.24	....
<b>ALLIUM</b> <i>tricum</i> . Wood Leek. Deciduous. 6-12 in. Flowers greenish white in early spring. Strong.....	.25	.21	.18	
<b>ARUNCUS</b> <i>sylvester</i> . Goat's Beard. 4-6 ft. Stately herbaceous plant with large compound leaves. Stems bearing clusters of slender racemes of small white flowers in plume-like panicles in shady locations. June and July. X strong.....	.26	.22	.19	.17
<b>ASARUM</b> <i>canadense</i> . Canada Wild Ginger. Deciduous. 9-18 ins. Kidney-shaped leaves 3-5 in. wide, with single purplish flowers close to the ground. Plant in shady corner with ferns. Strong.....	.22	.18	.14	.11
<b>ASARUM</b> <i>shuttleworthi</i> . Mottled Wild Ginger. 4-6 in. Thick fragrant evergreen leaves, often mottled white. Shade or partial shade in rich soil. X strong	.27	.22	.17	.15
<b>ASTILBE</b> <i>biternata</i> . False Goatsbeard. 3-5 ft. Deciduous, shade loving. Large compound leaves. Yellowish white flowers. X strong.....	.22	.18	.14	.13
<b>BAPTISIA</b> <i>tinctoria</i> . Yellow Wild Indigo. 2-3 ft. Deciduous. Stems erect, much branched. Flowers showy bright yellow June to August. Desirable for rock garden. Sunny location or partial shade. X strong	.26	.22	.18	.16
<b>CAREX</b> <i>fraseri</i> . Fraser Sedge. Evergreen, 10-18 in. Flowers whitish spikes March or April. Leaves large. Prefers shade in rich soil. Strong plants.....	.25	.23	.22	

---



---

**HARDY NATIVE HERBACEOUS PERENNIALS, continued**

	PRICE EACH			
	1-9	10-24	25-250	1000
<b>CAULOPHYLLUM</b> thalictroides. Blue Cohosh. 2-3 ft. Deciduous. Leaves compounded. Several flowers in loose terminal panicle, greenish purple with yellow centers April and May. Fruit large blue showy berries. Dark shady places for best results. X strong.....	\$ .23	\$ .19	\$ .17	\$ .16
<b>CIMICIFUGA</b> americana. American Bugbane. 2-4 ft. Deciduous. Panicked racemes, white showy fragrant flowers, August to September. Showy divided leaves. Rich shady location. X strong.....	.24	.18	.15	.14
<b>CIMICIFUGA</b> racemosa. Cohosh Bugbane. Deciduous. 4-8 ft. Leaves divided. Flowers white in elongated wand-like racemes. Very showy, June and July. Moist shaded areas. X strong.....	.25	.18	.14	.12
<b>COLLINSONIA</b> canadensis. Citronella. Deciduous. 1-3 ft. Leaves opposite, large ovate toothed, pointed. Flowers yellowish, lemon scented, clustered loosely. Damp rich woods. X strong.....	.22	.18	.14	.12
<b>DISPORUM</b> lanuginosum. Fairybells. Deciduous. 1-3 ft. Flowers solitary at ends of branches, greenish. Fruit red late summer. Shade. Strong.....	.23	.18	.15	.14
<b>EPILOBIUM</b> angustifolium. Blooming Sally. Deciduous. 1-3 ft. Leaves scattered, lance shaped, willow-like. Flowers purplish-pink in large racemes, July and August. Moist sunny location. X strong.....	.25	.21	.19	.16
<b>EUPATORIUM</b> urticaefolium. American Ageratum. Deciduous. 2-3 ft. Stem smooth, branching leaves opposite, broadly sharp toothed. Flower heads white, clustered. Late summer. Woodlands and semi-shaded places. Strong.....	.23	.18	.15	.14
<b>GERANIUM</b> maculatum. Wild Geranium. Deciduous. 1-2 ft. Erect hairy. Leaves five-parted, lobed and cut. Flowers large pale, pink-purple, April to August. Shade loving. Strong.....	.24	.20	.17	.15
<b>GILLENIA</b> trifoliata. Bowmansroot. Deciduous. 2-4 ft. Handsome cut foliage. Flowers pure white or rose-tinted in June. Splendid for massing among shrubbery. Shade or partial shade. X strong.....	.25	.20	.16	.15
<b>HOUSTONIA</b> purpurea. Mountain Houstonia. Deciduous. 6-18 ins. Flowers purple in July. Shade or sunny location. Strong clumpy plants.....	.22	.18	.16	.14
<b>HYDRASTIS</b> canadensis. Goldenseal. Deciduous. 10-20 ins. A medicinal herb of great value. Large basal leaves. Fruit in raspberry-like head. Shade loving. Strong first size.....	.24	.20	.17	.15
Second size.....	.12	.10	.08	.07
<b>LIATRIS</b> pycnostachya. Cattail Gayfeather. Deciduous. 3-5 ft. Long spikes of rose-purple flower heads. Aug. and Sept. Sunny location. Strong.....	.28	.23	.21	

## HARDY NATIVE HERBACEOUS PERENNIALS, continued

	PRICE EACH			
	1-9	10-24	25-250	1000
<b>LIATRIS scariosa.</b> Large Button Snakeroot. Deciduous. 3-5 ft. Leaves alternate, narrowly lance shaped. Flowers beautiful shade of rose-purple. Dry sunny location. Strong plants.....	\$ .25	\$ .21	\$ .19	\$
<b>LIATRIS spicata.</b> Spike Gayfeather. Deciduous. 3-5 ft. Spike of purple flowers in August. Sun. Strong.....	.23	.20	.16	.14
<b>MITELLA diphylla.</b> Bishop's cap. Deciduous. 3-5 ins. Leaves heart-shaped, lobed and toothed. Flowers small white, April and May. Shade. X strong.....	.24	.20	.17	.16
<b>PANAX quinquefolium.</b> American Ginseng. Deciduous. 9-18 ins. Root large spindle-shaped, often forked. Flowers greenish white, fruit bright red berry. Medicinal plant, much in demand in China in normal times. Prefers rich well drained soil in shady location. Strong 1st size.....	.23	.21	.19	.17
2nd size.....	.12	.10	.09	.08
X heavy.....	.45	.40		
<b>PEDICULARIS canadensis.</b> Wood Betony. Deciduous. Stems clustered 5-12 inches high. Leaves coarse fern-like. Flowers yellow and red, in short dense spikes, early spring. Shade or semi. X strong.....	.24	.21	.18	.16
<b>PODOPHYLLUM peltatum.</b> Common May Apple. 12-18 ins. Deciduous. Large light green leaves. Flowers white, one or two inches broad, nodding. Shady location. Strong.....	.23	.19	.14	.12
<b>POLYGONATUM biflorum.</b> Small Solomon Seal. Deciduous. 1½-3 ft. Leaves alternate close to stems. Flowers yellowish, bell-shaped. June to July. Fruit dark blue berry. Shade or open location. Strong....	.22	.18	.14	.12
<b>SAPONARIA officinalis.</b> Bouncing-Bet. Deciduous. 1-2 ft. Leaves oval opposite. Flowers pink or white in clusters. Mid-summer. Open location. X strong.....	.24	.20	.15	.14
<b>SILENE stellata.</b> Starry Campion. Height 2 to 4 feet. White flowers in showy panicles in July. Shade. Strong.....	.25	.21	.19	
<b>SMILACINA racemosa.</b> False Solomon Seal. Deciduous. 1½-3 ft. Leaves oblong, veiny. Flowers greenish-white in June. Fruit pale red speckled berries in August. Shade. Strong.....	.25	.21	.15	.14
<b>SOLIDAGO canadensis.</b> Canada Goldenrod. Deciduous. 5-7 ft. Flowers small, very numerous, in yellow flat heads. Sunny location. X strong.....	.22	.18	.16	.14
<b>SOLIDAGO odora.</b> Fragrant Goldenrod. Deciduous. 2-3 ft. Yellow flowers Aug. and Sept. Dry, sandy location.....	.25	.21	.17	.15
<b>STENANTHIUM robustum.</b> Featherfleece. Deciduous. 2-5 ft. Flowers long delicate white. Late summer. Extremely ornamental and one of our finest perennials. Thrives in open damp, or dry situation. X strong....	.30	.25	.22	.20
Second size.....	.16	.13	.11	.10

## HARDY NATIVE HERBACEOUS PERENNIALS, continued

	PRICE EACH			
	1-9	10-24	25-250	1000
<b>STREPTOPUS roseus.</b> Rosy Twistedstalk. Deciduous. 9-18 ins. Stems stout and zig-zag. Leaves pointed clasping. Flowers dull purplish-pink May and June. Fruit red, roundish, late summer. Shade. Strong....	\$ .24	\$ .21	\$ .18	\$ .16
<b>THALICTRUM polygamum.</b> Tall Meadowrue. Deciduous. 4-8 ft. Leaves divided into many rounded leaflets. Flowers white in large clusters. July to Sept. Sunny moist location. X strong.....	.24	.21	.18	.16
<b>THERMOPSIS caroliniana.</b> Carolina Thermopsis. Decidu- ous. 3-5 ft. Flowers large yellow in terminal ra- cemes May and June. Very showy for massing. Rich garden soil, open locations. X heavy clumps.....	.35	.30	.26	.24
Strong plants.....	.25	.21	.18	.16
Light plants.....	.14	.12	.11	.10
<b>TIARELLA cordifolia.</b> Alleghany Foamflower. Deciduous. 6-12 ins. Flowers white May and June. Shade. Strong.....	.25	.21	.18	.16
SPECIAL OFFER: 100 Assorted Perennials, furnishing succession of flowers from early spring to fall, for only \$12.75. Selected for shady or sunny location, as desired.				
<b>TRADESCANTIA virginiana.</b> (Montana) Virginia Spider- wort. 1-2 ft. Deciduous. Ribbon-like foliage and showy blue flowers. June and July. Shade-Semi. X strong.....	.23	.19	.17	.15
<b>VERONICA virginica.</b> Culver's Physic. Deciduous. 2-4 ft. Leaves whorled, lance-shaped, finely toothed. Flow- ers small white in slender spikes. Mid-summer. Open location. Strong.....	.24	.20	.18	.16
<b>VIOLA blanda.</b> Sweet White Violet. Deciduous. 2-4 ins. Flowers slightly fragrant. Early spring. Moist or dry open places, or shade. X strong.....	.22	.19	.17	.16
<b>VIOLA cucullata.</b> Blue Marsh Violet. Deciduous. 6-10 ins. Blue flowers all summer. Semi-shade. X strong....	.21	.18	.16	.14
<b>VIOLA hastata.</b> Halberd-leaved. Deciduous. 4-6 ins. Flowers yellow, early spring. Strong.....	.20	.17	.15	.14
<b>VIOLA rotundifolia.</b> Yellow Roundleaf Violet. Deciduous. 2-4 ins. Flowers large yellow striped with purple, early spring. Leaves large prostrate, shining. Strong	.23	.19	.15	.13
<b>VIOLA sagittata.</b> Arrowleaf Violet. Deciduous. 4-8 ins. Deep blue flowers in May. Strong.....	.24	.21	.16	.15
<b>YUCCA gloriosa.</b> (Patens) Moundlily Yucca. Evergreen. 4-8 ft. Noble plant with long flower spike, rusty white or reddish. Sunny location. XX heavy clumps	1.25	1.00	.90	.80
<b>ZYGADENUS muscaetoxicum.</b> Crow-Poison. Deciduous. 1-2 ft. Long grass-like leaves. Flowers showy white in June. Shade or semi. X strong.....	.25	.21	.18	.16
100 HARDY VIOLETS, Assorted blooming size. Shade or sunny location. Our selection.....	\$9.75			



**Hardy Native Plants for Rock-Gardens**

	PRICE EACH			
	1-9	10-24	25-250	1000
<b>AQUILEGIA canadensis.</b> American Columbine. Deciduous. 1-2 ft. Showy, cut leaves. Reddish flowers with scarlet-yellow inside in May and June. Splendid for rock garden. Shade or partial shade. X strong plants.....	\$ .26	\$ .21	\$ .18	\$ .16
<b>ARISAEMA triphyllum.</b> Jack-in-the-Pulpit. Deciduous. 1-2 ft. Leaves generally two, each divided into three leaflets. Flowers conspicuous greenish white, early summer. Fruit bright scarlet berries. Shade loving. Rock gardens. X first size.....	.23	.20	.18	.16
<b>ASCLEPIAS tuberosa.</b> Butterfly Weed. 1-2 ft. Remarkable showy deciduous plant. Flowers disposed in numerous umbel-like clusters, very showy orange or red, in summer. Sunny location. Strong first size.....	.36	.32	.30	.28
Second size.....	.20	.18	.16	.15
<b>CAMPANULA divaricata.</b> North Carolina Harebell. Deciduous. 1-2 ft. Delicate pale blue bell-shaped flowers in July. Sun or shade for rockery or border. Strong.....	.24	.22	.20	.18
<b>CHAMAELIRIUM luteum.</b> Fairywand. Deciduous. 1-2 ft. A wand-like raceme of small white flowers in June. A dainty and showy plant for rock garden, sun or shade. Strong plants.....	.25	.22	.20	.18
<b>CLINTONIA borealis.</b> Bluebead. Deciduous. 9-18 ins. Flowers greenish yellow. Thin glossy green leaves. Fruit dark oval, blue shining berry. Rock garden companion, moist crevices and pockets. Cool moist woods for best results. Strong.....	.22	.20	.18	.16
<b>CLINTONIA umbellulata.</b> Speckled Clintonia. Deciduous. 8-15 ins. Oval pubescent green leaves at base. Flowers at top of stem, fragrant, spreading white, Fruit oval black shining berry. Rock garden companion. Moist rich location, in shade. Strong.....	.23	.21	.19	.17
<b>CONVALLARIA majalis.</b> Lily-of-the-Valley. Deciduous. 6-9 ins. Soft green leaves. Flowers fragrant white. Prefers partial shade. Suitable for rock garden. Strong plants.....	.20	.18	.15	.12
<b>COREOPSIS lanceolata.</b> Lance Coreopsis. Deciduous. 1½-3 ft. Free bloomer. Yellow flowers July and August. Sun or shady location. Rock garden subject. Strong.....	.21	.19	.17	.15
<b>DICENTRA canadensis.</b> Squirrelcorn. Deciduous. Small plant growing best in shade. Flowers white or faintly pink early spring. Strong.....	.22	.19	.17	.16
<b>DICENTRA cucullaria.</b> Dutchman's Breeches. Deciduous. 4-8 ins. Leaves thrice compound. Flowers white and yellow in raceme, early spring. Strong plants....	.20	.18	.16	.14
<b>DICENTRA eximia.</b> Fringed Bleeding Heart. Deciduous. 9-18 ins. Foliage graceful, fern-like. Flowers deep rose nodding, heart-shaped, blossoming from spring until autumn. Sun or partial shade. Natural rock garden plant. Heavy clumps.....	.50	.45	.40	.38
Strong first size.....	.30	.27	.25	.23
Second size.....	.20	.18	.16	.15

## HARDY NATIVE PLANTS FOR ROCK-GARDENS, continued

	PRICE EACH			
	1-9	10-24	25-250	1000
<b>DODECATHEON meadia.</b> Common Shooting Star. Deciduous. 9-18 ins. Flowers pink and showy, early summer, ground cover in moist shaded areas, succeeding also in dry sunny places. Splendid rock garden subject. Strong.....	\$ .25	\$ .22	\$ .20	\$ .18
<b>ERYTHRONIUM americanum.</b> Common Troutlily. Deciduous. 5-10 ins. Green mottled leaves. Flowers bright yellow, early spring, Shade or semi-shade. Rock garden. Flowering size.....	.20	.16	.10	.08
<b>EUPHORBIA corollata.</b> Flowering Spurge. Deciduous. 1-3 ft. Leaves ovate, lance-shaped. Flowers clustered white cup shaped, in summer. Suitable for rock garden, sunny location. Strong.....	.22	.20	.18	.16
<b>GENTIANA andrewsi.</b> Closed Gentian. Deciduous. 1-2 ft. Leaves opposite. Flowers blue to purple in Sept. Rock garden, shade or sun. Strong.....	.24	.21	.18	.16
<b>HEPATICAC acutiloba.</b> Sharp-lobed Hepatica. Evergreen. 6-8 ins. Leaves three lobed, mottled. Flowers lilac-white, pale purple, early spring. Ground cover, moist shaded places around home and rock garden. X heavy clumps.....	.25	.20	.18	.16
<b>HEPATICAC triloba.</b> Round-lobed Hepatica. Evergreen. 6-9 ins. Leaves rounded, three lobed. Flowers blue, white or pinkish early spring. For massing in shady corner or open woods. Strong.....	.26	.24	.22	.19
<b>HEUCHERA americana.</b> American Alumroot. Evergreen. 1-2 ft. Leaves heart-shaped, large lobed, mottled bronze in early winter. Flowers greenish or purplish, long narrow clusters in June. Rock garden subject, shade or partial shade. X strong.....	.23	.21	.19	.17
<b>HEUCHERA villosa.</b> Hairy Alumroot. Deciduous. 9-18 ins. White flowers. A good rock garden subject. Shade or partial sunny location. Strong clumpy plants.....	.22	.19	.17	.15
<b>NARCISSUS.</b> Daffodil. Assorted Varieties. Flowers yellow. Strong blooming size.....	.20	.15	.12	.10
<b>PHLOX divaricata.</b> Blue Phlox. Deciduous. 9-18 ins. Leaves opposite, oblong. Flowers pale lilac-purple, in loose spreading clusters in May. Fragrant. Sun or partial shade. Strong.....	.28	.24	.20	.18
<b>POLYGALA senega.</b> Seneca Snakeroot. Height about one foot. Flowers white or greenish. Sun or partial shade.....	.26	.24	.21	
<b>POLYGONATUM commutatum.</b> Great Solomon Seal. Deciduous. 2-5 ft. Gigantic species. Flowers drooping greenish white. June and July. Fruit dark blue pulpy berry. Shade or semi-shade. Rock garden subject. X heavy.....	.24	.20	.18	.16
<b>SANGUINARIA canadensis.</b> Bloodroot. Deciduous. 6-12 ins. Large pure white flowers, early spring. Leaves large leathery, appearing later. Rich soil, shade, rock garden in clumps. X strong.....	.23	.20	.16	.15

## HARDY NATIVE PLANTS FOR ROCK-GARDENS, continued

	PRICE EACH			
	1-9	10-24	25-250	1000
<b>SAXIFRAGA michauxi.</b> Michaux Saxifrage. Deciduous. 6-18 ins. Flowers white to pink, numerous, star-like. June. Rare mountain rock garden plant. Semi-shade. Strong.....	\$ .32	\$ .28	\$ .25	\$ .22
<b>SILENE virginica.</b> Firepink. Deciduous. 1-2 ft. Flowers large crimson or scarlet. Usually found in open woods and rocky hills. Splendid for rock garden. Strong plants.....	.26	.23	.20	.18
<b>SISYRINCHIUM angustifolium.</b> Pointed Blue-eyed Grass. 4-12 in. Leaves narrow grass-like. Flowers blue or purple, with yellow center. Suited for Rock garden and varied conditions. Strong plants.....	.24	.22	.20	.18
<b>STOKESIA leavis.</b> Stokesia. Deciduous. 1-2 ft. Flowers large blue and white, resembling China Asters. Usually found in open woods and rocky hills. Splendid for rock garden. Strong plants.....	.25	.22	.20	.18
<b>THALICTRUM dioicum.</b> Early Meadowrue. Deciduous. 2-4 ft. Leaves divided into many smooth lobed pale drooping leaflets. Flowers purplish and greenish, May and June. Natural rock garden plant. Shade or semi-shade. X strong plants.....	.23	.20	.18	.16
<b>TRILLIUM cernuum.</b> Nodding Trillium. Deciduous. 9-18 ins. Leaves large. Flowers white or pink in May. Shade. First size.....	.20	.18	.16	.15
Second size.....	.12	.11	.10	.09
XX largest size.....	.30	.26	.24	---
<b>TRILLIUM erectum.</b> Purple Trillium. Deciduous. 9-18 ins. Leaves broadly ovate, three in whorls. Flowers single terminal, usually purplish-red. Early vigorous spring bloomer. Shade. May be used in rock garden. XX largest size.....	.24	.21	.19	.17
Strong first size.....	.15	.12	.11	.10
Second size.....	.10	.09	.06	.05
<b>TRILLIUM erectum album.</b> Wax Trillium. Deciduous. 12-18 ins. Leaves large. Flowers white or pinkish, early spring. Shade loving. XX largest.....	.25	.20	.17	.16
Strong first size.....	.16	.14	.12	.11
Second size.....	.11	.09	.07	.06
<b>TRILLIUM grandiflorum.</b> Snow Trillium. Deciduous. 9-20 ins. Finest and largest species. Flowers 2-3 inches across, white turning to rose color early spring. One of our finest spring bloomers for woodland border and rock garden. Shade or semi-shade. See picture on Back Cover.				
XX largest size.....	.23	.20	.17	.16
Strong first size.....	.15	.12	.09	.07
Second flowering size.....	.10	.05	.04	.03
<b>TRILLIUM luteum.</b> Yellow Trillium. 9-18 ins. Deciduous. This plant requires no care when given its two requirements. They are shade and fairly loose wood soil. The leaves are large and broadly ovate, being dark mottled green, 2-6 inches long, and do not unfold as broadly as some of the other Trilliums. Flowers are lemon-yellow, having a long blooming season in April and May. Rich shady borders and woodlands. First size.....	.20	.17	.15	.14
Second size.....	.12	.09	.08	.07
XX largest size.....	.32	.25	.23	

---



---

**HARDY NATIVE PLANTS FOR ROCK-GARDENS, continued**

	PRICE EACH			
	1-9	10-24	25-250	1000
<b>TRILLIUM stylosum.</b> Rose Trillium. Deciduous. 10-18 ins. Desirable rare mountain species. Flowers large, rose pink nodding, early spring. Semi-shade, woodland, border or rock garden. XX largest size....	\$ .24	\$ .20	\$ .18	\$ .16
Strong first size.....	.15	.12	.09	.08
Second flowering size.....	.11	.07	.05	.04
<b>TRILLIUM undulatum.</b> Painted Trillium. Deciduous. 8-15 ins. Strong vigorous grower. Flowers large, with scarlet and white markings. Fruit scarlet seed pod. Shade, border, woodland. Rock garden. XX largest size.....	.25	.21	.19	.17
Strong first size.....	.15	.13	.11	.10
Second size.....	.11	.09	.07	.06
100 TRILLIUMS, Assorted, First size. Our selection of Varieties.....	\$8.80			
<b>UVULARIA grandiflora.</b> Big Merrybells. Deciduous. 12-18 ins. Largest of the Bellworts. Thrives in damp rich shady situation. Flowers light yellow in early summer. Strong plants.....	.23	.18	.16	.15
<b>UVULARIA perfoliata.</b> Wood Merrybells. Deciduous. 9-18 ins. Slender stems. Leaves oblong. Flowers drooping bright yellow. May and June. Rock garden in shady locations. Strong plants.....	.22	.19	.15	.14
<b>UVULARIA sessilifolia.</b> Little Merrybells. Deciduous. 10-20 ins. Leaves sessile. Flowers yellow, May and June. Shade. Strong.....	.21	.19	.17	.15
<b>VIOLA canadensis.</b> Canada Violet. Deciduous. 9-18 ins. Leaves heart-shaped, pointed toothed. Flowers white veined with purple. May to July. Semi-shade. X strong clumpy plants.....	.23	.19	.16	.14
<b>VIOLA pedata.</b> Birdsfoot Violet. Deciduous. 4-8 ins. Leaves divided. Flowers numerous and large, lilac-purple, April to June. Rock garden companion. Sun or semi-shade. Strong first size.....	.21	.17	.12	.10
Strong second size.....	.12	.09	.07	.05
<b>VIOLA pedata bicolor.</b> Two color Birdsfoot Violet. 4-8 ins. Deciduous. Flowers velvety light blue and purple pansy-like in May. Rare beautiful species. Strong first size.....	.23	.18	.14	.12
Second flowering size.....	.13	.10	.08	.06
<b>YUCCA filamentosa.</b> Common Yucca. Evergreen. 3-6 ft. Large perennial. Flowers showy white, early summer. Rock garden subject. Strong plants.....	.60	.50	.45	.40
<b>XEROPHYLLUM asphodeloides.</b> Turkey's Beard. Evergreen. 3-5 ft. Long grass-like leaves. Flowers attractive white, long spikes. Rock garden subject. Sun or semi-shade. X strong clumpy plants.....	.35	.30	.26	
100 ROCK GARDEN PLANTS. Strong Assorted. For shade or sunny location as desired. Our selection, please advise.....	\$13.50			

**Hardy Native Orchids**

	PRICE EACH			
	1-9	10-24	25-250	1000
<b>APLECTRUM</b> <i>hyemale</i> . Puttyroot. (Adam-and-Eve). Evergreen. About a foot high. Flowers greenish brown. Interesting. Prefers rich loam. Shade or partial shade.....	\$ .30	\$ .26	\$ .24	\$
<b>CALOPOGON</b> <i>pulchellus</i> . Grass-Pink Orchid. Deciduous. 12-18 ins. Grass-like foliage. Pink showy flowers early summer. Bog and water gardens. Sun or semi-shade. Also upland gardens. Strong flowering size.....	.35	.30	.26	.25
<b>CYPRIPEDIUM</b> <i>acaule</i> . Pink Ladyslipper. Deciduous. 6-15 ins. Leaves in clusters, flat on ground. Flowers large bright, purple-pink, upright in early spring. One of our most beautiful orchids. Shade loving. First size.....	.50	.45	.40	.36
Flowering second size.....	.25	.22	.20	.18
Strong seedling plants.....	.15	.12	.10	.08
Heavy clumps, 4-8 crowns each.....	1.50	1.40	1.30	
<b>CYPRIPEDIUM</b> <i>pubescens</i> . Common Yellow Ladyslipper. Deciduous. 12-20 ins. Downy leafy to top, leaves alternate. Flowers large, bright yellow in May and June. Rich soil, border, woodland and rock garden. Flowering second size.....	.40	.36	.32	.30
First size.....	.60	.50	.45	.40
Heavy clumps, 4-8 crowns, each.....	1.65	1.50	1.40	
<b>CYPRIPEDIUM</b> <i>spectabile</i> . Showy Ladyslipper. Deciduous. 1-2 ft. Stems downy. Leaves large oblong, pointed. Flowers white to rose colored. June and July. Extra strong grower in peat soils. Shade or semi-shade. Must be seen to be appreciated. Heavy clumps, 4-8 crowns, each.....	1.70	1.60	1.50	
X first size, 1-3 flowering crowns, each.....	.80	.70	.65	.60
Light one crown plants.....	.40	.36	.32	
<b>HABENARIA</b> <i>ciliaris</i> . Yellow Fringe Orchid. Deciduous. 1-2 ft. Leaves lanceolate, pointed. Flowers orange or yellow, the petals and tips fringed. July and August. Semi-shade. sandy soil. Border and rock gardens. Strong flowering size plants.....	.30	.26	.24	.22
<b>HABENARIA</b> <i>psycodes</i> . Small Purple-Orchid. Deciduous. 1 to 2 feet. Leaves oblong or lance-shaped. Flowers purple fragrant. Shade.....	.40	.36	.32	
<b>ORCHIS</b> <i>spectabilis</i> . Showy Orchid. Deciduous. 6 to 12 inches. Leaves at base of stem ovate dark glossy green. Flowers violet purple, mixed with lighter purple and white. May and June. Shade loving....	.25	.22	.20	.18
100 NATIVE ORCHIDS. Assorted. Flowering plants. Shade or partial shade. Our selection.....	\$21.75			

ORDERS FILLED IN ROTATION AS RECEIVED

PLEASE ORDER EARLY TO AVOID POSSIBLE DISAPPOINTMENT

## Hardy Native Ferns

For shady locations, no class of plants can equal the Ferns. They are easily grown in ordinary soils and will often thrive where it is impossible to make flowering plants succeed. We handle large quantities of Ferns annually and recommend the following:

	PRICE EACH			
	1-9	10-24	25-250	1000
<b>ADIANTUM pedatum.</b> Maidenhair Fern. Deciduous. 12-18 ins. One of the most distinct and beautiful ferns. Prefers moist shady location. Strong clumpy plants	\$ .24	\$ .20	\$ .15	\$ .12
<b>ASPLENIUM platyneuron.</b> Ebony Spleenwort. Evergreen. 6-8 ins. Leaves narrow. Naturally grows on cliffs and rocky soil. Semi-shade. Strong plants	.32	.30	.28	.26
<b>ASPLENIUM trichomanes.</b> Maidenhair Spleenwort. Evergreen. Small delicate. Naturally grows among rocks and cliffs. Semi-shade. Strong plants	.30	.26	.24	.22
<b>ATHYRIUM filixfemina.</b> Lady Fern. Deciduous. 1-3 ft. Exceedingly showy and vigorous. Shady location. X heavy clumpy plants	.25	.20	.17	.15
<b>BOTRYCHIUM virginianum.</b> Rattlesnake Fern. Deciduous. 6-12 ins. Triangular fronds. Deeply cut. Strong plants	.22	.18	.15	.13
<b>CAMPTOSORUS rhizophyllus.</b> Walking Fern. Evergreen. Leaves 4-12 ins. long. Heart-shaped at base. Its manner of growth suggests steps. Prefers dry shaded rocks. Strong plants	.36	.34	.32	
<b>CYSTOPTERIS bulbifera.</b> Berry Bladderfern. Deciduous. 1-2 ft. Finely divided rather weak stems. Tiny bulblets along underside of fronds. Shade or semi. Good for rockery. Strong plants	.26	.24	.22	
<b>DICKSONIA punctilobula.</b> Hayscented Fern. Deciduous. 1½-3 ft. Very handsome vigorous growing species. Recommended for shade or open locations. Widely distributed. XX heavy clumps	.25	.20	.16	.14
<b>DRYOPTERIS filix-mas.</b> Male Fern. Almost evergreen. 9-18 ins. Fine effects when massed. Shade. Strong plants	.27	.23	.20	.18
<b>DRYOPTERIS goldiana.</b> Goldie Fern. Deciduous. 2-3 ft. Tallest and largest of our Wood Ferns. Easily cultivated. Shade or partial shade and rich soil. X strong plants	.28	.24	.22	.20
<b>DRYOPTERIS hexagonoptera.</b> Winged Woodfern. Deciduous. 12-18 ins. Triangular fronds. Sun or shade. Strong plants	.24	.20	.16	.14
<b>DRYOPTERIS marginalis.</b> Leather Woodfern. Evergreen. 1-2 ft. A very common fern in woodland and cultivation. Shade or semi. Attractive species. X heavy clumpy plants	.25	.21	.16	.14

HARDY NATIVE FERNS, continued

	PRICE EACH			
	1-9	10-24	25-250	1000
<b>DRYOPTERIS spinulosa.</b> Toothed Woodfern. Evergreen. 1-2 ft. Of easy culture in rich moist soil. Shade or semi-shade. X strong plants.....	\$ .23	\$ .19	\$ .17	\$ .15
<b>DRYOPTERIS thelypteris.</b> Marsh Fern. Deciduous. 9-18 ins. Delicate fronds. Best suited to moist open or semi-shade. Strong plants.....	.22	.19	.16	.14
<b>LYGODIUM palmatum.</b> Climbing Fern. Nearly evergreen. 2-4 ft. The only fern with climbing stem found in United States. Leaflets heart-shaped. Should be in every rare fern collection. Shade or semi. Strong plants.....	.35	.32	.30	
<b>ONOCLEA sensibilis.</b> Sensitive Fern. Deciduous. 9-18 ins. Fronds very sensitive to early frosts. Prefers moist location in shade or sun light. Strong plants	.20	.17	.15	.13
<b>OSMUNDA cinnamomea.</b> Cinnamon Fern. Deciduous. 2-4 ft. X strong vigorous growing, suited to varied location. Shade or semi. X strong clumps.....	.25	.22	.18	.16
<b>OSMUNDA claytoniana.</b> Interrupted Fern. Deciduous. 1½-3 ft. Very bold, attractive species. Shade or semi. X strong clumpy plants.....	.26	.24	.20	.18
<b>OSMUNDA regalis.</b> Royal Fern. Deciduous. 2-4 ft. Naturally grows in swamps, shade and sunny locations. Very attractive foliage. X strong plants, clumpy.....	.27	.25	.22	.20
<b>PELLAEA atropurpurea.</b> Cliff Brake. Evergreen. 6-18 ins. Fronds clustered, leathery in texture. Grayish or blue-green. Prefers limestone cliffs and inaccessible places. Sun or semi. Strong plants.....	.30	.27	.24	.22
<b>POLYPODIUM vulgare.</b> Common Polypody. Evergreen. 6-18 ins. Often covering ledges and boulders. Excellent for rockery. Semi-shade. Strong clumpy plants.....	.24	.21	.18	.16
<b>POLYSTICHUM acrostichoides.</b> Christmas Fern. 9-18 ins. Evergreen, and extremely ornamental for massing in shade, or partial shade. Extensively used in Florist trade. X strong clumpy plants.....	.23	.18	.14	.12
<b>PTERETIS nodulosa.</b> Ostrich Fern. Deciduous. 2-5 ft. Bold growing, usually along streams. Very ornamental in moist shady location. X strong plants.....	.26	.22	.20	.18
<b>PTERIDIUM aquilinum.</b> Bracken. Deciduous. 2-3 ft. Spreading compound fronds. Shade or sun. Strong plants.....	.20	.16	.12	.10
<b>WOODWARDIA virginica.</b> Virginia Chain Fern. Deciduous. 2-3 ft. Strong vigorous growing. Suited to moist shady location. Strong plants.....	.24	.20	.18	.16
<b>100 NATIVE FERNS.</b> Strong assorted. Shade or partial shade. Our selection.....				\$12.90

## Hardy Aquatic and Bog Plants

	PRICE EACH			
	1-9	10-24	25-250	1000
<b>ACORUS</b> calamus. Sweet Flag. Hardy waterside plant, with sword-shaped, bright green leaves. Strong plants.....	\$ .30	\$ .25	\$ .22	\$
<b>ASTER</b> novae-angliae. New England Aster. Stems 3-4 feet high, densely clothed with narrowly lanceolate leaves. Flowers violet-purple, very large and showy. One of the best of the native Asters.....	.35	.26	.22	
<b>ASTER</b> puniceus. Swamp Aster. Deciduous. 3-5 ft. Leaves narrow, lanceolate. Flowers light violet, Aug. and Sept. Sometimes pale or purplish. Moist sunny location or semi. X strong clumps.....	.24	.20	.18	.16
<b>CALTHA</b> palustris. Marsh Marigold. Deciduous. 6-15 ins. Leaves bright green, broadly heart-shaped. Flowers bright yellow in early spring. Very showy. Moist location, semi-shade. Strong plants.....	.35	.30	.24	.22
<b>CHELONE</b> glabra. White Turtlehead. Deciduous. 1½-3 ft. Stem smooth upright branching. Leaves opposite, lance shaped, toothed. Flowers white or pinkish, July or Sept., in spike or clusters. Moist location. Shade or semi. Strong plants.....	.23	.19	.16	.15
<b>CHELONE</b> lyoni. Pink Turtlehead. Deciduous. 1-3 ft. Stems slender erect. Leaves lanceolate, with sharp toothed margins. Flowers red or rose. July to September. Moist location, shade or sun. Strong plants.....	.25	.22	.20	.18
<b>CICUTA</b> maculata. Spotted Waterhemlock. Deciduous. 3-5 ft. Finely cut leaves. Flowers white in umbels in mid-summer. Moist location. Sun or shade. Strong plants.....	.22	.19	.15	.14
<b>CORNUS</b> canadensis. Bunchberry. Deciduous. 5-8 ins. Flowers white or yellowish. Bright red berries, in clusters, moist open location. Sun or shade. Splendid ground cover. Strong clumpy plants.....	.50	.45	.40	
<b>DIONAEA</b> muscipula. Venus Flytrap. Deciduous. 4-8 ins. Leaves thick dark green, trap-like, catching insects. Flowers white terminal clusters, May and June. Peat bogs, moist location. Semi-shade. Strong plants.....	.60	.50	.45	.40
<b>DIPHYLLEIA</b> cymosa. Umbrellaleaf. Deciduous. 1-2 ft. Leaves large lobed. Flowers white terminal, May. Fruit showy purple in bunches. Prefers damp location, shade or semi. X strong plants.....	.24	.20	.17	.15
<b>EUPATORIUM</b> purpureum. Joe-Pye-Weed. Trumpet Weed. 4-10 ft. Deciduous. Smooth purple stalks. Leaves in whorls. Flowers large purple heads borne on top. Found in moist meadows and along streams. Yields readily to cultivation in ordinary rich garden. Sunny location or semi. X strong plants.....	.25	.20	.17	.16



HARDY AQUATIC AND BOG PLANTS, continued

	PRICE EACH			
	1-9	10-24	25-250	1000
<b>HELENIUM autumnale.</b> Sneezeweed. Deciduous. 3-5 ft. Leaves lanceolate or oblong. Flowers a blaze of gold, August and Sept. Damp sunny location. X strong plants.....	\$ .23	\$ .19	\$ .16	\$ .13
<b>HEMEROCALLIS fulva.</b> Tawny Daylily. Deciduous. 2-4 ft. Foliage grass-like. Flowers tawny orange, late summer. For bogs and water gardens as well as upland. Sun and semi-shade. Strong clumps.....	.24	.20	.14	.12
<b>IRIS pseudacorus.</b> Yellowflag. Deciduous. 2-4 ft. Leaves large sword-shaped. Flowers bright yellow May and June. A water loving plant as well as succeeding in dry upland. Sun or semi-shade. Strong plants.....	.25	.21	.18	.17
<b>IRIS versicolor.</b> Blueflag. Deciduous. 1-2 ft. Leaves flat sword-shaped. Flowers large and showy, violet-blue, varigated with green, yellow or white, late spring and early summer. Plant along brooks, marshes, and moist locations. Sun or semi-shade. Strong plants.....	.26	.22	.20	.18
<b>LOBELIA cardinalis.</b> Cardinal Flower. Deciduous. 3-5 ft. Leaves alternate, narrow oblong. Flowers bright red July to September, along upper part of stalk. Will thrive in any garden soil or along borders or pond or brook. Rock garden. Sun or shade. X strong plants.....	.25	.22	.20	.18
<b>LOBELIA siphilitica.</b> Large Blue Lobelia. Deciduous. 1-3 ft. Flowers large blue tube shaped. Thrives best in moist location. Shade or sun. Strong plants.....	.24	.20	.18	.17
<b>MERTENSIA virginica.</b> Virginia Bluebells. Deciduous. 1-2 ft. Leaves oblong, veiny. Flowers blue, pinkish in clusters, early spring. Thrives best in moist loamy soils, low meadows and along streams. Also in upland dry location. Sun or shade. XX largest size plants.....	.35	.30	.28	.26
Strong first size.....	.20	.18	.16	.15
Second size.....	.12	.10	.08	.07
<b>MONARDA didyma.</b> Oswego Beebalm. Deciduous. 2-4 ft. Leaves opposite, oval pointed, aromatic. Flowers bright red, clustered in close round head, July and August. Moist shady places. Strong plants.....	.23	.19	.16	.15
<b>SYMPLOCARPUS foetidus.</b> Skunkcabbage. Deciduous. 1-2 ft. Leaves large heart-shaped. Flowers small mottled, purplish brown and greenish yellow. Early spring. Low wet woods, meadows and swamps. Shade or sun. X heavy clumpy plants.....	.30	.26	.24	.22
<b>PHYLLOSTACHYS aurea.</b> Golden Japanese Bamboo. 10-20 ft. Excellent for low moist location. Tropical effect. Strong clumpy plants, cut-back to near the ground before shipment.....	1.00	.80	.70	.60

**HARDY AQUATIC AND BOG PLANTS, continued**

	PRICE EACH			
	1-9	10-24	25-250	1000
<b>SARRACENIA flava.</b> Trumpet Pitcherplant. Evergreen. 1-2 ft. Interesting bog plant, with trumpet-like leaves, yellowish green. Flowers large yellow. Peat bogs. Semi-shade. Strong plants.....	\$ .40	\$ .35	\$ .30	\$ .27
<b>SARRACENIA purpurea.</b> Common Pitcherplant. Evergreen. 6-15 ins. Leaves pitcher-shaped, broadly hooded. Flowers red, pink, or greenish, large nodding. Upland bogs and wet mossy places. Shade or semi. Strong plants.....	.34	.30	.2	24
<b>SARRACENIA rubra.</b> Sweet Pitcherplant. Evergreen. 10-15 ins. Leaves slender trumpet-shaped. Flowers crimson with scent of sweet violet. Bogs and moist location. Semi-shade. Strong plants.....	.45	.40	.36	
<b>SAXIFRAGA virginiensis.</b> Virginia Saxifrage. Deciduous. 4-12 ins. Leaves clustered, lettuce-like. Flowers white small clustered, April. Wet or moist locations. Shade or semi. Strong plants.....	.25	.21	.18	.16
<b>TYPHA latifolia.</b> Common Cattail. Deciduous. 4-6 ft. Leaves long narrow, bright green sword-like. Flowers large brown spikes. Succeeds best in shallow water, marshes and swamp. Sun or semi. X strong plants.....	.30	.24	.19	.17
<b>VERATRUM viride.</b> American Falsehellebore. Deciduous. 2-3 ft. Leaves broadly oval, pointed clasping. Flowers dull green clustered, June. Swamps and wet woods. Shade or semi. X heavy plants.....	.35	.30	.26	.24
<b>VERNONIA noveboracensis.</b> Common Ironweed. Deciduous. 3-5 ft. Leaves alternate. Flowers intense red-purple, loosely clustered, July and August. Low moist location, sun or shade. X strong clumpy plants.....	.24	.19	.17	.16
<b>50 AQUATIC AND BOG PLANTS.</b> Shade or sunny location. Strong plants. Our selection.....				\$9.60

MAXIMUM HEIGHTS GIVEN ALL THROUGH CATALOG INDICATES APPROXIMATE SIZES OF EACH AS FOUND IN WILD STATE.

ORDERS FILLED IN ROTATION AS RECEIVED

PLEASE ORDER EARLY TO AVOID POSSIBLE DISAPPOINTMENT

ADD 10% TO PARCEL POST ORDERS. ANY EXCESS WILL BE RETURNED WHEN ORDER IS MAILED

ORDERS NOT ACCEPTED FOR LESS THAN \$1.00

**Native Lilies for Naturalizing or Specimens**

		PRICE EACH			
		1-9	10-24	25-250	1000
<b>LILIUM canadense.</b>	Canada Lily. Deciduous. 2-5 ft. Leaves whorled, lance-shaped. Flowers in various shades of orange, yellow and red, July and August. Succeeds in varied locations. Sun or semi. Flowering size.....	\$ .17	\$ .15	\$ .14	\$ .13
	Strong first size.....	.30	.25	.23	.22
	XX largest.....	.45	.40	.36	
<b>LILIUM carolinianum.</b>	Carolina Lily. A showy Lily somewhat dwarfer than L. Superbum, with flowers a little lighter in color, but enriched with a delicate and pervasive fragrance. XX largest.....	.65	.55		
	First size.....	.40	.35	.32	
	Second size.....	.20	.18	.16	
<b>LILIUM grayi.</b>	Grays Lily. Deciduous. 2 to 5 feet. Flowers 1 to 6 deep reddish bell-shaped, orange spotted within, June and July. Damp moist locations. Sun or semi shade. XX largest.....	.60	.55	.50	
	First size.....	.30	.25	.22	.20
	Second size.....	.18	.15	.14	.13
<b>LILIUM philadelphicum.</b>	Orangecup Lily. Deciduous. 1-3 ft. Leaves whorled or scattered. Flowers orange red with purple spots. July and August. Plant among ferns and varied locations as desired. Shade or open locations. First size.....	.25	.24	.20	.19
	Second Size.....	.15	.12	.10	.09
<b>LILIUM regale.</b>	Royal Lily. 3-6 ft. One of the most beautiful of all known lilies. Exquisite blending of tints and colors forming a charming contrast with rich green foliage. Flowers deliciously fragrant, pure white, with bright canary markings inside. Second size.....	.30	.25	.32	
	First size.....	.55	.45	.40	
<b>LILIUM superbum.</b>	American Turkscap Lily. Deciduous. 4-8 ft. Leaves lance-shaped, the lower whorled. Flowers orange or scarlet with purple spots within. 3-40 flowers growing in pyramidal clusters in July per plant. Recommended for varied locations. Sun or shade. First size.....	.25	.22	.18	.16
	Flowering Second size.....	.15	.12	.10	.09
	Third size for growing on.....	.10	.07	.06	.05
	XX largest bulbs.....	.60	.50	.45	.40
<b>50 NATIVE LILIES, Assorted first size. Sun or semi shade.....</b>					<b>\$13.75</b>

We know how to pack to insure delivery in good condition, even to foreign countries.  
 Let us handle your orders for high-class native plant materials.

ALL PRICES ARE F. O. B. ASHFORD, N. C.  
 UNLESS OTHERWISE AGREED.

## Hardy Vines, Climbers and Creepers

	PRICE EACH			
	1-9	10-24	25-250	1000
<b>AMPELOPSIS</b> quinquefolia. Virginia Creeper. Deciduous. 25-75 ft. Clinging to walls and trees. Leaves usually divided into five leaflets, brilliantly colored in autumn. Flowers greenish, small clustered, July. Sun or shade. Strong plants.....	\$ .35	\$ .30	\$ .27	\$ .25
<b>BIGNONIA</b> radicans. Trumpet Creeper. Deciduous. 10-30 ft. Bold growing, with interesting foliage and partially climbing habit. Flowers huge trumpet-shaped, varying from bright brownish orange to vivid scarlet. Varied conditions. X strong plants. 2-4 ft.....	.45	.40	.36	
<b>CELASTRUS</b> scandens. American Bittersweet. Deciduous. 10-25 ft. Woody, twining, Leaves alternate, oblong, finely toothed, pointed. Flowers small, greenish or cream colored in clusters in June. Pods orange-colored berries. Varied conditions. Sun or shade. Strong plants, 1-2 ft.....	.20	.18	.13	.12
X heavy plants, 2-4 ft.....	.36	.32	.28	.26
XX heavy clumpy plants, 4-6 ft.....	.65	.50	.45	.40
6-12 in. Seedlings.....	.10	.07	.06	.05
<b>CLEMATIS</b> crispa. Curly Clematis. Deciduous. 3-6 ft. Graceful slender vine. Leaves compound, lobed or divided. Flowers purple nodding. Sun or shade. Strong plants.....	.32	.28	.26	
<b>CLEMATIS</b> virginiana. Virgins Bower. Deciduous. 10-30 ft. Graceful climber. Leaves opposite, three divided. Flowers whitish in clusters, July and Aug. A good vine of easy culture. Shade or sun. X strong plants.....	.30	.24	.20	.18
<b>DIOSCOREA</b> villosa. Yam. Deciduous. 4-8 ft. Climbing. Leaves large, turning to yellow in autumn. Flowers pale greenish yellow late summer. Shade or semi. Strong plants.....	.24	.20	.16	.15
<b>EPIGAEA REPENS</b> Trailing arbutus. Evergreen. Ground cover. 4-12 ins. Leaves rounded, heart-shaped at base. Flowers white or pink, clustered, fragrant, early spring. Plant in humus soil, well drained shady location. X strong clumpy plants.....	.50	.45	.40	.36
<b>GALAX</b> aphylla. Evergreen ground cover. 4-12 ins. Leaves broadly heart-shaped, shallow toothed, green or bronze, according to location sun or shade. Shade or partial shade. Flowers creamy white spike, early summer. X strong clumps.....	.26	.22	.19	.17
<b>GAULTHERIA</b> procumbens. Wintergreen. Ground cover. 3-6 ins. Leaves oval shining. Flowers white or pinkish, July. Fruit bright red berry, edible in winter. Shade or semi. X strong clumps.....	.25	.21	.19	.16
<b>HOUSTONIA</b> serpyllifolia. Creeping Bluets. Deciduous. 4-6 ins. Leaves ovate or roundish. Flowers blue or white, spring and early summer. Border and rock garden. Sun or semi. Strong clumpy plants.....	.24	.21	.18	.17

HARDY VINES, CLIMBERS AND CREEPERS, continued

	PRICE EACH			
	1-9	10-24	25-250	1000
<b>IRIS cristata.</b> Crested Iris. Deciduous. Ground cover. 4-6 ins. Leaves bright green, lanceolate. Flowers blue, with orange. Early spring. Splendid for varied conditions. Shade or semi. X strong clumps Light plants.....	\$ .25 .12	\$ .21 .10	\$ .18 .06	\$ .16 .05
<b>IRIS siberica.</b> Siberian Iris. Deciduous. 1-2 ft. Leaves slender green. Flowers lilac-blue. Suitable for rock garden, massing or border. Strong plants.....	.35	.30	.28	
<b>IRIS verna.</b> Vernal Iris. Evergreen. 4-8 ins. Leaves narrow, sea-green. Flowers violet-blue, with yellow center. Early spring. Shade or semi. Strong clumps.....	.26	.21	.18	.16
<b>LONICERA JAPONICA HALLIANA.</b> Hall's Honeysuckle. Deciduous. 10-15 ft. Very strong growing. Leaves ovate, dark green. Flowers white, changing to yellow, very fragrant, early summer. Splendid climber and ground cover. Shade or sunny location. X heavy plants..... Strong second size.....	.30 .15	.25 .12	.22 .11	.20 .10
<b>LONICERA sempervirens.</b> Trumpet Honeysuckle. Deciduous. 10-20 ft. Leaves entire, opposite oblong. Flowers deep red without, yellowish within in clusters May to Oct. Fruit red berries. Sun or shade. Strong plants, 2-3 ft.....	.45	.40	.38	
<b>MITCHELLA repens.</b> Partridge Berry. Evergreen. Ground cover. 3-6 ins. Leaves rounded, veined with white. Flowers white or pinkish. fragrant. Spring and early summer. Fruit bright red berries. Shade or semi. X heavy clumpy plants.....	.25	.22	.20	.18
<b>PACHYSANDRA terminalis.</b> Japanese Pachysandra. Evergreen. Ground cover. 6-9 ins. Flowers white terminal, spring. Useful for bordering walks and drives. Shady location. X strong clumpy plants.....	.30	.24	.21	.18
<b>PASSIFLORA incarnata.</b> Maypop. Deciduous. 10-25 ft. Leaves three lobed. Flowers large purple, spring and summer. Fruit yellow when ripe, edible. Sun or shade. Dry location. X strong plants.....	.30	.27	.25	.22
<b>RANUNCULUS repens.</b> Creeping Buttercup. Deciduous. 4-8 ins. Leaves frequently white, varigated or spotted. Flowers deep yellow, early spring. Low wet or moist ground. Semi-shade. Strong plants	.24	.19	.16	
<b>PHLOX stolonifera.</b> Creeping Phlox. Nearly evergreen. 4-12 ins. Creeping. Flowers reddish-purple early spring. Semi-shade. Strong plants.....	.24	.22	.20	.18
<b>PHLOX subulata.</b> Moss Pink. Evergreen ground cover. 4 to 8 inches. Leaves narrow. Flowers crimson, pink or nearly white. April to June. Most excellent border and rock garden plant. Sun or semi. Strong plants.....	.35	.30	.26	.24

## HARDY VINES, CLIMBERS AND CREEPERS, continued

	PRICE EACH			
	1-9	10-24	25-250	1000
<b>POTENTILLA TRIDENTATA.</b> Wineleaf Cinquefoil. Evergreen. 4 to 8 in. Splendid creeper. Leaves glistening, taking on brilliant bronze Autumn coloring. Flowers Strawberry-like in Summer. Splendid for rock garden. Strong clumpy plants.....	.35	.30	.26	
<b>100 EVERGREEN GROUND COVERS.</b> Strong assorted for shady location. Our selection.....				\$13.25
<b>SEDUM telephoides.</b> Wild Liveforever. Evergreen. 6-12 ins. Leaves fleshy. Flowers numerous, flesh colored, August. Natural rock garden plant and other dry sunny locations. Strong clumpy plants.....	\$ .25	\$ .22	\$ .20	\$ .18
<b>SEDUM ternatum.</b> Mountain Stonecrop. Deciduous. 2-4 ins. Handsome creeping ground cover. White flowers in early spring. Natural rock garden plant. Shade or semi. Strong clumpy plants.....	.23	.20	.18	.16
<b>SHORTIA galacifolia.</b> Oconee-Bells. Rare evergreen ground cover. 3-6 ins. Leaves bright green, resembling Galax. Flowers dainty creamy-white, bell-shaped, March and April. Requires moist shady location. Historic and worthy of consideration by all planters. X strong clumpy plants.....	.60	.50	.45	.40
Medium size plants.....	.30	.25	.22	.20
<b>VINCA minor.</b> Common Periwinkle. Evergreen ground cover, and rockery. Sun or shady location. X heavy clumps, several stems.....	.25	.20	.17	.16
Strong first size plants.....	.14	.11	.10	.09
Light plants for growing on.....	.10	.07	.05	.04
<b>50 HARDY VINES.</b> Strong Assorted. Shade or sunny location. Our selection.....				\$12.50



SHORTIA GALACIFOLIO. OCONEE-BELLS

## Rhododendrons

EXPLANATION: B&B indicates carefully dug with solid ball of earth securely wrapped in burlap.

	PRICE EACH			
	1-9	10-24	25-250	1000
<b>RHODODENDRON carolinianum. Carolina Rhododendron.</b>				
Evergreen 4-7 ft. A distinct hardy species of the Blue Ridge Mountains. Leaves dark green, dotted beneath. Flowers in May, Rose-pink. Funnel shaped, great profusion in many flowered clusters. Recommended for massing on hillsides and in rockeries. Sun or shade. 4-12 in. strong.....	\$ .40	\$ .36	\$ .34	\$ .32
Strong established roots, cut back.....	.90	.80	.70	.62
1-1½ ft. X quality clumps, B&B.....	2.00	1.80	1.60	1.55
1½-2 ft. X quality clumps, B&B.....	2.90	2.70	2.50	2.40
2-3 ft. XX heavy clumps, B&B.....	3.50	3.30	3.20	
3-4 ft. XX Specimen clumps, B&B.....	4.85	4.75	4.65	
4-5 ft. XXX Specimen clumps, B&B.....	9.90	9.75		
100 Strong seedling plants, 3-12 in.....	17.85			
<b>RHODODENDRON carolinianum album. White Carolina Rhododendron. Dwarf, early-blooming variety from Piedmont Section. Rare and most beautiful.</b>				
1 to 1½ feet. Clumps B&B.....	2.60	2.40		
3 to 4 feet. Clumps B&B.....	4.75	4.50		
<b>RHODODENDRON catawbiense. Catawba Rhododendron.</b>				
Evergreen 6-18 ft. Leaves large oval or oblong. bright green above, clustered at ends of branches, glaucous beneath. Flowers very large, reddish to rose-purple. Late spring and early summer. Sun or shady location. See picture on Front Cover. 4-8 in. strong stocky plants.....	.42	.37	.35	.32
8-12 in. X strong stocky plants.....	.65	.50	.46	.44
X cut backs, established roots for growing on.....	.85	.80	.75	.72
1-1½ ft. Heavy clumps, B&B.....	2.00	1.85	1.75	1.65
1½-2 ft. X heavy clumps, B&B.....	2.60	2.40	2.30	
2-3 ft. XX heavy clumps, B&B.....	3.40	3.20	3.00	
3-4 ft. XXX heavy clumps, B&B.....	4.80	4.70	4.60	
4-5 ft. XXX Specimen clumps, B&B.....	9.75	9.50	9.25	
5-6 ft. XXX Specimen clumps, B&B.....	13.50	13.25		
100 Strong stocky seedling plants, 4-12 in.....	12.50			
<b>RHODODENDRON maximum. Rosebay. Evergreen.</b>				
8-25 ft. Leaves oblong, dark green, 6-10 ins. in length. Flowers white to pinkish in large clusters, mid-summer. Most used for massing and naturalistic planting of all native broad-leaved evergreens. Sun or shade. 4-12 in. Strong seedling plants.....	.18	.15	.11	.10
4-6 in. Strong established plants.....	.25	.20	.18	.16
6-12 in. X strong established plants.....	.35	.32	.30	.27
X strong cut back estab. roots for growing on.....	.70	.65	.60	.55
1-1½ ft. X heavy clumpy plants, B&B.....	1.25	1.15	1.10	1.05
1½-2 ft. XX heavy clumpy plants, B&B.....	2.25	2.15	2.10	2.00
2-3 ft. XX heavy clumpy plants, B&B.....	2.50	2.40	2.30	2.25
3-4 ft. XX heavy clumps, B&B.....	4.00	3.90	3.80	3.70
4-5 ft. XXX heavy clumps, B&B.....	5.50	5.25	5.00	4.80
5-6 ft. XXX heavy clumps, B&B.....	7.00	6.75	6.60	
6-7 ft. XXX heavy clumps, B&B.....	9.50	9.00	8.70	
7-8 ft. Finest Specimens, B&B.....	12.75	12.00	11.50	
100 Strong stocky seedling plants, 12-15 in.....	19.75			

CERTIFICATE OF INSPECTION ACCOMPANIES EVERY SHIPMENT



### Mountain Laurel

PRICE EACH

1-9 10-24 25-250 1000

**KALMIA** latifolia. Mountain Laurel. Evergreen. 8-20 ft. This matchless Laurel is without question one of the most beautiful and attractive broadleaved evergreen shrubs on account of its dark green lustrous foliage and masses of glorious pink or rose colored flowers, appearing in lavish profusion in late spring and early summer. Much used for massing and naturalistic plantings. Succeeds under varied conditions. Shade or sun 4-12 in X strong established plants.....

1-1½ ft. Heavy clumps, B&B.....	\$ .40	\$ .36	\$ .34	\$ .32
1½-2 ft. X heavy clumps, B&B.....	1.60	1.50	1.45	1.40
2-3 ft. XX heavy clumps, B&B.....	2.25	2.15	2.00	1.90
3-4 ft. XX heavy clumps, B&B.....	3.00	2.85	2.75	2.60
4-5 ft. XXX heavy clumps, B&B.....	4.25	4.00	3.80	
4-12 in. Strong seedling plants.....	5.90	5.60	5.40	
X cut-back, established roots for growing on.....	.20	.15	.12	.10
	.75	.70	.65	.60
100 Strong stocky seedling plants, 12-15 in.....	19.50			

#### Cultural Directions for Azaleas, Broad-leaved Evergreens, and Similar Plants

Azaleas, Kalmias, Leucothoe, Pieris and Rhododendrons are acid-soil plants and will not succeed well in limestone soils. A deep, porous soil is essential. The ground should be excavated to a depth of about 2 feet, working in leaf-mold, humus, or well-rotted stable manure. This mixture must be worked in carefully and packed tight around the roots. Fill in the excavation with rotted sods, muck or peat soil, mixed with a small quantity of sand.

The plants should be set the same depth as in the nursery, which is shown by the earth-line near the base. After planting, mulch with several inches of leaves or light litter, allowing this mulch to remain around the plants, and renew it annually in the autumn. A thin covering of rich soil may be used to advantage in holding mulch in place and to assist in the decomposition. The mulch also tends to keep the soil cool in summer and protects against freezing in winter. If these simple instructions are observed, your planting of Broad-leaved Evergreens will be entirely successful.

For use in beds of Rhododendrons, Azaleas, and other similar plants we recommend the following: Galax, Shortia, Ferns, Orchids, Lilies, Trilliums, Cimifugas, Iris; Polygonatums; Sanguinarias, and most of our other perennials.



**Hardy Native Deciduous Trees and Shrubs**

	PRICE EACH			
	1-9	10-24	25-250	1000
<b>ACER dasycarpum.</b> Silver Maple. Deciduous. 65-100 ft. Rapid growing. Leaves silvery white underneath. Flowers greenish yellow. Sun or shade.				
10-12 ft.....	\$4.00	\$3.60		
12-15 ft.....	5.50	5.00	\$	\$
<b>ACER rubrum.</b> Red Maple. Deciduous. 80-100 ft. Leaves 3 to 5 lobed, red in autumn. Flowers rich crimson or scarlet, early spring. Splendid shade tree. Varied locations. 4-5 ft.....	2.00	1.75		
<b>ACER saccharum.</b> Sugar Maple. 75-100 ft. Handsome rapid-growing tree for general use. Splendid fall coloring. 2-3 ft.....	.85	.75	.70	
3-4 ft.....	1.35	1.20		
4-6 ft.....	1.65	1.50		
<b>ALBIZZIA julibrissin.</b> Silktree. 10 to 20 ft. Very attractive. Acacia-like foliage. Flowers in fuzzy pink clusters. June and July. Followed by big pods. Sun or shade. 6-8 ft.....	4.25	4.00		
8-10 ft.....	6.00	5.50		
<b>AMELANCHIER laevis.</b> Serviceberry. Deciduous. 25-50 feet. Leaves alternate, oval or oblong. Flowers snow-white in early spring. Fruit showy red, edible. July. Varied locations. 2-3 ft.....	1.00	.90	.80	
3-4 ft.....	1.40	1.30	1.20	
4-6 ft.....	2.00	1.85	1.70	
<b>ARONIA melanocarpa.</b> Black Chokeberry. 4-10 ft. Splendid shrub. Flowers white, berries black, attractive to birds. Sun or shade. 1-2 ft.....	.50	.45	.40	
2-3 ft.....	.65	.55	.50	.46
3-4 ft. X strong.....	1.00	.90	.85	
<b>AZALEA arborescens.</b> Fragrant White Azalea. 4-12 ft. Foliage bright green, turning to crimson in autumn. Flowers sweet scented, white tipped with rose in early summer. Very desirable shrub. Sun or shade. 1½-2 ft. X heavy clumps, B&B.....	2.80	2.70		
2-3 ft. X heavy clumps, B&B.....	3.75	3.65	3.50	
3-4 ft. XX heavy clumps, B&B.....	6.00	5.60		
4-5 ft. heavy clumps B&B.....	7.00			
<b>AZALEA calendulacea.</b> Flame Azalea. 6-8 ft. The most beautiful and varied species. Flowers red-orange to canary. Conspicuous in early summer throughout the Carolina mountains. Much used for massing and naturalistic plantings. Shade or sunny locations. 1-2 ft. Strong seedling plants.....	\$ .30	\$ .26	\$ .22	\$ .20
1-1½ ft. X heavy clumps, B&B.....	1.40	1.30	1.20	
1½-2 ft. XX clumps, B&B.....	2.00	1.85	1.75	
2-3 ft. XXX heavy clumps, B&B.....	2.40	2.30	2.20	
3-4 ft. XXX heavy clumps, B&B.....	3.25	3.10	3.00	
4-5 ft. XXX heavy clumps, B&B.....	4.00	3.75	3.65	
5-6 ft. XXX heavy clumps, B&B.....	5.50	5.00	4.75	
100 Strong stocky seedling plants, 12-18 in.....	16.75			

---



---

**HARDY NATIVE DECIDUOUS TREES AND SHRUBS, continued**

	PRICE EACH			
	1-9	10-24	25-250	1000
<b>AZALEA nudiflora.</b> Pinxter Bloom. 3-8 ft. A handsome free flowering shrub. Flowers in early spring, before the leaves appear, deep pink, profuse and very showy. The extreme earliness and beauty of the flowers commend this fine shrub to planters everywhere. Shade or sunny location.				
2-3 ft. XX heavy clumps, B&B.....	2.75	2.65	2.55	
3-4 ft. XXX heavy clumps, B&B.....	3.50	3.40		
<b>AZALEA vaseyi.</b> Pink-shell Azalea. A distinct and remarkable free-flowering hardy shrub of extreme rarity and beauty. The flowers are an exquisite shade of pink or rose and appear in profusion before the leaves unfold in early spring. In autumn the foliage assumes deep rich shades of red and crimson. Succeeds in varied locations. Shade or sun.				
1-1½ ft. Strong plants.....	.80	.70	.65	.60
1½-2 ft. Strong bushy plants, B&B.....	1.50	1.35	1.25	
2-3 ft. X heavy clumpy plants, B&B.....	2.60	2.50	2.40	
3-4 ft. XX heavy clumpy plants, B&B.....	3.00	2.80		
4-5 ft. XXX heavy clumpy, B&B.....	4.00	3.75		
5-6 ft. XXX finest specimens, B&B.....	5.50	5.00		
6-7 ft. XXX finest specimens, B&B.....	7.00			
<b>AZALEA viscosa.</b> White Swamp Azalea. Deciduous. 3-6 ft. Flowers white or rarely pink. Very fragrant. June or July. Prefers acid soil. Sun or shade.				
Strong plants, 6-12 ins.....	.70	.60	.55	
1½-2 ft. X strong plants, B&B.....	2.00	1.85		
<b>BERBERIS thunbergi.</b> Japanese Barberry. 3-6 ft. Leaves entire bright green, turning to orange, scarlet and crimson. Flowers pale yellow. Fruit bright red berries, attracting birds. Sun or partial shade.				
1-2 ft. strong plants.....	.65	.55	.50	
2-3 ft. strong plants.....	1.00	.90	.85	
<b>BETULA lenta.</b> Sweet Birch. 60-90 ft. Foliage shining green, twigs and bark fragrant. A good tree for general planting. 2-3 ft.....	.65	.55	.50	
3-4 ft.....	.90	.80		
4-6 ft.....	1.50	1.40		
6-8 ft.....	2.00	1.85	1.75	
<b>BETULA lutea.</b> Yellow Birch. 50-75 ft. Yellowish silvery bark and thin finely cut leaves. Desirable for general planting. 1-2 ft.....	.70	.60		
2-3 ft.....	1.10	.95		
<b>BETULA papyrifera.</b> Canoe Birch. 60-80 ft. Bark dull, chalky white. Leaves ovate, irregularly toothed, yellow in autumn. Graceful ornamental tree from the North. Desirable for general planting. 1-2 ft.....	.85	.75		
2-3 ft.....	1.25	1.10		
4-6 ft.....	2.00	1.90		
6-8 ft.....	3.50	3.25		

HARDY NATIVE DECIDUOUS TREES AND SHRUBS, continued

	PRICE EACH			
	1-9	10-24	25-250	1000
<b>CASTANEA pumila.</b> Chinquapin. 8-25 ft. Leaves oblong-oval, coarsely toothed, bright green, turning to dull yellow in autumn. Flowers showy May and June. Fruit usually solitary, edible. Sun or shade.				
4-6 in. Seedlings.....	.25	.20	.15	.10
<b>COMPTONIA asplenifolia.</b> Sweetfern. 1½-3 ft. Branched: Leaves narrow, divided and fragrant, fern-like. Flowers brownish. For dry upland. Sun or shade.				
Strong plants, 1½-2 ft.....	.50	.45	.40	.36
2-3 ft. Strong plants.....	.75	.65	.55	
<b>CHIONANTHUS virginica.</b> White Fringtree. 10-25 ft. Leaves ovate, dark green turning yellow in early autumn. Flowers appearing when leaves are about grown, white in loose drooping panicles, feathery and graceful. Fruit blue berries. Varied locations.				
1-2 ft.....	.50	.45	.40	
3-4 ft. XX finest quality.....	1.35	1.25	1.20	
4-6 ft. XX finest quality.....	1.80	1.70	1.60	
6-8 ft. XX finest specimens.....	3.65	3.50	3.25	
8-10 ft. XX heavy specimens.....	4.75	4.50	4.35	
<b>CLETHRA alnifolia.</b> Summersweet. 3-5 ft. Leaves dark green and lustrous, fading with yellow ones. Flowers creamy white, fragrant, in erect paniced racemes. July. Succeeding in varied locations. Very desirable. Strong plants 1-2 ft. ....	.75	.65	.55	
2-3 ft. X strong plants.....	.90	.80	.75	
<b>CORNUS florida.</b> Flowering Dogwood. See picture on front cover. 15-30 ft. Leaves oval, bright green, turning red or scarlet in autumn. Flowers large white tinged with pink, expanding in early spring. Fruit bright red scarlet. Suitable for varied locations.				
1-2 ft. Strong plants.....	.45	.40	.37	.35
2-3 ft. X strong plants.....	.65	.60	.56	.55
3-4 ft. X heavy plants.....	1.35	1.30	1.25	
4-6 ft. X heavy.....	1.75	1.65	1.60	
6-8 ft.....	2.25	2.10	2.00	
8-10 ft.....	3.50	3.25	3.00	
100 Strong seedlings, 6-12 in.....	7.50			
<b>CORNUS nuttali.</b> Pacific Dogwood. Tree 60-80 ft. Leaves 4-5 inches long. Flowers white or tinged pink; 4-6 in. Fruit bright red or orange. Recommended only for mild climate. Strong 6-12 in.....	.50	.45	.40	
<b>CRATAEGUS crusgalli.</b> Cockspur Thorn. 25-40 ft. Leaves ovate, dark green and shining. Flowers white, May and June. Fruit dull red. General conditions.				
8-10 ft.....	5.50	5.00		

VERY SPECIAL PRICES WILL BE QUOTED ON CARLOAD ORDERS

---



---

**HARDY NATIVE DECIDUOUS TREES AND SHRUBS, continued**

	PRICE EACH			
	1-9	10-24	25-250	1000
<b>CRATAEGUS prunifolia.</b> Plumleaf Hawthorn. 20-30 ft. Very handsome. Brilliant scarlet fruit and lustrous leaves, turning bright orange or scarlet in autumn. General conditions. 8-10 ft.....	\$ 5.00	\$ 4.65	\$	\$
6-8 ft.....	3.50	3.00		
6-12 in. Seedlings.....	.25	.20	.15	.12
<b>CYTISUS scoparius.</b> Scotch Broom. 4-8 ft. Green-barked leafless branches. Flowers bright yellow in great profusion May and June. Sunny location.				
5-6 ft. heavy B&B.....	3.50	3.00	2.75	
<b>CYDONIA japonica.</b> Flowering Quince. 4-8 ft. Splendid old-fashioned shrub. Free blooming early Spring. Flowers charming red. General conditions.				
1-2 ft. X heavy.....	1.00	.85	.75	
6-12 in. seedlings.....	.25	.15	.12	.10
<b>DIERVILLA sessilifolia.</b> Southern Bush Honeysuckle. 4-6 ft. Spreading branches. Leaves bright lustrous green. Flowers yellow in terminal clusters. Attracting bees. July. Sun or partial shade.				
3-4 ft. X heavy clumpy plants.....	1.25	1.10	1.00	
<b>DIERVILLA trifida.</b> Dwarf Bush-Honeysuckle. Deciduous. 1 to 3 ft. Leaves bright green, fading in autumn with red and yellow. Flowers yellow in flat topped clusters. General conditions. 1 to 2 ft.	.55	.45	.40	
<b>FORSYTHIA viridissima.</b> Greenstem Forsythia. 8-12 ft. Branches erect, green barked. Leaves simple, very dark green. Flowers golden yellow. Early spring. Sun or semi. X strong plants, 3-4 ft.....	1.25	1.10	1.00	
<b>HAMAMELIS virginiana.</b> Witch Hazel. 10-20 ft. Leaves heart-shaped, with wavy borders, turning bright yellow, orange or purple in autumn. Flowers yellow in the fall. General conditions.				
4-6 ft. X heavy.....	1.25	1.10	1.00	
6-8 ft. X heavy.....	1.75	1.60	1.50	
8-10 ft.....	2.35	2.00	1.90	
<b>HYDRANGEA paniculata grandiflora.</b> Large Panicked Hydrangea. 6-10 ft. Hardy tall shrub. Flowers creamy white, turning to rose and bronze, late summer. Leaves dark green. Excellent for massing or single specimens. Sun or shade. 1-2 ft. Strong plants.....	.90	.80	.75	
2-3 ft.....	1.25	1.10	1.00	
<b>HYPERICUM densiflorum.</b> Common St. Johnswort. 3-5 ft. Handsome shrub. Leaves narrow, dark green. Flowers bright yellow, numerous compound clusters. July. Varied sunny locations, or semi. Strong plants, 1-2 ft.....	.60	.45	.35	.30
2-3 ft. Strong clumpy plants.....	.80	.70	.60	.50
3-4 ft. X strong clumpy plants.....	1.00	.90	.80	.70

HARDY NATIVE DECIDUOUS TREES AND SHRUBS, continued

	PRICE EACH			
	1-9	10-24	25-250	1000
<b>HYPERICUM prolificum.</b> Shrubby St. Johnswort. 2-4 ft. Vigorous hardy shrub. Compact branches. Leaves dark green. Flowers bright yellow in terminal clusters. Late summer. Sun or shade. 1-2 ft.....	\$ .50	\$ .40	\$ .35	\$ .30
2-3 ft. X strong plants.....	.65	.55	.50	.46
3-4 ft. X strong plants.....	.80	.70	.65	.60
<b>ILEX monticola.</b> Mountain Winterberry. Deciduous, 10 to 35 feet. Spreading branches. Leaves bright green, turning yellow in autumn. Fruit Brilliant scarlet berries. General conditions.				
4-6 ft. ....	2.00	1.80		
1-2 ft. ....	.50	.45	.40	
<b>ILEX verticillata.</b> Common Winterberry. 4-12 ft. Thick growing shrub, with brilliant, bright red berries remaining till mid-winter. Much used for decorating. General conditions. 1½-2 ft. Strong plants....	.75	.65	.60	
2-3 ft. Strong plants.....	1.15	.90	.85	
<b>LIQUIDAMBAR styraciflua.</b> Sweetgum. 75-140 ft. Shapely tree with slender, corky, ridged branches. Leaves deeply lobed, bright green, turning to crimson in autumn. General conditions. 1-2 ft. Strong plants	.75	.65	.60	
<b>LIRIODENDRON tulipifera.</b> Tuliptree. 80-140 ft. Very stately tree. Leaves four-lobed, bright green and lustrous turning yellow in autumn. Flowers cup-shaped, resembling a tulip, greenish yellow, blotched with orange. June. General conditions. X strong,				
12-15 ft. X heavy trees.....	5.00	4.75		
15-18 ft.....	7.50	7.00		
18-20 ft.....	9.00	8.50		
<b>MALUS coronaria.</b> Wild Sweet Crab. 10-30 ft. Spreading spiny branches. Leaves ovate or heartshaped, bright green, yellow or bronze in autumn. Flowers pink or rose colored, very fragrant. May. Fruit yellow fragrant apples. General conditions.				
6-12 in. Seedlings.....	.35	.30	.25	.20
<b>OXYDENDRUM arboreum.</b> Sourwood. 30-50 ft. Leaves lanceolate, bright green, fading in autumn, with dazzling tones of scarlet. Flowers pure white, slightly fragrant, resembling Lily-of-the-Valley. General conditions.				
1-2 ft. X strong trees.....	.60	.50	.45	
2-3 ft. X strong trees.....	.85	.75	.65	
3-4 ft. X strong trees.....	1.50	1.35	1.25	
6-8 ft. X strong trees.....	3.00	2.75	2.60	
8-10 ft. XX strong trees.....	4.00	3.75		
100 Strong seedling plants, 6-12 in.....	8.00			
<b>QUERCUS coccinea.</b> Scarlet Oak. 60-140 ft. A beautiful symmetrical tree. Leaves mostly seven lobed, divisions toothed, green turning to scarlet in autumn. General conditions. 6-12 in.....	.25	.20	.17	.15
3-4 ft. ....	1.25	1.00	.90	.34
4-6 ft.....	2.00	1.75	1.60	
6-8 ft.....	2.75	2.50	2.30	

ALL OUR NURSERY STOCK IS GUARANTEED TO BE AS REPRESENTED

## HARDY NATIVE DECIDUOUS TREES AND SHRUBS, continued

	PRICE EACH			
	1-9	10-24	25-250	1000
<b>QUERCUS phellos.</b> Willow Oak. 60-80 ft. Graceful tree, Quick growing. Leaves alternate, leathery, linear willow like. Acorns yellowish brown. General conditions. 3-4 ft.....	\$1.50	\$1.40	\$1.20	\$
4-6 ft. X strong trees.....	2.00	1.80		
10-14 ft.....	5.25	5.00		
6-8 ft.....	4.00	3.75	3.60	
<b>QUERCUS palustris.</b> Pin Oak. 80-120 ft. Short spreading branches, symmetrical pyramidal head. Leaves bright green. Splendid tree for general conditions. 3-4 ft. X strong.....	1.35	1.25	1.20	
4-6 ft. X strong.....	2.00	1.80	1.70	
6-8 ft.....	3.00	2.75	2.50	
8-10 ft.....	4.00	3.75	3.60	
<b>RHODORA canadensis.</b> Rhodora. 2-3 ft. Closely resembles Azalea. Flowers lavender early spring before the leaves unfold. Very desirable shrub. Sun or shade. 9-18 in. strong.....	1.25	1.10	1.00	
<b>RHUS canadensis.</b> Fragrant Sumac. 3-6 ft. Much branched. Leaves compound, consisting of three bright green leaflets. Flowers yellow disposed in short spikes or clusters, fragrant. Fruit bright red berries. Sun or shade. 2-3 ft.....	1.10	1.00		
3-4 ft.....	1.40	1.30		
<b>RHUS copallina.</b> Shining Sumac. 10-25 ft. Desirable shrub. Leaves compound, dark green lustrous, fading in autumn to ruddy brown. Flowers brilliant red in late summer. Fruit bright red berries in autumn. Sun or shade. 2-3 ft. Strong plants.....	.85	.75	.70	
3-4 ft. X strong plants.....	1.15	1.00	.90	
<b>RHUS typhina.</b> Staghorn Sumac. 10-35 ft. Large tropical looking species. Leaves pinnate, narrow pointed, dark green above, pale to white beneath. Scarlet purple in autumn. Flowers inconspicuous greenish, in dense clusters. June. General conditions. Strong plants, 2-3 ft.....	.90	.80	.75	
3-4 ft. Strong plants.....	1.35	1.20	1.10	
4-6 ft.....	1.75	1.60		
<b>ROBINIA hispida.</b> Rose Acacia. 3-5 ft. Leaves compound, bright green. Flowers rose colored, very showy, in loose, nodding racemes, May and June. Sun or shade, general conditions. 1-2 ft. Strong.....	.55	.45	.40	.35
2-3 ft. Strong plants.....	.75	.60	.50	.46
3-4 ft. Strong plants.....	1.00	.90	.80	.70
<b>RUBUS odoratus.</b> Flowering Raspberry, 3-6 ft. Vigorous upright shrub with large leaves resembling those of the Maple. Flowers rose-purple, Berries light red, edible. Sun or shade. 1-2 ft. Strong plants.....	.50	.45	.40	
2-3 ft. Strong plants.....	.65	.60	.55	
<b>SORBUS americana.</b> American Mountain Ash. 15-45 ft. Small tree with spreading branches. Leaves compound, dark green, turning yellow in autumn. Flowers white in flat cymes, May and June, followed by bright scarlet clusters of berries. Sun or shade. Strong plants, 1-2 ft.....	.65	.60	.50	
2-4 ft.....	1.25	1.10	1.00	
4-6 ft.....	2.00	1.75		
4-6 in. Seedlings.....	.25	.20	.18	.16
6-8 ft.....	4.00	3.75		

HARDY NATIVE DECIDUOUS TREES AND SHRUBS, continued

	PRICE EACH			
	1-9	10-24	25-250	1000
<b>SPIRAEA vanhouttei.</b> Vanhouttei Spiraea. 4-6 ft. Splendid shrub with spreading branches. Leaves bright green, ovate fading with glowing colors. Flowers white, large and showy, sometimes purplish. Summer. Sun or shade. 2-3 ft.....	1.35	1.25		
<b>VACCINIUM pallidum.</b> Blue Ridge Blueberry. 2-7 ft. Best of all Blueberries, and very desirable ornamental shrub. General conditions.				
1½-2 ft. Strong clumpy plants.....	1.00	.85	.80	.75
2-3 ft. X heavy clumps, B&B.....	1.25	1.15	1.10	1.00
3-4 ft. X heavy clumps, B&B.....	1.50	1.40	1.35	
<b>VIBURNUM alnifolium.</b> Hobble-bush. Deciduous 3-5 ft. Wide spreading branches, leaves large broadly ovate, cordate at base. Flowers large white. Fruit red berries turning black with age. 1-2 ft.....	.75	.65	.60	
Strong 2-3 ft.....	1.00	.85	.80	
<b>VIBURNUM cassinoides.</b> Withe-rod. 6-18 ft. Very hardy flowering shrub. Widely distributed. Leaves oval green, beautifully colored in autumn. Flowers creamy white early autumn. Fruit pink berries, changing to dark blue. Sun or shade. Strong plants, 1-2 ft.....	.65	.60	.55	
6-8 ft. X heavy clumps.....	2.50	2.35		
<b>VIBURNUM dentatum.</b> Arrowwood 8-12 ft. Bushy with upright branches. Leaves heart shaped, bright green, with coarsely toothed borders. Flowers creamy white, flat topped clusters, early summer. Berries blue-black. Sun or shade.				
4-6 ft. X quality stocky plants.....	1.25	1.00	.90	.85
6-8 ft. stocky plants.....	1.75	1.60	1.50	
<b>ZANTHORHIZA apiifolia.</b> Yellowroot. 1-3 ft. Attractive shrub, with bright yellow wood and roots. Leaves compound, consisting of about five deeply lobed, bright lustrous green leaflets. Flowers brownish purple in drooping compound racemes, early spring. Recommended for border massing and along streams. Sun or shade. Light plants for growing on.....	.25	.20	.16	.15
6-12 in. Strong clumpy plants.....	.60	.45	.40	.36
1-1½ ft. X strong clumpy plants.....	.80	.70	.60	.50
1½-2 ft. X strong clumps.....	1.25	1.00	.80	.75
100 Light well rooted plants, for growing on.....	7.00			.06
2-3 ft. X Heavy Clumps.....	1.50	1.35	1.25	

Write for prices on carload lots of Azalea calendulacea, Flame Azalea; Azalea nudiflora, Pinxter Bloom; Kalmia latifolia, Mountain Laurel; Leucothoe catesbaei, Drooping Leucothoe, Rhododendron catawbeinse, Catawba Rhododendron; Rhododendron maximum, Rosebay Rhododendron.

## Hardy Native Evergreen Trees and Shrubs

	PRICE EACH			
	1-9	10-24	25-250	1000
<b>ABIES fraseri.</b> Fraser Fir. 35-60 ft. Excellent species of "Balsam" Fir from the Southern Mountains. Much superior to the Northern species. Sun or shade. Prefers cool climate. Strong transplanted. 6-12 in.				
1-2 ft. Strong.....	.35	.30	.26	.24
1-2 ft. Strong.....	1.25	1.15	1.00	
2-3 ft. Strong trees, B&B.....	1.75	1.60	1.50	
3-4 ft. Strong trees, B&B.....	2.25	2.10	2.00	
4-5 ft. Strong trees, B&B.....	3.50	3.25		
100 Strong seedling plants, 6-12 in.....	7.50			65.00
<b>BERBERIS atropurpurea.</b> Purple Barberry. 2-4 ft. Splendid for hedge or specimen planting. Sun or semi.				
1-2 ft. Strong plants.....	.90	.85	.80	
<b>BUXUS sempervirens.</b> Common Boxwood. 8-12 ft. Leaves oval-oblong, or lanceolate. Flowers clustered. For hedge or single specimen planting. Sun or shade.				
9-12 in. X strong plants.....	1.10	.90	.85	.80
1-1½ ft. X strong stocky plants, B&B.....	1.40	1.30	1.20	1.10
2-3 ft. XX heavy stocky plants, B&B.....	5.75	5.50	5.25	
3-4 ft. XX heavy, B&B.....	7.50	7.00		
<b>BUXUS suffruticosa.</b> Old English Boxwood. 4-12 ft. Dwarf compact shrub. Recommended for edging, specimen or hedge.				
1-1½ ft. X strong stocky plants, B&B.....	4.75	4.50	4.35	4.25
1½-2 ft. XX heavy, B&B.....	9.50	9.25	9.00	
<b>ILEX opaca.</b> American Holly. 15-45 ft. A handsome, broad leaved evergreen known to many as Christmas Holly. Much used for holiday decoration. Leaves bright green, shining. Flowers small white, followed by abundance of red berries. Sun or shade.				
10-12 ft. Heavy, B&B.....	20.00			
100 Strong seedling plants, 6-12 in.....	18.50			170.00
<b>JUNIPERUS communis depressa.</b> New England Prostrate Juniper. 1-4 ft. Most excellent ground cover, border and rockery. Sun or semi.				
9-18 in.....	.90	.80	.70	
<b>JUNIPERUS depressa plumosa.</b> Andorra Juniper. Low Spreading Juniper. Brownish-green foliage in autumn and winter. For border or rockery. Sun or semi				
4-6 ft. X quality clumps, B&B.....	4.00	3.75		



HARDY NATIVE EVERGREEN TREES AND SHRUBS, continued

	PRICE EACH			
	1-9	10-24	25-250	1000
<b>JUNIPERUS hibernica.</b> Irish Juniper. 10-18 ft. Pyramidal. with silvery foliage. General conditions.				
1½-2 ft. Strong plants, B&B.....	\$ 1.35	\$ 1.25	\$ 1.15	\$
2-3 ft. X quality, B&B.....	2.25	2.15	2.00	
3-4 ft. X quality, B&B.....	2.75	2.60	2.50	
4-5 ft. X quality, B&B.....	3.50	3.25		
5-6 ft. X B&B.....	4.50	4.00	3.80	
<b>JUNIPERUS sabina.</b> Savin Juniper. A trailing type with erect sprays heather-like foliage. Sun or shade.				
18-24 in. XX strong, B&B.....	1.75	1.60	1.50	
2-3 ft. XX strong, B&B.....	2.25	2.15	2.10	
3-4 ft. XX strong, B&B.....	2.75	2.50	2.40	
<b>JUNIPERUS sabina vonehron.</b> Vonehron Juniper. Splendid foundation subject. Usually 3-4 ft. high. Fast growing, loose, open appearance. Deep rich color.				
2-3 ft. specimens, B&B.....	2.25	2.00	1.90	
3-4 ft. specimens, B&B.....	3.00	2.75	2.65	
<b>JUNIPERUS communis ashfordi.</b> Ashford's Juniper. Open, loose grower, branched at groundline. Fine silvery-green foliage, deepening to purple shades during the fall. Responds readily to shearing.				
2-3 ft. XX strong, B&B.....	2.35	2.20	2.10	
3-4 ft. XXX heavy, B&B.....	3.00	2.85		
4-5 ft. heavy, B&B.....	3.50	3.25	3.10	
5-6 ft. heavy, B&B.....	4.00	3.75		
6-7 ft. heavy, B&B.....	5.00	4.75	4.50	
<b>JUNIPERUS excelsa stricta.</b> Spiny Greek Juniper. Habit narrow and columnar. Erect branches. Foliage spiny, with glaucous blue color. Suitable for dry, sunny location. X strong 1-1½ ft. B&B.....				
	1.25	1.10	1.00	
<b>LEIOPHYLLUM buxifolium.</b> Box Sandmyrtle. 1-3 ft. Leaves dark green, resembling dwarf boxwood. Flowers white or pinkish, May and June. Useful for massing, border or rock garden. Sun or semi-shade. Strong clumps, 6-9 ins.....				
	.75	.65	.60	
9-12 in. X heavy clumps, B&B.....	1.20	1.10	1.00	
1-1½ ft. X heavy clumps, B&B.....	1.50	1.40	1.30	
100 Strong stocky plants, 4-6 in.....	15.00			
<b>LEIOPHYLLUM buxifolium prostratum.</b> Alleghany Sand myrtle. 4-15 ins. From high Southern Mountains. Flowers white to pink. April to June. Natural rock garden plant. Also for border and massing. Sun or semi-shade.				
Strong clumpy plants, 4-6 ins.....	.60	.50	.45	
6-9 in Spread clumps.....	.90	.80	.75	
100 Strong stocky plants, 3-4 in.....	17.50			

## HARDY NATIVE EVERGREEN TREES AND SHRUBS, continued

	PRICE EACH			
	1-9	10-24	25-250	1000
<b>LEUCOTHOE catesbaei.</b> Drooping Leucothoe. 3-7 ft. Leaves dark shining green, in shade, bronze in sunny location in winter. Flowers creamy white, fragrant and showy. May and June. Splendid for border and massing among other shrubbery. Sun or shade. This is one of our best broad-leaved evergreens. Strong stocky plants. 9-18 ins.....	.60	\$ .50	\$ .45	\$ .40
1-1½ ft. X heavy clumps, B&B.....	\$1.25	1.10	1.00	.90
1½-2 ft. X heavy clumps, B&B.....	1.60	1.50	1.40	1.35
2-3 ft. X heavy clumps, B&B.....	2.00	1.80	1.70	
100 Strong transplants, 6-12 in.....	14.00			125.00
3-4 ft. X heavy clumps, B&B.....	2.75	2.60	2.50	
<b>LIGUSTRUM lucidum.</b> Glossy Privet. 8-20 ft. The large thick leaves are shiny and dark green. White flowers followed by black berries which are retained all winter. Splendid ornamental shrub for varied locations. 1½-2 ft. Heavy clumps B&B.....	2.75	2.60	2.50	
<b>MAGNOLIA glauca.</b> Sweetbay. 20-50 ft. Leaves oblong or oval, green above, pale or white beneath. Flowers creamy white, fragrant, cup-shaped, long lasting. May and June. Very hardy. Recommended for general planting.s Sun or shade. 6-8 ft. XXX heavy trees, B&B.....	3.50	3.35	3.25	
8-10 ft. XXX heavy trees, B&B.....	6.00	5.50	5.25	
12-14 ft. XXX heavy trees, B&B.....	8.00	7.50		
<b>NANDINA domestica.</b> Japanese Nandina. 2-6 ft. Leaves compound, with numerous small leaflets. Showy coloring in autumn and winter. Flowers white. Fruit scarlet and showy berries early winter. For southern locations. Sunny location. 6-12 in.....	.90	.85	.80	
<b>PICEA mariana.</b> Black Spruce. 60-100 ft. Slender with pendulous branches. Dark bluish green. Ornamental and suitable for general planting. 6-12 in. X strong.....	.40	.35	.30	.25
100 Strong seedling plants, 6-12 in.....	7.50			
<b>PICEA pungens.</b> Colorado Spruce. 70-100 ft. Beautiful hardy tree from the Rocky Mountains. Narrow, pyramidal. Sun or shade. 1½-2 ft., B&B.....	1.50	1.40	1.30	
6-12 in.....	.50	.40	.36	

**HARDY NATIVE EVERGREEN TREES AND SHRUBS, continued**

		PRICE EACH			
		1-9	10-24	25-250	1000
<b>PIERIS</b>	<i>floribunda</i> . Mountain Andromeda. 2-5 ft. Dense evergreen shrub. Leaves dark green above, black mottled beneath. Flowers showy white in terminal panicles. Early spring. Extremely hardy. Sun or semi-shade. For massing with other shrubs, rock garden and borders. X quality clumps, B&B, 9-12 in.	\$2.00	\$1.85	\$1.75	\$
<b>PINUS</b>	<i>strobus</i> . White Pine. 60-150 ft. Tall symmetrical pyramidal crown. Best known American evergreen tree. Very hardy and recommended everywhere.				
	6-12 in. Seedlings.....	.30	.25	.20	.18
	1-2 ft. Strong, B&B.....	.90	.80	.75	.70
	2-3 ft. X quality, B&B.....	1.50	1.40	1.30	1.25
	3-4 ft. X quality, B&B.....	1.85	1.75	1.70	
	4-6 ft. X quality, B&B.....	3.50	3.25	3.00	
	6-8 ft. heavy trees B&B.....	6.50	6.00		
<b>THUJA</b>	<i>occidentalis</i> . American Arborvitae. 40-60 ft. Pyramidal form. Foliage bright green, turning to brown and bronze in winter. Much used for decorating. Recommended for general conditions.				
	1-2 ft. Strong.....	.80	.70	.60	
	3-4 ft. B&B.....	2.00	1.85	1.75	
	6-12 in. Strong.....	.35	.30	.25	
<b>THUJA</b>	<i>occidentalis globosa</i> . Globe Arborvitae. Dwarf hardy form. For rockeries and formal plantings. Sun or semi. X strong plants, 9-12 in., B&B.....	1.50	1.35	1.25	
	12-18 in., Strong plants.....	2.00	1.80	1.75	
<b>TSUGA</b>	<i>canadensis</i> . Canada Hemlock. 50-100 ft. Tall and graceful tree, spreading or drooping branches, forming a pyramidal crown. For lawn, forest, hedges and wind breaks. General conditions.				
	1-1½ ft. X strong plants.....	.75	.70	.65	.60
	1½-2 ft. X strong plants, B&B.....	1.40	1.30	1.25	1.20
	2-3 ft. XX strong, B&B.....	2.50	2.30	2.20	2.10
	3-4 ft. XX strong, B&B.....	4.00	3.80	3.70	
	7-8 ft. XXX strong, B&B.....	9.00	8.50		
	100 Strong stocky seedlings, 6-12 in.....	8.75			75.00
	8-10 ft. B&B.....	12.50	11.50		

**Leaf-Mold — Nature's Plant-Food**

This is the food nature provides for Azaleas, Rhododendrons, Kalmias, Leucothoe, Andromedas, Hemlocks, Pines, Ferns, Lilies, Trilliums, Native Orchids, and Perennials. Leaf-Mold gives the proper acid elements to the soil, insuring the best root-systems, foliage, and flowers. Valuable for old or new lawns. Leaf-Mold is collected from old Rhododendron beds, without artificial or chemical treatment.

200 lbs.—\$3.00      Ton—\$22.50      Carload (20 tons)—\$370.00

NO DISCOUNT ON THIS ITEM

---



---

**HARDY NATIVE EVERGREEN TREES AND SHRUBS, continued**

	PRICE EACH			
	1-9	10-24	25-250	1000
<b>TSUGA caroliniana.</b> Carolina Hemlock. 40-75 ft. A stately tree, with grace and beauty, unapproached by any other American tree. More compact with pendulous spreading branches than the Canada Hemlock. Leaves dark green and glossy, with two white lines beneath. Reported to be hardier and more adapted to varied conditions than Canada Hemlock.				
6-12 in. Splendid quality.....	\$ .50	\$ .45	\$ .40	\$ .36
100 Strong stocky seedling plants, 6-12 in.....	14.50			135.00
2-3 ft. B&B.....	3.00			
3-4 ft. B&B.....	4.75			

---

**SPECIAL NOTE :**

We have no connection whatever with any other Nursery. We employ no agents. Our entire business being transacted from our office at Ashford, North Carolina. **BEWARE OF ANY SO CALLED NURSERYMEN, CLAIMING TO REPRESENT US AND OUR NURSERY STOCK.**

---

**ALL OUR NURSERY STOCK IS GUARANTEED TO BE AS REPRESENTED, GOOD QUALITY AND TRUE TO NAME. BEST PACKING. VISITORS ALWAYS WELCOME.**

Please Use This Order Form

**GARDENS OF THE BLUE RIDGE**

E. C. ROBBINS, Nurseryman

Ashford, McDowell County, N. C.

**Hardy American Plants and  
Specimen Evergreens**

Post Office ..... Date.....

Dear Sir: Enclosed please find \$..... for the below order selected from Catalog of your GARDENS OF THE BLUE RIDGE.

Ship to .....

.....  
.....  
.....

Give full shipping instructions unless you wish to leave to our best judgment, but we assume no responsibility after delivery in good condition to carrier. State whether by Freight, Express, Truck, Parcel Post or Carload. For further remarks use reverse side of order form. Cash with order entitles you to a special discount of 5 percent, applying only to orders amounting to \$5.00 and over.

Send in time to arrive on or before.....

.....  
.....

Yours truly. ....

**PLANT INSURANCE:** No guarantee—expressed or implied—is made that stock will grow, whether planted by us or not. As we have no control over after-treatment or weather conditions, the purchaser must assume all risks, after stock leaves our Nursery in good condition.

Quantity	Names of Items Wanted	Size	Price	Total
	<b>FORWARD</b>			

**TERMS:** Cash with order from unknown parties, or satisfactory reference. Net thirty days to customers with established credit. Interest at 6 percent will be charged on overdue accounts. All prices are f.o.b. Ashford, N. C. We reserve the rights to change from parcel post to express when we consider it best. Packing will be charged at cost on charge orders.

**Note:** Add 10% to parcel post orders for postage. Any excess will be returned when order is mailed.



FROM

---

---

E. C. ROBBINS

*Hardy Native Plants*

ASHFORD,

McDowell County,

N. C.

*Gardens of  
The Blue Ridge*







GALAX LEAVES

***EVERGREENS***  
***for HOLIDAY***  
***DECORATIONS***

*Beautiful - - Fragrant*

**F**RESH from the Blue Ridge Mountains in North Carolina. The green leaves and red berries will bring a distinct Christmas atmosphere to your home, or convey a message of greetings to your friends.



*Bearing the fragrance of  
Balsam and Pine, the color  
of Galax and Holly*

# Use EVERGREENS and other V

ARE you looking for something unusual? Something that has not become common by long-time usage? Something that breathes an air of originality?

Nothing that you can use in your home, or send to friends, will be more distinctive, or welcome, than a box of Christmas Greens from the slopes of the Blue Ridge Mountains.

All assortments are cut fresh daily, packed and shipped promptly. Without question these greens will be the outstanding note in your home decoration, and in the home of the friend whom you wish to remember at the holiday season.

Case N contains sufficient for a dinner-table decoration, to use on the sideboard and serving table.

Case Q will be ample for decorating the living-room, dining-room, and a few sprays in other rooms. Likewise it will supply material for the complete decoration of a small apartment.

AMERICAN HOLLY  
AND GROUND PINE

## Christmas Decorations

THESE evergreens carry, as nothing else can, the Christmas spirit. They breathe the beauty and fragrance of the Southern mountains, and they find a ready place in every room of most of the notable homes in America during the Christmas holiday season.

My Christmas Decorations are positively the most carefully selected and the finest to be had. My methods of packing insure delivery in perfect condition, and I guarantee satisfaction or the money will be refunded. The keeping qualities of these evergreens are unsurpassed under ordinary conditions; even in warm rooms, because of their vitality, they will retain for weeks their freshness and brilliant natural colorings.

You will find these evergreens unusual and incomparable decorations both for your own home and the homes of your friends. The cost is nominal and any of the collections will carry more real Christmas cheer than can possibly be found elsewhere.

E. C. ROBBINS

Gardens of the Blue Ridge

# GREENS for your Christmas Holiday Winter Decorations

**M**OST holiday remembrances — flowers, candies, and the like—last but a few days: even the memory has disappeared in a fortnight or so.

Decorations of evergreens will remain fresh for weeks, bringing a daily thought of the donor. One of my friends said that the Galax, the Holly and the Ground Pine kept splendidly until long after Candlemas, and that the Spruce remained green for over three months.

## SEND A BOX TO YOUR FRIENDS

Select a box collection that appeals to you (or make an assortment as you choose), send the name and address of your friends, and I will ship direct from Ashford. Send a card, bearing your own name as the giver, which will be enclosed in the box.

I am sure that you and your friends will be delighted with this unusual token of regard at the holiday season.

### PRICES PREPAID

*Cash with Order from Unknown Parties*

AMERICAN HOLLY (Branches). Deep green leaves with bright red berries. Excellent quality. 1 to 2 ft. -----	per doz.	\$4.00
BALSAM FIR. Choice branches 1 to 2 feet long; woody fragrance -----	per doz.	3.50
BALSAM NEEDLES and TWIGS clipped for pillows -----	10 lbs.	4.50
GALAX LEAVES. Medium and small sizes, green or bronze -----	per 1000	2.50
Large selected sizes, green or bronze -----	per 1000	3.50
GROUND PINE (Bouquet Green). Very effective -----	5 lbs.	3.50
LEUCOTHOE SPRAYS. Beautiful foliage, naturally in the shape of a partial garland or wreath. Deep green or rich bronze. 1 to 2 feet. -----	per 100	5.00

### SPECIAL PREPAID BOX PRICES

*Order by Mail or Wire*

CASE N. 200 Assorted Galax and introductory assortment made up from above. Splendid value, to get acquainted -----	3.50
One-half case -----	1.90
CASE O. 400 Assorted Galax, with extra-nice assortment from all of the above -----	6.00
CASE P. 1000 Assorted Galax, 50 Leucothoe Sprays, 15 Fern Sprays, 6 Fir Branches, 1 lb. Bouquet Green, 6 sprays choice Holly. Splendid bargain -----	10.00
CASE Q. 2000 Assorted Galax and extra quantities of all above named. This beautiful collection will be enough for yourself and to divide with all your neighbors. XX Special Value -----	15.00
CASE R 100 Evergreen Branches assorted 1½ to 3 feet. Including some Extras of all items listed for only -----	\$9.85

*Send Card to be Enclosed in Each Package to Friends*



LEUCOTHOE SPRAYS

ASHFORD, NORTH CAROLINA

= 1949 =

# Plant Specials for Holiday Gifts

THESE are rugged plants in sizes that can readily be potted. You will get much pleasure from watching them develop and bloom. In spring they can be planted in the garden or border; there they should continue to grow for many years, increasing in size and value from season to season.

BALSAM CHRISTMAS TREES. *Fragrant Woodsy.*  
1½ to 2 ft. \$1.40 each. 3 or more \$1.25  
2 to 3 ft. \$1.90 each. 3 or more \$1.70.

LILIUM SUPERBUM. *American Turkscap Lily.* 6-8 ft.  
Flowers orange or scarlet with purple spots. Recommended for varied locations. Sun or shade. XX heaviest Jumbo bulbs 60¢ each. Five or more @ 50¢.

LILIUM REGALE. *Royal Lily.* 3-6 ft. high. Flowers deliciously fragrant, inside bright canary-yellow, outside white, tinged yellow at base. One of the most beautiful of all known lilies. X heavy bulbs 75¢ each. Five or more @ 65¢.

GALAX APHYLLA. *Galax.* One of our most beautiful evergreen ground covers. Leaves broadly heart-shaped, with shallowly toothed borders, the exposed ones assuming brilliant shades of bronze and red at the approach of cold weather. Flowers creamy white, produced in slender spikes in early summer. A splendid cover for beds of Kalmias and Rhododendrons where shade and cool surroundings are mutually favorable. Admirable companion for the subjects of Fern border. Very ornamental. Strong stocky clumps. 65¢ each, 5 or more @ 55¢.

## ORDER NOW

and we ship to reach you or your friends before Christmas. Remember, I pay transportation charges on these special offers.

SHORTIA GALACIFOLIA. *Oconee-Bells.* Rare evergreen ground cover. A beautiful shade-loving plant. Leaves bright green, resembling those of the Galax. Flowers white, nodding, borne on slender stems 3 to 6 inches tall, opening in early spring. One of the most noted historic American Plants. Stocky clumps, 60¢ each, 5 or more @ 50¢.

MERTENSIA VIRGINICA. *Virginia Bluebells.* A beautiful early-flowering plant, with large handsome blue flowers. Stems clustered, bearing large glaucous green leaves. Thrives best in moist loamy soils, low meadows and along streams. Extra large plants, 45¢ each, 5 or more @ 40¢.

TRILLIUM GRANDIFLORUM. *Snow Trillium.* XX largest, 5 or more @ 20¢.

TRILLIUM ERECTUM. *Purple Trillium.* XX largest, 6 or more @ 18¢.

TRILLIUM STYLOSUM. *Rose Trillium.* XX largest, 5 or more @ 22¢.

TRILLIUM UNDULATUM. *Painted Trillium.* XX largest, 6 or more @ 17¢.

TRILLIUM LUTEUM. *Yellow Trillium.* XX largest, 6 or more @ 16¢.

35 X BEST TRILLIUM ASSORTMENT \$5.75.

DIONAEA MUSCIPULA. *Venus Flytrap.* 5-8 in. tall. Leaves thick dark green, trap-like, catching insects. Flowers white terminal clusters. Naturally found in Peat bogs, moist location. X strong plants 55¢ each. Five or more @ 50¢.

OSMUNDA CINNAMOMEA. *Cinnamon Fern.* A stately large Fern with very large creeping rootstocks. Leaves deciduous, produced in a circular cluster. Very ornamental and impressive, succeeding in rich soil in shade or partial shade. Extra heavy clumps @ 50¢, 5 or more @ 40¢.

POLYSTICHUM ACROSTICHOIDES. *Christmas Fern.* 9-18 in. Extremely ornamental for massing in shade, or partial shade. XX heavy clumpy plants 45¢ each. Five or more @ 40¢.



Leucothoe Sprays

*Gardens of  
The Blue Ridge*

E. C. ROBBINS  
ASHFORD, NORTH CAROLINA

# Evergreens for Holiday Decorations

BEAUTIFUL - - FRAGRANT

FRESH from the Blue Ridge Mountains in North Carolina. The green leaves and red berries will bring a distinct Christmas atmosphere to your home, or convey a message of greetings to your friends.

## SEND A BOX TO YOUR FRIENDS

Select a box collection that appeals to you (or make an assortment as you choose), send the name and address of your friends, and I will ship direct from Ashford. Send a card, bearing your own name as the giver, which will be enclosed in the box.

I am sure that you and your friends will be delighted with this unusual token of regard at the holiday season.



Bearing the fragrance of Balsam and Pine, the color of Galax and Holly

## ORDER NOW

and we ship to reach you or your friends before Christmas. Remember, I pay transportation charges on these special offers.

### PRICES PREPAID WITHOUT DISCOUNT

Cash with Order from Unknown Parties

AMERICAN HOLLY (Branches). Deep green leaves with bright red berries. Excellent quality. 1 to 2 ft. Per doz.....	\$4.00
BALSAM FIR. Choice branches 1 to 2 feet long; woody fragrance. Per doz.....	3.50
BALSAM NEEDLES and TWIGS clipped for pillows. 10 lbs.....	4.50
GALAX LEAVES. Medium and small sizes, green or bronze. Per 1000.....	2.50
Large selected sizes, green or bronze. Per 1000.....	3.50
GROUND PINE (Bouquet Green). Very effective. 5 lbs.....	3.50
LEUCOTHOE SPRAYS. Beautiful foliage, naturally in the shape of a partial garland or wreath. Deep green or rich bronze. 1 to 2 feet. Per 100.....	5.00

### SPECIAL PREPAID BOX PRICES

Order by Mail or Wire

CASE N. 200 Assorted Galax and introductory assortment made up from above. Splendid value, to get acquainted.....	\$ 4.50
One-half case.....	2.45
CASE O. 400 Assorted Galax, with extra-nice assortment from all of the above....	7.00
CASE P. 1000 Assorted Galax, 50 Leucothoe Sprays, 15 Fern Sprays, 6 Fir Branches, 1 lb. Bouquet Green, 6 sprays choice Holly. Splendid bargain	11.00
CASE Q. 2000 Assorted Galax and extra quantities of all above named. This beautiful collection will be enough for yourself and to divide with all your neighbors. XX Special Value.....	16.60
CASE R. 100 Evergreen Branches assorted 1½ to 3 feet. Including some extras of all items listed for only.....	9.85

Send Card to be Enclosed in Each Package to Friends

ORDERS FILLED IN ROTATION AS RECEIVED

PLEASE ORDER EARLY TO AVOID POSSIBLE DISAPPOINTMENT



TRILLIUM GRANDIFLORUM. Snow Trillium. Deciduous. Finest and largest species. Flowers 2 to 3 inches across, white turning to rose color early Spring. One of our best Spring bloomers, for woodland border and rock garden. Shade or semi-shade.

	100	1000	5000
All Blooming Size Plants.....	\$ 4.25	\$37.50	\$175.00
Extra Strong First Size.....	6.75	62.50	300.00
XX Largest Bulbs.....	13.50	125.00	

*Gardens of  
The Blue Ridge*

HARDY AND RARE TREES, SHRUBS, FERNS, VINES AND  
HERBACEOUS PERENNIALS OF THE BLUE RIDGE MOUNTAINS

E. C. ROBBINS, Nurseryman

ASHFORD, McDOWELL COUNTY, N. C., U.S.A.