

Historic, Archive Document

Do not assume content reflects current scientific knowledge, policies, or practices.

62,89

WOOD'S

LIBRARY RECEIVED
OCT 17
U.S. DEPT. OF AGRICULTURE



fall Catalogue 1949

DAISY SCHAEFFER

DICK WELLBAND



MRS. R. O. BACKHOUSF



BEERSHEBA



PINK PEARL



T. W. WOOD & SONS

Seedsman Since 1879.

RICHMOND, VIRGINIA

Wood's Special Grass and Clover Mixtures

FOR PERMANENT HAY AND PASTURE CROPS

Contains Ladino Clover, Orchard Grass, Ky. 31 and Alta Fescue

Fall is the Best Time for Seeding Grass and Clover

Plants make a strong root growth during the cool months and are better established to withstand summer heat than if sown in the spring. They can be seeded safely until the middle of October, but early fall seeding is best if weather permits. Soil should be limed and well prepared, fine but firm. If a cultipacker is used more seeds will come up. Heavy applications of fertilizer at seeding time and as a top dressing each year, pay big dividends.

Sow 30 to 35 lbs. per acre of Wood's Special Grass and Clover Mixtures. For over half a century they have proved their superiority as economical, heavy and permanent producers of nutritious hay and pasture crops. We have added Ladino Clover, Ky. 31 and Alta Fescue to insure vigorous growth in cold or hot weather, in dry or wet seasons. Slow to establish, they are long lived and increase in productivity with age. Other ingredients in our mixture grow quickly, assuring good crops from the start. Our mixtures are far superior to seeding these crops alone.

Wood's Southern Permanent Pasture and Hay Mixture No. 12

A fine mixture for hay or pasture in the Southern Coastal and Gulf States. Suitable to both light and heavy soils.

WOOD'S PERMANENT PASTURE MIXTURES Nos. 1 to 3

Contains grasses and clovers which make their maximum growth at different times throughout the year, furnishing abundant nutritious, year-round grazing.

- No. 1. For light gravelly or sandy soil
- No. 2. For good loam soil
- No. 3. For moist bottom land

WOOD'S PERMANENT HAY MIXTURES Nos. 6 to 8

Contains grasses and clovers which mature at the same time, making bumper hay crops, which are easily cured.

- No. 6. For light gravelly or sandy soil
- No. 7. For good loam or clay soil
- No. 8. For moist bottom land

Wood's Permanent Hay Mixtures produce tremendous yields of the finest quality hay. They continue to bear abundantly for many years, minimizing the original seeding cost. They contain Ladino Clover, Ky. 31 and Alta Fescue and a wide assortment of the finest grasses and clovers which mature together for hay for several big cuttings each year in good or bad seasons. The grasses are properly balanced with alfalfa, clovers and lespedezas, increasing the palatability protein and feeding value. The hay is relished by all livestock.

WOOD'S LAWN GRASSES

MADE WITH ONLY THE FINEST QUALITY TURF-PRODUCING GRASSES

To Make a Lawn

The Fall months are always considered as being particularly favorable for the seeding of new lawns or the reseeded of old ones. For new lawns, preparation of the seed bed is of the greatest importance and too much care cannot be given to this. The ground should be broken and thoroughly pulverized to a depth of at least six inches. If the land needs lime it should be applied at this time and well worked in. Repeated raking of the surface at intervals of several days will aid in killing any volunteer foreign growth and help to provide a clean seed bed. One or two days before seeding, work a good application of Wood's High-Grade Sheep Manure into the top two or three inches. Broadcast the seed evenly, half one way and half the other, cover lightly either by raking or with a drag and roll with a light roller. Keep moist, using a fine spray to avoid washing and after germination is well started, water only when necessary. Pull out any weeds that appear.

What Grass to Sow

In Virginia and farther north, in westerly sections of the Carolinas and farther west, sow Wood's Super-Green, Wood's Evergreen and Shady Park Lawn Grasses. In other parts of South sow Wood's Emerald Park Grass. Under trees and shaded places sow Wood's Shady Park Lawn Grass.

Renewing Old Lawns

Every Fall and Spring sow more seed. Cut the grass close, apply a good fertilizer and rake in and broadcast the seed evenly, one pound or more per 500 square feet, according to the stand and again run the mower over the lawn. This will put the seed into the soil. Water freely.

How to Cut Your Lawn

Cut when two to three inches high and keep cut regularly but never shorter than one and one-half inches unless during cool weather. Be sure your mower is kept sharp. A dull mower bruises and injures the grass. During hot weather it is advisable to raise the mower blades.

Wood's Winter-Green Lawn Grass

As its name implies, this Lawn Mixture will produce a beautiful green lawn through the winter months when many other grasses are dormant or not at their best. Especially recommended for broadcasting on top of established lawns to freshen them up during the cold months. To seed, simply cut the existing lawn close, rake with a sharp rake, broadcast 1 to 2 lbs. of Wood's Winter Green Lawn Grass per 100 square feet and again run the mower over the lawn. The result will be a velvety green lawn through the winter months. For best results, seeding should be done not later than October, although later seeding will produce good results if the weather remains open.

By mail postpaid, 1 lb. 60c.; 5 lbs. \$2.30; 10 lbs. \$4.45; 25 lbs. \$9.90. Not postpaid, 1 lb. 45c.; 5 to 24 lbs. 40c. lb.; 25 to 99 lbs. 38c. lb.; 100 lbs. 37c. lb.

Wood's Evergreen Lawn Grass

1 lb. sows 200 square feet; 90 to 100 lbs. sows an acre

No one grass is suitable for making a lawn, so we have put into our Evergreen a well-balanced mixture of grasses that are at their best at all seasons, and will make a rich, deep green velvety lawn in as short a time as possible. It contains no coarse grasses.

By mail postpaid, 1 lb. 90c.; 5 lbs. \$3.80; 10 lbs. \$7.45; 25 lbs. \$17.85. Not postpaid, 1 lb. 75c.; 5 to 24 lbs. 70c. lb.; 25 to 99 lbs. 68c. lb.; 100 lbs. 67c. lb.

Wood's "Super-Green" Lawn Grass

1 lb. sows 200 square feet; 90 to 100 lbs. sows an acre

A combination of the finest turf grasses available. Contains only Certified Bent Grass, Cheeping's Fescue, Kentucky Blue Grass, and Red Top; no Clover. All seeds are our Super Grades and of the highest possible quality, and will produce a thick, even, velvety turf, even in shady locations. Recommended for lawns in Virginia, Piedmont and mountain sections of the Carolinas and Georgia, and all states north of Virginia. Should be used where particular care can be given.

By mail postpaid, 1 lb. \$1.05; 5 lbs. \$4.55; 10 lbs. \$8.95; 25 lbs. \$21.60. Not postpaid, 1 lb. 90c.; 5 to 24 lbs. 85c. lb.; 25 to 99 lbs. 83c. lb.; 100 lbs. 82c. lb.

Wood's Emerald Park Lawn Grass

1 lb. sows 150 square feet; 125 lbs. sows an acre

A splendid mixture of fine quick-growing grasses that are adapted to the Middle and South Atlantic States. It contains none of the coarse grasses, nor those that grow in tufts. It is a good all-around general purpose lawn mixture for large areas, parks, athletic fields, etc.

By mail postpaid, 1 lb. 75c.; 5 lbs. \$3.05; 10 lbs. \$5.95; 25 lbs. \$14.10. Not postpaid, 1 lb. 60c.; 5 to 24 lbs. 55c. lb.; 25 to 99 lbs. 53c. lb.; 100 lbs. 52c. lb.

Shady Park Lawn Grass

Few grasses thrive in shade. Our mixture is composed of dwarf grasses especially adapted to shady places under trees and around the house. Under trees apply a double quantity of fertilizer.

By mail postpaid, 1 lb. \$1.00; 5 lbs. \$4.30; 10 lbs. \$8.45; 25 lbs. \$20.35. Not postpaid, 1 lb. 85c.; 5 to 24 lbs. 80c. lb.; 25 to 99 lbs. 78c. lb.; 100 lbs. 77c. lb.

White Dutch Clover

By mail postpaid, 1 lb. \$1.40; 5 lbs. \$6.30; 10 lbs. \$12.45; 25 lbs. \$29.60. Not postpaid, 1 lb. \$1.25; 5 to 24 lbs. \$1.20 lb.; 25 to 99 lbs. \$1.15 lb.; 100 lbs. \$1.10 lb.

Rye Grass—For Winter Lawns

A beautiful green lawn during the winter and early spring months can be obtained by broadcasting Rye Grass Seed over any existing lawn. The growth is quick. Before seeding it is necessary to cut the lawn, rake it lightly and sow the seed evenly at the rate of one pound to 100 square feet and run the mower over the lawn again. Seeding is best done in late September or early October.

By mail postpaid, 1 lb. 35c.; 5 lbs. \$1.25; 10 lbs. \$2.35; 25 lbs. \$5.10. Not postpaid, 1 lb. 25c.; 5 to 24 lbs. 19c. lb.; 25 to 99 lbs. 17c. lb.; 100 lbs. 16c. lb.

FERTILIZERS FOR LAWNS

WOOD'S HIGH-GRADE SHEEP MANURE

The supreme natural fertilizer finely pulverized. Unequaled for lawns, gardens and shrubbery. Fine for mulching or as a liquid manure. Use 10 lbs. to 100 square feet for mixing in soil and half that quantity for top dressing. 25 lbs. \$1.00; 50 lbs. \$1.75.

WOOD'S PULVERIZED AND SHREDDED COW MANURE—25 lbs. \$1.00; 50 lbs. \$1.75.

VIGORO—Regular Stock for Lawns and Flowers. Analysis: 4% Nitrogen, 12% Phosphoric Acid, 4% Potash. Prices, F.O.B. Richmond: 5 lbs. 50c.; 10 lbs. 90c.; 25 lbs. \$1.60; 100 lbs. \$4.25.

MILORGANITE—The All Organic Fertilizer. Nitrogen 6%; Phosphorus Acid 2%. 25-lb. bag, \$1.50; 50-lb. bag, \$2.50; 100-lb. bag, \$4.00. Will not burn.

STEAMED BONE MEAL—\$5.00 per 100 lbs.; \$2.60 per 50 lbs.

Bulbs ^{KIT} for Indoor Culture



Colchicum

FRENCH GROWN Giant White Narcissus

The Most Satisfactory
Winter-Blooming
House Plant

They will bloom in water from 6 to 8 weeks from time of planting, if not planted too early. The flowers are large, attractive in color and very fragrant. A very unique and simple way to grow them is to place 6 or 8 bulbs in a shallow bowl with water; support the bulbs with pebbles; and place the bowl in the dark until the roots have started, when they should be brought into the light. Change the water occasionally to keep it pure. From our experiments, November, December and January plantings give best results.

3 for	Doz.	100
55c.	\$1.60	\$11 00

COLCHICUM

A bulb that you don't have to plant. Will bloom in from two to three weeks. Just place the bulb on window sill and they will produce beautiful lavender-pink, crocus-like blossoms, 1½ to 2 inches in diameter. After blooming the bulbs may be planted outside, where they will make very pretty foliage in the spring. Order early, as our supply is limited. 40c. each; 3 for \$1.00; \$3.50 per dozen.

RISING SUN NARCISSUS

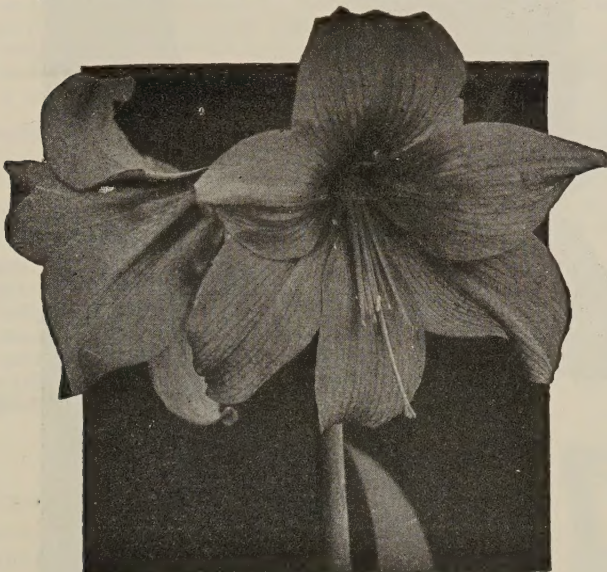
This is a Yellow Narcissus exactly like the Giant White, except the flowers are a rich yellow instead of white, and a little later in blooming. Excellent for growing in water, and when grown this way will bloom in from 8 to 10 weeks. Plant 6 to 8 bulbs in a bowl and give the same treatment as Giant White Narcissus. 3 for 50c.; \$1.60 per dozen; \$11.50 per 100.

Paper-White French-Grown Narcissus

These are excellent for growing in water and rocks, provided they are not planted too early. From our experiments, November, December and January plantings give best results. 3 for 45c.; \$1.35 per dozen; \$9.00 per 100.

GIANT HYBRID AMARYLLIS

A reselected strain of the very largest flowered sorts, ranging in color from almost pure white, through various shades of pink, to the deepest scarlet; some with beautiful markings and mottled throats. Can supply in mixed colors only. Ready November 1st. 35c. each; \$3.75 per dozen.



Giant Hybrid Amaryllis



OXALIS

One of the finest winter-flowering bulbs grown. A single plant well grown will fill a 6-inch pot, throwing up 50 to 70 stems, which bear an immense number of flowers.

BERMUDA BUTTERCUP. Bright yellow. 3 for 20c.; 50c. per dozen; \$3.50 per 100.

GRAND DUCHESS. Pink and Lavender. 3 for 20c.; 50c. per dozen; \$3.50 per 100.

GLOXINIAS

Makes a very satisfactory and most unusual house plant when planted in pots and bowls. The plants may also be set in rock garden in semi-shaded places after danger of frost. Do not over water, but keep the soil slightly moist at all times. May be had in the following colors: Scarlet, Violet, White, Scarlet and White, Violet and White. Ready in December. 25c. each; \$2.50 per dozen.

FREESIAS

One of the most charming bulbs known for winter flowering and cut flowers. The blooms are grown on long, graceful stems and are delicately scented and very pretty. They force very easily and can be brought into bloom by Christmas.

TECOLOTE GIANT HYBRID FREESIAS. Flowers of immense size, wide open and delightfully fragrant. Plants of unusual strength and vigor. Tall, strong stems. Much finer than the standard commercial varieties. May be had in the following colors: Pink, Talisman, Lavender, Red, White, Blue and Purple. 3 for 30c.; 90c. per dozen; \$6.00 per 100.

LILIES

CALLA LILIES. Well known house plants of great popularity. Our bulbs are large California dry roots, which are best for forcing. Mammoth roots, 45c. each; \$4.75 per dozen.

YELLOW CALLA LILIES. A beautiful yellow blooming Lily, for growing indoors during the winter months. May be safely planted outside in the spring after danger of frost. Ready for delivery during December. 35c. each; \$3.50 per dozen.

All Bulbs In This Catalog Will Be Sent Postpaid

Daffodils and Jonquils

Among early spring flowers these are in the front rank of popularity. Appearing just after winter, they animate our gardens with masses of gold and silver, while their fragrant blossoms in the home are invaluable for decorative purposes.

Culture Out-of-Doors: All varieties of *Narcissus* should be grown in clumps and patches in every suitable spot, and there is not a spot where grass will grow in which *Narcissus* will not succeed. In planting be guided by the size of the bulb, allowing 4 to 5 inches between small sorts and 6 to 8 inches between large varieties. The bulbs will soon completely fill the space, forming a compact mass, and it is then their flowers are produced the most freely. Plant about 5 inches deep, according to the size of the bulb.

BEERSHEBA Perianth and trumpet of magnificent proportions. Sturdy foliage and stem; height 20 to 22 inches. Its color is pure white and expressive of purity in the highest sense. Those who are forming collections of fine *Narcissus* rate Beersheba at the top of the large white Trumpets. Large size, 35c. each; 3 for 90c.; \$3.00 per dozen; \$20.00 per 100.

GOLDEN HARVEST. An all golden yellow trumpet variety, of fine form. An improvement over the older variety, Golden Spur. Very early blooming, both in the garden and for forcing. Large size, 3 for 50c.; \$1.35 per dozen; \$9.75 per 100

INSURPASSABLE. An outstanding novelty. Extremely large, golden yellow flower of bold carriage. It is one of the finest of the big flowered golden trumpet Daffodils. It grows well, blooms freely, and has long stems, altogether a great Daffodil of recent introduction. 35c. each; 3 for 85c.; \$2.75 per dozen; \$18.00 per 100.

KING ALFRED. One of the finest and largest deep golden trumpet varieties. A tall, strong grower, with magnificent frilled trumpet and large perianth, all of a rich golden yellow. Jumbo size, 3 for 70c.; \$2.10 per dozen; \$14.00 per 100. Large size, 3 for 45c.; \$1.20 per dozen; \$8.00 per 100.

LORD WELLINGTON Very large, magnificent deep golden yellow flower with broad petals and a large trumpet; tall stiff stem. Much larger and ten days later than King Alfred. Large size, 3 for 65c.; \$1.80 per dozen; \$12.50 per 100.

ROXANE. A large flower of splendid form and carriage, with white overlapping perianth and a beautiful broad trumpet, vigorous grower. Can be forced after January 20th. Large size, 3 for 65c.; \$1.80 per dozen; \$12.50 per 100.

ROBERT SYDENHAM. The superb heavily frilled trumpet of beautiful golden yellow, glittering as if sprinkled with gold dust, backed by the soft sulphur-yellow perianth, presents an unforgettable picture. Large flowers, borne on long, stiff stems. Large size, 3 for 50c.; \$1.50 per dozen; \$10.00 per 100.

LARGE FLOWERING MIXED. Made up of named sorts. Excellent for growing in masses for garden decorations and fine for cut flowers. \$1.10 per dozen; \$7.00 per 100.



MRS. E. H. KRELAGE. The perianth and trumpet are pure white and this is one of the finest white Daffodils. Large size, 3 for 50c.; \$1.40 per dozen; \$9.50 per 100.

MUSIC HALL. A very large bicolor, with pure white perianth, golden yellow trumpet; medium yellow. 3 for 70c.; \$2.10 per dozen; \$14.00 per 100.

ROBINHOOD. A new departure in Giant Trumpets. Deep orange trumpet with a golden yellow perianth. Outstanding introduction. Large size, 3 for 45c.; \$1.30 per dozen; \$9.00 per 100.

JONQUILS

CAMPERNELLE REGULOSUS. Rich, deep yellow flowers, broad imbricated perianth with straight wrinkled cup. 3 for 35c.; \$1.10 per dozen; \$7.00 per 100.

CAMPERNEL ODORUS. Distinct from any other Campernel. Three to five deep yellow, extremely fragrant flowers per stem, with longer cups than are ordinarily seen in this group. Very early bloomer; height 8 inches. 3 for 55c.; \$1.50 per dozen; \$10.50 per 100.

JONQUILLA SIMPLEX. Dainty heads of small, rich, golden yellow flowers; much praised for their delicious scent. 3 for 35c.; \$1.10 per dozen; \$7.00 per 100.

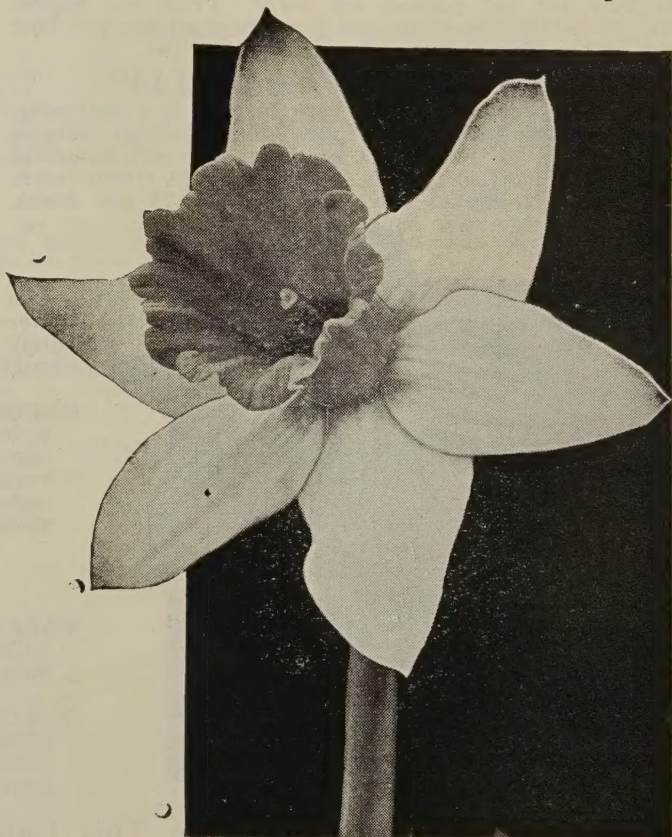
DAFFODILS FOR NATURALIZING

Suitable for garden display, woodland plantings or cutting. Practically any soil has been found suitable, and they are grown equally well in the open as among trees and in woodland. Contains a mixture of large Trumpets, Leedsi, Barri, Poeticus and Poetaz types, making a mixture that cannot be beaten for value.

80c. per dozen; \$5.00 per 100

TERRA-LITE

Aids in creating a dependable reservoir of plant root moisture; air-conditions the ground; fluffs stiff soil to prevent cooking, packing and hardening; tends to reduce need for watering and cultivation; provides a satisfactory medium for cuttings, seedlings and transplantings. Ideal for storing bulbs, particularly dahlias and for vegetable winter storage. Postpaid, 4-qt. pkg., 50c.; 1/2-bus. bag, \$1.00. Not postpaid, 2-bus. bag, \$1.75.



Narcissus

BARRI TYPE

ELLY NEY. Pure white perianth with very broad petals, fine lemon yellow cup with picoteed edge of deep red. Remarkable flower of perfect form. 3 for 45c.; \$1.20 per dozen; \$8.00 per 100.

CROWNED BEAUTY. Fine citron yellow perianth, heavily frilled dark orange cup; one of the finest in this class. 3 for 70c.; \$2.10 per dozen; \$14.00 per 100.

CAROLINA. Large perfectly formed pure white perianth, beautiful flat frilled, intense orange cup. Lovely flower on a tall stem. 3 for 70c.; \$2.10 per dozen; \$14.00 per 100.

INCOMPARABILIS TYPE (Short Cup)

CARLTON. A fine clear yellow of great size. Flat overlapping perianth and a large expanded cup frilled at the brim. Sturdy plant of great vigor. 3 for 45c.; \$1.20 per dozen; \$8.00 per 100.

DICK WELLBAND. White semi-overlapping perianth, deep orange-red cup of remarkable quality; does not fade. 3 for 55c.; \$1.65 per dozen; \$11.50 per 100.

FANCHEON. Creamy white petals with exceptionally large cup, which lies flat on the petals; the cup of orange color, one of the best Narcissus in its class. 35c each; 3 for 90c.; \$3.00 per dozen; \$20.00 per 100.

FORTUNE. Recognized as the best Daffodil of its type that has yet been produced. It has a beautiful color of clear deep lemon-yellow and a splendid flat, overlapping perianth with a very large and long bold cup of coppery red orange; is of good substance, a two foot stem and perfect carriage. 3 for 55c.; \$1.65 per dozen; \$11.50 per 100.

FRANCISCUS DRAKE. Pure white perianth of unusual substance tinted gold at base. The wide deep cup is golden yellow at the base and changes gradually to flaming red at the densely frilled edge. A striking flower on a tall stem. 3 for 45c.; \$1.30 per dozen; \$9.00 per 100.

HADES. Large white perianth of exceptional substance, well expanded cup of deep cherry red, which holds its color. Wonderful flower on a tall stem. 3 for 75c.; \$2.25 per dozen; \$16.00 per 100.

SCARLET ELEGANCE. Deep yellow perianth with vivid orange-red cup. Tall stem and a strong grower; outstanding. 3 for 45c.; \$1.20 per dozen; \$8.00 per 100.

POETICUS TYPE

ACTAEA. Broad overlapping white perianth of great substance and fine form. The large flat cup has a broad margin of the deepest red. Rated the largest and best Poeticus. 3 for 45c.; \$1.20 per dozen; \$8.00 per 100

HORACE. Pure white flower, with orange cup, edged with deep crimson. Beautiful for outside planting; fine cut flower. 3 for 45c.; \$1.20 per dozen; \$8.00 per 100.

LEEDSI TYPE

DAISY SCHAEFFER. One of the best of the remarkable new Giant Leeds type; the flower 4½ inches across, with cup nearly 2 inches. Resembles a Giant Trumpet, but much more graceful in form; perianth pure white, with cup opening primrose and turning to light canary-yellow deeper at the base. Long, lemon-yellow stigma and styles add to the color harmony of this remarkable flower. 3 for 55c.; \$1.50 per dozen; \$10.50 per 100.

GERTIE MILLAR. Wonderful flower of the new Giant Leeds type with pure white perianth similar to and as large as Van Waveren's Giant; a beautifully proportioned pale primrose cup, deeply fluted and frilled, and of translucent texture. 3 for 65c.; \$1.65 per dozen; \$12.50 per 100.

MRS. R. O. BACKHOUSE. This is the famous "Pink Daffodil." Fine informal perianth of ivory-white, and beautifully proportioned slim, long, trumpet of apricot-pink, changing to shell-pink at the deeply fringed edge, delicately beautiful but of exceptional substance; long lasting, early. Belongs in every collection. 45c. each; 3 for \$1.25; \$4.25 per dozen.

BULB PLANTER

The "Hole-In-One" Bulb Planting Tool. Removes the soil up to a depth of five inches, making a perfect planting hole for many kinds of bulbs.

75c., postpaid



DOUBLE VARIETIES

DAPHNE. Magnificent double pure white flower with exquisite fragrance. 3 for 45c.; \$1.20 per doz.; \$8.00 per 100.

INSULINDE A large, well shaped double flower, composed of many creamy white petals of good size. Interspersed between these are somewhat shorter but brilliant orange-scarlet inner petals. In our opinion this is one of the best of the double Daffodils of the so-called Pompon type blooms. Free flowering and very colorful. 3 for 70c.; \$1.85 per dozen; \$13.50 per 100.

TWINK. A double of the semi-full type with alternating petals of soft primrose and clear orange and so arranged as to give the flower a most attractive appearance. 3 for 45c.; \$1.20 per dozen; \$8.00 per 100.

POETAZ TYPE

CHEERFULNESS. Clearly defined perianth of good white, semi-double cup of white and yellow. Two to 5 flowers per stem. 3 for 25c.; \$1.00 per dozen; \$6.00 per 100.

GERANIUM. Large, pure white perianth with beautiful orange red cup. 4 to 6 on stem. 3 for 45c.; \$1.20 per dozen; \$8.00 per 100.

LAURENS KOSTER. Bearing on tall, graceful stems heads of 5 to 6 large flowers with solid rounded perianth and pale yellow cup. 3 for 35c.; \$1.00 per doz.; \$6.00 per 100.

SCARLET GEM. Four to ten beautiful primrose flowers per stem; cup of deep orange; strong grower. 3 for 40c.; \$1.10 per dozen; \$7.00 per 100.

TRIANDUS-THALIA In addition to a peculiar attraction at first sight, this flower leaves one with an impression that it is white, yet it is whiteness that is not white. The recurving petals and the angle of the three trumpets are unlike the conventional short-cupped Daffodil. The stem is dark green, round and reed-like thin. Called the "Orchid-Flower" Narcissus. 30c. each; 3 for 75c.; \$2.35 per dozen; \$16.00 per 100.

HYPONEX

With Hyponex and water, plants grow luxuriantly, flower abundantly and develop sturdy growth, regardless of the poorness or sterility of the soil.

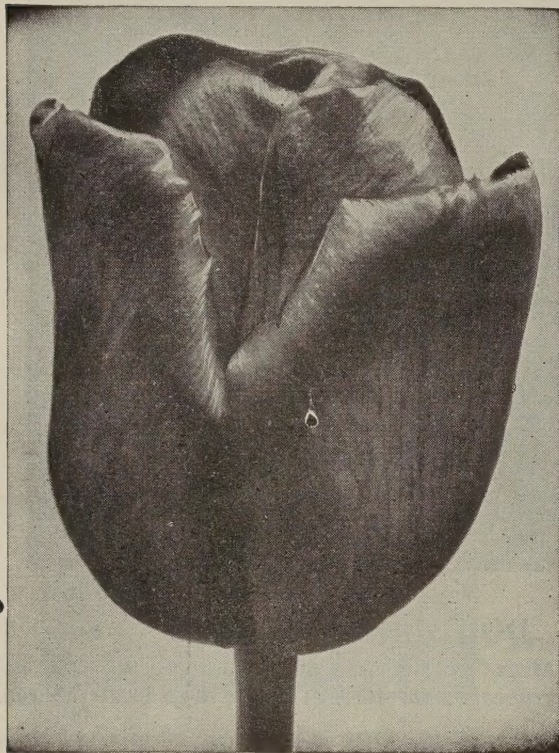
With Hyponex they will grow and flourish in clean sand, cinders or barren earth. Hyponex is ideal for hydroponics.

3-oz. pkg., 25c.; 7-oz. pkg., 50c.; 1-lb. can, \$1.00; 10-lb. drum, \$8.00.

Wood's Giant May-Flowering Tulips

TOP SIZE BULBS—GROWN IN HOLLAND

These gorgeous new late or May-Flowering Tulips are very stately and beautiful, producing immense flowers on tall, sturdy stems, and bearing beautiful globular flowers of remarkably heavy texture, in a large range of colors. They embrace almost every conceivable tint in rose, heliotrope, claret, maroon, crimson and other rich and rare shades. Unsurpassed for bedding and cutting. Letter after variety denotes class of Tulip. (B) Breeder (C) Cottage (D) Darwin.



Tulips of Special Merit

The Tulips listed below are new varieties, introduced by the growers in Holland just before the war and were quoted at considerably higher prices than we are asking today:

ARISTOCRAT (D). 32 inches. Enormous, strong and tall Tulip, soft purplish violet-rose, lighter edged. Really an aristocrat. 3 for 60c.; \$1.50 per dozen; \$10.00 per 100.

CHARLES NEEDHAM (D). 26 inches. Brilliant scarlet red with blue base; strong, tall stem, large flower. The best of the red Darwin Tulips. 3 for 50c.; \$1.25 per dozen; \$8.00 per 100.

DEMETER (D). One of the largest Darwins ever seen, reaching a height of at least 30 inches and carrying an enormous violet flower. 3 for 60c.; \$1.50 per dozen; \$10.00 per 100.

GEORGE GRAPPE (B). 30 inches. Enormous uniform lavender-blue flower, distinct heavenly-blue base, straight tall stem. A great favorite in all gardens. 3 for 55c.; \$1.35 per dozen; \$9.00 per 100.

INSURPASSABLE (D). 24 inches. Lovely lilac, turning slightly lighter toward edges. Very large flower of great substance. Far superior to Wm. Copeland. 3 for 55c.; \$1.35 per dozen; \$9.00 per 100.

J. J. BOUMAN (B). 28 inches. An exquisite flower which might be described as tomato-red, with claret-red flush, edges of petals delicately tinted yellowish bronze. 3 for 50c.; \$1.25 per doz.; \$8.00 per 100.

LOUIS XIV (B). 30 inches. Rich purple, with an edge of golden bronze, producing a fine blending of tone. Immense flower and a great favorite. 3 for 55c.; \$1.35 per dozen; \$9.00 per 100.

MARSHALL HAIG (C). 25 inches. Brilliant scarlet with glittering red interior, yellow base. Highly recommended. 3 for 55c.; \$1.35 per dozen; \$9.00 per 100.

TANTALUS (B). 28 inches. Outer petals dull lilac on yellow ground passing to yellow towards edges. Inside is the yellow color predominating. Very large cup-shaped flower on tall stem. 3 for 50c.; \$1.25 per dozen; \$8.00 per 100.

WHITE GIANT (D). 27 inches. One of the largest pure white Darwin Tulips under cultivation, white base and black anthers; the large, well shaped flowers has fine, lasting qualities. 3 for 60c.; \$1.50 per dozen; \$10.00 per 100.

WILD LUST (Glacier) (D). 26 inches. Pure white; white base with yellow anthers; long, oval flower of gigantic size with lasting qualities. The largest white Tulip. 3 for 65c.; \$1.85 per dozen; \$13.50 per 100.

MR. VAN ZYL (D). .26 inches. This Tulip reminds one of the favorite Rosabella, but is of deeper color. Has long-lasting qualities and a fine, strong stem. One of the choicest pinks. 3 for 55c.; \$1.35 per dozen; \$9.00 per 100.

MRS. JOHN T. SCHEEPERS (C). 24 inches. Pure yellow with yellow anthers. A giant flower on a tall, sturdy stem. The largest and best yellow Tulip. 3 for 55c.; \$1.35 per dozen; \$9.00 per 100.

PRIDE OF ZWANENBURG (D) 26 inches. Very pleasing old rose, turning lighter towards the edges; inside pink, with base and purplish black anthers. Very large, attractive flower of great merit. 3 for 50c.; \$1.30 per dozen; \$8.50 per 100.

Select Single Early Tulips

These Tulips will bloom from two to three weeks earlier than the May-Flowering Tulips. They are 10 inches to 15 inches in height. 3 for 40c.; \$1.40 per dozen; \$9.50 per 100

GENERAL DE WET (Fireglow). Golden yellow, splashed and stippled deep orange, giving the general effect of a clear orange; sweet scented. Sport from "Prince of Austria." Recommended for forcing as well as for bedding.

KEIZERSKROON (Grand Duc). Bright crimson scarlet with broad golden yellow border; bold cup shaped flower on stout stem. Good for medium late forcing.

PRINCE CARNAVAL. A very showy variety. Yellow overlaid with brick-red blotches shading to buff orange.

PINK BEAUTY. Deep rose with broad stripe of white on center of petals. Very large, stately flower of pleasant appearance on strong stem. Excellent bedder.

PRINCE OF AUSTRIA. One of the best early Tulips, both for bedding and for forcing. Well-shaped and strong flower of a fine deep orange-red color.

VAN DER NEER. A very good bedding Tulip of perfect flowering habits. Large deep violet flower on a short stem.

New Parrot Tulips TOP SIZE—GROWN IN HOLLAND

The New Parrot Tulips are a great improvement upon the older family. They are all of free-flowering and erect habit. We strongly recommend them to Tulip lovers and some are now within the reach of every garden.

BLUE PARROT. 24 inches. A noble flower of old rose, turning lighter towards the edges, inside reddish pink, with base and purplish black anthers. Very large. 3 for 45c.; \$1.30 per dozen; \$8.50 per 100.

FANTASY. 20 inches. A remarkably beautiful Parrot sport of the famous Clara Butt Tulip; color beautiful soft rose with faint stripes and featherings of apple-green on outer petals. The flowers expand to an enormous size and attract great attention. Of very free-flowering habit, highly recommended. 3 for 55c.; \$1.35 per dozen; \$9.50 per 100.

ORANGE FAVORITE. 22 inches. Bright orange, green blotches, yellow base. Flower has good substance, strong erect stem. Sport from Cottage Tulip Orange King. Sweet scented. 3 for 55c.; \$1.35 per dozen; \$9.50 per 100.

The older family. They are all of free-flowering and erect habit. We strongly recommend them to Tulip lovers and some are now within the reach of every garden.

PIERSON PARROT. 24 inches. Very fine deep blood red. A sport of the Darwin Tulip Allard Pierson. A good variety for outside or forcing. 3 for 55c.; \$1.40 per dozen; \$10.00 per 100.

RED CHAMPION. 24 inches. A fine Parrot sport of the good Darwin Tulip Bartigon; the flowers are of quaint yet beautiful form with both inner and outer petals heavily lacinated, opening to enormous size when fully developed. Its color is a uniform warm deep blood-red with only tiny faint white markings at the top of outer petals; strong grower. 3 for 60c.; \$1.85 per dozen; \$13.50 per 100.

SUNSHINE. 14 inches. Clear golden yellow deeply lacinated and cut, sometimes a slight marking of green, which enhances the beauty of this unusual flower. 3 for 65c.; \$1.95 per dozen; \$14.50 per 100.

Wood's Standard May-Flowering Tulips TOP SIZE BULBS GROWN IN HOLLAND

3 for 35c.; \$1.10 per dozen; \$7.50 per 100

AFTERGLOW (D). 24 inches. A cup-shaped flower of clear dark salmon, edged light orange. This excellent variety makes a gorgeous effect if planted in masses with blue ground cover.

BARONNE de la TONNAYE (D). 26 inches. Bright rose, margined blush rose. A sturdy variety, excellent for bedding.

BLUE EAGLE (D). 26 inches. Shining deep purple. An outstanding variety. Improvement over Blue Amiable.

CARRARA (C). 24 inches. Pure white with ivory anthers. Large globular flower. An outstanding variety.

BARTIGON (D). 22 inches. Fiery crimson with white base; very strong grower. One of the best in this color.

CAMPFIRE (D). 24 inches. A very handsome, large globular flower of a deep blood-red shade and of great substance; base pure white with broad ring of deep blue. Strongly recommended for bedding.

CLARA BUTT (D). 20 inches. Clear salmon pink; a beautiful and charming bedding Tulip.

DILLENBURG (B). 26 inches. A new variety best described as a glorious salmon-orange, with large, showy, well formed flowers of great substance.

DIDO (C). 26 inches. Orange red, slightly flushed cerise, with amber-orange edges, inside salmon-orange with yellow base.

FARNCOMBE SANDERS (D). 24 inches. Scarlet, with a rosy gloss; broad petaled flowers of perfect shape.

GOLDEN AGE (D). 24 inches. Deep yellow, inside slightly lighter; yellow base and yellow anthers. Large flower of true Darwin shape, on tall, strong stem. An outstanding variety.

INGLESCOMBE YELLOW (C). 20 inches. Clear golden yellow. One of the best May-flowering yellows, has given universal satisfaction.

OSSI OSWALDA (C). 24 inches. A striking new novelty of creamy white, edged rose, resembling Picotee, changing by the day, until at its height it is a pure rose.

LA TULIPE NOIRE (D). 24 inches. The nearest approach to the so-called Black Tulip; deep maroon-black, with a velvet sheen. One of the darkest varieties.

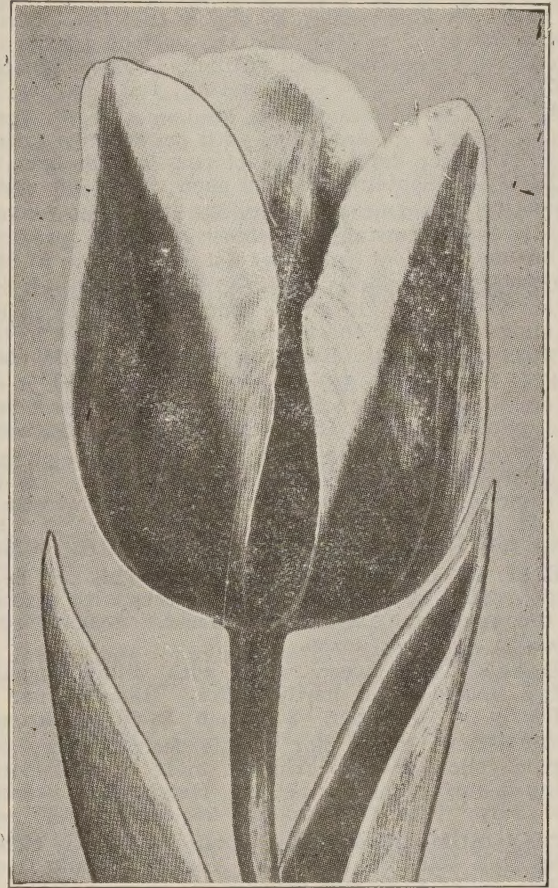
LEMON QUEEN (Mother's Day) (C). 24 inches. Magnificent variety of recent introduction, producing large flowers of erect habit; color a lovely pale yellow self, anthers yellow with slightly deeper yellow base. Recommended.

MRS. MOON (C). 24 inches. This is beyond a doubt one of the finest late yellow Tulips, vase-shaped, with pointed petals, distinctly perfumed.

PRIDE OF HAARLEM (D). 25 inches. Brilliant American Beauty Red; most popular Darwin; sweet scented.

PRINCESS ELIZABETH (D). 24 inches. Clear deep pink, changing to rose-pink. A well shaped flower giving it added attraction.

NIPHETOS (D). 27 inches. A glorious soft yellow flower with lighter base and anthers; the reflexing petals are of a remarkable texture. The flower is carried on a strong erect stem.



QUEEN OF THE NIGHTS (D). 26 inches. The darkest black of all black Darwins, most outstanding of all the black Tulips.

REV. EWBANK (D). 26 inches. Lavender lilac, deeper towards the edges, white base. Good sized flower.

SCARLET LEADER (D). 27 inches. Its name expresses its appearance perfectly. Color is of beautiful fiery scarlet, without any markings. We find this variety a wonderful improvement of the Scarlet Beauty.

ZWANENBURG (D). 27 inches. A pure white Tulip with black anthers. A good white for many purposes.

WOOD'S SPECIAL MIXED DARWIN TULIPS. Composed entirely of named sorts and contains a great variety of all colors and shades. 80c per dozen; \$5.25 per 100.

Triumph Tulips Top Size—Grown in Holland

They are exceedingly valuable for the flower garden, in borders, etc., on account of their strong stems, vigorous habit and wonderful colors. **Triumph Tulips** flower about ten days later than Early Single Tulips, thus bridging the gap between the early and late varieties nicely.

3 for 35c.; \$1.20 per dozen; \$8.00 per 100

AVIATEUR. 22 inches. Brilliant carmine red bordered silver; flowers are of good size. A very fine bedding Tulip.

CROWN IMPERIAL. 20 inches. Bright mahogany, with golden yellow edge. Very attractive.

ELIZABETH EVERS. 24 inches. A tremendously large flower of Fuchsia-red, flushed with lines of silver and white, and a white base. Very strong grower, and the flowers last a long time.

KANSAS. 22 inches. Snow white, with lemon-yellow base and yellow stamens. One of the best white Tulips for outdoor planting.

ELMUS. A grand Tulip, producing very large globular flowers of a pleasing shade of warm cherry-red, deeply edged pure white, really a happy combination of color; large, pure white base, tall, sturdy grower.

KORNEFOROS. 24 inches. Vivid cherry-red, flushed deeper red; white and blue center; brown pollen. Very easy forcer; tall, sturdy stem.

TELESCOPIUM. 20 inches. A very elegantly shaped flower of a reddish-violet, of large size and great beauty; the blooms are borne on tall stems.

LATE DOUBLE TULIPS--Peony Flowered

They are May-flowering Tulips and represent almost an entirely new group. Much time has been devoted to the production of new colors and the result has been the creation of very beautiful varieties, which are delightful for bedding or planted in groups in the border or among evergreens, etc. They are 18 inches to 22 inches in height.

3 for 40c.; \$1.40 per dozen; \$10.00 per 100

MOUNT TACOMA. Resembling a large, double white Chinese Peony, immense large flowers, which are produced on fairly tall, strong stems.

LIVINGSTONE. Bright red with light yellow base. Very strong grower. One of the best of this color.

COXA. Carmine-red, edged vermillion, very small white border, large flower; extra for border or bedding.

EROS. Very large, substantial flowers of a clear old rose color. This is indeed one of the best doubles under cultivation and will certainly command attention when flowering in the garden.

SYMPHONIA. Brilliant rosy carmine with blue base. Very large double flower on tall, strong stem.

Hardy Lilies

These are unsurpassed by any of the class of hardy plants. They begin flowering in May, and the various species continue in uninterrupted succession until autumn. Can be planted in the garden, either in the fall or early spring; fall planting is better.

CANDIDUM (Annunciation, Madonna, or St. Joseph's Lily). An old favorite garden Lily, with snow-white fragrant blooms. It is good for forcing and blooms in the open ground in May. Ready in September. 40c. each; \$4.00 per dozen.

ESTATE (the Outdoor Easter Lily). A pure white Lily of Easter Lily type, growing 3 to 4 feet in height, producing 4 to 6 large blooms. Ready November 1st. 65c. each; \$7.00 per dozen.

GUERNSEY (Spider). Bears from 10 to 20 bright crimson flowers on stems 10 to 15 inches long. Blooms in early fall, the leaves appearing after the flowers. Easily grown in the South in ordinary garden soil. Ready in September. 15c. each; \$1.50 per doz.

HENRYI (Yellow Speciosum). Gorgeous rich apricot-yellow flowers, 6 to 8 in a bunch, carried on stalks 4 to 5 feet high. Blooms July and August. Ready in December. 45c. each; \$4.50 per doz.

PARDALINUM GIGANTEUM This is one of the easiest lilies to cultivate. It is vigorous, dependable, very hardy and multiplies rapidly. The base of the flower is yellow with petals of sunset red, spotted with small brown dots. Height 5 to 6 feet. Blooms in July. Ready December 1st. 35c. each; \$3.50 per dozen.

PHILIPPINENSE FORMOSANUM This Lily bears 3 to 5 blooms at a time, of beautiful white flowers with emerald green throat. Blooms from August until frost. Ready December 1st. 25c. each; \$2.50 per dozen.

REGALE. Pure waxy white with yellow throat. One of the finest of all hardy Lilies. Blooms June and July. Ready in November. 30c. each; \$3.00 per dozen.

SUPERBUM. The color in this desirable Lily varies from pale yellow to deep crimson, more or less spotted on the inner surface of the petals. Height 6 to 8 feet. Blooms in July. Ready December. 35c. each; \$3.50 per dozen.

SPECIOSUM RUBRUM. Delicate pink, almost white, spotted with red, flowers in August. Ready December 1st. 70c. each; \$7.00 per dozen.

TENUIFOLIUM (Coral Lily). Handsome bright scarlet flowers, borne on slender stems. Excellent for rock gardens. Blooms May and June. Ready December 1st. 25c. each; \$2.25 per dozen.



UMBELLATUM—Orange. A very free flowering Lily of easy culture. Carries large blooms of light orange-red flowers. Blooms in June. Ready December 1st. 30c. each; \$3.00 per dozen.

TIGRINUM SPLENDENS (Improved Tiger Lily). Very hardy Lily; bright orange-red, spotted black. Blooms August. Ready December 1st. 30c. each; \$3.00 per dozen.

TIGRINUM FLORE PLENO (Double Tiger Lily). Handsome double flowers, the same color as the above. Blooms August. Ready December 1st. 30c. each; \$3.00 per doz.

Peonies

The best time for planting Peonies is during October. The roots should be set so that the top or upper eyes are about 2 or 3 inches below the level of the soil, from 3 to 4 feet apart each way.

85c. each; 3 for \$2.25

ALBERT CROUSSE. Very fresh salmon pink, delicate color, large compact bomb shape; fragrant, erect, medium height. Late.

COURONNE D'OR. Immense white blooms with crimson blotches. Very late.

EDULIS SUPERBA. Very early, crown type; clear mauve-pink, with a beautiful silvery sheen.

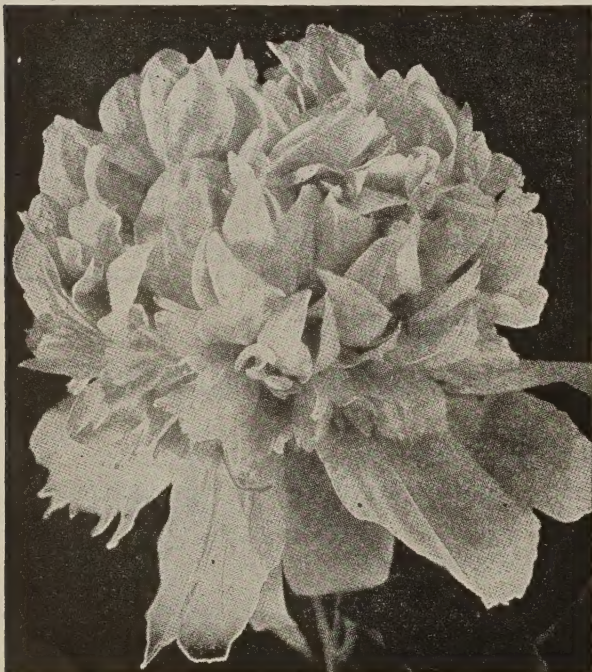
FELIX CROUSSE. Rose type, brilliant ruby-eyed. One of the best and most popular kinds.

FESTIVA MAXIMA. Paper-white, crimson markings to center; very large and full rose type; very tall. Early.

KARL ROSENFELD. Very large flower; globular, semi-rose type. Extremely vigorous grower, tall and free flowering. As an early red it has no equal.

REINE HORTENSE A uniform hydrangea-pink, with guard and center petals marked crimson. This is a variety that gives universal satisfaction and is both a show and garden variety. The plant is tall with long stiff stems.

PEONIES BY COLOR. Red, white and pink. 75c. each; 3 for \$2.00; \$7.00 per dozen



Wood's Exhibition Mixture of Darwin Tulips

This mixture is made up entirely of top size named varieties. It includes the better varieties and covers a wide range of colors.

\$1.10 per dozen; \$7.50 per 100

Single Tulips, Mixed Colors.....\$1.10 per dozen; \$7.50 per 100
 Triumph Tulips, Mixed Colors 1.00 per dozen; 6.75 per 100
 Late Double Tulips, Mixed Colors..... 1.30 per dozen; 8.75 per 100

WOOD'S HYACINTHS



CULTURE IN POTS: Use any good soil, mixed with sand, potting so as to leave the top of the bulb even with the soil. For a single plant use 4 or 5-inch pot; but the effect will be prettier if several bulbs are planted in a larger pot, and still more effective if all are of one color. Press the soil firmly around the bulbs, but do not pack it underneath. Sink the pot in the earth about 6 inches, covering with soil, choosing a location that is not too wet. For a succession of blooms, bring the first out about December 1st, and every two weeks thereafter, until February 1st. Keep moderately warm and when they begin to bloom, give plenty of water, and as much fresh air as possible. Too much heat dries up the flower and shortens the blooming period.

CULTURE IN OPEN GROUND: Any good garden soil will suit. If clay or very heavy, do not cover more than 3 inches; if light, from 4 to 6 inches. Protect with manure, leaves or coarse litter to prevent freezing.

CITY OF HAARLEM. A very beautiful, large, pure yellow, compact bloom of fine form and substance; the best yellow Hyacinth for bedding and pots.

GERTRUDE. Deep rose-pink, fine compact spike with bells of medium size; very handsome variety for all purposes.

GRAND MAITRE. Very pleasing shade of deep lavender-blue, the immense large and broad truss is of great beauty and substance; one of the best blue Hyacinths under cultivation; recommended for all purposes.

KING OF THE BLUES. A very dark blue, bearing a splendid spike with large bells; excellent for late forcing or bedding.

LA VICTOIRE Brilliant rose-crimson, when forced a fine dark pink. This variety grows a large spike of perfect form and is unsurpassed for all purposes.

L'INNOCENCE. Pure white, fine large truss, produced on a strong stem with large bells of great beauty and substance; the best white Hyacinth for massive bedding and forcing.

MARCONI. Bright deep rose, faintly shaded rosy-white, producing a large broad spike, borne on a stiff stem; particularly good for bedding.

OSTARA. Pure blue all over, lightly tinted violet inside; easy and excellent Christmas forcer; good spike.

PERLE BRILLANTE. A very fine lavender-blue; produces large broad spike on stiff stem; good form.

PINK PEARL. One of the finest new clear pink Hyacinths. It is a valuable improvement of Gertrude, a large spike with closely set bells of a very distinct rose-pink; a splendid bedder and a very good one for indoors.

The above Hyacinths may be had in two sizes:

WOOD'S EXHIBITION HYACINTHS—EXTRA LARGE BULBS
30c. each; \$2.75 per dozen; \$20.00 per 100

WOOD'S SUPERIOR BEDDING HYACINTHS
3 for 55c.; \$1.75 per dozen; \$12.00 per 100

ROMAN HYACINTHS—White, Pink & Blue

The flowers, while smaller than those of the Dutch Hyacinths, are borne in much greater abundance, each producing about 6 graceful spikes of blooms, which makes it a most valuable sort for cutting. They can be forced very easily, and if planted early and brought into the house at intervals of about two weeks, will yield a succession of blooms from Christmas to Easter. 3 for 55c.; \$1.75 per dozen; \$12.00 per 100.

Dutch Iris

The flowers of Dutch Iris are broader, the falls usually wider apart, and the lips larger than the Spanish type. They are about two weeks earlier, blooming right after the Cottage Tulips. They are wonderful for cutting, opening nicely even if cut in bud, and lasting a long time.

All Varieties: 3 for 25c.; 75c. per dozen; \$5.00 per 100

A. BLOEMAARD. Standards dark purple, falls lighter blue. Very large flower. Early.

D. HARING. Grayish white, tinted lilac; falls pure white. Large flower. Early.

IMPERATOR. The finest, largest Iris for all purposes. A strong growing, free blooming, clear blue Iris.

POGGENBEEK. Standards and falls uniform, dark blue. Very early.

WEDGEWOOD. Standards blue, falls beautiful pale blue with a yellow blotch.

WHITE EXCELSIOR. Extra large, snow-white; lips carry feathers of golden orange.

GOLDEN HARVEST. Deep golden yellow, extra large. Very early.

VAN EVERDINGEN. White blotched with yellow. A very fine Iris.

WOOD'S SPECIAL MIXED DUTCH IRIS. 65c per dozen; \$4.00 per 100.



Bulbs for the Rock Garden

ANEMONES

Anemones should be planted the latter part of October, 3 inches deep and about 6 inches apart. They will do well on any well drained loam soil so long as it is not lacking in lime.

ST. BRIGID (Semi-Double). Mostly double, with finely divided petals, and the most brilliant and varied shades, all having a handsome blue-black central base. Very graceful. 85c. per dozen; \$6.00 per 100.

DE CAEN. Taller in growth than the St. Brigid and more single. They contain many fine shades of blue, white and scarlet. 75c. per doz.; \$5.50 per 100.

CHIONODOXA

GLORY-OF-THE-SNOW. One of the earliest of our spring flowers. Bright blue, with large, clear white center. 45c. per dozen; \$2.50 per 100.

BLEEDING HEART

(DIELYTRA SPECTABILIS). One of the most showy of the old-fashioned flowers. The flowers are heart shaped, vary from light pink to a rosy crimson color, and are produced in sprays along the stem. They can be grown in either shady or sunny places, although they are more at home in the shade. Ready November 15th. Large roots, 65c. each; \$7.00 per dozen.

CROCUS—Large Bulbs

One of the earliest blooming spring flowers and very effective in lawns and borders. They show off very prettily when planted in the lawn. Make a small hole about 2 inches deep with a dibble or sharp-pointed stick, and then cover with a little extra soil. They are also very useful to plant in Hyacinth or Tulip beds between the rows, thereby giving a succession of early flowers. Set the bulbs 2 inches deep and 2 to 3 inches apart and plant as early in the fall as possible

MONT BLANC. Pure white, tall; very fine.

PURPUREA GRANDIFLORA. Purple. The largest in this color.

QUEEN OF THE BLUES. A very fine light blue.

SIR WALTER SCOTT. Striped.

MAMMOTH YELLOW. Golden yellow. Very large.

All named varieties of Crocus: 60c. per dozen; \$3.25 per 100

Mixed Crocus: 55c. per dozen; \$3.00 per 100

LEUCOJUM

VERNUM (Snowflake). A white flower, resembling the Snowdrop, but much larger. Plant in clumps, 3 inches deep. \$1.20 per dozen; \$7.50 per 100.

SCILLA

CAMPANULATA (Wood-Hyacinth). Bears spikes 15 inches high of bell-like flowers, during early May. Plant 5 or 6 inches deep in shady situation. Very effective for borders; will grow under fir or pine trees. White, Blue and Rose. 55c. per dozen. \$3.25 per 100.

SCILLA SIBERICA. Spring Beauty. Large delft blue blooms on spikes 4 to 5 inches high, fine for massing in borders or naturalizing. Plant 3 to 4 inches deep. Blooms outside in April. 70c. per dozen; \$4.75 per 100.

RANUNCULUS

Plant and treat same as Anemones. Mixed Colors, 85c. per dozen; \$6.00 per 100.



Scilla Campanulata

SNOWDROP

The first flower to proclaim the coming of spring, frequently blooming in the snow. The pure white, bell-shaped blooms come before winter departs. 80c. per dozen; \$5.25 per 100.

FRITILLARIA MELEAGRIS

The Fritillaria Meleagris produces a very fine effect when naturalized in grass on banks, in shady glens or under large trees. They may also be planted to obtain charming effect in groups in the border and clumps in the rock garden. Plant 3 inches deep. Mixed colors. 50c. per dozen; \$2.75 per 100

MUSCARI

ARMENIACUM. Bright deep blue, larger than the well-known Heavenly Blue. A good variety for planting outdoors or forcing. 60c. per dozen; \$3.50 per 100.

BOTRYOIDES ALBUM (White Grape Hyacinth). Bearing pretty, little fragrant, pure white flowers, valuable for the garden and for pot culture. 65c. per dozen; \$4.00 per 100.

PLUMOSUM (Ostrich Feather). Producing in May splendid spikes of a violet-blue color; the flowers have the appearance of a feather plume, very attractive and interesting. 65c. per dozen; \$4.25 per 100.

Botanical Tulips

The following Tulips are all wild species. They are beautiful and will be highly appreciated by lovers of hardy bulbous plants. Their right place is the rock garden, where their flowers are seen to advantage.

CLUSIANA (The Lady Tulip). 8 inches. A charming little Tulip; outer petals cherry red with inner petals white; violet base. Plant in a warm and sheltered position. 3 for 35c.; \$1.10 per dozen; \$7.50 per 100.

FOSTERIANA (Red Emperor). 22 inches. Positively the most beautiful Tulip under cultivation; it produces colossal blooms on erect strong stems; color is fascinating and is of the loveliest shade of glowing scarlet imaginable; base yellowish. Very sturdy grower. Strongly recommended. 3 for 50c.; \$1.50 per dozen; \$10.50 per 100.

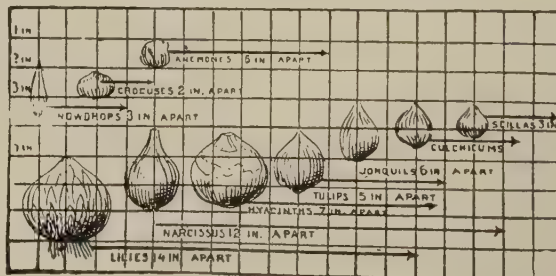
CHRYSANTHA. 6 inches. A pretty little species similar to Tulipa Clusiana. Color yellow with red on outside of outer petals. Recommended. 3 for 35c.; \$1.20 per dozen; \$8.00 per 100.

KAUFMANNIANA (Waterlily Tulip) 6 inches. A charming species, producing in March large flowers of elegant form and remarkable beauty, opening out to a great size in the sun; color soft creamy white centre slightly marked with carmine-red; strongly recommended for planting in groups in borders and in rock gardens. 3 for 35c.; \$1.20 per dozen; \$8.00 per 100.

EICHLERI. 11 inches. A very beautiful species with fairly large blooms of a lovely crimson scarlet color and a glistening base, golden margined. 3 for 35c.; \$1.20 per dozen; \$8.00 per 100.

MARJOLETTI. 18 inches. Producing pretty little flowers of a creamy-white flaked with pink. Very fine for cutting. 3 for 40c.; \$1.40 per dozen; \$10.00 per 100.

Planting Chart for Bulbs



Wood's Pedigreed Grain

We are the largest Southern breeders and growers of small grain seed, growing 6,269 acres from the finest Registered or Certified stock. To avoid mixing in the drill or combine, only one variety of a crop is grown on any one farm. No crop is planted in a field where any other small grain was grown last season. All fields are carefully rogued free of mixture. State Crop Improvement Associations closely inspect our breeding and production fields. They permit no crop mixture, objectionable weeds or seed borne disease in either the field or bin inspections for Foundation or Registered seeds. Every year more of our breeding fields pass this rigid test.



Dr. T. R. Stanton, chief oat breeder for the U. S. D. A. (right), watching our staff of experienced plant breeders harvest our oat breeding plots. We constantly improve our foundation strains of all our small grains. We hot water treat our foundation seed of wheat and barley to prevent smut.



THORNE wheat we grew for stock seed from hot water treated foundation seed. The Crop Improvement Association found no objectionable weeds, disease or crop mixture in it. C. S. Richardson, Forsyth Co., N. C., says: "Wet weather delayed wheat harvest 2 weeks, causing my old wheat to fall down badly. Your Thorne wheat stood up well and yielded 40 bus. per acre. I will plant all my crop in it next year.

It is recommended in the N. C. Mountains, where it has been the highest yielding wheat for years in experiment station tests, making 47 bu. per acre in 1948, resisting storm and winter.

Has outyielded all other wheats and has the highest recommendation by experiment stations throughout the Upper South and East, where it is replacing other wheats as rapidly as seed is increased. It is more smut and rust resistant, winter hardy, stands up better and combines easier. Has large heads, big, plump grain, high milling quality.

It made 48.3 bu. per acre in a Williamsburg, Va. test, making the highest average yield 2 years. Also in West Va. and for 7 years in Pa. tests.

NURED SMOOTH WHEAT

An improved strain of Forward; same stiff straw, long full heads and big plump grains, but more smut and rust resistant, higher yield and is replacing it. At the top in Tenn. and Va. tests 4 years. Made a record 49.2 bu. acre at Williamsburg. Earlier, shorter, more rust resistant than Vahart.

VAHART SMOOTH WHEAT

Va. recommends it. Highest average yield for 4 years at the 6 Va. experiment stations, and 9 years at V. P. I. A selection from Redhart, it averaged 5 bu more per acre, is a week later with taller much stronger stalks and larger, plumper heads. It resists cold, mildew and smut. Most Vahart seed is mixed, but ours is field rogued.

REDHART SMOOTH WHEAT

Earliest maturing wheat. Recommended in S. C., N. C., Piedmont and Coast and Western Ky. Highest yield of any available wheat 2 years in N. C. Coast tests. Short, strong straw. Resists storms and stem rust. Good stooling.

WOOD'S SEED ABRUZZI RYE

We are the only recognized foundation growers of Abruzzi Rye. For years we have bred for quick fall and heavy winter growth and grain yields. This insures earlier fall and more winter pasture or cover. Our strain yielded a record 54.6 bu. of grain per acre at Clemson, S. C. We clean Rye on machinery devoted exclusively to Abruzzi.

It resists insects and disease, thrives on lighter land, with less fertilizer, can be sown over a longer period, is more winter hardy and gives more winter pasture than other small grains.



W. C. Johnson, King Wm. Co., Va., left, showing long compact heavy Calhoun Barley, heads well filled with 6 rows of big plump grain, says: "I liked my 25 acres of Calhoun so well I will plant no other small grain. It made 75 bu. per acre to 14 for my wheat and 50 for oats, sown in Sept., which looked like wonderful crops until harvest. The Calhoun, sown only 2 bu. per acre Dec. 23, stood the winter and stood into a perfect stand. I cut it and sowed soybeans 2 weeks before the wheat and oats ripened. My Wong rusted badly, made only 2/3 as much grain, and fell down so it had to be hogged off. Calhoun did not rust and stood up perfectly just the right height to combine. Grain ripens before the straw, which continue up hold up the heads. It does not shatter."

WONG BARLEY

Most popular small grain in the East. Semi-beardless, its short awns break off at harvest. Can harvest it and plant summer crops 1 to 2 weeks before wheat and oats ripen. Highly resistant to cold, rust, mildew, leaf spot and lodging. Stiff straw easy to combine. Heavy tiller, wide leaves, superior winter grazing. Good feed substitute for corn. Tremendous yields. At experiment stations it made 61 bu. per acre at Clemson, S. C., 74 bu. in a N. C. test, 87.6 in a Va. test, and highest in Del., and for 3 years in Md. N. J., and Pa. also recommend it.

HARDIRED WHEAT

Recommended in S. C. and N. C. Piedmont and Coast, where it made the highest average yield in 20 tests since 1944, making 46.5 bu. per acre in a 1948 test. Highest in North Ala. tests 3 years, making 47.3 bu. per acre in one test. Medium early. Resists rust and cold. Medium tall, stools profusely. Long, square, well filled heads. High milling quality. Our strain outyielded Hardired 1949 B. F. S. 10% in the 1948 Pee Dee, S. C., test.

LETORIA OATS

Has all good qualities of Lee but more rust and smut resistant. Recommended in N. C., Va., Piedmont and Coast, and S. C. Mountains. In a N. C. test it made 101.2 bu. per acre. Our Letoria outyielded all winter oats in West Va. in 1948 and made 102.1 bu. per acre in an Alabama test. Mid-season. Mid-tall. High hay yield. Resists storms and cold. Heavy grain.

FORKEDEER OATS

Highest yielding variety at the 6 Va. experiment stations 2 years, 5 years in Tenn., and 4 years in Del. Most winter hardy. Recommended in Piedmont and Mountain Va., Ky., and in N. C. Mountains testing 110 bu. per acre with good hay yield and mosaic resistance. Medium tall stiff straw. Easily combined. Mid-season. Heavy grains, less hull.

STANTON OATS

Recommended from Eastern Va. to Miss. Made a record 117.1 bu. per acre in a N. C. experiment station test and since 1945, the highest average yield in 20 tests, and the most hay in 16 tests, averaging 5,520 lbs. per acre, and is rated tops in yield, winter hardiness and straw strength, mid-tall and mid-season. Made 101.3 bu. per acre in a Va. test, and 106.3 in a S. C. test.

FULGRAIN OATS

Earliest, shortest, stiffest straw and most popular recommended oat from N. C. and S. C. Coast and Piedmont to Miss. Made 101.3 bu. per acre in a Va. test. Only 1% lodged, others up to 45%. Ideal to combine. Tillers profusely. Matures before hot weather. Resists rust and smut. Heads are long, well balanced and fruit heavily. Grains plump, heavy, of high feeding value.



WOOD'S FULGRAIN, Strain 3

Bred from the original Fulgrain variety 10 years thru severe Va. winters, it is far more vigorous and heavy yielding than later Fulgrain strains which were crossed on Victoria. It made the highest yield of any available oat in the 1949 Pee Dee, S. C. test, 15.1 bu. per acre more than Fulgrain 1949 B. F. S. It matures before rust and resists cold, smut and the dread Victoria blight, which can wipe out other Fulgrain.



WOOD'S SEEDS ARE TESTED

And we know that they will grow before they are sent out. Even then they occasionally do not come up due to causes over which we have no control, such as covering too deeply or not deeply enough, too little or too much manure; cold weather, insects, or a crust through which the sprouts cannot penetrate, etc.; therefore, T. W. Wood & Sons give no warranty, express or implied, as to the description (name and kind), productiveness or any other matter of any seeds, bulbs or plants we sell, and will not be in any way responsible for the crop. Our liability in all instances is limited to the purchase price of the seed.

Preferred

LONG DISTANCE TELEPHONE 3-2138
WE MAKE NO CHARGE FOR BAGS

T.W. WOOD & SONS

RICHMOND, VIRGINIA

SEEDSMEN SINCE 1879

Always Dependable

CLOVER and GRASS SEEDS

	—Prices F.O.B. Richmond—			Postpaid Prices			
	100-lb. lots, 25 to 99, 5 to 24, per lb.	per lb.	per lb.	25 lbs.	10 lbs.	5 lbs.	1 lb.
CLOVERS							
CRIMSON CLOVER23	.24	.26	\$6.85	\$3.05	\$1.60	\$.45
RESEEDING CRIMSON CLOVER,							
99½% Pure42	.43	.44	11.60	4.85	2.50	...
AUSTRIAN WINTER PEAS08¾	.10	.12	3.35	1.65	.90	.30
HAIRY VETCH. Sow 25 lbs. acre25	.26	.28	7.35	3.25	1.70	.45
RED CLOVER. Sow 12 lbs. acre52	.53	.55	14.10	5.95	3.05	.70
MAMMOTH CLOVER (Sapling) ..	.52	.53	.55	14.10	5.95	3.05	.70
ALFALFA, Okla. grown. Approved ..	.57	.58	.60	15.35	6.45	3.30	.80
ALFALFA, Kansas Grown62	.63	.65	16.60	6.95	3.55	.85
ALSIKE CLOVER. 5 to 8 lbs. acre ..	.45	.46	.48	12.35	5.25	2.70	.65
WHITE SWEET CLOVER25	.26	.28	7.35	3.25	1.70	.45
WHITE DUTCH CLOVER, Lb. \$1.25 ..	1.10	1.15	1.20	29.60	12.45	6.30	1.40
Wood's Dixie. Lb. \$1.30	1.15	1.20	1.25	30.85	12.95	6.55	1.45
LADINO CLOVER. Lb. \$1.90	1.75	1.80	1.85	45.85	18.45	9.30	2.05
Certified Domestic Blue Tag Ladino,							
Lb., \$2.10	1.95	2.00	2.05	50.85	20.95	10.30	2.25
BURR CLOVER—Hulled72	.73	.75	19.10	7.95	4.05	.95
LESPEDEZA—100-lb. bags:							
Korean. 25 lbs. acre, 500 lbs. 10½c. ..	.11	.12	.14	3.85	1.85	1.00	.35
Korean, Dodder free, 500 lbs., 11½c. ..	.12	.13	.15	4.10	1.95	1.05	.35
Sericea Scarified
GRASS SEEDS							
TIMOTHY32	.33	.35	9.10	3.95	2.05	.50
RYE GRASS. Domestic. 25c. lb.16	.17	.19	5.10	2.35	1.25	.35
PERENNIAL RYE GRASS, 30c. lb.19½	.20	.22	5.85	2.65	1.40	.40
ORCHARD GRASS							
Fancy, Va. Grown. Trace Onion.30	.31	.33	8.60	3.75	1.95	.50
Extra Fancy. Onion free35	.36	.38	9.85	4.25	2.20	.55
BROME GRASS (Smooth)45	.46	.48	12.35	5.25	2.70	.65
KENTUCKY BLUE, 85% pure59	.60	.62	15.85	6.65	3.40	.80
RED TOP or HERDS. 92% pure.65	.66	.68	17.35	7.25	3.70	.85
CHEWINGS FESCUE 30 lbs. acre ..	.50	.51	.53	13.60	5.75	2.95	.75
CREEPING RED FESCUE55	.57	.60	15.10	6.45	3.30	.75
ALTA FESCUE57	.58	.60	15.35	6.45	3.30	.75
KENTUCKY 31 FESCUE55	.57	.60	15.10	6.45	3.30	.75
CERTIFIED KY. 31 FESCUE70	.72	.75	18.85	7.95	4.05	.95
MEADOW FESCUE, Domestic30	.31	.33	8.60	3.75	1.95	.50
Extra Fancy, Danish Grown32	.33	.35	9.10	3.95	2.05	.55
BENT GRASS:							
Certified Seaside Bent. Lb. \$1.10 ..	.95	1.00	1.05	25.85	10.95	5.55	1.25
Certified Highland Bent
Colonial Bent. Lb. \$1.0590	.95	1.00	24.60	10.45	5.30	1.20
Certified Astoria. Lb. \$1.30	1.15	1.20	1.25	30.85	12.95	6.55	1.45
BERMUDA GRASS, Unhulled,							
Lb., 60c.50	.52	.55	13.85	5.95	3.05	.75
Hulled. Lb. 80c.70	.72	.75	18.85	7.95	4.05	.95
DALLAS GRASS, Imported57	.58	.60	15.35	6.45	3.30	.80
CARPET GRASS, Domestic47	.48	.50	12.85	5.45	2.80	.70
CARPET GRASS, Impt., 98% pure.52	.53	.55	14.10	5.95	3.05	.75
SUDAN GRASS. 25 lbs. acre10½	.11	.12	3.60	1.65	.90	.30
No. 23 Sudan Grass13	.14	.16	4.35	2.05	1.10	.35
Sweet Sudan Grass14	.15	.17	4.60	2.15	1.15	.35
Certified Sweet Sudan17	.18	.20	5.35	2.45	1.30	.40
WOOD'S GRAIN PASTURE MIXT. .08½	.09	.11		3.10	1.55	.90	.30
WOOD'S HAY GRAIN MIXTURE. .08½	.09	.11		3.10	1.55	.90	.30
WOOD'S SPECIAL GRASS and CLOVER MIXTURES:							
Permanent Pasture Mixt. Nos. 1 to 3 ..	.39	.40	.42	10.85	4.65	2.40	.60
Permanent Hay Mixt. Nos. 6 to 8.39	.40	.42	10.85	4.65	2.40	.60
Southern Permanent Mixture No. 12 ..	.39	.40	.42	10.85	4.65	2.40	.60

ONION SETS

1-Bushel Open Mesh Bags Included

	Per lb.	Per peck	Per bu., 32 lbs.
Yellow Ebenezer ..	\$.25	\$1.00	\$3.15
White Silver Skin. .	.25	1.10	3.35

10-bus. lots and over, 10c. bus. less.
Postpaid prices add 15c. lb.; peck 40c.; bushel \$1.05.

Wood's Pedigreed Grain

We are the largest Southern breeders and growers of small grain seed, growing 6,269 acres from the finest Registered or Certified stock. To avoid mixing in the drill or combine, only one variety of a crop is grown on any one farm. No crop is planted in a field where any other small grain was grown last season. All fields are carefully rogued free of mixture. State Crop Improvement Associations closely inspect our breeding and production fields. They permit no crop mixture, objectionable weeds or seed-borne disease in either the field or bin inspections for Foundation or Registered seeds. Every year more of our breeding fields pass this rigid test.

WOOD'S SEED INOCULATION

Specify Group Wanted.	Prices	Postpaid
GROUP 1 —Alfalfa, Sweet Clover, Bur Clover	1 bus. 2½ bus.	.50 1.00
GROUP 2 —Clovers, Red Crimson, Alsike, Ladino, Dixie and White Dutch	1 bus. 2½ bus.	.50 1.00
GROUP 3 —All Lespedezas	100 lbs.	.50
GROUP 4 —Soybeans, all varieties	all 2 bus. 5 bus. 25 bus. 30 bus.	.36 .55 2.50 3.00
GROUP 5 —Cowpeas, Peanuts, Lima Beans, Velvet Beans, Crotalaria, Kudsu, Sesbania, Beggar Weed	2 bus. 5 bus. 25 bus. 30 bus.	.30 .55 2.50 3.00
GROUP 6 —Beans, Snap, Wax, Pole, Navy, Kidney	1 bus.	.35
GROUP 7 —Vetch Peas: Austrian, Canada, Garden, Sweet	1 bus. 100 lbs.	.35 .55
GROUP 8 —Garden Beans, Peas, Sweet Peas, Lupine	5 lbs. or less	.15

ARASAN—For Soybeans, Cowpeas, Peanuts, Corn and Vegetable Seeds. Seeds treated with Arasan are protected against rotting and produce healthier and more vigorous plants, and protects seeds from birds and rodents. By mail postpaid, ¼-oz. size, 30c.; 8-oz. size, 95c.; 4-lb. size, \$5.50. Not postpaid, ¼-oz. size, 25c.; 8-oz. size, 80c.; 4-lb. size, \$5.16; 25 lbs., \$30.00; 100 lbs., \$115.00.

WOOD'S LAWN GRASSES

Wood's Evergreen. Lb. 75c.67	.68	.70	17.85	7.45	3.80	.90
Wood's Emerald Park. Lb. 60c.52	.53	.55	14.10	5.95	3.05	.75
Wood's Super-Green. Lb. 90c.82	.83	.85	21.60	8.95	4.55	1.05
Wood's Dixie. Lb. 70c.62	.63	.65	16.60	6.95	3.55	.85
Wood's Shady Park. Lb. 85c.77	.78	.80	20.35	8.45	4.30	1.00
Wood's Winter Green Lb. 45c.37	.38	.40	10.35	4.45	2.30	.60

Wood's Grains

99.8% Pure. 90% Germination

In New Bags. Triple Cleaned to Eliminate Weeds and Shrivelled Grains. Grow More Vigorously. Make Bumper Crops of High Quality Grain that Brings Top Prices on the Market. All Wood's Seed Wheat, Oats and Barley are Ceresan Treated to insure better stands and Disease-Free Crops.

BEARDLESS WHEAT

Plant 1½ bus. acre. 2-bus. bags. Treated.	20-bu. lots, 60 lbs.	Per bu. 32 lbs.
THORNE	\$3.10	\$3.20
NURED	\$3.10	\$3.20
FORWARD	3.10	3.20
LEAP'S PROLIFIC	3.10	3.20
Certified Leap's Prolific ...	3.35	3.45
From registered hot water treated stock. Recommended in Piedmont and Mountains Va. and North. High yield in N. C. mountain tests. Resists cold, smut, stem rust and lodging. Big heads.		
VAHART	\$3.35	\$3.45
REDHART	3.10	3.20
Certified Redhart	3.35	3.45
RED MAY	3.10	3.20
HARDIRED	3.10	3.20
Certified Hardired	3.35	3.45

Bearded Wheat

	20-bu. lots, 60 lbs.	Per bu. 32 lbs.
V. P. I. 131	\$3.10	\$3.20
FULCASTER	3.10	3.20
STONER	3.10	3.20
NITTANY or PA. 44	3.35	3.45
The highest yielding bearded wheat. Recommended in Va., Md., Pa., and N. C. Mountains. An improved strain of Fulcaster, replacing it and V. P. I. 131, more resistant to smut, mildew, cold and storm. Top milling quality.		

Wood's Grain Hay Mixture

The best early hay mixture possible to sow. Makes a much heavier yield that is far more palatable and nutritious than oats or any other crop sown alone. Hay is easy to cure and relished by all livestock. It contains winter oats, smooth wheat, beardless barley, properly balanced with hairy vetch, Austrian winter peas and crimson clover. The legumes increase the protein and feeding value of the hay and enrich the soil. Sow 100 lbs. per acre alone or 50 lbs. as a nurse crop, seeding grass and clovers. Fertilize well.

WOOD'S GRAIN PASTURE MIXTURE

Furnishes more grazing in less time and at less cost than any other fall crop. The grains are balanced with legumes to supply protein for growth and warmth during the winter. Includes every ingredient for continuous grazing throughout fall, winter and spring. Contains the ideal proportions of hairy vetch, Austrian winter peas, crimson clover, rape, abruzzii rye, winter barley, winter oats and smooth wheat. Relished by all livestock, it is popular for poultry and hogs, as it contains rape properly balanced with grain so it cannot cause bloating. Its use has increased enormously in all sections of the South and East, proving its wonderful value and dependability.

It can be grazed in early spring before other pastures are ready. Small grains, combined with winter legumes furnish fall and winter grazing, which saves labor, reduces grain requirements, provides cheaper feed, makes healthier animals and returns greater profits. Pasture is the most economical feed for livestock. Sow 100 lbs. per acre.

See Prices on Preceding Page

WOOD'S WINTER OATS

Sow 2 bu. per acre. Treated. New 3-bu. bags.	30-bu. lots, 92 lbs.	Per bu. 32 lbs.
FULGRAIN	\$1.55	\$1.60
WOOD'S FULGRAIN 3 ...	1.75	1.80
Our Fulgrain Oats for stock seed passed registered requirements with no variety or crop mixture, weeds, or disease, yielding over 70 bu. per acre.		
FORKEDEER—Sold Out		
LEE COLD PROOF—Sold Out		
STANTON	1.75	1.80
VICTORGRAIN	1.60	1.65
LETORIA	1.75	1.80

WINTER RYE

More winter resistant than Abruzzi, starts its spring growth later and is preferred for turning under to plant tobacco and other summer crops. It is excellent for winter and spring grazing as well as a cover crop. It can be sown later than Abruzzi and still make a good crop. It's straw is superior for bedding livestock.

WOOD'S SEED BARLEY

Treated. 2-bu. bags. Sow 2 bu. acre.	20-bu. lots, 48 lbs.	Per bu. 32 lbs.
WONG	\$1.70	\$1.75
BEARDLESS—Sold Out		
CALHOUN—Sold Out		

A new beardless barley, high in feeding value, that should become the most popular small grain in the Southeast. S. C., N. C. and Va. recommend it. It looks like Wong without its stubby beards, is earlier, more rust and smut resistant, and has shorter, stronger straw, ideal to combine, where other grains lodge. Made 87.6 bu. per acre in a Va. test.

WOOD'S SEED RYE

Sow 1½ bu. acre.	2-bu. bags.	Bu. 50 lbs.	
ABRUZZI RYE			\$2.75
Pedigree Abruzzi Rye, grown from Certified Seed, Onion Free ...			
			2.90
WINTER RYE			\$2.60 \$2.65

Sorghum--Millet--Peanuts, Etc.

No Charge for Bags	—Prices F.O.B. Richmond—			Postpaid Prices			
	100-lb. lots, 25 to 99, 5 to 24, per lb.	per lb.	per lb.	25 lbs.	10 lbs.	5 lbs.	1 lb.
SORGHUM—Early Amber	\$.08	\$.09	\$.11	\$3.10	\$1.55	\$.85	\$.30
Early Orange, 5u lbs. acre08	.08½	.11	3.00	1.55	.85	.30
Sugar Drip, for syrup; 8 lbs. acre	.12½	.13	.15	4.10	1.95	1.05	.35
Honey (Texas Seeded Ribbon Cane), Certified17½	.18	.20	5.35	2.45	1.30	.40
HEGARI—Certified08	.08½	.10	3.00	1.45	.80	.30
Certified Early Combine Hegari ..	.08½	.09	.11	3.10	1.55	.85	.30
Certified Martin's Combine Milo ..	.08½	.09	.11	3.10	1.55	.85	.30
Certified Caproc Combine Milo ..	.08½	.09	.11	3.10	1.55	.85	.30
MILLET—Tenn. Cultivated German	.09½	.10	.12	3.35	1.65	.90	.30
Pearl or Cattail. Drill 8 lbs. acre	.17	.18	.20	5.35	2.45	1.30	.40
Proso or Hog Millet08½	.09	.11	3.10	1.55	.85	.30
Brown Top Millet17	.19	.21	5.60	2.55	1.35	.40
PEANUTS—Holland Jumbo22	.23	.25	6.60	2.95	1.55	.45
DWARF ESSEX RAPE16	.17	.19	5.10	2.35	1.25	.35
Wood's Quail Planting Mixture16½	.17	.19	5.10	2.35	1.25	.35
Wood's Bird Scatter Food10½	.11	.13	3.60	1.75	.95	.30
SESBANIA22	.23	.25	6.60	2.95	1.55	.40
BENE32	.33	.35	9.10	3.95	2.05	.55
CANADA FIELD PEAS09½	.10	.12	3.35	1.65	.90	.30
SUNFLOWER—Mammoth Russian							
Gray Striped (large size), for seed	.27½	.28	.30	7.85	3.45	1.80	.50
Gray Striped (med. size), for seed	.25	.26	.28	7.35	3.25	1.70	.45
Dark Striped Sunflower, for feed	.15	.16	.18	4.85	2.25	1.20	.35

EDIBLE PEAS

Early Wilt Resistant Ramshorn ..	.15	.16	.18	4.85	2.25	1.20	.40
Giant Wilt Resistant Ramshorn ..	.16	.17	.19	5.10	2.35	1.25	.40
Blue Goose or Gray Crowder16	.17	.19	5.10	2.35	1.25	.40
Brown Sugar Crowder20	.21	.23	6.10	2.75	1.45	.45
Red Speckled Crowder20	.21	.23	6.10	2.75	1.45	.45
Early Six Weeks Browneye20	.21	.23	6.10	2.75	1.45	.45
Blackeye White Crowder18	.19	.21	5.60	2.55	1.35	.40
Large Black Peas19	.20	.21	5.85	2.55	1.35	.40
Conch (Wood's Sumptucus)20	.21	.23	6.10	2.75	1.45	.45
Dixie Queen Browneye22	.23	.25	6.60	2.95	1.55	.45

POSTPAID PRICES above apply to Va., N. C., W. Va., Md., Del., N. J., Penn. POSTAGE ON FIELD SEED TO OTHER STATES: To S. C., Ga., Ky., Tenn., Ohio, Ind., N. Y., New England and Mich., add 2c per pound to postpaid prices. To Ala., Ark., Fla., Ill., Iowa, La., Miss., Mo., and Wisc., add 4c. per pound. To Texas, Okla., Kansas and Neb., add 6c. per lb. to postpaid prices

WOOD'S FERTILIZERS

MILORGANITE—The All Organic Fertilizer. Nitrogen 6%; Phosphoric Acid 2%. 25-lb. bag, \$1.50; 50-lb. bag, \$2.50; 100-lb. bag, \$4.00. Will not burn.
WOOD'S SPECIAL ALL CROP FERTILIZER—Analysis: 5% Nitrogen; 10% Phosphoric Acid; 5% Potash. Prices: 25 lbs., \$1.00 100 lbs., \$2.75.
WOOD'S HIGH-GRADE SHEEP MANURE—The Great Natural Fertilizer. Prices: F. O. B. Richmond, 25 lbs., \$1.00; 50 lbs., \$1.75.
WOOD'S HIGH-GRADE COW MANURE—Prices F. O. B. Richmond: 25 lbs., \$1.00; 50 lbs., \$1.75.
DRICUNURE—Composed of cow manure, sheep manure and peat moss. 7½-lb. bag, 60c.; 50-lb. bag, \$2.25; 10-bag lots, \$2.15 per bag.
WOOD'S GARDEN PEAT MOSS—Extra large bale, \$5.65.
VIGORO—Regular Stock for Lawns and Flowers. Analysis, 4-12-4. Prices F. O. B. Richmond: 5 lbs., 50c.; 10 lbs., 90c.; 25 lbs., \$1.60; 100 lbs., \$4.25.
HYDRATED LIME—Prices F.O.B. Richmond: 10 lbs., 25c.; 50 lbs., 75c.
STEAMED BONE MEAL—\$5.00 per 100-lb. bag; \$2.60 per 50-lb. bag.

Feeds and Baby Chick Prices

WCOD'S FEEDS—Mash and Mixed Feeds in Print Cloth Bags

For Making Dresses, Curtains, etc. Worth About 50c. Each

CHICKEN FEEDS	F.O.B. Richmond.	10 lbs.	50 lbs.	100 lbs.		
HOLLYBROOK LAYING MASH						
With dried milk and cod liver oil\$.55		\$2.30	\$4.45		
HOLLYBROOK GROWING MASH						
With dried milk and cod liver oil60		2.35	4.55		
HOLLYBROOK STARTING MASH						
With cod liver oil and dried milk30		2.35	4.55		
PAMUNKEY SCRATCH45		1.90	3.60		
Includes cracked corn, wheat, etc., but no grit.						
HOLLYBROOK CHICK GRAINS60		2.35	4.55		
HOLLYBROOK DEVELOPING FOOD50		2.20	4.15		
PAMUNKEY PIGEON, With Corn65		2.70	5.25		
HOLLYBROOK PIGEON, No Corn70		3.35	6.40		
MISCELLANEOUS FEEDS:						
YELLOW CRACKED CORN40		1.70	3.25		
WHITE CRACKED CORN40		1.65	3.15		
POULTRY GRIT, Coarse, Fine, Medium (80-lb. bag)20		.65	1.10		
OYSTER SHELLS—For Poultry20		.70	1.20		
FAUST PIGEON HEALTH GRIT35		1.50	2.90		
CHARCOAL—Medium, Fine, Coarse (50-lb. bags)65		2.25		
RABBIT PELLETS75		2.90	5.60		
GAME BIRD SCATTER FOOD 1.30		5.50	10.50		
DOG FOODS—F.O.B. Richmond.						
		5 lbs.	10 lbs.	25 lbs.	50 lbs.	100 lbs.
HUNT CLUB CUBES\$.65	\$1.20	\$2.50	\$4.80	\$9.35	
HUNT CLUB DOG FOOD—MEAL65	1.20	2.50	4.80	9.35	
PARD DOG FOOD, Swift's—1-lb. can, 15c.; 48 cans,	\$6.75.					

SUNDAY SHOWER—Kills ticks and fleas. Pint, \$1.00; postpaid, \$1.25.

BIRD SEED

MIXED BIRD SEEDS—By mail postpaid, lb. 40c.; 5 lbs., \$1.40; 10 lbs., \$2.45. Not postpaid, lb. 25c.; 5 lbs. \$1.15; 10 lbs. \$2.00.

CANARY SEED—By mail postpaid, lb. 40c.; 5 lbs. \$1.40; 10 lbs. \$2.45. Not postpaid, lb. 25c.; 5 lbs. \$1.10; 10 lbs. \$2.00.

LOVE BIRD and PARAKEET SEED—By mail postpaid, lb. 40c.; 5 lbs. \$1.40; 10 lbs. \$2.45. Not postpaid, lb. 25c.; 5 lbs. \$1.10; 10 lbs. \$2.00.

BIRD MILLET—By mail postpaid, lb. 25c.; 5 lbs. 85c.; 10 lbs. \$1.55. Not postpaid, lb. 15c.; 5 lbs. 45c.; 10 lbs. \$1.05.

BIRD RAPE—By mail postpaid, lb. 35c.; 5 lbs. \$1.25; 10 lbs. \$2.35. Not postpaid, lb. 25c.; 5 lbs. 95c.; 10 lbs. \$1.90.

VEGETABLE PLANTS

READY FOR SEPTEMBER 15th DELIVERY

CABBAGE PLANTS—Late Flat Dutch. 70c. per 100; 500 for \$2.90; \$5.20 per 1,000, postpaid. Not postpaid, 50c per 100; 500 for \$2.40; \$4.50 per 1,000.

COLLARD PLANTS—70c. per 100; 500 for \$2.65; \$4.70 per 1,000, postpaid. Not postpaid, 50c. per 100; 500 for \$2.25; \$4.00 per 1,000.

Strawberry Plants

READY FOR IMMEDIATE DELIVERY

Plant in Rows 3 to 3½ Feet Apart, 12 to 18 inches

Apart in Row

100 plants of 4 varieties must be ordered at the 25-plant rate
100 plants of 2 varieties must be ordered at the 50 plant rate

Prices of Early, Mid-Season and Late Varieties: Postpaid, 25 plants, \$1.25; 50 plants, \$2.25; 100 plants, \$3.40; 200 plants, \$5.75; 300 plants, \$7.25; 400 plants, \$8.75; 500 plants, \$10.25. Not postpaid, 25 plants, \$1.00; 50 plants, \$1.90; 100 plants, \$3.00; 200 plants, \$5.25; 300 plants, \$6.75; 400 plants, \$8.00; 500 plants, \$9.40; 1,000 plants, \$15.00; 5,000 lots, \$14.00 per 1,000.

EARLY VARIETIES—Premier and Blakemore

MID-SEASON VARIETIES—Catskill and Big Joe

LATE VARIETIES—Chesapeake, Aroma and Lupton

EVERBEARING VARIETIES—Mastodon and Gem

Prices of Everbearing Varieties: Postpaid, 25 plants, \$2.25; 50 plants, \$3.50; 100 plants, \$5.40; 200 plants, \$9.25; 300 plants, \$11.75; 400 plants, \$14.25; 500 plants, \$16.50. Not postpaid, 25 plants, \$2.00; 50 plants, \$3.15; 100 plants, \$5.00; 200 plants, \$8.75; 300 plants, \$11.25; 400 plants, \$13.50; 500 plants, \$15.65; 1,000 plants, \$25.00; 5,000 lots, \$24.00 per 1,000.

Cyclone Seed Sower



The Cyclone is a splendid seed sower that will pay for itself in a few days in the time it will save. Besides sowing grass and clover seeds and grain of all kinds faster and more evenly and uniformly than is possible by hand. It will sow as fast as you can walk, and the quantity can be regulated to any amount to the acre. By mail postpaid, \$3.60. Not postpaid, \$3.25.

No. 132. Garden Duster



A serviceable duster for small gardens, one that distributes dry powder insecticides perfectly to the last particle either on top or under the leaves. The filler cap is easy to remove for refilling. By mail postpaid, \$1.85. Not postpaid, \$1.50.

INSECTICIDES

ARSENATE OF LEAD—For All Leaf-eating Insects. By mail postpaid, 1-lb. pkg. 75c.; 4-lb. pkg. \$1.85. Not postpaid, 1-lb. pkg. 60c.; 4-lb. pkg. \$1.00.

BLACK LEAF 40—For Sucking Insects and Poultry Lice. By mail postpaid, 1-oz. size, 45c.; 5-oz. size, \$1.20; 1-lb. size, \$2.65; 2-lb. size, \$4.40; 5-lb. size, \$8.25. Not postpaid, 1-oz. size, 36c.; 5-oz. size, \$1.05; 1 lb. \$2.42; 2 lbs. \$4.15; 5 lbs. \$7.90; 10 lbs. \$13.75.

.75 ROTENONE DUST—By mail postpaid, 1-lb. pkg. 65c.; 4-lb. pkg. \$1.30. Not postpaid, 1-lb. pkg. 50c.; 4-lb. pkg. \$1.00; 50 lbs. \$9.00.

20% SABADILLA DUST—By mail postpaid, 2-lb. pkg. 95c.; 5-lb. pkg. \$2.25. Not postpaid, 2-lb. pkg. 80c.; 5-lb. pkg. \$1.85.

DDT SPRAYS and DUSTS

DuPONT 5% DDT INSECT SPRAY—Postpaid, 1-pint bottle, 60c.; 1-quart bottle, \$1.00. Not postpaid, 1 pint, 45c.; 1 quart, 75c.

Wood's Baby Chicks

100% Live Delivery Guaranteed

We supply only the highest bred Chicks from culled, blood tested flocks, selected for laying and strong bodies. Healthy, sturdy, and quick growing.

At the time this catalog goes to press, Fall prices have not been established, and our first hatching date is expected to be in early October, or possibly late September.

Hatch days will be Tuesdays and Fridays, and terms are cash with order. **BOOK NOW**, with \$2.00 deposit, and just as soon as possible will advise you prices and shipping date.

WOOD'S *High Grade*

GARDEN SEEDS

GARDEN BEETS Plant now for winter storage. 1 oz. will plant 50 ft. row. 6 to 8 lbs. one acre.

	Postpaid			
	Pkt.	Oz.	½ lb.	Lb.
Early Wonder, 50 days	.10	.15	.45	1.50
Crosby's Egyptian, 50 days	.10	.15	.45	1.50
Improved Early Blood, 55 days	.10	.15	.45	1.50
Detroit Dark Red, 55 days	.10	.15	.45	1.50
Crimson Globe, 55 days	.10	.15	.45	1.50
Extra Early Egyptian, 45 days	.10	.15	.45	1.50



Copenhagen Market

CABBAGE One ounce will plant 100-foot row and will produce about 2,000 plants; 6 to 8 ounces will make enough plants for 1 acre.

	Postpaid			
	Pkt.	Oz.	½ lb.	Lb.
Copenhagen Market, 70 days	.10	.25	.70	2.50
Wood's Sel. Ey. Jersey Wakefield, 65 days	.10	.30	.95	3.50
Wood's Charleston Wakefield, 75 days	.10	.25	.85	3.00
All Head Early, 85 days	.10	.25	.70	2.50
Early Flat Dutch, 85 days	.10	.25	.70	2.50
Perfection Drumhead Savoy, 90 days	.10	.30	.90	3.25
Chinese Petai or Celery Cabbage, 80 days	.10	.20	.60	2.00

YELLOWS RESISTANT CABBAGES

Marion Market, 75 days	.10	.30	.95	3.50
Wisconsin All Seasons	.10	.30	.95	3.50

CARROTS One ounce will plant 100 feet of drill, 3 to 4 pounds to the acre.

	Postpaid			
	Pkt.	Oz.	½ lb.	Lb.
Red Cored Chantenay, 70 days	.10	.15	.45	1.50
Danvers Half Long, 75 days	.10	.15	.45	1.50
Wood's Scarlet Intermediate, 75 days	.10	.20	.60	1.75
Imperator, 75 days	.10	.15	.45	1.50
Improved Long Orange, 85 days	.10	.15	.45	1.50
Large White Belgian	.10	.15	.45	1.50

COLLARDS

	Postpaid			
	Pkt.	Oz.	½ lb.	Lb.
Carolina Header	.10	.20	.60	2.25
North Carolina Short Stem, 80 days	.10	.15	.35	1.00
White or Cabbage, 80 days	.10	.15	.30	.90
Georgia or Southern, 80 days	.10	.15	.30	.90

CRESS

Upland, 60 days	.10	.15	.45	1.50
Curled or Pepper Grass, 40 days	.10	.20	.60	2.00

ENDIVE

	Postpaid			
	Pkt.	Oz.	½ lb.	Lb.
Green Curled, 90 days	.10	.15	.50	1.50
Broad Leaved Batavian, 95 days	.10	.15	.50	1.50

KOHL RABI

	Postpaid			
	Pkt.	Oz.	½ lb.	Lb.
Early White Vienna	.10	.30	.95	3.50

LEEK

	Postpaid			
	Pkt.	Oz.	½ lb.	Lb.
Large Flag	.10	.45	1.40	5.00

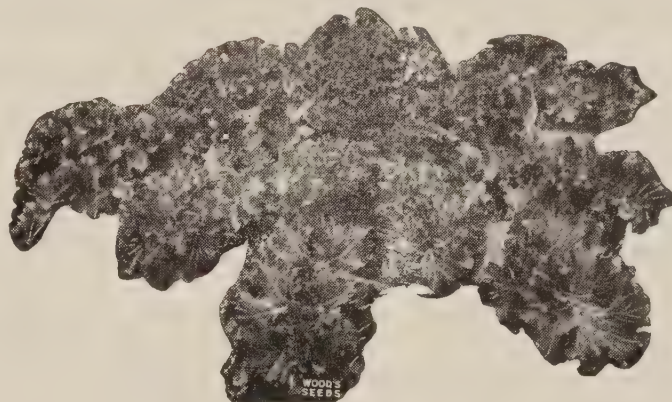
LETTUCE

One ounce produces about 1,500 plants; 2 lbs. an acre.

	Postpaid			
	Pkt.	Oz.	½ lb.	Lb.
Wood's Cabbage, 65 days	.10	.20	.65	\$2.25
Improved Big Boston, 75 days	.10	.15	.50	1.75
Iceberg, 80 days	.10	.25	.75	2.50
Great Lakes, 82 days	.10	.40	1.40	5.00
Kentucky Bibb, 60 days	.10	.20	.60	2.00
Imperial, 44 days	.10	.25	.85	3.25
Cos or Romaine, 65 days	.10	.15	.50	1.75
Early Curled Simpson, 50 days	.10	.15	.50	1.75
Grand Rapids, 45 days	.10	.15	.50	1.75
Black Seeded Simpson, 50 days	.10	.15	.50	1.75
Chicken Lettuce, 55 days	.10	.15	.50	1.75

MUSTARD One ounce will plant 100 feet of row. 5 to 6 pounds per acre.

	Postpaid			
	Pkt.	Oz.	½ lb.	Lb.
Southern Giant Curled, 35 days	.10	.15	.40	1.25
Old Fashion	.10	.20	.45	1.50
Chinese Broadleaved, 40 days	.10	.15	.40	1.25
Florida Broad Leaved, 40 days	.10	.15	.40	1.25
Tendergreen or Mustard Spinach, 25 days	.10	.15	.30	.90



Early Curled Siberian or Blue Kale.

KALE One ounce plants 100 feet of drill; 8 pounds to the acre broadcast; 4 to 5 pounds in drills.

	Postpaid			
	Pkt.	Oz.	½ lb.	Lb.
Early Curled Siberian, 65 days	.10	.15	.40	1.25
Blue Curled Scotch or Norfolk	.10	.15	.45	1.50
Spring Kale or Hanover Salad, 30 days	.1015	.50

ONION

	Postpaid			
	Pkt.	Oz.	½ lb.	Lb.
Extra Early White Pearl, 85 days	.10	.35	1.15	4.00
Prize Taker or Spanish King, 100 days	.10	.30	1.00	3.75
Valencia Sweet Spanish	.10	.30	1.00	3.75
Yellow Globe Danvers, 110 days	.10	.25	.90	3.25
Silver Skin or White Portugal, 100 days	.10	.30	1.00	3.75

PARSLEY

One ounce will plant 100 feet.

	Postpaid			
	Pkt.	Oz.	½ lb.	Lb.
Champion Moss Curled, 70 days	.10	.15	.40	1.25
Plain or Single, 70 days	.10	.15	.45	1.50
Hamburg Parsnip Rooted, 90 days	.10	.15	.45	1.50

GARDEN PEAS

	Postpaid			
	Pkt.	½-lb.	1 lb.	5 lbs. 10 lbs.
Thomas Laxton, 55 days	.10	.30	.50	1.75 3.10
Laxton's Progress' 53 days	.10	.30	.50	1.80 3.25
Laxtonian or Hundredfold, 53 days	.10	.30	.50	1.80 3.25
Early Bird or Laxton's Superb, 55 days	.10	.30	.50	1.75 3.10
Little Marvel, 55 days	.10	.30	.50	1.75 3.10

WINTER RADISHES

One ounce will plant 50 feet, 8 to 10 pounds an acre.

	Postpaid			
	Pkt.	Oz.	½ lb.	Lb.
Rose China Winter, 60 days	.10	.15	.40	1.25
Chinese or Celestial, 60 days	.10	.15	.40	1.25
Long Black Spanish, 60 days	.10	.15	.40	1.25

SPINACH

Two ounces will plant 100 feet of drill; 12 to 15 lbs. one acre.

	Postpaid			
	Pkt.	Oz.	½ lb.	Lb.
New Zealand, 55 days	.10	.15	.30	1.00
Norfolk Savoy or Bloomsdale, 45 days10	.25	.75
Long Standing Bloomsdale, 50 days10	.25	.75
Virginia Blight Resistant10	.25	.75

TURNIP

One ounce plants 100 feet of drill; 1½ lbs. plants 1 acre in drills; 2 lbs. 1 acre broadcast; salad varieties, 3 pounds to the acre.

	Postpaid			
	Oz.	½ lb.	Lb.	
Improved Purple Top White Globe	.10	.40	1.25	
Mammoth Purple Top White Globe	.10	.35	1.15	
Purple Top Strapleaf	.10	.35	1.15	
Early White Flat Dutch	.10	.35	1.15	
Pomeranian White Globe	.10	.35	1.15	
Long White Cowhorn	.10	.35	1.15	
White Egg	.10	.35	1.15	
Purple Top Yellow Aberdeen	.10	.35	1.15	
Large Amber or Yellow Globe	.10	.35	1.15	
Golden Ball	.10	.35	1.15	
Seven Top (Salad Variety)	.10	.25	.75	
Southern Prize (Salad Variety)	.10	.25	.75	
Shogoin (Japanese Salad)	.15	.30	1.00	

RUTABAGA

Improved Purple Top Yellow	.15	.40	1.25
Purple Top Yellow	.15	.35	1.15

INSECTICIDES



Japanese Beetle



APHIS



CODLING MOTH



RED SPIDER



ANTS

Arsenate of Lead For all Leaf-Eating Insects. Sticks to the leaf. Use 1 to 2 pounds to 50 gallons of water (one level tablespoonful to gallon) for general spraying. Postpaid, 1-lb. pkg. 55c.; 4-lb. pkg. \$1.85. Not postpaid, 1 lb. 45c.; 4 lbs. \$1.60.

Barsprout A sprout inhibitor for treating potatoes and other root crops from sprouting and reduce shrinkage in storage. Postpaid, 12-oz. sifter top, \$1.15; 5-lb. size, \$5.75. Not postpaid, 12-oz. sifter top, \$1.00; 5-lb. size, \$5.50.

Black Leaf 40 For Sucking Insects and Poultry Lice. Kills plant lice on roses, shrubbery, fruits and vegetables. A concentrated solution of nicotine sulphate. Dilute 1 to 2 teaspoonfuls to a gallon of water, as directed. By mail postpaid, 1-oz. bottle, 45c.; 5-oz. pkg., \$1.15; 1 lb., \$2.60; 2 lbs., \$4.40. Not postpaid, 1 oz. 36c.; 5 ozs., \$1.05; 1 lb., \$2.45; 2 lbs., \$4.15; 5 lbs., \$7.90; 10 lbs., \$13.75.

Blue Stone Copper Sulphate or Blue Vitriol (Pulverized Snow). For early spraying, for making Bordeaux mixture and copper solution. Postpaid, 5 lbs., \$1.45; 10 lbs., \$2.50. Not postpaid, 5 lbs., \$1.15; 10 lbs., \$2.10; 25 lbs., \$4.25; 50 lbs., \$8.00; 100 lbs., \$15.50.

Bordeaux Mixture For Blight, Scab, Mildew, etc. Prevents blight, scab, rust, mildew, black-rot and other fungus diseases of plants and fruits and improves the quality and increases the yield. 8 pounds to 50 gallons water makes a 4-4-50 mixture (3 level tablespoonfuls to 1 gallon). Postpaid, 1 lb.-size, 55c.; 4-lb. size, \$1.20. Not postpaid, 1-lb. size, 40c.; 4-lb. size, 95c.

Carbon Bisulphide Kills weevil, bugs and insects generally in beans, peas and grains while in storage. When placed on top of either bulk or sacked grains the fumes permeate the entire bulk. 2½-lb. can, \$1.00; 5-lb. can, \$1.75 each. Cannot be mailed.

Copper Carbonate For Treating Wheat. 2 to 3 ounces will treat one bushel. By mail, postpaid, 1-lb. pkgs., 40c. each; 5-lb. pkgs., \$1.50 each. Not postpaid, 1-lb. pkgs., 30c. each; 5-lb. pkgs., \$1.25 each.

New Improved Ceresan For Oats, Barley and Wheat. Effective in controlling covered smut and stripe of barley, oat smuts, and bunt or stinking smut of wheat. It improves the stand and yield of grains 1 to 5 bushels to the acre. A pound treats 32 bushels at cost of 1¼ to 2½ cents a bushel. By mail postpaid, 4-oz. size, 50c.; 1-lb. size, \$1.15; 4-lb. size, \$3.60. Not postpaid, 4-oz. size, 45c.; 1-lb. size, \$1.00; 4-lb. size, \$3.40; 40-lb. drum, \$28.75; 100-lb. drum, \$69.00.

Cyanogas A Dust Kills field mice, moles, rats, cray fish, ground hogs, bed bugs, clothes moths, ants, wasps, yellow jackets, grape leaf hopper, grass-hopper, locusts, etc. By mail postpaid, 1-lb. can, \$1.15; 5-lb. can, \$4.00. Not postpaid, 1-lb. can, \$1.00; 5-lb. can, \$3.75; 25 lbs., \$12.50; 100 lbs., \$30.00.

Cyanogas Dusters Foot Duster. Postpaid, \$11.30. Not postpaid, \$11.00.

Cyanogas Ant Killer For ants in the garden and lawn. Kills millions. By mail postpaid, 50c. Not postpaid, 40c.

"Dogzoff" Repels dogs, cats, moles, mice and rabbits. Protects shrubs, plants, porch furniture and trees. A single application lasts several weeks. By mail postpaid, 70c. Not postpaid, 60c.

Rootone Makes Cuttings Easy to Root. Dip cuttings in Rootone before planting to give faster and better rooting. Stimulates root growth on cuttings, quickens germination of seed and bulbs, reduces damping off, and wards off fungus attack. ¼-oz. pkg. (treats 400 cuttings), 25c.; 2-oz. jar, \$1.00; 1 lb., \$5.00, postpaid.

Triogen Destroys leaf-eating insects like rose slugs, caterpillars, webworm, red spider, plant lice, aster beetles, etc.; controls mildew, black spot, canker, and rust on roses and other plants; yellows and fungus diseases on many flowering plants.

	By mail postpaid	Not Postpaid
Economy Kit, makes 8 quarts	\$1.50	\$1.35
A—Small Kit, makes 16 quarts	2.50	2.25
B—Medium Kit, makes 64 quarts	6.40	6.00
C—Large Kit, makes 32 gallons	9.50	9.00
D—Estate Size, makes 128 gallons	30.00	30.00

Zinc Sulphate For control of peach bacterial spot and possibly brown-rot and scab. The recommended formula is 4 pounds each of zinc sulphate and fresh hydrated or slaked lime to 50 gallons water. The addition of 1 pound zinc sulphate to 100 gallons lead arsenate spray corrects the spray injury. By mail postpaid, 5 lbs., \$1.15; 10 lbs., \$2.15; 25 lbs., \$4.00. Not postpaid, 5 lbs., 90c.; 10 lbs., \$1.75; 25 lbs., \$3.25.

D-X Rotenone-Pyrethrum Spray A pyrethrum and rotenone contact spray for aphid, Japanese beetles, Mexican bean beetles, tent caterpillars, canker worms, thrips, and web worms, chewing and sucking insects; kills and repels cabbage worms, leaf hopper and many similar insects. Dilutes 1 to 800 for aphid—stronger for more resistant insects. By mail postpaid, 1½-oz. size, 55c.; ½-pt. size, \$1.90; 1-qt. size, \$5.70. Not postpaid, 1½-oz. size, 50c.; ½-pt. size, \$1.75; 1-qt. size, \$5.25; 1-gal. size, \$13.50.

Dry Lime-Sulphur For San Jose Scale. The most generally used and very effective remedy for San Jose Scale. Exactly like lime-sulphur solution, except that the water has been taken out. For fall and spring spraying use 12 to 15 lbs. to 50 gallons water. Summer spraying, 2½ to 3 lbs. to 50 gallons water. Postpaid, 1-lb., 55c.; 5 lbs., \$1.90; 12½ lbs., \$2.80. Not postpaid, 1 lb., 40c.; 5 lbs., \$1.65; 12½ lbs., \$2.50; 100-lb. drum, \$19.00.

Lime-Sulphur Solution Our solution retains its strength indefinitely and does not crystalize if kept from air and freezing. For fall and spring spraying use 1 gallon to 8 gallons of water. For summer spraying, 1½ gallons to 50 gallons of water. 50-gallon barrel, \$15.00.

Scalecide For San Jose Scale. It is especially recommended for spraying trees, shrubs, etc., while in the dormant state. Kills aphid and red mites and destroys the eggs and larvae wintering in inaccessible places on the bark of trees. It spreads rapidly into cracks and crevices and covers rough bark thoroughly. Mix one part Scalecide with 15 parts water. By mail postpaid, 1 quart, \$1.25; 1 gallon, \$2.90. Not postpaid, 1 quart, \$1.00; 1 gallon, \$2.40; 5 gallons, \$8.10; 15 gallons \$19.00; 55-gallon drum, \$45.00.

Dusting Sulphur Apply it for red spider, brown rot, scab, mildew, leaf-spot, rust and other fungus diseases. Use it on potatoes when cut for planting to prevent scab and bleeding. Postpaid, 5 lbs., 70c.; 10 lbs., \$1.20. Not postpaid, 5 lbs., 45c.; 10 lbs., 80c.; 25 lbs., \$1.55; 50 lbs., \$2.90; 100 lbs., \$5.50.

Para-Scalcide For controlling peach tree borers. Para-Scalcide is applied in the early fall or in the spring when the ground temperatures are not colder than 60 degrees F. Dilute one gallon Para-Scalcide with 7 gallons of water. One gallon treats approximately 125 one to two-year old trees, 64 three or four-year old trees. Postpaid, 1-qt. can, \$1.50; 1-gallon can, \$3.30. Not postpaid, 1-qt. can, \$1.25; 1-gallon can, \$2.90; 5-gallon can, \$9.10; 15-gallon drum, \$21.80.

Para-di-Chloro-Benzene For controlling peach tree borer. Apply when the ground is dry, in September or October. This will have to be used at once when ordered, on account of evaporation. One pound treats ten trees. By mail postpaid, 1-lb. pkg., 60c.; 2½-lb. pkg., \$1.20; 5-lb. pkg., \$2.00. Not postpaid, 1-lb. pkg., 50c.; 2½-lb. pkg., \$1.00; 5-lb. pkg., \$1.75.

PlanTabbs Contains Vitamin B1 and analyzes 11% nitrogen, 15% phosphoric acid and 20% potash, just the proper plant food to encourage a vigorous, healthy growth. A complete plant food in odorless, ready to use tablet form. 30 tablets, 25c.; 75 tablets, 50c.; 200 tablets, \$1.00; 1,000 tablets, \$3.50, postpaid.

WEED KILLERS

Ammate Weed Killer Kills Poison Ivy. Exterminates weeds in walks, driveways, tennis courts, etc. Deadly to vegetation but harmless to humans, animals and birds. Entirely free from fire and explosion hazards, and exerts only temporary soil sterilization. 1 lb. to a gallon of water kills poison ivy; 1 to 3 lbs. to a gallon kills deep rooted perennials and is enough for 100 square feet of heavy growth. By mail postpaid, 2-lb. size, \$1.15; 6-lb. size, \$2.65. Not postpaid, 2-lb. size, 85c.; 6-lb. size, \$2.25; 50-lb. drum, \$13.00.

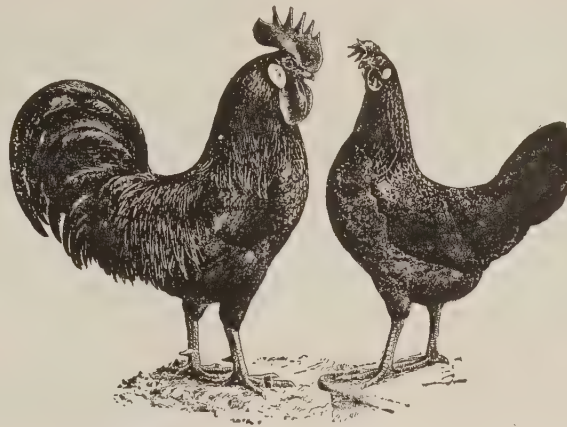
Weedone—2-4-D Weed Killer Kills weeds underground as well as above ground, right down to the root tips. Kills poison oak, poison ivy, wild morning glory, Japanese honeysuckle, sassafras, black locust, choke cherry and many other weeds. Postpaid, 6-oz. size, 85c.; 1-qt. can, \$2.90; 1-gal. can, \$7.00. Not postpaid, 6-oz. size, 75c.; 1-qt. can, \$2.50; 1-gal. can, \$6.50; 5-gal. drum, \$21.25; 54-gal. drum, \$216.00.

DDT SPRAYS and DUSTS

50% DDT Dry Wettable Dust

A dry wettable 50% DDT powder that mixes readily. 2 lbs. of Pratt's 50% DDT in 100 gallons of water is generally used to control codling moth, Japanese beetles, oriental peach moth and other insects. Postpaid, 1-lb. size 90c.; 4-lb. size, \$2.25. Not postpaid, 1-lb. size, 75c.; 4-lb. size, \$2.00.

Poultry, Animal and Dog Remedies



Pratt's Animal Regulator

For continuous use in the daily feed of all livestock. Supplies the indispensable Trace Elements and Vitamin D which feeds may lack. In larger doses it is also an excellent tonic. **Postpaid 1-lb. pkg. 50c.; 2½-lb. pkg. \$1.00; 6-lb. pkg. \$1.90. Not postpaid, 1-lb. pkg. 40c.; 2½-lb. pkg. 80c.; 6-lb. pkg. \$1.60; 35-lb. bag, \$8.25; 100-lb. bag, \$19.50.**

Pratt's Poultry Regulator Famous old reliable product whose "Trace Elements" help make more eggs when feed is deficient. Also an excellent tonic for birds convalescing from disease. **By mail postpaid, 18-oz. pkg., 50c.; 2½-lb. pkg. 85c.; 6-lb. pkg., \$1.70; 12½-lb. bag, \$3.00. Not postpaid, 18-oz., 35c.; 2½ lbs., 70c.; 6 lbs., \$1.40; 12½ lbs., \$2.50; 35 lbs., \$6.50; 100 lbs., \$13.50.**

Pratt's "Split Action" Worm Capsules

Pennies for worming bring back dollars. Wormy birds seldom lay well. Get rid of worms with Pratt's "Split-Action" Worm Capsules that do the work of two ordinary worm treatments at one low cost. They contain Phenothiazine and get cecum worms too. **By mail postpaid, adult size, 50-tablet pkgs. 85c.; 100 tablets, \$1.50; 500 tablets, \$6.00; 1,000 tablets, \$11.25. Chick size, 50 tablets, 55c.; 100 tablets, \$1.00; 500 tablets, \$4.25; 1,000 tablets, \$7.25.**

Pratt's C-KA-Gene Stops heavy losses from bloody coccidiosis. A highly effective flock treatment that works by the new immunity (permanent protection) method. **By mail postpaid, 50-chick size, \$1.00; 100-chick size, \$1.75; 250-chick size, \$3.75; 500-chick size, \$6.50; Not postpaid, 50-chick size, 90c.; 100-chick size, \$1.60; 250-chick size, \$3.50; 500-chick size, \$6.25.**

Pratt's Poultry Worm Powder New Improved. Controls both large and round and cecum worms. Contains Phenothiazine. Just add it to the mash feed. **By mail postpaid, 4-oz. size, 80c.; 8-oz. size, \$1.50; 1½-lb. size, \$3.25; 2½-lb. size, \$5.75. Not postpaid, 4 ozs., 70c.; 8 ozs., \$1.35; 1½ lbs., \$3.00; 2½ lbs., \$5.50.**

Pratt's Powdered Lice Killer With DDT. For dusting poultry, cows, horses, dogs and other livestock. **Postpaid, 14-oz. size, 50c.; 2-lb. size, 95c. Not postpaid, 14-oz. size, 40c.; 2-lb. size, 80c.**

Pratt's Roost Paint With DDT. Kills poultry lice by fumes and contact. Just apply to the tops of the roosts and cross arms. Effective under all hen house conditions. **By mail postpaid, 4-oz. size, 70c.; ½-pint \$1.00; 1 pint, \$1.60; 1 quart, \$2.25. Not postpaid, 4 ozs., 60c.; ½ pint, 85c.; 1 pint, \$1.35; 1 quart, \$2.00; 1 gallon, \$6.75.**

Pratt's Cow Tonic Give your milk check a tonic by adding this appetizer, tonic and mineral supplement to the feed of your dairy cows. **By mail postpaid, 1½-lb. size, 85c.; 3½-lb. size, \$1.60. Not postpaid, 1½ lbs., 70c.; 3½ lbs., \$1.40.**

Pratt's Hog Powder A tonic and mineral supplement formulated especially for swine. Supplies Vitamin D. **By mail postpaid, 1½-lb. pkg., 50c.; 3-lb. pkg., 90c.; 7-lb. pkg., \$1.75. Not postpaid, 1½ lbs., 35c.; 3 lbs., 70c.; 7 lbs., \$1.40; 35 lbs., \$6.00.**

Pratt's Disinfectant A standard coal tar disinfectant such as all authorities recommend. For use on all poultry and livestock farms. **By mail postpaid, 1 pint, 75c.; 1 quart, \$1.10. Not postpaid, 1 pint, 60c.; 1 quart, 85c.; 1 gallon, \$2.25.**

Lime Nest Eggs They look like real hen's eggs. Made from pure sterilized sulphate of lime. A product well known among poultry raisers for its value in keeping nests in a clean, healthful condition. **By mail postpaid, 3 for 30c.; 1 dozen, 75c. Not postpaid, 3 for 25c.; 1 dozen, 60c.**

Glass Nest Eggs Made of first-class flint glass, the same size and color of a hen's egg. They do not break easily. Will last a lifetime. Keep one egg in every nest. **By mail postpaid, 3 for 20c.; 60c. per dozen. Not postpaid, 50c. per dozen.**



Walko Tablets Especially valuable for diarrhoea and loose bowel trouble among incubator chicks. They tend to prevent digestive disturbances and should be given in all drinking water from the time the chicks are out of the shell. Also recommended for swellings of roup in the head and simple catarrh among older birds. **Price, postpaid, small size, 50c.; large size, \$1.00; 1,000 size, \$3.50.**

Sergeant's DOG MEDICINES

Sergeant's Skip-Flea Powder Kills fleas and lice on dogs and cats. Not nauseating; not injurious. **2-oz. size, 35c.; Economy size, 4-oz. size, 50c., postpaid.**

Sergeant's Skip-Flea Soap For pups and dogs. Kills fleas and lice. Soothes skin, leaves coat soft and fluffy. **30c. postpaid.**

Sergeant's Tick Killer New formula. Kills ticks (American and Brown Dog Ticks), on dogs, including engorged (swollen) ticks. **75c. postpaid.**

Sergeant's Sarcoptic Mange Medicine For treating Sarcoptic Mange. Also for use on human scalp. **Economy size, 6 ozs., 65c., postpaid.**

Sergeant's Skin Balm For relief of a condition of itching of the skin, often called "Summer Eczema." Also effective in treating Sarcoptic Mange. **\$1.00, postpaid.**

Sergeant's Sure-Shot Capsules For large roundworms (ascarids) and hookworm in puppies and dogs weighing over ten pounds. **60c. postpaid.**

Sergeant's Puppy Capsules For large roundworms (ascarids) and hookworms in puppies and dogs weighing under ten pounds. **60c., postpaid.**

Sergeant's Tapeworm Medicine For tapeworms in pups and dogs. **60c. postpaid.**

Sergeant's Vitamin Capsules (Vitapets) A supplement to the daily diet, supplying needed quantities of vitamins required for your dog's vitamin balance. As important during good health as in illness. **60c. postpaid.**

Sergeant's Condition Pills Tonic and alterative for pups and dogs. **60c. postpaid.**

Sergeant's Pepsin and Aromatic Tablets Increases protein meat digestion. Relieves colic in pups and dogs caused by improper food. Splendid for pups at weaning time. **60c. postpaid.**

Sergeant's Laxative Tablets For treating constipation in pups and dogs. **60c. postpaid.**

Sergeant's Intestinal Astringent Checks too frequent bowel action in cases of diarrhea. **60c. postpaid.**

Sergeant's Sedative Tablets For relief from excitement and nervous irritability. **60c. postpaid.**

Sergeant's Special Medicine For reduction of fever in pups and dogs in cases of distemper and pneumonia. **\$1.00, postpaid.**

Sergeant's Eye Wash For minor irritations and slight injuries of the eyes and eyelids. **60c. postpaid.**

Sergeant's Expectorant Medicine For coughs due to cold in pups and dogs. **60c. postpaid.**

Sergeant's Disinfectant It's Fragrant of Pine. Deodorizing, flea-killing disinfectant. Pleasant odor. Will help rid kennels, sleeping quarters and premises of flea and lice. Also fine for general household use. **4-oz. size, 25c.; 12-oz. size, 60c., postpaid.**

Sunday Shower The quick dog bath. Sprinkle on, rub it in, wipe it off; the dirt wipes off too. Kills ticks, fleas and dog odor. Guaranteed or your money refunded. **Pint size, \$1.25, postpaid.**

Sergeant's Dog Book FREE
on request—Ask for it



SPRAYERS AND TOOLS



No. 44-G. Big Head Sprayer

Heavy galvanized steel tank, high-pressure. Easy to fill, to open, to seal, to drain, to clean. 4-gallon capacity with 2-ft. extension rod, adjustable shut-off nozzle. **Postpaid, \$12.50. Not postpaid, \$12.15.**

No. 34-G. Big Head Sprayer

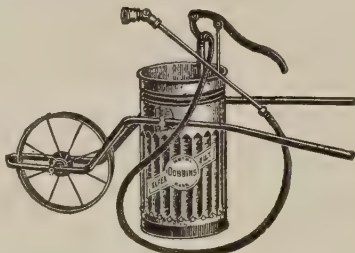
The Big Head provides a large opening for filling and permits the user to clean and remove all residue from the tank. 3½-gal. capacity, with 2-ft. extension rod and automatic shut-off nozzle. **Postpaid, \$10.25. Not postpaid, \$9.90.**

No. 21-G, Fun-L-Fill Sprayer

For convenience and economy in filling. A great saving of time and costly spray solutions. 3½-gallon capacity, with a 2-ft. extension rod and automatic shut-off nozzle. **Postpaid, \$9.00. Not postpaid, \$8.55.**

No. 3170. Wheelbarrow Spray Pump

An efficient portable spraying outfit, designed for shrubbery, garden, truck, vineyards, orchards, greenhouses, and for spraying all insecticides and disinfectants. Used in industrial plants, dairy barns, poultry houses and all farm buildings. 12 gal. capacity, furnished with 6 ft. ¾-in. pressure hose, 2-ft. extension rod and nozzle. **\$22.40 Cannot be mailed.**

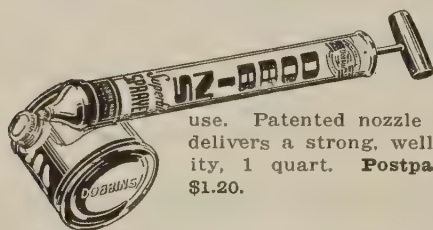


Copper Continuous Sprayer

The tank is heavy copper, the pump cylinder is seamless brass to insure long wear. Slow pumping gives a continuous unbroken spray. Twin nozzles for straight and angle spraying. **By mail postpaid, \$3.70. Not postpaid, \$3.50.**



No. 704. Continuous Type Sprayer

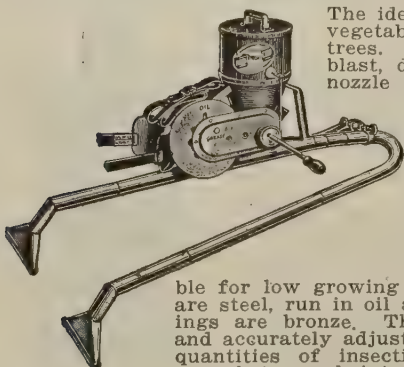


For spraying oils, chemical fly sprays, disinfectants and general household use. Patented nozzle with special whirl vanes delivers a strong, well atomized spray. Capacity, 1 quart. **Postpaid, \$1.35. Not postpaid, \$1.20.**

Spray Hose

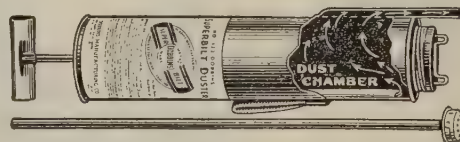
¾ inch (diameter of hole), 14c. per foot; 1 inch, 15c. per foot. Postage, 2c. per foot extra.

No. 200. Crank Duster



The ideal duster for large areas of vegetables, tobacco, cotton and fruit trees. It develops powerful air blast, delivering enough air at the nozzle to prevent clogging and breaks the powder into a fine floating dust. It can be adjusted to feed exactly the amount of insecticide required. Will handle any powder, light or heavy. Dusts either in front or behind the operator, either under or above the foliage. The discharge tubes are adjustable for low growing and tall plants. The gears are steel, run in oil and are dustproof; the bearings are bronze. The indicator can be quickly and accurately adjusted for either large or small quantities of insecticide. The tubes are long enough to reach into fairly large trees. **By mail postpaid, \$21.60. Not postpaid, \$21.10.**

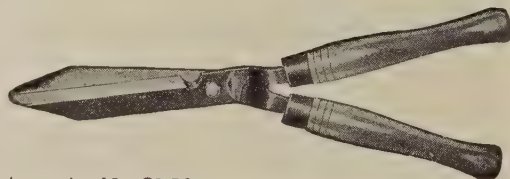
No. 132. Garden Duster



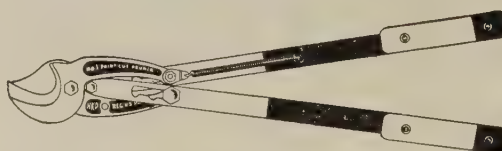
A serviceable duster for small gardens, one that distributes dry powder insecticides perfectly to the last particle either on top or under the leaves. The filler cap is easy to remove for refilling. **By mail postpaid, \$1.75. Not postpaid, \$1.55.**

Hedge Shears

Made of the finest grade tool steel, 8-inch blades for cutting small branches. One blade has a saw edge, handles of hardwood. **By mail, postpaid, \$2.75. Not postpaid, \$2.50.**



Point Cut Pruner



slide shift power slot for tough, heavy branches that gives 50 to 100 per cent increase in cutting power. **By mail, postpaid, \$7.25. Not postpaid, \$7.00.**

Cuts close and clean without the slightest injury to the bark, cuts that heal quickly. Both blades have sharp cutting edges. Has

Alligator One-Hand Pruning Shears

A well made and satisfactory pruning shear, 12½ in. long. The length makes it easy for those hard-to-get-places. The hardened and tempered cutting blades are kept in line by a lock nut and leaves a clean, perfect cut. **Postpaid, \$1.75. Not postpaid, \$1.50.**



Wiss Klip Grass Shears



does not tire the operator. **By mail postpaid, \$1.90. Not postpaid, \$1.75.**

A shear with equal cutting pressure at every point of the blade. Will get into the space between flag stones and into small corners. The offset handle prevents skinning the knuckles;

Garden Trowel

A well balanced tool for use in any garden or greenhouse. 11 inches long; 3½ inches wide.



Transplanter

A narrow trowel, expressly made for transplanting purposes. 11 inches long; 2 inches wide.



Cultivator and Bulb Tool

A handy tool for use in the garden, weeding or planting bulbs.



Made of Cast Aluminum Will Last a Lifetime Postpaid, 65c. Each Set of 3, \$1.75

National Eezy Wear Garden Gloves



Large for women; Medium and Large for men. Specify the size wanted. **By mail postpaid, \$1.25 per pair.**

Made from special imported hides processed to render them amazingly soft and pliable. Permit almost bare-hand freedom, yet provide complete all-leather protection. Dust-proof, durable, washable. Five sizes: Small, Medium and

Cyclone Seed Sower

The Cyclone is a splendid seed sower that will pay for itself in a few days in the time it will save, besides sowing grass and clover seeds and grain of all kinds faster and more evenly and uniformly than is possible by hand. It will sow as fast as you can walk, and the quantity can be regulated to any amount to the acre. **By mail postpaid, \$3.50. Not postpaid, \$3.25.**



From _____

Always register letters containing money

T. W. WOOD & SONS

SEED GROWERS AND MERCHANTS

P. O. BOX 6--0

RICHMOND 19, VA.

BEFORE SEALING THIS ENVELOPE

Be sure you have written your name,
postoffice and shipping point plainly on
your order.

HARDY ANNUALS FOR FALL PLANTING



Giant Imperial Larkspur

CALENDULA

- No. 658. **Sunshine or Chrysantha.** The large double flowers are an exquisite clear buttercup yellow, with long, loosely arranged drooping petals. Pkt. 10c.; 1/4 oz. 25c.; 1/2 oz. 40c.
- No. 657. **Campfire or Sensation.** The largest of all Calendulas; brilliant orange with a scarlet sheen and full yellow center. Pkt. 10c.; 1/4 oz. 35c.; 1/2 oz. 60c.
- No. 656. **Orange Shaggy.** A distinct type with long deeply fringed petals; the long fringed petals overlap each other in a rather irregular fashion and build up a bloom with a shaggy appearance. The color is an intense orange, shading to lighter orange at the center. Splendid long stems; grows 18 inches high. Pkt. 10c.; 1/4 oz. 35c.; 1/2 oz. 60c.; oz. \$1.00.
- No. 659. **Pastel Shades.** Many shades of apricot, salmon, cream, orange and lemon. Pkt. 10c.; 1/4 oz. 30c.; 1/2 oz. 50c.
- No. 660. **Double—Mixed Varieties.** A fine mixture of all the best varieties. Pkt. 10c.; 1/4 oz. 25c.; oz. 40c.

Flowering Centaureas

(EACGED ROBIN OR CORNFLOWER)

Universal favorites for cut flowers, deliciously scented; long stemmed, will last for days. Sometimes called Bachelor's Button. Hardy annual.

- No. 710. **Cyanus Double Rose Pink.** Pkt. 1/4 oz. 25c.; 1/2 oz. 35c.; oz. 60c.
- Cyanus Red Boy—Double Red.** Pkt. 10c.; 1/4 oz. 25c.; 1/2 oz. 35c.; oz. 60c.
- No. 711. **Cyanus Blue Boy—Double Blue.** Pkt. 10c.; 1/4 oz. 25c.; 1/2 oz. 35c.; oz. 60c.
- No. 712. **Cyanus Double Mixed Colors.** Pkt. 10c.; 1/4 oz. 20c.; 1/2 oz. 30c.; oz. 50c.

LARKSPUR

For bedding among shrubbery and as cut flowers, larkspurs are strikingly beautiful. Germination is improved if refrigerated for several days.

GIANT IMPERIAL LARKSPURS

The most advanced strain in size of flower, foliage of spikes and color shades. The intensified branching habit gives a greater number of branches, each producing a solid mass of color, 3 to 4 foot spikes make ideal, long-lasting cut flowers.

931. **Rose King** Pkt. 10c.
 932. **White King** 1/4 oz. 40.
 933. **Carmine King** 1/4 oz. 70c.
 934. **Dark Blue Spire** Oz. \$1.25
 941. **Lilac or Lavender Spire**
 942. **Mixed Colors**

STOCK FLOWERED LARKSPURS

940. **Rosamond.** Pure pink; yields a fine cut flower two weeks before others. Numerous flower spikes, heavily covered with fully double blooms. Pkt. 10c.; 1/4 oz. 35c.

936. **Double Dark Blue** Pkt. 10c.
 938. **Double Light Blue** 1/4 oz. 35c.
 937. **Double Pink** 1/2 oz. 60c.

939. **Double Mixed Colors.** Pkt. 10c.; 1/4 oz. 30c.; 1/2 oz. 50c.; oz. 85c.

ESCHOLTZIA

(CALIFORNIA POPPY)

Easily grown annuals, producing bright, poppy-shaped flowers from spring till frost. Bed in full bloom makes brilliant effect.

335. **Scarlet Beauty.** Pt. 10c.; 1/4 oz. 30c.; 1/2 oz. 50c.
334. **Sunset.** Rich deep golden orange. Pkt. 10c.; 1/4 oz. 30c.; 1/2 oz. 50c.
336. **Golden West.** Pkt. 10c.; 1/4 oz. 30c.
337. **All colors mixed.** Pkt. 10c.; 1/4 oz. 30c.; oz. 50c.

ANNUAL POPPIES

No. 1140. **WOOD'S SUPERB POPPY MIXTURE.** A grand mixture of all the newest and best double and single annual Poppies, all varieties and every color. The wonderful variety and brilliant coloring make an effective display. Pkt. 10c.; 1/4 oz. 30c.; oz. 50c.

No. 1141. **Special Mixed Single Poppies.** Contains only select varieties that will give a dazzling display of colors. Pkt. 10c.; 1/4 oz. 20c.; 1/2 oz. 35c.

No. 1142. **Special Mixed Double Poppies.** An elegant collection of the largest blooms and most gorgeous colors. Pkt. 10c.; 1/4 oz. 20c.; 1/2 oz. 35c.

No. 1144. **Tulip Poppy.** Large single bright scarlet blooms, 3 inches across; as dazzling as scarlet tulips; brilliant in massed beds. Pkt. 10c.; 1/4 oz. 25c.

SHIRLEY POPPIES. Remarkably brilliant and free-flowering, delicately fringed.

No. 1139. **Scarlet.** Pkt. 10c.; 1/4 oz. 25c.; 1/2 oz. 40.

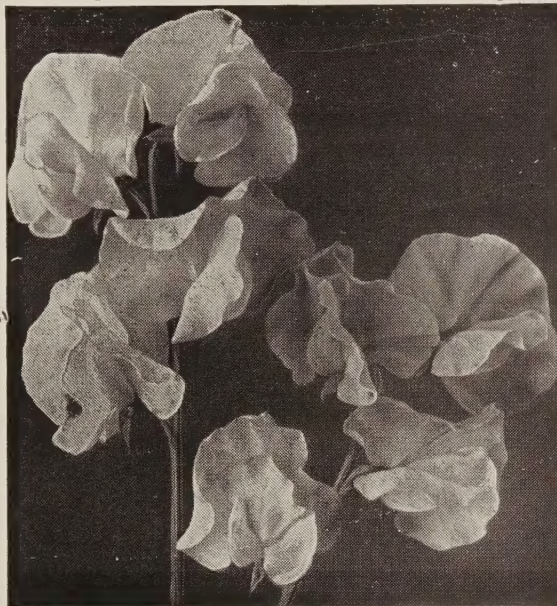
No. 1145. **Mixed Colors.** Pkt. 10c.; 1/4 oz. 25c.; 1/2 oz. 40c.; oz. 75c.

No. 1148. **Double Shirley.** Double and semi-double in an endless variety of color. Pkt. 10c.; 1/4 oz. 30c.; 1/2 oz. 50c.

Wood's Spencer or Orchid Flowering Sweet Peas

ALL VARIETIES: Pkt. 10c.; oz. 25c.; 1 lb. 75c.; lb. \$2.50, postpaid

1329. **Avalanche.** No pure white sweet pea makes as large a flower, nor blooms that will last as long; a strong grower and a profuse bloomer.
1332. **Black Diamond.** Dark maroon. The largest and best of its color.
1331. **Capri.** An outstandingly fine light blue; the color is clear, the flower is large and long stemmed.
1330. **Charming.** Bright glowing cerise with a scintillating salmon sheen; large flower.
1335. **Chieftan.** A showy and attractive pure satiny mauve. Free from purple shading.
1350. **Crony.** Soft golden salmon. An "Award of Merit" winner.
1341. **Elstree.** Bright salmon pink on cream ground. The frilled blooms have extra long, strong stems; profuse bloomer.
1343. **Flagship.** Deep navy blue. The large blooms are borne on long stems.
1337. **Fortune.** A brilliant waved flower with violet standard and dark blue wings; a lovely combination.
1342. **Gigantic.** A beautiful frilled, long stemmed, pure white; an extra large and exquisite flower.
1333. **Grand National.** The large frilled flowers are a rich deep cream; an "Award of Merit" winner.



Spencer Sweet Peas.

1345. **Highlander.** A perfectly formed, lovely, pure, clear lavender.
1336. **Magnet.** The richest and brightest cream pink; fine size and long stemmed.
1338. **Mastercream.** Rich deep cream without a trace of pink; flowers duplexed, large and beautifully frilled.
1334. **Olympic.** Large, waved royal purple flower; deep and rich, vigorously and free bloomer.
1347. **Pinkie.** The largest and finest rich rosy pink; beautifully waved flowers.
1348. **Prince of Orange.** Unquestionably the finest in its color class. Large and beautiful rich glistening orange.
1340. **Red Boy.** Pure rich deep crimson flower; four blooms on long stems; does not sunburn.
1336. **Red Rover.** Long stemmed, brilliant dark crimson.
1346. **Reflection.** A magnificent clear cornflower blue with no trace of violet; bears 3 to 4 blooms on sturdy stems.
1339. **Sweet Afton.** A sparkling shade of deep silvery pink.
1344. **Welcome.** The most dazzling and glowing scarlet; the large bold flowers are sunproof.
1349. **WindSOR Blue.** A clear, heavily waved mid-blue.

Early Flowering Spencer Sweet Peas

These bloom weeks earlier and remain in bloom longer than other Spencers. The blooms are equally as large, are beautifully waved and are borne on long stems. They are especially well adapted for outdoor planting in the South as well as for greenhouse culture. We have had spring plantings bloom earlier than fall plantings of other kinds, yielding plenty of blooms before hot weather arrives.

All Varieties: Pkt. 15c.; oz. 40c.; 1 lb. \$1.20; lb. \$4.00, postpaid

1361. **American Beauty.** So named because the color is the same as the American Beauty rose, glowing crimson-rose.
1360. **Cascade.** A beautiful pure white flower; borne on long stems.
1363. **Giant Rose.** An unusually large flower; a beautiful rose pink; a robust grower.
1362. **Memory.** The large waved blooms are clear rosy lavender.
1364. **Mrs. Herbert Hoover.** "The California Blue." Clear deep blue.

Sweet Peas in Mixtures

1374. **WOOD'S EARLY FLOWERING SPENCER MIXTURE**
 They bloom 3 to 4 weeks earlier than the summer flowering Sweet Peas and are especially recommended for growing in the warmer parts of the South. In cold climates they do splendidly in the greenhouse. We offer a well-balanced mixture of all colors from pure white to deep maroon. Pkt. 10c.; oz. 30c.; 1 lb. \$1.00; lb. \$3.50, postpaid.

1376. **WOOD'S SUPERB SPENCER MIXTURE**

The Spencers are the finest type of Sweet Peas in cultivation. Our mixture is a well-balanced blend of colors from the purest white to the deepest maroon, one that will please the most exacting lover of Sweet Peas. It will give a lavish display in an almost endless range of colors. Pkt. 10c.; oz. 20c.; 1 lb. 65c.; lb. \$2.25, postpaid.

RETURN POSTAGE GUARANTEED

T. W. WOOD & SONS,

SEEDSMEN SINCE 1879

Richmond, Virginia

Section 34.66 P.L.&R.

U. S. POSTAGE

PAID

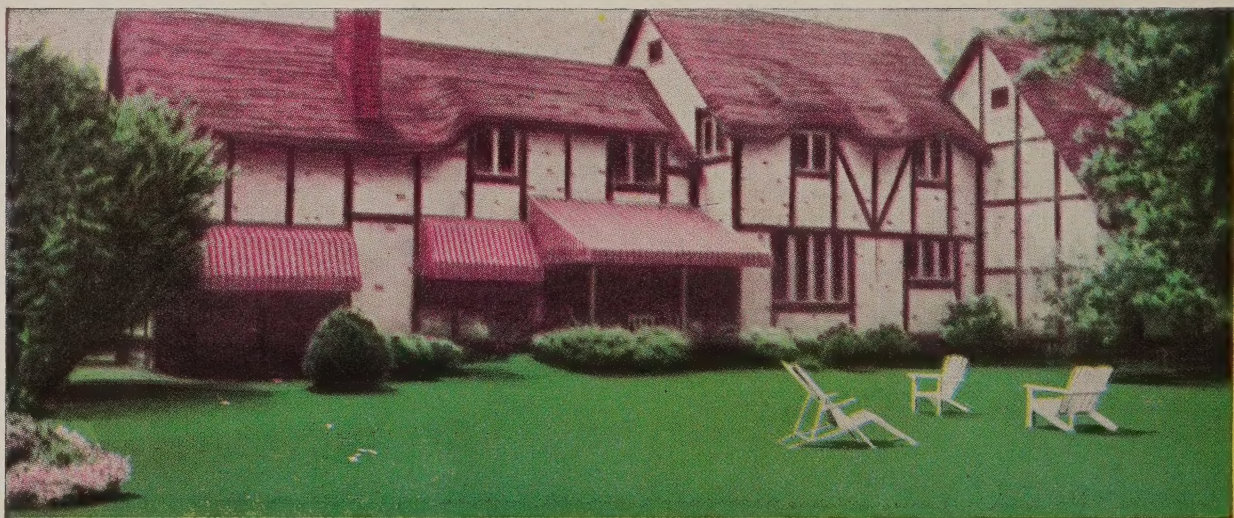
RICHMOND, VA.

Permit No. 142

WOOD'S SEEDS

The Sign of Good Seeds

LIBRARIAN, U.S. DEPT. OF AGRI.
WASHINGTON, 25, D.C.



Wood's RAINBOW Collection DARWIN TULIPS

50 Bulbs

FIVE EACH, SEPARATELY BAGGED AND LABELED
OF 10 FAMOUS VARIETIES, FOR ONLY

AFTERGLOW—Rosy Orange
BARTIGON—Fiery Crimson
INGLESCOMBE YELLOW
MARGEAUX—Wine Red
MOTHERSDAY—Pale Yellow

PRUNUS—Clear Pink
THE GENERAL—Dark Red
SCOTCH LASSIE—Deep Lavender
WM. COPELAND—Lavender
ZWANENBURG—White

\$3.25

100 Bulbs, 10 Each of the Above, for \$6.25

