

## **Historic, Archive Document**

Do not assume content reflects current scientific knowledge, policies, or practices.



62171

LIBRARY  
EST. 1852  
P  
★  
L. B. Ware  
Lilium

1924



*Autumn Planting*

**BELLINGHAM HYBRID LILIES (Page 7)**

BETTER BULBS FOR BETTER GARDENS

*Romaine B. Ware - Lilies*

CANBY, OREGON





L. AURATUM

Healthy, Northwest Grown

## *Auratum Lilies*

Golden-Rayed or Gold Banded Lilies

*"Till now one dreamed not what could be done  
With a bit of earth and a ray of sun."*

—Lowell.

Auratum is the most gorgeously beautiful of all Lilies, the "ne plus ultra" of the Lily world. Mere words are painfully inadequate to describe its perfection. Only when seen can the unparalleled beauty of this jewel be truly appreciated.

Since first flowered in this country more than 80 years ago, millions of Lily lovers have planted and coddled this garden aristocrat only to find it a fleeting joy. Imported diseased bulbs have brought disaster until very few survive. However, the last decade has seen healthy disease free bulbs produced from seed here in the Northwest by the thousands. You can plant them with confidence. And besides being healthy and vigorous, the blooms are even more beautiful than the older forms.

The Auratum is a large bowl-shaped Lily, waxy-white, spotted crimson with each segment striped with a gold band. The sturdy three- to eight-foot stems carry up to 30 or more horizontally held blooms when well established and their fragrance is delightful. Blooming season, late July to mid-September. They enjoy full sunshine except in very warm sections; a moist but well drained soil with ample humus, and, this is very important, DO NOT PLANT DEEP. In spite of most authorities to the contrary, five inches of soil above the bulb is enough. Deep planting courts disaster. This shallower planting advice is the result of recent exhaustive tests.

**AURATUM, The Gold Banded Lily**—130—This is the usual type we have loved these many years. A very beautiful lily with large open bowl-shaped blooms, waxy-white, spotted crimson and each segment striped with a central band of gold. The tips of the petals are slightly recurved, the margins somewhat waved. All our bulbs are grown in the Northwest and are free from any visible signs of disease. Auratums mature late and are dug and shipped in November. They should be planted at once. The illustration above portrays but poorly the exquisite perfection of these aristocrats of the garden. We have them in large and medium size bulbs; also a limited number of fine jumbos. For all Auratums, please ORDER EARLY, as many kinds are sold out even before they are dug. NOVEMBER SHIPMENT.

**AURATUM Praecox**—137—Have you ever wished you could have these gorgeous lilies in bloom earlier? This one flowers before the middle of July. The blooms are similar to the type though not quite as large. Plant this one, No. 137, for early bloom, the type No. 130 for midseason and the late form (No. 131) offered below, to give you a long season of these beauties. This early form as well as the late are distinct and desirable additions to your lily planting.

**AURATUM Late Form**—131—Except for season of bloom, this is the same as No. 130. However, it blooms from late August into September. Height, planting depth and culture the same as the type. Many garden folk who know and appreciate these gorgeous lilies will welcome the opportunity to have the extended season now possible.

**AURATUM Extra Hardy**—132—This is an Auratum especially suited to northern areas where frosts tarry late in the spring and come early in the fall. It is a selection from the type that comes up late, blooms quickly and matures early. Surely they are a welcome addition to the group and should prove invaluable in the short season sections. Blooms, depth of planting, culture and all other factors are the same as the type (130).

**AURATUM Pictum**—136—A very superior variety. Large open blooms, white, heavily spotted crimson, with tips of petals flushed pink to crimson. A delightful and distinct variation. This form has been famous for many years but never plentiful. We have a good stock of it, Oregon grown, which will not disappoint you.

The Auratum Lily is at last coming into its own in this country. During the war thousands of keen gardeners learned they need not depend upon the many times diseased imported lilies. They learned that "Oregon Grown", fresh dug lilies were far superior to stocks formerly bought, so far superior that they will never again knowingly spend good money for the "so called bargains" so glibly advertised. All our bulbs are grown in this country and fresh dug at maturity before shipping. The many enthusiastic letters we get from near and far are eloquent testimony to their quality.

**AURATUM Rubro Vittatum**—138—A very scarce variety but always popular and never in sufficient supply in spite of the price. The bloom is extremely beautiful, a glistening white, with the band deep red except at the base where it is yellow. The spots are larger and brilliant crimson, one of the most highly colored of all the Auratums. The entire Auratum group is so beautiful and now that it is possible to get disease free, home grown bulbs, they can be enjoyed most everywhere. Of this variety we seldom have enough, so please ORDER EARLY. November shipment.

### *Auratum Platyphyllum*

**AURATUM Platyphyllum**—139—This is a more massive and robust form and if possible, hardier than the type. The leaves are broader and more numerous. The flowers are simply huge, often measuring twelve inches or more in diameter. The upper petals are frequently somewhat pendant, giving the blooms a hooded appearance. Platyphyllum is not quite as spotted as the type and what spots there are, generally are more concentrated towards the center of the petals. All in all it is an outstanding variety.

Mr. Kline has specialized in this variety for many years and his stock is extra fine, very vigorous and perfectly healthy. If you only buy one of the Auratums, this should be earnestly considered. It seems to favor partial shade and like all the others must have perfect drainage. Flowering season a little earlier than the type.

**AURATUM Tri-color**—133—A type similar to Platyphyllum but without the crimson spots. It has the gold band and light yellow spots. A very striking, robust variety, desirable in every way. It has long been scarce and today's supply is very limited.

FOR INDEX AND PRICES SEE PAGES IN CENTER OF CATALOG



# Auratum Esperanza

Again this year we consider ourselves fortunate to be able to offer this outstanding strain of American grown Auratums. They are all grown from seed in this country with the most painstaking care to insure them being free of disease. The reports we have had from them in the last three years have been most gratifying. As seedling lilies there is great variation in them. Many are the finest we have ever seen and all are outstandingly beautiful. In size they vary from the normal up to huge blooms almost unbelievable. I wish it were possible to illustrate them in color but conditions forbid. Only by seeing them in your own garden can you appreciate their glorious beauty. They are extremely hardy, even at below zero, and down south, with partial shade they succeed beautifully. Five inches of soil over the bulb in average soil is correct. Don't plant too deep as old time directions advised. Delivery mid-November. Quantities are limited so ORDER EARLY.

**AURATUM Esperanza Select Strain**-135-These are a choice selection, in many forms, star, windmill, bell-shaped, orchid, frilled and waved. Blended and splashed with color, gorgeously rayed, they simply defy description. Stock of this Select Strain is limited. They are offered in medium and large bulbs. On early orders a few jumbo bulbs will be available.

**AURATUM Esperanza EXTRA Select**-134-It is quite impossible to portray the exquisite perfection of these lilies. They include many truly spectacular, the best out of tens of thousands of seedlings. Some are of huge proportions on stems up to eight feet tall with as many as 30 blooms when established. Types and forms are similar to the Selects but for this group, the choicest have been set aside. Only when seen in the garden can their full beauty and perfection be appreciated.

## *Auratum Esperanza--Named Varieties*

In addition to the selections offered we have prepared a booklet describing two dozen Esperanza named varieties priced up to \$100 per bulb. Only a few bulbs of each are available. If interested we will be happy to send you a copy.

ANOTHER AURATUM TYPE



## AURELIAN HYBRIDS

We again offer this fine lot of hybrid lilies by Carleton Yerex, lily hybridist of Oregon. He terms them "Aurelian Hybrids" and while in some respects similar to the older Aurelian Hybrids, they are a distinct step forward. The original crosses were made by Edouard Debras in France more than 20 years ago and from these thousands of seedlings have been produced. They vary in form and color from white lilies shaped like Henryi to trumpet lilies of deep yellow and apricot and all imaginable intermediate shapes and colors. Some are shaped almost like Auratums. Throughout the years they have been selected and re-selected. This year we are offering three groups of these new hybrids which we feel are most worth while. PD 6 inches.

**AURELIAN Hybrids, Henryi Form**-150-Both the plant and the flowers are large and come in delightful pastel tones. Some have up to 20 blooms on eight-foot stalks. They can only be offered as mixed hybrids though each one is selected for perfection of form and type. They are truly lovely.

**AURELIAN Hybrids, Semi-trumpets**-151-Some of the most beautiful and striking forms of these hybrids are in this group. The Henryi blood shows in the shortened trumpets and the recurved petals. They vary from pure white through the pastel shades but all show the influence of the Henryi blood.

**AURELIAN Hybrids, Ivory, Buff and Sulphur Trumpets**-152-These are true trumpet lilies showing the Sargentiae blood but the lovely buff, ivory and yellow color comes from the Henryi infusion. Some of the experts who have seen them consider them superior to the Burmese lily *Suiphureum*. They are tall, vigorous and very large. A delightful picture is produced by planting them with the charming blue flowered *Aconitum napellus* Sparks' variety. There are countless lovely combinations that may be worked out in your borders, effects that will give your garden a degree of charm truly expressing your individuality. Only a limited number of these Aurelian Hybrids can be sold this year.

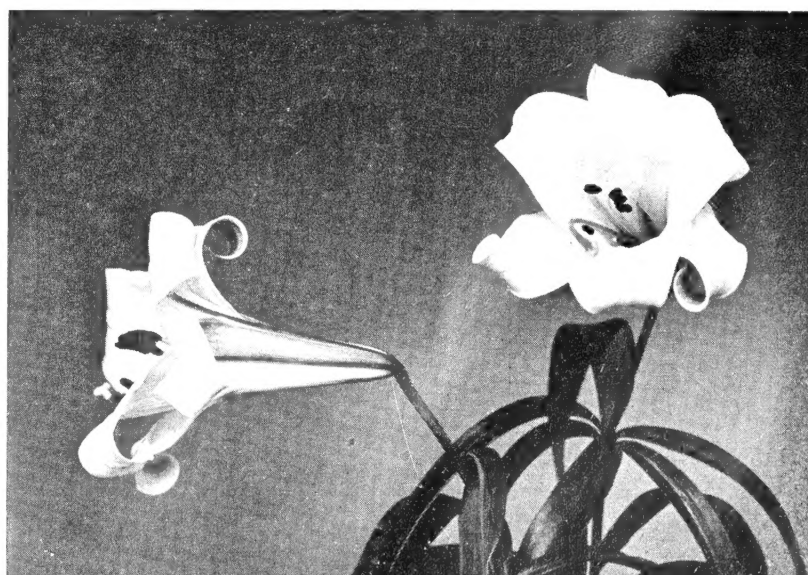
**AURELIAN Hybrids, Special Selections**-153-In response to many requests we now offer these hybrids specially selected in the field while in flower to fill your wants as to color and type. We must, however, have the orders by early July so that we can personally make the selections and mark the bulbs for digging separately. These hybrids contain some of the finest of the new lilies. **NO ORDERS AFTER MID-JULY ON THESE.**

**AMABILE**-125-A June blooming dwarf, ideal in foreground of your border or as a brilliant highlight in rock garden. Turk's Cap shape, grenadine-red, spotted black. Easiest culture, sun or partial shade. Try it against white *Spiraea Von Houttei*. Ht. 1 1/2 to 3 ft. PD 4 inches.

**AMABILE Luteum**-126-A rare form in a lovely yellow. Delightful against *Delphinium Belladonna* with a ground planting of pansies in deep ultramarine blue. Culture as above. Stock scarce.

**AZALEA**-160-An extremely vigorous new hybrid (*Philadelphicum-Dauricum*) with brilliant, attractive, apricot colored cup-shaped blossoms. Valuable either massed or as individual specimens. Makes a delightful picture with a ground cover of the Hybrid Alpine Aster "Goliath", against dark green foliage. May-June. Ht. 2 to 2 1/2 ft. PD 4 in. Sunny situation.

BROWNII (Page 10)





HANSONII

## A Book About Lilies

### LILIES for American Gardens

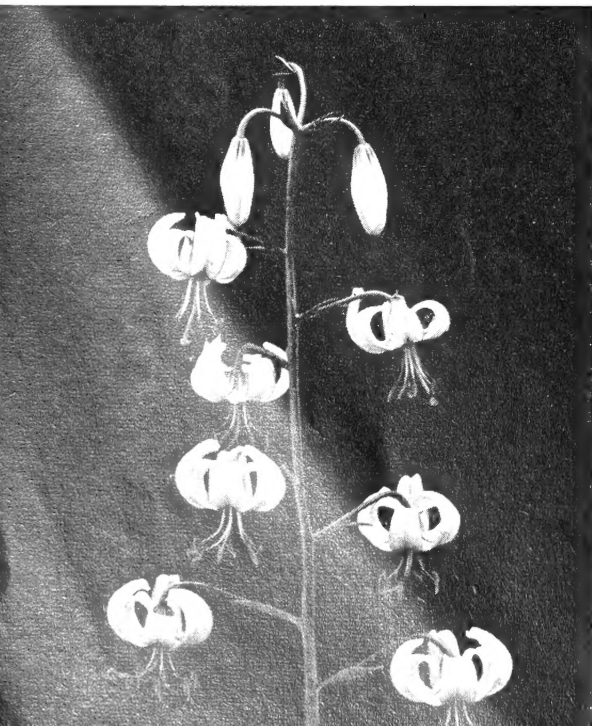
By George L. Slate

Here's a thoroughly American book by my good friend George L. Slate, a most interesting book written from a wealth of personal experience and extensive research. Either for an amateur or a Lily specialist this book is invaluable. It covers every phase of Lily culture including soil, site, planting, maintenance, winter protection, pests, diseases, propagation and hybridizing.

Illustrated with many photographs and sketches, it describes more than 280 varieties and how to use them in the garden. Personally I think so well of the book that I keep copies on hand and will mail it, postpaid, at the publishers price. Even if you grow but a few varieties, this book will be worth far more than the price.

**\$5.00 per copy, postpaid**

MARTAGON ALBUM



## Lilium Hansonii

**HANSONII**-380-Here's one of the most satisfactory of all lilies for garden planting. It is charming, distinct and unusual but even more important, it is of easy culture. The blooms are medium size, thick petaled, bright orange-yellow, brown flecked, somewhat recurved but not the true Martagon type.

Hansonii is a sturdy, hardy, long lived lily, little subject to disease. Like some others, it is occasionally injured by late frosts but this may be avoided by protecting with companion plants and covering in case of severe frosts.

This lily will grow in full sun but is better in partial shade as the delightful color fades in hot sunshine. It blooms in late June into July. One of the most certain of lilies, it is beloved by both beginners and the keenest of specialists. The lovely white Martagon Album, opening just before Hansonii is a good companion and Dalhansonii, a hybrid of Martagon dalmaticum and Hansonii, might well round out the group. As a foil and ground cover try the dwarf shrub Philadelphia Macrophyllus. Plant against a dark background to enhance the display.

Hansonii matures early and is generally ready for shipment in early September. Too, it usually sells out early, in fact, we very seldom have enough to fill all orders. Height 4 to 5 feet. PD 5 inches. Please ORDER EARLY.

**MARTAGON**-506-This is the true purple Martagon Lily, often referred to as the "Turks Cap." Its culture is easy in either sun or shade. Tall spikes carry numerous waxy light purple flowers, spotted with deep purple. Generally takes a year to establish itself before blooming. Ht 3 to 5 ft. PD 4 in. June-July.

**MARTAGON Cattaniae.** (Syn. Martagon dalmaticum)-516-Though this is one of the oldest lilies in cultivation, it is far from plentiful. The thick petaled flowers are a deep port-wine color, almost black. Though sometimes capricious, once established, it is vigorous and even taller than the type. Group it with Martagon Album and face the spot with Oenothera grandiflora (Evening Primrose). L. Testaceum too is lively with Martagon Cattaniae. Our stock never meets the demand so place your order early. June-July. PD 4 in.

## Martagon Album

**MARTAGON Album**-510-Few, if any Lilies offer a more beautiful effect than a well grown clump of this graceful and charming variety. Its small delicate Turk's Cap blooms are pure white and sweetly fragrant. Borne on 4 foot stems from mid-June well into July. Try it with a mass of very tall light blue iris back of it against an evergreen background and on either side a plant of that lovely light pink oriental Peony, Tokio. In the foreground use a wide drift of pale blue Viola "Maggie Mott". There are literally scores of pictures you may develop in your garden with Lilies playing leading parts, and L. Martagon Album may well be cast in a leading role. PD 4 in. Succeeds in light or heavy soils.

FOR PRICES SEE PAGES  
IN CENTER OF CATALOG

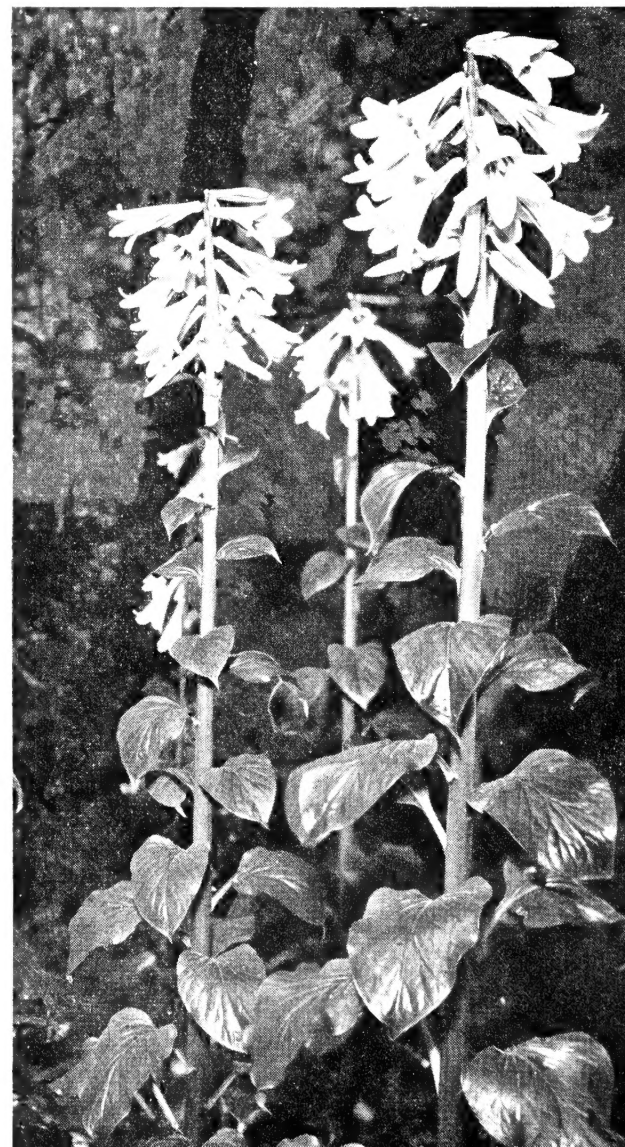
"All that Nature did omit,  
"Art, playing Nature's second part, supplied." —Spencer

**POLYPHYLLUM**-620-This fragrant, nodding, white Lily, splashed with purple inside is one of the rarest and not the easiest to grow. The high valleys of famed Kashmir are its home. The soil is moist but well drained and thickly matted with leaves. Here in the Northwest we find it does well out in the sunshine but where the sun gets really hot, partial to full shade is probably best. A good location would be the Rhododendron bed where the surface is shaded but the stems reach up into the sunshine. Ferns would be an ideal ground cover. Ht 4 ft. PD 4 inches. Late June.

## A Woodland Giant

**GIGANTEUM Himalaicum**-350-The giant of all Lilies, sends up imposing stalks ten to twelve feet, crowned with huge white trumpets, as many as thirty to a stem, striped and splashed inside with red-purple. If you have the right setting for this gem, it will reward you richly. The ideal location is in open woods where the sun just peeps through, where the soil is always damp but also well drained. Likes to be protected from winds and the soil should be rich with humus, in fact loose and fluffy with it. This Lily produces a very large bulb which upon flowering, dies, leaving behind several offsets which may be reset and these in a few years will bloom. Cover top of bulb not deeper than one inch.

GIGANTEUM HIMALAICUM





# New Hybrids of T. A. Havemeyer

*Produced by Mr. Edgar L. Kline*

With the vast number of new hybrid lilies being offered today, these Havemeyers are still rated tops. Their beautiful forms, perfectly marvelous colors, hardiness, resistance to disease combined with ease of culture, tolerance to sun or partial shade, robust growth and adaptability to average soils augurs an ever increasingly popularity.

All of them are seedlings of *Lilium T. A. Havemeyer*, hybrid of *Sulphureum* and *Henryi*. Both for garden and cutting, they are hard to beat. The following six have been selected for clonal propagation and named as outstanding representatives of the strain. August-September. Height 5 to 6 feet. PD 6 inches.

**PAULINA KLINE**-810-A stunning majolica-yellow shading to saffron, flecked at base of petals with oxblood-red—back of petals lettuce-green. Flowers 5½ inches (expanded 8 inches).

**MABEL B. RONNA**-812-Majolica-yellow, stained lemon yellow, flecking of oxblood-red. 5 inch flower. This is an eight foot tall lily, very striking in effect.

**WILLIAM BATES**-814-Light tangerine-orange shading to ivory. Flower 5 inches, fully opened, slightly recurved. The color tones of this lily are superb.

**G. V. SHAW**-816-Mr. George L. Slate, lily expert and author of the very fine lily book, "Lilies for American Gardens", appraised this as one of the truly fine new lilies, when he visited out here a few years ago. The color is a delicate shade of Egyptian buff shading to old ivory. Anthers a contrasting shade of brown, and very prominent, giving the flower a most distinctive appearance.

**EDMUND L. KAGY**-818-A stunning erect six foot beauty, persimmon-orange, lightly flecked oxblood-red. An 8 inch bloom, recurved tips. An exquisite lily, very erect.

**IDA JANE CALIF**-820-This is somewhat different from the rest, a dainty medium size bloom only three feet tall. Majolica-yellow with border spotted red half way to the tips. Recurved.

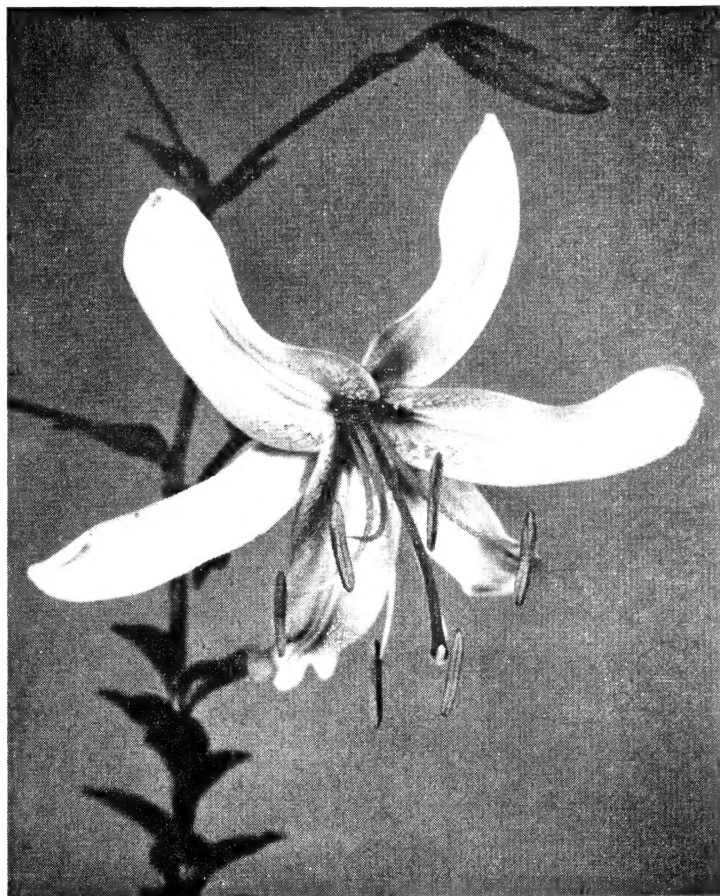
## *Havemeyer Mixed Seedlings*

**T. A. HAVEMEYER Mixed Seedlings**-804-A collection of seedlings of the same parentage as the above named varieties but with slight variations. They are not sufficiently different from those selected to warrant naming but after all inferior types were thrown out, these proved worthy to be propagated. Sold as a mixture they are easily worth several times the price. Color range, descriptions and culture, same as other Havemeyers. We feel this strain has a remendous future when its merits are known. They are offered with confidence that you will find them far more lovely than anticipated.

**T. A. HAVEMEYER**-800-(True) This unusual hybrid was first introduced in 1937 and wherever exhibited, has received almost royal acclaim. Blooms have been exhibited seven inches in diameter, a warm ivory-yellow, suffused with apricot; on the outside of each segment there is a band of vivid green. Truly a gorgeous lily that will be greatly in demand wherever seen. Another important fact is their blooming late, August-September, when comparatively few lilies flower. Height 5 to 6 feet. PD 6 in. Like so many of the new and better hybrids, they are tolerant in soil requirements, enjoy sun or partial shade but, of course, respond to good treatment. Stock is limited so order early.

**SCOTTIAE Light Form**-760-A hybrid produced by Mr. F. L. Skinner, Manitoba, Canada. The blooms are ideally held, facing outward, a bright salmon-orange, spotted purple. As a Lily for the flower border it is of easy culture and vigorous growth. Ht 2 to 3 ft. Use purple violas for ground cover planting and you'll have a delightful picture. July-August. PD 5 inches.

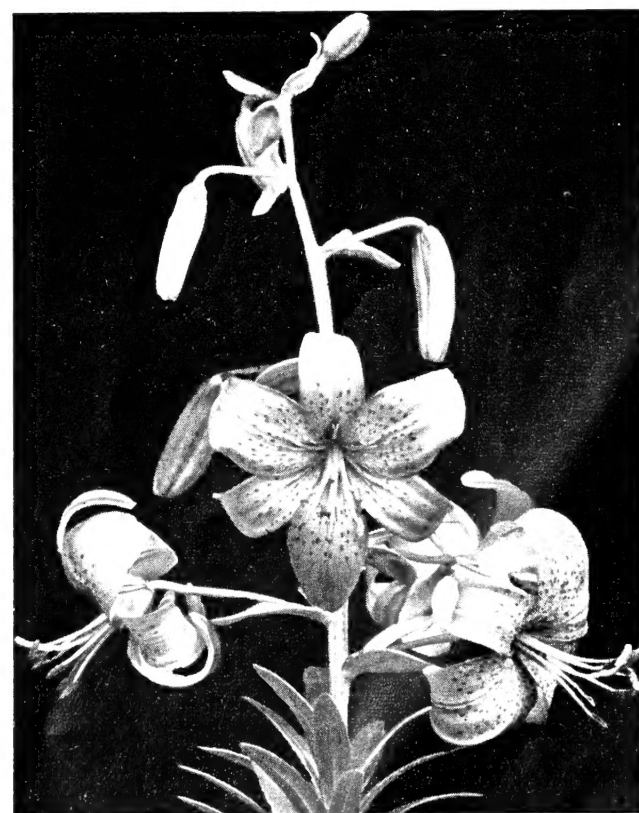
**SCOTTIAE Dark Form**-764-Same as above but darker and earlier blooming.



PAULINA KLINE

**BURBANKII**-188-A strain of hybrids produced by the famous Luther Burbank by crossing *L. Paryii* and *L. Pardalinum*. This one is a gorgeous yellow five to eight feet tall, intermediate between the parents in type of flower, bearing up to 20 blooms. It is vigorous and healthy and altogether worth while. Up until now we have not had sufficient stock to offer it. You will find it a good addition to your collection. The golden yellow blooms are shaded crimson with mahogany spots, a semi-recurved bloom, opening in July. Partial shade. PD 4 inches.

**DON'T  
OVERLOOK  
THE COPPER  
SPRAY  
OFFERED  
ON  
PAGE 29**



LILIUM  
SCOTTIAE

FOR INDEX AND PRICES SEE PAGES IN CENTER OF CATALOG



**STAR OF OREGON-785**-A hybrid of *Humboldtii* x *pardalinum*. It produces 14 to 20 Martagon type blooms on vigorous stems six to seven feet tall. Color is cadmium orange, spotted black in the throat with spots enlarging with red zones outward. Strikingly brilliant Lily. July flowering. PD 6 inches.

**SKYROCKET-770**-This is the first offering of this new hybrid and we anticipate it will find great favor when better known. The medium size blooms are pendulous and a glowing vermilion-red, dotted with black, a stunning Lily and worthy of a prominent location in your garden. Try it against a white flowering shrub and use plenty of blue flowering plants in the foreground. Ht 4 to 6 ft. PD 5 in.

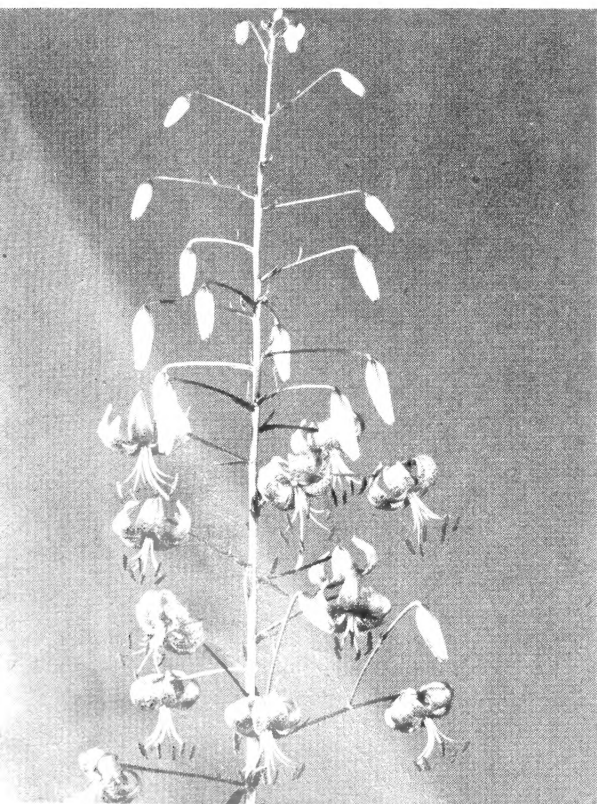
**SZOVIKSIANUM-810**-A rare Caucasian lily closely related to *Monadelpum* but blooming somewhat earlier. In fact, one of the earliest of all, and valuable for this reason. Blooms are pale straw-yellow, freely spotted purplish black. A very beautiful and desirable lily. Ht 3 to 5 ft. PD 4 in. Generally requires a year to establish. Partial shade, ample humus.

### Spring Planting

We can not consistently recommend spring planting of Lilies. There are a few such as Regal, Centifolium Hybrids, Henryi and others that do not seem to resent it but the great majority should be planted as soon as possible after their digging at maturity in the fall.

However, sometimes it is impossible for various reasons to plant in the fall and for these customers we will pack their orders all ready to ship and hold them in cold storage until spring. These orders, however, must be received in the fall or the bulbs will not be available as we do not carry over but a very few varieties. There is no charge for cold storage but **PLEASE send orders EARLY.**

MAXWILL



### Maxwill

**MAXWILL-540**-One of the most striking Lilies of recent introduction and withal one of the most satisfactory doers in the garden. The color is brilliant orange-red with black spots and brick-red stamens. Maxwill is a hybrid of *L. Davidi Willmotiae* and *L. Leichtlini* var. *Maxomowiczi* with the most desirable qualities of both. Its very large blooms are held aloft on stiff stems 5 to 6 feet tall with as many as thirty to forty on a stalk. The beginner will find this an ideal variety to stimulate his interest and to the collector it is a "must". Plant it against a background of that lovely perennial, *Thalictrum Dipterocarpum*. July blooming. Easily established. PD 5 inches.

**DAVIDI-252-Improved form.** This attractive Lily is worthy of a place in every garden. It somewhat resembles *L. Tigrinum* with blooms smaller and more refined. Cinnabar-red with black dots and numerous flowers to a stalk. Happy in any good, well drained soil in full sun. Mid-July. Ht to 6 ft. PD 5 in. Plant against white Weigelia or other shrub with white flowers in July.

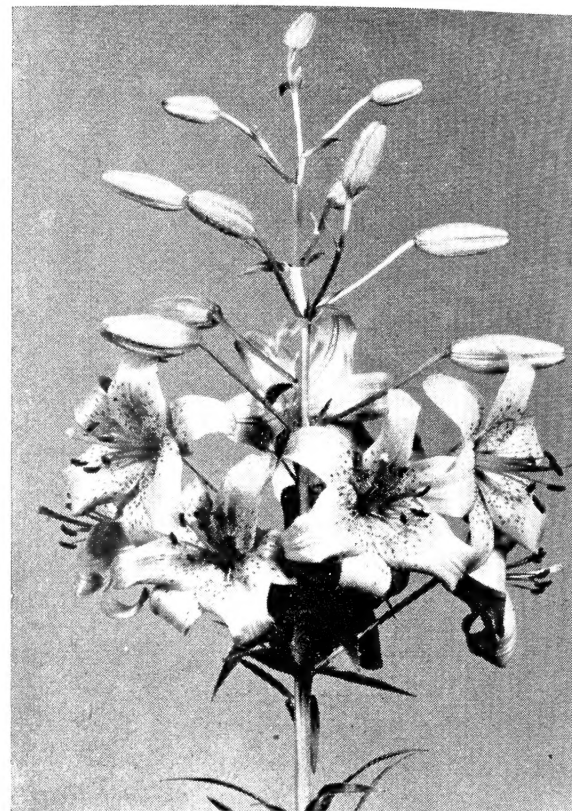
**DAVIDI Oriole-260**-A fine new break in this strain. A seedling selected by Miss Preston in Canada. Pale to golden-orange. Culture same as type. Award of Merit Royal Horticultural Society.

**DAVIDI Willmotiae-872**-Formerly listed as *L. Willmotiae*. This is a fine Chinese Lily, typically Martagon with tightly recurved flowers, bright orange-red spotted black, often as many as 20 on the gracefully curving stalk. Blooms earlier than type, culture same. A free blooming attractive Lily.

**DAVIDI Unicolor-876**-Syn. *L. Sutchuenense*. Formerly listed as *Willmotiae Unicolor*. A dwarf form, seldom over 3 feet, with strong stem, yellow with few if any spots. You will find it an excellent performer in the garden.

**PYRENAICUM-666**-Commonly known as the Yellow Turks Cap and especially desirable as among the earliest of all Lilies to bloom. The gay little Martagon type blooms are a rich greenish yellow spotted black with prominent anthers bearing brilliant scarlet pollen. A hardy little Lily not particular as to soil and excellent for partial shade in the wild garden. Ht 2 to 4 ft. PD 3 inches. May-June.

**MONADELPHUM-555**-A scarce and beautiful lily we have not been able to offer for several years. Color a deep, rich yellow almost unspotted, wine-red at the base. Medium size, semi-reflexed with an almost overpowering fragrance. Not an easy lily but so beautiful you will want to grow it. Ht 3 to 4 ft. June. PD 4 in. Sun or part shade, moist clay loam.



FIRE KING

### Fire King

**FIRE KING-310**-Experts who have seen this new hybrid acclaim it not only one of the finest of Lilies but a truly important addition to new garden plants. It produces a magnificent spike about four feet tall with as many as forty vermilion-scarlet blooms beautifully arranged, held horizontal to the stem. Fire King multiplies quite fast and is very easy to grow. An established planting is one of the most vivid color displays in the garden in late June and early July. PD 5 inches.

**CORDATUM-224**-Similar to that rare woodland Lily, *Giganteum*, with broad heart-shaped leaves. Trumpet shaped flowers, creamy white. Enjoys partial shade in open woodland. Cover bulbs with not over an inch of soil and protect early spring growth from frost. Likes a cool moist soil with ample humus. Ht 4 to 6 ft. July. Seldom blooms till second year.

## A NEW LILY BOOK "Success with Lilies"

See Page 27

**GUINEA GOLD-366**-A new hybrid, Martagon type. Buds are pink, flowers yellow, thickly spotted brown. A healthy vigorous Lily, best in partial shade. Guinea Gold will be very popular when more plentiful and better known. Try planting it among a mass of blue flowering *Anchusa myosotidiflora* against a background of green. June-July. Ht 4 to 5 feet. PD 5 inches.

FOR INDEX AND PRICES SEE PAGES IN CENTER OF CATALOG

## Bellingham Hybrids

**BELLINGHAM Hybrids Mixed-177**—This magnificent group of hybrid lilies should not be overlooked. They are remarkably resistant to most lily diseases and generally long lived. Their colors are striking and varied. The pyramidal clusters of bloom, 20 to 30 on a stalk, are airy and graceful, almost orchid-like in effect. Grouped against evergreens, their brilliance rewards you richly. The named varieties are outstanding and the mixed hybrids make very fine mass effects. The picture on the front of the catalog does not do justice to their brilliance.

### *Bellingham Hybrids---Named Varieties*

Below we offer named hybrids of exceptional quality. They were selected by the late Dr. David Griffiths at the Bellingham Experiment Station as the best among thousands of seedlings. They were tried out under all kinds of conditions, soils and climates and these four have stood the tests admirably. For sheer brilliance of color and mass effect few other groups of hybrids equal them.

### *Lilium Shuksan*

**SHUKSON-790**—An irregularly reflexed, typically Martagon type lily, cadmium yellow, faintly flushed red at the ends of the petals and dotted blackish maroon. Altogether a striking lily, vigorous, healthy and handsome. Many of the experts consider it the best of the Griffith hybrids. Enjoys partial shade and an open porous soil. July blooming. Ht. 4 to 5 feet. PD 6 inches.

**CYRUS GATES-235**—One of the most brilliant of the Bellingham Hybrids but always scarce. We never have enough of this. The numerous flowers are true Martagon shape, cadmium-orange, base profusely spotted purple-black. It is very vigorous and all together one of the truly fine lilies. When this lily becomes more plentiful, it will be very popular. July blooming. 5 to 7 feet tall. PD 6 in.

**DOUGLAS INGRAM-278**—A beautifully reflexed lily, deep cadmium in the throat with a dull red overlay extending outward and blending into a large bright red spot. Ht. 4 to 5 feet. June-July blooming. PD 6 inches.

**SACAJAWEA-750**—This lily was named after the indian woman who so faithfully guided Lewis and Clark on their memorable expedition which had so much to do with winning this vast region for the United States. Its large reflexed flowers are a deep orange-yellow with black spots, the stem enhanced with whorls of lustrous foliage. Ht. 5 to 6 feet. Sun or partial shade. PD 6 inches. Like all the lilies in this group, it enjoys a porous soil with abundant leafmold or peat and, of course, good drainage. A healthy vigorous lily you'll surely enjoy.



CROW'S HYBRIDS

## Backhouse Hybrids

Half a century ago a Lily enthusiast in England, Mrs. R.O. Backhouse, (pronounced Backous) crossed L. Martagon and its varieties with L. Hansoni, producing a group of hybrids which are today among our most valued Lilies. Not only are they very beautiful, but due to rugged constitution, they have persisted through the years, their value undiminished. We offer true stock of four of her original named hybrids as well as a choice selection of the strain in unnamed mixture. Don't overlook this long-lived, disease resistant group. Late June to July. Ht 5 to 6 ft. Sun or partial shade. PD 5 in. They will make a grand show in front of purple Buddleia, faced down with low growing Deutzias as protection from frost to the early starting Lily shoots.

**BROCADE-182**—One of the loveliest in the group, free flowering and vigorous, orange-yellow with pink marbling and maroon dots. The fragrant, graceful recurving blooms are strikingly effective in the garden. Scarce.

**MRS. R. O. BACKHOUSE-170**—A tall vigorous variety with 15 to 30 flowers to a stem, ivory, flushed gold, delicately spotted with purple. Truly a gem. Scarce.

**SCEPTRE-786**—An exquisite Lily, pinkish-buff with deep purple spots, tips of petals suffused fuchsia purple. An intriguing beauty. Blooms later than most of this group. Tall and vigorous. Selected bulbs.

**SUTTON COURT-794**—Not unlike Mrs. Backhouse but a bit deeper in tone. Light yellow interior, spotted purple, exterior shaded pink. A decidedly distinct and pleasing Lily. Stocks never equal the demand.

### *Backhouse Hybrids--Mixed*

**BACKHOUSE HYBRIDS, Mixed-171**—These are unnamed seedlings of the strain and vary from ivory to gold, tinted with purple, pink, brown, orange and apricot. Their iridescent beauty, together with ready adaptability to ordinary garden conditions and freedom from disease, make them truly indispensable. Though we have considerable stock of these this year, it is doubtful if it will meet the demand.

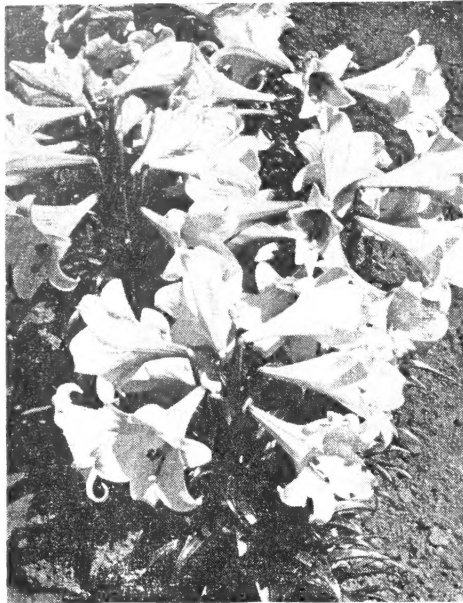
**DUCHESS-284**—Here's a brand new Lily, hybrid of Amabile, a variety of which we have comparatively few hybrids. It has lovely semi-recurved blooms of medium size. A fine orange-yellow with brown spots. It is a good grower and blooms freely. Try it in your border with blue flowers as the background. There are so many schemes that can be worked out if you study your garden with the thought of color combinations. Late June into July. Ht 2 to 3 ft. PD 5 inches.

**ST. NICHOLAS-786**—This is a comparatively new hybrid. It is a Martagon-Hansoni cross with striking buttercup-yellow blossoms having small black dots. A most attractive flower. Arrangement is pyramidal as with Martagon and altogether delightful. This is a rare variety in this country and Mr. Kline recommends it very highly. These Martagon-Hansoni hybrids are true quality lilies and due to their slow propagation are not likely to ever become cheap. But they have a big future due to their resistance to disease. St. Nicholas flowers in June. Ht. 3 to 4 feet. Partial shade. Planting depth 5 inches. Stock limited.

**NOTE: PD, planting depth, means the depth of soil over the bulb. "PD 6 in.," means six inches of soil over the bulb.**

### *Crow's Hybrids*

**CROW'S HYBRIDS-230**—These are selected seedlings of a magnificent strain of trumpet Lilies, a crossing of L. Sulphurgale-L. Princeps. Mostly they are huge white blooms with colored exteriors. Occasionally they are greenish-yellow to cream and pale yellow. Blooming after the Regals are through, they become a distinct addition to the garden. Ht. 5 to 6 feet. PD 6 in.



SLOCUM'S "ACE"

**LONGIFLORUM "Slocums Ace"**-435-An exceptionally lovely new Lily developed here in Oregon by Mr. Clark Slocum. It has proved one of the rare Longiflorums to be outstanding as a garden Lily. Very free flowering. A wonderful Lily for massing as it grows rather dwarf, 1½ to 2½ feet tall. The blooms are huge and well held on strong stems. Quality and texture even exceed the famous "Croft Lilies". This new Lily has proven a very fine forcer also. "Ace" has shown unusual resistance to the various lily diseases and we look for it to be truly "Ace High" when better known. In the garden it blooms late July into August. PD 6 inches.

**LONGIFLORUM "Snow Drift"**-450-An excellent new strain from Australia which has proven most floriferous with individual blooms measuring to 7 inches. In form, this Lily somewhat suggests that of Auratum. The delightful fragrance has been described as touching that of Magnolias. The wide rounded petals are pure white and of good substance. Mid-summer blooming. Ht 4 to 6 ft. PD 6 in.

**LONGIFLORUM GARDEN PRIDE**-441-Here's a brand new lily somewhat like Estate but with larger blooms and more of them giving a longer blooming season. Two to five feet tall, very sturdy and vigorous, especially good for greenhouse forcing. PD 6 inches.

## Lilies in the Greenhouse

When the bulbs arrive, they should be potted at once in six or eight inch pots with good drainage, using a compost of two parts good fibrous loam, two parts pulverized peat or leaf mold and one part sharp sand.

After potting place in a cold frame, cool greenhouse or other shelter where night temperature will be around 40 to 45 degrees and allow to remain there six to eight weeks, or until top growth appears. Keep moderately moist but do not overwater. If soil was reasonably moist at potting time, very little additional watering will be needed. After top growth starts, move to greenhouse where night temperatures of 60 degrees can be maintained. Ventilate whenever possible, water in the mornings so foliage will be dry at night.

Flowering time depends upon many circumstances. Buds should show about six weeks before opening. Careful regulation of temperatures can hurry or retard. 55 to 60 degrees with light shading is recommended for bud development. Give liquid fertilizer sparingly as buds begin to show.

## Lilies for Forcing

Auratum	Formosanum, early	Regale
Candidum	Formosanum, late	Sulphureum
Concolor	Hansonii	Speciosum varieties
Croceum	Henryi	Tenuifolium varieties
Crow's Hybrids	Longifolium varieties	Testaceum
Dauricum varieties	Nepalense	Umbellatum varieties
Elegans varieties	Princeps Hybrids	Willmottiae

This list is not exhaustive but includes those most often and successfully grown in pots.

# Lilies for Garden and Greenhouse

## *Lilium Longiflorum*

### New Strains Developed and Grown in Oregon

In the world of Easter Lilies, Oregon has made a tremendous contribution during recent years. "Croft," "Estate" and now the new "Ace" Lilies have pushed quality up to an all time high. These wonderful new strains, developed and grown right here in Oregon are far superior to the older imported stocks both for the garden and greenhouse. Probably the best news of the moment regarding them is that after extensive and repeated careful tests we can offer most of them as hardy outside even in New England. They give us huge pure white trumpet Lilies for mid-summer gardens, a long wanted group. For the greenhouse, these new varieties are absolutely supreme. Try them and I'm sure you will be pleased. We have an exceptionally fine stock of these bulbs which can be shipped starting in October.

### *The Estate Lily*

**LONGIFLORUM "The Estate Lily"**-440-Without question the finest of this species ever introduced. Under glass "Estate" produces stems up to five feet tall with six to nine huge white trumpets at least double the size of the old imported Easter Lilies. For size of bloom, substance of flower, stature, ease of culture, hardiness and long lasting, "Estate" far surpasses all other varieties. As an early spring Lily in the greenhouse, none other is its equal. In the garden, with nominal protection, it is hardy even through New England winters. Altogether, a truly wonderful lily. Ht. 4 to 6 ft. PD 6 inches.

**LONGIFLORUM "Croft"**-430-This famous forcing Lily, unquestionably the finest of all "Easter" lilies, originally grown only in southern Oregon, is similar to Estate but not so tall and a bit less hardy outside. In the greenhouse it is hard to beat. The huge blooms are freely produced in 1½ to 2 foot stems. Their remarkable substance and ease of culture bids fair to make them increasingly popular. Mid-July. PD 6 inches. Full sun.



L. LONGIFLORUM, "THE ESTATE LILY"

FOR INDEX AND PRICES SEE PAGES IN CENTER OF CATALOG



# Lilium Candidum

The Lily of antiquity was undoubtedly Candidum, the Madonna Lily. Materlinck refers to this loveliest of Lilies when he says: "The great white Lily, the Lord of the gardens, the only authentic prince among all the commonalty . . . with his invariable six-petaled chalice of silver, whose nobility dates back to the gods themselves, the immemorial Lily raises his ancient sceptre, august, involute, which creates around it a zone of chastity, silence and light."

But be you poet, painter or just plain gardener, this grand old Lily can make your garden outstanding. Candidum is a Lily to plant generously, use it in groups, or masses, line the path with it and your garden will become truly a hallowed spot.

In planting this Lily, wisdom will guide you to use only freshly dug Oregon grown bulbs. The war years have proven this. Climate and soil conditions give these bulbs a vigor not present in the older strains.



CONCOLOR

MADONNA LILY

*A thing of beauty  
is a joy forever.*  
—Keats.

**CANDIDUM (Type)**—195—The Oregon grown strain of this fine Lily, vigorous and healthy, has during the past decade, made north-west grown Lilies so greatly in demand. In fact the demand has been so heavy that year after year we decline far more orders than we ship. This Lily thrives in ordinary garden soil, with very little if any plant food added. Full sun is best though partial shade will do. Plant with top of bulb only an inch or two below the surface and cultivate with extreme care as the roots are almost at the surface. Be sure drainage is good. This Lily of all Lilies deserves planting in quantities—emblem of purity, the inspiration of poet and painter down through the ages, truly a benediction to the garden as June fades into July—its delightful fragrance is equaled by no other lily.

Good stock very scarce so **ORDER EARLY.**

**CANDIDUM Salonikae**—205—This is a comparatively new strain of this grand old Lily. It was discovered near Salonika, Macedonia some years ago and is still quite scarce. Considered by experts to be more resistant to disease, it is also desirable for early blooming, coming about a week earlier than the usual variety, thus extending the season. We are most happy to offer it in a limited way. All stock is Oregon grown. August-September delivery only.

## Candidum, Oregon Hybrid

**CANDIDUM**—200—This is a new seedling type, introduced for the first time. It has been reselected for several years from crosses between L. Candidum Salonika and the best English types. Blooms are larger, plants remarkably disease resistant. When I checked last blooming season, they were far superior to any Candidums I've ever seen. Truly the answer to Lily lovers longing for better and better strains. August to mid-September delivery only. Early orders and early planting urged.

**CROCEUM**—228—The "Cottage Garden Lily" or "Orange Lily", ideal for the perennial border where it makes a bold, dazzling display either in full sun or part shade. In Ireland its rich orange color has made it the emblem of the Orangemen. A hardy Lily, usually free of disease and not particular as to soils. Croceum blooms about the same time as Regal. Try these two Lilies with a background of blue Delphinium and Yuccas and a ground cover planting of purple Violas or Pansies. Ht. 3 to 6 ft. June-July. PD 5 inches.

FOR PRICES SEE PAGES IN CENTER OF CATALOG

**CONCOLOR**—222—A brilliant scarlet Lily for rock garden or the front of your border. Blooms are star-like, held upright and freely produced. Ht 1 to 2 feet. Try it back of or among a mass of low-growing blue flowering plants and you will have a delightful picture. PD 3 in. Full sun or partial shade. June. Likes plenty of leafmold and tolerates lime.

**CONCOLOR Racemosa**—221—An improved form produced in Canada by Mr. Skinner. The stems are taller, two to three feet, and very vigorous with 18 to 26 blooms each. Flowers larger than the type. a brilliant sealing wax red.

**RUBELLUM**—712—Here it is at last. Hundreds of customers have been asking when we would be able to supply this lovely small rose-pink lily. This lily is one of the loveliest and especially welcome as it is tall with one to four funnel-shaped blooms, delightfully fragrant. Lovely in the front of the border or in the rock garden. Rubellum has proven long lived under conditions to its liking. Planted about four inches deep in a well drained sandy soil with plenty of leafmold and light shade. These conditions are not difficult to supply and the exquisite loveliness of this lily makes it very worth while.

RUBELLUM



# Trumpet Lilies

**BROWNII-183**—True variety, one of the finest trumpet Lilies. Large marble white blooms, stained purple outside, anthers chocolate brown. A fragrant Lily of classic gracefulness with heavy waxy-like petals. The demand is heavy for this beautiful Lily and the supply is always limited. July. Ht. 3 to 4 feet. PD 6 inches.

**SULPHUR Hybrids-793**—Here's a new strain of pale yellow and sulphur-yellow trumpet lilies which, flowering early, extend well into mid-summer. This late flowering lily is well worth while. They are selected strains from a crossing of Crows hybrids with Sulphureum, vigorous and healthy, asking no special pampering. They should receive a hearty welcome. PD 6 inches.

**SARGENTIAE Seedlings-757**—These are seedlings of the species Sargentiae so there is some variation in them. We know of no stock of the true form which is free of disease and therefore do not offer it. These seedlings are a magnificent group, flowering late July to early August. They have large trumpets, reddish-brown outside, creamy-white inside with a golden throat. Height 4 to 5 feet and very vigorous. PD 6 inches.

**GREEN MOUNTAIN HYBRIDS-363**—By many of the experts this is considered to be one of the finest strains among the newer hybrid trumpet lilies. They were produced by the late Dr. Abels, a true lily connoisseur, and only recently have been available. The buds are bronze-green to pink with some a greenish-sulphur. Interiors are white to cream with throats ranging through yellow to orange to greenish-yellow. Their blooming season is three to four weeks in mid-summer. They have size, vigorous growth, freedom from disease and altogether, they are a magnificent group, worthy of a spot in any garden. Try them with a foreground planting of light pink phlox and a background of evergreens. Ht. 3½ to 6 feet. PD 6 in.

## Princeps Hybrid Lilies

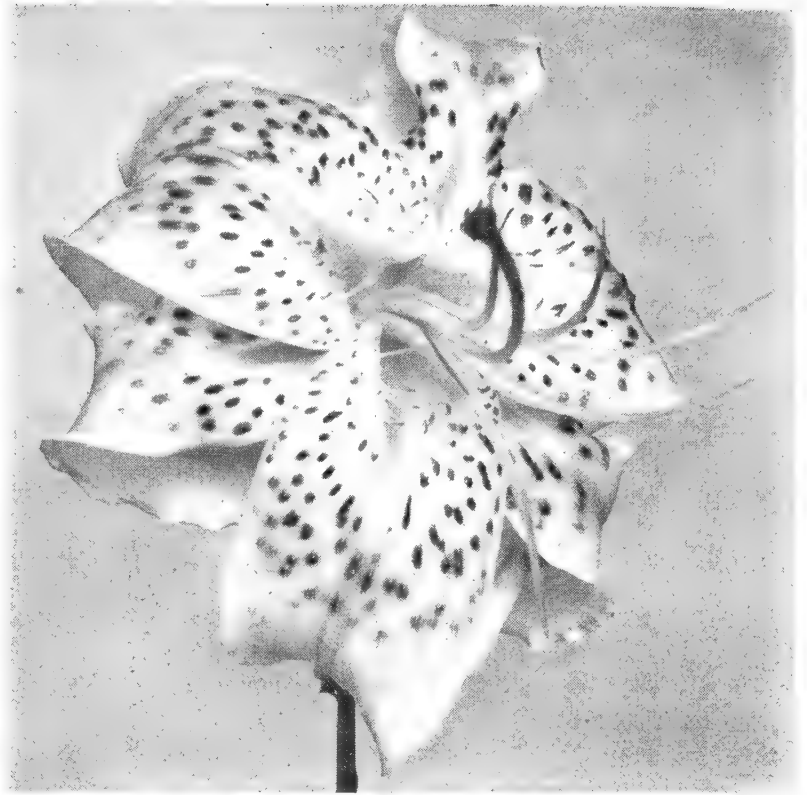
These are hybrids of L. Sargentiae and L. Regale. They are a very vigorous, handsome and large flowered group flowering later the Regale, from early July into August. Their long buds resemble those of Sargentiae but the more open blooms are white stained with rose. Being even better plants than either of the parents, they fill a very real need for a mid-summer Lily to follow the Regale. It is by carefully selecting the varieties for your plantings with an eye to their flowering seasons and picture value in the border that you can plant garden pictures of rare beauty. These hybrids and many others offer the material and with painstaking study and observation you can achieve very marvelous results.

**PRINCEPS, G. C. CREELMAN (True)**—630—This is considered one of the finest of the Regal x Sargentiae hybrids now in commerce. producing truly extraordinary heads of trumpet type bloom late in July. The long tubular blossoms are white with lemon yellow center and brownish-lavender exterior. Extremely valuable in the mid-summer border. It was considered by the late E. H. Wilson superior to either of its parents. Full sun or partial shade. Ht 6 to 8 feet. PD 6 inches. We have but a limited supply of this lily.

### Princeps Creelman Hybrid Seedlings

**PRINCEPS Creelman Hybrid Seedlings-634**—This group of seedlings has won well deserved popularity. All are handsome trumpet Lilies similar to the true Creelman but they vary in blooming time from early July to mid-August, extremely valuable for this reason. Of these also we never have enough to meet the demand. Culture as above.

**PRINCEPS Creelman x Centifolium Hybrids-650**—A grand strain of hybrids produced by Miss Beatrice Palmer of Cobble Hill, B. C., Canada. They are similar to their parents in appearance and extremely vigorous producing immense heads of white bloom in late July. Culture same as Creelman.



SPECIOSUM OREGON GIANT

### Speciosum Oregon Giant

This is without doubt the finest of all Speciosums offered today. The blooms are larger, the color and form exceptionally fine and all in all it bids fair to be "tops" for some time. In general effect it is of the Punctatum type, white with pink spots or blotches. You will call it a pink lily with white margins and simply fall in love with it. The illustration on page 10 shows its recurved form and the extreme breadth of the petals. Vigorous, three to five feet, free flowering. Stock is slightly more plentiful than last year but will go quickly if advance orders are any indication. Early orders are advisable.

### Lilium Henryi

#### The Golden Speciosum

**HENRYI, The Golden Speciosum-386**—A very fine Lily from China worthy of admittance to any garden. It blooms just before the true Speciosums in August. Slender six to eight foot stems carry from four to twenty or more large, nodding, reflexed, frilly blooms in a soft golden orange-yellow with a green central line along each petal. One of the best border Lilies, vigorous and healthy, seldom failing, truly an invaluable garden plant. Not finicky as to soil but partial to a half shady spot. Mass it against blue Hydrangeas or against that charming shrub Vitex Macrophylla. This Lily is so like the Speciosums that a delightful group may be made by combining the three, Henryi, Speciosum Rubrum and Album. Against an evergreen background they are gorgeous. Group with them the lovely white "Estate Lily" (Longiflorum Estate). Henryi is a Lily to plant freely in your garden due to its inherent dependability. Excellent for cutting and beautiful also under glass. PD 6 inches. See page 21.

### Special for Mass Planting

See the special offer No. 10-A in the price list offering 5 each of Speciosum Rubrum, carmine pink; Speciosum Kraetzeri, white, and Henryi, called the yellow Speciosum. It is a real value.

Romaine B. Ware—Lilies



SULPHUREUM (Page 25)

SPECIOSUM

AURATUM (Page 2)

## *Lilium Speciosum*

Unquestionably the Speciosums are among the handsomest of all lilies, ranking with the Auratums, Backhouse Hybrids and Have-meyers. Too, they are one of the greatest favorites for border planting due to very satisfactory performance year after year. The graceful, waved and frilled petals, recurved and twisted, are delightfully spotted and blotched with delicate color. Prominent papilles add contrast and the conspicuous anthers, delicately poised, lend charm to the symphony of color.

Speciosum lilies are not too particular as to soil but do best in a cool, well drained loam with plenty of humus. In hot soils they do not thrive. Partial shade during the heat of mid-day is important. They are easily the highlight of the late summer garden and even more so because of their comparatively easy culture. Heights vary with varieties from three to six feet. Planting depth (PD), cover 5 inches.

**SPECIOSUM Melpomene**-777-One of the finer and generally scarce varieties of Speciosum not available during the war years. Color a brilliant deep crimson-lake with white margin. Mid-August flowering and one of the most attractive of all garden lilies. Stocks limited.

**SPECIOSUM Magnificum**-779-This, like var. Rubrum, is called the Pink Showy Lily. It is a deep carmine pink, spotted crimson, one of the finest of the colored varieties. For border planting few other lilies make as spectacular a display. Along with others of this great species, it is easily the crowning glory of the late August garden. Delightful with Anemone Hupehensis, Heliotrope and blue Hosta. Combine it with Auratum and Longiflorum Estate against a background of evergreen and flank with Abelia Grandiflora for a never to be forgotten picture. Magnificum is an improved form of Rubrum.

**SPECIOSUM Rubrum, "Red Champion"**-781-A variety of the red show lily of Japan found growing in an isolated garden in the foothills of the Cascade mountains here in Oregon where it flourished undisturbed nearly half a century. It is disease free and vigorous. Like all other Speciosums, it likes a well drained soil, amply filled with humus and a location where it receives partial shade during the heat of the day. Flowers in late August or early September. PD 5 inches.

**SPECIOSUM Rubrum**-780-This is probably the most widely grown and best known of the whole group. The flowers are white flushed and spotted with deep rose, producing a bloom essentially carmine-pink. Like all the rest it is very free flowering and a vigorous grower. Any of the Speciosums are excellent for the beginner due to their tolerance of varied conditions. One must, however, start with healthy bulbs. In years past all too many of the bulbs of this species were imported and badly infected with mosaic. All our stocks are grown here in the Northwest with extreme care that they are healthy. They are ready in October, in plenty of time for fall planting anywhere in the country. Please ORDER EARLY as stocks though ample, are not unlimited.

**SPECIOSUM Kraetzeri**-775-An extra choice form of the pure white Speciosum, this one with a green stripe in the center of each petal. We've not had this to offer for several years due to scarcity as it has always been very much in demand. In many respects similar to Album but generally considered more beautiful. The supply is limited so get your order in as early as possible.

**SPECIOSUM Punctatum**-778-An early variety and desirable to extend the season of this glorious lily. The color is white with rose-pink spots. It is a very vigorous variety with up to 20 blossoms on stems 4 to 6 feet tall. Partial shade is most to its liking. We've not had sufficient stock to offer this for several years. PD 6 inches.

**SPECIOSUM (Pure white strain)**-783-A collected lot of bulbs from an isolated section of Japan which we are growing here for the first time this year. The blooms are pure white (no gold or green midrib), and have prominent yellow anthers. They are said to set seed and seem very disease resistant. No variety name has as yet been given them and only a limited number of bulbs are available. It is hoped that purchasers of these bulbs will report to us their opinions of this variety. The collector, a lily expert, considers them exceptionally fine.

FOR INDEX AND PRICES SEE PAGES IN CENTER OF CATALOG





LILIUM CENTIFOLIUM HYBRID

**CENTIFOLIUM Hybrid, Selected Forms-213-**

These are just what the term describes, selections from the tens of thousands of seedlings. They are selected for perfect form in growth and flower, tagged while in bloom and kept separate at digging time. Some have the clusters of bloom especially well spaced and perfectly held, others are superior in strength of stem and vigor of growth. Every bulb of this selection is definitely superior and well worth the added cost.

There are but a limited number of these Selected Forms, so please ORDER EARLY. We fill orders in rotation as received.

*Sunset Lily*

**PARDALINUM Giganteum, The Sunset Lily-596-**This gorgeous giant of a Lily is of the easiest culture, simply fool-proof. Very hardy, vigorous, dependable and increases rapidly. It stands five to eight feet tall with up to 30 brilliant crimson and golden yellow blooms, profusely spotted purple-amber-brown. The sturdy stems demand no staking. A group of six or a dozen when in bloom makes a striking picture. Plant back of a mass of gentian-blue Chinese Delphinium against a dark evergreen background and your July garden will take on added brilliance. Planting depth 5 inches. Sun or partial shade. July.

**COLUMBIANUM Ingramii-220-**This is an improved form of one of Oregon's native lilies. In the wild it frequently reaches seven feet in height but seldom that tall in the garden. It is a robust lily bearing up to 20 small reflexed blooms, orange-yellow. A lily for the specialists. PD 5 inches. Partial shade, humus and perfect drainage.

*Centifolium Hybrids*

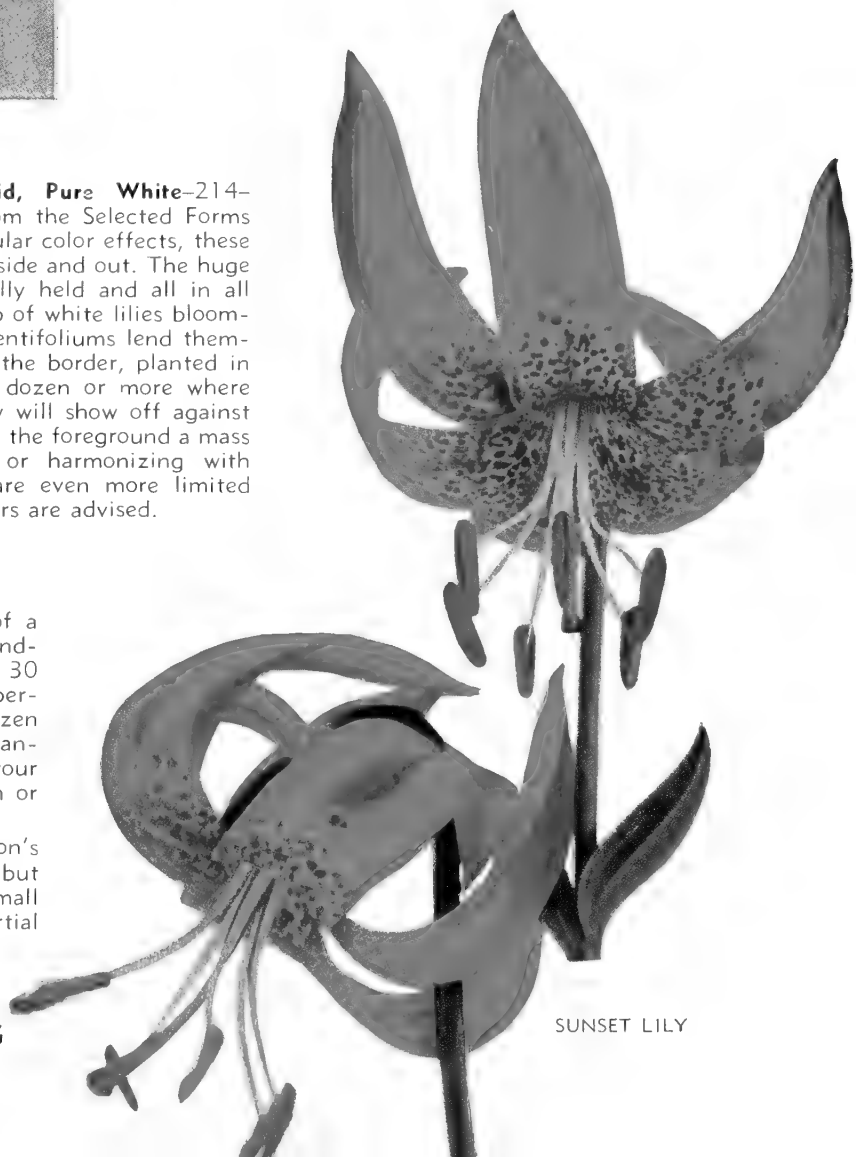
**CENTIFOLIUM Hybrid-212-**Here's a gorgeous lily, one you will want no matter how many others you may have. Their huge white trumpets, with exteriors tinted from green to pink and reddish purple, are held aloft on four to six foot stems. These lilies are close cousins to the Regale, the world's most popular lily and in many respects more beautiful. They come into bloom just as the Regales are through and thus extend the season of white trumpets another three weeks.

With a mulch to prevent them starting too early in the spring and being nipped by late frosts, they are very hardy. Plant groups against a dark evergreen background or in front of a late flowering pink climbing rose. They are lovely backed by a purple leaved plum or rising from a mass of heliotrope with a backing of Lonicera Heckrottii with its purple-yellow blooms.

These unusually vigorous and healthy lilies with their free blooming habits are worthy of mass planting. A dozen or 25 or more will produce never-to-be-forgotten pictures. Our stocks are not unlimited but we have a substantial supply of top quality bulbs. July blooming. PD 6 inches.

*How Big Is "Flowering" Size?*

This depends entirely upon the particular variety. Formosanum will bloom beautifully from a bulb no larger than a robin's egg. A flowering size bulb of Regale is a bit smaller than a hen's egg. But regardless of size a lot of lilies will not bloom the first year after planting due, probably, to not being fully established. Every bulb we send out is blooming size and has either flowered in the field or is of such a size we confidently expect it to bloom the first year. Extra large bulbs are sometimes slow to establish themselves.



SUNSET LILY

FOR PRICES SEE PAGES IN CENTER OF CATALOG

"Flowers are the beautiful hieroglyphics of Nature, by which she indicates how much she loves us."—Goethe

## Miss Preston's Hybrid Lilies

The Lily world is deeply indebted to Miss Isabelle Preston of the Central Experimental Farm, Ottawa, Canada, for her very wonderful contributions in the field of new hybrid Lilies. It has not been my privilege to know this famous Lily expert but her fine introductions seem destined to play a major role in the future of hardy Lilies both in America and abroad. Not only do these new hybrids offer a most gratifying degree of hardiness but their forms are beautiful and many are among the most brilliantly colored of all Lilies. Great popularity is predicted for them when more plentiful.

**CORSAIR-227**—This is typical of Miss Preston's fine hybrids. The blooms are medium size vase-shaped and they face upwards. The stiff, straight stems carry 12 to 15 well arranged blooms, apricot yellow, flushed with red. Ht. 2 to 3 feet. Flowers June-July. PD 6 inches.

**BRENDA WATTS-180**—Here's a bold brilliant Lily which seems to have everything, rugged constitution, easily established, the flower arrangement is about perfect and year after year it seems to do better. The tall graceful 5 foot spikes hold numerous out-facing blooms, of a soft flaming orange-red, dotted purple-red towards the center. Truly a gorgeous Lily that will be much sought after as it becomes better known. Sun or partial shade. July. PD 6 in. Stock limited.

**CORONATION-226**—Another recent introduction. Three foot tall spikes hold up to 20 slightly pendant recurved flowers of clear yellow with a few brown spots. A most delightful color. The plant is healthy, vigorous and admirably behaved under average garden conditions. July. PD 6 inches. Sun or partial shade. Limited stock.

**EDNA KEAN-290**—This Lily is similar to Brenda Watts but a deep cherry red, a shade not common among Lilies. Easy culture in either full sun or partial shade. Plant is to contrast against tall spires of lavender-blue Pacific Hybrid Delphinium and use the beautiful Gypsophila Bristol Fairy as a foreground. Ht 3 to 4 feet. PD 6 in. June-July. Supply limited.

### Grace Marshall

**GRACE MARSHALL-356**—Another Lily that measures up to the high standards Miss Preston demands. The flowers are outward-facing, up to 30 in number, reflexed, on wiry erect stems. Color a lovely deep red with a few brown spots. July flowering. Ht 4 to 5 feet. PD 6 inches. Sun or partial shade.

GRACE MARSHALL



**SPITFIRE-784**—If Miss Preston had never introduced any lily other than this distinctive and charming variety, her fame as a hybridist would be secure. You'll love its candelabrum form with vase-shaped blooms facing upwards. The color is flame-scarlet with reddish-brown spots and Brazil-red pollen. Along with its lovely form and stunning color, Spitfire is easy to grow and vigorously healthy. A clump of this lily among a group of Chinese Delphinium will make the entire mass glow. Early July. Height about 3 feet. PD 5 inches. Full sun or partial shade.

### Phyllis Cox

**PHYLLIS COX-616**—Here again Miss Preston offers a worth while new break, one of the most stunning of the newer hybrids. This one is a brilliant orange-red deepening towards the tips with the outside of the petals a lovely golden orange. For sheer color Phyllis Cox is hard to equal. As a vividly contrasting ground planting use purple Petunias and plant against a dark background. Ht 3 to 4 ft. Sun or partial shade. PD 6 in. July.

**LILLIAN CUMMINGS-420**—Another valuable new hybrid with large reflexed blooms of a light orange-red held almost horizontal on sturdy 4 to 5 foot stems. This is a very striking vigorous Lily worthy of inclusion in any garden. July. PD 6 inches.

**LYLA McCANN-470**—A sister hybrid to Lillian Cummings and equally good. The out-facing blooms are orange, lightly spotted a shade darker. Like others of this group, it is a good Lily for any garden. Sun or partial shade. Ht. 3 feet. PD 6 inches. Scarce.

**HURRICANE-402**—A distinctive charming Lily, with vase shaped flowers facing upwards and arranged candelabrum style. Color a brilliant cherry-red with a few dark spots. A lovely new hybrid worthy of a choice spot in your garden. Ht 3½ ft. Early July. PD 5 inches. Limited supply.

**MURIEL CONDE -564**—This is a new Preston Hybrid. The large blooms are delightfully recurved, a rich golden-orange with darker spots. Extremely free flowering on wiry stems 4 to 5 feet tall. A healthy vigorous grower. If you want to try a worthwhile variety among the very newest, this is it. July. PD 5 inches.

**MOSQUITO-560**—Another of Miss Preston's comparatively new hybrids with lovely small blooms very similar to Davidi Willmottiae both in color and shape. The Martagon type blooms are a deep orange-red, striking and effective. They are well spaced and out-facing on sturdy stems. This lily will be extremely popular when it becomes more plentiful. Try it among Meadow-Rue with a carpet of purple violas and against a dark background. The effect will be delightful. Height 4 feet. PD 4 inches. July blooming.

### Preston's Hybrids Mixed

**PRESTONS HYBRIDS Mixed-624**—For several years we have been producing seedlings of the above hybrids. Many of them are similar to the named varieties but we offer them mixed and you will find them most interesting. All have been flowered in our fields and only the selected forms are sold. Colors range through reds, oranges and golds, an array of beauty unequaled in other groups of hybrids. Culture as with named varieties. Ht. 3 to 5 feet. PD 6 inches.

FOR INDEX AND PRICES SEE PAGES IN CENTER OF CATALOG

# Native American Lilies

**PARDALINUM-590**—One of the easiest grown of all native Lilies is this brilliant gem from the Pacific Northwest. Perfectly hardy and not particular as to location though happier in partial shade with plenty of moisture but good drainage. The Martagon type blooms are quite recurved, deep orange shading to crimson at tips of the petals. Well grown plants carry up to 30 blossoms. This Lily is ideal along a stream or beside a pool with ferns as ground cover combined with blue or lavender flowered Hosta (Funkia) Mid-June-July. Ht. 4 to 7 feet. PD 4 inches.

**HUMBOLDTII Magnificum-398**—The most striking of our natives. Strong grower, 3 to 4 feet tall, flowering freely. Blooms reflexed, golden-orange, dotted maroon, each dot bordered crimson. Try against Buddleia Ile de France with a foreground mass of Aster Frikarti (Wonder of Staffia). This Lily usually takes a year after planting to become established but is well worth the waiting. PD 6 in. July.

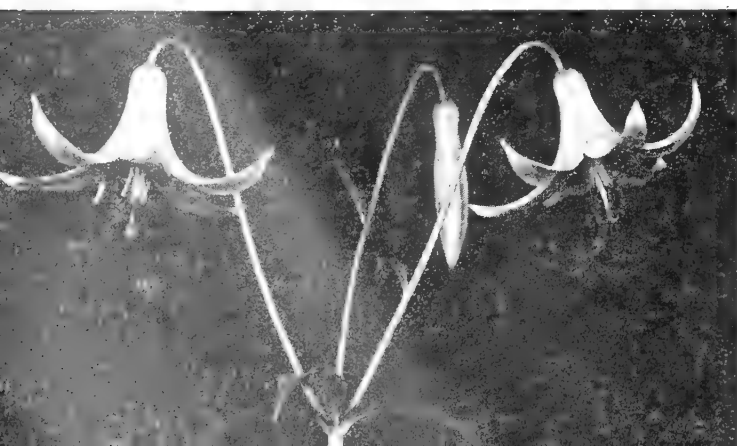
**MICHAUXII (Carolinianum)-550**—A native Lily from the southeastern states, somewhat similar to Superbum. One of our less hardy Lilies but satisfactory in a protected place. Fragrant, bright orange blooms in late July. Ht. 1½ to 3 feet. PD 5 inches.

**MICHIGANENSE-556**—Another native, this one from the middle-west, possibly a hybrid between Canadense and Superbum. Blooms vary from a brilliant red to shades of yellow, profusely spotted with purplish brown, petals reflexed. A good Lily for the woodland garden where it finds partial shade and ample moisture. July. Ht. 2 to 5 feet. PD 5 inches.

**KELLOGGII-406**—This is our native West Coast Martagon, with fragrant nodding flowers, pale pink with a yellow stripe through center of each petal and finely spotted with maroon. An attractive, dainty Lily, demanding a moderately moist, partially shaded spot with good drainage and preferably a gravelly soil. Ht 2 to 3 ft. June-July. PD 4 in. Supply very limited.

**OCCIDENTAL-580**—A rare native Lily from the west coast which accommodates itself nicely to garden conditions. Its small bell-shaped blooms are orange-red with throat spotted maroon. As the petals age they become recurved. Like most native Lilies, partial shade is most to its liking. Prefers a lime free soil with plenty of leafmold or peat moss. July. Ht 2 to 4 feet. PD 4 inches.

CANADENSE FLAVUM



**WASHINGTONIANUM Purpureum-880**—Our beloved Mt. Hood Lily. The Purpureum variety is considered best for gardens and is the only one we offer. Stock is all nursery grown and fully matured. This beautiful native Lily carries up to 30 funnel shaped blooms opening white with purple dots in the throat. As the flowers age they become lilac purple. Fragrant. Plant in a loose gravelly soil with plenty of leafmold and PERFECT drainage. Prefers partial shade. Generally requires a year after planting to establish itself. PD 5 inches. Ht. 3 to 6 feet. June-July.

**L. MARITIMUM-520**—A beautiful native species, best grown in moist woodland, in partial shade. Flowers bell shaped, deep crimson, spotted maroon. A dainty though capricious plant with which cultural care is essential. Plant 4 inches deep in well drained soil abundant in leaf mold and supply with adequate moisture during the growing season. Height 1½ to 3 feet. July.

**GRAYI-360**—A delightful little Lily somewhat resembling the lovely Canadense. Outside of blooms is crimson; orange inside with many reddish-purple dots. Try planting it with a ground cover of ferns against a blue flowering hydrangea. You'll be surprised how the brilliance of the Lily will enliven the blue of the shrub. A moist location in partial shade suits this Lily best. Our bulbs are the true form and stock is limited. Ht 2 to 3 ft. PD 4 in.

**SUPERBUM-796**—This is our native Turk's Cap, a favorite with every gardener and easily one of the finest American plants. The flowers are nodding, Martagon type, strongly reflexed, bright orange suffused yellow with red tips and brown spots. A lily easily established in moist but well drained lime free soil with plenty of humus. Grows vigorously, 5 to 9 feet tall, with up to 40 flowers on a stalk. A versatile lily equally at home in the border, shrubbery or wild garden. Prefers partial shade and plenty of moisture. Try a group of them rising among tall feathery spires of white Cimicifuga Racemosa against a dark background and the ever valuable Aster Frikarti massed in the foreground. July-August. PD 5 inches.

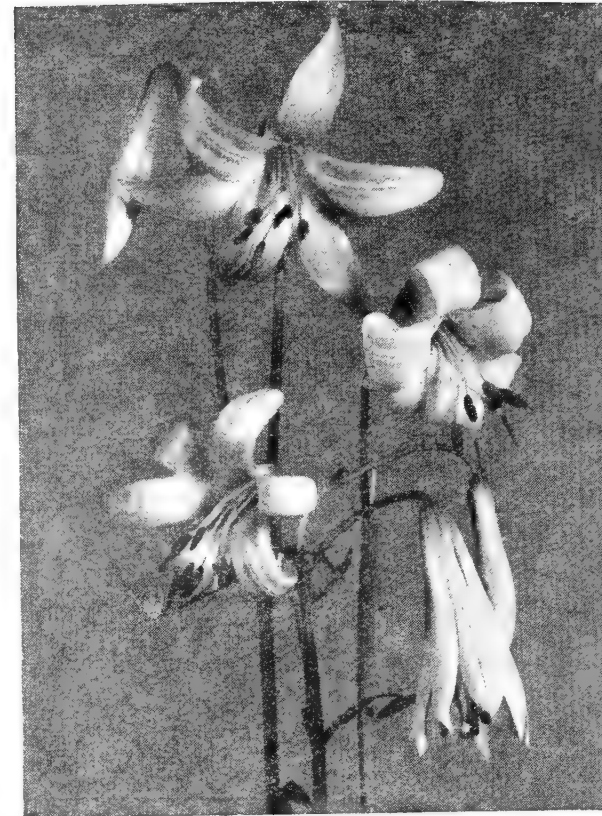
**BOLANDERI-185**—A dainty little native from southern Oregon bearing from one to six crimson blooms with purplish spots. A small bulb, not too easily grown but well worth extra attention. It demands a loose soil with ample leafmold and a shady spot with good drainage. Ht. 1 to 3 ft. PD 5 inches.

**CANADENSE Flavum-191**—One of the best loved American lilies, easy to grow, tall, graceful, nodding bell-shaped flowers in a pleasing shade of yellow with chocolate spots. Likes plenty of moisture, humus and full sun. June. Ht. 2 to 5 feet. PD 4 inches.

**CANADENSE Rubrum-192**—A red form of the above with yellow throat and a few spots. More rare than the type. Delightful.

**ROEZLII-700**—An Oregon-northern California native Martagon of graceful form and striking color. The blooms are golden yellow shading orange-red at the tips of the petals, spotted maroon. It bears six to 12 blooms in early July. Thrives in sun or partial shade and should have plenty of moisture during the growing season with ample drainage. Prefers a lime-free soil. Ht 3 to 5 ft. PD 4 inches.

**NOTE:** Don't forget to include a copy of "Success with Lilies" in your order. See page 27.



PARRYI

**PARRYI-600**—Of all the lovely Lilies found native in this country of ours, none are more beautiful than this. It's found in the high Sierras of central and eastern California and in Arizona. The deliciously fragrant blooms are pale lemon-yellow to citron-yellow, lightly spotted brown, funnel-shaped with tips gracefully recurved. This Lily is a bit finicky in its tastes but withal so charming, it is, worth extra effort. Ht to 6 ft. PD 4 in. Early July. Light soil, rich in humus, plenty of moisture but good drainage.

**RUBESCENS-716**—Here is another for which we have never been able to meet the demand. This Oregon-California native, equally as lovely as the Mt. Hood Lily (Washingtonianum), is also known as the Redwood Lily. The experts consider it the better of the two for garden planting. The dainty fragrant blooms are tubular, white to pale lilac, spotted purple, changing to wine purple soon after opening. Stems, two to six feet tall, carry up to 30 medium size blooms. It demands a loose gravel soil with plenty of leaf-mold and partial shade. PD 5 inches. June-July.



# Christmas Holly

## For Gifts and Decorations

Again in December as for the past three years we will ship our huge boxes of Old English Holly that have gladdened the homes of so many of our customers and proven happy gifts for their friends. Shipping these by SPECIAL DELIVERY has proven so successful that we will continue to go to this extra expense. By this method the beautiful sprays of fine holly with their load of glistening red berries reaches you just a few days after cutting, almost as fresh as if you gathered it yourself. We shipped a late order to upper New York state last year on the 17th of December and the box arrived the morning before Christmas, fresh and colorful.

Our Fall and Christmas Lilygrams will repeat these offers but if you can get your orders in earlier, it will aid us in planning our shipping program. We pack the holly in large boxes two feet six inches long by thirteen inches wide and six inches deep, really a huge box, shipping weight over five pounds. **This big box is sent postpaid, special delivery for \$5.00**, arriving the week before Christmas, fresh and glistening, a joy to behold. For \$3.00 we send a lesser quantity, shipping weight about three pounds, also sent prepaid special delivery.

Many of our customers ordered a half dozen or more boxes as Christmas gifts and the letters of appreciation we've had from them are most gratifying. In checking back I find many customers order year after year, which would indicate they find the holly as superior as we feel it to be. For gift orders please send your cards and we will enclose them. As this is written it seems a long time until Christmas but the months go quickly and it will not be long until we'll again be packing this gorgeous holly which we know you'll enjoy so much.

## Tall Bearded Iris

Due to catalog limitations and the ever increasing number of lilies I found it necessary to discontinue the featuring of Tall Bearded Iris, much as I would like to offer them. Blooming before the lilies in most cases they are very important features of many gardens and with the vastly improved varieties available today you should not overlook them.

However, I am going to continue the very popular Special Iris Offer of Dykes Medal Winners. This year we are offering eight gorgeous varieties, one plant each, the Dykes Medal winners 1940 to 1946 inclusive. These varieties won the highest awards in the iris world. They are Wabash '40, The Red Douglas '41, Great Lakes '42, Prairie Sunset '43, Spun Gold '44, Elmohr '45 and the tied '46 winners Daybreak and Ola Kala—all eight of these wonderful iris for \$10.00 postpaid. If you have a spot in your garden where you want an especially fine iris display order this Special.

## WIRE BULB PLANTING BASKETS

We are not offering these wire baskets due to the very high cost of wire and also manufacturing difficulties. I'm hoping another year will find it possible to supply them.

## SEED SPECIALTIES

Again this year we can supply a limited amount of the superior Primrose Seed offered the last two years. It is the Giant Polyanthus Primrose, the finest I've ever seen. We will supply it, Primula No. 1454 at, per packet \$1.25.

We are discontinuing all Pansy seed except the Giant Hybrid Swiss Mixed. This is a reselected strain, clear brilliant colors with huge blooms on compact plants. No. 1488, Pkt. \$1.25.

## LILY SEED

The '49 lily seed list will be out in the early fall and a copy is sent to every customer of record. If you have not ordered from us during the last three years, and wish a seed list, send us your name. We offer about 70 kinds of lily seed, all hand fertilized.

# Price List and Index 1949

	Page	Each	Three	Doz.
*Reduced from Last Year				
Amabile-125	3	\$ .55*	\$ 1.55	\$ 6.05
Amabile Luteum-126	3	1.05*	3.00	11.55
Auratum (Type)-130	2	1.50*	4.15	16.50
Auratum (Type)-130 Large	2	1.85	5.10	20.35
Auratum Late Form-131	2	1.90	5.25	20.95
Auratum Extra Hardy-132	2	1.95	5.40	21.45
Auratum Platyphyllum-139	2	1.75	4.85	19.25
Auratum Platyphyllum-139 Large	2	2.10	5.80	23.10
Auratum Praecox-137	2	1.85	5.10	20.35
Auratum Pictum-136	2	4.75	13.10	52.25
Auratum Rubro Vitatum-138	2	9.00	24.80	99.00
Auratum Esperanza-135	3	2.25*	6.20	24.75
Auratum Esperanza-135 Large	3	3.35*	9.25	36.85
Auratum Esp. Extra Select-134	3	8.95	24.65	98.45
Auratum Tri-Color-133	2	7.50	20.65	82.50

### AURATUM SPECIAL No. 14-A

To enjoy Auratums in your lily plantings as long a season as possible you should plant the early form, Auratum Praecox (No. 137), the regular or Type (No. 130) and the late form (No. 131). We are offering these three in quantities of one each, three each or five each. All are flowering size, top quality, Oregon Grown, fresh dug. November shipments only. Ask for Special No. 14-A—One of each, labeled separately, \$4.55; Three of each, \$13.50; Five of each, \$21.95. All postpaid.

Aurelian Hybrids, Henry form-150	3	\$3.00	\$ 8.25	\$ 33.00
Aurelian Hy. Semi-Trumpet-151	3	3.00	8.25	33.00
Aurelian Hybrids, Ivory, etc.-152	3	3.00	8.25	33.00
Aurelian Hy., Special Select-153	3	11.00	30.25	121.00
Azalea-160	3	.70*	1.95	7.70
Mrs. R. O. Backhouse-170	7	4.50	12.40	49.50
Backhouse Hy. Seedlings-171	7	2.50	6.90	27.50
Bellingham Hybrids-177	7	.55*	1.55	6.05
Bellingham Hybrids large-177	7	.85*	2.35	9.35

**Bellingham Hybrid Lilies**, illustrated on the front cover and described on page seven, are fast becoming recognized as a most outstanding strain of lilies. They are truly American Lilies, produced by hybridizing the native lilies of the west coast. Not all gardens can succeed with the native species but these hybrids have proven their value in gardens all over the country. You'll find them excellent buys. For massing, we'll mail 25, postpaid for **\$10.95**.

Bolanderi-185	14	\$1.65	\$ 4.55	\$ 18.15
Bonanza-888	26	3.50	9.65	38.50
Brenda Watts-180	13	.90	2.50	9.90
Brenda Watts, large-180	13	1.35	3.75	14.85
Brocade-182	7	4.50	12.40	49.50
Browni-183	10	4.50	12.40	49.50
Burbankii-188	5	.95*	2.65	10.45
Callosum-190	23	1.05	2.90	11.55
Canadense Flavum-191	14	.45	1.25	4.95
Canadense Rubrum-192	14	.70	1.95	7.70
Candidum-195	9	.65	1.80	7.15
Candidum, Select-195	9	1.00	2.80	11.00
Candidum, Jumbo-195	9	1.40	3.85	15.40
Candidum Oregon Hybrids-200	9	.80*	2.25	8.80
Campfire-886	26	3.50	9.65	38.50
Cardinal-207	24	5.00	13.75	55.00
Catesbaei-208	24	4.00	11.00	44.00
Centifolium-210	12	1.00	2.80	11.00
Centifolium Hybrids-212	12	.35	1.00	3.85
Centifolium Hybrids, Medium-212	12	.50	1.40	5.50
Centifolium Hybrids, Jumbo-212	12	1.00	2.80	11.00

**QUANTITY PRICES** on Centifolium Hybrids, fine flowering size, fresh dug bulbs, postpaid, October-November shipment: 25 bulbs \$6.25, 50 bulbs \$12.25, 100 for \$24.00.

Centifolium Hy. Selected Forms-213	12	1.65*	4.55	18.50
Centifolium Hy. Pure White-214	12	1.70*	4.70	18.70
Cernum-218	24	\$ .90*	\$ 2.50	\$ 9.90
Columbianum Ingrami-220	12	.75	2.10	8.25
Concolor-222	9	.45	1.25	4.95
Concolor Racemosa-221	9	.95	2.65	10.45

All bulbs are flowering size, either having bloomed in our beds or they are of such size they may reasonably be expected to bloom the first year. Some, regardless of size, demand a year to establish themselves.

# Price List &

	Page	Each	Three	Doz.
*Reduced from Last Year				
Cordatum-224	6	1.50	4.15	16.50
Coronation-226	13	2.50	6.90	27.50
Coronation, large-226	13	3.75	10.35	41.25
Corsair-227	13	2.45	6.75	26.95
Croceum-228	9	1.25	3.45	13.75
Crows Hybrid Seedlings	7	1.15*	3.20	12.65
Cyrus Gates-235	7	1.75*	4.85	19.25
Dalhansonii-250	21	4.95	13.65	54.45
Dauricum (Type)-268	21	.50	1.40	5.50
Dauricum Wilsoni-272	21	.55	1.55	6.05
Davidi Improved-252	6	.40*	1.10	4.40
Davidi Improved, large-252	6	.55	1.55	6.05
Davidi Oriole-260	6	2.25	6.20	24.75
Davidi Willmottiae-872	6	.35*	1.00	3.85
Davidi Willmottiae, Large-872	6	.50*	1.40	5.50
Davidi Unicolor-876	6	.85	2.35	9.35
Douglas Ingram-278	7	1.35	3.75	14.85
Duchartrei Farreri-282	21	3.10	8.55	34.10
Duchess-284	7	8.00	22.00	88.00
Dunkirk-285	24	8.50	23.35	93.50
Easter Early-285	23	.65	1.80	7.15
Edna Kean-290	13	.85*	2.35	9.35
Edna Kean, large-290	13	1.35	3.75	14.85
Edmund L. Kagy-818	5	7.50	20.65	82.50

	Page	Each	Three	Doz.
*Reduced from Last Year				
Hansonii-380	4	.95*	2.65	10.45
Hansonii large-380	4	1.35*	3.75	14.85
Henryi-386	10	.65	1.80	7.15
Henryi Large-386	10	.80	2.25	8.80
Henryi Jumbo-386	10	1.35	3.75	14.85
Humboldtii Magnificum-398	14	\$1.75	\$ 4.85	\$ 19.25
Hurricane-402	13	2.50*	6.90	27.50

## FANCIERS LILY COLLECTION No. 16-B

52 Lily Bulbs in 16 Varieties  
**\$18.75**

This collection is made up of 16 of the most popular and satisfactory varieties blooming from June to September. 52 bulbs in all, including Auratum, the famous Gold Banded Lily; Speciosum Oregon Giant, Bellingham Hybrids, Maxwill, the Olympic strain of Centifolium Hybrids, Estate, the late flowering Dauricum Wilsoni, Umbellatum Vermilion Brilliant and eight other fine varieties. A full color range and everyone a fresh dug, flowering size bulb, each lot labeled. This collection will be shipped in two lots as they mature.

**52 Fine Lily Bulbs in 16 Varieties, Catalog value of \$25.00, Postpaid for \$18.75**  
**EXTRA SPECIAL! Two of these Collections, 104 Bulbs in 16 Varieties, Postpaid for \$36.00**

Ida Jane Califf-820	5	7.50	20.65	82.50
Japonicum-400	25	1.55	4.30	17.05
Japonicum Pure White-399	25	2.50	6.90	27.50
Japonicum Deep Rose-401	25	2.50	6.90	27.50
Kelloggii-406	14	1.75	4.85	19.25
Kulshan-410	23	1.70	4.70	18.70
Lillian Cummings-420	13	.85*	2.35	9.35
Lillian Cummings Large-420	13	1.35	3.75	14.85
Longiflorum "Croft"-430	8	.35*	1.00	3.85
Longiflorum "Croft" Select-430	8	.75*	2.10	8.25
Longiflorum Estate-440	8	.55*	1.55	6.05
Longiflorum Estate Large-440	8	.80*	2.25	8.80
Longiflorum Estate Jumbo-440	8	1.50	4.15	16.50
Longiflorum Garden Pride-441	8	.85*	2.35	9.35
Longiflorum Snowdrift-450	8	.65*	1.80	7.15
Longiflorum "Ace"-435	8	1.50	4.15	16.50
Longiflorum "Ace" Large-435	8	2.00	5.60	22.00

## BEGINNERS \$5.00 COLLECTION No. 12-A

25 Fine Lily Bulbs, Catalog Value Over \$8.00

If you are just starting with lilies, here's a value you'll appreciate—5 bulbs each of 5 different lilies, including the lovely yellow Canadense, the popular red Davidi Improved, the late flowering Formosanum and two others—25 bulbs in all, each lot labeled, all fresh dug, Oregon Grown lilies—Catalog value over \$8.00.

**No. 12-A—25 Lily Bulbs, postpaid for \$5.00**

Lyla McCann-470	13	\$1.35	\$ 3.75	\$ 14.85
Mabel B. Ronna-812	5	7.50	20.65	82.50
Margaret Johnson-480	21	3.00	8.30	33.00
Mandarin-475	25	2.35*	6.50	25.85
Martagon-506	4	1.65*	4.55	18.15
Martagon Album-510	4	1.35	3.75	14.85
Martagon Album Select-510	4	1.95	5.40	21.45
Marhan (True)-490	23	3.75	10.35	41.25
Mei Ling-155	24	11.00	30.25	121.00
Maritimum-520	14	1.75	4.85	19.25
Maximowiczii Apricot-531	23	1.65	4.55	18.15
Maximowiczii Wadai-530	23	.40*	1.10	4.40
Maximowiczii Wadai Large-530	23	.55	1.55	6.05
Maxwill-540	6	.45*	1.25	4.95
Maxwill Large-540	6	.70	1.95	7.70
Medeoloides-546	24	1.55	4.30	17.05
Michiganense-556	14	\$ .85*	\$ 2.35	\$ 9.35
Mosquito-560	13	1.45*	4.00	15.95
Muriel Conde-564	13	1.35	3.75	14.85
Nepalense-570	25	2.50	6.90	27.50
Occidentale-580	14	1.50	4.15	16.50
Pagoda-885	26	2.35	6.50	25.85
Parade-890	26	3.50	9.65	38.50

## A FINE NEW TROWEL



Here's a grand new trowel you will enjoy. It's made of heavy stainless steel—will

never rust—so strong and sturdy, it will last your lifetime, with a comfortable hardwood handle that will not come loose. The narrow blade is 7 inches long (trowel 12 inches over all). Ideal for bulb planting and all transplanting. **Mailed postpaid anywhere—\$2.00.**

Elegans Aureum-297	22	\$.85	\$ 2.35	\$ 9.35
Elegans Gold Cup Hybrids-296	22	1.95	5.40	21.45
Elegans Mahogany-299	22	.55	1.55	6.05
Elegans Purple Queen-295	22	1.10*	3.05	12.10
Elegans mixed-300	22	.55	1.55	6.05
Enchantment-887	26	2.35	6.50	25.85
Fiesta Hybrids-245	24	2.25*	6.20	24.75
Fireflame-889	26	3.50	9.65	38.50
Fire King-310	6	3.25*	8.95	35.75
Flamingo-305	24	2.25*	6.20	24.75
Formosanum, late-316	21	.35*	1.00	3.85
Formosanum Extra Select-316	21	.65*	1.80	7.15
Formosanum Improved early-330	21	.50	1.40	5.50
Galahad-341	24	6.50*	17.90	71.50
Giganteum Himalaicum, small-350	4	2.10*	5.80	23.10
Giganteum Himalaicum, medium	4	3.00*	8.30	33.00
Glow-370	23	.70*	1.95	7.70
Golden Chalice Hybrids-870	22	1.35	3.75	14.85
Grace Marshall-356	13	1.30	3.60	14.30
Grayi-360	14	\$.70	\$ 1.95	\$ 7.70
Green Mt. Hybrids-363	10	1.10	3.05	12.10
Grenadier Hybrids Select-365	26	4.75	13.10	52.25
Guinea Gold-366	6	3.75	10.35	41.25

## LILY SPECIAL No. 25-A for \$5.00

We've added three more bulbs to the famous \$5.00 special which has been so popular with our customers during the past two years. This season we offer 17 (instead of 14) fine lily bulbs in nine different varieties flowering June to September in a wide variety of colors including white, dark red, orange, yellow and each lot will include a bulb of the wonderful pink Speciosum "Oregon Giant", described on page 10. Each variety is labeled, all are full flowering size, fresh dug Oregon-grown bulbs of the finest quality. This special will be shipped in October but please order early so that we can plan on the bulbs before digging.

**17 Lily Bulbs in nine different varieties, \$5.00**

# Index 1949

The prices on these pages supercede all previous prices which are null and void. Except where noted all prices are prepaid. This should be remembered as most nurserymen do not ship prepaid.

*Reduced from Last Year	Page	Each	Three	Doz.
Pardalinum-590	14	.35	1.00	3.85
Pardalinum Short Form-591	24	.45*	1.25	4.95
Pardalinum Giganteum-596	12	.35	1.00	3.85
Pardalinum Giganteum Large	12	.60	1.65	6.60
Parryi-600	14	1.95	5.40	21.45
Paulina Kline-810	5	7.50	20.65	82.50
Phyllis Cox-616	13	.95	2.65	10.45
Phyllis Cox Large-616	13	1.35	3.75	14.85
Prestons Hybrids-624	13	.65*	1.80	7.15
Prestons Hybrids Large-624	13	.95*	2.65	10.45
Princeps Creelman (True)-630	10	4.25	11.75	46.75
Princeps Creelman Seedlings-634	10	.75*	2.10	8.25
Princeps Creelman Seedlings Large	10	.95*	2.65	10.45
Princeps Creel'n x Centifolium-650	10	3.50	9.60	38.50
Pyrenaicum-666	6	2.75	7.60	30.25
Radiance-675	24	2.35	6.50	25.85
Redbird-671	25	3.50*	9.65	38.50

*Reduced from Last Year	Page	Each	Three	Doz.
Talisman-894	23	1.55	4.30	17.05
Tangerine-850	24	3.50*	9.70	38.50
Tenuifolium-830	21	.25	.70	2.75

## SPECIAL No. 10-A

For a group planting of Speciosums and Henryi (the Golden Speciosum) we are offering five bulbs each of Henryi, No. 386; Speciosum Rubrum, No. 780, and Speciosum Kraetzeri, No. 775. 15 bulbs in all, cataloging at the "each" price, \$19.75. Special in this offer, \$15.95, postpaid. All are full flowering size, top quality, Oregon Grown bulbs. Each variety labeled.

15 Bulbs for \$15.95 — 10 each, 30 Bulbs, \$30.95

Tenuifolium Select-830	21	.40	1.10	4.40
Tenuifolium Golden Gleam-834	21	.45	1.25	4.95
Tenuifolium Red Star-838	21	.55	1.55	6.05
Tenuifolium Yellow Bunting-840	21	3.00	8.30	33.00
Testaceum-848	23	2.50	6.90	27.50
T. A. Havemeyer (True)-800	5	8.50	23.45	93.50
Havemeyer Seedlings-804	5	4.50	12.40	49.50
Tsingtauense-850	25	1.55	4.30	17.05
Umbellatum Chief Chinook-854	22	.80	2.24	8.80
Umbellatum Darkest of All-855	22	1.00	2.80	11.00
Umbellatum Erectum-856	22	.45*	1.25	4.95
Umbellatum Golden Fleece-858	22	.85*	2.35	9.35
Umbellatum Incomparable-864	22	.45*	1.25	4.95
Umbellatum Incomp. Large	22	.70*	1.95	7.70
Umbellatum Orange King-853	22	.85	2.35	9.35
Umbellatum Prince of Wales-852	22	1.10	3.05	12.10
Umbellatum Vermilion Brilliant-860	22	.55	1.55	6.05
Umbellatum Mixed-868	22	.55	1.55	6.05
Vagabond-892	26	3.50	9.65	38.50
Valencia-893	26	2.35	6.50	25.85
Viking-871	25	3.50*	9.65	38.50
Wallichianum-875	23	1.95	5.40	21.45
Washingtonianum Purpureum-880	14	1.75	4.85	19.25
William Bates-814	5	7.50	20.65	82.50

NOTE—LILIES unavailable '49 — Bakerianum, Candidum Salonikae, Martagon Cattanae, Michauxii, Monadelphum, Ochraceum, Pollyphyllum, Rubescens and Szovitsianum.

## CONNOISSEURS LILY COLLECTION No. 11-A

### 8 Exceptionally Fine Lilies for \$10.95

Here's a collection of truly fine lilies selected for the gardener who wants the better varieties but still appreciates real value. Each variety is chosen for its great beauty and also for its satisfactory garden performance. Included are Auratum Platyphyllum, Martagon Album, Speciosum Magnificum, Parryi, Rubellum, Brenda Watts, Fiesta Hybrid and Centifolium Hybrid Selected Form. These eight are all outstanding. They catalog at \$13.25 but as a collection, you may have one of each, separately packed and labeled postpaid for 10.95. They will be shipped in two lots as they mature.

Special No. 11-A, the Connoisseurs Lily Collection for \$10.95

	Each	12	25	50	100
Regale-680	\$0.25	\$2.75	\$ 5.50	\$10.75	\$21.00
Regale Medium-680	.35	3.50	7.00	14.00	28.00
Regale Large-680	.55	5.50	11.00	22.00	44.00
Regale Jumbo-680	.90	9.90	19.80	39.60	79.20
Regale Bulblets-680B				2.75	5.00

*Reduced from Last Year	Page	Each	Three	Doz.
Regale Blondie-681	32	\$.75*	\$ 2.10	\$ 8.25
Regale Light Pink-682	32	3.00	8.30	33.00
Roexlii-700	14	.85	2.35	9.35
Rubellum-712	9	1.45*	4.00	15.95
Rubellum Large-712	9	1.95	5.40	21.45
Sacajawea-750	10	1.30*	3.60	14.30
Sargentiae Seedlings-757	10	.95*	2.65	10.45
Sargentiae Seedlings Large-757	10	1.35	3.75	14.85
Sceptre-682	7	4.50	12.40	49.50
Scottiae Light Form-760	5	1.10	3.05	12.10
Scottiae Dark Form-764	5	1.15	3.20	12.65
Serenade-891	26	2.35	6.50	25.85
G. V. Shaw-816	5	7.50	20.65	82.50
Shuksan-790	7	.75*	2.10	8.25
Skyrocket-770	6	2.65*	7.30	29.15
Skinnors Orange-772	24	.75"	2.10	8.25
Speciosum Album-776		Discontinued		
Speciosum Kraetzeri-775	11	1.95	5.40	21.45
Speciosum Kraetzeri Large-775	11	2.50*	6.90	27.50
Speciosum Rubrum-780	11	1.25*	3.45	13.75
Speciosum Rubrum Large-780	11	1.75	4.85	19.25
Speciosum Red Champion-781	11	1.25	3.45	13.75
Speciosum Oregon Giant-782	10	1.35*	3.75	14.85
Speciosum Ore. Giant Large	10	1.95*	5.40	21.45
Speciosum Melpomene-777	11	2.45	6.75	26.95
Speciosum Magnificum-779	11	\$1.95	\$ 5.40	\$ 21.45
Speciosum Punctatum-778	11	1.95*	5.40	21.45
Speciosum Pure White-783	11	3.95	10.95	43.45
Spitfire-784	13	\$2.35*	\$ 6.50	\$ 25.85
Star of Oregon-785	6	1.25*	3.45	13.75
St. Nicholas-786	7	4.95*	13.70	54.45
Sulphur Hybrids-793	10	2.95*	8.15	32.45
Sulphureum-792	25	2.95	8.15	32.45
Sulphureum Large-792	25	3.75	10.35	41.25
Sultan-791	25	2.15	5.95	23.65
Superbum-796	14	.50	1.40	5.50
Sutton Court-794	7	4.95*	13.70	54.45

## LITTLE COUSINS OF THE LILIES (Page 28)

	Page	Three	Doz.
CAMASSIA Leichtlinii-1162-Blue	28	\$.50	\$ 1.75
CALOCHORTUS, all varieties		Discontinued	
CROCUS-We can supply six of the species in quantities of not less than one dozen of one kind—Send for prices.			
CYCLAMEN Neopolitanum, Pink-1170, Flowering size	28	1.50	5.75
CYCLAMEN Neopolitanum, Pink-1170-Large	28	2.15	8.50
CYCLAMEN Neopolitanum, White-1172-Flowering size	28	2.25	8.85
CYCLAMEN Neopolitanum, White-1172-Large	28	3.75	15.00
CYCLAMEN Atkinsi, Mixed Colors-1176	28	3.75	15.00
CYCLAMEN Repandum, Deep Pink-1173	28	3.00	12.00
FRITILLARIA Meleagris Aphrodite-1211	28		
FRITILLARIA Meleagris Artemis-1212	28		
FRITILLARIA Meleagris Charon-1213	28		
FRITILLARIA Meleagris Poseidon-1214	28		
FRITILLARIA Meleagris Saturnus-1215	28		
FRITILLARIA Meleagris Thunbergii-1204	28		
DICTANMUS, Rosy Pink-1020	28	2.15	8.50
DICTANMUS, White-1021	28	2.25	9.00
GALTONIA Candicans-1240	28	1.15	4.50
INCARVILLEA Grandiflora Brevipes-1256	28	2.15	8.50
IXIOLIRION Ledebouri-1260		.85	3.40
MUSCARI Armeniacum-1264	28		
MUSCARI Comosum Plumosum-1266	28	All Muscari	
MUSCARI Heavenly Blue-1265	28	12, 85c; 100, \$6.80	
SCILLA Bifolia-1284	28	12, 85c; 100, \$6.80	
SCILLA Peruviana-1283	28	1.15	4.50



# Price List and Index 1949

	Page	Three	Doz.
TULIPA Species—"Group A"	28	.85	3.40
TULIPA Species—"Group B"	28	.45	1.75
	Page	3	12
TULIPA Ciusiana-1304	28	\$ .55	\$2.10
TULIPA Fosteriana Red Emperor-1310	28	.50	1.95
			15.50

## MISCELLANEOUS BULBS

	Page	Each	Three	Doz.
AMARYLLIS Mammoth Hybrids, Small-1560	30	\$ .40	\$ 1.10	\$ 4.40
AMARYLLIS Mammoth Hybrids, Medium	30	.60	1.65	6.60
AMARYLLIS Mammoth Hybrids, Jumbos	30	1.00	2.80	11.00
HEMEROCALLIS Geo. Yeld-1432	30	.50	1.40	5.50
HEMEROCALLIS Rajah-1464	30	.50	1.40	5.50
HEMEROCALLIS Bagdad-1454	30	.50	1.40	5.50
HEMEROCALLIS Lemona-1446	30	.50	1.40	5.50
HEMEROCALLIS Mrs. W. H. Wyman-1450	30	.50	1.40	5.50
HEMEROCALLIS Fulva Rosea-1460	30	2.50	6.90	27.50
HEMEROCALLIS Hyperion-1470	30	.75	2.10	8.25
HEMEROCALLIS Sonny-1468	30	1.50	4.15	16.50
MATILIJIA Poppy-1475	30	2.00	5.00	19.00
NARCISSUS Bulbocodium Conspicuous-N60	31	Page 6 \$.75	25 \$2.95	100 \$11.50
NARCISSUS Triandrus Albus-N70	31	Page Three \$1.40	Doz. \$ 5.50	

### EXTRA SPECIAL MIXED DAFFODIL SEEDLINGS

These mixed daffodil seedlings are one of the greatest values in the flower world. We never have enough of them to meet demands. Among them are bulbs worth 10 to 20 times the prices asked. Try 50 or 100 and I know you will agree with me. 50 for \$7.00, 100 for \$12.50, 250 for \$29.00, 1000 for \$115.00. Not less than 50 sold. These mixed seedlings are shipped EXPRESS COLLECT. Please order early as they sell out quickly.

	Page	1 lb.	4 lb.
MICRONIZED Copper Spray	29	\$2.75	\$4.25
		Page	Each
IRIS Kaempferi Blue Pools-1700	29		\$2.75
IRIS Kaempferi Blue Glory-1703	29		2.00
IRIS Kaempferi Crimson Glow-1712	29		3.00
IRIS Kaempferi Deep Shadows-1715	29		2.00
IRIS Kaempferi Giant Glory-1720	29		3.00
IRIS Kaempferi Imperial Gem-1728	29		2.50
IRIS Kaempferi Picotee-1732	29		2.75
IRIS Kaempferi Sunset Glow-1742	29		2.50
IRIS Kaempferi The Swan-1745	29		2.50
IRIS Kaempferi Twilight-1750	29		2.25
IRIS Kaempferi Vice-Regal-1751	29		3.00
IRIS Kaempferi Wabash-1754	29		3.00
IRIS Kaempferi White Treasure-1755	29		2.25

### IRIS KAEMPFERI SPECIAL No. 1-K

Five gorgeous beauties, the world's finest, catalog value \$12.50. One each of Blue Glory-1703, Deep Shadows-1715, Giant Glory-1720, Twilight-1750 and White Treasure-1755, each plant labeled. Postpaid for \$10.00

	Page	Six	Doz.	100
TIGRIDIAS, White-1550	32	\$ .85	\$1.65	\$12.50
TIGRIDIAS, Yellow-1552	32	.85	1.65	12.50
TIGRIDIAS, Rose-1554	32	.85	1.65	12.50
TIGRIDIAS, Mixed-1558	32	.75	1.45	11.60

## BOOKS AND CHARTS

"SUCCESS WITH LILIES" by Romaine B. Ware—Page 27—Cloth Bound \$1.00, Paper 50c.

"LILIES FOR AMERICAN GARDENS"—Page 4—\$5.00.

"A LILY CHART" by E. L. Kline—2700 items of data on 225 varieties of lilies. Every horticulturalist, lily enthusiast, library, nurseryman, garden club and bulb dealer needs this chart for ready reference. Eight large pages. Postpaid \$1.00.

"PLANT MAGIC" by Haworth—A new and unusual book on plant mutations for the amateur—very worthwhile. \$3.00.

"BULBS FOR BEAUTY" by Mueller—A new book for the gardener who wants to know about all garden bulbs. So clearly written a fifth grader would enjoy it. Postpaid for \$3.50.

# May We Send Your Order Special Delivery?

The fall of '48 was the first we sent any large portion of our bulb shipments Special Delivery and the gratifying letters on fast deliveries we received from all over the country have more than ever convinced us of the desirability of this way of shipping. I had occasion to write letters to several of our customers and they wrote back that the letter and the bulbs arrived the same day. Most of these were from the east coast and the fact that the bulbs arrived as quickly as the letters speaks highly for this method. I'm more than ever convinced that to any point over a thousand miles distant, special delivery is far more than worth the extra cost.

A lot of you live in small towns or in the country where special delivery is not available BUT if your package leaves here Special Delivery, it is speeded on its way as fast as a first class letter instead of having to poke along with the vast bulk of parcel post which takes two or three times as long, so even if you don't get actual special delivery to your door, you are greatly the gainer in having your package travel so much quicker.

In the fall when every day counts in getting your bulbs into the ground, this fast service is invaluable. Too, there is far less danger of packages going astray when shipped Special Delivery as each one has to be individually signed for at all points.

I wish it were possible for me to pay this added cost but in these days of rising expenses in almost every phase of this business it is impossible. The rate is 25c up to two pounds, 35c from two to seven pounds and 45c for seven pounds or more. This is the "Special Delivery Fee" which is in addition to the regular postage. We pay the regular postage on all packages unless otherwise stated.

Again this year, as I did last season, I'm placing a notation on the order blank where you can indicate if you are willing to pay the Special Delivery Fee. You can remit in stamps after the bulbs are delivered. By having your bulbs forwarded this way they will not only travel much quicker but frequently packages arriving on Saturday or holidays will be delivered at once when otherwise they might lay over a day or two in the hot post office.

## We Pay the Postage

On orders of \$5.00 or more within the U. S. we pay the postage unless otherwise state. On orders sent out of this country please add 10% to cover postage and extra handling. On all orders less than \$5.00, kindly add 50c for postage and handling.

## Shipping Dates

All lily bulbs are dug as soon as they mature starting in August and continuing into November. Prepare your ground before the bulbs arrive and plant them as soon as possible.

## Please Order Early!

Last year we were short thousands of bulbs and hundreds of customers were disappointed. Lilies are not like other plant material. It takes years to produce lily bulbs. Backhouse Hybrids, for example, take seven years to produce flowering size bulbs. And each year we sell out of practically everything that can be spared.

## Send Your Order Now!

As soon as you have made your selection. Don't wait till later. Many varieties will be short and early orders get first consideration. Most orders are shipped in two or more lots as soon as they mature. This causes extra work and expense but we believe you are better served and your success is our success.

## But Please---

**Help Us and Yourself  
ORDER EARLY**

**Special Delivery—**

I would like you to send my order special delivery and agree to reimburse you for fees advanced. I'm signing my initials in authorization

B'k.	A'k.	C'k.	T'b.
------	------	------	------

**ORDER BLANK**  
**ROMAINE B. WARE**  
**CANBY, OREGON**

We acknowledge your order and remittance and ship at digging time as soon as bulbs mature, beginning mid-August and extending to late November. Most orders must be shipped in two or more lots according to digging. Unless advised to the contrary, we send equally good or more costly varieties if any kinds ordered are sold out. No Regals used as substitutes.

**Please check one**



Mr.  
Mrs.

Date \_\_\_\_\_, 194\_\_

Ship to (Name) Miss \_\_\_\_\_

Please PRINT Name and Address Plainly

Street or  
R.F.D. No. \_\_\_\_\_

Zone \_\_\_\_\_

Town or  
City \_\_\_\_\_

State \_\_\_\_\_

M. O. for \$ \_\_\_\_\_  
Enclosed

Check for \$ \_\_\_\_\_  
Enclosed

Please do not send currency as it is at your risk. Money orders, checks or bank drafts may be used. Terms: Cash with the orders—no C.O.D.

Every order guaranteed to be in first class condition when shipped and to reach you safely and undamaged. All bulbs are guaranteed to bloom if given reasonable care. Of course, you would not expect us to replace bulbs lost due to weather conditions, carelessness or neglect. Complaints of damage in transit must be made at once.

We acknowledge receipt of your order and remittance and ship at digging time.

**PLACE YOUR ORDER EARLY SO WE CAN RESERVE THE BULBS NOW.**

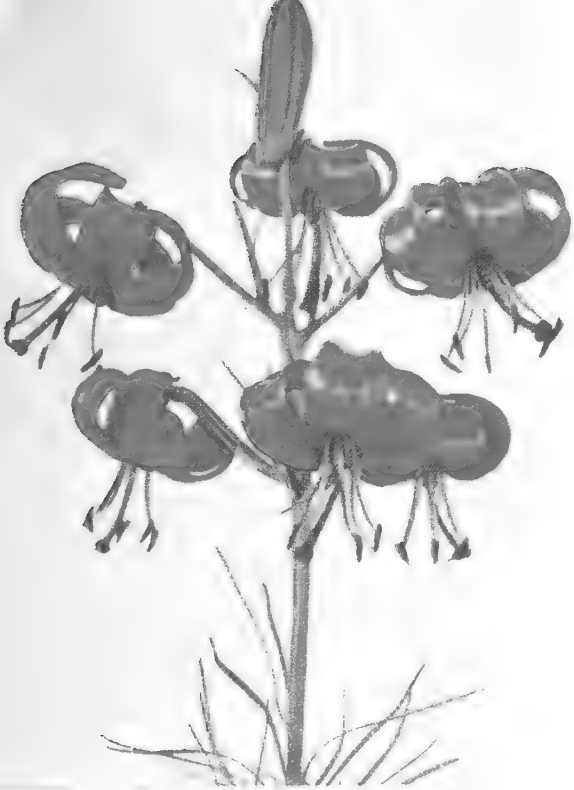
**Postage Prepaid**

All orders of \$5.00 or more are sent post-paid within the U. S. unless otherwise stated. On orders of less than \$5.00, kindly add 50c to cover handling and postage. There is no Sales Tax in Oregon.

Do Not Write In This Space	Quantity	Catalog Number	NAME OF ARTICLE	Price	Total Price	
			<b>Be Sure to Include 36-page Booklet SUCCESS WITH LILIES (See Page 27)</b>		\$	
Keep your copy of the catalog until you receive the next issue.				Amount Carried Forward	\$	

Do Not Write In This Space	Quantity	Catalog Number	NAME OF ARTICLE	Price	Total Price		√
			Order—Continued	FORWARD	\$		
<b>TOTAL ORDER</b>				\$			





LILIUM TENUIFOLIUM

**TENUIFOLIUM-830**—The gayest of the "little lilies", bringing into our gardens joy and gladness in late May and early June. The slender wiry stems have an air of delicacy and refinement, holding aloft their many dainty Turk's Cap blooms of bright scarlet. Either in the front of the border or in the rock garden, their dwarf stature is ideal. Try them among a mass of *Anchusa Myosotidiflora*. You'll be astonished how the scarlet of the lily livens up the forget-me-not blue of the *Anchusa*. This lily is reasonable enough to plant liberally and charmingly beautiful as well. PD 3 inches.

**TENUIFOLIUM Golden Gleam-834**—Identical with the above except in color which is a delightful golden apricot yellow. Try it among large drifts of rich purple pansies. You'll love it.

**TENUIFOLIUM Red Star-838**—This has been very scarce as it is comparatively new. It is a variation from the type, scarlet in color but with broader petals and less reflexed. An excellent novelty, very good for cutting. Culture as for type.

**TENUIFOLIUM Yellow Bunting-840**—Another new offering, size and type similar to the older kinds but a light canary-yellow, a graceful flower you'll adore in the garden. It opens early, almost the first lily to bloom, it is especially welcome for this reason as well as its delightful color and form. Ht. 1 1/2 ft. PD 3 inches. Stock limited.

**MARGARET JOHNSON-480**—This is a new hybrid of our old favorite Tiger Lily. The blooms are held horizontally or erect in a truly charming manner. Color is a delightful salmon-orange, spotted mahogany. It flowers freely on sturdy stems 4 to 5 feet tall. Plant in sun or partial shade. This is the first offering of this variety which will be popular when plentiful. Plant it in front of a purple leaved Plum that has been pruned into a bush form. You will enjoy the effect. August. PD 6 in.

## Duchartrei

**DUCHARTREI-282**—Syn. *L. Farreri*. This is a very rare Lily from the mountains of China and Tibet, an exquisite jewel of which we never have enough to meet demands. Its slender stems, two to four feet tall, carry up to a dozen pendant, recurved blooms, pure white, spotted lightly wine-purple and touched with green in the throat. Truly a lovely Lily. The bulbs of this gem are small, seldom as large as a marble but they send up a vigorous stem. This variety like several others, sends out a stem which wanders around under ground before emerging sometimes as much as two feet from the bulb. Bulblets form along this stem which result in large colonies. Try it among low growing Azaleas and Rhododendrons where you do not cultivate the surface. All our bulbs are grown from seed to insure disease free stock. It likes plenty of humus, a moist, well drained soil and partial shade. June. PD 4 inches. Scarce.

**DAURICUM (Type)-268**—A useful, very colorful dwarf Lily for borders with upright blooms. Vase-shaped, light to deep orange, yellow at the base, spotted darker. Ours is the true form quite rare as *Elegans* has frequently been substituted. All the Dauricums are good among Lavender or plants having purple, blue or lavender flowers. Ht 1 to 1 1/2 ft. PD 4 in.

**DAURICUM Wilsoni-272**—An August flowering form with deep apricot blooms, spotted mahogany, 2 to 3 feet tall. Especially welcome in the late summer border.

## Lilium

### Formosanum

#### Syn. *Philippinense*

This is a lovely trumpet Lily becoming more popular every year. It is pure white within, suffused with wine-purple outside or occasionally white, fragrant and long blooming. Stems are slender, varying from two to six feet tall. The late form starts blooming early in the fall and continues until frost. Last year in our planting they were still in full flower in mid-November. In California and mild southern sections, they keep blooming well into the winter, sending up new shoots which continue the display. PD 5 in.

#### A late long-flowering Lily

**FORMOSANUM Late Variety-316**—This has the longest flowering season of any Lily. Height 5 to 6 feet, sometimes eight or more in the south. Bulbs very small considering the size of the plants. Lovely with *Anemone Japonica "Alice"* or with masses of hardy Fall Asters or Chrysanthemums. September to frost.  
**Even small bulbs produce five-foot stems.**

**FORMOSANUM Early-330**—Known as Price's variety, growing barely a foot high, blooming late July into August. Good in rock garden or front of the border. With some of the summer blooming Violas massed around it the effect should be lovely.



HENRYII (Page 10)

**DALHANSONII-250**—A handsome hybrid Lily not only gorgeous in color but an eminently satisfactory grower, vigorous and easy culture. Blooms are thick petaled, recurved, similar to *Hansoni*, one of the parents. The color is a deep glossy mahogany-red, almost a purple-brown. As many as forty blooms have been reported on one stem. For an outstanding garden picture, group *L. Dalhansonii* with *L. Hansoni* and along with them feathery Meadow-Rue (*Thalictrum Aquilegiaefolium*) and purple Violas in the foreground, all against a background of dark evergreens such as Pine or Yew. Plant *Dalhansonii* 5 inches deep, partial shade, good drainage. Ht 4 to 5 feet. June.

FORMOSANUM LATE



## Elegans Lilies

These are dwarf, 12 to 18 inches but the blooms are large and upright on the stems. Very showy in the rock garden or massed in the border. For sheer color they are seldom equaled. Try them among a colony of Funkia or White Heuchera for an effective display. Elegans is a healthy, vigorous lot. Culture the easiest, thriving in any well drained loam in a sunny spot. June-July. PD 4 in.

**ELEGANS Mixed**-300-Yellow through apricot to deepest crimson. A mass of them is a riot of color. These and all other of the group are excellent in pots.

**ELEGANS Mahogany**-299-Also known as Mahony. Deep mahogany-crimson flowers on fifteen inch stems. An attractive variety and we never have enough. June.

**ELEGANS Aureum**-297-An orange-yellow form, conspicuously spotted deep yellow. A desirable variety that is popular.

**ELEGANS Purple Queen**-295-One of the darkest of all Elegans, a purplish-red, with narrow shiny foliage. This variety blooms later than others of the group, a desirable feature as it helps to lengthen the flowering season.

**ELEGANS Gold Cup Hybrids**-296-This is a selected group of seedlings of Elegans Orange Queen (Alice Wilson of commerce) and Dauricum luteum. They range in color from bright orange-yellow through apricot shades to chrome yellow. Vigorous upright lilies in a color range that is bright and pleasing. Ht. 1 1/2 to 2 feet. June flowering. PD 4 inches. Of easiest culture in full sun.

## The Umbellatum Lilies

These consist of numerous varieties with vigorous, showy, upright flowers related to Elegans and Croceum. They are a healthy, satisfactory lot, mostly 1 to 2 1/2 feet tall, a few 4 feet, with a wide range of color and easiest culture, thriving in average garden soil, sun or partial shade. All Umbellatums are ideal lilies for the hardy border, massing well between Iris or Peonies, where they hold their own admirably. Fine for pot culture in a cool greenhouse. June-July. Planting depth 4 inches.

**UMBELLATUM Chief Chinook**-854-This outstanding lily was first introduced by Mr. Kline in '41 and is today one of the finest of the group. The upright flowers of "Chief Chinook" measure 5 1/2 to 6 inches across and are carried on stout stems 2 1/2 to 4 feet tall with 15 to 20 blooms on a stem. Color is apricot at the base shading to capsicum red at the tips with a few mahogany spots. Like most Umbellatums it is highly resistant to disease and of easiest culture either in full sun or partial shade. Try it with dark blue Baptisia and lemon yellow Hemerocallis against a background of Pacific hybrid Delphinium. PD 4 inches.

**UMBELLATUM Golden Fleece**-858-A very large bloom of a clear golden yellow with petals tipped scarlet. One of the most handsome of the group. Good pot plant in the cool greenhouse. Stock limited. Ht. 2 to 2 1/2 ft.

**UMBELLATUM Vermilion Brilliant**-860-A crimson-blood-red, one of the showiest of the lot. Petals are broad, sparsely spotted black. This is a stunning variety and we are glad to offer it again. Ht. 2 to 2 1/2 ft. Mass six of these for a brilliant border display. They are long lived and develop fine large clumps.

**UMBELLATUM Incomparable**-864-A rich crimson, the best of the medium reds. A vigorous showy Lily for the hardy border. Ht 2 to 3 feet. Plentiful and inexpensive enough to use for mass color in the middle and foreground of the hardy border. All the Umbellatums "look up" at you and make wonderful color masses.

**UMBELLATUM Mixed**-868-Contains the full color range of the strain and all heights. June to July. PD 4 inches. Few other plants will make the colorful display of bloom in the hardy border as will a mass planting of these mixed Umbellatums. Use a dozen or 25 in a clump if your border is large and their gorgeous color will charm you.

**GOLDEN CHALICE HYBRIDS**-870-In '46 we introduced for the first time another hybrid strain known as Umbellatum Dauricum Hybrids but these have now been renamed and "Golden Chalice" fits them remarkably well. This strain is extremely vigorous with a color range from clear lemon yellow through rich warm shades of gold and apricot-orange. June blooming. Height 2 1/2 to 4 feet. PD 5 inches. These hybrids are extremely drought resistant and seem to enjoy a warm dry spot in the border where they will flourish and flower freely with a minimum of care.

FOR PRICES SEE PAGES IN CENTER OF CATALOG



PARDALINUM (Page 14)

**UMBELLATUM Darkest of All**-855-A tall, very deep red, vigorous and free flowering. One of the most striking in color of this grand and valuable group. They make such a spectacular show in the hardy border. Always plant them in groups of three or a half dozen or more. PD 4 inches. Late June to July.

**UMBELLATUM Orange King**-853-This variety has not been available for several years. It is orange in the center, deepening to red at the tips of the petals, lightly spotted purple-black.

**UMBELLATUM Prince of Wales**-852-A delightful deep golden-yellow to orange-yellow with few spots. It is dwarf, a distinct and handsome lily, earlier than most of the group.

**UMBELLATUM Erectum**-856-Applegates var. A large flowered variety, erect in habit, bright reddish-orange. Makes a grand display in the border. It flowers later than most varieties. Ht. 1 1/2 to 2 ft.

LILIUM UMBELLATUM





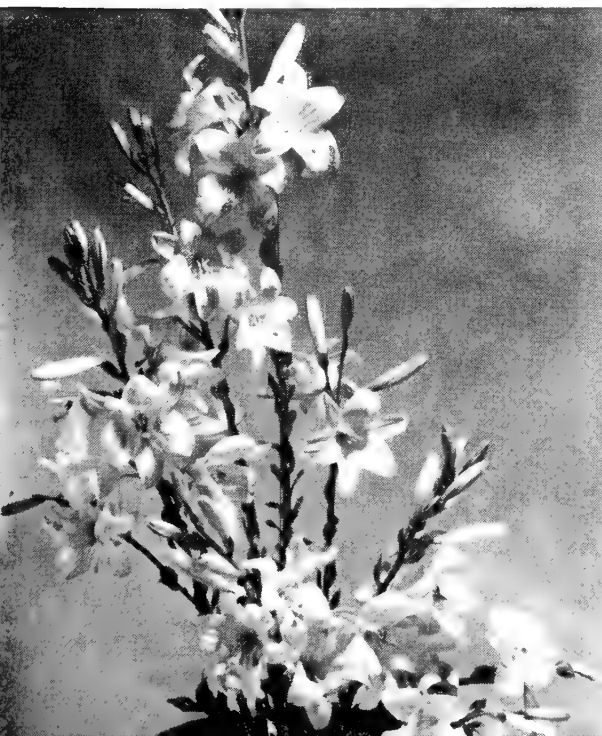
TESTACEUM

## Flower Arrangements

Lilies lend themselves delightfully to flower arrangements, just using the upper parts of the stems. They have an airy grace that offers charm and beauty unobtainable with many other flowers. They are truly aristocrats in the field of flower arrangement just as they are in the garden itself.

We are interested in securing pictures of flower arrangements featuring principally lilies. If you win an award at a flower show with an arrangement of lilies and will send me a photo of it, I'll send you a nice box of lily bulbs (our selection, value at least \$3.00) as an extra prize. This offer is limited to the 1949, 1950 and 1951 flowering seasons. inches.

CANDIDUM (Page 9)



# Lilium Testaceum

**TESTACEUM (Syn. Excelsum)**-848-The Nankeen Lily, one of the choicest, a real aristocrat. Fragrant blooms are true nankeen-yellow delightfully tinged pale pink with brilliant orange anthers; forming open cluster at top of stem. Effective against dark evergreens with pale blue Delphinium. Due to delicate tones, avoid planting among bright colored flowers. June-July. Full sun best, but tolerates partial shade. Late planting undesirable, September ideal. PD 3 in. Ht. 4 to 6 ft. **Very scarce.**

**GLOW**-370-One of the earliest Lilies, late May into June. An improved hybrid form of *L. Philadelphicum* with larger flowers and heavier foliage. Cup-shaped blooms, a deep glowing reddish-orange in two foot stems. Try with a ground cover of deep ultramarine blue Swiss Pansy "Ullswater". Full sun. PD 4 inches.

**CALLOSUM**-190-A small lily producing up to 20 dull-red to orange nodding flowers tightly reflexed. They vary from 2 to 5 feet tall and are most attractive when planted in groups of a dozen or more. They are too tall and slender to plant singly. It is a dainty plant and flowers late in July when few lilies of the type are available. Sun or partial shade, a light well drained soil with plenty of leafmold. PD 3 inches.

**KULSHAN**-410-A hybrid of *Humboldtii* and *Pardalinum*, which has given us so many fine lilies. Flowers are 10 to 20 in number, typically Martagon, tightly reflexed, deep cadmium orange, spotted darkly. It grows 5 to 6 feet tall. A good lily but very slow to propagate. July blooming. Sun or partial shade. PD 6 inches.

**EASTER EARLY**-285-A hybrid of the early *Formosanum* and one of the *Longiflorum*s. The white trumpets are long and rather narrow and seldom show any exterior coloring. Late June into July. Ht. 2 to 3 feet. PD 5 inches. This lily is also an exceptionally easy lily to flower early under glass. Grown in a cool green house (55°) it will commence flowering in early March from early potting. Height under glass 4 to 5 feet. PD 5 inches.

## New and Rare

**TALISMAN**-894-A brand-new lily, a 1949 introduction. It somewhat resembles the popular *Maxwill* but is even more brilliant, and makes a conspicuous display in the border. Its *Tigrinum* blood is evident in that it produces numerous black-brown bulbils in the leaf axils. *Talisman* is highly disease resistant, flowers in July, color orange-red densely spotted with purplish-black, very stiff strong stem, height six feet. PD 5 in. It has proven exceptionally valuable as a seed parent. You will find it a first-class garden lily.

**WALLICHIANUM**-865-A very rare and handsome lily but not hardy outside where the ground freezes. It is funnel-shaped with a slender tube and wide spreading mouth, creamy-white within and green outside. A lovely fragrant lily for the greenhouse or outside in the warm sections. Himalayan foothills are its home where it grows on open grassy hills. A very scarce lily. Height 3 to 6 feet. PD 5 inches. August-September.

FOR PRICES SEE PAGES  
IN CENTER OF CATALOG

**MAXIMOWICZII Wadai**-530-This Lily is essentially a refined Tiger Lily with all the good points of the latter and as easily grown. If you have had difficulty getting Tiger Lilies that are free of Mosaic, here's the answer to your prayer. Orange-red, spotted purple-brown. By planting both the varieties we offer you may have them in bloom from late in July until well into September. For background try white *Weigelia* and mass them with lavender fall *Asters* and yellow *Heleniums*. Add also a few plants of *Rudbeckia Purpurea* to the group. Full sun or partial shade. Ht 4 to 6 ft. PD 5 inches.

**MAXIMOWICZII, Apricot Colored Form**-531-This is doubtless the finest variety of this species. The bulbs were collected from an isolated section and it has not as yet been given a variety name. We have grown them here one year. It produces up to two dozen large apricot colored Tiger Lily type blooms on 3 to 4 foot stems. And best of all, it flowers late (August into September) when colorful lilies are very scarce. Most gardeners who appreciate lilies overlook the possibilities of late color from them. This new *Maximowiczii* should find a ready welcome. PD 5 inches.

**MARHAN**-490-This is the original *Marhan* from which all other named varieties developed. It is a hybrid of *Martagon Album* and *Hansoni* with flowers somewhat similar to the latter but a rich orange spotted with reddish-brown. It is a vigorous, healthy lily growing five feet tall and easily grown. Many fine lilies have come from this cross and they have been long lived and good performers in the garden. Partial shade suites it best. June. PD 5 inches.

DAURICUM (Page 21)





# New and Rare Lilies

**RADIANCE-675**—An Umbellatum Hybrid (1949 introduction). These new lilies are a distinct improvement of older forms not only in freedom of bloom but in their resistance to disease and vigorous growth. Radiance is a warm orange-red with large blooms which make a remarkable show in the border. June-July blooming, 2½ to 4 feet tall, PD 4 inches, full sun or partial shade. Don't overlook these upright lilies for border planting. They may well produce the gayest spot in your whole border.

**MEI LING-155**—An Aurelian Hybrid. Special Selection. A very free flowering lily with 25 or more blooms when established. Medium size, cream colored, shading to old gold in the center, flat-faced with recurving tips. A stunning new lily which received an Award of Merit at the Boston show of the Massachusetts Horticultural Society 1947. These new lilies are the lilies of the future when they will be grown in every garden just as Regals are today.

**DUNKIRK-285**—Another new variety, first offered in 1948, a new hybrid by Mr. F. L. Skinner of Canada who has given us many good lilies. This lily is a deep blood-red with out facing blooms slightly flattened and the tips of the petals somewhat recurved. July flowering. Height 4 feet. PD 4 inches.

**FLAMINGO-305**—Here's a new lily, first offered in 1948. It is a seedling from a cross of Umbellatum, Dauricum and Elegans, vigorous grower with large cup-shaped blooms having very broad overlapping petals and an ideal candelabra form. The color does not fade and is best described as salmon-pink. Height 2 to 3 feet. PD 4 inches.

**CARDINAL-207**—Here's a new fire red lily with nodding, spotted blooms similar in form to the old Tiger Lily, one of its seed parents. The other parent is the attractive little lily, Amabile. Cardinal is free blooming, vigorous, four to five feet tall with strong stems. This was first offered in 1948 and is truly worth while. PD 4 to 5 inches. Blooms July.

**CATESBAEI-208**—The only native American lily except Philadelphicum with erect flowers. They are borne singly, yellow and scarlet with brown spots, blooming a month later than Superbum. Attractive but not hardy outside except where frost is almost unknown. In the cool greenhouse it is practically evergreen. A true swamp lily, it should never want for water. Planting depth (PD) 3 inches. Partial shade with plenty of peat.

**PARDALINUM, Short Form-591**—A selection from the type growing but 3 to 4 feet tall and more free flowering. Blooms are slightly smaller. This lily is of the easiest culture in sun or partial shade; however, in semi-shade it will grow a bit taller. Experts consider the Pardaliums among the most satisfactory of all the west coast natives as they are very adaptable to a wide variety of conditions. They make fine large clumps in full sun. PD 4 inches.

**SKINNER'S ORANGE-772**—A new hybrid of our native Philadelphicum and very much worth while. The bright orange blooms are spotted with brown and held erect on stems 1½ to 2 feet tall. An excellent border lily, probably best in partial shade. June. PD 4 in.

**CERNUUM-218**—A most attractive little lily, rosy-lilac spotted wine-purple, delightfully fragrant. Similar to our lovely L. Tenuifolium in form and as easy to grow. The only trouble with this variety is, we can never supply even half the demand. This year we will have to limit orders to not more than five bulbs to a customer and orders will be filled strictly in rotation as received. This dainty little lily is ideal for the rock garden or front of your border. Its nodding, reflexed blooms are produced two to six on slender stems one to three feet tall in mid-July. PD 3 inches. Full sun.

**GALAHAD-341**—A new hybrid trumpet lily from crosses and re-crosses of Sulphureum, Sargentiae and Regale. Blooms in late summer in a lovely shade of sulphur-yellow. Galahad is a strong growing, robust lily and very hardy, carrying up to 14 blooms in a pyramidal raceme of great beauty. Stock is limited so better order early. PD 6 inches.

**TANGERINE-850**—We introduced this new lily in 1946. It is an Umbellatum hybrid, pure tangerine in color with numerous, well spaced, upright blooms. In the garden it makes a brilliant show and considering its vigorous, healthy growth and adaptability to average soils, it will enjoy a hearty welcome. June-July. Height 3 to 4 feet. PD 4 inches. Stock limited.

## Rare Burma Lilies

Late last winter we received a shipment of seed and a few bulbs of the rare Burma lilies Bakerianum and Ochraceum. The seed will be sold at \$1.00 per packet while it lasts. The bulbs we are growing to check their trueness to name and freedom from disease before offering them. If you are interested in them, please write me. These have not been available since the beginning of the war. These are greenhouse lilies except where frosts are very light.

**MEDEOLOIDES-546**—A rare lily from the Orient we've not been able to offer for some time. It is Martagon type, producing two to four nodding blooms, apricot to scarlet in color and spotted black. Partial shade and a light soil with ample humus is to its liking. Height 1½ to 2 feet. PD 3 inches.

**FIESTA HYBRIDS-245**—We offered this grand new strain of lilies for the first time in 1946 under the name of Dr. Abels Hybrids but last year they were renamed most fittingly as you will agree when you see them. They are Martagon type, on thin wiry stems, 3 to 6 feet tall, in brilliant shades of bright yellow, through orange to a beautiful dark red. Colors are clear and delightful with many of the blooms facing outward and upward. Fiesta is a grand cut flower, delightfully attractive indoors.

FIESTA HYBRIDS



## FRESH DUG versus IMPORTED BULBS

All our lily bulbs are fresh dug right here in the Pacific Northwest. Believing our customers want healthy, disease free stocks, we do not sell imported lilies. Many years of sad experience with diseased bulbs, most of them badly dried out from long storage, have convinced us that imported bulbs, even though sometimes cheaper, are far more costly in the end.

FOR PRICES SEE PAGES IN CENTER OF CATALOG

# for Keen Gardeners

**SULPHUREUM-792**-(Syn. *Myrophyllum superbum*.) Easily one of the most beautiful trumpet lilies ever to grace our gardens. It is not unusual for buds to measure 11 inches in length with the fragrant flowers opening a pale sulphur yellow deepening in the throat. Exterior is tinged claret red. Well grown specimens have been known to reach a height of 10 feet, bearing up to 10 huge trumpets. Coming from Burma, it is not too hardy in the north and should be very heavily mulched. Except in the warmest parts of the country, full sun is most to its liking but where summer suns are really hot, partial shade is best.

Sulphureum seed, produced by cross-pollination of different plants, germinates almost as quickly as Regale. It is a wonderful seed parent for lily hybridists with possibilities almost unlimited.

Fall, 1948, was the first time we had any of this rare lily since the beginning of the war and stocks are far from plentiful. Bulbs are Oregon grown. Orders taken subject to stock available. Flowers mid-August into September and is especially welcome at that time. Planting depth (PD) 6 inches.

**TSINGTAUENSE-850**-A rare species from China, similar in habit to the popular Concolor except that the color is orange and they are carried in an umbel rather than scattered. It is best planted in the shade, in moist well drained soil. In full sun it fades badly. Here in Oregon it is quite charming and we are happy to offer it. PD 3 inches. Height 1½ to 3 feet.

**JAPONICUM-400**-One of the few and probably the most beautiful pink lily in the world. An exquisite trumpet-shaped species bearing two to five delightful blooms. The color varies from pale to deepest pink with trumpets to six inches in length. This is not a robust lily like Regal and success with it means a lot of real effort but when it blooms all your trouble and efforts are forgotten in the exquisite perfection of its beauty. Plant it 4 inches deep in partial shade in a location protected from strong winds. The soil should be well supplied with humus and perfectly drained. As it is a stem rooting lily, never cultivate around it. In its native habitat, it grows among trees, low shrubs and dwarf growth which keeps the soil moist. A delightfully fragrant lily, June blooming, two to four feet tall.

**JAPONICUM Pure White Selections-399**-The great variation in color found among any large lot of this lily has led to dividing it into groups. The No. 400 offered above is the pink form and here in No. 399 we have a pure white. It is a lovely and dainty lily. Its broad funnel-shaped blooms, delightfully fragrant, are most welcome in early June, one of the earliest lilies to open.

**JAPONICUM Deep Rose Selections-401**-This deep rose lily is very rare as comparatively few of them are ever seen. Easily one of the most beautiful of all lilies, it is a color found in no other. Form, culture and all other characteristics are the same for all of them. It is not an easy lily but under the right conditions, it is so beautiful that you will feel well repaid for the extra efforts put forth upon it.

**NEPALENSE-570**-A rare Himalayan lily with funnel-shaped blooms of a most interesting and unusual color, greenish-yellow with throat heavily stained a rich dark purple. In the north for greenhouse only. OK outside in the south where frosts are light. Blooms are large and solitary or few in number. Ht. 2 to 3 feet. PD 4 inches. July. Partial shade, moist soil, perfect drainage.

**SULTAN-791**-This is a glowing, ox-blood red lily with an orange line from the base to center of each petal. A hybrid of Davidi and Edna Kean. It produces up to 20 reflexed blooms on strong, erect, dark colored stems four feet or more in height. The flowers have a heavy wax-like substance which gives them a pleasing sheen and unusually long lasting quality. Partial shade. PD 4 inches.

**VIKING-871**-A new hybrid between Davidi Willmottiae and Tigrinum, a nodding Turks Cap lily in a sort of light orange-red, rather difficult to describe. Flowers in mid-summer on very strong six foot stems with as many as 36 blooms per stalk. Lower bloom pedicels carry secondary buds so there are open flowers over quite a long period. Forms bulbils at leaf axils like Tigrinum though not so freely. PD 5 inches.

**FOR PRICES SEE PAGES IN CENTER OF CATALOG**



SULPHUREUM

**MANDARIN-475**-A grand new dark red lily, rich maroon or blood red. It is an Umbellatum-Dauricum seedling which the experts consider the best of its color in upright cup-shaped lilies. This is a new variety, offered for the first time this year. Its brilliant blooms will make a gorgeous display in the border. The plants are stocky and sturdy, 1½ to 2 feet tall, the flowers nicely placed. The blossoms are large, wide open with long petals narrowing to a sword shape at the tips. I'm sure you will like this new lily. June flowering. PD 4 inches.

**REDBIRD-671**-A striking hybrid, medium dark red with touch of Tigrinum rose and spotted darker. The blooms are large, half reflexed, held facing outward, up to 16 on a stem. Stalk is about five feet tall, straight and strong. Redbird blooms for about three weeks in late mid-summer after many others are past. Its late season of bloom and long flowering period make it well worth while. PD 5 inches.

RED BIRD



# New Hybrid Lilies

Here's probably the most startling offering of new hybrid lilies ever made. They are a major and sensational advance in the breeding of garden lilies, offering not only beauty but a degree of vigor, ruggedness and endurance almost unbelievable. All have been given rigid tests under varying conditions and we believe they will prove themselves in practically all parts of the country.

Most of them are of *Tigrinum-Umbellatum* parentage, selections from thousands of seedlings with careful regard to every factor that makes a good lily. They were produced by the Oregon Bulb Farms, almost in the shadows of Mt. Hood, in what is probably the largest lily hybridizing program ever made.

These new hybrids are being introduced on a comparatively small scale and only a limited number of bulbs are available. We believe all of them have what it takes to be top ranking garden lilies. All will succeed under a wide variety of conditions but the better you prepare the soil and look after their simple needs, the more rewarding the results. They will tolerate full sun or partial shade, the latter preferred where summer suns are really hot.

**PAGODA**-885-An upright, wide open lily with six to eight or more blooms well placed on the sturdy stems. They are orange-chrome or marigold-orange in color with a height of three to four feet or more. This lily seems to be a "natural" for large flower arrangements.

**CAMPFIRE**-886-Here's a brilliantly rich, deep, fiery red lily. The few spots are maroon-red and hardly noticeable. Petals are rather narrow and pointed giving it a "different" and distinctive look. Height three to four feet. These upright lilies with their superior quality have a distinct place in the garden where they can produce mass color effects of great brilliance.

**ENCHANTMENT**-887-Patented. (May be propagated commercially only under special license.) This is one of the most beautiful of all these new lilies. Its color is a vivid nasturtium-red, full of life and brilliance. It stands out prominently as far as the eye can see, an upright lily with many well formed blooms and excellent habits. It forms numerous bulbils in the leaf axils and has proven a fine seed parent. Many who have seen this lily in the field consider it one of the finest new lilies of the century.

VALENCIA



PAGODA

**BONANZA**-888-This is the fourth and last of the new upright lilies. It is a beautiful clean orange-yellow with very slight spotting. The blooms have a wonderful smooth texture, a real quality lily. Height three to four feet.

**FIREFLAME**-889-This is a short, sturdy lily, ideal for the foreground in the hardy border or for growing in pots. The color is a solid mahogany-red, slightly spotted black or deep maroon. The blooms are neither upright nor pendant, but face outwards, looking straight at you. It is a large lily with broad heavily textured petals. It carries eight or more flowers to a head with the buds opening over quite a long period. Without question, this lily has a great future.

**PARADE**-890-Another outward facing lily, this one a rich yellow-orange with a stripe of burnished gold down the center of each petal, and heavily spotted with minute black or maroon dots. A gorgeous lily with its horizontal flowers and wide petals making a gorgeous show. Its 12 to 15 or more flowers are well spaced with plenty of room for each one to develop fully. Parade sparkles in the sun; a great favorite with everyone who has seen it.

**SERENADE**-891-This one blooms a little later than the rest of the group, a good clean and clear orange. Height two to three feet with large outfacing blooms. An ideal lily for massing in the border or pot culture. It is a lily of fine proportions, stems very sturdy and like all the rest of this group, very resistant to all lily diseases and pests.

**VAGABOND**-892-A distinct salmon-orange of a most unusual shade. The enormous flower faces outward and its wide open bloom lights up the entire garden with its brilliance. In the trials this lily has taken highest honors. No description can do it justice. This whole group is so outstanding that mere words fail when we try adequately to portray their good qualities. Vagabond is a truly fine lily worthy of a place in any garden.

**VALENCIA**-893-This is a lily with a lovely soft orange to rich yellow coloring, brilliant, clear and sparkling. The very large, flat opening flowers have a slight midrib of coppery gold and a few maroon dots spot the petals. Altogether it is a stunning flower, a worthy companion to the others on this page of "NEW" lilies.

FOR PRICES SEE PAGES IN CENTER OF CATALOG



*A New Book!*

# "SUCCESS WITH LILIES" IN THE HOME GARDEN

*By Romaine B. Ware*

If I could sit down with each of you and talk over the problems of growing lilies in your gardens I'm sure you would think of countless questions to ask. And, quite likely many of them would stump me but I'd do the best I could. And so it was in writing this little book. Thousands of you have written me, asking about this and that in connection with growing lilies and in as far as possible I've tried to answer your letters. But the writing of hundreds of letters has grown to be a heavy burden and much as I would like to do it, adequate answers are impossible.

This little book is an attempt to answer your questions adequately in as far as it is possible to do so. It is a how-to-do-it book, telling the how, when and where of lily planting, soil preparation, choosing varieties, winter care, watering, feeding, a few pages on diseases and a wealth of other information. I know there will be some questions unanswered as it was impossible to think of everything, but if you will study it carefully, your chances of success with lilies will increase many fold.

Lilies, the most of them, are not really difficult, BUT, they do demand a bit more knowledge than it takes to grow zinnias or marigolds. And I'm sure you will agree with me that lilies are worth a little more effort than ordinary flowers require. You can grow a goodly variety of them in the average garden and if you do so, your cup of joy will overflow because you will look on them with a thrill of achievement and your garden will become famous.

This little book is priced so reasonably that every customer, even if they grow but a few lilies, can afford to own it. **Cloth bound for \$1.00 or paper bound 50c.** It is my sincere wish that each of you will send for a copy and maybe an extra one for your neighbor who should also grow a few lilies. The indescribable joy of success with these aristocrats of the garden is almost beyond imagination but it is yours if you wish it and are willing to learn the answers.



GRENADIER

**GRENADIER HYBRIDS—365**—This is the first offering of this new strain, a cross of *Maximowiczii* Wadai and *Dauricum* Wilsoni. Grenadier (True) will not be on the market for several years. It was awarded a First Class Certificate by the Massachusetts Horticultural Society in '46. These hybrids we are offering are from a group of selected clones from the same cross which are practically the same in color and form as the true Grenadier. The clones are described as shades of Chinese coral, heavily spotted garnet brown. The blooms are large, held horizontal to the stem and are somewhat recurved at the tips. Height 3 to 4 feet. PD 4 inches. Early July blooming.

## Planting and Care of Lilies

Only the major essentials can be covered in this limited space so I earnestly suggest you send for my booklet described above. Whether you plant a dozen lilies or several hundred, "SUCCESS WITH LILIES" will be invaluable.

In the description of each variety I have tried to give the correct planting depth and requirements as to sun or shade. These should be followed carefully. Depths should be varied as much as 25% in very heavy or very light soils. That is 4 inches in average soils would be five in light soil and only three in heavy. Using judgment in this respect will pay well.

Good drainage is vital. Practically no Lilies will thrive in wet soggy soils. If yours is heavy and poorly drained, excavate two to three feet deep, fill bottom six to twelve inches with gravel, crushed rock or similar material that water may drain readily. Then lighten the soil by adding a third to a half by bulk of sharp sand and peat moss or leafmold. Old compost is valuable also. Good soil for Lilies has been described as "frothy," a most apt description. It should be loose and very friable. In soil the least bit heavy, plant in a little pocket of sand, above, around and beneath the bulb. "Frothy" soil allows air to penetrate, this aids bacterial action, a factor highly important to soil fertility.

The best fertilizer is bone meal and potash—wood ashes are fine when mixed with the soil. Avoid ordinary commercial fertilizers as they are inclined to burn the roots. Good compost is excellent. Leaf-mold soils are the natural habitat of many Lilies.

Plant your Lilies as soon as they arrive. They resent being kept out of the ground a moment longer than necessary. We ship our Lilies as soon as dug for this reason rather than hold the early ones until

the later maturing varieties are ready. This means thousands of extra packages mailed but we feel it worth the trouble.

Spring planting is not recommended as we do not carry bulbs over in storage. The late maturing varieties can be planted any time before the ground freezes. If a cold spell comes before the late maturing varieties are ready, prepare the soil ahead and mulch it heavily so that it will not freeze. Freezing solid the day after planting will not harm any of the hardy varieties and this applies to all except those specifically listed as tender. Dry leaves, straw or peat moss or even evergreen boughs can be used as a mulch to forestall freezing.

A new mulch is now available called vermiculite, a home insulating mineral product, available from building material dealers. It is probably the best of all. In addition to mulching, it has many other uses in the gardening field which can not be mentioned here. We will hear lots about this new product in the future.

All stem rooting Lilies, and this includes most every one we plant five inches deep or deeper, should have the soil replaced to a depth of four inches in an area eighteen inches in diameter each spring. The new soil you use to replace that which served the bulb the previous year should be enriched with thoroughly rotted manure or compost that it may feed the new stem roots which grow above the bulb and are so important to its growth and blooming. The time to replace this upper four inches of soil is just as soon as the stem breaks through the surface in the spring.

Cultivate around Lilies with extreme care as their roots are close to the surface. Better that the surface should be mulched to prevent weeds becoming established and to keep the surface cool and moist. The above mentioned vermiculite is ideal for this. The mulch, about two inches thick, can be applied early in the spring and left on throughout the season. Vermiculite is good protection from early frost damage.

# Delightful LITTLE COUSINS of the Lilies

## SPECIES TULIPS

**CAMASSIA Leichtlinii**-1162-A native Oregon bulb carrying star-shaped blue flowers on 3 foot stems, sometimes as many as a hundred buds to one stem. Easy culture and perfectly hardy. Plant in fall 3 to 6 inches deep, 6 to 8 inches apart. Seems to prefer a heavy soil and ample moisture in the spring.

### Hardy Cyclamen

**CYCLAMEN Napolitanum**-Hardy Cyclamen. Similar to the popular greenhouse varieties. Delightful in the shaded rock garden or front of a shady border. Thrive in open well drained soil containing plenty of leaf mold or peat. They must never want for moisture. Bloom late summer. Barely cover corms. 1170-Pink. 1172-White.

**CYCLAMEN Atkinsi**-1176-A lovely little dwarf gem with pinkish-lavender blooms very early in the spring. Ideal for the rock garden in partial shade. Same culture as above.

**CYCLAMEN Repandum**-1173-A spring flowering species blooming a bit later than Atkinsi, deep pink in color and in full foliage when the blooms open. A dwarf little gem having very small corms, which produce lovely sheets of color in moist shady spots.

**DICTAMNUS, The Gas Plant**-An old-fashioned perennial, once established in your garden will thrive several generations. The ashlike leaves are delightfully fragrant and the flowers, freely produced, have tiny glands secreting a resinous volatile matter, which may be ignited in the evening on hot days without damage to the plant.

**Dictamnus Fraxinella caucasicus**-1020-Rosy pink. June and July. Prefers a deep rich loamy soil. Full sun. Once planted avoid disturbing roots. An extremely interesting subject for the hardy border.

**Alba**-1021-The white form of the above. Fine and long lasting for cutting.

### FRITILLARIA

Another woodland bulb with drooping or nodding flowers often resembling small lilies. Lovely for naturalizing or the rock garden where they may be undisturbed for many years.

**Meleagris Aphrodite** - 1211 - A fine, strong growing white variety.

**Meleagris Artemis**-1212-Grayish-purple chequered. Very fine and unusual.

**Meleagris Charon** - 1213 - Very dark purple, almost black.

**Meleagris Poseidon** - 1214 - Whitish, chequered purple. Very large blooms on 6-inch stems.

**Meleagris Saturnus** - 1215 - Flowers pinkish, chequered. Rare.

**Thunbergii**-1204-A graceful, distinct species, creamy white, veined green with as many as ten blooms to a plant. Partial shade. 1 1/2-2 feet.

**INCARVILLEA Grandiflora Brevipes**-1255-The Trumpet Flower. A comparatively little known perennial of striking beauty for the sunny border. Rose-pink flowers in large trusses on 18-inch stems.

Tulip species, mostly from Southern Europe and Asia, enjoy dry, sun-baked locations where little moisture reaches them during the summer.

They are beautiful and interesting, not at all like the usual garden Tulips. Many are quite dwarf but all have charm and individuality. Plant them in the dry rock garden or any warm nook in little groups where they will enliven the early garden picture. You will like them, I'm sure.

### A MAMMOTH TULIP

**Fosteriana Red Emperor**-1310-A magnificent variety, with huge vermilion-scarlet well rounded blooms. Has a handsome black and yellow bordered base. Among the world's largest tulips, tall and especially welcome as it is early, in bloom with the Daffodils.

### GROUP A

**T. Acuminate**-1300-Either yellow or pink.

**Hageri**-1312-Bronze scarlet. Striped green on the outside.

**Fosteriana Princeps**-1309-Very fine large red flowers on short stems. Excellent in the rock garden.

**Ostrowskiana**-1303-Elegantly reflexed red blooms on slender stems.

**Linifolia**-1315-A charming species for the rock garden with small scarlet-vermilion blooms with a black base.

**T. Australis**-1302-Yellow, reddish outside.

**Kolpakowskiana**-1314-Yellow, often red or purple outside.

**Persica**-1336-One to three yellow blooms. Rare.

**GALTONIA Candicans (Summer Hyacinth)**-1240-A lovely summer-flowering bulb for your July-August border among the lilies. The two to five foot stems carry up to 20 or more pure white bell-shaped flowers. An imposing plant against a dark background. PD 6 in. Sun or part shade, rich moist soil.

### MUSCARI-Grape Hyacinths

One of the indispensable blues of the early spring garden. A long-lived, easily established bulb, delightful in masses, either in sun or shade. Naturalizes well in the wild garden.

**Armeniacum**-1264-Early Giant. Deep cobalt blue with a distinct white rim. Many spikes with flowers larger than Heavenly Blue.

**Comosum plumosum**-1266-The Feathered Hyacinth. Fine feathered plumes of violet colored filaments in May. Unusual and fascinating.

**Muscari Heavenly Blue**-1265-Deep cobalt-blue, very fragrant. The best variety for mass planting, opening about the same time as Crocus.

**SCILLA Bifolia**-1284-A blue with some white and reddish flowers. Wheel or star shaped, mostly nodding. A seldom offered variety.

**SCILLA Peruviana**-1283-This is a rare variety with purple to reddish, sometimes white flowers on 12 inch stems. Stock is limited.

### A CHARMING TULIP

**T. Clusiana**-1304-One of the daintiest of all tulips, medium size blooms on 15 inch stems, white with crimson exterior and a dark blue base. Plant them in clumps of a dozen for lovely effects.

### GROUP B

**Eichlerii**-1306-Crimson scarlet, yellow and black center.

**Eichleri Excelsa**-1307-An improved form with very large crimson flowers.

**Marjoletti**-1316-Light yellow, edges red.

**Sylvestris**-1320-Rich golden yellow, fragrant.

**Turkestanica** - 1324 - Small star - shaped, white. Several on a stem.

**Chrysantha**-1230-Bright yellow, medium size.

**Kaufmanniana** - 1332 - A spreading white bloom, back of petals red.

**Kaufmanniana Elliott**-1333-White, exterior very bright red. A very early red of good size.

**Kaufmanniana Primrose** - 1331 - A light primrose yellow, yellow center.

**Kaufmanniana Gaiety**-1335-A very dwarf, creamy-white bloom that seems to rest on the leaves. Charmingly different.

**Oculus Solis**-1301-A tall variety with large bright red flowers, large base black with yellow margin. Very showy.

**Praestens Tubergens var.**-1319-An early dwarf, orange-scarlet, two to three flowers on each stem. Brilliant for massing.

**Praecox**-1338-Very early, red or scarlet with purplish bottom.

**Retroflexa**-1340-Large bright crimson.

**Tarda (Dasystemon)**-1322-Small white and yellow, several to a stem.

HARDY CYCLAMEN



FOR INDEX AND PRICES SEE PAGES IN CENTER OF CATALOG

## Micronized Copper for Botrytis Control

If you've not tried this new spray (we introduced it in '46) for the control of this bothersome lily disease you should obtain a supply at once. Botrytis destroys the lower leaves of lilies and sometimes entire stems during humid weather. Micronized Copper with 101 Spreader was developed here in the Northwest where millions of lilies are grown and has proven almost 100% control. Unlike the commonly used bordeaux, it will not burn the tenderest seedlings. It adheres even through heavy rains, keeps well in mixture and is very easy to clean out of your sprayer.

Botrytis, despite reports to the contrary, is not necessarily fatal to lilies. It may destroy the foliage but it does not attack the bulb, nor is it carried by the bulb and it does not winter over in the soil. Repeated tests have proven that plantings affected one season may be entirely healthy the next but loss of the foliage may weaken the bulb and threaten its survival. So be prepared to promptly combat botrytis when it first puts in its appearance. This spray is preventative rather than curative.

This new improved Micronized Copper and Spreader is all you need to combat botrytis but be sure you have it on hand BEFORE it is needed. A delay of but a few hours can make a great difference in results when it is needed.

This Micronized Copper and Spreader can also be used wherever you would use the old fashioned bordeaux and with much better results. It does not leave unsightly stains on foliage like the latter.

We offer this spray combination in two sizes as follows:

### TRIAL SIZE

One pound of Micronized Copper and four ounces of the Spreader (enough to make 25 gallons), shipped postpaid for... **\$2.75**

### ECONOMY SIZE

Four pounds of Micronized Copper and one pint of the Spreader (enough for 100 gallons), **Express Collect** . . . . . **\$4.25**

If desirable you may add nicotine sulphate (Blackleaf 40) to control aphids at the same time at the rate on an ounce to 25 gallons. Aphids are the spreaders of lily mosaic and should definitely be controlled wherever lilies are grown. Both Copper and Spreader keep perfectly, so if you do not use it all this season you will be ready for next year.

### We appreciate these!

Miss M. A., Atlanta, Ga. "My package arrived today and I am very much pleased with my purchase. Your packing is just about perfect."  
H. M., Palo Alto, Calif., "Received my Lily bulbs a few days ago and have never received nicer bulbs from anywhere, and so perfectly packed."

L. B. G., Oakland, Calif., "Your bulbs are the finest we ever had—they came so well packed and I like the way you sent them, as they are dug, instead of all in one order."

**If you think Lilies may be difficult—**  
Mrs. L. N. L., Ellicott City, Maryland, writes. "But this year, without servants, my little garden had to look after itself to a large extent and I found out the value of Lilies."

If you make them happy, they stay with you for many years. Who could ask for more entrancing guests?

## Iris Kaempferi---RAINBOW IRIS

I've never been able to understand why more gardens do not use these magnificent Iris more freely. They offer, without question, one of the most gorgeous splashes of color in early summer. Give them a spot that can be kept moist from early spring until after blooming. Avoid all lime in the soil and feed sparingly with liquid manure as buds begin to form. They reward you handsomely with huge blooms beautifully held above graceful foliage. Plant in masses or borders, group them around your pool and you will have pictures long to remember. These varieties are an extra fine strain, far superior to those commonly offered. They come from the private garden of a west coast collector. Some customers have inquired if these Iris ever had Japanese names so I'm adding them. Personally I've always disliked these practically unpronounceable names and believe most home gardens feel the same.

**BLUE POOLS**—1700—Chitose-no-homare. A very large six petaled double bloom, deep ultra-marine blue. One of the handsomest of all.

**BLUE GLORY**—1703—Hisakata. Immense double midnight blue with gold highlights. Very late flowering. Gorgeous and fast growing.

**CRIMSON GLOW**—1712—Ten-no-hagaromo. A very large single, rich glowing crimson, one of the reddest of all. Truly spectacular.

**DEEP SHADOWS**—1715—Karaginu. A big 10 inch flower, royal purple with gold highlights. One of the finest doubles in this color.

**GIANT GLORY**—1720—Midoroki. A 12 inch bloom under ideal conditions. A rich plum purple, violet center. Beautifully ruffled.

**IMPERIAL GEM**—1728—Kuruma-dome. A pure white with narrow crimson edge, beautifully crimped. A large double exquisitely formed.

*"Iris Kaempferi takes the stage with brazen flourish of trumpets; there is nothing like it in the garden for arrogance, for subtlety, for obviousness, for sheer insolence of beauty."*  
-Reginald Farrer, in "Alpines and Bog-Plants."

**NOTE:** See page 18 for a Special Offer of these beauties.

**FOR INDEX AND PRICES SEE PAGES IN CENTER OF CATALOG**

IRIS KAEMPFERI—RAINBOW IRIS





# HEMEROCALLIS

## Day Lilies

These not-too-distant relatives of the Lily are invaluable in the hardy border not only for their profusion of lovely blooms which continue over a long period but for their excellent foliage as well. Succeeding in either sun or part shade, dry or moist soil, they are excellent companions for numerous lilies. Many delightful combinations are possible. Our stock of Hemerocallis, grown here in the ideal climate of the Willamette Valley, is exceptionally vigorous. A good combination would be Hemerocallis Hyperion with Liliun Longiflorum Estate directly back of it and Tenuifolium in the foreground. Or try Hemerocallis Mrs. W. H. Wyman, a late bloomer, with the late L. Formosanum back of it and L. Elegans in the foreground. There are countless combinations possible either to bloom together or to provide continuing color in a definite spot.

### HEMEROCALLIS--*Hyperion*--1470

Hyperion is a hybrid between Hemerocallis Sir M. Foster and H. Florham. The fine citron-yellow blooms are produced in profusion on 3½ foot stems and its graceful arching masses of foliage are an excellent foil for them. Horticultural experts consider this variety one of the finest of the color. The Royal Horticultural Society of Great Britain gave it their Award of Merit. As a cut flower it opens well in water and has a delightful fragrance. Perfectly hardy in any soil, sun or shade. Blooms July-August.

**GEO. YELD**—1432—Lovely buff, apricot and terra-cotta blended. A handsome vigorous grower, very free flowering. August.

**RAJAH**—1464—A delicate orange, veined red with garnet brown eye. A striking plant in full bloom. 3½ feet tall. June-July.

**BAGDAD**—1454—Rich coppery brown and red over orange. A brilliant show in the June border. Fine for cutting. Vigorous free blooming.

**LEMONA**—1446—Delicate pale lemon-yellow, flowering profusely on 4½ foot stems. Very large blooms similar to an Oriental Iris.

**MRS. W. H. WYMAN**—1450—A lovely pale glistening lemon-yellow on four foot stems. Long blooming season, very free flowering. One of the latest of the Hemerocallis to bloom beginning in August, often continuing into September.

### HEMEROCALLIS--*Fulva Rosea*

#### *Clon Rosalind*--1460

A wild form from the Orient. A beautiful old-rose shading to a golden yellow center on a tall graceful stalk. Blooms June-July. Height 3½ feet. We have a fine stock of this.

### Special No. 6--HEMEROCALLIS

One root each of five varieties of Hemerocallis (our selection) including the famous Hyperion, postpaid \$2.50.

### HEMEROCALLIS--*Sonny*--1468

A charming variety. Petals delightfully recurved, heavy firm textured. Color a lovely light yellow, iridescent in the sun. Free flowering. July-August. Height 3 feet.



MATILIJIA POPPY

## Matilija Poppy

"ja" pronounced "ha"

**MATILIJIA Poppy**—1475—A gorgeous plant in full bloom. A western American native perennial with a profusion of big five to six inch crinkly crepe-paper-like blooms, pure glistening white with big golden-orange centers. Established plants send up three to a dozen six to eight foot stems with silvery or light bluish-green foliage, each one with up to two dozen beautiful fragrant blooms. Starts early in the spring, growing rapidly.

It will thrive in the hottest, driest, poorest soil you have or in any average soil. Summer irrigation is not necessary once it is established though ample watering will keep it green and attractive longer. Demands good drainage. Few if any pests or diseases bother it. Generally hardy to 10 above zero and with plenty of protection will thrive most anywhere. Plant in late fall only and avoid disturbing in the spring. Matilija is very deep rooting. The plants should be set upright in the soil with the bud end about two inches below the surface.

Matilija makes a striking cut flower and lasts well in water. Cut just after flower opens. Blooms profusely in early summer with scattered blossoms till frost.

## AMARYLLIS---1560

### *Mammoth Hybrids*

This is the same fine strain that Miss Clark offered for so many years, the Mammoth Hybrids. The bulbs are all Oregon grown and come with roots intact. We supply them in mixed colors only and they can be had at most any time of the year. In the greenhouse they produce blooms well over eight inches in diameter. For winter flowering in the house or greenhouse, they are grand. On the medium size bulbs the supply is generally ample but stocks of the extra large size are limited.

The Mammoth Hybrid Amaryllis make ideal gifts for friends who like to grow flowers in the house. If you wish them shipped as gifts, please send a card to be enclosed. All bulbs are shipped postage prepaid.

**SPECIAL!**  
**EXTRA**

## **ANNUAL \$5.00 COLLECTION**

### **14 Hardy Lily Bulbs in seven varieties**

Beautiful lilies from early summer into fall producing gorgeous garden pictures you'll love. Two each of seven choice kinds for a long season of bloom. Shades of red, orange, yellow and white, including the Pink Showy lily, Speciosum Rubrum. No Regal lilies in this collection and all are different from last season's Special No. 7. Fresh dug, flowering size, each lot labeled, postpaid in October.

*Fourteen Fine Bulbs for \$5.00*

## **The Above . . . PLUS Special No. 15**

As a supplemental selection to the above we offer an additional 14 fine lily bulbs, all different from those in the \$5 collection above. They include a wide range of lovely shades and flower types, among them being the beautiful Auratum Platyphyllum, Bellingham hybrids, Longiflorum "Slocums Ace" and four others. This special is only offered in connection with the \$5 collection above and is not sold separately. We will ship the two above specials—28 bulbs in all, 14 different varieties, for \$10.95, postpaid. Catalog value over \$15.00.

**ROMAINE B. WARE — LILIES**  
**CANBY, OREGON**





# *Romaine B. Ware - Lilies*

C A N B Y , O R E G O N

Dear Friend:

If only it were possible to stop at your house and hand you this new 1949 catalog, there are doubtless numerous lily questions you would like to talk over. Your interesting letters have been most welcome but it is quite impossible to fully cover cultural details in a letter, no matter how lengthy. That's why I wrote the little book, "Success with Lilies in the Home Garden". You will find it fully described in the catalog. If, after reading it, you don't feel it is worth the price, we'll "swap" back. That's fair enough, is it not?

In this new lily catalog you will find practically every worthwhile lily available today. We believe it is the most complete selection offered anywhere. Wherever possible, prices have been reduced (sixty varieties cost less than last year). However, many expenses have increased including postage (a big item), now higher than ever before, and don't forget, we ship all bulbs postpaid.

As this is written, lilies here in the Northwest are growing rapidly, the finest I've ever seen. The unusually cold winter we had does not seem to have affected them. We did not expect it would, as, with few exceptions, all our lilies are perfectly hardy at zero or even well below.

Lily plantings in this area are expanding considerably but not as fast as the demand. More and more lily fanciers are learning that Oregon Grown lily bulbs, acclimated and fresh dug at the proper time, are far more sure of succeeding than are imported bulbs which sad experience has taught us are frequently diseased. Lily bulbs from overseas, often badly dried out and held over in cold storage for spring planting, even at their best, are far from being in prime condition.

And thanks a million for telling your friends about our lilies. Their cordial letters have been thoroughly enjoyed. Don't delay too long getting your orders in. Many varieties will sell out quickly.

Very sincerely,  
*Romaine B. Ware*  
Romaine B. Ware





SPECIES TULIP CLUSIANA (Page 28)

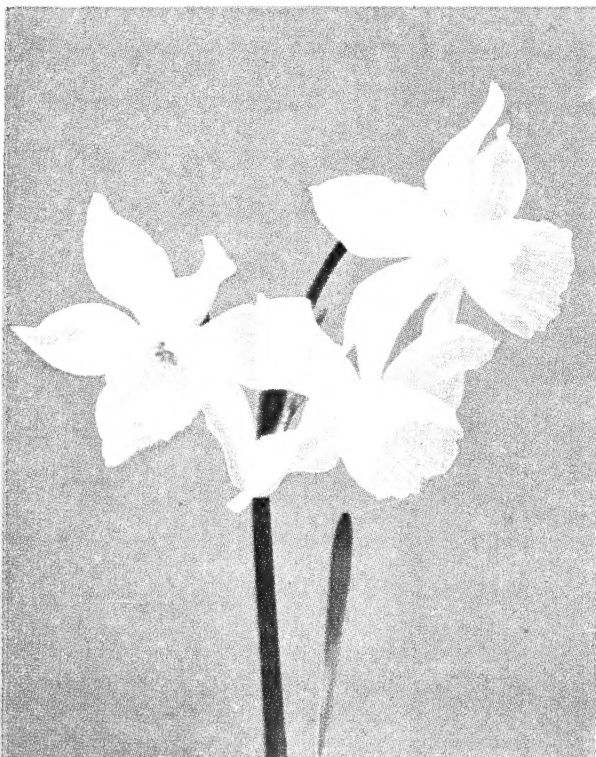
### Miniature Daffodils

**BULBOCODIUM Conspicuum**-N60-The Yellow Hoop Petticoat daffodil, a rich golden yellow, rush-like foliage. Height 6 inches. Blooms late February into early March; likes a sandy peat soil with fair amount of moisture in spring and but little in summer. No manure. A lovely little jewel.

**TRIANDRUS Albus**-N70-Angels Tears. Dainty and charming gems, lovely in rock gardens and beautiful as pot-plants. Semi-shade is best and a gritty, well drained soil. A well grown clump of "Angel Tears" will be the envy of your gardening friends.

**THALIA**-N54-An unusually exquisite flower, not large but delightfully different. Two or three lovely 2-inch blooms per stem, pure white. Beloved by all who see it, especially suitable for bouquets and corsages.

THALIA



# Daffodils

"Oregon Grown--  
Fresh Dug"

EXTRA SPECIAL!

## Daffodil Seedlings

Each spring for more than decade I've visited one of the world's leading Daffodil hybridizers here in Oregon. From fifty to seventy thousand new seedlings, grown each year, less than fifty are selected for further propagating. Present day standards for new introductions are so extremely high that nothing short of the very unusual is considered. The entire balance is sold as a Special Seedling Mixture. I've arranged to offer a portion of them and feel they are without doubt the grandest opportunity imaginable to secure truly fine varieties at a mere fraction of their real value.

Among them are many new pink Leedsii of indescribable beauty as well as lovely Triandrus hybrids, highly colored Barrii, Incomparabilis and huge Trumpet varieties. They are offered as a mixture at an almost ridiculous price.

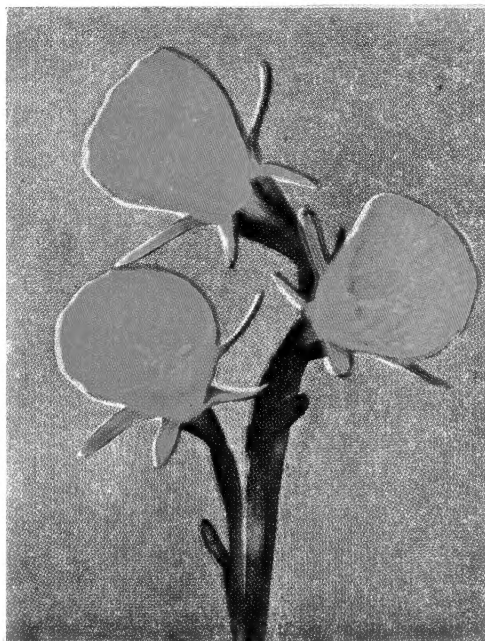
Friends for whom I secured some of these bulbs a few years ago tell me they simply clean up at flower shows, taking all the blue ribbons. I'm not surprised as many of these seedlings all but made the grade to be introduced at \$5.00 to \$25.00 per bulb.

For naturalizing, mass planting or the cutting garden, nothing could be finer. You may buy them in lots of 50, 100, 250 or more. No orders for less than 50 accepted.

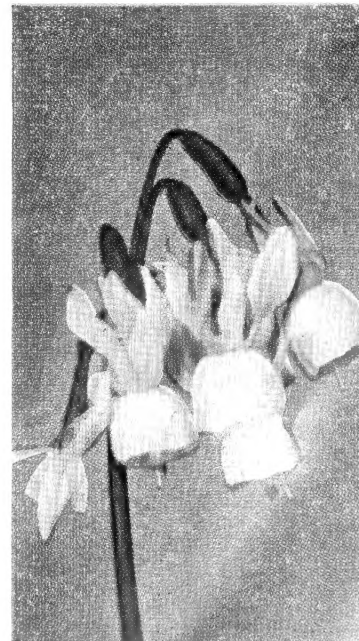
FOR PRICES SEE PAGES  
IN CENTER OF CATALOG

**NOTE:** ALL DAFFODILS EXCEPT THESE  
ARE DISCONTINUED.

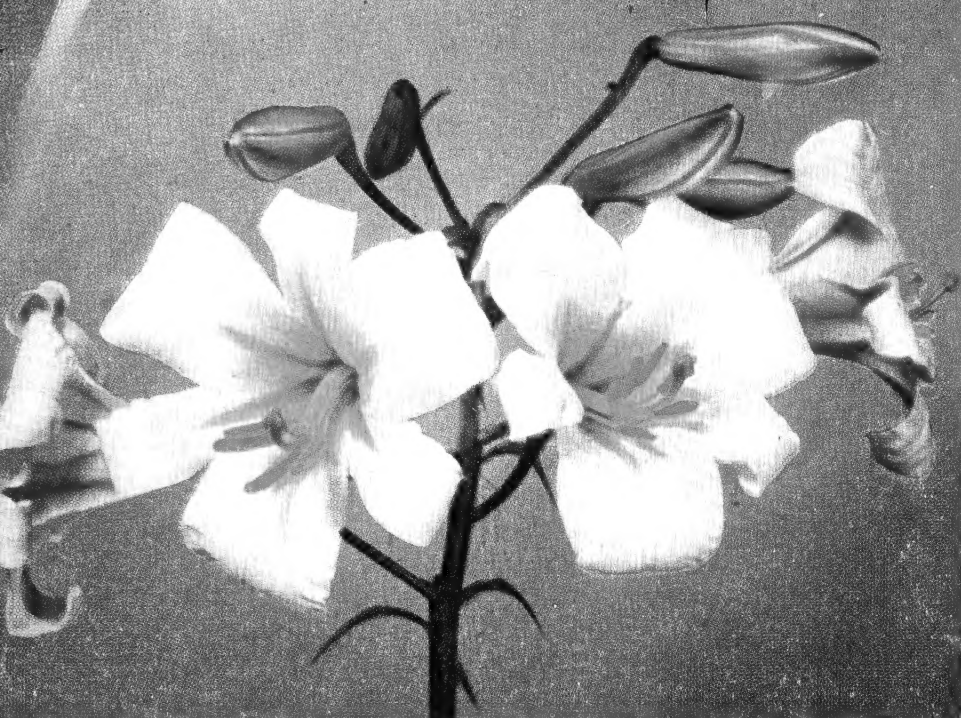
BULBOCODIUM CONSPICUUS



TRIANDRUS ALBA







REGALE LILY

Try planting drifts of them against a fence covered with pink climbing Roses; here and there in the foreground use a few clumps of clear blue Oriental Iris (*Iris Kaempferi*) and make a ground-cover planting of lovely pink flowered *Gypsophila Repens*, Rosy Veil. There are many ways to use quantities of Regals in your garden and don't make the mistake of thinking because of their ease of growth, they are not desirable. Regals are deservedly the most popular Lily in the world today, truly the Royal Lily.

**REGALE-680**-No other lily equals the Regale in characteristics that make a good garden plant. Height 3 to 5 feet. Planting depth 6 inches. June-July. Regale produces Jumbo bulbs when properly handled and we usually are able to supply a limited number. They are also offered in large, medium and flowering size. The flowering size have all bloomed in the fields and may be expected to bloom the first year. Shipment October to March but **PLEASE ORDER EARLY**.

## Regal Lilies for Mass Planting

Please note the special prices for mass planting of Regals in the price list. In quantities of 25, 50 or 100, they are a real buy. For cutting or mass effects, few other garden flowers will give the truly spectacular results. Order them in quantity and enjoy their lavish beauty. Special prices by request on quantities of 500 or more.

### REGALE--*Pure White*

**REGALE, Blondie-681**-The White Regal Lily. This is white not only on the inside but outside as well. Blooms same time as the usual Regal but is distinctively different. Has every good trait of the species and bids fair to become popular when better known. Culture same as type.

### TIGRIDIA--*Tiger Flower*

Aptly called "Captive spirits of the Aztec Sun-Dancers". Color! Gorgeous splashes of it from summer till frost! Tigridias are one of the most brilliant and long flowering bulbous plants for the summer garden. Offered in separate colors and mixed. Culture same as Glads. Spring delivery. They make the best display planted in groups of a half dozen or more.

**White-1550**-Delightfully airy blooms, graceful and brilliantly spotted.

**Yellow-1552**-A very rich yellow.

**Rose-1554**-A lovely color.

**Mixed-1558**-A mixture of half dozen colors, a gorgeous show. Order by color and number.

No order for less than six of one kind.

FOR PRICES SEE PAGES IN CENTER OF CATALOG

"Most radiant, exquisite  
and unmatched beauty."  
—Shakespeare

## The Regal Lily

### Today's Most Popular Lily

If you have room for but one Lily let it be Regal. If you have room to mass a hundred Lilies, let them be Regals. Maybe you wonder why I suggest this when there are so many fine Lilies. Simply because the Regal gives such complete satisfaction and grows with the least care. Year after year it thrives and blooms, making garden pictures ever so satisfying.

Regal is a Lily to plant in quantity. Their cost is so moderate everyone can afford them and though others may be most intriguing, the beauty of the Regal is surely satisfying. Plant them by the dozen, in masses of 25 or more. Line them out in the cutting garden, your friends will enjoy a half dozen. The bulbs are so cheap you can afford to cut them with long stems even if the bulb does not survive. Leaving half the length of the stem when cutting will generally permit the bulb to live.

Picture Regals banked against an evergreen hedge, their great blossom heads, deliciously fragrant, make an unforgettable show. Against a gray stone wall or lining the garden path, their gracious beauty is ever welcome. Regals have an exotic quality to their beauty equal to that of any other variety, a quality that makes them welcome in most any setting. They enjoy full sun, thrive in light or heavy loam, with or without lime. They start early, so keep them mulched well in cold sections until frost danger is past.

### *Light Pink Regal*

**REGALE, Light Pink-682**-These are a selection from thousands of seedlings. They are shaded pink, not a pink like *Rubellum* or *Japonicum* but in the field they stand out as distinctly pink. Every bulb has flowered in our fields and has been tagged as light pink. They bloom at the same time as the regular Regals and are the same rugged constitution. Experience has indicated that they must be grown in acid soil, otherwise they show practically no pink tint. We have a limited stock of these, so **ORDER EARLY**.

TIGRIDIA

