

Historic, Archive Document

Do not assume content reflects current scientific knowledge, policies, or practices.



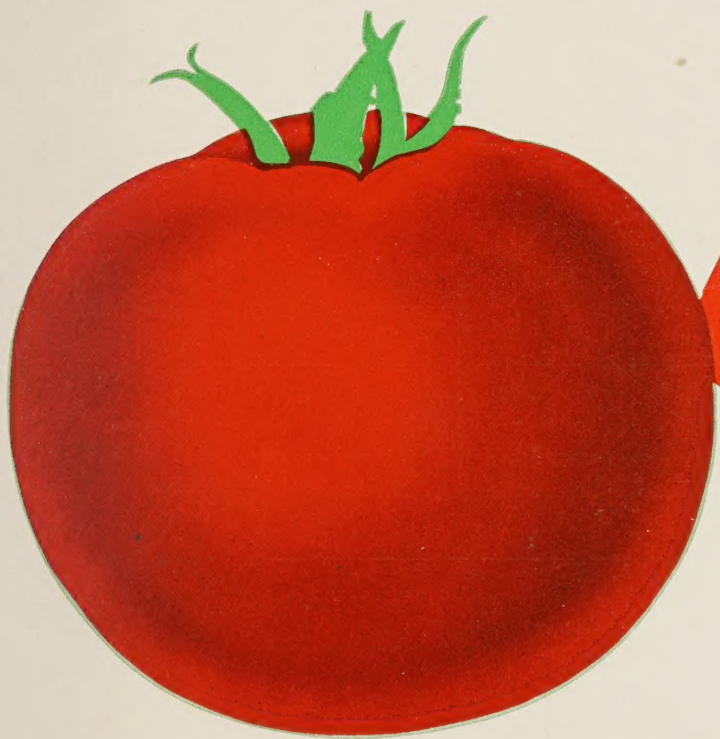
2,47

LIBRARY RECEIVED
★ JAN. 31 1950 ★
U. S. Department of Agriculture

1950

Market Gardeners

SEED ANNUAL



★ **Bokay Tomato . Certified**
86 DAYS FROM PLANTING TIME
TO SETTING SEE PAGE 29

WHOLESALE AND RETAIL

Andrews-Burri Seed Co.

505 WALNUT ST. • KANSAS CITY 6, MO.

Special Notice

We make a specialty of supplying Market and Home Gardeners with the best strains of seeds. We do not compete in prices with irresponsible parties, whose sole effort is to secure the lowest priced seeds, regardless of quality; such seeds are dear at any price. The first cost of seeds is insignificant, compared with time and labor that must be expended upon a growing crop. Quality is our first consideration, and the prices we offer are as low as first-class seeds can be sold for. It is our endeavor to maintain the prices quoted in this Catalog, but they are subject to change without notice.

Our policy is actuated by the personal interest we have in the results you get from our goods. There are many conditions over which the buyer or seller has no control, but we want you to know that it is our aim and desire to please every customer. The satisfied patron is the best advertisement. This is the personal element in our definite policy—your guarantee for fair dealing.

How to Order and Remit—Read Carefully

Use the order sheet in Catalog if possible. Write your name, post office, shipping point or nearest express office, your county and state.

Prices quoted in this List include transportation charges except on insecticides, fertilizers and implements, which will be shipped at buyer's expense.

In ordering, please mention whether wanted by mail, express or freight. We guarantee safe and prompt delivery on every order.

We make no charge for boxes, bags, packing or drayage.

If there is only a slight difference between freight and express charges, we will send by EXPRESS. Remittances should be made by POSTAL MONEY ORDER, EXPRESS MONEY ORDER, CERTIFIED CHECK, or REGISTERED LETTER.

C. O. D. ORDERS:—If goods are to be sent C. O. D. or SIGHT DRAFT BILL OF LADING ATTACHED, 25 per cent of the amount must accompany the order.

Write for special prices on large quantities.

Express and freight rates are cheaper in large quantities. We make no charge for delivery to depot or express office.

STANDARD GUIDE FOR PLANTERS

TIME REQUIRED FOR MATURITY OF DIFFERENT GARDEN CROPS RECKONED FROM DAY OF PLANTING

| | Days | | Days | | Days |
|---------------|------------|-----------------|------------|------------------|------------|
| Beans—String | 45 to 65 | Corn | 70 to 96 | Radish | 25 to 35 |
| Beans—Shell | 65 to 75 | Egg Plant | 90 to 130 | Squash—Summer | 60 to 65 |
| Beet—Table | 60 to 75 | Lettuce—Heading | 70 to 85 | Squash—Winter | 100 to 115 |
| Beets—Stock | 100 to 120 | Melon—Water | 90 to 110 | Tomato | 110 to 120 |
| Cabbage—Early | 65 to 105 | Melon—Musk | 85 to 110 | Turnip | 50 to 70 |
| Cabbage—Late | 100 to 120 | Onion | 100 to 115 | Spinach, average | 45 to 55 |
| Cauliflower | 60 to 65 | Pepper | 140 to 150 | | |

QUANTITY OF SEED REQUIRED FOR A GIVEN NUMBER OF PLANTS

| | Plants | | Plants | | Plants |
|-------------|--------------|-----------|-------------|----------|-------------|
| Asparagus | 1 oz. 800 | Endive | 1 oz. 3,000 | Thyme | 1 oz. 4,000 |
| Cabbage | 1 oz. 4,000 | Egg Plant | 1 oz. 2,000 | Sage | 1 oz. 1,000 |
| Cauliflower | 1 oz. 4,000 | Lettuce | 1 oz. 3,000 | Savory | 1 oz. 2,000 |
| Celery | 1 oz. 15,000 | Pepper | 1 oz. 1,000 | Marjoram | 1 oz. 1,500 |
| Leek | 1 oz. 1,500 | Tomato | 1 oz. 3,000 | Rhubarb | 1 oz. 500 |

NUMBER OF PLANTS TO THE ACRE AT GIVEN DISTANCES

| Dis. apart | No. Plants | Dis. apart | No. Plants | Dis. apart | No. Plants | Dis. apart | No. Plants | Dis. apart | No. Plants |
|------------|------------|------------|------------|------------|------------|------------|------------|------------|------------|
| 12x 1 in. | 522,720 | 24x 1 in. | 261,360 | 36x 3 in. | 58,080 | 48x24 in. | 5,445 | 10x 1 ft. | 4,356 |
| 12x 3 in. | 174,240 | 24x18 in. | 15,520 | 36x12 in. | 14,520 | 48x30 in. | 4,356 | 10x 6 ft. | 726 |
| 12x12 in. | 43,560 | 24x24 in. | 10,890 | 36x18 in. | 9,680 | 48x36 in. | 3,630 | 10x10 ft. | 435 |
| 16x 1 in. | 392,040 | 30x 1 in. | 209,088 | 36x24 in. | 7,260 | 48x48 in. | 2,723 | 12x 1 ft. | 3,630 |
| 18x 1 in. | 348,480 | 30x 6 in. | 34,848 | 36x36 in. | 4,840 | 60x36 in. | 2,901 | 12x 6 ft. | 736 |
| 18x 3 in. | 116,160 | 30x12 in. | 17,424 | 42x12 in. | 12,446 | 60x48 in. | 2,178 | 12x12 ft. | 302 |
| 18x12 in. | 29,040 | 30x16 in. | 13,068 | 42x24 in. | 6,223 | 60x60 in. | 1,743 | 16x 1 ft. | 2,722 |
| 18x18 in. | 19,360 | 30x20 in. | 10,454 | 42x36 in. | 4,148 | 8x 1 ft. | 5,445 | 16x16 ft. | 170 |
| 20x 1 in. | 313,635 | 30x24 in. | 8,712 | 48x12 in. | 10,890 | 8x 3 ft. | 1,815 | | |
| 20x20 in. | 15,681 | 30x30 in. | 6,970 | 48x18 in. | 7,790 | 8x 8 ft. | 680 | | |

ANDREWS-BURRI SEED CO.

Local and Long Distance Telephone Victor 5263

Store and Office, 505 Walnut St.

KANSAS CITY 6, MISSOURI

Keep this Catalog for RUSH ORDERS

When You Need Seeds Rushed . . . Use Cards in Back of Book



Dear Customer:

Introducing to you in this catalog through his picture along side of mine is Mr. W. F. Huebner. He is our new associate in place of Mr. Burri, who has passed on.

Mr. Huebner is in perfect agreement with both Mr. Lesch and myself on our policy of supplying you with only the finest quality seeds to which you have been accustomed for the past quarter century.

We all expect to visit you personally as usual when in your territory.

With heartiest personal regards to the all of you and extreme best wishes for a prosperous New Year, we are

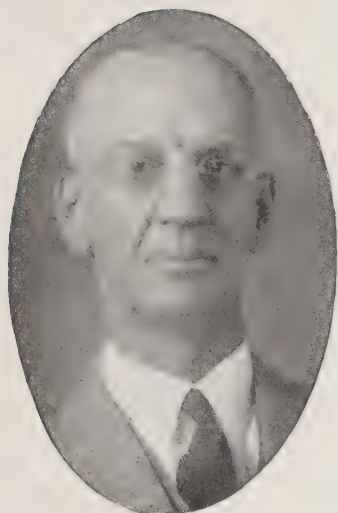
ANDREWS-BURRI SEED CO.

BY

C. C. Andrews

To Our Friends and Customers

WE BUILD THE ROAD . . . OTHERS
WILL MAKE THE JOURNEY



C. C. Andrews



W. F. Huebner

FOR MANY YEARS the bulk of our business has been with the market gardeners, supplying them with the best the market affords. We are constantly on the alert for new and better varieties. We have been fortunate in giving our trade many of the outstanding varieties of today and you can rest assured that we will constantly endeavor to give your needs our first consideration as to quality and service.

We specialize in quick service and pride ourselves in shipping your order the same day it is received. We have been doing this for years.

Prices Subject to Change Without Notice

DREWS-BURRI SEED COMPANY

WHOLESALE AND RETAIL

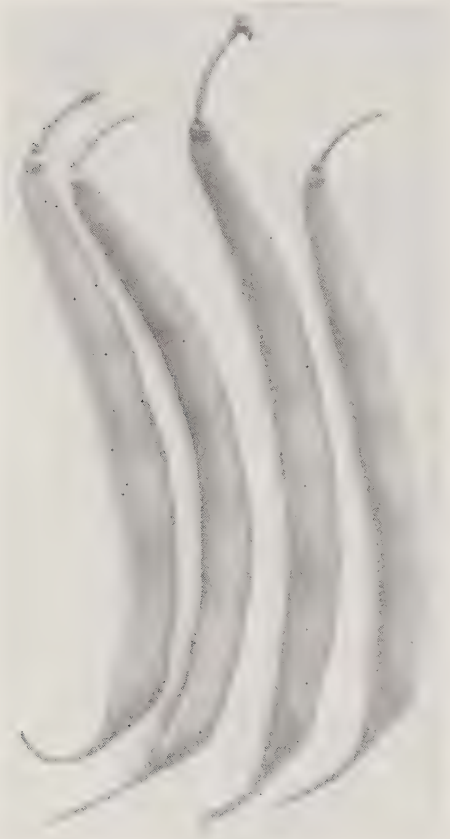
505 WALNUT STREET

KANSAS CITY 6, MISSOURI

LOCAL AND LONG DISTANCE TELEPHONE Victor 5263

ASPARAGUS

| One-half Pound at Pound Price | Oz. | ¼ Lb. | Lb. |
|-------------------------------|-----|-------|--------|
| Palmetto. | 15c | 50c | \$1.75 |
| Conover's Colossal | 15c | 50c | 1.75 |
| Mary Washington | 15c | 50c | 1.75 |



BLACK VALENTINE . . . STRINGLESS

DWARF GREEN-PODDED BEANS

One pound will plant 100 feet of row;
60 pounds will plant an acre.

PLENTIFUL—(New)—For many years Bountiful has been, by far, the leading flat-podded green dwarf variety. Plentiful, though 2 or 3 days later in maturing, has slightly thicker, darker green, and much longer, 8-inch straight pods of better flavor.

BOUNTIFUL—The best, heaviest yielding, flat-podded variety, with light green pods, 6½ to 7 inches long, stout, flat, somewhat curved, and absolutely stringless in clusters, making this the easiest one to pick. Very early, vigorous, and produces heavily.

FULL MEASURE—The fine stringless medium green pods are straight, 6 inches long, very fleshy, round, crease-backed, have no neck, show depressions around the Bean, and are tender. Follows Bountiful by a few days and is a heavy cropper.

TENDERGREEN—This matures early, with 6½ to 7-inch pods, quite slender, straight, and perfectly round. They are green, absolutely stringless, meaty and tender, maturing at same season as Full Measure.

BLACK VALENTINE—The original strain, with round, straight, slim pods, earlier than the Stringless strain, but having strings. It is very prolific.

BLACK VALENTINE STRINGLESS—This strain is becoming very popular in all sections. The 6-inch pods are round, quite straight, dark green and stringless. They are usually ready for picking in 55 days. A fine market variety.

BURPEE'S STRINGLESS—Very early, productive, hardy and vigorous, with dark green pods, 5½ inches long; straight, stout, round, and crease-backed. They are tender, brittle, and strictly stringless.

BEANS, LIMA, DWARF

FORDHOOK U. S. 242—Uniform—Heavy Yielding—Dependable—A new and really better lima bean for market. Developed by the U.S.D.A., this strain will set heavy crops of fine pods even under adverse conditions such as hot, dry weather. It yields more on the early pickings and the total yield for the season is greater. The pods are remarkably uniform—every one is good sized, nearly straight and closely filled with 3 or 4 choice, thick beans. The seed is a little smaller than our regular Fordhook, but the fine shape and size of pod holds up even on the late sets. We highly recommend this new strain to all growers, and particularly to those who have had difficulty growing good limas in the past. See prices on page 3.

FORDHOOK BUSH—75 days—Plants strong, erect, bearing pods in clusters of from 4 to 8. Pods measure 4 to 5½ inches long, and contains 3 to 5 large, green beans. Seed white.

HENDERSON'S (BABY LIMA)—65 days—Plant medium large, very productive. Small pods, 3 inches long, contain 3 to 4 green shell beans of very fine quality. Plants bear until frost.

POLE BEANS

KANSAS WONDER—A white seeded variety—a vigorous climber, very productive, pods medium green, 9 inches long and nearly round, flesh brittle, stringless when young. Can be used for snap beans, a good shipper, superior to the old Kentucky Wonder. If you are planting pole beans this year, don't fail to include Kansas Wonder Pole.

Plant Kansas Wonder and you plant the best.

DWARF WAX-PODDED BEANS

PENCIL-POD WAX—Very strong, vigorous, 15 inches high, and very productive. The pods are large, 6½ to 7 inches long, fully rounded, straight and deeply saddle-backed, golden yellow, stringless, brittle, and fleshy.

UNRIVALLED WAX—53 days—Immensely productive. Pods 5 to 5½ inches long, narrow, straight, stringless when young, and fleshy. Disease resistant. Excellent for shipping, making it ideal for market gardeners. Light tan seed.

ROUND POD KIDNEY WAX—52 days—Especially fine for home gardens and for canning. Plants of medium size, prolific. Pods 5½ to 6 inches long, round, fleshy, brittle, stringless, and of fine quality. Seed white with black eye, kidney shaped.

BEANS

DWARF OR BUSH—GREEN PODDED

| 25 Pounds at 100 Pound Price | Lb. | 5 Lbs. | 10 Lbs. | 100 Lbs. |
|--------------------------------------|-----|--------------|---------|----------|
| Logan | 60c | \$2.50 | \$4.50 | \$40.00 |
| Streamliner | 50c | 2.25 | 4.00 | 38.00 |
| Early Bountiful | 45c | 2.00 | 3.60 | 34.00 |
| Burpee's Stringless Greenpod. | 40c | 1.80 | 3.40 | 32.00 |
| Plentiful | 50c | 2.25 | 4.00 | 38.00 |
| Black Valentine, Old Type... | | Discontinued | | |
| French Horticultural (Romaine) | | OPEN | | |
| Full Measure | 50c | 2.05 | 3.70 | 35.00 |
| Tender Green | 50c | 2.05 | 3.70 | 35.00 |
| Stringless Black Valentine... | 45c | 1.90 | 3.50 | 33.00 |
| Landreth Stringless | 40c | 1.80 | 3.40 | 32.00 |

BEST DWARF YELLOW PODDED OR WAX

| 25 Pounds at 100 Pound Price | Lb. | 5 Lbs. | 10 Lbs. | 100 Lbs. |
|------------------------------|-----|--------|---------|----------|
| Currie's Rust Proof Wax.... | 50c | \$2.25 | \$4.00 | \$38.00 |
| Round Rod Kidney Wax.... | 50c | 2.25 | 4.20 | 40.00 |
| Pencil-Pod Wax | 50c | 2.25 | 4.00 | 38.00 |
| Golden Wax | 50c | 2.25 | 4.00 | 38.00 |
| Dwarf Unrivalled Wax.... | 50c | 2.25 | 4.00 | 36.00 |

BEANS, DWARF LIMA

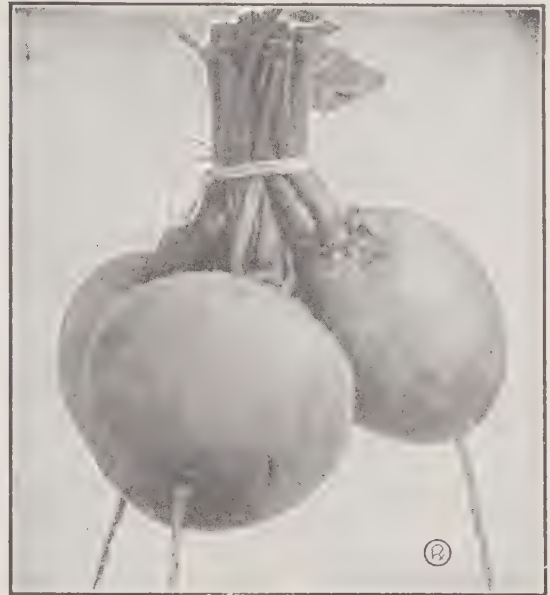
| 25 Pounds at 100 Pound Price | Lb. | 5 Lbs. | 10 Lbs. | 100 Lbs. |
|------------------------------|-----|--------|---------|----------|
| Henderson's Bush Lima | 40c | \$1.80 | \$3.50 | \$33.00 |
| Fordhook Bush Lima | 50c | 2.20 | 4.00 | 38.00 |
| Burpee's Bush Lima | 50c | 2.20 | 4.20 | 40.00 |
| Wood's Prolific | 40c | 1.90 | 3.60 | 34.00 |
| Fordhook 242 | 55c | 2.20 | 4.00 | 38.00 |

BEST VARIETY POLE BEANS

| 25 Pounds at 100 Pound Price | Lb. | 5 Lbs. | 10 Lbs. | 100 Lbs. |
|---|-----|--------|---------|----------|
| Kansas Wonder (Green Pod, one of the best)..... | 50c | \$2.40 | \$4.50 | \$40.00 |
| Kentucky Wonder or Old Homestead | 50c | 2.20 | 4.00 | 38.00 |
| King of the Garden Lima.... | 50c | 2.40 | 4.00 | 38.00 |
| Carpinteria | 50c | 2.50 | 4.20 | 40.00 |

BEETS . . . for table

GREEN TOP EARLY WONDER—An outstanding new selection of Early Wonder. Tops slightly taller than original strain. Foliage clean bright green which does not have the tendency to turn red or bronze when grown in cool weather. Roots nearly globe shaped; slightly flattened on top and bottom. Interior color deep purplish red zoned with lighter shade. Recommended for shippers and for home or market gardeners.



MATCHLESS

OUR NEW MATCHLESS BEET is a fine globe-shape variety for early bunching, as well as for main crop. There is no beet that is its equal in quality and fine appearance. In fact, it is perfect in every way. It is as early as the finest strains of beets known to us in our long experience of thirty years' dealing with the critical market gardeners. It is superior in shape and color with the extra advantage that its foliage is lighter green in color. The bulbs have small tap root, are smooth and much darker in color than most globe beets, both in and out. The flesh is rich, deep brilliant scarlet red without light zones, always sweet and tender. Matchless is an all-purpose beet, but especially fine to growers catering to the trade who demand quality and appearance.

ASGROW WONDER—Early and uniform. Attractive for market bunching with round to semi-globe deep red roots, small neck and tap root. Flesh dark red.

A & B SPECIAL CROSBY—Very early, uniform, smooth, real dark blood-red roots, round but slightly flat on top. Nice green bunching tops.

DETROIT DARK RED SELECTED—Smooth, uniform, almost-globe roots which cut dark black-red throughout. Green, red-veined tops. As the tops hold up well in hot weather it is specially suitable for late summer and fall bunching.

BEETS . . . for table

| | Oz. | ¼ Lb. | Lb. |
|--------------------------------------|-----|-------|--------|
| Asgrow Wonder | 15c | 40c | \$1.25 |
| A & B Special Crosby..... | 15c | 50c | 1.40 |
| Detroit Dark Red..... | 15c | 40c | 1.25 |
| Nutting's Gem | 15c | 50c | 1.50 |
| Light Columbia, Larger Tops..... | 15c | 50c | 1.40 |
| Crosby's Egyptian, Light Strain..... | 15c | 50c | 1.40 |
| Extra Early Flat Egyptian..... | 15c | 50c | 1.50 |
| Early Wonder, Select..... | 15c | 40c | 1.25 |
| Swiss Chard, Fordhook Giant..... | 15c | 30c | 1.00 |
| Matchless. | 15c | 50c | 1.40 |
| Early Wonder, Green Top..... | 15c | 40c | 1.25 |
| Early Wonder, Tall Top..... | 15c | 40c | 1.25 |
| Dark Red Crosby..... | 15c | 50c | 1.40 |
| Detroit, Short Top | 15c | 40c | 1.40 |

BEETS . . . Mangel and Sugar

Five Lbs. and Over 5c Less Per Lb.

| One-half Pound at Pound Price | Oz. | ¼ Lb. | Lb. |
|-------------------------------|-----|-------|--------|
| Mammoth Long Red..... | 15c | 35c | \$1.15 |
| Golden Tankard | 15c | 35c | 1.15 |
| Giant Half Sugar White..... | 15c | 35c | 1.15 |

PROPEGANO BROCCOLI

This is a specially selected strain of unusually high quality. The center heads are heavy, solid and of uniform, extra-large size and good dark green color. After they are cut out, the terminal heads which form on the side branches are large and compact and very attractive. Both types of head are tender and of delicate flavor.

BROCCOLI

| | Oz. | ¼ Lb. | Lb. |
|----------------------------------|-----|--------|--------|
| Italian Green Sprouting..... | 40c | \$1.00 | \$3.00 |
| Propegano | 40c | 1.00 | 3.00 |
| St. Valentine, extra select..... | 75c | 1.75 | 6.00 |
| Early Pearl | 75c | 1.75 | 6.00 |
| Decirco | 50c | 1.25 | 3.50 |

CABBAGE

GOLDEN ACRE—A very superior Danish-grown strain which we maintain at its high degree of uniformity by special selection. It resembles the old Copenhagen Market, but the medium-size firm heads, 4 to 5 pounds each, mature one week earlier than our Early Copenhagen Market. The dwarf, compact plants, with rather small frame, can be set closely to give a very heavy yield of first-quality heads. On yellows infested land, because of its earliness, it often matures and is fully marketed before the soil becomes warm enough for the disease to become active. This strain is easily worth the higher cost of the seed.

PRIDE OF DENMARK Cabbage makes fine, round, solid heads weighing from 3 to 5 lbs. each; 5 days ahead of any other variety. It will make money for the gardener and more friends for us. Except that it is earlier, it resembles the Golden Acre variety, and like Copenhagen it is not suited for storing, although it will keep in prime condition for at least 60 days after maturity. For an early crop, it has no equal.

GREEN ACRE CABBAGE (NEW)—The heads of this fine variety are like Golden Acre, but are larger, greener, and a few days later. The uniform, compact plants are short-stemmed and have few outer leaves. The intense green leaf color makes the heads appear fresh and inviting, even after shipping.

COPENHAGEN MARKET—The round, solid heads, larger than Golden Acre, are of fine quality and very uniform. The light green leaves fold tightly over one another. Plants are short-stemmed, with heads just above the ground.

HIGHLAND BALLHEAD CABBAGE—A truly wonderful cabbage of the later varieties, somewhat similar to Ferry's Hollander in growth and season, but larger in size and darker green than Ferry's—not unusual for bushels to show a weight of 65 to 70 pounds. Much superior in quality to any other late variety than we are acquainted with and our customers give us the information quoted.

RED ACRE—The Earliest Red Cabbage. This famous early red variety is again available! The solid, round heads are medium-sized (3-5 lbs.) and mature a little later than Copenhagen Market. Red Acre is remarkable for its ability to stand a long time without splitting even under adverse weather conditions, and the hard heads keep well in storage.



We import direct from the originators, to insure the true type.

GOLDEN ACRE CABBAGE

CHINESE CABBAGE—CHIH LI—Imported—This is the most popular kind and best for market and roadside stands. It has almost entirely replaced all other kinds. The heads are very attractive, often 18 inches long, uniform in shape and size, hard and firm. A profitable crop both muck and upland, as it commands a ready market, and can also be held in storage for winter sales. Sow the seed in July or August; the crop matures in 8 to 10 weeks. 1 to 1½ pounds will sow one acre.

Don't Delay Your Order. Make Your Plans Early. Order Early



CHINESE CABBAGE . . . CHIHLI

CABBAGE

One-half Pound at Pound Price

| | Oz. | ¼ Lb. | Lb. |
|-----------------------------------|------|--------|--------|
| Golden Acre Elite..... | 50c | \$1.50 | \$5.00 |
| Pride of Denmark..... | 60c | 2.00 | 6.00 |
| Golden Acre | 50c | 1.40 | 4.50 |
| Copenhagen Market | 40c | 1.15 | 3.50 |
| Early Jersey Wakefield | 40c | 1.15 | 3.50 |
| Charleston Large Wakefield | 35c | 1.00 | 3.00 |
| Glory of Enkhuizen | 40c | 1.30 | 4.00 |
| Penn State Ballhead | 50c | 1.50 | 5.00 |
| Early Dwarf Flat Dutch | 40c | 1.30 | 4.00 |
| Ferry's Hollander | 50c | 1.50 | 5.00 |
| Green Acre | 50c | 1.40 | 4.50 |
| Danish Ballhead, Short Stem | 40c | 1.30 | 4.00 |
| Highland Ballhead | 50c | 1.50 | 5.00 |
| Red Acre | 60c | 2.00 | 6.00 |
| Mammoth Red Rock | 50c | 1.50 | 5.00 |
| American Perfection Savoy | 50c | 1.50 | 5.00 |
| Savoy Chieftain | 50c | 1.50 | 5.00 |
| K. C. Market | 40c | 1.30 | 4.00 |
| Red Copenhagen | 60c | 2.00 | 6.00 |
| Meteor Red | 1.00 | 3.00 | 10.00 |
| CHINESE CABBAGE (Wong-Bok) .. | 30c | 1.00 | 3.00 |
| CHINESE CABBAGE (Chihli)..... | 30c | 1.00 | 3.00 |
| CHINESE CABBAGE (Michihli).... | 35c | 1.35 | 4.00 |

YELLOWS RESISTANT STRAINS OF CABBAGE

Following, 1900 crop failures became more frequent in cabbage growing sections of the Middle West. Even on land where the crop had been grown only a few times, growers were puzzled by the fact that plants turned yellow, leaves dropped off at stem and plants died in large numbers even with careful rotation of cabbage with other crops. Once this diseased condition appeared there seemed to be no effective cure or prevention by rotation, seed or soil treatment, and the only course left was to abandon such fields as "Cabbage sick." The varieties described below have proven their real worth in districts where it has been impossible to grow cabbage of more common varieties in the past few years.

EARLY YELLOWS RESISTANT GOLDEN ACRE, absolutely a new variety, which has been bred out of the Golden Acre, but has been entirely satisfactory in the last ten years in many parts of the country. We have found it to be as early as the early strains of Copenhagen and yet as resistant as any of the other varieties of cabbage, which are bred with a thought of producing a crop on infested soils.

EARLIEST OF ALL, is an early yellow resistant Golden Acre, more resistant than Early Detroit and Racine Market, stands longer without bursting, darker green, about 3 to 4 days earlier than Detroit Resistant and about 6 to 7 days earlier than Racine Market. A more superior strain of the other yellow resistant strains of Golden Acre.

MARION MARKET OR YELLOWS RESISTANT COPENHAGEN—90 days—This is a yellows resistant strain of Copenhagen Market. Plants large, coarse, not so uniform or early by ten days as the original Copenhagen, but have solid, crisp, tender, round heads. Will produce a crop when nonresistant strains fail.

YELLOWS RESISTANT BUGNER'S SHORT STEM, extremely popular wherever planted, our strain of seed is a production of the originator's stock seed. This variety produces large, semi-round heads. It is disease resistant and will take trifle more space to grow than other varieties, should not be set closer than 2½ by 3 feet.

WISCONSIN NO. 8, a yellows resistant strain of the Danish Ballhead, desirable for growing in sections infested with this disease. Plants are somewhat larger, more leafy and spreading than the Ballhead, but heads are fully as firm, compact and long keeping.

DANISH BALLHEAD SHORT STEM (Yellows Resistant)—A desirable new strain which produces excellent crops on soil infested with cabbage "yellows." Keeps well, is of fine texture, and matures slightly earlier than Wisconsin No. 8.

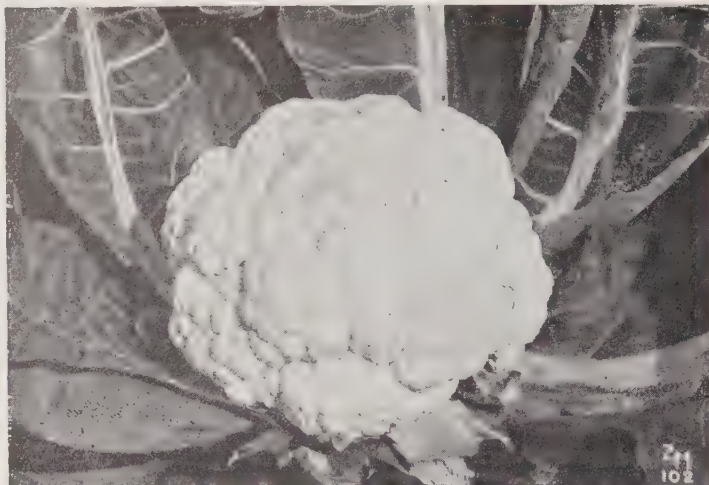
GLOBE, a yellows resistant type of the well-known Glory of Enkhuizen, having about the same size head as the Glory. The most popular of all the yellows resistant varieties. We sell more of Globe than all others.

EVERGREEN HOLLANDER—Latest introduction in the disease resistant cabbages. A fine strain of Hollander, heads well rounded, solid, and dark green color. More resistant to yellows than any other late varieties of cabbages.

RED HOLLANDER, YELLOWS RESISTANT—Absolutely a yellows resistant red cabbage, somewhat smaller than Mammoth Red Rock, color dark red. Its firm heads make it a good keeper, in size and season about the same as Danish Ballhead.

YELLOWS RESISTANT VARIETIES

| | Oz. | ¼ Lb. | Lb. |
|--------------------------------------|-----|--------|--------|
| Golden Acre | 60c | \$2.00 | \$6.00 |
| Wisconsin No. 8..... | 50c | 1.50 | 5.00 |
| Marion Market | 60c | 2.00 | 6.00 |
| Wisconsin Ball Head..... | 60c | 2.00 | 6.00 |
| Globe (Enkhuizen) | 60c | 2.00 | 6.00 |
| Bugner's Short Stem..... | 60c | 2.00 | 6.00 |
| Danish Ballhead, Yellows Resistant.. | 60c | 2.00 | 6.00 |
| Red Hollander | 70c | 2.35 | 7.00 |
| Evergreen Hollander | 60c | 2.00 | 6.00 |
| Racine Market | 60c | 1.75 | 5.50 |
| Early Detroit | 60c | 1.75 | 5.50 |



WHITE MOUNTAIN

★ PLANT EARLY
IT ALWAYS PAYS
TO BE FIRST ON
THE MARKET

★ CAULIFLOWER
IS MOST ALWAYS
ONE OF THE BEST
MONEY CROPS

CAULIFLOWER

WHITE MOUNTAIN—Because of its unusual qualities and resistance has displaced nearly all of the other varieties where in competition. A strong growing variety of the snowball type, produces larger and deeper heads and with no unusual growing hindrances will make very ample foliage with overlapping leaves over the head as a protection to the snow-white heads in its forming. The heads are of great depth and pure white in color, green leaves rarely appear in the head. Ten years' experience prompts us to say that White Mountain will produce 25 to 30 per cent more number one marketable heads than most other varieties. White Mountain is in a class of its own and our statements are backed by the reports of our customers in Colorado, Michigan, Minnesota, Iowa and Illinois.

A NEW, EARLY CAULIFLOWER WHITE TOP—Unquestionably the earliest maturing strain of the Snowball type, over which it is a grand improvement indeed. Comes about 8 days earlier. Of dwarf, compact habit. Noticeable for its extreme earliness and the certainty of producing its finely grained, firm snow white large heads, of the finest quality. The best strain for forcing and specially adapted for very critical market gardeners. Produces nearly 100% heads.

SUPER SNOWBALL—Our Super Snowball is the best strain grown. It is about two days later than our famous White Top under favorable

conditions of soil and weather. Produces a wonderful yield of large, compact, beautiful white heads, well protected with leaves which curl over the head. In a way quite distinct from other strains. Heading very uniform, so crops can be harvested within two or three weeks.

WHITE EXCELSIOR is a somewhat more vigorous type of the Snowball class and selected to produce a larger head than Snowball without losing materially in earliness. After we introduced this new type, result of close cooperation between our breeding department and a prominent market gardener, it has conquered the market by leaps and bounds and we feel perfectly sure it will meet with instantaneous favor in your locality. This new strain will mature with great evenness and, although Snowball will perhaps give a few forerunners a couple of days before White Excelsior makes its start, the bulk of the crop is nearly as early and harvesting may be completed 120 days after date of sowing. The pure white heads are remarkable for their great depth and unexcelled white color. The curd is of fine texture, and resistant in a high measure to "riciness" and "fuzziness." Also heads in which small green leaves appear will be sought in vain. The foliage is somewhat larger than of Snowball and the inner leaves are perfect, protecting the head until nearly full grown. We are sincere in believing that White Excelsior ranks as one of the very superior stocks of Cauliflower available anywhere at any price.

CAULIFLOWER

| | ½ Oz. | Oz. | ¼ Lb. | Lb. | | ½ Oz. | Oz. | ¼ Lb. | Lb. |
|------------------------|--------|--------|---------|---------|---------------------------|--------|--------|---------|---------|
| Henderson's True Early | | | | | July King | \$1.75 | \$3.00 | \$11.00 | \$40.00 |
| Snowball | \$2.00 | \$3.00 | \$11.00 | \$40.00 | White Top | 1.50 | 2.50 | 9.00 | 30.00 |
| Super Strain Snowball | 1.50 | 2.50 | 9.00 | 30.00 | White Excelsior, American | 1.50 | 2.50 | 9.00 | 30.00 |
| Danish Giant or Dry | | | | | A. & B. Special | 2.50 | 4.00 | 14.00 | 50.00 |
| Weather | 2.00 | 3.00 | 11.00 | 40.00 | White Mountain, Imported | 1.75 | 3.00 | 10.00 | 35.00 |
| White Mountain | 1.50 | 2.50 | 9.00 | 30.00 | White Excelsior, Imported | 1.75 | 3.00 | 10.00 | 35.00 |

CARROTS



CHANTENAY SPECIAL . . . LONG TYPE

CULTURE — The carrot will do well in any good, well-worked soil. For early use, sow the seed when the apple is in bloom, in rows 15 inches apart, and when 2 inches high thin out so that the plants stand 4 inches apart in the row. For fall and winter use, sow the seed from the 1st to 15th of June. Sow one ounce of seed to 100 feet of drill, 2 to 3 pounds to acre.

CHANTENAY SPECIAL (Long Type) — Days to maturity, 55-70. This variety, introduced by the great French firm of Vilmorin-Andrieux & Cie., forty years ago, is still the leading commercial carrot in the United States. It has held its great popularity on merit alone, for it has a beautiful appearance and excellent table quality. Its length will average from 5 to 6 inches and its

color is a rich orange-red. In shape the root is of great uniformity, of the half-long type, smooth and free from side rootlets. Our stock has been finely bred and may be planted with absolute confidence by market gardeners, truckers and ranchmen. Our sales of this variety have now reached enormous proportions, and this could not have been possible had we not had an extremely fine strain. If you have not tried our Chantenay, do not fail to do so.

DANVERS HALF LONG—A handsome, cylindrical shaped carrot of good size and stump-rooted. It differs from Chantenay in that it is slightly longer in reaching maturity and will average an inch or so more in length. Our true type averages 6½ to 7 inches in length, tapering uniformly to a blunt point. The roots are smooth and very attractive, of rich, deep orange color, with crisp, sweet, tender flesh. A popular variety for the shipper, also splendid for the table.

XXX CORELESS—This variety is by far the earliest of its type, but its earliness does not affect in any way its size or quality. It is a half-long, cylindrical, blunt-pointed variety, with a very small tap-root and small, fine top. The shape and size are extremely uniform, averaging 6 to 7 inches in length and 1½ inches in diameter, clean-skinned, smooth and easily pulled. The flesh is very fine-grained, absolutely without any woody heart or core, and entirely free from stringiness and coarseness. Color of flesh is rich red-orange, and flavor finest.

We try to treat others as we would be treated

HUTCHINSON — Like Bagley except that it has a greenish tinge at the shoulder, growing slightly out of ground.

SUPREME HALF LONG — Resembles a small refined Danvers with short tops. Root 6 to 7 inches long, about 2 inches in diameter at shoulder, tapering to a half stump. Exterior smooth, and of excellent color. Flesh tender, sweet and of fine flavor. Core small and the same dark red as the rest of the flesh. Especially adapted to use by market gardeners both for bunching and as a basket carrot.

MORSE'S BUNCHING — All-America Award 1934. Tops short; foliage rather coarsely

cut; stems medium size and strong. Roots at maturity are 1¼ to 1½ by 8 inches in size, almost cylindrical with rounded shoulders, and are well stumped. Developed as a bunching carrot for long distance shipping. Does well in North and should be used more by market growers.

NANTES — Stump-Rooted — Particularly desirable for frame culture and one of the best for home garden and early market. Tops small. Roots bright orange; 6-7 inches long, 1¼ inches thick; cylindrical; stump-rooted. Flesh bright orange, of highest quality; core inconspicuous. Similar to much that is offered under the term "coreless."

IMPERATOR—All-America Selections Silver Medal 1933—Similar in size and shape to Morse's Bunching, with medium tops strong enough for bunching, shoulders slightly rounded. Bright orange color and coreless.

NANTES STRONG TOP—A new selection developed out of our outstanding strain of Nantes, Stump-Rooted. Has the same general root characteristics as Nantes, Stump-Rooted, but tops, while not noticeably larger, are stronger and less likely to break at the collar in pulling.

CARROTS

| Five Lbs. and Over 5c Less Per Lb. | | | |
|------------------------------------|-----|-------|--------|
| One-half Pound at Pound Price | | | |
| | Oz. | ¼ Lb. | Lb. |
| Coreless XXX | 20c | 70c | \$2.00 |
| Early Long Scarlet Nantes | 20c | 70c | 2.00 |
| Chantenay Special, Long Type | 15c | 50c | 1.50 |
| Chantenay Regular | 15c | 50c | 1.50 |
| Chantenay Red Cored | 15c | 50c | 1.50 |
| Danvers Half Long | 15c | 50c | 1.50 |
| Denver Danvers | 15c | 50c | 1.50 |
| Danvers, Red Cored | 20c | 55c | 1.60 |
| Tender Sweet | 20c | 55c | 1.60 |
| Morse Bunching | 20c | 55c | 1.60 |
| Hutchinson | 20c | 70c | 2.00 |
| Imperator | 15c | 50c | 1.50 |
| Supreme Half Long | 20c | 55c | 1.60 |
| Streamliner | 20c | 70c | 2.00 |
| Nantes Strong Top | 20c | 70c | 2.00 |



JUMBO No. 99

CELERY

CULTURE—Sow in drills and tread seed firmly in; thin out to an inch apart and keep ground well worked and free from weeds; shade young plants for a week or ten days and do not let soil dry out. To secure stock plants cut off tops once or twice before transplanting, before July, after the plants have attained a height of 4 to 6 inches. One ounce of seed for 5,000 plants, 4 ounces for one acre.

TALL GOLDEN SELF-BLANCHING—This new tall strain, selected in France from Golden Self-Blanching Celery, differs from the original by making a decidedly heavier and taller growth. The foliage is also quite distinct and has been bred for disease resistance. The slender heart is well blanched. It is an extra-early variety which should be carefully tested by celery growers to determine its adaptability to their particular growing conditions and its market value. Because of their taller growth, the plants require more labor if they are blanched with earth.

GOLDEN PLUME, OR WONDERFUL CELERY—This celery is very similar to the Golden Self-Blanching. It is of the same color and general appearance, but of more vigorous, sturdy growth, forming heavy, solid stalks which blanch quickly and are of fine quality. We have a very fine strain which will be found equal, if not superior, to any sold, even at much higher prices. We advise all growers of celery to try this strain. There are never any soft stalks and the celery is large, vigorous and healthy, and keeps well in storage.

PARIS GOLDEN SELF-BLANCHING—Similar to the White Plume in its self-blanching characteristics, but of a deep golden yellow color.

GIANT PASCAL—Grows two feet high; the stalks are very broad, thick and crisp, and of a rich nutty flavor. The heart is golden yellow, very full and attractive in appearance. It blanches very easily and quickly.

CORNELL NO. 19—100 days, main crop—Yellows Resistant—Developed by Cornell University, cross between Golden Self-Blanching and Utah; combining good characteristics of both, has the desirable green pascal features, with the earliness of easy-blanching strains and the outstanding quality of the famous pascal.

The stalks are 10 to 11 inches to the joint, smooth ribbed and rounded. The hearts are long and well developed. The flesh is thick, tender and crisp, free from strings. The hearts have super quality and flavor.

Cornell No. 19 has proven highly successful on both muck and upland soil, plants vigorous, 24 inches in height, are highly resistant to fusarian wilt.

We suggest it for main crop. We do not recommend this as an early crop, as it has tendency to produce seeds.

JUMBO NO. 99—Of Utah parentage, earlier, taller and vigorous growth, height 22 to 26 inches. Large, erect, compact, full heart and composed of many thick, rounded stalks. Edible stalks usually 8 to 10 inches, medium, with quite smooth outer stalks. Lighter green at maturity, can be easily blanched to a clear, greenish white.

MICHIGAN GOLDEN—New Strain—Developed by Michigan State Agricultural College; resistant to fusarian wilt, bred from tall strain Golden Self-Blanching; sealed packages only.

CELERIAC, OR TURNIP-ROOTED CELERY—Sow seed same as celery. Transplant in rows two feet apart, six inches in the row. Thorough cultivation is necessary to secure good roots. Earthing-up is not necessary. Roots may be cooked or used as salad.

CELERY

| | Oz. | ¼ Lb. | Lb. |
|---|--------|---------|---------|
| Colorado Pascal, Short..... | \$3.50 | \$12.00 | \$45.00 |
| Kansas Pascal, Tall..... | 3.00 | 10.00 | 35.00 |
| Giant Pascal | 70c | 2.10 | 7.00 |
| Ace Celeriac, Turnip-Rooted..... | 70c | 2.10 | 7.00 |
| Golden Plume | 1.00 | 3.50 | 12.00 |
| Tall Strain Golden, Self- Bleaching..... | 1.00 | 3.50 | 12.00 |
| California, Golden No. 14..... | 1.50 | 5.00 | 18.00 |
| Supreme Golden | 2.00 | 6.00 | 20.00 |
| Golden Pascal | 1.50 | 5.00 | 18.00 |
| Cornell No. 19 | 1.75 | 5.00 | 16.00 |
| Michigan Golden | 2.25 | 8.00 | 30.00 |
| Tall Delti | 3.50 | 12.00 | 45.00 |
| Golden Plume, New Strain..... | 1.00 | 3.50 | 12.00 |
| Jumbo No. 99..... | 1.00 | 3.00 | 10.00 |

CHICORY

WITLOOF—A delicious winter salad, eaten usually with French dressing like cos lettuce. The root is long like a parsnip, but the part eaten is the top of the root, with the young leaves, usually best when forced in the winter.

COLLARDS

TRUE GEORGIA COLLARDS—This is a tall, loose-leaved cabbage-like or kale-like plant grown throughout the South and known in different sections as "Cole," "Colewort," or simply "Greens." It is extensively used for the table as well as for stock feeding in the South, where it continues in growth and is usable throughout the entire winter. Collards usually succeed in locations where cabbage cannot be grown to perfection.

Sow the seed thickly in drills, in rich ground, transplanting when about 4 inches high; or sow in drills where the plants are to remain, and when well started thin to two or three feet apart in the row. In the South, seed may be sown from January to May and from August to October.

| | | |
|---|--------|---------|
| CHICORY—Witloff, French Endive..50c | \$1.50 | \$5.00 |
| COLLARDS—Georgia, Southern or Creole | 10c | 25c 60c |
| DILL—Mammoth | 15c | 25c 75c |

HYBRID SWEET CORN

SENECA DAWN—65 days—150 kernels per oz. A large-eared, extra-early yellow hybrid. Stalks 4½ to 5 feet, strong, upright. Ears well up from the ground, 6½ inches long, 12 to 14 rows, medium yellow, fair quality, kernels on large cob. Heavy husk gives good coverage to end of ear.

SENECA "60"—62 days—150 kernels per oz. This new hybrid is very prolific, usually producing two and many times three ears per stalk. The stalk is 4 to 4½ feet tall. Ears 6 inches long, slender, 8 to 10 rowed. Kernels yellow, medium wide and fair quality. The earliest of all hybrids. Not resistant to wilt.

SENECA 60 × C13—65 days—150 kernels per oz. A new wilt-resistant hybrid for those sections where bacterial wilt is prevalent. The 4½ to 5-foot stalk is a vigorous grower. Ears 6½ inches long, 10 to 14 rows of yellow kernels of fair quality. A larger ear than Seneca 60 and only a few days later.

SENECA GOLDEN—72 days—220 kernels per oz. Stalks 5½ feet tall and produce two marketable ears on practically every stalk. Ears nearly as large as Golden Cross and well filled clear to the tip. Kernels rich golden yellow, and if harvested when ready are of excellent quality. Should not be used in the South where bacterial wilt is serious.

GOLDEN CROSS BANTAM—4 to 8 days later than Golden Bantam. Stalks averaging 6½ to 7 feet, are sturdy and straight, and under favorable conditions two ears are usually produced on each stalk. The ears are about 8 inches long, 10 to 14 rowed, with tightly wrapped husk, which makes it resistant to ear worms. This hybrid is also noted for resistance to Stewart's disease and for the uniformity of its ears. Matures in 85 days.

EARLIGOLD—The newest Hybrid developed for critical market gardeners, who want earliness, ear size, wilt tolerance, and improved quality in a first early hybrid. Earligold matures in 72 to 75 days, which is in season with Golden Hummer, Golden Sunshine and Golden Early Market. It produces 12-16 rowed ears, slightly tapering, well filled and 6½ to 7 inches long. Uniformity is one of its merits. The plants are sturdy, 5 to 5½ feet tall, with few suckers. In wilt-free sections production of marketable ears is 10% to 30% greater, and in wilt-infested areas 10% to 60% greater than Golden Hummer, Golden Sunshine and Golden Early Market.

TENDERGOLD—A top cross of Purdue Bantam or Golden Sunshine, ears are cylindrical to slightly tapering, from 7 to 8 inches long. It has 10 to 14 rows of kernels of the high quality of Golden Bantam. It yields more than either Golden Bantam or Golden Sunshine and matures in 78 days, at about the same time as the Golden Bantam. It is very resistant to Stewart's disease, shows great uniformity of ears and produces a large percentage of two-eared stalks.

MARCROSS C6.13—A 75-day early, yellow, wilt-resistant corn. The 7-inch to 8-inch ears are borne on sturdy, leafy stalks, 5 to 6 feet tall. The ears are slightly tapering, containing 12 to 14 rows of delicious golden kernels. The ears are well above the ground. This variety, like all hybrids, is a heavy producer, yielding 30 to 40% more marketable ears than most open pollinated types. Its uniformity in maturing is a great advantage to the market grower in the gathering.

NARROW GRAIN EVERGREEN—White—90 days—A new hybrid variety developed primarily to provide growers with a late white type of heavy yield and high quality in shape and texture of kernels. Stalks tall and strong; ears large and well filled with 18-22 rows of narrow, deep kernels; a very promising variety.

CARMELCROSS—Yellow—79 days—A second early variety developed by the Connecticut Experiment Station, New Haven, for market, canning or home garden use. Vigorous and heavy yielding in comparison to its earliness. Medium sized gently tapering ears with 12-14 rows of yellow kernels.

HYBRID SWEET CORN . . . Continued

IOANA Yellow — 87 days — Originated by Iowa State College, commercially developed and entered in the All-American Trials for 1939, when it was awarded a Bronze Medal. An attractive variety, highly resistant to wilt. Plants tall and sturdy. Ears 7½ to 8 inches long, 12-14 rowed, cylindrical; well filled with medium-narrow, light yellow kernels. The strain of this leading hybrid is distinctive and exceptionally productive.

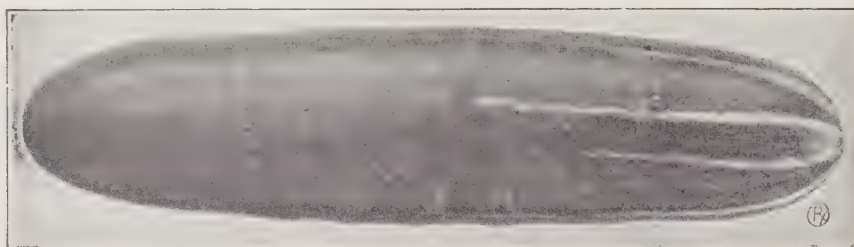
HYBRIDS

| | Lb. | 5 Lbs. | 10 Lbs. | 100 Lbs. |
|--------------------------------|------|--------|---------|----------|
| Earligold | .60c | \$2.50 | \$4.10 | \$37.00 |
| Marcross C6.13 | .60c | 2.50 | 4.10 | 39.00 |
| Seneca (60) Yellow | .65c | 3.00 | 5.75 | 55.00 |
| Tendergold | .60c | 2.50 | 4.10 | 39.00 |
| Golden Cross Bantam | .60c | 2.50 | 4.10 | 39.00 |
| Evergreen Hybrid | .60c | 2.85 | 5.75 | 55.00 |
| Country Gentlemen Hybrid. .60c | .60c | 2.85 | 5.75 | 55.00 |
| Seneca 60 C×13 | .65c | 3.00 | 5.75 | 55.00 |
| Aristogold | .60c | 2.50 | 4.50 | 40.00 |
| Ioana | .60c | 2.50 | 4.10 | 39.00 |
| Spancross C-3×13 | .60c | 2.50 | 4.50 | 42.00 |
| Seneca Golden | .65c | 3.00 | 5.75 | 55.00 |
| Seneca Dawn | .65c | 3.00 | 5.75 | 55.00 |
| Carmelcross | .60c | 2.50 | 4.10 | 39.00 |
| Whipcross | .60c | 2.50 | 4.10 | 39.00 |
| Bantam Evergreen | .60c | 2.50 | 4.10 | 39.00 |
| Staycross | .60c | 2.50 | 4.10 | 39.00 |

SWEET CORN, OPEN, POLLENATED

| | Lb. | 5 Lbs. | 10 Lbs. | 100 Lbs. |
|-----------------------------------|------|--------|---------|----------|
| Adams Early Ideal. | .30c | \$1.15 | \$2.25 | \$20.00 |
| Golden Early Market. | .40c | 1.80 | 2.80 | 25.00 |
| Whipple's Early Yellow. | .40c | 1.80 | 2.80 | 25.00 |
| Barden's Wonder Bantam. | .40c | 1.80 | 2.80 | 25.00 |
| Golden Hummer | .40c | 1.80 | 2.80 | 25.00 |
| Golden Sunshine | .40c | 1.80 | 2.80 | 25.00 |
| Bantam Evergreen | .40c | 1.80 | 2.80 | 25.00 |
| Golden Bantam | .40c | 1.80 | 2.80 | 25.00 |
| Early Evergreen | .40c | 1.80 | 2.80 | 25.00 |
| Stowell's Evergreen Special. .40c | .40c | 1.80 | 2.80 | 25.00 |
| Country Gentleman | .40c | 1.80 | 2.80 | 25.00 |

★ IF YOU HAVE ANY PROBLEMS WE MAY BE ABLE TO HELP YOU. OUR PRINCIPALS HAVE SPENT MOST OF THEIR LIVES SERVING MARKET GARDENERS. WRITE US AND WE'LL DO OUR BEST TO HELP YOU.



OUR WONDERFUL

CUCUMBER

OUR WONDERFUL—Beautiful in appearance, of dark bluish green color. Suitable for both the garden and forcing. A healthy, productive and fairly early variety, the fruits averaging 14 inches in length by 2½ inches in diameter and are very symmetrical. An ideal cucumber for the market grower.

WONDER GREEN—10 inches long. A beautifully long, slender, dark green cucumber commanding a premium on the critical market, exceedingly popular because of excellent shape and intense dark color which is maintained longer than in any other variety. Fruit tapering at stem end, vigorous, productive, resistant to unfavorable growing conditions. Seeds are few.

CUBIT—(New)—65 days—1944 winner of All-America Bronze Medal. This new variety is of the A. & C. and Colorado class. Vines prolific; fruit smooth, unusually dark green color, cylindrical with blunt ends, length 8½ inches, small seed cavity. An excellent shipper. Holds its color, crisp texture, and flesh quality well in shipping or on the market.

DOUBLE YIELD—Enormous yields of the finest pickles. Increasingly popular among growers because of the enormous yield of fine, straight pickles. The young cucumbers are produced in clusters. The cucumbers are very straight with blunt ends, medium deep green in color and the very best shape for pickles. The earliest variety we know, enabling growers to plant late and get a large yield.

STRAIGHT-8—62 days—This outstanding variety produces symmetrical, cylindrical fruits about 8 inches in length and about 1½ inches in diameter. Fruits well rounded at ends, deep green when ready for use, and free from stripping. An ideal shipping cucumber.

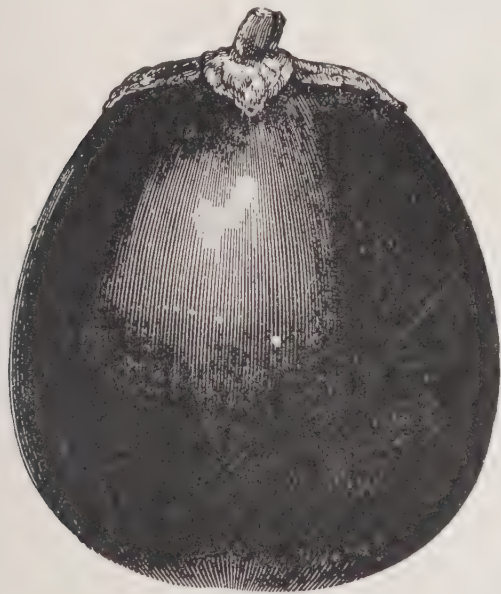
MARKETER—65 days—A high yielding variety, somewhat on the order of Straight 8. Holds its dark green color exceptionally well. Outstanding in yielding ability, as prolific vines throw an exceptionally large number of female blossoms per plant. Stands heat better than most varieties.

CUCUMBER . . . Continued

DARKIE, a greenhouse forcing variety, very dark green, 10 to 11 inches in length. Holds its color well, making it ideal for shipping, also for outdoor planting.

CUCUMBER

| Five Lbs. and Over 5c Less Per Lb. | Oz. | ¼ Lb. | Lb. |
|------------------------------------|-----|-------|--------|
| Our Wonderful | 25c | 75c | \$2.50 |
| Wonder Green | 25c | 75c | 2.50 |
| Clark's Special | 20c | 60c | 2.00 |
| Longfellow. | 25c | 75c | 2.50 |
| The Vaughn | 25c | 75c | 2.50 |
| A and C. | 25c | 75c | 2.50 |
| Stays Green | 20c | 60c | 2.00 |
| Rice's Early Fortune. | 20c | 60c | 2.00 |
| Davis Perfect | 20c | 60c | 2.00 |
| National Pickling | 20c | 60c | 2.00 |
| The Colorado | 25c | 75c | 2.50 |
| Straight-8. | 20c | 60c | 2.00 |
| Klondike. | 20c | 60c | 2.00 |
| Stays Green Long Type. | 20c | 60c | 2.00 |
| Double Yield | 25c | 75c | 2.50 |
| Darkie. | 25c | 75c | 2.50 |
| Cubit | 30c | 85c | 2.75 |
| Marketer. | 25c | 75c | 2.50 |
| Ace. | 25c | 75c | 2.50 |
| Improved Long Green. | 20c | 60c | 2.00 |
| Deltus | 25c | 75c | 2.50 |
| Boston Pickle | 20c | 60c | 2.00 |



BLACK BEAUTY

EGG PLANT

CULTURE—Thrives well in any good garden soil. Sow the seed in hotbed or greenhouse in March or April, and when an inch high, pot in 2 or 3-inch pots or plant in shallow boxes 4 inches apart each way. Plant in the open ground when danger of frost is past, in rows 3 feet apart each way. One ounce will yield 2,000 plants; ¼ pound for an acre. To prevent blight and bugs use Bordeaux Mixture with arsenate of lead.

EGG PLANT . . . Continued

BLACK BEAUTY—The earliest and best of all large-fruited egg plants. It is valuable alike to the private planter and to the extensive grower for market. Black Beauty produces fruits fully as large as and ready for use ten days to two weeks earlier than the New York Improved. The plants branch freely near the ground, and grow in well-rounded bushes. The grand, large fruits are thick, of attractive form. The skin is a rich, lustrous purplish black—the satin gloss and rich coloring add greatly to the beauty. The brilliant coloring is uniform over the whole fruit and does not fade at the blossom end; entirely free from spines or thorns.

IMPROVED NEW YORK—Best variety in cultivation. Sure cropper and fine quality. Plants large and vigorous; fruits large, oval and deep purple color; flesh white and tender.

FORT MYERS MARKET—Robust heavy yielding type that is widely grown in warm season areas and for shipping from the South. Plants tall and vigorous, resistant to disease and carry the fruit off the ground. Attractive long oval fruit of extremely smooth, glossy black color. Ours is an exceptionally fine stock.

KOHL RABI

CULTURE—Seed should be sown in light, rich soil as early in spring as possible in rows 1½ feet apart and when well established thin to 6 inches apart in the row. Plantings at intervals of ten days will give a succession until hot weather, when they will fail to grow well. Plantings may be made the latter part of July for fall use.

PRAGUE FORCING—Extra for Forcing—Extremely early, with distinctly small tops. Bulbs are of medium size, light green, or nearly white, and of best quality for table if used when about 2 inches in diameter.

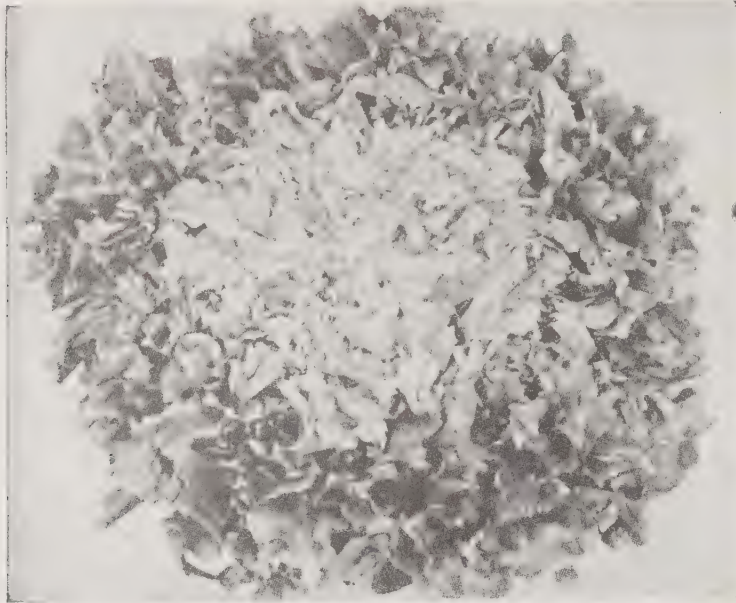
WHITE VIENNA—Very early, having few leaves. Mild-flavored, smooth, white bulbs of medium size and fine quality, ready 75 days after sowing. A fine forcing sort and can be planted closely. The bulbs are best when about 2 inches in diameter. The most popular variety.

EGG PLANT

| One-half Lb. at Lb. Price. | Oz. | ¼ Lb. | Lb. |
|------------------------------|-----|--------|--------|
| Improved New York | 75c | \$2.00 | \$7.00 |
| Black Beauty | 75c | 2.00 | 7.00 |
| E. Z. Market | 90c | 2.70 | 9.00 |
| Florida, High Bush | 75c | 2.50 | 8.00 |
| Fort Meyers | 75c | 2.50 | 8.00 |
| Long Dark Purple | 75c | 2.50 | 8.00 |

KOHL RABI

| | | | |
|------------------------------|-----|--------|--------|
| Prague, Forcing | 50c | \$1.50 | \$5.00 |
| Early White Vienna | 40c | 1.25 | 4.00 |
| Purple Vienna | 50c | 1.50 | 5.00 |



ENDIVE—FULLHEART

ENDIVE (Escarolle)

CULTURE—Sow in spring as soon as earth is free from frost, and repeat to within 60 days of autumn frost. Drill in rows of 2 feet and thin plants to 8 inches apart. Tie up loose leaves or cover with pots to blanch for salad. Valuable for salads and decorative as a garnish to vegetables. Two ounces of seed to 100 yards of row. Three pounds to acre.

DEEP HEART—Broad Leaved—Deepheart Endive is one of the most important crops in many sections. It is usually grown practically all the year 'round and is looked upon as the best money-making crop. Of course, our truckers are very particular with regard to the stocks they use and it takes a fine stock which can please them. Our stock does and it will please you, too. If planted sufficiently close, plants will grow upright and easily blanch without needing to be tied.

LARGE GREEN CURLED—Pink Ribbed—A hardy, vigorous grower, with bright green leaves. Midribs of the outer leaves are tinged with rose. The dense mass of deeply divided leaves formed in the center blanches very readily to a rich cream color. Highly esteemed for market and home garden, and much used for salads.

GREEN CURLED—In 70 days. Standard variety for fall and winter. Finely divided leaves make the plant appear mossy, and when centers are blanched it is most beautiful.

ENDIVE

| | Oz. | ¼ Lb. | Lb. |
|------------------------------------|-----|-------|--------|
| Large Green Curled, Pink Ribbed... | 15c | 40c | \$1.25 |
| Broad-Leaved Batavian | 15c | 40c | 1.25 |
| Fullheart. | 15c | 40c | 1.25 |
| Large Green Curled..... | 15c | 40c | 1.25 |
| Deepheart | 15c | 40c | 1.25 |
| President | 25c | 75c | 2.50 |

KALE or BORECOLE

CULTURE—One ounce of seed will sow 100 yards of row. Four pounds to the acre. This is a very valuable plant for greens. A curly, loose-leaved plant of the Cabbage family. Sow in the early spring when the Oak is in full leaf, again in the early autumn. Drill in rows of 2½ feet, thin to 8 or 20 inches, according to vigor of variety.

BLOOMSDALE, DOUBLE EXTRA CURLED—50 days—A superior sort, introduced by us in 1894, being very curly, dark blue green, hardy, so short stemmed that it rests practically on the ground, 9 to 11 inches broad, spreading and far denser in foliage than any other sort. Plants broader than a bushel basket and seem to hug the earth. More hardy than Dwarf Curled Scotch, passing unharmed through the severest winter as far north as Philadelphia. 9 inches high.

DWARF CURLED BLUE SCOTCH—We have a very superior strain, absolutely uniform, with very fine curled leaves and the much desired deep bluish green color. Plants of dwarf habit, vigorous with large leaves.

SIBERIAN—Also called "Early Sprouts"—Plants very large and spreading, leaves broad and thick, curled only at the edges. Color blue green. Very hardy and used largely for wintering over.

SPECIAL DWARF GREEN CURLED SCOTCH—This stock produces the finest plants imaginable. The leaves are extremely curly, and yellowish green in color. The plant has the very desirable double-deck, and withstands frost.

TALL SCOTCH—A tall strain of curly, dark green kale, the stems being about 3 feet tall.

LONG STANDING CURLED SIBERIAN—The green leaves are very large and comparatively plain in the center, but heavily curled on the edge. It is a fast grower, extremely hardy and will stand longer in the spring without bolting than any other variety.



BLUE SCOTCH

KALE OR BORECOLE

| | Oz. | ¼ Lb. | Lb. | 5 Lbs. |
|--|-----|-------|--------|--------|
| Tall Curled Scotch..... | 20c | 60c | \$2.00 | \$9.00 |
| Dwarf Green Curled Scotch.... | 20c | 60c | 1.80 | 8.50 |
| Dwarf Blue Scotch..... | 20c | 60c | 2.00 | 9.00 |
| Siberian, Long Standing, Curled | 15c | 50c | 1.50 | 7.00 |
| Bloomsdale, Double Extra Curled | 20c | 50c | 1.50 | 7.00 |

MUSTARD

An ounce of seed will sow about 300 feet of row.

Mustard is very widely grown for greens, particularly in the home and market gardens of the South. An abundance of tender, succulent leaves is available 4 to 5 weeks after sowing seed.

FLORIDA BROAD LEAF—Large, vigorous growth; leaves deep green; large, thick, broad-oval with distinct whitish midrib; margin toothed, but not frilled; seeds reddish-brown.

FORD HOOK FANCY—(Long Standing)—Leaves are slightly smaller and more finely cut and curled than the Southern Curled. A very pure stock.

LONG STANDING—(Southern Giant Curled)—Will stand without bolting to seed for a long time. During the hottest part of the summer this variety has stood for three weeks after it was large enough to cut without going to seed. The leaves are a medium dark green with beautiful, finely curled edges.

GIANT SOUTHERN CURLED—True curled variety, much used in the South, especially for late fall planting.

FORDHOOK FANCY—A fine variety with dark green feathery leaves, on account of which it is also called Ostrich Plume. Mild flavor.

MUSTARD

| | Oz. | ¼ Lb. | Lb. |
|--|-----|-------|-----|
| Moss Curled, Long Standing | 15c | 25c | 75c |
| Florida Broad Leaf | 15c | 20c | 60c |
| Southern Giant Curled, Long Standing | 15c | 30c | 80c |
| Fordhook Fancy, Long Standing | 15c | 25c | 75c |
| Southern Giant Curled | 15c | 30c | 80c |

LEEK

ELEPHANT—The stalks are large and very sturdy. The bottoms are clear, pearly white and smooth with the white part extending well up the stalk.

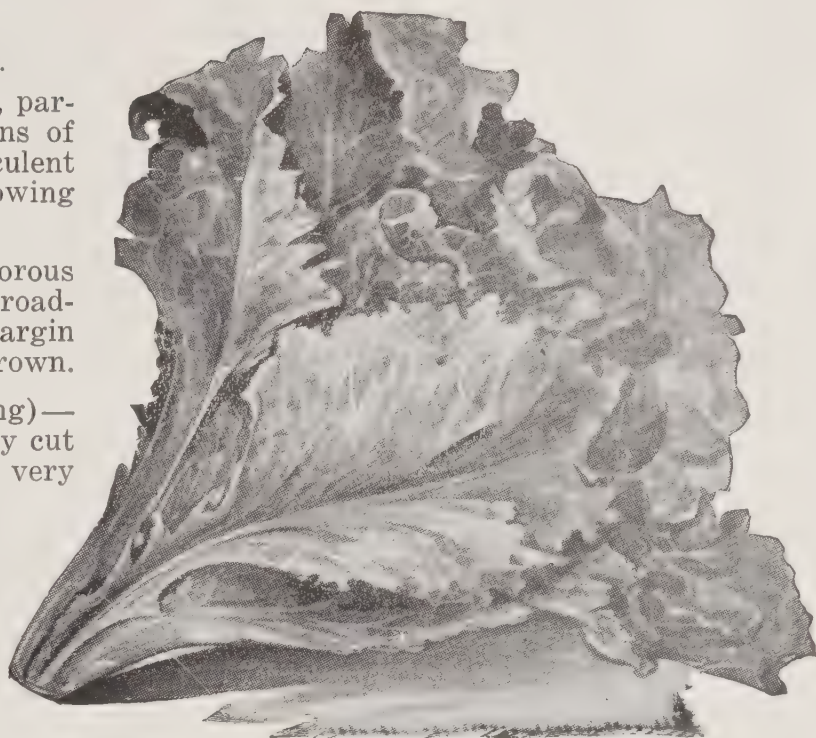
GIANT MUSSELBURG—A hardy variety, with long, medium-thick stem. Leaves broad, deep green.

LARGE AMERICAN FLAG—(London Flag)—An early popular sort. Stems 8 to 10 inches long, 1½ inches thick; white, and attractive. Leaves large, medium green, drooping backwards.

GIANT CARENTAN—Large stems, 6 to 8 inches long, 2 to 3 inches thick. Leaves very dark green. Hardy, prolific; for fall and early winter use.

LEEK

| | Oz. | ¼ Lb. | Lb. |
|---------------------------|-----|--------|--------|
| Elephant | 50c | \$1.50 | \$5.00 |
| Giant Musselburg | 50c | 1.50 | 5.00 |
| Large American Flag | 50c | 1.50 | 5.00 |
| Giant Carentan | 50c | 1.50 | 5.00 |



GRAND RAPIDS, WASHINGTON STRAIN

LETTUCE

An ounce of seed will sow 250 feet of row; about 2 lbs. per acre.

CULTURE—Lettuce is quite hardy and may be sown early in the spring. It thrives on rich and well-cultivated soil, the cabbage-heading varieties especially requiring better soil than the loose leaf sorts. May also be sown in hotbeds and transplanted after being hardened by exposure to the air. An ounce will seed 400 feet of row; 3 pounds per acre.

GRAND RAPIDS FORCING, WASHINGTON STRAIN—45 days—This splendid strain is one of the favorite strains, being used by all of the large greenhouse growers, who recommend it as a superior lettuce. It was first produced by plant selection by the honored W. W. Tracy of the Agricultural Department at Washington. Mr. Yonker procured some from Eugene Davis, sent him by Mr. Tracy. Mr. Yonker, by careful plant selection, has kept it up to its original purity. It is absolutely true to type and is more like the original Grand Rapids Forcing as it came from the hands of Eugene Davis. Mr. Yonker is well qualified to continue the breeding of this variety and can be depended upon to keep it up to its present high standard. There are very few, if any, sports. Color is light green; heads very heavy; leaf crisp, tender and curly; quality of the best. We grow our stock seed in the greenhouse and send to one of the best lettuce seed growers on the Coast to grow the seed crop.

GRAND RAPIDS, b. s.—Very early. Hardy, disease resistant; the most widely used and best adapted variety for greenhouse forcing. Plants large, upright, compact and handsome; bright solid light green; leaves large, broad, margin much waved and frilled; very tender and sweet when grown under glass.

LETTUCE . . . Continued

GRAND RAPIDS U. S. NO. 1, b. s. (Mildew Resistant)—Developed by Dr. I. C. Jagger of the U. S. Department of Agriculture, and is resistant to mildew. About the same as Grand Rapids except that the leaf margins of U. S. No. 1 are little more deeply cut and heavily frilled; the color a little duller and lighter green. Recommended for general planting as it stands longer without bolting to seed than other strains.

EARLY CURLED SIMPSON, w. s.—Early. Also well known as "White Seeded Simpson." Very hardy and dependable; particularly popular for home gardens. Plant large, compact, bright, light lustrous green; leaves broad, frilled, firm, crisp, sweet and of good quality.

BLACK SEEDED SIMPSON, b. s.—Early. Dependable in all parts of America and widely grown in home and market gardens. Plant large, attractive, compact, with broad, frilled, light green leaves that are of fine, crisp texture and splendid quality.

DARK GREEN, Cos w. s.—A medium large, dark green variety which forms a good-sized, well-folded head.

CORNELL NO. 456—A selection of the Imperial type developed by the United States Department of Agriculture and Cornell Experiment Station. Has proved very sure heading when grown in the East during the summer months. Particularly adapted for growing on muck soils. Frame and head slightly smaller than Great Lakes and of lighter green color. Resistant to tip burn and early bolting.

GREAT LAKES (New)—Tipburn Resistant—New Iceberg Type for Summer Growing—This new variety is remarkable for its ability to stand up and produce good, hard heads even in the hot weather of midsummer. It is highly resistant to tipburn, heads nearly 100% under a wide range of conditions and stands without bolting longer than any other kind.

The plants are large and vigorous, and the heads are of good size and attractive deep green color. They have heavy ribs and crisp, thick leaves that fold well over to make very solid, hard heads. Planted in the spring, they are ready to cut about a week later than Imperial 44 and will remain in condition a long time thereafter.

Great Lakes is best adapted for upland growing. See prices at right.

NEW YORK NO. 515—This is another early-maturing strain, but its most outstanding feature is its sure heading ability. Each plant makes a big, solid head, slightly darker than No. 12 and rounder. It stands fairly long without bolting.

IMPERIAL NO. 847—A new black-seeded strain of New York which may prove to be better than New York No. 12. The large-framed plants have large, rounded, medium green heads with abundant wrapper leaves. This strain shows high resistance to brown blight and tipburn. Specially recommended for summer production, as well as spring and fall. Later than New York No. 12, but stands longer.

IMPERIAL 44—High quality Iceberg for spring or fall crop—For early spring and fall crops, Imperial 44 is still the best Iceberg type to grow in the East, both on muck and upland. It is a sure heading, high quality lettuce, producing crops that compete successfully with western-grown Iceberg. The heads are large, well formed and solid, and practically every plant makes a fine head. It has considerable resistance to tipburn and produces lettuce of very superior quality. We highly recommend Imperial 44 to all growers. See prices below.

NEW YORK NO. 12, w. s.—For many years a standard "Iceberg" type for market, with solid cabbage heads, light green leaves slightly curled on edges. Stands heat well.

IMPERIAL NO. 456—80 days—Developed by Cornell Experiment Station as a variety suitable for those who wish to grow head lettuce in July and August. Of the Imperial type, and said to withstand high temperatures and tipburn better than Imperial No. 44.

HEAD LETTUCE

| Five Lbs. and Over 10c Less Per Lb. One-half Pound at Pound Price | | | |
|--|-----|-------|--------|
| | Oz. | ¼ Lb. | Lb. |
| Imperial No. 847, Black Seeded..... | 30c | 90c | \$3.25 |
| New York No. 12..... | 30c | 90c | 3.25 |
| New York No. 515..... | 30c | 90c | 3.25 |
| New York No. 44..... | 30c | 90c | 3.25 |
| New York No. 23..... | 30c | 90c | 3.25 |
| Big Boston | 20c | 75c | 2.50 |
| Unrivalled Summer | 20c | 75c | 2.50 |
| Great Lakes | 60c | 1.80 | 5.00 |
| Imperial No. 55..... | 30c | 90c | 3.25 |
| Cornell 456 | 60c | 1.80 | 5.00 |
| Improved Hanson | 25c | 75c | 2.50 |

LEAF LETTUCE

| | Oz. | ¼ Lb. | Lb. |
|-------------------------------------|-----|-------|--------|
| Black Seeded Simpson..... | 20c | 50c | \$1.50 |
| Grand Rapids | 20c | 50c | 1.50 |
| Early Curled Simpson..... | 20c | 60c | 1.75 |
| Prize Head | 20c | 50c | 1.50 |
| Grand Rapids, Washington Strain.... | 20c | 60c | 1.75 |
| Grand Rapids, U. S. No. 1..... | 20c | 60c | 1.75 |

ROMAINE OR COS

| | Oz. | ¼ Lb. | Lb. |
|----------------------|-----|-------|--------|
| Light Green Cos..... | 15c | 50c | \$1.50 |
| Dark Green Cos..... | 15c | 50c | 1.50 |
| Bibb. | 30c | 90c | 3.00 |

★ WE MAKE EVERY EFFORT TO SHIP YOUR ORDER THE DAY IT IS RECEIVED. DON'T HESITATE TO SAY YOU ARE IN A HURRY.

HALE'S BEST No. 36 85 Days



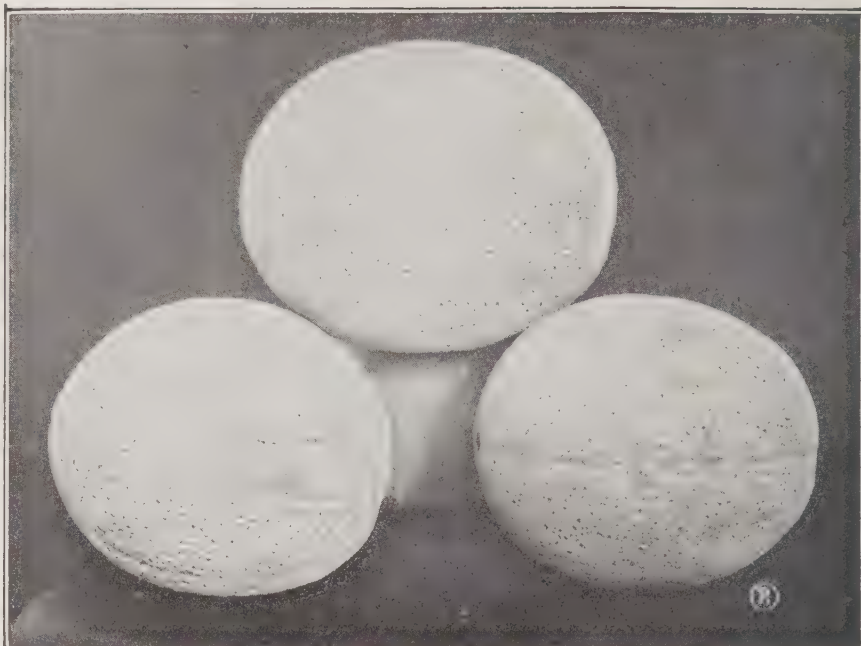
MUSKMELON or CANTALOUPE

HALE'S BEST NO. 36—85 days—A beautiful melon; highly flavored, really good to eat. Has proven its worth by becoming the most popular cantaloupe with large shippers the past several seasons. So wonderfully uniform that it is an outstanding breeding accomplishment. It is large, packing mostly 36's or using the Jumbo flat crate 12's. Solidly netted, little if any suture and no ribs. The rich, spicy salmon flesh is deep, fine-grained and holds up well for long-distance shipping. While primarily bred for the shipping trade, its many fine qualities make it ideal for roadside market and home gardens. We recommend this melon to melon growers; for North—where the seasons are short—for South to be first on the market with a real good cantaloupe.

SCHOONS HARDSHELL. 87 days. A new and excellent flavored large melon. Slightly oblong with coarse netting on a tough, hard shell, and distinctly ribbed. Carries well to distant markets. It has bright salmon colored flesh and the best flavor to be found. Weight 5 to 8 pounds or more.

MILDEW RESISTANT NO. 45 CANTALOUPE—The vines of this introduction are entirely free of any mildew and highly disease resistant. In some fields for a comparison and test purposes, other Rocky Ford varieties were planted by the side of the Resistant. In these fields the non-resistant strains were immediately killed by mildew, while the Resistant intertwined with them showing no mildew infection whatever. The Mildew Resistant Cantaloupe is no longer an experiment. The production and shipping qualities due to the fact the No. 45 must be picked on a FULL SLIP and will then carry to the far distant markets, arriving in perfect condition. It has won its fame for being the most popular of the Mildew Resistant Strains; in other words, as a shipping melon, it is unexcelled. The No. 45 has a thick salmon colored flesh; is well flavored. However, the flesh is not a fine grained, neither is the flavor equal to that of the Improved Hale's Best Strains. The melon has a reasonable small seed cavity and is perhaps one week later in maturing than the Hale's Best. If you want a melon with proven shipping and carrying qualities, we advise giving the Mildew Resistant No. 45 a trial the coming season.

HARD-SHELL GOLDEN OSAGE—A new and excellent flavored melon on the order of Bender's Surprise in general appearance. It is valuable, especially for its hard shell, which makes it fine for marketing, as they will stand up better than most varieties. Deeply ribbed, covered with a grayish yellow rope-like netting except for the distinct stripes. Skin is a beautiful yellow, flesh is medium in grain, red salmon in color, and sweet, tasty flavor. Weight about 6 to 7 pounds.



HALE'S BEST SPECIAL

MUSKMELON or CANTALOUPE . . . Continued

HONEY ROCK. 87 days. Also known as Sugar Rock. Fruit nearly round, medium, weighs 4 pounds. Skin grey-green, covered with a coarse netting. Flesh thick, juicy, orange-salmon, with fine flavor. Good for home use and for shipping to nearby markets.

NEW CANTALOUPE HARDSHELL. BENDER—This new melon has great promise for home gardeners and market gardeners. A large melon, bigger than Bender with rind very strong or hard, covered with heavy netting. It is slate colored, turning to light yellow when fully matured. The thick, brilliant flesh has a very high sugar content and the texture is soft and of delicious quality. It is claimed that it resembles Oregon Delicious but with better shipping qualities.

DELICIOUS (Early Bender)—83 days—An excellent early variety of very superior quality. Similar in general character to Bender's Surprise, but a week to 10 days earlier. Fruits about 6 inches in diameter, with coarse netting and quite prominent ribs. Rind solid; creamy green at maturity. Highly recommended for the home garden and for local markets.

HALE'S BEST SPECIAL—86 days—The earliest shipping melon of outstanding merit for home and market garden. Fruits oval, 6½ inches long by 5½ inches in diameter, ribbing indistinct; covered with heavy netting. Flesh thick; salmon-orange; sweet aromatic flavor.

HALE'S BEST, JUMBO STRAIN—83 days—A large-fruited strain of this leading variety for local markets, preferred in some areas to Bender's Surprise or Tip Top. Fruits oval, 5-6 pound; ribbing somewhat prominent, heavily netted. Flesh thick, salmon-orange, sweet and of excellent quality; seed pocket rather large.

QUEEN OF COLORADO—90 days—All-America Honorable Mention. This appears to be an improved strain of Pride of Wisconsin and, we believe, should be considered as such. Originally, we believe, it was the result of a cross between Honey Rock and Hearts of Gold. Queen of Colorado combines the tough rind and flavor of Honey Rock with the thick flesh and texture of Hearts of Gold. The melons are slightly larger than Honey Rock and run more uniform in size.

LARGE HEARTS OF GOLD—Round type or Morrill strain—94 days—The outstanding feature of this melon is its deep golden flesh, which is of the finest quality; sweet, spicy, fine-grained, and distinctly flavored. Melons medium large, round, well netted except a narrow stripe between narrow ribs. Very firm and ships well for moderate distances.

ROCKY FORD—(Netted Gem)—Fruits are small with rather large seed cavity, nearly round, 2½-pound, with very faint ribs, and heavily covered with hard gray netting; flesh thick, green in color, with gold tinge at the center; juicy, spicy, and of good flavor.



BREAKFAST QUEEN

BREAKFAST QUEEN CANTALOUPE—87 days—The best variety of cantaloupes yet introduced; no variety can claim superiority in flavor and eating quality; flesh thick salmon in color.

It holds up well for several days, allowing plenty of time for marketing and shipping to distant markets. Melons solidly netted with a very coarse gray netting, thick salmon in color.

Picked just before frost when fully netted, can be stored in shed or barn to ripen and will retain its solidity and flavor.

MUSKMELON or CANTALOUPE . . . Continued

IROQUOIS MELON—New Resistant Medium-Size Bender Type—This new medium-sized melon has such uniformly fine flavor and thick flesh that it has quickly become a great favorite. It was developed for resistance to fusarium wilt and is the only kind to grow on infected soil. It is also ideal in all sections where the Bender type is preferred but where smaller melons are desired.

The fruits look much like Benders, with prominent ribs and heavy netting, and they have a thin, tough rind that stands handling and shipping. The flesh is very thick, smooth, fine-grained and sweet, and the color is an excellent

deep orange. Ripens about the same time as Benders and the vigorous vines hold up well till frost. Try some Iroquois this year.

ORANGE FLESH—Undoubtedly the “last word” in the Rocky Ford type of shipping melons and has brought the highest price in every market shipped to. Its appealing deep orange flesh is its distinctive characteristic. Fruits 5-5½ x 6-6½ inches, weigh 2½-3 pounds, thick oval to globular, no ribbing, and abundant, fine-laced netting; skin dark green, flesh salmon orange, medium thick, highly flavored, firm, juicy, good quality. Popular all-purpose melon.

MUSKMELON or CANTALOUPE PRICES

Five Lbs. and Over 5c Less Per Lb.
One-half Pound at Pound Price

| | Oz. | ¼ Lb. | Lb. | | Oz. | ¼ Lb. | Lb. |
|--------------------------------|-----|-------|--------|---------------------------------|-----|-------|--------|
| Hale's Best Special..... | 25c | 60c | \$2.20 | Hale's Best, Number 36..... | 20c | 60c | \$2.00 |
| Milwaukee Market | 20c | 60c | 2.00 | Hale's Best Jumbo..... | 20c | 60c | 2.00 |
| Super Fecto | 20c | 60c | 2.00 | Rocky Ford Improved..... | 20c | 60c | 2.00 |
| Bender's Surprise | 25c | 75c | 2.25 | Mildew Resistant Number 45..... | 20c | 60c | 2.00 |
| Maryland. | 25c | 75c | 2.25 | Iroquois | 30c | 1.00 | 3.00 |
| Early Sunrise | 20c | 60c | 2.00 | Texas Resistant No. 1..... | 40c | 1.00 | 3.00 |
| Hard-Shell Bender | 25c | 75c | 2.25 | Schoons Hard-Shell | 25c | 75c | 2.25 |
| Osage Extra Early..... | 20c | 60c | 2.00 | Banana Grey or Pink..... | 25c | 75c | 2.50 |
| Lake Champlain | 25c | 75c | 2.50 | Pride of Wisconsin..... | 20c | 60c | 2.00 |
| Orange Flesh | 20c | 60c | 2.00 | Queen of Colorado..... | 20c | 60c | 2.00 |
| Golden Osage, Hard-Shell | 25c | 75c | 2.25 | Tip Top | 20c | 60c | 2.00 |
| Breakfast Queen | 20c | 60c | 2.00 | Milwaukee Market | 20c | 60c | 2.00 |
| Honey Rock or Sugar Rock..... | 20c | 60c | 2.00 | Eden Gem | 20c | 60c | 2.00 |
| New Delicious | 20c | 60c | 2.00 | Oregon Delicious | 20c | 60c | 2.00 |
| Large Hearts of Gold..... | 20c | 60c | 2.00 | | | | |

Every detail in descriptions is carefully verified. You can rely on Andrews-Burri Seeds

WATERMELON

CERTIFIED SEED

The following are a few of the rules a grower must comply with in order to qualify a field of watermelons for CERTIFICATION. A violation of any of these will disqualify a field regardless of acreage.

Prior to planting we have to advise the Department just how many acres of each variety we are going to grow. Give location and history of previous crops. Isolation must be $\frac{1}{4}$ mile distant. We must send a sample of the seed we are going to plant and its pedigree or history for their approval.

A state inspector can and does inspect these fields any time he chooses. He must inspect them at least three times after they have set a crop

of melons. The crop itself has to meet certain stringent requirements for qualification, such as general excellency and vigor, purity, and cutting qualities. Any melons removed from the field for any purpose automatically disqualifies a field. Promptly after harvest the seeds are re-cleaned and samples are taken and state seals placed on each bag by the State Inspector. Later if seeds pass the required germination tests, etc., the seals are broken by the State Inspector and packaged under his supervision and state seals put on each package by him.

It would indeed be difficult to set up a more stringent set of rules to insure the quality of a product by a concern as unassailable as a State Department of Agriculture.

BLACKLEE-CERTIFIED

WILT RESISTANT

SIZE AND QUALITY

FINE SHIPPER

**THIS MELON IS TRULY
WILT RESISTANT**

BLACKLEE CERTIFIED is oblong in shape, rind dark green, flesh rich red, seeds black. A very solid melon, free from hollow centers, heavier than any other in proportion to size than any melon of our acquaintance, average weight 35 to 40 pounds.

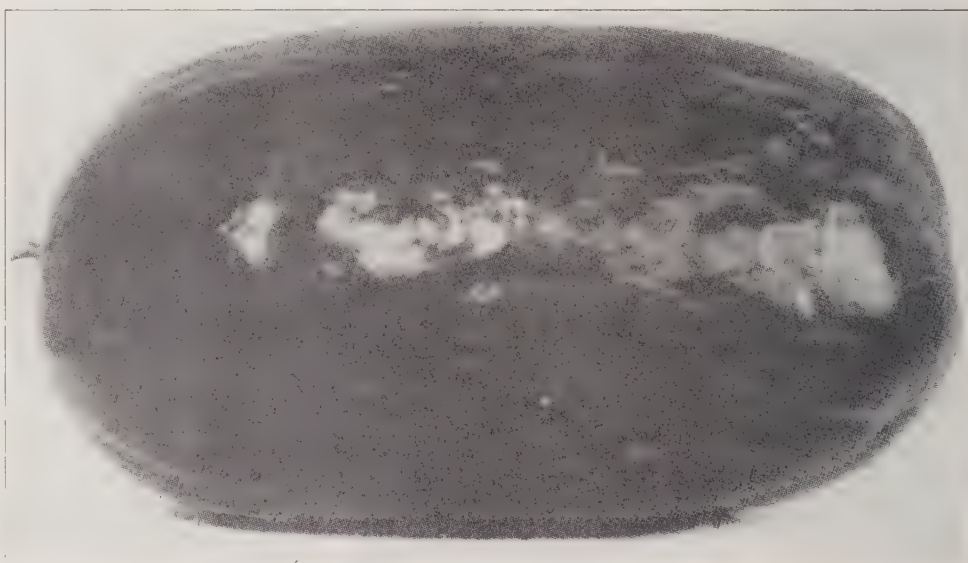
Flesh of fine texture, free from stringiness, crisp, melting and sweet. Our trials have shown it to be nearly 100% free from wilt.

Has a tough, thin rind, making it one of the best of all the quality shippers.

DARLINGTON is a long-type melon weighing up to 75 pounds, gray-green with irregular dark strips, very similar to Georgia Rattlesnake, rind very thin, flesh very tender, luscious, melting with a distinct and pronounced flavor and aroma, very high in sugar content. Seeds white or ivory with brown smears.

Darlington is in our opinion the best of all the melons for home and local markets, rind too thin for shipping.

FLORIDA GIANT, OKLAHOMA CHIEF OR CLARA LEE CERTIFIED—A large, round melon with a black-green, shiny, glossy rind. Has no stripe, just solid, smooth black-green. Its flesh is blood red, tender and very sweet. Grayish black seeds that are rather large. Melons almost as large as Jumbo Triumph, many as large as 70 and 80 pounds, and under very favorable conditions they will grow



BLACKLEE CERTIFIED

to 100 pounds. The rind is very thin and tough and they can be hauled without damage any distance that any melon can be hauled. They are hardy and resist drought better than any except Kansas King. They ripen along with Tom Watson and other mid-season melons.

SMOKY JOE—90 days—There are many long varieties of melons but only one Smoky Joe. A watermelon of enormous size and of the finest shipping quality. The giant melons often measure 28 inches long and 18 inches in diameter and weigh 60 to 80 pounds each. The color is an attractive dark green. The rind is medium thick, enough to insure long keeping, and the withstanding of rough handling during shipping. The meat is an appealing rich red and is delicious and sweet. It is entirely free from hard centers and stringy flesh, and when fully ripe will slice half an inch thick and not break. The Smoky Joe is our own development and introduction, a crossing of the famous quality melons, Kleckley Sweet and Tom Watson. Smoky Joe has blunt ends and more free from necks than any other melon we know of.

WATERMELON . . . Continued



FLORIDA GIANT

KANSAS KING—A very well known melon of high merit. Distinctly early, of large size, and excellent quality. Fruits nearly round, slightly longer than broad; handsome color, deep emerald green with irregular paler green stripes; seeds large and of reddish color. Popular in Midwest for shipping. Rind medium thick and fairly strong.

WATERMELON

| | Oz. | ¼ Lb. | Lb. |
|--------------------------------------|------|-------|--------|
| Clara Lee or Florida Giant Certified | .25c | 75c | \$2.25 |
| Darlington | .30c | 90c | 3.00 |
| Mountain Hoosier | .20c | 60c | 2.00 |
| Fourth of July | .15c | 50c | 1.50 |
| Tom Watson (Cut Red) | .15c | 50c | 1.50 |
| Kleckley Sweet Improved, New Wonder | .15c | 50c | 1.50 |
| Blue Boy | .20c | 60c | 1.80 |
| Smoky Joe | .20c | 60c | 1.80 |
| Winter Queen | .15c | 50c | 1.50 |
| Kletex Watson | .15c | 50c | 1.50 |
| Oklahoma Chief | .20c | 60c | 1.80 |
| Stone Mountain | .15c | 50c | 1.50 |
| Arnold Grey | .20c | 60c | 1.80 |
| Kleckley No. 6 (Wilt Resistant) | .15c | 50c | 1.50 |
| Dixie Queen | .20c | 60c | 2.00 |
| Clara Lee (or Florida Giant) | .20c | 60c | 1.80 |
| Kansas King | .15c | 50c | 1.50 |
| Bill Rogers | .20c | 60c | 2.00 |
| King Bee | .20c | 60c | 2.00 |
| Blacklee | .30c | 90c | 3.00 |
| Northern Sweet | .15c | 50c | 1.50 |
| Hutchinson, Striped | .15c | 50c | 1.50 |
| Early Kansas | .15c | 50c | 1.50 |
| Blacklee Wilt Resistant Certified | .30c | 1.00 | 3.50 |
| Oklahoma Chief Certified | .25c | 75c | 2.25 |
| Black Diamond | .20c | 60c | 1.80 |
| Hawkesbury Wilt Resistant | .20c | 60c | 1.80 |
| Citron Red or Green Seeded | .20c | 60c | 1.80 |
| Black Diamond Certified | .25c | 75c | 2.25 |

OKRA

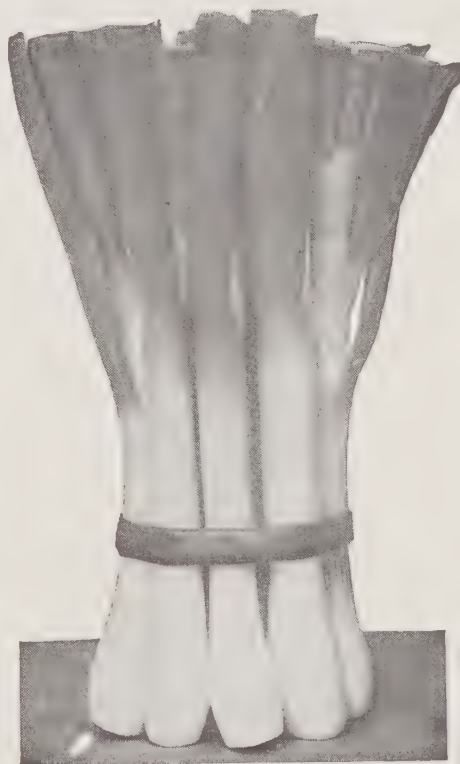
| | Oz. | ¼ Lb. | Lb. |
|-----------------|------|-------|-----|
| White Velvet | .15c | 30c | 75c |
| Perkins Mammoth | .15c | 30c | 75c |
| Dwarf Green | .15c | 30c | 75c |

WE DO OUR BEST TO PLEASE YOU...ALWAYS

ONIONS

CULTURE—Onions do best on a rich loam, previously cultivated for two years. Still clay and light sand are equally unfavorable. The land should be highly fertilized with well-rotted manure. Fresh stable manure has a tendency to produce soft onions. Drill in 4 pounds of seed per acre, ½ inch deep. If sets are wanted, use 60 to 80 pounds of seed per acre. Fifteen to 20 bushels of sets will plant an acre.

WHITE BUNCH—Once again we are pleased to offer this popular white bunching onion. This popular variety is planted very extensively for table use or green onions, produces long, slender onions, nearly pure white, mild and tender. One of the best for bunching under good conditions. It is slow to bulb, has a heavy top that stands up well during summer months.



WHITE BUNCH

ONIONS . . . Continued



UTAH WHITE SWEET SPANISH — A selection from White Spanish, larger than the old strain, about the same in size and shape as Utah Yellow Spanish. This outstanding, large, mild variety under favorable conditions often produces bulbs 4 to 4½ inches in diameter and will produce a heavy yield of perfect-shaped white bulbs, either in upland or on muck soil. This Utah White Spanish is an exceptional keeper, so if you are a grower of White Onions, don't fail to plant this variety.

UTAH YELLOW SWEET SPANISH—Days to maturity, 112. This excellent Utah strain of Sweet Spanish has made a lot of money for our customers in the past five years. It is a superlative development of the well-known Spanish variety, Gigantic Gibraltar, and is very similar to Valencia and Denia. We take special pride in this strain of Utah Sweet Spanish because of its beautiful appearance, its uniform globe shape and its bright golden color. The Utah Sweet Spanish onion is now grown over large areas in the United States. It is one of the most attractive onions on the market and has an extremely mild flavor. Its shipping and keeping qualities make it a great favorite in commercial centers. It will ripen down very evenly. Yields have been reported as high as 25 tons per acre.

EXTRA EARLY YELLOW GLOBE—98 days—Excellent semi-globe shaped and is a good yielder. It ripens well, and under normal conditions the bulbs are ready for market 10 days ahead of the Southport Yellow Globe. The color is a rich deep yellow and it can be kept in storage for a limited time.

WHITE GLOBE OR SOUTHPORT WHITE GLOBE—This is considered the best of the white varieties. It produces medium to large, handsome, fine, globe-shaped bulbs. The flesh is fine-grained, snowy white, and of mild flavor. It keeps very well for a white kind. The bulbs of the white varieties should be gathered as soon as ripe, and carefully dried under shelter away from strong sunlight.

NEW WONDER BUNCH—Sown in the spring, this variety produces large green onions early in the summer. It does not form a bulb. The stems are nearly twice as large as ordinary onions and hold in eating condition for a long time. If sown in the fall and given a little protection, this onion will stand all winter and produce fine, large "green" onions in the spring.

WHITE SWEET SPANISH—Nearly as large as Utah White Spanish. Globe-shaped, small neck, skin white, flesh firm and exceptionally mild. Splendid for use in salads or suitable for eating without cooking. A very heavy yielder and a fair keeper. The past season many growers found White Sweet Spanish an excellent table or bunching variety.

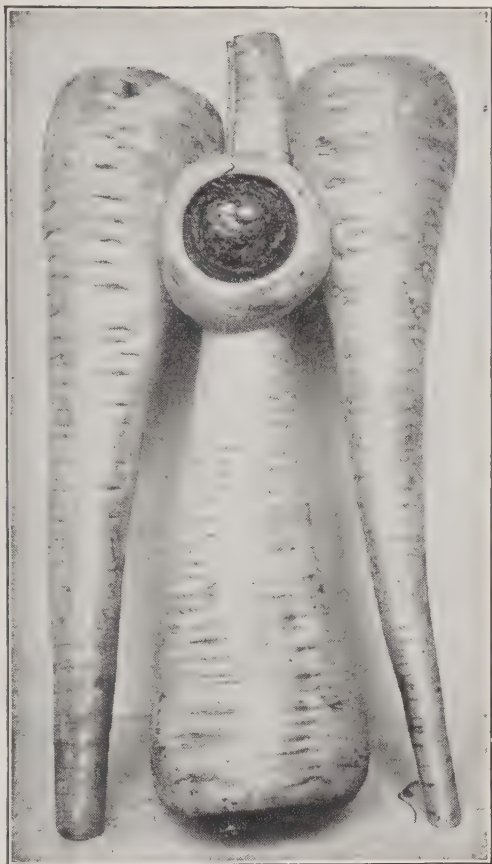
SOUTHPORT YELLOW GLOBE—(Selected Strain)—This onion produces very heavy yields on good soil. The onions are of perfect globe shape and good, deep yellow color. They are handsome onions and keep remarkably well. This is the best shaped and best keeper of the yellow globe onions. We have an extra selected strain of this variety which produces onions of uniform globe shape and deep yellow color and with very small necks.

WHITE PORTUGAL OR SILVERSKIN—This is a medium-sized onion of mild flavor and with beautiful, clear, white skin. The variety is a favorite with many for use when young as a salad or bunching onion and for pickling. It usually matures about ten days earlier than White Globe and is fine for growing sets.

ONIONS

| | Oz. | ¼ Lb. | Lb. |
|--|------|--------|--------|
| Five Lbs. and Over 10c Less Per Lb. One-half Pound at Pound Price | | | |
| Yellow Globe Danvers..... | .45c | \$1.25 | \$4.00 |
| Southport Yellow Globe, Brigham Strain | .45c | 1.25 | 4.00 |
| Extra Early Yellow Globe..... | .45c | 1.25 | 4.50 |
| Crystal White Wax..... | .45c | 1.35 | 4.50 |
| New Wonder Bunch..... | .45c | 1.25 | 4.00 |
| Ebenezer Yellow | .50c | 1.50 | 5.00 |
| Southport Large Red Globe..... | .50c | 1.50 | 5.00 |
| Southport White Globe..... | .45c | 1.35 | 4.50 |
| White Portugal or Silver Skin..... | .45c | 1.35 | 4.50 |
| Riverside Sweet Spanish..... | .50c | 1.50 | 5.00 |
| White Bunch | .40c | 1.25 | 4.00 |
| White Sweet Spanish..... | .50c | 1.50 | 5.00 |
| Yellow Sweet Spanish, Utah Strain..... | .50c | 1.50 | 5.00 |
| White Lisbon | .40c | 1.25 | 4.00 |
| White Sweet Spanish, Utah Strain.... | .60c | 1.75 | 6.00 |
| Southport Yellow Globe..... | .40c | 1.25 | 4.00 |
| Hardy White Bunch..... | .40c | 1.25 | 4.00 |
| White Ebenezer | .40c | 1.25 | 4.00 |

PARSNIPS



ALL-AMERICAN HOLLOW CROWN

CULTURE—Parsnips are usually grown in deep, rich, sandy soil, but will make good roots in any soil which is deep, mellow and moderately rich. Fresh manure is apt to make the roots coarse and ill-shaped. As the seed is sometimes slow and uneven in growth, it should be sown as early as possible in drills 2½ feet apart; cover ½ inch deep and press the soil firmly over the seed. Give frequent cultivation and thin the plants to 6 inches apart in the row.

ALL-AMERICAN HOLLOW CROWN—The roots are medium long with a broad shoulder gradually tapering downward. The skin is very white in color and quite smooth. It is considered the best and most productive of the long parsnips, with fine-grained, tender and sweet flesh. Under fair conditions it yields a tremendous crop of well-shaped roots. Our seed is carefully tested for germination and you will get a result from your planting.

PARSNIPS

| One-half Pound at Pound Price | Oz. | ¼ Lb. | Lb. |
|----------------------------------|-----|-------|--------|
| Hollow Crown, All-American..... | 15c | 30c | \$1.25 |
| Thick Shoulder Hollow Crown..... | 15c | 30c | 1.25 |
| Early Model | 15c | 30c | 1.25 |

PARSLEY

CULTURE—Parsley is easily grown, only it takes several weeks for it to come up, hence the ground where it is sown is often covered with weeds or dug over with the belief that the seed is no good. The seed may be soaked several hours in warm water before sowing, which will hasten germination. Sow it early in the spring in rows a foot apart. It can also be used to

border beds, making a very pretty effect. One ounce will sow a 150-foot row. A few plants can be taken up in the fall and put in pots or boxes in a sunny window and will continue to furnish leaves for flavoring or garnishing throughout the winter.

CHAMPION MOSS CURLED—This is a vigorous, compact growing variety, excellent for garnishing and flavoring, and a handsome, decorative plant. The leaves are very finely cut and so closely crisped or curled as to resemble bunches of moss. Owing to its uniformly fine deep green color and very attractive foliage, this is one of the most popular sorts for both the market and home garden.

PLAIN OR SINGLE—The leaves of this variety are flat, deeply cut but not curled. Very desirable for flavoring soups and stews and for drying. It is a favorite on account of its very dark green leaves as well as its hardiness of plant. The curled sorts are more extensively used for garnishing.

HAMBURG, OR SHORT THICK ROOTED—The root is the edible portion of this variety and resembles the parsnip both in color and shape. The flesh is white, a little dry and in flavor is similar to celeriac. The foliage is practically the same as that of Plain Parsley. The roots can be dug late in the fall and stored in sand for winter use. They are extensively used for flavoring soups and stews.

PARAMOUNT—Silver Medal in All-American Trials. Plants 12 inches tall with spread of 20 inches when properly spaced. Color unusually rich dark green; texture more uniformly and attractively "triple curled" than older strains. A striking variety for uniformity of type.

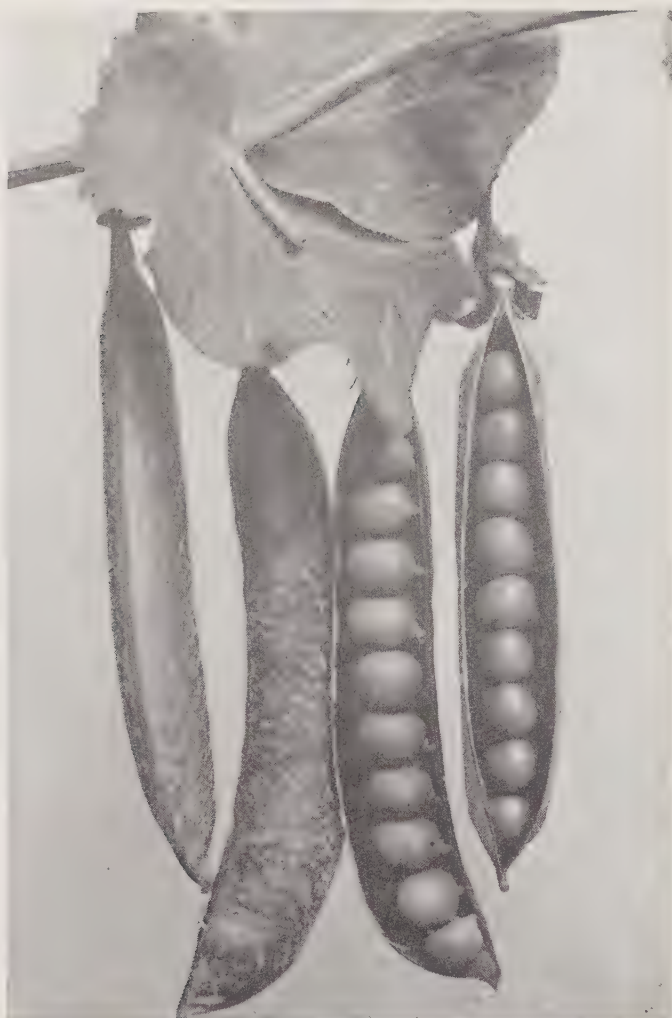


VICTORY.
CURLED.

PARSLEY

| One-half Pound at Pound Price | Oz. | ¼ Lb. | Lb. |
|-------------------------------|-----|-------|--------|
| Double or Moss Curled | 15c | 30c | \$1.10 |
| Plain or Single | 15c | 30c | 1.00 |
| Thick Rooted Hamburg | 15c | 30c | 1.00 |
| Paramount | 15c | 30c | 1.25 |
| Victory Curled | 15c | 30c | 1.10 |

PEAS



LAXTON PROGRESS

CULTURE—Sow as early as possible a few of some of the early varieties in warm, sandy soil. The seed can be sown in rows in a very satisfactory way. It is best to sow in an open way with a hoe, the full width of it, and broadcast the seed thinly in the bottom. Later plantings should be of the wrinkled varieties, they are better yielders, sweeter and very finely flavored. Early varieties will mature in about 50 or 60 days, later varieties in about 70 to 85 days.

WESTERN GIANT—This truly is a giant podded pea of recent introduction. Its mammoth long, dark green pods, 5½ to 6 inches long, are slightly curved, the vines about 26 inches high, produce a bountiful crop about 73 days from planting. Unlike many varieties of its season, the quality is rich in flavor and will remain tender and sweet several days after picking.

HUNDREDFOLD—This is, without doubt, the very best dwarf pea ever grown. It is the best-flavored and the largest-podded dwarf-growing sort in existence. It is ready about three days after the earliest sorts, and bears an enormous crop of handsome, intensely dark green, fairly broad and pointed pods, 4 inches long, containing about 8 large, dark green peas of excellent quality. The vines are 16 inches high, sturdy, and resist heat well.

THOMAS LAXTON—Days to maturity, 73. A variety having been originated in England by Mr. Thomas Laxton of Bedford, a noted English horticulturist. This pea is hardy and slightly earlier than Gradus and a more abundant yielder. The pods resemble Gradus in shape, excepting that they are blunt-ended. They will attain a length of 4¼ inches. They are straight, inclined toward roundness and are well filled. The vines will grow to a height of 30 inches.

WORLD'S RECORD—56 days—Seed wrinkled, large, cream and green color. Pods are pointed, about 4 inches long, and broad. An early type of the celebrated Gradus, very frequently used as an early Gradus. Height of vine 24 to 30 inches, light green. Fine, showy, single pods, with 7 or 8 peas in each. Vines medium heavy. A wonderful, early pea for market and home gardener.

LAXTON'S PROGRESS—A new variety of great merit and popularity. The pods are large, 4 to 4¼ inches long, and of a fine dark green color. Vines grow only 18 to 20 inches high, and bear a heavy crop of handsome pods. Being one of the earliest of the sweet wrinkled sorts, Laxton's Progress is in great demand everywhere. Matures in about 55 to 58 days.

LITTLE MARVEL—Days to maturity, 60. The vines of this variety will grow to a height of 15 inches, producing pods 2¾ to 3 inches in length. This variety resembles the Nott's Excelsior in vines, habit of growth and quality. The pods are considerably longer, very often being produced in pairs, and are straight, slightly broader than Nott's Excelsior.

ALDERMAN—A very fine pea for main crop. Height of vine about 4 feet. Yields more than almost any other variety. The pods resemble Telephone, but are larger, deeper green and better filled, while the vines are of more robust growth and more prolific. It is really an improved Telephone and the best of this type. The pods are immense, often 5 inches long and contain 8 to 10 large peas. Matures medium late.

PEAS

| One-half Pound at Pound Price | Lb. | 5 Lbs. | 10 Lbs. | 100 Lbs. |
|-------------------------------|------|--------|---------|----------|
| Mammoth Pod, Extra Early | .40c | \$1.75 | \$3.00 | \$28.00 |
| Alaska | .40c | 1.60 | 2.60 | 24.00 |
| Alaska (Large Podded) | .40c | 1.60 | 3.00 | 28.00 |
| Gradus | .45c | 2.00 | 3.40 | 31.00 |
| Thos. Laxton (Dark Podded) | .45c | 2.00 | 3.40 | 31.00 |
| Laxtonian | .45c | 2.00 | 3.40 | 31.00 |
| Dwarf Telephone | .45c | 2.00 | 3.40 | 31.00 |
| Little Marvel | .40c | 1.85 | 3.15 | 28.00 |
| Hundredfold | .45c | 2.00 | 3.40 | 31.00 |
| Early Bird | .45c | 2.00 | 3.40 | 31.00 |
| Telephone | .45c | 2.00 | 3.40 | 31.00 |
| Alderman (Dark Podded) | .45c | 2.00 | 3.40 | 31.00 |
| Laxton Progress | .45c | 2.00 | 3.40 | 31.00 |
| World's Record | .45c | 2.00 | 3.40 | 31.00 |
| Western Giant | .40c | 1.80 | 3.10 | 27.00 |

PEPPER



PRIDE OF THE MARKET

PRIDE OF THE MARKET—Pride of the Market Pepper is of the California Wonder type, but 10 to 12 days earlier. Its earliness and productiveness warrant it first place among the heavy-meated varieties. The plants are sturdy, upright and of medium size with dark green, abundant foliage and broad leaves that well protect the pods. There is possibly a smaller percentage of four-lobe peppers than in the older California Wonder types.

The fruits are borne upright, of medium width and averaging 3 to 3½ inches in length. The color when young is an intense dark green, changing to a beautiful scarlet when ripe. The walls are very thick and the flesh entirely sweet, making it outstanding. Also excellent as an early red pepper where red peppers are in demand. As Pride of the Market is early in maturing with medium plants, it is especially suited to Northern growing conditions.

To any grower who wants a very early, thick-fleshed, smooth, solid pepper, 90% blight-resistant, desirable for local, or hauling to distant markets, we recommend Pride of the Market.

XXX CALIFORNIA WONDER—An earlier and more productive strain of California Wonder developed by line breeding. Fruits blocky, smooth, with thick, mild, sweet flesh. Plants shorter and stockier than California Wonder, but fruits are set earlier and more abundantly. An outstanding strain unsurpassed for shipping or for the home and market garden.

OZARK GIANT—A large and heavy yielding Southern strain of the Giant type. Fruits similar in shape to Chinese Giant but smoother, mostly 4-lobed and of large size, 4½ by 4 inches, medium weight.

YELLOW SWEET BANANA — (Sweet) — Attractive yellow variety producing fruits 4 to 4½ inches long and 2½ inches through at shoulder. Color light waxy yellow when at best picking stage, becoming bright scarlet when fully ripe. Plants vigorous growing and productive. Flesh sweet but shows some pungency.

YELLOW SWEET BULL NOSE—The largest yellow pepper. Skin golden yellow, flesh thick and bright yellow. Very mild and sweet. Of about the same shape as Bull Nose.

YELLOW HOT HUNGARIAN—(Hot)—Very early. Very desirable for home, market garden and canning. Plants small; heavily productive. Fruits 6-7 inches long, 2 inches thick, tapered; smooth; waxy light yellow, becoming bright red; flesh thick and pungent.

CALWONDER—This new variety is an earlier, more prolific type of California Wonder. In season it is practically as early as Early Giant. The plants are exceptionally vigorous, of a somewhat spreading or branching habit of growth, and produce an enormous crop of fruit, beginning early in the season and continuing over a long period. The fruits are very similar in shape to California Wonder, but are slightly smaller, and have the thick walls and superior quality of California Wonder. A most desirable variety for market and shipping.

SUNNYBROOK—The deep scarlet peppers are somewhat like a flattened tomato, 3 inches across and 2 inches deep, and come in clusters of 4 or 5 sturdy, compact, 18-inch, heavily laden plants. The thick flesh is mild and sweet.

OZARK WONDER—60 days—Ozark Wonder is a cross between Ozark Giant and Pride of the Market. Plants are vigorous and upright fruits, nearly as large as Ozark Giant, 4½x4 inches in diameter, flesh medium thick, deep green, very prolific, often as much as 25 to 30 large peppers per plant.

Ozark Wonder is the most prolific of all large peppers. Our customers state that never before have they grown a pepper of the size and earliness of the Ozark Wonder.

PEPPER

| One-half Pound at Pound Price | Oz. | ¼ Lb. | Lb. |
|--------------------------------|--------|--------|---------|
| Pride of the Market..... | \$1.00 | \$3.00 | \$10.00 |
| California Wonder | 60c | 1.80 | 6.00 |
| Sunnybrook (Pimiento) | 70c | 2.10 | 7.50 |
| Chinese Giant | 90c | 2.50 | 9.00 |
| Ruby King | 60c | 1.80 | 6.00 |
| California Wonder XXX..... | 90c | 2.50 | 9.00 |
| Yellow Sweet Bull Nose..... | 90c | 2.50 | 9.00 |
| Calwonder, Extra Early | 90c | 2.50 | 9.00 |
| Long Red Cayenne..... | 60c | 1.80 | 6.00 |
| Imp. Thick Long Red..... | 1.00 | 3.00 | 10.00 |
| Ozark Wonder | 1.00 | 3.00 | 10.00 |
| Small Chili | 80c | 2.40 | 8.00 |
| World Beater or Goliath..... | 60c | 1.80 | 6.00 |
| Harris' Earliest | 1.00 | 3.00 | 10.00 |
| Harris' Early Giant | 70c | 2.10 | 7.00 |
| Oshkosh. | 70c | 2.10 | 7.00 |
| Ozark Giant | 1.20 | 3.60 | 12.00 |
| Yellow Hot Hungarian..... | 70c | 2.10 | 7.00 |
| King of the North | 70c | 2.10 | 7.00 |
| Yellow Sweet Banana..... | 1.20 | 3.60 | 12.00 |
| Mo. Wonder | 1.00 | 3.00 | 10.00 |
| Oakview Wonder | 80c | 2.40 | 8.00 |
| Waltham Beauty | 1.00 | 3.00 | 10.00 |
| Floral Gem | 1.00 | 3.00 | 10.00 |
| Golden California Wonder | 1.00 | 3.00 | 10.00 |

PUMPKIN

CULTURE—Plant when the ground is warm, in hills 8 by 8 feet apart. One ounce for 25 hills; 3 to 4 pounds per acre. Thin to 2 or 3 plants per hill.

CONNECTICUT FIELD—The most commonly used variety, large, ribbed, deep orange in color, thick fleshed, coarse and sweet. Excellent for cooking or stock feed.

SMALL SUGAR—Called New England Pie. Small, orange skinned, slightly ribbed. Finest quality flesh for pies.

KING OF THE MAMMOTHS—Extra large exhibition pumpkin or for stock feed. Solid flesh with light yellowish orange skin.

LARGE CHEESE — (Special) — Very flat, ribbed, with creamy-orange skin. Medium sized, finest quality flesh. Popular for canning. Our strain is very fancy.

GREEN STRIPED CUSHAW—A smooth, crookneck shaped variety, white with green mottling and stripes. Medium sized, with thick yellow flesh.



CONNECTICUT FIELD

PUMPKIN

Five Lbs. and Over 5c Less Per Lb.

| One-half Pound at Pound Price | Oz. | ¼ Lb. | Lb. |
|-------------------------------------|-----|-------|--------|
| Large Cheese or Kentucky Field..... | 15c | 40c | \$1.25 |
| Sweet Potato | 15c | 40c | 1.25 |
| Small Sugar | 15c | 40c | 1.35 |
| Connecticut Field | 15c | 40c | 1.25 |
| King of Mammoth..... | 20c | 60c | 1.75 |
| Cushaw Striped | 15c | 40c | 1.25 |
| Winter Luxury (Netted)..... | 15c | 40c | 1.25 |
| Cushaw White | 15c | 40c | 1.25 |

RADISH

BRIGHT SCARLET GLOBE SPECIAL GREENHOUSE IMPORTED STOCK—

(Transplanted Stock)—We offered a Special Greenhouse Stock of Scarlet Globe Radish a few years ago which has made many friends. Last year we offered an improved stock of this type. In addition to an earlier maturity, this strain is much improved in color, which is a rich brilliant scarlet, approaching the Saxa color. Its main advantage is the unsurpassed quality. Crisp as no other radish, thin-skinned and much longer standing before becoming pithy. This improved strain is one of our new introductions of "Quality Radishes."

RESELECTED SCARLET GLOBE (Imported)—Standard Type No. 1—Grown from carefully selected transplanted roots. A perfect strain, result of individual plant selection. Surprisingly uniform, color brightest scarlet, shape perfect, well-rounded bottom, with thin taproot. Tops are of medium size and uniform. Flesh pure white, crisp and of fine flavor. It remains very long in prime condition. Fine for market. European grown.

CAVALIER—A highly colored and very attractive variety for all purposes, and especially for shipping. Tops small; roots oblong-globe, slightly longer than broad, very firm and of bright almost true scarlet color. Especially adapted for forcing and growing on muck land.



BRIGHT SCARLET GLOBE GREENHOUSE SPECIAL IMPORTED

RADISH . . . Continued

ICICLE—A splendid long variety of almost transparent whiteness. Produces nice roots in 22 days from the date of sowing, and it continues in prime condition for a long period. It is much the most popular sort of the entire list. There is no variety that grows more uniform in type.

WHITE STRAUSBURG—Handsome, oblong and tapering, both skin and flesh being pure white. Flesh is firm, brittle and tender and retains its crispness even if old and large. Excellent for summer use. Very popular because it remains fit for use a long time and does not get pithy.

ICICLE MUCK-SOIL STRAIN—This is a very highly selected strain and excels all others we have ever observed. The roots are remarkably uniform and perfectly shaped. The tops in this strain are short and compact, but when grown on muck soil they reach just the ideal size for easy bunching and basketing.

EARLY SCARLET GLOBE—(Short Top)—This is a very fine, short-top strain, equally valuable for forcing and for outdoor growing, especially on muck. The small tops are ideal for bunching and the olive-shaped roots are rich bright scarlet in color. The flesh is clear white and firm. A very uniform stock which we can recommend highly.

WINTER VARIETIES

ROUND BLACK SPANISH—Grows to a large size; very solid.

CALIFORNIA WHITE MAMMOTH—One of if not the largest radish. Often a foot or more in length. Firm flesh and keeps perfectly.

LONG BLACK SPANISH WINTER—Oblong, or very large size and firm texture, with dark green leaves. Is sown earlier than fall turnips and should be stored in cellar for winter use.

CHINESE ROSE WINTER—A bright scarlet winter variety. About 4 inches long and stump-rooted. Like Chinese White Winter, only red colored and two weeks earlier.

RHUBARB or Pie Plant

GIANT VICTORIA—Rhubarb, also known as Pie Plant, or Wine Plant, is the earliest spring vegetable and is grown for its leaf stalks, which are extensively used for pies and sauce. Rhubarb succeeds best in deep, somewhat retentive soil and the richer this is and the deeper it is stirred, the better. Sow in drills an inch deep and thin out the plants to 6 inches apart. In the fall transplant into very highly manured and deeply stirred soil. Stalks should not be pulled or cut until second year.

| | RHUBARB | Oz. | ¼ Lb. | Lb. |
|--------------------------|----------------|-----|-------|--------|
| Giant Victoria | | 20c | 65c | \$2.00 |



SCARLET GLOBE, EUROPEAN GROWN RADISH

RADISH

| | Oz. | ¼ Lb. | Lb. | 100 Lbs. |
|---|-----|-------|------|----------|
| Five Lbs. and Over 5c Less Per Lb. | | | | |
| One-half Pound at Pound Price | | | | |
| Bright Scarlet Globe, Greenhouse Special | 15c | 30c | 85c | \$75.00 |
| Scarlet Globe, Short Top | 15c | 30c | 85c | 75.00 |
| Scarlet Globe, Medium Top | 15c | 30c | 80c | 70.00 |
| New Sparkler White Tip, Imp. | 15c | 30c | 85c | 70.00 |
| Improved Crimson Giant | 15c | 30c | 90c | 80.00 |
| Cavalier Scarlet Globe, Imp. | 15c | 30c | 90c | 80.00 |
| Philadelphia White Box | 15c | 35c | 1.00 | 90.00 |
| Wood's Early Frame | 15c | 30c | 90c | 80.00 |
| Long Scarlet Short Top | 15c | 30c | 90c | 80.00 |
| White Strasburg | 15c | 30c | 90c | 80.00 |
| Improved Chartier | 15c | 30c | 95c | 90.00 |
| White Icicle | 15c | 30c | 80c | 70.00 |
| White Stuttgart | 15c | 30c | 90c | 80.00 |
| Round Black Spanish | 15c | 30c | 90c | 80.00 |
| Long Black Spanish | 15c | 30c | 90c | 80.00 |
| Mammoth White Winter | 15c | 30c | 90c | 80.00 |
| Scarlet Globe, Mkt. Gardener Strain | 15c | 30c | 85c | 75.00 |
| Greenhouse Special, Scarlet Globe, Imported | 15c | 30c | 90c | 80.00 |
| Scarlet Globe, Medium Top, Imported | 15c | 30c | 90c | 80.00 |

SALSIFY or OYSTER PLANT

CULTURE—One of the most desirable winter vegetables, and one which deserves to be more used. Before sowing, the soil must be stirred to considerable depth. Sow early and quite deep. Frost does not hurt the roots, but a quantity should be stored for winter in a pit or cool cellar before the ground freezes. An ounce will sow 75 feet; 8 to 10 pounds per acre.

MAMMOTH SANDWICH ISLAND—This variety is less liable to branch than most varieties, but coarse or fresh manure should not be used if smooth roots are wanted. We grow this seed ourselves for critical customers.

SALSIFY

| | Oz. | ¼ Lb. | Lb. |
|-----------------------------------|-----|--------|--------|
| Mammoth Sandwich Island | 45c | \$1.40 | \$4.50 |

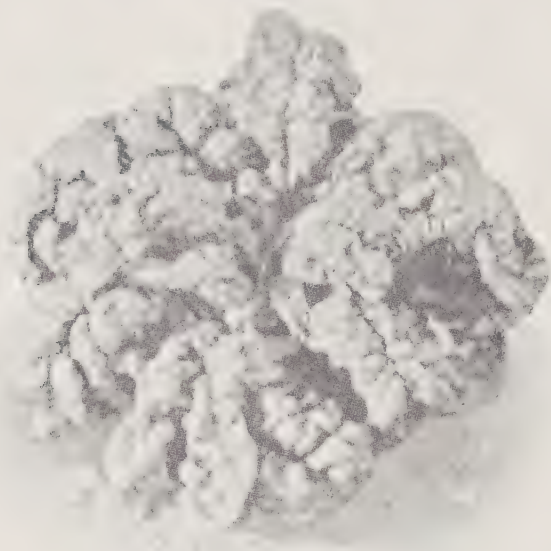
SORREL

CULTURE—A hardy perennial, which may bear for several years. Sow in spring or summer in drills. Excellent in salads, or cooked like spinach. The flavor of the green leaf is slightly sour, hence often called Sour Grass. An ounce will sow 150 feet; 10 to 14 pounds per acre.

NARROW LEAF—A superior variety which we have been supplying to market gardeners for many years. Superior to the ordinary commercial strains.

| | | | |
|--------------------|---------------|--------|---------|
| | SORREL | | |
| | Oz. | ¼ Lb. | Lb. |
| Narrow Leaf | 50c | \$1.50 | \$5.00 |
| | SAGE | | |
| | Oz. | ¼ Lb. | Lb. |
| Large Leaved | \$1.00 | \$3.00 | \$10.00 |

SPINACH



LONG STANDING BLOOMSDALE

CULTURE—Sow the seed in good, rich ground free from acid, 1 inch deep, in rows a foot apart. The fast bolting or quick-growing types may be sown very early in the spring or from August 15 until frost. The slow bolting types may be sown during the season when it is impractical to sow the early types. An ounce will sow 100 feet; 8 to 10 pounds per acre in drills. (If broadcast, sow 12 to 15 pounds per acre.) Matures in from 45 to 55 days.

HOLLANDIA — 45 days — The very hardy, prickly seeded variety commonly used for market and canning in California. The leaves are smooth, large, thick and dark green.

GIANT THICK LEAVED—(Nobel)—43 days —(Round Seeded)—Decidedly the best of the round seeded, thick leaved group. Because of the enormous yield, long standing character, and the deep green color and smooth character of the leaves, this is highly recommended for canning as well as for home and market garden. Leaves very large, thick, broad arrow-shaped with rounded tip.

LONG STANDING BLOOMSDALE—45 days —(Round Seeded)—In demand for home and market gardens because of the uniform, handsome plants and remarkable long standing quality. Resembles Savoy Leaved or Bloomsdale, but is a trifle later, or more compact habit, a trifle darker green, and remains free of flower stalks about two weeks longer.

OLD DOMINION — (Blight Resistant) — 40 days—A cross between Virginia Blight-Resistant Savoy and King of Denmark. Large, dark green, heavily crumpled leaves. Long standing and resistant to mosaic. Used mostly for an early crop.

BLOOMSDALE DARK GREEN, RE-SELECTED—40 days—(Round Seeded)—The standard very early sort for home and market garden. Plants upright and compact, attain height of 10-12 inches and spread of 12-15 inches. Leaves large; blistered and crumpled; rich, deep, glossy green; of splendid quality.

KING OF DENMARK — 48 days — (Round Seeded)—Extremely long standing, smooth, dark green leaved sort for home and market garden as well as for canning. Plants large and spreading, with large, thick leaves that are only slightly crumpled. Spring sown crops are very often free of flower stalks until midsummer.

HARLEM MARKET OR PRESTO—36 days—Recommended especially for use at seasons when ordinarily you would sow Reselected Bloomsdale or Blight-Resistant Savoy. It resembles the Savoy or Bloomsdale varieties in appearance, but is hardier, earlier and quicker growing. In fact, it grows so quickly that it can be cut and off the ground before other varieties. The seed is prickly.

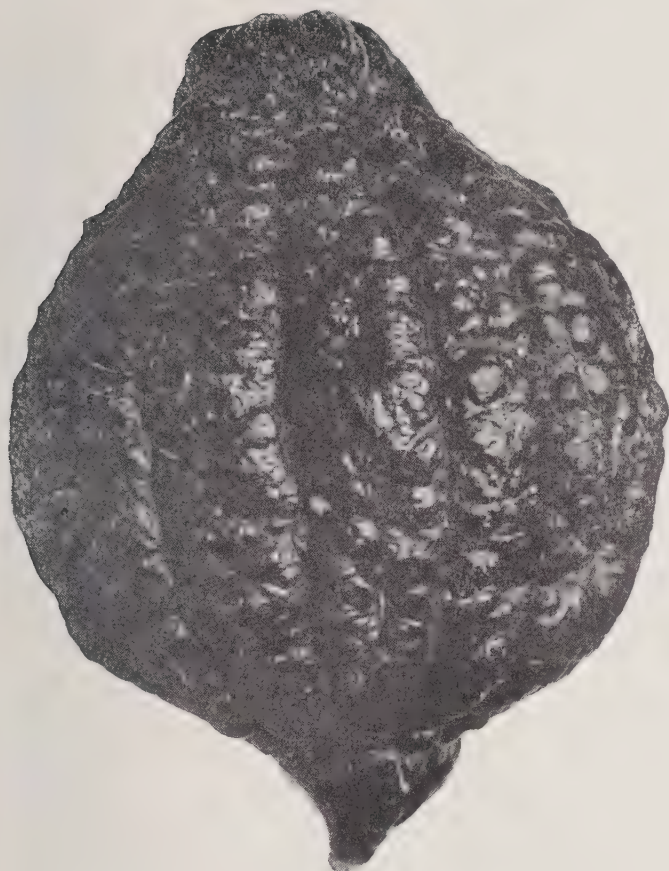
NEW ZEALAND—70 days—Absolutely distinct in form, color and habit from other spinach—it is not a spinach, though used as a spinach. Foliage thick, succulent, dark green, never sunburns, a true heat resistant, leaves covered with water globules like an ice-plant. Later to mature for table spinach of usual form, but remaining in edible condition ten times as long. Plants remain in edible condition from July until killed by frost. A sort to "cut and come again."

VIRGINIA SAVOY-LEAVED BLIGHT RESISTANT —This robust variety is especially valuable for its blight-resisting quality. The large, dark green leaves of good substance are savoyed and crumpled. It is best suited for late crop and the seed should not be sown before the latter part of August, as the plants have a great tendency to bolt to seed if sown earlier.

SPINACH

| 25 Pounds at 100 Pound Price | Lb. | 5 Lbs. | 10 Lbs. | 100 Lbs. |
|---|------|--------|---------|----------|
| Bloomsdale Reselected, Dark Green, Imported | .60c | \$2.40 | \$4.30 | \$40.00 |
| Bloomsdale Savoy (Blight Resistant) | .60c | 2.40 | 4.50 | 40.00 |
| Viroflay Thick Leaf | .60c | 2.50 | 4.50 | 42.00 |
| Long Standing Bloomsdale Special, Imported | .60c | 2.40 | 4.60 | 43.00 |
| Presto | .60c | 2.40 | 4.50 | 40.00 |
| King Noble | .60c | 2.50 | 4.50 | 42.00 |
| Old Dominion (Blight Resistant) .. | .60c | 2.60 | 4.80 | 45.00 |
| Gaudry .. | .60c | 2.50 | 4.50 | 42.00 |
| New Zealand | 1.00 | 4.75 | ... | ... |
| Bloomsdale, American | .50c | 2.40 | 4.30 | 40.00 |
| Bloomsdale, Long Standing .. | .50c | 2.50 | 4.30 | 42.00 |
| Hollandia .. | .50c | 2.30 | 3.30 | 30.00 |

SQUASH



DENNING'S BLACK STRAIN WARTED HUBBARD

CULTURE—Make ground very rich. Sandy loam is best. Seed should not be planted until warm weather. Allow 4x4 feet for hills for bush squashes and 8x8 feet for running varieties. Four plants to hill; 3 to 4 pounds of seed to the acre. For summer squashes estimate 2 ounces to 100 hills; winter squashes 4 ounces to 100 hills.

DENNING'S BLACK STRAIN WARTED HUBBARD — Denning's Warded Hubbard Squash has been bred to meet the requirements of a high-class trade; fruits are of large size, rough skin, dark green in color. For producers on a large scale, these qualities are needed. Our strain is ideal for the home market, vines are of strong, robust growth, fruit is large, grand shape, heavily warted, flesh is bright orange, fine grained, rich and dry.

XXX BLUE HUBBARD—A new variety obtained by selection from the original Hubbard. The fruit is of a gray-blue color, grows much larger than Hubbard and keeps remarkably well as the shell is extremely hard. The quality is equal to or even better than the original Hubbard. The shape and appearance of this squash is ideal. Market gardeners find an increasing demand for this variety.

IMPROVED OR LARGE TABLE QUEEN—

The demand for this large size Table Queen squash is growing by leaps and bounds because growers find it the most profitable kind to grow. The fruit have the true pointed acorn shape but are larger than the regular Table Queen, measuring about 6-7 inches long and 5 inches across. There is always a ready market for these attractive dark green squash and the big vines yield tremendous crops.

EARLY PROLIFIC CROOKNECK—50 days—Very popular in the South, where squashes are picked young. Plants very prolific. Fruits curved at neck, light yellow, warted.

EARLY PROLIFIC STRAIGHTNECK—50 days (All-America Award)—New high-yielding summer squash, earlier than Giant Summer Straightneck. Plants strictly bush and compact with ample foliage, permitting close planting. Fruits straight, smooth, and of delicate creamy color; firm and usable when only 4 to 5 inches long and until 12 to 14 inches long. Quality unsurpassed. Suitable for home and market garden and for shipment.

EARLY WHITE BUSH SCALLOP—50 days—Standard scallop squash for home and market garden. Fruits uniform, round, attain 9 inches diameter, flattened, with scalloped margins; smooth; greenish-white when young, white when mature.

BUTTERCUP—100 days—Developed by Prof. A. F. Yeager at North Dakota Agricultural College. Shape similar to that of Turban, 3½-pound. Rind thin and tough, dark green with narrow gray stripes and slight mottling. Orange flesh cooks sweet and dry. A small, thick-flesh squash of good storage and eating quality.

ZUCCHINI GREY—60 days—A well-known Italian Marrow type. Fruits very nearly cylindrical, straight. Color medium green, mottled with cream-gray and lighten green lace pattern and stripes; flesh very firm, and of delicate flavor.

BLACK ZUCCHINI—62 days—Developed from Italian Marrow; notably popular in the West and South. Fruits are cylindrical, long, smooth, dark green-black; flesh greenish white at eating stage and of good flavor.

GIANT HUBBARD—This is an improvement over the original Warded Hubbard. It is nearly twice as large, ideal for hotels and restaurants, rather large for family use. If your market demands a large squash, plant Giant Hubbard.

SQUASH OR CYMBLING

| One-half Pound at Pound Price | Oz. | ¼ Lb. | Lb. |
|--|-----|-------|--------|
| Improved Table Queen or Acorn..... | 20c | 60c | \$1.80 |
| Early Prolific Straightneck..... | 20c | 60c | 1.80 |
| Early Prolific Crookneck..... | 20c | 45c | 1.40 |
| Giant Warded Hubbard | 50c | 1.50 | 3.50 |
| Early White Bush..... | 15c | 35c | 1.25 |
| Mammoth White Bush..... | 15c | 40c | 1.35 |
| Golden Summer Crookneck..... | 15c | 40c | 1.35 |
| Warded Hubbard, Denning's Black | | | |
| Strain | 20c | 60c | 2.00 |
| Zucchini, Black | 20c | 50c | 1.50 |
| Des Moines, or Table Queen or Acorn..... | 20c | 50c | 1.50 |
| Giant Summer Straightneck..... | 20c | 50c | 1.50 |
| Blue Hubbard Special Strain XXX..... | 25c | 60c | 2.00 |
| Buttercup | 25c | 70c | 2.25 |
| Zucchini, Grey | 20c | 50c | 1.50 |
| Vegetable Marrow, Bush..... | 20c | 50c | 1.50 |
| Vegetable Marrow, Vining..... | 20c | 50c | 1.50 |
| Fordhook, Bush | 20c | 50c | 1.50 |
| Fordbook, Vining | 20c | 50c | 1.50 |
| Butter Nut | 35c | 1.00 | 3.50 |
| Cocozelle, Bush | 20c | 50c | 1.50 |
| Cocozelle, Vining | 20c | 50c | 1.50 |

TURNIPS

CULTURE—Sow early varieties in April, in drills 12 to 18 inches apart. Cover seed ½ inch and thin out to 4 to 6 inches in the row. Cultivate frequently. For succession, sow at intervals until the last week in May. For fall and winter crop, sow in July or August in drills or broadcast. Use 1 ounce to 250 feet of drill; 1 pound per acre in drills or 1½ pounds broadcast.

EXTRA-EARLY PURPLE TOP MILAN

—This splendid new turnip is the earliest in cultivation. The bulbs are flat, medium size, smooth, and free from rootlets, with thin and crisp white flesh of excellent flavor. The upper portion of the bulb is a rich purple, while the lower half is pure white.

PURPLE TOP WHITE GLOBE

—The bulb measures 3 inches and more in diameter, being of perfectly globe form; the upper portion is of rich purplish red, and the lower half is clear, creamy white. Flesh white, firm and crisp, of mild flavor. It is an excellent keeper, and being so productive, is one of the best to grow for stock feeding. The plants, being of such large, strong growth, should be thinned more severely than with small early sorts. This variety is very extensively used for market growing.

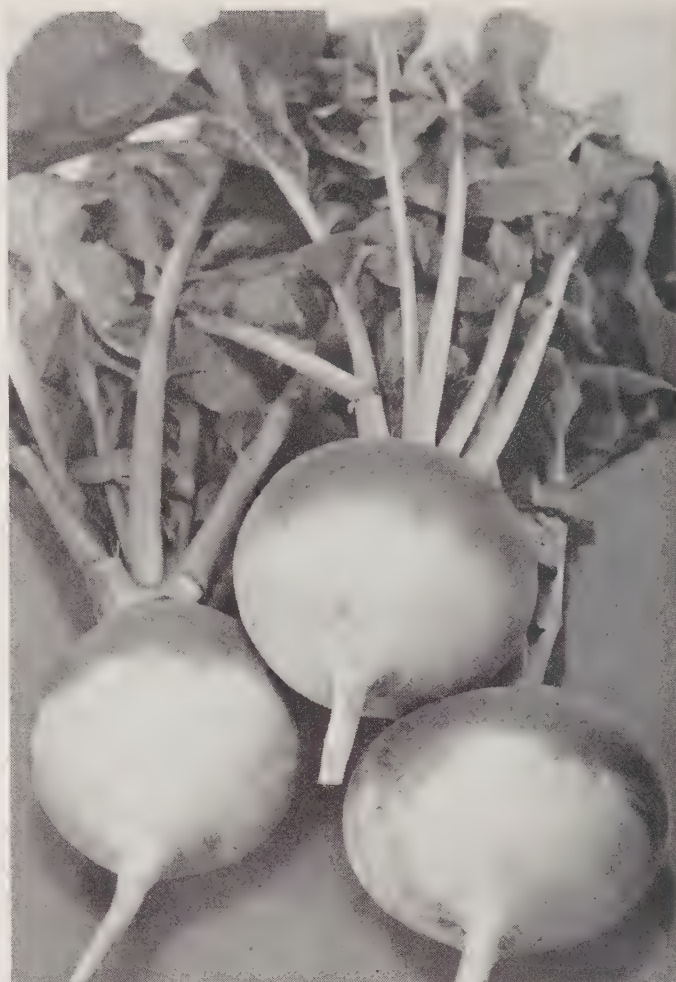
XXX PURPLE TOP WHITE GLOBE—Owing to the great amount of care and labor involved in making this the best strain on the market, we are obliged to ask a higher price than for the ordinary stock. However, the better price you will obtain for these extra fine turnips will more than offset the small increase in cost. Its particular feature is its very bright red top which goes well down on the root. It is a quick-growing type, with fine-flavored white flesh. Keeps well for such an early variety.

RUTABAGA

NECKLESS—A new introduction of special merit. It is globe-shaped, color bright yellow with clear purple top, very smooth and practically free from any neck.

AMERICAN PURPLE TOP—Days to maturity, 90. This type of rutabaga has been grown in this country for a hundred years. The American strain is a selection from the older English type. It has been selected for a smaller top and shorter neck than is usually found in England. The roots are globular, but grow to a large size and are of splendid quality. Excellent for table use or stock feeding.

★ IF YOU DON'T FIND WHAT YOU WANT LISTED, WRITE US, WE MAY HAVE IT



PURPLE TOP GLOBE

PRICES—TURNIP

| | Oz. | ¼ Lb. | Lb. |
|----------------------------------|-----|-------|--------|
| Seven Top | 10c | 20c | \$1.00 |
| Cow Horn | 10c | 20c | 1.00 |
| Early White Milan | 15c | 35c | 1.00 |
| Purple Top Milan | 15c | 35c | 1.00 |
| Purple Top Globe | 15c | 25c | 1.00 |
| Purple Top Strap Leaved | 15c | 25c | 1.00 |
| Early Snowball | 15c | 35c | 1.00 |
| Rutabaga, Neckless | 15c | 35c | 1.25 |
| XXX Purple Top White Globe | 15c | 40c | 1.25 |

HERBS—SWEET, MEDICINAL, POT PRICES POSTPAID

| | Oz. | ¼ Lb. | Lb. |
|-----------------------|------|--------|--------|
| Anise. | | OPEN | |
| Basil, Sweet | 50c | \$1.50 | \$5.00 |
| Borage. | | OPEN | |
| Caraway. | | OPEN | |
| Fennel, Sweet | | OPEN | |
| Marjoram, Sweet | | OPEN | |
| Sage | 1.00 | 3.00 | 10.00 |
| Summer Savory | 60c | 2.40 | 6.00 |
| Thyme. | | OPEN | |

TOBACCO

| | Oz. | ¼ Lb. |
|--------------------|-----|--------|
| White Burley | 50c | \$1.25 |
| Yellow Pryor | 50c | 1.25 |



SUPER BREAK O'DAY

TOMATO

One ounce will produce 2,000 plants; 4 ounces sufficient to transplant an acre.

CULTURE—This delicious vegetable is one of the most important of all garden products. The seed should be sown in a hotbed about the first week in March, in drills 5 inches apart and $\frac{1}{2}$ inch deep. When the plants are about 2 inches high, they should be set out 4 to 5 inches apart in another hotbed, or removed into small pots, allowing a single plant to a pot. Whenever danger from freezing is past, the plants may be set out in the open ground. Sufficient plants for a small garden may be started by sowing a few seeds in a shallow box or flower pot and placing it in a sunny window.

BO-KAY CERTIFIED—(86 days from plant-setting time)—We are sincere in our belief that this tomato is an outstanding main crop variety. It is wilt resistant, and trials show it to be almost free from checks or cracks. It is a very heavy cropper, and is large and smooth with dark red color inside and out. Its strong, heavy foliage makes it a valuable variety for planting on light soil. Also good for greenhouse forcing and staked or field growing.

SUPER BREAK O'DAY—This new Break O'Day must not be confused with the older type, as it has all the good qualities of the old with much more added. The vine has larger stems than the Break O'Day, and the foliage is much larger and more abundant. The vines stand up better than the Break O'Day and the additional foliage protects the fruit from sun scald. The fruits are globe shaped with no flat sides. Is as large as the Break O'Day with better outside color. The internal structure is very solid and meaty, and is a much darker red color than the older type. Ten to fifteen tons of fruit per acre is not an unusual yield for this

variety. The crop matures about the same time as the old Break O'Day, which is about 68 days from setting plants desirable as field stake or for greenhouse growing.

SUPER PURPLE KING—85 days—A second-early, smooth, pink-fruited variety. It is very similar to Globe. Fruits are globe-shaped, high-crowned, medium sized, and perfectly smooth; very solid and meaty, and has a thick skin. They set in clusters of from 5 to 7. Vines make a good growth and have rather heavy-cut foliage. Unsurpassed by any other shipping variety. Should be staked. Vines long, somewhat resistant to wilt.

KING OF THE STAKERS—A many-purpose variety, extra early and smooth, medium large—Fruits are large, smooth, globe-shaped, bright scarlet and unusually free from cracks. Highly resistant to fusarium wilt. Very productive. We recommend it as a staked or un-staked tomato for fields in sections where tomatoes are subject to sun scald. As early as Earliana. Has normal vine coverage. Also very satisfactory as a greenhouse tomato, one grower reporting a 25% heavier yield than four other varieties.

FIRESTEEL—A very large-fruited tomato, globe-shaped and scarlet red in color. It is not affected by hot weather as much as other varieties and is very productive. The fruit is smooth, and very uniform, remarkably free from cracking at the stem end. Maturity 60 to 70 days.

BONNY BEST—Unexcelled as a general purpose tomato; very valuable for forcing under glass and as a canning and shipping variety in northern sections. Fruits handsome; evenly colored bright deep scarlet-red; medium large; flattened globe-shape; smooth and firm.

RUTGERS CERTIFIED—72 Days—A development introduced by the New Jersey Agricultural Experiment Station. Fruits medium to large, similar in shape to Marglobe but slightly more flattened. Highly recommended as a second early maturing variety for canning and tomato juice.

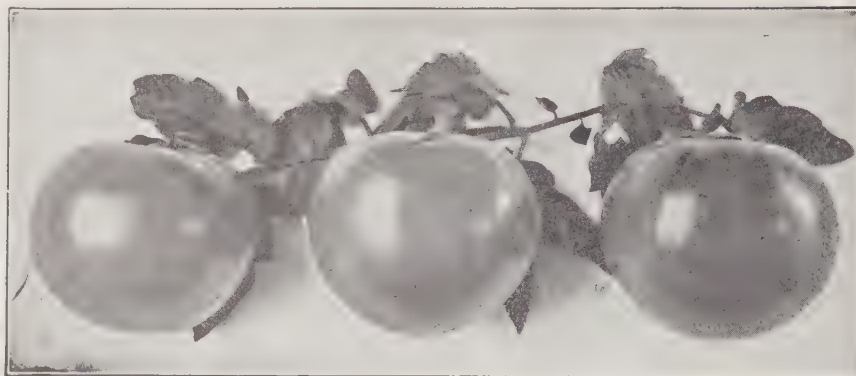
CARDINAL—A recent introduction highly recommended for canners and market gardeners. Strong dark green foliage. Fruits large, semi-globe shaped. Color rich scarlet with fine, deep interior color. Excellent flavor. A main crop variety maturing somewhat earlier than Stone.

DWARF CHAMPION—Strictly dwarf and tree-like; requires no training to permit culture where space is limited. Fruits purplish-pink; flattened globe shape; medium size.

DWARF STONE—Strictly dwarf and tree-like; requires no training to permit culture where space is limited. Fruits bright red, flattened globe shape, a trifle over medium size.

SUPER EARLIANA—Particularly valuable for home garden and early market. Our strain is definitely superior in earliness and quality. Fruits medium size; flattened globe shape; deep scarlet-red; firm and smooth.

MORE VARIETIES AND PRICES ON NEXT PAGE



KING OF THE STAKERS

TOMATOES . . . Continued

GULF STATE MARKET SUPREME—A superb strain. Bred for large size, attractive color and abundant yield. For markets where a purplish-pink tomato is desired, this strain can be recommended as the most satisfactory variety available. The seed we offer is all grown with the most exacting care.

STOKESDALE CERTIFIED—A second early scarlet-fruited variety maturing about a week earlier than Marglobe. Plant rather open in habit with medium heavy foliage. Fruits large, globe or sub-globe, smooth and well colored. Recommended for both canners and shippers, particularly where length of growing season is less than average.

MARGLOBE CERTIFIED—We offer a most superb strain of this splendid type in point of earliness, uniformity, and general desirability; particularly valuable for shipping; definite disease resistance recommends this variety for use in sections infested with Fusarium Wilt and Nail-head Rust. Plants thrifty and heavily productive of long-bearing period. Fruits uniform deep scarlet; large, uniformly globe-shaped; smooth, solid and of distinct quality.

SIoux—A new tomato developed from All Red x Stokesdale at the Nebraska Experiment Station. Plant relatively open, with finely-divided leaves; fruits of medium size, almost globular, thick-walled and practically free from hard core, juicy with good acid flavor. This variety possesses the uniform ripening factor.

MARBON, SPECIAL SELECTION—68 days—Probably a cross between Bonny Best and Marglobe, as it is between these two varieties in appearance. Its favorable features are earliness, size, globular shape, interior color and solidly. Ripens from the inside out. Intense scarlet in color. The producer predicts that it may replace such tomatoes as Earliana, Bonny Best and John Baer. Give Marbon a good test.

It is possible that you will like it better than other early varieties you have used. Similar to Stokesdale.

VALIANT CERTIFIED—This variety is becoming very popular with market gardeners. A half-brother of Stokesdale, it develops a deep Marglobe type tomato and ripens within 3 days of Earliana. It is 4 days earlier and often 2 ounces heavier than Stokesdale. A valuable tomato for market but not primarily adapted as a canner. Our sales have steadily increased on this variety.

TOMATO

| One-half Pound at Pound Price | Oz. | ¼ Lb. | Lb. |
|---|--------|--------|---------|
| Super Break O'Day..... | \$1.00 | \$3.00 | \$10.00 |
| Bo-Kay Certified | 1.00 | 3.00 | 10.00 |
| Scarlet Dawn | 1.00 | 3.00 | 10.00 |
| Prolific Early | 80c | 2.40 | 8.00 |
| Bonny Best | 80c | 2.40 | 8.00 |
| Chalks Early Jewel..... | 80c | 2.40 | 8.00 |
| Spark's Earliana | 80c | 2.40 | 8.00 |
| John Baer | 80c | 2.40 | 8.00 |
| Super Purple King | 1.00 | 3.00 | 10.00 |
| Matchless | 70c | 2.35 | 7.00 |
| Dwarf Champion | 1.00 | 3.00 | 10.00 |
| Michigan State Forcing | 70c | 2.35 | 7.00 |
| New Globe | 80c | 2.40 | 8.00 |
| Indiana Baltimore | 60c | 1.80 | 6.00 |
| Purple King | 70c | 2.35 | 7.00 |
| Dwarf Stone | 1.00 | 3.00 | 10.00 |
| New Stone | 70c | 2.35 | 7.00 |
| Dwarf Ponderosa | 1.20 | 3.60 | 12.00 |
| Tall Ponderosa | 1.20 | 3.60 | 12.00 |
| Yellow Pear, Red Pear, Yellow Plum. | 70c | 2.35 | 7.00 |
| Break O'Day | 70c | 2.35 | 7.00 |
| Pritchard or Scarlet Topper | 70c | 2.35 | 7.00 |
| Super Earliana | 1.00 | 3.00 | 10.00 |
| Bonny Best Crown Set..... | 2.00 | 7.00 | 21.00 |
| Marglobe Certified | 80c | 2.40 | 8.00 |
| Stokesdale Certified | 80c | 2.40 | 8.00 |
| Valiant Certified | 80c | 2.40 | 8.00 |
| King of Stakers..... | 2.00 | 7.50 | 25.00 |
| Supreme Gulf State Market | 80c | 2.40 | 8.00 |
| Rutgers (Certified) | 80c | 2.40 | 8.00 |
| Firesteel. | 1.00 | 3.00 | 10.00 |
| Cardinal | 1.25 | 4.00 | 15.00 |
| Marbon Special Selection | 1.00 | 3.00 | 10.00 |
| Sioux. | 1.00 | 3.00 | 10.00 |
| Bonny Best Certified..... | 90c | 2.70 | 9.00 |

★ IF IT'S SOMETHING ABOUT SEEDS YOU'D LIKE TO KNOW, WRITE US.

FLOWER SEEDS

ASTERS

American Branching—(Also known as Vick's Branching)—We recommend the American Branching type highly. Very free blooming, producing flowers of broad-petaled type, slightly incurved and very lasting. Handsome double flowers borne on long stems, free brancher and unsurpassed in merit. 24 inches tall. Wilt resistant.

CrimsonPkt., 10c; 1/4 oz., 35c; oz., \$1.00
 Lavender or Dark Blue...Pkt., 10c; 1/4 oz., 35c; oz., \$1.00
 Shell PinkPkt., 10c; 1/4 oz., 35c; oz., \$1.00
 Purple or Dark Blue ...Pkt., 10c; 1/4 oz., 35c; oz., \$1.00
 RosePkt., 10c; 1/4 oz., 35c; oz., \$1.00
 WhitePkt., 10c; 1/4 oz., 35c; oz., \$1.00
 Fine MixedPkt., 10c; 1/4 oz., 35c; oz., \$1.00

Crego's Giant Branching Comet—Also known as "Ostrich Plume"—Is the most popular variety grown. The flowers have long, shaggy petals, suggesting a Chrysanthemum, and often are curled and interlaced. Blooms midsummer. 2 feet. Wilt resistant.

CrimsonPkt., 10c; 1/4 oz., 35c; oz., \$1.00
 LavenderPkt., 10c; 1/4 oz., 35c; oz., \$1.00
 Purple or Dark Blue ...Pkt., 10c; 1/4 oz., 35c; oz., \$1.00
 RosePkt., 10c; 1/4 oz., 35c; oz., \$1.00
 Shell PinkPkt., 10c; 1/4 oz., 35c; oz., \$1.00
 WhitePkt., 10c; 1/4 oz., 35c; oz., \$1.00
 Fine MixedPkt., 10c; 1/4 oz., 35c; oz., \$1.00

Hearts of France—(Wilt resistant)—Beautiful rich dark red, and much in demand.

1/8 oz., 45c; 1/2 oz., \$1.50; oz., \$2.25

Queen of the Market—(Wilt resistant)—The best early among the Asters. Habit branching. Flowers double and nearly round. Plants 18 inches high and very productive. Ten days earlier than any other.

CrimsonPkt., 10c; 1/4 oz., 35c; oz., \$1.00
 Purple or Dark Blue...Pkt., 10c; 1/4 oz., 35c; oz., \$1.00
 LavenderPkt., 10c; 1/4 oz., 35c; oz., \$1.00
 Light RosePkt., 10c; 1/4 oz., 35c; oz., \$1.00
 WhitePkt., 10c; 1/4 oz., 35c; oz., \$1.00
 Fine MixedPkt., 10c; 1/4 oz., 35c; oz., \$1.00

ANTIRRHINUM (Snapdragon)

An exquisite, tender perennial, living for a second and third year, but best treated as an annual, blooming in July if sown early and then on until killed by frost. By cutting off most of the flowering stems and giving a slight protection over winter, plants will bloom second summer for four months.

Majus Golden King, 2 ft. 1/4 oz., \$1.00; 1 oz., \$3.00
Majus Scarlet Cardinal, 2 ft. .. 1/4 oz., \$1.00; 1 oz., \$3.00

Majus Queen Victoria—
 White, 2 ft. 1/4 oz., \$1.00; 1 oz., \$3.00

Majus Harmony—Terra Cotta
 Orange, 2 ft. 1/4 oz., \$1.00; 1 oz., \$3.00

Majus Rose Queen, 2 ft. 1/4 oz., \$1.00; 1 oz., \$3.00
Majus Mixed, 2 ft., Pink, Red,
 Rose, Yellow, Scarlet 1/4 oz. \$1.00; 1 oz., \$3.00

BELLIS PERENNIS (English Daisy)

Monstrosa Maxima, Selected Giant—This is a very fine, large-flowering, extra-double strain, with full-centered flowers on compact plants 6 inches high. Unexcelled for bedding. Dark Red, Dark Rose, White, or Mixed. Ask for price.

CALENDULA

Campfire.....Pkt., 10c; oz., 80c; 1/4 lb., \$2.50; lb. \$8.00
Orange King, Double—The best bright

orangePkt., 10c; oz., 50c
Lemon Queen, Double—Good clear

lemonPkt., 10c; oz., 50c

COSMOS

Extra Early Mammoth Mixed.....Pkt., 10c; 1/2 oz., 30c
Late Mammoth Mixed.....Pkt., 10c; 1/2 oz., 25c

Extra Early Double Crested Mixed.
 50% doublePkt., 10c; 1/4 oz., 75c

DAHLIA (Seeds Only)

Hybrid Show Double Mixed—An exceptional mixture of really fine seed, saved from prize-winning plants.

Pkt., 10c; 1/8 oz., 35c

Finest Single Mixed—Will produce brilliant flowers running through a wide range of striking colors. Fine for cuttingPkt., 10c; 1/4 oz., 40c

DIANTHUS

Heddewigi Double Mixed (Japan Pink)—Very showy and fragrant. Flowers 2 to 2 1/2 inches, resembling a carnation, many beautifully striped and mottled. 10 inchesPkt., 10c; 1/2 oz., 60c

Heddewigi Single Mixed (Japan Pink)Pkt., 10c; 1/2 oz., 60c

Annual Sweet William (Sweet Wivelsfield)—A very desirable type of single flower (Dianthus Hybridus), with a Sweet William-like growth. Flowers, however, are much larger and brighter, and more unusually marked and flaked. Blooms first year. Mixed.

Pkt., 10c; 1/4 oz., 25c

FOUR O'CLOCK—Mixed.Pkt., 10c; oz., 45c

GAILLARDIA—Grandiflora Mixed...Pkt., 10c; oz., 90c

GERANIUM—Mixed.Pkt., 10c; 1/4 oz., \$1.00

GOURDS—Dish ClothPkt., 10c; oz., 25c

Sugar TroughPkt., 10c; oz., 25c

Hercules.Pkt., 10c; oz., 25c

Egg ShapePkt., 10c; oz., 25c

Giant Water Bottle.....Pkt., 10c; oz., 25c

Mixed.Pkt., 10c; oz., 25c

CalabashPkt., 10c; oz., 25c

Pear-shaped StripedPkt., 10c; oz., 25c

Turk's Turban, Ornamental.....Pkt., 10c; oz., 25c

Small SpoonPkt., 10c; oz., 25c

BicolorPkt., 10c; oz., 25c

Warted Mixed Colors.....Pkt., 10c; oz., 25c

Horned CucumberPkt., 10c; oz., 25c

HELICHRYSUM MONSTROSUM

Strawflowers—Canary YellowPkt., 10c; oz., \$1.25

Fire BallPkt., 10c; oz., \$1.25

Rose QueenPkt., 10c; oz., \$1.25

Gomphrena—MixedPkt., 10c; oz., \$1.25

Gypsophilia—Baby's Breath, Single ..Pkt., 10c; oz., 75c

Gypsophilia—Baby's Breath,
 Double.Pkt., 10c; 1/4 oz., \$1.25

MARIGOLD

When all other flowers are past their prime, Marigolds will still furnish a wealth of color. The dwarf varieties are ideal for bedding, while the taller types are valuable for cutting. Marigolds are shallow rooters, and apt to be blown about unless staked.

(New) Sweet-Scented Yellow Supreme—"All-America" Gold Medal for 1935. Is lemon-yellow counterpart of the famous Guinea Gold, and like it is carnation-flowered and 100% semi-double, but its flowers are even larger. After being in water 48-72 hours, it takes on an even more delightful color, and, if possible, a more graceful form. Delicious sweet scented.
 Pkt., 10c; 1/4 oz., 50c; oz., \$1.60; 1/4 lb., \$5.00

(New) Gigantea Sunset Giants—A new race with double flowers, 5-7 inches across, in shades of vivid orange, dark and light yellow and primrose. Sweet-scented, too. 35% will come single, but the excellence of the doubles will compensate for this. Long stems for cutting. . 1/4 oz., 35c; oz., \$1.40; 1/4 lb., \$4.00

African Orange Ball—

2 1/2 feetPkt., 10c; 1/4 oz., 40c; oz., 1.25

African Lemon Ball—

2 1/2 feetPkt., 10c; 1/4 oz., 40c; oz., 1.25

African Tall Mixed Double—

2 1/2 feetPkt., 10c; 1/4 oz., 35c; oz., 1.00

French Dwarf Double—

Orange—10 in.Pkt., 10c; 1/4 oz., 30c; oz., .90

French Dwarf Double—

Lemon, 10 in.Pkt., 10c; 1/4 oz., 30c; oz., .90

NASTURTIUM

- Scarlet GleamPkt., 10c; oz., 25c
- Golden GleamPkt., 10c; oz., 25c
- Tall or Climbing2 oz., 40c; 1 lb., \$3.00
- Dwarf Varieties—
Finest Mixed .Pkt., 10c; oz., 25c; 2 ozs., 40c; 1 lb., \$3.00

PETUNIAS

For garden or house culture few plants equal the petunia in effectiveness. Beautiful and especially useful for borders, solid beds, window boxes, porch boxes and vases. They commence flowering early and continue a sheet of bloom until killed by frost; easily cultivated, requiring a fairly good soil and sunny position.

Giants of California Mixed—A well-balanced mixture containing a remarkably fine variety of colors, in blends of crimson, white, violet, lavender and pink. Large flowers freely produced.

Pkt., 25c; 1-16 oz., \$4.50; 1/2 oz., \$20.00

Elk's Pride—Surpassing Purple Prince in size, is darkest velvety-purple single, and in much demand for modern gardens. Effective in combination with Dainty LadyPkt., 25c; 1-16 oz., \$4.00; 1/8 oz., \$7.00

Balcony Petunias—Free-blooming, and trailing in growth, with single flowers 3 inches across. Suited for hanging baskets and window and porch boxes. Very easily grown. Height 15 inches.

Balcony Blue—An outstanding variety with large flowers of a beautiful, clear violet-blue color. This is a very popular, uniform strain.

Pkt., 15c; 1-16 oz., 45c; 1/8 oz., 80c; oz., \$5.00

Balcony Crimson, Rose, White, or Mixed—
EachPkt., 15c; 1-16 oz., 40c; 1/4 oz., \$1.25; oz., \$4.50; 1/4 lb., \$17.00

Improved Rosy Morn—An improved strain of the long-popular, clear pink bedding variety. Of deeper coloring, more compact growth, and freer flowering than the older type, with the same white throat.

Pkt., 15c; 1/8 oz., 60c; 1/2 oz., \$1.75; oz., \$3.25

Rose of Heaven—Rich brilliant rose, with inconspicuous white throat, darker than Rosy Morn.

Pkt., 15c; 1/8 oz., 50c; 1/2 oz., \$1.75; oz., \$3.40

PANSY

Giller's Super Giant Pansy Mixed—These produce enormous flowers, fine texture and form in a remarkably fine color range and especially well marked; many of the darker colors are in the mixtures, which adds to its beauty. A medium length stem and sturdy plants are one of the fine qualities that causes it to be so popular among all growers.

1/8 oz., \$2.25; 1/4 oz., \$4.00; 1/2 oz., \$6.50; 1 oz., \$12.00

America Mixed—An extremely bright mixture, early flowering dwarf with good varieties of colors. The plants are sturdy and produce an abundance of large, substantial flowers with a wide range of colors.

1/8 oz., \$2.00; 1/4 oz., \$3.50; 1/2 oz., \$6.50; 1 oz., \$12.00

Englemen's Giant Mixed—Early flowering of giant strains of pansy, the plants are compact, but robust growers, large in size, sometimes 3 or 4 inches, borne on heavy stems. This is a fine color blend, contains both light and dark shades.

1/8 oz., \$2.50; 1/4 oz., \$4.00; 1/2 oz., \$7.00; 1 oz., \$12.00

Maple Leaf Giant Mixed—A fine, large flowering pansy, producing blooms of good shape and color, plants are husky growers, having dark green foliage and large leaves.

1/8 oz., \$2.00; 1/4 oz., \$3.50; 1/2 oz., \$6.50; 1 oz., \$12.00

PORTULACA (Moss Rose)

Double Mixed—Saved from the finest flowers only, and will produce a large percentage of doubles.

Pkt., 10c; 1/4 oz., \$1.20

Single Mixed—Large flowers.Pkt., 10c; 1/4 oz., 60c

SALVIA OR SCARLET SAGE

A half ounce should raise 1,000 plants. Sow seed in hotbed or box in house and plant out when ground is warm, or sow outdoors when the apple is in bloom. In bloom 60 days. Likes full sun. Will produce, when well grown, 150-200 spikes to the plant.

Blaze of Fire—very dwarf.oz., \$5.00; 1/4 lb., \$17.00
Bonfire or Clara Bedman—A fine variety, 24 inches high; forms a dense, compact bush. Brilliant scarlet. oz., \$5.00; 1/4 lb., \$17.00

Farinacea "Blue Bedder"—2 feet. Perennial. Surmounting dense tufts of attractive foliage, rise spikes of light wedgewood-blue flowers. Blooms first year if started early. Flowers may be dried, and used as an everlasting. . . 1/4 oz., \$1.50; 1/2 oz., \$2.75, oz., \$5.00

SWEET PEAS

Late Giant Spencer Mixture—The varieties in this mixture have been selected to afford unusual richness and brilliancy of color. It contains the finest named sortsPkt., 10c; oz., 25c; 1/4 lb., 60c; lb., \$2.00

Early-Flowering Mixture—This is the finest blend, giving a perfect balance of the various colorings. Pkt., 10c; oz., 25c; 1/4 lb., 90c; lb., \$3.00

ZINNIAS—DAHLIA FLOWERED

Large size, fullness of petals, fine color range, good keeping qualities have all contributed to the popularity of this strain. The flowers resemble in appearance the Decorative Dahlia and for this reason it is called the Dahlia Flowered Zinnia. When in full bloom they often measure 5-6 inches in diameter.

Canary Bird—Delicate primroseoz., 75c; 1/4 lb., \$2.25; lb., \$8.00

Crimson Monarch—Bright crimsonoz., 75c; 1/4 lb., 2.25; lb., 8.00

Dream—Deep lavender purpleoz., 75c; 1/4 lb., 2.25; lb., 8.00

Exquisite—Bright rose with deeper center. . .oz., 75c; 1/4 lb., 2.25; lb., 8.00

Golden Dawn—Bright golden yellowoz., 75c; 1/4 lb., 2.25; lb., 8.00

Illumination—Deep roseoz., 75c; 1/4 lb., 2.25; lb., 8.00

Oriole—Orange and goldoz., 75c; 1/4 lb., 2.25; lb., 8.00

Polar Bear—Pure whiteoz., 75c; 1/4 lb., 2.25; lb., 8.00

Purple Prince—Fine deep purpleoz., 75c; 1/4 lb., 2.25; lb., 8.00

CALIFORNIA (California Giant)

Enchantress—Light rose with deep rose centeroz., 75c; 1/4 lb., \$2.25; lb., \$8.00

Golden Queen—Golden yellowoz., 75c; 1/4 lb., 2.25; lb., 8.00

Lavender Gem—Deep lavender purpleoz., 75c; 1/4 lb., 2.25; lb., 8.00

Orange King—Rich orange overlaid with scarletoz., 75c; 1/4 lb., 2.25; lb., 8.00

Orange Queen—Attractive golden orange. .oz., 75c; 1/4 lb., 2.25; lb., 8.00

Purity—One of the best white Zinniasoz., 75c; 1/4 lb., 2.25; lb., 8.00

Rose Queen—Lovely shade of bright deep roseoz., 75c; 1/4 lb., 2.25; lb., 8.00

Salmon Queen—Salmon roseoz., 75c; 1/4 lb., 2.25; lb., 8.00

Scarlet Gem—Fine deep glowing scarletoz., 75c; 1/4 lb., 2.25; lb., 8.00

Violet Queen—Exquisite deep purpleoz., 75c; 1/4 lb., 2.25; lb., 8.00

RED RIDING HOOD—Covered all over with little round double bright scarlet flowers about an inch across. 12 in.oz., 75c; 1/4 lb., \$2.25

LILLIPUT—Handsome little bushes, 18 inches high, bristling with tiny, medium-stemmed double flowers. Mixed colorsoz., 75c; 1/4 lb., \$2.25

THUNBERGIA—Alata—Mixed—Excellent for baskets or rock garden.1/4 oz., 30c; 1/2 oz., 50c; oz., \$1.00

VERBENA

Defiance Scarlet . . 1/4 oz., 50c; 1/2 oz., 75c; oz., \$1.40

Blue Shades 1/4 oz., 50c; 1/2 oz., 75c; oz., 1.40

Pink1/4 oz., 50c; 1/2 oz., 75c; oz., 1.40

Order Sheet Andrews-Burri Seed Co.

| QUANTITY WANTED | ARTICLES WANTED | PRICE | |
|-----------------|-----------------|-------|--|
| | | | |
| | | | |
| | | | |
| | | | |
| | | | |
| | | | |
| | | | |
| | | | |
| | | | |
| | | | |
| | | | |
| | | | |
| | | | |
| | | | |
| | | | |
| | | | |
| | | | |
| | | | |
| | | | |
| | | | |
| | | | |

GIVE BELOW NAMES OF FRIENDS YOU THINK MIGHT BE INTERESTED IN HAVING OUR CATALOGUE, AND WE WILL SEND THEM A COPY.

| NAME | ADDRESS | POST OFFICE | STATE |
|------|---------|-------------|-------|
| | | | |
| | | | |
| | | | |
| | | | |
| | | | |
| | | | |
| | | | |
| | | | |
| | | | |
| | | | |
| | | | |
| | | | |
| | | | |
| | | | |
| | | | |
| | | | |
| | | | |
| | | | |
| | | | |
| | | | |

ADDITIONAL ORDER SHEETS FURNISHED ON APPLICATION.

Use these Cards for RUSH ORDERS

FILL IN - SIGN - MAIL - NO POSTAGE REQUIRED

Mail this Card for RUSH ORDERS—No Postage Necessary
Please RUSH Shipment of the Following Seeds:

| Quantity | ARTICLES WANTED | Price | |
|----------|-----------------|-------|--|
| | | | |
| | | | |
| | | | |
| | | | |
| | | | |
| | | | |
| | | | |

Name _____

Address _____

Mail this Card for RUSH ORDERS—No Postage Necessary
Please RUSH Shipment of the Following Seeds:

| Quantity | ARTICLES WANTED | Price | |
|----------|-----------------|-------|--|
| | | | |
| | | | |
| | | | |
| | | | |
| | | | |
| | | | |
| | | | |

Name _____

Address _____

Mail this Card for RUSH ORDERS—No Postage Necessary
Please RUSH Shipment of the Following Seeds:

| Quantity | ARTICLES WANTED | Price | |
|----------|-----------------|-------|--|
| | | | |
| | | | |
| | | | |
| | | | |
| | | | |
| | | | |
| | | | |

Name _____

Address _____

Use these Cards for RUSH ORDERS

FILL IN - SIGN - MAIL - NO POSTAGE REQUIRED

FIRST CLASS
Permit No. 2923
(Sec. 34.9 P. L. & R.)
KANSAS CITY, MO.

BUSINESS REPLY CARD

No Postage Stamp Necessary if Mailed in the United States

2c Postage Will Be Paid by—

ANDREWS-BURRI SEED CO.

505 Walnut Street

Kansas City 6, Missouri



FIRST CLASS
Permit No. 2923
(Sec. 34.9 P. L. & R.)
KANSAS CITY, MO.

BUSINESS REPLY CARD

No Postage Stamp Necessary if Mailed in the United States

2c Postage Will Be Paid by—

ANDREWS-BURRI SEED CO.

505 Walnut Street

Kansas City 6, Missouri



FIRST CLASS
Permit No. 2923
(Sec. 34.9 P. L. & R.)
KANSAS CITY, MO.

BUSINESS REPLY CARD

No Postage Stamp Necessary if Mailed in the United States

2c Postage Will Be Paid by—

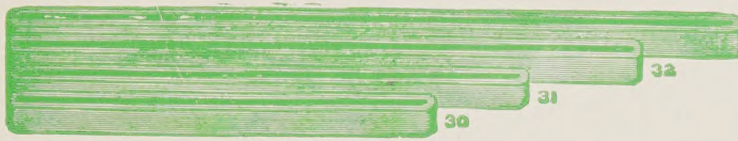
ANDREWS-BURRI SEED CO.

505 Walnut Street

Kansas City 6, Missouri



RUBBER BANDS



New Rubber Bands cheaper and far more handy than twine for asparagus, onions, radishes and other bunching varieties. 7,000 to pound, the larger sizes a trifle less count per pound. We can supply the following sizes: Nos. 8, 9, 10, 11, 12, 14 and 16. Write for prices.

TWIST EMS

**FOR STAKING TOMATOES
or
BUNCHING VEGETABLES**
Takes Place of Twine

Write for Prices

CHLORDANE

NEW INSECTICIDE
**Kills Bugs, Grasshoppers
and Most Insects**

In Dust and Liquid
Write for Prices

Insecticides, Sprayers and Dusters

PLANET JR. TOOLS

DRILLS . . . WHEEL HOES . . . HORSE HOES

WRITE FOR CATALOG

BEE SUPPLIES

**WE CARRY A COMPLETE
LINE OF A. I. ROOT
BEE SUPPLIES**

FERTILIZERS

**VIGORO, SULPHATE OF AM-
MONIA, ACID PHOSPHATE
WIZARD BRAND SHEEP
MANURE**

ANDREWS-BURRI SEED Co.

505 WALNUT ST., KANSAS CITY 6, MO.

WONDERGREEN CUCUMBER

Beautiful in appearance, of dark bluish green color. Suitable for both garden and forcing. A healthy, productive and fairly early variety, fruits averaging 10 to 12 inches in length by 2½ inches in diameter, and are very symmetrical. An ideal cucumber for the market grower and greenhouse man as a "straight pack" variety for shipment boxed and wrapped in paper, to markets demanding top-notch product where price is no object.



The seed we offer is of the highest quality saved only from well-developed straight and perfect fruits. Whether you wish to grow it in the open or under glass, rest assured that our seeds are the best money can buy.

**IF YOU HAVE NEVER
GROWN THIS GREAT
CUCUMBER TRY IT . . .
NOW**

ANDREWS-BURRI SEED CO.

RETAIL STORE AND OFFICE
505 WALNUT ST.
KANSAS CITY 6, MISSOURI