

## **Historic, Archive Document**

Do not assume content reflects current scientific knowledge, policies, or practices.





62.23

LIBRARY  
RECEIVED  
JUN 2 1950  
U.S. DEPARTMENT OF AGRICULTURE

SUMMER 1950

*Geo. J. Ball*  
I N C.  
WEST CHICAGO  
ILLINOIS

**BETTER**  
*"Flower Seeds for Florists"*



# TO OUR CUSTOMERS:

Hybrid Snaps continue to be the headliner in "Flower Seeds for Florists" for summer sowing. For both retail and wholesale growing, the characteristics of our modern F<sub>1</sub> Hybrid varieties are responsible for their universal acceptance among growers who appreciate the importance of growing only the best. Our increasing knowledge and experience with parent lines are enabling us to combine characteristics to more nearly produce ideal varieties for both retail and wholesale markets.

We've tried to make this catalog as helpful and attractive as possible. Cultural notes on the important crops are included. I would like particularly to call your attention to our new Felix Pansy. Felix is a distinctly different Pansy and I think you'll like it.

Yours for more and better business!

*George K. Ball*

President

## World Famous Pansies

(25,000 seeds per oz.)

### Quality is our business . . .

And we feel that in no line of flower seeds are we able to offer a more complete range of the finest quality strains available than in Pansies.

Our annual greenhouse flowering trials in which all available strains are exhaustively tested and compared have indicated a preference for several strains. For your guidance in ordering, we have listed these strains on the opposite page. We will appreciate your comments on our selections.

### What's new?

Butterfly Hybrids (we sell only originator's stock) is a very attractively colored, ruffled mixture. Also, pictured on the opposite page, the new bewhiskered "Felix" is a sure-fire attention getter.

Possibly excepting Petunias, there's no bedding flower so universally accepted or appreciated as Pansies. Make the best of them for your trade. Start in right by selecting the best strains.

### Culture:

In the latitude of Chicago, Pansies are usually sown early in August. As far south as Oklahoma this should be delayed until around September 1, because of prolonged hot summers. Sowing is best done in outdoor frame covered with cloth and in light soil containing plenty of decayed organic matter. Close attention to moisture is essential. When large enough to handle, seedlings are transplanted 4 x 4 or 4 x 6 inches into frames or open beds. Some form of loose covering is desirable in the North after plants are frozen in—further south this protection is not so important.

● **Ball Giant Mixture.** See 4 Best, opposite page.

**Ball Giant Mixture Dwarf Strain.** A fine Swiss Giant strain selected for dwarf and compact habit. Tr. pkt., 60c; ¼ oz., \$2.50; 1 oz., \$8.00; 4 ozs., \$30.00.

● **Maple Leaf Giants.** See 4 Best, opposite page.

**Canadian Giants.** This selection from Maple Leaf Giants contains some of the largest flowers in Pansies. Tr. pkt., 90c; ⅓ oz., \$1.75; ¼ oz., \$3.00; 1 oz., \$10.00.

● **Engelmann's Giant Mixture.** A large flowered and brightly colored strain, many being penciled or veined. Fairly compact growth. We offer originator's seed only. Tr. pkt., 75c; ¼ oz., \$3.75; 1 oz., \$12.00.

● **Butterfly Hybrids.** Ruffled 2½- to 3-in. flowers, including unusual apricot, terra cotta and rosy orchid shades, are freely produced on vigorous plants. Originator's seed only. Tr. pkt., \$1.00; ⅓ oz., \$2.00; ⅓ oz., \$3.50; ¼ oz., \$6.00; ½ oz., \$11.00; 1 oz., \$20.00.

**Fluffy Ruffles.** (New.) The medium sized flowers of this imported strain are attractively ruffled and frilled, and the color range is varied and appealing. Tr. pkt., 60c; ¼ oz., \$2.50; 1 oz., \$8.00.

● **Roggli Giant Mixture.** See 4 Best, opposite page.

**America.** An exceptionally free flowering mixture with medium sized blooms. Dwarf and extra early. Tr. pkt., 60c; ¼ oz., \$2.50; 1 oz., \$9.00.

**Geneva Giants.** A choice American selected strain of Swiss Giants. Tr. pkt., 75c; ¼ oz., \$2.75; 1 oz., \$9.00.

● **Steele's Jumbo Mixture.** See 4 Best, opposite page.

**Improved Swiss Giants.** Predominates in rich bronze and red shades. Tr. pkt., 60c; ¼ oz., \$2.50; 1 oz., \$8.00.

**Delft Blue.** Porcelain blue; a much wanted and unusual color in Pansies. Good sized flowers. Tr. pkt., 75c; ⅓ oz., \$1.75; ¼ oz., \$3.00; 1 oz., \$10.00.

**Ball Winter Flowering.** Upright growing, long stemmed variety for cut flowers. Sow in July or early August for winter and early spring greenhouse crop. ½ tr. pkt., 60c; tr. pkt., \$1.00; ⅓ oz., \$2.50; ¼ oz., \$4.75.

### SWISS GIANTS IN SEPARATE COLORS

**Firebeacon.** Brick-red.

**Coronation Gold.** The finest clear yellow.

**Lake of Thun.** Large flowered blue with darker center.

**Alpenglow.** Rich garnet-red.

**Rhinegold.** Large flowered yellow with dark center.

**Berna.** Dark velvety blue.

**Mt. Blanc.** Best clear white in the large-flowered Swiss type.

**Giant Orange.** Light orange; similar in color to Viola Apricot.

Prices above 8, each: tr. pkt., 75c; ⅓ oz., \$1.75; ¼ oz., \$3.00; 1 oz., \$10.00.

**Raspberry Rose.** Soft pink with contrasting velvety blotch in deeper tone. An entirely new color in Swiss Giant Pansies. Tr. pkt., \$1.00; ⅓ oz., \$2.25; ¼ oz., \$4.00; 1 oz., \$12.00.



# 4 Best Pansies

Here are, in our opinion—based on our flowering trials, sales, and reports from our customers—the 4 finest Pansy mixtures available to the trade today. They represent the skill of the finest Pansy breeders in the United States, Canada, and Europe, and all four are offered by us with complete confidence as to excellence, color, uniformity of habit and satisfactory flower size.

- **Ball Giant Mixture.** This is our finest and most popular bedding Pansy mixture. We blend this ourselves, using the best available strains of Swiss Giants, adding separate varieties to insure a good balance of colors. Tr. pkt., 60c; ¼ oz., \$2.50; 1 oz., \$8.00; 4 ozs., \$30.00.
- **Maple Leaf Giants.** An excellent, extra large flowered strain. Heavy growth with good stems. Tr. pkt., 60c; ⅛ oz., \$1.50; ¼ oz., \$2.75; 1 oz., \$9.00.
- **Roggli Giant Mixture.** A choice Swiss bedding strain, predominating in rich red and bronze shades. We supply only the originator's imported seed. Tr. pkt., \$1.00; ⅛ oz., \$3.00; ¼ oz., \$5.00; 1 oz., \$18.00.
- **Steele's Jumbo Mixture.** We handle the originator's seed of this popular American strain. Tr. pkt., \$1.00; ⅛ oz., \$3.00; ¼ oz., \$5.00; 1 oz., \$16.00.



## "Felix" is here!

This distinctive new Pansy is really the "cat's whiskers"—hence the name "Felix", suggested by the prominent dark veining in every flower. Our trial this past spring showed it to be uniformly true to this type, with well ruffled flowers of good size carried on fairly dwarf plants. Colors are rich and unusual—including purple, apricot and wine shades together with pastel bronzes and smoky tones difficult to describe. Each flower is marked with the dark "whiskers" characteristic of this strain, and the over-all effect is indeed striking. We are exclusive distributors for this excellent new Pansy. Tr. pkt., \$1.00; ⅛ oz., \$3.00; ¼ oz., \$5.00; 1 oz., \$15.00

### CONDENSED INDEX

	Page		Page		Page		Page
Begonia	12-13	Cyclamen	15	Perennials	28-32	Snapdragons	2-5
Calceolaria	13	Delphinium	26-27	Petunia	17	Stocks	6-8
Calendula	11	Larkspur	8-9	Plants and Bulbs	20-25	Sweet Peas	10-11
Cineraria	14	Pansy	Cover 2-1	Primulas	16	Miscellaneous	18-19, Cov. 3

SEE INSIDE BACK COVER FOR COMPLETE INDEX AND BUSINESS TERMS



# Forcing Snapdragons



We know of no seed-grown cut flower crop as profitable, year in and year out, as well-grown Snaps. So wide is the selection of varieties available today, that there's scarcely a greenhouse grower throughout our broad land who can't find several that are ideally suited to his particular conditions. Your choice can range from dependable inbred or self-pollinated varieties—nearly all of which we produce from single plant selections right here in our own screened greenhouses—to the finest of modern Hybrids, noted for their uniformly vigorous growth, heavy production and quick come-back for second and even third crops. We feel certain that you will be well repaid for the time spent in looking this list over carefully.

**CULTURE:** For hints on growing better Snaps—see page 5.

## HYBRID SNAPS

The production of Hybrid Snaps involves the use of the same principles that have made Hybrid Corn—with its increased vigor and yield—so popular today. The Hybrid Snapdragon is the result of crossing pure-line strains of two distinct varieties and possesses, to a marked degree, a faster and more vigorous rate of growth than any self-pollinated variety. As a result, considerable growing time can be saved—which means a saving in costs. In addition, their quicker come-back for a second crop has meant many extra dollars in the pockets of growers who are accustomed to cutting two crops from one planting. Our Hybrids were recommended by prominent speakers at last spring's Cornell, Ohio State and Purdue short courses.

### ← ● BALL YELLOW HYBRID No. 1

Speaking at last winter's Ohio State University Short Course, one of the Midwest's most prominent Snap growers named this on his preferred list of varieties. It's a rich golden yellow with long stems and flower spikes, and very productive. Can be flowered easily in January from a mid-July sowing. ½ tr. pkt., \$1.75; tr. pkt., \$3.00.

### ● BALL PINK HYBRID No. 2 (New)

An early and free-flowering medium pink. Nice spikes and a good producer. The outstanding feature of this new Hybrid is its earliness and pleasing color. While some growers have reported soft stems on this variety, others have been well pleased. We suggest comparing this alongside Dorcas Jane and Maryland Pink under your growing conditions. A mid-July sowing flowers in December with us. ½ tr. pkt., \$1.75; tr. pkt., \$3.00.

### ● BALL RED HYBRID No. 7 (Pictured on opposite page.)

Has the same rich scarlet-crimson color of the old Velvet Supreme, but with superior flower spike and stem length. This color should not be confused with the purplish shade common in most so-called "red" varieties. We find a mid-July sowing flowers for Christmas around Chicago. ½ tr. pkt., \$1.75; tr. pkt., \$3.00.

**Barbara.** (New—Yoder.) The originator describes this as a vigorous grower with long spikes and large bronze florets with pink throat and bright bronze lips. Seed ready early in July. ½ tr. pkt., \$1.75; tr. pkt., \$3.00.

**Better Times.** (Windmiller.) Bright cerise-rose; medium length stems and compact spikes. ½ tr. pkt., \$1.25; tr. pkt., \$2.00.

● **Christina.** (Yoder.) This medium-light pink is just a shade deeper than Mary Ellen. Florets are large and well spaced on hard grass-free stems. We consider this one of the finest mid-season Hybrids. Seed ready mid-June. ½ tr. pkt., \$1.75; tr. pkt., \$3.00.

● **Christmas Cheer.** (Windmiller.) Extra early and productive, bright rose-pink. One of the most popular Hybrids. ½ tr. pkt., \$1.75; tr. pkt., \$3.00.

● **Dorcas Jane.** (Burkey.) A second early with good stems and long spikes of clear silvery rose. ½ tr. pkt., \$1.50; tr. pkt., \$2.50.

**Goldrush.** (Winkler.) A medium yellow; lighter than Ball Yellow Hybrid No. 1, and a few days earlier. ½ tr. pkt., \$1.75; tr. pkt., \$3.00.

**Jubilee.** (New—Winkler.) Described by the originator as a light golden bronze similar in color to Suntan. Habit of growth resembles Goldrush. Seed ready early July. ½ tr. pkt., \$1.75; tr. pkt., \$3.00.

● **Mary Ellen.** (Yoder.) Same color as Maryland Pink, but somewhat later and has longer stems and flower spikes. ½ tr. pkt., \$1.50; tr. pkt., \$2.50.

● **Maryland Pink.** (Winkler.) Soft, creamy pink; early flowering with medium length stems. ½ tr. pkt., \$1.75; tr. pkt., \$3.00.

**Maxine.** (Smith.) Winter flowering rose-pink. Slightly deeper than Dorcas Jane. ½ tr. pkt., \$1.75; tr. pkt., \$3.00.

**Patricia.** (New—Yoder.) Originator's description: "Vigorous growing yellow with long spikes of medium sized florets with deep yellow lower lip. Habit of growth resembles Margaret, but blooms earlier." Seed ready mid-June. ½ tr. pkt., \$1.75; tr. pkt., \$3.00.



# Forcing Snapdragons

## BALL "20 BEST" LIST (HYBRIDS and INBREDS)

These "top-notch" varieties are selected on the basis of our annual greenhouse flowering trials and your preference as indicated by your orders.

### LIGHT PINK

- **Christina.** HYBRID. The best medium-light pink we've seen in a long time. See opposite page for further description. Seed ready mid-June. ½ tr. pkt., \$1.75; tr. pkt., \$3.00.
- **Maryland Pink.** HYBRID. The earliest light pink Hybrid. See opposite page for further description. ½ tr. pkt., \$1.75; tr. pkt., \$3.00.
- **Mary Ellen.** HYBRID. Popular light pink; one of the first Hybrid Snaps. Further described on opposite page. ½ tr. pkt., \$1.50; tr. pkt., \$2.50.

### MEDIUM PINK

- **Dorcas Jane.** HYBRID. See opposite page for description. ½ tr. pkt., \$1.50; tr. pkt., \$2.50.
- **Ball Pink Hybrid No. 2.** (New.) Try this medium pink Hybrid alongside Dorcas Jane and Maryland Pink to see how it measures up in your locality. Further description on opposite page. ½ tr. pkt., \$1.75; tr. pkt., \$3.00.
- **Cheviot Maid No. 33.** Might be described as between medium pink and light rose in color. Not quite as early as Dorcas Jane, but a satisfactory and widely grown self-pollinated variety. We consider this the best of the many Cheviot Maid strains. Tr. pkt., \$1.50.

### ROSE

- **Christmas Cheer.** HYBRID. As popular today as when it was introduced in 1939. See opposite page. ½ tr. pkt., \$1.75; tr. pkt., \$3.00.
- **Delworth's Supreme.** We consider this the best early flowering, fairly deep rose. Both stem length and spike are superior to Better Times, although the color of the latter is considerably darker. Tr. pkt., \$1.50.
- **Peggy Schumann.** Here's a variety that's been on our "best" list for a long time—and deservedly so, too. It's a beautiful creamy rose-pink with good spikes of well spaced florets. At its best for a spring crop. Tr. pkt., \$2.00.
- **Better Times.** HYBRID. We have a hard time trying to decide whether this is a rose or a red. Perhaps the term "rose-red" most accurately describes it. While the stems and spikes are a bit on the short side, it is quite widely grown. ½ tr. pkt., \$1.25; tr. pkt., \$2.00.

### PLEASE NOTE

½ tr. pkts. of any variety priced at \$1.00 are supplied at 60c; ½ pkts. of \$1.50 varieties, \$1.00. No ½ pkts. on \$2.00 or \$3.00 varieties EXCEPT WHERE NOTED.

### YELLOW

- **Ball Yellow Hybrid No. 1.** Our finest yellow. See opposite page for picture and full description. ½ tr. pkt., \$1.75; tr. pkt., \$3.00.
- **Ethel.** The standard mid-season yellow. While this popular self-pollinated variety has been superseded by our Yellow Hybrid, it continues to be widely grown. Noted for its clean, hard growth. Tr. pkt., \$1.50.

### WHITE

- **Margaret.** This clean growing and productive ivory-white is the most-called-for variety on our entire list. Seems to be equally at home in all localities. Mid-season in flowering. Tr. pkt., \$2.00.
- **White Wonder Improved.** A very satisfactory pure white for late winter and spring. Stems are long and firm with spikes of good length. This is our own reselected strain. Tr. pkt., \$1.50.
- **Peace.** The "whitest" white Snap that we know of. While some growers report unsatisfactory results with this variety during mid-winter, others find it invaluable at that season. For Easter and Mother's Day it is at its very best—and a mighty hard white to beat. Tr. pkt., \$1.50.

### BRONZE

- **Lady Dorothy.** A bright orange-bronze with long, tapering spikes. A true mid-winter variety and hard to beat for color, but stems are inclined to droop a bit under some growing conditions. For this reason, some growers still prefer Afterglow, which is at its best in spring rather than mid-winter. ½ tr. pkt., \$1.75; tr. pkt., \$3.00.
- **Afterglow.** An old-timer that still finds favor with many growers. Spikes of clear orange-bronze are compactly formed and growth is clean. At its best during spring. Tr. pkt., \$1.00.

### RED

- **Ball Red Hybrid No. 7.** Most satisfactory red for Christmas or later. See opposite page for full description. ½ tr. pkt., \$1.75; tr. pkt., \$3.00.
- **Shisler's Red.** While lacking the rich warm scarlet-crimson color of our Red Hybrid No. 7, this will be found a useful wine or purplish red. Although the florets are not large, the spike is well formed and the stems hard and free from grass. Rather late blooming. Tr. pkt., \$2.00.

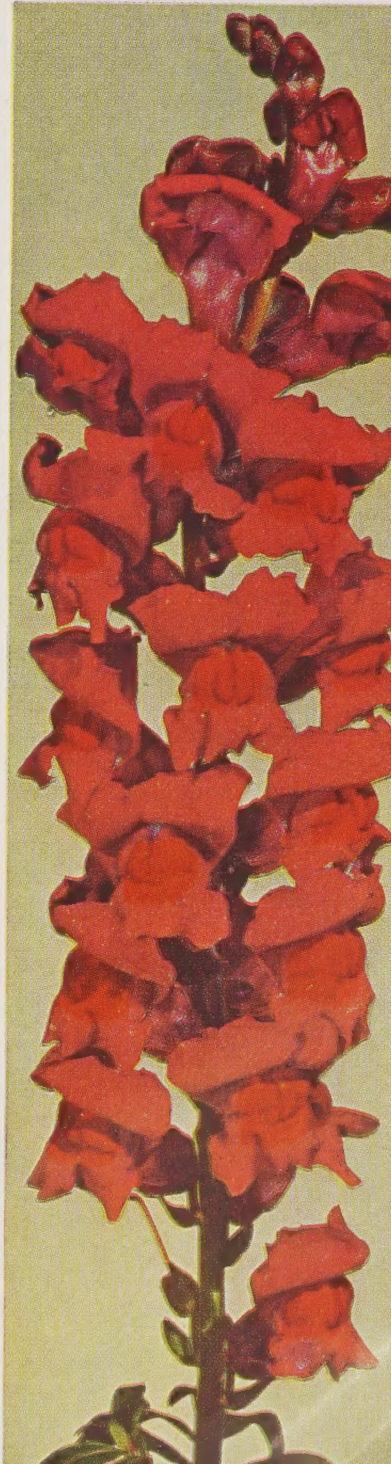
### LAVENDER

- **Ball Lavender.** Most popular variety in this color class. The color is a bright, rosy lavender; stems are long and strong. This, as well as other lavender varieties, is inclined to be late and should be flowered from February on. Tr. pkt., \$1.50.

### PICTURED BELOW

#### Ball Red Hybrid No. 7

A mid-July sowing flowers for Christmas around Chicago. Better try it. Tr. pkt., \$3.00.





# Forcing Snapdragons (continued)

## COMPLETE LIST OF VARIETIES

### LIGHT PINK

Tr. pkt.

- **Christina.** HYBRID. The best medium light pink we've seen in some time. Ready mid-June. ½ tr. pkt., \$1.75... **\$3.00**
- Daybreak.** Clear light pink. . . . . 1.00
- La France.** Light pink for late winter and spring. . . . . 1.50
- Maiden's Blush Imp.** Pale pink. ½ tr. pkt., 85c. . . . . 1.50
- **Marie Louise.** A beautiful light shell-pink. Especially choice color for spring. . . . . 2.00
- **Mary Ellen.** HYBRID. Same color as Maryland Pink but somewhat later and stonger. ½ tr. pkt., \$1.50. . . . . 2.50
- **Maryland Pink.** HYBRID. Creamy light pink. Early flowering and productive. ½ tr. pkt., \$1.75. . . . . 3.00
- **St. Louis Pink.** Excellent light pink for spring. . . . . 1.50

### MEDIUM PINK

- **Ball Pink Hybrid No. 2.** (New.) Outstanding for earliness and pleasing clear pink color. ½ tr. pkt., \$1.75. . . 3.00
- **Cheviot Maid No. 33.** The best of the many Cheviot Maid strains. Between pink and rose in color. . . . . 1.50
- **Dorcas Jane.** HYBRID. Good stems and long spikes of silvery rose-pink make this outstanding. ½ tr. pkt., \$1.50 . . . . . 2.50
- Early Cincinnati.** Early flowering medium pink. . . . . 1.00
- New Cincinnati.** Medium rose-pink with shatter-proof spikes and extra long stiff stems. . . . . 1.00

### ROSE

- America.** Very attractive rose and orange bicolor. . . . . 1.50
- Ball Early Pink.** Early flowering rose-pink. . . . . 1.00
- Better Times.** HYBRID. Bright cerise-rose. Medium length stems; compact spikes. ½ tr. pkt., \$1.25. . . . . 2.00
- Charm.** Extra large deep rose. Heavy spikes, but stems rather short for raised benches. . . . . 2.50
- Cheviot Maid Reselected.** Popular rose-pink. . . . . 1.00
- **Christmas Cheer.** HYBRID. Extra early and productive, bright rose-pink. ½ tr. pkt., \$1.75. . . . . 3.00
- **Delworth's Supreme.** Long, strong stems and good spikes of deep rose. A true early. . . . . 1.50
- Gilbert's Pink.** Deep rose-pink. . . . . 2.00
- Maxine.** HYBRID. Winter flowering rose-pink. Slightly deeper than Dorcas Jane. ½ tr. pkt., \$1.75. . . . . 3.00
- **Peggy Schumann.** Beautiful creamy rose-pink. One of the best spring flowering varieties. . . . . 2.00
- **Rockwood Pink Supreme.** A fairly deep, bright rose-pink; compact spikes and heavy stems. . . . . 2.00
- **Rose Queen.** Deep rose; an old time favorite. . . . . 1.00
- Tetraploid Rose.** Extra large deep cerise-rose. This is a true winter flowering tetraploid. . . . . 1.50

### RED

- **Ball Red Hybrid No. 7.** Best red for Christmas and later. Bright scarlet-crimson. ½ tr. pkt., \$1.75. . . . . 3.00
- Red Lips.** Bright wine-red with gold lip and white tube. An attractive bicolor novelty. . . . . 2.00
- **Shisler's Red.** Attractive wine-red. True to color and a good hard stemmed variety for spring. . . . . 2.00

### LAVENDER

- **Ball Lavender.** Long stemmed and strong growing with good spikes of bright rosy lavender. . . . . 1.50
- Bertha Baur.** Prefer Ball lavender. . . . . 1.50
- Schumann's Lavender.** Popular spring variety. . . . . 2.00
- **Windmiller's Lilac.** Long stemmed rosy lilac. . . . . 2.00

### PLEASE NOTE

½ tr. pkts. of any varieties priced at \$1.00 are supplied at 60c; ½ pkts. of \$1.50 varieties, \$1.00. No ½ pkts. on \$2.00 or \$3.00 varieties EXCEPT WHERE NOTED.

### YELLOW

Tr. pkt.

- **Ball Yellow Hybrid No. 1.** Today's finest golden yellow Snapdragon. ½ tr. pkt., \$1.75. . . . . \$3.00
- Carol Jean.** Light, creamy yellow. . . . . 2.00
- Ceylon Court.** Medium yellow for spring. . . . . 1.00
- Coate's Yellow Perfection.** Spring flowering yellow. . . . . 1.00
- **Ethel.** The most satisfactory self-pollinated yellow; extra clean and uniform. . . . . 1.50
- Goldrush.** HYBRID. Large flowered medium yellow. A good producer. ½ tr. pkt., \$1.75. . . . . 3.00
- Junglewood Lemon.** Light yellow. ½ tr. pkt., \$1.25. . . . . 2.00
- **Junglewood Yellow.** A clean growing rich yellow by the introducer of Junglewood White. ½ tr. pkt., \$1.25. . . . . 2.00
- **Klondike Supreme.** Rich deep yellow. A vigorous growing, large flowered variety. . . . . 1.00
- **Patricia.** (New.) HYBRID. Medium yellow. Habit similar to Margaret. Ready mid-June. ½ tr. pkt., \$1.75. . . . . 3.00
- Thomson's Yellow Imp.** Early flowering deep yellow. Better spike and uniformity than Yellow Wonder. . . . . 2.00
- Yellow Peggy Schumann.** For spring. . . . . 2.00
- Yellow Wonder Imp.** Extra early, but with some unevenness in color and habit of growth. . . . . 1.50

### WHITE

- Bail Dwarf White.** Quite nice for pot plants. Not a cut flower type. Cultural notes with each packet. . . . . 1.00
- Feist's White.** Slightly creamy white with yellow lip; early and free flowering. . . . . 2.00
- **Junglewood White.** Extra long stemmed pure white. Rather late flowering with us. ½ tr. pkt., \$1.25. . . . . 2.00
- Koester's White.** Extra early pure white with medium length stems. We prefer Peace. . . . . 1.50
- Lucky Strike Imp.** Long stemmed ivory-white. We consider Margaret much superior. . . . . 1.50
- Madeline.** Late flowering pure white. . . . . 2.00
- **Margaret.** Clean ivory-white; very productive. The most popular variety on our entire list. . . . . 2.00
- Marion.** Popular spring flowering white. . . . . 1.50
- **Peace.** The purest paper white we know of. Though a true early, it's at its best in spring. . . . . 1.50
- Rockwood's Crystal White.** (New.) Pure white. Recommended for late spring and early summer only. . . . . 3.00
- Schaffroth's White.** Long stemmed creamy white. . . . . 1.50
- Schlegel's White.** Early vigorous white. . . . . 1.50
- Snowdrift.** Double flowering white. At its best during spring months. ½ tr. pkt., \$1.75. . . . . 3.00
- Snow White.** Fine spring white; many flowers duplexed. . . 1.50
- **Tommy Armstrong.** (New.) A first class pure white for late winter and spring. Stems are clean and hard with closely spaced flower spikes. . . . . 3.00
- **Westover's Fringed White.** Large attractively fringed white. One of the better varieties for spring. . . . . 1.00
- Westover's Fringed White, Early.** Early strain of above. . . 1.50
- **White Wonder Imp.** This is our own long stemmed strain and should not be confused with the original short stemmed variety. . . . . 1.50



# Forcing Snapdragons (continued)

## BRONZE

	Tr. pkt.
● <b>Afterglow.</b> Bright orange-bronze; still widely grown. . . .	\$1.00
<b>Barbara.</b> (New.) HYBRID. Large flowered bronze with pink throat. Ready early July. ½ tr. pkt., \$1.75 . . . . .	3.00
<b>Bronze Christmas Cheer.</b> ½ tr. pkt., \$1.25 . . . . .	2.00
● <b>Glorious.</b> Bright reddish bronze for spring . . . . .	1.50
<b>Ideal Improved.</b> Blend of rose, orange and yellow . . . . .	1.50
<b>Jubilee.</b> (New.) HYBRID. Light golden bronze. Habit similar to Goldrush. Ready early July. ½ tr. pkt., \$1.75 . . . . .	3.00
<b>Kirkwood Beauty.</b> Orange-bronze . . . . .	1.00
● <b>Lady Dorothy.</b> Bright orange-bronze. The best in this color class for mid-winter. ½ tr. pkt., \$1.75 . . . . .	3.00
<b>Miss Wooster.</b> Spring flowering, golden orange . . . . .	1.00
<b>Schlegel's Early Bronze.</b> An improved Bronze Christmas Cheer, with better flowers and habit . . . . .	2.00
<b>Sunlite.</b> Extra early light bronze . . . . .	1.00
<b>Talisman Imp.</b> Double and semi-double golden bronze . . . . .	2.00

## MIXTURES

● <b>Ball Forcing Mixture.</b> Carefully blended by formula from the best varieties only . . . . .	1.00
<b>Standard Early Mixed.</b> All varieties . . . . .	.75

## SOME CULTURAL DO'S AND DON'T'S

Are you a retail grower?—or do you grow for market? Winter or spring? Do you want 3 ft. stems or heavier production? By carefully planning your sowings, and varieties used, you can make your Snap crop produce what you can sell and when you can move it. Here are several suggested plans based on our experience—and that of other growers. Sowing dates are for the Middle West. They can be of help to the fellow with limited experience. Nothing can equal, though, what you learn by growing Snaps several seasons on your own place—and keeping records. That's important!

**For the retail grower:** Sow July 10; transplant to 2 in. bands when ready; bench 8x8 in. on raised bench Aug. 27. Pinch when about 12 inches high, leaving four pairs of leaves (for heavy production). First crop, early varieties (Christmas Cheer) for Thanksgiving; later ones (Peggy Schumann) for Christmas. Second crop, March through Easter. Benches clear for spring stock.

**Early spring Snaps for market:** (Best market prices most sections Feb. 1 through Easter.) Sow July 30. Transplant seedlings to raised bench 3x3 in.; dig and bench (ground bed) 8x10 in., Sept. 21. Pinch Oct. 4 leaving 3 pairs of leaves. Prune, leaving best 4 shoots (for quality). Flower: Good long spikes early March to Easter, one crop only. Follow with Poms.

**Two crops a year for market:** Sow July 2; transplant to flats as ready; bench transplants to ground beds; pinch after benching. First crop Dec. 1 through Feb. 1. Prune plants back to four best shoots for good quality second crop March 1 through April. Follow with Carnations. Dates for central Ohio.

**Single stem:** The latest wrinkle!—especially for market growers. You can bring a crop in 3 to 4 weeks sooner, cut one good spike per plant, clear bench for next crop without waiting for stragglers. Production about equal to 7x8 in. spacing pinched; quality usually better. Sowing dates: Better have a succession of sowings coming along. It's hard to hit a holiday. Suggested sowings dates (not guaranteed!), all single stem:



Here's how Sykoras of Batavia, Ill. (top-notch growers—by the way) handle their Snaps. Seedlings are transplanted to raised benches 3x3 in. At about the height pictured above they're ready to dig and bench—unpinched. This encourages those strong bottom breaks (see inset) rather than weak top breaks which would result from early pinching while plants were still close spaced. See story below for method of handling after permanent benching.

Sow	To Flower	Sow	To Flower
Aug. 10	December	Nov. 1	Early April
Sept. 1	February	Dec. 15	May
Sept. 16	Early March		

These dates are based on medium-early varieties (Ball Yellow Hybrid No. 1, Dorcas Jane). An example: A Sept. 1 sowing flowered Ball Yellow Hybrid No. 1 February 10 single stem. Ball Red Hybrid No. 7 (an extra early) flowered Jan. 10 from the same sowing.

### Troubles, troubles!

Most serious are the several diseases:  
 Case No. 1: Plants rot off just below the ground shortly after benching. It helps to sterilize soil, but give it several weeks curing plus leaching before benching. In benching, set plants just deep enough to bury roots—no deeper! Avoid susceptible varieties. Have extras to replace the casualties.

Case No. 2: Worst in mid-winter—plants just start drying and rotting back from leaf tips. For help, carry more air on houses, drop night temperature to 45°, keep plants on dry side. Sterilized soil helps, also raised benches help harden growth. Best cure: drop varieties that trouble you this way. Remove affected plants promptly.

Case No. 3: Stubby spikes—again a mid-winter trouble. Some varieties this past winter developed as few as 2 or 3 florets on a spike during early January. Weather records from New York to Seattle showed about half normal sun this past January. Cleveland with least sun (23%) had most stubby spikes (see "Talks" March '50). It's the kind of thing that happens one winter in ten—or less. You can drop the affected varieties, but the one you drop might prove a winner next winter.

### NEED SNAP PLANTS?

We have available from mid-August to early March most of the popular kinds. All are grown in our own greenhouses in 2-inch bands and shipped in our reliable "Ball-Pak." See page 24 for varieties and prices.



# Ball NON BRANCHING Stocks

(18,000 seeds per oz.)

Introduced to the trade by the late "G.J.B." nearly 20 years ago, Non-Branching Stocks remain high on the list of cool house crops. They have been good property on the wholesale markets, especially up to and including Easter. Retail growers find them easy to grow and useful for baskets, funerals, etc. They're colorful, showy, and they surely do have fragrance!

**On cutting costs:** Along with our Easter sowing this year (made Oct. 22), we filled several thousand 2x2 in. veneer bands with soil, sowed 2-3 seeds in each. They were thinned to one seedling, bands removed, and plants benched Jan. 10. At this writing (Mar. 30) there's very little difference between the plants from bands and those sown direct to the bench at the same time. The saving?—nearly 3 months use of the bench. As we figure it, that

should cut cost per dozen flowers almost one-third.

**Breeding** and growing seed of Stocks is one of our most important tasks at West Chicago. Our Stock seed growing and breeding program is, for one thing, the only effective means we know of to keep the percentage of doubles high. Further, it assures you of strains true to color. Note our new and improved strains of Ball Lilac Lavender No. 1, Ball Blue No. 3, Malmaison No. 7, Ruby No. 8, and Deep Apricot No. 24. Each is a decided improvement in its color class.

Our new rot resistant strain of Ball White No. 16 is again standing up almost 100% even in soil which rots the ordinary strain severely. We expect to have it ready for you in 1951.

Prices all Non-Branching Stocks, each: ½ tr. pkt., 60c; tr. pkt., \$1.00; ¼ oz., \$2.50; ½ oz., \$4.75; 1 oz., \$9.00.

## OUR "5 BEST"

- **No. 16 Ball White—Medium Tall.** This early pure white is the most popular variety on our entire list. Well-liked because of its extra large florets and well-formed, compact spikes.
- **No. 1 Lilac-Lavender Improved.** This is our new strain of this popular silvery lilac variety. Stems are heavier with longer flower spikes—and we find it quite resistant to rot.
- **No. 22 Ball Supreme.** A long stemmed, vigorous growing variety with fine, heavy spikes of rich silvery rose. The most outstanding Stock in its color class.
- **No. 20 Ball Apricot.** Long spikes of rich apricot faintly tinged pink. Blends well with lavenders and purples.
- **No. 21 Purple Heart.** Long stemmed and large flowered, bright violet-purple. Striking in combination with white, buff and yellow shades.

## WHITE VARIETIES

- **No. 16 Ball White—Med. Tall.** See 5 Best above.
- **No. 99 Ball White.** We find this pure white averages 4 to 6 inches longer spike and stem than our popular No. 16.

**White Giant.** (New.) Good long stemmed white. Best white for outdoor culture in cool areas. We prefer our No. 16 Ball White for greenhouse use. **Not available till November.**

**Gardenia.** Long stemmed pure white, but not entirely non-branching. Widely grown outdoors in cool climates.

**No. 5 Ball Dwarf White.** Spikes of this dwarf Non-Branching Stock resemble a white Hyacinth. An ideal pot plant variety.

## LAVENDER, BLUE AND PURPLE VARIETIES

- **No. 1 Lilac-Lavender Improved.** See 5 Best above.
- **No. 3 Ball Blue Improved.** Heavier stems and better spikes than our earlier Ball Blue. Double percentage slightly low.
- **No. 21 Purple Heart.** See 5 Best above.

## PINK, ROSE AND RED VARIETIES

- **No. 22 Ball Supreme.** See 5 Best at left.
- **No. 11 Ball Pink.** A medium light rose-pink. Earlier and somewhat lighter than our No. 22, but not quite as long stemmed.
- **No. 14 Ball Rose.** An early flowering, fairly deep rose-pink. Darker in color and longer stemmed than the above variety.
- **No. 9 Chamois Pink.** A warm rosy buff color. Good stems and flower spikes.
- **No. 7 Malmaison Pink Improved.** Long spikes of soft, shell-pink; a popular color. Entirely non-branching.
- **No. 6 American Beauty.** Rich deep American Beauty or carmine-rose. An appealing color.
- **No. 8 Ruby Improved.** Larger florets and a more brilliant scarlet-crimson color than the former Ruby.

## MISCELLANEOUS VARIETIES

- **No. 20 Ball Apricot.** See 5 Best at left.
- **No. 24 Deep Apricot Improved.** A more coppery, terra cotta shade than the earlier strain. A good novelty color.
- **No. 17 Gold Standard.** Creamy, ivory yellow; an attractive pastel.
- **No. 10 Mixture.** Our own formula mixture. Contains mostly good market varieties with a limited amount of novelty colors.

Prices all Non-Branching Stocks, each: ½ tr. pkt., 60c; tr. pkt., \$1.00; ¼ oz., \$2.50; ½ oz., \$4.75; 1 oz., \$9.00.

## FOR OUTDOOR GROWING

In cooler localities (where Stocks are commonly grown as an outdoor crop) authorities have found the following varieties to be the most satisfactory:

- WHITE—Ball White No. 16, White Giant and Gardenia.
- ROSE—Ball Supreme No. 22 and Ball Rose No. 14.
- LIGHT PINK—Malmaison Pink Improved No. 7.
- LAVENDER—Lilac-Lavender Improved No. 1.
- PURPLE—Purple Heart No. 21.

SEE PAGE 8 for COMPLETE LIST of BRANCHING STOCKS

The dot (●) indicates varieties most dependably satisfactory in our experience and observation.



**PICTURED HERE—**

The 3 most popular of our 5 best varieties of Non-Branching Stocks.

**No. 1 Lilac Lavender Improved**  
**No. 16 Ball White—Medium Tall**  
**No. 22 Ball Supreme**

See opposite page for descriptions and prices.





## BRANCHING STOCKS

Retail growers should include some of this class in their planting. All, with the exception of the Dwarf Ten Week, are handled the same. Plant 8x8 in. and top when about 8 in. tall for plenty of good flowers with medium length stems. The Dwarf Ten Week type is largely used for pot plants.

### GIANTS OF CALIFORNIA

- Golden Gate.** Soft, creamy yellow.  
**Monterey.** A clear bright pink.  
 ● **Pacific.** Fairly dark lilac-mauve.  
**Redwood.** Ruby red.  
**Santa Barbara.** Chamois or buff.  
 ● **Santa Maria.** Best branching white.  
 ● **Tahoe.** Clear lavender.  
 ● **Yosemite.** Rich rose-pink.  
**Prices** above 8, each: tr. pkt., 35c; ¼ oz., \$1.25; 1 oz., \$4.50.  
**Mixture** of all colors in this class. Tr. pkt., 35c; ¼ oz., \$1.15; 1 oz., \$4.00.

### IMPROVED BISMARCKS

- Antique Copper.** Fine copper-red.  
**Apple Blossom.** Pale, delicate pink.  
**Blood-Red.** Bright ruby-red.  
 ● **Chamois.** Clear chamois or buff.  
 ● **Elk's Pride.** Rich purple.  
**Flesh.** Pale coral-pink.  
**Golden Ball.** Ivory-yellow.  
 ● **Lavender.** Clear lilac-lavender.  
**Lilac.** Fairly deep lilac-blue.  
 ● **Rose.** Fine bright rose-pink.  
 ● **Shasta.** Giant flowered white.  
**Formula Mixture** of above colors.  
**Prices** above 12, each: tr. pkt., 35c; ¼ oz., \$1.15; 1 oz., \$3.50.

### BEAUTY OF NICE

- Cote D'Azure.** Light lavender-blue.  
**Flesh-Pink** (Beauty of Nice).  
**Mont Blanc.** Extra early pure white.  
**Queen Alexandra.** Fine rosy lilac.  
**Mixture.**  
**Prices** above 5, each: tr. pkt., 30c; ¼ oz., 75c; 1 oz., \$2.65.

### PERPETUAL BRANCHING

- Empress Victoria.** Lilac. **Mixture**  
**Prices** above 2, each: tr. pkt., 30c; ¼ oz., 75c; 1 oz., \$2.65.

### DWARF TEN WEEK

- Blood-Red Carmine-Pink Lavender**  
**Canary-Yellow Deep Rose Purple**  
**White Formula Mixture**  
**Prices** above 8, each: tr. pkt., 25c; ¼ oz., 65c; 1 oz., \$2.00.

## Annual Larkspur



Left to right:  
 1. Sup. Maj. Lavender 3. Sup. Maj. White 5. Giant Imp. Rosalind  
 2. Salmon Supreme 4. Giant Imp. Blue Spire  
 Five of today's finest Larkspur. See 7 Best list, opposite page.

### For Early Summer Cut Flowers Outdoors

If a sowing is made outdoors by growers in the near South 6 or 7 weeks before the ground freezes, plants well enough established to winter over in all except the most severe seasons can be produced. In our locality sowing should be done late enough to avoid germination before the ground freezes. With good drainage and some coarse covering, such a sowing will germinate promptly in early spring and get into flower 2 or 3 weeks before the spring sown crop.

### Under Glass—Spring Flowering

For indoor growing, Larkspur is a nice crop to follow either early or late Mums. Well started 3 inch banded or potted plants should be ready, and are produced by a September or later sowing.

Space at least 12x12 in. on ground; 10x10 in. on raised beds should be ample. The after Mum planting is generally started out cool, 40° to 45° nights, increasing to 50° or more with spring weather.

### Germination

Larkspur seed, as well as its perennial form, Delphinium, holds its germination for but one year—more or less. And it doesn't germinate well in high temperatures. If it must be sown when hot, better do so in flats set under a bench or in a cool shed. It requires 2 to 3 weeks to come through, sometimes longer.

### New Crop Seed

is always most reliable for sowing under adverse conditions of summer heat. We have a special source for Larkspur seed (7 best varieties only) permitting delivery in early August. If you order in June or July, please specify whether you prefer to wait for new crop. After August all orders are filled with new crop.



# Annual Larkspur

(8,000 seeds per oz.)

## OUR "7 BEST"

Several excellent strains of Larkspur have made their appearance on the market in the past several years. We have flowered each strain in comparison with the standards which have been in use for years, and noted the merits of each. Notable improvements were found, particularly in the Super Majestic strains. Accordingly, the best of those strains are included in our 7 best list this year. The varieties Blue Bell, Sweet Lavender and White King—formerly in this "Best" group—will be found at the head of the Giant Imperials elsewhere on this page.

- **Super Majestic Light Blue.** (New.) An excellent light blue; outstanding.
  - **Super Majestic Lavender.** Beautiful orchid-lavender; a rich color.
  - **Super Majestic White.** Long stemmed pure white; improves White King.
  - **Giant Imperial Blue Spire.** Fine violet-purple; best in its color.
  - **Giant Imperial Brilliant Rose.** The standard deep rose; fully double.
  - **Giant Imperial Rosalind.** Vigorous, medium pink; very choice.
- Prices above 3, each: tr. pkt., 25c; 1/2 oz., 65c; 1 oz., \$1.10; 4 ozs., \$3.60; 1 lb., \$11.00.
- **Salmon Supreme.** Medium deep rose; heavy, fully double spikes. Tr. pkt., 35c; 1/2 oz., \$1.00; 1 oz., \$1.80; 4 ozs., \$6.00; 1 lb., \$18.00.
  - **7 Best Mixture.** Blended by formula from these 7 varieties. Tr. pkt., 25c; 1/2 oz., 65c; 1 oz., \$1.10; 4 ozs., \$3.60; 1 lb., \$11.00.

**SPECIAL OFFER:** One tr. pkt. each of above 7 varieties for \$1.75.

## SUPER MAJESTICS

Extra vigorous growth with long stems and long spikes of fully double flowers are the important points about this strain.

- **Deep Carmine.** (New.) Rose, flecked white.
  - **Deep Salmon-Pink.** Medium deep rose.
  - **Lavender.** (See 7 Best, above.)
  - **Light Blue.** (See 7 Best, above.)
  - **Rose-Pink.** Excellent, medium pink.
  - **Rosy Mauve.** (New.) Rich lilac shade.
  - **White.** (See 7 Best, above.)
  - **Mixture** of above and other colors.
- Prices above 8, each: tr. pkt., 25c; 1/2 oz., 65c; 1 oz., \$1.10; 4 ozs., \$3.60; 1 lb., \$11.00.

## SUPREMES

A vigorous growing, base branching class with large spikes of fully double flowers. Compares favorably with the Super Majestics in stem length and spike quality.

- **Dark Blue Supreme.** Deep violet-purple.
  - **Lilac Supreme.** Good rosy lavender.
  - **Rose Supreme.** Clear deep rose.
  - **Salmon Supreme.** (See 7 Best, above.)
  - **White Supreme.** Nice pure white.
  - **Supreme Mixture.** All Supreme colors.
- Prices above 6, each: tr. pkt., 35c; 1/2 oz., \$1.00; 1 oz., \$1.80; 4 ozs., \$6.00; 1 lb., \$18.00.

## REGAL TYPE

(Pictured at right)

- **Regal Rose.** Rich, deep rose with fine, heavy spikes and large, double florets. This was outstanding in our trials. Tr. pkt., 35c; 1/2 oz., \$1.00; 1 oz., \$1.80; 4 ozs., \$6.00; 1 lb., \$18.00.

## GIANT IMPERIALS

(Base Branching)

- **Blue Bell.** (Formerly in 6 Best list.) Shades of light blue.
  - **Sweet Lavender.** (Formerly in 6 Best list.) A good lavender.
  - **White King.** (Formerly in 6 Best list.) Prefer Super Majestic White.
  - **Brilliant Rose.** (See 7 Best, above.)
  - **Blue Spire.** (See 7 Best, above.)
  - **Coral King.** Pleasing, soft coral-pink.
  - **Dazzler.** Deep carmine, flecked white.
  - **Exquisite Pink Imp.** Fine medium pink.
  - **Gloria Imp.** Medium rose shades.
  - **Lilac King.** Rich, deep bluish lavender.
  - **Lilac Queen.** Orchid; lighter and rosier than Lilac King.
  - **Los Angeles Imp.** Salmon-rose.
  - **Miss California.** Prefer Super Majestic Rose-Pink.
  - **Rosalind.** (See 7 Best, above.)
  - **Rosamond.** Excellent deep rose. This is a Stock-Flowered variety.
  - **White Cockade.** Good pure white.
  - **White Spire.** Prefer Sup. Maj. White.
  - **Formula Mixture** of Giant Imperials.
- Prices above 18, each: tr. pkt., 25c; 1/2 oz., 65c; 1 oz., \$1.10; 4 ozs., \$3.60; 1 lb., \$11.00.

## HYACINTH-FLOWERED

Produces one long non-branching spike.

- |                    |                   |                |
|--------------------|-------------------|----------------|
| ● <b>Dark Blue</b> | ● <b>Lavender</b> | ● <b>Pink</b>  |
| ● <b>Purple</b>    | ● <b>White</b>    | ● <b>Mixed</b> |
- Prices above 6, each: tr. pkt., 35c; 1/2 oz., 90c; 1 oz., \$1.60; 4 ozs., \$5.20; 1 lb., \$16.00.



Regal Rose—a fine new rose



# Winter Sweet Peas

(350 seeds per oz.)

Winter Peas are still one of the retail grower's bread and butter crops—and when well grown they are in demand on most wholesale markets. The long stemmed, fragrant beauties that bring real prices call for sterilized soil and early sowing so that vines will become sufficiently hardened to hold buds for winter flowering. With us this is early July—later further south. Our monthly "Grower Talks" (2 years \$1.00) gives timely cultural details.

## OUR "12 BEST"

### PINK, ROSE and SALMON

- **New Ball Rose.** Free flowering, bright rose. Shorter vines make this variety valuable where headroom is limited.
- **Ball Rose Queen.** Extra long stemmed and large flowered clear rose-pink. One of the finest commercial varieties.
- **Ball Rose Supreme.** Large wavy flowers of bright silvery rose-pink. Good stems and free flowering.
- **Ball Salmon.** Fairly deep salmon-pink; an excellent producer.

### ORANGE and RED

- **Ball Orange Supreme.** Improves the original Ball Orange in better stem length and more brilliant color.
- **Treasure Island.** Large wavy flowers of glowing orange-scarlet.
- **Fiesta.** Brilliant scarlet-cerise the finest red in early Peas.

### LAVENDER, BLUE and PURPLE

- **Ball Blue Supreme.** The same rich blue color as Mrs. Hoover, but larger flowered and a better producer.
- **Twilight.** A bright clear lavender. Considered by many as an improvement over Harmony.
- **Triumph.** Long stemmed, rich lilac-mauve; very well liked.
- **Rhapsody.** Extra large flowered, deep rosy lavender.

### WHITE

- **Ball White.** The finest long stemmed pure white; white seeded.

### MIXTURE

- **12 Best Mixture.** Our own formula mixture of the above twelve. Prices above 13, each: ½ oz., 30c; 1 oz., 50c; 4 ozs., \$1.50; 1 lb., \$5.50.

## STANDARD VARIETIES

### PINK, ROSE and SALMON

- American Beauty.** American Beauty rose.
- Apollo.** Salmon-cerise; fine for spring.
- Attraction.** Long stemmed salmon-rose.
- Boon.** Deep salmon-rose.
- Bridesmaid.** Delightful silvery pink. Long stemmed.
- **Daphne.** Soft salmon-pink on cream. Large flowered.
- **Hiawatha.** Strong growing, large flowered deep rose.
- Josie.** Rose-pink; rather small flowered.
- **Loddie Imp.** Long stemmed, fairly light rose-pink.
- Majestic Rose.** Large flowered pink.
- **Mother Machree.** Large coral-rose flowers; semi-duplexed.
- Sequoia.** Large flowered standard salmon-rose.
- **Titania.** Extra large flowered deep rose; heavy stems.
- **Tops.** Extra large, wavy flowered, light salmon-rose.



Every retail grower will find a planting of Winter Peas invaluable

### ORANGE and RED

- Pride.** Extra long stemmed brilliant cerise.
- **Redwood.** Large flowered, deep velvety crimson.
- **Signal Red.** Long stemmed, brilliant red.
- **Sparks.** The finest Poppy scarlet.

### LAVENDER, BLUE and PURPLE

- **Bacchus.** Deep maroon-purple; large flowered.
- Fragrance.** Clear lavender for spring flowering.
- Harmony.** Standard early flowering lavender.
- Michigan.** Clear lavender.
- **Mrs. Hoover.** Standard early mid-blue.
- **Princess Blue.** Large flowered, light blue; very attractive.
- **Tahoe.** Fine mid-blue for spring flowering.
- **Top Hat.** Deep bright violet-blue.

### WHITE and CREAM

- Cascade.** Extra large, white seeded white.
- **Gardenia.** Long stemmed pure white for spring.
- **Hope.** Fine black seeded white.
- Oriental.** Black seeded cream.
- **White Harmony.** Similar to Hope; black seeded.

### MIXTURE

- Ball Early Mixture.** Carefully balanced mixture of winter varieties. ½ oz., 25c; 1 oz., 45c; 4 ozs., \$1.35; 1 lb., \$5.00.
- Prices all above (except Mixture), each: ½ oz., 30c; 1 oz., 50c; 4 ozs., \$1.50; 1 lb., \$5.50.



# Spring Peas

## Cuthbertson Strain

(350 seeds per oz.)

This class, being intermediate in flowering date between the Winter and Summer types, is proving increasingly valuable for spring greenhouse flowering. Because of their stronger growth, they are generally longer stemmed and last longer into the spring than the weaker growing Winter varieties. For greenhouse use, sowing should be done between October and February. They are also much used for winter outdoor growing in the extreme South.

### PINK, ROSE and SALMON

**Billy.** Bright cerise-rose on salmon; very showy.

● **Carol.** Attractive clear pink on white ground.

**Evelyn.** Extra long stemmed, soft salmon-pink.

● **Lois.** Light rose-pink, similar in color to Ball Rose Queen in the Winter class.

### RED

● **Coline.** Vivid, intense scarlet.

### LAVENDER, BLUE and PURPLE

**Danny.** Brilliant, deep marine blue.

● **Frank G.** Fine soft rosy lavender. One of the best.

**Hazel.** Soft, light Princess Blue shade.

● **Jessie.** Closely resembles Winter Flowering Triumph in its rich lilac coloring.

● **Tommy.** A clear mid-blue about the color of Mrs. Hoover in the Winter class.

### WHITE

● **Janet.** Large frilled white flowers are carried on long, heavy stems; black seeded.

**Jennie.** White seeded white; fine long stems.

### MIXTURE

● **Mixture.** A mixture balanced according to demand for each color. ½ oz., 30c; 1 oz., 55c; 4 ozs., \$1.65; 1 lb., \$5.50.

Prices all above Cuthbertson varieties (except Mixture), each: ½ oz., 35c; 1 oz., 65c; 4 ozs., \$2.00; 1 lb., \$6.50.

# Summer Peas

(350 seeds per oz.)

## BALL "10 BEST"

● **Ball Shrimp-Pink.** A pleasing soft shrimp-pink.

● **King Lavender.** Exceptionally fine clear, even lavender with long, strong stems. Excellent growth.

● **Maytime.** A bright golden cerise; large flowers and long stems.

● **Olympia.** A rich mauve; similar in color to the winter flowering variety, "Triumph."

● **Pinkie.** Finest large flowered rose-pink; a heavy producer.

● **Snow White.** The finest clear white; black seeded.

● **Stylist.** Large flowers of clear, deep salmon rose pink.

● **Sweet Afton.** Strong growing clear bright pink.

● **Welcome.** An intense sunproof scarlet of vigorous growth. Fine flower size and stem, and a heavy producer.

● **Windsor Blue.** A supremely fine mid-blue. Its clear, even color, stem length, and flower size set it apart.

**Ball Best Mixture.** Composed only of the best varieties in proportion to their commercial value.

Prices above 11, each: ½ oz., 20c; 1 oz., 30c; 4 ozs., 90c; 1 lb., \$2.90; 5 lbs., \$12.50.

# Ball Calendula

(3,000 seeds per oz.)



A vase of well grown Ball Calendula

Strong, attractive colors and economy of production are outstanding points that favor Calendula as a winter cut flower crop. We are as certain as we can be that lack of care in disbudding plus night temperatures that are too high (50° or over) are largely responsible for many of the second grade flowers seen today. As a result we can't help emphasizing the important, yet simple points in Calendula culture which must be followed if those fine 4 to 5 inch flowers on long, stiff stems are to be had.

Of prime importance are an **early start** (July or early August in our locality); **cool temperatures**—not over 45° nights (40° is better) during fall and winter; and **regular disbudding**—just as Carnations or Mums are disbudded. Ground beds are preferable, but raised benches will produce a good crop if not allowed to dry out too much between waterings.

● **Ball Improved Long Orange.** The longest stemmed and largest flowered variety. Golden orange with light eye.

● **Ball Masterpiece.** Deep glowing orange with dark eye.

● **Ball Lemon Queen.** Lemon-yellow with dark brown eye.

● **Ball Gold.** Deep golden yellow with light eye.

**Ball Orange.** Extra deep, intense orange. Light-eyed.

**Ball Apricot.** Dark eyed buff or apricot shade.

**Campfire.** Popular deep orange.

Prices above 7, each: tr. pkt., 40c; ¼ oz., 60c; 1 oz., \$2.00; 4 ozs., \$6.50.

**Ball Formula Mixture.** Carefully made up of our named varieties with fully half orange.

**Ball Art Shades Mixture.** Contains many original and unusual shades and interesting bi-colors.

Prices above 2, each: tr. pkt., 35c; ¼ oz., 50c; 1 oz., \$1.50; 4 ozs., \$5.00.





Ball Deep Rose is one of the most colorful of all Begonias

### DWARF CLASS

**Adeline.** Extra free flowering bright pink; dwarf and compact. Tr. pkt., \$1.00; 1/64 oz., \$2.50; 1/32 oz., \$4.50.

● **Ball Deep Rose.** Under winter and spring conditions the color is a deep rosy red which gradually fades to a luminous pink with the coming of warmer weather. Tr. pkt., \$1.25; 1/64 oz., \$2.75; 1/32 oz., \$5.00.

● **Ball Red.** Medium large flowers of bright true scarlet are freely produced on fairly dwarf, uniform plants. This is more inclined to rot than most varieties if watered carelessly. Tr. pkt., \$1.25; 1/64 oz., \$2.75; 1/32 oz., \$5.00.

**Ball White.** Rather small flowers but very freely produced. Tr. pkt., \$1.25; 1/64 oz., \$2.50; 1/32 oz., \$4.50.

● **Gruga.** HETEROSIS (HYBRID) STRAIN. Large flowers of Adeline pink color. Habit similar to Ball Red. Tr. pkts. only, \$1.50.

● **Luminosa Compacta.** Dwarf, free flowering scarlet-red. Tr. pkt., \$1.00; 1/64 oz., \$3.00; 1/32 oz., \$5.50.

● **Pink Pearl.** HETEROSIS (HYBRID) STRAIN. Resembles Adeline in flower size, rich pink color and uniformly dwarf, compact growth. This is the genuine imported Hybrid seed. Originator's tr. pkts. only, \$1.50.

● **Red Pearl.** HETEROSIS (HYBRID) STRAIN. Identical to Pink Pearl except for its Luminosa red color. Originator's imported Hybrid seed. Tr. pkts. only, \$1.50.

**Rosabella.** (New.) Large medium pink flowers. Growth habit resembles Ball Red. Seed ready in July. Tr. pkt., \$1.00; 1/64 oz., \$2.50; 1/32 oz., \$4.50.

● **Snowbank.** Large, glistening white flowers are carried on dense growing, even plants. The best white. Tr. pkt., \$1.00; 1/64 oz., \$2.50; 1/32 oz., \$4.50.

**Dwarf Varieties Mixed.** Our own formula mixture of dwarf varieties. Tr. pkt., \$1.00; 1/64 oz., \$2.50; 1/32 oz., \$4.50.

# Ball Begonias

## FIBROUS ROOTED

(30,000 seeds per 1/32 oz.)

## OUR "7 BEST" LIST

The following varieties are further described under their respective headings: Dwarf, Intermediate and Tall.

- **Adeline.** Dwarf. Bright pink. Tr. pkt., \$1.00; 1/64 oz., \$2.50; 1/32 oz., \$4.50.
- **Ball Deep Rose.** Dwarf. Tr. pkt., \$1.25; 1/64 oz., \$2.75; 1/32 oz., \$5.00.
- **Ball Red.** Dwarf. Scarlet. Tr. pkt., \$1.25; 1/64 oz., \$2.75; 1/32 oz., \$5.00.
- **Indian Maid.** Intermediate. Bronze leaved scarlet. Tr. pkt., \$1.00; 1/64 oz., \$2.50; 1/32 oz., \$4.50.
- **Luminosa.** Intermediate. Scarlet. Tr. pkt., \$1.00; 1/64 oz., \$3.00; 1/32 oz., \$5.50.
- **Scandinavia Pink.** Intermediate. Tr. pkt., \$1.00; 1/64 oz., \$2.75; 1/32 oz., \$5.00.
- **Snowbank.** Dwarf. Pure white. Tr. pkt., \$1.00; 1/64 oz., \$2.50; 1/32 oz., \$4.50.

## INTERMEDIATE CLASS

- **Carmen.** The original bronze-leaved Begonia; bright rose-pink flowers. Tr. pkt., \$1.00; 1/64 oz., \$2.25; 1/32 oz., \$4.00.
- Fire Sea** (Blaze of Fire). Large, fiery red with green foliage. Tr. pkt., \$1.00; 1/64 oz., \$2.25; 1/32 oz., \$4.00.
- **Indian Maid.** Foliage a deep lustrous bronze with scarlet flowers. Tr. pkt., \$1.00; 1/64 oz., \$2.50; 1/32 oz., \$4.50.
- King of the Reds.** Free flowering rose-red; vigorous growth. Tr. pkt., \$1.00; 1/64 oz., \$2.50; 1/32 oz., \$4.50.
- **Luminosa.** Very attractive and popular scarlet-red. Tr. pkt., \$1.00; 1/64 oz., \$3.00; 1/32 oz., \$5.50.
- Prima Donna.** Medium rose-pink. Prefer Scandinavia Pink. Tr. pkt., \$1.00; 1/64 oz., \$2.00; 1/32 oz., \$3.50.
- **Scandinavia Pink.** Very free flowering bright rose-pink. Fine bushy habit. Tr. pkt., \$1.00; 1/64 oz., \$2.75; 1/32 oz., \$5.00.
- **Scandinavia Red.** Identical to the above except for its bright red flowers. Tr. pkt., \$1.00; 1/64 oz., \$2.75; 1/32 oz., \$5.00.
- Scandinavia White.** A white Scandinavia selection. Tr. pkt., \$1.00; 1/64 oz., \$2.75; 1/32 oz., \$5.00.
- White Pearl.** Tr. pkts. only, \$1.00.
- Intermediate Varieties Mixed.** Our own mixture made up of the above separate colors; carefully blended. Tr. pkt., \$1.00; 1/64 oz., \$2.00; 1/32 oz., \$3.50.

## TALL CLASS

- Christmas Cheer.** Large flowered, deep crimson-rose. Tr. pkt., \$1.00; 1/64 oz., \$1.75; 1/32 oz., \$3.25.
- Masterpiece.** Extra large flowered, light pink. Tr. pkt., \$1.00; 1/64 oz., \$2.25; 1/32 oz., \$4.00.
- Pink Radio.** Extra large flowered, rich rose. Tr. pkt., \$1.00; 1/64 oz., \$2.25; 1/32 oz., \$4.00.
- Silver Wings.** Extra large pure white flowers. Tr. pkt., \$1.00; 1/64 oz., \$1.75; 1/32 oz., \$3.25.
- Tall Varieties Mixed.** A formula mixture of the above strong growing sorts. Tr. pkt., \$1.00; 1/64 oz., \$1.50; 1/32 oz., \$2.50.



# Ball Begonias

## BEGONIA NOTES

A well grown batch of these colorful fibrous Begonias will add welcome variety to your Christmas pot plants. Sow in July to make strong 4's for Christmas; June for 4's for Thanksgiving. Since they are rapid growing and inexpensive, you can offer them at a moderate price and yet realize something for your effort. Try working them into combinations for the holidays. Some growers plant 2 1/4's into small ornamental pottery; they make a fine house plant (and boost your pottery sales).

**Varieties:** We find the Dwarf types best for pots and combinations: Adeline, Ball Deep Rose, Ball Red, Luminosa Compact, Ball White. Indian Maid is showy. Gruga is new and nice.

**Culture:** Not hard! We use clear neutral peat for germination; no covering over the seed (except paper till they sprout). Keep surface of flat moist. Use half peat, half soil for potting. They must have 60° to keep them moving—and shade or they'll burn sure!

**Our Begonia Seed** (except originator's varieties) is grown by us at West Chicago to insure trueness, and germination. And it's cleaned, really cleaned!—by hand right here on our own place. It's some job, but you can't germinate the chaff.

## EXTRA DWARF BEGONIAS

Ideal for small pots, combinations, or outdoor bedding borders where summers are moderate.

- **Ball Dwarf Carmen.** Extra compact habit with rich bronze leaves and light pink flowers. Tr. pkt., \$1.25; 1/64 oz., \$3.50.
- **Saga.** (New.) Extra dwarf and dense growth. Small, bright Luminosa red flowers are very freely produced. Tr. pkt., \$1.25; 1/64 oz., \$4.00; 1/32 oz., \$7.50.

## TUBEROUS ROOTED and MISC. BEGONIAS

**Doty's Calla Queen.** A novelty Fibrous Rooted Begonia with attractively variegated green and white foliage which contrasts vividly with its red and pink flowers. Needs pinching for shapely plants and good variegation in leaves. Germination uncertain. Originator's tr. pkt., \$3.00; 1/2 tr. pkt., \$1.75.

● **Tuberous Rooted Double Mixed.** Gorgeous colors with 80% to 90% good doubles. Tr. pkt., \$2.50.  
Also available in the following separate colors: Yellow, orange, red and white at \$2.50 per tr. pkt.

**Tuberous Rooted Single Mixed.** Attractive mixture; large flowered. Tr. pkt., \$1.00; 1/64 oz., \$2.50; 1/32 oz., \$4.50.

● **Lloydii Mixed.** Double flowers, about 2 inches, in shades of scarlet, rose, salmon and white. Tr. pkt., \$3.00.

**Rex Hybrids.** Mixture of ornamental leaved Rex Begonias; many unusual variations. Seed is quite small and requires extra care in germinating. Tr. pkts. only, \$1.00.

## 2-INCH BANDED BEGONIAS

SHIPPED IN OUR "BALL-PAK"

We are extensive producers of Begonias in 2-inch bands. They are all shipped in our very efficient "Ball-Pak" at no added cost. If in need of perfect plants, finished with extra spacing, and well packed, let's hear from you. Most popular varieties are available from September to June. See page 24.

# Calceolarias

(20,000 seeds per 1/32 oz.)



Ball Multiflora Nana Calceolaria is unexcelled

While Calceolarias aren't difficult to grow, they are rather exacting in their requirements. But they do sell, for it is difficult to imagine a more showy pot plant. To make 5-inch plants for Easter, seed should be sown around Aug. 15. In sowing use only loose, sterilized material. The seed is very fine and no soil covering should be used. When large enough to handle, they should be flatted—later they may go into 5's. Cool temperatures (45°-48° nights) are important after plants are well up; and from late winter on they'll need protection from direct sun. Regular fumigation is essential, too. Ball Multiflora Nana Mixture is the most popular variety.

● **Ball Multiflora Nana Mixture.** Large heads of medium sized flowers in brilliant reds, yellows and intermediate shades. The dwarf plants are wiry in growth with small durable leaves. Tr. pkt., \$1.00; 1/128 oz., \$2.35; 1/64 oz., \$4.35; 1/32 oz., \$8.00.

**Cloth of Gold.** Medium large, golden yellow flowers. Very showy. Tr. pkt., \$1.00; 1/64 oz., \$2.50; 1/32 oz., \$4.50.

● **Duplex Hybrids Mixed.** Upper pouch of each flower is almost as large as the lower, giving an attractive duplexed effect. Plants are bushy and fairly dwarf; nice color mixture. 1/2 tr. pkt., \$1.25; tr. pkt., \$2.00; 1/128 oz., \$4.00.

● **Dwarf Tigered or Spotted.** Various spotted shades of red, yellow and rosy bronze. Dwarf and compact; needs no staking. Tr. pkt., \$1.00; 1/64 oz., \$2.50; 1/32 oz., \$4.50.

**Flower Cloud.** Cloud-like heads of small flowers in shades of yellow, orange and bronze. Tr. pkt., \$1.50; 1/128 oz., \$3.50.

● **Grandiflora Dwarf Mixed.** Extra large flowers in unusual and striking colors are carried on dwarf plants. Tr. pkt., \$1.00; 1/64 oz., \$2.75; 1/32 oz., \$5.00.

**Grandiflora Mixed.** A tall growing strain of the above. Tr. pkt., \$1.00; 1/64 oz., \$2.50; 1/32 oz., \$4.50.

**Indian Prince.** A bright scarlet Multiflora Nana selection. Tr. pkt., \$1.00; 1/128 oz., \$2.35.

**Perennial Hybrids (Rugosa).** A very small flowered type for large exhibition work and bedding. Tr. pkt., \$1.00.

**Red Triumph.** A separate color selection of Triumph, 90% true scarlet-red. Tr. pkt., \$1.00; 1/64 oz., \$2.75; 1/32 oz., \$5.00.

● **Triumph Strain.** Medium large flowers; mostly bright reds and yellows. Tr. pkt., \$1.00; 1/64 oz., \$2.75; 1/32 oz., \$5.00.





The bright yellow eyes of Cineraria Multiflora Nana, Gold Center, present a striking contrast to its richly colored petals. You'll find the combination most effective.

## Cinerarias

The outstanding value of Cinerarias lies in their appealing colors, ease of growth and their lasting ability—and they can be had from January to Mother's Day. There isn't much demand though, for the big show specimens. The business and profit is in the 5 and 6 in. pot sizes. 4 in. plants for those popular spring combinations are valuable, too, and easily produced from an early October sowing. For mid-winter and Easter plants, most seed is sown during July and August.

To avoid damping off, transplant the seedlings to 2½ inch plant bands as soon as they can be handled. Before they become root-bound, shift into their final size pot. While this method calls for a little care in preventing over-watering until they make new roots, we find it produces better results, with less labor, than handling them in small pots which dry out rapidly during warm sunny weather.

When they become pot-bound at flowering time, the main point to watch is the watering. They dry out fast—especially on bright days. Another important point is to avoid overcrowding. And keep them fumigated regularly for aphids.

- **Siter's Rainbow Strain.** 3500 seeds per 1/32 oz. An excellent market strain with immense heads of medium large, mostly white-eyed flowers and small foliage. Tr. pkt., \$2.00; 1/64 oz., \$2.50; 1/32 oz., \$4.50; 1/16 oz., \$8.00.
- **Multiflora Nana, Gold Center.** 6300 seeds per 1/32 oz. Attractive medium small, solid colored flowers with bright yellow anthers. Good shipper. Tr. pkt., \$1.00; 1/64 oz., \$2.00; 1/32 oz., \$3.50.
- **Cremer's Prize Strain.** (Our own reselected strain.) 6300 seeds per 1/32 oz. Extra large heads of medium small flowers in widely varied color assortment; about half light eyed. An excellent commercial strain. Tr. pkt., \$1.50; 1/64 oz., \$2.25; 1/32 oz., \$4.00; 1/16 oz., \$7.50.

### "VIVID" FORMULA MIXTURE

Because of increasing demand, we are offering this new mixture of solid colors, which we blend ourselves; ranging from salmon and azure-blue to blood-red and dark blue. Habit is dwarf with well rounded heads. Tr. pkt. (1000 seeds), \$1.50. Separate colors available on request.

**Ball Copper-Scarlet.** Compact small-leaved plants with medium sized, bright copper tinged, scarlet flowers. Uniform and attractive. Tr. pkt., \$1.50; 1/64 oz., \$2.25.

● **Berlin Market Mixed.** (White-Eyed or Weissensee Strain.) 3500 seeds per 1/32 oz. Large rounded heads of medium large flowers. Tr. pkt., \$1.00; 1/64 oz., \$1.75; 1/32 oz., \$3.25.

**Berlin Market, Dark Crimson.** A deep crimson selection without any eye. Tr. pkt., \$1.00; 1/64 oz., \$1.75.

● **Grandiflora Dwarf Mixed.** 3500 seeds per 1/32 oz. Large flowers in a wide assortment of rich colors with contrasting large white eyes. Extra dwarf and compact growth. Tr. pkt., \$1.00; 1/64 oz., \$1.75; 1/32 oz., \$3.25.

**Stellata Mixture.** (Star type.) Small, free flowering strain. 24 to 30 in. tall. Tr. pkt., 75c; 1/64 oz., \$1.25; 1/32 oz., \$2.25.

● **No. 1 Mixture.** Consists of Cremer's Prize Strain and Siter's Rainbow Strain in equal proportions. Tr. pkt., \$1.00; 1/64 oz., \$2.00; 1/32 oz., \$3.75.

● **No. 2 Mixture.** Contains 1/2 Cremer's Prize Strain and 1/4 each Siter's Rainbow Strain and Multiflora Nana, Gold Center Strain. Tr. pkt., \$1.00; 1/64 oz., \$2.00; 1/32 oz., \$3.75.



Small leaves and brilliant, solid colors are outstanding points in our new "Vivid" Cineraria Mixture.



# Ball's Cyclamen

## A WORD ABOUT OUR CYCLAMEN

Repeated observations of Cyclamen flowering trials in our own greenhouses, as well as careful examination of the leading strains grown elsewhere, have led us to believe that no one Cyclamen seed specialist excels in all varieties. As a result, the Cyclamen seed we offer on this page as Ball's strain has been obtained from several of the world's most qualified Cyclamen specialists. We believe our customers are entitled to this service.



Pure white Cyclamen are becoming increasingly popular; and our strain is noted for its fine, large flowers.

To see why Cyc's remain so much-grown, take one home—watch it continue to throw still more bright, new florets after 3, even 4 weeks. That's double the life of most plants—in our home at least!

**Culture**—not difficult. Sow July to finish 6's for Christmas '51. Sown early November, you'll get nice 4's—lower cost, lower priced, maybe better sellers for your trade. Night temperature, 55°. Remember the old words: "It's the space between the plants that

makes quality pot plants." Give 'em plenty of room!

**Mite**—that No. 1 problem. A weekly spray program alternating with Vapotone, NNOR—followed **religiously** from the 2¼ stage on will usually result in clean plants. Big trick is to keep them clean from the start. Once mite get inside the buds, there's no cure. Methyl bromide fumigation is sure-fire but hardly worth the trouble except for specialists.

**DISCOUNTS**—All Cyclamen prices are net, no cash discount. 250 of a variety at 1000 rate (except Vogt's). 10,000 to 25,000 seeds, any assortment of varieties, less 5%; over 25,000 seeds, less 10%.

	100 Seeds	1000 Seeds		100 Seeds	1000 Seeds
No. 1 Dark Blood-Red	\$1.75	\$16.00	No. 19 Lavender	\$1.75	\$16.00
No. 2 Bright Red	1.75	16.00	No. 21 Pink Pearl. Salmon-pink	2.30	21.00
No. 3 Pure Rose (Rose of Aalsmeer)	1.75	16.00	No. 22 Beardse Wonder. Salmon with white border	2.25	20.00
No. 4 Soft Rose with carmine eye. (Improved Rose of Marienthal)	1.75	16.00	No. 24 Roseum Oculatum. Light pink, salmon eye	2.20	18.00
No. 5 White with carmine eye	1.75	16.00	No. 25 Sylphide. (New.) Light mauve	2.20	18.00
No. 6 Pure White	1.75	16.00	No. 26 Victoria. Fringed white, tipped red	2.25	20.00
No. 7 Bonfire. Brilliant salmon	2.25	20.00	No. 30 Mixture of above colors	1.65	15.00
No. 8 Salmon-Scarlet (America Imp.)	2.30	21.00	No. 50 Ruffled Lavender	2.30	21.00
No. 9 New Salmon-Rose Imp.	2.25	20.00	No. 51 Ruffled Salmon	2.30	21.00
No. 10 Glory of Wandsbek (Perle of Zehlendorf). Dark salmon	2.20	18.00	No. 52 Ruffled White	2.30	21.00
No. 11 Rose of Zehlendorf. Light salmon	2.20	18.00	No. 53 Ruffled Dark Red	2.30	21.00
No. 12 Orange Beauty. Orange-vermilion	2.30	21.00	No. 60 Ruffled Mixture	2.30	21.00
No. 13 Rococo Mixed. Fringed flowers; unusual shapes and markings	2.25	20.00			
No. 14 Morning Red	2.20	18.00			
No. 15 Dirk Beardse. Soft wine-red	4.00	36.00			
No. 16 Saffron Red-Silver Edged	2.25	20.00			
No. 17 Striped Varieties Mixed	2.20	18.00			
No. 18 Mozart. Deep pink	2.30	21.00			

### VOGT'S DOUBLE-FLOWERED STRAIN

**Admiration.** Salmon-rose with shaded eye.  
**Mixture.**

Prices above 2, each: 100 seeds, \$3.50; 250 seeds, \$7.00; 500 seeds, \$13.00; 1000 seeds, \$25.00.



# Primulas

(Primroses)

## PRIMULA MALACOIDES

(12,000 seeds per 1/32 oz.)

Sowings of this popular pot plant Primula may be made from May through September for blooming plants from January until April. Malacoides Primulas are of easy culture if they are grown in an airy, cool house (45° night temperature) and not allowed to get dry between waterings. Equally important is the avoidance of fertilized soil in the seed flat or early stages of growth.

Because of past germination difficulties with seed from other sources, we supply hand pollinated seed of our own growing only, except for the Double Mixture.

- **No. 32 Glory of Riverside Imp.** One of the finest and most popular varieties with freely produced, beautiful salmon-rose flowers.
- **No. 41 White Giant.** This is by far the finest pure white variety available. Large flowers and heavy stems.
- **No. 43 Brilliancy Improved.** Large, beautifully fringed flowers of rich wine-red. This is our own origination and should not be confused with the old, small flowered Brilliancy.
- **No. 51 Mrs. Eriksson of Riverside.** Large flowers of deep rose-red on compact plants of medium height. The brightest color in Baby Primroses.
- **No. 62 Ball Lavender.** Flowers are large and of a beautiful orchid-lavender shade. Many are attractively fringed, adding much to their appearance.

**No. 50 Mixture.** Carefully blended by formula from named separate color varieties.

Prices above 6, each: tr. pkt., \$1.00; 1/64 oz., \$2.75; 1/32 oz., \$5.00.

## DOUBLE MALACOIDES

**Fairy Jewels.** Pink. **First Lady.** White. **Mixture.**  
Prices above 3, each: Originator's tr. pkt. (1000 seeds), \$1.50.



Mueller's Berlin Rose—popular rose-pink Obconica



White Giant—finest of all white Primula Malacoides

## PRIMULA OBCONICA

(4,000 seeds per 1/32 oz.)

This brightly colored class excels all other Primulas in large flower size. Sow during June and July for late winter and early spring pot plants.

- **Fasbender's Red.** An outstanding fine, extra large flowered deep crimson-red.
  - **Better Days.** Bright carmine-red.
  - Mohnstein's Atroranguinea.** Popular deep red.
  - **Mueller's Berlin Rose (Mueller's Rosea).** Soft medium rose. Heavy compact plants and large flowers.
  - Lachsrosa.** Salmon-rose shades.
  - **Coerulea.** Clear mid-blue. A choice strain.
  - White.** Rather tall growth.
  - **Formula Mixture.** Carefully blended from above colors.
- Prices above 8, each: tr. pkt., \$1.25; 1/64 oz., \$2.25; 1/32 oz., \$4.25.
- Wyaston Wonder.** A special selection of this famous English variety. Vigorous growing, large flowered bright crimson. Tr. pkt., \$1.25; 1/64 oz., \$3.00; 1/32 oz., \$5.50.

## PRIMULA CHINENSIS

(Chinese Primula)

A popular class with many retail growers. Very colorful and showy. Sow early June for 4's for Valentine's Day.

- **Kardinal.** Vivid, intense orange. Improves Dazzler in depth and brilliance. Tr. pkts. only, \$1.50.
- Dazzler.** Standard orange. Tr. pkt., \$1.50; 1/32 oz., \$5.60.
- Special Mixture.** A choice assortment of colors. Tr. pkt., \$1.00; 1/32 oz., \$3.60.



# All-Double Petunias

More growers than ever have written in to tell us of the wonderful results they had last spring with All-Double Petunias as pot plants. And remember—those nicely flowered, bushy 4 and 5 in. plants for Easter are produced from a late October sowing, grown cool. Better order your seed in plenty of time.

## CANADIAN ALL-DOUBLES

● **Canadian Mixture.** The excellent germination, rich coloring and uniformly dwarf but vigorous and free branching habit of this fine Petunia have been favorably commented on by growers everywhere. Though not heavily fringed, the large flowers are nicely ruffled and 100% double. Rose, pink and mauve are represented in this fine mixture. ½ tr. pkt., \$1.80; tr. pkt., \$3.00; ¼ oz., \$6.50; ⅛ oz., \$11.70.

● **Colossal Shades of Rose.** The largest flowered All-Double Petunia, shades of pink and rosy mauve. ½ tr. pkt., \$1.50; tr. pkt., \$2.50; ¼ oz., \$5.00; ⅛ oz., \$9.00.

● **Rose of Canada.** Fully double, bright medium rose flowers about 3 inches across are freely produced on compact, bushy plants. Here's your chance to grow all the spring pot plants you need of the most popular color in Double Petunias.

● **Northern Lights.** A fairly light rose-pink—a few plants are a pleasing shade of light shrimp. Ideal bushy pot plant habit with 3 inch, fully double flowers.

Prices above 2, each: ½ tr. pkt., \$1.80; tr. pkt., \$3.00; ¼ oz., \$6.50; ⅛ oz., \$11.70.

● **America.** This Carnation-Flowered All-Double Petunia is of medium size, and freely produced. Its deep rose color gives it distinct value in combinations, pot plants or bedding. ½ tr. pkt., \$1.25; tr. pkt., \$2.00; ¼ oz., \$3.50; ⅛ oz., \$6.50; ⅓ oz., \$11.70.

## PAN-AMERICAN ALL-DOUBLES

● **Caprice.** Medium sized rose-pink flowers are carried on fairly dwarf plants.

● **Sonata.** Large, fully double, pure white flowers. Not as compact in growth as some varieties; should be pinched to induce branching.

● **Minuet.** Medium sized lavender. Tall; should be pinched.

● **Nocturne.** Semi-double deep Elk's Pride purple. The medium large flowers are borne on vigorous, but compact plants.

Prices above 4, each: ½ tr. pkt., \$2.50; tr. pkt., \$4.00; ¼ oz., \$7.60; ⅛ oz., \$14.45.

### ● ALLEGRO

Medium to large, fully double flowers of clear, bright salmon are carried on fairly dwarf plants. A new and attractive color in the All-Doubles and the finest in its color class. ½ tr. pkt., \$2.50; tr. pkt., \$4.00; ¼ oz., \$7.60; ⅛ oz., \$14.45.

● **Glorious Mixture.** Contains both tall and dwarf types in all the Pan-American colors. In transplanting, be sure to use both large and small seedlings, thus insuring a complete range of colors. ½ tr. pkt., \$2.00; tr. pkt., \$3.50; ¼ oz., \$6.65; ⅛ oz., \$12.60; ⅓ oz., \$24.00.

➡  
We find it hard to imagine a nicer pot plant than a well grown All-Double Petunia. Don't you agree?

Germination is the one point in their culture that must be watched closely. Sow in finely sifted light material without soil covering. Constant attention to moisture and shading should bring them through in a week or 10 days. Further suggestions are on every packet of All-Double Petunia seed we sell.

## NEW! BALL ALL-DOUBLE MIXTURE

(Formula Mixture)

We've added sufficient quantities of separate color white, salmon and purple All-Double varieties to our already well known Canadian Mixture to insure a complete and well balanced formula mixture of **all colors**. Growers who liked the Canadian Mixture (still offered at left) will be even more pleased with this new and improved blend. ½ tr. pkt., \$2.00; tr. pkt., \$3.50; ¼ oz., \$6.65; ⅛ oz., \$12.60; ⅓ oz., \$24.00.

## VICTORIOUS ALL-DOUBLES

● **Orange.** Bright orange with some lighter colored. ½ tr. pkt., \$2.25; tr. pkt., \$4.00; ¼ oz., \$8.50.

● **Pink Perfection (World Beauty).** Deep rose color and uniformly dwarf growth.

● **Gaiety.** Dwarf and compact with flowers blotched rose and white.

● **Snowball.** Well fringed clear white flowers.

● **Blue Brocade.** Elk's Pride purple.

● **Victorious Mixture.** We blend this mixture ourselves from the above varieties. We do not handle the regular mixture.

Prices above 5, each: ½ tr. pkt., \$2.00; tr. pkt., \$3.50; ¼ oz., \$6.00; ⅛ oz., \$11.00; ⅓ oz., \$21.00.





# For Summer and Fall Sowing

## IMPORTANT!

This catalog does not contain a complete list of annuals. Specialty items for summer and fall sowing are featured on these pages. For full list of annuals see our January catalog. Complete perennial list starts on page 28 of this catalog.

## ASTERS—SPRING FLOWERING

Sept. and later sowings of early Asters will flower from Easter on, if 50 watt bulbs are spaced about 18 in. above the plants at 4 ft. intervals, and lighted to provide 5 hours additional day length. Lights must be used from the small seedling stage until flowering, spacing the plants about 10 x 10 in.

Growers are finding this crop an excellent one to follow Mums, especially where lights are already in place for late Mums. Many have reported very satisfactory returns on their early Aster crop handled this way.

We like the Royals best for this purpose although the slightly earlier Queens may be desirable in other localities.

ROYALS	QUEENS
Azure-Blue	Azure-Blue
Shell-Pink	White
White	Ballet Queen
Ball Deep Rose	Deep Rose
Ball Deep Purple	Flesh-Pink

Price above 10, each: tr. pkt., 30c; ¼ oz., 60c; 1 oz., \$1.85; 4 ozs., \$6.50.



Greenhouse-grown Asters can be had in flower from Easter on with the aid of additional lighting. The beauties pictured above were photographed in our greenhouses early last July.

## CANDYTUFT

**Hyalanth Flowered, Giant White** (Ball Strain). This is our own unsurpassed strain reselected for fewer, but larger, flower spikes. Sow from September on for January and later cutting. Tr. pkt., 20c; ½ oz., 45c; 1 oz., 80c; 4 ozs., \$2.65; 1 lb., \$8.50.

## EXACUM

**Affine.** An easily grown, neat and attractive pot plant with richly fragrant violet-blue flowers. Tr. pkt., \$1.00; ¼ oz., \$3.00; ½ oz., \$5.50.

## FUCHSIA

**HYBRIDA. Special Mixture.** A very desirable mixture of single and double types saved from one of the finest collections in the country. Seed sown in late summer should produce nice flowering pot plants the following spring and early summer. Choice specimens may be cutting propagated. 250 seeds, \$3.00; 500 seeds, \$5.00; 1000 seeds, \$9.00.

## STREPTOCARPUS

**Giant Flowered Mixture** (Cape Primrose). Makes an exotic pot plant as well as a fine long stemmed cut flower, lasting 8 to 10 days in water. Our strain is produced by an outstanding European specialist and contains an abundance of rich colors. Sow in early fall for spring blooming. Tr. pkt., \$1.00; ¼ oz., \$2.75.

## BEDDING PETUNIAS

### BALL TEN BEST

Growers in Florida and Gulf areas will find these varieties well suited for winter bedding use.

**Admiral.** Bright blue—almost no violet shading. Tr. pkt., 75c; ¼ oz., \$1.50; ½ oz., \$2.75; ¾ oz., \$5.00; 1 oz., \$9.00.

**Bright Eyes.** Rose-pink with white throat. Tr. pkt., 35c; ½ oz., \$1.10; ¼ oz., \$2.00; 1 oz., \$6.00.

**Celestial Rose Improved.** Free flowering bright rose. Tr. pkt., 50c; ½ oz., \$1.00; ¼ oz., \$1.75; 1 oz., \$6.00.

**Cheerful.** Star shaped, clear salmon. Tr. pkt., 50c; ¼ oz., 90c; ½ oz., \$1.65; ¾ oz., \$3.00.

**Fair Lady.** Light, soft silvery pink. Tr. pkt., 35c; ¼ oz., \$1.25; ½ oz., \$2.00; ¾ oz., \$3.75; 1 oz., \$13.50.

**Fire Chief.** All-America Gold Medal winner for 1950. True scarlet-red, shading to deep salmon-rose with age. Tr. pkt., 50c; ½ oz., \$1.25; ¼ oz., \$2.25; ¾ oz., \$3.50.

**Heavenly Blue.** The best silvery blue. Tr. pkt., 35c; ½ oz., 90c; ¼ oz., \$1.50; 1 oz., \$5.00.

**Snow Queen.** Finest pure white for bedding. Tr. pkt., 35c; ¼ oz., \$1.25; 1 oz., \$3.75.

**Topaz Queen.** Glowing carmine-rose. Tr. pkt., 35c; ½ oz., \$1.00; ¼ oz., \$1.75; 1 oz., \$6.00.

**Velvet Ball.** Deep, velvety mahogany-red. Tr. pkt., 50c; ½ oz., \$1.35; ¼ oz., \$2.50; ¾ oz., \$4.50; 1 oz., \$8.25.

**Ten Best Formula Mixture** of above varieties. Tr. pkt., 35c; ¼ oz., 90c; ½ oz., \$1.65; ¾ oz., \$3.00; 1 oz., \$10.00.



# For Summer and Fall Sowing

## MARIGOLDS FOR WINTER

Marigolds are easily flowered from January on if sowing is done around mid-August and later. Important points for the early crop are: shallow soil, not too much water, and night temperatures of not over 50° to 55°.

### FIVE BEST FOR CUTTING

We find this class gives best results if grown single stem and spaced about 4x5 inches.

**Ball Giant Orange.** Similar to All-Double Orange, but somewhat larger flower and deeper color. Tr. pkt., 35c; ¼ oz., 65c; 1 oz., \$2.00.

**All-Double Orange.** Fistulosa or African type. Produces nearly 100% double flowers.

**All-Double Lemon.** Same as above except for color.

**Gold Improved.** Carnation flowered orange; odorless foliage.

**Yellow Supreme.** Similar to above but yellow; odorless.

**Five Best Cutting Mixture.** Formula mixture of above.

Prices all above Marigolds except Ball Giant Orange, each: tr. pkt., 25c; ¼ oz., 50c; 1 oz., \$1.60; 4 ozs., \$5.50.

### SIX BEST DWARF TYPES

Handled in small bands or pots, this group makes very effective material for winter combination boxes.

**Spry.** Gold crest; dark red guard petals.

**Ball Dwarf Harmony.** Bright orange and maroon.

**Butterball.** Butter-yellow, tipped maroon.

**Sunkist.** Solid, deep golden orange.

**Yellow Pygmy.** Rich, bright lemon-yellow.

**Scarlet Glow.** Bright, bronzy red.

**6 Best Dwarf Mixture** of above varieties.

Prices above 7, each: tr. pkt., 25c; ¼ oz., 50c; 1 oz., \$1.75; 4 ozs., \$5.50.

### WINTER FLOWERING CLASS

This group includes short-day varieties, and, unlike the previous varieties, will not flower satisfactorily during late spring and summer.

**Australian Tree.** Golden yellow crest with mahogany guard petals. Tr. pkt., 25c; ¼ oz., 40c; 1 oz., \$1.20.

**Lieb's Brown and Gold.** Similar to above.

**Lieb's Winter Sunshine.** Solid golden yellow.

Prices above 2, each: tr. pkt., 25c; ¼ oz., 60c; 1 oz., \$2.00.

**Winter Harmony.** Bright orange crest with reddish guard petals. Tr. pkt., 25c; ¼ oz., 40c; 1 oz., \$1.20.

### MYOSOTIS

**Ball Early.** Nothing easier to grow than this always popular blue flower, for which you'll find plenty of uses during the winter and spring months. Sow from June to August and grow in a 50° house, spacing about 10x10 inches. Tr. pkt., 35c; ¼ oz., 85c; 1 oz., \$3.00.

### SAINTPAULIA

**Ionantha** (African Violet). Deep blue. Extra fine-seed that requires care in germinating. Uniform moisture, a 60° temperature and protection from bright sun are necessary in growing good Saintpaulias. Tr. pkt., \$1.50.



*Browallia, Speciosa Major* makes an unusually attractive winter and early spring pot plant. Sow seed this summer.

### BROWALLIA

**Speciosa Major.** Nice winter pot plants of this popular subject can be had easily from a sowing this summer. Produces attractive 1½ in. violet-blue flowers. Tr. pkt., \$1.00; 1/16 oz., \$2.00; 1/8 oz., \$3.75; ¼ oz., \$8.50.

### SCHIZANTHUS

Sow from September to November for attractive spring pot plants or cut flowers. Easily grown in a 50° house.

**Ball Giant Flowered.** Extra large flowers (often 2 inches in diameter) and unusually brilliant colors are the outstanding points about this strain. Nice for cutting or makes a choice pot plant if pinched. Tr. pkt., 75c; 1/8 oz., \$2.00; ¼ oz., \$3.60.

**Ball Dwarf Mixture.** A distinctly dwarf growing strain with large compact heads of medium sized flowers. Makes an excellent pot plant. Tr. pkt., 50c; 1/8 oz., \$1.50; ¼ oz., \$2.50.

**Ball Brilliant Blend.** A carefully blended mixture of fairly tall growing varieties recommended for the grower who grows a limited number of plants and wants a complete mixture. Tr. pkt., 35c; 1/8 oz., 75c; ¼ oz., \$1.25.

**Dr. Badger's Improved Hybrids.** A brightly colored large-flowered strain of medium height. Suitable either for pots or cutting. Tr. pkt., 35c; ¼ oz., \$1.15.

**Giant Blotched.** Bright colored rose and pink shades, with contrasting dark centers. Somewhat earlier than most strains and a good pot plant if well pinched. Tr. pkt., 50c; 1/8 oz., \$1.25; ¼ oz., \$2.25.

**Monarch Strain.** An attractive mixture of bright golden rose colors. Tr. pkt., 50c; 1/8 oz., \$1.25; ¼ oz., \$2.25.

**Pansy-Flowered Mixture.** Flowers, flat and full petaled, resembling small Pansy flowers. Tr. pkt., 35c; 1/8 oz., \$1.00; ¼ oz., \$1.80.



# Ball Better Lily Bulbs

## BALL CROFTS

### PACIFIC NORTHWEST GROWN BULBS

Easter is Early Next Year—March 25th

The experience of growers everywhere has proved the Croft to be without equal as the pot Lily for Easter—but clean, disease-free bulbs are an **absolute necessity**. To insure your getting the kind of bulbs you really want, our plantings have been thoroughly inspected by our own skilled bulb men, as well as state supervised throughout the growing season. Orders placed now will be delivered at the proper time to plant for Easter forcing.

Available in the following sizes:

Size 7-8 in. ....	250 Bulbs per case
Size 8-9 in. ....	200 Bulbs per case
Size 9-10 in. ....	150 Bulbs per case
Size 10 in. up .....	100 Bulbs per case

F.O.B. West Coast, Chicago and New York

## JAPANESE GROWN LILIES RUBRUMS

Popular Pink Lily for summer cutting.

F.O.B. Chicago

Size 7-9 in. ....	250 Bulbs per case
Size 8-9 in. ....	200 Bulbs per case
Size 9-10 in. ....	150 Bulbs per case
Size 10-11 in. ....	100 Bulbs per case

## AURATUM (Gold Band)

White, spotted crimson; yellow stripes.

F.O.B. Chicago

Size 7-9 in. ....	250 Bulbs per case
Size 8-9 in. ....	200 Bulbs per case
Size 9-10 in. ....	150 Bulbs per case
Size 10-11 in. ....	100 Bulbs per case



Ball Crofts are noted for their uniform, disease-free growth.

All Lilies listed at left are available in case lots only at regular market prices.

## West Coast Grown Bulbs

### CALLA AETHIOPICA (Large White)

August Delivery

1¼-1½ in. ....	\$ 9.50 per 100	\$ 85.00 per 1000
1½-1¾ in. ....	17.50 per 100	165.00 per 1000
1¾-2 in. ....	23.50 per 100	225.00 per 1000
2-2½ in. ....	27.50 per 100	265.00 per 1000
2½ in. up .....	32.00 per 100	300.00 per 1000

### CALLA ELLIOTTIANA (Yellow)

November Delivery

1¾-2 in. ....	\$11.00 per 100	\$ 97.50 per 1000
2-2½ in. ....	17.50 per 100	165.00 per 1000
2½-3 in. ....	32.00 per 100	300.00 per 1000
3 in. up .....	45.00 per 100	415.00 per 1000

### CALLA REHMANII SUPERBA (Pink)

November Delivery

1¼-1½ in. ....	\$11.00 per 100	\$100.00 per 1000
1½-2 in. ....	16.00 per 100	150.00 per 1000
2-2½ in. ....	24.00 per 100	225.00 per 1000
2½ in. up .....	32.00 per 100	300.00 per 1000

All Callas F.O.B. Chicago

## WEST COAST DAFFODILS

	DN No. 1		DN No. 2	
	Per 100	Per 1000	Per 100	Per 1000

<b>King Alfred</b>				
Large golden yellow ..	\$10.00	\$ 90.00	\$ 7.50	\$65.00
<b>Golden Harvest</b>				
Golden yellow .....	12.00	110.00	10.00	90.00
<b>Rembrandt</b>				
Best yellow for pots ..	11.00	100.00	8.50	75.00

F.O.B. Seattle, Chicago and New York

## WEST COAST IRIS

	8-9 in.		9-10 in.	
	Per 100	Per 1000	Per 100	Per 1000

<b>Wedgewood. Blue</b> .....	\$3.50	\$27.50	\$6.00	\$50.00
------------------------------	--------	---------	--------	---------

F.O.B. Seattle or Chicago



# Domestic and Imported Bulbs

## FREESIAS

### GIANT HYBRIDS

**Mammoth White.** Large pure white; very early.  
**Mammoth Golden Yellow.** Improved Golden Daffodil; very early.  
**Elder's Golden Giant.** Bright golden yellow; large wide open flowers. Tall.  
**Oriole.** Fine deep orange. Earliest of all.

### TECOLOTE HYBRIDS

**Talisman** (Pat. No. 555) **Yellow** **Rose** **Lavender** **Blue**  
**Pure White** **Pink** **Purple** **Red** **Mixture** (well blended)

### ELDER'S VARIETIES

**Elder's Giant White** **Blanche Blue** **Rosy Morn** **Flo**  
**Elder's Double White** **Judy** (double yellow) **Blondies Mixture**

Price per thousand—all above **Freesias**  
 $\frac{1}{2}$ - $\frac{5}{8}$ " \$17.00       $\frac{5}{8}$ - $\frac{3}{4}$ " \$24.00       $\frac{3}{4}$ - $\frac{7}{8}$ " \$37.50  
 For less than 1000, add 10% to above prices.

### STANDARD COMMERCIAL FREESIAS

**Rainbow Mixture** of all colors.

Price per thousand  
 $\frac{1}{2}$ - $\frac{5}{8}$ " \$12.00       $\frac{5}{8}$ - $\frac{3}{4}$ " \$20.00       $\frac{3}{4}$ - $\frac{7}{8}$ " \$30.00  
 For less than 1000, add 10% to above prices.

## ANEMONES

**Monarch De Caen.** Single Poppy type.

Price per thousand  
 $\frac{5}{8}$ - $\frac{3}{4}$ " \$30.00       $\frac{3}{4}$ - $\frac{7}{8}$ " \$37.50       $\frac{7}{8}$ " up \$48.00

**Blue Poppy.** Bright blue, single.  
**His Excellency.** Bright scarlet, single.  
**St. Brigid.** "Creagh Castle," double.  
**The Bride.** Pure white, single.  
**Roseus.** Fuchsia rose, single.

Price per thousand  
 $\frac{5}{8}$ - $\frac{3}{4}$ " \$35.00       $\frac{3}{4}$ - $\frac{7}{8}$ " \$45.00       $\frac{7}{8}$ "-up \$52.50  
 For less than 1000, add 10% to above prices.

## RANUNCULUS

Golden Yellow Pink Shades	Yellow Shades Orange Shades	Red Shades White	
Price per thousand			
$\frac{5}{8}$ - $\frac{3}{4}$ " \$27.00	$\frac{3}{4}$ - $\frac{7}{8}$ " \$40.00	$\frac{7}{8}$ -1" \$52.50	1"-up \$65.00
Mixture of all colors			
Price per thousand			
$\frac{5}{8}$ - $\frac{3}{4}$ " \$21.00	$\frac{3}{4}$ - $\frac{7}{8}$ " \$35.00	$\frac{7}{8}$ -1" \$45.00	1"-up \$60.00

For less than 1000, add 10% to above prices.

## CALADIUMS

(Delivery Dec. to Mar. F.O.B. Florida)

Our Special Mixture of Fancy Leaved Caladiums is unexcelled. You'll find they make ideal pot plants in addition to their usefulness for cutting, and outdoor bedding in partial shade.

	Price per 100
	Named Varieties      Special Mixture
1 -1½ in. diameter. No. 2 . . . .	\$12.00      \$10.00
1½-2½ in. diameter. No. 1 . . . .	18.00      16.00
2½-3½ in. diameter. Jumbo . . .	25.00      22.00
3½ in. up diameter. Mammoth .	40.00      35.00

Minimum order 50 bulbs.

## TUBEROUS ROOTED BEGONIAS

### DOUBLE CAMELLIA-FLOWERED

Scarlet Crimson Yellow	Copper Rose Salmon	White Mixed
------------------------------	--------------------------	----------------

<b>Belgian Grown</b>	<b>American Grown</b>
(F.O.B. Chicago)	(F.O.B. Calif. and Chicago)

Dec.-Jan. . . . .	Delivery . . . . .	Jan.-Feb.
100	1000	Size
\$ 9.50	\$ 85.00 . . . . .	1½-2 in. . . . . \$17.00
12.00	110.00 . . . . .	2 in. up . . . . . 21.00
		1000
		\$150.00
		195.00

Minimum order 50 bulbs.

## GLOXINIAS

**Emperor Frederic.** Scarlet, bordered white.  
**Emperor William.** Violet, bordered white.  
**King of the Reds.** Bright red.  
**Mont Blanc.** Pure white.  
**Blanche de Merou.** Rose, white throat.  
**Princess Elizabeth.** Blue, white throat.  
**Violacea.** Violet.  
**Queen Wilhelmina.** Pink.  
**Mixture** of all above colors.

<b>Belgian Grown</b>	<b>American Grown</b>
(F.O.B. Chicago)	(F.O.B. Calif. and Chicago)

Dec.-Jan. . . . .	Delivery . . . . .	Jan.-Feb.
100	1000	Size
\$13.00	\$120.00 . . . . .	1½-2 in. . . . . \$25.00
20.00	185.00 . . . . .	2 in. up . . . . . 32.00
		1000
		\$225.00
		300.00

Minimum order 50 bulbs.



# Hyacinths — Tulips — Narcissi



To assure delivery direct from Holland, send your order to reach us before July 15.

All prices are F.O.B. Chicago or New York and are subject to change without notice.

**HYACINTHS**  
**Prepared Hyacinths**  
 L'Innocence. Pure white.  
 Bismarck. Light porcelain blue.  
 Pink Pearl. Bright rosy pink.

**PRICES PREPARED HYACINTHS**

Size	Unit	Per 100	Per 1000
19/up	50 per unit (bag)	\$16.50	\$155.00
18/19	50 per unit (bag)	15.00	140.00
17/18	100 per unit (bag)	13.00	120.00
14/15	200 per unit (bag)	9.00	80.00

**Regular Hyacinths**

**RED AND PINK**

- Gertrude.** Rosy pink, medium forcer.
- Jan Bos.** Scarlet, very early forcer.
- Lady Derby.** Light pink, medium forcer.
- La Victoire.** Rosy red, medium forcer.
- Marconi.** Bright pink, rather late forcer.
- Pink Pearl.** Rosy pink, very early forcer.
- Queen of the Pinks.** Bright, beautiful pink, for late forcing.

**WHITE**

- L'Innocence.** Pure white, very early forcer.

**BLUE**

- Bismarck.** Light blue, very early forcer.
- Dr. Lieber.** Medium blue, early forcer.
- Grand Maitre.** Deep blue, medium forcer.
- King of the Blues.** Dark blue, late forcer.
- Perle Brilliante.** Clear blue, medium forcer.

**YELLOW**

- City of Haarlem.** Golden yellow, medium forcer.

**PRICES REGULAR HYACINTHS**

Size	Unit	Per 100	Per 1000
19/up	50 per unit (bag)	\$14.00	\$130.00
18/19	50 per unit (bag)	12.50	115.00
17/18	100 per unit (bag)	11.00	100.00
16/17	100 per unit (bag)	9.50	85.00
15/16	175 per unit (bag)	8.50	75.00
14/15	200 per unit (bag)	7.50	65.00

**TULIPS**

All Tulips packed as follows:

11/12 and 12/up .....250 per unit (bag)

**Early Single Tulips**

	Per 1000	
	12/up	11/12
<b>Brilliant Star.</b> 10". Scarlet	\$55.00	\$45.00
<b>Couleur de Cardinal.</b> 13". Deep scarlet	55.00	45.00
<b>Fred Moore.</b> 11". Apricot orange	47.00	37.00
<b>General de Wet.</b> 13". Yellow, flushed orange	47.00	37.00
<b>Ibis.</b> 12". Deep rose	47.00	37.00
<b>Keizerskroon.</b> 14". Yellow flower, edged red	55.00	45.00
<b>Pink Beauty.</b> 12". Deep pink and white	62.00	52.00
<b>Prince of Austria.</b> 13". Orange-scarlet	47.00	37.00
<b>Van der Neer.</b> 10". Violet	62.00	52.00
<b>Vermilion Brilliant.</b> 10". Vermilion-red	62.00	52.00
<b>White Hawk.</b> 12". Pure white	50.00	40.00
<b>Yellow Prince.</b> 10". Yellow, sweet scented	50.00	40.00
<b>Choice Mixture</b>	47.00	37.00

**Early Double Tulips**

	Per 1000	
	12/up	11/12
<b>Electra.</b> 10". Deep cherry-red	\$55.00	\$45.00
<b>Marechal Niel.</b> 10". Golden yellow	55.00	45.00
<b>Mr. Van der Hoeff.</b> 10". Pure yellow	55.00	45.00
<b>Murillo.</b> 10". White, flushed pink	55.00	45.00
<b>Orange Nassau.</b> 10". Orange-red	55.00	45.00
<b>Peach Blossom.</b> 10". Deep pink	55.00	45.00
<b>Schoonoord.</b> 10". Pure white	57.00	47.00
<b>Triumphator.</b> 10". Deep pink	55.00	45.00
<b>Vuurbaak.</b> 10". Scarlet	57.00	47.00
<b>Choice Mixture</b>	55.00	45.00

**Cottage Tulips**

	Per 1000	
	12/up	11/12
<b>Advance.</b> 30". Scarlet	\$55.00	\$45.00
* <b>Albino.</b> 20". Pure white	60.00	50.00
<b>Belle Jaune</b> (Imp. Inglescombe). 24". Yellow	42.00	35.00
* <b>Carrara.</b> 20". White	42.00	35.00
* <b>Golden Harvest.</b> 26". Lemon-yellow	42.00	35.00
<b>G. W. Leak.</b> 26". Scarlet, yellow base	57.00	47.00
<b>Henry Correvon.</b> 26". Geranium-red, white base	47.00	37.00
<b>Marjorie Bowen.</b> 28". Buff and salmon	42.00	35.00
* <b>Mother's Day.</b> 24". Lemon-yellow	42.00	35.00
<b>Mount Erebus.</b> 28". White	57.00	47.00
<b>Mrs. John T. Scheepers.</b> 26". Light yellow	55.00	45.00
<b>Ossi Oswald.</b> 24". Cream, flushed rose	42.00	35.00
<b>Rosabella.</b> 24". Pale rose with lighter edge	55.00	45.00
<b>Yellow Emperor.</b> 24". Golden yellow	42.00	35.00

**Parrot Tulips**

	Per 1000	
	12/up	11/12
<b>Blue Parrot.</b> 24". Dark lavender	\$45.00	\$37.00
<b>Fantasy.</b> 22". Deep salmon, blotched green	45.00	37.00
<b>Orange Favorite.</b> 22". Orange, green, yellow	60.00	50.00
<b>Red Champion.</b> 24". Flushed scarlet	60.00	50.00
<b>Sunshine.</b> 18". Golden yellow	60.00	50.00
<b>Therese.</b> 24". Very large, cochineal-red	60.00	50.00

\*Best forcing varieties.



# Quality Bulbs for Fall Delivery

## TULIPS (Continued)

### Mendel Tulips

	Per 1000	
	12/up	11/12
<b>Fridjof Nansen.</b> 16". Medium forcing . . . . .	\$55.00	\$45.00
<b>Her Grace.</b> 18". Pink and white . . . . .	55.00	45.00
<b>Krelage's Triumph.</b> 14". Red, forcing . . . . .	42.00	35.00
<b>Scarlet Admiral.</b> 16". Crimson, medium early . . . . .	42.00	35.00
<b>Van der Erden.</b> 16". Glowing red, early . . . . .	42.00	35.00
<b>Weber.</b> 18". White and pink, medium early . . . . .	42.00	35.00
<b>White Sail.</b> 14". White, early . . . . .	42.00	35.00

### Triumph Tulips

	Per 1000	
	12/up	11/12
<b>Alberio.</b> 16". Cherry-red, edged yellow . . . . .	\$42.00	\$35.00
<b>Aviator.</b> 16". Carmine-red, edged white . . . . .	42.00	35.00
<b>Bandoeng.</b> 16". Mahogany-red, edged yellow . . . . .	42.00	35.00
<b>Crater.</b> 16". Deep carmine-red . . . . .	42.00	35.00
<b>Edith Eddy.</b> 18". Carmine-red, edged white . . . . .	42.00	35.00
<b>Elmus.</b> 18". Cherry-red, white border . . . . .	57.00	47.00
<b>Hindenburg.</b> 20". Garnet-red, edged yellow . . . . .	42.00	35.00
<b>Korneforus.</b> 20". Light red . . . . .	42.00	35.00
<b>Red Giant.</b> 16". Soft red . . . . .	57.00	47.00

### Darwin Tulips

	Per 1000	
	12/up	11/12
<b>Afterglow.</b> 28". Orange-rose . . . . .	\$55.00	\$45.00
* <b>All Bright.</b> 24". Bright red . . . . .	42.00	35.00
* <b>Bartigon.</b> 24". Clear crimson-red . . . . .	42.00	35.00
* <b>Campfire.</b> 24". Blood-red . . . . .	42.00	35.00
<b>Charles Needham.</b> 24". Brilliant red . . . . .	47.00	40.00
<b>City of Haarlem.</b> 28". Scarlet . . . . .	55.00	45.00
<b>Clara Butt.</b> 24". Salmon, rosy pink . . . . .	42.00	35.00
* <b>Cordell Hull</b> (Rembrandt). 24". Red on white . . . . .	50.00	40.00
<b>Cote D'Azure.</b> 24". Lilac-blue . . . . .	45.00	37.00
* <b>Demeter.</b> 28". Reddish purple; early . . . . .	60.00	52.00
<b>Eclipse.</b> 26". Crimson-maroon . . . . .	55.00	45.00
<b>Farncombe Sanders.</b> 28". Scarlet . . . . .	42.00	35.00
<b>Insurpassable.</b> 26". Lilac . . . . .	60.00	52.00
<b>La Tulipe Noire.</b> 26". Purple-black . . . . .	42.00	35.00
* <b>Niphotos.</b> 26". Soft sulphur-yellow . . . . .	42.00	35.00
* <b>Philip Snowden.</b> 24". Light carmine-rose . . . . .	42.00	35.00
* <b>Princess Elizabeth.</b> 26". Rose . . . . .	42.00	35.00
* <b>Prunus.</b> 24". Salmon-pink . . . . .	42.00	35.00
<b>Queen of Night.</b> 28". Deep velvet maroon . . . . .	42.00	35.00
* <b>Red Pitt.</b> 24". Bright red . . . . .	42.00	35.00
* <b>Rose Copeland.</b> 24". Lilac-rose . . . . .	42.00	35.00
<b>Sunkist.</b> 26". Deep golden yellow . . . . .	47.00	40.00
<b>The Bishop.</b> 28". Violet-purple . . . . .	65.00	55.00
* <b>Utopia.</b> 22". Cardinal-red . . . . .	42.00	35.00
* <b>Victoire de Oliviera.</b> 26". Deep crimson . . . . .	42.00	35.00
* <b>Wm. Copeland.</b> 24". Lavender . . . . .	42.00	35.00
* <b>Wm. Pitt.</b> 24". Brilliant carmine . . . . .	42.00	35.00
<b>Zwanenburg.</b> 26". Ivory-white . . . . .	55.00	45.00
<b>Choice Mixture.</b> . . . . .	42.00	35.00

\*Best forcing varieties.

## NARCISSI

All Narcissi packed as follows:

Daffodils DN No. 1 . . . . .	500 per unit (case)
Daffodils DN No. 2 . . . . .	750 per unit (case)
Poetaz DN No. 1 . . . . .	750 per unit (case)
Poetaz DN No. 2 . . . . .	1250 per unit (case)

### Double Daffodils

	Per 1000	
	DN No. 1	DN No. 2
<b>Texas.</b> Yellow and fiery orange . . . . .	\$100.00	\$80.00
<b>Twink.</b> Creamy white and orange . . . . .	90.00	70.00

### Trumpet Daffodils

	Per 1000	
	DN No. 1	DN No. 2
<b>Golden Harvest.</b> Golden yellow . . . . .	\$105.00	\$85.00
<b>King Alfred.</b> Golden yellow . . . . .	85.00	65.00
<b>Mrs. E. H. Krelage.</b> Creamy white . . . . .	100.00	80.00
<b>Queen of Bicolors.</b> White, yellow trumpet . . . . .	95.00	75.00
<b>Rembrandt.</b> Dark golden yellow . . . . .	95.00	75.00
<b>Romaine.</b> Large, pure white . . . . .	145.00	125.00

### Leedsii Daffodils

	Per 1000	
	DN No. 1	DN No. 2
<b>Mrs. R. O. Backhouse.</b> White, shell-pink cup . . . . .	\$155.00	\$135.00

### Poetaz Narcissi

	Per 1000	
	DN No. 1	DN No. 2
<b>Cheerfulness.</b> White and yellow center . . . . .	\$ 60.00	\$ 50.00
<b>Geranium.</b> White, deep orange-red cup . . . . .	65.00	55.00
<b>Laurens Koster.</b> White, yellow cup . . . . .	60.00	50.00

## HOLLAND GROWN IRIS

### October Delivery

	8/up		7/8	
	Per 100	Per 1000	Per 100	Per 1000
<b>Imperator</b> . . . . .	\$3.50	\$25.00	\$2.50	\$18.00
Dark blue.				
<b>Van Vliet</b> . . . . .	3.50	25.00	2.50	18.00
Earlier dark blue.				
<b>White Excelsior</b> . . . . .	4.00	27.00	3.00	20.00
Best white.				
<b>Golden Harvest</b> . . . . .	4.00	27.00	3.00	20.00
Golden yellow.				
	7/8		6/7	
	Per 100	Per 1000	Per 100	Per 1000
<b>Yellow Queen</b> . . . . .	\$3.50	\$23.00	\$2.50	\$18.00
Standard yellow.				

Minimum order 500 bulbs, 100 of a variety.

All Holland Iris F.O.B. West Chicago, Ill.



# Ball-Grown Small Plants

All the 2¼-in. stock listed below is grown by us at West Chicago in Ball Better Bands and shipped in our modern "Ball-Pak."

We've successfully shipped over 2 million plants by this method—and repeat business from satisfied growers is increasing yearly.

If you're tired of plants arriving in poor condition, here's your chance to see what real packing is like. And if you're busy the day they come in, just set flat and all out on a bench until you have time for potting or benching.

## BEGONIAS

Available Sept. to June.

<b>Adeline</b>	<b>Ball Red</b>
<b>Ball Deep Rose</b>	<b>Indian Maid</b>
<b>Scandinavia Pink</b>	<b>Carmen</b>
<b>Scandinavia Red</b>	<b>Snowbank</b>
<b>Luminosa Compacta</b>	<b>Assorted</b>

\$9.00 per 100, \$80.00 per 1000. 250 @ 1000 rate.  
Minimum order 100; 25 of a variety.



Each "Ball-Pak" contains two of these 25 band PlanTrays. Your Begonias and other small plants from Ball's will be just like the beauties pictured here.

## SNAPS

Available Aug. to Mar.

<b>White Wonder Imp.</b>	<b>Ball Yellow Hybrid No. 1</b>
<b>Margaret</b>	<b>Ethel</b>
<b>Ball Pink Hybrid No. 2</b>	<b>Afterglow</b>
<b>Dorcas Jane</b>	<b>Ball Red Hybrid No. 7</b>
<b>Peggy Schumann</b>	<b>Better Times</b>
<b>Christmas Cheer</b>	<b>Ball Lavender</b>
<b>Cheviot Maid No. 33</b>	<b>Assorted</b>

\$7.00 per 100, \$60.00 per 1000. 250 @ 1000 rate.  
Minimum order 100; 25 of a variety.

## PRIMULA OBCONICA

Available July to Dec.

<b>Fasbender's Red</b>	<b>Mueller's Berlin Rose</b>
<b>Coerulea. Blue.</b>	<b>White Assorted</b>

\$10.00 per 100, \$90.00 per 1000. 250 @ 1000 rate.  
Minimum order 100; 25 of a variety.

## PRIMULA MALACOIDES

Available Oct. to Jan.

<b>Glory of Riverside Imp.</b>	<b>Mrs. Eriksson of Riverside</b>
<b>Ball Lavender</b>	<b>White Giant Assorted</b>

\$10.00 per 100, \$90.00 per 1000. 250 @ 1000 rate.  
Minimum order 100; 25 of a variety.

**ORDER EARLY!** The wanted varieties always sell out first.  
Get your needs in now!

For descriptions of above varieties refer to:  
Snaps, pages 2-5; Begonias, pages 12-13; Primulas, page 16.

# Roses

## FOR POT FORCING

Delivery Dec.-Jan. F.O.B. West Chicago

### EARLY FORCING VARIETIES

<b>Triomphe d'Orleans. Red.</b>	Grade	Per 10	Case of 120	Case of 220
<b>Garnette. Garnet-red.</b>	XXX	\$6.50	\$68.50	\$125.00
<b>Margo Koster. Light orange.</b>	XX	5.50	Case of 160 \$68.50	
<b>Magna Charta. Bright pink.</b>			Case of 250 \$68.50	
<b>Gloria Mundi. (Late.) Orange.</b>	X	3.50		

Less than case lots in multiples of 10 only.

## XXX ROSE COLLECTION

60 <b>Triomphe d'Orleans</b>
20 <b>Garnette</b>
20 <b>Margo Koster</b>
20 <b>Magna Charta</b>
120 Case (collection) <b>\$68.50</b>



# HOLLAND BULBS

## *for Counter Sales*

### SPECIAL COLLECTION FOR EARLY SEPTEMBER DELIVERY

Order now and be sure of getting your bulbs early next September—when your customers have the planting urge. Colored posters to help your sales come with each collection.



#### 1,100 BULBS for \$50.00

- 25 Hyacinths, Blue.
- 25 Hyacinths, Pink.
- 25 Hyacinths, White.
- 125 Tulips, *Bartigon*. Bright red.
- 125 Tulips, *Philip Snowden*. Deep rose.
- 125 Tulips, *All Bright*. Deep red.
- 125 Tulips, *Wm. Copeland*. Lavender.
- 125 Tulips, *Carrara*. Pure white.
- 125 Tulips, *Golden Harvest*. Lemon-yellow.
- 125 Tulips, *Her Grace*. Pink and white.
- 25 Tulips, *Blue Parrot*. Dark lavender-blue.
- 25 Tulips, *Fantasy*. (Parrot.) Deep salmon, blotched green.
- 100 Daffodils, *King Alfred*. Golden yellow.

C.O.D. orders must be accompanied by 50% cash in advance. Prices are f.o.b. Chicago or New York.



Prices subject to change without notice.



# Florists' Delphinium

(10,000 seeds per oz.)

## OUR "6 BEST" GIANT PACIFICS

- **Black Knight.** Deep midnight violet. The darkest of all.
- **Blue Bird.** The clearest of medium blues; white bees.
- **Galahad.** The finest clear white Delphinium. Huge, double flowers on long, closely set spikes.
- **Guinevere.** Excellent, light pinkish lavender; white bee.
- **King Arthur.** Royal violet with white bee. Exceptional size.
- **Summer Skies.** Light blue with an attractively contrasting white bee.

Prices above 6 each: **Regular seed.** Tr. pkt., \$1.25; 1/8 oz., \$2.50; 1/4 oz., \$4.00; 1 oz., \$14.00.

**Originator's seed.** 1/2 tr. pkt., \$1.00; tr. pkt., \$1.75; 1/8 oz., \$3.00; 1/4 oz., \$5.00; 1 oz., \$18.00.

## GIANT PACIFIC HYBRIDS Court Series

- **Black Knight.** See 6 Best above.
- **Blue Bird.** See 6 Best above.
- Blue Jay.** A brilliant true medium blue with dark bee.
- Cameliard.** A pure lavender with white bee. Very attractive.
- **Guinevere.** See 6 Best above.
- **Galahad.** See 6 Best above.
- **King Arthur.** See 6 Best above.
- **Percival.** Large, glistening white flowers with strongly contrasting black bees.
- **Summer Skies.** See 6 Best above.

**Round Table.** Contains all above plus many new colors.

Prices above 10, each:

**Regular Seed.** Tr. pkt., \$1.25; 1/8 oz., \$2.50; 1/4 oz., \$4.00; 1 oz., \$14.00.

**Originator's Seed.** 1/2 tr. pkt., \$1.00; tr. pkt., \$1.75; 1/8 oz., \$3.00; 1/4 oz., \$5.00; 1 oz., \$18.00.

## GIANT PACIFIC HYBRIDS Regular Strain

- Clear White.** A fine clear white, large flowered hybrid Delphinium.
  - Blue Shades.** Popular mixture of light, medium and dark blue shades.
  - Lavender Pastel Shades.** Lavender combinations with dark bees.
  - Mixture.** A complete mixture of all colors in this fine hybrid type.
- Prices above 4, each: tr. pkt., \$1.00; 1/8 oz., \$2.00; 1/4 oz., \$3.50; 1 oz., \$12.00.

## DELPHINIUM CHINENSIS (Annual Delphinium) (20,000 seeds per oz.)

- **Blue Mirror.** Bright navy-blue flowers without spurs. Tr. pkt., 50c; 1/4 oz., \$1.20; 1 oz., \$3.60.
- **Cambridge Blue.** The standard Belladonna-blue variety. Tr. pkt., 35c; 1/4 oz., 75c; 1 oz., \$2.60.

**White**                      **Dark Blue**                      **Mixture**

Prices above 3, each: tr. pkt., 20c; 1/4 oz., 35c; 1 oz., \$1.25.

## OTHER VARIETIES

- **Belladonna Imp.** (Cliveden Beauty). A carefully reselected strain of this popular light blue. Tr. pkt., 35c; 1/4 oz., 95c; 1 oz., \$2.85; 4 ozs., \$10.00; 1 lb., \$35.00.
- Belladonna.** Light blue. Tr. pkt., 30c; 1/4 oz., 70c; 1 oz., \$2.20.
- Bellamosum Improved.** A reselected strain of this standard deep blue. Tr. pkt., 35c; 1/4 oz., 95c; 1 oz., \$2.85; 4 ozs., \$10.00; 1 lb., \$35.00.
- **Lamartine.** Deep, bright marine-blue with white eye. Tr. pkt., 50c; 1/4 oz., \$1.35; 1 oz., \$4.75.
- **Blackmore and Langdon Hybrids.** Shades of blue with contrasting bees. A fine flowering hybrid strain. Tr. pkt., 35c; 1/4 oz., 90c; 1 oz., \$2.70; 4 ozs., \$9.00.
- Wrexham or Hollyhock Strain.** Extra large, tapering spikes. Tr. pkt., 50c; 1/4 oz., \$1.60; 1 oz., \$5.50.
- Gold Medal Hybrids.** Tr. pkt., 25c; 1/4 oz., 50c; 1 oz., \$1.75.
- Cardinale.** Bright scarlet. Tr. pkt., 35c; 1/4 oz., 80c; 1 oz., \$2.40.

Whether you grow for cut flowers indoors or out—or for a plant trade, Delphinium should be a part of your program. And the wonderfully fine Giant Pacific Hybrids should head your list of varieties. Our trials last summer again showed them far ahead of any other strain for huge florets and spikes—and for wonderful colors.

**For outdoor cut flowers:** Sow Sept. 1—you're assured of fresh seed, and cooler weather then helps sprouting. Sow seed thinly direct to a cold frame. In late fall remove sash and protect with some loose coarse material. You'll have fine plants either for field planting or plant sales the next spring.

**For greenhouse forcing:** We experienced best results when an Aug. 1 sowing, rather than year old clumps, was used. Transplant seedlings to cold frame when ready. About Dec. 1 move them to a cold house, spacing 6x8 in. for hybrids; 6x6 in. for Belladonna types. Feb. 1 run them up to 40° nights, gradually increasing to 50°. You'll cut excellent spikes from Mother's Day well into July. Belladonnas are heaviest producers; Pacific Hybrids top quality. Take your choice.

Six months from seed! That's Giant Pacific Delphinium, Galahad.



## IMPORTANT

Delphinium seed usually doesn't germinate satisfactorily after it is around ten months old. Because of this, orders for Delphinium seed received after June 1st will be held for new crop seed—ready about mid-July—unless we are instructed to make immediate shipment, in which case orders will be filled with 1949 seed.



King Arthur

Summer Skies

QUEEN OF DELPHINIUMS  
*Giant Pacific  
Hybrids*

Black Knight

Guinevere

These four Giant Pacific Delphinium—plus the pure white variety Galahad and the brilliant Blue Bird—make up our "Six Best" group. Left to right: King Arthur, Summer Skies, Black Knight, and Guinevere. See box, opposite page, for descriptions and prices.



# Popular Hardy Perennials

A sowing of hardy perennials made this summer will flower freely next year with a minimum of care. See our January catalog for a more complete description of the following:

- ACHILLEA**—●**Filipendula, Parker's Variety** (Cloth of Gold). Golden yellow. Tr. pkt., 25c; 1/8 oz., 65c; 1/4 oz., \$1.20.  
 ●**The Pearl** (Ptarmica). The standard double white for cutting. Tr. pkt., 25c; 1/8 oz., 65c; 1/4 oz., \$1.20.
- ACONITUM** (Monk's Hood)—**Napellus**. Dark blue; does best in partial shade. Tr. pkt., 25c; 1/4 oz., 75c.
- ALSTROEMERIA**—**Chilensis**. Very showy flowers in shades of pink, rose and red. Medium tall. Tr. pkt., 50c; 1/4 oz., \$1.50; 1 oz., \$4.50.
- ALYSSUM**—●**Saxatile Compactum** (Gold Dust). Rich golden yellow. Tr. pkt., 15c; 1/4 oz., 30c; 1 oz., \$1.00.  
**Saxatile Silver Queen** (Sulphureum). Light lemon-yellow. Tr. pkt., 25c; 1/4 oz., 65c; 1 oz., \$2.25.
- ANCHUSA**—**Dropmore Strain** (Italica). Nice blue for cutting. Tr. pkt., 15c; 1 oz., 60c.  
**Myosotidiflora**. May flowering Forget-me-not blue. Tr. pkt., 50c; 1/8 oz., \$1.25; 1/4 oz., \$2.25; 1 oz., \$8.00.
- ANEMONE**—**St. Brigid Mixed**. Choice long stemmed mixture of brilliant colors. Tr. pkt., 50c; 1/4 oz., \$1.00; 1 oz., \$3.00.
- ANTHEMIS**—**Kelwayi** (Hardy Marguerite). Yellow Daisy flowers produced throughout summer. Tr. pkt., 15c; 1 oz., 65c.



The rich contrast of its red and white flowers have made **Crimson Star Hybrids** one of the most popular **Aquilegias** grown.



Grow **Anemone St. Brigid Mixed** for brilliant color display.

- AQUILEGIA** (Columbine)—**Alpina**. Blue. Tr. pkt., 25c; 1/4 oz., 85c; 1 oz., \$3.00.  
**Coerulea** (Rocky Mountain Columbine). Sky-blue with white corolla. Tr. pkt., 25c; 1/4 oz., 75c; 1 oz., \$2.50.  
**Copper Queen**. Copper-red shades with yellow corolla. Tr. pkt., 50c; 1/8 oz., \$1.50; 1/4 oz., \$2.75; 1 oz., \$8.25.  
 ●**Crimson Star Hybrids**. Dark red with white corolla; varies some. Tr. pkt., 50c; 1/8 oz., \$1.50; 1/4 oz., \$2.75.  
 ●**Longissima**. Delicate, pale yellow with extra long (4 in.) spurs. Tr. pkt., 50c; 1/8 oz., \$2.50; 1/8 oz., \$4.50.  
 ●**Longissima Hybrids**. A variety of attractive shades in this extra long spurred class. Tr. pkt., 50c; 1/8 oz., \$2.00.  
 ●**Mrs. Nicholls**. Deep blue. Tr. pkt., 50c; 1/8 oz., \$1.25; 1/4 oz., \$2.25; 1 oz., \$8.00.  
 ●**Mrs. Scott Elliott's Hybrids**. An excellent and popular long-spurred mixture. Tr. pkt., 35c; 1/4 oz., \$1.00; 1 oz., \$3.50.  
**Rose Queen**. Rose with white corolla. Tr. pkt., 35c; 1/4 oz., 70c; 1 oz., \$2.10.  
 ●**Snow Queen**. Extra large pure white flowers. Tr. pkt., 25c; 1/4 oz., \$1.00; 1 oz., \$3.50.  
**Long Spurred Mixture**. Best mixture in our trial ground. Tr. pkt., 25c; 1/4 oz., 85c; 1 oz., \$3.00.



## MISCELLANEOUS PERENNIALS—Continued

**ARABIS** (Rock Cress)—● **Alpina Snowcap**. Shining snow-white. Tr. pkt., 35c; ¼ oz., 75c; 1 oz., \$2.50.  
**Alpina**. White. Tr. pkt., 25c; ¼ oz., 55c; 1 oz., \$1.80.  
**Spring Charm** (Blepharophylla). Carmine. Tr. pkts. only, 50c.

**ARMERIA** (Thrift)—**Alpina**. Dwarf, bright rose. Tr. pkt., 75c.  
**Formosa, Large Flowered Hybrids**. Tr. pkt., 35c; ⅛ oz., 70c; ¼ oz., \$1.30; 1 oz., \$3.90.  
● **Glory of Holland**. Ball-shaped deep pink flowers about 1½ inches in diameter. Tr. pkt., 50c; ⅛ oz., \$2.00.  
**Maritima** (Statice Armeria). Lilac-rose. Grass-like, evergreen foliage. Tr. pkt., 50c; ⅛ oz., \$1.50.

**ARTEMISIA**—**Lactiflora** (Silver Plume). Silvery foliage; creamy blooms. For cutting. Tr. pkt., 35c; ⅛ oz., 70c; ¼ oz., \$2.00.

**ASCLEPIAS**—**Tuberosa**. Fine orange for cutting. Tr. pkt., 25c; ¼ oz., 85c; 1 oz., \$2.75.

**ASPARAGUS**—**Lace Veil** (Pseudoscaber). Produces quantities of material as valuable as Asparagus Sprengeri. Hardy. Tr. pkt., 50c; ¼ oz., \$1.50; 1 oz., \$4.50.

**Verticillatus** (Willow Spray). Completely hardy, summer green material. Finely cut foliage. Requires 3 years for best results. Tr. pkt., 50c; ½ oz., \$1.25; 1 oz., \$2.25.

**ASTER**—**Hardy Large Flowered Mixture**. Attractive assortment. Tr. pkt., 50c; ⅛ oz., \$1.10; ¼ oz., \$2.00.

**Alpinus, Finest Mixed**. Tr. pkt., 50c; ⅛ oz., \$1.00.

**AUBRIETIA**—**Large Flowered Hybrids** (Monarch strain). Wide and bright color mixture. Tr. pkt., 50c; ⅛ oz., \$1.00.

**Hendersoni**. Deep purple. Tr. pkt., 50c; ⅛ oz., \$1.00.

**Leichtlini**. Carmine-rose. Tr. pkt., 50c; ⅛ oz., \$1.00.

**BAPTISIA**—**Australis** (False Indigo). Sprays of pea-shaped indigo-blue flowers. Tr. pkt., 25c; 1 oz., 75c.



**ARMERIA**  
**Glory of Holland**  
The ball-shaped, deep pink flowers of this valuable perennial are carried on stems of good length.

**BELLIS**—**PERENNIS**. Popular Double English Daisy.

**Red**                      **Rose**                      **White**  
Above 3, each: tr. pkt., 50c; ⅛ oz., \$2.00; ¼ oz., \$3.50.  
**Mixture**. Tr. pkt., 50c; ⅛ oz., \$1.80; ¼ oz., \$3.20.

**BOCCONIA**—**Japonica** (Plume Poppy). Tr. pkt., 25c; ¼ oz., 50c; 1 oz., \$1.50.

**BOLTONIA**—**Latisquama**. Delicate pink. Tr. pkt., 25c; ¼ oz., \$1.00; 1 oz., \$3.00.

**BROOM**—**Hybrids Mixed**. Vigorous shrubs; bright color range. Tr. pkt., 40c; ⅛ oz., \$1.25; ¼ oz., \$2.25.

**CAMPANULA**—**CARPATICA**. Dwarf perennial.

**Blue**. Tr. pkt., 25c; ⅛ oz., 75c; ¼ oz., \$1.35.

● **Hybrid Mixture**. Tr. pkt., 50c; ⅛ oz., \$1.50; ¼ oz., \$2.70.

**MEDIUM CALYCANTHEMA** (Cup-and-saucer type).

**Dark Blue**      **Light Blue**      **Rose**      **White**      **Mixture**  
Above 5, each: tr. pkt., 20c; ¼ oz., 50c; 1 oz., \$1.60.

**MEDIUM SINGLE** (Canterbury Bells).

**Dark Blue**      **Light Blue**      **Pink**      **White**      **Mixture**  
Above 5, each: tr. pkt., 15c; ¼ oz., 25c; 1 oz., 75c.

**PERSICIFOLIA**. **White**      **Blue** (Princess Royal)      **Mixture**

Above, 3, each: tr. pkt., 35c; ⅛ oz., \$1.00; ¼ oz., \$1.75.

**Telham Beauty**. Tr. pkt., 35c; ⅛ oz., \$1.00; ¼ oz., \$1.75.

**PYRAMIDALIS** (Chimney Campanula).

**Mixture**. Tr. pkt., 35c; ⅛ oz., \$1.00; ¼ oz., \$1.75.

**CARNATION**—**GRENADIN** (Hardy Carnation).

**King of the Blacks**. Darkest red.

**Golden Sun**      ● **Pink**      ● **Red**      **White**      ● **Mixture**  
Above 6, each: tr. pkt., 50c; ¼ oz., \$2.50; 1 oz., \$8.00.

**CATANANCHE**—**Coerulea**. Everlasting light lavender-blue flowers. Tr. pkt., 25c; ¼ oz., 45c; 1 oz., \$1.50.

**CENTAUREA**—**Montana**. Large Cornflower-blue flowers. Tr. pkt., 25c; ¼ oz., 40c; 1 oz., \$1.20.

**CERASTIUM**—● **Tomentosum** (Snow-in-Summer). White edging and rockery plant. Tr. pkt., 25c; ¼ oz., 50c; 1 oz., \$1.75.

**CHEIRANTHUS** (Wallflower)—● **Golden Bedder**. Large deep golden yellow. Tr. pkt., 15c; ¼ oz., 25c; 1 oz., 75c.

**Allioni**. Free flowering orange. Tr. pkt., 10c; 1 oz., 35c.

**CHRYSANTHEMUM**—● **Glory Mixture**. Our finest mixture of hardy Mums. Tr. pkt., 75c; ⅛ oz., \$2.20; ¼ oz., \$4.00.

**Korean Hybrids**. Single and semi-double types in a good color range. Tr. pkt., \$1.00; ⅛ oz., \$2.75; ¼ oz., \$5.00.

**CLEMATIS**—**Paniculata**. White flowered climber.

**Recta, Mandschurica**. Upright growing, pure white.

Above 2, each: tr. pkt., 70c; ⅛ oz., \$1.40; ¼ oz., \$2.50.



The colors in our Hardy Large Flowered Aster Mixture are rich and varied. Plant this for a real fall show.



**MISCELLANEOUS PERENNIALS—Continued**



Plant *Coreopsis Sunburst* for summer cutting.

**COREOPSIS**—●**Sunburst** (New Gold). A fine semi-double strain. Tr. pkt., 20c; ¼ oz., 30c; 1 oz., \$1.00.

●**Mayfield Giant**. Extra large deep golden yellow. Single. Tr. pkt., 15c; ¼ oz., 25c; 1 oz., 75c.

**DAISY** (*Chrysanthemum Maximum*)—

●**G. Marconi**. The largest flowered and finest double Shasta Daisy. Originator's seed: tr. pkt., 50c; 6 tr. pkts., \$2.50. Regular stock: tr. pkt., 50c; ⅛ oz., \$1.50; ¼ oz., \$2.75.

●**Double Fringed** (Diener's). A specially selected strain. Tr. pkt., 50c; ⅛ oz., \$1.25; ¼ oz., \$4.00.

●**June Marguerite**. Tr. pkt., 25c; ¼ oz., 40c; 1 oz., \$1.25.

●**Mayfield Giant**. Quite large flowered, end of June.

●**Alaska**. The standard Shasta Daisy, July.

●**Conqueror**. Giant late white, late July.

Above 3, each: tr. pkt., 15c; ¼ oz., 30c; 1 oz., \$1.00.

**DELPHINIUM**—See pages 26 and 27.

**DIANTHUS**—**Allwoodi Alpinus Mixed**. Single flowers in shades of pink. Tr. pkt., 35c; ⅛ oz., 90c; ¼ oz., \$1.50.

●**Deltoides Erecta**. A dwarf Maiden Pink. Bright red. Tr. pkt., 35c; ⅛ oz., 90c; ¼ oz., \$1.50.

●**Latifolius Atrococcineus**. Miniature crimson flowers. Tr. pkt., 35c; ⅛ oz., 90c; ¼ oz., \$1.50; 1 oz., \$4.50.

●**Loveliness**. Large, fringed and curled, light lavender flowers. Quite fragrant. Tr. pkt., 50c; ⅛ oz., \$1.25.

●**Winteri**. Large single flowers in a rich mixture of pure colors. Long blooming period. Tr. pkt., 50c; ⅛ oz., \$1.50.

**PLUMARIUS** (*Clove Pink*). ●**Cyclops**. Deep rose with crimson ring. Tr. pkt., 35c; ¼ oz., \$1.00.

●**Double Mixture** (Scoticus Florist Strain). Unusual colors. Tr. pkt., 35c; ⅛ oz., 90c; ¼ oz., \$1.50; 1 oz., \$4.50.

●**Single Mixture**. Tr. pkt., 15c; ¼ oz., 40c; 1 oz., \$1.35.

●**BARBATUS** (*Sweet William*). Early June flowering.

●**Holborn Glory**. Striking combination of crimson with white.

●**Newport Pink** (*Pink Beauty*). Salmon-rose shade.

●**Purple Beauty**. A rich deep color.

●**Scarlet Beauty**. Well named, intense scarlet-red.

●**Giant White**. Ours is an extra large flowered strain.

●**Single Mixture** ●**Double Mixture**  
 Above 7, each: tr. pkt., 30c; ¼ oz., 75c; 1 oz., \$2.40.

●**Single Midget Mixed**. Very fine rock plant. Tr. pkt., 50c; ¼ oz., \$1.50; 1 oz., \$4.50.

●**Double Midget Mixed**. Tr. pkt., 35c; ¼ oz., 85c; 1 oz., \$3.00.

**DICENTRA**—**Spectabilis** (*Bleeding Heart*). Tr. pkt., \$1.00; ⅛ oz., \$1.75; ¼ oz., \$3.25.

●**Eximia** (*Plumy Bleeding Heart*). Tr. pkt., 35c; ¼ oz., \$1.00.

**DICTAMNUS**—**Fraxinella** (*Gas Plant*). Pink with dark veins. Tr. pkt., 25c; ¼ oz., 50c; 1 oz., \$1.75.

**DIGITALIS**—**GLOXINOIDES** (*Foxglove*).

●**Purple** ●**Rose** ●**White** ●**Giant Shirley Mixture**  
 Above 4, each: tr. pkt., 20c; ¼ oz., 60c; 1 oz., \$2.00.

**ECHINOPS**—**Ritro** (*Globe Thistle*). Blue flower heads 1½ to 2 inches in diameter. Tr. pkt., 35c; ¼ oz., \$1.00; 1 oz., \$3.00.

**EUPHORBIA**—**Corollata** (*Wild Baby's Breath*). Small white flowers. Tr. pkt., 35c; ¼ oz., \$1.25.

●**Myrsinites**. Silvery foliage. Tr. pkt., 35c; ⅛ oz., \$1.00.

●**Polychroma**. Bushy plants with bracts of bright yellow changing to rosy bronze. Tr. pkt., 50c; ⅛ oz., \$1.35.

**FEVERFEW** (*Matricaria*)—

●**Ball Double White Improved**. 90% double, imbricated blooms. Tr. pkt., 50c; 1/32 oz., \$1.00; ⅛ oz., \$3.60.

●**Double and Semi-Double White**. 40% double—balance anemones. Tr. pkt., 35c; ⅛ oz., \$1.00; ¼ oz., \$1.75; 1 oz., \$5.75.

●**ALL-DOUBLE DWARF**. For pots or borders.

●**Golden Nuggets**. Tr. pkt., 35c; ⅛ oz., 50c; ¼ oz., \$1.80.

●**Snow Puffs**. Tr. pkt., 35c; ⅛ oz., 50c; ¼ oz., \$1.80.

**GAILLARDIA**—**GRANDIFLORA**. ●**Dazzler**. The standard fine cutting strain. Golden yellow with maroon center.

●**Monarch Strain**. A very superior mixture.

Above 2, each: tr. pkt., 25c; ¼ oz., 50c; 1 oz., \$1.75.

●**Burgundy**. Red. Tr. pkt., 25c; ¼ oz., 75c; 1 oz., \$2.25.

●**Portola Hybrids Mixed**. Tr. pkt., 25c; ¼ oz., 50c; 1 oz., \$1.75.

●**Goblin**. Compact plants; red and yellow bicolored flowers. Tr. pkt., 25c; ¼ oz., 65c; 1 oz., \$2.25.

●**Aurea Pura**. Pure yellow. Tr. pkt., 25c; ¼ oz., 60c; 1 oz., \$1.80.

**GEUM**—**Lady Stratheden**. Yellow. ●**Mrs. Bradshaw**. Red.

Above 2, each: tr. pkt., 25c; ¼ oz., 50c; 1 oz., \$1.75.

**GILIA**—**Coronopifolia** (*Standing Cypress*). Heads of scarlet flowers. Tr. pkt., 30c; ⅛ oz., 60c; ¼ oz., \$1.00.

**GYPSOPHILA**—●**Pacifica**. Starry pink flowers in Sept. and Oct. Tr. pkt., 25c; ¼ oz., 80c; 1 oz., \$2.75.

●**Oldhamiana**. Feathery light pink. Oct. flowering; watch frost dates. Tr. pkt., 25c; ¼ oz., 65c; 1 oz., \$2.25.

●**PANICULATA**. ●**Double Snow Flake**. About 50% are double flowering. Tr. pkt., 35c; ¼ oz., \$1.35; 1 oz., \$4.50.

●**Single White**. Tr. pkt., 15c; 1 oz., 40c; 4 ozs., \$1.35.

●**REPENS**. Rose. Tr. pkt., 25c; ¼ oz., 80c; 1 oz., \$2.40.

**HELIANTHEMUM**—**Mutabile** (*Sun Rose*). Attractive dwarf rock plant. Tr. pkt., 20c; ¼ oz., 40c; 1 oz., \$1.35.

**HELLEBORUS**—**Niger** (*Christmas Rose*). Attractive 2½ in. white flowers; basal foliage. Seed should be frozen before sowing. Tr. pkt., 35c; ⅛ oz., 75c; ¼ oz., \$1.35.

**HESPERIS**—**MATRONALIS** (*Sweet Rocket*). Sweet scented.

●**Violet** ●**White**

Above 2, each: tr. pkt., 15c; ¼ oz., 30c; 1 oz., 90c.

**HEUCHERA**—**SANGUINEA** (*Coral Bells*).

●**Splendens**. Crimson. ●**Hybrida Mixed**

Above 2, each: tr. pkt., 50c; ⅛ oz., \$1.75; ¼ oz., \$3.00.

**HIBISCUS**—**Mallow Marvels Mixed**. Ours is an extra large flowered strain. Tr. pkt., 20c; ¼ oz., 40c; 1 oz., \$1.20.

**HOLLYHOCK**—**Imperator Improved**. Choice double crested mixture. Tr. pkt., 30c; ¼ oz., 55c; 1 oz., \$1.80.

●**Allegheny Mixed**. Single and semi-double types. Tr. pkt., 15c; ¼ oz., 25c; 1 oz., 75c.

●**Triumph**. Double fringed flowers in delicate art shades. Tr. pkt., 30c; ¼ oz., 50c; 1 oz., \$1.50.

●**CHATER'S DOUBLE**. The standard double Hollyhock.

●**Chamois**, ●**Deep Rose**, ●**Lilac Beauty**, ●**Newport Pink**, ●**Scarlet**, ●**Sulphur Yellow**, ●**White** and ●**Mixture**.

Above 8, each: tr. pkt., 30c; ¼ oz., 50c; 1 oz., \$1.50.



**Dazzler**—most popular of the hardy *Gaillardias* for cut flowers.



## MISCELLANEOUS PERENNIALS—Continued

- IBERIS** (Hardy Candytuft)—**Gibraltarica**. Large flowered lilac. Tr. pkt., 20c; ¼ oz., 45c; 1 oz., \$1.40.  
**Sempervirens**. White flowers in late May. Tr. pkt., 50c; ¼ oz., \$1.25; 1 oz., \$4.50.  
**Jucunda**. Pink flowers. Tr. pkt., 50c.
- INCARVILLEA**—**Grandiflora, Brevipes**. Brilliant dark rose flowers. Tr. pkt., 50c; ½ oz., \$1.00.
- IRIS**—**Dichotoma** (Vesper Iris). Mixed colors; fragrant. Tr. pkt., 30c; ¼ oz., 65c; 1 oz., \$2.00.
- LATHYRUS**—**LATIFOLIUS** (Hardy or Everlasting Sweet Pea).  
**Pink Beauty**      **White Pearl**      **Red**      **Mixture**  
Above 4, each: tr. pkt., 20c; ¼ oz., 30c; 1 oz., \$1.00.
- LAVANDULA**—**• Munstead Strain**. Freely produces large sweet scented flowers. Tr. pkt., 35c; ¼ oz., \$1.00.
- LEONTOPODIUM**—**Alpinum** (Edelweiss). Small, greenish white leaves. Tr. pkt., 50c; ⅛ oz., \$1.00; ⅓ oz., \$1.80.
- LIATRIS** (Gay Feather)—**• Pycnostachya**. Long spiked purple.  
**Scariosa, Purple**. Extra large individual flower heads.  
**Spicata**. Purple. Not as long stemmed as Pycnostachya.  
Above 3, each: tr. pkt., 30c; ¼ oz., 90c; 1 oz., \$2.70.  
**• Scariosa, White**. A very fine pure white. Long spikes.  
**• September Glory**. Tall growing with purple spikes.  
**Kobold**. Hybrid, non-branching lilac-purple.  
Above 3, each: tr. pkt., 50c; ¼ oz., \$1.80; 1 oz., \$5.40.
- LILY**—**• White Queen**. Finest white seed propagated Lily. ½ tr. pkt., 60c; tr. pkt., \$1.00; ⅓ oz., \$2.50; ¼ oz., \$4.50.  
**Candidum** (Madonna Lily). Tall pure white. Tr. pkt., \$1.00; ⅓ oz., \$2.75; ¼ oz., \$5.00; 1 oz., \$15.00.  
**Formosanum, Giant Flowered**. White. Tr. pkt., 50c; ¼ oz., \$1.00; 1 oz., \$3.50; 4 ozs., \$12.00.  
**Henryi**. Orange. Tr. pkt., 50c; ¼ oz., \$1.50; 1 oz., \$4.50.  
**Regale** (Regal Lily). Pink with primrose center. Tr. pkt., 25c; ¼ oz., 50c; 1 oz., \$1.50; 4 ozs., \$5.00.  
**Tenuifolium** (Coral Lily). Medium sized flowers of brilliant coral-red. Tr. pkt., 35c; ¼ oz., 75c.
- LINUM**—**Perenne** (Per. Flax). Blue. Tr. pkt., 15c; 1 oz., 50c.  
**Flavum**. Yellow. Tr. pkt., 25c; ¼ oz., 75c.  
**Collinum**. Dwarf growing, light blue. Tr. pkt., 35c; ¼ oz., 75c; 1 oz., \$2.25.
- LOBELIA**—**Cardinalis** (Cardinal Flower). Bright red. Tr. pkt., 35c; ¼ oz., \$1.20; 1 oz., \$3.60.
- LUNARIA**—**BIENNIS** (Honesty or Money Plant).  
**White**      **Mixture**  
Above 2, each: tr. pkt., 25c; ¼ oz., 35c; 1 oz., \$1.25.
- LUPINE**—**POLYPHYLLUS** (Hardy Lupine). **• Russell Strain**. Unusually long flower spikes and attractive colors. Reselected Stock (Originator's packets): 20 seeds, 30c; 65 seeds, 65c; 150 seeds, \$1.25; 350 seeds, \$2.50.  
Regular seed: tr. pkt., 35c; ¼ oz., 60c; 1 oz., \$2.00; 4 ozs., \$6.00.
- MISCELLANEOUS POLYPHYLLUS VARIETIES.**  
**Dark Blue**. Tr. pkt., 15c; ¼ oz., 35c; 1 oz., \$1.15.  
**Rose**. Tr. pkt., 35c; ¼ oz., 60c; 1 oz., \$1.80.  
**White**. Tr. pkt., 20c; ¼ oz., 30c; 1 oz., \$1.00.  
**• Harkness Regal Mixture**. The standard fine hybrid mixture. Tr. pkt., 20c; ¼ oz., 30c; 1 oz., \$1.00.
- LYCHNIS**—**• Chalcedonica** (Maltese Cross). Scarlet. Tr. pkt., 25c; ¼ oz., 40c; 1 oz., \$1.25.
- MYOSOTIS** (Forget-me-not)—**• Blue Bird** (Oblongata). Standard blue for spring greenhouse flowering. Tr. pkt., 35c; ¼ oz., 85c; 1 oz., \$3.00.  
**Palustris Semperflorens**. Flowers from early spring until autumn. Tr. pkt., 35c; ¼ oz., \$1.00; 1 oz., \$3.00.
- VICTORIA**. A dwarf compact strain. 6 to 8 in.  
**Dark Blue**      **Rose**      **White**      **Dwarf Mixed**  
Above 4, each: tr. pkt., 35c; ⅓ oz., 85c; ¼ oz., \$1.50.
- ALPESTRIS**. **Blue Eyes**. Early flowering bright blue with white eyes. Tr. pkt., 50c; ¼ oz., \$1.50; 1 oz., \$4.50.  
**• Royal Blue** (Indigo Blue). Deep rich blue. Tr. pkt., 30c; ¼ oz., 85c; 1 oz., \$3.00.
- NEPETA**—**Mussini** (June-flowering Catnip). Aromatic foliage and flowers. Tr. pkt., 25c; ¼ oz., 75c; 1 oz., \$2.25.
- OENOTHERA**—**Youngi** (Sundrop). Large yellow blooms. Tr. pkt., 25c; ¼ oz., 60c; 1 oz., \$1.80.
- PHLOX**—**Hybrid Mixture** (Decussata). Large brilliantly colored types. Tr. pkt., 35c; ¼ oz., 80c; 1 oz., \$2.40.
- PHYSALIS**—**Francheti** (Chinese Lantern Plant). Giant orange-scarlet pods. Tr. pkt., 25c; ¼ oz., 75c; 1 oz., \$2.50.
- PHYSOSTEGIA**—**Virginica**. Rosy lilac. Tr. pkt., 50c; ¼ oz., \$1.50; 1 oz., \$5.00.
- PLATYCODON**—**GRANDIFLORUM** (Balloon Flower).  
**Blue**. A clear, deep violet-blue.      **White**  
Above 2, each: tr. pkt., 35c; ⅓ oz., 85c; ¼ oz., \$1.50.



**PRIMULA**—  
Cashmeriana is the name of this unusual hardy Primula with ball-shaped purple flowers. See page 32.



Pyrethrum Robinson's Dark Crimson fills the bill for a rich red daisy-type summer cut flower. See page 32.





## MISCELLANEOUS PERENNIALS—Continued

- POPPY—ORIENTALE** (Oriental Poppy). **Beauty of Livermere.** Dark oxblood-red. Tr. pkt., 30c; ¼ oz., \$1.25.  
**Brilliant.** Vivid fiery red. Tr. pkt., 35c; ⅛ oz., 90c; ¼ oz., \$1.50.  
**Princess Victoria Louise.** The standard light orange. Tr. pkt., 30c; ¼ oz., \$1.00; 1 oz., \$3.50.  
**Salmon Shades.** Tr. pkt., 35c; ⅛ oz., \$1.00; ¼ oz., \$1.75.  
**Mixture.** Tr. pkt., 35c; ¼ oz., \$1.25; 1 oz., \$4.00.
- PRIMULA—VERIS.** ● **Collosea.** Unusual colors. Tr. pkt., \$1.00; ⅛ oz., \$2.75; ¼ oz., \$5.00; 1 oz., \$15.00.  
 ● **Giant Munstead Strain.** Shades of yellow. Tr. pkt., \$1.00; ⅛ oz., \$2.75; ¼ oz., \$5.00; 1 oz., \$15.00.  
 ● **Polyanthus Mixture.** Tr. pkt., 75c; ⅛ oz., \$2.20; ¼ oz., \$4.00; 1 oz., \$12.00.  
**Giant Monarch Strain.** A fine large flowered mixture. Tr. pkt., \$1.00; ⅛ oz., \$2.75; ¼ oz., \$5.00; 1 oz., \$15.00.

### MISCELLANEOUS HARDY PRIMULAS

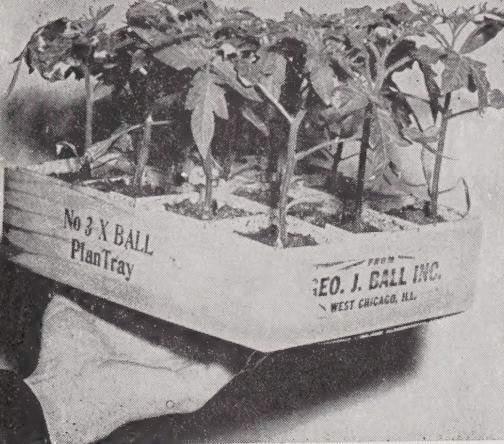
- Cashmeriana.** Ball-shaped heads of rich purple flowers with yellow centers. Tr. pkt., \$1.00; 1/16 oz., \$2.25; ¼ oz., \$7.50.  
**Giant Crimson** **Giant Yellow** **Giant White**  
 Above 3, each: tr. pkt., 75c; ⅛ oz., \$1.75; ¼ oz., \$3.00.  
**Blue Flowered.** Tr. pkt., \$1.00; 1/32 oz., \$2.20; 1/16 oz., \$4.00.  
**Vulgaris** (True Yellow English Primrose). Tr. pkt., 50c; ¼ oz., \$1.65; 1 oz., \$6.00.  
**Japonica.** Crimson, rose and pink flowers born in whorls on 6 to 9 in. stems. Tr. pkt., 35c; ⅛ oz., \$1.00.
- PYRETHRUM—ROSEUM** (Painted Daisy).  
**Atrosanguineum.** A popular dark crimson strain.  
**Rose.** Single pink flowers.  
**Robinson's Dark Crimson.** Giant flowered, dark red.  
 ● **Robinson's Hybrids.** Large single mixture.  
 ● **Semi-Double Mixture.** An excellent strain.  
**Single Mixed.** An attractive large flowered mixture.  
 Above 6, each: tr. pkt., 50c; ¼ oz., \$1.50; 1 oz., \$4.50.  
 ● **Extra Double Mixture.** The finest double Pyrethrum. Tr. pkt., 50c; ⅛ oz., \$1.40; ¼ oz., \$2.50; 1 oz., \$7.50.  
**Parthenifolium Aureum** (Golden Feather). Dwarf; yellow-green foliage. Tr. pkt., 15c; ¼ oz., 30c; 1 oz., 90c.
- RUDBECKIA—Purpurea** (Echinacea). Reddish purple. Tr. pkt., 35c; ¼ oz., \$1.00; 1 oz., \$3.00.
- SALVIA—Patens.** Navy blue. Tr. pkt., 50c; ¼ oz., \$1.50; 1 oz., \$4.50.

- SAPONARIA—Ocyroides.** Hardy rock plant. Tr. pkt., 25c; ¼ oz., 70c; 1 oz., \$2.10.
- SCABIOSA—Caucasica, Goldingensis.** Large flowered, fine deep lavender. Tr. pkt., 35c; ¼ oz., \$1.00; 1 oz., \$3.50.  
**Caucasica, Perfecta.** Improved large flowered form of this lilac-lavender strain. Tr. pkt., 30c; ¼ oz., 75c; 1 oz., \$2.50.  
 ● **Caucasica, House Hybrids.** Large flowers ranging from white to deep blue. Tr. pkt., 35c; ¼ oz., \$1.00; 1 oz., \$3.50.
- STATICE—Caspia.** Seedlings flower second season. Lilac. Tr. pkt., 25c; ¼ oz., 75c; 1 oz., \$2.50.  
 ● **Dumosa.** Dense clumps of silvery gray flowers. Tr. pkt., 25c; ¼ oz., 75c; 1 oz., \$2.50.  
 ● **Latifolia** (Sea Lavender). Standard blue perennial Statice. Tr. pkt., 25c; ¼ oz., 60c; 1 oz., \$1.85.  
**Perezi.** Flowers in large lavender heads first year from seed. Tr. pkt., 25c; ¼ oz., 60c; 1 oz., \$1.85.
- STOKESIA—Cyanea** (Stokes' Aster). Large blue flowers. Tr. pkt., 35c; ¼ oz., 90c.
- THALICTRUM—Dipterocarpum** (Meadow Rue). Rosy purple flowers. Tr. pkt., 25c; ¼ oz., 75c; 1 oz., \$2.25.
- THERMOPSIS—Caroliniana.** Long panicles of yellow pea-shaped flowers. Tr. pkt., 25c; ¼ oz., 75c; 1 oz., \$2.25.
- TRITOMA** (Red Hot Poker). ● **Pfizer's Hybrids.** Brilliant red. **Mirabilis Hybrids.** Yellow and orange shades. Above 2, each: tr. pkt., 25c; ¼ oz., 60c; 1 oz., \$2.00.
- TROLLIUS—Ledebouri, Orange** (Globe Flower). Tr. pkt., 50c; ⅛ oz., \$1.25; ¼ oz., \$2.00.  
**Europaeus** (Golden Ball). Late yellow. Tr. pkt., 35c; ⅛ oz., \$1.00; ¼ oz., \$1.75.
- VERONICA—Spicata, Dwarf Mixed** (Speedwell). Easily grown; brightly colored. Tr. pkt., 35c; ¼ oz., 65c; 1 oz., \$2.00.
- VIOLA—CORNUTA. Apricot.** Prefer Chantreyland. Tr. pkt., 50c; ⅛ oz., \$1.10; ¼ oz., \$2.00; 1 oz., \$6.00.  
**Arkwright Ruby.** Maroon-scarlet with dark center. Tr. pkt., 50c; ⅛ oz., \$1.50; ¼ oz., \$2.65; 1 oz., \$8.00.  
**Black Imp.** Tr. pkt., 50c; ¼ oz., \$1.50; 1 oz., \$5.00.  
 ● **Blue Elf** (Improved Johnny Jump Up). Three-colored blooms. Tr. pkt., 50c; ⅛ oz., \$1.25; ¼ oz., \$2.25.  
 ● **Blue Perfection.** Large flowered clear medium blue. Tr. pkt., 50c; ⅛ oz., \$1.10; ¼ oz., \$2.00; 1 oz., \$6.00.  
 ● **Chantreyland.** Extra large flowered true apricot. Tr. pkt., 50c; ⅛ oz., \$1.10; ¼ oz., \$2.00; 1 oz., \$6.00.  
**Firmament.** Free blooming, clear sky-blue. Tr. pkt., 50c; ⅛ oz., \$1.50; ¼ oz., \$2.65; 1 oz., \$8.00.  
 ● **Helen Mount.** A combination of violet, lavender and canary-yellow. Tr. pkt., 50c; ⅛ oz., \$1.25; ¼ oz., \$2.25.  
**Jersey Gem.** Deep orchid. Tr. pkt., 50c; ⅛ oz., \$1.50; ¼ oz., \$2.70.  
 ● **Lutea Splendens.** Clear golden yellow. Tr. pkt., 50c; ¼ oz., \$1.50; 1 oz., \$5.00.  
**Papilio.** Blue and white combinations. Extra dwarf and free-flowering. Tr. pkt., 35c; ¼ oz., \$1.25; 1 oz., \$4.00.  
 ● **White Perfection.** Small pure white. Tr. pkt., 35c; ¼ oz., \$1.25; 1 oz., \$4.00.  
 ● **Large-Flowered Mixture.** Complete mixture of all large flowered varieties. Tr. pkt., 35c; ¼ oz., \$1.25; 1 oz., \$4.00.
- YUCCA—Hardy Varieties Mixed.** Striking plants of exotic appearance. Tr. pkt., 25c; ¼ oz., 75c; 1 oz., \$2.25.



Primula Veris Collosea not only makes a wonderful hardy bedding show, but is an excellent pot plant when forced under glass.





One of our sturdy No. 3X PlanTrays filled with a dozen husky Tomato plants, ready for sale. These are also made in 4-X size for 12 3x3 in. bands. See below for full description.

# BALL BETTER PLANT BANDS



Most perennials are handled to advantage in long lasting Ball Better Bands.

## and PlanTrays

**BALL VENEER PLANTRAYS**  
Now Made in Five Sizes. See Price List. Just the thing for all your Perennial Plants such as Delphiniums, Mums, Aquilegias, Small Evergreens, etc. **ORDER EARLY.**

### Prices Ball PlanTrays

Regular Sizes	100	250	1000
No. 1-R (12-1 $\frac{3}{4}$ " )	\$3.40	\$ 8.60	\$30.50
No. 2-R (12-2" )	3.75	9.25	33.50
No. 3-R (12-2 $\frac{1}{2}$ " )	4.30	10.25	38.00
Special Sizes	100	250	1000
No. 1-S (25-1 $\frac{3}{4}$ " )	\$3.90	\$ 9.25	\$34.50
No. 2-S (25-2" )	4.25	10.25	37.50

Quantity Discounts: up to 3000 net; 3000 to 5000 5%; 5000 and over 7 $\frac{1}{2}$ %.

### Something Has Been Added to Our PlanTray Line

Our No. 3 size is now made also in double thick or extra heavy veneer (No. 3-X). Very sturdy flat—stands rough handling. For 1 dozen 2 $\frac{1}{2}$  in. bands. Selling very fast at \$45.00 per 1000. Crate of 100 \$7.00. No. 4-X for 12 3x3 in. bands at \$52.50 per 1000.

**GLAD TO SEND SAMPLES OF ANY ITEMS. PLEASE INDICATE SIZE.**

—are ideal for all growing-on stock. You'll need them for your Snaps, Cinerarias, Begonias, Primulas, Cyclamen—and they're really tops for young Perennials. **NURSERYMEN!** Don't miss the many advantages of these sturdy wood veneer bands. They'll last for months in moist soil. Send for new circular showing complete story on Plant Bands.

### Prices Ball Better Plant Bands

F.O.B. Midwest factory or West Chicago

To save delay be sure to specify which way to ship; Express, Freight or Truck. This is important. Bands sold only in units as listed below. Quantity discounts: 2000 to 24,000 net; 26,000 to 50,000 5%; 52,000 to 100,000 10%; 102,000 to 200,000 12 $\frac{1}{2}$ %. Write for prices on larger quantities.

Following sizes put in units of 2000 only.

	Per 1000
1 $\frac{3}{4}$ x2	\$3.95
1 $\frac{3}{4}$ x2 $\frac{1}{2}$	4.20
2x2	4.10
2x2 $\frac{1}{2}$	4.70
2x3	4.95
2 $\frac{1}{2}$ x2 $\frac{1}{2}$	5.10
2 $\frac{1}{2}$ x3	5.30

Following sizes available F.O.B. Seattle, Washington, at 10% over West Chicago prices: 2x2 $\frac{1}{2}$ , 2x3, 2 $\frac{1}{2}$ x2 $\frac{1}{2}$ .

Put up in units of 1000 only.

	Per 1000
3x3	\$5.45
3x4	6.35
4x3	6.30
4x4	7.40

Made extra heavy—put up in units of 250.

	Per 1000
4x6	\$15.80
6x4	16.00
6x6	21.00
6x9	28.00

**We can also supply Bird Vita-Bands, Tom Thumb Flats and Paper Pots at regular advertised prices.**

### CATALOG No. 61—SUMMER 1950—BUSINESS TERMS

**NOTE—Cash or C.O.D. Discount!** Prices quoted on Cyclamen seed, Lawn Grass and Plant Bands are net, no cash discount. Plant and Bulb prices are net unless quoted differently in special catalogs or lists. Otherwise, when cash is enclosed, or on C.O.D.s, a discount of 5% is allowed on all seed orders from \$5.00 to \$25.00. On \$25.00 and over, 8% is allowed. Plants, Bulbs and Plant Bands **cannot** be sent C.O.D.

If this is your first order, it should be signed with some **individual's name** in writing. Payment should accompany all orders unless credit has been established. C.O.D. shipments 50% in advance.

**IMPORTANT.** Make all checks or money orders payable to **Geo. J. Ball, Inc., WEST Chicago, Illinois.** Not responsible for currency sent in the mail.

**Business Hours** (holidays excepted) are 8 to 12 and 1 to 5 Monday through Friday; 8 to 12 Saturday. Our phone number is West Chicago 299.

**All Prices in this catalog subject to change without notice.**

**All Seed Orders** sent prepaid in U.S. and Canada at catalog prices.

**Our Business is with Florists only.** We do not sell at retail.

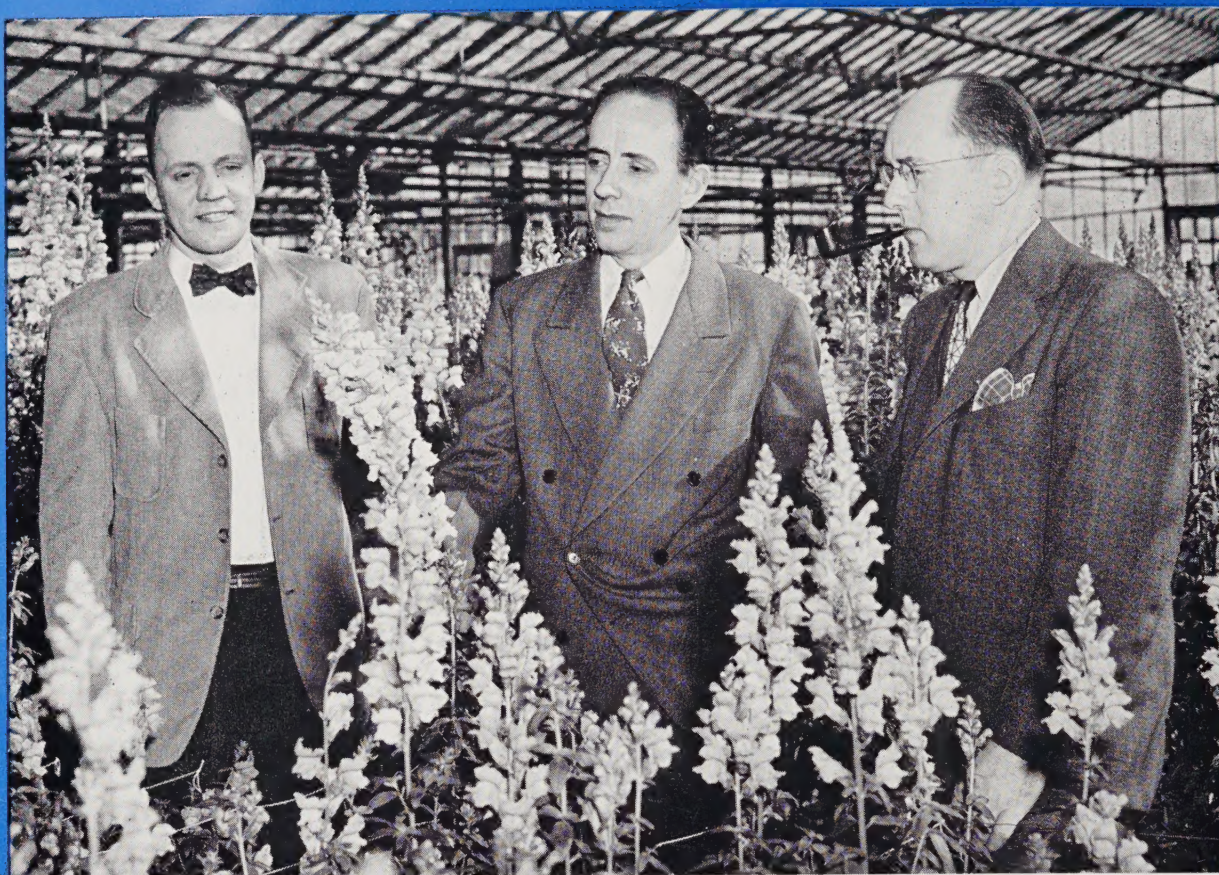
**Shortages.** All items are offered subject to crop failures or shortages.

**LIMITATION OF WARRANTY.** We, Geo. J. Ball, Inc., warrant, to the extent of the purchase price, that Seeds, Plants or Bulbs sold are as described on the container, within recognized tolerances. We give no other or further warranty, express or implied.

## Index

Achillea .....	28	Baptisia .....	29	Clematis .....	29	Helianthemum .....	30	Marigold .....	19	Saintpaulia .....	19
Aconitum .....	28	Begonia .....	12, 13	Coreopsis .....	30	Helleborus .....	30	Myosotis .....	19, 31	Salvia .....	32
Alstroemeria .....	28	Bellis .....	29	Cyclamen .....	15	Hesperis .....	30	Nepeta .....	31	Saponaria .....	32
Alyssum .....	28	Bocconia .....	29	Daisy .....	30	Heuchera .....	30	Oenothera .....	31	Scabiosa .....	32
Anchusa .....	28	Boltonia .....	29	Delphinium .....	26, 27	Hibiscus .....	30	Plant Bands .....	Cover 3	Schizanthus .....	19
Anemone .....	28	Broom .....	29	Dianthus .....	30	Hollyhock .....	30	Plants .....	24	Snapdragon .....	2, 3, 4, 5
Anthemis .....	28	Browallia .....	19	Dicentra .....	30	Iberis .....	31	Pansy .....	Cover 2, 1	Statice .....	32
Aquilegia .....	28	Bulbs .....	20, 21, 22, 23, 25	Dictamnus .....	30	Incarvillea .....	31	Petunia .....	17, 18	Stocks .....	6, 7, 8
Arabis .....	29	Calceolaria .....	13	Digitalis .....	30	Iris .....	31	Phlox .....	31	Stokesia .....	32
Armeria .....	29	Calendula .....	11	Echinops .....	30	Larkspur .....	8, 9	Physalis .....	31	Streptocarpus .....	18
Artemisia .....	29	Campanula .....	29	Euphorbia .....	30	Lathyrus .....	31	Physostegia .....	31	Sweet Peas .....	10, 11
Asclepias .....	29	Candytuft .....	18	Exacum .....	18	Lavandula .....	31	Plant Bands .....	Cover 3	Thalictrum .....	32
Asparagus .....	29	Carnation .....	29	Feverfew .....	30	Leontopodium .....	31	Plants .....	24	Thermopsis .....	32
Aster:		Catananche .....	29	Fuchsia .....	18	Liatris .....	31	Platycodon .....	31	Tritoma .....	32
Annual .....	18	Centaurea .....	29	Gaillardia .....	30	Lily .....	31	Poppy .....	32	Trollius .....	32
Perennial .....	29	Cerastium .....	29	Geum .....	30	Linum .....	31	Primula:		Viola .....	32
Aubrietia .....	29	Cheiranthus .....	29	Gilia .....	30	Lobelia .....	31	Annual .....	16	Yucca .....	32
		Chrysanthemum .....	29	Gypsophila .....	30	Lunaria .....	31	Perennial .....	32		
		Cineraria .....	14			Lupine .....	31	Pyrethrum .....	32		
						Lychnis .....	31	Rudbeckia .....	32		





Carl, Vic and George K. Ball discuss the pros and cons of a new pink hybrid Snap in our trials at West Chicago

### **PLANT IMPROVEMENT . . .**

. . . is of first importance to us here at West Chicago. It's the real "heart" of our seed enterprise. Under the direction of Vic Ball and Phil Jones, the program also engages the interest of other firm members, as pictured above.

### **THE OBJECT . . .**

. . . of this work is to provide you with a steady supply of new, yet tested, varieties with which you may answer your customer's ever-engaging question: "What's new?" In the past our efforts have yielded a line of Stocks, and hybrid and inbred Snaps well known to the trade. Asters are a subject first dealt with several decades ago, and also the object of considerable current work.

For "what's new" this year, see the pages of this catalog—also watch for results of our accelerated and intensified "Ball florist strains" breeding program in years to come.

*Geo. J. Ball*  
I N C.  
WEST CHICAGO  
ILLINOIS