

## **Historic, Archive Document**

Do not assume content reflects current scientific knowledge, policies, or practices.



# COMPLETE PRICE LIST

Evergreens,  
Roses, Fruits, Shrubs,  
Trees, Perennials, Hedges,  
Lawn Seed, Fertilizers

Order Now!

 Christianson Landscape Service

FARGO, N. DAK.

RETURN POSTAGE GUARANTEED



U. S. DEPARTMENT OF AGRICULTURE

LIBRARY

WASHINGTON 25, D. C.

OFFICIAL BUSINESS  
PRINTED MATTER

GPO

PENALTY FOR PRIVATE USE TO AVOID  
PAYMENT OF POSTAGE, \$300

Library, U. S. Dept. of Agriculture,  
WASHINGTON 25, D. C.

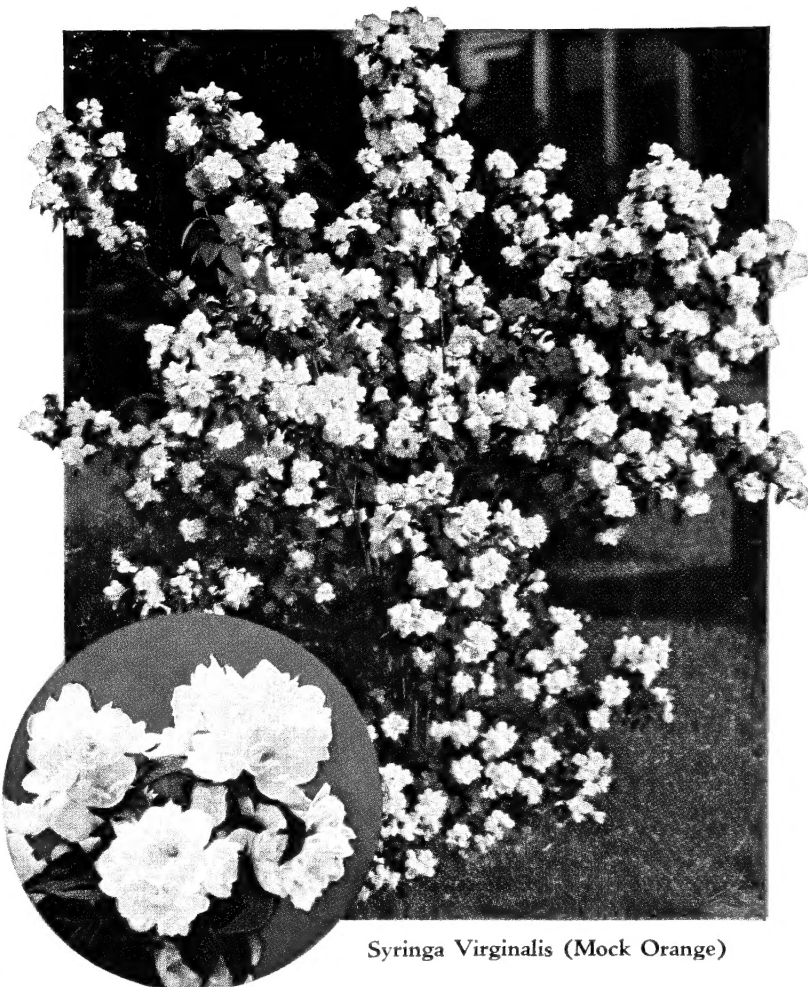
# ORNAMENTAL FLOWERING

Shrubs

## HEAVY LANDSCAPE GRADES

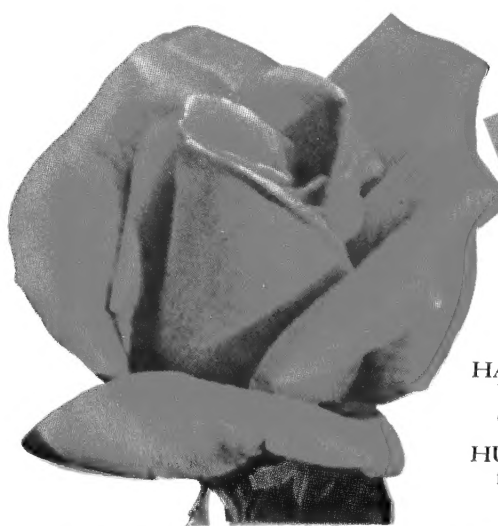
(The letters T—tall, M—medium, L—low, following name of each variety indicates their ultimate height at mature growth.)

- BARBERRY, L.** Popular low dwarf hardy shrub with brilliant red foliage and berries in autumn. Each \$1.00; 2 for \$1.90; 5 for \$4.50.
- BUCKTHORN, T.** Valuable for screening or variation in the shrub border. Very hardy. Each \$1.00; 2 for \$1.90; 5 for \$4.50.
- CARAGANA, Pygmaea, L.** Dwarf, low, densely branched. Here at Fargo this is a very popular shrub and can be seen in the better planted yards of our city. This plant comes from Canada. Each \$1.25; 2 for \$2.40; 5 for \$5.75.
- CARAGANA, Arborescens, T.** Siberian pea-tree, about half shrub and half tree. Used for tall background or an accent plant in the border. Each \$1.00; 2 for \$1.90; 5 for \$4.50.
- CURRENT Aureum, M.** Yellow flowers, very fragrant, fruit good for jell. Good all-purpose shrub. Each \$1.25; 2 for \$2.40; 5 for \$5.75.
- CURRENT, Alpine, L.** One of the best low-growing, densely branched all-around useful shrubs. Does well in shade. Each \$1.25; 2 for \$2.40; 5 for \$5.75.
- CISTENA, T.** Rich wine-colored foliage. A beautiful accent plant either for foundation or border. Grafted plants. Each \$2.50; 2 for \$4.80; 5 for \$11.50.
- CRANBERRY, High Bush, T.** White flowers followed by scarlet fruit. Gorgeous autumn coloring. Each \$2.00; 2 for \$3.80; 5 for \$9.00.
- CORALBERRY, L.** Foliage similar to Cotoneaster, thrives in shade, very hardy. Red berries in fall. Each \$1.00; 2 for \$1.90; 5 for \$4.50.
- CORNUS, Red-Twig, M.** Its great usefulness lies in its red bark for the winter landscape. Grows in shade, has white flowers. Each \$1.25; 2 for \$2.40; 5 for \$5.75.
- CORNUS, Variegated, M.** Variegated foliage, wine-colored bark in winter; this is a very striking shrub. Each \$2.00; 2 for \$3.80; 5 for \$9.00.
- COTONEASTER, M.** Dark glossy green foliage, most attractive in its autumn coloring. A most popular shrub among our Fargo-Moorhead people who know the plant. Each \$1.25; 2 for \$2.40; 5 for \$5.75.
- ELDER, Cut Leaf, M.** Lacy-like foliage, beautiful green, white flowers. A handsome shrub. Each \$1.25; 2 for \$2.40; 5 for \$5.75.
- ELDER, Golden, M.** Brilliant golden colored foliage. Spectacular in any planting. Each \$1.25; 2 for \$2.40; 5 for \$5.75.
- HONEYSUCKLE, T.** Excellent tall shrub for background, dark red blossoms followed by red berries. Each \$1.25; 2 for \$2.40; 5 for \$5.75.
- HYDRANGEA Arborescens, L.** Snowball-like white flowers. Blooms June to frost. Good in shade. Each \$1.25; 2 for \$2.40; 5 for \$5.75.
- LILAC, Persian, M.** Light purple flowers, small leaves, densely branched, will not sucker and unlike common Lilac varieties. Excellent for both foundation and border. Each \$1.25; 2 for \$2.40; 5 for \$5.75.
- LILAC, French Hybrids, M.** Available in Red, White, Blue colors. State color wanted. These Hybrid Lilacs are gorgeous in coloring, flowers much larger than the ordinary Lilacs. Very fragrant. Usually will bloom first year and they do not sucker. Each \$2.50; 2 for \$4.80; 5 for \$11.50.
- MAPLE, Ginnala, T.** Half shrub and half tree with small maple-leaf foliage. Good for the background. Fall foliage is beautiful bright red. Each \$2.00; 2 for \$3.80; 5 for \$9.00.
- MOCK ORANGE, Coronarius, T.** The old-fashioned variety, white fragrant flowers. Each \$1.50; 2 for \$2.80; 5 for \$6.50.
- MOCK ORANGE, Virginalis, M.** Semi-double fragrant creamy white blossoms. Remarkable florescence. Moorhead and Fargo garden enthusiasts evaluate this as one of the outstanding ornamentals of all time. Each \$1.75; 2 for \$3.30; 5 for \$7.50.
- MOCK ORANGE, Lemoine, L.** Good foundation and border shrub. Numerous fine branches, white fragrant flowers. Each \$1.25; 2 for \$2.40; 5 for \$5.75.
- MOCK ORANGE, Minnesota Snowflake, T.** Plant Patent No. 538. Undoubtedly a very fine and sensational new variety. Each \$2.00; 2 for \$3.80; 5 for \$9.00.
- NINEBARK, Dwarf, M.** Very desirable shrub with excellent foliage, thickly branched, white flowers. Ideal for both foundation and border plantings. Each \$1.25; 2 for \$2.40; 5 for \$5.75.



Syringa Virginalis (Mock Orange)

- PRUNUS Triloba, M.** Sometimes erroneously called Flowering Almond or Flowering Plum. Its masses of double pink-rose blossoms in early spring before the leaves unfold is truly a beautiful sight. Really one of the most popular early bloomers. Each \$2.50; 2 for \$4.80; 5 for \$11.50.
- SPIREA Van Houttei, M.** Long graceful drooping sprays of white flowers. Grows anywhere. Each \$1.25; 2 for \$1.90; 5 for \$4.50.
- SPIREA, Snowgarland, M.** Earliest white flowering, lacy-like foliage, unusually popular. Each \$1.25; 2 for \$2.40; 5 for \$5.75.
- SPIREA Froebeli, L.** Beautiful foliage with rosy crimson flowers. Excellent low dwarf and seems to do well under any exposure. Each \$1.00; 2 for \$1.90; 5 for \$4.50.
- SPIREA Sorbifolia, M.** Fern-leaf foliage, white plummy spikes of flowers, fine for shady places. Each \$1.25; 2 for \$2.40; 5 for \$5.75.
- SUMAC, T.** Colors up beautifully in autumn, pleasing foliage variation in shrub border. Clusters of crimson berries that attract birds. Each \$1.00; 2 for \$1.90; 5 for \$4.50.
- SNOWBERRY, L.** Low graceful shrub producing large waxy white berries that remain into winter. Good under trees or in shade or in front of larger shrubs. Each \$1.00; 2 for \$1.90; 5 for \$4.50.
- SNOWBALL, T.** Continues to hold the affection of planters everywhere. Masses of large white snowball-like flowers. Each \$2.50; 2 for \$4.80; 5 for \$11.50.
- TAMARIX, T.** Pink blossoms, fine foliage, grows rather tall and coarse. Allow ample room. Ideal for public grounds, parks, etc. Each \$2.00; 2 for \$3.80; 5 for \$9.00.



Roses

The beauty of Roses is beyond description. Their utter loveliness of form, texture, fragrance and color cannot help but make them the most wanted of all flowers for the garden. For Fargo and the northern midwestern areas we list only varieties that have proven themselves to be hardy and dependable.

- PAUL'S SCARLET CLIMBER.** This is a very good Climber. Scarlet-red, blooms early and lasts a long time. Requires trellis for support. Each \$1.50; 3 for \$4.00.
- HANSA.** Hybrid Rugosa shrub type with large, double, red blossoms. Very fragrant. Excellent for borders. Each \$1.50; 3 for \$4.00.
- HUGONIS.** Another large shrub-type, single yellow flowers. Very hardy. Each \$1.50; 3 for \$4.00.
- GROOTENDORST.** Small shrub-type Rose of the Rugosa family. Bright double red clusters of flowers blooming profusely all summer long. Very hardy. Each \$1.50; 3 for \$4.00.
- HYBRID TEA ROSES.** Your choice red, pink, white. Large double flowers blooming all summer starting in June first year. Perhaps our three most popular Roses among our many Fargo and out-of-town customers. Each \$1.25; 3 for \$3.50; 6 for \$6.00.

NONE BUT THE FINEST IN PLANTS  
ARE OBTAINABLE AT CHRISTIANSON'S

# ALL OUR PLANTS ARE THE HARDIEST NORTHERN GROWN VARIETIES

## Decorative, Clinging

Vines

**BOSTON IVY.** Clings to brick, stone, stucco. Small leaved, glossy foliage. Beautiful, thick and compact. Ideal for the chimney. **Each \$1.25; 3 for \$3.50.**

**GRAPE.** Good for trellis, very hardy and fruit producing. **Each 75c; 3 for \$2.10; 6 for \$3.60; 10 for \$5.50.**

**CLEMATIS, Jackmani.** Large purple flowers, blooms most of the summer. Perhaps the most popular vine of all—needs trellis or support. Blooms first year. **Each \$1.50; 3 for \$4.00.**

**ROSE.** Paul's Scarlet Climber is very hardy—scarlet-red. Requires trellis. **Each \$1.50; 3 for \$4.00.**

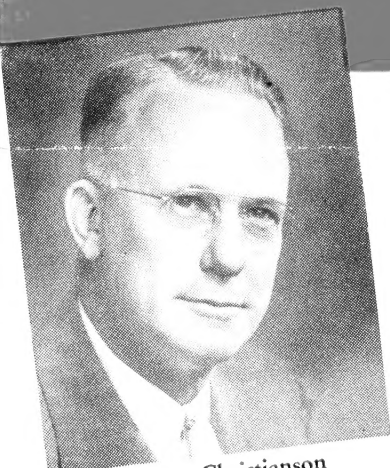
**BITTERSWEET.** Glossy leaves, yellow flowers, orange-red berries; requires trellis. **Each \$1.00; 3 for \$2.75.**

**HONEYSUCKLE.** Scarlet, trumpet-shaped flowers. Fine for covering arbors, etc. **Each \$1.00; 3 for \$2.75.**



Clematis Jackmani

## YOU CAN ENTRUST YOUR PLANTING PROBLEMS TO CHRISTIANSON'S



W. T. Christianson  
Manager-Owner

Our merchandise must measure up to the full value of your dollar. Our exchange must be equal and mutually satisfactory. The fact that our customers continue to come back to us year after year, we feel, indicates that our efforts to provide a highly specialized service and first grade quality nursery stock at such low prices are not only successful but also appreciated.

### Here Are The Reasons Why Christianson Landscape Service Can Help You!

- None but the finest in plants are obtainable at Christianson's.
- All their plants are the hardiest, northern grown varieties.
- Through care and protection in selecting, handling and packing, you are assured of fancy fresh stock in perfect growing condition.
- You can entrust your planting problems to Christianson's.
- Their training and experience is at your service.
- All nursery stock sold with a written guarantee.
- Affiliated with the National Organizations and knowing how to serve you efficiently and economically. Your inquiries are invited.

**WHEN AND HOW TO ORDER:** Send in your order at the earliest possible moment. Your stock will then be withdrawn from sale and reserved for you and shipment or delivery made at the proper time for planting in your section. Give shipping instructions, whether by freight or express. State if shipping point is different from your post office address. Express is most desirable on small shipments and freight on bulky shipments. When not instructed we will use our best judgment. Print your name and address to avoid mistakes.

**SHIPPING COSTS:** Prices herein listed are based on stock f. o. b. Fargo, North Dakota. The customer pays the shipping costs except where otherwise stated. Fargo-Moorhead local deliveries are made free of charge if your order amounts to \$2.50 or more. No free deliveries under \$2.50.

**TERMS OF SALE:** Send remittance with order or we will accept one-half of purchase price in advance with order and ship goods C. O. D. for the balance, plus collection charges. You may remit by personal check, money order or bank draft but **DO NOT SEND POSTAGE STAMPS.** North Dakota residents must include sales tax with remittance.

**FREE PACKING CHARGES:** We do not make any additional charge for packing boxes, crates, bales, etc.

**PLANTING INSTRUCTIONS:** Complete planting instructions accompany each shipment along with State Certificate of Examination.

**OUR GUARANTEE:** We guarantee all nursery stock purchased from us to reach you in good, live, growing condition. Any material failing to grow during the first growing season will be replaced once at one-half the original purchase price (excepting forestry stock) providing we are informed by September first following the season of planting and accompanied by remittance in full covering such replacements. We shall in no case be liable for any sum greater than the amount originally received for said nursery stock. Our very liberal replacement guarantee is possible only because we have full confidence in the vitality and sturdiness of our plants and trees and know they will succeed with normal care and attention. Good customers are the life blood of any business and we value ours very highly. We know that a Company can be judged by the customers it keeps. **CHRISTIANSON'S APPRECIATE** the loyalty of their customers, and put forth every effort to earn their continued confidence.

**REFERENCES:**

- American Association of Nurserymen, Inc.
- National Landscape Nurserymen's Association.
- Minnesota State Nurserymen's Association.
- Fargo National Bank, Fargo, North Dakota.
- The National Mail Order Nurserymen's Association.

Prices subject to change without notice.



Left: The Outdoor Living Room. You too can own a prize winning yard such as this at a very moderate cost.

## PUT OUR ORGANIZATION TO WORK FOR YOU **Now!**

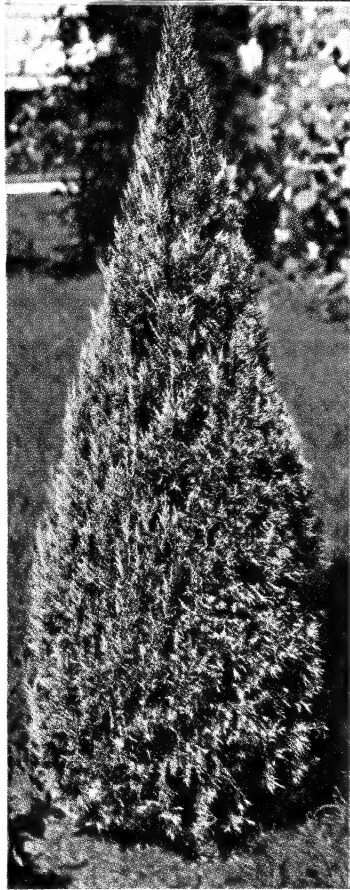


# Ornamental EVERGREENS

(Note.—All our evergreens are select specimens adapted for the most exact landscape use. Quality stock that cannot be surpassed elsewhere in the entire Northwest. Each tree expertly balled and continues to grow in its own soil without interruption.)

## PYRAMIDAL SILVER JUNIPER

Bright silvery foliage that holds its color all the year through. Compact and symmetrical, hardy and drought resistant. Ideal for house corner foundation or framing the door entrance or step. Ideal for memorial plantings on each side of the monument. These are grafted trees and beautiful specimens. Each, 3½-4 ft., \$17.50; 4½-5 ft., each \$20.00.



Pyramidal Silver Juniper



Evergreen Entrance Planting

## SAVIN JUNIPER

Low, prostrate, deep green, lacy-like foliage, suitable for foundation plantings and especially appropriate for grave lots in each corner or framing the monument, very hardy. Select specimens, 18-24 in. spread, each \$9.00.



Savin Juniper

## BLACK HILLS SPRUCE

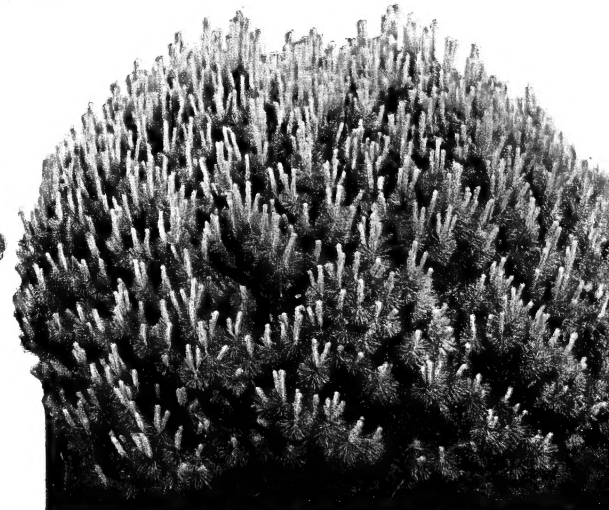
Hardest of all Spruces. Thick, compact, highly ornamental as a specimen or in group or cluster plantings. Always rich fresh green color and sometimes runs to a bluish tint. Select specimens, 18-24 in., each \$4.50; 2½-3 ft., each \$9.00.



Black Hills Spruce

## MUGHO PINE

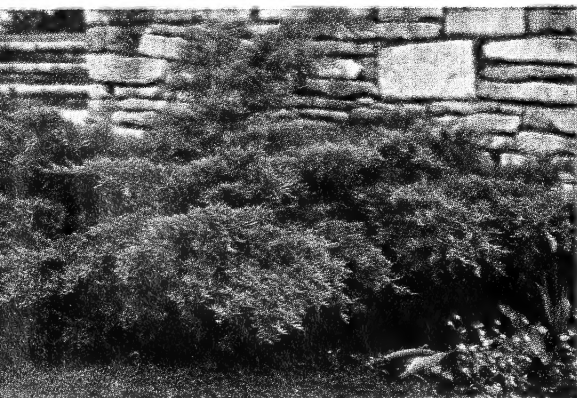
Round and compact, well sheared, dwarf growing. Unexcelled for framing a low brick step entrance and for general foundation use. Another popular evergreen for memorial plantings. Plant in front of taller evergreens for splendid effect. Beautiful specimens, 18-24 in. spread, each \$10.00; 24-30 in. spread, each \$15.00.



Mugho Pine

## PFITZER JUNIPER

Low growing, spreading, prostrate, hardy and dependable. Very appropriate for foundation and group planting. Size 18-24 in. spread, each \$10.00.



Pfitzer Juniper



# Hardy Nursery Stock from

# Ornamental SHADE TREES

(Select Specimen Stock)

All Our Nursery Stock Has Been State Inspected to Assure You 100% Satisfaction

**AMERICAN ELM.** Used for lawn and street trees. Our selected stock is of the type demanded by experts. A very dependable hardwood tree. 8-10 ft., each \$4.00; 10-12 ft., each \$7.50.

**CUT-LEAF WEEPING BIRCH.** Favorite ornamental tree because of its typical white bark, long slender weeping branches and small lacinated leaves. 5-6 ft., each \$4.50; 6-8 ft., each \$6.50.

**WHITE CANOE BIRCH.** Native tree distinguished by its white bark on trunk and branches. Very hardy. 6-8 ft., each \$5.00; 8-10 ft., each \$6.00.

**HOPA FLOWERING CRAB.** Masses of rose-pink flowers in spring. Foliage flushed maroon. Rich crimson fruits add to its attractiveness and make good jelly. Our most popular flowering tree. 5-6 ft., each \$3.50.

**MAPLE.** (Soft Maple.) Very rapid growing tree. Broad form and quick shade. Symmetrical. Many fine trees here in Fargo. 8-10 ft., each \$4.00.

**MOUNTAIN ASH.** Of medium stature, striking blossoms in clusters followed by bright orange-red panicles of berries. 6-8 ft., each \$5.00.

**WEEPING WILLOW.** Golden bark, slender drooping branches. An old favorite. 6-8 ft., each \$3.50.

**LOMBARDY POPLAR.** Used for screening in background and good for skyline effects. Narrow and columnar form. Our trees are low-branched. Very rapid grower. 6-8 ft., each \$2.50; 8-10 ft., each \$3.50.

**GREEN ASH.** Another dependable uniform street and lawn shade tree widely planted. Do not confuse this with the White Ash. Our Fargo strain is of select parentage. 8-10 ft., each \$4.00.

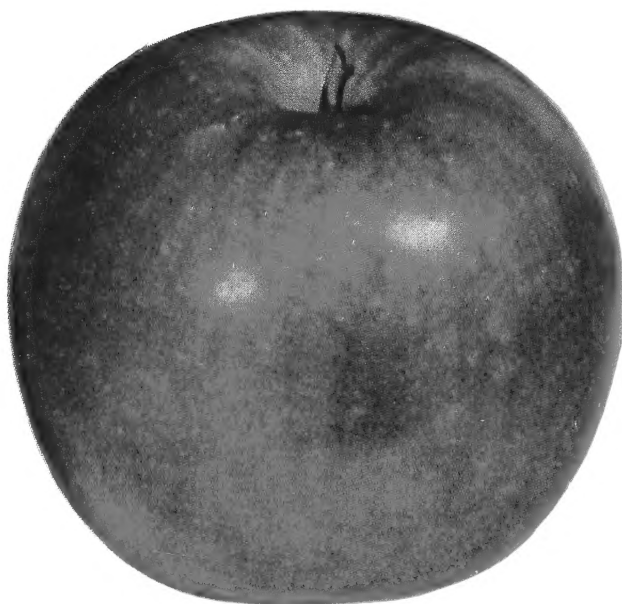
**WALNUT, BLACK.** Every home ground should possess at least one of these fine trees. Rich nuts, valuable wood, perfectly hardy. 6-8 ft., each \$4.50.



Cut-Leaf Weeping Birch  
"Colorful in All Seasons"

## HARDY FRUITS

Prof. W. H. Alderman, Chief of the Division of Horticulture, University Farm, St. Paul, Minn., says: "The HARALSON APPLE has proven to be one of the most dependable winter varieties for Minnesota and adjacent areas. The fruit has an attractive red color and a crisp juicy flesh that is well adapted for either eating fresh or cooking. The HARALSON becomes ready for use about November and in reasonably good cellar storage will hold good in good condition until April." Signed W. H. Alderman.



Haralson Apple

## Fruit Trees

(Heavy, first grade size)

**APPLES.** Haralson, Red Duchess, Anoka, N. W. Greening, Wealthy. Each \$2.50.

**CRABS.** Dolgo, Whitney. Each \$2.50.

**PLUMS.** Waneta, Underwood, Superior, Opata. Each \$2.75.

**CHERRIES.** Oka. Each \$2.75.

**BUSH CHERRY.** Each 85c; 3 for \$2.40; 6 for \$4.50.



Prof. W. H. Alderman

## Small Fruits

**RASPBERRY, Latham.** Largest fruit and most popular of all Red Raspberries. Heavy producer, hardy everywhere. Sturdy, No. 1 plants, 25 for \$4.00; 50 for \$7.50, 100 for \$14.00.

**CURRENTS, Red Lake.** Long stems loaded with large red fruit. The best of all Currents. Strong plants, each 75c; 3 for \$2.10; 6 for \$3.60.

**GOOSEBERRY, Pixwell.** Originated at North Dakota State College. Berries large, annual prolific bearer. Ranked best for pies, sauce, jell and preserves. Strong plants, 3 for \$2.10; 6 for \$3.60; 10 for \$5.50.

**RHUBARB, MacDonald.** Originated in Canada. Best dark red, requires less sugar, cook without peeling—bears heavy first year. Each 75c; 3 for \$2.10; 6 for \$3.60.

**GRAPE, Beta.** Withstands any severe climate, bears big crops annually. Excellent quality. Each 75c; 3 for \$2.10; 6 for \$3.60.

**ASPARAGUS, Washington.** Produces big crops of high quality large stocks. 25 for \$1.75; 50 for \$3.25; 100 for \$6.00.

**STRAWBERRIES, Streamliner.** Most productive and recent everbearing variety. Large rich-red fruit of delicious flavor. Starts bearing 60 to 90 days after planting, continuing until frost. 25 for \$2.25; 50 for \$4.00; 100 for \$7.50.

We can  
due to pac  
more of a  
1 ft. apart  
Peonies 3  
planted in  
planting.

PE  
fo

ASTER. 4-5 f  
BABY'S BREA  
3 for \$2.75.  
BLEEDING HI  
COLUMBINE.  
COREOPSIS.  
CHRYSANTH  
\$1.60.  
DAHLIAS. Fo  
colors. 3 for  
DAISY, GIAN  
DAISY, SHAS  
\$1.60.  
DICTAMNUS.  
FUNKIA. 1 f  
well in shade  
\$2.10.  
FERNS. 1 1/2-2  
\$2.10.  
GAILLARDIA.  
GLADIOLUS.  
on this list.  
IRIS. Assorted  
LYTHRUM. 3  
3 for \$1.60.  
LARKSPUR or  
60c; 3 for \$1.  
LILY-OF-THE-  
May-June. E  
LILY, Elegans.  
\$1.60.

(Please note—  
at t  
SPIREA Van  
ful bloomin  
2 ft. apart.  
100.  
HONEYSUCC  
growing tall  
followed w  
3 ft. apart.  
100.  
CARAGANA  
and drought  
kept sheared  
18 in., \$5.0  
BARBERRY,  
low hedge a  
ful branch  
Colors well  
ries remain  
1 ft. apart. 1  
RUSSIAN OI  
beautiful sil  
cold, drought  
good thick  
for windbre  
hedges spac  
Size 12-18

Christianson Landscape Service

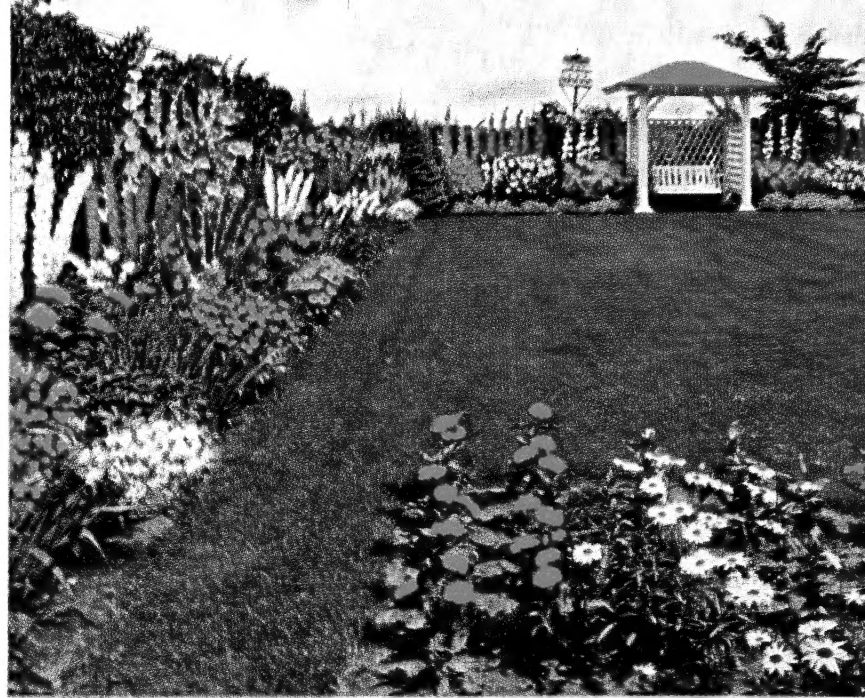


**PLEASE NOTE**

We cannot accept perennial orders for less than 3 plants (your selection) due to packing and labor costs. Perennials show up best when planted 3 or more of a kind and more is much better grouped together. Stagger plants about 1 ft. apart on all listed varieties except Peonies and Bleeding Heart. Space Peonies 3 ft. apart, Bleeding Heart 2 ft. apart. All following varieties can be planted in spring. Not all of them can be fall planted. See list below for fall planting. Sizes given indicate ultimate height of bloom.

# PERENNIALS for Spring Planting

- ASTER. 4-5 ft. Hardy, rose-colored flowers, fall blooming. Each 60c; 3 for \$1.60.
- BABY'S BREATH. 1½ ft. Double snow-white flowers through July-Aug. Each \$1.00; 3 for \$2.75.
- BLEEDING HEART. 1½ ft. Pink flowers. May and June. Each \$1.00; 3 for \$2.75.
- COLUMBINE. 2 ft. Assorted hybrid colors. June to Sept. Each 60c; 3 for \$1.60.
- COREOPSIS. 2 ft. Golden yellow flowers. June to frost. Each 60c; 3 for \$1.60.
- CHRYSANTHEMUMS. New Minnesota varieties, assorted colors. Each 60c; 3 for \$1.60.
- DAHLIAS. For spring planting only. Take up roots in fall. Choice varieties, assorted colors. 3 for 1.20; 6 for \$2.10.
- DAISY, GIANT. 4-5 ft. Large white flowers, fall blooming. Each 60c; 3 for \$1.60.
- DAISY, SHASTA. 1½ ft. Popular June flowering white Daisy. Each 60c; 3 for \$1.60.
- DICTAMNUS. 2 ft. Spikes of deep pink. June and July. Each 60c; 3 for \$1.60.
- FUNKIA. 1 ft. Blue flowers, large glossy green leaves, good border plant. Grows well in shade. Each 60c; 3 for \$1.60.
- FERNS. 1½-2 ft. Hardy outdoor variety. Ideal for shady spot. 3 for \$1.20; 6 for \$2.10.
- GAILLARDIA. 2 ft. Rich, red-crimson petals. June to frost. Each 60c; 3 for \$1.60.
- GLADIOLUS. For spring planting only. Take up bulbs in fall. See prices elsewhere on this list.
- IRIS. Assorted colors in choice varieties. 3 for \$1.20; 6 for \$2.10.
- LYTHRUM. 3 ft. Morden Canadian variety. Rose-pink. July to Sept. Each 60c; 3 for \$1.60.
- LARKSPUR or DELPHINIUM. Assorted Pacific Hybrids in gorgeous colors. Each 60c; 3 for \$1.60.
- LILY-OF-THE-VALLEY. 8-10 in. Fragrant, pure white dainty bell-shaped flowers. May-June. Each 60c; 3 for \$1.60.
- LILY, Elegans. 1½ ft. Orange-red flowers, July, profuse bloomer. Each 60c; 3 for \$1.60.



- LILY, Canadian. 4-5 ft. Orange-red nodding flowers often 30 to 40 blooms per stem. First prize Royal Horticultural Show, London, England. Each 85c; 3 for \$2.40.
  - LILY, Yellow Day. 2½ ft. Lemon-yellow, new introduction. One of the best. June-July. Each 60c; 3 for \$1.60.
  - LILY, Regale. 2½ ft. Center of flower flushed with yellow shading to white at outer edges, streaked externally with brown ribs. Vigorous grower. Very beautiful. July. Large bulbs, each 75c; 3 for \$2.10.
  - MONARDA. 3 ft. Bright red flowers. June to Sept. Each 60c; 3 for \$1.60.
  - PLATYCODON. 1½ ft. Balloon flower, light blue. June to Sept. Each 60c; 3 for \$1.60.
  - PEONIES. Very choice varieties in outstanding colors of red, pink, white. Each \$1.25; 3 for \$3.60; 6 for \$6.00. These Peonies are the best of hundreds of named varieties.
  - PHLOX. 1½ ft. Showy flowers in choice colors of red, pink, white. Bloom midsummer until fall. Each 60c; 3 for \$1.60.
  - PHLOX Divaricata. 9-12 in. Blue-lavender flowers. April, May. Each 60c; 3 for \$1.60.
  - VERONICA. 1½ ft. Spikes of blue flowers. June to Sept. Each 60c; 3 for \$1.60.
- (FALL PLANTING: The following plants transplant splendidly in the fall as well as spring—Bleeding Heart, Funkia, Ferns, Iris, Peonies, all Lily varieties.)

## Hedges

(Please note—25 or more plants sold at the 100 rate.)

- SPIREA Van Houttei. Make a graceful blooming hedge. Space plants 2 ft. apart. 18-24 in., \$35.00 per 100.
- HONEYSUCKLE, Tatarian. Rapid growing tall hedge with pink flowers followed with red berries. Space 3 ft. apart. 12-18 in., \$35.00 per 100.
- CARAGANA Arborescens. Very hardy and drought resistant. Should be kept sheared. Space 1 ft. apart. 12-18 in., \$5.00 per 100.
- BARBERRY, Japanese. Makes a neat low hedge about 1½ ft. high. Graceful branches protected by thorns. Colors well in autumn, has red berries remaining into winter. Space 1 ft. apart. 12-18 in., \$35.00 per 100.
- RUSSIAN OLIVE. A thick growing, beautiful silvery foliage, withstands cold, drought and alkali soils. Makes good thick hedge and very valuable for windbreak and shelter belts. For hedges space about 18 inches apart. Size 12-18 in. \$5.00 per 100.

## GLADIOLUS

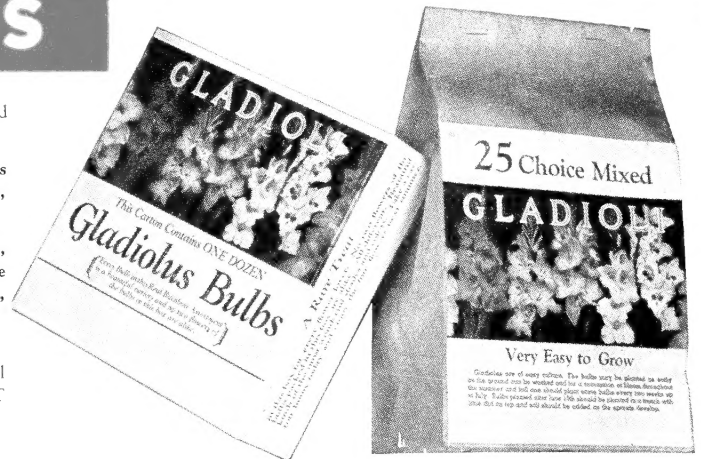
World Famous Varieties—New, beautiful and magnificent colors make up these collections.

CARTON of 12, large blooming, first size bulbs of all different, glorious colors, \$1.20; 2 cartons, \$2.30; 5 cartons, \$5.50, postpaid.

COLLECTION of 25 choice, large blooming, first size, mixed bulbs that will produce top grade flowers. Collection of 25, \$1.95; collection of 50, \$3.80; collection of 125, \$9.00, postpaid.

Gladiolus bulbs are for spring planting only.

SEND YOUR ORDERS NOW! We will mail bulbs at proper planting time—ORDER AT ONCE while they last.



## FORESTRY STOCK (Note—50 trees at the 100 rate)

	Size	Per 100		Size	Per 100
GREEN ASH	18-24 in.	\$7.50	COTTONWOOD	12-18 in.	\$4.00
AMERICAN ELM	18-24 in.	7.50	NATIVE PLUM SEED-		
CARAGANA (Siberian Pea Tree)	12-18 in.	5.00	LINGS	12-18 in.	8.00
HONEYSUCKLE	12-18 in.	35.00	CHINESE ELM	18-24 in.	7.50
			RUSSIAN OLIVE	12-18 in.	5.00

ice

# Fargo, North Dakota









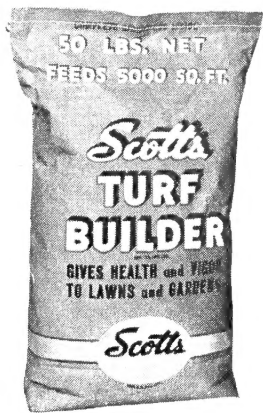
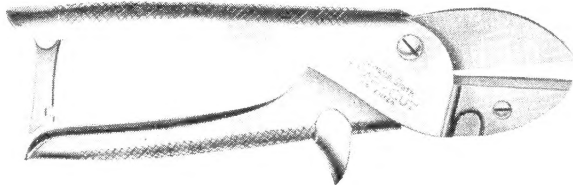
# Finest Quality **LAWN SEED**

The selection of your lawn seed will spell the difference between **SUCCESS** and **FAILURE** . . . Our experience can serve you well . . . Why not use it? . . . Do not waste precious time and expense in poor seed sold at a cheap price. It can contain only cheap seeds to be sold on a price appeal. **Good seed** must contain specific varieties of high germination and purity tests. Our mixture is the result of many years in the actual construction of lawns. In it is a high percentage of Kentucky Blue Grass and other nurse crop seeds to perform their particular function. It is easy to build a beautiful lawn when you plant **good seed**. Allow one pound of seed to every 150 sq. ft. of new lawn area. For reseeding on old lawns one pound to 300 sq. ft. will be sufficient. Prices are given for seed packed and ready to ship. Please add 12c per lb. for parcel post shipments for small lots. Express is advisable for medium quantities and freight for large quantities. 1 lb. \$1.25; 5 lbs. \$5.75; 10 lbs. \$10.50; 50 lbs. \$45.00; 100 lbs. \$90.00.

NOTE: Lawn seed and fertilizer are exempt from sales tax.

## Original "Snap-Cut Pruner"

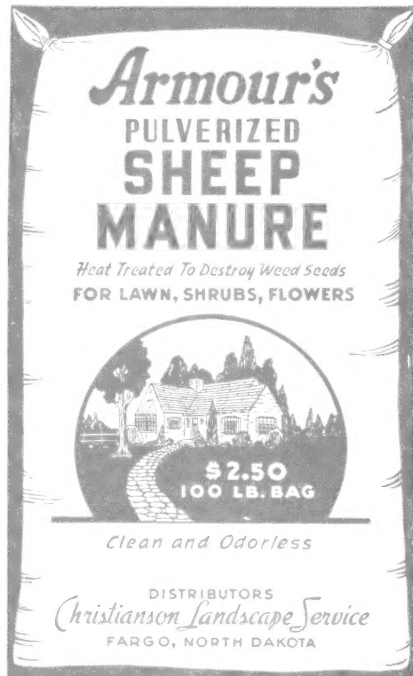
Original "Snap Cut Pruner." Nationally known quality pruner. Easy "Snap Cut" action of keen "V" blade onto non-dulling soft metal anvil cuts large, tough,  $\frac{3}{4}$ -inch branches like twigs. Alloy steel cutlery blade is precision ground and expertly polished. Comfortable shaped, non-pinching, pressed steel handles with handy quick-action safety catch. All parts easily replaceable. Bright chrome finish. In our many years of pruning experience we like the "Snap Cut" best of all and we are supplying it as a service to our customers. **Price: Each \$2.50. Prepaid parcel post \$2.75.**



*Scott's*

### Turf Builder

Is the specific grass and tree food. Keeps lawns healthy, vigorous and sparkling green. Most economical to use since 50 lbs. feeds 5000 sq. ft. 50 lbs. \$3.95; 100 lbs. \$7.50; 500 lbs. \$35.00. Prices f.o.b. Fargo, No. Dak.



Offered in 100-Lb. Bags for \$2.50 F.O.B., FARGO, N. DAK.