

Historic, Archive Document

Do not assume content reflects current scientific knowledge, policies, or practices.

6591

[1450]

Bu

NTHS • DAFFODILS • TULIPS • LILIES and other

Spring Garden

BEAUTIES

RECEIVED

★ JUL 27 1950 ★

U. S. Department of Agriculture



FRAGRANT HYACINTHS—Pages 4 and 5

Floravista

A. N. KANOUSE

ROUTE 3, OLYMPIA, WASHINGTON

Please Read Carefully Before Ordering

WE PAY TRANSPORTATION CHARGES on all orders of \$2.00 or more, when order is accompanied by payment in full. Payment should be by check or money order, or stamps for small orders as cash may become lost in the mails.

NO C.O.D. SHIPMENTS, PLEASE.

PLACE YOUR ORDERS EARLY. We will fill them in the order received. After our final warehouse inspection by the State Horticultural Inspectors, we start filling our orders about Sept. 1st. Then, about Nov. 1st we plant all surplus stocks then on hand, so **NO ORDERS ACCEPTED AFTER NOV. 1st.** We reserve the right to substitute with equal or better varieties unless instructed **NOT TO** do so. Early orders will help prevent delay in getting your order out.

GUARANTEE: We guarantee to send out only clean bulbs, free from disease and pests. Any claims in regard to bulbs should be sent in soon after receiving the bulbs. We send you the best bulbs obtainable, and if they do not meet with your approval when received, just return them at our expense; your money will be promptly refunded.

YOUR RESPONSIBILITY. In view of the varied conditions under which this stock will be grown after leaving our care, it is manifestly impossible for us to guarantee in any manner, cultural or otherwise, the crop resulting from the material listed. Ordering from this catalog will definitely be construed as your acceptance of these terms.

WASHINGTON CUSTOMERS—Please add 3 per cent sales tax.

Six bulbs of any ONE variety for half of dozen price.

No spring catalog is issued by us. Our regular Hardy Bulb catalog will reach you in May or June if you are on our active mailing list. If, after sending catalogs for two consecutive years, no order results, that name is dropped from our files. We have a very fine list of customer-friends who have favored us with their bulb needs for years. Thank you for your confidence in us; we assure you we will strive to continue our personalized service to your complete satisfaction.

We may decide to issue only a supplement in 1951 and if we do this, your 1950 catalog should be filed for reference purposes.

Bonus Bulbs, "POTLATCH"*

It has always been our practice to "potlatch" some kind of bulb or bulbs with each order, sometimes in long count, sometimes a nice new variety for trial, sometimes both.

This year we are going to give away a new seedling narcissus that we have grown and as yet not named. It is a very nice variety, as good as many high priced sorts, but we have decided not to introduce it. To warrant our introduction a variety must be not only "as good as" but **BETTER** than any variety already on the market.

While it lasts, we will use this tall, vigorous, large-cup bi-color as a bonus bulb and have named it "POTLATCH". The number of bulbs included depends on the size of your order. A few years ago this would have been listed for \$5.00 each or more. We are sure you will like this new Potlatch, a credit to any garden.

*Potlatch, a Northwest Indian word meaning "giving away of prized possessions".

Open Package and Sacks of Bulbs Immediately Upon Arrival. BULBS MUST HAVE AIR.



JUNIOR PARTNERS, KATHRYN AND CAROLE

Howdy, Neighbor!

And we mean just that. You are a flower lover or you wouldn't be getting our bulb catalog. We have a great deal in common—the love of beautiful flowers, working with them in our gardens, passing them along to others less fortunate, spreading beauty and cheer while we are able.

We make no claim to literary ability; all our effort and training has been in the field of just "plain dirt gardening". It is hard for us to express what we want to say, but we have been striving to incorporate something of ourselves in our modest catalog because we take a personal interest in each order received, and try to treat you as we would like to be treated. Our growing family of steady customers proves to us that you do appreciate our way of doing business, and we respect that trust.

Some twenty-odd years ago we had high ambitions. We would develop a big business, make a lot of money, get to be somebody. As we grew older, our ambitions did not materialize; we liked our work and tried to do it all alone. Hard work and long hours were tiring, but it was fun, too. We didn't make a lot of money, but we made a lot of friends. That is our real wealth, and that's the way we want it to be. We are not business people because we are too conscientious, but as long as we are able to grow flowers, that is the way we intend to conduct our business.

Thanks for all those fine letters; we like to hear about your garden, your family, and friendly chatter. Sometimes it is just the lift we need to keep going when the day seems like it will never end. We would like to personally answer each letter. All orders are acknowledged as soon as received, usually after working all day in the garden. It's the best we can do. The only way we can show our appreciation for your orders and kind letters is an additional bulb or so when your order is filled.

Our prices are as reasonable as we can make them considering the quality of the bulbs. We do not knowingly undersell reputable growers, but neither do we try to compete with dealers who advertise bulbs at ridiculously low prices. They know what their bulbs are worth and we know what ours are worth. You will have to decide what kind of flowers you want to grow in your garden. A few bulbs of the varieties we list will get you started; with reasonable care, they increase in numbers. Each year some new additions to your collection will give you some nice flowers to look forward to the following spring. Try some of the newer daffodils, they are outstanding and you will be growing something not common in your neighborhood.

Depend on us to give you full value at all times. We want you to be satisfied. Thanks for those fine orders last fall, we were gratified to find they averaged larger than in previous years and we will be happy to serve you again. Since we realize it is only through you that we can continue the work we love, we value your co-operation and help the more.

Sincerely,

A. N. AND MAUDE S. KANOUSE
CAROLE AND KATHRYN



ENGLISH IRIS (ILLUSTRATED ON BACK COVER)

For the past several years we have been trying to build up a fair stock of good named varieties of English iris. This year we are listing a few of them. Stocks are not too plentiful and we have no idea how long they will last, so please order early and you won't be disappointed. Even the mixed seedlings sell short, and we have never had enough to fill our orders. The named varieties have been selected for vigor and distinct coloration. You are sure to like them.

EMPEROR. Tall, deep blue, vigorous; occasionally flecks darker. **3 for 35c; 12 for \$1.25.**

FASCINATION. True cattleya orchid. Our favorite. **3 for 50c; 12 for \$1.75.** (See back cover.)

GALE S. HILL. A color break that's different. Deep reddish purple. **3 for 50c; 12 for \$1.75.** (See back cover.)

MT. RAINIER. Pure white, sturdy; the tallest we have grown. **3 for 50c; 12 for \$1.75.**

R. M. COOLEY. Light blue, nice wide falls with yellow spot. **3 for 50c; 12 for \$1.75.** (See back cover.)

SANTIAM. Light orchid, having a tendency to fleck with violet, which does not detract from its appeal. **3 for 50c; 3 for \$1.75.**

MIXED COLORS. English iris in many colors; mostly mixed seedlings that have never been segregated. All colors are included, but we can't tell what you will get. All are beautiful, with a possibility of finding some very outstanding ones. Colors include orchids, light and dark blues, medium blue, purple and white. **12 bulbs for \$1.25.**

NEW IMPROVED DUTCH IRIS

In the past few years we have tried out many new varieties of Dutch iris. Some have been discarded as not being superior to older sorts. From our plantings we have selected the following list as being the best we have grown. Priced somewhat higher than common varieties, they are just as hardy, average taller, with greatly improved colors. Because they are really outstanding and little known, a small planting in your garden will thrill you and your friends. We wouldn't want to be without them.

All priced at **3 for 35c (all one variety); 12 for \$1.35; 100 for \$9.50.**

BELLE JAUNE. A two-toned orange-yellow that blooms rather late.

BLUE PEARL. Extra tall, deep blue with yellow spot in falls. A newcomer with plenty of class; the tallest grower in this list.

BRONZE BEAUTY. Standards violet blue, olive green falls with orange blotch.

JEANNE D'ARC. Enormous creamy white with yellow blotch on falls.

KING MAUVE. Very large orchid-lavender; a much needed color.

LE MOGUL. Deep bronze with olive-bronze lip. It's different.

LEMON QUEEN. Beautiful lemon yellow standards; falls slightly scalloped with even rounded notches. One of the loveliest, and an unusual color.

MAUVE QUEEN. Very fine lilac-mauve.

PRINCESS BEATRIX. Very deep golden yellow. Large flower.

PRINCESS IRENE. Yellow with large orange-yellow blotch on falls, standards creamy white. Very distinct.

SAXE BLUE. Standards delft blue, falls lighter blue with orange yellow blotch. Very strong grower and really an outstanding blue.

WHITE TROPHY. Large, fine white with yellow blotch in falls.



NEW DUTCH IRIS

ULTRA-NOVELTY IRIS COLLECTION

BLUE PEARL. Bountiful blue.

BRONZE BEAUTY. "Blue-tiful" bronze.

JEANNE D'ARC. A creamy creation.

LEMON QUEEN. Luscious lemon.

MAUVE QUEEN. Meritorious mauve.

PRINCESS IRENE. Brilliant bi-color.

3 each of above 6 varieties, 18 bulbs, \$2.25

6 each of above 6 varieties, 36 bulbs, 4.00

12 each of above 6 varieties, 72 bulbs, 7.50

All Postpaid

"Last year I ordered your collection of rare Dutch Iris and was very pleased this spring with the assortment of colors, which I had never seen before in this type iris."

Mrs. J. S. Duthridge, Calif.

"Am finally getting a little report to you about the bulbs of ENGLISH IRIS you sent me a year ago. They were planted the first few days of Sept., used a heavy covering of leaves placed over branches to keep them from packing. It was all covered over with deep snow as we had a heavy snow fall before the ground froze. The iris all came up and bloomed the last part of June, lasted about 10 days, and were beautiful and thoroughly enjoyed as they are so different."

Amy Ekstrand, Cokato, Minn.

GOLDEN LION (Spanish iris). The blossoms on the Spanish iris are the same general shape as the Dutch, but this variety is in a class all its own. Standards are lemon yellow; falls, beautifully ruffled, are deep golden yellow. Without a doubt it is the finest Spanish iris, as large as any of the Dutch iris and more ruffled, but, being Spanish, blooms later. Stock limited. **3 for 40c; 12 for \$1.50.**

THE FRAGRANT

Hyacinths are a precious source of color and fragrance, their early vivid hues making lovely companions for the daffodils.

This year we have such a nice collection that we are segregating them for you as to color, making it easier for you to select colors you want. The bulbs are large, plump, and ready to give a splendid account of themselves. We have a good stock of them, but have no means of knowing how long they will last. If you send your order in early, you won't be disappointed.

Hyacinths—All varieties priced at 3 bulbs of one variety for 55c; 6 (one variety) for \$1.00; 12 (one variety) for \$2.00.

BLUE HYACINTHS

BISMARCK. Sky blue, broad spike. Extra fine for early forcing. Darker in color than Dr. Streseman, lighter than Ostara.

BLUE GIANT. Midseason blooming. Giant bells on a giant spike; of a lovely medium light blue color.

DR. LIEBER. Rather late blooming. Long, slender spikes of lavender blue bells.

DR. STRESEMAN. Midseason. Large, rather loose spike of medium blue bells; little darker than Lindberg and little later.

KING OF THE BLUES. Deep violet blue; one of the darkest and best. Splendid large trusses.

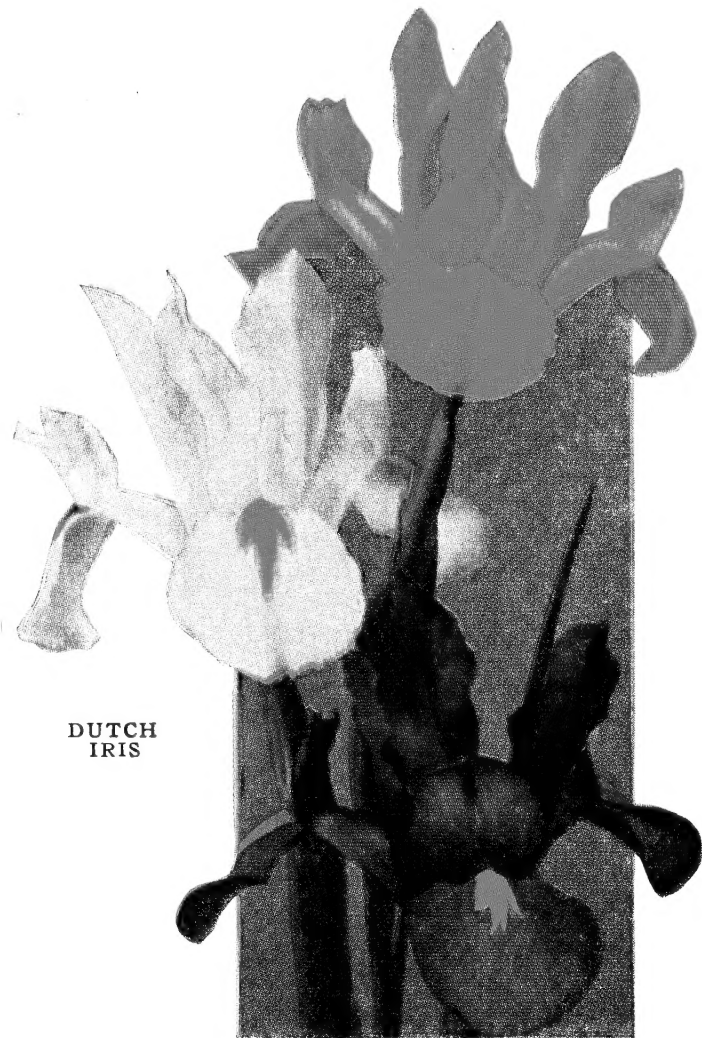
MYOSOTIS. A catching tone of light forget-me-not blue; large spike and bells.

OSTARA. Early. Pure dark blue outside, lightly tinted violet inside.

LILAC AND PURPLE HYACINTHS

LORD BALFOUR. Lilac, tinged rosy-violet. Could be called pinkish-heliotrope. A very unusual color in hyacinths and very popular. Quite early blooming.

PURPLE KING. Late blooming. We would call this more of a deep lilac or light violet than purple. A long spike of rather small bells, very compact; and one of the latest to bloom in our garden. Color entirely different than Lord Balfour.



DUTCH
IRIS

DUTCH IRIS

These bulbous iris are among the prettiest of all spring flowers for cutting or garden decoration. Being orchid-like in their beauty of form and color, they are choice subjects for table arrangements and corsages. Millions are forced yearly for the early cut flower trade, and because of heavy demands, present stocks will not be sufficient to supply late customers. Order your bulbs early and thus be assured of prompt delivery at the proper planting time. Plant 5 inches deep and 6 to 8 inches apart in rich, light soil, having good winter drainage. In colder climates provide a mulch. They flower from early May into June, in our locality.

All these iris priced at 3 for 25c (one variety); doz. 75c; 100 for \$5.25.

BRONZE QUEEN. A lovely bronze iris; golden spot in falls.

GOLDEN EMPEROR. A deep yellow flower of nice form, good size, good growing habits.

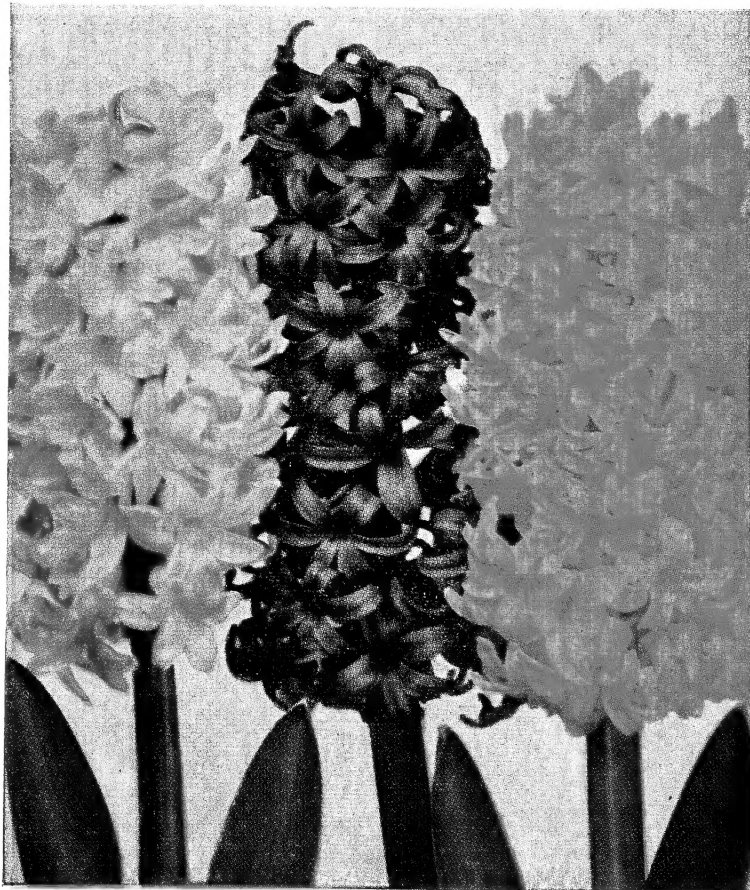
H. C. VAN VLIET. Deep violet blue standards, pearl blue falls with yellow blotch. Tall and vigorous, splendid cut flower.

WEDGWOOD (Tingitana) 24". A very early, beautiful and tender iris which can be grown out of doors only in the South and along the western edge of the Pacific Coast. Standards are of pale wedgwood-blue with rather deeper colored falls.

WHITE SUPERIOR. Splendid pure white. The typical yellow blotch is replaced in this variety by a thin yellow line, giving the flower a whiter appearance. A really outstanding flower.

IRIS SPECIAL

MIXED DUTCH IRIS. A splendid mixture made up of many types and varieties of Dutch iris, all fine varieties. This mixture will give a wonderful assortment of cut flowers, lasting several weeks. 12 for 60c; 25 for \$1.10; 100 for \$4.20.



HYACINTHS
PRINCESS MARGARET—OSTARA—CITY OF HAARLEM

HYACINTHS

See Complete
DAFFODIL LISTING
on Pages 6 to 15

PINK AND ROSE HYACINTHS

G. VAN DER MEY. Early. Deep rose, getting darker as flower develops.

LADY DERBY. Midseason. Very pale pink, lighter than Princess Margaret.

MARCONI. Late blooming. Very dense spike of rose pink bells; the latest to open in our field.

PINK PEARL. Midseason. Rich, deep rose; very strong and handsome spike. An all-round variety for bedding, forcing, or growing in pots or bowls. Large spike.

PRINCESS MARGARET. Midseason. A true, soft pink with large bells and large spike. We consider this the best of the true pinks; does not darken in the field but holds its color throughout the season.

WHITE HYACINTHS

CARNEGIE. Late. Huge spikes of pure white bells, waxy in texture. This is a new one and really fine. Trusses are extra large and individual florets large and compact on stem.

L'INNOCENCE. Pure white. The old reliable and still good. Its bedding and forcing qualities have stood the test of time.

YELLOW HYACINTHS

CITY OF HAARLEM. Compact bloom of creamy yellow fading to creamy white as flower matures. Form and substance good. Bedding qualities excellent and valuable for pots.

HYACINTH COLLECTION

1 each—any 12 varieties—properly labeled,
your choice—**12 bulbs, \$2.40**

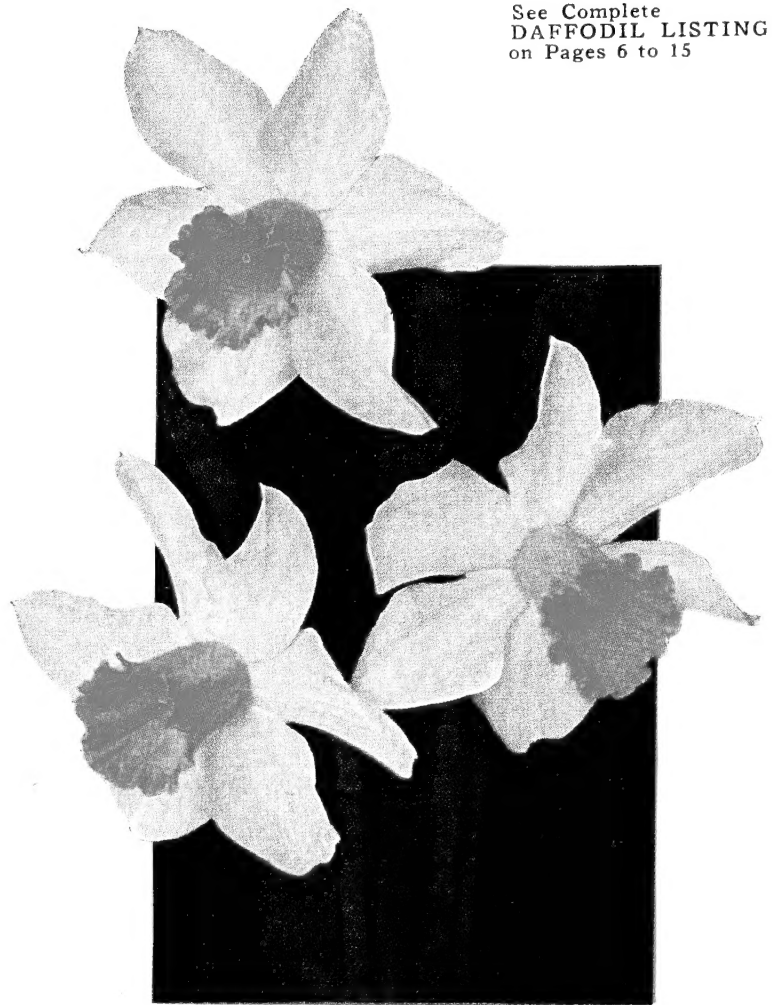
3 each—any 12 varieties—properly labeled,
your choice—**36 bulbs, \$6.50**

"My bulbs came this week, I planted them today . . . I came in with stickers in my fingers and a 'crick' in my back, but a song in my heart! I've pored over the catalog again tonight. You folks will probably never be rich, except in friends . . . The personal touch leaves a warm glow . . . Dutch iris bloom here in late March, April and May."

Mrs. B. J. Lawler, Mission, Texas

MIXED HYACINTHS.

We'll give you a wide variety of colors in this mixture as they will be hand mixed. If you have a preference of colors, please advise and we will try to comply with your wishes as long as colors hold out. **6 for \$1.00; 12 for \$1.90; 50 for \$7.00.**



MRS. R. O. BACKHOUSE (Page 6)

DOUBLE HYACINTHS

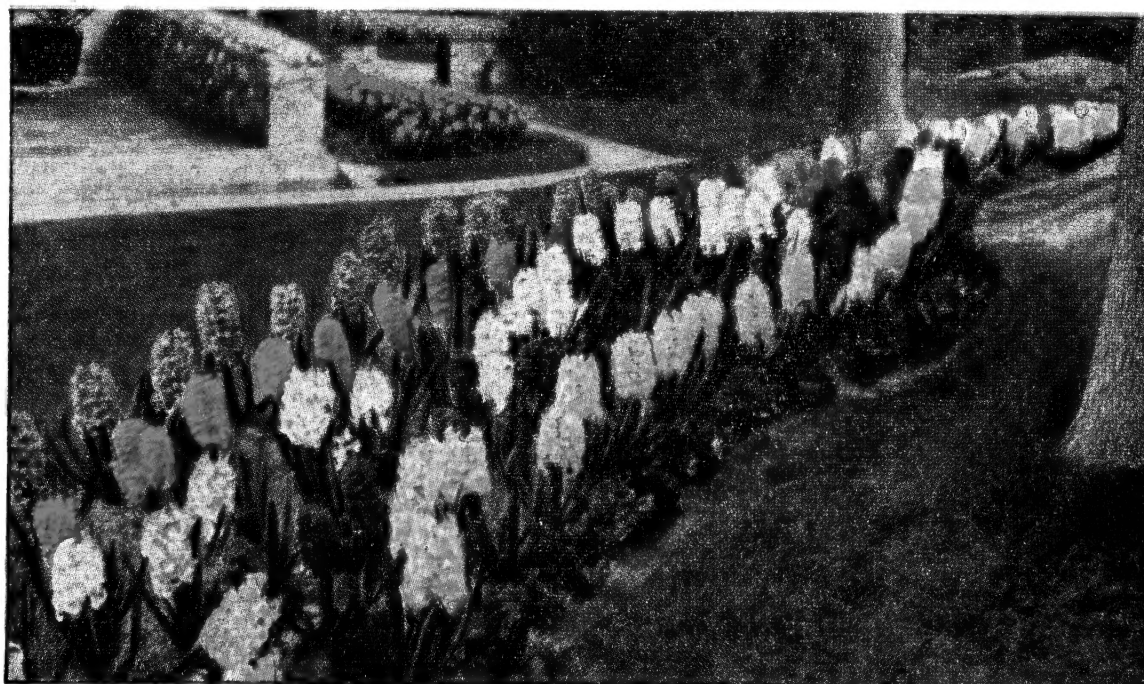
Double hyacinths are of unusual merit. The duplication of the petals gives a miniature camellia appearance to the florets. There are fewer bells, which give the spike an admirable grace. Most gardeners have never seen these charming and fragrant flowers. We urge you to make a trial planting of a few of them. Only three varieties available at this time.

Double Hyacinths—All varieties priced at 3 bulbs (one variety) 75c; 12 for \$2.50.

BEN NEVIS. The best double white we have grown; large truss loosely set with large flowers.

CHESTNUT FLOWER. The one and only good double soft pink; large bells; very fine for pots.

GENERAL KOHLER. Bright blue, fully double flowers; extra fine.





BEERSHEBA

TRUMPET DAFFODILS

In this class the trumpet (or cup) is as long as or longer than the perianth segments.

Letters following varieties represent the time of blooming. E—early, M—medium, L—late.

ADA FINCH. E. A very early white trumpet daffodil; a large flower with wide perianth, and huge flaring trumpet which opens lemon color but fades to creamy white. One of the most showy white trumpet varieties. **Each \$1.00; 3 for \$2.75.**

BEERSHEBA. M. A forerunner to a new race. A truly magnificent flower, all white, nearly five inches across. The large perfectly flat perianth and long, beautifully flanged trumpet makes this the perfect show flower. A flower of fine form, stately carriage and remarkable substance, keeping for weeks. Produces wonderful bulbs that are very vigorous and increase rapidly, a cold climate seems to add to its vigor. Beersheba will hold its own at any flower show in the country. Many impressive awards. **Each 40c; 3 for \$1.10.**

DIOTIMA. E. Considered by many to be the best of the new super-giant yellow trumpets. The flower is beautifully proportioned and is carried gracefully on flattened tapering stems, two feet tall. The broad overlapping petals form a star-shaped perianth of medium deep primrose, 5 to 6 inches across; trumpet slightly deeper in color. One of the top-notchers for many years. **Each 50c; 3 for \$1.35.**

GOVERNOR (Burgemeester Gouverneur). An outstanding yellow trumpet daffodil with slightly lighter perianth; a flower of huge size, great substance, and faultless form. **Each 50c; 3 for \$1.35.**

KING ALFRED. E. A deep golden yellow flower of wonderful substance, on stiff two-foot stems. Trumpet deeply frilled and recurved at the mouth. By far the best all yellow in its price class. The universal favorite for the cutflower trade. Produces wonderful, large, hard bulbs. **Each 15c; doz. \$1.50.**

MORNING SUN. Here is a bi-color that is different!

A new variety which was introduced in 1949, and it is really outstanding. This is a huge flower with a giant trumpet of the loud-speaker type. The well overlapping perianth is soft creamy-white; the medium length trumpet (about 1 ¼ to 1 ½ inches long) is of a lemon yellow color slightly darker at the wide open scalloped edge. The loud-speaker trumpet opens to a good 2 ½ inches or more at the mouth, and, with its deep golden yellow throat and edge of lovely sunny yellow, it truly looks like the morning sun. Bouquets of these blooms at spring flower shows were exclaimed over and admired by all. If you like giant cups you'll love this one. It's reasonable, too, for a new introduction. **Each \$2.00.** Stock limited.

MRS. R. O. BACKHOUSE. M. This is the famous "Pink Trumpet Daffodil." Fine informal perianth of ivory white, and beautifully proportioned; slim, long trumpet of apricot pink, turning to a deeper pink at the deeply fringed edge. Delicately beautiful but of exceptional substance; long lasting; belongs in every collection. **Each 40c; 3 for \$1.10; doz. \$4.00.**

PRESIDENT LEBRUN. M. Truly an outstanding flower of huge size, with well overlapping pure white perianth; large well proportioned trumpet of soft luscious creamy yellow. A bi-color you're sure to like. **Each 20c; doz. \$2.00.**

QUEEN OF BICOLORS. E. The perianth of this fine flower is pure white, broad and overlapping; the rich, golden yellow trumpet is large and showy. Trumpet deeper in color than that of President Lebrun. Truly a fine bi-color. **Each 20c; doz. \$2.00.**

ROXANE. The round, overlapping white perianth crowns a large, flaring creamy white trumpet. Exceptionally broad petals, fine form, and one of the largest of the white trumpet daffodils. **Each 35c; 3 for \$1.00; 12 for \$3.50.**

LARGE CUPPED DAFFODILS

In this class the cup is more than one-third but less than equal to the length of the perianth segments.

ARANJUEZ. Flat, perfectly overlapping perianth of light yellow with deep yellow cup margined with orange-red. A magnificent show flower, which was priced at \$75.00 each in 1937. **Now 45c each; 3 for \$1.20; doz. \$4.50.**

BIALITA. Early, all yellow petals that slightly reflex, of good size, up to 4" for us. Solid orange, nicely flaring cup extending ½" to rim. Very showy. **Each 30c; 3 for 80c; 12 for \$3.00.**

BENJAMIN GIGLI. Early. 22". Lemon yellow petals, not overlapping. The one-inch cup is yellow at the base with outer half heavily ruffled with deep, vivid orange, commanding instant attention. Because of its earliness, it is about the showiest in the garden when it opens. **Each \$1.00; 3 for \$2.75.**

DAISY SCHAFFER. M. One of the most outstanding of the new giant Leedsii type. The flower, 4 ½ inches across, cup nearly two inches, resembles a giant trumpet, but much more graceful in form; perianth pure white, with cup opening primrose and turning to light canary yellow. The long lemon yellow stigma and styles add to the color harmony of this remarkable flower; a leader for years to come. Awarded a gold medal at the "Flora" International Exhibition, Haarlem, Holland, 1935; many other awards. **Each 30c; 3 for 80c; doz. \$3.00.**

"I have never seen anything better than Aranjuez. We had both strong winds and sun while it was blooming, and it held its color till it was gone. It seems to be the longest lasting variety of all . . ."
Irene B. Schmitz, Van Nuys, Calif.

DAFFODILS

DICK WELLBAND. M. One of the finest in this class. The perianth is pure white and the cup the brightest flame orange, making a striking contrast. One of its most remarkable qualities is that the color of the cup does not fade but rather intensifies with age. The flower lasts unusually long. A marvelous exhibition variety and one of our favorites. **Each 25c; 3 for 70c; dozen \$2.50.**

ELDORADO. M. Here is a magnificent variety, of good form and striking color. The broad petaled perianth is a deep golden yellow; the widely expanding cup is deep yellow edged with vivid orange, and opens almost flat against the petals to a width of about two inches. The flower is held majestically on a good stem. **Each 50c; 3 for \$1.25; doz. \$5.00.**

FORTUNE. E. One of the finest things in the Daffodil world, lovely in form, attractive in color, a good strong grower, with its flower held tall and nobly erect. Fortune is a Giant Incomparabilis of largest size, perfect form, and gorgeous color, borne on a 24-inch stem. Its grand flat overlapping perianth of great substance is clear brilliant yellow, with a very large and long bold crown of wonderful coppery red-orange. Vigorous and of good constitution. A remarkable feature of this gorgeous flower is its extreme earliness. Get your start of this fine variety now! **25c each; 3 bulbs for 70c; 12 for \$2.50.**

FRA ANGELICO. Fairly early, with 3½-inch overlapping, broad petals, slightly reflexing, of soft yellow color. Large one-inch-long cup flaring to two inches wide at mouth. Cup bright orange with deeper orange, very ruffled rim. Another very showy one. **Each \$1.00; 3 for \$2.75.**

GRETA GARBO. Large, creamy yellow perianth, overlapping; soft orange, flaring cup 2" wide at mouth with slightly deeper color on scalloped edge. Good substance with plenty of class. **Each \$1.00; 3 for \$2.75.**

GROTE KOOS (Big Jack). L. The broad creamy white petals are nicely overlapping; the deep yellow cup opens flat against the petals and is edged with a rich orange. This large flower with the two-inch-wide cup is very showy, and as it blooms rather late it extends the daffodil blooming period. **Each 40c; 3 for \$1.10; doz. \$4.00.**

JOHN EVELYN. M. An outstanding favorite in the daffodil world. Large pure white perianth opens perfectly flat and is 4 to 5 inches across. The large flat cup of lemon yellow is densely frilled or shirred to the base. A flower of most refined appearance. Unexcelled for either garden display or the show bench. **Each 25c; doz. \$2.50.**

OPTIMIST. Late. The pure white perianth measures 3½ to nearly 4 inches for us, the three outer petals being so wide that they touch behind the three inner petals, all well rounded and with a golden halo against the cup. The rich yellow cup is heavily frilled and edged with vivid orange, a little over half an inch long and better than an inch wide at the mouth. The lateness of the flower gives some gorgeous bouquets when many of the other varieties are gone. It's really a honey. **Each 25c; 3 for 70c; doz. \$2.50.**

ORANGE BLOSSOM. Primrose yellow petals overlapping and slightly pointed. Cup about one inch long and solid orange to base, slightly flaring and nicely ruffled. Holds color well and does not scald. Fine grower and propagator; should be in every garden. **Each 35c; 3 for \$1.00; 12 for \$3.50.**

REINE BLANCHE. Early, white perianth overlapping and four inches wide. The rather large cup flaring to a ruffled and fluted edge, is cream edged lemon, which fades to white with cream edge as it develops. A dainty, waxy flower, vigorous yet graceful. Looks like a John Evelyn seedling. **Each \$1.50; 3 for \$4.00.**



WESTERN STAR

ROCKEFELLER. Here is a new one with extra long stems, white perianth of good size, overlapping and showing golden yellow at the extreme base adjoining the cup. The inch long cup is nicely frilled, slightly flaring and of a rich yellow color throughout, slightly deeper inside. **Each 25c; 3 for 70c; doz. \$2.50.**

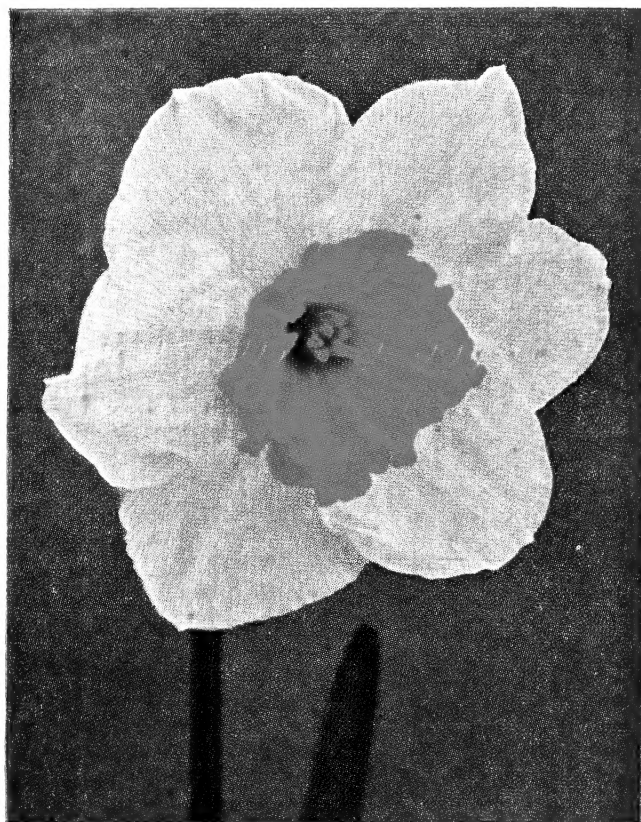
SELMA LAGERLOF. M. One of the most outstanding in this class, this magnificent flower has a large snow white perianth, a flat, expanding cup of lemon yellow with a band of vivid orange. The flat yellow cup, opening to a good two inches wide, with the striking orange edge flattened back against the pure white petals make a flower of striking beauty. **Each 70c; 3 for \$2.00.**

TUNIS. E. A large, tall robust growing Leedsii of most distinct character and great lasting substance; broad waved white perianth and large bold ivory crown with handsome flanged and serrated brim retaining a remarkable flush of pale coppery gold at the edge. **Each 25c; 12 for \$2.50.**

*****WESTERN STAR.** This is a new introduction of real merit, being released for the first time in 1949. The flower is a huge white star; wide overlapping petals of pure white, the three outer petals almost meeting behind the three inner ones. The inch long cup flares to over two inches wide at the heavily ruffled and fluted edge. This luscious cup is a soft cream-white, faintly darker at the edge, with a soft golden throat deep inside the cup. It is an early bloomer, good keeper, and an outstanding show flower. Although the bloom is large (4 inches or more) it is graceful and stately and was greatly admired at various flower shows where displayed this spring. To our knowledge there is nothing like this on the market. We know you'll like it. It is being introduced at the very reasonable price of **\$5.00 each.** Stock limited.



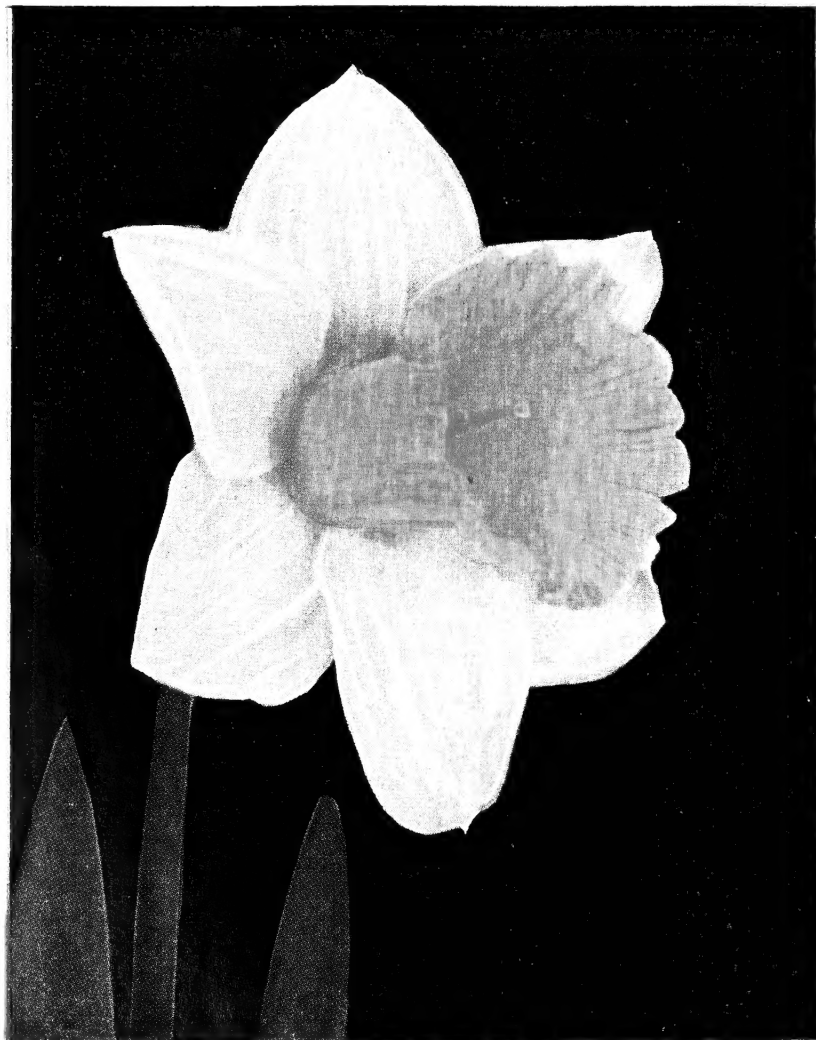
FORTUNE
(Page 7)



JOHN EVELYN (Page 7)

NOVELTY DAFFODILS

Orders for Novelty Daffodils, priced at 75c each or more, should be in our hands before October 1st. When ordering these newer Daffodils at a later date, it would be well to name a substitute, in case your order could not be filled completely.



ROXANE (Page 6)

SMALL CUPPED DAFFODILS

In this class the cup is not more than one-third the length of the perianth segments.

ASTA NIELSON. Complete overlapping perianth of pure white, 3 1/2 inches across. Cup yellow and flat, one inch wide with dainty picotee edge of orange. Grows 16" high. Midseason blooming. We like this one very much. Each 35c; 3 for \$1.00.

FLOWER RECORD. This new variety derives its name because of the record number of flowers from each bulb. The creamy white perianth is well overlapping, and of good size. The short three-quarter inch cup opens wide and is of a deep golden yellow with a quarter inch band of vivid orange around its crinkled edge. This is a good one for the garden and highly recommended for forcing in pots; we forced a few in our little greenhouse last winter and had as high as 14 blooms from ONE bulb. One bulb in a pot is all that is needed for a nice display. The most free-flowering variety of all narcissi. Midseason blooming outdoors. Each 25c; 3 for 70c; doz. \$2.50.

GARDEN OFFICER. Light yellow, overlapping, broad perianth; medium cup is deep yellow with nicely ruffled orange edge. Each 40c; 3 for \$1.10; 12 for \$4.00.

JOHN DIX. Late. Here is a nice late blooming narcissus with white, rounded, well overlapping petals, and a short, heavily fluted vivid orange cup. The flower is well held on a long stem. Flower similar to La Riente but later blooming; nice for bouquets. Each 40c; 3 for \$1.10; doz. \$4.00.

LA RIANTE. Pure white with nicely overlapping petals that are flat and round, about 3 1/2 inches across. Cup of deep orange opens flat to one inch wide. Dainty and very showy. The earliest of our Barriis to bloom. It's fragrant, too. Each 25c; 3 for 70c; doz. \$2.50.

MAGIC FIRE. Striking flower of exceptional substance. Pure white well overlapping, broad petals; small cup with fiery red rim. One of the finest show flowers we have grown. Each 25c; 3 for 70c; 12 for \$2.50.

PLYMOUTH. Perianth wide and overlapping, up to four inches for us without pampering. White petals suffused with yellow at base; yellow cup is 1/2-inch long and has bright orange ruffles. Each 40c; 3 for \$1.10.

PORTHILLY. Early midseason. Good sized flower with pure yellow broad perianth, and a good size crown of fiery orange red. A brilliantly colored flower and a fine propagator. Each 50c; 3 for \$1.25.



TEXAS

SILVER SALVER. Late. Purest white perianth and cup; like a large Poeticus narcissus but pure, glistening snow white over all except for the yellow anthers inside the lace edged flat cup and a touch of cool emerald green in the center. Lovely and refined. Each 75c; 3 for \$2.00.

WALTER BREEDVELD. Large, pure white overlapping perianth. Petals are well rounded and three back ones reflex somewhat. The wide flaring cup of rich deep yellow with bright orange edged rim makes it a variety that has everything; color, form, substance and vigor. Nothing is lacking to make this one of the best we grow. Medium late blooming. Each 40c; 3 for \$1.10; 12 for \$4.00.

ZWANDENDRIFT. Flower opens cream white and fades to pure white. Nice yellow cup, long and flaring, with bright orange red edge. Tall and free-flowering. Each 35c; 3 for \$1.00; 12 for \$3.50.

DOUBLE NARCISSI

CHEERFULNESS. L. The double Elvira, a very distinct and decorative variety. Erect stems, each bearing a cluster of small blooms with broad, rounded, creamy white perianth and full double center of creamy white and yellow. Cheerfulness is well named and makes friends instantly. Fragrant. Each 15c; doz. \$1.50.

IRENE COPELAND. Large, full double creamy white flower with primrose petals interspersing the white ones. A lovely distinct variety. If you like the doubles you will love Irene. Very showy. Each 35c; 3 for \$1.00; 12 for \$3.50.

MARY COPELAND. L. One of the famous varieties of the new semi-double type; this variety has been termed the most striking double in cultivation; the longer petals are pure cream white, interspersed with shorter petals of lemon and brilliant orange. Each 30c; doz. \$3.00.

TEXAS. M. Very large full double. Golden yellow and brilliant orange petals in alternate layers. Blooms 4 inches in diameter on tall stems. Robust grower and a giant among the doubles. Each 50c; 3 for \$1.25; 12 for \$5.00.

TWINK. E. Of the semi-double type; alternating petals of primrose and clear orange, and so arranged as to give the flower a most attractive appearance. A novelty of merit that attracts instant attention wherever seen. Each 20c; doz. \$2.00.



SILVER
CHIMES
(Page 10)

"With the exception of SILVER CHIMES, which is not very hardy in our garden, I think it (White Wedgwood) is the loveliest jonquil among the nine varieties I have in my garden. Again thanking you for the fine quality of your bulbs . . ."

Grace G. Heinly, York, Pa.



LA RIANTE



TRIANDRUS NARCISSUS THALIA



DOUBLE NARCISSUS CHEERFULNESS

NARCISSUS TRIANDRUS HYBRIDS

Includes all varieties obviously containing N. Triandrus blood. All of the varieties in this section are most interesting garden subjects, flowers are more or less drooping, of elegant form and graceful habit. Fine for rock gardens.

SILVER CHIMES. One of the prettiest of the small-cupped Triandrus hybrids. Frequently produces heads of 6 or more waxy flowers per stem, with pure white perianth and delicate pale primrose cup; has a delightful fragrance and is unsurpassed in delicate beauty and adaptability for bouquets. Hardy in our climate but needs some protection in extreme cold climates. **Each 75c; 3 for \$2.00.**

THALIA. M. An exquisite flower of unusually pleasant appearance; three to four pure white flowers on one stem. Often described as the "Orchid Narcissus." Thalia is sold to almost all flower lovers that see it in bloom here at the farm. Ideal in every way, especially for corsages and bouquets. **Each 25c; doz. \$2.50.**

TRIANDRUS ALBUS—See page 11, Rockery Narcissus.

JONQUILLA AND JONQUIL HYBRIDS

Includes all varieties of Narcissus Jonquilla parentage.

GOLDEN PERFECTION. M. A large jonquil hybrid with a perfect perianth of wide overlapping segments, deep citron yellow, with mica sheen, and cup of pure gold perfectly proportioned to balance the flower; calyx grey-green flecked with gold. Its name fits perfectly this Giant Jonquil with the texture of golden wax; from one to three lovely flowers per stem. Unique in its class. **Each 20c; 12 for \$2.00.**

JONQUILLA SIMPLEX. L. The original sweet scented, single Jonquil; three to five charming rich yellow flowers to the stem. A gem for the rockery; produces very tiny bulbs which can be left undisturbed for years. Ideal for bouquets. **Each 15c; doz. \$1.25.**

TREVITHIAN. Very fine short crowned hybrid. Free flowering, sweetly scented flowers of a pale self lemon-yellow throughout. The texture is smooth; produced 2 or more flowers per stem; has many awards to its credit. Greatly reduced in price. **Each 15c; 3 for 40c; 12 for \$1.50.**



JONQUILLA SIMPLEX



NATURALIZED PLANTING OF ACTAEA

TAZETTA (Poetaz) NARCISSUS

These are hybrids from Poeticus and Polyanthus Narcissus. All are very hardy, very fragrant, and bear their flowers in clusters.

CHEERFULNESS. L. (See Double Narcissus.)

GERANIUM. L. Round, flat, pure white perianth, deep orange cup. Late. One of the best in this class. Very strong stems with from 3 to 6 and sometimes up to 8 flowers per stem. Each 20c; 12 for \$2.00.



LAURENS KOSTER. M. Creamy white perianth and lemon yellow cup, usually 5 to 7 on a stem. An old standby and the best white poetaz for forcing. Each 15c; doz. \$1.50.

←
LAURENS
KOSTER

POETICUS NARCISSUS

Perianths are snow white; cups are small and flat with yellow eyes, edged scarlet or crimson. All are sweet scented and unequalled for naturalizing.

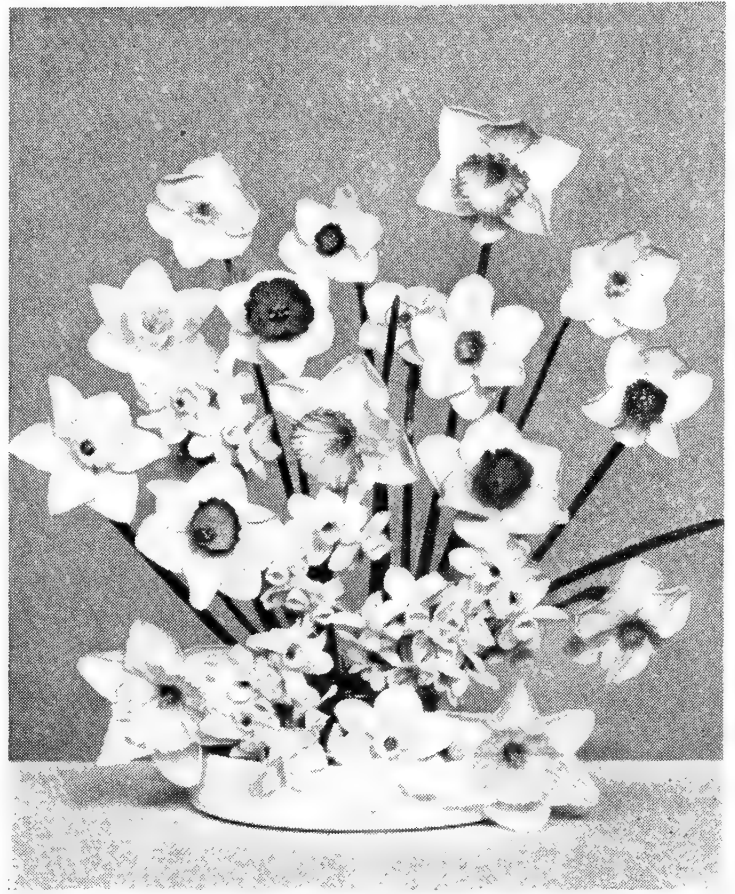
ACTAEA. L. Largest poeticus in existence. Broad snow white perianth of great substance and good form. Very large eye broadly margined with dark red. Considered the most beautiful Poeticus and wonderful exhibition flower. Each 20c; doz. \$2.00.

RECURVUS (Pheasant's Eye). An "old timer" that brings back memories of our Grandmother's garden. Perianth pure white and slightly reflexing, short cup margined scarlet. Very spicy fragrance and one of the last to bloom. Fine for borders or naturalizing in grass. We are growing this again by popular demand. Each 15c; 12 for \$1.25.



TRIANDRUS ALBUS (Page 12)

MIXED DAFFODILS

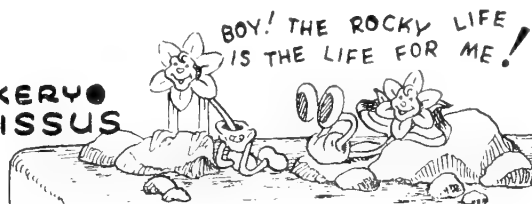


For that much needed cutting garden we have a very special assortment set aside. All lots are **hand mixed double nosed bulbs** that will make a good account of themselves and give you much pleasure. If you prefer, you may have all long trumpet varieties in this mixture, or long and short trumpets, or all short cups; just let us know which type you prefer, and we will do the rest. If no preference is given, we will send you one bulb each of 12 fine varieties, all types, but not labeled, for \$1.50. As many lots as you want for this price. Prepaid. Can't say how long this offer will last, so don't wait too long before sending in your order.

12 for \$1.50; 50 for \$5.25; 100 for \$10.50
All Prepaid

Baby

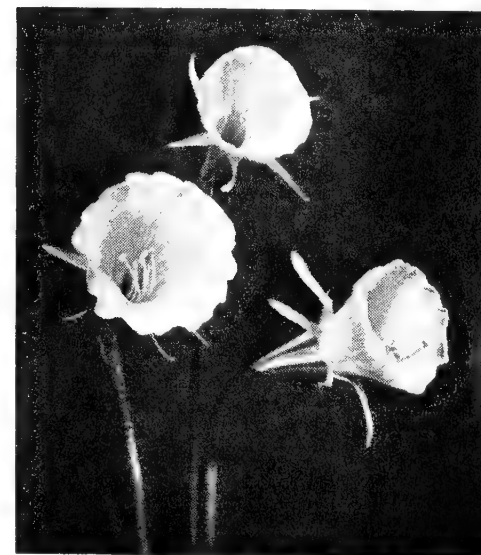
ROCKERY
NARCISSUS



See ROCK GARDEN NARCISSUS Page 1

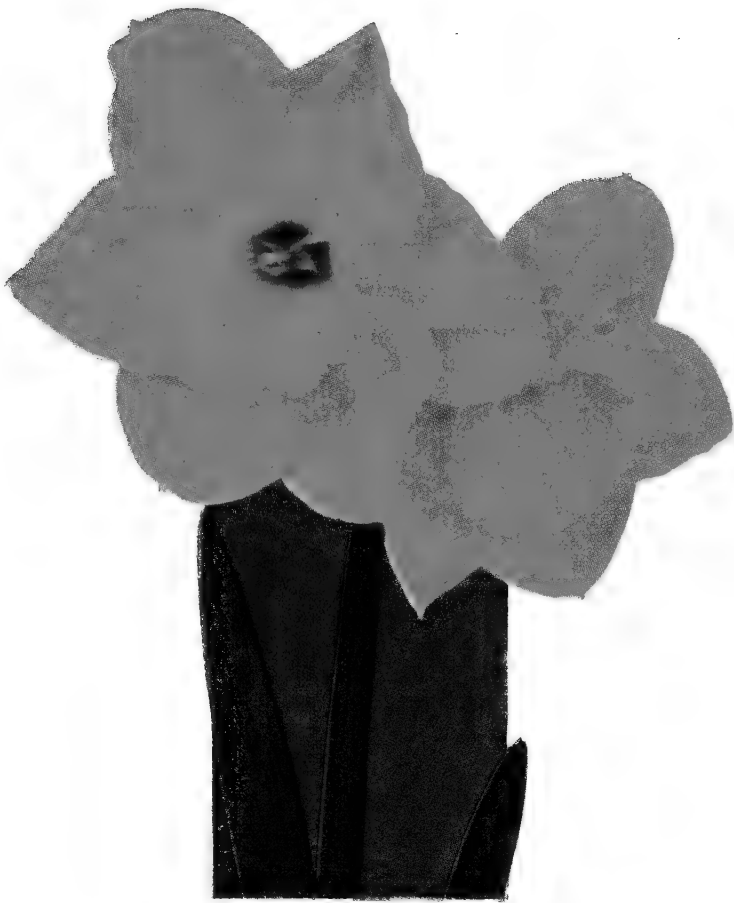
DIME STORE BULBS

We have often heard growers remark that the dime store competition worked a hardship on catalog dealers and growers. We do not take that stand. The amateur gardener just starting out may purchase these cheaper grades of bulbs. Usually the varieties are older sorts with a few of the more popular kinds. They produce nice flowers in the spring that compare favorably with the amount of cash paid out. When their flowers bloom, they begin noticing their neighbor's flowers and comparing them with their own. Soon they are writing to catalog dealers and ordering better stock from specialists who grow and sell improved varieties. The amateurs then become true flower fans and their gardens are the show places in their communities; after that, the best is none too good for them.



BULBOCODIUM CONSPICUUS

SPECIES AND WILD FORMS (Rock Garden Varieties)



GOLDEN PERFECTION
(Page 10)

In collections we reserve the right to substitute varieties of equal or higher value if any of the varieties ordered are sold out.

BULBOCODIUM CONSPICUUS. The yellow Hoop Petticoat, flowers rich golden yellow, trumpet hoop-petticoat form with tiny reflexed petals. Height 6 inches. It blooms from the end of February to early March, and prefers a sandy peat soil with a fair amount of moisture while in growth, but not in summer, no manure should be given. These little daffodils are most charming for rock garden, edgings, or small beds. Each 10c; doz. \$1.00.

CANALICULATUS (Tazetta). M. A dainty little Polyanthus narcissus for the rockery, height 6 inches. Has narrow erect bluish green foliage and bears heads of three to five flowers with white perianth and globular golden cup; small and very sweetly scented. Each 10c; doz. \$1.00.

FEBRUARY GOLD (Cyclamineus Hybrid). E. Perianth golden yellow, trumpet fringed orange. The trumpet is straight and tube-like and the perianth reflexed as in a cyclamen. Very early flowering. Each 15c; doz. \$1.50.

TRIANDRUS ALBUS (Angel Tears)—The dainty little "Angel's Tears" daffodils were found by the late Mr. Peter Barr on the mountains of Spain and Portugal, growing in very hard, firm, fine gritty soil, sometimes in the narrowest fissures of granite slatestone rocks. They make beautiful pot-plants and do very well in the rock garden where they form a picture of grace and beauty with their white flowers, and drooping habit. They prefer shade, a gritty soil and a well-drained position. No manure should be given. Each 20c; doz. \$2.00.



GERANIUM (Tazetta) (Page 11)



FEBRUARY GOLD

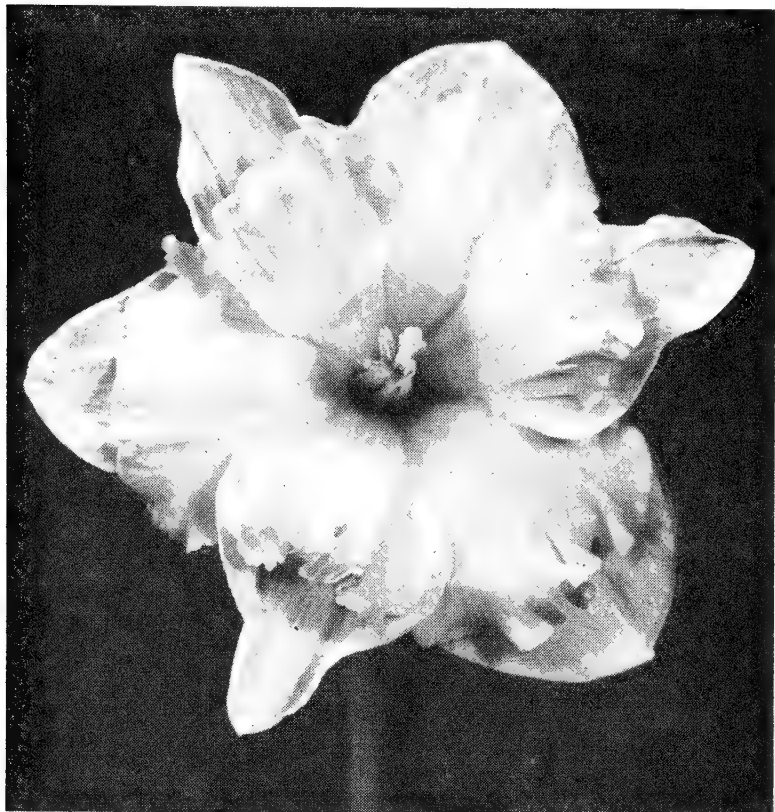
"... the parcel arrived. I could scarcely wait—in fact, I opened it at school, like a kid with a Christmas sock. At home I carefully removed each bag, opened it, and loved every bulb. And that sawdust (cedar) some of them were packed in! To you that is all it is—packing. To me it was a breath from home, whose fragrance carried a myriad of memories. Such little things mean so much to a person abroad. Everything is in perfect condition. I can scarcely wait for the week end to get up to the farm and tuck them into the ground... Wishing you every success in a business which must spread cheer to many (think of that when you have discouragements)..."

Fae McKeown, Chiriqui, Panama

MISCELLANEOUS NARCISSI

In this class we have some outstanding novelties that are so striking and different that they warrant a class of their own.

DR. deMOL. The forerunner of a new race of daffodils in which the trumpet splits and lies back on the perianth, rather an open-faced flower. Color of segments is golden yellow with lighter petals. Rather short grower but flowers profusely. The daddy of Hill Billy and Hill Billy's Sister. Not as good as either of his offspring but a real novelty. **Each \$1.00; 3 for \$2.75.** Stock limited.



HILL BILLY



HILL BILLY. A break in daffodil types in which the trumpet has split into six segments and lies back upon the perianth. Individual blooms vary, but all are interesting and different from any other daffodil. The perianth is white and the clear yellow inner petals make it a striking, orchid-like flower. Stems are strong and hold the blooms erect at all times. Shown at the East Bremerton, Wash., Flower Show in 1949 for the first time, it was an instant favorite. **Price \$2.00 each.** Stock limited.

HILL BILLY'S SISTER. Same type as above, except it is earlier and taller. The flower is a uniform yellow, with perhaps a little more frills and ruffles (as sisters should have). At the Tacoma, Wash., 1949 Daffodil Show it was the most talked about variety there . . . Hill Billy's Sister stole the show. This also is a new introduction. If you like the unusual you should like Sis. **Each \$2.00.** Stock limited.

REVISED SYSTEM for the CLASSIFICATION of DAFFODILS

DIVISION I

TRUMPET NARCISSI. Distinguishing characters: One flower to a stem; Trumpet or Cup as long as or longer than the Perianth segments.

- Perianth colored; Trumpet colored, not paler than the Perianth.
- Perianth white; Cup colored.
- Perianth white; Trumpet white, not paler than the Perianth.
- Any color combination not falling into the other groups.

DIVISION II

LARGE-CUPPED NARCISSI. Distinguishing characters: One flower to a stem; Cup more than one-third but less than equal to the length of the Perianth segment.

- Perianth colored; Cup colored, not paler than the Perianth.
- Perianth white; Cup colored.
- Perianth white; Cup white, not paler than the Perianth.
- Any color combination not falling into the other groups.

DIVISION III

SMALL-CUPPED NARCISSI. Distinguishing characters: One flower to a stem; Cup not more than one-third the length of the Perianth segments.

- Perianth colored; Cup colored, not paler than Perianth.
- Perianth white; Cup colored.
- Perianth white; Cup white, not paler than Perianth.
- Any color combination not falling into the other groups.

DIVISION IV

DOUBLE NARCISSI. Distinguishing characters. Double flowers.

DIVISION V

TRIANDRUS NARCISSI. Distinguishing characters: Characteristics of *Narcissus triandrus* clearly evident.

- Cup not less than two-thirds the length of the Perianth segments.

- Cup less than two-thirds the length of the Perianth segments.

DIVISION VI

CYCLAMINEUS NARCISSI. Distinguishing characters: Characteristics of *Narcissus cyclamineus* must be clearly evident.

- Cup not less than two-thirds the length of the Perianth segments.
- Cup less than two-thirds the length of the Perianth segments.

DIVISION VII

JONQUILLA NARCISSI. Distinguishing characters: Characteristics of any of the *Narcissi* Jonquilla group clearly evident.

- Cup not less than two-thirds the length of the Perianth segments.
- Cup less than two-thirds the length of the Perianth segments.

DIVISION VIII

TAZETTA NARCISSI. Distinguishing characters: Characteristics of any of the *Narcissus* Tazetta group clearly evident.

DIVISION IX

POETICUS NARCISSI. Distinguishing characters: Characteristics of any of the *Narcissus poeticus* group without admixture of any others

DIVISION X

SPECIES AND WILD FORMS AND HYBRIDS. All species and wild or reputedly wild, forms and hybrids.

DIVISION XI

MISCELLANEOUS NARCISSI. All narcissi not falling into any of the foregoing Divisions.

WHY NO FLOWERS ON DAFFODILS?

If your daffodil bulbs throw up many leaves but no flowers, after having bloomed in other years, you are troubled with Narcissi Bulb Fly. This pest seems to be universal wherever daffodils are grown. What really causes the damage is the larva of the adult fly. After the egg is deposited at the ground level of the plant by the adult fly during May or early June, the young grub hatches and starts down through the ground close to the plant looking for its first meal. When the grub finds the bulb, it works its way into it, usually through the base near the roots. There the grub remains and grows through the winter, living on the heart of the bulb, emerging in the spring to go into a pupa stage before hatching into the adult fly, to lay more eggs and start the cycle over again.

About all the average gardener can do is to dig these suspicious looking plants and examine them. If they are soft or a hole can be found in the base, they should be destroyed. **DEEP PLANTING, 10 to 12 INCHES**, helps to discourage these pests. The poor (?) little grubs starve to death before they get down to the bulbs for lunch. There is no spray yet available to combat them.

All bulbs grown in Washington and Oregon are subjected to rigid inspection and thorough fumigation, so you may order with complete confidence. However, bulbs secured from other sources may be infested; or old established neighboring plantings may harbor the fly which then may travel to your new bulbs.

DEEP AND CAREFUL planting of daffodils and narcissi will result in years of beauty.



PLEASE, OH PLEASE, sign your name the same each time you order or write to us. Don't be Alice Jones one time and Mrs. William Jones the next, as William Jones is clear at the other end of the Joneses from Alice, and I have to look through the whole file, or your name isn't found at all and your order is improperly filed under another name. Alice Jones, A. W. Jones, Bill Jones, and Mrs. William Jones, could very easily be the same person, or from the same household. It will save me hours of time when it is at a premium, and maybe errors in looking up your order in case you ever refer to it, if you will please send all orders and correspondence under one name. We do thank you.

"The box of lovely bulbs came yesterday and I want to thank you for the generous way you filled the order . . . I had had a man get a bed ready for my new treasures so when Posty left the box at 11 A.M. I went to work, and at 5 P.M. all were safely resting on a bed of bone meal and Milorganite, covered with good earth and peat moss, then with good garden loam to complete the work. I can hardly wait for March and April to come. These are in the open, but the dainty Angels Tears are sheltered and shaded, in sandy soil."
Carrie B. Hill, Vashon, Wash. (an 88 year young gardener)

NATURALIZING BULBS

By naturalizing, we mean planting bulbs in sizeable groups to give the appearance of spontaneous growth. In places where they can grow with less attention than they would get in the garden, they appear to care for themselves. Greater quantities of bulbs are used, and we try to plant them in drifts to give a natural appear-

ance. Many types of sturdy bulbs, such as Daffodils, Crocus, Muscari, Scilla, and Chionodoxa are suitable for this type of planting. They bloom faithfully each spring, ripen their foliage and disappear for most of the year. A welcome top-dressing of bone meal, just after flowering, is a great help in keeping the flowers coming year after year.



You, too, can have a planting such as this . . . see our **SPECIAL DAFFODIL COLLECTION** (Page 13)

Outstanding PARRC

PARROT TULIPS

This class of tulips has immense flowers. The petals are feathered, twisted and lacinated; green shades show among the brilliant colors. Their exotic form and large size appeal to most gardeners, although a few people do not care for them.

BLUE PARROT. 24". Bluish- heliotrope flower of enormous size on strong stems. A fine novelty and a remarkably beautiful variety. Sport of Darwin tulip Bleu Aimable. **3 for 45c; 12 for \$1.50.**

DISCOVERY. 22". Lilac rose; only recently introduced and seldom seen in catalogs. A true sport of the Darwin Princess Elizabeth. **3 for 45c; 12 for \$1.60.**

FANTASY. 22". Soft rose pink which sported from the Darwin Clara Butt. It has been available for several years and is very popular. The enormous flowers grow on strong, erect stems. Apple green markings on the outside make it one of the most unique tulips. Now very reasonable in price. **3 for 40c; doz. \$1.35.**

FIREBIRD. A true scarlet-red form of the popular Fantasy, with all the good habits of this variety; intense vermilion-red with green markings on outside; elegantly poised on an excellent stem. Being introduced at a much cheaper price than Fantasy when new. **3 for 55c; doz. \$1.75.**

ORANGE FAVORITE. 23". Glistening, deep orange, shaded rose. Inside deep orange-scarlet with yellow base. Great size and brilliant coloring. Some can detect a sweet scent to this one. **3 for 45c; 12 for \$1.50.**

PARROT PIERSON. A deep glossy maroon color; early blooming variety on extra long stems. A sport of the Darwin Tulip Allard Pierson; not as heavily frilled and lacinated as some parrots, but a fine early variety. **3 for 45c; doz. \$1.60.**

RED CHAMPION. 24". Fiery rose-red. A sport of Bartigon. The flat flowers grow to a large size on strong, rigid stems. Petals are heavily lacinated. **3 for 45c; 12 for \$1.60.**



In collections we reserve the right to substitute varieties of equal or higher value if any of the varieties ordered are sold out.

PARROT TULIP
THERESE

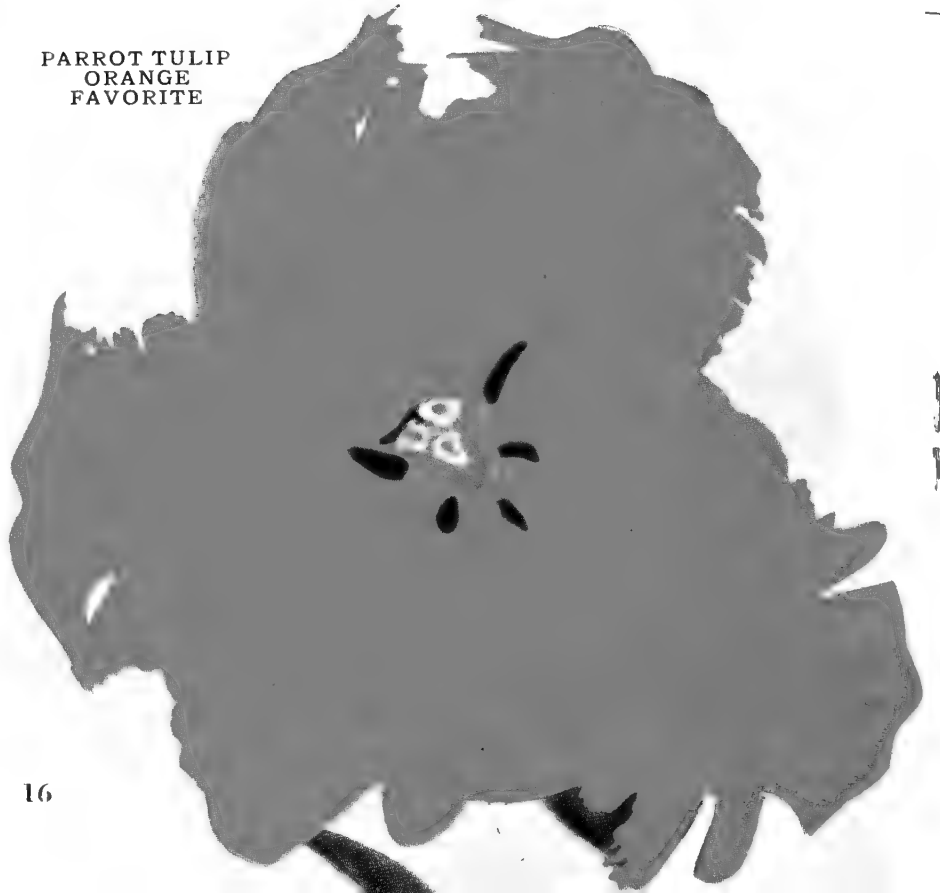
Special Collection of Parrot Tulips

1 each of any 8 varieties, properly labeled. . . \$1.20
3 each of any 8 varieties, properly labeled. . . \$3.60



PARROT
TULIP
FANTASY

PARROT TULIP
ORANGE
FAVORITE



Clerk
Check

Quantity

PLEASE WRITE ONE ITEM ON EACH LINE

Washington Customers only, please add 3% sales tax

Price

T and PEONY TULIPS

SUNSHINE. 14". Clear golden yellow. The petals are deeply lacinated and cut, which produces a charming effect. Sported from the Cottage tulip Bouton d'Or. The stems are not strong, but it is lovely for cutting. **3 for 60c; 12 for \$2.00.**

THERESE. 22". Scarlet. Flowers often attain a diameter of 8". A sport of Darwin tulip Farncombe Sanders. Wide open flowers with white center, tinted blue. Most interesting. **3 for 45c; 12 for \$1.60.**

VIOLET QUEEN. Soft lavender, distinct feathery appearance, white center. Tall and vigorous and the last parrot tulip to bloom for us. **3 for 45c; 12 for \$1.50.**

PEONY FLOWERED TULIPS

(LATE DOUBLE TYPE)

If you like big tulips, these should satisfy you. Do not confuse these with the double earlies, there is no comparison. The peony-flowered tulips' blooming period is approximately May 1st to 20th, about the same time as the single Darwins. Some shade during the hottest part of the day is advisable and a rich soil encourages size and texture. Stems are strong and stiff, averaging 20 inches. We have tried out a number of these and have settled on the varieties listed as the most dependable. After additional trials other colors will be added.

BLUE FLAG (Bleu Celeste). Gigantic flowers of pleasing shade of warm mauve-purple; good stems. **3 for 45c; doz. \$1.50.**

EROS. Pleasing shade of old rose, fully double blossoms, 6 inches in diameter. **3 for 40c; doz. \$1.35.**

LIVINGSTONE. A large double flower of a brilliant cherry red, yellow center; strong, stiff stem. **3 for 45c; doz. \$1.50.**

MOUNT TACOMA. Pure white, large double flowers, sometimes marked greenish on outer petals; sturdy stem. **3 for 45c; doz. \$1.50.**

ORANGE SUPERB. A fine scarlet-orange, full double tulip, slightly lighter on edge; strong, stiff stem. **3 for 45c; doz. \$1.50.**

UNCLE TOM. Rich mahogany-red. Outstanding. **3 for 55c; doz. \$1.80.**



PEONY FLOWERED TULIPS

Peony Flowered Tulip Collection

1 bulb each, 6 varieties (not labeled), \$.90

3 bulbs each, 6 varieties (labeled) . . . \$2.65

"I want to tell you that I received blue ribbons on each of my tulips I got of you last year . . . They were the peony-flowered, late double type . . . Have been so proud because there were thousands of tulips in our Flower Festival."

Mrs. Al Gesdahl, Bellingham, Wash.

TULIP BLUE PARROT

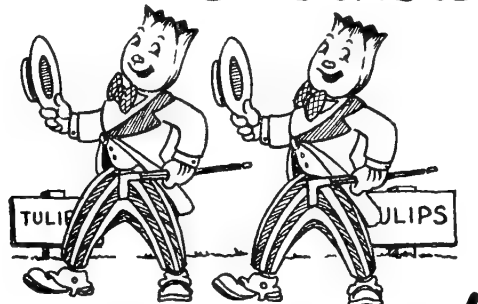


PARROT TULIP
RED CHAMPION



TULIPS FOR THE HARDY BORDER

GOOD PERFORMERS



IN YOUR GARDEN!

SINGLE EARLY TULIPS

An old favorite race of tulips in great demand. While these are not as long stemmed as other types, they are especially desirable to lengthen the tulip blooming season as they flower about two weeks before the Cottage and Darwin types. They start coming into bloom with the daffodils, or soon after. They are also fine for early forcing.

All Single Early Tulips priced at 3 for 40c (one variety); 12 for \$1.35.

DE WET (Fireglow). A lovely warm orange, flushed and stippled brighter orange. Flowers sweet-scented; good forcer.

KEIZERSKROON (Grand Duc). 15". Bright carmine-scarlet deeply edged golden yellow. Very early to bloom and a large flower of striking color. This is a very popular tulip and we are fortunate to have an excellent stock of this variety again.

IBIS. A very fine deep rose, edged silvery rose. A favorite pink for forcing.

PELICAN. A large, pure white of great substance.

SINGLE EARLY TULIP COLLECTION

- 1 bulb each, 4 varieties (not labeled), . . . \$.45
- 3 bulbs each, 4 varieties, properly labeled, \$1.45
- 6 bulbs, each, 4 varieties, properly labeled, \$2.70

BREEDER TULIPS

Breeders are tall, their colors are dignified, mostly purples, browns, bronzes, reddish-orange shades and the like. These are only outward appearances, for inside their fragrant cups are an unsuspected sparkle, gloss and glitter. Many of them are very long lasting in the garden and offer unusual possibilities for cutting.

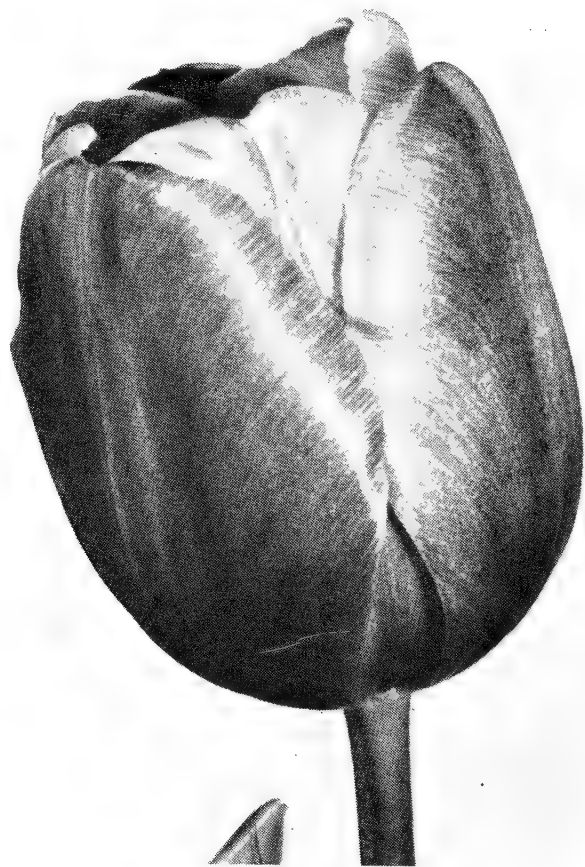
ADMIRAL TROMP. 30". A bright orange-red, shaded salmon-orange, a lovely color. Large bloom of splendid substance; a typical breeder color and form.

CHERBOURG. Undoubtedly one of the finest breeder tulips. A deep tone of golden yellow with a suffusion of terra-cotta, the deeper tone of yellow growing stronger toward the edges of the petals.

JESSIE. Clear, rather deep coffee brown flushed bronze, yellow base. A glorified tone of the well known Louis XIV. A magnificent large flower held on a tall stiff stem; sweet scented.

GEORGE GRAPPE. A fine novelty of a soft mauve throughout with a clear blue base. A large flower on long, stiff stem.

TANTALUS. 30". A recent introduction of great merit, producing cup-shaped flowers of pale cadmium yellow, shaded dull violet. Base dark yellow, anthers black. An outstanding exhibition tulip. All above Breeder tulips priced at 3 (any one variety) for 40c; 12 for \$1.40.



CHERBOURG (Breeder)



KEIZERSKROON (Single Early)

TULIP FIRE BLIGHT

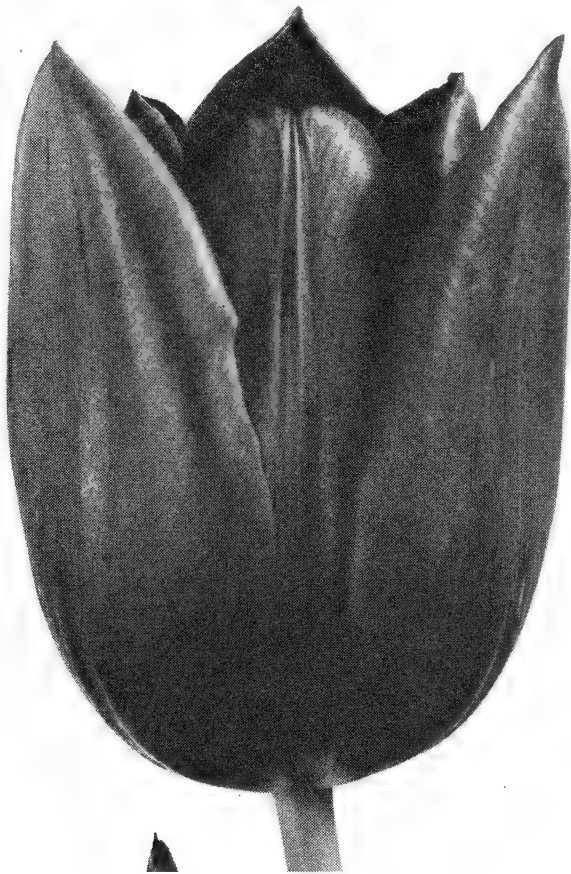
Tulips are very susceptible to a fungus disease called Botrytis or Fire Blight. If bulbs are planted where no tulips have grown for three or more years, there is little cause to worry. However, if the tulip foliage is damaged at any time, you are inviting this disease. If the kids and dogs take a short cut through your tulip bed, or the calf gets loose and runs through them, or even raking, hoeing, hail or anything else damages the leaves it is apt to start this "fire" blight. A little precaution will pay big dividends in choice blooms.

MAYFLOWERING TULIPS (Darwin and Cottage)

The Darwin and Cottage tulips have been cross-hybridized so much in recent years that it is no longer possible to distinguish between the two types. We are, therefore, listing the Darwin and Cottage tulips under one heading of Mayflowering. We believe it will be easier and less confusing for you to choose the varieties you prefer. The Breeders, as they run mostly to bronze shades, are being listed separately.

The May garden is a dull place without tulips. Their varied bloom of many shapes and colors work in exceptionally well with other border plantings. When planting tulips in clumps through the border, plant them nine inches deep and they can stay put for several years. The blooms will be larger and bloom over a longer period of years without having to be disturbed. The warmer the climate, the deeper they should be planted.

All Mayflowering tulips priced at 3 for 40c (one variety); 12 for \$1.35.



HENRY CORREVON (May Flowering)

ADVANCE. (C). 32". So large and tall it is hard to recognize this one as a Cottage tulip. One of the earliest in its class, the color is a striking glossy scarlet inside, with a softer rosy scarlet outside and overlaid with a dusky, bluish sheen. A flower hard to describe, but very popular.

ARISTOCRAT. 31". This is a magnificent garden tulip of recent introduction, robust habit and extremely strong constitution. Large clear rose flowers of great size and splendid carriage; truly an aristocrat among giants.

BARBARA PRATT. 32". Radiant cherry pink with an extraordinary effect of golden light shining through it. Of recent origin and a very popular variety.

BELLE JAUNE. 28". One of the finest of the deep yellow tulips; the egg-shaped blossoms are perfect in form. Outside petals are deep golden yellow, inside sparkling yellow of a lighter tone; pure yellow anthers. Stems strong and tall. You'll like it.

BEVERLY. 28". (Lily flowering.) Flame orange flower on strong stems. Excellent for cutting; very popular in our planting and highly recommended.

BLANCA. 22". Ivory white, medium large flower, excellent for bedding or pot culture as they do not grow too tall. Can be planted in front of taller varieties.

CHARLES NEEDHAM. 30". Possibly one of the best brilliant red Darwin tulips yet introduced. The large well-formed flowers are carried on strong stems. Fine for exhibition.

COLUMBINE. Here is a tulip that is unique; bright yellow with a center line of scarlet dividing each petal; no other red featherings.

DEMETER. 28". Deep violet-blue. Large flower that shows up well in the garden if you like its color. Its earliness is welcome, being much earlier than most Darwins.

ECLIPSE. Brilliant deep crimson, with blue base. Tall, stiff stems, large and most attractive flower; one of the finest of the deep red tulips. Do not confuse this with the orange yellow Cottage tulip of the same name.

FULL MOON. Light yellow; immense round globes on strong stems.

GOLDEN HARVEST. 28". This outstanding new tulip is a lovely shade of soft yellow with ivory anthers. The cup-shaped bloom has rather long, rounded petals. Stems are long and stiff, and flower exceptionally long lasting in the garden.

HENRY CORREVON. (C). 26". Bright red, large pure white center, ivory stamens. A very beautiful introduction.

INSURPASSABLE. 28". The color of this one is orchid lavender with white center and purplish pollen. Its unusual size, plus great substance and beauty make it very desirable for exhibition purposes. It is, also, a good forcer.

JUBILEE. Rich pansy violet with purple shade. Large, tall, with strong stem.

MARCELLINA. 26". One of the nicest of the lily flowering. Graceful, long, deep rose pink flower which is lighter at the margin; white base with faint blue halo. Fine for bouquets or garden.

MARJORIE BOWEN. A magnificent novelty, color when opening is a lovely combination of salmon and orange shades, which become pale rose when flower develops. Very beautiful.

MARSHAL HAIG. 32". Bright orange-red, with wide base of rich yellow. A giant flower that stands out above most others in the field and makes a fine splash of color.

MONGOLIA. (C). Enormous oval shaped flowers of a fine shade of canary yellow that are held on strong, stiff stems. This is decidedly one of the largest tulips in cultivation. Really an outstanding novelty.

MOUNT EREBUS. 30". Very fine snow white. Extra fine texture of bloom and good all purpose variety.

MRS. JOHN T. SCHEEPERS. (C). 30". Another giant among tulips. Color pure yellow with yellow anthers. Flowers are oval shaped on sturdy stems. Recommended.

NIPHETOS. (D). 29". This is a magnificent introduction with lovely flowers of soft creamy yellow, yellow anthers and base. Long petals of good substance and durability.

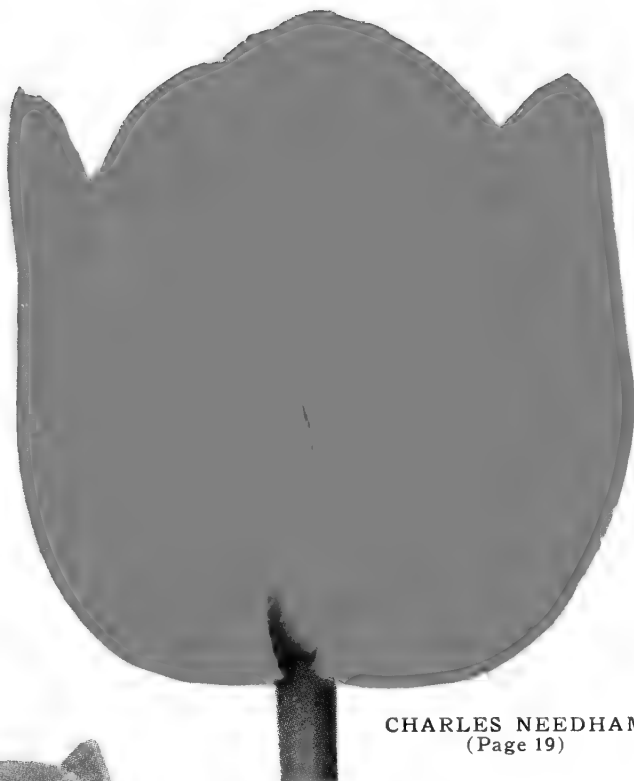
OSSI OSWALDA. Cream color, with rose pink picotee edges, and after a few days the entire flower becomes suffused with the rose pink. Very effective planted in groups in front of dark evergreens. Black pollen; medium height.

PICOTEE. 20". Opens white, but the beautifully reflexed pointed petals soon become margined with bright pink. Exceptionally dainty.

PRIDE OF ZWANENBERG. (D). 28". Very much admired here at Floravista. Salmon rose in color, with a narrow edge of blush rose towards margin of petals. Large flowers on very strong stems.

"Last year you sent us *Praestans Fusilier* as a pot-latch. They were the most beautiful flowers we had among our spring bloom and they attracted a great deal of attention. The little corner was simply a blaze of red and they lasted so long. Thank you for making us acquainted with them. We tried the *BABY GLADS* last year and with a heavy mulch they came through the winter fine. The *Nymph* was as beautiful as any orchid . . . We owe so much of our spring joy to you. Thanks."

Mrs. Chas. Fuchs,
Mansfield, Ohio



CHARLES NEEDHAM
(Page 19)



ECLIPSE (Page 19)

INSURPASSABLE
(Page 19)



May Flowering Tulips (Continued)

PRINCESS MARY. 28". Beautiful rose pink, stately habit and fine form. Good size and considered one of the loveliest tulips in cultivation.

QUEEN OF THE NIGHT. 28" Deep velvet maroon. Larger than any we have seen in the so-called "black" tulips. Even foliage has a dark cast overall. It has replaced *Le Tulipe Noire* in our garden. An outstanding variety and one you will be well pleased with if you like "black" ones.

SCARLET LEADER. (D). Its name expresses its appearance perfectly. Color is a beautiful fiery scarlet with black center. Has great substance with tall, strong and stiff stems. A true leader.

SCOTCH LASSIE. (D). Purest lilac-lavender with a darker shade inside; base dark blue. Flowers are very large and slightly reflexing; one of the best in this color.

THE PEACH. Egg-shaped flower in a fine rose-pink color; dark pollen.

WHITE ENSIGN. White lily-flowering. Nice.

All Mayflowering Tulips Priced at 3 for 40c (one variety);
12 for \$1.35



←
PRAESTANS
FUSILIER
(Page 22)



MARCELLINA
(Page 19)



ARISTOCRAT
(Page 19)



MONGOLIA
(Page 19)



*"I need pants but
I'd rather have bulbs.
I'm nuts about agates,
too. I like youse
guys.*

Mrs. T. M., Wash.

EXQUISITE BOTANICAL TULIPS

Almost every variety of these wild species is outstanding, beautiful, and charming. The varieties differ in height, color, and form. Tulip species are especially recommended for the rockery, where the little groups of flowers are seen to advantage.

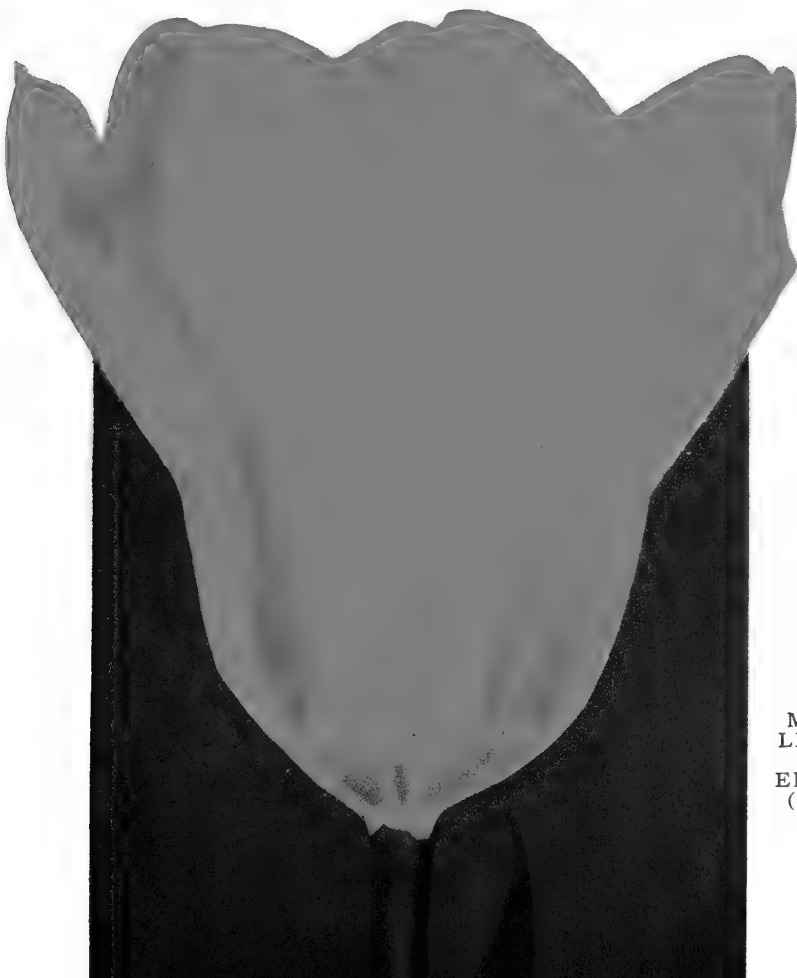
CLUSIANA (The Lady Tulip). A charming little, slender tulip, with outer petals cherry red and inner petals white; violet base. Plant in a warm and sheltered position. Early flowering. Height 8 to 10 inches. **3 for 50c; 12 for \$1.50.**

KAUFMANNIANA (Species) (Waterlily Tulip). Outstanding species variety blooming very early; flowers are good size, creamy white petals with carmine-red on the reverse; center golden yellow. A beautiful variety which grows only 6 to 8 inches high, making it ideal for rock garden. **3 for 35c; 12 for \$1.20.**

KAUFMANNIANA THE FIRST. The earliest Kaufmanniana to bloom; color deep cream-yellow passing to white, exterior of flower scarlet. **3 for 60c; doz. \$2.00.**



QUEEN OF THE NIGHT
(Page 20)



MADAM
LEFEBER
RED
EMPEROR
(Page 22)



KAUFMANNIANA, THE FIRST

BOTANICAL TULIPS—Continued

KAUMANNIANA PRIMROSE. Soft primrose color, dark yellow base. **3 for 35c; doz. \$1.35.**

KAUFMANNIANA SCARLET ELEGANCE. Uniform brilliant scarlet; one of the earliest to bloom. Fine. **3 for 60c; doz. \$2.00.**

KAUFMANNIANA VIVALDI. A wonderful new variety, growing about 15" high, and producing large flowers of carmine with yellow edge; the green foliage is beautifully flecked brown. **3 for 60c; doz. \$2.00.**

MADAME LEFEBER (Red Emperor) (Fosteriana Type). 18". One of the most striking tulips under cultivation today. It produces colossal blooms on erect, strong stems. The color is fascinating and is of the loveliest shade of glowing scarlet with yellowish base. The petals are long and in the full sun open like a huge fiery poppy. Blooms very early for us, the very first large tulip in our garden. Would perhaps need some protection in very cold climates because of its earliness. We can certainly recommend this tulip if you want a bright red spot that "jumps right out at you" when you need red accents in the garden. **3 for 35c; 12 for \$1.25.**

PRINCEPS (Fosteriana Type). Huge flowers of glowing scarlet, with blue base edged yellow. The flower is of the same vivid color as Madame Lefebber, but on a shorter, stockier stem. It's really a striking tulip. Princeps blooms about two weeks later than Madame Lefebber, and ideal for rockery. **3 for 40c; doz. \$1.35.**

PRAESTANS FUSILIER. A cluster type tulip for the rockery; a flaming orange red color, 3 to 5 flowers per stem; dwarf growing. Very early, the earliest red tulip, blooming for us with the early daffodils. **3 for 35c; doz. \$1.30.**



SPECIES
(Botanical)
TULIPS

ARE IDEAL FOR THE ROCKERY OR LOW BORDER

TULIPS IN THE SOUTH

Coming into greater popularity each season, tulips are really going places in the South. A few general rules must be observed for best results, and a little care in planting will pay big dividends in beauty.

Planting time is from Oct. 15 through November. Earlier plantings may become more susceptible to the botrytis fungus or fire blight. Keep all petals from falling on the leaves after the flowers fade. Clean cultivation and good drainage is necessary, but be sure not to injure the growing plants with garden tools. Damage to foliage invites fire blight.

Plant bulbs 12 inches deep if you plan to leave them undisturbed for a period of years. If they must be moved every year or two, 8 or 9 inches is deep enough. Plan your plantings, then plant accordingly.

With these simple rules, the average gardener need not be without these bright and cheerful flowers with their wide range of color and type. They are a most welcome addition to every garden. After tulip foliage has matured, shallow rooted annuals can be planted right over the bulbs, eliminating blank spots in the garden.

* * *

If advised to do so, we will hold your tulip order in cold storage until the time you would like to have them delivered. Early orders are appreciated and we will hold them at no extra cost to you.

TULIP PLANTING STOCK

Because of the labor shortage last season we offered tulip planting stock for sale in variety. These sold out early and we were forced to refund on a great many orders. This year we can offer tulip planting stock in mixed colors only.

50c per pint; 80c per quart; \$3.00 per gallon

THIS OFFER CLOSES OCTOBER 1ST

Order early and you won't be disappointed as many were last season.

TULIPS

Rainbow Mixture

Darwins • Cottage Breeder Types

All May flowering. These bulbs will be selected from our stocks of named varieties with as wide a color range as possible. Above the average in quality—this collection will enable you to have enough for a large bed, showy border or for cutting. Always a popular item and one of our best sellers.

12 bulbs \$1.25 25 bulbs \$2.25
50 bulbs \$4.25 100 bulbs \$8.00

All Postpaid



GORGEOUS RAINBOW MIXED TULIPS

HARBINGERS OF SPRING

CROCUS, Spring Flowering

These early cups of sunshine and brightness are among the loveliest of all spring flowering plants. Generally the first flower to bloom in very early spring (even before winter has left us); they like a rather sunny place in the garden to make the flowers open up fully and disclose their lovely hearts of pure gold.

BARON VON BRUNOW. Large flowering, deep purple. Very fine.

EARLY PERFECTION. Dark lilac, very early.

EDINA. Mauve stripes on white ground and white margin.

GOLDEN YELLOW. A great favorite. The only yellow among Dutch crocus although sometimes listed under various names. Large flowers and first to bloom in this class.

KATHLEEN PARLOW. Large, globular, pure white flowers with golden anthers. Fine lasting qualities. Recommended.

MIKADO. Light mauve, striped purple.

NIGGERBOY. Very dark purple, extra large.

QUEEN OF BLUES. Pure light lilac blue. A charming flower of extra large size and the best of the lighter blues.

REMEMBRANCE. Lovely lilac-blue of fine form and pleasing shade. Considered by many as the best crocus under cultivation.

All above varieties, Blooming sized bulbs, priced at 12 for 45c; 25 for 85c; 100 for \$3.00.

CROCUS, MIXED COLORS. We hand mix the Crocus and will give you a good range of colors. If you have any preference as to colors, please advise, and we will try to give you the colors you like as long as they are available. 12 for 40c; 25 for 75c; 100 for \$2.75.

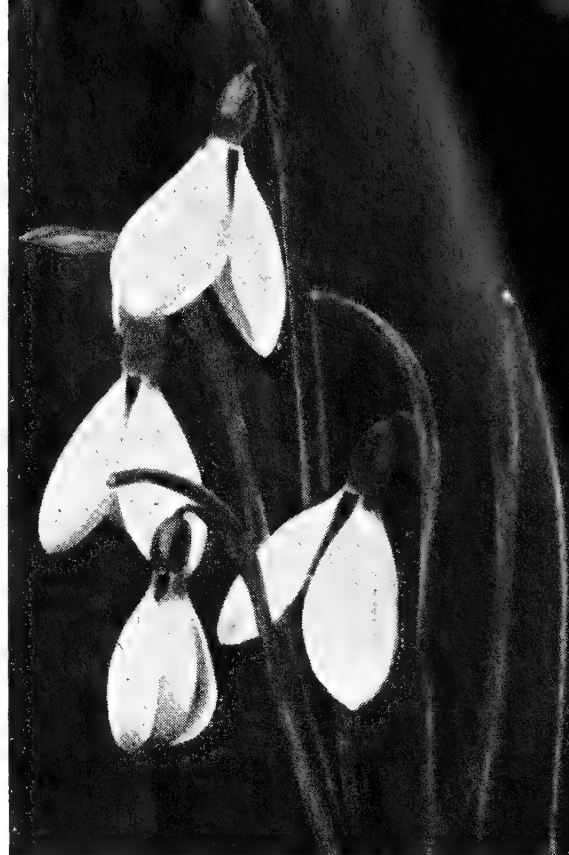


WHITE MUSCARI (Botryoides Alba) (Page 24)

"The crocus you sent were simply immense in size, some of them are already up, and so are some of the tulips (Jan. 19). The Iris (Dutch) that I planted in November have buds on them, one bloomed yesterday, is fully open today. You always send such beautiful bulbs that I feel I get my money's worth from them even before they are planted..."

Mrs. R. H. Steude,
Houston, Texas

GALANTHUS
(Snowdrops)



GALANTHUS (Snowdrops)

In February the country folk in Holland say the "Foolish Maidens" are up; a nicer old English expression was the "Fair Maids of February" are back again; the French have "Perce-Neige" for this earliest of Spring heralds. But under any name our little Snowdrops are always such a welcome sight in very early spring (really before spring begins). Their persistency is noteworthy; they thrive in cold climates; they like to be left undisturbed for years, but don't mind being moved, either; neglected shady places are their paradise when being naturalized.

NIVALIS (Single Snowdrops). Dainty little white flowers on stems 4 to 6 inches long. The three petaled flower has a dainty little white cup, tipped with green. Ideal for rockery, edge of border, around pool, or anywhere low growing, early blooming flowers will be welcomed. 12 for 75c; 25 for \$1.40; 100 for \$5.25.

NIVALIS FLORE PLENO (Double Snowdrops). The difference between these and the single snowdrops is that the cups of the doubles are filled with small soft petals; flower a little later than the singles. 12 for 85c; 25 for \$1.60; 100 for \$5.95.

GROW CROCUS INDOORS

Crocus can be grown indoors as well and as easy as daffodils or hyacinths. They can be potted in soil in the regular way, stored in a cool, dark cellar or closet until about Jan. 25th, then brought into a steady temperature of 50 or 55 degrees, and they should be in bloom in a few days.

A much simpler and less messy way is to store the crocus bulbs in a warm dry place until the middle of November, then place 6 or 8 bulbs in a shallow, flat bottom glass or china dish. Put in a small amount of water, perhaps $\frac{1}{8}$ inch, and maintain that much moisture at all times; no more, no less. Put dish or pan in a dark cupboard to root. After the buds begin to show bring into living room or kitchen and watch them burst into bloom. Purples, white, and striped are best for this purpose, yellows do not do well.

Try some for your apartment, you will be pleasantly surprised at your success.

WARNING. Crocus do not like the hot dry summers of inland California valleys and sections having similar climatic conditions. Be sure they will grow in your climate before ordering. We do not want you to be disappointed in any bulbs we send you.



ERANTHIS
HYEMALIS
(Winter
Aconite)



ERANTHIS (Winter Aconite)

HYEMALIS. Cheerful little golden flowers that bloom before the crocus. The very first bulbous plant to bloom in our garden. Their little golden cups, with frilled green collars, grow on 3-inch stems. Have tried them only one year so not sure how hardy they are. As our stock came to us from Holland, we think they can take some very cold weather and still hold up their pretty little golden heads. The very tiny bulbs should be planted only two inches deep. **12 for 50c; 100 for \$3.50.**

MUSCARI (Grape Hyacinths)

A charming and exceedingly popular spring flower, requiring no special culture or soil. Perfectly hardy and increasing rapidly by offsets. They look beautiful naturalized in the rock garden, while as edgings and massed in the flower border they produce a lovely effect and continue a long time in bloom.

ARMENIACUM (Early Giant). Flowers deep cobalt-blue with distinct white rim. Many spikes; taller and larger than Heavenly Blue. Excellent for massing in border or rockery; fine for forcing. **12 for 60c; 25 for \$1.10; 100 for \$4.20.**

BOTRYOIDES ALBA. Very pretty with its spikes of pure white bells, looking not unlike a wedge of seed pearls. Very pretty planted with Heavenly Blue. Height 6 in. Plant 3 to 4 inches deep. **Doz. 65c; 25 for \$1.20; 100 for \$4.50.**

PLUMOSUS (Feather or Plume Hyacinth). Handsome feathery plumes of violet-blue, 6 to 7 inches high, blooming in May. Resembles violet-coral; attractive and different. In cold climates this will need some protection as the buds are apt to frost if weather gets too cold after they have come through the ground. **Doz. 70c.**

IXIAS

(Corn Lilies)

The colors vary from all shades of pink through red and yellow, blush and pure white. These beautiful bulbs from the Cape Colony (South Africa) are far too little known; they should be planted in late autumn and in cold districts must be covered with a thick layer of straw or leaves. Splendid for Southern states. Few bulbs are so lovely and graceful. Those who live where the climate is mild should plant them freely. (We had a planting here at Floravista which stood our exceptionally cold winter of 6 degrees above zero with a mulch of 4 inches of peat moss. **Dozen 50c; 100 for \$3.50.**



IXIAS

CHIONODOXA LUCILIAE

"The hyacinth mixture was in just the colors I asked for and every one bloomed. Ditto the crocus. I have tried ERANTHIS before without having one come up, but every single one of yours bloomed, the first on March 19, the earliest I've ever had any sort of bloom in my garden.

*Helen McCaughey,
Augusta, Maine*



MIXED
CROCUS
(Page 23)



IXIOLIRION (Siberian Bluebell)

PALLASII. New and rare flower of unusual lasting qualities. Bears umbels of beautiful violet six-lobed flowers in May and June. Thrives in any good deep light soil and fairly open sunny situation. Height 10 to 12 inches. Showy in borders and prized for cutting. Dozen 90c.

CHIONODOXA

(Glory of the Snow)

The Chionodoxa is one of the loveliest spring flowers, and when established, its sheets of blue in very early spring are a great attraction. It blooms at the time of the Crocuses, producing dwarf flower spikes, bearing 12 to 15 flowers of a sky blue with a pure white heart, creating a lovely effect. It should be used in borders as edgings, also massed on rockwork or in the shrubbery. Chionodoxa may be placed in a sunny location or in half shade where they can remain undisturbed for years. They will seed themselves, forming natural colonies. Plant September to November, 3 to 4 inches deep, and for best effect about 18 bulbs to the square foot.

GIGANTEA. A very distinct and beautiful species with large (1½-inch) flowers of a pleasing shade of soft lavender-blue with a light center. Doz. 50c; 25 for \$1.00; 100 for \$3.75.

LUCILIAE. Bright lavender-blue with a white center. Blooms about 1 inch across. Doz. 50c; 25 for \$1.00; 100 for \$3.75.

LUCILIAE ALBA. A charming, pure white form of Luciliae, having same size and habits. Doz. 75c; 25 for \$1.40; 100 for \$5.50.

ROSEA. A new and rare form of Luciliae which it resembles except for the color, which its name describes as a rosy pink. Doz. 75c; 25 for \$1.40; 100 for \$5.50.

SARDENSIS. True gentian blue, of striking beauty. 1-inch blooms. For mass planting cannot be recommended too highly. Doz. 50c; 25 for \$1.00; 100 for \$3.75.

MIXED, ALL COLORS. 12 for 50c; 25 for \$1.00; 100 for \$3.75.

TRITELEIA (Milla)

UNIFLORA VIOLACEA (Blue Star Flower). Each 5-inch stem bears a single pale blue flower with white center. Excellent in the rockery or under trees and shrubs. The bulbs increase rapidly and soon carpet the ground. Blooms at the same time as the daffodils. 12 for 50c; 100 for \$3.50.

IXIOLIRION (Siberian Bluebell)



"The hardiness of *Triteleia* is not well established here, but I'm still trying to find a protected spot where snow, ice, and 30 degrees below zero do not harm them. *ERANTHUS*, however, is definitely hardy. I've had it for 20 years. It is a delightful little spring flower, never fails, endures dryness, 3,000 ft. altitude, and sub-zero. It will multiply by sowing its own seed, but does much better by gathering the fresh seed and throwing it in some out-of-the-way corner unmolested and forgetting them. In a couple of years there is a whole new colony, with their quaint Sir Walter Raleigh ruffs."

Mrs. J. W. Buob,
Coulee City, Wash.

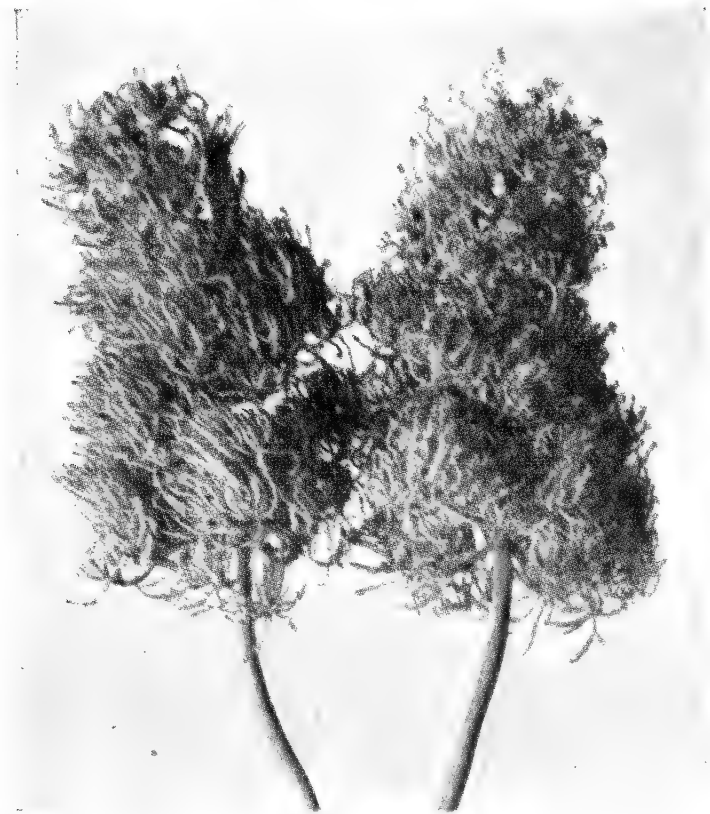


"I had good success with bulbs purchased from you last year and found the *BABY GLADS* hardy in the mountains of North Carolina."

Mrs. John Burroughs,
Bat Cave, N. C.



BABY GLADIOLUS (Page 26)



MUSCARI PLUMOSUS
TRITELEIA (Blue Star Flower)

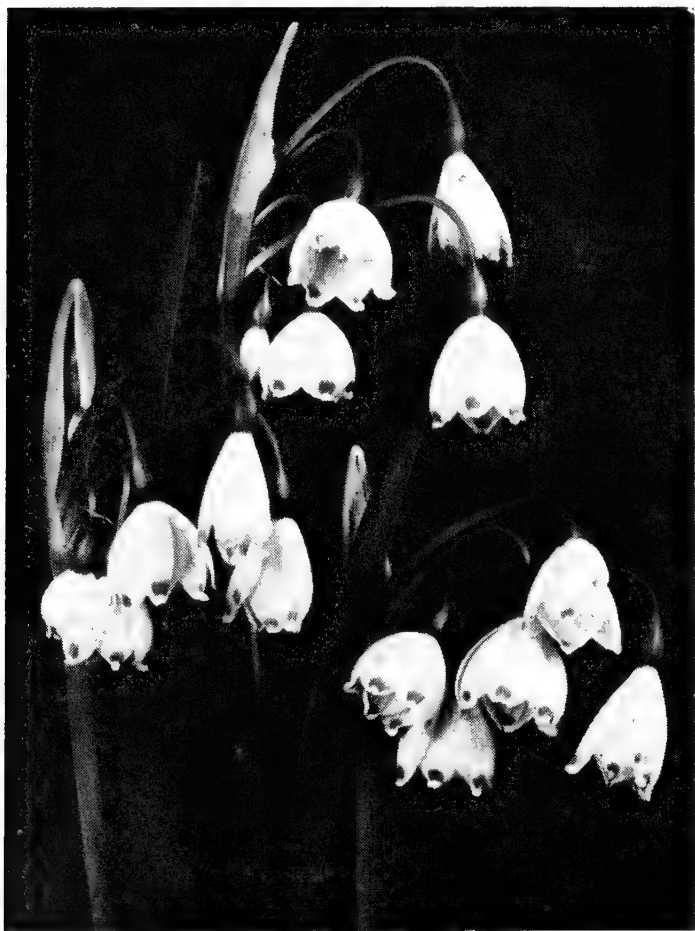




FRITILLARIA MELEAGRIS

FRITILLARIA

FRITILLARIA MELEAGRIS. Called the Guinea Hen Flower here and in England the Snake's Head Fritillary, this charming bulbous plant can be naturalized in full sun or partial shade. Its drooping bell-shaped flowers, checkered with purple on yellow, are produced in April and May. The coloration and markings vary, some individuals being almost pure white. Should be planted in clumps for best results, about six inches deep. Don't plan on moving them for several years. Mixed colors only, **12 for 50c; 100 for \$3.50.**



LEUCOJUM (Snowflake)

GLADIOLUS NANUS

(Baby Glads)

Beautiful new strain of fall planted gladiolus; an extremely popular flower of marvelous grace and beauty. The dainty flowers carry the characteristic diamond-shaped markings on the lower petals. These flowers are easily grown and hardy down to a temperature of about 10 degrees F. In colder climates they should be grown in a frame and well mulched. For us here at Floravista, they bloom in late June and early July, before the regular glads come into bloom, and are much sought after by florists. They make very dainty table arrangements, being smaller and much more graceful than the later blooming varieties. Plant about 4 inches deep in Sept. and Oct. Priced at **3 for 30c; 12 for \$1.00; 100 for \$7.00.**

AMANDA MAY. Bright salmon red with small violet blotches in lower petals. Very large flowers on fine spikes. One of the best.

BYZANTINUS. A robust grower for a species variety and petals more spreading at maturity. Upper three petals are dark purple and three lower ones have a prominent white stripe. Byzantinus is hardier than most baby glads, but still little known in most gardens.

PEACH BLOSSOM. Uniform delicate pink.

SPITFIRE. Brilliant scarlet with deeper blotches. Very free flowering and the best in its color class.

THE BRIDE. Pure white; the only white baby glad without a brightly colored blotch.

All above baby glads priced at **3 (any one variety) for 30c; 12 for \$1.00; 100 for \$7.00.**

MIXED COLORS. We will hand mix a good variety of colors and varieties, our choice. If you have a preference for any special color, please advise and we will try to include it as long as colors hold out. **3 for 30c; 12 for \$1.00; 50 for \$3.75; 100 for \$7.00.**

NYMPH. Large pure white flowers with crimson blotches in lower petals. The lovely white flowers look as if a nymph had dabbed a bit of paint on the lower petals, sometimes letting a little of it slip over onto the upper petals by mistake. Extra strong grower and one of the tallest varieties; graceful branching sprays. An extra choice variety. **3 for 45; 12 for \$1.50.** (Not included in collection.)

WARNING. While English Iris and Baby Glads grow to perfection along the Pacific Coast and in warmer sections of the country, in colder climates they should be treated as semi-hardy and given a nice warm mulch. Plant Baby Glads as late as possible before the soil freezes, so as to discourage top growth which would freeze and damage the growth of the plant. If you want to experiment, try a few at first to see what success you will have in your colder climate. Unless you know how they perform in your locality, don't buy in quantity. We want to sell you the bulbs, but we also want you to get results from them.

BABY GLAD COLLECTION

3 each of the 5 varieties listed
15 bulbs \$1.50

6 each of the 5 varieties listed
30 bulbs \$2.75

12 each of the 5 varieties listed
60 bulbs \$5.00

All properly labeled and postpaid

LEUCOJUM (Snowflake)

LEUCOJUM AESTIVUM. A very handsome, hardy and robust plant producing in May elegant spikes of long stemmed flowers highly prized for vases. The stems 14 to 18 inches high are topped by 4 to 8 handsome white, drooping, bell-like flowers having a small dot of green on the edge of each petal. The bulbs look like narcissus, require similar culture, and may be left undisturbed for years. Plant in September to November, 3 to 4 inches deep, measuring from the shoulder of the bulbs. Prefers a partly shaded position in moist loamy soil well drained in winter. Lovely in fern borders or in groups in the shrubbery. 3 for 30c; doz. \$1.10; 100 for \$7.50.

SCILLA CAMPANULATA

(Wood Hyacinths)

Produce graceful spikes of bell-shaped flowers similar to hyacinths. Very strong growers and ideal for naturalizing as they will thrive in full sun, partial shade, under trees and in shady places. Showy border and rock garden flowers; fine for small bouquets. They bloom in tulip time and are lovely planted in a bed of tulips or bordering a tulip bed.

EXCELSIOR. A tall vigorous grower with sturdy stems. The flower spikes are large and the individual flowers very large and a delightful shade of deep lavender blue. This is the finest of the Scilla Campanulatas. A group of these in the border, with the sun on them, makes a brilliant show. Later flowering. Doz. 60c; 100 for \$4.20.

ROSE QUEEN. Soft lilac-rose. Doz. 50c; 100 for \$3.50.

WHITE QUEEN. Pure white. Doz. 50c; 100 for \$3.50.

MIXED COLORS, Scilla campanulata.
Doz. 50c; 25 for 90c; 100 for \$3.50.



SCILLA CAMPANULATA, EXCELSIOR



SCILLA
SIBIRICA

SCILLA SIBIRICA (Siberian Squill)

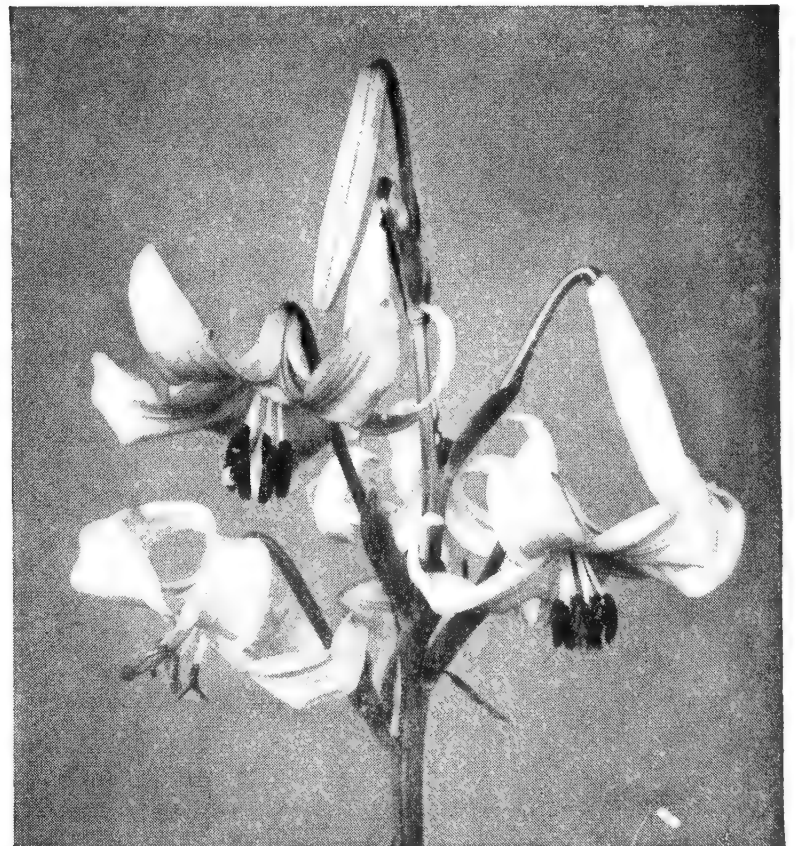
A very charming plant for early Spring flowering, either planted in masses or for edging. They are of dwarf and compact habit, and excellent for forcing in pots, bowls, etc., and form a pleasing effect among indoor plants. For outdoor culture, plant 3 inches deep in well drained soil where they can remain for several years. They seldom disappoint one if occasionally enriched with a top dressing of manure.

SIBIRICA BLUE. Bright blue flowers of dwarf, compact habit, flowers 5 inches high when established, with many stems per bulb. Doz. 70c; 100 for \$4.90.

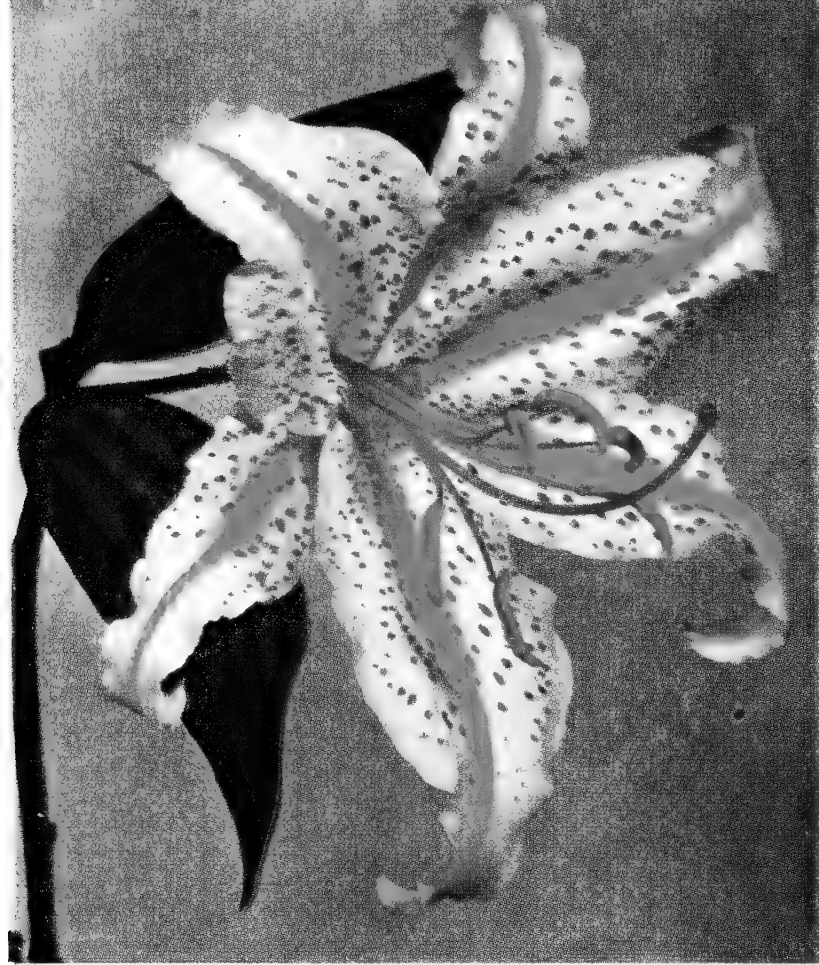
SIBIRICA ALBA. The pure white variety, same as above except for color. Doz. 70c; 100 for \$4.90.

See Complete

Listing of Lilies on Pages 28-29



LILIUM TESTACEUM



L. AURATUM

This year we are offering a few more hardy lilies. All are time tested and deserve a prominent place in your garden. The European type Candidum we have replaced with the virus free Salonikae variety, which blooms very much like the older one. It is free seeding and more dependable, otherwise treated the same.

Having a continuous root system, most lilies resent being disturbed, and some may even fail to bloom after transplanting. Give them proper care and you can enjoy them for years. We send out healthy stock, all of which have blossomed the previous year. The heavy root system on some varieties is essential to their becoming quickly established, do not destroy them or let them dry out. We ship at the proper planting time, so plant them as soon as bulbs are received.

The ideal soil for lilies should be porous enough to permit good drainage, yet containing sufficient organic matter to retain moisture during dry seasons. Soil should be deep and well tilled. Most bulbs are planted deeply and permanent roots feed far below. Most hardy varieties (except Candidum) form annual root systems on the stalk, from top of bulb to surface of soil, which gather in food from top soil. For this reason lilies should never be cultivated deeply close to the stem.

For you flower lovers in the Northern and Northeastern States, it will be a race to get your lilies before your winter starts. You know your conditions better than we do, so order accordingly. We want to sell you our bulbs, but Lilies in the North **MUST** be in the ground before Nov. 1st at the latest. Because some Lilies mature rather late, we cannot ship them until October. It may be a race to beat the frost. Depend on us to do our utmost to get your bulbs to you on time, but don't request delivery before Oct. 10th. They will not be ready before then unless otherwise stated.

To you folks in Southern California the opposite is true. If some means could be found to give the bulbs a rest for two or three months during the winter, you, too, could have beautiful lilies in your garden. The winter rest period is vital to their well-being. In higher elevations they are o.k. Learn their requirements, consider your climate; we send good bulbs, the rest is up to you.



L. REGALE

NORTHWEST

AURATUM. Also called "Gold Banded Lily of Japan". Our bulbs are Western grown from seed and are as free from virus as any lilies of this type will ever be. Fragrant, waxy white flowers with golden streaks through center of petals, often crimson spotted. Flowers of great size, blooming in August and September. Plant 5 to 7 inches deep in full sun and a rich, well-drained soil. **Flowering size bulbs, each \$1.35; 3 for \$3.75; 12 for \$13.75.**

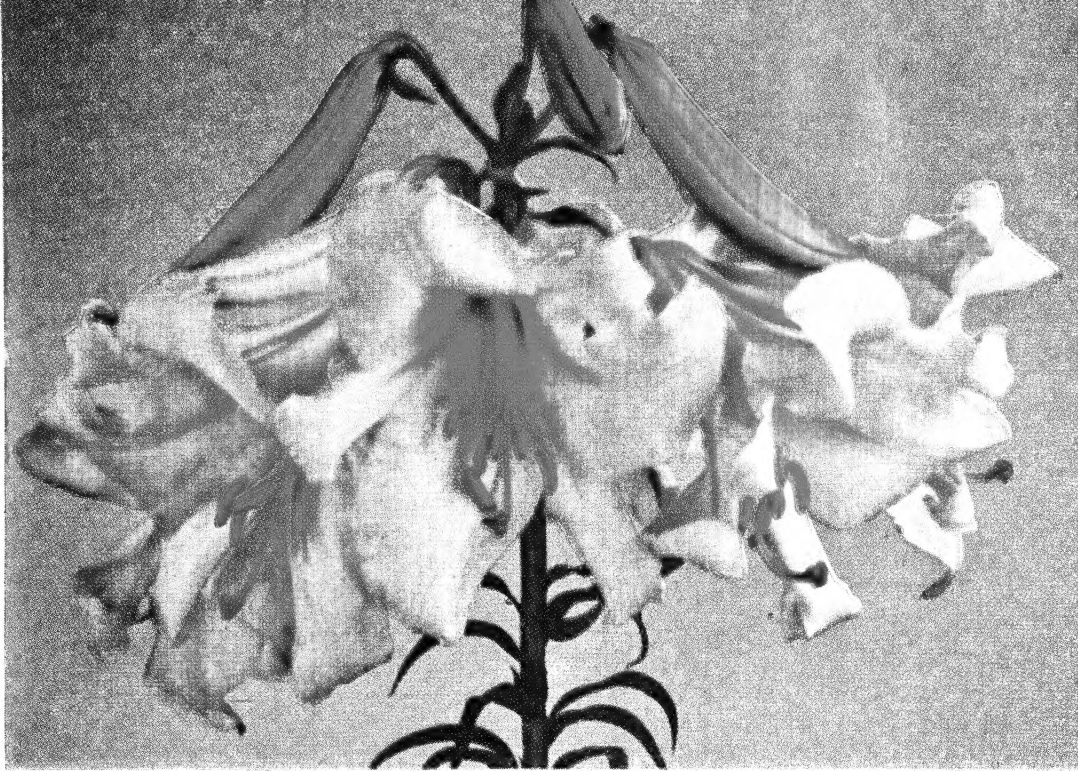
CANDIDUM (Salonikae)—This is a recently discovered, free-seeding variety of Madonna. Trumpets are trifle shorter and more open, but the plant is equally as beautiful as the European variety. We do not believe it is quite so susceptible to Botrytis or "lily fire" as the old variety. This lily makes rosettes in the fall, carrying over until spring. Planting should be done in September, if possible. Bloom appears in June or early July. Pure white open trumpets, yellow anthers. Plant bulbs shallow, not over two inches to top of bulb. **AUGUST SHIPMENT ONLY. Each 50c; 3 for \$1.40; 12 for \$5.00.**

CENTIFOLIUM HYBRIDS—Gorgeous, tall growing lilies with strong stems, bearing trumpets of pure white or ivory, suffused brown or rose on outside of petals. Some have brown pollen, others bright yellow. Blooms follow the Crow's Hybrids about a week, usually through July. Wonderful in large plantings where height is desired. Our bulbs are all from re-selected seed. **Each 45c; 3 for \$1.25; 12 for \$4.50.**

FIESTA HYBRIDS. As cheerful and gaily colored as the name implies. Colors range from bright yellow through orange to beautiful dark rich red. Flowers are recurved on a graceful stem. They are sun-lovers and should be planted 5 to 6 inches deep in full sun. Propagation is rapid from stem bulblets, and resistant to mosaic. Blooms here in July. Mixed colors only. **Each 90c; 3 for \$2.50; 12 for \$9.75.**

FIREFLAME. A short, sturdy lily of Umbellatum x Tigrinum parentage, growing to 25 inches high. Color is solid mahogany-red slightly spotted with deep maroon or black. The very large flowers face out and have broad, heavy textured petals. When established, as many as eight flowers are produced on each spike, well spaced on the sturdy stem. Plant 5 to 6 inches deep in full sun. **Each \$2.25; 3 for \$6.00.**

PARDALINUM GIGANTEUM, The Sunset Lily—One of the most popular of the giant turks-cap lilies. The famous Bellingham Hybrids are doubtless related to this fine lily. Grows quite tall, 5-7 feet and bears 20 or more scarlet, recurved blooms tipped with golden-yellow and spotted deep maroon. Bulbs grow in large clusters and must be cut apart in dividing. Plant 5 inches deep. Blooms July. **Each 40c; 3 for \$1.10; 12 for \$4.00.**



GROWN LILIES

▲
CENTIFOLIUM
HYBRIDS

PARDALINUM
GIGANTEUM
(Sunset
Lily)

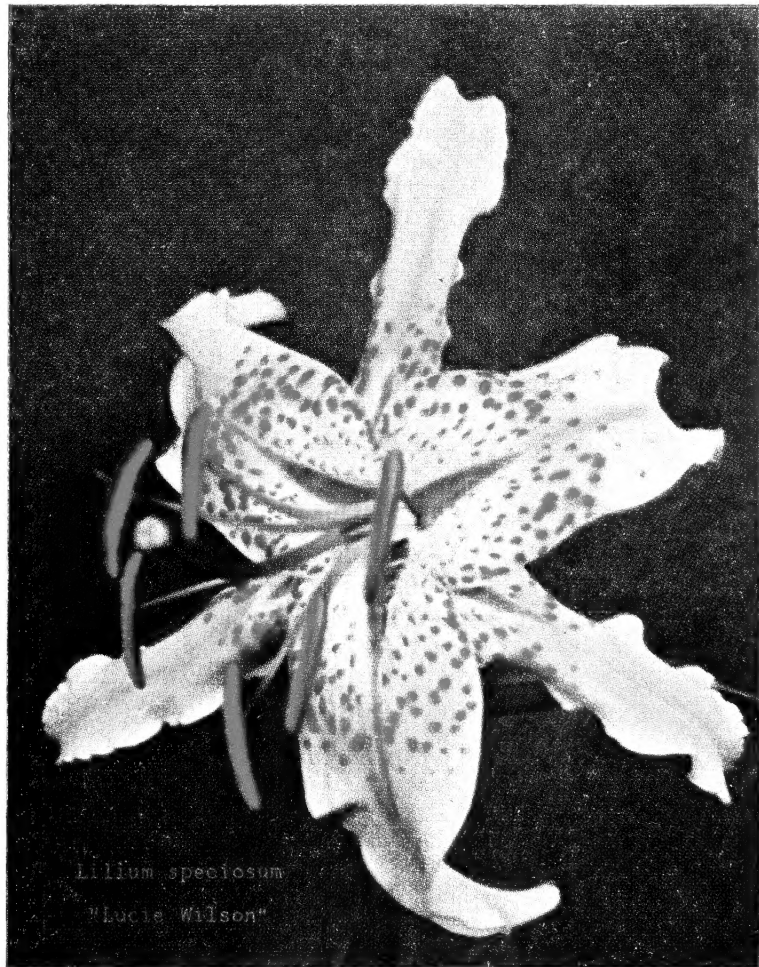
**ALWAYS 6 BULBS AT
HALF OF DOZEN PRICE**

RAINBOW HYBRIDS. An upright flowering group of cup-shaped lilies that, like tulips, stand straight up. Colors vary from true golden-yellow through all shades of orange to deep mahogany-red. A nice garden variety of rather short growth; makes a vivid spot in any garden. Full sun is required and should be planted 4 to 6 inches deep with good drainage. Mixed colors only. Each 55c; 3 for \$1.50; 12 for \$5.50.

REGALE—Probably the most widely-known and loved trumpet lily. Golden-throated white trumpets stained pink to deep rose on exterior. Very heavy scented. Very hardy and should succeed in every garden. Need no staking as stems are wiry and strong. Plant 6-8 inches. Blooms July. Flowering size 4-6 inches—Each 25c; 6 for \$1.40; 12 for \$2.50.

SPECIOSUM "LUCIE WILSON"—A stately lily of upright growth. Numerous stalks from mature bulbs often reach six feet. Soft pink recurving flowers, delicately scented, margined white and spotted deep rose are born laterally on stem. Gracefully waved and frilled petals roll back to expose a pea-green star in the center, while bright brown anthers poise several inches away, seemingly suspended by a hair. Without question the finest lily in existence for corsages and bouquets. Blooms last up to 10 day in water. Plant bulbs 6-8 inches deep. Each \$1.00; 3 for \$2.75; 12 for \$10.00.

TESTACEUM (Nankeen)—One of the most sought-after lilies in existence at present. We never can quite supply the demand for bulbs. Deep, apricot-yellow recurving blossoms face downward, from which are suspended fiery orange anthers. Flowers held in an open cluster at crest of the stem. A distinct, delightful fragrance completes this altogether lovely lily. Grows 4 to 5 feet tall in full sun. Plant bulbs 3 to 4 inches deep. **AUGUST SHIPMENT ONLY.** Each 90c; 3 for \$2.60; 12 for \$9.00.



L. SPECIOSUM "LUCIE WILSON"

HARDY LILY COLLECTION

1 Centifolium	\$.45
1 Fiesta Hybrid90
1 Sunset40
1 Rainbow Hybrid60
1 Lucie Wilson	1.00

Regular catalog price \$3.35

COLLECTION PRICE

5 bulbs, all properly labeled, Postpaid, \$3.15
15 bulbs, 3 each above 5 varieties, properly labeled, postpaid, \$8.75





"MAMA" AND "PAPA" ON OUR HYACINTH HILLSIDE

NORTH + SOUTH = WEST

The writer, having been born in Michigan soon after the turn of the century, came to Washington at a very early age and grew up on a small farm with ambitions to become an expert potato grower. After the flea-beetle infestation hit Western Washington, however, it was not hard to switch to bulb culture which was still in its infancy. We have grown up with the bulb industry of the Pacific Coast and have lived to see Northwest grown bulbs recognized as the world's best. This is due to painstaking efforts on the part of growers in keeping stocks healthy and vigorous. We are happy with our work.

Mrs. Kanouse was born in old Kentucky, but her family soon left the blue grass for the tall timber of the Evergreen State. After teaching school long enough to get her life diploma she found growing flowering bulbs a fascinating and satisfying vocation. No more regular routine of the classroom; gardening work varies with the seasons. Longer hours, too, sometimes not as remunerative as teaching, but soul satisfying. She, with the help of husband and girls, manages to can and freeze over

300 quarts of fruit and vegetables each season, so the family is assured plenty of eats.

Carole, now a first year high school student, likes to cook and play the piano. An honor roll student, she also plays clarinet in the school band. Horses are her hobby, which she collects with enthusiasm whenever she can. It is regrettable that we can't keep a real live horse for her. Last summer she started a butterfly collection and has caught and mounted most of our local ones.

Kathryn is our tomboy, now in the eighth grade. On the school pep squad she performs at all school athletic events. Also on the honor roll, her special interest is acrobatic and tap dancing and it comes natural for her. She has so many hobbies that it keeps her busy. It is probably a stand-off between dogs and stamps as to her first choice, but she collects everything; a pack-rat has nothing on her.

Naturally we are proud of our girls and do a lot of bragging, which is the privilege of parents. Both girls were born in Olympia, the best little capital city in the country. Our daughters are the best crop we grow here at Floravista and they are growing up too fast to suit us.

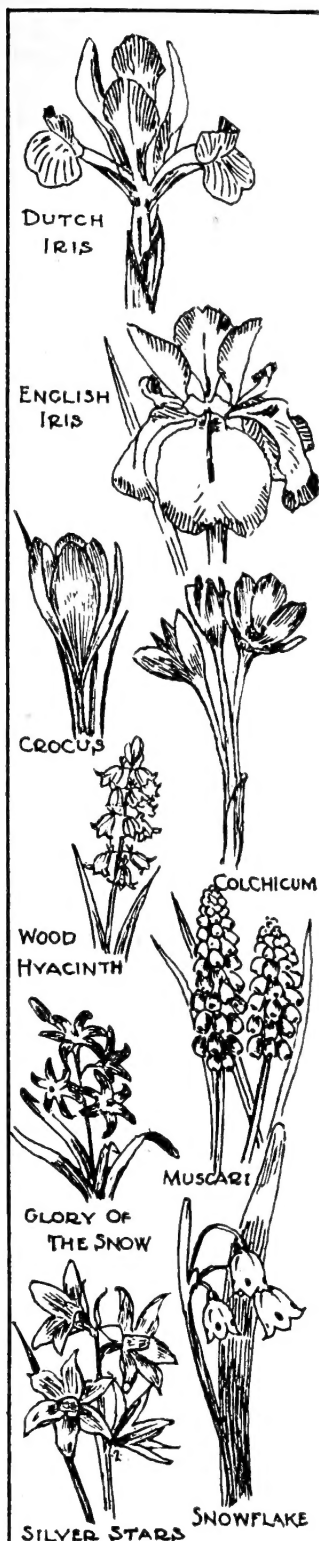
BULB PLANTING CHART

GROUND LEVEL	BULB PLANTING CHART											
1"	CYCLAMEN											
2"	TUBEROUS BEGONIA, LILY OF THE VALLEY, IRISE, PEONY											
3"	LILIA LONG LILIES, GLADIOLUS (BABY), MUSCARI, ANEMONE, CROCUS, SNOW DROP, SPARAXIS											
4"	SEILLA, EREESIA, HYACINTH ROMAN, BULBOUS IRISE, WATSONIA											
5"	LILIES BASE ROOTING, DAFFODIL, NARCISSUS, PAPER WHITE, GLORY OF THE SUN											
6"	TULIP, SNOWFLAKE, LILIES STEM ROOTING											
7"												
8"												
9"												
10"												
11"												
12"												

WINTER MULCHING

Where winters are cold, or spring comes slowly, with much freezing and thawing, we recommend applying a mulch covering of evergreen boughs and leaves. Such a covering should be applied after the ground freezes and be left on until growth starts above the soil in spring. When growth is seen above the ground level, remove about half of the mulch and a week later remove the rest. Mulches are not like blankets to keep bulbs warm. On the contrary, they keep the ground constantly frozen, eliminating the danger of alternate freezing and thawing. Mulches are not necessary in mild climates.

PLANTING INFORMATION FOR BULBS



NAME	PLANTING TIME	SPACING	DEPTH TO PLANT	CULTURAL NOTES
Scilla Italica and Sibirica Campanulata	Sept.-Nov.	3 in.	3-4 in.	Good, well drained soil.
	Sept.-Nov.	4-5 in.	5-6 in.	Top dress with bone meal or wood ashes. Useful naturalized in woods and shady place.
Leucojum	Sept.-Nov.	6-8 in.	6-8 in.	Partial shade in moist loamy soil, well drained in winter.
Muscari	Sept.-Nov.	2-3 in.	3-4 in.	Sun or light shade. Best in good sized clumps.
Jrnithogalum nutans	Fall.	4-6 in.	4-5 in.	Sun or shade. Prefers heavier type of soil.
Erythronium	When received.	2-4 in.	2-3 in.	Don't allow bulbs to dry while planting. Set with growing point upward in loose gritty soil rich in well rotted leaf mold. Moist shady place.
Chionodoxa	Sept.-Nov.	18 bulbs per sq. foot.	3-4 in.	Sun or half shade. Moisture and light during growth.
Trillium	When received.	8-10 in.	5-6 in.	Light or deep shade in rich deep, moist soil with plenty of woods soil. Never disturb.
Calochortus	Late Oct. just before soil freezes.	4-8 in.	3 in.	For rock gardens in sun. Best in pots or boxes. Water only when in full growth. Plant in wire baskets to protect from rodents. Lift when they die down and store dry until October.
Colchicum	Aug.-Sept.	6-8 in.	4 in. 2 in. over the top	Sun, or part shade in warm climates. Deep well enriched soil. Replant when crowded, waiting until leaves have died down.
Narcissus	Sept.-Nov.	6-8 in.	Small, 6 in. Large, 9-12 in.	Prefer a good sandy loam.
Tulips	Oct.-Nov. Dec. in south	4-5 in.	Light soil, 9-12 in. Heavy, 6-9 in.	Lift when dormant and store in a cool dry place until October. Give refrigeration treatment if planted in south.
Hyacinth	Before Nov.	6-10 in.	4-6 in.	Good sandy loam, mulch in cold climates. Nice in groups against shrubbery.
Crocus	Early, soon as received.	Lawns, 1 in. Other, 2 in.	3-4 in.	Good soil, sun or light shade. Replant or renew every two to three years.
Iris Dutch and Spanish	Sept.-Oct.	6-8 in.	3-4 in.	Rich, light soil with good winter drainage. Mulch in winter. Lift when crowded during August, replant in September.
	Sept. 1, early planting best.	8-10 in.	4-5 in.	Moist loam, rich in humus or a good garden soil. Needs water during growth. Leave until clumps are crowded.

INDEX

	Page		Page		Page
Classification of Daffodils	14	Ixiolirion	25	Narcissi, Special Collection	13
Chionodoxa	25	Leucojum (Snowflakes)	27	Narcissi, Triandrus	10
Crocus	23	Lilies	28-29	Narcissi, Trumpet	6
Eranthis	24	Muscari	24	Ordering Instructions	2
Fritillaria	26	Narcissi, Double	9	Scilla	27
Galanthus (Snowdrops)	23	Narcissi, Jonquilla	10	Triteleia	25
Gladiolus nanus	26	Narcissi, Large Cupped	6-7	Tulips, Botanical	21-22
Hyacinths	4-5	Narcissi, Miscellaneous	14	Tulips, Breeder	18
Hyacinths — Double	5	Narcissi, Mixed	11	Tulips, Double Peony Flowered	17
Iris, Dutch	3, 4	Narcissi, (Tazetta) Poetaz	11	Tulips, Mayflowering	19-20
Iris, English	3	Narcissi, Poeticus	11	Tulips, Mixed	22
Iris, Spanish	3	Narcissi, Rock Garden (Species)	12	Tulips, Parrot	16-17
Ixias	24	Narcissi, Small Cupped	8-9	Tulips, Planting Stock	22
				Tulips, Single Early	18



ENGLISH IRIS
(See Page 3)
Fascination (*orchid*)
Gale S. Hill (*purple*)
R. M. Conley (*light blue*)

A. N. KANOUSE

Floravista

ROUTE 3, OLYMPIA, WASHINGTON